



BAILEY COUNTY JOURNAL

'The Community Of Opportunity-Where Water Makes The Difference'



© 1990

Vol. 30, No. 6

12 PAGES TODAY

Published Every Sunday At Muleshoe, Bailey County, Texas 79347

Member
TA TEXAS PRESS
ASSOCIATION

20¢ SUNDAY, FEBRUARY 10, 1991

FFA & 4-H Youth Enter Houston Show

around muleshoe

Muleshoe Activities Committee (MAC) will have their annual meeting February 19, 7:30 p.m. at the Muleshoe State Bank meeting room. Dick Pylant will have the program. All members are asked to please attend the meeting.

Cub Scouts, their families, and guests will be attending the annual Blue and Gold Banquet on Friday, February 15, at 6 p.m. at the Methodist Church Fellowship Hall.

Parents are asked to bring a covered dish to adequate to serve your family, plus two guests.

For further information, if needed, call Belinda Morris or Kay Graves.

From Watson Junior High School Educator of the Week is Bob Graves, principal.

Artist of the Month was Judy Rowe.

Principal's honor list included Lacy Morris, sixth; Wayne Palmer, seventh and Heather Villalobos, eighth grade.

The Bailey County Sheriff's office is still investigating the theft of a 1975 front-end loader, from Precinct Three, near the Maple community.

Joey Kindle, commissioner, said the front-end loader was valued at \$21,500. It disappeared between November 6, 1990 and November 8, 1990.

Funeral services for Nettie Mae Scott, mother of Flo Brown, formerly of Muleshoe, were held at 2 p.m. Saturday in the First Christian Church Chapel in Lubbock.

Mrs. Scott died in a Lubbock Hospital Thursday night following a lengthy illness.

Her survivors include a daughter, Flo Brown, Lubbock; one granddaughter, Lisa Brown, of Fort Worth; one grandson, Scott Brown, of Lazbuddie; and two great-grandsons, Heath and Scotty Brown, both of Lazbuddie.

IT'S COOKIE TIME!!

The youth of Calvary Baptist Church are once again conducting their annual cookie drive.

They are taking orders for giant (9-inch) Valentine cookies. These are iced and decorated sugar cookies personalized with your own message to that very special person.

Place your order now. They are \$3.75 and delivered inside the city limits.

Contact any Calvary Teen or call 272-5319 or 272-4012.

The Calvary Teens added, "Thanks once again for helping us to go to church camp in June."

Muleshoe Athletic Boosters will present a Mens', Womens, and Mixed Division Volleyball Tournament, March 7-9.

The double elimination tournament will be played in the Muleshoe Junior High gym.

T-Shirts will be given for first

Cont. Page 6, Col. 2

WEATHER

February 2	65	17	.00
February 3	62	32	.00
February 4	70	31	.00
February 5	59	26	.00
February 6	58	19	.00
February 7	62	19	.00
February 8	60	18	.00



FLAG BEARERS AT TMC--Amanda Lopez, Ashley Gutierrez and DiAnna Mendoza were the flag bearers Wednesday morning at a "Ribbon Rally" at the Texas Migrant Council. One of the children at TMC, Jesus Yap's father, Aaron Lopez, is presently in Saudi Arabia. Romero Sifuentes, from TMC's main office at Laredo, is also serving in Saudi Arabia. (Journal Photo)

Cities And Counties Receive Latest Mixed Drink Tax Check

State Comptroller John Sharp Tuesday sent checks totaling \$11.7 million to 219 counties and 446 cities that tax mixed drink sales.

The checks represent the counties' and cities' share of the state's 14 percent mixed drink tax collected during October, November and December of 1990.

Bailey County received a check in the amount of \$557.66, on reported tax revenues of \$5,204.78. The City of Muleshoe also received a check of \$557.66 on reported tax revenues of \$5,204.78.

Cochran County's check was in the amount of \$103.17, on their reported revenues totaling \$962.89.

In Lamb County, the check was in the amount of \$426.76 on their reported tax revenues of \$3,983.08.

Parmer County received the smallest check, \$42.61 on tax revenues reported to be a total of \$397.69.

Sharp said that the state collected \$56.6 million in mixed drink taxes during the fourth quarter of 1990, up 23 percent from \$46 million in 1989's fourth quarter.

Counties received \$6.1 million compared to \$5.7 million received during the same three-month period of 1989. Cities received \$5.6 million, up from the \$5.4 million received last year during those months.

The state's General Revenue Fund received \$44.9 million, up 29 percent from 1989's fourth quarter collections of \$34.9 million.

"That increase doesn't mean that Texans drank more last year than they did in 1989," Sharp said. "Revenue is up

because the state raised the gross receipts tax from 12 to 14 percent, effective July 1, 1990."

Although the increase raised the state's percentage of the mixed drink tax, the portion allocated to local areas stayed the same.

Under state law allowing the sale of mixed drinks, Texas cities and counties each receive a 10.7143 percent share of the state tax collected on mixed drinks sold within their boundaries.

The mixed drink tax is collected by the Alcoholic Beverage Commission. City and county tax rebates are sent out quarterly by Sharp's office.

Bids, Vacations,

Bonds, Easements

All On Agenda

At 10 a.m. Monday, the Bailey County Commissioners Court will meet in regular session at the Bailey County Courthouse.

After routine items, the commissioners will hear auditors' review of the financial report for fiscal year which ended September 30, 1990; open and consider bids for the sale of a 1954 3/4 ton pickup from Precinct Four; Jackey Wayne Burriss will discuss Hepatitis-B vaccinations for the EMS personnel, and commissioner's will discuss his vacation.

Also, to be discussed will be a maintenance agreement for the Law Enforcement Center telephone system and renovation of the jail.

In other action, the commissioners will consider granting a right-of-way easement to Teddy Harrison; consider advertising for bids for Janitorial Service; discuss and consider payment of local matching funds for the South Plains Association of Government regional solid waste management plan.

They will approve soil conservation worksheets; approve the bonds for Deputy District Clerk, Juvenile Probation officer and Justice of the Peace, Precinct Four; discuss release of security pledges and pledge new securities and consider Budget Amendment No. Two to FY 1991 budget.

Twenty-one FFA members and 29 4-H youth from Bailey County will be joining other FFA and 4-H members from throughout the state for showing competition at the upcoming

Houston Livestock show Feb. 16 through March 3 at the Astrodome in Houston.

These FFA and 4-H exhibitors compete in one of two divisions of the Houston Livestock Show - the junior show division. The other division, the open show, attracts its exhibitors from the world's agricultural industry, primarily professional breeders and ranchers.

Entries in both the open and junior shows combine with horse show entries to make the Houston Livestock Show the world's largest.

FFA members entering include LeAnn Altman, with one lamb and one barrow; Buck Angeley, one barrow; Gage Angeley, one barrow; Bryce Embry, one lamb and one barrow; Kyle Embry, one steer, one lamb and one barrow.

Exhibiting barrows will be Justin Lee, Scotty Mills, Clay Myers, Mandy Myers, Johnny Noble, Brandon Thomason, Larry Wauson and Steven Wauson, who will also exhibit a steer.

Also, Jeffrey Wheeler, a steer, a lamb and a barrow; and Wade Wheeler, a steer and a lamb.

From the Three Way School, FFA members exhibiting will be Cynthia Bennett, one lamb; Carrie Kindle, one lamb; Marc Tucker, one barrow.

Muleshoe 4-H members exhibiting will be Katie Black, one steer and one barrow; Lynsie Black, one steer and one barrow; Jacen Claunch, one steer; John Bryan Cowart, one steer; Robin Cowart, one steer; Jason Harmon, one barrow; Krystal Heathington, one steer and one barrow; Jill Hodges, one lamb; Lori Hodges, one lamb; and Suzy Hodges, one lamb.

Also, Bob Holloway, one steer; Jack Holloway, one steer; Amy Hooten, one lamb and one barrow; Heather Hooten, one lamb and one barrow; Keila Kennedy, one steer and one barrow; Ky Kennedy, one steer and one barrow; Jonathan Kindle, one barrow; and Keith Kindle, one barrow.

Also, Brittany Kirby, one barrow; Monty Kirby, one steer and one barrow; Russell Pollard, one steer and one barrow; Scott Pollard, one steer and one barrow; Larry Robertson, one steer, one lamb and one barrow; Rebecca Robertson, one steer, one lamb and one barrow; and Colin Tanksley, one steer and one barrow.

And, Courtney Tanksley, one steer and one barrow; Joshua Tooley, one steer, one lamb and one barrow.

Our congratulations to these 4-H youth and our best wishes to them as they compete in other shows this season.

Cont. Page 6, Col. 1

County 4-H Youth Enter Stock Shows

Spencer Tanksley, CEA-Ag, reports the following results from the recent Ft. Worth and El Paso Livestock Shows for Bailey County 4-H youth as shown:

FT. WORTH STOCK SHOW STEERS

Colin Tanksley, third, middle weight Polled Hereford; Larry Robertson, fifth, middle weight Hereford; Jack Holloway, fifth, middle weight Shorthorn; Bob Holloway, seventh, mid. weight Hereford and Larry Robertson, 15th, middleweight Crossbred.

HEIFERS

Jack Holloway, FIRST, Sumner Yearling, Maine Anjou.

EL PASO STOCK SHOW STEERS

Russell Pollard, 10th place, heavy weight Crossbred; Courtney Tanksley, 11th place, heavy weight Crossbred; Joshua Tooley, 11th place, middle weight Crossbred and Robin Tooley, 14th place, middle weight Crossbred.

BARROWS

Courtney Tanksley, FIRST, Duroc; Russell Pollard, fifth, light weight Hampshire; Russell Pollard, ninth, light weight OPB; Colin Tanksley, ninth, middle weight OPB; Courtney Tanksley, 12th, middle weight Cross; Jason Harmon, 16th, light weight OPB; Krystal Heathington, 16th, light weight Cross; Jason Harmon, 17th, light weight OPB; and Colin Tanksley, 18th, middle weight OPB.

These are Bailey County youth who exhibited and the ranking of their placements. These 4-H'ers and others will be exhibiting their animals in other statewide shows in the coming weeks.

Those shows will include San Antonio (February 11-16), Houston (February 25-March 2), and San Angelo (March 6-March 9). Results of their placements from those shows will be forthcoming as they are received.

Our congratulations to these 4-H youth and our best wishes to them as they compete in other shows this season.

9-1-1 Implementation Set Here For October

As 9-1-1 implementation dates near, citizens of the region will hear and learn, more and more about the emergency service. This emergency service will be beneficial to communities throughout the South Plains saving lives and property. After implementing the service, citizens are encouraged to use the three-digit, easy - to - remember number in emergency situations.

The implementation date for Bailey County is projected for October, 1991.

By having 9-1-1 service, faster access to public safety agencies in an emergency situation will be a contributing factor to the success of the system. This is due to 9-1-1 lines being dedicated, and 9-1-1 call takers trained to recognize, answer, and handle the call as an emergency call.

Emergency response personnel from public safety agencies

are aware of the service, how the 9-1-1 system operates, and are humble enough to work with other agencies to provide the necessary assistance needed in an emergency.

Overall, 9-1-1 will bring the communities closer together. This will result in a better working relationship and better communication among public safety agencies and the community. Most of all, 9-1-1 will help save lives and property.

The Dallas Morning News recently reported the following story about an Austin family:

Four-year old Erica Hoyt was credited with saving the lives of her mother and newborn sister by remaining cool under pressure when talking with emergency medical workers. The girl's mother, Karen Hoyt, who was eight months pregnant, began bleeding profusely.

Ms. Hoyt dialed 9-1-1 and Cont. Page 6, Col. 4

Additional information about Cont. Page 6, Col. 3

**Eric Smith
Funeral Services
Held Saturday**

Funeral services for Eric J. Smith, 72, were held at 2 p.m. Saturday in Ellis Funeral Home Chapel of the Chimes with the Rev. Richard Edwards, pastor of the First United Methodist Church and the Rev. Mike Doyle, pastor of the Spanish Assembly of God Church, officiating.

Masonic graveside services were conducted at 3 p.m. (New Mexico time) in Portales Cemetery, Portales, N.M. Burial was under the direction of Ellis Funeral Home of Muleshoe. Smith died at 7:50 p.m. Wednesday in Muleshoe Area Medical Center.

Born March 20, 1918, in Enloe, TX, he had been a resident of Muleshoe since August 1965, moving here from Portales, N.M. He was a member of the Portales Church of Christ, Delta Masonic Lodge at Cooper, TX, Ballut Abyad Shrine Temple of Albuquerque, N.M., Chapter, Council, Commandery of York Rite, Order of Eastern Star, and Texas Tech Teachers Association. He was a school teacher, having taught science from 1965 to 1979 in Muleshoe High School. He owned and operated Clintsmith Jewelry in Portales, N.M. from 1948 to 1959. He married Lucy Faye Yoachum on June 10, 1951, in Portales.

He was a veteran of WWII, serving in the U.S. Army.

Survivors include his wife, Lucy Faye; a daughter, Patricia Faye Thatcher and a son-in-law, Charles Thatcher, Jr. of Portales, N.M.; a sister, Hibernia Turner of Ft. Worth; a brother, Robert Smith of Houston.

The family suggests memorials be made to the Parkinson Foundation, through Ellis Funeral Home, Box 403, Muleshoe, TX 79347.

1990: warmest year
on record for Earth.

**Chester Lee
Services Held
At Earth**

Funeral services for Chester Lee, 64, of Earth were held at 4 p.m. Saturday, Feb. 9 in the Earth United Methodist Church with the Rev. Cecil Shirey, pastor, officiating.

Burial was in Springlake Cemetery under the direction of Parsons-Ellis Funeral Home. Justice of the Peace Skeeter Brock pronounced him dead Thursday at his home.

Born August 2, 1926, in Ringling, Okla., he moved to Earth in 1987, from Lone Oak, Texas. He was a retired pipeliner and a veteran of World War II, serving in the U.S. Army. He married Mickey Thomas on Dec. 31, 1949, in Childress. She died in November 1986.

Survivors include four daughters, Paulette Garner, Pauline Cooper and Becky Perry, all of Earth and Beverly Swink of Mountain View, Missouri; three sisters, Willie Rowan and Ola King, both of Bakersfield, Calif. and Jewell Pellam of Quinlan, TX; a brother, Melvin Lee of Clovis, N.M.; seven grandchildren; and one great grandchild.

The family suggests memorials be made to the Sybil Davis Fund in care of the Earth First State Bank.

**Gabriel Salazar
Funeral Services
Pending**

Services for Gabriel Salazar, 85, are pending with Ellis Funeral Home in Muleshoe. Salazar died at 10:30 p.m. Thursday in the Methodist Hospital in Lubbock.

Born March 20, 1905, in Eagle Pass, Salazar had been a resident of Muleshoe three years, moving here from Fresno, Calif.

Survivors include a son, Jose L. Villiarreal of Houston; five grandchildren; and 32 great grandchildren.

A Bill You Won't Mind Receiving

Your right to be treated fairly, professionally, promptly and courteously by the IRS is protected by many laws including the recent Taxpayer's Bill of Rights. A summary of your rights appears in Publication 1, *Your Rights as a Taxpayer*. Highlights include:

Privacy and Confidentiality: Personal and financial information must be kept confidential.

Free Information and Help in Preparing Returns: The IRS provides free publications, telephone and walk-in assistance.

Payment of the Correct Amount of Tax: You are liable only for the least amount of tax due under the law. If your return is questioned, the IRS must send you a letter requesting more information or state a reason why a change needs to be made on your return. You have the right to ask that the time and place for an audit of your return is convenient for both you and the IRS. You also have the right to have an attorney, certified public accountant, enrolled agent or other authorized person to represent you or be present during an interview.

Cancellation of Penalties: If you received erroneous advice from IRS employees, you have the right to request that certain penalties, but not interest, be cancelled. You must show that your reliance on the advice was reasonable and that you filed your return after you received that advice. According to the IRS, information that assists in determining whether there is reasonable cause with regard to erroneous advice includes such matters as: whether the taxpayer tried to find the answer to the question from IRS forms, instructions or publications; the question asked and the specific

facts given to the IRS employee; the answer the taxpayer received; the employee's name; and the date and time of the call.

Appeal of Examination Findings: You have the right to appeal if you don't agree with the examiner's audit findings. Publication 5, *Appeal Rights and Preparation of Protests for Unagreed Cases*, explains your appeal rights in detail.

Fair Collection of Tax: Whenever you owe additional tax, the IRS will send you a bill describing the tax and stating the amount you owe. You should make every effort to pay your bill in full. Notify the IRS at once if you can't pay; you may qualify for an installment agreement.

Special Help to Resolve Problems: If you have a tax problem that you can't clear up through normal channels, write or call the Problem Resolution Office in the IRS district or service center where you have the problem. You may request assistance on Form 911, "Application for Taxpayer Assistance Order to Relieve Hardship," if you will suffer a significant hardship because of the administration of the tax laws. The Problem Resolution Office cannot resolve disputes over tax law.

Refunds: You will receive interest on any delayed refund. You should receive your refund within 45 days after the April 15th due date or the date you filed your federal tax return, whichever is later.

Your taxpayer rights are explained in Publication 1, *Your Rights as a Taxpayer*. For a copy of the publication, call toll-free 1-800-829-3676.

Nursing Home News

by: Joy Stancell

Monday afternoon the Muleshoe Church of Christ came to visit and play Skip-Bo with the residents. We were so pleased to have this nice group to come and visit.

Tuesday morning Louise Legg from Me Ma's Ceramic Shop in Sudan brought ceramics for the residents to paint. Residents participating were: Stella Morgan, Clara Weaver, Audrey Langfitt, Thelma Stearns, Pearl Cox, Bernice Amerson, Patsy Franklin, Minnie Pettyjohn, Ora Roberts, Effie Smith, Guy Kendall and Rosemary Pool.

Tuesday afternoon Lula Maye Shanks, Claudine Embry, Bonnie Green, and Olive Cox came to shampoo and set the ladies hair. Helen Free gave manicures.

Each Sunday morning the Muleshoe Church of Christ conducts communion service, Clara Lou Jones comes for Bible study. Each Saturday morning J.C. Shanks comes to cut the men's hair and give shaves. Glenda Jennings comes on Wednesday afternoon for a Sing-A-Long. Clifton Finnley

comes Wednesday morning to go shopping for the residents.

Thursday morning we gathered in the Day Room for a time of gospel music and singing and an inspirational message by Mike Doyle.

Hester Robertson is out at this time visiting with her two sisters from Albuquerque, N.M. in the home of her sister, Argilee Millen.

Grace Scarbrough brought her button collection and a quilt top for the residents to view Wednesday morning. Helen Free and Joy Stancell displayed their collection of children's tea sets and dishes.

Suspicious people are those who judge mankind by themselves.

For Sale
Cock Pheasants
Call
Jack Little
272-4805

Jewelry and WATCH REPAIR


Buddy Holmberg

- Ring Sizing 2 Day Service
- Remounting & Diamond Setting
- Full Line Watch Batteries
- Neck Chains Repaired
- Jewelry Appraised for Insurance
- Faster Service
- Diamond Re-Tipping
- Prongs Repaired

 
Holmberg Jewelry
312 Main Serving Clovis 49 years 762-9376

Need A Yard Man For 1991
I Can Do Anything You Need Done.

CALL
CAPPY GATEWOOD
ANYTIME
272-5435



BAILEY COUNTY ELECTRIC COOPERATIVE ASSOCIATION

**Annual Membership Meeting
February 16, 1991**

**At The
Muleshoe High School Auditorium**

Registration - 9:00 a.m. Meeting - 10:00 a.m.

Bailey County Electric Cooperative's Annual Membership Meeting will be held February 16, 1991 at the Muleshoe High School Auditorium in Muleshoe, Texas. The meeting is open for all members of Bailey County Electric Cooperative.

A barbecue meal will be served at noon to all guest and to all members and their families. Registration begins at 9:00 a.m. (You must register to get a meal ticket).

**Business meeting will include:
Financial Report Progress Report**

★ Election of Directors from District No. 1 & No. 2

The following have been nominated:

DISTRICT No. 1	DISTRICT No. 2
Darrell Stephens	Alfred Hicks
Norris Conklin	Ed Nickels

MAKE PLANS TO BE PRESENT AT YOUR COOPERATIVE MEETING

NOTE: If you are a member or shareholder of a company, corporation or civic organization, and you are acting as a voting delegate, you must present a letter of authorization at the registration table signed by the president and secretary of that organization.



TMC 'RIBBON RALLY'--The Unique Generation youth group invited the TMC (Texas Migrant Council) children to join them during support week. The children at TMC decided to do a small "Ribbon Rally" to show their support of the Armed Forces in the middle east. One of the children, Jesus Yan's father, Aaron Lopez, is presently in Saudi Arabia. Romero Sifuentes, from TMC's main office in Lorado, is also serving in Saudi Arabia. (Journal Photo)

Local Attorney Presents AAUW Program

The Muleshoe Branch of the American Association of University Women met Monday, February 4th at the Muleshoe Depot.

Gordon Green, local attorney, informed the Branch relative to "Living Wills/Directives to Physicians" and the "Durable Power of Attorney".

Donna Green and Sandi Chitwood were hostesses for the meeting.

Members attending were: Jean Allison, Julie Cage, Joyeline Costen, Margaret Gleason, Maurine Hooten, Nan Johnson, Marilyn Miller, Nancy Benham,

Pam Hancock, Sharon Angeley and Elizabeth Watson. Hostesses for the March

meeting will be Maurine Hooten Virginia Bowers and Beulah Mimms.

Prize Money Offered In Poetry Contest

A first prize of \$500 is being offered for the best poem in a contest sponsored by Sparrowgrass Poetry Forum. Thirty-four other cash prizes will also be awarded. There is no cost to enter.

"The rules are simple: each poet may enter one poem only, 20 lines or less, in any style, on any subject. Deadline for entry is March 31, 1991. Winners will be notified by May 31, 1991,

said William H. Trent, editor. "The contest is open to everyone. But new poets, especially, are urged to enter, because we are always hoping to encourage and reward new talent." Williams continued.

"The poem you send for the contest also will be considered for publication in a hardcover book." Book purchase may be required to insure publication, but is not required to be eligible for the contest.

To enter, send one poem to: Sparrowgrass Poetry Forum, Dept. D, 203 Diamond St., Sistrerville, WV 26175.

Enochs News

by: Mrs. J.D. Bayless

Visiting in the home of Harvey and Bonnie Blackston the past week was her sister, Nell Coats from San Angelo.

Dale Nichols visited a son, Donnie Nichols, at Canyon Thursday.

Visiting in the home of Rev. and Mrs. Donnie Howell Wednesday was Leon Lewis of Muleshoe.

Lazbuddie Students Qualify For TIP

Five Lazbuddie seventh-graders have qualified for the Duke University Talent Identification Program (TIP). To qualify for TIP, a student must score in the top three-percentile on a standardized in-school achievement, aptitude, or mental ability test battery. Those qualifying from Lazbuddie are: Travis Barber, Heather Engelking, Julie McDonald, Socorro Reyes, and Dawn Weir.

The Duke University TIP is a program founded on the premise that "the future of this nation depends upon the fullest development of our best intellectual resources. The objectives of the Program are, therefore, to identify the very bright among our youngsters at an early age; to assist in the educational facilitation of these students; to follow and nurture their talent through the middle and high school years; and to develop an effective research effort to help understand the nature of gifted adolescents."

Students recognized for TIP are asked to participate in another round of standardized testing. The College Board's Scholastic Aptitude Test (SAT), and the American College Testing Program's ACT are used to measure the verbal, mathematical, and general reasoning ability of these highly-able seventh-graders. These tests were developed for college-bound high school students and are far too difficult for the average seventh-grader. Seventh-grade students qualifying for the Talent Identification Program travel to a testing site and take the SAT or ACT alongside high school seniors seeking admittance to college.

Lazbuddie elementary princi-

pal, high school counselor, and standardized test coordinator, Mrs. Anne Farris, accompanied Travis Barber, Julie McDonald, Socorro Reyes, and Dawn Weir to Clovis, New Mexico on Saturday, January 26, where they took the SAT. A fifth student, Heather Engelking, qualified for TOP but was unable to attend.

Lazbuddie school officials extended congratulations to these

students and expressed pride in the students' outstanding accomplishments and demonstration of talents.

Travis is the son of Jerry and LaReta Barber; Heather is the daughter of Dave and Sheryl Engelking; Julie is the daughter of Donnie and Joann McDonald; Socorro is the daughter of Jose and Maria Reyes; and Dawn is the daughter of Doyle and Debbie Weir.



STUDENTS QUALIFY FOR TIP--Five seventh grade students from Lazbuddie recently qualified for TIP (Duke University Talent Identification Program). (Back row, from left) Socorro Reyes, Travis Barber, Julie McDonald. (Seated from left) Heather Engelking and Dawn Weir. (Guest Photo)

BIBLE VERSE

"Know ye that the Lord he is God: it is he that hath made us, and not we ourselves."

1. Who is the author of this verse?
2. What does this verse warn us against?
3. What is the rest of the verse?
4. Where may it be found?

Answers:

1. The Psalmist, probably King David.
2. Against the sin of worry.
3. "We are his people, and the sheep of his pasture."
4. Psalms 100:3.

A community cannot grow beyond the vision of its leaders.

Lordy Lordy
Look Who's 40
From All Of Your Friends

Food Box Elects New Slate Of Officers

The Board of Directors of the Bailey County Food Box met on Friday, Feb. 1 at the Trade Winds Plaza Building. This was the first meeting for the new board. Officers were elected. New officers include: Jim Hartline, chairman; Lucy Mardis, vice chairman; and Sharon Plott, secretary.

Topics for discussion were the Food Distribution Reports for December and January. The Food Box served a total of 102 families for the two months.

Also discussed were the income guide lines. It was decided to leave them as is for the present time. Also reviewed were the application for service forms. There will be changes in that area later. The Bailey County Food Box hours are Tuesday and Thursday from 10 a.m. to 4 p.m.

Board members present were

Betty Griswold, Betty Moore, Josie Pedroza, Father Pat Maher, Jim Hartline, Lucy Mardis and Sharon Plott. Also attending were Rosemary Rangel, Leonard Griswold, Molly Nelson and Pheba Davison.

The Food Box will accept food donations, clothing or cash, magazines or anything that can be used for the needy. Clothes are sold for 10 cents each. All the money goes to buy food for the Food Box.

"We are in need of any type of tables to put our clothes on" said a spokesperson from the Food Box. "We do not receive any type of funding and the Food Box is operated by volunteers.

The next board meeting will be April 5 at 5 p.m.

Anyone who has any donations can call 272-5130 and they will be picked up.

FOOD CORN GROWERS
8101 W
8344

- Texas Sesame and Frito-Lay approved
- Consistent high yields
- Very good standability
- Excellent quality

Special prices in effect through

"Garst Days", February 28.

See Us For Details:

- | | | |
|-------------------|----------------|----------|
| Bailey Gin Co. | Needmore, Tx. | 946-3397 |
| Rex Black | Muleshoe, Tx. | 272-3431 |
| Curtis Hunt | Lariat, Tx. | 925-6498 |
| Jerry Don Glover, | Lazbuddie, Tx. | 965-2162 |
| Roger Sanders | Dodd, Tx. | 965-2338 |



It's Hearts
And Flowers
At...

Rip's
IN TEXICO

VALENTINE SALE

Let Us Help You
With Your
Sweetheart's Shopping -
Men's Or Ladies'

10% OFF Anything Red Or Sterling Silver

Excludes Exotic Leather Boots BUT Includes The Following Red Justins:

Men's & Women's Red Justin Ropers Reg. \$89.95 Valentine Special.....	\$80.98
--------------------------------------------------------------------------------	----------------

Also Children's Reg. \$54.98 Lace Up Ropers \$49.48 Valentine Special.....	\$42.28
Children's Reg. \$46.98 Ropers Valentine Special.....	\$42.28

Several Group Men's & Ladies' Winter Apparel
50% - 75% OFF

Our New
Spring Merchandise
Is Now Arriving!

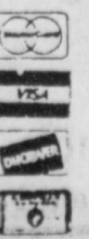
Valentine Gift Suggestions:

- * Locketts * Earrings
- * Belt Buckles
- Single, Double & Triple Heart Styles Available

OPEN 8:00 AM - 6:30 PM C.S.T.

1-800-748-2459
482-3363

314 Wheeler St. IN TEXICO
We're Your Family Store!



Gigantic Skate/Walk-A-Thon Set: Have Fun, Raise Funds

A gigantic Skate-A-Thon-Walk-A-Thon, for all ages is being planned by the Muleshoe Jennyslippers to raise funds for the 4th of July celebration (especially for the fireworks.)

Adults as well as children are urged to pick up pledge sheets at the Muleshoe Public Library, then go out and get those pledges. "Can you walk or skate for four hours (maximum) or one or two hours? You are urged to pick up your pledge sheet, get those pledges and be at the arena of the Bailey County Civic Center on Saturday, Feb. 16," said Nelda Merriott, chairman. "We'll be skating or walking (your choice) from 1 to 5 p.m. Come a few minutes early and get checked in." There will be refreshments for all participants.

"The Jennyslippers are challenging other organizations," Mrs. Merriott continued. "We'll have members skating and walking--send your representatives out."

You can earn the prize you

Library News

By Anne Camp

There is always something new at the library! February 1st, we received the first packet of 15 videos from the West Texas Library System, and every month we will be getting 15 new videos, and will send the first 15 on to another library. This is a very nice collection of various titles. These will be circulated just like our library's own collection for overnight showing at home. We hope everyone will enjoy the variety. A list of the videos is available at the library.

All our eyes are focused on the War in the Gulf, and our books on war planes, ground vehicles, rockets, missiles of the Army, Airforce, Navy and Marines are in great demand. We have laminated a large map and have it on display in order to follow the progress of the war from day to day.

We are still getting IRS forms for the public to use to file their 1990 income taxes. This is another tree service of the library.

Storyhour for pre-school age children will be held Wednesday, Feb. 6th at 10:30 a.m. and all children three or over are invited to come, and enjoy, stories, games, movies and other activities.

February is Heart Month, and Hugh and Pat Young has furnished the library with material for the large display case. They also brought new brochures on having a healthy heart, as well as on heart disease and other topics. For the children there are coloring books--"The Healthy Heart". We need to remember that Saturday, February 9th is the radio auction to support the Heart Association.

want! All participants will receive a Skateathon/Walkathon Badge, and you will receive a Tri Color Back Pack, in addition to any other prize that you earn, by turning in \$25.00 or more in pledges. Other prizes include: Solar Sharp Calculator, \$50.00; Football, Basketball or Soccer Ball, \$55.00; Roller Skates, \$75.00; Skateboard, \$100.00; Keyboard, \$150; AM-FM Walkman, \$150.00; \$50 Gift Certificate, from Poyner's, \$150.00; \$60.00 Gift Certificate, from Wilson Appliance, \$175.00; BMX 20" Bicycle, \$190.00; Roper Boots, \$200.00; 10 speed 26" Bicycle, \$200.00; \$75.00 Gift Certificate from Joe's Boot Shop, \$225.00; and Western Flyer "50's" Cruiser Bicycle, Special Edition! \$425.00.

Set a goal for yourself. You can earn any or all of the above prizes, provided you turn in the amount of pledges required. Sign up as many sponsors as possible, Keep Your Goal In Mind.

Pledges will be collected after the Skateathon/Walkathon has been completed. Sponsors may give a flat donation or pledge by the hour.

Pledges must be turned in by Monday, March 4 at the Muleshoe Public Library and prizes will be awarded on Saturday, April 6 at 10 a.m. in the parking lot of the Bailey County Court House.

"If you would just like to come out and walk with friends--come on out, said Mrs. Merriott. The perimeter of the arena will be set aside for walkers. "We sincerely appreciate the fine support that the people of Muleshoe and the surrounding area always give to the Jennyslippers. Whether walking-skating-or sponsoring a participant--WE THANK YOU.



Latest Arrivals

Whitney Ann Robertson

Jonathan and Angie Robertson are the proud parents of a daughter, Whitney Ann, who was born January 29 at 3:23 a.m. in the University Medical Center in Lubbock.

The young lady weighed six pounds and 12 ounces and was 20 inches long. She has a big sister, Ashley, 4 and a big brother, John 2.

Grandparents are Jim and Pat Walker of Wichita, Kansas, and Jon Rex and Orlean Robertson of Eagle Pass.

Great grandparents are Mr. and Mrs. Donald Gudgeon from Tucson, Ariz., Oral Miller of Durango, Colo., and Mr. and Mrs. Clarence Thrall of Kansas City, MO.



ENGAGEMENT ANNOUNCED--Mr. and Mrs. Jack Turner of Bovina and Mr. and Mrs. George Nieman of Muleshoe announce the engagement and approaching marriage of their children, Tandra Kay and Shawn Page. Vows will be exchanged at 2 p.m. Saturday, March 30 at the Concho River Gazebo in San Angelo. They are both students at Angelo State University. (Guest Photo)



SCHOLARSHIP RECIPIENT--Selina K. Gonzalez, daughter of Ana M. Gonzalez, has received the Sharon Robinson Elliott Province XVII Scholarship. To qualify for this scholarship, a student must be outstanding in campus and chapter activities and have maintained at least a 2.8 average with no 'F' grades. A pre-pharmacy student seeking a BS degree in chemistry and a minor in Biology, Miss Gonzalez is a member of Delta Kappa Zeta, the University of North Texas Top 20, chosen by the faculty and staff. She is president of Eaglettes, which is a little sister organization that promotes North Texas athletics. She is also a member of the Catholic Campus Center, a sophomore student at North Texas University, Miss Gonzalez is a 1989 graduate of Muleshoe High School. (Guest Photo)

Ed Stephens To Present Art Association Program

The regular monthly meeting of the Muleshoe Art Association will be held at 2 p.m. Tuesday, Feb. 12 in the community room of the Muleshoe State Bank.

Guest artist will be Ed Stephens who will give a watercolor demonstration.

Stephens graduated from Texas Tech University in 1958, with a degree in architecture. He is a self employed consulting architect in Lubbock. He was a part time instructor for two semesters in the school of architecture at Texas Tech and is presently a part time instructor at Lubbock Christian University teaching architectural drafting. He conducts watercolor workshops and teaches watercolor classes.

Stephens has attended watercolor workshops conducted by Tom Hill, Betty Lynch, Naomi

Hobby Club

The Muleshoe Hobby Club met at 2 p.m. Thursday, Feb. 7 in the Senior Citizens Complex with 14 members present.

Those present included: Sammie Ethridge, Jane Williams, Onieda Cornelison, Hazel Reeder, Callie Dikes, Frances Bruns, Glenda Morris, Katherine Hancock, LaDema Wright, Laura Mae Stancel, Blanche Aubrey, Loma Baker, Mattie Benton and Mable Caldwell.

Sammie Ethridge was in charge of the business meeting. The minutes of the previous meeting were read and approved.

All the members signed a card to send to a former member, Edith Fox, who has moved to Slaton.

The members took items to show. Mrs. Ethridge took a romper, jumper suit; Ms. Williams took place mats and coasters, she had made; and Ms. Morris and Ms. Stancel took paper bag holders.

Mrs. Cornelison drew the hostess gift, a relish tray. Ms. Wright was hostess for the day.

Ms. Wright served peach cobbler, ice cream, coffee, tea and Coke.

Ms. Caldwell will be hostess for the next meeting.

For Your
Mary Kay Cosmetics
Josie Flowers
272-3865
8 a.m. - 12 noon
& after 6 p.m.

The Family of
Sherman Inman
invite you to share in the celebration of his
80th Birthday
February 16, 1991
1-3 p.m.
The Depot
2200 WEST 5TH ST.
Muleshoe, Texas
NO GIFTS, PLEASE
COME AS YOU ARE

SHOP OUR EVERYDAY LOW PRICES..... WE APPRECIATE YOU!

FEBRUARY 10 - 16

272-4862
318 W. Amer. Blvd.

Enjoy "all coke family"
Coke
12 oz. cans
\$3.99
12 pk

RUSSET POTATOES
10 lb. BAG 99¢

BEEF N CHEESE Chimi-Changas
89¢

ALLSUPS Breakfast Burritos 79¢

SHURSAVING FACIAL TISSUE
150 ct. BOX 49¢

BUY YOUR FAVORITE 16 oz. FOUNTAIN DRINK AND YOUR CHOICE OF ANY FRITO LAY GRAB BAG 99¢

SHURSAVING or SHURFINE FLOUR 49¢
5lb. BAG

COOKED FRESH 24 HRS. A DAY		HOT FOODS MENU		AVAILABLE AT ALL ALLSUP'S LOCATIONS
BARBECUE BEEF SANDWICH	99¢	9 PIECE BOX CHICKEN	\$4.99	
BARBECUE PORK RIBS (LB.)	\$3.99	BEEF & CHEESE CHIMICHANGA	\$1.19	
BARBECUE WHOLE CHICKEN	\$3.99	(MEAD) CORN DOG	69¢	
ALLSUPS BURRITO	79¢	DELICIOUS HAMBURGER	59¢	
BREAKFAST BURRITO	99¢	WILSON HOT LINKS	99¢	
BURRITO BEEF & SALSA	\$1.19	SAUSAGE ON A STICK	\$1.59	
DELICIOUS CHEESEBURGER	79¢	SAUSAGE & BISCUIT	79¢	
CHICKEN FRIED STEAK	\$1.59	SAUSAGE, EGG & BISCUIT	\$1.09	
3 COUNT CHICKEN STRIPS	\$1.49	SAUTEYA SAUSAGE	\$1.09	
W/POTATO WEDGES/CHICKEN (2 PCS) BISCUIT	\$1.99	4 COUNT STEAK FINGERS	\$1.00	

CALL-IN ORDERS WELCOME CHECK OUR WEEKLY SPECIALS

DURING NC + DAYS
FROM NOW UNTIL FEBRUARY 23rd

Get NC + 6414, 5990 and 5891 in plateless sizes P80's or P90's for only \$64.43* per bag MF and Mr only \$66.19*

NEW LOW PRICE FOR NC + 8141 W WHITE FOOD CORN in plateless sizes P80's or P90's for only \$64.43* per bag MF and MR only \$66.19*

CALL JAMES L. WEDEL BEFORE FEBRUARY 23rd

272-5901 or 946-7011
*10 Bag Minimum Order
Paid For By February 23rd

America's down to earth seed company

Houston Show

Cont. From Page 1

one barrow; Robin Tooley, one steer, one lamb and one barrow; and Brittany Young, one steer and one barrow.

Representing 862 Texas 4-H clubs and FFA chapters, the junior show is expected to exceed 13,000 entries this year. A variety of animals are shown in the junior show division: market steers, market swine, market sheep, market poultry, beef and dairy heifers, breeding sheep, goats, commercial steers and breeding rabbits.

The four market animal categories represent animals raised by the exhibitor as food sources. Top animals in each of these categories are eligible for their individual market auctions. Total money paid in 1990 at the four junior show auctions exceeded \$2.7 million.

"The Houston Livestock Show and Rodeo is committed to benefiting youth and supporting education. We feel we accomplish these goals through the active role we take in supporting the second week of livestock competition, our junior show. This second week features the livestock projects of youngsters from all over the state and we're proud of the dedication and hard work they give to each of their animals," said Steve Woodley, Houston Livestock Show and Rodeo assistant manager.

In addition to the upcoming livestock show competition, a series of lectures, seminars and live animal demonstrations will again be on the calendar for the month of February - the International Stockmen's School. Held Feb. 14-16, at the Sheraton Astrodome Hotel, this school focuses on lectures and seminars delivered by agricultural experts from throughout the world.

CALF SCRAMBLE

Steven Wauson, a 15-year-old FFA member from Muleshoe, will compete in the 1991 Houston Rodeo calf scramble on Feb. 23 in the Astrodome in Houston.

The calf scramble is an exciting part of Houston rodeo action, featuring Charley Pride as part of that evening performance.

Steven, the son of Wayne and Mary Wauson, will compete for one of 252 calves to be awarded at the 1991 show.

Additionally, as many as two youngsters from each of the 18 rodeo performances will be awarded "hard luck" certi-

ificates for their hearty efforts to catch a calf, resulting in 36 more certificates actually given.

An entertaining event whose net proceeds provide educational contributions to Texas students, the Houston Livestock Show and Rodeo ranks as the nation's largest donor of agri-

Muleshoe...

Cont. From Page 1

and second places and trophies will be presented 1st through 3rd place teams.

Entry fee is \$45 per team, and deadline for entry is March 1.

A concession stand will be available, and all proceeds will go to the Athletic Boosters.

For additional information, or to enter a team, call Alex Garcia, 8 a.m.-5 p.m. at (806) 272-4390; Marsha Watkins, 272-5632; Vickie Hardwick, 272-4345 or Larry Rasco, 272-5269.

Jennifer Green, daughter of Mr. and Mrs. Ben Green of Muleshoe and Heather Hutton, daughter of Mr. and Mrs. Terry Hutton of Muleshoe, were among 778 students named to the Dean's List in December at Abilene Christian University.

To make the Dean's List, a student must complete at least 12 semester hours for grades and earn a 3.45 grade point average or higher.

Green graduated from Muleshoe High School in 1988, and Hutton is a 1990 graduate of MHS.

A total of 14 students from the Muleshoe/Dimmitt areas have been named to the combined President and Dean's Honor Lists for the fall 1990 semester at South Plains College, Levelland.

John Chamberlin and Randall Watkins of Muleshoe were named to the Dean's List; Missy Johnson of Bovina was named to the President's List; Dustin Hardage of Farwell was named to the President's List; while Greg Bearss and Kendra Stephens of Farwell were named to the Dean's List.

Funeral services for Floss S. "Fluff" Baldwin, 79, were pending with Ellis Funeral Home in Muleshoe at press time.

Baldwin died at 6:02 p.m. Friday, Feb. 8 in Muleshoe Health Care

cultural scholarships. Currently, more than 1,000 students are on Show-sponsored scholarships. The Show's educational commitment for the 1990-91 school year exceeds \$2 million.

Equally important is the Show's commitment to youngsters competing at the event itself. The calf scramble is one of the Show's major programs benefiting youth, requiring a yearlong commitment from the winner to the animal project.

Beginning with athletic competition in the Astrodome, the program ends 12 months later with top-notch competition in the Astrohalla showing.

The actual calf scramble event involves 28 energetic youngsters pitted against 14 vigorous calves. Each youngster is committed to capturing a calf, haltering and bringing it to the finish line -- but only the successful ones receive \$800 calf purchase certificates.

The certificate, donated by a generous sponsoring firm or individual, is used to purchase a purebred registered beef or dairy heifer. This year, several companies have strengthened their commitment to the calf scramble program by sponsoring a calf for each of the 18 rodeo performances.

The calf is raised by the winner for special showing competition in the Astrohalla at the following year's Show. The yearlong project is closely supervised by the appropriate county extension agent or agricultural science teacher.

Additionally, the winners are required to submit financial records, photographs, and a scrapbook to the calf scramble office to detail the progress of the venture. The youngsters are encouraged to provide updated reports to their sponsors as well.

Proper livestock evaluation techniques, efficient cattle feeding and production methods, principles in economics and money management are all realistic learning experiences for the youngster who manages to get a firm hold on a calf.

Seeding...

Cont. From Page 1

the weather modification conference is available by contacting George Bomar with the Texas Water Commission at (512) 463-7935, the Texas Tech University Water Resources Center at (806) 742-3597 or the High Plains Underground Water Conservation District No. 1 at (806) 762-0181.

Junior High Boys Finish '91 Basketball

Monday evening, the 7/8 grade Mules finished their 90-91 season by traveling to Floydada. The outcome, however, was not to be desired. The games were close and the Mule teams played their BEST of the Year in both grades, but the seventh grade score was 24-20, with the Mules losing. The eighth grade lost 51-47.

The action was fast-paced in both games and the lead changed many times. "We played the best game of our young lives in the seventh grade. The defense-rebounding press break was really being executed," said their coach. "Our guys just went out and put it all together. The lead changed hands more than sever-

9-1-1...

Cont. From Page 1

lost consciousness and Erica took charge. Erica listened to the 9-1-1 telecommunicator and did what she was told to do. She got towels for her mom and minutes later, opened the door and showed emergency response personnel to the location of her mom.

Today, Ms. Hoyt and her new daughter, Aubree Jane, are doing good, thanks to Erica. Apparently, Ms. Hoyt suffered from an unexpected reaction to an earlier pregnancy in a condition called placenta previa. Erica said she hadn't realized much about what was happening, "I was just scared for my mom." Erica's dad was out-of-town when the incident occurred.

No one knows when emergency assistance may be needed. It is important that citizens of the region, especially children, know what 9-1-1 is and when to use it. Public education programs are available for all age groups. The intent of 9-1-1 service is for use in an emergency situation to save lives and property, not for hang ups or pranks.

If you have any questions about 9-1-1, please contact Mike Pedigo or Ella O'Neal at (806) 762-8721.

al times during the game. I really hope the kids stick with it and continue as much as they have in the last few games."

Leading scorers for the seventh were A. Gonzales, five points; M. Jaramillo, four points and J. Slayden, three points. J. Rodriguez, R. DelToro, C. Myers and D. Garbarino each had two points.

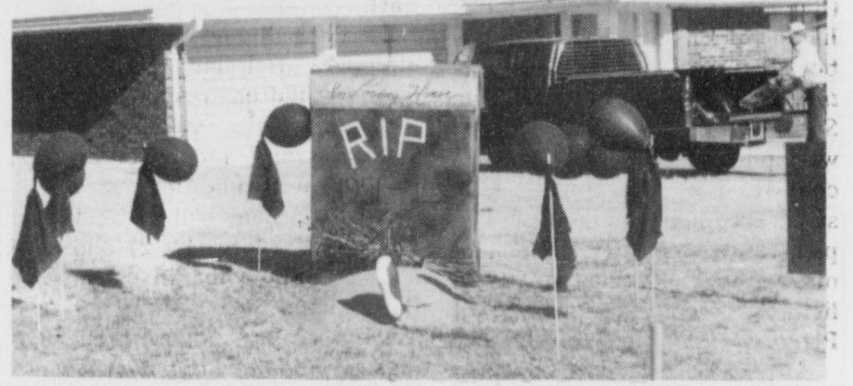
"In the eighth grade, we were playing a team who we had played to a double overtime the first time, and we played good and hustled to the very end," said the coach. "We saw the lead change at least 15 times during the game. Several of our guys played up and beyond what they had previously to this night. We had

changes from the charity line and field to put the 'Winds away, but it just wasn't to be, I guess."

Leading scorers for the eighth were R. Kirven, 17; B. Field, 11; A. Perez, nine; R. Jaime and J. Guana, four points each; and C. Edwards, two points.

The coach concluded, "It's been great working with both groups. I wish both groups success in the future, along with keeping their resolve and dedication. Also, I don't get to say it much, but many Thanks, parents for supporting these kids."

The seventh grade finished the season with a 1-15 record while the eighth grade boys finished 10-6, second to Dimmitt in the district.



WE'RE NOT TELLING ANYONE'S AGE-BUT!--If you would look in the front yard at a certain location in west Muleshoe, you would see this display. We won't tell who reached the certain age of '40' -- but it is commemorated for history now! (Journal Photo)

1991 Crop		
	Sale	Month
	Flat	
Feed Corn.....	4.27-.01ch	March
White Cobb Yellow.....	4.90,0.34ch	March
Red Cobb Yellow.....	4.47,0.10ch	March
White Food Corn.....	5.80,0.85ch	March
Milo.....	4.13-.09ch	March
Soybeans.....	5.15-.054sh	March
Wheat.....	2.29-.031kwh	KW March
96%		
Prices effective Feb. 8, 1991		
Farmer's Co-Op Elevators		
272-7561		

AN IRA

IS YOUR SMARTEST OPENING MOVE

It's a strong strategy for short-term advantage in tax savings, and at the same time puts you in excellent position for long-term security. And of course, now is the best time to make that move - while it can still be of benefit to you when figuring your 1990 taxes. Our doors are open and our phones are on the hook. Your move.

Clovis, N.M.

FIRST SAVINGS BANK

In Touch with You

Pile St. Office 762-4417 Prince St. Office 769-2286

Remember To Support Our Armed Forces In The Gulf!

<p>1/2 Beef</p> <p>\$1.59</p> <p>lb.</p> <p>Cut & Wrapped To Your Specifications</p>	<p>1/2 or Whole Hog</p> <p>Cut & Wrapped To Your Specifications</p> <p>\$1.19</p> <p>lb.</p>	
<p>All Meat Beef Patties</p> <p>2 Lb. Pack</p> <p>\$1.59</p> <p>lb.</p>	<p>Pork Spare Ribs</p> <p>\$1.69</p> <p>lb.</p>	<p>Larry's Breakfast Sausage</p> <p>2 lb. Stick</p> <p>\$3.00</p>
<p>New York Strip Steaks</p> <p>By The Loin</p> <p>\$3.91</p> <p>lb.</p>	<p>Home Made Smoked German Sausage</p> <p>\$2.19</p> <p>lb.</p>	

Let Larry & Paula Cater Your Next Party!

Winkler Meat Co.

401 Main Muleshoe, Tx. 272-4703

S-E School Schedules Parent Education Meets

Practical Parent Education is a unique program designed to support and assist families in being creative with solutions to problems which they may encounter in today's society. The goal is to encourage parents in their effort to rear self-confident responsible and mentally healthy children. Information is shared concerning all aspects of child rearing, from infants through adult children, depending on the participants. Any parent or person involved in the care of any child will benefit from the knowledge received at the series of seminars offered, entitled *Developing Healthy Families*.

In conjunction with Texas Association of School Boards and Education Service Center (Region XVII), Springlake-Earth Independent School District has been actively involved in *Practical Parent Education* since the Spring of 1990. The program was piloted by Plano ISD to combat the effects of teen suicide in their community. The program was introduced to other schools in January 1989 in light of the enormous success of Plano.

A positive approach to parenting is the goal of *Practical Parent Education*. Participants in the seminars are led in discussion by trained Parent Educators who have spent many hours preparing by doing research, reading books related to the subjects and studying resource guides. Parent Educators are trained by personnel associated with TASB and Plano ISD.

Many parents benefit from the seminars which encourages, supports and acts as a networking system between parents, school, church and community. The result is a strong bond between parents who share the same ideals for their children and grandchildren. Parents who are experiencing satisfaction within their families are needed to support and encourage those experiencing difficulty. Parents who wish to enhance their family relationships bring their

positive skills and find creative ways of dealing with family pressures. Parents in crisis, though they may not be aware, bring their strengths which may be hidden in the stresses of getting through each day. Those parents learn to use those strengths to cope with "life's little surprises." The perfect family is a myth which needs to be explored to get the message to their parents that they are doing the very best they know how.

Beginning Monday, February 11, a new series of seminars will be available to any interested person. *Understanding Parenting and Power* will be held each Monday night at 7 through March 4 at the First State Bank Community room in Earth.

Topics will include: choosing effective discipline techniques, giving children responsibilities for themselves, dealing with sibling rivalry and encouraging motivation in children.

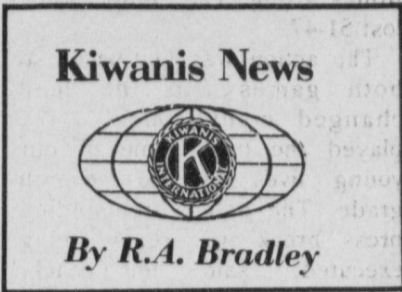
Noon sessions will be held on Thursdays, March 14, 21 and 28 at the FSB community room. Participants may bring their lunch for the 12-1 p.m. meetings. *Communicating Within the Family* will be the topic of the sessions, which include communicating effectively with children, expressing and communicating feelings and emotions and dealing with anger in the family.

For a nominal fee of \$5, parents will receive or have access to the most up-to-date information compiled by many of the renown therapists and authors. A number of the books have been purchased with contributions from businesses, individuals and organizations. The Family Resource Library is currently housed in the Home-making Cottage at S-E School and books are available for use by the community. Contributions are being sought to enlarge the Library and secure more titles needed to enhance the effectiveness of the program.

Do your family a great

service! Attend the *Practical Parent Education* seminars and *Develop a Healthier Family*. You'll be glad you did! The sessions are thought-provoking and a positive experience which may change the course of family relationships.

To register for the seminars, please contact Monda Daniel at 257-3810.



Ten Kiwanians, two honorary Kiwanians, four guests and Sweetheart Marsha Wilson met Friday morning at the Dairy Queen. Honorary members present were Robby Clapp and Jon Keith Turner. Guests were Marc Jacobson, Barry Moynihan, James Byers and Riley Byers. It was good to have each and every one.

President Glen Morris called the meeting to order. Herb Langfitt led the club in the pledge to our flag and Lyndon Huckaby gave the invocation.

R. A. Bradley had the honor of installing Marc Jacobson as a new member to the Muleshoe Kiwanis Club. Marc is a radio announcer as "Marc Steele" and traffic manager for KSEL at Portales, N.M. Marc is married to our own Clea "Williams" Jacobson. Marc, we are proud to have you in the Kiwanis Club - Welcome.

Larry Parker, who has been looking for a friend for two weeks, finally found the coin, but when it came to a friend that's another question. Barry Moynihan volunteered to be Larry's friend, but when it came up about Barry having to come back next week and Larry would have to buy Barry's breakfast well -- that was a short friendship.

Larry finally gave the friendship coin to Eddie Morris, as Eddie was having trouble finding a chair this morning. Eddie, we hope you will have better luck.

Barry Moynihan gave the program and told about the Scouting program here in Muleshoe. Next Friday, Feb. 15, the Cub Scouts will have their Blue & Gold Banquet at the Methodist Fellowship Hall at 7 p.m.

At that time, they will graduate 23 Webelos up to the Boy Scouts. This will leave only about 60 Cub Scouts but will be a big lift to the Boy Scouts.

Barry stated that the Scouting program, Cubs and Boy Scouts, was doing good in Muleshoe. There is also a good Scouting program for girls in Muleshoe.

Barry also stated that the new Boy Scout Handbook was the 11th edition. The Boy Scout Handbooks have sold more than 33 million copies.

Barry, who is an Eagle Scout, said that for about every 100 Boy Scouts, only one makes Eagle Scout.

Being an Eagle Scout carries quite a prestige. The Boy Scouts started in the USA in 1911 - "Do a good turn daily" -- that is the Scout's motto. Wouldn't it be good if we all practiced this every day.

Hugh Young announced that the American Heart Association would have its Radio Auction Saturday, February 9 on KMUL starting about 6:30-7 a.m.

Marc -- another big Welcome.

FHA-HERO Will Be Celebrating Special Week

FHA-HERO members will be sponsoring their FHA-HERO Week February 11-15.

Many exciting activities will be held that week. Activities include visiting the Nursing Home, visiting Texas Migrant Council, a best backside contest, locker buddies, and selling ice cream bars to the student body at Muleshoe High School.

During FHA-HERO Week, the members will show their support for the organization.

HERO members will be attending their regional meeting March 1 in Midland.

Farmers Union Wraps Annual State Convention

Members of the Texas Farmers Union meeting this week in Austin say farmers are headed for another depression that could cost rural Texas billions of dollars.

During a "Town Hall Farm Forum", held during the group's state convention, farmers presented testimony about the rural situation to a group of state and federal legislative officials and farm lobbyists. "Certainly, the 1990 farm bill will do little to improve the situation in agriculture," TFU Vice-President Robert Green told the panel. The group has joined with Farmers Union organizations in other states in a petition drive aimed at reopening the farm bill.

Green cited difficulties he's experienced in getting operating credit this year. He said "bankers are reluctant to make loans while commodity prices remain low. Over the last six months, Texas wheat prices have dropped by over a dollar a bushel, and dairy prices have dropped by more than three dollars per hundredweight. But, Greene said easier credit is not the answer to the farm sector's problems. "We don't want loans, we want a price; a fair price."

A 22-year old farmer from Castro County, Daniel Higgins, told the panel that the farm bill will cut his income considerably. "In my opinion, this farm bill makes no economic sense," he said.

H.R. Pruett, a dairy farmer from Denton County, said higher petroleum prices resulting from the Persian Gulf crisis are hitting farmers particularly hard. Pruett said fuel costs, electric costs, and fertilizer and chemical costs have all risen dramatically in the last few months. "At the present time, my fuel costs have gone up approximately forty percent, and my milk price is down twenty-five percent.

The economic problems a-

mong farmers have led to other problems for rural Texans, said Linda Lowery, the Criminal District Attorney in Yoakum County. "In the past five years, Texas led the nation in the number of rural hospital closures" she said. Lowery said Texas lost sixteen small-town hospitals last year. "Fifty-five of our counties now have no hospital."

Norbert Schlegel of Wheeler County said the ultimate affect of the farm price crisis will be the depopulation of rural Texas, and may even cause employment problems in metropolitan areas as farmers and ranchers are forced to move to cities. "If we are going to survive until 1995, we have to change this current legislation. It's disastrous."

The time to take care of your health is while you have it.

Three Way News

by: Mrs. H.W. Garvin

Mr. and Mrs. Bobby Kindel attended the funeral of an uncle, M.A. Lemons in Roswell, N.M., Friday.

Mr. and Mrs. Joe Sowder spent the weekend in Logan, N.M. with their grandchildren.

Mr. and Mrs. Bill Dolle and Darla visited Mr. and Mrs. Vance Davis in Sundown Saturday afternoon.

Mr. and Mrs. R.L. Davis visited George Tyson Sunday afternoon.

Mr. and Mrs. Bud Huff spent Monday night and Tuesday in Midland attending the funeral of Buds brother in law.

Mr. and Mrs. Bill Dolle and Darla visited Bill's parents in Littlefield Sunday.

Funny, Clever, and Caring. Specialty Valentine's Cards from Forget Me Not

FORGET ME NOT

AMERICAN GREETINGS

© WCMCCI American Greetings Corp. 2104 W. Amer. Blvd. 272-3855

Ben Franklin Better quality for less

Mon.-Sat. 8 a.m. - 8 p.m. Sun. 12 noon - 5 p.m.

2104 W. Amer. Blvd. 272-3855

HOMESTEAD EXEMPTIONS



CAN LOWER THE PROPERTY TAXES ON YOUR HOME

A homestead Exemption

lowers the property taxes on your home by lowering its taxable value. For example, if your home is valued at \$50,000 and you receive a \$5,000 homestead exemption, your home will be taxed as if it were worth only \$45,000.

You qualify

for a homestead exemption if you owned your home on January 1 and used it as your primary residence on January 1. It doesn't matter whether your home is a house, a condominium or a mobile home.

Exemptions are available

to all homeowners on their school taxes. Additional exemptions are available to homeowners who are disabled or age 65 or over. Other exemptions may be offered to homeowners by school districts, counties, cities, and special districts. All taxing units offer exemptions to disabled veterans.

Apply to

your local appraisal district office at the address shown below for all exemptions you may qualify for. Application forms are available at this address.

if you received a homestead exemption on your present home in 1990 you won't need to apply again for 1991 unless the chief appraiser requires you to reapply.

However, if you passed your 65th birthday or became disabled before January 1, file a new application to receive additional exemptions.

If you haven't received an exemption on your present home, or if you moved to a new home, make a new application for 1991.

The deadline for applications is April 30, 1991. Contact your appraisal district before then if you need more time.

For more information, get a free copy of the pamphlet, *Taxpayer's Rights, Remedies, Responsibilities*, at your appraisal district office or from the State Property Tax Board in Austin.

Bailey County

Appraisal District

104 E. Ave. C.

272-5501

BEAT THE HARVEST LINES!



VINEYARD SEED COMPANY

RR 1, Box 147 • Homer, IL 61849 • Ph. 217-688-2770

- Plant **FC540** White Cob Yellow
- Yields with major competition
- **2 to 3 points drier** than competition
- Easy Shelling
- Excellent Pericarp Removal

T&M Fertilizer, Inc., Clovis.....(505) 763-3318
Lester Merrill, Clovis.....(505) 683-5287
Gene Paul Jarman, Muleshoe.....(806) 965-2340
Agri-Sprayers, Bovina.....(806) 238-1475

Planting **VINEYARD** HYBRIDS Makes \$ense!

Jimmy Christie
806-357-2556
806-357-2523

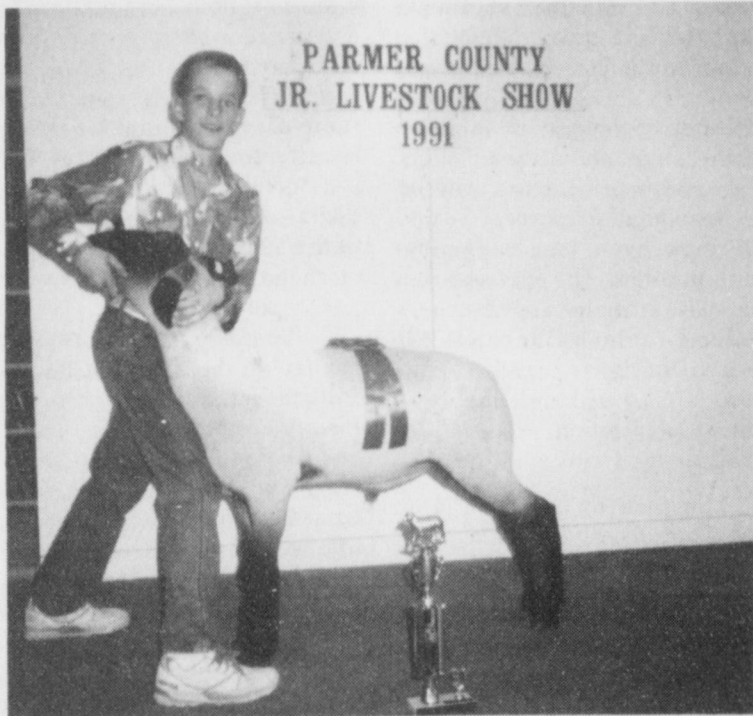
Kenneth Christie
806-364-4027

Jimmy Christie Seed Co., Inc. Box 81 Summerfield, Texas 79085

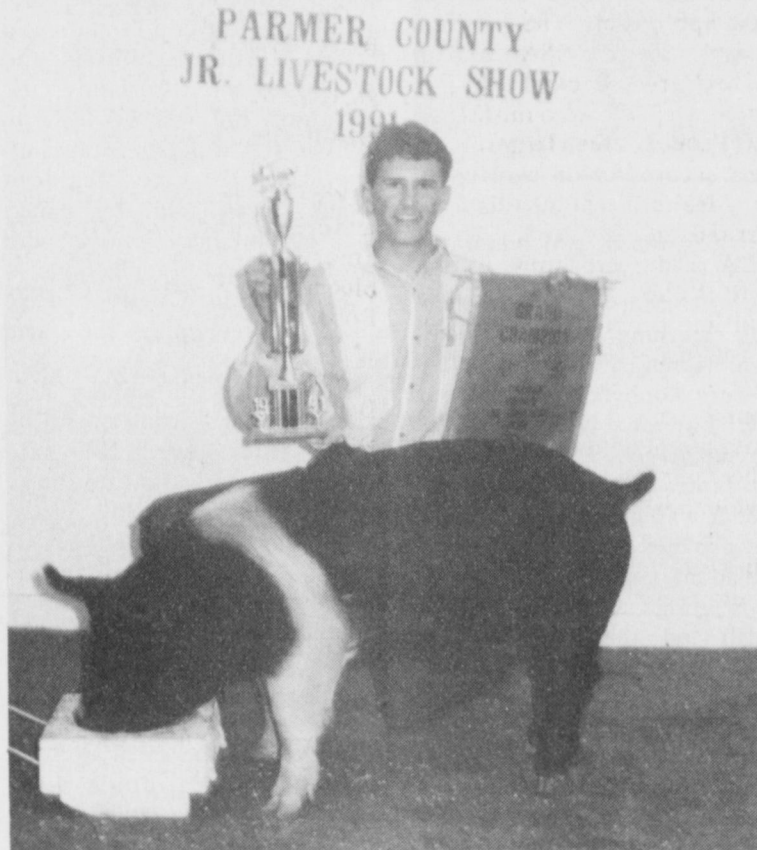
Congratulations

**Lazbuddie Winners From
Parmer County Livestock Show**

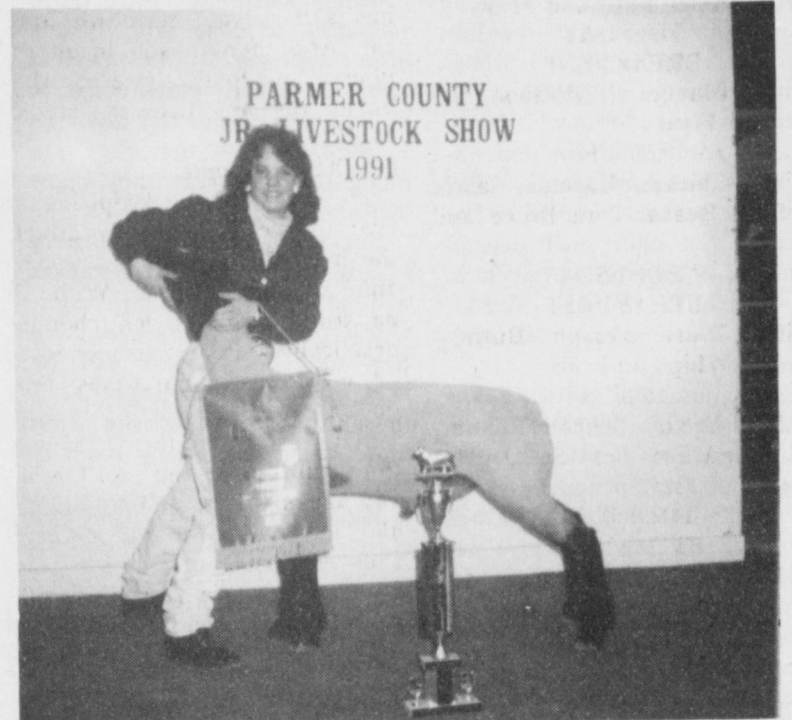
January 25-28, 1991



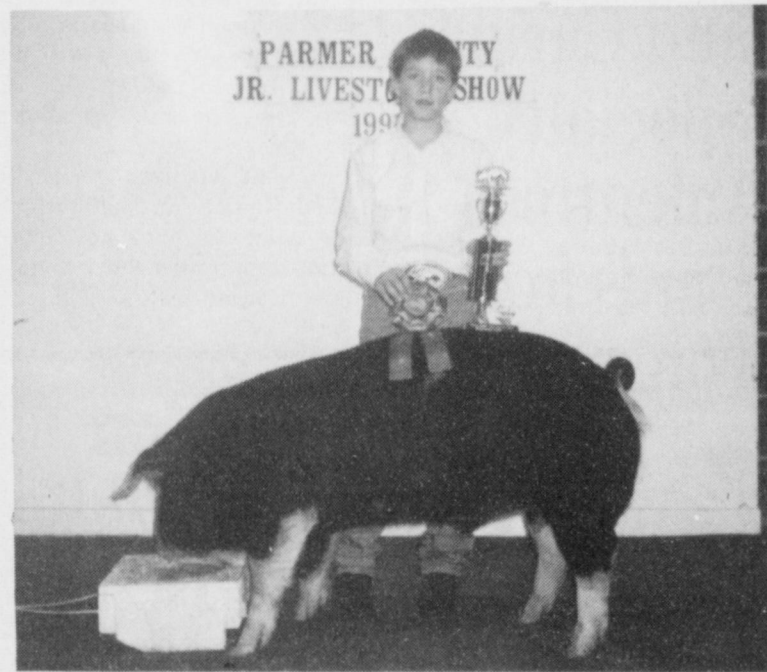
BREED CHAMPION--Cade Morris is shown with his Hampshire lamb that was named Breed Champion of it's class at the Parmer County Junior Livestock Show held in Friona Jan. 25-26, 1991. (Photo Courtesy: Friona Star)



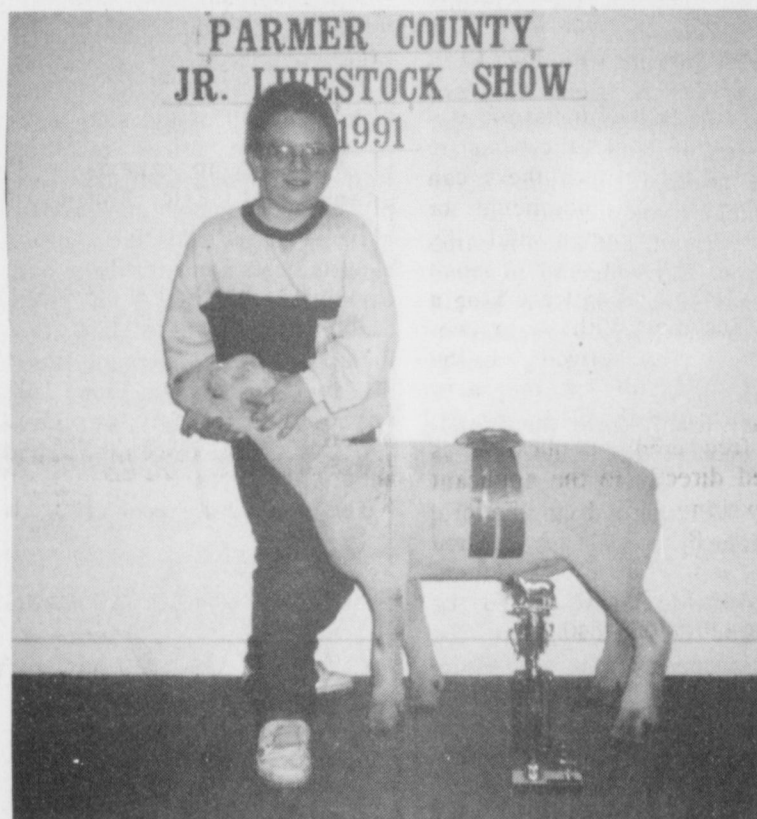
GRAND CHAMPION SWINE--Casey Bradshaw is shown with his Hampshire pig which he took Grand Champion honors at the 1991 Parmer County Junior Livestock Show, held Jan. 25-26, 1991. (Photo Courtesy: Friona Star)



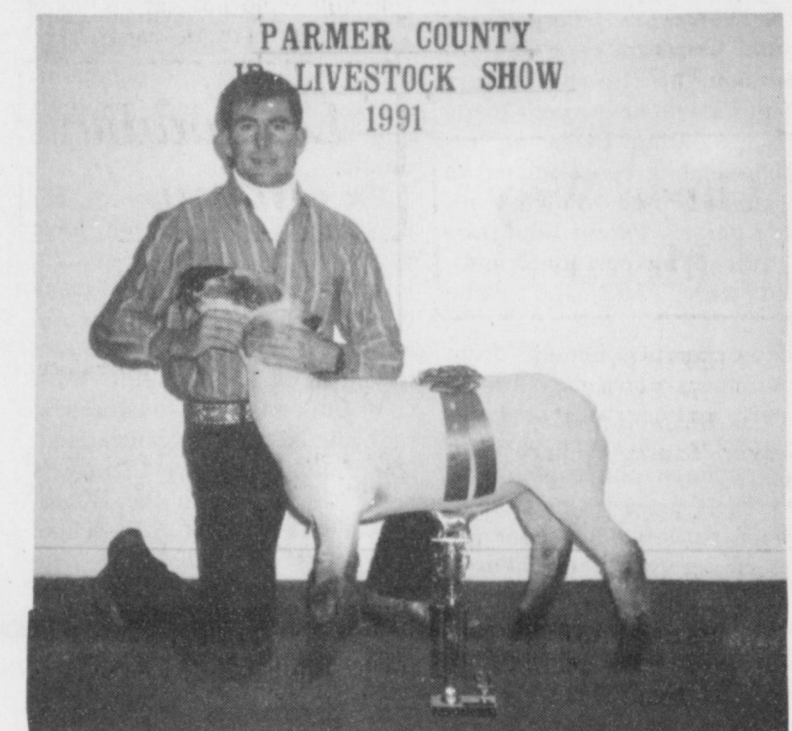
GRAND CHAMPION LAMB--Shana Foster exhibited her Suffolk Lamb in the Parmer County Jr. Livestock Show, January 25-26, 1991. Shana walked away with the Grand Champion trophy and banner at the show.(Photo Courtesy: Friona Star)



BREED CHAMPION POLAND--Shown with his Poland barrow is Brice Redwine who took Breed Champion honors at the Parmer County Junior Livestock Show held in Friona January 25-26, 1991. (Photo Courtesy: Friona Star)



BREED CHAMPION SOUTHDOWN LAMB--Edwary Terry exhibited his Southdown Lamb at the Parmer County Junior Livestock Show held in Friona Jan. 25-26, 1991 and took Breed Champion honors. (Photo Courtesy: Friona Star)



BREED CHAMPION FINEWOOL CROSS--Craig Russell took Breed Champion honors in the Finewool Cross class at the Parmer County Junior Livestock Show held Jan. 25-26, 1991. (Photo Courtesy: Friona Star)



RESERVE CHAMPION STEER--Jason Jesko exhibited his steer at the Parmer County Junior Livestock Show and took Reserve Champion honors at the show. (Photo Courtesy: Friona Star)

Leals' Restaurant

272-3294

*Sponsored By These
Civic Minded Merchants:*

**Farmers Co-Op
Elevators**

5 Locations To Serve You 272-7561

Foster Fertilizer, Inc.

965-2921

Easter Grain, Inc.

965-2817

**W.T. Services
Radio Shop**

272-4888

North Lazbuddie Gin

965-2754

**Sherley-Anderson
Lazbuddie Elevator**

965-2933

Violas Restaurant

272-3838

Muleshoe Menu

FEB. 11-15 MONDAY BREAKFAST
Milk, Cereal, Toast and Fruit

LUNCH
Milk, Tuna Fish Sand., Salad, Oven French Fries and Fruit

TUESDAY BREAKFAST
Milk, Blueberry Muffins and Orange Juice

LUNCH
Milk, Chicken Taco's, Salad, Refried Beans, Corn Bread and Fruit

WEDNESDAY BREAKFAST
Milk, Toast, Peanut Butter-Honey Whip and Fruit

LUNCH
Milk, Baked Turkey Ham, Scalloped Potatoes, Salad, Hot Rolls and Fruit

THURSDAY BREAKFAST
Milk, Toast, Jelly, Sausage and Fruit

LUNCH
Milk, Baked Fish, Eng. Peas, Macaroni & Cheese, Hot Rolls and Fruit

FRIDAY BREAKFAST
Milk, Pancakes, Syrup, Sausage and Fruit

LUNCH
Milk, Turkey & Gravy, Green Beans, Creamed Potatoes, Hot Rolls and Fruit

Three Way Menu

FEBRUARY 11-15 MONDAY BREAKFAST
Pancake, Sausage, Juice and Milk

LUNCH
Hot Dogs w/Chili, Tator Tots, Peaches and Milk

TUESDAY BREAKFAST
Cereal, Fruit, Juice and Milk

LUNCH
Beef Stew w/Cheese Sticks, Veg. Sticks, Cornbread, Jello w/Fruit and Milk

WEDNESDAY BREAKFAST
Biscuit, Gravy, Juice and Milk

LUNCH
Steak Fingers, Green Beans, Macaroni w/Cheese, Rolls, Pudding and Milk

THURSDAY BREAKFAST
Pigs 'n' Blanket, Juice and Milk

LUNCH
Taco, Salad, Corn, Apple Cobbler and Milk

FRIDAY BREAKFAST
Cinnamon Rolls, Juice and Milk

LUNCH
Hamburger w/Cheese, French Fries, Lettuce, Tomatoes, Onions, Pickles, Pears and Milk

Bank Offers Big Break To Former Bankrupts

"You think your whole world ceased in", said the young mother of two sons when her lawyer advised that she declare herself bankrupt.

"Within a year I lost my husband, home, furniture and car. And then to add insult to injury, my bank lowered the boom on my beloved credit card!"

Over 600,000 bankruptcies a year in the USA deeply affect the lives of the young, the old and all in between. With a bankruptcy, life styles change drastically and such former joys as credit card purchases are gone.

With a bankruptcy listed on the credit bureau records, few if any banks will issue a traditional VISA or MasterCard. In fact, the majority of banks, on average approve less than 30 percent of all credit applications they receive-with or without bankruptcies.

Key Federal to the Rescue
The management of a small bank in Maryland-Key Federal Savings Bank--felt strongly about people who had solved their past financial problems and still could not get approved for a major credit card. They

believed that every one deserves credit once they have proved to be financially responsible individuals.

So in 1982, Key Federal pioneered a credit card program for those who cannot meet the rigid standards of the traditional credit application. The program consists of a VISA and/or MasterCard backed by a Savings Deposit Account (SDA). Key Federal, the largest and oldest secured credit card bank, has issued hundreds of thousands of SDA cards.

SDA credit card program is a practical idea. You decide on a credit line (from \$500 to \$5,000) and deposit that amount in a Key Federal secured savings account. That is your pledge to maintain a good credit record.

The question arises: if the individual has that much cash, why does he or she need a credit card?

There are at least two reasons to establish a major credit card. First, there is the need to establish a healthy credit record. Second, the credit card is an integral part of our life style: reserving hotel rooms, air travel and auto leasing; entertaining; direct mail shopping and access to cash from automatic teller machines.

Easier Credit Standards
Because the individual's savings account is pledged to the bank, credit standards are less demanding for the VISA and MasterCard. There are three basic conditions for approval: the bankruptcy has to have been finalized; there can be no current judgments or delinquent accounts; and the applicant must show proof (such as pay stubs) of at least \$165 a week income. With those conditions met, approval for the VISA or MasterCard is practically guaranteed.

A free credit application is mailed directly to the applicant by writing to Key Federal Savings Bank, 626 Revolution Street, P.O. Box 6055A, Havre de Grace, Maryland 21078, or calling (301) 939-4840.

Lazbuddie Menu

FEB. 11-15 MONDAY BREAKFAST
Cinnamon Toast, Applesauce and Milk

LUNCH
Spaghetti w/Meat Sauce, Green Salad, Green Beans, Garlic Bread, Fruit and Milk

TUESDAY BREAKFAST
Cereal, Toast, Juice and Milk

LUNCH
Fish Nuggets, Macaroni and Cheese, Peas, Hot Rolls, Fruit and Milk

WEDNESDAY BREAKFAST
Toast, Bacon, Juice and Milk

LUNCH
Nachos w/Meat & Cheese, Pinto Beans, Green Salad, Brownies and Milk

THURSDAY BREAKFAST
French Toast, Juice and Milk

LUNCH
Hot Turkey, Potatoes & Gravy, Green Beans, Fruit, and Milk

FRIDAY BREAKFAST
Cinnamon Rolls, Juice and Milk

LUNCH
Hamburgers, French Fries, Salad, Cobbler and Milk

SALAD BAR SERVED MONDAY THROUGH THURSDAY

Sudan News

by Ann Gaston

Twenty-nine students from the Sudan Band Department traveled to Lubbock on Friday and Saturday, January 25 and 26, to participate in the District XVI All-Region Band Clinic-Concert. The event is sponsored by Texas Music Educators Association.

Thirteen Sudan students participated in the A-AA Jr. High Band and sixteen in the A-AA High Band. Clinician for the jr. high was Ray Lashaway from McCamey, and the high school clinician was Harris Brinson from Angelo State University.

The bands rehearsed for eight hours on Friday and four hours on Saturday, and then performed in concert at Monterey High School on Saturday night.

Patients in Muleshoe Area Medical Center

FEB. 4-6 MONDAY
Ashley Beggs, Guadalupe Hernandez, Eric Smith, Travis Lambert, Marie Fritts, Kimberly Chance, Nelda Mullins, Allma Ott and Edith Lee

TUESDAY
Ashley Beggs, Kayla Manzanales, Eric Smith, Travis Lambert, Marie Fritts, Kimberly Chance, Edith Lee, Nelda Mullins and Alma Ott

WEDNESDAY
Lubertha Steptoe, Antonia Alonso, Kayla Manzanales, Travis Lambert, Dorothy Neal, Sherri Shipman, Marie Fritts, Jo Kelm, Kimberly Chance, Edith Lee, Nelda Mullins, Alma Ott, Ann Marie Rodriguez, Baby Girl Arce, and John McGimpsey

Nursing home News

by: Joy Stancell

Wednesday Thelma Stearns celebrated her 84th birthday. The residents gave her cards and sang the Happy Birthday song to her.

Our heartfelt thanks to the Mary Martha and Lydia S.S. Class of the First Baptist Church for their donation to the Healthcare Center.

We are really excited about watering and watching our amaryllis bulbs grow and bloom, given to us by Inez Bobo.

Sunday afternoon the Calvary Baptist Church came for church services.

Thursday afternoon Winnie Berry, J.E. Embry, Sherman Inman, Johnnie and Rue Kimbrough, and Grace Scarbrough came to play Skip-Bo and dominoes with the residents.

Retha sang praise songs to the residents and visitors Wednesday morning.

Lula Maye Shanks sent the employees a beautiful Valentine bouquet. We wish to thank her for the bouquet and her thoughtfulness.

Cari Kidd has been absent due to a back problem. We really miss her and wish her a fast recovery.

We wish to express to the family of Eric Smith our heartfelt sympathy.

Jack Knowles was visited by his sister, Vera Tompson.

HEALTH INSURANCE
CALL Mark Morton 272-7519
109 S. 1st Muleshoe

From The Senate

By: Teel Bivins

Legislation to reform Texas products liability laws was introduced Wednesday by Senator Teel Bivins (R-Amarillo) and Representative Curtis Seidlits (D-Sherman).

They said in a joint statement that their bill is aimed at balancing the interests of Texas consumers harmed by defective products with those of innocent business people forced to defend themselves against unjustified lawsuits.

"Texas has a bad reputation for unfairness in the way we deal with liability for defective products," Bivins and Seidlits said. "Our laws penalize companies for making improvements in the safety of their products and encourage consumers to sue a seller or distributor for a defective product even though they had nothing to do with its manufacture. We are not proposing to change the basic principles of products liability law, but only to strike a reasonable balance and to deter frivolous claims, relieve overcrowding of the court system, and reduce legal costs."

In the last Legislature, Seidlits passed a products liability reform bill through the House but it failed to reach the Senate floor despite approval by the Senate Economic Development Committee. Reform has been endorsed by the Texas Civil Justice League, the Texas Chamber of Commerce, and many other organizations.

Bivins and Seidlits said:

"This bill imposes responsibilities on manufacturers, distributors, and retailers that will encourage product safety in the marketplace. At the same time it gives juries clear guidance to determine who is a fault when an injury occurs.

"This bill preserves the right of every Texan to a legal remedy for an injury caused by a defective product. But it also gives an innocent person a better chance to defend himself or herself against a frivolous and expensive lawsuit.

"Small retailers in Texas are facing the threat of lawsuits for defective products when they are totally innocent of creating the problem. This bill makes it clear that they cannot be sued unless they were actually responsible for the defective product."

If their bill is passed:
• A person who claims a product is defective will have to show exactly what was wrong with it.

• Retailers and distributors cannot be sued unless they were actually responsible for a defect in a product they sold.

• Irresponsible behavior won't be rewarded. If a person alters or misuses a product, or if he's primarily responsible for his own injury, he won't be allowed to recover damages.

• Manufacturers won't be asked to do the impossible. They won't be penalized for not using tomorrow's technology in today's products.

Dr. A.R. Ploudre

Optometrist
Family Vision Care Contact Lens
Texas & New Mexico Medicaid
*Announcing, New Program of Special Assistance to Provide Vision Care to Low Income Families. - Call For Information.
*Credit Arrangements Available Upon Prior Approval
762-2951 1515 Gidding St., Clovis, N.M.

OUR 10 MOST POPULAR FILTERS ARE ON SALE DURING THE MONTH OF FEBRUARY RECEIVE A 12% DISCOUNT ON THESE FILTERS



See Your John Deere Dealer For Big Savings on Filters

- AR75603 FITS 30 SERIES TRANS/HYD. WAS \$3.97 - NOW \$3.49
- AR79679 PRIMARY AIR FITS 4430, 40 and 50 WAS \$27.88 - NOW \$24.53
- AR 79680 SECONDARY GOES WITH AR79679 WAS \$16.14 - NOW \$14.20
- AR79941 PRIMARY AIR FITS 484, 7440, 7445 COTTON STRIPPERS WAS \$20.40 - NOW \$17.95
- AR94510 TRANS/HYD. FITS 40, 50, 55 SERIES WAS \$20.56 - NOW \$18.09
- T19044 OIL FILTER FITS ALL COTTON STRIPPERS WAS \$3.35 - Now \$2.95
- AR43634 OIL FILTER FITS 30, 40 SERIES WAS \$7.64 - NOW \$6.72
- AR101278 OIL FILTER FITS 50 & 55 SERIES WAS \$10.14 - NOW \$8.92
- AR50041 FUEL FILTER FITS 30, 40 SERIES WAS \$7.68 - NOW \$6.76
- AR86745 FUEL FILTER FITS 50 SERIES WAS \$13.60 - NOW \$11.97

DENT & CO.

Hwy 84 West
272-4296
Muleshoe



VINEYARD SEED COMPANY

RR 1, Box 147 • Homer, IL 61849 • Ph. 217-688-2770

Don't leave it to luck...

...leave it to **THE COMPANION HYBRIDS V-68W & V-58W** and get great results everytime!

Book Now
'Don't Be Left Out'
February 16, 1991
Early Payment
\$4.75 Discount Per Bag

Planting VINEYARD Hybrids Makes \$ense!

Area Dealers:
T&M Fertilizer, Inc., Clovis.....(505) 763-3318
Lester Merrll, Clovis.....(505) 683-5287
Gene Paul Jarman, Muleshoe.....(806) 965-2340
Agri-Sprayers, Bovina.....(806) 238-1475

Jimmy Christie 806-357-2556 806-357-2523
Kenneth Christie 806-364-4027

Jimmy Christie Seed Co., Inc.
Box 81 Summerfield, Texas 79085

18. Legals

PUBLIC NOTICE

Notice is hereby given that the Commissioners' Court of Bailey County will enter into a contract with any banking corporation, association or individual banker in Bailey County for the depositing of the public funds of Bailey County in such bank, on March 1, 1991.

Any banking corporation, association or individual banker in Bailey County desiring to be designated as county depository shall make and deliver to the County Judge an application applying for such funds and said application shall:

1. State the amount of paid up capital stock and permanent surplus of said bank; and,
2. there shall be furnished with said application a statement showing the financial condition of said bank at the date of application; and
3. be delivered to the County Judge on or before March 1, 1991 at 10:00 a.m., and,
4. be accompanied by a CERTIFIED CHECK or CASHIER'S CHECK for \$8,700.00 as required by V.T.C.A., Local Government Code 116.023.

News From State Comptroller John Sharp

"January may be in the middle of winter, but it was the hottest on record at the Comptroller's office," State Comptroller John Sharp said today.

"Texas taxpayers broke all January records by filing \$1.3 billion in state and local taxes," Sharp said. "The first month of the year is historically busy since all state sales taxpayers file returns then, but this was easily the largest ever."

There were 1.5 million transactions for the month, up 235,000 over last January. Total taxes collected increased by almost \$28 million over last January's record.

"Comptroller employees literally worked around the clock processing returns and seeing that the money was quickly deposited into the state's interest-bearing accounts," Sharp said.

Most taxes processed in January are traditionally for the state's 6 1/4 percent sales tax collected by merchants in cities and counties across Texas.

"These businesses help us keep a finger on the pulse of the Texas retail economy and from their returns, I'd say our economic heartbeat is strong," Sharp said.

Record numbers of fuels tax returns were also filed with the state with almost 8,000 more transactions last month than in January 1990 for a total of 42,560.

Minerals taxpayers also filed a record 147,849 transactions, up 13,807 over last January's total.

Texas taxpayers also filed 124,441 other tax transactions during January.

LOCAL DISTRIBUTION OPPORTUNITY FOR NATIONAL FIRM

Nation's Leading Car Care Product Co. is now selecting dealers - Partners for A Local Route. Accounts/Territory Protected. Minimum 10K Investment. Nets UP To 60K+ Per Year. 100% Secured.

Call Mr. Coy NOW!
1-800-771-7722

Said application should set out all terms and conditions for the handling of such funds, including, but not limited to, the rate of interest, if any, to be paid on demand deposits, and the rate of interest, if any, to be paid on time deposits.

This notice shall be published once a week in some newspaper published in Bailey County and posted at the courthouse door of Bailey County.

Marilyn Cox
County Judge

C18-6s-3tcS

Top Ten Songs For The Week

1. Brother Jukebox by Mark Chestnutt
2. Daddys Come Around by Paul Overstreet
3. Walk on Faith by Mike Reid
4. Rumor Has It by Reba McEntire
5. These Lips Dont Know How To Say Goodbye by Doug Stone
6. Forever's As Far As I'll Go by Alabama
7. Love Can Build A Bridge by The Judds
8. You've Got To Stand For Something by Aaron Tippin
9. Come On Back by Carlene Carter
10. If You Want ME To by Joe Diffie

Right is the opposite of wrong; and wrong consists in inflicting injuries on other people.
-Robert Briffault.
-Aristotle.

FREE HEARING TESTS FOR SENIOR CITIZENS

MEET AT WESTERN DRUG—MULESHOE
114 MAIN
Wednesday, February 13, 1991
COME BY OR CALL 272-3106 9:30 a.m.-10:30 a.m.
10 DAYS FREE TRIAL 12 BRANDS TO CHOOSE FROM
SATISFACTION GUARANTEED

Sponsored by:
LIVINGSTON HEARING AID CENTER, INC.
Roland K. Denison
1903 19TH LUBBOCK, TX 79401
606-B QUINCY PLAINVIEW, TX 79072
806/762-2951 806/293-8874
TOLL FREE 1-800-828-0722

My thanks and appreciation to everyone for the cards, calls, flowers, and prayers, especially to the pastors of the Muleshoe churches for your visits and prayers. Everyones show of concern gave me strength during my long stay at me Methodist Hospital. God Bless You All
A.C. Bryant

Immaculate Conception Catholic Church
Father Patrick Maher
Northeast of City

First Baptist Church
220 West Ave. E.

Emmanuel Baptist Church
Iglesia Bautista Emmanuel
107 East Third
Isaia Cardenas, Pastor

Trinity Baptist Church
314 E. Ave. B.
Rev. Dale Berry

Circle Back Baptist Church
Intersection FM 3397 & FM 298
Pastor, Glen Price
946-3676

Calvary Baptist Church
1733 W. Ave. C.
Rev. Rick Michael

Victory Baptist Church
605 West 8th
James Williams, Pastor

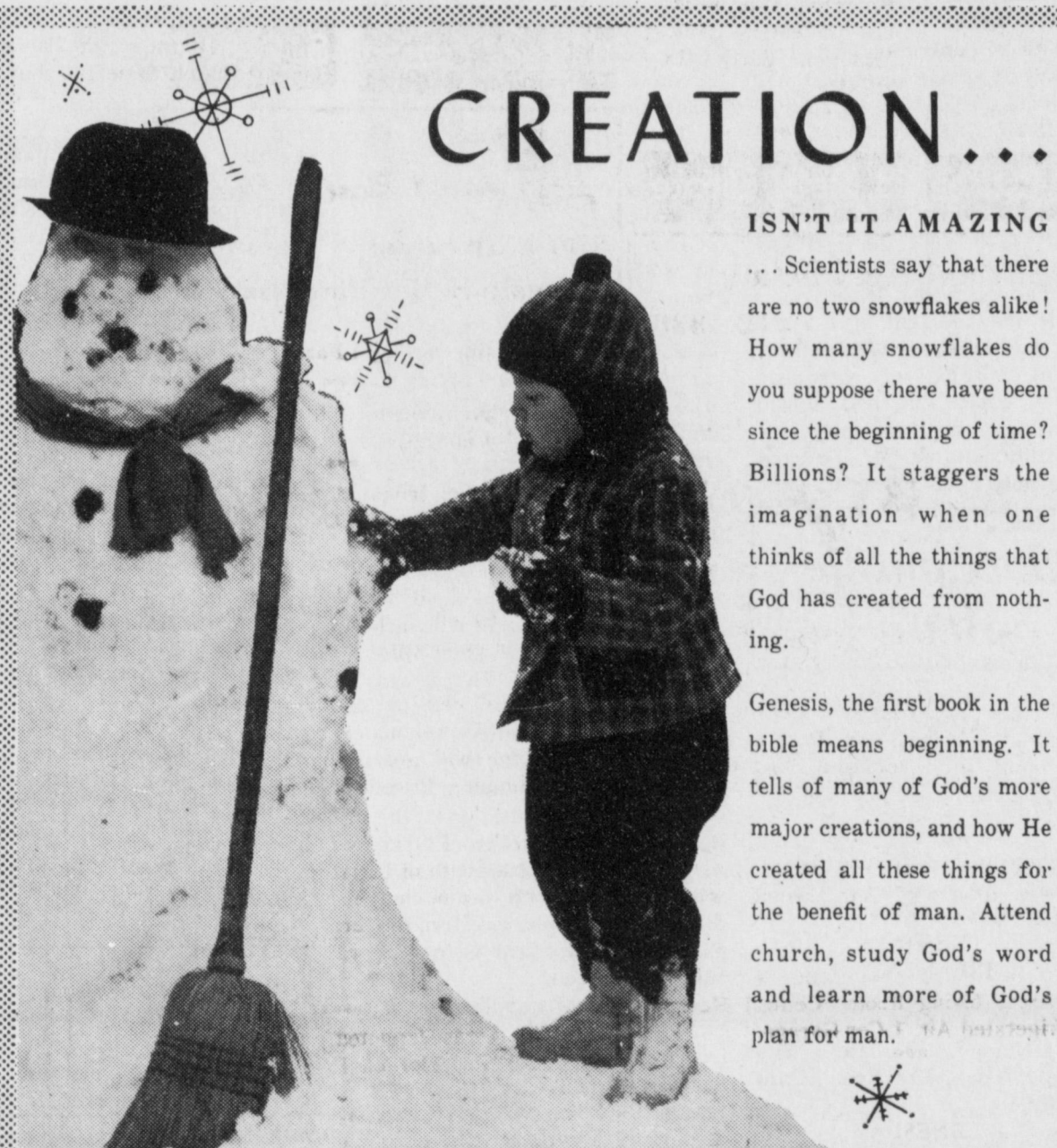
Progress Baptist Church
Charles Fisk, Pastor
Progress, Texas

Richland Hills Baptist Church
17th and West Av. D.

St. Matthews Baptist Church
Corner of West Boston & West Birch
M.S. Brown, Pastor

Progress Second Baptist Church
1st and 3rd Sunday
Rev. Arthur Hayes

Primitive Baptist Church
621 South First
Elder Cleveland Bass, Pastor
1st Baptist Church
Lazbuddie, Tx.
Gary Wilcox, Pastor
965-2126



CREATION...

ISN'T IT AMAZING

... Scientists say that there are no two snowflakes alike! How many snowflakes do you suppose there have been since the beginning of time? Billions? It staggers the imagination when one thinks of all the things that God has created from nothing.

Genesis, the first book in the bible means beginning. It tells of many of God's more major creations, and how He created all these things for the benefit of man. Attend church, study God's word and learn more of God's plan for man.

The Church is God's appointed agency in this world for spreading the knowledge of His love for man and of His demand for man to respond to that love by loving his neighbor. Without this grounding in the love of God, no government or society or way of life will long persevere and the freedoms which we hold so dear will inevitably perish. Therefore, even from a selfish point of view, one should support the Church for the sake of the welfare of himself and his family. Beyond that, however, every person should uphold and participate in the Church because it tells the truth about man's life, death and destiny; the truth which alone will set him free to live as a child of God.



Coleman Adv. Ser.

The Christian Center
Morton Hwy
272-5992

St. John Luthern
Sunday School and Bible
Classes 9:30 a.m.
Church Services 10:30 a.m.
Rev. Mac Bearss, Pastor

Lazbuddie Methodist Church
965-2121
Doug Chapman, Pastor

New Covenant Church
Plainview Hwy
Sunday 10:00 a.m.
Wednesday 7:00 p.m.
Jimmy Lowe, Pastor

Jehovah Witness
Friona Hwy
Jack Tiffin, Minister
Warren Meeks, Minister

Templo Calvario
507 South Main
Sunday 10:00 a.m.
Sunday Evening 7:00 p.m.
Evangelistic Services
J.L. Soto, Pastor
Church Of The Nazarene
9th and Ave. C.

Primera Iglesia Bautista
223 E. Ave. B.
Roy Martinez, Pastor

Lariat Church Of Christ
Sunday School 10:00 a.m.
Worship 11:00 & 6:00 p.m.
Wednesday Services 7:00 p.m.
Sam Billingsley, Minister

Muleshoe Church Of Christ
Clovis Hwy
Bret McCasland, Minister
16th & Ave. D. Church Of Christ
Sunday 10:30 a.m.
Evening 6:00 p.m.
Wednesday 8:00 p.m.
Curtis Shelburne, Minister

Lazbuddie Church Of Christ
Minister, Keith Courmier
Sunday School 9:30 a.m.
Morning Services 10:00 a.m.
Evening Services 6:00 p.m.
Wednesday Night 7:00 p.m.

First Assembly Of God
Rev. G. Dean Reid, Pastor
Sunday School 9:45 a.m.
Morning Worship 11:00 a.m.
Evening Services 6:30 p.m.
Mid-Week Services 7:30 p.m.
272-3984

Spanish Assembly Of God
East 6th and Ave. F.
Mike Doyle, Pastor

First United Methodist Church
507 W. 2nd Street
Richard Edwards, Pastor

El Divino Salvador Methodist Church
5th and Ave. D.
Jose M. Fernandez, Pastor

United Pentacostal Lighthouse Church
207 East Ave. G.
Rev. N.W. Thompson
272-3258

Truth Tabernacle Pentecostal Church
200 E. Ithaca & Fir
Pastor. Les James
272-3391

Western Drug 114 Main 272-3106	Attend The Church Of Your Choice!		Dairy Queen 1204 W. Amer. Blvd. 272-3412
Wes-Tex Futures, Inc. 1910 W. Amer. Blvd. 272-5585	Serv-All Thriftway 401 W. Amer. Blvd. 272-4585	American Valley, Inc. W. Hwy 84 272-4266	Viola's Restaurant 2002 W. Amer. Blvd. 272-3838
Bob Stovall Printing 221 E. Ave. B 272-3373	Combination Motor & Salvage 272-4458	Farmer's Co-Op Elevators Muleshoe 272-4335	Bobo Insurance 108 E. Ave. C. 272-4264
Attend The Church Of Your Choice	W.T. Services, Inc. 319 E. Amer. Blvd. 272-4888	Bratcher Motor Supply 107 E. Ave. B. 272-4288	5-Area Telephone Cooperative, Inc. 302 Uvalde 272-5513
Irrigation Pumps & Power West Hwy 84 272-4483	Wes-Tex Feed Yards, Inc. 272-7555	Muleshoe Lawn & Leisure 522 W. Amer. Blvd. 272-3162	Richland Hills Texaco 1914 W. Amer. Blvd. 272-4875

CLASSIFIEDS 272-4536

CLASSIFIED RATES

15 Words & Under Minimum Charge \$2.30 Thereafter \$2.00

16 Words & Over 1st Insertion 15 cents per word 2nd Insertion 13 cents per word

CLASSIFIED DISPLAY RATES \$1.75 Per Column Inch

DEADLINES
12 noon Tues. For Thursday Paper
12 noon Friday For Sunday Paper

To receive the reduced rate after the first insertion ad must run continuously.

We reserve the right to classify, revise, or reject any ad. We are not responsible for any error after ad has run once.

1. Personals

CONCERNED
About Someone's Drinking? HELP IS AVAILABLE through Al-Anon Call 272-2350 or 965-2870 or come to visit Tuesday and Thursday nights, 8:00 p.m. & through AA call 965-2870 or come visit Tuesday nights, 8:00 at 620 W. 2nd, Muleshoe.

WORK WANTED
Older man wants work-has experience building pole barns, welding, fitting, roofing, painting, dry-wall carpentry-Quite reasonable hourly rate. Plus-free estimate. Leave message and phone number. Call 272-4536. P1-6s-1tp

3. Help Wanted

ASSEMBLERS: Excellent income to assemble products from your home. 504-646-1700 DEPT. P4027. 3-6s-4tp(ts)

DELIVERY DRIVERS wanted. Must have own car, insurance, drivers license, and 18 years old. Pizza Hut. H3-6t-2tc

LOCAL SALES REPRESENTATIVE for leading life insurance organization. Call or write: Sammy Saied, P.O. Box 720, Childress, TX 79201, 817-937-8824. S3-6t-3tc

EARN \$300 to \$500 per week reading books at home. Call 1-615-473-7440 EXT. B805. A3-6t-4tp(ts)

CONSTRUCTION jobs now hiring all positions. Both skilled & unskilled. Male & Female openings. For info. Call (615) 779-5505 Ext. J-1104.

WANTED: Experienced machinist and gearhead man. Call (806) 238-1596 days or 238-1328 nights-- after 9 p.m. B3-ftc

4. Houses For Rent

FOR RENT: Two bedroom house. Available February 15. Call 272-4011. H4-5t-4tc

PIANO FOR SALE: Wanted-- Responsible party to assume small monthly payments on piano. See locally. Call credit manager 1-800-447-4266. J11-5t-7tp

8. Real Estate

9. Automobiles For Sale

FOR SALE: 84 Chevrolet Blazer. 4X4 Loaded. 1 owner-\$6,000. Call 806-272-5527 or 272-4246. M9-6s-4tc

FOR SALE: 1986 Cadillac Fleetwood Broughm. One owner, low mileage. James Littleton, Earth, Tx. 257-3376. L9-6t-8tp

8. Real Estate

9. Automobiles For Sale

FOR SALE: 1987 Chevy Subaru Silvarado. AM/FM Cassette, tilt cruise, new tires. 60,000 miles. Call 277-5037.

FOR SALE: 1984 Camero Berlinetta. Fully loaded. \$4,000. A9-6t-2tc

8. Real Estate

15. Misc.

We need to buy 100,000 ft of aluminum pipe 2" to 8". Also side row sprinklers. Contact T. L. Timmons, State Line Irrigation, Littlefield, 806-385-4487. T15-tfc

8. Real Estate

15. Misc.

Seed Contracts
Excellent opportunity for producers with clean land and average water.
For Information Call office 1-800-274-4404 evening 806-293-7927

15. Misc.

HOUSE FOR LEASE: 3-2-1. \$500. a month. \$300. deposit. 1218 W. 14th, Littlefield. 385-3122. Available April. W13-6s-2tc

15. Misc.

3 PEERLESS Submersible Pumps \$700 or \$2500 each. Used part of one season Muleshoe area. 180' 4" 15HP, 160' 5" 15HP, 185' 6" 25HP including cables bowl units sand skirts panels. Phone 715-835-8372. Lila Schultz 3834 Nimitz, Eau Claire, Wisconsin 54701. S15-6t-3tpS

Smallwood Real Estate

232 Main Muleshoe 272-4838



3 Bedroom, 1 Bath, Living Room, Kitchen and Dining Area, Central Heat, Dishwasher, Garage, Patio and Large Shop Building. \$25,000.00

On pavement in Country. 3 Bedroom, 2 Bath, Large Kitchen and Dining Area, Living Room, Large Den, and Playroom. 1 Acre. Owner will carry 2nd lien.

All electric energy efficient, Central Heat and Air, 2 Bedroom, 1 1/2 Bath, Living Room and Den, 1 Car Garage with Storage. Corner Lot.

Brick- 3 Bedroom, 1 1/4 Bath, Kitchen, Dining Area, Living Room, Central Heat and Refrigerated Air. 1 Car Garage.

STUCCO--2 Bedroom, 1 1/4 Bath, Remodeled Kitchen, Dishwasher, 2 Oven Stove, Central Heat and Air, Fireplace, Nice Carpet. Good Terms.

LAMB County Farm 145A on Bailey County line with Valley Circle Sprinkler. One-8 inch and One-6 inch well. Electric motors. 1/2 Circle Improved Grass, grass on 4 corners, Alotments-Wheat-28A. Corn 57A. Cotton 32.7A. Must sell by March 1.

J.B. Sudderth Realty, Inc.
109 Fifth Street Farwell, Texas
Realtors/Certified Appraisers

*Have Buyers. Need Farm Land to Sell.

*80 Acres Irrigated, 1 well. Lays good. South of Lariat.

*46.6 Acres Irrigated on Hwy. South of Lariat-will subdivide. Owner finance, small tracts.

*626 Acres Irrigated NE of Farwell on Hwy. Excellent Dairy location and large barn in good water area.

*Almost perfect 320 Acres irrigated, 3 wells. Approximately 160 acres wheat growing will go, Lazbuddie area. Owner will finance. Priced for immediate sale.

*Excellent 320 Acres Irrigated on highway 3 miles south of Lariat. 2 Circle Sprinklers. Newly remodeled 3 bedroom home with garage, barn, several storage buildings and livestock corral. Possible Owner Financing.

*320 Acres Irrigated. Two 8" wells, 1 Circle Sprinkler on Hwy. Oklahoma Lane area.

*640 Acres Irrigated. Good Water Area. Super Nice Large Brick Home with Good 50x100 steel barn. Oklahoma Lane Area.

J.B. Sudderth Broker
Daren Sudderth Broker
Master Senior Appraiser
806-481-3288

Bingham & Nieman Realty

116 E. Ave. C. George Nieman, Broker 272-5285 or 272-5286

LENNAU ADD.
Nice 4-2-2 carport home. Cent. A&H, built-ins, FP, Cent. Vac., Office, Sewing area, fenced yard. \$30's!!!!

3-2-2 Brick, heat pump, built-ins, nice carpets, fenced yd., & more!!!!

3-1 1/2-1 Brick Air, utility, IN CONTRACT. FmHA financing possible!!!!

3-1 Home, Corner lot, wall furn., fenced yd. \$20's!!!!

COUNTRY CLUB-PRICE REDUCED on this 3-2-2 Brick, Cent. A&H, built-ins, FP, 2,000+ sq. ft. area, freshly painted, storage bldg., fenced yd., much more. \$69,900!!!!

COUNTRY CLUB IN CONTRACT Cent. A&H, built-ins, freshly painted, fenced yd.!!!

JUST LISTED-VERY NICE 3-2-2 Brick, 3,000+ sq. ft. of lv. area incl. nice finished basement, built-ins, geothermal A&H, energy-eff., loads of closet & storage, on 7.86 acres, fence, stock tank, sideroll, & many more amenities, close to town. DON'T MISS THIS! \$90's!!!!

3-2-3 Carport Home on 11 ac. edge of town, Cent. A&H, built-ins, cellar, barns, & corral. MAKE OFFER!!!!

NICE 3-2-1 Home on 1 acre close to town, Cent. Heat, evap. air, nice carpets, remodeled. \$30's!!!!

GYMNASIUMS STUDIO- BLDG. & EQUIPMENT- PRICED TO SELL!!!!

RESTAURANT BLDG., LAND., & EQUIPMENT- A GOOD BUY!!!!

COMMERCIAL TRACT 175'X100' (Hwy. 70 & 84, RR spur access, approx. 1200 sq. ft. bldg. PRICED TO SELL!!!!

24 ac., W. Hwy. 84, 8" well, 3 homes, 1+ mobile home hookups, & also has veg. & fruit stand!!!!

RICHLAND HILLS
IMMACULATE 3-2-2 Brick, Cent. A&H, Built-ins, FP, sunken lv. area with cathedral ceiling, ceiling fans, earthtones, storage bldg. \$50's!!!!

NICE RESIDENTIAL LOTS- \$5,000 UP.....

PRICE REDUCED-Nice 3-2-2 Brick, Cent A&H, FP, Earthtone carpets, fenced yd. \$60's!!!!

NICE 3-2-2 Brick, Heat pump, built-ins, FP, earthtone carpets, freshly painted, fenced yd., & more. REDUCED TO \$34,900.00!!!!

3-2-2 Brick, Built-ins, IN CONTRACT ent. A&H, HIGH SCHOOL

3-2-1 Home 1900+sq. ft. of lv. area, heat pump, built-ins, FP, fenced yd., storage bldg., & much more. \$40's!!!!

PRICED REDUCED 3-1-1 Home, earthtone carpets, workshops, cellar, fenced yd.

2-1 1/2-1 Brick, fl. furn., Cent. Air, fenced yd., & more. \$20's!!!!

FmHA FINANCING to qualified buyer- 3-1-1 Brick, Cent. heat, earthtone carpet, \$20's

HIGHLAND AREA
NICE 3-2-1 Brick, built-ins, Heat Pump FP, fans, energy eff., fenced yd., & storage. \$50's!!!!

JUST LISTED 2-2-2 Home, Cent. heat, evap. air, built-ins, fenced yd., & more.

VERY NICE 4-2-1 Brick, Cent. A&H, built-ins, earthtone carpets, util., encl., patio, storm win. & doors, grill, spktr. sys., stor. bldg., fenced yd. \$60's!!!!

PRICE REDUCED 2-2-2 Brick, corner lot, Cent. A&H, spacious rooms, utility, new carpet, & vinyl, cov. patio, fenced yd. \$30's!!!!

JUST LISTED- Nice 2-2-1 Brick, Cent. A&H, built-ins, HEATED POOL, spktr. Sys., fenced yd., corner lot, & more. \$50's!!!!

8. Real Estate

FOR SALE: Will consider renting. 3 bedroom house in country. Call 946-3417. K8-6s-tfc(S)

FOR SALE: Country Home. 3 Bedroom, 2 Bath. 220 sq. ft. with 3 Acres. 8 miles North of Lazbuddie. K8-51s-tfc

8. Real Estate

HOUSE FOR SALE: 3 Bedroom, 2 full baths, Central heat and air. Good storm cellar and well. On 2 Acres, 3 miles East on Hwy 70 and 1 mile North, then 200 yards East. 806-352-1715 or 352-1899 in Amarillo. B8-4t-tfc

COUNTRY LIVING. Great family home plus 80 Acres farmland. Close to town. \$75,000. For information call:
Patricia Yeager, Broker
(806)655-1093 or 655-3378

James F. Hayes & Co.

Agricultural Real Estate Sales & Appraisals
Vic Coker, Agent

114 ACRES-East of Muleshoe on HW 84. Allotted, Sideroll Sprinkler, Seller Motivated. Priced to Sell.

160 ACRES-West Camp Area-2 Wells, 1 Sprinkler Lays Perfect. Small House.

108 ACRES-East of Muleshoe in Lamb County. Good Water. Allotted and some grass. Nice part time operation. Terms Available.

177 ACRES-Near Circleback. Good Soil, Good Bases & Yields.

700 ACRES of Lamb County. Good fenced submersible pump and well for stock water. Nice!

143 ACRES-East of Muleshoe and North of Highway 70. 1-6" well pumps 500+ gallons. 13 acres of grass. Balance is allotted. Reasonably Priced.

177 ACRES-Light Water, Setup for Center Pivot Irrigation, Good Soil, Fully Allotted.

320 ACRES-With Two Sprinklers Near Hub. LEPA system. Excellent Soil & Water. PRICE REDUCED.

380 ACRES-2 New sprinklers with injectometer tanks. 2 Wells, Excellent W. motors go with sale. Fully Allotted.

320 ACRES-West Camp PRICE REDUCED! Lays good, good water, electric sprinkler, large but modest home. Terms possible.

160 ACRES-North of Progress. Excellent Water, Two Wells, Good Allotments, Pad & Pipe for Center Pivot Sprinkler.

220 ACRES at Baileyboro. Light Water, Fully Allotted, Lots of Depreciable Assets. Owner VERY Motivated.

590 ACRES in Two Tracts North of Baileyboro. Fully Allotted. Priced for IMMEDIATE Sale! Terms Possible.

480 ACRES-West of Clays Corner, 3 Sprinklers, On pavement, Good Water, Small House, Good Opportunity.

We have other listings available. We believe now is a very good time to be buying farmland. Come by and visit with Vic.

310 Main Street, Suite 103
Phone 272-3100
Home 965-2468
Muleshoe, Texas

8. Real Estate

FOR SALE: 14x70, 2 bedroom, 2 bath mobile home. Good condition. \$10,000 or will consider any reasonable offer. 272-5489 or 965-2178. D8-5s-tfc

FOR SALE: 100 Horse Power-Electric irrigation motor. Complete. Call 965-2601 before 7:00 in the morning. S15-6s-4tc

8. Real Estate

HCR REAL ESTATE
2-2 1/4-double carport. Brick. Buy now and repair yourself or see after repaired.
Thursie Reid
272-5318

BAILEY COUNTY LAND FOR SALE
Owner will finance the following size blocks: 2-80 acres, 3-160 acres, 4-240 acres, 5-320 acres, 6-400 acres, 7-480 acres, 8-560 acres, 9-640 acres, 10-720 acres, 11-800 acres, 12-880 acres, 13-960 acres, 14-1040 acres, 15-1120 acres, 16-1200 acres, 17-1280 acres, 18-1360 acres, 19-1440 acres, 20-1520 acres, 21-1600 acres, 22-1680 acres, 23-1760 acres, 24-1840 acres, 25-1920 acres, 26-2000 acres, 27-2080 acres, 28-2160 acres, 29-2240 acres, 30-2320 acres, 31-2400 acres, 32-2480 acres, 33-2560 acres, 34-2640 acres, 35-2720 acres, 36-2800 acres, 37-2880 acres, 38-2960 acres, 39-3040 acres, 40-3120 acres, 41-3200 acres, 42-3280 acres, 43-3360 acres, 44-3440 acres, 45-3520 acres, 46-3600 acres, 47-3680 acres, 48-3760 acres, 49-3840 acres, 50-3920 acres, 51-4000 acres, 52-4080 acres, 53-4160 acres, 54-4240 acres, 55-4320 acres, 56-4400 acres, 57-4480 acres, 58-4560 acres, 59-4640 acres, 60-4720 acres, 61-4800 acres, 62-4880 acres, 63-4960 acres, 64-5040 acres, 65-5120 acres, 66-5200 acres, 67-5280 acres, 68-5360 acres, 69-5440 acres, 70-5520 acres, 71-5600 acres, 72-5680 acres, 73-5760 acres, 74-5840 acres, 75-5920 acres, 76-6000 acres, 77-6080 acres, 78-6160 acres, 79-6240 acres, 80-6320 acres, 81-6400 acres, 82-6480 acres, 83-6560 acres, 84-6640 acres, 85-6720 acres, 86-6800 acres, 87-6880 acres, 88-6960 acres, 89-7040 acres, 90-7120 acres, 91-7200 acres, 92-7280 acres, 93-7360 acres, 94-7440 acres, 95-7520 acres, 96-7600 acres, 97-7680 acres, 98-7760 acres, 99-7840 acres, 100-7920 acres, 101-8000 acres, 102-8080 acres, 103-8160 acres, 104-8240 acres, 105-8320 acres, 106-8400 acres, 107-8480 acres, 108-8560 acres, 109-8640 acres, 110-8720 acres, 111-8800 acres, 112-8880 acres, 113-8960 acres, 114-9040 acres, 115-9120 acres, 116-9200 acres, 117-9280 acres, 118-9360 acres, 119-9440 acres, 120-9520 acres, 121-9600 acres, 122-9680 acres, 123-9760 acres, 124-9840 acres, 125-9920 acres, 126-10000 acres, 127-10080 acres, 128-10160 acres, 129-10240 acres, 130-10320 acres, 131-10400 acres, 132-10480 acres, 133-10560 acres, 134-10640 acres, 135-10720 acres, 136-10800 acres, 137-10880 acres, 138-10960 acres, 139-11040 acres, 140-11120 acres, 141-11200 acres, 142-11280 acres, 143-11360 acres, 144-11440 acres, 145-11520 acres, 146-11600 acres, 147-11680 acres, 148-11760 acres, 149-11840 acres, 150-11920 acres, 151-12000 acres, 152-12080 acres, 153-12160 acres, 154-12240 acres, 155-12320 acres, 156-12400 acres, 157-12480 acres, 158-12560 acres, 159-12640 acres, 160-12720 acres, 161-12800 acres, 162-12880 acres, 163-12960 acres, 164-13040 acres, 165-13120 acres, 166-13200 acres, 167-13280 acres, 168-13360 acres, 169-13440 acres, 170-13520 acres, 171-13600 acres, 172-13680 acres, 173-13760 acres, 174-13840 acres, 175-13920 acres, 176-14000 acres, 177-14080 acres, 178-14160 acres, 179-14240 acres, 180-14320 acres, 181-14400 acres, 182-14480 acres, 183-14560 acres, 184-14640 acres, 185-14720 acres, 186-14800 acres, 187-14880 acres, 188-14960 acres, 189-15040 acres, 190-15120 acres, 191-15200 acres, 192-15280 acres, 193-15360 acres, 194-15440 acres, 195-15520 acres, 196-15600 acres, 197-15680 acres, 198-15760 acres, 199-15840 acres, 200-15920 acres, 201-16000 acres, 202-16080 acres, 203-16160 acres, 204-16240 acres, 205-16320 acres, 206-16400 acres, 207-16480 acres, 208-16560 acres, 209-16640 acres, 210-16720 acres, 211-16800 acres, 212-16880 acres, 213-16960 acres, 214-17040 acres, 215-17120 acres, 216-17200 acres, 217-17280 acres, 218-17360 acres, 219-17440 acres, 220-17520 acres, 221-17600 acres, 222-17680 acres, 223-17760 acres, 224-17840 acres, 225-17920 acres, 226-18000 acres, 227-18080 acres, 228-18160 acres, 229-18240 acres, 230-18320 acres, 231-18400 acres, 232-18480 acres, 233-18560 acres, 234-18640 acres, 235-18720 acres, 236-18800 acres, 237-18880 acres, 238-18960 acres, 239-19040 acres, 240-19120 acres, 241-19200 acres, 242-19280 acres, 243-19360 acres, 244-19440 acres, 245-19520 acres, 246-19600 acres, 247-19680 acres, 248-19760 acres, 249-19840 acres, 250-19920 acres, 251-20000 acres, 252-20080 acres, 253-20160 acres, 254-20240 acres, 255-20320 acres, 256-20400 acres, 257-20480 acres, 258-20560 acres, 259-20640 acres, 260-20720 acres, 261-20800 acres, 262-20880 acres, 263-20960 acres, 264-21040 acres, 265-21120 acres, 266-21200 acres, 267-21280 acres, 268-21360 acres, 269-21440 acres, 270-21520 acres, 271-21600 acres, 272-21680 acres, 273-21760 acres, 274-21840 acres, 275-21920 acres, 276-22000 acres, 277-22080 acres, 278-22160 acres, 279-22240 acres, 280-22320 acres, 281-22400 acres, 282-22480 acres, 283-22560 acres, 284-22640 acres, 285-22720 acres, 286-22800 acres, 287-22880 acres, 288-22960 acres, 289-23040 acres, 290-23120 acres, 291-23200 acres, 292-23280 acres, 293-23360 acres, 294-23440 acres, 295-23520 acres, 296-23600 acres, 297-23680 acres, 298-23760 acres, 299-23840 acres, 300-23920 acres, 301-24000 acres, 302-24080 acres, 303-24160 acres, 304-24240 acres, 305-24320 acres, 306-24400 acres, 307-24480 acres, 308-24560 acres, 309-24640 acres, 310-24720 acres, 311-24800 acres, 312-24880 acres, 313-24960 acres, 314-25040 acres, 315-25120 acres, 316-25200 acres, 317-25280 acres, 318-25360 acres, 319-25440 acres, 320-25520 acres, 321-25600 acres, 322-25680 acres, 323-25760 acres, 324-25840 acres, 325-25920 acres, 326-26000 acres, 327-26080 acres, 328-26160 acres, 329-26240 acres, 330-26320 acres, 331-26400 acres, 332-26480 acres, 333-26560 acres, 334-26640 acres, 335-26720 acres, 336-26800 acres, 337-26880 acres, 338-26960 acres, 339-27040 acres, 340-27120 acres, 341-27200 acres, 342-27280 acres, 343-27360 acres, 344-27440 acres, 345-27520 acres, 346-27600 acres, 347-27680 acres, 348-27760 acres, 349-27840 acres, 350-27920 acres, 351-28000 acres, 352-28080 acres, 353-28160 acres, 354-28240 acres, 355-28320 acres, 356-28400 acres, 357-28480 acres, 358-28560 acres, 359-28640 acres, 360-28720 acres, 361-28800 acres, 362-28880 acres, 363-28960 acres, 364-29040 acres, 365-29120 acres, 366-29200 acres, 367-29280 acres, 368-29360 acres, 369-29440 acres, 370-29520 acres, 371-29600 acres, 372-29680 acres, 373-29760 acres, 374-29840 acres, 375-29920 acres, 376-30000 acres, 377-30080 acres, 378-30160 acres, 379-30240 acres, 380-30320 acres, 381-30400 acres, 382-30480 acres, 383-30560 acres, 384-30640 acres, 385-30720 acres, 386-30800 acres, 387-30880 acres, 388-30960 acres, 389-31040 acres, 390-31120 acres, 391-31200 acres, 392-31280 acres, 393-31360 acres, 394-31440 acres, 395-31520 acres, 396-31600 acres, 397-31680 acres, 398-31760 acres, 399-31840 acres, 400-31920 acres, 401-32000 acres, 402-32080 acres, 403-32160 acres, 404-32240 acres, 405-32320 acres, 406-32400 acres, 407-32480 acres, 408-32560 acres, 409-32640 acres, 410-32720 acres, 411-32800 acres, 412-32880 acres, 413-32960 acres, 414-33040 acres, 415-33120 acres, 416-33200 acres, 417-33280 acres, 418-33360 acres, 419-33440 acres, 420-33520 acres, 421-33600 acres, 422-33680 acres, 423-33760 acres, 424-33840 acres, 425-33920 acres, 426-34000 acres, 427-34080 acres, 428-34160 acres, 429-34240 acres, 430-34320 acres, 431-34400 acres, 432-34480 acres, 433-34560 acres, 434-34640 acres, 435-34720 acres, 436-34800 acres, 437-34880 acres, 438-34960 acres, 439-35040 acres, 440-35120 acres, 441-35200 acres, 442-35280 acres, 443-35360 acres, 444-35440 acres, 445-35520 acres, 446-35600 acres, 447-35680 acres, 448-35760 acres, 449-35840 acres, 450-35920 acres, 451-36000 acres, 452-36080 acres, 453-36160 acres, 454-36240 acres, 455-36320 acres, 456-36400 acres, 457-36480 acres, 458-36560 acres, 459-36640 acres, 460-36720 acres, 461-36800 acres, 462-36880 acres, 463-36960 acres, 464-37040 acres, 465-37120 acres, 466-37200 acres, 467-37280 acres, 468-37360 acres, 469-37440 acres, 470-37520 acres, 471-37600 acres, 472-

You'll Love These Values

Bacon
GET A 12 OZ. PKG. Wilson Meat Franks
Free!

WHOLE **Smoked Picnics**LB. **\$1.18**

HEAVY GRAIN FED BEEF BONELESS **Sirloin Tip Roast**LB. **\$2.59**

SUPER LEAN- GROUND ROUND QUALITY **Ground Beef**LB. **\$2.29**

FAMILY PACK BONELESS TOP **Sirloin Steak**LB. **\$2.49**

HEAVY GRAIN FED BEEF BONELESS **Rump Roast**LB. **\$2.69**

FAMILY PACK BEEF **K.C. Strip Steak**LB. **\$4.99**

Round Steak
\$1.78
LB. FAMILY PACK BONE-IN

FAMILY PACK BONELESS **Round Steak**LB. **\$1.98**

Soft'n Gentle
SOFT-N-GENTLE **Bath Tissue**
4 ROLL PKG. **79¢**

MORRISON **Corn Kits**
6 OZ. POUCHES **3 FOR 99¢**

SHURFINE **Pinto Beans**
2 LB. BAG **59¢**

ASSORTED FLAVORS RAGU **Spaghetti Sauce**
30 OZ. JAR **\$1.89**

alwaysPlus **Always Maxi Pads**
NIGHT/PLUS/DOUBLE PLUS
16-24 CT. PKG. **\$3.29**

ASSORTED FLAVORS SHURFINE **Ice Cream**
1/2 GALLON SQUARE CARTON **\$1.39**

ALL TYPES **Coca-Cola**
3 LITER BTL. **\$1.59**
6 PACK/12 OZ. CANS **\$1.99**

LIPTON **Tea Bags**
100 CT. BOX **\$2.29**

EQUAL **Equal**
50 CT. BOX **\$1.99**

ASSTD BETTY CROCKER SUPERMOIST **Cake Mix**
18 OZ. BOX **89¢**

ASSORTED BETTY CROCKER READY TO SPREAD **Frosting**
16 OZ. CAN **\$1.29**

GERBER'S SECOND FOOD **Baby Food**
4 OZ. JARS **3 \$1**

We Support Our Men and Women In The Middle East!

GOLDEN...RIPE **Sweet Potatoes**
3 LBS. **\$1.00**

FRESH CRISP GREEN **Leaf Lettuce**
BUNCHES **2 \$1.00**

MEDIUM **White Onions**LB. **58¢**

CRISP... **Sno-White Cauliflower** EACH **88¢**

LARGE BUNCH GARDEN **Fresh Broccoli**BUNCH **88¢**

LARGE SIZE FROM MEXICO **Fresh Pineapple** .. EACH **98¢**

Ruby Red Grapefruit
6 FOR **\$1**

ASSORTED MICROWAVE POPCORN **Pop Secret**
3 CT. PKG. **\$1.79**

COMSTOCK REGULAR OR LIGHT **Cherry Pie Filling**
21 OZ. CAN **\$1.09**

ASSORTED TONY'S **Microwave Pizza**
9 OZ. BOX **\$1.29**

TONY'S ASST. MICROWAVE **French Bread Pizza** PKG **\$1.19**

ASSORTED **Degree**
• ROLL-ON 15 OZ. BTL.
• AEROSOL 4 OZ. CAN
• SOLID 2 OZ. SIZE
\$2.29

WESTERN FAMILY SYRUP OR EXPECTORANT **Triaminic**
4 OZ. BTL. **\$1.99**

TABLETS OR CAPLETS **Nuprin**
50 CT. PKG. **\$3.69**

ASSORTED **Suave**
• SHAMPOO 16 OZ. BTL.
• CONDITIONER 16 OZ. BTL.
• HAIRSPRAY 4 OZ. BTL.
99¢

SHED'S SPREAD **Country Crock**
3 LB. TUB **\$1.49**

REG. HOT, QR MILD MEX. **Velveeta**
16 OZ. LOAF **\$2.79**

SLICES **Lunch Wagon**
12 OZ. PKG. **\$1.49**

ASSORTED **Pillsbury Biscuits**
10 CT. CANS **489¢**

HEAT-N-SERVE **Fisher Boy Fish Sticks**
1 LB. BOX **\$1.39**

BOOTH FANTAIL **Shrimp**
1 LB. BOX **\$5.99**

BOOTH PERCH **Filletts**
1 LB. BOX **\$2.49**

RHODES WHITE/HONEY WHEAT **Bread Dough**
3 LOAF PKG. **\$1.49**

YOUR CHOICE **Wrigley's Gum**
MIX OR MATCH
10 \$1

thriftway

401 W. Amer. Blvd. Muleshoe, Tx. 272-4585

AAFFILIATED FOODS INC. MEMBER STORE
WE ACCEPT FOOD STAMPS... WE RESERVE THE RIGHT TO LIMIT
Prices Effective February 10 - 16, 1991

REGULAR OR LIGHT **Cheetos**
REGULAR \$1.79
99¢