

the great american smokeout
Nov. 20



AMERICAN
CANCER
SOCIETY

24 hour prayer
service 659-2911

THE GRUYER STATESMAN

Volume 16 No 6

The Gruver Statesman, Gruver, Texas 79040

Thursday November 13, 1986

New Gruver Superintendent



Chester Juroska

The Gruver School Trustees have named Chester Juroska as the new Superintendent of the Gruver Schools, effective January 1, 1987.

Juroska, 38, was reared and attended public school in Brazoria County, Texas. He earned his B.A. Degree from the University of Houston, and both M.A. and M. Ed. Degrees from Stephen F. Austin State University, and has completed the course requirements for a doctorate at East Texas State University.

Juroska has seven years of classroom teaching experience, and an additional nine years of administrative experience. He is currently High School Principal at Commerce, Texas.

Juroska and his wife, Sandra, have two children, ages 7 and 10 months.

Juroska will replace Jack Weldon who is retiring after having served the district as Superintendent since July, 1970.

Hospital

Patients in Hansford Hospital are Ruth Hutton, Bill Russell, Phillip Jenkins, LoRee Booth, Debra Russell, Jennifer Laxson, and Melissa Schuman.

Dismissed were: Leland Cook, Dorothy Haner, Josephine Gruver, Ronnie Bullard, Joe Garcia, Jesus Villigas, Dora Olivarez, and Francis Williams.

Weather

Date	Hi	Lo
7	62	45
8	60	35
9	50	27
10	44	18

Markets

Wheat Corn	\$2.17
Wheat Milo	\$1.70
Milo	\$2.65



Ty Seagler

National Association Teachers of Singing

Connie Woolley of Spearman, Ty Seagler, and Robin Karlin, of Gruver, will be participating in the thirty-fifth regional auditions of the National Association of Teachers of Singing. The auditions will be held on the Campus of the University of Oklahoma, November 13, 14, 15. Three songs are prepared by each student from a required repertoire. Students who receive a grade of 90 each round will be allowed to sing again. Five students will sing in the final round. Specific goals of the auditions are: 1. To stimulate the desire and incentive for vocal and musical self improvement; 2. To provide and opportunity to sing before qualified and impartial judges, and to receive careful and constructive criticism.

Six hundred and sixty-six students are entered from the three-state region: Oklahoma, Texas, and New Mexico. High School Students through Post-Graduate students will participate.

Other students participating in the event from this area are: Shelley Pafford, and Luann Walker, Boise City; Frank Eldridge, Hooker, Laura Bohlander and Stephanie McKinnon, Guymon. All are students of Billie Godley.



Robin Karlin



Connie Woolley

Muncho Frio!

High winds and cold temperature plus heavy clouds greeted Gruver residents early Wednesday morning. A cold front dipped into Hansford Co. with gusting to 40 mph early Wednesday. The Chill factor was expected to dip below zero of Wednesday and Thursday of this week. Snow began falling in Gruver between 8 and 9 p.m. Weather forecasters do not expect any accumulation of snow.

Cancer Seminar

Area residents are welcome to attend a cancer seminar called "Winning Against Cancer at Home" presented by the Don & Sybil Harrington Cancer Center. The seminar will be Thursday, November 13th at 7:00 p.m. at the First State Bank and is co-sponsored by First State Bank and First National Bank of Spearman. The seminar will touch on several topics as an overall view of cancer control today, patient care and research. The local Spearman FHA will be hostesses for this event.

Thanks

A big thank-you to all the merchants, organizations, and individuals that helped make the 1st Annual Gruver Halloween Carnival a success.

Thanks especially to all those that donated time. Gifts & money were donated by the following people: Bort Insurance Agency, G&G Foodliner, Gruver Lumber, Main Street, Gruver Farm Supply, Whitaker Cattle Co., Gruver Ford, Gruver Schools, Hansford Supply, Horseshoe Inn, Larry's Welding, Sun Spot, Sec Designs, Universal Oil, Helen's Gifts, Nite n Day, Sluder-Evans, Hansford Co. Electric, The Dahl House, Caprock Industries, Continental Grain, Equity, Gruver Drug, Gruver Body Shop, Gruver Insurance, Sparks Bros., Gruver Texaco Wholesale, Riley Brothers, Hat-4, Dairy Queen, Ace Sign Shop, Cluck Cattle Co., Allsups, Jones Pipeline, Hansford Steakhouse, Evans Dirt Work, Gopher's City of Gruver, Gruver Lions Club, Hoel CPA, Miller Electric, Delano Real Estate, DGC Feeders, Panhandle Spraying, Panhandle Irrigation, Gorham Paint Service, Speartex Grain, Little Tiffanies, Gruver Redi-Mix, Gruver State Bank.

Turkey Walk

The American Heart Association recently sponsored a "Turkey Walk" for the citizens of Gruver. Despite the cold winds, there were thirteen walkers who braved the weather and walked the three mile course in order to help the association to raise money.

A total of \$1200 has been raised so far with honors going to Tonya Adkins for \$400 contributed by her sponsors and to Steve Gains for \$181. Honorable mention goes to Bill and Fran Maupin representing the older generation. The youngest walkers who not only completed the course but made the best time were Grant Odom and Will Etheredge.

Those of you who would like to make a donation to the American Heart Association, may send it to Pat Irwin who was chairman of the Turkey Walk.

Boots and Slippers

The Boots and Slippers Square Dance Club will be dancing tonight, November 13th, 8:00 p.m. at the Golden Age Center with Murry Beasley calling, ya'll come join the fun!!!

SPEARMAN FAMILY SERVICES
Open every Tuesday
9:00 a.m.-2:00 p.m.
at the
Home Demonstration Bldg.
in Spearman
For more
information or appointments
Call 659-3325
or 435-3671

Election Results 1986

	Precinct #1 - County Courthouse	Precinct #2 - Renner Ranch	Precinct #3 - Community Bible Church, Gruver	Precinct #4 - Gruver County Agri. Bldg.	Precinct #5 - Spearman County Agri. Bldg.	Precinct #6 - Spearman High School	Precinct #7 - Oslo Church	Precinct #8 - Absentee Voting	Precinct #9 - Morse Community	TOTALS
United States Representative - District 13										
Doug Seal	110	5	49	82	70	121	1	24	12	474
Soulter	334	37	109	295	232	256	34	85	65	1447
Governor										
Mark White	95	6	29	80	63	80	3	26	16	398
Clements	361	36	127	298	245	315	32	89	63	1556
Doyle	2	0	1	3	2	3	0	0	0	11
Lieutenant Governor										
Hobby	222	22	89	178	146	191	15	48	28	939
Davidson	200	17	61	174	138	175	20	58	45	888
B.Howell	4	0	2	5	4	0	0	0	2	17
Attorney General										
J. Mattox	193	18	72	167	108	180	12	45	21	816
Barrera	231	22	73	196	186	196	22	62	55	1043
Stephens	6	0	1	3	1	0	0	0	0	11
Comptroller of Public Accounts										
Bullock	266	28	99	240	188	252	23	72	45	1213
Weeks	62	0	9	16	35	21	1	3	3	150
State Treasurer										
Richards	251	26	95	225	200	240	19	72	40	1168
Reid	67	0	5	13	31	13	1	1	4	130
Commissioner of the General Land Office										
Mauro	230	14	80	183	151	219	12	53	43	985
Anderson										
Jr.	164	24	60	155	118	127	19	48	27	742
Landman	5	0	0	3	2	5	0	0	2	17
Commissioner of Agriculture										
Hightower	257	19	63	197	161	208	12	60	34	1011
Powers	180	21	85	155	121	151	20	50	43	826
Reed	5	0	2	5	4	4	0	1	0	21
Railroad Commissioner										
Sharp	200	13	64	153	125	194	12	45	33	839
Fox	177	22	67	162	130	142	21	57	40	818
Daniel	5	1	3	8	2	5	0	1	2	27
Justice-Supreme Court - Place 1										
Mauzy	144	10	48	120	96	151	6	35	26	636
Howell	228	26	80	201	156	181	24	64	47	1007
Justice - Supreme Court - Place 2										
Campbell	161	14	58	141	105	170	8	42	28	727
White Jr.	203	20	70	172	146	158	21	56	38	884
Justice - Supreme Court - Place 3										
Wallace	243	22	93	220	185	235	19	70	42	1129
Rawlins	57	1	5	112	34	8	2	2	4	225
Justice - Supreme Court - Place 4										
Gonzalez	135	8	36	103	96	126	7	30	22	563
Bates	242	29	97	228	167	201	24	74	49	1111
Judge - Court of Criminal Appeals - Place 1										
Duncan	246	26	91	217	187	232	22	72	38	1131
Judge - Court of Criminal Appeals - Place 2										
McCormick	247	26	90	217	186	232	22	72	41	1133
Judge - Court of Criminal Appeals - Place 3										
Teague	243	26	90	215	186	229	22	72	40	1123
State Representative - District 88										
Buchanan	221	19	43	112	124	168	10	64	25	786
Waterfield	235	23	108	264	184	229	24	48	53	1168
Justice - Court of Appeals - 7th District										
Dndson	260	26	92	224	181	235	22	74	39	1159
County Judge										
McClellan	321	32	117	267	224	282	23	88	46	1400
District & County Clerk										
Johnson	305	30	115	262	224	266	28	96	47	1373
County Treasurer										
Mackie	293	28	98	213	214	283	17	81	31	1258
Blankenship	169	14	59	158	95	118	18	32	47	710
Justice of Peace - Precinct 1										
Vernon	294							36		330
County Commissioner - Precinct 4 (Voting Precinct 489)										
Venneman	36							290	19	345
County Commissioner - Precinct 2 (Voting Precinct 286)										
Winger	302							11	55	368
Constitutional Amendments										
No. 1 For	194	23	67	164	135	180	14	52	29	858
Against	170	11	55	140	121	134	11	38	41	721
No. 2 For	259	25	92	220	199	243	19	63	46	1166
Against	99	8	34	92	64	78	8	25	25	433
No. 3 For	220	18	70	168	161	191	17	56	32	933
Against	129	17	53	135	104	122	11	34	39	644
No. 4 For	257	20	87	208	196	228	19	71	39	1125
Against	136	17	54	127	89	113	12	22	34	604

Hometown News

Handel's "Messiah" to be performed in Perryton

Navy Airman Recruit Angela R. Ross, daughter of Ronald R. Ross of 610 S. Fordham, Perryton, TX, has completed recruit training at Recruit Training Command, Orlando, Fl.

During Ross's eight-week training cycle, she studied general military subjects designed to prepare her for further academic and on-the-job training in one of the Navy's 85 basic fields.

Ross's studies included seamanship, close order drill, Naval history and first aid. Personnel who complete this course of instruction are eligible for three hours of college credit in Physical Education and Hygiene.

A 1986 Graduate of Gruver High School, Gruver, she joined the navy in June 1986.

G.F. Handel's masterpiece, "The Messiah," will be performed Sunday, December 7, 3:00 p.m. in the Perryton High School auditorium, with Cloys Webb directing.

"The Messiah," performed more than 25 years in Perryton, will feature 20 members of the Amarillo Symphony, more than 100 members of the chorus from the tri-state area, and soloists who come from a large area including Texas, Oklahoma, and Kansas.

The Perryton production was started in the Methodist Church in Perryton more than 25 years ago under the direction of Lawrence Ellzey and was moved to the high school auditorium 5 years ago. It is funded by the Hotel-Motel tax and local donations.

John Ellzey, chairman of the plan-

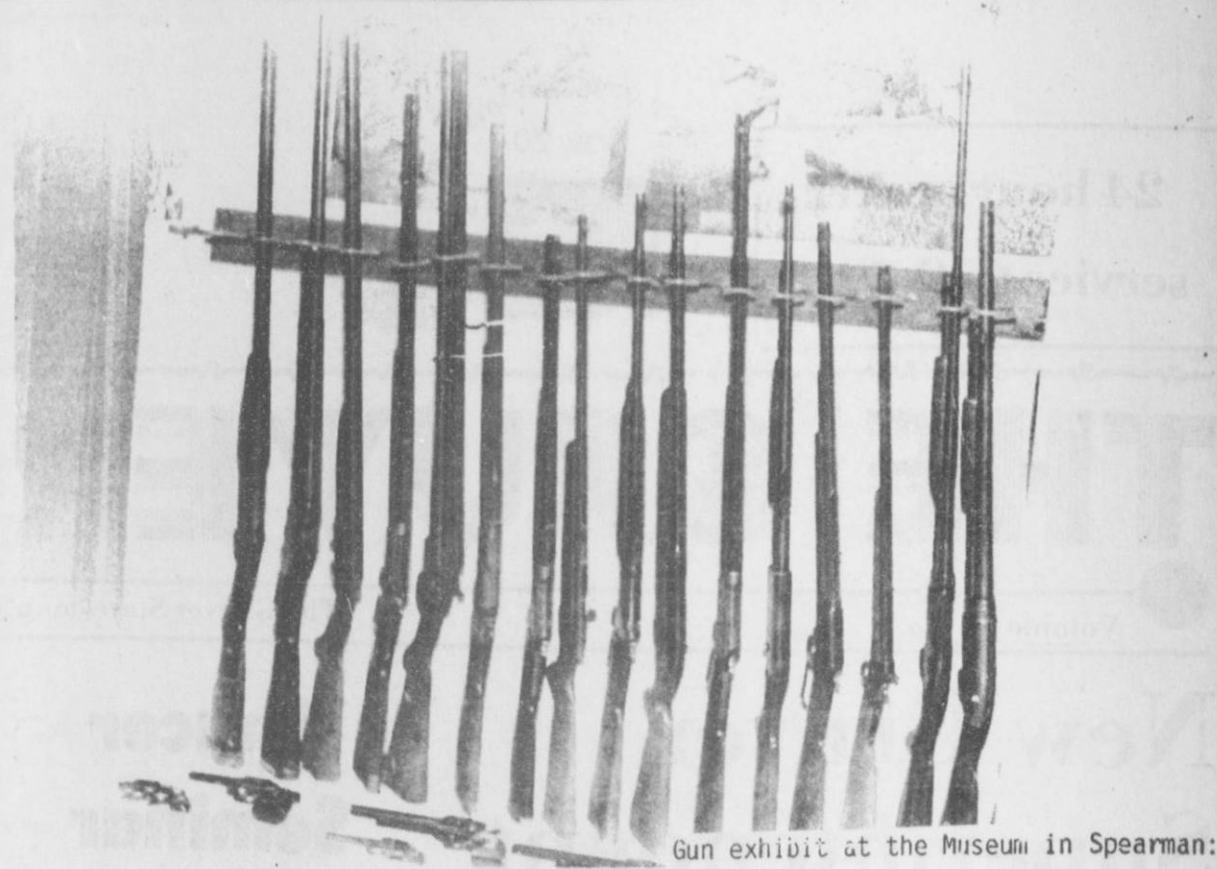
ning committee, notes that the Perryton production is unique.

"I don't know of another town the size of Perryton that has attempted such a production. You would have to go to Amarillo or Oklahoma City to find anything to compare with it.

"We're fortunate to have so many talented people in our area, and we welcome singers from neighboring communities to join us in an unforgettable experience."

Singers from area towns are invited to participate in the production. Practices will be held on Thursday, November 20th, and on December 4 at 7:00 p.m. in the Perryton High School choir room.

The public is invited to the performance Sunday, December 7, at 3:00 p.m. There is no admission charge.



Gun exhibit at the Museum in Spearman.

Xi Psi Kappa's Meeting

Xi Psi Kappa met for a meeting on Nov. 4 in the country home of Kathy Logsdon. After a business meeting, Judy Stedje presented a delightful program on holiday fashions for women and children. Alexa Thoreson won the hostess gift. Refreshments were served by Kathy to the following members: Peggy Barkley, Judy Stedje, Kathy Stedje, Alexa Thoreson, Regina Barkley, Sally Jones, Fran Duncan, Judy Park, Debby Odum, and Linda Venneman.

Xi Psi Kappa's meeting on Oct. 21 was held in the home of Mary Jo Cluck. Judy Park gave a very informative and inspiring program on the Home Executive. The hostess gift was won by Regina Barkley. Refreshments were served by Mary Jo to members Kathy Stedje, Regina Barkley, Judy Park, Diane McLain, Peggy Barkley, Sally Jones, Judy Stedje and Alexa Thoreson.

TeBeest Upholstery

304 Main - Gruver, Texas
733-2026

All Types of Upholstery

- ★ Furniture
- ★ Office Chairs
- ★ Pickup Seats
- ★ Tractor Seats
- ★ Old Model Cars

Large Selection of Fabrics and
Vinyls to Choose from

★ Satisfaction Guaranteed

Super Singles Sunday

Panhandle Singles are planning a "Super Singles Sunday", November 16. This get-together will take place at the Junction II, 210 S. E. 24th Perryton, Texas. Doors will open at singles at reduced prices. Dance to Dee Jay Music. All Panhandle Singles ages 21 and over are invited to attend and join in the fun and festivities. For more information, call Fonda Brown at 435-3050 or Debra Blackshear at 435-5890.

Final Planting November 15

November 15 is the Final Planting Date for Insured Barley and Wheat in Hansford County, Texas, according to Jackie Harris, a representative for the Federal Crop Insurance Corporation (FCIC).

Insured Barley and Wheat planted by November 15 must be reported by November 30 in order to receive full Crop Insurance Coverage. The Acreage Report reflects the actual Acreage planted and reported by the farmer.

"During the Growing Season, if damage occurs, notice should be given promptly," Harris said.

Crop Insurance based on actual production history (aph), is available this year to producers of Wheat, Barley, Oats and Rye in addition to Corn, Grain Sorghum, Soybeans, Peanuts, Cotton, Rice and other Crops.

"Increasingly, our Insured Producers and discovering that with a yield guarantee which reflects production capability, Crop Insurance establishes a Farm Income Floor. Thus, Cash Flow and the ability to repay a loan may be more accurately projected," explained Harris.

A hardworking woman needs a hardworking investment plan.

Your career keeps you busy. That's why you've gained in responsibilities and income. And it's why you now need sound investment counsel to help make more of all you make.

Chances are you have neither the time nor the special skills necessary to develop a financial program in these uncertain economic times. We can help with a wide range of capital appreciation opportunities from real estate to cable television, leasing to oil and gas, from \$1000 up. For every working woman who wants to put her money to work. Call or write us soon.

*Sheikhnigh, Wilson,
Stoppes Wood
& Associates, Inc.*

3014 W. 26th #4000
AMARILLO, TX 79109; 358-7131

P.O. BOX 516
SPEARMAN, TX 79081; 659-3880

IR Integrated Resources
Equity Corporation

*Marcia Sheikhnigh
Debra Stoppes*

Member SIPC

STORE-WIDE Pre-Christmas Sale

Everything from 20% to 50% off

- ★ Diamond Rings
- ★ Pearls
- ★ Watches
- ★ China

Dunlavy Jewelry
Perryton, Tx.
Phone 435-3136

Master-charge Visa

CHRISTMAS MAILING DATES—1986

Military Mail—Outbound
To assure the timely arrival of overseas destinations for Christmas delivery, all mail should be processed in the Continental United States (cont) on or before the following dates in 1986:

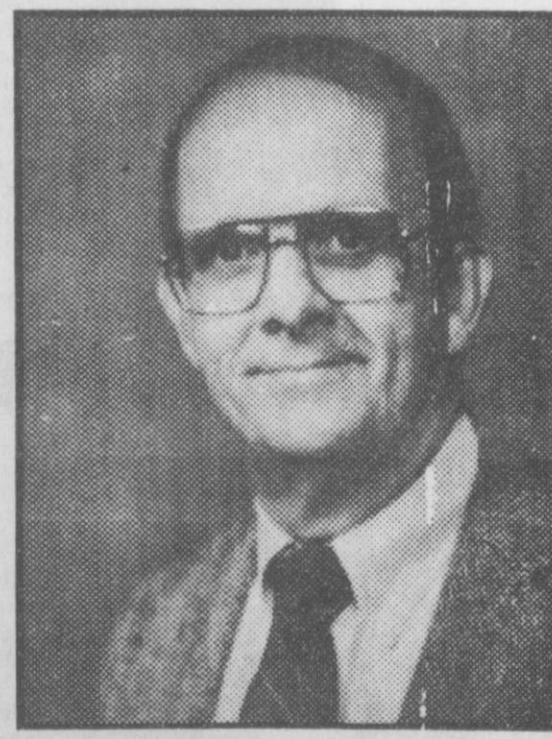
Destination	Priority	Letters	Parcels	Surface
Africa	1 Dec	10 Nov	10 Nov	3 Nov
Alaska	8 Dec	1 Dec	24 Nov	24 Nov
Hawaii	24 Nov	1 Dec	24 Nov	17 Oct
Caribbean/West Indies	8 Dec	10 Nov	17 Nov	17 Nov
Central and South America	24 Nov	15 Nov	3 Nov	31 Oct
Europe	5 Dec	24 Nov	14 Nov	17 Oct
Far East	5 Dec	24 Nov	14 Nov	17 Oct
Greenland	1 Dec	24 Nov	17 Nov	31 Oct
Iceland	8 Dec	24 Nov	17 Nov	31 Oct
Mid-East	24 Nov	24 Nov	3 Nov	17 Oct
South and East Asia	24 Nov	24 Nov	2 Nov	17 Oct

Officers outside the Continental United States, i.e., Puerto Rico, Virgin Islands, Hawaii, Alaska, and Trust Territories, should advise customers of actual posting dates which will insure that Christmas mail en route to other countries is available in the Continental United States by the dates listed above.

Military Mail—Inbound
To assure the timely arrival and delivery at United States destinations, all mail should be received at the gateway points by the following dates:

Destination	Priority	Letters	Parcels	Surface
Guatemala Points	12 Dec	12 Dec	8 Dec	24 Nov
International Mail—Outbound				
South and Southwest Africa	24 Nov	24 Nov	1 Dec	3 Oct
Caribbean/West Indies	12 Dec	12 Dec	5 Dec	3 Nov
Central and South America	1 Dec	1 Dec	1 Dec	17 Oct
Europe	24 Nov	24 Nov	24 Nov	17 Oct
Far East	24 Nov	24 Nov	24 Nov	17 Oct
Mid-East	24 Nov	24 Nov	24 Nov	17 Oct
Southwest Asia	24 Nov	24 Nov	24 Nov	17 Oct
Southeast Asia	24 Nov	24 Nov	24 Nov	17 Oct
West Africa	24 Nov	24 Nov	24 Nov	17 Oct

Officers outside the Continental United States, i.e., Puerto Rico, Virgin Islands, Hawaii, Alaska, and Trust Territories, should advise customers of actual posting dates which will insure that Christmas mail en route to other countries is available in the Continental United States by the dates listed above.



Thank you for your vote of confidence!

**My office will always be open
to the people of the 88th District.**

Dick Waterfield



State Representative District 88

Paid Pol Ad The Dick Waterfield Campaign, Malouf Abraham, Treasurer
P.O. Box 36, Canadian, Texas 79014

WANT ADS

CLASSIFIED RATES

Regular.....Per Word-\$0.13
 Display.....Per Col. Inch-\$4.20
 Double rate for blind ads
 Minimum charges
 Cash:.....\$4.00
 Charge:.....\$4.50

CASH IN ADVANCE ADS

Work Wanted*Trailers For Sale*
 Business Opportunities*No Longer
 Responsible*Political Advertis-
 ing*Child Care*Baby-sitting*
 Garage Sales*Out-Of-County Ads-
 unless advertiser has
 established credit with
 The Gruver Statesman

DEADLINES

To place or cancel ads
 Fri., 12:00 p.m.....Sun. edition
 Tues., 12:00 p.m.....Thurs. edition

The Gruver Statesman reserves
 the right to reject, edit, revise and
 properly classify all advertising
 submitted for publication. The
 Gruver Statesman also reserves
 the right to cancel any advertise-
 ment at any time.

The Gruver Statesman,
 Box 796
 Gruver, Texas 79040

OSGOOD MONUMENT CO.

Amarillo, Texas
 Dealers of Rock of Ages
 Granite, as well as all
 colored granites, marble
 and bronze memorials.

represented by
**BOXWELL BROS.
 FUNERAL HOME**

519 S. EVANS
 659-3802

NOTICE

Wallace Monument Co.
 Monuments, Curbing,
 Grave Covers
 Local Representative
LEONARD JAMESON
 Spearman, Texas
 40-rtm

FOR SALE:

2 Year Old Brick, 3 Bedroom - 2
 Bath Fireplace, Mini Blinds,
 Fenced, Workshop Landscaped,
 Double Garage, Many Extras. Call
 806 733-2870 for appointment.
 4 2c

Sewing wanted, alterations etc.
 Baking and decorating cakes. I now
 have the Wuzzles cake pan "EleRo".
 Call Joy at 733-2517.
 52-rtm-nc

WANTED: Custom work get a jump
 on your 1987 crop by working your
 ground this fall. Will Do! Chisel
 Plowing, Discing, Listing, Rodweed-
 ing, NH3 Application, Combining of
 Corn and Milo, for less than you are
 Now paying. Work Guaranteed Fully
 Insured. 806-384-2086.
 2-4tp

For Sale



FOR SALE: Fertile eggs pullet size 50
 cents per dozen hen size 75 cents per
 dozen. Call Joy at 733-2517.
 NC

Special Item

Half Price! Flashing arrow signs \$299!
 Lighted, non-arrow \$289! Unlighted
 \$239! Free Letters! See locally. Call
 today! Factory: 1 (800) 423-0163,
 anytime.

TeBeest Upholstery

All types of Upholstery, large
 selection of Fabrics and Vinyls, for all
 types of needs; furniture, office
 chairs, car seats and tractor seats. Call
 TeBeest Upholstery 733-2026, Gruver,
 Tx.
 6-4tc

Just Arrived - 1986 Tri-Chem
 Christmas catalogue. See the new
 Sun-glo, Sticker Art & Liquid Em-
 broidery items. Get a head start on
 your gift list or craft projects. Call Joy
 at 733-2517.

WANTED: Custom work get a jump
 on your 1987 crop by working your
 ground this fall. Will Do! Chisel
 Plowing, Discing, Listing, Rodweed-
 ing, NH3 Application, Combining of
 corn and milo, for less guaranteed
 fully insured. 806-384-2086.
 2-4tp

FOR SALE: Hogs ready to be butcher-
 ed. Call 733-2517.

Situations Wanted

WANTED: Cake baking & decorating
 done. I now have the "Ele-roo pan."
 Also sewing and alterations. Call Joy
 at 733-2517.

Real Estate

0 DOWN PAYMENT!
 No payment for 45 Days
 Qualify by Phone
 806-381-1352
 Call Collect
 Financing by
 Shelter America Corp.
 Alliance Homes Inc.

**TAKE UP PAYMENTS ON TWO AND
 THREE BEDROOM HOMES.**
 Alliance Homes of Amarillo
 Qualify by Phone
 806-381-1352
 Call Collect

ALCOHOLICS ANONYMOUS MEETING

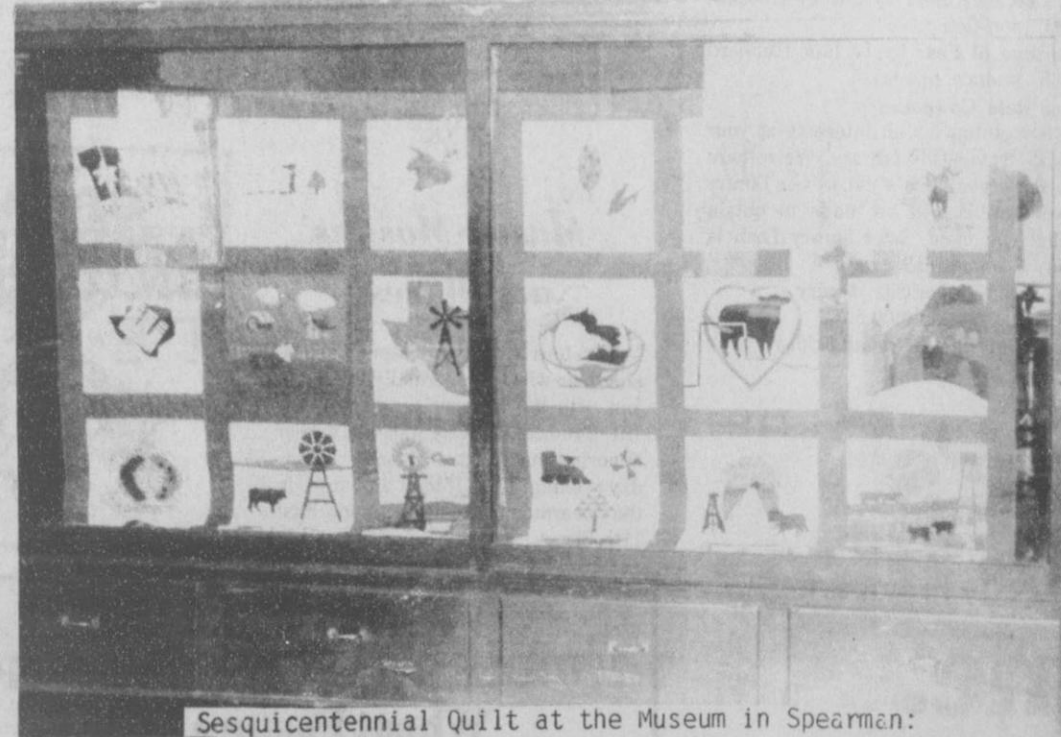
Tuesday
 8:00 P.M.
 Hansford County Library
 (Upstairs)

122 Main - Spearman

AL ANON

Tuesday
 8:00 P.M.

Hansford County
 Planned Parenthood
 412 Davis
 659-2483
 Spearman
 Mon. - Fri.
 8:30 - 12:30



Sesquicentennial Quilt at the Museum in Spearman:

Sesquicentennial Quilt on Display at Museum

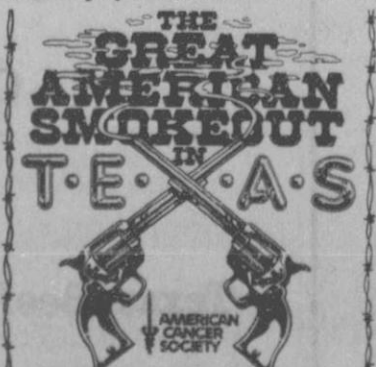
Last fall plans were made to
 construct something that would be
 outstanding and tell a story in the
 State of Texas. The Sesquicentennial
 was coming up and the Panhandle
 wanted to let Texas know just how
 they felt about the 150 years of
 traditions, memories, economies and
 values of the pioneers of our area.

A contest was held in each county to
 construct a quilt block depicting the
 county's situation. One winner was
 sent in to the Panhandle Plains
 Museum where Jo Anne Arasim,
 curator of Textiles and Beck Saunders,
 Clothing Specialist for TAEX, held an
 old fashion quilting bee to construct
 this unique quilt. Hansford County's
 block was submitted by Nelle Evans of
 Gruver.

The Texas Panhandle Sesquicen-
 tennial Quilt measures 114 1/4 inches
 wide by 97 1/2 inches long consisting of
 30-14 inch hand applied blocks on
 white backgrounds. These have been

hand-quilted together with a solid red
 3 inch border sashing in a crisscross
 pattern, adjoining all blocks into an
 overall design known as the Rope
 Pattern. There is a 4 inch wide navy
 blue border sashing with a rope design
 around the outer edge of the quilt.

The month of November will be your
 chance to view this unique quilt at the
 Stationmaster House Museum. It will
 be on display November 3 thru 25. A



DID YOU KNOW?

Cold weather can damage
 hair. Did you know:

- Wearing a tight-fitting hat outside can leave hair flat and limp. This might prompt you to overuse curling irons or hot rollers which can cause dry, brittle hair.
- When you're outside, the wind can dry hair.
- When you're inside, overheated rooms can be the culprit.
- Hair grows more slowly in the cold. You're likely to get it cut less frequently. That gives hair more time to suffer from wind, cold and dryness.
- Many people help their hair get through everyday damage with a weekly hot oil treatment. Salons offer them, but you can do it economically at home with V05 Hot Oil Treatment. Newly formulated for today's busy lifestyles, this one-minute, once a week treatment actually penetrates the hair shaft to strengthen, moisturize from within, and protect hair from winter damage. Since it is used before shampooing, no residue remains on the hair to weigh it down.

Own your own JEAN SPORTS-
 WEAR, LADIES APPAREL, CHILD-
 RENS, MATERNITY, LARGE SIZES,
 PETITE, DANCEWEAR, AEROBIC
 OR ACCESSORIES STORE. JOB
 DACHE, CHIC, LEE, LEVIZOD,
 GITANO, GUESS, CALVIN KLEIN,
 SERGIO VALENTE, EVAN PICONE,
 LIZ CLAIBORNE, MEMBERS ONLY,
 GASOLINE, HEALTHTEX OVER
 1000 OTHERS. \$14,300 to \$25,900
 inventory, training, fixtures, grand
 opening Etc. Can open 15 days. Mr.
 Loughlin (612) 888 6555.

Card of Thanks

I would like to thank everyone for
 their cards, prayers, and kindness
 during the loss of my Father last week.
 Everyone has been so helpful and it
 has meant so much to my entire
 family. Thanks again. God Bless each
 of you.

Norma Red and Family

DPS Report

Major V. J. Cawthon, Regional
 Commander of the Texas Department
 of Public Safety said, "Although the
 Thanksgiving Holiday is not classified
 as an official operation motoreide, all
 available troopers will be working, in
 an effort to reduce accidents."

Major Cawthon also said, "Even
 though some motorists will be travel-
 ing across town, others will be
 traveling across the state, all motorists
 can assist in reducing traffic accidents
 by observing all traffic laws. Remember
 that alcohol is involved in at least
 50% of all fatal accidents."

Major Cawthon noted that all law
 enforcement agencies will be cooper-
 ating in an all out effort to help make
 this a safe and enjoyable holiday.
 Even a small accident can ruin any
 holiday, but law enforcement agencies
 cannot make this a safe holiday by
 themselves. This is why it takes cooper-
 ation between law enforcement and
 the motoring public in order for all to
 have a safe and enjoyable Thanksgiv-
 ing holiday.

The Gruver Statesman

PUBLICATION (USPS 6868-0000)
 GRUVER, TEXAS 79040
 BOX 796
 659-3434

OWNER-PUBLISHER
 William M. Miller
 EDITOR
 Joy Henderson
 Gruver, Tx.

Second Class postage paid at
 Gruver, Texas 79040.

Any erroneous reflection
 upon the character of any
 person or firm appearing in
 these columns will be gladly
 and promptly corrected upon
 being brought to the attention
 of the management.

POSTMASTER: Send address
 changes to the Gruver States-
 man, Box 796, Gruver, Texas
 79040.

SUBSCRIPTION RATE: The
 Gruver Statesman, adjoining
 counties, \$20.00 per year.



CONVENIENCE STORES

30

YEARS OF SERVING YOU

Reba's Punch Embroidery
 Supplies- Needles, Thread, Patterns.
 Call, Gruver 733-2786 or Spearman
 659-3332
 12-4tp
 6-2tp

PERFECT ANYTIME OF THE DAY ALLSUP'S

CHIMICHANGAS

69¢ EACH

FILLED WITH YOUR FAVORITE FOUNTAIN DRINK 30 YEAR COMMEMORATIVE

ALLSUP'S MUG

99¢ EACH

REFILLS ONLY 49¢

ALLSUP'S MONEY ORDERS ONLY **19¢**

A TASTY CHANGE ALLSUP'S HOT CHOCOLATE **30¢**

8 OZ. CUP

MIX OR MATCH TOM'S DONUT STICKS OR **PECAN TWIRLS**

3 \$1 FOR

REG. Burritos Each **59¢**

THE 25¢ CUP OF COFFEE IS BACK!! FILLED WITH FRESH HOT COFFEE-ALLSUP'S COFFEE MUGS **99¢**

REFILLS ONLY 25¢

BORDEN'S HOMO MILK Gal. **\$2.09**

Jug

BORDEN'S ORANGE JUICE QT. JAR **89¢**

BORDEN'S ASST. ICE CREAM 1/2 GAL. RND. CTN. **\$1.69**

CHILI DOGS
2 for 99¢

HOT DOGS
2 for 79¢

REGULAR/TACO/NACHO CHEESE OR COOL RANCH

DORITOS \$1.89

CHIPS REG. \$2.69 SIZE NOW ONLY

YOUR #1 WITH US

ALLSUP'S

CONVENIENCE STORES

DATES GOOD NOV. 13,14,15,1986

WHILE SUPPLIES LAST

Prices good at our store location in Gruver, Texas.

Diet Dr. Pepper, Dr. Pepper or Sugar Free Pepper Free

12oz. cans 6 pak **\$1.89**

DECKER Sliced Bacon 1lb. pkg. **\$1.49**

DECKER Bologna 12oz pkg. **99¢**

DECKER Franks 12oz pkg. **89¢**

City of Gruver

Notice of Meeting of the
Governing Body of
City of Gruver

Notice is hereby given that a regular meeting of the governing body of the above named City or Town will be held on the 12th day of November, 1986, at 2:00 p.m., in the City Hall at 108 East Broadway, Gruver, Hansford County Texas, at which time the following subjects will be discussed, to wit:

1. Open Meeting
2. Read and approve the minutes of the last regular meeting
3. Approve the bills for the month of October, 1986
4. Discuss the Library budget with members of the Library Board
5. Discuss a petition requesting a change in the drainage in Eling Addition
6. Discuss progress on the gas line
7. Discuss the outdoor Christmas

Painting

An original painting by Marilyn Yanke will be on display at the First National Bank in Spearman. Another painting will be on display in Gruver. The American Cancer Society (Hansford Unit) are taking donations of \$1 per ticket or 6 tickets for \$5 and the drawing will be November 20th at the monthly meeting in Spearman. You need not be present to win. The winner will have his or her choice of these paintings.

Those wishing to purchase tickets for the original painting by Marilyn Yanke to be given on Nov. 20 in observance of Great American Smoke-out may contact Mozell McClellan, Mary TeBeest, Jolene Thompson, Georgia Holt, Vivian Harris, Joy Henderson.

Panhandle Crisis Center

Isn't it great to receive affirmation for the work you are doing? The following letter reached me this past week, giving permission to use it for newspaper articles, board meetings, and grant proposals, but requesting that the name be withheld. The letter is also for you Read it and rejoice:

"Dear Mrs. Ellzey: Six months ago, when I first became involved with the Crisis Center, I didn't feel like I was an abused wife. I had been hit, pushed, shoved, and called names. My opinion of an abused wife was someone who was beaten by her husband all the time.

"I started going to a support group and became aware of what they call verbal abuse. Sometimes the things my husband would say would hurt more than if he had hit me. Bruises and cuts will go away, but cruel words seem to stick in my mind for a long time.

"I feel the group meetings have helped me a lot. I'm able to say things to my husband now, and do things I want without feeling guilty. I realize now I'm a worthwhile person, and I am not to blame for everything that goes wrong in our marriage. Several months ago I took my child and left home. My husband was acting moody like he had in the past before becoming assaultive. In less than a week we got back together and were able to talk things out."

(As with most homey moons, this one was also short lived. The lady found it necessary to continue with the support group and is so impressed with the Crisis Center, she made the following suggestion.)

"I feel that the Crisis Center needs a support group for men, and another for couples. Men need someone to talk to about their problems as much as women do. A group for couples would be good. Couples need to learn to talk to each other and control their anger. I am controlling my anger better because of the support group. I think the people are great and they're doing a great job, especially for me.

"My desire is that this marriage work. You have my permission to use my letter for newspaper articles.

Street lighting
Dated this the 7th day of November,
1986.
Gruver By A.J. Ratliff, City Manager

I, the undersigned authority, do hereby certify that the above Notice of Meeting of the governing body of the above named City or Town of Gruver is a true and correct copy of said Notice and that I posted a true and correct copy of said Notice on the bulletin board, in the City Hall of said City or Town in Gruver, Texas, a place convenient and readily accessible to the general public at all times, and said Notice was posted on November 7, 1986, at 5:00 o'clock p.m., and remained so posted continuously for at least 72 hours preceding the scheduled time of said Meeting.

Dated this the 7th day of November,
1986.
Gruver By A.J. Ratliff, City Clerk

On the Go with Joy

One of the reasons that I don't have a "weekly column" every week is because I neglect to take time out to hunt for a brilliant idea from my box full of "clipped newspaper stories". Most editors have a pile of out of town dailies, weeklys and monthlys that they exchange with other editors and publishers perhaps hoping that they will be a source of something clever to present to their faithful followers. But alas! Sometimes I'm too "busy?" to dig through for an idea.

Some of my favorite ideas come from Erma Bombeck, Lewis Grizzard, and others that already have a million readers more or less. But one of my favorites (who also admits that all writers' borrow' (JH-I don't like the word steal) is Joy Daane whose mind is like mine they run in great channels and must be built kind of like me. She is not fat-just too short for her weight.

Anyhow, Joy Daane heard from a friend who had a farmer for a friend. The farmer had two horses but couldn't tell them apart. He chopped off the tail of one but it grew out. He tried putting a bell on one horse but the bell fell off and he still couldn't tell them apart. Then he decided to measure the horses to see if one might be taller than the other. And sure enough the black horse was six inches taller than the white horse.

This friend of Joy's (named Gracie) sent her another joke about two hunters arguing about tracks in a field. One reckoned as how they were deer tracks and the other figured they looked more like tracks made by a buffalo. While they were standing there arguing, a train ran over them.

Now just in case my friends have trouble figuring out the "catch" to these jokes, I have another friend (B.G.) who would like to show you an "Aggie Quarter."

Annual Home Tour Set

The Gladiola Flower Club have plans underway for the Annual Home Tour and Country Store. The date set is December seventh. Four homes will be shown.

Tickets will be available from all Gladiola Flower Club members. Tickets will be four dollars if purchased ahead of time and five dollars if purchased at the door of the homes on tour. No tickets will be sold for children.

The Country Store will be held in the Lobby of the City Hall and will feature arts and craft items as well as homemade items from the Gladiola Flower Club member's kitchens. Refreshments will be served at the Country Store also.

Homes to be toured are: Mr. and Mrs. Bobby Brown, Mr. & Mrs. Lennie Simpson, Mr. & Mrs. Alton Ellsworth and Mr. & Mrs. Frank Wilmoth.

the great american smokeout
Nov. 20



AMERICAN
CANCER
SOCIETY

40th Anniversary Alzheimer's Disease

November, 1986, will mark the fourth anniversary of federal recognition of efforts to combat Alzheimer's Disease, when President Ronald Reagan once again designates November as "National Alzheimer's Disease Month."

"The emotional, financial and social consequences of Alzheimer's Disease are so devastating that it deserves special attention," the President has said. "Research is beginning to reveal many of its mysteries. Until a cure is found, however, afflicted families need our hope and understanding... Let us mark this month by striving to educate ourselves about Alzheimer's Disease and by participating in appropriate activities and observances." Congressional recognition of Alzheimer's was boosted in 1982 with the designation of "National Alzheimer's Disease Week," the observance was extended to a month in 1983.

This official recognition of efforts to conquer Alzheimer's Disease has been accompanied by a steady increase in federal and state support for research and assistance to victimized families. In the five years, federal expenditures for research into the illness have multiplied to an estimated \$50 million in 1986, up from \$16.7 million initially.

Among key Alzheimer-related legislation currently being considered by Congress is a bill that would launch five exploratory projects to determine the feasibility of expanding Medicare

coverage for Alzheimer victims. The projects would investigate victim and caregiver needs such as outpatient drug therapy, respite care, adult day care, counseling and other in-home services, and make recommendations for revisions in medicare programs.

"This is truly a breakthrough piece of legislation because it acknowledges Alzheimer's Disease as a permanently debilitating disease, with an enormous emotional and financial cost to caregiving families," notes Jerome H. Stone, chairman emeritus of Stone Container Corporation and founding president of Alzheimer's Disease and Related Disorders Association (ADRDA). ADRDA, a privately-funded national organization battling Alzheimer's Disease, has drafted a major position paper, "A National Program to Conquer Alzheimer's Disease," that is one of the more widely-used models for legislation at both the federal and state levels.

ADRDA's 149 Chapters and Affiliates across the U.S. are using "National Alzheimer's Disease Month" as a focal point to implement special programs aimed at increasing public awareness of the disease. A variety of activities in education, family service, fund raising and community awareness and support are planned to heighten the national observation at the local level.

The Association will also launch a new national awareness - building public service campaign in November.

Gruver City Library

The Raiders of Wall Street by Eric W. Allison is one of several new books received this week at Gruver City Library. They go to battle in limousines. They make no products, perform no service, help no one but themselves. Win or lose they make money. They are the piranhas of capitalism, and this is their story.

No corporate raider has ever produced a better company. The companies that fight off the raiders successfully enrich their enemies and sometimes impoverish themselves. T. Boone Pickens, Ivan Boesky, Carl Icahn, Saul Steinberg, et al, have changed the face of American business, accumulated vast fortunes, and shaken corporate managers across the country. The names and deals of these men are splashed across the nation's headlines with stunning regularity. Their rapid accumulation of vast wealth, their aggressive tactics, their lavish life-styles, everything about them has the aura of the triumphant underdog turned overdog.

The Raiders of Wall Street explains the reasons for their success and how the game is played. Each of the seven portraits shows what they started with and how they managed to build their fortunes. Each contains a complete "anatomy" of their biggest deal, how they work and how they choose their targets, and what they see for the future, as well as their own investment recommendations.

For the first time a single book tells

the truth about the most successful, exciting, and controversial members of the business community.

The author, Eric Allison, is the co-author of **Managing Up, Managing Down**. Before leaving the business world to devote his time to writing, he had many years of experience as a Certified Financial Planner, a stockbroker, and a tax shelter specialist, in the course of which he worked with Paine Webber, Merrill Lynch, and Shearson-American Express. Interesting reading for a cold winter night!

Other new books just received:

Riders of the Silences by Max Brand (Wester)

High Jinx by William F. Buckley, Jr. (novel)

Suspects by William J. Caunitz (novel)

Confessions of a Parish Priest by Andres Greley (autobiography)

The Passion of Ayn Rand By Barbara Branden (biography)

A Cast of Killers by Sidney Kirkpatrick (non-fiction)

Fortune of Fear by L. Ron Hubbard (v.5, science fiction)

Ace Reid Cowpokes

Something for all interests at your local Gruver City Library. We're here to serve you! If it's not in our library every effort will be made to obtain what you need. Inter-library Loan is only a phone call away.

Gruver City Library
2:00-6:00 p.m.
Monday Through Friday

There's no taste like home.



1/2 lb. HOMESTYLE
Hungr-buster.
99¢

1/2 lb. HOMESTYLE
Beltbuster.
\$1.69

For 100% pure beef that looks, cooks and tastes homemade, you can't beat Dairy Queen's Homestyle burgers. And for a limited time, you can't beat the price either.

Friday, November 14th
thru Sunday, November 23rd



To Hansford County Voters

Thank You!

Norma Jean Maskie
Pd. Pol. Ad.

Bake Sale!!

Sacred Heart Catholic
Women's Guilled
Bake Sale
Wednesday, November 26, 1986
From 8:30 - ?
at Gordon's Drug
&
Thriftway

TOPS

Our October meetings were called to order with the Tops Pledge. The minutes of our last meetings were read and approved as read at each meeting. The roll was called with Louise Evans, Ida Hendrick, Rhonda Reichen and Winnie Vernon winning the fruit bowl for best loss of the week. The drawings were won by Louise Evans and Ina Soapes. Ida Hendrick is our new KOPS, we are very proud of her!! Louise is our Queen for the month of October with best loss for that month. Phyllis Rasor won the Rain Wash Contest. Congratulations, all!!!

Several great programs were presented during the month. The "Treasure Hunt Contest is still going with clues for each loss. Good luck (or losses) to everyone. Our booth at the Halloween Carnival was very busy. We had a lot of fun. We are very happy to have Winnie back with us. Our meetings were closed with the Serenity Prayer.

Duo- Pianist

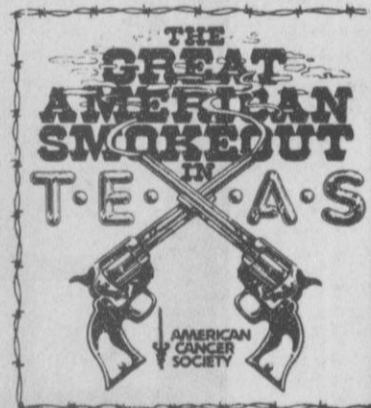
The Community Concerts of Berger will present the second Concert of the season at the High School Auditorium Saturday, November 15 at 8:00 p.m.

Frances Veri and Michael Jamanis, duo-pianist, present superb musicianship and vibrant performances when they play Bach, Saint Saene, Brahms, Rachmonioff, Gershwin, Joplin and Fats Waller.

Their record of re-engagements coast-to-coast and throughout Canada is enviable. They have appeared on National Television in their own PBS-TV Specials, Rhythm/Song/Blues... Gershwin and the award-winning Carnival of Animals. They have made several highly acclaimed recordings, most recently, Gershwin: The Complete Piano Music. Their sense of partnership makes their playing effective communication on all levels. No one brings Gershwin's music alive as thrillingly as they do.

Master Masons' and Wives

Hansford County Master Masons' and their wives are cordially invited to join with the Spearman Chapter No. 721, Order of Eastern Star at a dinner honoring our Master Masons' Saturday evening, Nov. 15th at 6:30 p.m. in the Spearman Masonic Lodge on East 11th Street.



MIDDLEWELL CATTLE COMPANY Wheat Pasture Needed

MWC needs wheat pasture in your area for a large number of straightened out stocker cattle. We also need good care takers and will pay competitive rates.

Additional opportunities for joint ventures and buy backs.

Contact: Chris Comstock
Home: 806-383-2940
Office: 806-372-3877

A Texas Beef Producer's Company

the Great American SMOKEOUT

★ Quit Tips for Texans ★
(Things a Texan might do November 20 instead of smoking.)

S hine your spurs
M ake some chili
A dmire yourself
R ide a horse
T ackle a taco



Satellite Arts and Crafts Festival



Do your Christmas Shopping at the Satellite Arts and Crafts Festival.

More than 200 booths laden with paintings, sculpture, macrame, toys, dolls, jewelry, woodcrafts, quilts, baked goods, frames and games will be on display at the Satellite Arts and Crafts Festival Nov. 22 & 23 inside the Expo Center in Perryton.

All the items are handmade by artists and craftsmen from a six state area, Wanda Estes, Director of the Satellite Center said.

Estes and JoAnn Allen, an assistant at the Center, were especially fond of a brass sculptor, Les Seamster of Allison, who will be back this year.

"He had etched brass pictures—one of an eagle I thought was outstanding. It looked like it was in flight. It was done like etching on glass, except it was on brass.

"When the artist was finished, the eagle portion of the etching was filled-in with dark brown: a spotlight accented the color and gave a sense of depth."

"The show kind of reminds me of Silver Dollar City," said Allen. "It takes you back in time. There are things there you can't buy in department stores, all kinds of woodcrafts and handmade items."

Many of the art show patrons do their Christmas shopping at the show, Estes said, picking up unique items that are sure to be a special delight at Yuletide.

The Satellite Center a sheltered workshop for adults with mental retardation, keeps 10 percent of the total table sales from each exhibitor.

Funding collected from this year's sale will help support the workshop activities.

Food and refreshments will be served by Wheatheart Shrine Club. REACT will watch the booths at night, and the Lions Club will perform accounting and clean-up chores.

The 16th annual version of the festival will be open from 9 a.m. to 7 p.m. Nov. 22 and from 11 a.m. to 5 p.m. Nov. 23.

Ochiltree County Expo Center is on north side of Highway 15 one mile west of Highway 83.

There are 102 "oldtimers" in this version of the show, Estes said and 43 new exhibitors from 24 Texas towns and five other states, including Missouri, Kansas, Oklahoma, New Mexico and Colorado.



Annie Oakley Gun Display at the Station Masters Museum



The day finally comes when she doesn't even know her own children.

Alzheimer's Disease steals your memory, your mind, your self-awareness and eventually, your life. It affects 1 out of 3 American families, but its shadow misses no one.

There is, however, a source of hope: Alzheimer's Disease and Related Disorders Association. Presently we are funding research, providing family support, increasing public awareness and encouraging legislation. But we need your help to make

Alzheimer's Disease a memory. For more information please call your local chapter or the number below.

1-800-621-0379

A.D. Alzheimer's Disease and Related Disorders Association, Inc.

Easing the burden. Finding the cure.™

National Headquarters, 70 E. Lake St., Chicago, IL 60601-5997
In Illinois 1-800-572-6037

SAFETY ALERT

Notice For LP Gas Customers

A safety warning has been issued to people who own LP gas-heating systems, including central furnaces, boilers, pool heaters, conversion burners, floor furnaces, gas-fired logs and recreational vehicle heaters.

If you bought your system between the years 1966 and 1975, and it has a Honeywell combination gas valve, it may be hazardous and could fail. In such an instance, the valve does not shut off the gas supply when the pilot light is out. Since LP gas is heavier than air, it may accumulate near the floor. If the combustible gas is exposed to an ignition source such as electric sparks or matches, a fire or explosion may occur causing property damage and personal injury.

If you fear you may be at risk, check your furnace or heating appliance and identify the model number on the combination control valve. Numbers being recalled include C5133, C5134, C55133, C55134, V4136, V4146, V5189, V7284, V8129, V8136, V8139, V8146, V8169, V8188, V88133, V88138 and V88193.

If the gas control has one of these numbers, you should immediately call Honeywell toll-free at 1-800-328-8194. The recalled LP controls will be replaced with newer models at the company's expense.

The Hound's Tale

The Gruver PTA Associational meeting for November 3, 1986 was called to order by Lee Harper at 7:00 p.m. in the school auditorium.

The presentation of the colors was presented by Steven Knowles and Curt Shook of Den 1, Pack 550 Cub Scouts.

The devotional was given by Tim Stedje.

Following a brief business meeting a program was presented by the Beginning Band, directed by Hershel Lester. The band played several selections including HOT CROSS BUNS* AND MERRILY WE ROLL ALONG.

The meeting was adjourned at 7:20 p.m.



Beginning band directed by Hershel Lester.



One of the presentations at the Gruver PTA by the Beginning Band.



The 12th Annual Allsup's Fall Roadraces were held October 18th and attracted approximately 250 runners from across the southwest.

Calm and beautiful weather proved to be great racing conditions for competitors from as far away as Albuquerque and Wichita Falls. Running enthusiasts of all ages competed in Allsup's one mile event, 10,000 meter event, and the half and full marathons.

The results for overall winners and

age divisional winners are as follows: Photo Caption:

They're off, over 250 runners from across the southwest completed in the 12th Annual Allsup's Fall Roadraces on Oct. 18th. The event sponsored by Allsup's Convenience Stores is held each year in Clovis, N.M.



A close relative of the June bug, a leaf eating beetle, is the Japanese beetle.

Scanner Hears What Others Don't

Thousands of Americans like to keep up with what is happening in their communities. They have found a simple up-to-the-minute way... programmable scanners.

These radios allow citizens to hear their police and fire fighters at work. Listeners can also follow the dispatch of ambulances or get the latest official word on the weather. Radio Shack® is one of the most convenient spots to find out about scanners. With about 7,000 neighborhood outlets, Radio Shack features nine of the well-known Realistic® brand scanners. Prices range from about \$100 for a portable unit to approximately \$400 for a scanner that can provide up to 300 different channels of excitement.

CONGRATULATIONS, SCHOLAR/ATHLETES.

The following students have been selected as Scholar/Athletes of the year. They have been recognized in their high schools for their outstanding achievements in classroom and sport, in academics and athletics.



AMARILLO

John Buchanan
Kimberly Guthrie

BALCO

Brad Aubrey
Heidi Neufeld

BEAVER

Clinton Parker
Juli Fitzpatrick

BORGER

William Compton
Christi Birch

BOOKER

Edward Laffitte
Candy Simpson

BOVINA

Terry Moore
Marie Pesch

BOYS RANCH

Gregory Adams
CAPROCK

Monty Buchanan
Teri Cole

CLAUDE

Jeffery Wheelhel
Cenece Gunter

DALHART

Daloo Kuumyig
LaDawna Gentry

DIMMITT

Woody Glass
Jill Smith

FARWELL

Kevin Owen
Alma Nicolas

FELT

Kristy Wells
FORGAN

Kenan Kirkendall
Heather Shepherd

GRUVER

Kip Pittman
Joby White

MATADOR

Paul Block
Kim Hand

PALO DURO

Sonorin Instiengmay
Penny Briant

PANHANDLE

Matthew Mulkey
Chandra Hinkle

ROLLA

Aron Floyd
Carrie Easterwood

STINNETT

Alan Jones
Shannon Riemer

SUNRAY

Michael Brewer
Pam Lowry

TASCOSA

Billy Duvain
Catherine Collins

TEXHOMA

Mike Yates
Nicki Goetz

TULIA

Todd Sanders
Shana Howell

VEGA

Tracy Walker
Joan Potter

WHITE DEER

Brent Bridwell
Cathy Williams

The US Army Reserve Scholar/Athlete Award

Excellence in both academics and athletics is a goal to which many aspire, but few achieve. Each year, the US Army Reserve presents the Scholar/Athlete Award to thousands of high school students across the country who have demonstrated excellence in both areas.

We believe such dedication to excellence deserves special recognition, and we recognize the hard work and sacrifice it takes to be all you can be.

ARMY RESERVE. BE ALL YOU CAN BE.



THESE PRICES GOOD NOV. 13-15
IN PERRYTON ONLY
DOUBLE COUPONS ON THURSDAY

Autumn Festival OF SAVINGS

Keep playing *Trim-A-Tree*

Register For
FREE
19" G.E. Color T.V.
To Be Given Away
Saturday, November 22, 1986
at 5:00 P.M.
Must Be 18 Years or Older to Register
No Purchase Necessary
Employees of United Not Eligible.

WE GIVE S&H GREEN STAMPS EVERY DAY
DOUBLE STAMPS ON WED. & SAT. with purchase of \$2.50 or more, excluding cigarettes

PRODUCE

CHIQUITA BRAND
BANANAS
4 LBS. \$1

NEW CROP SUNKIST
NAVEL ORANGES
L.B. .39

NEW CROP CALIFORNIA
TANGERINES
L.B. .39

CASSEROLE
PINTO BEANS
4 LB. BAG. \$1.19

HUNT'S
TOMATO KETCHUP
32 OZ. .98

MRS. TUCKER'S
SHORTENING
42 OZ. .88

UNITED PREMIUM QUALITY
WHITE BREAD
1 1/2 LB. LOAF .39

GOLD MEDAL ALL PURPOSE
FLOUR
5 LB. BAG .78

FINE FARE SWEET
CUCUMBER CHIPS
32 OZ. .89

HUNT'S
TOMATO SAUCE
REG. OR NO. SALT 8 OZ.
6 FOR \$1

KRAFT
MIRACLE WHIP
REG. OR LIGHT 32 OZ.
\$1.39

MERICO
TOASTER PASTRIES
ASSORTED 11 OZ.
.69

MAZOLA
CORN OIL \$1.98
48 OZ.

ELLIS
JUMBO TAMALES .98
28 OZ.

ELLIS
REFRIED BEANS 3 FOR \$1
16 OZ.

GROCERY

MEATS

WILSON
BACON
1 LB. PKG. \$1.58

SUNDAY HOUSE GRADE A
SMOKED TURKEYS
L.B. \$1.28

FARMLAND
PORK ROAST
BOSTON BUTT L.B. \$1.38

FARMLAND
PORK CHOPS
CENTER CUT L.B. \$1.98

COUNTRY PRIDE BASTED GRADE A
TURKEY BREAST L.B. \$1.98

LEAN
GROUND BEEF L.B. \$1.28

KRAFT
AMERICAN SINGLES 12 OZ. PKG. \$1.58

FROZEN

DONALD DUCK
ORANGE JUICE
12 OZ. .69

ORE IDA
TATER TOTS REG. ONION BACON \$1.29
2 LB. BAG

WELCH
GRAPE JUICE
12 OZ. .79

DAIRY

SHEDDS
COUNTRY CROCK
3 LB. TUB \$1.29

BELL SUPER PROTEEN
2% MILK 1/2 GAL. \$1.09

PILLSBURY HUNGRY JACK
BISCUITS ASSORTED 10 CT. .49

QUANTITY RIGHTS RESERVED • NO SALES TO DEALERS

CHARMIN
BATH TISSUE
4 ROLL .98

LUVS
DIAPERS
• SMALL 66 CT.
• MED. 48 CT.
• LARGE 32 CT.
\$8.99

JERGEN'S
LOTION
REG. OR DRY 10 OZ. \$1.49

MEDIPREN
TABLETS OR CAPLETS
50 CT. \$2.89

HEALTH & BEAUTY