

24 hour prayer
service 659-2911

Gruver PTA Says;
Halloween will be
Saturday Nov. 1st



HANSFORD COUNTY L.B.A.
SPEARMAN, TEXAS 79081

THE GRUYER STATESMAN

Volume 16 No. 3

The Gruver Statesman, Gruver, Texas 79040

Thursday October 23, 1986

Dr. Taylor now practicing in county



Dick Waterfield, Canadian visits with Dr. Taylor at the Rotary Club in Spearman on Monday of this week.

Dr. Taylor recently moved to Spearman and has begun his medical practice. He will be located in his

clinic near the Hansford Hospital.

The Regular Meeting of the Board of Directors of Hansford County Hospital District was held on October 10, 1986 at the Hansford Hospital Board Room.

Present

- Jack Oakes, President
- Alton Ellsworth, Vice President
- Leslie Barkley, Sec. Tres.
- Jerry Hunt
- Absent
- Dwight Hutchison
- John Trindle
- Administration
- Dennis Robertson
- Dan Powers, C.M.R.
- Guests: C.M.R.
- Dr. Juan Viola, C.O.S.
- Dr. Fredie Taylor
- Kaye McFarlin, DON
- Rita Weaver, CRNA

The meeting was called to order by Jack Oakes, President.

The minutes of the September 11, meeting were read and with the correction of one word, motion to accept the minutes was made by Jerry Hunt, seconded by Alton Ellsworth, approved by a vote of 4 for, 0 against.

Mr. Robertson presented three proposals for new Cardiac Monitoring equipment to the Board. They were Physio Control, \$30,006.00, Hewlett-Packard, \$30,862.00 and Bio-Medical Services \$22,311.00. An explanation of what equipment was being bid on and number of pieces was given. Dr. Viola,

Dr. Taylor, and Kaye McFarlin also covered the importance and need to replace our current equipment. After considerable discussion by all present, a motion to purchase Physio-Control was made by Leslie Barkley, seconded by Alton Ellsworth, and approved by a vote of 4 for, 0 against.

Mr. Robertson presented to the Board the Medical Staff recommendation to grant active Medical Staff

privileges to Dr. Fred Taylor. A motion was made by Leslie Barkley, seconded by Jerry Hunt, and approved by a vote of 4 for, 0 against, to approve him to the staff.

Financial report was covered and the presentation of the bills for the Board's consideration of payment. A motion to pay these bills was made by Jerry Hunt, seconded by Leslie Barkley, and approved by all present.

The indemnification of Officers, Board Member, and Others:

The Authority shall indemnify any officer or member of the Board or former Officer or member of the Board for expenses and costs (including attorney's fees) actually and necessarily incurred by him in connection with any claim asserted against him, by action in court or otherwise, by reason of his being or having been such Officer or member of the Board, except in relation to matters as to which he shall have been guilty of negligence or misconduct with respect to the matter in which indemnity is sought. By order of the Board, the Authority may, under comparable terms and limitations, indemnify members of the Medical Staff and agents of the Authority with respect to activities within the scope of their services as members of committees, officers or other officials of the staff or Authority.

After discussion and explanation by Mr. Powers, a motion was made to amend the Governing board by-Laws and add this paragraph by Alton Ellsworth, seconded by Jerry Hunt, and approved by a vote of 4 for, 0 against.

The lots at Gruver was discussed and tabled until all the Board Members are present.

Dan Powers presented an equipment list that Dr. Taylor is offering to

sell to the Hospital District. After discussion, the Board authorized Dan Powers to examine the equipment and negotiate a deal within the context of their discussion. Motion was made by Alton Ellsworth, seconded by Jerry Hunt, and approved by all.

There being no further business, motion was made by Jerry Hunt, seconded by Leslie Barkley to adjourn the meeting, and approved by all present.

Jack Oakes, President
Leslie Barkley, Sec. Tres.

Palo Duro Project Farmers

The Palo Duro River Authority met in regular session here Tuesday afternoon. All members were present and discussion on the Palo Duro Dam was very interesting. Officials stated that geophysical work on the dam could begin in 3 to 4 weeks with actual testing beginning in 2 to 3 months. Land acquisition will begin soon also. The Board stated that the land owners have been very cooperative with the Authority.

The dam construction will be laid out in 12 steps. The first step is the Water Conservation plan. Step 2 is the Archeological survey and testing. The 3rd step is final Geotechnical Analysis.

is. These 3 steps will be done in 1986 and early 1987.

Step 4 will be Survey Of Land requirements, since most of the first 3 steps should be accomplished soon.

The 5th step is Conflict Evaluation.

The 6th step is Land Appraisal. 7th step is Final Design. 8th step is Conflict Resolution. In early 1988 the Texas Water Development Board will review the project. In Mid 1988 Advertising and Award of Contract for the Construction of the dam will be let. Actual construction which is step 12, should begin in 1988 with completion of the dam in 1990. A complete chart is printed on page 5 of this paper.

American Cancer Society

The Hansford County Unit of the American Cancer Society met Thursday October 16th at the Hospitality Room of B and B Industries. The members from Gruver served as hostesses with a noon luncheon.

The meeting was called to order by Mozelle McClellan. The minutes of the previous meeting were read and approved. A treasurers report was given by Arbeta Nobles. Committee reports were given on Service/Rehabilitation, Public Information, Public Education, and Crusade.

New Business included discussions of a fund raising project which will be ticket sales for an original painting by Marilyn Yanke. The winner will be notified after a drawing at the next Cancer Society meeting on Nov. 20th. The Great American Smokeout will also be observing their 10th Anniversary on November 20th and the Hansford unit received pockets with which we are to use for publicizing this event.

A staff report was given by Melody Miller and brought to our attention the Guest Room program for Cancer

patients receiving treatment in Amarillo, crusade emphasis and also Board orientation about the responsibilities of our officers.

Congratulations go to Mr. James Dorman of Gruver who was honored with a plaque. That noted him receiving a Lifesaver Award in Public Education. Recognition was also given to Georgia Holt of Gruver and Betty Davis of Spearman who received Award of Merit for Crusade. Funds raised by Hansford County in 1985-86 were \$5,617.00 in Residential; \$1,703 Business; Send a Mouse to College \$353.00; Memorials \$1,215.00 for a total of \$8,888.00.

Those attending this meeting were Mozelle McClellan, James Dorman, Joy Henderson, Sandi Foster, Arbeta Nobles, Georgia Holt, Mary TeBeest and Melody Miller, district field representative from Amarillo.

Remember to contact any ACS member for tickets on the drawing for the painting to be given away November 20th. Donations are \$1 per ticket or 6 tickets for \$5.

Mexican Dinner

The Sacred Heart Catholic Church will host their annual Mexican dinner on October 26, 1986. Everyone is invited to come and savor this wonderful spanish meal.

Prices for the meal will be children \$3.50 Adults \$5.50. Take out orders will be ready at 11:30 a.m. and you may call for take out order at 659-2166.

We will have an enchilada plate with rice, beans, salad, sopapillas, nachos and hot sauce and to top it off you have a choice of desserts. Tea and coffee is also served. Come on and join us and listen to some easy listening spanish music and savor our spanish cooking. Remember that's This Sun. October 26, 1986.

Halloween will be Saturday Nov. 1st

The Hound's Tale

TRICK-OR-TREAT NIGHT WILL BE NOV.1st. City Manager, Jim Ratliff, has set Nov. 1st., as the night for trick-or-treating. Due to a home game on Friday, October 31st., Saturday appears to be the safest night for little spooks and goblins.

Have you had your soup today? Save that Campbell's label. Swanson and Franco-American labels are needed also. Leave them in the box by the elementary secretary's office.

Treat your teacher- Treats for the teachers in all three buildings will be provided by PTA members one Tuesday each month. If you would like to help, call Mary Jo Cluck at 2207.

Hospital

Patients who were admitted in the Hansford Hospital are:
Steve Saenz Colleen Schaefer
R.L. Huse Thelma Wright
Carrie Russell

Road check

is \$16,049.16

State Treasurer Ann Richards has sent checks totaling \$7.3 million to Texas 254 counties for road construction and maintenance.

The Treasurer each year disburses money appropriated by the legislature for the Lateral Road Program. The grants may be used by counties for the purchase of right-of-way and for construction and maintenance of lateral roads, farm-to-market roads or state highways.

The money is allocated to each county under a formula based on the county's area, rural population and lateral road mileage. Treasurer Richards said.

Hansford County received \$16,049.46 for their share.



The Spearman and Gruver Football Teams were in action at Greyhound Stadium last Thursday. Complete

reports of the game are in this paper. Remember the Greyhounds do not play this week.

Word was received as we go to press that Dwight Hutchison passed away Wednesday morning.

He was injured early this week when he fell from a drill and shattered his leg. He apparently died from a blood clot following surgery.

Funeral services are pending with Boxwell Brothers Funeral Directors.



Move your clock back one hour before you go to bed Saturday night!. Don't be early for church Sunday morning.

Valley View buys land

Verna Jean Thomas Boone informed the Plainsman Thursday that her father's place, known as the Roy Thomas farm, has been sold to Valley View Energy Corp., Dallas.

The land will be used to build a 49 megawatt electric power generating plant. The land is located 2 miles north of Gruver and contains approximately 320 acres. Valley View is expected to purchase another 160 acres from the Ken Wilmet estate. The railroad runs through the Ken Wilmet 160 acres.

The Roy Thomas farm, which includes a brick home, sold for \$800.00 per acre.

Weather

DATE	HI	LO
17	77	44
18	74	47
19	70	54
20	85	48

Markets

WHEAT	\$2.10
MILO	\$2.75
CORN	\$1.75



SPS Seek to Lower Fuel-Cost Factor on Electric Bills

Southwestern Public Service Company (SPS) today filed with the Public Utility Commission of Texas (PUCT) to lower its fuel-cost factors on electric bills and to credit \$12 million in past fuel savings and interest to its Texas retail customers.

If approved, the fuel-cost factor on residential bills will be reduced from 2.7555 cents per kilowatt-hour (KWH) to 2.6096 cents, beginning with December bills. The change will reduce overall rates by 2.5%.

The one-time credit will lower December's bill by \$13 for a "typical" residential customer who uses 600 kilowatt-hours of electricity monthly, said Sam Hunter, SPS vice president of rates and economic research. The lower fuel rate will result in an ongoing savings of 88 cents a month for the same "typical" customer.

"This action is possible for two basic reasons," Hunter said. "First, the prices of the natural gas and the coal we use to generate electricity have declined because of the current energy situation. Second, SPS employees have continued to increase the fuel efficiency of SPS power plants. SPS recently was cited as one of the 10 best among the 100 largest investor-owned electric utilities in the United States in terms of power plant generating efficiency."

Under PUCT regulations enacted in February and revised in July, electric utilities are mandated to file for a fuel-cost adjustment if lower fuel costs lead to an accumulation of at least a 4% overcollection, and if the lower fuel costs are expected to continue. Interest, calculated at 11.7% annual rate, is added to the fuel-cost overcollections and will be included in the credit to customers, Hunter said.

The new PUCT rule replaced a previous ruling in 1983 that eliminated monthly fuel-cost adjustments and that required electric utilities to establish a fixed fuel factor to be in effect at least 12 months. At that time, fuel costs had been rising steadily. Falling fuel costs since then prompted the PUCT to make the most recent change in its rules, Hunter said.

Southwestern Public Service Company primarily provides electric service to a population of about one million in a 52,000-square-mile area of eastern and southeastern New Mexico, the south plains and Panhandle of Texas, the Oklahoma Panhandle and southwestern Kansas. Corporate headquarters is in Amarillo, Texas.

Cancer Society

The Hansford County Unit of American Cancer Society will be taking donations for a "drawing" of an original painting by Marilyn Yanke. The winning ticket will be drawn at our next ACS meeting on November 20th in Spearman. Two paintings by Marilyn will be on display in Spearman and Gruver and the winner will have his or her choice of paintings.

You may have one ticket per \$1.00 donation or 6 tickets per \$5.00.

This fund raising project is to be held in conjunction with the Great American Smokeout to be observed on Nov. 20th.

Over 70's

The United Methodist Church was the scene for the annual "Over 70's Night Out" on October 14. Members of Alpha Mu Psi served a meal of turkey, ham, dressing, potatoes, gravy, green beans, an assortment of salads, and plenty of home-made pies, to over sixty guests. After the delicious meal, Bob and Connie Burgoon started the entertainment with Bob singing and Connie accompanying him on the piano. Next on the agenda was some songs sung by Debbie Black-shear. She was accompanied on the piano by Ann Potts. Betty Chisum ended the evening entertainment by singing and playing her guitar.

All through the evening there were numerous door prizes being given away. The door prizes were donated by the following merchants: G.&D. Grocery, Main Street, Gruver Drug, Universal Oil, Gurver Lumber Co., Texaco Wholesale, Hansford Steak-house, Gruver State Bank, Helen's Gifts, Nite and Day Beauty Salon, Gruver Ford, Casa de Boutique, Gruver Farm Supply, The Dahl House Little Tiffanies, Caprock Ind., Hansford Supply, Gophers', Dairy Queen.

The Over 70's dinner was a big success again this year. Thanks to Alpha Mu Psi and all of the Gruver merchants who donated door prizes.

Junior V

by Billy Close

Following a scoreless first half both JV teams returned to the field fired up and ready to play ball. Gruver fumbled on the kick-off and #65 Larry Dunn recovered on the 27 yard line. The Lynx after making a first down turned the ball back over to Gruver on a fumble at the 10 yard line. Gruver moved the ball to the 30 yard line only to give it back to Spearman. Spearman's #12 Shawn Cook intercepted the ball and returned it to Gruver's 25. The Lynx again coughed up the ball, this time on the 2 yard line. Gruver's #44 Brian Payne recovered. The Lynx defense held and Gruver was forced to punt. A 15 yard punt return was made by #33 Pete Saenz to Gruver's 20 yard line. #22 J. Garnett connected with #12 Shawn Cook on a twenty yard TD pass. Extra point conversion was made good on a kick by #28 Cody Reynolds.

During Gruver's first possession of the fourth quarter they were forced to punt, likewise Spearman was forced to give the ball back on a punt that ended on the 40 yard line of Gruver. The Greyhounds #44 Brian Payne rushed for a 31 yard carry before finally being brought down. From the Lynx 29 yard line #44 Brian Payne again broke lose, this time for 29 yards and the TD. The extra point conversion failed, and Spearman hung to a 1 point lead.

Following the kick-off Spearman took possession on their own 30 yard line. Mark Garcia broke lose over the right side and pounded his way to the fifty. On first and ten Garcia again went over the right side for 50 yards and the TD. Point after failed.

Gruver received the ball on their 35 yard line after the kick-off. #22 Vance Scarborough found daylight and picked up 30 yards. From the Lynx 25 yard line #14 Justin Armes connected with #20 Ramon Ortega for a twenty-five yard TD pass. Point after failed and the Lynx ended the game with a one point margin. Final score Spearman 13, Gruver 12.

The Lynx JV will play Stinnett at Lynx Stadium this Thursday night, following the two Junior High games.

WHO KNOWS

1. Who presides over the Senate?
2. Who wrote "I Hear America Singing"?
3. Define the word bizarre.
4. For what was George M. Cohan awarded the Congressional Medal of Honor?
5. What was the original name given to the White House?

Answers to Who Knows
 1. The Vice President.
 2. Walt Whitman.
 3. Odd, extravagant or eccentric in style or mode.
 4. In 1941, he was awarded the medal for his patriotic World War I song, "Over There."
 5. The President's Palace.

 The neighbor who borrows should be willing to lend.



In the late 1500's, fashionable ladies decorated their hairstyles with daggers.



Karen's Kozy Korner

For years large food and drug companies have been pursuing the perfect substitute for sucrose - or sugar. Most of their efforts have gone into artificial sweeteners, such as saccharin, cyclamate and aspartame. But the companies are also experimenting with other types of sugar, including exylitol, sorbitol and fructose, as a replacement for sucrose.

Every sweetener so far has some disadvantage. Saccharin has a bitter aftertaste and its safety has not been firmly established. Aspartame cannot be heated and is very expensive. Cyclamate may pose health risks. And the sugar alcohols are poorly absorbed by the body.

Dieters and diabetics are the most likely candidates to use artificial sweeteners. Diabetics should check with a physician to see which artificial sweeteners fit into their diet plan.

Since nearly everybody diets from time to time, artificially sweetened foods are growing in popularity. But according to the Food and Drug Administration, there is no evidence that drinking diet soft drinks or eating artificially sweetened foods will help a person lose weight. Consumption of diet sodas and other artificially sweetened products have dramatically increased, and yet Americans are heavier than ever.

The only proven way to lose weight is to reduce caloric intake from all sources and to increase physical activity. Even for diabetics the need to avoid all sugar is open to question, since diabetic diets have been liberalized to allow a controlled amount of sugar.

The sugar substitutes on the market are not harmful, but probably should be kept used in moderation. To be safe, children and pregnant women should avoid saccharin.

EDUCATIONAL PROGRAM CONDUCTED BY THE TEXAS AGRICULTURAL EXTENSION SERVICE. SERVE PEOPLE OF ALL AGES, REGARDLESS OF SOCIO-ECONOMIC LEVEL, RACE, COLOR, SEX, RELIGION, HANDICAP OR NATIONAL ORIGIN.

BIBLE VERSE

He that hath two coats, let him impart to him that hath none; and he that hath meat, let him do likewise.

1. Who made the above statement?
2. To whom was he speaking?
3. What happened just after this?
4. Where may this statement be found?

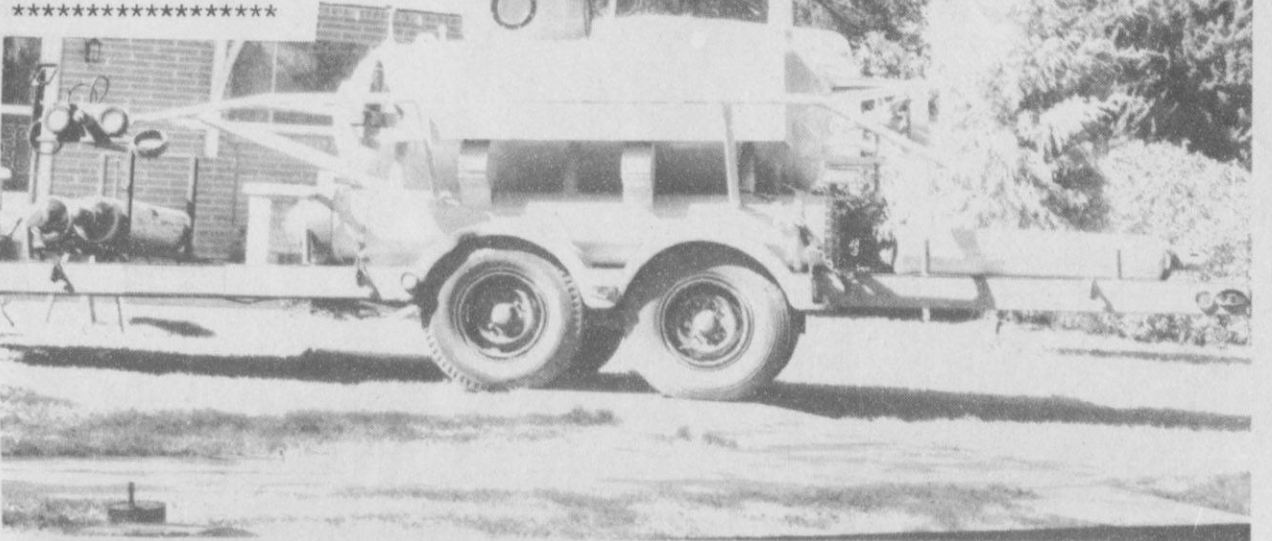
Answers to Bible Verse
 1. John the Baptist.
 2. The people who were listening to his sermon.
 3. He introduced Jesus as the long promised Messiah of the Jews.
 4. Luke 11:41.

What really flatters a man is that you think him worth flattering.
 -George Bernard Shaw.



Remember not to forget to move your clocks back one hour. Also note that Halloween will be Nov. 1st instead of October 31st.

This yellow submarine may be needed if it keeps on raining in the area. Spearman received .56 as of noon Tuesday, Gruver had received more rain, approximately 1 inch. The yellow submarine belongs to Don Smith.



Clinic is now OPEN

Dr. Fred J. Taylor

office at
720 S. Roland Spearman, Tx.

Office Hours:

9:00 to 5:00 Monday thru Friday

9:00 to 12:00 Noon Saturday



720 S. Roland

Office Phone 659-2551

STORE-WIDE Pre-Christmas Sale

Everything from 20% to 50% off

★ Diamond Rings
★ Pearls

★ Watches
★ China

Dunlavy Jewelry

Perryton, Tx.

Phone 435-3136

Master-charge
Visa

WANT ADS

CLASSIFIED RATES

Regular.....Per Word-\$0.13
 Display.....Per Col. Inch-\$4.20
 Double rate for blind ads
 Minimum charges
 Cash:.....\$4.00
 Charge:.....\$4.50

CASH IN ADVANCE ADS

Work Wanted*Trailers For Sale*
 Business Opportunities*No Longer
 Responsible*Political Advertis-
 ing*Child Care*Baby-sitting*
 Garage Sales*Out-Of-County Ads-
 unless advertiser has
 established credit with
 The Gruver Statesman

DEADLINES

To place or cancel ads
 Fri., 12:00 p.m.....Sun. edition
 Tues., 12:00 p.m.....Thurs. edition

The Gruver Statesman reserves
 the right to reject, edit, revise and
 properly classify all advertising
 submitted for publication. The
 Gruver Statesman also reserves
 the right to cancel any advertise-
 ment at any time.

The Gruver Statesman,
 Box 796
 Gruver, Texas 79040

POLITICAL ANNOUNCEMENT

This newspaper is authorized to
 announce the candidacy of the following
 candidates for public office subject to
 the action of the voters in the MAY
 PRIMARY ELECTIONS:

DEMOCRAT

FOR COUNTY TREASURER

-arc

Norma Jean Mackie

FOR COUNTY AND DISTRICT
 CLERK

Amelia C. Johnson

FOR STATE REPRESENTATIVE

J.W. Buchanan

REPUBLICAN

FOR COUNTY TREASURER

Eschol Blankenship

FOR STATE REPRESENTATIVE

Dick Waterfield

TCFA Fed Beef Carcass Challenge

TO: Area News People
 FROM: Burt Rutherford, communica-
 tions director
 SUBJECT: TCFA Fed Beef Carcass
 Challenge

It's just around the corner, and it
 promises to be the biggest yet.

"It" is the TCFA Fed Beef Carcass
 Challenge, and the \$10,000 in prize
 money up for grabs this year will make
 the nation's largest carcass show even
 bigger as more feedyards than ever
 before enter the competition.

The purpose of the carcass show is
 twofold. One, it allows feedyard
 managers to pit themselves and their
 cattle against others in friendly com-
 petition to see who can produce and
 select the animals which yield the
 high-quality, lean meat today's con-
 sumers demand. Secondly, the TCFA
 Fed Beef Carcass Challenge provides
 an educational forum for area students
 to come and test their livestock
 judging skills against each other and
 the experts as they train to become
 the future of the cattle industry.

The Carcass Challenge will begin
 Oct. 22 at 10 a.m., when cattle begin
 arriving at the Amarillo Livestock
 Auction. The live evaluation contest
 will run from 3 to 5:30 p.m., to be
 followed by a calf fry dinner from 6 to
 9 p.m. The carcass evaluation will be
 Friday, Oct. 24, from 7 a.m. to 10 a.m.
 at the IBP plant near Amarillo.

I hope you can join us Oct. 22 at the
 Amarillo Livestock Auction for the
 TCFA Fed Beef Carcass Challenge.

Burt



NEWS VIEWS

Ronald Reagan, President:
 "The Senate vote should not
 be viewed as the final chapter in
 America's efforts, along with our
 allies, to address the plight of the
 people of South Africa."

Real Estate

WHY PAY RENT! Move into a beautiful
 home for less than you are paying in
 rent.

Alliance Homes of Amarillo
 Qualify by Phone
 806-381-1352
 Call Collect

TAKE UP PAYMENTS ON TWO AND
 THREE BEDROOM HOMES.

Alliance Homes of Amarillo
 Qualify by Phone
 806-381-1352
 Call Collect

Situations Wanted

WANTED: Cake baking & decorating
 done. I now have the "Ele-roo pan."
 Also sewing and alterations. Call Joy
 at 733-2517.

Sewing wanted, alterations etc.
 Baking and decorating cakes. I now
 have the Wuzzles cake pan "EleRoo".
 CALL Joy at 733-2517.
 52-rtn-nc

WANTED: Custom work get a jump
 on your 1987 crop by working your
 ground this fall. Will Do! Chisel
 Plowing, Discing, Listing, Rodweed-
 ing, NH3 Application, Combining of
 Corn and Milo, for less guaranteed
 fully insured. 806-384-2086.
 2-4tp

For Sale

FOR SALE: Fertile eggs pullet size 50
 cents per dozen hen size 75 cents per
 dozen. Call Joy at 733-2517.
 NC

FOR SALE: 357 Colt Python 6" nickel,
 357 SW model 686, 6" Stainless. Also
 Dillon RL450B Progressive Reloader
 For more details call 659-5189 After
 5:00 p.m.
 2-2tp

FOR SALE: Hogs ready to be butcher-
 ed. Call 733-2517.

OWN YOUR OWN \$10.99 ONE PRICE
 DESIGNER SHOE STORE. A RETAIL,
 PRICE UNBELIEVABLE FOR QUAL-
 ITY SHOES NORMALLY PRICED
 FROM \$19 TO \$60. over 150 BRAND
 NAMES 250 STYLES. \$14,300 TO
 \$25,900 INVENTORY, TRAINING,
 FIXTURES, GRAND OPENING. CAN
 COMBINE WITH OVER 1,000
 BRANDS OF APPAREL, ACCESS-
 SORY, DANCEWEAR/AEROBIC,
 CHILDREN'S SHOP. CAN OPEN 15
 DAYS. MR. MCCOMB (404)
 365-8575.

Vote for Doug Seal Democrat for Congress

Pvt. ad. pd. for by Doug Seal for Congress Committee,
 Bobbie Thomas, Treasurer, 806 East Avenue,
 Wellington, Texas 79092

OSGOOD MONUMENT CO.

Amarillo, Texas
 Dealers of Rock of Ages
 Granite, as well as all
 colored granites, marble
 and bronze memorials.

represented by
BOXWELL BROS.
FUNERAL HOME
 519 S. EVANS
 659-3802

NOTICE

Wallace Monument Co.
 Monuments, Curbing,
 Grave Covers
 Local Representative
LEONARD JAMESON
 Spearman, Texas
 40-rtn

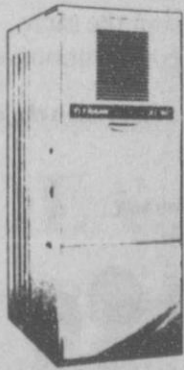
Hansford County
 Planned Parenthood
 412 Davis
 659-2483
 Spearman
 Mon. - Fri.
 8:30 - 12:30

3-2tc

Obituary

Thomas H. Martinez
 Thomas H. Martinez, 67 years old,
 died in Amarillo on October 15, 1986.
 Thomas was born on October 10,
 1919 in Kansas City, Kansas.
 Services were held on Monday,
 October 20, 1986 at 1:00 p.m. in the
 Chapel of Hope Mount Moriah Ce-
 metery in Kansas City, Missouri. The
 Rev. Howard Pittsley officiated. In-
 terment was at Leavenworth National
 Cemetery in Leavenworth, Kansas by
 Mount Moriah Directors.
 Mr. Thomas also lived in Spearman
 for 12 years and served in the Marine
 Corps in WWII.
 He was survived by his Mother -
 Rachel Martinez of Lenexa, Kansas,
 2 sisters - Mrs. Grace Lowther Kansas
 City, Missouri, and Linda Martinez of
 Lenexa, Kansas.

\$200 SAVINGS BOND FROM TRANE.



FREE WITH AN XL 90 GAS FURNACE.

Buy and install an XL 90 gas furnace (LU-K or LD-K models)
 between September 1 and October 31, 1986, and you'll receive
 a free \$200 U.S. Savings Bond from Trane. Plus you'll save
 even more by controlling your heating bills. The XL 90
 features super efficiency...up to 95% AFUE...to help you save
 all winter, every winter.

SUMMER SAVINGS, TOO! You can also get a \$200 U.S.
 Savings Bond...and save on energy costs every summer...if
 you buy and install a qualifying energy efficient Trane air
 conditioner. Call us for all the details.

Offer available from participating dealers. Offer not available to contractors and builders.

Hansford County Electric

733-5224

Gruver, Tx. 79040



30 million people take comfort in it

Farm Items

Hay Swathing and Baling done -
 German Millet, Alfalfa, Wheat, Hay
 Grazer (Cow Kandy) - Call 733-2517

Special Item

Just Arrived - 1986 Tri-Chem
 Christmas catalogue. See the new
 Sun-glo, Sticker Art & Liquid Em-
 broidery items. Get a head start on
 your gift list or craft projects. Call Joy
 at 733-2517.

WANTED: Custom work get a jump
 on your 1987 crop by working your
 ground this fall. Will Do! Chisel
 Plowing, Discing, Listing, Rodweed-
 ing, NH3 Application, Combining of
 corn and milo, for less guaranteed
 fully insured. 806-384-2086.
 2-4tp

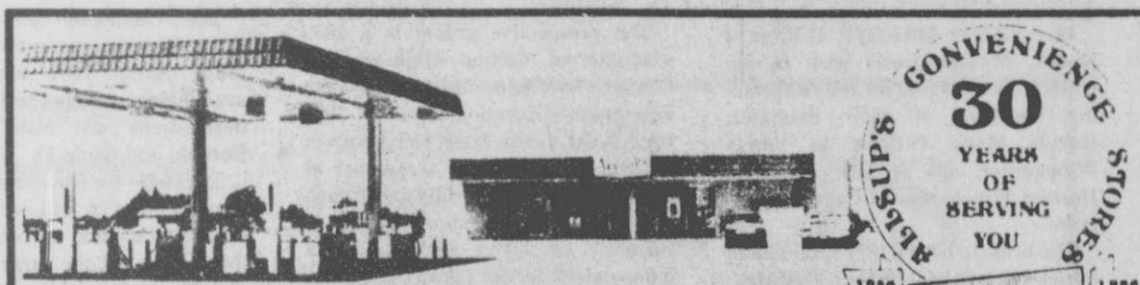
GRANDMA'S CORNER

221 Sanders-659-5133



Purple Tagged Items
25% Off
 New and "Good as New"
50-50 Consignment

Joanne Eaton



SANTITAS

Tortilla Chips

\$1.19

REG. \$1.79
 NOW ONLY!!

CONVENIENCE STORES
 30 YEARS OF SERVING YOU

FILLED WITH FRESH HOT COFFEE-ALLSUP'S
Coffee Mugs REFILLS ONLY 25¢ EACH **99¢**
 ALLSUP'S SAFE & CONVENIENT
Money Orders EACH **19¢**

FRESH & TASTY ALLSUP'S
Onion Rings ORDER **59¢**
 ALLSUP'S
Famous Burritos FOR **2 99¢**

ALLSUP'S ASST. FLAVORS
CHILI DOGS 2 99¢
HOT DOGS 2 79¢
Ice Cream 1/2 GAL. RND. CTN. **\$1.59**

8 OZ. ASSORTED FLAVORS
Borden's Yogurt BUY 1 GET 1 **FREE**
 TOM'S TOASTED SPANISH/HOT/ BOSTON BAKED BEANS CANDY
Tube Peanuts 2 \$1 FOR

BORDEN'S DIPS AND
Sour Cream 8 OZ. CTN. **49¢**
HAMBURGERS 2 99¢
CHEESE BURGERS 2 1 19

30 YEAR ANNIVERSARY SPECIAL
Allsup's Tallsup 32 OZ. CUP **39¢**
 DATES EFFECTIVE OCTOBER 23, 24, 25, 1986
 WHILE SUPPLIES LAST
YOU'RE WITH US

FAMILY SCOTT Bathroom Tissue 4 roll **79¢**

TIDE LAUNDRY DETERGENT 42oz. Box **1 89**

Diet Pepsi, Pepsi-Cola, Pepsi Free or Pepsi Light 12oz cans 6 pak. **1 89**



Engagement Announced



Brenda O'Brien & Verlin Winegarner

Mr. and Mrs. Michael P. O'Brien of Natick, Massachusetts wish to announce the engagement and forthcoming marriage of their daughter, Brenda Marie O'Brien to Verlin Winegarner, son of Mr. and Mrs. Herbert Winegarner of Campo, Colorado.

The bride to be is a 1977 graduate of Natick High School in Natick, Massachusetts. She received her Economics degree in 1981 from Framingham State College, in Framingham, Massachusetts. She is currently employed with First National Bank in Spearman, Texas.

The prospective groom is a 1975 graduate of Campo High School, Campo, Colorado. He received an Elementary Education degree in 1979 from West Texas State University in Canyon, Texas. He is a member of Sigma Nu Social Fraternity and Kappa Delta Pi Honor Fraternity. He is currently employed with Spearman Independent School District in Spearman, Texas.

The couple plans to be married November 28th at the First United Methodist Church in Spearman, Texas.
50s-2nc



Nature is a great teacher, if you care to take lessons.

A hardworking woman needs a hardworking investment plan.

Your career keeps you busy. That's why you've gained in responsibilities and income. And it's why you now need sound investment counsel to help make more of all you make.

Chances are you have neither the time nor the special skills necessary to develop a financial program in these uncertain economic times. We can help with a wide range of capital appreciation opportunities from real estate to cable television, leasing to oil and gas, from \$1000 up. For every working woman who wants to put her money to work. Call or write us soon.

Sheffield, Wilson, Stupper, Wood & Associates, Inc.
3014 W. 25th, #4000
AMARILLO, TX 79109 358-7131
P.O. BOX 516
SPEARMAN, TX 79081 659-3880

Integrated Resources
Equity Corporation

Marvin Sheffield
Debra Stupper

Member SIPC

The Bargain Store

- ★ New shipment of Antiques
- ★ New Consignment Garage Sales
- ★ Used Furniture & Appliances
- ★ Excellent Used Clothing
- ★ I sell and trade

601 Main
Gruver, Tx
733-2129

Owner Anne Whitaker

"Kids of America"

"Kids of America" are coming to Perryton, Texas for the first time and will offer children from the ages of 0-17yrs. the opportunity to participate in one of the most outstanding and exciting youth development programs in the country. The event will be Sunday, November 2nd at the Perryton High School Auditorium, 1102 So. Jefferson, Perryton, Texas. "Kids" just completed their Grand Finale '86 at the fabulous loews ANatole where children from all over the country participated for Savings bonds, Trips, Wardrobe Attire, Etc. you can win; your chance to compete at Grand Finale '87 by entering our first area competition and receive your entry fee paid to go on to the national level. This youth development program in the form of a beauty and talent pageant will offer participation for boys and girls between the ages of 3-17 yrs in a special up to 3:00 minute talent presentation and judging will be based on skill and entertainment. The beauty competition is separate and judged by a different panel of judges and participants may enter one or both. Beauty contestants will have a judge's interview, model on stage in casual wear and formal wear. (Short dress 3-12 yrs, long gown for 13-17yrs) top five finalist in both beauty and talent

banners. The Beautiful Baby division for ages 0-11mos, 12-23mos, 24-35mos is for both boys and girls and they are judged equally on grooming, alertness and personality. Top five finalist receive a trophy and winner receives a banner, trophy and entry fee paid to Grand Finale. Also offered is a photograph, either black/white or color, no larger than a 8x10. Judging is done by major agencies in the print and media field prior to the pageant date. You may enter the photogenic competition without entering any other event and do not have to be present during the pageant to win. Business sponsors are not required by the sponsors (can also be grandparents, friends, etc.) will be listed in the program book. We are also having a fun competition is for both boys and girls 0-17 yrs. and you do not have to enter any other portion of the pageant. This is a COSTUME CONTEST. So start getting out your ideas for an original costume. You must be pre-registered by mailing your entry form postmarked by Oct. 27th in order to have photographs judged and to be printed in the program book. For more information or to receive an entry form please call (806) 435-4145 or (214) 328-KIDS.

Panhandle State University News

The Panhandle State University humanities department will offer three tours during 1987 which will be available for college credit. Among the destinations are New York City, Europe, and Santa Fe, New Mexico.

The trip to New York, Feb. 27 through Mar. 4 will include several Broadway shows, an opera, tours of the studios of the largest theatrical costume maker in the United States and of The Players, theatre museum. Also included will be a seminar led by a leading New York theatre critic and interviews with directors and actors following play performances. A significant block of time will be allotted for the participants to explore the city and its many attractions on their own.

The international Humanities Tour will depart Oklahoma City on June 1, and return on June 16. The first international destination will be London, England. After spending two nights in London, the group will depart for the continent. Countries to be visited while on the continent include the following: France, Switzerland, Italy, Austria, West Germany, Holland, and Belgium. In addition to London, many other European cities will be visited. Among these are Canterbury and Dover, England; Calais and Paris, France; Bern and Lucerne, Switzerland; Pisa, Florence, Assisi, Rome, and Venice, Italy; Innsbruck, Austria; Munich, Frankfurt, and Cologne, West Germany; Amsterdam, Holland; and Brussels, Belgium. From Brussels the group will cross the English Channel and return to London for the return flight to the United States.

The annual Santa Fe Opera trip will be made in late August. The time and dates for this trip will be announced in March when the opera schedule has been received.

For specific information about any or all of the trips, prospective partici-

pants should contact either Kathryn Bayless, 349-2611 ext 256, office, or 349-2270, home; or Jesse Hankla, 349-2611 ext. 260, office, or 349-2458, home.

Halloween Costume Party and Dance

Panhandle singles will hold their Second Annual Halloween Costume Party and Dance, Saturday, October 25, from 9p.m. to 1 a.m. at the Expo Center, Perryton, Texas.

Music will be provided by DeeJay Eric Stevens and the Music Machine of Kiss FM 108, Amarillo. Prizes will be awarded for the best costumes and the winner of a dance contest.

Cover Charge is \$5 per person in costume and \$7 without costume.

All Panhandle singles are invited to attend and join in the fun and festivities. For more information, call Fonda Brown at 435-3050 or Debra Blackshear at 435-5890.

Borger Concert

The Tennessee River Boys will present the first concert of the season on Sunday, October 26, 1986 at 3 P.M. at the Borger High School auditorium. All members are urged to attend and enjoy an afternoon of good country music.

Gruver City Library

Tom Clancy's first novel was the phenomenal **The Hunt For Red October**, a story about the chase for a defecting Soviet submarine that topped the bestseller lists for seven months; that added the intelligence experts of several nations reading it for its astonishing authenticity; that gained raves from critics, admirals and even the President himself.

Red Storm Rising, now available at Gruver Library, is Clancy's second novel, and it is in every way bigger, more daring, even more thrillingly dramatic.

Once again, the players are the U.S. and the U.S.S.R. - but this time the stakes are much higher. When Moslem fundamentalists blow up a key Soviet oil complex, making an already critical oil shortage calamitous the Soviets decide they have no choice. To survive, they must seize the oil in the Persian Gulf; to seize the oil, they must find a way to keep NATO from retaliating.

And they find it: **Red Storm**, an audacious, four-monthy master plan of elaborate diplomatic trickery and crash military buildup designed to keep the West off-balance and ready it for the knockout blow. As the weeks tick by, and we watch the brilliant Soviet strategy unfolding, the rumors

flying, the West scrambling to keep up, Clancy turns up the tension, notch by notch, until it seems it can go no higher - and then the novel explodes with the full fury of the Soviet armed forces as they sweep into Europe and the North Atlantic, and the West finds itself in an all out shooting war, and maybe more - the climactic battle for control of the globe.

In one of the most remarkable depictions of modern warfare ever written, Clancy weaves men, planes, ships, missiles and submarines; scenes of large-scale battle and individual acts of heroism; moments of tragedy, joy and unimaginable endurance into an intricate pattern that dances and whirls before our eyes. Filled with a memorable cast of Russians and Americans alike, and the extraordinary authentic detail for which Tom Clancy has been acclaimed, it is both a triumph of the storyteller's art - and frighteningly real.

Red Storm Rising by Tom Clancy - one of many bestsellers waiting for you at your Gruver Library.

Gruver City Library
2:00-6:00

Monday through Friday

"Check it Out!"

Halloween

Strange and fantastic creatures will soon invade quiet neighborhood streets. Recreation centers will welcome groups of oddly costumed youngsters. Once again, Halloween arrives with all of its enjoyable frights and scares, and Texas Safety Association offers some tips to keep it happy, safe, and "deliciously scary."

"Although our children will spend the night 'pretending,' we, as responsible adults, need to take extra, realistic care to keep them safe on Halloween," advises George Gustafson, president of the association.

"The young Frankensteins and vampires will be thinking of treats and fun. We must prepare them, our neighborhoods, and ourselves to eliminate as many real dangers as possible."

Dangers that can ruin your child's Halloween thrills:

--MASKS: If a mask inhibits vision, it could contribute to a bad fall or a pedestrian accident. Sharp points or edges can scratch the skin or catch on other materials. Make certain masks fit securely, with large enough eye, nose, and mouth openings for unrestricted breathing and sight. Consider using non-toxic face paints or makeup instead of masks.

--COSTUMES: If the costume material is easily flammable, too long or flowing, or too dark, a child's safety could be at stake. Look for fire-resistant costumes that fit comfortably, and use reflective tape as part of the costume design.

--NEIGHBORHOOD ROUTE: If a child is unfamiliar with a new neighborhood or visits another area, he or she could become easily disoriented in the dark and then lose the way home. Pre-plan your child's route a day or two ahead. Arrange for an older brother, sister, or family friend to accompany the young "monsters" if a parent or other adult is unavailable. Be sure each ghost, goblin, or princess carries a flashlight or light stick.

--YARD AND DRIVEWAYS: Gard-

en tools, hoses, trash cans, etc. can trip up even the most careful visitor in the dark. Clear the outside of your home so that your treats come without any threats to safety, and keep the area well lighted.

"We must actively accept the responsibility for our children's safety. This includes preparing their costumes, watching for them as we drive, using child safety seats and fastening their safety belts when they ride with us, and inspecting their filled bags of treats when the night's revelry ends," emphasizes Gustafson.

"Our children depend on us, expect us to keep them safe from harm, and learn from our continued caution."

Pumpkin Patch Festival

Time is drawing near for the fourth annual Pumpkin Patch Arts & Crafts Festival. Lambda Psi Chapter of Beta Sigma Phi will host the event, scheduled for Saturday, November 1, 1986 from 10:00 a.m. to 6:00 p.m. at the Texas County Activity Center in Guymon, Oklahoma.

Over one hundred exhibitors with various arts and crafts will be present along with a concession provided by Lambda Psi including homemade desserts, luncheon items, soft drinks, tea and coffee.

As yet another attraction, the Panhandle Business Professional Women will be conducting a Book Fair at the Activity Center in a room adjacent to the craft exhibits.

Proceeds from the profits of the Pumpkin Patch Festival will be donated to Panhandle Area Sheltered Workshop.

They kept down the cost of electricity.

In the past three years, while national electric costs went up more than 12%, most SPS residential customers paid about the same... some even less! For this you can thank SPS people and their conscientious, efficient efforts.

SPS people are doing all they can to keep the cost of electricity as low as possible.

SPS SOUTHWESTERN PUBLIC SERVICE COMPANY



PALO DURO RESERVOIR

ESTIMATE OF CASH FLOW (THOUSANDS OF DOLLARS)

Year	Jan	Feb	Mar	April	May	June	July	Aug	Sep	Oct	Nov	Dec	Total
1986 (\$ to date)											165	165	330
1987 (\$ to date)	165	165	165	165	165	165	165	165	165	165	165	165	1,980
1988 (\$ to date)	495	660	825	990	1,055	1,320	1,485	1,650	1,815	1,980	2,045	2,310	4,520
1989 (\$ to date)	2,475	2,640	2,805	2,970	3,135	3,300	3,465	3,630	4,430	5,230	6,030	6,830	9,600
1990 (\$ to date)	7,630	8,430	9,230	10,030	10,830	11,630	12,430	13,230	14,030	14,830	15,630	16,430	5,799

PALO DURO RESERVOIR

PRELIMINARY SCHEDULE

	1986	1987	1988	1989	1990
1. Water Conservation Plan		██████████			
2. Archeological Survey & Testing		██████████	██████████		
3. Final Geotechnical Analysis		██████████			
4. Survey of Land Requirements			██████████		
5. Conflict Evaluation			██████████		
6. Land Appraisal				██████████	
7. Final Design			██████████		
8. Conflict Resolution			██████████	██████████	
9. Land Purchase				██████████	██████████
10. Texas Water Development Board Review				██████████	
11. Advertising and Award of Contract				██████████	
12. Construction					██████████

Heart

The Hansford County Heart Association will be hosting a meeting October 27, 7:30 p.m. in the Fellowship Hall of First Christian Church in Spearman. Featured Speaker will be Dr. C.Y. King of Amarillo. Dr. King's current positions include: Assistant Professor of Surgery, Texas Tech University School of Medicine, Amarillo, Texas; Attending Surgeon and Chief, Vascular Surgery V.A. Medical Center, Amarillo, Texas; Board Member Texas Tech University Health Sciences Center Institutional Review Board; Chairman, Tumor Board V.A. Hospital, Amarillo, Texas; Director, American Heart Association in Texas, Amarillo Division; President, American Heart Association, Amarillo, Texas; Council Member West Texas Council of the American Heart Association; Board Member, Pastoral Council of the American Heart Association; Board Member, Pastoral Council, St. Joseph's Parrish; Lay Minister, St. Joseph's Church, Amarillo, Texas.

Dr. King will speak from a wide field of knowledge and experience, specifically he will speak on "Axillofemoral Bypass for Poor Risk Patients with Advanced Aortoiliac Disease." He will be available for questions from the audience following his address.

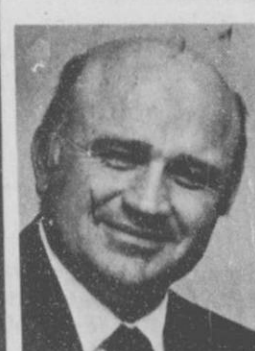
You are cordially invited to attend, for your heart's sake and for the sake of those you love. See you there!

Jim Wright, Senator, (D-Texas): on trade legislation: "The administration and the Republican leader appear to think they can stonewall the problem, pretending that it does not exist..."

Museum News

The ladies of the board of the Stationmaster's House Museum met last Monday and Tuesday to clean and rearrange the showcases for the upcoming gun show, November 8th. If you have an antique rifle or gun that you would like to display in this show contact Helen Boyd or come by the museum. A sesquicentennial rifle will be given away during the show. Tickets may be purchased at the museum or any board member.

Individual thinking is a perishing art.



Let's talk.

Information about your changing telephone service from Gary Stevens, Manager-Community Relations

SWBT urges Texans to become informed voters

Think back to last October. If you are like most of us, you probably had only a vague notion of what the strange word — sesquicentennial — meant. A year later, I would wager that there are very few Texans who aren't familiar with the term's meaning. Perhaps a few of us even learned how to spell and pronounce it.

Although many people may have grown a bit weary of the festivities surrounding Texas' century-and-a-half birthday, no one can deny that this event put the Lone Star State in the nation's spotlight.

Before that attention is diverted from us, however, we have one last opportunity to show the rest of the country that Texas is a dynamic state, committed to shaping its own future. And what better way to prove that fact, than by Texans voting in record numbers during the November general elections?

Few people would disagree that this year's elections are especially critical to our state, in light of our difficult economic situation. There is no doubt that the people we elect next month will be charting the future of Texas. Since each of us has a stake in this process, we must be certain our voices are heard by casting our ballot.

However, voting demands responsibility. Many would contend that it is better not to vote, than to vote without a firm grasp of the issues. As citizens of this state, we have an obligation to learn about each candidate's platform so that we are able to vote with the conviction of our beliefs.

Southwestern Bell Telephone is a strong advocate of our election process, and we encourage our employees to become informed voters. If they are so inclined, we encourage employees to become active in all levels of government.

Although we've heard it before, we all need to be reminded, now and again, that a democracy is only as strong as the people who participate in it. So this November, learn the issues and cast an informed vote.

Questions on a taxing subject

While on the subject of those things governmental and civic, I'd like to pose a couple of questions I heard on the radio the other day from a national columnist. They are on a favorite topic of most Texans... taxes. Perhaps this exercise will give you something to ponder in your idle time.

Question #1 — Is it possible to divert taxes from individuals to businesses?

Some people would argue that when businesses do receive higher tax bills, they simply pass that surcharge along to the customer — that's you and me.

The reality is that in today's economy there are probably few businesses able — and fewer still willing — to absorb a greater tax burden. Proof of the unsettled business environment can be seen in the rash of recent bankruptcies.

Then, is it better to pay higher individual taxes or higher prices at the counter? We must decide that answer for ourselves.

Question #2 — Is it better to levy taxes from the federal or from the local level?

Corollary #1 — Does it matter, aren't we going to end up paying the bill anyway?

One argument can be made that when taxes are paid locally, there are fewer middlemen to claim a portion of those monies. Additionally, some would say local tax revenue can be monitored more closely by local residents. Theoretically, this allows each of us to have more of a say regarding how funds are spent.

Is this type of control evident in your community? If you answered, "No," speak up at your town's next council meeting. Your elected officials want to hear from you.

As you probably guessed, there are no right or wrong answers to these questions. This is usually the case when discussing complicated issues. However, I hope this short quiz may have started you thinking. We all need to give these kinds of topics some thought. After all, any constructive act has to begin with an idea. Perhaps something great will come from one of yours.



Gary Stevens
SW Bell Telephone
714 S. Tyler
Amarillo, TX 79101

MDA

Area Airports to be Discussed

The Panhandle Chapter of the Muscular Dystrophy Association (MDA) is offering free anti-influenza inoculations again this year to people who have any of the 40 neuromuscular diseases covered by the Association's programs, Chapter President Cyndi Pray, announced today. Children and adults with neuromuscular disorders are considered at high risk of serious illness if infected with influenza viruses and should receive flu shots annually as medically prescribed, she added.

The Panhandle Chapter of the Association will pay for flu shots for all patients it serves, whether shots are administered by patients' personal physicians or by physicians at MDA clinics.

MDA supports some 240 hospital-affiliated clinics throughout the United States and in Puerto Rico. In the Panhandle the MDA clinic is located at St. Anthony's Professional Building.

Hansford Hospital Auxiliary

Hansford Hospital Auxiliary met Oct. 13, 1986 at Iv's Hungry Cowboy B.Q. for a luncheon.

The Hospital Auxiliary will host a reception for Dr. Fred Taylor, Oct. 26, 1986 at Hansford Hospital from 2:00 til 3:00 p.m.

Natural Gas Pipeline Co. of America donated a check in the amount of \$300.00 to the Hospital Auxiliary. We do thank them for the donation.

Auxiliary voted to buy a new Christmas tree for Hansford Hospital. Guest speaker was Dennis Robertson Hospital administrator. He talked about the manor. He also gave us Dr. Fred Taylor's office number 659-2551, and home number 659-2031.

Those present were Hazel Stumpf, Rosa Lee Butt, Virginia Head, Lorene Kunselman, Beth Phelps, Ethel Byers, Maylynn Schubert, Adalyn Barnes, Gwenn Smith, Ora Lee Blackburn, Virginia Trindle, Edith Smith, Jo Larson, Dorothy Haner, Freddie Largent, Myrt Bohanan and speaker Dennis Robertson.

AREA AIRPORTS TO BE DISCUSSED

A Texas Aeronautical Facilities Plan regional planning meeting will be held at 10:00 a.m., Wednesday, October 29, in the Community Room, Perryton National Bank, 825 S. Main, Perryton, Texas.

Development of airports in Hansford, Lipscomb, and Ochiltree Counties will be discussed. The meeting will be conducted by the Texas Aeronautics Commission.

All area citizens with an interest in air transportation and airport development are invited to attend. Participating in the meeting will be city and county elected officials, airport board members, airport managers, representatives of the Panhandle Regional Planning Commission, and other citizens.

During the meeting, the airport development needs currently identified in the Texas Aeronautical Facilities Plan (TAFP) for area airports will be reviewed. Preservation and development of airport facilities in the area will be covered. The availability of state and federal funds for airport development will be discussed. Information on area economic development, community goals and objectives, and

other factors that may influence the need for, or timing of, airport development will be requested.

The TAFP has been developed for Texas and the Federal Aviation Administration by the Texas Aeronautics Commission. The Plan was first published in 1974. The latest Plan revision was published in August, 1984. Completion of this TAFP revision is scheduled for mid-1988.

Altrusa Club

Plans have been announced by the Altrusa Club of Borger for their November Flea Market, to be held November 15 and 16 at the Aluminum Dome, north of Wilson Street on Highway 136, in Borger, from 9 a.m. to 5 p.m. each day.

The Aluminum Dome location was chosen because of additional space for exhibitors as well as better facilities for the sidewalk cafe and more parking for both exhibitors and customers.

Changes have also been made in the administration of the Flea Market by the Altrusa Club. Anyone wishing

tween the hours of 9 a.m. and 5 p.m. further information on how to rent space for the event are asked to call Pam Sessions at (806) 273-7741 be-

The Flea Market will provide an opportunity to begin your Christmas shopping early. Exhibitors will have handmade gift items, wooden decorations for the home, dolls, cosmetics, guns, jewelry, toys, antiques, collectables, and as well as Christmas decoration items for sale.

The Altrusa Club will provide a sidewalk cafe featuring all the food specialties they have become known for over the years. All proceeds from the cafe and space rental are returned to the community in the form of community service projects and scholarships to help women improve their vocational education and thus raise their economic status.

ALCOHOLICS ANONYMOUS MEETINGS
Monday & Thursday 8:00 P.M.
Saturday - 8:00 P.M.
7th & Birch
AL ANON
Monday & Thursday - 8:00 P.M.
Phone: 435-3590, 435-5081
Club House Phone: 435-9974
[During Meeting Hours]

JUAN F. VIOLA, M.D., P.A.
General Practice
Announces the Incorporation of the Following Services
ALLERGY TESTING / TREATMENT
MEDICAL ACUPUNCTURE / ACUPRESSURE
for
PAIN CONTROL
SMOKING CESSATION
Gruver 733-5011 Spearman 659-3733
Call: 733-5011 659-3733

JUNIOR HIGH HONOR ROLL

8th Grade
 Katie Williams 98.1
 Jennifer Terry 97
 Marci Roberts 95.2
 Gretchen Lowder 94
 Jennifer Hart 93.9
 Elda Pando 93
 Ashley Wagner 92.1
 Amanda Hiller 91.3
 Kathy Augustine 90.4
 P. D. Swink 90.4

B Honor Roll
 Chris Kauffman
 Casey Spence
 Patricia Moreno
 Kevin Babbs
 Lee Bort

Billy Crawford
 Dan McCloy
 Kyle Haenisch
 Jill Schell
 Billy Hayes
 Ana Ortega
 Eva Babbs
 Cynthis Winn

Tracy Kincannon
 Jason Bass
 Bobby Shrader
 Stacey Cantrell
 Brice Goldsmith
 Lisa Payne
 Shane Fitzgerald
 Kerri Minter
 Cuca Marquez

7th Grade

Luke Miller 96.54
 Kenny Slough 94.6
 Benny McClenagan 93.0
 Garrett Gurnford 92.90
 Trent Seagler 92.8
 Tera Boyd 92.0
 Rex Ralston 91.72
 Matthew Hoel 91.2
 Clay Gillispie 91.0
 Cinnamon Martin 90.63
 Crockett Tidwell 90.27

B Honor Roll

Stacey Williams
 Shannon Pool
 Cathy Minter
 Chad Brown
 Rafael Lozano
 Delfina Ortiz
 Chad Stork
 Felipe Dominguez
 Jill Stedje

6th Grade

Traci Crawford 97.8
 Marquit Viola 97.6
 Cody Barkley 96.6
 Sharlet Slough 96.4
 Jennifer Baker 94.0
 Cora Meyer 93.8
 Travon Shiple 93.8
 Carey Kauffman 92.2
 Holly Venneman 92.2
 Heath Gaines 92.0
 Michael Park 91.6
 Monica Ward 90.2

B Honor Roll

Amy Murray
 Brendy Brown
 Kasey Davis
 Akiko Bort
 Kevin Spivey
 Kim Boone
 Tracy Taylor
 Nancy Alvarez
 Matt Etheredge
 Crystal French
 Brady Pool
 Isaul Cruz
 Danny Sotelo
 Jennifer Anderson
 Jeffrey Price

5th Grade

Will Evans 97.88
 Sarah Jones 96.13
 Kenton Odum 96.00
 Wynn Maupin 95.13
 Mika McLain 95.63
 Lee Bob Harper 94.13
 Raymond Lewellan 94.5
 Anissa Ryan 93.25
 Hart Derrington 94.0
 Gina Hoel 92.63
 Tammie Stevens 92.75
 Dawn McCullough 91.38
 Mark Viola 92.13
 Rosa Gonzales 90.0
 Kalee Shook 90.13

B Honor Roll

Traci Smith
 Sara Moreno
 Lee Stedje
 Ruben DeSantiago
 Melissa Sterart
 Steve Pando
 Justin Carthel
 Jered Bass
 Andee Salmans
 Bryan Boyd
 Jr. Rivera
 Tek Ferguson
 Chris Stork
 Steve Flowers
 Robert Whitaker

GRUVER HIGH SCHOOL HONOR ROLL

SENIORS ALLA's
 Steve Duncan
 Jill Garrett
 Kathryn Gurnfory
 Sally Holt
 Anne Potts

Cami Shapley
 Dala Shapley
 A's with one B
 Joanna Reynolds
 Trey Roberts
 Tracy Saltzman
 Sherrie Thompson

JUNIORS ALLA's
 Brian Gillispie
 Brooke Holt
 Billy Kelly
 Tammy Seal

A's with one B
 Laneida Burmam
 Ron Green
 Pepe Marquez

SOPHOMORES ALLA's
 Christy Brown
 Anne Marquez
 Jennifer Price
 Krista Stedje
 Brent Wagner

A's with one B
 Cindy Barkley
 Shiloh Finney
 Brian Hoel
 Amy Sparks

FRESHMEN ALLA's
 Kelly McCloy
 Theron Park

A's with one B

Kyle Irwin
 Troy Seagler
 Joe Sotelo
 Lance Sparks
 Brent Stedje
 Klint Venneman
 Manda Winger

Most denunciations are motivated by ignorance.

8th

by Billy Close

The Spearman Eighth graders kicked-off to the Greyhounds to start a late game at Gruver. Gruver's #22 Michael Messer returned the ball 25 yards. Messer carried the ball from the line of scrimmage for a 15 yard gain. Spearman's #32 Joe Voshalike sacked the Greyhounds for a 4 yard loss. Gruver ended up punting the ball. The Greyhound defense held and the Lynx were forced to punt on their first possession. Gruver took the ball at the 28. #12 Michael Messer busted the line for a 9 yard carry. #24 Kyle Haenisch found daylight twice, once for 6 yards and again for 7 yards. The Lynx defense held and Gruver punted. After a short drive Spearman's #34 Edgar Nava went 37 yards for the goal line but the play was called back on a penalty. Gruver's #68 J.J. Renteria and #66 Chris Spivey sacked Spearman's QB for a ten yard loss. Spearman punted and Gruver took over from their 24 yard line. Unable to move the ball they too were forced to punt. From the 42 Spearman's #35 Ramon Rosales gained 12 yards following the blocks of #34 Nava. #12 Jay York connected with #87 for a 20 yard pass. Spinning off of one tackle #34 Edgar Nava cut up the middle for 12 yards and the TD. Point after failed. Spearman Kicked-off and Gruver took over from their own 19 yard line. #35 Ramon Rosales intercepted the ball for Spearman on Gruver's 28 yard line. Marking the end of the first half.

Returning to play, Gruver kicked-off to Spearman, where the Lynx took over on their 32 yard line. #34 Edgar Nava found a hole good for 13 yards to the Lynx 45. Spearman fumbled the ball in the backfield and the Greyhounds recovered at the Lynx 43. #22 Michael Messer busted through the line for a 12 yard gain to the 21 yard line. Spearman's defense held and Gruver was forced to punt. Spearman took the ball at their 22 yard line. #35 Ramon Rosales carried the ball for a 28 yard gain to mid field. #34 Edgar Nava then broke through the right side for fifty yard run and the TD. Point after failed.

Following the kick-off both teams were forced to punt. On Spearman's second possession their downs expired giving the ball to Gruver at their own 28. #42 Tracy Kincannon, busted lose for twenty yards. Then #22 Michael Messer connected with #20 Geronimo Ortega for a 49 yard TD pass. Point after failed.

On the kick-off #34 Nava returned the ball 25 yards to the 45 yard line. Nava then carried for 15 yards up the middle. #33 Rosales carried for a 4 yard gain, then Nava again carried. This time picking up 13 yards. Nava carried for 3 more, and #12 Jay York carried for 2. The final score of the game came on a 6 yard carry by Nava, the conversion failed on a pass attempt. The Lynx won by a 18 to 6 score.

McCrorry Stores Celebrates 104 years

McCrorry Stores is celebrating a birthday—its 104th—and everyone is invited to the party.

McCrorry whose stores include trade names such as T.G.&Y., J. J. Newberry, McClellan, H. L. Green and Kress, operates convenient and low priced "five-and-ten" stores which offer a wide assortment of affordable, exciting and fun, everyday basic and seasonal merchandise.

During the month of October, all McCrorry stores are offering sales and other in-store promotions, including a special Halloween promotion.

McCrorry's birthday celebration this year includes an official welcome to over 500 former T.G.&Y. stores that were acquired earlier this year and are now part of the McCrorry five-and-ten family. These stores are being converted to McCrorry's merchandise mix and assortment and will all be renamed McCrorry.

McCrorry, a twenty-two year old entrepreneur, opened his doors in Scottsdale, Pennsylvania. Today, through acquisitions and new store openings, the company operates approximately 1250 stores in 38 states and the District of Columbia and projects sales of approximately \$2 billion for 1986.

McCrorry offered his customers a novel merchandising concept - a wide selection of low-priced merchandise. His approach set the precedent for modern variety retailing. Customers bought the idea—and the merchandise.

McCrorry was able to open a second store in DuBois, PA the next year and by 1884 his chain had grown to five stores in Pennsylvania.

Cost-efficient management was important to John McCrorry. He quickly dropped the silent "E" from his name to reduce the cost of the gilt-lettered signs over his stores.

By 1911, the McCrorry chain boasted 69 stores. Its main offices were moved from Johnstown, PA to New York City.

McCrorry Corporation opened the world's largest variety store in Brooklyn, New York in 1922 with 2,500 lineal feet of counter space on two floors. By John McCrorry's retirement in 1931, his McCrorry Stores had firmly established a tradition of growth and customer service.

In 1936, United Stores Corporation assumed control of both McCrorry Corporation and McLellan Stores, although the two were not merged until years later.

The McCrorry organization pioneered store modernization. In 1940, it extended assortments and price ranges, modernized with special fixtures that highlighted certain merchandise, and changed window displays to bring merchandise closer to the customers eye.

The company's founder, John McCrorry, died in 1943.

An active history of expansion, mergers and acquisitions continued. In 1952, McCrorry Stores opened in Brooklyn one of the largest variety stores at that time with 70,000 square feet of selling space. The store, now with 47,000 square feet of space, continues to operate in the same location today.

In 1959, H.L. Green Company, Inc. acquired United Stores Corporation's interest in McCrorry and McLellan to create the McCrorry - McLellan Green chain of approximately 850 stores (known as MMG).

Meshulam Riklis acquired 50 percent of United Stores Corporation's stock in 1960. He bought control of H.L. Green Company, Inc. in 1961. Returning to its "home" state of Pennsylvania in 1966, the headquarters of McCrorry-McLellan-Green moved from New York City to York. In 1969, 22 former Super Stores were integrated into MMG.

Riklis' Rapid-American Corporation acquired the 439-unit, J. J. Newberry Company in 1972, merging it with the McCrorry-McLellan-Green organization, and renaming the new variety division G. McNew. The division name changed in 1975 from G. McNew to McCrorry Stores. In that year, fifteen former W. T. Grant locations also became a part of McCrorry Stores.

In 1980, J. Philip Lux was appointed president of McCrorry Stores. Eight former Neisner Brothers Stores were acquired that year and new store openings continued.

Rapid-American Corporation became a privately-owned company on January 31, 1981, owned completely by Meshulam Riklis, chairman of the board, president and chief executive officer.

In 1981, McCrorry acquired 46 S. H. Kress and V. J. Elmore stores from S.H. Kress.

Stephen L. Pistner, former president and chief executive officer of Montgomery Ward & Company, became chairman and ceo of McCrorry Corporation in 1985.

On January 7, 1986, Rapid-American Corporation completed the largest acquisition in McCrorry history with its purchase of the approximately 700-store T.G. & Y. chain. At the time, McCrorry was comprised of 748 variety stores.

Through an ambitious conversion program, 511 of the T.G.&Y. Stores are being integrated into the McCrorry chain, the remaining T.G.&Y. locations have been closed. All aspects of the conversion program including training merchandise assortment conversion, and changing the store interiors to best display the McCrorry variety merchandise, will be completed in 1986. The Spearman store announces that its new hours are from 8 a.m. until 7 p.m. Monday through Saturday.

McCrorry, now the largest five-and-ten retailer in the nation, continues to meet customers' everyday needs with basic and seasonal merchandise at affordable prices, a pleasant shopping atmosphere, and convenient locations.

Lynx win

Prior to the ballgame Friday night, the Lynx crowned this years homecoming king and queen. Queen candidates this year were Ann Marie Jarvis, Jill McLain, and Shari Vernon. King candidates were Dusty Hill, Mike Pearson, and Jesse Lozano. The winners being crowned were Shari Vernon and Jesse Lozano.

#11 Tim Stedje, returned the kick-off 15 yards to the 30 yard line of Gruver. #29 Loyd Cator, carried for 6 yards and then the Greyhounds were forced into a punting situation. The Lynx took the ball on their own 22 yard line. #10 Brett Davis carried for 8 yards, followed by a 22 yard carry by #12 Mark Garnett. Davis then connected with #80 Keith Benson for an 11 yard pass. On 4th and a long 4, #45 Dusty Hill tried for the first down, coming up inches short. Gruver's #11 Tim Stedje then found #20 coming out of the back field for a 9 yard pass. #29 Loyd Cator then carried for 23 yards over the right side. Cator again carried for 5 yards. Following a pass attempt that failed Gruver punted.

From the 27 yard line #22 Mike Pearson carried for a 12 yard gain. Hill busted for 4 more before #19 Ross Renner caught Davis behind the line on 3rd and 15. Spearman punted, and Gruver took over from the 45. Completing a pass for 11 yards before #66 Allen Gardiner dumped the Greyhounds for a ten yard loss. #21 Kris York then intercepted a Gruver pass on Spearman's 30 and returned it 26 yards to the 44.

Following a 18 yard run by Davis,

the Lynx completed a 24 yard pass. Gruver then forced the Lynx to cough up the ball in a fumble at the 7 yard line. Stedje then connected with #1 for a 13 yard pass. Cator found a hole and scrambled for another 12 yards. Gruver fumbled and #11 Will Black recovered.

Dusty Hill carried for a 23 yard gain, and Davis then rushed for another 12 to take the Lynx to Gruver's 2 yard line. Davis went the other two for the TD. Davis kicked the extra point to give the Lynx a 7 point lead.

After the kick-off Gruver got the ball on the 45 following a penalty. Stedje connected with #1 for 13 yard pass. Cator hustled for a 12 yard gain. On 4th and 9 a screen pass came up short of the first and the Lynx took over.

Hill carried for 13 yards on two plays, and #22 Mike Pearson gained 8 more. Davis kept the ball tacking on another 20 yards. Hill carried again for 13 yards and Davis went across for the TD. Extra point attempt was blocked.

On the kick-off #12 Brent Wagner returned the ball 10 yards to the 27. On a reverse #10 Tim Fletcher rushed for 8 yards, and Cator carried for two more. Following a penalty, Gruver was faced with 1st and 15. Stedje found Fletcher on a 17 yard pass, and again for 15 yards. #10 Davis then intercepted the ball on the twenty yard line to keep the Greyhounds from scoring before halftime.

Gruver kicked to start the second half. Hill rushed for 18 yards before the Lynx fumbled on the 44 yard line. Stedje connected with #20 Brian Gillispie for 12 yards. Then #21, for the Lynx, Kris York intercepted the ball and returned it 26 yards.

A penalty put the Lynx back to the 36 yard line. Hill gained 4 yards and Davis carried for 13 more before Spearman punted the ball. On third and long Gruver quick kicked from their own 19 yard line. Spearman took over from Gruver's 26. #33 Stan Brandt found room for 6 yards, and Davis connected with #81 twice for 11 yards and 4 yards. Brandt scored on a 15 yard scamper with Davis running for the conversion.

Following the kick-off the Greyhounds were forced to punt. From the Lynx 17, Davis found Benson for 9 yards. Brandt carried twice for 7 yards and 5 yards. The Lynx fumbled and Gruver recovered on Spearman's 17. Stedje hit Cator for a 8 yard pass and #19 Ross Renner carried for 7 yards. Cator scored from the 1 yard line and the conversion failed on a pass attempt.

Spearman took the ball on their twenty yard line after the kick. Hill carried twice for 14 yards and 5 yards. #28 Alan Beeson rushed for 6 yards, and Brandt carried for 3 yards. Davis kept the ball for 12, then following a penalty #33 Stan Brandt busted lose over the left side for a 34 yard TD. Davis kicked the extra point.

Cator returned the kick-off 19 yards to the 34 yard line. A Lynx penalty moved the Greyhounds to the 49. Cator received the ball on a pass from Stedje for a 18 yard gain that was called back due to a penalty. Gruver then fumbled on the 33 yard line with Spearman's #52 Lance Swan recovering. Brandt, finding daylight rushed 33 yards for the goal line. Extra point failed.

Following the kick, Cator carried the ball six times for a total gain of 39 yards. Stedje connected with #1 for 7 yards. #11 Will Black intercepted a Greyhound pass and returned it 28 yards to the 37.

#40 Jeff Gustin then carried for 7 yards. #22 Mike Pearson crashed through the Gruver defense for a fifty

yard gain to the 12 yard line. Following a five yard penalty and a 3 yard sack the Lynx found themselves on the Gruver 20. #12 Mark Garnett found room for ten, and #28 Alan Beeson added on another 6. The downs expired for the Lynx and the Greyhound took over deep in their own territory at the 1 yard line. The clock ran out and the Lynx defeated the Greyhounds by a 34 to 6 score for Spearman's homecoming.

This Friday the Lynx will play at Stinnett, kick-off will be a 7:30. The Stinnett Lions Club are sponsoring a chili supper prior to the Stinnett Homecoming game. All fans are invited to attend.

by Billy Close

Gruver fans are invited to watch the Stinnett Lynx game at Stinnett Friday night! The

The Hounds are off for this week!

Lyndon LaRouche, political extremist, after arrest of followers:

"I have committed no crime and will not submit passively to an arrest but in such a scenario I will defend myself."

7th

by Billy Close

Following the early JV game the two seventh grade teams took the field. On their first possession of the ball game Gruver was forced to punt. Spearman's #30 made a 23 yard return and the Lynx took over on Gruver's 37 yard line. #44 Darian Hawkins rushed through the line on a 29 yard carry that ended at the Greyhound 2. #10 Khris Kelp, kept the ball and went in for the TD from the 2. Kelp again kept the ball for the 2 point conversion.

On Gruver's next possession they again were forced to punt, but Spearman fumbled the ball on the return. Gruver's #85 found a hole in the Lynx defense and rushed for 15 yards. The downs expired and the Lynx took possession on the 30 yard line. #30 Brian Beck went over the right side for 31 yards, then #10 Khris Kelp found a hole for a 24 yard run that was called back due to a penalty. #11 Chad Riggins then carried for 10 yards, but was short of the first down. Gruver took over with little time left in the first half. Unable to get a drive going the clock ran out.

Gruver kicked-off to start the second half. Spearman's #11 Chad Riggins, returned the ball 29 yards to the 41 yard line. #23 Brandon Rex gained 9 yards followed by a eight yard gain by #30 Brian Beck. #10 Khris Kelp broke lose for 10 yards before being brought down at the one yard line. Kelp scored the TD on a one yard run. Khris Kelp connected with #11 Chad Riggins for the extra point.

Despite a 7 yard run by #43 Chad Stork and a 22 yard run by #15 Chad Brown the Greyhounds were unable to score. Gruver's defense held the Lynx for the remainder of the game and Spearman won by a 16 to 0 score.

Thursday night at 5:00 p.m. the 7th graders will kick-off against Stinnett at Lynx Stadium.

MIDDLEWELL CATTLE COMPANY Wheat Pasture Needed

MWC needs wheat pasture in your area for a large number of straightened out stocker cattle. We also need good care takers and will pay competitive rates.

Additional opportunities for joint ventures and buy backs.

Contact: Chris Comstock
 Home: 806-383-2940
 Office: 806-372-3877

A Texas Beef Producer's Company



Experienced
 Effective
 Efficient

Re-Elect

J. W. "Buck" Buchanan

To The Texas House Of Representatives

A family man and civic leader, he's a full-time legislator

Political Advertising Paid For By J. W. "Buck" Buchanan Campaign, Ken Morrison, Treasurer, Box 636, Dumas, Texas 79029