

7/23/98

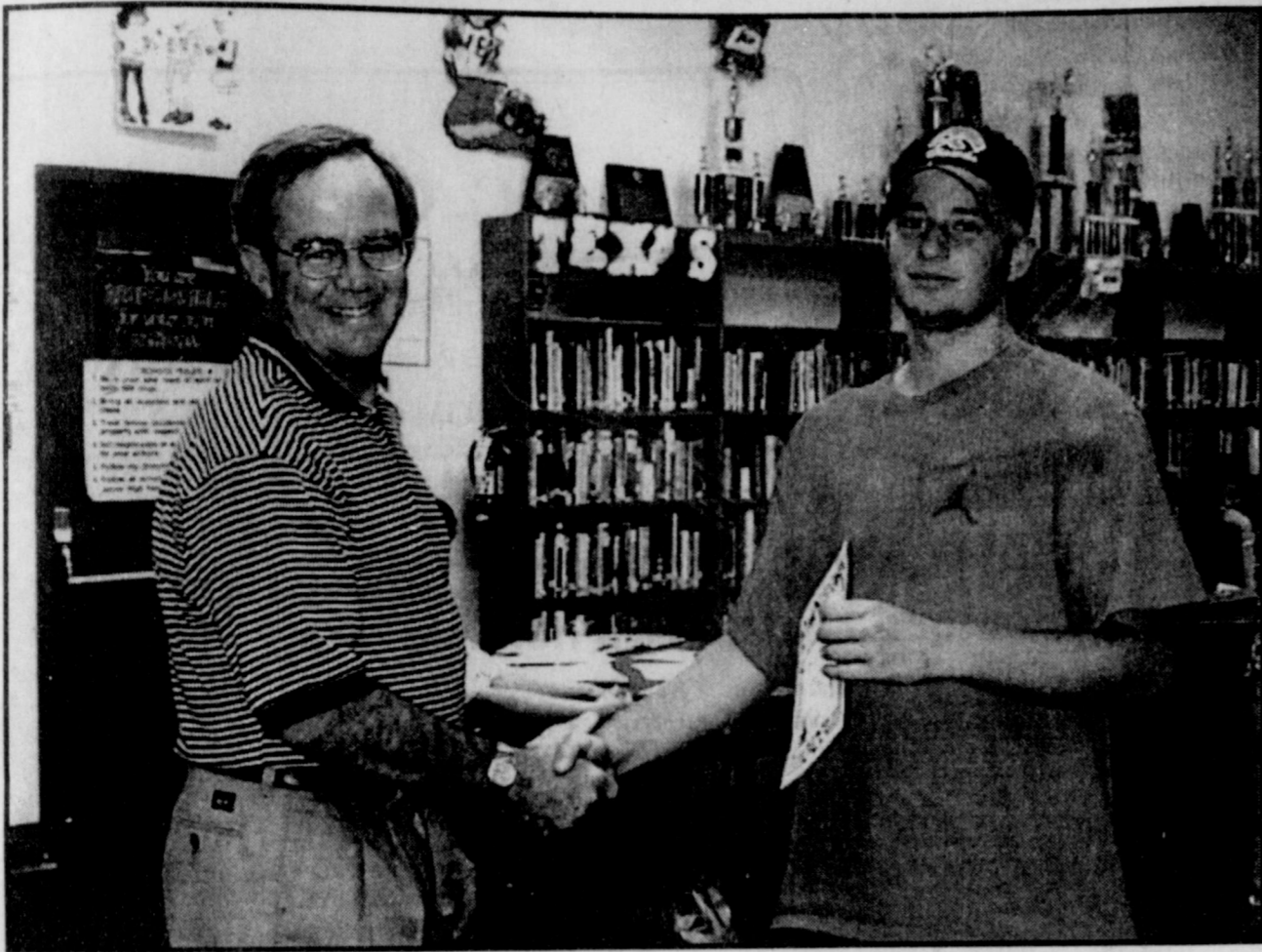
MRS. LITA WATSON
528 W. CLARA
IOWA PARK TX 76367
111

IOWA PARK LEADER 50¢

Vol. 29, No. 46

IOWA PARK, WICHITA COUNTY, TEXAS 76367

Thursday, July 23, 1998



SCHOOL BOARD RECOGNIZES STUDENTS WHO COMPETE ON STATE LEVEL
... Justin Phillips, member of the Hawk baseball team, with Board President Keith Fisher.

Drug dog, stadium seats, technology topics get school board's action

A drug dog, jointly owned by the school and city, stadium seats with backs in the reserved section of Hawk stadium, and additional computer technology are possibilities following Thursday night's school board meeting.

School trustees are working on an agreement with the city to share in the cost of purchasing and training a drug detector dog.

Iowa Park Police Chief Lynn Collins told board members that a drug dog could be purchased, trained, and a dog handler trained for an approximate cost of \$4,500. Collins said he was working on finding the right dog, but he already has a local police officer who would be trained as the handler.

Although no official action was taken, the board asked that Superintendent Mike Caplinger and City Administrator Mike Price get together and work out the arrangements.

Trustees voted to approve TIF grant assurance, a requirement to qualify for a grant from the State Technology Infrastructure Fund.

The grant is for \$88,000, 10 percent of which would be funded by the local school district. According to Lee Pelz, the grant would be used for networking schools and getting up to date on technology. The state uses this approach to get campuses wired for the Web and communications with TEA and Education Service Centers, among others.

As a fundraiser for the schools, Athletic Director Weldon Nelms asked board members if they were interested in purchasing chair back stadium seats that were taken out of the Olympic stadium in Atlanta, Ga.

The seats would be installed in the reserved section of Hawk Stadium, and an increase in the price of reserved season tickets would pay for the new seating over a two-year period. After that, the extra money raised would go toward improvements in the athletic facilities.

The board unanimously approved the purchase of approximately 525 chair back stadium seats at a cost of \$24 each. The price of a reserved season ticket would increase from

\$25 to \$40, which would recoup the cost of the stadium seats in two years.

Six new teachers were hired for the 1998-99 school year, and two resignations were accepted. In addition, Ann Norris, a first grade teacher at Kidwell, was granted a one-year leave of absence.

Letters of resignation were accepted from Mary Alfert, Kidwell Elementary S/PH, and Shelley Merchant, junior high school social studies/GT.

Sallie Banks was hired to teach special education at the high school. She has a BS degree from Southwestern Oklahoma State, and 11 years teaching experience.

Penny Chacon will teach special education at the junior high school. She received a BBA degree from Midwestern State University, and this is her first teaching assignment.

Donna Davis, who received her BS degree at Midwestern State University, will teach fourth grade at Bradford. She has one year teaching experience.

Teresa Dodson is the new high school/junior high assistant band director. She earned a BAAS degree at Midwestern State University and has four years teaching experience.

Linda Hoagland will teach junior high language arts and speech. She has a BSE degree from Midwestern State University and three years teaching experience.

Dusty Rafferty will coach and teach science at the junior high school. He has a BS degree from Tarleton State University and two years teaching experience.

During his report, Supt. Caplinger suggested that the board have a special meeting on facility needs, and asked the finance committee to take a look at the budget.

He pointed out that the district will not be receiving much more funding from the state than it did two years ago.

This, combined with automatic salary increases, state mandates, insurance costs, etc., will make the budget tight again this year.

Caplinger asked that the budgets be sent back to the principals to see

if any more cuts can be made.

In other business, the board authorized the execution of an earnest money contract and purchase of property for an Alternative Education Center.

At their June meeting, the trustees approved an interlocal agreement with City View, Electra and Holliday ISD's to purchase the C&S Service building in Iowa Park and use it for an off-campus Alternative Education Program facility. It will be known as the Texoma Education Center.

Other action included:
* accepting bid from Managed Care Concepts of Delaware, Inc. for student/athletic insurance for the 1998-99 school year;

* approved an application to TEA for a waiver to permit local Title I employees to work with other mainstream students in addition to the identified lower achieving students; and,

* approved bids for cafeteria food/non-food items.

Preceding the meeting, members of the Hawk baseball team that went to the state playoffs this year, and their coach, David Furhman, were recognized by the board.

Local woman receives recognition

Helen Dale (Clark) Roberts was recognized as an Outstanding Lay Woman in the Christian Church (Disciples of Christ) at the International Christian Womens Fellowship Quadrennial Assembly, June 24-28, at Purdue University.

She was one of three women chosen from the Southwest Region for their personal dedication to the church through service in their local congregation, their area, and region. Their selection was made following a lengthy regional process. The Southwest Region consists of churches in Texas, New Mexico, and sections of Oklahoma and Kansas.

During the Assembly, attended by 3,545 women from all over the world, Helen was presented a stole, recognized on stage, and honored with a reception. Thirty-five other regions in the United States and

Chamber takes aim at funding problem

Looking for ways to make a buck. Sound familiar?

That's what the Iowa Park Chamber of Commerce is undertaking, in order to meet its financial commitments.

Robert Palmer, president of the Chamber, told Monday's monthly meeting of the board of directors that he was "charting a course of action."

For a number of years, the organization's primary sources of income have been membership dues and rental fees for booth spaces at the Whoop-T-Do.

However, increases in costs of operations are now exceeding those two sources.

He listed: selling ads to be run on maps used in a city-wide garage sale; renting the meeting room of the Chamber building; and having a concession stand at Lake Iowa Park.

The Chamber promotes two city-wide garage sales each year. The next event will be Saturday, Aug. 1.

Palmer explained that maps to assist shoppers are handed out at various stores. Three sizes will be available, for \$15, \$25 and \$50, and directors were asked to solicit sales of the ads.

Residents and organizations listing sales locations will be charged a \$5 fee each, to be included on the maps.

Special prizes will be offered for shoppers with winning numbers that

will be printed on the maps used, Palmer explained.

Palmer named a committee, composed of Joe Singer, Cindy Clifton and Bob Hamilton, to draft a proposal for consideration concerning a rental policy for the building.

The president stated there is a real need for a concession stand to be operational at Lake Iowa Park, because of the large numbers of people who visit the facility.

He proposed finding a means of locating one there, and then renting it out to a contractor as an important new source of revenue for the Chamber.

Concerning the number of people visiting the lake, Palmer estimated as many from out of town as live here pay regular visits there.

Two activities coming up in the near future in which the Chamber will be active include a ribbon-cutting for a new business, and sponsoring a special activity for the first practice session of the high school football team.

Directors will cut a ribbon on Aug. 26 for O'Reilly Auto Parts store which was recently constructed at the intersection of West Highway and Fourth Street.

A special activity is planned the night of the first workout of the season by the Hawks, in Hawk Stadium.

The practice session is to get underway at 12:01 a.m. on Wednes-

day, Aug. 5.

Palmer's suggestion is to have an activity in the stadium preceding the workout, and calling it the Chamber of Commerce Hawk Kickoff.

The proposal is to have different divisions of competition for punt, pass and kick, beginning at 8 p.m. Participation would require a \$2 entry fee.

During Tuesday's meeting of the Iowa Park Lions Club, the organization issued a challenge to all other organizations of the community to compete in the PP&K contest.

Tuesday deadline to have sales listed

The deadline to have locations listed in advertisements in the August 1 city-wide garage sale being coordinated by the Iowa Park Chamber of Commerce is 3 p.m. Tuesday.

Residents wishing to participate in the sale should turn in their address and pay a \$5 fee at the Chamber's office before that deadline.

Advertisements published in newspapers and on maps listing the sale locations will be coordinated by the Chamber.

For neighbors or groups planning a "block sale," the fee for that listing is \$25, according to Susan Dillard, Chamber secretary.

Police ask assistance to solve pickup theft

Iowa Park police are asking for assistance from the public in solving the theft of a pickup.

Though the vehicle has been recovered, it was apparently used for a "joy ride" and abandoned after having been driven numerous miles on a rim following a blowout.

Police were notified by telephone at 2:42 a.m. Sunday that a 1988 Chevrolet extended cab pickup had been taken from a residence in the 400 block of West Jefferson.

The tire on the right front apparently blew out or went flat soon afterward, because officers have been able to follow the rim's markings throughout most of the southern part of the city, and even on Coleman

Park Road almost to FM 367.

The pickup was found abandoned later in the morning in the 300 block of West Pecan. The vehicle's keys were not in the ignition switch.

Police have received information from residents who said they heard the loud noise of a pickup, but had not seen who was driving it.

Two other theft cases also were reported to police during the past week.

A juvenile female reportedly took a blank business check from a business in the 900 block of West Highway Monday evening, and cashed the forged instrument later in Wichita Falls.

Tuesday, a resident in the 500

block of West Coleman filed a complaint that the spare tire of his pickup had been stolen from its rack, sometime between that date and July 10, according to the police blotter.

Two men were arrested on Class C family assault charges during the week.

Jason Raylynn Routh, 18, was picked up when officers were called to a disturbance at 2:51 a.m. Sunday at Colonial Apartments. He was released at 5:15 a.m., after posting a \$250 bond.

Officers were called at 12:58 a.m. Wednesday to a disturbance in the 1600 block of Wagon Wheel, and at that time Christopher Bryan Jolly, 20, was arrested on a family violence charge. He was released at 4:40 a.m. after signing a promise to appear in municipal court.

Monty Keith Britt, 18, was arrested on a charge of public intoxication at 10:59 p.m. Friday, in the area of Texas and Pacific. He was released at 12:50 a.m. after signing a promise to appear in court, according to the police blotter.

and national assemblies of the Disciples Church.

A graduate of Texas Christian University, which was established by her Clark ancestors, she is a fourth generation Disciple. While at TCU,

Continued on page 3

Council may not meet Monday

The city council's regularly-scheduled meeting Monday night apparently will be cancelled, according to Administrator Mike Price.

The major topic of the meeting was to adopt the 1998-99 budget.

However, a final report on the city's tax values had not been received by noon Wednesday from the Wichita County Tax Appraisal District.

That information is vital to the

council's adopting of a budget and setting the tax rate.

The appraisal figures are due on or before July 25, according to Price.

However, the city's regular meeting must be posted at least 72 hours before its start. Without that time span, the council is not allowed to take any action.

Only emergency meetings can be held with an agenda is posted less than 72 hours, according to state law.

COOK of the WEEK



Mary Troutman

In addition to being a good cook, Mary Troutman is talented in many other areas.

Mary said her first love is making porcelain dolls. She has many buyers for the dolls, and they have been sent all over the United States, and to Germany.

She also makes and paints ladies purses, which she sells.

Mary does a lot of craft work, oil painting, and, in the past, has done sewing for the public. She worked at Peg's Fabric Closet in Wichita Falls.

Mary grew up in LaVale, Md. where she graduated high school, and attended Frostburg State College.

She and her husband, Harvey, who grew up in Wellersburg, Penn., met at a church picnic. On Sept. 25, will celebrate their 46th wedding anniversary.

The Troutmans moved to Iowa Park from LaVale in 1975, when Harvey was transferred with PPG. He had worked for PPG over 31 years before retiring in 1991.

They have a daughter and two sons, and five grandchildren.

Their daughter, Janis, lives in LaVale where she is a second grade school teacher. A son, Gary, and his wife Linda live at Dean. They have two children, Gerard, a graduate of Rider High School, and Jason, 13, who goes to school in Petrolia. The other son, Steven, and his wife Charlene live in Inglewood, Colo. with their three children, Matthew, 12, Stephanie, nine, and Rachel, five.

Mary's father, Harold Everline, who came to Iowa Park quite often to visit, passed away April 3 in LaVale. He was a frequent visitor at Evening Lions Club meetings and Friendly Door.

Both Mary and Harvey are active members of Highland Heights Christian Church in Wichita Falls, where they are both elders. She is active in Christian Women's Fellowship.

Mary is a member of both the Faith Chapter Eastern Star and Iowa Park Order of the Eastern Star. She works with the Love Assembly 298 Rainbow for girls, and helps deliver Meals on Wheels in Iowa Park.

Harvey is the newly-installed president of the Evening Lions Club.

The Troutmans enjoy traveling, and have made many trips to Maryland and Colorado.

Mary likes to cook, and she also enjoys canning. She said Harvey always has a large garden, and right

now, they are busy canning vegetables.

Referring to her recipes, Mary said that "Scalloped Apples" was everyone's favorite. It is a recipe she got out of her mother's cookbook. The "Maple Country Ribs" recipe is one she started using when they lived where there was an abundance of maple syrup. "Potato-Hamburg Casserole" is a dish she takes to pot-luck suppers.

Scalloped Apples

- 6 medium apples
- 1/4 tsp. cinnamon
- 1/4 tsp. salt
- 1 Tbsp. lemon juice
- 1/4 cup water
- 3/4 cup brown sugar
- 1/4 cup flour
- 1/3 cup butter

Core and slice apples. Place in a buttered casserole and add cinnamon, salt, lemon juice and water. Work the sugar, flour and butter together until crumb-like in consistency. Spread over the top of the apples and bake.

Sunny Vegetable Salad

- 5 cups broccoli
- 5 cups cauliflower
- 2 cups shredded Cheddar cheese
- 2/3 cup onion, chopped
- 1/2 cup raisins
- 1 cup mayonnaise
- 1/2 cup sugar
- 2 Tbsps. red wine vinegar
- 6 bacon strips, cooked & crumbled

In a large salad bowl, toss chopped broccoli & cauliflower, cheese, onion and raisins. In a small bowl, combine mayonnaise, sugar and vinegar. Pour over salad; cover and refrigerate 1 hour. Sprinkle bacon over top and serve.

Maple Country Ribs

- 3 lbs. pork ribs
- 1 cup maple syrup
- 1/2 cup applesauce
- 3 Tbsps. lemon juice
- 1/4 tsp. each of salt, pepper, paprika, garlic powder and cinnamon

Place ribs in a greased baking pan. Combine all ingredients. Pour half over the ribs and bake at 325 degrees 1 1/2 hours or until meat is tender, basting often with remaining sauce.

Potato-Hamburg Casserole

- 1 lb. hamburger meat
- 6 medium potatoes, sliced thin
- 1 medium onion, chopped
- 1/2 cup Cheese Whiz
- 1/3 cup Tostitos cheese
- 1 can cream of mushroom soup
- 1 cup seasoned croutons

Brown hamburger meat and onion in skillet. Spray Pam in a baking dish. Slice potatoes thin and put in baking dish. Add meat, mushroom soup, Cheese Whiz, Tostitos cheese (med. restaurant style). Top with croutons and bake at 350 degrees until potatoes are soft, about 45 minutes.

Best Cake Ever

- 1 yellow cake mix
- 4 eggs
- 1 egg white
- 1 cup water
- 1/3 cup oil
- 1 can coconut-pecan frosting

Combine cake mix, eggs, water and oil in large bowl. Beat with electric mixer 1 1/2 minutes. Add 1 can icing mix into cake batter. Pour into greased bundt or tube pan and bake at 350 degrees 1 hour. Let cool in pan for 15 minutes and turn out onto cake dish. Sprinkle powdered sugar over the top.

IN THE MILITARY

In Mediterranean Sea

Naval Hospitalman Cory D. Gilmore, son of Mr. and Mrs. Carl R. Gilmore of Iowa Park, recently departed to participate in a multinational exercise in the Mediterranean and Baltic Sea aboard the hospital ship USNS Comfort, home-ported in Baltimore.

Gilmore is a 1995 graduate of Hirschi High School.

RICHARD C. CARVER, D.D.S.
GENERAL DENTISTRY

TELEPHONE 940-592-5141 315 NORTH WALL IOWA PARK, TEXAS 76367

PhytoPharmica

Your natural choice for a healthier life™

If you haven't heard of PhytoPharmica before, you soon will. Doctors, pharmacists, and health-conscious people nationwide are quickly learning that PhytoPharmica creates the most beneficial natural products available for the human body. We were the first U.S. company to introduce scientifically proven compounds such as glucosamine sulfate, ginkgo biloba, saw palmetto berry extract, and many more. Our products include:

- Nutritional supplements
- Homeopathic remedies
- Natural OTC medicines
- Standardized herbal extracts
- Phytosome™ products

Unlike medicines that cover up symptoms and cause side effects, PhytoPharmica products strengthen your body, helping it work the way it should. PhytoPharmica is your natural choice for a healthier life.

Available at:

Hughes Pharmacy
120 W. Park 592-4191
Toll Free 1-800-585-4191



PhytoPharmica.
Your natural choice for a healthier life™

NATURAL RELIEF FOR:

- ANXIETY
- ASTHMA
- FATIGUE
- HEMORRHOIDS
- INDIGESTION
- MOTION SICKNESS
- PSORIASIS

NUTRITIONAL SUPPORT FOR:

- BONES & JOINTS
- CHOLESTEROL
- EYES
- HEART
- IMMUNE SYSTEM
- LIVER
- SKIN CARE
- WEIGHT CONTROL
- AND MUCH MORE

Family Hair Styles

612 E. Highway • 592-5731

Deanna Whitman, Owner-Operator
Hours:

Monday through Friday, 9:30 a.m. to 4:30 p.m.
Open Late Thursdays by appointment
Walk-Ins Welcome

Haircuts ~ \$8
Perms ~ \$30
Sun Glitz
\$35

Broken Down?

Option #1 - Have a cell phone in hand.

Option #2 - Walk...and walk...and walk ...and walk.

FOUR DAYS ONLY!
SIGN UP FOR NEW SERVICE
AND RECEIVE:

- 1 MONTH FREE ACCESS
- 3 MONTHS FREE WEEKEND CALLING
- DOUBLE MINUTES
- 1/2 OFF ACTIVATION FEE
- FREE CELL PHONE

Offer ends Sunday, July 26

Cellular Service Pre-Paid Cellular Come By Today!

DLS COMMUNICATIONS • 107 W. PARK • IOWA PARK • 940-592-3570

UNITED STATES
CELLULAR
AUTHORIZED AGENT

FFA members receive Lone Star degrees

Seven members of the Iowa Park FFA chapter received their Lone Star FFA Degree, and the local chapter placed sixth as a Golden Horizon Chapter at the 70th Annual Texas FFA Convention, held July 14-17 in Fort Worth.

Local students who received their Lone Star degree, which is one of the highest achievements for a FFA member, are Chris Clerihew, Ross Dillard, Bryan Taylor, Misty Dipprey, Jake Bryman, Dustin Hicks, and Cari Hogan.

These students have been working two and three years in FFA to earn this award.

The FFA degrees are vital com-

ponents of the FFA Association. They recognize the students who have completed an active program of projects and participated in FFA activities in the various agricultural fields.

In placing sixth as a Golden Horizon Chapter, the local group was recognized by the State FFA Association for their hard work and dedication to the Texas FFA and its members. The Iowa Park chapter was selected from over 950 other chapters throughout the state to receive this ranking.

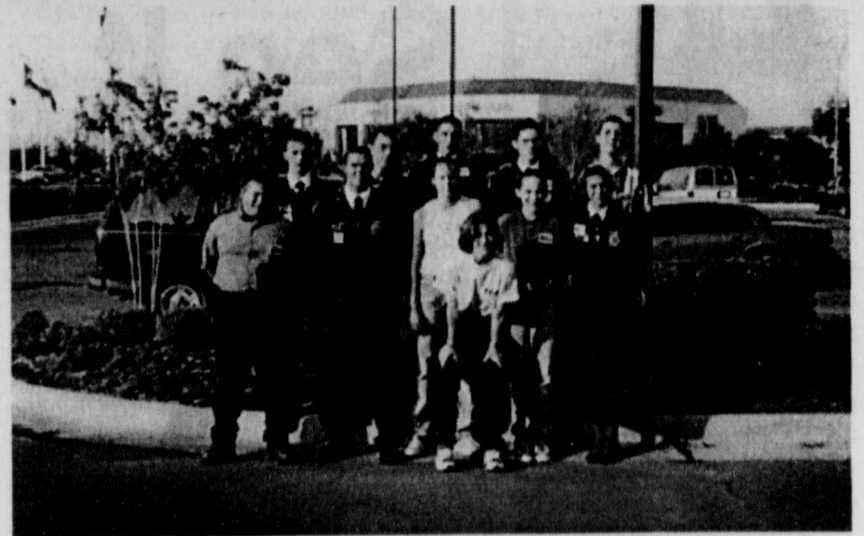
Other Iowa Park FFA members who attended the convention were Mark Dreher, Courtney Sheets, Robyn Dillard, Heath Hodges, and Brad Green.

In attendance with the group were the chapter advisors, Wendy Meadows, Ray Dillard and George Martin.

The Texas FFA Convention is an annual event which features award recognition, motivational speakers, scholarship presentations, a state FFA president election and entertainment.

Students also serve as voting delegates and help decide first hand what policy changes will affect the FFA in the upcoming year.

The Texas FFA organization,



ATTENDS STATE CONVENTION

with over 58,582 active members, is the largest state affiliate of the National FFA organization. It is a non-profit educational organization dedicated to making a positive difference in the lives of students through agricultural education.

The national organization has 7,241 local chapters located throughout the United States, Puerto Rico, Guam and the Virgin Islands. FFA's mission is to make a positive differ-

ence in the lives of students by developing their potential for premier leadership, personal growth and career success through agricultural education.

Local, district, area, state and national activities and award programs provide opportunities for students to apply knowledge and skills learned in the classroom as they develop career pathways and discover school to work transitions.



Helen Dale Roberts

Roberts recognized...

Continued from page 1

she met Rollin Roberts and they were married in Iowa Park on June 2, 1951. They have five children, Marsha Roberts Stallard, Mike Roberts, Carey Dale Roberts, Patricia Roberts, and Ken Roberts. They have four grandchildren.

Helen was a teacher in the Iowa Park CISD 21 years prior to her retirement in 1989. She also worked regularly as a substitute teacher for 17 years. She was named Educator of the Year by the Iowa Park Chamber of Commerce in 1989. In addition to her church activities, she is a member of the Twenty-Three Study Club and

works part-time for Weight Watchers.

Her parents, the late Dr. and Mrs. T.M. Clark (affectionately known as "Doc Tommy" and "Momma Clark"), by their teachings and example, instilled in her and her sisters, Lenore "Sister" Clark Best and Polly Clark Moss, a desire to serve the ongoing programs of their church. As her pastor, Tom Oden-Peace says of Helen, "She simply loves her Lord."

She was accompanied on the trip to Purdue University in West Lafayette, Ind. by Betty Cole of Iowa Park, Marge McGhee of Henrietta, and Betty Barker, her TCU roommate, formerly of Bowie, now of Sarasota, Fla.

Cheerleaders to hold clinic at high school

The Iowa Park High School varsity and junior varsity cheerleaders will conduct a cheerleading clinic Aug. 3-4 at the high school. The classes will last from 8-11:30 a.m.

There will be jump, cheer/chant, stunt/pyramid classes, and a dance class where students will learn a pom pom routine.

The clinic is for girls of all ages, and the cost is \$20.

To sign up, contact Leslie Crumb, 855-7977, or Donna Williams, 592-2039.

All girls calling in advance will receive a camp t-shirt.

KNOW EFFICIENCY INSIDE AND OUT.



For maximum efficiency, an air conditioning system must be properly matched both inside and out. So while your home may feel great now, inside information says

you may be spending more on utility bills than you should - which is definitely out. Call your local Rheem® dealer for tested, matched air conditioning equipment today.



McCLURE REFRIGERATION HEATING & AIR CONDITIONING



592-5523

SCOTT McCLURE - OWNER/TECHNICIAN

TX. License #B-2120

State National Bank

Presents

The Original

TEXAS CROSSWORD

by Charley & Guy Orbison

Copyright 1998 by Orbison Bros.

<p>ACROSS</p> <p>1 Mount Pleasant FM TX perennial</p> <p>6 Cowboy Newton pickup rubber</p> <p>7 TXism: "don't give a hoot ___ holler"</p> <p>9 assoc. for TX Red Duke (abbr.)</p> <p>12 Dallas downtown site: John Neely Bryan's ___</p> <p>17 TXism: "___ a lick of sense"</p> <p>19 TXism: "could talk ___ out of a ditch" (persuasive)</p> <p>21 TX lotto winners ___ a lot of wampum</p> <p>22 Valley citrus</p> <p>23 TX actress Hyer</p> <p>28 TX Caroline Hunt once owned ___ Ranch in Hawaii</p> <p>29 TX Helmond was Jessica ___ on TV series "Soap"</p> <p>30 TXism: "agile as a snake ___ road"</p> <p>31 TXism: "___ day suit" (naked)</p> <p>35 TXism: "can stay neck 'n neck with ___ Texas jackrabbit" (fast)</p> <p>36 Stephenville-based "National ___ Free Men"</p> <p>42 UT alum & pres. of Peru: Fernando ___ Terry</p> <p>44 happen again</p> <p>46 UT semester (2 wds.)</p>	<p>47 Gulf's ___ tide</p> <p>49 El Paso is biggest city ___ Texas</p> <p>50 SMU living area</p> <p>51 average golf score</p> <p>52 TXism: "___ a drowned rat"</p> <p>53 TX Gilley's "A Headache Tomorrow ___ Heartache Tonight"</p> <p>54 golf expression for a long drive: "Hit it ___"</p> <p>55 stumbles</p>	<p>DOWN</p> <p>1 TXism for a wicked person</p> <p>2 Grand ___ TX</p> <p>3 this west TX operation was once the largest of its kind in the world (2 wds.)</p> <p>4 TX Tanya's "Can ___ You Tonight?"</p> <p>9 TXism for "against"</p> <p>10 Dallas has ___ HOV lanes</p> <p>11 TXism: "___ some gravel" (fell)</p> <p>12 famous TX square dance caller Golden</p> <p>13 TXism: "mad as ___"</p>	<p>14 The Crimson Tide</p> <p>15 TXism: "___ sheared like a spring lamb" (swindled)</p> <p>16 TXism: "not a lick"</p> <p>18 "Texas ___" (oil)</p> <p>20 "Stormin' Norman" (init.)</p> <p>23 Sonora produces a lot of ___ hair</p> <p>24 Santa ___ National Wildlife Refuge</p> <p>25 TXism: "tough as ___ hide"</p> <p>26 TX-made film: "___ News Bears ..."</p> <p>27 TXism: "useless as panty ___ a pig"</p>	<p>38 TXism: "hot as ___ stove"</p> <p>39 TXism: "___ these parts"</p> <p>40 the Gulf's Atlantic</p> <p>41 "no muss no ___"</p> <p>43 TXism: "got misery up to my ___ pits"</p> <p>45 this Roy was TX Bonnie Parker's husband (init.)</p> <p>48 raised writing</p> <p>49 TXism: "feel like ___ chewed up and spit out"</p> <p>56 TXism: "all bought and ___ for"</p>
--	---	--	--	--

STATE NATIONAL BANK

Yessir...An independent bank can serve you best!

We are an independent bank and locally owned for over 65 years! Why settle for less than the best? Let's talk, it's the first step.

65 Years of Continuous Service

104 W. PARK
592-4131

Equal Housing Lender

FDIC

As I See It... By Bob Hamilton



While considering what subject I would use for this week's column, it occurred to me that we've had a considerable number of new residents move into the community recently.

That fact, and because we are all guilty at times of not recognizing, or appreciating, or taking for granted, what we have, my choice is to discuss quality of life in Iowa Park.

First of all, living up to the city's name, there are nine parks within the city limits, all equipped for enjoyment, both for play and picnics. And none of those include the school grounds, which also are used by young and old alike for outdoor enjoyment.

Two of those parks are at both the fine lakes that are inside the city limits. And our third lake, like the other two, are outstanding fishing locations.

We have, without a doubt, one of the best and most beautiful libraries you can find anywhere. Not only is the library very well stocked with books, as well as offering computers for use by residents, but the building is steeped in the history of the community. That's an added plus for those interested in history.

Our schools are the center of activity and interest to most residents. Besides being assured of excellence in education for our younger citizens, families bond as result of the many activities.

There are a great number of civic and social organizations available, which gives residents an opportunity not only to meet others, but allows members to feel a greater purpose in life by serving.

Three facilities, all located on North Third Street, are centers for service and activities which come close to completing a community's needs for quality of life.

They are the Recreational Activities Center, the Friendly Door, and the Optimist gymnasium.

The Recreational Activities Center, or RAC as most folks call it,

not only has planned activities for virtually every member of the family, but also provides space for regular or needed meeting space.

An additional offering of service by the RAC is to begin this fall, when after-school child care will be available. That will not be at the main building, however, but personnel will host enrolled children at schools between dismissal of classes and time when working families return home.

For our older citizens, the Friendly Door provides a center for daily activities and social gathering, as well as meals. And for those who are unable to go there, they have a lengthy list of volunteers who pick up food on weekdays and deliver them.

The Optimist gym offers an opportunity for youngsters and adults alike to participate in activities, primarily basketball, both organized and individuals.

As is the case of any community, there are still a few quality of life facilities not yet available here... but we're working on them.

We still do not have a park in the neighborhoods north of US 287, we don't have a walking track for the growing number of people who like that form of exercise, and we don't have a golf course.

The city government is looking into obtaining land for a park in the northern area, but that is not yet in budgeting plans.

As for the walking track, construction is to begin sometime between now and next spring on a fine facility that will encircle Gordon Lake.

By the way, one disappointment has developed concerning the track. An old historical road bridge was offered to the city which would be used to cross over the north end of that body of water.

However, the city was informed that it would not be available until the turn of the century. So plans are to

build a crossing, thus not having to wait that long for a track to be available.

And, as most of you already know, I've been pointing to the need of a public golf course for our citizens several years now.

I've already admitted that this is a personal thing for me. But more and more folks are commenting on their desire for a course here also.

Realtor Tommy Key has already had an expert design a course on the northern edge of Iowa Park. But I've asked him so many times how it's getting along that I've become self-conscious, and know he'll tell me when it's time.

Quality of life is always important to families and individuals. But first and foremost, quality of life begins in the home and church. Nothing outside those two can replace them.

And while I've been sitting here preparing this piece, I received a phone call from a resident who wanted to tell me that Iowa Park is known to others who live outside Wichita County.

Mrs. Johnny Lee said they were in Mickey Gilley's theatre in Branson, Mo. recently and struck up a conversation with a couple from Leavenworth, Kansas.

When asked where the Lees were from, she first said Wichita Falls, but then recanted and named Iowa Park.

"Oh, we know about Iowa Park," the woman responded. "They've got a good football team (the Hawks) there. And they also have good school teachers."

You see? Word gets around when you've got what we have in Iowa Park.

State Capital



HIGHLIGHTS

By Ed Sterling

TEXAS PRESS ASSOCIATION

AUSTIN — A defendant's guilt or innocence is the key to his decisions in death-penalty appeals, Gov. George W. Bush said last week.

"Of all the death penalties we've had in our state, I am confident that those who have been put to death have been guilty under the eyes of the law," Bush said while speaking to the Sheriffs Association of Texas.

Following a recommendation from the Board of Pardons and Paroles, Bush recently commuted the death sentence of Henry Lee Lucas to life in prison. Lucas recanted testimony claiming responsibility for hundreds of murders, including the "Orange Socks" murder for which he was sentenced to death.

Bush also followed the board's recommendation against clemency for convicted murderer Karla Faye Tucker, who did not claim innocence and was put to death Feb. 3.

Lee County Sheriff Joe G. Goodson, head of the association, disagreed with Bush's decision to commute Lucas' sentence to life. "He let a guilty man not go free, but he commuted his sentence to life and the guy is evil. He should have died," Goodson said, but added, "I still like (Gov. Bush). Everybody makes mistakes."

Garry Mauro, a Democrat challenging Bush in the upcoming gubernatorial race, also disagrees with Bush's decision on Lucas.

Mauro said he agrees with the jury that found Lucas guilty and sentenced him to death and 23 appellate judges who reviewed the case and let the jury's decision stand.

At the sheriffs association meeting, Bush also said he would seek:

- Automatic jail time for minors

who commit crimes with a firearm or are caught unlawfully carrying handguns.

- Additional funds for juvenile probation officers.

- Expansion of regional gang databases to a statewide database.

Funds Available for Crime Victims

Texas counties in 1997 collected \$61.5 million in court fees that went to the Texas Crime Victims' Compensation Fund.

In fiscal year 1997, \$23 million was paid to victims in those counties, the office of the Texas attorney general reported.

"Even though we've done a lot to make it known across Texas that this money is available, there is still more money coming into the program than going out," Ron Dusek, spokesman for Attorney General Dan Morales, told the Associated Press last week.

At the end of last fiscal year, there was \$140.8 million in the fund created in 1979.

The main requirement for a person to be eligible to receive money from the fund is that the crime be one in which the victim died or suf-

fered physical or emotional harm. Sources such as health insurance benefits and Medicaid must be exhausted before money is given from the fund.

Expenses paid from the fund have included medical treatment, counseling, compensation for loss of support payments to dependents of a deceased victim, loss of wages, funeral expenses and child care.

23 Die From Oppressive Heat

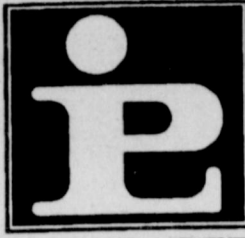
Record-high temperatures across the state have caused 23 heat-related deaths this year. Sixteen of those deaths have occurred in Dallas since June 1.

Criteria for determining whether a death is heat-related:

- A person is found dead from stroke, emphysema or heart attack in a hot, closed area.

- A person's body temperature is above 104 degrees at the time of death, or immediately thereafter.

The U.S. Department of Agriculture has approved a waiver in 49 Texas counties allowing farmers to grow one cutting of hay on their Conservation Reserve Program land.



IOWA PARK LEADER

THE LEADER

- Bob Hamilton Editor/Publisher
Dolores Hamilton Co-Publisher
Kari Collins Advertising Director
Don Young Sports Writer
Sherrie Williams Reporter

The IOWA PARK LEADER is published every Thursday. Offices are located at 112 W. Cash, Iowa Park, Texas, 76367 (766280). Telephone: 592-4431. Second Class Postage Paid at Iowa Park, Texas 76367. Annual Subscription rates are \$15 in Wichita County; \$17 elsewhere in Texas; \$20 anywhere in the United States. Any erroneous reflection upon the character, standing or reputation of any person, firm or corporation which may appear in the columns of this newspaper will be corrected upon being brought to the attention of the publisher. The entire content of each issue of the Iowa Park Leader is protected under the Federal Copyright Act. Reproduction of any portion of any issue will not be permitted without the express permission of the Iowa Park Leader.

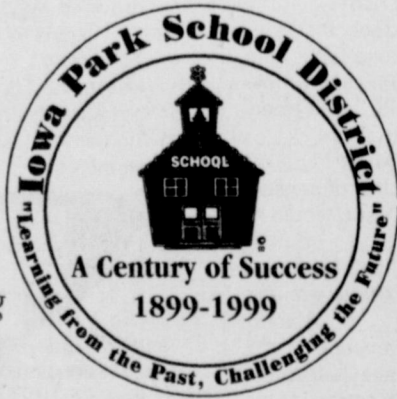


MEMBER
TEXAS PRESS ASSOCIATION

ATTENTION GRADUATES OF W.E. GEORGE AND IOWA PARK HIGH SCHOOL

If you have not already filled out and returned this form, please take this opportunity to do so, with a picture if possible. Send it to the Iowa Park Leader, P.O. Box 430, Iowa Park, TX 76367.

Beginning in September and continuing through the big Homecoming weekend in October, the Leader will be featuring former graduates in "Where Are They Now?" mini-features



Iowa Park Schools Centennial Celebration Fact Sheet

Name _____ Year of High School Graduation _____

Occupation _____

Name of Spouse _____

Children _____

Grandchildren _____

Use extra sheets, if necessary, to fill out the remainder of the questionnaire.

What do you remember most about attending school in Iowa Park?

How did you get to school each day?

What was your favorite subject and why?

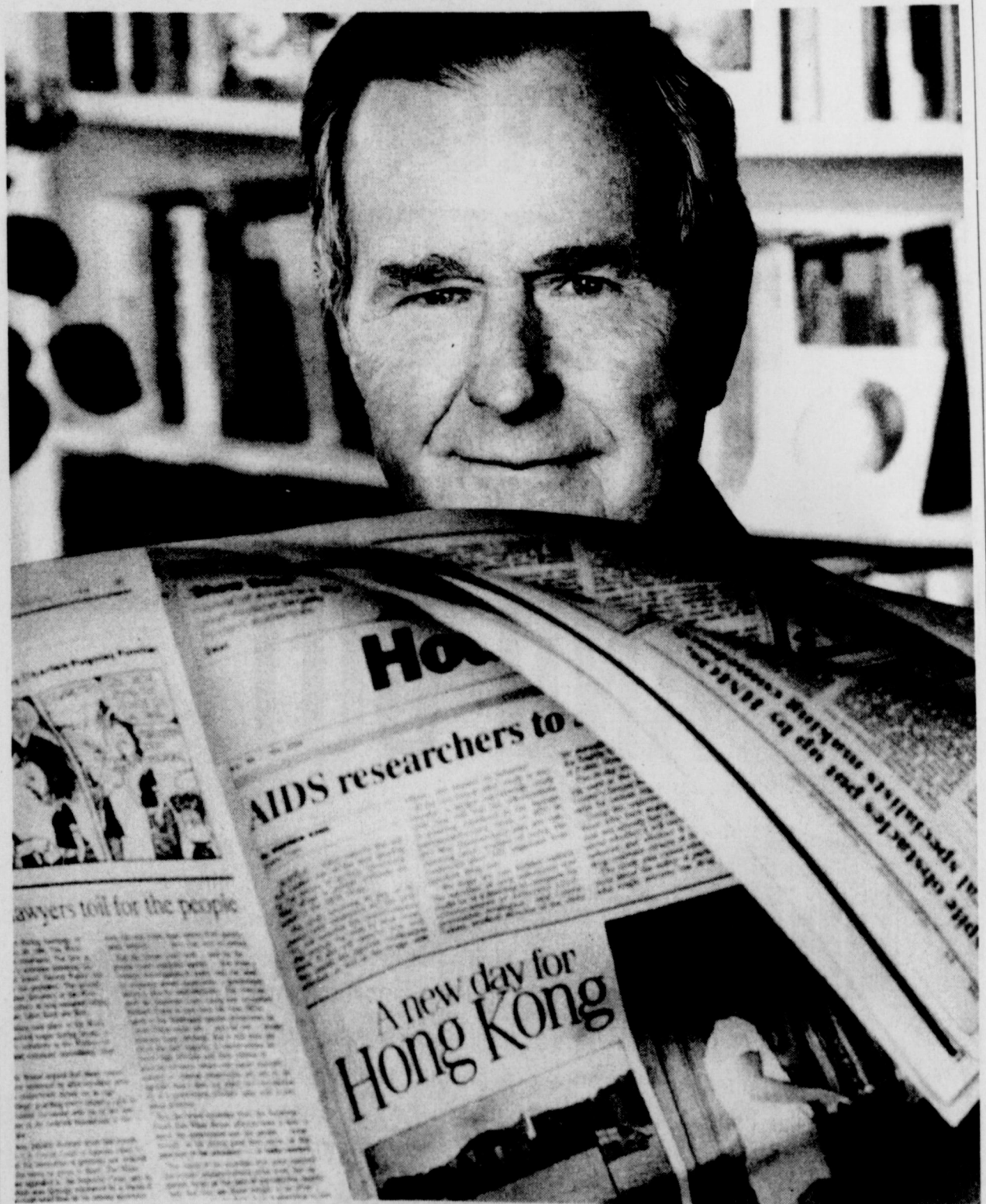
How do your fellow classmates from school probably remember you best?

What school activities and/or sports did you participate in?

Please list any special hang outs and memories you have of those special places.

What were the fads and fashions of your school days?

Please provide a summary about yourself since graduation. Please mention higher education, places you have lived, occupations, and any other events of interest to your classmates.



"Encourage your children to read every day. One day they may take the world by storm."



IOWA PARK LEADER

ESA members plan year

Members of Epsilon Eta Chapter of Epsilon Sigma Alpha met recently in the home of President Mary Lynn Boyd for their yearly planning meeting.

All fourteen members were present and went swimming and were served hot dogs with all the trimmings before the meeting.

Summer meetings, including the District Six meeting in Fort Worth July 26, and the State Board meeting in Houston Aug. 8-9, were discussed. Members who are planning to attend were asked to send in their registrations.

Vice President Sue Driskell discussed rush plans and asked for names of prospective members.

Joyce Henry, educational chairman, assigned monthly programs on "Discover the Berry Best of Ethnic Cooking and Customs."

Essie Johnson, service chairman, asked for volunteers to finish up the food sales for the year at the Iowa Park Gun Club. She also asked everyone to help out at the "Capture for Kids" to be held at Ron Roberts Ford in Wichita Falls on July 23. This event will benefit St. Jude Children's Hospital.

Social chairmen, Pat Lincoln and Judy Ricketts, asked members to name their favorite socials so some of them could be included in this year's social calendar.

Boyd, who is co-chairman of the District Six Bass Tournament,

reported on the tournament to be held Oct. 4, at Possum Kingdom. All proceeds from this event will go to St. Jude Children's Hospital. Anyone interested in fishing in this tournament should call her at 696-1722.

FRIENDLY DOOR MENU

Thur. July 23

Meat loaf, creole sauce, macaroni & cheese, okra, cornbread, oatmeal raisin cookies.

Fri. July 24

Turkey cutlet, au gratin potatoes, zucchini & tomatoes, dinner roll, vanilla pudding w/ peach half.

Mon. July 27

Cucumber/tomato salad, charbroiled steak, parslid new potatoes, crinkle cut carrots, wheat bread, watermelon slice.

Tues. July 28

Spanish rice and ground beef, tossed salad, green beans, cornbread, Boston cream pie.

Wed. July 29

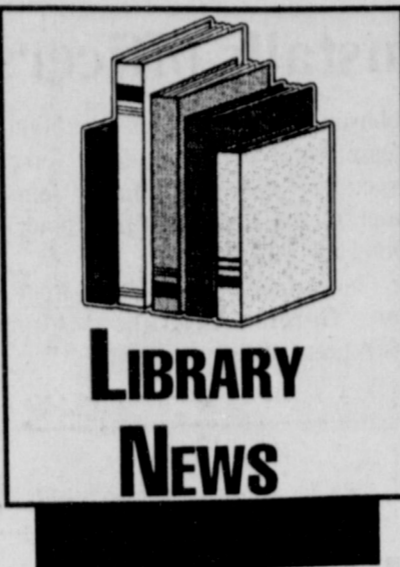
Cornbread, roast beef, brown gravy, oven browned potatoes, Dutch mixed vegetables, butterscotch pudding.

Thur. July 30

Oven fried chicken, potato salad, lettuce, carrots, hotroll, lemon bisque.

Fri. July 31

Oven fried catfish, tarter sauce, French fries, creamy slaw, cornbread, strawberry jello w/ fruit & topping.



LIBRARY NEWS

Time Change for Storytime

Starting August 4th, storytime will be on Tuesdays and Thursdays from 10 a.m. to 10:30.

We will start another storytime on Wednesday, August 12th, tentatively from 10 a.m. to 10:30. If this time slot is inconvenient for parents or child care providers, please contact Gayle at the library.

New Children's Books

Amber Brown Sees Red by Danziger
Old Mother Hubbard by Johnson
Kids Pick the Funniest Poems by Lansky

The Wee Little Woman by Barton
Good Zap, Little Grog by Wilson
Miss Mary Mack by Hoberman
Archaeopteryx, the First Bird by Sandell
Maia Saura, the Dinosaur with the Smallest Brain by Sandell
Apatosaurus, the Deceptive Dinosaur by Sandell

Junior High band practice begins July 29

Junior high school band students will be reporting to practice starting next week.

Percussion only will practice next Wednesday, Thursday, and Friday from 9-11:30 a.m.

On Monday, Aug. 3, at 8:30 a.m., all band students should pick up their music and check out instruments.

The band will have rehearsals everyday, from 9-11:30 a.m., Aug. 3 through Aug. 6.

In addition to Greg Miller and Ed Hefti, a new band director, Teresa Dodson, has been hired and will be working with the students.

All seventh grade students who play wind instruments will need a "Rubank Intermediate Method Book." Eighth graders who play a wind instrument will use the "Prescott Method Book." Both classes will need a music lyre to hold their music during pep rallies and football games.

Percussionists will need the "Haskall Snare Drum Book, vol. 1."

All supplies can be purchased at Hughes Pharmacy in Iowa Park or Sam Gibbs Music Store in Wichita Falls.

The supplies needed are as follows:

Woodwinds -
Flutes - Tuning rod, small screwdriver, cleaning cloth, pencil, and key oil.
Clarinets - Cleaning swab, small screwdriver, cleaning cloth, pencil, 4 medium hard reeds (LaVoz), and key oil.

Saxophones - Cleaning cloth, small screwdriver, pencil, 4 medium hard reeds (LaVoz), and key oil.

screwdriver, pencil, 4 medium hard reeds (LaVoz), and key oil.

Brass -
Trumpets, cornets, French horns, baritones, and tubas - valve oil, tuning slide grease, and a cleaning cloth.
Trombones - Tuning slide grease, cleaning cloth, cold cream, and a

water bottle.

Percussion -
Percussionists need 2B snare drum sticks, medium hard timpani mallets, and a pair of acrylic mallets.

Instrument rental is \$50 a year or \$25 a semester, except for percussion and tuba, which is \$25 a year.



Puppy People

The 4-H Puppy People attended the State Dog Show in Texas City on June 26 and 27. We would like to congratulate the following people on their achievements:

Monica Conway and Renee Burditt - 1st place Drill Team; Megan Conway - placed in Clover Kid costume; John Rhoads - 4th place, Conformation-Sporting; Bobby Ennis - 1st place, Conformation - Non-Sporting; Monica Conway, 9th place,

Conformation-Toy; Bobby Ennis - 2nd place, Conformation - Toy; Monica Conway - 5th place, Conformation - Working; Bobby Ennis - 6th place, Conformation-Specials; Renee Burditt - 7th place, Conformation - Specials; Bobby Ennis - 1st place, Conformation - Non-Purebred Specials; Renee Burditt - 4th place, Obedience Novice A Senior; John Rhoads - 9th place, Obedience Novice B Junior; Bobby Ennis - 9th place, Senior Novice Showmanship.

by Renee Burditt, reporter

Good Cuts
113 W. Park 592-0306

Summer Highlight Special
No more painful caps
New foil procedure!

Highlights \$35 includes hair cut

Ask for Jodi - Price good through August 15, 1998

This Cowboy turned
22 on July 15
Happy Birthday
Jimmy Spikes
Love, Mom and Sasha

DUTTON FUNERAL HOME
"FUNERAL DIRECTORS SINCE 1908"

Larry Dutton

Providing Funeral Services and Pre-Arranged Funeral Plans

Honoring all insurance policies and major credit cards

Funeral Financing available
592-4151

300 E. Cash Street Iowa Park

KEEP IT GOING!
WITH QUALITY AUTO & TRUCK PARTS

D.C. AUTO PARTS

"Your Hometown Parts Store"

211 North Wall • Iowa Park, Texas
940-592-4181

VISA MasterCard OPEN Mon. thru Fri. 7:30 a.m. to 6 p.m. Saturday 7:30 a.m. to 12 Noon

Starting Fluid
by Johnsen #6732 7.22 oz.
\$1.11

Total Lube
#0612
\$2.74

Brake Cleaner
#1420
\$2.56

Power Steering Fluid
by Johnsen #2912 12 oz.
\$1.09

ACDelco Batteries

Batteries For:
• Automobiles
• Pickups
• Trucks
• Motorcycles / ATV
• Agriculture
• Lawn & Garden

We have the AC Delco Battery for your needs

King Karl Klement's

HAIL OF A SALE

1998 MERCURY MOUNTAINEER

7 in stock - 12 available

Total Vehicle plus options... \$28,460
Option pkg. discount... \$1,090
MSRP... \$27,370
KKFM discount... \$3,871
Hail discount... \$500
Sale price after discounts

\$22,999

SAVE \$4,371 from MSRP

1998 EXPLORER XLT

2 in Stock!

MSRP... \$27,555
Option discount... \$990
MSRP... \$26,565
KKFM discount... \$2,965.01
Hail discount... \$500
Sale price after discounts

\$23,999⁹⁹

SAVE \$3,065.01 from MSRP

LAST 1 LEFT must go!

1997 F-150 REG. CAB XLT

V-8, Automatic

Total vehicle w/options... \$22,810
Option pkg. discount... \$1,500
MSRP... \$21,310
Hail discount... \$500
KKFM discount... \$3,315

\$17,495

SAVE \$3,815 from MSRP

1998 RANGER SUPERCAB XLT

Stock #WPA41954

Total vehicle plus opt... \$17,315
Option pkg. disc... \$1,310
MSRP... \$16,005
KKFM Discount... \$1,506
Hail Discount... \$500

\$13,999

SAVE \$2,006 from MSRP

1999 F-350 CREWCAB DIESEL

Stock #XEA15255 Dual Rear Wheel, Diesel

Total vehicle plus options... \$30,545
KKFM discount... \$3,197.20
Hail discount... \$500

\$26,847⁸⁰

SAVE \$3,697.20 from MSRP

1999 F-250 SUPERCAB XL

Stock #XEA52053 5.4 liter engine, std. transmission, trailer towing pkg.

Total vehicle plus options... \$22,475
KKFM discount... \$2,975.01
Hail discount... \$500

\$18,999⁹⁹

SAVE \$3,475.01 from MSRP

Open Monday - Friday, 8-8 & Saturday, 8-6 • Se Habla Español

KING KARL KLEMENT
FORD - MERCURY, INC.

US Hwy. 287 South Decatur, TX Metro 430-8610 Toll Free 1-800-772-8928

Illustration may not reflect actual vehicle. Tax, title & license not included.

Obituaries

Nadine Welch Mathis

Former Iowa Park resident, Nadine Welch Mathis, 91, died July 21 in a Bryan hospital.

Services will be at 10 a.m. Monday at Erman Smith Funeral Home Chapel in Pittsburg, Tx., with Rev. Ricky Ricks officiating. Burial will be in Pleasant Grove Cemetery, located near Pittsburg.

Mrs. Mathis was born April 6, 1907, in Upshur County. She was the daughter of Richard and Lillian Myrtle Meadows Young, both now deceased.

She was a member of First United Methodist Church of Iowa Park and a member of the Wichita County Humane Society. She was a retired employee of First Wichita National Bank in Wichita Falls.

Survivors include two stepsons, Charles R. Mathis and John K. Mathis, both of Houston; two brothers, Ralph Young Sr. of Bryan, and Edgar M. Young of Houston; and one sister, Eddie Faye Stocks of Marshall.

Visitation will be from 6-8 p.m. Sunday at the funeral home.

Preston Flick

Funeral services for Preston Flick, 101, of Paoli, Ind. were Sunday at McAdams Mortuary in Paoli with Harvey McAdams officiating. Burial was in Ames Chapel Cemetery.

Mr. Flick died Wednesday, July 15, in his home.

He was the father of Jesse Flick of Iowa Park.

Flick was born Jan. 27, 1897, in Orange County, Inc. He and Louella Lashbrooks were married in 1922. She died December, 1987.

He was lifetime member of DAV, and a World War I veteran, serving in the Army. He was retired from Frenchlick Springs Hotel and was a farmer.

He is survived by a daughter, Wanita Braband of Hempstead; three other sons, Dwight of Waco, Neb., Dwayne and Carroll, both of Indiana; 23 grandchildren; and several great and great-great-grandchildren.

Evening Lions installs officers

Belvin Lytle, president of the Noon Lions Club, installed the 1998/99 officers for the Evening Lions Club, at a "Pot Luck Dinner," July 14.

The newly installed officers are: Harvey Troutman, president; Virgil Woodfin, first vice president; Claud

Johnson, second vice president; John Besse, third vice president; Jerry Pruett, secretary; Sam Hunter, treasurer; Gordon Griffith, Lion Tamer; Don Hall, Tail Twister.

New directors are: Claud Johnson, Gordon Griffith, Milton McWhorter and Jerry Pruett.

ATTEND the CHURCH of your CHOICE

CHURCH OF GOD

of Iowa Park
801 E. Cash

"Where Love is More Than Just A Word"

SUNDAY
Sunday School 8:45 a.m.
Sunday Morning 10:45 a.m.
Children's Church 10:45 a.m.
Evening Worship 6:00 p.m.
Wed. Family Training 7:30 p.m.

Pastor
Clifton McFadden

Church 592-4348 Parsonage 592-6318 Bus & Nursery Available



ATTEND CHURCH SUNDAY

SHOP IOWA PARK FIRST

First Assembly of God

200 South Yosemite
Rev. Rickey Rasco, Pastor
592-5087

Sunday School 9:45	Wednesday Worship 7:00
Sunday Worship 10:45	Royal Rangers 7:00
Sunday Evening 6:00	Missionettes 7:00

Come experience the Power of God

Our Mission is to Make Disciples for Jesus Christ

First United Methodist Church

201 East Bank Street (592-4116)

Worship at 8:30 and 10:40 a.m.
Sunday School at 9:30 a.m.



Be a part of the Family at First Church

John Besse, Pastor
Parsonage 592-4969

Kamay Road Church of Christ

Corner of Colorado & Emerald

Sunday Services
9:30 a.m.
6:00 p.m.

For Information Call:
592-2082
592-5076

Good Shepherd Lutheran Church

Corner of 1st & W. Magnolia
592-5605

Sunday School
9 a.m.
Worship Service
10 a.m.

Rev. Orville Horn, pastor
569-4085

Country Chapel

A Family Church teaching people to reach their world.

Sunday School ~ 9:30 a.m.
Sunday Worship ~ 10:30 a.m. and 6 p.m.
Sunday Children's Church ~ 10:15 a.m.
Wednesday evening ~ 7 p.m.

Pastor Garry Tippit

855-8811 287 N at Wellington Rd.



COWBOY CHURCH

2635 HAWS ROAD, IOWA PARK
855-3494

Take FM 367 to Bridwell Road.
Turn South to hear the best of God's Word.

SERVICES

SUNDAY	WEDNESDAY
9:30 a.m. Sunday School	7 pm. Bible Study
11 a.m. Worship	THURSDAY
6 p.m. Worship	8 pm Men's Bible Study

Messages by:

Paul Simmons, Billy McCalup, Joe H. Williamson
Jack Stevens and John Dooley

OLD-TIME CHURCH ATMOSPHERE - CASUAL DRESS PLEASE
"A FAMILY-ORIENTED CHURCH WHERE VISITORS COME...AND STAY."
Gospel Opera 5th Saturday in May, August & October - 7:30 p.m.
Anyone wishing to sing or play is welcome. Contact Jimmy Via, 592-9925.
Listeners also needed.

IOWA PARK CHURCH OF CHRIST

301 E. PARK + 592-5415

Sunday Morning Bible Study 9:30 a.m.	Sunday Worship 10:30 a.m. & 6 p.m.	Wednesday Evening Worship 7:00 p.m.
--------------------------------------	------------------------------------	-------------------------------------

MINISTER - JEFF RATLIFF

Lakeview Church of God

N. Victoria and Expressway

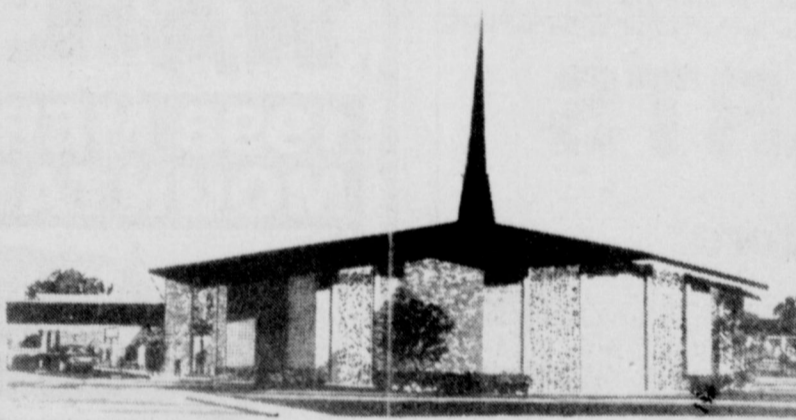
Opportunities for Services

Children's Church	Ladies Ministry
Choir (youth & adult)	Men's Fellowship
Nursing Home	Boys' Club, ages 6 - 17
Visitation	Girls' Club, ages 6 - 17
Puppet Ministry	Nursery Provided

Sunday School.....9:45 a.m.	Wednesday Family Training Hour...7:30 p.m.
Morning Worship...10:45 a.m.	(Classes for all ages)
Sunday Night.....6:00 p.m.	

Phone - Church: 592-2776, Parsonage: 592-9555
Pastor Ole Olds
Discover The Joy

FAITH BAPTIST CHURCH



Find Out More About Us on Website:
<http://www.uf.net/~faithbbp>

SUNDAY		WEDNESDAY	
Morning Worship 8:00 a.m.	Adult Bible Study 6:30 p.m.	Adult Bible Study 6:30 p.m.	6:30 p.m.
Sunday School 9:15 a.m.	Children's Mission Programs 6:30 p.m.	Children's Mission Programs 6:30 p.m.	6:30 p.m.
Morning Worship 10:30 a.m.	Youth Worship 6:30 p.m.	Youth Worship 6:30 p.m.	6:30 p.m.
Discipleship Training 6:00 p.m.	Choir Rehearsal 7:30 p.m.	Choir Rehearsal 7:30 p.m.	7:30 p.m.
Evening Worship 7:00 p.m.			

411 S. Wall
592-2716

Dr. Greg Ammons, Pastor
A Southern Baptist Church

First Baptist Church



A Place to Worship - A Place to Grow

SUNDAY WORSHIP	
9:30 a.m.	Bible Study
10:45 a.m.	Morning Worship
5:00 p.m.	Discipleship Training
6:00 p.m.	Evening Worship
WEDNESDAY ACTIVITIES	
6:00 p.m.	Acteens
A Missions Learning and Doing Organization for Girls 7th-12th Grades	
7:00 p.m.	G.A.s & R.A.s
Missions Learning and Doing Organizations for Girls 1st-6th Grades and Boys 1st-6th Grades	
7:00 p.m.	Jam
Youth Jesus and Me Praise Service & Bible Study	
7:00 p.m.	Church Prayer Meeting
7:45 p.m.	Sanctuary Choir Rehearsal

300 N. Yosemite - Iowa Park, Texas - 592-2151
Steve Beckwith, Pastor

NURSERY PROVIDED FOR ALL SERVICES

ATTEND THE CHURCH OF YOUR CHOICE THIS SUNDAY

NORTHSIDE BAPTIST CHURCH

800 N. WALL

SERVICES

SUNDAY
10 A.M. AND 6:30 P.M.
WEDNESDAY
7:30 P.M.

PASTOR EARL CORRELL
592-2200

First Presbyterian Church



Rev. Carol Phillips, Pastor

We welcome all to our friendly, family atmosphere
at the First Presbyterian Church

Sunday School 9:30
Worship 11:00

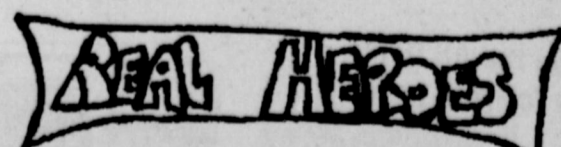
211 S. Yosemite

592-4220

MEET THEM AT VACATION BIBLE SCHOOL



August 3, 4 & 5
7 to 8:30 p.m.
3 years to 5th grade
(completed)
More information:
592-5415



Iowa Park Church of Christ

301 E. Park

GARDENING HINTS

By MARK TERNING, COUNTY AGENT - HORTICULTURE

Q. Enclosed is a sample of my Chinaberry tree in Wichita Falls. Can you please identify the problem with this tree?

A. The tree sample you sent in to my office was off a Hackberry tree, not a Chinaberry. The damage on your sample is plain and simple moisture stress. The browning of the edges of the foliage is indicative of moisture stress. With the triple digit temperatures we have experienced for days on end there are many plants exhibiting the same stress symptoms as your tree.

Deep watering every 10 days at the drip-line of your tree will be necessary to help reduce the moisture stress. Trees and other plants will lose water from foliage through a process called transpiration which helps to cool the plants during these hot conditions.

The problem has been keeping up with the tremendous amount of moisture loss from our plant material with normal irrigation. Learn to watch for signs of moisture stress on plants such as leaf scorching, wilting, defoliation, and compensate with a regular watering plan.

Q. We heard you lecture at our church about a year ago. We thought that you might be able to help us out with a tree problem we are having in Wichita Falls. Our large mimosa tree is leaking a white, foamy type of material out of the trunk. What is causing this constant leak of sap out of the tree?

A. Older Mimosa trees are highly susceptible to borer damage. The white, foamy material leaking from the trunk is sap leakage resulting from borers in the conductive tissue of the tree.

You can prevent future damage by making monthly applications of *Dursban* (Chlorpyrifos) to the trunk area of the tree from the ground up to

the first set of side limbs. Make the monthly treatments from April through October when borers are active.

Q. We live in Burkburnett and are having a terrible time with gophers in our lawn and landscape. What can be done to control these gophers?

A. The sandy type soils in the Burkburnett area are regularly infested with gophers. This makes for easy digging and tunneling for the gophers. A single gopher may have a burrow system that extends for 800 feet and can cover an acre of ground!

Controlling these destructive rodents is not an easy task and takes persistence to say the least. You can use mechanical traps in smaller areas like yards or gardens. These traps are designed to be placed in the main runway of the gophers tunnel system.

Dig down with a shovel to locate the main runway and place several traps in different locations down in the runway. The traps are then secured to a stake with a section of wire to keep the gopher from pulling it away.

Another option for control is to use gopher bait. These poisonous baits are placed under the ground into the tunnel system of the gopher. The baits are your best option for large areas which are heavily infested with gophers.

Local feed stores, garden centers and do-it-yourself pest control outlets carry baits and traps.

Q. My bermuda lawn in Iowa Park is producing a great deal of seed heads. What causes this? Is it the extreme heat this summer?

A. Generally, the production of seed-heads in Bermuda turf is related to a lack of nitrogen. Apply a quality lawn fertilizer with a 3-1-2 ratio and slow-release nitrogen every six weeks to your lawn for best results. This should decrease the number of seed-heads your bermuda produces.



RAC News

Bridge Results

With two tables in play, Billie Dowell had the high score of 5350. Lorene Mahler reported a score of 5160 for the second high.

Employment Opportunity

The RAC still needs to fill several positions for the after-school program, which will begin Aug. 18. Experience in working with children (or the desire for such!) will be very beneficial. To apply, please stop by the RAC office at 806 N. Third.

Thank You...

The RAC would like to thank the following people for contributions made to our summer program: Margie Faulkner, John Borrego, and Beckie Bates at the Dollar General. Your support is very much appreciated.

Kidwell PTA offering supply kits

Kidwell PTA is offering school supply kits at a reduced price to parents of Kidwell students, according to Tracy Eaton, project coordinator.

The kits will include each item named on the supply list for each grade, not including a backpack or lunch box.

Kindergarten kits will be sold by the PTA for \$13; first grade for \$14; and second grade \$17.50.

There will be a limited number of kits available, so they will be sold on a first-come, first serve basis.

Kits will be sold at Kidwell Elementary on Tuesday, Aug. 11 from 11 a.m. to 2 p.m., and 4 to 7 p.m.; Saturday, Aug. 15 from 11 a.m. to 2 p.m.; and Monday, Aug. 17, from 4 to 6 p.m.

All supplies in the kits were purchased locally at a reduced price, according to Mrs. Eaton.

Included in the kits will be:

Kindergarten:

- 6 - No. 2 pencils
- 2 - boxes facial tissue, 200 count
- 2 - boxes 8-count crayons
- 2 - boxes 16-count crayons
- 1 plastic school box, 8 1/2X5 1/2 no handles
- 1 - large eraser
- 3 - glue sticks
- 3 - 4 oz. bottles school glue

- 1-package paper plates
- 1 - 8 count washable markers
- 4 - pocket folders (no metal fasteners or side pockets)
- 1 - pair scissors

First Grade:

- 2 - small erasers
- 1 - pair scissors
- 12-#2 pencils (wooden)
- 2 - boxes regular 8-count crayons
- 1 - box regular 16-count crayons
- 1 - box regular 24-count crayons
- 1 - water colors
- 1 - cardboard school box (8 1/2X5 1/2X2 1/2)
- 2 - boxes facial tissue, 200 count
- 1 - box resealable freezer bags, gallon size
- 3 - bottles school glue (4 oz.)
- 1 - 12" - 30 cm ruler (plastic)
- 5 - folders with pockets (no metal fasteners or side pockets)

Second Grade:

- 8 - No. 2 - wooden pencils
- 2 - large erasers
- 1 - 8 oz. school glue
- 2 - glue sticks
- 1 zipper bag for pencils
- 1 - 24-count crayons
- 1 - pair scissors
- 2 - boxes facial tissue, 200 count

- 1 - school box (no larger than 8 1/2X5 1/2X2 1/2)
- 1 - box 12 coloring pencils
- 3 - pockets folders (no metal or side pockets)
- 1 - wide ruled spiral notebook (120 sheets)
- 1 - roll paper towels
- 1 - box quart size freezer bags

Correction

Two names were transposed in the report last week concerning a four-vehicle accident at Scobee's. The correct order was: Joe Oliver Kerley struck an ice box while pulling away from the building when he said his accelerator stuck, causing him to crash into a vehicle driven by Billy Joe Alderman. We regret the error.

**SHOP
OUR HOMETOWN
FIRST!!**

DARE TO KEEP KIDS OFF DRUGS.

KING'S KIDS CHRISTIAN DAYCARE & PRESCHOOL

"Iowa Park's Finest for Parents Who Care"

- Before and After School Openings•
- Preschool included with full time program•
- School Bus Service before and after school•
- Weekly, Daily, Hourly Rates Available•
- Member Texas Licensed Child Care Association•
- Drop-Ins Welcome• •Parents Welcome Anytime•
- Fenced Playground• •Tornado Shelter•

202 N. Jackson

592-4242

HOST FAMILIES NEEDED



Paco, 16 yrs.

Make a new lifelong friend from abroad. Enrich your family with another culture. Now you can host an exchange student (girl or boy) from Scandinavia, Germany, France, Spain, England, Japan, Brazil, Italy or S. Africa. Becoming a host to a young international visitor is an experience of a lifetime!



Maria, 16 yrs.

Call for information or to choose your own exchange student. Large variety of nationalities, interests, hobbies, etc. now available (single parents, couples with or without children may host). Call now:

**Tracey Craig at 1-940-691-2928
Susan at 1-800-473-0696**

Founded 1976



Fully Accredited International Organization

A WORLD OF UNDERSTANDING THROUGH CROSS-CULTURAL AND EDUCATIONAL PROGRAMS

Gift and Resale Shop
Lots of Gifts
Open Afternoons
302 S. Colorado
592-5012



Cyndi Swedberg
Swedish Massage
Therapy

By Appointment Only

**592-2120
438-9110**

In-Home Sessions Available

*'Experience
The Healing Touch'*

Schram & Cluley

FURNITURE & MATTRESS CO.

Randall Schram
Eddie Cluley

IOWA PARK

592-4186
204 W. Bank

All Major Credit Cards Accepted
In-store financing ~ 3 months-No Interest

COMPUTER RELATED

If it's not Computer Related, we don't have it!

Authorized Acer Reseller

Laser Printer Service

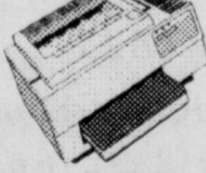
Recycled Toner Cartridges

1321 N. 4th St.

Iowa Park, TX 76367

Phone: 592-7070

MasterCard/Visa/IMPAC Cards Welcome



Striving to make your home a more comfortable place to be...

WE HAVE EXPANDED TO INCLUDE

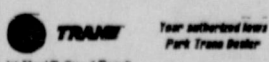
PLUMBING

For over 30 years, we have offered Iowa Park **quality** Air Conditioning and Heating Sales and Service. To better serve the needs of our hometown, we are now offering plumbing sales and service. **Call today for all your plumbing needs, and as always, your air conditioning and heating needs.**
We are 30 years strong and growing!



592-2761

24-Hour Service
TACLB010194E



We were here before the storm....

**For All Your Roofing Needs
"Just-Us"**

JUSTUS & CO. ROOFING

**All Types Roofing • Windows • Screens
• Siding • All Storm-Related Repairs
Free Estimates**

We work with insurance claims

(940) 592-4237

Licensed

Bonded

Tracy Justus

We will be here AFTER the storm.

GARDENING HINTS

By MARK TERNING, COUNTY AGENT - HORTICULTURE

Q. Enclosed is a sample of my Chinaberry tree in Wichita Falls. Can you please identify the problem with this tree?

A. The tree sample you sent in to my office was off a Hackberry tree, not a Chinaberry. The damage on your sample is plain and simple moisture stress. The browning of the edges of the foliage is indicative of moisture stress. With the triple digit temperatures we have experienced for days on end there are many plants exhibiting the same stress symptoms as your tree.

Deep watering every 10 days at the drip-line of your tree will be necessary to help reduce the moisture stress. Trees and other plants will lose water from foliage through a process called transpiration which helps to cool the plants during these hot conditions.

The problem has been keeping up with the tremendous amount of moisture loss from our plant material with normal irrigation. Learn to watch for signs of moisture stress on plants such as leaf scorching, wilting, defoliation, and compensate with a regular watering plan.

Q. We heard you lecture at our church about a year ago. We thought that you might be able to help us out with a tree problem we are having in Wichita Falls. Our large mimosa tree is leaking a white, foamy type of material out of the trunk. What is causing this constant leak of sap out of the tree?

A. Older Mimosa trees are highly susceptible to borer damage. The white, foamy material leaking from the trunk is sap leakage resulting from borers in the conductive tissue of the tree.

You can prevent future damage by making monthly applications of *Dursban* (Chlorpyrifos) to the trunk area of the tree from the ground up to

the first set of side limbs. Make the monthly treatments from April through October when borers are active.

Q. We live in Burkburnett and are having a terrible time with gophers in our lawn and landscape. What can be done to control these gophers?

A. The sandy type soils in the Burkburnett area are regularly infested with gophers. This makes for easy digging and tunneling for the gophers. A single gopher may have a burrow system that extends for 800 feet and can cover an acre of ground! Controlling these destructive rodents is not an easy task and takes persistence to say the least. You can use mechanical traps in smaller areas like yards or gardens. These traps are designed to be placed in the main runway of the gophers tunnel system.

Dig down with a shovel to locate the main runway and place several traps in different locations down in the runway. The traps are then secured to a stake with a section of wire to keep the gopher from pulling it away.

Another option for control is to use gopher bait. These poisonous baits are placed under the ground into the tunnel system of the gopher. The baits are your best option for large areas which are heavily infested with gophers.

Local feed stores, garden centers and do-it-yourself pest control outlets carry baits and traps.

Q. My bermuda lawn in Iowa Park is producing a great deal of seed heads. What causes this? Is it the extreme heat this summer?

A. Generally, the production of seed-heads in Bermuda turf is related to a lack of nitrogen. Apply a quality lawn fertilizer with a 3-1-2 ratio and slow-release nitrogen every six weeks to your lawn for best results. This should decrease the number of seed-heads your bermuda produces.



Bridge Results

With two tables in play, Billie Dowell had the high score of 5350. Lorene Mahler reported a score of 5160 for the second high.

Employment Opportunity

The RAC still needs to fill several positions for the after-school program, which will begin Aug. 18. Experience in working with children (or the desire for such!) will be very beneficial. To apply, please stop by the RAC office at 806 N. Third.

Thank You...

The RAC would like to thank the following people for contributions made to our summer program: Margie Faulkner, John Borrego, and Beckie Bates at the Dollar General. Your support is very much appreciated.

Kidwell PTA offering supply kits

Kidwell PTA is offering school supply kits at a reduced price to parents of Kidwell students, according to Tracy Eaton, project coordinator.

The kits will include each item named on the supply list for each grade, not including a backpack or lunch box.

Kindergarten kits will be sold by the PTA for \$13; first grade for \$14; and second grade \$17.50.

There will be a limited number of kits available, so they will be sold on a first-come, first serve basis.

Kits will be sold at Kidwell Elementary on Tuesday, Aug. 11 from 11 a.m. to 2 p.m., and 4 to 7 p.m.; Saturday, Aug. 15 from 11 a.m. to 2 p.m.; and Monday, Aug. 17, from 4 to 6 p.m.

All supplies in the kits were purchased locally at a reduced price, according to Mrs. Eaton.

Included in the kits will be:

Kindergarten:

- 6 - No. 2 pencils
- 2 - boxes facial tissue, 200 count
- 2 - boxes 8-count crayons
- 2 - boxes 16-count crayons
- 1 plastic school box, 8 1/2X5 1/2 no handles
- 1 - large eraser
- 3 - glue sticks
- 3- 4 oz. bottles school glue

- 1-package paper plates
- 1 - 8 count washable markers
- 4 - pocket folders (no metal fasteners or side pockets)
- 1 - pair scissors

First Grade:

- 2 - small erasers
- 1 - pair scissors
- 12-#2 pencils (wooden)
- 2 - boxes regular 8-count crayons
- 1 - box regular 16-count crayons
- 1 - box regular 24-count crayons
- 1 - water colors
- 1 - cardboard school box (8 1/2X5 1/2X2 1/2)
- 2 - boxes facial tissue, 200 count
- 1 - box resealable freezer bags, gallon size
- 3 - bottles school glue (4 oz.)
- 1 - 12" - 30 cm ruler (plastic)
- 5 - folders with pockets (no metal fasteners or side pockets)

Second Grade:

- 8 - No. 2 - wooden pencils
- 2 - large erasers
- 1 - 8 oz. school glue
- 2 - glue sticks
- 1 zipper bag for pencils
- 1 - 24-count crayons
- 1 - pair scissors
- 2 - boxes facial tissue, 200 count

- 1 - school box (no larger than 8 1/2X5 1/2X2 1/2)
- 1 - box 12 coloring pencils
- 3 - pockets folders (no metal or side pockets)
- 1 - wide ruled spiral notebook (120 sheets)
- 1 - roll paper towels
- 1 - box quart size freezer bags

Correction

Two names were transposed in the report last week concerning a four-vehicle accident at Scobee's. The correct order was: Joe Oliver Kerley struck an ice box while pulling away from the building when he said his accelerator stuck, causing him to crash into a vehicle driven by Billy Joe Alderman. We regret the error.

**SHOP
OUR HOMETOWN
FIRST!!**

DARE TO KEEP KIDS OFF DRUGS.

KING'S KIDS CHRISTIAN DAYCARE & PRESCHOOL

"Iowa Park's Finest for Parents Who Care"

- Before and After School Openings•
- Preschool included with full time program•
- School Bus Service before and after school•
- Weekly, Daily, Hourly Rates Available•
- Member Texas Licensed Child Care Association•
- Drop-Ins Welcome• •Parents Welcome Anytime•
- Fenced Playground• •Tornado Shelter•

202 N. Jackson 592-4242

HOST FAMILIES NEEDED




Make a new lifelong friend from abroad. Enrich your family with another culture. Now you can host an exchange student (girl or boy) from Scandinavia, Germany, France, Spain, England, Japan, Brazil, Italy or S. Africa. Becoming a host to a young international visitor is an experience of a lifetime!

Call for information or to choose your own exchange student. Large variety of nationalities, interests, hobbies, etc. now available (single parents, couples with or without children may host). Call now:

Tracey Craig at 1-940-691-2928
Susan at 1-800-473-0696

Founded 1976 **IASSE** Fully Accredited International Organization
A WORLD OF UNDERSTANDING THROUGH CROSS-CULTURAL AND EDUCATIONAL PROGRAMS

Gift and Resale Shop
Lots of Gifts
Open Afternoons
302 S. Colorado
592-5012



Cyndi Swedberg
Swedish Massage
Therapy

By Appointment Only
592-2120
438-9110
In-Home Sessions Available

*'Experience
The Healing Touch'*

Schram & Cluley

FURNITURE & MATTRESS CO.

Randall Schram 592-4186
Eddie Cluley IOWA PARK 204 W. Bank

All Major Credit Cards Accepted
In-store financing ~ 3 months-No Interest

COMPUTER RELATED

If it's not Computer Related, we don't have it!

Authorized Acer Reseller
Laser Printer Service
Recycled Toner Cartridges

1321 N. 4th St.
Iowa Park, TX 76367
Phone: 592-7070
MasterCard/Visa/IMPAC Cards Welcome

Striving to make your home a more comfortable place to be...

WE HAVE EXPANDED TO INCLUDE

PLUMBING

For over 30 years, we have offered Iowa Park quality Air Conditioning and Heating Sales and Service. To better serve the needs of our hometown, we are now offering Plumbing sales and service. Call today for all your plumbing needs, and as always, your air conditioning and heating needs. We are 30 years strong and growing!



IOWA PARK
AIR CONDITIONING & HEATING CO.

592-2761

24-Hour Service
TACLB010194E

TRANE Your authorized Iowa Park Trane Dealer

We were here before the storm....

For All Your Roofing Needs
"Just-Us"

JUSTUS & CO. ROOFING

All Types Roofing • Windows • Screens
• Siding • All Storm-Related Repairs
Free Estimates

We work with insurance claims

(940) 592-4237

Licensed Bonded

Tracy Justus

We will be here AFTER the storm.

Blood drive set Aug. 5

The American Red Cross is urging residents of Iowa Park to donate at the blood drive sponsored by the Iowa Park Masonic Lodge.

The summer months pose a concern for the Red Cross, due to the traditional decline in blood donations because of school closings and family vacations.

Historically, blood donations are low during the summer months since schools and colleges are closed and consequently, blood drives are not hosted.

In addition, many families plan vacations and other functions during the summer, which may preempt regular blood donors from giving.

"The blood we receive will help people who depend on Red Cross every day for life-saving transfusions."

The blood drive is scheduled 1:30-6:30 p.m. Wednesday, Aug. 5, at the Masonic Lodge, 710 West Washington.

As an added incentive to local donors, donors will each be given a special t-shirt.

To donate blood, one must be healthy, at least 17 years of age, and weigh 110 pounds or more.

Helpful Facts

Any dog or cat in the city is required to have a current rabies shot.

Helpful Facts

The city's Board of Adjustments meetings are at 6:15 p.m. on Mondays when there is an agenda, in Council Chambers, 103 North Wall. Public notices for all Board of Adjustments meetings are published two weeks in the *Iowa Park Leader*, and are open to the public.

AG AGENT'S REPORT

By JOE RAFF, Wichita County Agriculture Agent

Horses need to stay cool too!

It was wonderful to have the rain Monday of last week. It cooled everything off for a while, and I enjoyed every minute of it.

I think after talking to some weather people, they said we were lucky enough to have had 15 or 20 days out of the 30 in June of 100 degree temperatures.

Wow, that's hot, and I don't think we have missed very many in July. I have recently talked to some of my horse committee people about the heat and they requested that I run this article again. Hope this helps everyone out.

There are several ways to keep your working horse cooler in the summer and these are just a few ideas that may help.

Feed would be the first thing that comes to mind. Try to feed only protein to the requirements of the horse. When protein is over fed of the requirements, heat is produced through digestion and naturally causes the body heat to rise. Keep the ration about 10% crude protein.

Feed hay at night. It's the same idea with the overfeeding of protein. It causes heat from the digestion and raises the body temperature. Try to keep hay at 1% of the body weight per day, and feed high fat concentrates.

Research shows that horses fed higher fat feeds (more than the 3% fat in traditional feeds), require less feed to perform the same amount of work. Also, the fat supplemented feed produces less heat. Consider feeding a fat added feed, a fat supplement or top dressing fat onto the existing feed.

One thing that some of us may not think about is salt. A mature 1,000-pound riding horse, under average conditions, requires about 2 ounces of salt per day. Salt requirements increase with increased sweating.

Commercial feeds almost always contain some salt. Increasing feed intake to compensate for increased workload may provide sufficient increases in salt intake to meet re-

quirements.

However, horsemen not feeding commercial rations should always provide salt, free choice, to horses in pasture. Stalled horses should be fed loose salt in amount ranging from 0.5 to 1.0% of the total ration depending on how much the horse sweats.

Water is always a big concern. A mature 1,000-pound riding horse, under average conditions, will drink 12-14 gallons of water per day. Use caution when offering water to an extremely thirsty horse... drinking too fast may cause colic.

Riding in the cooler part of the day and riding in shade are always good ideas. One other weather related idea is climatic conditions. Horses have a thermoregulatory mechanism which helps them maintain constant body temperature.

Add the temperature (F) + relative humidity (%) and subtract the wind (MPH) to get the "effective temperature." Below an effective temperature of 130, the thermoregulatory mechanism works fine. At 150 it is compromised... at 180 it doesn't work!

When riding you may also take the pinch dehydration test. Pinch or pull up a section of skin on a horse's neck or shoulder. If the skin pinched goes down quickly, the horse is OK. If the skin pinched doesn't recoil in less than 10 seconds, the horse is in some degree of dehydration and needs water.

Horses should be cooled out properly (trotting is best) and enough to remove lactic acid from muscles.

Project illustrates composting benefits

The yard trimmings many Texans consider garbage and throw out with their household trash could hold the key to opening up landfill space and improving water quality throughout the state.

A recently completed demonstration project funded by the Texas State Soil and Water Conservation Board (TSSWCB) through the U.S. Environmental Protection Agency's 319 (h) program, showed that compost and wood clippings from yard trimmings could be used to significantly benefit two problem areas affecting urban and agricultural sectors in Texas, water contamination from eroding farmland and the growing scarcity and landfill space.

Part of the project's objective was to determine the effectiveness of using compost to increase the water infiltration of erodible soils, making them less likely to be blown or washed away. When water carries away topsoil as runoff (particularly from erodible land), it can carry soil and agricultural chemicals into drinking water supplies. This is known as nonpoint source pollution.

Increasing the amount of water entering the soil, infiltration, will reduce the likelihood of it being eroded. Tests at a demonstration site in Big Spring indicated the addition of wood chips and compost can significantly enhance a soil's infiltration, said Scott McCoy, program specialist/compost recycling section, Texas Natural Resource Conservation Commission (TNRCC).

Water infiltration, the amount of water entering the soil, improved from 10.7 percent on uncomposted soils to 11.3 percent when compost was

applied at 10 tons of wood chips per acre; and 21 percent with 20 tons of wood chips per acre, according to TNRCC figures.

Ken Awtrey, Piney Woods RC&D coordinator, Nacogdoches, orchestrated the use of yard trimmings compost collected at the Lufkin city landfill for use on plots at a nearby vegetable farm. The test area contained typical, sandy, east Texas soil, and showed a marked improvement in structure after the addition of compost, Awtrey said.

Many people are beginning to realize the benefits of compost, particularly when used to aid soils supporting crops like cotton, which doesn't add much organic material to the land. Even with rates of application as low as five tons per acre, soil benefits would accrue over a period of years, Awtrey said.

The project's second goal was to measure how diverting yard wastes into compost might lessen the burden on landfills. Last year, approximately 11 million tons of compostable materials were put into state landfills, according to the TNRCC.

Composting sites in Pampa, Big Spring and Lufkin were set up to process yard clippings and brush and document amounts of compostable materials diverted from landfill.

In Pampa (population 20,000) yard trimmings diverted from disposal in the city landfill amounted to: 2,909 tons during 1994; 3,694 tons in 1995; and 3,525 tons in 1996. Close to 20 local residents come to the Pampa landfill each week for the free

compost.

In Lufkin, (population 31,000) approximate amounts of brush and yard trimmings composted during the project were; 3,900 tons in 1995; 4,500 tons in 1996; and 6,556 tons in 1997. Dennis Webster, superintendent of solid waste/recycling for the city of Lufkin, predicted 1998 amounts to double last year's figures.

Between 20-25 cubic yards of compost are sold weekly to commercial and private users for \$5 a cubic foot. Loading is done by the city at no charge.

Most of the trimmings diverted at the Big Spring (population 23,000) site were wood chips, said Howard Shivers, Big Spring superintendent of solid waste. During 1997, the landfill processed 15,000 tons of wood chips and 20 tons of compost.

In addition to increasing the water-infiltration of erodible soils and saving landfill space, compost applications also boosted production of crops grown at demonstration sites.

Cotton yields at a project site in Big Spring improved from 110.4 pounds of lint per acre with no compost added to: 152 pounds of lint per acre with 20 tons of wood chips added per acre; and 163.3 pounds of lint per acre with 40 tons of compost added per acre, according to TNRCC figures.

At a demonstration site in Pampa, grain yields increased from 24 bushels per acre with no compost added, to 37 bushels per acre with 30 tons of compost added per acre, according to TNRCC figures.

BURDITT INC. 604 S. Colorado St.
Iowa Park
QUALITY TRUCK AND AUTO REPAIR
Shop: 940-592-8466
24-Hour Emergency Road Service: 940-592-2587
Certified A/C Work and Engine Work • Brake Work • Electronics
Fuel Injection • Suspension Work • total Auto Repair
Visa - MasterCard - American Express FREE Estimates

JOE'S BARBER SHOP
113 W. PARK
592-5591
Hours: Tuesday - Friday 6:30 a.m. - 5:30 p.m.
(Closed 12:30 - 1:30 for lunch)
Saturday 6 a.m. - 12:00 noon

CAR ACCIDENT RECENTLY?
FREE REPORT reveals what the insurance companies don't want you to know.
Was your car injured? **You may be too!**
It may be weeks, months or even years before you experience pain, stiffness, headaches, even arthritis!
Don't settle your case until you read our free report.
FOR YOUR FREE REPORT CALL 1-800-824-0196
TOLL FREE 24-HOUR RECORDED MESSAGE

Park Tire & Battery
Tire Repair - Shop or Field
Suremark Batteries
A Complete Line of Tires & Tubes
Kelly tires Sigmæ (Kelly-Springfield) Tires
Now Available: UNIROYAL and MICHELIN by Goodrich
600 E. Pasadena James Cates, Owner
Iowa Park 592-2056

WELCOME an Exchange student into your home! Choose one today from American Intercultural Student Exchange. Many countries to choose from, like Scandinavia, Europe, Russia, South America, or Asia. You provide room and board, love and supervision. August arrival. Call today 1-800-SIBLING or visit our website at www.sibling.org.

BRENT PATTERSON, DVM
SMALL ANIMAL CLINIC
805 SW ACCESS RD.
IOWA PARK
592-VETS (8387)
HOURS:
MONDAY - FRIDAY:
8:30 - 12-NOON AND 1 - 5:30 PM.
SATURDAY: 8:30 - 12-NOON

JC's Automotive
104 North Alcott ~ 592-9588
Pager ~ 720-1821
"We Take Pride In Your Ride"
Hours: Monday - Friday 8 a.m. - 6 p.m.
We accept Visa, MasterCard, Discover & American Express

On Your Side...
The Law Office of Brett W. Hale
* Divorce
* Modifications
* Adoption
* Personal Injury
* Criminal
318 W. Park Avenue, Iowa Park 592-5099
Not Certified by the Texas Board of Legal Specialization

SummerFest '98
August 1st
4:00 - ??????
Water Polo
Lowrider Races
Chicken Poop Bingo
7 p.m. - Talents of Local Artists
9 p.m. Street Dance with
CAPT. RON & CREW
FOOD • GAMES • MUSIC • DANCIN'
Bring Lawn Chairs
Downtown Electra
Sponsored by Downtown Electra Association

2 State Farm policies are even better than 1
You may qualify for a discount on your State Farm auto insurance when you buy homeowners insurance coverage from us.
Don't miss this opportunity! See your good neighbor agent today for details:
See Me:
PHILIP WELCH
118 W. PARK
592-4155
Like a good neighbor, State Farm is there.®
State Farm Mutual Automobile Insurance Company
Home Office: Bloomington, Illinois

Sand Castle Beach Volleyball
Now forming new Monday/Thursday night league. Sign up deadline is July 23. To register a team or for more info on league and upcoming tournament, call Billy at 592-2098. (if no answer, please leave message.)

Hawks nearing workout start

The Dallas Cowboys opened their training camp for the 1998 season last week at Midwestern State University with two-a-day workouts as the team prepares for the upcoming season.

Not to be outdone by the Cowboys, the Iowa Park Hawks are less than two weeks away from kicking off their own 1998 season.

Midnight Madness, an event started by head coach Weldon Nelms, is just around the corner.

The University Interscholastic League forbids teams from practicing before August 5. Not wanting to wait until daylight on Wednesday morning like most schools do to hold their first workouts, the Hawks wait until one minute past midnight, then they take the field getting a jump on most of the other teams in the state.

This year the festivities will kickoff with a parents meeting in the High School Auditorium at 8 p.m. on Tuesday, August 4 for all parents with children playing high school football. During the meeting, Coach Nelms will introduce his staff and talk a bit about the upcoming season.

For the first time since Midnight Madness started, the Chamber Of Commerce will be holding a Punt, Pass and Kick competition for both male and females in seven different divisions, with awards being given in each division. The competition will start after the meeting and will conclude with the awards presentation at 11:45 p.m., just before the Hawks take the field for their first workout.

There will be a \$2 entry fee with first, second and third place awards being handed out in each division. The divisions will include 9 and under, 10-12, 13-15, 16-19, 20-29, 30-49, and Over 50.

Following the awards presentation, the Hawks will open the '98 season with their first workout starting at 12:01 a.m. The players will return that same morning at 10-11:30 for weights and conditioning work, then will be back on the field from 5:30-8:30 p.m. for their final workout of the first day.

The following day, Aug. 6, The Hawks will be on the field from 8-

10:30 in the morning and from 5:30-8 p.m. on Thursday and Friday. There will be a workout for Varsity players only on Saturday the 8th from 8-10 a.m.

Things get kicked into high gear on Monday, Aug. 10 when the team will workout in pads for the first time in the morning from 7:30-10:30. The afternoon practice will be from 6-8:30.

There will be no morning practice the following day, Aug. 11 with the only workout in the afternoon from 6-8:30.

There will be no morning workouts, only weight lifting from 6:30-7:30, the rest of the week as the team will practice only in the afternoon from 6-8:30.

On Saturday, Aug. 15, there will be an Intra-Squad Scrimmage from 8-11:00 a.m. with a cake auction and player feed to follow.

The following Monday the team will hold the last of its two-a-day workouts with the morning workout from 8-9:30 and the afternoon practice from 4:30-7:00. School begins on Tuesday.

The Hawks will travel to Cisco

to scrimmage Brady on Thursday the 20th.

The Varsity will open the season the following week when they play the Holiday Eagles. The first game for the Freshmen and JV will be on Sept. 3 against Burk Burnett.

Volleyball workouts soon

The Iowa Park Lady Hawks will take to the gym on Wednesday, Aug. 5 to prepare for the upcoming volleyball season.

All volleyball players from incoming freshmen through seniors need to report before 7:30 a.m. to the High School Gym.

There will be a meeting for players' parents on Tuesday night, Aug. 4 in the High School Auditorium for all parents of female athletes in-

terested in athletics this season.

The Lady Hawks will work out from 7:30-12:30 on Wednesday through Friday. Their first scrimmage will be on Aug. 14.

All incoming freshmen, transfers and any athlete injured last school year must have their physicals taken care of before August 5.

For more information contact Brenda Hodges 592-2144 or Kim Huff 691-6293.



DISTRICT 6 SENIOR LEAGUE CHAMPIONS celebrate after defeating both Jack County and Graham in tournament. The team advances this weekend to the Sectionals, which will be played at Dumas. Shown are: front row from left, Stevie Holguin, Jenna Crawford, Jessica Sales, Domanique Clych, Mary Kight and Bobbie Gilmore; back row, Coach Ralph Dillard, Andrea Murray, Meredith Williams, Robyn Dillard, Brittany Taylor, Stevi Brown, Christine Dillard, Courtney Sheets, Lindsay House and Coach Skip Sheets.

CHAMBER OF COMMERCE HAWK KICKOFF
Tuesday, August 4 8:00 - 11:45 p.m.
Punt, Pass and Kick -- Male & Female
\$2.00 Entry Fee 1-3 prizes in each division

Male	Female	Divisions
-----	-----	9 & under
-----	-----	10-12
-----	-----	13-15
-----	-----	16-19
-----	-----	20-29
-----	-----	30-49
-----	-----	Over 50

Awards will be presented at 11:15 - 11:30 in each division

Turn in entry forms at K&K, Hughes Pharmacy, Parkway, State National Bank, Iowa Park City Hall, Iowa Park Chamber of Commerce.

Concession stand will be open from 8:00 through Midnight Madness -- Drinks, Hot Dogs, Candy and Misc.

Nobody gets tired of home cooking... they just get tired of cooking at home

NEW SUMMER HOURS
6 A.M. TO 9 P.M.
MONDAY through FRIDAY
6 A.M. TO 2 P.M. SATURDAY
CLOSED SUNDAY

We make you feel at home at

City Cafe
114 W. Cash 592-4721

All-Stars win Vernon event

Iowa Park's 10-year-old All Stars captured the Vernon Invitational Tournament last weekend.

The team won its first three games on run-rule in three innings, earned the finals with a 2-1 victory, and then captured the trophy 13-8.

Members included Curtis Bohannon, Ronald Latimer, Corey Sikes, Bryan Whitaker, Sam Raines, Brady Rusk, Tyler Gann, Blake Beals, Chris Trevino, Grant Gibson and Richard Windhorst.

Randy Gibson, Marty McCasland and Daryl Beals were the coaches.

Helpful Hints

It is unlawful to trap, hunt, shoot or attempt to shoot or molest in any manner any bird or wild fowl or to rob bird nests or wild fowl nests.

Get a
Moon Burn!
MOON LIGHT SWIM!!!
Friday, July 24
8:30 p.m. - Midnight
Adults \$3.25 Under 9 years - \$2.75

New series of swimming lessons beginning July 28 and end Aug. 7- Last series this year!

SAND BEACH
4490 Iowa Park Road 855-2711

FOLLOW THE MASSES.

to Ken's Pizza!
There's a good reason everybody eats at Ken's.
Great food, selection and prices....plus the best staff in Iowa Park! Ewe'll love us, too!

<p>GET ANY LARGE PIZZA FOR A MEDIUM PRICE</p> <p>Excluding PricePleaser Pizzas. Not good with other coupons or offers. With Coupon only. Coupon expires 7-31-98</p>	<p>BUY A LARGE PIZZA GET A MEDIUM, SINGLE TOPPING PIZZA FOR ONLY...</p> <p>99¢</p> <p>Not good with other coupons or offers. With Coupon only. Coupon expires 7-31-98</p>
--	--

ken's PIZZA 902 W. Highway 592-9999

Quench Your Thirst at
Scobee's Mini Mart

Your Summertime Soft Drink Headquarters

<p>Hamburger Basket \$2.79</p>	<p>JULY FOUNTAIN SPECIAL 44 OZ. Soft Drinks 69¢</p>	<p>All 3 Liter Soft Drinks \$1.99</p>
	<p>20 oz. Coca-Cola Products 79¢</p>	<p>1 Liter Dr. Pepper/Pepsi 79¢</p>

322 W. HIGHWAY 592-5961

The Classifieds

REAL ESTATE

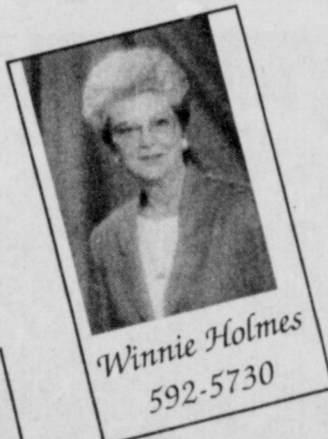
Out in front

Regency One REALTORS

Residential • Commercial • Farm • Ranch

Don't just dream! Live the dream!

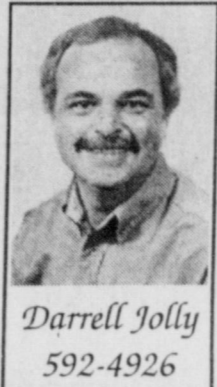
592-2133
1-800-870-2133



Winnie Holmes
592-5730



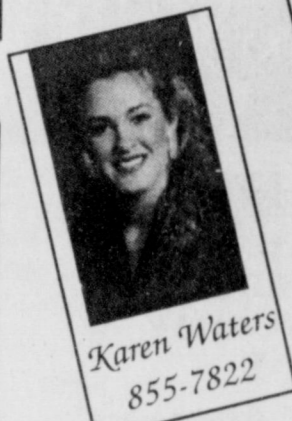
Mary Taber
495-3325



Darrell Jolly
592-4926



Julie Russell
766-5919



Karen Waters
855-7822

Home

Powerful

Meaning

RESIDENTIAL

310 E. Washington	IN CONTRACT	\$6,500
419 N. Illinois	IN CONTRACT	\$11,500
1322 N. 9th St., WF	IN CONTRACT	\$12,000
713 Jalonic, WF	3-1-0 Corner Lot	\$14,000
706 N. Waggoner,	SOLD	\$15,900
100 S. Colorado, IP	1-1-0 Reduced	\$22,500
803 S. Main, Electra	IN CONTRACT	\$22,500
310 W. Harrison, Elec.	2-2-1CP corner lot	\$27,000
7702 W. Hwy. 258, Kamay	3-1-1 CP	\$27,700
1106 N. Electra, Elec.	SOLD	\$28,000
309 W. Franklin	3-1-CP	\$28,000
1901 S. FM 368, IP	IN CONTRACT	\$35,000
N. FM 368	IN CONTRACT	\$29,500
210-12 S. Wall, IP	IN CONTRACT	\$37,500
207 E. Ida, Elec.,	SOLD	\$40,000
504 N. Wall, IP	3-2-1 REDUCED	\$42,500
609 W. Washington, IP	SOLD	\$42,500
3019 Abbott, WF	3-1-1 UPDATED	\$44,500
316 N. Wichita St., Elec.	3-2-CP Reduced	\$45,000
1008 W. Highway, IP	3-1 1/2-1 Lg. Living Rm.	\$47,000
702 W. Alameda, IP	3-1-1 Completing Updates	\$49,500
1007 Lincoln, IP	IN CONTRACT	\$55,500
1301 Bluejay, IP	IN CONTRACT	\$57,500
120 S. Crescent Dr., Elec.	SOLD	\$68,500
1102 W. Cornelia, IP	4-1 1/2-2 CP	\$69,500
902 Dossia, IP	3-2-2 Plus Pool	\$70,000
175 Southgate	3-1-3 - 5 acres. REDUCED	\$72,500
822 N. Park, IP	4-2-2 New Carpet & Paint	\$76,900
4628 Mourning Dove Ln.	3-2-2 Super Location	\$94,000
2824 Mill Valley, WF	SOLD	\$99,500
1804 Johnson Rd., IP	3-2-2 REDUCED	\$105,500
1605 E. FM 367	SOLD	\$152,500
2233 FM 368, IP	3-2 1/2-2 8 Oil wells - 27 acres	\$159,500
2002 AVONDALE, WF	4-3 1/2-2 CP + pool	\$249,500
2896 Huntington Ln.	3-2-2+ 108 Acres	\$350,000

COMMERCIAL PROPERTY

509 E. Front St., Elec.	Plus Income	\$44,500
Talley Ln., WF	7 M.H.-1 house-6.95 Acres	\$257,500

LOTS AND ACREAGE

1048 Cherokee, Nocona.	Lot	\$1,000
107 Seneca Tr., Nocona	Lot	\$1,000
303 Nocona Dr., Nocona	Lot	\$1,500
1002 Brazos Dr., Nocona	Lot	\$1,500
2692 Greenhill Circle, Nocona	Lot	\$1,500
156 Taos Tr., Nocona	Nice Size Lot	\$2,000
2454 Rivercrest Dr., Nocona	Lot near golf course	\$5,000
801 S.W. Access Rd., IP	90X202 Lot	\$8,500
803 S.W. Access Rd., IP	90X202 Lot	\$8,500
22 Inca Ct., Nocona	Lake Front Lot	\$9,000
662 Coleman Park Rd., IP	Approx. 6.25 Acres	\$14,310
664 Coleman Park Rd., IP	Approx. 6.25 Acres	\$14,310
666 Coleman Park Rd., IP	Approx. 6.25 Acres	\$14,310
668 Coleman Park Rd., IP	Approx. 6.25 Acres	\$14,310
670 Coleman Park Rd., IP	SOLD	\$14,310
672 Coleman Park Rd., IP	Approx. 6.25 Acres	\$14,625
676 Coleman Park Rd., IP	Approx. 6.25 Acres	\$14,715
656 Coleman Park Rd., IP	Approx. 6.25 Acres	\$15,900
660 Coleman Park Rd., IP	Approx. 6.25 Acres	\$15,900
678 Coleman Park Rd., IP	Approx. 16.58 Acres	\$33,160
Hwy. 79 McClure Loop, Elec	OLD	\$16,000
Lot 3 Turtle Creek Rd., WF	REDUCED	\$25,000
Lot 4 Turtle Creek Rd., WF	REDUCED	\$25,000
Lot 6 Turtle Creek Rd., WF	REDUCED	\$35,000
Lot 7 Turtle Creek Rd., WF	REDUCED	\$35,000
S. FM 369, IP	15 acres	\$61,720
9516 Flippin Rd., Rt.2 Elec.	152 Acres	\$98,800

TEXAS REALTY

Selling Iowa Park®



Tami Witherspoon
Residence
592-4964



Tommy & Glenda Key
Res. 592-4660
Mobile Ph. 781-1996

109 W. Cash
592-2728

104 W. Chestnut
MLS #65602

2-BR mobile home has central heat and air, covered porches, a 2-car carport, dog pen, and shop building.

30's

715 S. Park
MLS# 65608

Well-kept mobile home with detached garage, outbuildings, shop building, covered porches, large lot.

40's

918 Van Horn
616 W. Louisa
MLS #65772

3-BR home in private area has storm windows and doors, a large storage building, and well-maintained lawn.

50's

506 W. Magnolia
MLS #65370

Charming 2-BR with office/study was recently remodeled, has landscaped lawn, and is located on a shaded lot. Reduced to \$52,900.

1303 Edgehill
MLS #65639

3-BR home close to high school has new kitchen and bathroom flooring and recent interior paint.

1213 Richland
MLS #66047

3-BR home built in 1995 in new area features walk-in closet in master, covered front porch, and outdoor lighting.

60's

702 W. Cornelia
MLS #65601

Attractive 3-BR has large living room with fireplace, lovely formal dining, and some recent renovations.

1015 Foley
MLS #64602

Well-maintained and total electric 3-BR home has updated bathrooms. REDUCED

513 W. Rebecca
MLS #66101

Total electric 3-BR home on corner lot includes an extra room for office, storage, etc.

1308 Emma
MLS#65711

4-BR home has a large family room with fireplace, kitchen with updated appliances, large covered patio, and 2-car carport.

501 W. Coleman

SOLD by Texas Realty

108 Ski Shore Dr.
Lakeside City
MLS#65189

Spacious, 4-BR, 2-story lake-front property has screened-in balcony, workshop & pier.

807 E. Texas
MLS #64998

Immaculate 3-BR features large living/dining room, and energy efficient features. REDUCED to \$81,500

503 W. Coleman
MLS# 65757

Custom-built 3-BR features designer ceilings, large master bath, and is nicely landscaped.

723 N. Park
MLS #66050

Spacious 4-BR home on large corner lot features lots of storage, great room with fireplace and much more.

1003 E. Texas
MLS #64870

90's

4-BR home has fireplace, eating bar, designer ceilings, privacy fence, and large patio.

SOLD by Texas Realty

100's

1500 Bentwood

Energy efficient new construction 3-BR home featuring covered porch and patio overlooks Lake Gordon.

1202 N. Jackson

1703 Johnson Rd. N.
MLS #64877

3-BR new construction in Park Place subdivision features Reward Wall System, fireplace and nine foot ceilings.

Suburban

2451 FM 3695
MLS# 66002

2-BR home on 2.77 acres needs some minor repairs. Bathroom has been completely remodeled.

300 Coleman Park Rd.
MLS # 65916

3-BR features central heat/air, replacement windows, 2-car garage, barns and pens - on one-half acre.

12509 McFall
5099 FM 1206
MLS #65812

3 or 4 BR double-wide mobile home on 5 acres features an animal shed, outbuildings, stock tank, and irrigation is available.

6427 Johnson Rd. N
MLS #65464

Spacious 3-BR home has ample storage plus 1-BR guest house also with 2-car attached garage - all on 2 acres.

1708 Quail Valley
MLS #65636

4-BR, 3-BA executive home on 5 acres features 2 living areas, covered patio, and beautiful in-ground pool. Reduced to \$129,900.

2722 Bell Road S
MLS #64970

Spacious, well-maintained 3-BR, 3-BA home on 3.28 acres has open floor plan, gameroom, sun-room, and covered patio.

6710 Old Electra Rd.
MLS#64573

Captivating, custom-built, 3-BR, 2.5 bath home on 10 acres provides beauty, energy efficiency, and tranquility. Features include large workshop and barn.

Reduced to \$139,000.

Land

Highland Park
Subdivision
Lot 31, Blk 1

Lots now available at special low prices. Country Meadows Drive. 100X255'. 2 acres, single-wire fence, Wichita Valley water.

721 Southgate Garden

5 acres has 200' frontage, fenced, water available.

Johnson Rd. North

Tract 1 - 12.5 Acres in cultivation with approximately 290' frontage.

Brogdon Road

Tract 2 - 12.5 Acres in cultivation with approximately 290' frontage. 80.46 acres with frontage on Johnson Road.

NEW LISTINGS - RESIDENTIAL

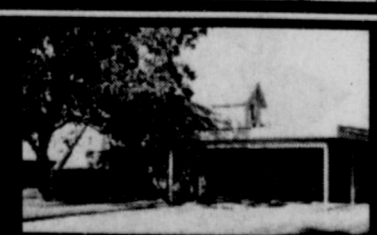
604 W. TEXAS

This small but tidy 3-bedroom home has central heat/air, mini blinds, a storage room in the garage, vinyl exterior siding, and fenced yard.



1021 VAN HORN

Well-maintained 3-bedroom, 1 1/2 story home on beautiful lot features garage, carport, sprinkler system; dining room could also be a den.



VISIT US ON OUR WEB SITE

www.REALTOR.COM/WichitaFalls/TexasRealty

You may obtain more information regarding these properties by entering the MLS #'s provided in this ad.

OPEN HOUSE!

SUNDAY, JULY 26 1:00 TO 2:30 P.M.
822 NORTH PARK

A MUST SEE! Absolutely a doll house! New carpet, beautiful hardwood floors, completely painted on the outside, inside. Three or four bedrooms, huge living area with formal dining area. Great neighborhood. You gotta see it...it really is nice, and priced at only \$76,900. Sellers have done a magnificent job.

NEW LISTINGS!!

1515 RITA LANE

Super location! Country Club of Iowa Park. 3 BR, 2 1/2 baths, 2-car garage. 2 living areas. Great back yard. Large storage building. \$72,500. Call Winnie.

3010 McGAHA, WICHITA FALLS

Faith Village area. Good curb appeal. 3 BR, 1 bath. Carpet and air compressor about 4 years old. Call Julie. \$44,500.

Visit these listings and more on the World Wide Web at

WWW.wfar.com or WWW.realtor.com

CALL US. WE'LL FAX YOU INFORMATION ON ANY HOME!

24 Hour Emergency Call

CITY GLASS AND MIRROR

Mike LeDue, Owner
2214 Seymour Hwy.
Wichita Falls, Tx. 76301

(817) 723-8515
(817) 723-7550
Pager 851-1160
Fax 723-7673

We're Just a Stones Throw Away

HOMES FOR SALE

1005 PARK PLAZA. \$49,500. 3 bedroom, 1 1/2 bath, 1 car garage. Owner is licensed real estate agent. 592-4583. 5-28-tfc

3 BEDROOM house, 1 1/2 bath, 2 car garage. 592-5217. 7-9-tfc

710 EAST HIGHWAY - Price reduced by owner. 3 bedrooms, 2 baths, den, 2 carports, storage building, carpet, drapes, and all appliances. Large lot, central heat & air. 592-5240. 7-23-2tc

FOR RENT

1 BEDROOM HOUSE. \$275 month, plus deposit and utilities. 592-5395. 1-23-2tp

OFFICE SPACE (formerly Edward D. Jones office) offered by Texas Realty, 592-2728. 2-19-tfc

IF YOU can read this, so can your customers!

BUSINESS

EIBEN Home Repair and Remodeling. Additions, roofing, painting, sheetrock, doors, carports, patio covers, and more. Small jobs welcome. Reasonable rates. Licensed and bonded. 592-2053. 10-24-tfc

MARY KAY Cosmetics - Norma Young, Independent Sales Director. 692-1454, 495-3480. 10-24-tfc

TELEPHONE JACKS, Installation or repair. Affordable rates. Free Estimates. Jerry Reed, 592-2243. 10-24-tfc

DURABLE AWNINGS and carports built. Free estimates. Call 592-9325. 7-3-tfc

JUSTUS & CO. All types roofing and repairs. Free estimates. 592-4237. 12-19-tfc

REMODELING, water damage, archways, dividers, doors. Repairs large or small. 20 years experience. Dale, 592-9455. 2-12-tfc

ROOFING - IOWA PARK for 27 years. Jimmy Wolfe Roofing, 855-5657. 6-18-tfc

BLACK POWDER Guns and accessories, revolvers \$112 and up. Powder \$6.50 lb. Will order modern guns for 10% over cost. Ye Ole Gun Shack, 413 W. Washington, 592-5430. 10-24-tfc

HEALTH INSURANCE for the self-employed at affordable rates. 1-888-310-7093. 3-12-tfc

UPHOLSTERY - auto, boat, home & commercial. 438-2243. 5-28-tfc

DEIDRE'S AFFORDABLE Errand Service. Tuesday thru Friday, 1-7 p.m. Saturday 10 a.m. - 7 p.m. 592-0440. 7-23-1tp

YARD WORK

REASONABLE lawn and garden service. 592-0489. 5-2-tfc

MOWING, hedge shaping. Trees trimmed or removed. Gardening, top soil. Serving area since 1989. Dale, 592-9455. 2-12-tfc

MOWING, TRIMMING, light hauling, handyman repairs. Have references. Alan, 592-2226. 7-23-2tp

MISC. FOR SALE

3 FAMILY SALE - Clothes - boys/girls, men/women, sizes infant to 3T, small through 2X. Toys, books, retiring teacher supplies, craft kits, glassware, bicycle, beginner bow/arrows, and furniture. 3776 Bus. 287 (Old Iowa Park Road), Saturday, 8-3. 7-23-1tp

SALE - Boys clothes, toys, bike, cages, misc. Colonial Heights Apts., 701 Johnson Road, Apt. # 41D, Friday & Saturday, 8-4. 7-23-1tp

GARAGE SALE - Furniture, lamps, curtains, toys, Barbies and accessories, too much to list. Friday only, 8-2, 404 West Magnolia. 7-23-1tp

BACKYARD SALE - Kingsize water bed, clothing & misc. items. Starting at 7:30 a.m., Saturday & Sunday, 1320 Edgell. 7-23-1tp

GARAGE SALE - Saturday, 8-noon, 205 Valley Drive. Children's clothes, toys, misc. items. 7-23-1tc

GARAGE SALE - Electric clothes dryer, side-by-side refrigerator, electric cook stove, and Commodore computer. Misc. items from two households. 411 West Louisa from 8 a.m. - 5 p.m., Friday and Saturday. 7-23-1tp

'84 S-10 BLAZER, 4 WD auto, air, new seat covers, tires, battery, engine rebuilt, runs good, looks good. \$2,750 obo, 910 E. Bank. 7-23-1tp

7 FT. SPEED BOAT, two person, new interior, electric starter, 18 hp Evinrude. Lake ready - great fun. \$1,450 obo. 910 E. Bank. 7-23-1tp

700 FEET of 6-ft. chain link fence; seventy 8-ft. tposts; one 10-ft. double drive thru gate; one 5-ft. walk thru gate; all the hardware. 592-2818 daytime, 592-2443 evenings. 7-16-2tp

HELP WANTED

HELP WANTED - Please apply 8 a.m. - 1:30 p.m., M-F. City Cafe, 114 W. Cash. 9-18-tfc

PIZZA HUT of Iowa Park is now taking applications for all positions. Day and evening hours available. Apply in person at 412 W. Park, Monday through Friday, 2-4 p.m. only. 7-16-2tc

NEEDED - CNA's and primary care attendants for part-time work in Iowa Park. Call 322-5157, Monday thru Friday, 8:30 - 5. 7-23-2tc

DISPATCHER, City of Iowa Park Police Department. The Iowa Park Police Department is now accepting applications for part-time radio dispatcher. One (1) year dispatcher experience preferred, but not required. Must pass background investigation, physical examination and drug test. Must be willing to work a variety of shifts. Applications can be received between 8:30 a.m. & 4:30 p.m., Monday - Friday at: Iowa Park City Hall 103 North Wall, Iowa Park, Texas 76367.

Completed applications may be delivered or mailed to: Iowa Park Police Department Attn: Sherry Fowler 104 East Highway; P.O. Box 190 Iowa Park, Texas 76367-0190 Call 940-592-2181 for more information. The City of Iowa Park is an Equal Opportunity Employer. 7-23-1tc

WANTED - Man or woman with friendly personality, high family values, interested in people and community involvement, for a public relations and counseling position in the Iowa Park area. We provide comprehensive training for those who desire both above average income and a job that makes a difference. To schedule your personal interview, please call Bob at 1-800-353-4661. 7-23-1tp

NOTICE

WANT TO BUY - 22's working or non-working. 592-5743 after 6:00. 7-16-3tp

PUBLIC NOTICE
The City of Iowa Park, Texas, is accepting sealed proposals for the installation of a six (6) inch sewer main in the alley between the 400 blocks of West Clara and West Texas. Proposals will be accepted until Tuesday, July 28, 1998, at the City Secretary's office at which time and place the proposals will be opened and read. All proposals shall be placed in a sealed envelope clearly marked on the front "Clara/Texas Sewer Line." The City reserves the right to reject and/or all bids. Bid specifications and additional information may be obtained by contacting Belvin Lytle, Public Works Director at P.O. Box 190, 103 East Cash, Iowa Park, Texas 76367 or by calling (940) 592-2642. 7-16-2tc

FREE TO GOOD HOME - 1/2 Border Collie, 1/2 Australian Shepherd puppies. Call 592-5453, 631-9829. 7-23-1tp

LOST - 13-year-old white female Lab & Cocker mix. Vicinity of Southside fire station. Call 592-4630. 7-23-1tp

FOUND - Black female Labrador. 1 mile northwest of Iowa Park. Collar, no tag. 592-5247. 7-23-nc

DOMESTICS

NEED YOUR house or business cleaned from top to bottom? Call DeDe Tatum, 592-9632. 6-18-tfc
BABYSITTING in my home off FM 367. For information call 855-6975. 7-16-4tc
LICENSED DAY CARE in my home. Hot meals - activities - outside play. Call Nana's Playhouse, 592-4451.

AT YOUR SERVICE!
Copy Machine and Fax
Jack's PARK PHARMACY
115 W. Park 592-2731

Copying & Laminating
Copier - 2 pages 25¢
Protect your important documents with a plastic laminate overlay. Credit Card size to 8 1/2 X 11. Prices start at 60¢
Parkway 200 W. Bank

FAX Messages
Ph. 592-5613
Copies made - 15¢
UPS Packages

Hughes Pharmacy

MINI-CON Self-storage
1. Variety of sizes.
2. Competitive prices.
3. Locally owned and operated.
4. Monthly rates.
805 W. Hwy.
592-2761

LAWN MOWER & WEED EATER REPAIR
Overhauls, blades sharpened and balanced. Also edgers and riding mowers. Yard work. Real reasonable. 592-5402.

ELECTRICIAN!
All Types of Electrical Work
Licensed Residential Commercial
Kendell J. Hill, Electrical Contractor
592-4773

Heating & Cooling
Residential • Commercial
ALAN HOUSE AIR CONDITIONING
Sales • Service • Installation
LICENSE #TACL017054E
19 years experience 592-0336

TIDWELL PLUMBING
940-592-9814
24-Hour Emergency Service
Specializing in repairs and sewer & drain cleaning
Remodels
Licensed & Bonded
M-35521

KAMAY ELECTRIC SERVICE INC.
EARL CRAVENS
Serving Oil Field since 1964
8561 S.H. 258 W. Kamay
OIL FIELD CONTRACTORS • POLE LINE CONSTRUCTION
ELECTRIC MOTOR REWINDING AND REPAIRS
SELL REBUILT MOTORS AND NEW MOTORS
KAMAY 438-2844 WICHITA FALLS 723-9126
Earl Barry
940-438-2844 940-438-2483

WE MEAN BUSINESS
Business Cards • Letterheads • Envelopes
Magnetic Car Signs • Labels • Rubber Stamps
Specialties • Custom Logo Design
Custom T-Shirt • Register Forms
ideas unlimited
Barb Collins
(940) 435-2369
(940) 592-4431

ROGERS ANGUS
Pond Creek
Registered Angus 940-592-0404
ANGUS BULLS & FEMALES FOR SALE
Dick, Carla, Shannon and John Rogers
1656 Bus. 287-J, Iowa Park, TX 76367 E-Mail: RogersXXX@aol.com

One bedroom apartment \$234 to \$348
Two bedroom apartment \$286 to \$425

- Energy efficient
- Off-street parking
- Central Heat/Air
- Water Paid
- Children's Play Area
- Total Electric
- Fully carpeted and draped
- Fully-equipped laundry room

COLONIAL HEIGHTS APARTMENTS
592-2705

One Bedroom Apartment: \$297 - \$343
Two Bedroom Apartment: \$393 - \$454

- Energy Efficient
- Off-street Parking
- Central Heat/Air
- Water and Gas Paid
- Fully Carpeted
- Mini Blinds
- Rental Assistance for Qualified Applicants

QUAIL RUN APARTMENTS
301 E. Diamond 592-4646

TEXOMA REALTY INC.
723-7471
592-9622

Wichita Falls Sales Associates
Edwina Wight and Randle Forcher
723-7471

Thomas Johnson, Broker
Certified Residential Specialist
592-2399

Patty McLemore,
Graduate Realtor
592-9622

Your personal realtors.
We're selling homes so fast, we can't keep listings!
Need to sell? List with us!

Featured Home
1500 N. VICTORIA-4 bedroom, 2 bath, 2-car detached garage, 2-car carport, in-ground pool. New paint - interior and exterior. Over 2,700 sq. ft. Price reduced, motivated seller.

COMMERCIAL - Business Opportunities
314 BANK - Coin operated laundry. 34 washers, 14 dryers. Call Patty.
504 E. Highway - 2-Story, \$67,500 (possible owner finance). Call Thomas.
506 W. CORNELIA - 100' X 150. Call Thomas.
☆☆☆ 4 Residential Lots on 600 Block of Magnolia. 50 X 150 each. Make offer. ☆☆☆
.66 ACRE FM 368 and FM 1206. \$7,800. Call Patty.

Need to sell your home, or buy a new one?
Call us...we work for you!
HAVE A QUESTION - PLEASE CALL US!

KEY REALTY

Cindy Gray
592-4583

900 W. Highway
592-2718

AREA HOMES

WEST REBECCA
Plenty of summertime left to swim in your own pool! Terrific 3-2-2 one and a half story home on corner near Kidwell Elementary has 2 large living areas. Separate dining room. Enjoy landscaping with many trees. Come make a splash! #I-365.

REAVES ROAD
Super country living about 18 minutes to Wichita Falls. Three bedroom home is immaculate! Move in ready double-wide on 3.9 acres. Fenced. 16' X 24' shop. Two stall horse barn with tack room. #I-753.

ENJOY THE LUXURY!
You'll love the master bath in 3 bedroom, 2 bath single wide on W. Smith with sunken tub, white washed cabinets and forest green counters. Nicely situated on lot. #I-704.

DELIGHTFULLY REFURBISHED
Ceramic tile entry leads to newly placed carpet in living and hall in 3 bedroom home on Mockingbird. Pleasant decor. Asking \$58,750. Check on #I-761

EVERYTHING YOU NEED
To set up housekeeping with dishwasher, refrigerator, stove, washer and dryer in one bedroom mobile home on Country View with 10' X 16' storage (or workshop), 16' X 20' carport and neat covered patio. Call and see #I-733.

ASTONISHING LOW PRICE
on \$72,000 on E. Texas is below tax appraisal. Three bedroom home has beautiful floors throughout. New carpet in living area and hall, hardwood floors in bedroom and Mexican tile in Kitchen. Close to S.A.F.B., shopping, church and school. Now \$72,000, priced below appraisal. #I-769

FEATURE HOME
1405 Gunnison

This is such a fantastic offer we're trying to figure out why it hasn't been snapped up! Sweat equity is even available, so no worry about coming up with a large down payment! Three bedroom home has 1.5 baths and double carport. Formal living and dining rooms. Den with fireplace. Large sun room. Two car garage with shop in rear. Large covered patio. Asking \$54,500. It's your turn to own your own home!

EXPERIENCE THE COUNTRY QUIET
198 Acre property on Longley Road is fresh 'n clean. Three bedroom, 2 bath home has jacuzzi, fireplace, Mexican tile. Water from irrigation ditch keeps things green. Wichita Valley Rd. Double garage has openers. #I-766.

CAN YOU BELIEVE
A three bedroom, 2 bath home for only \$29,500! Property on W. Smith, has interior and exterior that is completely refurbished new carpet and vinyl. What a great buy. See to believe. #I-676.

BACK TO THE FIFTIES
When things were built to last! Three spacious bedrooms in home on E. Washington. Close to downtown area and shopping. Needs a little TLC but a great buy for \$35,000. Call #I-760.

LEGAL NOTICE

SHERIFF'S SALE
THE STATE OF TEXAS
County of Wichita
NOTICE IS HEREBY GIVEN That by virtue of a certain Order of Sale issued out of the Honorable 89th District Court of Wichita County, on the 1st day of July 1998 by Dorsey Trapp, Clerk of said District Court for the sum of Twelve thousand one hundred fifteen and 63/100 DOLLARS and costs of suit, under a certain judgment, in favor of Iowa Park Independent School District, Et Al in a certain cause in said Court, No. 40,067-C and styled City of Iowa Park, Iowa Park Independent School District, County of Wichita, Wichita County Education District vs. Heard Crouch and placed in my hands for service, I THOMAS J. CALLAHAN as Sheriff of Wichita County, Texas, did, on the 7th day of July 1998 levy on certain Real Estate, situated in Wichita County, Texas, described as follows, to-wit:
TRACT 1: Lots 1, 2, 10, 11, 12 and the East 34 feet of Lot 9, all in Block 67 of the Original Townsite of Iowa Park, Wichita County, Texas, as the same appears in the plat thereof filed in the County Clerk of Wichita County, Texas; known as 300 W. Bank of said city.
The above property shall be sold subject to the owner's right of redemption. The redemption period is two years for homestead and agricultural use property and six months for all other property. Purchasers shall receive a Sheriff's Deed that is without warranty. Bidders should satisfy themselves concerning the title and location of the property and improvements on the property prior to sale.
and levied upon as the property of Heard Crouch and that on the first Tuesday in August 1998, the same being the 4th day of said month, at the Court House door, of Wichita County, in the City of Wichita Falls, Texas, at 10 A.M. by virtue of said levy and said Order of Sale I will sell said above described Real Estate at public vendue, for cash, to the highest bidder, as the property of said Heard Crouch
And in compliance with law, I give this notice by publication, in the English language, once a week for three consecutive weeks immediately preceding said day of sale, in the Iowa Park Leader a newspaper published in Wichita County.
Witness my hand, this 7th day of July 1998
THOMAS J. CALLAHAN
Sheriff, Wichita County, Texas

By Larry W. Proffitt, Deputy.
7-9-3tc

NEWS OF THE IOWA PARK GENEALOGICAL & HISTORICAL SOCIETY



A valuable source for tracing New England families is "New England Historical and Genealogical Register," the genealogical periodical which began in 1847.

Some libraries have microfilm copies of the "Register" and copies of the printed indexes. Anyone who has spent hours cranking the film for small bits of information about their families, will really appreciate what technology has done.

Volumes 1 through 148 of the register, along with an index are now available on nine compact discs. Eight of those discs are image discs, each contains images of pages 15 to 20 volumes of the register with an index

for the volumes on that disc. The ninth disc contains a listing of names that appear anywhere in the 148 volumes, and the image disc or discs on which the name appears.

At \$298 this is an expensive set for individuals to buy, however if enough interest is shown, genealogical societies and libraries may make these available.

In addition to finding names and dates, it is important to add some "flesh" to our family histories, by noting historical events that took place during their life times.

At our next meeting on August 1, Richard Simpson, MSU professor, will present a program on The Tur-

bulent Years, New England 1620-1700. These are the years of the "witches". Mr. Simpson will give insight into living in New England, wars and the trials and tribulation in the new land.

Members meet at 2 p.m. August 1, at the Tom Burnett Memorial Library, don't miss this dynamic speaker. Guests are always welcome to enjoy the programs, refreshments and social time.

Marita Holdsworth

Helpful Facts

The city's Board of Adjustments meetings are at 6:15 p.m. on Mondays when there is an agenda, in Council Chambers, 103 North Wall. Public notices for all Board of Adjustments meetings are published two weeks in the *Iowa Park Leader*, and are open to the public.

Paul Starr Construction
Remodeling, Painting, Sheetrock, Home Repair, Acoustics
References Provided
Licensed and Bonded **592-5550**



All Seasons
Termite & Pest Control
Tree Spraying
Roaches • Fleas
Ticks • Rodent Control
Danny Frazier • 817-592-0239
800 E. Pasadena • Iowa Park, Texas 76367

Wallpaper Lacquer Acoustic Ceiling
GENE A. WILLIAMS
Paint • Tape & Bed
(817) 592-5494
121 S. Wall Iowa Park, Texas 76367

CARPORTS BY SCOTT
Custom-built metal constructed carports and patio covers to meet your needs. Your choice of colors. Protect your cars from mother nature and harmful rays of the sun. Free estimates.
592-4317

WICHITA FALLS SCHEDULE FALL SEMESTER 1998

REGISTER ON AUGUST 18 at Century City Center, 4105 Maplewood (9:30 a.m. - 6:00 p.m.)
Classes Begin August 24 and end November 9

CENTURY CITY CENTER - 696-8752	
CHILD DEVELOPMENT CDEC 1311.60 Intro to Early Childhood N 5:30-9:55 M CDEC 1357.60 Math/Science-Early Childhood N 6:00-8:55 T LAB Math/Science for Early Childhood N 6:00-8:55 Th CDEC 1317.60 Child Development Associate I TBA	NURSING - VOCATIONAL Contact Betty Duncan, ext. 3222 for more information.
COSMETOLOGY Contact Kathleen Beavers, ext. 3242 for more information.	OFFICE TECHNOLOGY OFFT 1301.60 Keyboarding 8:00-9:05 MTWTh LAB Keyboarding 9:05-10:10 MTWTh OFFT 1301.64 Keyboarding N 5:40-7:50 TTh LAB Keyboarding 3:30-5:40 TTh OFFT 1402.60 Electronic Typing I 8:00-9:05 MTWTh LAB Electronic Typing I 9:05-10:10 MTWTh OFFT 1402.64 Electronic Typing I N 5:40-7:50 TTh LAB Electronic Typing 3:30-5:40 TTh OFFT 1403.60 Document Processing 8:00-9:05 MTWTh LAB Document Processing 9:05-9:50 MTWTh OFFT 1403.64 Document Processing N 5:40-7:50 TTh LAB Document Processing 4:10-5:40 TTh OFFT 1405.63 Bus. Eng./Communications 1:00-2:05 MTWTh LAB Bus. English/Communications 2:05-3:10 MTWTh OFFT 1405.64 Bus. Eng. Communications N 5:40-7:50 TTh LAB Bus. English/Communications 3:30-5:40 TTh OFFT 1410.61 Introduction to Microcomputers 10:10-11:15 MTWTh LAB Introduction to Microcomputers 11:15-12:20 MTWTh OFFT 1414.64 Prin. of Word Processing N 5:40-7:50 TTh LAB Principles of Word Processing 4:10-5:40 TTh OFFT 1415.61 Information Processing 10:10-11:15 MTWTh LAB Information Processing 11:15-12:00 MTWTh OFFT 1420.64 Administrative Support N 5:40-7:50 TTh LAB Administrative Support 3:30-5:40 TTh OFFT 1441.62 Medical Terminology 10:10-11:15 MTWTh LAB Medical Terminology 11:15-12:20 MTWTh OFFT 1443.65 Medical Office Procedures N 5:00-7:10 MW LAB Medical Office Procedures 7:10-9:20 MW OFFT 1445.62 Medical Transcription I 10:10-11:15 MTWTh LAB Medical Transcription I 11:15-12:20 MTWTh OFFT 1446.62 Medical Transcription II 10:10-11:15 MTWTh LAB Medical Transcription II 11:15-12:20 MTWTh OFFT 1452.63 Computer Accounting 1:00-2:05 MTWTh LAB Computer Accounting 2:05-3:10 MTWTh OFFT 1455.63 Legal Office Applications 1:00-2:05 MTWTh LAB Legal Office Applications 2:05-3:10 MTWTh OFFT 2140.63 Special Projects 1:00-2:25 MW OFFT 2418.60 Adv. Word Proc./DTP 8:00-9:05 MTWTh LAB Adv. Word Proc./Desktop Pub. 9:05-9:50 MTWTh OFFT 2418.64 Adv. Word Proc./DTP N 5:40-7:50 TTh LAB Adv. Word Proc./Desktop Pub. 4:10-5:40 TTh
CRIMINAL JUSTICE CRIJ 2340.60 Problems in Criminal Justice N 6:00-10:25 Th CRIJ 2352.85 Correctional Sys. & Practices N 6:00-10:25 T	HEALTH INFORMATION SPECIALIST HEIN 1304.60 Health Records Science I 1:00-1:45 MTWTh
ENGLISH ENGL 1301.60 Composition and Grammar N 6:00-8:00 TTh	LEGAL ASSISTING LEGA 2301.60 Civil Litigation I N 7:40-9:55 MW LEGA 2303.60 Trust, Wills, & Probate N 5:25-7:40 MW
ENGLISH - DEVELOPMENTAL ENGL 0300.60 Basic Writing Skills I,II,III 10:30-12:45 MW	MATHEMATICS - PSI MATH 0300.60 Basic Mathematics 8:00-10:15 MW MATH 0300.61 Basic Mathematics 10:30-12:45 MW MATH 0300.62 Basic Mathematics 10:30-12:45 TTh MATH 0301.60 Elementary Algebra 8:00-10:15 MW MATH 0301.61 Elementary Algebra 10:30-12:45 TTh MATH 0301.62 Elementary Algebra 8:00-10:15 MW MATH 0302.60 Intermediate Algebra 10:30-12:45 MW MATH 0302.61 Intermediate Algebra 8:00-10:15 MW MATH 0302.62 Intermediate Algebra 10:30-12:45 TTh For each Mathematics PSI class selected above, select the corresponding time slot below
FIREFIGHTER TECHNOLOGY FIRE 2312.60 Building Codes and Construction N 5:30-9:55 Th FIRE 1325.60 Fire Science Hydraulics 5:30-9:55 T	MATHEMATICS - PSI TIME SLOTS MATH 0000.60 Mathematics PSI Time Slot 8:00-10:15 MW MATH 0000.61 Mathematics PSI Time Slot 10:30-12:45 MW MATH 0000.62 Mathematics PSI Time Slot 10:30-12:45 TTh
GOVERNMENT GOVT 2301.60 American Political System IN 7:45-10:00 MW	READING - DEVELOPMENTAL READ 0300.60 Reading I, II, III 8:15-10:30 MW
GOVERNMENT GOVT 2301.60 American Political System IN 7:45-10:00 MW	SPEECH SPCH 1315.60 Fund. of Public Speaking N 5:30-7:45 MW

SHEPPARD LEARNING CENTER - 855-2203

MONDAY AND WEDNESDAY 3:10-5:25 P.M.	TUESDAY AND THURSDAY 3:10 - 5:25 P.M.
COSC 1301.51 Introduction to Computers LAB Introduction to Computers 3:10-5:25 Th READ 0300.51 Reading I & II ENGL 1301.51 Composition & Literature	ECON 2301.51 Principles of Economics I ENGL 0300.52 Basic writing Skills I, II, and III ENGL 1302.52 Composition and Literature
5:25-7:40 P.M. ACCT 2413.51 Principles of Accounting I LAB Principles of Accounting I 7:40-10:20 W BUSI 1313.51 Introduction to Business COSC 1301.52 Introduction to Computers ENGL 1302.51 Composition & Literature GOVT 2301.51 American Political System I MCOT 1104.51 Introduction to Internet PSYC 2301.51 General Psychology READ 0300.52 Reading I READ 0301.52 Reading II READ 0302.52 Advanced Reading SPCH 1315.51 Fundamentals of Public Speaking	5:25 - 7:40 P.M. ACCT 2326.51 Payroll Accounting BIOL 1409.51 General Biology LAB General Biology 7:40-9:55 TTh BUSI 2321.51 Business Law I ECON 2302.51 Principles of Economics II ENGL 1301.53 Composition and Grammar HIST 1301.51 U. S. History Since 1865 MATH 1332.59 College Mathematics MCOT 1303.51 Principles of Word Processing LAB SOC 1301.51 Introductory Sociology SPAN 1411.51 Beginning Spanish I LAB SPCH 1315.52 Fundamentals of Public Speaking
7:40-9:55 P.M. BUSI 1301.53 Introduction to Computers ENGL 0300.51 Basic Writing Skills I, II, III ENGL 1301.52 Composition & Grammar GOVT 2302.51 American Political system II MATH 1314.59 College Algebra MCOT 1302.51 Microcomputer Operating system MGMT 2333.51 Personnel Management	7:40 - 9:55 P.M. ACT 2321.51 Intermediate Accounting I BUSI 2332.51 Employee-Employer Relations ENGL 0300.53 Basic Writing Skills I, II, and III HIST 1302.51 U. S. History since 1865 MATH 0301.59 Elementary Algebra MUSI 1306.51 Music Appreciation SPCH 1315.53 Fundamentals of Public Speaking
SATURDAY 8:00 A.M. - 12:55 P.M. GOVT 2302.52 American Political System II	

SKILLS TRAINING CENTER - 766-3369

ENROLLING NOW FOR CONTINUING EDUCATION CREDIT	
COMPUTER AIDED GRAPHICS DFTG 1405.70 Technical Drafting 8:30-10:40 MW LAB Technical Drafting 10:40-12:10 MW DFTG 1409.70 Basic Computer-Aided Drafting N 5:30-7:40 MW LAB Basic Computer-Aided Drafting 7:40-9:10 MW DFTG 2432.70 Advanced Computer-Aided Drafting N 5:30-7:40 TTh LAB Advanced Computer-Aided Drafting 7:40-9:10 TTh DFTG 2436.70 Computer-Aided Drafting Programming... 8:30-10:40 TTh LAB Computer-Aided Drafting Prog. 10:40-12:10 TTh	MANUFACTURING TECHNOLOGY-MACHINING MCHN 1338.70 Basic Machine Shop I N 5:30-7:00 TTh LAB Basic Machine Shop I 7:00-9:15 TTh MCHN 1341.70 Basic Machine Shop II N 4:25-7:15 M LAB Basic Machine Shop II N 7:15-9:25 MW MCHN 1352.71 Intermediate Machine Shop I N 4:25-7:15 M LAB Intermediate Machine Shop I 7:15-9:25 MW
ELECTRONICS-LECTURE ELTE 1363.70 Process Indus. Control III N 5:00-9:25 Th	MANUFACTURING TECHNOLOGY INDM 1102.70 Industrial Safety 8:30-11:45 Sat INDM 1102.71 Industrial Safety N 5:30-8:45 Th Above classes begin 8/27 and end 9/24 MCHN 1317.70 Machine Shop Blueprint Reading 8:30-12:55 W MCHN 1320.70 Precision Tools/Measurements N 5:30-9:55 M MCHN 1343.70 Machine Shop Math N 5:30-9:55 M WLDG 1313.70 Intro to Blueprints for Welders N 5:30-9:55 W
ELECTRONICS- PSI ELTE 1303 Semiconductors I ELTE 1309 Troubleshooting, Service, and Repair ELTE 1352 Opto-Electronics ELTE 1401 DC Circuits ELTE 1402 AC Circuits ELTE 1404 Semiconductors II ELTE 1405 Advanced Electronics ELTE 1407 Digital Fundamentals ELTE 1408 Digital Applications ELTE 2340 Electronic Device Maintenance ELTE 2350 Microprocessor Architecture ELTE 2351 Computer Operations ELTE 2352 Interfacing Devices ELTE 2353 Interfacing Techniques ELTE 2354 Industrial Electronics I ELTE 2355 Industrial Electronics II ELTE 2358 Laser Technology Contact Skills Training Center for times.	MANUFACTURING TECHNOLOGY-WELDING WELD 1337.70 Intro to Metallurgy N 5:30-7:00 TTh LAB Intro to Metallurgy N 7:00-9:15 TTh WLDG 1428.70 Intro to Shielded Metal Arc 8:30-10:00 TTh LAB Intro to Shielded Metal Arc 10:00-12:55 TTh WLDG 1428.71 Intro to Shielded Metal Arc N 5:30-7:00 TTh LAB Intro to Shielded Metal Arc 7:00-9:55 TTh WLDG 1430.72 Intro to Gas Metal Arc (MIG) 8:30-9:30 MWF LAB Intro to Gas Metal Arc 9:30-12:25 MWF WLDG 1430.73 Gas Metal Arc (MIG) N 5:30-6:30 MWF LAB Intro to Gas Metal Arc 6:30-9:25 MWF WLDG 1434.72 Gas Tungsten Arc (TIG) 8:30-9:30 MWF LAB Intro to Gas Tungsten Arc 9:30-12:25 MWF WLDG 1434.73 Gas Tungsten Arc (TIG) N 5:30-6:30 MWF LAB Intro to Gas Tungsten Arc N 6:30-9:25 MWF

Great Deals ALLways

Open, Fast & Friendly

ALLSUP'S

PRICES EFFECTIVE JULY 22-28, 1998

THE GROCERY STORE FOR PEOPLE ON THE GO!

BAR S Meat Bologna 12 OZ. PKG. 79¢	DR. PEPPER AND PEPSI 6 PACK \$1.69
BAR S Chopped Ham 10 OZ. PKG. \$1.59	PICANTE SAUCE 16 OZ. \$2.29
LAYS POTATO CHIPS REG. 99¢ 89¢	Tide Ultra 2 92-94 OZ. \$6.99
CORN FLAKES 12 OZ. BOX 99¢	Hormel Chili 15 OZ. \$1.49
ALLSUP'S Water 1.5 LITER 99¢	FREE MILK When You Purchase 12 Gallons of Milk PLUS You Get A Choice To Win FREE Milk For A Year!
ALLSUP'S Milk WHOLE, LIGHT 1%, OR SHURFINE 2% GALLON \$1.99	

10 LB. BAG SHURFINE CHARCOAL \$1.99

1 QT. SHURFINE CHARCOAL LIGHTER FLUID \$1.79

PLAY EASY MONEY

WIN INSTANTLY!
CASH, PRODUCTS, OR FOOD!
No Purchase Necessary!

THOUSANDS of Prizes & Dollars to be Given Away

YOU COULD WIN THE GRAND PRIZE
1998 F-150 XLT SUPERCAB PICKUP

Plus You Could Win Instant Cash up to \$1,000, or try your luck at our second chance sweepstakes for 1 of 8 gas for a year winnings, or 1 of 8 weekend trips for four people to SIX FLAGS!

Come In And WIN!