



# IOWA PARK LEADER 50¢

Vol. 27 No. 47

IOWA PARK, WICHITA COUNTY, TEXAS 76367

Thursday, August 1, 1996



**BOAT WRECK** - David Franklin Fields, 33, of Iowa Park was pulling his boat on US 287 Monday afternoon, when the trailer became unhitched as he approached Johnson Road. The trailer struck a guard rail in the median, and the boat was totally destroyed. Two friends are shown helping him clean up the mess.

## Financing of school highlighting board's meeting on Monday

Loaded with all sorts of good and bad news, members of the Iowa Park school board are to meet Monday evening to consider this year's budget and tax rate.

The meeting is to get underway at 7 p.m. in the junior high school library.

Heading the good news is the fact that the district's taxable values increased \$34,953,403 during the past year.

Certified values released recently by the Wichita Appraisal District gave the district \$293,468,645 in values this year, up from \$258,515,242 from 1995.

The increase in values, according to the district, would produce as much money for schools if the tax rate were dropped from \$1.16 per \$100 valuation to \$1.06776.

However, increasing student enrollment necessitating additional classroom space, as well as teachers and equipment, apparently will force the district to increase its tax rate.

And that's where state restrictions provide the bad news for the district's trustees.

Should the tax rate be set at \$1.14318, or higher, the district would face what is called "rollback" action from the taxpayers. In that case, a

series of meetings and an election to determine if the higher rate is acceptable would have to be held.

Increasing the delimita of the board is the fact that the year's budget must be adopted before Aug. 19. A budget normally is established based on two major facts: how much money is to be spent, and how much money is to be received.

Should a rollback election be required, it must be called between 30 and 90 days after notification.

Therefore, the board would not know how much money it expects to receive, in order to balance its expected expenditures, until after the budget is adopted.

## Unusual week for police

Unusual would be a fitting description of activities during the past week for the Iowa Park Police Dept.

The major entries on the police blotter included only two arrests, taking a pair of sub-teen boys into custody for shoplifting, and assisting the city's animal control officer.

Both arrests were made at the same time, which was at 12:49 a.m. Saturday in the 1400 block of Johnson Road.

Juan Jesus Venegas, 48, and Jon Michael Venegas, 40, were charged with public intoxication. Both were released at 10:17 a.m. after signing promises to appear Aug. 13 in municipal court.

The department's radio dispatcher received a call at 4:36 p.m. Friday from an individual who said two young boys had attempted to sell him costume jewelry.

The youths, nine and 10 years of age, were located by an officer, and determined the items had been shoplifted from Wal-Mart and Dollar General.

Items taken were returned to the stores, and the youths turned over to one of their parents. The other was reportedly visiting here from Dallas.

A call was received Sunday afternoon from an employee of the Wal-Mart store, asking for help to remove

a skunk from the building.

A police officer and the animal control officer responded. They were able to trap the animal, remove it from the building without any problem of "odor release," and turned it over to the city's animal control officer.

Two different reports were received during the week from citizens, alerting police of solicitors who had not obtained permits from city hall.

The first report was Wednesday, concerning someone going from door to door in a residential area, trying to sell beef steaks. Officers were unable to locate those people.

However, a report was filed Tuesday concerning a young woman attempting to sell fragrances in downtown businesses.

Two women were located by an officer after the report, and both chose to purchase \$30 presents after being informed of the city ordinance requirements, according to the police blotter.

## Town-wide garage sale set

Weekends are always big around Iowa Park during the summer, when people are holding garage sales.

But this coming Saturday, things will really be popping.

It's the annual city-wide Back-to-School Garage Sale, sponsored by the Iowa Park Chamber of Commerce.

There will be 43 sales in residential areas, and one non-profit organization participating as well.

## New students should enroll

All new high school students who have not previously enrolled in the Iowa Park district should report to the high school counselor's office to register and obtain a schedule for the beginning of classes.

New students to the district will need to have with them shot records and their previous school's transcript.

During last Thursday's meeting, trustees heard from Cecil Mardis, a business manager and accountant from Lubbock, who reviewed Iowa Park's financial standing over the next three years in light of state policies that will affect local funding.

Mardis utilized a computer template which analyzed state funding formulas allowing predictions to be made over the next three years.

The predictions were suggested by Supt. Mike Caplinger, in order to plan for facility and technology needs.

Mardis' outlined the district's financial concerns as:

1. School year 1996-97 is a benchmark year for public school funding. The local tax rates that are set this year will impact the following two years. The rate set will be a part of the funding formula for those years and as such, should be studied very carefully.

2. The addition of property value will help with local funding for 1996-97, but will reduce state funding for the following year.

3. Iowa Park is a "Category Two"

Continued on page 11

## School supply lists told

Supply lists for students at Kidwell and Bradford Elementaries, and the junior high school have been released.

With the first day of school a little over two weeks away, it's not too soon to start shopping for your child's school needs.

### KIDWELL ELEMENTARY

**Early Childhood -**  
2 - 4 oz. bottles of glue  
1 package of pencils  
3 boxes of 8-count crayons - primary colors  
2 boxes of facial tissue  
1 pencil or supply box  
1 book bag or back pack  
1 package wet wipes

### Pre-K

1 pair school scissors (child size)  
2 bottles sponge top liquid glue  
1 box crayons (8 count)  
1 box 24-count crayons  
1 box facial tissue (A.M. only)  
1 box resealable freezer bags - gallon size (A.M. only)  
1 box resealable freezer bags - sandwich size (P.M. only)  
1 pkg. brown paper bags (lunch size 100 count) (P.M. only)  
1 backpack - WITH ZIPPER  
1 - 4 oz. bottle white glue  
1 change of clothes - pants, shirts, and underwear - in case of accidents  
Bring supplies to Pre-K orientation.

Please put child's name on all items.

### Kindergarten -

6 - No. 2 pencils  
1 box facial tissue - BOYS  
2 boxes facial tissue - GIRLS  
2 boxes 8-count crayons - No jumbo, fluorescent, metallic, paste, scented  
1 box 16-count crayons  
1 plastic school box, 8 1/2 x 5 1/2 NO HANDLES  
1 PLASTIC folding rest mat  
1 large eraser  
2 glue sticks  
1 - 8 oz. bottle school glue  
1 box resealable freezer bags (gallon size)  
1 package white paper plates - BOYS ONLY

1 package paper bags - 50 count  
1 backpack or book bag  
1 - 8 count box large WASHABLE markers

2 pocket folders - NO METAL FASTENERS

1 pair school scissors - metal blades/plastic handles

### First Grade -

1 large pencil eraser  
1 pair pointed scissors  
12 - #2 pencils, regular size  
2 boxes regular crayons, 8 count. No gemtones, glitter, magic scent, fluorescent, my world colors, cosmic colors, multicuture, etc.  
2 boxes regular crayons, 16 COUNT  
1 box watercolors  
1 school box, no larger than 8 1/2 x 5 1/2 x 2 1/2  
2 boxes facial tissue - 200 count  
1 book bag or satchel  
1 box resealable freezer bags - QUART SIZE, NO PLEATED BAGS  
3 plastic bottles school glue (4 oz. size) NO COLORS, NO GEL, NO GLUE STICKS  
1 - 12" - 30cm ruler - wooden

3 folders with pockets - No metal fasteners, no side pocket folders  
Supplies will need to be replenished throughout the year.

Please put your child's name on each item.

### Second Grade -

8 No. 2 pencils (soft lead) replace as needed  
1 large eraser - replace as needed  
1 - 8 oz. bottle school glue  
2 glue sticks - replace as needed  
1 bag - small zipper bag for pencils and erasers  
1 box regular crayons (24 count) - replace as needed  
1 pair pointed, good sharp scissors (not plastic)  
2 boxes facial tissue (200 count)  
1 school box - no larger than 8 1/2 x 5 1/2 x 2 1/2  
1 box of 12 coloring pencils  
1 package notebook paper WIDE RULED ONLY  
3 pocket folders - replace as needed  
1 wide ruled spiral notebook (120 sheets) To be replaced as needed.  
1 tote bag or back pack  
BOYS - 1 box gallon-size resealable freezer bags  
GIRLS - 1 box quart-size resealable freezer bags

Do not send loose leaf notebook binders, trapper keepers or clipboards.  
Permanent identification must be on all items - supplies, coats, lunch boxes.

### BRADFORD ELEMENTARY

#### Third Grade -

1 box quart-size resealable freezer bags  
2 red grading pens (felt tip - NOT PERMANENT)  
6 No. 2 pencils - Please replace as needed.

1 pkg. looseleaf notebook paper (WIDE RULED ONLY)

1 box regular crayons - 24 count  
1 pair pointed scissors

5 folders with pockets and brads (each folder should be a different color)  
1 slicker 3-ring plastic folder with metal binders

2 boxes facial tissues (200 count)

1 ruler - WOOD with inches and metrics (NOT PLASTIC)

1 LARGE eraser

1 - 8 oz. bottle school glue

1 bag - small zipper bag for pencils and erasers

1 school box (5 1/2 x 8 1/2 maximum)

1 pkg. of 8 large washable colored markers

1 cursive writing tablet for third grade

1 box map colors (12 or larger)

The above list is for all third grade classes. Individual teachers may re-

Continued on page 4

## Council near ready to set budget, rate

Increased tax values, both from additional construction and re-evaluations by the Wichita Appraisal District, apparently will spell some amount of relief for Iowa Park taxpayers.

Though no official action has yet been taken during the city council's four budget study sessions, aldermen indicated Monday night that the city could operate on a lower tax rate than last year.

Aldermen tentatively agreed that the city could operate on a tax rate of .70514 per \$100 valuation, down from the 1995-96 rate of 74 cents.

The city's values were increased by \$10,034,215 over last year, due to new construction and re-evaluations. The Appraisal District last year set values at \$108,459,736, while the new values are \$118,493,951.

During a discussion on when the council would vote both on the new year's budget and tax rate, it was generally agreed that those actions

would be taken at the council's regular meeting on Monday, Aug. 26.

Both Mayor Tim Hunter and Mayor Pro Tem Joe Singer said they had plans to be out of town when the regular meeting of Aug. 12 is held.

Aldermen, however, will meet Aug. 12 to conduct regular business, it was decided.

The new budget includes purchasing of two vehicles and other needed equipment, as well as pay raises of various percentages for personnel.

The new tax rate, will produce about \$10,000 more revenue than the budget requires, and aldermen said they wanted to dedicate those funds toward construction of a walking track around Gordon Lake.

Applications for state grants will be made to help fund that project, and a campaign for donations from the general public as well as organizations will be developed, according to the council's discussion.

Weekends are always big around Iowa Park during the summer, when people are holding garage sales. But this coming Saturday, things will really be popping. It's the annual city-wide Back-to-School Garage Sale, sponsored by the Iowa Park Chamber of Commerce. There will be 43 sales in residential areas, and one non-profit organization participating as well.

And, as evidenced by similar events in the past, several families often times band together at a single location, to participate in the sale.

A complete listing of the addresses is in an advertisement on page 11 of this issue.

Listing of addresses, as well as maps will also be available at the Chamber office, as of 7 a.m. Saturday, according to Susan Dillard, secretary.

## News Briefs

Registration dates for new students will be 8-12 a.m. or 1-3 p.m. either Monday or Tuesday of next week, according to Richard Davis, principal. The first day of classes for all Iowa Park schools will be Monday, Aug. 19, according to the school calendar.

## July moisture only 1.13 inches

Unless additional precipitation fell after presstime Wednesday, Iowa Park's total moisture for the entire month of July was 1.13 inches. Virgil Woodfin said he measured .16 Friday and .37 Tuesday for a total of .53 during the past week. He had .60 earlier in the month.

**Does your subscription to the Leader expire this month? Check the list on page 4.**





Mr. and Mrs. Robbie Wheeler  
(Cindy Hayley)

## Hayley, Wheeler wed in outdoor ceremony

Robbie Wheeler and Cindy Hayley exchanged marriage vows July 18, in an outdoor ceremony performed before the water fountain at Tom Burnett Memorial Library.

The groom's grandfather, Rev. Glenn Willson officiated.

Children of the bride and groom, Tyler Hayley, Gage Wheeler and Karli Lutz attended the couple.

A reception followed at the home of the groom's parents, Robert and Karen Wheeler in Iowa Park. The bride's parents are Kenneth and Margaret Burks of Wichita Falls.

The bride is employed by State National Bank of Iowa Park. The groom is an employee of Cryovac in Iowa Park.

The couple took a honeymoon trip to Las Vegas.

## Bluegrass musicians meet Thursdays at RAC

Anyone who enjoys playing bluegrass music and would like to play with other musicians, can do so by going to the Recreational Activities Center (RAC) on Thursday evenings.

The Red River Bluegrass Music Club meets at 7 p.m. every Thursday at the RAC, located at 806 N. 3rd St.

Anyone interested in playing Bluegrass music (acoustic instrument only) is welcome to come, or call Richard Luna at 592-2660.

## Methodists slate garage/bake sale

Share Our Church (S.O.C.) Day will be held Saturday, Aug. 3, from 7:30 a.m. to 3 p.m. The All Church Family Garage Sale is on the City-Wide Garage Sale Saturday.

There also will be a bake sale, a cornbread and beans luncheon with all the trimmings, and door prizes will be given every 30 minutes.

Included in the sale will be children's clothes, kitchenware, toys, electronics, books and music, tools, crafts, furniture, appliances and much more.

## Card of Thanks

We the family of Todd Duncan cannot express enough thanks and gratitude to everyone who participated in the benefit at the Fraternal Order of Eagles #4128. Thank you to all the businesses, officers, and friends. Our hearts go out to you all. May God bless you for your kindness to us.

Thank you again  
Cathy Duncan & Children



Tamara Ann Segler and Shane Colson

## Couple to wed in August

Mr. and Mrs. J.W. Segler of Holliday are announcing the engagement of their daughter, Tamara Ann, to Shane Colson of Henderson. The bride-elect is a granddaughter of Ray Gholson of Kamay.

Miss Segler graduated Tarleton State University in May with honors, majoring in Human Sciences.

The prospective groom is a graduate of Tarleton State University with a Master's degree in Agriculture and is presently employed by Estes Chemical Company of Dallas.

The wedding is calendared for Aug. 31 at 7:30 p.m. in Tom Burnett Memorial Library in Iowa Park.

## Community concert slated August 10

The Iowa Park Police Department and several local merchants are sponsoring "Night-Out Against Crime" community concert August 10 in the 100 block of West Park.

A national event, this is the first year Iowa Park has coordinated an effort to participate.

From 7 to 10 p.m., the public is invited to bring lawn chairs and listen to local gospel and country music talent. Free hot dogs, soft drinks and popcorn will be served.

Many merchants in the downtown area will be open late that night and offering specials throughout the evening.

Iowa Park Police Dept. Crime Prevention officer DeDe Alderman said the event has been scheduled to promote the fight against crime in Iowa Park.

**Does your subscription to the Leader expire this month? Check the list on page 4.**



Melissa Rotz and Michael Joe Loyd

## Engagement announced

Cecil and Pam Rotz are announcing the engagement and approaching marriage of their daughter, Melissa to Michael Joe Loyd.

The prospective bridegroom is a son of Michael Loyd and Louise Loyd of Holliday.

The couple will pledge marriage vows Saturday, Aug. 10, at 2 o'clock in Corner Stone Church of God.

Miss Rotz is a 1995 graduate of Iowa Park High School. Loyd graduated Holliday High School and is employed by A-Bar Electric in Wichita Falls.

## LOOK WHO'S NEW

### Blackerby

David and Gina Blackerby are the parents of a daughter, Rhegan Alese, born July 9, at Wichita General Hospital. She weighed eight pounds, nine ounces, and was 21 inches long. The new baby has a brother, Daron, 15, and two sisters, Kenzie, five, and Peyton, 16 months old. Mrs. Blackerby is the former Gina Duncan of Iowa Park.

Grandparents are Tom and Frances Duncan of Iowa Park, and Aaron and Ann Blackerby of Nocona.

Great-grandparents are Mrs. Cecil Blackerby of Hutchins, and Loyd and Dorothy Sharp of Dallas.

**TEXAS SNOBALL**  
901 WEST HIGHWAY (next to Coach Video)

36 FLAVORS as well as Hershey's Chocolate & Cream!

25% OFF Any Snoball 10 am. - 2 pm. Saturday Aug 3

Visit Us 2 - 10 pm Daily 10 am-10 pm Saturdays

*The Finest Snow In the World*

**HEARTLAND WIRELESS**

LOWEST IN PRICE QUALITY UNSURPASSED

**\$29.95\*** +Tax & fees FREE INSTALLATION \*Some restrictions apply.

**PETE NEALLY** (817) 696-0314 HBO & Showtime Included

**WE CATER TO THE COUNTRY**

Ask Me About How You Can Earn Extra

*If you're Looking for*

- ✓ Fast
- ✓ Friendly
- ✓ Service

*Also*

- ✓ Convenient parking to building
- ✓ 24-Hour emergency service
- ✓ Delivery service available

*All this at*

**Hughes PHARMACY**

**HEALTH MART**

120 W. Park Joe Hughes - Pharmacist  
Toll Free 1-800-585-4191 592-4191 UPS Service

**LOOK WHO'S NEW**

**Camp**  
Eric and Miranda Camp are parents of a son born July 19 at Bethania Regional Hospital. He weighed 8 pounds, 11 ounces, and was 21 inches long. He has been named Keih Mark.

Grandparents are Mark and Nancy Camp and Jeff and Darline Coss, all of Iowa Park.

Great-grandparents are Annie Jo Copeland of Seymour, Harold and Naomi Poore of Wichita Falls and Barbara Coss of Woburn, Mass.

Great-great-grandmother is Edith Bets of Seymour.

**CD Buyers**

Callable Certificates of Deposit

**7.50% \*APY** Interest Rate

**7.50% Interest Rate**

\*Interest paid semi-annually

- FDIC insured to \$100,000
- Non-callable for 2 years
- Callable thereafter @100
- Final maturity -08/11/2011

**Bo Watson**  
105 W. Cash  
Iowa Park, Texas  
592-5480

**Edward Jones**  
Serving Individual Investors Since 1871

This CD is non-callable for the first 24 months and then can be called at par every 6 months thereafter by the bank. Early withdrawal may not be permitted. Minimum \$5,000. Subject to availability as of 7/30/96. \*APY-interest cannot remain on deposit; periodic payout of interest required.

**True Value**  
Help Is Just Around The Corner

<p><b>GreenThumb</b></p> <p><b>4.96</b> Home Pest Insect Killer. Controls ants, roaches, silverfish quickly &amp; easily. Gallon. L 596 643 F4</p>	<p><b>CASIO</b></p> <p><b>1.96</b> 8-Digit Calculator. Has a flip-up cover. M 805 385 10</p>	<p><b>Rubbermaid</b></p> <p><b>7.96</b> Hinged Lid Roughtote. 28 gallon. Stackable. Snap-on lid. 2461 W 632 557 F6</p>
<p><b>Rubbermaid</b></p> <p><b>8.96</b> 24" Roughneck Push Broom. Has a 24" palmyra block. X009-04 W 429 134 F4</p>	<p><b>Master</b></p> <p><b>2.96</b> Combination Padlock. A back to school essential. H 181 768 F12</p>	<p><b>HI-LITE INDUSTRIES, INC.</b></p> <p><b>4.96</b> Black or White Clip-On Lamp makes the perfect study companion for any student. E 648 017/003 12</p>

**BARGAINS of the Month "You can't buy 'em for less"**

Store Hours:  
Mon. - Fri., 8 a.m. - 6 p.m.  
Saturday, 9 a.m. - 5 p.m.

**PARKWAY**  
True Value Hardware  
200 W. Bank - Downtown - Iowa Park

Phone Numbers:  
592-5512 - Main  
592-4681 - 2nd  
592-5552 - Fax



### GED tests are offered at VRJC

The General Education Development Test (G.E.D.) has been scheduled Monday, Aug. 12 and Wednesday, Aug. 14 at 4 p.m. at Vernon Regional Junior College.

The G.E. D. Test is for a non-high school graduate who is at least 16 years of age. If a prospective student has not finished high school, he or she will be required to take this test before admission.

The College-Level Examination Program (CLEP) will be administered Tuesday, Aug. 6 at 4 p.m. CLEP is a national testing program administered by the Educational Testing Service. CLEP examinations are prepared in two formats-general exams or subject exams. The exams are given to anyone who wishes to take them.

The Pre-TASPTest will be given Tuesday, Aug. 13, and Monday, Aug. 19 at 4 p.m. This test is for anyone who has not had the TASP test and wants to enter VRJC this fall. All testing will be given on the VRJC campus in Room 423.

#### Helpful Hints

City ordinance prohibits the keeping of any wild animal as a pet.



BOBBIE SHAW (center) installed recently as president of Texas State Council Epsilon Sigma Alpha International

### Mrs. Shaw to preside over leadership seminar

Plans are being completed for the August Leadership Seminar and Executive Board meeting of Epsilon Sigma Alpha to be held at the Sheraton Grand Hotel in Irving Aug. 10-11. It will be presided over by Bobbie Shaw of Iowa Park, president of Texas State Council Epsilon Sigma Alpha International and hosted by District I of Irving.

Mrs. Shaw was installed 1996-97 president in May at the Texas State Council Convention held in Odessa.

Her theme for the year is "Take Time" and in her acceptance speech she stressed her belief in Chapter 3 of Ecclesiastes which states, "To every-

thing there is a season, and a time to every purpose under the heaven." Her official symbol is the hourglass.

Because Epsilon Sigma Alpha is a philanthropic, leadership and service organization, Mrs. Shaw believes the membership should take time for the right to be of service; take time for education; take time to laugh; take time for the youth of today; take time for friendship--and by doing all these, the membership will have taken time for ESA. In conclusion, Mrs. Shaw stressed in her acceptance speech that finally each member should take time for God, for this is

the only lasting investment.

ESA, founded in 1929, has approximately 20,000 members in 1,200 chapters in the U. S. as well as four foreign countries.

### Hendricks-Jackson reunion held

The fifth Hendricks-Jackson Reunion was held Saturday at the Iowa Park Recreational Activities Center with 145 relatives in attendance.

Lena Simmons is the only surviving child of the late Mr. and Mrs. H.K. Hendricks and next to the youngest in her family of nine brothers and sisters.

Some attending met the relatives for the first time at the reunion and many others have made all five reunions.

The late Mr. and Mrs. Hendricks moved to Iowa Park in 1897 and each of their nine children were born here. They raised eight to adulthood.

Hendricks was a carpenter and constable of Iowa Park until his death July 4, 1932.

Hendricks grandchildren attending the reunion represented the families of each of the eight children of the Hendricks'.

Grandchildren, great-grandchildren, great-nieces and nephews, and many cousins attended from Sweet Springs, Mo., Anchorage, Alaska, Dyersburg, Tenn., Lawton, Okla., and from the following 21 Texas towns:

La Marque, Texas City, Bloomington, Victoria, El Campo, Ganado, Pampa, Wheeler, Dallas, Fort Worth, Van Alstyne, Edna, Nemo, Meridian, Chico, Burkburnett, Kamay, Holliday, Henrietta, Wichita Falls and Iowa Park.

**Does Your Subscription to the Leader expire this month?**  
Check the list on page 4.

### KING'S KIDS CHRISTIAN DAYCARE & PRESCHOOL

"Iowa Park's Finest for Parents Who Care"

- Before and After School Openings•
- Preschool included with full time program•
- School Bus Service before and after school•
- Weekly, Daily, Hourly Rates Available•
- Member Texas Licensed Child Care Association•
- Drop-Ins Welcome• •Parents Welcome Anytime•
- Fenced Playground• •Tornado Shelter•

202 N. Jackson

592-4242

Make it a perfect wedding beginning with your invitation!

Select yours from Regency's fine collection of Wedding Invitations and Accessories

Jack's Park Pharmacy  
115 WEST PARK IOWA PARK 592-2731

**Nat-rul Health VITAMIN SALE**

BUY 1 GET 2nd BOTTLE AT 1/2 PRICE ON ENTIRE LINE

**STOCK-UP & SAVE 50%**

\* ON 2nd BOTTLE OF SAME OR LOWER PRICED ITEM

AVAILABLE AT:  
**Jack's PARK PHARMACY**  
115 W. Park 592-2731 FREE DELIVERY SERVICE

**COUPON**

**BUY ONE HAMBURGER AT REGULAR PRICE GET A SECOND HAMBURGER FREE**

Coupon expires 7-31-96

Try our Fresh-from-the-Grill

## Hamburgers

Grilled daily Monday through Saturday  
6 a.m. till 8 p.m.

We use only Grade A Beef and fresh lettuce and tomatoes

TEXAS LOTTO - CASH 5 PICK 3 - SCRATCH OFF  
We now carry American Express Money Orders

## SCOBBEE'S Mini MART

322 W. Highway 592-5961

Open 6 a.m. - 11 p.m. 7 Days A Week

## STATE NATIONAL BANK Presents

**TEXAS CROSSWORD**  
by Charley & Guy Orbison

Copyright 1996 by Orbison Bros.

**ACROSS**

- snakes in the Houston Zoo
- San Antonio mayor Cockrell ('90)
- TX Charley Pride tune: "\_\_\_ Can Be"
- TXism: "I \_\_\_ that like a duck needs an umbrella"
- TX B.J. Thomas hit: "I'm So Lonesome I Could \_\_\_"
- TXism: "passed me up like I was on \_\_\_ the garage" (fast)
- TXism: "useless as a saddle on \_\_\_"
- TXism: "\_\_\_ blanket" (divorce)
- TX Buddy Holly hit: "\_\_\_ Boy"
- Happy, TX is "town with \_\_\_ frown"
- Tex Ritter studied this at UT
- in San Antonio: \_\_\_ Polo Center
- seat of Camp Co.
- TX firefighter Adair (init.)
- Co. north of Crockett
- TX fishing technique: \_\_\_ line
- Osmond album: "\_\_\_ Wanted You"
- Lamb Co. town of TX Waylon Jennings
- panhandle ice storm
- TX Gene Tierney married this Oleg
- TXism: "let \_\_\_ rip!"
- Glen Rose, TX has \_\_\_ saur tracks

**DOWN**

- in Hudspeth Co. on I-10: Sierra \_\_\_
- Houston AFC team
- TX V.T. Hamlin's comic strip (2 wds.)
- TXism: "\_\_\_ nuff \_\_\_"
- Houston actress Jaclyn (init.)
- the chosen 12
- Astros & Rangers dress in \_\_\_ house
- Beaumont TV
- TX Kris film: "A \_\_\_ Born"
- TX Wills line: "take \_\_\_ away, Leon"
- Dallas' ice league
- this TX Mel won gold in '48 & '52
- TXism: "close but \_\_\_ cigar"
- first garden or TX town
- Bush is George's \_\_\_
- Davy's home state (abbr.)
- TX Trini sang "\_\_\_ Bamba"
- TX Buck Owens' "Love's \_\_\_ Live Here"
- TX Dan Jenkins magazine: Golf
- Cowboy Noonan (init.)
- TXism: "fast as \_\_\_ up a rafter"
- \_\_\_ Yakado bought 7-11
- early pay for TX Rangers: \$1.25 \_\_\_ day
- to Mineral Wells from Abilene
- this TX Brown was only female U.S. shot putter ('60)
- Mineral Wells slogan: "Where America Drinks Its \_\_\_ Health"
- this Rogers married Uvalde's Dale (init.)
- boot width
- soft mineral found in Texas
- TX Jimmy Dean's "Big Bad John" was \_\_\_ of a man"
- this TX Randy won gold in shot put ('68)
- Dallas' \_\_\_-Marcus
- TXism: "a boldface \_\_\_ (big fib)"
- Oilers favorite zone
- Dr. Pepper began at a Waco \_\_\_
- Hardin-Simmons athletic conference
- TXism: "\_\_\_ gut" (whiskey)
- TX JoBeth Williams was in "Teachers" with this Nolte (init.)
- TXism: "bellyache"
- "got \_\_\_ up by skeeters"

**SENIOR CITIZENS ACCOUNT**

We think you have earned the privilege to be treated special. For more information please call or come by State National Bank. Minimum deposit to open - \$100.

**Last Puzzle Solution**

BOLD  
IDIE  
GENE  
DR  
MAC  
COLA  
GRILL  
AUCTIONED  
ONE PUTT  
LIABAMBA  
AMABOR  
TENNANT  
YELLOWAIS  
LLENEL  
UNAWARE  
TRA  
OFART  
ES  
GDB  
ELI  
LEA

**STATE NATIONAL BANK**

104 W. PARK 592-4131

Your Full Service Bank

Equal Housing Lender Striving to meet your banking needs

FDIC



# Supplies

Continued from page 1  
quest additional supplies after school begins.

Please do not send large looseleaf notebook binders, trapper keepers or clip boards.

Please have permanent identification on all items.

- Fourth Grade -**  
4 No. 2 pencils (sharpened, if possible - not mechanical)  
1 red pen  
1 WOOD ruler (inch & centimeter)  
1 box map colors  
1 box crayons (24 count)  
1 box markers (8 primary colors)  
1 - 4 oz. bottle school glue  
1 pair pointed scissors  
2 pkgs. 200 count notebook paper  
3 folders with pockets & brads. Solid color - no designs or pictures  
2 large boxes of facial tissues  
1 spiral notebook (70 sheets)  
1 "makeup" type bag (for pencils). Cloth is preferable  
1 - 1 1/2 inch 3-ring notebook (NO TRAPPERS)  
1 pkg. dividers

Absolutely no supply boxes of any kind or supplies in larger amounts than listed.

Please keep up with your student's supplies. They need to be replenished. We have school supplies available at our Bradford Store each morning.

- Fifth Grade -**  
2 No. 2 pencils - WOOD  
1 plastic bottle school glue - LARGE 1 ruler - 12 in. (cm. and in.)  
1 pkg. looseleaf notebook paper - WIDE RULED - NO COLORED PAPER  
1 spiral - wire side  
1 box map colors (12 count or larger)  
1 pair pointed scissors  
6 folders with brads and pockets  
2 - 1" binders (To be used for Math & Science only)  
2 pkgs. of dividers (5 in each pkg.)  
2 boxes facial tissue (200 count)  
2 red grading ink pens  
1 plastic zippered pencil bag (NOT BOX) cosmetic bag or quart-size resealable freezer bag is more sturdy for pencils.  
1 tote bag (optional)  
1 box crayons (24 count)  
1 washable markers  
NO TRAPPERS - They do fit inside desks.

Please label each item for ownership (except facial tissues).

Please check on and replenish your child's supplies frequently.

- JUNIOR HIGH SCHOOL**  
**Sixth Grade -**  
8 folders with pockets and brads  
4 spiral notebooks  
2 - 1 inch binders  
2 boxes facial tissue (boys only)  
Red pen  
Notebook paper  
Pencils  
Map pencils  
Scissors  
Glue stick  
1 box of baby wipes (girls only)  
Pencil sharpener (to catch shavings)  
Zipper bag to hold pencils, map colors, scissors, glue  
1 - 3 hole binder for Math (5) dividers for binder  
\* All bags must fit in lockers.

- Seventh Grade -**  
2 boxes of 200 count facial tissue  
9 folders with brads and pockets  
Number 2 pencils  
2 packages of white recycled paper  
4 - 2 inch or larger 3 ring binder with dividers  
1 box of 8 count or larger map pencils  
Blue or black ink pens  
5 small spirals  
2 - 3 ring binders (small rings)  
2 highlighters  
Scissors  
1 bottle glue  
Ruler with customary and metric - any size  
NO TRAPPERS

- Eighth Grade -**  
3 packages of dividers  
1 package of index cards  
Wide-ruled paper (loose leaf)  
Colored pencils  
Pens - black (erasable)  
Pencils  
2 boxes facial tissue (boys only)  
1 box of baby wipes (girls only)  
5 folders with pockets & brads  
2 highlighters  
3 (1 1/2") 3 ring binders  
1 spiral  
\* Please see individual teachers for specific supplies for that class.

# As I See It... By Bob Hamilton



I don't want to spoil your enjoyment of summer, but folks, it's just about over.

No, don't go over to your wall calendar and check the date of the month. That's not the type of summer I'm talking about.

If you're like me, summer has always been defined as that period between the spring and fall semesters at school.

So, your summer will end for Iowa Parkans in just a little over two weeks.

Monday, August 19, to be exact. That is the day Iowa Park Consolidated Independent School District's classes begin.

Actually, summer ends for all faculty and administration people two weeks from today. Teachers begin "staff development" Thursday, Aug. 15.

There was a time when summers were lengthy. Actually, almost too long.

That was when, as a youth, I always had a job during the summer. I enjoyed the work, and more especially the money I was paid.

But that was early-on. As the summer lengthened from weeks to months -- more than three months of summer vacation from school in those days -- my mind started turning to all the fun I would have in school, if it would only get started.

I guess I've not changed, even though I'm years out of school.

During the latter days of the school year, when it seems like everything in the world is going on, I begin looking forward to the end of the school year.

Actually, I'm not ready for summer to end now, but knowing that the school calendar has been set,

and things are about to start popping around here once more, my mind is getting ready for another school year.

So, ready or not, summer is all but over, and another school year is only about 400 hours away.

## IN THE MILITARY

### Connor in exercise

Chief Petty Officer Charles R. Connor, a 1981 graduate of Iowa Park High School, recently participated in a 17-day multinational exercise aboard the U.S. Sixth Fleet flagship, USS La Salle.

He was among 140 sailors and marines who serve on the staff of the admiral in charge of U.S. naval forces in the Mediterranean Sea.

Matador '96 was the first combined joint task force exercise afloat conducted in the Mediterranean, cross-training 11,000 U.S. service men and women with military forces from Spain.

Homeported in Gaeta, Italy, USS La Salle's primary mission is to provide facilities and support to the commander, Sixth Fleet and his staff.

Connor joined the Navy in November of 1982.

## NOTICE TO SUBSCRIBERS

This is only a notice to those listed below that their subscriptions will expire on the published date. You don't owe us a thing if your name is on the list. It only means that what you've paid for is running out. To renew your subscription, please fill out the form below, as it appears on your paper's mailing label. Indicate whether this is a renewal or a new subscription. Enclose your check or money order, as all subscriptions must be paid in advance.

### Subscriptions due to expire AUGUST 15, 1996

Please disregard this notice if already paid

<b>A</b> Sheri Albus Richard Altic Robin Antonio Donnie Atchley Louise Ault	<b>B</b> L.A. Barnes Kristen Bauer G.K. Beall O.M. Bell Cody Beavers Ron Berry Larry Beutel Jody Beavers Blanton Frances Boone Fred Botkin Jim Bowerman Buddie Bridwell ATAA Corey Bridwell NAS Jackson Floyd Browning Helen Burrell Frank Burns Mrs. William Burns	<b>C</b> Adele Callaway Greg Campbell Vera Cantwell Betty Carroll John Clubb Dernard Cranelli ET2 Ronald D. Cunningham Diego Garcia R.D. Cunningham	<b>D</b> Don Davis Erschell Davis Sharon Davis Dick Dillard Diane Dill Jon Dressler Jimmy Duggins Glenn O. Durham	<b>E</b> Harold Eaton Susie M. Eaton Kenneth Edwards Jayne Elliott G. A. Enterprises Bobby Evans	<b>F</b> Steve Fairchild Barbara Findley Glenn Francis Bobby Frazier	<b>G</b> Mrs. Ruth Gard Betty Gandy Virginia Gartman Billy C. Gilmore Steve Gray Yeada Gunter	<b>H</b> Bill Harrington Dorothy Harris Wendy Hartman W. T. Hastings Betty Haswell Billy Helms Roy D. Henson Jerry Hogan Marita Holdsworth K. J. Hollis Robert Horton Ed Howard Calvin Huff	<b>J</b> Opal Jackson Tommy Jares Frank Johnson Melvin Johnson Donald Ray Jones Earl Jones Ben Joplin	<b>K</b> Cathy Key Thelma Ruth Kight Shane Kimbrow Mrs. Harriette Laird Jo Ann Lange John Leard Gracie Lee Brad Lewis Vivian Lilly Charles Lyons	<b>L</b> Mrs. Harriette Laird Jo Ann Lange John Leard Gracie Lee Brad Lewis Vivian Lilly Charles Lyons	<b>M</b> H. M. Mahler Kenneth Manuel Bill Martin Clara Martin Jerome Mason Clarence Matthews Mrs. Virginia May Edgar Mays Lois Mitchell Joe Moer Steve Moody Esther L. Morris Davis Moss Annelle Mundt Donna Jean Myers	<b>Mc</b> A.J. McAllister Mrs. Hunt McKee	<b>N</b> Darline Nault David Nelson Theresa Neubert	<b>O</b> William D. Owens	<b>P</b> Steven Parkey Lee Pelz Mrs. Doris Perry Richard Phillips Ina Faye Pierce Harold W. Pohlmann Mrs. Carl Price Mike Price Judy Pruett Janice Putman	<b>Q</b> None listed	<b>R</b> Jack Railsback John Rains Judy Raybourne Clayton Reece Eddie Reece Earnie Reusch Jack Reynolds J. J. Riley Charles Roberts Linda Rowe Bobby Rowland Frank Roy George Roy Gary Rusk	<b>S</b> Eddie Sasser Steve Schoenecker Kerry Scobee Raymond Scobee Charles Seets E.J. Shook Paul Sikes Anna Smith Mike Soller Junior Sosebee David Springer Dan Spruiell Jeff Spruiell Jennifer Spruiell Stan Spruiell Jim Stevens	<b>T</b> Helen Taylor J.T. Thompson P.A. Torgerson R.D. Trammell Aimee Trantham	<b>V</b> Jimmie Veik	<b>W</b> Brett White Curtis Williams Gerlin Williams Marion L. Williams Vada Williams Iris Wilson Ivan Wilson Penny Wilson Randal Wilson Holly Witt Hugh Woody	<b>Y</b> Dennis Yeager Bural Yoder
--	---	--	---	--	--	---	--	--	--	---	--	---	--	------------------------------	---	-------------------------	---	---	--	-------------------------	---	--

## Finnell chairs subcommittee

Rep. Charles Finnell has been appointed chairman of the House and Agriculture and Livestock subcommittee on fire ants.

Fire ants, which invaded Texas in the 1950s, have steadily spread across the state, causing approximately \$90 million in damage a year in crops, electrical equipment, medical care costs for humans and animals, and for chemicals.

## SOCIAL SECURITY NEWS

### WORKERS SHOULD UPDATE EARNINGS ESTIMATES

Nearly one million people who work, collect Social Security benefits, and earn over the annual exempt amount will get a notice from Social Security some time in August.

The notice will ask them to update their estimated earnings. It will also ask them for an estimate on their earnings for 1997.

**Computer Related**  
Your Laser Printer Specialist  
Ted Berry  
Remanufactured Toner Cartridges  
Laser Printer Service  
(817) 851-6137 Pager: 851-3879

**IOWA PARK ATHLETIC CENTER**  
215 N. Yosemite 592-2570  
Located one block North of Allsup's Convenience Store off the Old Iowa Park Rd.  
Stairsteppers, Treadmills, Bicycles, Climbers, Skier, Free Weights Upstairs, Co-Ed Gym  
Certified Personal Trainer  
**SELLERS**  
BODYBUILDING SUPPLEMENTS

We carry  
**FENTON GLASSWARE**  
Handmade in the U.S.A. since 1905  
**D&J ANTIQUES**  
NANNY'S ANTIQUE MALL 111 W. PARK  
DAVID & JANIS WILSON, DEALERS  
592-2100 592-9095 (HOME)

**IOWA PARK LEADER**  
THE LEADER  
Bob Hamilton ..... Editor/Publisher  
Dolores Hamilton ..... Co-Publisher  
Kari Collins ..... Advertising Director  
Myrna Smith ..... Reporter  
Don Young ..... Sports Writer  
The IOWA PARK LEADER is published every Thursday. Offices are located at 112 W. Cash, Iowa Park, Texas, 76367 (766280). Telephone: 592-4431. Second Class Postage Paid at Iowa Park, Texas 76367. Annual Subscription rates are \$15 in Wichita County; \$17 elsewhere in Texas; \$20 anywhere in the United States. Any erroneous reflection upon the character, standing or reputation of any person, firm or corporation which may appear in the columns of this newspaper will be corrected upon being brought to the attention of the publisher. The entire content of each issue of the Iowa Park Leader is protected under the Federal Copyright Act. Reproduction of any portion of any issue will not be permitted without the express permission of the Iowa Park Leader.  
MEMBER  
**TEXAS PRESS ASSOCIATION**

Wichita County ..... \$15.00  
Elsewhere in Texas ..... \$17.00  
Elsewhere in United States ..... \$20.00

To: Iowa Park Leader  
P.O. Box 430  
Iowa Park, Texas 76367

PLEASE CHECK ONE:  
 New  
 Renewal  
 Change of Address Only  
\$ \_\_\_\_\_ Enclosed

Name \_\_\_\_\_  
Address \_\_\_\_\_  
City \_\_\_\_\_ State \_\_\_\_\_ Zip Code \_\_\_\_\_





**MAKING IT OFFICIAL** - A ribbon-cutting ceremony highlighted Sunday afternoon's open house to the public at the Friendly Door senior citizen center, 180 North Third. Joining members of the center were their board of directors and members of the Chamber of Commerce.

## FRIENDLY DOOR NEWS

### COUNTRY & WESTERN DANCE

Thursday, Aug. 8, from 7 until 10 p. m. at the Iowa Park RAC on 3rd Street. Admission: \$3 each. Band members are Bunny Bartosh, Louis Bartosh, Don Duncan and Joy McCullough.

**THANK YOU** everybody that helped to make our Open House Sunday be a dream come true. It has been a long time in the making, but now we can look back and say a job well done to everyone that has helped or been involved one way or another.

**MEMORIAL POEM**--Thanks to

Tami Witherspoon for the poem she gave us in memory of her husband and our great friend, Jack Witherspoon. Jack wanted to see this facility completed and he would have been pleased.

**BLOOD PRESSURE CLINICS**  
Aug. 8--10:30 Park Home Health  
Aug. 20--10:30 Outreach Home Health.

**BLOOD SUGAR CLINIC**  
Aug. 29 10:30 Park Home Health

**BINGO**--Torch Home Health is playing Bingo every other Wednesday at the Center, starting at 10:30 a.m. Come

and win lots of good prizes. The dates for Bingo this month are Aug. 7 and Aug. 21.

**TRANSPORTATION**--If you need a ride to doctors, bill paying, grocery shopping, or other places, call the Center and let our bus pick you up. The cost is donation only. Call 592-9311.

**THANK YOU**--Garden Club and 23 Study Club for donating the four crape myrtles in front of our building.

## CUB SCOUT NEWS

We hope everyone is having a super summer. Just a reminder that our last summer activity, which is a swimming party, will be held at the Iowa Park pool Thursday, Aug. 1, from 6:30 to 8:30 p.m.

The following is what each Den should bring:  
Dens 1, 5, 7 - Drinks of any kind. Two six-packs per boy.  
Dens 2, 6 - Cookies. Two dozen per boy.  
Dens 8, 9 - Freezer pops.

Round Table has been changed to Aug. 1, at 7:00 p.m.

We would like to say a very big thank you to the Boy Scouts for setting up and making summer camp much easier for our boys and the grown ups who attended.

We hope you enjoy the rest of your summer, and we will see you when school starts.

## Thomas given 50-year Masonic Service Award

J.W. Thomas, former long-time resident of Iowa Park, now living in Irving, was presented the Grand Lodge 50-year Masonic Service Award July 25, by a group of Masonic brothers from Iowa Park Lodge #713 A.F.&A.M.

The presentation ceremony was conducted at Ashford Hall in Irving. This Grand Lodge honor was bestowed on Thomas in recognition of his more than 50 years of dedicated service to the Masonic Fraternity.

A team of masons from his home lodge made the presentation. The team included Marvin Doyle Parks, Worshipful Master; Charles Seets, secretary; Joe Ward, chaplain; and Don Fields, Grand Lodge representative. Other masons accompanying them were Thomas Johnson, Malcolm Turner and Mark Wicks.

Thomas' honored guests included

his daughter, Carol Dobbins and her husband, Tim Dobbins, D.D.S. and his grandson, David Dobbins, all of Irving.

Many other guests were in attendance during the presentation and for the short reception that followed the official ceremony.

Parks said, "The comment was made that with proper notification, a bus load of men would have attended the special tribute to Thomas".

Persons wishing to offer their congratulations may do so by writing to him at the following address: J.W. Thomas, 2021 Shoaf Dr. Room 109, Irving, Tx 75061. His telephone number is (817) 438-6497.

**SHOP IOWA PARK FIRST!**



## Schram & Cluley

FURNITURE & MATTRESS CO.

Randall Schram  
Eddie Cluley

IOWA PARK

592-4186  
204 W. Bank

All Major Credit Cards Accepted  
In-store financing ~ 3 months-No Interest

Kyleen,  
Thank you for nine wonderful years.  
Happy Anniversary!  
Glenn

## RICHARD C. CARVER, D.D.S.

GENERAL DENTISTRY

TELEPHONE 315 NORTH WALL  
817-592-5141 IOWA PARK, TEXAS 76367

## DUTTON FUNERAL HOME

FUNERAL DIRECTORS SINCE 1908  
Larry Dutton

Providing Funeral Services and Pre-Arranged Funeral Plans

Honoring all insurance policies and major credit cards

Funeral Financing available

592-4151  
300 E. Cash Street Iowa Park

## Patty Cakes

We're baking Cakes as fast as we can!

For all special occasions

592-2402

## IOWA PARK AIR CONDITIONING & HEATING CO.

592-2761

### Introducing ROTOBURSH™ DUCT CLEANING

The intricate maze of air ducts, vents and heating and cooling systems designed to make your home comfortable, may in fact, be making you uncomfortable or maybe even sick.

Your air system plays host to a variety of air pollutants such as mold, mildew and dust mites, which commonly cause allergic reactions, breathing difficulties, infections and disease.

What is the answer to this problem?  
**The Rotobrush™ Duct Cleaning System.**

This advanced cleaning method thoroughly scrubs and vacuums your ducts, vents and heating and cooling systems.

We offer the best prices in the area...  
Call today for details.

**TRANE** Your authorized Iowa Park Trane Dealer  
It's Hard To Stop A Trane™  
Locally owned and operated for 26 years  
TACL010194E

## KARL KLEMENT

US Hwy. 287 S., Decatur, Texas  
Open: Monday-Friday 8-8 & Saturday 8-6  
Metro 430-8610 • Toll Free 1-800-772-8928

## TRUCK COUNTRY DEALS

## FORD MERCURY

<h3>1996 RANGER SUPERCAB XLT</h3> <p>Total vehicle plus options \$16,488 Option pkg. discount \$1,306 MSRP \$15,182 KFFM Discount \$2,083 Ford Rebate \$1,000 Sale price after rebates <b>\$12,099*</b></p> <p>\$1,000 Factory Rebate or 6.0% up to 48 months</p> <p>2.3 liter engine, 5 speed, AM/FM, air cond., special pkg., sliding rear window.</p>	<h3>1996 EXPLORER XLT</h3> <p>Total vehicle plus options \$25,855 Option pkg. discount \$850 MSRP \$25,005 KFFM disc \$2,080 Sale price after rebates <b>\$22,925*</b></p> <p>Air Cond.</p> <p>PEP 941A, 4.0 liter engine, auto, tilt, cruise, power locks &amp; windows. Stock #E93463.</p>	<h3>1997 F-150 XLT</h3> <p>Total vehicle plus options \$19,755 Option pkg. discount \$2,000 MSRP \$17,755 KFFM Rebate \$1,750 Sale price after rebates <b>\$15,995*</b></p> <p>1997 F-150 XLT</p> <p>4.2 liter engine, 5 speed. Stock # F13847.</p>	<h3>1996 F-150 SUPERCAB XLT</h3> <p>Total vehicle plus options \$23,589 Option pkg. discount \$1,400 MSRP \$22,189 KFFM disc \$2,695 Sale price \$19,494 Farm Bureau rebate \$500 Comm. rebate \$300 Sale price after rebates <b>\$18,694*</b></p> <p>Air Cond.</p> <p>Automatic, 5.0 V8 engine, AM/FM, tilt, cruise, power doors &amp; windows. Stock # F36855.</p>
<h3>1997 F-150 SUPERCAB XL</h3> <p>Total vehicle plus options \$16,456 Option pkg. discount \$850 MSRP \$15,606 KFFM Discount \$2,207 Sale price after rebates <b>\$16,399*</b></p> <p>ALL NEW 3-DOOR</p> <p>5.4 liter engine, 5 speed. Stock # F63995.</p>	<h3>1996 F-150 STYLESIDE XL</h3> <p>Total vehicle plus options \$17,432 Option pkg. discount \$2,223 MSRP \$15,209 KFFM disc \$1,819 Sale Price \$13,390 Farm Bureau rebate \$500 Comm. rebate \$300 Sale price after rebates <b>\$12,790*</b></p> <p>4.9 liter engine, 5 speed, air conditioning, AM/FM radio. Stock # F20324.</p>	<h3>1996 F-250 SUPERCAB XLT</h3> <p>MSRP \$24,081 Option pkg. discount \$850 KFFM Discount \$2,236 Sale Price \$20,995 Farm Bureau rebate \$500 Comm. rebate \$300 Sale price after rebates <b>\$20,195*</b></p> <p>Air Cond.</p> <p>Camper Pkg., 5.8 liter engine, 5 speed, tilt, cruise, air conditioning. Stock # G35735.</p>	<h3>1996 RANGER XLT</h3> <p>Total vehicle plus options \$14,332 Option pkg. discount \$1,306 MSRP \$13,026 KFFM Discount \$2,067 Ford Rebate \$1,000 Sale price after rebates <b>\$9,959*</b></p> <p>Air Cond.</p> <p>2.3 liter engine, 5 speed, AM/FM, air cond., special pkg., sliding rear window.</p>

\* Price plus tax, title, license and dealer documentary fee. Factory rebate assigned to dealer. See dealer for details on Farm Bureau & Commercial rebates and Young Buyer discounts. Illustration may not reflect actual vehicle.



**OBITUARIES**



**Todd David Crumpton**

Services for Todd David Crumpton, 28, were at 2 p.m. Tuesday at Dutton Funeral Home. Rev. Larry and Rev. Carol Crumpton, pastors of First United Methodist Church of Claude, officiated. Burial was in Highland Cemetery.

Mr. Crumpton died Saturday in Lubbock.

Crumpton was born June 21, 1968, in Wichita Falls. He was 1986 graduate of Iowa Park High School. He played trumpet in the junior high band two years and the high school band four years.

He was a member of Iowa Park Future Farmers of America. He received the Star Green Hand award his freshman year and the Lone Star Farmer award his senior year.

He attended Weatherford Junior College from 1986-1988 and Texas Tech University from 1990-91. He was employed by Best Buy in Lubbock. He was a member of Faith Baptist Church of Iowa Park.

Survivors include his parents, Michael and Judy Crumpton of Iowa Park and one brother, Derek, of Lubbock.

Mr. McClanahan, brother of Jimmy Ganus of Kamay, died Wednesday, July 24, in a Wichita Falls nursing home.

Born Oct. 31, 1935, in La Junta, Colo., he was married to Ruth Harrison March 21, 1962, in Waurika, Okla.

McClanahan was a carpenter for Stone Brothers and retired in 1987. He did custom cabinet work. He was a member of First Baptist Church of Holliday and moved to the Wichita Falls area 45 years ago from Odessa.

Survivors include his wife; two sons, Jimmy Dale Willis and Ricky Lynn McClanahan, both of Holliday; two other brothers, Terry Dean McClanahan and John Patrick McClanahan, both of Orangefield, and one grandson.

**Charlette Kennedy**

Services for Charlette Ramona Thompson Kennedy, 75, were at 10 a.m. Tuesday at Willis C. Worley Funeral Home in Waurika, Okla.

Rev. Clarence Mize, pastor of Irving, Okla., Baptist Church, officiated. Burial was in Sugden, Okla.

Mrs. Kennedy died Friday in her Iowa Park home.

Born Nov. 24, 1921, on the Thompson family farm southwest of Waurika, she was the daughter of Charlie and Effie Thompson. She was married March 1, 1941, to Joe Kennedy in Hobart, Okla. He died Oct. 5, 1990.

Mrs. Kennedy grew up in the Sugden area and was a 1938 graduate of Sugden High School. She graduated Oklahoma College for Women, now the University of Science and Arts, in Chickasha, Okla., with a Bachelor's degree in mathematics.

She taught at the Irving Consolidated School and later taught in the Duncan, Okla., public school system. She and her family moved to Wichita Falls, Aug. 1, 1945, from Columbus, Ga. She worked at Sheppard Air Force Base as an instructor in the A&E school five years.

She and her husband later worked overseas for the Halliburton Co. 20 years, before they retired in Iowa Park. She was a Baptist. She was a member of the Wednesday Night Bridge Club, the Iowa Park Garden Club, and was a lifetime member of the Red River Orchid Society.

Survivors include a daughter, Karel Jahns of Washington; one son, Kendall Kennedy of Phoenix, Az.;

one brother, C.L. Thompson of Iowa Park; four grandchildren and one great-grandchild.

Memorials may be made to Texas Lions Camp, P.O. Box 247, Kerrville, Tx, 78029-0247, or to a favorite charity.

**Card of Thanks**

We would like to thank everyone for the food, flowers, prayers, and expressions of sympathy following the loss of our loved one. Also, a special thanks to Gary Bernal.

The Family of James (Jim) Jenkins



**CHRIST THE KING CATHOLIC CHURCH**  
Sunday Schedule  
8:45 Children's Religious Formation  
10:00 a.m. Mass  
First & Clara  
592-2802  
Rev. Patrick Burke, Pastor

**Good Shepherd Lutheran Church**  
Corner of 1st & W. Magnolia  
592-5605  
Sunday School 9 a.m.  
Worship Service 10 a.m.  
Rev. Orville Horn, pastor  
569-4085

**First United Pentecostal Church**  
592-9478 802 N. First 592-4275  
Tires of Religion? Looking for an exciting experience with God?  
Sunday... Sunday School 10:00 a.m. Evening Worship 6:30 p.m.  
Wednesday... Our Daily Bread 7:30 p.m. Children's Church 7:30 p.m.  
Friday... Action (Youth) 7:29 p.m.  
Pastor Greg Hardin  
A Place for New Beginnings

**Country Chapel on the Hill**  
"An Evangelical Bible Church Open to all People"  
A GREAT BIG TEXAS WELCOME AWAITS YOU  
Sunday Worship 10:30 a.m. Ph. 855-9367  
Dr. John Ward, Pastor (Chaplain USAF-Ret) 287N at Wellington

**CORNERSTONE CHURCH OF GOD**  
"The Church at the Foot of the Cross:"  
1201 W. Smith  
9:45 a.m. Sunday School  
10:50 a.m. Morning Worship - Children's Church  
6:00 p.m. Evangelistic Service  
7:00 p.m. Wednesday Family Night; Christian Pathlighters, Boys & Girls  
10:00 a.m. Saturday - Primary, Junior & Senior Bible Quiz  
Church Phone - 592-5929 Pastor Duffy Terry - 592-5520  
Where Jesus is Lord

**Lakeview Church of God**  
N. Victoria and Expressway  
Opportunities for Services  
Children's Church Ladies Ministry  
Choir (youth & adult) Men's Fellowship  
Nursing Home Boys' Club, ages 6 - 17  
Visitation Girls' Club, ages 6 - 17  
Puppet Ministry Nursery Provided  
Sunday School.....9:45 a.m. Wednesday Family Training Hour...7:30 p.m.  
Morning Worship...10:45 a.m. (Classes for all ages)  
Sunday Night.....6:00 p.m.  
Phone - Church: 592-2776, Parsonage: 592-9555  
Pastor Ole Olds  
Discover The Joy

**CHURCH OF GOD of Iowa Park**  
601 E. Cash  
"Where Love is More Than Just A Word"  
SUNDAY  
Sunday School ..... 8:45 a.m.  
Sunday Morning ..... 10:45 a.m.  
Children's Church ..... 10:45 a.m.  
Evening Worship ..... 6:00 p.m.  
Wed. Family Training ..... 7:30 p.m.  
Rev. & Mrs. Johnny House  
Church 582-4948 Parsonage 582-5818 Bus & Nursery Available

**IOWA PARK CHURCH OF CHRIST**  
301 E. PARK + 592-5415  
Sunday Morning Bible Study 9:30 a.m.  
Sunday Worship 10:30 a.m. & 6 p.m.  
Wednesday Evening Worship 7:00 p.m.  
MINISTER - JEFF RATLIFF

THE END OF YOUR SEARCH FOR A FRIENDLY CHURCH  
**ASSEMBLY OF GOD**  
SUNDAY  
9:45 a.m. Sunday School  
11:00 a.m. Morning Service  
6:00 p.m. EVANGELISTIC SERVICE  
WEDNESDAY  
7 p.m. Royal Rangers & Missionettes  
Nursery provided Sunday morning & Wednesday evening  
200 S. YOSEMITE  
592-5087 - Church  
592-4627 - Pastor Charles Hensley, Pastor

**Kamay Road Church of Christ**  
Corner of Colorado & Emerald  
Sunday Services  
9:30 a.m.  
6:00 p.m.  
For Information Call:  
592-2082  
592-5076

**First Baptist Church Iowa Park, Texas**  
300 N. Yosemite + 592-2151  
Sunday  
9:30 a.m. Bible Study (Graded Sunday School Program)  
10:45 a.m. Worship  
5:00 p.m. Discipleship (Training Classes for all ages)  
6:00 p.m. Evening Worship  
Wednesday  
6:00 p.m. Acteens for Girls (Jr. High & High School)  
7:00 p.m. R.A.s for Boys  
7:00 p.m. JAM for Youth Prayer Meeting  
7:45 p.m. Sanctuary Choir  
Dr. Derrell Monday, Pastor  
NURSERY PROVIDED FOR ALL SERVICES

**FIRST UNITED METHODIST CHURCH**  
REV. JOHN BESSE, PASTOR  
"Catch The Spirit" ~ Come Grow With Us!  
Sunday School - 9:30 a.m. UMYF - 5:00 p.m.  
Sunday Worship - 8:45 a.m. and 10:40 a.m.  
201 E. Bank 592-4116

**First Presbyterian Church**  
A warm welcome to our new pastor,  
Rev. Carol Phillips  
We welcome all to our friendly, family atmosphere at the First Presbyterian Church  
Sunday School 9:30  
Worship 11:00  
211 S. Yosemite 592-4220

**FAITH BAPTIST CHURCH**  
"The presence of God is our greatest asset"  
411 S. Wall 592-2716  
SUNDAY  
Sunday School 9:15 a.m.  
Morning Worship 10:30 a.m.  
Discipleship Training 6:00 p.m.  
Evening Worship 7:00 p.m.  
WEDNESDAY  
Adult Bible Study 6:30 p.m.  
Children's Mission Programs 6:30 p.m.  
Youth Cross Training 6:30 p.m.  
Choir Rehearsal 7:30 p.m.  
Dr. Greg Ammons, Pastor  
A Southern Baptist Church  
-Nursery provided for all activities  
-Ministry Opportunities for the entire family

First Baptist Church  
**Music Camp**  
August 5-9  
8:30-11:30  
Heart to Change the World  
Performance Saturday, August 10 - 7pm  
Cost: \$10.00  
Grades K-6  
Come join us for Bible Study, Singing, Drama, Snacks, and lots of fun.  
Auditions Sunday August 4 - 4pm  
Choir Room



# COOK of the WEEK



Leslie Crumb,  
Jordan and Joshua

This week's featured cook, Leslie Crumb, could be described as a lesson in perpetual motion.

But with four children, it would be hard to not be constantly busy.

Leslie and her husband, Ian, are the parents of Jennifer, 14, Joshua, 13, Jeffrey, 10 and Jordan, seven years old.

Leslie said she spends much of her spare time shuttling back and forth to practices and games involving her children. Jennifer is active in tennis; all three boys play baseball, and Jeffrey and Jordan both play soccer. Other than that, she said she enjoys reading and playing tennis.

She also donates her time to help with Special Olympics, a project she especially enjoys.

If it sounds like by now that children play a major role in her life - they certainly do.

Leslie, who has until this year been a fourth grade teacher at Bradford, will take the position of Iowa Park High School resource teacher when school starts.

She taught resource class five years at Bradford before taking on a fourth grade class, a position she has held eight years.

In addition, she works part time at her father's business, Copeland Central Packing in Wichita Falls. Her husband is also employed there. Because of this, many of the recipes she submitted include meat.

Leslie said she is sharing with the public, for the first time, the two ice cream recipes that won her first place at the "Hotter 'N Hell" Freeze Off a couple of years ago. At the competition she and a friend served the two dishes, "Heavenly Vanilla" and "Sinful Dark Chocolate," dressed in full costume.

Having a way of making things interesting, Mrs. Crumb is known by her former students as the teacher in whose class they dissected a Snickers bar to learn about cross-section diagramming. "Then they got to eat the evidence," she explained.

She recently acquired a cedar recipe box full of recipes at an estate sale. What she found inside proved to be a treasure. Some of the recipes were written on church bulletins, several names of friends on them or remarks as to whether or not they were good. She also found in the box several Betty Crocker coupons dated 1939. Leslie said when she has time at

night, she likes to go through and read the recipes and notations.

Reared in Wichita Falls, Leslie was graduated from Hirschi High School, and received her bachelor of science in education from Midwestern State Univ.

## Sinful Dark Chocolate Ice Cream

(Warning: Do not even read this recipe if you are counting fat grams!)

1 (12 oz.) pkg. semisweet chocolate chips  
1 large jar marshmallow cream  
1 can evaporated milk  
1 Tbsp. vanilla  
1 cup heavy cream  
1 qt. light cream

Melt chocolate chips in the top of a double boiler over simmering water; add marshmallow cream and hot, stirring occasionally, until melted. Pour in the evaporated milk, a little at a time, mixing well after each addition, then mix in vanilla.

Chill.  
Stir in heavy cream.  
Put the mixture in an ice cream freezer and add light cream to the fill line. Freeze according to the freezer instructions.

## Heavenly Vanilla Ice Cream

(Warning: Fat grams alert! Don't let the name fool you!)

1 large carton egg substitute  
1 can Eagle Brand milk  
2 Tbps. vanilla (I use more than this amount)  
1 large jar marshmallow cream  
1 pt. heavy cream  
1 qt. light cream

Mix egg substitute, Eagle Brand milk, and vanilla.

Heat over very low heat. Stir in marshmallow cream until melted.

Chill.

Mix in heavy cream.

Put mixture in ice cream freezer.

Add light cream to the fill line. Freeze according to freezer directions.

## Swiss Steak

6 pieces cutlet meat or tenderized round steak cut into individual pieces

Flour  
Garlic salt  
Pepper  
Oil to brown meat and vegetables  
1 can Italian seasoned stewed tomatoes  
1 small can tomato sauce

ADVERTISEMENT



## I.H.S. OF IOWA PARK RESIDENT OF THE MONTH EMPLOYEE OF THE MONTH

Ester Weiss was voted Resident of the Month for July. Ester has lived in Iowa Park 38 years. Ester and her husband, Albert have been married 62 years, and have two children. They have resided at I.H.S. four months.

Mike Perez, restorative aide, was voted I.H.S. Employee of the Month for July. He has been employed at I.H.S. five months.

*Congratulations, Ester and Mike!*

ADVERTISEMENT

Does your subscription to the Leader expire this month? Check the list on page 4.



Report illegal dumping and other felonies to

CRIMESTOPPERS  
322-9888 or  
1-800-322-9888

1 green pepper cut into strips  
1 onion, sliced

Dredge meat in flour and sprinkle garlic salt and pepper on the steak. Brown in hot oil.

Remove meat from skillet and brown the onion and green pepper in about 2 tablespoons of the oil in the same pan the meat was browned.

Return the meat to the pan with the onions and peppers. Pour the stewed tomatoes and tomato sauce on top of the meat.

Cover the skillet and let meat simmer until sauce is thickened and meat is tender.

This is good served with rice.

Cooked chicken fajita meat  
1 cup grated cheese

Lettuce

Diced tomatoes

Sour cream

Small onion diced

Take a pizza pan or round baking stone and press the crescent rolls out to cover the bottom. Bake until golden brown in a 375 degree preheated oven. (This step can be done in advance.)

Mix the refried beans and taco seasoning. Spread on top of the baked crescent pizza crust.

Spread the picante sauce on top of the refried beans.

Spread the fajita meat on next. (I use leftover fajita meat from a previous meal.)

Sprinkle cheese on top of the meat. Return to oven until cheese is melted.

Garnish with lettuce, tomatoes, onions, and sour cream.

Slice into pizza slices.

## Chicken Fajita Pizza

1 can cheese crescent rolls

1 large can refried beans

1 pkg. taco seasoning

1/4 cup picante sauce

# Three Bottles FREE of cool clear water



SPRING HOUSE  
*The Secret Is In The Water*

Distributed by Ozark Water Company

As an introductory offer to you and your family

**CALL NOW**

and receive **3 Bottles FREE** of refreshing spring water delivered right to your door!

**1-800-715-5122**

New customers only, on approved credit. Deposit may be required for water cooler rental.

NOW PLAYING

MOVIN' MOVIES PRESENTS....

Tanning at it's very best!

Sign Up Now!  
Two Months of  
Unlimited Tanning

Only **\$20** per month

*Plus...receive a free T-Shirt!*  
*Hurry in...supplies are limited*

We recently added private air conditioned room to make your tanning sessions a really cool experience!!!

928 W. Highway 592-0214

## JC's Automotive

is pleased to announce the association of **DESMOND MAYFIELD** to our repair staff. Desmond brings with him 24 years experience as a G.M. certified repair technician. He invites all his friends and customers to stop by **J.C.'S AUTOMOTIVE** to see him.

104 North Alcott ~ 592-9588  
Hours: Mon.-Fri. 8 a.m. - 6 p.m.  
We accept Visa, MasterCard, Discover & American Express

REAL PEOPLE.  
*Saving money.*

WHY DO YOU SHOP AT THE BARGAIN DEPOT?

"For tools, work clothes, all kinds of things ... we shop Bargain Depot first for the best choice."

*The Jeff Watts Family*  
IOWA PARK

3915 Kell in the old Gibson's Building 692-0611 Hours: 10-8 Mon.-Sat., Closed Sunday



# Midnight football nearing

Don't forget to stock up on your No-Doze this week as Midnight Madness is just around the corner.

The 1996 Hawk football program will officially get started Tuesday night at 12:01 following a pep rally at Hawk Stadium that is scheduled to begin around 11 p.m..

The University Interscholastic League says that no high school football team can begin the '96 season until Aug. 7, but they didn't say how early on the 7th you could get started.

"We thought it would be something new and exciting not only for the fans but for the kids as well," said head coach Weldon Nelms, who led his team last season to the Class 3A State playoffs after starting the season with an 0-5 record.

"We had a real good spring and that is a big plus for us. Part of the reason for the success was the way we finished up last year. These kids got a taste of winning and now they expect and are working hard to get back to that level of play."

Preceding the pep rally, there will be a parents' meeting in the High School Auditorium in which coach Nelms will introduce his coaching staff and speak about the upcoming season.

Other members of Nelms' staff include backfield and assistant offensive coordinator Chris Ellis, defensive coordinator Bruce Merrell, offensive line coach Steve Stewart, inside linebacker coach Dick Smith, defensive back coach Jeff Standard, outside linebacker coach David Fuhrman, wide receiver coach Tim Clark, and assistant offensive line


coach Greg Biehl. Junior High coaches include David May, Bob Gray, Larry Zachary, and Larry Beard.

All parents with children participating in school-sponsored sports are encouraged to attend the brief meeting.

The midnight workout will last about an hour and a half with the Hawks returning to the field at 10 the same morning and later in the afternoon at 5. The schedule will return to normal on Thursday with workouts starting at 8 a.m. and 5 p.m..

## SAND CASTLE BEACH VOLLEYBALL MIXED FOURS TOURNAMENT

**8:30 P.M. - AUGUST 9**  
**ENTRY FEE - \$40 PER TEAM**



For more information on the tournament or league, call **Billy Gilmore at 592-2098.**

## Season tickets going on sale

Season tickets for Hawk football games to be played at home will go on sale Monday, in the principal's office.

Fans who had season reserved seat tickets last year will have until the first home game, which will be Sept. 8, to renew their option on the same seats again this year, according to Richard Davis, principal.

At \$5 per game, a book of five season tickets this year will cost \$25.

Reserved seats after the first game will also cost \$5 per game. However, no reserved tickets will be sold at the gate.

General admission tickets this year will be \$2 for students and \$4 for adults, if purchased before the game. Those sold at the game will be \$5.

Tickets will be sold at the principal's office between 8 a.m. and 12-noon, and 1-4 p.m.

### Card of Thanks

The Iowa Park Major League All Stars would like to thank our coaches, Steve Moody and Henry Holguin for your time, hard work and dedication. We couldn't have gone so far without you.

Iowa Park Major League All Stars and Parents

# Harvey's

**592-4731**  
HOURS: 6 A.M. - 10 P.M. 7 DAYS A WEEK

## BURRITO with CHILI & CHEESE

# \$1.69

## CONGRATULATIONS GIRLS! IOWA PARK MAJOR LEAGUE ALL STARS



All Star Team Members and Coaches: (FR) Heather Moody, Mindy Justus, Bobbie Gilmore, Sarah Fisher, Tori Crawford, Stevie Hognin. (BR) Jessica Sales, Keeley McFann, Dana Smith, Sheila Looney, Andrea Murray, Meagan Cerveny, Lucie Gomez. Coaches Steve Moody and Henry Holguin (not pictured)

- ★ DISTRICT 6 CHAMPIONS
- ★ SECTIONAL FINALISTS ★
- Iowa Park 14
- Plano 4
- Iowa Park 25
- Plano 5
- Iowa Park 2 Wh. Settlement 14
- Iowa Park 25
- Pampa 12
- Iowa Park 12
- El Paso 11
- Iowa Park 4 Wh. Settlement 12

WE ARE PROUD OF YOU!

50-212 (Rev. 5-94/3)

### 1996 Property Tax Rates in CITY OF IOWA PARK

This notice concerns 1996 property tax rates for CITY OF IOWA PARK. It presents information about three tax rates. Last year's tax rate is the actual rate the taxing unit used to determine property taxes last year. This year's effective tax rate would impose the same total taxes as last year if you compare properties taxed in both years. This year's rollback tax rate is the highest tax rate the taxing unit can set before taxpayers can start tax rollback procedures. In each case these rates are found by dividing the total amount of taxes by the tax base (the total value of taxable property) with adjustments as required by state law. The rates are given per \$100 of property value.

Last year's tax rate:	
Last year's operating taxes	\$ 725,977
Last year's debt taxes	\$ 97,876
Last year's total taxes	\$ 823,853
Last year's tax base	\$ 108,401,771
Last year's total tax rate	\$ .76 /\$100

This year's effective tax rate:	
Last year's adjusted taxes (after subtracting taxes on lost property)	\$ 815,408
+ This year's adjusted tax base (after subtracting value of new property)	\$ 115,637,661
= This year's effective tax rate	\$ .70514 /\$100

*In the first year a hospital district or city collects the additional sales tax to reduce property taxes, it must insert the following lines unless its first adjustment was made last year:*

- Sales tax adjustment rate	\$ -0- /\$100
= Effective tax rate	\$ .70514 /\$100

x 1.03 = maximum rate unless unit publishes notices and holds hearing \$ .72629 /\$100

This year's rollback tax rate:	
Last year's adjusted operating taxes (after subtracting taxes on lost property and adjusting for transferred function)	\$ 718,514
+ This year's adjusted tax base	\$ 115,637,661
= This year's effective operating rate	\$ .62135 /\$100
x 1.08 = this year's maximum operating rate	\$ .67106 /\$100
+ This year's debt rate	\$ .08254 /\$100
= This year's rollback rate	\$ .75360 /\$100

*A hospital district or city that collects the additional sales tax to reduce property taxes, including one that collects the tax for the first time this year, must insert the following lines:*

- Sales tax adjustment rate	\$ -0- /\$100
= Rollback tax rate	\$ .75360 /\$100

*For a taxing unit with additional rollback rate for pollution control, insert the following lines:*

+ Additional rate for pollution control	\$ -0- /\$100
= Rollback tax rate	\$ .75360 /\$100

50-179 (Rev. 5-96/5)

### Schedule A CITY OF IOWA PARK

#### Unencumbered Fund Balances

The following estimated balances will be left in the unit's property tax accounts at the end of the fiscal year. These balances are not encumbered by a corresponding debt obligation.

Type of Property Tax Fund	Balance

#### Schedule B 1996 Debt Service

The unit plans to pay the following amounts for long-term debts that are secured by property taxes. These amounts will be paid from property tax revenues (or additional sales tax revenues, if applicable).

Description of Debt	Principal or Contract Payment to be Paid from Property Taxes	Interest to be Paid from Property Taxes	Other Amounts to be Paid	Total Payment
	\$ 80,000	\$ 17,810	\$ -0-	\$ 97,810
<i>(Expand as needed)</i>				
Total required for 1996 debt service			\$ 97,810	
- Amount (if any) paid from funds listed in Schedule A			\$ -0-	
- Excess collections last year			\$ -0-	
Total to be paid from taxes in 1996			\$ 97,810	
+ Amount added in anticipation that the unit will collect only _____ % of its taxes in 1996			\$ -0-	
= Total Debt Levy			\$ 97,810	

#### Schedule C Expected Revenue from Additional Sales Tax

(For hospital districts, cities and counties with additional sales tax to reduce property taxes)

In calculating its effective and rollback tax rates, the unit estimated that it will receive \$ -0- in additional sales and use tax revenues. For County: The county has excluded any amount that is or will be distributed for economic development grants from this amount of expected sales tax revenue.

#### Schedule D State Criminal Justice Mandate (For Counties)

The \_\_\_\_\_ County Auditor certifies that \_\_\_\_\_ County has spent \$ \_\_\_\_\_ in the previous 12 months beginning \_\_\_\_\_, 19\_\_\_\_, for the maintenance and operations cost of keeping inmates sentenced to the Texas Department of Criminal Justice. \_\_\_\_\_ County Sheriff has provided information on these costs, minus the state revenues received for reimbursement of such costs.

#### Schedule E Transfer of Department, Function or Activity

The \_\_\_\_\_ spent \$ \_\_\_\_\_ from \_\_\_\_\_ to \_\_\_\_\_ on the \_\_\_\_\_ . The \_\_\_\_\_ operates this function in all or a majority of the \_\_\_\_\_ .

This notice contains a summary of actual effective and rollback tax rates' calculations. You can inspect a copy of the full calculations at **IOWA PARK CITY & SCHOOL TAX OFFICE 1303 N. 4TH STREET**

Name of person preparing this notice **ALLEN T. SHEWMAKE**

Title **TAX ASSESSOR/COLLECTOR**

Date prepared **JULY 29, 1996**







# The Classifieds

## DEADLINES

12-NOON WEDNESDAY (WORK ADS ONLY)  
4 P.M. TUESDAY, DISPLAY ADS

**SAVE 10¢ PER WORD FIRST  
INSERTION BY PAYING  
WITH COPY AT OFFICE**

## RATES:

30¢ PER WORD FIRST INSERTION  
20¢ PER WORD EACH REPEAT

**TEXOMA REALTY INC.**  
723-7471  
592-9622


**MLS**

592-2399 Iowa Park Office  
direct line to Thomas Johnson, GRI  
592-9622 Iowa Park Office  
-direct line to Patty McLemore, GRI  
723-7471  
Wichita Falls Office  
824 Indiana Ave., Suite 2 - 4  
Laura Hammond, Edwina Wigh  
and Randle Forcher

## SHOP IOWA PARK FIRST!!!

**RDS Real Estate**  
Darlene Schreiber 322-2270  
Great location, close to Kidwell Elementary, 3-2-2, Central Heat & Air, Formal living room, freshly painted, owners anxious will help with buyer's closing expenses.

**LAWNMOWER & WEDEATER REPAIR**  
Overhauls, blades sharpened and balanced. Also edgers and riding mowers. Yard work. Real reasonable.  
592-5402.



## HOMES FOR SALE

BY OWNER: Lovely 3 bdrm., 2 bath, 2-car garage home. Excellent neighborhood. Large family room, dining and kitchen, w/large pantry. Family room overlooks covered patio and split level deck. Extra large master bdrm.. Marble top vanities in baths. Four walk-in closets. Built-in bookcase and desk, built-in microwave, fireplace, heat pump, garage door opener, ceiling fans, mini blinds, security lighting and storm windows. Carpet, hot water heater, dishwasher and disposal are only 2 years old. Fenced backyard landscaped with crepe myrtles, large trees, shrubs, and has storage house.  
592-2246.  
7-25-tfc

**IOWA PARK**  
• #28 Surrey - 3 BR, 2 baths, 2 car garage, huge back yard. C/patio, fenced, fireplace, HMS warranty provided. Only \$82,900 for quick sale.  
• New Listing - 7722 Headquarters Road - Super remodeled farm home on 10 acres. Outbuildings. Homeowners warranty. Additional acreage available. \$94,900.  
• 1 - 2 NICE OFFICE SPACES for Lease - 208 N. Yosemite. Come on by to see!

**WICHITA FALLS**  
• 1624 Cimmaron, 3 bedrooms, HMS Warranty, \$35,000.  
• 1426 Tanbark, 3 bedrooms, \$31,500.

**SUBURBAN**  
• Room to roam. 2,692 sq. ft., 3 BR, 2 bath, 2 living areas, fireplace. 2 porches. 10.6 acres. S/barn, s/tank, off of Little Lease Road. Holliday schools. \$116,500.  
• Hwy 79, 2 living, 3 BR, 2 bath, 2 car garage. 2 acres, fireplace, c/patio. \$89,500.  
• Arrowhead Ranch Estate: 4801 Pulte. 3 bedrooms, living/dining combination, 2 baths, large lot, C/patio, extra nice. HMS Warranty, \$63,000.

**LAKEFRONT**  
• WEEKEND RETREAT - 3 BR, 2 baths. Larger, older home. 20'X24' shop, large lakefront lot, fenced. Lot E5, Crow Trace, Lake Arrowhead. \$19,000. Call Patty.

**"WE WORK FOR YOU"**  
PLEASE CALL US FOR YOUR REAL ESTATE NEEDS.

**Nanny's Antique Mall**  
111 W. Park 592-2100  
Gifts for all occasions  
We Buy Antiques  
Booth Space Available

Wallpaper Lacquer Acoustic Ceiling  
**GENE A. WILLIAMS**  
Paint • Tape & Bed  
(817) 592-5494  
121 S. Wall Iowa Park, Texas 76367

**WOODBRIAR COMMUNITY**  
1, 2 and 3 bedroom units  
ALL BILLS PAID (includes basic cable)  
1000 Mary 592-2121

**Additions and Remodeling  
Complete Home Care**  
Carpentry Roofing Painting Plantation Shutters Cabinets Counter Tops Flooring  
Call for Free Estimate  
592-2480 Home 592-0266 Fax 720-8755 Pager

**ELECTRICIAN!**  
All Types of Electrical Work  
Licensed Bonded  
Residential Commercial  
Kendell J. Hill, Electrical Contractor  
592-4773

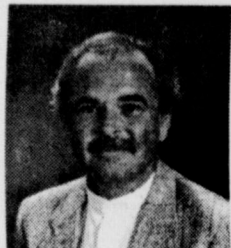
## FOR RENT

1 BEDROOM, Huntington Lane. Stove, refrigerator, AC. 855-3062, 696-3891.  
8-1-1tp

MOBILE HOME, Talley Lane, 2 bedroom, central air, range, frig., large fenced yard, City View school. 855-3062.  
8-1-1tp

Don't Just Dream...Live the Dream! Don't Just Dream...Live the Dream!

**Out in front**  
**Regency One REALTORS**  
Residential • Commercial • Farm • Ranch  
592-2133 • 1-800-870-2133  
Don't Just Dream...Live the Dream!  
Selling Iowa Park!



Darrell Jolly  
592-4926  
(mobile) 781-8109



Mary Taber  
1-495-3325



Julie Ressel  
766-5919



Winnie Jo Holmes  
592-5730

721 S. PARK - Clean and neat mobile home. Sits on corner lot. Two bedrooms, one bath, stove, refrigerator, washer dryer, and twin beds remain with property. \$18,000.

402 JEFFERSON, W.F. - Two bedroom, one bath, single car carport. Lot size 100X100. Also has laundry room, and storage building. Call Winnie.

NEW LISTING - 1908 ELIZABETH, W.F. - Older home. **SOLD** Call Winnie.

2020 OLD BURK RD, W.F. - Two bedroom mobile home. Has central heat, (14X52) Sits on 1.12 acres, city water, sewer, and gas. Has old house that could be used as a storage building. Price reduced to \$19,900. Owner will look at offers. Call Darrell.

3834 E. FM 367 - 3 bedroom, 2 bath, 1 car garage. 3 outbuildings, sits on 2.03 acres. \$59,500. Call Darrell.

3634 KARLA, W.F. - Recently remodeled, new carpet in June 96, freshly painted, like new cabinets. Large laundry room, over 700 square feet in garage with workshop and flooring in the attic for storage. Call Winnie. \$63,500.

103 VALLEY DRIVE - New construction. **SOLD** Separated master suite, cut Berber carpet, jewel white pain, loads of extras, even the yard is in car. Darrell. \$78,500.

1505 RITA LANE - Approximately 1,778 sq. ft. of living area. Over 600 sq. ft. in the garage. Huge living area, has fireplace in dining area. Huge kitchen with range/oven, built-in mixer, and dishwasher. Privacy fence put up in June of 95. Carpet approx. two years old. Freshly painted. \$76,500. Call Darrell.

2504 9TH, W.F. - Large two story home with basement. 4 bedrooms, 1 1/2 bath, two central H/A units. Some renovations have been done. Could be commercial. \$75,000. Call Julie.

2506 9TH ST., W.F. - New home. **SOLD** Feb., '96.

3096 S. BELL ROAD - Looking for that little ranchette! 1st home - 2,556 sq. ft.; 2nd home - 1053 sq. ft.; 1st barn - 5,532 sq. ft. with office. **IN CONTRACT** sq. ft. with squeeze chute and loading dock. 3rd horse barn 2,953 sq. ft. with office and eleven stalls. Sits on 156.67 acres. \$325,000. Call Darrell.

**LOTS AND ACREAGE**  
1118 S. FM 368. - 7 1/2 acres. Completely fenced. Will allow mobile home.  
**HUGE INDIVIDUAL CITY LOTS** Located on access road of Expressway 287 between North 3rd and North 4th in Iowa Park. Call for prices and size.  
**WEST SMITH - 6+ acres.** Pond and fenced, mobile homes accepted. \$20's.  
**COUNTRY MEADOWS (100X255)** All utilities available. Great for new home. Price reduced to \$10,000 or best offer.  
**WEST SMITH - 1 lot.** 6 lots sold! Utilities available. Mobile homes accepted. Call Winnie.  
**GARDEN VALLEY - 25 Lots available.** Restrictions. No mobile homes. Will build to suit.  
**1208 W. HIGHWAY -** Great location to build new home.  
**508 W. CORNELIA - Lot - street not complete.** \$9,500.  
**HWY. 82, HOLLIDAY -** 4 acres, fenced.  
**2408 MCKINNEY RD., WICHITA FALLS -** East of W.F. Commercial. 3.96 acres.  
**514 MANES -** 1.14 acres. Commercial or build.  
**HIGHWAY 79, W.F. -** 68.12 acres, fence, 3 ponds **IN CONTRACT**

Don't Just Dream...Live the Dream! Don't Just Dream...Live the Dream!

## Gary Williams Construction

One bedroom apartment \$230 to \$382  
Two bedroom apartment \$281 to \$468  
• Energy efficient • Off-street parking  
• Central Heat/Air • Water Paid  
• Children's Play Area • Total Electric  
• Fully carpeted and draped • Fully-equipped laundry room

**COLONIAL HEIGHTS APARTMENTS**  
592-2705

## KEY REALTY

900 W. Highway  
592-2718



Brenda Featherston  
592-5524



Cindy Gray  
592-4583

## AREA HOMES

**POSSIBLE \$1 VA TO QUALIFIED BUYER**  
On 2 new homes on Callie Lane. Each has approximately 1560 sq. ft. plus double car garage. Three large bedrooms, 2 full baths. Lots of extras. \$87,500 each. #305.  
**WORK AT HOME? HUGE SHOP, OFFICE, WAREHOUSE!**  
Four bedroom home on Johnson Road has 2 baths, large living area and separate dining with a total of 2380+ sq. ft. Ideal for entertaining a large family. Gunnite pool, large storm cellar. #909.  
**NEW CONSTRUCTION**  
Brick 3 bedroom, 2 bath home on E. Texas that includes living area and separate dining, and an extra room plus closed-in garden room that brings outdoors in to you! \$79,500. #317.  
**PEACEFUL SURROUNDINGS**  
Four bedroom home in Horseshoe Bend Estates is a planned community. Great view of lake can be seen from home. It features 2 living areas, separate dining, 2 1/2 baths. Oversized lot has sprinkler system and pool. #281.  
**PACE ROAD**  
ASSUMABLE 3 bedroom, 2 bath double wide mobile home is spic and span. \$35,000 for the home on the lot or less if you want to move it to another place. Central heat and air. #307.  
**TALL TREES, SMOOTH LAWN**  
Nicely landscaped home on W. Magnolia is a great buy for only \$34,900. Bedrooms are spacious and living area is 25'X22'. Corner lot. Needs a little finish work but a lot of potential. Ask for #283.  
**BELL ROAD**  
Four bedroom, 3 bath home sits on 6.2 acres and has a beautiful view of surrounding countryside. Two living areas, separate formal dining room. Outside has stock tank, 2 barns and 2 storage buildings. Call for #230.

## Feature Home 410 West Louisa



**ENJOY TOMORROW, BUY TODAY!**  
Three bedroom home on W. Louisa has one living area with separate dining room. Corner lot features nice yard, privacy fence and covered patio. \$49,900. #327.

**OPPORTUNITY FOR CHANGES**  
Three bedroom on Sunset has large den with fireplace, 1 3/4 bath. Large 11.5'X15' room could be extra living or formal dining. Large sunroom on back allows relaxing hours for you or use as 4th bedroom. Now \$53,000. Ask for #263.

**AVAILABLE FOR LEASE PURCHASE**  
1990+ square feet home on N. Park has 2 bedroom, 2 living areas, 2 baths, double garage and 2 extra rooms to use as you need to use them! All the rooms are spacious. Extra large lot, mature trees. \$69,500. #315.

## LAND! LAND! LAND!

**HORSE PERSON**  
52 acres on Arena Road features 18,066 sq. ft. indoor arena, outside arena, 938 sq. ft. mobile home and 1,458 sq. ft. building. Many pipe pens. For more information call for #120.  
**LONGLEY & FM 1206**  
Approximately 34.5 acres available for \$1,300 an acre. For more information call for #224.

## COMMERCIAL

**HIGH VISIBILITY**  
1.05 acres on the corner of Johnson Road and Hwy. 287 would be perfect for fast food restaurant. Former service station has unlimited potential with plenty of concrete parking and building. Call for #227.

## YARD WORK

**DALE'S TREE/YARD Service** Tree trim or removal, lawn mowing, hedge trimming. Seniors rates. 592-9455.  
7-27-tfc

REASONABLE lawn and garden service. 592-0489.  
5-2-tfc

## DOMESTICS

**WEEKLY house cleaning.** Very dependable. References. 592-4907, Beverly Frazier.  
7-25-1tp

**CHILD CARE** in my home. Reasonable rates, excellent with children. Call 592-5203.  
7-18-4tc

**CHILD CARE**, Monday thru Friday in my home. Mature & experienced. Ages 3 and up. Meals, snacks & lots of attention. 592-9670, ask for Stephanie.  
8-1-1tp

**ENROLLING NOW** for pre-school/day care. 4 to 5 openings for 2-5 years old. Food program. Registered. Beverly 592-4907.  
8-1-1tp

**Park Home Health Services**  
592-2753  
Phone Answered 24 hours  
Medicare-Medicaid approved  
Private Insurance

**SMALL PLUMBING REPAIR**

- Work After 5:00
- Backhoe
- New Sewer Line
- FREE Estimates
- Low Rates

Senior Citizen Discount  
**704-1222**



**MISC. FOR SALE**

**HUGE CARPORT SALE** - Saturday, 8-7, 904 W. Cornelia. Good, brand name junior, women's, and children's clothing and shoes (good school clothes), wind suits, nice girl's winter coats & jackets, men's Wranglers & Levi's (38x34), good men's shorts and shirts, purses, jewelry, puzzles, books, household items, brand new men's cologne, lunch boxes, kinder mat, electric typewriter, makeup, toys, roller skates, Girl Talk radio, golf bag, tons of misc. 8-1-1tp

**GARAGE SALE** - 1011 Van Horn, Friday only, 7:30 a.m. Rocky Mountain jeans, king size waterbed, men's Wranglers, misc. 8-1-1tp

**DRIVEWAY SALE** - Fishing stuff, car parts, tools, mags, clothes, Little Tyke toys, & misc. Saturday & Sunday, 407 Valley. 592-0038. 8-1-1tc

**MISC. FOR SALE**

**GARAGE SALE** - Plants, bedding, pictures, 2-6x little girls clothing. Friday, 8-2, 404 W. Magnolia. 8-1-1tp

**YARD SALE** - Fiberglass camper shell for LWB, 16' camper trailer for hauling or storage, sewing machine in maple cabinet, small freezer. Too much to list. Friday only, 211 W. Alameda. Cancelled if raining. 8-1-1tp

**GARAGE SALE** - Friday, 8:00 - 1:00, Saturday 8-7? Loft bunk bed set, computer desk, boys & mens bikes, toys, children & adult clothing, lots of misc. 1602 Johnson Rd. 8-1-1tp

**BABY'S, BOY'S**, women's clothes, fireplace front - with tools, toys, car seat, high chair, phone, dishes. 1006 S. Park at backside of trailer park on South Wall. Friday & Saturday. 8-1-1tp

**MISC. FOR SALE**

**GARAGE SALE** - 8-4, Friday & Saturday. Camping equipment, tools, exercise equipment, many, many items. 511 East Cash. 8-1-1tc

**GARAGE SALE** - 102 James, 8-1, Saturday. Gas stove - \$50, luggage rack, lots of misc. 8-1-1tp

**YARD SALE** - Saturday, 8-7, 106 W. Garden. Lots of children's clothing, plus size women's clothing, geico lizards with tank, light and heating pad, & misc. 8-1-1tp

**YARD SALE** - Saturday, 8-7? TV, dishwasher, chairs, 2 microwaves, bread machine, lots of misc. 406 W. Magnolia. 8-1-1tp

**BACKYARD SALE** - Saturday, 8 a.m. Canopy baby bed w/comforter and sheet set (extras included), name brand children's clothes (18m to 2T) and shoes, misc. items. 622 S. Bond. 8-1-1tp

**GARAGE SALE** - Saturday, 8-7, 212 Hope Lane. Baby items (swing, walker), designer jeans, youth and junior sizes, children's clothes, chest of drawers, Nintendo games, a lot of misc., too much to mention it all! 8-1-1tc

**GARAGE SALE** - Saturday, 8-7, 212 Hope Lane. Baby items (swing, walker), designer jeans, youth and junior sizes, children's clothes, chest of drawers, Nintendo games, a lot of misc., too much to mention it all! 8-1-1tc

**TV'S, WASHER, DRYER**, lawnmower, infant car seat, play pen, etc., dorm refrigerator, clothing - all sizes, fresh watermelons. Saturday, 8-2, 505 W. Alameda. 8-1-1tp

**ICEBOX, TV, KEYBOARD** baby mattress, heavy duty portable work bench, Little Tyke, toys, kids & adult clothing. Saturday, 8 til, 1825 Peterson Rd. North, 1 mile north 287. 8-1-1tc

**MISC. FOR SALE**

**BIG BACKYARD SALE** - Men's & ladies' clothes, tape deck, holiday misc. (Halloween, Christmas, Easter), Dirt Devil upright vacuum cleaner. Saturday, 8:30 - 2:30, 609 W. Smith. 8-1-1tp

**BACK YARD SALE** - Girl's clothes 0-2T, lots of name brands, maternity clothes - career & casual, 10-14. Too much to list. 501 E. Ruby, 7 a.m. - 12 noon, Saturday. No early sales, cash only. 8-1-1tp

**MOVING SALE** - #10 Park Place Circle, Saturday, 8-12. Baby items 0-2T, boys clothes, entertainment center, pictures, misc. 8-1-1tp

**1117 CORNELIA** - TV, oven, storm window, dishwasher, clothes, jeans. Saturday. 8-1-1tp

**GARAGE SALE** - Saturday only. King size waterbed, TV, rug, microwave, chest, clothes, & misc. 1302 Mockingbird. 8-1-1tp

**'78 CLASS C DODGE RV** almost new tires, dash, roof air, 14000 mi. on remanufactured engine. Asking \$6,000. 1332 Sunset. 8-1-1tp

**'90 SUBURBAN**, 83,000 miles. Loaded. Extra clean, non-smoker, brand new tires. \$8,995. 696-0794, leave message. 8-1-1tc

**1990 CROWN VICTORIA** Completely gone over. \$4,800. 592-4911. 6-6-1tc

**BUSINESS**

**EIBEN Home Repair and Remodeling**. Additions, roofing, painting, sheetrock, doors, carports, patio covers, and more. Small jobs welcome. Reasonable rates. Licensed and bonded. 592-2053. 7-27-tfc

**DALE'S HOME REPAIRS** For all your repair needs. Small jobs welcome. Senior rates. Quality work. 592-9455. 7-27-tfc

**TELEPHONE JACKS**, Installation or repair. Affordable rates. Free Estimates. Jerry Reed, 592-2243. 7-27-tfc

**RANDY WHITAKER** - Fencing tear out, build, repair. Privacy and chain link. Free estimates, 592-9433. 6-6-8tp

**POOP SCOOP** - For a low monthly fee, I will come to your yard once a week to de-poop your yard. Just call Jason, 692-1394. 5-23-tfc

**BLACK POWDER** Guns and accessories, revolvers \$112 and up. Powder \$6.50 lb. Will order modern guns for 10% over cost. Ye Ole Gun Shack, 413 W. Washington, 592-5430. 7-27-tfc

**MARY KAY Cosmetics** - Norma Young, Independent Sales Director. 692-1454, 495-3480. 7-27-tfc

**SIGNS BY KEVIN** - Magnetic signs. Small jobs welcome. 592-2740. 8-1-2tp

**LEE'S BARGAIN CENTER** 102 S. Victoria, Thurs., Fri., Sat. 9:00 - 5:00. A continuous garage sale inside out of the weather. We have racks of back to school clothing from .10, .25, .50, \$1.00, up to \$5.00. We have 2 bedroom suites, sofas, recliners, desk, book cases, refrigerator, dryers. Need something? Check with us first! 8-1-1tc

**NOTICE**

**LOST** - Male Rottweiler, 3 years old, answers to Sam. Very gentle. Chain collar. If seen or found, please call 592-9370, leave message. 8-1-1tp

**PUBLIC NOTICE** The Iowa Park Consolidated Independent School District will hold a public hearing on the proposed 1996-97 budget on August 15, 1996, at 7:00 P.M. in the Junior High Library. 8-1-1tc

**PUBLIC NOTICE** The Iowa Park CISD is accepting applications for Cafeteria Manager. Applications will be accepted through August 12, 1996. General information and applications are available at the Iowa Park Administration Building, 413 E. Cash, Iowa Park, TX 76367. 8-1-1tc

**NOTICE OF APPLICATION FOR FLUID INJECTION WELL PERMIT**

Gregory W. Stone P.O. Box 507 Holliday, Texas 76366 is applying to the Railroad Commission of Texas for a permit to inject fluid into a formation which is productive of oil and gas. The applicant proposes to inject fluid into the Cisco Series Overby Well Number 26. The proposed injection well is located 4 Miles East of Kamay in the Wichita County Regular Field, in Wichita County. Fluid will be injected into strata in the subsurface depth interval from 860 to 1056 feet. LEGAL AUTHORITY: Chapter 27 of the Texas Water Code, amended, Title 3 of the Texas Natural Resources Code, as amended, and the Statewide Rules of the Oil and Gas Division of the Railroad Commission of Texas.

Requests for a public hearing from persons who can show they are adversely affected, or requests for further information concerning any aspect of the application should be submitted in writing, within fifteen days of publication, to the Environmental Services Section, Oil and Gas Division, Railroad Commission of Texas, P.O. Box 12967, Capitol Station, Austin, Texas 78711 (Telephone 512/463-6792). 8-1-1tc

**Financing**

Continued from page 1

school (classified by the Texas Education Agency for funding purposes, and will not receive state funds for a four-month duration of December through March. The district fund balance will have to be at a level to stand this absence of funding.

Caplinger pointed out that the district has been prudent with its resources over the years, in keeping the tax rate in the bottom 10 percent of all Texas schools.

Now, however, he said "we find ourselves being penalized for being a 'low tax effort' school district. The rules of the game have changed, requiring schools to tax higher to secure increased state funding."

"This creates a major problem when you need additional classrooms on all campuses," he added.

Mardis reviewed computer and work-related needs of the central office and briefly suggested additional personal computers for TEA reporting purposes and more in-house computer generated programs.

He suggested more networking and computer training.

According to the Appraisal District, \$177,455,007 was set for real property, \$95,146,721 for personal property, \$174,377 for mobile homes, and \$20,692,540 for oil.

Monday night's posted agenda includes three topics:

1. Review the 1996-97 proposed budget and tax rate needed to generate the budget. Consult with Ken Smith, financial consultant, concerning funding strategies.

2. Schedule a public hearing on the 1996-97 budget. Adopt 1996 calendar for truth in taxation.

3. Should the proposed tax rate be more than three percent above the effective tax rate (or above the roll-back rate) take a record vote and set the date for the public hearing on the proposed tax rate.

Besides its budget work session during last Thursday's meeting, trustees accepted one of five bids for a portable classroom building.

A bid of \$19,700 submitted by Sunbelt was accepted, with the provision that it will be in place by the start of the school year.

**FRIENDLY DOOR MENU**

**THURSDAY, Aug. 1**  
Lunch--Paprika chicken over noodles, French cut green beans, beets, wheat roll, Mandarin fruit salad, milk.

**FRIDAY, Aug. 2**  
Lunch--Spaghetti pie, broccoli, carrots, white or wheat bread, peanut blossom cookies, milk.

**MONDAY, Aug. 5**  
Lunch--Steak fingers, cream gravy, peas and carrots, mashed potatoes, white or wheat bread, chocolate pudding on a cloud, milk.

**TUESDAY, Aug. 6**  
Lunch--Tossed salad, baked chicken in mushroom sauce, cornbread dressing, mixed vegetables, unsweetened applesauce, milk.

**WEDNESDAY, Aug. 7**  
Lunch--Baked pork chop, brown gravy, sweet potatoes, Scandinavian mix, cornbread, tapioca pudding, milk.

**THURSDAY, AUG. 8**  
Lunch--Baked roast, brown gravy, copper pennies, mashed potatoes, wheat roll, frosted cake, milk.

**ALL-CHURCH FAMILY GARAGE SALE**  
Saturday, August 3  
7:30 a.m. to 3 p.m.

Kitchenware, baby stuff, toys, electronics, ladies accessories, knick-knacks, children's clothes, books and music, men's tools, linens and curtains, crafts, youth T-shirts, computer stuff, furniture appliances.

**Bake Sale**  
Cornbread & Beans Luncheon with all the trimmings  
Door Prizes Every 30 Minutes  
First United Methodist Church  
201 East Bank (East of the Square)  
592-4116

**CITY-WIDE GARAGE SALE**  
All Day Saturday  
SATURDAY, AUGUST 1

505 W. Alameda	1115 Lincoln
1311 Bluejay	1000 Louisa
215 S. Bond	406 W. Magnolia
622 S. Bond	1302 Mockingbird
108 W. Cash	1314 Mockingbird
511 E. Cash	811 N. Park
612 W. Coleman	1006 S. Park
614 W. Coleman	#10 Park Place Circle
709 W. Coleman	715 Park Plaza
711 W. Coleman	903 Park Plaza
904 W. Cornelia	1825 N. Peterson
1009 W. Cornelia	501 E. Ruby
1021 W. Cornelia	307 N. Second
1117 W. Cornelia	1007 N. Second
908 Dosa	609 W. Smith
1516 Douglas	511 W. Texas
907 Foley	407 Valley
921 Foley	804 Van Horn
1027 Foley	107 E. Washington
106 W. Garden	402 W. Washington
212 Hope Lane	
102 James Dr.	
1602 Johnson Road	

**NON-PROFIT**  
First United Methodist Church - 201 E. Bank

Sponsored by the Iowa Park Chamber of Commerce

**HELP WANTED**  
FULL-TIME Waitress - 5 days a week. Apply in person. City Cafe, 114 W. Cash. 1-11-tfc

**MINI-CON Self-storage**  
1. Variety of sizes.  
2. Competitive prices.  
3. Locally owned and operated.  
4. Monthly rates.

805 W. Hwy. 592-2761

**\$1000 REWARD**  
For information leading to the arrest and conviction of any person or persons involved in theft, vandalism, arson, fishing or hunting on any of our properties in Wichita, Archer, Wilbarger, Clay, Wise or any other county in which we may have equipment located. Tom Swanson Oil Co., TS&T Drilling Inc. 817-495-3971.

**"ANTIQUE STORE"**  
ANNUAL REMODELING FUND SALE  
HIGHWAY 277/82 ~ HOLLIDAY  
This is a "HUMONGOUS" Clearance Sale of Used Useable houseware and furnishings. Wednesday - Sunday, 9 a.m. - 8 p.m.. Dealers welcome! Rain or Shine!  
ONE OF MY LARGEST SALES EVER!  
Antique Store merchandise 10% OFF, excluding antique furniture.  
YOU BICKER, I DICKER!!

**Limited Openings available for Piano Students now. 592-4230**

**AT YOUR SERVICE!**  
Copy Machine and Fax  
Jack's PARK PHARMACY  
115 W. Park 592-2731

**Copying & Laminating**  
Copier - 2 pages 25c  
Protect your important documents with a plastic laminate overlay.  
Credit Card size to 8 1/2 X 11.  
Prices start at 50c  
Parkway 200 W. Bank

**FAX Messages**  
Ph. 592-5613  
Copies made - 15c  
UPs Packages  
Hughes Pharmacy

The Following is a list of dissatisfied Leader Classified Advertisers:

**MyStaf**  
Go to work for the fastest growing temporary -permanent placement service in the area.

**WE'RE HIRING NOW!**  
Typist • Metal Worker • Catering • Production • Data Entry • Machinist • Work Processing Warehouse • H/VAC Technician • Food Service • Receptionist • Assembly • Janitorial Accounts Receivable • Movers • Executive Secretary • Welders

Call Today! Start Tomorrow  
**MyStaf**  
322-5588  
Country Club Willage • 1501 Midwestern Pwky, Suite 1023  
Wichita Falls Never A Fee EOE

**PARK MOTORS**  
USED CAR SALES  
904 W. Highway 592-5890  
We Finance

Frank & Sandra Smith Owners  
**ROBINSON CREEK CATTLE CO.**  
Registered Brangus Cattle  
Bulls, Heifers, Show Prospects  
Bus. Office 426 Rifle Range Rd. 817/592-2980  
Robinson Creek Ranch Rt. 1 Box 58 - Vashli Bellevue, TX 76228 817-928-2049





**SOFTBALL MINOR LEAGUE ALL-STARS** finished third in the district tournament. Players include, front from left, Gidgette Byrd, Alisha Horsky, Jennifer Swanner, Kayla Green, Nataly Gray and Brandy McLemore; back row, Kriston McLaughlin, Whitney Cole, Amy Philmon, Nikki Pendergrass, Candice Wright, Valine Hyde, Holly Smith and Ashlee Binns. Coaches were Vonna Bailey, Greg McLaughlin, Gayla Harrell and Curtis England.

**LIBRARY NEWS**

**PIZZA HUT READERS**

TIMES UP! for our young patrons who participated in the reading program sponsored by Pizza Hut and Tom Burnett Memorial Library, during the month of July. Please bring your slip in to be checked. After it is completed you will receive a personal pan pizza from the Iowa Park Pizza Hut.

**STORYTIME CLASSES**

Starting Tuesday, Aug. 6, classes will be held each Tuesday from 9:30-10 for 2-4 years; Thursday, 1-1:30, 4-6 years, Friday from 9-9:30, 2 years and up. Classes consist of a story and color sheet or craft, with the themes varying with holidays and seasons. There are no fees for these programs.

**THANK YOU**

Ardis wishes to extend a special "Thanks" to Joy Blundell for taking over for me and covering Storytime on Fridays, while I was on vacation.

**NOW AVAILABLE**  
**Pecan Haven Mini Storage**  
**AND RV-BOAT STORAGE**

- 10X10 & 10X20 STORAGE
- FENCED - LIGHTED
- ACROSS FROM THE POLICE STATION

**110 S. WALL**  
**592-9320**  
CELLULAR # - 704-1377

**Helpful Facts**

The City of Iowa Park offers a \$250 reward for information leading to the arrest and conviction of any person committing arson within the city limits.

**It's A Fact . . .**

Residents of Iowa Park are eligible to purchase a dumping permit for \$5, to get rid of trash, appliances and brush at no additional cost by delivering it to the city's convenience center, located south of the intersection of Smith and Johnson roads. The permit is good for 12 full months. Days and hours the center is open include: 12-6 p.m. Fridays; 9 a.m.-5 p.m. Saturdays; 1-5 p.m. Sundays, and 12-6 p.m. Mondays. The center is closed Tuesdays, Wednesdays and Thursdays.

**Posey's Unique Gifts & Crafts**  
Consignments welcome

Quality Merchandise at low prices  
**SIDEWALK SALE SATURDAY!!**  
Weather permitting outside, inside otherwise!  
Come see our newly arrive merchandise as well.  
Brighton look-alike belts & purses, designer watches by Mary C., much more!

- Service
- Parts
- Sales

all major makes of washers, dryers, freezers, refrigerators, and window air conditioners.

• Franchise for most major brands

**Posey's Appliance Service**

**WIN THIS COOL '96 FORD XLT PICK-UP AT ALLSUP'S**

NO PURCHASE NECESSARY! REGISTER AT ANY ALLSUP'S STORE THROUGH AUGUST 17, 1996

**CHECK OUT the FIREWORKS at ALLSUP'S**

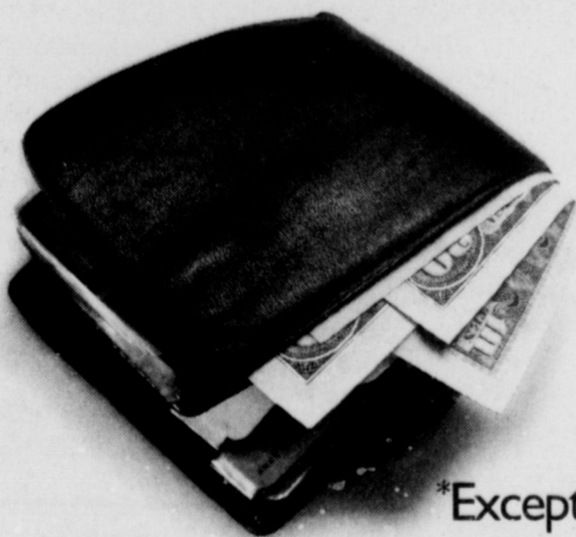
<b>PEPSI</b> 12 OZ. CANS 6-PACK <b>\$2.19</b>	<b>COMBO MEAL</b> 2 Hot Diggidy Corn Dogs! & Tallsup <b>\$1.89</b>
<b>HONCHO Fountain Drink</b> PLASTIC CUP 99¢ PLASTIC REFILL 79¢ 44 OZ. PAPER CUP <b>89¢</b>	<b>HUNT'S ASSORTED FLAVORS BBQ Sauce</b> 18 OZ. BTL. <b>89¢</b>

**ALLWAYS a LOW PRICE on**

<b>SHURFINE Citrus Punch</b> 64 OZ. BTL. <b>\$1.39</b>	<b>SHURFINE Hamburger Dills</b> 32 OZ. JAR <b>\$1.49</b>	<b>SHURFINE Corn Flakes</b> 12 OZ. BOX <b>\$1.29</b>
You'll find all this and more at your Allsup's store	<b>SHURFINE GRADE A Medium Eggs</b> 1 DOZEN <b>69¢</b>	<b>WESTERN FAMILY 35MM Disposable Camera</b> 27 EXPOSURES <b>\$5.99</b>
<b>IOWA PARK &amp; HOLLIDAY STORES</b>	STORE SPECIAL	STORE SPECIAL



**It's just like cash.\***



\*Except for the bulge.

**The Instant Cash & Check Card. Looks Like A Credit Card. Works Like A Check.**

Don't carry a big wad of cash. Now there's **Instant Cash & Check** from Norwest. Use it to get cash when you need it at **Instant Cash**, Cirrus® and Pulse® automatic teller machines. Use it to make purchases wherever Visa® is accepted, more than 12 million merchants worldwide! Simply present your card and ask to pay with Visa. Sign your name, it's that easy! It's more convenient than

carrying cash or writing a check. There's no need to show multiple I.D., and record keeping is easy! No monthly bill, purchases are deducted directly from your checking account. Your monthly statement will list the location and amount of each purchase you make. So, make your wallet less bulky. Get the convenience of **Instant Cash & Check**, only from Norwest Banks.



To The N<sup>th</sup> Degree®

Iowa Park  
219 West Park  
592-4418

**Instantly Win up to \$1,000** or other great cash prizes & free products!

Get a Free Game Ticket With Every **HONCHO** 44 oz. Fountain Drink Purchase!

Take this coupon to any Strebeck location. If you purchase a new vehicle before August 31, 1996, you will receive \$50.00 worth of free gasoline courtesy of ALLSUP'S.

**\$50.00 WORTH OF GASOLINE FREE!!!**

**ALLSUP'S Always**  
LOW PRICES, GREAT PRODUCTS 24 HOURS A DAY

**PRICES EFFECTIVE JULY 28-AUGUST 3, 1996 OFFER GOOD WHILE SUPPLIES LAST**