

6/13/96

MRS. LITA WATSON
520 W. CLARA
IOWA PARK TX 76367
112

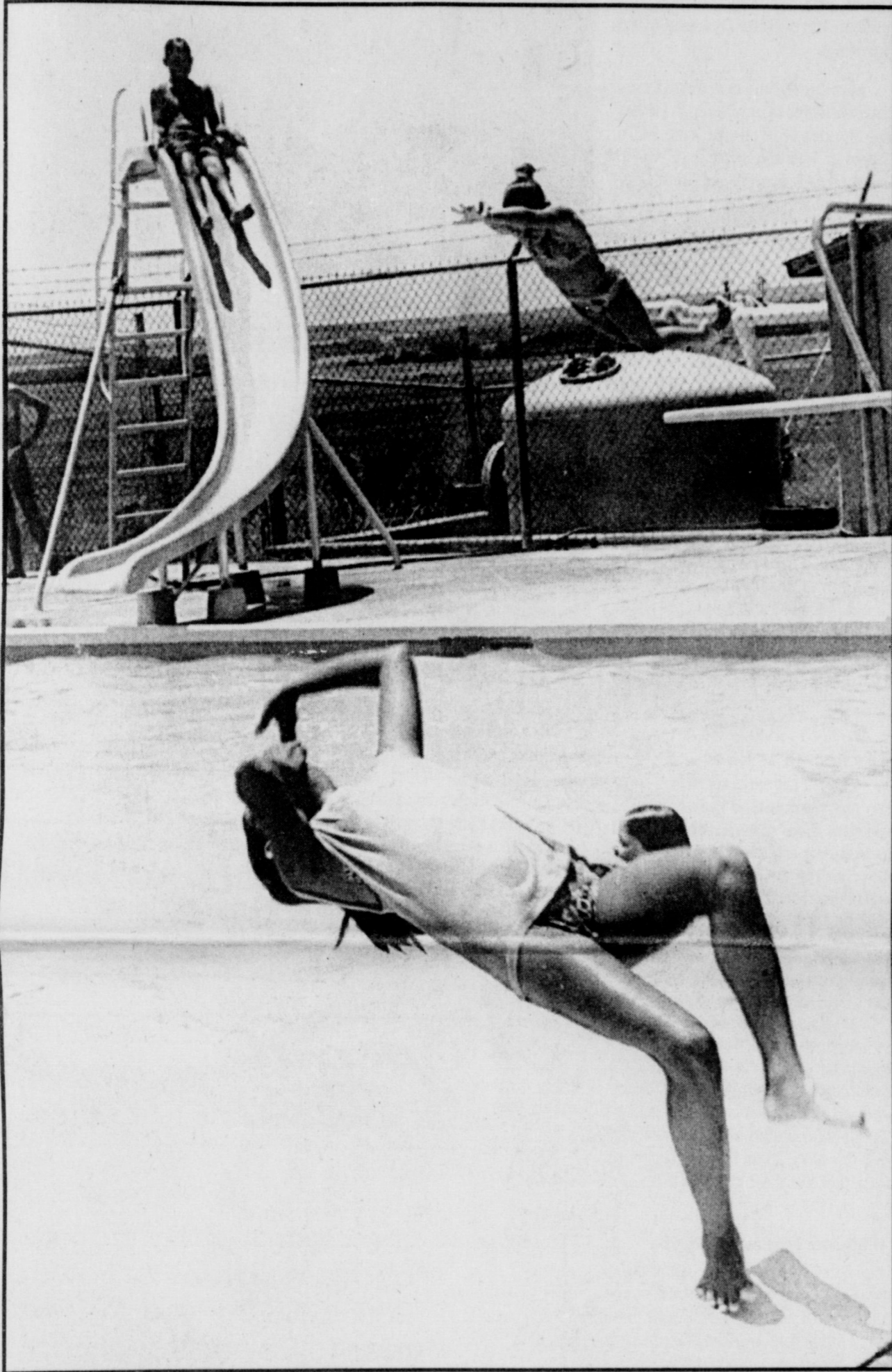


IOWA PARK LEADER 50¢

Vol. 27 No. 40

IOWA PARK, WICHITA COUNTY, TEXAS 76367

Thursday, June 13, 1996



REAL COOL ACTIVITY - Iowa Park's Bicentennial Swimming Pool proves to be a magnet for those wishing to cool off on hot summer afternoons, and have fun at the same time. But, while the facility is exceptionally busy during the daytime, one special evening schedule has been cancelled. Due to a lack of participation, the Monday Night High School Swim has been cancelled.

Three closed sessions on board's agenda

When the school board meets this evening, with their new superintendent as the district's professional staff representative at the table, three separate executive sessions are to be held.

The regularly-scheduled meeting is to get underway at 7:30 p.m., in the junior high school library.

Michael Caplinger will be the staff's spokesman, because retiring Superintendent Glen Mitchell is using up some of his leave time before his contract expires June 30.

According to the posted agenda, the portions of the meeting which will be held behind closed doors are for:

"A. Student discipline matter, consider request for change in the District tobacco policy.

"B. Grievance hearing for former cafeteria employees.

"C. Personnel matters; accept resignations; employ new personnel."

The agenda provides for "necessary action" to be taken on any of

the three executive session topics, once the meeting resumes open to the public.

Topics listed on the agenda under "Superintendent's Report" include "Thoughts concerning proceeds from sale of school property;" "Personnel requests for school year 1996-97;" "Superintendent's Workshop - July 13-15;" and "TAAS results at the July meeting."

Besides the usual departmental business reports, the agenda also calls for:

* Authorize Michael Caplinger to act on behalf of the District as Chief Executive Officer from June 13 to June 30, 1996;

* Consider shared services agreement for the West Wichita County Special Education Cooperative;

* Consider an auction of excess equipment from the old bus barn and the Valley View Schools, on July 13;

* Consider use of the high school auditorium and band hall for a dance

recital on June 29;

* Consider appointment of superintendent to the Regional Advisory Committee, Region Nine ESC;

* Consider delegate and alternate to the TASA/TASB convention Sept. 27-30 in Houston;

* Consider bids on athletic supplies and equipment.

Two discussion items are included on the agenda, including the student code of conduct which is due Sept. 1, and setting a date for a priorities/goal setting work session.

At the outset of the meeting, an open forum is stated, stating, "30 minute period when persons, who have requested, may address the board - limit for each person is five minutes; for extended presentations, contact the superintendent for a specific agenda item."

Does your subscription to the Leader expire this month? Check the list on page 4.

Charges pending on two juvenile cases

"It sure has started out early this year," commented Police Chief Ray Smock with a concerned expression on his face.

He was referring to the large number of juvenile problems his department has experienced in the few short weeks of summer vacation.

The chief was being questioned about two cases in the Garden Valley Addition involving juveniles, both taking place within a four-day period.

The first was a criminal mischief report filed Friday, when it was discovered that the telephone lines at Amanda's convenience store had been cut, and someone had used paint to write graffiti on the roof of the building.

Three male juveniles, two of them 15 years of age, have been identified, questioned and their statements taken, during the following investigation.

Police were considering on Wednesday what charges are to be filed in that case.

Then about 2 p.m. Tuesday, a neighbor reported seeing some young girls entering a residence in the 200 block of West Garden, and the caller said no one was supposed to be there at that time.

Police responded, and the result was eight females ranging in age from 11 to 15 were taken into custody.

The girls had in their possession some costume jewelry, leather bags and other miscellaneous items, none of which had real value, police said.

There were no signs of forceable entry, so it is believed they had entered through an unlocked back door.

Police believe all property has been recovered and returned, and they also are considering charges to be filed in the case.

Two criminal mischief reports also were filed by neighboring vehicle owners in the south part of town.

Sunday, the owners reported the paint on their vehicles had been scratched, while parked in the 1200 block of South Wall.

Thursday morning, police took a 32-year-old woman into custody after it was determined by a computer check a warrant had been issued for her arrest by the sheriff's department in Erath County.

Kimberly Andrew Starnes was picked up at a residence in the 400 block of West Pecan, and turned over to be transported to the county detention center.

Starnes was wanted on a charge of criminal mischief \$20-\$500, with a bond of \$500, according to the report.

When James Matthew Ferro, 24, appeared Tuesday morning in municipal court on two charges, he opted to not pay his fine and go to jail.

Ferro had been charged with operating an unregistered motor vehicle, and displaying a wrong license plate.

Police picked him up at 9:35 a.m., and transported him to the county jail at 2:36 p.m., according to the police blotter.

Council to cooperate on development plan

The city council Monday night agreed to again participate in the expansion of Park Place Addition, in the North part of town.

Developer Tommy Key requested the council to participate in what he termed the "second phase" of the addition, as it had in the original phase.

Under that agreement, the city does the contracting for street work and extension of utilities, for which the city is repaid at an eight-percent interest rate as each lot is sold.

Any lots unsold within three years of the agreement will be paid by the developer, according to the agreement.

Key, who is co-developer with his partner Tommy Hammond, said the new phase would be for 12 lots on a cul de sac.

He explained the expansion is needed because most of the original development's lots have been sold.

The council also approved another request during the meeting, that being from the Volunteer Fire De-

partment to close most of the 100 block of East Cash Saturday, June 22, for the organization's annual street dance fund-raising project.

The first of two required public hearings on an annexation request was held, without any comment from the audience. The property is in the 700 block of South Texowa.

Administrator Mike Price asked the council for permission to contract for the construction of a metal shed at the city's public works complex, to provide shelter for mobile equipment.

Price said the project was estimated to cost \$11,854, and his request was approved.

Aldermen approved bids offered on two vehicles, which were made available as excess property.

The bids included \$1,000 from Clinton Goswick for a 1979 van and

\$679 from Deryl James for a 1987 police cruiser.

A bid offered on the street sweeper, for \$679, was rejected, and no bids were received on any of the five bicycles which were available.

Mayor Tim Hunter's appointments of himself, Tracy Fears and Joe Ward to represent the city on the RAC Council were confirmed.

Also approved was a resolution naming four individuals as qualified under the First-Time Homebuyer Assistance program through the city's Home Program.

The individuals included David Bailey, Shelly Moore, Darrell Holder and Gena Lawrence.

Aldermen are to hold the second in a series of 1996-97 budget workshops next Monday in council chambers, commencing at 7 p.m.

NEWS BRIEFS

Parents offered free textbooks

The Iowa Park school district has a large number of out-of-date books which are available free to parents.

The books, stored at the Valley View campus, are allowed by law to be distributed to parents, to assist with helping their students prepare for regular school classes.

Because the Valley View cam-

pus has been sold and storage space is limited, the district is offering the books to parents.

School officials will be at the campus between 2 and 4 p.m. Tuesday to make the distribution. Entrance should be made on the South side of the newest building.

State law prohibits resale of textbooks.

Noisy clouds drop little moisture

Clouds passed over the area twice during the past week, but had more sound and fury than precipitation.

Virgil Woodfin said he measured a total of .37, including .22 Thursday and .15 Monday.

The early-morning storms woke residents up with their loud rumblings

and shook up some folks in the 400 block of East Jefferson.

David Ohm said a lightning bolt destroyed a large cottonwood tree, but he reported no damage to any other property.

One report from the Valley View area was that about an inch and a half of precipitation fell Monday.

Leader to print early next week

Next week's issue of the *Iowa Park Leader* will be printed a day earlier than usual, requiring all deadlines to be moved up one day.

Though the issue will be dated June 20, it actually will be printed Tuesday evening and distributed on Wednesday, instead of the usual Thursday.

Deadline for display advertisements (those with borders), will be 4 p.m. Monday. Classified advertisements, such as garage sales, must be turned in by noon Tuesday, in order to make that issue.

All deadlines and publication dates will resume to their normal days commencing with the June 27 issue.

Continued on page 4

Escue, Stanfield nuptials read in Saturday afternoon ceremony

A double ring candlelight ceremony performed Saturday afternoon at two o'clock in First Baptist Church of Wichita Falls united in marriage Tina Marie Escue and David Lawrence Stanfield.

Herman and Linda Escue of Iowa Park are parents of the bride. She also is the granddaughter of Lee and Billie Nielsen of Wichita Falls and Jewel Escue of Iowa Park and the late Clarence Escue.

The groom's mother is Dolores Stanfield of Vicksburg, Miss. He is the grandson of Elsie Rote of Oklahoma City, and the late Cecil Rote.

Rev. Mike Blaylock, Minister of Education of First Baptist Church of Wichita Falls, directed the couple in the recitation of their nuptial vows.

The couple left following their wedding for a honeymoon in San Francisco, Carmel and Monterey, Calif. They will establish residence in Wichita Falls when they return.

English ivy and stargazer lilies decorated the altar candelabra. Baskets of Boston Fern and tulle and gold brocade bows completed the decorations.

Wearing a formal bridal gown of white silk shantung, the bride was given in marriage by her father. Her gown was designed with fitted off-the-shoulder bodice accented with pearls. The full skirt was fashioned of tulle. She wore a veil of tiered illusion caught to a headpiece of silk shantung rosebuds.

Stargazer lilies gathered with gold brocade ribbon formed the bride's bouquet.

The musical program consisted of "All I Ask of You" and "I Will Be Here", solos by Terry Escue, brother of the bride; "More Than Wonderful" and "Household of Faith", duets by Escue and Julie Whitecotton, and "Shine On Us", sung by a trio composed of Escue, Buddy Mercer and Monte Clearman.

The attendants entered the nuptial area to the tune of "Canon in D".

For the bride's entry "Trumpet Voluntary" was played by Karalee Boucher, organist, and trumpeter, Connie Jennings, who with pianist Matt Haddock played the "Wedding March" as the Sabre Corps from Sheppard Air Force Base performed for the bride and groom's recessional.

Cindy Haddock of Waco served the bride as matron of honor.

Bridesmaids were Holly Escue of Savannah, Ga., sister-in-law of the bride, Celeste French of Wichita Falls, Sharon Wynn of Lubbock and Heather Shipley of Wichita Falls.

They were attired in identically styled tea-length gowns of azalea faille. Their dresses were designed with princess seams, off-the-shoulder necklines and above the elbow sleeves.

They carried bouquets of stargazer lilies gathered with gold brocade ribbon.

The groom's best man was Joe Golovach of Wichita Falls. Groomsman were Dave Wilder of San Antonio, Eddie Melton, Vicksburg, Mark



Mrs. David Lawrence Stanfield
(Miss Tina Marie Escue)

Snow of Tucson, Ariz., and Edward Godsey of Wichita Falls.

Serving as ushers were Mark Skelton, Mark Franklin, Jason Randolph, and Brandon Beshear, all of Wichita Falls.

Jessica Davis and Bobbi Lynn Gilmore, both of Iowa Park, distributed programs to guests.

The reception was held in Fellowship Hall of First Baptist Church.

Arrangements of fresh stargazer lilies and English ivy in large blown glass vases decorated the reception area.

The bride's four-tiered white cake was decorated with fresh English ivy and stargazer lilies and was arranged on a table laid with a green cloth under white Battenburg lace.

A two-tiered chocolate cake with chocolate drizzle and chocolate dipped strawberries was arranged on a table laid with white Battenburg lace over green.

An additional focal point in the reception area was a photo essay of the bride and groom from highpoints in their lives.

The registry table was decorated with a bride doll that had belonged to the bride's mother and to the bride when they were growing up. Kari Cole of Wichita Falls registered guests.

Members of the houseparty were Becky Hardegre, Susan Williams, Joylyn Simpson, Nancy Beshear, Lynn Ehn, Stacy Golovach and Jeanne Crossland, all of Wichita Falls.

The bride is a graduate of Iowa Park High School and Midwestern State University. She is a fifth grade

teacher at City View Elementary School in Wichita Falls.

Stanfield is a First Lieutenant in the U.S. Air Force, assigned as as Military Training Flight Commander, Sheppard Air Force Base. He graduated Lafayette High School in Oxford, Miss., and the University of Mississippi.

Out-of-town guests for the wedding came from Mississippi, Georgia, California, Arizona, and Oklahoma.



Reid

A son, Dylan Paul Fulfer Reid, was born May 16, at Bethania Regional Health Care Center to Paula and Michael Reid. He weighed eight pounds and three ounces. The new baby has a sister, Tiffany, and a brother, Cody.

Grandparents are O.L. and Eula Fulfer of Kamay.



RAC NEWS

Bridge Results

With three tables in play, Ray Anderson had the high score of 4140 at bridge last Wednesday. Second high of 3400 was reported by combined efforts of Betty Dyer and Marti Tinnerstet.

Monday's game had close scores with two tables in play. Louise Helms had the high of 4850 and John Chapman had the second of 4840. There are 11 players registered for next Monday.

T-Shirt

We will be decorating t-shirts for the 4th of July with the children on Friday. Those who attend should bring a white t-shirt and \$2.00. We will provide paints, supplies, shirt boards and instructions. To assist us in preparation, we ask that you call ahead if you are coming to this event.

Thank You

The RAC would like to thank Wendy Meadows for assisting us with our summer program this week. It is "junior gardeners" week at the RAC, and we potted flowers and plants with the children. Thanks also to Wal-Mart for the donation of supplies for this project!

Summer Programs

The theme next week for summer programs will be 'music makers.' We will have a variety of musical instruments available on Friday for the children to experience. Games and projects throughout the week will also be based on this theme. Other themes this summer will include transportation, clowns, teddy bears, splash party, ice cream, friends around the world, and back to school.

If you haven't been attending the summer programs, we encourage you to join us... we're having lots of fun! Summer memberships are \$5.00 each and program fees are only \$2.00. Those who attend all week will get one day free. To register, or for more info, call the RAC at 592-4471.

Kleenex Boxes Needed

For one of our upcoming projects, we will need tissue boxes that open from the top. If you have any empty ones, or would like to save them for us, we would appreciate any donations.



Aleisha Gayle Bowen and Larry Wayne Mayberry

Announce engagement

The marriage of Aleisha Gayle Bowen and Larry Wayne Mayberry is planned for Friday, June 21.

The bride-elect is the daughter of Linda Croom of Wichita Falls and Farrell Branch of Electra. Parents of the groom-to-be are Glen and Kay

Ledbetter of Wichita Falls

Ms. Bowen is a graduate of Jal, N.M. High School.

Mayberry is a graduate of Hirsch High School in Wichita Falls. He is employed at Food Depot in Iowa Park.

Art group has June meeting

Members of Iowa Park Arts and Crafts Association learned to make bluebonnets during their June meeting.

Debbie Richard was in charge of the program. She showed the group how to make replicas of the state flower using plastic soda can holders.

A set of crocheted sunflower kitchen towels, made by Bobbie Heacox, was the door prize. They were won by Sheri Heidrich.

The work of Dorothy Johnson

will be on display at the library this month.

At the July meeting, Ann Harper will show the group how to make a wreath swag.

Does Your Subscription to the Leader expire this month?

Check the list on page 4.

A Special Thank You

To The Board of Education and employees of Iowa Park CISD for the Retirement Reception and Watch given me on Friday, May 24, 1996.

To Georgia Kingcade, Amy Brown, Beckie Lovelady, and Georgia Moore for planning the reception.

To The community for the opportunity you have given me to be your superintendent for the past eleven year.

It is Willa's and my prayer that the Lord will bless each of you and that you will continue to make a difference in the lives of boys and girls of Iowa Park in the days ahead.

Glen Mitchell



Asters on Rose Overlay Glass

Glistening clear Dusty Rose layered over a core of pristine Milk glass. Fenton craftsmen blow this lovely combination into a vase, basket and pitcher. Martha Reynolds designed handpainted Asters with a visiting butterfly to complement each piece.

The pitcher is inscribed with Lynn Fenton's signature (4th generation) as part of the 1996 Family Signature Series.

FENTON

Handmade in the U.S.A. since 1905

D&J ANTIQUES

NANNY'S ANTIQUE MALL 111 W. PARK
DAVID & JANIS WILSON, DEALERS
592-2100 592-9095 (HOME)

More than a pharmacy, we offer

SERVICE

FREE BLOOD PRESSURE TEST

TAKES ABOUT A MINUTE OF YOUR TIME

We can send and receive your important messages and documents, in a matter of seconds...and at a most affordable price.

Our RECEIVING FAX phone number is
817-592-5613

Hughes
PHARMACY

HEALTH MART

120 W. Park Joe Hughes - Pharmacist
Toll Free 1-800-585-4191 592-4191 UPS Service

Cook of the Week



Lorene Mahler

Often, women who are known for their cooking skills tell us, "I don't cook that much anymore since the children are grown and no longer living at home."

And who would blame them? After many years of preparing hot meals and trying to please different appetites, they deserve less time in the kitchen.

But luckily for our readers who are looking for new recipes to try, and those who are just learning to cook, these ladies are willing to share some of their favorite recipes.

Lorene (Mrs. Bill) Mahler, who is known as a good cook, told us that she doesn't cook as much as she once did. But she agreed to let us use some of her recipes.

"Pork Chop Casserole" is her daughter's favorite, and "Baked Corn Casserole," a recipe given to Lorene by her late mother-in-law, Maggie Mahler, is a favorite of her son. She said the recipe for "Beef Burgundy Flambe" is easy to prepare and good to serve a crowd.

Lorene grew up near Addington, Okla., where she graduated high school.

She met Essie (Caldwell) Johnson while attending beauty school, and they later worked together in the beauty salon at Perkins Timberlake in Wichita Falls. When they leased a shop together in Iowa Park, Lorene was invited to live with Essie's family, the Caldwelles. She agreed, and

lived there until she and Bill Mahler were married.

Bill was born in Iowa Park and is a graduate of W.F. George High School. He received a B.S. degree in Agriculture from Midwestern State University in 1955, with a Soil and Plant Science major and an Animal Husbandry minor. He received the M.S. in Botany; Plant Taxonomy from Oklahoma State University in 1960, and his Ph.D in Botany; Plant Taxonomy at the University of Tennessee in 1968.

He has taught at several universities including Southern Methodist University, where he was also director of the herbarium.

While Bill was teaching at SMU, he and Lorene lived in Richardson and Plano, and she worked in the Dallas County Tax Office.

They moved back to Iowa Park

in in 1992, and bought the home next door to Bill's dad.

The Mahlers have two children. Their daughter Brenda lives in Dodge City, Ka. She is married to a physician and has two children. Their son Shawn is single, and lives in Arlington where he is an accountant.

Lorene likes to travel, see her grandchildren, and play cards. She and Bill have a farm in Oklahoma, located close to where she was born, and they go there a lot. She said that several family members live near by, and it's like having a family reunion every time they go. They are members of First United Methodist Church.

Beef Burgundy Flambe

- 2 slices bacon
- 2 Tbsps. flour
- 1 tsp. seasoned salt
- 1 cup burgundy
- 1 1/3 cup water
- 2 lbs. sirloin steak, cut in short thin strips
- 1 Tbsp. tomato paste
- 12 small onions - no larger than 1 1/2" diameter
- 16 cherry tomatoes
- 1 Tbsp. butter or margarine
- 1/4 cup brandy
- 4 oz. fresh mushrooms, sliced & lightly browned

Fry bacon in a dutch oven. Coat meat strips with a blend of flour and seasoned salt. Add to fat in dutch oven and brown thoroughly. Add beef stew seasoning, burgundy, water, and tomato paste. Cover and simmer gently 45 minutes.

Peel onions and pierce each end

with a fork so they will retain their shape when cooked. Add onions to beef mixture and simmer 40 minutes or until meat and onions are tender. Add mushrooms and cherry tomatoes. Simmer 5 minutes. Pour into shallow serving dish or chafing dish.

Heat brandy quick & gentle over hot water. Pour over beef burgundy; set aflame at the table. Stir gently and serve over rice or noodles.

Fourteen Karat Cake

- 2 1/4 cups flour
- 2 tsps. baking powder
- 1 tsp. soda
- 1 tsp. salt
- 2 tsps. cinnamon
- 2 cups sugar
- 1 1/2 cup oil
- 4 eggs
- 2 cups grated carrots
- 1 - 8 1/2 oz. can crushed pineapple, drained
- 1 cup chopped nuts
- 1 tsp. vanilla

Sift together dry ingredients. Add sugar, oil and eggs; mix well. Add carrots, pineapple and nuts. Turn mixture into three greased and floured 9" layer pans. Bake at 350 degrees 35 to 40 minutes. Cool and frost with following:

Cream Cheese Frosting

- 1/2 cup butter or margarine
- 1 - 8 oz. pkg. cream cheese
- 1 tsp. vanilla
- 1 lb. powdered sugar

Pork Chop Casserole

- 6 thick pork chops
- 4 med. sweet potatoes
- 2 oranges
- 1/2 cup orange juice
- 1/2 cup brown sugar
- 1/2 tsp. salt or to taste
- Dash of cinnamon, nutmeg

Trim excess fat off chops and brown in skillet.

Slice (peeled) yams into 1/2" slices. Place layer in bottom of 9x13 baking pan. Top with thin slices of orange. Place chops on top of orange slices.

Mix 1/2 cup orange juice, brown sugar, and spices; pour over meat. Bake covered 45 minutes; then uncovered 20 minutes in 350 degree oven.

Jalapeno Potato Salad

- 5 cups cubed, boiled & peeled potatoes
- 4 boiled eggs, coarsely chopped
- 5 ribs celery, diced
- 5 or 6 green onions, diced
- 1 med. yellow onion, diced
- 1 1/2 to 2 cups mayonnaise
- 1/4 cup chopped pickled jalapenos
- 1 Tbsp. juice from jalapenos
- 1/4 cup chopped parsley
- 1 tsp. comino

- 1 tsp black pepper
 - 1 1/2 tsp. salt
- In large bowl, combine potatoes, celery and both onions.

Combine remaining ingredients and add to potato mixture. Mix well and chill several hours or overnight. NOTE - This goes well with barbecue and baked beans.

Baked Corn Casserole

- 1 can cream style corn
 - 1 can whole kernel corn
 - 3 eggs
 - 2 Tbsps. sugar
 - 1 tsp. salt & pepper to taste
 - 1/2 stick margarine, melted
 - 3/4 cup Bisquick mix
- Mix first 6 ingredients well. Then stir in Bisquick mix. Pour into greased 9x12 baking dish.

Topping

- 2 cups coarse bread crumbs mixed with 1/2 stick melted margarine.
- Bake at 350 degrees 30 minutes until set.

Helpful Facts

Property owners working on their plumbing and needing the water cut off at the meter should contact city hall for assistance.

Fieldon and Girtue Britt Family Reunion

Saturday, June 15, the family of Fieldon and Girtue Britt will gather at 705 E. Jefferson Ave. Friends of the family are invited to visit between 2 p.m. and 4 p.m. Loretta (Britt) Stephens

"Make it a perfect wedding beginning with your invitation!"

Select yours from Regency's fine collection of Wedding Invitations and Accessories.

Jack's Park Pharmacy
115 WEST PARK IOWA PARK 592-2731

Father's Day is June 16

Hallmark Carks, Fragrances, Electric Razors, Dominoes, Personal Gifts

Jack's PARK PHARMACY
115 W. Park 592-2731 FREE DELIVERY SERVICE



Allstate
You're in good hands.

606 East Highway • Iowa Park
592-4499 • Fax: 592-2093

Mark Inman Insurance Agency

Come by and see Jennifer Inman Jo Wanda Zeigler or Jimmy Doolen for a

"Free Coke and A Quote"

Come by for a quote on your insurance and have a coke on us." Call for a quote if you cannot come in.

Hours: Monday through Friday 9:00 a.m. - 12-noon and 1:00 - 5:30 p.m.

STATE NATIONAL BANK Presents

ACROSS

- 1 Austin business: Hickorybaked Honey
- 5 TXism: "get your ducks in"
- 6 TX B.J. Thomas hit: "Lonesome I Could Cry"
- 7 TXism: "he's plumb" (crazy)
- 8 pre-hurricane (2 wds.)
- 18 to ax a tree
- 19 Kingsville Naval
- 21 this TX Clark was Australian ambassador
- 22 Ranger "Pudge's" glove
- 23 Gilley's mechanical bull (2 wds.)
- 24 first name of TX's 1st female governor
- 29 TXism: "raise a little" (celebrate)
- 30 Brownsville TV
- 31 TX Tanya (init.)
- 32 TXism: "feel like I was chewed up"
- 34 citrus drinks
- 35 TXism: "took everything but the ___ in my lungs" (robbed)
- 36 fell behind
- 37 to read quickly
- 38 UT is ___ mater of Earl Campbell
- 39 insect harmful to plants
- 40 crippled horse
- 41 pasted
- 42 Gulf fish catcher

DOWN

- 1 "All ___ State!"
- 2 Fort Hood's "2nd ___ Division Museum"
- 3 TX Bush signed START 2 here
- 4 "in one fell ___"
- 9 TX '24 slogan: "Me for Ma, And ___ Got a Dern Thing Against Pa"
- 10 quote a source
- 11 San Antonio's River ___ Show
- 12 jeans inventor Levi (init.)
- 13 this Seagal starred with TX Tommy Lee in "Under Siege"
- 14 "tall" TX stories
- 15 this Preminger directed TX Tierney in "Laura"
- 16 ___ Grande
- 17 TX 1st Poet Laureate: Judd ___ Lewis
- 20 Nolan Ryan's last contract had a ___ clause
- 22 in Bowie Co. on 67
- 24 nickname of 24-across
- 25 TXism: "big biscuit ___ the pan" (boss)
- 26 Palmer plays 3 ___ base for Rangers
- 27 Galveston is one
- 28 TXism: "couldn't fight his way out of ___ bag"
- 29 A&M females
- 30 Sinton AM radio
- 33 Dallas based ___ Friday's
- 34 where TX John Wesley Hardin died
- 35 used by TX fishermen (2 wds.)
- 37 NAFTA Mexican signer: ___ Gortari
- 38 this Kessler was a Houston Rocket 1st rounder
- 40 young men
- 41 cotton processors
- 44 Chester, TX named for this U.S. president (init.)
- 45 TXism: "compadres"
- 48 TXism: "___ over the outhouse" (caused trouble)

The Original TEXAS CROSSWORD
by Charley & Guy Orbison
Copyright 1996 by Orbison Bros.

JUNE IS COMMUNITY BANK MONTH
and State National Bank would like to say "Thank You" to all our customers. Locally owned for over 60 years. "You'll like our attitude."

Last Puzzle Solution

STATE NATIONAL BANK

104 W. PARK 592-4131

Your Full Service Bank
Striving to meet your banking needs

Equal Housing Lender
FDIC

As I See It... By Bob Hamilton



For several months now, I've been following the progress of a new industry which is being finalized near the city of Perryton, up in the extreme northeast corner of the Panhandle.

It's unlike anything we have in this part of the country. It's a major, major pig farm.

Texas Farm is a subsidiary company of Nippon Meat Packing, Inc. of Japan. Nippon is the largest supplier of pork and pork products in Japan. After Texas Farm pigs are slaughtered, the majority of the cuts will be exported to Japan, writes my old publisher friend Jim Hudson.

How big is Texas Farm? Well, when completed and in operation, it will have 220 employees and an annual payroll of \$4.4 million.

Plans are to produce 540,000 market pigs each year.

But, folks, this isn't your ordinary big series of muddy pens where the pigs are raised. Nope, they'll never see the direct light of day, because they will be raised inside huge buildings.

The industry will expend a total of \$110 million when completed. Of that, \$85 million is for construction and equipment, and the rest for land.

Keeping up with the progress of Texas Farm -- they recently held an

open house for the public, because the general public will never get to go inside once it is in operation -- has reminded me of a couple of stories concerning pork production that I wrote about back in the 1960s.

The first time I ever heard of raising pigs completely indoors was when Jimmy Dean began contracting with farmers around the Plainview area.

Dean's company was promoting what they called "whole-hog" sausage at the time.

But the point being made was that they would purchase only disease-free pigs for slaughtering. And that meant that the pigs had to be raised in a disease-free environment.

And in order to insure that the hogs were free of any diseases, the original stock had to be taken by cesarean operation, performed by a licensed veterinarian.

Problem was, at that time I was told that only two such vets in the nation did the operation. And the producers who entered into the business had to take their sows to his clinic -- in Idaho.

Setting up a disease-free pork production system is expensive enough, but it doesn't stop there. You see, humans, who can transmit dis-

ease to pigs, must completely change their clothing as they enter a hog barn, and put on sterilized clothing.

That's why the general public will not be allowed to tour Texas Farm, once its operation gets underway.

The second hog story of which I was reminded actually originated with a railroad.

While doing a special edition concerning the anniversary of Swisher County, someone gave me a copy of a report prepared by a scout hired by Santa Fe Railroad.

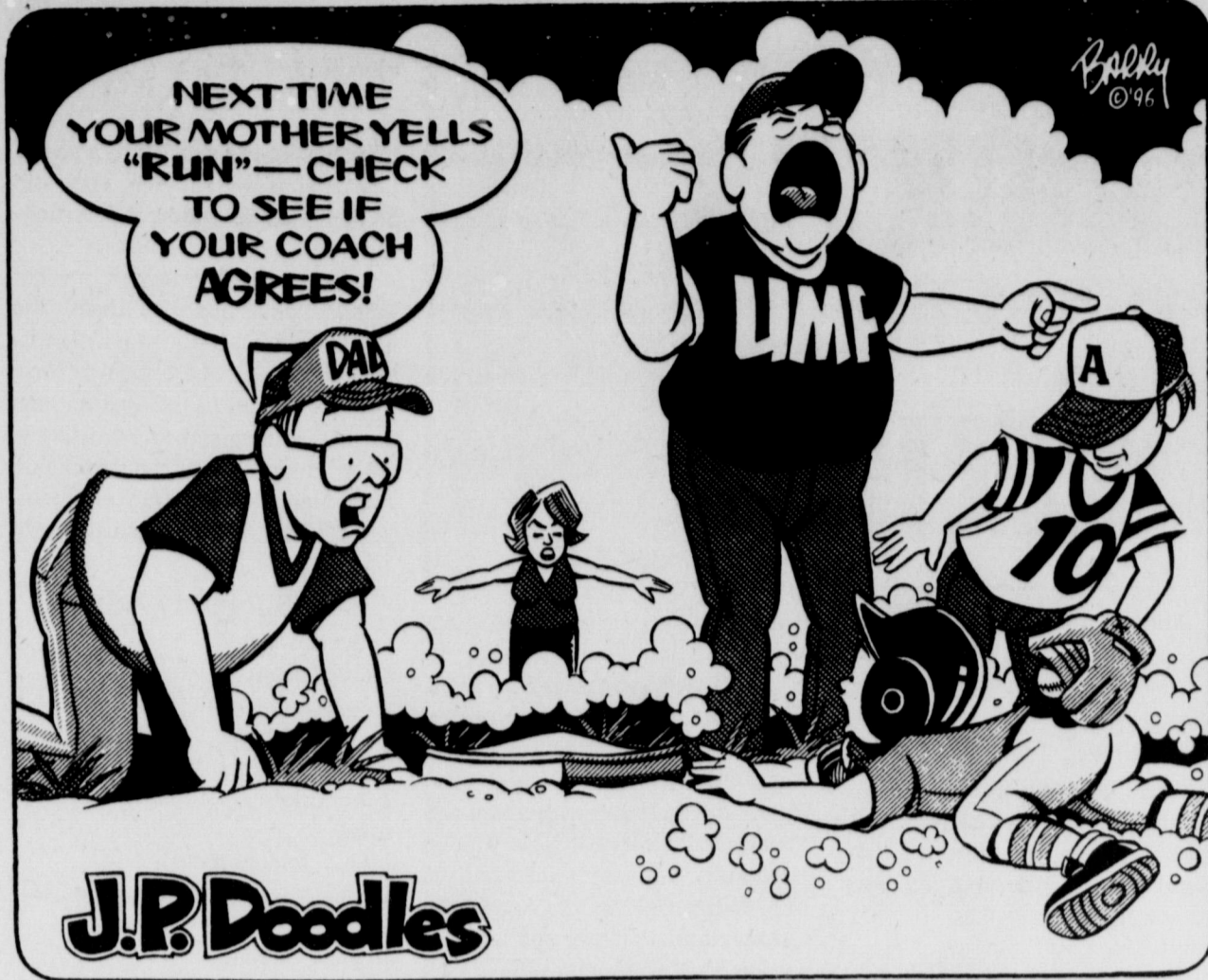
He was assigned to scout out the Panhandle of Texas, because the company was considering building the first rail line into that area.

The scout lived in the northern part of the country, apparently somewhere in Illinois, so you can imagine his impression of this part of the country.

I can't lay my hands on that copy of his report, but in essence, he wrote:

"It's flat, hot and dry. The wind blows all the time. There are no trees, but a lot of grass. And it's not good for anything besides raising hogs."

That report was prepared more than 100 years ago, but Jimmy Dean and the Japanese have apparently finally discovered how accurate it was.



Early

Continued from page 1

The early publication date has been made necessary, in order for some of the staff to attend the annual summer convention of the Texas Press Association, which will be held in Galveston.

"We recognize that moving our deadlines around are an inconvenience to our customers and readers," said Publisher Bob Hamilton. "But with a limited staff, this is the only way we have to attend such events as the TPA convention. We really appreciate everyone's cooperation and understanding."

OPEN HORSE SHOW

An open horse show will be held Saturday at the Holiday Creek Ranch - Jack Ayres Arena, sponsored by the Holiday Area 4-H Club. Registration is to begin at 8 a.m. and ride at 9.

Letters to Editor policy explained

The *Leader* receives numerous letters which cannot, for one reason or another, be published.

Letters will not be printed unless they are signed. A typed name will not do. And, for the sake of verification, the writer's telephone should be included.

Should the writer not wish his/her name printed, it will be omitted upon request. However, the letter will be kept on file to be read upon request.

Letters also must be free of libel. If not, they will not be published, because we will not edit the content of any letter.

In letters supporting political candidates or issues, the *Leader* reserves the right to limit their lengths.

We encourage your Letters to the Editor, and offer the paper space as your forum for discussions of ideas and observations.

WORTH QUOTING

We never thought we'd see the day that a prairie dog was worth more than a cow and a calf.

According to news reports out of Amarillo, a company up there is sucking prairie dogs out of their holes and pedaling them to the Japanese as exotic pets for \$700 each.

Gay Balfour and Dave Honaker, co-owners of Dog Gone, were in the fourth week of prairie dog roundup on a 320-acre tract.

"These little guys are worth \$700 apiece as pets in Japan and \$450 in New York," Balfour, who invented a large suction device that pulls the critters from their burrows, told the Amarillo Globe-News.

Honaker said the rodents make good pets. "They're real trainable and social animals," he told the interviewer.

He should have added a note of warning that only the real young can be made into pets.

We remember talking to Andrews pioneer Daisy Craddock who kept a diary of her early days in this county.

She said at one time, around 1912, that a prairie dog village stretched all the way from Andrews to Leveland. She said cowboys hated to fight brush fires north of Andrews because of all the prairie dog holes.

Like many other West Texans, we can testify that prairie dogs, if taken young enough, can make good pets.

But we have scars on our fingers from messin' around with the adult critters. They can bite thru a leather glove like a hot knife going through cold butter.

Joe Allbright, out east of town, probably had a fortune on his hands at one time. That's where the dogs in Prairie Dog town came from. Volunteer firemen used local fire trucks to flush the critters out of their holes and bring them into Andrews to stock the pen back of the chamber building.

But local officials soon found that you can't mix residents of one village with those from another. In other words, you can't integrate villages.

Once, when the local supply ran low, Odessa furnished Andrews a dozen prairie dogs from their dog village.

When placed in Prairie Dog Town, havoc resulted.

One group -- we were never sure whether it was the out-of-towners or the local prairie dogs -- refused to co-habit and soon we had prairie dogs that dug under the fence and appeared on the block east of the chamber, some west, and some down by the lake.

Small, round holes started appearing in the pavement just west of the chamber building and motorists were startled to see tiny heads pop up in the middle of the street.

Back in the days before organized activity took over a kid's summer, we and brother Wesley built many a trap using 1x4's, screen wire, and tin from Prince Albert pipe tobacco cans. And when the traps failed, we'd walk and carry No. 2 washtubs full of water from nearby windmills to try and drown out the little critters.

Cold weather and prairie dogs don't mix -- at least on top of the ground. We've thrown shoeboxes full of seemingly frozen-stiff prairie dogs out in the yard only to have the sun warm them and bring them back to life. Pick up a prairie dog by its tail when it's in that frozen state -- and the tail will come off in your hand.

During a cold spell, when the embers in the wood-burning stove died and the temperature in the house would plummet, the young dogs would appear frozen and dead the next morning.

But when wrapped in a cup towel and placed in the kitchen oven, it didn't take long for the little critters to start barking.

A young prairie dog can be made into a lovable pet that the entire family can enjoy. We once had one named Jerry that became a town favorite.

In the late afternoon, he'd waddle over to Andrews Drug, amble into the cool interior, and bark until someone fed him vanilla ice cream. He quickly became an obnoxious, overweight, overbearing eight-pound pest.

He died from a slug from a Colt .45 wielded by an angry widow woman fed up with Jerry digging in her vegetable garden.

We still have prairie dogs in Andrews, especially north of town on the Seminole highway. But if we don't get heavy rains soon, ranchers may have to turn to selling prairie dogs to survive.

First it was chinchillas, then ostriches, then emu's, and now prairie dogs. What next? Crows?

JAMES ROBERTS
Andrews County News

things and now there seems to be a mass exodus.

So I just wanted to state publicly how much we appreciate the efforts of some of those who are moving or have moved on.

We first met the Rev. Ed Prince and his family at one of our first official functions in Henrietta last summer, the Independence Day celebration on the courthouse square.


We would encounter Ed many more times during the last few months, from little league basketball games to Henrietta High athletic events to community-wide services.

We always found Ed to exude geniality, and we are grateful for his personal friendliness and to what he meant to this community.

No sooner had we gotten over the shock of Ed moving on to a church in Brownfield than we got the word that our own pastor, Tommy Brumett, was being reassigned in Bonham. Tommy was another whom we met early on, and who welcomed us warmly and sincerely.

He has been there for us during the sometimes difficult transition to a new environment, and to use one of his favorite phrases, his ministry has been a blessing to us. He and his family will leave Henrietta a better place than they found it.

PHIL MAJOR
Clay County Leader



IOWA PARK LEADER

THE LEADER

Bob Hamilton	Editor/Publisher
Dolores Hamilton	Co-Publisher
Kari Collins	Advertising Director
Myrna Smith	Reporter
Don Young	Sports Writer

The IOWA PARK LEADER is published every Thursday. Offices are located at 112 W. Cash, Iowa Park, Texas, 76367 (766280). Telephone: 592-4431. Second Class Postage Paid at Iowa Park, Texas 76367. Annual Subscription rates are \$15 in Wichita County; \$17 elsewhere in Texas; \$20 anywhere in the United States. Any erroneous reflection upon the character, standing or reputation of any person, firm or corporation which may appear in the columns of this newspaper will be corrected upon being brought to the attention of the publisher. The entire content of each issue of the Iowa Park Leader is protected under the Federal Copyright Act. Reproduction of any portion of any issue will not be permitted without the express permission of the Iowa Park Leader.

MEMBER

TEXAS PRESS ASSOCIATION

NOTICE TO SUBSCRIBERS

This is only a notice to those listed below that their subscriptions will expire on the published date. You don't owe us a thing if your name is on the list. It only means that what you've paid for is running out. To renew your subscription, please fill out the form below, as it appears on your paper's mailing label. Indicate whether this is a renewal or a new subscription. Enclose your check or money order, as all subscriptions must be paid in advance.

**Subscriptions due to expire
JUNE 15, 1996**

Please disregard this notice if already paid

- | | | |
|--------------------|------------------------|---------------|
| A | L | |
| H. Abernathy | Leon Little | |
| JS Automotive | | |
| B | M | |
| Marvin Banks | Dean L. Miller | |
| Kenneth L. Battle | Dale Moore | |
| Fay Brott | Leona Moore | |
| Kenneth Burditt | | |
| Lance Burroughs | Mc | |
| | Shane McKnight | Phoenix |
| C | N | |
| Jim Cash | Weldon Nelms | |
| Catherine Cox | Joe H. Noel | |
| Johnny Crawford | | |
| D | P | |
| Gene Dean | Terry Peters | |
| Martha Dillard | | Burleson |
| E | R | |
| K & M Electric | Ron Rainsberg | |
| | Monty Reaves | |
| F | S | |
| Tom Fitzgerald | Emilie Sherrod | Richardson |
| Kathy Brott Franks | Sgt. Maj. Ron Stebbins | Wichita Falls |
| | Gilbert Stogsdill | Burleson |
| G | Weldon Strain | |
| Barney Glickman | James Swan | |
| Joy Griffith | | |
| Tommy Gruber | | |
| H | T | |
| Robert Harper | Larry Thompson | |
| Sam Henderson | John E. Timms | |
| Johnie Hicks | Roger Tinnerstet | |
| Ronnie Holliday | | |
| Leo Howland | | |
| K | W | |
| C. S. Ketchersid | Stephanie Wood | |

Wichita County	\$15.00
Elsewhere in Texas	\$17.00
Elsewhere in United States	\$20.00

PLEASE CHECK ONE:

New
 Renewal
 Change of Address Only
 \$ _____ Enclosed

Name _____

Address _____

City _____ State _____ Zip Code _____

OBITUARIES

Jettie Estelle Sampley

Graveside services for Jettie Estelle Sampley, 87, will be at 10:30 this morning (Thursday) at Highland Cemetery Pavilion with Dr. Greg Ammons, pastor of Faith Baptist Church, officiating. Arrangements are under the direction of Dutton Funeral Home.

She died Monday in a Wichita Falls hospital.

Mrs. Sampley was born Oct. 28, 1908, in Altoga. She and Edgar Monroe Sampley were married June 4, 1927, in Grayson County. He died Feb. 8, 1954.

She was a member of Faith Baptist Church and the Friendly Door Senior Citizens. She had lived in Iowa Park since 1954, coming from Holliday. She was a nursery worker in the church for many years and retired as a cook from Metz Cafe in 1971.

A son, Edgar Wayne, died in 1929, and another son, Wally Jack, died in 1977. A daughter, Mary Estelle Clark died in 1994.

Survivors include five sons, Roger Dale and Glenn, both of Iowa Park, Charles Ray of Royse City, Billy of Maricopa, Calif., and Narvin Lehman of Taft, Calif.; a daughter, Charlene Fay Capehart of Taft, Calif.; a sister, Myrtle Buchanan of Houston; 23 grandchildren; several great-grandchildren; and several great-great-grandchildren.

Memorials may be made to the Friendly Door Senior Citizens.

Water-saving tips for summer

Because of current drought conditions, many communities have implemented lawn-watering restrictions.

However, Texans can do a lot more than easing up on the sprinklers to conserve water.

By following a few more simple steps around the home, a family of four can save up to 100,000 gallons of water annually and \$100 to \$200 every year on the water bill.

"There are certain measures we recommend Texans take to conserve water not just during drought conditions but year-round," said Stacy Dukes-Rhone, water conservation program manager at the Texas Natural Resource Conservation Commission.

"Most of these steps require little time and money to implement and all can lead to significant savings on the water bill."

1. The single most effective conservation step that can be taken inside the home is to install low-flow showerheads. They use 30 to 70 percent less water while still providing invigorating showers.

2. Toilet water use can be cut by up to 70 percent by installing low-flow or air assisted commodes. If you can't replace your toilet, place a half-gallon plastic jug of water or a toilet dam in your tank. This can cut toilet water use by 20 percent.

3. Install low-flow faucet aerators on the bathroom and kitchen sinks. These use about half as much water.

4. Sing shorter songs in the shower. Your shower shouldn't last longer than five minutes. Sing all you want when you take a bath --

just be sure to fill the tub half-way. Turn the faucet off while brushing your teeth or shaving.

5. When washing your car, use a cut-off nozzle instead of running the hose continuously.

6. About eight percent of home water use takes place in the kitchen. Instead of running water, rinse dishes in a basin and soak pots and pans before scrubbing. Compost your fruit and vegetable scraps to avoid running the garbage disposal. Be sure your dishwasher is full before you run it. Next time you buy a dishwasher, consider the water-saving models which can cut water use by 25 percent.

7. Laundry accounts for about 14 percent of home water usage. Adjust the water level on your washing machine, be sure to wash only full loads. Consider buying a water-saving model, which reduces water use by up to 30 percent.

8. Avoid having to run water until it's hot. Insulate your water heater and hot water pipes.

9. Repair all plumbing leaks immediately. A dripping faucet can waste up to two gallons of water per hour. Check your toilet by dropping a small amount of food coloring into the tank. If colored water appears in the bowl after 10 minutes, you've got a leak that needs repairing.

10. If your community has not implemented mandatory outdoor watering restrictions, voluntarily cut back on lawn watering to no more than once every five days with no more than an inch of water at a time. To avoid evaporation, water before 10 a.m. or after 8 p.m. If it rains more than an inch, wait five days to water.

Does your subscription to the Leader expire this month? Check the list on page 4.



IDA MAE ALLEN was recently honored as Integrated Health Services' oldest mother. Ida Mae will turn 99 June 16, and has two children, five grandchildren and several great-grandchildren. A resident of I.H.S. four years, she enjoys bingo and crafts.

Three are graduated

Three Iowa Parkans received degrees during commencement exercises last month at Vernon Regional Junior College.

Ricky D. Blevins received an Associate in Applied Science degree and a certificate in electronics, while Lynda Litteken and Jennifer Lee were graduated with an Associate in Applied Science in Nursing.

Card of Thanks

Our grateful thanks to the Iowa Park Police and Fire Department for their prompt response to our 9-1-1 call, and for the care they gave our son.

We appreciate each and every one of you.

Jackie and Diana Britt

AROUND THE CLOCK

CHILD CARE

1323 N. FOURTH ST. 592-9955

- State Licensed • 24 Hour Care-7 days a week
 - Drop-ins Welcome • All ages 0 - 13
 - School transportation • Reasonable Rates
 - Licensed Nurse on Staff
- Spring Break is coming Soon!
Make reservations now...call for details.



Heartland Wireless
Basic including Showtime and HBO
\$29.95 Free Install Some restriction apply

Don't Wait Any Longer, call now!
FREEda HARLOW
(817) 692-6151 OR (817) 692-7980
Hours: 7 a.m. - 10 p.m. 7 Days A Week
Literature at Scobee's

Schram & Cluley
FURNITURE & MATTRESS CO.
Randall Schram
Eddie Cluley
IOWA PARK
592-4186
204 W. Bank

All Major Credit Cards Accepted
In-store financing ~ 3 months-No Interest

L.A. Tans
July 4th Special

Now through July 4th, sign up for one month of unlimited tanning (\$25), get a second month membership 1/2 off. Call 592-4539 for your introductory visit.

Large variety of quality tanning accelerators, intensifiers and moisturizers available.
104 W. Ruby ~ 592-4539

SHOP IOWA PARK FIRST
No other newspaper in the world would make that statement

Computer Related
Your Laser Printer Specialist
Ted Berry
Remanufactured Toner Cartridges
Laser Printer Service
(817) 851-6137 Pager: 851-3879

KING'S KIDS CHRISTIAN DAYCARE & PRESCHOOL
"Iowa Park's Finest for Parents Who Care"

- Before and After School Openings
- Preschool included with full time program
- School Bus Service before and after school
- Weekly, Daily, Hourly Rates Available
- Member Texas Licensed Child Care Association
- Drop-Ins Welcome • Parents Welcome Anytime
- Fenced Playground • Tornado Shelter

202 N. Jackson 592-4242

Patty Cakes
Decorated Cakes
Made to Order
592-2402

DUTTON FUNERAL HOME
"FUNERAL DIRECTORS SINCE 1908"
Larry Dutton

Providing Funeral Services and Pre-Arranged Funeral Plans
Honoring all insurance policies and major credit cards
Funeral Financing available

592-4151
300 E. Cash Street Iowa Park

KARL KLEMENT June Tent Sale
Free Hot Dogs & Pepsi Every Friday & Saturday in June
US Hwy. 287 S., Decatur, Texas
Open: Monday-Friday 8-8 & Saturday 8-6
Metro 430-8610 • Toll Free 1-800-772-8928

<p>1996 F-150 STYLESIDE XL</p> <p>Total vehicle plus options \$17,207 Option pkg. discount \$2,223 MSRP \$14,984 KCFM disc \$1,811 Sale Price \$13,373 Farm Bureau rebate \$500 Comm. rebate \$300 Sale price after rebates \$12,573*</p> <p></p> <p>4.9 liter engine, 5 speed, air conditioning, AM/FM radio. Stock # F37415.</p>	<p>1996 WINDSTAR GL</p> <p>Total vehicle plus options \$23,740 Option pkg. discount \$1,250 MSRP \$22,490 KCFM disc \$1,541 Sale Price \$20,949 Farm Bureau rebate \$1,000 Ford Rebate \$1,000 Sale price after rebates \$19,949*</p> <p></p> <p>High cap., air conditioning, tilt, cruise, AM/FM cassette, 7 passenger. Stock #W54978.</p> <p>\$1,000 Factory Rebate or 4.8% up to 48 months</p>	<p>1996 F-250 SUPERCAB XL</p> <p>MSRP \$22,067 KCFM Discount \$2,714 Sale Price \$19,353 Farm Bureau rebate \$500 Comm. rebate \$300 Sale price after rebates \$18,553*</p> <p></p> <p>7.5 liter engine, 5 speed, tilt, cruise, air conditioning. Stock # G34703.</p>	<p>1996 F-350 CREWCAB XLT</p> <p>Total vehicle plus options \$27,767 Option pkg. discount \$850 MSRP \$26,917 KCFM Rebate \$2,918 Sale Price \$23,999 Comm. Rebate \$300 Farm Bureau Rebate \$500 Sale price after rebates \$23,199*</p> <p></p> <p>7.5 liter engine, auto, camper package, remote entry. Stock # H23388.</p> <p>XLT Crew Cab Dual Rear Wheel</p>
<p>1996 RANGER XLT</p> <p>Total vehicle plus options \$14,332 Option pkg. discount \$1,306 MSRP \$13,026 KCFM Discount \$2,027 Ford Rebate \$600 Sale price after rebates \$10,399*</p> <p></p> <p>2.3 liter engine, 5 speed, AM/FM, air cond., special pkg., sliding rear window</p> <p>\$600 Factory Rebate or 4.8% up to 48 months</p>	<p>1997 F-150 SUPERCAB XL</p> <p>Total vehicle plus options \$19,456 Option pkg. discount \$850 MSRP \$18,606 KCFM Discount \$2,207 Sale price after rebates \$16,399*</p> <p></p> <p>4.2 liter engine, 5 speed. Stock # F84001.</p>	<p>1996 F-150 SUPERCAB XLT</p> <p>Total vehicle plus options \$23,589 Option pkg. discount \$1,400 MSRP \$22,189 KCFM disc \$2,695 Sale Price \$19,494 Farm Bureau rebate \$500 Comm. rebate \$300 Sale price after rebates \$18,694*</p> <p></p> <p>Automatic 5.0 V8 engine, AM/FM tilt, cruise, power doors & windows. Stock # F36855.</p>	<p>1996 RANGER SUPERCAB XLT</p> <p>Total vehicle plus options \$16,488 Option pkg. discount \$1,106 MSRP \$15,382 KCFM Discount \$2,083 Ford Rebate \$500 Sale Price \$12,499 Sale price after rebates \$12,499*</p> <p></p> <p>2.3 liter engine, 5 speed, AM/FM, air cond., special pkg., sliding rear window</p> <p>\$600 Factory Rebate or 4.8% up to 48 months</p>

* Price plus tax, title, license and dealer documentary fee. Factory rebate assigned to dealer. See dealer for details on Farm Bureau & Commercial rebates and Young Buyer discounts.

New pastor appointed to Methodist Church

United Methodist Bishop Bruce P. Blake, resident bishop of North Texas Annual Conference, has announced the appointment of Rev. John C. Besse as pastor of First United Methodist Church of Iowa Park, effective Saturday.

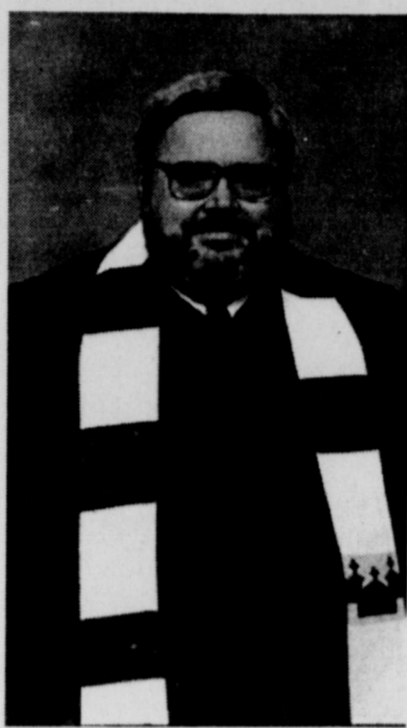
Rev. Besse comes from East Texas State University, Commerce, where he served three years as Director of Campus Ministry at the University Christian Center.

Rev. Besse follows Rev. Glen Blackmon who moves to First United Methodist Church, Celina, following three years with the Iowa Park church.

John and Cathy Besse and their son John are excited about moving to Iowa Park, and becoming part of the family at First United Methodist Church. John says, "I have served all types of churches, small, medium and large with persons of varying backgrounds, but I have never been more excited about a move, than I am about this one. We feel as a family that God has placed us where God wants us to serve. We look forward to ministering with members of the church, as we seek and discover God's vision."

Cathy says, "We have heard great things about Iowa Park. People we know in Commerce have talked about the good schools and our son was glad to hear that there are several kids his age at the church."

John was born in Texarkana,



Rev. John C. Besse

Arkansas, and spent his early years in Tennessee and Louisiana. He graduated high school in Charlotte, N.C. and has a B.A. in Anthropology from the University of Arkansas, and a M. Div. from Midwestern Baptist Seminary. He has done post graduate study at Perkins School of Theology at SMU.

Rev. Besse has served and pastored churches in Missouri, Michigan, and Texas. He helped found the Dallas Emmanuel Community and has served as one of its

spiritual directors.

Most recently he has been the director of the University Christian Center, an ecumenical campus ministry at East Texas State University. While there he has also been an instructor at the University, serving as the Chair of the Bible Department.

In addition to his pastoral assignments, Besse worked four years as a marine cargo surveyor in the Los Angeles harbor, and throughout the Los Angeles basin, doing damage investigation, assessment and control. During that time he was also a volunteer at the "Crystal Cathedral Congregation" and learned how to minister with single adults by participating in their leadership of "Positive Christian Singles", the oldest and one of the largest ministries to Christian singles. He continued that work when he moved to Texas 15 years ago as minister of Single

Adults at First United Methodist Church in Carrollton.

Mrs. Besse grew up in Minneapolis, Minnesota. She is a registered nurse with experience in psychiatric, and medical-surgery nursing. She has also worked as a nurse for the Minnesota State Prison and the Los Angeles County jail.

She has been a United Methodist Volunteer in Mission on the West Bank of Israel in 1995 and most recently in Zaire, Africa.

In January this year, Cathy spent three weeks working in the refugee camp with Burundian refugees in relatively primitive conditions. During both experiences she was impressed by the vitality of the local Christians, who live and work in situations that we have difficulty even imagining. She will be looking for a part time nursing job after she arrives in Iowa Park.

John and Cathy's son, John, (not Jr.) will enter third grade this fall. He plays soccer and baseball and is a Cub

Scout. Recently he has been learning to "surf the net" with his dad on the family computer. John will miss his

old friends, but is looking forward to making new ones. The family arrived in Iowa Park Wednesday. Rev. Besse's first Sunday will be Father's Day. The public is invited to come and worship and meet the new pastor.

ATTEND CHURCH SUNDAY

<p>Good Shepherd Lutheran Church Corner of 1st & W. Magnolia 592-5605</p> <p>Sunday School 9 a.m.</p> <p>Worship Service 10 a.m.</p> <p>Rev. Orville Horn, pastor 569-4085</p>	<p>CHRIST THE KING CATHOLIC CHURCH</p> <p>Sunday Schedule 8:45 Children's Religious Formation 10:00 a.m. Mass</p> <p>First & Clara 592-2802 Rev. Patrick Burke, Pastor</p>
---	---

THE END OF YOUR SEARCH FOR A FRIENDLY CHURCH

ASSEMBLY OF GOD

SUNDAY
9:45 a.m. Sunday School
11:00 a.m. Morning Service
6:00 p.m. EVANGELISTIC SERVICE

WEDNESDAY
7 p.m. Royal Rangers & Missionettes
Nursery provided Sunday morning & Wednesday evening

200 S. YOSEMITE
592-5087 - Church
592-4627 - Pastor
Charles Hensley, Pastor

First United Pentecostal Church
592-9478 802 N. First 592-4275

Tires of Religion? Looking for an exciting experience with God?

Sunday... Sunday School 10:00 a.m. Evening Worship 6:30 p.m.
Wednesday... Our Daily Bread 7:30 p.m. Children's Church 7:30 p.m.
Friday... Action (Youth) 7:29 p.m.

Pastor Greg Hardin
A Place for New Beginnings

CHURCH OF GOD of Iowa Park
801 E. Cash

"Where Love is More Than Just A Word"

SUNDAY
Sunday School 8:45 a.m.
Sunday Morning 10:45 a.m.
Children's Church 10:45 a.m.
Evening Worship 6:00 p.m.
Wed. Family Training 7:30 p.m.

Rev. & Mrs. Johnny House
Church 502-4348 Parsonage 502-5816 Bus & Nursery Available

"THE CREATION" NORTHSIDE BAPTIST CHURCH

800 N. WALL-IOWA PARK
VACATION BIBLE SCHOOL
MONDAY - FRIDAY
JUNE 17 - 21
7 - 9 P.M.
FREE RIDES AVAILABLE
592-2200

CORNERSTONE CHURCH OF GOD
"The Church at the Foot of the Cross."
1201 W. Smith

9:45 a.m. Sunday School
10:50 a.m. Morning Worship - Children's Church
6:00 p.m. Evangelistic Service
7:00 p.m. Wednesday Family Night; Christian Pathlighters, Boys & Girls
10:00 a.m. Saturday - Primary, Junior & Senior Bible Quiz

Church Phone - 592-5929 Pastor Duffy Terry - 592-5520
Where Jesus is Lord

IOWA PARK CHURCH OF CHRIST
301 E. PARK † 592-5415

Sunday Morning Bible Study 9:30 a.m.
Sunday Worship 10:30 a.m. & 6 p.m.
Wednesday Evening Worship 7:00 p.m.

MINISTER - JEFF RATLIFF

FIRST UNITED METHODIST CHURCH

REV. JOHN BESSE, PASTOR
"Catch The Spirit" ~ Come Grow With Us!
Sunday School - 9:30 a.m. UMYF - 5:00 p.m.
Sunday Worship - 8:45 a.m. and 10:40 a.m.
201 E. Bank 592-4116

Kamay Road Church of Christ
Corner of Colorado & Emerald

Sunday Services
9:30 a.m.
6:00 p.m.

For Information Call:
592-2082
592-5076

First Baptist Church Iowa Park, Texas
300 N. Yosemite † 592-2151

Sunday 9:30 a.m. Bible Study (Graded Sunday School Program)
10:45 a.m. Worship
5:00 p.m. Discipleship (Training Classes for all ages)
6:00 p.m. Evening Worship

Wednesday 6:00 p.m. Acteens for Girls (Jr. High & High School)
7:00 p.m. R.A.s for Boys
7:00 p.m. JAM for Youth Prayer Meeting
7:45 p.m. Sanctuary Choir

Dr. Derrell Monday, Pastor

NURSERY PROVIDED FOR ALL SERVICES

Does your subscription to the Leader expire?
Check the list on page 4.

FAITH BAPTIST CHURCH

"The presence of God is our greatest asset"
411 S. Wall 592-2716

SUNDAY
Sunday School 9:15 a.m.
Morning Worship 10:30 a.m.
Discipleship Training 6:00 p.m.
Evening Worship 7:00 p.m.

WEDNESDAY
Adult Bible Study 6:30 p.m.
Children's Mission Programs 6:30 p.m.
Youth Cross Training 6:30 p.m.
Choir Rehearsal 7:30 p.m.

Dr. Greg Ammons, Pastor
A Southern Baptist Church

Nursery provided for all activities
Ministry Opportunities for the entire family

First Presbyterian Church

Paul Tomlinson, Interim Pastor

New to the area? A warm welcome awaits you at First Presbyterian Church. Experience our friendly, family atmosphere this Sunday.

Sunday School 9:30
Worship 11:00

211 S. Yosemite 592-4220

Lakeview Church of God
N. Victoria and Expressway

Opportunities for Services

Children's Church	Ladies Ministry
Choir (youth & adult)	Men's Fellowship
Nursing Home	Boys' Club, ages 6 - 17
Visitation	Girls' Club, ages 6 - 17
Puppet Ministry	Nursery Provided

Sunday School.....9:45 a.m. Wednesday Family Training Hour...7:30 p.m.
Morning Worship...10:45 a.m. (Classes for all ages)
Sunday Night.....6:00 p.m.

Phone - Church: 592-2776, Parsonage: 592-9555
Pastor: Ole Olds
Discover The Joy

Show & Shine slated here next Saturday

The Iowa Park Police Dept. will host its second annual "Show & Shine" June 22 in Wal-Mart's west parking lot.

Proceeds will benefit the Iowa Park Police Department/Crime Prevention Fund.

Vehicle and booth registration will be from 8 a.m. to 12-noon, and show time has been set from 1:00 to 2:30 p.m. Awards will be announced at 3:00 p.m.

Thirteen classes of vehicles will be judged, with first and second place

trophies awarded in each class. A People's Choice Award will also be given. Dash plaques are being awarded to the first 100 entries.

Vehicle classes will include unfinished, street rods, classic, motorcycle, late model, truck, competition oval track, bicycle, low rider, Corvette, competition drag, antique and tractor.

Those interested in obtaining an entry form may go to the Iowa Park Police Department, 104 East Highway, or call 592-2181.

Look Who's New

Alvarez

Wendy and Willie Alvarez of Wichita Falls are the parents of twin girls, Hope Daniella and Faith Alesia, born May 28 at Wichita General Hospital. Hope weighed four pounds, 15 ounces, and Faith weighed five pounds, five ounces.

The twins have two brothers, Willie, Jr., 19, and Dillon Maxwell, seven years old, and a three-year-old sister, Gabriella. Their mother is the former Wendy Herrington of Iowa Park.

Grandparents are R.D. and Janis Herrington of Ringling, Okla. and Mike Alvarez Sr. of Stephenville.

J.Q. Porter and Artie Herrington, both of Ringling, are great-grandparents.

Campbell

Rob and La Donna Campbell of Burkburnett, formerly of Iowa Park, are parents of a son born May 30 at Wichita General Hospital. The baby was named Westin Chandler. He weighed eight pounds, four ounces and was 18 1/2 inches long and is their first child.

Grandparents are Mr. and Mrs. Paul Chandler of Wichita Falls and Mr. and Mrs. Doug Campbell of Gaffney, S.C.

Great-grandparents are Christine Schwartz and the late Fred Schwartz of Vernon and Viola Chandler of Wichita Falls and the late Emmett Chandler.

Iowa Parkans named to MSU honor rolls

Iowa Park was well represented among the 550 honor students at Midwestern State Univ. who were listed for the spring semester.

The Dean's List consisted of 171 students and 379 made the University Honor Roll.

Iowa Parkans listed included: Dean's List: Cynthia Marie Grace Collazo, Donna L. Klinkerman Davis, Steven Wade Dawson, Dianna P. Ashley Keach and Stephanie Irene Roberts.

University Honor Roll: Douglas Lynn Aibus, Daniel Allen Carter, Neely Wayne Carter, Christie Leigh Catlin, Tracy LaDonna Hale Catlin, Angela Kathleen Cook, Henry Latham Dickens, Jeffrey Dale Franklin, Karen Leann Stallcup Gauthier and Dani Marie Goin.

Also, Teresa Lea Himes, Philip Jason House, Rebecca Lynn Jones, Lori Dawn Kasperek, Nicole Renee Ducioame Kaufhold, Heather Nicole Lovelady, Jonathan David Matthews,

Jody Renee McQuerry, James Robert Merrick, Janna Elizabeth Raley Rich, Kimberly Michelle Robbins and Dee Ann Warren.

To make the Dean's List, a student must complete a semester schedule of at least 12 hours with no grade lower than an "A." The University Honor Roll requires the same hours, but with a minimum grade point average of 3.5 and no grade lower than a "C."

Helpful Hints

The running or roaming at large of any dog, cat or other animal within the city has been declared a nuisance and positively prohibited, and it has been made unlawful and deemed a Class C misdemeanor for the owner or keeper of any dog, cat or other animal to allow the same to run or roam at large within the city.



LIBRARY NEWS

REPTILEMANIA

Are you interested in snakes, lizards, chameleons, etc? Come join us here at the library Friday, June 21, at 2 p.m. for Reptilemania.

This program is for young and older alike. All programs given here at the library are free of charge.

READY-SET-READ

There are three more weeks of summer reading program. If your child has not been able to attend the reading sessions, be sure to have them fill out their blue registration sheet with the titles of the books they have read. They will need to turn them in by Friday, June 28.

For the children having read at least 10 books, coupons from various Iowa Park merchants will be given to them. Prizes will be given for readers at different reading levels for the amount of books read. We have squeeze bottles, frisbees, book bags, beach towels, etc., as incentive gifts.

Reading sessions are held Tuesdays and Thursdays for children ages three years through the sixth grade. If you are interested in participating, calendars are available on the circulation desk.

CHILDREN'S AREA

Come in and see what we have new in this area for reading in. A special "Thanks" to Patricia Costello for loaning us this special area. The children will love it.

LIBRARY HOURS-STORYTIME

Are you new to this area, or perhaps just not had time to check out your library. We invite you to come see what is available at Tom Burnett Memorial Library.

Our hours are Tuesday & Thursday 10 a.m.-8 p.m.; Wednesday & Friday 10 a.m.-5 p.m.; Saturday, 10 a.m.-2 p.m. Storytime is held Friday morning from 9-9:30 for children two years and up.



4-H CLUB NEWS

Local 4-H'ers, Bryan Taylor and Bo Vernon were among 2,500 outstanding youth from across the state who competed in the 1996 Texas 4-H Roundup at Texas A&M University June 3-7.

Vernon, son of Buster and DeAuta Vernon of Kamay, and Marcus Womble, son of Bill and Kay Womble of Wichita Falls, placed fourth as a team in the Consumer Decision Making Contest.

Participants were given four comparable items and asked to rank them based on the needs and desires of a person in a given story or situation.

Vernon also placed along with Taylor, son of Darryl and Priscilla Taylor of Iowa Park, with an illustrated talk on Farm and Ranch Economics.

Taylor also entered the State 4-H Photography Contest and had his photos on exhibit during the Roundup.

Does your subscription to the Leader expire this month? Check the list on page 4.

Happy Birthday, Allen
You're 48!
P.S. Happy Father's Day
Love, Sandy, Randy and Rachel



JC's Automotive

104 North Alcott ~ 592-9588
"We Take Pride In Your Ride"
Hours: Monday - Friday 8 a.m. - 6 p.m.
We now accept Visa, MasterCard & Discover

OIL CHANGE SPECIALS



Any Pennzoil (30 or 10-30) Up to 5 quarts \$19⁹⁵

Tuesday - Ladies Day (30 or 10-30) any oil in stock \$18⁹⁵

10% SENIOR DISCOUNT ON EVERYTHING

*EXCEPT STATE INSPECTIONS

We will be closed June 17 - 22

We Stock Motor Craft Oil - State Inspections
Hours: 8 a.m.-6 p.m., Monday - Friday; 8 a.m.-3 p.m., Saturday
We Accept Visa and Mastercard

CATLIN QUICK CHANGE

507 W. Highway 592-2818

Beautification group planning new projects

Plans to raise money for a gazebo to be built in Oscar Park, and Christmas lighting and decorations for the parks was discussed during a meeting of Iowa Park Clean and Green Beautification Committee.

Members of the committee met Thursday afternoon at the Chamber of Commerce office.

Cost of a metal eight-foot gazebo was estimated to be from seven to eight-thousand dollars. Clean and Green hopes to raise enough money through the collection and sale of aluminum cans, plus donations, to pay for it.

Clean and Green Chairman Dolores Hamilton said this method of fundraising is being used in a town near Dallas that is similar in population to Iowa Park. A local civic group there raises around \$700 a month through collection and sale of aluminum cans, and is using the money for improvements at a local park.

Clean and Green is hoping to get a large bin or trailer placed at a convenient location for collection of aluminum cans.

If this plan works, and the gazebo is paid for, future money collected will go toward buying Christmas lights and other improvements for the park.

Claudia Friday, chairman of Christmas Decorations, told about trips she took during the Christmas season to Altus and Chickasha, Okla. She described the impressive way a park in each city had been decorated for the holidays. She and her committee are currently studying ways that similar ideas can be used in Iowa Park.

In a few weeks, representatives from the Texas Highway Department and members of Clean and Green will get together to go over plans for a project in Iowa Park.

If all the requirements are met, the highway department will landscape the area at the four-way stop signs at Johnson Road and West Highway.

In order for the highway department to do the work, there must be water available at the site so the plants can be watered, and a group has to agree to "adopt" the area.

It has been determined that water is available at that location, and Wendy Meadows and her horticulture class have agreed to be the sponsors.

The next meeting of Clean and Green will be July 11.

FRIENDLY DOOR MENU

MONDAY, June 17

Lunch--Oven fried steak, cream gravy, mashed potatoes, carrots, hot roll, banana, milk.

TUESDAY, June 18

Lunch--Pinto beans with ham chunks, cole slaw, squash, cornbread, Apple Brown Betty, milk.

WEDNESDAY, June 19

Lunch--Tossed salad, parmesan chicken, parslid noodles, beets, whole wheat bread, strawberry shortcake, milk.

THURSDAY, June 20

Lunch--Barbecue on bun, baked beans, carrot slaw, sweet relish, pear, half with topping, milk.

Compare Our CD Rates

FDIC insured to \$100,000			
1-Year	5.70% APY*	5.70% Interest rate	Minimum deposit \$5,000
2-Year	6.15% APY*	6.15% Interest rate	Minimum deposit \$5,000
3-Year	6.45% APY*	6.45% Interest rate	Minimum deposit \$5,000

*Yield effective 06/11/96, subject to availability. Yield and market value may fluctuate if sold prior to maturity.



Call or stop by today for more information.
Bo Watson
105 W. Cash
Iowa Park, Texas
592-5480

Edward Jones
Serving Individual Investors Since 1871



IOWA PARK AIR CONDITIONING & HEATING CO.

592-2761

Introducing ROTOBRUSH™ DUCT CLEANING

The intricate maze of air ducts, vents and heating and cooling systems designed to make your home comfortable, may in fact, be making you uncomfortable or maybe even sick.

Your air system plays host to a variety of air pollutants such as mold, mildew and dust mites, which commonly cause allergic reactions, breathing difficulties, infections and disease.

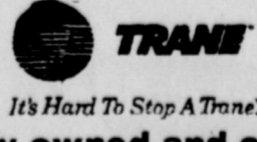
What is the answer to this problem?

The Rotobrush™ Duct Cleaning System.

This advanced cleaning method thoroughly scrubs and vacuums your ducts, vents and heating and cooling systems.

We offer the best prices in the area....

Call today for details.



Your authorized Iowa Park Trane Dealer

Locally owned and operated for 26 years
TACLB010194E

IOWA PARK ATHLETIC CENTER

215 N. Yosemite 592-2570
Located one block North of Allsup's Convenience Store off the Old Iowa Park Rd.
Stairsteppers, Treadmills, Bicycles, Climbers, Skier, Free Weights Upstairs, Co-Ed Gym
Certified Personal Trainer
SELLERS
BODYBUILDING SUPPLEMENTS

Posey's Unique Gifts & Crafts

Consignments welcome

Quality Merchandise at low prices

- Service
- Parts
- Sales
- Graduation Gifts
- Southwest Items
- Porcelain Dolls
- Candles
- Gift Items
- Collectibles
- Tasteful home decor
- Jewelry
- Tea Sets
- Much more

All at prices so reasonable you won't believe!!

1356 FM 368 South
Located Together
592-5452

Posey's Appliance Service

Higginbotham recognized for achievements

Rachel Higginbotham, who will be an eighth grade student at Iowa Park Junior High School next year, recently attended the Duke University 1996 Texas Recognition Ceremony at Texas Christian University in Fort Worth.

The award ceremony was held to recognize outstanding participants in the Talent Identification Program Talent Search who achieved high scores on either the SAT or ACT.

The Talent Search selects high-achieving seventh grade students from around the nation and requires participants to take a college assessment test under the same conditions as high school students.

To be eligible for the Texas Recognition Award, students must score a minimum of 500 on either the verbal or math portion of the SAT.

Low interest loans available

U.S. Sen. Phil Gramm has announced that small businesses depending on farmers and ranchers in 20 Texas counties are eligible to apply for low-interest loans to help recover from agriculture damages.

Gramm said the areas were designated as eligible for disaster assistance by the Small Business Administration due to agriculture damages caused by drought conditions, unseasonably cool temperatures and an early freeze which occurred from August through December of 1995.

Other counties besides Wichita are Bowie, Childress, Clay, Collingsworth, Cooke, Dallam, Fannin, Grayson, Hansford, Hardeman, Hemphill, Lamar, Lipscomb, Montague, Ochiltree, Red River, Sherman, Wheeler and Wilbarger.

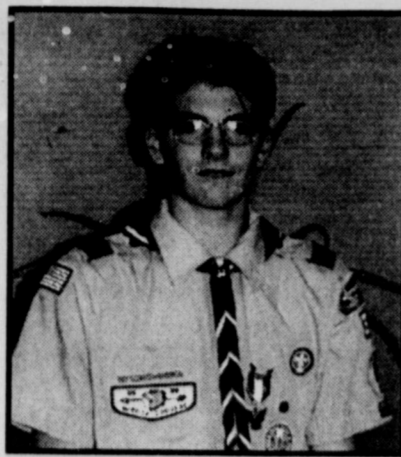
The closing date for loan applications is Jan. 6, 1997.

The program covers small businesses which are without credit elsewhere. The interest rate available is four percent, with a maximum of 30 years allowed for repayment.

The Small Business Administration provides the loans to small businesses which have substantial economic injury resulting from natural disasters.

Helpful Facts

Property owners working on their plumbing and needing the water cut off at the meter should contact city hall for assistance.



CHRIS SUTTON

Sutton is newest local Eagle Scout

Christopher H. Sutton, 14-year-old son of Mr. and Mrs. Henry Sutton, received the rank of Eagle Scout in a Court of Honor held June 2.

A sophomore this fall at Iowa Park High School, Sutton has earned 25 meritbadges as a member of Troop 37.

Presentation of the award was made by Tim Hunter, followed by the Eagle Challenge from Life Scout Mitchell Spruiell and Eagle Victor Manes.

For his Eagle project, Sutton designed a pamphlet identifying a variety of plants, trees and grasses along a Nature Hiking Trail at Lake Arrowhead State Park. The project required 48 hours of planning, including 16 hours of service work from other Scouts.

Other Scouts participating in the Eagle Court of Honor were Ky Hunter, Nathan Hall, Markus Johnson, Phil Johnson and Doug Chaney.

SAFB plans celebration

Sheppard AFB is gearing up for its annual Fourth of July celebration, "Freedom Fest."

Festivities will kick off at noon on the spacious picnic grounds near the base hospital and conclude at approximately 10 p.m.

Sheppard invites the public to browse through a multitude of arts and crafts and skill booths, as well as hot-rod and vintage automobiles, along with an array of static aircraft on display.

In addition, a variety of food will be available while enjoying continuous entertainment on two stages.

There will also be various demonstrations and music ranging from country to Top 40 hits.

Competitive sporting tournaments are planned throughout the day, including mud volleyball, softball, and tug-o-war. There will also be a Freedom Fest 5K and 10K run in the morning of the event, sponsored by the Red Cross.

State Capital



HIGHLIGHTS

By Lyndell Williams & Ed Sterling
TEXAS PRESS ASSOCIATION

AUSTIN — State inspectors pop in so infrequently at registered in-home day-care facilities that bad situations can slip through the cracks.

Inspectors are required to visit each of the 12,769 registered family homes in Texas only once every three years, according to a report by the Associated Press.

An internal audit of the Texas Department of Protective and Regulatory Services shows infrequent monitoring of registered family homes that care for four or more unrelated children "has a questionable impact on the protection of children" and might as well be cut to save money.

Child-care advocates oppose cutting the monitoring.

Ronnie Earle, Travis County District Attorney, opposes curtailing the unannounced inspections, but said that if the monitoring is cut, there must be an alternative program. "We have to provide for the safety of our children, and that means these homes have to be monitored," he said.

Meanwhile, last week, the Texas Sunset Advisory Commission released a study recommending the Department of Protective Regulatory Services be given power to fine deficient or dangerous day-care facilities, the *Austin American-Statesman* reported.

"I think it would put some teeth in the laws out there," said Fred Seale, deputy director of programs for the agency. "It becomes more of an issue ... if there's a penalty associated with a non-compliance finding," he told the *American-Statesman*.

The agency has authority to

revoke licenses or file lawsuits, but the authority to fine would expand enforcement power to deter violations of state law, the sunset commission report said.

Last year, state regulators found about 92,000 violations of child-care standards, but imposed only 122 sanctions and of those revoked only 48 permits to operate.

Sharp Recommends Drought Aid

Texas Comptroller John Sharp last week released a list of ways the state could help drought-stricken farmers across Texas.

"These hard-working folks who put food on our tables deserve the full range of available assistance to see them through these trying times," he said, and made four recommendations:

- That the U.S. Department of Agriculture extend its emergency livestock feed program, which is set to expire Aug. 31, and readmit 24 counties to the program that had been dropped.

- Expand the state agricultural water conservation loan program, which helps water districts, farmers and ranchers pay for water conservation efforts and irrigation systems.

- Redirect loans that go to farmers who diversify their crops and expand their processing.

- Put more money into the small community emergency loan program so towns can deal better with the drought.

Sharp also announced the Texas Department of Transportation will promote a program allowing ranchers to get livestock feed by cutting and baling grass from state highway rights of way.

No Refund for Eaten Food

Attorneys for the State of Texas last week withdrew their demand for a \$3 million refund for a soybean-based meat substitute purchased — perhaps illegally — by the Texas Department of Criminal Justice.

Why? Most of the granular, just-add-water foodstuff made by the Canadian firm, VitaPro, has already been eaten by Texas prison inmates and guards.

Seeking a refund also could have required switching the location of the trial from prison headquarters in Huntsville to a court in Austin. State attorneys opposed the move because their witnesses and records are in Huntsville.

Dudley's Deli

111 W. Park & catering

Opening Soon

THE WEEKLY OIL AND GAS REPORT

PREPARED BY OIL & GAS REPORTING SERVICE, INC.
P. O. BOX 2645, CORPUS CHRISTI, TX 78403 512/883-6533

RRC DISTRICT 9 - WICHITA FALLS

ARCHER COUNTY

BRIDWELL OIL COMPANY of Wichita Falls, TX has reported a NEW OIL WELL COMPLETION in the North BRR [Mississippian] Field, 6 miles N of Scotland. The MCGREGOR Well No. 29, located in the Sec. 4, Blk. 1, H&TC RR Co. Survey, A-906 on a 320 acre lease, tested 20 BO/D, 40 MCF/D, no water, flowing on 7/64 choke at 240# from perfs 5413-25' after acid treatment.

JOHN H. HAYS of Graham, TX has reported a NEW OIL WELL COMPLETION in the Archer County Regular Field, 10 miles NE of Olney. The M. P. ANDREWS [BURGESS] Well No. 4, located in the TE&L Co. Survey #1807, A-502 on a 80 acre lease, tested 10 BO/D, no gas, 10 BW/D on pump from perfs 4470-78'.

RIGGS PETROLEUM COMPANY of Graham, TX has reported a NEW OIL WELL COMPLETION in the Archer County Regular Field, 3 miles NW of Markley. The PRIDEAUX "I" Well No. 24, located in the A. Rohus Survey, A-1126 on a 55 acre lease, tested 5 BO/D, no gas, 25 BW/D on pump from perfs 603'-669'.

ROBINSON OIL CO. of Olney, TX has reported a NEW OIL WELL COMPLETION in the Archer County Regular Field, 2.5 miles W of Archer City. The FALLS COUNTY SCHOOL LAND "A" Well No. 10, located in the Blk. 62, Falls CSL Survey, A-130 on a 44 acre lease, tested 10 BO/D, no gas, 30 BW/D on pump from perfs 1160-68'.

CLAY COUNTY

MUIRFIELD EXPLORATION, LTD. of Wichita Falls, TX has filed for a permit to DRILL a 2000' depth Wildcat well 5 miles W of Petrolia. The HARRISON & ALLEN Well No. 31 is located in the J. Duncan Survey, A-112 on a 200 acre lease.

MUIRFIELD EXPLORATION, LTD. of Wichita Falls, TX has filed for a permit to DRILL a 2000' depth Wildcat well 5 miles W of Petrolia. The HARRISON & ALLEN Well No. 32 is located in the J. Duncan Survey, A-112 on a 200 acre lease.

MUIRFIELD EXPLORATION, LTD. of Wichita Falls, TX has filed for a permit to DRILL a 2000' depth Wildcat well 5 miles W of Petrolia. The HARRISON & ALLEN Well No. 33 is located in the J. Duncan Survey, A-112 on a 200 acre lease.

PRODUCERS OPERATING CO., INC. of Amarillo, TX has filed for a permit to DRILL a 2000' depth Wildcat well 5 miles SE of Petrolia. The ALBERT GRAF Well No. 1 is located in the Blk. 74, Parker CSL Survey, A-374 on a 190.7 acre lease.

WICHITA COUNTY

BTO VENTURE, INC. of Iowa Park, TX has filed for a permit to DRILL a 1999' depth Wichita County Regular Field well 1.5 miles N of Kamay. The 1ST NATIONAL SHALLOW "A" Well No. 11 is located in the Blk. 29, Kemp's W.V.F.L. S/D on a 426 acre lease.

BTO VENTURE, INC. of Iowa Park, TX has filed for a permit to DRILL a 1999' depth Wichita County Regular Field well 1 mile N of Kamay. The BURNS SHALLOW Well No. 40 is located in the Lot 7, Blk. 26, KEMP'S W.V.F.L. S/D on a 426.68 acre lease.

BTO VENTURE, INC. of Iowa Park, TX has filed for a permit to DRILL a 1999' depth Wichita County Regular Field well 2.5 miles NE of Kamay. The BURNS-MCCUTCHEN SHALLOW Well No. 25 is located in the Lot 9, Blk. 27, KEMP'S W.V.F.L. S/D on a 42 acre lease.

D. F. & M. L. BALES of Burkburnett, TX has reported a NEW OIL WELL COMPLETION in the Wichita County Regular Field, Within city limits of Burkburnett. The BURKE-BALES UNIT Well No. 2, located in the Block 9, Red River Lands S/D on a 3.6 acre lease, tested 12 BO/D, no gas, 130 BW/D on pump from open hole 1569'-1571' after frac treatment.

Kathy's Kakes

592-4357

We have custom decorated cakes for every kind of Dad!

Father's Day Special
\$10.95 - 1/4 sheet



- Goofy Golfer
- Couch Potato Dad
- Sports Dad
- Fisherman
- Many more designs

Owner/Operator - Kathy Hicks

Harvey's

592-4731

HOURS: 6 A.M. - 10 P.M 7 DAYS A WEEK

TACO BASKET \$2.19

SUNDAY LUNCH SPECIAL

Chicken Fried Steak, Mashed potatoes, salad, vegetable, toast, dessert **\$4.25**



Hot, Hearty Lunches, just like Mom used to make...

Monday	Tuesday	Wednesday	Thursday	Friday	Saturday
Hamburger Steak or Chicken Fried Steak served with your choice of three: •Mashed Potatoes •Green Beans •Corn •Salad •Rolls Pic of the Day Coconut • Chocolate	Meat Loaf or Chicken Fried Steak served with your choice of three: •Mashed Potatoes •Carrots •English Peas •Salad •Rolls Pic of the Day Pineapple • Coconut	Roast Beef or Chicken Fried Steak served with your choice of three: •Mashed Potatoes •Boiled Cabbage •Squash Casserole •Salad •Rolls Pic of the Day Cherry Cream • Coconut	Enchilda served with Spanish Rice, Refried Beans, Taco, Chips & hot sauce or Chicken Fried Steak served with your choice of three: •Mashed Potatoes •Blackeyed Peas •Corn •Salad •Rolls Pic of the Day Coconut • Chocolate	Fish served with French Fries, Hush Puppies, Onions, Pickle, Red Beans or Cole Slaw or Chicken Fried Steak and your choice of three: •Mashed Potatoes •Corn on the Cob •Red Beans •Salad •Rolls Pic of the Day 5 pies (assorted)	Barbecue served with •Fried Okra •Ranch Style Beans •French Fries •Salad Pic of the Day Fruit Pies

Nightly

Steaks offered Nightly...
Sirloin • Ribeye • T-Bone
Served with
Choice of Baked Potato or French Fries
Salad and Texas Toast

Hours

Monday through Friday
6 a.m. - 9 p.m.
Saturday
6 a.m. - 2 p.m.
Closed Sunday

City Cafe

114 W. Cash

592-4721

Norris heads All-District list

The 1996 3-3A All-District Teams were announced this week with the top two teams in the conference, Iowa Park and Graham, grabbing many of the 14 nominations.

Iowa Park's Chris Norris was voted as the district's Most Valuable Player as the senior righthander finished the season with a 12-2 record and 146 strikeouts. Norris finished with a 1.65 era and also had a good season at the plate hitting .352.

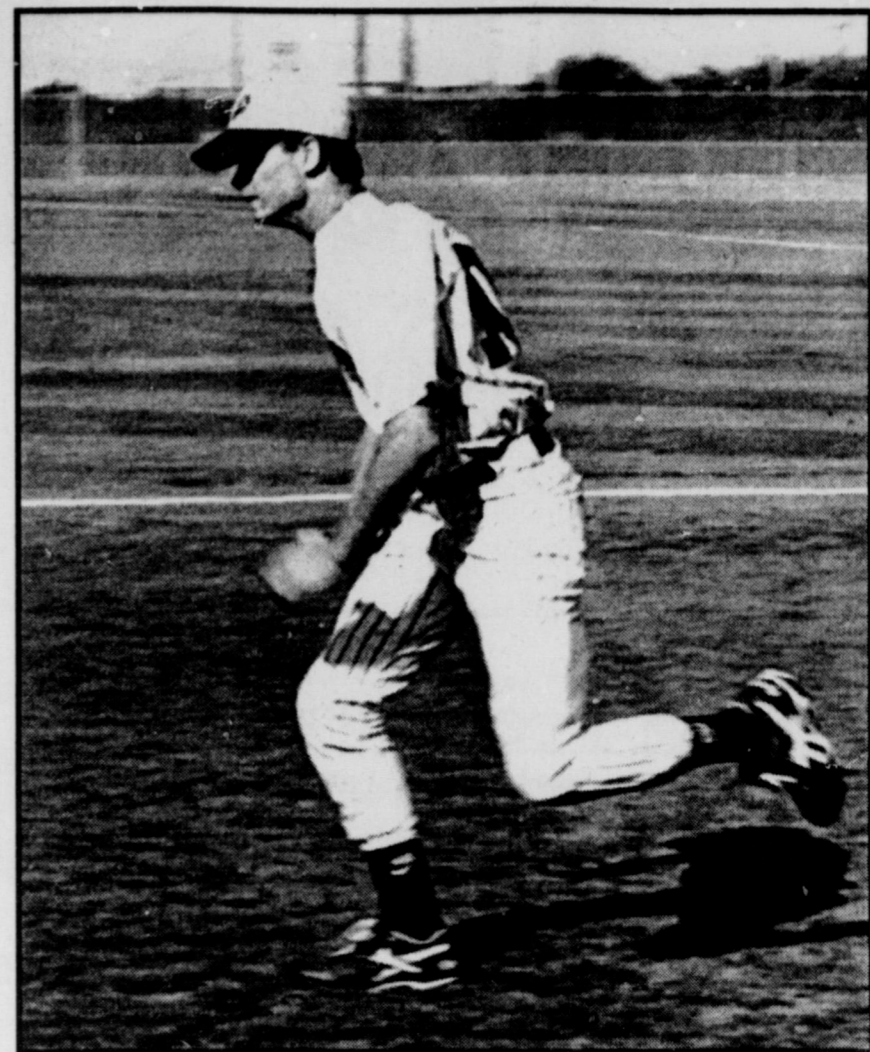
Other Hawks to be named to the First Team were senior outfielders Dusty Owen and Clancy Lalumia and junior catcher, Dusty Crawford.

Norris led the team in home runs with five and drove in 22 runs while hitting .314 while Lalumia hit .414 and drove in 24 and stole 13 bases. Crawford finished the season hitting .302.

Iowa Park also placed two players on the Second Team. David Waterbury was selected at second base after hitting .414 with a team-high 24 stolen bases, while Corky Petty was named to the second team pitching staff. Petty was also voted as honorable mention at first base.

The following is a listing of all players selected.

- First Team 1st Base**
Brent Belf, Sr. Graham
Jacob Allen, Jr. Bridgeport
- Second Team 1st Base**
Royce Bauman, Sr. Vernon
- Honorable Mention 1st Base**
Corky Petty, Sr. Iowa Park
- First Team 2nd Base**
Justin Hutchins, Sr. Vernon
- Second Team 2nd Base**
David Waterbury, Sr. Iowa Park
Shawn Mann, Sr. Bridgeport
- First Team Shortstop**
Phillip Bell, Sr. Vernon
- Second Team Shortstop**
Ryan Dollar, Sr. Graham
- First Team 3rd Base**
Brandon Norman, Jr. Bridgeport
- Catcher**
Trey Nicholson, Soph. Graham
- Outfielders**
Dusty Owen, Sr. Iowa Park
Clancy Lalumia, Sr. Iowa Park
Clint Kieschnick, Sr. Vernon
Lance Cauter, Jr. Graham
- Utility**
Bart McNatt, Jr. Graham



CHRIS NORRIS

GIRLS SOFTBALL STANDINGS

Senior League			
	W	L	T
Thrillers	8	4	0
Magic	7	4	1
Lakers	7	6	0
Rascals	2	10	1

Game Scores

Rascals 14, Lakers 12
Lakers 15, Rascals 5
Magic 12, Thrillers 6

Major League			
	W	L	T
Heat	7	3	1
Mavericks	5	4	1
Spurs	5	5	1
Mavericks	5	5	1
Hawks	3	8	0

Game Scores

Mavericks 12, Hawks 11
Jazz 15, Hawks 12
Mavericks 12, Jazz 7
Heat 9, Spurs 9

Minor League			
	W	L	T
Cavaliers	7	5	2
Celtics	7	6	1
Cavaliers	7	6	1
Warriors	4	10	0

Game Scores

Cavaliers 6, Warriors 0
Celtics 16, Sonics 6
Warriors 15, Sonics 6
Cavaliers 9, Warriors 3
Sonics 6, Celtics 3
Celtics 7, Cavaliers 2

Midget League			
	W	L	T
Nuggets	8	5	1
Clippers	7	5	2
Hornets	5	6	3
Knicks	5	9	0

Game Scores

Clippers 12, Nuggets 11

BOYS BASEBALL STANDINGS

Major League			
	W	L	T
Dodgers	11	3	0
Rockies	10	4	0
Rangers	7	6	1
Giants	7	7	0
Astros	4	8	2
Yankees	1	12	1

Game Scores

Rockies 8, Yankees 7
Rockies 7, Rangers 2
Dodgers 9, Rangers 3
Dodgers 8, Astros 0
Giants 8, Astros 5

Minor League			
	W	L	T
White Sox	11	1	0
Rangers	8	3	0
Cubs	7	4	0
Mariners	5	5	1
Reds	3	6	1
Padres	2	7	1
Expos	2	7	1

Game Scores

Rangers 15, Padres 4
Braves 10, Phillies 7
Mariners 10, Cubs 7
Braves 7, Phillies 3
Expos 17, Reds 5
Diamondbacks 10, Pirates 9
White Sox 9, Padres 2
Mariners 10, White Sox 7
White Sox 14, Expos 10

5-Pitch			
	W	L	T
Blue Jays	8	1	0
Tigers	5	3	0
Brewers	3	6	0
Angels	1	7	0

Game Scores

Blue Jays 20, Angels 7
Tigers 10, Brewers 5

- Most Valuable Player**
Chris Norris, Sr. Iowa Park
- Sophomore of the Year**
Randy Boland, Vernon
- First Team Pitchers**
Kyle Jones, Sr. Graham
Ryan Dollar, Sr. Graham
Mike Odom, Sr. Bridgeport
- Second Team Pitchers**
Corky Petty, Sr. Iowa Park
Clint Kieschnick, Sr. Vernon
Calab Roth, Sr. Bowie

Booster Club sets meeting

The Iowa Park Athletic Booster Club will meet at 7 p.m. Monday at the Iowa Park RAC.

Items to be discussed will include the football program, fundraisers and plans for the coming school year.

Parents of all students in the Iowa Park athletic program are asked to attend.



COUPON

**BUY ONE HAMBURGER
AT REGULAR PRICE
GET A SECOND HAMBURGER
FREE**

Coupon expires 7-31-96

**Try our Fresh-from-the-Grill
Hamburgers**

Grilled daily Monday through Saturday
6 a.m. till 8 p.m.

We use only Grade A Beef
and fresh lettuce and tomatoes

TEXAS LOTTO - CASH 5 - PICK 3 - SCRATCH OFF
We now carry American Express Money Orders

SCOBBEE'S Mini MART

322 W. Highway 592-5961

Open 6 a.m. - 11 p.m. 7 Days A Week

Happy Birthday Nikki Stevens

*Always On The Go!
Love you, MaMa and PaPa*

Happy Birthday PaPa Quick

*From terrible 2's to 62
Love You, Jason, Eric & Nikki*

You don't have to be a genius...

best service + best food
Ken's

to find the best pizza place in town.

LUNCH BUFFET
All-You-Can-Eat
Pizza, Pasta and Salad Buffet

\$2.99

Coupon expires 6-30-96
Limit one coupon per customer

Buy One
Medium or Large
Specialty Pizza
Get Another
Medium or Large

FREE

ken's PIZZA Delivers EXPIRES 6/30/96

Buy One
Large Pizza
Get Another
Large Pizza

FREE

*with equal or less toppings
ken's PIZZA Delivers EXPIRES 6/30/96

FREE

FOR ALL
WITH ANY DELIVERY OR CARRYOUT ORDER!
Receive your choice of any one item with any \$6 delivery or carryout absolutely FREE!
•Breadstick •Garlic Bread
•Cinnamon Sticks
•Half-Gallon Soft Drinks

ken's PIZZA Delivers EXPIRES 6/30/96

Ken's

PIZZA

902 W. Highway 592-9999

The Classifieds

DEADLINES

12-NOON WEDNESDAY (WORK ADS ONLY)
4 P.M. TUESDAY, DISPLAY ADS

SAVE 10¢ PER WORD FIRST
INSERTION BY PAYING
WITH COPY AT OFFICE

RATES:

30¢ PER WORD FIRST INSERTION
20¢ PER WORD EACH REPEAT

WOODBRIAR COMMUNITY
1, 2 and 3 bedroom units
ALL BILLS PAID (includes basic cable)
1000 Mary 592-2121

CARPENTS BY SCOTT
CARPORTS > PATIO COVERS > RESIDENTIAL PAINTING
SCOTT SANDERS 592-4317

HOUSES FOR SALE

3 BDRM. BRICK, 1 bath, carport, central H/A. \$49,500. 303 E. Alameda, 592-2510. 6-6-1tp

NEW HOME, over 1,300 square feet. 3 bedroom, 2 bath, air conditioning/heat, skirting, set up and delivered. \$260 per month now. 1-800-852-7920. 6-6-2tc

303 W. RUBY, large 2 bedroom older starter home. Big yard, ceiling fans, mini blinds. 855-3062. 6-13-1tp

FOR RENT

3 BEDROOM mobile home. 2 baths, heat and air. \$325. \$200 deposit. References. 592-2955. 6-13-1tp

901 E. WASHINGTON - 2 bedroom mobile home. \$275 month plus \$250 deposit and utilities. References. 592-4549. 6-13-1tp

Park Home Health Services
592-2753
Phone Answered 24 hours
Medicare-Medicaid approved
Private Insurance

SUPER NICE 3 bedroom, 2 bath home. 2 living areas, Jenn-Aire cook top, garage door opener, covered patio, great location. \$57,000, seller will help buyer with closing costs. **Darlene, RDS Real Estate, 322-2270**

One bedroom apartment **\$215 to \$226**
Two bedroom apartment **\$262 to \$276**
• Energy efficient • Off-street parking
• Central Heat/Air • Water Paid
• Children's Play Area • Total Electric
• Fully carpeted and draped • Fully-equipped laundry room

COLONIAL HEIGHTS APARTMENTS
592-2705

Gary Williams, Contractor
Remodeling and Renovating
Call for Free Estimates
Painting Cabinets
Carpentry Formica Work
Plantation Shutters
817-592-2480

ELECTRICIAN!
All Types of Electrical Work
Licensed Bonded
Residential Commercial
Kendell J. Hill, Electrical Contractor
592-4773

Town & Country
Remodeling Inc.
1-800-445-9736 • 592-4974
Siding Kitchen & Bath
Soffit & Facia Remodeling
Storm & Replacement Carpet
Windows Room Additions
Caprots Garage Conversions
Fencing Glass Rooms
0-DOWN - 100% FINANCING
If your house isn't becoming to you, you should be coming to us.

MINI-CON
Self-storage
1. Variety of sizes.
2. Competitive prices.
3. Locally owned and operated.
4. Monthly rates.
805 W. Hwy.
592-2761

REAL ESTATE

2 LOTS - 50' x 142' each. 500 block of West Magnolia. 592-4192, days; 592-4598 evenings. 3-21-tfc

7 LOTS - 610 W. Alameda, 50'x150', \$3000 each. Owner-Broker. 592-4661. 5-16-tfc

TEXOMA REALTY INC.
723-7471
592-9622
MLS

592-2399 Iowa Park Office
direct line to Thomas Johnson, GRI
592-9622 Iowa Park Office
-direct line to Patty McLemore, GRI
723-7471
Wichita Falls Office
824 Indiana Ave., Suite 2 - 4
Laura Hammond, Cyndi Bumgardner,
Edwina Wight and Randle Forcher

HELP WANTED

FULL-TIME Waitress - 5 days a week. Apply in person. City Cafe, 114 W. Cash. 1-11-tfc

Copying & Laminating
Copier - 2 pages 25¢
Protect your important documents with a plastic laminate overlay. Credit Card size to 8 1/2 X 11. Prices start at 50¢
Parkway 200 W. Bank

IOWA PARK
• 1 - 3 Nice Office Spaces for Lease - 208 N. Yosemite. Come on by to see!
• Lots available on Alameda, W. Cornelia and W. Magnolia
WICHITA FALLS
• 1624 Cimmarron, 3 bedrooms, HMS Warranty, \$35,000.
• 1426 Tanbark, 3 bedrooms, \$31,500.
SUBURBAN
• Hwy 79, north of the Old Petrovia Hwy. Toward Dean. 3 bedrooms, 2 living areas, fireplace, C/Patio on 2 acres, \$89,500.
• Arrowhead Ranch Estate: 4801 Piute. 3 bedrooms, living/dining combination, 2 baths, large lot, C/patio, extra nice. HMS Warranty, \$63,000.
LAND
• 1201 Loop 11, 1.3 acres. \$50,000.
• 4498 Seymour Hwy., 1.45 acres in front of Payless. \$75,000
• 6767 Southwest Parkway, 3.15 acres, \$50,000.
• 1401 & 1501 Pacific Ave., 11.8 acres, \$250,000.
"WE WORK FOR YOU"
PLEASE CALL US FOR YOUR REAL ESTATE NEEDS.

TEXAS REALTY



Polly Spruiell
Res. 592-4756
Mobile Ph. 781-6155

Selling Iowa Park
109 W. Cash
592-2728



Tommy & Glenda Key
Res. 592-4660
Mobile Ph. 781-1996
Mobile Ph. 781-3949

304 E. Ruby **20's**
2-BR house on large lot, includes detached garage and carport.

1204 S. Wall **40's**
3-BR home with 1.5 baths, 2 living areas, and fireplace.

107 W. Alameda **SOLD**
60's
601 E. Texas
New construction in Indian Springs, this 3-BR home features Geothermal H/A, 2X6 exterior walls, low maintenance exterior, and vinyl insulated windows.
702 W. Texas
3-BR home features large den that overlooks covered patio and back yard; includes a sewing/utility room, good storage. Call today!

707 E. Texas **70's**
Under construction in Indian Springs, this beautiful 3-BR, 2-BA home has fireplace, raised ceilings, and open floor plan.

524 Callie Lane **80's**
516 Callie Lane **PENDING WITH CONTINGENCY**
New construction in Highland Park subdivision features approx. 1550 sq. ft. of living, two dining areas, beautiful ceilings, and separated master suite.

1701 Johnson Rd. N **New Construction** in beautiful Park Place subdivision features separated master with lovely bath, formal dining. Call today!

1603 Wagonwheel **100's**
SOLD

540 Burnett Road **Suburban**
\$89,500
Attractive 3-BR home has large rooms, walk-in closets, great floor plan and sits on one (1) acre of land. \$99,500 with 10 acres. Lovely 3-BR home on three (3) acres has ample storage, security system, and reinforced storm shelter.

1758 Van Horn Rd. **Impressive 4-BR home** in Pleasant Valley Estates has spacious rooms, ample storage, and includes 4-stall horse barn on 3.71 acres. Spacious home on approx. 40 acres includes 4 bedrooms, office, storm cellar, barns and pens.
205 Melanie **\$132,500**

4504 FM 367 West **\$151,500**
1716 Texowa **\$299,000**
Gorgeous home has over 3,000 square feet of living space, 50'X100' shop w/offices and 14 acres of land.

Farm
700 Johnson Rd. S
Approximately 348 acres of fenced and cross-fenced land; includes historic home and numerous barns and buildings.

Land
IN CONTRACT
Johnson Road

Lots
32.01 Acres
79.12 Acres
FM 368 North
1034 Crescent, W.F. 130'X200' lot in Hillside Terrace. 105'X210' lot, city utilities available

NEW LISTING - RESIDENTIAL

900 W. Cornelia

This attractive 3-bedroom home has recently been totally remodeled and sits on a tree-shaded, corner lot with lovely yard and child's swingset/fortress.

KEY REALTY

900 W. Highway
592-2718



Brenda Featherston
592-5524



Cindy Gray
592-4583

AREA HOMES

127 WOOD CIRCLE
Floor plan offers living room, large den with fireplace, dining room, 2 baths and double garage. \$59,900. Take a look and call for #203.

TALL PINES
at 706 W. Texas welcome you to 4 bedroom, 2 bath home. Open, airy floor plan has large living area and also an extra room. Brick exterior has energy saving features. \$56,850. Ask for #237.

MAKE A GREAT MOVE
to three bedroom, 1 3/4 bath home on Sunset. Choice of room arrangements available in this flexible floor plan. Large room could be extra living or separate dining. Sun room at back could be 4th bedroom. #230

WICHITA VALLEY FARMS
Total electric home on FM 369 has 4 bedroom, 3 baths, 2 living areas, and large kitchen, 3+ acres has dog kennels, horse stalls, storm cellar. All for \$78,900. Please call for #205.

BARGAIN PRICE!
\$18,000 buys 3 bedroom, 1 3/4 bath mobile home on 401 S. Alcott. Corner lot has covered patio with wooden deck, large workshop and storage building. Many fruit trees. Owner finance available. #262.

2774 BELL ROAD
Four bedroom, 3 bath, 2 living areas, separate dining room allows enough space for everyone. 6+ acres has stock tank, 2 barns and lots of storage. Beautiful surroundings. Call for #230.

Feature Home

3170 & M 1206



COUNTRY SPIRIT and family heart in 3 bedroom brick home. Three bedrooms, 2 1/2 baths, 2 car garage is handicapped accessible. Vaulted ceilings in living area opens to separate dining room. 149+ acres. Call today.

CONTRACTOR'S DREAM
Four bedroom, 2 bath home has large living area and separate dining. Gunnite pool. 2.94 acres has office, shop storage and warehouse buildings. Please call for #909.

CORNER LOT
on W. Magnolia is nicely landscaped with trees and shrubs. Two bedroom home has large rooms and living room is 25'X22'. Home needs a little finishing but a great buy at \$34,900. Ask for #283.

COMMERCIAL

PERFECT LOCATION
Your business venture will be in the best location on 1.05 acres at Johnson Road and 287. Unlimited potential for this former service station with loads of concrete parking. Really great use might be for a restaurant. Profit now and buy! #227.

LAND LAND LAND

FORTY-SEVEN ACRES
Grassland with stock tank available for \$117,500. Property is east of Country Meadows addition. Water line to fenced property. Owner financing available. For more information, give us a call!

HORSE AROUND
Arena Road property sits on 52 acres and features 18,066 sq. ft. indoor arena, outside arena, 1,458 sq. ft. building and 936 sq. ft. mobile home. Many pens for animals. Ask for #120.

COUNTRY MEADOW ADDITION
North of City of FM 369, south of Exit 287. Residential lots beginning at \$8,200 per lot have water line to each property and no city taxes. Iowa Park Schools. Owner finance available.

MISC. FOR SALE

HUMONGOUSSALE-Frig., dishwasher, full bed, 2 twin beds, Wonder Bug Hood, old glass, new glass, everything from A to Z. All priced to sell. Tables of clothes 25¢. Thurs. & Fri., 8 to 7, 309 W. Pecan. 6-13-1tp

HUGE MOVING SALE - Thursday and Friday, 8-7. Household items, dishes, antiques, books, Home Interiors decoration, bedding, lots and lots of miscellaneous items and knickknacks. New items added Friday. 706 W. Texas. 7-13-1tc

PATIO SALE - Tools, electrical, plumbing, horse shoes, clothing, old records, misc. Friday, Saturday, 306 E. Magnolia. 6-13-1tp

BIG SALE - Tools, desk, shelves, lawnmower, cabover camper, jewelry, clothes. Friday, 7:30, 722 E. Cash (Corner of Cash & Hawthorne). 6-13-1tp

GARAGE SALE - 205 E. Aldine. Furniture, infant's clothes, knickknacks, etc. Friday, Saturday, 8-2. 6-13-1tp

MISC. FOR SALE

MOVING SALE - Saturday, 8:00 til 7, 308 W. Texas. Lots of misc. items, clothes, etc. 6-13-1tp

GARAGE SALE - 102 James, 8-2, Saturday. Lots of misc. items. 6-13-1tp

ANTIQUA DRESSER and sewing machine. 592-5623, 592-5951. 6-13-1tp

'94 **CORSICA** loaded, 35 mpg, \$7800. '92 Ranger V6, 120K, only \$2750. '71 Chevy P/U, automatic w/350, \$975. '83 Ford Cargo Van, \$500. 592-9055, Jim or Chris Parker. 6-13-1tp

1990 CROWN VICTORIA Completely gone over. \$4,800. 592-4911. 6-6-tfc

MOTOR HOME - Fire damaged. Easily fixed, mostly cosmetic inside. \$1,950, or trade. 910 E. Bank.

AT YOUR SERVICE!
Copy Machine and Fax
Jack's PARK PHARMACY
115 W. Park 592-2731

YARD WORK

DALE'S TREE/YARD Service Tree trim or removal, lawn mowing, hedge trimming. Seniors rates. 592-9455. 7-27-tfc

REASONABLE lawn and garden service. 592-0489. 5-2-tfc

DEPENDABLE Yard Man. Commercial & Residential. Mowing, weedeating, clean flower beds. Also work on any kind of lawnmowers. Experienced & dependable. Call 592-2790. 6-13-1tp

LAWNMOWING - Basic cut and trim. Reasonable rates with senior discounts. Trees trimmed, minor cleanup & junk hauled off. Call 592-5728 or 592-4531. 6-13-2tp

FAX Messages
Ph. 592-5613
Copies made - 15¢
UPs Packages
Hughes Pharmacy

\$1000 REWARD

For information leading to the arrest and conviction of any person or persons involved in theft, vandalism, arson, fishing or hunting on any of our properties in Wichita, Archer, Wilbarger, Clay, Wise or any other county in which we may have equipment located. Tom Swanson Oil Co., TS&T Drilling Inc. 817-495-3971.

BUSINESS

GARY WILLIAMS, contractor. Remodeling and renovating. Painting, carpentry, cabinets, formica work. Free estimates. 592-2480. 7-27-tfc

EIBEN Home Repair and Remodeling. Additions, roofing, painting, sheetrock, doors, carports, patio covers, and more. Small jobs welcome. Reasonable rates. Licensed and bonded. 592-2053. 7-27-tfc

HOUSE PAINTING, Interior & exterior. Sheetrock repair, acoustic ceiling, general carpentry. Small jobs welcome. Carport-patio covers. Free estimates. 592-5550. 7-27-tfc

DALE'S HOME REPAIRS For all your repair needs. Small jobs welcome. Senior rates. Quality work. 592-9455. 7-27-tfc

RANDY WHITAKER - Fencing tear out, build, repair. Privacy and chain link. Free estimates, 592-9433. 3-28-9tp

TELEPHONE JACKS, Installation or repair. Affordable rates. Free Estimates. Jerry Reed, 592-2243. 7-27-tfc

SUPERIOR PAINTING - Quality painting at reasonable prices. Call today and ask about our 6-month unconditional guarantee and free estimate. 592-4077. 7-27-tfc

BAHAMA CRUISE! 5 days/4 nights, Underbooked! Must Sell! \$279/Couple. Limited Tickets. 1-800-935-9999 ext 7605, Mon - Sat, 9 a.m. - 10 p.m., EST. 5-30-4tp

BLACK POWDER Guns and accessories, revolvers \$112 and up. Powder \$6.50 lb. Will order modern guns for 10% over cost. Ye Ole Gun Shack, 413 W. Washington, 592-5430. 7-27-tfc

NOTICE

STUDENT MASSAGE Therapist seeking 10 individuals who would enjoy receiving a free therapeutic Swedish massage. Call Cyndi, 592-0248. 7-13-1tc

EXPERIENCED LVN seeking private duty nursing. Will do light housekeeping also. References. Call Jo Williams, 592-9389. Leave message. 5-23-4tp

NOTICE OF APPLICATION FOR FLUID INJECTION WELL PERMIT

JoJon Petroleum Co. % P.O. Box 507 Holliday, Texas 76366 is applying to the Railroad Commission of Texas for a permit to inject fluid into a formation which is productive of oil and gas. The applicant proposes to inject fluid into the KMA J A Kemp Est. #2 Well Number 4M. The proposed injection well is located 1/2 Miles NE of Kadane Corner in the KMA Field, in Wichita County. Fluid will be injected into strata in the subsurface depth interval from 3771 to 3775 feet.

LEGAL AUTHORITY: Chapter 27 of the Texas Water Code, as amended, Title 3 of the Texas Natural Resources Code, as amended, and the Statewide Rules of the Oil and Gas Division of the Railroad Commission of Texas.

Requests for public hearing from persons who can show they are adversely affected, or requests for further information concerning any aspect of the application should be submitted in writing, within fifteen days of publication, to the Environmental Services Section, Oil and Gas Division, Railroad Commission of Texas, P.O. Box 12967, Capitol Station, Austin, Texas 78711 (Telephone 512/463-6792). 6-13-1tc

BUSINESS

MARY KAY Cosmetics - Norma Young, Independent Sales Director. 692-1454, 495-3480. 7-27-tfc

POOP SCOOP - For a low monthly fee, I will come to your yard once a week to de-poop your yard. Just call Jason, 692-1394. 5-23-tfc

RANDY WHITAKER - Fencing tear out, build, repair. Privacy and chain link. Free estimates, 592-9433. 6-6-8tp

SELL IT WITH Classifieds

ideas unlimited
graphic design
Letterheads Envelopes Logo Creation
Invitations Flyers Announcements
Business Cards T-Shirt Designs

The Following is a list of dissatisfied Leader Classified Advertisers:

YOU HAVE A CHOICE!
Slow Credit
Poor Credit
Bad Credit
YOU CHOOSE The Vehicle!
YOU CHOOSE The Down Payment!
No Hassles
No Old Junkers
No Cinnimiks
Call our 24 Hr 7 Days a Wk
Pre-Approved Hotline
1-800-283-4899
Se Habla Español

CONSTABLE'S SALE
Monday, June 17, 1996
10:00 a.m.
104 West Park
Iowa Park, Texas 76367
The following items will be sold:
1984 Chevrolet Pickup - C14 1/2 ton
1985 Chevrolet Pickup - C33 - Dual Rear Wheels
1982 Royal Travel Trailer
1984 Oldsmobile-Delta 88 Brougham
For additional information you may contact Craig French at 817-592-4131 or Mark Brewer, Constable.

JUSTUS & CO ROOFING
All types roofing & repairs
Free Estimates - Licensed & Bonded
Member BBB Care Program
592-4237
"For all your roofing needs-Just-Us"

Clint Gibson Fresh Water Service
1800 Gallon Capacity
495-7167
Mobile: 704-0697

Nanny's Antique Mall
111 W. Park 592-2100
Gifts for all occasions
We Buy Antiques
Booth Space Available

PARK MOTORS
USED CAR SALES
904 W. Highway 592-5890
We Finance

ROBINSON CREEK CATTLE CO.
Registered Brangus Cattle
Bulls, Heifers, Show Prospects
Bus. Office 426 Rifle Range Rd. 817/592-2980
Robinson Creek Ranch Rt. 1 Box 58 - Vashti Bellevue, TX 76228 817-928-2049

MENDOZA'S HOUSE LEVELING & FOUNDATION REPAIR
Pier & Beam Repair, We also level brick home with concrete slabs
23 years experience, Licensed & Bonded
Manual Mendoza
817-720-2530 or 322-3227 - Wichita Falls

Wallpaper Lacquer Acoustic Ceiling
GENE A. WILLIAMS
Paint • Tape & Bed
(817) 592-5494
121 S. Wall Iowa Park, Texas 76367

Don't Just Dream...Live the Dream! Don't Just Dream...Live the Dream!

Out in front Regency One REALTORS
Residential • Commercial • Farm • Ranch
592-2133 • 1-800-870-2133
Don't Just Dream...Live the Dream!
Selling Iowa Park!

Darrell Jolly 592-4926 (mobile) 781-8109
Mary Taber 1-495-3325
Julie Ressel 766-5919
Winnie Jo Holmes 592-5730

NEW LISTING - 721 S. PARK - Neat and clean mobile home. Corner lot. Call Darrell.
NEW LISTING - 402 JEFFERSON, W.F. - 2-1-1, Corner lot. Call Winnie!
NEW LISTING - 1908 ELIZABETH, W.F. - Older home with apt. Call Winnie **IN CONTRACT**
NEW LISTING - 1008 WICHITA, ELECTRA **SOLD**
OLD BURK RD., W.F. - (2-1-0) Sits on 1.12 Acres. Price reduced to \$19,900.
NEW LISTING - 2221 BROAD, W.F. **ISOLD**
493 WELLINGTON **ISOLD**
NEW LISTING - 403 E. IDA, ELECTRA - Spacious, 3 BR, 3 bath. 50's.
NEW LISTING - 1316 EMMA **ISOLD**
1905 BURROUGHS, WICHITA FALLS **SOLD**
NEW LISTING - 3634 KARLA, W.F. - 3 Bedroom, 1 1/2 bath, 2 living., \$60's.
103 VALLEY DRIVE - New construction, 3-2-2. Formal tiled entrance & all the extras. \$70's.
NEW LISTING - RITA LANE - 3-2-2. Large living area. PRICE REDUCED, \$76,500.
1200 N. ILLINOIS - ELECTRA **SOLD**
2504-06 9TH ST., W.F. - 2 homes - will sell together or sep. (4-1 1/2 -0) (2-1-0) \$90's.
3096 S. BELL ROAD - 2 homes, 3 barns, 2 offices, arena, horse walker, 4 1/2 ponds, pipe welded fence, 156.67 acres. Farm and Ranch. \$325,000.
COMMERCIAL
310 W. PARK, IOWA PARK - Perfect commercial bldg., over 6,000 sq. ft. Price reduced to \$94,500.
LOTS AND ACREAGE
NEW LISTING - 1118 S. FM 368 7 1/2 acres.
NEW LISTING - Individual city lots located on access of expressway. Possible commercial.
WEST SMITH - 6+ acres. Pond and fenced, mobile homes accepted. \$20's.
COUNTRY MEADOWS (100X255) All utilities available. Great for new home. Price reduced to \$10,000 or best offer.
WEST SMITH - 7 lots. Utilities available. Mobile homes accepted.
GARDEN VALLEY - 25 Lots available. Restrictions. No mobile homes. Will build to suit.
1208 W. HIGHWAY - Great location to build new home.
508 W. CORNELIA - Lot - street not complete. \$9,500.
5 ACRE TRACT - NORTH JOHNSON RD. Price reduced to \$12,500. **IN CONTRACT**
5 ACRE TRACT NORTH JOHNSON RD. S. Price reduced to \$12,500. Call Darrell.
HWY. 82, HOLLIDAY - 4 acres, fenced.
2408 MCKINNEY RD., WICHITA FALLS - East of W.F. Commercial. 3.96 acres.
514 MANES - 1.14 acres. Commercial or build.
500 W. BANK **SOLD**
NORTH JOHNSON ROAD - 80 acres. Partial fence, water avail. Price reduced to \$56,000.
HIGHWAY 79, W.F. - 68.12 acres, fence, 3 ponds.

Don't Just Dream...Live the Dream! Don't Just Dream...Live the Dream!

'96 Farm Bill details explained

The conservation provisions of the 1996 Farm Bill establish cost-efficient programs that will direct conservation gains into the next century, according to local conservationists.

"The conservation provisions demonstrate a renewed commitment by the agricultural community and the public to environmental protection," said Mike Isbell, with the USDA Natural Resources Conservation Service office in Iowa Park.

"Isbell said the bill reauthorizes a number of popular programs and creates new programs that will help local landowners. "The Conservation Reserve, Wetlands Reserve, Resource Conservation and Development, and the Forestry Incentives programs will continue," he said.

The bill also creates a new program called the Environmental Quality Incentives Program that combines the functions of four existing cost-sharing programs into one that focuses federal funding into conservation priority areas, said Isbell.

In addition, the bill creates a wildlife habitat incentive program, a nonprofit national natural resources conservation foundation, a grazing lands initiative, and a farmland protection program.

Dave Robnett, with the USDA Farm Service Agency, said the new farm bill's focus is on providing voluntary incentives to landowners to protect and improve natural resources.

"There has been some tremendous progress made in the past 10 years in resource protection, and we intend to use this farm bill to build on that progress," Robnett said.

The Conservation Reserve Program (CRP) will extend through 2002. The program encourages landowners to leave highly-erodible and environmentally sensitive lands in grass, trees, or other conservation cover.

The 1996 Farm Bill provides that up to 36.4 million acres may be enrolled in the program at any one

time and allows new enrollments to replace expired or terminated contracts to maintain the total authorized level.

Contracts in existence before Jan. 1, 1995, may be terminated after they have been in effect for at least five years and if the land meets other early release requirements, Robnett said.

The Environmental Quality Incentives Program (EQIP) combines the functions of the Agricultural Conservation Program, Water Quality Incentives Program, the Great Plains Conservation Program, and the Colorado River Basin Salinity Control Program.

EQIP is to be funded at \$130 million in fiscal year 1996 and \$200 million annually after that until 2002. Conservation practices related to livestock will receive half of program funding.

Under EQIP, five to 10 year contracts will be established with landowners to provide cost-share and incentive payments for up to 75 percent of the cost of conservation practices.

Total cost-share and incentive payments to any person are limited to \$10,000 annually and \$50,000 for the life of the contract.

The Wetlands Reserve Program (WRP) is extended through 2002 with an enrollment cap of 975,000 acres. The WRP focuses on restoring and protecting wetlands to enhance water quality and improve wildlife benefits.

After Oct. 1, 1996, the program will start enrolling one-third of total program acres in permanent easements, one-third in 30-year easements, and one-third in restoration only cost-share agreements.

The 1996 Farm Bill also establishes the National Natural Resources Conservation Foundation. It will be a nonprofit corporation which funds research and educational activities relating to conservation on private lands.

A new Conservation on Private Grazing Land initiative is designed to

provide technical, educational and related assistance to landowners on the nation's 642 million acres of private grazing lands.

According to the latest National Resources Inventory, about 64 percent of the nation's grazing lands would benefit from conservation treatment.

There is also a new incentive program in the bill designed to help states with farmland conservation programs purchase conservation easements. The Farmland Protection Program provides up to \$35 million to help farmers preserve their land in agriculture.

Another new provision, the Wildlife Habitat Incentives Program, provides \$50 million over the life of the bill for wildlife habitat improvement on private lands.

Robnett said the bill makes several policy changes to the Swampbuster and wetland conservation programs. "The changes will provide us with the flexibility to work with farmers for common sense solutions that will protect natural resources," he said.

"We expect that over time, these changes will make this program more successful, with productive farmland made more productive while achieving a net gain in the functions and values of these valuable resources."

Regarding Conservation Compliance, Isbell said the bill was also changed to allow USDA employees who are providing on-site technical assistance to notify landowners if they observe potential compliance problems.

Landowners will have up to one year to take corrective action. In addition, county committees are authorized to provide relief in cases of economic hardship.

Isbell and Robnett said there are a number of other details in the new

bill, and encouraged anyone with questions to visit the USDA Center or conservation district office in Iowa Park.

SHOP IOWA PARK FIRST!



ideas unlimited
graphic design

Kari Collins
(817) 438-0917
Friday, Saturday, Sunday
(817) 592-4431
Monday, Tuesday, Thursday

Business Cards

Huge selection of paper color, ink color and foil

Plastic foil stamped, Glaskote, Marble Glaskote, Foldover and second-side printing available

COMPETITIVE PRICES

Call Today for a quote!

Business Stationary

Announcements

Logo Creation

T-Shirt Designs

Personalized Party Invitations

Snowball Stand
Next to Scobee's Mini Mart

BUY ONE SMALL & GET ONE FREE
Bring Ad

SIZZLIN' SUMMER SAVINGS




at ALLSUP'S

The weather's hot, and so are our prices. At Allsup's you'll find LOW PRICES on your favorite products, just in time to COOL OFF for summer!

So come to Allsup's, where the savings are so hot they SIZZLE.

Iowa Park Lodge #713



Stated Meeting and Election
June 13 7:30 p.m.

RICHARD C. CARVER, D.D.S.
GENERAL DENTISTRY

TELEPHONE 817-592-5141 315 NORTH WALL IOWA PARK, TEXAS 76367

 <p>12 OZ. CANS 6-PACK \$2.19</p> <p>Pepsi-Cola "YOUR DRINK PEPSI GET STUFF HEADQUARTERS"</p>	<p>COMBO MEAL 2 Beef & Bean Burritos & Tallsup</p>  <p>\$1.99</p>
 <p>SHURFINE REG. OR HICKORY BBQ Sauce 18 OZ. 99¢</p>	<p>FAMILY SIZE Potato Chips REG. \$1.39 99¢</p> 

HIGH YIELD SAVINGS ACCOUNT


THE CLASSPLUSSM ACCOUNT

Competitive. Convenient.

5.00%
\$50,000 or more
Annual Percentage Yield
Rate guaranteed through August 1, 1996*

The **ClassPlus** Account pays you a competitive interest rate. An account maintaining a \$50,000 balance would earn 5.00% annual percentage yield, accrued daily and compounded monthly. An account maintaining a balance less than \$50,000 would earn 3.25% APY, accrued daily and compounded monthly.

Isn't it time you had a savings plan that paid you a great rate. Stop in and see your Norwest banker today and ask about a **ClassPlus** Account.



To The **Nth** DegreeSM

Iowa Park
219 West Park
592-4418

*APY based on balances of \$50,000 or more. APY offered effective May 6 through August 1, 1996. \$25,000 minimum daily balance is required to avoid a monthly fee of \$10. Not available for institutional funds. The rate may change after the account is opened. Fees could reduce earnings on the account.
© 1996 Norwest Bank Texas, Wichita Falls, N.A. Member FDIC

ALLWAYS a LOW PRICE on



<p>LIBBY'S Vienna Sausage 5 OZ. CAN</p>  <p>59¢</p>	<p>BOLO Dog Food 15 OZ. CAN</p>  <p>39¢</p>	<p>VISINE Eye Drops .75 OZ.</p>  <p>\$4.99</p>	
<p>You'll find all this and more at your Allsup's store</p> <p>IOWA PARK & HOLLIDAY STORES</p>		 <p>CORN KING Meat Bologna 12 OZ. PKG. 59¢</p>	
<p>SHURFINE CHARCOAL 10 OZ. \$1.79</p>	<p>SHURFINE CHARCOAL FLUID 32 OZ. \$1.39</p>	<p>CHARMIN BATH TISSUE \$1.39</p>	<p>SHURFINE PAPER TOWELS 2/\$1</p>
<p>ALLWAYS... LOW PRICES, GREAT PRODUCTS 24 HOURS A DAY</p>  <p><i>Allways</i></p> <p>PRICES EFFECTIVE 6/9-15/96 OFFER GOOD WHILE SUPPLIES LAST</p>			