

1/4/96

MRS. LITA WATSON
528 W. CLARA
IOWA PARK TX 76367
112



IOWA PARK LEADER

50¢

Vol. 27 No. 17

IOWA PARK, WICHITA COUNTY, TEXAS 76367

Thursday, January 4, 1996



GETTING YEAR STARTED RIGHT - A weather system moved over Iowa Park Monday, New Year's Day, and deposited almost an inch of precipitation. Mid-day snow, shown

gracing the Tom Burnett Memorial Library, followed heavy showers that began prior to dawn. In all, .88 of an inch of moisture was measured by Virgil Woodfin.

Chamber award nominations deadline nears

One of the reasons Iowa Park is such a pleasant city to live in is because citizens go out of their way to make things even better than they were.

For that reason, the Iowa Park Chamber of Commerce several years ago began recognizing those who make those types of contributions, by presenting them with awards.

In many cases, only a few even know who makes those contributions. That is why they solicit nominations for award recipients.

Nomination forms are available at the Chamber office, which is located directly across Wall Street from city hall.

The completed forms should be turned in by next Tuesday, in order for committees to evaluate them and determine the winners for this year.

The awards, for Outstanding Citizen, Outstanding Educator, and Outstanding Senior Citizen, will be presented at the banquet Saturday, Jan. 13.

Two other awards also are given in years when committees deem the nominees are worthy. Those are Outstanding Business and Outstanding Agriculturist.

Tickets for the banquet, which includes a steak dinner prepared by the Iowa Park MuleSkinners, are \$10. They are on sale at the Chamber, Park Cleaners, Hughes Pharmacy and Iowa Park Leader.

The late Gladys James was the initial recipient of the Outstanding Citizen of the Year, in 1971.

Others who followed, in order, were Dr. Gordon Clark, Mrs. Frank Harlin, Ralph Beall, Wayne House, Darrell Dick, Mrs. Lita Watson, Mrs. Charlie Lee, Bill Steger, Gordon Griffith, Buck Voyles, Bill Gilmore, H.M. Nipper, and the entire Iowa Park Volunteer Fire Department membership.

Following them were Grover Cleveland, Frances George, James Barrington, Dr. Erwin Soell, Robert Palmer, Bob Hamilton, Michael Price, Ruth Welch, Sheri Kennedy, Joe Hughes, and last year's recipient, Louis Sefcik.

The first Outstanding Senior Citizen recipient went to the late Fenton Dale. Following him were Mrs. W.F. George, Arch Hughes, Charlie Metz, Bertha McDonald, Mrs. Otis Gay, Mrs. James Sewell, Lester Brooks, Riley Thompson, Olive Blalock, Pauline Singleton, Carl Sullivan, Ida Mae Lehman, Raymond Good, Tommie Smith, Betty Lowe, Wayne House, Virgil Woodfin, Martha Robinson and Laverne Owen.

In 1978, the first award presented for Outstanding Agriculturist went to Virgil Woodfin.

Following Woodfin were Loys Barbour, Ray Hicks, Rex Wells, Barry Mahler, Robert Wilcox, Stanley Williamson, Freddie Daume, Denny McCarthy, Marvin Klinkerman, David Robnett, Gene Jordan, and Richard Hill.

The year following the initial Agriculturist award, the Chamber began awarding the Outstanding Educator award. It was presented to John Sibley.

Others presented were Linda Ayers, Bob Dawson, Earnie Reusch, Patsy Todd, Carol Edwards, Joni Whittis, Greg Miller, Jim Gotcher, Helen Roberts, Carole Venhaus, Kenneth Davis, Carolyn Richter, Dorothy Palmer, Linda Gray, and last year's recipient was Jo Ann Hale.

Cryovac was the first to receive the Outstanding Business of the Year award, presented in 1989. Others recognized were State National Bank, the City of Iowa Park, Entex Fabrication Inc., Dutton Funeral Home, and last year it went to B&R Thriftway.

Holiday problems few for police

As was the case over the Christmas holidays, things were reasonably quiet for police over the New Year's period, according to this week's police blotter.

Officers were called to four disturbances during the period.

When officers responded to a domestic disturbance call at a residence in the 300 block of East Aldine at 11:46 p.m. Thursday, they charged Gary Allan Grubbs, 28, with Class C assault to prevent family violence.

Grubbs was released within the hour, after paying a fine of \$132, according to the blotter entry.

Two disturbance calls were received New Year's Eve.

Earl Wayne Wilson, 31, was charged with Class C assault when police were summoned to a residence in the 500 block of East Bank, at 3:57 a.m.

Wilson was released at 8:00 a.m. after signing a promise to appear in municipal court.

At 9:20 p.m. officers were called to a residence in the 100 block of West Jefferson, where a domestic disturbance was reportedly underway.

Though emergency medical personnel were summoned to attend to a person, no charges were filed by officers.

However, two persons involved filed Class C assault charges against each other Tuesday with the municipal court clerk.

They were Carl Randal Creswell, 45, and Charolett Renee Creswell, 30.

Those charges will be heard in municipal court.

Police were called at 9:04 p.m. Tuesday to a residence in the 1300 block of Mockingbird, where a man reportedly would not leave when asked.

George Deatherage, 23, was issued a warning for criminal trespass.

However, it was determined he had an outstanding warrant for his arrest, issued locally, for having alcohol beverage in a city park.

Deatherage was taken into custody on the outstanding warrant, and later released after paying a fine of \$118.50, according to the blotter entry.

An officer stopped a vehicle at 11:51 p.m. Friday for a traffic violation in the 400 block of North Victoria, and both occupants were taken into custody.

The driver, Jeffrey Martin Lewis, 29, was found to have an outstanding warrant issued by the county sheriff's department, for *capius pro fine*, driving while license was suspended.

He was released at 1:31 a.m. to a county deputy to be transported to jail.

The vehicle's passenger, Shelley Lynn Jackson, 27, was taken into custody on a charge of public intoxication.

Jackson was released at 9:25 a.m. after her fine of \$129 was paid.

A criminal mischief complaint was filed by a resident in the 600 block of East Alameda, saying the home had been hit by eggs some time Thursday night.

Council to meet Monday

Only three items of business are listed on the tentative agenda for Monday night's meeting of the city council.

The meeting, which will be the council's first since Dec. 11, will be held at 7 p.m. in council chambers.

An ordinance will be considered which would reduce the space allotted of the no parking zone in the 100 block of West Park.

The council will consider au-

thorizing the city administrator to enter into a lease agreement for grazing rights at Lake Iowa Park.

The third agenda item calls for the council to "consider sustaining or overriding the mayor's veto concerning the contract for janitorial services."

At the council's last meeting, aldermen approved the second-lowest bid for janitorial services, but the mayor later issued a veto on that action.

NEWS BRIEFS

Project to close Smith Road

The long, two-and-one-half-week holiday vacation ends Monday for students, faculty and staff of Iowa Park schools.

Classes, and the spring semester, get underway Monday morning,

Long school holiday near end

A portion of Smith Road will be closed for major repairs Tuesday and Wednesday of next week, according to Belvin Lytle, the city's public works director.

The city will be installing box culverts in the 800 block, in an effort to improve drainage from the West Highway area.

Lytle emphasizes the work is scheduled on a tentative basis, because the weather must cooperate in order for the project to be accomplished.

Should rain occur, which would make the work impossible, it would cause a postponement until conditions were dryer.

BUILDING OVER \$4.4-MILLION

Bumper year for permits

The year 1995 was a banner period for construction in Iowa Park, according to building permit reports issued by city hall.

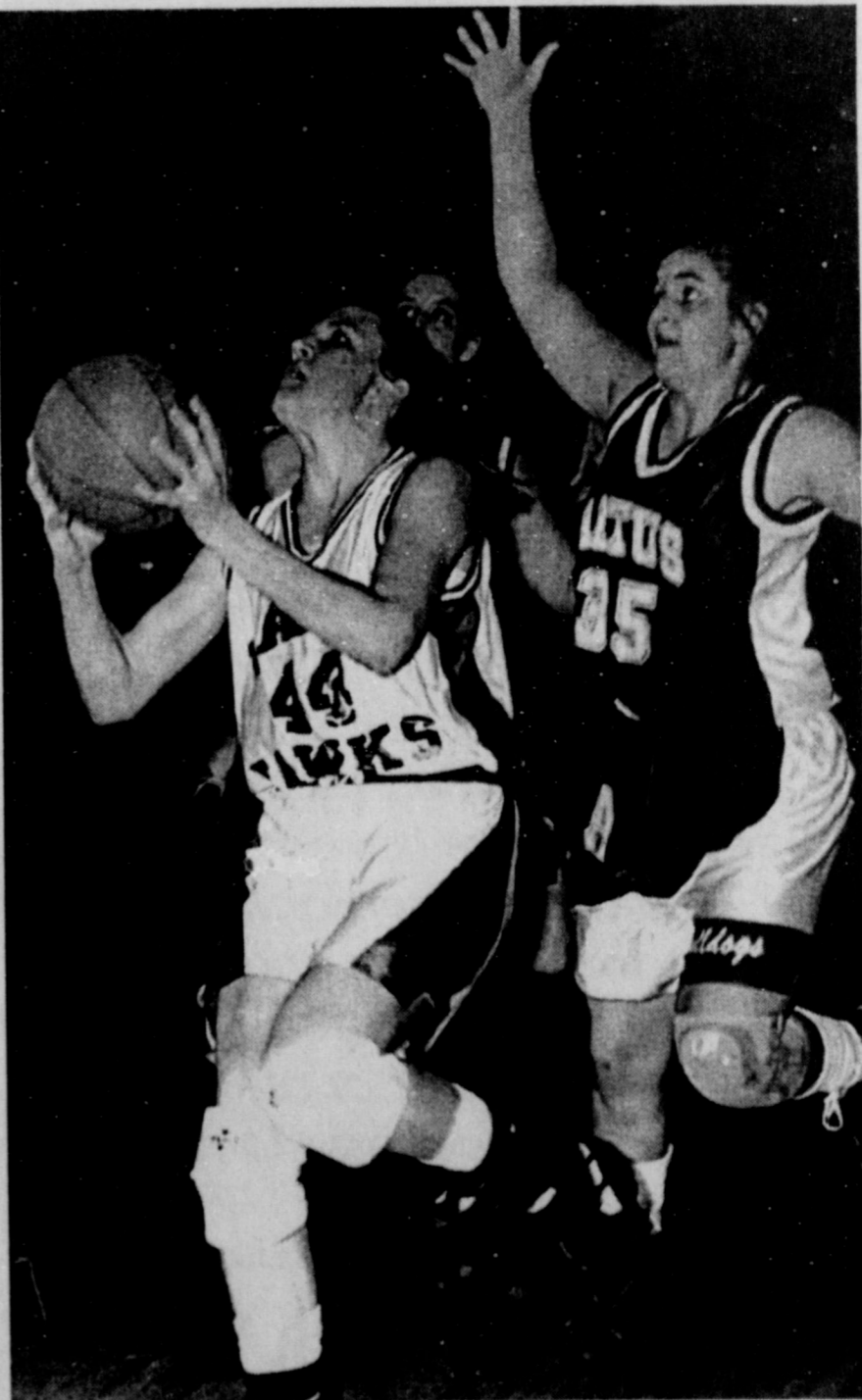
Total of permits was \$4,408,827, after December's \$261,525. That was bolstered by permits being issued for the construction of five new homes.

When compared with recent years, the 1995 total is even more impressive. The total for 1994 was \$3,009,817; in 1993, \$2,025,480, and for all of 1992, the total building permits amounted to only \$743,628.

Additionally impressive was the fact that none of the permits issued last year was for a public structure, such as additional classrooms for the schools. That, likely, will bolster the final count in 1996.

Permits issued in December included: Hal Williams, 715 W. Alameda, addition, \$11,000; George Register, 605 E. Texas,

new home, \$42,000; George Register, 609 E. Texas, new home, \$42,000; George Register, 607 E. Texas, new home, \$44,000; George Register, 611 E. Texas, new home, \$44,000; Billy Armstrong, 507 W. Alameda, roofing, \$200; Hatcher Pools, 512 W. Coleman, swimming pool, \$10,000; Bill Hamilton, 909 Foley, brick garage, \$500; Gary Grubbs, 311 E. Aldine, roofing, \$500; Holloway Construction, 909 E. Texas, new home, \$60,000; Carol Mullins, 1003 Park Plaza, repair, \$5,000; Jerry Springmeyer, 402 W. Washington, storage building, \$125; John Mixon, 310 W. Magnolia, siding, \$1,400; Ernest O. Williams, 304 W. Aldine, carport, \$800.



READY FOR DISTRICT - The Lady Hawks, defeated Altus 78-66 here Tuesday, as they prepare to open conference play Friday at Bowie. Dusti Welch is shown scoring Tuesday. More sports are on page 7 of this issue.

Does your subscription to the Leader expire this month? Check the list on page 4.

Weaver, Cruz vows exchanged in Saturday evening ceremony

Faith Baptist Church was the setting for the Saturday 6 o'clock double ring wedding ceremony that united Shonna Kay Weaver and Marc Gambill Cruz.

The bride is the daughter of Melba Weaver and the late Harold Weaver of Iowa Park.

Parents of the groom are Sandra and Perry Green, also of Iowa Park.

The recitation of marriage vows was directed by Dennis Neal, associate pastor of Faith Baptist Church.

The railing in back of the wedding party was lined with white lights, accentuated by twin ficus trees decorated with white lights. Two heart-shaped candelabra and the unity candle completed altar decorations. Pews were marked with white tulle intertwined with greenery and iridescent beads.

As family members were seated, "The Wedding Song" was played by Mitzi Briggs, pianist, and sung by Melissa Logan. Attendants entered the nuptial area to the tune of "Trumpet Voluntary" and the bride's processional was "Bridal Chorus"

"In This Very Room" was sung by Melissa Logan and Allen Briggs, accompanied by Mrs. Briggs, as the mothers lit the tapers of the unity candle. "I Will Be There" was sung by Briggs during the lighting of the unity candle by the couple. At this time the couple asked the congregation's blessing of the marriage.

Following the ceremony "Wedding March" was played as the newlyweds left the church and "Jesu, Joy of Man's Desiring" was played as the attendants left. The attendants also entered the sanctuary together.

The bride was escorted to the altar by her mother. She chose a bridal white Victorian gown styled with V-neckline and embellished with lace appliques and bow accents as was the remainder of the long sleeves that came to a point over the hands.

The train repeated the pearl, bow and lace applique trim. Her veil of bridal illusion with blusher was attached to a band of satin roses and trimmed with pearls and iridescent beads.

She carried a cascading arrangement of stargazer lilies, red roses, baby's breath and ivy.

Rhonda Weaver was maid of honor and Karleen Franks of Wichita Falls served a matron of honor.

Bridesmaids included Cindy Tammen and Kelley Hickey of Wichita Falls, Julie Cokendolpher of Burkburnett, and Jill Silvers of Iowa Park. Rikki Jo Nichols of Wichita



Mrs. Marc Gambill Cruz
(Shonna Kay Weaver)

Falls was flower girl.

They were attired in tea-length dresses of hunter green iridescent taffeta with a bow marking the center back.

Their bouquets were of stargazer lilies, red roses, baby's breath and greenery fashioned similar to the bridal bouquet.

Blake Hamilton of Iowa Park was ring bearer. He wore a tuxedo with hunter green bow tie and cummerbund.

Lee Cokendolpher of Burkburnett, Perry Green of Iowa Park, John Moore, Fort Smith, Ark., Tim Butler, Jeff Boyd and Randy Enriquez, all of Wichita Falls were groomsmen. Ushers were Perry Hamilton of Iowa Park and Joe Rollans of Wichita Falls.

The reception was held in the Tom Burnett Memorial Library.

Tauwlee Perry and Nicole Kaufold of Iowa Park and Vickie Durbin and Sandi Kent of Wichita Falls served the bride's cake. The four tiered heart-shaped cake, with three heart-shaped satellite cakes connected by stairs, were trimmed with cascading roses.

Lisa Hamilton of Iowa Park secured signatures of guests. Janice Adams was wedding coordinator.

Following the reception, the bride wore her wedding attire for their lim-

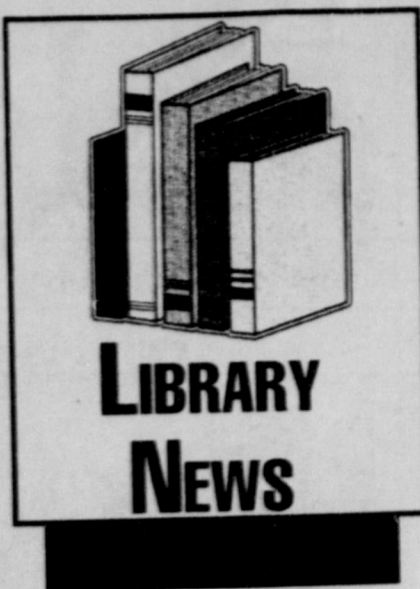
ousine trip to Dallas where they planned for their wedding trip to Cancun, Mexico.

The rehearsal dinner was hosted by the groom's parents at the church on Friday night. It was catered by Dyers Barbecue.

Both the bride and groom are graduates of Iowa Park High School and both are graduates of Midwestern State University.

The bride is a registered nurse and is employed by Wichita General Hospital.

Cruz is employed by the Wichita County Sheriff's Department. They will make their home in Wichita Falls.



LIBRARY ANNIVERSARY

Tuesday, Jan. 16, marks the 10th anniversary of Tom Burnett Memorial Library. Special events will take place that week. Watch for more information in this column next week.

STORYTIME

Tuesday 9:30-10 a.m. for 2-4 years of age

Thursday 1-1:30 p.m. for 4-6 years of age.

Friday 9-9:30 a.m. for ages 2 and up

Themes for the month of January are Winter, Animals, Houses, Ground Hog Day.

for all classes. If you have questions, call 592-4981 and ask for Ardis.

LIBRARY HOURS

Tuesday & Thursday 10 a.m.-8 p.m.

Wednesday & Friday 10 a.m.-5 p.m.

Saturday, 10 a.m.-2 p.m.

Sunday and Monday: CLOSED

TRIVIA

Can Caffeine Be Lethal?

A moderate dose, such as that in a cup of coffee or in a soft drink, is not harmful unless you are allergic to caffeine or suffer from certain conditions, such as a peptic ulcer. However, large doses can be lethal. Ten grams, or 100 cups of coffee over four hours, can kill the average human.

THANK YOU

Sunday, Dec. 31, was a busy afternoon for Garden Club members. We wish to express our appreciation to all of you for taking down the decorations, following the Christmas holiday.

Band Boosters will meet to plan annual supper

The Band Boosters will meet Tuesday evening at 7:30 in the high school band hall.

The agenda includes making final plans for the annual cornbread and bean supper to be held in February.



Traylor

Guy and Mitsi Traylor are the parents of a son, Christopher John, born December 29, at Bethania Regional Health Care Center. He weighed seven pounds and six ounces.

He has a sister, Caylie, who is 18 months old.

Grandparents are Ward and Sue Kuehn of Vernon and John and Helen Traylor of Temple, Tex.

Glenn

A daughter, Danielle Lee, was born Dec. 29, at Wichita General Hospital, to Danny and Sandra Glenn of Iowa Park. She weighed seven pounds, seven ounces.

The new baby has a brother, Heith, 13, and a sister, Mandy, 11 years old. Her mother is the former Sandra Compton of Iowa Park.

Grandparents are Mike and Lynn Compton of Iowa Park, and Ron and Sue Glenn of Wichita Falls.

Great-grandparents are Illey Compton of Childress, Audra and Coy Blagg of Gainesville, and Artie and Georgie Wood of Nocona.

Cenia May Phipps of Nocona is a great-great-grandmother.



VIOLET SPRUIELL was voted as Integrated Health Services Resident of the Month for December. Born in Oklahoma, Mrs. Spruiell has lived in Iowa Park 79 years and attended Iowa Park schools. She has been a resident of I.H.S. since September. She and the late Joel Spruiell were married 58 years.

It's A Fact . . .

Residents of Iowa Park are eligible to purchase a dumping permit for \$5, to get rid of trash, appliances and brush at no additional cost by delivering it to the city's convenience center, located south of the intersection of Smith and Johnson roads. The permit is good for 12 full months. Days and hours the center is open include: 12-6 p.m. Fridays; 9 a.m.-5 p.m. Saturdays; 1-5 p.m. Sundays, and 12-6 p.m. Mondays. The center is closed Tuesdays, Wednesdays and Thursdays.

CREATIVE CHILD CARE CENTER

OPEN 6:15 A.M. TO 7:15 P.M.
PRESCHOOL AVAILABLE
101 E. JEFFERSON
592-5521

CITY CAFE

114 W. Cash 592-4721

TUESDAY NIGHTS

Country Fried Chicken, mashed potatoes with all the fixin's

Make it a perfect wedding beginning with your invitation!

Select yours from Regency's fine collection of Wedding Invitations and Accessories.

Jack's Park Pharmacy
115 WEST PARK IOWA PARK 592-2731

BACK TO THE FUTURE

with Customized Medication.

We are trained to prepare medications that are essential to patient care. With a physician's prescription, we have the expertise to prepare medications by compounding that are: preservative-free, less-expensive, more palatable, or prepared in unique dosage forms.

Hughes PHARMACY

HEALTH MART

120 W. Park Joe Hughes - Pharmacist
Toll Free 1-800-585-4191 592-4191 UPS Service

Wishing won't keep your BLOOD PRESSURE down...

Regular monitoring and medication will.

CHECK YOUR BLOOD PRESSURE FREE AT

We know how it is... when you're feeling good, you tend to forget to take your medicine... and that can be dangerous. Now... in less than a minute and at no cost to you... you can check your blood pressure here.

WE CARE ABOUT YOUR HEALTH

JACK'S PARK PHARMACY

Your Pharmacist Can Save You Money on All Your Prescriptions Through The IPF Plan

SAVE Up to 100% on Your Prescription TODAY!

CONTROL Your finances by not waiting for insurance reimbursements!

FORGET About saving all your prescription receipts

NEVER Fill out another insurance claim form for prescriptions

Subject to approval by your insurance company.

115 W. Park 592-2731

Emergency loan applications beings accepted at FSA office

Applications for emergency farm loans for losses caused by excessive rain, flood, hail and high winds, which occurred in May through August of 1995, are being accepted at the Farm Service Agency (FSA) office in Vernon.

Wichita and Wilbarger counties are among five in Texas recently named by the Secretary of Agriculture for loans to cover part of actual production losses resulting from the storms.

Farmers may be eligible for loans of up to 80 percent of their actual losses or the operating loan needed to continue in business or \$500,000, whichever is less.

For farmers unable to obtain credit from private commercial lenders, the interest is 3.75 percent.

Farmers participating in the Federal Crop Insurance program will have to figure in proceeds from those programs in determining their loss.

NEWS OF THE IOWA PARK GENEALOGICAL & HISTORICAL SOCIETY



The many different ethnic groups who immigrated to our country brought their traditions and customs with them and contributed greatly to the American culture.

Influence of the Pennsylvania Dutch was felt in agriculture techniques, trades, foods, pre-industrial technology and also in religious patterns. The Christmas tree and the Easter bunny are two of the customs they brought with them.

Among the many traditional recipes this ethnic group contributed are sauerkraut, pretzels, hot salads and shoofly pie. All became popular and are still enjoyed.

The Pennsylvania Dutch also were responsible for the Conestoga wagon, documented as early as 1717, and was used on the frontier for hauling freight and then was the type of wagon used by pioneers on their way west. They were producers of folk art and manuscript decoration that was popular from about 1750 to 1850 (called fraktur style).

Pennsylvania Dutch and Pennsylvania German are American terms. The "Dutch" coming from the German word for German—"Deutsch" and denoted those immigrants from the Rhineland.

This ethnic group began a settlement called Germantown, near Philadelphia in 1683. There were 13 Quaker and Mennonite families from the Rhineland in the original group. Later a large German emigration came from the Palatinate and they were first called Palatines, then Dutchmen.

In the 18th century many German speaking immigrants came to

Pennsylvania, including Palatines, Swabians, Alsations, Hessians and Swiss. They often sailed from Holland, sometimes waiting a long time to sail, time to marry and have children.

Most were Lutheran or Reformed Church members, but there were also Amish, Anabaptists, Moravian, Brethern, Mennonites and Harmonites.

If you are searching for Pennsylvania Dutch roots, there are many genealogical and historical records available.

For marriage records, search church books, the Family History Library in Salt Lake City has micro-filmed records which encompass many years, including census, and church records of baptisms, marriages and burials.

In public libraries consult the Directory of Historical Societies in the United States and Canada, also the Directory of Archives and Manuscript Repositories by National Historical Publications and Records Commission, for further resources to search for your Pennsylvania Dutch ancestors.

—Marita Holdsworth

COOK of the WEEK



DeDe Alderman

DeDe Alderman, our Cook of the Week, is well known by most Iowa Park school children. She is the DARE (Drug and Alcohol Resistance Education) and Crime Prevention Officer with the Iowa Park Police Department.

DeDe says she really enjoys her work because she loves working with children.

DeDe teaches DARE classes to fifth grade students and teaches a shorter version for grades pre-K through fourth. She conducts follow-up programs at the junior high. In addition, she speaks to different clubs and organizations on crime prevention.

DeDe has lived in Iowa Park since 1976. She is a 1978 graduate of Iowa Park High School and attended Vernon Regional Junior College.

She is married to Skip Alderman, who is employed by the Wichita Falls Independent School District. They have two daughters and three sons.

In her free time, DeDe coaches

basketball for 10 and 11 year old girls, and likes to fish and go camping.

The following recipes are some DeDe uses often, and many times will prepare one of them to share with fellow officers in the police department.

Shrimp Dip

1 - 8 oz. pkg. cream cheese

- 1 - 8 oz. ctn. sour cream
- 1 bunch green onions (or to taste)
- 3 cans medium-size shrimp (or crab meat)
- 1 Tbsp. red pepper (or to taste)
- 1 Tbsp. lemon juice

Blend all ingredients together, saving 1/2 can of shrimp. Garnish with remaining shrimp and sprinkle extra red pepper on top for color.

Broccoli Casserole

- 10 oz. bag broccoli, cooked and drained
- 2 cups minute rice, cooked
- 1 can cream of chicken soup
- 1 1/2 lbs. Velveeta cheese
- 1/2 cup milk
- 1 large can French fried onions

Mix together broccoli, rice and soup. Melt together cheese and milk and mix with rice mixture. Put ingredients in a casserole dish and top with French fried onions. Bake at 350 degrees until onions are brown.

Shrimp Fried Rice

- 1/2 lb. whole cooked and deveined shrimp
- 2 cups cooked minute rice

- 2 large onions
- 6 to 8 slices bacon
- Soy sauce
- 4 eggs
- 1 small can mushrooms (optional)
- Salt & pepper to taste

Saute onions and mushrooms in large fry pan or wok. Cut bacon in 1/2 inch pieces; add to onion mixture and brown.

Scramble eggs into mixture one at a time. Add shrimp and soy sauce and simmer 5 minutes, stirring occasionally. Add cooked rice and stir fry approximately 10 minutes, stirring frequently. Add more soy sauce to taste.

Chicken Burritos

- 1 whole chicken
 - 1 lb. Velveeta cheese
 - 1 to 2 cans Rotel tomatoes
 - Flour tortillas
- Cook and debone chicken. (It's best if pressure cooked). Add Velveeta cheese and melt. Add Rotel tomatoes. Wrap in flour tortillas.

Iowa Park Lodge #713

Stated Meeting Visit by D.D.G.M. Thurs., Jan. 11 7:30 p.m.

Schram & Cluley

FURNITURE & MATTRESS CO.

Randall Schram Eddie Cluley IOWA PARK 592-4186 204 W. Bank

All Major Credit Cards Accepted
In-store financing ~ 3 months-No Interest

CITY CAFE
114 W. Cash 592-4721

MONDAY NIGHTS
Sirloin, Ribeye or T-Bone steak, served with baked potato, green salad and Texas toast.

STATE NATIONAL BANK Presents

ACROSS

5 record Jewish caught with ___ and reel off Galveston in '37

6 hay or cotton bundle

7 TX Lovett song: "___ No Lady"

8 emergency service (abbr.)

9 final Civil War battle fought at this TX ranch

16 Cedar Hill H.S. class

17 TX Renaissance Festival in Magnolia has ___ minstrels

19 how Texans pronounce "earn"

20 TXism: "stands on ___ own two feet"

21 Texans call it a spear

22 type of Texas pecan found in Callahan Co.

27 "Don't ___ with Texas"

28 TXism: "___ than a well rope"

29 "___ good bum!"

30 TXism: "so dry the Baptists ___ sprinkling"

31 TX "Tarzan" Ely

32 TX Medal of Honor winner Audie (init.)

33 gate is ___ to corral

36 TXism: "feeling his ___ (frisky)"

37 he sang TX Willie's "Hello Walls" (init.)

38 Bush was his V.P.

39 TXism: "___ as a fiddle"

40 UT singing club

42 TX Dr. Pepper rival

43 Muenster hosts ___ fest

46 TXism: "___ it with ___ to Abilene from Lubbock"

48 TXism: "___ to do that" (intend)

49 TX fashion: western ___

50 TXism: "attracted ___ ___ to light"

53 El Paso's Shoemaker won the Kentucky ___

54 this Isaac was "Barbed-wire King" (init.)

55 Charlie Pride record label

56 TX Jimmy Dean's "Big ___ John"

DOWN

1 TX science students experiment in these ___

2 TX Mickey Gilley

3 "A Headache Tomorrow ___ ache Tonight"

3 on hwy. 283, S.E. of Abilene

4 part of "Fetro-plex"

9 "no ___, no play"

10 TXism: "hunting with ___ empty gun"

11 Dallas film star Darnell (init.)

12 Texas cantaloupes

13 Texan McKeel was a hostage here

14 small bell ring

15 how often Texans pay taxes (3 wds.)

16 Dallas' Grand Prix is one (2 wds.)

17 Decatur is the seat of this county

18 disease producer

20 TXism: "skeeaddle out of ___"

22 this Ben was Austin marshal in 1880 (init.)

23 "Cougars" college

24 Houston actress: Meredith Mac ___

25 Kenedy FM radio

26 goes in 33-across

27 was partnered with TX Lehrer on PBS

28 in Falls Co. on 77

31 TX made film: "Baby the ___ Must Fall" ('64)

34 this Ava starred in "Lone Star" (init.)

35 TXism: "two-bit ___"

36 Texas is in United States ___

37 Canton's ___ market

40 Oiler '94 Pro Bowl punter Montgomery

41 he phoned home

44 Cynthia Parker was taken in Indian ___

45 TX Monke Nesmith

46 TX mostly female college in Denton

51 TXism: "draw ___ on it" (aim)

52 TXism: "missed it ___ a country mile"

55 SMU's Berry who was an NFL All-Pro (init.)

State National Bank is proud to announce that we are offering our own low interest Visa and Mastercard credit cards. Please call or come by for more information. *W.A.C.

ANNUAL PERCENTAGE RATE FOR PURCHASES	ANNUAL MEMBERSHIP FEE	GRACE PERIOD FOR PURCHASES	METHOD OF COMPUTING THE BALANCE FOR PURCHASES	LATE PAYMENT FEE	OVER THE LIMIT FEE	CASH ADVANCE FEE
13.82% - Basic 12.96% - Gold	NONE	25 DAYS*	AVERAGE DAILY BALANCE INCLUDING NEW PURCHASES*	NONE	NONE	NONE

All the data this application was printed (shown in the lower right-hand corner - this side) the information listed above was accurate. Because rates and terms are subject to change, you may contact us for the current information by writing to the business reply address shown on the reverse side.

* A Finance Charge will be imposed on Credit Purchases only if you elect not to pay the entire New Balance shown on your monthly statement by the previous closing cycle within 25 days from the closing date of this statement. If you elect not to pay the entire New Balance shown on your previous monthly statement within that 25-day period, a Finance Charge will be imposed on the unpaid average daily balance of such Credit Purchases from the previous statement closing date and on new Credit Purchases from the date of posting to your account during the current billing cycle, and will continue to accrue until the closing date of the billing cycle preceding the date on which the entire New Balance is paid in full or until the date of payment if more than 25 days from the closing date. The Finance Charge for a billing cycle is computed by applying the monthly Finance Rate to the average daily balance of Credit Purchases, which is determined by dividing the sum of the daily balances during the billing cycle by the number of days in the cycle. Each daily balance of Credit Purchases is determined by adding to the outstanding unpaid balance of Credit Purchases at the beginning of the billing cycle any new Credit Purchases posted to your account, and subtracting any payments as received and credits as posted to your account, but excluding any unpaid Finance Charges.

A finance charge will be assessed on cash advances from the date of the cash advance, or the first day of the billing cycle in which the cash advance is posted, whichever is later, and will continue to accrue until payment in full is made.

Last Puzzle Solution

S-207

STATE NATIONAL BANK

Your Full Service Bank

Striving to meet your banking needs

Equal Housing Lender

Each Depositor Insured to \$100,000
FDIC
FEDERAL DEPOSIT INSURANCE CORPORATION

IN THE MILITARY

Sternadel in Navy

Seaman Recruit Jay L. Sternadel, son of Mr. and Mrs. Ricky Sternadel of Holliday, recently reported for duty aboard the submarine tender USS Frank Cable, homeported in Charleston, S.C.

The 1994 graduate of Holliday High School joined the Navy in April of 1995.

The GARSMITH

Classic Restorations • Custom Painting
Hull Damage • Auto Glass Installed
Professional Collision Repair
Fiberglass & SMC Repairs
INSURANCE CLAIMS WELCOME

Gary Smith 592-5920
1109 FM 368 S. Iowa Park

WAIT!

Before you accept a Rate Increase on your Medicare Supplement, LOOK at a Sensible Alternative.

Senior Benefits Of Texas, Inc.

Judy Wade & Associates

*No waiting on pre-existing conditions!

3711 Maplewood Suite 202 • Merrill Lynch Bldg.
691-5885

Park Clinic is Proud to Announce the association of

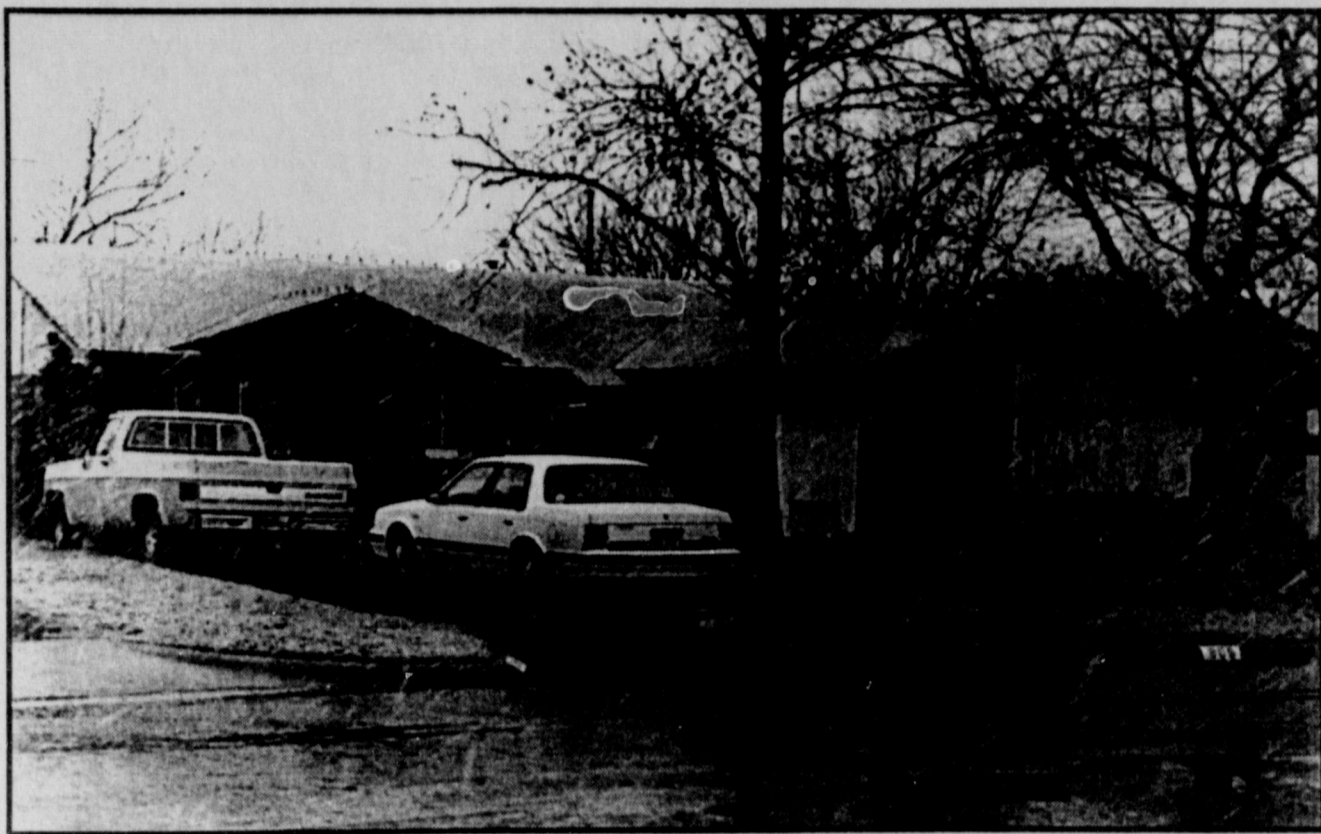
ROBERT S. SMITH P.A.-C

formerly of Holliday Community Health Clinic

He is joining the physicians at

PARK CLINIC

310 W. Alameda ~ Iowa Park
Now taking appointments ~ Call 592-4141



WINTER WONDERLAND - Heavy snowflakes flutter to the ground Monday, framed by the Paul Hubner residence at 909 West Cornelia.

FFA Booster Club to meet

The FFA Booster Club will hold a regular meeting Monday night in the high school vo-ag building.

Main topic of discussion for the meeting that begins at 7 p.m. will be the donkey basketball game. This is a fundraiser the group has sponsored over the past few years.

**SHOP
IOWA
PARK
FIRST!**

**ATTEND THE CHURCH
OF YOUR CHOICE
SUNDAY**

THE END OF YOUR SEARCH FOR A FRIENDLY CHURCH

ASSEMBLY OF GOD

SUNDAY
9:45 a.m. Sunday School
11:00 a.m. Morning Service
6:00 p.m. EVANGELISTIC SERVICE
WEDNESDAY
7 p.m. Royal Rangers & Missionettes
Nursery provided Sunday morning
& Wednesday evening

200 S. YOSEMITE
592-5087 - Church
592-4627 - Pastor
Charles Hensley, Pastor

**IOWA PARK
CHURCH OF CHRIST**
301 E. PARK + 592-5415

Sunday Morning Bible Study 9:30 a.m.	Sunday Worship 10:30 a.m. & 6 p.m.	Wednesday Evening Worship 7:00 p.m.
--	--	---

MINISTER - JEFF RATLIFF

First Christian Church
(Disciples of Christ)
Phone 592-2721

210 E. Cash

Sunday School 9:45 a.m.
Worship 10:55 a.m.
Tom Oden-Peace, Pastor

**First United
Pentecostal Church**
592-9478 802 N. First 592-4275

Tired of Religion? Looking for an exciting experience with God?

Sunday... Sunday School 10:00 a.m. Evening Worship 6:30 p.m.
Wednesday... Our Daily Bread 7:30 p.m. Children's Church 7:30 p.m.
Friday... Action (Youth) 7:29 p.m.

Pastor Greg Hardin
A Place for New Beginnings

ATTEND THE CHURCH OF YOUR CHOICE THIS SUNDAY

**CHRIST THE KING
CATHOLIC
CHURCH**

Sunday Schedule
8:45 Children's
Religious
Formation
10:00 a.m. Mass

First & Clara
592-2802
Rev. Patrick Burke, Pastor

**Kamay Road
Church of Christ**
Corner of
Colorado & Emerald

Sunday Services
9:30 a.m.
6:00 p.m.

For Information Call:
592-2082
592-5076

**Good Shepherd
Lutheran Church**
Corner of
1st & W. Magnolia
592-5605

Sunday School
9 a.m.
Worship Service
10 a.m.

Rev. Orville Horn, pastor
569-4085

**A Place of Worship
A Place to Grow**

First Baptist Church
300 N. Yosemite
Iowa Park, Texas

SUNDAY SERVICES

8:15 a.m. Worship Service
9:30 a.m. Sunday School
10:45 a.m. Worship Service
Extended Session for 3 & 4 Year Olds
Chapel Church for 5 years to 3rd Grade

5:00 p.m. Discipleship Training
Nursery - Preschool - Children - Youth - Adults
6:00 p.m. Worship Service

Nursery Provided for all Services

**CHURCH OF GOD
of Iowa Park**
601 E. Cash

"Where Love is More Than Just A Word"

SUNDAY
Sunday School 8:45 a.m.
Sunday Morning 10:45 a.m.
Children's Church 10:45 a.m.
Evening Worship 6:00 p.m.
Wed. Family Training 7:20 p.m.

Rev. & Mrs. Johnny House
Church 582-4948 Parsonage 582-5818 Bus & Nursery Available

**Lakeview
Church of God**
N. Victoria and Expressway

Opportunities for Services

Children's Church Ladies Ministry
Choir (youth & adult) Men's Fellowship
Nursing Home Boys' Club, ages 6 - 17
Visitation Girls' Club, ages 6 - 17
Puppet Ministry Nursery Provided

Sunday School.....9:45 a.m. Wednesday Family
Morning Worship...10:45 a.m. Training Hour...7:30 p.m.
Sunday Night.....6:00 p.m. (Classes for all ages)

Phone - Church: 592-2776, Parsonage: 592-9555
Pastor Ole Olds
Discover The Joy

**FIRST UNITED
METHODIST CHURCH**

REV. DARREL GLEN BLACKMON, PASTOR
"Catch The Spirit" ~ Come Grow With Us!
Sunday School - 9:30 a.m. UMYF - 5:00 p.m.
Sunday Worship - 8:45 a.m. and 10:40 a.m.
201 E. Bank 592-4116

CORNERSTONE CHURCH

"The Church at the
Foot of the Cross"

1201 W. Smith

9:45 a.m. Sunday School
10:50 a.m. Morning Worship - Children's Church
6:00 p.m. Evangelistic Service
7:00 p.m. Wednesday Family Night, also Christian Pathlighters,
Boys & Girls
10:00 a.m. Saturday - Primary, Junior & Senior Bible Quiz
Church Phone ~ 592-5929 Pastor Duffy Terry ~ 592-5520
Where Jesus is Lord

FAITH BAPTIST CHURCH

"The presence of God is our greatest asset"

411 S. Wall 592-2716

SUNDAY	9:15 a.m.	WEDNESDAY	6:30 p.m.
Sunday School	10:30 a.m.	Adult Bible Study	6:30 p.m.
Morning Worship	6:00 p.m.	Children's Mission Programs	6:30 p.m.
Discipleship Training	7:00 p.m.	Youth Cross Training	7:30 p.m.
Evening Worship		Choir Rehearsal	

Dr. Greg Ammons, Pastor
A Southern Baptist Church

Nursery provided for all activities
Ministry Opportunities for the entire family

**First
Presbyterian Church**

Paul Tomlinson, Interim Pastor

New to the area? A warm welcome awaits
you at First Presbyterian Church.
Experience our friendly,
family atmosphere this Sunday.

Sunday School 9:30
Worship 11:00

211 S. Yosemite 592-4220

**Join Us For A Simple
Celebration Of Eternal Life**

*Non-Denominational *Contemporary Music
*Systematic teaching through the Bible *Loving, informal atmosphere
that welcomes everyone!

**CALVARY
CHAPEL
TEXOMA**

Beginning this
Sunday, Service
at 10 a.m. and
6 p.m.

For more
information
851-8931 or
851-0273

Now meeting at 1321 N. 4th & 287 N

Hawks run season record to 14-4

The Iowa Park Hawks traveled to Aledo to play in the Aledo Classic last week and split four games, winning a pair and losing two. The Hawks returned home Tuesday night and won a 72-70 thriller over Byers to improve to 14-4 for the season.

Iowa Park opened the Aledo tournament with a 67-45 win over Maypearl. The Hawks won all four quarters enroute to the 22-point win. Shaun Campbell led his team with 15 points followed by Michael Fallon with 10 and Corky Petty with 9.

The Hawks came up short against Mineral Wells 75-53 in their second game with the turning point coming in the second quarter in which Iowa Park was outscored 29-9. Nick Black led the Hawks in scoring with 19 and David Waterbury was close behind with 16. Mineral Wells was led by Jerome Jackson who finished with 34, with 18 of those coming in the second quarter.

In the third game of the tournament Iowa Park downed Castleberry 63-51 with Black leading the way with 16 points, followed by Petty who finished with 11.

The Hawks finished the tournament with a 70-48 loss to Krum. McNeil led Iowa Park in scoring with 10 points followed by Campbell who scored 9.

"We played up and down all week," said head coach Tim Clark. "I think we got better defensively but we struggled some on offense. The competition level was outstanding. Six different coaches at the tournament have won the state tournament. I think our kids seeing teams like this play will make us work harder."

Iowa Park returned home Tuesday night to play host to Byers and this one went down to the final buzzer.

With the game tied at 70-70 and with Byers inbound the ball at halfcourt, Waterbury stole the



NICK BLACK TIPS BYERS PLAYER'S SHOT AT GOAL

Waterbury finished the game with 17 points followed by Black with 16. Campbell finished with 12 while Petty finished with 10.

"Byers played great," Clark said. "They hit their open shots. We didn't play very good defense in the first half but played better in the second. I don't think we shot any better in the second half. It was our defense that improved. I think we just wanted it

more than they did down the stretch and our depth just wore them down."

The Hawks will host Springtown Saturday with the freshmen getting started at 1 p.m.. The JV will follow with the varsity getting started around 4 p.m. The Hawks will then travel to Hirschi Monday night to take on the Huskies before opening district play the followin Friday night against Jacksboro.

DISTRICT-OPENER

Lady Hawks to Bowie

The Iowa Park Lady Hawks are doing what every team wants to do heading into district play.

Getting hot at the right time.

Iowa Park is currently riding a three game-winning streak with all three wins coming over 4-A schools.

The Lady Hawks picked up two of those wins this past week, beating Wichita Falls High School 61-50 Friday night and followed that with a 78-66 win over Altus Tuesday night. The streak started with a win over Hirschi Dec. 19.

Iowa Park picked up it's 10th win of the season Friday night when the Lady Hawks blew a close game open in the third quarter. Iowa Park held a slim two-point advantage at halftime but outscored the Lady Coyotes 18-6 in the third quarter to take a 44-30 lead heading into the final eight minutes of play. The Lady Hawks were outscored 20-17 in the fourth but it wasn't enough. Dusti Welch led the team with 18 points followed by Wendy Bridwell who finished with 17. Randi Tigrett also reached double figures finishing with 10.

The Lady Hawks moved to 11-7 for the season in their final non-district game Tuesday night with a 78-66 win over the Lady Bulldogs from Altus.

Once again Iowa Park blew open a close game, this time in the fourth quarter with a 24-14 run.

With the game tied at 34-34 at the half, Tigrett and Welch took over with the pair scoring 14 of the team's 20 points in the period. Tigrett scored 8 points, all coming on assists from Welch who finished the game with 8. Welch scored 6 of her game-high 24 points in the third on a three-point play and a three-pointer both on assists from Tigrett.

"We're doing a much better job seeing the floor and hitting the open man," said head coach Ronda Havins. "Our scoring is more balanced and we're playing better defense and that's a good sign heading into district."

Iowa Park led 54-52 heading into the final eight minutes of play and the

Lady Hawks took over from that point on outscoring Altus 24-14. Iowa Park held the Lady Bulldogs without a point from the 6:08 mark until the 2:26 mark. During that stretch, the Lady Hawks scored 12 to take a 72-56 lead.

Once again Iowa Park had three players reach double figures. Welch finished with 24, Bridwell scored 13 and Tigrett tossed in 12.

"This was a good win for us," Havins added. "We'll start getting ready for Bowie tomorrow. We've got to be ready to play every time we take the floor in District and just take them one game at a time and we'll be alright."

The Lady Hawks open District 3-3A play in Bowie against the defending 3A State Champion Lady Rabbits Friday night and return home Tuesday to host Graham.

inbounds pass at the time line and raced to the basket laying the ball off the glass as the final second ticked off the clock to give his team a 72-70 win.

Byers led 17-13 after the first period and then it was bombs away in the second as both teams started hitting from long range.

The Hornets made five of their eight first-half three-pointers in the second period to take a 42-33 lead into the locker room. Black kept Iowa Park within range hitting four consecutive three-point bombs in the period.

Byers built the lead to 10 at 47-37 at the 6:13 mark of the third but Iowa Park rallied and scored eight unanswered points to cut the lead to 47-45 with 4:36 left in the third. Iowa

Park took it's first lead at 49-48 with 3:27 left on a six footer by Levi Scholl. Byers quickly built the lead back to 8 at 60-52 on a layup with 17 seconds left in the third.

The Hawks pulled to within one at 62-63 with 6:01 to play in the game on a short jumper by Black. Iowa Park took a 70-65 lead with 3:01 left in the game on a three-pointer by Waterbury. Byers answered with a pair of free throws and a three-pointer of their own to tie the game at 70-70 with 2:18 left. Byers went into a stall and held the ball until Campbell came up with a steal with 18 seconds left.

Black worked free on the baseline but his 10-footer missed the mark with Byers grabbing the loose ball to set up Waterbury's heroic finish.

IOWA PARK ATHLETIC CENTER
215 N. Yosemite 592-2570
Located one block North of Allsup's Convenience Store off the Old Iowa Park Rd.
Stairsteppers, Treadmills, Bicycles, Climbers, Skier, Free Weights Upstairs, Co-Ed Gym
Certified Personal Trainer
SELLERS
BODYBUILDING SUPPLEMENTS

GET IN SHAPE AFTER THE HOLIDAYS
DOOLEY'S FAMILY FITNESS CENTER
400 West Park, Suite D • Across from Thriftway
592-2120
Loose Those Unwanted Pounds and Extra Inches!
JOIN TODAY!
Call: 592-2120 after 3

SCOBEE'S MINI MART
322 W. Highway 592-5961
Open 6 a.m. - 7 Days A Week
FROM THE DELI
FRESH MADE
Sausage, Egg & Cheese Burrito or Bacon, Egg & Cheese Burrito **99¢** | Biscuit & Sausage **79¢**
12 Pack Cans Pepsi/Dr. Pepper Products ~ 2/16
TEXAS LOTTO - CASH 5 - PICK 3 - SCRATCH OFF
We now accept Visa ~ Mastercard ~ Discover ~ American Express

TOP 10 REASONS TO EAT AT KEN'S PIZZA IN 1996

10. Manager Pat is just a really nice guy.
9. Our waitresses actually like you being in our restaurant.
8. GREAT food and a GREAT value!
7. Fast, friendly service - dine-in, carryout or delivery.
6. One word - BUFFET! (Tuesday night and everyday at noon)
5. Calzone, Calzone, Calzone!
4. Big Screen TV.
3. We support all Iowa Park School and Community Activities
2. We accept all local competitor's coupons, but they don't accept ours.
1. You don't have to eat our pizza backwards.

Our pizza tastes great any way you eat it.

LARGE PEPPERONI PIZZA \$7.99 Pay only \$7.99 plus tax for a large pepperoni pizza. Offer good with coupon only, carryout, delivery or dine-in. Coupon expires January 31, 1996	PRICEPLEASER PIZZAS \$5.99 EACH OR 2 FOR \$10.99 Your choice of Meatpleaser, Cheesepleaser, Combopleaser or Pepperoni Pleaser. Good for carryout, delivery or dine-in. Coupon expires January 31, 1996	\$3 OFF LARGE PIZZA \$2 OFF MEDIUM PIZZA NOT VALID WITH PRICEPLEASER PIZZAS. Good for carryout, delivery or dine-in. Coupon expires January 31, 1996
---	--	---

ken's PIZZA 902 W. Highway 592-9999

The Classifieds

DEADLINES

12-NOON WEDNESDAY (WORK ADS ONLY)
4 P.M. TUESDAY, DISPLAY ADS

**SAVE 10¢ PER WORD FIRST
INSERTION BY PAYING
WITH COPY AT OFFICE**

RATES:

30¢ PER WORD FIRST INSERTION
20¢ PER WORD EACH REPEAT

Wallpaper Lacquer Acoustic Ceiling
GENE A. WILLIAMS
Paint • Tape & Bed
(817) 592-5494
121 S. Wall Iowa Park, Texas 76367

WOODBRIAR COMMUNITY
1, 2 and 3 bedroom units
ALL BILLS PAID (includes basic cable)
1000 Mary 592-2121

MOVIES FOR SALE

303 KATHLEEN - 3-2-2, greenhouse, ornamental fish pond, completely new paint. Fenced back yard. 592-4091. 12-7-tfc

REAL ESTATE

CALL ME FIRST! I buy houses. Fast closing. Darline-agent. 592-2950. 10-5-tfc

CARPORTS BY SCOTT

CARPORTS > PATIO COVERS > RESIDENTIAL PAINTING
SCOTT SANDERS 592-4317

One bedroom apartment \$215 to \$226
Two bedroom apartment \$262 to \$276
• Energy efficient • Off-street parking
• Central Heat/Air • Water Paid
• Children's Play Area • Total Electric
• Fully carpeted and draped • Fully-equipped laundry room
COLONIAL HEIGHTS APARTMENTS
592-2705

MENDOZA'S HOUSE LEVELING & FOUNDATION REPAIR
Pier & Beam Repair, We also level brick home with concrete slabs
23 years experience, Licensed & Bonded Manual Mendoza
817-720-2530 or 322-3227 Wichita Falls

BY OWNER - 308 East Magnolia. On 1 1/2 lots, new roof. Nice 2 bedroom, 1 bath, garage, attached storage room, steel siding, central heat/air, storm shelter. \$38,000. 592-2340. 1-4-1tp

4 ACRES for sale outside Iowa Park city limits. 30x50 metal shop building. Paved frontage. City water available. \$17,500. 592-0341. 12-28-2tc

24 Hour Emergency Call
CITY GLASS AND MIRROR
M.E. LeDue
2214 Seymour Hwy.
Wichita Falls, Tx. 76301
(817) 723-8616
(817) 723-7550
Pager 851-1160
We're Just a Stones Throw Away

592-9622 **THOMAS JOHNSON** BROKER
TEXOMA REALTY
723-7471
723-7471 592-9622
723-7471
PATY McLEMORE
LAURA HAMMOND
CYNDI BURGARDNER
RYNDEL FORCHER
"Together We Get It Done"
800 NORTH JACKSON
306 EAST DIAMOND - **IN CONTRACT**
two outbuildings. Slashed
504 E. HIGHWAY - Improved spacious 2-story comm.bldg., \$56,300.
LOTS, Alameda, and W. Cornelia. Call for information.

JUSTUS & CO ROOFING
All types roofing & repairs
Free Estimates - Licensed & Bonded
592-4237
"For all your roofing needs-Just-Us"

1983 12X56 2 bedroom, 1 bath, newly remodeled, CH&A, laundry connections, appliances. 592-4064. 1-4-2tp

FOR RENT

UNFURNISHED two bedroom. Heat & air, carpet, washer & dryer connections. \$275. \$150 deposit. References required. 592-4980.

POSEY'S APPLIANCE SERVICE
We service all makes of washers, dryers, freezers, refrigerators and window air conditioners.
1356 FM 368 SOUTH 592-5452

YARD WORK

DALE'S TREE/YARD Service Tree trim or removal, lawn mowing, hedge trimming. Seniors rates. 592-9455. 7-27-tfc

Park Home Health Services
592-2753
Phone Answered 24 hours
Medicare-Medicaid approved
Private Insurance

Don't Just Dream...Live the Dream! Don't Just Dream...Live the Dream! Don't Just Dream...Live the Dream!

Regency One REALTORS
Residential • Commercial • Farm • Ranch
592-2133 • 1-800-870-2133
Don't Just Dream...Live the Dream!
Selling Iowa Park!
Darrell Jolly
592-4926 (mobile) 781-8109

OPEN HOUSE
Sunday, Dec. 17
1 - 4 p.m.
103 Valley Drive
New Construction - \$78,500

Mary Taber 1-495-3325
Julie Ressel 766-5919
Winnie Jo Holmes 592-5730

312 W. PARK
1 bdrm., 1 bath, living area, dining area, convenient to business district. \$14,000. Call Darrell.
- OLD BURK RD., W.E.
Mobile home, 2 BR, 1 bath, carpet-vinyl, recently painted inside and out. Sits on 1.76 fenced acres. \$22,000.
NEW LISTING - E. BANK
2 BR **IN CONTRACT**
616 S. PARK
Beautiful trees on corner lot. 3 BR, 1 bath, 1 car garage. Sits on approx. 2 lots. Great starter home. Call Winnie. Price reduced to \$25,000.
306 SOUTH YOSEMITE
1994 mobile home, 2 BR, 2 bath, super nice. Has 2nd home-needs work. Sits on 3 lots. Large trees. Price reduced to \$27,500.
NEW LISTING-7702 W. SH 258, KAMAY
3 bdrms., 1 bath, nice size living area. New metal roof. Sits on 4.4 acres. Partially fenced. \$39,500 Call Darrell.
4716 EDEN LANE, W.E.
3 living areas, Franklin fireplace, 3 bdrms., 1 1/2 baths, 2 storage bldgs., carpet less than two years old. Fresh and neat. \$47,500. Call Darrell.
1905 BURROUGHS - WICHITA FALLS
3 BR, 2 bath, 2 living areas, formal dinning, breakfast bar, CH/A. Reduced to \$67,000. Call Darrell.
510 N. WALL
Beautiful corner lot. Large trees - 3 BR, 2 bath, 2-car garage. Formal living, dining & den. \$76,000. Will look at offers. Call Winnie.
103 VALLEY DRIVE
New home construction. 3 BR, 2 bath, sep. master suite. \$78,500.
1200 N. ILLINOIS - ELECTRA
Approx. 3,000 sq. ft. living area. 4 BR, 3 baths, 3+ attached garage. 2 fireplaces, in-ground pool. \$80,000.

4126 COUNTRY MEADOWS
Quiet neighborhood. 3 BR, 2 bath, 2 car garage. Corner lot size (128X255), tile, carpet, skylights. Fireplace, ceiling fans. \$92,000.
2504-06 9TH ST., W.E.
4 BR, 1 1/2 bath, over 3,500 sq. ft., full base-ment. Rental in back-2 BR, 1 bath. \$98,500.
MORNINGSIDE ADDN.-W.E.
106 Pembroke. Stately home in exclusive area. Freshly painted inside, hardwood floors. A must see. \$98,500. Call Julie.
COZY COUNTRY CLUB
Excellent condition. Beautifully landscaped. Terrific two story home on Cooke. 3 or 4 bedrooms, 2 living areas, 2 dining areas, fireplace in study. 2 baths. Pool. \$221,000. Call Darrell.
NEW LISTING - 3096 S. BELL ROAD FARM AND RANCH (COMBO)
1 ST HOUSE - 2,556 sq. ft. 2ND HOUSE - 1,056 sq. ft. 3RD (MOBILE HOME) (40X12). 2,953 sq. ft. horse barn with office; 5,000 sq. ft. barn with office; 5,532 sq. ft. hay barn with office; working arena; 4 1/2 ponds; 100 acres wheat; 19 acres coastal bermuda; 3 loafing sheds. Sits on 156.67 acres. \$325,000 firm. Call Darrell.

LOTS AND ACREAGE RESIDENTIAL & COMMERCIAL
LOT ON DAISY & POE
.46 of an acre. Call Winnie.
LOTS IN GARDEN VALLEY
100 VALLEY DRIVE - \$7,750
102 VALLEY DRIVE - \$7,750
107 VALLEY DRIVE - \$7,750
124 VALLEY DRIVE - \$7,900
1208 W. HIGHWAY
PRICE REDUCED TO \$9,500. Great location to build your new home. Established area.
NEW LISTING - LOT
508 W. CORNELIA - \$9,500
2 TRACTS - NORTH JOHNSON RD.
2-5 acre tracts, redistricted. 5 miles north of 287, \$15,000 each. Make offer Call Darrell.
HWY. 82, HOLLIDAY
4 Prime acres to build new home. Restricted covenants. \$20,000. Call Winnie.
HWY. 258
Ready to build? I have 10 acres waiting just for you. Cleaned, level land with stock tank and corrals.
NEW LISTING-COMMERCIAL ACREAGE
514 W. Manes. Any form of business. 1.14 acres. \$45,000. Call Darrell
500 W. BANK
Lots 1 thru 24. Entire block located behind Wal-Mart. Price reduced to \$69,000. Prime Commercial Location.
80 ACRES
Located 5 miles north on Johnson Road. Farm land. Has pond at back. \$72,000. Make offer. Call Darrell.
68.128 ACRES ON HIGHWAY 79
SUPER building site. Trees, fenced. 20X30 butler bld. \$100,000. Call Julie.

TEXAS REALTY
Selling Iowa Park
109 W. Cash
592-2728
Polly Spruiell
Res. 592-4756
Mobile Ph. 781-6155
Tommy & Glenda Key
Res. 592-4660
Mobile Ph. 781-1996
Mobile Ph. 781-3949
20's
300 E. Ruby
2-BR, 2-BA mobile home on corner lot has central heat/air, 2-car carport, and storm cellar. 2-BR home is paneled and carpeted and includes detached garage & carport.
304 E. Ruby
2-BR home is paneled and carpeted and includes detached garage & carport.
504 E. Washington
3-BR double-wide mobile home with addition for guests sits on 1.5 lots.
111 James
307 E. Lafayette
SOLD SOLD
30's
421 N. Wall
This 3-BR, 3-Ba home sits on corner lot, has 1-car garage, fenced yard, central heat, good storage, and lots of space.
40's
5190 Love Road
3-BR, 2 BA on approximately 3 acres has barns with grooming/wash areas. House recently recarpeted; ceramic tile entry.
104 W. Ruby
3-BR, 2 BA, large living room, trees, detached guest accommodation/business opportunity.
60's
601 E. Texas
New Construction; 3-2-2; Indian Springs Subdivision.
70's
905 E. Texas
New Construction; 3-2-2; Indian Springs Subdivision.
80's
1307 Edgehill Tr.
3 BR, 2 BA with 2 living areas and excitingly unique secluded back yard. Must see!
516 Callie Lane
524 Callie Lane
Under Construction in Highland Park subdivision, these homes feature approx. 1550 sq. ft. of living, two dining areas, beautiful ceilings, separated master suite.
100'S
301 Peterson Rd. N
Spacious 3-BR home on 2.69 acres features 2 living areas, 2 dining areas, and utility room with pantry.
Farm
700 Johnson Rd. S
Approximately 348 acres of fenced and cross-fenced land; includes historic home and numerous barns and buildings
7722 Headquarters Rd.
100 acres with large, recently remodeled home; includes guest house, barns, and other buildings.
Land
1.73 Acres
NE corner 3rd Street & 287 Serv. Rd.
8.22 Acres
32.01 Acres
60.00 Acres
IN CONTRACT
Holman Road north of Burk Burnett Johnson Road
79.12 Acres
Commercial IN CONTRACT
1.54 Acres
LOTS
FM 368 North
130'X200' lot in Hillside Terrace.
NEW LISTING - RESIDENTIAL
500 W. MAGNOLIA
This comfortable 2-BR home sits on a large corner lot in excellent location. It features central heat and air, hardwood floors, is neat and clean, and has many large pecan trees.

Don't Just Dream...Live the Dream! Don't Just Dream...Live the Dream! Don't Just Dream...Live the Dream!

Thank you, Iowa Park, for your patronage!

IF YOU WANT YOUR CUSTOMERS TO REMEMBER YOU, HIT THEM WITH A 2X4.

MISC. FOR SALE

GREAT CONDITION - couch & loveseat \$150. Oak entertainment center w/glass doors \$50. 592-4398. 1-4-1tp

EARTHTONE COUCH, \$50; matching chair, \$25; brown chair, \$25; matching loveseat, \$40; microwave, \$80. Havins - call for appointment to see, 592-0291. 1-4-1tp

1971 CORVETTE T-top (white) New HP 350, 4 speed, new tires & new leather interior. \$11,500 obo. After 6:00 p.m. 592-9342. 1-4-1tp

IN EXCELLENT condition, sleeper sofa. Call 592-5203 anytime. 11-30-tfc

OAK FIREWOOD - free delivery. \$70/rick; \$135/cord. 592-4237. 11-9-tfc

HELP WANTED

PART-TIME HELP - 5 days a week, 10:30 - 2 p.m. Apply in person, City Cafe, 114 W. Cash. 10-26-tfc

COOK NEEDED. Excellent benefits. Apply in person, Integrated Health Services, 1109 North Third. 1-4-1tc

HOMEMAKERS WANTED Full-time/part-time, work from home. Simple, fun, set own hours. Free training. Call 592-0248. 1-4-1tc

WICHITA HOME Health Primary Home Care seeks attendants to assist clients in home part-time. 322-5157. 1-4-1tp

Shaklee Distributors
Ruby & Dan Love
1601 Karen, Iowa Park
592-5951

DOMESTICS

NEED YOUR HOME or business cleaned from top to bottom? Call DeDe Tatum, 592-9632. 8-31-tfc

IRONING - 592-9006. 12-28-5tp

BUSINESS

EIBEN Home Repair and Remodeling. Additions, roofing, painting, sheetrock, doors, carports, patio covers, and more. Small jobs welcome. Reasonable rates. Licensed and bonded. 592-2053. 7-27-tfc

HOUSE PAINTING, Interior & exterior. Sheetrock repair, acoustic ceiling, general carpentry. Small jobs welcome. Carport-patio covers. Free estimates. 592-5550. 7-27-tfc

SUPERIOR PAINTING - Quality painting at reasonable prices. Call today and ask about our 6-month unconditional guarantee and free estimate. 592-4077. 7-27-tfc

DALE'S HOME REPAIRS For all your repair needs. Small jobs welcome. Senior rates. Quality work. 592-9455. 7-27-tfc

GARY WILLIAMS, contractor. Remodeling and renovating. Painting, carpentry, cabinets, formica work. Free estimates. 592-2480. 7-27-tfc

TELEPHONE JACKS, Installation or repair. Affordable rates. Free Estimates. Jerry Reed, 592-2243. 7-27-tfc

LAWNMOWER & weedeater repair. Overhauls, blades sharpened and balanced. Also edgers and riding mowers. Yard work. Real reasonable. 592-5402. 7-27-tfc

BLACK POWDER Guns and accessories, revolvers \$112 and up. Powder \$6.50 lb. Will order modern guns for 10% over cost. Ye Ole Gun Shack, 413 W. Washington, 592-5430. 7-27-tfc

MARY KAY Cosmetics - Norma Young, Independent Sales Director. 692-1454, 495-3480. 7-27-tfc

NOTICE

LOST - LHASA APSO female, answers to Frances or Frankie. 592-0267. 1-4-1tp

FREE - MIXED BREED dogs. 5 months old, have shots, need good home. 592-5127, ask for Sedalia. 1-4-1tp

REWARD for information leading to return of 8-month-old female kitty. Black and white, long hair, black cross on chest. Missing Dec. 26 from 400 block East Washington. 592-9429. 1-4-1tp

MALE BOSTON TERRIER Lost near Burnett Park by Wichita River Bridge on FM 368. Dark brown brindle colored with white chest, forehead stripe, and some white on feet. Wearing brown leather collar, red tag. Reward for return or information leading to location. Call 438-2504. 1-4-1tp

PUBLIC NOTICE
The Board of Adjustment of the City of Iowa Park, Texas, will conduct a public hearing at 6:00 p.m. on Monday, January 15, 1996, to consider the issuance of a variance at Tract 6, NW 150' West of Highway, Block 33, Texas Addition (811 West Highway), to allow a residence in a C-A/R (Automobile Commercial and Commercial Recreation district) zone. Any comments for or against may be presented orally at the hearing or in writing to City Hall prior to the meeting. All meetings are open to the public. 1-4-1tc


The Following is a list of dissatisfied Leader Classified Advertisers:

ELECTRICIAN!
All Types of Electrical Work

Licensed  Bonded

Residential Commercial
Kendell J. Hill, Electrical Contractor
592-4773

PARK MOTORS
USED CAR SALES

904 W. Highway  592-5890

We Finance



AUTO CRAFT ENGINE REPAIR, INC.
Locally Owned & Operated
Complete Automotive Repair

Butch Hager 412 South Yosemite, Iowa Park
Manager (817) 592-5041


 


PORTFOLIO REAL ESTATE

Darline Nault
592-2950

YOUR HOMETOWN ADVANTAGE

NEW LISTING - #46 SURREY
3 bedrooms, 2 baths, 2 car garage. Recently updated, painted, tile, carpeted and updated kitchen and baths. Beautifully landscaped, immaculate home. Sits on large lot with two fenced yards. Includes pool, pool house. \$92,000.
4 HOMES IN BURKBURNETT
Owner finance - Call Darline.

 **Register Contracting**
George Register-Builder
Experienced and Reliable

 **Darline Nault - Realtor**
1003 E. Texas

Under Construction. If you hurry you can still pick out car garage.

IN CONTRACT

Over 1,700 sq. ft.
611 E. Texas
To begin construction soon.
609 E. Texas
To begin construction soon.
607 E. Texas
To begin construction soon.
605 E. Texas
To begin construction soon.
801 E. Texas
Under Construction. Three bedroom, two bath, garage, over 1,200 sq. ft.
711 E. Texas
Under Construction. Three bedroom, two bath, garage, over 1,200 sq. ft.
709 E. Texas
Under Construction. Three bedroom, two bath, garage, over 1,200 sq. ft.

All homes will include marble tubs, geothermal heating/cooling system, total electric, 2X6 walls, vinyl insulated windows, low maintenance exterior.

CLASSIFIEDS SELL!!

Copying & Laminating
Copier - 2 pages 25c
Protect your important documents with a plastic laminate overlay. Credit Card size to 8 1/2 X 11. Prices start at 50c
Parkway 200 W. Bank

FAX Messages
Ph. 592-5613
Copies made - 15¢
UPs Packages
Hughes Pharmacy

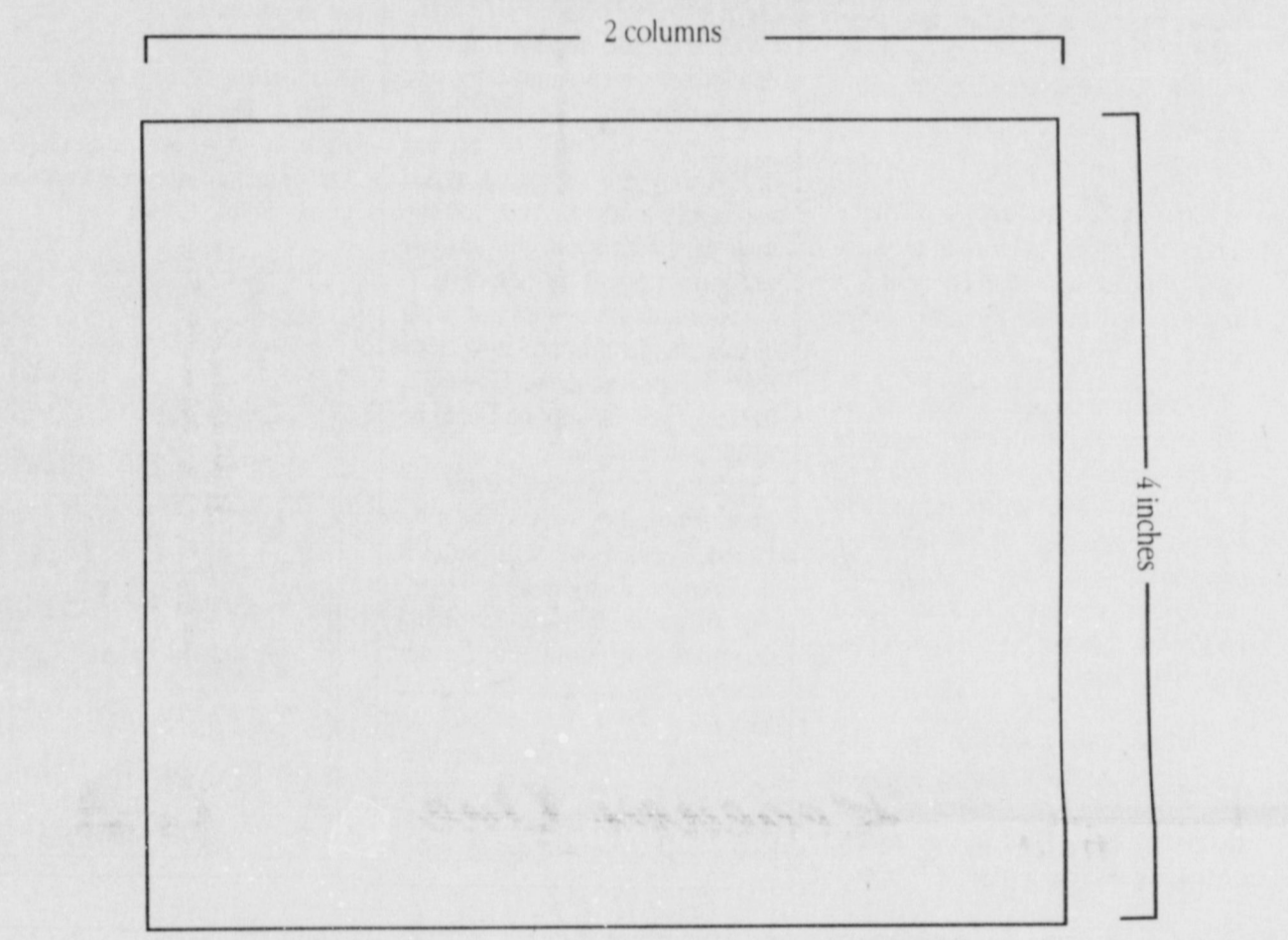
MINI-CON Self-storage

- Variety of sizes.
- Competitive prices.
- Locally owned and operated.
- Monthly rates.

805 W. Hwy.
592-2761

\$1000 REWARD

For information leading to the arrest and conviction of any person or persons involved in theft, vandalism, arson, fishing or hunting on any of our properties in Wichita, Archer, Wilbarger, Clay, Wise or any other county in which we may have equipment located. Tom Swanson Oil Co., TS&T Drilling Inc. 817-495-3971.



You won't find more effective advertising for your small business than an ad in the Iowa Park Leader. It goes directly to your customers and gives them a wallp they won't soon forget. In addition, they're inexpensive! Only \$20 buys you a 2 column by 4 inch advertisement. Again: \$20 doesn't buy ONE ad, it buys over 8,100 ads!! You can't buy more effective advertising than that!

Call us at 592-4431, or come by 112 W. Cash. We'll set you up with a 2X4. If that's not enough, you can always hit them with a 4X4.



IOWA PARK LEADER

Edward Jones gets first place rating

Edward Jones brokers gave the firm a first-place rating in a national survey of nine investment companies, Bo Watson, Lorie Vagher and Mike Bruckner the investment representatives for Jones in Iowa Park, announced today. Even more impressive is the fact that Jones received a near-perfect score when it comes to putting clients first and doing what it promises.

"Although we'd love to take credit for these recent achievements," Watson said, "we know it really belongs with those who have played the most important roles in making our firm a successful organization -- our customers and friends."

This is the fourth consecutive year that Edward Jones has ranked either first or second in the survey, conducted every October by Registered Representative magazine. The survey results, which appear in the December 1995, issue are based on anonymous telephone interviews with 50 brokers from each company. The brokers rate their firms on such factors as overall ethics, freedom from pressure to sell certain products, quote and information systems, and quality of research.

In the four main categories of the survey -- work environment, support, product and management -- Jones scored higher than any other firm.

Additionally, Jones received an "A" letter grade in all sub-categories except research, for which it received a "B". The firm scored especially high in the category of freedom from pressure to sell certain products and in the ethics category. Jones received an overall score of 9.05 out of a possible 10 points.

"This survey reflects the opinions of our brokers, the people who are on the front lines dealing with our customers," said John W. Bachmann, managing principal of the St. Louis-

based company. "Because of that, we are very proud of the high scores we received."

"In addition, our investment representatives are members of the communities in which they work, so their opinions about our firm are significant. We are very happy that we are providing the support they need," Bachmann said.

Edward Jones is one of the largest financial services firms in the nation with more than 3,100 branch offices in 49 states. The firm serves more than 2-million clients and specializes in investments tailored to the needs of individual investors. It offers such investments as certificates of deposit, taxable and tax-free bonds, stocks and mutual funds.

The Iowa Park office is located at 105 W. Cash.

Letters to Editor policy explained

The Leader receives numerous letters which cannot, for one reason or another, be published.

Letters will not be printed unless they are signed. A typed name will not do. And, for the sake of verification, the writer's telephone should be included.

Should the writer not wish his/her name printed, it will be omitted upon request. However, the letter will be kept on file to be read upon request.

Letters also must be free of libel. If not, they will not be published, because we will not edit the content of any letter.

In letters supporting political candidates or issues, the Leader reserves the right to limit their lengths.

We encourage your Letters to the Editor, and offer the paper space as your forum for discussions of ideas and observations.



Iowa Park 4-H Club

The Iowa Park 4-H Club met Thursday, Dec. 21, at the RAC. We had our Christmas party, and Tim and Phyllis Hunter prepared chili dogs for us. We decided to give presents to a needy family. These were delivered with a Christmas tree on Dec. 23.

The next meeting will be Jan. 18, 1996. See you.

- Dee McEwen



Basketball fans will again be asked to sit on their respective sides at all Dist. 3-3A games, as was decided last year by conference members, IPHS principal Richard Davis says.

ss ss ss ss ss

A meeting of the Athletic Booster Club will be held at 7:00 this evening in the high school cafeteria. Basketball fans and player parents are encouraged to attend.

CITY CAFE
114 W. Cash 592-4721
FRIDAY NIGHTS
Cattfish or Shrimp,
French fries, hush
puppies, cole slaw
or red beans, pickles
and onions

The CARSMITH
Remote Auto Alarms
Keyless Entry Systems
Window Tinting
Power Window and Lock Repairs
Cars Unlocked
Gary Smith 592-5920
1109 FM 368 S. Iowa Park

RICHARD C. CARVER, D.D.S.
GENERAL DENTISTRY
TELEPHONE 817-592-5141
315 NORTH WALL
IOWA PARK, TEXAS 76367

The World Store
592-5163
FAX 592-0354
504 E. Highway
Iowa Park
Layaway Terms
As Long As You Like

"SOMETHING NEW FOR YOU IN 1996"
END OF YEAR REMODELING SALE.
HAVE TO MAKE ROOM FOR REMODELING CREWS.
Most items will be marked to cost and some even below. Items not marked will be 25% off. **25% OFF store-wide unless otherwise marked.** (Note: this will not include wholesale merchandise or uniforms.)
Remember: this is a sale on items that are already below ALL area prices.
SEE YA!

Always Read The Fine Print.

Norwest Free Checking:
No Service Charges • No Minimum Balance • No Limit On Check Writing • No Fine Print
No Kidding

To The Nth Degree®

Iowa Park Office
219 West Park
592-4418

© 1995 Norwest Bank Texas, Wichita Falls, N.A. Member FDIC

EFFECTIVE DEC. 31, 1995 - JAN. 6, 1996
IOWA PARK & HOLLIDAY STORES

SAVE ON **Pepsi-Cola** 3 LITER **\$1.99**

ALLSUP'S RING-IN 1996

Tide Detergent 98 OZ. BOX **\$5.99**

Bake-Rite Shortening 42 OZ. CAN **\$1.99**

DECKER FRANKS

Ham, Egg & Cheese or Sausage, Egg & Cheese

ALLSUP'S Breakfast Burritos EACH **99¢**

ALLSUP'S Chicken Strips & Potato Wedges 3 STRIPS & 5 WEDGES **\$1.79**

SAVE ON Decker Meat Franks 12 OZ. **59¢**

PRESTONE Anti-Freeze Coolant GALLON **\$5.99**

CHOCOLATE / BANANA Mello Party Pies 5 **\$1**

1.5 LB. LOAF Allsup's Sandwich Bread 69¢ EACH OR **2 \$1** FOR

SAVE ON Decker Cooked Ham 10 OZ. PKG. **\$2.39**

SOFT & GENTLE Bathroom Tissue 4 ROLL PKG. **99¢**

18 CT. LG. OR 24 CT. MED. Shurfine Basic Diapers EACH **\$4.19**

NEW MANAGER'S SPECIAL **BURRITO & TALLSUP \$1.39**

1 GALLON **ALLSUP'S MILK \$1.99**