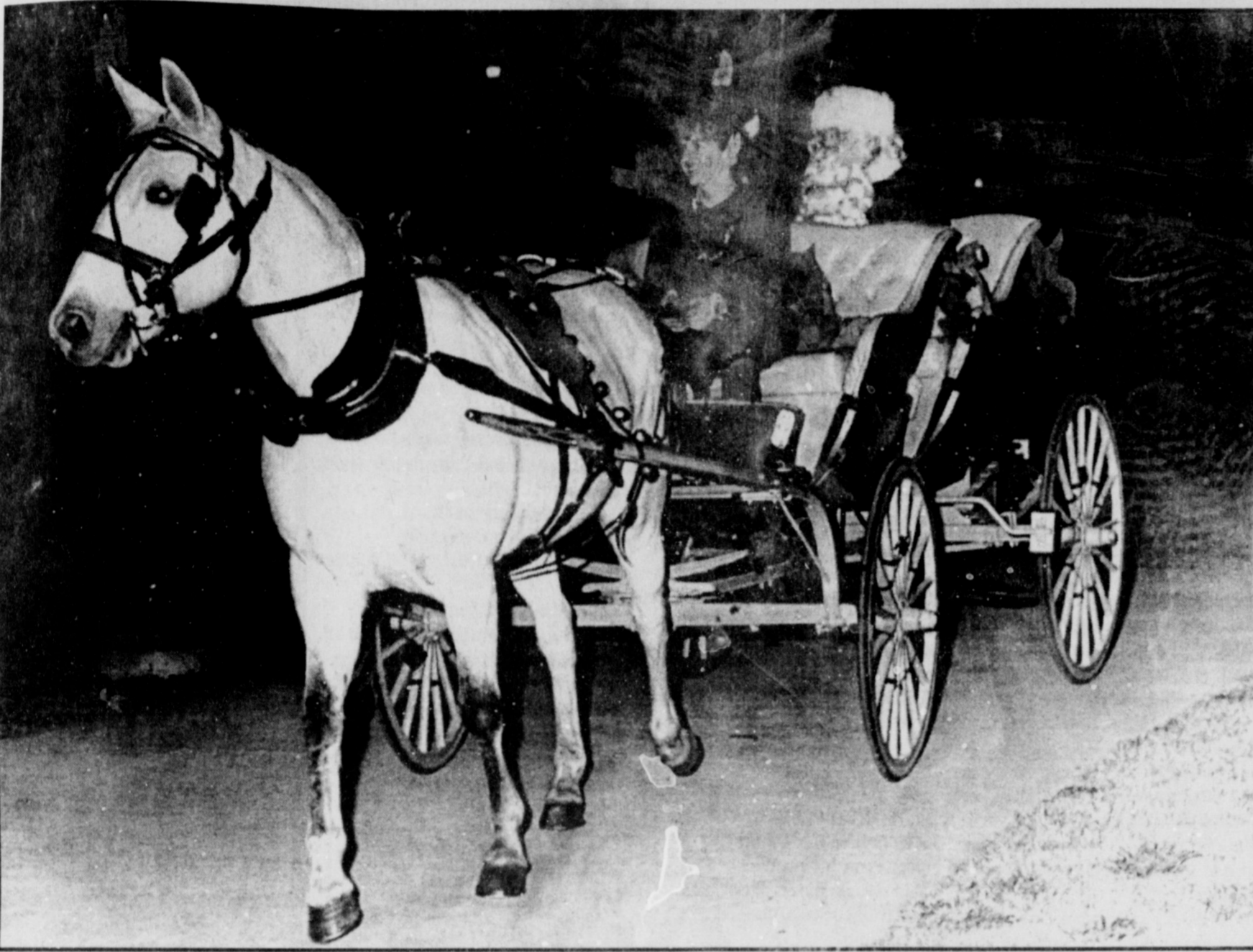


# IOWA PARK LEADER 50¢

Vol. 27 No. 13

IOWA PARK, WICHITA COUNTY, TEXAS 76367

Thursday, December 7, 1995



SANTA CLAUS MAKES A TRUE WEST TEXAS ENTRY AT THE LIBRARY  
... during annual Christmas lighting ceremony.

## Annual tour of homes is Saturday

By MYRNA SMITH

You'll think you just took a trip "right down Santa Claus Lane" after you've made the eighth annual tour Saturday to seven beautifully decorated homes and the Tom Burnett Memorial Library. And, the trip costs only \$5 per person.

The annual event sponsored by the Iowa Park Recreational Activities Center, will be from 3 to 7 p.m.

It is interesting to view how individuals come up with such variations on a theme, yet each using signature items of the Yuletide season.

Homes on tour are those of Pat and Sheri Kennedy, 1705 Quail Valley, Tommy and Glenda Key, 1609 Karen, Paul and Theresa Arrington, 1758 Van Horn Road, Bob and Dolores Hamilton, 904 Cornelia, Mike and Diane Hicks, 300 W. Washington, Karla Hopper, 1218 Richland, Zearl and Bobbie Gilbreath, 2805 Peterson Road, South, and the Tom Burnett Memorial Library, 400 W. Alameda.

### Pat Kennedy Home

The Kennedy home focuses on

family and tradition. Nativity sets and a white Christmas tree dominate the decorations in the formal living room.

Sheri began collecting nativity sets about five years ago. Most of them are handcrafted, some very primitive ones are made of wood and some are of fabric. A very special one to Sheri is one her 84-year-old grandmother made last year from plastic, canvas and yarn. It has the manger and all of the pieces.

Santas provide most of the decorations in the den where they have their fresh green Christmas tree. It is decorated with ornaments they have selected for their children through the years, as well as ornaments their children have made.

The game room tree is decorated with snowmen and snowflakes, made by Sheri, her mother and grandmother. Garlands of greenery adorn the banister.

Sheri also collects towels and a display of these are in the kitchen and dining area, with decorations worked around them. The kitchen

is fragrant with spices, including a unique Christmas tree made of spoons and hung with homemade cinnamon ornaments, made by Sheri.

In their yard is a wooden Christmas tree and a wagon filled with silk poinsettias.

### Paul Arrington Home

It's a country Christmas at Paul and Theresa Arrington's house.

Visitors will get to see the Arringtons' hobby of woodworking combined with her collection of snowmen. Most of the things they use in decorating are either something they have made or that have been made by someone else and given to them.

The Arringtons have used red, green and clear lights, red bows and a lot of greenery in their decorations.

A decorative accent this year of which Theresa is especially proud is a fireplace screen that is the handwork of her mother-in-law, Mary Arrington. She also has a Christmas bedspread that was made and quilted by her mother-in-law.

Traditional decorations have been used in the kitchen and dining area.

Their sons' bathroom has a Christmas tree and shower curtain depicting the Christmas theme.

The tree in Josh's bedroom carries a Hawk theme. A freshman, Josh is active in football and basketball.

Adam, a sixth grader, is also interested in sports and the tree in his bedroom also has a sports theme, particularly football and baseball. His tree is hung with chocolate candies wrapped and shaped like footballs, basketballs and baseballs.

Mauve, with traditional

Christmas colors and festive decorations, is used in the master bedroom and bath.

Greenery with red bows accent each of the front windows on the outside. White lights outline the house and luminaries march down the walkway.

Theresa is a substitute teacher in the Iowa Park schools. She says her hobby now is going to craft shows. One of her good friends, Charlie Fears, will serve as co-hostess with her Saturday.

### Tommy Key Home

Poinsettias and treasured items and traditions set the scene in the home of Tommy and Glenda Key.

From the entryway, where a tree decorated with poinsettias and white lights greets visitors, throughout the rest of the house poinsettias are dominant.

Poinsettias and a lighted winter village scene are principal decorations in the living room.

In the dining room, candleholders and napkin rings are poinsettias. A grapevine

Continued on page 9

## Council slates meeting

Bids, an ordinance, a public hearing, an appointment and a drug policy program are listed on the tentative agenda for Monday night's meeting of the city council.

The meeting, to begin at 7 p.m. in council chambers, is the only one scheduled for the month of December.

Aldermen will consider awarding bids for construction of a sewer main to serve Indian Spring Addition, and another for janitorial services at city-owned buildings.

Rankings and awarding of contracts for two professional projects also are on the agenda. One is for administrative and management consultant services for the city's 1995 Texas Capital Fund Project grant, and the other for the same project's engi-

## Home burglary solved by police in only one hour

Quick work by the Iowa Park Police Dept. resulted in solving a reported burglary of a home last week in less than one hour.

A resident in the 400 block of West Pecan called police at 4:20 p.m. Wednesday, and at 5:17, a 12-year-old neighbor was not only located, but confessed to the crime.

The young boy reportedly had broken out a window to gain entrance, and took a pellet rifle and pellet pistol, valued at \$140, a Nolan Ryan baseball card, and a total of \$45 in cash.

All except the cash was recovered, because the money already had been spent.

The youth was taken before a justice of the peace and released to the custody of his parent, who had agreed to make restitution. His case will be referred to the county juvenile probation office.

Police and emergency personnel were summoned to a residence in the 300 block of East Diamond at 12:28 a.m. Thursday, where a 31-year-old male reportedly had attempted suicide by cutting his wrist with a pocket knife.

The man was transported by ambulance to a Wichita Falls hospital. No charges were filed.

Two Wichita Falls residents were served warrants this week in connection with forgery cases which have been under investigation over the past few months.

John Allen Brinlee, 20, was wanted on two charges. He had reportedly cashed forged checks amounting to more than \$1,000 here in October, and in May he had used another man's credit card to make a \$60 purchase, resulting in a charge of credit card abuse.

Brinlee was remanded to the county jail under \$5,000 on each of the two charges, police reported.

Linda Annette Myers, 30, was served a warrant yesterday in the county jail for reportedly forging checks in the amount of \$175 here in October.

That warrant was served on Myers in the county jail, where she had been charged in another forgery case.

An officer on patrol Thursday night at Lake Iowa Park arrested Donald Franklin Potter, 61, on a charge of public intoxication. He was released five hours later, after paying \$10 toward his fine of \$132, according to the police blotter.

Daniel Gerard White, 19, was

taken into custody Saturday afternoon in the 200 block of West Highway, when it was determined by a computer check a warrant, issued by the Wichita County Sheriff's office, had been issued for his arrest.

White, wanted on a charge of theft by check, was detained in the local jail until he was picked up by a county deputy.

Also included on the week's police blotter were two theft reports and one of criminal mischief.

A resident in the 600 block of West Cornelia told police four tires, each valued at \$125, had been taken from the bed of a pickup truck some time between Friday and Sunday.

A theft under \$50 was filed by a resident in the 1200 block of Emma Monday. The resident said he had left his home at 6:30 p.m., and when he returned 20 minutes later, all the Christmas lights in his front yard had been stolen.

Christmas decorations were the target of vandals some time Wednesday night, at a residence in the 1300 block of Mary Drive.

## Free hams given for Christmas

Members of the Iowa Park Chamber of Commerce will again this year be giving away free hams for Christmas dinners.

The participating members are now asking everyone who visits their places of business to register once, each time they are in the business.

The drawing for winners will be held Monday, Dec. 18, and each participant will notify the winners, who are to pick up their certificate which will be redeemed at Food Depot.

Chamber members participating include:

Wal-Mart  
G.M. Via Insurance  
Texas Realty  
Tangles  
Subway  
State National Bank  
State Farm Insurance  
Southern Gardens  
Sincerely Yours  
Schram & Cluley  
Sam's Body Shop  
RAC  
Pizza Hut  
Dr. Carter Pirkle  
Parkway TrueValue  
Park Home Health  
Park Cleaners  
Louis Jewelry  
King's Kids  
Ken's Pizza  
K&K Foods  
JC's Automotive  
Jack's Park Pharmacy  
Iowa Park Leader  
Iowa Park Florist  
IHS  
Hughes Pharmacy  
Harvey's  
Gene James Air Conditioning  
Food Depot  
Edward D. Jones  
Dutton Funeral Home  
DC Auto  
Catlin Quick Change  
B&R Thriftway  
Barbour Trucking  
Autocraft Collision  
All Occasions

## Yule lighting contest seeks more entries

In this first week of December, many Iowa Park residents already have the Christmas spirit and have gaily decorated the outside of their homes and yards - with the number increasing nightly!

Those who would like to enter their home, or the home of a friend or neighbor, in the Christmas Lighting Contest this year can do so by contacting the Chamber of Commerce office or the Iowa Park Leader by Dec. 15.

This is the second year for the contest, sponsored by the Iowa Park Clean and Green beautification committee of the Chamber of Commerce.

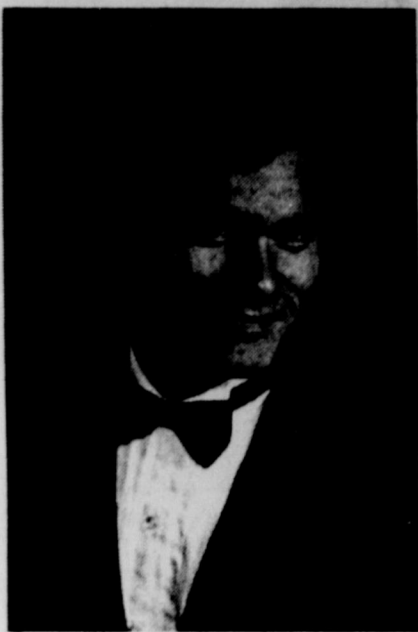
Entries should be in one of four categories. They are: 1. Most original; 2. Religious; 3. Most effective use of lights; and 4. Neighborhood.

A committee of judges from outside the community have been invited to select the winners. A cash prize of \$25 will be awarded to the winners of each of the first three categories, and a "traveling trophy" will be presented to the winning neighborhood. Last year's winners are not eligible this year.

Judging will be over the Dec. 16-17 weekend, and the winners will be announced in the Christmas issue of the Iowa Park Leader.

Does your subscription to  
the Leader  
expire this month?  
Check the list on page 4.





Shane Bagley



Jennifer Heckman

## Two students honored by Red River Optimist Club

Shane Bagley and Jennifer Heckman were honored recently by the Red River Optimist Club of Wichita Falls. They were selected Young Texan and Tex-Anne for the month of November. Both are seniors at Iowa Park High School, and are double A honor roll students.

The objective of the Young Texas/Tex-Anne program is to recognize Texas youth in major activity areas such as scholastic activities and accomplishments; athletic activities and awards; extra-curricular activities, awards and honors; church affiliation and activities; part-time, vacation or full-time employment; hobbies, talents and other interests not listed above.

To qualify, each student must be between the ages of 16 and 18; be nominated on scholastic basis or nominations are based on an unselfish activity or heroic act.

After gathering resumes from the candidates, the club chairman

prepares a nomination form to submit to the State Board of Directors representative in the North Texas District. The representative will then present the resume to the panel of judges, who select a nominee in each category from the North Texas District to be entered into the state-wide competition.

Optimist Club Young Texan/Tex-Anne nominees will receive a Declaration of Merit certificate. District winners of the month will receive a Declaration of Merit certificate signed by the District Governor. The state winners of the month will each receive a plaque and Optimist key chain issued by the Young Texas/Tex-Anne Corporation.

At the end of the fiscal year there will be 12 Young Texan/Tex-Anne contestants to compete for a one-thousand dollar scholarship and trophy. The two runners-up will receive a trophy in each category for Young Texan/Tex-Anne of the Year.

# Cook of the Week



Joni Freeman and Shane

In addition to being a good cook and having some great recipes, Joni (Mrs. Mike) Freeman is also quite adept at pumping gas and checking under the hood of a car. Since last March, she and her husband have been operating a service station, Mike's Texaco, which is located on East Highway.

Joni grew up in Wichita Falls and is a graduate of Rider High School. Mike is a native of Statesboro, Ga., and came to Texas to work in the oil fields. They met and were married in Wichita Falls.

Joni worked 16 years for Albertson's and attended Midwestern State University where she was working toward a degree in education.

After completing about half of the required studies for a degree, Joni decided to drop out for a while because of the increasing demands of work and taking care of their son, four-year-old Shane.

For relaxation, Joni likes to read and work on crafts. Mike is a member of Wichita County Young Farmers, and they are members of Lakeview Church of God. Joni said they both like to fish and look forward to making trips to the coast and going deep sea fishing.

All of Joni's recipes would be good to use during the holiday season. "Flat Tire Cake" is a recipe she put together that is quick and easy.

### Flat Tire Cake

Angel Food cake  
Strawberry glaze  
Cool Whip  
Vanilla pudding

Take one regular Angel Food cake and spoon out a trench in the top. (Save the spooned out pieces of cake). Pour strawberry glaze in the trench, let it soak in, and replace pieces of cake. Combine Cool Whip and vanilla pudding and use to frost the cake.

### Vanilla Wafer Cake

2 sticks oleo  
6 eggs  
2 cups sugar  
1/2 cup milk  
1 - 12 oz. pkg. vanilla wafers  
1 cup pecans  
7 oz. Angel Flake coconut  
1/2 tsp. vanilla

Mix oleo and sugar well. Add eggs, one at a time. Crumble wafers; add with milk and vanilla. Bake in tube pan 1 1/2 hours at 275 degrees.

### San Jacinto

#### Sweet Potato Casserole

3 cups (1 lbs. 14 oz. can) sweet potatoes, drained and mashed  
1/4 brown sugar, packed  
1/2 tsp. salt  
1/2 tsp. cinnamon  
1 egg, beaten  
1/2 cup milk  
1 can (11 oz.) mandarin oranges, drained, or 1 cup fresh orange sections, or pineapple chunks  
1 1/2 cup miniature marshmallows, divided

Combine all except fruit and marshmallows. Whip until light and fluffy. Fold in fruit and half of marshmallows. Spoon into individual baking dishes or six cup baking dish. Bake at 350 degrees about 20 minutes. Top with remaining marshmallows and return to oven until marshmallows are light brown or beginning to melt. Serves 8.

NOTE: 1 sometimes use both pineapple and mandarin oranges.

### Watergate Salad

1 - 10 oz. ctn. Cool Whip  
1 pkg. Pistachio pudding  
1 - 14 oz. can pineapple w/juice  
1 can fruit cocktail, drained  
1/2 cup nuts  
1 cup marshmallows  
Combine Cool Whip and pudding mix. Add rest of ingredients and chill.

### Shrimp Dip

2 cans broken shrimp  
1/2 cup mayonnaise  
16 oz. cream cheese, softened  
1/4 cup onion, diced  
1/4 cup bell pepper or celery, diced  
1 tsp. Lowry's seasoned salt  
Mix together and refrigerate until ready to use.

### Peanut Patties

2 1/2 cups sugar  
2/3 cup white corn syrup  
1 cup milk  
2 1/2 cups fresh peanuts  
4 tps. butter or oleo  
Red food coloring  
1 cup powdered sugar

Pour first four ingredients into large pan. Cook slowly to soft ball stage, or about 45 minutes.

Remove from heat. Add butter and several drops of red food coloring and powdered sugar. Stir until mixture is thick. Drop by large spoonfuls onto wax paper or buttered cookie sheet. Allow room for spreading.

NOTE: Chopped pecans can be used instead of peanuts for variety.

### Cheese Ball

2 cans (4 1/4 oz. ea.) deviled ham  
1 - 8 oz. pkg. cream cheese, softened  
1 pkg. (0.4 ozs.) dry ranch style dressing mix  
1/2 cup diced tomato  
1/2 cup diced green pepper  
2 cups (8 ozs.) shredded Cheddar cheese  
1/2 cup chopped pecans.

In a medium bowl, combine all ingredients except pecans. Refrigerate until firm enough to handle. Form into a ball and roll in chopped pecans. Refrigerate until ready to use.

NOTE: Sunflower seeds can be used instead of pecans.

**Does your subscription to the Leader expire this month? Check the list on page 4.**

## CHRISTMAS MERRYMAKERS

FOR ANYONE ON YOUR LIST!

**NEW** BC60XLT  
10 Channel Programmable Handheld Scanning Radio  
•10 Channel Capacity •10 bands •2-Digit LCD Display  
•One-Touch Weather •Review Button •Channel Lockout  
•Memory Backup •Battery-Low Indicator •Keypad Lock  
•Built-In Scan Delay •Manual Channel Access •Track Tuning •AC/DC Operation  
•AC Adaptor Included  
•Belt Clap \*Included  
Coverage: 29-54, 136-174, 506-512 Mhz  
**\$99<sup>95</sup>**

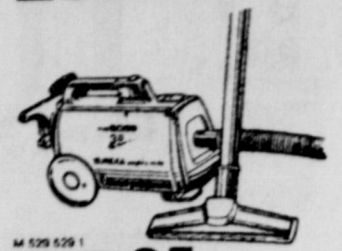
BC 178XLT  
**NEW** 100 Channel Programmable Scanning Radio  
•11 Bands with Aircraft •100 Channel Capacity  
•5 Banks •Twin Turbo: Search & Scan  
•Unique Data Skp Key •Programmable Search  
•Preprogrammed Service Search •Auto Weather Scan & Alert •Full Frequency LCD •Automatic squelch  
•Channel Lockout  
•Memory Backup •5 Priority Channels  
•Manual Channel Access  
Coverage: 29-54, 108-174, 406-512 Mhz  
**\$149<sup>95</sup>**

BCT 7  
**BEAR TRACKER**  
•Pre-programmed mobile warning scanner with priority channels (includes mobile-extender frequencies used by Highway Patrol) •State Key, HighwayKey, Police, D.O.T. search, Weather, Scan/Hold, Delete Mute, Volume, and Squelch controls.  
•100 programmable channels •12 bands including aircraft & 800 MHz, preset service search, 40 channels CB scan & band search  
•Full frequency LCD & TURBOSCAN  
•Channel Lockout •One-touch weather with AC adaptor & cigarette lighter adaptor.  
ONLY 2 AVAILABLE AT THIS PRICE.  
**\$99<sup>95</sup>**

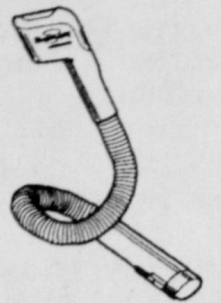
KEYS MADE  
**True Value HARDWARE**  
**PARKWAY**  
200 W. Bank 592-5512 592-4681

Gifts for her.....

## EUREKA



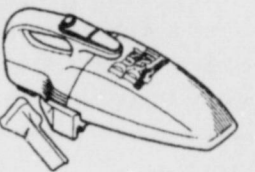
**79<sup>95</sup>**  
The Boss™ Mighty Mite Vacuum Cleaner with 3.0-peak HP motor, 20-ft. power cord and 7-cc. attachment set.



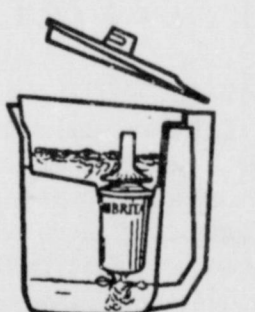
**24<sup>88</sup>** SnakeLight™ Flexible Flashlight. The original E 564 446 6



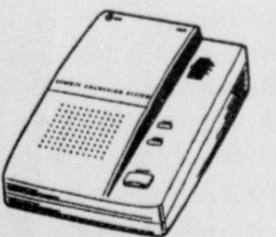
**8<sup>99</sup>** 43-Piece Tool Kit in Zipper Case is a handy kit with screwdriver bits, standard and metric sockets. R 327 596 24



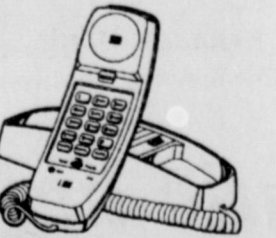
Royal™ Cordless Dust Devil  
**19<sup>88</sup>**  
Incl. on-board crevice tool and more. 0820 M 702 137 1



**17<sup>88</sup>** 2-Quart Water Filter System. Just add tap water. 35507 W 288 746 6  
Replacement Filter. 6.99  
35524 W 288 993 24  
BRITA™



AT&T  
**29<sup>99</sup>** Remote Answering System. 1309 E 305 698 6



**18<sup>86</sup>** Trimline Table/Wall Telephone. White, ivory, blue. E 522 177/185/193 4



**3<sup>99</sup>** 8-in. Bent-Handle Trimmer has stainless-steel blades for the smoothest cut.

**True Value PARKWAY**  
200 W. Bank 592-5512 592-4681

**RAC News**  
By JO LYNN COCHRUM

### Bridge Clubs

With three tables in play this week, John Chapman had the high score of 4680. Second high was reported by Ann Guthrie with 4540. There are nine players registered for next Monday.

There were two tables played last Wednesday, with very close scores reported. Virgil Woodfin had the high of 4050, and John Chapman and the second of 4020.

### Tour of Homes

The 8th annual Tour of Homes will be held this Saturday from 3:00 to 7:00 p.m. Tickets are \$5.00 each, or \$4.00 for lots of ten and for senior citizens. If you have not yet purchased your ticket, they are available at the RAC office (806 N. Third) or will be available at the homes on the day of the tour.

### Christmas Elf Workshop

In conjunction with the Tour of Homes, we will offer a Christmas Elf Workshop for the children to attend at the RAC while mom and dad go on the tour. Workshop hours will be 2:30 to 7:30 p.m. at a cost of \$1.50 per hour. Advance reservations are required and may be made by calling 592-4471.

### Breakfast with Santa

Tickets are available now at the RAC for Breakfast with Santa, to be held on Saturday, Dec. 16, at 9:00 a.m. Cost for tickets is \$3.00 for

children and \$1.50 for adults. Ticket price includes breakfast and a show by the Story Patch Players, and photos with Santa for the children. Please call the RAC at 592-4471 to make reservations.

### Christmas Break Activities

The RAC will sponsor a fun-filled week of activities for school aged children during the Christmas break. For a cost of \$5.00 per day, students may attend activities at the RAC from 10:00 a.m. to 3:00 p.m. on January 2 through 5. Each student should bring a lunch. A minimum of 10 students will be required to hold the activity week, so please call 592-4471 to make a reservation.

Crystal • Pewter Chimes • Copper Items  
Porcelain Holiday Angels • Cookie Jars  
Photo Albums Snow Angels  
Figurines Sunshades

**25% Off All Gift Items**

Barbie Collectibles Stoneware  
Photo Albums • Coca Cola Memorabilia  
Much, much more!

**Hughes PHARMACY**  
**HEALTH MART**

120 W. Park Joe Hughes - Pharmacist  
Toll Free 1-800-585-4191 592-4191 UPS Service

**CITY CAFE**  
114 W. Cash 592-4721  
**MONDAY NIGHTS**  
Sirloin, Ribeye or T-Bone steak, served with baked potato, green salad and Texas toast.



# LIBRARY NEWS

## New Adult Books

The Christmas Tree by Barbara Segall  
Love in Another Town by Barbara Taylor Bradford  
People of the Lightning by Kathleen O'Neal Gear  
Peterson's Guide to Two-Year Colleges  
Peterson's Four-Year Colleges 1996  
College Costs & Financial Aid Handbook 1996  
Puerto Vallarta Squeeze by Robert James Waller  
Streisand; Her Life by James Spada

## New Children's Books

Wacky Wednesday by Theo LeSieg  
The Magic Buss Inside a Hurricane by Joanna Cole  
Go, Dog, Go! by P.D. Eastman  
The Big Bug Book by Margery Facklam

## Library Closings

The library will be closed on Saturday, Dec. 23, and Saturday, Dec. 30 for the holidays.

## Thank You

We would like to thank Karen Foster and Walter Beeman for helping us during our Open House last Thursday.

## Trivia

What do they observe in China on December 25?  
In the Republic of China -- Taiwan -- they observe Constitution Day, a national holiday.

## Reminder

The library will be a part of the Tour of Homes, and tickets are available here at the library for \$5.

The event will take place on Saturday, Dec. 9.

## Santa's Castle

Santa's Castle will be held on Wednesday, Dec. 13, from 9 a.m. - 5 p.m. Every 15 minutes a new group of children will begin the tour, starting at 9 a.m. and the last one starting at 4 p.m. Volunteers to assist with this special event are very much welcome. If you would like to help, please contact the library and we will work with you to set the hours best suited for you. As of Tuesday of this week, we have scheduled 458 children, so you can see the need for volunteers. We still have a few times available after school, if you have not registered. Registration will cease on Dec. 8, and are a MUST.

Donations of non-perishable food items, paper products and storybooks, or a donation to offset the cost of the program will be accepted.

## Helpful Facts

The city's Board of Adjustments meetings are at 6:15 p.m. on Mondays when there is an agenda, in Council Chambers, 103 North Wall. Public notices for all Board of Adjustments meetings are published two weeks in the Iowa Park Leader, and are open to the public.

# United Way donations show increase

Nearly three months after the September kickoff, over 140 volunteers gathered in Wichita Falls to celebrate the 1995 United Way campaign. They weren't disappointed.

Chairman Hardy McAlister reported that \$1,820,000 had been raised, which is nearly \$170,000 more than 1994 and 95.7 percent of the \$1,900,000 goal.

Bennie Horton, Iowa Park campaign chairman, is expecting a 10-percent increase in giving from here, which is just over \$8,500 raised over the 1994 effort.

While Iowa Park had a challenging \$95,400 goal, the more important goal was to increase individual giving and personal contacts of potential contributors.

"I had many outstanding volunteers working this year, but most notably were Leverne Owens, Sherry Wood, JoLynn Cockrum and Patricia Costello. These are the folks who led this year's campaign to victory," Horton said.

"We set an extremely ambitious goal this year. Goal setting was difficult because of the argument which is better: to set a low goal and exceed it, or to set a high and possibly un-

realistic goal that raises more money but risks not making the goal.

"I believe that if you want to go to Dallas, you don't just plan the trip as far as Decatur, so we opted for a high goal.

"Have we been successful? Absolutely! Do we still have work to do to finish the campaign? Sure. Are there still businesses and individuals who have not yet responded? Yes. Are we going to solicit them? You

bet. Is reaching the \$1,900,000 goal still possible. Most assuredly," Horton concluded.

The United Way of Greater Wichita Falls conducts an annual campaign on behalf of 26 agencies, which served over 119,000 persons last year.

In 1994, 22 United Way agencies touched the lives of over 4,400 people from Iowa Park, according to reports.

## IN THE MILITARY

### Wikel enlists in Army

Cathy J. Wikel has joined the U.S. Army under the Delayed Enlistment Program at the Army Recruiting Station in Wichita Falls.

The Delayed Enlistment Program gives young men or women the opportunity to delay enlistment into the Army for up to one year before reporting to basic military training.

The enlistment gives the new soldier the option to learn a new skill, travel and become eligible to receive as much as \$30,000 toward a college education.

After completion of basic training, soldiers receive advanced individual training in their career specialty.

Wikel, a 1994 graduate of Iowa Park High School, will report Jan. 18 to Fort Jackson, S.C., for basic training.

She is the daughter of Raymond E. Wikel of Iowa Park.

Make it a perfect wedding beginning with your invitation!

Select yours from Regency's fine collection of Wedding Invitations and Accessories.

Jack's Park Pharmacy  
115 WEST PARK  
IOWA PARK  
592-2731

## New Shipment of Pottery

### Farm Scene

&

### Apple Cluster designs

These unique pieces of hand-turned stoneware from Marshall, Texas make excellent Christmas Gifts!!! Entirely made by hand ~ dishwasher, microwave and oven safe.

## Jack's PARK PHARMACY

115 W. Park 592-2731 FREE DELIVERY SERVICE

# STATE NATIONAL BANK Presents

## TEXAS CROSSWORD

by Charley & Guy Orbison  
Copyright 1995 by Orbison Bros.

**ACROSS**

1 TX El! Wallach film "The Hunter" was the story of \_\_\_\_\_ Thorson

5 TXism: "blind as \_\_\_\_\_"

6 Decatur's county \_\_\_\_\_ Chaney Street is in San Antonio

8 TX no longer produces this mineral "how are you?" south of the border (2 wds.)

9 ex-Gov. Richards horse track near Austin (2 wds.)

20 TX "Tarzan" (init.)

21 Astro umpire call: "\_\_\_\_\_ at first"

22 dry creek bed \_\_\_\_\_

23 33-down was \_\_\_\_\_ man in the world

29 XIT ranch bought land for 50¢ an \_\_\_\_\_

30 TXism: "don't get your shorts in a \_\_\_\_\_"

31 \_\_\_\_\_ Goodrich

32 TV show of Buck Owens of Sherman

33 USS Texas was in this Normandy event \_\_\_\_\_

34 irritable \_\_\_\_\_

35 TXism: "\_\_\_\_\_ in concrete (permanent)"

36 "Big Tex's" stompin' ground (2 wds.)

38 TXism: "footloose and fancy \_\_\_\_\_"

39 TXism: "running \_\_\_\_\_ (wife)"

40 belief in God \_\_\_\_\_

41 TXism: "that gets my \_\_\_\_\_"

**DOWN**

1 "south \_\_\_\_\_" (lefty)

2 Taylor Co. seat \_\_\_\_\_

3 El Paso resident: El \_\_\_\_\_

4 camping shelter (2 wds.) \_\_\_\_\_

8 TX Kenny's "The Gambler, \_\_\_\_\_ II"

9 TXism: "busier than a boomtown \_\_\_\_\_"

10 Bank \_\_\_\_\_ Texas \_\_\_\_\_

11 "The Mighty \_\_\_\_\_" doesn't run in TX

12 east TX co. named for citrus fruit \_\_\_\_\_

13 on I-37, Patricio Co. \_\_\_\_\_

14 TXism: "\_\_\_\_\_ it all out" (unravel)

15 Texas \_\_\_\_\_-step

16 "if it was \_\_\_\_\_ I couldn't stand it"

18 Weatherford's Martin who was "Peter Pan" \_\_\_\_\_

19 most like a baby's bottom \_\_\_\_\_

21 wound reminder \_\_\_\_\_

23 Hoffman was 1st TX in major leag. (init.) \_\_\_\_\_

24 won nomination in Houston in '28 (init.) \_\_\_\_\_

25 Dallas sports card corp.: Pro \_\_\_\_\_, Inc.

26 TXism: "\_\_\_\_\_ log won't float"

27 TXism: "I could \_\_\_\_\_ lunch" (tougher than he is)

28 Brazoria Co. town near the Gulf \_\_\_\_\_

29 Slurpee cost in '66 \_\_\_\_\_

30 Center AM radio \_\_\_\_\_

33 Bob Hayes '64 gold medal: 100m \_\_\_\_\_

34 Dublin's county \_\_\_\_\_

35 La \_\_\_\_\_ led 1st French expedition to TX

37 TXism: "hissey \_\_\_\_\_"

38 FW of DFW \_\_\_\_\_

39 TXism: "give \_\_\_\_\_ bacon without the sizzle" (be brief)

41 "don't look a \_\_\_\_\_ horse in the mouth"

42 "B" of TX H.E.B. \_\_\_\_\_

44 TXism: "that \_\_\_\_\_ won't hunt"

45 TX chief Iron Jacket wore \_\_\_\_\_ of mail \_\_\_\_\_

48 corrected \_\_\_\_\_

52 athletic conference \_\_\_\_\_

# The perfect gift for every Iowa Parkan on your list..

## GAME OF IOWA PARK

(It's played like Monopoly)

Offered by the Iowa Park Lion's Club, these games can be purchased for only \$10.00 each. All proceeds from the sale of the games will go into the Lion's Club Iowa Park High School Scholarship Fund.

Available at:  
Parkway True Value - Hughes Pharmacy - Southern Gardens  
Iowa Park Leader - Louis' Jewelers

## JUST IN TIME FOR CHRISTMAS

State National Bank is proud to announce that we are offering our own low interest Visa and Mastercard credit cards. Please call or come by for more information. \*W.A.C.

ANNUAL PERCENTAGE RATE FOR PURCHASES	ANNUAL MEMBERSHIP FEE	GRACE PERIOD FOR PURCHASES	METHOD OF COMPUTING THE BALANCE FOR PURCHASES	LATE PAYMENT FEE	OVER THE LIMIT FEE	CASH ADVANCE FEE
13.92% - Basic 12.96% - Gold	NONE	25 DAYS*	AVERAGE DAILY BALANCE INCLUDING NEW PURCHASES*	NONE	NONE	NONE

At the date this application was printed (shown in the lower right-hand corner - this side) the information listed above was accurate. Because rates and terms are subject to change, you may contact us for the current information by writing to the business reply address shown on the reverse side. \*A Finance Charge will be imposed on Credit Purchases only if you elect not to pay the entire New Balance shown on your monthly statement for the previous billing cycle within 25 days from the closing date of that statement. If you elect not to pay the entire New Balance in full or until the date of payment if more than 25 days from the closing date, a Finance Charge will be imposed on the unpaid average daily balance of such Credit Purchases from the previous statement closing date and on new Credit Purchases from the date of posting to your account during the current billing cycle, and will continue to accrue until the closing date of the billing cycle. The Finance Charge for a billing cycle is computed by applying the monthly Finance Rate to the average daily balance of Credit Purchases, which is determined by dividing the sum of the daily balances during the billing cycle by the number of days in the cycle. Each daily balance of Credit Purchases is determined by adding to the outstanding unpaid balance of Credit Purchases at the beginning of the billing cycle any new Credit Purchases posted to your account, and subtracting any payments as received and credits as posted to your account, but excluding any unpaid Finance Charges. A Finance Charge will be assessed on cash advances from the date of the cash advance, or the first day of the billing cycle in which the cash advance is posted, whichever is later, and will continue to accrue until payment in full is made.

### Last Puzzle Solution

WASP  
ELLA  
APES  
KIDS  
AND  
SLEEP  
GRAHAM  
KINENO  
MAYDOFC  
STRAIN  
THEATL  
ED  
SUGARLAND  
TERM  
COTTON  
NO  
ATTWATER  
RAISER  
DEAD  
DAM  
SHE

# STATE NATIONAL BANK

Your Full Service Bank

Striving to meet your banking needs

Equal Housing Lender

Each Depositor Insured by \$100,000 FDIC FEDERAL DEPOSIT INSURANCE CORPORATION



# As I See It...

By Bob Hamilton



I'm no race car driver or speed demon, but I've gotta tell you I feel a great amount of relief over our state changing its speed limits on the highways.

Although I have held my speed to the limit -- well, almost to it most of the time -- I have always felt the 55 mph was a waste of time and a knuckling under to the do-gooders.

Traveling has been drudgery ever since it was enacted.

Only a month after the speed limit was cut to 55 on all highways, I had to attend a regional press meeting in Fort Stockton. That trip set my temper, and it's never cooled.

Dolores couldn't go with me, because all the kids were in school, so I had to go by myself. And folks, if you don't realize how far Fort Stockton is from Iowa Park, I'll tell you: a B-29 bomber would have to make a mid-air refueling to reach it.

I knew the patrol cars would be out in force, because the limited speed was new. And I also knew I didn't want a speeding ticket. So I crept all the way to and from that distant

destination -- bored to tears, literally.

Even when the feds gave us some relief, by raising the limit to 65 on interstate highways, I still maintained my disgust. Why? Because there's not an federal interstate highway in Texas any better than US 287. But the latter roadway remained at the low, low 55 mph.

At least once a year, and as often as three times, I'll drive south of the Metroplex, usually to Austin or San Antonio. Going down, it's like taking an aspirin getting off 287 and onto I-35, because that's where the speed limit goes up to 65.

But, coming back, after traveling some three hours at 65, and getting back on 287 again and having to cut back to 55 once more, well, it's almost like being punished for something I didn't do.

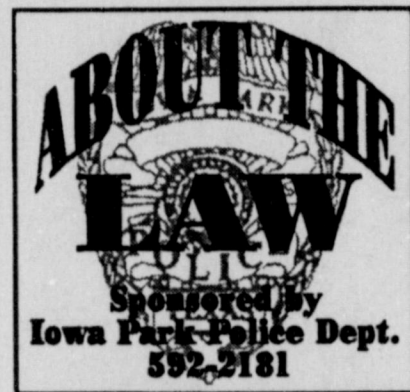
No, I don't believe there will be a significant increase in traffic fatalities because of the increase in the speed limit. Our highways in Texas were built for those kinds of speeds, our vehicles all have better collision

protection equipment like air bags, and wearing of the seat belts is mandatory, where it wasn't back when the speed limit was 70 mph.

I accepted the government's explanation of cutting back to 55 mph when it was done, recognizing the world's oil supply situation at the time.

But that situation has long since been resolved, as well as improvements made in the fuel consumption of vehicles built since then.

No, I'm not going to put on my helmet and goggles so I can risk my life traveling at unbelievable speeds in the future, but I think I'm going to enjoy traveling over our state a lot more in the very near future... at a reasonable speed.



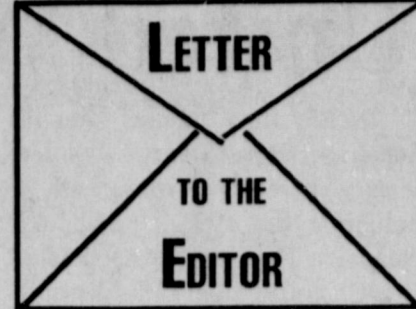
Criminal mischief means the deliberate destruction of private or public property without the owner's consent.

This includes writing or spray painting graffiti on property such as public or private buildings, restrooms, lake dams, etc.

To some, this may seem like a joke, or some may feel that vandalism such as graffiti doesn't really hurt anyone. That's not true!

People are out hundreds, sometimes thousands of dollars repairing property that has been vandalized by graffiti. Not only does this damage homeowner's or the business' property, but it also damages the image of our city.

Depending on the amount of damage involved, a violator can be charged with a Class C Misdemeanor, and up to a First Degree Felony.



## Expensive furloughing

Dear Sir:

The recent furlough of about 800,000 Federal employees cost the taxpayers \$80,000,000 if their average pay was slightly more than \$100 per week. If their pay averaged slightly more than \$200 per week, it cost the taxpayers about \$160,000,000 for work not performed, although it appears the workers will be paid for the furloughed days.

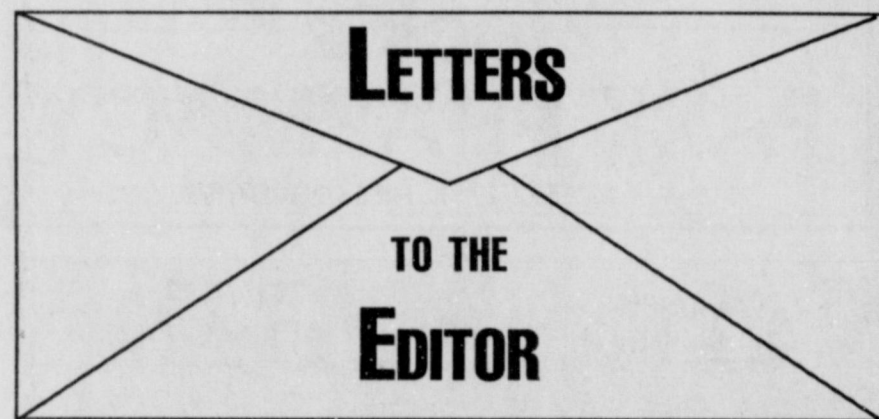
Congress, both Democrats and Republicans, are quick to talk about accountability for the actions of government employees. Members of Congress are government employees. Accountability should apply to their actions and activities, as well as to military, justice, war dept. and all other government agencies and departments.

The media, interested taxpayers, voters, retirees, business owners, veterans, corporations and all citizens interested in good government, should hold Congress accountable for this 80 to possibly more than 160 million dollars of waste by demanding that the 1996 Congressional budget for this fiscal year, as passed by Congress, be automatically reduced by the furlough costs.

Such action will spur the present politicians and future Congresses to get the Federal budgets passed and to the president in a timely manner, rather than waiting to very near the end of a fiscal year in order to exert pressure on the executive branch of our government. It would also help reduce the budget deficit for fiscal year 1996.

By the way, just how many employees of the Congressional delegations were furloughed as "non-essential." Most of them are more preoccupied with assuring their "boss" gets reelected and that is very "non-essential."

Sincerely,  
Roy D. Thompson Jr.



## Helping those in need

The Ministerial Alliance of Iowa Park engages in need based assistance, conducts two community worship services, and provides other cooperative ministries for the local community. This year's ministries climax this December 14, 1-4 p.m. at the First United Methodist Church in the distribution of Christmas baskets. This is done in conjunction with the Lone Star Santa's program sponsored by the Bank of America employees. An expression of appreciation for all the help provided should make Iowa Park residents proud.

The participating clergy in the Alliance give thanks. First and foremost they thank God for the ability and opportunity to give assistance to people with real needs. Food, some assistance with utilities, and clothing have been made available (as policy and provision allow) to people who ask for help.

The Alliance especially wants to thank those volunteers who make the Alliance Outreach Ministries possible. Billy Mashburn is the Volunteer Director, operating the Outreach office Monday, Wednesday, and Friday 9-11 a.m., at the First United Methodist Church. His time and effort make it all possible. Helping him with the food pantry is Leota Elliott. Many thanks are due these two people. They are assisted by many other volunteers. The new president of the Alliance is unable to name all of these individuals, so rather than leave some out, please accept the Alliance's thanks anonymously. The entire staff of the Bank of America has volunteered to conduct the Lone Star Santa program and also deserve thanks.

Everyone who distributed food, clothing, and/or money are also greatly appreciated. The generosity of this community is to be commended! The ability of the Alliance to meet needs is greatly enhanced by such charity.

The mission arm of the Alliance is known as Alliance Outreach Ministries. It collects and distributes food, clothing, and money. The food pantry has been well stocked with canned and dry foods through food drives, church and small group donations, and individual gifts. Alliance Outreach Ministries also collects and distributes monies to be used for some assistance on needy residents' utility bills and for gasoline assistance when people passing through are in such need. Of all the ministries mentioned, the help with utilities displays the greatest ongoing need. Apparently, those who reach a point of need have spent their last money on food and not their utility bills. Please consider a gift of money to the Alliance when able. The clothing ministry sponsored by Lakeview Church of God helps those who have such needs.

The Alliance recently made its transition of leadership. Rev. Tom Oden-Peace of First Christian Church is the President for 1996, and Rev. Gregory Hardin of First United Pentecostal Church is the new year's Secretary. If the Alliance can satisfy your needs, whether a real need for assistance, or inquiry into policy, or to volunteer, please feel free to call 592-4490, Monday, Wednesday or Friday 9-11 a.m. or contact one of the local clergy. Once again, the Alliance appreciates all that this community does to assist those with need.



Bob Hamilton ..... Editor/Publisher  
Dolores Hamilton ..... Co-Publisher  
Kari Collins ..... Advertising Director  
Myrna Smith ..... Reporter  
Don Young ..... Sports Writer

The IOWA PARK LEADER is published every Thursday. Offices are located at 112 W. Cash, Iowa Park, Texas, 76367 (766280). Telephone: 592-4431. Second Class Postage Paid at Iowa Park, Texas 76367. Annual Subscription rates are \$15 in Wichita County; \$17 elsewhere in Texas; \$20 anywhere in the United States. Any erroneous reflection upon the character, standing or reputation of any person, firm or corporation which may appear in the columns of this newspaper will be corrected upon being brought to the attention of the publisher. The entire content of each issue of the Iowa Park Leader is protected under the Federal Copyright Act. Reproduction of any portion of any issue will not be permitted without the express permission of the Iowa Park Leader.



## SHOP IOWA PARK FIRST

No other newspaper in the world would make that statement

## NOTICE TO SUBSCRIBERS

This is only a notice to those listed below that their subscriptions will expire on the published date. You don't owe us a thing if your name is on the list. It only means that what you've paid for is running out. To renew your subscription, please fill out the form below, as it appears on your paper's mailing label. Indicate whether this is a renewal or a new subscription. Enclose your check or money order, as all subscriptions must be paid in advance.

### Subscriptions due to expire

## December 15, 1995

Please disregard this notice if already paid

<b>A</b>	S.R. Alexander V.L. Alvey	Grand Junction	<b>K</b>	Tim Kaspar Carl Kent Clayton Knapp	Wichita Falls
<b>B</b>	Marie Balch Doug Baldwin Janie Barker Bob Bates Brian Baugh Bob's Appliance Alyce Bondurant Bud Boniol Marvin Brandt Leon Brown Robert Brown Randy Brown	Saint Jo Corinth	<b>M</b>	Estelle Mason Jeri Miller Faye Monroe	Spring
<b>C</b>	Margaret Carter Delbert Catlin Tim Clark Barbara Cooper Anthony Crittendon M.W. Crumpton Roger Cummings Raymond Curtis	Nacogdoches	<b>Mc</b>	Craig McCord Carolyn McCullough Jim McDonald Clifford McFadden Daniel McGhee Robert McIlroy Dennis McQuerry	Wichita Falls Whitesboro
<b>D</b>	Francis Davis Diane Dewitt M.E. Disselhorst Don Duerson Ron Duerson	Arlington Palmyra Ceiba	<b>P</b>	Clyde Patterson Nobel Phillips	Wichita Falls
<b>E</b>	James Edwards Wayne Edwards Mike Ehlert Pat Ehlert Richard Eland	Cincinnati	<b>R</b>	Buster Reaves Lana Reddick Mrs. G. F. Richter Robert Robinson	Fort Worth
<b>F</b>	Robert Fletcher Wiley Francis	Odessa	<b>S</b>	Gladys Sands Lonnita Shaw Jim Shelton Jeff Shierry Mrs. J.W. Sins Mrs. Boyd Smith Mark Smith Raymond Smith CW2 Dennis Sorey Mrs. Carl Sullivan	Electra San Antonio
<b>G</b>	Bobby Gibson Mary Guthrie Betty Guyette	Bowie	<b>T</b>	C. E. Thompson Mrs. Lois Thompson Opal Thompson Beatrice Todd W.R. Townsend Adria Trocasso Pam Tyler	Holliday Wichita Falls Kamay
<b>H</b>	Jo Ann Hale Mrs. Charles Harrell Linda Hatfield Rudy Hawkins Donald Hill Susan Howell J. J. Hunt Douglas Hutchins	Wichita Falls Wichita Falls Rochester Hills Bensenville Wichita Falls	<b>W</b>	Carl Watson Randy Welch E.T. Wells Rex Wells Wayne Williams Mrs. A. J. Wood Clyde O. Wright	Grand Prairie Wapanucka Wichita Falls

## Go for the Gold.

As our way of saying "Thank You," State National Bank will hold drawings for collector's coins through December 22. Beginning December 1, each Friday we will draw two names, one for an Olympic Silver Dollar and one for a United States Collector's Nickel Set.

Then, on Dec. 22, we will draw for each of these, plus a \$5 Gold Coin. To be eligible for the GOLD coin, you must open an account (checking, savings, CD or IRA).

To be eligible for the Silver Dollar and Nickel Set, you must make a minimum deposit of \$50 at any teller's window.

Winners of the December 1 drawings were:  
Allen Shewmake -  
Olympic Silver Dollar  
Perry Johnston -  
U.S. Collector's Nickel Set



## STATE NATIONAL BANK

Your Full Service Bank  
Striving to meet your banking needs



Wichita County ..... \$15.00  
Elsewhere in Texas ..... \$17.00  
Elsewhere in United States ..... \$20.00

PLEASE CHECK ONE:  
 New  
 Renewal  
 Change of Address Only  
 \$ \_\_\_\_\_ Enclosed

Name \_\_\_\_\_  
 Address \_\_\_\_\_  
 City \_\_\_\_\_ State \_\_\_\_\_ Zip Code \_\_\_\_\_





**Sherrod**

Emilie and Tim Sherrod of Dallas are the parents of twin sons, Tyler "Ty" Jesse and Tate Joseph, born Dec. 1 at Presbyterian Hospital in Dallas. These are the couple's first children.

Ty weighed 6 pounds, 1 ounce and was 18 3/4 inches long. Tate weighed 6 pounds, 4 ounces, and was 19 inches long.

Mrs. Sherrod is the former Emilie Flick of Iowa Park.

Grandparents are Jesse and Norma Flick of Iowa Park, the late Jodi Clawson of Austin and Mack and Nancy Sherrod of Austin.

Great-grandparents are Preston Flick of Paoli, Ind., Myrtle Locklin of Lexington, and Melba Meziere of Austin.

**Leath**

Mike and Frances Leath of Iowa Park are parents of a son, Elliott Alton, born Nov. 22 at Wichita General Hospital. He weighed 8 pounds, 12 ounces. He has a brother, Russell, and a sister, Beckiey Whisnand of Denton.

Grandparents are Pat and Preston Leath of Iowa Park, Evelyn Schmidt of Iowa Park and the late Kenneth A. Schmidt.



**Diane Johnston Lockard**

**Accepts new position**

Diane Johnston Lockard has accepted the position of Elementary Counselor at I.C. Evans Elementary in Burkburnett.

She was previously employed as a Speech Language Pathologist for the Wichita Falls ISD.

Diane is the daughter of Melvin and Claudine Johnston, and is a graduate of Iowa Park High School.

**Thomas J. Pace receives award**

Thomas J. Pace, Professor Emeritus, Southern Illinois University-Carbondale, was recipient of the Speech Communication Association 1995 Lifetime Teaching Excellence Award.

The award recognizes retired scholars who have exhibited a lifetime of dedication to distinguished teaching.

The presentation was made at the association's national convention in San Antonio Nov. 20.

Pace retired from the Department of Speech Communication in 1994 after 29 years of service.

A native of Iowa Park, Pace is a 1946 graduate of W.F. George High School. He is the son of the late Tom and Perle Pace.

**FRIENDLY DOOR NEWS**

**Birthday Party**

The party for members celebrating birthdays this month will be Dec. 11. They are Alma Frances, Evelyn Qualline, Wanda Bowen, Ben Steed, Ernest Williams, Cara Lakey, Marge George, Fern Jones, Patsy Newsom, Gene Rice, Ruby Moffett, Gertude Richter, and Etoy Chapman.

**Junior High Choir**

Wednesday morning, the junior high school choir came to the Friendly Door Senior Citizens Center to perform for the members.

**Shopping Trip**

We will leave the Center at 9:30 a.m., Friday, Dec. 8, for a shopping trip to Sikes Senter Mall. We will return around 1:30 p.m.

**RAC Tour of Homes**

For those going on the RAC Tour of Homes, meet at the Center around 3 p.m. Ticket for senior citizens are \$4 each.

**Fifth Grade Choir**

The Fifth Grade Choir from Bradford will perform at the Center at 11:15 a.m., on Tuesday, Dec. 12.

**Don't Forget**

Don't forget to get your ticket for the Christmas lunch on Friday, Dec. 22. Suggested donation price is \$2. Deadline is December 15.

**The CARSMITH**  
 Classic Restorations • Custom Painting  
 •••••  
 •••••  
 •••••  
 •••••  
 •••••  
 •••••  
 •••••  
 •••••  
 •••••  
 Gary Smith 592-5920  
 1109 FM 368 S. Iowa Park

**MENU**

**MONDAY, Dec. 11**

Lunch--Charbo beef patty, brown gravy, hash brown potatoes, country trio vegetables, roll, pudding.

**TUESDAY, Dec. 12**

Lunch--Oven fried chicken, potato salad, carrot coleslaw, white or wheat bread, bran muffin.

**WEDNESDAY, Dec. 13**

Lunch--Meat loaf, Creole sauce, navy beans, spinach, cornbread, yum yum cake.

**THURSDAY, Dec. 14**

Lunch--Roast beef, brown gravy, mashed potatoes, Brussel sprouts, hot roll, banana pudding.

**FRIDAY, Dec. 15**

Lunch--Oven fried catfish, baked beans, cabbage carrot coleslaw, cornbread, pineapple/lime Jello.

**ATTEND THE CHURCH OF YOUR CHOICE THIS SUNDAY**

**CITY CAFE**  
 114 W. Cash 592-4721  
**WEDNESDAY NOON**  
 Roast Beef,  
 mashed potatoes,  
 roast gravy, two  
 vegetable & rolls

**Schram & Cluley**  
 FURNITURE & MATTRESS CO.  
 Raddall Schram  
 Eddie Cluley  
 IOWA PARK  
 592-4186  
 204 W. Bank

All Major Credit Cards Accepted  
 In-store financing ~ 3 months-No Interest

**Southern Gardens**  
 Nursery and Landscape  
 111 W. Park 817-592-2100

**Beautiful Poinsettias**  
 Festively Wrapped & Ties with a Bow

Red, White, Pink & Marble **\$12** each

2' Live Christmas Trees wrapped and delivered **\$19<sup>99</sup> to \$29<sup>99</sup>**

Douglas & Noble Fir Trees **\$14** through Saturday

Full Service Garden Center  
 111 W. Park 817-592-2100  
 HOURS: MON-FRI. 9 A.M.-5:30 P.M. SAT. 9 A.M.-5:30 P.M.



**Feel like a kid again**

We can help relieve headaches, neck pain, arthritis pain, leg pain, arm pain and low back pain....gently.

**FREE exam & 2 x-rays\***

\*If indicated by exam... no coupon necessary...initial visit only

Hours:  
 Monday ~ 2 - 6 p.m. Wednesday & Friday ~ 8 - 12-noon and 2 - 6 p.m.  
 Monday morning & Tuesday and Thursday afternoons ~ Call Burkburnett office:  
 (817) 569-2266

**APOLLO CHIROPRACTIC CLINIC**  
 592-2778 402-A West Park

**Pharm/alert Tips**  
 Health Tips for Patients

**After You Stop Smoking...**

- ◆ **20 Minutes:** Your blood pressure, heart rate and the temperature of your hands and feet normalize.
- ◆ **8 Hours:** The oxygen and carbon dioxide levels in your blood normalize.
- ◆ **1 Day:** Your likelihood of having a heart attack decreases.
- ◆ **2 Days:** Your sense of smell and taste improves. Nerve endings start to regrow.
- ◆ **2 Weeks - 3 Months:** Your circulation becomes better and breathing improves; it becomes easier to walk.
- ◆ **1 - 9 Months:** Coughing, sinus congestion, shortness of breath and fatigue decrease and you have more energy.
- ◆ **1 Year:** Happy Birthday! Your excess risk of heart disease is now less than half what it was a year ago.
- ◆ **5 Years:** Your risk of cancer of the lung, mouth, throat and esophagus is half that of a pack-a-day smoker.
- ◆ **10 Years:** Your risk of dying of lung cancer is similar to non-smokers! Precancerous cells have been replaced.
- ◆ **15 Years:** You are at no more risk of heart disease than if you never smoked.

For more information about smoking cessation ... ask your pharmacist!

**WAL-MART PHARMACY**  
 True Quality  
 500 W. Highway  
 Iowa Park, Texas  
 Angie Adams - Pharmacist



## Mammography screening Tuesday at Friendly Door

Friendly Door Senior Citizens Center is providing on-site mammography screening to women 35 and older who are symptom free and meet specific criteria.

Bethania's Mobile Mammography Screening unit will be parked at the Friendly Door, 100 W. Cash, next Tuesday from 8:30 to 4:30 p.m.

Those who want to have this examination need to make an appointment and can do so by contact-

ing Sherry Wood at the Friendly Door Senior Citizens Center or calling 592-9311.

The unit features the latest in high-resolution, low-dose radiation equipment. Procedures are performed by certified mammography technologists from Bethania Regional Health Care Center.

Total charge for the examination is \$65.

THE END OF YOUR SEARCH FOR A FRIENDLY CHURCH

## ASSEMBLY OF GOD

SUNDAY  
9:45 a.m. Sunday School  
11:00 a.m. Morning Service  
6:00 p.m. EVANGELISTIC SERVICE  
WEDNESDAY  
7 p.m. Royal Rangers & Missionettes  
Nursery provided Sunday morning & Wednesday evening

200 S. YOSEMITE

592-5087 - Church

592-4627 - Pastor

Charles Hensley, Pastor

## IOWA PARK CHURCH OF CHRIST

301 E. PARK + 592-5415

Sunday Morning	Sunday Worship	Wednesday Evening
Bible Study	10:30 a.m. & 6 p.m.	Worship
9:30 a.m.		7:00 p.m.

MINISTER - JEFF RATLIFF

# ATTEND the CHURCH of your CHOICE

### Good Shepherd Lutheran Church

Corner of  
1st & W. Magnolia  
592-5605

Sunday School  
9 a.m.  
Worship Service  
10 a.m.

Rev. Orville Horn, pastor  
569-4085

### Kamay Road Church of Christ

Corner of  
Colorado & Emerald

Sunday  
9:30 a.m. 6:00 p.m.  
Wednesday  
7:00 p.m.

For Information Call:  
592-2082  
592-5076

### CHURCH OF GOD

of Iowa Park  
801 E. Cash

"Where Love is More Than Just A Word"

SUNDAY  
Sunday School ..... 9:45 a.m.  
Sunday Morning ..... 10:45 a.m.  
Children's Church ..... 10:45 a.m.  
Evening Worship ..... 6:30 p.m.  
Wed. Family Training ..... 7:30 p.m.

Rev. & Mrs. Johnny House

Church 582-4848 Parsonage 582-5816 Bus & Nursery Available



## First United Pentecostal Church

592-9478 802 N. First 592-4275

Tired of Religion? Looking for an exciting experience with God?

Sunday... Sunday School 10:00 a.m. Evening Worship 6:30 p.m.  
Wednesday... Our Daily Bread 7:30 p.m. Children's Church 7:30 p.m.  
Friday... Action (Youth) 7:29 p.m.

Pastor Greg Hardin

A Place for New Beginnings

### First Christian Church

(Disciples of Christ)  
Phone 592-2721

210 E. Cash



Sunday School 9:45 a.m.  
Worship 10:55 a.m. Tom Oden-Peace, Pastor

## Gospel Singing

Iowa Park Church of Christ  
Saturday, Dec. 9 7-8:30 pm

Come join us in songs of praise to God  
and fellowship of the saints.

Refreshments served 8:30-9

### ATTEND CHURCH SUNDAY

### CHRIST THE KING CATHOLIC CHURCH

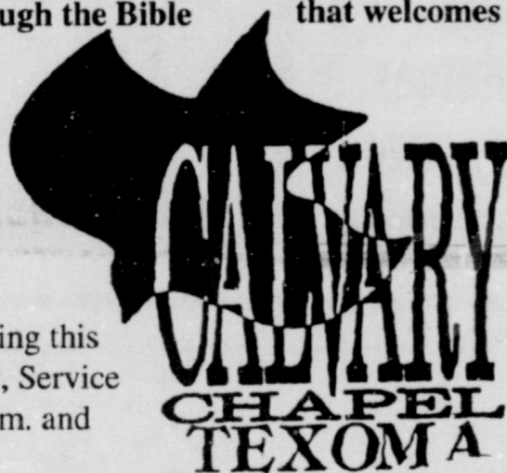
Sunday Schedule  
8:45 Children's Religious Formation  
10:00 a.m. Mass

First & Clara  
592-2802

Rev. Patrick Burke, Pastor

### Join Us For A Simple Celebration Of Eternal Life

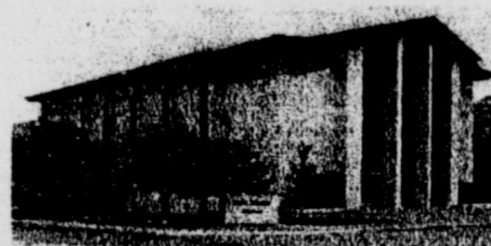
\*Non-Denominational \*Contemporary Music  
\*Systematic teaching through the Bible \*Loving, informal atmosphere that welcomes everyone!



Beginning this Sunday, Service at 10 a.m. and 6 p.m.

For more information 851-8931 or 851-0273

Now meeting at 1321 N. 4th & 287 N



### A Place of Worship A Place to Grow

## First Baptist Church

300 N. Yosemite  
Iowa Park, Texas

#### SUNDAY SERVICES

8:15 a.m. .... Worship Service  
9:30 a.m. .... Sunday School  
10:45 a.m. .... Worship Service  
Extended Session for 3 & 4 Year Olds  
Chapel Church for 5 years to 3rd Grade  
5:00 p.m. .... Discipleship Training  
Nursery - Preschool - Children - Youth - Adults  
6:00 p.m. .... Worship Service

Nursery Provided for all Services

### CORNERSTONE CHURCH



"The Church at the Foot of the Cross"

1201 W. Smith

9:45 a.m. Sunday School  
10:50 a.m. Morning Worship ~ Children Church  
6:00 p.m. Evangelistic Service  
7:00 p.m. Wednesday Family Nite, also Christian Pathlighters, Boys & Girls  
10:00 a.m. Saturday ~ Primary, Junior & Senior Bible Quiz

Church Phone 592-5929 Pastor Duffy Terry 592-5520

Where Jesus is Lord

### FIRST UNITED METHODIST CHURCH



REV. DARREL GLEN BALCKMON, PASTOR

"Catch The Spirit" ~ Come Grow With Us!

Sunday School - 9:30 a.m. UMYF - 5:00 p.m.

Sunday Worship - 8:45 a.m. and 10:40 a.m.

201 E. Bond 592-4116

## Lakeview Church of God

N. Victoria and Expressway

#### Opportunities for Services

Children's Church	Ladies Ministry
Choir (youth & adult)	Men's Fellowship
Nursing Home	Boys' Club, ages 6 - 17
Visitation	Girls' Club, ages 6 - 17
Puppet Ministry	Nursery Provided

Sunday School.....9:45 a.m. Wednesday Family  
Morning Worship...10:45 a.m. Training Hour...7:30 p.m.  
Sunday Night.....6:00 p.m. (Classes for all ages)

Phone - Church: 592-2776, Parsonage: 592-9555  
Pastor Old Olds

Discover The Joy

## THE SOUND WILL BE IN CONCERT

AT LAKEVIEW

CHURCH OF GOD  
SATURDAY, DEC. 9

7 P.M.

NO CHARGE FOR ADMISSION  
AN OFFERING WILL BE TAKEN  
CALL 592-2776

## First Presbyterian Church



Paul Tomlinson, Interim Pastor

New to the area? A warm welcome awaits you at First Presbyterian Church.

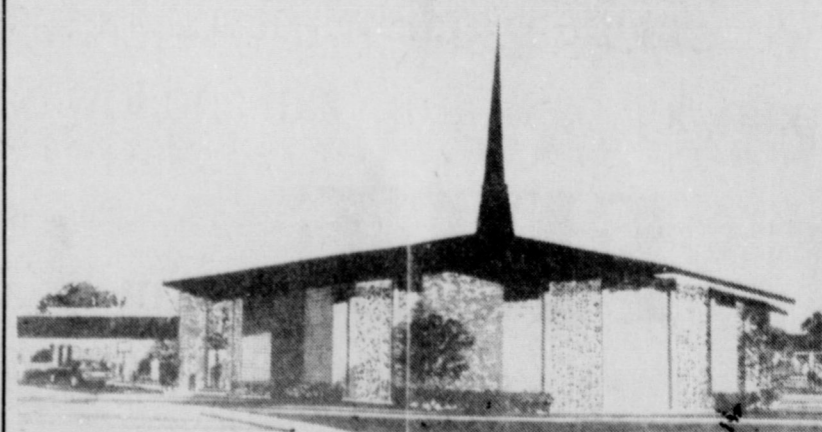
Experience our friendly, family atmosphere this Sunday.

Sunday School 9:30  
Worship 11:00

211 S. Yosemite

592-4220

## FAITH BAPTIST CHURCH



"The presence of God is our greatest asset"

411 S. Wall

592-2716

SUNDAY		WEDNESDAY	
Sunday School	9:15 a.m.	Adult Bible Study	6:30 p.m.
Morning Worship	10:30 a.m.	Children's Mission Programs	6:30 p.m.
Discipleship Training	6:00 p.m.	Youth Cross Training	6:30 p.m.
Evening Worship	7:00 p.m.	Choir Rehearsal	7:30 p.m.

Dr. Greg Ammons, Pastor  
A Southern Baptist Church

Nursery provided for all activities  
Ministry Opportunities for the entire family



NEWS OF THE  
**IOWA PARK  
GENEALOGICAL & HISTORICAL SOCIETY**



One of the topics included in the North Texas Genealogy Association's fall seminar was the Oral History and Interviews, presented by Ken Hendrickson, historian at MSU.

Knowing how to interview well is most helpful in getting the information you want, sometimes the history you are seeking is not available any place else. This also presents the possibility of not being always right and needs to be verified. Family history needs to be accurate also, but may be harder to verify.

The major steps in interviewing:  
1) topic, research and prepare questions to ask. If it's a family member not well known to you, get background from some other relative.

2) Contact the individual and explain what you want to do, the benefit of the project (family history), also tell the person you will be using a tape recorder as well as taking some notes.

3) Set a date and time and if possible the length of time you'd like.

4) Have an interview outline and some topical questions as a guide but be flexible as the topic may branch in unexpected directions.

Interviewing requires some skill, creating a relaxed and patient atmosphere helps, some rules to follow will include:

1) The decision of whether to allow a third person to be present during interviews. Sometimes another family member can derail the process. Other times they can play a vital part.

2) The smaller the tape recorder the less obtrusive it will be. Have fresh batteries and extras. Be equipped with a 160-minute tape and be sure to have an extra in case the tape breaks.

3) Have a schedule, but if the person tires, you may have to shorten the interview.

4) Have a note pad, and note facial reactions and other emotional

signs that may occur during the interview. Coordinate with the time on the tape recorder.

5) Ask leading, not vague questions. Involve the emotions if possible.

6) Try to get the interviewee to reconstruct conversations, descriptions of persons and places. Sometimes weather is important to the story.

7) Be patient, don't rush an old person. They need time to reflect. If they pause, don't rush in to fill the vacuum. Maybe they'll say more and maybe the additional comments will be the best of all.

Holidays offer a good time to talk to older family members, look at family pictures and reminisce with them. If you're interested they will be glad to share family history with you.

Marita Holdsworth

**CUB SCOUT  
NEWS**

Will Santa really be at the pack meeting Monday, Dec. 11, beginning at 7 p.m. at the RAC? It's said he might be giving away presents, so you better come and see.

There will be refreshments provided by each den.

Dens 1, 9 - cups, napkins, plates  
Dens 2, 7 - drinks, ice  
Den 5 - chips  
Dens 6, 8 - cookies, brownies

Don't forget the pinewood derby is Saturday, Jan. 20, from 12 to 4:30 p.m. at the RAC. The Blue and Gold banquet will be Feb. 23, at 7 p.m. at the high school.

Have a Merry Christmas!

**IOWA PARK SCHOOL LUNCH MENU**

**BRADFORD AND KIDWELL**

**MONDAY, Dec. 11**

Breakfast--Oatmeal, toast, jelly, fruit or juice, milk.

Lunch--Burrito with chili and cheese, corn, salad, fruit, milk.

**TUESDAY, Dec. 12**

Breakfast--Cheese toast, fruit or juice, milk.

Lunch--Rib dippers, au gratin potatoes, green beans, fruit, bread, milk.

**WEDNESDAY, Dec. 13**

Breakfast--Pancake pup, fruit or juice, milk.

Lunch--Hamburger, lettuce, tomatoes, pickle, onion, french fries, ice cream, milk.

**THURSDAY, Dec. 14**

Breakfast--Waffles, breakfast meat, fruit or juice, milk.

Lunch--Christmas dinner

**FRIDAY, Dec. 15**

Breakfast--Cereal, toast, jelly, fruit or juice, milk.

Lunch--Chili dog with cheese, tater tots, pork 'n beans, fruit, milk.

**JR. HIGH AND HIGH SCHOOL**

**MONDAY, Dec. 11**

Breakfast--Breakfast burrito, juice, milk or cereal, toast, juice, milk.

Lunch--Tacos with cheese, lettuce, tomatoes, corn, fruit, bread, milk.

**TUESDAY, Dec. 12**

Breakfast--Donut, breakfast meat, juice, milk or cereal, toast, juice, milk.

Lunch--Chicken fried steak, potatoes, gravy, green beans, fruit, milk.

**WEDNESDAY, Dec. 13**

Breakfast--Pancake pup, juice, milk, or cereal, toast, juice, milk.

Lunch--Hamburger, lettuce, tomato, pickle, onion, french fries, ice cream, milk.

**THURSDAY, Dec. 14**

Breakfast--Biscuit sandwich, juice, milk or cereal, toast, juice, milk.

Lunch--Frito pie, cole slaw, beans, bread, fruit, milk.

**FRIDAY, Dec. 15**

Breakfast--French toast sticks, breakfast meat, juice, milk, or cereal, toast, juice, milk.

Lunch--Fish, macaroni & cheese, blackeye peas, cornbread, fruit, milk.

**Does Your Subscription  
to the Leader expire  
this month?**

Check the list on page 4.

**CD Buyers**

Callable Certificates of Deposit

**6.8%**

\*APY

**6.8%**

Interest Rate

• Interest paid semi-annually

• FDIC insured to \$100,000

• Callable thereafter @100

• Non-callable for 18 months

• Final maturity - 12/21/2010

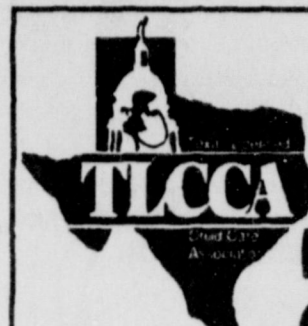
Bo Watson  
105 W. Cash  
Iowa Park, Texas  
592-5480



**Edward Jones**

Serving Individual Investors Since 1871

This CD is non-callable for the first 12 months and then can be called at par every 6 months thereafter by the bank. Early withdrawal may not be permitted. Minimum \$5,000. Subject to availability as of 12/05/95.  
\*APY-interest cannot remain on deposit; periodic payout of interest required.



**KING'S KIDS  
CHRISTIAN  
DAYCARE &  
PRESCHOOL**

*"IOWA PARKS FINEST FOR PARENTS WHO CARE"*

More Than Just Daycare

Specializing in preparing your child for the future

• Preschool Programs designed to promote spiritual, social, educational, & emotional growth.

- State Licensed • Trained Staff
- Member Texas Licensed Child Care Association
- Year-Round Program • Drop-ins Welcome
- Toddlers • Preschool • After School
- Transportation to and from public school

In Iowa Park Since 1980

**"PARENTS WELCOME ANYTIME"**

MONDAY THRU FRIDAY  
6:30a.m. - 6:00p.m.

202 N. Jackson

592-4242

Simple. Easy. Unbelievable!

**Norwest®  
Free Checking**

Minimum balance requirement **\$0**

Per check charges **\$0**

Monthly service charge **+ \$0**

**TOTAL \$0**

Sure, we'll be happy to double check our math!

Norwest Free Checking offers unlimited check writing and your first order of 150 Norwest standard design checks (wallet or duplicate) absolutely free! Only \$100 opens the account—and it's free as long as you have the account! Contact a Norwest personal banker today for details.



To The N<sup>th</sup> Degree™

Kell Office  
2301 Kell Blvd.  
767-8321

Iowa Park Office  
219 West Park  
592-4418

Wichita Falls  
Downtown Office  
809 8th Street  
767-9218

Nacona Office  
105 East Highway 82  
825-3394

Southwest Office  
2714 Southwest Parkway  
691-6250

Archer City Office  
200 North Center  
574-4507

Iowa Park RAC's Ninth Annual  
**Christmas Tour of Homes**  
Saturday, December 9 3 ~ 7 p.m.

Mr. and Mrs. Pat Kennedy ~ 1705 Quail Valley  
Mr. and Mrs. Tommy Key ~ 1609 Karen  
Mr. and Mrs. Paul Arrington ~ 1758 Van Horn Road  
Mr. and Mrs. Bob Hamilton ~ 904 W. Cornelia  
Mr. and Mrs. Mike Hicks ~ 300 W. Washington  
Tom Burnett Memorial Library ~ 400 W. Alameda  
Ms. Karla Hopper ~ 1218 Richland (Off Texowa)  
Mr. and Mrs. Zearl Gilbreath ~ 2805 Peterson Rd. South

Admission ~ \$5  
\$4 if purchased in lots of 10 or more or for senior citizens  
Available at the Iowa Park RAC or from any board member

**While you're on the tour....**  
Bring your kids to the **ELF WORKSHOP** at the RAC They will enjoy Christmas Snacks, movies and crafts at the low fee of \$1.50 per hour. Reservations must be made by 4 p.m., Friday, December 8.



# Obituaries



### Virginia Ruth Cook

Services for Virginia Ruth Cook, 70, were at 10:30 a.m. Wednesday at Iowa Park Church of God.

Rev. Johnny House, pastor, officiated. Burial was in Highland Cemetery under direction of Dutton Funeral Home.

Mrs. Cook died Sunday in the Iowa Park nursing home.

Born Aug. 25, 1925, in Denton County, she was married to Abraham Cook Oct. 5, 1952, in Wichita Falls. He died Sept. 4, 1991. Her daughter, Leeda Gayle Sears, died May 16, 1953.

Mrs. Cook had lived in Iowa Park 50 years. She was a homemaker and a member of Iowa Park Church of God and the Disabled American Veterans Auxiliary.

She is survived by her mother, Mae Lee Simmons of Iowa Park; one son, Virgil Phillip Sears Jr., of Long Beach, Calif.; two daughters, Jeannie Ruth Browning of Houston and Linda Kay Estep of Columbia, S.C.; two brothers, James Eugene Lee of Wichita Falls and Johnny D. Lee of Iowa Park; four grandchildren and a great-grandchild.

### G. L. Cleveland

Graveside services for G.L. Cleveland, 78, were at 11 a.m. Saturday in Crestview Memorial Park.

Rev. Paul Tomlinson, minister of Iowa Park First Presbyterian Church, officiated. Arrangements were under direction of Dutton Funeral Home.

Mr. Cleveland died Wednesday; Nov. 29, in a Wichita Falls hospital.

Born April 20, 1917 in Cisco, he was married to Marion Burridge May 15, 1943, in Coffeyville, Kan.

Mr. Cleveland, a resident of Iowa Park since 1959, retired as an engineer and network manager for Southwestern Bell Telephone Co. of Wichita Falls after 34 years service.

He was a 1948 graduate of Texas Christian University, and was a veteran of the Army, serving as a social worker in an Army hospital.

Mr. Cleveland was a member of Masonic Lodge No. 713, Sons of the American Revolution and the Noon Lions Club of Iowa Park where he served as president from 1967-68. He was an elder in First Presbyterian Church of Iowa Park. He served 10

years as Scoutmaster with the Boy Scouts and received the Silver Beaver Award in 1968. In 1985 Mr. Cleveland was named Iowa Park Chamber of Commerce Outstanding Citizen. He moved to Iowa Park from Burkburnett and Abilene.

Survivors include his wife, two sons, George and Roy, both of Wichita Falls; six brothers, Dr. C.M. Cleveland of Cisco, Roy of Fort Worth, Flouinoy of San Antonio, M.O. of Abilene, Robert of Pensacola, Fla., and Jesse of Orlando, Fla., and three grandchildren.

Memorials may be made to Boy Scouts of America, 3604 Maplewood, Wichita Falls., Tx. 76308.

### Ruby Don Griffin

Services for Ruby Don Griffin, 79, were at 11 a.m. Saturday at the Quannah Church of Christ.

Robin Wright, minister, and David McSpadden officiated. Burial was in Quannah Memorial Park under direction of Price-Jackson Funeral Home.

Mrs. Griffin, sister of Frank Webb of Kamay, died Thursday in her home.

Born Feb. 10, 1916, in Hardeman County, she and Oran Griffin were married Dec. 23, 1934, in Quannah. He died May 26, 1968.

Mrs. Griffin was a retired florist and a homemaker. She was a member of the Church of Christ and a lifetime resident of Quannah.

Survivors in addition to her brother, include one daughter, Camilla Holland of Carrollton; one son Charles of Quannah; three sisters, Eureka Scarbrough of Quannah, Imogene Hargeseimer of Lubbock, and Maxine Kinnear of Lamesa; five grandchildren and three great-grandchildren.

Memorials may be made to Hardeman County Home Health Care, 404 Mercer, Quannah, Tx, 79252.

### Betty Faye Walker

Services for Betty Faye Walker, 64, mother of Nancy Miller and Brenda Williams of Iowa Park, were at 10 a.m. Tuesday at Owens & Brumley Funeral Home.

Rev. Billy Williams officiated. Burial was in Crestview Memorial Park under direction of Owens & Brumley Funeral Home.

Mrs. Walker died Saturday in a Wichita Falls hospital.

Born Jan. 4, 1931, in Atlanta, Ga., she had lived in Wichita Falls 20 years. She was a housewife and was a member of Gantt Baptist Church in Greenville, S.C.

Survivors include her husband, Charles B. Walker of Wichita Falls; one son, Andy Walker of Wichita Falls; another daughter, Barbara Alfaro of Denton; two sisters, Doris Boyce of Augusta, Ga., and Naoma Gallaway of Clinton, S.C.; 15 grandchildren and two great-grandchildren.



### Laverne Wakefield

Graveside services for Laverne Wakefield, 51, were at 2 p.m. Monday in Highland Cemetery.

Dr. Greg Ammons, pastor of Faith Baptist Church, and Rev. Patrick J. Burke, pastor of Christ the King Catholic Church, officiated. Arrangements were under direction of Dutton Funeral Home.

Ms. Wakefield died Saturday at her home in Iowa Park.

Born Aug. 9, 1938, in Idabel, Okla., she and Luther "Junior" Wakefield were married in November, 1957. She was a resident of Iowa Park 37 years.

She and Jim Lewis were married in 1985.

She retired in 1994 as a production supervisor after working 25 years for Texas Recreation Corp. She was a member of Faith Baptist Church.

She is survived by her husband; two sons, Larry Dwain Wakefield and Terry Wayne Wakefield, both of Iowa Park; one daughter, Jeanie Sue Wakefield of Abilene; two stepdaughters, Karen Lewis of Omaha, Neb., and Debbie Delacruz of Beaumont; one brother, Edward (Buck) Hanshaw of Wichita Falls; three sisters, Myrtle Hlatki of Calhan, Col. and Christine Denny and Earline Ainsworth, both of Iowa Park; a half brother, Robert Chism of San Antonio; one grandchild and three stepgrandchildren.

Pallbearers were Rex Huckabay, Monty Lynn Britt, Robert Britt, Danny Ainsworth, Terry Tatom, David Turner, Victor Caballero and Don Eaton. Clint and Scotty Owen were honorary pallbearers.

The family suggests that memorials be made to Hospice in Wichita Falls.

### Winifred L. Roberts

Services for Winifred L. "Bo" Roberts, 69, of Kamay were at 2:30 p.m. Tuesday at First Baptist Church in Kamay.

Rev. Mark Mitchell, pastor, officiated. Burial was in Rosemont Cemetery under direction of Owens & Brumley Funeral Home of Wichita Falls.

Mr. Roberts died Sunday in Kamay.

He was born Aug. 3, 1926, in Hamilton. He was a retired oil field worker and a member of the First Baptist Church in Carlton. He served in the Army during the Korean War.

Survivors include his wife, Dorothy; one daughter, Kathy Smith of Amarillo; one brother, A.R. of Portales, N.M., and two grandchildren.

### Oleta O. Brown

Services for Oleta O. Brown, 81, were at 3 p.m. Thursday, Nov. 30, at Faith Baptist Church.

Dr. Greg Ammons, pastor, officiated. Burial was in Highland Cemetery under direction of Dutton Funeral Home.

Mrs. Brown died Tuesday, Nov. 28, in Wichita Falls.

Born March 26, 1914, in Wilson, Okla., she was married to John Henry Brown Nov. 26, 1932, in Duncan, Okla.

Mrs. Brown had been a resident of the Iowa Park area since 1941. She was a member of Pleasant Valley Baptist Church many years before becoming a member of Faith Baptist Church of Iowa Park.

She was a homemaker and a member of Eastern Star Lodge No. 684.

Survivors include her husband; one son, Johnnie Ralph Brown of Iowa Park; one daughter, Lenora Pearl Lieb of Minneapolis, Minn.; one brother, Floyd D. Coleman of Las Cruces, N.M.; six grandchildren and seven great-grandchildren.

Memorials may be made to Faith Baptist Church Building Fund.

### Tommie Ragland

Services for Tommie Ragland, 80, were at 1:30 p.m. Monday at Lunn's Colonial Funeral Home.

Rev. John Dillard of First United Methodist Church officiated. Burial was in Crestview Memorial Park.

Mrs. Ragland, former resident of Iowa Park, died Friday in a Wichita Falls hospital.

Born March 12, 1915, in Byers, she was married to Vance Ragland June 3, 1939.

Following graduation from Iowa Park High School in 1933, she attended Draughon Business College in Wichita Falls.

Mrs. Ragland was a homemaker and a member of First United Methodist Church where she taught a children's Sunday school class 20 years.

She was a longtime resident of Wichita Falls and a member of the B.O.P. Class, Optimist Club and the Wichita Club.

Survivors include her husband; one son, Tommy Vance of Ponca City, Okla.; one daughter, Vanette Randall of Plano; one sister, Charlesie Mae Harding of Clayton, N.M., and three grandchildren.

### Sylvia G. Whisenhunt

Services for Sylvia Gladys Whisenhunt, 94, former resident of Iowa Park, were at 1 p.m. Thursday, Nov. 30, at Dutton Funeral Home.

Rev. Dennis Neal of Faith Baptist Church of Iowa Park, officiated. Burial was in Highland Cemetery.

Mrs. Whisenhunt died Monday, Nov. 27, in a Mesquite hospital.

Born Aug. 18, 1901, in Burwell, Neb., she and Bascom W. Whisenhunt were married in Wichita Falls in 1919. He died Jan. 22, 1978.

Mrs. Whisenhunt lived in the Iowa Park area from 1919 until 1980, when she moved to the Dallas area. She was a member of Faith Baptist Church in Iowa Park and a homemaker. She was a pianist and a member of Friendly Door Senior Citizens of Iowa Park.

She is survived by three sons, Leonard of Oklahoma City, Emery of

Fort Worth and Delos of Dallas; three daughters, Lenora Driskill of Del City, Okla., Arlene Wedel of Plano, and Norelene Spaur of Mesquite; eight grandchildren and seven great-grandchildren.

Memorials may be made to Faith Baptist Church of Iowa Park Building Fund.

### Mary Ann Morris

Graveside services for Mary Ann Morris, 100, were at 1 p.m. Friday in Belew Cemetery in Aubrey.

Rev. Otis Ray "Bud" Loooper of Aubrey officiated. Arrangements were under direction of Dutton Funeral Home.

Mrs. Morris died Wednesday in the Iowa Park nursing home.

Born Aug. 28, 1895, in Denton County, she was married to Wesley Kerner Morris Aug. 31, 1913, in Aubrey. He died in 1986. Her daughter, Lottie Watson, died in 1992 and her son, Wesley Morris died in the 1920s.

Mrs. Morris was a homemaker and a Baptist. She had lived in Iowa Park since 1991, moving from Wichita Falls where she had been a resident since the early 1920s.

Survivors include one daughter, Ina Settle of Iowa Park and a great-granddaughter.

### John Hopkins

Services for John Hopkins, 54, of Vernon were at 4 p.m. Monday at Sullivan Funeral Home.

Rev. E. E. Chappell officiated. Burial was in Wilbarger Memorial Park in Vernon.

Mr. Hopkins, brother of Carolyn Horton of Iowa Park, died Saturday in a Vernon hospital.

Born Jan. 1, 1941, in Tyler, he and Myra Anderson were married Oct. 12, 1968, in Vernon. He had been a resident of Vernon most of his life and was a member of Westside Baptist Church.

Hopkins retired as the custodian of First Methodist Church after 15 years of service. He was a former player on Vernon Vikings, semi-professional football team, and coached Little League Baseball.

Survivors include his wife; one son, Steven of Vernon; his mother, Lillian Hopkins of Vernon; three brothers, Dan, Roger and Leon, all of Vernon; six sisters in addition to Mrs. Horton, Carol Jean Collinsworth of Denison, Clara Loggins of Burkburnett, Peggy Harlan of Davidson, Okla., and Ruby Wilkerson, Mary Wilkerson, and Louise McDonald, all of Vernon.



### Thelma Jane Hoffman

Services for Thelma Jane Hoffman, 90, were at 11 a.m. Tuesday at Highland Pavilion.

Rev. Merwyn Turner, associate pastor of Floral Heights United Methodist Church of Wichita Falls, officiated. Burial was in Highland Cemetery under direction of Dutton Funeral Home.

Mrs. Hoffman died Saturday in Iowa Park.

Born Feb. 21, 1905, in Sanger, she and Carl Hoffman were married July 28, 1928, in Myra. He died Oct. 3, 1984.

Mrs. Hoffman had lived in Iowa Park since 1928. She was a member of First United Methodist Church of Iowa Park.

A public school teacher from 1923 to 1933, she returned to college and received her teaching certificate at age 55. She taught at City View schools from 1962 until 1970. She then taught at Our Lady Queen of Peace School, now Notre Dame Elementary. She later retired.

She and her husband operated The Hawk's Roost Hamburger Stand and a minnow ranch several years.

Memorials may be made to First United Methodist Church of Iowa Park.

### Card of Thanks

When we think of kindnesses and acts of love, we think of the wonderful people of Iowa Park. During the recent loss of our wife, mother, grandmother, and great-grandmother, the people of Faith Baptist Church, neighbors and friends have rallied in true Texas love and hospitality. To say "thank you" is so inadequate, but it is certainly heartfelt. If we have missed anyone that sent food, cards, called or stopped by to express love, strength and sympathy we send our most humble love and appreciation.

The Family of Oleta Brown  
Henry, Johnnie, Hazel, Lenora, Joe, Robert, Julie, Ashley, Rob, Randy, Ryan, Julie, Bobby, Michael, Bradey, Pati, Ed and Pam

**DUTTON FUNERAL HOME**  
\*Thoughtfulness \*Professionalism \*Dedication

Serving Iowa Park Area Since 1908  
Pre-Need Payment Plans with No Interest Charge  
We honor most other pre-need Funeral Plans and Burial Insurance  
Call Collect 817-592-4151 300 E. Cash  
Iowa Park, Texas

**Need a Special Christmas Gift?**  
"HAPPY BIRTHDAY IOWA PARK 1888 - 1988" is the answer!

This is the Centennial issue of the Iowa Park Leader formatted in book form; over 370 pages and fully indexed. Call Shirley Banks, 592-4511 or Fillmore Spangler, 592-2447 or any IPGHS member for pick up or delivery at \$20 per book; \$23 by mail order.

IPGHS  
P.O. Box 553  
Iowa Park, Tx 76367-0553

**Heartland Wireless of Wichita Falls**  
Serving a 30-mile radius of Wichita Falls

**\$29.95** includes **HBO SHOWTIME**  
BASIC & PREMIUM CHANNELS

Mind Extension Univ. ~ NBC-KFDX 3 ~ TLC ~ A&E ~ CBS-KAUZ 6 ~ ABC-KSWO 7  
Local Sports - 35 ~ FOX-KJTL 18 ~ Nickelodeon ~ PBS-KERA 24  
TBN ~ The Weather Channel ~ \*\*Disney @ \$2.95 Mo. ~ SHOWTIME ~ ESPN  
The Family Channel ~ WGN ~ TNN ~ WTBS ~ HBO ~ C-NBC ~ CNN ~ CMT  
TNT ~ TNT ~ Discovery Channel ~ USA Network ~ AMC ~ UNIVISION  
More Channels To Come!

\*Some Restrictions Apply \*Sale for a limited time only  
**Free Installation! Save \$49.95**

**Freeda will be at Scobee's Mini Mart Saturday, Dec. 9 from 2 - 6 p.m.**  
"I want to be your representative!"  
**FREEda HARLOW**  
(817) 692-6151 OR (817) 692-7980

ADVERTISEMENT

**I.H.S. OF IOWA PARK EMPLOYEE OF THE MONTH**  
Brenda Williams was voted as Employee of the Month for November. Brenda has worked at IHS for three months. She has lived in Iowa Park 2 years and is married with one son.  
**Congratulations, Brenda!**

ADVERTISEMENT



# Tour of homes

Continued from page 1

wreath centered with a Christmas tree decorated with lights and poinsettias form the table centerpiece. There are also gold holders with red, green and gold candles.

An unusual decoration in the dining room is swagged grapevine decorated with poinsettias that is attached to a battery operated carousel hanging from the ceiling to give the illusion of an upside down Christmas tree. Ornaments on this are ornaments their children made when they were small or personalized ones that were given to the children as gifts.

The table is covered with a white cloth that has a poinsettia border.

Coffee tables and end tables hold poinsettia arrangements, and a three by six foot table is topped with a lighted village that Tommy and Glenda started the first Christmas they were married in 1982. They have added to the scene each year since.

The Key kitchen and family room have a country theme. The fireplace mantel in the family room has garlands of straw dotted with burlap bows and green wreaths centered with a Santa Claus wearing a cap of burlap.

The fireplace screen is an imitation fence. A cowboy Santa and his horse is standing in front of the fence.

Among the sentimental arrangements in the family room are Glenda's children's boots when they were small, her son's spurs, and a cowboy sheriff decked out for Christmas.

Another is a grouping that has a milk can from the dairy farm of her dad, Dewey Spruiell. On a bale of hay is a boot that was her dad's before he retired from farming. Also in the arrangement is a wooden bowl that her grandmother, Mrs. Hill Spruiell, made bread in. The bowl cracked and Dewey wired it together for her. She continued to use it and at her death Dewey got the bowl. It is now filled with polished red apples.

Glenda said she had to beg and beg her dad before he would let her use it, and only if she promised she wouldn't put anything but apples in it.

Also in this room is a Fontanini nativity scene which the Keys started in their marriage year

and have added to it.

Daughter Andrea's room has Christmas bears and a tree decked with white lights and a teddy bear nestled in the branches that is blowing bubbles. Bears sit around the tree and on a rug with a Christmas bear on it.

In the master bedroom is a table top tree decorated in a charming Victorian motif with mauve colored lights.

The roll top desk has a sleigh filled with Christmas balls, poinsettias and greenery. Mauve poinsettias and santas decorate a garland that runs the length of the desk.

The chest of drawers has a small tree with white lights and angels. Also there is a Precious Moments nativity scene that Glenda's daughter gave her last year for Christmas.

Outside the home colored lights line a circle drive and decorate the house. In the shrubbery is a white nativity scene that projects on to the wall of the house when it is lighted.

Also outside a Santa is being hoisted on the roof by his elves.

Refreshments will be served by the Keys.

### Tom Burnett Library

The library has a large green tree downstairs. A flocked tree upstairs is placed on the stage and is surrounded with greenery and clear lights.

The mantel on the fireplaces downstairs and upstairs have garlands of greenery studded with clear lights. There are Christmas lights throughout the library.

The banister on the stairway going upstairs is garlanded with greenery and lights.

The downstairs children's room has a Christmas tree decorated with ornaments the children have made in the story telling periods.

Outside the gazebo is decorated with greenery and red bows. An ice

skater display is on the west side of the building. On the east side of library are a group of lighted carolers.

On the upstairs balcony Santa Claus can be seen with his reindeer. Red ribbon also decorates the porch.

The light poles are decorated with greenery and potted poinsettias encircle the fountain.

The Iowa Park Garden Club decorates the library except the children's room.

### Karla Hopper

The past five years Karla Hopper and her sons, Michael, 12, and Brandon, 8, have gone different places to cut their own Christmas tree. This year they cut their tree on Wellington.

It is even more exciting for them this year because they are living in a new home.

They placed their tree in the living room and strung it with multi-colored lights. The ornaments were all made by the boys.

Karla says she is using lots of "hand-me-downs" this year from her mother, Claudia Friday, who is a collector of many things. She has made all of her own Christmas decorations and is now tired of them so she has given them to Karla and the boys.

Her mother collected nativity sets from the time of her marriage in the 1950s. Karla said some of them still have the price of 19 cents on the bottom. Karla has these on top of her television by her Christmas tree.

Karla said she grew up with a lot of Christmas decorations and has always enjoyed them through the years.

She has used poinsettias and santas throughout the house. Both of the children have trees in their room. One is a Dallas Cowboy fan and the other is a San Francisco 49ers fan. They have decorated

their trees themselves and their favorites have provided their themes.

For Christmas Karla's dad, Charles Friday, made her a replica of an old-fashioned trunk with rounded top from wooden Coca-Cola crates. She is very proud of this and is using it in her decorations.

Outside the house is a nativity scene and a sleigh and reindeer. The trees and bushes all have lights on them.

Lighted three-foot candy canes with red bows, tin soldiers and lollipops. Karla says her decorations really show up better after dark.

### Bob Hamilton Home

Lighted shrubbery and luminaries lining the walkway lead visitors to the doorway of the Hamilton home where they are greeted by a straw angel holding a bouquet of flowers tied with burgundy ribbon.

Dolores has decorated the living room to appeal to adults and the family room for children. She likes to use things she already has out, so she works them in to the Christmas theme by making them take on a festive air with bows and greenery.

She is a collector of candleholders and elephants and these are used by incorporating them into the decorations with greenery, poinsettias and candles.

The living room fireplace mantel features a grapevine wreath with a straw angel, burgundy poinsettias, pine cones and greenery. Straw angels holding bouquets are accented with burgundy ribbon. Pillar candles in brass holders, greenery, old books and pine cones complete the setting.

A straw angel, a pillar candle with hurricane cover, burgundy poinsettias, greenery, pine cones and old books also decorate the fireplace hearth.

In this room is a Christmas tree topped with a large ecru cloth bow on top. Birds and other wildlife ornaments, bells made of bark, bird nests, pine cones, straw and baby's breath decorate the tree. The tree skirt is made of burlap.

Greenery, white poinsettias,

votive candles and tapers in graduated antique garment factory thread spools are used on the book shelves to blend with the Yuletide scheme.

A burgundy runner on the dining table centered with a basket of greenery and a grapevine garland atop the china cabinet add the Christmas touch in the dining room.

Baskets of fruit, greenery and candles are the decorative accents in the kitchen.


In the family room colors of green and red predominate. The live tree is topped with a large gold bow. Smaller bows of gold and red velvet, along with ornaments Dolores has collected over the years and appeal to children, raffia and

Continued on page 10

## POSEY'S UNIQUE GIFT & CRAFT SHOP

1356 FM 368 South 592-5452

*Kid's Shopping Day!*  
Kids and teenagers - come shop for your family.....  
**THURSDAY, DEC. 14**  
**7 - 9 P.M.**  
FREE GIFT WRAPPING



Great selection of seasonal gifts  
We carry a full line of the Winter Wonderland Snow Globes and Ornaments  
Pres. Gifts  
New line of designer light switches & covers

Come by and see us  
Mon. - Fri. ~ 10 a.m. - 5:30 p.m. Saturday ~ 10 a.m. - 2 p.m.

## CITY CAFE

114 W. Cash 592-4721

**TUESDAY NIGHTS**  
**Country Fried Chicken, mashed potatoes with all the fixin's**

## CREATIVE CHILD CARE CENTER

OPEN 6:15 A.M. TO 7:15 P.M.  
PRESCHOOL AVAILABLE  
101 E. JEFFERSON  
592-5521

Satisfaction guaranteed or your money back

# SEARS

**Are you ready for the holidays?**



**Our gift to you**  
**Carpet Cleaning ONLY**

\$19

min. 3 rooms for \$57. Per Room

- We use truck mounted units for stronger cleaning power
- We move and put back most furniture
- All our work is guaranteed to your personal satisfaction.
- Convenient appointments even Saturdays

**BETTER VALUE**

Any 5 areas  
**\$89**

**FREE**

Chair steam cleaned with the cleaning of a 3 seat sofa at the regular price of \$69.  
(Loose back cushions and specialty fabrics extra).

**BONUS**

**20% OFF**

Scotchgard™ protection

Minimum charge is \$49. An area is defined as a room, hall, bathroom or large walk-in closet. L-shape rooms or rooms over 200 sq. ft. are considered two areas. A travel charge may apply to outlying areas. Bonus offer expires December 31st, 1995.

767-4660

## SEARS

Authorized Carpet & Upholstery Cleaning






© Sears, Roebuck and Co. 1995



## BEVERAGES, COCKTAILS & JUICES



MANUFACTURER'S COUPON EXPIRES 06-30-96

SAVE 55¢

ON THE PURCHASE OF ANY TWO (2) OLD ORCHARD BEVERAGES, COCKTAILS & JUICES




RETAILER: We will reimburse you for the face value plus 8 cents handling if you and your customer comply with the terms of this offer. Any other use constitutes fraud. Invoices showing purchase of sufficient stock to cover all coupons must be presented upon request. Coupon may not be assigned or transferred. Cash value 1/20 cent. Mail to: Apple Valley International, P.O. Box 278, North Lake, WI 53064.

LIMIT ONE COUPON PER PURCHASE



# Tour of homes

Continued from page 9

babys breath complete the decorations. A beautiful quilt is used for the tree skirt where "The Three Bears" rest under the tree.

Teddy bears, Santa and Mrs. Claus, red candles and greenery are arranged in groupings and green wreaths with red poinsettias are used in the windows.

A favorite decoration of the family, which is now becoming a traditional decoration, is a large Christmas snow globe with a scene of Baby Jesus and the Little Drummer Boy.

## The Mike Hicks Home

The elegance of lace and pearls is noted in the home of Mike and Diane Hicks, with its Victorian theme.

Diane said what inspired them to open their home for the annual tour was the fact that so many people had wanted to see how they have remodeled it.

The house, built in 1928 for Mr. and Mrs. Will Spruiell, has been completely redone inside.

Angels, cherubs, and the colors of burgundy and gold, are intermingled with acquired antique pieces and the hobbies of stained glass and wood carving the Hicks love to do.

Myriad lights, clear, gold and a few reds that look burgundy when lit, are used throughout the home.

The living room has beautiful miniature houses, a hand carved Santa, executed by Mike, and a nativity scene replete with jewels draw attention in the living room. The nativity scene had belonged to a friend and it had been a tradition in her family to use the scene each year, which made it special to Mike and Diane.

The tree is typically Victorian, trimmed in gold, burgundy and off white, with porcelain doves, gold "Around the World" ornaments and gold and burgundy beads.

In the breezeway are grapevine wreaths and three three-foot angels, with white lights all around them.

In the dining room and kitchen area Diane has large baskets of fruit decorating the bar. Several wreaths

throughout the home are gold and white, some with greenery and gold fruit.

In the family room, fishing, hunting and sports objects are used in the decor. A display of antique game warden skies, ski poles and snow shoes from Maine is in this room.

## The Zearl Gilbreath Home

Treasured family traditions as well as contemporary utilitarian pieces handcrafted or sewn by their daughter, Malinda, and daughter-in-law, Sherry are in evidence. These are interspersed with mobiles or battery operated items, and music boxes to make the Gilbreath home both interesting and beautiful.

Among the many interesting items displayed throughout the home is a quilt hanging on one bedroom wall. It was made by her father, Robert Musgrave of Oklahoma City when he was 85 years old.

Among some of the treasured items at various focal points through-out the house is a child's 39-year-old chair where Bobbie has placed an antique doll; a grouping of elves with one elf doing the ironing with an antique iron.

She has three winter wonderland scenes. One is by the fireplace den, one is in a bathroom and she has one in a china cabinet on the glassed-in sunroom.

The guest bedroom is decorated in pink and blue. Over a window in this room is a grouping of mobiles of clear glass bells and balls in colors of pink and blue. The crocheted bedspread is white with a red rose and green leaves. Several stuffed elves are in this room.

Thirty-two handmade Christmas stockings are hung in various places in the rooms. Three of the stockings are 38 years old and have been hung in the house every year since her sister made them.

In the spa all windows have holly and red and green lights.

The bathroom has an ice skating village with motion ice skaters, made by Sherry.

She also made a 5x7 rug with a large Santa Claus in the center. This is used in the sunroom.

Matching stockings have been made for the children and grand-

children and the in-laws.

In the kitchen Bobbie has old blue and white and red and white enamelware pans that are decorated like hen's nests of barnyard straw and filled with eggs. She has green silk garlands with bows among these. Also in this room is a hand-turned Daizy churn with lights and poinsettias. She has her father's enamel water dipper, fitted with a bird nest, where a Finch has its home.

In the dining room is a china cabinet filled with angels and doves. On top are red lights.

The table has an arrangement of reindeer, lights and greenery and a procelain boy and girl. A green wreath centerpiece has lights and Christmas ornaments and is centered with a candle. The Christmas placemats and napkins were made by their daughter.

On the television is a lighted ceramic village that was made by their daughter.

Malinda also made the bedspread in the master bedroom that has a large Santa in the center. The Gilbreaths' daughter-in-law made matching drapes.

Blue lights and holly decorate different areas of the room. A glass enclosed curio cabinet has a different scene on each shelf. Bobbie has a collection of more than 30 music boxes and a collection of clowns that are used in the shelves and in other areas.

In the sunroom is a huge carosel wreath with ponies marching around the wreath. Valances over the 17 windows in this room have a midnight blue background with white trim. Each valance is painted with a different scene, some with village homes and some with other Yule themes. These were made by daughter-in-law Sherry.

They have many motion ornaments. The Gilbreaths have been married 40 years and have saved all of their tree ornaments. They still hang some they had on their first Christmas tree.

The Gilbreaths are proud of their talking Santa Clause that tells the Christmas story.

Mrs. Gilbreath's birthday is in

November and the girls take advantage of that and always know what they are going to make her for her birthday. It is always used the following Christmas.

In front of the house is a 50 foot Christmas tree that has been decorated by Gilbreath.

Tickets for the tour may still be purchased from the RAC, the Library, or any board member. Or they may be purchased at the door of the first home visited.



## Santa Letters

Dear Santa,

I want a new 96' Chevy Suburban because my aunt is getting a 96' 4x4 Tahoe and it costs a lot. But otherwise I want a CD player, a TV, and a video game called Madden 96'. But you don't have to get me those things because I don't deserve them.

O.K. Santa.

Thanks!

Wade Havins

P.S. Hope I get 96' Chevy Suburban.

*(Editor's Note: We invite all you children to write your Letters to Santa this season. Mail them at the post office or drop them off at the Leader, and we will be printing them until our Dec. 21 Christmas edition.)*

**It's A Fact . . .**  
Residents of Iowa Park are eligible to purchase a dumping permit for \$5, to get rid of trash, appliances and brush at no additional cost by delivering it to the city's convenience center, located south of the intersection of Smith and Johnson roads. The permit is good for 12 full months. Days and hours the center is open include: 12-6 p.m. Fridays; 9 a.m.-5 p.m. Saturdays; 1-5 p.m. Sundays, and 12-6 p.m. Mondays. The center is closed Tuesdays, Wednesdays and Thursdays.

# Junior High Roundup

## 7TH GRADE A TEAM

The 7th grade A team moved it's record to 3-0 this week by drilling Jacksboro 44-21.

The Hawks held the Tigers to zero points in the second quarter while scoring 16 to take a 26-8 lead at the half. Iowa Park outscored Jacksboro 18-12 in the second half to take the win.

Iowa Park was led in scoring by Chase Wright who finished with 10 and by Stephen Gray who finished with 8.

## 7TH GRADE B TEAM

The 7th grade B team picked up it's first win of the season this week by beating Jacksboro 16-14. The Hawks, 1-3, were led by Alex Quick, Josh Lytle and Colby Rusk who all finished with 4 points.

## 8TH GRADE A TEAM

The 8th grade Hawks improved to 3-0 this week by hammering Jacksboro 81-59.

The Hawks outscored the Tigers 21-3 to start the game and coasted to a 45-22 halftime lead before putting Jacksboro away with a 36-27 second half.

Ryan Huff led the Hawks in scoring with 23 followed by Tyler Pulley who finished with 13. Landon Miller added 11 points to help pace Iowa Park.

## 8TH GRADE B TEAM

The 8th grade Hawk B team is still looking for it's first win of the season after falling to 0-4 with a 38-27 loss to Jacksboro this week. Iowa Park was led in scoring by Carl Morgan and Jusid Phillips who each finished with 10 points.

## 7TH GRADE B TEAM

The 7th grade girls' B team played in the City View Tournament this week, winning one of their three games.

In the opener, Iowa Park fell to City View 29-12. Lindsay House and Christi Pruitt each scored 4 points.

In game two, Vernon outscored the Lady Hawks 23-12. Pruitt led the team with 6 points.

In game three, it was Iowa Park winning 33-10 over Jacksboro. Shonda Cook led the Lady Hawks in scoring with 8 points.

## 8TH GRADE A TEAM

The 8th grade Lady Hawks lost a close one this week to Jacksboro 30-26. Amanda Reed led Iowa Park in scoring with 9 points.

## 7TH GRADE A TEAM

The 7th grade A Lady Hawks won a close one this week by beating Jacksboro 24-22. High scorers for Iowa Park included Johnna Brown with 6 points followed by Lindsay Havins and Brittany Taylor with 4 points each.

# Finish 2nd at Childress

The JV Lady Hawks finished the week with a 3-1 mark and picked up a second place finish in the Childress Tournament along the way.

In the Championship game, Quannah broke open a close game scoring 15 points in the final period to take a 34-27 win over the Lady Hawks. Iowa Park was led in scoring by Jordan who finished with 9 points.

Iowa Park opened the Tournament with a 43-10 win over the Quannah freshman team. Lori Wiggins led the Lady Hawks in scoring with 12 followed by Lee Ann Jordan and Jodi Henderson who both finished with 8 points.

In game two, Iowa Park beat Wellington 42-37 to advance to the title game with Amanda Roberts leading all scorers with 16 points.

Iowa Park ran it's record to 6-3 Tuesday night with a 45-29 win over the Lady Bulldogs from Burkburnett. Iowa Park got a balanced scoring effort as 11 different players scored. Summer Sternadel led the team with 8 followed by Roberts who finished with 6. Henderson, Osborne and Jordan all finished with 5 points apiece for Iowa Park.

**TEXHOMA CHESS CLUB**  
FORMERLY WICHITA FALLS CHESS CLUB  
MEETS AT 7 P.M. EACH MONDAY  
AT THE IOWA PARK OPTIMIST CLUB GYM  
KIDS AND ADULTS WELCOME  
CONTACT JOHN CHAPMAN, 592-4952

Jim B. Pulley  
Prudential Representative

**The Prudential**

3917 Call Field Road  
Wichita Falls, TX 76308  
Office: 817-696-0033 Residence: 817-592-9456  
Fax: 817-696-1508

**IOWA PARK ATHLETIC CENTER**  
215 N. Yosemite 592-2570  
Located one block North of Allsup's Convenience  
Store off the Old Iowa Park Rd.  
Stairsteppers, Treadmills, Bicycles, Climbers, Skier,  
Free Weights Upstairs, Co-Ed Gym  
Certified Personal Trainer  
**SELLERS**  
**BODYBUILDING SUPPLEMENTS**

**JOHN Speer**

CHEVROLET  
PONTIAC  
OLDSMOBILE  
Geo

**HUSTLE  
ATTITUDE  
WORK  
KNOWLEDGE  
SUCCESS**

Buy American  
**N.E. (NORM) HODGES**  
Sales Representative

905 Sheppard Road  
Burkburnett, TX 76354

(817) 569-5271  
1-800-787-7337

**Happy 30th  
DAD**

Love, Utah

**RICHARD C. CARVER, D.D.S.**  
GENERAL DENTISTRY

TELEPHONE 315 NORTH WALL  
817-592-5141 IOWA PARK, TEXAS 76367

**Park Tire & Battery**  
Tire Repair - Shop or Field  
Suremark & Continental Batteries

A Complete Line of Tires & Tubes  
Kelly Tires Sigmae Tires Remington Tires  
Now Available: UNIROYAL and MICHELIN by Goodrich

600 E. Pasadena James Cates, Owner  
Iowa Park 592-2056

Friends are invited

**Mildred McLeMore**  
84th Birthday Reception  
Saturday, December 9  
2 - 4 p.m.  
Iowa Park RAC

Oh, to be 19 again!

**Happy Birthday  
Bob**

Love,  
Betty, Katherine, Clint, Alan, DeeDee,  
Megan, Clay and Micheal

Look who turned 13  
on December 2

Love,  
Mom, Dad and Jason

**Unexpected,  
out-of-pocket  
expense.**

That's what you have when your heating and air conditioning equipment fails. The Customer Assurance Program offers you the peace of mind that your system will be professionally maintained to run more efficiently and extend the life of your equipment. Consider it inflation protection against rising repair cost. Call today to assure your comfort and peace of mind.

**592-2761**  
**IOWA PARK**  
AIR CONDITIONING & HEATING CO.

Locally owned and operated for 26 years  
TAGLB010194E

*We assure your comfort and peace of mind!*



# Tough week for Lady Hawk varsity

The Iowa Park Lady Hawks found the going tough this past week on the hardwood, losing a pair of games in the Key City Tournament in Abilene and coming up just short in a tough game against Burkburnett on Tuesday.

The Lady Hawks opened the week against Abilene High in the first

round of the tournament dropping a 56-48 decision. Iowa Park fell behind 21-12 in the first quarter but outplayed Abilene from that point on, led by the long range shooting of Randi Tigrett, who drained five three-pointers and finished with a team high 16 points. Dusti Welch finished close behind with 14.

In the second game of the tournament, the Lady Hawks were outscored 55-42 by Abilene Wylie. Again it was Welch and Tigrett who led the team with 11 and 10 points respectively.

Despite losing the first two games, Iowa Park was awarded the Sportsmanship Trophy and Tigrett

was named as Honorable Mention to the All Tournament Team.

In Tuesday's game against the Lady Bulldogs, Iowa Park gave Burk, 10-2, all they wanted for the first three quarters trailing by only 2 heading into the final eight minutes of play. But the Lady Dogs caught fire and hit their first 4 shots of the quarter and finished the period shooting 7-of-9 from the floor in the fourth to take a 46-40 win.

Iowa Park, 5-5, was led by Welch who finished with 13 and by Wendy Bridwell and Tigrett who each finished with 6.

The two teams finished the first quarter tied at 8-8. Burk opened the second with a three point play to take an 11-8 lead before Iowa Park went on a 13-3 run to take a 21-14 lead with 2:28 left in the first half. Welch sparked the run hitting three consecutive jumpers from the outside to give her team the 7 point lead. Burk trimmed the deficit to only 2 at 23-21 at the half by outscoring the Lady Hawks 7-2 over the final 2:15 of the second.

The Lady Hawks will travel to Seymour to play in the Seymour Tournament with their first game against Munday scheduled for 9:30 a.m. Thursday morning. The winner will play at 3:30 p.m. on Friday with the Championship game scheduled for 6:30 p.m. Saturday night.



WENDY BRIDWELL LAUNCHES TWO-POINTER

## Hawks suffer first loss

The Iowa Park Hawks, playing in their first game since winning the Fantasy Of Lights Tournament, suffered their first loss of the season losing 73-65 to Decatur Monday.

Iowa Park, 6-1, came out flat after the eight-day layoff and fell behind 12-2 to start the game, but rallied behind Rylan McNeil and David Waterbury to close the margin to 24-18 at the end of the first quarter. Waterbury and McNeil each scored 6 points in the period and finished with 18 and 15 points respectively.

Shaun Campbell, who finished with 17, scored 8 points in the second quarter to help the Hawks pull to within one at 38-37. McNeil also scored 6 in the second quarter.

The Hawks took the lead after three periods, leading 53-51 heading into the final eight minutes of play, but were outscored 22-12 in the fourth.

"I knew we were in trouble in the pre-game warm ups," said head coach

Tim Clark. "We were just going through the motions and that showed in the first quarter when we fell behind 12-2. We turned the ball over 10 times in the first quarter and finished the game with 14 after we started playing.

"I'm sure the layoff hurt us some," Clark added. "But we're not using that as an excuse. We just didn't play as well as the team we played. It's as simple as that."

The Hawks will be looking to get back in the win column Thursday when they travel to Seymour to de-

ferend their title in the Seymour Tournament. Iowa Park's first game will be at 11 a.m. Thursday against Munday with the winner playing at 5 p.m. The Championship game is scheduled for 8 p.m. Saturday.

In other games of interest in District 3-3A, Graham, ranked No. 4 in the latest TABC poll, dropped its first game of the season losing in the Championship game of the Possum Kingdon Classic to Class A Brock 83-82. The loss leaves the Steers at 3-1 overall for the year.

## Frosh Lady Hawks 6-0

The freshman Lady Hawks ran their record to a perfect 6-0 this week by winning all four games they played, including the title game of the Iowa Park Tournament.

In the first game of the Tournament, Iowa Park beat Wichita Falls High School 39-26. The Lady Hawks were led by Randi Nelms with 9, Alisha Clements and Dena Brown with 7 and by Carrie Evans and Lacy Downs who each finished with 5 points.

In the second game, Iowa Park pounded Holliday 45-28. Leading

scorers for the Lady Hawks were Brown with 10, Atchley with 7, Nelms and Evans with 5 and Clements with 4.

Iowa Park ran its record to 5-0 Saturday beating Hirschi 45-30 in the Championship game. Brandi Parker led the team with 10 points followed by Evans with 9 while Amanda Duffy and Nelms each finished with 5.

The Lady Hawks capped off the perfect week by edging Burkburnett 36-34 Tuesday night. Evans led the team with 16 points followed by Nelms and Brown who each finished with 8.

### THIS WEEK IN HAWK BASKETBALL

Thursday 12/7 - Lady Hawks in Seymour Tournament vs. Munday 9:30 a.m.; Hawks in Seymour Tournament vs. Munday 11 a.m.; Iowa Park JV Tournament, boys and girls.

Friday 12/8 - If the Lady Hawks win, at 3:30 p.m. if they lose, 12:30 p.m.; If the Hawks win, at 5 p.m., if they lose 2 p.m.; JV Tournament boys and girls.

Saturday 12/9 - Girls Championship game 6:30 p.m.; Boys Championship game 8 p.m.; JV Tournament boys and girls.

Monday 12/11 - Freshman Hawks A and B teams at Burkburnett at 6 p.m..

Tuesday 12/12 - Lady Hawks freshman JV and varsity at home vs. Henrietta at 5 p.m.; Hawks JV and varsity at Weatherford at 6 p.m..

## Hawk Frosh finish 2nd

The freshman Hawks capped a nice week of basketball by finishing second place in the Iowa Park Tournament held here over the weekend.

The Hawks opened the tournament against the Hawks B team with the A team winning 69-19. Tommy Duerson led the A team in scoring with 18 followed by Bryan Miller who finished with 14. Johnny Bosley and Jon Thomas each added 11 points for the Hawks. Chad Bauer, Travis Cline, and Josh Arrington all scored 5 points apiece for the B team.

Iowa Park lost its second game to Holliday, the eventual champions, 49-45. Bosley led the team in scoring with 11 followed by Bryan Lyons who finished with 10.

In the third game of the round robin schedule, the Hawks beat Vernon 54-48 to pick up the second place trophy. Lyons led the team with 21 followed by Miller who finished with 8.

The B team's second game was a 62-32 loss to Vernon. Aaron McGuinn led the Hawks with 10 followed by Bauer who finished with 9. The B team lost its third game to Holliday 74-47 with Arrington leading the team with 16 points. McGuinn finished with 9 followed by Bauer and Justin Denton who each scored 7 points.

The A team played again on Monday night against Decatur and lost another close one 55-49. Bosley led the team in scoring with 11 followed by Duerson with 8 and Denton with 7. The A team's record is 2-4 while the B team stands at 0-3.

## JV opens season 4-0

The Iowa Park JV Hawks opened the season winning all four games they played this week, including the Childress Tournament.

The Hawks opened the Tournament with a 66-57 win over Paducah. Iowa Park trailed by 8 at the half but turned the game around in the third outscoring the Dragons 26-10 to take a 48-40 lead into the fourth. Shawn Fulfer led the Hawks in scoring with 23 followed by Chad Graham who finished with 12. Todd Yeager, Clint Mathis and Jonathan Horton each added 8 points.

Iowa Park beat Wellington 45-29 in the semi-finals to advance to the Title game with Graham and Fulfer leading the team with 11 and 10 points respectively.

The Hawks were matched against host Childress in the Championship game which Iowa Park won 48-41. The Hawks were led by Yeager who

finished with 14 and by Graham who finished with 11.

Iowa Park capped a perfect week by beating Decatur 46-39 Monday night to move to 4-0 for the season. Waylon Stewart led the Hawks with 10 followed by Graham who finished with 9 points.

The Hawks will host the Iowa Park JV Tournament this weekend with the first game being played today.

**JC's**  
**Automotive**

104 North Alcott ~ 592-9588

∞ "We Take Pride In Your Ride"

Hours: Monday - Friday 8 a.m. - 6 p.m.  
We now accept Visa, MasterCard & Discover

Does your subscription to the Leader expire this month? Check the list on page 4.

**The**  
**CARSMITI**

Remote Auto Mirrors  
Keyless Entry Systems  
Window Tinting  
Power Window and Lock Repairs  
Cars Unlocked

Gary Smith 592-5920  
1109 FM 368 S. Iowa Park

**CITY**  
**CAFE**

114 W. Cash 592-4721

**FRIDAY NIGHTS**  
Catfish or Shrimp,  
French fries, hush  
puppies, cole slaw  
or red beans, pickles  
and onions

**NEED EXTRA CASH FOR THE SEASON?**

HOLIDAY

If you didn't receive your Ken's Kash in the mail...  
come into the store and pick yours up today for

**\$7 OF KEN'S KASH™**

USE LIKE CASH TOWARD PURCHASES AT KEN'S PIZZA.

THE MORE YOU BUY, THE MORE CERTIFICATES YOU CAN USE, THE MORE YOU CAN SAVE.

This newspaper ad is non-redeemable  
Limited amount of Ken's Kash available.

**ken's**  
PIZZA

902 W. Highway  
592-9999

*Harvey's*

592-4731

**HAMBURGER  
AND FRIES  
\$2.39**

**SUNDAY LUNCH SPECIAL**

BEEF TIPS AND RICE, VEGETABLE,  
SALAD AND TOAST **\$4.25**

**Evening Specials**

Nightly Dinner Plate - \$2.99  
served from 5 to 8 p.m.



# The Classifieds

## DEADLINES

12-NOON WEDNESDAY (WORK ADS ONLY)  
4 P.M. TUESDAY, DISPLAY ADS

SAVE 10¢ PER WORD FIRST  
INSERTION BY PAYING  
WITH COPY AT OFFICE

## RATES:

30¢ PER WORD FIRST INSERTION  
20¢ PER WORD EACH REPEAT

One bedroom apartment \$215 to \$226  
Two bedroom apartment \$262 to \$276

- Energy efficient
- Central Heat/Air
- Children's Play Area
- Fully carpeted and draped
- Off-street parking
- Water Paid
- Total Electric
- Fully-equipped laundry room

**COLONIAL HEIGHTS APARTMENTS**

592-2705

Wallpaper Lacquer Acoustic Ceiling

**GENE A. WILLIAMS**  
Paint • Tape & Bed  
(817) 592-5494  
121 S. Wall Iowa Park, Texas 76367

**HOUSES FOR SALE**

**910 FOLEY** - Excellent condition, 3 bedroom, 1 1/2 bath, 1-car garage, brick, storage bldg., privacy fence, all electric. \$49,900. 767-3751 or 761-3882. 11-30-tfc

**REAL ESTATE**

CALL ME FIRST! I buy houses. Fast closing. Darline - agent. 592-2950. 10-5-tfc

**WOODBRIAR COMMUNITY**  
1, 2 and 3 bedroom units  
ALL BILLS PAID (includes basic cable)  
1000 Mary 592-2121

592-9622 THOMAS JOHNSON BROKER

723-7471 PATTY McLEMORE LAURA HAMMOND CYNDE BUMGARDNER RANDIE FORCHER

**TEXOMA REALTY**

"Together We Get It Done"

NEW LISTING - 800 NORTH JACKSON - 2 bedroom, living room, formal dining, kitchen storm cellar, partial privacy fence. Beautiful hardwood floors. Has had a great deal of updating completed. This nice home can be yours for only \$28,000. Call Thomas.

306 EAST DIAMOND IN CONTRACT  
two outbuildings. Slashed to \$17,500.  
504 E. HIGHWAY - Improved spacious 2-story comm. bldg., \$56,500.  
LOTS, Magnolia St., and Alameda, W. Cornelia. Call for information.

**JUSTUS & CO ROOFING**  
All types roofing & repairs  
Free Estimates - Licensed & Bonded  
**592-4237**  
"For all your roofing needs-Just-Us"

**YARD WORK**

**303 KATHLEEN** - 3-2-2, greenhouse, ornamental fish pond, completely new paint. Fenced back yard. 592-4091. 12-7-tfc

**DALE'S TREE/YARD** Service Tree trim or removal, lawn mowing, hedge trimming. Seniors rates. 592-9455. 7-27-tfc

**POSEY'S APPLIANCE SERVICE**

We service all makes of washers, dryers, freezers, refrigerators and window air conditioners.

1356 FM 368 SOUTH 592-5452

**FOR SALE CERTAIN-TEED SIDING**  
\$38 per square

Sales Office: 1005 East Texas  
Phone: 322-7711 or 761-5810

Liberal Credit  
Registered Contractor

**CARPORTS BY SCOTT**  
CARPORTS > PATIO COVERS > RESIDENTIAL PAINTING  
**SCOTT SANDERS 592-4317**

24 Hour Emergency Call

**CITY GLASS AND MIRROR**

M.E. LeDue (817) 723-8516  
2214 Seymour Hwy. (817) 723-7650  
Wichita Falls, Tx. 76301 Pager 851-1160  
We're Just a Stones Throw Away

**MENDOZA'S HOUSE LEVELING & FOUNDATION REPAIR**

Pier & Beam Repair, We also level brick home with concrete slabs  
23 years experience, Licensed & Bonded  
Manual Mendoza  
817-720-2530 or 322-3227 Wichita Falls

DON'T JUST DREAM... LIVE THE DREAM! DON'T JUST DREAM... LIVE THE DREAM! DON'T JUST DREAM... LIVE THE DREAM!

**Regency One REALTORS**  
Residential • Commercial • Farm • Ranch  
592-2133 • 1-800-870-2133  
Don't Just Dream! Live The Dream!

**Darrell Jolly**  
592-4926 (mobile) 781-8109

**Mary Taber** 1-495-3325  
**Julie Ressel** 766-5919  
**Winnie Jo Holmes** 592-5730

Listen to **KNIN 990 AM Total Gospel Station** every Saturday morning from 7:30 - 8:30 a.m.  
**"HAWK FOOTBALL REVIEW"**  
Held "Live" at Harvey's!

**500 W. BANK**  
Lots 1 thru 24. Entire block located behind Wal-Mart. Price reduced to \$69,000. Prime Commercial Location.  
**1905 BURROUGHS - WICHITA FALLS**  
3 BR, 2 bath, 2 living areas, formal dinign, breakfast bar, CHA. \$74,000. Call Darrell.  
**COZY COUNTRY CLUB**  
Excellent condition. Beautifully landscaped. Terrific two story home on Cooke, 3 or 4 bedrooms, 2 living areas, 2 dining areas, fireplace in study, 2 baths. Pool. \$221,000. Call Darrell.  
**4126 COUNTRY MEADOWS**  
Quiet neighborhood. 3 BR, 2 bath, 2 car garage. Corner lot size (128X255), tile, carpet, skylights. Fireplace, ceiling fans. \$92,000.  
- 2504-06 9TH ST., W.F. IN CONTRACT \$98,500.  
**NEW LISTING - 510 N. WALL**  
Beautiful corner lot. Large trees - 3 BR, 2 bath, 2-car garage. Formal living, dining & den. \$76,000. Call Winnie.  
**NEW LISTING-7702 W. SH 258, KAMAY**  
3 bdrms., 1 bath, nice size living area. New metal roof. Sits on 4.4 acres. Partially fenced. Call Darrell.  
**103 VALLEY DRIVE**  
Approx. 1,380 sq. ft. New home construction. 3 BR, 2 bath, sep. master suite. \$78,500.  
**MORNINGSIDE ADDN.-WE**  
106 Pembroke. Stately home in exclusive area. Freshly painted inside, hardwood floors. A must see. \$98,500. Call Julie.  
**306 SOUTH YOSEMITE**  
1994 mobile home, 2 BR, 2 bth, super nice. Has 2nd home-needs work. Sits on 3 lots. Large trees. Call for showing. Price reduced to \$27,500.

**312 W. PARK**  
1 bdrm., 1 bath, living area, dining area, convenient to business district. \$14,000. Call Darrell.  
**4716 EDEN LANE, W.F.**  
3 living areas, Franklin fireplace, 3 bdrms., 1 1/2 baths, 2 storage bldgs., carpet less than two years old. Fresh and neat. \$47,500. Call Darrell.  
**OLD BURK RD., W.F.**  
Mobile home, 2 BR, 1 bath, new carpet, vinyl, wallpaper, freshly painted inside and out. Sits on 1.76 fenced acres. Has hook-ups for second trailer. \$22,000.  
**616 S. PARK**  
Beautiful trees on corner lot. 3 BR, 1 bath, 1 car garage. Sits on approx. 2 lots. Great starter home. Call Winnie. Price reduced to \$25,000.  
**1200 N. ILLINOIS - ELECTRA**  
Approx. 3,000 sq. ft. living area. 4 BR, 3 baths, 3+ attached garage. 2 fireplaces, in-ground pool. \$80,000.

**COMMERCIAL**  
**1892 HISTORICAL BUILDING - DOWNTOWN**  
2-  
**SOLD**  
income property. \$25,000. Call Winnie.  
**GOOD LOCATION - GREAT BUILDING**  
Approx. 6,000 sq. ft. Any form of business. Nice butler building, nice size  
**COMMERCIAL PROPERTY-PRICE REDUCED**  
Main and West Olive in Holiday. Could be used for any form of business. Has garage, leased. Super location. Call Darrell. \$39,000.

**1208 W. HIGHWAY**  
PRICE REDUCED TO \$9,500. Great location to build your new home. Established area.  
**LAND!LAND!LAND!LAND!LAND!LAND!**  
**NEW LISTING - 80 ACRES**  
Located 5 miles north on Johnson Road. Call Darrell.  
**HWY. 82, HOLLIDAY**  
4 Prime acres to build new home. Restricted covenants. \$20,000. Call Winnie.  
**HWY. 258**  
Ready to build? I have 10 acres waiting just for you. Cleaned, level land with stock tank and corrals.  
**68.128 ACRES ON HIGHWAY 79**  
SUPER building site. Has already been landscaped. Many, many possibilities. Can see the city lights of Wichita Falls. Price reduced to \$100,000. Call Julie.  
**CRAMPED AND CROWDED?**  
Enjoy easy living, 20 acres or split into 10-acre tracts. FM 369 & Wrangler's Retreat Restrictions, no mobile homes. \$3,000 per acre.  
**8 ACRES FM 369**  
Fabulous area to build your new home! Restrictions, no mobile homes. \$32,000.  
**LOTS!LOTS!LOTS!LOTS!LOTS!LOTS!**  
**100 VALLEY DRIVE - \$7,750**  
**102 VALLEY DRIVE - \$7,750**  
**107 VALLEY DRIVE - \$7,750**  
**124 VALLEY DRIVE - \$7,900**  
**NEW LISTING - LOT ON DAISY & POE**  
46 of an acre. Call Winnie.  
**2 TRACTS - NORTH JOHNSON RD.**  
2-5 acre tracts, located exactly 5 miles north of Highway 287. Restricted covenants are no mobile homes; home construction must be at least 1,400 sq. ft. and brick with side entrance. \$15,000 each.

**Thank you, Iowa Park, For your patronage!**

★ ★ ★ ★ ★ TEXAS REALTY ★ ★ ★ ★ ★

**Selling Iowa Park**  
**109 W. Cash 592-2728**

**Polly Spruiell**  
Res. 592-4756  
Mobile Ph. 781-6155

**Tommy & Glenda Key**  
Res. 592-4660  
Mobile Ph. 781-1996  
Mobile Ph. 781-3949

**20's**  
300 E. Ruby 2-BR, 2-BA mobile home on corner lot has central heat/air, 2-car carport, and storm cellar.  
304 E. Ruby 2-BR home is paneled and carpeted and includes detached garage & carport.

**111 James**  
307 E. Lafayette

**5190 Love Road**  
3-BR, 2 BA on approximately 3 acres has barns with grooming/wash areas. House recently recarpeted; ceramic tile entry. 3-BR, 2 BA, large living room, trees, detached guest accommodation/business opportunity.

**104 W. Ruby**

**601 E. Texas**  
New Construction; 3-2-2; Indian Springs Subdivision.

**905 E. Texas**  
New Construction; 3-2-2; Indian Springs Subdivision.

**1307 Edgehill Tr.**  
Magnificent 3 bedroom show place. Most unusual secluded back yard. Must see to appreciate. Under Construction in Highland Park subdivision, these homes feature approx. 1550 sq. ft. of living, two dining areas, beautiful ceilings, separated master suite.

**26 Surrey**  
Spacious 3-BR home has sunken living room, built-in appliances, and many extras. Enjoy the ideal location and large lot that provides a view of the lake.

**100's**  
301 Peterson Rd. N  
Spacious 3-BR home on 2.69 acres features 2 living areas, 2 dining areas, and utility room with pantry.

**Farm**  
700 Johnson Rd. S  
Approximately 348 acres of fenced and cross-fenced land; includes historic home and numerous barns and buildings

**7722 Headquarters Rd.**  
100 acres with large, recently remodeled home; includes guest house, barns, and other buildings.

**Land**  
1.73 Acres NE corner 3rd Street & 287 Serv. Rd.  
8.22 Acres 2007 Peterson Circle  
32.01 Acres IN CONTRACT  
60.00 Acres Holman Road north of Burk Burnett Johnson Road  
79.12 Acres  
1.54 Acres  
FM 368 North

**Commercial**  
IN CONTRACT  
**Lots**  
130'X200' lot in Hillside Terrace.

**NEW LISTING - RESIDENTIAL**  
**504 E. WASHINGTON**  
Three-bedroom mobile home on large lot (1.5 lots) has addition suitable for guests because addition also has kitchen facilities.



**HELP WANTED**

**PART-TIME HELP** - 5 days a week, 10:30 - 2 p.m. Apply in person, City Cafe, 114 W. Cash. 10-26-tfc

**MISC. FOR SALE**

**SHARP '95 Thunderbird LX**, V-8, loaded. Low mileage. Beautiful chameleon blue. \$14,900. 586-1709 or 692-7126. 12-7-1tp

**MISC. FOR SALE**

**YARD SALE** - 401 E. Lafayette, 8-4, Thursday - Saturday. 12-7-1tp

**DOMESTICS**

**KING'S KIDS** Christian Day Care & Pre-School. "Iowa Park's finest for Parents: Who Care." 202 N. Jackson. 592-4242. 7-27-tfc

**BUSINESS**

**EIBEN Home Repair and Remodeling**. Additions, roofing, painting, sheetrock, doors, carports, patio covers, and more. Small jobs welcome. Reasonable rates. Licensed and bonded. 592-2053. 7-27-tfc

**BUSINESS**

**COMPUTER for Christmas?** Include some training to get going quickly and easily! Certified instructors, sixteen years experience. Wichita Falls, 817-691-2777. 11-30-3tp

**JANITOR NEEDED**

The Farm Service (FSA) Agency, 400 N. Wall, will accept sealed bids until 5:00 P.M., Dec. 14, for janitor work. See David Robnett at the FSA for details. Equal Employment Opp.

**GOLF CLUBS** - Ping irons, Tommy Armour 845 irons, metal woods, Ping putters, putters, wedges, & bags. 592-4429. 12-7-1tp

**WHITE BABY BED** with mattress and accessories, \$65. Sofa, rocking chair and chair group - wood frame with brown cushions, \$250. Light brown hide-a-bed couch, \$250. 592-5402. 12-7-1tp

**GARAGE SALE** - 204 S. Yosemite, starting Thursday. Some shop tools. 12-7-1tp under for sale

**MOVING** - Piano, \$200; twin bed frame, \$5. Female 3/4 Labrador (spayed) free to good home. 592-0363. 12-7-1tp

**1986 CHEVY CAVALIER**. Needs work. \$500. 592-4603. 12-7-1tp

**XMAS BALLS** - 100 single or multi-colored lights or 150 multi-function. Call 495-7222 after 3. 11-30-4tp

**IN EXCELLENT** condition, sleeper sofa. Call 592-5203 anytime. 11-30-tfc

**OAK FIREWOOD** - free delivery. \$70/rick; \$135/cord. 592-4237. 11-9-tfc

**WILL BABYSIT** in my home. 592-5203. 11-30-2tc

**NEED YOUR HOME** or business cleaned from top to bottom? Call DeDe Tatum, 592-9632. 8-31-tfc

**ICLEANHOUSES**. Reliable, dependable. 438-2712 (leave message). 11-30-2tp

**NOTICE**

**TRESPASSERS** caught on land owned by the Triangle Ranches of Texas located in Foard, Cottle and Hardeman counties including the Pease River will continue to be prosecuted. 12-7-2tc

**FOUND** - Black kitten, very well cared for, in 500 block of Clara. Call 592-4589 to claim. 12-7-nc

**Copying & Laminating**  
Copier - 2 pages 25¢  
Protect your important documents with a plastic laminate overlay. Credit Card size to 8 1/2 x 11. Prices start at 50¢  
Parkway 200 W. Bank

**FAX Messages**  
Ph. 592-5613  
Copies made - 15¢  
UPs Packages

Hughes Pharmacy

**\$1000 REWARD**

For information leading to the arrest and conviction of any person or persons involved in theft, vandalism, arson, fishing or hunting on any of our properties in Wichita, Archer, Wilbarger, Clay, Wise or any other county in which we may have equipment located. Tom Swanson Oil Co., TS&T Drilling Inc. 817-495-3971

**MINI-CON Self-storage**

1. Variety of sizes.
2. Competitive prices.
3. Locally owned and operated.
4. Monthly rates.

805 W. Hwy.  
592-2761

**LEGAL NOTICE**

**NOTICE OF PUBLIC HEARING**

The City of Iowa Park will hold a public hearing at:

Date: December 11, 1995  
Time: 7:00 p.m.  
Location: City Council Chambers of the Iowa Park City Hall 103 North Wall Iowa Park, Texas

The purpose of the hearing is to allow for final public comment regarding the completion of the 1993 Community Development Program - Sewer System Improvement - TCDP Contract No. 703371. The general public is invited to attend and participate.

In addition, should any non-English speaking citizen(s) desire to address the City during such hearing and needs the assistance of an interpreter, the City will attempt to provide one if sufficient notice is provided. Also, should any citizen(s) desire technical assistance, handicap accessibility to the hearing site, or need interpreter assistance, please call Mike Price, City Administrator at 817/592-2131. Written comments may be sent to the City of Iowa Park, P.O. Box 190, Iowa Park, Texas 76367, or to the city's grant consultant (Governmental Service Agency, Inc.) at 9500 Forest Lane, Suite 408, Dallas, Texas 75243, (214/342-1892).

Wayne House  
Mayor  
City of Iowa Park

12-7-1tc

**SHERIFF'S SALE**

THE STATE OF TEXAS  
County of Wichita

**NOTICE IS HEREBY GIVEN** That by virtue of a certain Order of Sale issued out of the Honorable 30th District Court of Wichita County, on the 7th day of November 1995 by Dorsey Trapp, Clerk of said District Court for the sum of Five thousand nine hundred forty and 09/100 DOLLARS

Plus 10% interest from date of judgment and costs of suit, under a certain judgment, in favor of Iowa Park Independent School District, Et Al in a certain cause in said Court, No. 39,171-A and styled Iowa Park Independent School District, City of Iowa Park, Wichita County Education District, County of Wichita vs. Leta Mae Singleton, Rodney Singleton, Debra Singleton Pesterfield and placed in my hands for service, I Thomas J. Callahan as Sheriff of Wichita County, Texas, did, on the 13th day of November 1995 levy on certain Real Estate, situated in Wichita County, Texas, described as follows, to-wit:

Tract 1: 0.52 acres, more or less of the west one-half of Block 21, Texas Addition, Wichita County, Texas, as more particularly described in a deed recorded in Volume 848 at Page 81 of the Deed Records of Wichita County, Texas; known as 210 W. Washington Iowa Park, Texas.

Tract 2: Lot 7 and the west one-half of Lot 8 and 15 feet by 142 feet adjacent to Lot 7, Block 43, Original Townsite, Iowa Park, Wichita County, Texas, as more particularly described in a deed recorded in Volume 1158 at Page 848 of the Deed Records of Wichita County, Texas; known as 210 W. Washington Iowa Park, Texas.

The above property shall be sold subject to the owner's right of redemption. The redemption period is two years for homestead and agricultural use property and six months for all other property. Purchasers shall receive a Sheriff's Deed that is without warranty. Bidders should satisfy themselves concerning title and location of the property and improvements on the property prior to sale. and levied upon as the property of Leta Mae Singleton and that on the first Tuesday in January 1996, the same being the 2nd day of said month, at the Court House door, of Wichita County, in the City of Wichita Falls, Texas, at 10 A.M. by virtue of said levy and said Order of Sale I will sell said above described Real Estate at public vendue, for cash, to the highest bidder, as the property of said Leta Mae Singleton

And in compliance with law, I give this notice by publication, in the English language, once a week for three consecutive weeks immediately preceding said day of sale, in the Iowa Park Leader a newspaper published in Wichita County.

Witness my hand, this 13th day of November 1995  
Thomas J. Callahan  
Sheriff, Wichita County, Texas

By Larry W. Proffitt, Lt. Deputy  
12-7-3tc



**JETTIE SAMPLEY** was voted as Integrated Health Services Resident of the Month for November. She has lived in Iowa Park since 1954, and has five sons and one daughter.

Does your subscription to the Leader expire this month? Check the list on page 4.

**SHOP IOWA PARK FIRST**

**Shaklee Distributors**  
Ruby & Dan Love  
1601 Karen, Iowa Park  
592-5951

**Park Home Health Services**  
592-2753  
Phone Answered 24 hours  
Medicare-Medicaid approved  
Private Insurance

**ELECTRICIAN!**  
All Types of Electrical Work

Licensed  Bonded  
Residential Commercial  
Kendell J. Hill, Electrical Contractor  
592-4773

**PARK MOTORS**

USED CAR SALES  
904 W. Highway  592-5890  
We Finance



**AUTO CRAFT ENGINE REPAIR, INC.**  
Locally Owned & Operated  
Complete Automotive Repair

Butch Hager 412 South Yosemite, Iowa Park  
Manager (817) 682-6041

**KEY REALTY**

900 W. Highway 592-2718

**AREA HOMES**

**1322 EDGEHILL**  
Not just any home! 3 BR, 1 1/2 bath home has over 1500 S.F. with large den, fireplace, brick exterior. Possible lease purchase. \$59,500.

**3140 HORSESHOE BEND**  
Comfortable 4 BR has lots of offer. Convenient 3 bath plan has two living areas, formal dining, covered patio, 3-car garage, and lakeside lot.

**920 FOLEY**  
Price Reduced! This neat 3 BR, 2 bath brick just got better. Spacious living room, fireplace, central H&A, and now \$59,900. Call to see.

**609 LOBBAN, W.F.**  
Convenient to Iowa Park, this four bedroom home offers a huge corner lot, big den, screened porch and over 2,200 S.F. Check it.

**1107 LINCOLN**  
The time has come to see this affordable 3 BR, 2 bath Redin Heights home. Extra clean with fresh paint and priced at \$49,500.

**2037 PETERSON**  
Want acreage? 4 1/2 acres come with this 4 BR that has 2 living areas, formal dining, open floor plan and 2,000 sq. ft.

**1005 E. OLIVE**  
Must see! 3 acres and a great 4 BR, 2 1/2 bath home on Seymour Highway. 400 sq. ft. shop, in-ground pool! \$115,000.

**302 LOUISIANA, ELECTRA**  
Calling for a loving family, this adorable 3 bedroom has central H/A, 2 baths, fenced yard and an affordable \$35,000 price.

**1203 JOHNSON ROAD**  
Features galore! Four large bedrooms, formal dining, pool, office bldg., workshop, warehouse bldg. on 2.94 acres. Perfect for contractor.

**FARM AND RANCH VERNON**  
180 acres good for Cotton, wheat and grasses, plus a neat 3 BR home with central H/A, spacious rooms and garage. Minerals included.

**FOARD COUNTY**  
Undivided 1/2 interest in 1172 acres. Active crop program. Good dove and quail hunting. Stock tanks. Part of minerals.

**COMMERCIAL NURSERY**  
Residential & Commercial landscaping and nursery business includes 30'X50' metal building, attached greenhouse, and plant inventory.

Call for a free market consultation  
Cindy Gray-592-4583 Sarah Barker-495-3743

*A New*

**Home for the Holidays**



Prices starting in the low 60's

All homes will include marble tubs, geothermal heating/cooling system, total electric, 2X6 walls, vinyl insulated windows, low maintenance exterior.

**Christmas Bonus!**  
FREE Privacy Fence on any of these properties in contract by December 25.

**Darline Nault - Realtor**  
1003 E. Texas

Under Construction. If you hurry you can still pick out carpet, tile and wallpaper. 4 bedroom, two bath, 2 car garage, with garage door opener, fireplace and much more. Over 1,700 sq. ft.  
801 E. Texas

Under Construction. Three bedroom, two bath, garage over 1,200 sq. ft.  
711 E. Texas

Under Construction.  
709 E. Texas

To Begin Construction Soon.

**Register Contracting**  
George Register - Builder  
Experienced and Reliable  
Registered Builder

 811 W. Highway  
592-2950



# NEWS FROM THE HALLS OF THE HAWKS

## JUNIOR HIGH

### All District band members

The following Junior High Band students were selected for the All District Band Saturday:

Josh Moer, Will Richter, Staci Morgan, Bubba Antones, Jason Simmons, John Nichols, Lisa Nichols, Simona Gonzales, Zac Miller, Karen Schell, Leslie Hodges, alternate.

The students will perform in concert at Hirschi High School Auditorium Saturday, Jan. 27.

## BRADFORD

### Time to order yearbooks

Orders are being taken through December 15 for Bradford yearbooks, which will be delivered in the spring.

Information and order forms are being sent home with students this week.

The yearbooks may be purchased for \$8 each, and are a service project of the Bradford PTA. Extra order forms are available in the school office.

### MSU Jazz Band to perform

Bradford students will be "jazzin' it up" next Thursday with the help of the Midwestern State Univ. Jazz Band.

The band will come to the school to perform for all three grades.

### Visiting Santa's Castle

Third graders will take a trip to Santa's Castle at Tom Burnett Memorial Library next Wednesday.

The hour-long visit will begin with a ride around the library in Jack Steven's horse-drawn wagon (as Santa's Sleigh). Next the children will visit with Santa Claus. Next, participants will paint a ceramic sleigh and eat a snack with Mrs. Claus. The

event will culminate with Mrs. Claus reading the students a story.

### Over \$5,200 raised

Over \$5,200 was raised for the American Heart Assoc. in a recent jump rope-a-thon.

Top money raiser was Rachel Watreas, \$112; followed by Ray Shook, \$106; Reagon Roose, \$93; Tamara Rikard, \$83.35; and Ashley Davis, \$80.00.

## KIDWELL

### Santa Shop is coming!

Kidwell's Santa Shop will begin Monday.

The Santa Shop is a service project of the Kidwell PTA, and is specifically designed to offer reasonably priced merchandise for children to shop for their families for Christmas.

Each child can bring money with him or her on a specific day, and shop with the assistance of an adult. All gifts purchased are wrapped.

### 1st Graders going to Santa's Castle

Kidwell first graders will take a trip Wednesday to Santa's Castle at Tom Burnett Memorial Library.

The hour-long visit will begin with a ride around the library in Jack Steven's horse-drawn wagon (as Santa's Sleigh). Next the children will visit with Santa Claus. The participants will then paint a ceramic sleigh and eat a snack with Mrs. Claus. The event will culminate with Mrs. Claus reading the students a story.

### Send food for the needy

Kidwell Elementary is collecting canned food and perishable food items for their annual "food tree."

The items will be distributed to needy families in the area before Christmas.

In summarizing the need for food to be brought in, a poem was written by kindergarten teacher Kimberly Mogg:

"If it's extra canned goods that you have a plenty,  
Like green beans or carrots or beef stew made by Dinty.  
We really could use them for the canned food drive at school.  
Kidwell builds a big food tree, it really is cool!  
Sometimes in our cabinets we get such a clutter of baby food, dried fruits, jars of smooth peanut butter.  
We forget there are families who'd put them to use.  
So clean out those cupboards, you have no excuse.  
We need your non-perishable by the fifteenth of December  
To make some families' Christmas one they'll remember.

### Steve Moody's have Yard of the Month

The yard at the home of Mr. and Mrs. Steve Moody, 30 Surrey Circle, was selected Yard of the Month by the Iowa Park Garden Club.

Chosen not only for being so well kept, but also for the beautiful way it is decorated for Christmas. Citizens are invited to drive by and view the yard.

### LIVE CHRISTMAS TREES

Why travel out of town?  
Come to

### CHOOSE AND CUT

### TREE FARM

on Wellington Lane  
between Old Iowa Park Rd. & 287

All Trees - \$30

2 to 10-ft.

Open

10 a.m. till dark

855-6508



# CAMP FIRE NEWS

A "Country Christmas" was the theme for the annual Mother-Child banquet held Saturday evening at the RAC.

The tables were decorated with place mats and centerpieces made by the children.

Welcome and introductions were made by Cheryl Rust, and presentations of the colors were by Jean Johnson's club.

Everyone enjoyed the delicious casseroles, salads and desserts that were brought.

Each club presented a song or skit for entertainment. Benediction was by Sandra Neal. Pat Hall's club made gingerbread houses to decorate their table. Special thanks to Lee Pelz

for the programs.  
Dec. 9 - Parade of Toys, 10 - 11:30 a.m., First Baptist Church gym, Wichita Falls.  
Dec. 11 - "Crash Dummies" 3:30 p.m. at Harrell Park. Grades K, 1, 2, and 3.

Does Your Subscription to the Leader expire this month?

Check the list on page 4.

Come in and see

## Marilyn Jordan

for all of your hair's needs...  
Cuts..Coloring...Styling...Perms

### Holiday Perm Special

Regular Perm Reg. \$30.00	Walk-ins Welcome	Spiral Perm Reg. \$40.00
<b>\$22.50</b>		<b>\$30</b>

\*Extra for long hair. Prices good through December 16, 1995

### TALK OF THE TOWN

900 W. HIGHWAY 592-2969

## CITY CAFE

114 W. Cash 592-4721

### THURSDAY NIGHTS

Beef or chicken fajitas, pico de gallo, potato wedges Spanish rice and refried beans

EFFECTIVE DEC. 3-9, 1995  
IOWA PARK & HOLLIDAY STORES

SAVE ON Coca-Cola  
3 LITER \$1.69

## ALLSUP'S

FRESH CHRISTMAS TREES  
SCOTCH PINE FROM NORTHERN MICHIGAN  
5'-7' Tall \$12.99 Your Choice

ALLSUP'S HAM OR SAUSAGE, EGG AND CHEESE Breakfast Burritos EACH 99¢

ALLSUP'S Barbeque Beef Sandwich EACH 99¢

LANA'S Pork Egg Roll 2\$1 FOR

RUSSET Potatoes 10 LB. BAG \$1.29

SANTA FE Flour Tortilla 12 CT. PKG. 99¢

NABISCO® PREMIUM Saltine Crackers 1 LB. BOX 99¢

ALLSUP'S Homogenized Milk GALLON \$1.99

MELLO CRISP Bacon 1 LB. PKG. 99¢

Best Holiday Buys

DORITOS® OR FRITOS® GRAB BAGS REG. 75¢ ..... 2 FOR \$1.00

CUDDLES 20 LRG. OR 26 MED. DIAPERS ..... EACH \$4.99

ALLSUP'S SANDWICH 1.5 LB. LOAF BREAD 69¢ EACH OR..... 2 FOR \$1.00

OZARKA SPRING WATER..... 33.8 OZ. 99¢

# TRUCK DEALS

<h3>1995 F-250 PEP Package 540A</h3> <p>Total vehicle plus options \$17,383 Option pkg. discount \$300 MSRP \$16,083 KKFM disc \$2,004 Sale Price \$14,799 Comm. Rebate \$14,799 Farm Bureau Rebate \$500 Selling price \$13,999* after rebates...</p> <p>4.9 liter engine, 5 speed, tilt, cruise, AM/FM, spare wheel. Stock # T28190</p>	<h3>1995 ESCORT WAGON LX</h3> <p>Total vehicle plus options \$13,995 Option pkg. discount \$300 MSRP \$13,695 KKFM disc \$2,265 Rebate \$750 Sale Price \$10,375 Young Buyers Discount \$400 Selling price \$9,975* after rebates...</p> <p>1.9 liter engine, auto, rear defroster, air conditioning. Stock #273941</p>
<h3>1996 F-150 STYLESIDE XL</h3> <p>Total vehicle plus options \$17,291 Option pkg. discount \$2,223 MSRP \$15,068 KKFM disc \$1,525 Sale Price \$13,440 Comm. Rebate \$500 Farm Bureau Rebate \$500 Selling price \$12,640* after rebates...</p> <p>4.9 engine, 5 speed. Stock # F20809</p>	<h3>1995 T-BIRD LX Package 155A</h3> <p>Total vehicle plus options \$19,791 Option pkg. discount \$1,955 MSRP \$18,140 KKFM disc \$2,541 Sale Price \$15,499 Rebate \$500 Selling price \$14,999* after rebates...</p> <p>4.6 liter V8, auto, keyless entry. Stock #151457</p>
<h3>1996 F-150 STYLESIDE XL</h3> <p>Total vehicle plus options \$18,223 Option pkg. discount \$2,068 MSRP \$16,155 KKFM disc \$1,106 Sale Price \$14,299 Comm. Rebate \$500 Farm Bureau Rebate \$500 Selling price \$13,799* after rebates...</p> <p>\$750 REBATE AUTO UNDER 6500 GVW 4.9, auto, AM/FM. Stock # F21654</p>	<h3>1995 F-350 CHASSIS CAB XL</h3> <p>MSRP \$21,348 KKFM disc \$5,349 Sale Price \$17,999 Comm. Rebate \$500 Farm Bureau Rebate \$500 Selling price \$17,199* after rebates...</p> <p>POWER STROKE 137" WB Stock # 3T53829</p>
<h3>1995 F-250 REG. XLT 4X4</h3> <p>MSRP \$23,767 Ford \$850 List \$22,917 KKFM Discount \$4,339 Sale Price \$18,578 Comm. Rebate \$500 Farm Bureau Rebate \$500 Selling price \$17,778* after rebates...</p> <p>5.8 V8, 5 speed, tilt, cruise, aluminum wheels. Stock #2178477</p>	<h3>1996 F-250 CREWCABS</h3> <p>7.3 D.I. DIESEL BRAND NEW FOR 1996</p>

Price plus tax, title, license & dealer documentary fee. Factory rebate assigned to dealer. See dealer for details on Farm Bureau & Commercial rebate & Young Buyer discount.

## KARL KLEMENT

FORD MERCURY  
US Hwy. 287 S., Decatur, Texas  
Open: Monday-Friday 8-8 & Saturday 8-6

Metro 430-8610 • Toll Free 1-800-772-8928