

MRS. LITA WATSON
528 W. CLARA
IOWA PARK TX 76367
112

IOWA PARK LEADER

50
Cents

Vol. 24, No. 51

IOWA PARK, WICHITA COUNTY, TEXAS 76367

Thursday, September 2, 1993

City holding line; tax remains same

The city council put the finishing touch on a balanced budget for next year and decided to go through a different route to dispose of the landfill and trash collection responsibilities, during a called meeting Monday night.

The \$2,762,700 budget to fund the year that begins Oct. 1 is slightly higher than last year's \$2,721,017, but is based on no increase in the 80-cent tax rate.

Mayor Wayne House expressed relief that the proposed budget was approved, and satisfaction that it was balanced with anticipated revenues that required no hike in the tax rate.

Included in the proposed budget is a three percent increase in wages for employees.

A public hearing on the proposed budget will be held at the council's next regularly-scheduled meeting, on Monday, Sept. 13.

Administrator Mike Price requested and received authorization to "advertise for proposals for the sale and operation of the City's Type 1

landfill, all solid waste disposal equipment and all solid waste collection equipment in lieu of fees for the collection and disposal of the City's solid waste."

Aldermen had voted at their meeting a week earlier to sell the landfill and related equipment to the Bell Group for \$10, in a deal which would include turning over the collection duties to the company.

However, Price said the city's legal advisor, Attorney Jay Cantrell, has recommended the transfer process go through the bidding process, complete with all legal details included in the document.

Also approved by the council was a request from the Volunteer Fire Dept. to close off parts of Cash and North Wall on Sunday, Sept. 12, when the local organization hosts a district convention of volunteer departments.

Prior to the council's called meeting, members held a work session on the budget, their fifth this summer, that lasted a full hour and a half.

Number of fights mystery to police

For some unexplainable reason, there was an unusual number of fights between males and females Sunday and Monday, according to Iowa Park police.

Four arrests resulted from three different domestic disturbances during a 20-hour period, and two of them were within the same hour.

Police were called to the 900 block of East Washington at 9:05 p.m. Sunday, where they arrested Jimmie Lee

Via, 23. He was booked on a charge of assault to prevent family violence, and released on a personal recognizance bond.

At 9:41 p.m., officers responded to a call in the 500 block of East Alameda. There, they took Victor Manuel Ramos, 45, into custody on an assault to prevent family violence. He also was booked and released after

Continued on page 4

News Briefs

Monday is holiday for most

Monday will be a holiday for a major portion of Iowa Park residents, in observation of Labor Day.

Scheduled to be closed that day are all schools, banks and city hall, but many businesses expect to be open.

City receives .40 more rainfall

Showers Sunday and Monday dropped varying amounts over the city and area, and wind did some damage to the northwest of the city.

He said he measured .27 Monday morning from Sunday's rain, and added .13 Tuesday morning.

High winds Sunday afternoon destroyed Jimmy Alsup's front porch, and blew down a peach tree of Richard Davis. Both live on Harmony Road.

Virgil Woodfin said his gauge caught only .40 of an inch, all together.

City plans to conduct survey

City employees will begin surveying homes in the south part of town to document information to be used in an application for a Texas Community Development Program grant.

The homes to be surveyed will be

north of Chestnut and south of Crystal.

Should the grant be approved, the monies would be used to enlarge a main sewer line from South Wall to the wastewater treatment plant, as well as enlarging a lift station.

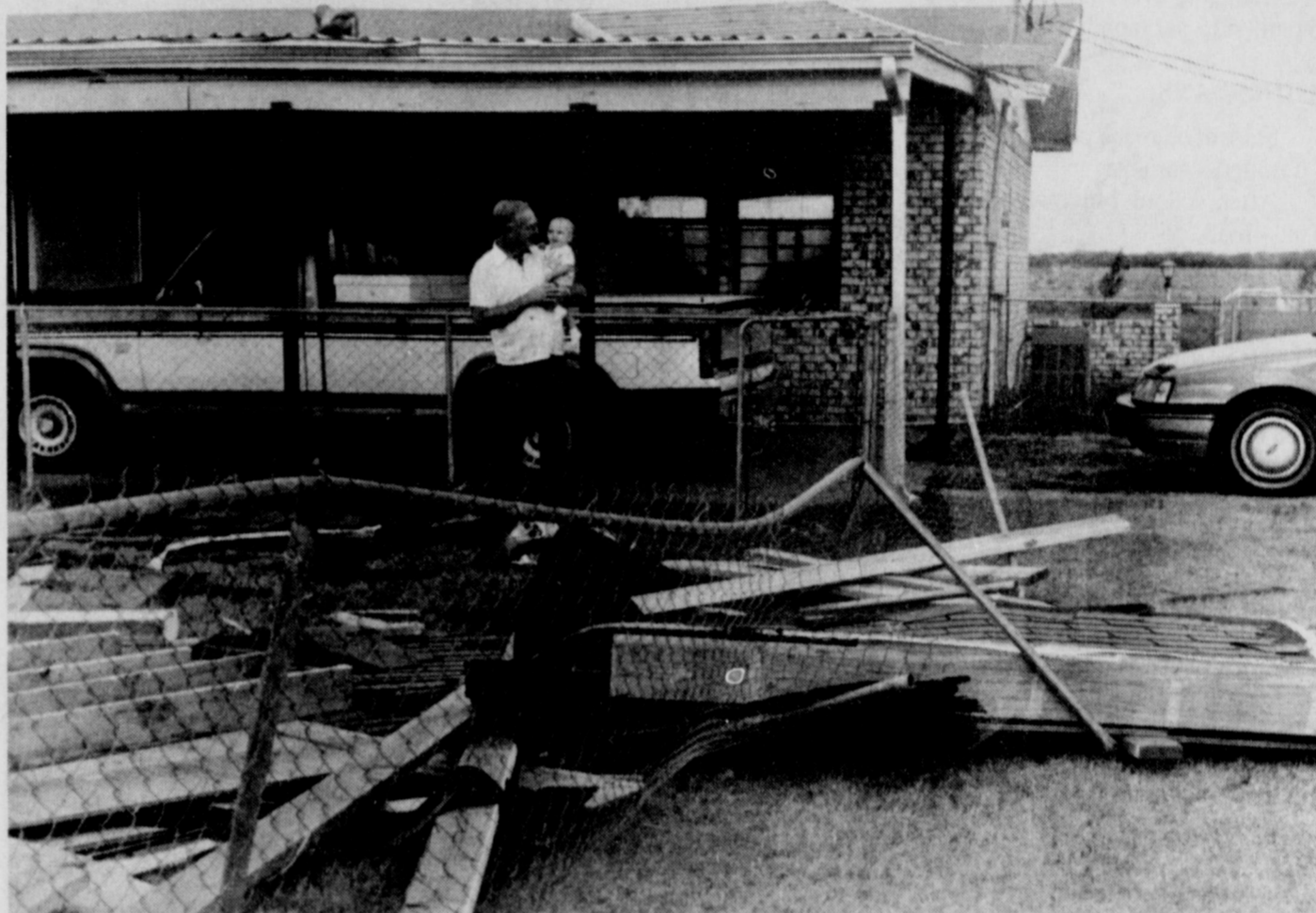
Homecoming parade theme told

Comic strip and cartoon characters will be the theme of this year's Iowa Park High School homecoming parade.

The event will be held at 4 p.m. on Friday, Oct. 1, prior to the big football game between the Hawks and the

Wellington Skyrockets.

Organizations and individuals wishing to have entries in the parade are asked to contact Carole Venhaus, sponsor of the IPHS Student Council, at 592-2144 or 592-4715. The Council coordinates the traditional parade.



IT HAPPENED AGAIN - The front porch of the Jimmy Alsup home on Harmony road was ripped off and thrown into the back yard again Sunday, almost a year after it happened the first time. A strong wind out of the west lifted the porch from its place on the west side of the house and deposited almost all of it on the east side. The other time was on another Sunday, Sept. 30, 1992. But unlike last year's storm, this one also did some damage to Alsup's neighbor property on the north, where a mature peach tree on the east side of the home was blown to the ground.

Trustees approve budget, but disagree on tax rate

Iowa Park school trustees Monday night approved the proposed budget for the 1993-94 school year, but then in an informal vote, did not muster a majority to approve the four-cent increase in taxes on which it was based.

The proposed budget presented by Supt. Glen Mitchell called for expenditures of \$7,763,906, which he said would leave a year's-end balance of some \$950,000 needed to start the 1994-95 year.

Mitchell's prediction, however, was based on the board's approval of raising the tax rate from \$1.12 to \$1.16 per \$100 valuation.

Trustee Wendell House countered with his opinion that the district could leave the tax rate of \$1.12 unchanged, and still finish the year with \$925,000 carryover.

The unofficial vote was needed for a state-mandated public notice being published in this week's issue of the *Iowa Park Leader* informing the district's taxpayers that a public hearing would be held at 7:30 p.m. Monday, Sept. 13, in the junior high auditorium.

The unofficial vote on the proposed four-cent increase went as follows: Sheri Kennedy, Martha Dudley and Max Henderson, yea; House,

Randy Catlin, Dennis Yeager and Keith Fisher, nay.

One of the requirements of school districts is that budgets are amended at the end of each year. Trustees voted to amend the 1992-93 budget to read that expenditures were \$7,668,183, and revenues had been \$7,544,294.

Supt. Mitchell gave the board seven reasons in support of his request for approval of the \$1.16 tax rate for next year. They included:

1. The Texas Education Agency recommends a three-month carryover of \$1.5-million.

2. The court case on school funding could result in the judge cutting off state funds in the summer.

3. We have one of the lowest fund balances per pupil enrolled in the Region.

4. To build permanent kindergarten classrooms.

5. To address district maintenance needs.

6. An additional special education teacher may be needed for the junior high T.L.C.

7. So that our teachers can continue to receive the above-base salary.

The board accepted the resignation of Karen (Mrs. Tom) McCluer, who's family has moved to Nebraska,

and approved hiring of Mary Brooks Crain, for fifth grade teacher at Bradford Elementary.

Also approved was a bid submitted by Gary Lyles for the maintenance delivery contract position, for \$18,500.

Continued on page 4

School tax notice meets state's law, but is misleading

A tax notice published on page 10 of this week's issue of the *Iowa Park Leader* and paid for by the Iowa Park Consolidated Independent School District may leave some local taxpayers scratching their heads in confusion.

The notice incorrectly states that the school tax rate will grow by 319 percent. But in publishing the notice, local school officials are only complying with state law, drafted by the legislature.

"This is one of those situations where the law doesn't make any sense, but we must nevertheless comply with it or risk serious consequences," said Supt. Glen Mitchell.

The Iowa Park district is required by the state's "truth in taxation" law to publish an official notice reporting last year's tax rate, the proposed tax rate for this year, and the percentage increase.

However, due to a drafting oversight in the new school finance law, the notice significantly understates the tax rate for last year and produces a misleading comparison between last year's and this year's school taxes.

Under the previous school finance law, the county education district (CED) levied part of the taxes used for

'Dogs since their 37-23 decision in 1989.

A young team by past standards, about half the Bulldog starters as juniors. Burk was hit hard by graduation last spring, losing such players as quarterback Chad Lobaugh and runningbacks Skip Hicks and Danny Williams.

Coach Jerry Watson is following a widely-accepted trend in changing his offensive formation to the wide open, single-back "run and shoot" formation.

But the Hawks have already seen that set, in their first pre-season scrimmage against the Wichita Falls Coyotes. And they'll find it again at Frederick and in Dist. 4-AAA play, when they meet Bowie and Vernon, according to Coach Robert Clensay.

"I'm real positive about the coaching staff, the players and the coming season," Clensay said during the traditional pre-season report by the Head Hawk for Tuesday's meeting of the Iowa Park Lions Club.

"The players are really conditioned, they are larger and quicker than last year, and we have the depth that we will have to use only three players on both defense and offense," he said.

Clensay said the Hawks will use the "offset I" offensive formation. He described it as being "a lot like the (Washington) Redskin offense, only simpler."

Defensively, the Hawks will employ a "split 6" alignment which, according to the coaches, is ideal against a run and shoot offense.

Because only three players will stay on the field both offensively and defensively, and the fact that only one starter, Scott Byrd, is injured, "We'll play a lot of kids. I feel that to be an advantage against Burk Friday. They play seven both ways."

"If we can go into halftime down by more than 14 points, I feel we have a chance to win," Clensay said. And he made his point recalling last year's game with the Bulldogs, when the Hawks trailed at the half by 14, and almost pulled off an opening victory.

Among the Hawks with speed, according to Clensay, are Brent Brown, Stan Tigrett, Tony Lozipone and Jason Young, all of whom run 4.5 or better in the 40-yard dash.

Brown has attracted the attention of Baylor Univ. scouts, because of his size and speed, Clensay said.

Missing from the starting lineup is

Continued on page 11

Hawks to open season Friday with Bulldogs

The Hawks will kick off the 1993 football season in Hawk Stadium at 8 p.m. Friday against a traditional opponent, the Burk Burnett Bulldogs.

This will be the eighth consecutive season opener between the two clubs. Iowa Park has been playing Burk Burnett more years than any other school on its schedule.

Actually, the season officially

begins for Iowa Park High School tonight, because the Hawk Junior Varsity and Freshman squads will travel to Burk Burnett for games at 5 and 7 p.m.

In their past 24 meetings the Class AAAA Bulldogs hold a slight 14-10 edge over the Hawks. They won their third consecutive clash last year by a scant two-point (21-19) difference.

Iowa Park has not knocked off the

RAC NEWS

by Jo Lynn Cockrum

C&W DANCE

The monthly country & western dance will be held tonight beginning at 7 p.m. Admission will be \$3 per person and the public is welcome. No alcohol is permitted on the premises, however, refreshments, coffee, and soft drinks are available.

LABOR DAY

The RAC will be closed Monday for the labor day holiday. Gymnastics classes will not be held.

Scouts who meet on Mondays will need to check with their leader to see if meetings will be held or cancelled.

BRIDGE CLUB

The high score for bridge this week was held by John Chapman with 4975 points. Louise Helms reported 4500 for the second high. The club was playing three tables again this week.

CLOGGING

Kitty Wilkes is back at the RAC with all her clogging talents! Lessons are held Wednesdays and are open to all ages. Monthly class fees for RAC members are \$15, non-member fees will be \$20.

Beginner lessons are available, as well as intermediate and advanced. For further information or to register for lessons, call the RAC at 592-4471.

GYMNASTICS OPENINGS

There are still a few openings for 3-4 year olds who wish to take gymnastics at the RAC. Class fees are \$25 per month for RAC members, \$30 for non-members. An annual registration fee of \$15 is due to the instructor upon registration or at the first class. For further information, please call the RAC at 592-4471.

DANCE LESSONS

Tap, jazz and ballet lessons will begin Tuesday Sept. 7. Class fees will be \$25 per month for RAC members, or \$30 for non-members. An annual registration fee of \$10 is due to the instructor to cover business expenses.

If you missed the initial registration date, you may call the RAC to register. Lessons are open to students age three and over.

FALL SCHEDULE

The following schedule has been set for activities at the RAC; copies are available at the office or by mail if you call and request one.

MONDAYS:

Pre-school bingo--9:30-10 a.m. free.

Gymnastics--every 30 minutes beginning at 3 p.m.--\$25 per month.

Bridge Club--1 p.m.--free for members.

TUESDAYS:

Student outreach program--2:30-5 p.m.--cost variable.

Dance classes--every hour beginning at 3 p.m.--\$25 per month.

WEDNESDAYS:

Mousercise--9:30-10 a.m.--\$1 per child.

After school activity hour--3-4 p.m.--cost variable.

Clogging--every hour beginning at 6 p.m.--\$15 per month.

THURSDAYS:

Student outreach program--2:30-5 p.m.--cost variable.

After school bingo--3:30-4:15 p.m.--free.

FRIDAYS:

Mother's day out--9 a.m.-2 p.m.--\$6 per child per day or \$1.50 per hour.

Several events have been scheduled for the holidays, more info will be posted in this column at a later date.

AFTER HOURS PHONE

If you need to reach persons at the RAC after 6:30 p.m., please note that the office phone is only answered by machine at that time.

Persons here with meetings have access to the pay phone in the hallway. Incoming calls can be received if you dial 592-9106.

LOOK WHO'S NEW

Higgenbotham

Dana and Jennifer Higgenbotham are parents of a son, Robert Lee, born Aug. 26 at 5:28 a.m. at Memorial Hospital in Colorado Springs. He weighed six pounds, 14 ounces and was 19 3/4 inches long. This is the couple's first child.

Mrs. Higgenbotham is the former Jennifer Blum.

Grandparents are James Greenwood of Iowa Park, Joann Davidson of Colorado Springs and Mr. and Mrs. George Blum of Orlando, Fla, and Mr. and Mrs. Robert Lee of Colorado Springs.

Great-grandparents are Annette Sovereign of Colorado Springs and Mary Blum of Delray Beach, Fla., Mr. and Mrs. James Wallace of Nocona, and Mr. and Mrs. William Greenwood of New Boston.



Brenda Simmons and Donald Kenyon

To marry September 9

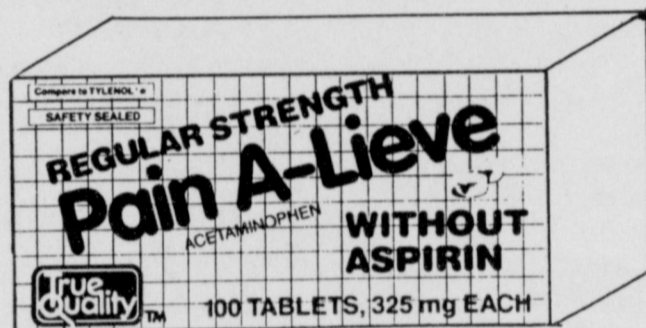
Brenda Simmons and Donald Kenyon will pledge marriage vows Sept. 9.

Park and the groom-elect's parents are the late Mr. and Mrs. Andy Kenyon of Iowa Park.

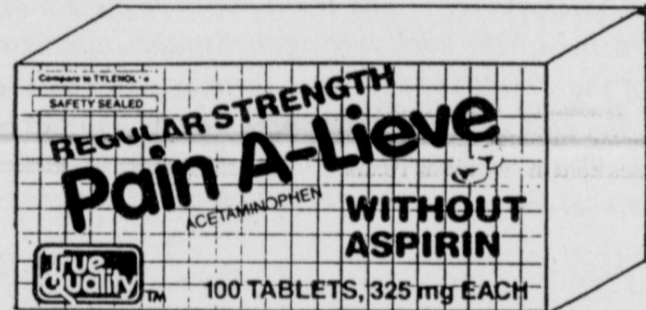
Parents of the bride-to-be are Dean and Ruby Simmons of Iowa

Kenyon is employed at G&L Tool, and the bride-elect is employed at Texhoma Christian Care Center.

Entire Stock Close-Out PAIN-A-LIEVE



Buy One at Regular Price



Get Second at HALF PRICE!



500 W. Highway 592-4157
Tammi Tucker - Pharmacist

FRIENDLY DOOR NEWS

BIRTHDAY PARTY, Monday, Sept. 13. Those celebrating birthdays are Ilene McCoy, Loraine Via, Mildred Moore, Billie Everette, Loraine Jones, Sam Hunter, Faye Woodfin, Johnnie Goforth, Euna Copass, Lila Sims, Hallie Price, Edna Lemond.

SING-A-LONG directed by Rev. F. M. Small Friday, Sept. 10 at 11 a.m.
HAWAIIAN DAY Friday, Sept. 17. Wear your grass skirts.

BLOOD PRESSURE--Thursday, Sept. 9, 10:30-12.

BLOOD SUGAR--Friday, Sept. 24, 10:30-12.

GAME NIGHT Friday, Sept. 24 at 6:30 p.m. Bring covered dish and enjoy fun and fellowship.

UNITED WAY KICKOFF for Iowa Park will be at the RAC Thursday, Sept. 9 at 12 noon. Come for hot dogs and entertainment.



Christie Chandler

now taking appointments at
Family Hair Styles

LaVelle Turman, Owner

Christie has been working in Burk Burnett for 1 1/2 years. She attended IPHS, and was instructed in the Cosmetology Dept. by LaVelle Turman.

SPECIALIZING IN PERMS & SUNGLITZING

SPECIAL WITH THIS AD

PERMS: \$20 SUNGLITZING: \$25

CALL Christie Chandler for appt. - 592-2822

YOU CAN DO IT WITH True Value HARDWARE

WELLS LAMONT
Suede
Leather Palm
GLOVES
Men's Large
2/500
True Value
326 165
9/9 SEPTEMBER 13 O.K.

THERMOS
Unbreakable 12-Oz.
TRAVEL MUG
199
Bargain
214 533
9/9 SEPTEMBER 13 O.K.

SL WABER
MULTIPLE-OUTLET STRIPS
6 Grounded Outlets On Each
599
2-Pack
True Value
214 954
9/9 SEPTEMBER 13 O.K.

Taylor Tarp
8 x 10 Poly-Woven
STORAGE TARP
259
Bargain
248 948
9/9 SEPTEMBER 13 O.K.

GreenThumb
24-Tine Metal
LAWN RAKE
499
True Value
279 216
9/9 SEPTEMBER 13 O.K.

CASIO, 8-Digit
Solar-Powered
CALCULATOR
277
Bargain
613 612
9/9 SEPTEMBER 13 O.K.

WHILE SUPPLIES LAST QUANTITIES LIMITED

KEYS MADE
True Value HARDWARE
PARKWAY
200 W. Bank 592-5512 592-4681

PARKER SQUARE BANK

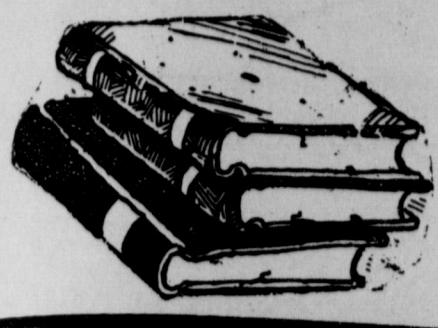
AS LOW AS **6.50%** UP TO 60 MONTHS APR*

Making Your Dreams Come True!

We've lowered our rates on new car and truck financing! Now you can finance the car of your dreams at an Annual Percentage Rate as low as 6.50%. Plus, you can receive an additional .15% interest rate discount if you have your monthly payment automatically debited from your Parker Square Bank checking account. Call Douglas James today at 592-4418 to take advantage of the best new car rates in town!

*EXAMPLE: \$16,000 at 6.5% APR for 60 months results in equal monthly payments of \$313.06. All loans subject to credit approval. Member FDIC.

219 West Park Avenue Iowa Park, Texas 76367 592-4418



LIBRARY NEWS

By Ardis Jensen

GENEALOGY WORKSHOP

Monday, Sept. 20 from 7-8:30 p.m. our next workshop will be presented by Lita Watson. Her program will be directed toward "How to Prepare for Travel Researching". She will explain what we would need to prepare ahead of time and the areas in which we would search for our ancestors.

Come join us and learn still another facet in our Genealogy Researching. If you have any questions, please feel free to call me at 592-4981.

Remember that we now have the Genealogy Program, "Brothers Keeper" and "Kinfolks" on our computer, for your use. To record your information please bring 3.5 or 5.25 Computer Diskette with you.

The program will not run without the recording diskette. These programs will give you the information needed to record your family history with your information and will not remain in our computer unless you desire to leave it.

We would like to thank the following persons for their donations in memory of Gladys and Don James.

- English Department, San Antonio College
John Igo
Oran and Ruth Park
Rita Mayer
Larry and Norma Dutton
Mr. and Mrs. Leighton Steward
Juanita Stanford
Mr. and Mrs. Buster Reaves
Pat Clements
Carol Repp
Thurman and Sue Adkins
Judy Lampert
Red River Renegades of Electra

NORTH TEXAS VIDEOS

(Interlibrary Loan)

NILS MOVIES

(September and October)

1. A Soldier's Story
2. A Tree Grows in Brooklyn
3. Baby's Storytime
4. Bicycle Repair
5. Bingo
6. Black Rain
7. Blame It On the Bellboy
8. Brady's Escape
9. Butterfield 8
10. Captains Courageous
11. Cat On a Hot Tin Roof
12. Ferngully: The Last Rainforest
13. Frugal Gourmet: Low-Salt/ Low Fat Cooking
14. Here Come Bugs!

15. Hero
16. How To Design A Flower Garden
17. In Search Of The Wow Wow Wibble Wobble Wassie Woodle Woo
18. Julie Andrews Sings Her Favorite Songs
19. Kidnapped
20. Koi And The Kola Nuts
21. Little House On The Prairie: The Creeper of Walnut Grove
22. Lonesome Dove (2 tapes)
23. Manhunter
24. Mister Roberts
25. Misty
26. Murder in Coweta County
27. National Velvet
28. New Orleans
29. Opening Night
30. Pure Luck
31. Robin Hood
32. Scene of The Crime (France)
33. Second Chorus
34. Sophie's Choice
35. Star Trek: 25th Anniversary Special
36. Strangers in Good Company
37. Tango And Cash
38. Teeny-Tiny and The Witch Woman
39. Terminator 2: Judgment Day
40. The Best of Eddie Murphy
41. The Clan of The Cave Bear
42. The Fourth War
43. The Gnome-Mobile
44. The Longest Drive
45. The Maid
46. The Mouse and The Motorcycle
47. The Secret Garden
48. The Terminator
49. We All Sing Together
50. Wind

NEW ADULT BOOKS

- The Black Opal by Victoria Holt
The Horse You Came In On by Martha Grimes
Guardian by John Saul
Without Remorse by Tom Clancy
Powers That Be by Anne McCaffrey
The Night Manager by John Le Carré
Mischief by Ed McBain
Star Flight by Phyllis Whitney
Venus Envy by Rita Mae Brown
The Twelfth Angel by Og Mandino
Family Secrets by Nancy Thayer
Spellbound by Hillary Norman
Days of Grace by Arthur Ashe
The Last Brother by Joe McGinniss

NEW CHILDREN'S BOOKS

- Giraffes by Lynn Stone
How Is Paper Made by Isaac Asimov
How Does a TV Work by Isaac Asimov
Eric Carle's Treasury of Classic Stories for Children by Eric Carle
Making Models by Diana Craig
The Ancient Greeks by Sophie Descamps
Renaissance Places by Sarah Howarth



Mimi Lintott and Joe Spruiell

Announce engagement

Mimi Lintott and Joe Spruiell, both of Houston, are planning to be married October 16, at Holy Rosary Catholic Church in Houston.

She is the daughter of Mr. and Mrs. Red Schroeder of Rosenberg, and Mr. and Mrs. John Lintott of Falls Church, Va., and he is the son of Aretas Spruiell and the late Bill Spruiell of Iowa Park.

Miss Lintott is a graduate of Sam Rayburn High School in Pasadena, Tx. and the University of Texas at Austin. She is employed as a computer

programmer by Natural Gas Pipeline Co. of America.

Spruiell is a graduate of Iowa Park High School and Texas A&M University. He is employed by MidCon Gas Services Corp. as a senior reservoir engineer.

Simple Pleasures
Special Decorative Accents & Gifts
Prints - Calligraphy - Country Gifts
114 W. Park 592-2141
Upstairs in Iowa Park Florist
All Items are Cash & Carry

Corley earns degree

Mary Kathryn Davis Corley was among 325 graduates who received diplomas during summer commencement exercises held in August at Texas Woman's Univ. in Denton.

The daughter of Mr. and Mrs. Wesley Davis, 3626 Loop 370, she and her husband, Richard E. "Buddy" C. Corley, reside at Saint Jo and are members of the First Baptist Church in that community.

She received the Master of Arts in Sociology.

Mrs. Corley grew up in the Iowa Park area and attended Iowa Park High School, and later Vernon Regional Junior College, where she received two associate degrees in data processing and midmanagement personnel.

She is assistant resource development coordinator for the Good Samaritan Villages in Denton.

Burkes renew vows Sunday

Rev. Mr. Patrick and Linda Vogt Burke renewed their wedding vows during the Sunday Mass at Christ The King Catholic Church, with their two children, Christopher and Karen, in attendance.

The Burkes were married Aug. 30, 1968 in New Orleans, La.

Special guests were Rev. Emil Fardellone pastor of St. John Bosco Catholic Church, New Orleans, Sister Maureen Flanagan, pastoral associate of St. Bosco Parish, Rev. Mr. and Mrs. Roland Benoit, Wichita Falls, Donna and John Hansen of Clinton, Iowa, mother and stepfather of Mrs. Burke, and David and Cheryl Vogt of

Carrollton, brother and sister-in-law of Mrs. Burke.

Rev. Fardellone, a close friend and former pastor of the Burkes, received the renewal of vows.

Sister Maureen Flanagan, read the scriptures during the Mass and Rev. Mr. Benoit assisted at the altar.

Christ The King Altar Society hosted a covered dish dinner following Mass, with more than 125 friends and parishioners from Christ The King and St. Paul Catholic Church in Electra present.

Centerpiece for the serving table was a beautiful arrangement of red roses and white carnations, given by St. Paul Parish.

LOOKING AHEAD

FOR LAWNS
PRE-EMERGENT~\$12.99
WATER CONDITIONER
CHEMICALS - \$9.99
(Water Conditioner - less \$2 mail-in rebate - \$7.99)
EACH BAG COVERS 5,000 SQ. FT.

Fall vegetables- tomatoes, cauliflower, cabbage, broccoli, brussel sprouts
MARIMUMS 4" pot ~ \$1.29
Fall colors of yellow and orange PACKS ~ \$2.49
BLUEBONNETS -4-inch Texas flowers in pink or blue - plant now for next spring!

LOCALLY-PRODUCED HONEY
Southern Gardens
Landscape & Design
X-Pert Weed Control 592-2841 Southern Gardens Nursery 592-2100
111 West Park - Iowa Park, Texas
(817) 592-2100 Mon.-Sat. 9-5:30; Closed Sunday

STATE NATIONAL BANK

Presents

ACROSS

- 1 Lubbock's Buddy Holly tune: "___ On"
- 5 this Jack was in "The Texas Wheelers"
- 6 large birds raised on some TX ranches
- 7 Edwards Aquifer is ___ source of drinking water for San Antonio
- 8 TX Pride was '71 CMA ___ of the Year
- 16 Dallas Morning News banned them from front page in 1907
- 17 TXism: 'he's ___ (not alert)
- 21 TX Mandrell tune: "If Loving You ___ Wrong"
- 22 Olney hosts "One-Armed Dove ___"
- 23 TX rancher Chuck Norris was ___ weight karate champ
- 24 TXism: 'couldn't fight his way out of ___ bag'
- 29 TXism: "___ up on" (study)
- 30 TX Lefty Frizzell hit: "Always ___ With Your Kisses"
- 31 Cisco h.s. class
- 32 biggest oil discovery was East ___
- 34 TX Buddy Holly hit: "Not ___ Away"
- 35 Nolan's full initials recently done to Capitol's exterior
- 37 this Meredith was in "The Son of Davy Crockett"
- 38 TX Kite stroke
- 39 film 'JFK' had this type of cast (2 wds.)
- 41 Belview AM radio
- 42 and the rest (abbr.)
- 43 TX Ketchum went on crime ___ in 1890s
- 44 TXism: 'he's only got one ___ the water'
- 45 ___ Harvey Oswald
- 46 TX gunfighter Longley was ___ to hang in 1877
- 48 35 across was TX pro ___ of year in '90
- 49 TX president: "___ beau B. Lamar (1838)"
- 50 bivouac bed for TX Guard
- 51 35 across is held in ___
- 52 drug of the 60s

DOWN

- 1 near Lubbock: ___ Base
- 2 a snack on TX Southwest planes
- 3 where TX banks keep the dinero
- 4 TXism: 'never let' ___ you sweat'
- 9 Sweetwater has big rattlesnake ___ up
- 10 TX choreographer Tommy
- 11 some Texans use it for long distance
- 12 TX Vikki Carr hit: "___ Must Be Him"
- 13 West TX plains tribes were these
- 14 in '92 Cowboys were the ___ in the NFL
- 15 real ornerly
- 18 this school beat A&M in '93 Cotton Bowl (abbr.)
- 19 TX outlaw Ringo rode with the ___ gang
- 20 TXism: 'cold as a banker's ___'
- 22 TX Bonnie & Clyde pulled 'em (2 wds.)
- 24 Austin band: Asleep ___ The Wheel
- 25 Corpus Christi is 70 ___cent water
- 26 tree choppers
- 27 TX Horsemint hue
- 28 Staubach today is in real ___
- 29 TX crop
- 30 TXism: "___ up" (bed ridden)
- 33 Willie album: "The ___ Tapes"
- 34 penalty point tries by the Spurs (2 wds.)
- 35 sane or clear
- 37 TXism: 'spittin' image of'
- 38 Paris hosts Chili du ___ Chili Cookoff
- 40 TX Hagman show: "I ___ of Jeannie"
- 41 Andrews AM/FM
- 44 Galveston movie: "Capricorn ___"
- 47 Texans were ___ after '93 Super Bowl

The Original TEXAS CROSSWORD
by Charley & Guy Orbison
Copyright 1993 by Orbison Bros.

WARNING!!! GUARD YOUR ACCOUNT NUMBERS!!!
-Criminals are working hard to get your money.
-This is the reason you should be very careful before giving anyone your bank or credit card number.
-We appreciate your business. Let us know how we can help!

Last Puzzle Solution

STATE NATIONAL BANK
Your Full Service Bank
Striving to meet your banking needs
Equal Housing Lender
FDIC

FREEDOM PRESCRIPTION PLAN®

A unique prescription service aiding you in the relief of rising costs of prescription medication.

***HOW DOES IT WORK?** This pharmacy has the capabilities to direct bill your health insurance company for prescription medication supplied by our pharmacy.

***DOES THIS MEAN I NO LONGER HAVE TO FILL OUT AND FILE LENGTHY INSURANCE CLAIM FORMS?** Absolutely! Our pharmacy will complete all necessary claim forms required by your insurance company.

***WILL I STILL HAVE TO WAIT FOR REIMBURSEMENT FROM MY INSURANCE COMPANY?** Of course not! We will directly receive payment on all prescriptions supplied by our pharmacy.

***WILL THIS REDUCE MY COSTLY OUT-OF-POCKET EXPENSE?** Certainly! Pay only your portion as stated by your insurance company.

Example: 80/20 Insurance Plan
\$25.00 Prescription
5.00 (20%) YOUR PORTION!
20.00 (80%) Insurance Portion

***HOW DO I QUALIFY?** Easy! Just present your health insurance card and we will contact your insurance company asking all the qualifying questions. It takes only a few minutes!

***WHY WOULD WE WANT TO PROVIDE SUCH A TREMENDOUS AND DESPERATELY NEEDED SERVICE?** Because we care about you!!!

Hughes PHARMACY
HEALTH MART
120 W. Park Joe Hughes - Pharmacist
Toll Free 1-800-585-4191 592-4191 UPS Service

As I See It. . .

By Bob Hamilton



With all this controversy between the local broadcasting stations and cable companies, I found an insert in the *McGregor Mirror* last week extremely interesting.

"Wireless cable television has come to central Texas," it stated.

Obviously, McGregor, which is only a few miles west of Waco, is in the middle of the broadcaster vs. cable conflict, just like we are.

The advertisement said the company offers wireless cable television to the home by microwave signal, and no cable is needed.

And then the punch line: "over 300 channels at one quarter cost of regular cable tv."

Full details weren't included in the advertisement, but I'm sure there's a charge for the dish necessary to receive the microwave signal, and that

cost referred to was the monthly charge.

The advertisement reminded me of several stories I read in business sections over a year ago, about franchises being available for investors in such ventures.

The existing cable companies have argued that the broadcasters banded together to get lobbies busy in Washington, to come up with the bill that requires cables to pay broadcasters for their signals.

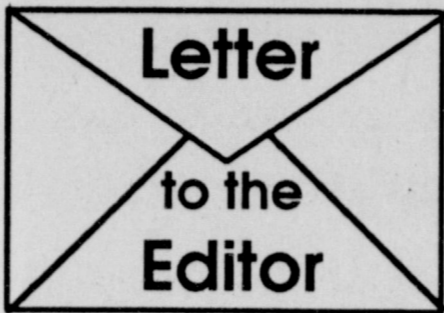
But now I'm not so sure these folks with the microwave business didn't have a hand in all that.

Microwaving the cable signal makes sense, when you think about it. The company doesn't have to pay rent on poles owned by utility companies to reach the homes, and that cuts their costs considerably.

And, since this particular company with the microwave signal likely

is officed in Waco, it just may be that they don't have to pay McGregor a sales tax or franchise tax, again saving more money.

Be patient. I've got a hunch this kind of deal is coming our direction in the near future.



Parent 'practically livid'

Dear Mr. Hamilton:

I've been compelled to write this letter after the first day of classes this year brought an end to my daughter's excitement and enthusiasm for entering junior high school. Throughout the summer, each and every time we drove within a half mile of the junior high campus, our daughter asked us to drive by to see it. In preparation for her first year in junior high, we and her grandmother purchased almost four hundred dollars worth of new clothes from some of the more reputable clothing stores in the area, such as Dillard's, Montgomery Ward's, J.C. Penney's and Sears. Each of the displays we drew from were boldly marked "Back-to-School" specials. These are some of the nicest, most attractive outfits we've ever purchased. They are, in my opinion, very modest and certainly acceptable for schoolwear. I have not hesitated to dress her in these clothes for attending church, but she was informed yesterday that she would not be allowed to wear the outfit she had on again or she would have to put on sweats for the remainder of the school day. Additional instances would result in detention or expulsion. I am practically livid at this. We have searched through many of the clothing outlets throughout north Texas and southern Oklahoma and found that all the clothes which fit our daughter properly fall too far short of the knee to meet the dress code.

I am not embarrassed at the way these clothes fit. As a matter of fact, I would not send my child to school or anywhere else if I thought her dress was inappropriate or provocative. She's only a sixth grader, but her mother and I have some pretty conservative ideas about proper dress regardless of the age or grade the child is in. These clothes are simply not offensive or objectionable. I don't know where else we could go to buy clothes which meet the length requirements and still fit. In addition, it seems unreasonable to me to buy clothes marketed for schoolwear which have to be altered to meet dress code requirements. I know our daughter is not the only child affected by these requirements, but I do know that her embarrassment has significantly diminished her enthusiasm for becoming a junior high student. I'm wondering just exactly where educating our children falls in this process!

Danny Long

Police Continued from page 1

signing a personal recognizance bond. Monday evening, at 7:06, officers were notified of a fight in the front yard of a home in the 700 block of East Cash, between a male and female.

Upon arrival, they arrested Bobby Joe Johnson, 21, and Reba Crystal Williams, 19, on charges of disorderly conduct. Both were released on personal recognizance bonds.

When an officer returned Johnson to the original address, he found that his vehicle's windshield had been broken out and radio antenna broken, neither of which had occurred before he was taken to the police station. That situation remains under investigation, police said.

The only other arrest during the past week, according to the police blotter, was one for public intoxication.

Thomas Brian Wittman, 22, was taken into custody near the intersection of Park Ave. and Yosemite at 2:19 p.m. Sunday. He was released six hours later, after paying a \$270 fine.

Police arrested Cody Lynn Beavers, 17, Friday evening after he was observed beating on a vehicle parked at 715 W. Alameda. He was taken to county jail, where he was later released after posting a \$500 bond.

Police were called to a residence in the 400 block of West Pecan Saturday evening, where a resident said a man was criminal trespassing.

Jamie Peters, 17, was issued a warning to cease harrasing residents at that address.

Police continue investigations into two criminal attempt cases that were reported during the week.

A resident in the 400 block of North Penn told police he found the hood of his vehicle open Wednesday morning of last week, and someone had apparently attempted to take the battery.

Saturday evening, residents in the 400 block of West Ruby called police to their home, where they found the car in their garage had been broken into and the ignition switch broken, apparently in an attempt to steal it.

A local resident reported to police

last Wednesday evening that someone had apparently removed her purse from her car, while she was visiting at a residence other than her own.

Two incidents of criminal mischief were reported.

A resident in the 100 block of West Alameda told police a neighboring child had shot out a window in the home with a BB gun. The youth's parents have promised restitution.

A resident in the 700 block of West Louisa called police Monday evening to investigate the results of someone having poured an unknown fluid on the seat of a car parked there.

Trustees

Continued from page 1

and a request from Greg Miller for a high school band fund-raising project.

Additionally, transfer requests for five elementary children representing two families were approved.

Board members reviewed a time line for construction of permanent kindergarten classrooms, which were approved in August of last year.

The project calls for reviewing enrollment trends of kindergarten through grade 12 this year and next year, and vote December 1994 whether to build or not. Should the vote be approved, the schedule calls for the students to move into those new facilities at the start of the 1995-96 school year.

Prior to Monday's meeting, an informal reception for all new school personnel was held, and the first order of business when the meeting got underway was to recognize students who had participated last year in state level competition, including baseball, cosmetology, FFA, choir, and jazz band.

As part of the superintendent's monthly report, enrollment figures were reported. Mitchell said there were 471 pupils at Kidwell, 500 at Bradford, 488 at junior high and 580 in high school, for a total of 2,039, an increase of 19 since the first day of classes.



NOTICE TO SUBSCRIBERS

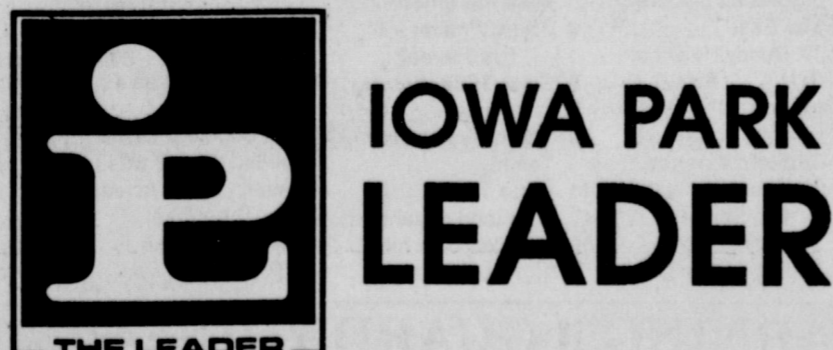
this is only a notice to those listed below that their subscriptions will expire on the published date. You don't owe us a thing if your name is on the list. It only means that what you've paid for is running out. To renew your subscription, please fill out the form below, as it appears on your paper's mailing label. Indicate whether this is a renewal or new subscription. Enclose you check or money order, as all subscriptions must be paid in advance.

Subscriptions due to expire SEPTEMBER 15, 1993

Please disregard this notice if already paid

A	R. A. Ashton				
B	J. C. Bales Nancy Bauer Cheryl Bills Grady Boomer S. M. Bradberry Lindsey E. Brown Kenneth Burks	Wichita Falls			
C	Mark Campbell Brian Catlin Ola R. Coats Kay Donne Cockburn James Cockrum Sonny Cook J. R. Crenshaw S. W. Crim	Ft. Worth Holliday Houston Electra Kamay			
D	Mike Davenport O. D. Davenport Tina Dipprey Lisa Doyle James Dudley Paul Duffy	Houston Kamay Wichita Falls			
E	Esta L. Eddins James Entrekkin K&M Electric				
F	James Foster Grace Franks Wanda Frantz Willard Frye	Wichita Falls Wichita Falls			
G	Lenora Gee Oscar Goetze Allen Green Larry Green Gordon Griffith Jerry Guyton	Kamay Wichita Falls Duncan			
H	Alvin Heidrich Randy Heidrich Mary M. House Jay Howington	Alexandria			
J	Nina Jacobson James Jordan				
K	Thelma Ruth Kight	Desota			
L	David Lightsey Donald Littig Travis Little Forest Lucy Brian Luney Harold Lynn	Mansfield The Colony San Angelo Lubbock Grand Prairie			
M	Jeri Martin Mrs. F.D. Martin Dr. Charles Mattis Mrs. Raydean Mattis Betty Melchiori Verna Moore	Wichita Falls Corp. Christi			
Mc	Mary Lee McClure Sue McKnight Sam McIlroy				
N	Mrs. Joel Nordman	Bridgeport			
O	Joe W. Owen	Middleton			
P	Preston Pace Robert Palmer Wilda Palmer James R. Patterson Bob Perkins Brenda Philmon Cindy Price Dorothy Pybus	Electra Wichita Falls			
R	J. C. Ralston Helen Reed				
S	Bill Sasser Peggy Scarlett Randall Schram Gene Shawver Jimmy Sheets Christy Slack Mike Smith Jeff Spruiell Pauline Steele Kari Steward Jerry Stucki Lorene Sumrall	Wichita Falls Garland Hereford			
T	Hubert C. Thompson Delbert Todd Pam Tyler	Kamay			
U	Frances Underwood United Way	Wichita Falls			
V	Gary Vickers Morris Vogel Buck Voyles	Littleton			
W	Cheryl Weaver George L. White Clay Williams Jeff Williamson W. F. Williams Mrs. Opal Wineinger Stanley Wright Mrs. W. W. Wright	Lone Oak Fort Worth Electra Weatherford Wichita Falls			
James Riddlehuber	James Riddlehuber	Lawton			
<p>Wichita County \$13.00 Elsewhere in Texas \$15.00 Elsewhere in United States \$18.00</p> <p>To: Iowa Park Leader P.O. Box 430 Iowa Park, Texas 76367</p> <p>PLEASE CHECK ONE: () New () Renewal () Change of Address Only</p> <p>\$ _____ Enclosed</p> <p>_____ Name</p> <p>_____ Address</p> <p>_____ City State Zip Code</p>					

CLASSIFIEDS



Bob Hamilton Editor/Publisher
Dolores Hamilton Co-Publisher
Karl Collins Advertising Director
Myma Smith Reporter

The IOWA PARK LEADER is published every Thursday. Offices are located at 112 W. Cash, Iowa Park, Texas, 76367 (766280). Telephone: 592-4431. Second Class Postage Paid at Iowa Park, Texas 76367. Annual Subscription rates are \$13 in Wichita County; \$15 elsewhere in Texas; \$18 anywhere in the United States. Any erroneous reflection upon the character, standing or reputation of any person, firm or corporation which may appear in the columns of this newspaper will be corrected upon being brought to the attention of the publisher. The entire content of each issue of the Iowa Park Leader is protected under the Federal Copyright Act. Reproduction of any portion of any issue will not be permitted without the express permission of the Iowa Park Leader.





Mrs. Mark Toby

Connie and Mark Toby moved their family to Iowa Park a little over two years ago when they purchased one of the city's landmarks, the spacious W.F. George home on E. Texas St.

With two children in school, the Tobys quickly blended into the flow of community activities. Their son Jeff is a sophomore and member of the varsity tennis team at Iowa Park High School, and daughter Amanda is a freshman and junior varsity cheerleader. They are members of First Baptist Church, where Mark sings in the choir and Jeff and Amanda are active in the youth group.

The Tobys also have two married daughters, Kelly Harper of Tulsa, Okla., and Kim Auger who lives in North Dakota, and three grandchildren.

Connie and Mark both grew up in Wichita Falls. She is a graduate of Wichita Falls High School, and he graduated Rider High School and attended Midwestern State Univ. They own Wichita General Fire and Safety in Wichita Falls. Mark is in charge of sales and purchasing, and Connie manages the office. They have another business in Wichita Falls, First Response, which sells and re-stocks first aid equipment, and in Abilene, they own Abilene Fire and Safety.

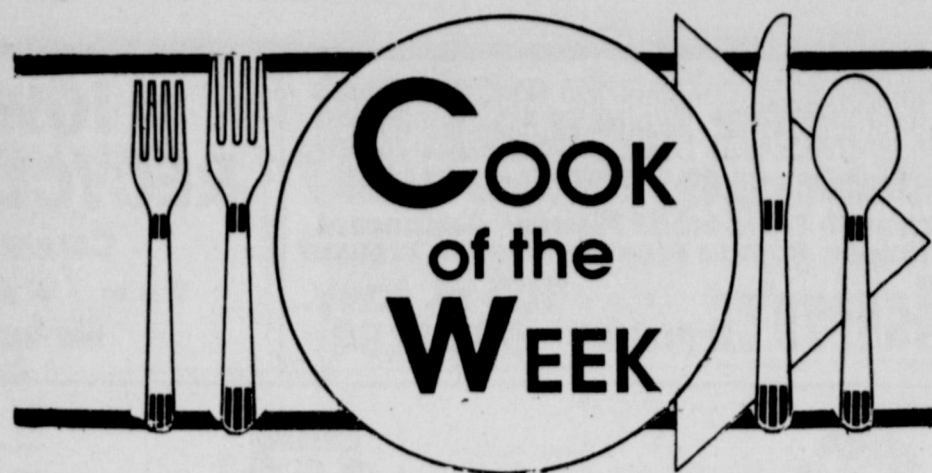
Since moving in, they have been busy renovating and remodeling their home, but Connie said the family likes to snow ski and they try to set aside time for that.

Connie is a member of the Woman's Forum in Wichita Falls, and former member of the board of Child Care, Inc. She and Mark are members of the Hawk Booster Club.

Connie said that she loves to cook, but does most cooking on weekends. The recipes she is sharing this week are some of her favorites. She said the "Beef Pie" is good, and the "Easy Tacos" are a family favorite.

Easy Tacos

- 2 lbs. ground beef
- 1 large can bean dip
- 1 - 2 cups grated cheese
- Garlic



Cook of the Week

Brown meat in margarine; sprinkle "heavily" with garlic; drain fat. Put meat in bowl and mix in bean dip and cheese until thick.

Heat about 1-inch of oil in pan. Dip corn tortillas in oil just long enough to be soft. Stuff soft taco shells with meat mixture and hold together with toothpicks. Fry in hot grease until golden brown and crispy. (Can be eaten as soft tacos also).

Caesar Salad

- 1 clove garlic
- 1/2 can anchovies
- 1/4 cup olive oil
- Romaine lettuce
- 1/3 cup Parmesan cheese
- Lea & Perrin
- 1 egg
- 1/2 lemon
- Croutons

Mash clove of garlic with anchovies. Add olive oil and mix well. Pour over lettuce and mix slightly. Add Parmesan cheese and mix with 1 tablespoon of Lea & Perrin. Refrigerate. Right before serving, break one raw egg (beaten), mix with lemon and toss until egg is mixed. Add croutons.

Buttermilk Cake

- 1 scant cup Crisco (1 cup - 1 Tbsp.)
- 2 cups sugar
- 3 eggs
- 2 cups flour
- 1/2 tsp. salt
- 1/2 tsp. soda
- 1 tsp. baking powder
- 1 cup buttermilk
- 1 tsp. vanilla
- 1/4 tsp. almond flavor

Cream shortening and sugar together. Add eggs, one at a time, beating well. Sift flour and dry ingredients together. Add buttermilk and dry ingredients alternately. Add flavorings.

Grease and flour bundt pan. Add mixture and bake at 325 degrees 40-50 minutes (until golden brown).

Glaze

- Combine in small saucepan:
- 1/2 cup sugar
- 1/4 cup buttermilk
- 1 1/2 tsp. light corn syrup
- 1/8 tsp. soda
- 1/8 tsp. salt
- 1/2 tsp. vanilla
- 1 1/2 tsp. butter

Bring to a boil over low heat and continue to cook over low heat 4-5 minutes, stirring constantly. Pour slowly over warm cake.

Beef Pie

- 1 1/2 lb. ground beef
- 1 onion (chopped)
- 2 Tbsps. green pepper (chopped)
- 1 clove garlic
- 1 1/2 - 2 Tbsps. chili powder (or to taste)
- 1 can condensed tomato soup
- 1/2 cup grated cheese
- Double pie crust
- 1 can green chilies (chopped or whole)

Brown meat, onion, green pepper and garlic in small amount of oleo. Drain off fat and add salt, pepper, and chili powder to taste. Add tomato soup and mix in 1/2 cup grated cheese.

Line bottom of pie crust with green chilies, then add meat mixture on top of green chilies. Put top pie crust on and bake one hour at 350 degrees.

Creamy Banana Pudding

- 1 (14 oz.) can Eagle Brand milk
- 1 1/2 cups cold water
- 1 (4 serving size) pkg. instant vanilla pudding mix
- 2 cups (1 pint) whipping cream, whipped
- Vanilla wafers
- 3 med. bananas, sliced (optional - dip bananas in lemon juice)

In large bowl, combine Eagle Brand and water. Add pudding mix and beat well. Chill 5 minutes and fold in whipped cream. Spoon 1 cup pudding mixture into 2 1/2 qt. glass serving bowl. Top with 1/3 each of vanilla wafers and bananas. Repeat layering, ending with pudding. Garnish as desired. Chill thoroughly.

C&W dance tonight

The monthly country and western dance will begin at 7 this evening at the Recreational Activities Center (RAC), 806 North 3rd St.

The Over the Hill Gang from Archer City will provide the music, and admission is \$3 a person.

No alcoholic beverages are allowed on the premises, but soft drinks, coffee and other refreshments are available.

The dance, which is open to the public, lasts until 11 p.m.



A PLACE OF FUTURE BEAUTY - The northeast corner of Wall and Cash is undergoing work that will transform it into a place of beauty in the future. Workmen are laying a concrete curb away from the sidewalk, and removing the concrete pavement, for a mini park site. It's all part of the community's beautification effort.

SW Bell announces Telehope program

Southwestern Bell Telephone is planning to provide some help for those who have had more than their share of rainy weather -- it's called TeleHope.

"TeleHope is a way for Southwestern Bell employees and customers to direct the outpouring of support, caring and giving through the next stage of Flood '93, the crucial recovery phase," said Bob McJilton, area manager for Bell.

"We are inviting our customers in the five-state region to join us in a program that promises to touch every facet of the communities we serve by way of a customer checkoff donation to the flood victims," McJilton said.

The TeleHope Fund checkoff donation program encourages Bell's nearly 10-million customers to donate \$1, or any amount, easily and conveniently through their September and October phone bill statements.

The amount specified by the customer, and added to their bill payment, will be forwarded to flood relief efforts administered by the Red Cross and Salvation Army.

The checkoff donation program is tax deductible.

Additionally, Southwestern Bell Foundation has provided a \$100,000 grant to the Salvation Army.

Telephone Pioneer chapters across Canada and the United States have collected more than \$85,000 in donations for flood relief programs and have

donated more than 15,000 hours to help flood victims.

Southwestern Bell Mobile Systems donated more than 75 cellular phones and service in St. Louis for the Salvation Army, American Red Cross, Missouri Water Patrol, Monsanto, KSDK-TV and many other groups since the flood began.

Bell presented a \$50,000 contribution to the American Red Cross. Numerous other aid and assistance programs are taking place in the flood-ravaged area.

"These efforts and other employee and company initiatives will complement the TeleHope Fund checkoff donation program," said McJilton.

In Missouri, the Bell business office, which registers changes in customer service orders, has extended its hours by three and a half hours each

day and is now open on Saturdays to keep up with the increased call volume.

Repair and installation departments are keeping workers on 10-hour shifts, working 13 out of every 14 days.

"Families and friends want to continue to reach loved ones for reassurance," said McJilton. "Businesses need to provide critical services. Relief efforts must be reinforced and fortified. Public safety must be maintained."

"A disaster is the most crucial time of all to keep communications intact and our employees are doing everything possible to make that happen," he said.

Does your subscription to the Leader expire this month? Check the list on page 4.

PRESTO

CHILDREN'S BOOKS

Great gift item for children.

Has their personal name and also of friends throughout the pages.

5 different subject books. "The magic of your child's name"

Jack's

PARK PHARMACY

115 W. Park 592-2731

She can dance, she can cheer, and her 18th is here!

Happy Birthday Brande

Getting Married? We can help!

Let us be your Wedding Invitation Consultants.

Jack's Park Pharmacy

115 W. PARK IOWA PARK 592-2731

PLEASE HELP

If you are 18 or older and a registered voter, please sign. This is a petition to get the lights located at Allendale and Kell changed to a four-way stop intersection, in remembrance of **Jason Robert Priddy**.

Send To:
Josh Bata
805 E. Pasadena
Iowa Park, Texas 76367

Voter Signature _____

Many Headaches are NOT in your head!

Dr. Dan Broom

One of the most commonly overlooked causes of headaches is Cervicogenic, or headaches related to the neck. When these nerves are irritated, headaches may go from the back of the skull to the temples or into the forehead and eyes. Many studies now show Chiropractic manipulation to be one of the most appropriate and effective treatments for these types of headaches. *Don't suffer.* If you're experiencing pain from headaches, call us today for an appointment and treatment you can trust!

If you're suffering with headache...call today!

592-2778

BROWN-CAVETT CHIROPRACTIC

402-A W. Park Ave. Iowa Park

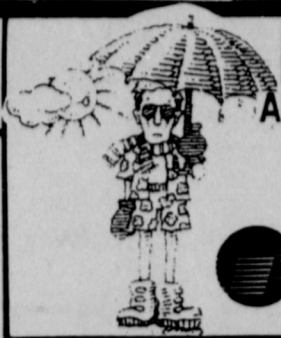
Most Insurance covers Chiropractic care. Payment plans available.

COUPON
INITIAL EXAMINATION AND X-RAYS \$50
Regular \$150.00 Value!
Call 592-2778 today for your appointment

Mary's Haircutting
926 W. Highway



Subway of Iowa Park
404 West Park Iowa Park
592-2782 592-A-SUB
OPEN TIL MIDNIGHT 7 DAYS A WEEK



IOWA PARK
Air Conditioning & Heating
You can trust us even if you can't
trust the weather.

TRANE 592-2761
Lic#TACLA001156C

PRICE PLEASERS
1 Medium - \$5.99 2 Mediums - \$10.99
Choose from Meat Pleaser, Pepperoni
Pleaser, Combo Pleaser, Cheese Pleaser

ken's PIZZA 902 W. Hwy.
592-4184

IOWA PARK
RECYCLING CENTER

Corner Pacific & Bank
9 a.m. - 6 p.m., Friday & Saturday
We buy cans & glass

Harvey's

592-4731

805 W. Highway



GO
HAWKS!

Parker Square Bank

Looking For Ways To Make Life Better.

2301 Kell at Kemp In Parker Square • 809 8th Oil and Gas Building
220 Clay, Nocona, Texas • 219 W. Park, Iowa Park, Texas • Member FDIC

Cheers from across the street!
Carter Pirkle, D.D.S.

General Dentistry
Dr. Carter Pirkle & Staff

Got a tough job?
You can do it with
True Value Hardware

PARKWAY

200 W. BANK True Value 592-5512
HARDWARE STORES 592-4681

HOURS: Mon.-Fri. 7 a.m. - 6 p.m.
Open Saturday 8 a.m. - 2 p.m.

DC Auto Parts

211 N. Wall 592-4181
Iowa Park
Danny Coffman - Owner,
Bob Whatley, Manager

Southern Gardens
Landscape & Design
X-Perl Weed Control 592-2841 Southern Gardens Nursery 592-2100
111 West Park - Iowa Park, Texas
(817) 592-2100 Mon.-Sat. 9-5:30; Closed Sunday

J&C'S
KORNER

Backs The Hawks!
Jason & Carolyn Hoffman
369 & Old Iowa Park Road
OPEN: 5 a.m. to Midnight

SAM'S
BODY SHOP



Sam and Marye Lou

Wal-Mart Pharmacy

592-4157

500 W. Highway, Iowa Park
Tammi Tucker
Manager

KINGS KIDS
CHRISTIAN DAYCARE
& PRESCHOOL

"Iowa Park's finest for Parents who care"
202 N. Jackson 592-4242

1993 Iowa Park Hawk Varsity



Hawk Junior Varsity



Freshman Hawks

We Support Our Hawks
CRYOVAC
PACKAGING/MARKETING SYSTEMS
IOWA PARK

Tangles Salon

311 N. Wall

592-2400

"We support the Hawks"
TEXOMA REALTY INC.
Thomas Johnson 592-2391
Patty McLemore 592-5109
592-9622
"Together, we get it done."



Park Tank Truck Service

24-Hour
Radio Dispatched Service
592-4164

Acid & Frac
Service

•Radio Equipped Trucks •Downhole tools •Power swivel units
•Oil, mud & water hauling •Kill trucks •Acid sales & services
•Vacuum trucks for rotary •Salt water disposal



Spruiell
Drilling
Company Inc.

592-5471
307 N. Wall Iowa Park

GO HAWKS!

Louis' Jewelry

408 W. Park
592-5942

-REMEMBER-
All Occasions
Flower and Gift Shop
(817) 592-2323
Dorothy Cates
Brenda England
520 W. Highway
Iowa Park, TX. 76367

GOOD & PLENTY RESTAURANT
510 Old Iowa Park Road 592-4933
HOURS: 6 a.m. - 9 p.m.
7 Days a week

WAL-MART
ALWAYS THE LOW PRICE
Always:
Loop 370 & Pacific Ave.
Iowa Park

BOBBY EVANS
Sporting Goods INC.

SNB State National Bank
Iowa Park, Texas
Member of F.D.I.C.
Equal Housing Lender

POSEY'S
APPLIANCE SERVICE
We service all makes of washers, dryers, freezers, refrigerators and window air conditioners.
208 James 592-5452

Hughes
PHARMACY
Joe Hughes, Pharmacist
592-4191 120 W. Park
24-Hour Service
FREE Delivery of prescriptions

IOWA PARK LEADER
"Covering the Hawks Since 1969"

SCOBEE'S MINI MART
322 W. HIGHWAY
WE SUPPORT THE HAWKS!

BROWN-CAVETT
BACK & NECK CHIROPRACTIC
GO HAWKS!
402-A W. Park Iowa Park DR. DANIEL R. BROOM 592-2778

Dutton Funeral Home

592-4151 300 E. Cash

HAWKS IOWA PARK HAWKS VS. BURKBURNETT

HERE 8:00 P.M. FRIDAY

JACK'S PARK PHARMACY
115 W. Park 592-2731
GO HAWKS!

MEAN GREEN STRENGTH
Iowa Park Ready Mix
592-2052
SAND—ROCK—GRAVEL

GOLDEN FRIED CHICKEN
592-2811
Loop 370 & Pacific Ave.

HAWK VARSITY

DATE	OPPONENT	PLACE	TIME	WE	THEY
SEPT. 3	BURKBURNETT	HERE	8:00	_____	_____
SEPT. 10	CHILDRESS	THERE	8:00	_____	_____
SEPT. 17	FREDERICK, OK	THERE	8:00	_____	_____
SEPT. 24	MEMPHIS	HERE	8:00	_____	_____
OCT. 1	WELLINGTON**	HERE	8:00	_____	_____
OCT. 8	VERNON*	HERE	7:30	_____	_____
OCT. 15	BOWIE*	THERE	7:30	_____	_____
OCT. 22	BRECKENRIDGE*	THERE	7:30	_____	_____
OCT. 29	GRAHAM*	HERE	7:30	_____	_____
NOV. 5	HENRIETTA*	THERE	7:30	_____	_____

* DENOTES DISTRICT GAMES **DENOTES HOMECOMING

Go Mean Green!
Red River Harley-Davidson
EXPRESSWAY 287 AT BELL RD. EXT.
P.O. BOX 86 / IOWA PARK, TEXAS 76367
PHONE (817) 592-5642
1-800-234-5818

B&R Thriftway
401 W. Park 592-9831
Open 7 days a week

PARK CLINIC
Providing care for the people of Iowa Park and the surrounding area for 41 years
•In-office lab, X-ray, EKG
•Family Practice •Obstetrics
Monday - Friday Calls answered 24 hours
8:30a.m. - 6 p.m. 592-4141
Dr. Erwin Soell Dr. Earl Watson Dr. Larry Stutte

Auto Craft Collision Repair
411 S. Yosemite, Iowa Park
592-5946 days
592-2615 nights

SONIC
FASTER & BETTER THAN EVER!
719 W. Highway 592-2087

SCOTT BOREN
AIR CONDITIONING AND HEATING
Residential - Commercial
(817) 592-0043
24 Hour Service
Owner SCOTT BOREN #TACL011983E

KAMAY ELECTRIC SERVICE
P.O. Box 144 Kamay, Texas
Kamay 438-2844 Electra 495-4391
W.F. 723-9126 W.F. 723-4602

CITY CAFE
RAY & NELL COPENING
Hours: 6 a.m. - 8 p.m.
Breakfast - Lunch - Dinner - Fish Friday
592-4721 114 W. Cash
Downtown Iowa Park, Texas

JUNIOR VARSITY ~ FRESHMAN

SEPT. 2	BURKBURNETT	THERE
SEPT. 9	CHILDRESS-9TH "A"	HERE
	HOLIDAY-JV	HERE
	QUANAH-9TH "B"	IPJHS
SEPT. 16	FREDERICK, OK	HERE
SEPT. 23	WFHS	THERE
SEPT. 30	WFHS JV	HERE
OCT. 7	VERNON	THERE
OCT. 14	BOWIE	HERE
OCT. 21	BRECKENRIDGE	HERE
OCT. 28	GRAHAM	THERE
NOV. 4	HENRIETTA	HERE

9th grade games are at 5 p.m. against non-conference teams and 5:30 against District teams. JV games are 7:00 p.m. against non-conference and 7:30 against District teams.

7TH & 8TH GRADES

SEPT. 7	BURKBURNETT	HERE
SEPT. 14	FREDERICK OK	THERE
SEPT. 21	CITY VIEW	HERE
SEPT. 30	QUANAH	THERE
(7th at 4:30, 8th at 5:00, 9th at 7:30)		
OCT. 5	VERNON 8TH A&B	HERE
	VERNON 7TH A&B	THERE
OCT. 12	BOWIE 8TH A&B	THERE
	BOWIE 7TH A&B	HERE
OCT. 19	BRECKENRIDGE	THERE
B TEAMS AT 5:00, A TEAMS AT 7:00		
OCT. 26	GRAHAM 8TH A&B	HERE
	GRAHAM 7TH A&B	THERE
NOV. 2	HENRIETTA	THERE

EARL CRAVENS RONNY
438-2844 Kamay 438-2901

Sincerely Yours
Floral & Gifts
Balloon & Basket Design
592-2493
300 N. Wall
Tami Taylor - Owner

Jim's Conoco
Check with Jim for expert repairs on your vehicle.
592-4897
612 W. Highway


Pleasant Valley Grocery
We support the Hawks!
Mark & Phyllis Carter
Old Iowa Park Rd. & 369
Hours:
9 - 10 Monday - Saturday
12 - 10 Sunday

G.M. Via Insurance
Glena Via
206 W. Bank
592-4159

BACKING THE HAWKS!
K&K Foods
Open 7 days a week
1409 Johnson Rd. 592-5931

TEXAS REALTY
SELLING IOWA PARK!
109 W. Cash 592-2728

State Capital



HIGHLIGHTS

By Lyndell Williams and Ed Sterling
TEXAS PRESS ASSOCIATION

AUSTIN — George W. Bush sought his father's advice about running for Texas governor last week and hopes to make a final decision soon, according to published reports.

Bush, managing partner of the Texas Rangers baseball team, was at the family retreat in Kennebunkport, Maine, talking with his father, former president Bush.

Republican sources told the *Houston Chronicle* that the younger Bush hopes to have made a final decision on whether he will run by the time he returns home.

But he may not immediately announce his plans, GOP political consultant Karl Rove said.

"The guy's got significant name identification and support in the party. He doesn't need to be rushed," Rove said.

State Rep. Tom Craddick of Midland said earlier he will not run if Bush enters the race, and Dallas lawyer Tom Luce, a GOP candidate in 1990, said a Bush candidacy could make a difference in whether he runs.

Another possible contender, Houston businessman Rob Mosbacher, does not intend to base his decision on whether Bush runs, spokesman Mark Sanders said.

Court Fees for Security
Courthouse security may be beefed up under a new law that goes into effect Sept. 1.

The bill, which Gov. Ann Richards signed into law June 19, establishes mandatory fees of \$5 for offenders convicted of felonies and \$3 for misdemeanors, with all

Kamay Road Church of Christ
Corner of Colorado & Emerald
'Seeking the Old Paths'
10:30 a.m. & 6 p.m.
Wednesday 7:00 p.m.

proceeds to be spent on courthouse security.

The measure, authored by state Sen. John Leedom, R-Dallas, also allows counties to set fees of up to \$5 on the filing of civil suits. If such fees are adopted on civil cases, the bill requires a \$1 charge for other filings such as marriage licenses and liens, said Roland Greenwade, an attorney for Leedom.

Greenwade said the recent spree of violence at courthouses around Texas prompted Dallas County Commissioners to approach Leedom about providing a funding mechanism for security measures.

Judge Blocks Ethics Rule
A state district judge last week blocked enforcement of a new conflict-of-interest law that some feared would result in mass resignations of local school board members.

Responding to a lawsuit filed by Texas Association of School Boards, District Judge Margaret Cooper of Austin issued a restraining order preventing enforcement of the law and scheduled a Sept. 30 hearing on the law.

The law prohibits trustees, their spouses or companies in which they have "significant interests" from signing contracts with school boards.

Counts Applauds Insurer
State Rep. David Counts commended Travelers Insurance Co. last week for cutting its workers' compensation rates by 13 percent.

Counts, D-Knox City, said the rest of the insurance industry should use Travelers' action as a model. He said the workers' compensation reforms passed in 1991 have helped reduce system costs.

"It does not make sense for insurance companies to continue charging rates based on their experience under the old workers' comp law," Counts said.

Good Shepherd Lutheran Church
Corner of 1st & W. Magnolia
592-5605
Sunday School 9 a.m.
Worship Service 10 a.m.
Rev. Orville Horn, pastor
569-4085

FIRST UNITED METHODIST CHURCH



Rev. Darrel Glen Blackmon, Pastor
"Catch The Spirit" ~ Come Grow With Us!
Sunday School- 9:30 a.m. Worship- 10:40 a.m. UMYF- 5 p.m.
201 E. Bank 592-4116

SUNDAY SCHEDULE
Sunday School.....9:30 a.m.
Morning Worship.....10:45 a.m.
Discipleship Training.....5:00 p.m.
Evening Worship.....6:00 p.m.
Graded Choir Program
Active Youth Program
WEDNESDAY SCHEDULE
Prayer Service.....7:00 p.m.
Sanctuary Choir.....7:45 p.m.
More Information: (817) 592-2151

First Baptist Church
300 N. Yosemite ~ Iowa Park



Dr. Derrell Monday, Pastor

Guerrero to Graduate (Finally)
Former Texas Railroad Commissioner Lena Guerrero this week awaits official notice from the registrar's office that she has graduated from the University of Texas.

Guerrero, a Democratic appointee of Gov. Richards, resigned during her election campaign last fall, admitting reports were true that she had lied about having a college degree.

UT Journalism Department Chairman Rusty Todd said Guerrero has completed course work for a bachelor of journalism degree.

Guerrero said she wants to continue running her Austin lobbying firm, and she is considering pursuing a higher college degree. Meanwhile, Southwestern Bell has hired her to lecture students on the merits of earning a high school diploma.

Eckstein Appointed to SBOI
Gov. Richards has appointed one of her aides, Austin lawyer Deece Eckstein, to replace Paul Williams on the three-member State Board of

Insurance. Williams resigned from the board to work for the state treasurer's office.

Richards said Eckstein has been her adviser on insurance and helped pass a bill that increases the availability of insurance for small businesses.

On Sept. 1, the board will lose much of its power, but will continue to exist up to one year as authority shifts to a single insurance commissioner who has not been named.

Other Highlights
■ Eleven people have been killed and about 140 people have been wounded in 742 drive-by shootings in San Antonio between January and July, police officials announced. "It's almost exclusively gang-related," said Capt. Gilbert Sandoval.
■ El Paso and Hudspeth counties have been added to a bee quarantine after Africanized bees were found there. Sixty-eight counties, generally south of a line from Houston to Midland, are now included in the quarantine.

Look Who's New

Lehman
James and Maryann Lehman are parents of a son, James Michael II, born March 1 at 7:09 a.m. at 355th Medical Group in Tucson, Ariz. He weighed five pounds, 12 ounces and was 19 inches long. James has a sister, Maxine, 3 years old.
Grandparents are James Greenwood of Iowa Park, Joann Davidson of Colorado Springs, Mr. and Mrs. Al Lehman of Kamay, and Mr. and Mrs. George Blum of Orlando, Fla.
Grandparents are Annette Sovereign of Colorado Springs and Mary Blum of Delray Beach, Fla., Mr. and Mrs. James Wallace of Nocona, and Mr. and Mrs. William Greenwood of New Boston.

Christ The King Catholic Church
First & Clara 592-2802
Rev. Mr. Patrick Burke, Pastor
8:45 a.m. Children's Religious Formation
10:00 a.m. Mass
The Catholic church recognizes that there are many good people outside its membership, that other religions can and do bring their members closer to God and to their fellow human beings. But we as Catholics have indeed found something very special and we would like to share our Church, our Faith, our Way of Life with you. If you are interested in more information about the Catholic Church, please call the church office.

NORTH TEXAS CAMP MEETING
September 13 - 17
7:30 p.m. nightly
SPEAKER-MARK WILLIAMS
Nursery Provided - ages up to 3 years
LAKEVIEW CHURCH OF GOD
N. Victoria & Exp. 287 592-9555

THE END OF YOUR SEARCH FOR A FRIENDLY CHURCH
ASSEMBLY OF GOD
SUNDAY 9:45 a.m. Sunday School
11:00 a.m. Morning Worship
7:00 p.m. Evangelistic Service
WEDNESDAY 7:00 p.m. Royal Rangers & Missionettes
Nursery provided Sunday morning & Wednesday Evening
200 S. YOSEMITE
592-5087 - Church
592-4627 - Pastor
Charles Hensley, Pastor

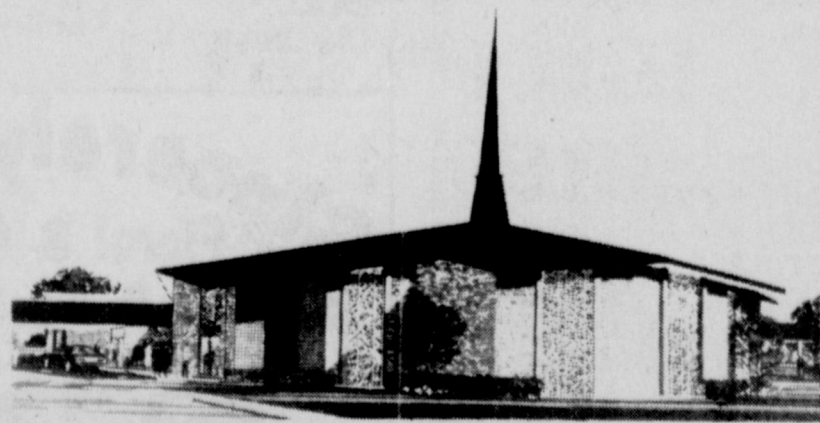
Country Chapel
Country Style Singing & Preaching
Lots of God's Love & Acceptance
Sun. Sch. 9:30 a.m.
Worship 10:30 a.m. & 6 p.m.
Wednesday 7:00 p.m.
Dr. John D. Ward, Pastor 855-9367
Chapel Phone 855-8811
287N. at Wellington Rd. Wichita Falls, TX 76305
Y'ALL COME!

Serving Iowa Park Since 1890
FIRST PRESBYTERIAN CHURCH
Philip W. McLarty, Pastor
Sunday School 9:30 a.m. Sunday Worship 11:00 a.m.
Wednesday Night Bible Study
211 S. Yosemite 592-4220

Cornerstone Pentecostal Church of God
"The Church at the foot of the Cross"
West Smith Road
9:45 a.m. Sunday School
10:50 a.m. Morning Worship
6:00 p.m. Evangelistic Service
7:00 p.m. Wednesday Family Night, also Christian Pathlighters Boys and Girls
"If you like a small church, you better hurry"
Church Phone 592-5929 Pastor Duffy Terry 592-5520
Where Jesus is Lord

Lakeview Church of God
N. Victoria and Expressway
Opportunities for Service
Children's Church Ladies Ministry
Choir (youth & adult) Men's Fellowship
Nursing Home Boys' Club, ages 6-17
Visitation Girls' Club, ages 6-17
Puppet Ministry Nursery Provided
Sunday School...9:45 a.m. Wednesday Family
Morning Worship...10:45 a.m. Training Hour...7:30 p.m.
Sunday Night...6:00 p.m. (Classes for all ages)
Phone - Church: 592-2776, Parsonage: 592-9555
Pastor Ole Olds
Discover The Joy

Faith Baptist Church



BREAK THROUGH "Where the Bible is taught, the family is emphasized, and where everybody is somebody."
411 S. Wall S.B.C. 592-2716
SUNDAY 9:15 a.m. Morning Worship 10:30 a.m. Church Training 6:00 p.m. Evening Worship 7:00 p.m.
WEDNESDAY 9:15 a.m. Wednesday Evening Prayer 8:00 p.m. Choir Rehearsal
Nursery Care Provided - Full Range of Missions and Children's Ministries
Dr. Greg Ammons, Pastor

IOWA PARK'S FAMILY WORSHIP CENTER
Invites You To Be A Part Of
*Exciting Praise & Worship Music
*Dynamic Worship Services
*Innovative Children's Ministries
SUNDAY 9:45 a.m. 10:45 a.m. 6:00 p.m.
WEDNESDAY 7:30 p.m.
Rev. and Mrs. F.M. SMALL, Pastor
Yes, There Is a Place.....
"Where Love is More Than Just A Word"
601 E. Cash 592-4348 592-5316
Van Transportation Available



NEWS FROM THE HALLS OF THE HAWKS

JUNIOR HIGH

IPJH Student Council elects officers for year

Iowa Park Junior High Student Council officers have been elected for the 1993-94 school year.

They are Michael Swenson, president; Toby Catlin, vice president; and Sharla Hughes, secretary, all eighth grade students.

Executive Council members are Jodi Beason, sixth grade, Stacy Hester and Carrie Evans, seventh grade.

BRADFORD

VIP Program

The Volunteer Involvement Program (VIP) will begin soon at Bradford Elementary.

The program recruits parent volunteers to work once a week in the classrooms as tutors, or help in the library with such chores as shelving books.

Parents who don't work in the classrooms, help with material preparation on the second and fourth Wednesdays. This involves coloring, tracing, cutting paper, etc., and the first workday is scheduled for Sept. 8, on the cafeteria stage.

Debbie Williamson is the program's coordinator, and works with Bradford Principal Pat Cravens.

Student aides

Five high school students are coming to Bradford every morning during second period and working as teacher's aides.

Applies for grant

Bradford Elementary School has applied to the Texas Education Agency for a grant to fund a comprehensive development guidance program for students in "at-risk" situations.

At the beginning of the current school year a survey was sent home with the students. Out of 503 questionnaires, 380 or 76 percent were returned.

Counselor Diane Granbury says she believes the results of the survey reflect the demographics of the entire school enrollment.

The survey revealed there are 61 percent of the children living with their natural parents; 29 percent live with a single parent; 21 percent live with a parent and step-parent; 4 percent live with some other relative or in foster care; 4.5 is the average number of people living in the household;

Eight percent are children with chronic health problems, 6 percent are parents with chronic health problems; 4 percent of the parents surveyed quit

school before graduation; 10 percent of the parents got their GED; 66 percent of these parents obtained a high school diploma; 40 percent of the parents have some college credit; 11 percent have technical training; 26 percent have college degrees and five percent have Masters Degrees.

Facts that the statistics reveal and that school personnel believe point to a child being "at-risk", in addition to the state criteria, are that 55 percent of the children have both parents who work outside the home, while 37 percent are from homes where only one parent works outside the home; that in 7 percent of the homes surveyed, one or both parents are unemployed; four percent of those answering the survey are parents who one or both were disabled and unable to work.

KIDWELL

Foster Grandparent program

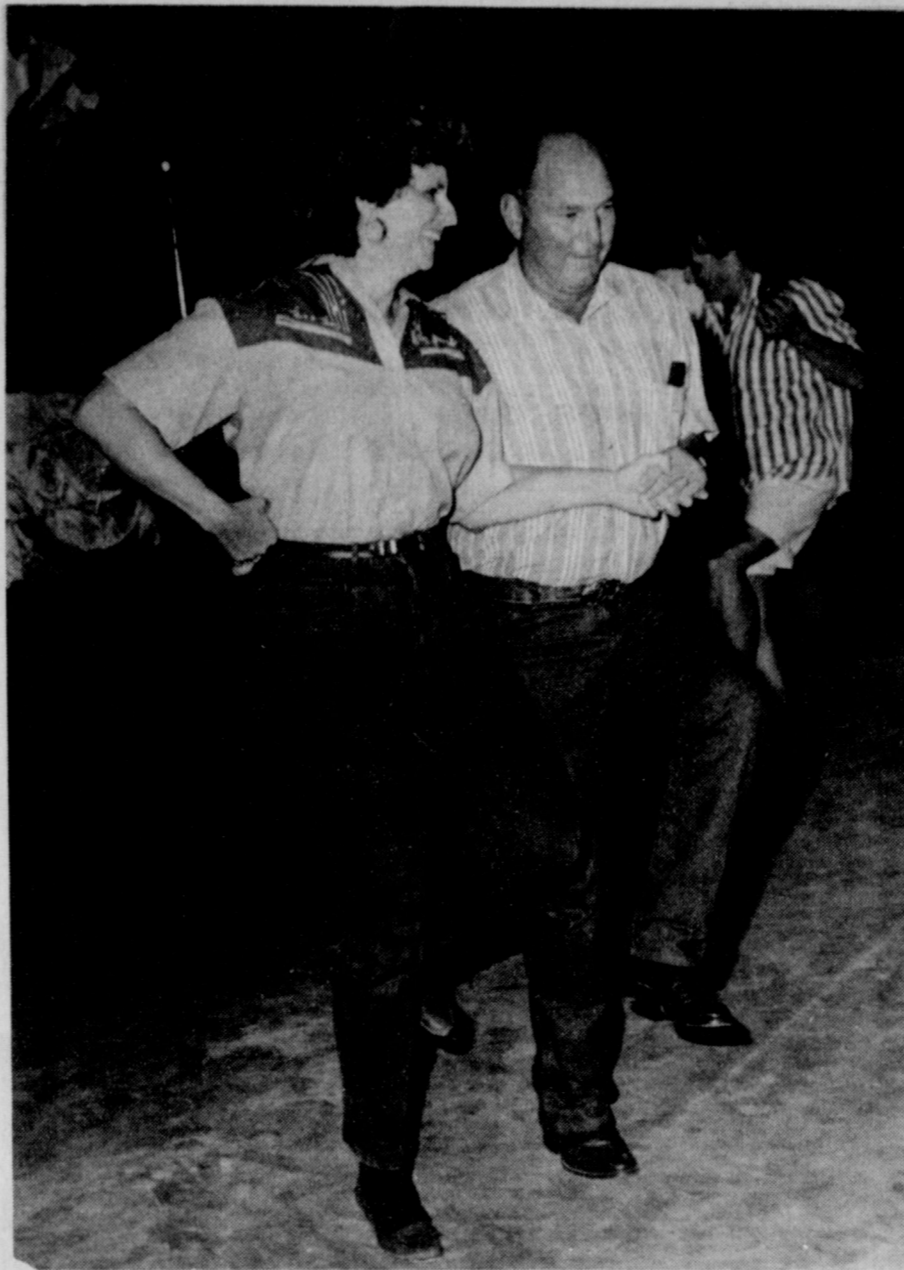
Kidwell Elementary is sponsoring a Foster Grandparent Program again this school year, according to Mike Hoover, principal.

Individuals from Friendly Door Senior Citizen Center and residents of Heritage Manor are volunteering their time for the program, reading to and spending time with Kidwell students.

The program is being utilized primarily in Kindergarten classrooms.

IOWA PARK SCHOOL MENU

MONDAY, Sept. 6	Holiday
TUESDAY, Sept. 7	Breakfast--Cereal, toast, jelly, fruit, milk.
	Lunch--Fiestada pizza, pinto beans, fruit, dessert, milk.
WEDNESDAY, Sept. 8	Breakfast--Waffle, sausage, fruit juice, milk.
	Lunch--Cheeseburgers, french fries, lettuce, tomatoes, pickles, onions, dessert, milk.
THURSDAY, Sept. 9	Breakfast--Cinnamon toast, rice, fruit, milk.
	Lunch--Chicken nuggets, mashed potatoes, mixed vegetables, hot rolls, dessert, milk.
FRIDAY, Sept. 10	Breakfast--Scrambled eggs, toast, fruit juice, milk.
	Lunch--Steak sandwich, lettuce and tomatoes, curley Q fries, dessert, milk.



"PUT YOUR LITTLE FOOT..." - The 100 block of Eash Cash was a busy place Saturday night, when the Iowa Park Volunteer Fire Department put on its annual fund-raising street dance. Proceeds from the event augment funds from the city and county to purchase equipment for the department.

Friendly Door Menu

THURSDAY, Sept. 2	Lunch--Beef tips over noodles, buttered carrots, fried okra, roll watermelon.
FRIDAY, Sept. 3	Lunch--Salmon patty, carrot-raisin salad, green beans, tomato wedge, wheat bread, oatmeal cookies.
MONDAY, Sept. 6	Labor Day Holiday
TUESDAY, Sept. 7	Lunch--Steak fingers, cream gravy, peas and carrots, mashed potatoes, white or wheat bread, chocolate pudding on a cloud.
WEDNESDAY, Sept. 8	Lunch--Spanish rice with beef,

pecante sauce, garden salad, pinto beans, tortilla chips, butterscotch brownies.
THURSDAY, Sept. 9
Lunch--Oven fried chicken, potato salad, broccoli, hollandaise sauce, wheat roll, apricot cobbler.
FRIDAY, Sept. 10
Lunch--Barbecue on bun, baked beans, carrot cabbage slaw, banana cake.

Helpful Facts
The city's Board of Adjustments meetings are at 6:15 p.m. on Mondays when there is an agenda, in Council Chambers, 103 North Wall. Public notices for all Board of Adjustments meetings are published two weeks in the *Iowa Park Leader*, and are open to the public.

Worth Quoting

The following has made the rounds in newspapers across the state. It is hopefully a reminder to everyone involved with fundraising projects that those much sought after funds are raised locally and therefore should be returned to the community whenever possible.

"Shop TULIA While It's Still Here!"

That was the message an individual requested to be placed in a paid advertisement in *The Tulia Herald* recently. This is a message to be heeded, but it likely will not be taken to heart by a number of individuals.

Why?
Because of the "me syndrome," to quote a personal friend who is city manager of a South Plains town. My terminology for this malady which troubles our society is the "Big I" rationale.

The friend, who has an abundant supply of "horse sense," came by our office for a visit last week and got on his soap box. He emphasized the same message as the above-mentioned advertisement. In fact, it's a message he constantly espouses.

A teacher in his town, which has two restaurants specializing in pizza, drove to Plainview to buy pizza for a school function. The following week, students who participated in this function paid a visit to both local pizza restaurants -- asking donations! The city manager asked to be placed on the agenda at the next school trustee meeting to make his point on the subject. The board adopted an informal policy that school-related groups are not compelled to trade in their home town, but they shall not seek contributions from firms they do not patronize!

While examining the policy, that school board learned that the Junior Class was sending someone to Lubbock twice weekly to purchase items from a large discount store for the class-operated concession stand. In the meantime, they were soliciting donations from the town's food store.

A local non-profit organization in the same town was catering a meal for a major town activity. They went to Lubbock for the food, then asked the local food store for major discounts on last minute odds and ends to complete and serve the meal.

That old dog has almost hunted too many times, so to speak.

Many people will drive 60 miles to save a dollar, but that practice is "killing the goose that lays the golden egg." Termed differently, who will fund all types of local endeavors -- everything from school yearbook sponsorship, to providing gifts for senior citizens' events, to offering livestock show premiums, to youth baseball team sponsorship, to picnic celebration financing and numerous others? The vast majority of funding comes from local businesses.

Sheer and simple, small-town merchants can't stay in business and support worthwhile local activities if potential customers spend all their dollars in Amarillo, Plainview and Lubbock.

Obviously, in this day and time families must seek out bargains to make their dollars stretch as far as possible. In a mobile society, that means many people think nothing of driving 50 miles or more to shop. This is a prime reason why Olton and virtually every other town in West Texas lose stores each year. How many have shut their doors here in the past six months?

As the above-mentioned friend said, without business local firms cannot exist. "One day we could get to the point where nobody can buy a quart of milk -- or secure a donation -- in their home town."

Thought should be given to the possibility every time anyone makes an out-of-town purchase... and seeks a local donation.
RICK CRAIG
Hamlin Herald

Happy 45th Birthday
Donald Kenyon
Love, Brenda & Kids

Joe's Barber Shop
Specializing in Men & Boys
Cuts & Styling
Tuesday-Friday: 8:00-6:00 Saturday: 8:00-3:00
Closed for Lunch 12:30-1:30 p.m.
Joe Voyles
Owner & Barber
592-5591
113 W. Park
Iowa Park, Texas

INSURANCE CLAIMS FILED FREE
RICHARD C. CARVER, D.D.S.
GENERAL DENTISTRY
TELEPHONE 817-592-5141
315 NORTH WALL
IOWA PARK, TEXAS 76367

EFFECTIVE
SEPT. 1, 1993
Lone Star Gas
bills can be paid at
Parker Square Bank
219 W. Park
Iowa Park

OIL CHANGE SPECIALS

Any Pennzoil (in stock) Up to 5 quarts \$19.95	Tuesday - Ladies Day (up to 5 qts.) any oil in stock \$18.95
--	--

10% SENIOR DISCOUNT ON EVERYTHING
*EXCEPT STATE INSPECTIONS

Furnish your own oil & filter, we change it for only **\$9.95**

We Stock Motor Craft Oil - State Inspections
Hours: 8 a.m.-6 p.m., Monday - Friday; 8 a.m.-3 p.m., Saturday
ALL SPECIALS RUN WEEKLY - EVEN IF NOT ADVERTISED

CATLIN'S QUICK CHANGE
507 W. Highway 592-2818

Jennifer and Kacey wish this little cowboy a
HAPPY 18TH BIRTHDAY

GO #7!
GOOD LUCK FRIDAY NIGHT!

I.P.A.C.
IOWA PARK ATHLETIC CENTER
215 N. Yosemite - 1 block north of Allsup's 592-2570
Open 9 a.m. - 1 p.m. and 4 p.m. to 9 p.m.

Come join our Senior Citizen Morning Crew Monday, Wednesday and Friday, 9 - 11 a.m. for a Cardio-Vascular Workout while listening to Country & Western music.

We now offer a FULL LINE OF SUPPLEMENTS
use for weight loss, weight gain, energy loss, sore muscles, sore joints, fat burning, 2nd wind, muscle gain, etc.

REASONS FOR PHYSICAL FITNESS

- Increase Healthiness • Increase Metabolism (burn off fat)
- To feel better, relieve pain • Control your weight
- Increases Overall Strength • More Youthful Appearance
- Healthy Stress • Promotes Self-Confidence

THE WEEKLY OIL AND GAS REPORT

PREPARED BY OIL & GAS REPORTING SERVICE, INC.
P. O. BOX 2645, CORPUS CHRISTI, TX 78403 512/883-6533

WICHITA COUNTY

CODA ENERGY, INC. of Dallas, Tx has reported a NEW OIL WELL COMPLETION in the Wichita County [Special] Field, 2 miles NE of Electra. The B. A. BYWATERS Well No. 170, located in the SP RR Co. Survey #1, A-280 on a 292.5 acre lease, tested 4 BO/D, trace of gas, 112 BW/D on pump from perfs 1198'-1206', 1463'-80', 1586'-1613' and 1741'-83' after acid treatment.

CODA ENERGY, INC. of Dallas, Tx has reported a NEW OIL WELL COMPLETION in the Wichita County [Special] Field, 2 miles NE of Electra. The B. A. BYWATERS Well No. 178, located in the SP RR Co. Survey #1, A-280 on a 292.5 acre lease, tested 3 BO/D, trace of gas, 77 BW/D on pump from perfs 1004'-24', 1475'-96', 1582'-98' and 1744'-98' after acid treatment.

CRENSHAW OIL of Wichita Falls, Tx has filed for a permit to DRILL a 650' depth Wichita County Regular Field well 5 miles SE of Burkburnett. The J. J. WIEBENER Well No. 35 is located in the BBB&C RR Co. Survey, A-28 on a 243 acre lease.

GREGORY W. STONE of Holliday, Tx has filed for a permit to DRILL a Wichita County Regular Field well 4 miles E of Kamay. The OVERBY No. 22 is located in the Blk. 46, H. B. Balch Survey, A-127 on a 103.44 acre lease.

GREGORY W. STONE of Holliday, Tx has filed for a permit to RE-ENTER a 850' depth Wichita County Regular Field well 4 miles E of Kamay. The OVERBY Well No. 9 is located in the Blk. 46, H. B. Balch Survey, A-127 on a 103.44 acre lease.

JOE B. HOOD of Wichita Falls, Tx has reported a DRY HOLE in the Wichita County Regular Field, 6 miles SW of Burkburnett. The GEORGE Well No. 1, in the Oscar Farrish Survey, A-383, was plugged and abandoned at a depth of 1475'.

JOSEPH B. GOULD of Las Vegas, Nv has filed for a permit to DRILL a 2000' depth Wichita County Regular Field well 2 miles NE of Kamay. The JENNING MUNCHER Well No. 14 is located in the Lot 31, Kemp's W.V.F.L. S/D on a 80 acre lease.

SEISMOTECH ENERGY, INC. of Dallas, Tx has reported a NEW OIL WELL COMPLETION in the Wichita County Regular Field, 4 miles SW of Burkburnett. The WEST '3' PRESTON Well No. 303, located in the O'Farrish Survey, A-383 on a 12 acre lease, tested 2 BO/D, no gas, 4 BW/D on pump from perfs 456'-460' after frac treatment.

SEISMOTECH ENERGY, INC. of Dallas, Tx has reported a NEW OIL WELL COMPLETION in the Wichita County Regular Field, 4 miles SW of Burkburnett. The WEST '3' PRESTON Well No. 306, located in the O'Farrish Survey, A-383 on a 12 acre lease, tested 10 BO/D, no water, on pump from perfs 550'-558' after frac treatment.

ARCHER COUNTY

JAMES D. LINDEMANN of Holliday, Tx has filed for a permit to DRILL a 5600' depth E. Anarene [Caddo] Field well 9 miles SW of Archer City. The CALVIN-HILL UNIT Well No. 1 is located in the Sec. 11, Jefferson C S L Survey on a 160 acre unit.

TALON PRODUCTION, INC. of Wichita Falls, Tx has reported a DRY HOLE in the Archer County Regular Field, 10 miles NW of Archer City. The SWANSON-PERKINS Well No. 1, in the Lot 2, Blk. 11, A.T.N.C.L. Survey, A-805, was plugged and abandoned at a depth of 1660'.

GUS BERRY - C/O TRIO OPERATING CO., INC. of Wichita Falls, Tx has filed for a permit to RE-ENTER a 1800' depth Sheckells [Mississippian] Field well 5 miles SW of Archer City. The GOUGH Well No. 2-SWD is located in the C. A. Sheckells Survey, A-1285 on a 40 acre lease.

TURNBOW DRILLING CO. of Wichita Falls, Tx has filed for a permit to DRILL a 1800' depth Archer County Regular Field well 5 miles SE of Holliday. The WILSON 'G' Well No. 7 is located in the Blk. 29, A.T.N.C.L. Survey on a 160 acre lease.

TURNBOW DRILLING CO. of Wichita Falls, Tx has filed for a permit to DRILL a 1800' depth Archer County Regular Field well 5 miles SE of Holliday. The WILSON 'G' Well No. 8 is located in the Blk. 29, A.T.N.C.L. Survey on a 160 acre lease.

BAYLOR COUNTY

SUNDAY CORPORATION of Olney, Tx has reported a NEW OIL WELL COMPLETION in the Baylor County Regular Field, 15 miles E of Seymour. The FAYETTE CO. SCHOOL LAND 'F' Well No. 1, located in the Fayette C S L Survey, A-148 on a 135 acre lease, tested 17 BO/D, 3 MCF/D, 50 BW/D on pump from perfs 4929'-35' after acid treatment.

CLAY COUNTY

LANDRUM WEST, INC. of Burkburnett, Tx has reported a DRY HOLE in the Clay County Regular Field, 2 miles SW of Petroliia. The HOUSEHOLDER Well No. 1-L, in the Blk. 7, Byers Bros. S/D, was plugged and abandoned at a depth of 1990'.

LANE OPERATING CO. of Wichita Falls, Tx has reported a NEW OIL WELL COMPLETION in the N. Buffalo Springs [Congl.] Field, 2 miles SW of Buffalo Springs. The JOHNSON Well No. 1, located in the W. A. Farris Survey, A-147 on a 150 acre lease, tested 4 BO/D, 185 MCF/D, no water, flowing on 16/64 choke at 50# from perfs 6022'-30' after acid and frac treatment.

JACK COUNTY

ATHENA RESOURCES, INC. of Dallas, Tx has filed for a permit to DRILL a 3900' depth Reba [Strawn] Field well 12 miles NW of Jacksboro. The J. H. SHOWN 'C' Well No. 1 is located in the J. B. Irvine Survey, A-312 on a 217 acre lease.

EXORARE ENERGY, INC. of Dallas, Tx has filed for a permit to DRILL a 5500' depth Jack County Regular Field well 3 miles N of Perrin. The WIMBERLY Well No. 2 is located in the A. Ferguson Survey, A-215 on a 159 acre lease.

GLEN GONZENBACH of Henrietta, Tx has reported a PLUG BACK GAS WELL RECOMPLETION in the Jupiter [Conglomerate 3rd] Field, 2 miles S of Cundith. The GRACE RANCH Well No. 1, located in the A. H. Jackson Survey, A-1626 on a 93.64 acre lease, tested 602 MCF/D on 14/64 choke at 695# from perfs 5588'-98' after acid and frac treatment. SIWP-1070#. GOR-120,000. Absolute open flow-1055 MCF/D.

MITCHELL ENERGY CORPORATION of The Woodlands, Tx has filed for a permit to DRILL a 5855' depth Maryetta [Atoka 5360] Field well 0.2 miles W of Maryetta. The ZOY GUNTER Well No. 2 is located in the Sion Pritchard Survey, A-459 on a 160 acre unit.

MITCHELL ENERGY CORPORATION of The Woodlands, Tx has reported a OIL WELL COMPLETION ADDED in the Jack County Regular Field, 13 miles E of Jacksboro. The MCCONNELL Well No. 2, located in the E. S. Perryman Survey, A-2369 on a 80 acre unit, tested 23 BO/D, 68 MCF/D, 2 BW/D on pump from perfs 5392'-5404' and 5668'-78' after acid and frac treatment.

MITCHELL ENERGY CORPORATION of The Woodlands, Tx has filed for a permit to WORKOVER [plug back & test at 4550'] a 4995' depth Crum [Marble Falls] Field well 10 miles W of Jacksboro. The FLO-COOP, INC. Well No. 1 is located in the Alfred Benton Heirs Survey, A-37 on a 352 acre lease.

WAGGONER-BALDRIDGE OPERATING CO., INC. of Dallas, Tx has filed for a permit to DRILL a 3200' depth Jack County Regular [Gas] Field well 1.73 miles N of Giltown. The AARON HULL Well No. 9 is located in the Sec. 30, Blk. 1, Henderson C S L Survey, A-257 on a 704 acre lease.

MONTAGUE COUNTY

PEBA OIL & GAS CO. of Nocona, Tx has filed for a permit to DRILL a 1999' depth Montague County Regular Field well 12 miles N of Nocona. The J. W. ROWLAND Well No. 49 is located in the J. Chambliss Survey, A-123 on a 80 acre lease.

PEBA OIL & GAS CO. of Nocona, Tx has filed for a permit to DRILL a 1999' depth Montague County Regular Field well 12 miles N of Nocona. The J. W. ROWLAND Well No. 50 is located in the J. Chambliss Survey, A-123 on a 80 acre lease.

PEBA OIL & GAS CO. of Nocona, Tx has reported a NEW OIL WELL COMPLETION in the Montague County Regular Field, 12 miles N of Nocona. The J. W. ROWLAND Well No. 47, located in the J. Chambliss Survey, A-123 on a 80 acre lease, tested 45 BO/D, trace of gas, 40 BW/D on pump from perfs 1495'-1500' after acid treatment.

This notice is required by the Texas Legislature.

*The percentage increase shown in the first paragraph below may appear unusually high because it does not reflect 1992 taxes levied by the now-abolished county education district (CED). In 1992, the CED levied a portion of the taxes used for school purposes, and the school district levied the remainder of school taxes. In 1993, school districts will levy all school taxes. For an explanation of the increase, attend the public hearing scheduled below or call your school district.

Notice of Public Hearing on Tax Increase

The IOWA PARK CISD BOARD OF TRUSTEES will hold a public hearing on a proposal to increase total tax revenues from properties on the tax roll in 1992 by 319 percent. Your individual taxes may increase at a greater or lesser rate, or even decrease, depending on the change in the taxable value of your property in relation to the change in taxable value of all other property.

The public hearing will be held on MONDAY SEPT. 13 at 7:30 PM IOWA PARK JR HIGH SCHOOL.

FOR the proposal: Sheri Kennedy, Martha Dudley, Max Henderson
AGAINST the proposal: Keith Fisher, Randy Catlin, Dennis Yeager, Wendall House
PRESENT and not voting:
ABSENT:

The statement above shows the percentage increase the proposed rate represents over the EFFECTIVE tax rate that the unit published on AUG. 26, 1993. The following table compares taxes on an average home in this taxing unit last year to taxes proposed on the average home this year. Again, your individual taxes may be higher or lower, depending on the taxable value of your property.

	Last Year County Education District	Last Year School District	This Year School District
Average home value	\$ 38,628	\$ 38,628	\$ 36,795
General exemptions available (amount available on the average home, not including senior citizen's or disabled person's exemptions)	\$ 5,000	\$ 5,000	\$ 5,000
Average taxable value	\$ 33,628	\$ 33,628	\$ 31,795
Tax rate	\$.84684	.27 /\$100	1.16 /\$100 (proposed)
Tax	\$ 284.78	\$ 90.80	\$ 368.82 (proposed)
Total 1992 School Taxes	\$ 375.58	Total 1993 School Taxes	\$ 368.82 (proposed)

This paragraph compares last year's CED and school district taxes with this year's proposed school district taxes:

Under this proposal taxes on the average home would DECREASE by \$ 6.76 or 1.8 percent compared with last year's total school taxes. Comparing tax rates without adjusting for changes in property value, the tax rate would INCREASE by \$ 4.316 per \$100 of taxable value or 3.8 percent compared to last year's total school tax rate. These tax rate figures are not adjusted for changes in the taxable value of property.

[All school districts must publish the following:]

This paragraph compares last year's school district tax with this year's proposed school district taxes:

Under this proposal taxes on the average home would INCREASE by \$ 278.02 or 306 percent compared with last year's school district taxes. Comparing tax rates without adjusting for changes in property value, the school district tax rate would INCREASE by \$.89 per \$100 of taxable value or 329 percent compared to last year's school district tax rate. These tax rate figures are not adjusted for changes in the taxable value of property.

THE ACCOMPANYING TAX NOTICE IS WRONG!

The IOWA PARK Independent School District is required by state law to publish the accompanying tax notice in this form, even though the notice is deceptive.

Because of an omission in the recently-enacted state law, IOWA PARK I.S.D. may not include revenue collected by the county education district in the calculation of taxes for the 1992-93 school year. The effect of this is to understate last year's actual school tax rate and produce an inaccurate comparison of last year's tax rate to this year's tax rate.

The correct comparison of tax rates is as follows:

Last year's (1992-93) total school tax rate (including county education district taxes):	\$1.11684
This year's (1993-94) proposed school tax rate:	\$1.16000
Percentage change:	3.8%

	Last Year	This Year
HOME VALUE	\$ 40,000	\$ 40,000
General exemptions available (amount available on the average home, not including senior citizen's or disabled person's exemptions)	\$ 5,000	\$ 5,000
TAXABLE VALUE	\$ 35,000	\$ 35,000
Tax rate	\$1.11684/\$100	\$1.16000/\$100 (proposed)
Tax	\$ 390.89	\$ 406.00 (proposed)
INCREASE	\$15.11 per year or \$1.26 per month.	

Hawks

Continued from page 1

senior Scott Byrd, who repeated last year by breaking a bone in his foot during pre-season action. The only difference is, the 1993 break is in the other foot from the 1992 fracture.

"We were counting heavily on Scott," Clensay said. "There's no telling how good he can be, because he hasn't played since he was a sophomore."

Byrd told coaches he expects to be given a clearance next week to return to play, but Clensay said the senior likely will be held out of action until Vernon or Bowie games.

In his place in the secondary, the only sophomore on the varsity became Jimmy Fallon, who was called up from the JV as a backup.

Concerning last Friday's final pre-season scrimmage session at Abilene Wylie, the Head Hawk said he wasn't very happy about the first 15-play series. "We just weren't ready to play, even though we moved the ball a little bit."

Then, when the teams began two complete quarters of regular play, the head coach said Hawk play improved considerably. Wylie was held without a single first down, and Iowa Park moved into scoring position three times, but never crossed the goal line.

"We didn't get anyone hurt, but Stan (Tigrett) sat out the scrimmage with a strained back, Clensay said.

But, looking toward Friday's season-opener, Clensay says he expects everyone physically (except Byrd) and mentally ready for the Bulldogs.

Cheerleaders' Point of View

The theme for Friday is Hat Day. Everyone is to come to school with a hat to support the Hawks.

The Pep Rally will be at 9:50 a.m. in the high school gym. We are encouraging everyone that can to attend and again to attend the game at 8 p.m.

We are really excited about this year's season, so let's show the Hawks some support by everyone getting involved.

Also, students, don't forget to be at the gym Thursday at 3:15 to decorate.

Good luck, Hawks, and beat those Bulldogs.

The Cheerleaders

SPORTS

Shorts



Pep rally time at Iowa Park High has been changed from the traditional last period of the day to "break time" for students. Adults who like to attend the weekly event should be at the school by 9:55 a.m. each Friday.

This Friday is the last day Hawk fans can purchase season reserved seats for all five varsity home football games. Individual reserved seats will continue to be sold on a per-game basis, but that does not reserve the same seat(s) through the season.

Junior High Hawk football teams will open their 1993 season Tuesday at the junior high stadium. Both the Seventh and Eighth grade clubs will host Burkburnett, with the first game starting at 5 p.m.

Bradford to celebrate National D.A.R.E. Day

Students and faculty of Bradford Elementary school will celebrate National D.A.R.E. (Drug Abuse Resistance Education) Day Thursday Sept. 9.

The celebration will begin at

Helpful Facts

Persons other than the property owner doing work on a residence must be a licensed building contractor, plumber, electrician, or heating and air conditioning contractor with the City of Iowa Park, and carry a performance bond.

Helpful Facts

Yearly permits to keep animals (except dogs and cats) on your property are available for \$5 at Iowa Park City Hall.

Boosters plan work session

Instead of the regular Monday night meeting of the Hawk Booster Club, members will hold a work session, according to Sherry Rose.

Members will be assembling player pictures in their frames to be distributed to businesses in town.

They will begin their work at 5 p.m., and will be in the field house concession stand, next to the weight room.

BREAKFAST SPECIAL 2 eggs, bacon or sausage, hash browns, biscuit and gravy..... \$2.49	LUNCH SPECIAL <i>Served everyday but Saturday</i> Monday - Friday Small \$3.30 Large \$3.85 Sunday Lunch Small \$4.25 Large \$4.99
FRIDAY NIGHT SPECIALS	
All You Eat Fish & Shrimp \$7.99	Fish & Shrimp Basket \$5.99

GOOD & PLENTY RESTAURANT

510 Old Iowa Park Road 592-4933
HOURS:
6 a.m. - 9:30 p.m., Sunday - Thursday
6 a.m. - 10 p.m., Friday & Saturday

FRIDAY NIGHT

IOWA PARK FFA BOOSTER CLUB "FRIDAY NIGHT FEED"

Before the Iowa Park-Burk Game
Friday, September 3 ~ 6:00 p.m.
at the Vo-Ag Building
North of Football Field

Hamburgers, Polish Sausage, Homemade Ice Cream & Desserts
\$4 Adults **\$3** 12 & under

SLOW DOWN

THEY DEPEND ON YOU

\$5.99 plus tax
PRICEPLEASER™ PIZZA
Pepperoni/pleaser, Combopleaser, Cheesepleaser, Meatpleaser, Redeem this coupon for one \$3.99 Pricepleaser™ Pizza.

2 for \$10.99 plus tax
PRICEPLEASER™ PIZZAS
Pepperoni/pleaser, Combopleaser, Cheesepleaser, Meatpleaser, Redeem this coupon for two Pricepleaser™ Pizzas for only \$10.99.

HELP YOUR CHURCH WITH KEN'S TITHING PROGRAM
Anytime you dine at Ken's, tell us what church you belong to and at the end of the month, each church will receive 10% of what it's congregation has spent at Ken's!

ken's PIZZA Delivers 902 W. HIGHWAY 592-4184
We Accept Local Competitors Coupons

CITY CAFE

114 W. Cash 592-4721

DINNER SPECIALS

MONDAY - FRIDAY 5 P.M. TO CLOSE

MONDAY
Grilled Pork Chops, Mashed Potatoes, Red Beans & Salad...\$4.50

TUESDAY
T-Bone or Sirloin Steak, Baked Potato or French Fries, Salad, Texas Toast...\$6.50

WEDNESDAY
Shrimp Basket, French Fries, Salad, Texas Toast...\$4.50

THURSDAY
Steak Finger Basket, French Fries, Salad and Texas Toast...\$3.50

FRIDAY
Catfish, French Fries, Red Beans or Cole Slaw, Hush Puppies...Sm. \$4.50...Reg. \$6.50

RIO BRAVO

MEXICAN CAFE

604 E. Highway 592-0443
Carry out orders welcome
Hours:
Monday - Saturday
11 a.m. - 9 p.m.

DAILY SPECIALS ~ 11 A.M. - 4 P.M.

THURSDAY, SEPT. 2
"SUPER BURRITO" **\$2.75**
Beef, bean, cheese, sour cream, lettuce and tomatoes.

FRIDAY, SEPT. 3
3 CHEESE ENCHILADAS \$3.85
Closed Saturday, Sunday & Monday for LABOR DAY!

TUESDAY, SEPT. 7
1 CHEESE ENCHILADA 1 TAMALES \$4.25
Rice, beans & guacamole

WEDNESDAY, SEPT. 8
1 CRISPY BEEF TACO 1 CHEESE ENCHILADA \$3.75
with Guacamole

THURSDAY, SEPT. 9
2 FLOUR ENCHILADAS BEEF & CHEESE \$4.25
Rice, beans & guacamole

FRIDAY, SEPT. 10
2 TAMALES \$3.85
with sauce, rice & beans

SUBWAY

404 W. Park 592-ASUB
Open until Midnight 7 days a week

FREE ROUND

With the purchase of any 12" sandwich

One coupon per customer per visit. This offer is not good in combination with any other offer. Good only at the Iowa Park Location.
OFFER EXPIRES: August 31, 1994

Harvey's

592-4731

TACO BASKET

\$1.99

FARM-FRESH CATFISH
5 - 10 p.m. Every Thursday!

THANK YOU FOR MAKING US THE 2ND LARGEST RESTAURANT CHAIN IN NORTH AMERICA!

2,300 8,393

The Classifieds

DEADLINES


10 a.m. WEDNESDAY (Word Ads Only)
4 P.M. TUESDAY, DISPLAY ADS

SAVE 8¢ PER WORD FIRST
INSERTION BY PAYING
WITH COPY AT OFFICE

RATES:

23¢ PER WORD FIRST INSERTION
15¢ PER WORD EACH REPEAT

Free Estimates



ROBERT A. BAUMER
CONSTRUCTION

(817) 592-4995
New Homes • Additions • Remodeling
Roofing • Cement Work

MINI-CON
Self-storage

- Variety of sizes.
- Competitive prices.
- Locally owned and operated.
- Monthly rates.

805 W. Hwy.
592-2761

One bedroom apartment \$215 to \$226
Two bedroom apartment \$262 to \$276

- Energy efficient
- Central Heat/Air
- Children's Play Area
- Fully carpeted and draped
- Off-street parking
- Water paid
- Total electric
- Full equipped laundry room

COLONIAL HEIGHTS APARTMENTS




592-2705

FOR RENT

TALLEY LANE, 5 miles east of Iowa Park, 2 & 3 bedroom mobile homes. Large fenced lots, central air/heat, carpeted, range, refrigerator, washer/dryer connections. 855-3062. 9-2-1tp

CUTE LITTLE 2 room furnished house. Window unit air conditioner. Single or married couple. No pets. 309 W. Magnolia. 592-5326. 9-2-1tc

KEY REALTY




Sarah Barker
Cindy Witherspoon

592-2718 592-4583
We hold the Key to your new home

TEXAS REALTY

Selling Iowa Park

109 W. Cash
592-2728



Polly Spruiell
Res. 592-4756
Mobile Ph. 733-4832

Tommy & Glenda Key
Res. 592-4660
Mobile Ph. 781-1996
Mobile Ph. 781-3949

306 S. Yosemite Beautiful lot, mobile home hook-ups. **REDUCED**
762 S. College In Holiday - small house, great carport.
300 W. Park Small home has remodeled kitchen; central H/A.
300 W. Ruby **IN CONTRACT**
206 E. Garden Small 2-BR with nice yard, carport.
20's

304 E. Bank 2-BR with carpet, paneling, fence, cellar.
202 E. Garden Neat 2-BR with carport, washer/dryer conn.
305 W. Diamond Two-story, 3 BR home with vinyl siding.
4335 Cunningham, W.F. **IN CONTRACT**
30's

201 S. Jackson Duplex (1 BR ea.) with steel siding.
317 E. Cash 2-BR home-central H/A and rentals in the rear
608 W. Cornelia 3 BR brick, 1/5 bath, fenced, garage.
40's

1107 Lincoln 3 BR, 2 BA has formal dining, vinyl siding.
802 Van Horn **IN CONTRACT**
1607 Douglas **IN CONTRACT**
308 W. Daisy Nice home together with welding shop, etc.
507 E. Benton Hwy. 79 in Petrolia, 3 BR, 1.62 acres.
1010 Foley **SOLD**
1009 Lincoln **IN CONTRACT**
219 S. Wall **IN CONTRACT**
50's

1318 Sunset **SOLD**
504 W. Aldine Non-qualifying 3-BR with recent improvements.
60's

302 E. Diamond Remodeled 3 BR on large corner lot, shop bldg.
615 N. Wall **SOLD**
70's

903 Dosia Beautifully maintained home; spacious; many extras
714 W. Manes Total electric 3 BR, new pain, kitchen built-ins.
1452 Horseshoe Lake Rd. 21 acres w/2 BR house, barns, corral, farmland.
#29 Surrey **SOLD**
80's

1607 Yucca **SOLD**
90's

1802 Johnson Road New Construction. Call for details.
100's

1704 Quail Valley Beautifully decorated 3 BR on 5 acres.
Land

1.73 Acres NE corner 3rd Street & 287 Serv. Rd.
10.00 Acres South Peterson Rd. - good location.
32.01 Acres Peterson & 287 Expressway
Commercial

1.54 Acres Old Iowa Park Hwy & Magnolia
926 & 928 W. Highway Two buildings; one is leased

NEW LISTING
2311 BRIDWELL ROAD
Lovely home with rock exterior on .503 acre. This total electric, 3 bedroom with large master suite, fireplace, and pool is in the Iowa Park school district.

SOLD

TEXOMA REALTY
592-9622

Patty McLemore 592-5109
Thomas Johnson 592-2391

YOUR GUIDE TO HOMES

IOWA PARK INVESTOR'S DREAM **SOLD** oms, extra room, patio, cellar, central air conditioning.

WICHITA FALLS
5123 Jamaica Drive - 1,368 S.F., three bedrooms, large living area, formal dining, covered patio. \$52,000.
671 Mesa - 3 years old, two bedrooms, central air conditioning, C/H&A, patio. **IN CONTRACT** 7/P. energy efficient.

3019 Borton Ln. - Another investor's special. 2 bedrooms. \$22,000.

HAVE BUYERS-NEED SELLERS!!!
Call us to see VA & FHA acquired homes.
Also we have vacant lots in Iowa Park & Wichita Falls
REALTORS OF DISTINCTION

TRAVCO PLUMBING CO.
(817) 855-7334
After 5 & weekend calls welcome
Licensed & Bonded

\$1000 REWARD

For information leading to the arrest and conviction of any person or persons involved in theft, vandalism, arson, fishing or hunting on any of our properties in Wichita, Archer, Wilbarger, Clay, Wise or any other county in which we may have equipment located. Tom Swanson Oil Co., TS&T Drilling Inc. Ph. 817-495-3971.

Hunter Real Estate
108 E. Cash 592-4661
Sam Hunter Wanda Hunter

3 BDRM. BRICK. Large rooms, double garage. Corner lot. \$48,000.
LARGE 3 BDRM., three car garage. Den, fireplace. Redecorated interior. \$48,000.
3 BDRM., 107 James. FHA, VA or Conv. financing. Make offer.
20 ACRES with commercial building on FM 369. Could be converted to residence. Possible owner finance. **CONTRACT PENDING**
FOUR LOTS on North Bond. Good building location.
MOBILE HOME LOTS for rent. \$60 monthly.
411 E. JEFFERSON - Corner lot. - **SOLD**

RESIDENTIAL

10479 LONGLEY RD.	75,000	3-2-1, sun room, formal dining, 1.98 acres, extra special!
300 E. GARDEN	47,000	FHA appraisal. 3-2-2. extra bedroom or living area, corner lot.
410 W. LOUISA	39,000	Negotiable, motivated seller! 2 or 3 bedroom, super living & dining area corner lot.
CHARLIE ROAD	65,000	1-2, 5 acrea, totally remodeled Victorian styling. A real looker!
603 W. TEXAS	39,500	2-1-1, Owner finance.
1500 DOUGLAS	45,000	3-1 1/2, super home, excellent decor. A must see.
313 E. WASHINGTON	55,000	4-2-2, nicely updated, above ground pool.
1500 N. VICTORIA	4+bedroom	2 baths, pool. Country setting. Lease, \$1,200 mo. or owner finance.
300 E. GARDEN	\$49,000	CONTRACT PENDING
406 E. MAGNOLIA	\$16,500	3-2-2.
900 S. BELL ROAD	\$32,500	3 BR, 2 bath, extra nice, country-like living.
307 E. GARDEN	3-2-1	CONTRACT PENDING
410 W. LOUISA	3-1-2	CONTRACT PENDING
902 VAN HORN	\$39,000	3-1 1/2-2, extra could be 4th bedroom. Reduced.
1106 W. LOUISA	\$49,000	SOLD
RUBY & BELL RD.	\$38,500	CONTRACT PENDING
1408 LONGVIEW	ASSUMPTION	CONTRACT PENDING
COMMERCIAL		Super location for business, Hwy 287.
COMMERCIAL		Building in super location. 2 story, Mid-30's Call for details!

Regency One REALTORS
Don't Just Dream...Live the Dream!
Office - 592-2133 or 592-2134

DON'T JUST DREAM...LIVE THE DREAM!

1113 POLK Steel siding, central heat/air, 3 bedroom, 1 bath, 2 living areas, 2 fireplaces, built-in china cabinets in kitchen, hardwood floors under carpet, double garage with G.D.O. and small workshop. Call Julie.

1416 FM 368 SOUTH Private, country atmosphere. 3 bedroom, 1 bath, with loads of mature trees, on 29 acres. Call Julie!

710 W. MANES Picture Perfect! 2 living areas, study with built-in desk & bookcases, 2 fireplaces, skylights, storm windows, water treatment system. 45X22 ft. pool with cabana. 2,138 sq. ft. Call Julie.

603 W. CORNELIA Suburbia in the heart of the city on fenced double lot. 3 BR, 1 3/4 bath, 2 living areas. \$52,500. Call Julie.

1892 HISTORICAL BUILDING DOWNTOWN IOWA PARK Solid 2-story. Great for any form of business. \$25,000. Call Today!

NEW LISTING - 905 W. CORNELIA 3 BR, 1 1/2 bath, central air conditioning. **IN CONTRACT**

411 N. TEXOWA - PRICE REDUCED 2 BR, 1 BA, laundry room, formal dining, corner lot, \$15,000.

NEW LISTING - 705 W. REBECCA Super nice 2 bedroom, two story. **IN CONTRACT**

REDUCED TO ONLY \$15,000-COLEMAN PARK RD. Private, country atmosphere. 3 bedroom, 1 bath, with loads of mature trees, on 29 acres. Call Julie!

1416 FM 368 SOUTH Renovation in progress. Approx. 1036 sq. ft. will be 2 bdrm., 2 bath, living area, formal dining. Has apartment that is approx. 400 sq. ft. Garage, 50X30 workshop, 29X22 stalls, 12X8 storage building, pipe welding fence. Will look at as is offers.

103 & 105 HAWTHORNE 2 houses, each has living area, kitchen-dining, 1 bdrm, 1 bath. Price reduced, \$12,900.

500 E. PASADENA New carpet throughout, 3 BR, 1 bath, vinyl siding, new roof, freshly painted inside. \$31,500.

523 N. WALL Approx. 1.4 acres. **IN CONTRACT** ing, ldry.

PRICE REDUCED-2994 HORSESHOE BEND Immaculate 3 BR-3BA home. Formal dining - breakfast area & breakfast bar. Ldry. room, large living/fireplace, study & TV room. 15X12 storage. Has pier. \$119,500. Will look at trade in Iowa Park.

NEW LISTING - 509 W. ALAMEDA 3 or 4 bedroom home. 2 full baths, very neat and clean, carpeted. 2 storage buildings. \$40,500. Call Winnie.

TIME SHARE CONDO
Located in Christi, Colo. \$8,000. 3 weeks out of the year. Call for info.

LAND! LAND! LAND! LAND! LAND!
NEW LISTING - Four lots located on 619 W. Washington, \$8,500.
Vacant lot, \$2,200. 200 W. Garden.
1206 W. Highway - 2 Vacant Lots - 160X130, great building site. \$21,500.

COMMERCIAL - IOWA PARK
Fashionable southwest style building, 2,590 sq. ft. beautiful entrance. 3 offices. Has multitude of uses.

GREAT BUY & GREAT LOCATION
Commercial property. Two metal buildings, overhead doors, concrete floors, nice offices w/CH/A. Situated on 5.72 acres - Seymour Hwy. Owner will sell all or one building separately. Will consider owner financing.

340,000
Commercial acreage. 10 acres with Seymour Highway frontage. Paramount location next door to Channel 6. Will sell all or part. Call Julie.

600 W. HIGHWAY
Prime location for any form of business. \$163,000.

GOOD LOCATION - GREAT BUILDING
Approx. 6,000 sq. ft. Any form of business. \$127,500.

DON'T JUST DREAM...LIVE THE DREAM!

DON'T JUST DREAM...LIVE THE DREAM! DON'T JUST DREAM...LIVE THE DREAM! DON'T JUST DREAM...LIVE THE DREAM!

CARPORTS BY SCOTT

Custom-built metal constructed carports and patio covers to meet your needs. Your choice of colors. Protect your cars from mother nature and harmful rays of the sun. Free Estimates.
592-4317

MISC. FOR SALE

GARAGE SALE - Washer, dryer, Bentwood rocker, play pen, baby swing, high chair, car seat, lots of GOOD kids clothes - infant to 2T girls, 4T boys, much more! Saturday, 8:30 a.m. - ? , 708 W. Rebecca. 9-2-1tp

GARAGE SALE - Saturday only, 8-4. Forgotten treasures. 505 W. Clara. 9-2-1tc

GARAGE SALE - Saturday, 8 a.m. - 7, 1205 N. Pacific. Clothes, lots of misc. 9-2-1tc

8-PIECE BASSETT bedroom suite, pecan wood, Country English style, in mint condition. \$700. 706 W. Clara. 9-2-1tp

EXERCISE BICYCLE, less than 400 miles. 592-5183. 9-2-1tc

KENMORE washer & dryer, \$50 each. 592-4911, 592-0104. 9-2-1tp

REGISTERED Boxer puppy, 7 month old female. Fawn & white, black mask. \$75. 592-4406. 9-2-1tp

DIRT BIKE - Yamaha 80. Runs great. See to appreciate. Randy Brown, 592-0106. 9-2-1tc

DOONEY-BOURKE copy. \$45. 592-4398. 9-2-1tc

"DOUBLE CRYPTS" inside mausoleum, \$4995. Call 592-9005 or 767-9226, ask for Heidi. 9-2-2tp

1973 FORD Grand Torino. 351 V8. Auto, power & air. Runs and looks good. \$800 or best offer. 592-2024. 9-2-1tp

BUSINESS

HORTON CONSTRUCTION Additions, roofing, painting, remodeling, dry wall & acoustic ceilings. Blaine Horton, 592-5586. 2-1-tfc

TNR CONSTRUCTION - Roofing, painting, sheetrock, and texture, brick and cement work. Licensed and bonded. Rick Caffey, 592-4625. 2-1-tfc

BLACK POWDER Guns and accessories, revolvers \$112 and up. Powder \$6.50 lb. Will order modern guns for 10% over cost. Ye Ole Gun Shack, 413 W. Washington, 592-5430. 2-1-tfc

REMODELING, additions, or new constructions. Bath and kitchen remodels a specialty. Roofing, insulation and storm windows. Free estimates, references, discount for senior citizens. Jack or David Kerr, 5056 Old Electra Rd., 592-5710. 2-1-tfc

EIBEN Home Repair and Remodeling. Additions, roofing, painting, sheetrock, doors, carports, patio covers, and more. Small jobs welcome. Reasonable rates. Licensed and bonded. 592-2053. 2-1-tfc

DALE'S HOME REPAIRS - Doors, roofs, floors, painting, hauling. Senior's rates. 592-9455. 4-22-tfc

WOLFE ROOFING - Residential-commercial. Free estimates. 855-5657. 2-1-tfc

PET SHOP - Fish - Bird supplies. Books to trade. Call or come by. Check us out. Park Hobby Shop, 702 E. Hwy. 592-5242. 3-4-tfc

TELEPHONE JACKS, Installation or repair. Affordable rates. Free Estimates. Jerry Reed, 592-2243. 2-11-tfc

GARY WILLIAMS, contractor. Remodeling and renovating. Painting, carpentry, cabinets, formica work. Free estimates. 592-2480. 5-13-tfc

BIOGIME SKIN CARE - all natural products. Cruelty free. 817-696-1234. 5-13-tfc

COPIES MADE - 20¢ each including reduction and enlargement. Iowa Park Air Conditioning. 607 E. Bank. 2-1-tfc

LEER CAMPER SHELLS - Over 200 in stock. Most colors and sizes. Petes R.V., Marlow, 658-5114. 2-1-tfc

GROOMING - Call or drop by anytime. Park Hobby Shop, 702 E. Hwy. 592-5242. 6-3-tfc

LAWN & GARDENING Service. Mowing, edging, hedging, trimming, hauling, etc. Reliable, dependable, with references. Call Dale 592-9455. 4-22-tfc

LAWNMOWER & weed eater repair. Overhauls, blades sharpened and balanced. Also edgers and riding mowers. Real reasonable. 592-9300. 7-29-tfc

JUDY'S RESALE now open. Buy, sell, trade. Used furniture, bedding, housewares. Call us at 592-4911 or 592-2153. 7-15-tfc

FACSIMILE capability. Glenna Via Insurance. 2-1-tfc

COPIES MADE at Parkway True Value, 25¢ each. 2-1-tfc

AVON PRODUCTS. Call 592-9607. 10-8-tfc

MARY KAY Cosmetics - Norma Young. 692-1454. 2-4-tfc

MARY KAY COSMETICS - Call B.J. Gibson, Independent Beauty Consultant, 592-9395. 7-22-tfc

TEACHERS, MOTHERS, and others needed to represent Discovery Toys. For more information call Carey Roberts collect (817) 860-2926. 7-22-8tp

SHOP IOWA PARK FIRST

No other publication in the world will make that statement!

Serving North Texas and Southern Oklahoma for 30 years in Construction and Industry

CESSCO RENTAL & SALES

703 E. Scott
Wichita Falls, Texas 76301

817-766-0238 1-800-443-6492

JOHN Speed
CHEVROLET PONTIAC OLDSMOBILE Geo
★Buy American★
NORM HODGES
New Ownership - New Inventory
Catering to the needs of Iowa Park
905 Sheppard Rd. (817) 569-5271
Burkburnett, Fax (817) 569-3722

ALLEN LEEK AIR CONDITIONING

21 Years Experience Working For You
•Commercial & Residential •Heating & Cooling
•Sales & Service •Heat Pumps •Maintenance Contracts
•Energy Management •Commercial Refrigeration
•Service All Makes & Models

113 North Kirkwell
Wichita Falls, TX 76302
(817) 766-3779
TACLA012006C

24 Hour Service

24 Hour Emergency Call
CITY GLASS AND MIRROR
M.E. LeDue (817) 723-8515
2214 Seymour Hwy. (817) 723-7550
Wichita Falls, Tx. 76301 Pager 851-1160
We're Just a Stones Throw Away

BANKRUPTCY ADVICE

1st Appointment Free

Stop Creditor Harassment
Save Exempt Property
Erase Dischargeable Debts
Stop Foreclosure
Experienced Law firm

THE WESBROOKS FIRM, P.C.
(817) 322-7771
1-800-552-8529

not certified by the Texas Board of Legal Specialization

IT'S HARD TO STOP A TRANE.



IOWA PARK AIR CONDITIONING & HEATING CO.
592-2761

TACLBO10194E

TRANE
It's Hard To Stop A Trane™
We Service All Brands
Let Us Help You Keep Your Cool!

POSEY'S APPLIANCE SERVICE

We service all makes of washers, dryers, freezers, refrigerators and window air conditioners

208 James Drive Phone - 592-5452

DOMESTICS

RESISTERED family home has full time openings for all ages. Monday - Friday only. USDA food program. Nancy 592-4657. 6-24-tfc

REGISTERED family home has full time openings for all ages. Monday-Friday only. USDA food program. Nancy 592-4657. 6-24-tfc

PRE-SCHOOL CLASSES start Sept. 1, 8:30-11:00 a.m. Openings for 3, 4 & 5 year olds. Call or come by for more information. King's Kids, 202 N. Jackson, 592-4242. 8-26-2tc

REGISTERED Child Care - Openings for infants and preschoolers. 592-9561. 8-26-3tp

HOUSE CLEANING - References, dependable. 592-4443, 592-4906. 9-2-2tc

WILL CLEAN your home or office. Reasonable rates. 592-5954 or 592-4063. 9-2-1tp

HELP WANTED

PART-TIME night cook. Apply in person, Ken's Pizza, 902 W. Highway. 8-12-tfc

FULL-TIME RN needed. Apply at Park Home Health, 117 W. Park, Iowa Park. 9-2-2tc

ERRAND SERVICE
Pay bills, chores, housekeeping, shopping, references
Cheryl Harville
592-0106

Shaklee Distributors
Ruby & Dan Love
1601 Karen, Iowa Park
592-5951

Park Home Health Services
592-2753
Phone Answered 24 hours
Medicare-Medicaid approved
Private Insurance

FAX Messages
Ph. 592-5613
Copies made - 15¢
UPS Packages
Hughes Pharmacy

LAWN SERVICE
Mowing, trimming, edging, weedeating, reasonable - need jobs.
592-9300

WOODBRIAR COMMUNITY
1, 2 and 3 bedroom units available
ALL BILLS PAID (Includes Basic Cable)
Check about our Section 8 for elderly.
1000 Mary 592-2121

BUSINESS

NOTICE

GARY WILLIAMS, contractor. Remodeling and renovating. Painting, carpentry, cabinets, formica work. Free estimates. 592-2480. 5-13-tfc

FREE to good home, 2 male black lab mix dogs. 9 months old. Good with children. 592-2242. 9-2-1tp

REDUCE: Burn off fat while you sleep. Take OPAL tablets and E-Vap Diuretic available Wal-Mart Pharmacy. 8-12-5tp

PUBLIC NOTICE
The Board of Adjustment of the City of Iowa Park, Texas, will conduct a public hearing at 6:00 P.M. on Tuesday, September 7, 1993, to consider the issuance of a variance at the north 75' of Lot 1 & 2, Block 179, Original Townsite (1000 South Wall), to allow the temporary use of a travel trailer outside a mobile home park. Any comments for or against, may be presented orally at the hearing or in writing to the City Administrator prior to the meeting. All meetings are open to the public. 8-26-2tc

HORSEBACK riding lessons. Beginner to advanced. Lesson horse available. 1/2 hour and hour lessons. Call Kim Cox, 592-0048. 8-19-4tp

PUBLIC NOTICE
The City of Iowa Park, Texas is requesting proposals for the sale of their type 1 sanitary landfill and all their solid waste collection and disposal equipment along with a ten (10) year contract with two (2) one year extensions for the collection and disposal of solid waste within the corporate city limits. Proposals will be accepted until 10:00 a.m. on Friday, September 10, 1993, at the office of the City Secretary at which time and place the proposals will be publicly opened and read. All proposals shall be sealed in an envelope clearly marked on the front "Solid Waste Contract". The City of Iowa Park reserves the right to reject any or all proposals. Proposal specifications may be obtained by contacting Michael C. Price, City Administrator at P.O. Box 190, Iowa Park, Texas, 76367 or by calling (817) 592-2131. 9-2-2tc

MY BEST friend lost 101 lbs. in 13 months. I'm doing it too! Want to know how? Call 817-569-3093. 8-26-4tp

NOTICE OF APPLICATION FOR FLUID INJECTION WELL PERMIT
Finnell Oil Company, P.O. Drawer Z, Wichita Falls TX 76308 is applying to the Railroad Commission of Texas for a permit to inject fluid into a formation that is productive of oil or gas. The applicant proposes to inject fluid into the Cisco, Jackson C, Well Number 1, 3, & 6. The proposed injection well is located 1 mile north of Holliday, TX, in the Archer County Regular Field, in Archer County. Fluid will be injected into strata in the subsurface depth interval from 670 to 1615 feet. LEGAL AUTHORITY: Chapter 27 of the Texas Water Code, as amended, Title 3 of the Texas Natural Resources Code, as amended, and the Statewide Rules of the Oil and Gas Division of the Railroad Commission of Texas. Requests for a public hearing from persons who can show they are adversely affected or requests for further information concerning any aspect of the application should be submitted in writing, within fifteen days of publication, to the Underground Injection Control Section, Oil and Gas Division, Railroad Commission of Texas, P.O. Drawer 12967, Capitol Station, Austin, Texas 78711-2967 (Telephone 512/463-6790). 9-2-1tc

ARE YOU Self-Employed? Health insurance at affordable group rates! Call 1-800-756-0048. Non-cancellable. Stable Rates. 8-26-2tp

BAHAMA CRUISE! 5 days/4 nights. Underbooked! Must Sell! \$279/couple. Limited tickets. (407) 767-8100 ext. 7605, Mon-Sat., 9 a.m. - 10 p.m. 9-2-4tp

TUTOR - MSU student. Grades 1-8. Call 592-5055, please leave a message. 9-2-2tp

LEE'S BARGAIN CENTER, 102 S. Victoria, 9:00-5:00. Open this week with lots of new items. Refrigerator, range, microwave, dryer, twin bed, love seat, sofas, baby bed, walker, swings, stroller. Clearance on summer clothing. Check us first! 9-2-1tc

The Following is a list of dissatisfied Leader Classified Advertisers:

ELECTRICIAN!
All Types of Electrical Work
Licensed Bonded
Residential Commercial
Kendell J. Hill, Electrical Contractor
592-4773

MENDOZA HOUSE LEVELING
Exteriors Interiors
Professional House Painting
MANUEL MENDOZA All Type of Repair Work
(817) 720-2530 or 322-3227 Remodeling and Roofing

ANTIQUE MALL
Now Open
10X12 spaces available - be first!
400-C West Park
592-0104
Call 592-4911 or 592-2153 for more info.

WICHITA FALLS FIREFIGHTER
Accept the Challenge. Reach the goal. Get the job done.
CITY OF WICHITA FALLS
•Advancement Opportunity •24 Hours On-48 Hours Off
•Longevity Pay •Life, Health and Dental Insurance
•Pension •Paid Holidays, Vacations, Sick Leave
•Tuition Assistance •Credit Union

If you would like to know more, contact:
City of Wichita Falls
P.O. Box 1431 Wichita Falls 76307 (817)761-7615
Applications must be received by Sept. 21, 1993

No matter what the temperature,
you can count on us for your heating and cooling needs.

SCOTT BOREN
AIR CONDITIONING AND HEATING
Residential - Commercial
(817) 592-0043
24 Hour Service
Owner SCOTT BOREN #TACLBO11983E

Obituaries

Mary Charlene Johnson

Services for Mary Charlene Johnson, 58, will be at 11 a.m. today in the Pavilion at Highland Cemetery with Bill Keesling, minister of Edgemere Church of Christ in Wichita Falls, officiating. Burial will be in Highland Cemetery under the direction of Dutton Funeral Home.

She died Tuesday in a Wichita Falls hospital.

Mrs. Johnson was born March 30, 1935, in Stonewall, Okla. She had lived in Iowa Park since 1977, moving here from Duncan, Okla. She drove a truck for Car Quest, and was a member of the Church of Christ.

Survivors include her father, Austin Charles Eslick of Duncan, Okla.; one son, Charles Lee Eslick of Dumas; one brother, Don Eslick of Iowa Park; one sister, Christine Martin of Iowa Park; and two grandchildren.

Memorials may be made to Hospice of Wichita Falls or the Iowa Park Volunteer Fire Department.

Lonita L. Graham

Services for Lonita L. Graham, 57, were at 1:30 p.m. Friday at Owens & Brumley Funeral Home.

Rev. Garth Wilcoxson, pastor of Beverly Drive United Methodist Church, officiated. Burial was in Riverside Cemetery.

Mrs. Graham died Thursday in her home in Wichita Falls. She was the mother of Sandra Lynn Roy of Iowa Park.

Born Aug. 22, 1936 in Fort Townsend, Okla., she had been a resident of Wichita Falls 30 years. She was married to E.L. Graham March 14, 1956 in Post.

Mrs. Graham was a retired service assistant at Wichita Falls State Hospital.

Others surviving are two sons, Randy Cleveland and Jimmy DeWayne, both of Wichita Falls; another daughter, Cynthia Ann Lanman of Wichita Falls; seven brothers, Winford Little and Eugene Little, both of Little Rock, Ark., and Lloyd Little, Charles Little, Ole Little, Ronnie Little and Leroy Little, all of Brownfield; three sisters, Shirley Hales and Janie Van Story, both of Brownfield, and Elizabeth Clark of Orange, Calif., and six grandchildren.

Jason Robert Priddy

Memorial services for Jason Robert Priddy, 18, were at 3 p.m. Friday at First Presbyterian Church in Wichita Falls.

Dr. Isaac Butterworth, pastor, officiated. Arrangements were under direction of Hampton-Vaughan Funeral Home.

Priddy died Wednesday morning in a two-vehicle wreck.

Born April 24, 1975, in Wichita Falls, he was a lifetime resident of the area. He was a student at Iowa Park High School and a member of First Presbyterian Church in Wichita Falls.

Survivors include his mother, Suzanne B. of Wichita Falls; his father, R. Carlisle of Wichita Falls; his grandparents, Mr. and Mrs. Robert Priddy and Mr. and Mrs. Lawrence Black, all of Wichita Falls; his great-grandmother, Annie Black of Iowa Park, and two brothers, Nathaniel Carlisle and Richard Heath, both of Wichita Falls.

Jerry Wayne Hill

Graveside services for Jerry Wayne Hill Sr. 55, of Burkburnett were at 2 p.m. Saturday in Farmersville Cemetery.

Arrangements were under direction of Baumgardner Funeral Home of Fort Worth.

Hill, brother of Wanda Jamison, of Iowa Park, died Wednesday in a Wichita Falls hospital.

Hill was born Sept. 10 in Farmersville. He was an auto mechanic.

Other survivors include his wife, Jo Ann; two sons, Jerry Wayne Jr., of Springtown and Joseph David of Burkburnett; one brother, Paul David of Odessa; two other sisters, Gladys Stephens and Ruth Brown, both of Odessa, and two grandchildren.

Early-day resident dies in Florida

Iowa Park native, Gordon Faulkner Palm, 68, who will be remembered by those who graduated Iowa Park High School with him in the class of 1942 and by many older citizens, died July 21 in Lakeland, Fla.

Palm was born in Iowa Park May 31, 1925. His mother, Alice Faulkner Palm, a native of Decatur, taught in the Iowa Park school system and served as principal of Pleasant Valley School when it was part of the system in the early 1940s. She died about a year ago in Lakeland.

Palm's father, R.A. Palm, and his grandfather operated an auto parts store and distribution business in a building located between the Leader office and the Friendly Door. His grandfather was a Justice of the Peace in the 1930s and '40s.

The family was active in the First United Methodist Church. Palm was one of the few to achieve the rank of Eagle Scout in Troop 37 of Iowa Park.

Oscar Lochridge of Fort Worth, also a 1942 graduate of Iowa Park High School, provided the *Iowa Park Leader* with information on Palm's unusual and outstanding activities through the ensuing years after his graduation here.

Palm attended the 50th reunion of the class of 1942 last September. He was using a walker, a result of Parkinson's Disease, which he had suffered the past few years.

This disease and its resulting in the loss of equilibrium caused him to fall and in the recuperating period he contracted pneumonia which led to his death.

At the time of his death he was owner and operator of Gordon F. Palm and Associates, consulting chemical engineers, in Lakeland. The geographic area of operation of his business was unlimited, with both domestic and foreign services offered.

Palm received the BS degree in Chemical Engineering from the University of Illinois, and in 1954 he received the MS degree from the University of Houston where he was assistant professor of Chemical Engineering.



Gordon F. Palm

He was a fellow of the American Institute of Chemical Engineers and was a registered Professional Engineer in Illinois and Florida, and as a consulting engineer, he was a member of the National Society of Professional Engineers. He also was a member of the Air Pollution Control Association. Palm was listed in Who's Who in Engineering and in 1977 was named Engineer of the Year.

In order to gain the nomination for the latter honor, Palm had earned their respect in achievement and distinction in the technical and professional aspects of engineering, well-rounded in civic and community affairs, and held in high regard as to personal character, integrity and public image.

He had 38 years of world-wide experience in the Phosphate Fertilizer Industry and in process engineering, process design, cost estimation,

project management, plant design, plant start-up and technical sales.

Palm was considered to be the world's foremost authority on chemical fertilizers.

For 25 years Palm had been consulting engineer in the Phosphate Fertilizer Industry. In the last few years Palm had become an inventor and has several patents.

He was an Army veteran of World II, serving as a combat engineer in the European Theater.

For many years Palm had been a member of the scout committee and scouting coordinator for the Boy Scout program of College Heights United Methodist Church in Lakeland.

His wife, Marcella and their son, Eugene, live in Lakeland. Their daughter, Dorothy Sandbrook lives in Brevard, N.C. They also have three grandchildren.

MONEY SAVING COUPONS the Sunflower Group

INTRODUCING NEW SUPER G FILM

SUPER FINE GRAIN SUPER SATURATED COLORS SUPER SHARPNESS

SAVE \$1.00 ON ANY 1 ROLL FUJIFILM

1.23813

7410101076

ALLSUP'S

IOWA PARK & HOLLIDAY STORES

PRICES EFFECTIVE SEPTEMBER 2 - 8, 1993

TOM'S NACHO OR AUTHENTIC CORN CHIPS 16 OZ. BAG \$1.49

CORN KING MEAT FRANKS 12 OZ. PKG. 49¢

ALL SUP'S HOT LINKS 2 FOR 2.99¢

MAMA ANGELINA'S COMBO PIZZA 5 INCH ONLY 79¢

TROP ARTIC MOTOR OIL QUART \$1.29

10W/30 OR 10W/40 QUART \$1.39

SAUSAGE, EGG & BISCUIT 89¢

SHURFINE KETCHIP 79¢

SHURFINE FRUIT RINGS CEREAL 15 OZ. BOX \$2.99

SOPHIE MAE PEANUT BRITTLE 4 OZ. BOX 79¢

SHURFINE DOG FOOD 20 LB. BAG \$3.99

DISPOSABLE CUDDLES DIAPERS 24 LARGE OR 32 MEDIUM CONV. PKG. \$3.99

BRAWNY PAPER TOWELS JUMBO ROLL 99¢

WILSON MEAT BOLOGNA 12 OZ. PKG. 79¢

PERSON'S PEANUT PEANUT NUT ROLL.....2/89¢

REG. 55¢ BOYER'S MALLO CUP CANDY.....3/99¢

16 OZ. SHURFINE WHOLE TOMATOES.....39¢

8 ROLLS CHARMIN SPACEMAKER TOILET TISSUE \$2.09

175 COUNT KLEENEX TISSUE 89¢

COMBO OF THE MONTH

2 CHIMICHANGAS OR 2 BEEF & SALSA BURRITOS EACH COMES WITH A TALLSUP FOR ONLY \$1.99

COOKED FOODS SPECIAL OF THE WEEK

ALLSUP'S "FAMOUS" BURRITO & A 20 OZ. NR COKE FOR ONLY 99¢

Flowers Always Say Just The Right Thing.

Flowers speak straight from your heart. And that's a language everybody understands.

All Occasions

520 W. Highway 592-2323

A Word of Comfort

In difficult times it helps to know that all arrangements are being handled with the utmost dignity and understanding. That's why so many people in our community look to us to help ease their burden.

Please feel free to call or stop in for details about our services.

(817) 592-4151

DUTTON FUNERAL HOME

300 E. Cash

We honor Visa MasterCard Discover American Express

Funeral Financing with approved credit through Complete Care Handicapped Accessible