

MRS. LITA WATSON
528 W. CLARA
IOWA PARK TX 76367
112

IOWA PARK LEADER

50 Cents

Vol. 23, No. 25 IOWA PARK, WICHITA COUNTY, TEXAS 76367 Thursday, March 5, 1992

Police report five arrests

Five arrests were reported during the past week by the Iowa Park Police Department.

Two were results of domestic disturbances, one for possession of drug paraphernalia, one for three different charges and the other for indecency with a child.

When officers responded at 8 p.m. Thursday to a home in the 100 block of James, they arrested Jimmie Maurice Wahl, 45, on a charge of assault to prevent family violence.

He was released at 7:30 a.m. the following day after signing a personal recognizance bond, which carries a fine of \$71.50.

Michael Neil Foix, 22, also was charged with assault to prevent family

violence at 12:47 a.m. Tuesday when officers were called to a residence in the 900 block of South Park.

He was released the following morning after posting a \$71.50 cash bond, according to the police blotter entry.

After police stopped Bobby Joe Owen, 27, in the 400 block of South Yosemite at 11:56 p.m. Tuesday of last week, officers determined he had in his possession paraphernalia for using drugs.

The paraphernalia was confiscated and Owen released.

A suspect who was approached by officers at 12:47 a.m. Monday in the 100 block of West Highway initially gave false identification.

Police placed Allen Martin Anderson Jr., 26, under arrest on a charge of failure to identify to a police officer.

Martin also had outstanding warrants against him for no vehicle liability insurance and violation of driving restrictions.

He was later released after signing three personal recognizance bonds and promising to appear in municipal court.

A 31-year-old Iowa Park man was arrested at the police station after turning himself in at 10:14 p.m. Thursday.

He was charged with indecency with a child, and taken to Wichita County jail where he was held under a \$1,000 bond which had been set by Justice of the Peace Bill Robinson.

A resident in the 1300 block of Emma told police a red, Honda four-wheeler had been taken from his back yard. The theft was reported Sunday morning.

Permit issued for new home

The first permit for construction of a new home to be issued in approximately two years was recorded early in February.

The month's permit total was 20 times that of January's, \$90,080, and raised the year's total to \$94,590.

The last new home built in Iowa Park was constructed in the 500 block of West Clara.

Permits issued during February included:

Patty Smith, 514 W. Coleman, new home, \$29,000.
Walter Greaser, 600 E. Bank, mobile home, \$38,450.
Eddie Cockburn, 1514 Rita, alteration, \$5,000.
Eugene Miecir, 1208 S. Wall, repair, \$1,000.
DeWayne Williams, 117 W. Cash, repair, \$500.
O.N. Newman, 303 N. Wall, repair, \$5,000.
James Wilson, 1015 W. Cornelia, alteration, \$850.
Elbert Owen, 403 S. Victoria, garage, \$2,880.
John Huff, 208 W. Diamond, repair, \$1,000.
Mr. Williams, 403 E. Washington, repair, \$1,400.
Don Haynes, 510 S. Colorado, mobile home, \$5,000.

Project Show Saturday

Iowa Park 4-H and FFA Project Show coordinators are anticipating 230 entries to be exhibited Saturday at the school show barn on East Ruby.

After being held on Tuesday and Thursday nights the past several years, this year's stock show was once again returned to a one-day event.

Only youth who attend Iowa Park schools are eligible to show their animal and poultry projects.

The show traditionally is a prelude

to the county-wide show, which will be held the following week in Wichita Falls.

Judging will begin at 8:30 a.m. with mares and geldings, followed by broilers, turkeys, rabbits, goats, sheep, heifers and steers and concluding with the swine classes.

Exhibitors can take their entries to the show barn between 4 and 10 p.m. Friday. All weight cards for swine, lambs, goats and steers are to be turned in by 9 that evening.

Area opens pocketbooks, hearts for cancer victim

Residents of the Iowa Park area have opened their hearts for a young Wichita Falls girl, Megan Ledue.

The younger is to undergo a bone marrow transplant in Fort Worth in hopes of curing cancer which threatens her life.

A drive for funds began two weeks ago. Other special fund-raising events have been held, or are in the planning stages, but Saturday's "Meg-a-Thon" was considered extremely successful.

Efforts here and in the Kamay area, have raised more than \$3,500 for her fund to date.

Responses to Saturday's call for help amounted to \$1,037. Donations made to a special account set up at State National Bank were \$1,574.50 as of Wednesday morning. And additional \$929 was collected in canisters set out at various locations.

Locations where canisters were located include: Ken's Pizza, Video Library, K&K Food, Allsup's, Scobee Mini Mart, B&R Thriftway, Movie Store, King's Food, Wal-Mart, Golden Fried Chicken, Harvey's Family Restaurant, 3-M Cafe, Valley View Mini Mart, State National Bank and in Electra, Coda Energy.

Pre-registering now underway

To aid in planning the total school program for the 1992-93 school year, Kidwell Elementary is now pre-registering children three to five years of age.

Forms have been sent home by students attending the school, asking that they be returned by Mar. 10.

Parents who have not received the forms are asked to call the school at 592-4322.

Children who are five years of age on or before Sept. 1 of this year will be eligible to attend Kindergarten this fall, according to Ron Woods, principal.

Trustees to consider new faculty contracts

Teacher contracts for the 1992-93 school year and adoption of the local textbook committee report will receive school board action, when trustees meet at 7:30 p.m. Tuesday in the junior high library.

Action on contracts for all professional personnel will take place when the meeting is re-opened following a closed executive session, according to the board's meeting agenda.

The textbook committee's report will be made following a lengthy period during which faculty members studied proposed textbooks available for adoption.

Trustees will be asked to consider a change in board policy which would include additional high school honor classes that would be offered in the 1992-93 year.

Supt. Glen Mitchell is to report on a proposed Wichita Area Vocational Training Center, as well as current local enrollment figures.

Besides hearing reports on tax

collections, transportation and cafeteria, trustees are to cast ballots for the Region Nine Educational Service Center board of directors.

Bulletin

Just before the *Leader* went to press, Supt. Glen Mitchell announced trustee Denny McCarthy had asked that Tuesday's meeting be changed to 5 p.m. instead of 7:30.

McCarthy explained he needed to be at the county court house at the scheduled meeting time, because he is a candidate for county commissioner and Tuesday is election day.

Mitchell said he was unable to contact all school board members prior to the paper's printing, and would not know until later whether the time would be changed or not.

Should it be, the revised agenda will be posted at the school for public inspection.

SUPER TUESDAY

Democrats, Republicans to vote on their choices of candidates

Democrats and Republicans will be selecting their preferences among candidates for president all the way down to county precinct constable when they hold their respective primaries Tuesday.

Polls will open at 7 a.m. and close at 7 p.m.

Winners of the contested races will

face off in the November's general election.

Democratic Party primary polls include: Precinct 32, Wichita County Agricultural Building, 220 W. Park; Precinct 33, Faith Baptist Church, 411 S. Wall; Precinct 34, West Wichita Coop Building at Valley View; and Precinct

Church Camp Rd.

Republican Party primary polls include: Precincts 32 and 33, First Christian Church, 105 E. Cash; Precinct 34, West Wichita Coop Building, Valley View; Precinct 35, Chaparral Baptist Assembly, 3784 Church Camp Rd.

Early voting in the primaries will conclude Friday.

Candidates on the respective party ballots include:

PRESIDENTIAL NOMINEE
Bob Kerrey, Paul E. Tsongas, Rufus Higginbotham, Charles Woods, Edmund G. Brown Jr., Lyndon H. LaRouche Jr., George W. Bennis, Tom Harkin, Tod Howard Hawks, J. Louis McAlpine, Bill Clinton, Democrat
George Bush, Patrick J. Buchanan, David Duke, George A. Zimmermann, Tennie Rogers, Republican

U.S. REPRESENTATIVE DISTRICT 13

Bill Sarpalius, Democrat
Ernie Houdashell, Ray Powell, Bob Price, Beau Boulter, Republican

RAILROAD COMMISSIONER
David Young, Lena Guerrero, Democrat

Barry Williamson, Carole Keeton Rylander, Republican

JUSTICE, SUPREME COURT PLACE 1

Oscar H. Mauzy, Democrat
Craig Enoch, Charles Ben Howell, Republican

JUSTICE, SUPREME COURT PLACE 2

Rose Spector, Democrat
Eugene Cook, Republican

JUSTICE, SUPREME COURT PLACE 3

Jack Hightower, Paul Banner, Democrat
George Barbary, John D. Montgomery, Republican

JUDGE, COURT OF CRIMINAL APPEALS, PLACE 1
Sam Paxson, Charles F. (Charlie) Baird, Democrat

Jim Vollers, Joseph A. (Joe) Devany, Republican

JUDGE, COURT OF CRIMINAL APPEALS, PLACE 2

Gene Kelly, Morris L. Overstreet, Democrat
Sue Lagarde, Republican

JUDGE, COURT OF CRIMINAL APPEALS, PLACE 3

Pete Benavides, Democrat
Ed Gray, Lawrence (Larry) Meyers, Republican

MEMBER, STATE BOARD OF EDUCATION, DISTRICT 14

William L. (Bill) Hudson, Democrat

STATE SENATOR DISTRICT 30

Steven A. Carriker, Democrat
Tom Haywood, Republican

STATE REPRESENTATIVE DISTRICT 69

John Hirschi, Democrat

STATE REPRESENTATIVE DISTRICT 68

Charles Finnell, Democrat

JUSTICE, 2ND COURT OF APPEALS, PLACE 3

Doyle Willis Jr., R.E. Thornton, Democrat
Tod Weaver, Republican

DISTRICT JUDGE 78TH JUDICIAL DISTRICT

Keith Nelson, Republican

DISTRICT JUDGE 89TH JUDICIAL DISTRICT

Juanita Pavlick, Democrat
Roy Sparkman, Republican

SHERIFF

James Clarence Roy, Tom Callahan, Democrat

Ronnie Shields, Ray Cannedy, Republican

COUNTY TAX ASSESSOR-COLLECTOR

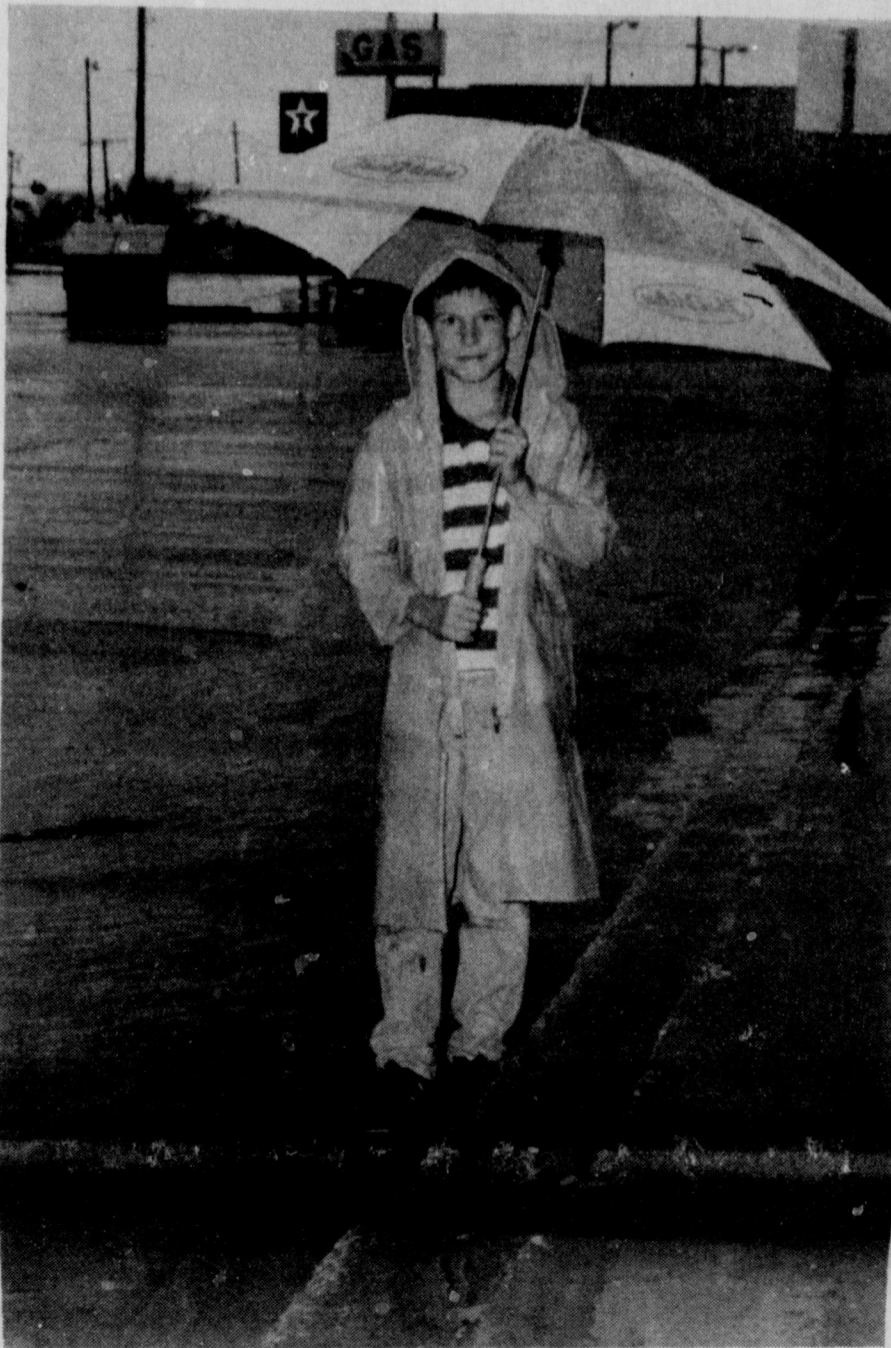
Mac McGee, Monette Pemberton, Democrat

COUNTY COMMISSIONER PRECINCT NO. 3

Gordon Griffith, Mary Ward, Jerry Dean Simmons, Denny McCarthy, J.C. Thompson, Democrat

CONSTABLE PRECINCT NO. 3

Aubrey C. Bohannon, Sam Fairchild, Joe Price, Democrat



CHECKING OUT RAIN - Timothy Smith, 10, checks out the flooded streets following a heavy downpour here late Tuesday afternoon. Though Virgil Woodfin reported measuring .59, some residents said they received more than an inch. Woodfin's report brings the city's total to 2.54 for 1992.

Ordinance, contract top council agenda

Action on two issues carried over from the city council's Feb. 24 meeting will be completed at Monday's meeting.

The meeting will begin at 7 p.m. in council chambers.

Final approval on an ordinance prohibiting petroleum products and oil contaminated filters from being deposited in city-owned waste containers or landfill will be taken.

Deleted from the existing ordinance, which already prohibited petroleum products, was "... manure from cow lots, horse stables, poultry yards, pigeon lofts and other animal or fowl pens..."

Added were "oil contaminated filters," which were added to those items which cannot be put in landfills which are governed by the Environmental Protection Agency.

An amendment to the water purchase contract with Wichita Valley Water Supply Corporation also was

delayed from the previous meeting, and will be considered Monday, according to the meeting agenda.

Administrator Gary Jones is to give a report on results of a survey taken of residents and businesses inside the city, now using septic tanks, on whether they want to receive sewer service.

The council was told that 41 such addresses in the city had been identified as not receiving sewer service and using septic tanks.

Funding of the changeover also will be discussed.

The official order calling for the city election and naming of election judges will be attended to.

Council members will be asked to confirm the mayor's appointments of David Padgett and Jimmy Medlinger to the Planning and Zoning Board.

A public appearance also is listed on the agenda, by Mr. and Mrs. Danny Bohannon.

No new candidate filings

"Everybody seems to be waiting to see what somebody else is going to do."

That's a comment by one election judge concerning the lack of filings in both the May 2 city and school elections.

No new filings have been received since the first week. Candidates have until Mar. 18 to get their names on the ballots.

Two candidates have filed for the office of mayor: incumbent Wayne

House and challenger Mike Grubbs.

Two positions are to be decided on the council, where the terms of aldermen Johnny Crawford and Charlie Helms are expiring. Both are completing their first, two-year terms.

Only Jerry Reed has filed for either of the two school trustee positions which will be decided.

Reed is seeking re-election. The other trustee, Denny McCarthy, has not indicated whether he will run again.

Does Your Subscription to The Leader expire this month?

Check the list on page 4.

Sewell, Bean wed February 21

Michael Lee Bean and his bride, the former Lisa Carol Sewell, are at home in Iowa Park following their marriage Feb. 21 and a honeymoon trip to the Dallas area.

The bride is the daughter of Mr. and Mrs. James Sewell of Wichita Falls and parents of the groom are Mr. and Mrs. W.L. Bean of Iowa Park.

Double ring vows were pledged by the couple in a candlelight ceremony performed at Faith Baptist Church of Iowa Park, with the pastor, Dr. Greg Ammons, officiating.

Fan shaped candelabras and a unity candle, decorated with greenery and white lace and black ribbon bows formed the background for the recitation of vows. Large arrangements of potted ivy plants added to the altar decor.

Pews were marked with white bows and red and white carnations.

Guests were seated to the strains of "Tannhauser Overture"--Richard Wagner. After the bride was given in marriage by her parents, the couple held hands, facing each other, as the organist played "Dreams to Dream". During the lighting of the Unity candle, Judy Douglas sang "All of Me".

The bride's gown of satin was styled with a richly beaded high neckline on a yoke of illusion that featured a heart-shaped keyhole back. The Gigot sleeves were lavishly decorated with lace sprinkled with sequins and drop faux pearls.

A dropped waistline was accented with teardrop pearls that fell into a shower of iridescent sequins and pearls on a large spray of lace that extended to the bottom of the skirt. Faux pearls defined the cut-outs on the cathedral train that was embellished with sequins and pearls.

Adding interest to the gown was a lace peplum trimmed with iridescent sequins and pearls, complimented at the waist with a satin bow.

The bridal veil was caught to a pouf of illusion with sprays of faux pearls.

Her traditional bouquet was formed of white carnations centered with three red roses and sprigs of baby's breath tied with lace and white satin cascading ribbons.

Maid of honor was the bride's sister, Kelly Sewell of Wichita Falls. She wore a black and white taffeta dress fashioned with fitted bodice and puffed sleeves, accented at the shoulders with black taffeta bows. The skirt of black taffeta was gathered to the drop waistline.

She carried a small round bouquet of white carnations centered with one red rose.

Konnie Sewell of Wichita Falls, niece of the bride, served as flower girl. Courtney and Carrie Sheets of Iowa Park, nieces of the groom, were train bearers. They were attired identical to the honor attendant.

Reese Inman of Wichita Falls attended the groom as best man. T.J. Bean, brother of the groom, and Jeff Huff, both of Iowa Park, acted as ushers.

A reception was held in the reception hall at Faith Baptist Church.



Mrs. Michael Lee Bean
(Miss Lisa Carol Sewell)

Tables were covered with black cloths overlaid with white lace and decorated with black ribbon and white lace bows. A black and white basket held the rice bags of white and black, tied with red ribbons.

The three-tiered bride's cake was decorated with black and white silk flowers and white roses accented with black leaves.

The Red Velvet groom's cake was

decorated with chocolate dipped strawberries.

A graduate of Hirschi High School, the bride attended Vernon Regional Junior College and Midwestern State University. She is employed by Sunbelt Savings in Iowa Park.

Bean graduated Iowa Park High School and attended Texas Tech before graduating MSU. He is a teacher at Bradford Elementary School.

Watson gives genealogy program

Genealogy was the topic of the program given by Lita Watson for members of Epsilon Eta Chapter, meeting in the home of Pat Lincoln. The speaker was introduced by Mary Lynn Boyd.

Mrs. Watson said that genealogy has become one of the most popular hobbies. Recording family history is a tribute to your family and serves as a memorial to your ancestors.

Mrs. Watson teaches genealogy at Midwestern State Univ., and her next class will be on April 4.

In the business meeting, conducted by Essie Johnson, plans were made for the sale of balloons at the Easter Seal Telethon to be held this weekend. Also, members will be answering phones for the telethon at the home of Lela Mercer from 10:30 p.m. to midnight on Saturday, and 8 a.m. to 6 p.m. on Sunday.

Cyndy Dickerson, Denise Henson and Lela Mercer will serve as hostesses for a progressive dinner on March 17, and the next business meeting will be April 7 at the home of Mrs. Dickerson.

RAC NEWS...By Sheri Kennedy

Painting Class

The can painting class will be held Monday, March 9, beginning at 7 p.m. We will be painting three soda cans to look like a cow, pig and rabbit. The supply list is available from the RAC and we need pre-registration so that we have enough materials on hand. The cost is \$8 for members and slightly higher for non-members. This promises to be a lot of fun - we hope you will join us.

Arts and Crafts Show

Don't forget that the deadline for booth rental for the "Hop Into Spring" Arts and Craft Show is Wednesday, March 11. The show will be held Saturday, March 14 from 9 a.m. until 4 p.m.

Mid-America Baseball School

We still have space available for the Mid-America Baseball School that will be taught by the Oklahoma State Univ. coaching staff. The weekend school is \$90. You can pay \$45 at the time of registration with the balance due before the school or you may pay with Mastercard or Visa. The school starts on Friday, March 27 and will end Sunday March 29. For details please contact the RAC.

Bridge Club

Marilyn Hale had the high score of 4,610 and Raydean Mattis was second high with 4,380 at Bridge Club on Monday afternoon. Anyone who enjoys playing Bridge and would like to play with this group can do so by contacting the RAC at 592-4471.

EXPRESS YOURSELF
with a letter to the editor
Iowa Park Leader
P.O. Box 430
Iowa Park, TX 76367

Auxiliary plans bake sale

The Ladies Auxiliary of the Iowa Park Volunteer Fire Department are planning a bake sale on Saturday.

They will be selling baked goods at B&R Thriftway from 10 a.m. until 2 p.m.

Card of Thanks

We would like to thank everyone for all they did during our time of sorrow. Words cannot express the gratitude we feel in our hearts.

The family of
Mary Catron Walls



2 1/2-Gal. POLY GAS CAN
288
True Value of the month
EXTRA

Allenite 37-Pc. Ratcheting SCREWDRIVER SET
With Bits and Sockets
988
True Value of the month

AstroTurf Flair OUTDOOR DOORMAT
19 1/4 x 29 1/2 In.
599
Bargain of the month

Tuffcrates Multi-Purpose 12-Gal. STORAGE ORGANIZER
21 1/2 L x 12 1/2 H x 15 1/4 W In.
688
Clear, with Red Lid
Bargain of the month

YARD 'N GARDEN
399
Your Choice
Dirt Shovel has a long handle and a round point with a turned step. LLF401851

YARD 'N GARDEN
399
Garden Hoe with a one-piece blade and a sturdy 48-in. handle. LG696444

YARD 'N GARDEN
399
Bow Rake has a spring action design that cuts down on fatigue. 14 teeth. LB14631574

39c
Duplex Receptacle is supplied with heavy-duty contacts. White, ivory or brown.

166
4-Pk. Soft White Bulbs reduce annoying glare and shadows. 40, 60, 75 or 100W.

396
Tub & Tile Sealant resists mildew, remains flexible. White. 10.3 fl. oz. GE5070

Shower Selections for...
ANGELIA McILROY and JOEL GALLOWAY
Hughes PHARMACY
120 W. Park Joe Hughes -Pharmacist 592-4191

CONTROLLING YOUR BLOOD PRESSURE

- High blood pressure (hypertension) is a major contributor to premature death and disability.
- Sixty million Americans have hypertension.
- Hypertension often has no symptoms.
- To find out if you have hypertension, have your blood pressure checked regularly by a healthcare professional.
- If you have hypertension, you can usually control it and reduce your risk of disease.
- Follow the treatment prescribed by your doctor. He or she might tell you to:
 - Reduce if overweight.
 - Stop smoking.
 - Cut down on high cholesterol foods.
 - Begin to exercise.
 - Take medication as directed.

For further information on hypertension—
Ask your pharmacist.

WAL-MART PHARMACY
500 W. Highway 592-4157
Tammi Morman - Pharmacist

SHOWER SELECTIONS FOR:
ANGELIA McILROY and JOEL GALLOWAY
HOPE DRISSEL and JAMES ALLEN
PARKWAY
200 W. Bank
592-5512 or 592-4681

Shop Late 'til 8, Monday - Friday
PARKWAY
200 W. Bank
True Value HARDWARE STORES
592-5512
592-4681
Just say "Charge It!" at participating stores

FRIENDLY DOOR NEWS



Florence Battle
Senior citizen of the month
Florence is a regular member of the Friendly Door. She enjoys quilting and bowling.

SCHEDULE

MONDAY, March 9
Birthday Party

Those having birthdays in March are: Wavie Coleman, Artie Everette, Faye Hobbs, Ima Lee Reece, Reba Snow, Clyde Skinner, Lorene Lewis, Hugh Woody, Alice Downs, Charlie Metz, Grace Churchman, Virgil Scott, John Chapman, Eva Hicks, and Homer Whisnand. Flowers were by Iowa Park Florist and cake by Kathy Hicks.

TUESDAY, March 10
Sack Day

THURSDAY, March 12
Blood Pressure 10:30-12. Park Home Health.

TUESDAY, March 17
Ed Prince Sing-Song

THURSDAY, March 19
Band Practice 11 a.m. with Sue Gwinn. Band will play at Texoma Christian Care at 2 p.m.

FRIDAY, March 27
Covered Dish and Game Night at 6:30 p.m.

FRIDAY, March 31
Inside Out Day
Blood Sugar Test 10:30-12 by Park Home Health

EVERY MONDAY
Dave Bridgers plays

EVERY WEDNESDAY
Bible Study with Ellie Beel, 10:30.
Grocery shopping at 12:30

EVERY THURSDAY
Nail trim 9 a.m. with Etoy Chapman.

EVERY FRIDAY
Exercise at 11 a.m.

Parents to discuss sex ed material

Parents are invited to meet Monday at 6:30 p.m. at the Junior High School for the purpose of previewing materials to be used in a sex education unit.

The unit will be taught in the science classes of the sixth and eighth grades the last six weeks of school.

A short video will be shown and parents are encouraged to ask questions, or address any concerns they may have.

All parents of junior high students are encouraged to attend the meeting which will be held in the cafeteria.

Menu

FRIDAY, March 6

Oven fried fish with tartar sauce, stewed tomatoes with crutons, green beans, cornbread, applesauce cake, milk.

MONDAY, March 9

Lima beans and ham, carrisalat, tater tots, cornbread, purple plums, milk.

TUESDAY, March 10

Beef Stroganoff with noodles and sour cream, broccoli, beets, wheat rolls, pear cake, milk.

WEDNESDAY, March 11

Barbecue chicken, mashed potatoes, carrot raisin salad, cornbread, sweet applesauce, milk.

THURSDAY, March 12

Smothered pork chop, carrots, sauerkraut salad, cornbread, strawberry cake, milk.

Local crafts makers participating in show

Iowa Parkans Betty Smith and Collis Ikey will be participants in the March 13-14 Sheppard Art League art show at Sikes Senter Mall in Wichita Falls.

Artists from over the Southwest have been invited to show their works, and this year's event, the 18th annual, is expected to be the largest ever.

Proceeds from the shows have enabled the Sheppard organization to provide some 75 area high school students with art scholarships.

Card of Thanks

We would like to thank the Iowa Park RAC for its donation of folding chairs.

Iowa Park Volunteer Fire Department

Wichita Mountain Refuge program topic

Maryanne Gilmore presented a program on "Touring Wichita Mountain Wildlife Refuge," for members of the Iowa Park Garden Club who met Friday morning at the Recreational Activities Center.

She said that Fort Sill was established in 1869, and in 1901, under the direction of Teddy Roosevelt, 92 square miles of land was set aside for the preservation of wildlife. This area was named the Wichita Mountain Wildlife Refuge in 1936.

The refuge is the home of deer, buffalo, elk, antelope, Texas Longhorn cattle, wild turkey, and a variety of birds including the bald eagle. The refuge contains 20 man-made lakes, all constructed by the WPA and the CCC. The tallest mountain in the

range is Mt. Pinacha at 2,479 feet, with Mt. Scott a close second at 2,464 feet.

The refuge also hosts an Easter Pageant each year. The pageant, viewed by thousands of people each year, began in 1936, and is held at an area named the Holy City. This year's pageant will be held April 18.

Mrs. Gilmore concluded by stating that the Wildlife Refuge is a favorite spot in our area for those who love the outdoors.

Roll call was answered with members telling if they had ever been to the Wichita Mountain Wildlife Refuge, and Jo Gilbert read a poem entitled "Long Road Home" for the thought for the day.

Louise Clapp presided during the

Evening Lioness Club meets

Twelve members of Evening Lioness Club met Thursday for a business session in the Lions building.

Hostesses were Mmes. Herman Daymude, T.C. Berry and C.L. Thompson.

Mrs. Grover Cleveland gave the meditation following the pledge of allegiance to the American flag. She used two articles, "Honest Measure," written by Arthur Gordon, and "A Word We Can Do Without," by Norman Vincent Peale.

During the business directed by Mrs. Kenneth Via, members voted to remain as an affiliate of the sponsoring Evening Lions Club rather than join a

Card of Thanks

We would like to thank Pizza Hut, Allsup's, Sincerely Yours, Cody Parks, the RAC, and the Iowa Park Leader for their help with the Junior High Leap Year Dance.

Iowa Park Drug Free Youth Awareness Organization

Lions Club or apply for a Lions Club charter.

This will require the sponsoring club writing to the International Board of Directors asking for a conditional license for the Lioness Club.

The next meeting will be March 26 when the guest speaker will be Dr. Daniel Broom of Brown-Cavett Chiropractic Clinic.

Make Sure You Have The Right Insurance Coverage On Your Home

With Prudential's Pru-Review

For your fast and free Pru-Review, contact me today.

Glena Via Insurance
206 W. Bank, Iowa Park
817-592-4159

The Prudential Insurance Company of America, Newark, N.J.

B&R THRIFTWAY
DOUBLE COUPONS
\$1 coupons doubled EVERY Monday, Wednesday & Saturday
See Store for Details

ASST. 1/2 GAL. CTN. **BLUE BELL ICE CREAM**
\$2⁸⁹

15 PACK 12 OZ. CANS **COCA-COLA**
\$2⁸⁹

Get A Golden Tan Now....
...The Easy Way on a Wolf Tanning Bed

Single Visit-\$5 Weekly (5) Visits - \$12.50
Monthly (20) - \$40

We have a full line of accelerators, amplifiers, intensifiers & moisurizers. Most California Tan Accelerations

Merle's Beauty Shop
900 S. Colorado 592-4429

ENTIRE STOCK
SEIKO WATCHES

Marked Down During March **50%** OFF RETAIL PRICES
Some even below our cost

Louis' Jewelry
408 W. Park 592-5942

SINB

We Encourage You To SUPPORT OUR YOUTH
in two major local activities this weekend

The Iowa Park 4-H and FFA Project Show
All day Saturday at the School Stock Barn on East Ruby
Judging will begin at 8:30 a.m. with horses, followed by poultry, rabbits, goats, sheep, beef and swine.

The Iowa Park Lions Club Hawk Relays
Begins Friday afternoon and Continues All Day Saturday at Hawk Stadium
Some field events and most all preliminaries will be run off Friday, starting at 3:30 p.m. The 3200-meter races will begin at 9 a.m. Saturday, as well as all other field events. All running event finals will begin at 2 p.m.

STATE NATIONAL BANK
Your Full Service Bank
Striving to meet your banking needs

Each Depositor Insured to \$100,000
FDIC
FEDERAL DEPOSIT INSURANCE CORPORATION

Tangles Salon for Tanning
Featuring California Tan Accelerators & Intensifiers

Specials on Monthly, Bi-weekly or Single Sessions
\$35 Monthly (\$40 Value)
\$25 Bi-Weekly (\$35 Value)
\$4 Single Session

Appointed suggested, but not always necessary

Tangles Salon
311 N. Wall 592-2400

Letters to the Editor

Think of kids' safety

Dear Parent,
This is an open letter to the one that I almost hit in my car this morning. First let me apologize to you. I wasn't paying as close attention to my surroundings as I should have been. My mind was already on the tasks I needed to accomplish today. I almost pulled out in front of you. I readily admit that had we hit each other it would have been my fault. Thank goodness the Lord was watching out for both of us.

Let me also plead with you to "buckle up" your children. After our near miss, my heart was pounding with fear, relief and embarrassment at my absent mindedness. However it was followed shortly by anger and frustration at your stupidity and thoughtlessness. Don't you love your children? Apparently not enough to set a good example for them or to take the time to protect them. When I realized that you had a toddler standing in the seat beside you and a baby in your lap I was furious. I could have killed your children I couldn't have lived with myself if our encounter had ended as it seemed it would.

I know and understand how tiring it is to get your kids harnessed for only a short drive through a town as small as Iowa Park. I had two in diapers, that couldn't walk at the same time. Some days it seemed that I spent more time getting them in the car and ready to go, than it did to get where I needed to go. I remember how it felt. It hasn't been that long ago. PLEASE take the time to protect your children on your next car ride. There are hundreds of people out there just like me, short on time and long on thought. Help us to keep from making your life miserable because of the untimely death of your precious children. If you need any more encouragement, watch the next "Don't be a dummy" commercial and see what would have happened to your babies' head when it hit the steering wheel and was crushed by the force of your body hurled forward. Think what life would have been like for your toddler if she had lived through the impact of having her body pushed face first, through the windshield. If you will keep these thoughts foremost in your mind as you are getting in your car next time, I'll bet that the few moments invested in your kids' future will pay off in the most precious dividends that life has to offer.

Sincerely,
Gemma Spruiell

applies here. I doubt that every individual's family will feel the need to move from wherever to here to be closer to their loved ones. Besides, I feel there are some very upstanding families who have a "bad apple" in the bunch whom they would rather not claim as their own. It does not mean that each family moving closer to their prisoner family member will be a drug pusher or user, not that they will be thieves or murderers themselves. Perhaps they can come here to contribute to society and spend their dollars on housing, clothing and food. Again, think of how many individuals already are living in the area whom we could probably do without their problems.

I am sorry for individuals who will have to live in the vicinity of the prison, for I know they will have concerns of their own regarding property value and taxes and scenery. I have no opinion concerning having a prison in my back yard, for I am not in that category. My primary opinion is that I feel we should not stand in the way of growth and development. Let's try to concentrate our efforts on bettering the vicinity, from pollution to getting drugs off the streets. There are many problems facing us today, from education to the economy. If there is a chance that a prison will help our community by bringing in dollars and housing the growing population of criminals, it should be worthy of our support instead of our criticism.

Sincerely,
Gemma Spruiell

Has 'pet peeve'

Dear Bob,
I would like to voice an opinion, or should I say "pet peeve." Why is the front of the fairly new, Junior High, painted bright blue instead of HAWK GREEN?

Am I the only former student, "50s," that notices this every time I drive by?
Thank you.
Marilyn Morris

Supports prison in county

Dear Bob,
This is my first letter to the Editor and from all the other letters you and the paper have received, I guess I shouldn't be writing this one. From what the others say, to have an opinion on whether we should have a prison or not, you must be young (under 35), a Vietnam Vet or born in Wichita County. Well, I don't qualify on any of these counts so I guess I should be a member of the "Silent Majority," but, I'm not. I'm 63 years old, served in the Navy during WWII and only moved to Wichita County in 1945 so you see, the "Loud-mouthed Minority" will think I should have no input in this matter -- well, I do.

First, I don't know why the young people think that when you get to be 40 years old, you should lay down and keep your mouth shut. If some of the old people hadn't had some foresight, Wichita County would be in a lot worse condition than it is now. Who do they think went out and got PPG, Washex, GM and all the others? It sure wasn't the "Loud-mouthed Minority."

I'm sure that if we didn't already have Sheppard AFB and the Government was looking for a place to put an Air Base, they would be against it because the airplanes would be too noisy!

And, if they found a new oil field in Wichita County, they wouldn't want to have all the drilling rigs around because it wouldn't look good to our "tourists" that come thru Wichita County.

At one time, we had a "Texas-Oklahoma Fair" in Iowa Park and a few people decided we didn't need it and it was lost. I worked the Fair, both as a Coca-Cola salesman and as a Deputy Sheriff. I'll tell you, the place was always full and I know it brought in money, but, the "Loud-mouthed Minority" at that time put it out of business.

The last time we tried for a prison, the "Loud-mouthed Minority" were the only ones heard from so the State said Wichita County didn't want a prison and did not consider us for a location.

If some of the "Loud-mouthed Minority" will look around, we have empty houses all over Wichita County

and we have unemployment that no one will ever admit to. We've got people standing on corners asking for work just to buy food. To have something that might put some of these people to work is not in the "Loud-mouthed Minority's" plans - let them do without.

What if every employee of the prison, after it is built, is brought in from outside (and we all know they won't be) -- these people still must have a place to live and a place to buy what they need and use.

I know I've gotten carried away but I do get upset when a few people want to run everything and tell everyone else to just stay out of it.

Thank you for printing this,
Bobbie A. Birdett

Thanks for the help

Dear Mr. Hamilton:

There are no words to express the thanks of my family to all the Iowa Park, Electra and Wichita Falls citizens who took part in the search for my 79-year-old father on February 22 and 23. He had gotten lost on the evening of the 22nd with his five bird dogs while hunting with my brother and a friend. Although my mother was not there to see the outpouring of help, we were given access to a mobile phone to let her know what was being done to find Dad. He and the dogs were found about 11:00 a.m. the next day tired and exhausted but alive and unharmed. Everone involved in the search was sympathetic, understanding and ready to help. We thank the Wichita West Volunteer Fire Department, the Electra Riding Club, the Wichita Falls Sheriff's Department, the Highway Patrol, the Mobile Command Unit and all the volunteers on foot and in vehicles. My family will be forever grateful to all of these people who made February 23, 1992, a very important date to Raleigh Seby's wife, five children, 11 grandchildren, and 6 great-grandchildren. We hope to celebrate many more of their wedding anniversaries as joyfully as we did their 60th last month. Thank you from the bottom of our hearts!
**Susan Thompson, Daughter
Fort Worth**

Worth Quoting

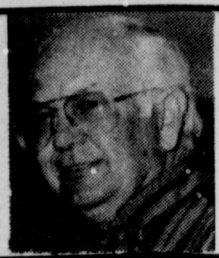
We noticed the report on a poll taken of a 1,000-plus adults concerning the assassination of President Kennedy.

We couldn't believe the results: over 70% thought the government had withheld information on the assassination and about the same percentage thought a conspiracy of some sort was involved.

We can't help but wonder if the pollster had asked the same adults about the tooth fairy, Santa Claus, and free lunches, if the result would not have been the same.

Since we've got people in this country that sincerely believe that we didn't land Neil Armstrong on the moon or that the Holocaust is a figment of the imagination, we shouldn't be surprised at anything anymore.
JAMES ROBERTS

As I See It... By Bob Hamilton



The Wichita County commissioners' court is very likely going to be made up of four residents of Wichita Falls, after Tuesday's voting.

I predicted in 1982 it would happen.

Incumbent Gordon Griffith has drawn four opponents in Tuesday's Democratic Party primary election.

He and three opponents, Mary Ward, Jerry Dean Simmons and Denny McCarthy, live outside Wichita Falls.

Only J.C. Thompson is a Wichita Falls resident.

Okay, you respond, why do I think Thompson will be elected?

Well, in case you've overlooked previous articles, our commissioners' court in 1982 gerrymandered Precinct Three, the heart of which has historically been Iowa Park, into the predominantly-black East Side of Wichita Falls.

It was allegedly done following the passage by congress of the Equal Voting Rights Act, which mandated that political subdivisions must have equal population representation.

After the gerrymandering -- which was accomplished by connecting the northwest territory of Precinct Three to the East Side by the railroad track -- Precinct Three now has 40.17 percent of the county's 48.5 percent minority population.

Those figures were brought out last year during a hearing to readjust precinct boundaries to equalize precinct populations following the 1990 census.

Eventhough the East Side does not have the majority population of Precinct Three, it is very possible that the four candidates who do not reside in Wichita Falls will so dilute the voting that the Wichita Falls resident will be elected.

Don't get me wrong, I'm not ready to say Griffith is out on his ear just yet. I'm just saying that there is a realistic possibility.

Nor am I saying none of the other non-Wichita Falls residents do not have a chance of being elected, either.

Why do I say it will all be decided Tuesday, and not next November? Well, there is no Republican Party candidate. So, unless there is a groundswell written in candidacy by November, the winner Tuesday will take office after the general election.

Only one Griffith challenger has ever held an elected office. McCarthy was elected to the Iowa Park school board.

Political Column

The following is a list of candidates who are seeking offices subject to their respective party primary elections, and who have paid for the political advertisement.

State Representative,
80th District

Charles Finnell

Constable
Precinct 3

Sam Fairchild

Not only did the gerrymandering into Wichita Falls dilute the voting of the historic Precinct Three, where Iowa Park had been the dominating block, it also diluted the party voting.

You see, Iowa Park was fast becoming a Republican Party stronghold. The East Side of Wichita Falls is predominantly Democratic in its voting.

Prior to last year's election, only two members of the commissioners' court were Wichita Falls residents. That

included one commissioner and the county judge.

Then, Electra lost its commissioner when Harold White Sr. of Wichita Falls was elected. That made three members residents of the city.

Anyway, don't be shocked if, and when, Wichita County's commissioners' court becomes an all-Wichita Falls makeup.

You can just say, "Well, Hamilton told us it would happen."

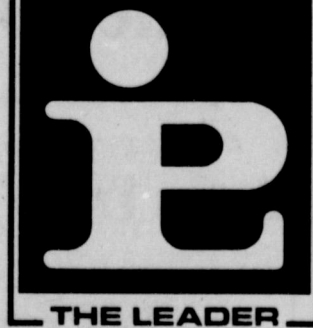
NOTICE TO SUBSCRIBERS

This is only a notice to those listed below that their subscriptions will expire on the published date. You don't owe us a thing if your name is on the list. It only means that what you've paid for is running out. To renew your subscription, please fill out the form below, as it appears on your paper's mailing label, please. Indicate whether this is a renewal or new subscription. Enclose your check or money order, as all subscriptions must be paid in advance.

Subscriptions due to expire March 15, 1992

Please disregard this notice if already paid

- | | |
|---|---|
| A
Jeanette Ashmore
Bob Aulds | M
H. Gainess Maness
William L. Marston
Lorene F. Mason Nashville
R. L. Midkiff
E.P. Mier
Micheal Miller
Mike Mills
Joy Morrison Holliday |
| B
Bodie Brandt
William J. Bryant Wichita Falls | P
Marvin Parks
Parkway
Deena Perry Waukomis |
| C
John Cain
Adele Callaway
Rev. Sam Callaway
Warren Calvert
Clara Cole N. Richland H.
A. L. Coleman
Bernice Compton
James Conkling | R
Ola Reed
Timothy Rich
Anna Mae Richardson
Mrs. Clyde Robertson
Troy Robinson |
| D
Margie Dickerson
Eldon Dowell
Chuck Dyer
Keith Dyer Wichita Falls
Dana Dunlap Redlands | S
Kathleen Salan
Mrs. Kerrie Schmidt APO New York
Lowell Short
Wayne Short San Antonio
Lena Simmons
Pauline Singleton
Armon Smith Lake Kiowa
Joel Spruiell
Mrs. Anne Strome Burkburnett |
| G
R.L. Good | T
Charles Tillery
Herman Turner |
| H
Pete Hall
James Hartmangruber
Charles Hensley
Mrs. J. O. Hicks Wichita Falls
Richard Hicks
Wallace Hobbs Lufkin
Andy Honea Wichita Falls
John Hooker | W
Randy Watreas
Mrs. Elmo Weaver
Robert Wheeler
Dan Williams Wichita Falls |
| J
Joe Jones
Mrs. Leonard B. Jones
Sally Jones Logan | Y
Roger York |
| L
Wm. C. Lane
Mike Leath
Orange Lester
Mrs. George Lewis
H.O. Lochridge Ft. Worth | |



IOWA PARK LEADER

Bob Hamilton Editor/Publisher
Dolores Hamilton Co-Publisher
Kari Collins Advertising Director
Myrna Smith Reporter

The IOWA PARK LEADER is published every Thursday. Offices are located at 112 W. Cash, Iowa Park, Texas, 76367 (766280). Telephone: 592-4431. Second Class Postage Paid at Iowa Park, Texas 76367. Annual Subscription rates are \$13 in Wichita County; \$15 elsewhere in Texas; \$18 anywhere in the United States. Any erroneous reflection upon the character, standing or reputation of any person, firm or corporation which may appear in the columns of this newspaper will be corrected upon being brought to the attention of the publisher. The entire content of each issue of the Iowa Park Leader is protected under the Federal Copyright Act. Reproduction of any portion of any issue will not be permitted without the express permission of the Iowa Park Leader.

MEMBER
TEXAS PRESS ASSOCIATION

Wichita County \$13.00
Elsewhere in Texas \$15.00
Elsewhere in United States \$18.00

To: Iowa Park Leader
P.O. Box 430
Iowa Park, Texas 76367

PLEASE CHECK ONE:
() New
() Renewal
() Change of Address Only

\$ _____ Enclosed

Name

Address

City State Zip Code

As for having prisoners' families move into the area, the same response



Moss

David Moss is at Midwestern Insuling Center, three sons, and on their farm at

Vichita Falls and Chita Falls High er BA and M.Ed. ere she was a ja Sorority and a Student Govern-

have lived on a e their marriage. r-old Clay, who e at junior high is a seven-year- dwell, who plays ber of the Tiger -old Sam keeps se.

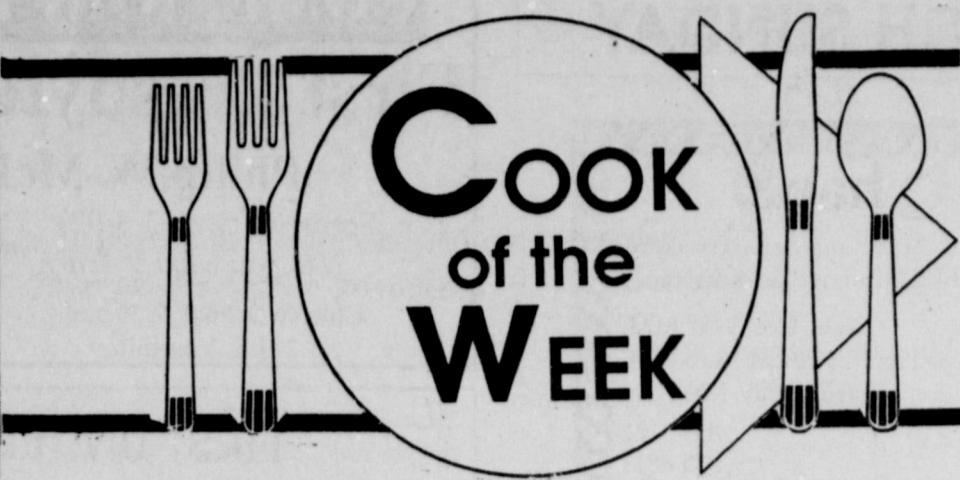
r boys help with with the cooking. by appetites.

oyed by Texaco tation, and farms. as a family. Clay in the controls for

ne, Pam likes to dcrafts. She also o keep current on s a member of r's Assoc., Texas inseling and De- ensed in the State rker. Last, but room mother at

e family enjoys e to vacation in members of the hrist. ones that were y members and mily favorites.

scription r expire th? n page 4.



Trifle

- 1 white cake mix (and whatever ingredients the mix calls for)
- 1 - 8 oz. pkg. cream cheese
- 1 lb. powdered sugar
- 1/2 - 1 cup milk (approximately)
- 1 large pkg. frozen, sliced strawberries, sweetened
- 1 large container Cool Whip
- 1/2 cup chopped pecans

Prepare white cake mix as directed on the box and bake in 9x12 pan. Cool. Using a large glass bowl with straight sides, break cake into pieces and place in the bottom of bowl. (You might not use the whole cake, this will depend on the size of your bowl.) Set aside.

In a mixing bowl combine the cream cheese and powdered sugar. Mix and gradually add enough milk to this mixture until it is about the consistency of thick pancake batter. Mix well and pour over crumbled cake in bowl.

Take the package of thawed frozen strawberries and spoon the juice and berries over the cream cheese mixture. Using a dinner knife, poke holes through the strawberries and cream cheese mixture to the cake so that some of the red juice seeps down to the cake. Cover this with 1 large container of Cool Whip. Garnish with chopped pecans.

This may sound difficult, but after you make it once, it is a breeze.

Marinated Vegetables

- 2 lbs. raw carrots, sliced
- 1 - 17 oz. can whole kernel corn, drained
- 3 green onions, diced
- 1 Tbsp. dried parsley flakes

Shrimp Continental

- 3/4 cup white vinegar
- 1/2 cup sugar
- 1/4 cup salad oil
- 1/8 tsp. paprika
- Dash
- Optional:
- 1/2 can french-cut green beans, drained
- 1/2 cup sliced, raw cauliflower or small can sliced mushrooms

Heat carrots in boiling water until tender crisp, approximately 10 minutes. Drain carrots. Add corn and onions to carrots. (Also add optional vegetables at this time if you choose.) Set aside.

In sauce pan, combine parsley, vinegar, sugar, oil, paprika and pepper. Cook over high heat for 5 minutes. Add dressing to vegetables and put in air-tight container. Chill. Stir several times before serving.

Sunshine Punch

- 4 cups water
- 2 cups sugar
- Mix; bring to a boil, and cool.
- Add:
- 46 oz. pineapple juice
- 1 - 16 oz. can frozen orange juice
- 1 - 10 oz. can frozen lemonade
- 5 ripe bananas, mashed

Mix with first mixture. Freeze in 3 portions. When ready to use, set portion out until slushy. Use 1 bottle of ginger ale for each portion (3 bottles if all 3 portions used.)

This is very good for weddings and showers.

Shrimp Continental

- 1/2 cup chopped green onion
- 2 Tbsps. butter
- 1 can cream of celery soup

- 1/2 cup milk
- 2 cups cooked shrimp
- 1/2 cup grated sharp cheese
- 2 Tbsps. dried parsley flakes
- 2 Tbsps. lemon juice
- 1/8 tsp. Tabasco sauce
- 2 cups cooked rice

Saute onion in butter. Blend in soup and milk. Stir in shrimp, cheese, parsley, lemon juice and Tabasco.

Heat, stirring now and then, until cheese is melted and mixture is hot. Serve over rice.

Variety Cookie Bars

- Chocolate Chip**
- 1 yellow cake mix or golden vanilla cake mix
- 3/4 cup brown sugar
- 2 eggs
- 1/4 cup water
- 1 tsp. vanilla
- 1 stick margarine
- 6 oz. chocolate chips

Pre-heat oven to 350 degrees. Melt margarine in 9x12x2 pan. Mix first five ingredients in large mixing bowl. Add melted margarine and stir in chocolate chips. Pour into pan. Bake on top rack of oven approximately 30 minutes. (Some brands of cake mixes may require a little more cooking time.) Cool and cut into 2-inch squares.

Variations

Instead of yellow cake mix and chocolate chips, substitute:

- Oatmeal Bars** - Use only 1/2 box of cake mix and add 2 cups quick oats.
- Chocolate Brownies** - Use devil's food cake mix and 1/2 cup chopped nuts. Ice with chocolate icing.
- Fruit Cake Bars** - Use orange flavored cake mix. Add 1/2 cup candied fruit, 1/4 cup coconut and 1/4 cup nuts.
- Lemon Pecan Bars** - Use lemon flavored cake mix and 1 cup chopped pecans.
- Spice Bars** - Use spice cake mix, 1/2 cup raisins and 1/2 cup quick oats.

Thompson gives UMW devotion

United Methodist Women met at the church building Tuesday morning for their monthly business session. Eleven members were attendance.

Hilda Thompson gave the devotion, opening with a poem by Thomas Blake titled, "The Promise of God."

Her lesson was about "Hearing God's Reply," to an individual's prayers.

The fellowship meeting Tuesday will be at the church with a special guest, Dorothy Prunty of Jacksboro, speaking on the Legislative Event she attended in Austin recently.

UMW welcomes anyone to this

special meeting. It is not necessary to be a UMW member to attend. The meeting will be at 9:30 a.m. and refreshments will be served.

Cub Scout NEWS

Tiger Cubs would like to thank Charles Wright, Daniel Lightsey, Bob Kennedy, Lewis Skinner, Danny Skinner, Archie Layfield, Donald Jones and Lee Uhren for giving a program on fire safety and showing us the fire truck, Monday at the RAC.

Mardi Gras Nails
Family Hairstyles
"Just In Time For Summer"
For every new set of sculpts, get Get \$5 OFF the next 5 fills with coupon
592-2822
Call now for an appointment
1st Fill | 2nd Fill | 3rd Fill | 4th Fill | 5th Fill

"Hop Into Spring" ARTS & CRAFTS SHOW
March 14 9 a.m.-4 p.m.
Iowa Park RAC
806 N. Third
Deadline for Booth Rental is March 11, 1992
For more information, call Iowa Park RAC, 592-4471

STEELMASTER
STEEL QUONSET BUILDINGS (ALL SIZES)
COMPLETE KITS AVAILABLE FOR DO-IT-YOURSELF CONSTRUCTION
Durable... Versatile... Economical... Spacious... QUALITY...
Distributed by: GILMORE, INC.
Iowa Park, TX
Call for Details: 592-2222

Jack's Park Pharmacy
115 W. Park 592-2731
Bridal Selections For Tomi Sue Cockburn & Micheal Johnson
8:30 a.m. - 6 p.m., Monday - Friday
9 a.m. - 1 p.m., Saturday

THANKS
To express our profound gratitude to all many people, both professional and volunteer, who participated in the successful night for Mr. Raleigh Selby during the night of March 22nd and the following morning.
So many people would give of their time and effort was a revelation to us. We wish that we could thank each one of you personally. Thankless you.
Nancy and Michael Kangerga

Thank You Iowa Park!
For making this another successful year. We are celebrating our 2nd year anniversary.
STOP BY AND REGISTER FOR A Tire Rotation, Computer Balance, and Front End Alignment \$64 VALUE TO BE GIVEN AWAY!
AUTO CRAFT ENGINE REPAIR
412 S. Yosemite 592-5041
A full-service repair shop. We specialize in doing the job right the first time. 24-Hour Wrecker Service Night - 592-4435
A FREE SERVICE FOR THE PUBLIC
We will accept your used oil and dispose of it for you. Remember, don't put used oil or oil filters in your trash dumpster.

Values is meeting theme

"Living Values in Changing Times," was theme of the meeting of Wichita Falls District of United Methodist Women Saturday morning.

The meeting was held in fellowship hall of First United Methodist Church

here with 36 in attendance from 14 area churches.

Following coffee and refreshments during the registration period, Rev. Joe Pool, featured speaker, was introduced by Mary Rexin of Chico.

To highlight the theme, Rev. Pool summarized the study he gave at the School of Christian Mission in Dallas.

Rev. Pool posed the question, "What is valuable to you?"

He then enumerated some facts about values. He stated, "Values are things that we really want. They are chosen freely from alternatives after thoughtful consideration of consequences. We prize and cherish our values and want to share them with others, and we feel guilt and failure if we go against our values."

Rev. Pool said, "We tend to have optimism rather than face reality if values are shallow, and when values collide we have chaos and disorder."

He told his listeners that society's diseases are growing and said, "the cure is so simple if only we were willing to be models for others."

In conclusion Rev. Pool said "It is our responsibility to find time for family activities. We may pick our fight, but must go in prepared to lose and accept defeat as possible victory."



Casey Gahagan

Student teacher begins training

Casey Gahagan, senior Agricultural Services and Development major from Tarleton State University, has begun his student teaching in Iowa Park Public School.

Gahagan is under the supervision of George Martin and Ray Dillard, agricultural science teachers.

The student teacher has been in the community since Feb. 24 and will remain here through May 12.

Gahagan is here for the purpose of receiving training in agricultural science teaching. This arrangement was made by a mutual agreement between Iowa Park CISD and Tarleton State University.

He will assist with all activities concerning the local agricultural science program.

Upon completion of this training period, Gahagan will receive the Bachelor of Science degree in Agricultural Services and Development from TSU.

Pacific Avenue Missionary Baptist Church

1400 N. Pacific Ave.
Larry Washburn - Pastor
Church - 592-9711
Pastor - 855-4690

Informal, Christ-Centered Worship for all ages.

Sunday School 9:45 a.m.
Morning Worship 11:00 a.m.
Evening Worship 6:00 p.m.
Wednesday 7:00 p.m.

Kamay Road Church of Christ

Corner of Colorado & Emerald

Seeking the Old Paths

Lord's Day 10:30 a.m. & 6 p.m.
Wednesday 7:00 p.m.

ATTEND CHURCH SUNDAY

Country Chapel

Country Style Singing & Preaching
Lots of God's Love & Acceptance

Sun. Sch. 9:00 A.M.
Worship 10:30 A.M. & 6 P.M.
Wednesday 7:00 P.M.

855-9367
855-8811
Wichita Falls, TX 76305

Dr. John D. Ward, Pastor
Chapel Phone 287N. at Wellington Rd.

THE END OF YOUR SEARCH FOR A FRIENDLY CHURCH

ASSEMBLY OF GOD

SUNDAY
9:45 a.m. Sunday School
11:00 a.m. Morning Worship
5-6:30 p.m. Missionettes & Royal Rangers
7:00 p.m. Evangelistic Service
Wednesday Service 7:00 p.m.

200 S. YOSEMITE
592-5087 - Church
592-4627 - Pastor
Charles Hensley, Pastor

Lakeview Church of God

N. Victoria and Expressway

Opportunities for Service

Children's Church Ladies Ministry
Choir (youth & adult) Men's Fellowship
Nursing Home Boys' Club, ages 6 - 17
Visitation Girls' Club, ages 6 - 17
Puppet Ministry Nursery Provided

Sunday School...9:45 a.m. Wednesday Family Training Hour...7:30 p.m.
Morning Worship...10:45 a.m. (classes for all ages)
Sunday Night...6:00 p.m.

Phone - church: 592-2776, Parsonage: 592-9555
Pastor Ole Olds

Discover The Joy

First Baptist Church

300 N. Yosemite - Iowa Park - Texas - 76367 - Phone: 592-2152

Worship & Bible Study for the Family

Sunday Schedule

Sunday School - 9:45 a.m.
Morning Worship - 11:00 a.m.
Discipleship Training - 5:00 p.m.
Evening Worship - 6:00 p.m.

Wednesday Schedule

Prayer Meeting - 7:00 p.m.
Youth In Action - 6:30 & 7:00 p.m.
RA's for Boys - 7:00 p.m.
Sanctuary Choir - 7:45 p.m.

Jim Wright
Music/Education



Dr. Derrell Monday, Pastor

Greg Sipe
Youth Director

COME, JOIN THE FAMILY!

First Presbyterian Church

Philip W. McLarty, Pastor

Sermon Topic (3-8-92): "Do you know how to pray? Do you want to learn?" (Read Luke 11:1-13)

Church School 9:30 a.m. Worship 11:00 a.m.
211 S. Yosemite 592-4220

FIRST UNITED METHODIST CHURCH



Rev. Karl S. Klaus, Pastor

Be "Another Happy Methodist"

Sunday School- 9:30 a.m. Worship-10:40 a.m. UMYF-5 p.m.
201 E. Bank 592-4116

Faith Baptist Church



BREAK THROUGH

"Where the Bible is taught, the family is emphasized and where everybody is somebody."

411 S. Wall S.B.C. 592-2716

SUNDAY
Sunday School 9:15 a.m.
Morning Worship 10:30 a.m.
Church Training 6:00 p.m.
Evening Worship 7:00 p.m.

WEDNESDAY
Wednesday Evening Prayer 7:00 p.m.
Choir Rehearsal 8:00 p.m.

Nursery Care Provided - Full Range of Mission's and Children's Ministries

Dr. Greg Ammons, Pastor

AREN'T YOU GLAD YOU FOUND ME?

A few years ago a magazine article told the story of a family on a camping trip in some very rugged terrain. When the parents began to set up their tent, they told the older children to be sure to watch Kathy, who was only four years old. When mealtime arrived, Kathy was nowhere to be found. Immediately the members of the family began searching for the little girl. Other campers joined in the search, then the state police. The parents' sense of fear and panic was immense. Finally a man in the search who had gone off by himself heard a child cry. He went down into a shallow ravine and there was Kathy. The man quickly brought Kathy to her parents, and there was much joy and celebrating.

That night Kathy's parents prepared her for bed and were tucking her into her bedroll. They hugged her tight and held her quietly for a long time. It was Kathy who broke the silence. She said, "Mommy, Daddy, aren't you glad you found me?"

"Oh, Kathy, if only you knew how worried we were about you and the joy in your mother's and my heart that we found you," was her father's reply.

Jesus said God is like that. God is like Kathy's father and mother, loving us so much, so concerned when we are away, and rejoicing when we come home.

"What do you think? If a man has a hundred sheep, and one of them has gone astray, does he not leave the ninety and nine on the hills and go in search of the one that has gone astray? And if he finds it, truly, I say to you, he rejoices over it more than over the ninety and nine that never went astray. So it is not the will of My Father, who is in heaven, that one of these little ones should perish." (Matthew 18:12-14).

Welcome To The

Church of Christ

300 East Park, Iowa Park, 592-5415

Dwight Parker, Gospel Preacher

George Watson, Associate

Watch "Search" Every Sunday at 7:30 a.m.

On KFDX - CHANNEL 3

SCHEDULE OF SERVICES

SUNDAY
Bible Study 9:30 a.m.
Worship 10:30 a.m.
Worship 6:00 p.m.

WEDNESDAY
Evening Study 7:30 p.m.
FREE BIBLE COURSE!
Call for information.

Christ The King Catholic Church

First & Clara 592-2802
Rev. Mr. Patrick Burke, Pastor

8:45 a.m. Children's Religious Formation
10:00 a.m. Mass

The Catholic Church recognizes that there are many good people outside its membership, that other religions can and do bring their members closer to God and to their fellow human beings. But we as Catholics have indeed found something very special and we would like to share our Church, our Faith, our Way of Life with you. If you are interested in more information about the Catholic Church please call the church office.

Cornerstone Pentecostal Church of God

"The Church at the foot of the cross"
West Smith Rd.

9:45 a.m. Sunday School
10:50 a.m. Morning Worship
7:00 p.m. Evangelistic Service
1 p.m. Tuesday Ladies Prayer & Bible Study
7 p.m. Wednesday Family Nite, also Christian Pathlighters Boys & Girls

"If you like a small church, you better hurry"

Church Phone 592-5929 Pastor Duffy Terry 592-5520

Where Jesus is Lord

IOWA PARK'S

FAMILY WORSHIP CENTER

Invites You To Be A Part Of

- *Exciting Praise & Worship Music
- *Dynamic Worship Services
- *Innovative Children's Ministries

SUNDAY
9:45 a.m.
10:45 a.m.
6:00 p.m.
WEDNESDAY
7:30 p.m.

Rev. and Mrs.
L. Edward Prince, Pastor

Yes, There Is a Place.....
"Where Love is More Than Just A Word"

601 E. Cash 592-4348 592-5316
Van Transportation Available

SEARCH FOR GOD

Obituaries

Bessie M. Esparza

Graveside services for Bessie Mae Esparza, 64, were Thursday at 3:30 p.m. in Highland Cemetery.

Dr. Derrell Monday, pastor of First Baptist Church, officiated. Arrangements were under the direction of Dutton Funeral Home.

Mrs. Esparza died Wednesday, Feb. 26, in a Wichita Falls hospital.

Born Dec. 24, 1927, in Madison, Wis., she was married Oct. 9, 1945 to Henry R. Esparza in Bremerton, Wash.

She has been a resident of Iowa Park since 1954. She was a homemaker and a member of First Baptist Church.

Survivors are her husband; two sons, Richard and Allen, both of Fort Worth, one daughter, Sandra Watreas of Iowa Park; one brother, Bill Updyke of Carmichael, Calif.; five sisters, Marge Mutz of Fort Bragg, Calif., Winnoa Maki of Quilcene, Wash., and Valentine Nevill, Opal Johnson and Hazel Rosen, all of Seattle, Wash.; three grandchildren and three great-grandchildren.

Memorials may be made to the American Heart Association or the American Diabetes Association.

Albert H. Breazeale

Services for Albert Haynie Breazeale, 88, former teacher in the Iowa Park and Valley View schools, were Saturday at 2 p. m. at First Baptist Church in Lometa. Burial was in Lometa City Cemetery with Masonic rites.

Breazeale died Thursday in a Lampasas nursing home.

Born May 14, 1903 in Bertram, he was married to Eunice H. Green Aug. 31 in Goldthwaite. He was a retired school superintendent and teacher with 42 years of service. He graduated North Texas State University in 1931.

In 1936 Breazeale received a masters degree from University of Texas and had completed work on his

Ph.D. He also taught in the Lometa and Canadian school districts.

Breazeale was assistant superintendent in charge of business for Northeast Houston School District. He taught at Hardin University in Wichita Falls and summer terms at the University of Texas, and was the first business manager of Central Texas College.

A charter member of Retired Teachers Association, he was a 50-year member of Lometa Masonic Lodge No. 514 AF&AM where he held the office of Worshipful Master in 1970 and 1979, and served as Deputy Grand Master two years. He was a former member of Lions Club and Rotary Club.

A member of First Baptist Church, Breazeale served 30 years as a Sunday School superintendent, was a deacon and director of Adult Department.

Survivors include his wife; one son, Larry Wayne of Dallas; five grandchildren, and two great-grandchildren.

Walter J. McKay Sr.

Services for Walter J. "Dick" McKay Sr., 72, were at 2:30 p.m. Sunday at Dutton Funeral Home.

Rev. Carl Kent, pastor of Pleasant Valley Baptist Church, officiated. Burial was in Highland Cemetery.

McKay died Friday in a Wichita Falls hospital.

He was born Dec. 7, 1919 in Vernon and had lived in the Wichita Falls area most of his life. He and Jo Nell Culver were married March 23, 1940 in Wichita Falls.

McKay retired in January, 1990 from McKay Upholstery of Wichita Falls. He was a member of Pleasant Valley Baptist Church.

Survivors include his wife; one son, Walter J. Jr., of Farmers Branch; one sister, Vera Brock of Wichita Falls; two brothers, Frank of Iowa Park and Ed of Salida, Calif.; two grandchildren, and one great-grandchild.

Dear Voters,

The citizens of Wichita County will elect a new County Tax Assessor/Collector this year.

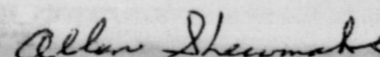
On March 10 in the Democratic primary, I will place my vote for Mac McGee (County Tax Assessor/Collector).

- Mac brings 30 years experience in private business to this office
- 14 years of civic leadership prove he is committed to Wichita County
- He is qualified to do the job.

Please join me on March 10 in the Democratic primary and vote for Mac McGee, County Tax Assessor/Collector. See you at the polls!

Allen Shewmake

Pol. Adv. Pd. for by Allen Shewmake



Zela Wells

Services for Zela Marie Wells, 61, sister of Mary Gladys Hunter of Kamay, were at 1 p.m. Saturday at Owens & Brumley Funeral Home.

Rev. Davis Adair, pastor of Southwest Baptist Church, officiated. Burial was in Holliday Cemetery.

She died Thursday in a Wichita Falls.

Born April 21, 1930, in Aberdeen, Miss., she had been a resident of Wichita Falls two years. She was a retired supervisor for Goodwill Industries. She was a member of Southwest Baptist Church.

Other survivors include three other sisters, Jewell Perkins of Caladonia, Miss., Jackie Scott of Memphis, Tenn., and Lela Smith of Brookhaven, Miss.

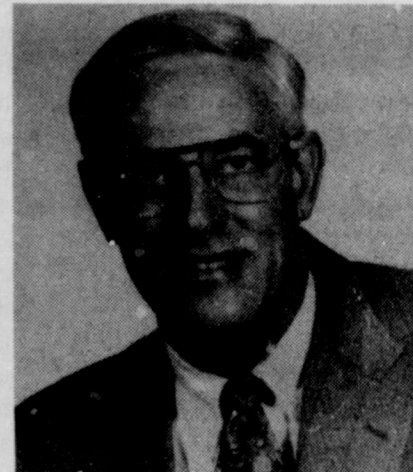
SHOP IOWA PARK FIRST

Vote March 10 Democratic Primary

★ ★ ★
Mac McGEE
★ ★ ★
DEMOCRAT
★ ★ ★
COUNTY TAX ASSESSOR/ COLLECTOR

State Representative John Hirschi, Campaign Chairman

Paid for by Mac McGee for County Tax Assessor/Collector Campaign Fund
Bill Palmer, Treasurer, 4539 Miller Road, Wichita Falls, TX 76708



I would bring to this office:

- A completely fresh approach to County Government
- 30 years of successful experience in private business management
- 14 years of civic and charitable leadership in Wichita County
- Dedication to improving the economic climate in our area

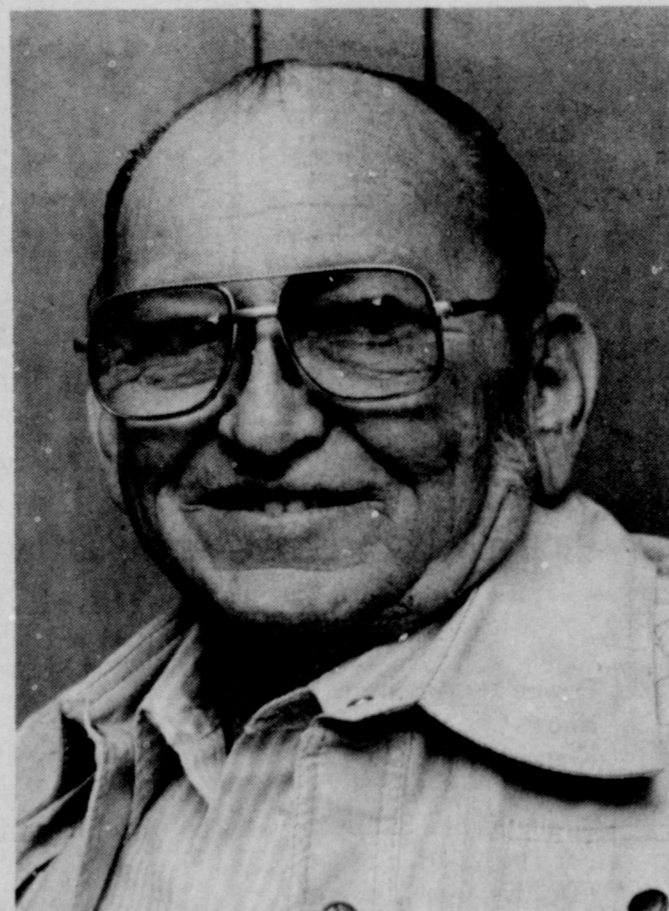
Let me put my leadership and management experience to work for you.

I'd appreciate your vote on March 10th.

Mac

ELECT SAM FAIRCHILD

CONSTABLE Precinct 3



Pol. Adv. Pd. for by Sam Fairchild

GORDON GRIFFITH • GORDON GRIFFITH • GORDON GRIFFITH



Re-Elect GORDON GRIFFITH

County Commissioner Precinct 3

- Full-time Commissioner with 11 years experience on the court
- Available and interested in the county's problems
- One of two Commissioners that voted against tax increase.
- Proven record of caring and helping people in need regardless of ethnic background
- Not afraid to stand up and be counted when it comes to unnecessary spending
- Believes in strong law enforcement and economic growth

VOTE FOR PROVEN ABILITY & LEADERSHIP Experience Counts.

Pol. Adv. pd for by Supporters of Gordon Griffith, Rosa Griffith, Treas. 807 E. Ruby, Iowa Park, Tx. 76367

COUNTY COMMISSIONER • COUNTY COMMISSIONER

Smith home exudes talents of occupants

By MYRNA SMITH

A house filled with handicrafts and artworks reveals the talents of the mother and son who reside there.

Betty Smith's dolls and Charles' original and unique results of his artistic talents in the same house doesn't leave a lot of room to move around.

Charles graduated Iowa Park High School in 1988. He is a senior at Midwestern State University majoring in art and is excelling in his academic course. And he works at Sheppard Air Force Base Arts and Crafts Center as a picture framer.

He received his first scholarship to MSU from Sheppard Art League. The following year he received the first Gene Roth Fine Arts Endowment Scholarship that was given and received another this year.

He was awarded the second scholarship last spring for the 1991-92 academic year when the faculty selected students they felt excelled in their studio and academic courses. That marked the first competitive student exhibition at MSU juried by an art professional from outside the academic community.

The juror was Jim Fisher, curator of prints from the Modern Art Museum of Fort Worth and reflected his view of the work submitted. At that time Charles also received a Merit Award.

Charles has loved to draw and paint since he was a child. In fact, he got in trouble more than once for his developing talent when the teachers thought he was just doodling. They didn't know he was working on his future.

His mother has a beautiful landscape that he painted when he was 10 years old. But, Charles really doesn't like to do landscapes. He prefers to use his own original ideas.

And, he devises many designs, using unusual subject matter to accomplish the desired effect.

Charles uses shells, bones, (particularly those of the spinal vertebrae) broken glass, and incorporates a cow's skull in some. He does not use the typical cow's skull usually seen in southwestern art. Bones might be said to be the identifying mark in his paintings.

Although Charles likes all mediums, he prefers to work with an airbrush.

He has three beautiful soft pastels, the result of one of the assignments in his art class, which was to show the relationship between two objects.

Selecting a small area of two shirts of different patterns and color Charles enlarged them to capture the relationship between the objects. He especially likes to work with colors of green and shades of orange with some blue.

One of his unusual pieces done with a colored pencil was set up on top Mt. Scott in the Wichita Mountains. This his mother says, has become her favorite.

Objects in the picture include the nose of a pair of serrated pliers, the head of a wild fox that Charles and a friend fed cookies, a segment of spinal vertebrae, a cookie, some broken glass, a piece of metal jewelry and a girl's hand and forearm.

Another assignment was to execute a work in pointillism, a French impressionist method using tiny points on a white ground. Charles used a pen and black ink to form points blended together to create a muscular athlete jumping hurdles, observed from above.

Charles has a 24x36 painting that has hung in the gallery hall in the Fine Arts Building at MSU for more than a year. This again, features his favorite objects of shells, broken glass, and a cow skull set up reflected in a mirror.

An interesting painting is a large one he has exhibited in shows and it is always interesting to watch the spectators as they view it.

The subject matter uses his favorite objects with some of his metal jewelry. He arranged them on top of the headboard of his black bed and they are reflected in a mirror. He taped a piece of paper in the upper left corner and a piece of the canvas is torn in the lower right corner. He photographed the arrangement and his own form with camera and tripod is dimly seen in the background.

Charles painted the picture from the photo. It looks so realistic that when people view it in shows, they try to pull off the tape in the upper corner and feel of the torn canvas, as well as what appears to be molding.

When Charles has time between studies and working, he does some work for people who request it. He first was asked by the Hawk Booster Club to paint the hawks on the field house. He recently painted hawks on the front and back of the high school and junior high school.

The young artist has two paintings hanging in Jimmie Banks' Wichita County Water District office. They were commissioned by Mrs.

Banks and are painted by Charles from photographs taken of the Lake Kemp Dam.

A unique ceramic piece, is an original all free form. Charles drew the designs and then created his own mold. The finished piece is a shark's head going through the center of several black ceramic circles, and is appropriately named "Shark Steak Plate."

He recently started courses in photography and metal smithing, and is making metal jewelry. The metal is composed of brass, copper and nickel. As is customary of them, his mother received Charles' first piece of jewelry, which is a pendant of abstract form.

The 21-year-old Charles had his first chance to try his talent at snow skiing this winter at Cloudcroft, which is close to Holloman AFB, where he was born.

His future plans include earning a Masters Degree and then going into commercial art, a frame shop and art gallery, or possibly teaching art at the college level. He has yet to make up his mind which sounds the most intriguing.

Betty has an intense interest in her son's chosen career and has learned a lot about art from him. He has an interest in his mother's handicraft, but he is tired of rabbits, he admits.

She has made stuffed rabbits off and on for several years. Her interest in handicrafts, with an artist's eye for color, detail and perfection began early in her life.

She makes soft body rabbit dolls, clowns, pigs, elephants, ducks, bears, and about anything else there is to be made. She dresses them in beautifully finished frilly dresses trimmed with lace, or in clown suits, pants and shirt, or whatever is appropriate. Most of the girls have hats and some have parasols.

Betty, like her son with his art, wants all of her dolls and their attire to be original and that is why she never makes a pattern, but cuts them and their clothes directly from a flat piece of material, sometimes eight at a time.



Betty Smith

All of their clothing is a different pattern, she just decides what would "look" better on a particular doll.

She likes for each one to have her special touch, and she signs each one, even though she knows they can be copied, but when someone buys them she wants them to be her original.

"I have the help and encouragement of friends not to stop," Betty says.

She grew up on a farm near Elk City, Okla., and was making doll clothes before she started to school. By the time she was in the second grade she was making some of her own clothes. Her mother died when Betty was 12, so she had to learn to do a lot of things in the home.

She has been making rabbit dolls for about three years. Before that she made mouse dolls, Orphan Annie and New Annie dolls.

Betty hand packs the bodies of the dolls, stuffing them to be hard enough so they will not get too soft to be handled properly. In fact, she packs the dolls so hard she dislocated her shoulder one time trying to get one just right.

She makes all of the clothes so they can be taken off and put on. She uses Velcro so it will be easy for children to dress and undress them. And any of the dolls can be placed in

a pillowcase and put in the washing machine.

A grandma and grandpa doll that are especially dear to her are the ones she had made for her daddy and her stepmother. When her father died, she kept both of the dolls. Another is one she made for Charles when he was very young.

Betty is very busy now working on dolls of various descriptions to take to the Sheppard Art League show scheduled March 13-14 at Sikes Senter Mall.

Each year she donates a rabbit or another doll to be sold at the auction

held to benefit the Rehabilitation Center.

Last year she gave two rabbit dolls to the auction and they brought \$300. Betty was thrilled to think they helped the Center that much.

She donated some dolls to the Iowa Park Volunteer Fire Department at Christmas for their Toys for Tots project and she gave two rabbit dolls dressed as policemen to the City Police Department for the Iowa Park Whoop-T-Do.

Betty first became interested in

Continued on page 9



SHERIFF TOM CALLAHAN


**Please Vote to Help Me
Keep Wichita County
A Safe Community**

Pol. Adv. Paid for by Callahan for Sheriff Campaign, Marilyn Fulton, Treasurer

Country Peddler Show
Your Original Folk Art and Decorator Show
ABILENE, TEXAS
FRIDAY, SATURDAY, & SUNDAY - MARCH 6, 7, 8, 1992
Abilene Civic Center
1100 N. 6th Street
HOURS: Fri 4pm to 9pm • Sat 9am to 6pm • Sun 11am to 5pm
ADMISSION: Adults \$4.00 • Children Under 12 Free
Folk Art and Country Crafts
Furniture, metalwork, quilts, baskets, rugs, dried flowers, clothing, Santas, teddy bears, pottery, dolls... everything quality, original and handcrafted.
American Country Shows, Inc. • Country Peddler Show
P.O. Box 706 • Fort Aransas, Texas 78373 • (512) 749-5449

PLEASE PROMOTE AND ELECT
CHIEF DEPUTY
**MONETTE
PEMBERTON**
To
WICHITA COUNTY
TAX ASSESSOR-COLLECTOR
--IN THE DEMOCRAT PRIMARY-MARCH 10, 1992

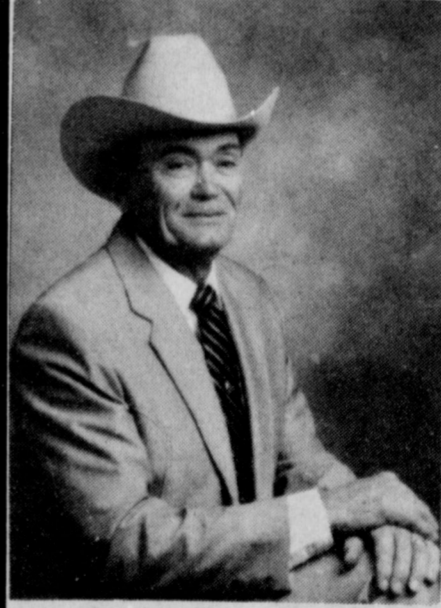
Experienced - 27 Years
In The Tax Office-all
Areas
Educated For The Job
Holds The Registered
Texas Assessor-
collector Certification
(required By The State
Of Texas)



Proven Management.
Knows The Staff.
Knows How To Best
Employ Their
Strengths And Skills
For The Most
Effective, Cost-
conscious
Productivity.

POLITICAL AD PAID FOR BY PEMBERTON CAMPAIGN
BETTY NICKS, TREAS. 4219 EMERSON, WICHITA FALLS, TX

**VOTE FOR
Aubrey C.
Bohannon**
for
Constable
Precinct 3



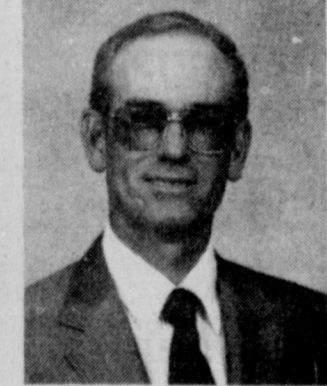
*I will be a full-time constable working for Wichita County.
*Resident of Wichita County since 1943
*Served in the Air Force during Korean and Vietnam Conflict.
*Lifetime member of the Disabled American Veterans.
*Member of the Iowa Park Church of God
*Member of Tarrant Lodge No. 942 AF and AM
*Endorsed by Texas AFL-CIO and Wichita Falls Trade Council

**Your support will be
appreciated.**

Pol Adv. Paid by C.W. Boyd, 1880 Horseshoe Lake Rd., Iowa Park, Texas 76367



**R&R Carpet
Cleaning**
Best prices on carpet,
upholstery & car interiors.
Free estimates
Call Ronnie - 767-4660
24-Hour Emergency Service

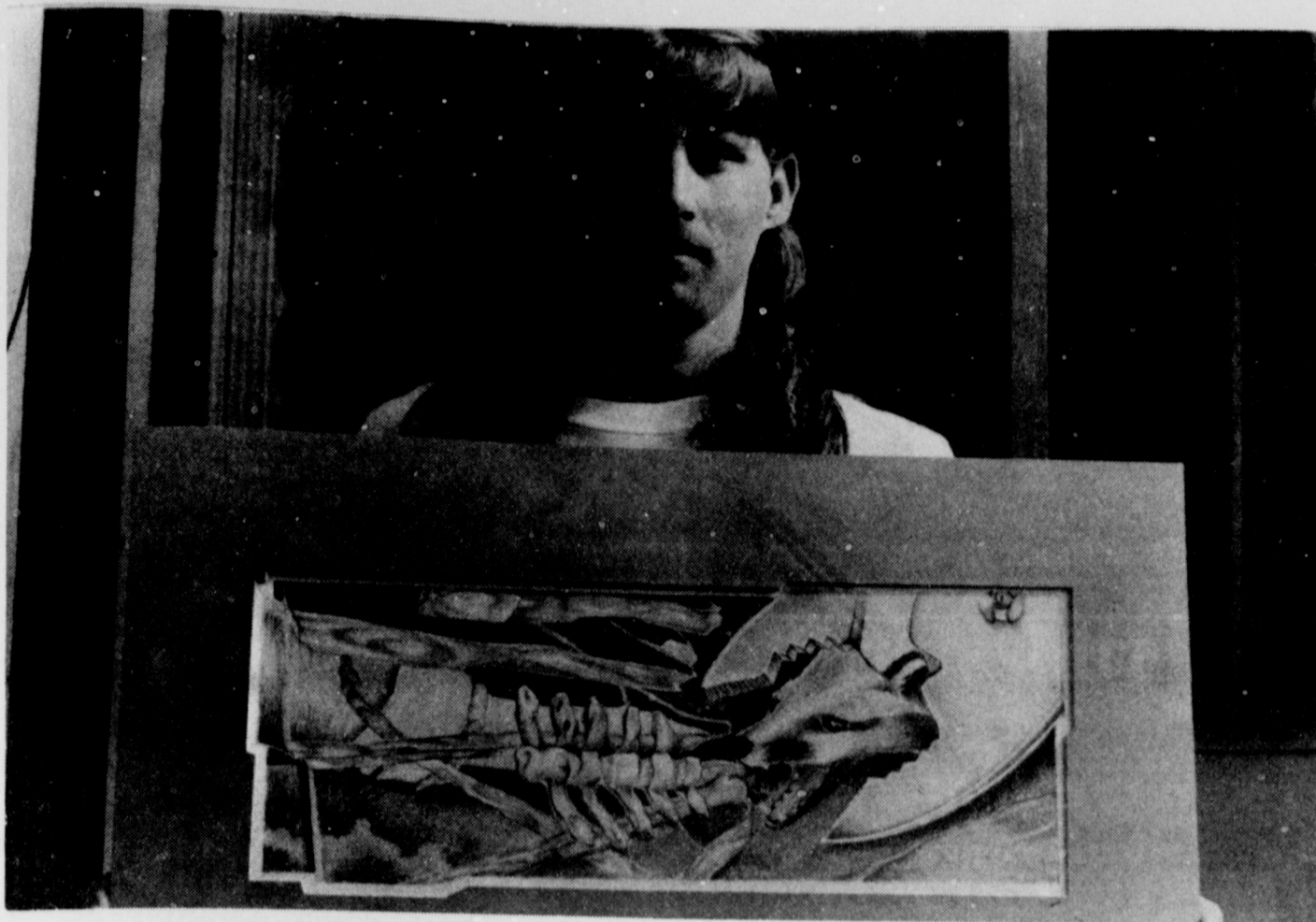


Vote For
**Denny
McCarthy**
Commissioner
Precinct 3

- ★Lifetime Resident of Wichita County
- ★Graduate of Iowa Park High School
- ★Self-Employed
- ★Youth & Public Interest come FIRST!

Your Opinion Counts, Be Sure To VOTE!

Pol. Ad. Paid for by Denny McCarthy - 2030 Johnson Road - Iowa Park, TX 76367



Charles Smith

Talent of Smiths

Continued from page 8

dolls after her husband, Larry, brought her two beautiful porcelain Oriental dolls from Guam several years ago.

Every now and then Betty takes a break from making dolls because her husband insists on it and she knows she needs a break.

When she gets to dreaming about the dolls, or when she wakes up during the night thinking how she will make and dress the next doll, that's when she takes her breaks.

But, that is when she has to be doing something with her hands, so she makes covers for solid air fresheners of cute rabbit heads with full dresses of several styles and colors.

She also makes finger pin cushions by running elastic through holes in a two liter bottle cap, with the cushion covered in colorful material and encircled with beads.

Betty says, "This puts the pins and needles in a convenient place on the forefinger while you are sewing, so you don't hold pins or needles in your mouth, stick them in your clothing, or drop them on the carpet."

Sometimes she makes doorknobs from the same general pattern of a rabbit head and a full dress that covers the bottom half of a plastic bottle that she fills with cement to make it heavy enough to hold the door back.

Betty and Larry, a native of Oregon, met while he was stationed at Clinton Sherman AFB at Burns Flat, Okla.

He retired after 20 years service and now is a civilian employee at Sheppard AFB where he is a hydraulic mechanic on planes used for pilot training.

They first moved to Iowa Park in November 1972 and bought their home. Shortly after they thought they were settled for a while Larry was transferred to a base in California. They returned here in 1977.

Through the years when Smith was home long enough that he had a chance to go fishing, Betty would take

their two sons and go with him, not because she liked to fish, but because she had to be away from him so much.

Now Betty loves to fish, almost more than Larry. In fact, she already has his activities planned out after he finally retires.

She has decided they will get a motor home, or a travel trailer and travel at least six months out of the year. "We would have to have at least a trailer to take all of my things to make my dolls," Betty added thoughtfully.

Both Betty and Larry love to go to Lake Texhoma to fish, and she says that will be one of the first things they will do after he retires. They will go there and stay long enough to satisfy their fishing urge for a while.

The Smiths have another son, Gary, who does body work for AutoCraft, where he has worked since he was a junior in high school. They also have a six-year-old grandson, A.J. Their daughter-in-law is office manager for Herb Easley Chevrolet in Wichita Falls.

Helpful Facts

Persons other than the property owner doing work on a residence must be a licensed building contractor, plumber, electrician, or heating and air conditioning contractor with the City of Iowa Park, and carry a performance bond.

Helpful Facts

Any person or persons soliciting door to door in any Iowa Park residential area is required to pay a fee of \$30 per day, and register at the Public Works office at the city hall.

Dear Daughter,
Your Life Is A Blessing
Happy 30th Birthday
Valerie
March 6
We Love You, The Family

Laura Brookshire
is now at
Bangs & Thangs
117 W. Cash
INTRODUCTORY SPECIAL
Bring This Ad in and Receive \$5 OFF a permanent
Good Through March, 1992

THE ONLY CANDIDATE WITH A PROVEN RECORD OF HELPING PEOPLE IN NEED

WHO IS MARY WARD:

A LOVING CARING CANDIDATE FOR COUNTY COMMISSIONER PCT. 3.
BORN AND RAISED IN WICHITA FALLS AND LIFETIME RESIDENT OF PCT. 3.
MARRIED TO CHAPLAIN JOHN WARD USAF (RET.) - 5 CHILDREN AND 7 GRANDCHILDREN
23 YEARS COMMUNITY WORK AS VOLUNTEER, 7 YEARS EMPLOYED WITH COMMUNITY COUNCIL AND UNITED WAY.

MARY WARD IS THE ONLY CANDIDATE WITH A PROVEN RECORD FOR HELPING THE POOR AND NEEDY OF THIS COUNTY.

MARY WARD NOW SERVES AS A VOLUNTEER ON THE FOLLOWING BOARDS AND COMMITTEES

1. CHRISTMAS IN SPRING Volunteer Executive Director and Organizer of the program using over 1000 volunteers, donated materials and funds, to repair approximately 60 to 70 homes annually for the elderly and disabled people living at or below the poverty levels of the area without cost to the residents. In the past 8 years over 400 homes have been repaired with a value to the Community of over \$400,000.	8 YEARS
2. WICHITA COMMUNITY RESOURCE BOARD A State mandated committee consisting of a 15 member Board of Community Service Workers, to find solutions of unmet needs of children and youth in Wichita County.	2 YEARS
3. EXCEPTIONAL FAMILY MEMBER PROGRAM - SAFB A committee dealing with Military families with special needs.	3 YEARS
4. CHILD ABUSE PREVENTION NETWORK	4 YEARS
5. WICHITA COUNTY INDIGENT HEALTH APPEALS BOARD	1 YEAR
6. CHILD CARE MANAGEMENT SERVICES	2 YEARS
7. CITY VIEW SD SCHOOL BOARD	1 YEAR

PAST COMMUNITY SERVICES

1. LEADERSHIP WICHITA FALLS ALLIANCE	3 YEARS
2. COMMUNITY ACTION CORPORATION BOARD	1 YEAR
3. WICHITA FALLS COMMISSION OF DISABILITIES	2 YEARS
4. DIRECTOR - ALTRUSA OF THE RED RIVER	2 YEARS
5. YWCA BOARD OF DIRECTORS (PRES 1 YEAR)	3 YEARS
6. TEEN CHALLENGE OF SAN FRANCISCO	1 YEAR
7. CHURCH MUSICIAN / ORGANIST / CHRISTIAN DRUG REHAB PROGRAM	30 YEARS
8. YOUTH DIRECTOR / COUNSELOR	4 YEARS
9. HOME DELIVERED MEALS (formerly Delivered Meals)	3 YEARS
10. PTA PRESIDENT	1 YEAR

Pd. Pol. Ad. Dee Decker, Treasurer
624 Indiana Suite 307, Wichita Falls, Tx 76301

TIME FOR A CHANGE
A CANDIDATE WHO WILL REPRESENT ALL OF THE PEOPLE
VOTE FOR MARY WARD
"THE PEOPLES CANDIDATE"
"THE RIGHT CHOICE"
FOR PRC 3
COMMISSIONER
WICHITA COUNTY

I CARE ENOUGH TO LISTEN AND I LISTEN ENOUGH TO CARE
FOR MY PERSONAL MESSAGE PLEASE CALL (817) 855-0925

LIBRARY NEWS

IOWA PARK SCHOOL MENU

Thank You

We appreciate our volunteers who help us here at the library. This past Thursday, Lucile Holm came and shared her time and talents with our children in Storytime Class. We extend our sincere thanks to her.

Reminders!!!

Daycare Personnel - There will be a Continuing Education Video Program on Monday, March 9, from 7-9 p.m. Subjects will be on Infant Development, Toddler Development and Positive Child Guidance, each lasting around 30 minutes.

CPR/First Aid Course

To be held on March 16 and 23, 6-10 p.m. Registration required by the 13th. Fee is \$25. Call 592-4981 for more information.

Spring Break

Magic Show on Tuesday, March 17, from 1:30-3:00 p.m. This show is for all ages, please come join in on the fun.

Movie Morning on Thursday, March 19, from 9:30-10:30. The movie is entitled "Hang Your Hat on the Wind," and will last 45 minutes.

Large Print Materials

Romance, Westerns, Mystery, General Fiction are among the subjects found in this area.

Audio Books

In this section of the library, you will find Westerns, Mystery, Romance. The Focus on the Family and What Wives Wish Their Husbands Knew About Women by Dr. James Dobson, and Nancy Reagan, The Unauthorized Biography, written by Kitty Kelly are among some of the titles found in this section.

New Books

Adult Fiction
McNally's Secret - Lawrence Sanders
Fugitive Nights - Joseph Wambaugh
Twilight's Child - V.C. Andrews
Adult Non-Fiction
How to Write Your Own Will - John Howell
Texas Living Trust - John Bledsoe

Reference Books

Information Please Almanac
The Planet Earth - Dougal Dixon
The Heavens - Robin Kerrod
Physics Today - Neil Ardley
The Human Body - Mike Janson
The Animal World - Ann Kramer
Dorland's Pocket Medical Dictionary - Saunders
Chemistry Today - Martin Sherwood
The Plant World - Ruth Binney
Men and Women of Science - William Nault

Juvenile Fiction

Presents for Pipkin - Brimax Books
A Windy Day - Brimax Books
A Zoo in Our House - Heather Eyles
The Icky Bug Counting Book - Jerry Pallota
The Marvelous Mud Washing Machine - Patty Wolcott
Pickle, Pickle, Pickle Juice - Patty Wolcott
Where Did That Naughty Little Hamster Go? - Patty Wolcott
Tuna Fish Sandwiches - Patty Wolcott

FRIDAY, March, 6
Breakfast--Cinnamon roll, breakfast meat, fruit juice, milk.
Lunch--Pizza, corn, combination salad, dessert, milk.

MONDAY, March, 9
Breakfast--French toast, sausage, fruit juice, milk.
Lunch--Little smokies, potatoes, Ranch Style beans, bread slices, dessert, milk.

TUESDAY, March, 10
Breakfast--Oatmeal, buttered toast, fruit, juice, milk.
Lunch--Salisbury steak, mashed potatoes, gravy, carrots, hot rolls, dessert, milk.

WEDNESDAY, March, 11
Breakfast--Biscuits, gravy, sausage, fruit juice, milk.
Lunch--Hamburgers, French fries, lettuce, tomatoes, pickles, onions, ice cream, milk.

THURSDAY, March, 12
Breakfast--Cereal, toast, jelly, fruit, milk.
Lunch--Chalupas with cheese, corn, lettuce and tomatoes, bread slices, dessert, milk.

FRIDAY, March, 13
Breakfast--Biscuit, syrup, breakfast meat, fruit, milk.
Lunch--Bun day, fruit, pork and beans, potato chips, dessert, milk.

Does your subscription to the Leader expire this month?
Check the list on page 4..

RICHARD C. CARVER, D.D.S.
GENERAL DENTISTRY

TELEPHONE 817-592-5141
315 NORTH WALL
IOWA PARK, TEXAS 76367

VOTE

SIMMONS

FOR

COUNTY COMMISSIONER

PRECINCT 3

ON

MARCH 10, 1992

or vote early February 19 through March 6 during normal business hours at two locations:

Wichita County Court House - 7th & Lamar, Wichita Falls
Wichita County Agricultural Bldg.-220 W. Park, Iowa Park

WHO IS SIMMONS?

I am Jerry Dean Simmons. I presently work in production at Certaineed, as a hard-working factory worker. I graduated MSU in 1987, with a degree in Political Science and Public Administration. I served in the Navy as a supervisor in engineering on board a nuclear submarine. I was honorably discharged in 1984. I moved back home where my family and relatives live. I have been married to Sandy for 11 years and have 2 sons, Jason and Freddie, ages, 10 and 8.

I worked construction as a laborer, while attending college. I am an open-minded and sincere individual, at age 34. I have been laid off. I know first-hand how people are still suffering from lay off or worried about a lay off. Wichita county needs to generate more jobs (i.e., multi events center, increased tourism, new industries, the prison, and better treatment of small businesses.) No job means no health insurance. The moral and financial responsibility for indigent health care falls on the county. I believe that the county has made it to first base, but still has a long way to home plate. Our children are our future and needs to be protected from the abyss of our present. I would try to improve communications between county government and the people it represents. I would look at new ways to solve old problems (i.e., crime, the environment, and more). I am a working man who is seeking your support come election day.

Pd. Adv. Pd. for by F.E. Simmons, treasurer.

Thank You.

Hawk Relays start Friday, finals on Saturday

Twenty-nine teams will be competing in five divisions, when the annual Iowa Park Lions Club Hawk Relays get underway in Hawk Stadium Friday afternoon.

This will be the first time the an-

nual event has been spread out over a two-day period.

Two field events, the pole vault and girls' triple jump, will get underway

Coach sidelined with leg injury

Iowa Park High tennis coach Dick Wineinger suffered a torn Achilles' tendon Monday, and was to have undergone surgery Tuesday.

Wineinger reportedly was having his players do some running exercises at the school's courts, and decided he would exercise with them.

Both tendons reportedly tore away from the bone near the ankle, said Coach Steve Stewart, who assisted the injured man until help arrived.

Spurs playing in title game

Iowa Park's Spurs have gone undefeated in Boys Club basketball for eight year olds, and will play for the city championship at 6 this evening in the Northwest Boys Club in Wichita Falls.

Members of the team are Brandon Criswell, Chase Wright, Jon Jordan, Russell Duggins, Ryan Bess, Jimmy Miller, Michael Weeks, Michael Davis and Rowdy Hebel. Coaches are David Wright, Jimmy Duggins and Phil Bess.

LL coaches' meet Saturday is 'must'

Attendance at an orientation meeting Saturday is mandatory for all Little League coaches, according to Mike Miller, league secretary.

The meeting will be held from 10 a.m. to 1 p.m. at the Little League field concession stand.

Following the meeting, until 3:30, coaches will hold a work day.

Should it be raining at the time of the meeting, the gathering will be moved into the Optimist Club Building.

at 3:30 p.m. Friday. All the other field events will be held Saturday morning.

Preliminaries in all events except the distance races and relays will be held Friday afternoon, including the hurdles and sprint races.

The 3200-meter races will start at 9 Saturday morning, at the same time as the balance of the field events.

Finals in all running events except the 3200 will be that afternoon, with the first race set for 2 p.m., and the final races of the day scheduled to start at 5:45.

No admission will be charged for the Friday events in the stadium, but a

\$1 admission will be charged throughout Saturday.

Division I will include girls' A and AA varsities and AAA junior varsities. Schools entered are Electra, Memphis, Nocona, Temple, Wellington and Iowa Park.

Division II will be for AAA and larger schools. Teams entered besides Iowa Park are Vernon and Childress, as well as two Amarillo varsity teams, Caprock and Tascosa.

Division IV is for A and AA boys' varsities, as well as AAA junior varsities. Entered are Electra, Memphis, Temple, Wellington, and Bowie, Vernon

and Iowa Park junior varsities.

Division V will be AAA varsity teams and larger school JVs. Teams in the division will be Childress, Bowie, Vernon, Iowa Park, and junior varsities from Rider, Hirschi and Wichita Falls High.

Four schools are entered in Divi-

sion VI, including three from Wichita Falls, "Old High," Rider and Hirschi, and Amarillo Tascosa.

Besides competing for the division championships, the high-point athlete in each division also will receive an award, according to Derrell Monday, meet coordinator.

Carroll is All-District

Hawk senior Jeremy Carroll was among six players who were unanimous 4-AAA All-District selections, chosen by conference coaches for the 1991-92 season.

The 5-11 Carroll was joined by Chris Hall, 6-2 Graham junior, Chad Harrison, 5-10 Breckenridge senior, James Cherry, 6-1 Vernon senior, Chad Eubanks, 6-2 Bridgeport junior, and Toby Dollar, 6-2 Graham junior.

Other first-team selections included Brent Craig, 6-2 Graham senior, Andy Collier, 6-4 Vernon junior, and two

other Bowie players, Chad Cowan, 6-8 senior and Clint Richardson, 6-1 senior.

Three Hawks were Honorable Mention selections: Jon Hankins, Robert Denton and Todd Pulley. All are seniors.

Bowie also had three players who received special recognitions. Most Valuable Player was Brady Fitzner, 6-5 senior; Sophomore of the Year, 6-3 Lee Nored, and Defensive Player, Chad Upshaw, 6-0 senior.

Graham's Lonnie Gaylor was the coaches' selection for Coach of the Year honors.



Both Dist. 4-AAA boys' basketball representatives failed to make it to the regional tournament. Graham lost in bi-district 63-52 to Brownfield. Bowie won its bi-district contest with Seminole, 72-63, but was defeated Tuesday in the area contest with Canyon, 54-49 in overtime.

ss ss ss ss ss

That Canyon school district, which is just below Amarillo, is a hotbed for basketball. The district may have set a record this year by sending both its girls' teams into the state tournament that will be played this weekend in Austin. They are Canyon High, Class AAA, and Canyon Randall, Class AAAA.

ss ss ss ss ss

Midwestern State's track team will compete in its first outdoor meet Thursday at Howard Payne in Brownwood. The only meet the Wichita Falls school will enter this spring, closer than Dallas and Sherman, will be the TIAA Conference Meet April 24-25 in Wichita Falls. Former Hawk Bruce Palmer is the only Iowa Parkan on the Indian squad.

ss ss ss ss ss

Junior High boys and girls' team will compete in their first track meet of the season Friday at Nocona.

IOWA PARK LITTLE LEAGUE SIGN-UP

March 7, 14 & 21 11 a.m. - 3 p.m.

At Optimist Club Building (Next to Harvey's Restaurant)

March 23, 24, 26 & 27 6-8 p.m.

At Little League Field Concession Stand

Absolutely no sign-ups accepted after this time.

Ages 6-15

Copy of Birth Certificate required for all new players



Girls Softball Little League Sign-up

Saturday, March 7 11 a.m.-3 p.m.
Optimist Club Building (Beside Harvey's)

Copy of Birth Certificate required for all new players

Ages 6-15

Johnson & Hoffman

Certified Public Accountants

One Parker Square
2525 Kell Suite #200
Wichita Falls, Texas 76308
767-7142

Individual and Business Tax Return Preparation

Electronic Filing of Individual Tax Returns

Why wait for your federal income tax refund?

Rates Now Reduced

Rates Now Reduced

- receive your refund anticipation loan within a matter of days
- available whether we prepare your return or not

H&R BLOCK

406 W. PARK 592-2221

HOURS: 9 - 6, Weekdays; 9-5 Saturday

IT'S TAX TIME AGAIN

Stamp Out The Headache of New Forms and Laws

FINANCIAL ADVANTAGES

I'll put more money back in your hands

Since 1980 592-2334

Cornerstone Pentecostal Church of God presents

FIRST ANNUAL BARBECUE

Saturday, March 7 4 - 7 p.m.

Iowa Park RAC - 806 N. Third
Adults: \$6 Children: \$3

Duffy Terry - Pastor

592-5520 or Church 592-5929

All proceeds go to benefit Children's Church

IOWA PARK ATHLETIC CENTER

215 N. Yosemite - 1 block north of Allsup's
592-2570

"We're The Best - Then There's The Rest"

Hours:
Monday - Friday, 8 a.m.-1 p.m. & 4-9 p.m.
(Closed 1 - 4 p.m.)
Saturday, 9 a.m. to 5 p.m. - Closed Sunday

Physical Fitness is our only business - not a sideline

- ~ Locally owned & no joining fee
- ~ Newly remodeled, family atmosphere, clean, and professional staff. Designed for our patron's safety. Personal fitness trainer available.
- ~ Student and Senior Citizen Discount

It's never too late to get into shape
Come see what Iowa Park is talking about and meet your friends!

"I come here because it's fun to work out and it's co-ed."
-Jim Murfield

"Overall professionalism and the equipment."
-Karen Haleomb

"Great equipment and it's clean."
-Jay Freeman

"I like coming in the mornings when my kids are in school."
-Nancy Camp

You deserve the best...

DUTTON FUNERAL HOME

300 E. BANK (817) 592-4151

...We strive to be the best.

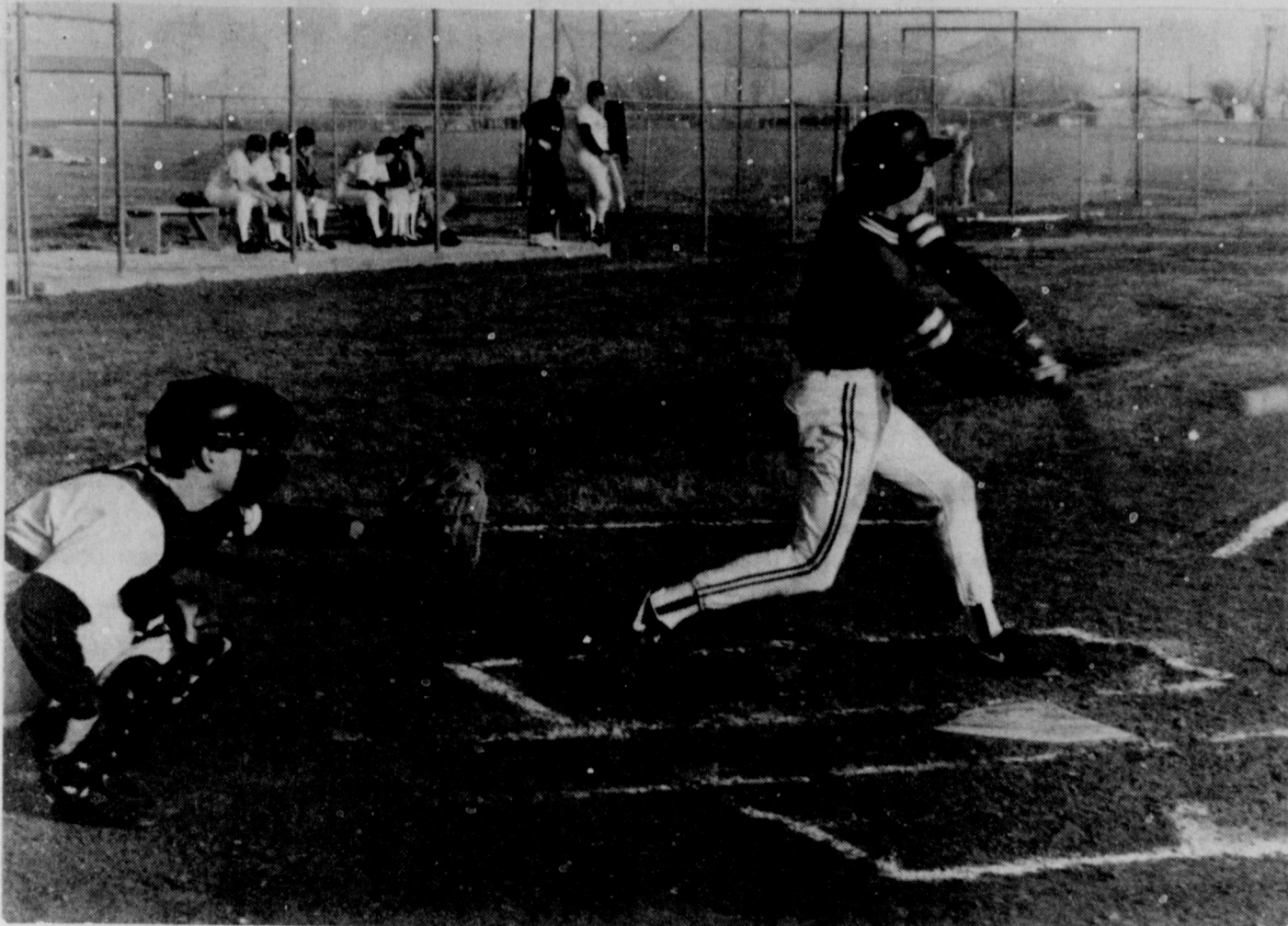
Serving the Iowa Park area since 1908 with

- CONCERN
- PROFESSIONALISM
- DIGNITY
- EXPERIENCE
- PRIDE
- CONFIDENTIALITY

We have one of the largest funeral chapels in the North Texas area.

Pre-needs... burial insurance

Larry and Norma Dutton's traditional values are combined with modern innovations to offer you the best.



JEREMY CARROLL CONNECTS IN 24-0 SEASON OPENER AGAINST NOCONA

2-1 Hawks play today in Classic first round

The Iowa Park Hawks will put their 2-1 record on the line at noon today, when they play their first contest in the annual Wichita Falls Baseball Classic.

Their first-round opponent will be Hirschi, a club they edged 4-2 Friday.

First win of the season was a 24-0 rout of Nocona, played here Thursday after having been delayed by wet field conditions the previous Tuesday.

Iowa Park's only loss thus far was suffered at Burkburnett Monday, when the Hawks were edged by the Class AAA club 9-8.

The first two wins were credited to their opponents' pitching problems. Monday's loss was apparently the hitting ability of the Bulldogs.

In the Nocona laugher, the Hawks averaged .612 at the plate. Leaders included Todd Pulley, who went four-for-four, scored four runs, and was credited with seven runs batted in; Tony Lozipone, 3x5 and four scores; Patrick Kennedy, 2x3, two runs and four RBIs;

Robert Denton, 2x4, three scores; J'Bill Merrick, 2x3, three runs, and Jeremy Carroll, 2x3, two runs.

Pitcher Ralph Dillard got credit for the win, and also went 1x1 at the plate, scoring twice. He also got credit for the win over Hirschi.

The Hawks had only one hit, by Denton, against Hirschi. But the help of the Husky pitcher in the fourth inning led to all four scores. Lozipone had the team's only RBI.

Iowa Park players were aggressive on the bases, stealing seven times successfully.

Hirschi scores came in the fifth and sixth innings.

Burk's Miller Spessard provided most of the damage Monday. The senior clobbered a two-run homer in the first inning and came back in the second frame with a two-run triple.

Hawk bats weren't silent, however. Contributing to the .346 team average were: Denton, 2x3, two runs and two

RBIs; Jason Miller, 2x4, one run and one RBI; Pulley, 1x3, two runs, one RBI, and Kennedy, 1x3, two RBIs.

The club also had four stolen bases.

Next scheduled game following the Wichita Falls tourney for the varsity will be here Tuesday against Holliday.

Harvey's
FAMILY RESTAURANT
HAMBURGERS

805 West Highway
NEW WINTER HOURS:
8 a.m. - 10 p.m. Monday-Saturday, 7 a.m. - 9 p.m. Sunday
FOR TAKE OUT ORDERS
CALL 592-4731

THIS WEEK'S SPECIAL
1/4 LB. **\$3.09** Reg. \$3.49
HAMBURGER
fries & med. drink
BREAKFAST SERVED ANYTIME!
Breakfast Special

Egg, Biscuit, Gravy...99¢
Breakfast Burrito...\$1.28

SUNDAY LUNCH
Turkey, Dressing and all the trimmings
\$4.29

BEAN DAY EVERY THURSDAY
All you can eat: Pinto Beans, cornbread, onions, pickles.
Served from 11 a.m. - 2 p.m.
11 a.m. - 9 p.m. Thursday
FARM FRESH CATFISH
Served with • Cole Slaw • Tartar Sauce • Fries
• Hush Puppies • We now use Cholesterol-Free
Canola Cooking Oil and dipped in our special
batter and \$5.95

VALLEY VIEW
MINI MART & CAFE

Cafe Hours:
6:30 - 6:00, Monday - Thursday
6:30 am - 7:30 p.m., Friday
(Fish Served 11-2 and 5-7:30)
6:30 - 2, Saturdays
CALL-INS WELCOME
438-2901

OPEN LATE FRIDAYS
FOR OUR
CATFISH FRY!

Lady Hawks 4th at Burk

The Lady Hawk track team placed fourth in Friday's Burk Relays, scoring 62 points.

Hirschi won the girls' division with 82 points, Keller had 73 and Burkburnett 64. Twelve teams were entered.

The short-handed Hawks, who missed athletes competing in other events that same day, tied with the Keller JV for 10 place, with two points.

Only two individual field events are observed at the first unofficial meet of the season.

Jennifer Ricks placed second in

both the shot putt and discus. Misty Cook and Jodi Young were third and fourth, respectively, in the discus.

Kristi Ring and Christie Catlin also qualified for the finals in the discus, but only three from the same team were allowed to advance beyond the preliminaries.

Results of other events by the Lady Hawks included:

3200 Relay - 1st., 11:14.65 (Lori Kyle, Brandi Catlin, Gina Inman, Christie Welch).
400 Relay - 55.64 (Lychelle Monday, Nikki Williams, Marcy McCarthy,

Mandy Threet).
Sprint Medley - 4th (Kyle, Lisa Halady, Nikki Williams, Jayne Roberts).
800 Relay - 6th 1:55.7 (Welch, Monday, Halady, Dee Ann Warren).
Distance Medley - 5th. (Christie Catlin, Becky Hall, Kyle, Diane Voisinot).
1600 Relay - 5th 4:36.27 (Welch, Cook, Halady, Warren).

Powerlifters earn awards

Two members of the Hawk powerlifting team won first and five others placed among the top five of their weights Saturday at a meet in Sanger.

Jayson Miller won his 132-pound class, as did Mark Tatum in the 181 class.

Charles Jolly placed second in the competition for 198-pounders.

Placing fourth were Chris Williams, 165, and T.J. Bean, 220, while Mark de la Rosa, 165, and Philip House, 198, placed fifth.

Miller was a hands-down winner in

his 132 class, squatting 330, benching 225, and dead lifting 380. His total lifts were 935 pounds.

Tatum's best squat was 365, 255 in the bench press and 380 deadlift, for an even 1,000.

Jolly's best lifts were 450, 260 and 450, for a total of 1,160 pounds.

Williams went 380, 245, 400 for 1,025; Bean 420, 235, 425 for 1,080; de la Rosa 360, 255, 400, 1,015, and House 320, 275, 405, 1,000.

SUNRISE SPECIAL

1 egg, sausage **\$2.10**
or bacon,
toast & coffee **2+ tax**

FRIDAY NOON & NIGHT
Farm-Raised Catfish

Served with French Fries, hush puppies,
cole slaw, pickles, onions and tartar sauce.

Half and Full Orders

~ Pete & Otto's ~
3-M CAFE

114 W. Cash 592-4721
Hours: Monday - Friday, 6 a.m. - 2 p.m.
Friday night, 5-8 p.m.; Saturday, 6-10 a.m.

GOOD & PLENTY
RESTAURANT

510 Old Iowa Park Road
592-4933
HOURS:
6 a.m. - 9 p.m.
7 Days a week

Remember, We're open Saturday and Sunday for Breakfast
2 eggs, any style, bacon or sausage, hash browns, biscuits, and gravy.
\$2.49

Lunch specials served every day except Saturday
REG. \$3.10 LARGE \$3.85
TUESDAY NIGHT SPECIAL
6 Butterfly Shrimp, Baked potato, salad, toast
\$6.99

THURSDAY NIGHT SPECIAL
10 oz. T-Bone Steak and Shrimp
\$7.99

FRIDAY NIGHT SPECIALS
All you can eat fish and shrimp.
\$7.99

Fish and Shrimp Basket
\$5.99

10 oz. T-Bone & Shrimp, baked potato, salad, toast.
\$7.99

SATURDAY NIGHT SPECIAL
8 oz. Rib Eye Steak, choice of potatoes, salad, toast
\$5.25

ALL THE CATFISH YOU CAN EAT
Every night of the week from 5 until closing
\$7.99

Check our house specials nightly
CO HAWKS!

Sunday Family Buffet

11 a.m. - 2 p.m.
Pizza • Pasta
Salad Bar
Dessert
\$3.89

Here to Stay...By Popular Demand!

Monday Night Pizza Buffet 5-8 P.M. \$2.99	Budget Lunch! M-F, 11-2 p.m. Mon.-Ham & Cheese or Sub Tues. - Small Lasagna Wed. - Garlic Cheese Bread Thur. - Salad Bar Fri. - Small Buffalo Wings \$1.99
--	---

And as always...
Regular Lunch Buffet
M-F 11-1:30 **\$3.89**

WE HONOR LOCAL COMPETITOR'S COUPONS

ken's PIZZA 901 W. Hwy. 592-4184

LARGE SUPREME PIZZA Redeem this coupon for a Large Supreme Ken's Pizza for \$9.95. Tax not included. One coupon per customer, per order, please. Void with other promotions. Dine-in, carry out or delivery. \$9.95	MED. THIN CRUST PEPPERONI Redeem this coupon for a Medium thin-crust Pepperoni Pizza for \$5.95. Tax not included. One coupon per customer, per order, please. Void with other promotions. Dine-in, carry out or delivery. \$5.95
---	---

FREE DELIVERY* *with minimum \$5 food purchase

EXPRESSWAY RESTAURANT

US 287 & Pacific 592-4811
Hours: 7 a.m. - 9 p.m.
Owner: Ray Copening

This Ad is the actual size of our 1/3 pound
TEXAS-SIZE HAMBURGER Reg. \$2.91 **\$2.49**

We have full meals, as well as our regular menu of sandwiches - 7 Days A Week! A different plate lunch is offered daily - and is available to eat in our dining room or carry out, from 11:30 a.m. - 8 p.m.
EACH MEAL ONLY \$3.29

The Classifieds

DEADLINES

10 a.m. WEDNESDAY (Word Ads Only)
4 P.M. TUESDAY, DISPLAY ADS

SAVE 8¢ PER WORD FIRST

**INSERTION BY PAYING
WITH COPY AT OFFICE**

RATES:

23¢ PER WORD FIRST INSERTION
15¢ PER WORD EACH REPEAT

FOR RENT

FOR RENT - Small furnished house for one. Utilities paid. \$225 monthly. \$100 deposit. Call 592-5272.
2-27-tfc

FOR RENT

2 BEDROOM, 1 bath, central H/A, washer, dryer connections. 317 Cash, \$300/month. Call 592-9367.
3-5-1tc

FOR RENT

2 BEDROOM, living, dining, carpet, refrigerator, stove, washer/dryer connections. No smokers, no pets. Deposit, references required. 1920 6th, between Denver and Van Buren, Wichita Falls. 761-2750.
3-5-1tc

FOR RENT

FURNISHED 3-room efficiency apartment, \$150. Call 592-4131 days; 592-9367 nights, ask for Glenn.
3-5-1tc

HOMES FOR SALE

BRICK HOME in pecan orchard. 2,300 sq. ft. and 3 acres. \$67,500. Additional 8 acres and shop available. Iowa Park schools. 322-2839.
2-13-4tp

MISC. FOR SALE

GARAGE SALE - Saturday, 9:00. Last call before moving. Large variety of things from household items to Christmas lights and snow sled. Beautiful Thomasville trestle table, hutch and eight chairs. Some unusual antique items. Cash and carry, please. 310 Cindy Lane, 592-5616.
3-5-1tp

MISC. FOR SALE

TWIN MATTRESS/Box springs \$50; queen sofa/sleeper \$225; wooden queen headboard \$20; brown/rust lamp \$25. 592-9488.
3-5-1tp

DOMESTICS

ITTY BIDDY Day Care has 2 openings for ages 18 mos. and up. Also 2 openings in latch key program (1st grade & up). Mary Biddy, 592-4302.
2-13-tfc

One bedroom apartment \$189 to \$199
Two bedroom apartment \$229 to \$244

- Energy efficient
- Central Heat/Air
- Children's Play Area
- Fully carpeted and draped
- Off-street parking
- Water paid
- Total electric
- Full equipped laundry room

COLONIAL HEIGHTS APARTMENTS

Handicap Accessible **592-2705**

3 BEDROOM mobile home on large, private, fenced lot, central heat/air, range, refrigerator, carpeted, City View school, cellar, cable. 855-3062.
3-5-1tp

More Classifieds on next page.

RETAIL STORE, Iowa Park Road, central heat/air, walk-in cooler, equipment furnished. Good location. 855-3062.
3-5-1tp

More Classifieds on next page.

6 FAMILY Garage Sale - Ceiling fan, radios, toys, curtains, baskets, nice clothes, coffee pot, baby items, swing, walker, car seats, infant & toddler, maternity clothes, lots of misc. Saturday, March 7, 706 W. Texas, 8-4.
3-5-1tp

ETHAN ALLEN sleeper sofa, 592-5764 after 5:30.
3-5-1tc

1971 INTERNATIONAL truck. 2-ton single axle, very good condition, steel flat bed. \$2,500. 592-9774.
3-5-1tp

YARD WORK

LAWNS MOWED. Jim Holm 592-9865 or 592-5845.
3-5-1tp

801 VAN HORN- 3 bedroom. Must sell. Make offer. **Good Starter Home** near Jr. High with new vinyl siding and storm windows. Reduced to \$17,000.
3 BEDROOM, corner, near Jr. High, Lrg. bdrms., 2 full baths, double gar., includes \$125 rental in back yard.
3 BEDROOM, choice location, \$32,000.
NICE LOT, good location. Small house on back of lot needs repair. \$7,500.
LARGE CHOICE COMMERCIAL Lot. Long term lease. Ideal for almost any kind of business. Call Owner/Broker. Lease negotiable.
.75 ACRE deeded lot on Lake Arrowhead near Scotland. Price negotiable.
MOBILE HOME LOTS - \$60 monthly.
We need listings! If you need to buy or sell, call us!

Sam Hunter Real Estate
107 E. Cash 592-4661

Sam Hunter Wanda Hunter

Century 21
Gold Coat
4706 Brookdale, Suite 2
Wichita Falls, Texas 76310
Business (817) 696-5561
Business (800) 568-2128
Residence (817) 592-2082

Deryl Edward Roy
Sales Associate
Each office is Independently Owned and Operated

WOODBRIAR COMMUNITY
2 and 3 Bedroom Units Available
(Selected 2 & 3 BR Units have washer/dryer connections)
Lots of Storage Fenced Playground
Discount for Retired and Elderly People
ALL BILLS PAID (includes Basic Cable)

Come to the Woodbriar Community
1000 Mary 592-2121

GARAGE SALE - 300 W. Washington, Saturday, 8 a.m. Clothes, furniture, misc. etc.
3-5-1tc

GARAGE SALE - 1/2 mile south of Iowa Park on FM 368. Thursday & Friday, 8-7.
3-5-1tp

UPRIGHT PIANO, good condition, \$350. Call after 5 p.m. 592-2064.
3-5-1tp

DOMESTICS

REGISTERED Child Care, one year and up. Day, night, drop-ins welcomed. Certaineed area. 696-3608.
3-5-2tc

MS. ALICIA'S Day Care has 2 openings for your toddler or preschool age child. M-F, flexible hours. 592-2845.
2-27-5tp

CHILD CARE - My home. Monday-Friday. 592-5597. Terri.
2-20-4tp

HELP WANTED

CERTIFIED NURSING Assistant. Would you like to work in a pleasant and caring environment? Competitive wages and excellent benefits package including educational reimbursement, health, dental and life insurance. Free training program if not already certified. Apply in person or call Patsy Martin, Electra Nursing Center, 511 S. Bailey, 817-495-2184.
3-5-2tc

HELP WANTED - mostly daytime. Apply only in person. Expressway Restaurant.
10-17-tfc

COOK and counter help. Must be able to work flexible hours. Apply in person, Harvey's Family Restaurant.
2-20-tfc

LVNS NEEDED - All shifts, good pay, benefits and working conditions. Apply EMC, 511 S. Bailey, Electra.
2-20-tfc

Regency One REALTORS
Don't Just Dream...Live the Dream!
Office - 592-2133 or 592-2134

MIAMI ST. - W.F.
Very neat 2 Bdrm., 2 bath, nice size living area. Very well kept. Formal dining area, Dbl. carport. \$45,500.
208 W. ALDINE, IOWA PARK
Approx. 1800 sq. ft. Separated master bedroom, 3 BR, 2 baths, living/dining area, breakfast area, laundry room. 2 car detached garage, 50X20 shop. Sits on 4 lots. \$54,000.

3404 WELLINGTON
Approximately 5000 sq. ft. home. 2 living, 2 dining areas. 4 or 5 BR, separated master suite. Gameroom or office. Private study with bookshelves, new pool, new fence, 4-line telephone. 3-car garage, carport, 6.76 acres. \$287,500.

EDEN HEIGHT - W.F.
New carpet, new curtains in this lovely 3 bedroom, 1 1/2 bath home. Has a formal dining area. Ceiling fans throughout. Two car garage. Central H/A. \$47,500.

NEW LISTING - 2994 HORSESHOE BEND
Immaculate 3 Bdrm. - 3 bath home. Formal dining-breakfast area and breakfast bar. Laundry room, large living/fireplace, study and TV room. 15X12 storage. Has pier, GREAT lake to canoe on. \$126,500.

NEW LISTING - COUNTRY ATMOSPHERE
3 BR, 2 baths, 2 living areas, 2 dining areas, 2 fireplaces, 2-car garage, sun room, new privacy fence. \$62,500.

4634 KARLA - W.F.
2 living areas, 3 BR, 1 1/2 bath, ceiling fans, new kitchen cabinets, lg. laundry room, 2 car detached garage. Central H/A. \$54,950.

WICHITA GARDENS - W.F.
Corner lot. Two bedrooms, large living area, cute kitchen with dining area, new carpet. Price reduced to \$16,500.

QUAIL VALLEY - IP SITS ON 7.9 ACRES
Living area **IN CONTRACT** windows/room, 2-car garage. 2 barns, tack room. \$94,900.

QUAIL VALLEY ESTATES - IP
2700 sq. ft. of living area. 4 BD, 3 baths, formal living area/fireplace, built-ins; den/Franklin stove, sitting area or office. Sewing or sound room. Game rm./wet bar. \$110,000.

411 W. LOUISA - IOWA PARK
4 BR home, 2 full baths, formal dining, laundry room, central H/A, two car carport. Large trees. Established area. \$39,900

LAKE CABIN (DIVERSION)
Lakel front prop. - 2 story - all beds, cooking ut. remain. Like new pier. \$8,500. Will trade for motor home of equal value!

NEW LISTING - 103 & 105 HAWTHORNE
2 Houses, each has living area, kitchen-dining, single BR, and 1 full bath. Live in one, rent the other. Both-\$14,500.

NEW LISTING - 1004 N. JACKSON
IN CONTRACT living, all storage
2BR, 1 built-in bldg. Brick home, ceiling fans. \$40,500.
1004 W LOUISA - IOWA PARK
Clean 2 BR, 1 1/2 bath. Easily 3 BR. Like new carpeting, 2 car garage, carport, workshop, lg. storage bldg., lg. covered patio, underground watering in garden area. \$36,000.
207 E JEFFERSON - IOWA PARK
Corner **IN CONTRACT** pm, single car gar **IN CONTRACT**

SMALL HOUSE - BIG LOT
IN CONTRACT as storage
1 Bdrm building
1328 EDGEHILL - IOWA PARK
1600 sq. ft. of living area, 4 BD, lg. living/fireplace, 2 baths, formal dining. Breakfast bar, central H/A. Corner lot. Seems like you're living in the country. Fenced back yard. \$43,000.
LAND! LAND! LAND! LAND!
Vacant Lot - \$1,500
8.76 Acres - Reduced, \$8,760
11.6 Acres - Reduced, \$13,340
COMMERCIAL BUILDING
Centrally located. \$75,000. Private showing only.

KEY REALTY
592-2718
592-4583
Cindy Witherspoon

RESIDENTIAL

4612 SH 370	\$65,000	5 acr. quality liv. Must see
SH 258	\$54,000	3-2-2, living area, 2 acres
711 W. COLEMAN	\$55,000	IN CONTRACT
421 W. VALLEY	\$49,500	3/4 acre lot, super decor.
1308 EMMA	\$45,000	Must sell! Make offer!
.607 DOUGLAS	\$44,000	Remodeled, must sell!
1312 MOCKINGBIRD	\$42,500	IN CONTRACT
154 YUCCA (Rural)	\$41,900	IN CONTRACT
800 PARK PLAZA	\$39,500	Immaculate, corner lot
1303 MOCKINGBIRD	\$39,500	IN CONTRACT
1302 WESTRIDGE	\$38,900	
1210 N. JACKSON	\$33,950	FHA Assumption
616 W. TEXAS	\$32,750	3-1-2/Corner Lot
807 E. PASADENA	\$26,500	2-1
511 N. VICTORIA	\$13,500	REDUCED

FOR LEASE
800 S. WAGGONER, ELECTRA

MINI-CON Self-storage

- Variety of sizes.
- Competitive prices.
- Locally owned and operated.
- Monthly rates.

305 W. Hwy. 592-2761

\$1000 REWARD

For information leading to the arrest and conviction of any person or persons involved in theft, vandalism, arson, fishing or hunting on any of our properties in Wichita, Archer, Wilbarger, Clay, Wise or any other county in which we may have equipment located. Tom Swanson Oil Co., TS&T Drilling Inc. Ph. 817-495-3971.

TEXAS REALTY
SELLING IOWA PARK
109 W. Cash
592-2728

LOOK for information boxes on our yard signs. Fact sheets are FREE.

NEW LISTING #22 SURREY
4-bedroom home in choice location. Total election, sunken living area, optional .925 acre behind property.

Polly Spruiell
Res. - 592-4756
Mobile ph. - 733-4832

Tommy & Glenda Key
Res. - 592-4660
Mobile ph. - 733-0646
Mobile ph. - 733-4012

300 W. Ruby	2-bedroom; corner lot.
208 W. Clara	SOLD
317 E. Cash	IN CONTRACT
903 W. Louisa	3-bedroom, big yard, near school.
205 W. Texas	2-bedroom, central heat, shaded lot.
1002 Louisa	Enlarged living room; covered patio. REDUCED
1308 N. 4th	Steel siding trim; covered patio; 3-bedroom
1310 Mockingbird	Total electric, lg. liv. room, gorgeous FP
1104 W. Cornelia	IN CONTRACT
905 Dossia	IN CONTRACT
125 Wood Circle	IN CONTRACT
1003 W. Cornelia	Fireplace; new carpet; 3-year-old-kitchen
723 N. Park	Large home on corner lot; kitchen built-ins.

60's
#27 Surrey
801 N. Park
10479 Longley
#25 Surrey
#36 Surrey

70's
2311 Bridwell Road
601 W. Magnolia
2400 Lansing, WF

80's
1606 Yucca
Land
2 Acres
16.5 Acres
32.01 Acres
38.53 Acres
54.75 Acres

Commercial
1.54 Acres
1321 N. 4th
1109 FM 368S
926 & 928 W. Highway

Isolated Master bedroom; great location.
Double-hearth fireplace; Large lot.
Garden room, 3 bedrooms, 1.98 acres.
IN CONTRACT
Beautiful back yard, sunken living room.

3-bedroom, redecorated, pool, .503 acre.
Lovely, custom-built home on corner lot. **REDUCED**
Large 3 BR home on corner lot; great location.

IN CONTRACT

Close to Iowa Park on FM 367.
Headquarters Road; barn, corral, pond
Peterson & 287 Expressway
Corner of FM 367 & Coleman Park Road
FM 367

Old Iowa Park Hwy & Magnolia
Corner of 4th and expressway access road
Approx. .5 acre lot; 4600 sq. ft. building.
Two buildings; one currently rented.

BUSINESS

EIBEN Home Repair and Remodeling. Additions, roofing, painting, sheetrock, doors, carports, patio covers, and more. Small jobs welcome. Reasonable rates. Licensed and bonded. 592-2053. 11-1-tfc

COPIES MADE at Parkway True Value, 25¢ each. 11-1-tfc

CAMPERSHELLS - Over 200 in stock. Fiberglass, from \$495. Metal, \$345. Pete's RV, Marlow, Okla. 405-658-5114. 5-2-tfc

SIDING, INSULATION, windows & doors. The Great Plains Siding and Insulation Company 761-2124 or 592-9829. 10-3-tfc

TNR CONSTRUCTION - Roofing, painting, sheetrock, and texture, brick and cement work. Licensed and bonded. Rick Caffey, 592-4625. 11-1-tfc

HOME IMPROVEMENTS from additions to remodeling. Patios and carports, acoustic ceiling, ceramic tile, general carpentry. Gary Williams, 592-2480. 11-1-tfc

HORTON CONSTRUCTION Additions, roofing, painting, remodeling, dry wall & acoustic ceilings. Blaine Horton, 592-5586. 11-1-tfc

WOLFE ROOFING - Residential-commercial. Free estimates. 855-5657. 11-1-tfc

REMODELING, additions, or new construction. Bath and kitchen remodels a specialty. Roofing, insulation and storm windows. Free estimates, references, discount for senior citizens. Jack or David Kerr, 5056 Old Electra Rd., 592-5710. 11-7-tfc

BLACK POWDER Guns and accessories, revolvers \$50 and the Powder \$3.99 lb. Will order modern guns for 10% over cost. Ye Ole Gun Shack, 413 W. Washington, 592-5430. 11-1-tfc

AUTO DETAILING, transmission work, minor engine repair & service. Call Eric Tidwell, 592-5857. 2-6-tfc

BUSINESS

HOME REPAIR and improvement, remodeling, new construction. Free estimates, references available. Call Paul, 592-4584. 2-20-3tp

COPIES MADE - 20¢ each including reduction and enlargement. Iowa Park Air Conditioning. 607 E. Bank. 11-1-tfc

FACSIMILE capability. Glenda Via Insurance. 11-1-tfc

TREE WORK - Pruning, topping and removal. 592-4237. 2-20-6tp

PLOWING, landscaping, yard work. Free estimates. Derek, 592-2351. 2-27-12tp

GRASSSEED - WW Spar High PLS - will deliver quantities. 1-800-685-7592. 2-27-6tp

NOTICE

PUBLIC NOTICE The Iowa Park Consolidated Independent School District is accepting bids on Athletic Medical Supplies.

Bids will be accepted until 2:00 p.m. March 23, 1992, in the School Administration Office, 413 East Cash, Iowa Park, Texas 76367. Bids will be opened 2:00 p.m. March 23, 1992, in the School Administration Office.

Invitations to bid, general instructions, and specifications may be obtained at the School Administration Office, 413 East Cash, Iowa Park, Texas 76367 or by calling 592-4193. 2-27-2tc

Mary Kay Cosmetics Paradise Found Glamour MasterCard Visa Norma Williams Young 592-2337 495-3480

Cash for Cans IOWA PARK RECYCLING CENTER Corner Pacific & Bank 9 a.m. - 6 p.m., Fri. & Sat.

FAX Messages Ph. 592-5613 Copies made - 15¢ USP Packages Hughes Pharmacy

NOTICE

FREE PUPPIES & dogs. 592-4003. 3-5-1tp

LOST - Cream colored female Afghan Hound. Around Kidwell school. If found, please call 592-5352. Reward. 3-5-1tp

ADVERTISEMENT FOR BIDS CITY OF IOWA PARK, TEXAS

Sealed bids for Spur No. 370 Sanitary Sewer Trunk Main Improvements in the City of Iowa Park, Texas will be received by Mr. Gary Jones, City Administrator, until 10:00 a.m. Wednesday, April 8, 1992, in the City Council Chambers, Iowa Park, Texas and then publicly opened and read aloud. Information for bidders, form of bid, plans, specifications, and terms of bid bond, performance bond, and payment bond, together with other contract documents, may be examined at the offices of Biggs & Mathews, Inc., 2500 Brook, Wichita Falls, Texas 76301. Copies may be obtained at the offices of Biggs & Mathews, Inc. upon payment of \$15.00 for each set, which is non-refundable. 3-5-2tc

The following is a list of dissatisfied Leader Classified Advertisers:



DIRECT FROM BRANSON - The Foggy River Boys will be appearing Friday, Mar. 13, in Iowa Park High School's auditorium, sponsored by the Iowa Park Lions Club. Tickets are available at Hughes Pharmacy, Parkway True Value and Iowa Park Leader. When purchased in advance, tickets are \$10 for adults and \$5 for children, and \$2 higher at the door.

State Capital



HIGHLIGHTS

By Lyndell Williams TEXAS PRESS ASSOCIATION

AUSTIN - Presidential politics dominated the Capitol scene last week, wooing Texans who will vote in next Tuesday's primary:

- President Bush flew in for an international drug war pow-wow held in San Antonio;
Former KKK leader David Duke, a Republican, and Arkansas Gov. Bill Clinton, a Democrat, sparked some white-black flashes of anger, one inadvertently; and
New Hampshire Democratic primary winner Paul Tsongas, backed by Texas Railroad Commissioner Bob Krueger, opened campaign headquarters in Austin, Houston, San Antonio and Dallas.

A recent poll shows Clinton, who has the support of Land Commissioner Gary Mauro and Democratic Party chairman Bob Slagle, leading Texas with more than 40 percent of Democrats.

The Clinton Flare-up The Clinton flare-up came after he remarked that black leader Jesse Jackson was double-dealing, underhanded and dishonorable for campaigning for primary opponent Tom Harkin.

Clinton thought he was off-the-air, but his remarks were taped and repeated in media news, causing a brief rift that he and Jackson apparently resolved over the phone.

Meanwhile, Duke's words were deliberate when he said many freedoms that white Texans died for at the Alamo were being threatened by minority take-over.

That prompted appeals court judge Morris Overstreet, the first black elected statewide, to accuse Duke of trying "to incite racism" by invoking the Alamo. This rift was not resolved.

Poll Predictions Other Texas poll results showed President Bush with 78 percent GOP support; Duke one percent; and Patrick Buchanan 11 percent.

Among Democrats, Tsongas was second with more than 30 percent and closing.

Other Highlights

Gov. Ann Richards has a 70 percent approval rating as she heads into her second year in office, according to a Houston Chronicle poll. The approval rating is the highest ever posted for a Texas governor in at least 14 years, said University of Houston Political scientist Richard Murray, who conducted the poll.

When Texas Congressman Joe Barton slipped \$50,000 into an appropriation bill to provide for drug testing of members of Congress, Oregon Rep. Peter DeFazio countered with an amendment to use the money for congressional IQ tests.

THE WEEKLY OIL AND GAS REPORT

PREPARED BY OIL & GAS REPORTING SERVICE, INC. P. O. BOX 2645, CORPUS CHRISTI, TX 78403 512/883-6533

RRC DISTRICT 9 - WICHITA FALLS

ARCHER COUNTY

BURNS OPERATING OF Wichita Falls, Tx has filed for a permit to DRILL a 4800' depth Archer County Regular Field well 5.5 miles NE of Megargel. The FURR-DEEP No. 2 is located on a 320 acre lease in the Lot 19, So. Anderson Ranch S/D.

DAVID F. CRUTCHER, INC. of Wichita Falls, Tx has filed for a permit to DRILL a 1700' depth Archer County Regular Field well 10 miles N of Archer City. The JANICE No. 1 is located on a 4.2 acre lease in the Section 15, Block 41, A. T. N. C. L. Survey.

BAYLOR COUNTY

MERIT ENERGY COMPANY OF Dallas, Tx has filed for a permit to DRILL a 6000' depth Wildcat well 9 miles E of Seymour. The P. C. GREEN 'D' No. 11 is located on a 325 acre lease in the T. & N. O. R.R. Survey #215, A-368.

CLAY COUNTY

MALEDON ENTERPRISES OF Wichita Falls, Tx has filed for a permit to DRILL a 1400' depth Clay County Regular Field well 5 miles W of Petrolia. The TAYLOR RANCH 'B' No. 1B is located on a 54 acre lease in the Section 41, Bacon Bros. S/D.

COOKE COUNTY

AUGUST OIL of Muenster, Tx has filed for a permit to DRILL a 1999' depth Wildcat well 3 miles S of Muenster. The HELLMAN No. 1 is located on a 20 acre lease in the J. Trussel Survey, A-1225.

J. R. & ADAM SEITZ of Wichita Falls, Tx has filed for a permit to DRILL a 4000' depth Wildcat well 4.5 miles ESE of Gainesville. The INEZ FARR HEIRS No. 1 is located on a 40 acre lease in the D. N. Campbell Survey, A-197.

HARDEMAN COUNTY

TRIO OPERATING CO., INC. of Wichita Falls, Tx has reported a NEW OIL WELL COMPLETION in the Thrash [Chappel] Field, 9 miles NNW of Chillicothe. The MULKEY 'A' No. 1-B, located on a 40 acre lease in the Section 10, Block H, W & NW RR Co. Survey, A-1512, tested 216 BO/D, 320 MCF/D, no water, flowing on 11/64 choke at 1270# from perfs 8460-66' after acid treatment.

JACK COUNTY

BEST PETROLEUM EXPLORATION, INC. of Jacksboro, Tx has reported a NEW OIL WELL COMPLETION in the Leatherwood Barham [Up. Straw] Field, 7 miles W of Jacksboro. The FARRIS No. 1, located on a 21.47 acre lease in the I. Farris Survey, A-220, tested 55 BO/D, no gas, no water, on pump from perfs 2955-65'.

MCEVER OIL COMPANY, INC. of Troup, Tx has filed for a permit to WORKOVER [plug back & test at 3104'] a 3172' [PBT] depth East Bryson Field well 3 miles E of Bryson. The SEWELL-SENATE 'B' No. 1 is located on a 40 acre lease in the M. Hamilton Survey, A-262.

MILES PRODUCTION CO. of Bridgeport, Tx has filed for a permit to DRILL a 5400' depth Jack County Regular [Wildcat] Field well 5 miles NE of Jermyn. The RUTH PEEK 'A' No. 2 is located on a 311 acre lease in the James W. Williams Survey, A-877.

MILES PRODUCTION CO. of Bridgeport, Tx has filed for a permit to DRILL a 5900' depth Jack County Regular [Wildcat] Field well 3.5 miles NE of Jermyn. The VERA RONEY No. 14 is located on a 660 acre lease in the T. E. & L. Co. Survey #3306, A-729.

MITCHELL ENERGY CORPORATION OF The Woodlands, Tx has filed for a permit to DRILL a 6100' depth Boonsville [Bead Cong., Gas] Field well 3 miles SE of Candiff. The JACK GRACE RANCH No. 11 is located on a 352 acre unit in the H. H. Akers Survey, A-1221.

WESTERN CHIEF OIL & GAS COMPANY OF Graham, Tx has filed for a permit to DRILL a 5300' depth Box [Mississippi] Field well 2 miles NW of Bryson. The TONY KING No. 1 is located on a 160 acre lease in the Isaac Hughson Survey, A-256.

KNOX COUNTY

E. N. PATTON OIL COMPANY, INC. of Abilene, Tx has reported a DRY HOLE in a Wildcat well, 5 miles NW of Munday. The HARLAN No. 1, in the D. G. Burnett Survey #11, A-25, was plugged and abandoned at a depth of 2242'.

MONTAGUE COUNTY

O'BRIEN OPERATING CO. of Shreveport, La. has filed for a permit to DRILL a 6500' depth Wildcat well 5 miles E of Ringgold. The GARDNER No. 1 is located on a 718 acre lease in the J. H. Whitehurst Survey, A-866.

WICHITA COUNTY

BURK ROYALTY COMPANY OF Wichita Falls, Tx has filed for a permit to DRILL a 1550' depth Wichita County Regular Field well 8 miles SW of Iowa Park. The SUE MITCHELL-HAWKINS No. 16 is located on a 80 acre lease in the P. Castleman Survey, A-36.

JOE B. HOOD of Wichita Falls, Tx has filed for a permit to DRILL a 1999' depth Wichita County Regular Field well 2.5 miles SW of Clara. The MOBIL-POSTER 'A' No. 1 is located on a 165 acre lease in the Joseph Green Survey, A-581.

PRIMROSE OPERATING OF Wichita Falls, Tx has filed for a permit to DRILL a 1999' depth Wichita County Regular Field well 6 miles N of Iowa Park. The RUYLE UNIT No. 195 is located on a 441 acre unit in the S. P. R. R. Co. Survey #7, A-126.

PRIMROSE OPERATING OF Wichita Falls, Tx has filed for a permit to DRILL a 1999' depth Wichita County Regular Field well 6 miles N of Iowa Park. The RUYLE UNIT No. 196 is located on a 441 acre unit in the S. P. R. R. Co. Survey, A-437.

WISE COUNTY

MITCHELL ENERGY CORPORATION OF The Woodlands, Tx has reported a NEW GAS WELL COMPLETION in the East Newark [Barnett Shale] Field, 2 miles NE of Boyd. The TULLIE M. TIMM No. 2, located on a 353 acre unit in the L. Rostermeyer Survey #11, A-718, tested 2360 MCF/D dry gas on 12/64' choke at 2690# from perfs 6994'-7200' after acid and foam treatment. SIWP-2760#. Absolute open flow-15,000 MCF/D.

MITCHELL ENERGY CORPORATION OF The Woodlands, Tx has reported a PLUG BACK OIL WELL RECOMPLETION in the Bridgeport [Tidwell] Field, 0.5 miles S of Bridgeport. The CITY OF BRIDGEPORT No. 1, located on a 80 acre lease in the Rebecca Coleman Survey, A-155, tested 6015 BO/D, 196 MCF/D, no water, flowing on 14/64' choke at 460# from perfs 3950-85' and 4023-40' after acid and foam treatment.

TEXU, INC. of Mineral Wells, Tx has filed for a permit to DRILL a 6200' depth Morris [Consolidated Congl.] Field well 3 miles SE of Clifton. The NEWTON No. 1A is located on a 50 acre lease in the M. O'Neal Survey, A-668.

QUAIL RUN APARTMENTS Now accepting applications 1-2 bedrooms, water & gas paid, assistance available. Equal Opportunity Housing Property financed by Farmer Home. 592-4646

POSEY'S APPLIANCE SERVICE We service all makes of washers, dryers, freezers, refrigerators and window air conditioners 208 James Drive Phone - 592-5452

Shaklee Distributors Ruby & Dan Love 1601 Karen, Iowa Park 592-5951

KINGS KIDS CHRISTIAN DAYCARE & PRESCHOOL "Iowa Park's finest for Parents who care" 202 N. Jackson 592-4242

Come see what's happening in the World of AVON You can be a star in the New Star Program Jennifer Goin 592-9607

Park Home Health Services 592-2753 Phone Answered 24 hours Medicare-Medicaid approved Private Insurance

Bob's Appliance Repair Parts & Service Most Major Appliances Refrigerators - Freezers - Dishwashers Ranges - Washers - Dryers - Used Appliances -Also- Crafts - Gifts - Painted Shirts - Ceramics - Jewelry 855-8525 4280 SH 370

IOWA PARK AIR CONDITIONING & HEATING You can trust us even if you can't trust the weather 592-2761 We have 24-Hour Service We service Carrier and all other brands

Jim's Conoco Check with Jim or Mark Shirley for expert repairs on your vehicle. 592-4897 612 W. Highway