

Aug 13, 1987

MRS. LITA WATSON
528 W. CLARA
IOWA PARK TX 76367 112

IOWA PARK LEADER

28
Cents

Vol. 18, No. 48 IOWA PARK, WICHITA COUNTY, TEXAS 76367 Thursday, Aug. 13, 1987

City changing hours for landfill dumping

The city council Monday night changed the hours for public dumping at the sanitary landfill, increased the rates for trash collections, and initiated a process to demolish a house.

Aldermen had previously determined trash collection rates would have to be increased, in order to pay for the increased cost of disposal. The state has mandated a particular style of landfill pit here which, based on a bid approved last week, costs \$68,000 to hold a year's deposits.

New rates, which will be charged on all bills prepared after Aug. 31, will be \$9.25 per month for single-family residences; \$40 per container at businesses where pickups are made twice weekly, and \$90 per container for five pickups per week.

Dumping at the landfill will be cut off at 4 p.m. each weekday, in order to give the operator an extra hour to cover the refuse before he quits for the day.

Mike Price, public works director, said most of a day's dumping had been covered before the packer operator quit each afternoon, but more was dumped after he left.

The state inspector had no problem with that, Price told the council, because it usually did not contain edible materials. But since the practice has received comment, he proposed the change.

He also said the landfill would

remain open Saturdays and Sundays, and the city will pay an operator time and a half to come in on those afternoons to cover those deposits.

Weekend dumping will be from 8 a.m. to 6 p.m. Weekday dumping will be 8 a.m. to 12-noon, and 1-4 p.m.

A public hearing to consider condemnation of structures at 325 E. Bank was held, followed by approval of a resolution giving the owners 28 days to correct the problems.

At the end of the period, a second hearing would be held, and if no response or indication of correction is received at that time, the city can begin demolition immediately, aldermen were told.

Numerous complaints from owners in the area have been received at city hall, James Barrington, city administrator, told the council.

The structure, owned by Joe Harry Bower of Uvalde, and others, has been rental property and was occupied as recently as two months ago, Barrington said.

Neighboring property owners at the meeting told the council they had cleaned up and hauled numerous truck loads of trash which had accumulated between their homes.

They asked if the city could do something about the rodents and insects that live in the structure, but venture onto their property.

Several film slides were viewed

by the council, showing the condition of the structure.

The council also approved a proposal by H.J. Cannon of Wolfe Nursery to landscape city hall and the park to the east, at a cost of \$1,139.

Most of the work, other than the seeding of grass, will be done in the near future. Grass will be planted in the spring.

Along with that proposal, the city approved a plan to install a sprinkler system, at a cost of \$800, for the two areas.

In other business, the council took the following action:

* approved amending a contract with Lifeline Ambulance, for the amount of subsidy the city pays;

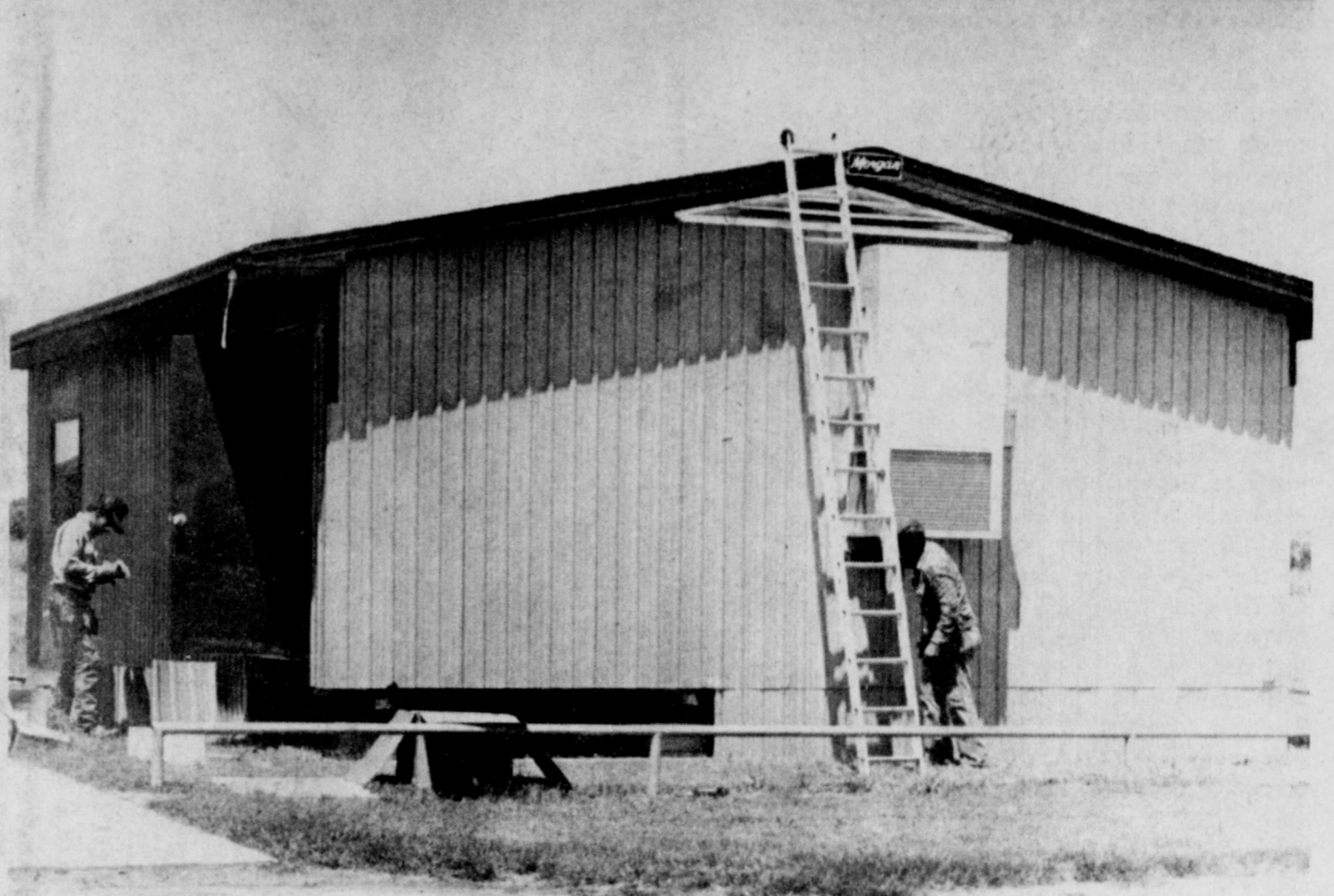
* heard a report by Barrington that Cryovac officials have indicated an interest in the city's plan to serve the plant by taking its refuse to be burned in an incinerator, and selling the firm steam from the plant;

* authorized reconstruction of two metal buildings at the new complex on FM 368 south, one of the final steps toward removal of most of the structures, other than the water treatment plant, at Gordon Lake dam;

* approved a volunteer tax plan for employees;

* approved a proposed exercise plan for employees, at no cost to the city;

* approved use of an intern from Midwestern State Univ.



CLASSROOMS HAVE ARRIVED - One of three temporary classrooms needed to handle meet state-mandated teacher-pupil ratio of 1-22 arrived this week at Bradford Elementary, and workers began immediately readying it for the Sept. 1 opening of school. Another will be placed beside it, and the third is already in place at Kidwell Elementary.

Proposed school budget based on cent tax hike

Iowa Park school trustees got their first look at the proposed 1987-88 budget Monday night, but want to take a longer study before acting on Supt. Glen Mitchell's request for a one-cent tax increase.

The proposed budget calls for expenditures of \$6,089,841.

Mitchell showed the board that by increasing the tax rate from 75-cents per \$100 valuation to 76-cents, the district would have an estimated revenue for the year of \$7,026,567, and leave a balance for operating and debt service at the end of the year of \$936,726.

Because of an increase in district values, the one-cent increase would actually generate eight percent more money than the district received from local taxes last year, trustees were told.

"Every effort has been made to

study the budget closely with building principals and to eliminate items that are not justifiable," Mitchell told the board.

"I have worked through each campus budget by line item with each principal. The increase in the budget has basically been caused by additional personnel, mandated salary increases, and \$250,000 for construction. These increases were brought about by House Bill 72," he said.

He offered four options for the board's consideration:

"Request a one year waiver to implement the 22-1 ratio in grades three and four. This would eliminate the need to budget \$250,000 for construction in the 1987-77 proposed budget.

"Purchase three additional portable classrooms for Bradford Elementary School for the 1988-89 school

year. Four additional classrooms will be needed in 1988-89. However, the additional fifth grade portable classroom purchased for this year will not be needed in 1988-89 for the fifth grade, and it could be used for one of the classrooms.

"Vote a bond issue to build and upgrade the present facilities.

"Move one grade to the Valley View Campus."

Of the \$6-million budget, district salaries are almost \$4-million, which represents a \$270,000 increase which was primarily dictated by HB 72, trustees were told.

"We've already got all the contracts out, but it looks like we've got more people than we can pay for," commented board chairman Jimmy Howell.

"What I'm asking you to do is
Continued on page 13

Drug abuse appears declining among students

by KARI COLLINS

While drugs may be easy to find in Iowa Park, it appears that usage among high school students is declining.

Alcohol, according to students and city and school officials, is by far the most abused drug by Iowa Park adolescents, followed by marijuana, amphetamines and tranquilizers, but the regular usage of these is reported to have declined. A small percentage of harder drugs can be found in Iowa Park, and most are readily available, even at the high school.

Any drug can be addictive, either physically or psychologically.

During the past year, there has been an aggressive movement through the media to put a stop to drug usage, with a simple message—"Just Say No."

And that message could be working among the youth of Iowa Park, if not with alcohol, at least with other drugs, with the help of students and adults alike who want to stop drug abuse among their peers and children.

Steps have been taken by students, educators and parents to try to curtail drug use among Iowa Park teenagers.

Several Iowa Park High School and Junior High students attended a drug abuse prevention seminar sponsored by Texans' War on Drugs recently where they learned several ways to "just say no."

Sheri and Christi Cravens, Iowa Park High School seniors, say peer pressure reversal, or offering alternatives to taking drugs to user-friends, is one effective way to "just say no." All agree, however, that the best solution is for parents and their children to have open communication about drugs and alcohol, and to avoid any situation where drugs and alcohol might be found.

The two are now working on "Project Graduation," a drug-free, all-night party just for seniors.

Allen Shewmake, a parent of junior high and high school-aged children, chaperoned the junior high group to the Texans' War on Drugs Seminar.

He also happens to be one of the key organizers of the Iowa Park Parents' Awareness organization whose main focus is to educate parents on drugs, what signs of drug use to look for and to teach them preventive measures in dealing with their children.

The group has held several question and answer sessions involving law enforcement officials, school officials, parents and students for the purpose of drug education.

Shewmake said the Parents Awareness group has no desire to catch drug users, just to educate and offer assistance.

The Iowa Park school system began using drug sniffing dogs several years ago to alert school officials to drugs inside the school. But during the past school year only two alerts were made, resulting in one expulsion, as compared with some half dozen alerts the first year the dogs were used.

Shewmake feels that drug education and prevention should begin at a younger age saying, "By the time a student gets to high school, their habits are pretty well formed."

School officials are fighting drug abuse through the use of drug dogs, drug education and counseling.

Randy Lovelady, assistant principal at the high school, said, "Our overall school goal (concerning drugs) is a positive atmosphere, to educate on the consequences of drug abuse, and to offer counseling."

The dogs are brought into the school at the owner's discretion to

search the lockers, not individual students, to deter the use, sale or trade of drugs in the school.

"We're not out to get anybody, we're out to change behavior," said Lovelady.

According to Lovelady, drug and alcohol use reflects in the school work of the student and in the absenteeism rate 99 percent of the time, and is the first sign school officials look for.

Jimmy Alsop, junior high principal, said "Right now, we don't have much of a problem. We do have some drugs and some alcohol."

He also said two or three years ago there was a bigger problem with drugs, but it has since declined.

The high school, like the junior high, offers drug education in health and science classes.

The reasons children choose to take drugs vary from person to person, but agree that users don't have a great deal of self-confidence.

Shewmake commented that the family unit isn't as close as it used to be with communication between parents and children lacking in most cases, and that society doesn't watch after one another, or one another's children, like they used to.

Sheri and Christi attributed drug usage among Iowa Park teens to either having nothing else to do or just trying to fit in.

Tammie Bridges, also a senior, believes the reasons kids use drugs vary from the family not caring, using it as an attention getter, they think others look up to them, they like the feeling, or they think it makes them "fit in" better.

Lovelady feels that peer pressure and a lack of self confidence are two main factors in drug users.

He also said that some students have parents and/or brothers and sisters who use drugs, which makes

it tougher to tell the adolescent users that drug abuse is wrong.

One IPHS student, who asked not to be identified, corroborated Lovelady's statement and said that some of the students' parents actually deal the drugs.

The student also said that the drug dogs have made a tremendous dent in drugs actually kept at the school for the purpose of selling, but finding drugs is no problem if you know who to ask.

Alan Sheffield, Iowa Park Chief of Police, said he feels that the excuse that "There is nothing to do" is a cop out, but says that lack of parental supervision, especially among the junior high students, lack of parental knowledge or simply a parent's lack of interest in what their child is doing or who he's doing it with are prime factors in drug use.

Lovelady also said, "It (drugs) hasn't been an apparent problem, but any drug problem is a serious problem." He also said that every school is going to have a certain amount of drug and alcohol abuse.

According to each source, a user does not have to have money to buy drugs. He can trade items or services, steal, sell items, get money from parents, some hold down jobs, or some simply have it given to them by friends or family members.

Sheffield put the issue in a broader scope.

"We know we have at least three locations in the city limits where drug sales take place, and suspect 10 others," he said.

He said it is hard to catch dealers, because it takes extensive surveillance, specialized training and funds.

"Drugs are big business and drug dealers have more funds to operate than law enforcement does," he said.

This is obvious when we find

that the illegal drug industry ranks in size with Mobil Oil as our nation's second largest business, with only Exxon being larger.

Sheffield also said that the use of marijuana almost always leads to the use of heavier drugs and believes that a program to educate students on narcotics and other drugs should be introduced earlier in the students' education.

Sheffield agreed that alcohol is more prevalent among high school aged kids citing more alcohol related arrests in this age group.

While drug use may be prevalent in one main "crowd," it is diversified, and may be found in any child.

Miss Bridges said that toward the end of the last school year, the use of marijuana and other drugs went up, especially among the students that were atypical of drug users. She said that some kids might even come to school drunk or "stoned" in the morning.

But she said that the use of drugs and alcohol among her peers is declining and she's glad.

She also said that marijuana, speed, cocaine and other drugs could be found at the high school.

Although Iowa Park may not have a huge drug problem, about normal for a town our size, according to Shewmake, any drug problem is a problem.

Nonetheless, Lovelady said the people that bring the drug dogs in comment that Iowa Park schools are a "vacation" compared to other schools as far as drugs are concerned.

He also said the responsibility of keeping our community drug-free lies with everyone.

"It's (drugs) are a community problem, a family problem and a school problem," Lovelady said, "It's not a problem that schools can solve. (It's the) family, community and

schools working together. Overall, our community can be proud of the student body."

Help is available for either youth or adults with a drug or alcohol problem.

Teen-Anon, Al-Anon or Alcoholics Anonymous are self-help groups that aid in alcohol rehabilitation.

Many toll free numbers are available for those with drug problems such as 1-800-COCAINE. There are also rehabilitation centers in the area for those with drug and alcohol dependency problems.

Some possible signs of drug or alcohol use to look for are: slurred speech, alcohol on breath and incoordination; sleeping more than usual or at odd times; poor grades or inconsistent schoolwork; physical complaints that fit the "hangover description"; roller coaster emotions, tantrums, irritability, silliness; isolation from family life, old friends, social activities or excessive social involvement, as in going out every night; excessive use of mouthwash or breath fresheners; a new set of friends.

An estimated 19 percent, or 3.3 million, teenagers in the United States are alcoholics according to the National Institute on Alcohol Abuse and Alcoholism. And the average beginning age of alcohol use in the U.S. is 12 and a half.

The discovery that A.I.D.S. (Acquired Immune Deficiency Syndrome) can be contracted from the use of dirty needles has made drug use even more dangerous.

Dr. Larry Stutte of Park Clinic said using dirty needles is the second most common way of contracting the deadly disease - one that has no cure.

His advice? "Just don't use drugs."

Hausler, Graner vows are exchanged Saturday

Wearing an exquisite formal wedding gown, Miss Heather Elaine Hausler met Walter James Graner at the altar of the First United Methodist Church in Lubbock Saturday evening to become his bride. The couple exchanged double-ring wedding vows under the direction of Dr. Sam Nadar.

The bride is the daughter of Joann Johnson of Iowa Park and Robert C. Hausler of Houston, and the groom is the son of Mr. and Mrs. Wallace H. Graner of Austin.

The bride looked her loveliest as she was escorted by her brother, Robby Hausler, who presented her in marriage. Her wedding gown of rich, luscious white satin featured a beaded Schifflil lace bodice and ruffled sleeves worn off the shoulder. The full sweeping skirt was adorned with lace medallions and tiered ruffle hem that made the dress simply dazzling as the bride walked down the aisle. The full cathedral train featured a cascade of wire-edged ruffles and a candy box bow that gave the gown a special flair for the special day in her life.

She wore a bandeau of lace and pearls to secure her tiered illusion veil that drifted to fingertip length. Completing the lovely picture, the bride carried a cascade of fresh white roses and rosebuds combined with white satin ribbon throughout arranged around a bridal Bible given to her by Mrs. Phillip Farnsworth, her matron of honor.

For "something old," she wore a whale bone hooped skirt under her wedding gown that was worn by the groom's mother in her wedding. She chose her wedding dress for "something new," and the groom's mother's double strand of pearls for "something borrowed." A "something blue" bow on her garter completed bridal traditions.

The dignity and elegance of the beautiful sanctuary, which ranks fourth in the United States for its stained glass windows, was complemented by eight candelabra holding fifty-six white tapered candles, and two fresh white rose arrangements. The church pews were marked with white silk bows.

The pipe organ music was provided by Randy Stevens who played the prelude selections, accompanied Mrs. Randy Stevens, the vocalist, who sang "Oh God of Love" and "Whither Thou Goest." The organist played "Trumpet Voluntary" for the minister, groom, his attendants, and the bride's attendants to take their places in the nuptial space. He played



MRS. WALTER JAMES GRANER

Wagner's processional for the bride to walk to the altar, and Mendelssohn's recessional to conclude his offerings.

The black satin gowns worn by the bride's attendants were designed by Sylvia Ann. In style, they showed to best advantage the square necklines, puffed sleeves, long formal skirts highlighted with small trains, candy box bows that bustled. They carried bouquets of white roses.

The bride's attendants were Mrs. Phillip Farnsworth of Iowa Park, matron of honor, Miss Chriss Kelly Cliett of Fairfax, Va., Mrs. David Hobbs of Houston and Miss Cindy Brooke Williams of Sweetwater, bridesmaids.

Miss Leisa Nowell Bates of Iowa Park and Miss Julie Shelley of Lubbock were junior bridesmaids. They were attired in white satin gowns styled identically to the attendant's gowns.

The groom wore a Pierre Cardin black formal tuxedo with tailed coat, black pants, vest and tie, and white pleated shirt. His attendants, ushers and fathers wore black Pierre Cardin tuxedos with tailed coats, white pleated shirts, vests, ties and gloves.

Rodney White of McAllen was best man. The groomsmen were Charles Perry of Iowa Park, Vernon Graner and David Hobbs of Austin and Robby Hausler. Ushers were Phillip Farnsworth of Iowa Park, Lynn Wright and Tony Henington.

The bride's mother wore a floor length periwinkle blue dress with blouson bodice, shoulders trimmed with sequins and pearls, and a matching pearl belt around the fitted waist. The groom's mother wore a black and white floral print crepe dress set off with a black cummerbund and a black bow in the back set with a diamond. Both wore wrist corsages of white rosebuds and miniature black satin roses.

The buffet and dance reception was held at the Lubbock Civic Center Terrace Suite and hosted by parents of the couple.

The three-tiered red velvet cake was placed on a circular table covered with white linen that held the crystal punch service and black napkins printed with names of the bride and groom in white. The cake was iced in white and decorated with fresh white roses.

The catered buffet meal featured beef roll-ups, ham, pineapple K-bobs, egg rolls, Swedish meat balls, and hot broccoli dip served on silver platters. The fruit and vegetable hors d'oeuvres with the lemon bars and pecan squares were served on mirrored trays. Punch and coffee were also provided.

A Lubbock based band provided country and western along with contemporary music for the dance held on the terrace.

The bride and groom left the church and reception in their wedding attire.

The bride was graduated from Iowa Park High School and is a senior at Texas Tech Univ. Health Sciences Center Nursing School. The groom was graduated from McAllen High School and attends Texas Tech Univ. on a football scholarship. He is a member of the Red Raiders football team. They have planned a delayed honeymoon and will live in Lubbock until they finish their education, then move to Austin.

Guests from Iowa Park were Dr. and Mrs. Roy K. Boutwell, Ray and Randy; Messrs. and Mmes. Robert Smith, Francis Harney, Phillip Farnsworth; Mmes. Gloria Bond, Barbara Smith, Linda Wood, Susie Bates and Leisa; Rodney W. Davis, Clay Schmoker, Jeryl Brixey and Johnny Bond.

CARD OF THANKS

I would like to take this opportunity to express my appreciation to my friends for the lovely cards, visits and calls during my recent surgery. Your friendship and prayers have meant so much to me.

Sincerely,
Helen Reed

CARD OF THANKS

Friends: Thank you so much for your prayers, visits and cards while I was ill. Friends mean so much at times like this. May God bless each of you.

Kathryn Ford

Singles group sets meeting

The New Life Singles, a non-denominational Christian group, will have an ice cream supper at 7:30 p.m. Saturday at 905 East Ruby. All singles in the area are invited to attend and are asked to bring their folding chairs.

The officers of the organization are: Patti Smith, president; Bob Wood, vice president; Betty Merri-man, treasurer; Donna Farnsworth, chaplain; Janna Barry, program director; Joan Adkins, publicity director; Emma Jo Davis, hospitality director; Betty Watson, amigo chairman; Adele Callaway, telephone chairman.

The group will meet Aug. 29 at the ASCS building and the guest speaker will be Dr. Vincent Escandell.

Shop Iowa Park FIRST

Louis Jewelry

408 W. PARK, IOWA PARK, TX 76367

LORUS QUARTZ

MEN'S DAY/DATE

Reg. \$39.95
Our Magic Price
\$29.95

Starting our 32nd Year in Iowa Park and Still Making Jewelry Magic!

Selected Sterling Silver Jewelry
UP TO 50% off

Kremontz

GOLD GIFT ITEMS
Many with Gemine Stones
30% off
Values from \$13.50 to \$36.50

BELAIR

LADIES' DIAMOND CROWNED WATCH
Was \$172.50
NOW **\$129.50**

FINISHING 31 YEARS OF BUSINESS, PLEASURE AND ENJOYMENT IN IOWA PARK & LOOKING FORWARD TO MANY MORE. COME ON IN AND VISIT.

Looking for that special gift? Ask about our custom cast jewelry service.

It's Not Too Early To Order Senior Class Rings

We accept Visa, Mastercard and Discovery Cards.

When time and money are the object...

DEMAND A GAS DRYER

Gas appliances deliver. Turn on—instant hot, turn off—instant cool. Gas cooks and dries quicker and cheaper with all the options AND more precise control than electric.

Automatic **GAS DRYER**
Reg. \$399 **\$359**

30 Gal. Gas **WATER HEATER**
Reg. \$174.95 **\$119**

Crosley 30-Inch **Gas Range**
✓ Pilotless Ignition
✓ Continuous Clean with clock and auto cook timer
Reg. \$539.95 **\$419**

PARKWAY

Don't Compromise. Demand Gas. **FURNITURE/HARDWARE**
200-206 W. BANK 592-5512 OR 592-4681

GAS ADVANTAGE APPLIANCE

| | | | |
|--------------------------------------------------------------------------------------------------------------|-------------------------------------------------------------------------------------------------------------------------------------------------|------------------------------------------------------------------------------------------------------------------------------|-------------------------------------------------------------------------------------------------------|
| <p>NEOSPORIN Triple Antibiotic Ointment 1 oz. \$2.67</p> | <p>Johnson & Johnson BABY SHAMPOO Regular or Gentle 11 oz. or BABY CONDITIONER 11 oz. \$2.57 EA</p> | <p>SUDAFED Nasal Decongestant Tablets 48's \$4.19</p> <p>Children's Liquid 4 oz. \$3.47</p> | <p>BAN ROLL-ON Anti-Perspirant/Deodorant Assorted Scents 1.5 oz. \$1.88</p> |
| <p>Bausch & Lomb SALINE SOLUTION Regular or Sensitive 12 oz. \$1.99</p> | <p>KAOPECTATE Effective Relief of Diarrhea 8 oz. \$2.19</p> | <p>RIOPAN or RIOPAN PLUS Antacid Anti-Gas 12 oz. \$2.99</p> | |
| <p>OS-CAL 250 mg Calcium Supplement Tablets 240's \$11.88</p> | <p>CALADRYL Calamine Lotion with Benadryl 6 oz. \$3.29</p> | <p>FIBERALL Natural Fiber Laxative Natural or Orange 10 oz. \$5.29</p> | |
| <p>BUFFERIN Fast Pain Relief Tablets, 100's \$4.47</p> | <p>RHULICREAM or RHULIGEL Fast, Soothing Itch-Relief 2 oz. \$2.67</p> | | |

Settle Drug

Joe Hughes - Pharmacist
592-4191 120 W. Park
24 Hour Service

We give S&H Green Stamps
FREE Delivery of Prescriptions

PCS • Blue Cross & Blue Shield
Medimet • Medicaid • Paid Prescriptions

Wist, Kidwell nuptials are solemnized Saturday afternoon

Mr. and Mrs. Charles Blaine Kidwell, who were married Saturday afternoon at the Grant Street United Methodist Church in Wichita Falls, are on a wedding trip to Florida and New Orleans. They will live in Wichita Falls when they return. The double-ring ceremony was performed by Rev. Jack Meyers, pastor.

The bride is the daughter of Mr. and Mrs. Skip Wist of Sarasota, Fla., and the groom is the son of Mr. and Mrs. Charles C. Kidwell of Nocona, former residents of Iowa Park.

Frances Jenne, the organist, played "Oh Perfect Love," "Panis Angelicus," and "Chorale" for prelude numbers. She played "Trumpet Voluntary" for the minister, groom, his attendants, and the bride's attendants to take their places in the nuptial space and Wagner's processional especially for the bride to walk to the altar. She concluded her offerings with Mendelssohn's recessional.

A table in the center of the rostrum held an open Bible. On either side stands held arrangements of silk white gladiola, white roses, dusty rose carnations, sweetheart roses, baby's breath, emerald greenery, ti leaves, dusty rose and burgundy silk bows. Seven-branched candelabra at altar extremities were decorated with boxwood greenery, grape leaf ivy, white and pink carnations, sweetheart roses and dusty

rose and burgundy satin bows. These held tall white burning candles.

The altar rail was wrapped with boxwood, grape leaf ivy accented with dusty rose and pink bows. The church pews were marked with white silk bows accented with teal and dusty rose ribbons.

The bride's parents presented her for marriage. She chose a white satin designer gown fashioned with a Victorian neckline bordered with reembrodered lace. The front of the bodice was covered with lace appliques to the basque waistline, and the back of sheer imported netting was accented with pearl buttons. The short tucked sleeves and a large satin bow at the back added the perfect touch to the bodice. The full skirt fell gracefully to floor length.

She wore a lovely silk-flowered comb in her hair to complete her ensemble, and carried a cascade bouquet centered with a large fantasia wisteria complemented with a teal ground lily, dusty rose tiger lilies and roses, white columbine, teal roses, white and dusty rose gypsophila, and English ivy.

Mrs. Calvin Carlton of Wichita Falls, the matron of honor, Mrs. Richard Cannon of Sherman, Mrs. Jeff Spruiell of Thornberry, Miss Vickie Henderson of Wichita Falls, the bridesmaids, wore rose organza floor length dresses and carried white lace fans beautified with dusty rose and white roses, tiger lilies, teal roses baby's breath, English ivy,

trailing teal, dusty rose and white ribbons.

Valery Cannon of Sherman and Carla King of Wichita Falls, the flower girls, wore pink silk street length dresses trimmed with white lace on the yokes and sleeves. They carried white lace baskets containing dusty rose, teal and white roses, carnations, tiger lilies, English ivy and baby's breath.

Jason Cannon of Sherman was the ring bearer; Beau Kidwell of Nocona, brother of the groom, the best man; Jeff Spruiell of Thornberry, Joe Spruiell of Houston and Kevin Thompson of Iowa Park the groomsmen, wore silver tuxedos with regular coats, white wingtipped shirts, dusty rose cummerbunds and ties.

The groom wore a silver tuxedo with a tailed coat, white wing-tipped shirt, silver tie and cummerbund. He wore a boutonniere centered with a white alstermeria lily ringed with dusty rose flowers, combined with roses in the chosen colors and burgundy gypsophila.

The mothers of the bride and groom wore attractive corsages formed with dusty rose sweetheart roses, burgundy gypsophila, white pixie carnations and baby's breath.

The wedding reception was hosted by the bride's parents in the Fellowship Hall of the church and the rehearsal dinner was hosted by the

groom's parents at the Trade Winds Motor Hotel.

The bride's table at the reception was the essence of grace and charm. It was covered with rose taffeta featuring a floor length skirt ruffled with beaded pins at the top and accented with ribbon bows at the top center and corners.

The centerpiece was an imposing five-branched candelabrum holding a bouquet of roses in shades of pink and dusty rose, and white candles. The three-tiered white cake featured two sets of Grecian posts, dusty rose-colored roses set amid tasteful sculptured designs, and a bride and groom on top standing under an arch bordered with flowers in the bride's colors.

Other bits of table interest included the silver punch service, bridal napkins, silver trays and compotes holding mints in shapes of roses and rosebuds and honey covered nuts. The guest book table in the church foyer carried out the bride's colors in the taffeta cloth with a pleated and pearl-pinned skirt, floral bouquet and plume pen. The gift table was covered with white lace over pink taffeta.

The bride and groom are students at Midwestern State Univ. She was graduated from Hirschi High School and works for Oiltex Supply Co. He is a graduate of Iowa Park High School and works for United Parcel Service and Wichita County Water Improvement District No. 2.



MRS. CHARLES BLAINE KIDWELL

Cook of the Week

Nearly every week we are reminded of the importance of sauces in 20th century American cooking. This week is no exception, as Meri Lynne (Mrs. Russell) Guyette shows us through three of her recipes that they can be a touch that literally lifts a dish up, glamorizes and gives it distinction.

Sauces for meat and game were such an important part of medieval feasts that every palace and wealthy home had a "saucier" whose sole business was to provide over that part of the meal.

Most modern chefs classify sauces as "pick-ups" and one of the most widely used today is Worcestershire Sauce. Many cooks have wondered how the sauce got such a tongue twister for a name.

The story goes that ancient Romans used a spicy sauce as a morning wake-up beverage, like we use coffee today. Centuries later, the English began making a similar sauce in Worcester and that's how the sauce got its name.

A sauce does not have to be complicated and tricky. The most important part is learning to combine flavors. A world famous chef advises women (and men) to be daring and to experiment with herbs and other seasonings.

Mrs. Guyette, the former Meri Lynne McIlroy, was graduated from Iowa Park High School. She received a B.S. degree from Midwestern State Univ. in education, and is a fourth grade teacher at Bradford Elementary School and member of ATPE.

She and Russell are members of First Baptist Church and she is a



Mrs. Russell Guyette

soloist with the sanctuary choir. She was director of the Vacation Bible School at the church this summer.

The Guyettes have one son, Rusty, two years of age. He is pictured with his mother today.

PEPPER STEAK

Cut 1 1/2 lbs. round steak in strips, coat with flour, salt and pepper. In large skillet, brown strip in 1/4 cup hot shortening. After fried, pour off grease and add: 1-8 oz. can whole tomatoes, cut up 1 cup water Onion salt Garlic salt 1 Tbs. beef-flavored gravy base 1 1/2 tsp. Worcestershire Sauce 1 green pepper

Cover and simmer one hour or until meat is tender, and sauce has thickened. Serve on top of rice.

RUSSELL'S SPAGHETTI

Brown 1 lb. hamburger. Season meat while cooking. Drain grease.

Add: 1 can tomato soup 1 can tomato sauce 1 can tomato paste 1 can mushrooms, optional

If you are missing one of the "tomatoes," add 1 can whole tomatoes, chopped, and oregano to taste. Let simmer until sauce has thickened. Add cooked noodles.

SPINACH SCALLOPED FRANKS

1/2 cup onion (or substitute onion salt) 6 Tbs. butter 1/4 cup flour 2 cups milk 2 cups shredded sharp cheese 1-10 oz. pkg. frozen spinach, cooked and drained 5 cups pared and cooked potatoes 1 lb. frankfurters, cut in 1/2 inch pieces

In medium saucepan, cook onion in butter, till tender. Stir in flour. Add milk, stirring constantly until mixture thickens. Remove from heat. Add 1 1/2 cup cheese, stirring until melted. Stir in spinach.

Arrange half of the potatoes evenly in 11X7X1 baking dish, top with half of the franks and half the spinach sauce. Repeat with remaining potatoes, franks and sauce. Cover and bake in 350 degree oven 45 to 50

minutes. Top with remaining 1/2 cup cheese and bake uncovered until cheese melts.

ICE CREAM SUNDAE CAKE

Melt: 1 stick butter 1 cup brown sugar Add: 2 1/2 cups coarsely crushed Rice Chex cereal Stir in: 1 cup Angel Flake coconut 1/2 cup chopped nuts

Place 1/2 mixture in the bottom of a rectangle cake pan. Slice 1/2 gallon of vanilla ice cream in 1-inch slices and cover first mixture. On top of ice cream, place remainder of cereal mixture. Freeze. Cut in squares and serve with hot chocolate syrup if desired.

STRIPED DELIGHT

1 1/2 cups graham cracker crumbs 1/4 cup sugar 1/3 cup melted butter 1-8 oz. pkg. cream cheese, softened 1/4 cup sugar 2 Tbs. milk 1-8 oz. Cool Whip 2 pkgs. chocolate instant pudding 3 1/2 cups cold milk

Combine graham cracker crumbs, 1/4 cup sugar and melted butter. Press firmly in bottom of 13X9 inch pan.

Beat cream cheese with sugar and 2 Tbs. milk until smooth. Fold in half the whipped topping, spread on crust.

Prepare pudding as directed on package. Pour over cream cheese layer. Chill several hours. Spread remaining whipped topping over pudding. Garnish with grated nuts.

Soccer Sign-Up!

Thursday night August 13 and Friday night August 14 6:00 p.m. til 8:00 p.m. Soccer Fields on FM 368 south of Iowa Park City Limits

Teams for all ages.

For more information: Call 592-2631 Days 592-9440 592-2014 Evenings



Storewide **Summer SALE**

SELF PROPELLED EUREKA VACUUM CLEANER
Large, 5.2 AMP motor
Reg. \$249.94 **\$148**

PARKWAY
Furniture/Hardware
200-206 W. Bank
592-5512 or 592-4681

SHOWER SELECTIONS FOR

APRIL WILLIAMS and ANDY ANDERSON

TERI FRANKLIN-ROJAS and JESSE ROJAS

CINDY BURKS and DALE HAYLEY

PARKWAY
True Value HARDWARE
HARDWARE/FURNITURE
200-206 W. BANK
592-4681 592-5512

Just Because

Our fall things are arriving and we are better buyers than sellers...

All summer merchandise is REDUCED to **75% OFF**

Mary & Estaleen **Just Because**
1803 Johnson Rd. 592-5496 (1/2 mi. no. expressway.)
NEW STORE HOURS:
Open Tuesday through Saturday 9:30 to 5:30
We accept Visa and Mastercard

Great Entertainment!

- ✓ Crocodile Dundee
- ✓ Three Amigos
- ✓ Golden Child
- ✓ Plus...more new releases coming in during the month!

Home-Owned & Home Operated

901 W. Hwy. 592-2422
11 a.m. - 8 p.m. Mon. thru Sat. Closed Sunday

video library

As I See It...

By BOB HAMILTON



How much are we willing to spend for the education of our children?

That the question that has been asked of Texans for several years, especially with the passage of House Bill 72 and its mandated increases in costs passed on to local districts.

And it's a question our local trustees will be asking themselves during the next couple of weeks, after being asked by the superintendent to approve a one-cent tax increase.

And I'll tell you the board members are concerned about the public's understanding of what is at hand, and its willingness to foot the bill.

Supt. Glen Mitchell put before the board Tuesday night a \$7-million budget which, he feels, would need to be funded by an increase of local taxes from 75-cents to 76-cents.

It's not so much the one-cent increase that appears to concern the board, as much as the public's perception of a mandated public notice which states the increase would generate an eight percent increase in total revenues.

Our school district is extremely fortunate this year, in the fact that the Cryovac's values increased more than we lost in oil values. We actually had a total value increase, because of our community's major industry.

As Allen Shewmake, the local tax collector, pointed out, many of our homes, especially in Redin Heights, were actually lowered in values this year.

So, what this means is, some residents won't be paying any more school taxes if the rate is increased by a penny.

What does it mean to others?

Well, if your home is valued at \$50,000, the same as it was the previous year, and one more cent is added to the tax rate, your total school tax would be increased by \$5. That's a little over 41-cents to be added onto your monthly mortgage payment, if your taxes are included in it.

Another concern of the board's, and some other observers for that matter, is the public perception of the school's carryover of funds.

The proposed budget calls for a carryover of almost \$1-million. Some don't feel the school should have anything like that kind of money to carry over from year to year.

Let's look at what that carryover means.

First of all, it was built up during the oil boom, and was, at one point, more like \$3-million.

The school absolutely must have funds to start off a school year, which starts in September. This is because no state money comes in to pay bills and salaries until late September or as late as mid-October.

Without the carryover, the school would have to borrow money, at the going interest rate. The interest on borrowed money would almost amount to what the carryover earns the district, just because it is there.

In fact, the carryover funds keeps our tax rate down. It generated the equivalent of 4.5-cents on the tax rate.

In other words, instead of the 75-cent tax rate last year, the earnings produced as much money as a 79.5-cent tax rate would have.

So, having an adequate carryover has provided about a 10-cent swing in our tax rate needs. Half of that to pay the interest on school start-up money and the other half earnings going into the general fund.

Should the board approve a tax rate of 76-cents per \$100 value, the school would have the money to do the things the administration feels needed.

But the rate would still be one of the lowest in this part of the country.

Another thought. House Bill 72 provides for local districts whose tax rate is below the state average, and no one knows what that will be until all the figures are in, a formula is put

into motion to fund that much less from the state coffers.

There are few who like taxes any less than I. First of all, I don't make much money and therefore little extra above a living to pay them.

Secondly, I'm now in the group that has long expressed the complaint, "I don't have any children in school."

I feel our school money is well spent, locally. I feel our school board and administrators do their level best to hold down costs as much as possible.

So, based on the figures shown the board Tuesday night, and having an appreciation of what our schools accomplish here with our children, I support the increase.

My home is valued at less than that \$50,000 example I gave. And I feel I can pay the increase.

And I hope you and the trustees see it the same way.

Finnell knocks Clements' veto

State Rep. Charles Finnell has criticized Gov. Clements' Aug. 6 line-item veto of emergency funding for many small school districts.

The veto eliminates \$52-million that the Texas House of Representatives dedicated to benefit local school districts that suffered devastating losses in property values.

"The gubernatorial veto shows an unfortunate lack of sensitivity to the plight of our smaller, rural school districts," Finnell said.

"Declining property values are already hampering many of our school systems, and the elimination of this special back-up funding will seriously aggravate local school financing problems," Finnell added.

The vetoed appropriations item was specifically designed to assist districts whose property values decreased by more than eight percent in the last year.

"The governor's untimely veto is disturbing to those of us who are trying to assist local school districts maintain quality public education," Finnell said.

New students to register

All high school students who did not attend school in the Iowa Park district last year should report to the school counselor's office to obtain a schedule for the beginning of school.

New students should register between 8 a.m. and noon, or 1-4 p.m., Monday through Wednesday of next week, according to Richard Davis, principal.

Rainfall varies

Iowa Park received a welcomed rain Sunday evening, but the amount varied from "a few drops" to an inch and a half.

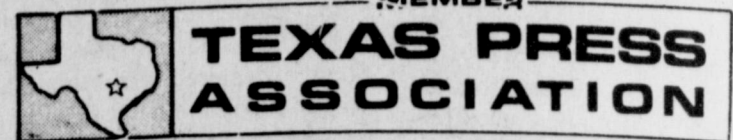
Most common reports inside the city were of three-quarters of an inch.

To the west and north of the city were the lightest reports, but on the immediate east side, an inch and a half was reportedly measured.

IOWA PARK LEADER

Bob Hamilton Editor/Publisher
Dolores Hamilton Co-publisher
Olive Blalock Reporter
Kari Collins Reporter
Kim Miller Composition

The IOWA PARK LEADER is published every Thursday. Offices are located at 112 W. Cash, Iowa Park, Texas, 76367. Telephone: 592-4431. Second Class Postage Paid at Iowa Park, Texas, 76367. Annual subscription rates are \$10 in Wichita and Archer Counties; \$12 elsewhere in Texas; \$14 anywhere in the United States. Any erroneous reflection upon the character, standing or reputation of any person, firm or corporation which may appear in the columns of this newspaper will be corrected upon being brought to the attention of the publisher.



When the nation took its first census in 1790, only five percent of the population lived in cities or towns. Most of the 3.9 million people lived in farm areas.

NOTICE TO SUBSCRIBERS

This is only a notice to those listed below that their subscriptions will expire on the published date. You don't owe us a thing if your name is on the list. It only means that what you've paid for is running out. To renew your subscription, please fill out the form below, as it appears on your paper's mailing label, please. Indicate whether this is a renewal or new subscription. Enclose your check or money order, as all subscriptions must be paid in advance.

SUBSCRIPTIONS DUE TO EXPIRE

August 15, 1987

Please disregard this notice if already paid

- A. Wanda Adams, Kingsville
Lillian Adkins, Irving
Lana Jacks Aguilar, Arlington
Charles C. Anderson, IP
- B. Chuck Beggs, IP
Larry Beisch, Electra
Cindy Bernstein, IP
Larry Beutel, IP
Jason Blair, IP
Larry Burke, IP
- C. Mrs. M.E. Cabe, IP
Thomas Coward, IP
Larry Culipher
R.D. Cunningham, IP
- D. Richard Davis, IP
Cathy Downes, Kamay
Don Duerson, IP
Wanzell Duggins, WF
Glenn O. Durham, IP
- E. Harold Eaton, Galveston
Donald Ehlert, IP
Michael Ehlert, Arlington
Tommy Evans, IP
- F. Faith Baptist Church, IP
Gary Fielding, IP
L.C. Fields, IP
Flowers By Reba, IP
Wanda Frantz, IP
Dena French, IP
Rich Frerich, WF
- G. Mrs. Ruth Gard, IP
James Gibson, WF
James F. Gossett, Simpsonville
Russell Guyette, IP
- H. Weldon Hayslip, IP
Julia Hendon, WF
Carlton Hicks, IP
Keith Hillard, WF
Faye Hobbs, IP
Jackie Hobbs, IP
Loyd W. Holmes, IP
Vern Horsky, IP
Robery Horton, IP
Calvin Huff, IP
- I. Independent American Savings, IP
- J. Estel Jameson, IP
Phil Johnson, IP
Donald Ray Jones, IP
Earl Jones, IP
- K. Mike Kelly, Mineral Wells
Jane Kellogg, Ada
Pat Kennedy, IP
R.D. Ketchersid, San Diego
Tommy Key, IP
Dave Kirk, Mill Valley
Bob Knecht, IP
- L. Joe Laird, IP
Kristi Lawson, Holl.
Pvt. Jeffrey M. Lewis, APO NY
Dwain Likin, IP
- M. Kenneth Manuel, IP
Conrad Martin, Azle
Joanna Matthews, IP
Mrs. Virginia May, IP
Patricia McKnight, IP
Mike Moede, IP
Joe Moer, IP
James Moore, Flower Mound
Larry Don Moser, IP
- N. Dave Nemeth, IP
Oleta North, IP
- O. Sandra Oldham, Midland
- P. James Papas, IP
Robert Parker, IP
Jerry Paschall, IP
Glenn Phillips, WF
- Q. Quality-Plus Auto & Truck Elec., IP
- R. Earnie Reusch, IP
Mrs. Gene Rice, IP
James Riddlehuber, IP
Jerry Robertson, IP
Linda Rockhold, IP
C.W. Rowell, WF
Bobby G. Rowland, IP
William Russell, WF
- S. Kerry Scobee, IP
R.B. Scobee, IP
Charlie Sells, IP
Skip Sheets, IP
Judy Shook, Roanoke
Murray Shook, IP
Priscilla Shoop, WF
Pauline Steele, IP
E.W. Sumrall, IP
- T. George Taylor, IP
Helen Taylor, IP
Larry Thompson, IP
Riley M. Thompson, IP
Cornelia Todd, IP
Charles Trainham, WF
Willie Tyler, Kamay
- V. L. Veik, Denver
Thomas E. Venhaus, IP
Jim Virgin, IP
John Virgin, IP
- W. Larry Washburn, IP
Ronnie Waters, IP
G.O. Wester, IP
Mrs. E.H. White, IP
Mrs. Sue Williams, IP
Mrs. Avis Wilson, IP
Holly Witt, Carrollton
David Wright, IP
- Y. Mike Yancey, Lakeside City
Mrs. N.A. Yarbrough, IP
Bural Yoder, IP
Daniel York, Friendswood

Wichita and Archer Counties. \$10.00
Elsewhere in Texas. \$12.00
Elsewhere in the United States. \$14.00

To: Iowa Park Leader
Box 430
Iowa Park, Tex.
76367

PLEASE CHECK ONE:

- New
- Renewal
- Change of Address Only

\$ _____ Enclosed

(Name)

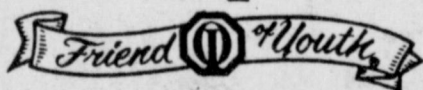
(Address, P.O. Box, or Route No.)

(City)

(State)

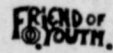
(Zip Code)

Iowa Park Optimist Club



10,000.00 TO BE GIVEN AWAY

THE IOWA PARK OPTIMIST CLUB WILL HAVE A BUDGET MEETING AT THE IOWA PARK RECREATION ACTIVITY CENTER 304 E. TEXAS IOWA PARK TEXAS ON AUG. 25TH AT 7:30 P.M. THE PURPOSE OF THIS MEETING IS TO DETERMINE OUR COMMUNITIES NEEDS FOR FUNDING IN YOUTH AND COMMUNITY SERVICE WORK. IF YOUR CLUB OR ORGANIZATION HAS A NEED FOR FUNDS PLEASE PLAN TO ATTEND AND MAKE YOUR REQUEST FOR POSSIBLE FUNDING. FOR MORE INFORMATION PLEASE CONTACT LOUIS SEFCIK 592-5942.



State National Bank invites you to the USA Country Music Capital

• Grand Ole Opry • Fall Foliage Tour • Civil War History •

October 13 - 18, 1987

HIGHLIGHTS INCLUDE:

Tour of Vicksburg Battle Field; Lookout Mountain and attractions at Chattanooga; Lynchburg where Jack Daniels makes all of his whiskey; Music Row and Museum of Tobacco, Art and History; Grand Ole Opry in Nashville; Loretta Lynn's Kitchen; Graceland (Elvis Presley's home); Hurricane Mills and Casey Jones Country Store in the Memphis area; Fall foliage colors in the Tennessee hills.

COSTS: \$540. per person, double occupancy
\$660. per person, single occupancy
\$515. per person, triple occupancy

\$50. deposit when reservation is made - balance due on October 1st
Itinerary Available in Lobby of State National Bank.



Obituaries



Willie Lane Ewing

Services for Willie Lane "Bill" Ewing, 61, of Holliday, were Wednesday at Owens and Brumley Funeral Home in Wichita Falls with Revs. Ed Lane, pastor of Lakeside City Baptist Church, and Paul Wade of Burton Lane Baptist Church, officiating. Burial was in Crestview Memorial Park. He died Monday in a San Antonio Hospital.

Ewing was born Feb. 15, 1926, in Wichita Falls and had lived in Holliday since 1977. He was a retired Marine and member of Lakeside City Baptist Church.

He is survived by his wife, June; two sons, Steve and Robert of Holliday; two daughters, Donna and Mary of Holliday; two brothers, Thomas and Isaac of Wichita Falls; six sisters, Laverne Entekin, Stella Stepp, Ruby Faulkenberry and Ruth Erwin of Wichita Falls, Almeda Parker of Iowa Park and Kathryn Gabbard of Yucaipa, Calif.; and six grandchildren.

Dallas Ralston

Services for Dallas Ralston, 81, were held Wednesday morning at the Lakeview Church of God with Rev. Ole Olds, pastor, officiating. Burial was in Highland Cemetery under direction of Tanner-Aulds Funeral Home.

Ralston was born April 24, 1906, in Iowa Park and was a lifelong resident. He was manager of Highland Cemetery 28 years before retiring in 1975. He was a Navy veteran of World War II and a member of the Lakeview Church of God.

He is survived by two sons, Teddy Lynn of Wichita Falls and Terry Loraine of Iowa Park; three daughters, Patsy Ruth Yergin of Albany, Judy Carol East of Iowa Park and Rebecca Jo Bates of Lake Arrowhead; a sister, Irene Darr of Dallas; 12 grandchildren; and six great-grandchildren.

Otha B. Bales

Services for Otha B. Bales, 82, were Friday morning at Crestview Memorial Park with Rev. James Richter, associate pastor of Jefferson Street Baptist Church, officiating.

She was born March 23, 1905, in Sherman.

Survivors include a son, Marvin Lee Haley of Iowa Park; a daughter, Mrs. A.C. Davis of Electra; seven grandchildren; and five great-grandchildren.



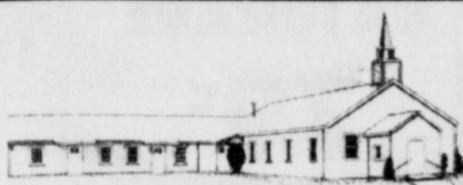
WINNERS of the Burnett Memorial Library summer reading program are the daughters of Mr. and Mrs. Kenny Dennison, 423 Valley Drive. Sharon, seven, read 101 books during the summer, for the reading award. And she read 49 of them to her four-year-old sister, Jessica, who was the "Read to Me" winner.

THE END OF YOUR SEARCH FOR A FRIENDLY CHURCH ASSEMBLY OF GOD

SUNDAY
9:45 a.m. Sunday School
11:00 a.m. Morning Worship
5-6:30 p.m. Missionettes & Royal Ranger
7 p.m. Evangelistic Service
Wednesday Service 7 p.m.

200 S. YOSEMITE
Charles Hensley, Pastor

Sunday School 9:45 a.m.
Morn. Worship 10:50 a.m.
Evening Service 7:00 p.m.
Wed. Prayer Meeting 7:00 p.m.



Pleasant Valley Baptist Church

Huntington Lane • South of Iowa Park Rd. • Church 855-3439
Pastor: Ben Story

"To God only wise, be glory through Jesus Christ forever. Amen." Romans 16:27 (KJV)

Faith Baptist Church

"Where the Bible is taught, the family is emphasized, and where everybody is somebody."



411 S. Wall S.B.C. 592-2716

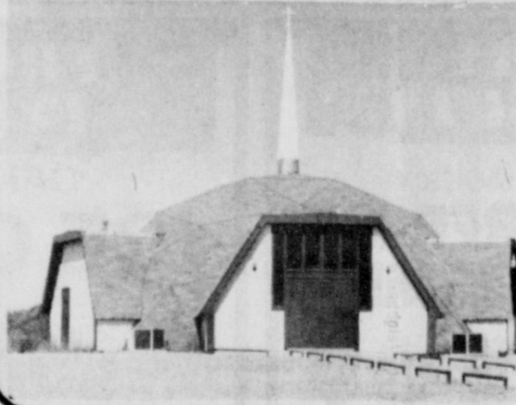
SUNDAY
Sunday School 9:30 a.m.
Morning Worship 8:20 & 10:40 a.m.
Church Training 6:00 p.m.
Evening Worship 7:00 p.m.

WEDNESDAY
Wednesday Evening Prayer 7 p.m.
Choir Rehearsal 8:00 p.m.

Pastor, Jerry L. Miller
Nursery Care Provided - Full Range of Mission's and Childrens' Ministries

Pacific Avenue Missionary Baptist Church

1400 North Pacific Avenue



Larry Washburn
Pastor
Church - 592-9711
Pastor - 592-4288

--Informal, Christ-Centered Worship for all ages--

Sunday School 9:45 a.m.
Morning Worship 11:00 a.m.
Evening Worship 6:00 p.m.
Wednesday 7:00 p.m.

Attend Church Sunday

Christ The King Catholic Church

First and Clara Phone 592-2802
Rev. Mr. Patrick Burke, Pastor
8:45 a.m. C.C.D. -- 10 a.m. Mass

First United Methodist Church

201 E. Bank

Church School 9:40 Youth Meetings 5:00
Morning Worship 10:40 Evening Worship 6:00

JOHN MOLLET, PASTOR

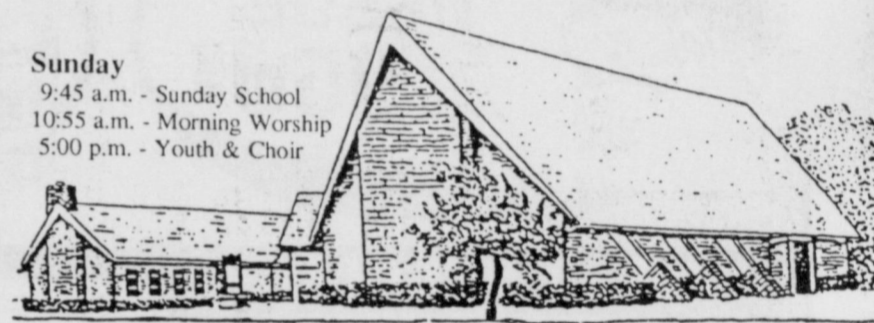
ARE YOU WALKING ALONE?

We invite you to join people who care

First Presbyterian Church

Church School 9:30 a.m. Worship 11:00 a.m.
Betty Meadows - Pastor
211 S. Yosemite 592-4220

Sunday
9:45 a.m. - Sunday School
10:55 a.m. - Morning Worship
5:00 p.m. - Youth & Choir



First Christian Church

(Disciples of Christ)

105 East Cash, Iowa Park Phone - 592-4513
Rev. Michael D. Grubbs, Pastor

Lakeview Church of God

Wednesday Evening (FTH-Bible Study) 7:30 p.m.
Sunday School 9:45 a.m.
Sunday Morning Worship 11:00 a.m.
Sunday Night Worship is now 6:00 p.m.

Pastor 592-9555 Rev. Ole Olds, Pastor Church 592-2776
N. Victoria & Expressway

First United Pentecostal Church

"And it shall come to pass in the last days, saith God, I will pour out of my Spirit upon all flesh..."

Sunday morn. 10:00 a.m. Wed. Bible Study 7:30 p.m.
Sunday even. 6:30 p.m. Action night (youth) Fri. 7:30 p.m.

A friendly & caring church

Pastor: Greg K. Hardin Phone 592-4275 802 N. First

Church of God 601 E. Cash

Pastor, S.A. Luke
Sunday School - 9:45 a.m.
Sunday Morning Worship - 11:00 a.m.
Sunday Night Worship Service - 7:00 p.m.
Wednesday Night Service - 7:30 p.m.

Parish 592-5316

Office 592-4348

Cornerstone Pentecostal Church of God

SS - 9:45 a.m. Sun. Morn. - 10:45 a.m. -SERVICES- Sun. Evening - 7:00 Wed. Evening - 7:30

Jesus said, upon this rock I'll build my church and the gates of hell shall not prevail against it. - Matthew 16:18

W. Smith Rd.

Pastor Duffy Terry

592-5520

Kamay Road Church of Christ

Corner of Colorado & Emerald

'Seeking the Old Paths'

Lord's Day 10:30 a.m. & 6 p.m.
Wednesday 7:00 p.m.

Good Shepherd Lutheran Church

1st & Magnolia Iowa Park

Sunday School: 9:45 a.m.
Worship Service: 10:45 a.m.

First Baptist Church

A Southern Baptist Church of Iowa Park Yosemite at Park



SUNDAY SERVICES Mornings

Sunday School 9:45
Worship 11:00
Evenings
Church Training 6:00
Worship 7:00

WEDNESDAY

Prayer Meeting 7:00
Choir Rehearsal 7:45
Dr. Derrell Monday, Pastor

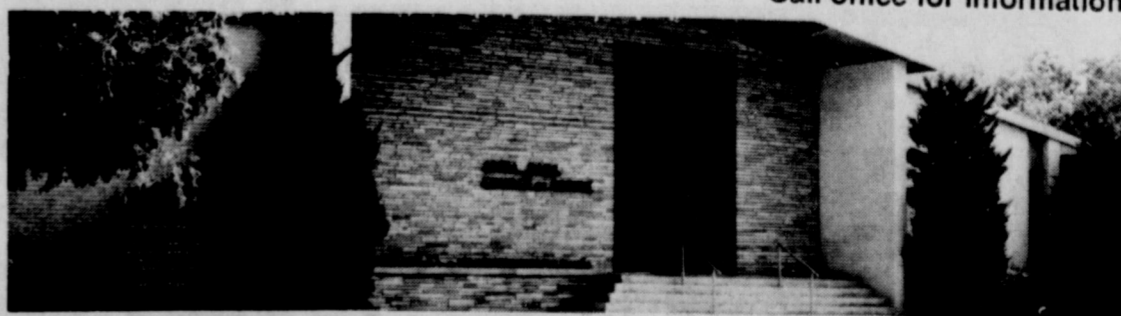
IOWA PARK CHURCH OF CHRIST

300 East Park, Iowa Park, Texas 76367, (817) 592-5415

SCHEDULE OF SERVICES

Sunday Bible Study 9:30a.m.
Worship 10:30a.m.
Evening Worship 6:00p.m.

Wednesday Evening Study 7:30p.m.
Thursday Ladies bible Class 7:30 p.m.
Call office for information



We offer a Free Bible Correspondance Course, Call for details.

Hawks open two-a-day practice sessions

While the sun was making its appearance on the eastern horizon Monday morning, 91 young athletes were being timed in a one-mile run.

It was the start of the 1987 football season at Iowa Park High.

The traditional two-a-day workouts began Monday and will continue through the rest of August.

The varsity, junior varsity and freshman players have been working out in shorts, as required by the UIL, through today. But tomorrow morning, they get into their pads.

Saturday morning will be the team's intrasquad scrimmage, with the freshmen scrimmaging the JV starting at 9, and the varsity and JV

beginning an hour and a half battle at 10, according to Head Coach David Baugh.

Baugh said 33 players have been assigned to the varsity, 32 to the junior varsity, and 26 are on the freshman team.

The Head Hawk said he wasn't satisfied with the physical condition of the players, when they reported Monday.

His test was for the backs to run the mile Monday in at least 6:05, and linemen in 6:45. Only 25 varsity and JV players met the goals, he said.

"Several (of the players) are going to have to play both ways (offen-

sively and defensively in games), and they weren't ready," he said.

"We're accomplishing what we need to," he said about the first three workouts.

The Hawks were hit hard by graduation last spring, losing several starters from the team that made it all the way to the quarterfinals.

"We must find some defensive ends and corners," he commented when asked what he was looking for most to make this season as successful as the '86 campaign, which ended with a 10-3-1 record.

The team's goals this year are: 1. win state; 2. beat the 1986 record.

The teams will get their first test against another school a week from Friday, when Holliday comes to town for a scrimmage.

Holder honored

HOLLIDAY - Nominated for outstanding achievement in vocational agriculture, Mike Holder, a junior at Holliday High School, was recognized recently by the national office of Who's Who Among American High School Students.

The son of Mrs. and Mrs. Mike Holder received the Star Greenhand Award and the Star Chapter Farmer Award his freshman and sophomore year, respectively.

Holder has been involved in sheep and swine production, and currently raises registered brahman cattle. He is also a member of the Holliday Eagle football team.

He plans to attend Tarleton State Univ. and study agri-business.

Top of Texas sign-up slated

Sign-up of youngsters to play in the Top of Texas Kid Football program this fall will be held between 10 a.m. and 2 p.m. Saturday at the ASCS building, 220 W. Park, according to Gordon Griffith.

Players must be at least eight years of age, but not 12, before Sept. 1.

Those unable to attend sign-up can contact Griffith at 592-4840.

Parents are encouraged to attend the meeting if they have questions about the program, Griffith said.

While the season is to begin in September, scheduling will be decided at a meeting of teams.



20-INCH,
3 SPEED
BOX FAN
Reg. \$24.95
\$17.88

PARKWAY
Furniture/Hardware
200-206 W. Bank
592-5512 or 592-4681



IOWA PARK HAWK BOOSTER CLUB

BRISKET DINNER

| | |
|--------------------------------------------------------------|--------------------------------------------------------------------------------------------------------|
| Brisket Potato Salad Beans Dessert Tea Coffee | Date: August 21st Time: 5 - 8:30 p.m. Where: High School Lunch Room Adults -\$4 Under 6 - \$2 |
|--------------------------------------------------------------|--------------------------------------------------------------------------------------------------------|

Iowa Park Hawks vs. Holliday Eagles Scrimmage




SONIC

America's favorite drive-in

719 WEST HWAY
IOWA PARK, TEXAS

Call in advance
592-2087

STEAK SANDWICH 99¢

B&R Delicatessen

HOT POCKETS 2/\$1.19
Ham-n-Cheese or Pepperoni Pizza

| | |
|-----------------------------------------------------------------------------------------------------------------------------------------------------------------------------------------------------------------------------------|----------------------------|
| Thurs. Upside-down Pizza Fri. Catfish & Shrimp Sat. Lasagna Sun. Sausage-n-Rice Casserole Mon. Chicken Enchilada Casserole Tues. Cheeseburger Mac Wed. Fajitas | ALL THIS AND MORE!! |
|-----------------------------------------------------------------------------------------------------------------------------------------------------------------------------------------------------------------------------------|----------------------------|

Pete & Otto's 3-M CAFE
114 W. Cash Ph. 592-4721
Call-ins Welcome
Open 7:00 a.m. - 2 p.m. (Breakfast 7:30 a.m. - 10 a.m.)

We have a different Luncheon Everyday

~~~~~

**Chicken Fried Steak and Lida Burger Baskets Served Everyday**

## Friday Fish Night

Open: 5-8:30 p.m. Every Friday Night

Small Basket \$2.95  
Medium Basket \$3.95  
Large Basket \$4.95

Served with French Fries - Hush Puppies - Tarter Sauce Pickles & Onions  
Menu items available - Dine In - Carry Out



**FREE SOFT DRINKS**

What a thirst quencher! Enjoy a Ken's Fill-It-Up Cup, full of your favorite soft drink, FREE! Simply buy your Ken's Fill-It-Up Cup today, then bring it back every time you visit. We'll fill it FREE, with any food purchase, all year long. It's our way of saying thank you and hurry back.

|                                                                                                                                                                                                                                                                                            |                                                                                                                                                                                                                                                                                              |
|--------------------------------------------------------------------------------------------------------------------------------------------------------------------------------------------------------------------------------------------------------------------------------------------|----------------------------------------------------------------------------------------------------------------------------------------------------------------------------------------------------------------------------------------------------------------------------------------------|
| <p><b>\$3 or \$2 off</b></p> <p>Redeem this coupon for \$3 OFF a Large, or \$2 OFF a medium Ken's Pizza.<br/><small>One coupon per customer, per pizza please. Void with other promotions.</small></p>  | <p><b>\$3 or \$2 off</b></p> <p>Redeem this coupon for \$3 OFF a Large, or \$2 OFF a medium Ken's Pizza.<br/><small>One coupon per customer, per pizza please. Void with other promotions.</small></p>  |
| <p><b>\$3 or \$2 off</b></p> <p>Redeem this coupon for \$3 OFF a Large, or \$2 OFF a medium Ken's Pizza.<br/><small>One coupon per customer, per pizza please. Void with other promotions.</small></p>  | <p><b>\$3 or \$2 off</b></p> <p>Redeem this coupon for \$3 OFF a Large, or \$2 OFF a medium Ken's Pizza.<br/><small>One coupon per customer, per pizza please. Void with other promotions.</small></p>  |

**ken's PIZZA** 901 W. Hwy. 592-4184

**This Week's Special**

## HAMBURGER

A whole 1/4 pound of 100% Pure Beef!

# 99¢

**Every Thursday Nite**

|                                |                                |
|--------------------------------|--------------------------------|
| Farm - Fresh<br><b>Catfish</b> | <b>\$4.50</b><br><b>\$5.50</b> |
|--------------------------------|--------------------------------|

Raised at Midway Fish Farm  
Served with:  
•Cole Slaw •Tarter Sauce  
•Fries •Hush Puppies  
•Cooked in Peanut Oil and dipped in our Special Batter



Enjoy **Harvey's** FAMILY RESTAURANT **HAMBURGERS**

Ask about our Senior Citizen 10% Discount Card.

**805 West Highway**

FOR TAKE OUT ORDERS  
**CALL 592-4731**

**Letters**  
to the  
**Editor**

**Supports landowner**

Dear Mr. Hamilton,  
In reference to Johnny Coker letter in last week's paper. He stated "Until now, the citizens of Iowa Park have enjoyed a very economical rate for a very high level of service." And he also stated, "Compensation of Mrs. Karstetter for any loss of cattle or use of topsoil is currently the subject of negotiations in connection with a suit filed by Mrs. Karstetter." I have really hated to see Mrs. Karstetter and her family go through the mental anguish and expense of dead cattle that they have the past few years that the landfill has been on her land. She has not benefitted from this landfill. The citizens of Iowa Park are benefitting from it every day due to the generosity of this wonderful, trusting woman. Mrs. Karstetter has paid dearly and it's time for the city to find someplace else for their garbage. Over a year after the landfill was in operation, I personally saw Mrs. Karstetter's cows inside the landfill and a couple of them were down in the hole eating. I called Mrs. Karstetter and told her about seeing her cows and she called the city. The next day the city was out at the landfill putting the fence up to keep her cattle out of the landfill. This should have been done from the beginning before any cleaning or digging of her land was done. I don't blame Mrs. Karstetter for wanting it off her property. Talking to the city members before all this damage was done did her no good. Plastic bags in the stomach of her dead cows, her top soil being hauled away by our city and numerous other things that "could and should have been prevented." I hope others will notify Mrs. Karstetter of any information they may have concerning her property where the landfill is located.

Linda Williams

**They did it again!**

Danny Skinner and his volunteer fire fighters saved our house from burning again. Not only our house, but others would have burned also. August 1st, 1987 these guys put out the grass fire on Old Electra Rd. with no damage caused except to the grass and mesquite. Don't try to tell me these guys can't "leap over buildings in a single bound," or "fly like an airplane" because we know they could if they just wanted to. And thanks to the Wichita West crew and all of you "pros" for your time and talents. Also thanks to all the friends and neighbors who came running with their shovels.

JoAnn and Argie Gould

**Mark Hubner is injured**

Mark Hubner, son of Mr. and Mrs. Paul Hubner, was injured in a car accident Aug. 1 and has been in a deep coma since that time. He is in Frye Regional Medical Center at 420 N. Center St. Hickory, N.C. 28601.

The family has requested special prayers for him, his wife, Diane, and two children, Joey, 13, and Shalina, seven.

**Rural school homecoming set Aug. 22**

The 11th annual homecoming of rural schools of Wichita County will be held Aug. 22 in the Electra Community Center.

All former students, teachers and parents have been invited to attend the event, that includes the Sunshine Hill, Barwise, Red River, Enterprise, Prairie Cottage, County Line, Fowlkes Station, Rocky Point, Clara, Eagle Bend and Beaver Creek schools.

Registering, visiting and picture taking will begin at 10 a.m.

A buffet luncheon will be served at 1 p.m. with each family living within a 100-mile radius bringing enough food for their family plus five other people. Paper plates, cups, drinks and other eating utensils will be furnished by the association.

A mailing list of all former students is not complete so anyone knowing the whereabouts of former students should contact Raymond Stanford at 495-3289, W.A. McClure, Jr. at 495-7139 or Frances Arnold at 495-7394.

**Fox yard picked**

The Iowa Park Garden Club's Yard of the Month sign has been placed at the home of Robin D. Fox, 311 W. Magnolia.

It will be one of the yards considered for the Yard of the Year award.



**Library News**  
By Toni Lutz

**New Books - Children:**

**Read and Do Series:** Taste & Smell; Touch & Feel; Light & Dark; Eyes & Looking; Ears & Hearing; Quiet & Loud; Wet & Dry; Hot & Cold-Doug Kincaid.

**Safety Series:** Camping Safety; Safety with Pets; First Aid; Safety in School - Mike Higgs.

**Learning Series:** Solar System; Space Travel, Television; Oceans-Mike Higgs.

**New Books - Adult:**

Texas Weather by Bomar; Cacti of Texas & Neighboring States by Weniger; Dance of the Broken Heart by Thompson; The Doberman Pinscher by Kerfmann.

**RENT-A-CAR**  
Ronnie Wilson 592-4106

**Legion post is proposed**

Special guests of the Evening Lions at their meeting Tuesday were Mrs. Donna Farnsworth, speaker, and Ellen Isaacs and Jessica Hagwer, who sponsored by the club at the Lions Camp in Kerrville this summer, and Mrs. Alan Hagwer.

Mrs. Farnsworth, introduced by Dave Davis, spoke to the group about the possibility and advantage of reorganizing an American Legion Post in Iowa Park. She said that the American Legion was organized by Teddy Roosevelt in 1919, and she discussed the varied programs and scholarships the organization offered. She announced a meeting at 7:30 p.m. Friday at TU Electric Reddy Room to discuss reorganizing the Post in Iowa Park.

Mrs. Hagwer was introduced by Jim Sligar and spoke briefly on the

benefits of the Lions Camp and thanked the club for making it possible for her daughter, who is deaf, to be able to attend.

**EXPRESS YOURSELF**  
with a letter to the editor  
Iowa Park Leader  
P.O. Box 430  
Iowa Park, TX 76367

**Tanner-Aulds Funeral Home**  
"Our family serving your family"



Call Us For Pre-Need Funeral Plans  
592-4151 300 E. Cash

**Wichita Telephone Service**



Complete sales and service  
Business and Residential

Ray Featherston  
(817) 592-4958

14 years Experience  
FREE Estimates

Storewide  
**Summer SALE**

ON ALL

**MAGNAVOX TELEVISIONS**

EXAMPLE:

25-INCH  
CABLE-READY  
STEREO  
1 only Reg. 1199.95

**\$ 799**  
**PARKWAY**  
Furniture/Hardware  
200-206 W. Bank  
592-5512 or 592-4681



**Why Worry?**

Have freedom from  
**UNWANTED HAIR!**

How much is enough to get rid of a disfiguring hair problem for life? If you measure in terms of satisfaction and self-confidence, permanent hair removal at GUNTER ELECTROLYSIS STUDIO, represents a minimum at which these qualities can be supplied. Since skill and know how are the determining factors in cost per treatment and number of treatments required for a cure, you probably would pay less to be hair-free than using some of the temporary methods of hair removal for the rest of your life.



**Gunter Electrolysis Studio**  
Closed Friday and Saturday  
592-2883

**Guess who will be the big 33 on Sunday?**



**Guess who was 30 August 6?**



We love you,  
Kim, Cody and Alisia

**AUTO RACES FRIDAY NIGHT**

Races start promptly at 8 p.m.

Come early and watch the "Hot-Laps"



\*Exciting competition \*Good food  
\*Economical entertainment for families  
On Jacksboro Hwy (US281)  
at Rathgeber in Wichita Falls

**COL. C's SPEED DROME**

**Front End Alignment**  
**\$19.95**

On most cars and light trucks

Ask About Our New



**Automated Fueling**

We also accept Credit Cards by  
VISA, Master Card, Fina, Discover, M-Pact, Pulse  
Use your bank Debit Card on any purchase (M-Pact or Pulse) and get cash back.

**AYRES TIRE CO.**

Open: 7 a.m. - 6 p.m. Mon.-Fri.  
7 a.m. - 12 Noon Saturday  
Closed Sundays  
Johnson Rd. at US 287  
Ph. 592-5621



Gasoline - Diesel - Propane

**SAM'S WHOLESALE CLUB**  
A Division of Wal-Mart Stores, Inc.

**ATTENTION BUSINESS OWNERS/MANAGERS AND FARMERS**

Save more money than ever before as a member of SAM'S WHOLESALE CLUB

**A Representative of SAM'S Wholesale Club will be at the WAL-MART DISCOUNT STORE**

**IOWA PARK** Loop 370 & North & Pacific Ave. Iowa Park, Texas  
**BURKBURNETT** 100 Expressway & Access Rd. Burkburnett, Texas  
AUGUST 10-14, 10 A.M. TO 4 P.M.

**To Apply for a business Membership**

Bring your business or tax license for identification purposes (plus tax exempt certificate if you will be purchasing merchandise for resale). The first Business Membership Card is \$25 annually; but you may purchase up to four additional Cards at \$10 each. All merchandise is national brand-name directly from the factory, at absolute rock-bottom wholesale prices.

**SAM'S WHOLESALE CLUB**  
6730 Old Cache Road  
Lawton, Oklahoma

Low rates make State Farm homeowners insurance a good buy.

Our service makes it even better. Call me.



Philip Welch  
118 W. Park



Like a good neighbor, State Farm is there.

State Farm Fire and Casualty Company  
Home Office: Bloomington, Illinois

## Letters to the Editor

### Upset with policeman

Dear Sir,  
Enclosed is a copy of a letter that I sent to Iowa Park's police chief because of an incident that occurred a couple of weeks ago. I'd be most grateful if you would publish this in your paper so that the citizens of Iowa Park will know how their police officer's treat some people. Thank you.

Sincerely,  
Ms. P. Martin

"Dear Sir,

This letter is in regards to an incident which occurred on July 27th, 1987, around 3:15 p.m.

I was on my way to pick up my son, who had spent the night with a friend in Iowa Park. As I approached the house at which he was staying, I saw my son being interrogated in the street by an Iowa Park police officer. When I asked the officer what the problem was, rather than answering my question, he asked me to present my driver's license and proof of insurance. The officer's attitude was very unprofessional as he made racial statements about the fact that someone had called the police because my 11 yr. old son was merely sitting on a curb waiting for me to pick him up. As a black parent who is trying to raise my son to grow up without prejudices, this officer set a very bad example of what to expect from a law enforcer.

So in closing I'd just like to say that along with the officer's prejudice attitude, I feel that he was wrong in checking my driving record without just cause and holding me up for about 15 minutes without even an attempt to walk across the street to check out my son's story. Unfortunately, I was too nervous to notice his name or badge number, but I'm sure it wouldn't be very hard to find out who this officer is since there are not that many in this area. Finally, what would that officer have done with my son if I hadn't arrived when I did?

Sincerely,  
Ms. P. Martin

### Chief responds

"Dear Ms. Martin,

I am in receipt of your letter dated August 4, 1987, regarding a dispatched police call on July 27 at around 3:15 p.m.

I have checked on this situation and would like to give you some details on my investigation into this matter. First, I checked with the officer who was dispatched on this call and found that at about that same time Sgt. Mike Stark was assigned a call on West Texas. The department had received a call to check on a sus-

picious subject carrying a knapsack, who was loitering in the neighborhood. Remember please, that was the way the report was received and not the departments language. That area, along with the surrounding neighborhood, has been plagued recently with a rash of vandalism. Our citizens are very close-knit and generally know who lives in every house around them and in their block. It is a fact that no black citizens live in that block. This would not be any different than a white male hanging around in a black neighborhood where no white families live.

Our job is to respond to any and all calls and to serve our citizens and all others as the case may be. That would include checking out your son if need be to determine his intent. We would answer a similar request from you in the same quick and efficient manner.

Sgt. Stark says that you seemed to be incensed that he was talking with your son and that you had a bad attitude when you drove up on the scene. I was not there so I do not know what words were exchanged. Obviously, there was a personality conflict from the onset.

On the issue of checking your drivers license, you should be aware that obtaining a license is a privilege granted by the State of Texas. Part of the many rules are that a police officer can check on the status of same when he deems necessary, within reason. You came on this location in a vehicle prior to the officer finishing his inquiry and it may be that he needed to see something with an address to help verify the validity of your sons information. Again, I was not there so it is hard for me to know exactly what happened. By the way, our records show that the total time on the call was only 4-5 minutes. Perhaps it just seemed like 15 minutes.

Finally, if you had not arrived when you did the officer would have been obligated to make a determination on what to do based on your sons information and further investigation.

Now for some general information on my policies and procedures. We have a very elaborate Code of Conduct manual and it is enforced when a violation can be proven. One of the many areas covered is that of treatment of citizens and public relations. I will not tolerate rudeness or prejudice in any employee. Sgt. Stark had been interviewed about this matter and it is my opinion that it probably could have been handled a little more professionally in regard to getting your license and perhaps in the area of words chosen and attitude

displayed. Please accept my apology if you were left with the impression that you or your son were not treated well. We have a professional force and it does concern me greatly when a problem of this nature occurs. I am taking steps to assure that this type call is handled properly in the future.

Please feel free to call or visit me at any time if you desire more information or details in this matter. Also, thank you for taking the time to report this problem to me. Its hard to correct something you do not know about.

Sincerely,  
Alan Sheffield"

### Street dance set Sept. 22

The annual Iowa Park Volunteer Fire Dept. street dance has been set Aug. 22, in the 100 block of East Park.

Providing the music for this year's fund-raiser will be Eddie Music and the Sundowners.

A hot dog feed, provided by the MuleSkinners, will begin at 7 p.m.

Area residents wishing to make donations for purchasing equipment can mail them to Box 404, Iowa Park.

## Man arrested after scuffle

An arrest of a man early Wednesday morning resulted in a local man being treated in a hospital and taken to county jail facing a number of charges.

Officer Chris Pearson stopped Walker Dean Hooten, 36, at 12:38 a.m. near the West Highway and Third Street intersection on a traffic check, according to the police blotter.

When Pearson learned by radio that Hooten was wanted on a charge by the Department of Public Safety in Wichita Falls, he attempted to arrest the driver.

During the process, according to a department spokesman, Hooten began fighting with the officer. He was reportedly knocked to the ground about the time another officer arrived and just before two county deputies drove up to the scene.

Hooten was taken to Wichita General Hospital for treatment, and, according to the blotter, turned over at 5:18 a.m. to county jail.

Besides the DPS charges of "fail

to drive in single lane" and failure to appear, with bonds of \$93, additional charges of aggravated assault on a police officer, resisting arrest and driving while license suspended were placed on him.

An 18-year-old woman, Rhonda Mae Robertson, was arrested at 9:44 a.m. Thursday in the 700 block of Magnolia, according to the blotter.

She was charged with fictitious drivers license and disregarding stop sign, and released after posting \$86 bond.

An officer Saturday found a woman's wallet in the road at Pacific and Access Road and along with identification, contained \$190 in written checks and \$90 in cash.

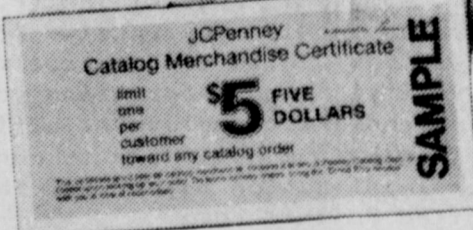
The woman was notified and given the wallet after identifying it.

Only one case of criminal mischief was noted during the week on the blotter.

Yvonne Ray, 1305 Mary, reported a window being damaged by a BB or pellet.

Looking for  
smart fashions  
for you and  
your home?

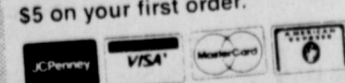
LOOK AT OUR BIG NEW  
FALL/WINTER CATALOG



**READY NOW!**

Just wait till you see it: our new Fall/Winter Catalog 1300 pages of fashion for the family from Levi's, Par Four, The Fox, and St. John's Bay! Furnishings and accessories for every room, electronics, sporting goods, and much, much more. Plus the convenience of at-home shopping.

Pick up your catalog today. Just \$4, with a certificate worth \$5 on your first order.



To inquire about an order  
692-8620

The JCPenney Catalog

Sikes Center

Shop by phone — 1-800-222-6161

## School

Continued from page 1

take this material (computer printout and sheets with budgets based on a 73-cent and 76-cent tax rates), study it, let me know of your questions and I'll have that information ready for you at the next meeting," Mitchell told board members.

Each penny on the tax rate generates \$25,910, Allan Shewmake, tax collector, explained.

The district's appraised value this year is \$259,107,052.

A public hearing will be held at 7:30 p.m. Aug. 24 in the administration building for the adoption of the budget.

Two members of the board, Wendall House and Gary Fielding, were absent from Tuesday's meeting.

Two purchases were approved for the start of school. They were 30 desks and chairs for Bradford Elementary and 22 desks for Kidwell Elementary, for a total of \$3,080.

They were on a "priority line items" list of six items proposed for board action at the meeting. Decision on the other items was postponed until the next meeting.

Trustees voted to accept resignations of five teachers. They were: Andrea Jones, third grade; Barney Wynn, fifth grade; and three from the junior high, LaVelda Barrick, English, Julie Salley, math, and Myrna Sharpe, history.

New personnel hired included: Galyia Kasparek, fifth grade; Mary Denise Alsup, fifth grade; Janna Monday, junior high English; Meredith Long, junior high math; Darlene Jo Powell, junior high history; Caia McCullar, junior high resource room; and Barbara Kline, special education at Kidwell.

Trustees also approved a proposal to adjust the teacher supplemental sick leave program and increased the

substitute teacher pay scale to \$40 and \$45 per day.

In action on bidding of supplies this year, trustees named Chester Wood Oil for gasoline; Preston Dairy for milk; Oak Farms for ice cream, and Rainbo for breads.

No increases in the lunchroom prices were recommended this year by Robert Palmer, assistant superintendent, and the board approved the federal free and reduced lunch program.

Storewide

## Summer SALE

**NO-WAX TARKETT VINYL FLOOR COVERING**

choice \$5.99 sq. yd.  
6 patterns

1 Roll only \$3.99 sq. yd.

**PARKWAY**  
Furniture/Hardware  
200-206 W. Bank  
592-5512 or 592-4681

## FAMILY HEALTH NOTES

### Conjunctivitis -- The "Eyes" Have It

Many people of vintage age, and maybe not so vintage, remember having "pink eye" as kids. It was a common occurrence in summer. The eyes turned red as a beet, mattered continually (especially during sleep), and seemed to always attract swarming gnats.

"Pink eye" was epidemic nearly every summer. One family member would become infected, and then the rest. Being highly contagious, "pink eye" sometimes ran through whole communities. Of course part of the reason for the seasonal outbreak was that sanitary conditions, as a rule, left a lot to be desired. One wash towel, one bar of soap, two or three to a bed, plus close contact almost always assured its spread.

Now things are different, environmentally, and "pink eye" is not as apt to become epidemic. But it is still a common infection and does occur, mostly as a result of close contact among children.

"Pink eye" is a viral form of conjunctivitis. Another form is caused by bacteria which usually results from infection caused by injury to the eyes; foreign substances, swimming in contaminated water, allergic reactions to pollen, and chemical burns, among others.

Conjunctivitis is so named because the conjunctiva, the inside of the eyelid and part of the surface of the eye, is infected. Symptoms of the infection are redness (bloodshot eyeball and red rims), swelling (puffy eyelids like that caused by lack of sleep, crying, etc.), tearing (as if you'd been chopping onion), and "mattering" (similar to what may occur in the corners of the eyes some mornings, only much worse).

The bacterial form of conjunctivitis can occur any time during the year, but is most common in summer due to dust and pollens. Specific symptoms are itchiness, redness, and sometimes inflammation. Bacterial conjunctivitis usually starts as a simple infection.

The initial treatment consists of warm compresses and a simple antiseptic such as a diluted boric acid eyewash, plus an antihistamine if the condition stems from an allergy. Sometimes treatment may call for a topical antibiotic. If the infection is severe enough, a systemic antibiotic to be taken internally may be prescribed.

Viral conjunctivitis does not respond to antibiotics. "Pink eye" treatment most often consists of little else other than a boric acid eyewash and warm compresses. Care should be taken to wash the eye from the inside corner out to make sure the tear ducts to not become infected.

Remember "pink eye" is one of the most catching of infections. Its spread can be limited if care is taken by the person who has it. One who is infected should not go swimming in a pool as others can get it from the water. They should not use anybody else's washcloth or towel. Hands should be washed every time they come in contact with the eyes, or the germs will be left on everything touched.

Conjunctivitis, whatever its cause, can be serious especially when initially caused by an injury to the eyes. Red, swollen eyes with a discharge should be properly diagnosed by your family doctor. Don't take a chance with your vision.



Park Clinic

Earl F. Watson, M.D.,  
Erwin F. Soell, M.D.,  
Larry D. Stutte, M.D.

Telephone 592-4141 • 310 W. Alameda  
Hours: Mon. - Fri., 8:30 a.m. - 6:00 p.m.  
Physician on call 24 hours

We make daily  
deliveries to  
Heritage Manor  
...at our same low prices!

To establish a monthly  
account, call or come by  
and discuss with us, if  
you have a relative who  
is a Heritage Manor resident.

We accept Texas Medicaid

**WAL-MART  
Pharmacy**

500 W. Highway 592-4157

9 a.m. - 7 p.m. Monday - Friday

9 a.m. - 6 p.m. Saturdays



Dear Parent or Guardian:

The Iowa Park Consolidated Independent School District serves nutritious meals every school day. Students may buy lunch for 75¢, 85¢, and \$1.00 and breakfast for 50¢. Children from households that meet federal income guidelines are eligible for free meals or reduced-price meals at 40¢ for lunch and 30¢ for breakfast.

**HOW AND WHERE TO APPLY:** A separate application must be filled out for each child you want to receive free or reduced-price meals. The completed application must be returned to that child's principal. One application form is attached, but you may obtain additional forms from any principal if you have more than one child for whom you want to apply. If you have any questions or need help in filling out the application form, please contact your child's principal.

**FOOD STAMP/AFDC HOUSEHOLDS:** If you currently receive food stamps or "Aid to Families with Dependent Children" for your child, you only have to list your child's name and food stamp or AFDC case number, print your name, and sign the application. Since you have already given income information to the welfare office, the school can confirm your eligibility.

**ALL OTHER HOUSEHOLDS:** If your household income is at or below the level shown on the attached scale, your child is eligible for either free or reduced-price meals. To apply for meal benefits, you must provide the following information and sign the application: (1) list the names of everyone who lives in your household. Include parents, grandparents, all children, other relatives and unrelated people who live in your household, (2) list the social security number of each adult age 21 or older. If an adult does not have a social security number print "None", (3) list total monthly income and amount of income (BEFORE deductions for taxes, social security, etc.) each person received last month and where it is from, such as wages, retirement, or welfare. If you have a household member for whom last month's income was higher or lower than usual, list the person's expected average monthly income.

**VERIFICATION:** The information on the application may be checked by school officials at any time during the school year.

**REPORTING CHANGES:** If you list income information and your child is approved for meal benefits, you must tell the school when your household income increases by \$50 or more per month (\$600 per year) or when your household size decreases. If you list a food stamp case number or AFDC number, you must tell the school when you no longer receive food stamps or AFDC for your child.

**REAPPLICATION:** You may apply for benefits at any time during the school year. If you are not eligible now, but have a decrease in household income, become unemployed, or have an increase in family size, fill out an application at that time.

**FOSTER CHILDREN:** If you have foster children living with you, they may be eligible for these benefits. If you wish to apply for these benefits for them, please contact the school and they will help you complete the application.

**NONDISCRIMINATION:** Children who receive free or reduced-price meal benefits are treated the same as children who pay for meals. In the operation of child feeding programs, no child will be discriminated against because of race, sex, color, national origin, age or handicap. If you believe you have been discriminated against, write immediately to the Secretary of Agriculture, Washington, D.C. 20250.

**FAIR HEARING:** If you do not agree with the school's decision on your application or the result of verification, you may wish to discuss it with the school. You also have the right to a fair hearing. This can be done by calling or writing Glen H. Mitchell, Superintendent, Iowa Park Consolidated Independent School District, P.O. Box 898, Iowa Park, Texas, 76367.

**CONFIDENTIALITY:** The information you provide will be treated confidentially and will be used only for eligibility determinations and verification of data. You will be notified when the application is approved or denied.

Sincerely,  
Glen H. Mitchell,  
Superintendent

INCOME ELIGIBILITY GUIDELINES 1987-88

| Family Size                   | Annual   |               | Monthly |               | Weekly |               |
|-------------------------------|----------|---------------|---------|---------------|--------|---------------|
|                               | Free     | Reduced-Price | Free    | Reduced-Price | Free   | Reduced-Price |
| 1                             | \$ 7,150 | \$ 10,175     | \$ 596  | \$ 848        | \$ 138 | \$ 196        |
| 2                             | 9,620    | 13,690        | 802     | 1,141         | 185    | 264           |
| 3                             | 12,090   | 17,205        | 1,008   | 1,434         | 233    | 331           |
| 4                             | 14,560   | 20,720        | 1,214   | 1,727         | 280    | 399           |
| 5                             | 17,030   | 24,235        | 1,420   | 2,020         | 328    | 467           |
| 6                             | 19,500   | 27,750        | 1,625   | 2,313         | 375    | 534           |
| 7                             | 21,970   | 31,265        | 1,831   | 2,606         | 423    | 602           |
| 8                             | 24,440   | 34,780        | 2,037   | 2,899         | 470    | 669           |
| Each Additional Family Member | \$ 2,470 | \$ 3,515      | \$ 206  | \$ 293        | \$ 48  | \$ 68         |

APPLICATION FOR FREE AND REDUCED-PRICE SCHOOL MEALS

**PARENT OR GUARDIAN:** To apply for free or reduced-price meals, complete, sign, and return this application to school. If you need help, please call the school.

**STEP 1 - SCHOOL CHILDREN:** Print the name of the child you want to receive free or reduced-price meals. If the child is receiving AFDC and not food stamps, report the AFDC case number. If your family is not receiving food stamps, and if the child listed is not receiving AFDC, you must list income in step 5 below. Also, please print the child's school and grade. A separate application must be filled out for each child for whom you are applying. The application must be returned to the principal of the school. (Additional application forms may be obtained from the school principal.)

| CHILD'S NAME | AFDC NO. | SCHOOL | GRADE |
|--------------|----------|--------|-------|
|              |          |        |       |

**STEP 2 - HOUSEHOLD MEMBERS:** List below the names and ages of everyone living in your household including yourself. Do not list the school children listed above.

**STEP 3 - SOCIAL SECURITY NUMBERS:** Print the Social Security Number of each adult age 21 or older that you listed below. If an adult does not have a Social Security Number, print "NONE" next to their name. (See back of form).

**STEP 4 - FOOD STAMP HOUSEHOLDS:** If your household is now receiving food stamps, you may give your food stamp case number and skip the income questions on this form. You still must list all household members and their Social Security Numbers. Yes we received food stamps this month and want school meals. Our food stamp case number is: \_\_\_\_\_

**STEP 5 - INCOME:** If you did not list your food stamp case number above, list ALL income received last month on the same line with the person who received it. List each amount of income under the correct title. You must list the gross income BEFORE all deductions for taxes, social security, etc. (See back of this page for the kinds of income to report.)

DO NOT LIST BELOW THE CHILDREN IN SCHOOL YOU LISTED ABOVE.

| Last Name | First Name | Age | Social Security Number | Salary Before Deductions |                          | Monthly Welfare Pymts. Unemployment Child Sppt. | Monthly Pensions, Retirement, Soc. Security | All Other Monthly Income |
|-----------|------------|-----|------------------------|--------------------------|--------------------------|-------------------------------------------------|---------------------------------------------|--------------------------|
|           |            |     |                        | (1st Job) Monthly Salary | (2nd Job) Monthly Salary |                                                 |                                             |                          |
|           |            |     |                        | \$                       | \$                       | \$                                              | \$                                          | \$                       |
|           |            |     |                        | \$                       | \$                       | \$                                              | \$                                          | \$                       |
|           |            |     |                        | \$                       | \$                       | \$                                              | \$                                          | \$                       |
|           |            |     |                        | \$                       | \$                       | \$                                              | \$                                          | \$                       |
|           |            |     |                        | \$                       | \$                       | \$                                              | \$                                          | \$                       |
|           |            |     |                        | \$                       | \$                       | \$                                              | \$                                          | \$                       |
|           |            |     |                        | \$                       | \$                       | \$                                              | \$                                          | \$                       |

**SIGNATURE:** I understand that all of the above information is true and correct and that all income is reported. I understand that this information is being given for the receipt of Federal funds, that school officials may verify the information on the application and that deliberate misrepresentation of the information may subject me to prosecution under applicable State and Federal laws.

TOTAL HOUSEHOLD MONTHLY INCOME \$ \_\_\_\_\_

PRINT NAME \_\_\_\_\_  
STREET \_\_\_\_\_ APT. NO. \_\_\_\_\_  
CITY \_\_\_\_\_ ZIP CODE \_\_\_\_\_  
Home Telephone \_\_\_\_\_ WORK TELEPHONE \_\_\_\_\_

SIGNATURE OF PARENT OR ADULT FAMILY MEMBER \_\_\_\_\_ DATE \_\_\_\_\_

**WHAT INCOME MUST YOU LIST ON THIS APPLICATION:** List all income received last month by each person. You must list: all wages from all jobs (the total earned BEFORE deductions for taxes, social security, etc.); retirement or pension income for anyone in your household receiving this income; and the other income types listed below. If you or anyone else in your household received disability, unemployment compensation, workman's compensation, or strike benefits last month, it must be listed as other income on the application. If you have household members for whom last month's income was higher or lower than usual, please list that person's expected average monthly income for this year. For example, self-employed people like farmers and seasonal workers should list average monthly income.

**RACE:** Please check the racial or ethnic identity of your child. You are not required to answer this question. We need this information to be sure that everyone receives benefits on a fair basis.

- White, not of Hispanic origin
- Black, not of Hispanic origin
- Hispanic
- Asian or Pacific Islands
- American Indian or Alaskan Native

No child will be discriminated against because of race, sex, color, national origin, age, or handicap.

**FOSTER CHILDREN:** In certain cases foster children are eligible for free or reduced-price meals regardless of your household income. If you have such children living with you, please contact the school for special instructions on how to complete this application.

**PRIVACY ACT INFORMATION - SOCIAL SECURITY NUMBERS:** Federal law (P.L. 97-35) requires you to list social security numbers of all adult household members before your child may receive free or reduced-price meals. You do not have to give social security numbers, but if you refuse your child cannot receive free or reduced-price meals. The social security numbers may be used to identify you for verifying the information you report on this application. Verification may include audits, investigations, contacting the State employment office, food stamp or welfare office, and employers, and checking the written information provided by the household to confirm the information received. If incorrect information is discovered, a loss of benefits or legal action may occur. These facts must be told to all household members whose social security numbers are reported on this form.

FOR SCHOOL USE ONLY - DO NOT WRITE BELOW THIS LINE

**ELIGIBILITY** Total Household Size: \_\_\_\_\_ Total Income: \$ \_\_\_\_\_  Monthly  Annual OR  Food Stamp Household

Eligibility Determination:  Approved Free  Approved Reduced Price  Denied

Reason for Denial:  Income Too High  Incomplete Application  Other (Reason) \_\_\_\_\_

Date Notice Sent: \_\_\_\_\_ Signature of Determining Official: \_\_\_\_\_ Date: \_\_\_\_\_

---

**VERIFICATION** Date Selected For Verification: \_\_\_\_\_

Response Due From Household: \_\_\_\_\_

Second Notice Sent: \_\_\_\_\_

Food Stamp Eligibility:  Not Confirmed  Confirmed

Food Stamp Office  Notice of Eligibility  ATP Card Issued monthly (not ID card w/o expiration date)

Income: \$ \_\_\_\_\_  Monthly  Yearly  Wage Stubs  Written Documents  Collateral Contact  Agency Records  Other \_\_\_\_\_

Sample Selection:  Random  Focused  100%  Other \_\_\_\_\_

Verification Result:  No Change  Ineligible  Free to Reduced Price  Reduced Price to Free

Reason For Eligibility Change:  Income  Household Size  Refused to Cooperate

Other \_\_\_\_\_

Date Adverse Notice Sent: \_\_\_\_\_

Signature of Verifying Official: \_\_\_\_\_ Date: \_\_\_\_\_

Space for notes about the Eligibility/Verification below \_\_\_\_\_

# Elementary school supply lists posted

With the Sept. 1 start of school nearing, elementary principals have announced supplies students will need to attend classes.

They are:  
**EARLY CHILDHOOD**  
2 primary pencils  
Box jumbo No. 8 crayons  
Box water colors  
Box facial tissues (200 count)  
Plastic bottle school glue, 4 oz.

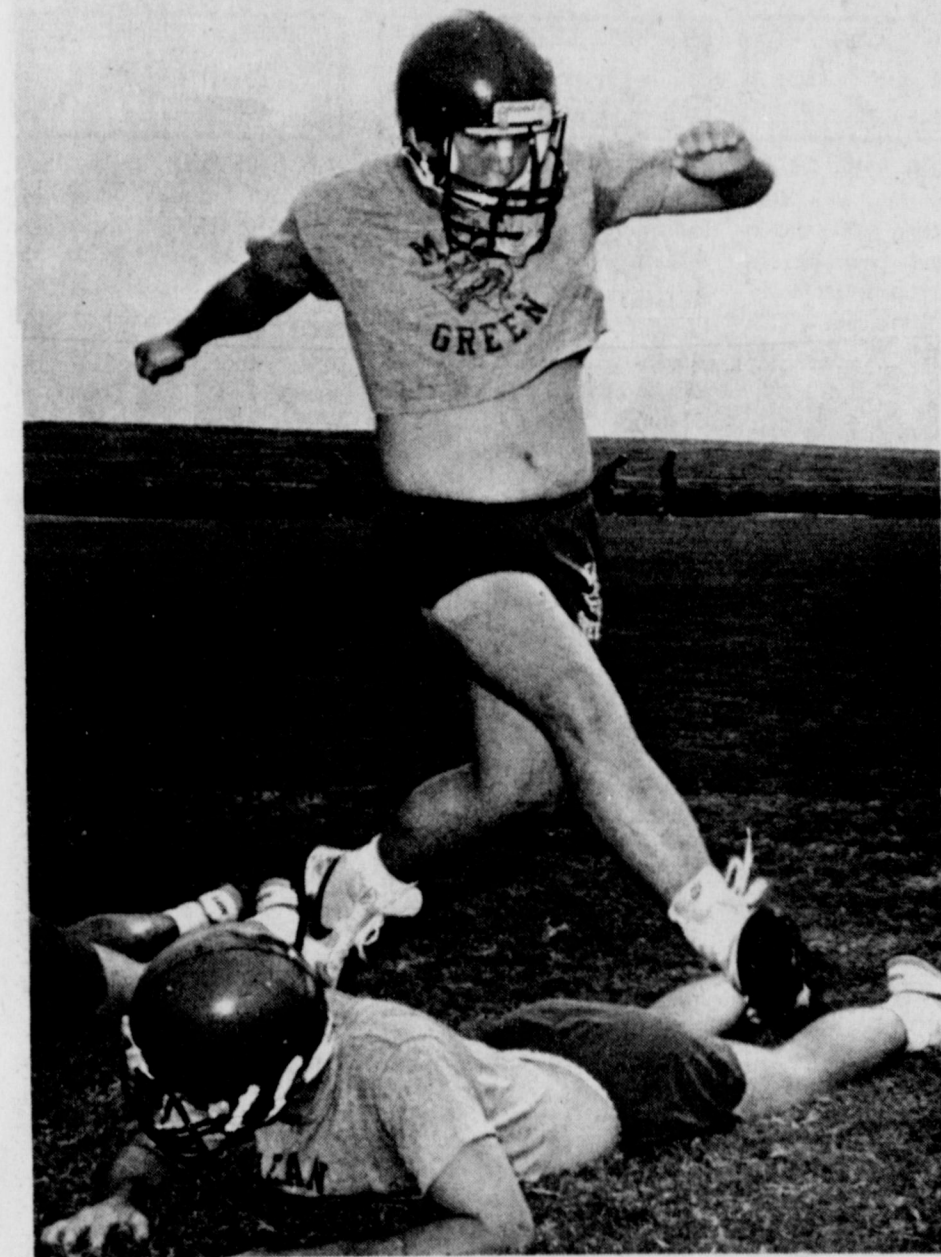
Rest mat (plastic, or heavy towel or rug, no larger than 24x46)  
\$10 per semester snack charge  
**KINDERGARTEN**  
3 each No. 2 pencils  
Box 8 crayons, not jumbo  
Box facial tissue, 200 count  
Plastic bottle school glue, 4 oz.  
**FIRST GRADE**  
1 large pencil eraser  
1 pair pointed scissors  
5 each No. 2 pencils

2 boxes crayons, 8 count  
Water colors  
2 plastic bottles school glue, 4 oz.  
1 glue stick  
Box facial tissue, 200 count  
School box (cigar box size)  
Book bag or satchel (child's name should be on items)  
**SECOND GRADE**  
8 each No. 2 pencils  
1 large eraser  
Bottle school glue, 8 oz.  
Box crayons (24 count)  
1 pair pointed scissors  
1 box facial tissue (200 count)  
School box  
Water colors (eight color set)  
2 red pencils  
1 pkg. notebook paper, wide rule  
6 folders with pockets (no brads)  
1 spiral-bound notebook (40 page, wide rule)  
Tote bag or back pack  
**THIRD GRADE**  
2 red grading pens or pencils  
2 each No. 2 pencils  
1 pkg. wide rule looseleaf notebook paper  
1 box crayons, 24 count  
Pair pointed scissors  
4 folders with pockets and brads (a different color for four subjects)  
3-ring plastic folder with metal binders  
1 pkg. of 6 pocket dividers  
1 box facial tissue (200 count)  
1 ruler, wood, inches and metrics  
1 large eraser  
1 plastic bottle school glue, 4 oz.  
1 small zipper bag for pencils, etc.  
Tote bag or back pack  
1 cursive writing tablet  
**FOURTH GRADE**  
4 ea. No. 2 pencils with erasers  
1 box crayons, 24 count  
1 bottle school glue, 4 oz.  
1 ruler, 12-inch, wood  
1 pkg. looseleaf notebook paper, wide ruled, white  
1 large eraser  
1 box map colors  
1 black felt tip marker  
1 pkg. of 6 pocket dividers  
3 folders with brads and pockets, different colors  
1 plastic ring folder

1 box facial tissue, 200 count  
1 red grading pencil  
1 small tote bag  
1 small zipper bag for pencils, etc.  
1 spiral-bound notebook  
**FIFTH GRADE**  
2 each No. 2 pencils

1 plastic bottle school glue, large  
1 ruler, 12-inch, with metrics  
1 pkg. looseleaf notebook paper, wide ruled, white  
1 box map colors (12 count or larger)  
1 pair pointed scissors  
2 spiral-bound notebooks

10 folders with brads and pockets  
1 box facial tissue, 200 count  
2 red grading pencils  
1 plastic zippered pencil bag  
1 tote bag (optional)  
1 pkg. looseleaf notebook paper  
1 box crayons, 24 count



WORKOUTS began this week for the Iowa Park Hawks, in preparation for their 1987 assault of the Dist. 6-AAA title. They will work out in shorts through today, put pads on Friday, and hold their intrasquad scrimmage Saturday morning.

## -PUBLIC NOTICE-

ORDINANCE NO. 58  
AN ORDINANCE DEFINING AUTOMOBILE SALVAGE YARDS; ESTABLISHING THE SPECIFIC STANDARDS OF SAFETY, PHYSICAL APPEARANCE, HOURS OF OPERATION, AN RECORDS; PROVIDING A PENALTY AND DECLARING AN EMERGENCY.  
BE IT ORDAINED BY THE BOARD OF ALDERMEN OF THE TOWN OF PLEASANT VALLEY, TEXAS:  
**SECTION 1:** As used in this ordinance, the term "automobile salvage" shall mean any lot or place which is exposed to the weather, upon which more than five motor vehicles of any kind, incapable of being operated, are placed.  
**SECTION 2:** An automobile salvage shall be entirely enclosed by a fence eight feet in height, which shall be kept neatly painted and in good repair at all times, and which shall be constructed of plank board or corrugated iron, so as to exclude such yard from public view. A period of fifteen days from the date of the passage of this ordinance is allowed the operators of such yards to construct the fence or fences required by this ordinance.  
**SECTION 3:** The fence enclosing an automobile salvage shall not be used for bill postings or other advertising purposes, except that a space not larger than six feet by twelve feet may be used for the advertisement of the business of the owner thereof. Where such yard fronts on more than one street, the use of space for advertisement herein permitted shall extend to each street on which the yard abuts.  
**SECTION 4:** The contents of an automobile salvage shall not be placed or deposited to a height greater than the height of the fence surrounding it.  
**SECTION 5:** Work in connection with the demolishing or wrecking of cars shall be permitted only on weekdays between the hours of seven a.m. and six p.m.  
**SECTION 6:** No open fire for the burning of rubbish, trash, automobiles, or any parts thereof, or other waste matters, shall be permitted.  
**SECTION 7:** An automobile salvage shall, as far as practicable, be kept clear and clean of all rubbish or waste matter.  
**SECTION 8:** All tanks and engines shall be kept thoroughly drained of gasoline.  
**SECTION 9:** All automobile salvage, together with the books required by this article shall be at all times open for inspection to all officers of the city having police power.  
**SECTION 10:** No purchaser operating or maintaining an automobile salvage yard shall purchase any vehicles, or

parts or accessories thereof, except between the hours of seven a.m. and nine p.m.  
**SECTION 11:** Any person maintaining or operating an automobile salvage yard shall keep at his place of business a book in which a record shall be kept of the day and time of day of each purchase, the name, residence, and description of the person selling and actually delivering the vehicle, parts, or accessories purchased, the amount of the purchase price, the make, state license number, motor number, body number, style, seating capacity of the vehicle purchased; the make and identifying number of the radiator, speedometer, and magnetos purchased, together with any other information concerning said property as may be necessary to prove ownership or identity of such vehicles or of such automobile parts or accessories purchased.  
**SECTION 12:** No purchaser shall knowingly buy, sell, receive, dispose of, conceal or have in his possession any motor vehicle, part or accessory from which the manufacturer's serial number or any other number of identification mark has been removed, defaced, covered, altered or destroyed for the purpose of concealing or misrepresenting the identity of the vehicle, part, or accessory from which has been removed, defaced, covered, altered or destroyed the manufacturer's serial number or any number or identification mark shall immediately notify the city marshal.  
**SECTION 13:** No licensee under this ordinance shall purchase any auto or auto part or any article, whatever from any minor without the written consent of the minor's parent or guardian.  
**SECTION 14:** Any person violating any provision of this ordinance shall be fined not less than twenty-five nor more than two hundred dollars and a separate offense shall be deemed to be committed on each day during or on which a violation shall continue.  
**SECTION 15:** The fact that there are presently no adequate provisions regulating automobile salvage yards within the Town of Pleasant Valley, creates an urgency and emergency for the immediate preservation of the public peace, health safety, and general welfare, and required that this Ordinance shall take effect immediately from and after its passage and publication.  
PASSED AND APPROVED this the 3rd day of August, 1987,  
Leon T. Little  
Mayor  
ATTEST:  
Glenn R. Miller  
8-6-2c

### NOTICE OF PUBLIC HEARING ON TAX INCREASE

The IOWA PARK CISD will hold a public hearing on a proposal in increase total tax revenues from properties on the tax roll in 1986 by 8%. Your individual taxes may increase at a greater or lesser rate, or even decrease, depending on the change in the taxable value of your property in relation to the change in taxable value of all other property.

The public hearing will be held on 20th August, 1987 at 7:30 p.m. Iowa Park CISD Adm. Bldg. 413 East Cash, Iowa Park, Texas.

FOR the proposal: Jimmy Howell,  
Martha Dudley, John Sibley,  
Jerry Reed, Don Decker

AGAINST the proposal: None

PRESENT and not voting: None

ABSENT: Wendall House, Gary Fielding

### EXPLANATION

Your Iowa Park Consolidated School District taxes may not necessarily be increased by 8% despite the state mandated notice concerning effective tax rate.

Here is an example:

|               |                   |                         |
|---------------|-------------------|-------------------------|
| Value of Home | Proposed Tax Rate | Last Year Tax Rate      |
| 50,000        | x .76 = \$380.00  | 50,000 x .75 = \$375.00 |

Proposed tax rate your school tax would increase \$5.00. Your school tax may be more or less if your value increased or decreased. If you would like to check your market value and have an estimate of your 1987 school tax please call School Tax Office, 592-5082.

If you are over 65 and have signed Homestead Exemption, your school tax will not increase.

BUYING? SELLING? RENTING? HIRING? **WANT ADS PAY OFF**

**DEADLINES**

10 A.M. WEDNESDAY (Word Ads Only)  
4 P.M. TUESDAY, DISPLAY ADS

**SAVE 8¢ PER WORD FIRST  
INSERTION BY PAYING  
WITH COPY AT OFFICE**

**RATES:**  
23¢ PER WORD FIRST INSERTION  
15¢ PER WORD EACH REPEAT

|                                                                                                                                                                                |                                                                                                                                           |                                                                                                                                                                                                                                                      |                                                                                                                                                                                                     |                                                                                                                                                                                                                                                                                                                                                                                                                                                                                                                                                                                                                                                                                                                                                                                                        |                                                                                                                                                                                                                                  |                                                                                                                            |                                                                                                               |
|--------------------------------------------------------------------------------------------------------------------------------------------------------------------------------|-------------------------------------------------------------------------------------------------------------------------------------------|------------------------------------------------------------------------------------------------------------------------------------------------------------------------------------------------------------------------------------------------------|-----------------------------------------------------------------------------------------------------------------------------------------------------------------------------------------------------|--------------------------------------------------------------------------------------------------------------------------------------------------------------------------------------------------------------------------------------------------------------------------------------------------------------------------------------------------------------------------------------------------------------------------------------------------------------------------------------------------------------------------------------------------------------------------------------------------------------------------------------------------------------------------------------------------------------------------------------------------------------------------------------------------------|----------------------------------------------------------------------------------------------------------------------------------------------------------------------------------------------------------------------------------|----------------------------------------------------------------------------------------------------------------------------|---------------------------------------------------------------------------------------------------------------|
| <b>For Rent</b><br>TWO BEDROOM, 1 bath, mobile home. Dishwasher, refrigerator, range, washer & dryer connections, heat & air. \$100 deposit, \$250 monthly. 592-4063. 8-13-1tp | <b>For Rent</b><br>TWO BEDROOM house C H/A, livingroom, dining room, kitchen, one bath, fenced. 592-2761, 8-5, 592-5836 after 5. 8-13-tfc | <b>Homes for Sale</b><br>14X70 KAUFMAN & Broad mobile home, 2 bedrooms, 2 baths, central heat and air, dishwasher, stove, garden tub, bay window, 8X10 porch and shed. \$2000 down (negotiable) owner finance or assume loan. 501-321-1583. 8-13-1tc | <b>Homes for Sale</b><br>ALL CLOSING Paid. Assume VA, payments, \$346. Great starter home. 3 BR, 1 bath, 1 car garage. Fenced yard. City View Area. 592-9508. 8-13-2tp                              | <b>Homes for Sale</b><br>HOUSE FOR Sale - by owner. Three bedroom, 2 baths, 2-car garage, covered patio, fenced. In Shiloh, reduced \$76,500. Call 592-2223. 7-30-tfc                                                                                                                                                                                                                                                                                                                                                                                                                                                                                                                                                                                                                                  | <b>Homes for Sale</b><br>TWO BEDROOM, bath, living room, den with fireplace, 4 ceiling fans, storm windows, and new storage shed. Home beautifully decorated and landscaped. Call 592-5859 after 4 p.m. for appointment. 8-6-2tp | <b>Domestics</b><br>BABYSITTING days or evenings. Transportation to and from Kidwell. 592-4885. 8-13-1tp                   | <b>Domestics</b><br>REGISTERED child care, Monday through Friday, have at least 2 openings, 592-9619. 8-6-2tc |
| <b>For Rent</b><br>RENT HOUSE - 2 bedroom, clean, appliances, garage, storage. No pets, 592-4356 after 6 p.m. 8-6-tfc                                                          | <b>For Rent</b><br>FOR RENT - 5 room house on 325 East Bank Street. No dogs. Joe Harry Bower, 227 West Oak, Uvalde, Texas 78801. 7-2-tfc  | <b>Homes for Sale</b><br>TRAILER HOUSE for sale. 14X80, 4 years old, fireplace, cathedral ceiling, 3 bedroom, 2 bath, to be moved or buy large corner lot. 900 Pasadena, 592-9617. 8-6-tfc                                                           | <b>Homes for Sale</b><br>NEW THREE BEDROM brick homes with central heat and air, energy efficient, and fully carpeted. Low monthly payments if you qualify. Swan Construction Co. 692-8788. 6-4-tfc | <b>Homes for Sale</b><br>2.01 ACRES - Large three bdrm, birch, 1813' living area, double garage, trees, good grass, priced \$5,000 below appraisal. Mo. City taxes, owner-broker Hunter Realtors. <b>CONTRACT PENDING</b><br>We sell V.A. & F.H.A. acquired homes.<br>404 W. ALDINE - Two bedroom, trees, cellar.<br>102 S. YOSEMITE - Large 3 bedroom, interior redecorated.<br>504 N. PACIFIC - Three bedroom, fenced, trees.<br>THREE BEDROOM BRICK - 2,528' living area \$68,500.<br>FOUR BEDROOM - many extras, desirable location \$90,000.<br>COMMERCIAL LOTS - Make offer.<br>BODY SHOP - ready for business - make offer.<br>3.2 ACRES SOUTH OF KAMAY - \$4,900.<br>4 ACRES FOR LEASE - fenced, with earth tank. Good grass.<br>100 X 100' LOT - good for mobil Home.<br>1 OLDER FRAME HOUSE. | <b>Domestics</b><br>REGISTERED Child Care. Openings before and after school. Judy Hamilton, 592-2825. 8-13-4tc                                                                                                                   | <b>Domestics</b><br>WILL BABYSIT in my home, all shifts, meals furnished, reasonable rates, references. 592-4453. 7-30-4tc |                                                                                                               |

**HALLMARK REALTORS**  
We Sell Iowa Park

**DAY OR NIGHT 691-7855**

**DONNA CHAMBERS**  
Owner Broker  
592-5428

**DEE BLACKWELL**  
438-2824

**DARRELL JOLLY**  
592-4926

**#987 BEST BARGAIN IN TOWN!** Lovely 4 bdrm, brick home in mint condition. Neutral tone carpet throughout, bright and sunny kitchen. \$32,500. Owner financing.

**We can show and sell FHA & VA Reposed Properties!**

**#111 COUNTRY MEADOWS** - lovely 3 bedroom, brick home on corner lot.

**#216 NICE FAMILY HOME** - with room to grow. 3 bdrms., brick on large corner lot, privacy fence and intercom system. HOW Warranty.

**#226 IF YOU'VE ALWAYS** - wanted 40 acres in the valley...here it is. Call for directions.

**#196 NICE YARD** - and roomy 3 bdrm. home on 5 city lots. See to appreciate.

**#209 GREAT BUY** in Redin Heights addition. Perfect starter home. Best price in the neighborhood.

**#197 MAKE YOU HOME** - on Bentwood Drive! Choice of floor plans with all the trimmings. Call for details.

**#173 ENJOY THE SUMMER** - on this large covered patio! Home has lots of living space and a sun room, too. Lovely neighborhood.

**#192 NO MORE STORAGE PROBLEMS** - Spacious home includes large basement, attic and beautiful hardwood floors.

**#109 HORSE LOVERS DELIGHT** - nice 3 bdrm. brick home on 6 3/4 acres. Includes 10 stall barn, pipe arena, calf shed, **SOLD** workshop and much more. Price reduced. Iowa Park schools.

**#224 HOW WARRANTY** - A home meant to be enjoyed! 3 bedroom, 2 bath, corner lot in great neighborhood. Assumable FHA loan.

**#965 COUNTRY MEADOWS** new home on large corner lot, excellent financing available.

**#181 GRAB THIS FAST** - It won't last! 3 or 4 bdrms. 2 full baths, fireplace, formal dining area. 125x50 prefab building, Swimming pool. Sets on 10 acres. Price will shock you.

**#162 SHILOH ADDITION** - 3 living areas, 2 1/2 baths, 2 covered patios, on extra lg. lot.

**#114 EXCEPTIONALLY** - meet & well arranged floor plan. 3 bdrms., 2 full baths, large living area. Central heat-air. 50'x20' shop, double car detached garage. Kitchen remodeled. Owner ready to sell.

**#108 SMALL TRACTS** - to build on, or own all 105 acres.

**#117 PEACEFUL COUNTRY LIVING** - Screened in porch on 3 bdrm. home with 7 acres.

**#175 IF YOU LIKE** - two everything, this home has it. Two living areas, 2 fireplaces, 2 car garage, large covered patio with an ornamental fish pond. Garden area, sets on a corner lot.

**#929 GREAT HOME** in Shiloh addition. Excellent floor plan. Priced to Sell!

**#147 PRICE REDUCED** - on this pretty 3 bdrm., 1 1/2 bath, single car garage. Central heat-air. Owners say sell. Make an offer.

**#231 NEW LISTING** - Nice, well kept 3 bdrm. home, covered patio. Great backyard with separate dog run. HOW Warranty.

**#971 PRICE DRASTICALLY REDUCED** - Swimming pool, sprinkler system, TV Satellite, storm shelter, security system, custom built home with 4 acres. Owners say sell!

**OWNER FINANCE**  
2 bedroom, large living room, kitchen and dining room, central heat and air, fresh paint inside and out, new carpet, single garage, large corner not, \$28,000.

**PRICE REDUCED**  
3 bedroom, brick, veneer, 1 1/2 bath, central heat, large lot, fenced yard. \$29,000.

**PRICED REDUCED**  
Lovely homesite 70X140 level lot. Asphalt street close to expressway. \$2,500

**GOOD INVESTMENT**  
Extra large living & dining room, giant master bedroom, CH&A, 2 car garage, large patio, small apartment in backyard, with garage. This ones for you. \$36,000.

For information on these and other properties, call now.

**JOHNNY LEE REAL ESTATE**  
592-2378  
109 W. CASH

**MEMBER MULTIPLE LISTING SERVICE**

**Sam Hunter Real Estate**  
107 E. Cash 592-4661

*We've been selling Real Estate in Iowa Park since 1958! Call an experienced Realtor when you need to buy or sell. We Appreciate Your Business!*

**Shirley Rains Real Estate**  
Shirley Rains - Broker  
Hometown Broker & Hometown Salespeople  
FHA - VA Broker

**VINCENT** 592-4584  
**MARY** 592-4747  
**HAZEL** 592-2397  
**LIZA** 592-2500

**BEAUTIFUL BRICK** - 3 bdrm., cathedral ceiling in family room, fireplace, Hollywood bath, privacy fence. \$49,500.  
**CORNER LOT** - over 2000 sq. ft. of living area, 2 1/2 bath, double fireplace, all enclaves, priced at \$65,000.  
**OWNER HAS MOVED** - says sell 3 bdrm., 1 3/4 bath, fenced yard \$38,500.  
**2 BEDROOM** - large fenced yard, siding, storage shed. \$22,000.  
**EXTRA LARGE LOT** - 2 bdrm., 2 car garage, new paint, \$25,000.  
**NO MONEY DOWN** - 3 bdrm., den, fireplace, 1 3/4 bath, formal living. If credit is good and you can make \$500 mo. payments you should look at this! \$49,000.  
**LARGE NICE OLDER HOME** - and extra lot, storm cellar, formal dining, fenced, contract pending. Qualify no money down. \$45,000.  
**LARGE ROOMS** - extra nice cabinets in kitchen, 2 bdrm., fenced yard, assumable. - payments \$338.00.  
**OWNER NEEDS TO MOVE** - to apartment Extra large living area, 2 bdrms., formal dining, shop, carport, make offer, listed at \$35,000. Will sell for appraisal.  
**TO SETTLE ESTATE** - small lot, home needs repair, make offer.  
**EXTRA LARGE CORNER LOT** - older home, formal dining, large living area, 3 bdrm. \$28,500.  
**2 BEDROOM** - with fireplace, nice lot with lots of trees. \$25,000.  
**FENCED, STORM CELLAR** - built-ins, 4 bedroom, 1 3/4 bath, CH&A \$39,500.  
**3 BEDROOM** - Shop, **SOLD** fireplace, \$35,000.

**Count on the Classifieds to Do the Job**

**Quail Run Apartments**  
1-2 Bdrm., Ground Floor, Central Heat & A/C. Appliances, Laundry. Close to school & public park. Starting at \$205 per month to qualified tenants. Gas & water paid. Call 592-2933

**SPACIOUS 4 bedroom**, new carpet, fire place, large kitchen with plenty of cabinets covered patio, storm cellar, barn shaped shed. Well landscaped with fenced yard. Lease purchase. \$48,000. #290

**NICE THREE BEDROOM** - corner lot with two covered patios, an above ground pool. Plenty of trees. #874

**IDEAL HOME** - for someone needing plenty of room, five bedrooms, whirl-pool, fireplace, irrigation, storm cellar, convenient to Iowa Park with 10 acres, the owner would trade for a smaller home in Iowa Park. #676 Contact Sheila at Key Realty 692-8461-723-7073

**NEW LISTINGS**

**#858 OWNER WILL trade down.** Beautiful trees, beautifully kept home, newly remodeled.

**#816 HOT DEAL!** Owner says move this! 3 bedroom, 1 1/2 bath, ceiling fan, wallpaper, extra size lot. Low 30's.

**#873 NEAT & SWEET** - super home for starter family or retiring couple, mini blinds, ceiling fans, garage door opener, extras galore.

**851 LANELLE** - Excellent assumption, low equity. Large home, fireplace, extra clean. Owner will lease to buy.

**COLONIAL HEIGHTS** - New area, home offers so many extras compared to other homes in this area. Privacy fence, walk in closets, ceiling fans, list goes on.....

**#857 BEST BUY** country living, 1/2 acre of peaceful luxury 3 bdrm., 2 bath, fireplace, privacy fence are enhanced by lovely backyard and pool-in ground. Loan may be assumed with low equity and 9.5% interest rate.

**#710 9.72 ACRES** listed at affordable price. Stock tank, barns, small shooting range, fenced. 3 bedroom, 1 1/2 bath, lovely area.

**#822 NEW LISTING** - Owner moving to town, extra large older home needs little repair, owner will allow for repairs. Almost 2 acres, beauty shop, and extra 2 car garage. \$50,000.

**#893 EXCELLENCE IN COUNTRY LIVING** 4 bedroom, 3 bath, shop, barn, 3 acres. Priced to Sell.

**KEY REALTY** Other Properties

**Cindy Witherspoon**

OFFICE I.P. 592-5381  
HOME 592-4964  
OFFICE W.F. 692-8461

**Home of the WEEK**

**2 ACRES OF PEACEFUL LIVING**  
only 2 miles from city limits. 60x20 barn, fenced for horses

**Land**  
BEAUTIFUL CORNER LOT - with trees, located near downtown.  
1.15 ACRES - and it has water meter rights.

**#709 LIGHT COMMERCIAL** - reduced, owner finance possible, large corner lot.  
**#665 FHA & VA Appraisal** says \$36,500, owners says sell at \$33,500. 1600 sq. ft.  
**#744 LOOKING UNDER \$15,000?** Hurry to see extra nice 2 bedroom, owner has installed many new items.  
**#761 16X30 SHOP** - hot tub, 2 living areas, newly remodeled from carpet to wallpaper to new ash cabinets.  
**#817 HOME WITH APPEAL** - starter home, owner will leave refrigerator, fresh, clean, neat, new vinyl siding.  
**#688 COMMERCIAL PROPERTY** - owner will work several ways, possible partnership, office space also for rent.  
**#597 REDUCED!** Spacious, peaceful, one of our finest areas, 2 Hollywood baths, 3 bedroom, large open kitchen, loads of cabinets.  
**#723 1700 SQ. FT** glorious living, rock fireplace, 2 living areas, 3 bedroom, 1 1/2 & 3/4 baths, owner will lease - purchase.  
**#538 LEASE PURCHASE** - owner will allow for new carpet, 2 story, super size rooms, needs a family.  
**#567 OWNER WILL TRADE** up super clean starter home with many extras, family needs more room, Mid 30's.  
**#781 \$1500 TOTAL MOVE IN** 3 bdrm., 1 1/2 bath, 2 living areas. Foley area. Super buy 9.5%.  
**#680 \$1000 TOTAL MOVE IN** 2 bdrm., 1 bath, 1 car garage, new vinyl siding, 9.5% interest. Low 20's.

**Colonial Heights Apartments**  
Magnolia St. at Johnson Rd.  
IOWA PARK

One and two-bedroom apartments, energy efficient, central heat/air, total electric appliances, fully carpeted and draped. Children's play area. Off-street parking. Fully equipped laundry room. Month to month rent starting at \$189.00 for one bedroom, and \$229 for two bedroom apartment (to qualified persons). Water paid.

CALL 592-2705

**EQUAL HOUSING**

**Woodbriar Apartments**  
All Bills Paid  
✓ 1, 2, 3 bedrooms  
✓ Cable  
✓ Senior Citizen Discount  
✓ Military discount  
✓ Swimming Pool  
✓ Special \$50 deposit  
Ask about our instant living home.  
592-2121

**Business**

**CARPET, UPHOLSTERY** Professionally Cleaned. Auto Interior and Water Pickup. Grime Busters, located in Iowa Park. 592-9637. 7-23-87p

**AMWAY HOME Care** products. Karen, 592-2874. 7-30-4tp

**ANIMAL ARK** Petting Farm - Open to public, Saturday-Sunday, 5 p.m.-Sunset. FM 369/367. Birthday parties/group rates, 7 days a week. 855-5220. 7-9-12tp

**WOLFE ROOFING** - Residential-commercial. Free estimates. 855-5657. 7-9-tfc

**PAINTING** - exterior or interior. Reasonably priced. References. 592-5654. 7-31-tfc

**MONTHLY** bookkeeping, quarterly reports. Will also file insurance and Medicare claims. Jan Clapp, 592-5471 or 592-4967. 6-18-tfc

**HANDYMAN SERVICES** Home repairs, painting, carpenter work, paper hanging, etc. No job too small. Work guaranteed. Call Herb, 592-5560 evenings and weekends. 11-20-tfc

**COPIES MADE** - 20¢ each including reduction and enlargement. Iowa Park Air Conditioning, 607 E. Bank. 10-2-tfc

**ROOFING** - Buzbee Roofing. Phone 592-4846. All work guaranteed. 1-30-52tp

**PRIVATE FENCE** sales and installation. Charles Skelton, phone 696-0839. 12-5-tfc

**BUILDING, remodeling or repair, additions, carports, patios.** Free estimates. Call day or night Phil McDonald 592-9437, or Jim Clapp 592-4967. 3-26-tfc

**CUSTOM CABINETS** - from new countertops to complete new kitchen or bathroom cabinets. Residential or commercial. For free estimate call Jeff Shiery, 592-2827 or 322-3636. 6-4-tfc

**COPIES MADE** at Parkway True Value, 25¢ each. 1-1-tfc

**Business**

**POODLE GROOMING** by appointment only. Reasonable rates. 592-4766. 8-6-12tp

**BLACK POWDER** Guns and accessories, revolvers \$50 and up. Powder \$5.00 lb. Will order modern guns for 10% over cost. Ye Ole Gun Shack, 413 W. Washington, 592-5430. 6-4-tfc

**VINYL & STEEL Siding.** Saves energy, never needs painting. 100% financing available. Call Jerry Matthews at Great Plains Siding and Insulation. 592-9829 or 761-2124. 10-2-tfc

**BUILDING, remodeling or repair, additions, carports, patios.** Free estimates. Call day or night Phil McDonald, 592-9437. 10-2-tfc

**HOME IMPROVEMENTS** from additions to remodeling. Patios and carports, acoustic ceiling, ceramic tile, general carpentry. Gary Williams, 592-2480. 10-2-tfc

**INSULATION** for walls, attics, & metal buildings. Storm windows and doors. For free estimates call Jerry Matthews at Great Plains Siding and Insulation, 761-2124 or 592-9829. 10-2-tfc

**MARY KAY** cosmetics, Ann Moore, 592-4752. 3-5-28tp

**STANLEY Home Products,** Call Shirley Hicks, 592-4634. 8-13-8tp

**BEGINNERS Piano Class.** School grade students, 1-5. Joyce Rentschler, 592-4351. 8-13-1tp

**\$1000 REWARD**  
For information leading to the arrest and conviction of any person or persons involved in the theft, vandalism, arson, fishing or hunting on any of our properties in Wichita, Archer, Wilbarger, Clay, Wise or any other county in which we may have equipment located. Tom Swanson Oil Co., TS&T Drilling Inc. Ph. 817-495-3971. 8-8-tfc

**Help Wanted**

**I NEED** a fulltime Nanny-type to come into my home and care for a 3-year-old and a 4-month-old baby. Must be a non-smoker, non-drinker with references. If interested, please call 592-2736 day or night. 8-13-1tc

**Misc. for Sale**

**GARAGE SALE** - 1507 Johnson Rd. 7 a.m. to 2, Thursday - Saturday. Oak tables, depression glass, hideabed sofa, chairs, Bell & Howell 16 mm movie projector, machinest tool box and mikes, small propane tank, shotgun and lots more. 8-13-1tp

**GARAGE SALE** - 615 W. Manes, Saturday 8-1 only. Good school clothes for size 7 boy and baby clothes for boys and girls plus lots of others things from A to Z. 8-13-1tc

**GARAGE SALE** - 313 E. Washington. Thursday - Saturday, 8 - 5. Apt. size refrigerator, chandelier, 22 pistol, school clothes, 501 jeans, coats, stereo, tools, student desks. 8-13-1tp

**GARAGE SALE** - 1408 N. Victoria, Sat., Aug. 15. 7:30 to 2:30. Household items mostly. 8-13-1tp

**TWO FAMILY** Garage sale. 801 N. Park, Saturday 8 till ? Antique dresser and church bench, miscellaneous. 8-13-1tc

**GARAGE SALE** - 1300 Mockingbird, Saturday, 8-2. Clothes, misc. 8-13-1tp

**YARD SALE** - 901 E. Pasadena. Saturday and Sunday, 9-? 8-13-1tp

**BACK TO** school garage sale. Lots of goodies, puppies. Saturday, 8-2. 1201 Emma. 8-13-1tp

**Misc. for Sale**

**PORCH SALE** - End tables, ladies shoes and purses, like new. Nice prom dresses, size 5. Picture frames and odds and ends. 808 E. Cash, Thurs, Fri. and Sat. 8-13-1tp

**GARAGE SALE** - Sat., 9 a.m. - ? 504 West Alameda. A little bit of everything. 8-13-1tp

**YARD & INSIDE** Sale. Thurs. - Sat. 7 a.m. to 5 p.m. 114 James. 8-13-1tp

**GARAGE SALE** - 511 E. Washington, Sat., 8 a.m. to 5 p.m. Items from the estate of Maurice Todd. 8-13-1tp

**COMMERCIAL** ice machine, \$350. Commercial reach-in freezer, \$300. 11 HP 36" riding lawnmower, \$525. Cabover camper sleeps 4, includes jacks and stand, \$650. 20,000 BTU Heat pump window unit, \$225. 592-2761, 8-5, 592-5836 after 5. 8-13-tfc

**FULL SIZE** Poster bed, dresser, chest of drawers, drop leaf table, dining table and china cabinet. 592-5010. 8-13-2tp

**COOK STOVE,** space heater, crafts, stereo, bed spreads, toys, odds and ends, 9-5, Sat. 15. 415 N. Bond. 8-13-1tp

**1983 CHEV** Caprice, 4 dr. vinyl top, electric windows and seats, power steering, brakes, air conditioner, reclining seat, low mileage, one owner, H.R. Sullivan, 592-4214. 8-6-2tp

**Misc. for Sale**

**FRESH HONEY** \$3.75 quart, 592-4009. 7-30-4tp

**Notice**

**PUBLIC NOTICE**  
The Iowa Park Consolidated Independent School District will hold a public hearing for the purpose of adopting the 1987-88 annual school budget on Monday, August 24, 1987, at 7:30 P.M. in the school administration building. Any taxpayer of the District may be present and participate in the hearing. The proposed budget is available for public inspection at the Administration Building, 413 E. Cash, during normal business hours. 8-13-1tc

**PUBLIC NOTICE**  
The Board of Adjustment of the City of Iowa Park, Texas, will conduct a public hearing at 5:30 p.m. on Tuesday, August 25, 1987, to consider the issuance of a variance at Block 97, Original Townsite (500 East Jefferson), to allow a mobile home in a I-L zone. Any comments for or against may be presented orally at the hearing or in writing to the City Administrator prior to the meeting. All meetings are open to the public. 8-6-2tc



**WORKERS PREPARE** the 100 block of South Victoria for a new concrete surface. The project is part of an overall city program to replace old asphalt paving.

**Notice**

**PUBLIC NOTICE**  
The Board of Adjustment of the City of Iowa Park, Texas, will conduct a public hearing at 5:30 p.m. on Tuesday, August 25, 1987, to consider the issuance of a variance at Lots 22 & 23, Block 17, Texas Addition (619 West Washington), to allow a mobile home in a R-2 zone. Any comments for or against may be presented orally at the hearing or in writing to the City Administrator prior to the meeting. All meetings are open to the public. 8-6-2tc

**Sales taxes improve here**

Iowa Park's sales tax picture continues to improve, according to this month's report from the state comptroller's office.

On sales through June and reported to the comptroller by July 20, the local tax rebate for the year has picked up from a minus 3.68 percent reported last month to minus 2.68.

This month's rebate check was for \$15,076.96, which brought the year's sum to \$102,935.80. The city this time last year had reportedly received \$105,770.05.

Electra is standing at a minus 21.62 percent and Wichita Falls has dropped to a minus 11.27. Burkburnett is only .82 percent down.

The monthly allocations over the state were down 7.4 percent, according to the comptroller's office.

The report also stated Holliday was minus 32.58 percent for the year.

**MINI-CON Self-storage**  
1. Variety of sizes.  
2. Competitive prices.  
3. Locally owned and operated.  
4. Monthly rates  
**805 W. Hwy. 592-2761**

**IOWA PARK LODGE #713 A.F. & A.M.**  
700 W. Washington Iowa Park, Texas 76367 Phone 592-5506. Gary Wood W.M. Phone 696-3132. Bud Mercer Sec. Phone 592-5413. Stated meeting 7:30 p.m. 2nd. Thursday each month. Floor school every other Thursday night.

**Buzbee Roofing**  
...and other work  
Phone 592-4846  
ALL WORK GUARANTEED

**Pam's Upholstery**  
✓High Quality Work  
✓Low Quality Prices  
592-2205 or 592-4839

**Monty's Plumbing**  
592-4928

**Monty & Son's SEPTIC TANK SERVICE**  
592-4928

**JC Penney's Custom Decorating**  
"Decorator consultant now available in Iowa Park area."  
Call 692-9630 ext. 276 for free in-home appointment  
Rita Nuckolls

**IOWA PARK Air Conditioning & Heating**  
Service On All Makes Installations & Sales 607 W. Bank FRANK GUYETTE  
**Carrier**  
PHONE 592-2761

**KING'S KIDS CHRISTIAN DAYCARE & PRESCHOOL**  
"Iowa Park's finest for Parents who care"  
202 N. Jackson 592-4242  
INFANT CARE "NEWBORN THRU 10 YEARS"  
PRESCHOOL CLASSES "CHRISTIAN CURRICULUM"  
FULLTIME CARE HALF DAYS BEFORE & AFTER SCHOOL SUMMER PROGRAM

**We Need Your Support!**  
Come See Us & Buy Something. "Li'l" Bit of Most Things - If we ain't got it - Ask & we will try to get it.  
Gas - Ice - Pop - Groc. - Sundries - Chips Picnic Supplies - Candy - Games Plus Estate items - Furniture - Cabinet Hardware - House numbers - Door Bumps Closet Frames - Glasses - Dishes - Hollywood Bed Frames - Refrigerators - Tables Chairs - Metal Office Chairs - New items weekly!  
Corner of James Dr. & FM 368 - South of Old Iowa Park Road - Open 6 a.m. - 10 p.m.  
**Amanda's Country Store**

**3 DAYS ONLY!** LEADING THE WAY INTO THE FUTURE  
**\$99** ABOVE FACTORY INVOICE  
ON OUR ENTIRE STOCK OF '87 FORD CARS & PICKUPS IN STOCK

**\$6627** +T.T.L.  
**NEW '87 ESCORT**  
1.9 EFI Engine  
4 speed Manual O/D Transmission  
P175/80R13 BSW Tires  
AM Radio with 2 speakers  
Cloth/Vinyl Low Back Bucket Seats  
#150  
The invoice may not represent actual dealer cost. All Rebates Assigned to Dealer

**\$141.** per mo.  
**NEW '87 RANGER**  
Custom model trim, argent grill, black moldings, 2.0 liter engine, 5 speed, manual over-drive transmission, vinyl bench seat.  
#210  
Payments based on Sale Price \$6737. 60 months at 12.5% APR, \$500 Down, TT&L not included with approved credit

**PARK FORD**  
600 West Highway 592-4106

**True Value BARGAIN OF THE MONTH**  
Sunbeam  
**4.99** White Supplies Last  
Mr. Sharp Cordless Pencil Sharpener. Uses 4 AA batteries (not incl.). 37018  
QUANTITIES LIMITED

**True Value OF THE MONTH**

**6.99** White Supplies Last  
Bypass Lopper cuts branches up to 1 1/2 in. Tempered-steel blade, hardwood handles. 137810  
QUANTITIES LIMITED

**True Value HARDWARE VALUE OF THE MONTH**

**1.99** Pack  
White Supplies Last  
Coverall® Banana Bags™ in 4 sizes for storage. 2-mil thick. With ties. 3235 40-40-00  
QUANTITIES LIMITED

**Parkway Hardware/Furniture**  
200-206 W. Bank 592-5512 or 592-4681  
**True Value**