

also 11, 1986

MRS. LITA WATSON
520 W. CLARA
IOWA PARK TX 76367 112

Man charged for rape

A 22-year-old Iowa Park man is in Wichita County jail facing a charge of aggravated sexual assault.

Victor Allen Richards was arrested at 8:09 a.m. Tuesday on the charge after having been sought since Saturday morning.

Police were notified at 4:24 a.m. Saturday by telephone from a resident in the 900 block of West Highway, that a woman was at their front door claiming her car and purse had been stolen and that she had been sexually assaulted.

The woman, a resident of Law-

ton, Okla. who reportedly works as a dancer in Wichita Falls, was transported to Wichita General Hospital at 5:07 a.m., according to the police blotter, to undergo tests.

Police were notified at 7:23 a.m. by Robert Lowry that a vehicle not belonging to him was in his driveway at 919 Foley. It belonged to the alleged victim.

A warrant for Richards' arrest was issued at 11:42 a.m.

The assault allegedly occurred in the area of the now defunct Farmers Grain elevators, according to the

victim.

Police also learned during their investigation that Richards has outstanding warrants against him from both the Wichita Falls Police Department and Wichita County Sheriff's Department.

Wichita police wanted him for failing to dim (vehicle) lights, no proof of vehicle liability insurance, and warrant fee.

County warrant for him was for driving while intoxicated, a charge on which he was serving probation.

IOWA PARK LEADER

25 Cents

Vol. 18, No. 13 IOWA PARK, WICHITA COUNTY, TEXAS 76367 Thursday, December 11, 1986

Three hours Saturday too much for police

The manpower of the Iowa Park Police Department was stretched beyond its limits during the early hours of Saturday morning.

According to the police blotter, police were notified between 2:40 and 5:59 a.m. of a theft, rape and two burglaries, all of which apparently took place about the same time.

Police answering the first call arrested Mark Anthony Miser, 26, while allegedly attempting to steal Christmas trees from K&K Quick Stop, at Johnson Road and US 287.

Charged with theft over \$20, Miser was taken before Justice of the Peace Virgil Hill, where his rights were read, and transported to county jail.

And while beginning their investigation of a rape charge, which was first reported at 4:24, burglaries of two neighboring businesses were reported.

Police first heard at 5:26 that the Dairy Queen had been burglarized. And at 5:59, they were told Expressway Texaco, next door, also had been burglarized.

Both businesses are owned by Ray Copening.

Entry into Dairy Queen was apparently the same as a month ago, through the air conditioning duct on the roof.

An undetermined amount of cash in coins was taken from the juke box

and a vending machine. But an estimated \$2,000 in damage was inflicted on the two units while getting to the money.

Entry into the service station was apparently through a broken window in a service bay door. Taken was approximately \$75 in rolled coins and \$450 worth of tools.

The rest of the week was not as

hectic for police, but busy, anyway.

Sandy Esley called the station at 8 p.m. last Wednesday and told the radio dispatcher that a bobcat wearing a collar was at the south door of Heritage Manor, and people were afraid to leave the building.

The owner of the animal, Mike Maine, was notified.

Continued on page 4

17 applicants seek police chief's job

The city council studied applications from 17 candidates for the police chief position during Monday night's meeting, but took no action.

Aldermen spent almost an hour in executive session discussing the applications, but will wait until Friday, the deadline for receiving them, before taking any action.

Mayor Tim Hunter said interviews with candidates will be held Tuesday and Saturday of next week.

The position opened when Bob Dean resigned. Mike Stark has been serving as acting chief during the interim.

Aldermen sustained Mayor Hunter's appointment of Ruth (Mrs. Phil) Welch as Iowa Park representative to the Sheppard Community Council, succeeding Jerry Gholson.

An appeal by Rich Pennycuff to have one or more stop signs placed on East Washington, between Bell and Victoria, was tabled by the council for further study.

Pennycuff presented a petition signed by residents of the area. He said traffic was too fast and should be slowed by the signs.

During a discussion, Administrator James Barrington pointed out



SKYLINE LANDMARK REMOVED - Workmen took down the old metal tower which has stood decades behind the city hall. The fire siren it had held was moved to the water tower. The metal structure has been relocated by the fire department's south station, where it will hold antennas and another siren, and will benefit the fire and police departments' emergency backup radio.

News in Brief

Schools to dismiss early Tuesday

All Iowa Park schools will be dismissed one hour earlier Tuesday afternoon, according to Assistant Superintendent Robert Palmer.

Reason for the early dismissal is an in-service training session for all faculty members.

Less than half inch rainfall

Slightly less than half an inch of precipitation was recorded in Iowa Park during the past week.

Virgil Woodfin said he measured .45 of an inch since Dec. 3.

FFA Boosters slate bake sale

Beginning at 9 a.m. Saturday, the FFA Booster Club will hold bake sales at King's Food and B&R Thriftway.

Also available will be two-year pocket planners (date books) and an assortment of buttons. Special orders also will be taken.

Are you missing a rifle?

Are you missing a military-type rifle?

Iowa Park police have a World War I weapon with a battalion plate

on the stock. It can be reclaimed with the proper identification at the police station.

Food, toys sought for the needy

City hall workers and the police department are collecting items for needy of the community.

The police are collecting food, and the others are collecting toys, all of which will be turned over to the

Iowa Park Ministerial Alliance to be distributed this Christmas.

Collecting points are inside the lobby of city hall, a roll-out trash container by the drive-through window, and at the library.

Youth to collect food for needy

The Christmas project of the Ministerial Alliance this year is giving food baskets to needy families in Iowa Park. The youth from the churches will be going from house to house beginning at 9 a.m. Saturday, to gather canned food, staples and etc. Adults with pickups will be needed to gather the food.

will know how many to prepare for, according to Mrs. Reba Snow, director of the local food pantry.

Does your subscription to the Leader expire this month? check the list on page 4.



END OF THE ROAD - Quarterback Jeff Huff's run, like the Hawks' advancement in the state playoffs, was brought to an end Saturday in Weatherford by Lampasas. The Badgers edged Iowa Park 16-7 to advance this weekend to the semi-finals against Jefferson. For a complete story and more pictures, please turn to page 6.

Couple's wedding trip National Rodeo Finals

Mr. and Mrs. Robert A. Baumer left for the National Finals Rodeo in Las Vegas following their wedding Saturday afternoon that took place in the Saint James Room at Wichita Falls Activity Center.

Mrs. Baumer is the former Rhonda Kay Spruiell, daughter of Mr. and Mrs. Raymond C. Shook of Lake Diversion, and the groom is the son of Mr. and Mrs. Robert C. Baumer of Scotland. Rev. Harvey McMurray, pastor of the City View Baptist Church, performed the double-ring ceremony.

The couple exchanged their vows before the fireplace holding an antique basket of mauve silk flowers instead of burning logs. The decorations in the nuptial area featured a brass archway and two seven-branched candelabra accented with mauve bows, and the unity candlestick.

Cindy Green provided the organ and vocal music for the wedding introducing it with familiar selections before the ceremony, playing "Trumpet Voluntary" for the processional, later singing "The Wedding Song" while the bride and groom light the unity candle and concluding with the "Bridal Chorus" for the recessional.

The bride was given in marriage by her daughter, Kaylee Spruiell, and Robert Joseph Baumer, son of the groom.

She wore a waltz length candlelight lace dress over taffeta fashioned with a sweetheart neckline, stand-up collar, scalloped bib, and sheer long sleeves. She wore a complementary candlelight brimmed hat with a blusher veil in front and a waist length veil in the back. She carried a cascade bouquet of candlelight roses and mauve baby's breath.

Church group meets

Eighteen members of the Alathan Sunday School class of First Baptist Church and one guest, Rose Dell Lewis of Hollis, Okla., attended the monthly covered-dish luncheon of the class Tuesday at the church.

Mrs. W.F. Booher told a Christmas story for the devotion, and Mrs. George Lewis directed the business when it was voted to make a monetary gift to Girlstown USA.

Dora Camley, the maid of honor, wore a mauve lace dress styled identically to the bride's and she wore the same styled hat except for no blusher veil. She carried a nosegay of mauve roses and candlelight baby's breath.

Kaylee Spruiell, the flower girl, wore a dress like the maid of honor scaled down to her size. She wore a halo of silk flowers and carried a basket of mauve roses and candlelight baby's breath.

The groom wore a black western tuxedo with a vest and a candlelight rose boutonniere. Doug Kucharski of Byers, the best man, and Robert Joseph Baumer, the ring bearer, wore black western-style tuxedos with mauve cummerbunds and matching rose boutonnieres.

The wedding reception was held in the same room where the ceremony was performed.

The bride's table was covered with white lace and centered with a silver candelabra accented with two doves holding mauve ribbon that extended through the branches then came together with matching roses.

The three-tiered white cake was tastefully decorated with cascades of mauve and candlelight silk roses and topped with a bride and groom standing in front of a heart laced with mauve ribbon surrounded with roses and baby's breath. A brass and silver punch bowl, mauve napkins inscribed with "Rhonda and Bobby," trays of mints and nuts completed the table decor.

The groom's table was covered in ecru and held a brass candelabra, and trays of finger foods.

A round table trimmed with greenery in the setting held the champagne fountain.

Refreshments were served by Stephanie Heyn and Sharry Box, and Shanna Shoemaker, niece of the groom, directed guests in registering at a mauve-covered round table that held the book, plume pen and the rice bag basket.

The bride was graduated from Iowa Park High School and is employed at Texas Electric in Wichita Falls. The groom was graduated from Windthorst High School. He attended Midwestern State Univ. and is self-employed. The couple will live in Iowa Park.

When they left on their wedding trip, the bride was wearing a denim skirt, pink blouse underneath a pink and grey sweater.



MR. AND MRS. ROBERT SMITH

Morrison, Smith vows exchanged Saturday

The First Baptist Church of Holliday was the setting for a Saturday afternoon wedding when Miss Tina Marie Morrison became the bride of Robert William Smith in a ceremony performed by Stan Todd, minister of youth. They are honeymooning in Cancun, Mexico this week.

The bride's parents are Joy Morrison of Holliday and Mr. and Mrs. Claude E. Morrison Jr. of Irving, and the groom is the son of Barbara Smith of Iowa Park and the late Billy C. Smith.

The bride's father presented her in marriage. She wore a lovely white bridal gown with a cathedral train

CARD OF THANKS

Kidwell PTA wants to thank those companies that donated money and materials for the balloons at the football game in Weatherford. We also want to thank all the fans and parents who helped with the balloons at the game. It was a big success. Thanks City Cleaners, Bud's Drilling, Phil Welch, Pleasant Valley Grocery, McGinnis Welding, A-L Welding, Catlin's Car Wash, Keith Rusk.

embellished with appliques of seed pearls and sequins and Italian-style lace that outline the pleats in front. Her chapel length veil was attached to a blown glass and pearl crown.

The bride's bouquet of fresh peach roses, stephanotis, baby's breath and ivy was encircled with a blue crystal seed bead rope necklace made by her great-grandmother for the bride's grandmother for wedding in 1924.

The bridal attendants wore peach taffeta tea length dresses overlaid with satin lace designed with long sleeves. Each carried two peach gladiola tied with blue ribbon and bow.

The maid of honor was Allison Barrickman of Huntsville, and the bridesmaids were Sondra Allen and Wanda Pearson of Wichita Falls and Sherri Marston of Iowa Park.

The groom wore a white tuxedo with tails, peach cummerbund

Club fetes patients

The 23 Study Club members made the annual trip to Wichita Falls State Hospital Thursday afternoon to provide the program, refreshments and present a monetary gift to Volunteer Services.

During the meeting, Mercy Sears, assistant volunteer coordinator, presented a plaque to the club expressing appreciation for the annual trips and support for more than 25 years. Mrs. Joe Singer, club president, accepted the plaque.

Miss Betty Meadows and Mrs. B.G. House directed the musical program when a large number of patients who assembled in the recreation center took part in singing a medley of Christmas carols.

Prior to the visit to the hospital, members met at Texas Electric Reddy Room for a brief business meeting directed by Mrs. Singer who showed an award the club had received from Girls Town USA for its constant support. Mrs. D.O. James, federation counselor, described the "Make A Wish" program, a project of general Federation of Women's Clubs.

New Meter Connections

Robert C. Worsham - Rt. 1, Box 67
Gerald D. Frazier - 401 S. Alcott
Sam Barnett - 905 S. Colorado
Gary Smith - 102 Hope
Larry L. Chafin - 920 Foley
Thomas Ross - 407 W. Texas
Homer Whisnand - 709 W. Magnolia

UMW meets

The United Methodist Women heard special Christmas programs from Program Resources Tuesday morning in fellowship meetings.

The Jessie Mae Owens Fellowship met with Mrs. Frank Gossett and the program was presented by Mrs. Don Owens. Ten members were present.

Eleven members of the Bertha McDonald Fellowship met in the church library for the program given by Mrs. R.E. Waters. The hostesses were Mrs. Reba Snow and Mrs. Miles Thompson.

with blue beneath a white cloth. It held a chocolate sheet cake trimmed with chocolate roses and the silver coffee service.

The rehearsal dinner was given by the groom's mother at the Hilton Hotel.

The bride was graduated from Holliday High School and is employed by Cobra Oil as a receptionist. The groom was graduated from Iowa Park High School and is employed by Northrup at Sheppard Air Force Base. They will live in Wichita Valley Farms.

Special wedding guests were Claude E. Morrison Sr. of Irving, paternal grandfather of the bride, and her maternal grandmother, Mrs. Leola Kent of Holliday. Other out-of-town guests included Marcella Rose of Irving, Mr. and Mrs. Olan Robbins of Ada, Okla. and Mrs. Bernice Bessire of Bridgeport.

The bride was honored at a miscellaneous shower and lingerie shower as pre-nuptial courtesies.

It's **TIME** for
Christmas

Enhance your home with a beautiful, functional piece of furniture that will last a lifetime.



Rickford made, 8-day cable wound, triple chime, moon dial, Lyre pendulum, ash wood with oak finish.

Suggested retail price \$2375

Sale Price \$1199 99



Churchill made, metal dial, ash/oak-brass, Lyre pendulum, moon dial, cable drive triple chime, beveled front glass.

Suggested retail price \$1625

Sale Price \$799 99

PARKWAY Furniture/Hardware
True Value
200 W. Bank 592-5512

Attention
Cable TV subscribers
of Iowa Park.

Your New Channel Line-Up is Effective On December 18, 1986

TV Cable of Iowa Park wants to remind you that something important is happening on December 18th. Your channel line-up will be changed so you can enjoy six exciting new channels.

Your New Channel Line-Up

Please refer to the new Channel Guide we sent you in November.


HBO	2	AMC	12	Discovery	23
KFDX	1	ESPN	13	TNN	24
KAUZ	5	CBN	15	MTV	25
TWC	7	KIDZ	17	PTI	26
KSWO	8	KITL	18	C-SPAN	27
CNN	9	WGN	20	Nickelodeon	28
USA	10	WTBS	21		
CVN	11	Disney	22		

If you have any questions or concerns, or if you have not received your new Channel Guide, please call TV Cable of Iowa Park. A representative can provide you with any current information you need.

TV Cable of Iowa Park • 696-0664

A Division of Tele-Communications, Inc.

**DISCOVER
A CABLE SELECTION
AS GRAND AS
TEXAS**



Study club members share Yule memories



WENDY HERRINGTON AND BILLY MAXWELL

Announce engagement

Mr. and Mrs. R.D. Herrington announce the engagement of their daughter, Wendy, and Billy Ray Maxwell, son of Mr. and Mrs. Ray Maxwell of Holliday.

The wedding has been scheduled

for April 4 at Faith Baptist Church.

Miss Herrington was graduated from Iowa Park High School and is employed at Wal-Mart. Her fiancé was graduated from Archer City High School and is employed by L.D. Burns Drilling Co.

Life, death meaning told

Rev. Betty Meadows, pastor of First Presbyterian Church, presented a story that gave meaning to both life and death for a joint meeting of the Lioness and Evening Liens Clubs Thursday.

She told "Barrington Bunny" from "The Way of the Wolf." She was introduced by Mrs. C.L. Thompson.

Following the program refreshments that included favorite Christmas foods were served.

The focal point of room decorations was the brilliantly lit and decorated green Christmas tree in a corner of the room from which gifts were exchanged to climax the meeting. Mrs. Riley Thompson decorated the tree.

Mrs. Herb Adcock was responsible for the table decorations which carried out the traditional red and green colors in poinsettias, candles, bows, pine and cedar.

CARD OF THANKS

The family of J.M. (Jim) Crow wish to acknowledge with gratitude the many kindnesses shown to us during the illness and recent death of our loved one. It is with great appreciation that we reflect on the thoughtfulness of our friends, co-workers, and neighbors.

With Heartfelt Thanks,
Oleta Crow
Bill Crow & Family
Jane Lewis & Family

The home of Miss Linda Ayres was totally decorated in the Christmas motif for the Monday evening meeting of the Philia Study Club. Mrs. Eddie Chambers served as co-hostess and refreshments were served from seasonal design plates, napkins, and red and green mugs. Sixteen members were present.

Mrs. David Springer presided during a brief business meeting, members discussed projects related to Girlstown and M.D. Anderson Hospital. Mrs. Vern Horsky led the group in singing a medley of traditional Christmas carols.

The interesting program was led by Judy Spring. Each member brought an ornament and recounted its special meaning in this holiday season.

Mrs. Jack Jordan Jr. brought a 75-year-old doll that had been the only present her grandmother received one Christmas. Mrs. James Rinehart brought a hand-crocheted star that she made about 10 years ago, and Miss

Ayers told about her nativity scene that she had completed in one year.

Mrs. Leon Biddy shared two of her favorite ornaments that were created by her sons in elementary school. Mrs. Chambers showed an ornament that brings to mind all of the pleasures of skiing at Christmas-time. Mrs. Glenn Phillips shared a recent Christmas addition, a musical wood-cut of Rudolph, and Mrs. Herman Escue brought an elf that had been part of a set purchased during her first year of marriage.

Mrs. Wilbert Wynn cherished a red poncho created by her mother-in-law and currently used as a novel tree skirt. Mrs. Helen Burrell shared a sentimental gold ornament and an apple that has "Grandmother" written on its side. She said that the apple brought back fond memories of the time when she served as grandmother of a Girl Scout troop.

Other club members who shared in the program were: Mrs. Raydean

Mattis who recalled some red, but faded, ornaments purchased by her late husband as they awaited the birth of their son. Mrs. Jimmie Kasperek's favorite Christmas ornament is a bell with a beaded clacker made from a communion cup by the late Mrs. Bertha McDonald.

Mrs. Valer May Jones remembered the dozen red stockings that she and her daughter made to adorn a white flocked tree. Mrs. Thomas Johnson showed a set of designer nativity plates ordered from Southern Living. She also favors a figurine of a tired Santa.

Mrs. Horsky uses and treasures some paper Hallmark ornaments that

are 33 years old, and she uses wooden ornaments that were painted during her first year of marriage.

Mrs. David Springer still uses her jeweled Christmas balls that took her two years to create, and Miss Spring brought her first stocking which she uses when the family gets together for the holidays.

Mrs. Escue provided the meditation. She stressed that God's message at Christmas is simple and straight forward, and that the hustle and bustle of the season often obscures His message of Peace and Joy. She closed by reading the Christmas story from the Gospel of Luke.

Allstate Update: Auto Financing

**"Need a new car?
See me for the financing!"**

Robbin Crawford
Agent
311 North Wall
Iowa Park
Bus. 592-2726
Res. 592-4873



Maybe you didn't realize Allstate finances new cars. We do! And you don't even have to be insured with Allstate to qualify for Allstate auto financing.

Our office is nearby. Just stop by or give me a call. Tell me how much you need, and let me explain our financing plans. In most cases, applications are approved in just a few hours.

Remember, shopping around for a great new car deal isn't the only way to save. You should shop for

the best financing too. So pick out your car and then come see me. You're in good hands with Allstate!

Allstate
Allstate Enterprises, Inc. & Subsidiaries
Northbrook, Illinois

ESA Bazaar

&

Bake Sale

Dec. 13 9a.m. - 3p.m

ASCS office

220 W. Park

Santa will be

there from 10-12

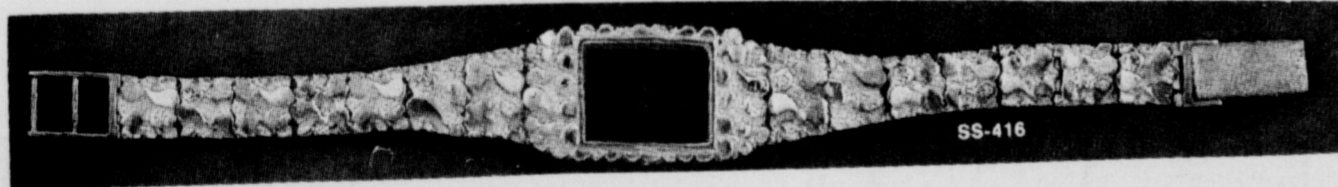
Santa pictures

will be taken

\$3 each

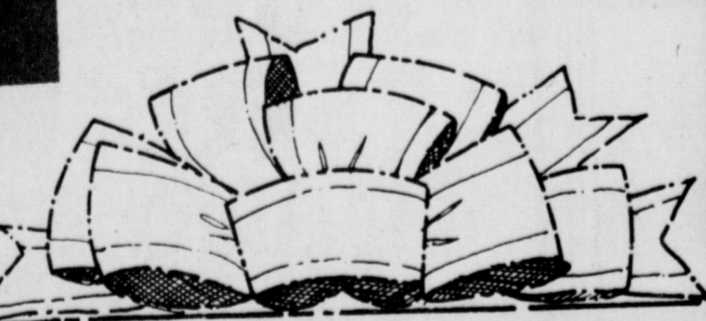
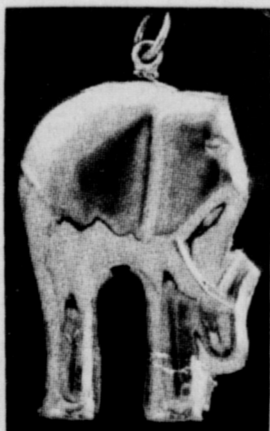
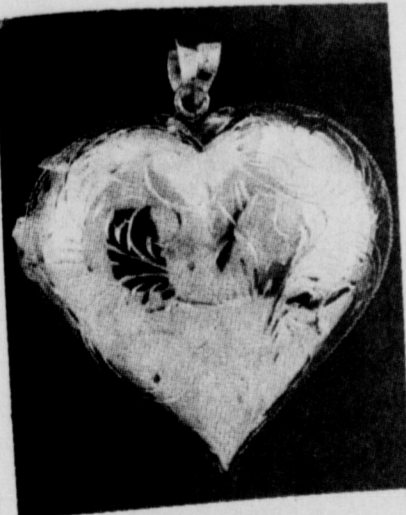


**14 Carat Gold
and
Sterling Silver**



*Best selection and
prices in the area!*

FREE GIFT WRAPPING!



**Louis'
Jewelry**

592-5942 408 W. Park

Flowers & Gifts

406 W. Park 592-2736

...for all your
Fresh Holiday Arrangements

ALL
GIFT
ITEMS

1/3 OFF

Come by and see our
**LARGE
POINSETTIA
PLANTS**

Christmas Decorations,
Fruit Baskets, Gifts

Open 'til 6 p.m.
wire service nation-wide
FREE Delivery
FREE Gift Wrapping



As I See It....

By BOB HAMILTON



When we shipped off last week's pages to the printing plant, I felt real good about the issue. We had worked hard on it. It had a lot of news. It was one about which I was proud.

But Thursday was a day of rude awakening! The issue was a bummer because of mistakes, mistakes and more mistakes.

First of all, two pictures on one page, one a wedding and the other an engagement, were transposed. The names and the stories just didn't match up with the faces in the photos.

That mistake wasn't ours. It happened at the printing plant. But we take the credit, anyway.

Then, Reba Catlin had been planning for weeks to hold an open house at her business, Flowers by Reba. Part of the planning included ordering a lot of cookies and goodies, as well as punch, for the visitors.

This was great, but she had it set for Thursday. And told me that. But when I laid out her advertisement, I put the date as Saturday!

And to put icing on the problem, the First Baptist Church ran a big advertisement about an event to be held Sunday.

We got the message out, but would you believe we transposed the "i" and "r" in Christmas? Where else but in a bummer edition would you find "Christ" misspelled?

Our apologies to all these people and if they never speak to me again, I'll understand.

I can only say we'll try harder.

How about those Hawks!!!

This was one of those "I told you so" seasons. Remember, back midway in the regular schedule, when a lot of folks were rumbering about the tie by Springtown and the loss to Breckenridge, that I said "our" team would go a long ways.

Well, it's been 16 long seasons since Iowa Park got as far as the quarterfinals.

I join the rest of the community in congratulating the players, coaches and student body for an outstanding year.

And speaking of years passing, it may well be another 22 years before Iowa Park plays another daytime football game.

It was former Coach Tommy Watkins who swore he'd never play one after losing back in 1964.

That wasn't the reason Iowa Park lost to Lampasas Saturday. But it still may be a long time before we play another game in the sun (if there was any sun Saturday).

We have a new county sheriff. He's Tom Callahan, who replaces Bill Burrow, who resigned.

Callahan was appointed by the

county commissioner's court. He was selected from a field of applicants that included former Iowa Park Police Chief Bob Dean.

Callahan will likely serve until he resigns or retires. That is based on what has happened to appointees of the court in this county over the past 20 years.

Every appointee has been elected to office by the voters after being appointed by the court.

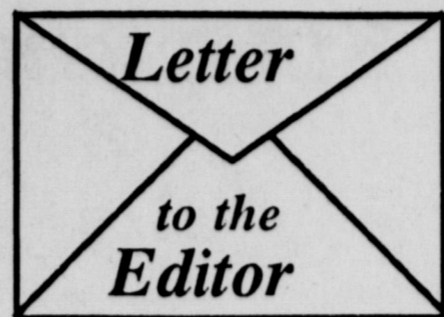
The voters either have complete faith in the judgement of commissioners, or are too lazy to determine if any candidates opposing the appointees might be better.

I'm not talking strictly about appointments as sheriff. Every county official appointed during the past two decades has been hand-picked by the court.

That's an amazing record. Commissioners selected Callahan over Mike Brewer, whom they had appointed to serve between the sheriff's resignation and their final selection for appointment.

I knew Brewer wouldn't get the appointment because he nailed his own coffin when he fired Artie Woods, best-known member of the entire department for his work in crime prevention.

Callahan's first apparent act was to re-hire Woods.



Band offers thanks

To the Band Boosters and the Community of Iowa Park

We appreciate all the help and support given to us for the entire marching season. Without your encouragement our success could not have been possible. Thanks again.

Sincerely

Kyle Long, President
Wes Ward, Vice-President, Drum Major

Renee Smith, Secretary
Dee Ann Todd, Treasurer
Emilie Flick, Historian
Phil Thames, Chaplain
Jana Coltrain, Reporter
Cristy Cravens, Drum Major

Police

Continued from page 1

Thursday evening, police arrested Danny Paul Franks, 17, on a felony warrant issued locally for criminal mischief. He was released to the county sheriff's department.

Also Thursday evening, Randy Marston, 600 S. Park, told police his three-wheel Yamaha had been stolen.

Another theft case was reported Friday morning, when Randall Yarbrough, 729 Park Plaza, told police a stereo had been taken from his pickup.

Shortly after that, Lindy Lasseter reported the theft of hub caps, alleging they were taken while parked at Wal-Mart.

Shortly before midnight Friday, police took a male juvenile into custody in the 200 block of West Washington for public intoxication. He was turned over to a parent, according to the police blotter.

Another burglary in the Wal-Mart parking lot was reported Monday, when Vern Stephen of Wichita Falls said items were taken from his pickup.

Choir sets four performances

The Iowa Park High School A Cappella Choir has a full agenda for the holidays with four performances slated next week.

The choir, directed by Darrell Dick, will present a Christmas program at 6:30 at the Presbyterian Manor and 8:30 at Sikes Senter Mall Monday night.

Tuesday at 7:30 p.m., they will participate in a combined Christmas program with Hirschi, Wichita Falls High School and Rider at the Faith Baptist Church in Wichita Falls.

Each choir will give a 15 minute program then combine to sing "Joy to the World."

They will perform again at 7:30 p.m. Dec. 18 at the Iowa Park High School auditorium. In addition to the A Cappella choir, the junior high, high school ladies and show choirs will perform.

Each performance will be free to the public.



A FULL-BLOWN PEP RALLY was held Friday morning on the front lawn of Kidwell Elementary, complete with the Hawk Band, Hawk Cheerleaders, Hawk Mascot, and the entire Hawk varsity football team. The delighted students had posters encouraging their heroes to win the big game Saturday against Lampasas.

Trustees to hear audit report

Iowa Park school trustees will see the bottom line of 1985-86 finances at their meeting tonight in the school administration building.

Accountants will review their audit of district receipts and disbursements at 7:30 p.m.

The meeting was postponed from Tuesday until this evening, in order for the accountants to attend.

A glowing report will be made concerning the high percentage of Iowa Park High juniors who passed the Texas Educational Assessment of Minimum Skills test.

Trustees will hear that 98 percent mastered the mathematics portion and 95 percent the language arts. Both figures are considerably

higher than state averages. And it was reported that only 80 percent of the juniors in Wichita Falls public schools passed the TEAMS test, which is required for graduation.

Board members will consider adopting district-wide educational goals, a building use policy, and an addition to the student dress code.

Three special recognition award presentations will be made during the meeting. They will be to the FFA Chapter for receiving the National Chapter Rating Award, the Hawk football team for reaching the state quarterfinals, and Stanley Williamson for representing the city and school on the Wichita County Appraisal District board.

course of a school day than the school secretary. Students, teachers, parents, custodians, cafeteria workers, counselors and administrators all rely on this very important member of the school staff. No job description could adequately cover the countless services that are performed by these dedicated ladies. In addition to their clerical and office functions, they find themselves part-mother, part-counselor, part-nurse to hundreds of children. They dry tears, bandage knees, sew on buttons, loan lunch money, deliver messages, pacify teachers, encourage principals - the list is endless.

To our secretaries: Judy Williams at Kidwell, Shirley Alsop at Bradford, Fern Roberts at Jr. High, Susan Biddy at High School - we respect and admire you. We could not operate effectively without you!

Twenty students from Iowa Park Junior High School will be inducted into membership of the National Junior Honor Society in an evening ceremony at the school Thursday, December 11, 1986.

Members were selected by a faculty council for meeting high standards of scholarship, service, leadership, character, and citizenship.

Students to be inducted are: Tommy Ashton, Patrick Birk, Timmy Bradberry, Tony Chacon, Kerri Dorner, Hope Drissel, Karen Ellis, Cassis Fisher, Marsha Glass, Gary Green, Jeremy Kingcade, Brian Luney, Katie Meyers, Misti Murray, Mary Owens, Michelle Sellers, Emily Short, Julie Short, Eric Smith and Jason Welch.

The Junior Honor Society ranks as one of the oldest and most prestigious national organizations for secondary school students. The local chapter received its charter last year.

It takes many people to make a school function, not to mention run effectively. This week and in ensuing weeks, this column will focus on some of the people who facilitate the effort to educate our children.

Perhaps no other person comes in contact with more people in the



IOWA PARK LEADER

766280

Bob Hamilton	Editor/Publisher
Dolores Hamilton	Co-publisher
Olive Blalock	Reporter
Kari Collins	Reporter
Kim Schroeder	Composition

The IOWA PARK LEADER is published every Thursday. Offices are located at 112 W. Cash, Iowa Park, Texas 76367 (766280). Telephone: 592-4431. Second Class Postage Paid at Iowa Park, Texas, 76367. Annual subscription rates are \$8.41 in Wichita and Archer Counties; \$10.51 elsewhere in Texas; \$12.00 anywhere in the United States. Any erroneous reflection upon the character, standing or reputation of any person, firm or corporation which may appear in the columns of this newspaper will be corrected upon being brought to the attention of the publisher.

MEMBER

TEXAS PRESS ASSOCIATION

NOTICE TO SUBSCRIBERS

This is only a notice to those listed below that their subscriptions will expire on the published date. You don't owe us a thing if your name is on the list. It only means that what you've paid for is running out. To renew your subscription, please fill out the form below, as it appears on your paper's mailing label, please. Indicate whether this is a renewal or new subscription. Enclose your check or money order, as all subscriptions must be paid in advance.

Subscriptions due to expire December 15, 1986

- | | |
|--|--|
| <p>A.
Walter Adams, IP
Herbert Adcock, IP
Lee Allen, IP
Andy Arrington, IP
Steve Arrington, Abilene</p> <p>B.
T.C. Berry, IP
Jerald Bishop, Bishop
Joe Harry Bower, Uvalde
Mrs. B.J. Boyd, IP
J.C. Bridges, IP
Vera Buck, Archer City
Carol Buikema, Dallas</p> <p>C.
Shirley Caloway, IP
Col. Robert Caloway,
New Braunfels
Myrtle Carter, IP
Dr. Richard Carver, IP
Brent Catlin, IP
Delbert Catlin, IP
Charles Connor,
FPT San Fran
Rozella Courtney, IP
Roy Crabtree, Arlington
Jos. B. Crawford, IP
Debbie Crume, IP
M.W. Crumpton, IP
Deana Custis, Maxwell</p> <p>D.
Bubba Davis, Dallas
Danny Davis, IP
Don Dowell, IP
Ron Duerson,
New Orleans</p> <p>E.
Margaret Edgin,
Ft. Worth
Cornell Evans, IP</p> <p>F.
Lonnie Fischer, IP
Leo Fletcher, IP
Jesse Flick, IP
Robert Forney, WF
Rick Frazier, IP</p> <p>G.
Ray Gholson, IP
Fritz Goetze, IP
Rev. Michael D. Grubbs,
IP
George Gunter, IP
Frank Guyette, IP</p> <p>H.
Mrs. W.E. Harty, Graham
Mrs. Willie L. Herrell, IP
Donald Hill, IP
Mrs. Harry Hill, IP
Mrs. Sam Hill, IP
Lorena A. Horine,
Big Lake
W.L. Howland, Sherman
James Huff, IP
Jim C. Huff, IP
Mrs. Ky Hunter, IP</p> <p>I.
Ben English, IP
Albert Intemann, WF</p> <p>J.
Eddie V. Jones, IP
Edith C. Jones, Austin</p> | <p>Marcus Jordan, WF
Michael Jordan, IP</p> <p>K.
Mrs. B.J. Kent, Holl.
Wayne B. Kingcade, IP
Leo Knezek, IP
Pete Koonce, IP</p> <p>L.
Howard Lane, IP
Wayne Leslie, WF
Mrs. E.H. Little, IP</p> <p>M.
Jerry Major, Tulsa
Billy Bob Marine, IP
Odus Mason, IP
Craig McCord, IP
Vida McClendon, IP
O.S. McLemore, IP
Vern Mikkelsen, IP
Jessie Mixon, IP
Clifford W. Moore, Mesa
Ruth Mulhauser, IP</p> <p>N.
Mrs. Nina Newman, IP
Mrs. James Newton,
Rankin</p> <p>P.
Margaret Pickett, IP</p> <p>Q.
Mrs. J. Louis Quick, IP</p> <p>R.
E.S. Ratcliffe, Holl.
Buster Reaves, IP
W.J. Redclift, Berwick
Don Richter, IP
Mrs. G.F. Richter, IP
Robert Robinson, IP</p> <p>S.
Rebecca Settles, Irving
Paul Sikes, IP
Rocky Smith, IP
Glenn Stout, IP
Carl Sullivan, IP</p> <p>T.
TV Cable, Burkburnett
Iva Tesson, Canadian
Mrs. Lois Thompson, IP
Opal Thompson,
Mountain View
Mrs. Myrtle Travis, WF</p> <p>U.
James R. Underwood, IP</p> <p>W.
Ann. Curtis Wallace,
APO N.Y.
Gerald Walsh, IP
Margaret Ward, IP
Carl Watson, Gnd. Prairie
E.T. Wells, IP
Mrs. Herbert Weseman,
IP
Beuna West, Electra
James Whitaker, IP
Kenneth Wilkinson, IP
Gary Williams, IP
Mrs. Raymond Williams,
IP</p> |
|--|--|

Wichita and Archer Counties. \$8.41
Elsewhere in Texas. \$10.51
Elsewhere in the United States. \$12.00

To: Iowa Park Leader
Box 430
Iowa Park, Tex.
76367

PLEASE CHECK ONE:
 New
 Renewal
 Change of Address Only

\$ _____ Enclosed

(Name) _____

(Address, P.O. Box, or Route No.) _____

(City) _____ (State) _____ (Zip Code) _____

HOLIDAY Savings



COKE CLASSIC,
TAB, SPRITE
& MR. PIBB

99¢
2 LITER BTL.

W/ FABRIC SOFTENER
FAB DETERGENT

\$5⁶⁹

ENRICHED
GLADIOLA FLOUR

89¢
5 LB. BAG

BATHROOM TISSUE
NICE N' SOFT

89¢
4 ROLL PKG.

DEL MONTE TOMATO
CATSUP
89¢
32 OZ. BTL.

DEL MONTE 17 OZ. CREAM STYLE/
WHOLE KERNEL GOLD CORN/ 16 OZ. CUT
GREEN BEANS
3 \$1
CANS MIX OR MATCH

DEL MONTE IN JUICE CHUNKS/ SPEARS/
CRUSHED/ SLICED/ TIDBITS
PINEAPPLE
69¢
15.5 OZ. CAN

DEL MONTE YELLOW CLING PEACHES/
SLICED/ HALVED OR HALVED
PEARS
79¢
16 OZ. CANS
FRUIT COCKTAIL 17 OZ. 79¢

DEL MONTE 17 OZ. EARLY GARDEN
SWEET PEAS/ 15 OZ.
SPINACH
3 \$1
MIX OR MATCH CANS

WASHINGTON EXTRA FANCY
RED DELICIOUS APPLES
2 89¢
LBS.



CALIFORNIA SNOW WHITE
CAULIFLOWER
66¢ EACH

D'ANJOU PEARS LB. **49¢**
TEXAS GREEN CABBAGE LB. **19¢**
LARGE CRISP CUCUMBERS LB. **29¢**
CALIFORNIA FRESH COLLARD & MIX OR MATCH MUSTARD GREENS 3 BUNCHES **\$1⁰⁰**

OAK FARMS
HOMO MILK
\$1⁰⁹
1/2 GAL.

SPECIAL BARGAINS

LIPTON INSTANT TEA **\$2³⁹**
3 OZ.

WESSON OIL 64 OZ. **\$2⁹⁹**
FOLGERS COFFEE 3 LB. CAN **\$7⁹⁸**
CHICKEN OF THE SEA TUNA 6.5 OZ. **59¢**
PALMOLIVE DISH LIQUID 48 OZ. **\$2¹⁹**
WOLF w/beans CHILI 15 OZ. CAN **79¢**

PILLSBURY OATMEAL/ PEANUT BUTTER/ SUGAR/ CHOC. CHIP COOKIES 20 OZ. TUBE **\$1⁹⁹**
PILLSBURY ALL READY 15 OZ. PKG. **\$1⁴⁹**
PIE CRUST KRAFT CHEESE/ OLD ENGLISH/ PIM/ BACON/ OLIVE/ JAR CHEESES PIM/ PINEAPPLE 5 OZ. JAR **79¢**
TOUCH OF BUTTER SPREAD 3 LB. TUB **\$1⁶⁹**
KRAFT JET PUFFED MARSHMALLOWS 16 OZ. PKG. **89¢**
KRAFT STRAWBERRY PRESERVES 18 OZ. JAR **\$1⁶⁹**
KRAFT DINNERS MAC & CHEESE 2 7 1/2 OZ. BOXES **89¢**

HEALTH & BEAUTY AIDS

15" OFF LABEL TOOTHPASTE AIM 4.6 OZ. TUBE **\$1²⁹**

REVLON FLEX SHAMPOO & CONDITIONER 15 OZ. BTL. **\$1⁹⁹**

FROZEN FOOD SPECIALS

DOWNYFLAKE HOMEMADE WAFFLES 10 CT. **99¢**
ORE-IDA HASH BROWNS 24 OZ. **\$1¹⁹**
CHEESE SPREAD KRAFT VELVEETA 2 LB. LOAF **\$2⁹⁹**

CITRUS HILL FROZEN ORANGE JUICE 16 OZ. CAN **88¢**

PAPER TOWELS BRAUNNY JUMBO ROLL **59¢**

FRESH 81% LEAN GROUND CHUCK **\$1⁴⁹** LB.

HEAVY GRAIN FED BONELESS CHUCK ROAST **\$1³⁹** LB.

SUPER TRIMMED ARM CUT CHARCOAL STEAK LB. **\$1⁷⁹**
SUPER TRIMMED BONELESS ARM ROAST LB. **\$1⁵⁹**
WRIGHT'S HICKORY SMOKED SLICED SLAB BACON LB. **\$1⁴⁹**
OSCAR MAYER SLICED MEAT 8 OZ. PKG. **\$1⁰⁹**
OSCAR MAYER SLICED BEEF 8 OZ. PKG. **\$1¹⁹**
FRESH EXPRESS DELUXE COMBO. / PEPPERONI YOUR CHOICE 2 FOR **\$5⁹⁹**

S&H BONUS SPECIALS

NICE N SOFT BATH TISSUE 4 ROLL **39¢** WITH ONE FILLED S&H BONUS BOOKLET
GLADIOLA FLOUR 5 LB. **39¢** WITH ONE FILLED S&H BONUS BOOKLET
CLASSIC COKE 2 LITER **49¢** WITH ONE FILLED S&H BONUS BOOKLET
DEL MONTE CATSUP 32 OZ. **39¢** WITH ONE FILLED S&H BONUS BOOKLET

B&R

AI AFFILIATED FOODS INC.

Come Home for Good!

WE ACCEPT FOOD STAMPS
WE RESERVE THE RIGHT TO LIMIT QUANTITIES

THRIFTWAY



PRICES EFFECTIVE
Dec. 11-17

Thrifty McSever

Mary's Haircutting
Next to Cabe's on West Highway

B&R Thriftway
401 W. Park 592-9831
Open 7 days a week

WE SUPPORT OUR HAWKS
CRYOVAC
PACKAGING/MARKETING SYSTEMS

Iowa Park

City Cleaners

107 W. Cash 592-4241

KAMAY ELECTRIC SERVICE
P.O. Box 144 Kamay, Texas
Kamay 438-2844 Electra 495-4391
W.F. 723-9126 W.F. 723-4602
Electric Motor Repair and
Pole Line Construction

EARL CRAVENS RONNY
438-2844 Kamay 438-2901

We're Proud of the Hawks



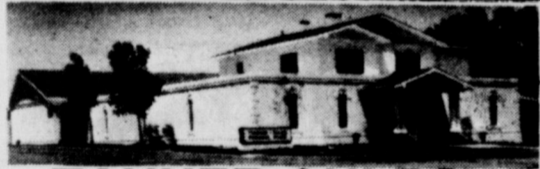
Louis'
Distinctive jewelry

592-5942 Louis & Betty Sefcik
408 W. Park George Bushfield

WE BACK THE HAWKS!

Jim's Conoco

592-4897
612 W. Highway



TANNER-AULDS FUNERAL HOME

-Since 1908-
300 E. Cash 592-4151
"Our family serving your family"



FORD

Park Ford

IOWA PARK 592-4106

Bud Mercer Electric Co.

Residential & Commercial

BUD MERCER, Owner
Phone 592-5413

HARDIN HILL
Phone 592-2666



BOBBY EVANS
Sporting Goods
INC.



Monty & Son's
SEPTIC TANK SERVICE
592-4928

Home Place
Gifts & Crafts



Come See Us & Browse
410 W. Park
592-5671

Hours:
Open 9:30-5:30 p.m.
Tuesdays:
9:30-8 p.m.

video library
Backs the Hawks!

901 WEST HIGHWAY
IOWA PARK, TX. 76367

Carmen & Eddy Lambert
Melissa Horne, Joni Whitis
Barbara Dumas

Playoff road ends 16-7 Saturday at Weatherford

The road to their third state football championship ended Saturday for the Iowa Park Hawks in Weatherford.

Iowa Park, one of only eight teams in the state with a shot at capturing the Class AAA title, was eliminated by Lampasas, 16-7.

The Badgers took advantage of their longest run of the game which also drew a major penalty to score in the first quarter, but missed the extra point kick and carried a 6-0 lead into the second period.

Iowa Park fought back, however, and mounted its only sustained drive, 54 yards, of the game and scored on a five-yard rollout by reserve quarterback Jeff Huff.

Toby Brown's kick for the extra point was true, and the Hawks held the lead with 5:54 remaining in the half.

But the lead was to last slightly more than five minutes, as Lampasas put together a drive that netted seven points only 45 seconds before the mid-way rest period.

Trailing only 13-7, the Hawks were still in the game until 3:46 showed on the scoreboard clock. The Lampasas kicker attempted a 40-yard field goal that, with the aid of a slight breeze, fell onto the crossbar and bounced across.

The additional three points was the final nail on Iowa Park's coffin, forcing the Hawks to score two touchdowns against a defense which allowed them only 34 net yards offense the entire second half.

Penalties and turnovers kept the Hawks from establishing a dominance during the first half of play. They were flagged five times in the first half for 45 yards and lost the ball twice on fumbles. But it was the three penalties (30 yards) and the two fumbles in the first quarter that gave the Badgers heart.

Neither fumble, however, led to a score. The first turnover was a fumble by Joel Galloway on the Hawks' initial possession. And even though the Badgers covered it on the Hawk 40, they were unable to pick up more than a yard and had to punt.

Two penalties in the next three minutes of play set up Lampasas' first touchdown. One was a flag for an illegal block that forced Iowa Park to punt.

The next penalty followed shortly. A Badger runner got outside the Hawk defense and sprinted 27 yards to the Iowa Park 31. He was hit at the sideline, according to a later study of the film. And even though he was not knocked off his feet, Iowa Park was penalized 15 yards to the 16.

Lampasas needed five more plays to score from the one.

On the ensuing kickoff, Scott Weaver took the handoff from Brad Huff and returned it to the Lampasas 41. But three plays later, a fumble by Danny Forman was covered by a Badger on the 31, ending an apparent scoring opportunity.

Iowa Park's scoring drive began on the Hawk 46, following a Badger punt early in the second period.

The nine-play drive was highlighted by a 17-yard run by Weaver and a 12-yarder by Forman, which took the ball to the two yard line. Forman was tackled for a three-yard loss on the next play.

After another unsuccessful Forman carry, Huff rolled out to his right on a pass-or-run option, saw his opening and dashed to the corner of the end zone to light up the scoreboard on Iowa Park's side.

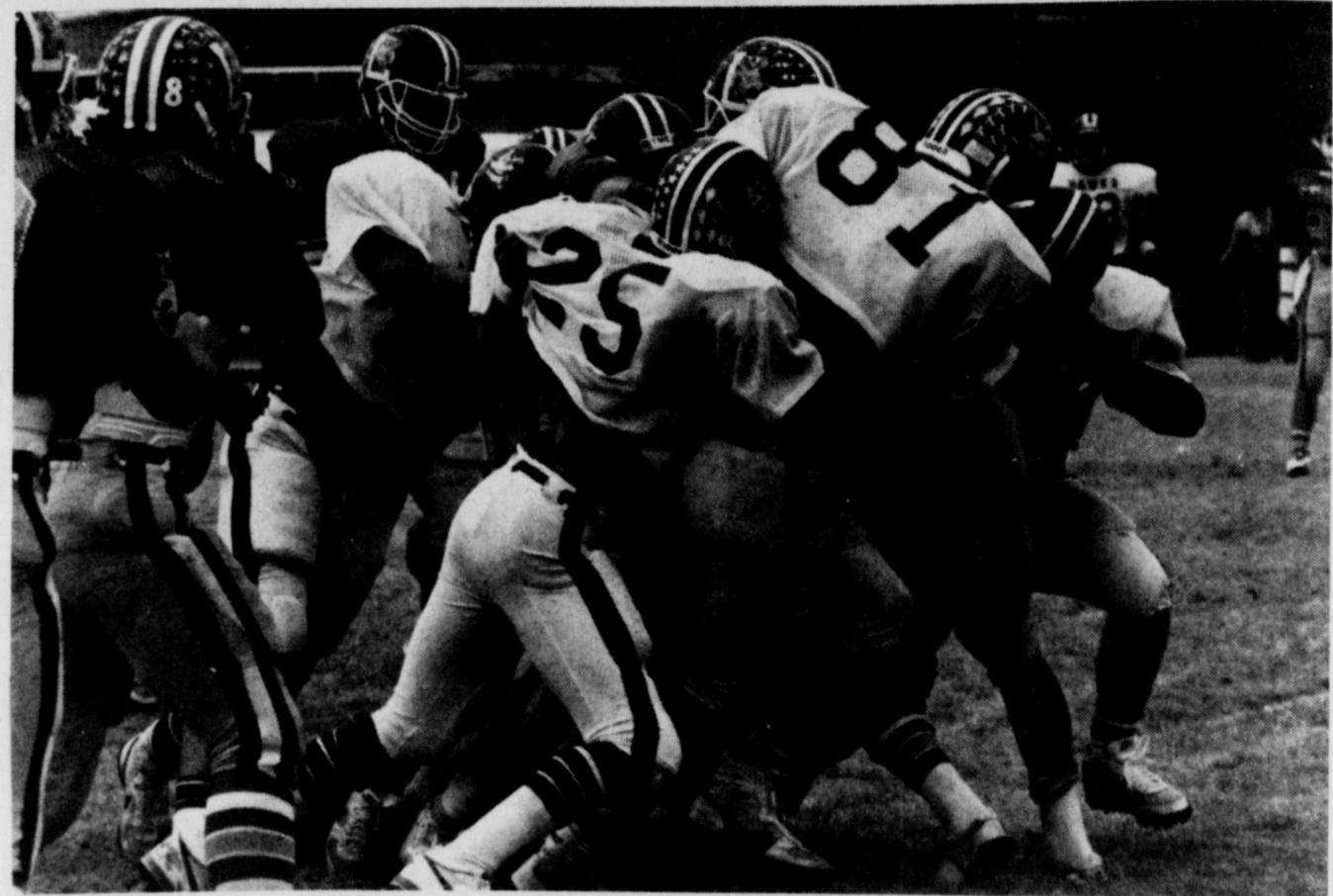
Weaver intercepted a Badger pass two plays after the following kickoff, on the Lampasas 43. Eric Whitman followed with an 18-yard run. But a couple of unsuccessful Huff passes into the end zone forced Brown to attempt a 41-yard field goal, which fell short.

The Badger quarterback, Richard Roach, who was injured the previous week and wasn't supposed to see action, entered the game at that point and engineered a 65-yard drive, completing all three pass attempts with the final, a 22-yarder, to tight end Curtis Thrift.

Neither team's offense found any success in the defensive battle which took place in the second half. Lampasas was held to 52 yards in the third quarter and only 19 in the fourth by the Mean Green.

But Lampasas, which had given up 158 total yards to the Hawk offense in the first half, held Iowa Park to only 22 net yards in the third quarter and a net 12 yards in the final period.

David Meissner intercepted a Badger pass at



HAWK DEFENDERS WORK TOGETHER TO STOP BADGER



JOEL GALLOWAY FIGHTS FOR EXTRA YARDAGE

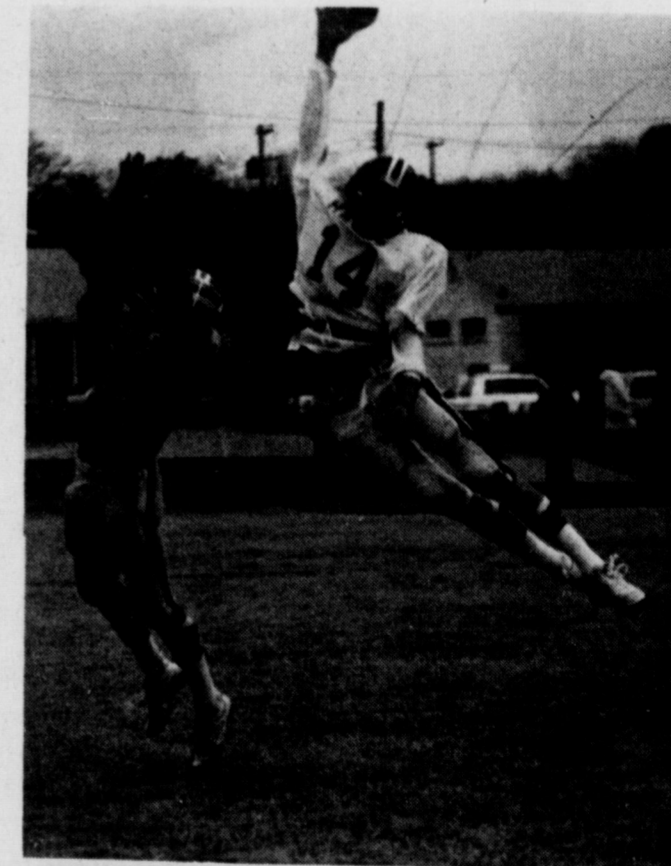
the Lampasas 41 late in the third period, but Iowa Park turned over the ball four plays later on the opponents' 30 yard line for lack of a first down.

Forman, who was held to only six yards in the second half, finished with 48 yards on 13 carries. Weaver gained 42 yards on six totes, Galloway 34 on 10 and Meissner 22 on four.

Weaver caught five of Iowa Park's six pass completions, for 37 yards. The other completion was credited to tackle Gregg Young, who kept the Badgers from intercepting a tipped pass, caught the ball and was tackled for a seven-yard loss.

Big defensive plays were turned in by Wayne Oltman, Charlie Stamm, Dennis Phillips, Robert Adams and Steve Allen.

	IP	Lam
First Downs	12	12
Yards Rushing	162	153
Yards Passing	30	44
Total Yards	192	197
Passes	6/13	3/10
Interceptions By	2	0
Fumbles Lost	2	0
Punts	5/34	6/32
Penalties	6-50	6-40



BRAD HUFF GOES HIGH FOR PASS

Iowa Park Florist
592-2141

Your friendly hometown florist
since 1951



Supporting Our Hawks

...Compliments

Dr. James Edwards

Optometrist

103 W. Park 592-4992



Cheers from across the street!

Dr. Carter Pirkle

General Dentistry


Ruth, Betsy, Rhonda & Sheryl

Park Tank Truck Service
IOWA PARK, TEXAS 76367



- RADIO EQUIPPED TRUCKS • OIL, MUD, & WATER HAULING
- WINCH TRUCKS • VACUUM TRUCKS FOR ROTARY • KILL TRUCKS
- ACID & FRAC SERVICE • SALT WATER DISPOSAL
- ACID SALES & SERVICES • POWER SWIVEL UNITS

Like a good neighbor, State Farm is there.



Philip Welch
118 W. Park

State Farm Insurance Companies
Home Offices
Bloomington, Illinois

See me for car, home, life and health insurance.

R.W. Hill Insurance
Complete Insurance Service
Glena Via, Agent
592-4159

PARKWAY
FURNITURE-ELECTRONICS-APPLIANCES
200-206 W. BANK
592-4681 592-5512




**CONGRATULATIONS
1986 HAWKS**

BI-DISTRICT CHAMPS
AREA CHAMPS
REGION CHAMPS

*You're champions both on and off the field. You've brought great honor to your community, your school and yourselves.
We are all very, very proud of you!*

K&K Quick Stop
Open 7 days a week
1307 Johnson Road 592-5931

GO...MEAN GREEN!
Pleasant Valley Grocery
and
Midway Fish Farm
Randy Jameson - Owner



Flowers

-REMEMBER-
All Occasions
Flower and Gift Shop
(817) 592-2323

Dorothy Cates
Brenda England

520 West Highway
Iowa Park, TX 76367

Flowers

Flowers & Gifts
406 West Park
Iowa Park, Tx 76367
(817) 592-2736
Answered 24-hours a day

Judy Rusk Burgess
Owner-Designer

Settle Drug
Joe Hughes Pharmacist
592-4191 120 W. Park
24-hour service



P.C.S. FREE delivery
Medimet of prescriptions
Medicare

Posey's Appliance Service

We service all makes of washers, dryers, freezers, refrigerator and window air conditioners.

208 James Ph. 592-5452

1986 SEASON SCHEDULE AND RECORD
ALL GAMES START AT 8 P.M.

IOWA PARK	6	BURKBURNETT	14
IOWA PARK	14	GRAHAM	0
IOWA PARK	7	SEYMOUR	0
IOWA PARK	14	SPRINGTOWN	14
IOWA PARK	5	VERNON	0
IOWA PARK	26	DECATUR	14
IOWA PARK	31	BOWIE	7
IOWA PARK	6	BRECKENRIDGE	20
IOWA PARK	56	JACKSBORO	7
IOWA PARK	35	BRIDGEPORT	28
<u>BI-DISTRICT</u>			
IOWA PARK	27	BALLINGER	12
<u>AREA</u>			
IOWA PARK	24	ROBINSON	0
<u>REGIONAL</u>			
IOWA PARK	36	KERMIT	14
<u>QUARTERFINALS</u>			
IOWA PARK	7	LAMPASAS	16

KINGS FOOD
300 W. Bank 592-2861

Wal-Mart Pharmacy
592-4157
500 West Highway, Iowa Park
JEREL KERBY — Pharmacist

SUPPORTING THE HAWKS

OPEN MON.-FRI. 7 A.M. - 6 P.M.
OPEN SATURDAYS 8 A.M. - 5 P.M.

DC Auto Parts
211 N. Wall 592-4181 Iowa Park
DANNY COFFMAN - owner
BOB WHATLEY - Mgr.

Doctors & Staff of
Park Clinic
Support the Hawks —

KING'S KIDS
CHRISTIAN DAYCARE
& PRESCHOOL
"Iowa Park's finest for Parents who care."
202 N. Jackson 592-4242


HEO **TCI**
TV CABLE
OF IOWA PARK
696-0664

Scobee's Mini Mart
322 W. Highway 592-5961
Home-Owned & Operated

CATLIN Car Wash
No. 1 & No. 2



SAM'S BODY SHOP
Sam and Marye Lou



MEAN GREEN STRENGTH
Iowa Park Ready Mix
592-2052
SAND—ROCK—GRAVEL

SNB **STATE NATIONAL BANK**
IOWA PARK, TEXAS
Member F.D.I.C.

ken's PIZZA
902 W. Highway
592-4184
Open after each Friday night's football game.



Harvey's
FAMILY RESTAURANT
HAMBURGERS
805 West Highway



Teacher's appeal rejected

HOLLIDAY - The Holliday School Board Monday night heard the appeal of a high school teacher not placed on the career ladder.

Mary Ann White, high school business teacher, appeared with legal council in executive session to appeal the decision not to place her on the career ladder.

After coming out of executive session, the board voted unanimously to uphold the decision.

She met two weeks earlier with Supt. Dan Owen in the first level of appeal, where he upheld the prior decision.

Owen said the next level of appeal was to the Commissioner of Education, but no indication was made as to whether that step would be taken by Mrs. White.

Other business included the authorization by the board to pay career ladder bonuses to the 18 qualified teachers in the amount of \$2,000 each.

A report on the TEAMS test, taken by 11th grade students, was given.

Results showed 39 of 42 students or 93 percent mastered the math portion of the test and 42 of 43 students or 98 percent mastered the language arts portion.

Students not mastering either portion of the test will have three more chances to take the test before



First United Methodist Church
201 E. Bank

Church School 9:40 Youth Meetings 5:00
Morning Worship 10:40 Evening Worship 6:00

JACK MEYERS, PASTOR

ARE YOU WALKING ALONE?
We invite you to join people who care

First Presbyterian Church
Church School 9:30 a.m. Worship 11:00 a.m.
Betty Meadows - Pastor
211 S. Yosemite 592-4220

Pacific Avenue Missionary Baptist Church
1400 North Pacific Avenue

Larry Washburn
Pastor
Church - 592-9711
Pastor - 592-4288

--Informal, Christ-Centered Worship for all ages--

Sunday School 9:45 a.m.
Morning Worship 11:00 a.m.
Evening Worship 6:00p.m.
Wednesday 7:00 p.m.

Kamay Road Church of Christ
Corner of Colorado & Emerald

Seeking the Old Paths

Lord's Day
10:30 a.m. & 6 p.m.
Wednesday 7:00 p.m.

Good Shepherd Lutheran Church
1st & Magnolia Iowa Park

Sunday School: 9:45 a.m.
Worship Service: 10:45 a.m.

IOWA PARK CHURCH OF CHRIST
300 East Park, Iowa Park, Texas 76367, (817) 592-5415

SCHEDULE OF SERVICES

Sunday	Wednesday
Bible Study 9:30a.m.	Evening Study 7:30p.m.
Worship 10:30a.m.	Thursday
Evening Worship 6:00p.m.	Ladies bible Class 7:30 p.m.
	Call office for information

We offer a Free Bible Correspondance Course, Call for details.

Attend Church Sunday

First United Pentecostal Church

"And it shall come to pass in the last days, saith God, I will pur out of my Spirit upon all flesh..."

Sunday morning 10:00 a.m. Wed. Bible Study 7:30 p.m.
Sunday evening 6:30 p.m. Fri. Youth Service 7:30 p.m.

A friendly & caring church.
Pastor: Greg K. Hardin Phone 592-4275 802 N. First

Cornerstone Pentecostal Church of God

Jesus is the Cornerstone

SS - 9:45 a.m. Sun. Evening - 7:00
Sun. Morn. - 10:50 a.m. SERVICES Wed. Evening - 7:00

Jesus said, upon this rock I'll build my church and the gates of hell shall not prevail against it. - Matthew 16:18

W. Smith Rd. Pastor: Duffy Terry 592-5520

Christ The King Catholic Church
First and Clara Phone 592-2802
Rev. Mr. Patrick Burke, Pastor
8:45 a.m. C.C.D. -- 10 a.m. Mass

Faith Baptist Church

"Where the Bible is taught, the family is emphasized, and where everybody is somebody."

411 S. Wall S.B.C. 592-4894

SUNDAY
Sunday School 9:30 a.m.
Morning Worship 8:20 & 10:40 a.m.
Church Training 6:00 p.m.
Evening Worship 7:00 p.m.

WEDNESDAY
Wednesday Evening Prayer 7 p.m.
Choir Rehearsal 8:00 p.m.

Nursery Care Provided - Full Range of Mission's and Children's Ministries

Pastor, Jerry L. Miller

Worship in the Church of your choice

First Baptist Church
A Southern Baptist Church
of Iowa Park Yosemite at Park

SUNDAY SERVICES Mornings

Sunday School 9:45
Worship 11:00

Evenings

Church Training 6:00
Worship 7:00

WEDNESDAY

Prayer Meeting 7:00
Choir Rehearsal 7:45

THE END OF YOUR SEARCH FOR A FRIENDLY CHURCH ASSEMBLY OF GOD

SUNDAY:
9:45 a.m. Sunday School
11:00 a.m. Morning Worship
5-6:30 p.m. Missionettes & Royal Ranger
7 p.m. Evangelistic Service
Wednesday Service 7 p.m.

200 S. YOSEMITE
Charles Hensley, Pastor

Lakeview Church of God

WEDNESDAY EVENING (FTH-Bible Study) 7:30 p.m.
SUNDAY SCHOOL 9:45 a.m.
SUNDAY MORNING WORSHIP 11:00 a.m.
SUNDAY NIGHT WORSHIP IS NOW 6:00 p.m.

Pastor Rev. Ole Olds, Pastor
592-9555 N. Victoria & Expressway Church 592-2776

Church of God
601 E. Cash

Pastor, S. A. Luke
Sunday School - 9:45 a.m.
Sunday Morning Worship - 11:00
Sunday Night Worship Service - 7:00 p.m.
Wednesday Night Service - 7:30 p.m.

Parish 592-5316 Office 592-4348

Singles Under Construction

Coming Soon!

Faith Baptist Church
presents

"A Carol of Christmas"
presented by the Sanctuary Choir
Sunday, December 14
8:20 a.m. and 10:40 a.m.

"Alleluia Angels Sing"
presented by the combined Childrens Choir
at 7:00 p.m.

Church Wide Fellowship Following Evening Service

through her children's belief in Santa Claus and a special visit from a Christmas angel.

1:30 (3) (3) Woman Watch

2:00 (3) (3) Bewitched

3:00 (3) (3) The Love Boat

3:30 (3) (3) Ever Increasing Faith

4:00 (3) (3) Lady Griffin

4:30 (3) (3) \$25,000 Pyramid

5:00 (3) (3) Duane

5:30 (3) (3) Walnut Hills

6:00 (3) (3) Public Policy Conference

6:30 (3) (3) Season Street

7:00 (3) (3) Sports Tonight

7:30 (3) (3) Movie: Secret of Golem

8:00 (3) (3) Movie: The Love Boat

8:30 (3) (3) Movie: The Love Boat

9:00 (3) (3) Movie: The Love Boat

9:30 (3) (3) Movie: The Love Boat

10:00 (3) (3) Movie: The Love Boat

10:30 (3) (3) Movie: The Love Boat

11:00 (3) (3) Movie: The Love Boat

11:30 (3) (3) Movie: The Love Boat

12:00 (3) (3) Movie: The Love Boat

12:30 (3) (3) Movie: The Love Boat

1:00 (3) (3) Movie: The Love Boat

1:30 (3) (3) Movie: The Love Boat

2:00 (3) (3) Movie: The Love Boat

2:30 (3) (3) Movie: The Love Boat

3:00 (3) (3) Movie: The Love Boat

3:30 (3) (3) Movie: The Love Boat

4:00 (3) (3) Movie: The Love Boat

4:30 (3) (3) Movie: The Love Boat

5:00 (3) (3) Movie: The Love Boat

5:30 (3) (3) Movie: The Love Boat

6:00 (3) (3) Movie: The Love Boat

6:30 (3) (3) Movie: The Love Boat

7:00 (3) (3) Movie: The Love Boat

7:30 (3) (3) Movie: The Love Boat

8:00 (3) (3) Movie: The Love Boat

8:30 (3) (3) Movie: The Love Boat

9:00 (3) (3) Movie: The Love Boat

9:30 (3) (3) Movie: The Love Boat

10:00 (3) (3) Movie: The Love Boat

10:30 (3) (3) Movie: The Love Boat

11:00 (3) (3) Movie: The Love Boat

11:30 (3) (3) Movie: The Love Boat

12:00 (3) (3) Movie: The Love Boat

12:30 (3) (3) Movie: The Love Boat

1:00 (3) (3) Movie: The Love Boat

1:30 (3) (3) Movie: The Love Boat

2:00 (3) (3) Movie: The Love Boat

2:30 (3) (3) Movie: The Love Boat

3:00 (3) (3) Movie: The Love Boat

3:30 (3) (3) Movie: The Love Boat

4:00 (3) (3) Movie: The Love Boat

4:30 (3) (3) Movie: The Love Boat

5:00 (3) (3) Movie: The Love Boat

5:30 (3) (3) Movie: The Love Boat

6:00 (3) (3) Movie: The Love Boat

6:30 (3) (3) Movie: The Love Boat

7:00 (3) (3) Movie: The Love Boat

7:30 (3) (3) Movie: The Love Boat

8:00 (3) (3) Movie: The Love Boat

8:30 (3) (3) Movie: The Love Boat

9:00 (3) (3) Movie: The Love Boat

9:30 (3) (3) Movie: The Love Boat

10:00 (3) (3) Movie: The Love Boat

10:30 (3) (3) Movie: The Love Boat

11:00 (3) (3) Movie: The Love Boat

11:30 (3) (3) Movie: The Love Boat

12:00 (3) (3) Movie: The Love Boat

12:30 (3) (3) Movie: The Love Boat

1:00 (3) (3) Movie: The Love Boat

1:30 (3) (3) Movie: The Love Boat

2:00 (3) (3) Movie: The Love Boat

2:30 (3) (3) Movie: The Love Boat

3:00 (3) (3) Movie: The Love Boat

3:30 (3) (3) Movie: The Love Boat

4:00 (3) (3) Movie: The Love Boat

4:30 (3) (3) Movie: The Love Boat

5:00 (3) (3) Movie: The Love Boat

5:30 (3) (3) Movie: The Love Boat

6:00 (3) (3) Movie: The Love Boat

6:30 (3) (3) Movie: The Love Boat

7:00 (3) (3) Movie: The Love Boat

7:30 (3) (3) Movie: The Love Boat

8:00 (3) (3) Movie: The Love Boat

8:30 (3) (3) Movie: The Love Boat

9:00 (3) (3) Movie: The Love Boat

9:30 (3) (3) Movie: The Love Boat

10:00 (3) (3) Movie: The Love Boat

10:30 (3) (3) Movie: The Love Boat

11:00 (3) (3) Movie: The Love Boat

11:30 (3) (3) Movie: The Love Boat

12:00 (3) (3) Movie: The Love Boat

12:30 (3) (3) Movie: The Love Boat

1:00 (3) (3) Movie: The Love Boat

1:30 (3) (3) Movie: The Love Boat

2:00 (3) (3) Movie: The Love Boat

2:30 (3) (3) Movie: The Love Boat

3:00 (3) (3) Movie: The Love Boat

3:30 (3) (3) Movie: The Love Boat

4:00 (3) (3) Movie: The Love Boat

4:30 (3) (3) Movie: The Love Boat

5:00 (3) (3) Movie: The Love Boat

5:30 (3) (3) Movie: The Love Boat

6:00 (3) (3) Movie: The Love Boat

6:30 (3) (3) Movie: The Love Boat

7:00 (3) (3) Movie: The Love Boat

7:30 (3) (3) Movie: The Love Boat

8:00 (3) (3) Movie: The Love Boat

8:30 (3) (3) Movie: The Love Boat

9:00 (3) (3) Movie: The Love Boat

9:30 (3) (3) Movie: The Love Boat

10:00 (3) (3) Movie: The Love Boat

10:30 (3) (3) Movie: The Love Boat

11:00 (3) (3) Movie: The Love Boat

11:30 (3) (3) Movie: The Love Boat

12:00 (3) (3) Movie: The Love Boat

12:30 (3) (3) Movie: The Love Boat

1:00 (3) (3) Movie: The Love Boat

1:30 (3) (3) Movie: The Love Boat

2:00 (3) (3) Movie: The Love Boat

2:30 (3) (3) Movie: The Love Boat

3:00 (3) (3) Movie: The Love Boat

3:30 (3) (3) Movie: The Love Boat

4:00 (3) (3) Movie: The Love Boat

4:30 (3) (3) Movie: The Love Boat

5:00 (3) (3) Movie: The Love Boat

5:30 (3) (3) Movie: The Love Boat

6:00 (3) (3) Movie: The Love Boat

6:30 (3) (3) Movie: The Love Boat

7:00 (3) (3) Movie: The Love Boat

7:30 (3) (3) Movie: The Love Boat

8:00 (3) (3) Movie: The Love Boat

8:30 (3) (3) Movie: The Love Boat

9:00 (3) (3) Movie: The Love Boat

9:30 (3) (3) Movie: The Love Boat

10:00 (3) (3) Movie: The Love Boat

10:30 (3) (3) Movie: The Love Boat

11:00 (3) (3) Movie: The Love Boat

11:30 (3) (3) Movie: The Love Boat

12:00 (3) (3) Movie: The Love Boat

12:30 (3) (3) Movie: The Love Boat

1:00 (3) (3) Movie: The Love Boat

1:30 (3) (3) Movie: The Love Boat

2:00 (3) (3) Movie: The Love Boat

2:30 (3) (3) Movie: The Love Boat

3:00 (3) (3) Movie: The Love Boat

3:30 (3) (3) Movie: The Love Boat

4:00 (3) (3) Movie: The Love Boat

4:30 (3) (3) Movie: The Love Boat

5:00 (3) (3) Movie: The Love Boat

5:30 (3) (3) Movie: The Love Boat

6:00 (3) (3) Movie: The Love Boat

6:30 (3) (3) Movie: The Love Boat

7:00 (3) (3) Movie: The Love Boat

7:30 (3) (3) Movie: The Love Boat

8:00 (3) (3) Movie: The Love Boat

8:30 (3) (3) Movie: The Love Boat

9:00 (3) (3) Movie: The Love Boat

9:30 (3) (3) Movie: The Love Boat

10:00 (3) (3) Movie: The Love Boat

10:30 (3) (3) Movie: The Love Boat

11:00 (3) (3) Movie: The Love Boat

11:30 (3) (3) Movie: The Love Boat

12:00 (3) (3) Movie: The Love Boat

12:30 (3) (3) Movie: The Love Boat

1:00 (3) (3) Movie: The Love Boat

1:30 (3) (3) Movie: The Love Boat

2:00 (3) (3) Movie: The Love Boat

2:30 (3) (3) Movie: The Love Boat

3:00 (3) (3) Movie: The Love Boat

3:30 (3) (3) Movie: The Love Boat

4:00 (3) (3) Movie: The Love Boat

4:30 (3) (3) Movie: The Love Boat

5:00 (3) (3) Movie: The Love Boat

5:30 (3) (3) Movie: The Love Boat

6:00 (3) (3) Movie: The Love Boat

6:30 (3) (3) Movie: The Love Boat

7:00 (3) (3) Movie: The Love Boat

7:30 (3) (3) Movie: The Love Boat

8:00 (3) (3) Movie: The Love Boat

8:30 (3) (3) Movie: The Love Boat

9:00 (3) (3) Movie: The Love Boat

9:30 (3) (3) Movie: The Love Boat

10:00 (3) (3) Movie: The Love Boat

10:30 (3) (3) Movie: The Love Boat

11:00 (3) (3) Movie: The Love Boat

11:30 (3) (3) Movie: The Love Boat

12:00 (3) (3) Movie: The Love Boat

12:30 (3) (3) Movie: The Love Boat

1:00 (3) (3) Movie: The Love Boat

1:30 (3) (3) Movie: The Love Boat

2:00 (3) (3) Movie: The Love Boat

2:30 (3) (3) Movie: The Love Boat

3:00 (3) (3) Movie: The Love Boat

3:30 (3) (3) Movie: The Love Boat

4:00 (3) (3) Movie: The Love Boat

4:30 (3) (3) Movie: The Love Boat

5:00 (3) (3) Movie: The Love Boat

5:30 (3) (3) Movie: The Love Boat

6:00 (3) (3) Movie: The Love Boat

6:30 (3) (3) Movie: The Love Boat

7:00 (3) (3) Movie: The Love Boat

7:30 (3) (3) Movie: The Love Boat

8:00 (3) (3) Movie: The Love Boat

8:30 (3) (3) Movie: The Love Boat

9:00 (3) (3) Movie: The Love Boat

9:30 (3) (3) Movie: The Love Boat

10:00 (3) (3) Movie: The Love Boat

10:30 (3) (3) Movie: The Love Boat

11:00 (3) (3) Movie: The Love Boat

11:30 (3) (3) Movie: The Love Boat

12:00 (3) (3) Movie: The Love Boat

12:30 (3) (3) Movie: The Love Boat

1:00 (3) (3) Movie: The Love Boat

1:30 (3) (3) Movie: The Love Boat

2:00 (3) (3) Movie: The Love Boat

2:30 (3) (3) Movie: The Love Boat

3:00 (3) (3) Movie: The Love Boat

3:30 (3) (3) Movie: The Love Boat

4:00 (3) (3) Movie: The Love Boat

4:30 (3) (3) Movie: The Love Boat

5:00 (3) (3) Movie: The Love Boat

5:30 (3) (3) Movie: The Love Boat

6:00 (3) (3) Movie: The Love Boat

6:30 (3) (3) Movie: The Love Boat

7:00 (3) (3) Movie: The Love Boat

7:30 (3) (3) Movie: The Love Boat

8:00 (3) (3) Movie: The Love Boat

8:30 (3) (3) Movie: The Love Boat

9:00 (3) (3) Movie: The Love Boat

9:30 (3) (3) Movie: The Love Boat

10:00 (3) (3) Movie: The Love Boat

10:30 (3) (3) Movie: The Love Boat

11:00 (3) (3) Movie: The Love Boat

11:30 (3) (3) Movie: The Love Boat

12:00 (3) (3) Movie: The Love Boat

12:30 (3) (3) Movie: The Love Boat

1:00 (3) (3) Movie: The Love Boat

1:30 (3) (3) Movie: The Love Boat

2:00 (3) (3) Movie: The Love Boat

2:30 (3) (3) Movie: The Love Boat

3:00 (3) (3) Movie: The Love Boat

3:30 (3) (3) Movie: The Love Boat

4:00 (3) (3) Movie: The Love Boat

4:30 (3) (3) Movie: The Love Boat

5:00 (3) (3) Movie: The Love Boat

5:30 (3) (3) Movie: The Love Boat

6:00 (3) (3) Movie: The Love Boat

6:30 (3) (3) Movie: The Love Boat

7:00 (3) (3) Movie: The Love Boat

7:30 (3) (3) Movie: The Love Boat

8:00 (3) (3) Movie: The Love Boat

8:30 (3) (3) Movie: The Love Boat

9:00 (3) (3) Movie: The Love Boat

9:30 (3) (3) Movie: The Love Boat

10:00 (3) (3) Movie: The Love Boat

10:30 (3) (3) Movie: The Love Boat

11:00 (3) (3) Movie: The Love Boat

11:30 (3) (3) Movie: The Love Boat

12:00 (3) (3) Movie: The Love Boat

12:30 (3) (3) Movie: The Love Boat

1:00 (3) (3) Movie: The Love Boat

1:30 (3) (3) Movie: The Love Boat

2:00 (3) (3) Movie: The Love Boat

2:30 (3) (3) Movie: The Love Boat

3:00 (3) (3) Movie: The Love Boat

3:30 (3) (3) Movie: The Love Boat

4:00 (3) (3) Movie: The Love Boat

4:30 (3) (3) Movie: The Love Boat

5:00 (3) (3) Movie: The Love Boat

5:30 (3) (3) Movie: The Love Boat

6:00 (3) (3) Movie: The Love Boat

6:30 (3) (3) Movie: The Love Boat

7:00 (3) (3) Movie: The Love Boat

7:30 (3) (3) Movie: The Love Boat

8:00 (3) (3) Movie: The Love Boat

8:30 (3) (3) Movie: The Love Boat

9:00 (3) (3) Movie: The Love Boat

9:30 (3) (3) Movie: The Love Boat

10:00 (3) (3) Movie: The Love Boat

10:30 (3) (3) Movie: The Love Boat

11:00 (3) (3) Movie: The Love Boat

11:30 (3) (3) Movie: The Love Boat

12:00 (3) (3) Movie: The Love Boat

12:30 (3) (3) Movie: The Love Boat

1:00 (3) (3) Movie: The Love Boat

1:30 (3) (3) Movie: The Love Boat

2:00 (3) (3) Movie: The Love Boat

2:30 (3) (3) Movie: The Love Boat

3:00 (3) (3) Movie: The Love Boat

3:30 (3) (3) Movie: The Love Boat

4:00 (3) (3) Movie: The Love Boat

4:30 (3) (3) Movie: The Love Boat

5:00 (3) (3) Movie: The Love Boat

5:30 (3) (3) Movie: The Love Boat

6:00 (3) (3) Movie: The Love Boat

6:30 (3) (3) Movie: The Love Boat

7:00 (3) (3) Movie: The Love Boat

7:30 (3) (3) Movie: The Love Boat

8:00 (3) (3) Movie: The Love Boat

8:30 (3) (3) Movie: The Love Boat

9:00 (3) (3) Movie: The Love Boat

9:30 (3) (3) Movie: The Love Boat

10:00 (3) (3) Movie: The Love Boat

10:30 (3) (3) Movie: The Love Boat

11:00 (3) (3) Movie: The Love Boat

11:30 (3) (3) Movie: The Love Boat

12:00 (3) (3) Movie: The Love Boat

12:30 (3) (3) Movie: The Love Boat

1:00 (3) (3) Movie: The Love Boat

1:30 (3) (3) Movie: The Love Boat

2:00 (3) (3) Movie: The Love Boat

2:30 (3) (3) Movie: The Love Boat

3:00 (3) (3) Movie: The Love Boat

3:30 (3) (3) Movie: The Love Boat

4:00 (3) (3) Movie: The Love Boat

4:30 (3) (3) Movie: The Love Boat

5:00 (3) (3) Movie: The Love Boat

5:30 (3) (3) Movie: The Love Boat

6:00 (3) (3) Movie: The Love Boat

6:30 (3) (3) Movie: The Love Boat

7:00 (3) (3) Movie: The Love Boat

7:30 (3) (3) Movie: The Love Boat

8:00 (3) (3) Movie: The Love Boat

8:30 (3) (3) Movie: The Love Boat

9:00 (3) (3) Movie: The Love Boat

9:30 (3) (3) Movie: The Love Boat

10:00 (3) (3) Movie: The Love Boat

10:30 (3) (3) Movie: The Love Boat

11:00 (3) (3) Movie: The Love Boat

11:30 (3) (3) Movie: The Love Boat

12:00 (3) (3) Movie: The Love Boat

12:30 (3) (3) Movie: The Love Boat

1:00 (3) (3) Movie: The Love Boat

1:30 (3) (3) Movie: The Love Boat

2:00 (3) (3) Movie: The Love Boat

2:30 (3) (3) Movie: The Love Boat

3:00 (3) (3) Movie: The Love Boat

3:30 (3) (3) Movie: The Love Boat

4:00 (3) (3) Movie: The Love Boat

4:30 (3) (3) Movie: The Love Boat

5:00 (3) (3) Movie: The Love Boat

5:30 (3) (3) Movie: The Love Boat

6:00 (3) (3) Movie: The Love Boat

6:30 (3) (3) Movie: The Love Boat

7:00 (3) (3) Movie: The Love Boat

7:30 (3) (3) Movie: The Love Boat

8:00 (3) (3) Movie: The Love Boat

8:30 (3) (3) Movie: The Love Boat

9:00 (3) (3) Movie: The Love Boat

9:30 (3) (3) Movie: The Love Boat

10:00 (3) (3) Movie: The Love Boat

10:30 (3) (3) Movie: The Love Boat

11:00 (3) (3) Movie: The Love Boat

11:30 (3) (3) Movie: The Love Boat

12:00 (3) (3) Movie: The Love Boat

12:30 (3) (3) Movie: The Love Boat

1:00 (3) (3) Movie: The Love Boat

1:30 (3) (3) Movie: The Love Boat

2:00 (3) (3) Movie: The Love Boat

2:30 (3) (3) Movie: The Love Boat

3:00 (3) (3) Movie: The Love Boat

3:30 (3) (3) Movie: The Love Boat

4:00 (3) (3) Movie: The Love Boat

4:30 (3) (3) Movie: The Love Boat

5:00 (3) (3) Movie: The Love Boat

5:30 (3) (3) Movie: The Love Boat

6:00 (3) (3) Movie: The Love Boat

6:30 (3) (3) Movie: The Love Boat

7:00 (3) (3) Movie: The Love Boat

7:30 (3) (3) Movie: The Love Boat

8:00 (3) (3) Movie: The Love Boat

8:30 (3) (3) Movie: The Love Boat

9:00 (3) (3) Movie: The Love Boat

9:30 (3) (3) Movie: The Love Boat

10:00 (3) (3) Movie: The Love Boat

10:30 (3) (3) Movie: The Love Boat

11:00 (3) (3) Movie: The Love Boat

11:30 (3) (3) Movie: The Love Boat

12:00 (3) (3) Movie: The Love Boat

12:30 (3) (3) Movie: The Love Boat

1:00 (3) (3) Movie: The Love Boat

1:30 (3) (3) Movie: The Love Boat

2:00 (3) (3) Movie: The Love Boat

2:30 (3) (3) Movie: The Love Boat

3:00 (3) (3) Movie: The Love Boat

3:30 (3) (3) Movie: The Love Boat

4:00 (3) (3) Movie: The Love Boat

4:30 (3) (3) Movie: The Love Boat

5:00 (3) (3) Movie: The Love Boat

5:30 (3) (3) Movie: The Love Boat

6:00 (3) (3) Movie: The Love Boat

6:30 (3) (3) Movie: The Love Boat

7:00 (3) (3) Movie: The Love Boat

7:30 (3) (3) Movie: The Love Boat

8:00 (3) (3) Movie: The Love Boat

8:30 (3) (3) Movie: The Love Boat

9:00 (3) (3) Movie: The Love Boat

9:30 (3) (3) Movie: The Love Boat

10:00 (3) (3) Movie: The Love Boat

10:30 (3) (3) Movie: The Love Boat

11:00 (3) (3) Movie: The Love Boat

11:30 (3) (3) Movie: The Love Boat

12:00 (3) (3) Movie: The Love Boat

12:30 (3) (3) Movie: The Love Boat

1:00 (3) (3) Movie: The Love Boat

1:30 (3) (3) Movie: The Love Boat

2:00 (3) (3) Movie: The Love Boat

2:30 (3) (3) Movie: The Love Boat

3:00 (3) (3) Movie: The Love Boat

3:30 (3) (3) Movie: The Love Boat

4:00 (3) (3) Movie: The Love Boat

4:30 (3) (3) Movie: The Love Boat

5:00 (3) (3) Movie: The Love Boat

5:30 (3) (3) Movie: The Love Boat

6:00 (3) (3) Movie: The Love Boat

6:30 (3) (3) Movie: The Love Boat

7:00 (3) (3) Movie: The Love Boat

7:30 (3) (3) Movie: The Love Boat

8:00 (3) (3) Movie: The Love Boat

8:30 (3) (3) Movie: The Love Boat

9:00 (3) (3) Movie: The Love Boat

9:30 (3) (3) Movie: The Love Boat

10:00 (3) (3) Movie: The Love Boat

10:30 (3) (3) Movie: The Love Boat

11:00 (3) (3) Movie: The Love Boat

11:30 (3) (3) Movie: The Love Boat

Library News

By TONI LUTZ

LIVE ENTERTAINMENT! Saturday night, at 7 p.m., a live nativity play, "Born in Bethlehem," will be performed at the library. Christmas carols will be sung, the Christmas story will be told, and real animals will be a part of this unique setting.

There have been several entries for the Christmas ornament contest. The children will be making their ornaments this week during a storytime in order to have them ready to enter before the deadline, Dec. 16, 1986. There's plenty of time to get your ornament in too.

The youth of Iowa Park have thoroughly been enjoying the new computer at the library. We would like to see more adults joining them in exploring the exciting programs we have available for the public use. We have programs such as The Print Shop, The Newsroom, The Holiday Edition, Dazzle Draw, Hardball, Winter Games, and many more.

NEW CHILDREN'S BOOKS
Surprises by Hopkins, What Do Doozers Do? by Muntean, No Girls

Allowed by Berenstein, The Mole Family's Christmas by Hoban, I Was So Mad by Mayer, The Four Seasons by Thomson, Buffalo Woman by Goble, Jet Aircraft by Heatley, Huddles - The Wacky Rulebook by Havel, The Cat Ate My Gymsuit by Danzinger.

NEW ADULT BOOKS
Texas Rich by Michaels, Texas Heat by Michaels, Funny Money by Singer, Modern Prevention by Rosenfeld, Necessary Losses by Viorst, All About Tarantulas by Lund, After the Reunion by Jaffe, When Calls the Heart by Oke, When Breaks the Dawn by Oke, When Comes the Spring by Oke.

MEMORIALS
Donation from Rex & Judy Wells in memory of Lottie Lochridge.
Donation from Mrs. Bill Spruiell in memory of Lottie Lochridge.
Donation from Mr. & Mrs. Joe Montgomery and Mr. & Mrs. Otis Gay in memory of John L. Matthews.

Donation from Taylor George in memory of Nellie George.
Donation from Dr. & Mrs. J.C. Farmer in memory of Nellie George.
Donation from Margie & Warren McDonald in memory of Nellie George.
Donation from Ferne Corder in memory of Nellie George.
Donation from Mr. and Mrs. H.O. Lochridge in memory of Nellie George.
Donation from Mrs. Boyt Smith, Glenda Powell, Mary Simmons & Boyt Smith Jr. in memory of Nellie George.
Donation from Herschel & Helen Nipper in memory of Nellie George.

Municipal Court Records

Results of municipal court held here yesterday were:
Albert David Spartin, expired drivers license, \$63;
Daniel Everett Gilbreath, speeding, taking defensive driving course;
Gregory Neil Feltman, speeding, \$53;
Lori Jayne Clark, speeding, \$61;
Steven Lee Lane, expired drivers license, \$43;
Floyd Paul Swinburne, assault, \$100;
Terri Lynette Garner, public intoxication, \$49;
Ireneusz Eric Rybka, public intoxication, \$112.50.



JEANNIE SKIPWORTH AND MICHAEL LUNNEY Announce engagement

Mr. and Mrs. Jimmy Skipworth of Wichita Falls announce the engagement and approaching marriage of their daughter, Jeannie Carol, and Michael Anthony Lunney, son of Mr. and Mrs. Richard D. Lunney of Iowa Park.
Miss Skipworth was graduated from Wichita Falls High School. She is a student at Midwestern State Univ. and is employed at Dillard's. The groom-to-be was graduated from Iowa Park High School and MSU. He is presently a graduate student and is on the band staff at New Mexico State Univ. at Las Cruces.

The couple will exchange their vows Jan. 3, 1987 at Lamar Baptist Church in Wichita Falls.



Happy 16th Birthday, Cody

Love, Mom & Dad

Balloon Creation
Grand Opening - 10% OFF
Bouquets \$15 and up.
(Register for free bouquet)
592-2335
Many decorations

Just Because
The beautiful clothes and crafts we advertised last week are here this week, we will be open 9:30 a.m. to 5:30 p.m. Monday through Saturday until Christmas. (We have to stay with it and pay for the boogers.)
Come back in for coffee and a browse. You will not believe our low, low prices for such quality merchandise.
Mary and Estaleen
Just Because
1803 Johnson Rd. 592-5496
1/2 mi. north of Expressway

First Baptist expecting visiting preacher Sunday

Dr. Derrell Monday of Arlington Hillsboro and summer youth director at the Lamar Baptist Church in Wichita Falls.

His other work experiences include associational youth director of South Plains Association, Associational VBS director of Hill Association, vice-moderator two years and moderator two years of the Cisco Association. He was Ministerial Alliance officer at Eastland four years, where he started a volunteer chaplain program in the hospital.

Dr. Monday was church training director of the West Central Association as well as evangelism director one year. He was a member of the Ministerial Alliance at Rotan two years, on the executive board of Possum Kingdom Resort Ministries three years, and on the executive board of Big Country Baptist Assembly three years, serving as president and chairman of the planning and program committee two years. He has also served on the executive board of Double Mountain Area two years.

Dr. Monday was graduated from Floyada High School. He received a B.S. degree from Hardin-Simmons Univ. at Abilene, a master of divinity degree from Southwestern Baptist Seminary at Fort Worth, and a doctor of ministry from Southwestern Baptist Seminary at Fort Worth, and a doctor of ministry from Southwestern Baptist Seminary.

He is presently serving as enlistment coordinator of the International Crusades. He has pastored the First Baptist Church at Rotan and Bethel Baptist Church at Eastland. He had earlier served as associate pastor of the First Baptist Church at

Excess Hair Gone Forever!
It Is Permanent & Inexpensive
The science of hair removal is constantly making new discoveries to bring greater comfort and satisfaction to its customers. Fore most is today's most advanced methods of hair removal is electrolysis. Closed Friday & Saturday.
Gunter Electrolysis Studio
592-2883
Member of the Association of Texas Electrologists

Happy Birthday, Donna Lyons
Guess Who?

#44 was 18 Dec. 8th
We love you, Mom, Grandma & Pop

Guess Who's 15 Happy Birthday
Love, Mom, Dad, Lisa and Little Perry

Andy's Bird & Pet Supplies
2108 Kemp Blvd. Wichita Falls 767-4882
...from Parakeets to Parrots, and Birds in Between.
*TROPICAL FISH *AQUARIUMS *FISH SUPPLIES *BOOKS
Store Hours: Mon.-Sat. 10-6 p.m. Sun. 1-5 p.m.
*EXOTIC BIRDS *A COMPLETE LINE OF BIRD SUPPLIES
Save on our ALWAYS low prices.

Santa's Helpers Children's Workshop
Your child will enjoy hours of fun while you do your Christmas Shopping
COOKIE DECORATING LETTERS TO SANTA
CHRISTMAS ORNAMENTS CHRISTMAS VIDEOS
STOCKINGS PAINTING
GIFT FOR MOM & DAD CANDY CANE WALK
AND MUCH MORE CHRISTMAS FUN!
Nov. 29th, Dec. 6th, and Dec. 13th (Saturdays)
NURSERY PROVIDED LUNCH PROVIDED
(0-2) (11:30)
Ages 3 - 8 \$1.50 per hour 10' till 4'
For more information call 592-4094 or church office 592-2776
Lakeview Church of God
N. Victoria & Expressway Iowa Park

The Hawk Shop
presents
Iowa Park Hawk Sweatshirts silkscreened with a new "1986 Regional Champions" Hawk logo.
available beginning Fri. Dec. 12 at
Flowers by Reba
309 N. Wall
*Adult sizes only

Unique Christmas Gifts for the home and loved ones
Fostoria Beautiful Men's Stemware Crystal Gifts
Teachers' Wee Win Gifts Toys with Cassettes
Home Place Gifts & Crafts
Come See Us & Browse
410 W. Park 592-5671
Hours: Open 9:30-5:30 p.m. Tuesday 9:30-8 p.m.

New Arrivals - Palmetto's sets, sweaters and sweat shirts.
PALMETTO'S
Sweater - \$17.98
Fashion Outlet
Corner of W. Park and N. Yosemite
HOURS: 10-6, Monday - Saturday

11:30 AM - 1:00 PM: The Great Escape
 1:00 PM - 2:00 PM: The Great Escape
 2:00 PM - 3:00 PM: The Great Escape
 3:00 PM - 4:00 PM: The Great Escape
 4:00 PM - 5:00 PM: The Great Escape
 5:00 PM - 6:00 PM: The Great Escape
 6:00 PM - 7:00 PM: The Great Escape
 7:00 PM - 8:00 PM: The Great Escape
 8:00 PM - 9:00 PM: The Great Escape
 9:00 PM - 10:00 PM: The Great Escape
 10:00 PM - 11:00 PM: The Great Escape
 11:00 PM - 12:00 AM: The Great Escape
 12:00 AM - 1:00 AM: The Great Escape
 1:00 AM - 2:00 AM: The Great Escape
 2:00 AM - 3:00 AM: The Great Escape
 3:00 AM - 4:00 AM: The Great Escape
 4:00 AM - 5:00 AM: The Great Escape
 5:00 AM - 6:00 AM: The Great Escape
 6:00 AM - 7:00 AM: The Great Escape
 7:00 AM - 8:00 AM: The Great Escape
 8:00 AM - 9:00 AM: The Great Escape
 9:00 AM - 10:00 AM: The Great Escape
 10:00 AM - 11:00 AM: The Great Escape
 11:00 AM - 12:00 PM: The Great Escape
 12:00 PM - 1:00 PM: The Great Escape
 1:00 PM - 2:00 PM: The Great Escape
 2:00 PM - 3:00 PM: The Great Escape
 3:00 PM - 4:00 PM: The Great Escape
 4:00 PM - 5:00 PM: The Great Escape
 5:00 PM - 6:00 PM: The Great Escape
 6:00 PM - 7:00 PM: The Great Escape
 7:00 PM - 8:00 PM: The Great Escape
 8:00 PM - 9:00 PM: The Great Escape
 9:00 PM - 10:00 PM: The Great Escape
 10:00 PM - 11:00 PM: The Great Escape
 11:00 PM - 12:00 AM: The Great Escape
 12:00 AM - 1:00 AM: The Great Escape
 1:00 AM - 2:00 AM: The Great Escape
 2:00 AM - 3:00 AM: The Great Escape
 3:00 AM - 4:00 AM: The Great Escape
 4:00 AM - 5:00 AM: The Great Escape
 5:00 AM - 6:00 AM: The Great Escape
 6:00 AM - 7:00 AM: The Great Escape
 7:00 AM - 8:00 AM: The Great Escape
 8:00 AM - 9:00 AM: The Great Escape
 9:00 AM - 10:00 AM: The Great Escape
 10:00 AM - 11:00 AM: The Great Escape
 11:00 AM - 12:00 PM: The Great Escape
 12:00 PM - 1:00 PM: The Great Escape
 1:00 PM - 2:00 PM: The Great Escape
 2:00 PM - 3:00 PM: The Great Escape
 3:00 PM - 4:00 PM: The Great Escape
 4:00 PM - 5:00 PM: The Great Escape
 5:00 PM - 6:00 PM: The Great Escape
 6:00 PM - 7:00 PM: The Great Escape
 7:00 PM - 8:00 PM: The Great Escape
 8:00 PM - 9:00 PM: The Great Escape
 9:00 PM - 10:00 PM: The Great Escape
 10:00 PM - 11:00 PM: The Great Escape
 11:00 PM - 12:00 AM: The Great Escape
 12:00 AM - 1:00 AM: The Great Escape
 1:00 AM - 2:00 AM: The Great Escape
 2:00 AM - 3:00 AM: The Great Escape
 3:00 AM - 4:00 AM: The Great Escape
 4:00 AM - 5:00 AM: The Great Escape
 5:00 AM - 6:00 AM: The Great Escape
 6:00 AM - 7:00 AM: The Great Escape
 7:00 AM - 8:00 AM: The Great Escape
 8:00 AM - 9:00 AM: The Great Escape
 9:00 AM - 10:00 PM: The Great Escape
 10:00 PM - 11:00 PM: The Great Escape
 11:00 PM - 12:00 AM: The Great Escape
 12:00 AM - 1:00 AM: The Great Escape
 1:00 AM - 2:00 AM: The Great Escape
 2:00 AM - 3:00 AM: The Great Escape
 3:00 AM - 4:00 AM: The Great Escape
 4:00 AM - 5:00 AM: The Great Escape
 5:00 AM - 6:00 AM: The Great Escape
 6:00 AM - 7:00 AM: The Great Escape
 7:00 AM - 8:00 AM: The Great Escape
 8:00 AM - 9:00 AM: The Great Escape
 9:00 AM - 10:00 PM: The Great Escape
 10:00 PM - 11:00 PM: The Great Escape
 11:00 PM - 12:00 AM: The Great Escape
 12:00 AM - 1:00 AM: The Great Escape
 1:00 AM - 2:00 AM: The Great Escape
 2:00 AM - 3:00 AM: The Great Escape
 3:00 AM - 4:00 AM: The Great Escape
 4:00 AM - 5:00 AM: The Great Escape
 5:00 AM - 6:00 AM: The Great Escape
 6:00 AM - 7:00 AM: The Great Escape
 7:00 AM - 8:00 AM: The Great Escape
 8:00 AM - 9:00 AM: The Great Escape
 9:00 AM - 10:00 PM: The Great Escape
 10:00 PM - 11:00 PM: The Great Escape
 11:00 PM - 12:00 AM: The Great Escape
 12:00 AM - 1:00 AM: The Great Escape
 1:00 AM - 2:00 AM: The Great Escape
 2:00 AM - 3:00 AM: The Great Escape
 3:00 AM - 4:00 AM: The Great Escape
 4:00 AM - 5:00 AM: The Great Escape
 5:00 AM - 6:00 AM: The Great Escape
 6:00 AM - 7:00 AM: The Great Escape
 7:00 AM - 8:00 AM: The Great Escape
 8:00 AM - 9:00 AM: The Great Escape
 9:00 AM - 10:00 PM: The Great Escape
 10:00 PM - 11:00 PM: The Great Escape
 11:00 PM - 12:00 AM: The Great Escape
 12:00 AM - 1:00 AM: The Great Escape
 1:00 AM - 2:00 AM: The Great Escape
 2:00 AM - 3:00 AM: The Great Escape
 3:00 AM - 4:00 AM: The Great Escape
 4:00 AM - 5:00 AM: The Great Escape
 5:00 AM - 6:00 AM: The Great Escape
 6:00 AM - 7:00 AM: The Great Escape
 7:00 AM - 8:00 AM: The Great Escape
 8:00 AM - 9:00 AM: The Great Escape
 9:00 AM - 10:00 PM: The Great Escape
 10:00 PM - 11:00 PM: The Great Escape
 11:00 PM - 12:00 AM: The Great Escape
 12:00 AM - 1:00 AM: The Great Escape
 1:00 AM - 2:00 AM: The Great Escape
 2:00 AM - 3:00 AM: The Great Escape
 3:00 AM - 4:00 AM: The Great Escape
 4:00 AM - 5:00 AM: The Great Escape
 5:00 AM - 6:00 AM: The Great Escape
 6:00 AM - 7:00 AM: The Great Escape
 7:00 AM - 8:00 AM: The Great Escape
 8:00 AM - 9:00 AM: The Great Escape
 9:00 AM - 10:00 PM: The Great Escape
 10:00 PM - 11:00 PM: The Great Escape
 11:00 PM - 12:00 AM: The Great Escape
 12:00 AM - 1:00 AM: The Great Escape
 1:00 AM - 2:00 AM: The Great Escape
 2:00 AM - 3:00 AM: The Great Escape
 3:00 AM - 4:00 AM: The Great Escape
 4:00 AM - 5:00 AM: The Great Escape
 5:00 AM - 6:00 AM: The Great Escape
 6:00 AM - 7:00 AM: The Great Escape
 7:00 AM - 8:00 AM: The Great Escape
 8:00 AM - 9:00 AM: The Great Escape
 9:00 AM - 10:00 PM: The Great Escape
 10:00 PM - 11:00 PM: The Great Escape
 11:00 PM - 12:00 AM: The Great Escape
 12:00 AM - 1:00 AM: The Great Escape
 1:00 AM - 2:00 AM: The Great Escape
 2:00 AM - 3:00 AM: The Great Escape
 3:00 AM - 4:00 AM: The Great Escape
 4:00 AM - 5:00 AM: The Great Escape
 5:00 AM - 6:00 AM: The Great Escape
 6:00 AM - 7:00 AM: The Great Escape
 7:00 AM - 8:00 AM: The Great Escape
 8:00 AM - 9:00 AM: The Great Escape
 9:00 AM - 10:00 PM: The Great Escape
 10:00 PM - 11:00 PM: The Great Escape
 11:00 PM - 12:00 AM: The Great Escape
 12:00 AM - 1:00 AM: The Great Escape
 1:00 AM - 2:00 AM: The Great Escape
 2:00 AM - 3:00 AM: The Great Escape
 3:00 AM - 4:00 AM: The Great Escape
 4:00 AM - 5:00 AM: The Great Escape
 5:00 AM - 6:00 AM: The Great Escape
 6:00 AM - 7:00 AM: The Great Escape
 7:00 AM - 8:00 AM: The Great Escape
 8:00 AM - 9:00 AM: The Great Escape
 9:00 AM - 10:00 PM: The Great Escape
 10:00 PM - 11:00 PM: The Great Escape
 11:00 PM - 12:00 AM: The Great Escape
 12:00 AM - 1:00 AM: The Great Escape
 1:00 AM - 2:00 AM: The Great Escape
 2:00 AM - 3:00 AM: The Great Escape
 3:00 AM - 4:00 AM: The Great Escape
 4:00 AM - 5:00 AM: The Great Escape
 5:00 AM - 6:00 AM: The Great Escape
 6:00 AM - 7:00 AM: The Great Escape
 7:00 AM - 8:00 AM: The Great Escape
 8:00 AM - 9:00 AM: The Great Escape
 9:00 AM - 10:00 PM: The Great Escape
 10:00 PM - 11:00 PM: The Great Escape
 11:00 PM - 12:00 AM: The Great Escape
 12:00 AM - 1:00 AM: The Great Escape
 1:00 AM - 2:00 AM: The Great Escape
 2:00 AM - 3:00 AM: The Great Escape
 3:00 AM - 4:00 AM: The Great Escape
 4:00 AM - 5:00 AM: The Great Escape
 5:00 AM - 6:00 AM: The Great Escape
 6:00 AM - 7:00 AM: The Great Escape
 7:00 AM - 8:00 AM: The Great Escape
 8:00 AM - 9:00 AM: The Great Escape
 9:00 AM - 10:00 PM: The Great Escape
 10:00 PM - 11:00 PM: The Great Escape
 11:00 PM - 12:00 AM: The Great Escape
 12:00 AM - 1:00 AM: The Great Escape
 1:00 AM - 2:00 AM: The Great Escape
 2:00 AM - 3:00 AM: The Great Escape
 3:00 AM - 4:00 AM: The Great Escape
 4:00 AM - 5:00 AM: The Great Escape
 5:00 AM - 6:00 AM: The Great Escape
 6:00 AM - 7:00 AM: The Great Escape
 7:00 AM - 8:00 AM: The Great Escape
 8:00 AM - 9:00 AM: The Great Escape
 9:00 AM - 10:00 PM: The Great Escape
 10:00 PM - 11:00 PM: The Great Escape
 11:00 PM - 12:00 AM: The Great Escape
 12:00 AM - 1:00 AM: The Great Escape
 1:00 AM - 2:00 AM: The Great Escape
 2:00 AM - 3:00 AM: The Great Escape
 3:00 AM - 4:00 AM: The Great Escape
 4:00 AM - 5:00 AM: The Great Escape
 5:00 AM - 6:00 AM: The Great Escape
 6:00 AM - 7:00 AM: The Great Escape
 7:00 AM - 8:00 AM: The Great Escape
 8:00 AM - 9:00 AM: The Great Escape
 9:00 AM - 10:00 PM: The Great Escape
 10:00 PM - 11:00 PM: The Great Escape
 11:00 PM - 12:00 AM: The Great Escape
 12:00 AM - 1:00 AM: The Great Escape
 1:00 AM - 2:00 AM: The Great Escape
 2:00 AM - 3:00 AM: The Great Escape
 3:00 AM - 4:00 AM: The Great Escape
 4:00 AM - 5:00 AM: The Great Escape
 5:00 AM - 6:00 AM: The Great Escape
 6:00 AM - 7:00 AM: The Great Escape
 7:00 AM - 8:00 AM: The Great Escape
 8:00 AM - 9:00 AM: The Great Escape
 9:00 AM - 10:00 PM: The Great Escape
 10:00 PM - 11:00 PM: The Great Escape
 11:00 PM - 12:00 AM: The Great Escape
 12:00 AM - 1:00 AM: The Great Escape
 1:00 AM - 2:00 AM: The Great Escape
 2:00 AM - 3:00 AM: The Great Escape
 3:00 AM - 4:00 AM: The Great Escape
 4:00 AM - 5:00 AM: The Great Escape
 5:00 AM - 6:00 AM: The Great Escape
 6:00 AM - 7:00 AM: The Great Escape
 7:00 AM - 8:00 AM: The Great Escape
 8:00 AM - 9:00 AM: The Great Escape
 9:00 AM - 10:00 PM: The Great Escape
 10:00 PM - 11:00 PM: The Great Escape
 11:00 PM - 12:00 AM: The Great Escape
 12:00 AM - 1:00 AM: The Great Escape
 1:00 AM - 2:00 AM: The Great Escape
 2:00 AM - 3:00 AM: The Great Escape
 3:00 AM - 4:00 AM: The Great Escape
 4:00 AM - 5:00 AM: The Great Escape
 5:00 AM - 6:00 AM: The Great Escape
 6:00 AM - 7:00 AM: The Great Escape
 7:00 AM - 8:00 AM: The Great Escape
 8:00 AM - 9:00 AM: The Great Escape
 9:00 AM - 10:00 PM: The Great Escape
 10:00 PM - 11:00 PM: The Great Escape
 11:00 PM - 12:00 AM: The Great Escape
 12:00 AM - 1:00 AM: The Great Escape
 1:00 AM - 2:00 AM: The Great Escape
 2:00 AM - 3:00 AM: The Great Escape
 3:00 AM - 4:00 AM: The Great Escape
 4:00 AM - 5:00 AM: The Great Escape
 5:00 AM - 6:00 AM: The Great Escape
 6:00 AM - 7:00 AM: The Great Escape
 7:00 AM - 8:00 AM: The Great Escape
 8:00 AM - 9:00 AM: The Great Escape
 9:00 AM - 10:00 PM: The Great Escape
 10:00 PM - 11:00 PM: The Great Escape
 11:00 PM - 12:00 AM: The Great Escape
 12:00 AM - 1:00 AM: The Great Escape
 1:00 AM - 2:00 AM: The Great Escape
 2:00 AM - 3:00 AM: The Great Escape
 3:00 AM - 4:00 AM: The Great Escape
 4:00 AM - 5:00 AM: The Great Escape
 5:00 AM - 6:00 AM: The Great Escape
 6:00 AM - 7:00 AM: The Great Escape
 7:00 AM - 8:00 AM: The Great Escape
 8:00 AM - 9:00 AM: The Great Escape
 9:00 AM - 10:00 PM: The Great Escape
 10:00 PM - 11:00 PM: The Great Escape
 11:00 PM - 12:00 AM: The Great Escape
 12:00 AM - 1:00 AM: The Great Escape
 1:00 AM - 2:00 AM: The Great Escape
 2:00 AM - 3:00 AM: The Great Escape
 3:00 AM - 4:00 AM: The Great Escape
 4:00 AM - 5:00 AM: The Great Escape
 5:00 AM - 6:00 AM: The Great Escape
 6:00 AM - 7:00 AM: The Great Escape
 7:00 AM - 8:00 AM: The Great Escape
 8:00 AM - 9:00 AM: The Great Escape
 9:00 AM - 10:00 PM: The Great Escape
 10:00 PM - 11:00 PM: The Great Escape
 11:00 PM - 12:00 AM: The Great Escape
 12:00 AM - 1:00 AM: The Great Escape
 1:00 AM - 2:00 AM: The Great Escape
 2:00 AM - 3:00 AM: The Great Escape
 3:00 AM - 4:00 AM: The Great Escape
 4:00 AM - 5:00 AM: The Great Escape
 5:00 AM - 6:00 AM: The Great Escape
 6:00 AM - 7:00 AM: The Great Escape
 7:00 AM - 8:00 AM: The Great Escape
 8:00 AM - 9:00 AM: The Great Escape
 9:00 AM - 10:00 PM: The Great Escape
 10:00 PM - 11:00 PM: The Great Escape
 11:00 PM - 12:00 AM: The Great Escape
 12:00 AM - 1:00 AM: The Great Escape
 1:00 AM - 2:00 AM: The Great Escape
 2:00 AM - 3:00 AM: The Great Escape
 3:00 AM - 4:00 AM: The Great Escape
 4:00 AM - 5:00 AM: The Great Escape
 5:00 AM - 6:00 AM: The Great Escape
 6:00 AM - 7:00 AM: The Great Escape
 7:00 AM - 8:00 AM: The Great Escape
 8:00 AM - 9:00 AM: The Great Escape
 9:00 AM - 10:00 PM: The Great Escape
 10:00 PM - 11:00 PM: The Great Escape
 11:00 PM - 12:00 AM: The Great Escape
 12:00 AM - 1:00 AM: The Great Escape
 1:00 AM - 2:00 AM: The Great Escape
 2:00 AM - 3:00 AM: The Great Escape
 3:00 AM - 4:00 AM: The Great Escape
 4:00 AM - 5:00 AM: The Great Escape
 5:00 AM - 6:00 AM: The Great Escape
 6:00 AM - 7:00 AM: The Great Escape
 7:00 AM - 8:00 AM: The Great Escape
 8:00 AM - 9:00 AM: The Great Escape
 9:00 AM - 10:00 PM: The Great Escape
 10:00 PM - 11:00 PM: The Great Escape
 11:00 PM - 12:00 AM: The Great Escape
 12:00 AM - 1:00 AM: The Great Escape
 1:00 AM - 2:00 AM: The Great Escape
 2:00 AM - 3:00 AM: The Great Escape
 3:00 AM - 4:00 AM: The Great Escape
 4:00 AM - 5:00 AM: The Great Escape
 5:00 AM - 6:00 AM: The Great Escape
 6:00 AM - 7:00 AM: The Great Escape
 7:00 AM - 8:00 AM: The Great Escape
 8:00 AM - 9:00 AM: The Great Escape
 9:00 AM - 10:00 PM: The Great Escape
 10:00 PM - 11:00 PM: The Great Escape
 11:00 PM - 12:00 AM: The Great Escape
 12:00 AM - 1:00 AM: The Great Escape
 1:00 AM - 2:00 AM: The Great Escape
 2:00 AM - 3:00 AM: The Great Escape
 3:00 AM - 4:00 AM: The Great Escape
 4:00 AM - 5:00 AM: The Great Escape
 5:00 AM - 6:00 AM: The Great Escape
 6:00 AM - 7:00 AM: The Great Escape
 7:00 AM - 8:00 AM: The Great Escape
 8:00 AM - 9:00 AM: The Great Escape
 9:00 AM - 10:00 PM: The Great Escape
 10:00 PM - 11:00 PM: The Great Escape
 11:00 PM - 12:00 AM: The Great Escape
 12:00 AM - 1:00 AM: The Great Escape
 1:00 AM - 2:00 AM: The Great Escape
 2:00 AM - 3:00 AM: The Great Escape
 3:00 AM - 4:00 AM: The Great Escape
 4:00 AM - 5:00 AM: The Great Escape
 5:00 AM - 6:00 AM: The Great Escape
 6:00 AM - 7:00 AM: The Great Escape
 7:00 AM - 8:00 AM: The Great Escape
 8:00 AM - 9:00 AM: The Great Escape
 9:00 AM - 10:00 PM: The Great Escape
 10:00 PM - 11:00 PM: The Great Escape
 11:00 PM - 12:00 AM: The Great Escape
 12:00 AM - 1:00 AM: The Great Escape
 1:00 AM - 2:00 AM: The Great Escape
 2:00 AM - 3:00 AM: The Great Escape
 3:00 AM - 4:00 AM: The Great Escape
 4:00 AM - 5:00 AM: The Great Escape
 5:00 AM - 6:00 AM: The Great Escape
 6:00 AM - 7:00 AM: The Great Escape
 7:00 AM - 8:00 AM: The Great Escape
 8:00 AM - 9:00 AM: The Great Escape
 9:00 AM - 10:00 PM: The Great Escape
 10:00 PM - 11:00 PM: The Great Escape
 11:00 PM - 12:00 AM: The Great Escape
 12:00 AM - 1:00 AM: The Great Escape
 1:00 AM - 2:00 AM: The Great Escape
 2:00 AM - 3:00 AM: The Great Escape
 3:00 AM - 4:00 AM: The Great Escape
 4:00 AM - 5:00 AM: The Great Escape
 5:00 AM - 6:00 AM: The Great Escape
 6:00 AM - 7:00 AM: The Great Escape
 7:00 AM - 8:00 AM: The Great Escape
 8:00 AM - 9:00 AM: The Great Escape
 9:00 AM - 10:00 PM: The Great Escape
 10:00 PM - 11:00 PM: The Great Escape
 11:00 PM - 12:00 AM: The Great Escape
 12:00 AM - 1:00 AM: The Great Escape
 1:00 AM - 2:00 AM: The Great Escape
 2:00 AM - 3:00 AM: The Great Escape
 3:00 AM - 4:00 AM: The Great Escape
 4:00 AM - 5:00 AM: The Great Escape
 5:00 AM - 6:00 AM: The Great Escape
 6:00 AM - 7:00 AM: The Great Escape
 7:00 AM - 8:00 AM: The Great Escape
 8:00 AM - 9:00 AM: The Great Escape
 9:00 AM - 10:00 PM: The Great Escape
 10:00 PM - 11:00 PM: The Great Escape
 11:00 PM - 12:00 AM: The Great Escape
 12:00 AM - 1:00 AM: The Great Escape
 1:00 AM - 2:00 AM: The Great Escape
 2:00 AM - 3:00 AM: The Great Escape
 3:00 AM - 4:00 AM: The Great Escape
 4:00 AM - 5:00 AM: The Great Escape
 5:00 AM - 6:00 AM: The Great Escape
 6:00 AM - 7:00 AM: The Great Escape
 7:00 AM - 8:00 AM: The Great Escape
 8:00 AM - 9:00 AM: The Great Escape
 9:00 AM - 10:00 PM: The Great Escape
 10:00 PM -

Nine Hawks first team All-District

Senior Robert Adams topped a list of nine Iowa Park Hawks who were named to the first team All-District list, selected by Dist. 6-AAA coaches.

Adams was not only a first-team selection for the third year, but this year he was the coaches' unanimous choice for Defensive Player of the Year.

Four Hawks were named to the first team offensive platoon and five to the first team defensive platoon.

In addition, four more were on the second team selection, and four were named honorable mention.

Of 11 players who were unanimous choices by the coaches, four were from Iowa Park.

First offensive team choices of the coaches included Danny Forman,

running back; Brad Huff, wide receiver; and Jimmy Kirkhart and Gregg Young, linemen.

First defensive team members from Iowa Park were Adams; Steve Allen, linebacker; David Meissner, back; Wayne Oltman, end, and Charlie Stamm, line.

Named to the second offense team were Scott Weaver, running back, and Clint Loggins, center. And second team defensive players were Jeff Huff, back, and John Wood, tackle.

Kirkhart, Young, Jeff Huff and Wood are all juniors and will be back next season. The rest are seniors.

Players receiving honorable mention were Scott Davis, Greg Feltman, Eric Whitman and Dennis Phillips. All are seniors.

FIRST TEAM DEFENSE

Player of the Year - Robert Adams (unan), Iowa Park, Sr.
 Back - Lance Aldridge (unan), Decatur, Sr.
 Back - Bud Jackson, Bridgeport, Sr.
 Back - Rich Stephens, Breckenridge, Jr.
 Back - David Meissner, Iowa Park, Sr.
 Linebacker - Steve Allen (unan), Iowa Park, Sr.
 Linebacker - Russ Grissom (unan), Breckenridge, Jr.
 Linebacker - Jeff Franklin, Bridgeport, Jr.
 End - Eric McIntush (unan), Breckenridge, Sr.
 End - Wayne Oltman (unan), Iowa Park, Sr.
 Lineman - James Jackson (unan), Breckenridge, Jr.
 Lineman - Charlie Stamm (unan), Iowa Park, Sr.
 Lineman - Hoss Hudson, Decatur, Soph.
 Punter - Lance Aldridge (unan), Decatur, Sr.

SECOND TEAM DEFENSE

Back - Eddie Clay, Jacksboro, Jr.
 Back - Rob Hagler, Breckenridge, Sr.
 Back - Jason Scarbrough, Jacksboro, Sr.
 Back - Jeff Huff, Iowa Park, Jr.
 Linebacker - Paule Ball, Jacksboro, Jr.
 Linebacker - Bobby Mercer, Bowie, Jr.
 Linebacker - Derrick Boyd, Decatur, Sr.
 End - David Carter, Bowie, Jr.
 End - Paul Perkins, Decatur, Sr.
 Lineman - Kenny Taylor, Breckenridge, Jr.
 Lineman - Coy Harris, Decatur, Jr.
 Lineman - John Wood, Iowa Park, Jr.
 Punter - Grant Gibson, Breckenridge, Sr.

FIRST TEAM OFFENSE

Player of the Year - Grant Gibson (unan), Breckenridge, Sr.
 Quarterback - Jeff Franklin, Bridgeport, Jr.
 Running Back - Lance Aldridge, Decatur, Sr.
 Running Back - Russ Grissom, Breckenridge, Jr.
 Running Back - Danny Forman, Iowa Park, Sr.
 Running Back - Jackie Cooper, Breckenridge, Jr.
 Running Back - Cason Rangel, Bridgeport, Jr.
 Wide Receiver - Brad Huff, Iowa Park, Sr.
 Wide Receiver - Rich Stevens, Breckenridge, Jr.
 Wide Receiver - Rob Hagler, Breckenridge, Sr.
 Tight End - Eric McIntush (unan), Breckenridge, Sr.
 Center - Chris Hart, Breckenridge, Sr.
 Lineman - Matt Pruitt, Breckenridge, Sr.
 Lineman - Ronny Burchard, Decatur, Sr.
 Lineman - Jimmy Kirkhart, Iowa Park, Jr.
 Lineman - Gregg Young, Iowa Park, Jr.
 Kicker - Roger Miller, Decatur, Soph.

SECOND TEAM OFFENSE

Quarterback - Jason Scarbrough, Jacksboro, Sr.
 Running Back - Scott Weaver, Iowa Park, Sr.
 Running Back - Craig Byork, Bowie, Sr.
 Running Back - Bud Jackson, Bridgeport, Sr.
 Wide Receiver - Wesley Cannon, Decatur, Sr.
 Tight End - Chris Hart, Breckenridge, Sr.
 Center - Scott Oates, Decatur, Jr.
 Center - Clint Loggins, Iowa Park, Sr.
 Lineman - Cody Grissom, Breckenridge, Sr.
 Lineman - Lennie Towitt, Bridgeport, Sr.
 Lineman - Brett Thomas, Jacksboro, Sr.
 Lineman - Stephen Wade, Bowie, Sr.
 Lineman - Marty Mooney, Decatur, Sr.
 Kicker - Tony Robinson, Jacksboro, Sr.



Mickey Mouse has arrived!!!!



LORUS QUARTZ
 MORE WATCH THAN HUMANLY POSSIBLE.

Come see our selection of Mickey Mouse Watches and Clocks. They make great gifts to treasure for a lifetime.

Louis' Jewelry
 408 W. Park 592-5942

Tis the season for giving, and all through our town little Children are writing their Christmas lists down • Hoping Santa will bring them the Toys of their dreams ~ talking dollies, toy soldiers, red wagons that gleam • But some of our Children will not know the joy of waking on Christmas to even one shiny Toy • Please remember these Children and answer their prayer. Send a gift that will show them you really do care • The delight on their faces will make you believe ~ It is better to give than not to receive.

Toys For Lots
 A CHRISTMAS TRADITION

Sponsored By:
TV Cable of Iowa Park
 100 Williams Drive
 Burkburnett, Texas 76354
 696-0664

Your donation of a new, unwrapped toy will be given to a youngster living in your community. Bring your toy to TV Cable of Iowa Park by December 19th.

In addition, when you bring in your donation, TV Cable of Iowa Park will provide you with free installation for basic cable service or the addition of a pay channel.

A Division of Tele-Communications, Inc.

This Christmas Give Major-Brand Cologne
 Choose from these and more!

 For HER Nina Ricci Vanderbilt Calvin Klein Primo Chloe' Bill Blass	 For HIM Pierre Cardin Quorum Halston Gray Flannel Adolpo Musk
--	---

WAL-MART Pharmacy
 500 W. Highway 592-4157
 9 a.m. - 7 p.m. Monday - Friday
 9 a.m. - 6 p.m. Saturdays



Iowa Park Hawks
1986
Regional Champions

Congratulations - and Thanks!
 ...for bringing football back to Iowa Park!
HAWK BOOSTER CLUB

SEASON'S SAVINGS

Times WATCHES
25% off

Amity BILLFOLDS
25% off

American GREETING CARDS \$2⁹⁹
 20 Cards in box with 21 envelopes from

For Christmas Wrapping BAG OF BOWS 19¢
 25 bows

GIFTWRAP ENSEMBLE \$3⁹⁷
 Features 2 Rolls Giftwrap 40 sq. ft.
 2 Ribbons 60 ft., 7 Bows, 10 Gift Folders

FREE GIFT WRAPPING OF PURCHASES
Settle Drug

Joe Hughes - Pharmacist
 120 W. Park 592-4191

We give S&H Green Stamps

FREE Delivery of Prescriptions

Medicare BCBS Medicaid

Baugh had high expectations



"I had high expectations for this bunch, but for a while I didn't think they were going to do it," Coach

David Baugh commented this week while reflecting on Iowa Park's most successful football season since

1970. "I think they played about as well as we could expect them to play."

And play well they did. The Hawks finished the season with a record of 10-3-1, but more importantly, they made it all the way to the quarterfinals of the state playoffs, and were among the final eight Class AAA teams in Texas.

"I was pleased with how we played in the playoffs," Baugh commented.

Among those playoff contests was a game Baugh considered as the team's highlight of the season -- the victory over Ballinger.

Iowa Park beat Ballinger 27-12, and it was Ballinger which knocked the Hawks out of the playoffs last season, 21-14.

After dumping Ballinger in the Bi-District contest, the Hawks then shut out a highly-rated Robinson, 24-0, and then humbled tough Kermit 36-14 for the Regional title.

The highlight of the regular season was the Hawks' 5-0 win over Class AAAA Vernon, a club that also saw state playoff action.

"It's always an accomplishment to beat them (the Lions). I have a lot of respect for their coaches, players and program," Baugh said of Vernon.

The Head Hawk's biggest disappointment of the season was not the loss Saturday to Lampasas, but rather the loss to Dist. 6-AAA champion Breckenridge (20-6).

"Overall, we played good defense

all season, but our offense jelled after the Breckenridge game," he said.

While the Mean Green mentor looks forward to next year, with a host of experienced players returning, there's no question he'll miss his two leading yardage gainers and three-time all-district defensive performer.

Gone by way of graduation after this year is team leader and outstanding player Robert Adams. Besides his blocking on offense, Adams has been named by district coaches to the first team All-District unit as noseguard all of his three years on the varsity.

Gone also will be Scott Weaver and Danny Forman from the backfield.

Weaver has gained 1,935 total yards offense his junior and senior years, 1,540 rushing a 395 on pass catches.

And Forman, who finished this year with 1,384 yards rushing, winds up his varsity career with 1,814 total yards offense.

BASKETBALL

Hawks

Coaches usually like to have at least three weeks practice with their teams before they go into action.

But Hawk basketball coach Earnie Reusch had only three workouts with his club, which is to see its first action this morning in the Holiday tournament.

All but three of those Reusch has on his varsity were members of the football team that extended its season until Saturday in the state playoffs. The first regular-season game had been scheduled Nov. 21.

Iowa Park takes on Megargel at 10 a.m. in the first game of the tournament. Other teams include Midway, Seymour, Notre Dame, Electra, Windthorst and Holliday.

Loser of this morning's game will meet the Midway-Seymour loser at 6 this evening, and winners will play at 9.

Championship game will be at 8:30 p.m. Saturday; third place at 4 p.m. and consolation at 2:30.

Steve Allen is the only regular

starter Reusch has back from last year's club, but four others were on the varsity and saw a lot of action.

They are Scott Davis, 5-9; Brad Huff, 6-0; Kyle Long, 6-3, and Scott Weaver, 6-0. Allen stands 6-2.

Weaver, who has been hampered all fall by a leg injury he sustained last summer, will not begin working out for an undetermined period, however.

But Reusch got some unexpected help in both height and experience during the fall semester when Sean Robinson, a 6-3 senior, moved here from Moore, Okla.

The transfer has played outside but Reusch said he plans to use him at the post position.

Five juniors finish out the roster. They are 5-10 Bill Chandler, 5-10 Marc Johnson, 5-11 Jeff Huff, 5-11 Toby Brown and 5-11 Stan Coker.

Tuesday, the Hawks are slated to travel to Graham, and next Friday they are to return to Holliday for a game with the Eagles.

Lady Hawks

The Lady Hawks, still smarting from a 52-33 loss to Wichita Falls High Tuesday night, are entered in the Holiday tournament this weekend.

The Lady Coyotes jumped off to an 8-2 first quarter lead, and held a 24-14 edge at the half. That lead was

extended by 18-11 in the third period.

Lori Allen was high scorer for Iowa Park, with 12. Laurie Espinoza had eight.

Following the tournament, Iowa Park will host Burkburnett Tuesday, with the freshmen starting at 4:30, to be followed by the junior varsity and varsity.

Girls split with Vernon

The Junior High girls split their doubleheader with Vernon, with the Seventh Grade extending their winning streak to four games without a loss.

Rachael Reed's 10 points was the difference between the scores in the Seventh Grade game, 28-18.

Melody Gray added five, Leslie Miller four and Leisa Bates and Marcy McCarthy each scored three.

Vernon's score in the Eighth Grade game was almost the reverse, winning 28-17.

Iowa Park scoring was by Dornier, five, and four apiece by Winter, Short and Murray.

The girls will host Notre Dame at 4:30 p.m. next Thursday.

GRAND OPENING
KATHY'S KITCHEN
Friday, December 12

Come in for free coffee and samples of our baked goods!

We have a great gift selection! Baskets filled with different breads, cookies and candies.

Remember the great food served in our cafeteria

402 W. Park 592-4633
Carry out orders welcome

LAST CALL!



Our Tuesday and Wednesday Evening Special of Large Pizza for Small Price Will End

Dec. 17

But we still have Money-Saving Bargains!

COUPON

Coupon expires Dec. 31, 1986

\$2.00 off **LARGE PIZZA**
\$1.00 off **SMALL PIZZA**

ken's PIZZA
The pizza that brings you back!

901 W. Hwy.
592-4184

GOLDEN

FRIED · CHICKEN
Loop 370 & Pacific Ave. - Iowa Park

Dinners

3 pieces of Golden Fried Chicken, Corn on the Cob, Cole Slaw or Potato Salad, French Fries, and a Biscuit. **3.39**

2 pieces of Golden Fried Chicken, Corn on the Cob, Cole Slaw, or Potato Salad French Fries, and a Biscuit. **2.79**

Chicken 'N Biscuit

3 Pieces - 1 Biscuit
All Dark 1.99
Mixed 2.19
All White 2.79

2 Pieces - 1 Biscuit
All Dark 1.49
Mixed 1.59
All White 1.89

FAMILY PAK

10 Pieces 4 Biscuits 6.89
15 Pieces 5 Biscuits 9.99
20 Pieces 6 Biscuits 12.79

TENDERS

4 Pieces Biscuit and Gravy 2.39
7 Pieces Biscuit and Gravy 3.59
15 Pieces 6.99

FIXING'S
French Fries .65
Corn on the Cob .49
Cole Slaw or Potato Salad .49
Mashed Potato .49
Jalapenos .19
Apple Pie each .49
Biscuits .39 each
Country Gravy .29
Cookies .39 each
Pepper Puppies .59 each

REGULAR **FAMILY**
1.75 1.75
1.69 1.69
1.69 1.79
1.99 3.09
1.09 3.09
1.79 3.09

Drinks

Coke Dr. Pepper Sprite
Lemonade Fresh Brewed Iced Tea .55 .70 .85
Coffee .35

SNACK PAK 1 Piece Golden Fried Chicken, French Fries, Biscuit **1.29**

45 extra for Breast
592-2811

NOW AVAILABLE: Popular Brands of Cigarettes, \$1 per pack

SONIC

719 WEST HWAY IOWA PARK, TEXAS

NOW AVAILABLE: Popular Brands of Cigarettes, \$1 per pack

Call in advance **592-2087**

This Week's Special through Wednesday

Hamburger
#1, #2, #3 styles

with cheese **99¢**
\$1.19

Lunchtime Special 11 a.m. to 1 p.m. Offer good through Wed.

Hamburger
#1, #2, #3 styles

with cheese **59¢**
79¢

This Week's Special

CAPTAIN'S PLATTER

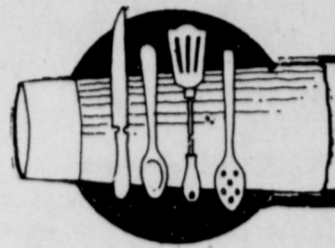
\$2.49

Reg. \$2.79

Enjoy **Coca-Cola** Trade-mark ©

Harvey's
FAMILY RESTAURANT
HAMBURGERS

805 West Highway
FOR TAKE OUT ORDERS
CALL 592-4731



Cook of the Week

One of the nicest things that people look forward to in the fall are the Thanksgiving and Christmas holidays and the festive dinners. After they feast to their hearts' content at Thanksgiving they welcome good old, everyday eating until the Christmas dinner.

Jeni (Mrs. Kenneth) Schlaud has some suggestions for what to eat between the two sumptuous meals. Three of her recipes are main dish, one is a salad and the other is a dessert. An important ingredient in the last two is pineapple, a favorite fruit in both fancy and not so fancy desserts and salads.

The pineapple has an interesting history. It was discovered in Guadeloupe in 1492 by companions of Christopher Columbus. The Spaniards, who first reached the New World on the islands of the Caribbean, found the pineapple ubiquitous there, and later on in the mainlands of Central and south America.

The Indians hung pineapple or pineapple crowns at the entrances to their huts as a promise of welcome and refreshments to all comers, but they also planted thick hedges of pineapple plants around the village to keep strangers out because the sharp, spike edges of the leaves can inflict nasty cuts. It is said that Carib boys at invitation were made to run at full speed between two closely planted rows of pineapple to prove their courage. Modern horticulturists have produced smooth-leaved varieties to spare the pickers' hands.

Archeologists tell us, on the evidence of its appearance as a decorative motif in Peruvian pottery, that the cultivation of the plant dates at the latest from the first millennium of our era, but botanists think that it is much older than that.



Mrs. Kenneth Schlaud

In 1752, George Washington accompanied his brother Lawrence to Barbados to the warm climate for health reasons, and he confided in his diary that he had tasted the pineapple and that it was the best fruit that he had ever tasted.

The pineapple remained a foreign fruit for most Americans until the development of fast coastwise shipping, but it was not until the middle of the 19th century that it became widely appreciated and accessible.

It is America's most popular sherbet flavor, after orange. It was not planted on the islands until almost three centuries after its discovery by the Europeans in 1700. It began to be cultivated there on an important scale in the 1880s, and during this century, Hawaii has assumed the leading place in pineapple production.

Kenneth and Jeni and their five children Amie, a 10th grader, Ken, a 9th grader, Paul, an eight grader, Chris, a fifth grade student, and Matthew, five years old, moved to Iowa Park from Randlett, Okla. in March.

Mrs. Schlaud is a native of Lapeer, Mich. where she was graduated from high school. She worked as a nurses' aide in extended care facilities there and she is currently working in an aide position at the Wichita Falls State Hospital. Kenneth is employed by AC Spark Plug in Wichita Falls. They belong to Christ the King Catholic Church, and FFA Booster Club, and he is a member of the Iowa Park Optimist Club. Her hobbies are needlepoint and cross-stitch.

HAMBURGER PIE

2 lb. ground beef
3/4 cup chopped onion
1/2 tsp. salt
Pepper
2 - 1 lb. cans (4 cups) green beans, drained
10 medium potatoes, cooked (instant potatoes can be used)
2 cans tomato soup
1 cup milk
2 eggs, beaten
3/4 - 1 cup grated cheese
Brown meat and onion until tender; drain grease. Add green beans and tomato soup. Pour into Dutch oven or large casserole. Mash potatoes while hot, add milk and eggs. Spoon in mounds over casserole. Sprinkle with cheese. Bake in 300-350 degree oven 25 minutes or until heated through and cheese is melted.

BAKED BEANS

4 cans pork and beans, drained
Small can crushed pineapple
3/4 cup brown sugar
1/2 cup chopped onions
1 T mustard
Mix together and cook in 350 degree oven until thick.

MANDARIN COCONUT SALAD

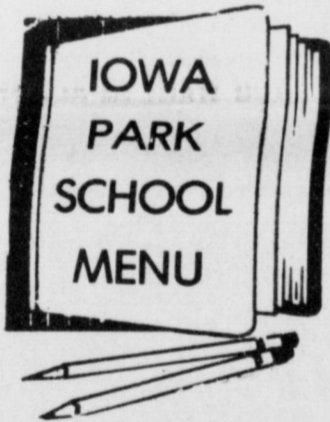
Combine:
1 lb. 4 1/2 oz. can pineapple tidbits
1 - 11 oz. can mandarin oranges
1 cup miniature marshmallows
1 cup seedless grapes
1 cup coconut
Mix in 1 cup sour cream. Chill several hours or overnight.

SCALLOPED POTATOES AND HAM

Sliced potatoes
Chopped onion
Cheese, grated
Slices or pieces of leftover ham
Pats of margarine or butter
Cream of mushroom soup
Make a white sauce and mix in cream of mushroom soup. Make layer of sliced potatoes, onions, ham, butter; pour 1/2 of white sauce mixture over. Layer again, pour remaining white sauce over and top with grated cheese. Cover and cook in 350 degree oven 1 hour. Uncover and cook 30 minutes longer. Serve with tossed salad.

PINEAPPLE UPSIDE DOWN CAKE

2-8 1/2 ounce cans sliced pineapple
6 T butter
1 cup brown sugar
8 marachino cherries, cut in half
2/3 cup shortening
1 cup sugar
2 eggs
2 tsp vanilla
2 cups flour
2 1/2 tsp. baking powder
1/2 tsp. salt
Drain pineapple, save juice.
Melt butter in 13x9x2 pan.
Add brown sugar and 2 T syr. up.
Arrange pineapple in bottom of pan and place cherry in center of each.
Add water to remaining syrup to make 1 cup.
Cream together shortening and sugar till light; add eggs and vanilla and beat till fluffy. Sift together dry ingredients, add alternately with cup of reserved syrup, beating after each addition. Spread over pineapple. Bake at 350 degrees 40-45 minutes. Cool 5 minutes. Invert on cookie sheet.



Friday, December 12
Breakfast: Cinnamon roll, fruit, milk.
Lunch: Soup & sandwich, chili dogs, pinto beans, Fritos, sweet relish, peanut butter fingers, milk.
Monday, December 15
Breakfast: Cereal, fruit, milk.
Lunch: Soup & sandwich, pizza, combination salad, corn, pudding, milk.
Tuesday, December 16
Breakfast: Scrambled eggs, toast, fruit juice, milk.
Lunch: Soup & sandwich, little smokies, potatoes, green beans, bread slices, brownies, milk.
Wednesday, December 17
Breakfast: Biscuit, honey, sausage, fruit juice, milk.
Lunch: Soup & sandwich, charburgers, French fries, lettuce, tomatoes, pickles, onions, ice cream, milk.
Thursday, December 18
Breakfast: Cinnamon toast, fruit, milk.
Lunch: Soup & sandwich, turkey & dressing, carrots, cranberry salad, hot rolls, butter, honey, pie, milk.

NOW OPEN

new canton
Restaurant

Kemp at Midwestern Pkwy
Wichita Falls, Texas
696-9500

★ Serving Gourmet Foods ★
American Cuisine • Chinese Delicacies
Steaks • Seafoods • Mexican • Sandwiches
We Welcome You!

We Believe You Will Experience a Most Enjoyable Meal
With Us. Henry Huie Has Been Operating the Canton
Restaurant For Almost Half a Century in the Red River
Valley And We Are Pleased to Invite You to Our Newest Home.

Hours	Open Daily For Luncheon Specials
Sunday - Thursday 11am - 10pm	Monday - Saturday 11am - 2pm
Friday & Saturday 11am - 10:30pm	

Make it a Western Christmas

THIS YEAR AND SAVE



ALL WILDFLOWER ROPERS
\$49⁹⁸

COWHIDE BOOTS
Style 9003
\$49⁹⁸

ALL 4 pc. and 6 pc.
LIZARD BOOTS
\$89⁹⁸

Buy a pair of regular price
EXOTIC BOOTS
and get a matching
EXOTIC BELT
\$10
for
NO SALE PRICES INCLUDED

LADIES FULL PYTHON BOOTS #0207
\$199

NOCONA BOOTS

Nocona Boot
Factory Outlet
AND WESTERN WEAR
Hwy 287 & Laurie 553-1022
Vernon, Texas

Our Everyday Boot Prices Are
35% to 50% OFF Suggested Retail Prices

Independent American Savings Association

Christmas Calendar of Events

MONDAY - Dec. 15 - Realtors/Builders Christmas Tree Decorating



TUESDAY - Dec. 16 - Senior Citizens Christmas Party - 3 P.M.

- ★ Refreshments
- ★ Free Blackeyed peas
- ★ Caroling
- ★ Vote for 1st, 2nd and 3rd place winners.

All Senior Citizens invited - Bring cameras

WEDNESDAY - Dec. 17 - Public Open House - 9 A.M. - 4 P.M.

Mrs. Clause will serve refreshments and hand out **FREE** blackeyed peas.

★ Vote for 1st, 2nd and 3rd place winners
Bring your cameras!

#1 PARKER SQUARE
SECOND FLOOR LOBBY
WICHITA FALLS

FRIDAY - Dec. 19 - Trees and gifts delivered to needy families.

PLEASE COME!

All donations of canned goods, paper goods, staples, bedding, etc. will be accepted in each of the 5 Independent American Savings Branches and distributed to selected families on the 19th.

Obituaries

Mrs. Mary Evans

Services for Mrs. Mary Evans, 82, who died Friday in a Wichita Falls hospital were held Sunday afternoon at Tanner-Aulds Funeral Home with Revs. Percy Travis and Wayne Sibrava, Baptist ministers, officiating. Burial was in Highland Cemetery.

Mrs. Evans was born Nov. 28, 1904, and had lived in Wichita County 50 years. She was a member of the Pleasant Valley Baptist Church.

She is survived by a son, B.D. of Agnes; five daughters, Mrs. Jerry Daulton and Mary Lou Steed of Wichita Falls, Jo Venable of Burk Burnett, Carol Crumpton of Midland and Judy Crumpton of Iowa Park; a brother, Archie Compton of McAlester, Okla.; three sisters, Mozelle Baldwin of Randlett, Okla., Minnie J. Morgan of Crowley and Joyce Gable of Arlington; 14 grandchildren, and 18 great-grandchildren.

Ruby Mae Reid

Services for Ruby Mae Reid, 87, were held Tuesday at Totten-Day Funeral Home in Electra with Rev. Bobby Christmas, pastor of the Jefferson Street Baptist Church in Wichita Falls, officiating. Burial was in Electra Memorial Park.

Mrs. Scott was born March 20, 1899, in Bonham and had lived in Electra until moving to Fort Worth in 1981. She was a member of United Pentecostal Church in Vernon.

Survivors include five sons, J.W. of Big Spring, Roy L. of Iowa Park, Melbourne of Dean, Norvell of Hillsboro, and Wilbur of Fort Worth; four daughters, Frances Hilliard of Lawton, Okla., Lou Nell Stewart of Colorado Springs, Colo., and Mary McLean and Dolores Burchfield of Fort Worth; a sister, Ella Ruth Simpson of Phoenix, Ariz.; 32 grandchildren; 37 great-grandchildren; and a great-great-grandchild.

Frieda M. Goetze

Services for Frieda M. Goetze, 97, were Tuesday at Trinity Lutheran Church in Clara with Rev. Douglas Kabell, pastor, officiating. Burial was in Highland Cemetery under direction of Tanner-Aulds Funeral Home.

Miss Goetze was born July 28, 1889, in Clara and had lived there all her life. She was a member of the Trinity Lutheran Church and Lutheran Women's Missionary League.

AM RADIO

Installation Kit
\$35 includes Radio,
Speaker, Antenna,
Knobs & Instruction Kit.
Fits '73-'77 Ford
Pickup As Is...
See Parts Department
Park Ford

J.W. Cantrell

J.W. Cantrell, 59, died Sunday in a Bowie hospital. Services were held Tuesday at Pleasant Mound Freewill Baptist Church with Dr. Larry Cox, pastor, and Rev. Duncan Miller, pastor of a Christian Church in Kansas, Mo., officiating.

Graveside services were held in Highland Cemetery in Iowa Park under direction of Burgess-Fry Funeral Home.

He was born Feb. 2, 1927, in Friendship. He was an Iowa Park resident 20 years before moving to Buffalo Springs four years ago. He was a retired route salesman with Wichita Cigar and Tobacco Co. where he worked 30 years.

He was a member of the Pleasant Mound Freewill Baptist Church, and the Texas Southwestern Cattle Raisers Association. He and Allene Duncan were married June 26, 1947, in Wichita Falls.

He is survived by his wife; two sons, Jay of Wichita Falls and Ross of Bryan; a sister, Jean Callaway of Henrietta; and a grandchild.

Gladys Gomillion

Graveside services for Gladys Gomillion, 85, of Graham were held Monday at the Pioneer Cemetery with Rev. Max Martin officiating.

She was born March 24, 1901, in Rockwall County and moved to Graham nine years ago.

She is survived by two daughters, Daphne Storey and Nell McCullough of Fort Worth; a son, Davis Jr. of San Antonio; a sister,

Glee Winters of Abilene; a half-brother, Melvin McCreary of Iowa Park; 11 grandchildren; 22 great-grandchildren; and a great-great-grandchild.

Patricia Smith

Services for Patricia "Patty" Smith, 32, were Wednesday at Owens and Brumley Funeral Home with Rev. Darius McKay, pastor of Trinity Baptist Church, officiating. Burial was in Crestview Memorial Park.

She was born Oct. 11, 1954, in Wichita Falls. She was a computer operator for Eagle Oil and Gas Co., and a member of the Baptist Church.

She is survived by her husband, Royce; a son, Toby Don of Wichita Falls; two stepsons, Royce Jr. of Jacksboro and Bryan of Wichita Falls; a stepdaughter, Janna Johnson of Wichita Falls; two brothers, Gary Haggerty and Mike Haggerty of Wichita Falls; two sisters, Ruth Ann Maxwell of Holliday and Jackie Ashbrook of Wichita Falls; her parents, Mr. and Mrs. Finis Haggerty of Wichita Falls; and grandmothers, Mrs. Ruth Haggerty and Mrs. Leota Sealy of Wichita Falls.

W.H. Jackson

Services for W.H. "Bill" Jackson, 72, of Kamay, were held Saturday at Tanner-Aulds Funeral Home with Rev. Jimmy Banks Jr., pastor of Kamay Assembly of God, and W.J. Rogers, pastor of Assembly

of God in Vernon, officiating. Burial was in Highland Cemetery.

He was born Dec. 9, 1913, in Lorraine and had lived in Kamay since 1947. He was a service operator for the Joe Hunt Well Service. He was a member of the Kamay Assembly of God Church and a World War II veteran. He and Lillie Mae Bell were married Dec. 22, 1937 in Charlie.

Survivors include his wife; five sons, Lewis of Iowa Park, David of Point Blank, Tommy of Throckmorton, Mark of Wichita Falls and George of Kamay; a daughter, Mona Brown of Dodge City, Kan.; five brothers, J.C. Frank, W.T. and Tom, all of Odessa and Robert of Greenville, Ark.; three sisters, Lenora Gee of Kamay, Stella Gilbert of Stoneburg and Agnes Lundie of Hobbs, N.M.; 12 grandchildren; and four great-grandchildren.

Beulah Mae Cox

Services for Beulah Mae Cox, 93, were held Friday at Tanner-Aulds Funeral Home with Rev. Scott Stripling of Brownsville officiating. Burial was in Highland Cemetery.

She was born April 4, 1893, in Jack County and had lived in Iowa Park since 1918. She was a member of First United Methodist Church.

She is survived by a son, R.C. of Jacksboro; a daughter, Mataline Stripling of Corpus Christi; two sisters, Fay Garner of Canyon and Ola O'Neal of Panhandle; four grandchildren, 11 great-grandchildren, and six great-great-grandchildren.

W. Webb Killingsworth

Services for W. Webb Killingsworth, 80, were held Friday at the First United Methodist Church in Hamlin. Rev. Jack Webb, pastor, and Rev. Robert Meixner, retired Methodist minister, were the officiants. Burial was in the Roby Cemetery under direction of Foster-Adams Funeral Home.

He was born May 22, 1906, in Mt. Vernon. He was married to Louise Perkins of Anson Aug. 25, 1934. He moved to Hamlin from Roby in 1973. He was a member of First United Methodist Church and Wesleyan Sunday School class. He was a retired farmer.

Survivors include his wife; a daughter, Jo Ann (Mrs. Darrell) Hale of Iowa Park; a brother, Bert of Roby; three sisters, Blanche Nordin of Hamlin, Mabel Cabaness of Mt. Pleasant and Christine Leech of Corpus Christi; and two grandchildren, Doug Hale of Iowa Park and Jacalyn Hale of Lubbock.

Harvey Walker

Services for Harvey "Doc" Walker, 70, were held Friday at Owens and Brumley Funeral Home in Wichita Falls with Rev. Darius McKay, pastor of Trinity Baptist Church, officiating. Burial was in the Sunset Cemetery.

Walker was born April 9, 1916, in Sunset and had lived in Wichita Falls 40 years. He was a retired brick mason and member of Trinity Baptist Church.

Survivors include four sons,

Leon of Holliday, Loyd of Electra, H.C. and Raymond of Wichita Falls; three daughters, Harvone Wilkerson of Wichita Falls, Lola Woods and Carolyn Tucker of Big Sandy; two sisters, Eva Simmons of Morgan and Flossie Payne of Wichita Falls; 20 grandchildren; and 18 great-grandchildren.

Clarence E. DeMoss

Services for Clarence C. DeMoss, 77, of Oklahoma City were held Saturday morning at the Chapel of the Chimes in Memorial Park Cemetery. Burial was under direction of Capitol Hill Funeral Home.

He was born June 18, 1909, in Newkirk, Okla. He worked for H.J. Jeffries Trucking Co. 10 years, and he was maintenance engineer for the Oklahoma City Library System 18 years. He was also an Army Air Corps veteran.

Survivors include a son, Dr. Coyle E. of Bells; two daughters, Carol E. Goolsby of Iowa Park and Clea E. Beiger of Oklahoma City; eight grandchildren; and six great-grandchildren.

CARD OF THANKS

The Family of Sue Lee would like to express gratitude for the food, flowers, love and other acts of kindness shown to us during the loss of our precious mama and loved one.

Susan, Coy, Tracy and Families

All Occasions

Flower and Gift Shop
520 W. Hwy. 592-2323
Open 7 a.m. to 7 p.m. Mon. thur Sat.
Dorothy Cates and Brenda England

FLOWERS

The Perfect Gift for Everyone on Your Shopping List
(even the person who has everything)



Fresh Flower Arrangements
Fresh Fruit Baskets
Poinsettias
Decorated Green Plants
Russ Country Tree Ornaments
Leanin' Tree Christmas Cards
Holiday Decorations
(for homes, hospitals, cemeteries)

FOR BEST SELECTION,
PLACE YOUR ORDERS EARLY

WE OFFER THE FOLLOWING SERVICES, FREE, TO YOU, OUR VALUED CUSTOMERS:

- * FREE DELIVERY SERVICE
- * ALL MAJOR CREDIT CARDS
- * FREE GIFT WRAPPING
- * HOURS: 7 A.M. TO 7 P.M.
- * TELEFLORA WIRE SERVICE

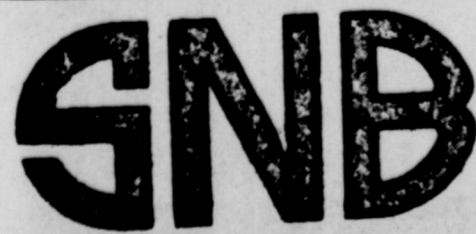


-We invite you to shop and compare our
INTEREST RATES FOR SAVINGS

(Applicable December 10 through December 16)

Account	Interest (compounded daily)	Yield
7-31 Days	5.90%	6.077%
91 Days	6.10%	6.289%
182 Days	6.25%	6.449%
New Money Market Accounts	5.65%	(Simple interest)
Super Now Accounts	5.25%	(Simple interest)
1 Year	6.65%	6.875%
2 Year	7.00%	7.250%
3-5 Years	7.25%	7.519%
I.R.A.	7.50%	7.788%

(Substantial interest penalty required for early withdrawal. Rates subject to change without notice.)



IOWA PARK, TEXAS
Locally
Owned



Prices Effective Dec. 11-12-13, While Supplies Last

CONVENIENCE STORES
30 YEARS OF SERVING YOU

SCOTCH PINE/BLUE SPRUCE/BALSAM/FIR
Fresh Cut
Christmas Trees
AS LOW AS
\$8.99 WE'VE GOT THE SIZE OF CHRISTMAS TREE YOU WANT AS ALLSUP'S

You're #1 With Us

BORDEN'S DIPS OR
Sour Cream
8 OZ. CTN.
2 FOR 99¢

FILLED WITH FRESH HOT COFFEE ALLSUP'S
Coffee Mugs
EACH
99¢
REFILLS ONLY 25¢

BORDEN'S
Egg Nog
QT. CTN. **99¢**

HOT AND GREAT TASTING-ALLSUPS
Hot Chocolate 8 OZ. CUP. **30¢**

BORDEN'S
Assorted Novelties 1/2 CT. PKG. **\$1.19**

ALLSUP'S GOLDEN BROWN & DELICIOUS
Chicken Nuggets 8 CT. SERVING **69¢**

BORDEN'S
Homo Milk 1/2 GAL. CTN. **\$1.09**

Hot Links 2/99¢
Chili Rellenos 99¢ each

DORITOS REG./TACO/NACHO CHEESE/COOL RANCH
Tortilla Chips **\$1.69**
REGULAR \$2.29 NOW

Shurfine Pancake & Waffle Syrup 24 oz.
79¢

Enjoy
Coke
\$2.59
12 oz. Cans 6 pak

BUYING? SELLING? RENTING? HIRING?

WANT ADS PAY OFF

DEADLINES

10 A.M. WEDNESDAY (Word Ads Only)
4 P.M. TUESDAY, DISPLAY ADS

**SAVE 8¢ PER WORD FIRST
INSERTION BY PAYING
WITH COPY AT OFFICE**

RATES:

23¢ PER WORD FIRST INSERTION
15¢ PER WORD EACH REPEAT

For Rent

ATTRACTIVE furnished one bedroom, living room with kitchenette, bath, Lone Star vented heater. Thermostat, refrigerated window unit. Adults, no pets. References. 592-5326. 12-11-1p

LARGE 3 bedroom. Completely remodeled. 591-5697 Earl Chesser. 12-11-1p

WOODBRIAR APTS. 1, 2, 3 bedrooms, all bills paid, cable, senior citizens discount, \$100 off first full month's rent. 592-2121. 12-11-1fc

TWO BEDROOM, lots of space, all appliances included, no pets. \$350 mo., deposit required. Call 855-9668 or 855-9670, Rick. 9-18-1fc

FOR LEASE near high school on Edgehill, 3 bedroom house, excellent condition \$375 month, cleaning deposit required. Call Jack Kerr, 1-495-3411. 12-4-1fc

Homes For Sale

3 BEDROOM frame home with central heat and air with 2 bedroom apartment on back of lot. Possible owner finance. \$32,000. 592-4234 after 5 and weekends. 12-11-1fc

908 FOLEY - 3 bedroom, 2 bath, garage, central heat/air, refrigerator, built-ins, new carpeting, fence. Century 21, Charles Chandler, Realtor. 691-1420, 691-0249. 12-4-2fc

NEWLY REFURNISHED - Fresh paint, curtains, wallpaper. Corner lot with double carport and fenced yard. 3 bedroom with central heat and air. 616 West Texas. Easy to own as owner will consider trade or shared equity. See this one today for only \$41,950. Dvorken Realtor, Owner 322-5291. 9-18-1fc

NEW 3-BEDROOM brick homes with central heat/air. Energy efficient. Hamilton Construction, 855-6100. 7-10-521p

NEW THREE BEDROOM brick homes with central heat and air, energy efficient, and fully carpeted. Low monthly payments if you qualify. Swan Construction Co. 692-8788. 3-14-1fc

Real Estate

RESIDENTIAL LOT, country living close to town. No restrictions. Build your dream home, \$1,250. Call Joan 592-5540 or Roland and Donnell 692-1903. 12-4-1fc

50 X 100 CONCRETE block building on 80X300 lot, one block north Quickie Food Store. H.R. Sullivan, 592-4214. 11-13-1fc

Open House

714 Rebecca
Friday, Saturday & Sunday
12 noon - 5 p.m.
By Owner

Misc. For Sale

FULL-SIZE box springs & mattress, 7-drawer Singer treadle sewing machine. 592-2259. 12-11-1p

TWO CLAY-BACK gas heaters, perfect shape. Electric Hoover sweeper with all attachments. 592-5213 after 6. 12-11-1p

GAS STOVE - Works good. See at 507 E. Jefferson or call 592-2367, 592-9601. Ask for Brad. 12-11-1p

WOODEN DOLL house, 23x25x14. 592-5689. 12-11-1p

PECANS - \$1.50 pound. Shelled, \$3.50 pound. 592-5953. 12-11-3p

71 DUSTER, mint condition \$895, 2703 Colquitt, Wichita Falls, 696-1858. 12-11-2fc

FRESH-SHELLED pecans \$3 pound. 592-5266. 12-11-2fc

PECANS for sale. Iowa Park Florist. 11-13-6fc

1980 CHEV. Cus. Deluxe 10 1/2 ton automatic, air, power, tool box. 70,300 mi. \$3,250. 592-4592. 12-4-21p

Help Wanted

GIRLING HEALTH CARE is now accepting applications for personal care and household task skills. Call Teresa, 1-915-643-5604. 11-20-4fc

REWARD

\$500 REWARD

for return of merchandise stolen on Dec. 6 or information bringing an indictment. Hooded white mink jacket, man's wedding band with three diamonds, man's horseshoe ring with nine diamonds, 592-5497

Come live with us. Home atmosphere, good food, LVN's around the clock. Private room & bath \$38.00, Semi-private room \$35.00.

Heritage Manor Nursing Home
1109 3rd St. Iowa Park 592-4139

Gene Weaver is now associated with **Key Realty** 692-8461 hm. 592-9574
108 N. Hawthorne. Handy Man's Dream Three bedroom, double garage on two lots.

Quail Run Apartments
1-2 Bdrm., Ground Floor, Central Heat & A/C. Appliances, Laundry. Close to school & public park. Starting at \$205 per month to qualified tenants. Gas & water paid. Call 592-2933

Hallmark Realtors

"We sell Iowa Park."
691-7855
Day or Night



Owner/Broker
Donna Chambers

SPLIT LEVEL home on 4.5 acres. Entry will take your breath away, office, game room, brick patio, 3 bedrooms, 2 1/2 baths, 2 car garage.

LARGE BRICK home on corner lot, 4 bedrooms, 2 baths, 2 car garage. **CONTRACT PENDING**

NICE BRICK HOME with lots of living space. Large den with fireplace. 3 bedrooms, 1 1/2 bath. \$45,900.

SHILOH II - Great floor plan. Home in excellent condition. Beautiful den with floor plan. 3 bedrooms, 2 baths, 2 car garage. \$68,400.

BEAUTIFUL 4 year old home. Custom built, 4 acres. Large game room, swimming pool, TV satellite dish. Storm shelter and sprinkler system. \$129,000.

QUAIL VALLEY - Lovely home on 7.67 acres. Large game room with wet bar. Barn with tack room. Too many extras to list. 3 bedrooms, 2 baths, 2 car garage.

INCOME PROPERTY - 3 bedroom home with siding. Large corner lot, beauty shop with equipment.

PLEASANT VALLEY - Country living at its finest. Large executive home on 2.72 acres with water well. Gourmet kitchen, pool, hot tub. 4 bedroom, 2 bath, 2 car garage.

DRASTIC REDUCTION - New home on large corner lot. Huge den with fireplace. Skylights, all amenities. 3-2-2. \$75,000.

OWNER ANXIOUS - Lovely home with over 2,200 sq. ft. of living space. Large hobby room, formal dining, huge yard with privacy fence. \$79,900.

REDUCED - Brick home on corner lot, beautiful yard, privacy fence. Small rent house on property. 3-2-2.

COUNTRY LIVING with city convenience. New home on 2 acres. Great floor plan with many extras. 3-2-1.

203 GLENDA - Clean 3 bdrm., roomy kitchen, living - dining area, nice yard, \$33,000.
SEE TO APPRECIATE - 503 N. Wall, desirable 2 or 3 bdrm., large liv. dining, 2 baths, loads of closets, storage, built-ins. Homey & comfortable, \$35,000.
921 FOLEY, 3 bdrm., 2 bath, den, fireplace, 1879 ft. liv. area, \$58,250.
2 BDRM., N. Atlantic, needs repair, Almost new garage, large lot, \$17,000.
2 BDRM. mobile home, \$5,000.
2 AC., water meter, mobile home. \$22,500, negotiable.
100 X 100 ft. lot, E. Park, \$5,500.
33 AC. Possible owner finance, \$1000 per ac.

Member Multiple Listing

Sam Hunter Real Estate
107 E. Cash 592-4661

2 BEDROOM - Extra large lot, 2 car garage. \$25,000.
2 BEDROOM - 1 3/4 lot, fenced, storage house, patio. New carport. \$14,500.
3 BEDROOM - Formal dining, large rooms, corner lot, great condition. Estate needs to sell. \$31,000.
3 OR 4 BEDROOM - 1 1/2 bath, separate shop, owner has appraisal and needs to sell. CH&A, \$45,000.
BUILT IN FINANCING - 3 bedroom, fireplace, separate shop. Need repair. Negotiable. Make us an offer. \$37,500.
NEW CARPORT. New paint. 3 bedroom, brick. 1 1/2 bath, fenced. Neighborhood. Owner very anxious. \$37,500.
3 BEDROOM, 1 3/4 bath, fenced, CH&A, owner says sell. Moved. \$38,500.
HUGE DEN - Rock fireplace. 2 1/2 baths, double care garage, formal living and dining. New dishwasher. \$60,000.
IMMEDIATE POSSESSION - Corner lot, office, extra large dining kitchen. 3 bedroom, 2 bath, 2 car garage, nice home. \$55,000.
ASSUME! Den with fireplace, corner lot, double car garage, 3 bedroom, 1 3/4 bath, ready to sell. \$55,000 and move-in. \$56,500.
BEAUTIFUL HOME adjoining lake. Huge shop, storm cellar, 5 acres, 3 bedrooms, 2 baths, fireplace and all amenities. Fenced - bargain. \$116,500.
SPANISH STYLING - 5 acres, horse barn, garages. Fenced, negotiable. \$127,500.
3 BEDROOM - Corner lot - CH&A. Formal dining - ready to move in. All amenities. Basement. \$72,500.
THREE BEDROOM - 1 3/4 bath, 2-car garage, new paint. Immediate occupancy. \$6,000 and assume loan.

SHIRLEY RAINS, Broker 592-4248
VINCENT RAINS, Salesman 592-4584
LISA YORK, Salesman 592-2500
DALE AND MARY THOMPSON, Salesmen 592-4747
HAZEL HAMBRIGHT, Salesmen 592-2397

Shirley Rains Real Estate
HOMETOWN REALTOR
121 W. Park Iowa Park, Tx. 76367 592-5191-Office
"Serving All Your Real Estate Needs"

COUNTRY LIVING
Approximately 1.38 acres at the edge of town. Three bedrooms, large living-room, kitchen and breakfast area. \$47,500.

NEED A CHURCH
This place is ready to worship in. Will seat approximately 124 people. Good parking. Space close to expressway. Possible owner financing.

THREE BEDROOM
Livingroom, den, central heat, kitchen & dining, fenced - yard, storage bldg., carpet & panelling. \$28,500.

BELOW APPRAISAL
Three bedrooms, 1 1/2 baths, large livingroom, large kitchen and breakfast room. Fresh paint, central heat and air.

TWO BEDROOMS
One bath, large living-room & den. Kitchen & dining area, utility room, fenced yard, good assumable loan. \$32,500.

For information on these and other properties, call now.

JOHNNY LEE REAL ESTATE
592-2378
109 W. CASH

MEMBER MULTIPLE LISTING SERVICE



NOW AVAILABLE
1-Bedroom Apartments

Energy efficient, central heat/air, total electric appliances, fully carpeted and draped. Children's play area. Off-street parking. Fully equipped laundry room. Month to month rent starting at \$189.00 for one bedroom apartment (to qualified persons). Water paid.

Colonial Heights Apartments

Call 592-2705
"EQUAL HOUSING"

The sign of the leader.

More people recognize the CENTURY 21 sign than any other sign in real estate. So give our CENTURY 21 office a call. And put all the power of Number 1 to work for you.
BETTY GUYETTE 592-2761
Put Number 1 to work for you.

Century 21 GOLD COAT REALTY
4706 BROOKDALE
696-5561
© 1985 & 1986 Century 21 Real Estate Corporation
Equal Housing Opportunity
INDEPENDENTLY OWNED AND OPERATED

SOLD

316 E. Park	710 N. Park	208 W. Ruby
700 N. Victoria	615 S. Park	1014 Cornelia
906 Van Horn	1300 Westridge	608 E. Bank
1221 Emma	124 W. Garden	106 W. Garden
1017 Cornelia	723 Park Plaza	1506 Douglas
307 Valley Drive	311 E. Aldine	621 W. Clara
1306 Emma	703 W. Magnolia	1323 Westridge
302 Kathleen	510 N. Colorado	Rt. 2 Coleman
404 W. Clara	504 W. Texas	Park Rd.
600 S. Bond	304 W. Alameda	103 W. Lafayette
1111 Louisa	804 N. Colorado	401 W. Texas
208 S. Jackson	703 N. Park	1324 Edgehill
109 West View	507 E. Jefferson	129 Wood Circle
815 N. Wall	208 W. Poe	1210 W. Highway

I would like to express my appreciation to the good citizens of Iowa Park for making this another good year in the Real Estate Business for our firm. Our multiple listing service provides you with many honest and ethical sales people through the local Board of Realtors assuring you the best of service.

Johnny D. Lee Real Estate
109 West Cash
592-2378

Colonial Heights Apartments

Magnolia St. at Johnson Rd. IOWA PARK

One and two-bedroom apartments, energy efficient, central heat/air, total electric appliances, fully carpeted and draped. Children's play area. Off-street parking. Fully equipped laundry room. Month to month rent starting at \$189.00 for one bedroom, and \$229 for two bedroom apartment (to qualified persons). Water paid.

CALL 592-2705
EQUAL HOUSING

KEY REALTY

NEAR KIDWELL ELEMENTARY - Corner lot, beautifully decorated, new carpets, 2 living areas, 3 bedrooms, 2 3/4 baths, many extras, owner has the price to sell.

5.83 ACRES-featuring beautiful custom built 3 bdrm., 2 bath home, cathe-dral ceilings, jacuzzi, large shop, many other extras, reduced to sell.

KEY REALTY

2 STORY-3 bedroom, 2 bath, extra storage, lots of tree, immediate possession, very clean, one of Iowa Parks finest areas, call for appointment to see!

MODULAR HOME TO BE MOVED-3 bedroom, 2 full baths, 4 ceiling fans, porches, fencing, call for more info. mid 30's.

When quality, service & dependability are a must - We are the Key

Cindy Witherspoon
592-5381
692-8461
592-4964

KEY REALTY

COUNTRY LIVING CITY CONVIENCE-Extra clean 3 bdrm., 1 3/4 bath, 2 car garage, large trees. Mid 50's.

BEN FRANKLIN FIRE-PLACE-Approx. 1600 sq. ft., 3 bdrm., 2 full baths, sunken living room, beautiful decorated. \$33,500.

KEY REALTY

ENERGY SAVING FEATURES-3 bedroom, 1 1/2 baths, storm windows, new carpets & vinyl, excellent neighborhood, near elementary school.

SATELLITE DISH-goes with home. Beautifully decorated extra clean, 3 bedroom, 1 1/2 bath, brick home, owner must move, bring all offers, 45,000.

Realty World
Elvin Dudley
4001 Callfield
Wichita Falls
691-7101

1613 YUCCA - The perfect family home, 4 bedrooms, 2 1/2 baths, formal living room and dining room, family room, game room plus 1.72 acre lot.

711 W. COLEMAN- 3 bedrooms, 2 story, \$61,000, FHA appraised. Large rooms.

Connie Rowell
767-0321

Colonial Heights Apartments
Magnolia St. at Johnson Rd. IOWA PARK

One and two-bedroom apartments, energy efficient, central heat/air, total electric appliances, fully carpeted and draped. Children's play area. Off-street parking. Fully equipped laundry room. Month to month rent starting at \$189.00 for one bedroom, and \$229 for two bedroom apartment (to qualified persons). Water paid.

CALL 592-2705
EQUAL HOUSING

Business

REGISTERED child care. Monday - Friday. 592-9055. 12-11-4tp

BABYSITTING in my home Mon-Fri. Any ages. Low rates. 592-2270. 12-4-2tp

BABYSITTING in my home. Days or nights. Any ages, meal included. Low rates. Drop-ins welcome. 592-4763. 12-4-2tp

TREE & SHRUBBERY trimming or removal. Also interior painting. Free estimates. Bob Harper, 592-5060. 12-11-2tp

KELLY GREEN sweat suits, tops and bottoms, socks, sizes child small through adult large. 100% acrylic, won't shrink or fade. Screen print available. Homestead, 116 W. Cash, 592-2631 or 592-2014. 12-11-2tc

IOWA PARK HAWK sweatshirts silkscreened with a new "1986 Regional Champions" Hawk logo. Adult sizes only. Available beginning Fri., Dec. 12 at The Hawk Shop in Flowers by Reba, 309 N. Wall. 12-11-1tc

BLACK POWDER Guns and accessories, revolvers \$50 and up. Powder \$5.00 lb. Will order modern guns for 10% over cost. Ye Ole Gun Shack, 413 W. Washington, 592-5430. 9-18-tfc

POODLE GROOMING by appointment only. Reasonable rates. 592-4766. 11-6-12tp

PAINTING - exterior or interior. Reasonably priced. References. 592-5654. 7-31-tfc

HOLDER'S Repair Shop, autos, small engines, appliances, evenings, weekends. 592-4658. 12-11-3tc

MONOGRAMMING 592-9850. 9-4-16tp

MAIN SHOOTING supplies - will order firearms at wholesale plus 6%. Save 10-30%. 592-5564. 10-30-tfc

Notice

PURSE STOLEN behind Friendly Door. Cloth, beige with dark brown stripes and two carry straps. Reward. If found, call 592-2097. 12-11-1tp

FOUND 12/7/86 male, 2-year-old, apricot color Cocker Spaniel w/freckles on nose. Followed kids home from Wal-Mart. Call 592-9790 or 592-5106. 12-11-nc

PUBLIC NOTICE The Board of Adjustment of the City of Iowa Park, Texas, will conduct a public hearing at 5:30 p.m. on Tuesday, December 23, 1986, for the issuance of two variances on the south 42' of Lots 4-5-6, Block 174, Original Townsite (905 South Colorado), to allow less than the 50' minimum lot frontage, and to allow less than the 900 square feet required for the principal building in a R-3 zone. Any comments for or against may be presented orally at the hearing or in writing to the City Administrator prior to the meeting. All meetings are open to the public. 12-11-2tc

SHERIFF'S SALE
THE STATE OF TEXAS
County of Wichita

NOTICE IS HEREBY GIVEN That by virtue of a certain Order of Sale issued out of the Honorable 89th District Court of Wichita County, on the 23rd day of September 1986 by Wayne Wiggins, Clerk of said District Court for the sum of One hundred twenty three dollars and 91/100 DOLLARS Plus 10% interest from date of Judgment and costs of suit, under a certain judgment, in favor of Iowa Park consolidated ISD, Et Al in a certain cause in said Court, No. 37, 178-C and styled Iowa Park consolidated ISD, the City of Iowa Park and the county of Wichita vs. Donald McLaurin, Patricia McLaurin and United Savings Association of Texas and placed in my hands for service, I Thomas J. Callahan as Sheriff of Wichita County, Texas, did, on the 8th day of December 1986 levy on certain Real Estate, situated in Wichita County, Texas, described as follows, to-wit:

Lot 4, Block 56 of the original town of Iowa Park, Texas, at 905 E. Washington and being more particularly described in that certain deed of record in volume 1213, page 715 of Wichita County, Texas, and levied upon as the property of Donald McLaurin, Patricia McLaurin and that on the first Tuesday in January 1986, the same being the 6th day of said month, at the Court House door, of Wichita County, in the City of Wichita Falls, Texas, at 10 A.M. by virtue of said levy and said Order of Sale I will sell said above described Real Estate at public vendue, for cash, to the highest bidder, as the property of said Donald McLaurin, AND Patricia McLaurin.

And in compliance with law, I give this notice by publication, in the English language, once a week for three consecutive weeks immediately preceding said day of sale, in the Iowa Park Leader a newspaper published in Wichita County.

NOTE: "Please be registered at the time of the Sale with the Sheriff, deputy Sheriff or agent conducting the Sale."
Witness my hand, this 9th day of December 1986

Thomas J. Callahan
Sheriff, Wichita County, Texas

By Melvin Scott Deputy.
12-11-3tc

**CLASSIFIEDS
SELL**

OUR MOST AFFORDABLE MODEL

Quality and Workmanship At a Special Value Price

If you're looking for a new water heater at an affordable price, call us today

FEATURES

- Dense fiberglass insulation
- Porcelain glass-lined tank
- Anode rod for corrosion protection
- Five-year tank warranty
- Two-year parts warranty (Best warranties and features for standard model of the business)
- 30-gallon, gas or electric

\$124⁹⁵

Includes free delivery in town

Parkway

True Value
HARDWARE & FURNITURE
200-206 W. Bank
592-5512 592-4681

Master PLUMBER *True Value*

PARK *FORD*

600 WEST HIGHWAY PHONE 592-4106

If you're looking for a nice used vehicle, we have the best selection we've had in ages. Try us. We'll trade!

- '86 LINCOLN TOWNCAR - 4-door
- '86 FORD CROWN VICTORIA - 4-door
- '86 FORD F150 LARIAT SUPERCAB - Loaded
- '86 FORD F150 LARIAT - Loaded
- '85 LINCOLN TOWNCAR - 4-door
- '85 MUSTANG GT - Convertible
- '85 TEMPO SPORT GL - 4-door
- '85 ESCORT - 4-door
- '85 RANGER PICKUP - 5-speed
- '85 CROWN VICTORIA - 4-door
- '84 CROWN VICTORIA - 4-door
- '84 CROWN VICTORIA - 2-door
- '84 FORD LTD - 4-door
- '84 FORD VAN - Starcraft conversion
- '84 FORD VAN - Extended - CVI conversion
- '83 CHEVY VAN - Tra-Tech conversion

All quality for 9.75% Financing
All carry Ford Motor Co. used car warranty
See or Call
O.L. Tucker, Ronnie Berry
or Bobby Morgan

ROOFING - Buzbee Roofing. Phone 592-4846. All work guaranteed. 1-30-52tp

PRIVATE FENCE sales and installation. Charles Skelton, phone 696-0839. 12-5-tfc

INSULATION for walls, attics, & metal buildings. Storm windows and doors. For free estimates call Jerry Matthews at Great Plains Siding and Insulation, 761-2124 or 592-9829. 10-2-tfc

HANDYMAN SERVICES Home repairs, painting, carpenter work, paper hanging, etc. No job too small. Work guaranteed. Call Herb, 592-5560 evenings and weekends. 11-20-tfc

Buzbee Roofing

Phone 592-4846
ALL WORK GUARANTEED

\$1000 REWARD

For information leading to the arrest and conviction of any person or persons involved in the theft, vandalism, arson, fishing or hunting on any of our properties in Wichita, Archer, Wilbarger, Clay, Wise or any other county in which we may have equipment located. Tom Swanson Oil Co., TS&T Drilling Inc. Ph. 817-495-3971. 8-8-tfc

Hayley Phone Service

Over 15 yrs. exp.

- Prewiring
- Repair
- Installation
- Jacks

Jack Hayley 592-2340

MINI-CON Self-storage

- Variety of sizes.
- Competitive prices.
- Locally owned and operated.
- Monthly rates.

805 W. Hwy. 592-2761

"Old Fashion Babysitting with an Old Fashion Price!"

- DAY OR NIGHT (Shift hours)
- Fri. or Sat. night for parents who want a night out.
- Diapers furnished
- Drop and pick up from School.
- Licensed by the State

Pat Hall
592-5420 1125 W. Louisa

Get in tune for the holidays... This week's SERVICE SPECIALS

PARK *FORD*
600 WEST HIGHWAY PHONE 592-4106

CLEAN BATTERY CABLES & TERMINALS Check Alternator \$9.00	OIL & FILTER Your Choice Of Oil Special \$12.99	ROTATE & BALANCE 4 TIRES Most Cars & 1.2 Ton Trucks \$24.00
WINDSHIELD WASHER ANTIFREEZE INSTALLED Special \$1.99	RADIATOR PROTECTION Includes up to 2 Gallons of Coolants/Anti-Freeze & Check of leaks. \$19.00	FRONT DISC BRAKE SPECIAL Install new pads, resurface rotors, re-pack wheel bearings, add needed fluid, inspect system, road test. Metallic pads extra. Most American cars and 1/2 Ton Pickups extra. \$55.88
INSTALL LONG BLOCK Complete - 12 Month, 12,000 Mile Warranty. Whichever Occurs First. H60 & 454 Slightly Higher. \$1450.00	FRONTEND ALIGNMENT Cars & Light Trucks Special \$45.00 Parts Extra	PACK WHEEL BEARINGS (Inter & Outer) Cars & Light Trucks 4x4 Prices Slightly Higher \$54.00

MOTORCRAFT ENGINE TUNE-UP SPECIAL
Solid state tune-up includes installation of Motorcraft spark plugs; inspection of choke, throttle, linkage, spark plug wires and distributor cap; adjustment of idle and timing. Aerostars and Econolines slightly more.
TOTAL PRICE INCLUDES PARTS & LABOR

4 CYL. \$29.60	6 CYL. \$36.80	8 CYL. \$42.00
---------------------------------	---------------------------------	---------------------------------

LIFETIME SERVICE GUARANTEE

* If you ever need to have your Ford, Mercury, Lincoln, Merkur, or Ford light truck fixed, you pay once, and we guarantee that if the covered part ever has to be fixed again... we will fix it free. Free parts. Free labor.
* Ask us for a free copy of the guarantee.

ANNOUNCING Safemark's New Line of Excellent Quality Passenger and Truck Tires

SAFEMARK

SBR II

- 10% longer treadwear than Michelin XA4
- 20% better on hydroplaning than Michelin XA4
- Our premium tire at a mid-line price
- Built by Kelly-Springfield

TWIN STEEL BELTED RADIAL

- Low rolling resistance for fuel economy
- Strong polyester body for smooth ride
- Two full steel belts
- A very good tire at economy price
- Built by B.F. Goodrich

ALL-SEASON BELTED (non-radial)

- Polyester/Fiberglass construction for long mileage and positive traction
- Ruggedly built
- Aggressive all-season tread
- Built by B.F. Goodrich

SUPREME 70 STEEL BELTED RADIAL

- Wide profile for good handling and cornering
- Deep rib tread for excellent mileage and traction
- Good fuel economy
- Built by B.F. Goodrich

SURVIVOR RADIAL LIGHT TRUCK TIRE

- Mud traction and highway tread design
- Low road noise
- Excellent traction
- Premium quality
- Built by Kelly-Springfield

Warranty
Passenger tires carry road hazard. Light truck tires carry road hazard for 50% of tread.

See these tires plus Safemark batteries and tillage tools at the following dealers:

J&S Tire and Battery
908 S. Colorado Iowa Park 592-2623

Shop Iowa Park First