

1985
Aug 29

MRS. LITA WATSON
520 W. CLARA
IOWA PARK TX 76367 112

Tardy bells Tuesday to end v

SCHOOL BUS ROUTES

Summer vacation officially ends for all school-age children in the Iowa Park school district, when the tardy bells ring Tuesday morning. Parents, especially of younger children, should note that classes the first day will dismiss an hour earlier than usual, and make arrangements accordingly. Teachers throughout the system began in-service training Monday. All high school students are to pick up their schedules today and tomorrow: seniors this morning; juniors this afternoon; sophomores Friday morning and freshmen that afternoon. Everyone will have a break with a long, three-day weekend, to observe Labor Day. And then it's back to the routine of school.

Eight bus routes are operated by the Iowa Park transportation department. This includes two country routes, one in town, and five combination country/town routes. As it was last year, students living within the city limits must live two miles from their school, or cross FM 368 or the Old Highway to be eligible to ride the bus. The school transported an average of 1,202 students per day last year. Unnecessary discipline problems, late students and students boarding wrong buses make transporting this large number of students very difficult, according to Assistant Superintendent Robert Palmer. He emphasized, "It is very important that students and parents

not abuse the privilege of riding a bus to school." Questions concerning transportation can be directed to Palmer, at the administration building. Route designations this year include: Bus 18 - Junior High Express. Begins on Rebecca, goes west to Kidwell, south to Old Highway, west to 287 Access Road, then to junior high. Bus 1 - Picks up all students north of the Expressway and west of Bell Road, students on North Victoria, all students north of Aldine and east of Third, and goes to all schools. Bus 2 - Begins in the Old Electra Road area, travels through Garden Valley to Bradford, delivers to Junior High, services the area immediately

north of Wal-Mart, goes to Kidwell, travels through the area west of Kidwell and then travels to Bradford. Bus 3 - Begins at the Experiment Station Road, services S. Peterson Rd., Willow Creed Rd., Bridwell Rd., and then to Pleasant Valley; the area north of Old Highway, the eastern section of Iowa Park to Junior High, south to Garden Valley, then to the remainder of schools.

Bus 4 - Begins at Horseshoe Lake Road, FM 369, Huntington Lane, up to FM 367 to town and Bradford, Junior High, then Kidwell, the area around Cryovac and then to Bradford. Bus 5 - Begins at FM 369, to Huntington, then Wellington, down Old Highway to Junior High, to the area north of Cryovac, then to Kidwell and Junior High. Bus 8 - Services the area east of Kamay, south of Kamay and

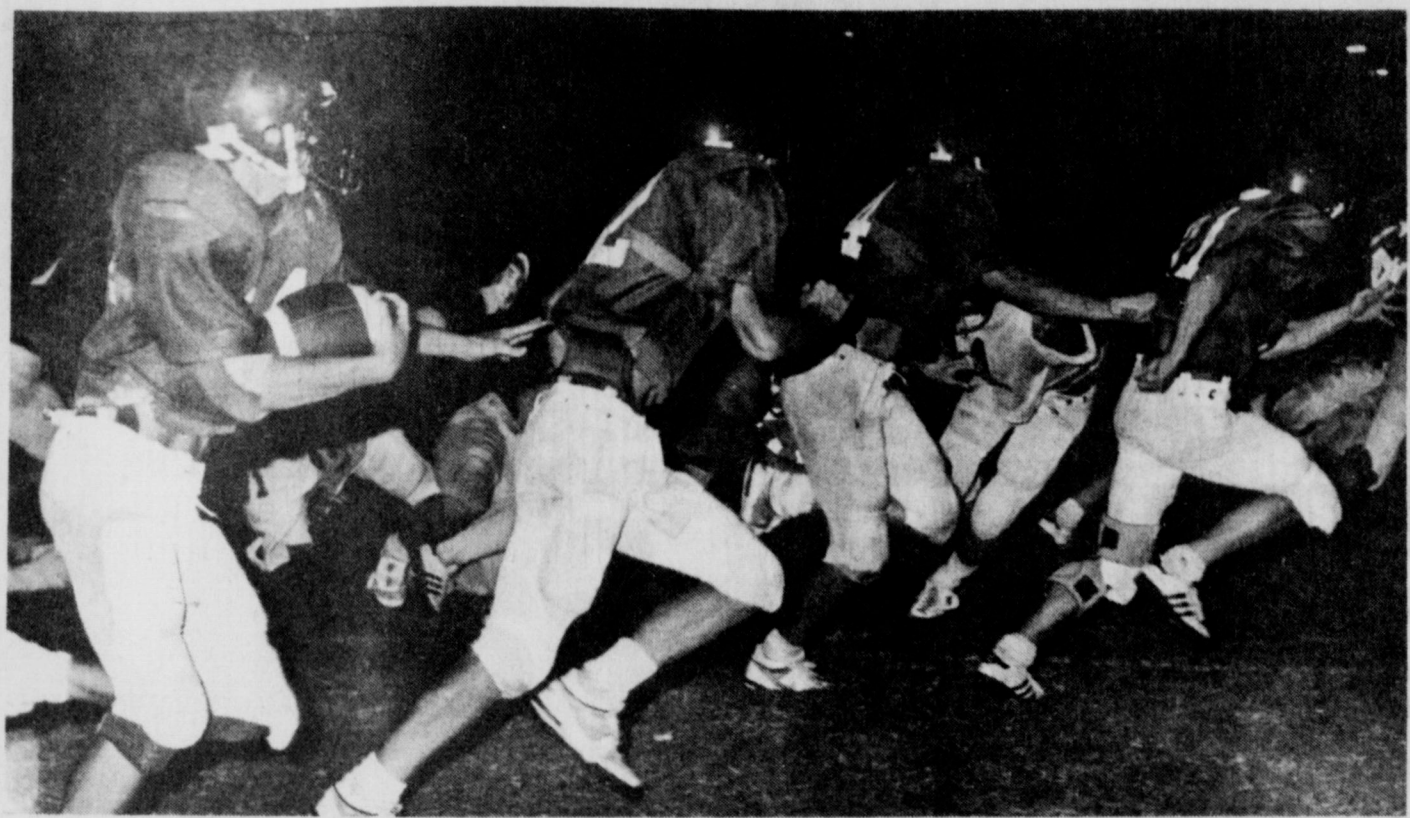
immediately west of Kamay, travels to Iowa Park and delivers to all schools. Bus 10 - Travels from Lake Diversion, down FM 1180 to Kamay, down FM 1206 to Longly Road, north up FM 368 to Iowa Park, to Bradford and remainder of schools. In addition to the regular routes, Buses 1 and 5 also carry an early Kidwell route.

IOWA PARK

LEADER

25 Cents

Vol. 16, No. 50 IOWA PARK, WICHITA COUNTY, TEXAS 76367 THURSDAY, AUGUST 29, 1985



POWERFUL HAWK SWEEP - The end sweep, long a "bread and butter" play of the Iowa Park Hawks, worked to perfection here Thursday night when the Mean Green scrimmaged Jacksboro. In fact this play worked so well, tailback Scott Weaver went 56 yards for a touchdown. More about that scrimmage and the one at Olney tomorrow is on page 9.

City to receive funds from federal government

The city council Monday night heard good news which can ease the 1985-86 budget, when Administrator James Barrington reported he expects "full funding" from federal revenue sharing. A report from Nortex Regional Planning Commission indicated revenue sharing will be continued during 1986, from which Iowa Park can expect approximately \$45,000. Barrington, who said he had anticipated only one more payment of some \$11,000, said the federal government had been leaning toward discontinuing the program. Monday's regular council meeting was the first of two required public hearings on revenue sharing, during which residents can offer suggestions as to how the money might be spent. The only suggestion offered during the hearing was made by Barrington, who said the council might consider using the funds to complete phase three of city hall renovation, which would be the exterior of the structure. The next public hearing on the topic will be Sept. 9. Aldermen rejected George Farmer's request to rezone three lots from residential to commercial. The property is on the southeast corner of Lafayette and Jackson, and Farmer termed it "undesirable for residential."

However, residents of the area protested, saying there was already more commercial use of property in the area than they wanted, and feared increased business use would decrease the standard of living they now enjoy. Farmer told the council he has been unable to sell the property for residential construction, but felt he could sell the land if he could have it rezoned. The council voted unanimously to retain present zoning. A similar proposal has twice earlier been rejected by the Planning and Zoning Commission. No comments were made from the audience on either of two proposed annexations of property into the city.

One is a large tract on the northwest end of town and the other is a smaller tract on West Smith Street. Action on two proposed ordinances, both updating existing ordinances, was postponed for further study and revision. One addresses demolition of structures found to be unsafe to the public, and the other would increase regulation of railroad traffic through the city. The condemnation ordinance, if changed, would shorten the 120-day waiting period now provided under the present ordinance. This, according to city leaders, has been found cumbersome when an actual threat to the public has existed. An addition to the proposed ordinance concerning railroads will be added to that which was presented to the council Monday, which would require prior notice to the city

whenever dangerous chemicals are being transported through the city. The council approved resolutions approving work and accepting new streets constructed on East Garden and the 800 block of Van Horn. Aldermen also accepted Mayor Tim Hunter's appointment of Mrs. George Francis, of 1512 Karen, as lay representative to the North Texas Library System. A request made by the city administrator to permit purchase of an additional computer terminal, at \$1,750, for use in the collections department was approved. Also accepted was a bid to repair a damaged city pickup, costing \$2,200. It was the lowest of three bids. The council held a 15-minute executive session on a proposal to lease city property, but made no announcement when the meeting was re-opened to the public.

Seminar slated tonight on veteran loan programs

North Texas veterans will attend an information seminar here today to hear more about state benefit programs which have poured \$17-million into the economy of this five-county area. Texas Land Commissioner Garry Mauro announced that the seminar will be held at 7 p.m. in the Disabled American Veterans Center, 417 Indiana Street. He also serves as chairman of the Veterans Land Board which administers the two major state programs—the Veterans Land Program and the Housing Assistance Program. State records show that almost 1,000 veterans in the counties of Wichita, Wilbarger, Clay, Archer and Baylor have received loans through the two programs. A total of \$5,582,656 was generated for the purchase of 28,017 acres of land since the Legislature approved the program in 1946. Under the

two-year-old housing programs, 241 veterans in the five-county area spent \$4,820,000 in loan funds for housing. Mauro noted that more than 20,000 veterans reside in the five counties, urging that they attend the seminar and learn how to gain benefits available through the Veterans Land Board. Sen. Ray Farabee will serve as moderator for the seminar which is open to realtors, developers and other interested in the programs for veterans. Revenue generated for the individual counties through the programs include: Archer \$703,367; Baylor \$214,786; Clay \$3,038,884; Wichita \$5,405,462; and Wilbarger, \$1,040,157. Wichita County numbers more than 15,000 veterans with 1,840 in Wilbarger; 1,320 in Clay, 970 in Archer and 610 in Baylor.

Trustees okay budget

Following a public hearing, during which only two persons made comments, the school board approved a budget of \$5,310,647 for the 1985-86 school year. Revenues figured in the budget are projected on a 71-cent local tax rate, an increase of 18-cents. Trustees are to hold a called meeting Tuesday evening to adopt a rate, which could be set lower but by law cannot be set higher than the 71-cents. Both persons who spoke to the board commented on high values, something with which taxing entities have nothing to do. They were informed the county's tax appraisal district sets the values, and that the school only uses the values given it by the appraisal district to project revenues on rates the school sets. There were others in the audience, but none had comment. Prior to accepting the comments and questions, Supt. Glen Mitchell briefly explained the budget, how the tax rate was established, effects of state mandated cost increases which are not funded by state, and commented on a report published about how much state money the

school is expected to receive. Mitchell said "by sending us less money and requiring us to do more," the state is making us raise our (tax) rates. About a report published in an area newspaper that Iowa Park schools would receive \$2.5-million from the state this year, Mitchell told the audience and board, "I cannot tell this board we'll get this (money). In fact, we may get less." State revenues figured in the budget are \$2,401,012. An additional \$69,387 is budgeted from federal sources. The budget, even with an 18-cent tax increase, calls for a deficit of \$492,190, which is to come out of the school's \$1.42-million carryover. Jessie Rowe told the board he felt like property was overvalued and that school costs could be cut by doing less bussing and operating the swimming pool. Rowe, who lives at 1323 Edgehill, said his home payments had increased \$60 per month over the past 10 years. He did not, however, attribute city taxes, insurance or anything else contributing to the increase. As to his home's value assessment, the tax records indicate it has been assessed at \$39,150 the past three

years. Part of the home's value was increased, according to tax collector Allen Shewmake, because the garage was taken in for a child care center, and the appraisal district figured the income generated by that service increased the value. Yvonne Kelly, who with her husband purchased the Marvin Klinkerman home on FM 368 north of town, told the board her home and two acres had been doubled in value when reappraised. She said the price put on it by the district was more than they paid. Prior to voting on the budget, board chairman Roy Boutwell told the audience, "Everyone has tried to do the best we can. And you've got to remember, we're taxpayers also. We have the best product (school) we can have for the price we pay." Vote on the budget was unanimous. In other business, trustees discussed a tractor/mower purchase and repairs to a school pickup that had been damaged. The tractor/mower issue was brought about when one type of mower that was approved, pending trial approval, was found unsuitable and another was to be tried for approval. Board members approved purchase at a recent meeting.

New bank tax received here

Iowa Park city and school have received \$16,127.82 from State National Bank from the first collection of the state's new franchise tax on banks. The city received \$9,492.39 and the school \$6,635.43. In the special session last year, the legislature brought banks under the franchise tax for the first time and allocated receipts from the tax to cities, counties, school districts and other local taxing units where the banks are located. Banks are taxed at the same rate as other Texas corporations. Previously, bank stocks were subject to local property taxes. The legislature exempted the stocks from property taxes, substituting the new bank franchise tax.

Reserved seat tickets on sale

Hawk football fans who had season reserved seat tickets last year have until Sept. 6 to renew their option on the same seats again this year. Tickets are sold from 8 a.m. until 12 noon and 1-4 p.m. at the high school administration office with a book of season reserved tickets costing \$24.50, which includes seven games. Reserved seats after the first game will cost \$4 per game. General admission tickets will be \$2 for students and \$3 for adults, if purchased before the game, and \$4 for either when purchased at the gate.

News in Brief

MD Pledge Center located here
Epsilon Eta will "man" a pledge center for the Muscular Dystrophy Association Labor Day Telethon Sunday and Monday at Shaw Ford in Iowa Park. Members will be taking pledges for the Iowa Park area from 8 p.m. until midnight Sunday, and from 8 a.m. until 6 p.m. Monday. To phone in pledges on these days, call 592-4106.

School annuals can be picked up
Iowa Park High School annuals for the 1984-85 school year are now available to be picked up by those students who graduated last spring. The annuals can be picked up today and Friday, from 8 a.m. until 3:30 p.m.

Library survey slated Tuesday evening
Members of Boy Scout Troop 38 will be knocking on doors in Iowa Park Tuesday night from 6:30 to 7:30 to survey residents on the new Tom L. Burnett Memorial Library, according to Trish Costello, survey coordinator. Costello said the survey, which was printed in last week's issue of the Leader, will be used, and that the volunteer scouts will be wearing "...some form of button or banner" to distinguish themselves. Anyone having questions concerning the survey can contact Costello at 592-2609.

Weather Report

Weather reports are officially compiled for Iowa Park at the Texas Experiment Station, southeast of town.

Rainfall for week.....	.87
Total for month.....	2.17
Total for year.....	27.13
Total for last year.....	11.81

Juveniles detained
Three juvenile boys were taken into custody by Iowa Park police when found to have been shooting a BB gun at the junior high building Monday afternoon. They were released to their mothers.

Dowell, Geary nuptials are solemnized Saturday afternoon

Miss Laura Beth Dowell and Timothy James Geary exchanged marriage vows in a beautiful wedding ceremony performed Saturday afternoon at Faith Baptist Church.

Rev. Kenneth Schroeder, pastor of Jean Baptist Church, officiated the double-ring ceremony to unite the daughter of Mr. and Mrs. Eldon S. Dowell of Iowa Park and the son of Mr. and Mrs. James M. Geary of Wichita Falls.

A brass archway decorated with boxwood garlands and shades of smoke blue and white carnation, hibiscus and stephanotis on the sides and a cascading plaque of the flowers and greenery at the top was used in the center of the altar as a focal point of decorations. Spiral candelabra flanking the archway had fifteen candles each to provide soft lighting.

To make the picture complete, tall brass baskets on either side of the steps of the altar were filled with smoke blue and white gardenias, roses, lilies, stephanotis and baby's breath.

Another feature that contributed to the excellence of decorations was the unity candlestick, also on the lower level. It held a large frosted unity candle imbedded with the couple's wedding invitation on one side and with their scroll on the opposite side. After the minister had pronounced them husband and wife, they lighted the candle as they left the altar, using the burning candles that their mothers had placed in the three-point holder before the ceremony.

The path to the altar was lined with brass hurricane globes tied with greenery and smoke blue ribbon bows with streamers.

Mrs. Glenn Schell, organist, and Mrs. Brett Perry of Waukomis, Okla., vocalist, furnished the wedding music. For Prelude numbers, Mrs. Schell played "Jesu, Joy of Man's Desiring," "Panis Angelicus," "From This Day Forth," "I Love You Truly" and "O Perfect Love." She played the time-honored marches and accompanied Mrs. Perry who sang "There Is Love" while the mothers were being seated, "The Rose" sung for the bride's father just before he presented her in marriage, and "The Lord's Prayer" while the bride and groom lighted the unity candle.

When the minister asked "Who gives this woman in marriage?", the bride's father, who had escorted her to the altar, replied, "Her mother and I."

The bride's natural beauty was enhanced by the formal white Chantilly lace and sheer organza gown that she was wearing. The gown was designed with a bodice of Chantilly lace sparkling with seed



MRS. TIMOTHY JAMES GEARY

pearls, a Queen Anne neckline, long fitted sleeves closed with self-covered buttons at the wrists above lace and organza ruffles. The buttons added a distinctive touch to the waist at the back.

The full carpet length skirt was set off with a deep lace hemline panel and organza ruffle that swept into a chapel length train in the back.

The bride's veil of bridal illusion drifted from a Juliet cap of lace and pearls and extended the length of the train. The delicate beauty of the gown was accented with her silk bouquet of smoke blue and white open roses, rosebuds, gladioli florets, silver forget me nots, white narrow silk streamers that she carried on her white Bible.

As she observed bridal traditions, she wore the wedding ring of her late paternal grandmother, Mrs. Floy Dowell, for "something old," pearl earrings, a gift from her sister, for "something new," a pearl necklace, the "something borrowed" from the groom's mother. The "something blue" touch was carried out in the ribbon and flowers that trimmed a white lace garter made especially for the bride by her mother. A pouch attached to the garter held three pennies, one dated the year of her birth, another dated the year of the groom's birth, and the third dated 1985.

The bride honored her mother by presenting her with a smoke blue rose as she approached the altar, and honored the groom's mother in the same way as they left the church.

The bride's colors were reflected in the sophisticated dresses and hats worn by her attendants. The smoke blue tea length dresses were fashioned with off-the-shoulder necklines, short pleated puffed sleeves, high waistslines hugged with sash belts that tied in bows at the back. They wore fashionable white fabric hats trimmed with smoke blue silk roses and white silk leaves and cascading blue and white lace streamers. The carried smaller versions of the bride's bouquet on white Bibles, their gifts from the bride.

Miss Suzanne Linn of Shreveport, La. was the maid of honor, Cheryl Wahl, sister of the bride, and Mrs.

Albert Alvarez, sister of the groom, were the bridesmaids.

The groom wore a medium grey tuxedo with matching tie and cummerbund. The attire of the best man, groomsmen, ushers and fathers matched that of the groom except for grey vests instead of cummerbund.

Albert Alvarez, brother-in-law of the groom, was the best man, Mike Geary of Cheyenne, Wyo. and Ensign James E. Geary, San Diego, Calif., brothers of the groom, were the groomsmen and assisted Donald Dowell of Memphis, Tenn., brother of the bride, with duties of ushering.

The bride's mother wore an ivory polyester dress with blouson top and a corsage of smoke blue and white silk roses, and the groom's mother wore a mauve floral print taffeta dress and a corsage of mauve silk roses.

The wedding was followed by a reception the the Fellowship Hall of the church hosted by the bride's parents.

The decorations and appointments on the bride's table were arranged to achieve a balanced design of beauty. It was draped with a light blue silk cloth with a white lace overlay trimmed with white lace and blue smoke ribbon bows at the top. A long arrangement of smoke blue and white silk gardenias, roses, lilies and stephanotis combined with eight tiny blue tapers, and a silver punch bowl at the sides pointed to the beautiful cake centerpiece.

The three-tiered cake with two sets of dividers was a delightful combination of scrollwork and cascades of blue roses softened by

pale green leaves and set over a fountain flowing with light blue water. Enduring symbols of love were emphasized in the top ornament featuring a porcelain bride and groom standing before a heart supported by a dais bordered with a shower of roses and tulle.

The silver toasting glasses, light grey napkins accented with a rose, names and wedding date of the couple in light blue added further interest to the table decor.

The groom's table was covered with dark blue silk overlaid with white lace. It held a large double-rings-shaped chocolate cake decorated with smoke blue frosting roses, a silver epergne filled with flowers like those in the arrangement on the bride's table accented with white doves, and a silver coffee service.

During the reception, Mrs. Donald Dowell of Memphis, Tenn., the bride's sister-in-law, Mrs. Roger Smith and Miss Mary Miller served refreshments at the bride's table, and Miss Kathy Geary and Miss Mollie Geary, sisters of the groom, served at his table.

Mrs. Mark Patterson secured signatures of the wedding guests before the service at a table in the church foyer. The center of attraction was a white satin shadow box ornamented with silk flowers in shades of blue and portraits of the bride in her wedding gown. The other appointments were a blue plume pen, a vase of silk flowers and two white baskets that contained the couple's scrolls and bird seed bags. The table

was draped like the bride's table at the reception.

Alyson Lieban of Denton and Wendy Bridwell passed out the bags and scrolls in the foyer, and Cindy Beisch, Dustan Wahl, nephew of the bride, and Alyson Lieban distributed the bird seed bags during the reception.

The rehearsal dinner was given by the groom's parents at the Polynesian Gardens.

The bride was graduated from Iowa Park High School and Texas Woman's Univ. where she was a member of Phi Upsilon Omicron, and TWU Baptist Student Union. She was also president of the Child Development Family Living Club, was on the honor roll, and belonged to the National Association of the Education of Young Children. She is employed by University Day Care Academy and Kindergarten.

The groom was graduated from

Cheyenne Central High School in Cheyenne, Wyo. He is a senior at Midwestern State Univ. and is a member of Beta Beta Beta. He is a member of the Navy Reserves and is employed by Wichita General Hospital in medical technology.

Following a trip to Dallas, the couple are at home in Wichita Falls. The bride left the church in a light grey linen ensemble with white sleeveless blouse and short-sleeved jacket, and she was wearing a white hat to match those worn by the bridal attendants.

The out-of-town guests, other than those who participated in the wedding were Messrs. and Mmes. Chester Dowell and family from Sufway, Mark Monroe and family of Oklahoma City, Woody Culpepper of McGregor, Craig Cajdos of Denton, Mrs. Alex Lieban of Denton; Miss Joyce Burch and Miss Linda Kelley of Butte, Mont.



LADIES EXERCISE CLASSES will begin Mon., Sept. 9

Instructor: JOY HEDRICK, 592-2000

This is a four-week course with other four-week courses to follow.

The fee is \$2.00 per lesson, plus a one-time initial RAC membership fee of \$3.00 per year. Lessons will be on Monday & Thursday evenings at 7:15 at the RAC and will feature a combination of aerobics, jazzercise, and stretching. The course is designed for weight reduction and physical fitness improvement. Wear tennis shoes and bring an exercise mat or beach towel for floor exercises.

WATCH FOR YOUR COPY OF OUR FALL PAINT TABLOID IN THE MAIL.

True Value HARDWARE STORES

Paint Now Pay Later

Fall Paint Savings
Aug. 28th thru Sept. 8th

<p>9.98* Gallon E-Z Kare™ Sat-N-Hue™ Latex Flat Finish is fully washable. Easy cleanups with soapy water. Choose from 39 colors and white. EZF</p>	<p>9.98 Gallon Solid Color Latex Stain lets you see the wood texture under a fade and water-resistant finish. 10 colors and white. LS</p>	<p>10.98* Gallon WeatherAll Latex Flat Finish puts years between painting jobs. For primed wood, more. 26 colors, black, white, custom colors. HPX</p>	<p>8.98* Gallon Latex Flat House Paint resists mildew, blistering. For exterior wood, brick, stucco, more. Easy soap and water cleanup. White. M</p>
---	--	---	---



We haven't lost a single roll of film during our first year in business!

24-HOUR SERVICE
...at a price you can afford

One-Hour Service Available

Picture Perfect

KIS PHOTO

107 W. Cash
Iowa Park

Kodak

<p>4.99 Gallon Flat Latex Wall Paint provides a high-hiding finish on all interior wall and ceiling surfaces. 7 decorator colors and white. YF</p>	<p>8.98 Gallon Clear Wood Sealer & Preservative penetrates, protects and waterproofs bare exterior wood. Allows natural weathering. CWC</p>	<p>12.98 Gallon E-Z Kare™ Latex Flat Enamel leaves an easy-to-care-for scrubbable finish on walls and trim. Choose from 39 colors & white. EZ</p>	<p>6.98 Gallon White Latex House Paint puts an economical flat finish on wood, brick, stucco, more. Low-chalking, fade-resistant formula. L-24</p>
---	--	--	---

PARKWAY

FURNITURE
True Value HARDWARE
200-206 West Bank
592-5512
592-4681



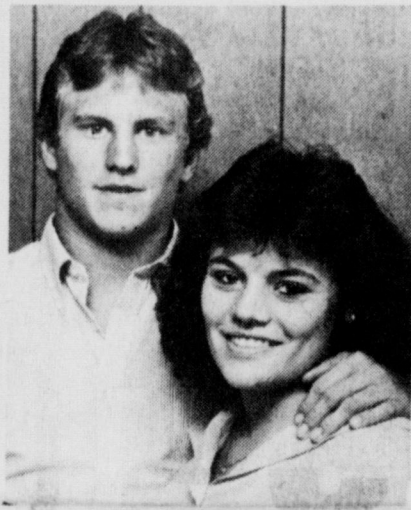
ROSEMARIE SOELL
and
ROBERT ROOSE

Announce engagement

Dr. and Mrs. Erwin F. Soell announce the engagement of their daughter, Rosemarie, and Robert Roose, son of Mr. and Mrs. Afton Roose of Farmersville. A wedding for June 7, 1986 is being planned.

Miss Soell was graduated from Iowa Park High School with valedictory honors. She attended Texas A&M Univ. three years. She was a member and officer of the Horsemen's Club, member of three honor societies, Phi Eta Sigma, Alpha Zeta and Phi Kappa Phi, and on the Dean's List. She will enter the university this fall as a first year veterinarian student.

Her fiancé was graduated from Farmersville High School and received an engineering degree from Texas A&M Univ. where he was active in Baptist Student Union Work. He is employed as an engineer by General Dynamics in Fort Worth.



MAXINE HILL
and
ROBBIE WILSON

Wedding date selected

Mr. and Mrs. Kendall J. Hill of Iowa Park are announcing the engagement of their daughter, Maxine, to Robbie Wilson, son of Mr. and Mrs. Jackie Wilson of Iowa Park.

Both attend Iowa Park High School where Wilson plays varsity football and Hill is active in Future Farmers of America.

The couple will exchange vows Sept. 7 at the Iowa Park Church of Christ.

Tyner, Frazier wedding is held here Friday

Miss Lisa Gayle Tyner and Jessy Lee Frazier were united in marriage Friday evening at the First United Pentecostal Church in a double-ring ceremony performed by Rev. Jimmy Frazier, pastor of the Life Center Tabernacle, Hot Springs, Ark., uncle of the groom.

The bride is the daughter of Mr. and Mrs. Floyd Davis of Iowa Park and Donald W. Tyner of Houston, and the groom is the son of Danny Frazier of Burkburnett and Stella Frazier of Wichita Falls.

Guests registered in the church foyer at a table covered with white lace. It was decorated with a five-point white wrought iron candelabrum holding lavender votive candles, pictures of the bride and groom, a white basket containing rosebud rice bags, a lavender plume pen and book. Miss Nancy Frazier, cousin of the groom, presided during the registration of guests.

The wedding decorations were white wicker baskets tied with grey bows holding fresh lavender gladioli, mums and carnations, and low brass candle holders on the altar rails supporting lavender candles. The pews for family members were designated with votive candles and greenery.

The wedding musicians were Mrs. Jimmy Frazier, pianist, Mrs. John Howard and Miss Sharon Routh, vocalists, who sang "If" and "Walk Hand in Hand with Me." Mrs. Frazier sang "Always" during the ceremony, played the wedding marches and provided accompaniment for the duet numbers.

The bride's stepfather gave her in marriage. The designer gown that she chose for her wedding was of shimmering white crepe georgette. It was designed with an exquisite Victorian neckline bordered with Alencon lace and tiny seed pearls on a bodice covered to the flattering waistline in front with appliques of the lace and in the back with sheer imported lace. The full skirt bordered with a deep flounce of Alencon lace gracefully flowed into a semi-cathedral train.

A matching hat and veil completed her ensemble and she carried a bouquet of fresh lavender carnations, white daisies and greenery with matching ribbon streamers.

In carrying out bridal traditions, she wore her great-grandmother's wedding band for "something old;" a 1948 wheathead penny, the "something borrowed" from her mother to wear in her shoe. Her wedding dress



MRS. JESSY LEE FRAZIER

and a garter were "something new" and "something blue."

Miss Becky Woods served as maid of honor. She wore a lavender sheer floor length dress styled with V neck and short puffed sleeves and carried long stem lavender carnations and white daisies.

Miss Tina Frazier, sister of the groom, and Miss Pam Stone were dressed in lavender and pink formal gowns, respectively, and carried long stem carnations as they served as bridesmaids.

Miss Jennifer Davis and Miss Amanda Davis, sisters of the bride, took part in the wedding as train bearer and flower girl, respectively.

They wore identical lavender dresses and the flower girl carried a white basket filled with lavender and grey paper petals.

Chris Miller, the groom's stepbrother, was the ring bearer.

The groom was attended by Steve Frazier, a cousin, the best man, Danny Frazier, his father, and Rick Frazier, another cousin, the groomsmen.

Donnie Tyner, brother of the bride, and Richard Willhoit, her uncle, ushered the guests and lighted the candles for the service.

The groom was dressed in a classic white tuxedo with tails and wore a lavender carnation with baby's breath boutonniere. The masculine participants in the wedding wore black tuxedos with lavender boutonnières.

The bride's mother wore a street length grey and white jersey dress and the groom's mother wore a beige and brown street length dress.

Mr. and Mrs. Floyd Davis were hosts for the reception following the wedding in the Fellowship Hall of the church.

The bride's table was draped with fine white lace over lavender, the lace accented at the top with miniature nosegays in pastel hues. A five-branched wood candelabrum in the center of the table held lavender votive candles in clear hurricane globes. It also held the bride's bouquet and the accessories were two white alabaster doves that matched those on the guest book table.

The three-tiered white cake was a special point of interest on the table. The second and third tiers were divided by small crystal inverted wine glasses covering mini bridal bouquets. A miniature bride and groom stood between the glasses, and each tier was decorated with silk white carnations and lavender roses. The top ornament, consisting of two white satin bells rimmed in seed pearls that hung in the center of a beaded heart rising from a pouf of net and lilies of the valley, gave the finishing touch to the cake.

A cut glass punch bowl and lavender and grey napkins imprinted with "To love and to share, Jessy and Lisa" were included in the decor.

The groom's table was covered with white linen and held the chocolate cake made by his stepmother and topped with a bride and groom, coffee service, grey taper candles in two round clear globes, and grey napkins.

Refreshments were served by the bridal attendants.

The bride was graduated from Iowa Park High School and is employed by Pro Cuts in Wichita Falls. The groom attended Iowa Park High School and works for Big Nine Super Market.

Mr. and Mrs. Danny Frazier were hosts for the rehearsal dinner Thursday evening at the church.

After a wedding trip to Hot Springs, Ark. the couple will live in Iowa Park.



SHOWER SELECTIONS FOR

TINA GAYE FEATHERSTON
and
TIMOTHY WESLEY NORRIS

PAM STONE
and
STEVE FRAZIER

LAURA DOWELL
and
TIM GEARY

PARKWAY



HARDWARE & FURNITURE
200-206
W. Bank 592-5512
592-4681 592-5512



We know our prices are as low, and in many instances lower than, in Wichita Falls, because our customers from Wichita Falls tell us they are!

<p>Microwave 1.5 cu. ft. large capacity, carousel turntable, variable cooking control. R4775/7710 Reg. \$349</p> <p>\$268</p>	<p>19" Color TV Programmable remote control, 112 channel, cable-ready, color monitor, high contrast tube. Reg. \$459⁹⁵</p> <p>\$399</p>	<p>Air Conditioner 7,600 B.T.U., 110 Volt, hi-efficiency, multi-speed, energy saver. AQ708AS Reg. \$459⁹⁵</p> <p>\$349</p>	<p>13" Color TV Programmable remote control, 112 channel, cable-ready, color monitor, high contrast picture tube. Reg. \$379⁹⁵</p> <p>\$325</p>	<p>VHS VCR 4 event, 14-day timer, 107 channel, cable-ready, front load, multi-function wired remote, special effects. 1VCL6003 Reg. \$469⁹⁵</p> <p>\$399</p>	
<p>Freezer 15.2 cu. ft. upright, textured steel door, locking with interior light. CU15ST Reg. \$399⁹⁵</p> <p>\$319</p>	<p>Channel Master Special</p> <p>Complete Satellite Antenna System \$1295 Installed</p> <p>\$34 mo.</p> <ul style="list-style-type: none"> 6-ft. fiberglass dish Manual positioner Variable tuning 100 degree LNA 		<p>Refrigerator 16 cu. ft. no frost, adjustable glass shelves, see-through crispers. TBF16TG Reg. \$649⁹⁵</p> <p>\$549</p>		
<p>25" Color TV Programmable remote control, 112 channel, cable-ready, color monitor, hi-contrast picture tube. Reg. \$749⁹⁵</p> <p>\$599</p>	<p>Washer Extra-large capacity, Perm. press cycle, water lever and temp. selections. Reg. \$479⁹⁵</p> <p>\$399</p>	<p>Upright Convertible Vacuum Heavy duty 4.8 amp motor. Converts to use an assortment of attachments No. 4271. Reg. 99.95</p> <p>\$69⁹⁵</p>	<p>Electric Range Two large, two small surface units, clock, automatic oven timer, windowdvor. (Not a strip-down model) JB526 Reg. \$469⁹⁵</p> <p>\$399</p>	<p>Dryer Automatic dryer with permanent press cycle. 3 drying selections DDE57006 Reg. \$369⁹⁵</p> <p>\$319</p>	<p>Hotpoint Microwave 15-minute timer, two power levels, glass tray, Almond color RES0C Reg. \$219⁹⁵</p> <p>\$133</p>
<p>Portable VHS VCR with Color Camera Reg. \$1295</p> <p>\$888 after rebate</p>	<p>PARKWAY FURNITURE ELECTRONICS APPLIANCES</p> <p>200-206 West Bank 592-5512 592-4681</p>			<p>Microwave Carousel turntable, 20-minute timer, two-power levels R5565 Reg. \$199⁹⁵</p> <p>\$175</p>	

CLASS RING DAY

Sept. 10
3:30 - 6 p.m.

FREE RING OPTIONS*
UP TO \$69 VALUE

Plus FREE Graduation Key Chain*

Gold Lance Class Rings • A Towle Product
2-4 Week Delivery • Full Lifetime Warranty

Louis' DISTINCTIVE JEWELRY
408 W. Park 592-5942

ASK FOR DETAILS

RIDER
WFHS
HAROLD
SEYMOUR
ARCHERCITY
IOWA PARK
HOLIDAY
ELECTRA
HIRSCH
BURBURNETT

FIRST IN SERIES

Home Rule Charter is explained

The basic, underlying purpose of a Home Rule Charter is to provide local self-determination of how a municipal government should be run at the most local level possible for each city.

The proposed Charter for the City of Iowa Park is designed to basically retain the form of government that currently exists while creating a situation that can be changed in the future to meet the changing wishes and needs of the citizens. The purpose of this particular article is to explain briefly the underlying philosophy behind General Law and Home Rule, and to introduce the first two Articles of the proposed Charter.

In future issues, leading up to the Nov. 5 election, each of the 10 articles will be addressed and outlined. Copies of the full text of the proposed Charter will be mailed to each registered voter in Iowa Park.

All Texas cities which have never grown to a population of at least 5,000 people are governed by a general

"charter" written over the years by the Texas Legislature. Such cities are called "General Law Cities" and are governed in their operations by "General Law."

As one might suspect, these general laws are written as a result of many particular problems and situations which have arisen in various parts of the state and been required by the legislature to correct these specific problems. While this may sound reasonable in theory, the result in practice is a series of contradictory and confusing laws that may have some real application in some parts of the state and be completely meaningless or even harmful in other communities.

As a way of dealing with the cities, Texas adopted laws many years ago that grant local governments of over 5,000 population a great deal of variety in creating a government that will suit their individual needs. In keeping with the philosophy behind the U.S. Constitution, the people of the community vote to decide what that structure should be. There, rather than general laws governing the operations of the local government, specific local laws

prevail that were written "at home." These laws make up a "constitution" for the city that can only be changed by a vote of the people and are called a "Home Rule Charter."

At the April election in 1984, the voters of Iowa Park approved the first step in the two-step process of becoming a Home Rule city. This was the passage of the question "Shall a Commission be chosen to frame a Charter?"; and the election of 15 individuals to draft this charter. The Charter Commission has met more than a dozen times in the intervening time and has submitted the proposed Charter to legal experts with the Texas Municipal League in Austin (at no cost to the city) for review. The final draft was approved and submitted to the City Council to call the second election in the process.

This election, to be held Nov. 5, will be to vote for or against the ratification of the proposed Charter.

Since the Charter is a unified document at this stage, it is being presented in total for acceptance or rejection. A ratified Charter may be subject to amendment on an article by article or even sentence by sentence basis with the approval of the voters at a regular or special election. The only stipulation limiting amendments is that a Charter may not be amended within two years of ratification or latest amendment.

The first two articles of the proposed Charter are basically the legal framework that is required by state law setting out the boundaries and providing the authority for the city to act in the same way as an individual or corporation in acquiring and selling property; conducting business and legal transactions; and other grants of authority for the normal conduct of business. It designates that the form of government shall be called "Mayor-Council-Manager." Later articles will detail the duties of the Mayor, City Council, and City Manager respectively.

The second article spells out that the city shall have all the powers allowed to Home Rule Cities by the state except as limited by the Charter or as addressed by the Charter in specific details. This is to give the city the ability to conduct business in an

orderly fashion without the necessity of seeking legislative approval every two years and without the necessity to create an excessively long document citing every power granted to Home Rule Cities by the state.

In summation, Home Rule is designed to give the local voters and their local government the ability to respond to local situations in a more timely manner. Future articles will go into greater detail of specific ways that this will be accomplished. It is not the purpose of this article to persuade people to vote for or against ratification, but rather to give information so that each voter may cast an informed and intelligent vote as he or she sees fit.

Home Rule is intended to allow the people at home to decide what they want their government to be.

Questions are welcome. We will try to answer as many questions as possible over the coming weeks. They should be addressed to the **Iowa Park Leader** or to **City Hall, Attn: City Administrator**.

Remember to vote November 5!


IOWA PARK LEADER

766280

Editor/Publisher: Bob Hamilton
 Co-publisher: Dolores Hamilton
 Reporter: Olive Blalock
 Reporter: Kevin Hamilton
 Reporter: Kari Collins

The IOWA PARK LEADER is published every Thursday. Offices are located at 112 W. Cash, Iowa Park, Texas 76367 (766280). Telephone: 592-4431. Second Class Postage Paid at Iowa Park, Texas, 76367. Annual subscription rates are \$8.41 in Wichita and Archer Counties; \$10.51 elsewhere in Texas; \$12.00 anywhere in the United States. Any erroneous reflection upon the character, standing or reputation of any person, firm or corporation which may appear in the columns of this newspaper will be corrected upon being brought to the attention of the publisher.

MEMBER
TEXAS PRESS ASSOCIATION



Municipal Court Records

Results of municipal court held here yesterday were:

- Craig Alan Rains, speeding, \$68;
- John Thomas McGrath, displayed expired motor vehicle inspection, \$60;
- Jeffery Clark Brookshire, exhibition of speed, \$60;
- Janice Laura Gibson, displayed expired tags, \$69;
- Jeff Ray James, speeding, \$66;
- Melonie Sue Smith, speeding, taking defensive driving course (DDC);
- Wanda Mae Schenewerk, speeding, taking DDC;
- Garrie Randal Baker Jr., ran stop sign, taking DDC;
- Michael Keith Bush, public intoxication, \$49;
- Billy Don Grimes, public intoxication, \$49;
- Janella Oakley Rambo Knight, public intoxication, \$49.

Seat belt law begins Sunday

Iowa Parkans will be expected to join other drivers across Texas starting Sunday, and driving with their seat belts buckled.

Starting Sunday, drivers and front seat passengers will wear seat belts or face a fine of up to \$50.

State troopers will issue warnings until Dec. 1, but after that date, drivers and passengers will pay from \$25 to \$50 for not wearing seat belts.

Inside the city limits of Iowa Park, Chief Bob dean said the city would probably follow the state in only issuing warning tickets until Dec. 1.

The law, passed recently by the state legislature, requires all cars and light trucks up to three-quarter ton capacity to have seat belts. Automobiles made prior to 1968 are not affected, according to a DPS spokesman.

As I See It....

By BOB HAMILTON



Every once in a while, I like to cut loose with some real sour grapes, just to make me feel better. It's kinda like kicking a wall or getting out somewhere and yelling to the top of your voice.

Brand X, that daily newspaper from Wichita Falls, has come up with a new term: two means several.

In yesterday's story about the school board meeting on the budget stated, "Several taxpayers attending Tuesday's meeting stated objections..."

Two persons, Jessie Rowe and Yvonne Kelly, spoke to the board. That's all! And only one mentioned anything about the budget.

And then there are the big town people who go into journalism who wear out the term "sleepy little

village" type of identification.

An Associated Press story reporting on the closing of a Swift beef packing plant in Hereford, described that city of some 16,000 population as "this small Panhandle community."

If "beauty is in the eyes of the beholder", then size of a community of less population than Dallas or Houston must be an exposure of aggravation of the writer.

He's in trouble if he goes to Maybelle or Mankins.

Newspapers just love to get requests from some high level Postal Service management type to publish, for free, a story about the department wanting to hire people at a starting salary of \$9.48 per hour "...with increases to \$12.90."

time making that kind of money in a day, even when advertisers pay their bills.

But then, there are happier notes, those of us who will be following the Hawks through the 1985 football season might not realize how much we will save on gas this year.

Our three road games account for only 376 miles, round trip. That's to Vernon, Bowie and Springtown.

Don't appreciate it yet?

Then consider if you lived in Fort Stockton, and were going on that school's five games out of town. If you didn't make any side trips, you could hold your mileage this season to a mere 1,470.

And they're lucky at that, because Ysleta of El Paso is playing at Fort Stockton, cutting off 240 more miles.



TANNER-AULDS FUNERAL HOME


300 E. Cash -Since 1908- 592-4151

Call us about a Pre-Paid Funeral Plan
"Our family serving your family"

Lordy, Lordy,

my mom's 40

Love, Kevin and Cody



Baby Jim

Guess who's 34 today & still climbing in success?

We love you, mom & eight brothers & sisters

NEW SUBSCRIBERS:
Choose basic and/or your choice of any of our premium services.

CURRENT SUBSCRIBERS:
Choose any additional premium service(s) of your choice.



"Jerry's Kids"...

Help us help

\$\$\$AVE ON CABLE INSTALLATION

WHEN YOU TELL US YOU WILL DONATE TO FIGHT

MUSCULAR DYSTROPHY

- ★ Blockbuster movies without cuts or commercial interruptions.
- ★ Specials, concerts and made-for-cable movies available nowhere else.
- ★ Exclusive sports, music and arts programming.
- ★ Award-winning family entertainment and movie classics.
- ★ 24-hour in-depth news and weather. Plus sharp, clear reception on all channels.



TEI TV CABLE

OF IOWA PARK

696-0664

* Good in cable-access area only - Offer Expires Sept. 1, 1985

KINGS FOOD VIDEO CENTER

300 West Bank
Iowa Park
592-2861

HOURS —
10 A.M. til 8 P.M.
7 DAYS A WEEK




MOVIE RENTS PRICES TRIMMED

\$ 1.50 PER ONE DAY AND THREE DAY RENTS.

NO DEPOSIT!

\$7.50 to rent VCR
— plus 2 free movies
\$5 per day for machine each day after

OVER 500 MOVIES

MEATBALLS PART II







**DOUBLE COUPONS
WEDNESDAY
& SATURDAY**

OFFER EXCLUDES RETAILERS OR FREE COUPONS AND CIGARETTES OR TOBACCO ITEM. COUPON VALUE CANNOT EXCEED VALUE OF ITEM. LIMITED OFFER.

**DOUBLE GREEN STAMPS
WEDNESDAYS**

LABOR DAY FOOD BUYS

PRICES EFFECTIVE AUGUST 29 THRU SEPTEMBER 4

REGULAR OR DIET
FAYGO POP
5 \$1
16 OZ. BTLS.

FRESH FAMILY PACK
GROUND BEEF
88¢
LB.

APPETITE PLEASIN'
RANCH STYLE BEANS
399¢
15 OZ. CANS

MOUNTAIN GROWN COFFEE
FOLGER'S
\$2.39
1 LB. CAN
DECAFFEINATED COFFEE
FOLGER'S **\$3.59**
13 OZ. CAN

SHURFRESH QUALITY MEAT
FRANKS
69¢
12 OZ. PKG.
KAHN'S HICKORY GROVE BONELESS FULLY COOKED
WHOLE HAMS
HALF OR PORTIONS 4 TO 7 LBS. AVERAGE **\$1.89**
12-14 LBS. AVERAGE **\$1.79**
HEAVY GRAIN FED BEEF BLADE CUT **CHUCK ROAST** LB. **89¢**
HEAVY GRAIN FED BEEF ARM **SWISS STEAK** LB. **\$1.69**
HEAVY GRAIN FED BEEF 7-BONE **CHUCK ROAST** LB. **\$1.29**
GRAIN FED BEEF **BRISKET** In the Bag, Packer Trim LB. **88¢**
WILSON'S SLICED MEAT **BOLOGNA** 1 FULL POUND **\$1.49**
HILLSHIRE FARM REG/ POLISH SMOKED **SAUSAGE** LB. **\$1.99**
CLAUSSEN'S KOSHER HALF OR WHOLE **DILL PICKLE** QT. JAR **\$1.49**

PILLSBURY COUNTRY STYLE OR BUTTERMILK
BISCUITS
5 \$1
10 CT. CAN

KRAFT DINNERS
Macaroni & Cheese Dinner
MAC & CHEESE
39¢
7 1/4 OZ. BOX

U.S. NO. 1 RUSSET
POTATOES
79¢
10 LB. BAG
CENTRAL AMERICAN
BANANAS
3 \$1
LBS.
CALIFORNIA EL Dorado **PLUMS** LB. **49¢**
CALIFORNIA RUBY RED **GRAPEFRUIT** LB. **35¢**
TEXAS GREEN **CABBAGE** LB. **15¢**
ITALIAN GREEN **SQUASH** LB. **39¢**

CHARCOAL
KINGSFORD
\$2.99
10 LB. BAG

PEPSI, DIET PEPSI, PEPSI FREE, PEPSI LIGHT, 7-UP, DIET 7-UP
\$2.29
12-12 oz. Cans

FROZEN FOOD SPECIALS
CITRUS HILL SELECT **ORANGE JUICE** 16 OZ. CAN **\$1.49**
FROZEN TOPPING **COOL-WHIP** 12 OZ. BOWL **\$1.19**
GROCERY SPECIALS
WOLF BRAND PLAIN **CHILI** 15 OZ. CAN **99¢**
INSTANT TEA **NESTEA** 3 OZ. JAR **\$2.59**
HEINZ KEG O **KETCHUP** 32 OZ. BTL. **\$1.29**
SUGAR SWEETENED **KOOL-AID** 10 QT. CAN **\$2.79**
KRAFT BONUS PACK CATA/TH. ISL/BTRMLK. **DRESSING** 20 OZ. BTL. **\$1.49**
KRAFT ASSORTED REGULAR OR THICK'N SPICY **BBQ SAUCE** 18 OZ. BTL. **99¢**
KRAFT **GRAPE JELLY** 18 OZ. JAR **79¢**
KRAFT JET PUFFED **MARSHMALLOWS** 10 OZ. PKG. **59¢**
FISHER BOY
FISH STICKS 15 OZ. BOX **\$1.39**
OLD EL PASO BEEF/CHICKEN **ENCHILADA** 10 OZ. PKG. **\$1.59**
OLD EL PASO BEEF/CHICKEN **CHIMICHANGAS** 9 OZ. PKG. **\$1.79**
NESTEA
TEA BAGS 100 CT. PKG. **\$1.89**
NESTEA **TEA BAGS** 24 CT. PKG. **\$1.39**
HONEY BOY PINK **SALMON** 15.5 OZ. CAN **\$1.89**
SUGAR SWEETENED **KOOL-AID** 2 QT. PKG. **69¢**
REGULAR **KOOL-AID** 6 2 QT. PKGS. **89¢**
SUGAR FREE **KOOL-AID** 2 QT. PKG. **79¢**
SUGAR FREE **KOOL-AID** 8 QT. PKG. **\$2.49**
INSTANT COFFEE CRYSTALS **FOLGER'S** 8 OZ. JAR **\$4.29**
INSTANT DECAFFEINATED COFFEE CRYSTALS **FOLGER'S** 8 OZ. JAR **\$5.29**

LAY'S POTATO CHIPS
LAY'S POTATO CHIPS
89¢
S1.39 Size Only

COOL DAIRY BUYS
KRAFT AMERICAN/PIMENTO/SWISS **SINGLES** 12 OZ. PKG. **\$1.49**
KRAFT CHILLED **ORANGE JUICE** 32 OZ. JAR **\$1.29**
SPECIAL BARGAINS
MOUTHWASH **SCOPE** 32 OZ. BTL. **\$3.39**
NEW FREEDOM PANTY LINERS **ANY DAY** 26 CT. PKG. **\$1.89**
NEW SUPER ABSORBENT SM/MED/LRG **PAMPERS** CONV. PACK **\$8.99**
REGULAR ABSORBENCY MED/LARGE **PAMPERS** BOX **\$8.49**
REGULAR/GEL-15" OFF LABEL **COLGATE** LARGE TUBE **\$1.19**
MEDICAL CENTER **ALCOHOL** 16 OZ. BTL. **49¢**

SHelf SPECIALS
PAPER TOWELS **HI-DRI** 2 JUMBO ROLLS **\$1.00**
BATHROOM TISSUE **WHITE CLOUD** 4 ROLL PKG. **\$1.19**
KLEENEX FACIAL TISSUE **SOFTIQUE** 150 CT. BOX **99¢**
KLEENEX FAMILY **NAPKINS** 140 CT. PKG. **89¢**
BATH TISSUE WHITE CLOUD 4-Roll Pkg. **69¢**
WITH ONE FILLED S&H SAVER BOOKLET
CRISCO 3-Lb. Can **\$1.98**
WITH ONE FILLED S&H SAVER BOOKLET
PEPSI-COLA 12-12 oz. Cans **\$1.79**
WITH ONE FILLED S&H SAVER BOOKLETT
BUTTERMILK SHURFRESH 1/2-Gal. **49¢**
WITH ONE FILLED S&H SAVER BOOKLET

B&R **THRIFTWAY**
Come Home for Good!
WE ACCEPT FOOD STAMPS
WE RESERVE THE RIGHT TO LIMIT QUANTITIES
Prices good Aug. 29 thru Sept. 4
WE RESERVE THE RIGHT TO LIMIT QUANTITIES
401 W. Park 592-9831
OPEN 7 DAYS A WEEK 8 a.m. - 9 p.m. Mon. - Sat.
8 a.m. - 8 p.m. Sunday

Obituaries

Alvin Louis Archa

Services for Alvin Louis Archa, 64, of Iowa Park were held Yesterday afternoon at Tanner-Aulds Funeral Home with Rev. David Jones, pastor of the First Baptist Church in Iowa Park officiating. Burial was in Highland Cemetery under the direction of Tanner-Aulds Funeral Home.

Archa was born Jan. 21, 1921, in Bonham, and was a retired upholsterer. He was a World War II veteran and served in the South Pacific. He had lived in Iowa Park seven years after moving here from Fort Worth.

He is survived by a son, William Gary Archa of Fort Worth; a daughter, Paula Archa Booth of Iowa Park; one brother, Clifford "Red" Archa of Abilene; two sisters, Mrs. Mae Holder of Iowa Park and Mrs. Vena Smith of Fort Smith, Ark.; and two grandchildren.

Pallbearers were Darrell Nichols, Larry Payton, Oscar McCullough, Wayne Keller, Joe Fairchild and Mike Price.

Mary Elizabeth Coppedge

Services for Mary Elizabeth Coppedge, 73, were held Sunday afternoon at the First Baptist Church in Guthrie with Rev. K.E. Woolley and Rev. Gene Provo officiating. Burial was in the Guthrie Cemetery.

She was born Aug. 29, 1913, in Chattanooga, Okla. and had been a longtime resident of King County. She and Arlyn B. Coppedge were married in Sylvester and she was a member of the Baptist Church.

Survivors include her husband; three sons, James of Uvalde, Lloyd of Guthrie, and Gary of Stamford; four daughters, Helen Green and Betty Henderson, both of Guthrie, Bobby Scott of Phoenix and Mary Ann Robinson of Lubbock; three brothers, Bill Barnes of Snyder, Lawrence Barnes of Andrews, and Bob Barnes of Monahans; a sister, Patsy Cribbs of Iowa Park; 18 grandchildren; and 13 great-grandchildren.

Sam Ed Reeves

Sam Ed Reeves, 65, a retired truck driver and lifelong resident of Young County, died Monday in a Graham hospital. Services were held Wednesday at Morrison Funeral Home with Rev. Edgar Jones, associate pastor of First Baptist Church, officiating. Burial was in Proffitt Cemetery.

Reeves was born Nov. 9, 1919 in Young County. He was a member of the First Baptist Church and Young County Masonic Lodge. He was a 32nd degree Scottish Rite Mason and a member of the Maskat Shrine Temple in Wichita Falls. He was a World War II veteran.

Survivors include a son, Russell of Oildale, Calif.; a daughter, Reta Mills of Garland; a stepson, Ronnie Rawdon of Fort Worth; a brother, Clinton of Graham; three sisters, May Davenport of Iowa Park, Paula Taylor of Mineral Wells and Vera McPherson of Houston; and eight grandchildren.

David J. Jacobi Sr.

Services for David J. Jacobi Sr., 48, were held Saturday morning at Sunnyside Baptist Church in Wichita Falls with Rev. James Henry, pastor of Immanuel Baptist Church, officiating.

Burial was in Crestview Memorial Park under direction of Owens and Brumley Funeral Home.

He was born March 18, 1937, in Electra and had lived in Wichita Falls since 1959.

He is survived by his wife, Maxine; two sons, David "Koby" Jr. and Tim of Wichita Falls; His mother, Agnes of Vernon; and a brother, Jake of Iowa Park.

Claudia Cullers

Funeral services for Claudia Cullers, 86, will be at 2 p.m. today in the Bryson Church of Christ. Burial will be in Cottonwood Cemetery under direction of Hawkins Funeral Home.

She was born Dec. 31, 1898, in Tim Top and had lived in Bryson most of her life.

She is survived by three sons, Mark E. of Holliday, Charles G. of Fort Worth and James D. of San Angelo; five daughters, Thelma Goode of Holly, Colo., Genetta Goode of Saginaw, Alma Lamb of Macon, Ga., Evelyn Irvin of Fort Worth and Carolyn West of Azle; 30 grandchildren; and 64 great-grandchildren.

Conservation program topic

Barry Mahler discussed the present crisis in agriculture and described soil conservation as the bright spot in the picture, Tuesday for the Evening Lions Club.

He showed slides of the work that has been done by the Soil Conservation District to impede soil erosion and establish waterways to change the direction of the water flow. "I am a conservationist, and I believe that we must conserve top soil and water for future generations," Mahler said. He was introduced by James Rinehart.

Delbert Todd was a visitor.

CLAY COUNTY ART SHOW

The Clay County Art Association will hold its 1985 show Sept. 21 in conjunction with that community's annual Pioneer Reunion. Exhibitors can contact Letitia Stine, 538-4696, or Jo Ellen Pennington, 476-2298.



First United Pentecostal Church

802 First Street 592-4275
Rev. Grover Milner, Pastor

Sunday Services

Sunday School - 10 a.m.
Special Singing - 11 a.m. - 12 Noon
Evangelistic Service - 7 p.m.
Wednesday - Prayer Meeting and Bible Study - 7:30 p.m.

Lakeview Church of God

WEDNESDAY EVENING [FTH-Bible Study] 7:30 P.M.
SUNDAY SCHOOL 9:45 A.M.
SUNDAY MORNING WORSHIP 11:00 A.M.
SUNDAY EVENING WORSHIP 7:00 P.M.

Meeting temporarily at Peppy's old store bldg. 4th and Access Road
Rev. Ole Olds, Pastor 592-9555

Northside Baptist Church

800 N. Wall

- Sunday School - 10 a.m.
- Sunday Worship - 11 a.m.
- Sunday Evening Worship - 6:30 p.m.
- Wednesday Worship - 7:30 p.m.

EARL CORRELL - Pastor Ph. 592-2200

Josie F. Briscoe

Services for Josie F. Briscoe, 73, will be at 2 p.m. today at Owens and Brumley Funeral Home in Wichita Falls. Larry Keele, minister of the Arlington Church of Christ, and Bob Frazier, minister of the 23rd and Grace Church of Christ, will officiate. Burial will be in Crestview Memorial Park.

She was born Oct. 8, 1911, in Stephenville and had lived in Wichita Falls 51 years. She was a member of the 23rd and Grace Church of Christ.

Survivors include two sons, Bobby and Billy, both of Wichita Falls; three daughters, Marie Gee of Wichita Falls, Peggy James of Iowa Park and Beatrice Lunosky of Melbourne, Fla.; a sister, Lois Cobb of Lancaster; 22 grandchildren; and 24 great-grandchildren.

YOUR NEWSPAPER

Something for Everyone

ARE YOU READY TO ENJOY MORE POSITIVE CHRISTIAN LIVING?

Zig Ziglar
shares his secrets in
Living Your Potential!

3 FILMS ON THE DYNAMICS OF DAILY CHRISTIAN MOTIVATION:
FILM ONE ZIG'S STORY
FILM TWO SUCCESS STARTS HERE
FILM THREE HOW GOD SEES YOU

SEE THE FILMS AT:
Aug. 25 - 6 p.m.
Sept. 1 - 6 p.m.
Sept. 8 - 6 p.m.

Pacific Avenue
Missionary Baptist Church
1400 North Pacific Avenue

First Christian Church

105 E. Cash
Sunday School - 9:45 a.m.
Worship - 10:55 a.m.
Corner, Cash & Bond St.

We encourage each of you to worship Jesus Christ in the church of your choice. If you do not have a church home, we invite you to come worship with our church family.

THE END OF YOUR SEARCH
FOR A FRIENDLY CHURCH

ASSEMBLY OF GOD

200 S. Yosemite

9:45 a.m. S.S./ 7 p.m. Charles Hensley,
Wednesday Service, 7 p.m. Pastor

Faith Baptist Church

411 S. Wall 592-4894

Sunday School - 9:45 a.m. Tuesday Morning Prayer - 5:30 a.m.
Morning Worship - 11:00 a.m. Wednesday Morning Prayer - 9:30 a.m.
Church Training - 6:00 p.m. Wednesday Evening Prayer - 7:00 p.m.
Evening Worship - 7:00 p.m.

Nursery Care Provided
Full Range of Missions' and Childrens' Ministries

Church of God

601 E. Cash

Pastor, S.A. Luke
Sunday School - 9:45 a.m.
Sunday Morning Worship - 11:00
Sunday Night Worship Service - 7:00 p.m.
Wednesday Night Service - 7:30 p.m.

Par. 592-5316 Office 592-4348

Jesus is the Cornerstone

Cornerstone Pentecostal Church of God

SS - 9:45 a.m. SERVICES Sun. Evening - 7:00
Sun. Morn - 10:50 a.m. Wed. Evening - 7:00

Jesus said, upon this rock I'll build my church and the gates of hell shall not prevail against it. - Matthew 16:18

504 E. Hwy. Pastor: Duffy Terry 592-5520

First Baptist Church

A Southern Baptist Church
of Iowa Park Yosemite at Park

SUNDAY SERVICES

Mornings

Sunday School 9:45
Worship 11:00

Evenings

Church Training 6:00
Worship 7:00

WEDNESDAY

Prayer Meeting 7:00
Choir Rehearsal 7:45

First United Methodist Church

201 E. Bank

Church School 9:40 Youth Meetings 5:00
Morning Worship 10:40 Evening Worship 6:00

JACK MEYERS, PASTOR

Grace Baptist Church

511 S. Colorado - 592-5632

Come Let Us Reason Together Saith The Lord
Sunday School . . . 10:00 A.M.
Morning Worship . . . 11:00 A.M.
Children's Worship . . . 11:00 A.M.
Evening Worship . . . 6:30 P.M.
Wednesday Service . . . 7:30 P.M.
Frankie Jones - Pastor

Christ The King Catholic Church

First and Clara Phone 592-2802
REV. MR. PATRICK BURKE, PASTOR
8:45 a.m. C.C.D. — 10 a.m. Mass

GOOD SHEPHERD LUTHERAN CHURCH

1st & Magnolia
Iowa Park

Sunday School: 9:45 a.m.
Worship Service: 10:30 a.m.

IOWA PARK CHURCH OF CHRIST

SCHEDULE OF SERVICES

	Sunday	
Bible Study	9:30 a.m.	Wednesday
Worship	10:30 a.m.	Evening Study 7:30 p.m.
Evening Worship	6:00 p.m.	Thursday
		Ladies Bible Class 7:30 p.m.
		Call office for information.

300 East Park, Iowa Park, Texas 76367, (817) 592-5415

First Presbyterian Church

REV. BETTY L. MEADOWS Pastor
CHURCH SCHOOL - 9:30 A.M.
WORSHIP - 11:00 A.M.

A Caring Congregation of
Palo Duro Presbytery - Presbyterian Church [USA]

Kamay Road Church of Christ

Corner of Colorado & Emerald

Seeking the Old Paths

Lord's Day 10:30 a.m. & 6 p.m.
Wednesday 7:00 p.m.

Gilmore, Haswell wed in double-ring ceremony

Miss Lesa LeAnn Gilmore, daughter of Mr. and Mrs. Jerry Lynn Gilmore, became the bride of Gary Charles Haswell, son of Mr. and Mrs. Clifford Odel Haswell, Aug. 17 at the First Christian Church. Rev. Gerald Kuykendall, pastor of the Lakeside Assembly of God, performed the double-ring ceremony.

The couple repeated their vows in an altar space decorated with an archway trimmed with greenery, pink, dusty rose and burgundy flowers flanked by heart-shaped candelabra.

Mrs. Ole Olds played soft organ music as wedding guests assembled. She furnished accompaniment for a solo number, "I Just Fall In Love Again" by Miss Elaine Olds and played the marches for the entrance and exit of the wedding party.

The bride was given in marriage by her father. She wore a full length dress of organza and lace styled with a lace bodice sprinkled with pearls and pearl buttons down the back, and a heart-shaped train. She carried a long flowing bouquet of flowers in her colors.

Miss Charla Beaver of Lubbock was the maid of honor, Miss Shawna Crowley of Wichita Falls and Miss Christi Gilmore were the bridesmaids. They wore identical dusty rose satin dresses trimmed with lace scallops and burgundy floral designs at the hemlines.

The maid of honor carried a long stemmed pink rose, and the



MRS. GARY CHARLES HASWELL

pink lace gown and a red rose corsage.

The reception was given by the bride's parents, her grandparents, Mr. and Mrs. M.F. Franklin, and an aunt, Mrs. Ben Mallonee, at the Wichita Valley Farms Community House.

During the reception, music was furnished by Melton Franklin, Raymond Edwards, Kenny Mayo, Carl Brinkley, Keith McCray, Jerry Hadley and Clint Cozart.

The bride's table and groom's table were covered with white lace and trimmed with big bows in the bride's colors, those on her table were pink and dusty rose, and burgundy bows were used on the groom's cloth.

The bride's table held a silver punch bowl and three-tiered cake decorated with burgundy flowers with two fountains and a centerpiece of fresh cut flowers.

The groom's table emphasized dusty rose and burgundy in a centerpiece of fresh cut flowers, the double horseshoe-shaped chocolate cake trimmed with burgundy flowers where the horseshoes joined. It also held a silver coffee service.

The hors d'oeuvres table, covered with burgundy overlaid with the groom's great-grandmother's beige lace cloth, held trays of meat, cheese, vegetables, crackers, bread, nuts and mints.

During the reception, Misses Mary Franklin, Christi Wynn and Amber Dunn served refreshments and Mrs. Ben Mallonee presided at the wedding memories book.

The bride wore a white pant suit when the couple left for a wedding trip to San Antonio. They are now at home in Iowa Park. They were both graduated from Iowa Park High School and he is employed by Haswell Trunk Tank Service.

The groom's parents gave the rehearsal dinner at Wester Sizzlin Steak House.

bridesmaids carried dark red roses.

Brandi Swanson, the flower girl, was dressed like the bride's attendants and scattered rose petals from a white basket.

Drew Franklin, the ring bearer, was dressed in a silver tuxedo with tails.

The groom wore a dusty rose tie and cummerbund with his silver tuxedo with tails. The men who participated in the wedding were attired in less formal wear.

Perry Schroeder was the groom's best man. The groomsmen were Bobby Wessel and Rob Kenyon. Kelly Gilmore and Bill Kenyon served as ushers and candlelighters.

The bride's mother wore a floor length dusty rose gown with cape and a wrist corsage of red roses. The groom's mother wore a full length

Schedule for:

Recreational
Activities
Center

A class in tile painting will be instructed this fall for intermediate students of the art by Margie Boylan. Students who know basic brush strokes who enroll will meet three-hour classes at 9 a.m. each Friday. Enrollment can be made by contacting Mrs. Boylan at 855-3795 or the RAC, 592-4471.

Several special workshops for those interested in ceramics will be held this fall. One group will meet at 7 p.m. Tuesdays.

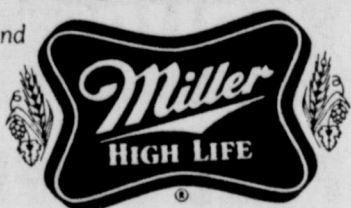
Workshops are also beginning in September in the art of Christmas Gift Making. Dates will be announced later.

KAREN NEVES

IS NOW ASSOCIATED WITH
HAIR SAFARI
3511 McNeil 691-5391
Men & Women's Hairstyles —
Manicures — Perms — Colors
Mon., Wed., Fri. Only
CALL FOR APPOINTMENT

WICHITA COUNTY MOUNTED PATROL

COOLEY'S
WESTERN WEAR



co-sponsored

Coke is it!

OPEN RODEO

September 6 & 7
7:30 P.M.

FM 369 — Arena

September 4th — BOOKS OPEN — 10 a.m.-4 p.m.
Cooley's Western Wear / 817 — 691-6012

EVENTS

Bareback, Saddle Bronc, Calf Roping, Team Roping,
Steer Dogging, Bull Riding - \$40 Entry Fee Barrel Race
- \$28 Entry Fee - Roper Boots to Winners Calf Scramble each
night, 11 yrs. & under, prize to winners

TICKETS

\$4 at gate — 1/2 Price if purchased in advance at
Cooley's Western Wear or Sheppard Ticket Office

Dance - Saturday Night

(after Rodeo 'til midnight)

Kenny Brewer



The LONE STAR TRUCK TERMINAL

Restaurant

"Friend, if you haven't seen us in a while, you haven't seen us!"



Located FM 369 and US 287

Our House Specialty

CHICKEN FRIED STEAK 4.50
Tender fresh beef steak, battered and pan fried in the Texas tradition. Served with delicious cream gravy, french fries, and tossed green salad.

Truck Stop Staples

STEAK FINGERS DINNER 3.75
HAMBURGER STEAK 4.50
With brown gravy and grilled onions
SOUTHERN FRIED CHICKEN 4.75
Four pieces with cream gravy
CHICKEN STRIPS 4.75
with cream gravy
Above served with tossed salad and french fries

Steaks

10 oz. T-BONE 7.50
10 oz. RIB EYE 7.50
10 oz. RIB CLUB 5.95
Always cooked to your specs and served with French Fries, Texas Toast and Tossed Salad. Baked Potato

South of the Border Especiales

CHEESE ENCHILADAS 4.50
3 enchiladas smothered with chili and cheese with refried beans, cole slaw, and french fries
BEEF ENCHILADAS 5.25
3 of our beef enchiladas, plenty of chili and cheese, with refried beans, cole slaw and french fries
TAMALES AND CHILI 4.00
3 hot tamales covered with chili, refried beans and french fries
DELUXE MEXICAN DINNER 5.25
2 enchiladas, 1 tamale, 1 taco, refried beans, spanish rice, chili, and cheese
CHALUPA PLATE 4.50 1/2 Order 2.95
2 fried corn tortillas heaped with taco meat, refried beans, lettuce, chili and cheese
TACO DINNER 4.25
3 of our tacos with rice and refried beans
FIENDA SPECIAL 4.00
1 enchilada, 1 beef taco, 1 bean taco covered with chili and cheese.
GRANDE BURRITO 4.00
A beef and bean burrito with chili, cheese, tossed green salad
FIESTA SALAD BOWL 2.95
Tossed salad with a generous portion of taco meat, cheese, tomatoes and onions
HOMEMADE CHILI 2.25
We make it here - served by the bowl full
RANCH BURGER 3.75
You get it open faced covered with chili, cheese and onions, served with slaw and fries
TACO BURGER 2.50
A bun heaped with our own taco meat and all the trimmings, served with french fries
BEEF TACO 1.25
FOSTADOS & HOT SAUCE 1.50
FOSTADOS & QUESO 1.95

Seafoods

...on the Platter ...in the Basket
CATFISH 4.95 CATFISH 3.95
SHRIMP 6.95 SHRIMP 5.50
OYSTERS 6.95 OYSTERS 5.50
COMBINATION 6.95
Served with a generous portion of French Fries, Cole Slaw, Pinto Beans, Hush Puppies, Texas Toast, Tarter Sauce, Pickle and Onions
Baskets served with French Fries, Texas Toast, Hush Puppies, Tarter Sauce, Pickle and Onions

Sandwiches

HOT STEAK 4.25
Open faced on toast with cream gravy, tossed salad, and french fries
HOT BEEF 4.25
Open faced on toast with brown gravy, mashed potatoes, and cole slaw
LONE STAR BURGER 2.75
Open faced with pinto beans, french fries, and grilled onions
HAMBURGER 1.75 SMOKED SAUSAGE 2.40
CHEESEBURGER 1.95 GRILLED CHEESE 1.25
FRISCO BURGER 2.25 GRILLED HAM & CHEESE 2.75
PATTY MELT ON TOAST 1.95 GRILLED BACON & CHEESE 2.75
STEAK ON A BUN 2.95 BACON & EGG 2.25
COLD ROAST BEEF 2.40 HAM & EGG 2.35
BACON, LETTUCE & TOMATO 2.40 SAUSAGE 1.95
FRIED HAM 2.40 HAM & CHEESE CLUB 2.95
EGG SANDWICH 1.00 BACON & CHEESE CLUB 2.95
All Sandwiches served with Potato Chips
With French Fries add \$1.00

Breakfast

LONE STAR SPECIAL BREAKFAST 3.95
2 eggs any style, smoked sausage
RANCHER'S BREAKFAST 4.50
2 eggs any style, small sirloin steak, sliced tomatoes
TRUCKER'S SPECIAL 3.50
2 eggs, 2 hot cakes, choice of ham, bacon, or sausage
TEXICAN BREAKFAST 3.25
Scrambled eggs covered with chili, and hot sauce
TWO EGGS - ANY STYLE - HAM, BACON OR SAUSAGE 3.50
ONE EGG - ANY STYLE - HAM, BACON OR SAUSAGE 3.25
BISCUITS AND GRAVY 1.25
OMELETTES (Ham, Bacon, Cheese, Spanish, Sausage, Ham & Cheese, Bacon & Cheese, Sausage & Cheese) 3.95
HOTCAKES Short Stack 1.25 Stack 1.75
All above served with hash browns or grits, toast or biscuits and gravy

Beverages

COFFEE 40
DECAF COFFEE 40
ICED TEA 40
HOT TEA 40
HOT CHOCOLATE 50
SWISS MOCHA 50
MILK 50
50 75 1.00
SOFT DRINKS 30 50 85
JUICES
Tomato, Grapefruit, Grape, Orange
.45 75 1.25

Desserts

BLUEBERRY 60
MUFFINS 60
PIE 1.00
CINNAMON ROLL 55
ICE CREAM DIP 50
SHERBERT DIP 50

Side Orders

Bowl Pinto Beans 1.00
Order Hush Puppies75
Onion Rings 1.25
French Fries 1.00
Texas Toast40
Side Order Vegetable65

Salad and Soup

DIET DELITE 2.95
Hamburger patty, dip of cottage cheese, boiled egg, shredded lettuce, sliced tomato.
FRUIT PLATE 3.25
Peaches, pears, pineapple on shredded lettuce with a dip of cottage cheese or sherbert.
COTTAGE CHEESE AND FRUIT 1.95
Choice of peaches, pears or pineapple with a dip of cottage cheese.
CHEF SALAD 3.50
SM. CHEF SALAD 2.75
TOSSED GREEN SALAD 1.50
SLICED TOMATOES 1.25
ORDER COLE SLAW75
BOWL JELLO75
COTTAGE CHEESE75
HOMEMADE VEGETABLE SOUP 1.25
CHICKEN NOODLE SOUP75

Kid's Korner

Under 12 Only
Price includes drink
1 Taco 1.50
With french fries
Chicken Drumstick 1.25
With french fries
2 Steak Fingers 1.25
With mashed potatoes and gravy
1 Corn Dog 1.25
With French Fries
Hamburger Patty 1.25
With French Fries

Terry, Upchurch vows are exchanged Friday

Mr. and Mrs. Jimmy Glen Upchurch, who were married Friday evening at the Faith Village Church of Christ in Wichita Falls, are on a wedding trip to St. Thomas in the Virgin Islands. The double-ring ceremony was officiated by Jeff Plake, youth minister of the church.

The bride is the former Charla Gale Terry, daughter of Mr. and Mrs. Charles Terry of Iowa Park, and the groom is the son of Mr. and Mrs. Joe Upchurch of Burkburnett.

The nuptial decorations featured heart-shaped candelabra trimmed with ivory satin bows, and the church pews were marked with hurricane globe candles accented with the bows.

An ensemble composed of Beth McKibbens, Laura Burnam, Judy Brown, Becky Brown, Christine Carpenter, Wendall Burnam, Chris John, David Hott and Ed Goodgean furnished the cappella music for the wedding, their numbers included "Oh Perfect Love," "One Hand, One Heart," "Walk Hand in Hand," "Bridal Chorus," "More," "The Lord Bless You and Keep You" and "Whither Thou Goest."

The fashionable Victorian influence was noted in the lovely gown of candlelight Schiffl lace over satin that the bride wore. The ruffled bodice was trimmed in Venice lace accented with seed pearls and ribbons with satin-covered buttons down the back adding extra charm. The bishop sleeves terminated in cuffs trimmed



MRS. JIMMY GLEN UPCHURCH

with the buttons. The bouffant skirt featured tiers of Schiffl lace that flowed into a cathedral length train.

She wore a stylish white hat covered with lace with a short veil at the back. Ivory roses, baby blue and ivory carnations, sweetpeas and baby's breath were fashioned into the bride's fascinating bouquet created by Miss Suzy Petty of Oklahoma City, who did all of the bouquets, corsages and flowers for the wedding.

The bride chose the original wedding band of her grandmother, Mrs. Rady Trout of Gould, Okla. for "something old" and "something borrowed," and she used a "something new" garter trimmed with a "something blue" bow in keeping with the traditions.

Mrs. Jim Grimes of Liberal, Kansas, served as matron of honor for her sister, and the bridesmaids were Miss Suzy Petty of Oklahoma City and Mrs. Roger Herron of Gould, Okla. They wore identical candlelight lace gowns over blue taffeta accented with blue taffeta cummerbunds. They carried bouquets composed of ivory and blue carnations, sweetpeas and baby's breath complemented with matching ribbon loops.

Allison McNeil of Burkburnett, niece of the groom, the flower girl, wore a baby blue taffeta frock with matching cummerbund trimmed in candlelight lace. Colin Herron of Gould, Okla., cousin of the bride, the ring bearer, wore a candlelight Dynasty tuxedo.

The groom wore a candlelight tuxedo. Curtis Curry, the best man, Joe Plake and Perry Curry, the groomsmen, Jimmy Terry, brother of the bride, and Jack Upchurch, brother of the groom, the ushers and candlelighters, were attired in light blue tuxedos.

The bride was graduated from high school at Liberal, Kan. She attended Oklahoma Christian College one year and will be a senior at Midwestern State Univ. this year. The groom was graduated from Burkburnett High School. He attended Devry Institute of Technology at Mesquite and is employed by Scoto Heating and Air Conditioning. They will live in Wichita Falls.

The wedding reception was given by the bride's parents at the church, and the rehearsal dinner was given by the groom's parents at Bonanza Steak House.

The bride's cake for the reception was made and decorated by Mrs. Roger Herron and it was the conservation piece on her table covered with ivory lace over ivory satin. The three-tiered confection was decorated with baby blue sweetpeas and daisies, topped with wedding bells, and placed over a fountain of splashing blue water. The cake was served by Miss Geri Stone.

Miss Kim Kennedy served the groom's chocolate cake at a table covered identically to the bride's table. Both tables were appointed with crystal and silver services adapted to fit into the decor.

Miss Connie Ledbetter and Miss Debbie Deaver presided at the gift

November date chosen

Mary L. Baskin and Dennis L. Reed, both of Dallas, will be married Nov. 24 in Irving.

Miss Baskin is the daughter of Dr. and Mrs. John L. Baskin of Dallas. She is a graduate of Trinity Christian Academy in Dallas and Univ. of Texas at Arlington. She is employed at Medical City in Dallas.

Reed is the son of Mr. and Mrs. Louie Reed of Wichita Falls and Mr. and Mrs. Roddie Mitchell of Albuquerque, N.M. He attended Iowa Park High School and was graduated from Sooner High School in Bartlesville, Okla. He is employed by American Airlines.



MARY BASKIN and DENNIS REED

IRS Tax Tips

TAX INFORMATION FOR SMALL BUSINESS

Small business owners are being reminded by the Internal Revenue Service of two free publications that explain federal tax requirements and procedures.

Publication 334, "Tax Guide for Small Business," goes into detail on such subjects as setting up a tax records system, determining net income, and tax credits and business assets. Publication 583, "Information for Business Taxpayers," explains what a small business person needs to

Count on the Classifieds to Do the Job

know to meet tax obligations, such as how to file forms and to compute the tax.

Taxpayers can obtain these free publications by calling the IRS number listed in their local phone directory.



— We invite you to shop and compare our INTEREST RATES FOR SAVINGS (Applicable August 28 thru September 3)

Account	Interest (compounded daily)	Yield
91 Days	7.80%	8.111%
182 Days	8.05%	8.382%
7 - 31 Days	7.00%	7.257%
New Money Market Accounts	6.85% (simple interest)	
Super NOW Accounts	5.75% (simple interest)	
1 Year	8.60%	8.980%
2 Years	9.15%	9.580%
3 - 5 Years	9.70%	10.185%
I.R.A.	9.85%	10.450%



NOTICE OF VOTE ON TAX RATE

The Iowa Park C.I.S.D. conducted a public hearing on a proposal to increase your property taxes by 33-percent on 8-27-85.

A public meeting to vote on the tax rate will be held on 9-3-85 at 7:30 P.M. Iowa Park School Administration Building, 413 East Cash Street, Iowa Park, Texas.

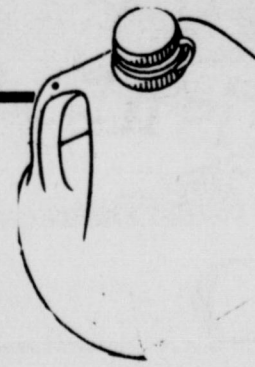


EASY SHOP FOOD STORE

1309 Johnson Road Iowa Park, Tx. 592-5931

OPEN 24 HOURS — 7 DAYS A WEEK

FREE COFFEE EVERY DAY



SUNNYDALE MILK \$1.99 Gal.



COKE COKE CLASSIC, CHERRY COKE, DIET COKE, SPRITE, ROOT BEER \$1.58 6 Pack 12 oz. Cans

Fri. & Sat. Only

HOT DOGS W/CHILI

3 FOR 99¢

FRESH DONUTS MONDAY THRU FRIDAY

"EVERYDAY LOW, LOW DELI PRICES"

ROAST BEEF & CHEDDAR \$1.59
SUBMARINE \$1.89
LARGE BARBECUE \$1.29
SMALL BARBECUE 99¢
BURRITO 55¢
HAM & AMERICAN \$1.59
HAM & PROVOLONE \$1.59

Chicken, Ham, Tuna Salad or Pimiento Cheese

SANDWICHES

99¢



FIVE WINNERS in last week's Back-To-School Tennis Tournament were from Iowa Park, including, from left, Matt Gersner, Jeff Bartow, Jenny Bowerman and Darrell Franklin, and Bill Chandler, not pictured. Sponsored by the Iowa Park

Tennis Association, more than 100 school-age players were entered, including an exchange student from Germany.

Hawks to scrimmage at Olney

The Hawks will get in one more scrimmage, Friday at Olney, before their Sept. 6 season opener here against Breckenridge.

Varsity teams are slated to match up about 7:30 p.m., following bouts by the freshman and JV clubs.

Because Olney doesn't field a freshman club, Hawk Frosh will scrimmage against Olney's JV reserves, starting at 5. That will be followed by the JV scrimmage, according to Head Hawk David Baugh.

Iowa Park dominated scrimmages here Thursday against Jacksboro clubs, with the Frosh outscoring the Tigers 2-1, and the JV scoring on the

final play to win 1-0.

The Hawk varsity outscored Jacksboro 2-0, but completely dominated statistics.

Iowa Park amassed 306 net yards, including 214 on the ground and 92 passing, along with 14 first downs.

Jacksboro passed 75 yards and had 58 yards rushing for 133 yards, and eight first downs.

Iowa Park's two junior running backs, Scott Weaver and Danny Forman, scored on long runs. Weaver's was a 56-yarder, shaking off four tacklers, while Forman's was a 44-yarder around left end.

Baugh admitted afterward his secondary gave up more pass

completions than it should have, but pointed out returning starting free

safety Stephen Bidy was not suited out because of a pulled back muscle.



MURRAY STATE COLLEGE freshman Cheryl Moore of Iowa Park gets some good advice on the horse management and training program from MSC instructor Bill Brown. Moore will be enrolled in a two-year horse management and training program. MSC is located at Tishomingo, Okla.

HOMESTYLE Hungr-buster

If you enjoy the special taste of a juicy, tender, home-cooked burger, you'll feel right at home with our Homestyle Hungr-buster.

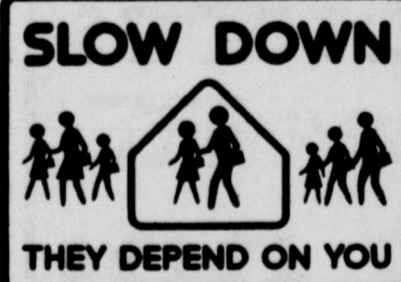
We start with a quarter-pound, 100% pure beef patty, cooked up fresh and hot. Then, we add your choice of toppings to make it just the way you like it — lettuce, tomato, pickles and onion. And right now, we're serving it up at a price that hits close to home.

The Dairy Queen Homestyle Hungr-buster. It's one burger that's worth leaving home for.

99¢ Sale

Tuesday, September 3 thru Sunday, September 8

Dairy Queen
"Better than ever"



Ask your doctor to call your prescriptions to
Settle Drug
592-4191

A.K. Settle R. Ph.
120 West Park
Iowa Park, Texas

Healthcare is Service from the Heart

If someone you love needs home or private duty care, arrange quality healthcare from a qualified Nursing Service. 766-1037

Healthcare Services
SERVICE FROM THE HEART
MICHOTA FALLS

Cut out for Ken's Pizza!

902 W. Hiway
592-4184



Free Salad(s)

With a purchase of any small deep pan pizza or medium Ken's pizza get one free trip to the salad bar . . . or . . . two free trips to the salad bar with any large pizza purchase. Offer not good with other promotions or coupons. OFFER GOOD UNTIL Sept. 28, 1985

COUPON VALUE 1/20 OF A CENT



\$2.50 & \$1.50 off.

Get \$2.50 off the price of any large Ken's pizza or \$1.50 off the price of any Ken's medium pizza or Ken's small deep pan pizza. One coupon per pizza. Offer not good with other promotions or coupons. OFFER GOOD UNTIL Sept. 28, 1985

COUPON CASH VALUE 1/20 OF A CENT



\$2 & \$1 off.

Get \$2.00 off the price of any large Ken's pizza or \$1.00 off the price of any Ken's medium pizza or Ken's small deep pan pizza. One coupon per pizza. Offer not good with other promotions or coupons. OFFER GOOD UNTIL Sept. 28, 1985

COUPON CASH VALUE 1/20 OF A CENT



DOVE HUNTER'S HEADQUARTERS



SHOTGUNS
SHELLS
CLEANING KITS
BAG VESTS



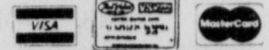
You can always bag bargains at

PARKWAY

FURNITURE ELECTRONICS APPLIANCES



200-206
West Bank



592-5512
592-4681

WE WILL BE

CLOSED LABOR DAY MONDAY

..so our employees can spend the holiday with their families.

PLEASE try to have your prescriptions filled by 6 p.m. Saturday, or come in Tuesday.

— Thank You

WAL-MART Pharmacy

500 W. Highway

592-4157



9 a.m. - 7 p.m. Monday - Friday
9 a.m. - 6 p.m. Saturdays

BONUS BURGER

\$2.05

Reg. \$2.35



805 West Highway

FOR TAKE OUT ORDERS

CALL 592-4731

en Hoops' (1964) Frank Sinatra, Dean Martin. The leader of a Chicago gang donates a large amount of money to one of the city's orphanages.

10:30 (4) **EMOTION EXPLOSION**
(5) **SPORTSCENTER**
(6) **TONIGHT**
(7) **U.S. OPEN TENNIS HIGHLIGHTS**
(8) **WORLD NEWS**
(9) **WORLD OF ANIMALS**
(10) **WORLD OF ANIMALS**

10:55 **HBO MOVIE** ★★: "Hill, September" Stranded in Paris after being separated from her four group, an American woman meets and falls in love with a married banker. R

11:00 (4) **TELEVISION WEEK IN REVIEW**
(5) **WORLD NEWS**
(6) **WORLD OF ANIMALS**
(7) **WORLD OF ANIMALS**
(8) **WORLD OF ANIMALS**
(9) **WORLD OF ANIMALS**
(10) **WORLD OF ANIMALS**

11:30 (4) **WORLD OF ANIMALS**
(5) **WORLD OF ANIMALS**
(6) **WORLD OF ANIMALS**
(7) **WORLD OF ANIMALS**
(8) **WORLD OF ANIMALS**
(9) **WORLD OF ANIMALS**
(10) **WORLD OF ANIMALS**

(13) **ODD COUPLE**
(14) **MOVIE** ★★: "Inside the Third Reich" (1982) Rainer Hauser, Blythe Danner. Based on the autobiography of Albert Speer. Despite the misgivings of his parents and his wife, an idealistic young man rises to prominence as chief architect for the Nazis. (Part 2 of 2)

(15) **WILD AMERICA**
(16) **WORLD NEWS**
(17) **WORLD OF ANIMALS**
(18) **WORLD OF ANIMALS**
(19) **WORLD OF ANIMALS**
(20) **WORLD OF ANIMALS**

7:05 (4) **MOVIE** ★★: "Anged Out" (1980) Ralph Waite, Paul Winfield. A poor West Florida family finds itself living in a squallor at a labor camp controlled by a greedy contractor. R

7:30 (4) **FAMILY TIES**
(5) **BASEBALL** Chicago Cubs at St. Louis Cardinals
(6) **THIS OLD HOUSE**
(7) **MOTORCYCLE RACING** Stadium Superbike, 250cc class, from Pasadena, Calif. R

(171) Robert Hoops, Jeremy State. Two San Francisco detectives investigate the murder of a 13th-century traveler. R

(18) **WORLD NEWS**
(19) **WORLD OF ANIMALS**
(20) **WORLD OF ANIMALS**

3:00 (4) **EAGLES' NEST**
(5) **AUSTRALIAN RULES FOOTBALL**
(6) **WORLD NEWS**
(7) **WORLD OF ANIMALS**
(8) **WORLD OF ANIMALS**
(9) **WORLD OF ANIMALS**
(10) **WORLD OF ANIMALS**

3:30 **HBO MOVIE** ★★: "All the Right Moves" (1983) Tom Cruise, Craig T. Nelson. An ambitious high school football player in a dying Pennsylvania steel town dreams of a college scholarship in order to make a better life for himself. R

4:00 (4) **GOD'S NEWS BEHIND THE NEWS**
(5) **BEVERLY HILLS**
(6) **HORSE RACING WEEKLY**
(7) **MOVIE TUNE NEWS**

(191) Jack Van Wipe
(192) **WASH WASH WASH**
(193) **WASH WASH WASH**
(194) **WASH WASH WASH**
(195) **WASH WASH WASH**
(196) **WASH WASH WASH**
(197) **WASH WASH WASH**
(198) **WASH WASH WASH**
(199) **WASH WASH WASH**
(200) **WASH WASH WASH**

12:00 (4) **WASH WASH WASH**
(5) **WASH WASH WASH**
(6) **WASH WASH WASH**
(7) **WASH WASH WASH**
(8) **WASH WASH WASH**
(9) **WASH WASH WASH**
(10) **WASH WASH WASH**

12:30 (4) **WASH WASH WASH**
(5) **WASH WASH WASH**
(6) **WASH WASH WASH**
(7) **WASH WASH WASH**
(8) **WASH WASH WASH**
(9) **WASH WASH WASH**
(10) **WASH WASH WASH**

(191) **WASH WASH WASH**
(192) **WASH WASH WASH**
(193) **WASH WASH WASH**
(194) **WASH WASH WASH**
(195) **WASH WASH WASH**
(196) **WASH WASH WASH**
(197) **WASH WASH WASH**
(198) **WASH WASH WASH**
(199) **WASH WASH WASH**
(200) **WASH WASH WASH**

12:00 (4) **WASH WASH WASH**
(5) **WASH WASH WASH**
(6) **WASH WASH WASH**
(7) **WASH WASH WASH**
(8) **WASH WASH WASH**
(9) **WASH WASH WASH**
(10) **WASH WASH WASH**

12:30 (4) **WASH WASH WASH**
(5) **WASH WASH WASH**
(6) **WASH WASH WASH**
(7) **WASH WASH WASH**
(8) **WASH WASH WASH**
(9) **WASH WASH WASH**
(10) **WASH WASH WASH**

(191) **WASH WASH WASH**
(192) **WASH WASH WASH**
(193) **WASH WASH WASH**
(194) **WASH WASH WASH**
(195) **WASH WASH WASH**
(196) **WASH WASH WASH**
(197) **WASH WASH WASH**
(198) **WASH WASH WASH**
(199) **WASH WASH WASH**
(200) **WASH WASH WASH**

12:00 (4) **WASH WASH WASH**
(5) **WASH WASH WASH**
(6) **WASH WASH WASH**
(7) **WASH WASH WASH**
(8) **WASH WASH WASH**
(9) **WASH WASH WASH**
(10) **WASH WASH WASH**

12:30 (4) **WASH WASH WASH**
(5) **WASH WASH WASH**
(6) **WASH WASH WASH**
(7) **WASH WASH WASH**
(8) **WASH WASH WASH**
(9) **WASH WASH WASH**
(10) **WASH WASH WASH**

(191) **WASH WASH WASH**
(192) **WASH WASH WASH**
(193) **WASH WASH WASH**
(194) **WASH WASH WASH**
(195) **WASH WASH WASH**
(196) **WASH WASH WASH**
(197) **WASH WASH WASH**
(198) **WASH WASH WASH**
(199) **WASH WASH WASH**
(200) **WASH WASH WASH**

12:00 (4) **WASH WASH WASH**
(5) **WASH WASH WASH**
(6) **WASH WASH WASH**
(7) **WASH WASH WASH**
(8) **WASH WASH WASH**
(9) **WASH WASH WASH**
(10) **WASH WASH WASH**

12:30 (4) **WASH WASH WASH**
(5) **WASH WASH WASH**
(6) **WASH WASH WASH**
(7) **WASH WASH WASH**
(8) **WASH WASH WASH**
(9) **WASH WASH WASH**
(10) **WASH WASH WASH**

(191) **WASH WASH WASH**
(192) **WASH WASH WASH**
(193) **WASH WASH WASH**
(194) **WASH WASH WASH**
(195) **WASH WASH WASH**
(196) **WASH WASH WASH**
(197) **WASH WASH WASH**
(198) **WASH WASH WASH**
(199) **WASH WASH WASH**
(200) **WASH WASH WASH**

12:00 (4) **WASH WASH WASH**
(5) **WASH WASH WASH**
(6) **WASH WASH WASH**
(7) **WASH WASH WASH**
(8) **WASH WASH WASH**
(9) **WASH WASH WASH**
(10) **WASH WASH WASH**

12:30 (4) **WASH WASH WASH**
(5) **WASH WASH WASH**
(6) **WASH WASH WASH**
(7) **WASH WASH WASH**
(8) **WASH WASH WASH**
(9) **WASH WASH WASH**
(10) **WASH WASH WASH**

(191) **WASH WASH WASH**
(192) **WASH WASH WASH**
(193) **WASH WASH WASH**
(194) **WASH WASH WASH**
(195) **WASH WASH WASH**
(196) **WASH WASH WASH**
(197) **WASH WASH WASH**
(198) **WASH WASH WASH**
(199) **WASH WASH WASH**
(200) **WASH WASH WASH**

12:00 (4) **WASH WASH WASH**
(5) **WASH WASH WASH**
(6) **WASH WASH WASH**
(7) **WASH WASH WASH**
(8) **WASH WASH WASH**
(9) **WASH WASH WASH**
(10) **WASH WASH WASH**

12:30 (4) **WASH WASH WASH**
(5) **WASH WASH WASH**
(6) **WASH WASH WASH**
(7) **WASH WASH WASH**
(8) **WASH WASH WASH**
(9) **WASH WASH WASH**
(10) **WASH WASH WASH**

(191) **WASH WASH WASH**
(192) **WASH WASH WASH**
(193) **WASH WASH WASH**
(194) **WASH WASH WASH**
(195) **WASH WASH WASH**
(196) **WASH WASH WASH**
(197) **WASH WASH WASH**
(198) **WASH WASH WASH**
(199) **WASH WASH WASH**
(200) **WASH WASH WASH**

12:00 (4) **WASH WASH WASH**
(5) **WASH WASH WASH**
(6) **WASH WASH WASH**
(7) **WASH WASH WASH**
(8) **WASH WASH WASH**
(9) **WASH WASH WASH**
(10) **WASH WASH WASH**

12:30 (4) **WASH WASH WASH**
(5) **WASH WASH WASH**
(6) **WASH WASH WASH**
(7) **WASH WASH WASH**
(8) **WASH WASH WASH**
(9) **WASH WASH WASH**
(10) **WASH WASH WASH**

(191) **WASH WASH WASH**
(192) **WASH WASH WASH**
(193) **WASH WASH WASH**
(194) **WASH WASH WASH**
(195) **WASH WASH WASH**
(196) **WASH WASH WASH**
(197) **WASH WASH WASH**
(198) **WASH WASH WASH**
(199) **WASH WASH WASH**
(200) **WASH WASH WASH**

12:00 (4) **WASH WASH WASH**
(5) **WASH WASH WASH**
(6) **WASH WASH WASH**
(7) **WASH WASH WASH**
(8) **WASH WASH WASH**
(9) **WASH WASH WASH**
(10) **WASH WASH WASH**

12:30 (4) **WASH WASH WASH**
(5) **WASH WASH WASH**
(6) **WASH WASH WASH**
(7) **WASH WASH WASH**
(8) **WASH WASH WASH**
(9) **WASH WASH WASH**
(10) **WASH WASH WASH**

(191) **WASH WASH WASH**
(192) **WASH WASH WASH**
(193) **WASH WASH WASH**
(194) **WASH WASH WASH**
(195) **WASH WASH WASH**
(196) **WASH WASH WASH**
(197) **WASH WASH WASH**
(198) **WASH WASH WASH**
(199) **WASH WASH WASH**
(200) **WASH WASH WASH**

12:00 (4) **WASH WASH WASH**
(5) **WASH WASH WASH**
(6) **WASH WASH WASH**
(7) **WASH WASH WASH**
(8) **WASH WASH WASH**
(9) **WASH WASH WASH**
(10) **WASH WASH WASH**

12:30 (4) **WASH WASH WASH**
(5) **WASH WASH WASH**
(6) **WASH WASH WASH**
(7) **WASH WASH WASH**
(8) **WASH WASH WASH**
(9) **WASH WASH WASH**
(10) **WASH WASH WASH**

(191) **WASH WASH WASH**
(192) **WASH WASH WASH**
(193) **WASH WASH WASH**
(194) **WASH WASH WASH**
(195) **WASH WASH WASH**
(196) **WASH WASH WASH**
(197) **WASH WASH WASH**
(198) **WASH WASH WASH**
(199) **WASH WASH WASH**
(200) **WASH WASH WASH**

12:00 (4) **WASH WASH WASH**
(5) **WASH WASH WASH**
(6) **WASH WASH WASH**
(7) **WASH WASH WASH**
(8) **WASH WASH WASH**
(9) **WASH WASH WASH**
(10) **WASH WASH WASH**

12:30 (4) **WASH WASH WASH**
(5) **WASH WASH WASH**
(6) **WASH WASH WASH**
(7) **WASH WASH WASH**
(8) **WASH WASH WASH**
(9) **WASH WASH WASH**
(10) **WASH WASH WASH**

(191) **WASH WASH WASH**
(192) **WASH WASH WASH**
(193) **WASH WASH WASH**
(194) **WASH WASH WASH**
(195) **WASH WASH WASH**
(196) **WASH WASH WASH**
(197) **WASH WASH WASH**
(198) **WASH WASH WASH**
(199) **WASH WASH WASH**
(200) **WASH WASH WASH**

12:00 (4) **WASH WASH WASH**
(5) **WASH WASH WASH**
(6) **WASH WASH WASH**
(7) **WASH WASH WASH**
(8) **WASH WASH WASH**
(9) **WASH WASH WASH**
(10) **WASH WASH WASH**

12:30 (4) **WASH WASH WASH**
(5) **WASH WASH WASH**
(6) **WASH WASH WASH**
(7) **WASH WASH WASH**
(8) **WASH WASH WASH**
(9) **WASH WASH WASH**
(10) **WASH WASH WASH**

(191) **WASH WASH WASH**
(192) **WASH WASH WASH**
(193) **WASH WASH WASH**
(194) **WASH WASH WASH**
(195) **WASH WASH WASH**
(196) **WASH WASH WASH**
(197) **WASH WASH WASH**
(198) **WASH WASH WASH**
(199) **WASH WASH WASH**
(200) **WASH WASH WASH**

12:00 (4) **WASH WASH WASH**
(5) **WASH WASH WASH**
(6) **WASH WASH WASH**
(7) **WASH WASH WASH**
(8) **WASH WASH WASH**
(9) **WASH WASH WASH**
(10) **WASH WASH WASH**

12:30 (4) **WASH WASH WASH**
(5) **WASH WASH WASH**
(6) **WASH WASH WASH**
(7) **WASH WASH WASH**
(8) **WASH WASH WASH**
(9) **WASH WASH WASH**
(10) **WASH WASH WASH**

(191) **WASH WASH WASH**
(192) **WASH WASH WASH**
(193) **WASH WASH WASH**
(194) **WASH WASH WASH**
(195) **WASH WASH WASH**
(196) **WASH WASH WASH**
(197) **WASH WASH WASH**
(198) **WASH WASH WASH**
(199) **WASH WASH WASH**
(200) **WASH WASH WASH**

12:00 (4) **WASH WASH WASH**
(5) **WASH WASH WASH**
(6) **WASH WASH WASH**
(7) **WASH WASH WASH**
(8) **WASH WASH WASH**
(9) **WASH WASH WASH**
(10) **WASH WASH WASH**

12:30 (4) **WASH WASH WASH**
(5) **WASH WASH WASH**
(6) **WASH WASH WASH**
(7) **WASH WASH WASH**
(8) **WASH WASH WASH**
(9) **WASH WASH WASH**
(10) **WASH WASH WASH**

(191) **WASH WASH WASH**
(192) **WASH WASH WASH**
(193) **WASH WASH WASH**
(194) **WASH WASH WASH**
(195) **WASH WASH WASH**
(196) **WASH WASH WASH**
(197) **WASH WASH WASH**
(198) **WASH WASH WASH**
(199) **WASH WASH WASH**
(200) **WASH WASH WASH**

12:00 (4) **WASH WASH WASH**
(5) **WASH WASH WASH**
(6) **WASH WASH WASH**
(7) **WASH WASH WASH**
(8) **WASH WASH WASH**
(9) **WASH WASH WASH**
(10) **WASH WASH WASH**

12:30 (4) **WASH WASH WASH**
(5) **WASH WASH WASH**
(6) **WASH WASH WASH**
(7) **WASH WASH WASH**
(8) **WASH WASH WASH**
(9) **WASH WASH WASH**
(10) **WASH WASH WASH**

(191) **WASH WASH WASH**
(192) **WASH WASH WASH**
(193) **WASH WASH WASH**
(194) **WASH WASH WASH**
(195) **WASH WASH WASH**
(196) **WASH WASH WASH**
(197) **WASH WASH WASH**
(198) **WASH WASH WASH**
(199) **WASH WASH WASH**
(200) **WASH WASH WASH**

12:00 (4) **WASH WASH WASH**
(5) **WASH WASH WASH**
(6) **WASH WASH WASH**
(7) **WASH WASH WASH**
(8) **WASH WASH WASH**
(9) **WASH WASH WASH**
(10) **WASH WASH WASH**

12:30 (4) **WASH WASH WASH**
(5) **WASH WASH WASH**
(6) **WASH WASH WASH**
(7) **WASH WASH WASH**
(8) **WASH WASH WASH**
(9) **WASH WASH WASH**
(10) **WASH WASH WASH**

(191) **WASH WASH WASH**
(192) **WASH WASH WASH**
(193) **WASH WASH WASH**
(194) **WASH WASH WASH**
(195) **WASH WASH WASH**
(196) **WASH WASH WASH**
(197) **WASH WASH WASH**
(198) **WASH WASH WASH**
(199) **WASH WASH WASH**
(200) **WASH WASH WASH**

12:00 (4) **WASH WASH WASH**
(5) **WASH WASH WASH**
(6) **WASH WASH WASH**
(7) **WASH WASH WASH**
(8) **WASH WASH WASH**
(9) **WASH WASH WASH**
(10) **WASH WASH WASH**

12:30 (4) **WASH WASH WASH**
(5) **WASH WASH WASH**
(6) **WASH WASH WASH**
(7) **WASH WASH WASH**
(8) **WASH WASH WASH**
(9) **WASH WASH WASH**
(10) **WASH WASH WASH**

(191) **WASH WASH WASH**
(192) **WASH WASH WASH**
(193) **WASH WASH WASH**
(194) **WASH WASH WASH**
(195) **WASH WASH WASH**
(196) **WASH WASH WASH**
(197) **WASH WASH WASH**
(198) **WASH WASH WASH**
(199) **WASH WASH WASH**
(200) **WASH WASH WASH**

12:00 (4) **WASH WASH WASH**
(5) **WASH WASH WASH**
(6) **WASH WASH WASH**
(7) **WASH WASH WASH**
(8) **WASH WASH WASH**
(9) **WASH WASH WASH**
(10) **WASH WASH WASH**

12:30 (4) **WASH WASH WASH**
(5) **WASH WASH WASH**
(6) **WASH WASH WASH**
(7) **WASH WASH WASH**
(8) **WASH WASH WASH**
(9) **WASH WASH WASH**
(10) **WASH WASH WASH**

(191) **WASH WASH WASH**
(192) **WASH WASH WASH**
(193) **WASH WASH WASH**
(194) **WASH WASH WASH**
(195) **WASH WASH WASH**
(196) **WASH WASH WASH**
(197) **WASH WASH WASH**
(198) **WASH WASH WASH**
(199) **WASH WASH WASH**
(200) **WASH WASH WASH**

12:00 (4) **WASH WASH WASH**
(5) **WASH WASH WASH**
(6) **WASH WASH WASH**
(7) **WASH WASH WASH**
(8) **WASH WASH WASH**
(9) **WASH WASH WASH**
(10) **WASH WASH WASH**

12:30 (4) **WASH WASH WASH**
(5) **WASH WASH WASH**
(6) **WASH WASH WASH**
(7) **WASH WASH WASH**
(8) **WASH WASH WASH**
(9) **WASH WASH WASH**
(10) **WASH WASH WASH**

(191) **WASH WASH WASH**
(192) **WASH WASH WASH**
(193) **WASH WASH WASH**
(194) **WASH WASH WASH**
(195) **WASH WASH WASH**
(196) **WASH WASH WASH**
(197) **WASH WASH WASH**
(198) **WASH WASH WASH**
(199) **WASH WASH WASH**
(200) **WASH WASH WASH**

12:00 (4) **WASH WASH WASH**
(5) **WASH WASH WASH**
(6) **WASH WASH WASH**
(7) **WASH WASH WASH**
(8) **WASH WASH WASH**
(9) **WASH WASH WASH**
(10) **WASH WASH WASH**

12:30 (4) **WASH WASH WASH**
(5) **WASH WASH WASH**
(6) **WASH WASH WASH**
(7) **WASH WASH WASH**
(8) **WASH WASH WASH**
(9) **WASH WASH WASH**
(10) **WASH WASH WASH**

(191) **WASH WASH WASH**
(192) **WASH WASH WASH**
(193) **WASH WASH WASH**
(194) **WASH WASH WASH**
(195) **WASH WASH WASH**
(196) **WASH WASH WASH**
(197) **WASH WASH WASH**
(198) **WASH WASH WASH**
(199) **WASH WASH WASH**
(200) **WASH WASH WASH**

12:00 (4) **WASH WASH WASH**
(5) **WASH WASH WASH**
(6) **WASH WASH WASH**
(7) **WASH WASH WASH**
(8) **WASH WASH WASH**
(9) **WASH WASH WASH**
(10) **WASH WASH WASH**

12:30 (4) **WASH WASH WASH**
(5) **WASH WASH WASH**
(6) **WASH WASH WASH**
(7) **WASH WASH WASH**
(8) **WASH WASH WASH**
(9) **WASH WASH WASH**
(10) **WASH WASH WASH**

(191) **WASH WASH WASH**
(192) **WASH WASH WASH**
(193) **WASH WASH WASH**
(194) **WASH WASH WASH**
(195) **WASH WASH WASH**
(196) **WASH WASH WASH**
(197) **WASH WASH WASH**
(198) **WASH WASH WASH**
(199) **WASH WASH WASH**
(200) **WASH WASH WASH**

12:00 (4) **WASH WASH WASH</**

