

Feb 19, 1987

MRS. LITA WATSON
520 W. CLARA
IOWA PARK TX 76367 112

IOWA PARK LEADER

28 Cents

Vol. 18, No. 23 IOWA PARK, WICHITA COUNTY, TEXAS 76367 Thursday, February 19, 1987



BATTLE OF MASCOTS - Iowa Park and Bowie mascots staged a scoring battle of their own Tuesday night during halftime of the varsity game. While the score was ruled a tie by the bookkeeper, the performance was ruled a big success by the crowd.

Burglars enter homes of sleeping residents

A series of successful and unsuccessful burglaries Tuesday night in a rural area southeast of town has prompted residents to increase their security.

Burglars entered the homes of Harrel Sullivan and John Clapp while the occupants were asleep, and left with several thousands of dollars worth of jewelry and some cash.

At least two other attempts to enter homes were unsuccessful, it was reported.

Mrs. Sullivan said the burglar, or burglars, entered their home between 11:30 p.m. and 5 a.m., by climbing through a window in the

garage and forcing open a door into the house.

"There was evidence they went through every room in our home," she said.

From her purse she had left on the kitchen cabinet, about \$70 in cash was taken.

The big haul was made when the burglar opened a small music box, which apparently had not been wound to play.

In it were Mrs. Sullivan's wedding band, engagement ring, and another ring she had received for their 40th wedding anniversary which had been made from her parents' rings and

had an additional diamond installed. Mrs. Sullivan said the rings were worth more than \$6,000, but their sentimental value was far greater than material value.

A small rifle was also taken. She believes the burglar exited through glass sliding doors, which were found open when the couple got up Wednesday morning.

Asked how anyone could get around the house in the dark, she said night lights had been put on the baseboards of the home when her late parents were living with them. She also felt a small pinlight was used.

Black, greasy smuges were left on a white velvet liner in the top of the music box where the rings were stored.

In quick order, following the ordeal, Mrs. Sullivan said a burglar alarm system had been installed, a dog now lives there, and additional locks were installed.

Neighbor John Clapp's home was also violated the same evening. Nothing was reportedly taken there except money.

Approximately \$80 in cash was taken from his billfold and her purse, both of which were on a table near the couple's bed.

An attempt to enter the home of Mrs. Ruby Sewell's garage the same evening was reported the next morning to police, and evidence at the Leslie Clapp home also indicated someone had attempted to gain entrance.

Sheriff's deputies are investigating the rural incidents, which does not include Mrs. Sewell's home.

PLAYOFF

Iowa Park, Bowie meet Friday in rubber match

The Iowa Park Hawks and Bowie Jackrabbits will face each other for the third time this season Friday in the Wichita Falls High School Coyote Gymnasium.

The 8 p.m. tipoff will produce the Dist. 6-AAA runner-up to advance into the state playoffs. Conference champion is Decatur, which went undefeated in district play.

Iowa Park defeated Bowie 56-53 here Tuesday, to finish second in the second half of the district's round robin schedule, with only the loss to Decatur. Bowie knocked off the Hawks 64-40 in the first round and had only one loss the first half.

Ticket prices for the playoff will be \$2 for students and \$3 for adults.

Iowa Park High Principal Richard Davis said Hawk fans will sit on the home side, which is the seating on the right when entering the gymnasium's front door. Bowie will sit on the left, or visitors' side.

In their meeting following Tuesday's game, the coaches decided on the Wichita Falls site after first considering Archer City and Henrietta.

News in Brief

Animal Control contact is changed

The Iowa Park Animal Control Officer has been reassigned from the Police Department to the Code Enforcement Department, according to Allen Sheffield, police chief. Persons wanting to contact the

Control Officer will likely receive a quicker response by contacting the City Hall, rather than the Police Department, Sheffield said. He added, however, that his Department would still handle calls when contacted.

Stock show plans to be discussed

Plans for livestock shows will be discussed at a meeting tonight of the FFA Booster Club. To begin at 7:30, the meeting will be held in the Vocational Agri-

culture building. Plans for both the Iowa Park 4-H and FFA Project Show, as well as the Wichita County Junior Livestock Show will be discussed.

Cubs, Scouts to attend dinner

Boy Scouts of Troop 7 and Cubs of Pack 7, and their parents will hold a joint dinner at 6:30 p.m. Saturday

in the county agriculture building. The event is to observe the founding of Boy Scouts.

Council to see audit report for 1985-86

City aldermen will hear results of an audit of the 1985-86 books at their meeting Monday evening, which is to begin at 7 in the council chambers.

Results of the audit, which was made for the fiscal year that began in October of 1985 and ended in September 1986, will be discussed, according to the advance agenda.

Action is expected to be taken on three projects for which bids will be received. The projects include concrete work around city hall, a three-year grounds maintenance contract, and construction of a water line in the south part of town.

The council will consider two requests by the administrator to advertise for a purchase and a sale.

Administrator James Barrington will seek permission to advertise for bids to purchase computerized meter reading hardware and software.

He will also ask permission to sell certain items of surplus property, but at auction rather than by the usual sealed bid method.

Authorization will also be asked to hold a boat race at Lake Iowa Park, to purchase a mosquito sprayer, and a proposal to finance purchase of bullet-proof vests for the police department. Barrington emphasized this would be for financing only, and would not be an expense for the city.

Barrington is to report on the

Schools facing more construction

Unless there is a change made by the state legislature now in session, Iowa Park schools will have to build five more classrooms and hire five additional teachers by fall of 1988.

Theft, poisoning are investigated

Iowa Park police are investigating a theft of tools and poisoning of a dog.

Scott Echols told police Sunday someone had taken a tool box from 805 E. Cash, and the box with contents was worth more than \$750 but less than \$2,000.

Debbie Freeman reported Wednesday of last week that someone had poisoned her dog at 116 James.

Bobby Gilbert filed a report Saturday afternoon that a light blue Silverado pickup has struck his vehicle while parked on South Jackson, and immediately left the scene.

street sealcoating project planned for this summer, as well as alternatives for future landfill operations, according to the agenda.

The administrator will also ask authorization to submit applications for grand funding for a community center/gymnasium project.

Cost of construction is estimated at between \$250,000 and \$300,000, according to Glen Mitchell, superintendent of schools.

But Iowa Park isn't alone. School districts across the state will have to hire 3,500 new teachers and spend an additional \$231-million to meet the mandates of House Bill 72, according to a recent article in the Dallas Morning News.

The additional classrooms would be required at Bradford Elementary, in order to meet the mandated teacher-pupil ratio of 22 to one. Principal Kenneth Davis has informed Mitchell he cannot handle the enrollments of the first and second grades now in Kidwell Elementary, and meet the ratio requirements.

Four classrooms were constructed and opened this year at Kidwell to handle the 465 students on that campus. In addition, restrooms, a workroom and storage space were built.

Districts are not required to meet the teacher-pupil ratio of the third and fourth grades until the 1988-89 year.

At that time, if there are no new students or move aways among pupils of today's first, second and third grades, Bradford's enrollment would balloon from today's pupil count of 407 to 439.

And classes at Bradford now range in average from 25 to 29.

Even with the new classrooms at Kidwell being added last fall, Ron Woods, principal, still had to submit an application for a temporary waiver because he had one first grade room with 24 students in it.

However, Woods reported by the time the waiver was granted, his

count had reduced to a point where the waiver was not necessary.

A total of 227 school districts in the state were granted waivers from the class-size standard last fall, the Dallas Morning News article stated.

Supt. Mitchell checked with a state official, and was told about half those districts were of large enrollments, but a very small portion were not considered to be making "an honest effort" to correct their ratio situation.

Also, some of the districts requesting waivers had large enrollments of itinerate pupils that would not be in the classes all year, he was told.

The superintendent said he was told it was possible that districts

meeting teacher-pupil ratios might receive more state funding than those not meeting it.

Also, those districts "performing well" on student progress, as indicated on testing, might receive waivers, he was told.

"If a school district is doing what we want it to do anyway, why should they have to hire additional teachers?" Jon Brumley, chairman of the state board of education, was quoted in the Dallas paper.

However, if there is no change made by the state this session, Supt. Mitchell said he has no alternative than to accept Principal Davis' recommendation to have additional classrooms built, and ask the trustees to authorize construction by fall of 1988.

Chamber resolution calls for import tax

Directors of the Iowa Park Chamber of Commerce Monday approved a resolution calling for a variable import fee on oil.

Similar resolutions have earlier been approved by the Midland Chamber and other members of the West Texas Chamber of Commerce, according to Midland attorney Charles Seltzer.

The resolution states:

"WHEREAS, the Iowa Park Chamber of Commerce recognizes that the United States has lost control of its energy future. The Nation and the American people are therefore exposed to disruptive economic and security threats more serious than any development short of war. These threats stem from one reality: the Nation will be dependent on foreign oil for over 50 percent of its energy requirements in approximately two years and the majority of such imports will come from unstable and often hostile producers in the Persian Gulf which own and control 69 percent of the world's oil reserves, and

"WHEREAS, the Iowa Park Chamber of Commerce further recognizes that there is no free or fair market in foreign crude oil. Prices are being deliberately manipulated with the intent to dismantle our domestic

petroleum industry; thereby denying the United States the ability to determine its energy future, and

"WHEREAS, our national security demands that the rising level of petroleum imports be stopped and that a revitalized U.S. oil and gas industry, with adequate and stable prices, is critical to achieving energy self-sufficiency, and therefore be it

"RESOLVED THAT, the Iowa Park Chamber of Commerce urges immediate adoption of a variable import fee on crude oil and refined products that is free from all exemptions and exceptions and that a floor price for crude oil and refined products be established at a level to revitalize the domestic petroleum industry and thereby ensuring the economic security and stability of the United States."

A copy of the resolution will be sent to Adolph Janca, executive director of the West Texas Chamber, who is to make a formal presentation of the proposal in Washington D.C. later this month.

In other business, Allen Gilstrap and Dr. Erwin Soell were appointed to function as the Chamber's budget committee, and a ribbon cutting was set for 10 a.m. Monday to recognize the relocation of Dr. James Edwards' office.

Only one race seen in election

At presstime yesterday, only one city alderman place was contested for the April 4 election, and no one had filed in the school board race.

Wednesday at 5 p.m. was the deadline for filing in the city election, but deadline for school trustee is not until Mar. 4.

Keith Fisher and Virgil Woodfin filed for Place One on the city council, which is being vacated by George Hammonds. Both candidates filed within an hour of each other Tuesday.

Neither Johnny Coker, Place Three, nor Diane Robnett, Place Five, drew opposition in the alderman election.

Fisher is owner of K&K Quick Stop and Woodfin was manager of the State Experiment Station before retiring.

School trustee incumbent Marilyn Hale confirmed this week she would not seek re-election to the board, thus leaving three places on the board open this spring.

Mrs. Hale's position on the

board was designated as Place Seven.

Rex Wells, Place Six, had already announced he did not intend to run for another term, and Roy Boutwell, Place Two, submitted his letter of resignation in November that he would resign effective in April, with still a year remaining in his term.

Candidates for school trustee can obtain a form to file for a place on the ballot at the administration building.

UPDATE: Charlie Brown just beat the deadline to file for Place One.

Sughrue, Billingsley exchange vows Saturday

A double-ring ceremony was performed Saturday evening by Rev. Jerry Miller, pastor of Faith Baptist Church, to unite Miss Pamela Michelle Sughrue and Andy Leroy Billingsley. The setting for the service was the home of Mr. and Mrs. Mark Raby, brother-in-law and sister of the groom.

The bride is the daughter of Mr. and Mrs. Ernest R. Sughrue of Wichita Falls, and the groom is the son of Mr. and Mrs. James I. Billingsley of Iowa Park.

The couple recited their vows before a gold arch threaded with greenery, and the unity candlestick was an important part of the nuptial space.

In keeping with Valentine's Day, the fireplace mantel was centered with a five-branched silver candelabra holding tall red candles, and the wall sconces in the room, one a five-arm, the other a three-arm, held red votive candles in crystal cups.

The taped music for the wedding featured "Will You Still Love Me" for a pre-nuptial selection and the traditional processional.

Presented in marriage by her father, the bride wore a lovely silk organza gown enhanced with Raschel and Schiffli laces. The fitted bodice was fashioned with a Chantilly lace ruffle starting at the shoulders and extending into a V, high neckline, Schiffli lace embroidered yoke, sheer see-through bishop sleeves cuffed with wide bands of Chantilly lace. The beauty of the wedding dress was enhanced with an overskirt look of Chantilly lace ruffled around the skirt with more fullness in the back. A wide border of lace encircled the hem of the gown and chapel train topped with white satin ribbon to complete the picture.

A Dior look was reflected in the bride's headpiece of Chantilly and Schiffli lace and silk tulle veil that fell to her waist. She carried a bouquet of red and white carnations, baby's breath tied with a red satin and white lace bow that fell in streamers.

Miss Donna Zug was the bride's maid of honor. She wore a tea length red satin dress and carried a bouquet of red and white carnations and baby's breath.



MRS. ANDY LEROY BILLINGSLEY

The groom and Randy Billingsley, the best man, wore white tuxedos, the groom wearing a boutonniere formed with a red carnation and baby's breath. The father of the bride wore a black tuxedo.

Miss Carol Sughrue sat at the guest book table holding tapered red candles in a two-branched candelabrum.

The reception following the wedding was held at the Raby home. Mrs. Gary Sullivan of Lubbock and Mrs. Randy Billingsley assisted her with duties of serving.

The bride's table was draped with white lace over red satin. The centerpiece was a five-branched silver candelabra filled with red and white candles and the sides were marked with the crystal punch service and cake which was baked by Mrs. Randy

Billingsley. It was a three-tiered confection with one set of Grecian posts. Each heart-shaped tier was bordered in red and decorated with red frosting roses, and the top piece was three white satin wedding bells.

The groom's table was covered with brown linen. The centerpiece was a tray of nuts surrounded by a lunch pail, hard hat and boots, suggestive of his work. The table also held a silver coffee service and chocolate cake.

The bride was graduated from Wichita Falls High School and works for Monnig's Department Store. The groom was graduated from Iowa Park High School and is employed by Daniel's Construction. They will live in Iowa Park.

A special wedding guest was Mrs. Robbie Sughrue of Sanger, grandmother of the bride.

Amity Club has meeting

The Amity Study Club met Monday evening in the home of Evelyn Ward, with Laura Thames acting as co-hostess.

Darlene Barrington read two poems, "America The Beautiful" and "I Am An American," for the meditation.

During the business meeting conducted by Marilyn Hale, president, various fundraising projects were discussed. Margaret Denton gave a report on scholarships available from Federated Clubs.

Participation in the 23 Study Club's Outstanding Boy and Girl Award was discussed and approved. Mrs. Hale pointed out that the club may participate in nominating an outstanding citizen for the Chamber of Commerce next year.

Following the business meeting, Mrs. Denton directed members in making wash cloth bunnies to be distributed at Heritage Manor.

The next meeting will be March 16, in the home of Marilyn Hale.

Club sets show date

David Findley, county extension agent, gave a program on lawn care and types of fertilizers, for the Iowa Park Garden Club Friday morning.

Members answered roll call by giving their favorite plant, and the horticulture specimen shown by Mrs. Billy Gilmore was a strange plant, Fly Catcher.

During the business, the date for the annual flower show was set for April 24, and members nominated candidates for the Outstanding Senior Girl and Boy sponsored by the 23 Study Club.

The meeting was held in the Tom Burnett Memorial Library and the hostesses were Mrs. Frank Harlin and Mrs. W.A. George.



MR. AND MRS. ROY PIERCE

Schrieber, Pierce wed

Christy Schrieber and Roy Pierce were married Jan. 31 at the home of her parents, Mr. and Mrs. Robert Van Speybroeck, by Virgil Hill, Justice of Peace.

The groom is the son of Joyce Qualls of Wichita Falls.

The bride was given in marriage by her brother, Bobby Van Speybroeck. She wore a tea length orchid chiffon dress over taffeta designed with high neck, long sleeves and bustle back. She carried a bouquet of orchid and white silk daisies and periwinkles and English ivy.

Teri Franklin attended the bride and wore a multi-print tea length dress. She carried a nosegay of burgundy and white silk roses.

The groom and Sam Brisco, the best man, wore grey suit coats and dark pants.

A reception was held after the wedding. The two-tiered white cake was heart-shaped, decorated with orchid frosting roses and topped with a bride and groom standing under a lace heart.

The bride was graduated from Iowa Park High School and works for Golden Fried Chicken. The groom was graduated from Wichita Falls High School and works for Overhead Door Co.

Guests at the wedding included Carolyn Campbell, Maryln Murphy, Lenny Hallmark and Rodney, Wendall Brisco, Norman Hamilton and Stephanie, Anna and Freddie Martin, Jesse Rojas, Maxie Davis, Perry Hamilton, Jo Ann Bowen, Brenda and Robert Britt, Freida Wiest, Rene and Dorothy Van Speybroeck, Melinda Scheffe, Mellisa and Jenni Jensen.

Look Who's New

Kalee Elise, a seven pound, 15 ounce daughter, was born to Mr. and Mrs. Michael J. Williams February 5. She has a brother, Clay, 15 years old and a sister, Kimberlie, eight years old.

The grandmothers are Mrs. Fannie Price of Iowa Park and Mrs. Mattie Williams of Wichita Falls.

Classic COKE

3 LITER BTL.

\$1.97

K&K QUICK STOP

1309 JOHNSON RD. PH. 592-5931



Lady, Tweezing Hair Gets You Nowhere!

Remove it permanently by Electrolysis. Doing it yourself will get you nowhere and can stimulate new growth. Our exclusive method is a system of short wave radio impulses, widely known to the medical profession. Closed Friday and Saturday.

Gunter Electrolysis Studio

592-2883

Member of the Association of Texas Electrologists

FINAL & FURTHER DRASTIC REDUCTIONS

Storewide Winter Sale Ends

Feb 28

REDUCTIONS

33% - 67%

TWO AND ONE HALF MILLION DOLLAR INVENTORY

Huff

FURNITURE GALLERIES

Bringing The Good Life Home To You.
Tenth at Brook - Wichita Falls, 723-4184

Pauline's Beauty Shop
is proud to announce the association of
Rene Sadberry

\$2 Discount

Bring a copy of this ad to Rene for \$2 Discount.

504 N. Wall
592-5354

Just Because



Junior has told us if we don't come up with the rent (\$5,000) by March 15, he is sending us back to those hot kitchens! We urge you to come look and buy!

All sportswear and dresses **25% off**

All in stock wedding dresses and formals **1/2 off**

Come See Us. Thursday, Friday, Saturday, 9:30-5:30

Mary & Estaleen

Just Because

1803 Johnson Rd. 592-5496 (1/2 mi. no. expressway.)

We accept Visa and Mastercard

Health Tips

-from Jerel Kerby

Bone Factor May Help Osteoporosis, Fractures

A newly discovered molecule (heterotopic bone factor-HBF) may help in the treatment of osteoporosis, improve hip implants and speed up healing of hard-to-heal bone fractures.

According to Dr. J. Edward Puzas, HBF stimulates the growth of bone cells, increases cell proliferation and collagen synthesis.

When purified, HBF may be used to promote the formation of new bone in a patient with osteoporosis, Dr. Puzas said.

It may also be applied locally, at the site of a hip implant or as a "filler" in certain bone fractures.

WAL-MART Pharmacy

500 W. Highway

592-4157

9 a.m. - 7 p.m. Monday-Friday

9 a.m. - 6 p.m. Saturdays

WAL-MART
"Pictureland" Portrait Studio
Exclusively at Wal-Mart

FREE 10x13 WALL PORTRAIT
on a traditional background
(a \$15 retail value)

5 Days Only!

Yours with the purchase of our 20-piece portrait package 2-8x10s, 3-5x7s and 15 wallets on a traditional background

\$12.95 ONLY includes 95¢ deposit

Bring in any lower-priced advertised offer AND WE'LL MATCH IT... because Wal-Mart's prices are UNBEATABLE!

We Welcome Everyone... BABIES, CHILDREN, ADULTS, and FAMILY GROUPS!

No appointment is ever necessary. Poses our selection. Special effects poses extra \$1.00 for each additional person in portrait. Minors must be accompanied by an adult. Satisfaction guaranteed!

5 Days Only!
Feb. 18, 19, 20, 21, 22
Studio Hours: 10 a.m.-8 p.m. Daily
Sunday: (where open) Store opening until one hour prior to store closing

IOWA PARK, TX
LOOP 370 & NORTH PACIFIC AVE.

Wal-Mart Sells for Less

Broday, Belvin exchange nuptials Saturday in Wichita Falls

The Sunnyside Baptist Church in Wichita Falls was the scene of a double-ring wedding Saturday evening for the exchange of vows by Debra Toft Broday and Rex Earl Belvin with Rev. Hubert Wright officiating.

Parents of the couple are Mr. and Mrs. Lloyd I. Toft of Wichita Falls and Mr. and Mrs. Billy E. Belvin of

Iowa Park.

The altar decorations featured an array of pink and white floral arrangements accented with matching silk ribbons.

Charles Weatherbee presented a piano medley of favorite love songs for the prelude music and played the organ for the traditional wedding marches.

The bride's parents presented her in marriage. She was beautifully attired in a floor length gown of white debutante taffeta fashioned with a sweetheart neckline ruffled with chiffon worn off the shoulder, short puffed sleeves, fitted bodice. The full skirt and chapel train were accented with pale pink silk roses and seed pearls and hemmed with double chiffon ruffles.

Her shoulder length illusion veil was attached to a white taffeta bridal hat trimmed with pearls and she carried a bouquet of white silk roses, pale pink roses and net, pink and white satin ribbon.

Miss Susan Woods, the maid of honor, Miss Cynthia Belvin and Miss Glenda Toft, the bridesmaids, wore identical pink taffeta debutante

dresses lined with pink satin. In design, the dresses featured lace-trimmed bodices and sleeves, sweetheart necklines and gathered skirts. They carried bouquets of white and pink silk flowers complemented with pink net, pink and white silk ribbon.

Deanna Ward, the flower girl, wore a pink taffeta frock trimmed with white lace. Laura Broday and Gary Broday shared ring bearer duties. She was dressed like the flower girl and he was dressed like the male members of the wedding party who wore silver tuxedos, pink cummerbunds and bow ties.

J.R. Gregory took part in the wedding as best man and the groomsmen were Richard Belvin and Thomas Werner. Duties of ushering

were assumed by Allen Woods and Brandon Woods.

Billy Toft and Jerry Toft ushered and seated mothers of the couple.

The bride was graduated from Burkburnett High School and is employed by Woods' Studio. The groom was graduated from Del Rio High School, attended Midwestern State Univ. and is employed by Metro Express No. 11. They have planned a wedding trip for later and will live in Wichita Falls.

The wedding reception was held in the Fellowship Hall of the church.

The bride's table was covered with a white lace cloth over pink satin and centered with a bouquet of pink and white silk flowers flanked by pink candles in crystal holders. The focal point of table interest was the three-tiered cake decorated with

pink roses and set on a color flow fountain with crystal cascades and pink bubbling water.

The groom's table was covered with white lace over silver and held a chocolate cake, silver candles in crystal holders.

Mr. and Mrs. J.R. Gahagan served refreshments during the reception.

The rehearsal dinner was held at the El Mexicano Restaurant.

Special guests at the wedding were Mrs. Ludie Dye of Waurika and Mrs. Lela Fields of Wichita Falls, grandmothers of the bride.



MRS. REX EARL BELVIN

Suzuki teaching discussed

The Modern Music Study Club meeting opened Thursday evening by Mrs. Michael Sargent playing "Hear Our Prayer, O Lord We Pray," the hymn of the month. It had special significance to the members because it was written by Mrs. Robert Gordon of Miramar, Fla., a longtime federated music club member.

Mrs. Kay Cole introduced Sharon Wynn, a senior in Iowa Park High School, who sang "Oh, What a Beautiful Morning" and "What Songs Were Sung."

Mrs. Sargent discussed the Suzuki method of teaching the violin to small children. She then furnished piano accompaniment for her small daughter, Melanie, to present violin numbers, "Song of the Wind," "Long, Long Ago" and "Twinkles."

Following adjournment, members sang "Texas Our Texas" and discussed the sacred music concert which will be held in March.

Mrs. John Rentschler was hostess for the meeting. A Valentine motif was noted on the white lace-

covered refreshment centered with pink and white azaleas and appointed with red and pink heart-shaped cakes, candies and punch.

Twelve members were present. The next meeting will be Mar. 12.

Shower fetes bride elect

Miss Cindy Lunney, bride-elect of Brian Fulfer, was honored at a lingerie shower Tuesday evening at Tom Burnett Memorial Library. Miss Lisa Maness was hostess for the event.

The serving table was covered with a peach linen cloth accented with grey bows at each corner, centered with a bouquet of peach and grey tiger lilies, and appointed with silver services holding the refreshments. Peach and grey governed the decorations on the gift table also.

Special guests were Mrs. Richard Lunney and Mrs. Sonny Fulfer, mothers of the engaged couple.

P G A O N L D D A



The Gold Panda Family From China

Coined in the image of the Panda, one of the most rare and lovable wild animals on earth, these beautiful coins are Official Legal Tender Bullion issued by the Bank of China.

Struck in .999 fine gold (24 karat), the Pandas are currently available in five convenient sizes - 1 oz., 1/2 oz., 1/4 oz., 1983, 1984 and 1985 (a different Panda design each year - 1/20 oz. size was not struck in 1982.)

Louis' Distinctive Jewelry

408 W. Park 592-5942

SHOWER SELECTIONS FOR
 WENDY HERRINGTON and BILLY MAXWELL
 PATRICIA ROBERTS and BILL HUDSON
 JACALYN HALE and MARK LANE

PARKWAY
 True Value HARDWARE
 HARKWARE & FURNITURE
 200-206
 592-4681 W. Bank 592-5512

WASHINGTON'S BIRTHDAY SALE

Group of Deflated FOOTBALLS
 They're not worth anything to us
 We'll Pay YOU **22¢** To Carry Them Off!
 Limits: One to Customer while supply lasts.

22¢ Items (some 1-of-a-kind)

- ✓ Poly Paint Brushes - choice of sizes
- ✓ Quarts of Paint
- ✓ License Plate Fasteners
- ✓ Pound of 16-Penny Box Nails
- ✓ Electrical Outlet Boxes
- ✓ Choice 60-75-100 Watt Light Bulbs - 130 Volt

\$2.22 Items (some 1-of-a-kind)

- ✓ Group of Wrist Watches
- ✓ Gallons of Paint
- ✓ Eureka or Hoover Replacement Bags (3 in pack)
- ✓ Lee or True Test Oil Filters
- ✓ Venetian Blind Cleaner Brush
- ✓ Cordmaster Extension Cord Storage Tote (Holds 100 ft.)

\$22.22 - Lamps and Light Fixtures
 - Group of Livingroom Tables

\$122.22 - Large oversize Velvet Club Chair (1 only)
 - Glass & Brass Table with 2 Chairs (1 only)

\$222.22 - "Almost New" Berkline Recliner
 - "Almost New" Sofa
 - Glass & Brass Table w/4 chairs (only 1)

\$322.22 - Choice of 2 Loveseats
 - All-Wood Table w/6 Upholstered Chairs

\$3.22 6-Hour VHS Blank Video Tape

\$4.22 All-Metal FLASHLIGHTS with batteries

\$13.22 14/2 wire with ground ROMEX CABLE 250 feet per box

These are just are few examples! More bargains throughout the store!

\$52.22
 12-INCH BLACK & WHITE PORTABLE Television

PARKWAY
 FURNITURE ELECTRONICS APPLIANCES
 True Value
 200-206 West Bank 592-5512 592-4681

Washington's...☆☆☆☆☆☆
Birthday SALE
 Friday & Saturday you'll find tables with real values, marked only
22¢ \$1.22 \$2.22

They'll be loaded with:
 Hair Care - Toys - Automotive Items - Cosmetics - Household Items - Shoes - Kitchen Utensils - Decorative Items - Gift Items - Christmas Decorations - Costume Jewelry - Much, Much More!

Settle Drug
 Joe Hughes - Pharmacist
 592-4191 120 W. Park
 24 Hour Service PCS FREE Delivery of Prescriptions
 We Give S&H Green Stamps Medimet-Medicaid

As I See It...

By BOB HAMILTON



An interesting situation has arisen up at Perryton, where the hospital board has made a move to force that community's seven physicians purchase \$500,000 in medical malpractice insurance.

The doctors, obviously, don't like it. And the hospital board has said if they don't buy the insurance, they can't practice in the hospital.

From what I read in the Perryton Herald, the board recently purchased its own liability insurance. It appears to cut the premium expense, the policy they purchased requires matching coverage from the doctors who practice there.

The doctors held a meeting to see if there was anything they could do to fight it. And from what I read, they realize they will either have to buy the insurance or move to another place where they can practice in a hospital.

Statements quoted in the papers indicate to me that the doctors are laying off the future cost increases on

the hospital, to cover the premiums. One physician made a point that the public would have to pick up the tab, "directly or indirectly." In saying that, I got the feeling that he'd rather the hospital just add it all in its bill, rather than the doctor doing the collecting.

One physician now charging \$1,000 for obstetrics may have to increase that by \$200 to \$500, one was quoted.

This business of liability insurance is nothing new to those who pay attention to such subjects at the city and school levels. Their costs have all increased dramatically. So it is not a surprise hospital coverage is also on the rise.

But who should pay those premiums is a subject I've often studied.

First of all, this is not criticism of doctors. It is more an evolution of practice.

Have you ever wondered if a doctor pays anything to the hospital for use of its facilities? The answer is no, if the doctor doesn't own it.

To put it in a different light, lets consider an auto mechanic.

A mechanic can do certain work on a car using nothing more than a couple of wrenches and screwdriver. But if it's something major, he's got to have a shop.

If the mechanic can't do an overhaul under his driveway tree, he would have to take it to a garage. Do you know of any place where the public uses tax funds to provide a shop where a mechanic can do a job for someone, and the mechanic is not charged for use of the space?

Obviously, doctors are not mechanics. Their's is a decidedly different game.

But, in the case of the folks up at Perryton, is it fair for a citizen to pay taxes to keep the hospital open, and have those taxes increase to pay a doctor's malpractice insurance?

Boy, I'm sure glad we don't have anything wrong going on around Iowa Park, so I can comment on what's happening someplace else!



THEY'RE THE TOPS - The five top Camp Fire Candy sales this year were, from left, Wendy Bridwell, Sarah Kaspar, Jennifer Eiben, Stacy Eiven and Michael Gaitan. Each sold more than 100 boxes.

Worth Quoting

All of us who attended the Medicare meeting a few weeks ago received some information that was new and the more we learned, the more we are apprehensive over what is happening to our health care. It was shocking to learn that Medicare pays city doctors about twice as much as rural doctors for office visits and Medicare people don't seem to regard this as unfair. Tightening up the requirement for Medicare payments has resulted in denial of hospital care for some people and surely that is not what the framers of the Medicare program had in mind when it was started.

The story last week in the Amarillo Daily News was revealing in that all rural hospitals in the Panhandle area are struggling to keep a patient load and all are fighting to stay afloat amid a sea of red ink. What we are fighting for is the survival of our small hospitals. If and when these small hospitals close people have no choice but to drive a long way to get hospital care.

Medicare has a new law which requires a second opinion from a doctor approved by the state Peer Review Organization before surgery is allowed for persons with Medicare insurance. Many private insurance companies are following suit and requiring their policy holders to get prior approval before surgery is performed. This may be a cost containing program but it sounds mighty inconvenient for the patient as well as the doctor. The intent is to put a curb on fees charged by doctors and no doubt excessive fees in the past have caused a lot of problems for Medicare and insurance companies. But the day of giving doctors a blank check appears to be over and until we get used to the inconvenience of filling out forms and getting second opinions we will just have to put up with it.

Thus far the outcry about medical care has been centered around Medicare, but now it is rapidly spreading to all other forms of health care insurance. In this day and time, people without health insurance simply cannot survive. For a long time many employees didn't concern themselves with health insurance because their employer paid for it. Today, with rapidly rising costs, more and more employers are requiring employees to pay at least part of the tab and this is getting painful. We all know that the cost of health care is the fastest rising cost of living and no doubt it is time to do something about it. Putting curbs on Medicare and applying sanctions to doctors seems to be a first step.

At the meeting here, it was apparent that most of the problems and unfairness of the Medicare program have a political basis and this means that any correction has to be done on a political basis. Thus all who attended the meeting were asked to contact their Senators and Representatives to ask for relief. Hopefully a lot of people did just this, because unless Rep. Beau Boulter and Sen. Phil Graham and Sen. Loyd Bentsen become really concerned with the Medicare problem it will not be corrected. Time magazine last week had an

article on health care and pointed out that the supply of doctors is rising and will soon reach the point where competition will affect fees being charged. More and more doctors are opting for salaried jobs rather than private practice. The supply of nurses across the nation is below the demand, largely because nurses have not been paid enough for the long and hard hours they work. Medical science has developed many new medicines and machines and surgical techniques. But the final result depends upon trained doctors and nurses and technicians. Time asks if the American people are being priced out of the health care market. It is a question that we all need to ask ourselves and maybe something can be done about it before it is too late.

HAROLD HUDSON
Perryton Herald

Amidst all the mud-slinging in the governors' race, all the charges and countercharges, qualifications or lack of them, one word you never heard was "ghostbuster."

Since both Clements and White have occupied the governor's mansion in Austin, the word "ghost" has never appeared in either candidate's vocabulary.

And it's probably on purpose because Texas' most famous ghost resides in the governor's mansion.

If you recall, Clements and his wife moved out of the mansion shortly after his election eight years ago in "order to remodel and restore" the mansion.

Four years later, when Mark White and his wife moved in, they generated a lot of publicity over the creation of a "playroom for the kids."

Both actions probably resulted from the upstairs ghost.

Tales of the upstairs phantom have been circulating in Austin for the past 121 years.

Accounts of this spectre were for decades the talk of Austin...but governors Shivers, Conally, Briscoe, Clements nor White have ever publicly mentioned the upstairs resident.

During the last, convulsive days of the Confederacy, Gov. Pendleton Murrah packed for a one-way trip to Mexico.

He was terminally ill with tuberculosis, and he had elected to die south of the border rather than in a Union prison cell.

Meanwhile, in an upstairs bedroom, of the official residence, a despondent young man made his own fateful decision. The governor's attractive niece had spurned his affections, and the rejected suitor could not face life without the fickle belle at his side. So he took a pistol and blew his brains out.

The blood stains were easy enough to erase, but the added, eerie cold that gripped the death room, has persisted year 'round despite repeated efforts to heat the room.

And though actual sightings of the tragic youth have been rare, hysterical members of the mansion staff have often heard an eerie moan and the fatal gunshot fired in 1865.

With the deficit problems our new governor must face come Jan-

uary, we won't be surprised if he starts rambling about the upstairs phantom.

Who knows, maybe the legislature will pass a resident ghost gas. It's about the only thing left in Texas without a tax on it.

JAMES ROBERTS
Andrews County News

Help is appreciated. These "church bloopers" appeared in a Presbyterian Church bulletin at Irving recently, and were sent to me by Ralph Chambers:

This afternoon there will be a meeting in the south and north ends of the church. Children will be baptized at both ends.

Tuesday at 4 p.m. there will be an ice cream social. All ladies giving milk please come early.

Wednesday, the Ladies Literary Society will meet. Mrs. Johnson will sing "Put Me in My Little Bed" accompanied by the Pastor.

This being Easter Sunday, we will ask Mrs. Johnson to come forward and lay an egg on the alter.

The service will close with "Little Drops of Water." One of the ladies will start quietly and the rest of the congregation will join in.

On Sunday, a special collection will be taken to defray the expenses of the new carpet. All those wishing to do something on the carpet, please come forward and get a piece of paper.

The ladies of the church will have cast off clothing of every kind and they may be seen in the church basement on Friday.

TOM MOONEY
McGregor Mirror

EXPRESS YOURSELF
with a letter to the editor
Iowa Park Leader
P.O. Box 430
Iowa Park, TX 76367

IOWA PARK LEADER

76367

Bob Hamilton	Editor/Publisher
Dolores Hamilton	Co-publisher
Olive Blalock	Reporter
Kari Collins	Reporter
Kim Schroeder	Composition

The IOWA PARK LEADER is published every Thursday. Offices are located at 112 W. Cash, Iowa Park, Texas 76367 (766280). Telephone: 592-4431. Second Class Postage Paid at Iowa Park, Texas, 76367. Annual subscription rates are \$8.41 in Wichita and Archer Counties; \$10.51 elsewhere in Texas; \$12.00 anywhere in the United States. Any erroneous reflection upon the character, standing or reputation of any person, firm or corporation which may appear in the columns of this newspaper will be corrected upon being brought to the attention of the publisher.

MEMBER

TEXAS PRESS ASSOCIATION

TEXAS GARDENER TIPS

Enduring Native Plums

There are native plums in every part of Texas. Although plums are not the only native fruits in Texas, they are certainly prominent because of the good taste and the beautiful springtime blooms.

As anyone who has lived through a Texas summer will say, the climate is harsh. The ground cracks, the sun bakes, winds howl, dust chokes—but native plants endure. They have grown accustomed to the Texas climate. Native fruits produce more reliably and with less care than non-natives.

It would only be fair to point out that the native varieties are subject to the same ills as any other; they have learned how to resist them better, however.

The Mexican Plum, *Prunus mexicana*, is perhaps the best known. It is a single-trunk tree, growing to 25 feet, with striking pinkish-white flowers in very early spring. In late fall, you will have large, purple fruit av-

small tree, topping out at 20 feet. The fruit is on the smallish side, about 1/2 inch in diameter, but has an excellent taste and makes terrific jellies and preserves.

The Wild Goose Plum, *Prunus munsoniana*, (shown) is a thicket-forming plant growing to 25 feet under excellent conditions. The showy, white flowers are followed, in late summer, by a distinctive, thin-skinned, juicy plum.

Rounding out the native plums is the Hog Plum, *Prunus rivularis*, one of the common plums, often found as a thicket along creekbeds and fence rows. The plum reportedly got its name because even a hog would not eat it. But the fruit and foliage are beautiful, resembling large cherries.

Then there is the Oklahoma Plum, *Prunus gracilis*, which, contrary to its name, prefers the dry sandy soils of Texas. This type of plum forms a thicket, so it is best in an unmanicured part of the yard. Depending on your pruning practices, it can mature anywhere from 2 to 15 feet and is an excellent landscape plant.

The Flatwoods Plum, *Prunus umbellata*, blooms in early spring, like the Mexican Plum. And, like it, the Flatwoods Plum does not form a thicket opting to be a large shrub, or a

TEXAS GARDENER
P.O. Box 9005 Dept. LA
Waco, TX 76714
©1987 TEXAS GARDENER SOCIETY

HOLLIDAY SCHOOL LUNCH MENU

Friday, February 20
Breakfast: Toast, pears, milk.
Lunch: Pizza, tossed salad, tator wedges, broccoli & rice, milk, cookies.

Monday, February 23
Breakfast: Cereal, milk, juice.
Lunch: Chicken nuggets, scalloped potatoes, gravy, green beans, pear salad, milk, hot rolls.

Tuesday, February 24
Breakfast: Biscuits, gravy, milk, sausage.
Lunch: Lasagna, garden salad, beans, Rice Krispie bar, milk.

Wednesday, February 25
Breakfast: Oatmeal, toast, milk, bacon.
Lunch: Chili dog, cheese, French fries, pinto beans, milk, cookies.

Thursday, February 26
Breakfast: Donuts, milk, juice.
Lunch: Stew, cornbread, rice, sugar, crackers, okra, or meat sandwich, milk.

Municipal Court Records

Results of municipal court held here yesterday were:

Debra C. Brown, no drivers license, \$63;

Debra C. Brown, no motor vehicle liability insurance, \$114;

David Conrad Wright, speeding, \$41;

Bobby Earl Gilbert, speeding, \$64;

Terry Coy Baker, speeding, \$46;

Harvey Don Eaton, altered drivers license, \$43;

Lee Bert Lovell, charged by Department of Public Safety for possible suspension of drivers license, suspended three months, probated six months.

Give a pint-sized gift.

Give Blood.

the good neighbor.

Allstate Update: Auto Insurance

"Does your auto insurance need a tune-up?"

Robbin Crawford

Agent
311 North Wall
Iowa Park
Bus. 592-2726
Res. 592-4873

When you keep your car running well, you can feel the difference. But what about your auto insurance? For all the money you put into it, your coverage still could be badly out of tune. And you might not even know it.

Maybe it's time to compare policies. Auto rates and coverages aren't the same at every company, and lots of folks are finding out they get a better deal with Allstate.

Our office is nearby, so why not bring in your auto policy or give me a call? I'll help you compare

your coverage and rate. And maybe you'll drive out with a better value. You're in good hands with Allstate.

Allstate

Allstate Insurance Company

FOOD SPECIALS

THE MORE YOU BUY... THE MORE YOU SAVE!



PRICE SAVER
GRANULATED SUGAR

\$1.29
5 LB. BAG



REGULAR / LEMON
PALMOLIVE LIQUID

88¢
22 OZ. BTL.



DEL MONTE
TOMATO CATSUP

89¢
32 OZ. BTL.



SHURFINE WHITE / ASSORTED
BATHROOM TISSUE

68¢
4 ROLL PKG.

6 pk 12 oz. Cans
Coke Classic \$1.29
Diet Coke
Mr. Pibb 2 liter **59¢**



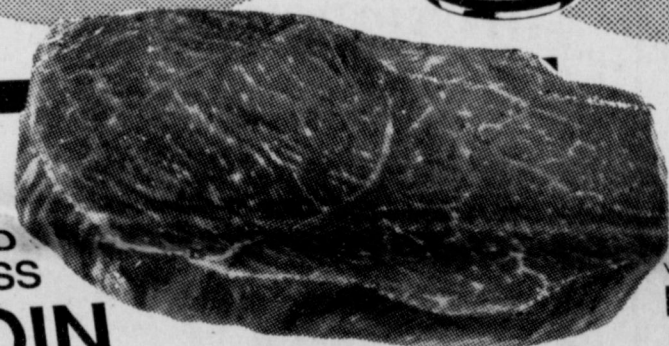
CONTADINA
TOMATO SAUCE
6 8 OZ. CANS **\$1**



GLADIOLA
FLOUR
89¢
5 LB. BAG



WITH FABRIC SOFTENER
FAB
\$5.49
147 OZ. BOX



SUPER TRIMMED BONELESS
SIRLOIN STEAK

\$1.99
LB.

FRESH FAMILY PACK
GROUND BEEF
77% LEAN
99¢

SHURFRESH BONELESS HALF HAMS
FAMILY PACK BONELESS TOP SIRLOIN STEAK
BONELESS TRIMMED BEEF BRISKET
WRIGHTS SLICED SLAB BACON
OSCAR MAYER SLICED MEAT BOLOGNA
OSCAR MAYER SLICED BEEF BOLOGNA

LB. **\$1.89**
LB. **\$2.09**
LB. **\$1.49**
LB. **\$1.49**
12 OZ. **\$1.49**
12 OZ. **\$1.59**



U.S. NO. 1 RUSSET
POTATOES
\$1.09
10 LB. BAG

FRESH ICEBURG
LETTUCE
49¢
HEAD

FRESH EXTRA LARGE BELL PEPPERS
CALIFORNIA FRESH BROCCOLI
LARGE HAWAIIAN PAPAYA
FRESH CRISP CUCUMBERS

LB. **59¢**
LB. **59¢**
EA. **79¢**
LB. **49¢**

This Country's Best You Can Always Depend on Thriftway Quality...
Great Savings Too.

GROCERY SPECIAL

VAN CAMP'S
PORK & BEANS 2 16 OZ. CANS **89¢**
SHURFINE PAPER TOWELS JUMBO ROLL **2/89¢**
SHURFINE POTATO CHIPS **69¢**
SHURFINE SALAD DRESSING 32 OZ. **\$1.39**
SHURFINE SHORTENING 3 LB. CAN **\$1.29**
ZESTA SALTINES 1 LB. BOX **79¢**
ELLIS WITH BEANS CHILI 15 OZ. **79¢**
SHURFINE COFFEE 1 LB. CAN **\$2.19**

66 SMALL / 48 MED. / 32 LARGE ULTRA
ULTRA PAMPERS CONV. **\$9.88**
GLADIOLA ASSORTED POUCH MIXES 3 6 OZ. PKGS. **89¢**
FACIAL TISSUE
KLEENEX 175 CT. BOX **99¢**

S&H BONUS BOOKLET SPECIAL

PRICE SAVER SUGAR 5 LB. 84¢	WITH ONE FILLED S&H BONUS BOOKLET	DEL MONTE CATSUP 32 OZ. 44¢	WITH ONE FILLED S&H BONUS BOOKLET
SHURFINE BATHROOM TISSUE 4 ROLL 24¢	WITH ONE FILLED S&H BONUS BOOKLET	SUNNY FRESH GRADE A EGGS 1 DOZ. 64¢	WITH ONE FILLED S&H BONUS BOOKLET

DAIRY SPECIALS

SUNNY FRESH GRADE A EXTRA
LARGE EGGS
\$1.09
18 CT. CTN.

KRAFT MILD / SHARP CHEDDAR OR MILD COLBY CHUNK
CHEESE
\$1.49
8 OZ. PKG.

KRAFT TOUCH OF BUTTER
MARGARINE
59¢
1 LB. QTRS.

FROZEN FOODS

MINUTE MAID 10 OZ. REDUCED ACID / 12 OZ. REG. / COUNTRY STYLE
ORANGE JUICE
\$1.39

OAK FARMS ICE CREAM 1/2 GAL. **\$1.69**
PILGRIM PRIDE CHICKEN 12 OZ. **\$2.19**
SHURFINE FROZ. 2 CT. PIE SHELLS 10 OZ. PKG. **79¢**

ASST. CRISP N TASTY
JENO'S PIZZA
99¢
10 OZ. PKG.

HEALTH AND BEAUTY AIDS

3 OZ. CONCENTRATE / 7 OZ. CONDITIONER / LIQUID
PRELL SHAMPOO
\$1.88
BTL.

DEODORANT SPRAY / ANTI-PERSPIRANT
SECRET 4 OZ. CAN **\$1.88**
J & J BABY POWDER 14 OZ. CAN **\$2.49**
J & J BABY OIL 10 OZ. BTL. **\$2.89**

ALKA-SELTZER PLUS
COLD TABLETS
\$2.29
20 CT. PKG.

AT AFFILIATED FOODS INC. *This Country's Best!*
B&R WE ACCEPT FOOD STAMPS WE RESERVE THE RIGHT TO LIMIT QUANTITIES PRICES EFFECTIVE FEB. 19-22

THRIFTWAY

Obituaries

Mary Jo Vinson

Funeral services for Mary Jo (Mrs. Keith) Vinson were held Sunday afternoon at the Calvary Baptist Church of Tyler with Rev. David Wilson, pastor, officiating. Burial was in the Tyler Memorial Cemetery under direction of Tyler Memorial Funeral Home.

She was born Nov. 16, 1918, in Colfax. She was graduated from North Texas State Univ. and taught first grade in Iowa Park three years. She was a retired school teacher at Tyler having completed 36 years of teaching. She was a member of the Calvary Baptist Church.

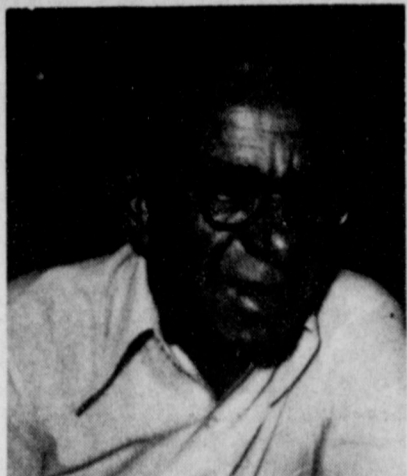
She is survived by her husband, whom she married in Iowa Park May 10, 1946; three daughters, Sandra Stone and Pat Watson, both of Tyler, and Marilyn Tucker of Midland; three sisters, Joy Belle (Mrs. C.L.) McKinnon of Iowa Park, Ella Ruth Chirico of Levittown, Pa., and Opal Thompson of Tyler; a brother, George Jeter of Hewitt; and five grandchildren.

Sandy Esley

Services for Sandy Esley, 44, were held Saturday at Tanner-Aulds Funeral Home with Rev. Jerry Miller, pastor of Faith Baptist Church, officiating. Burial was in Highland Cemetery.

She was born Feb. 21, 1942, and was a licensed vocational nurse at Heritage Manor Nursing Home. She was a member of First Baptist Church.

She is survived by her husband, Ron; a son, Marty of Iowa Park; her mother, Ethel Corless of Iowa Park; and a brother, Phillip Corless of Seymour.



Oscar E. Underwood

Services for Oscar E. Underwood, 70, were held Sunday at Tanner-Aulds Funeral Home with Rev. Larry Washburn, pastor of Pacific Avenue Baptist Church, officiating. Burial was in Highland Cemetery.

He was born Sept. 4, 1916, in Roanoke, Ark., and had lived in Iowa Park since 1940. He was a veteran of World War II and he was retired from Wichita Manufacturing Co. after 35 years. He was a member of Disabled American Veterans, Veterans of Foreign Wars and Muscular Dystrophy Association.

He and Frances Pearl Johnson were married March 4, 1966, in Wichita Falls.

He is survived by his wife; three sons, Ronnie Hatcher of Wichita Falls, Terry and Jerry Hatcher of Iowa Park; four brothers, Lance of Wellington, Beaury and Glen, both of Grapeland, and Marion of Flaton; two sisters, Nellie Gross of Wichita Falls and Mrs. Lonnie Jones of Bowie; and three grandchildren.

Pallbearers were Robert Kinnett, Phillip Dale, Terry Walls, Pete Walls, Donald Beavers and Hank Courmoyer.

Ada Bell Smith

Services for Mrs. Ada Bell Smith, 90, who died Thursday in a Wichita Falls nursing home, were held Saturday morning at Clarksville Funeral Home and burial was in the English Cemetery near Clarksville.

Mrs. Smith was born April 22, 1896, in Red River County and had lived in Wichita Falls four months.

She is survived by a daughter, Valer Mae Jones of Iowa Park; a son, Billy James Smith of Dallas; four brothers, Richard Brem of DeKalb, Roy Brem of New Boston, Elmer Brem of Annona, and Henry Brem of Boxelder; a sister, Dollie Jones of Clarksville; seven grandchildren; and seven great-grandchildren.

Night BW study ends

Mrs. S.B. Reaves concluded the study of "A Measure of Success" by Roberta McBride Damon, a foreign mission book, during a meeting of the Night BW of First Baptist Church Monday.

The study which emphasized the work of Wally and Betty Poor, Southern Baptist missionaries to Uruguay, particularly in La Paz and Pando, concluded with an encampment where all of the Southern Baptist missionaries in Uruguay met to make reports and plans for future work.

Mrs. Terrel Silvers presided during the business meeting.

Mrs. H.E. Cummings and Mrs. Elmer Singleton were hostesses for the meeting at the church.

During the social hour, refreshments were served from a table that carried out a patriotic theme, stressing the birthday of Abraham Lincoln through the use of logs, hatchets and flags.

Seventeen members were present.

CARD OF THANKS

The family of Oscar Underwood wish to express their sincere appreciation to friends for the food, beautiful flowers, and comforting words and support during their time of loss of a loved one. Special thanks to Rev. Larry Washburn for his support, prayers and services. We wish to thank the members of Tanner-Aulds Funeral Home for their kindness, and the nursing staff on 7th floor at Bethania Hospital for their concern and support. They made it easier to bear the loss.

Frances Underwood
Ronnie, Sue and Jamie Hatcher
Jerry Hatcher
Terry and Amber Hatcher
Scott and Shelly Schroeder

Attend the Church of your choice

First United Methodist Church
201 E. Bank
Church School 9:40 Youth Meetings 5:00
Morning Worship 10:40 Evening Worship 6:00
JOHN MOLLET, PASTOR

THE END OF YOUR SEARCH FOR A FRIENDLY CHURCH
ASSEMBLY OF GOD
SUNDAY 9:45 a.m. Sunday School 11:00 a.m. Morning Worship 5-6:30 p.m. Missionettes & Royal Ranger 7 p.m. Evangelistic Service Wednesday Service 7 p.m.
200 S. YOSEMITE
Charles Hensley, Pastor

Church of God
601 E. Cash
Pastor, S.A. Luke
Sunday School - 9:45 a.m.
Sunday Morning Worship - 11:00 a.m.
Sunday Night Worship Service - 7:00 p.m.
Wednesday Night Service - 7:30 p.m.
Parish 592-5316 Office 592-4348

Lakeview Church of God
Wednesday Evening (FTH-Bible Study) 7:30 p.m.
Sunday School 9:45 a.m.
Sunday Morning Worship 11:00 a.m.
Sunday Night Worship is now 6:00 p.m.
Pastor Rev. Ole Olds, Pastor N. Victoria & Expressway Church 592-9555 592-2776

Jesus is the Cornerstone
Cornerstone Pentecostal Church of God
SS - 9:45 a.m. Sun. Morn. - 10:45 a.m. -SERVICES- Sun. Evening - 7:00 Wed. Evening - 7:30
Jesus said, upon this rock I'll build my church and the gates of hell shall not prevail against it. - Matthew 16:18
W. Smith Rd. Pastor Duffy Terry 592-5520

Christ The King Catholic Church
First and Clara Phone 592-2802
Rev. Mr. Patrick Burke, Pastor
8:45 a.m. C.C.D. -- 10 a.m. Mass

Faith Baptist Church
"Where the Bible is taught, the family is emphasized, and where everybody is somebody."
411 S. Wall S.B.C. 592-2716
SUNDAY Sunday School 9:30 a.m. Morning Worship 8:20 & 10:40 a.m. Church Training 6:00 p.m. Evening Worship 7:00 p.m.
Pastor, Jerry L. Miller
WEDNESDAY Wednesday Evening Prayer 7 p.m. Choir Rehearsal 8:00 p.m. Nursery Care Provided - Full Range of Mission's and Children's Ministries

IOWA PARK CHURCH OF CHRIST
300 East Park, Iowa Park, Texas 76367, (817) 592-5415
SCHEDULE OF SERVICES
Sunday Bible Study 9:30 a.m. Worship 10:30 a.m. Evening Worship 6:00 p.m.
Wednesday Evening Study 7:30 p.m.
Thursday Ladies bible Class 7:30 p.m.
Call office for information
We offer a Free Bible Correspondance Course, Call for details.

Good Shepherd Lutheran Church
1st & Magnolia Iowa Park
Sunday School: 9:45 a.m. Worship Service: 10:45 a.m.

Kamay Road Church of Christ
Corner of Colorado & Emerald
Seeking the Old Paths
Lord's Day 10:30 a.m. & 6 p.m. Wednesday 7:00 p.m.

Iowa Park School Scene

...All information prepared by Iowa Park School Counselors

Kidwell Elementary students have been studying about various musical instruments in their music classes recently.

Mrs. Ann Norris, music teacher at Kidwell, decided that seeing and hearing all the instruments would be a great way for her young students to better understand the concepts she had been teaching.

Therefore, she invited the students of the Iowa Park High School Jazz Band, under the direction of Mr. Ed Hefli, to come to the Kidwell campus to help out in this endeavor. The 22 members of this unique group presented a program for all Kidwell students in the Kidwell cafeteria one Friday morning recently.

They performed several selections, and several students individually explained and demonstrated the various instruments of each section of the band. This presentation not only enabled the Kidwell students to have the experience of hearing and seeing the instruments about which they have been learning, but also gave the high school musicians an opportunity to share their knowledge and talents with the younger students.

Mr. Ron Woods, Kidwell principal, stated that he appreciated the positive example that these high school students set, as the Kidwell students look to the older students as role models in all areas, including the musical field.

First United Pentecostal Church
"And it shall come to pass in the last days, saith God, I will pur out of my Spirit upon all flesh."
Sunday morning 10:00 a.m. Wed. Bible Study 7:30 p.m.
Sunday evening 6:30 p.m. Fri. Youth Service 7:30 p.m.
A friendly & caring church.
Pastor: Greg K. Hardin Phone 592-4275 802 N. First

ARE YOU WALKING ALONE?
We invite you to join people who care
First Presbyterian Church
Church School 9:30 a.m. Worship 11:00 a.m.
Betty Meadows - Pastor
211 S. Yosemite 592-4220

Pacific Avenue Missionary Baptist Church
1400 North Pacific Avenue
Larry Washburn Pastor
Church - 592-9711 Pastor - 592-4288
--Informal, Christ-Centered Worship for all ages--
Sunday School 9:45 a.m. Morning Worship 11:00 a.m. Evening Worship 6:00 p.m. Wednesday 7:00 p.m.

First Baptist Church of Iowa Park
A Southern Baptist Church
Yosemite at Park
SUNDAY SERVICES Mornings
Sunday School 9:45
Worship 11:00
Evenings
Church Training 6:00
Worship 7:00
WEDNESDAY
Prayer Meeting 7:00
Choir Rehearsal 7:45
Dr. Derrell Monday, Pastor

SPIRIT FILLED REVIVAL
WITH EVANGELIST RODGER HAWKINS
SPECIAL SINGING ANNOINTED PREACHING PRAYER FOR THE SICK
PLACE Cornerstone Pentecostal Church of God - West Smith Rd.
DATE Feb. 22-25 TIME 7:30 p.m.
PASTOR Duffy Terry ph. 592-5520



Cook of the Week

One of the greatest gastronomes in history, Anehelme Brillat-Savarin, said "A dessert course without cheese is like a beautiful woman with one eye." He would surely be pleased with seasoned and novice cooks in the 20th century who rely heavily on the use of cheese, not only in desserts but in a variety of dishes.

Susan (Mrs. John) Mollet would be sure to delight the heart of the gastronome in the 18th and 19th centuries with her Cream Cheese Breads recipe this week.

It is reputed that the average American eats one half ton of cheese during a lifetime. There are so many varieties to choose from, including fresh-like Ricotta, dessert-like Bria, heavily-cooked Swiss to Camembert, hard-grating Parmesan and Romano to various kinds of adulterated "process cheese foods."

Susan, the wife of the new minister at First United Methodist Church, is the daughter of Rev. and Mrs. Verdon Feller, now of Texarkana. She was graduated from Gilmer High School, received a BS degree from Southwestern Univ. at Georgetown, and a master's degree from Texas Women's Univ. at Denton. She taught school in the Dallas area five years.

She and her husband had lived at Denton where he was associate pastor of the First United Methodist Church eight and a half years before moving to Iowa Park several weeks ago. They have two sons, Aaron, five years old, and Jared, 11 month of age.

Susan's hobbies are jogging, antiques and reading. She has her own potter's wheel and promised to demonstrate the shaping of clay on it sometime. She is a member of the hand bell choir at the church.



Mrs. John Mollet

Put first six ingredients in blender. Then separately, in double boiler, heat cheese and butter. Add blender ingredients to cheese and butter. Serve hot with chips. This makes a large amount.

CURRIED RICE AND SHRIMP SALAD

- 1 1/2 cups cooked rice
 - 1/4 cup minced green onion
 - 1 T. white wine vinegar
 - 2 T. olive or vegetable oil
 - 3/4 tsp. curry powder
 - 1 tsp. salt
 - 1 cup chopped celery
 - 1 cup thawed frozen green peas
 - 1/2 cup (about) mayonnaise
 - 1 bag (about 2 cups) frozen tiny shrimp
- Mix, chill and eat.

CHICKEN TETRAZINNI

- 4 T. butter or chicken fat
- 1 medium onion, chopped
- 1 stalk celery, chopped
- 2 cups cooked chicken or the meat from one fryer boiled, in small pieces
- 6 oz. uncooked fine spaghetti
- 1 tsp. salt
- 1/4 tsp. pepper
- 1 can (10 1/2 oz.) cream of chicken soup
- 2 1/2 cups chicken broth or bouillon
- 1 can (3 to 4 oz.) mushrooms
- 1/2 cup grated Parmesan cheese
- Paprika

Melt butter in skillet; add onion and celery and cook until clear. Arrange chicken in layer over this; add spaghetti. Mix salt, pepper, soup and broth. Pour over spaghetti being careful to moisten all of it. Place mushrooms on top. Sprinkle with cheese and paprika. Cover and cook gently until done. This works well in an electric skillet. Double for large group.

CARD OF THANKS

We would like to express our thanks and gratitude to Park Ford, Midway Fish Farm and Louis' Jewelry for sponsoring our W.F. Women's City league basketball team. We're happy to say we finished city champions with a 9-1 record and are on our way to regional playoffs in Abilene Feb. 28. Thank You Midway Hot Shots

ABOUT TOWN

Former Iowa Parkan Pat Watkins, now principal of Dinsmore Elementary School in Electra, is one of 150 Texas elementary principals selected to attend a state-wide Texas Elementary Principals and Supervisors Association Academy, it was announced last week.

- 1 egg, beaten
 - 1/8 tsp. salt
 - 2 tsp. vanilla
- Combine cheese, sugar; add egg, salt and vanilla.

The next day, after dough has been refrigerated overnight, divide dough into four parts. Roll out each part on well-floured board into 12X8 rectangle. Spread 1/4 of cream cheese filling on each rectangle. Cutting toward filling, make 4-inch cuts in dough at one inch intervals on both sides of filling. (dough should have 12-inch side horizontal). Fold strips alternately over filling; fold under ends of loaf.

Cover and let rise in warm place until double (about one hour). Bake at 425 degrees 12 to 15 minutes. Spread with glaze while hot.

- 2 cups powdered sugar
 - 1/4 cup milk
 - 2 tsp. vanilla
- Mix well. These freeze well.

ARTICHOKE BAKE (Dip appetizer)

- 2 cans marinated artichoke hearts, drained and minced
 - 1 cup salad dressing or mayonnaise
 - 1 cup grated Parmesan cheese.
- Mix well and put in 8-inch pie pan. Bake 15 minutes at 350 degrees. Serve with corn chips or fancy crackers.

"HOT" BLACKKEYED PEA DIP

- 4 cups blackeyed peas, cooked and drained, (no salt)
- 3 to 5 canned jalapeno peppers
- 1 T. jalapeno juice
- 1/2 medium onion, chopped
- 1-4 oz. can green chilies
- 1 clove garlic, minced
- 1/2 lb. sharp cheese (Old English)
- 1/2 lb. butter

CREAM CHEESE BREADS (makes 4)

- Dough:
- 1 cup sour cream
- 1/2 cup sugar
- 1 tsp. salt
- 1/2 cup melted butter
- 1/2 cup warm water
- 4 cups flour
- 2 eggs, beaten

Heat sour cream over low heat. Stir in sugar, salt and butter. Cool to lukewarm. Sprinkle yeast over warm water; stir until dissolved. Add sour cream mixture, eggs and flour. Mix well, cover tightly and refrigerate overnight.

- Filling:
- 2 - 8 oz. pkgs. cream cheese, softened
- 3/4 cup sugar

Spring fashion show slated Tuesday

HOLLIDAY - The Young Homemaker of Texas will hold its annual Spring Fashion Show at 7 p.m. Tuesday at Irma S. Barton Auditorium at Holliday High School.

Tickets for the event will be \$2 for adults, \$1 for children five to 12 years old and children under five will be admitted free. Tickets may be

purchased from any YHT or Future Homemakers of America member, or at the door.

Door prizes and free refreshments will be included, and a hand-made quilt will be given away.

New Meter Connections

Richard Schroeder - 602 S. Park
Cameron A. Gay - CV #6
Kim Frie - 317 E. Cash
Shelly Friar - 709 E. Park
Ronald Meador - 301 E. Magnolia

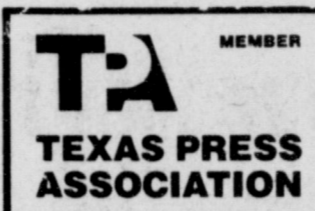
Area residents on honor rolls

Several area residents are included on the Midwestern State Univ. honor rolls for the 1986 fall semester.

James Vincent Rohrbaugh is listed on the Dean's Honor Roll, after having made no grade below an "A" for at least 15 semester hours.

Those included on the University Honor Roll must have made a minimum grade point of 3.5 on a 4.0 scale, with no grade below a "C" for at least 15 semester hours.

Listed on the University Honor Roll are Michael Lee Bean, Laura Ann Bills and Kimberly G. Hemmi.



Expressway TEXACO

Fm 368 & 287 592-9601

OPEN:
6 a.m. - 10 p.m. 7 days a week
serving you!

We have over 50 good used tires in stock. Anything from A 12 inch to A 16 inch. Starting at \$7.50.

- ✓ Mechanic always on duty.
- ✓ Car & Motorcycle State Inspection
- ✓ Full Wrecker Service

OIL CHANGE & LUBE SPECIAL
\$12.95 Havoline Oil Only
Friday thru Sunday

Country

A New Local Magazine for North Texas and Southern Oklahoma

Mike and Tricia Campbell invite you to be a charter subscriber to **Country Magazine**. If you enjoy country living, then you'll enjoy Steve Smith's gardening tips...Joe Tom White's outdoor report...Tricia's homegrown recipes...Mike's agri-news and many special features about your friends and neighbors. For only \$12 per year you can enjoy this monthly magazine devoted strictly to the area from Jacksboro to Lawton and from Bowie to Vernon.

To Subscribe by phone, call 817-691-2008 or 723-9935

Name: _____

Address: _____

City, State & Zip: _____

MAIL TO:
COUNTRY
8th and Indiana
The Wichita Tower -
Suite 1070
Wichita Falls, Texas
76301

SERVICE SPECIALS



A car will be provided if we have to keep your car. Come by and check out all our specials!

Clean Battery Cables and Terminals Battery Check \$9	Oil and Filter Your choice of oil Special \$12.99	Rotate & Balance 4 Tires Most cars and 1.2 ton trucks \$24
Windshield Washer Antifreeze installed Special \$1.99	Radiator Protection Includes up to 2 gallons of coolants/anti-freeze and check of leaks. \$19	Front Disc Brake Special Install new pads, resurface rotors, re-pack wheel bearings, add needed fluid, inspect system, road test. Metallic pads extra. Most American cars and 1/2 Ton Pickups extra. \$53
Under Coat Car or Truck \$72	Radiator Protection Cars and Light Trucks Special \$45 parts extra	Pack Wheel Bearings (Inner & Outer) 1/2 ton pickups 4X4 prices slightly higher \$54

MOTORCRAFT ENGINE TUNE-UP SPECIAL

Solid State tune-up includes installation of Motorcraft spark plugs; inspection of choke, throttle, linkage, spark plug wires and distributor cap; adjustment of idle and timing. Aerostars and Econolines slightly more.

4 cyl. \$26	8 cyl. \$39	6 cyl. \$34	TOTAL PRICE INCLUDES PARTS & LABOR
-----------------------	-----------------------	-----------------------	---

If you ever need to have your Ford, Mercury, Lincoln, Merkur or Ford light truck fixed, you pay once, and we'll guarantee that if the covered part ever has to be fixed again... we will fix it free. Free parts. Free labor.
Ask us for a free copy of the guarantee.

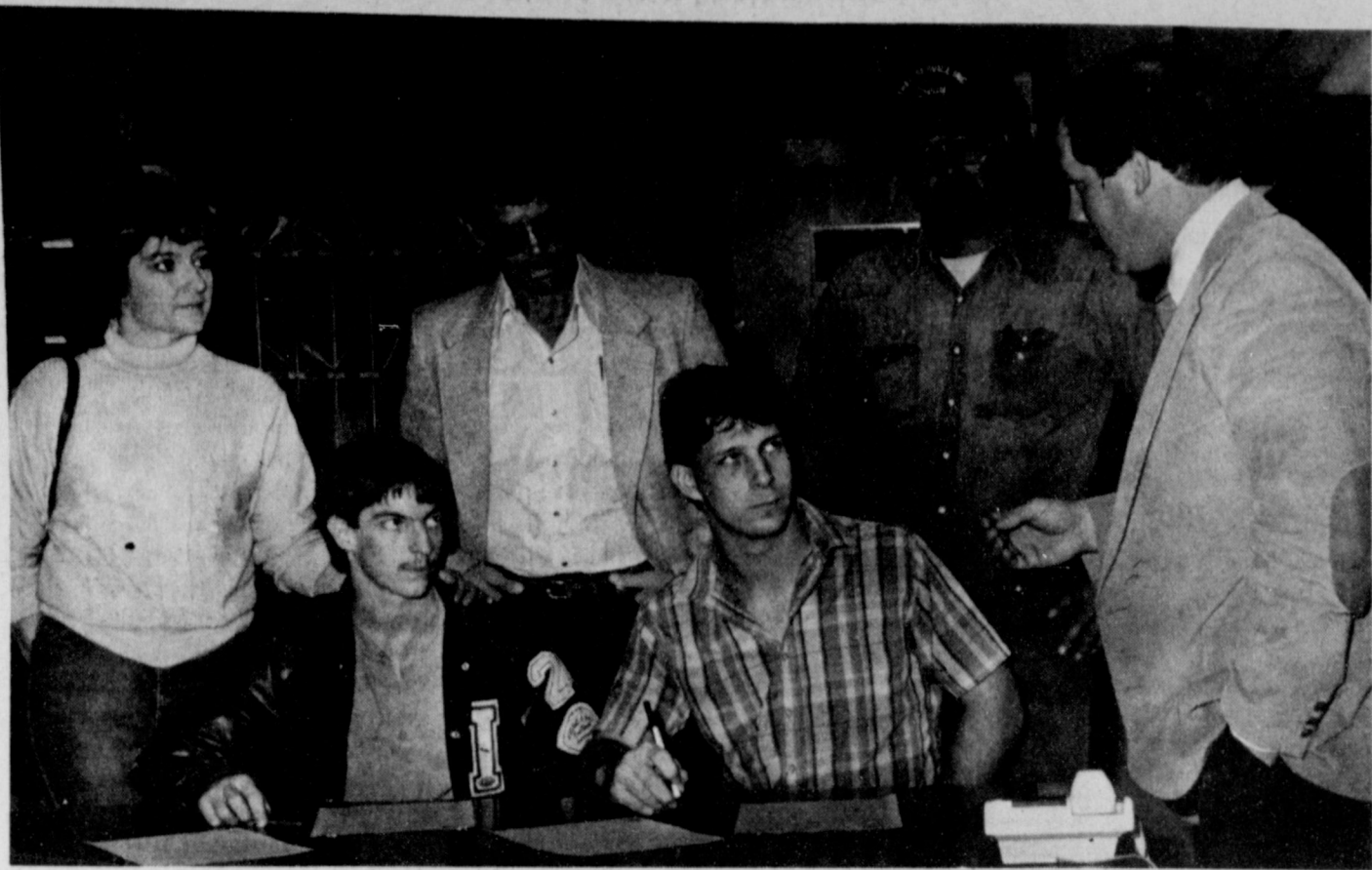
POWER OFTEN LIES IN THE HANDS OF AN UNKNOWN FEW.



They hold no public office. Yet, their duty is to serve and protect us all. They're all part of the team of men and women at your electric company who go to work when the lights go out. The job of finding and fixing a break in a power line isn't an easy one. It takes people to answer your call. Dispatchers to direct the crews to the problem. And, finally, a select group of

Troublemakers and Servicemen who must be able to complete their task even in high winds and thunderstorms. Or, on occasion, when wires are brought down by the weight of ice and snow. It takes people who can get the job done, no matter what the time of day. Or night. The team responsible for restoring your power is just part of our commitment to service. And that's something you can count on.

TU ELECTRIC
Texas Electric Service



HAWKS TURNED COYOTES - David Meissner, seated left, and Wayne Oltman signed letters accepting football scholarships from Kansas Wesleyan last week. Head Coach Jack Welch, right, explains the details of the agreements to them, their parents, and Coach David Baugh. The two will join former Hawk standout Phillip Davis, who will be a junior there next year.



TAKING A CUT - Pete Armstrong misses a pitch during the Hawks' first of three scrimmages held here Friday against the Wichita Falls Coyotes. They were to scrimmage Hirschi Tuesday and Graham tomorrow, here at 4 p.m. The club will launch its 1987 season against Rider at 4 p.m. Monday at the IPHS field.

MRS. LORENA STOWE

She came west on 'Orphan Train'

By OLIVE BLALOCK

Mrs. Lorena Stowe may well be the only woman in the area who "came west" on the orphan train.

When she was about eight years old, she and her baby sister were among 25 girls who boarded the train in New York City. They had traveled from Statten Island to get their shots for the trip to Texas.

The name Texas meant Indians and cowboys to the girls and they were very excited. So excited, they kept their eyes glued to the windows during the two-day, two-night trip. But they did not get a fleeting glimpse of either one.

Mrs. Stowe was one of six children born to William Henry and Mary Pauline Johnson Chapter in New York. She was four years old when her mother died and her father put the six children in orphanages

and foster homes. She and her baby sister were placed in the Goodhue Home for Girls on Statten Island.

The orphan train movement, which holds a unique place in American history, was started in New York in 1854 by the Children's Aid Society. In those years the orphanages were overcrowded with children who needed homes. So the society began sending groups of children "out west" to find adoptive homes, preferably farm homes where they could make a new life for themselves and know what home truly meant.

Charles Loring Bruce, secretary to the Children's Aid Society, believed the longer children lived in orphanages the less likely they would be able to do well in outside life. It was his influence that the children were being sent "out west" and the orphan train was a creative solution. The orphan train stopped operating in 1929 when social conditions and

philosophies of the social world changed.

The orphan train that brought Mrs. Stowe to Texas stopped at Bowie one Saturday night. People who knew that the train was coming and wanted to adopt one of the orphans, were waiting for it.

W.V. Young was among those waiting. Mrs. Young stayed home to prepare a good meal in anticipation of his bringing a little girl home with him.

They owned a modest home in the town and a farm in the country. Their two children were grown and away from home and the couple needed another child to fill the void.

Mr. Young, the man with the moustache, chose Lorena. She said she was almost scared to death because she had never seen a man with a moustache. She cried and cried all the way home, and she wonders now how she wrapped herself around their heart strings and they began to

shower her with love and affection so quickly.

She started to school and continued until she was graduated from high school. Her foster parents did not want her to work outside the home, so she stayed with them until she was married at 23 years to Henry Arwood Stowe. She had met him earlier before when she visited her foster sister and husband who owned a restaurant in Wichita Falls.

The couple moved to Wichita Falls where he owned a barber shop. She later started working for Monroe Street Pharmacy where she was employed 25 years. Her husband died in 1964.

Mrs. Stowe, a resident of Heritage Manor Nursing Home, suffered a stroke in 1981 which paralyzed her left side. She is a member of Lamar Baptist Church in Wichita Falls. She is a beautiful person, both in character and appearance, and an inspiration to her

family and friends as well as to the personnel and resident at the nursing home.

She was born Leona Adele Chapter but her foster mother had a friend named Lorena and wanted to change

Leona to Lorena. So she was Lorena Young while she lived with her foster parents.

Mrs. Stowe has two daughters, Beverly McClure of Iowa Park, a teacher in the school system here, and Linda Landers of Wichita Falls; a stepson, Arwood Henry Stowe of Wichita Falls; and eight grandchildren.

She still has one sister and three brothers in New York.

DR. PEPPER 6 PAK 12 OZ. CANS **\$1.99**

K&K QUICK STOP
1309 JOHNSON RD. PH. 592-5931

GOLDEN FRIED CHICKEN
Loop 370 & Pacific Ave. - Iowa Park

FREE Drink
with any 4 or 7-piece order of **TENDERS**

Dinners

3 pieces of Golden Fried Chicken, Corn on the Cob, Cole Slaw or Potato Salad, French Fries, and a Biscuit.	3.39	2 pieces of Golden Fried Chicken, Corn on the Cob, Cole Slaw, or Potato Salad French Fries, and a Biscuit.	2.79
--	------	--	------

Chicken 'N Biscuit

3 Pieces - 1 Biscuit		2 Pieces - 1 Biscuit	
All Dark	1.99	All Dark	1.49
Mixed	2.19	Mixed	1.59
All White	2.79	All White	1.89

FAMILY PAK

10 Pieces	4 Biscuits	6.89
15 Pieces	5 Biscuits	9.99
20 Pieces	6 Biscuits	12.79

TENDERS

4 Pieces	Biscuit and Gravy	2.39
7 Pieces	Biscuit and Gravy	3.59
15 Pieces	Biscuit and Gravy	6.99

	REGULAR	FAMILY
FIXING'S		
French Fries	.65	1.75
Corn on the Cob	.49	1.69
Cole Slaw or Potato Salad	.49	1.69
Mashed Potato	.49	1.79
Jalapenos	.19	
Apple Pie	.49	
Biscuits	.39 each	1/2 dozen 1.79 1 dozen 3.09
Country Gravy	.29	1.09
Cookies	.39 each	1/2 dozen 1.79 1 dozen 3.09
Pepper Puppies	.59 each	

Drinks

Coke	Dr. Pepper	Sprite
Lemonade	Fresh Brewed Iced Tea	Diet Coke
.55	.70	.85
	Coffee	.35

SNACK PAK 1 Piece Golden Fried Chicken, French Fries, Biscuit **1.29**

45 extra for Breast
592-2811



MRS. LORENA STOWE

B&R Delicatessen

Thurs. Chicken Fried Steak
Fri. Enchilada Casserole
Sat. Chicken-n-Rice
Sun. Beef & Cheese Enchiladas
Mon. Meatloaf
Tues. Steak & Gravy
Wed. Fajaitas

BBQ Beef, Brisket & Fried Chicken DAILY
Call-ins Welcome 592-9831

This Week's Special
Burrito Supreme \$1.99
Reg. \$2.65

Every Thursday Nite

Farm-Fresh Catfish
Raised at Midway Fish Farm **\$4.50**
Served with:
*Cole Slaw *Tater Sauce
*Fries *Hush Puppies **\$5.50**

Enjoy **Coca-Cola** Trade-mark ®

Harvey's FAMILY RESTAURANT **HAMBURGERS**
Ask about our Senior Citizen 10% Discount Card.

805 West Highway
FOR TAKE OUT ORDERS
CALL 592-4731

Hawks beat 'Rabbits' to stay alive

Iowa Park's Hawks recovered from Friday's disastrous showing at Decatur and defeated Bowie, 56-53, here Tuesday to force a showdown with the Jackrabbits for second place in the final Dist. 6-AAA standings.

Decatur, ranked fourth among AAA schools in the state, extended its season record to 28-1 by dumping the Hawks 87-47 in Eagle Gym. The win gave the Eagles their first district basketball title since 1982.

Tuesday's win here avenged that 64-40 'Rabbit' victory earlier in Bowie, and now the two clubs must

meet Friday to determine which will advance into the state playoffs. The Hawks held leads ranging

from two to five points through most of the first quarter against the Jackrabbits Tuesday, but a long jump

shot with eight seconds remaining gave the visitors their first lead, 18-17, as the initial period ended.

The score remained close early in the second quarter, until Marc Johnson went on a scoring spree. Coming off the bench, he hit nine consecutive unanswered points to give Iowa Park a 34-24 lead.

And from there, the Hawks extended the lead to 40-26 by halftime. But some sloppy play on the part of the green and white club gave the 'Rabbits' numerous turnovers midway in the third, and they quickly cut the lead to only 44-41.

Iowa Park held a narrow, 46-41 lead as the final period got underway. And the aggressive Jackrabbits took the lead, 47-46, with 6:07 remaining in the game.

That's when the Hawks put the

dampener on Bowie's offense. Using their sagging man-to-man defense, they allowed the visitors only one point during the next 4:41 minutes, and climbed to a 54-48 lead with 1:36 remaining on the clock.

Bill Chandler's two free shots with only 16 seconds remaining appeared to be a sufficient six-point cushion (56-50), but the 'Rabbits' hit a free shot with 12 ticks left on the clock, and four seconds later canned a layup to finish the scoring.

Despite the low scoring, three Hawks finished in double digits: Chandler, 14; Johnson, 11, and Brad Huff, 10.

In Friday's game at Decatur, the Hawks were in the game with 10 minutes remaining, after trailing only 35-30 at the half. But the touted

Eagles went on a scoring rampage to chalk up 52 points while holding the Hawks to only 17.

The Eagles, who had to sink four shots from the foul line in the final 1:21 of their game here to pull out a four-point, 62-58 win, canned 36 points in the final period Friday.

Steve Allen led Iowa Park scoring with 14 points, Chandler had 11 and Sean Robinson added 10.

Strong competition between the Hawks and Eagles for the basketball crown is nothing new. The Hawks put the Eagles into the runner-up spot two years ago when they met in a playoff for the championship.

That game was decided in a triple overtime, with Iowa Park winning.

Going into tomorrow's showdown, the Hawks hold a 11-8 season record.



SCOTT DAVIS BATTLES 'RABBIT FOR POSSESSION

Jones elected league president

Jessalea Jones was elected president of the Iowa Park Girls' Softball League at an organizational meeting Thursday.

Other officers include Bobby Morgan, vice president, Judy Patterson, secretary, and Debbie Atchley, treasurer.

League officers and leaders will meet again at 7 p.m. next Thursday in the Chamber of Commerce office.

Coaches are needed for the senior league, according to the president.



Friday, February 20
Breakfast: Biscuit, ham, cheese, fruit juice, milk.

Lunch: Soup/sandwich, pizza, combination salad, corn, ice cream, milk.

Monday, February 23
Breakfast: Toast, jelly, fruit, milk.

Lunch: Soup/sandwich, Salisbury steak, mashed potatoes, gravy, green beans, bread slices, banana pudding, milk.

Tuesday, February 24
Breakfast: Pancakes, syrup, fruit, milk.

Lunch: Soup/sandwich, chili, salad, spinach, corn, corn bread, cookies, milk.

Wednesday, February 25
Breakfast: Cereal, fruit, milk.

Lunch: Soup/sandwich, cheeseburgers, French fries, lettuce, tomatoes, pickles, onions, ice cream, milk.

Thursday, February 26
Breakfast: Pancake pup, fruit juice, milk.

Lunch: Soup/sandwich, turkey spaghetti, green beans, cranberry sauce, hot rolls, honey, jello/apple-sauce dessert, milk.

Little League meet

A meeting of the Iowa Park Little League has been rescheduled for 7 p.m. Tuesday in the TU Reddy Room, according to Sherri Kennedy.

Persons interested in volunteering to coach or otherwise help with the program are encouraged to attend.

To be discussed at the meeting are teams and plans for the season.

Iowa Park is hosting district tournament

A tournament for Dist. 6-AAA boys' Junior Varsity and Freshman basketball teams will get underway today at Iowa Park High School.

Jacksboro and Iowa Park Freshmen are slated to tip off at 3 p.m., followed by JV teams from the same schools at 4:30.

Breckenridge and Bridgeport Frosh are to play at 6 and at 7:30 the last game of the evening, between JV teams from those schools, is to start.

While the starting times for Friday games is "somewhat tentative" because of the Iowa Park-Bowie varsity playoffs that evening, games are

slated to begin at 12-noon and continue until 4:30.

Decatur and Bowie teams drew first-round byes. In the Freshman bracket, Bowie is to play the winner of the Iowa Park-Jacksboro game at noon and Decatur the winner of the Breckenridge-Bridgeport game at 3.

In the second round of the JV bracket, Decatur is to take on the Jacksboro-Iowa Park winner at 1:30 p.m. and Bowie starts at 4:30 against the Bridgeport-Breckenridge winner.

Freshman championship game is to get underway at 1 p.m. Saturday, followed at 2:30 with the Junior Varsity final.



TANNER-AULDS FUNERAL HOME

-Since 1908-

300 E. Cash "Our family serving your family" 592-4151

Pete & Otto's 3-M CAFE

114 W. Cash Ph. 592-4721

Call-ins Welcome

NEW Business Hours 7:00 a.m. - 2 p.m.
Serving Breakfast 7:30 a.m. - 10 a.m.

Friday Noon Fish
LARGE \$3.95 SMALL \$2.95

By Popular Demand

Friday Fish Night

is BACK at Pete & Otto's 3-M Cafe
Starting Friday, February 20

Open: 5-8:30 p.m.

Large Basket \$3.95 Small Basket \$2.95

Served with
French Fries - Hush Puppies - Tarter Sauce
Pickles & Onions

Menu items available - Dine In - Carry Out

ALL YOU CAN EAT

Tues. Nite Special SPAGHETTI - w/Meat Sauce Salad Bar Garlic Toast \$5.95	Friday Nite Special CATFISH - w/Cole Slaw Hush Puppies Texas Toast \$3.95
---	---

Coffee Break Special 24 Hours
Home Made Cinnamon Rolls & Coffee
48¢

LONE STAR RESTAURANT
855-1981
FM 369 & US 287

open 24 hours

Cut out for Ken's Pizza!
902 W. Hiway
592-4184

Free Salad(s)
With a purchase of any small deep pan pizza or medium Ken's pizza get one free trip to the salad bar . . . or . . . two free trips to the salad bar with any large pizza purchase. Offer not good with other promotions or coupons. OFFER GOOD UNTIL MARCH 4, 1987

\$ 2.50 & \$ 1.50 off
Get \$2.50 off the price of any large Ken's Pizza or \$1.50 off the price of any Ken's medium pizza. One coupon per pizza. Offer not good with other promotions or coupons. OFFER GOOD UNTIL MARCH 4, 1987

COUPON CASH VALUE 1/20 OF A CENT **ken's PIZZA**

81 SONIC

Faster and Better than Ever...

WHEN YOU PHONE AHEAD
592-2087
719 W. Hiway Iowa Park

Hamburger 99¢
Your choice of Numbers 1, 2 or 3
\$1.19 With Cheese

Sonic's Faster and Better than ever because there are twenty ordering stations... you can order ahead by phone... and Sonic just plain gets your order out fast. Food's cooked just right.

Low rates make State Farm homeowners insurance a good buy.
Our service makes it even better. Call me.

Philip Welch
118 W. Park

Like a good neighbor, State Farm is there.
State Farm Fire and Casualty Company
Home Office: Bloomington, Illinois

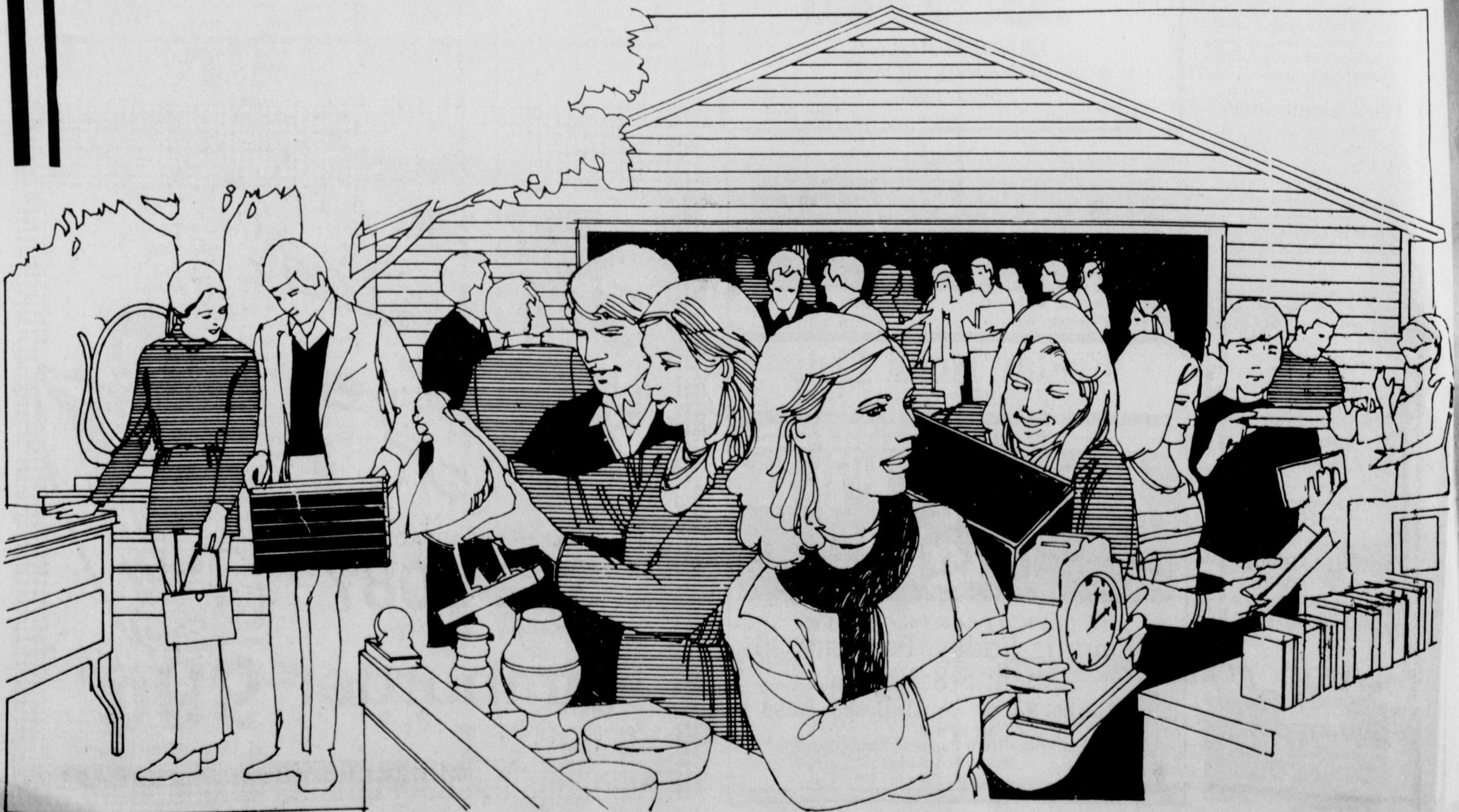
Classified ads really work!

Having a garage sale?

Let the
Iowa Park Leader
Classified Department help you.

Call us at 592-4431 or come by 112 West Cash

Let us help you.



Area oil, gas report

At a location one mile south of Kamay, Raymonds Operating finished a new oil producer in the Wichita Regular Field.

The well is designated as the No. 32 Kemp-Kempner, pumping six barrels of oil per day.

Location is in an 81-acre lease in the KWVFL Survey, A-773. Bottomed at 1,544 feet, production will be from a perforated interval in the Thomas Formation, 1,488 to 1,501 feet into the wellbore.

Drillsite is 1,223 feet from the north line and 1,500 feet from the east line of the lease.

Drillsite has been staked for the No. 14 N. George, a 1,900-ft. developmental well in the Wichita Regular Field. The operation will be located four miles northwest of Burkburnett in a 37-acre lease in the TE&L Survey, A-292. The operator is Birge Oil of Wichita Falls.

The well will be drilled 3,000 feet from the south line and 150 feet from the east line of the survey.

The No. 20 Murphree has been finished by Williams Petroleum.

It is a developmental well in the Wichita Regular Field, three miles east-southeast of Fowlkes. Drillsite is in a 640-acre lease in the SA&MG Survey, A-276.

Daily potential of two barrels of oil was posted with the Railroad Commission. Water production totaled 45 barrels per day. The well went to a 1,000-ft. bottom, and was plugged back to 480 feet. Production will be from a set of perforations in the Permian Sand Formation, 368 to 380 feet into the wellbore.

Drillsite is 1,350 feet from the north line and 450 feet from the west line of the lease.

The No. 16-1 Brock has been temporarily abandoned by Esper Oil. It is a wildcat well, located 3.5 miles east of Electra. Drillsite is in a 1,352-acre lease in the HT&B Survey, A-483.

The well was bottomed at 3,930 feet and plugged back to 3,700 feet.

Location is 303 feet from the north line and 998 feet from the east line of the lease.

Monroe Well Service has revealed production figures on the Nos. 31 and 32 ELSEA-DFS "1985", developmental wells in the Wichita Regular Field. Drillsites are 3.3 miles northwest of Burkburnett in a 116-acre lease in the RRVL S/D Survey, Blk. 88.

The No. 31 well pumped three barrels of oil per day, while the No. 32 well pumped four barrels of oil

per day. Total drilling depths were 1,784 and 1,790 feet, respectively. The No. 31 well produces from perforations in the Gunsight Sand Formation at 1,693 to 1,697 feet into the wellbore, and the No. 32 well produces from a perforated interval in the Cisco Formation, 1,702 to 1,706 feet into the hole.

The No. 31 well is located 845 feet from the south line and 1,230 feet from the west line of the lease. Drillsite for the No. 32 well is 750 feet from the south line and 1,023 feet from the east line of the lease.

The same operator has abandoned five undrilled locations in the Wichita Regular Field. The wells had been designated as the Nos. 15, 16, 18, 19 and 20 ELSEA-DFS "1985". Drillsites were 3.5 miles northwest of Burkburnett in a lease in the RRVL S/D Survey, Blk. 88.

Don H. Ford of Montgomery is planning to conduct a re-entry operation at the No. 1 W.T. Waggoner Estate, a wildcat well in Wilbarger County. The operation is located three miles east of Harrod in a 526-acre lease in the Waggoner Colony S/D Survey, Blk. 131.

The well was originally completed by J.C. Mann, Jr. et al

Dec. 20, 1956, as a dry hole. The original total depth was 4,950 feet. Ford plans to seek production at approximately 5,000 feet.

The well is situated 21 feet from the south line and approximately 2,125 feet from the most westerly west line of the lease.

Burk Royalty has abandoned its plans to drill the No. 2 Hall-Judd Unit, a developmental well in the Wilbarger Regular Field. The operation was to have been located four miles southeast of Vernon in an 80-acre lease in the H&TC Survey, Sec. 61, Blk. 14. The well had carried permit for 6,400-ft. total depth.

Flowing 447 barrels of oil per day, the No. 3 Bill Neal "321" was completed in Hardeman County's Dead Dog Field. The operator is EP Operating of Dallas.

Drillsite is five miles south of Medicine Mounds.

The well was drilled to 7,824-ft. total depth and will produce from perforations in the Chappel Formation, 7,810 to 7,818 feet into the wellbore. Production tests were run on a 13/64-in. choke.

The location is in a 320-acre lease in the H&TC Survey, A-148. Drillsite is 2,544 feet from the south line and 2,585 feet from the east line of the lease.

An 8,100-ft. wildcat well is

planned by Paul DeCleva Inc. of Wichita Falls at a drillsite 4.5 miles south-southeast of Medicine Mounds, Hardeman County. The location is in a 994-acre lease in the W.W. White Survey, A-707.

Well's designation is the No. 8 Cato. Drillsite is 868 feet from the north line and 2,540 feet from the east line of the lease.

The No. 1 Bell "101", an 8,700-ft. wildcat well, is scheduled to be drilled in Hardeman County. EP Operating of Dallas is the operator. The well will be spudded in a 306-acre lease five miles southeast of Medicine Mounds in the H&TC Survey, A-123.

Location is 2,083 feet from the north line and 2,155 feet from the east line of the lease.



Robnett TAX SERVICE

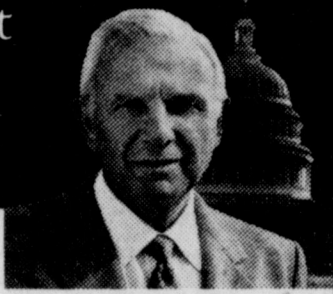
592-4455

602 W. Coleman Iowa Park

Call for appointment

"Guaranteed Low Fees"

"H&R Block is pledged to find you the biggest refund you've got coming." — Henry Block



The tax changes for 1987 are the most sweeping in history. We know you're concerned, and we'll answer your questions. This year put H&R Block on your side.

H&R BLOCK
THE INCOME TAX PEOPLE

WHERE MORE AMERICANS FIND A BIGGER REFUND.

404 W. Park Iowa Park, TX Phone 592-2221
Open Monday through Friday 9-6 • Saturday 9-5
APPOINTMENTS AVAILABLE

Some Good Advice On IRA's . . . from State National Bank

Need a 1986 Tax Break? Open an IRA!

Q WHAT IS AN IRA?

A An Individual Retirement Account (IRA) is a special savings plan authorized by the federal government to help you accumulate funds for your retirement.

Q WHO IS ELIGIBLE TO CONTRIBUTE TO AN IRA?

A Every individual who has earned income or received alimony may contribute to an IRA. Income from other sources such as investments or inheritances does not qualify. Contributions may not be made for or after the year in which you reach age 70 1/2.

Q HOW MUCH CAN I CONTRIBUTE TO AN IRA?

A Each year you can contribute all or part of compensation, up to:

- * Individual Taxpayer - \$2,000 for a single taxpayer.
- * Married Taxpayer - \$4,000 for married taxpayers where both spouses have earned income (each spouse can contribute up to \$2,000 each).
- * Spousal IRA - \$2,250 for married taxpayers filing jointly. (Yearly contributions may be unequally divided between the accounts, provided the total contribution does not exceed \$2,250 and neither account is allocated more than \$2,000).

Q CAN IRA FUNDS BE USED AS COLLATERAL FOR A LOAN?

A Pledging an IRA as collateral for a loan would require that the amount pledged be treated as a withdrawal, and that portion subject to taxation and penalty.

For many taxpayers, the New Tax Law hasn't changed a thing, and for most others, there's still something good in the IRA program!

Talk to us about yours. We'll show you how you can still benefit by having an IRA.

State National Bank

Iowa Park, Texas

Locally Owned



"Let's Talk . . . It's The First Step"

Krause Plow Sale 'Til March 1st

25% DISCOUNT off all plows in stock.

Bunt Equipment Co.
Wichita Falls Ph. 766-0109

Get More. Save More.

Pioneer Days, February 23-28.

Buy seed during Pioneer Days and take advantage of a big early payment savings on every bag of Pioneer® brand seed.

There's More

Plus, save even more with additional quantity savings. The more you buy, the more you'll save. Your local Pioneer sales representative has details.

Still More

You'll be buying hybrids and varieties that have the best chance of improving your yields, and your bottom line, next harvest season. That's more when you really need it.

One More Thing

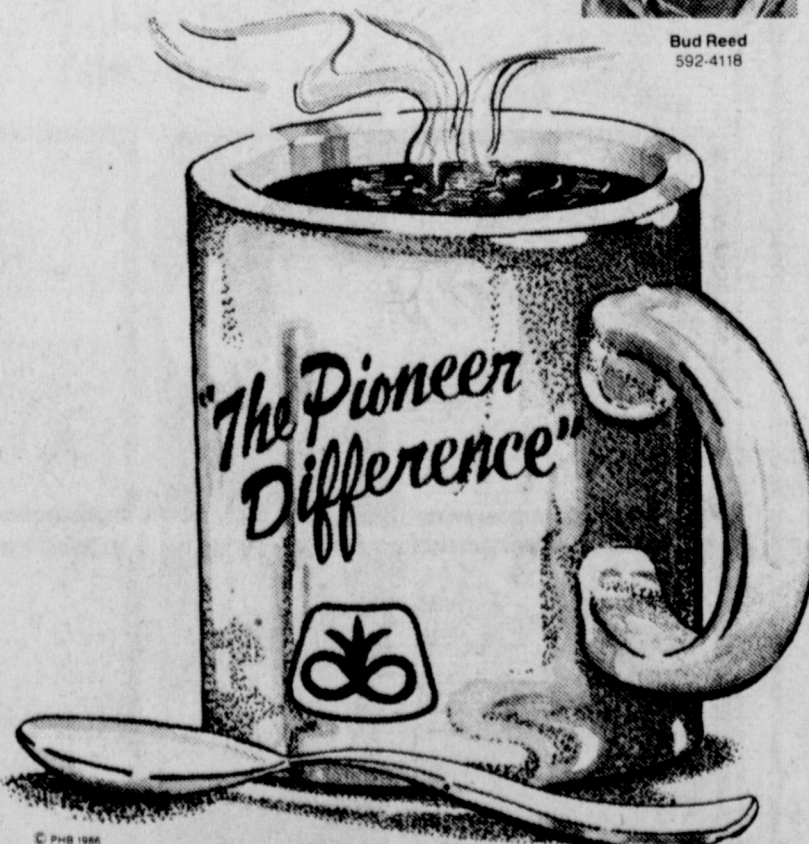
On top of providing you with the best line-up of corn and grain sorghum hybrids at tremendous savings, your local Pioneer sales representative also has a generous cup of coffee for you . . . and the commemorative cup is yours to keep.

Get more — and save more — at Pioneer Days, February 23-28. Come see:

REED FEED & SUPPLY
592-4118 209 S. VICTORIA



Bud Reed 592-4118



© 1987 Pioneer

Registered trademark of Pioneer Hi-Bred International, Inc. PIONEER® brand products are sold subject to the terms and conditions of sale which are part of the labeling and sale documents.

FAMILY HEALTH NOTES

Depression - Nobody's Immune

The tendency is to think of depression as an illness that affects mostly people who are burdened with tremendous responsibilities -- high powered executives -- people who, by the nature of their professions, are called upon daily to endure the stress of decision-making and shoulder the consequences of those decisions.

This is not the case. Although we know from history that some famous people were prone to depression (Abe Lincoln and Winston Churchill, for example) hardly anyone is immune. Laborers, bright young people on their way up the ladder, students, farmers, political leaders, housewives, people in just about every walk of life have suffered from the crippling ravages of depression. It is estimated that 35 million American receive some form of treatment for depression. All of us can be affected, regardless of age or social status.

Depression is a frequent reason patients visit a physician. The illness is not difficult to diagnose and to treat. It is a distressing state, a feeling of doom. Depression can be due to external causes (loss of a loved one or a job) or secondary to a chemical imbalance in the brain. Some individuals suffer from periodic mood swings; some are manic depressive. Depression is one of the basic and fundamental emotions of human experience and is frequently associated with anxiety. While anxiety is oriented toward the future, depression is oriented in the past and depression can go far beyond anxiety.

The symptoms of anxiety are a pounding heart, troubled breathing, trembling, nervousness, irritability and other symptoms or hyperactivity. Symptoms of depression include a feeling of tiredness, inability to sleep or eat, restlessness, boredom, inability to concentrate and a feeling of helplessness. All this can be accompanied by physical complaints such as headaches and fatigue. Crying spells are very common in depression. One of the hallmarks of the illness is loss of pleasure and interest -- nothing is enjoyed, past, present or future. The victim is sometimes pre-occupied with death or suicide; often exhibiting unreasonable feelings of guilt, self-blame or worthlessness.

Some believe that the breakdown in family ties, of religious conviction, of morality, along with financial and other problems has caused depression to accelerate in recent years among the general population. Polls indicated that one out of every two people are depressed much or some of the time. It has become easy for negative attitudes to take over in face of the calamitous situation in which many view their place in society. Never have so many people been so unhappy. Depression is also costly in terms of time lost from work and medical care costs.

Fortunately, in many cases of depression its natural history provided for recovery in seventy percent individuals within three to six months. While 85 to 90 percent of depressed patients are effectively treated, five to fifteen percent of the severe depressives commit suicide. Forty or fifty percent of recovered patients have a recurrence, and fifteen percent remain chronically depressed even with treatment.

Medical help is necessary when the intensity and duration of any of the symptoms of depression seriously interfere with the capacity to function, make decisions, carry out normal activities, or hinder the ability to relate to people in any kind of satisfying way.

In most cases of depression, effective treatment is available with the use of antidepressant medication and counseling by the family physician, which can alleviate symptoms and allow the patient to continue to function in society.



Park Clinic

Earl F. Watson, M.D.
Erwin F. Soell, M.D.
Larry D. Stutte, M.D.

Telephone 592-4141 • 310 W. Alameda
Hours: Mon. - Fri., 8:30 a.m. - 5:30 p.m.
Physician on call 24 hours

