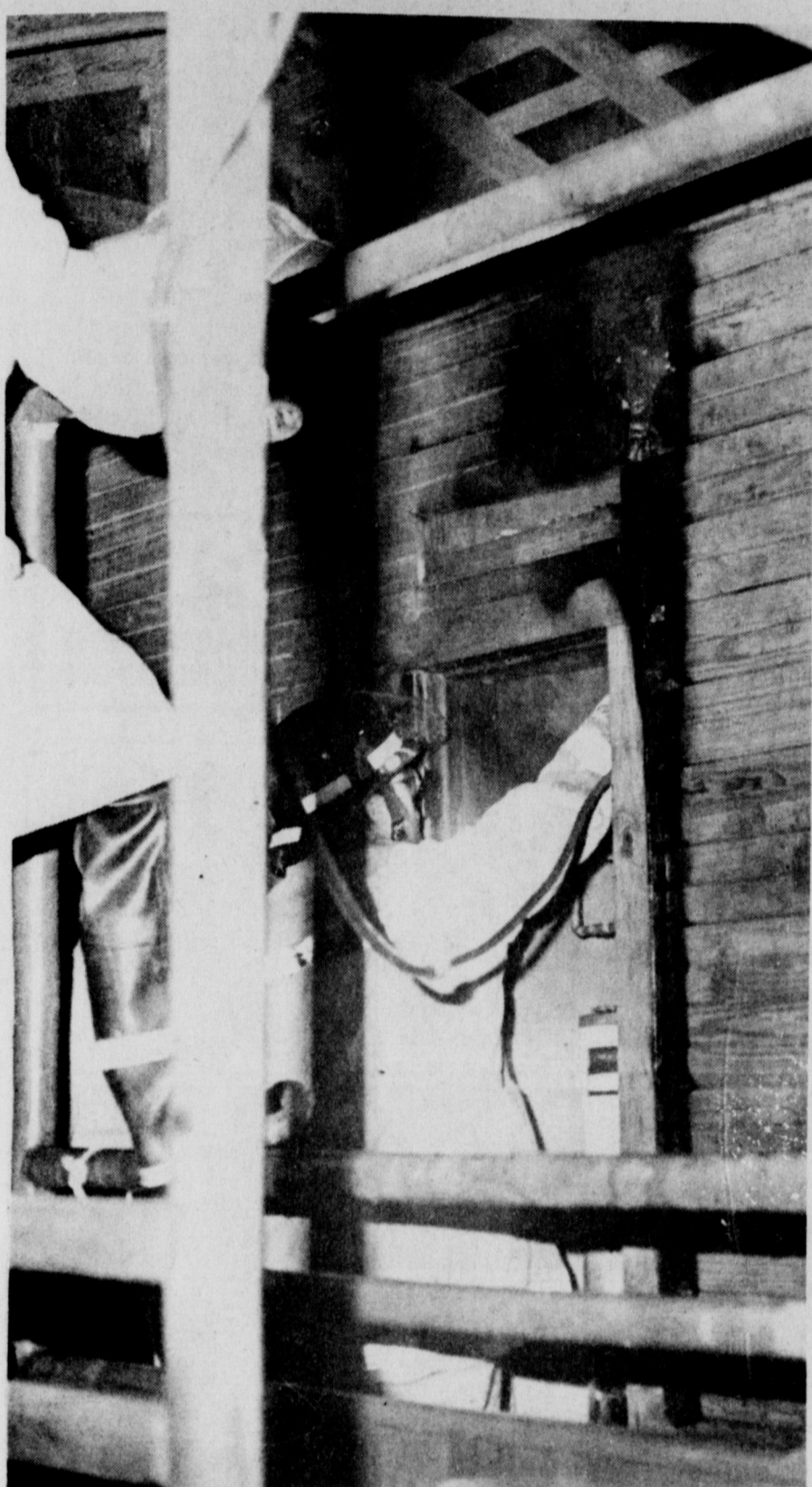


Jan 1, 1987

MRS. LITA WATSON
528 W. CLARA
IOWA PARK TX 76367 112



BARN SAVED - Quick response to a 3:32 a.m. fire in a horse barn on Huntington Lane, just south of US 287, Saturday by the Iowa Park Volunteer Fire Department saved the wooden structure.

Burglar hits Sonic

Another fast food business was burglarized over the weekend, and two Wichita Falls women were arrested while attempting to take a television set from a store without paying for it.

The Sonic Drive Inn was burglarized sometime Friday night. Someone broke out a backdoor window to gain entry, and took about \$50 in cash and some cigarettes, according to police.

The Dairy Queen has been burglarized twice during the past seven weeks.

Saturday afternoon, police were notified two black women were attempting to take a television set still in a carton from Wal-Mart.

Arrested were Rhonda Johnson, 19, and Shanell Renee McFail, 28, though police later learned each has more than one alias. They were charged with theft over \$200 and released to a Wichita County deputy.

Two vehicles were spray painted over the weekend. Mike Fairchild, 1001 Johnson Road, filed a report Saturday evening and Steve Shown, 913 Foley, made his report Sunday

evening. The theft of a statue of a boy and dog from the yard at 608 W. Manes

was reported Monday by Mrs. James Conkling, according to the police blotter.

Sales, fuel taxes increase January 1

The price of living goes up New Year's Day, when sales tax is increased by one cent and an additional five cents tax is added to each gallon of gasoline purchased.

Both increases were put into place when the Texas legislature met in special session.


Commenting on the sales tax increase, State Comptroller Bob Bullock said, "Only the rate has changed. In every case, what is and what is not taxable under current sales tax law remains the same when the new law goes into effect January 1."

Actually, the sales tax increase was one and one-eighth percent to deal with a shortfall of tax revenue

caused by the collapse of oil prices, Bullock added.

The state sales tax rate goes from 4.125 to 5.25 percent. Another cent is added in communities, like Iowa Park, for local revenue.

Bullock said that in many areas of Texas the state rate and local sales taxes, including transit and city sales taxes will put the combined rate to as much as 7.25 percent. In making accounting changes to collect the new tax rate, businesses should adjust cash registers and alerted and trained their personnel to collect sales tax at the new local rates, the comptroller said.



Christmas tree burning slated New Year's Eve

Residents will have an opportunity to get rid of their Christmas trees, the safe way, by taking them to the vacant block between Third and Fourth Streets by New Year's Eve.

The fire will be lit at 7 p.m. by members of the Iowa Park Volunteer Fire Department, who will oversee the project to be sure it remains safe.

Christmas trees, especially when they've been cut a long time and have dried out, are very dangerous because they ignite so easily, observed Fire Chief Danny Skinner.

Skinner said children have been known to collect discarded trees from the alleys and build forts in which to play. This, he pointed out, is extremely dangerous to the youngsters.

Those discarding their trees should place them in the marked area, where the two bonfires have been held this fall.

IOWA PARK LEADER

25 Cents

Vol. 18, No. 16 IOWA PARK, WICHITA COUNTY, TEXAS 76367 Thursday, January 1, 1987

Leader prints issue early

This issue of the Leader, though carrying a Jan. 1 dateline, was printed Tuesday for early distribution to subscribers.

The Leader office will close at 10 a.m. Wednesday, and remain closed until Monday, when regular hours and deadlines will resume.

Highlights of 1986 are reviewed

1986, as reflected in the pages of the Iowa Park Leader, was a busy year of accomplishments, improvements, changes, and in some cases, sorrow.

The Tom Burnett Memorial Library became a reality, thanks to the efforts of many people and organizations, and the cooperation of the city council. The stately structure has even been incorporated into the city's emblem. And dedicated individuals are promising continued support and improvements in the years to come.

Despite economy problems caused by lower oil and agriculture prices, people in business and city government demonstrated their faith in the future by making numerous improvements throughout the community.

Students at Iowa Park High School had a lengthy series of accomplishments during the calendar year, including those in band, choir, scholastics, and the sports teams of football, baseball and tennis earning titles.

But the year also brought sorrow, with the loss of several pioneer family members and civic leaders, including Mrs. W.F. George, Lottie Lochridge and Tom Corridon, as well as civic leader Bill Spruiell.

The following represents most of the highlights of 1986:

JANUARY

As the new year got underway, so was the moving of the city's library into its new and permanent home, the Tom L. Burnett Memorial Library. At the annual banquet for members of the Iowa Park Volunteer Fire Department, awards were presented to: Chris Klein, Fireman of the Year; Paul Shea, for his EMT service; Wayne Williams, 14 years service as secretary of the organization, and Terri Penaluna for work as radio dispatcher. Ownerships of three local businesses changed hands: Mr. and Mrs. Joe Hughes purchased Settle Drug; Mr. and Mrs. Keith Fisher bought Easy Shop Foods and renamed it K&K, and Mr. and Mrs. Lloyd Hutchinson purchased H&R Block. First activity in the community as part of the Texas Sesquicentennial was the planting of 10 pecan trees at Bradford Elementary. Groundbreaking ceremony was held for the new Wichita County Farm Bureau building. Police acted swiftly to stop a train at 1:30 a.m. before it struck a stalled car on the Texowa crossing, left there while a Burk Burnett man and woman fought. Shawn Price was notified he had been named to the Class AAA All State first team defensive platoon. At the annual football banquet, Price was also named Outstanding Player; Dennis Phillips "Ball Hawker"; Robert Adams "Hustler" award, and Chad Fielding received the first annual Jackie Denton Memorial Award.

FEBRUARY

Recipients of the annual awards presented by the Iowa Park Chamber of Commerce were: Mrs. W.A. George, Outstanding Citizen; Mrs. Pauline Singleton, Outstanding Senior Citizen; Joni Whitis, Outstanding Educator, and Stanley Williamson, Outstanding Agriculturist; keynote speaker at the banquet was Maj. Gen. Richard Phillips of Sheppard Air Force Base, and Rip Smith was installed as president. Grace Baptist Church called Rev. Aric John-

son. Continuing a program to improve the business district appearance, work was begun on the MuleSkinners' Mule Barn with a plaster covering. Jack Martin purchased Park Pharmacy, renaming it Jack's Park Pharmacy. Work continued and neared completion of a new pavillion at Highland Cemetery. After more than two months without precipitation, .61 of rainfall was measured, and launched one of the wettest years locally in history. Tanner's Kuntry Store in Holliday sustained an estimated \$250,000 loss by fire. Jack Monroe was named Holliday's Fireman of the Year. In the UIL's realignment, Iowa Park, Bowie, Decatur and Bridgeport were named to Dist. 6-AAA, losing Vernon and Springtown but picking up Jacksboro and Breckenridge. Iowa Parkan Charles Childs was injured by gunshot when he interrupted a robbery in progress in Wichita Falls. The school board approved purchase of 130 new band uniforms at a cost of \$31,887. Rev. Michael Grubbs was called by the First Christian Church. The Lady Hawk basketball team lost their final game to Bowie and an opportunity to advance into the playoffs along with Vernon. More than 40 area farmers spent a day preparing farming equipment of the Ray Hicks estate for auction. The city council accepted a bid of \$279,443 to rebuild Johnson Road from Wagonwheel to the access road, and install a storm sewer to cut down flooding in Country Hills Estates. School trustees accepted a bid of \$236,538 to construct four additional classrooms at Kidwell Elementary, a move necessitated to meet teacher-pupil ratios set by House Bill 72.

MARCH

Iowa Park's major Sesquicentennial event of the year was held on Texas Independence Day, with a time capsule burial, flag-raising ceremony, speeches and barbecue meal served on the lawn of Burnett Library. City workers began tearing down old buildings across Wall from city hall, to be developed into a parking area. Basketball players named All District were Cindy Clanton and Lisa Seby of the Lady Hawks and Stephen Biddy of the Hawks. Dedication ceremonies for the Tom Burnett Memorial Library were held. More than 200 entries were judged in the annual FFA and 4-H Project Show. The youngsters then dominated the Wichita County Junior Livestock Show by placing 90 of the 179 animals in the auction. City aldermen voted to rebuild all the crossings of the railroad. All teachers in the Iowa Park school system received a one-year extension on their contracts. Fire totally destroyed a mobile home at 719 E. Park.

APRIL

In city and school elections, Tim Hunter won in his uncontested bid for mayor, as did the two candidates for aldermen, Bud Burch and Bud Mercer; John Sibley, Jerry Reed and Jimmy Howell were elected to the board of trustees. The 23 Study Club recognized Cathy Downes and twins Ronald and Donald Young as outstanding students of the year at Iowa Park High School. The city council voted to condemn one of the oldest business structures in the 100 block of West Park as unsafe to the public, and it was later razed by the owner. Elizabeth Gorman was elected mayor of Holliday, as were two aldermen, Linda

Willis and J.R. Franklin. Holliday High's one-act play won first place in district competition, and later advanced to state. Iowa Park High's band earned sweepstakes in UIL competition for the third consecutive year. The school's tennis team won the Dist. 5-AAA championship. A teacher in the Iowa Park school system, James Kenneth Watts, was arrested and charged with two charges of "indecent with a child." The Chamber of Commerce sponsored a consumer opinion survey, with the assistance of Dr. Jim Mallett of Texas A&M Univ. Extension Service. The city council revealed a plan to construct a civic center on a block of land purchased between Third and Fourth Streets. The annual city-wide Clean-Up Week co-sponsored by the city and Chamber was held. Three high jumpers on the IPHS track teams swept district competition when Cindy Clanton won the girls' division and Stephen Biddy and Scott Weaver earned first and second, respectively, in the boys' meet; Brett Hale won the 3200-meter race to also qualify for region. Holliday residents were shocked when Tanner's Kuntry Store was burned to the ground, Wanda's Kuntry Kitchen was another attempted arson victim and tires on police vehicles were slashed by vandals.

MAY

Construction work to rebuild Johnson Road was begun. The city sounded its tornado warning after spotters sighted a threatening cloud advancing from the southwest. During the heavy downpour which accompanied the cloud, an elementary student, Michael B. McCarty II, was accidentally run over by a school bus he had just left in Garden Valley Addition, crossed the street and re-crossing it, sustaining leg fractures but surviving the incident. The MuleSkinners went to a ranch between Midland and Lamesa to feed occupants of the Texas Sesquicentennial Wagon Train. A two-truck collision on US 287, just south of Gordon Lake, resulted in the death of a construction worker. Gregg Young was elected secretary of the Wichita Future Farmers of America District. Holliday FFAers Robert Parkey and David Carr tied for first high individual in farm business management in state competition held at Texas A&M Univ. Donald Young was named valedictorian and Cathy Downes salutatorian of Iowa Park High's senior class. In a dispute over payment of a water bill, the Iowa Park city council threatened to cut off service to Country Hills Mobile Home Park, but the issue was later resolved. Members of the Rotary Club and employees of Cryovac participated in the community's first "Christmas in Spring" program, doing volunteer work to improve two homes. Laura Bills was named valedictorian and Robert Parkey salutatorian of Holliday High School. Iowa Park's Optimist Club held its annual bicycle safety program for local youngsters. Stephen Biddy and Scott Weaver swept first and second, respectively, in the high jump at region and finished fourth and sixth at the state meet. Iowa Park High faculty selected Biddy and Kari Robnett "Best All Around." The Hawk baseball team won the Dist. 5-AAA championship, the first in that sport since 1975, but lost in bi-district to Merkel. Continuing the improvements to the business district appearance, Smith X-Ray had a new front and awning constructed. Top scholastic students of the Eighth Grade were Jennifer Welch and Chris Blalack.

Local residents participated in the nation-wide promotion of "Hands Across the Nation." Mrs. Howard McDowell was named Outstanding ESAer of the State. Holliday's baseball team won district and bi-district and advanced to the regional level.

JUNE

The city council made an ordinance out of a long-standing policy, to not sell water to any new customers located outside the city limits. FFA students joined with members of the Iowa Park Garden Club to plant flowers at Burnett Library. Holliday school superintendent Dan Owen was elected to the Legislative Council of the University Interscholastic League. School trustees were informed local students scored well above the state average on the Texas Assessment of Basic Skills testing. A storm which dropped some four inches of rain also brought damage by knocking down several trees and lightning ignited a tank battery near Holliday. Police assisted a resident on South Wall to remove a three-foot snake from her bath tub. A water leak in the transmission line from Iowa Park's two lakes to the processing plant caused delay in construction of Johnson Road. Ayres Tire announced a major expansion of its facility here. Iowa Park Volunteer Fire Department held one of its more successful annual street dances. Iowa Park hosted the area Major Little League tournament. The city council approved major renovation bid for the city hall's exterior.

JULY

Luther Shaw announced he had sold Shaw Motors, a business he had operated 31 years, to Leon Stevenson and Bill Wilson. Because of water production problems in Wichita Falls, Iowa Park residents were requested to adopt an odd-even outside watering program. A young Iowa Parkan, Ronald Joseph May Jr., was charged with hit and run after Jeff Lawson, another local man, was struck while crossing FM 369 following an event at the rodeo grounds. Cryovac manager Frank Gossett was elected to fulfill the unexpired term of Chamber president after Rip Smith resigned. Iowa Park and Holliday schools operated at less per-student costs, \$2,949 and \$2,896, than the state average of \$3,346, according to a report by the Texas Research League. The school increased its cost of collecting taxes for the city from a base of \$5,800 to \$8,500 annually. "Tom Sawyer" was the title of the first play produced by the Summer Youth Theatre of Burnett Library.

AUGUST

City aldermen voted to have the concrete parking markers removed from the downtown business streets. Two graduated Hawk football players were named to play in post-season bowl games, Shawn Price in the Oil Bowl and Randy Boutwell in the Greenbelt Bowl. IPHS Class of '61 held a reunion. School trustees approved a \$5.4-million budget for the 1986-87 year. City workers began a 64-block pavement sealcoating project. Angela Hatfield received a 290-pound popsicle as winner of a Faith Baptist Church vacation bible school contest. Toni Lutz succeeded Stacia Brown as programs coordinator at Burnett Library.

Continued on page 11

Scholarship receives grant

The Bertha McDonald Scholarship Fund, sponsored by the Iowa Park Athletic Alumni Association, recently was increased by \$25.

That's not uncommon, but the fact the money came from a Wichita Falls organization was.

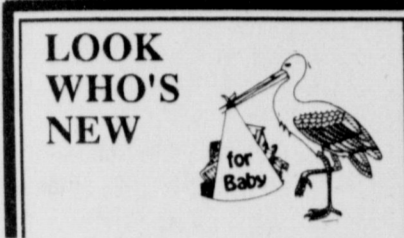
That community's branch of American Association of University Women held a College Financial Aid Clinic in October.

Five speakers discussed ways for high school students to prepare for scholarship and financial aid applications. Each had chosen a scholarship fund to which AAUW is making a donation.

One of the five speakers was Iowa Parkan Roy Boutwell, who was a great admirer of Mrs. McDonald and who, obviously, spoke of the scholarship named after her.



STATE FAIR WINNER - Mrs. Delbert Todd displays a crocheted bedspread she made that was a first place winner in the Texas State Fair. She completed the 48-square project in six months, and also had a crocheted tablecloth which earned honorable mention.



Mr. and Mrs. Doug Arnold Jr. of Alexandria, La. are the parents of a son, Jeremy Micah, born December 23, weighing seven pounds and 14 ounces. The new baby has a sister, Kimberly, 2 years old. Mrs. Arnold is the former Teresa Cummings of Iowa Park.

Grandparents are Mr. and Mrs. Jack Cummings of Iowa Park and Mr. and Mrs. Doug Arnold Sr. of Wichita Falls. Great-grandparents are Peggy Powell of Stamford, and Mr. and Mrs. Jimmie Cummings of Lubbock.

Mr. and Mrs. James McCord are the parents of a girl, Felicia Marie, born Dec. 28 at Wichita General Hospital. She weighed eight pounds and two ounces, and is the couple's first child. Mrs. McCord is the former Brandy Walker of Iowa Park.

Grandparents are Mr. and Mrs. Harold McCord and Mr. and Mrs. Bill Walker of Iowa Park. Great-grandparents are Mrs. Edna Sunday of Iowa Park and Mr. and Mrs. W.L. Walker of Jackboro.

Pecan show workers lauded

By DAVID FINLEY
County Agent

The 1986 Wichita County Pecan Show is history and it was a good one. A lot of thanks can go to a lot of people, almost too many to name, but I thought I would try.

When you start putting out "thank-yous," the place to start is with members of the Wichita County Young Farmers. There were some of these men that just stayed at the show and worked. The ones that came to mind are Fred Daume and David Bogart. They ran the pecan crackers on both days, almost all day.

Others that came out and aided in setting up the show included Paul Chandler, Clarence Mahler, and Ronnie Cravens. These men always help when there is a job to do.

Members of the pecan and fruit committee that worked so diligently at the show included Virgil Woodfin, Wesley Davis, Tim Hunter, Bob Williamson, Gordon Griffith, Joe Burton and Dennis Bogart. I have

several committees that I work closely with during the year and the pecan and fruit group is one of the best.

The committee cracked about 1200 lbs. of pecans at the show and thus raised enough funds to cover expenses for another show. A special thanks goes to Westside Orchard at Charlie for having the crackers for us to use. We did have one mishap though! One fell off the table and broke, but did not hurt anyone.

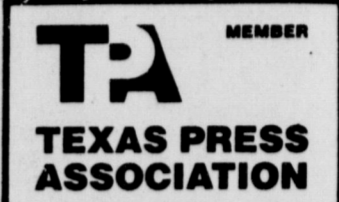
Besides the pecan show winners, there were winners of the door prize and "guess the number of pecans" in the jar contest. The guess the number winner was Jackie Hankins of Bowie. The correct number was 1035 and he guessed 1031. For being this close, Hankins will receive a bag of pecans.

Door prize winners at the show who won a bag of pecans included Linda Elliott, W.J. Kaspar, Madell Buttram, Harold Reed, Jim Anderson, LaNell Albert, Pam Andres, Alma

Hundt of Wichita Falls and Erma Mahler from Iowa Park.

Other door prize winners include Mr. William Hall of Wichita Falls, a pecan tree from Wolfe Nursery, Sherry Rose of Iowa Park, a pecan tree from Smith's Gardentown, Angela Long of Wichita Falls, chemicals from Union Carbide and finally C.T. Burley of Wichita Falls, chemical from Estes Chemical.

Winners of the prizes can pick them up at the sponsor location, while pecan winners can come by the county Extension office at 1626 Midwestern Pkwy. Congratulations to all the winners.



Settle Drug

Joe Hughes Pharmacist
592-4191 120 W. Park
24-Hour Service

We give S&H
Green Stamps

P.C.S.
Medimet
Medicare

FREE Delivery
of Prescriptions

Your Neighborhood

Health Care Pharmacy

Sale Starts Today - Good For Seven Days

 BUFFERIN Fast Pain Relief Tablets 100's 3.99	 DEXATRIM Appetite Suppressant Caffeine Free or Extra Strength Capsules or Caffeine Free Extra Strength or Extra Strength Capsules 20's Choice 2.89	 CONTAC 12 Hour Relief Capsules or Capsules 10's Choice 2.44	 VICKS FORMULA 440 Decongestant 4 oz. 2.29
--	--	--	---

Alka-Seltzer
EFFERVESCENT
ANTACID &
PAIN RELIEVER
Tablets 36's
2.27

"Help Fight Birth Defects"

January is "March of Dimes" month. The purpose is to remind us of the ongoing fight against birth defects. Years ago attention was focused on the effects of a fertility drug in producing birth deformities. As medications and drugs have been linked to birth defects, both physicians and pharmacists have urged women planning a family to obtain professional advice before consuming any medication.

Self prescribed use of over the counter drugs or out-dated medicines could be extremely dangerous, particularly to an expectant mother and her unborn child. We can fight birth defects with dimes, professional consultation and common sense.

JANUARY 1987

DORCOL
Pediatric Cough Syrup
or Cold Formula
4 oz.
Choice 2.34

 PERDIEM PLAIN Natural Vegetable Laxative Granules 250 gm 6.00	 BAUSCH & LOMB SALINE SOLUTION Regular or Sensitive Eyes 12 oz. Choice 3.28	 ASPERGUM Temporary Relief of Sore Throat Pain Orange or Cherry 16's Choice 1.29	 CAMPHO-PHENIQUE Pain Relieving Antiseptic Liquid 75 oz. Gel 25 oz. 1.37 1.67	 MYADEC Vitamin Supplement with Minerals Tablets 100 - 50 FREE 8.27
---	--	---	--	--

 MAALOX Antacid Liquid 12 oz. Tablets 100's Choice 2.38	 MURINE Antacid Eye Drops Regular or Murine Plus 5 oz. Choice 1.69	 SQUIBB INSULIN Regular, Lente or NPH Standard U-100 Ad Price 6.89 Less MFG Rebate 2.00 After Rebate 4.89 Choice
---	---	---

 EUCERIN Unscented Moisturizer Cream 4 oz. Lotion 8 oz. Choice 2.86	 LISTERINE Antiseptic 16 oz. 2.27	 KAZ DYNAMIST HUMIDIFIER 2 Gallon #1400 14.96	 KAZ DYNASTEAM VAPORIZER 2 Gallon #2805 8.46 Kaz Inhalant, 2 oz. - 1.09
---	--	--	---

 CASTORIA Fletcher's Natural Laxative for Children 5 oz. 2.46	 ANUSOL Fast Relief from Hemorrhoids Suppositories 12's Ointment 1 oz. 2.87 2.17	 NOVAHISTINE Cough/Cold, DMX or Elixir 4 oz. Choice 2.48	 OKYO Maximum Strength Acne Medication Lotion or Cover 1 oz. Wash 4 oz. Choice 2.88
---	---	---	--

PRICES OPTIONAL WITH PARTICIPATING STORES

WE RESERVE THE RIGHT TO LIMIT QUANTITIES

Prom '87. It's Right Around The Corner!

The Corner!

Models Emilie Flick and Jerri Brown

NEW 1987 Spring Styles
LATEST Fashions from:
Mike Benet, Lizette, Alyce, Loralie & more.

1987 Fabrications: Fantanza, Lame, Metallic Lace, Twinkle
Organza, Polished Cotton, Cromspun, and Amourette!
We will sell only 1 style of dress to 1 school function.
Shop early for best selection.
Best Selection - Best Prices Around

Elite Creations

4020 Rhea Rd. (Behind Cloth World) 692-1853
Visa, Master Card, Layaway hours 10 - 6:00

One cooking is really becoming tires of the and has creative co to most co new dish.

Facing responsible meals know of thought that will be the basic for Clapp share week that a holiday fea ing.

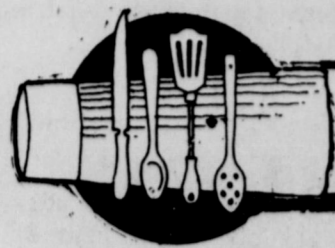
Jan, a and mother Bill Spruiell. S Iowa Park Midwestern works as a Drilling C Faith Bag Chamber of She an and contrac son, Will.

APRIL

2 1/2 cups
1 cup sugar
1/4 tsp. salt
1/4 tsp. bak
1/4 tsp. bak
2 eggs
1 cup butter
1/4 cup ap
3 tbsp. mel
1 cup fin
soaked in
1 cup chop
Sift
Mix eggs,
and melt
ingredient
nuts. Bake
for 60 to 7

GO

1 pkg. froz
2 small b
mix
10 tsp. ma
1 cup bro
2 tsp. cinn
Chopped
Great
pudding
cinnamon,
in bottom
rolls, rest
with towe
at 350 deg



Cook of the Week

One of the characteristics of cooking is its "dailyness," and it can really become "humdrum" when one tires of the "tried and true" recipes and has even exhausted all ideas for creative cooking. It is indeed a boon to most cooks to find a recipe for a new dish.

Facing a new year, those responsible for planning family meals know that it will require a lot of thought to prepare meals each day that will have a healthful balance of the basic food groups. Jan (Mrs. Jim) Clapp shares some of her recipes this week that are excellent for "after the holiday feasting" and year round eating.

Jan, a young homemaker, wife and mother, is the daughter of Mrs. Bill Spruiell and the late Mr. Spruiell. She was graduated from Iowa Park High School, attendec Midwestern State Univ. and presently works as a bookkeeper for Spruiell Drilling Co. She is a member of Faith Baptist Church and the Chamber of Commerce.

She and Jim, who is a builde and contractor, have a three-year-old son, Will.



Mrs. Jim Clapp and Will

APRICOT NUT BREAD

2 1/2 cups flour
1 cup sugar
1/4 tsp. salt
1/4 tsp. baking powder
1/4 tsp. baking soda
2 eggs
1 cup buttermilk
1/4 cup apricot nectar
3 tbsp. melted butter
1 cup finely diced dried apricots, soaked in 1 tsp. hot water
1 cup chopped pecans
Sift together dry ingredients. Mix eggs, buttermilk, apricot nectar and melted butter. Add to dry ingredients and mix. Add apricots and nuts. Bake in loaf pan at 350 degrees for 60 to 70 minutes.

GO TO BED ROLLS

1 pkg. frozen dinner rolls
2 small boxes butterscotch pudding mix
10 tsp. melted butter
1 cup brown sugar
2 tsp. cinnamon
Chopped nuts
Grease bundt pan. Mix together pudding mix, butter, brown sugar, cinnamon, & nuts. Put 1/2 mixture in bottom of pan, drop in 19 to 24 rolls, rest of mixture on top. Cover with towel, let rise overnight. Bake at 350 degrees 25-30 minutes.

WALDORF RED CAKE (Great for Valentine's Day)

1/2 cup shortening
1 1/2 cup sugar
2 eggs
1 oz. red food coloring
1 tsp. vanilla
1 tsp. cocoa
1 tsp. salt
1 cup buttermilk
2 1/4 cup flour
1 tsp. soda
1 tsp. vinegar
Cream shortening, sugar, eggs. Make paste of cocoa and food

coloring; add to first mixture. Add soda to vinegar, then add to batter and blend. Bake in 2 cake pans at 350 degrees, 30 minutes. When cool, split layers in half.

FILLING

Cook 1 cup milk and 3 tbsp. flour until thick. Cool. Cream 1 stick butter, 1 stick margarine, 1 cup sugar until fluffy. Add 1 tsp. vanilla. Mix together and blend well. Spread between layers and on top.



**Guess which
New Year's
Baby is 33?
Happy Birthday**

Love, S, K, & R

ROLLS
Can be refrigerated 3-4 weeks, used as needed.
1 T. Crisco
1/3 cup sugar
1 egg
1 tsp. salt
1 cup boiling water
4 cups flour
2 yeast cakes
Dissolve yeast cakes in 2 T. warm water, add 1 t. sugar. Heat together 1/3 cup sugar, 1 cup water, Crisco, until Crisco melts, let cool. Add yeast mixture, beaten egg. Add 2 cups flour, mix, add rest of flour, beat well. Keep in large greased bowl. Let rolls rise 3 to 4 hours, bake 20 to 30 minutes at 400 degrees.

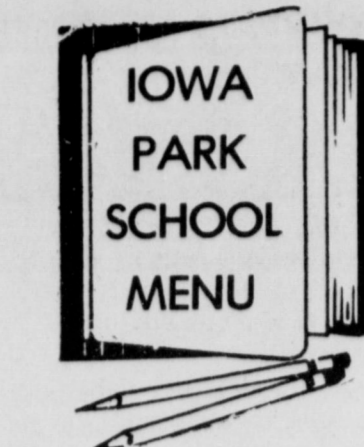
APRICOT NECTAR CAKE
1 yellow cake mix
4 eggs
1 pkg. lemon jello
3/4 cup apricot nectar
3/4 cup Wesson oil
2 tps. vanilla
Bake in bundt pan 45 minutes at 350 degrees.
Glaze with 1 cup powdered sugar and 1/4 cup apricot nectar.

PEPPERMINT ICE CREAM
Melt 27 oz. peppermint candy in 1 pt. whipping cream, 1 pt. half & half, add milk to fill level of 5 qt. ice cream freezer. Freeze as usual.

QUICK PIE CRUST
1 1/2 cup flour
1/4 cup milk
1/2 cup oil
1/4 tsp. salt
Mix together in pie pan with fork, pat out with fingers. For pre-baked crust, bake in 475 degree oven, 8-10 minutes.

ABOUT TOWN

Students in the class of Mrs. Bob Dawson collected over \$100 last week at Bradford Elementary, to give to the Salvation Army. The students used bells, Santa caps and collection buckets to solicit donations around the campus.



Monday, January 5
Breakfast: Cereal, fruit, milk.
Lunch: Soup/sandwich, corn dogs, scalloped potatoes, English peas, cake, milk.


Tuesday, January 6
Breakfast: Buttered rice, fruit juice, milk.
Lunch: Soup/sandwich, chicken fried steak, mashed potatoes, gravy, hot rolls, butter, honey, pudding, milk.

Wednesday, January 7
Breakfast: Biscuit, ham, cheese, fruit juice, milk.
Lunch: Soup/sandwich, cheeseburgers, French fries, lettuce, tomatoes, pickles, onions, ice cream, milk.

Thursday, January 8
Breakfast: Toast, jelly, fruit, milk.
Lunch: Soup/sandwich, enchiladas/cheese/chili, ranch style beans, cole slaw, bread slices, milk.

**Low rates
make State
Farm
homeowners
insurance
a good buy.**

*Our service
makes it even better.
Call me.*



**Philip
Welch
118
W. Park**

Like a good neighbor
State Farm is there

State Farm Fire and Casualty Company
Home Office: Bloomington, Illinois

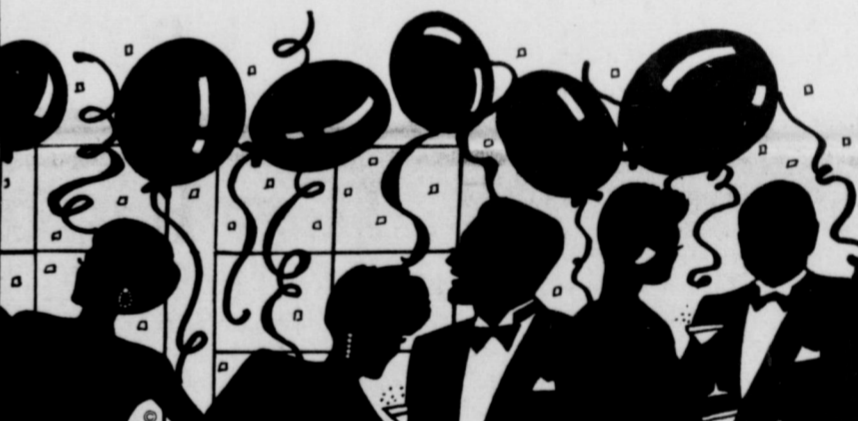
AULD LANG SYNE

May auld lang syne and wonderful times be your introductions into a wonderful New Year. Our sincere thanks for your support.

All Occasions Flower and Gift Shop

520 W. Hwy. 592-2323
Open 7 a.m. to 7 p.m. Monday thru Saturday

*See us for your
Party Balloons and Center Pieces*



IT'S YOUR BUSINESS!

New Rate... Starting

5 1/4%

Sales Not More Than	Tax	Sales Not More Than	Tax	Sales Not More Than	Tax
07	00	07	00	07	00
08	01	08	01	08	01
09	02	09	02	09	02
10	03	10	03	10	03
11	04	11	04	11	04
12	05	12	05	12	05
13	06	13	06	13	06
14	07	14	07	14	07
15	08	15	08	15	08
16	09	16	09	16	09
17	10	17	10	17	10
18	11	18	11	18	11
19	12	19	12	19	12
20	13	20	13	20	13
21	14	21	14	21	14
22	15	22	15	22	15
23	16	23	16	23	16
24	17	24	17	24	17
25	18	25	18	25	18
26	19	26	19	26	19
27	20	27	20	27	20
28	21	28	21	28	21
29	22	29	22	29	22
30	23	30	23	30	23
31	24	31	24	31	24
32	25	32	25	32	25
33	26	33	26	33	26
34	27	34	27	34	27
35	28	35	28	35	28
36	29	36	29	36	29
37	30	37	30	37	30
38	31	38	31	38	31
39	32	39	32	39	32
40	33	40	33	40	33
41	34	41	34	41	34
42	35	42	35	42	35
43	36	43	36	43	36
44	37	44	37	44	37
45	38	45	38	45	38
46	39	46	39	46	39
47	40	47	40	47	40
48	41	48	41	48	41
49	42	49	42	49	42
50	43	50	43	50	43
51	44	51	44	51	44
52	45	52	45	52	45
53	46	53	46	53	46
54	47	54	47	54	47
55	48	55	48	55	48
56	49	56	49	56	49
57	50	57	50	57	50
58	51	58	51	58	51
59	52	59	52	59	52
60	53	60	53	60	53
61	54	61	54	61	54
62	55	62	55	62	55
63	56	63	56	63	56
64	57	64	57	64	57
65	58	65	58	65	58
66	59	66	59	66	59
67	60	67	60	67	60
68	61	68	61	68	61
69	62	69	62	69	62
70	63	70	63	70	63
71	64	71	64	71	64
72	65	72	65	72	65
73	66	73	66	73	66
74	67	74	67	74	67
75	68	75	68	75	68
76	69	76	69	76	69
77	70	77	70	77	70
78	71	78	71	78	71
79	72	79	72	79	72
80	73	80	73	80	73
81	74	81	74	81	74
82	75	82	75	82	75
83	76	83	76	83	76
84	77	84	77	84	77
85	78	85	78	85	78
86	79	86	79	86	79
87	80	87	80	87	80
88	81	88	81	88	81
89	82	89	82	89	82
90	83	90	83	90	83
91	84	91	84	91	84
92	85	92	85	92	85
93	86	93	86	93	86
94	87	94	87	94	87
95	88	95	88	95	88
96	89	96	89	96	89
97	90	97	90	97	90
98	91	98	91	98	91
99	92	99	92	99	92
100	93	100	93	100	93

6 1/4%

Sales Not More Than	Tax	Sales Not More Than	Tax	Sales Not More Than	Tax
07	00	07	00	07	00
08	01	08	01	08	01
09	02	09	02	09	02
10	03	10	03	10	03
11	04	11	04	11	04
12	05	12	05	12	05
13	06	13	06	13	06
14	07	14	07	14	07
15	08	15	08	15	08
16	09	16	09	16	09
17	10	17	10	17	10
18	11	18	11	18	11
19	12	19	12	19	12
20	13	20	13	20	13
21	14	21	14	21	14
22	15	22	15	22	15
23	16	23	16	23	16
24	17	24	17	24	17
25	18	25	18	25	18
26	19	26	19	26	19
27	20	27	20	27	20
28	21	28	21	28	21
29	22	29	22	29	22
30	23	30	23	30	23
31	24	31	24	31	24
32	25	32	25	32	25
33	26	33	26	33	26
34	27	34	27	34	27
35	28	35	28	35	28
36	29	36	29	36	29
37	30	37	30	37	30
38	31	38	31	38	31
39	32	39	32	39	32
40	33	40	33	40	33
41	34	41	34	41	34
42	35	42	35	42	35
43	36	43	36	43	36
44	37	44	37	44	37
45	38	45	38	45	38
46	39	46	39	46	39
47	40	47	40	47	40
48	41	48	41	48	41
49	42	49	42	49	42
50	43	50	43	50	43
51	44	51	44	51	44
52	45	52	45	52	45
53	46	53	46	53	46
54	47	54	47	54	47
55	48	55	48	55	48
56	49	56	49	56	49
57	50	57	50	57	50
58	51	58	51	58	51
59	52	59	52	59	52
60	53	60	53	60	53
61	54	61	54	61	54
62	55	62	55	62	55
63	56	63	56	63	56
64	57	64	57	64	57
65	58	65	58	65	58
66	59	66	59	66	59
67	60	67	60	67	60
68	61	68	61	68	61
69	62	69	62	69	62
70	63	70	63	70	63
71	64	71	64	71	64
72	65	72	65	72	65
73	66	73	66	73	66
74	67	74	67	74	67
75	68	75	68	75	68
76	69	76	69	76	69
77	70	77	70	77	70
78	71	78	71	78	71
79	72	79	72	79	72
80	73	80	73	80	73
81	74	81	74	81	74
82	75	82	75	82	75
83	76	83	76	83	76
84	77	84	77	84	77
85	78	85	78	85	78
86	79	86	79	86	79
87	80	87	80	87	80
88	81	88	81	88	81
89	82	89	82	89	82
90	83	90	83	90	83
91	84	91	84	91	84
92	85	92	85	92	85
93	86	93	86	93	86
94	87	94	87	94	87
95	88	95	88	95	88
96	89	96	89	96	89
97	90	97	90	97	90
98	91	98	91	98	91
99	92	99	92	99	92
100	93	100	93		

As I See It... By BOB HAMILTON



Are you ready for this? 1987? It always takes me until sometime in February to remember to put the correct year on checks and letters. In a way, I hate to see 1986 end. There were lots of problems, with so many people out of work because of the oil situation. But, somehow, it was an outstanding year and one we will long remember and talk about.

While reviewing the issues of the Leader for the story on front page, I was impressed with all the accomplishments of the year. A lot of them were honors brought to the community by our students, their organizations and teams.

And I'll challenge anyone to tell me that our business district doesn't look much, much better because of

the efforts of business people and our city council!

I believe the citizens of Iowa Park can also take pride in the fact the community took part, in several different ways, the observation and celebration of the state's 150th anniversary, the Sesquicentennial. My only disappointment was the fact that I had intended to attend the State Fair, as I did during the Centennial.

I think 1986 is a year our farmers will be glad to get over. Farmers are great with their optimistic outlook when they can look at disaster striking their fields and say, "Oh well, maybe next year."

While the rains were great for us city folk, not having to water our lawns (they probably looked better this year than any past), the same precipitation has caused havoc to our farmers, and it looks like some of it may well carry over into 1987.

And looking into the next year, it appears, hopefully, that the citizens of Holliday are back on the right track with their government and the lessons learned in 1986, if learned, can only serve to make things better there in the future.

Whatever 1986 has been for you, I hope 1987 is better.
HAPPY NEW YEAR!

Hawk banquet slated Jan. 10

The annual Hawk football banquet will be held at 7 p.m. Jan. 10 at Chaparral Baptist Camp.

Guest speaker will be Guymon Phillips of Austin.

Deadline for purchasing tickets, which will be \$8.50 per person, is Jan. 8, and may be obtained by contacting Anna Phillips, 592-2292; Bradley Loucks, 592-9098, or the high school, 592-2144.

The banquet is open to all Hawk fans, the players and their guests.

Obituaries

Joe R. Fields

Services for Joe R. Fields, 101, were held Saturday at Aulds Funeral Home in Archer City.

He was born in Missouri Feb. 8, 1885 and had lived in Archer County most of his life. He was a former Justice of the Peace in Archer County 12 years, a former owner of Archer City Recreation Center and a member of the Oddfellows Lodge.

Survivors include a daughter, Eunice Cotton Pickard of Archer City; two sons, Jerry of Holliday and T.E. of Olney; a brother, J.N. of Kennedale; a sister, Blanche Hodges of Knox City; five grandchildren; eight great-grandchildren; and a great-great-grandchild.

Worth Quoting

It is good to see that an old time honored tradition of Texas politics has not been cast away in the modern push for reform of our state government. This week unsuccessful gubernatorial candidate, Mark White, announced that he was lifting the hiring freeze that he had placed on all state agencies and departments. At the same time he dropped the voluntary 15 percent budget cuts for those agencies.

The real reason that White is so interested in lifting his hiring freeze and making the money available for hiring is that a large number of his employees and supplicants will be without work on January 1. With White's philosophy on taxes and spending coupled to his demonstrated abilities with fiscal responsibility, his staff is going to have a hard time finding a job in private industry.

Most of the people on White's staff are professional government workers, as is White. The only way those folks could find a job is for their ex-boss to make some place for them in the state government.

We can see the true colors of Mark White in this move. The people that helped him become governor of Texas are more important to White than the financial well being of the state itself. What is a few hundred more payroll checks the state has to pay, if White can keep his group of followers employed for four years.

It is awfully generous of the taxpayers of this state to pay White's campaign staff until he can make another run at the governorship. It is heart warming that the taxpayers have so much compassion for the ex-governor to help him run again.

Of course this is not the first

time that a defeated governor has placed his staff in other jobs in the state house. All through the history of the state key staffers have been moved to head other departments in the state government.

Even with all the talk of reform and responsible spending it is business as usual at the state capitol. There is probably a collective sigh of relief echoing in the halls of the governor's office. Can you imagine the governor's head legislative representative walking into the personnel department of a large corporation to interview for a job.

"What are your qualifications to work for our company..." asks the company manager.
JIM HUDSON
Perryton Herald

SHOP IOWA PARK FIRST

No other newspaper in the world would make that statement.

IOWA PARK LEADER

766280

Bob Hamilton ----- Editor/Publisher
Dolores Hamilton ----- Co-publisher
Olive Blalock ----- Reporter
Kari Collins ----- Reporter
Kim Schroeder ----- Composition

The IOWA PARK LEADER is published every Thursday. Offices are located at 112 W. Cash, Iowa Park, Texas 76367 (766280). Telephone: 592-4431. Second Class Postage Paid at Iowa Park, Texas, 76367. Annual subscription rates are \$8.41 in Wichita and Archer Counties; \$10.51 elsewhere in Texas; \$12.00 anywhere in the United States. Any erroneous reflection upon the character, standing or reputation of any person, firm or corporation which may appear in the columns of this newspaper will be corrected upon being brought to the attention of the publisher.

MEMBER
TEXAS PRESS ASSOCIATION

AN OPEN LETTER TO WICHITA VALLEY WATER SUPPLY METER HOLDERS

By now, each of you have received your ballots; please note all names of board members are listed. Since there are only 3 up for re-election, chances are you could be voting for someone who has time left. To better inform you, the 3 up for re-election are M.C. Kuykendall of Kamay, Roy Thompson of Iowa Park and D.E. Bratt of Archer City. If you're not voting for one of these 3 your vote will be wasted.

If you're interested in trying to make a change, take advantage of the line marked "other." Besides myself, I understand Mr. Ben Kirkland and Ralph Harvey are also interested in board seats. Most of our present board members are long-standing and in some ways this is bad for our corporation. If our President is restricted to 8 years in office, shouldn't our board members be?

Recently we received a card showing how much water is used for in-house service: Commode, 5 gallons each flush; Shower, 5-10 gallons per minute; Bath, 4 1/2 gallons per inch; Top-loading washer, 30-55 gallons per load, and Cooking and drinking, 5%.

I sat down and put a pencil to it and here's what I come up with. Average family of 2 adults and 2 children: 3 flushes per person per day, 12 = 60 gallons, 2 flushes, 8 = 40 gallons; 2 showers per day, 3 minutes = 48 gallons, 2 showers, 2 minutes = 36 gallons; 2 baths per day, 3 inches = 27 gallons, 2 baths, 2 inches = 18 gallons; 6 loads laundry per week, 180:7 = 25 gallons, 3 loads per week, .7 = 13 gallons; 1 dishwasher per day = 12 gallons, every other day = 6 gallons; cooking and drinking = 2 gallons, cooking and drinking = 1 gallon; that makes gallons per day 174 or 114.

Our minimum of \$20.00 is based on 3,000 gallons or 100 gallons per day. The average use at a realistic level is 174 gallons per day and a conservative level is 114 gallons per day. It would seem 4,500 gallons would be a more realistic and fair minimal billing amount and at the same time still encourage water conservation.

This is one of the changes I would like to work for. The only way my family could meet the 100 gallons a day (our's averages 200 gallons) is if we installed an outhouse, used disposable dishes, wore our clothes until they were stiff and bathed out of a pitcher and bowl.

January is the time for change, not June when your high bills start coming.

With so many of our people out of a job or on reduced hours, consider the following letter, then come to the January 27th meeting and ask why:

"Wichita Valley Water
Box 550
Holliday, Texas

One month ago I received my water bill, in that water bill I had a letter stating to me that you had contracted a company from San Antonio, to sandblast, and coat the Wichita Valley Water tanks. I was very upset when reading this, because there are several sandblasting and coating contractors in Wichita Falls, area. After calling your office, I ask you what the contract price was, and you told me you did not know; at that time you gave me the President of The Wichita Valley Water

Association's telephone number. On December 8, 1986, I reached Don Barton and talked with him. He told me the reason for hiring this company was because he felt they were qualified. My question to you is why you let \$116,000.00 dollar contract go with one bid. I do not understand it, and after talking to your President and your office, I still do not understand it and will never understand it. Also, after talking to your office, I find out that the \$116,000.00 dollars, was just the initial contract, they will also receive \$3,200.00 dollars per year for 15 years to come here and inspect the tanks each year and repair what might need repaired.

Your President told me, that the reason these people were hired to start with, was because of their excellent guarantee. In my opinion there is no 15 year guarantee, when the people are receiving \$3,200.00 dollars a year for 15 years, which total \$48,000.00 dollars, so that puts the total of this contract to a \$164,000.00 dollars. In my wildest dreams, I can not imagine you taking only one bid on a job of this size. I also, ask Don Barton, who was going to inspect these tanks, since I drink the water, his answer to me was our people are watching them closely. My next question to him was, are your people qualified to be coating inspectors, he had no answer for that. My next question was, were they going to run Holiday detector test and Mill gage test on these tanks, his answer was no. This is very very unusual, these kinds of test should be made on these tanks. The price on the job seems to be to high, I believe the job could have been done locally much cheaper. I also believe there should have been someone in this area do the job, because if you have a problem, they could be there within an hour. How long would it take to come from San Antonio? I think every member on Wichita Valley Water should receive a letter from your office stating the contract price and maintenance agreement price and most important that you only took one bid. I think it would be very interesting for them to find this out, and if you do this, I believe they will be asking you the same questions I am. I live in Wichita Falls and have lived in Wichita Falls for 28 years. Our economy is not good, this is no surprise to anyone, but if we keep the money in Wichita Falls, our economy will be great in Wichita Falls, and Wichita Falls will be the good place to live that it has always been. We will be sending a copy of this letter to Harry Patterson and The Wichita Falls Times and Record News.

I appreciate your time in reading this letter, I would like to hear a response by letter or phone, but I would like to have a response from someone that can clearly explain why anyone would only take one bid on a job for \$164,000.00 dollars, that is the question here.

Sincerely yours,
Concern Citizens of Wichita Falls Economy
Floyd Browning Jr.
Bobby James
Lonnie Smith"

Marilynn Reeves
Wichita Valley Farms
Iowa Park, Texas

NOTICE TO SUBSCRIBERS

This is only a notice to those listed below that their subscriptions will expire on the published date. You don't owe us a thing if your name is on the list. It only means that what you've paid for is running out. To renew your subscription, please fill out the form below, as it appears on your paper's mailing label, please. Indicate whether this is a renewal or new subscription. Enclose your check or money order, as all subscriptions must be paid in advance.

Subscriptions due to expire January 15, 1987

- | | |
|-------------------------------|-------------------------------------|
| B. | M. |
| J.L. Baker - Kamay | Mrs. W.T. Mankins-Hol. |
| Marie Balch - IP | Sammie Marcum - IP |
| J.C. Bales - IP | Ken Markle - Burk |
| Roman Bartosh - IP | Charlie Mathis - IP |
| David Baugh - IP | Mrs. Jeanne McAdams-WF |
| Billy Beavers - IP | A.J. McAllister - IP |
| C. Bechyne - Austin | Denny McCarthy - IP |
| B.J. Bibby - Electra | James McCord - Bowie |
| Aubrey C. Bohannon - IP | Ola McLaurin - IP |
| Bud Boniol - Hol. | Milton McWhorter - IP |
| M.J. Brandt - IP | Homer Montgomery - IP |
| William James Bryant-WF | Manuel Moyer - IP |
| | Bruce Murray - IP |
| C. | N. |
| Camp Fire Girls Office-WF | Anna Neepor - IP |
| Evon Carter - Hol. | |
| J.W. Clapp Jr. - IP | O. |
| Royce Coats - IP | Jack Onstead - IP |
| Bedford H. Cook - WF | Kame B. Oshiro - IP |
| Mrs. E. Corless - IP | |
| Elmer Cornwell - IP | P. |
| Leon Costello - IP | Mrs. L.C. Perry - IP |
| W.T. Crawford Sr. - IP | Mrs. Joe Poynor - Kamay |
| | Mrs. Hallie Price - IP |
| D. | R. |
| DC Auto Parts - IP | Mrs. Thelma Roney - IP |
| Jill Davidson - IP | John Ratcliff - IP |
| David Davis - IP | Mrs. Ed Reed - Taft |
| Mrs. Herbert W. Davis-IP | Marvin Richter - Snyder |
| Larry Davis - Hol. | Mrs. Odis Riddle - IP |
| Mrs. Elgin Denny - IP | A. Rohrbaugh - IP |
| Bob Doan - IP | |
| Charles Dudley - IP | S. |
| William T. Duncan - IP | Mrs. Elvy Sargent - IP |
| Judy A. Dye - Houston | Charles W. Schaefer - WF |
| | School Tax Office - IP |
| E. | Richard Schroeder - IP |
| Bessie Esparza - IP | Mary Ann Shields - Austin |
| Mrs. Elsie Evan - Weatherford | Coy Smith - Kamay |
| | Freddie Smith - IP |
| F. | Linda K. Smith - New Braunfels |
| Ray Featherston - IP | Dennis Sorey - IP |
| Kenneth Ferguson - Hol. | Sue Staber - Houston |
| Jerry Fields - Hol. | R.A. Stewart - IP |
| Ralph Finney - IP | Cletys Stiles - IP |
| Joe Forsythe - IP | B.W. Stone - Hol. |
| Donna Franklin - WF | |
| Tommy Fulbright - IP | T. |
| G. | Texas Electric Service Company - IP |
| Leo Gilmore - Hol. | Mrs. Lavere Thompson-IP |
| Alie Girard - IP | Paul Tigrett - IP |
| | Cecil Turner - IP |
| H. | U. |
| Joe W. Hainline - IP | Ida Ueckert - IP |
| Joyce Hallum - IP | |
| Dee Hankins - IP | V. |
| Jack Hart - IP | Vestal Oil Co. - IP |
| Mrs. Carl Hoffman - IP | Mrs. E.L. Via - IP |
| Andy Honea - WF | |
| J. | W. |
| Albert Johnson - IP | Pat Walter - Ruidoso |
| C.G. Johnson - IP | Earl Watson - IP |
| Nelson Johnson - IP | Harry Weaver - IP |
| | Mrs. Chauncey Weiler-IP |
| K. | Mrs. R.E. White - IP |
| Ellie Kerr - Electra | Doris Widmoyer - Las Cruces |
| | Mrs. Ruie Wilkerson - IP |
| L. | Anita Williams - WF |
| Maxine Larsh - IP | John Williamson Jr. - IP |
| Almon Lawrence - IP | Ronald A. Woods - IP |
| Jim Lee - Plano | |
| Natalie Lee - IP | Y. |
| Ida Lehman - IP | Alton Yeakley - IP |
| Vernon Lewis - IP | Fred York - IP |
| Dick Lowder - Hol. | Frank Young - IP |
| Robert B. Lowry - IP | |
| Gary Lyles - IP | |

Wichita and Archer Counties. \$8.41
Elsewhere in Texas. \$10.51
Elsewhere in the United States. \$12.00

To: Iowa Park Leader
Box 430
Iowa Park, Tex.
76367

PLEASE CHECK ONE:

- New
 Renewal
 Change of Address Only

\$ _____ Enclosed

(Name) _____

(Address, P.O. Box, or Route No.) _____

(City) _____

(State) _____

(Zip Code) _____

INJURE ment to on into Park M Mrs. Br Wichita injuries.

Look Wh

Jenni ounce dan Mrs. Clau

The Mrs. Geo Billy Henz great-gran of Dibble,

Mr. and born Deca Hospital. and seven Grand Douglas L and Mrs. Star.

their don't means your pears this or



INJURED DRIVER - Iowa Park EMTs give emergency treatment to Marion K. Barber of Wichita Falls after she ran head-on into another car driven by Maudie Vowell Bradford of Iowa Park Monday afternoon in the 200 block of West Highway. Mrs. Bradford was uninjured, but Barber was transported to a Wichita Falls hospital by ambulance with undetermined injuries.



Look Who's New

Jennifer Renea, a six pound, two ounce daughter, was born to Mr. and Mrs. Claud Roy December 24.

The grandparents are Mr. and Mrs. George Roy and Mr. and Mrs. Billy Henson of Iowa Park and the great-grandmother is Mrs. Jewel Lane of Dibble, Okla.

Mitchell Broc Wilson, son of Mr. and Mrs. Mark Wilson, was born Dec. 20 at Wichita General Hospital. He weighed eight pounds and seven ounces.

Grandparents are Mr. and Mrs. Douglas Lambeth of Olney and Mr. and Mrs. O.M. Wilson of Rising Star.



MARY JACKSON was named Employee of the Year by vote of fellow employees at State National Bank. The recognition will be an annual event.



Library News

By TONI LUTZ

The Christmas play, "Born in Bethlehem," was performed this past Saturday night. There were quite a number of people who came to watch the children perform one of the most celebrated events in our history, the birth of Christ. If you were unable to attend this spectacular event, then we hope you will come by the library and check out the video which was recorded during the performance by Chad Fielding.

I would like to thank all of those who participated in the play: Bill Bates, Ron Barnes, Cody Parks, Julie James, Scott James, Brett Ming, Marc Ming, Cayce Ming, Cari Barrington, Karlee Barrington, Zachary Moser, Emma Moser, Jeremy Kingcade, Terry Walls, James Walls, Roger Walls, Rachel Walls, Randy Barnes, David Barnes, Janah Price, Mike Price, Michele Harris, Amanda Taylor, Teresa Stone, Nicola Kelly, Christi Fielding, Lori Maness, Robin Sharp, Kristen Cooper, Stacia Brown, Vicky

Bradshaw, Sue Maness, Larry Ashford, Stuart Lutz, and the Iowa Park High School Band. A special thanks goes to Ernest Soell for his donation of the superb lighting system.

The WINNERS of the Ornament Contest were:
Youth Division: Amber Miller, 1st place; Cayce Ming, 2nd place; Michael Davis, 3rd place; Katie Shank, 3rd place. Danny Glass and Lori Manes received Honorable Mention.
Adult Division: John L. Chapman, 1st place; Ramona Adams, 2nd place. Ramona Adams and Diane Miller received Honorable Mention.

We want to wish all of the library patrons a very Merry Christmas and a Happy New Year.
NEW BOOK LISTING: Non-fiction - A Field Guide to Texas Snakes by Tennant; The World Almanac & Book of Facts, 1987; Guinness Book of World Records,

1986; How to Start, Expand & Sell Business by Comiskey; The Divorce Handbook by Friedman; The American Heritage Picture History of the Civil War by Catton; Eerdmans' Book of Famous Prayers by Zundel.
Fiction - Floating Dragon by Straub; Dune Messiah by Herbert; Miracle on 34th Street by DePaola;

Dune by Herbert; Heretics of Dune by Herbert.
NEW VIDEOS: The Incredible Shrinking Woman; Cocoon; The Apple Dumpling Gang.
We also have the Old & New Testament on cassette tapes which can be checked out for three weeks.

'87 Jr. High Grads



Model Misti Murray

Elite Creations

New 1987 Spring Styles Are Here!
Choose from: Ruffles, Promtime, Carol J. McClintock and more.
Prices Start at \$75 and up. Sizes 4 - 20
Some styles are reduced up to **1/2 Price!**
Shop Early For Best Selections
Special Thanks to Tom Burnett Memorial Library

Elite Creations

4020 Rhea Rd.
(Behind Cloth World) Wichita Falls
692-1853
Hours: 10 - 6:00
Visa, Master Card, Layaway

Health Tips

-from Jerel Kerby



Wrinkle Remover

Use of retinoic acid (synthetic vitamin A acid) can slow the structural changes in the skin caused by exposure to the sun, according to Dr. Albert Klingman, of the University of Pennsylvania.

Wrinkles caused by the sun were prevented, slowed and perhaps partially reversed by three-month's use of a cream containing 0.5% retinoic acid. (Retinoic acid is the active component of a widely-used acne medication).

Dr. Klingman warns that retinoic acid treatment has no effect at all on wrinkles caused by the aging process.

This indication for retinoic acid does not have FDA approval, and Dr. Klingman is now testing a lower-dose cream (0.02%) to determine if it is as effective without the side-effects of the higher dosage.

WAL-MART Pharmacy

500 W. Highway 592-4157
9 a.m. - 7 p.m. Monday-Friday
9 a.m. - 6 p.m. Saturdays

ALLSUP'S FAMOUS
Burritos
69¢ EACH

ALLSUP'S
Hot Chocolate 8 OZ. CUP **30¢**

Chicken Nuggets
8/99¢

ALLSUP'S
Coffee Mugs
FILLED WITH FRESH HOT COFFEE
99¢
REFILLED AT ALL LOCATIONS FOR ONLY 25¢

Open New Year's Day
For Your **"Bowl"** Watching Needs

At Allsup's we're constantly striving to do a better job of providing the best service and quality products. We value and appreciate your business and we're working hard to earn your trust. Thank you from all your friends at Allsup's. Have a prosperous and HAPPY NEW YEAR

30 YEARS OF SERVING YOU

ALLSUP'S
CONVENIENCE STORES

BORDEN'S
Homo Milk \$1.09
1/2 GAL. CTN.

BORDEN'S
Butter Milk 99¢
1/2 GAL. CTN.

BORDEN'S ASST. FLAVORS
Ice Cream \$1.89
1/2 GAL. RND. CTN.

BORDEN'S
Egg Nog 99¢
QT. CTN.

B.B.Q. Ribs \$3.99 lb.

Coca-Cola \$2.59
12 oz. cans 6 pack

Enjoy Coke

PRICES EFFECTIVE JANUARY 1,2,3,1987 WHILE SUPPLIES LAST

Few changes noted in computing taxes

The first phase of the new tax reform law goes into effect this year. The way taxable income is computed is the biggest change most people will notice, according to a Texas Christian Univ. economist, Dr. Dick Waits.

"About 90 percent of all taxpayers don't have to worry about investment tax credits or business interests, so there should be little change in the amount of work required to finish your tax return," Waits noted. "People with money will just have to find new ways to invest. The more you try to manipulate your taxes, the more complicated they will be."

The majority of taxpayers fill out a short form. "If a long form with itemized deductions is used,

most find their deductions are rather straightforward so there really aren't many complicated decisions to be made no matter what the changes are," Waits added.

The new tax law has been criticized because it does not address the growing national deficit. Waits said the deficit and tax reform are two different issues and need to be addressed separately.

"Tax reform was desperately needed, but, if we tried to take care of the deficit at the same time, we'd run a serious risk of not doing a good job on either," said Waits.

All the same, the deficit will have to be addressed, and the TCU economist anticipates that higher taxes are probably in the future.

Six justices attend seminar

Six justices of the peace from Wichita and Archer counties were among 59 which attended a 20-hour seminar in November at Arlington, conducted by the Texas Justice Court Training Center.

From Wichita County were Virgil Hill of Iowa Park, Richard Cranford of Electra, and Arthur Bea Williams of Wichita Falls.

Archer County justices included Bettye Tanner of Holliday, Redford Gardner of Megargel, and Andrew Roewe of Windhorst.

Topics covered included a review of the newly published revision of the Justice Court Deskbook, Civil Law, Code of Judicial Conduct, Attorney General's Opinions, the Texas Property Code, Disposition of Stolen Property, the Penal Code, Probable Cause, the new Criminal Rules of Evidence and Bond Setting.

Letters to Santa

A few letters to Santa did not arrive in time to be printed in the Christmas edition of the Leader. Therefore, we included them in this issue.

After receiving the letters, they were forwarded to Santa.

Dear Santa
I want Grubby
I want Baby clothes
I want a play house
I want a Barbie shower
I want my Dog to have Bones
I want my Mom and my Dad to have a
I want my sister to have a Dog Picture
I want my brother to have picture
Duck Blanket
Your Friend,
Jennifer Nicholson

Dear Santa Claus,

I want a horse for Christmas more than anything else. I would also like a saddle for the horse. I know Christmas is only a few days away so I thought I would like to write you a letter.

I would like a barbie, with the glamour doll house. To go with that I would like the heart family surprise party set. Also the barbie remote control corvette that sparkles. I would like the barbie beauty salon & store. I would also like these barbies listed below: ken, skipper, western, twirly curls, tropical barbie, loving you barbie, magic moves, peaches and cream, crystal, sun tan skipper, tropical miko, baby dolls, and I guess more ken dolls.

The gift I want the most is to have a very merry Christmas.
Sincerely yours
Misty

AREA OIL & GAS NEWS

A Burkburnett-based operator has staked location for the No. 9 Hugh Reilly "A", developmental well to be located 5.5 miles southwest of Burkburnett. With projected total depth of 1,700 feet, the well is in a 140-acre lease in the Wichita Regular Field, J.B. Johnson Survey, A-169. The operator is Century Resources.

The well will be situated 275 feet from the north line and 1,570 feet from the west line of the survey.

A Wichita Falls-based operator has staked location for the No. 1-86 Brown, a wildcat well to be located 2.5 miles west of Medicine Mounds. With projected total depth of 8,700

feet, the well will be drilled in a 6,043-acre lease in Hardeman County's W&NW Survey, A-414. The operator is Cartex Energy.

The well will be drilled 1,900 feet from the north line and 300 feet from the east line of the lease.

The No. 1 Johnson, a 9,000-ft. wildcat well, is scheduled to be drilled in Hardeman County. Echo Production of Graham is the operator. The well will be spudded in an 80-acre lease four miles northeast of Quanah in the W&NW Survey, A-915.

New Meter Connections

Kathryn Shadley - 704 E. Ruby
Willie Reynolds - 305 W. Crystal
Darlene Price - 129 James
Terence W. Deathridge - 1601 Yucca
Faith Baptist Church #4 - 410 S. Wall
Linda Koerth - 1326 Edgehill
Raymond Tyler - 122 Westview
John D. Josey - 822 N. Park
Alan Sheffield - 708 W. Manes

HOLLIDAY SCHOOL LUNCH MENU

Monday, January 5
Breakfast: Donuts, applesauce, milk.
Lunch: Pizza, tater tots, English peas, milk, apple crunch.
Tuesday, January 6
Breakfast: Oatmeal, cinnamon toast, pears & milk.
Lunch: Stew or sandwich, buttered rice & sugar, peanut butter, crackers, cornbread, pineapple & milk.
Wednesday, January 7
Breakfast: French toast, peaches, milk.
Lunch: Chalupa, cheese, lettuce, tomatoes, French fries, milk, cake.
Thursday, January 8
Breakfast: Cereal, orange juice, milk.
Lunch: Chicken pot pie, mixed vegetables, broccoli & rice, peaches, milk.

College credit course in computers is offered

Vernon Regional Junior College will offer a college-credit course in microcomputers for business.

It will be held from 6:30 p.m. to 9:30 on Mondays.

Registration information and materials are available from Iowa Park High School teacher Jean Johnson. She can be contacted at 592-2391.

Late registration will be held at the high school at 6 p.m. Jan. 12.

The course is available to students wishing to gain knowledge or to work toward a college degree. The course is accredited and will transfer to most senior colleges and universities.

If approved by the local school board of trustees, high school seniors may enroll for college credit.

In order for the course to be taught, at least 15 students must enroll.

Bloodmobile to be here Monday

The Red River Regional Bloodmobile will make two stops in Iowa Park during January.

The first will be from 3:30 to 7 p.m. Monday at Faith Baptist Church.

According to Jim Grove, of the sponsoring Optimist Club, the goal of that stop will be 50 units of volunteer blood.

The second stop will be Jan. 26, at Iowa Park High School, reports Supt. Glen Mitchell.

In The Military

Elliott at Mather

Air Force Tech. Sgt. Noah L. Elliott Jr., son of Noah L. Elliott of 912 Louisa, Iowa Park, has arrived for duty with the 320th Bombardment Wing, Mather Air Force Base, Calif.

Elliott is a defensive serial gunner technician.

Barnett promoted

Charles B. Barnett Jr., son of Charles B. Barnett Sr. of Iowa Park, and Joan K. Hooper of Okemah, Okla., has been promoted in the U.S. Air Force to the rank of technical sergeant.

Barnett is a tactical aircraft maintenance technician at Randolph Air Force Base, with the 12th Organizational Maintenance Squadron.


Jesus is the Cornerstone

Cornerstone Pentecostal Church of God

SS - 9:45 a.m. Sun. Evening - 7:00
Sun. Morn. - 10:50 a.m. SERVICES- Wed. Evening - 7:00

Jesus said, upon this rock I'll build my church and the gates of hell shall not prevail against it. - Matthew 16:18

W. Smith Rd. Pastor: Duffy Terry 592-5520

 **Christ The King Catholic Church**

First and Clara Phone 592-2802
Rev. Mr. Patrick Burke, Pastor
8:45 a.m. C.C.D. - - 10 a.m. Mass

Pacific Avenue Missionary Baptist Church
1400 North Pacific Avenue

Larry Washburn
Pastor Church - 592-9711
Pastor - 592-4288

--Informal, Christ-Centered Worship for all ages--

Sunday School 9:45 a.m.
Morning Worship 11:00 a.m.
Evening Worship 6:00 p.m.
Wednesday 7:00 p.m.

 **First United Methodist Church**
201 E. Bank

Church School 9:40 Youth Meetings 5:00
Morning Worship 10:40 Evening Worship 6:00

LUCK MEYERS, PASTOR

ARE YOU WALKING ALONE?
We invite you to join people who care

First Presbyterian Church
Church School 9:30 a.m. Worship 11:00 a.m.
Betty Meadows - Pastor
211 S. Yosemite 592-4220

First Baptist Church
A Southern Baptist Church
of Iowa Park Yosemite at Park

SUNDAY SERVICES
Mornings
Sunday School 9:45
Worship 11:00
Evenings
Church Training 6:00
Worship 7:00

WEDNESDAY
Prayer Meeting 7:00
Choir Rehearsal 7:45

THE END OF YOUR SEARCH FOR A FRIENDLY CHURCH

ASSEMBLY OF GOD

SUNDAY:
9:45 a.m. Sunday School
11:00 a.m. Morning Worship
5-6:30 p.m. Missionettes & Royal Ranger
7 p.m. Evangelistic Service
Wednesday Service 7 p.m.

200 S. YOSEMITE
Charles Hensley, Pastor

Faith Baptist Church

"Where the Bible is taught, the family is emphasized, and where everybody is somebody."

411 S. Wall S.B.C. 592-4894

SUNDAY
Sunday School 9:30 a.m.
Morning Worship 8:20 & 10:40 a.m.
Church Training 6:00 p.m.
Evening Worship 7:00 p.m.

WEDNESDAY
Wednesday Evening Prayer 7 p.m.
Choir Rehearsal 8:00 p.m.

Nursery Care Provided - Full Range of Mission's and Children's Ministries

Pastor, Jerry L. Miller

Kamay Road Church of Christ
Corner of Colorado & Emerald

Seeking the Old Paths

Lord's Day
10:30 a.m. & 6 p.m.
Wednesday 7:00 p.m.

Lakeview Church of God

WEDNESDAY EVENING (FTH-Bible Study) 7:30 p.m.
SUNDAY SCHOOL 9:45 a.m.
SUNDAY MORNING WORSHIP 11:00 a.m.
SUNDAY NIGHT WORSHIP IS NOW 6:00 p.m.

Pastor Rev. Ole Olds, Pastor
592-9555 N. Victoria & Expressway Church 592-2776

IOWA PARK CHURCH OF CHRIST
300 East Park, Iowa Park, Texas 76367, (817) 592-5415

SCHEDULE OF SERVICES

Sunday
Bible Study 9:30 a.m.
Worship 10:30 a.m.
Evening Worship 6:00 p.m.

Wednesday
Evening Study 7:30 p.m.

Thursday
Ladies bible Class 7:30 p.m.
Call office for information



We offer a Free Bible Correspondance Course, Call for details.

Good Shepherd Lutheran Church
1st & Magnolia Iowa Park

Sunday School: 9:45 a.m.
Worship Service: 10:45 a.m.

Church of God
601 E. Cash

Pastor, S. A. Luke
Sunday School - 9:45 a.m.
Sunday Morning Worship - 11:00
Sunday Night Worship Service - 7:00 p.m.
Wednesday Night Service - 7:30 p.m.

Parish 592-5316 Office 592-4348

3:35 Angler's Notebook
4:00 Harvest Hour
4:30 Pull on the Hits
5:00 Musical Performances
5:30 Movie: Merry Trails, Theater
6:00
6:30
6:55
7:00
7:30
7:55
8:00
8:30
8:55
9:00
9:30
9:55
10:00
10:30
10:55
11:00
11:15
11:30
11:45
12:00
12:15
12:30
12:45
1:00
1:15
1:30
1:45
2:00
2:15
2:30
2:45
3:00
3:15
3:30
3:45
4:00
4:15
4:30
4:45
5:00
5:15
5:30
5:45
6:00
6:15
6:30
6:45
7:00
7:15
7:30
7:45
8:00
8:15
8:30
8:45
9:00
9:15
9:30
9:45
10:00
10:15
10:30
10:45
11:00
11:15
11:30
11:45
12:00
12:15
12:30
12:45
1:00
1:15
1:30
1:45
2:00
2:15
2:30
2:45
3:00
3:15
3:30
3:45
4:00
4:15
4:30
4:45
5:00
5:15
5:30
5:45
6:00
6:15
6:30
6:45
7:00
7:15
7:30
7:45
8:00
8:15
8:30
8:45
9:00
9:15
9:30
9:45
10:00
10:15
10:30
10:45
11:00
11:15
11:30
11:45
12:00
12:15
12:30
12:45
1:00
1:15
1:30
1:45
2:00
2:15
2:30
2:45
3:00
3:15
3:30
3:45
4:00
4:15
4:30
4:45
5:00
5:15
5:30
5:45
6:00
6:15
6:30
6:45
7:00
7:15
7:30
7:45
8:00
8:15
8:30
8:45
9:00
9:15
9:30
9:45
10:00
10:15
10:30
10:45
11:00
11:15
11:30
11:45
12:00
12:15
12:30
12:45
1:00
1:15
1:30
1:45
2:00
2:15
2:30
2:45
3:00
3:15
3:30
3:45
4:00
4:15
4:30
4:45
5:00
5:15
5:30
5:45
6:00
6:15
6:30
6:45
7:00
7:15
7:30
7:45
8:00
8:15
8:30
8:45
9:00
9:15
9:30
9:45
10:00
10:15
10:30
10:45
11:00
11:15
11:30
11:45
12:00
12:15
12:30
12:45
1:00
1:15
1:30
1:45
2:00
2:15
2:30
2:45
3:00
3:15
3:30
3:45
4:00
4:15
4:30
4:45
5:00
5:15
5:30
5:45
6:00
6:15
6:30
6:45
7:00
7:15
7:30
7:45
8:00
8:15
8:30
8:45
9:00
9:15
9:30
9:45
10:00
10:15
10:30
10:45
11:00
11:15
11:30
11:45
12:00
12:15
12:30
12:45
1:00
1:15
1:30
1:45
2:00
2:15
2:30
2:45
3:00
3:15
3:30
3:45
4:00
4:15
4:30
4:45
5:00
5:15
5:30
5:45
6:00
6:15
6:30
6:45
7:00
7:15
7:30
7:45
8:00
8:15
8:30
8:45
9:00
9:15
9:30
9:45
10:00
10:15
10:30
10:45
11:00
11:15
11:30
11:45
12:00
12:15
12:30
12:45
1:00
1:15
1:30
1:45
2:00
2:15
2:30
2:45
3:00
3:15
3:30
3:45
4:00
4:15
4:30
4:45
5:00
5:15
5:30
5:45
6:00
6:15
6:30
6:45
7:00
7:15
7:30
7:45
8:00
8:15
8:30
8:45
9:00
9:15
9:30
9:45
10:00
10:15
10:30
10:45
11:00
11:15
11:30
11:45
12:00
12:15
12:30
12:45
1:00
1:15
1:30
1:45
2:00
2:15
2:30
2:45
3:00
3:15
3:30
3:45
4:00
4:15
4:30
4:45
5:00
5:15
5:30
5:45
6:00
6:15
6:30
6:45
7:00
7:15
7:30
7:45
8:00
8:15
8:30
8:45
9:00
9:15
9:30
9:45
10:00
10:15
10:30
10:45
11:00
11:15
11:30
11:45
12:00
12:15
12:30
12:45
1:00
1:15
1:30
1:45
2:00
2:15
2:30
2:45
3:00
3:15
3:30
3:45
4:00
4:15
4:30
4:45
5:00
5:15
5:30
5:45
6:00
6:15
6:30
6:45
7:00
7:15
7:30
7:45
8:00
8:15
8:30
8:45
9:00
9:15
9:30
9:45
10:00
10:15
10:30
10:45
11:00
11:15
11:30
11:45
12:00
12:15
12:30
12:45
1:00
1:15
1:30
1:45
2:00
2:15
2:30
2:45
3:00
3:15
3:30
3:45
4:00
4:15
4:30
4:45
5:00
5:15
5:30
5:45
6:00
6:15
6:30
6:45
7:00
7:15
7:30
7:45
8:00
8:15
8:30
8:45
9:00
9:15
9:30
9:45
10:00
10:15
10:30
10:45
11:00
11:15
11:30
11:45
12:00
12:15
12:30
12:45
1:00
1:15
1:30
1:45
2:00
2:15
2:30
2:45
3:00
3:15
3:30
3:45
4:00
4:15
4:30
4:45
5:00
5:15
5:30
5:45
6:00
6:15
6:30
6:45
7:00
7:15
7:30
7:45
8:00
8:15
8:30
8:45
9:00
9:15
9:30
9:45
10:00
10:15
10:30
10:45
11:00
11:15
11:30
11:45
12:00
12:15
12:30
12:45
1:00
1:15
1:30
1:45
2:00
2:15
2:30
2:45
3:00
3:15
3:30
3:45
4:00
4:15
4:30
4:45
5:00
5:15
5:30
5:45
6:00
6:15
6:30
6:45
7:00
7:15
7:30
7:45
8:00
8:15
8:30
8:45
9:00
9:15
9:30
9:45
10:00
10:15
10:30
10:45
11:00
11:15
11:30
11:45
12:00
12:15
12:30
12:45
1:00
1:15
1:30
1:45
2:00
2:15
2:30
2:45
3:00
3:15
3:30
3:45
4:00
4:15
4:30
4:45
5:00
5:15
5:30
5:45
6:00
6:15
6:30
6:45
7:00
7:15
7:30
7:45
8:00
8:15
8:30
8:45
9:00
9:15
9:30
9:45
10:00
10:15
10:30
10:45
11:00
11:15
11:30
11:45
12:00
12:15
12:30
12:45
1:00
1:15
1:30
1:45
2:00
2:15
2:30
2:45
3:00
3:15
3:30
3:45
4:00
4:15
4:30
4:45
5:00
5:15
5:30
5:45
6:00
6:15
6:30
6:45
7:00
7:15
7:30
7:45
8:00
8:15
8:30
8:45
9:00
9:15
9:30
9:45
10:00
10:15
10:30
10:45
11:00
11:15
11:30
11:45
12:00
12:15
12:30
12:45
1:00
1:15
1:30
1:45
2:00
2:15
2:30
2:45
3:00
3:15
3:30
3:45
4:00
4:15
4:30
4:45
5:00
5:15
5:30
5:45
6:00
6:15
6:30
6:45
7:00
7:15
7:30
7:45
8:00
8:15
8:30
8:45
9:00
9:15
9:30
9:45
10:00
10:15
10:30
10:45
11:00
11:15
11:30
11:45
12:00
12:15
12:30
12:45
1:00
1:15
1:30
1:45
2:00
2:15
2:30
2:45
3:00
3:15
3:30
3:45
4:00
4:15
4:30
4:45
5:00
5:15
5:30
5:45
6:00
6:15
6:30
6:45
7:00
7:15
7:30
7:45
8:00
8:15
8:30
8:45
9:00
9:15
9:30
9:45
10:00
10:15
10:30
10:45
11:00
11:15
11:30
11:45
12:00
12:15
12:30
12:45
1:00
1:15
1:30
1:45
2:00
2:15
2:30
2:45
3:00
3:15
3:30
3:45
4:00
4:15
4:30
4:45
5:00
5:15
5:30
5:45
6:00
6:15
6:30
6:45
7:00
7:15
7:30
7:45
8:00
8:15
8:30
8:45
9:00
9:15
9:30
9:45
10:00
10:15
10:30
10:45
11:00
11:15
11:30
11:45
12:00
12:15
12:30
12:45
1:00
1:15
1:30
1:45
2:00
2:15
2:30
2:45
3:00
3:15
3:30
3:45
4:00
4:15
4:30
4:45
5:00
5:15
5:30
5:45
6:00
6:15
6:30
6:45
7:00
7:15
7:30
7:45
8:00
8:15
8:30
8:45
9:00
9:15
9:30
9:45
10:00
10:15
10:30
10:45
11:00
11:15
11:30
11:45
12:00
12:15
12:30
12:45
1:00
1:15
1:30
1:45
2:00
2:15
2:30
2:45
3:00
3:15
3:30
3:45
4:00
4:15
4:30
4:45
5:00
5:15
5:30
5:45
6:00
6:15
6:30
6:45
7:00
7:15
7:30
7:45
8:00
8:15
8:30
8:45
9:00
9:15
9:30
9:45
10:00
10:15
10:30
10:45
11:00
11:15
11:30
11:45
12:00
12:15
12:30
12:45
1:00
1:15
1:30
1:45
2:00
2:15
2:30
2:45
3:00
3:15
3:30
3:45
4:00
4:15
4:30
4:45
5:00
5:15
5:30
5:45
6:00
6:15
6:30
6:45
7:00
7:15
7:30
7:45
8:00
8:15
8:30
8:45
9:00
9:15
9:30
9:45
10:00
10:15
10:30
10:45
11:00
11:15
11:30
11:45
12:00
12:15
12:30
12:45
1:00
1:15
1:30
1:45
2:00
2:15
2:30
2:45
3:00
3:15
3:30
3:45
4:00
4:15
4:30
4:45
5:00
5:15
5:30
5:45
6:00
6:15
6:30
6:45
7:00
7:15
7:30
7:45
8:00
8:15
8:30
8:45
9:00
9:15
9:30
9:45
10:00
10:15
10:30
10:45
11:00
11:15
11:30
11:45
12:00
12:15
12:30
12:45
1:00
1:15
1:30
1:45
2:00
2:15
2:30
2:45
3:00
3:15
3:

Highlights of 1986 are reviewed

Continued from page 1
 School trustees approved a 75-cent tax rate for Iowa Park. Congressman Beau Boulter met with area agriculture leaders at the Farm Bureau office to discuss farming problems. Iowa Park city budget was set at 77-cents. Jet OJ, owned by Mr. and Mrs. James "Bud" Wells became the first locally-owned horse to qualify for the All American Quarterhorse Futurity.

SEPTEMBER
 Iowa Park schools opened with only 11 more pupils than they had the first day of school in 1985, but Kidwell had an increase of 40. City employees asked that a change in insurance coverage be made. A men's slow pitch softball team, composed mostly of Cryovac employees, placed 25th among 79 teams at the Class "A" Industrial Softball Tournament held in Montgomery, Ala. A resident of Woodbriar Apartments, Bobby T. McBride, 57, was struck and killed on the westbound access road while walking at night. A telephoned bomb threat shortened the annual Whoop-T-Do by two hours. Lana Swain was crowned homecoming queen, and the Classes of 1936 and 1946 held reunions. Specially-minted medallions were presented

to Whoop-T-Do winners by the Sesquicentennial group.

OCTOBER
 Funeral services were held for Tom Corridon, first white baby born (July 11, 1889) in Iowa Park. Kevin Coffman was elected Area Four Young Farmers president. The city council suspended Police Chief Bob Dean, who later tendered his resignation. The city council learned the insurance it had taken out on its employees was not in force, even though the first premium had been paid. Iowa Park High's band earned a Division One rating in the UIL marching contest. New full-color brochures were acquired by the Chamber of Commerce, replacing a publication which had been in use almost 20 years. The Buffalo Chip Kickers Volksmarch Club of Wichita Falls held a 10-kilometer walk through the city, attracting more than 200 participants. High school choral department students spent an entire day cleaning up roadsides as a fund-raising project. Interested persons organized a local Future Farmers of America Booster Club, and elected Mrs. Paul Chandler as their first president. The city council changed its format for electing aldermen, from at-large to by place, as did the school board the previous year. School trustees accepted a

bid of \$43,747 to repair and resurface the track at Hawk Stadium. An Iowa Park man, Kent Edward Fairchild, survived a stabbing in the stomach and his assailant, Oscar Bethel, was jailed.

NOVEMBER
 Iowa Park High's Mean Green Marching Machine qualified for the state UIL marching contest, and placed second. Former governor Bill Clements carried four of the five area boxes, as well as the rest of the state, in the general election. The Hawks finished in second place in the final Dist. 6-AAA standings behind Breckenridge. IPHS graduate Stan Blair, a professional opera singer, presented a program with the assistance of the A Cappella Choir. At the annual Chamber election, Frank Gossett was voted president, Robert Palmer first vice president and Kenneth Via second vice president. The Hawk Junior Varsity finished the season undefeated in district play. Sixteen members of the A Cappella Choir qualified for the Region Two choir and seven for state auditions. Roy Boutwell ten-

dered his resignation from the school board, effective April 1, after 11 years as a trustee.

DECEMBER
 Santa Claus made an early appearance in the community when he attended a ceremony to turn on the new decorative lights on Park Ave. Holiday's Eagles lost 35-21 to Mart in their bid for a regional championship. The Hawks lost 16-7 to Lampasas in the state quarterfinals after beating Ballinger 27-12 in bi-district, Robinson 24-0 in area and Kermit 36-14 in region. Dairy Queen was burglarized for the second time in four weeks. Workers removed the old metal tower which had stood for decades over the well on the east side of city hall. Iowa Park schools overspent revenues by \$17,000, but underspent the budget by \$384,000, according to the audit. Alan Sheffield was selected from a field of 20 applicants for the new police chief. Burt Williamson was named president of State National Bank by the board of directors. An arsonist made an unsuccessful attempt to burn out Family Hairstyles, which is housed in the old school homemaking building which more recently housed the city library.

Final Hawk Season Statistics

	Iowa Park	Opp.
Scoring	294	146
First Downs	226	161
Yards Rushing	3569	1696
Yards Passing	631	1010
Total Yards	4200	2706
Passes	51/120	68/170
Fumbles Lost	24	19
Interceptions By	24	7
Penalties	100	71
Penalty Yardage	1002	595
Rushing Plays	650	538
Total Offensive Plays	761	701

Individual Rushing Yardage

	Carries	Yards
Danny Forman	240	1384
Scott Weaver	119	714
David Meissner	28	234
Eric Whitman	28	284
Jim Cummings	43	195
Scott Davis	47	205
Joel Galloway	69	374
Jeff Huff	13	-17
Jerry Flesher	6	20
Billy Kenyon	4	41
Chad Fielding	14	85
Gary Tatum	14	57
Robert Adams	8	16
Brad Huff	3	-18
Jeff Merklin	8	-10

Pass Receptions

	Catches	Yards
Scott Weaver	22	231
Danny Forman	10	112
Brad Huff	8	139
Stan Coker	2	45
Richard Morath	1	10
Jim Cummings	2	25
Steve Allen	1	13
Joel Galloway	2	16
Gary Tatum	1	10
Billy Kenyon	1	37
Gregg Young	1	-7

Mission of mercy

Doctor going to Mexico to help repair facial deformities of residents

(Editor's Note: this article is a reprint from the Dec. 23 Dallas Morning News, written by Ana Puga, about Iowa Park native Steve Watson, son of Mrs. Hoyt Watson and the late Hoyt Watson. His wife, Karen, is the daughter of Mr. and Mrs. W.A. George.)

Dr. Stephen W. Watson has known Mexico only through his vacations. Next month the Duncannon oral surgeon will visit a Mexican city famous for its crafts -- not to shop, but to help repair the facial deformities of about 50 rural residents.

"It should be something totally different," he said. "I've never done anything like this before."

Watson will join a seven-member U.S. medical team that will spend Jan. 17-24 in Puebla, Mexico's third-largest city. The patients will be taken to Puebla, which is about 50 miles south of Mexico City, from rural areas by Carita, an international Catholic group, said Dr. Thomas S.

Jeter, the trip's organizer.

Jeter, a San Angelo oral surgeon, said he led his first team of physicians to Mexico in 1980 because he wanted to "help people who are underprivileged and perform a type of surgery that I think is very exciting."

"One of our oldest patients last year was 65 and had an unrepaired cleft -- a hole in his face," Jeter said. "That is almost unheard of in this country."

Though Mexican surgeons know the techniques necessary to repair facial deformities, there are too few doctors in rural areas, Jeter said.

The majority of the patients Jeter's team will treat suffer from cleft lips or cleft palates, which Watson said required "an artistic feel" to repair.

A cleft lip results when one side of a person's lip grows but the other side does not, creating an indentation in the face that may run as high as the eye, Watson said. In a cleft palate, the two sides of the roof of the mouth do not fuse correctly, creating a chasm between the mouth and

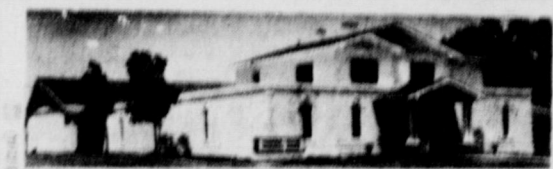
nose, he said. Patients with cleft lips or cleft palates suffer from an unsightly deformity and often have trouble speaking, eating or breathing.

Corrective surgery requires "cutting very precisely, rearranging the lip, face and nose tissue, then stitching it up," Watson said.

Watson said he spoke little Span-

ish and did not know much about Mexican culture. But the stigma of facial deformities is universal, he said.

"If you were 14 and looked like this," he said showing a slide of a young man with a lip that curves up toward his nose, "I don't care where you live, you aren't going to want it."



TANNER-AULDS FUNERAL HOME
 -Since 1908-

300 E. Cash "Our family serving your family" 592-4151

GOLDEN

FRIED CHICKEN
 Loop 370 & Pacific Ave. - Iowa Park

EVERY SUNDAY
3-Pc. Country Dinner
\$2.79
 Regular price of 2-pc. dinner

Dinners	
3 pieces of Golden Fried Chicken, Corn on the Cob, Cole Slaw or Potato Salad, French Fries, and a Biscuit.	3.39
2 pieces of Golden Fried Chicken, Corn on the Cob, Cole Slaw, or Potato Salad, French Fries, and a Biscuit.	2.79

Chicken 'N Biscuit	
3 Pieces - 1 Biscuit	
All Dark	1.99
Mixed	2.19
All White	2.79
2 Pieces - 1 Biscuit	
All Dark	1.49
Mixed	1.59
All White	1.89

FAMILY PAK	
10 Pieces	4 Biscuits 6.89
15 Pieces	5 Biscuits 9.99
20 Pieces	6 Biscuits 12.79

TENDERS	
4 Pieces	Biscuit and Gravy 2.39
7 Pieces	Biscuit and Gravy 3.59
15 Pieces	Biscuit and Gravy 6.99

FIXING'S	REGULAR	FAMILY
French Fries	.65	1.75
Corn on the Cob	.49	1.69
Cole Slaw or Potato Salad	.49	1.69
Mashed Potato	.49	1.75
Jalapenos	each .19	
Apple Pie	.49	
Biscuits	.39 each	1/2 Dozen 1.75 1 Dozen 3.59
Country Gravy	.29	1.09
Cookies	.39 each	1/2 Dozen 1.75 1 Dozen 3.59
Pepper Puppies	.59 each	

Drinks		
Coke	Dr. Pepper	Sprite
Lemonade	Fresh Brewed Iced Tea	Diet Coke
.55	.70	.85
	Coffee .35	

SNACK PAK 1 Piece Golden Fried Chicken, French Fries, Biscuit 1.29
 45 extra for Breast
592-2811

This Week's Special

Frisco Burger

\$1.59

Reg. \$1.90



805 West Highway

FOR TAKE OUT ORDERS

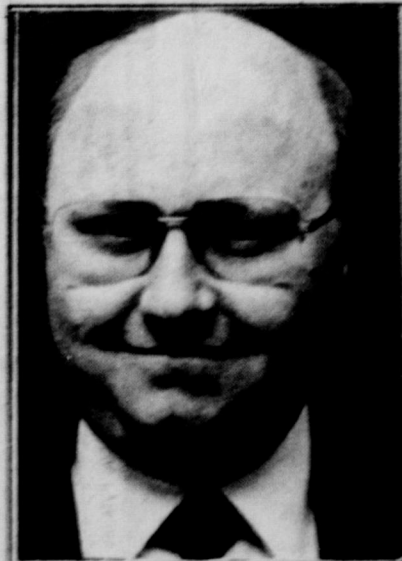
CALL 592-4731

Allstate Update: Auto Insurance

"Does your auto insurance need a tune-up?"

Robbin Crawford

Agent
 311 North Wall
 Iowa Park
 Bus. 592-2726
 Res. 592-4873



your coverage and rate. And maybe you'll drive out with a better value. You're in good hands with Allstate!

When you keep your car running well, you can feel the difference. But what about your auto insurance? For all the money you put into it, your coverage still could be badly out of tune. And you might not even know it.

Maybe it's time to compare policies. Auto rates and coverages aren't the same at every company, and lots of folks are finding out they get a better deal with Allstate.

Our office is nearby, so why not bring in your auto policy or give me a call? I'll help you compare

Allstate
 Allstate Insurance Company

2:40 (2) (3) (4) (5) (6) (7) (8) (9) (10) (11) (12) (13) (14) (15) (16) (17) (18) (19) (20) (21) (22) (23) (24) (25) (26) (27) (28) (29) (30) (31) (32) (33) (34) (35) (36) (37) (38) (39) (40) (41) (42) (43) (44) (45) (46) (47) (48) (49) (50) (51) (52) (53) (54) (55) (56) (57) (58) (59) (60) (61) (62) (63) (64) (65) (66) (67) (68) (69) (70) (71) (72) (73) (74) (75) (76) (77) (78) (79) (80) (81) (82) (83) (84) (85) (86) (87) (88) (89) (90) (91) (92) (93) (94) (95) (96) (97) (98) (99) (100)

BUYING? SELLING? RENTING? HIRING? WANT ADS PAY OFF

DEADLINES

10 A.M. WEDNESDAY (Word Ads Only)
4 P.M. TUESDAY, DISPLAY ADS

**SAVE 8¢ PER WORD FIRST
INSERTION BY PAYING
WITH COPY AT OFFICE**

**RATES:
23¢ PER WORD FIRST INSERTION
15¢ PER WORD EACH REPEAT**

For Rent

FOR LEASE near high school on Edgell, 3 bedroom house, excellent condition \$375 month, cleaning deposit required. Call Jack Kerr, 1-495-3411. 12-4-tfc

THREE BEDROOM house insulated, fenced yard, 318 W. Diamond, 592-9088. 1-1-1tp

FOR LEASE - 128 Wood Circle, 3 bedroom, 2 bath, 1260 sq. ft., fireplace. Deposit required. \$425 month. 592-4747. 1-1-2tp

FOR LEASE - One bedroom house, carpet, appliances, carpet, drapes, mini blinds, ceiling fans, refrigerated air. 592-5726. 1-1-1tp

FOR RENT - 1305 Sunset, 3 bedroom, refrigerator, 1 1/2 bath, air/heat, garage, fenced yard. \$150 deposit, \$350. 692-4831. 12-25-2tp

TWO BEDROOM, lots of space, all appliances included, no pets. \$350 mo., deposit required. Call 855-9668 or 855-9670. Rick. 9-18-tfc

NEW 3-BEDROOM brick homes with central heat/air. Energy efficient. Hamilton Construction, 855-6100. 7-10-52tp

NEWLY REFURNISHED - Fresh paint, curtains, wallpaper. Corner lot with double carport and fenced yard. 3 bedroom with central heat and air. 616 West Texas. Easy to own as owner will consider trade or shared equity. See this one today for only \$41,950. Dvorken Realtor, Owner 322-5291. 9-18-tfc.

2 ACRE tract, with water. \$9,800. 592-2633. 1-1-4tp

50 X 100 CONCRETE block building on 80X300 lot, one block north Quicke Food Store. H.R. Sullivan, 592-4214. 11-13-tfc

NEED YOUR house cleaned? Call Judy Woods at 1-438-2368. 1-1-2tp

WOULD LIKE to clean houses 592-2955. 1-1-4tc

MARY KAY cosmetics, Ann Moore, 592-4752. 9-18-26tp

BAKER BRO'S Oak fire-wood. \$55/truck, \$100/cord. (405) 875-2514, Walters, Ok. 12-18-3tp

BILL'S MOWING Service Edging, trimming, weed eating, grass catching available, light hauling. 592-4923, 592-2287. 1-1-tfc

COPIES MADE - 20¢ each including reduction and enlargement. Iowa Park Air Conditioning, 607 E. Bank. 10-2-tfc

MINI-CON Self-storage

- Variety of sizes.
- Competitive prices.
- Locally owned and operated.
- Monthly rates.

805 W. Hwy. 592-2761

Notice

LOST - American Husky Spitz female in vicinity of 601 W. Washington. Contact Bobby Morgan at Park Ford 592-4106. 1-1-tfc

FOUND - Poodle at S. Yosemite and Jefferson. Call and identify 592-4827 after 5:30 p.m. 1-1-nc

Buzbee Roofing

...and other work
Phone 592-4846
ALL WORK GUARANTEED

Misc. For Sale

BOX SPRINGS, full; sewing machine, 592-2259. 1-1-1tp

TWIN CANOPY bed frame. Sears Bonnet collection. Bedspread and curtains. \$75 or best offer. 592-5159. 1-1-1tp

Business

PARTY TIME for kids while you go out New Years Eve. Snacks, games, VCR movies, party favors. For information call Dianna Miller, 592-9561. 12-18-3tp

REGISTERED child care. Monday - Friday. 592-9055. 12-11-4tp

Real Estate

RESIDENTIAL LOT, country living close to town. No restrictions. Build your dream home, \$1,250. Call Joan 592-5540 or Roland and Donnell 692-1903. 12-4-tfc

Homes For Sale

LOOK AT THIS - 12x65, 2 bdrm., previously owned home. Will move to your location and hook up your water, sewer and gas. \$5,111 complete move in. Hurry while this bargain lasts. Call collect today. Wichita Falls, 767-3395. 1-1-1tc

Realty World Elvin Dudley
4001 Callfield
Wichita Falls
691-7101

NEW THREE BEDROOM brick homes with central heat and air, energy efficient, and fully carpeted. Low monthly payments if you qualify. Swan Construction Co. 692-8788. 3-14-tfc

1613 YUCCA - The perfect family home, 4 bedrooms, 2 1/2 baths, formal living room and dining room, family room, game room plus 1.72 acre lot.

711 W. COLEMAN - 3 bedrooms, 2 story, \$61,000, FHA appraised. Large rooms.

Connie Rowell
767-0321

Gene Weaver Key Realty
692-8461
592-8381
hm. 592-9574

108 N. Hawthorne. Will owner finance with approved credit and \$5,000 down. 3 bedroom on 2 lots with double garage.

The sign of the leader.

More people recognize the CENTURY 21 sign than any other sign in real estate. So give our CENTURY 21 office a call. And put all the power of Number 1 to work for you.

BETTY GUYETTE
592-2761
Put Number 1 to work for you.

Century 21 GOLD COAT REALTY
476 BROOKDALE
696-5561

1215 South Wall Very nice 3 bedroom, 1 1/2 baths home. Owners need to sell. Under \$30,000.

207 Valley Drive in South Iowa Park. Very nice 3 bedroom, 1 1/2 bath, brick. Priced \$38,500.

23 Acres Improved. Small, unfinished house, 56' barn, 100' well with pump house, good tank, fenced. 35 miles south of Wichita Falls on Highway 281. \$24,900.

Lee McQuerry
Realtor/Broker
692-1551
Realty World
691-7101
Elvin Dudley
4001 Call Field

NOW AVAILABLE 1-Bedroom Apartments

Energy efficient, central heat/air, total electric appliances, fully carpeted and draped. Children's play area. Off-street parking. Fully equipped laundry room. Month to month rent starting at \$189.00 for one bedroom apartment (to qualified persons). Water paid.

Colonial Heights Apartments

Call
592-2705
"EQUAL HOUSING"

Woodbriar Apartments

ALL BILLS PAID
✓ 1, 2, 3 bedroom
✓ Cable
✓ Senior Citizen Discount
✓ \$100 off first month's rent
592-2121

Quail Run Apartments

1-2 Bdrm., Ground Floor, Central Heat & A/C. Appliances, Laundry. Close to school & public park. Starting at \$205 per month to qualified tenants. Gas & water paid.

Call 592-2933

COUNTRY LIVING Approximately 1.38 acres at the edge of town. Three bedrooms, large living-room, kitchen and breakfast area. \$47,500.

THREE BEDROOM Livingroom, den, central heat, kitchen & dining, fenced yard, storage bldg., carpet & panelling. \$28,500.

BELOW APPRAISAL Three bedrooms, 1 1/2 baths, large livingroom, large kitchen and breakfast room. Fresh paint, central heat and air.

TWO BEDROOMS One bath, large living-room & den. Kitchen & dining area, utility room, fenced yard, good assumable loan. \$32,500.

For information on these and other properties, call now.

JOHNNY LEE REAL ESTATE
592-2378
109 W. CASH

MEMBER MULTIPLE LISTING SERVICE

KING'S KIDS CHRISTIAN DAYCARE & PRESCHOOL

"Iowa Park's finest for Parents who care"

202 N. Jackson 592-4242

ANNOUNCING NEW SERVICE

INFANT-CARE NEWBORN THRU 10 YEARS

PRESCHOOL CLASSES for ages 2 thru 5 at NO EXTRA CHARGE FOR OUR Regular Customers.

NEW YEARS SPECIAL 1 WEEK FREE for ALL NEW FULLTIME STUDENTS after first month

• Limited offer
CALL FOR DETAILS -

Cindy Witherspoon 592-5381 692-8461 592-4964

When quality, service & dependability are a must - We are the Key

KEY REALTY

NEAR KIDWELL ELEMENTARY - Corner lot, beautifully decorated, new carpets, 2 living areas, 3 bdrms., 2 3/4 baths, many extras, owner has the price to sell.

KEY REALTY

WELL LANDSCAPED - 4 bedroom, storm cellar, wooden storage shed, beautiful fireplace in spacious living room. \$51,500.

KEY REALTY

QUAIL VALLEY - 4 bedroom, 2 living areas, 3 full baths, 5 acres, fireplace, game room with wet bar.

KEY REALTY

THIS BEAUTY IS 3 YRS. OLD - 3 bedroom, 2 baths, pentagon dome ceiling in dining room, and latticed arbor on patio, storage shed, reduced to \$64,000.

KEY REALTY

CITY VIEW - lovely corner lot, 3 bedroom 2 living areas, Mid \$30's

KEY REALTY

2 STORY-3 bedroom, 2 bath, extra storage, lots of tree, immediate possession, very clean, one of Iowa Parks finest areas, call for appointment to see!

KEY REALTY

COUNTRY LIVING CITY CONVENIENCE-Extra clean 3 bdrm., 1 3/4 bath, 2 car garage, large trees. Mid 50's.

KEY REALTY

ENERGY SAVING FEATURES-3 bedroom, 1 1/2 baths, storm windows, new carpets & vinyl, excellent neighborhood, near elementary school.

KEY REALTY

BEN FRANKLIN FIRE-PLACE-Approx. 1600 sq. ft., 3 bdrm., 2 full baths, sunken living room, beautiful decorated. \$33,500.

KEY REALTY

SATELLITE DISH-goes with home. Beautifully decorated extra clean, 3 bedroom, 1 1/2 bath, brick home, owner must move, bring all offers, 45,000.

Colonial Heights Apartments

Magnolia St. at Johnson Rd. IOWA PARK

One and two-bedroom apartments, energy efficient, central heat/air, total electric appliances, fully carpeted and draped. Children's play area. Off-street parking. Fully equipped laundry room. Month to month rent starting at \$189.00 for one bedroom, and \$229 for two bedroom apartment (to qualified persons). Water paid.

CALL **592-2705** EQUAL HOUSING

\$100 For info to the conviction or person theft, fishing or of cur Wichita, ger, Clay, other count may ha located. T Co., TS& Ph. 817-49

OUR AFFOR MO

Quality and Workman Special V... if you're fo water heater price, call u

FEAT

- Dense insulation
- Parce tank
- Anode protection
- Five-year warranty
- Two-year rantly (B and featur model of \$30-gallon

\$12 Includes in town

Par

Master PLUMBER

Pos

We serv refriger 208 J

DATA CONTROL CODES

5700
5800
5900
5030

0011
0012
0022
0023
0031
0033
0034
0035
0036
0037
0041
0042
0051
0052
0081
6050

5060
6060
7000
1200
0100
1300
3000

AREA OIL & GAS NEWS

drive 55

EXPRESS YOURSELF
with a letter to the editor

Iowa Park Leader
P.O. Box 430
Iowa Park, TX 76367

\$1000 REWARD
For information leading to the arrest and conviction of any person or persons involved in theft, vandalism, arson, fishing or hunting on any of our properties in Wichita, Archer, Wilbarger, Clay, Wise or any other county in which we may have equipment located. Tom Swanson Oil Co., TS&T Drilling Inc. Ph. 817-495-3971.



Monty & Son's SEPTIC TANK SERVICE
592-4928

A 1,550-ft. developmental well is scheduled for spudding in the Wichita Regular Field about one mile south of Kamay. Raymonds Operating of Kamay is to be the operator. The well will be known as the No. 2 Kemp-Kempner. It is in an 81-acre lease in the KMA District May III. Location is 1,223 feet from the north line and 1,500 feet from the east line of Block 41.

Operating out of Burkburnett, J.B. Clark Energy has staked location for a shallow developmental bid in the Wichita Regular Field, seven miles northeast of Electra. It will be known as the No. 16 Foster "C" with total depth projected to 400 feet. Location is in a 133-acre lease in the A&MG Survey A-273, 2,240 feet from the north line and 1,000 feet from the east line of the survey.

Showing ability to pump 16 barrels of 40-gravity oil daily, the No. 58 S.M. Daniels has been completed in the Wichita Regular Field, four miles southeast of Burkburnett. F.T. Felty is the operator.

Felty took the hole to a 1,355-ft. bottom and perforated the Cisco Sand for production, 1,254 to 1,263 feet into the hole. Water production totaled five barrels daily. Drillsite is 1,770 feet from the south line and 1,350 feet from the east line of the survey.

Pumping 10 barrels of 39-gravity crude per day plus 31 barrels of salt water, the No. 8 Burnett "D" has been brought on line in the Wichita Regular Field two miles southeast of Fowlkes.

With Williams Petroleum as the operator, the well probed to a 1,000-ft. bottom and will produce from a set of Permian Sand perforations 297 to 302 feet into the wellbore. Location is 1,210 feet from the north line and 2,655 feet from the east line of the survey.

D.D. Strange, independent operator from Wichita Falls, is preparing to make hole for the No. 16 Earle "A" in the Wichita Regular Field, five miles northeast of Kamay. The well carries permit for 250 feet of hole. It is in an 82-acre lease in the H.B. Balch Survey A-12. Location is 2,650 feet from the north line and 150 feet from the west line of the survey.

Combined potential of 30 barrels daily was posted when J.B. Clark Energy finished two new producers in the Foster lease of the Wichita Regular Field, about seven miles northeast of Electra.

The wells are known as the No. 14 and No. 15 Foster "C". They showed ability to pump 10 and 20 barrels of 39-gravity crude per day, respectively.

They were drilled to 389 and 377-ft. bottoms and will produce from perforations in the Cisco Sand ranging from 312 to 345 feet into the wellbore.

The No. 14 well is located 2,600 feet from the south line and 650 feet from the east line of the survey, while the No. 15 well is located 2,600 feet from the south line and 350 feet from the east line of the survey.

Deep Oil Inc. has abandoned a workover and re-entry location at a 32-year-old producer in the Wichita Regular Field, 2.5 miles southwest of Iowa Park. The well is designated as the No. 1 Maude Stonecipher "B", originally completed by A.W. Komarek. It produced from perforations at 4,112 to 4,140 feet.

West Landrum has abandoned two undrilled locations in the Wichita Regular Field three miles southeast of Clara. The wells carried permit for 1,900 feet of hole and were designated as the No. 43 and 44 Hugh Reilly "L."

First production figures have been posted for a new pumping oiler in the Wichita Regular Field, one-half mile southeast of Electra. S&J Operating's No. 33 W.T. Waggoner Estate "B" pumped two BOPD plus six barrels of salt water daily.

It bottomed at 1,998 feet and will produce from Pennsylvanian perforations at 1,930 to 1,941 feet. Oil tested at 39-gravity. Drillsite is 150 feet from the south line and 290 feet from the east line of the survey.

EP Operating has completed a work-over operation at the No. 1 Degan "55", a developmental well in Hardeman County's Medicine Mounds Field. The well is located one mile north of Medicine Mounds in a 254-acre lease in the W&NW Survey, A-511.

The well pumped 32 barrels of oil per day from perforations in the Atoka Conglomerate Formation, 7,302 to 7,410 feet into the wellbore.

The original operator, Enserch Exploration Inc., previously completed the well Sept. 10, 1984, and it produced from perforations in the Mississippi Formation at 8,182 to 8,190 feet into the hole. The original total depth was 8,570 feet, and EP plugged the well back to 8,030 feet.

Drillsite is 1,650 feet from the north line and 1,570 feet from the

west line of the lease.

A Wichita Falls-based operator has staked location for the No. 1 Cato "320", a wildcat well to be located six miles south of Medicine Mounds. With projected total depth of 8,200 feet, the well will be drilled in a 160-acre lease in Hardeman County's H&TC Survey, A-1521. The operator is Paul DeCleva Inc.

The well will be drilled 1,498 feet from the south line and 1,432 feet from the east line of the lease.

The No. 1-A Walser-Walser Unit, an 8,800-ft. wildcat well, is scheduled to be drilled in Hardeman County. Fortson Oil of Fort Worth is the operator. The well will be spudded in a 44-acre lease three miles east-southeast of Medicine Mounds in the H&TC Survey, A-121.

Location is 2,163 feet from the north line and 2,286 feet from the west line of the lease.

A 4,500-ft. developmental well is planned by Marshall Energy of Dallas at a drillsite two miles southwest of Kamay, Wichita County. The location is in a 38-acre lease in the W.H. Spillers Survey, A-258. Well's designation is the No. 1-M M/Bank. It will be drilled in the K-M-A Field.

The well will be drilled 4,266 feet from the south line and 330 feet from the west line of the lease.

J&I Oil of Burkburnett has revealed plans to drill two 1,900-ft. developmental wells in the Wichita Regular Field. The operator has 31 acres leased, with drillsites in the DL&C Survey, A-616 and has designated the ventures as the Nos. 27 and 28 Newell-Hoppes. Drillsites are five miles south-southeast of Burkburnett.

The No. 27 well will be located 150 feet from the north line and 150 feet from the east line of the survey.

Drillsite for the No. 28 well is 450 feet from the north line and 150 feet from the east line of the survey.

J.F. Hood of Fort Worth has filed for permit to drill the No. 3 Texaco-Sun, a 2,000-ft. developmental well 1.5 miles south of Fowlkes. Location is in a 40-acre lease in the H&GN Survey, A-432. The well will be in the Wichita Regular Field. Location is 510 feet from the south line and 1,470 feet from the west line of the lease.

OUR MOST AFFORDABLE MODEL

Quality and Workmanship At a Special Value Price

If you're looking for a new water heater at an affordable price, call us today.

FEATURES

- Dense fiberglass insulation
- Porcelain glass-lined tank
- Anode rod for corrosion protection
- Five-year tank warranty
- Two-year parts warranty (Best warranties and features for standard model of the business)
- 90-gallon, gas or electric

\$124⁹⁵

Includes free delivery in town

Parkway

True Value HARDWARE & FURNITURE

200-206 W. Bank
592-4512 592-4681

Master PLUMBER

Over 15 yrs. exp.

Hayley Phone Service

Jack Hayley 592-2340

- Prewiring
- Repair
- Installation
- Jacks

HAPPY NEW YEAR!

Good luck, health and prosperity are our wishes for the New Year to all our customers.

PARK

600 WEST HIGHWAY PHONE 592-4106

Posey's Appliance Service

We service all makes of washers, dryers, freezers, refrigerator and window air conditioners.

208 James Phone 592-5452

IOWA PARK CONSOLIDATED INDEPENDENT SCHOOL DISTRICT
IOWA PARK, TEXAS
COMBINED STATEMENT OF REVENUES, EXPENDITURES, AND CHANGES IN FUND BALANCE
ALL GOVERNMENTAL FUND TYPES
YEAR ENDED AUGUST 31, 1986

DATA CONTROL CODES	Notes	GOVERNMENTAL FUND TYPES				TOTALS (MEMORANDUM ONLY)	
		10 GENERAL FUND	20/30/40 SPECIAL REVENUE FUND	50 DEBT SERVICE FUND	60 CAPITAL PROJECTS FUND	98 AUGUST 31, 1986	97 AUGUST 31, 1985
5700	REVENUES:						
5800	Local, Intermediate, and Out-of-State	\$2,054,854	\$	\$216,583	\$	\$2,271,437	\$2,001,161
5900	State Program Revenues	2,449,338				2,449,338	2,387,491
	Federal Program Revenues	94,894	60,434			155,328	163,014
5030	Total Revenue	\$4,599,086	\$60,434	\$216,583	\$	\$4,876,103	\$4,551,666
0011	EXPENDITURES:						
0012	Instruction	\$2,256,363	\$48,960	\$	\$	\$2,305,323	\$2,398,611
0022	Instructional Computing	26,310				26,310	2,310
0023	Instructional Resources and Media Services	99,697	11,474			111,171	88,222
0031	School Administration	272,622				272,622	234,953
0033	Guidance and Counseling Services	104,438				104,438	132,616
0034	Health Services	9,080				9,080	402
0035	Pupil Transportation - Regular	148,388				148,388	143,946
0036	Pupil Transportation - Exceptional Children	1,035				1,035	1,222
0037	Co-curricular Activities	358,591				358,591	109,952
0041	Food Services	341,144				341,144	323,663
0042	General Administration	302,437				302,437	326,389
0051	Debt Services			189,987		189,987	192,379
0052	Plant Maintenance and Operations	511,746				511,746	575,019
0081	Facilities Acquisition and Construction				258,194	258,194	48,686
	Community Service	16,252				16,252	15,224
6050	Total Expenditures	\$4,448,103	\$60,434	\$189,987	\$258,194	\$4,956,718	\$4,593,594
5060	OTHER RESOURCES AND USES:						
6060	Other Resources	\$ 91,592	\$	\$	\$258,194	\$ 349,786	\$ 21,956
	Other (Uses)	(349,486)				(349,486)	
7000	Total Other Resources and (Uses)	\$ (257,894)	\$	\$	\$258,194	\$ 300	\$ 21,956
1200	Excess (Deficiency) of Revenues and Other Resources Over Expenditures and Other Uses	\$ (106,911)	\$	\$ 26,596	\$	\$ (80,315)	\$ (19,972)
0100	Fund Balance - September 1 (Beginning)	1,595,793		46,229	505	1,642,527	1,665,066
1300	Increase (Decrease) in Fund Balance	(5,019)				(5,019)	(2,567)
3000	Fund Balance - August 31 (Ending)	\$1,483,863	\$ 0	\$ 72,825	\$ 505	\$1,557,193	\$1,642,527

FF

ERTION REPEAT

NI-CON
f-storage
ety of sizes.
mpetitive prices.
ally owned and
ated.
nthly rates.
W. Hwy.
2-2761

uzbee
roofing
and other work
hone 592-4846
ALL WORK
GUARANTEED

HARDIN HILL
Phone 592-2666

KIDS

DAYCARE
CHOOL
rents who care"
592-4242

ING
VICE

ARE
10 YEARS

CLASSES
5 at
E FOR OUR
mers.

SPECIAL
E for
E STUDENTS
nth
fer
AILS -

ights
ts
son Rd.

apart-
central
ppiances,
draped.
Off-street
laundry
starting
om, and
partment
aid.

AL HOUSING