

1984
June 7

MRS. LITA WATSON
520 W. CLARA
IOWA PARK, TEXAS 76367 112

IOWA PARK LEADER

25 Cents

Vol. 15, No. 38 IOWA PARK, WICHITA COUNTY, TEXAS 76367 THURSDAY, JUNE 7, 1984

Aldermen, Trustees set meetings next week

Both the city council and school board will hold their respective meetings next week.

The city meeting is to begin at 7 p.m. Monday in council chambers and school trustees will meet at 7:30 p.m. Tuesday in the administration building.

Aldermen will hear a second report and possibly take action on a proposal for the city to take a small part in the development of a golf course with contractor Rip Smith.

The course was discussed at the last meeting after a committee of citizens and aldermen was named to hammer out details. The city's portion is concerned only with a pipeline to carry effluent from the sewer treatment plant to the course site.

Another carryover from the last meeting is holding of a second public hearing required for application for a block grant from the Department of Housing and Urban Development to replace the water lines in the older part of town.

Three ordinances will be presented to the council for action. One would allow model boats to be operated on Gordon Lake, another would revise the city's personnel code, and the

third would change speed limits on state-maintained streets.

Administrator James Barrington will seek permission to have repair work done on a portion of the water treatment plant, and also for authority to advertise for the sale of bids not sold in last month's sealed bid auction of excess equipment.

Aldermen will consider approving a lease of property on East Jefferson.

An executive session is on the agenda, during which personnel will be discussed as part of preparation for the coming year's budget.

TRUSTEES TO MEET

Major improvements on campuses and their costs, and a report on the TABS tests highlight Tuesday's meeting of the school board.

Supt. Harold Cowley had outlined several major projects needed to maintain school campuses this summer, at an earlier meeting. He said he has cost figures ready for presentation.

Two contracts will be considered. One concerns the school's participation in West Wichita Co-op, and is expected to be renewed as it has since the organization's creation.

On the agenda again is a contract for services from Region Nine Service Center. No action was taken at last month's meeting, to give Cowley time to search for alternatives. Cost of the contractual service is almost being doubled for the coming year.

Trustees will consider whether to attempt to continue the Building Trades class at the high school. Enrollment reportedly is fewer than 15, and 20 is the minimum number for a state-financed teaching unit.

Junior High principal Jimmy Alsop is to ask the board to change a school

board policy which concerns sixth grade students.

During a session on personnel, several resignations are to be acted on, and hiring of new teachers considered.

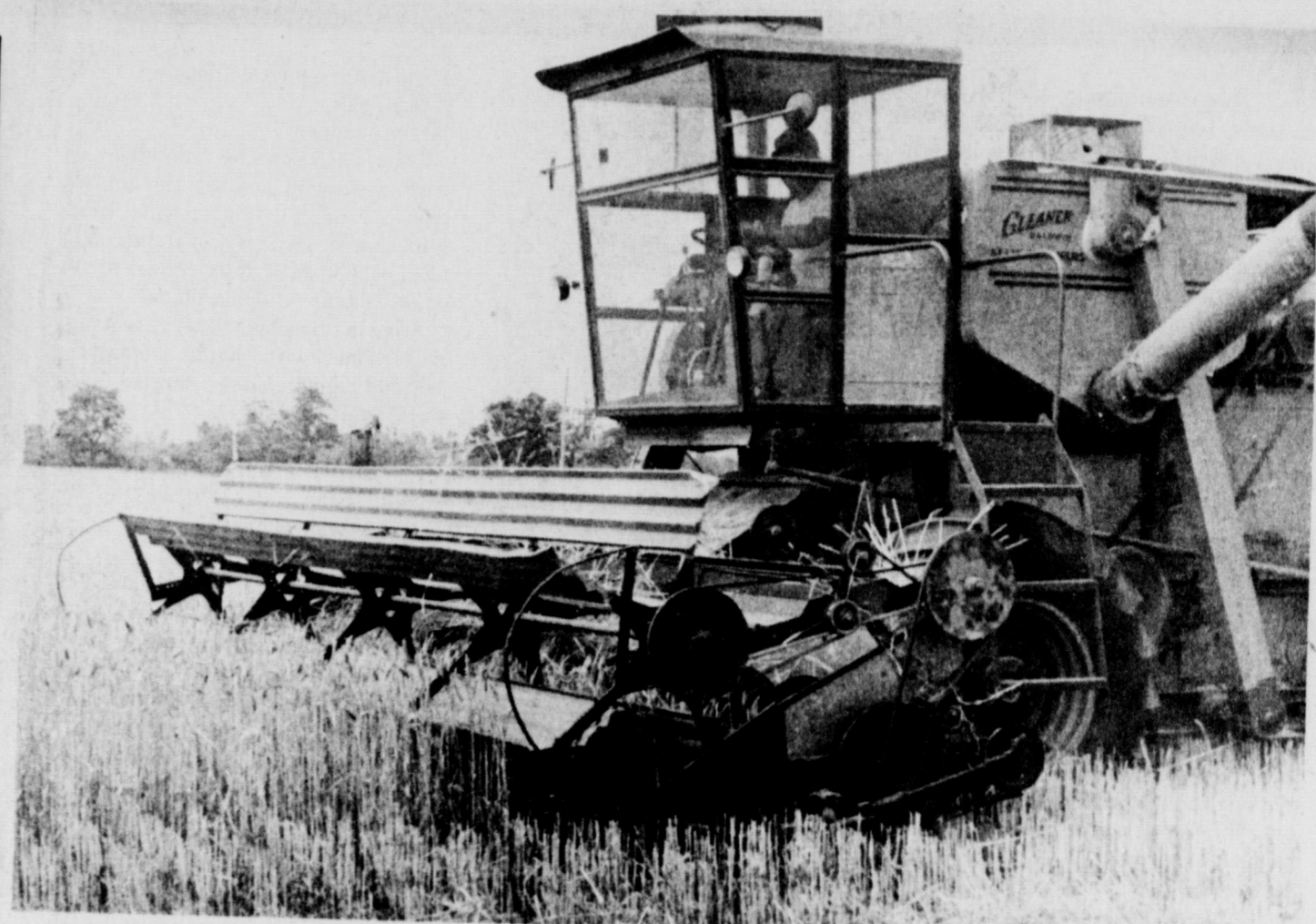
Ambulance services changes this morning

A change in ambulance service to Iowa Park and other neighboring cities takes place at 8 this morning, but using a different telephone number is about the only difference residents will notice.

Persons calling for ambulance service, who are not residents of Wichita Falls, must call 322-5611. This is the Wichita Falls city switchboard, which will handle dispatching duties temporarily. Wichita Falls residents will use the 911 number.

Plumlee Ambulance will not be answering calls as of 8 a.m. today. That service will be done, on an interim basis, by Lifeline Co. of Fort Worth.

Plumlee announced Tuesday he would no longer provide ambulance service if the political entities of Iowa Park, Burkburnett, Wichita Falls and Wichita



HARVEST ALMOST COMPLETE - Combines had just about completed their appointed rounds in wheat fields over this part of the country before the rains came Tuesday afternoon. Estimates made were 95 percent complete. Most farmers were pleasantly surprised with their yields,

considering the lack of moisture during the past three months. Some fields yielded in excess of 40 bushels per acre, but the most common average was about 30 bushels. Some reported volunteer fields below 20 bushels.

Small voter turnout gives Doggett win

Democrats turned out in light numbers, as anticipated, for Saturday's primary runoff, but supporters for one senatorial candidate returned to the polls in greater numbers than those for the other.

Only 27 percent of those who voted in the May primary returned to the local box Saturday. Democrats marked 1,390 ballots in the local boxes May 5, but only 379 ballots were cast when the same boxes were used Saturday.

And Austin liberal Lloyd Doggett took the lion's share in the second balloting. He attracted 47 percent of the votes from the first primary, receiving 221 votes Saturday and 468 in May.

Lubbock conservative Kent Hance drew 155 votes Saturday, far down from the 557 he polled in May. In fact, only 28 percent as many.

Doggett was a narrow victor state-wide, reversing the May standing when Hance won over both him and Bob Krueger. But Hance has asked for a re-count of all voting in the state. Final results are not expected from the re-count until late this week or early next week.

appeals judgeships, local voters went along with others in the county and apparently the rest of the state in picking the first name as they appeared on the ballots. W.C. Davis and Bill White were winners here.

Reunion dedicated to Jerry Padgett

Members and former members of the Iowa Park High School Class of 1959 will dedicate their 25th reunion June 16 to classmate Jerry Don Padgett, who died in 1980.

His wife, Nancy, will attend the afternoon reception, to be held from 1 to 2 at the Gateway Inn in Wichita Falls.

Reservations for the reception and dinner can be made through June 8 by calling Gayla Lynn Daugherty, at 855-1419. All members, teachers and room mothers of the class are encouraged to attend.

No television schedule this issue

The television schedule regularly published in the Leader will not appear in this issue. It never arrived.

For the first time in all the years the schedule has appeared in the Leader, copy for the schedule did not arrive in the mail.

322-5611 emergency ambulance

Study shows state, county major market areas

Texans are a fast growing lot with a far superior increase in buying power, individual investors and insurance coverage than has the entire nation as a whole.

Supporting these facts this week was a massive two-part market study by the Texas newspaper industry. This study reveals that, among other things:

"There are now 15,400,000 Texans comprising 5,450,000 households with spendable incomes totaling more than \$147 billion."

These multiple-digit figures highlight an impartial study commissioned by the Texas Press Association (TPA). Conducting the study was Communications Management, Inc. (CMI) of Winnipeg, Canada.

Their massive research revealed that Texans annually spend:

- * \$28 billion for food,
- * \$24 billion for motor vehicles,
- * \$31 billion for clothing, furniture and other department store items.

Wichita County's population and economics played a significant role in the statewide study.

This was revealed in statistics showing that Wichita County during 1983 was segmented into 46,800 households comprising a total population of 124,700.

Personal disposable income in this county was \$1,230-million during 1983, with a healthy increase obvious for 1984.

Lyndell Williams, Executive Vice-President of the state association comprising 542 Texas newspapers and more than 200 corporate associate members, termed the study results "An accurate and thorough

barometer of the size and scope of the state's booming economy and growth.

"This important study also provides local business and industry with the data necessary to make intelligent decisions involving vast expenditures and investments of capital."

The Texas boom is reflected in this study's report showing a 55.4 per cent increase in retail sales over the recent 4-year period. Retail sales throughout the U.S. during the same 4-year period rose only 33.2 per cent . . . 22.2 per cent less than the Texas growth.

John Taylor, Director of the Texas Newspaper Advertising Bureau (TNAB), said the study dramatized with accuracy the unlimited potential for still further growth within this state.

"Investors and the business community in general are reaching tomorrow's potential . . . today. They're not sitting back waiting for growth to come - they're becoming a part of it right now."

He emphasized this by pointing out that Texans who bought shares of publicly-traded stock during the past two years increased 37.4 per cent, as compared with a national increase of only 31.3 per cent. Individual stockholders in Houston and Austin provided the biggest increases in number with 38.4 per cent and 35.1 per cent during that 2-year period.

Taylor, whose Ad Bureau represents Texas newspapers in dealing with the major regional and national advertisers, also cited the multi-billion-dollar buying power of this state's 5,450,000 individual households.

"Texans spend more than \$6 billion

for clothing and shoes, another \$1.35 billion for furniture and over \$1 billion for major appliances," he continued.

Women 16 years of age and older spend the most money for clothing and shoes, at over \$2.7 billion per year.

Second highest spenders to be clothed and shod are men in that same age bracket, 16 years of age and older. This group spends close to \$2 billion annually.

More money is spent on shoes for boys in the 2 to 15-year age bracket than for girls. But less is spent on boys' clothing.

Over \$500 million annually is spent on clothing and shoes for infants under two years of age.

Williams, who commissioned the current study along with a massive survey still to be completed about Texans' reading, shopping and living habits, stressed the importance of individual ownerships and investments in Texas.

"We sought total accuracy in this study to determine the economic levels of not only businesses and industry within this state, but also those of its individual citizens. We feel that the study just completed by Communications Management has achieved that goal.

"It should also be noted that retail potentials listed won't necessarily correspond with retail sales figures for an area. That's because a goodly amount of shopping by many local area consumers was done in other counties."

Williams pointed out that this "retail drift" of local income dollars being spent in other areas should

provide community-located business firms with incentives for increasing their business promotions and advertising.

"The dollars are there in the vast majority of cases, and this study has revealed that an alarming amount is being spent outside of the local community's trade area.

The study also pictured Texas agriculture as a \$10-billion-a-year industry, and farmers of this state as major purchasers of farm machinery and supplies.

Wichita County's economy is also strongly supported by its agricultural community. The study revealed that 568 farms were operating in this county in 1978, and that its farm population had increased to 929 by 1980, figures initially reported by the U.S. Census reports.

Farmers of Wichita County also received \$23.9-million in 1982 for their products.

Statewide, the number of farms operating in Texas during 1978 totaled 194,253. The farm population stood at 268,893 in 1980.

Texas farmers in 1982 sold their products for \$9.67 billion. They also received an additional \$643 million in government payments.

The estimated market value of farm machinery and equipment in Texas in 1974 was over \$2.75 billion, but had risen more than 65 per cent by 1978.

Principal expenditures for Texas farmers included the purchase of livestock and poultry, which increased from \$1.34 billion in 1974 to an additional billion in 1978.

Other high cost items for Texas farmers for 1978 (the last available

figure) were \$334,700,000 for commercial fertilizer, \$169,100,000 for other agricultural chemicals and \$524,700 for commercially mixed formula feeds.

A second study to be released by the Texas Press Association will include a total statewide report on consumer shopping tendencies, media usage by Texans, readership by content and a wide variety of other demographics.

These studies, described by experts as the largest and most comprehensive ever conducted by the

May permits big increase

Even though there are only two new residences on the list of building permits issued during May by city hall, the past month's total almost matched all of the previous four months.

May permits amounted to \$108,475, while the sum of permits issued in January, February, March and April was \$115,540, bring the year's total to \$224,015.

Most of the permits issued during May were for additions and alterations to existing homes, but includes three mobile homes.

Permits issued during May included:
Billy Carter, Bell Rd. and Expressway, mobile home, \$4,000;
A.O. Robertson, 806 E. Cash, addition, \$2,500;
David R. Davis, 1613 Yucca, addition, \$150;

newspaper industry in the U.S., were conducted by out-of-state firms in order to achieve total objectivity and the most accurate figures obtainable.

This second study is being completed by Consumer Data Service, of Oklahoma City. This study is under the auspices of the Journalism Research Center at the University of Oklahoma.

Petroleum products, of course, was also one of the top expense items for Texas farmers in the 1970s. Farmers paid over \$4-million for these products in 1978.

Joe Minton, 705 W. Texas, addition, \$2,000;
Wichita Soil & Water Dist., 303 N. Jackson, addition, \$400;
H.P. Brown, 310 W. Bank, addition, \$4,000;

Richard Roy, 114 James, addition, \$500;
G.W. Milner, 404 W. Clara, new residence, \$25,000;
Billy Carter, Bell Rd. & Expressway, addition, \$1,500;
Billy Stewart, 611 E. Alameda, mobile home, \$14,925;
Rick Pennycuff, 502 E. Washington, addition, \$500;
Harold Bartow, 1502 Wagonwheel, new residence, \$30,000;
George Van Dee, 412 W. Poe, mobile home, \$15,000;
Warren D. Bagwell, 506 S. Wall, addition, \$6,000;
Lewis Hillard, 1314 Emma, alteration, \$2,000.

Cook of the Week

"There is in every good cook's opinion, no savory dish without an onion," said Dean Swift. The bulbous plant with its pungent odor and taste, cultivated worldwide, is considered by Americans an indispensable ingredient in soups, stews, goulash, Mexican dishes, etc., but they are aware that many savory dishes are prepared without the vegetable.

The origin of the onion remains a mystery to many. It was already being cultivated by prehistoric men when they were still in the collecting stages which preceded the pastoral and agricultural stages. Wherever the onion originated, its written history seems to begin in Mesopotamia and it was one of the most familiar vegetables of that region. The oldest known body of law, the Code of Hammurabi, stipulated that "the needy shall receive a monthly ration of bread and onions;" they ate it raw on bread, a combination which formed their daily diet. But it was also grown in the gardens of kings.

Ancient Egyptians were great onion eaters, and the plant is often shown in their art. The onion was present in Greece at least by 500 B.C. In Rome, it was included by Horace in his "economical diet," and later in a cookbook by Apicius designed for the wealthy, who used it in sauce recipes.

Columella, the first agricultural writer of the Christian era, praised the onion of Pompeii. By the time Trajan built his market, about A.D. 110, the onions were respectable enough in Rome so that they were hung in tressed strings from the ceiling to the first floor of the markets. The ancient Germans were accustomed to seasoning roasts and stews heavily with onions and garlic. They appeared in French feudal gardens more frequently than any other vegetable. Peking, China cooking is still characterized by the use of three strong-flavored sea-



Mrs. Coy Clanton

soners: onions, garlic and ginger, and they have been popular in England since the thirteenth century.

In America, Cortez saw onions on his way to Tenochtitlan, then capital of the Aztec Empire. A century later Pere Marquette told of being saved from starvation by eating nodding and tree onions, native wild varieties in America in 1624. The onions eaten in America today are almost always descendants of the Eurasian A. Cope, first known to be planted in Massachusetts in 1648.

The above bit of research on the onion was inspired by noticing that three of the recipes of Connie (Mrs. Coy) Clanton for the Cook of the Week section called for onions.

The Clantons are among the city's host of interesting newcomers. He is a Lt. with the Texas Department of Public Safety and they moved here from Weatherford. They are members of the First Baptist Church. They have four daughters, Cindy, a high school junior, Caroline, a seventh grade student, Cheryl, a fourth grader, and Cari, who will be in kindergarten next year.

Connie was graduated from Aledo High School. She is a Girls Auxiliary leader at the church and is working in the Vacation Bible School this week. Her hobbies are sports, especially baseball and volleyball, and cooking.

FAMILY GOULASH

- 4 ounces fine noodles
- 1 lb. ground beef
- 1 medium onion, chopped (about 1/2 cup)
- 2 cups sliced celery
- 1/2 cup catsup
- 1 jar (2 1/2 ounces) sliced mushrooms

- 1 can (14 1/2 ounces) tomatoes
- 2 tps. salt
- 1/4 tsp. pepper

Cook noodles as directed on package, except use half the amount of water and salt. While noodles cook, cook and stir ground beef and onion in large skillet until meat is brown and onion is tender; drain off fat.

Stir in noodles, celery, catsup, mushrooms with liquid, tomatoes, salt and pepper. Cover, simmer 30 to 45 minutes. Serves 4.

FLUFFY WHITE ICING

- 3/4 cup sugar
- 1/4 tsp cream of tartar
- 1 tsp vanilla
- 1 egg white
- 1 cup boiling water

Combine first four ingredients, then add boiling water and mix on high speed with electric mixer until light and fluffy. (Real good on angel food cake).

EASY FRUIT SALAD

- 1 large can fruit cocktail, drained
 - 2 cups small curd cottage cheese
 - 1 large container Cool Whip
- Mix everything together and keep in refrigerator until serving time. Keeps for days.

TUNA-MACARONI SALAD

- 1 pkg. shell macaroni
- 1 cup cubed Cheddar cheese
- 1-7 oz. can tuna, drained
- 3/4 cup sliced sweet pickles
- 1/2 cup minced onion
- 1 cup salad dressing or mayonnaise
- 3/4 tsp salt
- 1/4 tsp pepper
- 2 cloves garlic, crushed

Cook macaroni as directed on pkg.; drain and rinse with cold water. Combine macaroni, tuna, pickles and onion in large bowl. Stir together salad dressing, salt, pepper and garlic; pour over macaroni mixture and top. Cover; chill at least 3 hours. 6 to 8 servings.

DEEP DISH APPLE PIE

- 2 1/2 cups sugar
 - 1/2 cup all-purpose flour
 - 1 tsp nutmeg
 - 1 tsp cinnamon
 - 1/4 tsp salt
 - 12 cups thinly sliced pared apples or substitute 3 cans of apple slices
 - 2 tps. butter or margarine
- Pastry for 9-inch one-crust pie (Use your favorite pastry crust)
- Stir together sugar, flour, nutmeg, cinnamon and salt; mix with apples. Turn into ungreased square pan, 9x9x2 inches, dot with butter.

Heat oven to 425 degrees. Prepare pastry and roll into 10-inch square. Fold pastry in half; cut slits near center; unfold over fruit in pan and fold edges under just inside the edge of pan.

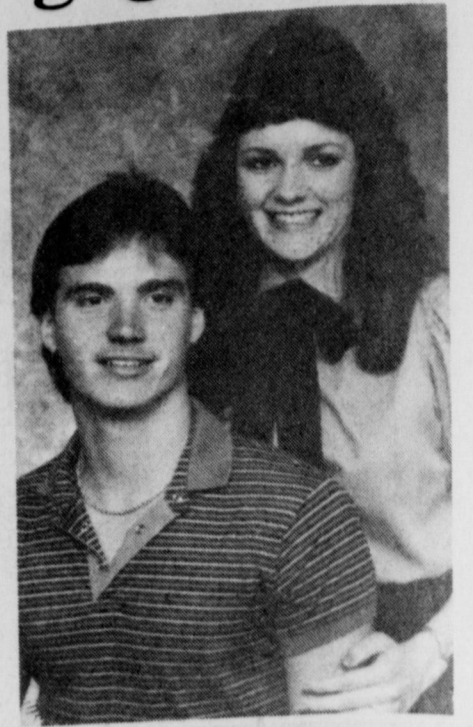
Bake 1 hour or until juice begins to bubble through slits in crust. Best served warm or maybe with vanilla ice cream.

CHILI CON CARNE [Crowd-size Meal]

- 4 lbs. ground beef
 - 8 medium onions chopped, about 4 cups
 - 4 cans (1 lb., 12 oz. each) tomatoes
 - 4 cans (15 1/2 oz. each) kidney beans, drained, reserve liquid
 - 1-15 oz. can tomato sauce
 - 2 tps. sugar
 - 3 tps. chili powder
 - 1 tps. plus 1 1/2 tps. salt
- Brown ground beef. Add other ingredients and cook slowly until done.

Announce engagement

The engagement of Miss Selena Kay Canada and Russell Jack Hayley, son of Mr. and Mrs. Jack Hayley, is being announced today by the young lady's parents, Janet Canada of Iowa Park and D.C. Canada of Amarillo. September 1 has been chosen by the couple for the date of their wedding that will take place in the First Baptist Church.



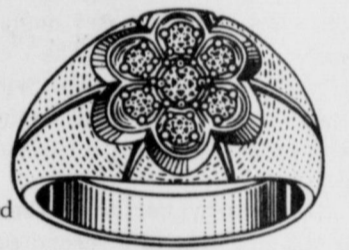
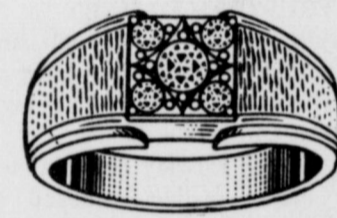
RUSSELL HAYLEY and SELENA CANADA

Both were graduated from Iowa Park High School. She was a cheerleader her junior and senior years, student council representative, recipient of the girls athletic award, chosen Miss Iowa Park High School. She attended Midwestern State Univ. for two years and is employed by Bailey-Meissner. He was active in football and track. He made All-District football, received the boys track award, competed in the regional track events and won the Red River sports award. He is employed by Cryovac.

FATHER'S DAY SALE!

Men's Brilliant DIAMOND CLUSTER RINGS

As low as..... \$199⁹⁵



Illustrations enlarged to show detail.

Louis' Distinctive Jewelry

408 W. Park

592-5942

SHOWER SELECTIONS FOR

RITA CHESSEY and RUSTY SMITH

KATHRYN MATTIS and JOEL NORDMAN

Parkway True Value FURNITURE HARDWARE

592-4681 592-5512

Tops meets

Seventeen members weighed in at the TOPS Club meeting Monday night which resulted in Carol Rainsberg being the best TOPS loser and Pauline Steele the Ideal KOPS for the week. Jean Weaver won the incentive jar and was the best loser for May. The group sang "Happy Birthday" to Edith French. Louise Dodd gave the program using an article "Not in the Mood to Diet" and a reading "Twelve Things."

HEO

HBO Subscribers in Iowa Park need to bring in their old converter boxes by the TV Cable Office and exchange them for a new model.

This is our first step in planned improvements in the Iowa Park system and this has to be done in the next few days.

There are no charges involved with this transaction.

For your convenience, the local Cable Office will be open Saturday, June 9, from 9 a.m. to 1 p.m.

TCI Tele-Communications, Inc. **T.V. CABLE of Iowa Park** 901 W. Highway 592-2164

BEST BUYS!

Recliners from **LA-Z-BOY** CHAIR COMPANY

DEDICATED TO OFFERING YOU THE BEST QUALITY & VALUE

NOW THRU SATURDAY ONLY!

Our 2 best-selling Reclina-Rocker® chairs now at a HOT PRICE!

\$289 HANDSOME RECLINA-ROCKER® CHAIR

A tall, deep-tufted back and thickly padded arms cushion you comfortably as you rock and recline. It's handsomely tailored and affordably priced, too!

\$369 CUSHIONY RECLINA-ROCKER® CHAIR

Lean back against the double-gathered back and rock or recline in luxury! It's smartly tailored and features padded arms. A value that you can't resist!

Use your Visa, MasterCard or our own convenient terms!

PARKWAY FURNITURE True Value HARDWARE

June 17 is Father's Day!

Taylor, Fairchild vows are exchanged here Friday



RANDY DOYLE MORGAN
and
TINA RENEE CHAFFIN

Couple sets June date

Tina Renee Chaffin, daughter of Mr. and Mrs. Jim Chaffin, and Randy Doyle Morgan, son of Mr. and Mrs. Raymond Morgan of Kamay, will be married June 15 at the Corner Stone Assembly of God in Kamay.

She was graduated from Iowa Park High School and is working as an assistant manager of the Burk Burnett Sonic. He was graduated from Holliday High School and works with his father in the oil field.

As the organ sounded the familiar strains of Lohengrin's "Wedding March," Miss Leah Darlene Taylor, attired in a beautiful formal gown of white Chantilly lace, entered the First Baptist Church sanctuary Friday evening to stand beside Stephen David Fairchild, her betrothed, for the recitation of their marriage lines. Rev. Howell Farnsworth, pastor, officiated the double-ring ceremony uniting the daughter of Mr. and Mrs. Stanley Taylor and the son of Mr. and Mrs. Joe Fairchild.

In the impressive altar decorations, attention was focused upon the unity candlestick that held the candle the bride and groom lighted to seal their vows, and the kneeling bench which suggested the important part prayer holds in a happy marriage. A background for the bench and candlestick was provided by a brass archway traced with boxwood greenery studded with white lilies of the valley, and seven-branched candelabra holding votive candles which provided soft lighting to supplement that which entered the sanctuary through the stained glass windows. Family pews were designated with white silk bows.

Delightful and impressive wedding music was furnished by Mrs. Glenn Schell, organist, and Buddy Mercer, vocalist, the latter singing "You Needed Me" when the bride made her entry and walked to the altar. During the ceremony, he sang "And On This Day" and "The Lord's Prayer" at the close. Mrs. Schell played the accompaniment for the solos. Her pre-nuptial selections included "Arioso," "Jesu, Joy of Man's Desiring," "O Perfect Love," and "Panis Angelicus," and the traditional marches, so often selected by brides, were included in her offerings.

The bride entered with her father, who escorted her to the altar and presented her in marriage for her parents. The romantic appeal of her exquisite gown and headpiece was noted in both design and ornamentation. The natural waist bodice of her gown featured a high neck of lace and yoke outlined in a small ruffle. The long sheer lace sleeves were cuffed at the wrists with flounces. The full skirt captured attention through side panels of tiny rows of lace that cascaded into a graceful semi-cathedral train.

Her bridal illusion veil trimmed in matching lace drifted to fingertip



MRS. STEPHEN DAVID FAIRCHILD

length from a cap of lace and pearls. The bride's chosen colors of blue and white inspired the fashioning of her bouquet created of white daisies, blue miniature carnations, leather leaf fern, white and blue picot satin ribbon streamers.

Keeping bridal traditions, she carried her bouquet on a white Bible that was given to her when she was a baby for "something old;" wore earrings that belonged to her sister, Miss Janice Taylor, for "something borrowed;" her gown and garter for "something new" and "something blue."

The quartet of bridal attendants who participated in the wedding wore formal white lace gowns over blue taffeta fashioned with high necks, flounce-bordered yokes, long full sleeves cuffed at the wrists, matching waistline sashes and full skirts. They carried nosegays of white and blue daisies with trailing blue satin ribbons.

Miss Gina Duncan had the maid of honor role, and the bridesmaids were Mrs. Vance Nault, Miss Janice Taylor, sister of the bride, and

The groom was attended by Steve Harris as best man, Denny Boland, Allen Datson and Jim Fellhauer as groomsmen.

The groom wore a white Dorchester tuxedo featuring self-faced top collar, peaked satin lapels, double-breasted contour back and rounded tail, wearing with it a boutonniere of blue daisies, white stephanotis and greenery. The attendants and fathers wore Claridge-style white tuxedos with regular length coats, self-faced top collars, modern fashioned notched lapels and pockets trimmed in satin, white ruffled shirts trimmed in blue, and white bow ties.

Mrs. Taylor, mother of the bride, wore a short formal of blue Qiana styled with flounced fitted bodice, bateau neck, three quarter length sleeves, waistline sash, and A-line skirt. Mrs. Fairchild, mother of the groom, wore a short cream chiffon dress patterned with a natural waist blouson bodice, high neck of illusion, long sleeves cuffed in Schiffli embroidery, satin sash and full flowing skirt. Both wore corsages formed of white mini carnations, blue daisies and ribbon.

The Fellowship Hall of the church was the scene of the wedding reception given by the bride's parents.

The cloth, cake, appointments and silver services on the bride's table blended to give it conspicuous beauty. The cloth of white satin was bedecked with garlands of ivy caught to white lace bows at the top. The centerpiece was a silver candelabrum holding a towering arrangement of white snapdragons, leatherleaf and tall white candles.

The three-tiered cake at one side was a sophisticated blue and white frosting triumph that dazzled and enchanted the guests with its roses, peonias, bridal trumpets and stephanotis in "full bloom" over the sides and top of the confection, all planted in a delightful combination of sculptured designs.

The table also held a silver punch bowl, crystal toasting glasses, a silver tray of blue double bell mints, and white napkins detailed with "And This Our Life - Our Beginning, Darlene and Steve, June 1, 1984." Refreshments were served by Misses

Rita Chesser, Tammy Hickey and Selena Canada.

Mrs. Dennis Taylor and Miss Pam Cope presided at the groom's table covered with white lace headed with a blue ribbon drape over blue crepe. His chocolate sheet cake, iced in white and trimmed with floral designs in the chosen colors, and the silver coffee service marked table extremities. Crystal trays filled with mints and nuts, a centerpiece of white and blue daisies in a crystal vase, white napkins bordered with blue and white daisies and accented with wedding bells tied with flowers in the border design completed the decor.

Two natural wicker baskets held white net rice bags tied with blue ribbons for the wedding guests who

had registered in the church foyer at a table covered with lace-edged white crepe holding a tall gold candlestick with a white candle and a bouquet of pastel spring flowers, and for those who registered at the reception at a table covered with white satin. Both tables held a white plume pen and the wedding book. Miss Connie Styles directed registration of guests.

The groom's parents hosted a catered-rehearsal dinner Thursday evening at the church.

The bride and groom were both graduated from Iowa Park High School where she was a cheerleader and he played football. She is attending Midwestern State Univ. and he is employed by Midwestern Furniture. They are living in Wichita Falls.

Party fetes two seniors

Lisa Jones and Christine Proulx were honored by their parents at a graduation dinner party May 25. They are the daughters of Mr. and Mrs. Kenny Jones and Mr. and Mrs. Jean Proulx.

Thirty-five friends and relatives were served dinner, before graduation exercises, at the MuleSkinner MuleBarn. Tables were covered with white cloths and decorated with green streamers, and antique telephone insulators were used to hold scented candles. The honorees' table was also covered with a white cloth, sprinkled with violets. It was decorated with scented candles burning in four frosted petal candle holders and two bouquets of silk violets.

The honorees were presented with corsages by their mothers.

After graduation ceremonies were over, the guests returned to the

MuleBarn and a large ice cream cake, decorated in the school colors, with a mortar board and diploma, and "Congratulations Christine and Lisa" written on it, was served for dessert.

Has 'A' average

Sarah Lyn White, daughter of Mr. and Mrs. Harold White, 307 E. Alameda, made the University Honor Roll with a 4.0 grade point average in the spring semester at Texas Women's University, Houston Medical Center.

A senior majoring in occupational therapy, White is currently completing her affiliations, including a psychiatric internship at Methodist Hospital, Houston Medical Center, and a pending internship in pediatrics at Corpus Christi.

LOOK WHO'S NEW

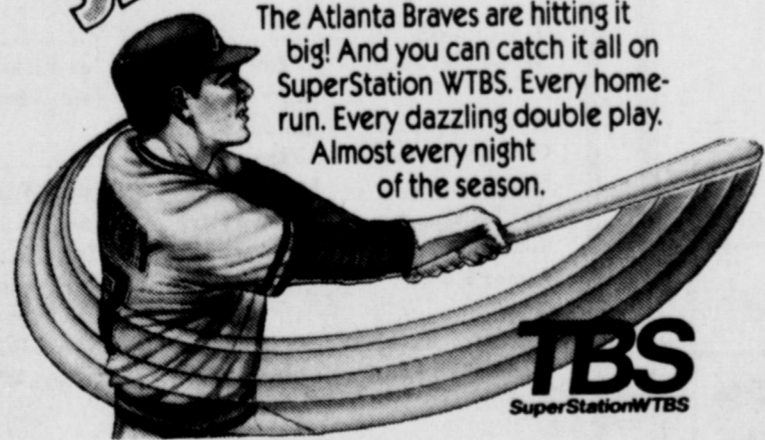


Dustin Lane, a seven pound, 10 ounce son, was born to Mr. and Mrs. Curtis Williams May 30. Mrs. Williams is the former Donna Cook.

The grandparents are Mr. and Mrs. Felton Williams of Valley View and Mr. and Mrs. Donald Cook of Houston. The great-grandparents are Mrs. W.M. Williams of Valley View, Mrs. Morean Cook of Graham, and E.C. Ewing of Abilene.

CARTER'S CHOICE TV

SUMMER'S SMASH HIT!



Can be seen daily on Cable Channel 5

CALL YOUR LOCAL CABLE COMPANY FOR MORE INFORMATION

TEL.

TV Cable of IOWA PARK

901 W. Highway 592-2164

BEST SUMMER BUYS

HOMOGENIZED BORDEN'S MILK \$2.49 GAL. CTN.

BURRITOS 2/99¢ COOKED FOOD SPECIAL

CHICKEN NUGGETS 8/99¢

PEPSI 6 Pack 12 oz. Cans \$2.19

BORDEN'S ASSORTED ICE CREAM \$1.79 1/2 GAL. RND. CTN.

GATORADE THIRST QUENCHER Orange - Lemon Lime - Punch 32 oz. Hot or Cold 99¢

OPEN 24 HOURS-EVERYDAY-ICE MONEY ORDERS-GROCERIES-COOKED FOODS WHILE SUPPLIES LAST THERE'S ALWAYS SOMETHING GOOD COOKING FOR YOU AT ALLSUPS PRICES EFFECTIVE JUNE 7-9, 1984

ALLSUP'S CONVENIENCE STORES

THERE'S ONE NEAR YOU®

As I See It....

By BOB HAMILTON



Why is it you never hear of a major political figure switching from the Republican Party to the Democratic Party?

Possibly there have been such switches, but none have impressed me as much as when John Connally and Phil Gramm moved to the Republican side.

It appears to me that since the administration of Lyndon B. Johnson in Washington, the Democratic Party has been moving more and more to the left. "The Great Society" days really meant the active solicitation of minority groups into the Democratic Fold, and with it the national Democratic platform smells more and more of socialism.

All of a sudden, our constitution was interpreted to read that everyone in the nation had a "right" to a job, a "right" to health care, a "right" to own a home and so on. This was a switch from what most of us had understood was an opportunity, not a right to have them provided by government.

Just as sudden, jobs were allotted by percentage of population. All major corporations were threatened that they must have a certain percent of color and sex in their employment, reflecting the population. It didn't make any difference if they were capable, dedicated, worthy or

what-
Liberal courts began turning upside down all interpretations of law which had been made in the past. Judges became kings without recourse. Decisions after decisions were made in favor of the criminal, and not the offended society. And it continues.

Let's go back to those "rights" I mentioned.

Did you know the City of Dallas is being sued by a liberal organization called ACORN, because Dallas won't make available any and all its city parks for camp sites to be used by those who want to demonstrate against the Republican Party at its national convention this summer?

ACORN not only rejects an offer to use land, which is available because it is too far from the convention site, but they want Dallas to provide tents, water and restroom facilities. All at no charge.

The suit, as I understand it, charges that Dallas is obstructing ACORN's First Amendment right by not providing all the group's demands.

I would venture to bet there is not one small percent of all ACORN

membership who belong to the Republican Party.

Ad avid Democrat, H.M. Baggerly of Tulia, once told an audience "You can't be a Texan and not belong to the Democratic Party."

I was both offended and angered by his onesidedness. First of all, I like to believe Texans can think for themselves, not what some political party, regardless of which one, thinks for them. Secondly, it's difficult for me to believe the majority of Texans want the government to provide everything for the individual, including income, homes, jobs, education, quotas, moral beliefs, health care and everything else of our lives.

Though he never switched party, Allen Shivers was the first to buck the national Democratic Party that I can remember. He supported Eisenhower, as I recall, and those who followed his leadership were called "Shivercrats."

Then, members of the Democratic Party who didn't want to go along with the socialistic practices and voting of their northern liberals were called "Dixiecrats" and more recently "Boll Weevils."

I admire politicians who vote their convictions, and I admire more politicians who belong to the political organization their thoughts and voting more correctly reflect.

That's why Connally and Gramm are kinda heroes to me. You may not like their politics, but you've got to admire their gumption and honesty.

Mesquite trees rob moisture

Brush is robbing the state of Texas of more than 10-million acre feet of water annually, which is more than one-half of the current annual use of ground water and surface water of 17.8-million acre feet. The state of Texas covers a land area of approximately 168-million acres of which almost 100-million acres is occupied by brush. The Texas brush problem is not going away and it is not getting better - it is getting worse.

Mesquite, which is the worst brush variety in the West Texas Chamber of Commerce service area, occupies about 56-million acres in 206 counties in Texas. Mesquite is a very inefficient water user as compared to the official state grass, sideoats grama. From one acre foot of water (325,851 gallons) mesquite will produce 1,600 pounds of dry matter as compared to 4,500 pounds of dry matter produced from the same quantity of water by sideoats grama.

The value of brush management to increase livestock and foliage production has been documented by major universities and the Soil Conservation Service. Their research indicates that the livestock carrying capacity has increased from one animal unit per forty acres to as much as one animal unit per six acres after brush control treatment on extremely heavy brush infested rangeland. Normal increases are one-half to three animal units on the same acreage after a brush control program.

Mesquites are phreatophytes; that is, they are plants that draw water like a well. They put their roots down to the top of the water table in areas where the water table is near the surface and drink water during low

precipitation or their deep roots extract the water from the soil before it has time to reach the water table in deeper aquifers. In areas where dense covers of mesquite are present, very little grass can survive.

Consequently, there is not any ground cover to absorb runoff and reduce surface evaporation. Also, the bare ground increases the potential of flood damage and excessive soil erosion which deteriorates the land and silts downstream reservoirs, thereby costing tax dollars for clean up. The annual depositing of sediment in our reservoirs, streams, rivers and channels is costing billions of dollars

annually. Sediment in our state's water supplies is our number one pollutant.

The water committee of the West Texas Chamber of Commerce is pursuing a goal of implementing a state-wide brush control program. Brush reduces the ranchers' livestock carrying capacity, which reduces the economic livelihood of our communities, our area and our state. Brush also reduces our wildlife potential, reduces our water supplies, deteriorates the quality of our surface water and costs billions in tax dollars.

June and July are optimum months for effective brush control.

NOTICE TO SUBSCRIBERS!

The Iowa Park Leader has suspended its practice of mailing individual renewal postcards to subscribers. Instead the Leader will publish a list of readers whose subscriptions are approaching expiration. Subscription prices are listed below, along with a convenient order form which may be clipped, filled out and mailed with payment to the Leader. Renewals and new subscribers must be paid in advance.

Subscriptions due to expire

June 15, 1984

PLEASE DISREGARD IF ALREADY PAID

- | | | |
|--|---|---|
|
Mrs. W.C. Albright Iowa Park
Edward Anderson Iowa Park |
Mrs. J. A. Bery Iowa Park
James I. Billingsley Iowa Park
Michael Blewitt Wichita Falls
Rose Boone Hallettsville |
Mrs. F. D. Martin Iowa Park
Mrs. Raydean Mattis Iowa Park
Robert L. McIlroy Iowa Park
Tom Mills Wichita Falls
Thomas K. Moore Iowa Park
Henry J. Moorehead Holliday
J.D. Morrison Iowa Park
Vicki Morgan Lawton, Ok.
Kathy Myers Iowa Park |
|
Mrs. F. A. Bery Iowa Park
Harold Cowley Iowa Park
Danny Cravens Kamay |
Mrs. Fernie Corder Iowa Park
Harold Cowley Iowa Park
Danny Cravens Kamay |
Mrs. C.L. Thompson Iowa Park
Roy D. Thompson Iowa Park
Don Todd Iowa Park |
|
Herman Daymude Iowa Park
Randy Daymude Gallup, N.M.
Jerry Denton Iowa Park |
Frederick Eke Iowa Park
Bob Evans Iowa Park |
Ed Reece Iowa Park
Rose Reynolds Iowa Park
Anna M. Richardson |
|
Dawn Jari Flatt Wichita Falls
Mrs. Jack Forbes Kamay
Clyde Fowler Iowa Park |
Marjorie Halbert Iowa Park
Donald E. Hale Iowa Park
Jerry T. Hatch Bethel Springs
William H. Hawm Iowa Park
Jack Hightower Wichita Falls
Dwain Holmes Iowa Park
Billy Honeycutt Moultrie
Pat Hunter Iowa Park |
Chuck Rinehart Atlanta, Mich.
Iowa Park |
|
James Ivy Seymour |
Mrs. O.M. Jones Iowa Park |
Joe Vickers Iowa Park
John Virgin Iowa Park |
|
C.S. Ketchersid Iowa Park
Billy Kinney Edmond, Ok.
Shirley Kissner Iowa Park
John Kochs Jr. Wichita Falls
Elmer Kyser Iowa Park |
David Wahl Iowa Park
Earl Watson Iowa Park
Mrs. L.L. Watts Iowa Park
Ben Wester Franklin
L.S. Whisnand Iowa Park
Felton Williams Iowa Park
Robert Wilson Iowa Park | |

Wichita and Archer Counties..... \$7.00
Elsewhere in Texas & Oklahoma..... \$9.00
Elsewhere in the United States..... \$11.00

To: Iowa Park Leader
Box 430
Iowa Park, Tex.
76367

PLEASE CHECK ONE:
() New
() Renewal
() Change of Address Only

\$ _____ Enclosed

(Name) _____

(Address, P. O. Box, or Route No.) _____

(City) _____ (State) _____ (Zip Code) _____

Municipal Court Records

Results of municipal court held here yesterday were:

- John Ray Miller, no operators license, \$40;
- John Ray Miller, no motor vehicle liability insurance, \$94;
- Perri Matthew Haynes, displayed expired motor vehicle inspection (MVI), \$60;
- Perri Matthew Haynes, no operators license, \$60;
- James Lishel Beebe, speeding, \$60;
- Tammy Lou Wahl, no motor vehicle liability insurance, \$94;
- Donald Ray Potter, displayed expired MVI, \$40;
- Valerie Lynne Ward, displayed expired MVI, \$40;
- Phillip Mark Johnston, displayed expired MVI, \$40;
- Phillip Mark Johnston, no motor vehicle liability insurance, \$94;
- Terence Lee Drown, no MVI, \$60;
- Mildred York Moenning, speeding, \$40;
- Martha Ellen Nelson, speeding, \$44;
- Louis Lawson Hansard Jr., displayed expired MVI, \$40;
- Jo Williams Farr, displayed expired MVI, \$80;
- Karen Landis Fullerton, speeding, taking defensive driving course;
- Jo James Winkler, speeding, taking defensive driving course.

IOWA PARK LEADER

766280

Bob Hamilton Editor-Publisher
Olive Blalock Reporter
Kevin Hamilton Reporter

The IOWA PARK LEADER is published every Thursday. Offices are located at 112 W. Cash, Iowa Park, Texas, 76367. Telephone: 592-4431. Second class Postage Paid at Iowa Park, Texas, 76367. Subscription rates are \$7 per year in Wichita and Archer Counties; \$9 elsewhere in Texas and Oklahoma; \$11 anywhere else in the United States. Classified advertising rates are 16 cents per word first insertion, 8 cents per word thereafter. Any erroneous reflection upon the character, standing or reputation of any person, firm or corporation which may appear in the columns of this newspaper will be corrected upon being brought to the attention of the publisher.

MEMBER
TEXAS PRESS ASSOCIATION



— We invite you to shop and compare our

INTEREST RATES FOR SAVINGS

(Applicable May 30 thru June 5)

Account	Interest (compounded daily)	Yield
91 Days	9.50%	9.965%
182 Days	10.25%	10.792%
7-31 Days	8.25%	8.59%
New Money Market Accounts	8.75% (simple interest)	
Super NOW Accounts	7.30% (simple interest)	
1 1/2 Years, less than 2 1/2 Years	10.45%	11.014%
2 1/2 Years, less than 3 1/2 Years	10.45%	11.014%
I.R.A.	10.65%	11.24%
1 Year Certificate of Deposit	10.50%	11.069%



STATE NATIONAL BANK
IOWA PARK, TEXAS
Locally Owned

Worth Quoting

The elections had some surprises to a lot of folks, including us. We hoped that Kent Hance would run well in the race for U.S. Senate but we were surprised when he led the ticket. The fact that he had a paper thin margin does not obscure the fact that he came on strong in the closing week of the campaign and apparently a great many Texans were attracted by his conservative

had set the stage for a big victory celebration in Austin and was reported to have confided to his friends that he expected to win without a runoff. Instead he wound up third, a very close third to be sure, but third just the same.

Kent Hance's views on amnesty for illegal aliens won him a lot of votes because Texans admire a man who will speak his convictions when he believes he is right. Granting permanent residence and eventual citizenship to millions of illegal aliens who managed to slip across the border and remain in this country is an affront to other Americans as well as to aliens who have applied for legal admittance to this country and are still on the waiting list. It was reported several weeks ago that a massive voter registration drive in South Texas had added some 300,000 voters to the rolls, and many of them are aliens. Sloppy voter registration is blamed for this, if it proves to be so. Certainly in the enthusiasm for getting voters registered, nobody questions a prospect's citizenship. For that matter, we have never been asked to produce a birth certificate attesting to the fact that we are a U.S. citizen.

HAROLD HUDSON
Perryton Herald

On Dean's List

David White, son of Mr. and Mrs. Harold White, 307 E. Alameda, recently was named to the Dean's Honor List for the spring semester at Vernon Regional Junior College.

A sophomore majoring in building technology, White made the list with a grade point average of 3.8.

Weather Report

Weather reports are officially compiled for Iowa Park at the Texas Experiment Station, southeast of town.

Rainfall for week.....	1.13
Total for month.....	1.13
Total for year.....	4.94
Total for last year.....	13.58

WANT ADS
GET RESULTS



UNUSUAL SIGHT - Unusual shadows were cast during last Wednesday's eclipse of the sun. Everywhere the sun's rays struck sidewalks, half moon shapes appeared. This photo was taken at 11:21 a.m.

Epsilon Eta dinner held

Epsilon Eta Chapter of Epsilon Sigma Alpha held its annual dinner meeting Tuesday evening in the Texhoma Room at Kiva Inn. Fourteen members and two guests were present.

Five pledges, Mmes. Robert Bumgardner, Bill Burns, Al Denton, Marvin Robertson and Joni Whitis, received their first pearl awards. Mrs. Luther Shaw received the fifth Pallas Athene award and Mrs. Bud Mercer received the Guardian of the Banner and Guardian of the Lamp awards.

The chapter will hold the final meeting for the year this evening at the home of Mrs. Shaw to discuss the 1984-85 activities.



Mr. and Mrs. William Adams announce the arrival of Miranda Renee, their first child. She was born June 1 and weighed six pounds and seven ounces. Mrs. Adams is the former Shawn Pelzer.

The grandparents are Mr. and Mrs. Evert Pelzer and Mr. and Mrs. Bill Adams of Iowa Park.

The great-grandparents are Mrs. Daisy Benham and Mr. and Mrs. G.E. Pelzer of Bakersfield, Calif., Mr. and Mrs. Lawrence Adams and Mr. and Mrs. Russell Crowley, all of Vernon.

Night WMU topic centers on Japan

Mrs. Elmer Singleton directed the program entitled "Salt and Light-Made in Japan" Monday for a meeting of the Night WMU of First Baptist Church, held in the home of Mrs. Roy Smith. Twelve members were present.

reluctant to take the first step over the "high doorsill."

Topics were discussed by Mmes. C.L. McKinnon, Smith, J.T. Parker, Eleanor Bell, Homer Blalock and Miss Helen Reed.

Mrs. V.I. Woodfin directed the business meeting. Mrs. E.T. Patterson was in charge of the special prayer period for missionaries on the birthday calendar for the day.

"Great ideas come from the heart." -Vauvenargues

LOSE WEIGHT

the safe way with Health and Nutrition Products



Call **Lil Smith**
Your Herbalife Supervisor
592-4332 or 691-1259

SUPER BINGO

3 NIGHTS PH. 855-9316
FRIDAY—SATURDAY—SUNDAY
WEEKLY
DOORS OPEN 6 P.M.
GAME TIME 7 P.M.

Sponsored by American Amputee Foundation Chapter 99 Lic. #30006199282-42004 & Chap. 66 Lic. #30006199308-42006

WHERE— One Block So. of SAFB Main Gate
1621-A ENTERPRISE AVE., WICHITA FALLS, TEX.
18 GAMES-ALL PAPER-NO HARD CARDS

1st Session—10 Games.....\$2500⁰⁰
2nd Session— 8 Games.....\$2500⁰⁰
GUARANTEED.....\$5000⁰⁰
3 BIG NIGHTS GUARANTEED—\$15,000⁰⁰

4-H NEWS

WICHITA COUNTY 4-HERS TO COMPETE

Wichita County 4-H Horse Club members will be competing in the District 4-H Horse Show on June 15-16 in Vernon at the Wilbarger County 4-H Horse Arena.

Members that will be competing include Levada Davis, Kash McMurray, Mike McMurray, Steve Keiser, Angela Keiser, Bill Brown, Kent Kyle, Bobby McCreary, Casey Cove, Karl Cove, Mike Harris, Laverne Bevers and Shari Cooley.

Members will be competing with 20 other counties in the district area and trying for a position to the 4-H Horse Show to be held in Waco in August. District events will include roping, halter, showmanship, western events and timed events.

REPORT OIL FIELD THIEVES
1-800-OIL-COPS
TOLL FREE • REWARD



Brides-to-Be is YOUR NAME
in our *Bridal Registry*

JO ANN CURRY
and
BRIAN THOMAS

KIM HRNCIRIK
and
CRAIG FRENCH

KATHRYN MATTIS
and
JOEL NORDMAN

SARAH LOWE
and
DON CAGE

SYLVIA HILL
and
JIMMY DON BROWN

VALERIE WARD
and
DENNIS DILLARD

Park Pharmacy &
Thoughtfulness Shop

115 W. Park 592-4116



CRYOVAC BAGGED

BRISKET

Lb. \$1⁰⁹

FAMILY PACK

GROUND BEEF Lb. 98^c

SIRLOIN

STEAK Lb. \$2³⁹

FAMILY PACK

ROUND STEAK Lb. \$1⁶⁸

SIRLOIN

TIPS Lb. \$2⁹⁹

OAK FARMS

FRUIT DRINK Gal. 99^c

COKE - SPRITE
TAB - MR. PIBB
DIET COKE
32 oz. Btl. \$2¹⁹
Plus Deposit

OAK FARMS SUNNYDALE

MILK Half. Gal. 99^c

ARTIC

ICE 2 10-Lb. Bags \$1



FIELD-FRESH

CARROTS Lb. 29^c

YELLOW

ONIONS Lb. 19^c

SUNKIST

ORANGES Lb. 39^c

RED DELICIOUS

APPLES Lb. 49^c

PERSIAN

LIMES Lb. 79^c

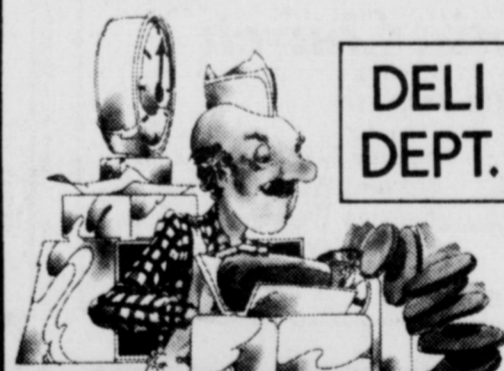
PRICES EFFECTIVE JUNE 7 THROUGH JUNE 10

MIKE'S Delicatessen

Ready-to-Eat Meals

AT MIKE'S DELI, WE HAVE COMPLETE MEALS READY TO ORDER, WITH A WIDE SELECTION OF MEATS, VEGETABLES, DESSERTS AND BAKERY ITEMS.

WE ALSO HAVE A VARIED SELECTION OF COLD CUTS AND CHEESES!!!

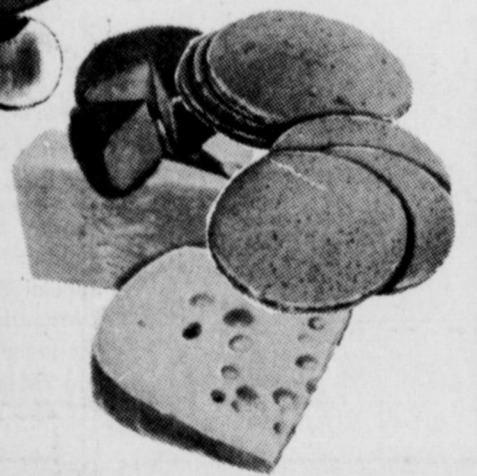


DELI DEPT.

ASK ABOUT OUR DAILY LUNCHEON SPECIALS.

CALL AHEAD YOUR ORDER BY PHONING 592-4186

ALSO — A WIDE SELECTION OF COLD CUTS, AND CHEESES.



AAFFILIATED FOODS INC.

THRIFTWAY

MIKE'S THRIFTWAY FOODS

ParkWest Shopping Center

Phone 592-4186

Store Hours: 8 a.m. - 8 p.m. Monday - Saturday; 9 a.m. - 6 p.m. Sunday

Our store family-owned and operated 20 years.

DOUBLE COUPONS EVERY TUESDAY

DOUBLE EVERY WEDNESDAY

Obituaries

Shiliana Crystal Erskin

Graveside services for Shiliana Crystal Erskine, infant daughter of Mr. and Mrs. Daryl Erskine, were held Wednesday morning at the Hilltop Cemetery in Wichita Falls with Rev. Earl Correll, pastor of the Northside Baptist Church in Iowa Park, officiating. Arrangements were under direction of Hampton-Vaughan Funeral Home.

In addition to her parents, she is survived by her grandparents, Mr. and Mrs. Herman Erskine of Wichita Falls and Mr. and Mrs. Earl Correll of Iowa Park.

Willis Hendricks

Services for Willis Hendricks, 77, will be at 2 p.m. today at Tanner-Aulds Funeral Home with Rev. Ole Olds, pastor of the Church of God, officiating. Burial will be in Highland Cemetery.

He was born Dec. 29, 1906, in Iowa Park and had lived here all of his life. He was a retired carpenter. He and Inez Bryant were married July 12, 1938, in Grandfield, Okla.

Survivors include his wife; a son Bill of Granbury; a daughter, Betty Solomon of Wichita Falls; two sisters, Lena Simmons and Ola McLaurin, both of Iowa Park; six grandchildren; and 11 great-grandchildren.

Nile Creacy

Services for Nile Creacy, 82, were held Wednesday at Hampton-Vaughan Funeral Home with Rev. Ken Cole, pastor of the Faith Baptist Church in Iowa Park, officiating. Burial was in the Highland Cemetery.

He was born Sept. 2, 1901, in Franklin County and had lived in Wichita Falls for 38 years. He was a retired civil service employee and a member of the National Watch and Clock Collectors Association.

He is survived by his wife, Bernice; three sons, James of Saudi Arabia, Donald of Dallas, and Wayne of Florissant, Mo.; two sisters, Helen Riggs of Lebanon, Mo., and Rachel Taylor of Antlers, Okla.; three brothers, Stiles of Athens, Johnny Lee of Wichita Falls and Coy of Colorado Springs, Colo.; eight grandchildren; and one great-grandchild. He was the stepfather of Robert Wilcox of Iowa Park.

Maggie Thompson

Services for Mrs. Maggie Thompson, 96, mother of Riley M. Thompson of Iowa Park, were held Monday afternoon in the Vega First United Methodist Church with Dr. Jordan Grooms, and Rev. Mike Hinton, pastor, officiating. Burial was in Vega Memorial Park Cemetery.

Mrs. Thompson was born in Coleman County. She married Riley Marvin Thompson in 1902 at Snyder. He died in 1954.

She had lived in Snyder and McLean before moving to Oldham County in 1909. She worked for the Rock Island Railroad in Wildorado, Adrian, Vega and Dalhart, then moved back to Vega in 1944. She was a station agent for Rock Island at Adrian during World War I. Her father, Jephtha Brown, was a scout with Col. Ranald McKenzie.

Mrs. Thompson entered Kings Manor Home in Hereford in 1972, where she lived until her death Friday.

Survivors include three sons, Raymond of Vega, Gordon of Lubbock and R.M. Jr. of Iowa Park; a daughter-in-law, Nancy Jo Thompson Houston of Dallas; nine grandchildren; 14 great-grandchildren; and three great-great-grandchildren.

Memorials may be given to Kings Manor in Hereford.

Mary Myrtle Mayo

Services for Mrs. Mary Myrtle Mayo, 88, mother of Odis Vincent Mayo of Iowa Park, were held Thursday at Sullivan Funeral Home in Vernon with Rev. Jerry Wood, pastor of Second Baptist Church, and Rev. John Klappenbach, pastor of Odell Baptist Church, officiating. Burial was in Eastview Cemetery.

She was born Aug. 10, 1985, in Hamilton County. She had been a resident of Vernon since 1907 and was a charter member of Second Baptist Church.

In addition to the son in Iowa Park, she is survived by three daughters, Ada Belle Collins of Odell, Ann Simon of Denver, Colo., and Juanita Wilson of Vernon; a brother, Cecil Hilliard of Vernon; 11 grandchildren; 24 great-grandchildren; and four great-great-grandchildren.

Kyle Lee Stubblefield

Graveside services for Kyle Lee Stubblefield, infant son of Mr. and Mrs. Randal Joe Stubblefield of Holliday, were held Thursday at Crestview Memorial Park with Rev. Elwood Poore, pastor of First United Methodist Church in Gainesville, and Rev. Ben Read, pastor of Beverly Drive United Methodist Church, officiating. Arrangements were under Owens and Brumley Funeral Home.

He is survived by his parents; and grandparents, Mr. and Mrs. William J. Murphy and Mr. and Mrs. Ronnie Lee Stubblefield of Holliday.

Donald Clifford Jones

Services for Donald Clifford Jones, 72, of Vernon were held Friday in Sullivan Funeral Home with Rev. Ron Fox, pastor of Calvary Baptist Church, and Rev. Murl McKay, retired minister of the Church of God, officiating. Burial was in Eastview Memorial Cemetery.

Born April 15, 1912 at Farmers Branch, he was a lifetime area resident. He and Oma B. Richardson were married March 26, 1931, in Vernon. He was a retired auto mechanic.

He is survived by his wife; a son, J.D. Jones of Vernon; a daughter, Peggy Burk of Vernon; four stepsons, Lois Alton Hopkins of Denver City, Emory Hopkins of Oklaunion, John David Hopkins of Iowa Park and Jessie Hopkins of Victoria; four sisters, Helen Sims and Sybil Bailey, both of Vernon, Johnnie Johnson of Ozona, and Francis Hamilton of Washington; a brother, Keith Jones of Sherman; 25 grandchildren; and 27 great-grandchildren.

John L. Mason

Services were Friday morning for John L. Mason, 65, in Owens and Brumley Funeral Home with Weldon Gann, Church of Christ minister from Graham, officiating. Burial was in Crestview Memorial Park.

He was born Aug. 20, 1918, in Terrell, and was a retired employee of Wichita Falls State Hospital. He served in the Navy in World War II and was a member of the Floral Heights Church of Christ.

Survivors include three brothers, Jack of Wichita Falls, Jerome of Iowa Park and Bob of Garland; and a sister, Dorothy Nell Mason of Wichita Falls.

Ann Fairchild Sanders

Services for Mrs. Ann Fairchild Sanders, 83, will be held Friday at 2 p.m. in Tanner-Aulds Funeral Home. Rev. Ken Cole, pastor of Faith Baptist Church, will officiate. Burial will be at 3:30 p.m. in the Eastview Memorial Cemetery at Vernon.

Mrs. Sanders was born Oct. 4, 1900, in Denton County and had lived in Iowa Park for eight years. She was a member of the Baptist Church.

She is survived by four sons, A.L. Fairchild of Pasadena, Kenneth, Sam and Joe Fairchild, all of Iowa Park; a daughter, Mrs. Robert Box of Bowie; three sisters, Mrs. Helen Shackelford of Randlett, Okla., Mrs. Lorene Oda of Oklahoma City, and Mrs. Ada Chandler of Sanger; 15 grandchildren; and 15 great-grandchildren.

CARD OF THANKS

Words cannot express the heart-felt thanks to all of those who supported us with flowers, food, and most of all love, during the loss of our Beloved Joline. She will forever be remembered in all our hearts. We love you all and may God bless each of you.

The Family of Joline Smith

—WELCOME—
ASSEMBLY OF GOD
S. Yosemite
9:45 S.S./7 P.M.
Wed. 7 P.M. Service
Rev. Charles Hensley,
Pastor

Police make two arrests

Iowa Park Police made two arrests during the past week, one on local charges and one for the sheriff's office.

Called to Woodbrier Apartments at 1:55 a.m. last Thursday where a disturbance was reported in the parking lot, police arrested Alton Maurice Sosebee, 34, of Wichita Falls, on a charge of public intoxication.

On a warrant from county for violation of probation on aggravated assault, Lester Thomas Sargent, 19, of 207 W. Crystal, was arrested at 2:53 p.m. Tuesday and turned over to a deputy sheriff.

Mid afternoon Wednesday of last week, Gail Fletcher, 903 Park Plaza, called police and told them someone across the street had fired a gun at her home, breaking a window.

Upon investigation, according to the report filed, Kevin Allen Ketchersid, 24, of 1300 Westridge, admitted to firing a home made air gun. The gun was confiscated and Ketchersid promised to make restitution for the window.

New Meter Connections

Bruce Coleman - 907 Dosia
Joe Kennedy - 14 Surrey
Billy Freeman - 509 E. Alameda
Margaret Sullivan - 412 W. Texas
Michael Castello - 401 W. Texas
Mark Wise - 311 W. Pecan
Russ Hayley - 115 Garden

ABOUT TOWN

Russell Shawver was listed among the students at Northern Illinois Univ. at De Kalb who earned at least a 3.75 grade point average for the spring semester. A Bachelor of Science undergraduate, he is majoring in accounting.

ABOUT TOWN

Dennis Lepak of the Iowa Park Police Department is completing a 320-hour Basic Peace Officers Certification Course and will be among 26 students from a 12-count area to participate in graduation exercises at 10 a.m. June 18 at the Wichita Falls Activities Center.

POLICEMAN HONORED - Sgt. Jerry Barker, of the Iowa Park Police Department, was recognized recently by the Optimist Club when he received a plaque as "Law Enforcement Officer of the Year." Barker joined the local force in May of 1983, moving here from Whitney.



Christ The King Catholic Church

First and Clara Phone 592-2802
8:45 a.m. C.C.D. — 10 a.m. Mass

Northside Baptist Church

800 N. Wall
• Sunday School - 10 a.m.
• Sunday Worship - 11 a.m.
• Sunday Evening Worship - 6:30 p.m.
• Wednesday Worship - 7:30 p.m.
EARL CORRELL - Pastor Ph. 592-2200

First Baptist Church of Iowa Park



Yosemite at Park SUNDAY SERVICES

— Mornings —
Sunday School 9:45
Worship 11:00
— Evenings —
Church Training 6:00
Worship 7:00
WEDNESDAY
Prayer Meeting 7:00
Choir Rehearsal 7:45

Pacific Avenue Missionary Baptist Church

1400 North Pacific Avenue

Larry Washburn
Pastor
Church - 592-9711
Pastor 592-4288



Sunday School 9:45 a.m.
Morning Worship 11:00 a.m.
Evening Worship 6:00 p.m.
Wednesday 7:00 p.m.

Everybody Welcome

Church of God

601 E. Cash

Pastor, Ole Olds
Sun. Morning Worship 11:00
Sun. Night Celebration Service 7:00 p.m.
Tues. Ladies Prayer Service 10 a.m.
Wed. Night Bible Study 7:30
Sat. Family Night 7:30
"Catch the Vision"

Par. 592-5316

Office 592-4348

First Christian Church

105 E. Cash

Sunday School - 9:45 a.m.
Worship - 10:55 a.m.
Corner, Cash & Bond St.

We encourage each of you to worship Jesus Christ in the church of your choice. If you do not have a church home, we invite you to come worship with our church family.

First United Pentecostal Church

802 First Street 592-4275
Rev. Grover Milner, Pastor

Sunday Services
Sunday School - 10 a.m.
Special Singing - 11 a.m. - 12 Noon
Evangelistic Service - 7 p.m.
Wednesday - Prayer Meeting and Bible Study - 7:30 p.m.



Kamay Road Church of Christ

Corner of Colorado & Emerald

Seeking the Old Paths'

Lord's Day 10:30 a.m. & 6 p.m.
Wednesday 7:00 p.m.

First United Methodist Church

201 E. Bank

Church School 9:40 Youth Meetings 5:00
Morning Worship 10:40 Evening Worship 6:00

GEORGE TOPPER, PASTOR

First Presbyterian Church

DR. EARLE W. CRAWFORD, INTERIM PASTOR

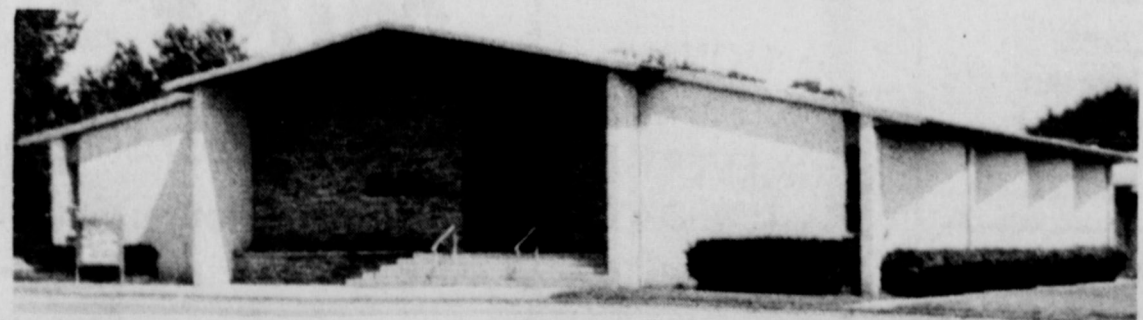
CHURCH SCHOOL - 9:45 A.M.
WORSHIP - 11:00 A.M.

A Caring Congregation of
Palo Duro Presbytery - Presbyterian Church [USA]

IOWA PARK CHURCH OF CHRIST

SCHEDULE OF SERVICES

Sunday
Bible Study 9:30 a.m.
Worship 10:30 a.m.
Evening Worship 6:00 p.m.
Wednesday
Ladies Bible Study 10:00 a.m.
Evening Study 7:30 p.m.



300 East Park, Iowa Park, Texas 76367, [817] 592-5415

GOOD SHEPHERD LUTHERAN CHURCH

1st & Magnolia Iowa Park

Sunday School: 9:45 a.m.
Worship Service: 10:30 a.m.

Girls' softball



Intermediate Division
 Sparks 2, Slick Chicks 19
 Slick Chicks 2, Fireballs 1
 Good News Bears 3, Slick Chicks 15
 Fireballs 13, Sparks 12
 Good News Bears 9, Fireballs 6

Senior Division
 Sizzlers 15, Angels 14
 Thunderbirds 18, T.N.T. 9
 Angels 15, T.N.T. 14
 Angels 3, Thunderbirds 22
 Thunderbirds 19, Sizzlers 18

IOWA PARK GIRLS SOFTBALL LEAGUE

STANDINGS

	WIN	LOSE
Beginners Division		
Rangerettes	2	1
Chargers	3	0
Butterflies	0	3
Mermaids	1	2
Intermediate Division		
Fireballs	1	2
Slick Chicks	3	0
Good News Bears	1	2
Sparks	2	1
Senior Division		
Thunderbirds	3	0
Angels	2	1
Sizzlers	2	1
T.N.T.	0	3

GAME SCHEDULES

Thursday, June 7
 Rangerettes vs. Butterflies
 Good News Bears vs. Sparks
 T.N.T. vs. Thunderbirds

Friday, June 8
 Mermaids vs. Chargers
 Fireballs vs. Slick Chicks
 Angels vs. Sizzlers

Monday, June 11
 Butterflies vs. Mermaids
 Slick Chicks vs. Good News Bears
 Thunderbirds vs. Angels

Tuesday, June 12
 Chargers vs. Rangerettes
 Sparks vs. Fireballs
 Sizzlers vs. T.N.T.

RESULTS

Beginners Division
 Rangerettes 12, Mermaids 2
 Chargers 17, Rangerettes 6
 Rangerettes 16, Butterflies 5
 Chargers 3, Mermaids 2
 Butterflies 5, Chargers 16



DRUM MAJORS Jana Rains, daughter of Mr. and Mrs. John Rains, and Tiffany Gray, daughter of Mr. and Mrs. Steve Gray, have been selected to attend drum major camp at East Texas State Univ. during the week of June 17. They were selected from 11 eighth graders in tryouts judged by out-of-town band directors. Both girls are active in junior high school choir and sports and are honor roll students. Jana will hold second chair clarinet and Tiffany will be first chair alto saxophone next year.

Wildcats make good show at Dallas tournament

Iowa Park's Wildcat soccer team, playing in the under-10 division of last week's Dr. Pepper Invitational Tournament in Dallas, advanced to the final round of competition before losing to Richardson's Dartmouth Titans 3-0 Sunday.

Three wins on Saturday for the Wildcats, though, gave the local team the distinction of being the only area team to advance to Sunday's finals. This includes other teams from Iowa Park, Wichita Falls and Burkburnett.

Of 47 teams entered in the under-10 division boys bracket, the Wildcats were one of 12 teams to advance Sunday.

In Saturday's games, the Wildcats beat the Dallas-Ft. Worth Broncos 2-1, then overcame Grapevine's Thunderbirds 4-1 before tying Grapevine's Bombers 1-1. The Wildcats advanced in competition due to more total points in a prearranged point system with 21 points to the Bombers' 18.

Team members are Darrin Lankford, Skip Drissel, Greg Carrillo-Miranda, Daron Bowling, Michael Smith, Bobby Van Spey-

brock, T.J. Bean, Ralph Hollenbeck, Corey Bridwell, Brian Kinnett, Carlos Thurlbill, Ron Howit, Chris Noel and Todd Pulley. Coaches are Jim Pulley, Buddie Bridwell and Aquilla Carrillo-Miranda.

Swim lessons being offered

Swimming lessons at Iowa Park's Bicentennial Pool will be offered in two sessions this summer, the first slated to begin Monday, according to Dick Wineinger, pool manager.

The sessions, lasting two weeks apiece, will cost \$10 per student, said Wineinger, and the only prerequisite is that the student be able to stand unassisted in the shallow end of the pool. Interested persons can sign up for the course at the pool during regular hours, which are from 1 to 6 p.m. daily.

The first session lasts from June 11 to June 22, from 6 to 7 p.m. The second session begins July 9 and ends July 20, with classes held the same hours.

SHIRLEY'S KUNTRY KITCHEN
 IOWA PARK 592-4721

114 W. CASH

New Hours

Friday Night's Fish Fry.
 6 p.m. - 9 p.m.

FRIDAY NIGHT FISH FRY
 Full or Half Orders

Carry-out orders by phoning 592-4721.
 Best chicken-fried steak in North Texas.
 Serving Breakfast weekdays at 6:30 a.m.

COUPON

FREE FOOD

(With this coupon)

Buy any Large Pizza at Ken's Pizza and get up to 3 Salads and all the Soft Drinks you can drink,

Free Ken's Pizza

592-4184 902 W. Highway

Limit 4 drinks per pizza on carry-out orders.
 Coupon Expires June 21, 1984

COUPON

Little Richard's

Salt Lick Restaurant

510 E. Highway 592-5252

Friday & Saturday Special
ALL YOU CAN EAT FISH & SHRIMP
 YOU EAT BETTER... FOR LESS!

Richard has lost 40 pounds in 50 days!!!

ASK HIM HOW.

ANNOUNCING THE **CORVETTE CLASSIC GIVEAWAY**
 APRIL 15 - JUNE 15

NATIONAL GRAND PRIZE
 A Beautifully Restored 1959 CORVETTE

LOCAL GRAND PRIZES
 A 1959 Corvette Replica GO-CART
 WEEKLY LOCAL PRIZES
 Magnavox AM-FM Stereo Headset Radio

SONIC WINNER WAYNE ROACH, IOWA PARK

Entry Forms and Contest Rules Available at Participating Stores (One per visit. No purchase necessary.)

WEEKEND SPECIAL
 Thursday thru Sunday

SONIC BURGER . . . 99¢
 No Limit - No Coupon Necessary

SONIC
 Iowa Park Only - 719 W. Highway
 Call In Orders Welcome 592-4221

99¢ Split Sale

This Monday, June 11, thru Sunday, June 17.

Dairy Queen

Dairy Queen brings you a Split Sale you can't afford to miss. Our 99¢ Split starts with a fresh whole banana, mountains of creamy rich Dairy Queen topped with luscious strawberries, tropical pineapple, rich chocolate, and finished off with heaps of whipped topping.

"Just keeps on getting better."

GO BANANAS

Fish Sandwich

\$ 1.39
 REG. \$1.65

Enjoy Coca-Cola

Harvey's
 FAMILY RESTAURANT
HAMBURGERS

805 West Highway
FOR TAKE OUT ORDERS
CALL 592-4731

Holliday News



GRAND OPENINGS - Three businesses observed official openings Saturday, with State Rep. and Mrs. Charles Fennell present during ribbon cuttings. They are, from the top down, Jackie's Kuntry Kitchun, Reba's Gift Shop, and Stone's Flea Yard.

Honor rolls released

The final honor roll for Holliday Middle School has been released by principal Jake Cottrell. Students making the "AA" list averaged 90 or above in each course taken, while those listed in the "A" roll averaged 90 or above in all classes combined. They are:

SIXTH GRADE AA: Johnny Hancock, Kim Whitsitt. **A:** Carla Carr, Schondra Conyca, Brandon Davis, Jody Echols, Darren Hill, Rickey Hogue, Robert Lindley, Teresa Noll, Brian Roland, Julie Scholl, Terry Stewart, Brian Sweitzer, Renee Wilson.

SEVENTH GRADE AA: Pam Bailey, Tammy Beaves, Scott

Belcher, Mary Jane Billingsley, Christy Edwards, Melissa Faver, Keri Lilley, Luci McIlhane, Karen McReynolds, Beth Moldenhauer, Michael Richards, Chad Stubblefield. **A:** Lisa Belvin, Shonda Croxton, Leslie Goodlett, Mike Holder, La Shana Luke, Katha McAllister, Ronnie Molina, Kathy Rathman, Kelly Rippin, Laurie Styles.

EIGHTH GRADE AA: Klonie Berend, Seretha Finnell, Shannon O'Brien, Norelia Reed. **A:** Dustin Bridges, Jenny Ingram, Colt West, Pat Williams.

Cheerleaders are named

Varsity cheerleaders at Holliday High School for the 1984-85 school year were selected recently through an extended-evaluation procedure, instead of the traditional one-day tryouts.

Deviating from normal selection procedures, the 28 candidates, eight of whom were selected, went through a series of evaluations which included completion of a creativity assignment, scheduled practice sessions, and an acceptable grade sheet, signed by a teacher.

Cheerleaders selected were Buffie Broyles, Kristi Martin, Cheryl Lowder, Lana Hutson, Traci Hawley, Amanda Parnell, Lana Parish and Audrea Birdwell.

Artists' works being displayed

Holliday Art Association members Lois Blair and Reba Dolberry will display their works at Olney Savings Gallery in Holliday until June 16, from 9 a.m. to 4 p.m. Monday thru Friday.

Blair has been painting seriously since 1974, starting in oils, but currently involved in watercolor. She has lived in Holliday since 1969, and is a native of Clay County.

Dolberry has been sewing and embroidering since she was in junior high school, and has done ceramics the past 10 years. She moved to Holliday in 1978 with her husband Rod, and three children. A native of California, she is the owner of Reba's Gift Shop in Holliday.



BURLE BOWLING and ALYSSA LYNCH

Announce engagement

Mr. and Mrs. Dan Lynch of Dallas announce the engagement and approaching marriage of their daughter, Alyssa Rebecca, and Burle Olen Bowling, son of Mr. and Mrs. Earnest Bowling of Holliday.

Miss Lynch was graduated from Newman Smith High School in Dallas and is employed in a Dallas dental office.

The prospective groom was

graduated from Holliday High School. He attended Midwestern State Univ. and Tarleton State Univ. before entering Texas State Technical Institute in Waco where he received his degree in dental laboratory technology. He plans to continue the dental laboratory field in Dallas.

The couple will be married July 21 at Lake Ray Hubbard in Rockwall.

WIC program helps needy

State Rep. Charles Fennell has announced that the Texas Department of Health recently approved a new Woman, Infants, and Children project (WIC), which will begin operation in several counties covering most of the 80th House District.

"This program will provide food and nutrition education services to eligible recipients," stated Fennell.

The Texas Department of Health will have clinics in Archer, Baylor, Clay, Foard, Hardeman, Jack, Montague and Wilbarger counties.

Additional information concerning this project can be obtained through the Public Health Region (4) headquarters, Commerce Plaza Office Building, 1290 S. Willis, Suite 100, Abilene, Texas 79605, or by calling 917-695-7170.

From one of America's largest health insurers...

GOOD NEWS FOR SENIOR CITIZENS

Now you can get the flexible new 75R—the insurance protection you need for the bills Medicare can't cover.

- **100% Hospital Benefit Coverage Available**
Pays ALL your Deductibles, Co-Payments, Usual and Customary costs not covered by Medicare Part A.
- **100% Medical Benefit Coverage Available**
Pays ALL Usual and Customary expenses for doctor services, out-patient hospital, supplies and other services not fully paid for by Medicare. Goes beyond ordinary restrictive definitions of "Medicare Eligible" expenses.
- **Lifetime Benefit Coverage**

No lifetime dollar or time limits to how much money you can collect.

- **Guaranteed Renewable**
Your protection can never be cancelled or your premiums raised because of poor health, or amount of benefits you collect.
- **No Medical Exams, No Health Questions Asked**
- **No Groups to Join, No Dues to Pay**
- **Quick Claim Service**

BANKERS LIFE AND CASUALTY COMPANY
Chicago, Illinois 60630

GET THE FREE FACTS TODAY... NO OBLIGATION

Neither Bankers nor its agents are connected with Medicare. Call or write for the full details on benefits, costs, and benefit reductions, limitations and exclusions.

Talk To Me



Robert L. Livingston
3227 Northwest Drive
Wichita Falls, TX 76305
(817) 723-1159
Out of Town Call Collect

Some people don't know their electric bills can be about the same all year round.

Some do.



The Average Payment Plan will put you in the know; and just in time to take the heat off your hot weather bills.

You'll still pay for all the electricity you use. But under the Average Payment Plan, your bills will be more even all year round.

The plan is based on a 12-month average that's figured each month. So you can pay less during the months you use the most electricity, by paying more during the months you use less.

The Average Payment Plan is available to Texas Electric residential customers. So look into it today. It's definitely worth knowing about.



A Division of Texas Utilities Electric Company

People Who Care About People

Caring for people you love is at the very heart of all we do.

We are constantly striving to improve the quality of life for our residents by providing only the best of everything.

That's why our facility has recently been remodeled. It's the reason behind the new whirlpool bath and the new chair lift.

It's why we offer our residents the best physical therapists and physical speech consultants. And it's the reason why our food is prepared by some of the county's best cooks under the supervision of professional dieticians.

Our health care costs are among the lowest. Here, they are based on specific individual needs and may be financed privately or by Medicaid.

We're the people who care about people because it's the best way we know to enhance the lives, health and happiness of those we serve and love. Come by soon for a visit with administrator, **Oneta Gregg** and tour our beautiful facility.

ELECTRA NURSING CENTER

511 South Bailey • Electra, Texas 76360

(817) 495-2184



(Another quality facility operated by Beverly Enterprises)



FAMILY GATHERING? - Members of Iowa Park High graduating Class of 1974 brought their children with them for a reception in the school cafeteria Saturday morning. The youngsters with babysitters that evening when a social and dance took place in Wichita Falls. Sixty-five classmates attended, but the total crowd was set at 100.

Stan Blair won the prize for traveling the most distance to attend, arriving from New York City. Russell Sargent was close behind, coming from Salt Lake City. Others from out of state were Sherry Anderson Bourque, Lakewood, Colo., and Dona Johnston Hardin, Bethany, Okla.

AREA OIL & GAS NEWS

James and Henderson of Iowa Park have filed first production figures on

Tennis lessons taught locally

Tennis lessons for school-age youth are being instructed at the high school courts by Wichita Falls pro Art Hobbs.

Purpose of the instruction is to give local players an opportunity to be more competitive when playing teams of other schools, according to Mrs. James Rowman, local enthusiast.

Beginner One and Two classes are held Monday, Tuesday and Wednesday, and Intermediate One and Two classes are Monday through Thursday. All classes are one-hour each and are held in the mornings.

A fee is being charged for instruction. Beginners will pay \$35 per month and Intermediates \$45. Classes began Tuesday, but registration for future classes can be made by calling 592-2722.

a new oil well in the Wichita Regular Field. The No. 10 Burnett Estate showed potential to make six barrels of oil per day.

The operator has 320 acres leased, with drills in the BURNETT Survey, A-43, three miles southwest of Iowa Park.

The well will produce from an interval 750 to 800 feet into the subsurface. Total drilling depth was 850 feet.

The well is 490 feet from the west line and 1,320 feet from the north line of the lease.

Three 2,000-ft. developmental wells are planned by Bessler Management Co. of Wichita Falls at a drillsite four miles southeast of Fowler. The locations are in a 150-acre lease in the W.A. Willis Survey, A-527. Well designations are the Nos. 9, 10 & 11 Wagoner 3D. They are in the Wichita Regular Field, SAA2608P Survey, A-27.

The No. 9 well is 490 feet from the south line and 750 feet from the west line of the lease and 950 feet from the south line and 750 feet from the west line of the survey.

The No. 10 well is 450 feet from the west line and 750 feet from the south line of the lease and 450 feet from the west line and 1,300 feet from the south line of the survey.

The No. 11 well is 750 feet from the west line and 750 feet from the south line of the lease and 750 feet from the west line and 1,300 feet from the south line of the survey.

William M. Bigger of Iowa Park has filed for permit to drill the No. 1 Foster 2,500-ft. developmental well six miles northwest of Electra. Location is in a 150-acre lease in the Wichita Regular Field, SAA2608P Survey, A-27.

Grazing needs to be deferred

By BOB WALKUP

Soil Conservation Service
Rest is a law of nature. Each of us can't work so long during the day, then expect to have rest to be able to work the next day. Most everyone enjoys taking a week or two off during the year for vacation or rest and relax.

The same is true of our range grasses. They, too, must have a rest. If we expect them to come back to work the next year and year after year, it is not, but true, that many of our grasses have never had a rest, vacation or been deferred, which ever term you would choose to use, but will we expect them to be on the job each season to provide food for our livestock and wildlife.

It is just as true, but even sadder, that unless our grasses have a rest, they will fade out of the picture and be replaced by something else that is not as desirable for our livestock and, consequently, nature has provided a plant with what we may call a built-in rest - because our livestock will not graze it.

It has been proven that our range grasses must have at least three to four months of rest at least once every three years. This rest is required to keep our grasses vigorous, allow them to deepen their roots and produce seed and spread, and thus provide more and better grazing. A systematic rest plan, whereby each pasture is given a rest every three years, at different seasons of the year, is best. On most ranches all it would take to start a defoliation system is just to pick out a pasture and start giving it a rest. For each year, choose a pasture that you are not "washing" the grass, but saving it to use later and also making your range plants healthy to produce more grass next year.

A technical explanation is posted on planning a defoliation system. It is available through the Soil Conservation Service at Iowa Park.

Schedule for:

- Recreational
- Activities
- Center

RENTAGE for six, seven and eight year olds is at 1:30 Monday afternoon, all summer. This is a simple, supervised play until 4 p.m. The game is available for use, if not at that time, the same hours on Wednesdays.

STUDENT, PUPPETS & PEPPER - puppet shows, popcorn and good programs for children of all ages. Held by Karen Gaudier, a professional dance teacher, dance instructor. Tuesday for three, four and five year olds and 5 p.m. Tuesdays for six, seven and eight year olds. Thursday for years six through 12. They begin June 22 and will continue six weeks.

WRESTLING - Beginning June 24, wrestling will be held at 8 p.m. on Wednesdays. A basic beginner course. Wrestling will last six weeks.

WRESTLING - The Thursday class is for all ages and will be held at 8:30 a.m. on Wednesdays for all eight through 12 years old.

DON'T LAMINATE NEW SOCIAL SECURITY CARDS
The new social security cards being issued since October 31, 1993, are computerized, resistant and longer lasting. The new cards are a light-blue tint with the words "Social Security" written in white.

The back of the new cards include the statement: "This card is invalid if laminated."

SSN applications should be worked in advance of 30 laminated their cards.

COUNTER TOPPING
FORMICA WILSON ART MICARTA
"WE NOW SELL CUT SIZES"
T.S. THOMAS, CABINETMAKER
1515 Beverly Wichita Falls, TX 76722-6622

TONY LAMA BOOTS
Reg. \$154 Now \$105

AGNE BOOTS Starting at \$41.95

ABILENE BOOTS Reg. \$125 Now \$105

STRAW HAT SALE
3 1/2 to 4" Reg. \$40 \$27.95
3 1/2 to 4" Quarter Horse Reg. \$48.95
Crestle \$30

WRANGLER JEANS
PRO RODEO COWBOY CUT \$13.95

COOLEY'S WESTERN WEAR
COWBOY BOOT HEADQUARTERS
Corner Kemp & Southwest Hwy. Across from K-Mart

Hey Timmy! Wake Up!
...It's your birthday!

When Your Child Needs You...

Make Sure You're Only A Call Away.

Call today to get a free copy of our new book, "When Your Child Needs You..."

Call today to get a free copy of our new book, "When Your Child Needs You..."

Call today to get a free copy of our new book, "When Your Child Needs You..."

Plants Etcetera
Exotic, Exotic Plants, Exotic Arrangements, Exotic Plants, Exotic Plants
2201 Elliot, W.F.
Open 1st - Every Day

THURSDAY, FRIDAY & SATURDAY ONLY!

PEPSI DIET PEPSI 7-UP DIET 7-UP MOUNTAIN DEW

\$1.69 6-Pack 12 oz. Cans

Scobee's I & II
I - 322 W. Hwy. 592-5961 II - 900 W. Hwy. 592-2663

MANUFACTURED HOMES FROM ALL THESE DEALERS ON DISPLAY

BOB'S MOBILE HOMES
BEST MOBILE HOMES
KEN PAINES MOBILE HOMES
HOMESTEAD MOBILE HOMES
QUALITY MOBILE HOMES
WICHITA HOUSING CENTER

FREE OFFER

HEAR YE, HEAR YE.

OPEN DURING HALL HOURS

BUYING? SELLING? RENTING? HIRING? WANT ADS PAY OFF

DEADLINES

10 A.M. WEDNESDAY (Word Ads Only)
4 P.M. TUESDAY, DISPLAY ADS

SAVE 10¢ PER WORD FIRST INSERTION BY PAYING WITH COPY AT OFFICE

RATES: 20¢ PER WORD FIRST INSERTION 10¢ PER WORD EACH REPEAT

HOMES FOR SALE

5 BEDROOM HOME on 4.47 acres. Wet bar, whirlpool tub, large country kitchen. \$88,000. 592-9898. 6-7-tfc

FOR SALE or Lease - 3 bedroom, 1 1/2 baths, den, central heat and air. Reasonably priced. 592-5785. 6-7-2tp

THREE BEDROOM brick, 1 1/2 bath, large kitchen. Will consider work for down payment, and owner financing. 592-5785. 5-24-4tp

BRICK, OLDER home, 1750 sq. ft. 2 bedroom, den, 1 1/2 baths, double garage, cellar, pecan trees, large lot. \$35,000. 592-5240 or 592-4405. 5-24-3tp

NEW LISTING - 4 bedrooms, corner lot, 2 full baths, fenced, immediate possession. \$61,500.

\$500 TOTAL MOVE-IN Beautiful townhouse. 2 bedroom, 2 1/2 bath, fireplace, all almond appliances.

OWNER FINANCE 5 acres, 3 bedrooms, large barn, storm cellar \$55,000

5 ACRES \$20,000, with peach orchard, marked well, new fence, restricted for home over 1800 sq. ft.

2 ACRES Large barn, 2 Bdrm. brick, 1 1/2 bath, den, formal living. \$76,500.

5 ACRES Over 2000 sq. ft. extra nice home. 3 Bdrm., 2 baths, utility room, lovely family room with fireplace. \$105,000.

GREAT BUILDING site. 5 acres, Iowa Park schools. \$20,000.

3 BEDROOM brick. Den with fireplace. New appliances. Storm cellar, fenced yard. Have appraisal \$50,000.

CORNER LOT - 3 bedrooms, fireplace, 1 1/2 baths. Separate 2 bdrm. apt. Owner says sell! \$60,000.

RE-DONE - Immaculate. New custom cabinets, 2 1/2 baths, game room, den - fireplace, 3 bdrm. \$47,500

COUNTRY PARADISE 4 years old. 5 acres. Beautiful 3 bdrm. ranch home, garden room, jacuzzi. Large shop in back. \$110,000.

2 BEDROOM - Possible owner finance. Attached garage. \$14,500.

7 GOOD building lots. \$10,000.

EXTRA NICE - Central heat and air, new carpet, 2 extra large bedrooms, storm cellar, fenced yard. Assumption only. \$32,500 \$5500 equity.

Member Multiple Listing
Shirley Rains
Real Estate
119 W. Park Iowa Park
592-4248 592-4584
Office Vincent

FOR RENT

FOR RENT 1 bedroom home on Huntington Lane. Stove, refrigerator, refrigerated air, central heat. Gas and water paid. Deposit. 855-5996 or 855-3062. 6-7-1tp

MISC. FOR SALE

GARAGE SALE Furniture, tools, appliances, organ, children's clothes, stereo, toys, motorcycle, books, decorative items, and more! 4 families. We're moving and we'll bargain! Thursday - Friday, 9-6. 14 Surrey. 6-7-1tp

4-FAMILY Garage Sale - Lots of good stuff and some junk. 306 S. Yosemite, Friday only. 6-7-1tp

BIG PORCH SALE All kind of things! 406 E. Lafayette, Thurs. - Sat. 6-7-1tp

902 E. HIGHWAY
Over 2,000 SFL area, storm windows, doors, 9" insulation, 5 air conditioners, 2 ceiling fans, fenced yard, corner lot. \$47,500.

529 S. WALL
2 bedroom, corner location. For sell to settle estate. \$10,500.

309 W. CRYSTAL
Nice 2 bedroom mobile, large fenced lot, garden & trees. \$15,000.

707 E. JEFFERSON
Three bedroom, two large lots. Look & make offer.

7 1/2 ACRES
of land on 367. \$22,500, owner finance.

46 ACRES
fronting of Hwy. 258 - \$30,000.

EAST GARDEN
Clean 2 bedroom brick. Cent. heat-air. Fenced yard. \$35,000.

MANES
4 bedroom brick only 6 years old. Fireplace, new privacy fence, 5 ceiling fans, fruit trees, good garden. Near Kidwell. \$69,500.

EMMA
Good buy on brick home near high school. Privacy fence, immediate possession. \$39,500.

WESTRIDGE
Clean 3 bedroom. New paint, nice carpet, extras. Pretty yard. \$42,500.

MUST SEE
Comfortable, older, spacious 3 bdrm., 2 baths, huge living room. Much more! Make offer for equity.

UNDER CONSTRUCTION
3 bdrm., 1 1/2 baths. All extras. \$47,000. FHA.

LOOK NOW
3 bdrm., 2 baths, insul. glass windows. More! Go by 611 W. Smith & check construction in progress. \$40,000.

STARTER HOME
2 bdrm. mobile with garage & upstairs storage. \$14,000.

Member Multiple Listing
Sam D. Hunter
Real Estate
107 E. Cash Ph. 592-4661

GARAGE SALE - 79 DR370 Suzuki, tow mirrors, bottle stretcher, walker exerciser, lots of glassware, kitchen, misc. items. Thurs., Fri., & until noon on Sat. 1208 Emma. 6-7-1tp

GARAGE SALE 704 W. Rebecca, Friday & Sat., 9-6. Lots of clothes, big small and in between sizes. Glassware, appliances, 10-speed bicycle in good shape, and lots of miscellaneous items. 6-7-1tp

GARAGE SALE - 1306 Mockingbird, Thursday. Baby car seat, maternity clothes, women's (size 7) and men's clothing, guitars. 6-7-1tp

2 FAMILY Garage Sale, 805 North Jackson, Thursday, Friday, 9-5. Barbie's toys, clothes, bicycle, furniture, dishes, misc. 6-7-1tp

GARAGE SALE Lamps, bar stools, faucets, lots of miscellaneous. Sat., 9:00 a.m. - 5:00 p.m., 116 West View. 6-7-1tp

CHOICE LOT
75x150 corner lot. Nice storm cellar. Some trees, close to town & shopping. \$6,500.

JUST IN TIME
For the summer months, with this large swimming pool. Lovely three bedroom, brick home.

NEW APPRAISAL
Beautiful brick home with over two thousand feet of living space. Two car garage, fireplace & much more. \$73,000.

THREE FOR ONE PRICE
Very lovely home with upstairs garage apartment and ground level beauty shop. Also extra fenced lot with mobile home hookups. \$46,500.

THREE BEDROOM
Brick, 1 1/2 baths, lovely carpet, single garage. \$36,600.

EXCELLENT BUY
Three bedroom, 1 1/2 baths, large garage, central heat & air. New FHA appraisal. \$40,000.

YES YOU CAN
Own this large three bedroom, livingroom, den diningroom. Over 1900 sq. ft. of floor space. \$59,500.

BEST BUY
Two bedrooms, bath, kitchen, living room. Large lot. \$18,600.

PRICE REDUCED
Two bedrooms, one bath, lovely paneling, single garage. \$26,500.

SUNSET
Four bedrooms, 1 1/2 baths, nice garage, large lot, fenced yard. \$41,250.

Try The Action Co.
I Think You Will Like Us

MEMBER
MULTIPLE LISTING
SERVICE

JOHNNY LEE
REAL ESTATE
592-2378
109 W. Cash

4-FAMILY Yard Sale. Friday only, 8:00 - ? Most items below \$1.00. Lots of misc. 306 S. Yosemite. 6-7-1tp

GARAGE SALE Friday, 9-4, 209 Hope Lane, Iowa Park. Excellent baby items, clothes, and miscellaneous. 6-7-1tp

CARPOR SALE Two family collection. Radios, small appliances, home-canned jellies, new quilt top, lots of good junk. 116 W. Garden, Friday & Saturday. 6-7-1tp

AKC REGISTERED Cocker Spaniel puppies - only 2 left! Adorable 1 male, 1 female, cream buff color. \$60 each. Daytime, call 761-8241 and ask for Kim. After 5 p.m. 592-9826. Anytime weekends. 6-7-tfc

MUST SELL 1982 Kawasaki 750 Spectre, excellent condition. Best offer. For information, call 691-1004. 6-7-1tp

BUSINESS

I NEED two small children to babysit in my home. Five days a week. Call anytime 592-9317. 6-7-1tp

REGISTERED child care. Monday-Friday, 592-9055. 5-17-4tp

MLS Hallmark
"Service at its Best"
2951 Southwest Pkwy.
691-7855

\$38,000 - Johnson Rd. VA appraised. #143.

\$38,500 - Park Plaza Great starter home. #190

\$49,900 - Douglas Excellent condition. #199

\$52,000 - Karen. Assumable loan. #186

\$72,500 - Surrey. Just for the fun of it! Pool! #211

\$122,500 - Holliday, TX Large home on 6 acres.

Kay or Lynn Dozier 766-3000

Charlotte Marteney 691-5104

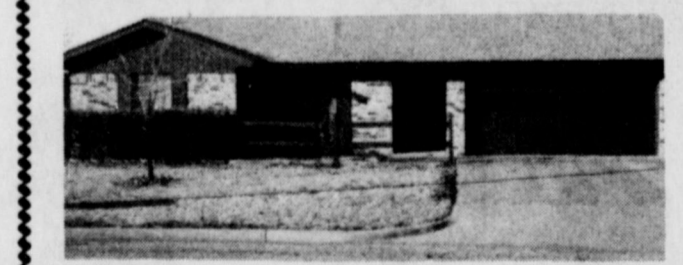
Mary Lou Polson 538-5903

Charles Seigler 855-1888

Colleen Evans 692-6983

CONTRACT PENDING

Featured Home of the Week



No spring cleaning required for this immaculate home! Beamed ceiling magnifies the warmth and space of the livingroom. Modern kitchen with gadgets galore. Cultured gold fixtures accent the luxury in the bath. Garage door opener makes it unnecessary to brave the bad weather. Giant shade trees are among the neighborhood's oldest inhabitants. VA appraised \$48,000.

Call us today at
691-1214
We have 5-acre tracts to build your dream home on. Ask about our trade-in policy.
RIP SMITH Realtor/Builder

PARK SERVICE CENTER Commercial and residential air condition, heating service. Repair most major appliances, kitchen restaurant equipment. 592-2515, 592-9467. 6-7-1tp

HAVE YOU LOOKED for profitable supplementary income with an established, documented company. . . whose produce is needed in every home but present in very few. A wide-open market? I've found it! Call Maryanne. 592-4144; nights, 592-4024. 6-7-1tp

MARY KAY Cosmetics, Rosene White, 307 E. Alameda, 592-5337. 6-7-4tp

GENERAL SHELTERS of Texas, Inc. is seeking a dealer in Wichita Co. for retail sales of portable buildings. Lot and small investment required. Excellent opportunity to expand existing business with low risk. Contact Mike Wulf, General Manager 817/422-4547. 6-7-4tc

HANDYMAN SERVICES. Painting, carpenter, repairs, renovations, wallpapering, paneling, etc. Reasonable and work guaranteed. No job too small. References. Herb 592-5560. 5-10-tfc

AUTO, BOAT and furniture upholstery repair. Vinyl repair. Call Kamay, 1-438-2243. 2-23-tfc

BUILDING, Remodeling, Repairing, Roofing, Painting and Cabinet Work. Joe Blizard, 592-4704. 5-31-4tp

LAWN MOWER blades sharpened, garages cleaned out, light hauling. 592-4335. 5-24-3tp

PRIVATE FENCE sales and installation. Charles Skelton, phone 592-5190. 1-6-tfc

VERY NICE 3-bedroom brick, central heat/air, kitchen built-ins, 1 1/2 baths, well cared for home, close to high school. Low \$40s.

PARK PLAZA AREA - 4-bedroom, 2 bath home, central heat/air. A great buy at \$38,500.

JOAN SHIERRY
Rowland & Donnell
Realtors
592-5540 - 692-1903

BURK SAND Yards, Clean Up. Don Hallum, 804 N. Wall. 592-4365. 1-7-tfc

LADY FINELLE natural cosmetics at reasonable prices. Call Annetta Reusch, 592-9001 for a free facial. 1-6-tfc

MARY KAY Cosmetics, Ann Moore, 592-4752. 8-19-26tp

COPIES MADE at Video Care, 25c each. 2-23-tfc

REMODELING? Do you need another room added on? A garage? Walls removed or added? Free estimates. References. Jack Kerr, 215 S. Wall, 592-9040 495-3411. 5-10-tfc

MONOGRAM SERVICE - 592-9850. 4-12-10tp

ROOFING - Wolfe Roofing Co. Phone 855-5657. 10-6-tfc

BUZBEE ROOFING & Painting. 592-4846 or 569-3493. All work guaranteed. 1-5-17tp

BUILDING, remodeling, or repair, additions, carports, patios. Free estimates. Call day or night Billy McDonald 592-4338, Phil McDonald, 592-2363. 11-17-tfc

**NOW RENTING
PRESTIGE
APARTMENTS**

Starts \$325
1100 sq. ft.
Fireplace
2 1/2 Baths
Microwave
Dishwasher
Refrigerator
Full size Washer
Dryer Hook-ups

592-2989

**Woodbriar
APARTMENTS**
592-2121 1000 Mary Drive
* Luxurious Living in Suburban Area
* 1-2-3 Bedroom Apartments * Swimming Pool
* cable TV * School Bus Pickup * Equal Housing
Ask about our move-in allowance

**Colonial Heights
Apartments**
Magnolia St. at Johnson Rd.
IOWA PARK
One and two-bedroom apartments, energy efficient, central heat/air, total electric appliances, fully carpeted and draped. Children's play area. Off-street parking. Fully equipped laundry room. Month to month rent starting at \$181.00 for one bedroom, and \$220.00 for two bedroom apartment [to qualified persons]. Water paid.
CALL
592-2705
EQUAL HOUSING

VIA CONSTRUCTION - Roofing, remodeling, paneling, painting. Small jobs welcomed. Discount to Senior Citizens. Call Jimmy Via, 592-5200. 4-12-12tp

BLACK POWDER GUNS and accessories, revolvers \$50 and up. Powder \$4.80 lb. Will order modern guns for 10% over cost. Ye Ole Gun Shack, 413 W. Washington, 592-5430. 1-6-tfc

MARY KAY COSMETICS Allie Girard, consultant, 109 W. Poe, 592-4217. 1-6-tfc

HOMEWORKERS, 150% Profit! Wholesale security products dealer. Details, send stamped addressed envelope. JCJ Distributors 8719(B) Cowart Houston, Texas 77029. 5-10-6tp

FOR YOUR COPY NEEDS including reduction and enlargement, call Iowa Park Air Conditioning, 592-5891, or come by 609 W. Bank. Charges 20 cents a copy (less for quantities). 10-6-tfc

ATTENTION LADIES:

Need 10 ladies to work from their home 10 hours per week. Can earn \$75 to \$150. I will be interviewing on Thursday, June 7, from 10 a.m. to 4 p.m. at 2012 Fillmore, W.F.

For appointment, call **322-3436** ask for Mrs. Smith

**Quail Run
Apartments**

1-2 Bdrm. Ground Floor, Central Heat & A/C, Appliances, Laundry. Close to school & public park. Starting at \$180 per month to qualified tenants. Gas & water paid.

Call 592-2933

HELP WANTED

WANTED someone to be care for bed patient. 592-2515. 6-7-1tp

HELP WANTED Full or part-time. Can progress quickly. Call 592-5886 after 5 p.m. 5-31-5tp

NEEDED IMMEDIATELY: Dietary cooks. Apply in person, 1109 N. Third. 5-24-tfc

HELP WANTED at Dairy Queen, apply in person, preferably between 9-11 mornings. 3-8-tfc

NOTICE

WANT TO BUY nice home on small acreage in Iowa Park School District, 559-5155 days, 559-2867 evenings. 6-7-tfc

NOTICE: Tom Chambers, an independent Health and Safety Consultant from Pampa, will be presenting a program which offers an answer to a vital need in Iowa Park, at 8:00 p.m. this Thursday, Friday and Saturday evenings at the old Country Collections building north side of Expressway between Peterson and Bell Roads. The public is invited to attend any or all sessions. 6-7-tfc

Pyramid Roofing Inc.
22 Yrs. Experience
In All Types of Roofing
Composition
Wood
Shingles
Shakes
Hot Mop
Gravel
2 Turbines Installed FREE with Each Complete New Roof
Discounts to Senior Citizens
Quality Work
Guaranteed
855-5895

SHAW SPECIALS

'83 MUSTANG V-6, automatic, air, power, lots of other extras. 10,000 miles. Like New!

'81 FORD ROYAL VAN 351, automatic, air, power, captain's chairs, seat/couch, dual air and heat. 37,000 miles. Local owner.

'81 LYNX WAGON 4-cylinder, 4-speed, air, low mileage. Local owner.

'81 CHEVY 3/4 TON Utility bed, 350, 4-speed, power, 32,000 miles. Clean as a pin.

'81 FORD VAN Two from which to choose, both with air and power.

'79 CHEVY PICKUP Long wide bed, Bonanza package, 350, automatic, air, power, running boards, 59,000 miles. Local owner.

'76 BLAZER 350, automatic, air, power, white wagon wheels. Lots of other options.

See or call
O.L. Tucker
or Bill Wilson
Shaw Motor Co.
Iowa Park 592-4106

Lawnmower Repair Service
SINGLETON'S
 505 W. Highway 592-2671

Hogue - Meador Construction Co.
 Licensed Bonded Free Estimates
 Remodeling Jobs - Additions - Roofing
 Cabinets - New Construction
 Patio Doors - Complete Service - Drywall
 Quality Work at a Reasonable Price **855-3739**

Family Boot & Shoe Repair
 700 E. Highway 592-2892
 * All types boot, shoe, saddle repair
 * Custom made boots, belts, billfolds
 8 - 5:30 M-F 8:30 - 12 Sat.

"A" SUPERTUB Reglazing
10% Off Regular Price
 On the Refinishing of Bathtub Or Ceramic Tile in Any Color
 Dull, hard to clean tubs made like new. Complete units refinished without removal in one day.
 Call **817/592-9792**
 for scheduling. Free Estimates & More Information
 Residents, Apartments, Hotels, Motels
 Serving Texoma

Commercial Residential Industrial
Collins Painting Co.
 33 Surrey
 Troy Collins 592-5104 Doug Collins 592-4789
 Furniture, home & lawn, refinishing
 Free pickup & delivery - Free estimates
 Bonded and Insured

YOUR OLD AIR CONDITIONER PROBABLY USES TWICE AS MUCH ELECTRICITY AS IT SHOULD.
WE'LL BUY IT ANYWAY.
 Today's best Carrier air conditioners are:
 • TWICE AS EFFICIENT as typical older-model air conditioners!
 • QUALITY ENGINEERED—you can't buy better!
 • the BEST SELLING air conditioner brand!
 Even our lowest priced Carrier units are True High Efficiency for big savings. And we'll buy your old air conditioner when you buy Carrier. Get a great deal now!
THE WEATHERMASTER™ IV
 Carrier's most efficient heat pump line. S.E.E.R. ratings as high as 14.0. C.O.P. ratings as high as 3.6.
FREE ESTIMATES, CALL TODAY!
IOWA PARK AIR CONDITIONING & HEATING
 607 W. Bank, Iowa Park
PHONE 592-5891
 Thank you for your business.
 Chuck, Paul, Frank and Russell
 Offer available from participating dealers to single-family home owners until May 31. Void where prohibited.

COMMERCIAL INSTITUTIONAL RESIDENTIAL FINANCIAL
CLEAN-WAY MAINTENANCE SERVICE
 BOB HOISINGTON (817) 592-9686
 PROFESSIONAL * FREE ESTIMATES
 JANITORIAL * FLOORS * WINDOWS * CARPETS

A-L WELDING PRODUCTS
 LIQUID AIR - CYLINDER AND BULK GASES
 3330 North Freeway Fort Worth, Texas 76111 (817) 626-3057
 1006 North Scott St. Wichita Falls, Texas 76304 (817) 322-0796
JIMMY DUGGINS
 Branch Manager

Bud Mercer Electric Co.
 Residential & Commercial
BUD MERCER, Owner Phone 592-5413
HARDIN HILL Phone 592-2666

WOLFE ROOFING
 Call 855-5657
 NAIL OUR REPUTATION ON YOUR ROOF

DAVIS BACKHOE
RANDY DAVIS 817-592-2027
 706 E. PARK IOWA PARK TEX 76367

Installation Rewiring Repair
A & D Electric Company
 Residential -- Commercial (Licensed and Bonded)
 24 Hour Service
 Larry Ashford 817/592-9642 Herman Daymude 817/592-9044
 P.O. Box 91, Iowa Park, Texas 76367

DON DIETRICHSON
 "REMODELING ALL KINDS"
 • Garages • Fireplaces • Turbines • Additions
 • Patios • Carports • Storm Door & Windows
 • LICENSED • BONDED
592-2232 FREE Estimates

AYRES TIRE
 592-5621
 Expressway & Johnson Rd.
 Cooper B.F. Goodrich Propane
 Used Tires Michelin Diesel
 Mechanical Work

THE GREAT PLAINS SIDING & INSULATION
 RESIDENTIAL—COMMERCIAL
 BATT'S—BLOWN—SPRAY
 WALLS • UNDER FLOORS • FOUNDATIONS
 ROOF LINES • DRY WALL • METAL BLOCS
 FIBERGLASS • ROCKWOOL • CELLULOSE
 Sound Absorbers — Fire Resistant
 ASK ABOUT OUR WRITTEN CONDITIONAL GUARANTEE QUALIFY FOR INCOME TAX CREDIT
 FREE ESTIMATES FINANCING AVAILABLE
 "VISIT OUR SHOWROOM"
 Member of North Texas Home Builders Assn.
 Call **JERRY MATTHEWS** for Free Estimate at 761-2124 or Res. 592-9829



LIGHTNING FIRE - Shortly before 5 p.m. Tuesday, grassfires were started near the intersection of FM 258 and 368, and at Midway Fish Farm. Lightning from storm clouds was blamed.

SOCIAL SECURITY TIPS
SOCIAL SECURITY FRAUD SENTENCING
 Eliza W. Toliver of 1425 Price St., Waco, pled guilty to two counts of defrauding the Social Security Administration.
 On January 23, 1984, a Waco U.S. District Court judge sentenced Mrs. Toliver to serve six months of a one-year jail sentence to be followed by five years probation. In addition, the judge directed Mrs. Toliver to repay the \$7,748.40 she obtained illegally.
 According to John Bynum, manager of the Wichita Falls Social Security office, Mrs. Toliver illegally received Supplemental Security Income (SSI) benefits on behalf of a daughter who was not living with or being supported by her. Bynum stated that Toliver did not report, as required, that her daughter had entered the Mexia State School. Toliver improperly used the benefits for a period of over three years.
 Bynum explained that SSI benefits are paid to individuals who are blind, disabled or at least 65 years old, and who have little or no other income or assets. The payments are not made out of Social Security funds, but from general federal tax revenues.

"MONEY WHEN YOU NEED IT"
 Loans on most anything of value
SOUTHWEST SALES & LOANS
 4423 Rhea Rd. 892-1371

55 A LAW WE CAN LIVE WITH

King's Kids Christian Day Care & Preschool
 "Iowa Park's Finest For Parents Who Care"
 Ages 0 thru 10
 Monday thru Friday 6:45 a.m. to 6 p.m.
 300 W. Park 202 N. Jackson 592-4242

Jo's Useable Ceramics
 SPECIAL GIFTS
 Bisque, Greenware, Supplies, Firing, Molds.
 BEGINNERS WELCOME
 Painting Classes
 Thursday Nights
 1031 Huntington Lane **855-8685**

GARAGE SALE
Friday and Saturday
 9 a.m. to 6 p.m.
Mrs. Frank Harlin 705 W. Rebecca
 — Trash to Treasures
 A little bit of everything, including hundreds of western paperbacks!

OPENING SATURDAY
The Treasurer Shop
 608 East Highway
 Open 8 a.m. to 8 p.m.
 Tuesday thru Sunday

NEW AT NEW NEARLY NEW STANLEY HOME PRODUCTS
410 Park West Center
Ph. 592-9563

TRICKLE DRIP IRRIGATION
 Supplies in Stock
 Systems made up
EXCLUSIVE
 FOR - Gardens, shrubs & trees.
 FROM - Flower beds to peach orchards to pecan groves.

True Value
BARGAIN OF THE MONTH
TOOL VALUE OF THE MONTH
 1-Gal. Jug With Shoulder Spout
 Keeps beverages hot/cold
 Wide-mouth opening handles stops Almond 012
 Quantities Limited **3.99**
 3-Pc. Plier Set
 Incl. 6 & 8-in. slip-joint
 10-in. groove-joint pliers
 with vinyl grips 8955
 Quantities Limited **5.49**

Southwest Bail Bonds
 City, County & Credit Bonds
24-Hour Service
 Confidential Assistance
692-1391

SEE IT IN USE
 Answers to more than 100 questions about trickle or drip irrigation.
MOISTURE METERS
SOIL THERMOMETERS

PARKWAY
 FURNITURE **True Value** HARDWARE
 592-5512 200-206 West Bank 592-4681

— WE BUY —
 guns, tools, chains and boomers, cars, pickups, lawn mowers, or what have you.
 Call **Danny 592-5266**
 or **Johnny 855-3878**

SOIL MIXED (YOURS)
 Closed Sundays
BAKER'S GREENHOUSE
 mile south on Bell Rd.

LOSE WEIGHT NOW and FEEL GREAT NOW
 using health and nutrition products
 Call your **Herbalife Distributor, Mary Cooper**
 592-9655 592-9563

E&S Exxon
EXXON
 • Tune-ups • Brakes
 • Front-end alignment
592-4897
 • Custom exhausts
612 W. Highway • Computer balance

We service all makes of washers, dryers, freezers, refrigerators and window air conditioners.
POSEY'S APPLIANCE SERVICE
 208 James Ph. 592-5452 Iowa Park