



WEATHER

June 19	78	52
June 20	81	57
June 21	89	61
June 22	98	60

BAILEY COUNTY JOURNAL

'The Community Of Opportunity-Where Water Makes the Difference'

Vol. 23 No. 27

12 Pages Today

Published Every Sunday at Muleshoe, Bailey County, Texas 75347

Sunday, June 23, 1985



Around Muleshoe

Lona Embry, vice president of the Old Settlers Reunion, held each July 4, said the reunion this year will be at 2 p.m. on Thursday, July 4, at the Civic Center.

Providing entertainment will be the Anchor Brothers Gospel Band from Sudan. Prizes and awards will be given; a business meeting will be held and refreshments will be served.

The Three Way School Reunion for all students, former students, parents and teachers will be on Saturday, June 29, at the Cochran County activity room in Morton at 2 p.m.

The building will open at 2 and will close late in the evening. For further information, contact Jean Abbe at 266-8658 or Dollie Shaw at 266-5630.

Myrtle Creamer, a patient in Sunrise Medical Center in Las Vegas, Nev. has improved some, and has been moved to a private room for further recuperation.

Cards may be sent to her at the following address: Ina Myrtle Creamer, Sunrise Medical Center, Room 509-West, 1836 South Marland Parkway, Las Vegas, Nev. 89109.

Her daughter, Cleta Williams, is in Las Vegas with her at this time.

A Villarreal family reunion for children and grandchildren is being held this weekend at 508 East Ave. E.

Attending are Jose Villarreal Jr., Crystal City; Lupe Villarreal, Toledo, Ohio; Beatrice Benavides, Hobbs, N.M.; Antonio Villarreal, Crystal City; Oscar Villarreal, Manuela V. Serrano and Eusebio Villarreal, all of Muleshoe; Jesse Villarreal, Del Rio; Benita V. Reynero, Amarillo and George Villarreal, Fort Rally, Kansas.

Waste Permits Are Now Issued Under New Rules

July 5 is the deadline for persons to apply for permits to recycle, re-use, or reclaim waste that has recently been defined as "hazardous waste" by the U.S. Environmental Protection Agency (EPA). Persons submitting permit applications by the deadline may continue to operate during review by the Texas Department of Water Resources.

Rules adopted by the Texas Water Development Board in April, 1985 may require permit applications for recycling activities involving certain types of secondary materials such as spent materials, sludges, by-products, commercial chemical products, and scrap. These include processes such as reclamation, burning for energy recovery, use constituting disposal, or speculative accumulation.

The Department believes that



CHEERLEADER CAMPERS--These cheerleaders from Three Way High School are attending the annual cheerleader camp at Western Texas College this week. Pictured from left are Dolle Barker, Shelli Terrell, Stacy Kindle and Lykinda Tyson. Sixty-five students from 13 West Texas schools registered for the camp.



ONCE IN A LIFETIME HAPPENING--These youngsters are witness to a once in a lifetime event, the blooming of a century plant in their front yard at West B and 15th St. Pictured with the plant are from left, Thelma Ford, holding Spunky; Joshua Morales; Laura Lira and Virginia Lira.

'Singer Of The Year' Welcomed To Muleshoe

It was a blistering hot first day of summer in Muleshoe, but more than 2,000 people patiently stood in line in the hot sunshine, then literally 'packed' the Bailey County Coliseum for the George Strait Show and Dance.

As it turned out, there was not much room for dance devotees to move around because of the immense crowd, said to be the largest group of people to ever attend an event at the Civic Center.

Sponsored by the Muleshoe Chamber of Commerce and Agriculture, the George Strait show featured the man who recently was named "Male Vocalist of the Year" for country music.

Opening the show was bright, bubbly and bouncy Ronna Reeves, an 18-year old Texan, who started life in Big Spring, and started entertaining in public as a singer at the very tender age of nine.

Now a seasoned performer, her enthusiasm for her chosen vocation was very evident during her 30 minutes on stage, and the time she took to visit with local people following her performance.

She was followed on stage by Clay Blaker and his Texas Honky Tonk Band, who very often open shows for George Strait, as well as being seasoned performers on their own.

Clay Blaker and his group

feature 'pure country' music, which he told The Journal is the most popular country music overseas.

He said he and his group had toured Europe four times, and each time their reception by Europeans has been 'fantastic.'

Preceding the show, Jackie Denham, of Earth, who cooks each week for the Muleshoe Rotary Club and the Muleshoe Lions Club, prepared a dinner for the entourage accompanying George Strait, and performer Ronna Reeves, said the meal was 'heavenly and fantastic.'

"We get used to junk food and then to be served such good home cooking was just great," said Miss Reeves.

It was a romping, stomping roaring good time when George Strait took to the stage to perform for more than an hour.

Most of his songs were familiar to the group, who were pleased to hear such songs as

Cont. Page 8, Col. 2

Summer School Will Open Here Monday, July 1

H. John Fuller, superintendent of the Muleshoe Schools, announces that the Muleshoe Independent School District is offering a summer program for pre-kindergarten and pre-first grade students beginning July 1 and continuing through August 23.

Students with limited ability to speak English and who are eligible to be enrolled in kindergarten or the first grade for 1985-86 may attend this eight-week summer program.

Parents have the option of whether to enroll their children and will need to provide transportation for the students to and from school.

This program will be held at Neal B. Dillman Elementary and classes will be from 8:30 a.m. to 11:30 a.m. each day, Monday through Friday. A principal will be on duty and certified elementary teachers have been employed to teach the classes, said Fuller.

All the activities will concentrate on intensive language development to prepare students for kindergarten or the first grade.

New materials have been

Cont. Page 8, Col. 2

Wild Horse Facility Opens In County

Baseball Youth Plan Mini-Blitz

Muleshoe Youth Baseball, Inc. has compiled a merchant coupon book on a local basis, which they are selling at this time. The book initially went on sale Saturday at the make-up games, and as only 300 books were printed, will be strictly on a first-come, first served basis.

All funds from the sale of the coupon books will remain in Muleshoe for the benefit of the baseball program, explained a spokesman for Muleshoe Youth Baseball.

He stressed that no outside organizations or salesmen are involved or receiving any funds from the project this year.

Muleshoe Youth Baseball officers, board members, coaches, and other supporters are selling these coupon books to the public for a nominal donation of \$20.

As the printing was limited to only 300 coupon books, the persons selling are conducting a mini-blitz of selling.

Muleshoe Youth Baseball expressed their appreciation to the following participating local businesses:

Baker Farm Supply, Harvey Bass Appliance, Lambert Cleaners, B.J.'s Cakes, Diet Center, Adrian Photography, Fry & Cox, Inc., Glenn's Beauty Retreat, Mule-Putt Miniature Golf, Bratcher Motor Supply, The Movie Video Stop, Buddy's Shoes, Inspirational Book Store and Dinner Bell.

Also, Anthony's, Lindsey Credit Jewelry, Ben Franklin, Higginbotham-Bartlett Co., Hurst Department Store, Sonic Drive In, IGA Supermarket, Dairy Queen, Albertson's Shop for Men, Pizza Hut, Lookin' Good, Leal's Mexican Restaurant, The Honey Comb and Lee's Western Wear.

Local Cancer Crusade Will Go Door-To-Door

Volunteers will be going door-to-door throughout Muleshoe and Bailey County June 23 - July 3 for the American Cancer Society. Crusade days are a door-to-door aspect of the Cancer Society which distributes educational material, along with a fund-raising effort, according to Betty Jennings, who will serve as chairman of the American Cancer Society's 1985 crusade in Muleshoe.

She said educational literature was distributed in Muleshoe last year and more than \$2,000 was raised during the residential drive. An additional \$2,000 is expected to be raised again this year, and Mrs. Jennings will have some 50 volunteers assisting her during the crusade.

Funds raised will be used to support programs in Muleshoe for prevention, early detection and treatment of cancer and to provide assistance to cancer patients.

According to Mrs. Jennings, another crusade goal is the saving of lives in Muleshoe. Local volunteers will be going door-to-door distributing the folder called "Your Colo-Rectal Health Check," which contains information that should save lives about this highly curable form of cancer as well as cancer's seven warning signals.

For 1985, the educational focus of the crusade is cancer of the colon and rectum. According to the ACS, colo-rectal cancer is one of the most curable forms of cancer, and also one of the most misunderstood. Most people believe that it is an uncommon type of cancer; in fact, about 134,000 cases will be diagnosed in the U.S. this year, resulting in 60,000 deaths.

But the ACS reports that

It's called Carr's Central Holding Center, and what it holds is wild horses. That's right! Located approximately 15 miles west of Muleshoe on FM1760, the facility is one of the three centers in the United States working with the Bureau of Land Management to relocate wild horses.

Right now, tentative plans call for Randall and Paula Carr, owners and operators of Carr's Central Holding Center, to begin taking applications for adoption of some of the 2,000 wild horses currently being trucked in to the holding facility.

Carr was one of almost 400 initial applicants to construct a holding facility in April. A total of 109 proposals were submitted to the BLM, and this was weeded down to the 43 applicants thought to be best qualified to feed and give appropriate care to the horses.

A final submission had weeded the applicants to 37 before four contracts were approved last April. Of the four applications approved in the nation, two were in Nevada, one in Nebraska and the facility to the west of Muleshoe.

Carr was awarded his contract to care for wild horses and burros removed from public range lands in the west. John Whitley, Bureau of Land Management project inspector, who is based at Carr's facility at this time, said there are currently 60,000 to 80,000 horses living in the west who are wild. He added that due to overcrowding and a shortage of food on public range lands, the horses face malnutrition, disease and death if left where they area. The range lands covering portions of Nevada, Idaho, Wyoming, California and Oregon are not capable of supporting more than 25,000 head of horses, he added.

"Although horses have only a 20-25 percent survival rate, horses have no natural predators. Man is the only predator they have," said the BLM official.

"The Wild Horse and Burro

Act passed by the Congress in 1971 mandated the BLM to manage horse herds on public land in the Western United States," commented Whitley. "This legislation outlawed removal of the horses from public range lands. Many were taken by poachers and sold for slaughter."

The Adopt-A-Horse program was started in 1976 by the BLM. An estimated 60,000 horses have been relocated to domestic homes by the program. This year, the Adopt-A-Horse program gathered 10,000 horses as of May.

In 1985, Congress Appropriated \$17.5 million to the BLM for the relocation of 17,500 to 18,000 wild horses. Of that amount, \$1 million funded a program for the National Academy of Sciences to study diseases and sterility in herds in the wild.

Whitley added, "We have got to get the numbers reduced. Competition for food and water is too intense."

Cont. Page 8, Col. 1

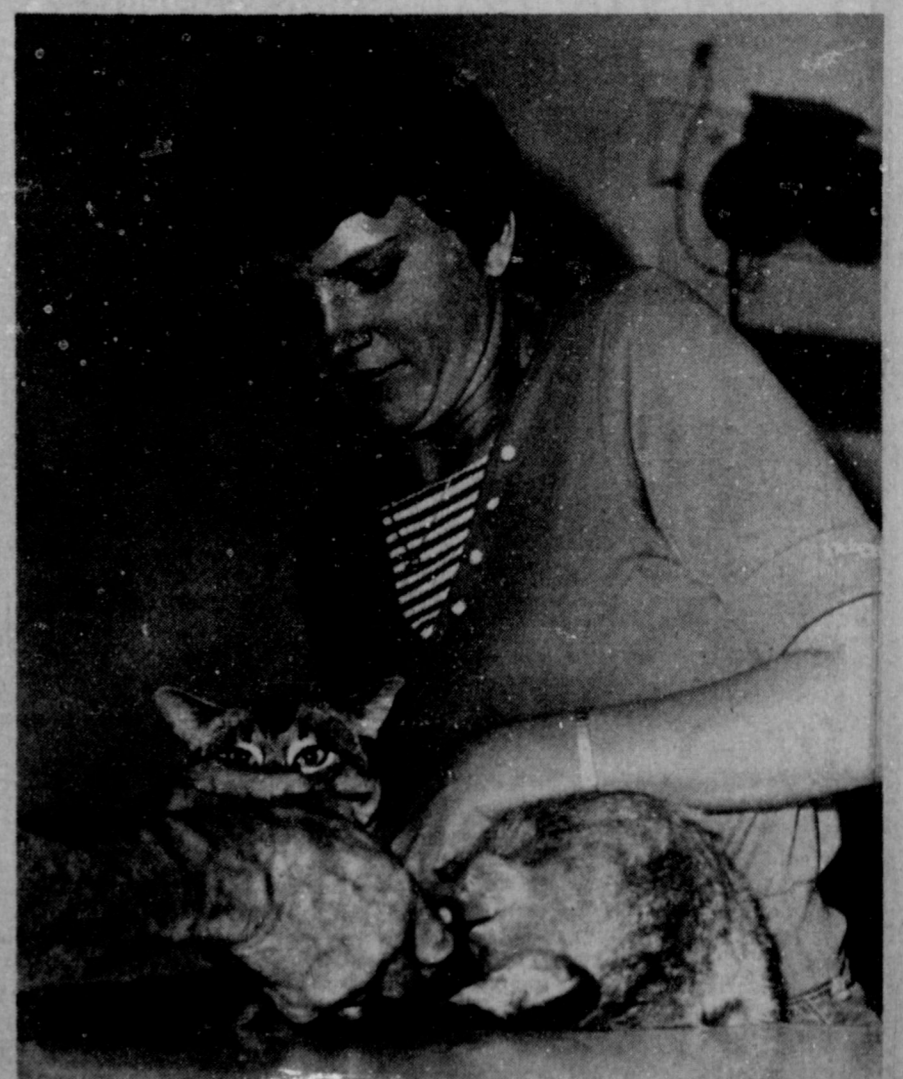
MHS School Reunion Scheduled

On Saturday, July 6, at 5 p.m., Muleshoe High School classes of 1924-1960, will have a reunion at the Civic Center in Muleshoe, Texas.

Scheduled for the evening are games, a banquet and a dance, featuring a live band. All former students from Muleshoe High School are urged to contact James (Sugar) Glaze at Drawer A, Muleshoe, TX 79347; call 1/806-272-4743 to make reservations. Or contact Fern Warren at First Bank, P.O. Box 565, Muleshoe, TX 79347; call her at 1/806-272-4515 to make your reservations.

You may send your check for \$10 per person to the addresses listed above. Glaze said approximately 300 former students have already made their reservations to attend the reunion, which will be honoring the surviving graduating class of 1924, the first graduating class; as well as the 50 year reunion of the 1935 class.

Former Muleshoe High School students are also urged to contact school friends who may not live in this area.



NOW, WHAT'S GOING ON HERE--Jennie McDaniel has a firm grip on her cat as Dr. Jerry Gleason administered a rabies shot Thursday afternoon. From the look in the cat's eye, the feline is definitely not pleased with his or her afternoon's activities.

Sorghum Farmers Asking For Statewide Checkoff

Farmers throughout Texas have decided the key to their economic recovery is in their own hands. They have called for a referendum on a statewide checkoff on grain sorghum to provide funding for development and expansion of markets for their grain. A survey conducted by Texas A&M University Extension Service confirmed that a majority of farmers who responded favored a grain sorghum checkoff for this purpose. In calling for the referendum, dozens of farmers expressed the opinion that it is up to farmers, themselves, to do something about slumping demand and depressed prices.

"Farmers must continue to work for a favorable farm program," said J.B. Cooper, a cotton and grain farmer who lives at Roscoe. "It is only right that farmers who are providing the good life for the rest of the nation should share in that prosperity. But it is clear that farmers can't wait for solutions from the government. The only way we can muster enough resources to implement an effective market development program is through a uniform checkoff."

"I am a firm believer that farmers need to help themselves," said Mark Lamon, a twenty-three year old farmer at La Coste in Medina County, "because no one else is going to do it for them."

That statement was repeated by J.L. Massey, of Robstown, who has been farming for more than forty years. "We need to promote our own product because no one else will do it for us," Massey said. "The price of grain sorghum today is far below the cost of production,

therefore, I am strongly in favor of a grain sorghum checkoff to support a program to increase sales and for research to seek ways to reduce production cost."

Ben Scholz, a grain sorghum farmer in the Wylie community of Collin County, said, "I believe in a self-help program for producers. Markets don't just happen. Unless we, the farmers, work on building markets, we cannot expect sales to expand or prices to improve."

U.S. grain sorghum, as a commodity, has some unique marketing problems. Its quality and value are not universally accepted. Most of the world's sorghum production is of a high tannin type which is poor in nutritional value. To overcome prejudice toward sorghum in general, it is necessary to demonstrate that U.S. sorghum is different. Every grain importer in the world is a potential customer for U.S. sorghum but the producers must prove that it is better than the poor quality sorghum most of the world knows. This proof must be demonstrated in feeding trials and projects throughout the world.

Texas already has a grain sorghum checkoff in a twenty-nine county area of the High Plains. It was established in a 1969 referendum and is called Texas Grain Sorghum Producers Board (TGSPB). TGSPB collects an assessment on sorghum at the time of its first sales transaction. Producers who do not wish to participate, simply request and promptly receive a refund. Last year, more than 95% of the farmers in the TGSPB area supported the

checkoff.

The referendum which established TGSPB provided that the program would remain under the control of farmers who produce within the referendum area. Producers elect a board of directors who set the rate of the assessment within limits approved by the farmers. The board administers collection procedures and projects.

Since 1969, TGSPB market development projects have produced dramatic increases in sorghum sales. For example, this month TGSPB is assisting the National Grain Sorghum Producers Association in financing and shipping 30 tons of sorghum to Egypt for trial in livestock feeding tests. The Egyptian government will not issue an import license for U.S. sorghum until the results of these tests are known. TGSPB is assisting with the shipment of grain for a similar demonstration in Algeria and is just concluding one in the PRC. To buy the grain and make special shipping arrangements is costly but these countries can be good markets for Texas Sorghum in the future.

"We see a potential for grain sorghum sales in more than a dozen countries right now," said TGSPB's executive director, Elbert Harp. "But we must limit our efforts to one or two markets at a time because we simply don't have financial resources from our 29-county checkoff for the rest. That really is too bad," Harp continued, "because we can prove that every sorghum farmer in the nation received at least 15 cents per hundredweight more for their grain last year as a direct

result of TGSPB's work."

In response to the requests of producers throughout the state and the results of the Extension Service survey, a referendum will be conducted under the authority of the Texas Commodity Referendum Law between July 15 and August 15. Texas sorghum farmers outside of the twenty-nine county area of the High Plains will vote to determine if they will join those already participating in the TGSPB checkoff. On the same ballot, they will choose directors for the fifteen member board to administer the program. Ballots will be mailed to more than 50,000 Texas sorghum farmers whose names are listed by ASCS. Any sorghum producer who does not receive a ballot in the mail by August 1, may pick one up at his County Extension Office or from the Texas Grain Sorghum Producers Board at Box R, Abernathy, Texas 79311.

Enochs News
by
Mrs. J.D. Bayless

Kristen and Landon Nichols of Muleshoe visited their grandparents, Mr. and Mrs. Dale Nichols and attended V.B. School.

Bailey County Journal USPS 040-200
Established March 31, 1963. Published by Muleshoe Publishing Co., Inc. Every Sunday at 304 W. Second, Box 449, Muleshoe, Texas, 79347. Second Class Postage paid at Muleshoe, Texas 79347.

TA MEMBER 1985
TEXAS PRESS ASSOCIATION

L.B. Hall, President
James Woods, Vice President
Cleta Williams, News Editor
Evelyn Harris, Society Editor
Holly Millage, Advertising
Lillie Nino, Circulation/Classified
Sammy Hall, Bookkeeper

SUBSCRIPTIONS:
Muleshoe Journal and Bailey County Journal \$1.95
Bailey and surrounding counties \$2.95
Muleshoe Journal and Bailey County Journal Elsewhere in Texas \$2.95
Muleshoe Journal and Bailey County Journal Outside of Texas \$3.95
Yearly by Carrier \$11.50
Advertising rate card on application.

Mrs. Robert George of Lubbock and Kerry Jay and Kelly Mosser of Slaton spent Friday night with her parents, Mr. and Mrs. E.N. McCall and Kerry Jay stayed to spend the week with his grandparents.

Free Bag of Seed

Buy 4 bags of Garrison early-maturing hybrid sorghums and get 1 FREE.

If you are a cotton producer with big weather problems, Garrison Seed is offering help. Just when you really need it, buy four bags of any Garrison premium, short-season hybrid sorghums and get the fifth bag free.

Garrison SG 688

- Early maturing
- 7,306 lbs. per acre in field tests
- Competes with longer maturing varieties
- Dryland or irrigation
- Bred for the plains

Garrison SG 677

- Early maturing
- 54.1 lbs. per bushel in field tests, first in class
- Red-seeded, short-stalked
- Excellent standability
- Bred for the plains

See your nearest Garrison dealer for Garrison high performance hybrid sorghums.

Tim McCormick
McCormick Seeds, Inc.
P.O. Box 590
Muleshoe, TX 79347
806/272-3156

Offer good until June 30th.

GARRISON SEED & CO., INC.
P.O. Box 927
P.O. Drawer 2420
Hereford, Texas 79045

True Value
HARDWARE STORES

HARDWARE VALUE OF THE MONTH

Master ELECTRICIAN

White Supplies Last

4.49

25-Ft. Trouble Light w/grounded outlet, bulb guard, hang-up hook. Bright orange 18/3 SJT cord. UL listed. 235705

QUANTITIES LIMITED

Fry & Cox
401 S. First 272-4511



Register Now Call Fern Warren
At 1/806-272-4515

THE STRENGTH OF A NATION LIES IN THE HOMES OF ITS PEOPLE
A. Lincoln

HOME SWEET HOME!!!
If you need one . . . now's the time to knock on the door of Muleshoe State Bank. We have money to loan right now.

Want to buy a home!!! Ask us about a home mortgage loan now. We can help you get your foot in the door, with payments that won't eat you out of house and home.

Fact is, Muleshoe State Bank can help you do almost anything that has to do with money.

We are offering more new services to more new customers than ever before. But one thing will never change, the Customer always comes first at Muleshoe State Bank.

MULESHOE STATE BANK
MEMBER FDIC
101 West American Blvd. Phone 806/272-4561
MULESHOE, TEXAS 79347

Equal Housing LENDER

STANDOUT SORGHUM

NC+ HYBRIDS

You'll notice a field of NC+ Hybrid grain sorghum—
Excellent Plant Health and High Yield Potential—
NC+ STANDS OUT ABOVE THE REST.

Several Short Season Varieties In Stock.

Matt Phelps
Rt.5
Muleshoe, Tx
925-6485

NC+ HYBRIDS


Ben Franklin

Better quality for less!
 2104 W. Armer. Blvd. 272-3855
 Muleshoe Open 8 a.m.-8p.m.
NO RAIN CHECKS!

Prices Good Til July 4
 While Quanties Last

1st ANNIVERSARY

Sale

 <p>Hi-Dri Paper Towels Roll 39¢ Limit 6 Rolls</p>	<p>Wire Grid Chairs.....\$5⁹⁷ Tables.....\$5⁹⁷</p>	<p>Gillette Disposable Cricket Lighters 3 Pack 87¢</p>	<p>Hefty Tumblers 14 ct. 16 oz. & 16 ct. 14 oz. 87¢</p> <p>Diet Pepsi - Pepsi Free - Mountain Dew Pepsi 6 Pk. 12 oz. Cans \$1²³</p>
<p>Sunbeam Patio Master Portable Gas Grill Model 18205 Reg. 39.97 \$33⁸⁷</p>	<p>½ Inch 100% Vinyl Garden Hose \$3⁸⁷</p> <p>Garden Tools \$7⁷⁷ each Shovels - Rakes - Hoes - Grass Rakes</p>	<p>Brachs Hard Candy Assorted Flavors 87¢ Pkg.</p>	<p>Charcoal 4.4 lb. Bag Easy Light.....\$1⁹⁹ Bag 10 lb. Bag Charcoal Briquets.....\$1⁹⁹ Bag</p>
<p>Cannon Irregular Assorted Colors 100% Cotton Towels \$2⁹⁹</p> <p>Misses & Ladies Jellies \$1⁹⁶ Pair</p>	<p>12 oz. Bag 100% Polyester Poly Fil by Fairfield 2 For \$3⁰⁰</p> <p>MBI Photo Albums \$1⁴⁴</p> <p>51 Count Foam Cups.....2 Pkgs.....93¢</p>	<p>FREE Balloons For The Kids!!</p> <p>Come See The Pepsi Inflatable Can Saturday, June 29!</p>	<p>60" Wadding Pool \$9²⁷</p> <p>100% Cotton 14x14 Wipe Eze Towels \$1⁸⁷ Pack of 6</p> <p>20" Galazy Fan Breeze Box 3 Speed \$18⁸⁸</p>
<p>AnSCO Disc Camera \$8⁸⁸</p> <p>Turco 2 Burner Gas Grills Reg. 199.99.....\$149⁹⁷ Reg. 147.77.....\$119⁹⁷</p> <p>Round B.B.Q. Grill \$44⁹⁷</p> <p>The Original Doll Baby Heads \$3⁴⁷ Reg. 5.97</p> <p>30 qt. Styrofoam Ice Chest 99¢</p>	<p>Kraft B.B.Q. Sauce 18 oz. Bottle 97¢</p> <p>80 Count Paper Plates 67¢</p> <p>Rally Roper Rear Bagger W/Catcher 3.5 hp Briggs & Stratton Reg. 229.99 \$199⁹⁷</p> <p>55 Quart Thermos Ice Chest Reg. 29.97 \$19⁹⁷</p> <p>1.25 Cu. Ft. Peat \$1⁵⁷ Bag</p>	<p>Lawn Mowers 3.5 hp Briggs Stratton 22" Side Discharge Reg. 179.97 \$139⁹⁷</p> <p>Delsey 4 Roll Pack Bath Tissue 89¢ Limit 2</p> <p>22" Self Propelled Reg. 269.99 \$227⁹⁷</p> <p>Ruffles Potato Chips Reg 1.39 86¢</p>	<p>One Gallon Shrubs \$1⁰⁰ each</p> <p>1 Gallon Clorox 93¢ Limit One 60-70 Watt G.E. Standard Light Bulb \$1⁹³ 4 Pack</p> <p>Post Raisin Bran And Grape Nuts \$1⁷¹ Each</p> <p>Brawny Paper Towels 48¢</p> <p>Lipton Ice Tea Mix 3 oz. Jar \$2³⁷</p> <p>Scot Tissue 3 Rolls \$1⁰⁰</p> <p>Splash & Stash Swimming Pool Reg. 16.99 \$12⁸⁸</p> <p>Ajax Cleanser 14 oz. Can 3 For 99¢</p>

Afternoon Ceremony Unites Tammy Stockman, Nash



MR. AND MRS. CHARLES BASIL NASH
(nee Tammy Beth Stockman)

Ms. Tammy Beth Stockman became the bride of Charles Basil Nash in a candlelight ceremony at 2 p.m. Saturday, June 1 at the Community Church. The Rev. H.D. Hunter read the double ring vows.

Parents of the couple are Mr. and Mrs. T.R. Hall of Muleshoe, Mr. and Mrs. Ben Fought of Hereford and Leonard Nash.

Vows were exchanged before a 15 branch candelabra flanked by two seven branch candelabras, adorned with English ivy and mauve bows. Bows marked the mothers and grandmothers pews.

Given in marriage by her father, the bride wore a rose colored gown featuring a scoop neckline with sheer mid-length sleeves. The skirt fell from a natural waistline into a full length ruffled skirt, it was a sheer ruffle over satin and gathered in the back with a sheer rose made of the dress material. She wore a matching hat with a shoulder length veil.

She carried a cascading bouquet made of silk flowers in shades of mauve, pink, navy blue and ice blue, with streamers in the same shades.

In keeping with tradition, for

something old was a Bible belonging to the bride's late great grandmother Crouch. Something new was her dress. Something borrowed was earrings from her grandmother Hall.

Mrs. Rich Magby, sister of the bride, served as matron of honor. Fourteen of the couple's nieces served as flower girls.

Jason Hesse served as best man. Candlelighters were Donna Nash and Janet Shugart,

both of Plainview. Ushers were Billy Dan Copley of Muleshoe and Rob Shugart of Plainview.

Following the ceremony, a reception was held in the home of Mr. and Mrs. Wayne Copley. Tina Copley registered the guests. Carrie Chilton and Debbie Monroe served the wedding cake and punch.

Following a wedding trip to Dallas, the couple are making

their home near Muleshoe.

The bride is a 1978, graduate of Muleshoe High School. Nash is a graduate of Dalhart High School and is a truck driver for C&C Trucking.

Out of town wedding guests were Mr. and Mrs. Ben Fought of Hereford, Leonard Nash, Gail Shugart, and Mr. and Mrs. Roland Nash, all of Plainview.

Mr. and Mrs. Wayne Copley hosted a rehearsal party.

WMU Weekly Meeting Held

WMU of the Trinity Baptist Church met at 2 p.m. Tuesday, June 18 at the church with four members present.

Clara Coffman led the opening prayer and Pearl Dunlap gave the Bible reading from Mark 10:1-9. The lesson for the day was on "Woman to Woman in the Neighborhood."

Those present included: Clara Coffman, Pearl Dunlap, Dora Barber and Wenona Spears.

Ms. Spears dismissed the group with a prayer. -30-

Senior Citizens Admitted Free At Six Flags Holiday Week

Senior citizens will be admitted free to Six Flags Over Texas during the 4th of July holiday week.

The offer of free admission to any visitor age 60 or over will be good July 1 through July 7.

Six Flags' general manager, Bob Bennett, said, "This is our way of showing appreciation of our senior citizens while we demonstrate what Six Flags Over Texas has to offer the older visitor."

"We are well aware that not all of our senior citizens guests will want to tackle major thrill rides, though they are certainly welcome to give them a try. Rather, we want the opportunity to show that Six Flags is much more than just rides, and that there's a lot here for all ages."

Bennett said he expects the entertainment center's show lineup to be particularly attractive to the 60-and-over crowd. "For example," he said, "we hope every one of our senior citizen visitors will see 'Celebrate, America!' in the air-conditioned Southern Palace Music Hall. It's an energetic, colorful salute to American holidays from Christmas to Halloween."

"For those who would like to experience the sensation of a fast-moving thrill ride, without actually riding one, Bennett suggests a stop at the Chevy Show Theater. The ultra-wide-screen movie shown there gives viewers the feeling of soaring in airplanes and dipping along roller coasters without leaving their theater seats."

Other shows on the "suggested list" for senior guests include the aquatic feats of the U.S. High Diving Team; the western charm of the Crazy Horse Saloon's country music revue; the Looney Tunes antics of "The Bugs Bunny Story;" a comic re-enactment of an Old West gunfight or a visit with Argyle, a hand-puppet snake with Don Rickles' sense of humor.

Musical groups, ranging from a 20-piece marching band to dixieland, bluegrass and brass ensembles, stroll the streets adding excitement to the park's biggest "unchoreographed" show...people watching.

Bennett commented, "Many of our older visitors tell us the park's landscaping is an attraction in itself. You can walk for exercise while enjoying the landscape and the people. Of course there are lots of interesting shops where you can just stop and browse along the way."

Senior citizens who visit during the July 1-7 period are asked to bring their driver's license or other identification showing their date of birth to any of park's main gate ticket booths. All persons age 60 and over will be admitted free. There is a \$3 parking fee. Six Flags' regular ticket price is \$14.95 Children under 42 inches tall are admitted for \$7.95. Children age two and under are admitted free.

TOPS CLUB

Muleshoe TOPS Club chapter No. 34 met at 6:30 p.m. Thursday, June 13 in the meeting room of Bailey County Electric.

Clara Lou Jones, leader, called the meeting to order. The TOPS pledge was recited and the fellowship song sung.

Jewel Peeler, weight recorder called the roll with nine members present and Evelene Harris, secretary, read the minutes of the previous meeting and they were approved as read.

Side one won the "Ladder Contest" and were entertained by Side Two. A new contest will begin next week and continue until Aug. 1.

The group decided to have a weigh-in only on Wednesday, July 3 with the crowning of the six months best loser being held on July 11.

Best loser for the week was Evelene Harris. Clara Lou Jones and Ernestine Steinbock tied for first runner up.

The meeting was closed with the singing of goodnight song.

Hobby Club

Lloyd, Vickie Hendricks and Polly Clark.
Myrtle Chambless drew the hostess gift.

Muleshoe Hobby Club met Thursday, June 20 in the community room of Muleshoe State Bank. Mabel Caldwell, president, called the meeting to order.

Mae Provence, secretary, read the minutes of the previous meeting and they were approved as read. Ethel Julian was elected to fill the vice-president vacancy, for the remainder of the year.

It was reported that there would not be a meeting on Thursday, July 4th.

The 14 members present included: Jane Williams, Mabel Caldwell, Nan Gatlin, Myrtle Chambless, Mae Provence, Frances Bruns, Ethel Julian, Blanche Aubrey, Opai Robison, Fiddle Shafer, Ruth Bass, May

FREEZING REMINDERS-- Many people have discovered that freezing is a quick and simple way to save the surplus from their home gardens and help stretch the family food budget. "When you have a freezer, there is no out-of-season period for fruits and vegetables," says Texas A&M University Agricultural Extension Service nutritionist Marilyn Haggard. Home frozen foods can have a color, flavor, texture and nutritive value much like the fresh product, if you follow recommended practices for freezing foods, she points out. If you have questions about those practices, you can get detailed information on freezing fruits and vegetables from your county Extension office, she adds.



MARRIAGE ANNOUNCED-- Sharon Carpenter and Arvis Burris were united in marriage Friday night, June 14. Parents of the couple are Betty Carpenter of Muleshoe, Jimmie Carpenter of Electra, and Orvidie and Bob Burris of Muleshoe. The bride is a 1981, graduate of Muleshoe High School and is owner and operator of Patio Beauty Shop. Burris is a 1976, graduate of Muleshoe High School and is employed at Wiedebush and Company. They reside at 110 West Sixth Street.

Thank You

We appreciate the deeds of kindness shown during the loss our beloved husband, daddy & Grandpa Rhiney Steinbock. Appreciation for the food, flowers, visits, calls & cards.

We are truly blessed with caring friends.

Trixie Wright Family Demp Foster Family
Ruby Steinbock

Out on the JOB

WATCH UP FOR POWER LINES

Out on the job, power lines bring needed electricity to the site. But they can be dangerous... if you don't watch up! You need to be especially careful when you are handling re-bar, pipes, scaffolding, or tools that are long enough to contact overhead lines. Contact with power lines is also a potential danger to operators of front-end loaders, dump trucks and any other equipment of unusual height.

Keep an eye up for power lines. Watch up, for safety's sake.



SOUTHWESTERN PUBLIC SERVICE COMPANY

CLOSED

Wednesday June 26

SALE SALE

Yes, we are closed today for our Mid-Year Inventory...but

We will RE-OPEN at 7 AM on Thursday, June 27

ANTHONY'S

321 Main Mon.-Fri. 8-6 Sat. 8-8 272-3478

AMWAY

PRODUCTS COME TO YOU

SATISFACTION GUARANTEED OR YOUR MONEY BACK

CALL 806-272-4663



AUGUST PLANS REVEALED... Maria Mendoza wishes to announce the engagement and approaching marriage of her daughter, Florida Mendoza to Aldo Almanza, son of Jose and Carlota Almanza. Vows will be exchanged at 4 p.m. Saturday, Aug. 24 in the Immaculate Conception Catholic Church. Miss Mendoza is a 1985, graduate of Muleshoe High School and is employed at the Chamber of Commerce. Almanza is a 1984, graduate of Muleshoe High School and Wyoming Institute. He is presently employed by Robert Green.

Light Is Right For Independence Day Brunch

A happy birthday party awaits the United States. This Fourth of July marks the 209th anniversary of the signing of the Declaration of Independence. Throughout America, the celebration is highlighted by family gatherings, fun activities, fireworks and food.

"Mexican food is appropriate for the occasion because of a multitude of Hispanic cultural and culinary contributions have influenced the evolution of American cuisine," says Anne Lindsay Greer, award-winning author of *Cuisine of the American Southwest* and expert in Mexican-American cuisine.

Greer recommends a holiday brunch consisting of a fluffy "Puffed Egg Omelette" enhanced with Las Palmas Tomato Enchilada Sauce and Diced Green Chilies, served with fresh fruit and a hearty "Mystery Spice Cake." Quick and easy to prepare, the omelette can be whipped up the night before, so it is ready to bake in the morning, while the chef is enjoying the festivities.

"This light, but satisfying brunch makes a perfect party celebration for our nation's birthday," says Greer. "and nutritionally, its pure protein/carbohydrate combination supplies a boost of energy without weighing you down."

PUFFED EGGS WITH GREEN CHILIES

- 1 tablespoon butter
- 9 large eggs
- 1 cup heavy cream
- 1/2 teaspoon salt
- 1 4 ounce can Las Palmas Green chilies (diced)
- 1 cup shredded Monterey Jack cheese, about 4 ounces
- 1 10 ounce can or 12 ounce jar Las Palmas Tomato Enchilada Sauce.

Butter an 8" by 11" pyrex baking pan, or a 10" quiche pan, at least 2 inches deep. Beat the eggs with cream and salt 3 minutes. Fold in the green chilies and shredded cheese. (If desired, this mixture can be refrigerated and the recipe continued the next day.) Pour mixture into prepared pan and bake in preheated, 350 degree oven for 45 minutes, or until the eggs have puffed and are golden brown.

Serve topped with warmed Las Palmas Tomato Enchilada Sauce. Makes 8 servings.

According to Greer, her "Mystery Spice Cake" is a suitable accompaniment for the egg dish. "It contains an unusual, but delicious combination of ingredients--one of which is Las Palmas Refried Beans", says Greer.

"But don't let that put you off; it's the secret ingredient that makes this a rich-tasting cake with a moist, pleasing texture and, if you don't tell them, your friends will never guess how you made it."

MYSTERY SPICE CAKE

- 1 cup plus 6 Tablespoons all purpose, bleached flour
- 1 Tablespoon baking powder
- 2 teaspoons ground cinnamon
- 1/4 teaspoon ground cloves
- 1/2 teaspoon salt
- 1 cup granulated sugar
- 1/2 cup (4 ounces) butter
- 1 large egg
- 1 17 ounce can Las Palmas Refried Beans
- 1 medium apple, peeled, finely chopped, about 1 cup
- 1 cup dark seedless raisins, chopped
- 1 cup pecans, chopped
- 2 teaspoons vanilla

Sift together the dry ingredients. Set aside. Using an electric mixer, cream the sugar and butter until light and fluffy. Add the egg and mix for 1 minute. Thoroughly beat the beans into the mixture.

Gently blend apples, raisins, nuts, flour mixture and vanilla. Pour into a buttered bundt, angel food pan or a standard loaf pan and bake in preheated 375 degree oven for 45 minutes to 1 hour 10 min. depending on pan size. Cool before slicing; however, the cake may be warmed before serving.

For garnish, you may use sweetened whip cream or ice cream, grated semi-sweet chocolate or caramel sauce (Mexican Cajeta). Makes 16 thin slices.

For additional authentic, easy-to-prepare Mexican recipes, please write: Jay Mainthia, Las Palmas Foods, P.O. Box 698, Ventura, California 90036.

Business men who keep advertising will find advertising will keep them.

Happy 60th Birthday



Granny & The Gang

Freezing Reminders

Many people have discovered that freezing is a quick and simple way to save the surplus from their home gardens and help stretch the family food budget.

"When you have a freezer, there is no out-of-season period for fruits and vegetables," says Texas A&M University Agricultural Extension Service nutritionist Marilyn Haggard.

Home frozen foods can have a color, flavor, texture and nutritive values much like the fresh product, if you follow recommended practices for freezing foods, she points out.

Whether you're freezing produce for the first time or simply need to brush-up on old techniques and learn what's new, Haggard offers the following pointers:

- Get your freezer ready. To maintain high quality frozen foods for any time, the temperature of the freezer must be 0 degrees F or below.

- Select high quality products to freeze. Freezing can only maintain the quality of the product. It will not improve it.

- Use proper packaging materials designed especially for freezer use. Materials should be airtight, moisture and vapor-resistant, clean and durable, and not add flavor or odor to the food.

Suitable containers include standard freezing or canning jars, polyethylene freezing bags, rigid plastic containers designed especially for freezing, and heavily-waxed cardboard freezing containers. Heavy duty aluminum foil, freezer paper, or plastic freezer films with overwraps are sometimes used for corn-on-the-cob.

"For best results freezing garden produce, follow recommended practices," advises Haggard. If you have questions about those practices, you can get detailed information on freezing fruits and vegetables from your county Extension office, she adds.

Stepmothering

Not Easy Task

None of the roles in a "blended" family resulting from remarriage is easy -- but being a stepmother may be the most difficult of all, says family relations expert Diane T. Welch.

"Research aimed at assessing the adjustments and effectiveness of stepmothers indicates they don't fare as well as stepfathers," explains Welch, a Texas A&M University Agricultural Extension Service specialist.

The studies tend to show that part-time and full-time stepmothers have more feelings of anxiety, depression or anger regarding family relationships, and indicate more interpersonal conflict within the family and more conflicts related to roles, finances, relatives and the community, she says.

Stepmothers appear to have better relationships with children under 13 than with teenagers, Welch says, although they may still have difficulty establishing an appropriate role.

If the mother is still psychologically alive and the child's mourning is incomplete, then the stepmother's identification as a "friend" seems to have advantages. If the child's mourning is complete, then the "primary mother" role seems to fit the situation best. But taking on the role of "other mother" seems least effective, says the specialist.

Most stepmothers desire emotional support from their husbands and seek appreciation from the stepchildren. They may also seek recognition from the natural mother for their role in step-parenting.

"Role adjustments could be easier for stepfathers than stepmothers because they may not be as possessive in their love, and may not spend as much time with their stepchildren," Welch maintains. "However, research findings also suggest that in general, mothering is more difficult than fathering."

The specialist emphasizes that step-parent success depends greatly upon acceptance by spouse and stepchild. And all family members must recognize that stepfamily relationships cannot be patterned on those of the traditional family, she adds.



The root of the cassava plant provides the flour from which many people in the West Indies bake bread.



ENGAGEMENT ANNOUNCED... Mr. and Mrs. Darrell Nowell wish to announce the engagement and approaching marriage of their daughter, Tammy Trazelle to John Phillip McCutchen, son of Mr. and Mrs. James McCutchen of Carthage. The couple plan to be married July 27 at the First Baptist Church of Muleshoe. The bride is a 1985, graduate of Muleshoe High School and attended Design Floral School of Denver, Colo. McCutchen attended Lazbuddie High School and is employed with Jennings Land and Cattle Co. of Lazbuddie.

TSTI Schedules

Summer Computer Day Camp

Computer Science Technology instructors at Texas State Technical Institute will conduct a TSTI Summer Computer Day Camp, July 8-12.

The computer camp will be for children, grades five through nine, and will feature hands-on training in the TSTI computer labs and recreational activities in the school's gymnasium and swimming pool. Cost of the week's activities will be \$30.00 per child, which will include all activities except lunch. Each child should bring a sack lunch for the week. Hours of the day camp will be from 8:30 a.m. to 4:00 p.m., with later pick-up times available by prior arrangement.

Enrollment will be limited to

CLOTHING ACCESSORIES ARE IMPORTANT--Accessories will become even more important as the cost of clothes goes up, says Becky Saunders, a Texas A&M University Agricultural Extension Service clothing specialist. Accessories make basic clothing versatile by changing its moods and image and are essential elements in wardrobe planning, she says. Saunders suggests choosing accessories that are flattering to your body size and proportion, sking tone and coloring, clothes and other accessories worn for any particular occasion.

20 participants in the beginning camp and 20 participants in the advanced camp. Advanced enrollment is recommended; enrollment can be arranged by contacting the TSTI-Amarillo Adult Continuing Education department at 806-335-2316, extension 346.

Advertisers who get results know that the columns of the Journal pay dividends.

For All Your Local News Or Club Activities Call 272-4536 Or Come By The Journal Office

Journal Society Policy

A processing charge of \$3 is made when a photo accompanies any wedding, engagement, or anniversary with the exception of anniversary of 50 years or more.

Five dollars will be charged for any shower picture taken by the Journal and \$3 charged for any shower picture accompanying a story. Pictures may be picked up after the article appears in the paper.

Wedding, engagement, and anniversary stories must be in the Journal office by Monday noon for the Thursday paper, and by Thursday noon for the Sunday paper.

After that time, stories will be run on a space available basis. Any wedding more than two weeks old, when received, will be edited and only the basic information will be included.

Shower pictures will not be taken without a 24 hour notice and copy must be in the office by 5 p.m., Monday for the Thursday paper and 5 p.m. Thursday, for the Sunday paper.



American Heart Association Dutch Honey Bread

- 2 Cups Unsifted All-Purpose Flour
- 1/4 Cup Brown Sugar
- 1 Tablespoon Baking Powder
- 1 Teaspoon Baking Soda
- 2 Teaspoons Cinnamon
- 1/4 Teaspoon Cloves
- 1/4 Teaspoon Nutmeg
- 1/4 Teaspoon Salt
- 1 Cup Buttermilk
- 1 Well-Beaten Egg (or 2 Egg Whites or Egg Substitute Equivalent to 1 Egg)
- 1/4 Cup Honey

Mix all dry ingredients together. Add the buttermilk, egg and honey; blend well. Pour into an oiled 9 x 5-inch loaf pan and bake at 350°F. for 45 to 60 minutes. When done, this bread has a very firm crust.

Yield: 1 Loaf (16 Slices)
Approx. Cal/Serv.: 1 Slice = 90

Help Your Heart Recipes are from the Fourth Edition of the American Heart Association Cookbook. Copyright © 1973, 1975, 1979, 1984 by the American Heart Association, Inc.

1/2 Price Sale

All Spring & Summer Styles
Sale starts Monday, June 24
at 10:00 am

All Sales Final!

New Summer Hours

Monday thru Friday 1:30 pm - 6:00 pm
Saturdays - 10:00 am - 5:30 pm

Effective Monday, July 1st

Susan's

220 N. Main

Hereford

364-4122

GRANULATED
SHURFINE SUGAR
\$1.39
5 LB. BAG




ASSORTED FLAVORS
SHURFINE POP
\$1.66
12 OZ. CANS




Sum
COM

SHURFINE WITH DIPSENER
BABY OIL 16 OZ. BTL. **\$1.99**
SHURFINE
BABY POWDER 14 OZ. CAN **\$1.99**

SHURFINE 30 GALLON TRASH
CAN LINERS
\$1.19
10 CT. PKG.



VEGETABLE OIL
\$1.99
48 OZ. BTL.



SHURFINE WATER
OR OIL PAK
CHUNK TUNA
\$1.59
6 1/2 OZ. CAN



WINNER OF THE STAMPS
Buster Colson

SHURFINE THROWN STUFFED MANZ.
OLIVES 5 1/2 OZ. JAR **89¢**
SHURFINE HAMBURGER SLICED
DILL PICKLES 32 OZ. JAR **\$1.19**

SHURFINE SQUEEZE
BOTTLE
TOMATO CATSUP
99¢
28 OZ. BTL.



SHURFINE PURE
VEGETABLE
SHORTENING
\$1.99
48 OZ. CAN



SHURFINE HEAVY DUTY
COMBINATION 24 CT. PKG. **49¢**
SHURFINE ZIP TOP QUART SIZE
FREEZER BAGS 20 CT. PKG. **\$1.99**
SHURFINE LIQUID LAUNDRY
DETERGENT 64 OZ. BTL. **\$1.99**


SHURFINE 2-PLY WHITE
BATH TISSUE
\$1.59
8 ROLL PKG.



SHURFINE CUT
GREEN BEANS
\$1.00
3 16 OZ. CANS



SHURFINE SALTINE
CRACKERS
59¢
1 LB. BOX



SHURFINE FRESH PAK KOSHER-POLISH OR
PLAIN DILLS 32 OZ. JAR **\$1.99**
SHURFINE
MUSTARD 2 16 OZ. JAR **\$1.99**

DAIRY AND FROZEN FOODS

ASSORTED-CHERRY OR ORANGE POPSICLES	6 CT. PKG.	49¢
SHURFINE FROZEN ORANGE JUICE	12 OZ. CAN	99¢
SHURFINE FROZEN SLICED STRAWBERRIES	10 OZ. PKG.	69¢
SHURFINE FROZEN WHIPPED TOPPING	12 OZ. BOWL	89¢
SHURFINE CALIFORNIA BLENDED VEGETABLES	20 OZ. PKG.	\$1.19
SHURFINE FROZEN CUT GREEN BEANS	20 OZ. PKG.	\$1.19
SHURFINE FROZEN BROCCOLI & CAULIFLOWER	20 OZ. PKG.	\$1.19
SHURFINE FROZEN BROCCOLI CUTS	20 OZ. PKG.	\$1.19

DAIRY AND FROZEN FOODS

SHURFINE FROZEN MIXED VEGETABLES	20 OZ. PKG.	89¢
SHURFRESH BUTTERMILK BISCUITS	6 8 OZ. CANS	\$1.00
SHURFRESH COUNTRY STYLE BISCUITS	6 8 OZ. CANS	\$1.00
SHURFRESH SPREAD	3 LB. BOWL	\$1.39
SHURFRESH IND. SLI. AMERICAN CHEESE FOOD	12 OZ. PKG.	\$1.29
SHURFRESH HALFMOON LONGHORN COLBY OR CHEDDAR CHEESE	10 OZ. PKG.	\$1.29
SHURFRESH FRENCH ONION DIP	8 OZ. PKG.	39¢
SHURFRESH COTTAGE CHEESE	24 OZ. CTN.	99¢
SUNNY FRESH FARMS EXTRA LARGE EGGS	18 CT. CTN.	\$1.09

SHURFINE IN TOMATO SAUCE
PORK & BEANS 3 16 OZ. CANS **89¢**

SHURFINE CAKE
CUP CONES
39¢
12 CT. PKG.



FRESH CALIFORNIA
RED HAVEN
PEACHES
49¢
LB.




PRODUCE SPECIALS

CALIFORNIA LA GRANDE NECTARINES	LB.	59¢
CALIFORNIA SANTA ROSA FRESH PLUMS	LB.	59¢
FRESH CALIFORNIA CELLO CRISP CARROTS	1 LB. PKG.	25¢
CALIFORNIA ITALIAN VARIETY RED ONIONS	LB.	29¢
CALIFORNIA LONG WHITE ALL PUR. POTATOES	10 LB. BAG	\$1.39
CALIFORNIA HASS VARIETY AVOCADOS	3 FOR	39¢


SHURFRESH ASSORTED FLAVORS
ICE CREAM
\$1.29
1/2 GAL. SQ. CTN.



FOR BRIGHTER WHITES
SHURFINE BLEACH
69¢
GAL. JUG



SHURFINE LIQUID PINK/LEMON
DETERGENT
79¢
22 OZ. BTL.



Pay-n-Save
QUALITY AND SERVICE



Summer Sale

COMPARE AND SAVE!

SHURFINE BABY SHAMPOO 16 OZ. BTL. **\$1.69**
 SHURFINE FABRIC SOFTENER SHEETS 40 CT. BOX **\$1.49**

SHURFINE
CHARCOAL BRIQUETS
\$1.29
 10 LB. BAG



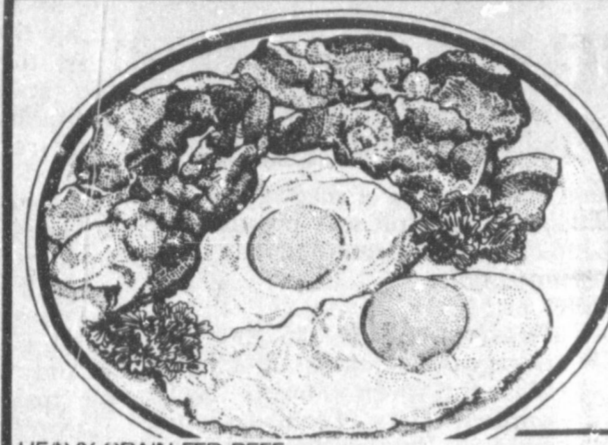
ALL GRINDS VAC PAK
SHURFINE COFFEE
\$1.99
 1 LB. CAN



SHURFRESH REG. -BBQ-WAVEE
POTATO CHIPS
68¢
 7 OZ. PKG.



SHURFRESH HICKORY SMOKED
SLICED BACON
\$1.39
 1 LB. PKG.




HEAVY GRAIN FED BEEF ROUND STEAK LB. \$1.48	SHURFRESH WAFFER THIN SLICED ASSTD. LUNCH MEATS 3 OZ. PKG. 39¢
EXTRA LEAN GUAR. 81% LEAN CHUCK QUAL. GROUND BEEF LB. \$1.48	SSHURFRESH REG. OR HOT WHOLE HOG PORK SAUSAGE 1 LB. ROLL \$1.49
SHURFRESH QUALITY SLICED MEAT BOLOGNA 12 OZ. PKG. 89¢	SHURFRESH REG. OR HOT WHOLE HOG PORK SAUSAGE 2 LB. ROLL \$2.97
SHURFRESH QUALITY MEAT FRANKS 12 OZ. PKG. 79¢	BONELESS 93% FAT FREE REG./HONEY WILSON HAMS 2 LB. PKG. \$4.49

SHURFINE MANDARIN **ORANGES**
69¢
 11 OZ. CAN



SHURFINE **BLACK PEPPER**
\$1.79
 8 OZ. CAN



SHURFINE **TOMATO SAUCE**
5 8 OZ. CANS **\$1**



SHURFINE SHOESTRING **POTATOES** 4 15 1/2 OZ. CANS **\$1.00**
 SHURFINE WHOLE PEELLED **TOMATOES** 2 16 OZ. CANS **\$1.00**
 SHURFINE GRAPE JAM/APPLE OR **GRAPE JELLY** 18 OZ. JAR **79¢**


SHURFINE **MACARONI & CHEESE DINNERS**
4 \$1
 7 1/4 OZ. PKGS.



SHURFINE **PINEAPPLE JUICE**
\$1.19
 46 OZ. CAN




SHURFINE **INSTANT TEA**
\$1.99
 3 OZ. JAR



SHURFINE COFFEE **CREAMER** 16 OZ. JAR **99¢**
 SYLVANIA INSIDE FROST 60-75-100 WATT **LIGHT BULBS** 2 CT. PKG. **99¢**
 SYLVANIA SOFT WHITE 60-75-100 WATT **LIGHT BULBS** 2 CT. PKG. **99¢**

SHURFINE ASSORTED **PAPER NAPKINS**
59¢
 140 CT. PKG.




HEAVY DUTY **SHURFINE SPOONS** 24 CT. PKG. **49¢**
 HEAVY DUTY **SHURFINE FORKS** 24 CT. PKG. **49¢**
 HEAVY DUTY **SHURFINE KNIVES** 24 CT. PKG. **49¢**

SHURFINE SMOOTH OR CRUNCHY **PEANUT BUTTER**
\$1.29
 18 OZ. JAR



SHURFINE **ALUMINUM FOIL** 2 12x25 ROLL **\$1.00**
 8 7/8" SIZE **HEFTY PLATES** 50 CT. PKG. **\$1.19**

SHURFINE **APPLESAUCE**
79¢
 25 OZ. JAR



SHURFINE WK/CS **GOLDEN CORN**
3 \$1
 17 OZ. CANS



KRAFT ASSORTED FLAVORS **BBQ SAUCE**
69¢
 18 OZ. BTL.



PRICES EFFECTIVE JUNE 23 THRU JUNE 29, 1985
 WE RESERVE THE RIGHT TO LIMIT

Wild Horse

Cont. From Page 1

"The contract initially called for a population of 2,000 head at Carr's facility, with the capability of expanding to 3,000," he added. "The horses are kept by Carr under a contractual agreement with the BLM. He receives approximately \$1.80 per day, per horse."

"There are two other facilities like Carr's in the United States. Western Horse Services of Lovelock, Nev. and Clark Mills and Son of Bloomfield, Nev. were both awarded contracts. Dyer Ranch of Dyer, Nev. also was awarded a contract but the facility was not built," added Whitley.

Whitley said people who want to adopt the horses are screened to prove they can provide adequate care for the horse. An adoption fee of \$125 is charged either for a stallion or for a mare with nursing colt.

Persons have one year to prove they can give the animal a good home and proper care. After the one year trial period, the BLM will issue a title to the horse, transferring ownership.

Adopted horses cannot be sold during the first year, and penalties can range to a \$1,000 fine with a two-year prison term.

Carr said that beginning July 1, three days each week will be set aside for the public to visit Carr's 40-acre site and see the horses. Each day now, horses are being trucked in to the facility, and will be until the local holding facility is filled.

Waste...

Cont. From Page 1

many of the larger companies are aware of the wastes that are now described as hazardous under EPA's new rules. Attempts are being made to bring this to the attention of all companies that will now have to recycle wastes subject to the rules.

Emergency rules adopted by the Board setting the July 5 deadline establish and clarify the state's permit application filing procedures for newly listed or identified hazardous wastes under the federal Resource Conservation and Recovery Act. These newly regulated wastes and activities are listed, identified, or described by EPA in the January 4, 1985 publication of the Federal Register.

In addition, the EPA regulations require all persons who generate, transport, process, or dispose of these hazardous wastes to notify the Texas Department of Water Resources.

Before the horses are shipped out from the gathering point, they are administered required medical care because Whitley said all the health papers are required to be in order before the animals can be brought across state lines.

Most of the horses being received locally are yearlings to two and three year olds.

"Our facilities have 500 square feet per horse. They have plenty of room, feed and clean water," said Whitley. "These horses are getting the best care they've ever received in their life."

"People who take horses for adoption are having a lot of success. Once you get them out of the wild state, they can be broken easily," he concluded.

With the opening of the new horse holding facility, several new people have moved to the Muleshoe area to add to the economy of this county.

School...

Cont. From Page 1

ordered and learning centers will be set up in the classroom using computers, recordings, filmstrips, finger plays and other media. Concepts in art, science, health, social studies, and music will be presented through this well-balanced oral language program, said the superintendent.

A snack will be provided at mid-morning.

Parents who have eligible students are encouraged to bring them to Dillman School on July 1.

If further information is needed, please call Elizabeth Watson at 272-3325.

Singer...

Cont. From Page 1

"You Look So Good In Love," "Fireman," "Marina Del Rey" and other of his special brand of country music.

He was presented a key to the city by former Mayor Charles Bratcher, as well as an official 'patch' from the Muleshoe Fire Department by Toni Eagle, manager of the Muleshoe Chamber of Commerce and Agriculture, a mule pin and other welcome gifts to Muleshoe.

It was a very popular show, and most people indicated they were just ignoring the heat and enjoying listening to the music.

Sales of existing homes highest in 4 1/2 years.



50-YEAR PIN PRESENTED--Last week, during a meeting of the local Masonic Lodge former resident Arthur Holt was presented a 50-year pin. Shown are Bob Phillips, who presented the pin; Arthur Holt and Mrs. Holt, who pinned him.

Local Masons Present 'Pin' For 50-Years

A former resident of Muleshoe, Arthur Holt, now of Brownwood, returned to his home lodge to receive his 50-year Masonic pin from the Grand Lodge of Texas.

Holt, who was pinned by his wife, was presented the 50-year pin on behalf of the Most Worshipful Grand Lodge of the Masons of Texas by Right Worshipful Roland Melton Jr., Deputy Grand Master of the 97th Masonic District of Texas.

His honor was presented at a meeting of Muleshoe Lodge No. 1137 and was attended by a large crowd who were served a meal at 7 p.m. preceding the business meeting.

Four 50-year members of the lodge were present, including Jim Cox, Matt Dudley, Earl Ladd and Arthur Holt.

New officers were elected during the meeting, and scheduled to be installed in office on

Cancer...

Cont. From Page 1

12 major Texas hospitals, medical schools and universities totalling over \$6 million," said Mrs. Jennings. "Because Texas has so many research institutions, the National society allocates additional funds here."

Texas Plans Program To Re-Train Farmers

The Texas Department of Agriculture hopes some federal job training money the state receives can be used to help thousands of farmers and ranchers driven off the land by the agricultural recession.

The department is proposing that a share of the \$7.5 million in federal funds Texas should get this fall for dislocated workers can be used for training, career counseling and job placement for farmers.

"Texas continues to lose more than 100 family farmers and ranchers a week," Agriculture Commissioner Jim Hightower said Tuesday. "Many of the producers we're losing are age 35 or younger."

Gary Keith, an agriculture department official, said officials aren't certain how many farmers might need the help, but said, "Certainly it has to be in the thousands."

At the department's request the state's Job Training Coordinating Council has agreed that retraining services are needed by the displaced farmers and ranchers, Hightower said.

Seven states already offer such assistance to farmers, he said. They are Iowa, Illinois, Nebraska, Kansas, Oklahoma, North Dakota and South Dakota.

Andy Welch, a spokesman for the agriculture department, said TDA officials will make a formal proposal to the Job Training Coordinating Council in August for extending job training services to displaced farmers and ranchers. A request for funding also will be made at that time, Welch said.

Hightower said he hoped some of the state's federal job training money then will be made available so programs for

farmers and ranchers could begin on Oct. 1.

Job training, counseling and placement would be coordinated by the Texas Department of Community Affairs and provided by local agencies statewide.

The agencies currently provide similar services for displaced homemakers, unemployed farmworkers, workers laid off in the auto, steel and refinery industries, among others.

Hightower noted that the nation's farmers have continued to face rough times even while many other sectors of the economy have improved.

"Call them bankruptcies, foreclosures, voluntary liquidations or early retirements. The truth is, it's still costing farmers more than they receive to produce every major commodity grown in Texas - cotton, grain sorghum, wheat, corn or rice," Hightower said.

"When current government farm policies keep the prices paid to farmers artificially low, displaced farmers deserve the opportunity to receive training and counseling for another kind of work," he said.

No deduction for state and local taxes hot issue in new tax plan.

If You Need Help
It's
Y.E.S.
(Youth Employment Service)
Call
272-4248

DAVID B. BADDOUR, M.D.
announces the
Relocation of his Practice in Urology
to
Hereford Medical & Surgical Building
at 343 North Miles
P. O. Box 887 Hereford, Texas 79045 806-364-4760
Effective June 3, 1985



OUCH, OUCH, OUCH--Evelyn Ziegenfuss cuddles her dog as Dr. Jerry Gleason sticks a needle in for a rabies shot during a clinic held here Thursday afternoon. Many dogs and cats were taken to the clinic during the afternoon to receive their annual shots, and get new tags.

A&M
Now Open
7 Days A Week
Mon - Sat,
7:30 a.m - 7:30 p.m.
Sunday
12:30 - 5:00

Clovis-Portales
Muleshoe
Muleshoe, Tx.
1302 W. American Blvd.
Portales, NM.
1601 S. Ave D.
Clovis, NM.
2600 Mabry Drive

NEW 8680 8855

Let your Pioneer dealer show you how these hybrids can fill your needs in 1985.

Gene Paul Jarman
Rt. 1 Muleshoe
806-965-2340

PIONEER BRAND SEEDS
Registered trademark of Pioneer Hi-Bred International, Inc.
Pioneer is a brand name; numbers identify varieties. The Limitation of Warranty and remedy appearing on the label is part of the terms of sale.

8.8% APR LIMITED TIME ONLY!
GMAC FINANCING

READY-TO-WORK C10 PICKUP FOR AS LITTLE AS...

GMAC ANNUAL PERCENTAGE RATE
\$228⁵⁵* PER MONTH

PLUS ASK ABOUT OUR SPECIAL FACTORY INCENTIVES ON 6.2 LITER DIESEL MODEL PICKUPS.
8.8% offer applies to new C10s and C20s only. You must take actual retail delivery out of dealer stock by July 31. Dealer financial participation may affect consumer cost. See us for qualification details.

*Based on \$9,000 amount financed at 48 equal monthly payments. \$1,000 down payment (cash or trade). DON'T MISS IT! 8.8% GMAC ANNUAL PERCENTAGE RATE FINANCING ONLY AVAILABLE NOW THROUGH JULY 31. SEE US FOR DETAILS. With Approved Credit.

Olds-Buick-Pontiac-GMC-Chevrolet

Robert D. Green, Inc.
806-272-4588 505-762-2772
2400 W. Amer. Blvd Muleshoe



MULESHOE YOUTH BASEBALL MAKE-UP SCHEDULE

-- JUNE --

- Monday, 24 -

VETERANS--SOX
LIONS--LONGHORNS
LADY BUGS--TORNADOES
BEARS--FIREBALLS
MAROON--GREEN
GRAY--BLUE

- Tuesday, 25 -

MUSTANGS--K-BARS
RANGERS--VETERANS (Make-Up of May 17 Game)
U-BARS--LAZBUDDIE
BLUE JEANS--GOLDEN EAGLES
GOLD--PURPLE
LAZBUDDIE--RED

- Thursday, 27 -

6:00 VETERANS--MUSTANGS (Make-Up of May 5 Game)
BLUE JEANS--LADY BUGS
LAZBUDDIE--REARS
RED--BLUE
GOLD--MAROON (Make-Up of June 4 Game)

- Friday, 28 -

6:00 MUSTANGS--RANGERS (Make-Up of June 4 Game)
8:00 BRANCO LEAGUE ALL STAR SELECTIONS & AWARDS
FIREBALLS--DOLLAR BILLS
TORNADOES--GOLDEN EAGLES
GREEN--GRAY
MAROON--GOLD

-- JULY --

- Monday, 1 -

BLUE JEANS--TORNADOES
LAZBUDDIE--DOLLAR BILLS (Make-Up of June 4 Game)
MAROON--RED
PURPLE--GRAY

- Tuesday, 2 -

** LAZBUDDIE--FIREBALLS (Moved from July 1)
(Also Will Finish June 13 Rain Delay)
DOLLAR BILLS--U-BARS

- Friday, 5 -

U-BARS--LAZBUDDIE
BEARS--FIREBALLS (Make-Up of May 20 Game)

** Moved From July 1

Vacation Time Has Arrived; Drive Carefully

Vacation time is just around the corner. Many Texas motorists will be on the road taking advantage of both the warm weather and the many vacation activities Texas has to offer. But, with more people driving more miles than ever before, there are a few precautions we need to take before and during our trips.

Before leaving on long trips, we need to take a little time to check over our vehicles. A long stretch of unfamiliar road is no place for a breakdown. So, checking simple items such as tires, cooling system, battery, belts, and hoses can prevent unwanted and unnecessary breakdowns. But nothing can spoil a vacation anymore than having an accident. Major Vernon Cawthon, Regional Commander of the Texas Department of Public Safety stated, "The number of vehicles on Texas Highways is increasing each year, and unfortunately, traffic accidents are keeping pace. Many people think they will never be involved in an accident, but no one is immune from having an accident."

The best defense against the many hazards involved in driving is to drive 55 MPH and use seat belts. Driving 55 is more important than ever before. Major Cawthon also said, "Besides giving you more precious time to react to danger, the lower speed reduces the risk of serious injury to you and your passengers if you are involved in an accident. It's just not worth the risk. Speeding up from 55 to 60 saves only 18 minutes for a 200 mile trip."

The troopers of the Department of Public Safety want the

summer of '85 to be the safest yet for the Texas motorist. Please drive friendly and have a good vacation!!!

DPS Caution About Driving When Drinking

The 4th of July is celebrated by almost everyone. However, for some there will not be much to celebrate this 4th of July holiday as lives will be lost and people will be injured in traffic accidents.

Since this is usually a time for celebration, many believe the best way to celebrate is by drinking and then driving. Major Vernon Cawthon, Regional Commander of the Texas Department of Public Safety, states, "At least fifty percent of all traffic deaths are alcohol related. Anyone who drinks can be a problem once they are on the highway. Many of these drivers go undetected until they get into a tight traffic situation, at which time a brain depressed by alcohol cannot think fast enough to keep them out of an accident producing situation."

On any given day under the right circumstances even that one "little drink", with which the social drinker is allegedly satisfied, can be one too many, and he can become a menace on the road.

Major Cawthon continued, "If you are planning a trip this 4th of July, be mindful of these things: the best way to have a safe, accident free holiday is by not drinking and driving, observing all traffic laws, and wearing seat belts."

So, let us all try to be extra careful this holiday and make it enjoyable for everyone!!

Make Your Reservations Call Now

Jehovah Witness Attend Convention Last Weekend

In recent years, political analysts have been setting and re-setting the "Doomsday Clock." It's usually thought that it's ticking out mankind's last days on earth, according to the local Jehovah Witness Congregation.

That subject was highlighted during the past weekend in the principal speech of the four-day

"Integrity Keepers" District Convention of Jehovah's Witnesses held at the Amarillo Civic Center Coliseum.

Addressing an audience of 6,646 persons including a local group, at the final session, A.C. Manera spoke on the subject "God's Times and Seasons --- To What Do They Point?"

Manera said God has a destination for this earth and for human life on it. He has purpose for these, otherwise he would not have created them.

"And that purpose is certain to be accomplished right on schedule," he stated.

West Plains Hospital Report

PATIENTS IN WEST PLAINS MEDICAL CENTER

June 18 - Betta Lancaster, Sherman, Inman, Juanita Foreman, Anita Guest, Gwenna Core, Clemmie Ladd, John Copley, Juanita Flores and Joe Lee Truelock

June 19 - Betta Lancaster, Julie Hawkins, Sonia Brooks, Belinda Caswell, Sherman Inman, Juanita Foreman, Anita Guest, Gwenna Core, Clemmie Ladd, John Copley, Juanita Flores and Joe Lee Truelock

June 20 - Betta Lancaster, Julie Hawkins, Belinda Caswell, Sherman Inman, Juanita Foreman, John Copley, Juanita Flores and Velma Howell.

Discipline tops list of teachers job stresses

COLLEGE STATION — Despite complaints about low salaries, teachers rank discipline No. 1 on the list of items that make their jobs stressful, a Texas A&M University study indicates.

Patricia Barber, while a doctoral student at Texas A&M, asked a group of primary elementary school teachers what factors were a source of stress in their jobs.

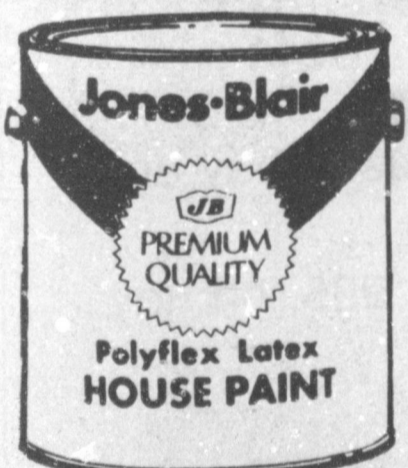
Classroom discipline was the only factor that was consistently listed by the 67 teachers, she said. Discipline beat out financial reward, amount of paperwork, conflict with administrators and 15 other factors as the top stress-inducer for the teachers who were from the Navasota, Hearne and College Station school districts.

Employ A Kid
Youth
Employment
Services
272-3002

Mental vacations are more necessary than physical rest.

A&M Five Point
Hi-Protein
Dog Food
50 lb Bag \$9.75

Jones-Blair Summer Sale Monday June 24-July 13



Polyflex Latex House Paint

Dries in 30 minutes. Sunfast colors cover wood, brick & other masonry surfaces.

VALUE PRICE \$12.95 Gal.
Mfg. Sugg. Retail \$19.62



CELEBRATION LATEX WALL PAINT

In 2 gallon plastic reusable pails. White can be tinted to light pastels.

11.89



CELEBRATION ACRYLIC HOUSE PAINT

In 2 gallon plastic reusable pails. White can be tinted to light pastels.

18.89



Peerless Latex Wall Paint

Brush, roll or spray. Water clean-up, easy to apply. Good hiding. Dries to touch in one hour.
VALUE PRICE \$6.99 Gal.
Mfg. Sugg. Retail \$9.61
SOME CUSTOM MIXED COLORS SLIGHTLY HIGHER.



Super Kote Latex House Paint

(White Only)

VALUE PRICE \$9.95 Gal.
Mfg. Sugg. Retail \$15.63

Higginbotham-Bartlett Co.

215 Main

272-3351

WISE IS THE HOUSEWIFE WHO CLEANS HOUSE WITH A CLASSIFIED!



Talk to thousands via a classified ad! Tell them all about what you have to sell and then wait for the phone to ring! Sweep up extra savings buying and selling through the classifieds! Call one of our friendly classified ad representatives now!

Muleshoe & Bailey County Journals
CALL CLASSIFIED 272-4536



**Register Now Call Sugar Glaze At
1/806-272-4743**

15. Misc.

15. Misc.

SHOP AROUND FOR THE BEST PRICE
THEN SEE OUR PRICES
60% OFF 14K GOLD&DIAMONDS
EVERY DAY

b15-23s-tfc

TEXSAT-Satellite antenna dealers needed. No experience required. For information call 800-222-1537 wait for dial tone, then dial 992298 or call (512) 367-4401. 15-24t-4tpts

FOR SALE extra good feed round wheat bales \$20 Hereford. 276-5239. a15-23s-6tc

BIRDWELL CATTLE Co. Coyote Lake, We are buying wheat & barley 806-946-3321. b15-23t-tfc

DAVIS COMMERCIAL PUMPING SERVICE

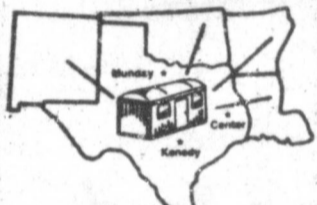
Cess pools, Grease pits, Dipping vats, Mud pits, Septic Tanks.

"If it's part liquid and not over 20 foot deep we'll try to drain it."

806-272-4673
806-272-3467
Muleshoe, Texas
15-25s-stfc

DISC ROLLING & sharpening Spearmen Disc & Implement 505-683-5362, Any size, style or make. We come to you. s15-20s-7tsc

GENERAL SHELTERS of Texas, Inc.



The fastest growing manufacturers of portable buildings, is seeking a dealer in the area for retail sales of portable buildings. Lot and small investment required. Excellent opportunity to expand existing business with low risk.

Contact Mike Wulf
General Manager
817-422-4547

Too Late To Classify

NEED YARDWORK?
Call 272-3789 or 272-3380 Jerry Bob, Graves & Sergio Gonzalez. a1-25s-tfc

Employers should give working mothers more 'board room' opportunities

COLLEGE STATION — Dads are getting more involved in the nursery and the laundry room, and that means employers should give moms more opportunities to get involved in the board room, says a Texas A&M University sociologist who studies the changing patterns of married women's responsibilities.

Dr. Elizabeth Maret's studies have shown that working women less and less frequently shoulder sole responsibility for child care, laundry, grocery shopping and other responsibilities associated with running a household.

"There is a conviction that women are first and foremost wives and mothers and that their responsibilities within the family prevent or inhibit them from a wider range of responsibilities outside the family and in society at large," she said. "Increasingly, that is a false conviction."

Employers are sometimes reluctant to hire or promote a woman because they believe home responsibilities, such as a sick child, will call her away from the job more often than a man, she said.

But Maret says that stereotypical views time has passed.

Healthful Hints
From Your
Ambulance
Service

HEART DISEASE

One of the leading causes of death in the United States is heart disease. Many factors attribute to heart disease or coronary artery disease. Some of these factors are:

Hypertension (high blood pressure); Cigarette smoking; Diabetes; High serum cholesterol (which is sometimes related to a high dietary intake of saturated fats and calories); lack of exercise; family history of heart disease, stroke; male gender; aggressive, competitive personality and birth control pills, especially in women over 35-40 years old.

Many of these risk factors we cannot do anything about, but some of these risk factors we can control. Number 5, lack of exercise, is a very good one to start working on now. What more perfect time to get outdoors and get in shape. Summer is an active season. There are many, many activities you can participate in.

A word of caution, for those who are not in shape and have not exercised for a while, start out slowly and work up. If you plan on running, start with a 1/4 of a mile. Do 1/4 mile for a week or until you think you can handle more. Then increase by 1/4 of a mile. If you start out by running 4 miles or even 1 mile you may hurt rather than help yourself. Running is not the only way to get into shape, walking is a very good exercise. Start the same way as with jogging (slowly then build-up). Walk briskly and enjoy the summer view.

Another very good exercise and one that is very popular for summer is swimming. Swimming is a great exercise that works on all the muscles of the body. But again start off slow. Exercise is just one of the risk factors that we can have control over and it will help reduce your chances of having heart disease.

Some of the other things you can do to reduce your chances of heart disease we will discuss in following articles. Until then start a summer get-in-shape activity, and have fun.

Misti Prater EMT-PI

AARP Warns Of Illegal Area Sales

The American Association of Retired Persons (AARP) and various law enforcement agencies have been receiving an increasing number of complaints about sales agents who are fraudulently selling estate planning services by claiming to represent the "AARP Trust Division." AARP has no Trust Division and no sales agents authorized to visit or telephone members.

Persons claiming to represent AARP services are currently active in north central Texas and use a P.O. Box in Edmond, Oklahoma.

Their general approach is to contact older persons who have responded to an advertising coupon from the National Estate Information Service in Washington, D.C.; this coupon allows people to request information on estate planning and/or the Uniform Gift to Minors Act. People are then contacted directly by individuals who want to deliver the "information" personally.

In similar cases in Weather-

ford, Bridgeport, Decatur, and Wichita Falls, Texas, older persons have been deceived into turning over personal checks in the amount of \$983.00.

It has always been a very strict policy of AARP to limit the offering of any AARP services to informational mailings only. There are no authorized agents of official AARP service providers who contact members by phone or in person to sell insurance, financial services, or other products. AARP does not provide the name, address or telephone number of any members to organizations other than those officially designated to provide services to AARP members.

Older persons especially should be wary of any high-pressure sales approach, particularly by individuals who claim to represent AARP. They should contact their local law enforcement agency or Better Business Bureau and AARP's regional office at 6440 North Central, Suite 700, Dallas, Texas 75206, telephone 214-369-9206.

SHOP THE CLASSIFIEDS!

Have You Considered Raising Holstein Heifers?

For The Past Several Months The Market On Good Holstein Heifers Has Been:

300 to 400 Lb. Heifers - 70 to 80 Lb.
500 to 800 Lb. Open Heifers - 55 to 65 Lb.

SPRINGER HOLSTEIN HEIFERS WEIGHING 1100 Lbs. HAVE GENERALLY SOLD AT 70 to 85 Lb.

PORTALES DAIRY SALE

Has A Good Offering Of Various Weights Of Holstein Heifers SAT. JUNE 29

FOR MORE INFORMATION ON RAISING HOLSTEIN HEIFERS

CONTACT:

Portales Livestock

(505) 356-4740

Or H.K. Carpenter, Sales Mgr. (806) 655-2300

HOLSTEIN HEIFER SALE!

Saturday, June 29th - 11:00 a.m. (Mt. Time)
Portales Livestock Co. Portales, N.M.
Expecting to sell 800 to 900 head, including:

Tentative Consignment of Complete Disposal of 200 Cows

120 Milking - Balance Dry Cows & Heifers

Expecting 200 Heavy Springer Hol. Heifers

35 Heavy Springer Hol. Hfrs.-1000 to 1250 Lbs.

68 Heavy Springer Hol. Hfrs.-1000 to 1200 Lbs.

90 900 to 1200 lb. Heifers - from 2 months bred to heavy springers

15 1200 lb. Springer Holstein Heifers

9 1100 to 1200 Lb. Springer Heifers

16 225 Lb. Holstein Heifers

22 300 Lb. Holstein Heifers

56 300 to 500 Lb. Holstein Heifers

162 250 to 500 Lb. Holstein Heifers

162 250 to 600 Lb. Heifers

90 600 Lb. Holstein Heifers

35 600 Lb. Holstein Heifers

20 600 Lb. Holstein Heifers

All Heifers over 500 Lbs. will be Pregnancy tested - All bred Heifers will be Bang's tested.

Texas Heifers must be T.B. Tested

We have facilities to do this but Heifers must be in the yards by Tuesday Night - T.B. test takes 72 hours.

CALL FOR MORE INFORMATION

Tommy or Donis Bouldin, Owners - (505)356-4740

H.K. Carpenter, Sale Manager - (806)655-2300

Dick Moore, Auctioneer - (505)359-0950

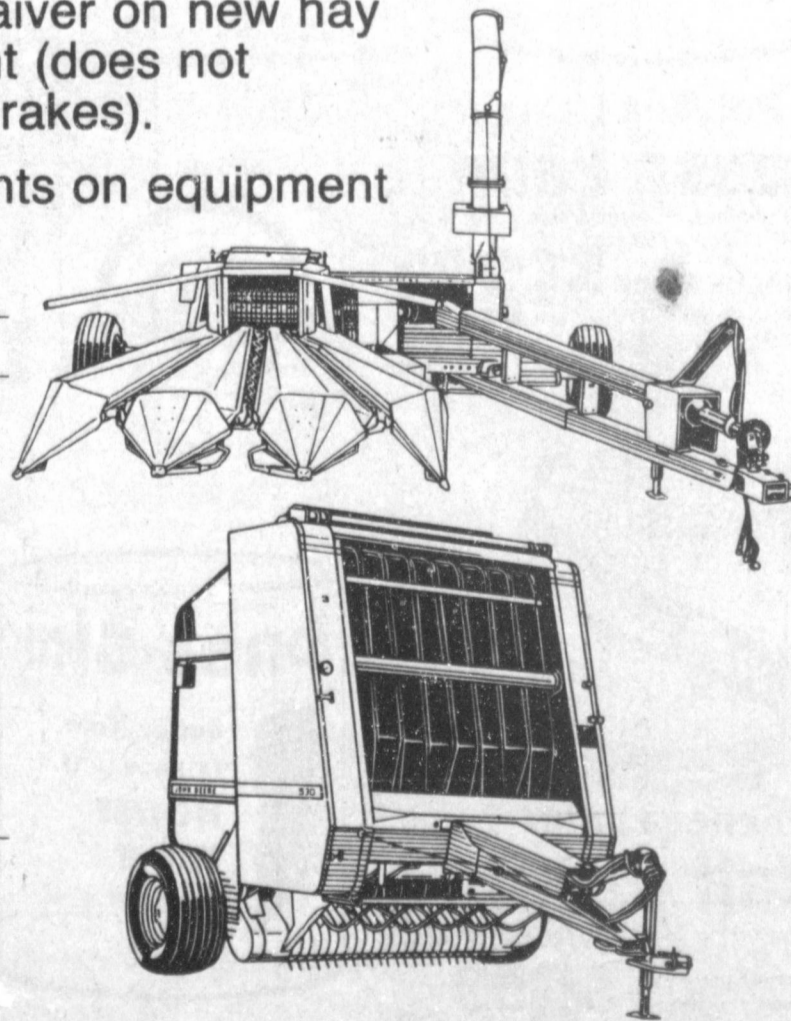
Tommy Williams, Auctioneer - (505)763-6904

**Interest-Free
Until October 1**

Extended waiver lets you save even more on John Deere Hay and Forage Tools

- Now's the time to save big on new and used hay and forage equipment.
- Interest-free financing* until October 1, 1985, on hay and forage equipment (new and used).
- Discount in lieu of waiver on new hay and forage equipment (does not include mowers and rakes).
- Big customer discounts on equipment shown below.

EQUIPMENT	CUSTOMER DISCOUNT
Round Balers	\$ 400
Square Balers	400
PTO Forage Harvester	
Model 3940	850
Model 3960	850
Model 3950	500
Model 3970	500
Model 4720	500
Mower Conditioners (except 1424)	450
Model 1424	41000
Self-Propelled Windrowers	
Model 2320 (grain only)	2500
Model 2420 (grain only)	2500
Model 2320 (auger platform)	2500
Model 2420 (auger platform)	2500
Model 2280 (auger platform)	3000
Model 3430	650
Model 3830	650



*Availability of John Deere financing subject to approval of credit. These offers may be withdrawn at any time.



Dent - Rempe, Inc.

1516 West American Blvd.

272-4296

Courthouse News

MARRIAGE LICENSE
Orvis Nathan Burris and Sharon Jean Carpenter, Muleshoe.

Jose Luis Rochel and Maria Gloria Torres, Muleshoe.
Charles Stephen Harvey and Joy LaDene Dudley, Muleshoe.

James Edward Pearson, Jr. and Betty Elaine Kirby, Muleshoe.
Lewis Oliver Kocher and Ann Oakes, Muleshoe.

WARRANTY DEEDS
Horace Hutton, D.M. McBee and Leon Kessler, Trustees of the Church of Christ at Enochs to Dale Nichols, Glynn and E.N. McCall, Trustees of the First Baptist Church of Enochs--Lots Number (1) and (2) in Block Number (7), in the townsite of Enochs, in Bailey County,

Martha Buck Funeral Services Held Thursday

Funeral services for Martha Buck, 65, were held at 11 a.m. Thursday, June 20 in Ellis Funeral Home Chapel of the Chimes with the Rev. Steve Davis, pastor of the Assembly of God Church, officiating, assisted by the Rev. Paul Brigham, pastor of the Progress Baptist Church.

Graveside services were conducted at 10:30 a.m. Friday at Simpson Cemetery, near Gorman, Tex. with the Rev. Richard Watson, of the First Baptist Church of Gorman, officiating.

Interment was under the direction of Ellis Funeral Home. Mrs. Buck died at 10:02 p.m. Tuesday in the Muleshoe Nursing Home following a lengthy illness.

A native of Des Demona, Texas, Mrs. Buck was born on Nov. 24, 1919, and moved to Muleshoe in 1961, from Levelland. She was a housewife and a member of the Seven Day Advent Church of Littlefield. She married John M. Buck in March of 1969, in Artesia, N.M. He died in 1978.

Survivors include four sons, Eddie Reynolds of Fort Worth, Roger Reynolds of Muleshoe, and Raymond Reynolds and Jimmy Reynolds, both of Abernathy; two daughters, Bonnie Drusendahl of Roswell, N.M. and Nelda Crawford of Muleshoe; one sister, Mrs. Marie Fritch of Las Cruces, N.M.; 10 grandchildren; and one great grandchild.

Texas.
Carl Ellington and wife, Evelyn Ellington to Billy J. Owen, Jr. and wife, Ruth Owen--A (1) acre tract of land out of Section Number (54), Block Y, WD&FW Johnson's Subdivision No. 2, in Bailey County, Texas.

J.M. Flowers and wife, Josie Faye Flowers to Martina Valdez--All of Lots 26, 28, 30, and 32, of Block 3, Apple Street, Townsite of Progress, Bailey County, Texas.

COUNTY COURT
Leslie J. Mills Motion to Dismiss
Mark Hayes Reeder Jury Trial Not Guilty

Frances Perez Order Discharging Defendant From Probation
Anselmo Regalado Order Discharging Defendant From Probation

Hal Barclay Order Discharging Defendant From Probation
DISTRICT COURT

Green Bros., Inc. Vs Ben Matthews Order of Dismissal
First Bank of Muleshoe Vs Cobbs Department Store of Muleshoe Motion To Dismiss

Jimmy Van Thomas and Ramona Ruth Thomas DV
Michael Lewis Davenport and Cara Evonne Davenport DV

Viola Lockridge Vs Bryan Houston Judgment
NEW VEHICLES

Beatrice Pedroza 1985 Olds 2dr from Robert D. Green, Inc.



MARTEA BUCK



Thin cream cheese, pot cheese or cottage cheese with a bit of milk and blend in chopped scallions, green pepper, radishes, garlic, herbs, nuts or chopped dried fruits to create your own tasty spreads and vegetable stuffers.

Amarillo Honeymooners In Big Race

Kay and Jerry McMennamy of Amarillo are honeymooning in exuberant style, motoring cross-country in a sleek, shiny, finely tuned 1935 Auburn, competing against 120 other

antique cars in America's richest old-car rally, the Great American Race. The driving teams begin arriving in Amarillo for an overnight stop at 5:30 p.m. at the Sheraton Hotel, 3100 I-40 West. Race arrivals will continue for three hours.

The McMennamys, married just two months ago, are making a dead-serious bid for a share of the quarter million dollar prize money awarded the cars that finish the grueling Los Angeles-to-New York run closest to a pre-determined time. The racers reach New York City on the Fourth of July.

"I would say that 50% of the entrants try pretty hard to win, and 10% go for the blood," Kay said. "The rest are just there for fun."

The McMennamys entered the race for fun, but their thoughts turn more to profit now.

"We've gradually gotten more competitive," Kay said. "Both of us are competitive individuals, and we have the tools to win if we can get our timing skills honed up quickly enough to be competitive against those who've done this before."

Success means staying strictly on schedule -- no missed turns, no mechanical foul-ups, no wrong estimates of how fast to drive. Since all these things have a way of happening despite the best efforts of the driving teams, the rules allow each team to throw out the worst daily time of the 11-day rally.

The McMennamys have

agreed to practice extreme courtesy, in the interest of winning and in the interest of enjoying the race.

"If we do mess up, then we won't discuss it until the day is over," Kay said. "If you get all frustrated, then you miss another instruction."

They've practiced, and practiced some more in their gold and brown classic, worth more than \$30,000. The car built in Auburn, Indiana, by the same company that manufactured the Cord and Duesenberg, sold in 1935 for \$850.



Attend The Class Reunion

Ellis Funeral Home
Pre-Need Funeral Plans
Supervised By Texas Department Of Banking
Price Frozen At Time Of Purchase

Firefighter's Report

by Wayne Peterson

The membership of the Muleshoe Fire Department continues to grow. John Stephens was voted in by the general membership at their last business meeting. Thirty members were present at that meeting.

Topic of discussion was a progress report by Chief Jack Dunham on the new fire station. It may be a little behind schedule, but is coming right along. Some firemen are already thinking of planting grass, flowers and making a barbecue pit. Next thing you know, someone will want a bed installed in case he gets kicked out of the house.

The department also voted to help out the Muleshoe Chamber with the 4th of July fireworks.

The department wants to thank everyone for their support on the annual Fireman's Ball. A lot of tickets were sold and that's what makes it a success.

A special 'thanks' to Channel 6, KMUL, the Muleshoe Journal and Jeff Smith for their help and contributions. You were there when called upon and we can be there when you need us.

True Value

HARDWARE STORES

Summer Savings

Stop in and pick up your FREE copy of our Summer Value Days circular

LAWN CHIEF
3.5-HP, 22-Inch Self-Propelled Mower with rear-wheel drive delivers a wide cut. Powerful engine with friction-type rear-wheel drive that makes fast work of even the largest lawns. Full underdeck baffles. 36-7C

299⁸⁸

WEED EATER
Electric Trimmer/Edger cuts a 14-in. path along walks, around trees and bushes. Ideal for average-size lawns. 807

39.88

Crosley
9-In. 2-Speed Oscillating Fan provides quiet operation and oscillates in a full 90° sweep. Compact design. C9FLT

14.99

Flintrol
20W Flying Insect Killer protects up to 1/2 acre. This weather-proof fixture has 2 clog-resistant grids and more. UL listed. XL45

29.99

Portable Air Compressor operates from 12-volt cigarette lighter. Incl. 12-ft. cord, 24-in. air hose, 2 adapters. 120 psi. 59990

9.99

WeatherAll Flat Acrylic Latex House Paint
128 FL. OZ. (1 Gallon)
*GIVES WARRANTY TO COVER DISCOLORING, CRACKING OR PEELING IF APPLIED CORRECTLY

10.98 Gallon

Kwikret Lockets
Replace your old locksets economically with Kwikret Entry Lockset. 4007-CP-3

7.77 Brass finish
Tylo Design Entry Lockset has turn-button interior, keyed exterior with deadlatch for additional security. Installs fast.

KIDDE
Fire-Away® Extinguisher is UL rated 10BC to put out fires in campers, cars or boats. Includes handy hang-up bracket. FA10

8.99

X-O RUST Red Metal Primer
Prevents Rust
*GIVES WARRANTY TO COVER DISCOLORING, CRACKING OR PEELING IF APPLIED CORRECTLY

4.98 Quart

SARVESS
Dial 5® Sprinkler covers 5 watering patterns with a twist of a dial. Rugged housing and large, nonclog water openings. 531731

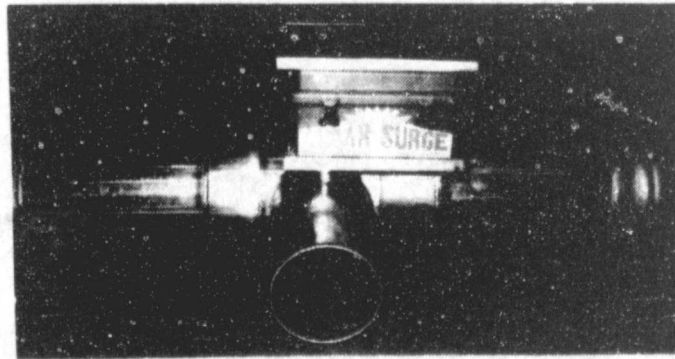
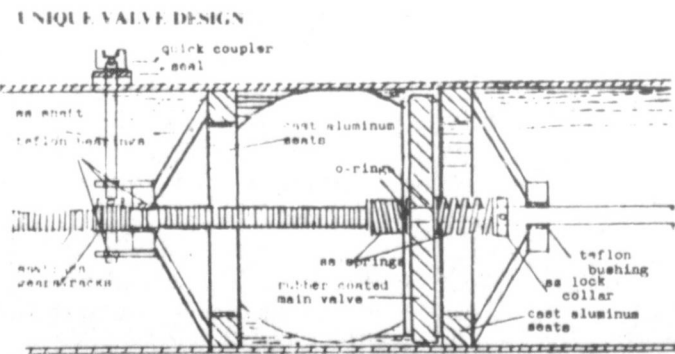
3.44

SMC
Caddy Hose Reel Cart features removable reel that holds up to 200 ft. of hose (not incl.). Sturdy 2-wheel utility cart. 3108

37.99

Solar Surge

FEATURING
Heavy Duty Simplicity!!



- * Rack & Pinion Drive assures slow valve change; no water "pound."
- * Solar Charged Battery means no heavy batteries to handle & charge.
- * Lightweight--total unit, including battery & solar panel, weighs less than 50 lbs.
- * Accurate, simple to set timer.
- * Quick detachable control --easy to move from Solar Surge to Solar Surge.
- * All this for less than \$1,000.00. This is the valve you have been looking for.
- * Full 1 year warranty on valve, 6 months warranty on electrical.

Come by and see at

OLTON FARM SUPPLY
Hwy. 70 Olton 285-2404



401 S. 1st

Mon. - Sat. 8-6
Fry & Cox, Inc.

272-4511