

1984  
March 15

# Absentee voting begins Monday

Absentee voting for both the April 7 city council and school board elections will begin Monday, and continue through April 3.

Polls to vote absentee in the respective elections are the city hall and school administration building.

Drawings by lot were made last week for the order in which names will appear on the ballots.

On the city ballot, the order for the two candidates for mayor are

Timothy W. Hunter and Freddie E. Simmons.

Order of candidates for alderman is George Hammonds, Don Decker, Bud Mercer and E.E. (Bud) Thompson.

Below the mayor and alderman voting spots on the city ballot is a referendum asking voters if they desire "a commission . . . to frame a charter."

Fifteen charter commission candidates will be listed, in the following

order: Dolores Hamilton, Susan Streich, Faye McAllister, Jerry Williams, James Edwards, Don D. Decker, Terry Davis, Margaret Soell, John Brown, Donald Hill, L.W. Teel, Virgil Woodfin, Annetta Reusch, Johnny Crawford and Buck Voyles.

Order in which candidates for school trustee appear on the school election ballot is: Virginia Klinkerman, Jerald Brown, Marilyn Hale and Rex Wells.

**IOWA PARK**

# LEADER

**25**  
Cents

---

Vol. 15, No. 26      IOWA PARK, WICHITA COUNTY, TEXAS 76367      THURSDAY, MARCH 15, 1984

## Mobile home park owner wants lower water rates

Members of the city council were raked across the coals during Monday night's meeting, and at the same time asked for a favor.

Edward Sneller, owner of Country View Mobile Home Park, located just east of town on the old Wichita Falls highway, chastized the council for what he termed "excessive (water) rates," and asked to be annexed into the city so he wouldn't have to pay out-of-city rates.

"I cannot continue to operate the Park unless granted relief from these excessive rates," he read to the council from a prepared, four-page statement.

Sneller said the city charges 4.25 times the in-city rate for the first 2,000 gallons of water purchased, and 2.4 times the in-city rate for all above 2,000 gallons.

He said he had paid \$10,000 for water during the past 12 months and claimed the city yielded a profit over \$9,000.

"If the water bills are passed on to the tenants, they would all move, and since I am in competition with other Parks in the area. A Park in Wichita Falls charges \$11 per month, which includes, not only water, but sewer and trash pickup, in comparison to an average water bill of \$43.76 at City View. I have operated the park at a loss for the past two years, due to this excess," he stated.

Sneller's letter included consider-

able information concerning rates charged by 411 reporting Texas cities for in-city and outside-city water sales. His comparisons were made from a 1980 publication of "Water Service in Texas Cities," prepared by the Texas Municipal League. However, his comparisons were made with current Iowa Park rates.

The report indicated, Sneller said, that of the 411 reporting cities, 100 do not charge additionally for outside-city customers.

"It is understood that the last raise of water rates which became effective October 1, 1983, was instituted as an alternative to raising taxes. This surely is a simple means of collecting city revenue - pay or we'll cut your water off. No legal recourse, no election, no lengthy tax foreclosure suits. You might question whether this is ethically or even legally justifiable," Sneller said.

"It is respectfully requested that you take prompt action in the following areas: 1. To reduce the excessive water rates, and to bring them in line with other cities in the State and to reinstate reduced rates for additional usage. 2. To either eliminate or reduce the difference between in-city and outside-city water rates. 3. To discontinue the policy of assessing minimum rates for each unit of multiple family dwellings. 4. To approve application for annexation to City of Iowa Park, of

the 8.7 acres comprising the Country  
**Continued on page 4**

## Council requesting measured phone service

The Iowa Park city council Monday night approved a proposal to recommend to the Public Utility Commission approval of the proposal for "local measured service" here.

The optional service would be available for all residences and one-party business customers, and "Lifeline Residence Service" for qualified persons.

Local Measured Services, Bell representative Dan Adams explained, would provide an opportunity for persons to control their telephone expenses if the number of calls initiated were held to a minimum. Base rate is estimated to be at \$6.85 monthly.

Lifeline Service is intended for persons who would not make more than 25 calls per month. It would have a basic cost of \$5 monthly, with per-call charges for those exceeding the basic number.

The council tabled a request of Jim Isbell to abandon a portion of South Park, between Emerald and Crystal. Asking to abandon 39 feet after first asking for a 15-foot abandonment, the council suggested a survey be made



RESCUE WORKERS ATTEND TO CURTISS PELTON AT THURSDAY WRECK

## Four injured in wreck

Four persons received injuries in a car-truck accident at the intersection of Yosemite and Lafayette shortly after 4:30 Thursday afternoon.

Injured were Curtiss Morgan Pelton, 83, of Rt. 1, Wichita Falls; Agnes Fuller, 32, Mary Fuller, 11, and Jason Beckett, 2, all of Holiday. Pelton was taken by Plumlee Ambulance to Bethania Hospital,

while the others were transported to Dodge, was travelling south on Yosemite and attempting to turn west on Lafayette, when his car crossed the center stripe, striking the left rear tandem of a truck, which was heading east, and driven by Lewis Edward Hillard, 46, of 1314 Emma.

Agnes Fuller appeared to receive the most attention at the wreck scene from Iowa Park V.F.D. EMTs, when the force of the collision thrust her head through the windshield, severing a major artery in her neck. Quick, proper attention of the EMTs kept the situation from becoming even more critical.

Pelton, driver of the late model

Pelton was issued citations from local police for "failure to yield half of roadway" and "no motor vehicle liability insurance."

Pelton was issued citations from local police for "failure to yield half of roadway" and "no motor vehicle liability insurance."

to decide the distance which could be abandoned so homes would be in line with the proposed setback.

Isbell explained that if he puts his mobile home at the required setback, he would have a 73-foot driveway. The proposal is to be on the Mar. 26 meeting agenda.

Council members approved abandonment of a dedicated easement on property owned by Eddie Richardson in Garden Valley.

Members also approved the replatting of three lots into two, at the northwest corner of Wall and Washington. The replatting was requested by James Bowerman.

Aldermen voted not to approve a contractual agreement drafted by the city attorney, to be used when a citizen wanted to do work on city property.

Alderman Bud Thompson said "I couldn't consider asking anyone to enter into this agreement," and his sentiments were repeated by George Hammonds and Tim Hunter.

Drafted after Billy Gilmore had asked the city to dump approximately \$100 worth of gravel in his alley, and

let him do the spreading and shaping. Gilmore told the council to "just

Concerning problems sewer plant

employees are having with part of their equipment, the council suggest-

manager for consultation.

## News in Brief

### Free meal reservation deadline Tuesday

Tuesday is the deadline for Senior Citizens to reserve their free meal, to be served Saturday, March 24, by the MuleSkinners.

Reservations are to be made by contacting the Iowa Park Chamber of Commerce office.

The meal will be served between 11:30 a.m. and 1 p.m. at the MuleBarn, 111 West Cash. However, those unable to leave their homes can ask for meal delivery when they contact the Chamber. Those requiring transportation can also inform the Chamber.

### Burglars take jewelry from home

An Iowa Park home was burglarized during the daytime Thursday.

Thirteen pieces of gold and costume jewelry were taken between 7:45 a.m. and 6 p.m. Thursday from the George Huckaby home, 1503 Johnson Road. Value of the items missing was set at \$271.

Sometime between 7:30 and 10:30 p.m. Friday, two businesses owned and operated by Carl Davis were attacked.

The laundry at 309 W. Bank had two coin boxes rifled, containing \$10, and a plate glass was broken costing \$140. During the same time frame, a lock and hasp on a door at his car wash, one block west, was broken off, causing \$20 damage.

An official from Wal-Mart told police Friday that sometime between then and Feb. 27, 18 shopping carts had been taken from in front of the building. Costing \$40 each, the loss was set at \$720.

### Free cheese distribution Tuesday

Free government cheese distribution will be held Tuesday at First Christian Church from 9 a.m. until 6

p.m. The distribution will be held each third Tuesday at the church in the future.

### Sales tax checks up over last year

Sales taxes thus far this year are running 3.15 percent ahead of this time last year for Iowa Park, but Holiday is showing a 27.04 percent gain, according to the latest information from the state comptroller's office.

Iowa Park's check for February was \$9,269.45, well above the \$6,269.17 received the same month in 1983. But for the year, the city has

received \$31,176.66, as compared with \$30,224.11 received this time last year.

Holiday's February check was \$6,494.52, making the two-month sum \$23,190.38. The monthly check in 1983 was \$4,434.40, and \$18,254.34 for the year.

### Council has called meeting Friday

Members of the city council will meet at city hall in a called session at 3:30 p.m. Friday to assign ballots for the April 7 election voting precincts.

Assignment of ballots is the only item on the agenda, according to James Barrington, city administrator.

### Weather Report

Weather reports are officially compiled for Iowa Park at the Texas Experiment Station, southeast of town.

Rainfall for week.....	.50
Total for month.....	.50
Total for year.....	1.73
Total for last year.....	4.59



MISTY HICKS WITH CHAMPION AND BUYERS



TAMMIE AND RONNIE HENDERSON WITH CHAMPION TURKEYS

## IP tops county in sale

For the first time in 15 years of the Wichita County Junior Livestock Show, Iowa Park dominated the premium sale entries.

According to the sale list, which was used Tuesday night when \$92,057 was generated for the youngsters, Iowa Park FFA and 4-H Club members had 70 entries, Burkburnett 60, Electra 24 and Wichita Falls 19.

Topping local exhibitors in money was Misty Hicks, who was paid \$1,100 by Berend Brothers for her grand champion barrow.

The children of Mr. and Mrs. Buddy Henderson matched last year's sweep of grand champion turkey tom and hen. But this year it was Tammie and Ronnie, each being paid \$450 for their birds by State National Bank and Johnny's Welding of Kamay.

# Rowell, Smyers wedding held Saturday evening in Wichita Falls

The altar decorations at the University United Methodist Church in Wichita Falls were esthetically pleasing for the Saturday evening wedding of Miss Teresa Anne Rowell and Jeffrey Martin Smyers.

Rev. Gene Gordon, pastor, was the officiant for the double-ring ceremony to unite the daughter of Mr. and Mrs. C.W. Rowell, former residents of Iowa Park, and the son of Mrs.

Allison Smyers and Jerry Smyers, both of Wichita Falls.

The setting appealed to the sense of the beautiful through candles aglow in two seven-branched candelabra trimmed with greenery and dusty rose bows. These were complemented with two large basket arrangements of white gladioli and carnations accented with dusty rose bows. Six church pews were marked

with bows in the same shade.

The music lent itself to the fine pattern of decorations. It was provided by Miss Jeanette Bail, organist, Miss Kristy Knowles and Tony Silva, vocalists. Miss Knowles sang "The Wedding Song" after mothers of the bride and groom were seated, and Silva sang "Longer" after the couple exchanged rings, and the two vocalists were featured in a duet "You and I" after the exchange of vows. The organist presented the prelude music, furnished accompaniment for the vocal selections, played Wagner's processional and Mendelssohn's recessional.

The bride was a charming picture when she entered the sanctuary with her father while the organ swelled the notes of "Here Comes the Bride." He walked with her to the altar and presented her in marriage for her parents. She chose a white Chantilly lace gown delicately trimmed with Venise appliques, seed pearls and sequins. In design, the gown featured a high neckline sheer yoke graced with a wide ruffle that dipped to a V in both front and back, long sleeves that terminated in points at the wrists. The distinction of the full skirt was noted in floor level ruffles and the ruffled train that extended from the waistline to cathedral length.

The bride's Chantilly lace-trimmed sheer fingertip veil was gathered to a camelot cap trimmed with seed pearls to match her gown. She carried a silk "castle in the air" cascade-style bouquet of pale pink rosebuds and stephanotis, open burgundy roses with trailing accents of pink ribbons, white lace threaded with pink ribbon and strands of pearls.

She wore a sixpence, a gift from Kate Allen of England, in her shoe. She completed traditions by wearing an amethyst ring that belonged to her great-grandmother for "something old" and "something borrowed," her gown for "something new" and a garter for "something blue."

Miss Linda Rowell, sister of the bride, had the maid of honor role in the wedding. She was attired in a dusty rose moire taffeta gown fashioned with a fitted bodice, ruffled scooped neckline, puffed sleeves and cummerbund. She carried a crescent-shaped silk bouquet of pale pink carnations and baby's breath, open burgundy roses, pink and burgundy



MRS. JEFFREY SMYERS

lace streamers.

The quartet of bridesmaids included Misses Robin Needham of Del Rio, Karen Flusche and Diane Jones of Wichita Falls and Kathy Martinez of Fort Worth. They wore burgundy taffeta gowns identical in style to the maid of honor's gown and carried duplicate bouquets. Miss Amy Avriette of Phoenix, Ariz. was the junior bridesmaid. Her gown and bouquet were modified versions of those of the attendants.

Miss Shelly Devers, the flower girl, wore a floor length white eyelet frock patterned with a ruffled scoop neckline, puffed sleeves, ruffled hemline flounce and set off with a burgundy taffeta waistline bow. She carried pale pink silk carnations and baby's breath and open burgundy roses in a small white basket trimmed with a bow and streamers.

Stephen Tanner, the ring bearer, wore a white tuxedo, white pleated shirt, burgundy bow tie, cummerbund and rosebud boutonniere.

Miss Lisa Tanner, who lighted the candles for the service, was attired in a white eyelet dress with dusty rose cummerbund.

The groom, best man, groomsmen and ushers wore charcoal gray

cutaway coats, silver gray vests, white wing-tipped collared shirts, black, gray and white striped ascots, and striped pants. The bride's father wore a black tuxedo, white pleated shirt, black cummerbund and bow tie.

The groom's boutonniere was a single pale pink rosebud from the bride's bouquet. The attendants and bride's father wore two burgundy silk rosebuds, and the ushers wore single pink carnations.

John Smyers of Wichita Falls, brother of the groom, was the best man. Groomsmen were Jim Rowell, brother of the bride, Smokey Burgess and Jimmy Achilles, all of Wichita Falls, and Shayne Owen of Abilene. The ushers were Billy Rowell of Whitney, Jimmy Murfield, Eddie Rancier, Jimmy Hargrove, Jack Martin and Matt Leveseur, all of Wichita Falls.

The bride's mother wore a champagne self-embroidered eyelet dress in after five styling designed with a square neck, tiered bell sleeves and self-fabric bow. The groom's mother also chose an after five dress of periwinkle blue chiffon and crepe fashioned with a bodice of chiffon tiers, long sheer sleeves and self-fabric bow. Each wore a corsage of tea-colored cymbidium orchids accented with pale pink baby's breath, burgundy net poufs and ribbon.

The bride was graduated from Iowa Park High School. She is a senior at Midwestern State Univ. majoring in journalism. She is a little sister to Phi Sigma Kappa fraternity and has been a reporter for the Wichitan. She is employed by Best Products. The groom was graduated from Holiday High School. He attended MSU and is now employed by Certain Teed. They will live in Wichita Falls when they return from a wedding trip to Colorado Springs, Colo. For travel, the bride wore a two-piece white wool suit with a bright blue ruffled collared shirt and off-white accessories.

The bride's parents were hosts for the wedding reception held in the church octangle.

The bride's table, covered with white lace over white satin, was a picture of sophisticated beauty. Occupying a special place in the picture was the three-tiered white cake decorated with cascades of pale

pink frosting roses, filigree hearts, sculptured garland and shell designs. The blown glass top ornament using some of the favorite wedding symbols dazzled and enchanted the guests. It featured a heart topped with love birds and centered with small dangling bells which was lifted by two large bells separated by a rose. Other bits of table interest were pink chocolate hearts, burgundy napkins imprinted in silver with "Terri and Jeff, March 10, 1984."

The punch table was draped like the bride's table and held the silver punch service and toasting glasses.

The groom's table was covered with silver satin and appropriately appointed with a double horseshoe-shaped chocolate cake bordered with burgundy frosting shells and topped with a blown glass bull rider and mini pink chocolate cow-shaped boots. The silver and tea service, silver candlesticks filled with burgundy candles completed the decor.

Mrs. Jimmy Murfield, sister of the groom, presided at the wedding book table to direct signatures of the guests. The table was covered with a white silk cloth and held a burgundy plume pen on a brass base, white wrought iron candelabra with burgundy votive candles in frosted cups, and arrayed with silk flowers in the chosen colors.

The reception assistants complemented their attire with silk corsages of burgundy roses, pink stephanotis and dusty rose ribbon. Included in the group were Misses Diana Russell and Gari Lynn Robinson, who presided at the bride's table; Becky Bartlett and Carla Camp at the groom's table; and Donna Hamilton and Beth Phillips at the punch table.

The groom's mother was hostess for a spaghetti supper with an Italian motif in connection with the rehearsal for the wedding.

Special wedding guests were Mr. and Mrs. Ernest Ward of Dallas, Mrs. C.W. Rowell of Brady, the bride's grandparents, Mrs. Cecil Smyers of Maysville, Okla. and Mr. and Mrs. John Avriette of Phoenix, Ariz., the groom's grandparents. Other guests from out-of-town were Mr. and Mrs. Stanley Rowell of Fort Worth, Mr. and Mrs. Bill Rowell and Robert of Whitney, Mrs. H.A. Stewart of Fort Worth and Miss Dorothy Benatti of Dallas.



MR. AND MRS. PAUL WESLEY SPRUIELL

## Couple weds here Friday

Sharon Denise Thornton and Paul Wesley Spruiell were united in marriage in an informal ceremony performed Friday afternoon by Virgil Hill, Justice of the Peace.

The bride, daughter of Mr. and Mrs. W.B. Thornton Jr. of Wichita Falls, is a graduate of Wichita Falls High School and Draughon's Business College, and is employed as officer manager of Circle T Oil in Wichita

Falls.

A graduate of Iowa Park High School, the groom attended Fort Lewis College in Durango, Colo. before becoming a driller and part owner of Spruiell Drilling Co. He is the son of Mr. and Mrs. Dan Spruiell of Iowa Park.

The couple will reside on Horseshoe Lake Road.

### ST. PATRICK'S SALE

\*PRICES EFFECTIVE MARCH 15-17, 1984

- SELF SERV GAS - GROCERIES
- OPEN 24 HOURS - EVERYDAY
- "THERE'S ONE NEAR YOU"

---

REG. EX. CRISPY, NACHO CHEESE

## DORITOS TORTILLA CHIPS

REG. \$2.09 BAG

# \$1.69

---

ALLSUP'S COOKED FOOD SPECIAL AS FEATURED ON TV.

## CORN DOGS

HOT AND READY TO GO!

# 2 FOR 89¢

---

BORDEN'S BUTTER-MILK

1/2 GAL. CTN.

# \$1.19

NOW AT ALLSUP'S ENLARGED PET SUPPLY CENTER

---

PEPSI 6-Pack Cans

# \$2.19

ALLSUP'S FAST CONVENIENT MONEY ORDERS

UP TO \$299\*\*

# 29¢ EACH

---

ASST. FLAVORS

## BORDEN'S ICE CREAM

1/2 GAL. RND. CTN.

# \$1.79

---

**THE TALLSUP IS BORN!**

Congratulations to Jan Sparks of Rotan, Texas for choosing the winning name first of Allsup's new 32 OZ. cup in the "NAME THE CUP CONTEST" "The Tallsup"

**JAN SPARKS - \$500 WINNER**

TALLSUP CUPS - COMING TO AN ALLSUP'S NEAR YOU!

**BURRITO & 16 oz. FOUNTAIN DRINK**

# 99¢

---

**PATIO ASSORTED DINNERS**

# \$1.59

## SPRING AIR® Mattresses

### At Major Savings!!!

- Exclusive Adapta-Flex springs that respond to the gentlest touch, yet give extra support as pressure increases.
- Alternating right- and left-turn springs that support each other while they support you, to prevent mattress lean and sag.
- The unique Health Center® for extra support where you need it most—between your neck and knees, where 70% of your body weight rests.
- The endorsement of orthopedic surgeons as an aid to healthful sleep.

STYLE	SIZE SET	REG.	SALE
Classis Comfort Supreme	King	\$649 <sup>95</sup>	<b>\$439<sup>95</sup></b>
Back Supporter Granduer	Queen	\$899	<b>\$559<sup>95</sup></b>
Chiro-Comfort (extra firm)	Queen	\$549 <sup>95</sup>	<b>\$289<sup>95</sup></b>
Classic Comfort	Queen	\$469 <sup>95</sup>	<b>\$289<sup>95</sup></b>
Spring-O-Pedic Special	Queen	\$449 <sup>95</sup>	<b>\$269<sup>95</sup></b>
Back Supporter Granduer	Full	\$719	<b>\$419<sup>95</sup></b>
Health Comfort (superfirm or reg.)	Twin	\$399 <sup>95</sup>	<b>\$219<sup>95</sup></b>
Luxury Comfort	Twin	\$319	<b>\$169<sup>95</sup></b>
Chiro-Comfort	Twin	\$279	<b>\$169<sup>95</sup></b>

# PARKWAY

200-206 West Bank FURNITURE HARDWARE

592-4681 592-5512

# WAL-MART

# Spring Sale



Save 23%  
**Mens Novelty T-Shirts**  
•50/50 Polyester/cotton  
•Assorted colors and sayings •S-M-L-XL  
•Reg. 3.94

**\$3**

**Sportabout® Gentlemen Jeans**  
•50% Cotton/50% Fortrel® Polyester ESP®  
•Hugbunny stretch denim  
•Brushed STRETCH denim for comfort •Dark or medium blue  
•32-42 Waist  
•S-M-L lengths

**\$14**

ESPTM and Fortrel® are trademarks of Fiber Industries, Inc., a subsidiary of Celanese Corporation.

**ESP**

**BIG YANK**

Save 2.94  
**Ladies Plus Size Pant**  
•65/35 Polyester/cotton •Cinch waist with drawstrings  
•Navy, white, black, khaki, blue and grey •32-38 Waist  
•Reg. 13.94

**\$11**

Limited Quantities

**Plus Size**

**ANACIN**  
FAST PAIN RELIEF  
HEADACHE COLDS BODY ACHE NEURALGIA

Low Price Every Day  
**Anacin**  
•100 Count  
•Tablets  
•Fast pain relief

**2.72**

**WAL-MART**  
Quality  
**TOWELS**

**43¢**

**Wal-Mart Paper Towels**  
•100 2-Ply towels •75 Sq. Ft.  
•Decorative design •Limit 2

**Spic and Span**  
THE BIG JOB CLEANER  
FOR FLOORS AND ALL WASHABLE SURFACES

**2 for \$5**

**Spic & Span**  
•The Big Job Cleaner  
•54 oz.  
•Reg. 2.77

**12.96**

**7 Pc. Teflon Cookware Set by Regal**  
•Blue •1 and 2 Qt. covered saucepan •5 Qt. dutch oven with lid •10 Inch open fry pan •Aluminum •Dishwasher safe and oven proof to 350°F •No. W800BU

**29.93**

**Clairol Custom Caresetter**  
•Velvety smooth roller surface •No split ends from snarled or tangled roll outs •Convenient clip storage compartment •Ready dot on cover indicates when rollers are fully heated •No. KF-20

**94.64**

**Emerson**

Low Price Every Day  
**5 Inch Portable Black and White T.V.**  
•AM/FM/PSB/WB radio receiver •Slide controls for h/lo...  
•Batteries NOT included •Earphone jack •No. VHS-50

**4.23**

**Rural Mail Box**  
•Postmaster approved  
•Aluminum or black finish  
•Slurdy red flag  
•No. ST10, ST10B

Save 3.05  
**Poplin Casual Shift**  
•Polyester/cotton blends  
•Sizes: 10-18 •Today's newest styles at a special savings •Assorted colors  
•Reg. 17.88

**14.83**

Save Up To 1.96  
**Ladies Baby Dolls or Waltz Gown**  
•Nylon or cotton polyester blends knit  
•Several styles •Solid and print fabrics •S-M-L  
•Reg. 7.94-8.96

**\$7**

Your Choice

Similar to illustration

**Our Job is to Save You TIME & MONEY!**

**1.63**

**Viasic Polish or Kosher Dill Pickles**  
•Crisp delicious pickles  
•46 Oz. jar •Limit 2

**2.18**

**Head & Shoulders Lotion Shampoo**  
•11 Oz. •Regular or conditioning •Limit 2

**American Styles**

**7.73** Girls, Reg. 9.96  
**8.73** Ladies, Reg. 10.84

Save Up To 2.23  
**Girls and Ladies Casuals**  
•Powder blue, ice pink and bone •Loafer style with tassel  
•Easy care uppers •Girls sizes 8½-3, Ladies sizes 5-10

**Great Buy! Cloth Mattress Cover**  
•Fruit of the Loom  
•100% Cotton  
•Twin, full or queen •Zippered  
•White

**\$4** Twin Size  
**\$6** Full Size  
**\$8** Queen Size

**1.48**

Save 23%  
**Life Lite® Disposable Flashlight**  
•Shatterproof case  
•8 Hours of light compared to 2 hours with regular 2 battery flashlight •Sealed to prevent leakage & corrosion •No. 1656B  
•Reg. 1.94

**WAL-MART**  
**Color Photo Processing**

Have reprints made from your favorite color negatives

**1.97** 12 Reprints

**WAL-MART** Coupon Must Accompany Order Expires 3-17-84

**1.34**

**Windex**  
•22 Oz. •With trigger spray  
•Limit 2

Save 21%  
**Moth Balls**  
•1 Lb. box •Moth preventative •No. E20  
•Reg. 1.24

**97¢**

**97¢**

**Handi Wipes**  
•8 Count •Reusable  
•For use in kitchen or cleaning  
•Limit 2

**1.46**

**Rave Hairspray**  
•7.2 Ounce •Regular, extra-hold, unscented  
•Limit 2

**SATURDAY, MARCH 17**  
**PAPER PLATE TOSS**  
2 p.m. - Children thru 12  
Prizes to be awarded

**EMPLOYEE DRESS-UP DAY**

PRICES GOOD THROUGH SATURDAY, MARCH 17  
500 WEST HIGHWAY, IOWA PARK  
9 A.M. - 9 P.M. MONDAY THRU SATURDAY

WAL-MART'S ADVERTISED MERCHANDISE POLICY—It is our intention to have every advertised item in stock. However, if due to any unforeseen reason, an advertised item is not available for purchase, Wal-Mart will issue a Rain Check on request, for the merchandise to be purchased at the sale price whenever available, or will sell you a similar item at a comparable reduction in price. We reserve the right to limit quantities. Limitations void in New Mexico.

MasterCard VISA

**WAL-MART**

# As I See It....

By BOB HAMILTON



Most everyone in the area read or heard of Monday's attack on Judge Keith Nelson in 78th District Court, but few know his attacker had a brief Iowa Park connection.

Identified as "Father" John Edwin Boydston, the former mental patient who is once again in Wichita Falls State Hospital was briefly in business in Iowa Park.

Boydston was married for a brief time to the widow of Shorty Cook. It was Cook and his wife who owned and operated "Cook's Classic Corral" in the old Famous building on West Cash.

There was another connection with this area involved in the court fracas. Kamay resident Tommy Collins, a member of the Wichita Falls Police Department, was in the room as a prospective juror and he assisted bailiff Jack Samples in subduing Boydston.

I was a little surprised the Wichita Falls media didn't identify Boydston

as a former Iowa Park resident and businessman. After all, it was a rather sensational event.

I've heard a number of people who said they'd like to choke some judge from time to time, but Boydston is the first I've ever personally known who actually tried.

Peter Grace, chairman of W.R. Grace & Co. which is the parent of Cryovac, has been making a lot of speeches since being named chairman of the President's Private Sector Survey and Cost Control committee.

I found a comment in one of his recent speeches that really struck home to this conservative heart.

He noted that "someone once said that democracy could not succeed since inevitably the citizens would discover that they held the keys to the treasury and would bankrupt the nation."

He doesn't propose to cut welfare payments, Social Security, food

stamps and other benefits to those who are legitimate recipients. But he gets on the case of those who aren't. And he should.

In the talk, he took issue with a presidential candidate who proposed to eliminate the national deficit by taxing the rich. He didn't say, but I'd bet a pretty penny the candidate is a Democrat.

Anyway, Grace points out that 90 percent of all taxable income in this country is accounted for by incomes up to \$35,000 level.

"If you define the rich as everyone with taxable income of \$75,000 or more, and we go this idea one better and take everything above \$75,000, we would have enough to run the country for less than 10 days. Obviously, this is no solution at all," Grace said.

I kinda like what the big man of Cryovac has to say. It's just a shame that more people don't hear, or listen to him.

## Letter to the Editor

Bob, I have had several requests from local citizens concerning when the next Postal Service examination will be held. I received this morning official notice from the Wichita Falls, Texas Post Office that they will be holding a specialized test for the positions of Letter Sorting Machine Distribution Clerk and Mailhandler.

Although these positions are not utilized in the Iowa Park Post Office, I am sure the local citizens would appreciate being aware of the opportunity to take this exam. Applications will be available at the Wichita Falls, Texas Post Office only, and may be obtained in person at the Federal Building, Room 312, 1000 Lamar. Applications should be returned in person to the Wichita Falls, Texas Post Office between the hours of 9:00 AM and 4:00 PM weekdays from March 21, 1984 through March 30, 1984.

I will be receiving a notice to post in the local Post Office lobby.

Thanks.  
Ken Turman

## Worth Quoting

Jenkin Lloyd Jones, a columnist for the Tulsa World, had a column a while back about the disappearance of service in our society at a time when more and more of our economy is

moving to the so-called service industries. He complained of having to wait in line to get a flat fixed, of having to check his own oil at a self-service gas place, and then

launched into a review of other areas where the average person has had to learn how to do it himself. We got a taste of this in Houston during our last trip down there. Daughter Mary's car developed a slow leak in a rear tire and I decided that I would spend a little time getting the tire fixed and while I was out, would have the oil changed in her car since it had been months since this was done. This turned out to be quite a chore in the city. In Perryton, I merely turn the car over to Norman and Alan Curry at the Tri-C Oil Co. and know that they will take care of everything it needs. In Houston it is not that simple.

I first drove off in search of a place to get the tire fixed. I stopped several times at places which sold gas and maybe formerly fixed flats, but no more. I finally found a tire store which specialized in flats. The man told me he may get to it in a couple of hours or so and I didn't have that much time. I found one of the jiffy oil change places but the place was out of business. I found another one which also did tune-ups and was told that they had quit changing oil because there was more money in tune-ups. By this time I had driven 50 miles, spent most of the morning and since I had to get back in time to be driven to the airport, returned back home with nothing done. This is what Jenkin Lloyd Jones was talking about.

HAROLD HUDSON  
Perryton Herald

Dear Bob & Kevin,

I want to thank you both for the article that was with my little sister's picture for Cook of the Week. It really meant a lot to us being so far away.

I really look forward to getting my Leader every week. It keeps me up with all the news and gossip.

We really love California but all of our family is in Texas. Mostly right there in Iowa Park. We all know how important a family is whether they are near or far. Mine are always close, maybe not in miles but in my heart. Pam, Donnie, Randy, Lacy Schraeder Grover City, California

REPORT OIL FIELD THIEVES  
1-800-OIL-COPS  
TOLL FREE • REWARD

## POLITICAL ANNOUNCEMENTS

The following have authorized the Iowa Park Leader to publish announcement of their candidacies for office, and have paid for the space.

STATE SENATOR  
District 30  
Ray Farabee

STATE REPRESENTATIVE  
District 80  
Charles Finnell  
Durhl Caussey

WICHITA COUNTY SHERIFF  
Howard Davis

## Owner

Continued from page 1

View Mobile Home Park," Sneller said.

### OTHER PROBLEMS

The Country View Mobile Home Park has experienced other problems than its water bills.

Natural gas supplies to the park were cut off by Lone Star Gas Co. until the pipelines were completely replaced, after what the utility company found to be dangerous leaks throughout the area.

Currently, the park is having to participate in state-held hearings concerning its application for approval of its septic system. At least one neighbor has complained locally and to the state about what is claimed to be an open sewer located near the park.

The water lines of the park were recently replaced, Sneller told the council.

Asked if he would be willing to put in sewer lines for the park and a line to Bell Road to hook it to the city lines, as well as a lift station to pump it up the hill, Sneller said he could not afford the expense.

There was no mention during the discussion whether the park could purchase water from the Wichita Valley Water Supply Corp.

Because the mobile home park is separated from the city limits by a

number of other property owners, a majority of all residents in the area concerned, including those owning property between the park and the city, as well as those occupying lots in the majority desiring to annex into the city limits, it was pointed out.

At least two aldermen suggested to Sneller that he might want to study the city ordinance concerning mobile home parks before pursuing annexation.

Several reasons for their suggestions are: requirements for paving, curb and guttering, sewer and other utilities provided by the developer, including a plat, set-back requirements and underskirting.

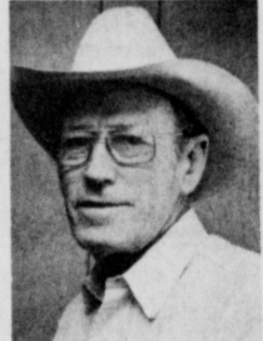
Also required is the space provided per lot, record keeping, shower and restrooms for overnight transient parking, trapped sewer on each lot sewer line, and others.

Sneller said he understood his appearance was the first step required to be taken before officially petitioning for annexation. He did not say he would continue his efforts, but implied he would.

Before the Wichita Falls resident sat down, he asked the council, "Is there any way to resist the water rates?"

Mayor Charlie Lee responded, "None whatsoever."

—ELECT—  
**J.R. "Bud" Reed**  
COMMISSIONER  
Precinct 3 Wichita County  
Your Support Appreciated



Paid Pol. Adv., Mrs. Bud Reed, Treas., Box 10, Iowa Park, TX 76367

—ELECT—  
**Marilyn Hale**

IOWA PARK  
School  
Trustee



\* Degree in Business Adm. from Baylor Univ.  
\* Holds Texas Certified Teachers Certificate  
\* Active in church, civic and other volunteer organizations locally.

Pd. Pol. Adv. by Marilyn Hale



—ELECT—  
**Barry L. Macha**  
District Attorney  
Wichita County, Texas  
Democratic Primary May 5, 1984

Pol. Adv. by Barry L. Macha  
411 E. Rogers, Wichita Falls, Texas

# IOWA PARK LEADER

Bob Hamilton ..... Editor-Publisher  
Dolores Hamilton ..... Assistant Publisher  
Olive Blalock ..... Reporter  
Kevin Hamilton ..... Reporter

The IOWA PARK LEADER is published every Thursday. Offices are located at 112 W. Cash, Iowa Park, Texas, 76367. Telephone: 592-4431. Second class Postage Paid at Iowa Park, Texas, 76367. Subscription rates are \$7 per year in Wichita and Archer Counties; \$9 elsewhere in Texas and Oklahoma; \$11 anywhere else in the United States. Classified advertising rates are 16 cents per word first insertion, 8 cents per word thereafter. Any erroneous reflection upon the character, standing or reputation of any person, firm or corporation which may appear in the columns of this newspaper will be corrected upon being brought to the attention of the publisher.

MEMBER  
**TEXAS PRESS ASSOCIATION**

# A Free Press

293 Years of Democracy in Action

## NOTICE TO SUBSCRIBERS!

The Iowa Park Leader has suspended its practice of mailing individual renewal postcards to subscribers. Instead the Leader will publish a list of readers whose subscriptions are approaching expiration. Subscription prices are listed below, along with a convenient order form which may be clipped, filled out and mailed with payment to the Leader. Renewals and new subscribers must be paid in advance.

## Subscriptions due to expire

# March 15, 1984

PLEASE DISREGARD IF ALREADY PAID

Wendell Atkins	Iowa Park	George Lewis	Iowa Park
		Larry Lilley	Wichita Falls
		Eugene Lowrey	Iowa Park
		Lt. Col. F.L. Lucy	F.P.O. N.Y.
James Beavers	Iowa Park	M. Lorene F. Mason	Nashville, Tenn.
Larry Beckham	Iowa Park	Sandy Matthews	Iowa Park
Claude Beisch	Iowa Park	Sherry McDonald	College Station
Eleanor Bell	Atlanta, Ga.	Melvin McCreary	Iowa Park
Mrs. W.F. Booher	Iowa Park	E.P. Mieir	Iowa Park
Robert Bradberry	Iowa Park	Chester Morrison	Iowa Park
Betty Braden	Iowa Park	Mountain Reading Service	Provo, UT
Sidney L. Burns	Iowa Park	C.E. Myers	Iowa Park
John Cain	Iowa Park	Unice Neely	Vernon
N.B. Calhoun	Iowa Park	Margie Negri	Iowa Park
Mrs. Virginia Camp	Iowa Park	Oleta North	Iowa Park
Louise Campbell	Iowa Park	Mrs. T.J. Pace	Iowa Park
Cecil Catlin	Iowa Park	Jimmy Parker	Iowa Park
Cecil Chesser	Iowa Park	Swan Reeves	Iowa Park
Mrs. O.D. Childers	Wichita Falls	Ola L. Reed	Iowa Park
G.L. Cleveland	Iowa Park	J.M. Richardson	Iowa Park
Betty Clines	Iowa Park	N.E. Seay	Iowa Park
Mrs. Johnny C. Cole	Iowa Park	Ernest Segovia	Iowa Park
Mrs. Arnold Coleman	Iowa Park	Lena Simmons	Iowa Park
Mrs. J.E. Cox	Iowa Park	Pauline Singleton	Iowa Park
Don Decker	Iowa Park	Mrs. Lee Smith	Tyler, TX
G.D. Dickey	Corpus Christi	John Staber	Iowa Park
Franklin Farmer	Arlington, TX	Leroy Stankewitz	Huntsville, TX
J.A. Ferguson	Iowa Park	Bill Steger	Iowa Park
Bob Gee	Iowa Park	Mrs. Anne Strome	Burkburnett
R.L. Good	Iowa Park	Fred Toler	Iowa Park
Mrs. Rexie Gordon	Iowa Park	Lee Towns	Iowa Park
Darrell Gunderson	Iowa Park	Charles Trainham	Wichita Falls
Pete Hall	Iowa Park	Herman Turner	Iowa Park
W.D. Hendricks	Iowa Park	Kathy Johnson	Lubbock
Mrs. Myrtle Hobbs	Iowa Park	Mrs. Leonard B. Jones	Iowa Park
William E. Hoffman	Iowa Park	M.R. Karstetter	Iowa Park
John Kibler	Iowa Park	John Kibler	Iowa Park
Ethyle Kidwell	Iowa Park	Mrs. Sue Williams	Iowa Park
Wm. C. Lane	Iowa Park	Wilbert Wynn	Iowa Park
Orange Lester	Iowa Park	Mrs. G.B. Young	Iowa Park

Wichita and Archer Counties..... \$7.00  
Elsewhere in Texas & Oklahoma..... \$9.00  
Elsewhere in the United States..... \$11.00

To: Iowa Park Leader  
Box 430  
Iowa Park, Tex.  
76367

PLEASE CHECK ONE:  
 New  
 Renewal  
 Change  
of Address Only

\$ \_\_\_\_\_ Enclosed

(Name)

(Address, P. O. Box, or Route No.)

(City) (State) (Zip Code)

# Iowa Parkans to work during annual telethon

Focus will be on handicapped patients and their families when the 1984 Easter Seal Telethon is aired March 31 - April 1 over KAUZ-TV, Channel 6, Wichita Falls. All money pledged on the Telethon from the North Texas area will remain with the North Texas Rehab Center, Wichita Falls.



LORENA SMITH and RICK PATTERSON

## Announce engagement

Mr. and Mrs. Horace Pruett announce the engagement of their daughter, Lorena Louise Smith, and Rick Eugene Patterson, son of Mr. and Mrs. Johnny S. Clark of Wichita Falls. Miss Smith was graduated from Iowa Park High School and received an associate degree at Texas Christian Univ. She is presently a junior at Midwestern State Univ. where she is carrying a double major in music education and voice performance, and belongs to Mu Phi Epsilon. The prospective groom was graduated from Rider High School. He attended Midwestern State Univ. and is presently a laboratory technician at Sheppard Air Force Base Hospital. He is also band director for the Iowa Park Church of God. A May wedding has been planned by the couple.

### Birk Circle meets

The Lucy Birk Circle of First Presbyterian Church met with Mrs. C.E. Birk Tuesday morning for a Bible lesson taught by Miss Titia Belle Blanks, who continued the study of the parables. She explained that the Parable of the Pounds was directed to people who are not willing to risk things in the way which Christians should live. Mrs. Lois Holloway assisted her in explaining why Jesus told the parable. Mrs. Edna Lemond assisted in the discussion of the Unjust Steward, which does not need much updating to fit smoothly in the world today. The lesson to be gained from the parable is that if one has not been trustworthy, he cannot be trusted with true riches, the speaker stressed. A covered dish luncheon followed the Bible lesson. Special guests were the interim pastor Dr. Earle W. Crawford and Mrs. Crawford.



Brides-to-Be IS YOUR NAME IN OUR Bridal Registry

- TERRI [ROWELL] and JEFF SMYERS
- DE LAYNE DAVIS and LARRY BEUTEL
- JAMIE [GILMORE] and DANNY ANDREWS

Park Pharmacy & Thoughtfulness Shop  
115 W. Park 592-4116

A satellite pledge center will be located in Iowa Park at the home of Lela Mercer, with members of Epsilon Sigma Alpha sorority in charge. Chairmen are Shirley Parkey and Joni Whitis. Connie Hrncirik is pledge center chairman for the eight-county area served by the Rehab Center. Epsilon Sigma Alpha is a corporate sponsor of the national Telethon. The pledge phone number for the Iowa Park center will be 592-5413. Those making pledges during the

Telethon should call between the hours of 10 p.m. to midnight, March 31 and from 7 a.m. to 6 p.m., Sunday, April 1. The 20-hour Telethon will begin at 10 p.m. Saturday and continue until 6 p.m. Sunday. Rich Segal and Becky Borders of Channel 6 will be hosts. About 25 minutes of each hour will be devoted to Wichita Falls programming in which patients, their families will be interviewed, vignettes of therapy at the Center will be shown and various individuals and commun-

ity groups will be making check presentations. There have been 219 patients from Iowa Park who have received help at the Rehab Center since it opened in 1948. Stanley Williamson of Iowa Park is a Rehab Center board member. Special guest during the Telethon will be Jennifer Mass, three-year-old daughter of Mr. and Mrs. Doug Mass of Henrietta. She is the 1984 Easter Seal Child for the Rehab Center and was born with cerebral palsy.

National Telethon hosts are Pat Boone and Donna Mills. National television personalities and entertainment will be included during the show, which originates from Los Angeles. The Telethon is one of the major fund raisers for the Rehab Center, which is the only facility within a 100 mile radius of Wichita Falls for treatment of persons with disabilities. Both the rich and poor receive treatment at the Center for

disabilities from birth defects, strokes, accidents, diseases as well as from disabilities of hearing, speech-language and developmental delay. Several special events have been planned to benefit the Center as part of the spring Easter Seal campaign. These include the Easter Seal Run March 31 at Lucy Park; Lily Day March 24 in which lily pins will be sold by Hirschi High School Key Club members; and O'Phelan's Day at O'Phelan's Restaurant, Wichita Falls, March 25.

**COKE - SPRITE  
TAB - MR. PIBB**  
32 oz. Btls. **\$2.19**

## Lots of Your Favorites Here!

30' OFF LABEL-LIQUID  
**PALMOLIVE**  
32 OZ. BTL. **\$1.59**

ARMOUR VIENNA  
**SAUSAGE**  
5 OZ. CANS **2.89¢**

STAFRESH  
**BREAD**  
1 1/2 LB. LOAF **69¢**

TALL KITCHEN BAGS  
**HEFTY**  
30 CT. PKG. **\$2.29**

**SOMEHOW,  
NOTHING SATISFIES  
LIKE BEEF.**

FRESHLY GROUND  
73% LEAN GUARANTEED  
**GROUND BEEF**  
LB. **98¢**

DECKER QUALITY SLICED  
**BACON**  
1 LB. PKG. **\$1.49**

HI-DRI  
**PAPER TOWELS**  
JUMBO ROLL **\$2.19**

DEALSEY  
**BATHROOM TISSUE**  
4 ROLL PKG. **89¢**

**FREE MILK**  
NESTLE CHOCOLATE  
**QUIK**  
2 LB. CAN **\$2.99**

NABISCO CHOCOLATE SANDWICH COOKIES  
**OREO**  
20 OZ. PKG. **\$1.99**

CALIFORNIA SUNKIST NAVEL  
**ORANGES**  
LB. **29¢**

CALIFORNIA  
**GREEN AVOCADOS**  
2 FOR **29¢**

CALIFORNIA SUNKIST  
**LEMONS** LB. **49¢**

WASHINGTON D'ANJOU  
**PEARS** LB. **49¢**

ALL PURPOSE RUSSET  
**POTATOES** 10 LB. BAG **\$1.49**

CALIFORNIA GREEN PASCAL  
**CELERY** LB. **39¢**

YELLOW STRAIGHT NECK OR ITALIAN GREEN  
**SQUASH** LB. **59¢**

GOLDEN GRIDDLE  
**SYRUP** 24 OZ. BTL. **\$1.69**

WHITE/ASST. FACIAL TISSUE  
**KLEENEX** 175 CT. BOX **79¢**

18 CT. DAY/14 CT. OVERNIGHT/24 CT. NEWBORN  
**HUGGIES** BOX

NEW FREEDOM REG/DEOD. THIN  
**MAXIPADS** 30 CT. PKG. **\$3.99**

CONVENIENT  
**HAND-WIPES** 6 CT. PKG. **79¢**

30' OFF LABEL  
**DYNAMO ACTION PLUS** 32 OZ. BTL. **\$1.69**

HIGH PROTEIN DRY DOG FOOD  
**FIELD TRIAL** 25 LB. BAG **\$4.49**

VEGETABLE JUICE  
**V-8 COCKTAIL** 6 PACK 6 OZ. CANS **\$1.29**

10 OZ. REDUCED ACID  
12 OZ. REG/MORE PULP  
MINUTE MAID  
**ORANGE JUICE**  
CAN **\$1.09**

30' OFF LABEL  
**KING SIZE FAB** WITH FABRIC SOFTENER **\$2.99**

**TOTAL GROCERY SAVERS**

100% NATURAL REG/MEAT/MUSHROOM SPAGHETTI SAUCE  
**PREGO SAUCE** 32 OZ. JAR **\$1.69**

AMERICAN BEAUTY LONG  
**SPAGHETTI** 10 OZ. PKG. **49¢**

GREEN GIANT WHOLE OR SLICED  
**MUSHROOMS** 2 1/2 OZ. JAR **69¢**

SUNSHINE KRISPY  
**CRACKERS** 16 OZ. BOX **79¢**

KELLOGG'S FROSTED  
**FLAKES** 20 OZ. BOX **\$1.99**

HERSHEY MINI/SEMI SW/MILK CHOCOLATE  
**CHIPS** 12 OZ. PKG. **\$1.79**

ALL GRIND MARYLAND CLUB  
**COFFEE** 1 LB. CAN **\$2.29**

LO-CAL SWEETENER  
**SWEET'N LOW** 100 CT. BOX **\$1.29**

DORITOS BRAND  
**TORTILLA CHIPS** 2.09 SIZE **\$1.69**

**Deli Open 7 Days A Week**

Open Until 3 P.M. Sundays

**Complete Meals**

Meats - Vegetables -  
Salads - Desserts -  
Sandwiches

Call **592-4186**  
for advance orders

**AFFILIATED FOODS INC.**  
MEMBER STORE

We're proud to give you more!

# THRIFTWAY

Prices Effective March 15-18  
WE RESERVE THE RIGHT TO LIMIT QUANTITIES  
WE ACCEPT FOOD STAMPS

DOUBLE COUPONS EVERY TUESDAY

**MIKE'S THRIFTWAY FOODS**

ParkWest Shopping Center Phone 592-4186

Store Hours: 8 a.m. - 8 p.m. Monday - Saturday; 9 a.m. - 6 p.m. Sunday

Our store family-owned and operated 20 years.

DOUBLE EVERY WEDNESDAY



Friday has been designated as Lois Holloway Day at Friendly Door, and her friends are invited to come by to visit with her and have cake and coffee between 10 a.m. and 12 noon.

Mrs. Holloway, who has been living in Iowa Park for about 25 years, will be leaving in the near future for Newport News, Va. to make her home. In Iowa Park, she has been an active member of the First Presbyterian Church and Friendly Door.

Officer Tom Stephens of the Iowa Park Police Department will speak to the participants of the Friendly Door Tuesday about personal and residential security. Officer Stephens' talk will include suggestions for the elderly citizen to avoid personal injury and property loss through criminal acts.

The talk is part of a new and continuing effort by the Iowa Park Police Department to involve the elderly citizen on a regular basis with the prevention of crime.

**FRIENDLY DOOR MENU**

**Fri., March 16** - Irish beef stew, vegetables in stew, fruit & cottage cheese, lime jello.

**Mon., March 19** - Swiss steak, rice, spinach, plums & graham crackers.

**Tue., March 20** - Sliced ham, blackeyed peas, cabbage, cornbread, chocolate cake.

**Wed., March 21** - Oven fried chicken, scalloped potatoes, green beans, cobbler.

**Thurs., March 22** - Hungarian goulash on noodles, mixed vegetables, beets, pineapple.

**PORCELAIN ARTS SHOW**

The annual Wichita Falls Porcelain Art Show will be held at Parker Square Bank March 25 from 1-5 p.m.

Registration will be at the north entrance and door prizes will be awarded during the afternoon. The show is open to the public and there is no admission charge.

### Staber among 160 initiates

More than 160 Texas Tech Univ. students will be initiated into the campus chapter of Phi Kappa Phi national honor society April 11.

Membership in Phi Kappa Phi, which recognizes outstanding scholarship in all academic disciplines, is limited to juniors, seniors, law students and graduate students who rank in the top 10 percent of their classes.

Initiates for 1984 include political science junior David Fred Staber, son of Mr. and Mrs. John F. Staber of Route 2, Iowa Park.

### Lee completes armour school

Capt. Sammy G. Lee, son of Sammy R. Lee of 106 James Drive, and Sally N. Jump of 700 N. Bond, both of Iowa Park, has completed an armor officer advanced course at the U.S. Army Armor School, Fort Knox, Ky.

Students were trained in administration and operations, management, armor and cavalry operations, nuclear, chemical and biological operations as well as internal defense, logistical support and research development.

He is a 1980 graduate of Midwestern State Univ.

**LOOK WHO'S NEW**

Dustin Kyle, an eight pound, 12 ounce son, was born to Mr. and Mrs. Allen Lee Little February 17.

The grandparents are Mr. and Mrs. Gerald Williams of Wichita Falls and Mr. and Mrs. Edward H. Little of Iowa Park. The great-grandparents are Mrs. Hattie White of Iowa Park, Mr. and Mrs. Riley C. Woods of Wichita Falls, Mrs. Cleo B. Suiter of Vernon and Mrs. Dick Williams of Bowie.

Brandon Mikel Brookshire announces the birth of his sister, Brandi Marie. She was born March 5 and weighed six pounds, seven ounces. The children's parents are Mr. and Mrs. Bennett Brookshire, and the mother is the former Bernice Forman.

Grandparents are Mr. and Mrs. Bradley Loucke and Mr. and Mrs. Otha Ray Brookshire of Iowa Park. Mrs. Beatrice Brown of Bowie is the great-grandmother.

# Cook of the Week



Mrs. J.D. Parker

have been eaten in the Indus Valley as early as that. They were probably wild bananas if they were eaten that early.

Arabs, often the first importers of foods from the Far East, are thought to have cultivated bananas in the Near East and Northern Egypt in the seventh century A.D. The Koran of that century identifies the forbidden fruit in the Old Testament as the banana, not the apple, and so did early Hindu Christians. Emperor Napoleon was impressed with a new dish, banana fritters moistened with rum served him at St. Helena.

At least two Assyrian carvings depict what look like bananas, but both were at royal banquets and could have been in the carvings as examples of the rare and luxurious fruits available to no one except exalted kings.

Perishable and difficult to transport, the banana was excruciatingly slow in making its way around the world, and it had to wait the development of refrigeration and transportation before it spread.

Mrs. Parker and her husband, who is production foreman for Petro-Lewis Corp., and a son, Paul of Wichita Falls are now renting and operating the Johnson Road Texaco Station. They have another son, Danny of Iowa Park, and a daughter, Marva Ferrill of Abilene.

Mrs. Parker attended high school at Andrews and took courses at South Plains Junior College at Levelland. She worked as a bookkeeper/clerk at a paint store in Andrews, and later at a variety store and as foreman of a fiber glass boat factory at Grants, N.M.

The Parkers moved from Levelland to Wichita County about three years ago. They lived nine miles southwest of town before moving into Iowa Park. They are members of the Church of God.

Mrs. Parker teaches ceramics, which is one of her hobbies, to senior citizens each Tuesday afternoon. Her other hobbies are leaded stained glass windows, sewing and crocheting.

**ICING**

3 egg yolks  
1 cup sugar  
1-13 oz. can condensed milk  
1 stick margarine  
1 cup coconut  
1/2 cup pecans

Cook until thick. Spread on warm cake; let set 24 hours before serving. Better if it sets 36 hours or more.

**QUICKIE PEACH PIE**

Melt 1 stick margarine in 2x11 1/4 x 9 1/2 inch pan. Pour in batter made from:

1 cup flour  
1 cup sugar  
1 cup milk  
2 teaspoons baking powder

Add 1-16 oz. can peaches and juice on top of batter. Bake at 350 degrees until brown.

**CORN DOGS and/or CORN FRITTERS**

1 1/2 cups flour  
1/2 cup corn meal  
1 teaspoon salt  
3 teaspoons baking powder  
6 tablespoons sugar

Add enough milk to make a thick batter. Dip franks or sticks into batter and fry in deep shortening until golden brown.

If there is any batter left, add a little whole kernel corn and finely chopped onion. Drop in deep shortening and fry until golden brown.

**FUDGE COOKIES**

2 cups sugar  
1 stick margarine  
1/2 cup sweet milk

Boil above ingredients together for one minute. Remove from heat and add:

2 cups 3-minute oatmeal  
2 tablespoons cocoa  
3/4 cup peanut butter  
1 teaspoon vanilla  
3/4 cup coconut

Beat together and drop by spoons on wax paper. Let cool.

### Church group meets

Seventeen members of the Friendship class of First Baptist Church attended the monthly meeting held Monday evening in the Fellowship Hall. Hostesses were Mmes. Walter Scott, Ruth Hill and D.O. James.

Mrs. Elmer Singleton was in charge of business when officers gave monthly reports and it voted to make a monetary love gift to a needy family.

Mrs. E.T. Patterson read an article "Surrender and Sunshine" by Louise Ravenhill for the devotional program. Mrs. Nelson Johnson directed the period of recreation.

A St. Patrick Day's motif was carried out in refreshment table decorations during the social hour.

### Poster contest winners named

Winners in the conservation poster contest sponsored by the ABCS have been announced.

Jeff Robertson was the over-all winner in the fifth grade. Other fifth grade winners were Karen Ellis, Chris Devore, Cathy Proulx and Monte Medina.

Andy Cravens was the over-all winner in the fourth grade. Other winners were Melody Gray, Corey Bridwell, Jennifer Beavers and Tricia Anderson.

**-WELCOME-  
ASSEMBLY OF GOD  
S. Yosemite  
9:45 S.S./7 P.M.  
Wed. 7 P.M. Service  
Rev. Charles Hensley,  
Pastor**

**First Presbyterian Church**  
DR. EARLE W. CRAWFORD, INTERIM PASTOR  
CHURCH SCHOOL - 9:45 A.M.  
WORSHIP - 11:00 A.M.  
A Caring Congregation of  
Palo Duro Presbytery - Presbyterian Church [USA]

**First Christian Church**  
105 E. Cash  
Sunday School - 9:45 a.m.  
Worship - 10:55 a.m.  
Corner, Cash & Bond St.

We encourage each of you to worship Jesus Christ in the church of your choice. If you do not have a church home, we invite you to come worship with our church family.

**Grace Baptist Church**  
511 S. Colorado - 592-5632

Come Let Us Reason Together Saith The Lord  
Sunday School . . . 10:00 A.M.  
Morning Worship . . . 11:00 A.M.  
Children's Worship . . . 11:00 A.M.  
Evening Worship . . . 6:30 P.M.  
Wednesday Service . . . 7:30 P.M.  
Jimmy Johnson, Pastor

**Pacific Avenue  
Missionary Baptist Church**  
1400 North Pacific Avenue

Larry Washburn  
Pastor  
Church - 592-9711  
Pastor 592-4288

Sunday School 9:45 a.m.  
Morning Worship 11:00 a.m.  
Evening Worship 6:00 p.m.  
Wednesday 7:00 p.m.

Everybody Welcome

**Christ The King  
Catholic Church**  
First and Clara Phone 592-2802

8:45 a.m. C.C.D. — 10 a.m. Mass

**First United  
Methodist Church**  
201 E. Bank

Church School 9:40 Youth Meetings 5:00  
Morning Worship 10:40 Evening Worship 6:00

GEORGE TOPPER, PASTOR

**Church of God**  
601 E. Cash

Pastor, Ole Olds  
Sun. Morning Worship 11:00  
Sun. Night Celebration Service 7:00 p.m.  
Tues. Ladies Prayer Service 10 a.m.  
Wed. Night Bible Study 7:30  
Sat. Family Night 7:30  
"Catch the Vision"

Par. 592-5316 Office 592-4348

**Kamay Road  
Church of Christ**  
Corner of Colorado & Emerald

'Seeking the Old Paths'

Lord's Day  
10:30 a.m. & 6 p.m.  
Wednesday 7:00 p.m.

**GOOD SHEPHERD  
LUTHERAN  
CHURCH**  
1st & Magnolia  
Iowa Park

Sunday School: 9:45 a.m.  
Worship Service: 10:30 a.m.

**First Baptist Church  
of Iowa Park**  
Yosemite at Park

**SUNDAY SERVICES**

Mornings  
Sunday School 9:45  
Worship 11:00

Evenings  
Church Training 6:00  
Worship 7:00

**WEDNESDAY**  
Prayer Meeting 7:00  
Choir Rehearsal 7:45

**IOWA PARK  
CHURCH OF CHRIST**  
SCHEDULE OF SERVICES

<b>Sunday</b>	Bible Study 9:30 a.m. Worship 10:30 a.m. Evening Worship 6:00 p.m.	<b>Wednesday</b>	Ladies Bible Study 10:00 a.m. Evening Study 7:30 p.m.
---------------	--	------------------	--

300 East Park, Iowa Park, Texas 76367, [817] 592-5415

# Sullivans observe 40th anniversary

One of the loveliest social events of the late winter season held in Iowa Park was a reception given Sunday afternoon to commemorate the fortieth wedding anniversary of Mr. and Mrs. Harrel Ray Sullivan.

The reception was held in the beautiful country home of Mr. and Mrs. Sullivan and hosted by their son and daughter-in-law, Mr. and Mrs. Roger Sullivan, assisted by the honored couple's two grandchildren, Brian, who greeted the guests, and Staci, who directed their signatures.

The guest book table in the entry hall was appointed with a picture of the bride in her white wedding gown and the groom in his Air Corps officer's uniform taken on their wedding day March 11, 1943. They were married at the Highland Street Church of Christ in Abilene.

The refreshment table held a wonderland of beauty with the cake, crystal and silver appointments lending a touch of elegance. The table will always be a vivid part of Harrel and Peggie Sullivan's memories of their fortieth wedding anniversary because it was designed and set in order by their daughter-in-law, who also baked and decorated the perfect picture cake, the highlight of decorations.

The table was draped with burgundy satin (burgundy being the fortieth anniversary color) and overlaid with pink lace caught up with burgundy silk bows.

Fresh pink, burgundy and white daisies, roses, carnations, spider mums and green fern gathered in

## Alathean class holds meeting

The Alathean class of First Baptist Church held the monthly luncheon and business meeting Tuesday at the church.

Mrs. Page Morgan, devotional chairman, brought the meditation based on the 23rd Psalm. Mrs. Earle Denny was in charge of the period devoted to business.

Sixteen members and two guests, Mrs. Corlis Wallace and Mrs. Mary Justin of Denton, were present.

clusters and falling in cascades gave the motif of the delicate design in decorating the cake with two sets of Grecian posts. A bouquet of the fresh flowers was an appealing top ornament for the lush creation. The same florid ornamentation was used on the four-branched silver candelabra where white candles burned on either side of the cake.

The table extremities were marked with a crystal punch service and pink napkins engraved with "Peggie and Harrel" in burgundy.

Reception assistants were Mrs. Joe Laird, Jerry Whitaker, Ray Fortner and R.L. Good.

Bouquets of the chosen flowers were used in vantage points throughout the reception rooms, on the registry table, in corsages and boutonnières.

## Terrariums program topic

Mrs. James Barrington presented an interesting program on "Terrariums" at the Iowa Park Garden Club meeting held Friday morning in Texas Electric Reddy Room.

She said that Dr. Nathaniel Ward, a famous botanist of England, discovered a fern growing in some mold he had under glass, and that led to the present day displays known as terrariums. His discovery aroused interest and by the mid 1800s every fashionable Mid-Victorian home displayed a Wardarian Case, as they became named.

Mrs. Barrington displayed terrariums that she had constructed and gave procedures used to start them.

During the business presided over by Mrs. R.L. Good, roll call was answered by the 22 members present giving their favorite observations of nature. Mrs. Jerry Reed was welcomed as a new member, and the horticulture specimen was an African violet displayed by Mrs. Kathleen Hatten.

Hostesses for the meeting were Mrs. J.R. Cope, R.L. Good and Hatten.

The March 23 meeting will feature the annual field trip. Club members will meet at 10 a.m. in front of the

Harrel and Peggie Sullivan, owners of Parkway Furniture and True Value, are active members of the Church of Christ.

The former Peggie Rogers received a degree in business from Abilene Christian College and taught in Iowa Park High School for a short time before their marriage. She also has a degree in interior decorating and her expertise is recognized not only by store patrons but by many who seek her advice in decorating, purchasing furniture and accessories. She is a former VEO sponsor and member of the Iowa Park Garden Club. She is also a five-gallon blood donor.

Following the couple's marriage, they lived at Austin several months before Harrel left for overseas combat 15 months. When they returned to Iowa Park, he worked for

Hill Motor Co., then owned and operated a feed store from 1946-50. He served in the Air Force at Chanute Field, Ill., during 1951-52. Back in Iowa Park, the couple owned White Auto Store until they opened Parkway Furniture in 1962.

Harrel is an elder and teacher of a Sunday school class at the Church of Christ. He is a charter member of the Rotary Club, a former city alderman, and he was a member of the Wichita County Water Improvement District when Lake Buffalo was built. He served nine years on the Selective Service Board. He has been a longtime member and director of the Chamber of Commerce. He is a former Boy Scout master, member of the Volunteer Fire Department, and is past president of the Iowa Park High School Alumni Association.



MR. AND MRS. HARREL SULLIVAN

First Christian Church and leave for a tour of the Midwestern State Univ. greenhouse, followed by a luncheon at Western Sizzler.

## Fellowships meet

The Rebecca and Mary Fellowships of United Methodist Women met at the church Tuesday morning and had a joint social together following separate meetings. Hostesses were Mrs. R.E. Waters, Charlie Lee and James Owens.

The Rebecca Fellowship met in the church library. Mrs. L.A. Thurlo gave the program on "We Are Yet a Part of the Mission Parade." Twelve members and one guest, Mrs. George Topper, were present.

The Mary Fellowship met in the MYF room for a program given by Mrs. Sam Hunter on "Gifts of the Holy Spirit." Mrs. James Owens used "New Every Morning" for the theme of the devotion. Eleven members attended.

Eight members of the Ruth Fellowship met in the home of Mrs. S.E. Keeter. Mrs. Floyd Boyd directed the lesson on "Homeless Women in the United States." Mrs. Larry Parks was a visitor.

## ADVERTISING

# DEPAUL BASKETBALL SUCCESS CREDITED TO CABLE TELEVISION

CHICAGO, ILL. (DePaul University) - If DePaul University wins the NCAA basketball championship this year, a large share of the credit must go to cable television.

WGN is carried on Cable Channel 11 of TV Cable of Iowa Park.

Ray Meyer, DePaul's coach for 42 years, said it wasn't long ago that his squad was dominated by Chicago-area players "because they were about the only ones who really knew us."

Today the Blue Demons have only two players from Illinois. The others hail from San Diego to the Queens Borough of New York. A sharp contrast to five years ago when DePaul games started being carried nationwide via satellite.

"The difference in our roster and recruiting success is the exposure we get from WGN television on cable systems across the nation," Meyer explains. "Last year we were successful in recruiting two of this year's top collegiate freshman players, 6'9" Dallas Comegys from Philadelphia, and 6'7" Lawrence West from San Diego, because they followed our team on their local cable television systems while they were playing in high school."

Through the popular Chicago independent television station WGN, DePaul has become the most televised basketball team in the U.S. It is carried live via satellite to more than 12 million homes in all 50 states and Puerto Rico.

"The game of basketball is dominated by large people," the dean of American basketball coaches says, "but one of our most valuable players stands 5'10", weighs 155 pounds and wears a three-piece suit more often than he wears sneakers. His name is Roy Elias."

Elias is executive vice president and chief operating officer of United Video, Inc., the Tulsa, Oklahoma-based company that put WGN on satellite in 1978 for national distribution to cable systems.

Elias explains that sports programming is one of the biggest reasons people subscribe to cable, and that in addition to carrying over half the DePaul schedule the Chicago Super-Channel carries 150 Notre Dame and Big Ten football and

basketball. "Sports is a big reason we chose to carry WGN, and DePaul is a bright star in the station's popularity," Elias said.

After the first year of national television exposure Meyer noticed a marked increase in acceptance of the Blue Demons when they played out of town. With that new visibility and players like All-American Mark Aguirre, Terry Cummings and Clyde Bradshaw making sports headlines, DePaul quickly gained national favor.

In fact, DePaul climbed into the national Top 20 Polls for the first time ever on February 26, 1979. The Blue Demons remained nationally ranked for the remainder of the campaign and for the following three seasons, including a No. 1 ranking in 1979-80 and 1980-81.

The Blue Demons burst into the 1983-84 season undefeated at 15-0 by January 25, and second nationally behind North Carolina.

But, in the past seven-and-a-half seasons DePaul has the best winning percentage (.824) in the nation, ahead of the second best North Carolina at .815. And each time his players win, Coach Meyer's 712-851 record further confirms his status as the nation's top-ranked active coach. Currently he is the fifth all-time winning coach in NCAA Division I, and the leading active coach. Plus he's only one of five coaches to reach the magic 700-win mark.

"United Video is the best recruiter on my staff," Meyer beams. "We have fan clubs wherever we go, and I credit satellite exposure to the fact that we already have 1984-85 commitments from three outstanding high school seniors from Aquippa, Pa., Jacksonboro, Miss., and Jackson, Mich. Cable gives coast-to-coast recruiting."

Freshman phenom Lawrence West makes no bones about why he's at DePaul. "I watched Cummings and Aguirre play and I decided right away that I wanted to play for a team that gets that kind of national exposure. It's good for the school, the team and me if I'm good enough to take my basketball career beyond college."

Since the Blue Demons are

televised more than any other major college basketball team, they have been nicknamed "America's College Team."

Even though he's in his last year as the Blue Demon head coach, Meyer keeps looking ahead. "Whatever happens from this point in the season on, can't take away the thrill I've had. I'll always remember this bunch of kids because of the way they pull together. No one player dominates for us, and when someone is having an off night, we have the best bench strength I've ever coached to turn to," he says.

"That bench strength is no accident," Meyer concedes. "Sure, there's a lot of great players from the Chicago area, but to put 10 players in uniform that can compete with anyone, you have to be able to recruit from all over the nation. Cable's our bench strength, too."

Meyer says he's happy that his final year is being such a great one, and even more appreciative of the fact that whoever fills his shoes next year will have the advantage of satellite programming distribution on the bench with him. And a great recruiter in Tulsa, Oklahoma.

Elias takes it all in equal appreciation. "We're proud of the fact that our efforts have provided outstanding sports viewing for so many Americans. Because of DePaul's success, they attract opponents like Louisville, South Carolina, Notre Dame, St. John's, UCLA, Georgetown and other national powers. That means that viewers everywhere want to turn to cable, and of course WGN television," he explained.

"It works both ways. I think Ray Meyer is one of the nation's finest gentlemen and coaches. Plus," he adds, "he's one of the best cable system recruiters we've ever had."

WGN is a full family, 24 hrs. a day, entertainment network channel, airing classic movies, syndicated programming, in depth news, children's programming as well as sports.

For further information concerning the entertainment value and the wide range of programming choices offered by the local cable television system call TV Cable of Iowa Park, phone 592-2144.



Epsilon Eta of Iowa Park presents its  
**Second Annual Charity Ball**  
**BOOTS & BOWTIES**  
 Dressy Western  
 Music by Texas Best  
 Donation \$10  
 Hors D'oeuvres and set-ups furnished  
 CALL 592-2476 or 592-9717

Wichita Falls Activity Center March 24, 1984—8 to 12 PM

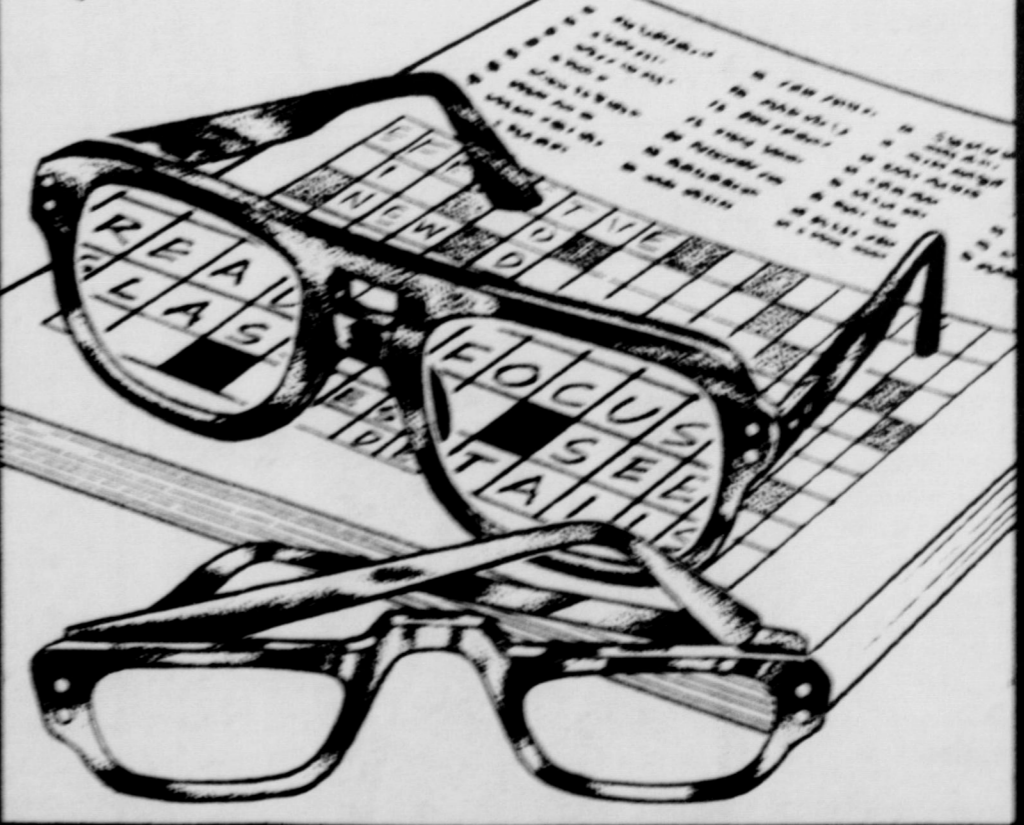
A BENEFIT FOR THE TOM BURNETT MEMORIAL LIBRARY

# WAL-MART Reading Glasses sale

Save Up To 2.88  
**Vision Aid® Reading Glasses**  
 • The effective, inexpensive way to bring the fine details of reading, close work and hobbies into sharp focus.  
 • Contains lenses of the highest quality.  
 • All meet FDA and state impact resistance standards and use high quality frame materials.  
 • Reg. 8.71-13.42

**6.93**

No. 125AM 8.28  
 No. 750C 9.37  
 No. 825 9.92  
 No. 409 10.74



Prices good thru Mar. 17  
 500 West Highway, I.P.  
 9 a.m. - 9 p.m. Mon. - Sat.



**WAL-MART**

WAL-MART'S ADVERTISING MERCHANDISE POLICY - It is our intention to have every advertised item in stock. However, if due to unforeseen reasons an advertised item is not available for purchase, Wal-Mart will issue a "Check or Request" for the merchandise to be purchased at the sale price whenever available, or will send you a similar item at a comparable reduction in price. We reserve the right to limit quantities. Limitations void in New Mexico.

# Honor rolls are released

Honor rolls for the fourth six-week grading period have been released at both the high school and junior high. They are:

**SENIORS AA** - Mike Bean, Michelle Evans, Wendy Kirksey, Becky Martin, Paula Mashburn, Caroline Patterson, Susan Streich. **SENIORS A** - Becky Barbe, Lee Birk, Brenda Cook, Jodi Corless, Maureen Duffey, Bobby Halady, Betsy House, Tracy Lawson, Lori Nanez, Tim Norris, Christine Proulx, Dana Trantham, Craig Whisnand, Kristi Wood.

**JUNIORS AA** - Kim Bajo, Phillip Clements, Bobby Duboise, Melissa Hatcher. **JUNIORS A** - Becky Brown, Holly Farnsworth, Karin Fedo, Kristi Lane, Michelle Langdon, Brian Todd, Gina Weaver, Jay Yeakley.

**SOPHOMORES AA** - Cathy Downes, Donald Young, Ronald Young. **SOPHOMORES A** - Stephen Bidley, Dawna Bradford, Tina Busby, James Redclift, Deryl Roy, John Roy, Amy Silvers, Tammy Washburn.

**FRESHMAN AA** - Amy Brillhart, Eddie Collins, Scott Davis, Danny Forman, Linda Gibbons, Brett Hale, Rachel Jones, Kim Nicholson, Sarah Owens, Dennis Phillips, Jana Thompson, Wes Ward. **FRESHMAN A** - Robert Adams, Tina Escue, Lisa Grace, Brad Huff, Melissa Schmitt, Wendy Trantham, Denise Ward.

**8TH GRADE AA** - Jenny Bowerman, Jerri Brown, Stan Coker, Lisa Cook, Christy Cravens, Sheri Cravens, Karie Davis, Joel Galloway, Glenda Swinn, Vicki Haynes, Lisa Hodges, George Storey. **8TH GRADE A** - Leona Allen, Tammie Bridges, Becky Brumbelee, Christy Clark, Kelly Clayton, Shana Devore,

Veronica Donahoo, Daryl Downes, Suzanne Gunderson, Keva Gunter, George Howell, Andy Jacobi, Berry Kaiser, Jimmy Kirkhart, Lorre Moser, Toni Oswald, Charles Smith, Sheila Staggs, John Stone, Heather Woods, Toby Brown, Chad Fielding, Ace Burkhart, Kathy Fehr, Elaine Elder.

**7TH GRADE AA** - Cody Barnett, Jeff Bartow, Andrea Blackwell, Steve Catlin, Amy Freeman, Tiffany Gray, Tammie Huff, Kim Martin, Jana Rains, Jenny Salan, Carrie Wilson.

**7TH GRADE A** - Paul Bowling, Frankie Chacon, Rita Fletcher, Jeff Floyd, Rhonda Foehner, Doug Hale, Valerie Hedrick, Jenny Jackson, Brad Lewis, Richard Owens, David

## Tree pruning Lions program

V.I. Woodfin gave a talk and demonstration on tree and shrub pruning and helpful hints on pruning back the plants that have been damaged by the severe cold weather this winter for the Evening Lions Club meeting Tuesday. He suggested cutting the shrubs back close to the ground if there is any sign of life instead of removing and replacing them.

He said that pruning was necessary to help the trees and shrubs hold their shape and form and that it added strength to them. He discussed the techniques of pruning and showed some of the tools that he used.

Rinehart, Amber Searle, Melinda Solomon, Brenda Trantham, Chris Wilson, Melissa Wilson, Shay Witherspoon, Will McCarthy, Sherri Feltman, Tomi Sue Cockburn, Stephanie Lankford, Kelli Richardson, Deborah McEmore.

**6TH GRADE AA** - Paula Beavers, Chris Blalack, Bret Bradford, Mike Brillhart, Jimmy Duggins, Melissa Horton, Denise Huot, Kelly McClure, Jennifer Welch, Kami Wynn. **6TH GRADE A** - Angie Barker, Jeanine Blair, Cheryl Boggs, Tim Braillhart, Misti Hrncirik, Stacy Martin, Shannon McCormick, Jill Silvers, Deanna Sosebee, Nancy Storey, Marc Thames, Shonna Weaver, Necia Williams, Dean Wynn.

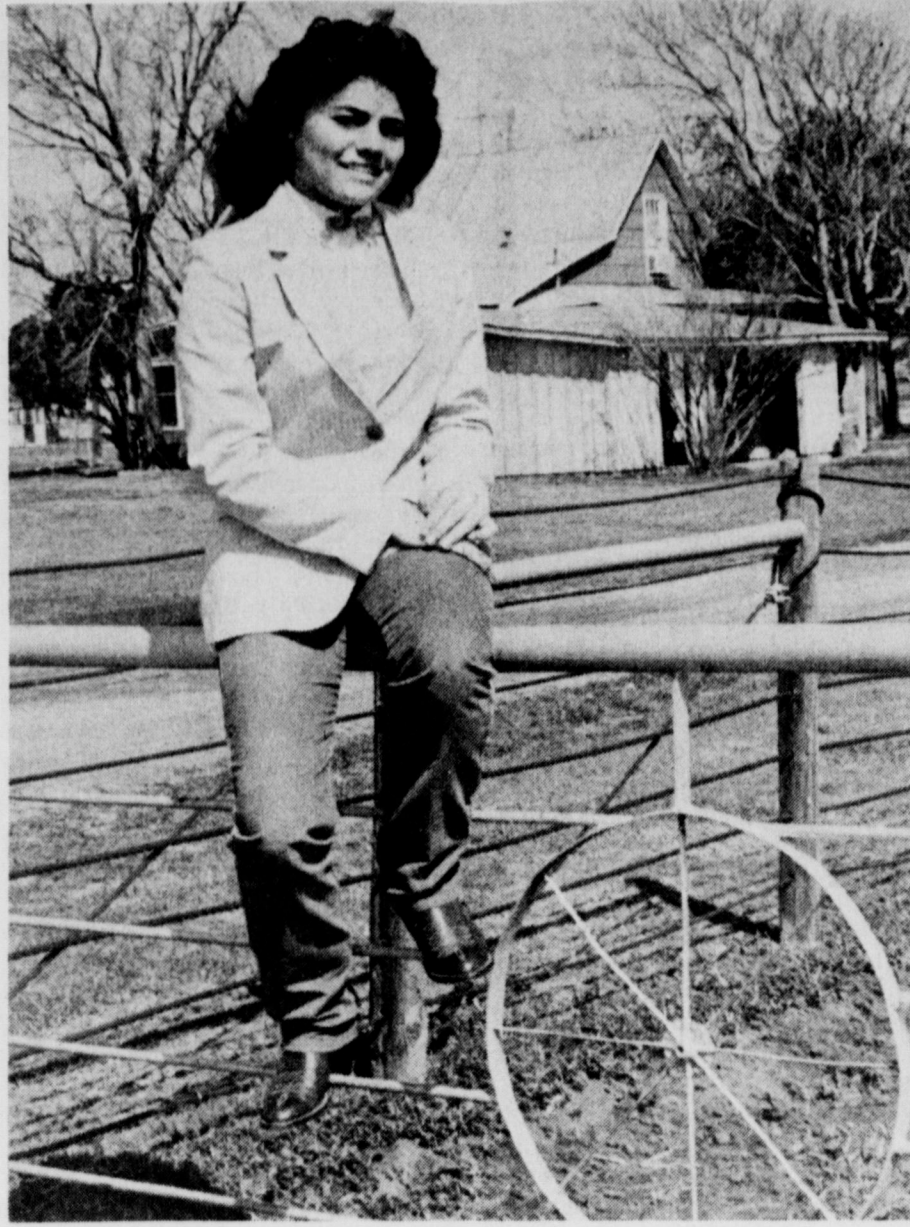
Schedule for:

## Recreational Activities Center

A course in Christmas decorations will be taught at 7 p.m. Tuesday by Linda Ayres. A fee will be charged and the RAC can be called, 592-4471, for amount and supplies needed.

A class in tole painting will begin at 9 a.m. Mar. 23, and continue six weeks. Margie Boylan will be the instructor. Pre-registration is required, and the RAC can be contacted for a list of supplies needed.

Two new classes in aerobics will begin next week. The evening class will begin Monday at 7:15, and the 9 a.m. class the following day. The evening class will be held Mondays and Thursdays, while the morning class will be Tuesdays and Fridays. The evening class will be for both beginners and advanced participants.



MISS RODEO TEXAS "TEEN" RUNNER-UP MAXINE HILL.

## Iowa Parkan in contest

Maxine Hill, daughter of Mr. and Mrs. Kendall J. Hill, Kamay Rd., placed fourth runner-up in the Miss Rodeo Texas "Teen" contest in San Antonio recently.

Miss Hill, 15, was also named "Miss Photogenic" in her division. A freshman at Iowa Park High School, she won the right to compete in the state pageant after being named Electra Rodeo Queen during the 1983 Electra Rodeo.

Active in local 4-H and FFA programs, Miss Hill has won several awards in the halter and show contests, and is a member of the Wichita 4-H, Electra Riding Club, Iowa Park High School Rodeo Club, and Wichita County Mounted Patrol. In addition to being named Miss Electra Rodeo Queen in 1983, she also captured the title of Red River Rodeo Jr. Queen.

Sondray Hurley of Yantis was crowned Miss Rodeo Texas "Teen" and Lashawn Wardlaw of Bracketville Miss Rodeo Texas at the pageant in San Antonio, with Larry Mahan serving as master of ceremonies.

Miss Hill is also active in high school sports, participating in basketball and track, and also models for a local photographer.



**Mon., March 19** - Salisbury steak, meat or cheese sandwich, soup, mashed potatoes & gravy, green beans, hot rolls, butter, honey, chocolate & plain milk, pudding. **Tues., March 20** - Pizza, meat or cheese sandwich, soup, buttered corn, combination salad, chocolate & plain milk, peanut butter fingers. **Wed., March 21** - Cheeseburgers, meat or cheese sandwich, soup, pinto beans, French fries, lettuce, tomatoes, pickles, onions, chocolate & plain milk, ice cream. **Thurs., March 22** - Goulash, meat or cheese sandwich, soup, fried okra, blackeyed peas, cornbread, chocolate & plain milk, fruit cobbler.

## New Meter Connections

Paul Rumble - Rt. 1, Box 58A  
William H. Smith - 1305 Blue Jay  
Cody Whitaker - 411 W. Jefferson  
David Elder - 101 West View  
Lee Allen - 616 W. Washington  
Bill Winton - 505 N. Victoria  
David Wahl - 410 S. Wall



# Obituaries

## Linnie Dillard

Services were Saturday morning at the First United Methodist Church in Holliday for Linnie Dillard, 70. Rev. Bob Bryan, pastor, officiated. Burial was in the Holliday Cemetery under direction of Owens and Brumley Funeral Home of Wichita Falls.

She was born April 3, 1913, at Rising Star and had lived in Holliday 43 years. She was a member of First United Methodist Church.

Survivors include her husband, H.F.; a son, Gary of Holliday; a daughter, Wanda Slack of Holliday; four brothers, L.B. Walker of Amarillo, W.D. Walker and O.D. Walker, both of Holliday, and Doyle Walker of Electra; two sisters, Ester Capehart of El Dorado Springs, Mo. and Zelma Kimes of Bryan; four grandchildren; and three great-grandchildren.

## Cammie L. Grundy

Services were held Monday morning at Tanner-Aulds Funeral Home for Mrs. Cammie L. Grundy, 89, who died Friday in a Wichita Falls nursing home, with Rev. David Edwards, pastor of Central Baptist Church in Wichita Falls, officiating. Burial was in the Highland Cemetery.

Mrs. Grundy was born Dec. 5, 1894, in Moscow, Ky., and came to Wichita County in the early 1920s. She was a registered nurse at Wichita General Hospital many years and before that she had worked for the Drs. Clark in Iowa Park. She was a member of Texas Registered Nurses Association and Central Baptist Church.

She is survived by a son, George L. Grundy Sr. of Wichita Falls; a daughter, Rosemary Anderson of Clear Lake City; eight grandchildren; and two great-grandchildren.

The family suggests that memorials be made to Wichita General Hospital nursery department fund.



Fairbanks, Alaska, is the closest city to North America to the Arctic Circle.

## Coming exclusively to Iowa Park

### Top Dress Wheat With SOIL-BAC

\*\$7.50 Per Acre (50 Acres or more)  
Applied

\*\$6.00 Per Acre (Less than 50 acres  
with 500 gal. spray rig furnished)

- ACTS AS AN ECONOMICAL ALTERNATIVE TO CHEMICALS
- HELPS TO INCREASE THE FARMERS NET PROFIT
- INCREASES PLANT AVAILABLE NITROGEN
- BUILDS HUMUS
- INHANCES ROOT STRUCTURE
- IMPROVES WATER EFFICIENCY
- ACTS AS A NATURAL SOIL BALANCER

SOIL-BAC is harmless to humans and animals and will not burn plants or crops. Livestock can graze on pastures treated with SOIL-BAC immediately after the product has been applied. That safety provides peace of mind for you and your family.

DISTRIBUTED BY  
JOE GALLOWAY

North Texas Planterra, Inc.  
855-3050

**Plants Etcetera**

READY FOR PLANTING  
Cabbage, Broccoli, Iris, Day Lilies, Hardy Herbs, Miniature Roses, Lots More!  
2951 Elliott, W.F.  
Open 10-6 Every Day!

WAL-MART

Look Mom!

\$2.00 OFF on any 10x13 Designer Wall Portrait for EASTER GIVING! when you purchase our 20 portrait package.

20 PROFESSIONAL COLOR PORTRAITS \$12.95

TWO 8x10 • THREE 5x7 • 15 WALLETS  
BABIES • CHILDREN • ADULTS • FAMILIES

Give all your special friends and relatives the most personal gift... a professional color portrait they will cherish forever!

95¢ Deposit - Balance \$12.00. Poses our selection. Special effects poses extra. Limit: One package per subject. \$1.00 each additional subject in portrait. Minors must be accompanied by an adult. Satisfaction guaranteed. Satin-textured finish at no extra charge.

ALSO AVAILABLE —  
THE NEW NIMSLO® 3-D  
CUSTOM PROFESSIONAL PORTRAIT

Imagine portraits so real you feel as if you could walk into them. Look into a Nimslo® 3-D portrait and you'll see not only rich, brilliant color, but the extra dimension of depth. Nimslo® 3-D portraits are beautiful lasting portraits that require no special lenses or glasses...you view them with the naked eye.

Not sold separately. Limit: One per customer.

5 DAYS ONLY! Daily & Sat 10-8  
Tues, Wed, Thur, Fri, Sat;  
Mar 13 14 15 16 17  
500 West Highway, Iowa Park

ESPN is available only through your local cable system. Programming subject to change.

# USFL LIVE!

The United States Football League is in full swing on ESPN with live matchups scheduled each week this month.

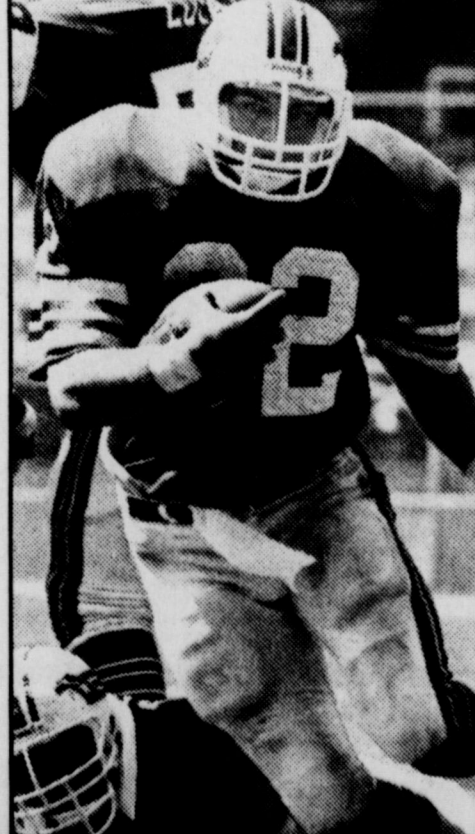
**March 17**  
Memphis Showboats/  
Birmingham Stallions

**8 PM**

**March 19**  
New Orleans Breakers/  
Jacksonville Bulls

**8 PM**

TV Cable of Iowa Park  
901 W. Hwy. 592-2164



THE TOTAL  
SPORTS NETWORK







# Undefeated Hawks open district play Tuesday

The Hawks will carry an undefeated record with them when they travel to Wichita Falls Hoskins Field at 4 p.m. Tuesday for their Dist. 3-AAAA debut against Hirschi.

After their season opener against Notre Dame, they won Wednesday of last week, 4-1, over the Wichita Falls Coyote JV, and Friday took measure of Holliday's Eagles, 16-4.

While the Coyote JV consisted of mostly non-varsity players, three varsity starters, all top hitters in the neighboring city, saw time on the field because their pitching against

competition was observed by their coach.

Robert Adams went all seven innings. He faced 25 batters, struck out 13, walked one and gave up one hit.

Iowa Park hits came from the bats of Van Hedrick, Ray Sefcik, Jeff Sawyer and Mike Williams. The Hawks stole eight bases, and committed two errors, according to Coach Daryl Frazier.

### HAWKS vs. EAGLES

Buddy Trejo was the winning pitcher for the Hawks over Holliday,

though he worked only two innings before Dale Hayley relieved him the last three frames.

Iowa Park scored three runs in the first and one in the second to give Trejo the lead. Holliday scored one in the bottom of the second, on a walk, and the other three in the fourth. A big third inning for Iowa Park produced seven runs, with one following in the fourth and four more in the fifth.

Larry Krob was credited with Holliday's loss.

Leading Iowa Park hitters, 12 hits

in all, were Mike Brooks and Hayley. Brooks had a triple on his only official at-bat and Hayley a double. David

Taylor was two-for-three, and Hedrick was 1-for-three. Taylor, Brooks and Hedrick each scored

twice. Eagles with hits were Bedford, Krob, Hobgood, Mahan and Daniels.

## Hawkettes win at Olney

Trailing by one point going into the final event of the Cubette Relays Saturday at Olney, the Hawkette mile relay team won handily and earned the first-place meet trophy.

Though the "large school" division

was small in numbers of teams, only Iowa Park, Wichita Falls High and Lawton High were competing, the victory required both talent and ability.

Also, both the other teams are

Class AAAAA, while Iowa Park will be dropping into the "small school" division next fall.

The mile relay team, composed of Holly Farnsworth, Lisa Selby, Cindy Clanton and Lisa Sefcik, posted a time of 4:35.84. Lawton was clocked in 4:41.77 and WFHS 4:49.60.

The relay win gave Iowa Park 189 total points, Lawton 186 and Wichita Falls 130.

Other Hawkette performances included:

- High jump - Cindy Clanton, 1st, 4-8;
- Paula Robinson, 2nd, 4-6;
- Shot put - Lisa Holloway, 5th, Dawna Bradford, 6th;
- Discus - Lisa Holloway, 4th, Dawna Bradford, 6th;
- Long jump - Becky Roberts, 1st, 15-3;
- Triple jump - Lisa Sefcik, 1st, 34-11;
- Becky Roberts, 2nd, 31-9; Cindy Clanton, 3rd, 30-5;
- 3200 meters - Sherri Schweiss, 1st, 13:40; Laurie Espinoza, 3rd, 14:37;
- 400 meter relay - Lisa Selby, Becky Roberts, Holly Farnsworth, Laura Parker, 3rd, 54:53;
- Hurdles - Lisa Sefcik, 1st, 15.5; Cindy Clanton, 3rd, 17.5;
- 800 meters - Lisa Selby, 2nd, 2:42;
- 100 meters - Laura Parker, 3rd, 13.93;
- 800 meter relay - Cindy Clanton, Dawna Bradford, Paula Robinson, Becky Roberts, 3rd, 2:01;
- 400 meters - Lisa Sefcik, 1st, 1:06.16;
- Holly Farnsworth, 2nd, 1:10;
- 200 meters - Laura Parker, 4th, 29.98;
- Dawna Bradford, 7th, 32.71;
- 1600 meters - Sherri Schweiss, 1st;
- Laurie Espinoza, 2nd.

## Hawks place third

The Hawks finished third among six teams Saturday at Stephenville.

Showing good representation for points in almost all field and running events, Iowa Park held its own against host Stephenville, Brownwood, Mineral Wells, Waco Richfield and Granbury.

Big Charles Perry copped first places in both the shot put and discus with distances of 48-2 and 142-9, respectively.

Brett Hale, the sophomore distance runner, was runner-up to Perry for points among teammates by placing second in the 3200-meter run with a 11:01.05 and a fifth in the 1600, clocking 5:11.88.

Lee Birk placed second in the high jump, though he and two others were given the same 6-0 clearance. The first and third placers also were 6-0.

Kendell Hill placed third in the pole vault, 11-0, and fourth in the 200 meters, 24:72.

The Hawk 1600-meter relay team showed promise of things to come later in the season, placing third with a 3:40.81. Granbury edged out the Hawks for second place with a 3:40.51.

Others placing included: David, 4th, high hurdles, 17:77; Curtis, 6th, 100 meters, 12:03; and the 400-meter relay team was sixth, 46:50.



### SOCCER RESULTS

The Iowa Park Wildcats, Rustlers and Warriors were the only winners out of eight local soccer teams in games played Mar. 10 at the G.W.F.S.A. (Greater Wichita Falls Soccer Association) complex on Southwest Parkway and Gregg Rd.

Following is the complete list of games played, with the next scheduled contests to take place Saturday at the G.W.F.S.A. complex.

- I.P. Hawks '79 0, Warriors 4
- I.P. Hawks '76 1, Strike Force 1
- I.P. Jets 0, St. Paul Saints 0
- I.P. Wildcats 2, All Stars 0
- I.P. Rustlers 4, Eagles 0
- I.P. Chiefs 0, Rowdies 4
- I.P. Warriors 9, Bearcats II 3
- I.P. Thunderbirds 1, Knights 3

### 4-H CLUB NEWS

#### 4-H PROJECT SHOW FOR NON-ANIMAL PROJECTS

Over forty-five projects were entered into the 1984 Wichita County 4-H Project Show for non-animal projects. The project is held in conjunction with the Wichita County Junior Livestock Show.

The top two projects in each division will compete in the State 4-H Project show to be held in June at Texas A&M University in College Station.

The following 4-Hers projects advance to state competition: Photo Story - Dawn Tanner, Iowa Park 4-H and Kathy Ennis, Lucky Leaf 4-H; Photography-Black and White Print - Barbara Berry, Horse Club, and Dawn Tanner, Iowa Park 4-H; Photography-Color Print - Kathy Ennis, Lucky Leaf 4-H; Sr. Woodworking - Power Tool - John Ridinger, Southwestern 4-H; Non-Original Clay & Glass - Dawn Tanner, Iowa Park 4-H; and Ralph Hollenbeck, Iowa Park 4-H; Family Life Education - Dean Wynn, Iowa Park 4-H; Potpourri - Displays & Collections - Joei Hanson; Misc. Media - Leslie Schulz, Southwestern.

Also, Non-Original Fiber Arts - Leslie Schulz, Southwestern 4-H; Leather Craft - Angie Padilla, City View 4-H and Shelly Wolfe, City View 4-H; Original Fiber Arts - Jolene Hodges - Valley View 4-H and Wendy Cook, City View 4-H; Original Clay &

Glass - Jolene Hodges, Valley View 4-H; Original Metal, Wood & Leather - Jason Young, Valley View 4-H; Poster Art - Open Theme - Jason Boyd - Iowa Park and Jeff Boyd - Iowa Park; Poster Art - A Family Affair - Jolene Hodges, Valley View 4-H; Poster Art - For Tomorrow's World - Barbara Berry, Horse Club and Lisa Hodges, Valley View 4-H; and Original Paintings and Drawing - Carla McAlister, Electra 4-H, and Robert McAlister, Electra 4-H.


A special houseplant division was added to the show this year and Justin Daume won grand champion houseplant. Justin won a blue ribbon and some soapberry tree seeds.

#### Boot, shoe repair business opens

Until this week, Iowa Park has been without a shoe repair business since Harry Brott was forced to close his business on West Cash after suffering a stroke.

David White has opened "Family Boot and Shoe Repair" at 700 E. Highway, offering not only boot, shoe and saddle repairs, but building custom boots as well.


The business is located just east of the old Jiffy Store.



# SUNDAY SPECIAL

Buy 2 pizzas, get a 3rd one FREE!

592-4184



Every Sunday you can get more of what you love to eat at Ken's. Come to Ken's for delicious piping hot pizza. Because when you order our 2 pizzas you get a 3rd one free. It's a great deal on a great meal. So stop by your nearby Ken's Pizza Restaurant and start your week off right. And make every Sunday a family treat with Ken's Sunday Special.



"It's a steal, alright, but you'll have to carry it out."  
— Sheriff Lick

Purchase one of our jumbo hamburgers, or jumbo cheeseburgers, and the fries and drink are

## FREE!

For carry-out orders only at

Little Richard's **Salt Lick**

510 E. Highway 592-5252

WE CARE ABOUT YOUR HEALTH WE CARE ABOUT YOUR HEALTH WE CARE ABOUT YOUR HEALTH

## WAL-MART PHARMACY

592-4157

DEBBI — CHRISTY  
BONNIE — PATTY  
& VESTA

500 West Highway

WE CARE ABOUT YOUR HEALTH WE CARE ABOUT YOUR HEALTH WE CARE ABOUT YOUR HEALTH

## CORN DOG WITH FRIES

\$ 1.34

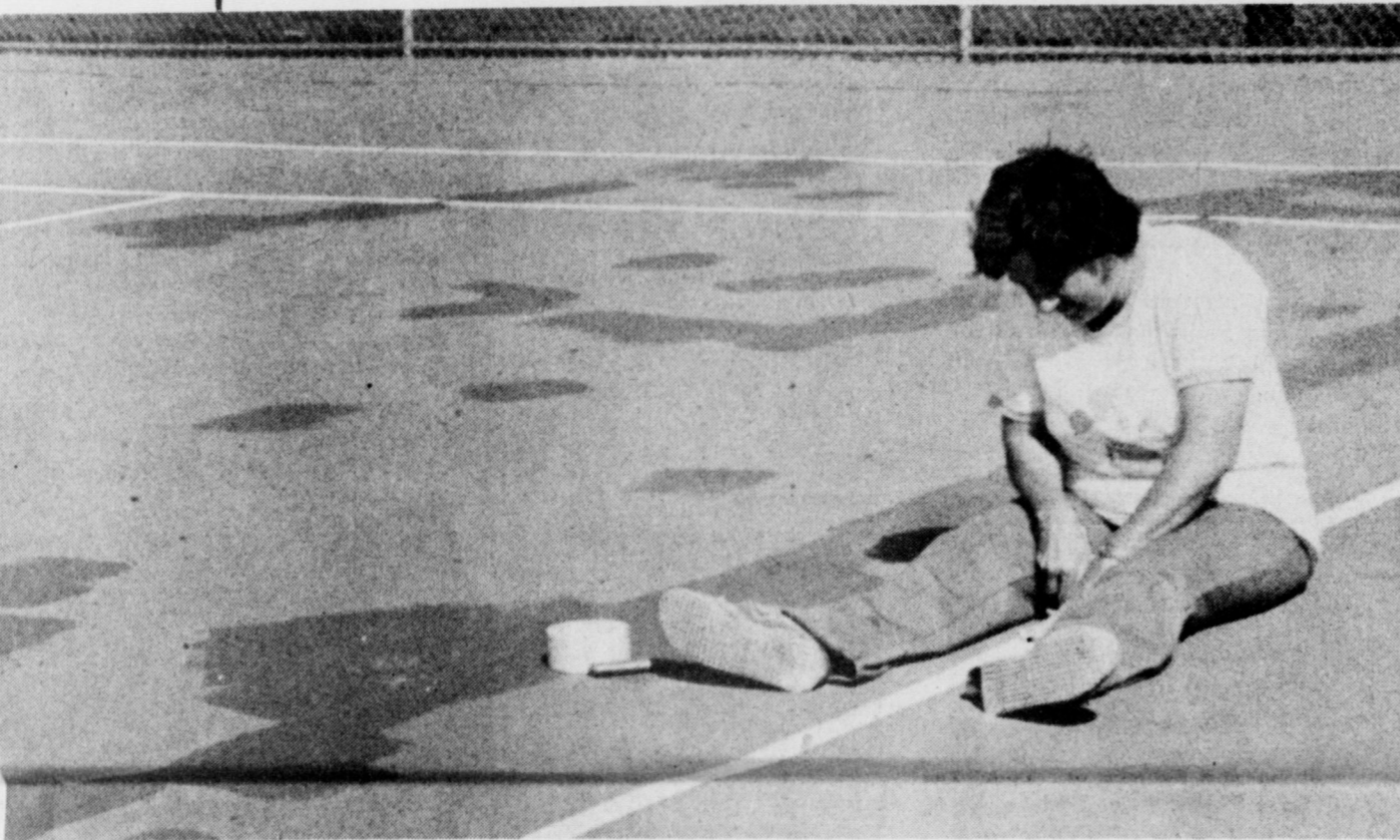
Reg. \$1.55





805 West Highway  
FOR TAKE OUT ORDERS  
CALL 592-4731

SPRING BREAK may be for the students at Holliday High School, but for others, including auxiliary personnel and contractors, it is business as usual. One worker, below, finishes taping the tennis courts before painting, while workmen at right cut and paint the pipe which will serve as the frame for the school's new exercise room.



## Art show Saturday

Holliday's Art Association will present its first annual "West-O'-Wichita" Arts and Crafts Show Saturday at the Holliday High School cafeteria.

Set-up time for participants in this nonjuried show is from 8 a.m. to 10 a.m., with the show lasting from 10 a.m. until 5 p.m., and is free of charge to the public.

Concessions will be offered by the Holliday High School Band Club.

A special attraction will be the Electra Trailblazers Square Dance Club. Performing an exhibition dance, the Trailblazers will also be selling state festival tickets.

Applicants to the arts and crafts show must display only original work, and a charge of \$10 will ensure one of three types of available space: a 2'x6' table, a 4'x8' pegboard, or, an empty space. Chairs will also be furnished.

Those wishing to enter must include name, address, telephone number, and description of the particular work to be shown. The deadline for written entries was Mar. 10, but arrangements for late entrants can be made by phoning 586-1728.

## Capps tops six teams

Pat Capps led the Holliday Eagle track team to an eighth place finish at the Bearcat Relays in Henrietta over the weekend, placing first in both the 400-meter dash and high jump to give Holliday an eighth place finish out of 14 teams entered.

Meanwhile, the Lady Eagles managed only 15 points in Olney, but that was also good enough for eighth place out of 12 teams entered in Holliday's division.

Capps cleared only 6-1 in the high jump, well below his personal best, but still good enough to win. In the open quarter, Capps' time of 55.07 was also good enough for first.

Both teams travel to Electra Friday and Saturday for the Tiger Relays.

# Holliday News



TERESA NOLL, fifth grade student at Holliday Elementary, placed first recently at the Midwestern State University Regional Science and Engineering Fair held at the MSU campus. Entered in the Elementary Division, Noll's entry "Plant Supporting Properties of Soil" was judged first in her class, and the student, shown with teacher/sponsor Diane Jones, received a \$100 award.

## Microwave cooking demonstration set

A microwave cooking demonstration will highlight the next meeting of the Holliday Homemakers at 7 p.m. Tuesday in the home economics room at Holliday High School, according to Donna Reynolds.

Cal Woodward of Johnson's Magnavox will be the featured speaker. Reynolds said anyone interested in attending the program is encouraged to do so.

## HOLLIDAY SCHOOL MENU

### Monday, March 19

Breakfast: Biscuits, gravy, sausage, milk.  
Lunch: Pizza, fried okra, salad, cake, milk.

### Tuesday, March 20

Breakfast: Cinnamon rolls, milk, fruit.  
Lunch: Nachos, green salad, cheese sauce, macaroni and tomatoes, milk, fruit.

### Wednesday, March 21

Breakfast: Frosted flakes, milk, juice.  
Lunch: Roast pork, broccoli and rice, creamed potatoes, gravy, milk, crunch, bread.

### Thursday, March 22

Breakfast: Oatmeal, bacon, toast, milk.  
Lunch: Corn dogs, pinto beans, milk, corn, cookies.

## LOOK WHO'S NEW



Mr. and Mrs. Kirk Styles of Holliday announce the arrival of their first child, Koby Wayne, a seven pound, six ounce son. Mrs. Styles is the former Jolene Ayres.

The grandparents are Mr. and Mrs. C.D. Ayres and Mr. and Mrs. Buster Styles of Holliday. The great-grandparents are Mrs. Susie Ayres of Holliday, Mrs. Leone Latham of Andrews and Mr. and Mrs. S.F. Styles of Seymour. The great-great-grandmother is Mrs. Annie Crouch of Wichita Falls.

Mr. and Mrs. Lynn Ayres announce the birth of Justi Lea, a six pound, 10 ounce daughter, born February 29. Mrs. Ayres is the former Judy Hrcirik.

The grandparents are Mr. and Mrs. Johnny Hrcirik and Mr. and Mrs. C.D. Ayres, all of Holliday. The great-grandparents are Mr. and Mrs. Elmer Biggerstaff, Mrs. J.O. Ayres of Holliday and Mr. and Mrs. Albert Hrcirik of Seymour.

Galaxy Oil Co. of Wichita Falls has filed for permit to drill the No. 18 J&J Waggoner, a 1,500-ft. developmental well eight miles southwest of Iowa Park. Location is in an 80-acre lease in the Wichita Regular Field, M.A. Willis Survey, A-547.

The well is 950 feet from the north line and 2,100 feet from the east line of the lease and 950 feet from the north line and 3,400 feet from the east line of the survey.

Shell E&P Inc. of Houston has filed first production figures on a new oil well in the Bryant-Dobos Field. The No. 101 F. Goetze showed potential to pump 85 barrels of oil and 85,000 CF gas per day.

The operator has 160 acres leased, with drillsite in Wilbarger County's H&TCRR Survey, A-231, one mile southeast of Odell.

The well will produce from an interval 5,548 to 5,559 feet into the wellbore. Total drilling depth was 6,750 feet.

The well is 1,610 feet from the south line and 600 feet from the west line of the lease and survey.

At a location four miles south-southwest of Vernon, Burk Royalty Co. of Wichita Falls has finaled a new oil producer in the Wilbarger Regular Field.

The well is designated as the No. 2 Schoppa, flowing oil at the rate of 60 barrels per day.

Location is in a 160-acre lease in the H&TCRR Survey, Sec. 70, Blk. 14. Bottomed at 6,181 feet, the well will produce from perforations 5,922 to 5,930 feet into the hole.

The well is 467 feet from the north line and 1,667 feet from the east line of the lease and survey.

Plug-and-abandon orders have been issued for the No. 1 Spears, a wildcat venture of Rincon-Dale Inc. in Wilbarger County. Spudded 1-2-84, the well had reached 8,547 feet total depth. Drillsite was ten miles west of Vernon.

The well was 1,091 feet from the west line and 2,963 feet from the north line of the lease and survey.

An 8,700-ft. wildcat well is planned by Paul DeClava of Wichita Falls at a drillsite six miles southwest of Medicine Mound, Hardeman County. The location is in a 640-acre lease in the H&TCRR Survey, A-1597. Well's

designation is the No. 1 James Long. The well is 1,700 feet from the west line and 2,160 feet from the north line of the lease and survey.

Trio Operating Inc. of Wichita Falls has given up in its efforts to make a producer out of the No. 1 B.J. Wilson. It was a wildcat try in the H&TCRR Survey, Sec. 97, Blk. 16, Hardeman County. The location was nine miles south of Chillicothe. Spudded 1-2-84, the well had reached 8,311 feet total depth.

The well was 1,344 feet from the east line and 1,320 feet from the south line of the lease and survey.

A 2,000-ft. developmental well is planned by Thomas S. Schalk of Wichita Falls at a drillsite three miles east of Electra, Wichita County. The location is in a 68-acre lease in the H&GNRR Survey, A-142. Well's designation is the No. 3 Sheldon. It is in the Wichita Regular Field.

The well is 150 feet from the south line and 450 feet from the north line of the lease and survey.

Breck Operating Co. of Breckenridge has filed for permit to drill the No. 2 Waggoner Ranch, a 2,500-ft. developmental well 15 miles southeast of Vernon. Location is in a 70-acre lease in the Wilbarger Regular Field, H&TCRR Survey, A-914.

The well is 1,040 feet from the north line and 330 feet from the west line of the lease and 330 feet from the south line and 330 feet from the west line of the survey.

Burk Royalty of Wichita Falls has filed first production figures on two new oil wells in the Wilbarger Regular Field, H&TCRR Survey.

The No. 1 Pearson showed potential to flow 78 barrels of oil and 58,000 CF gas per day on a 24/64 choke. Tubing pressure came in at 200 PSI. Bottomed at 6,492 feet, the well will produce from perforations 6,297 to 6,317 feet into the hole.

The operator has 324 acres leased, with drillsite five miles south-southwest of Vernon in A-803. The well is 467 feet from the west line and 2,173 feet from the south line of the lease and survey.

The No. 1 Frank H. Sims showed potential to pump 54 barrels of oil per day. Bottomed at 6,400 feet, the well will produce from perforations 6,192



## Area oil, gas report

to 6,206 feet into the hole.

The operator has 336 acres leased, with drillsite three miles southeast of Vernon in Sec. 71, Blk. 14. The well is 467 feet from the west line and 467 feet from the south line of the lease and the survey.

An 8,600-ft. wildcat well is planned by Kadane Oil Co. of Wichita Falls at a drillsite 6.5 miles south-southwest of Chillicothe, Hardeman County. The location is in a 157-acre lease in the H&TCRR Survey, A-1130. Well's designation is the No. 1 Bell "A".

The well is 1,273 feet from the southwest line and 729 feet from the northwest line of the lease and 1,273 feet from the southwest line and 1,886 feet from the southeast line of the survey.

The Quintin Little Co. of Ardmore, Okla., has filed first production figures on a new oil well in the Daves Field. The No. 2 L.R. Monaghan showed potential to flow 101 barrels of oil and 203,000 CF gas per day on a 12/64 choke. Tubing pressure came in at 320 PSI.

The operator has 1,346 acres leased, with drillsite in Wichita County's Denton CSL Survey, five miles northeast of Holliday.

The well will produce from an interval 5,327 to 5,358 feet into the wellbore. Total drilling depth was 5,655 feet.

The well is 1,650 feet from the east line and 1,850 feet from the north line of the lease and the survey.

A Burkburnett-based operator has staked location for the No. 30 Douglas, a developmental well to be located four miles southeast of Electra. With projected total depth of 2,000 feet, the well is in an 89-acre lease in the Wichita Regular Field, L.M. Collins Survey, A-399. The operator is B.H. Preston, Jr.

The well is 150 feet from the east line and 150 feet from the south line of the lease and the survey.

At a location ten miles south of Electra, TS&T Drilling Inc. of Electra

has finaled a new oil producer in Wichita County's KMA Field.

The well is designated as the No. 5 J&J Waggoner "14," pumping oil at the rate of 47 barrels per day.

Location is in a 560-acre lease in the H&TCRR Survey. Bottomed at 4,251

feet, the well will produce from perforations 4,019 to 4,033 feet into the hole.

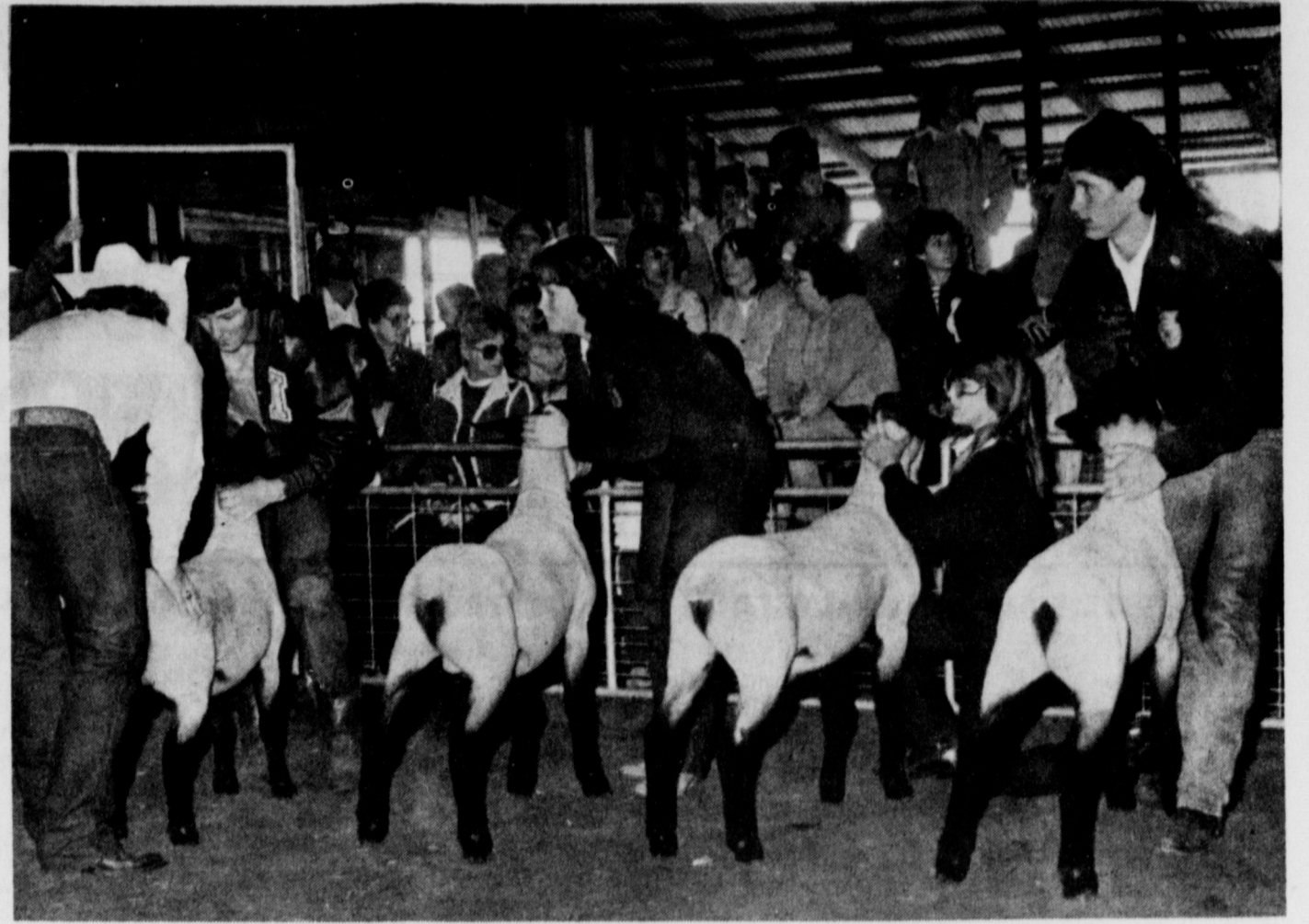
The well is 468 feet from the west line and 1,263 feet from the south line of the lease and survey.



INJURED EAGLE remains in present condition beside the new Holliday High School sign located at the northwest corner of the campus. Recently, three students attached a homemade bomb to the figure, which is solid fiberglass from the top of the head to the neck, hoping to detach the Eagle's head from the explosion. The result of their efforts, though, was suspension from school in addition to other disciplinary action. All considered, they were extremely lucky. The manufacturing of a homemade bomb is a federal offense.



JEFF BOYD, DEREK DAVIS WITH TOP BROILERS OF SHOW



SCOTT YOUNG, RIGHT, SHOWS LAMB TO TOPS IN SHOW

# Project Show winners announced

Senior FFA student Rowdy Robertson, son of Mr. and Mrs. Jerry Robertson, walked away from Saturday's annual Iowa Park FFA and 4-H Project Show with the coveted Herdsman Award.

The three showmanship awards were awarded to George Howell, in the swine division, Christy Cravens, sheep, and Becky Whitaker, beef.

Top awards in each division went to:

- Grand Champion Gelding: Marcy McCarthy
- Reserve Champion Gelding: Will McCarthy
- Grand Champion Broilers: Derek Davis
- Reserve Champion Broilers: Jeff Boyd
- Grand Champion Fryer Rabbits: Kristi Riggins
- Grand Champion Turkey Hen: Connie Cravens
- Grand Champion Turkey Tom: Christy Cravens
- Grand Champion Mare: Shea Slack
- Reserve Champion Mare: Kristi Wynn
- Grand Champion Market Lamb: Greg Young
- Reserve Champion Market Lamb: Van Hedrick
- Grand Champion Diary Goat: Jamie Hatcher
- Grand Champion Market Swine: Stacy Ward
- Reserve Champion Market Swine: Misty Hicks
- Grand Champion Beef Steer: Rowdy Robertson
- Reserve Champion Beef Steer: Tracy Taylor
- Grand Champion Beef Heifer: Lori Maple

- Placings by class included:
- MARE - 1.) Shea Slack, 2.) Kristi Wynn.
  - GELDING - 1.) Marcy McCarthy, 2.) Will McCarthy.
  - TURKEY HENS - 1.) Connie Cravens, 2.) Mike Phillips, 3.) Christy Cravens, 4.) Dwain Hopkins, 5.) Mark Phillips, 6.) Marcy McCarthy, 7.) Will McCarthy.
  - TURKEY TOMS - 1.) Christy Cravens, 2.) Mark Phillips, 3.) Mark Phillips, 4.) Tammy Henderson, 5.) Connie Cravens, 6.) Marcy McCarthy, 7.) Will McCarthy.
  - GOATS, SENIOR DOE - 1.) Jamie Hatcher, 2.) Deanna Sosbee, 3.) Jimmy Freeman, 4.) Donnie Watson, 5.) Monte Medina.
  - GOATS, JUNIOR DOE - 1.) Deanna Sosbee, 2.) James Hatcher, 3.) Donnie Watson, 4.) Monte Medina, 5.) A.D. Sparlin, 6.) A.D. Sparlin, 7.) Jimmy Freeman.
  - BUCK RABBITS - 1.) Ralph Hollenback, 2.) Kristi Riggins, 3.) Joe Boyd, 4.) Michael Cole, 5.) Christy Cravens, 6.) Ricky Hollenback, 7.) Lisa Tanner.
  - MEAT PEN RABBITS - 1.) Kristi Riggins, 2.) Ralph Hollenback, 3.) Ricky Hollenback, 4.) Connie Cravens, 5.) Christy Cravens, 6.) Jason Young, 7.) Sharon Wynn.
  - RABBIT DOES - 1.) Rickey Hollenback, 2.) Robert Cole, 3.) Connie Cravens, 4.) Robert Cole, 5.) Michael Cole, 6.) Andy Cravens, 7.) Michael Cole.
  - BROILERS - 1.) Derek Davis, 2.) Jeff Boyd, 3.) Jason Boyd, 4.) Joey Boyd.
  - FINE WOOL CROSS - 1.) Dale Allen, 2.) Christy Cravens, 3.) Scott Young, 4.) Kristi Wynn, 5.) Mike Kent, 6.) Kami Wynn, 7.) Greg Young.

- DOWN'S & DORSETS - 1.) Derek Davis, 2.) Becky Martin, 3.) Scott James, 4.) Christy Cravens.
- HAMPSHIRE - 1.) Rex Wilson, 2.) Tommy Riggins, 3.) Angie Martin, 4.) Kim Williams, 5.) Kristi Riggins, 6.) Kristi Riggins.
- LIGHTWEIGHT SUFFOLK - 1.) Bobby Whisnand, 2.) Christy Cravens, 3.) Scott Young, 4.) Kristi Wynn, 5.) Scott James, 6.) Melissa Matthews, 7.) Becky Martin.
- HEAVYWEIGHT SUFFOLK - 1.) Scott Young, 2.) Tammy Henderson, 3.) LaRita Bogart, 4.) Dale Allen.
- LT. WT. MED. WOOL CROSS - 1.) Kristi Riggins, 2.) Ronnie Henderson, 3.) Tammy Henderson, 4.) LaRita Bogart.
- HVY. WT. MED. WOOL CROSS - 1.) Van Hedrick, 2.) Tina Reasor, 3.) Derek Davis, 4.) Tommy Riggins, 5.) Scott James, 6.) Kim Williams, 7.) LaRita Bogart.
- BREEDING GILTS - 1.) Misty Hicks, 2.) Stacy Ward, 3.) Scott Lyles.
- BERKSHIRE & SPOT - 1.) A.D. Hambright, 2.) Greg Carillo-Miranda, 3.) Markita Savage, 4.) Kevin Meinzer, 5.) David Williams.
- YORKSHIRE - 1.) Misty Hicks, 2.) Karie Davis, 3.) Kevin Wells, 4.) Tracy Young, 5.) Rowdy Robertson.
- LIGHTWEIGHT HAMPS - 1.) Rowdy Robertson, 2.) Misty Hicks, 3.) Greg Patterson, 4.) Terry Hillard, 5.) Connie Cravens, 6.) Greg Patterson.
- HEAVYWEIGHT HAMPS - 1.) Stacy Ward, 2.) Stacy Ward, 3.) Carey Waters, 4.) Scott Davis, 5.) Kevin Meinzer, 6.) George Howell.
- BREED CHAMP - Stacy Ward;
- RESERVE - Stacy Ward.
- LIGHTWEIGHT DUROC - 1.) Mark Savage, 2.) Tracy Taylor, 3.) Becky

- Whitaker, 4.) Carla Pool, 5.) Becky Whitaker.
- HEAVYWEIGHT DUROC - 1.) George Howell, 2.) A.D. Hambright, 3.) A.D. Hambright, 4.) Connie Cravens, 5.) Scott Davis, 6.) Greg Patterson.
- BREED CHAMP - George Howell;
- RESERVE - A.D. Hambright.
- LIGHTWEIGHT CROSS - 1.) Derek Crumpton, 2.) Becky Whitaker, 3.)

- Todd Crumpton, 4.) Derek Crumpton, 5.) Angela Wachsmann.
- HEAVYWEIGHT CROSS - 1.) Stacy Ward, 2.) Misty Hicks, 3.) Larry Green, 4.) Karie Davis, 5.) Scott Weaver, 6.) Tracy Taylor, 7.) Darrin French.

- CROSS CHAMPION - Stacy Ward;
- RESERVE - Misty Hicks.
- LIGHTWEIGHT STEERS - 1.) John

- Woods, 2.) Lori Maples, 3.) Bruce Whitaker, 4.) Bobby Whisnand.
- HEAVYWEIGHT STEERS - 1.) Rowdy Robertson, 2.) Tracy Taylor, 3.) Doug Smith, 4.) Tracy Taylor.

## ACTIVITIES in Neighboring Communities

**CASTING 'HELLO DOLLY'**  
Auditions for Backdoor Theatre's spring musical, "Hello Dolly," will be held Sunday, March 18 and Monday, March 19 at 7:00 P.M. on the theatre's main stage.

There are several major roles to be cast at the March 18 and 19 auditions. These roles include three major singing/dancing roles for men covering a wide age range, as well as major singing/dancing roles for women. There are also several non-singing supporting roles in "Dolly."

**SHEPPARD OPEN HOUSE**  
It's just around the corner! Sheppard Air Force Base will conduct Community Day 1984 April 7 and 8. Gates open at 10:30 a.m. April 7 and close at 5 p.m. Activities begin at noon and end at 5 p.m. April 8. The U.S. Navy Blue Angels aerial demonstration team and the U.S. Army Golden Knights parachute team will be featured performers both days.

## IRS Tax Tips

### PBS Broadcast to Highlight Tax Laws for Older Americans

Tax laws, credits and deductions affecting taxpayers age 55 and older will be the subject of "Your Tax Return: 55 and Older Update," to be aired on Sunday, March 25, from 2 to 3 p.m. CST on Public Broadcasting Station KERA-TV, Channel 13.

Moderators for the special will be Mike Connors, television's "Mannix," and Lee Meriwether, a former Miss America featured on the TV series "Barnaby Jones."

During the program, Internal Revenue Service tax assistants will be available at IRS phone centers to answer viewer questions. The toll-free tax information number to call is 1-800-424-1040.

Among the tax laws to be discussed are the extra \$1,000 exemption for taxpayers age 65 and older, and the special exclusion of up to \$125,000 of gain on the sale of a residence by taxpayers age 55 and older.

The one-hour special, which will be

closed-captioned for the hearing-impaired, is being produced by WQED/Pittsburg in cooperation with the Internal Revenue Service.

### PENSIONERS MAY OWE TAXES, INTERNAL REVENUE CAUTIONS

Because pension income may be either fully or partially taxable, federal income taxes may be withheld from pension payments. Withholding is not compulsory, and any person can apply to their payor for exemption.

However, many retirees may find the withholding a convenience that can spare them penalties when they file their federal income tax returns. Without tax withholding, a retiree who owes \$300 or more for 1983 may be liable for an estimated tax penalty.

A retiree who chooses not to have tax withheld from pension payments may pay quarterly estimated payments to avoid the penalty. Additional information may be found in Publication 505, "Tax Withholding and Estimated Tax."

# SNB

# IRA

A Personal Retirement Plan That Will Save You Tax Dollars Every Year

### EVERY WAGE EARNER IS NOW ELIGIBLE

As of January 1, 1982, every wage earner, even though they are active participants in an employer sponsored pension plan, can make tax-sheltered contributions to an Individual Retirement Account (IRA). IRA contributions will accumulate tax-deferred with compounded interest until retirement.

### MAXIMUM CONTRIBUTIONS

The maximum contribution to an individual retirement account has been increased from \$1,500 to \$2,000; spousal IRA from \$1,750 to \$2,250. (Spousal IRA's are for married couples where only one spouse is employed.)

Whether or not you are covered by an employer sponsored pension plan	Contributory IRA	Spousal IRA
	\$2,000	\$2,250

### 100% CONTRIBUTION

Contributions are no longer limited to 15% of your annual earnings. You may now contribute up to 100% of your earnings up to the maximum limitation.

# SNB

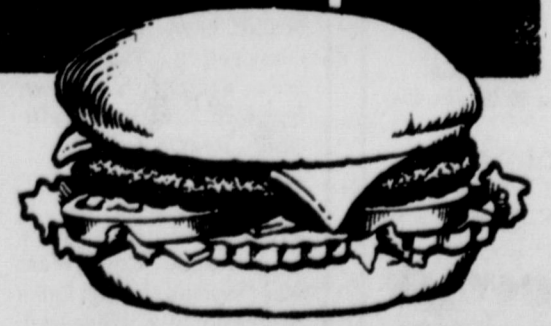
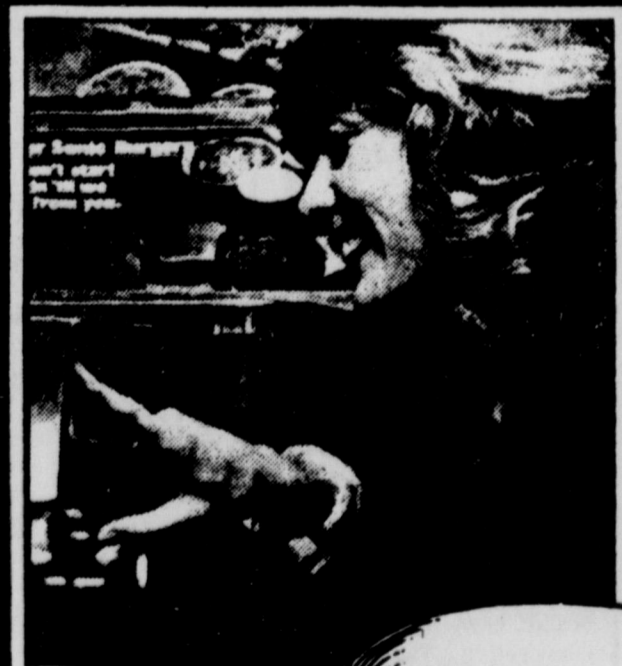
## STATE NATIONAL BANK

IOWA PARK, TEXAS



Locally Owned

We don't start cookin' til we hear from you.



WEEKEND SPECIAL  
Thursday thru Sunday

SONIC BURGER... 99¢

No Limit-No Coupon Necessary

Iowa Park Only - 719 W. Highway

Call In Orders Welcome 592-4221

# SONIC

© SONIC INDUSTRIES INC. 1981 ALL RIGHTS RESERVED

BUYING? SELLING? RENTING? HIRING?

# WANT ADS PAY OFF

## DEADLINES

10 A.M. WEDNESDAY (Word Ads Only)  
4 P.M. TUESDAY, DISPLAY ADS

SAVE 10¢ PER WORD FIRST  
INSERTION BY PAYING  
WITH COPY AT OFFICE

RATES:  
20¢ PER WORD FIRST INSERTION  
10¢ PER WORD EACH REPEAT

### ● HOMES FOR SALE

**NEW HOME** by owner below appraised value, 3 bedroom, 1 1/2 baths, 2x6 framing chain link fence, five ceiling fans, heat and air. 592-5033. 3-15-1tp

**IOWA PARK** - by owner, 3 bedroom brick, 1 1/2 baths, storm cellar, storage building, fenced yard, near Cryovac. 592-9454. 3-8-4tp

**Great Starter Home**  
For young couple. 3 bedroom, 1 and 1/2 bath house for sale near Cryovac Plant.  
**LARRY RHOME REAL ESTATE**  
Call 691-2500 or 691-7607

**THREE BEDROOM**  
1 1/2 baths, large living-room, kitchen & dining, storm cellar, privacy fence. \$41,500.

**EXCELLENT BUY**  
Three bedroom, 1 1/2 baths, large garage, central heat & air. New FHA appraisal. \$40,000.

**YES YOU CAN**  
Own this large three bedroom living room, den, dining room. Over 1900 sq. ft. of floor space. \$59,500.

**THREE BEDROOMS**  
Large living room, formal dining, nice kitchen, 1 bath, single garage. \$29,900.

**OWNER FINANCE**  
Two bedrooms, one bath, large living room, kitchen & dining room. \$18,500.

**SUMMER'S A COMING**  
Three bedroom, 1 1/2 baths, large living room, huge den, two gas fireplaces, lawn sprinkler system, lovely backyard. \$44,500.

**MOTHER-IN-LAW SPECIAL**  
Two bedroom home, large living room, extra large back yard, lovely one bedroom efficiency house for rental or etc. \$36,500.

**THREE BEDROOM**  
1 1/2 baths, living room, family room. Large workshop.

**TWO BEDROOM**  
1 bath, large living room, kitchen and den or third bedroom.

**HEY LOOK**  
Large home in Holliday, Tex. Three bedrooms, 2 baths, large corner lot. \$20,000.

**PRICE REDUCED**  
Two bedrooms, one bath, lovely paneling, single garage. \$26,500.

**SUNSET**  
Four bedrooms, 1 1/2 baths, nice garage, large lot, fenced yard. \$42,250.

Try The Action Co. I Think You Will Like Us

MEMBER MULTIPLE LISTING SERVICE

**JOHNNY LEE REAL ESTATE**

592-2378  
109 W. Cash

### ● REAL ESTATE

**2 ACRES** south edge Iowa Park. Water available. Black top road. 592-5219. 3-15-1tp

**REDUCED** Corner lot across from Kidwell. 3 bedroom, 1 1/2 baths, family kitchen. Owner says sell it.

**CLOSE TO CRYOVAC**  
Priced to sell. 4-bedroom, 2 bath, brick home. Central heat, air. Very nice for the price.

**JOAN SHIERRY 592-5540**  
**HIRSCHI REALTORS 692-8120 691-1212**

**IMMEDIATE** possession on quiet street. 3 bedroom brick, new built-in appliances, fireplace in den. Large yard with storm cellar, privacy fence. Have appraisal.

**REDUCED** - 4 bedroom close to school. Nice home, fenced yard. Owner transferred. Appraisal price \$59,000. Asking \$57,900.

**STARTER HOME** - \$15,000. Good condition. Can be assumed. Payments \$125.00.

**10 ACRES** - 4 bedroom home, 2 baths, den, extra large kitchen. Barn, storm cellar, 100% minerals, capped oil well, Iowa Park school district.

**COMPLETELY** remodeled. Mint condition. 2 bedroom. \$20,000. Ready to move in.

**7-50 FT. LOTS** \$10,000. Good home sites.

**3 BEDROOM** brick - 2 bedroom separate unit. Great for rental. Extra large lot. Allowance allowed for painting. \$60,000.

**IMMEDIATE** possession 3 bedroom trailer house, central heat & air, all appliances, new carpet. \$8,500.

If you are thinking of selling your home, call us. We have clients and need listings.

Member Multiple Listing

**Shirley Rains Real Estate**

119 W. Park 592-4248  
Iowa Park, Tex. 76367

Vincent Rains 592-4584

*There's no place like your home!*

**TWO ACRE** track in Arrowhead Estates has a brand new 3 bedroom home on it. Two living areas each with its own fireplace. Energy efficient. Ready now! \$105,000.

**THREE** bedroom home in Lakeside City West was custom built, looks professionally decorated. Large master bedroom suite. Quality look throughout. Fenced. Landscaped, 1/2 acre. \$89,900.

**QUAIL VALLEY** is the quiet setting for this 3 bedroom custom built home on 5 acres. Large den with wet bar. Brick fireplace covers one wall. Kitchen has lots of cabinets plus built-in desk. Metal barn, shed & tack room. Cross fenced. Great for horse lovers! \$127,500.

**ALPHA REALTORS 692-1800**  
*The Gallery OF HOMES*

### ● FOR RENT

**ONE BEDROOM** furnished apartment for single or couple. Available March 14. \$175 month, \$125 deposit. 592-9473, 592-4585. 3-15-2tp

**RELIABLE FAMILY** of four needs 3 bedroom, unfurnished house to rent April 1st in Iowa Park. Call 592-5685. 3-15-1tp

**UNFURNISHED** 2-bedroom house, central heat/air. Couple or would consider couple with small child. Call after 5 p.m., 592-4980. 3-15-1tp

**FIND IT ALL IN THE WANT ADS**

**PRICED TO SELL**  
Older, 3 bdrm., dining room, corner. Reduced. Owner-Broker.

**RESTORED**  
Large, older, 3 bdrm. & more. 4 lots. Corner. See to appreciate.

**OUTSIDE CITY LIMITS**  
Over 2 acres, orchard, garden, extra clean 3 bdrm., 2 bath mobile. Greenhouse. Much more. \$37,500.

**IMMED. POSSESSION**  
14x80 lots. Corner. Call & make offer. Owner-Broker.

**SMALL 3 ROOM**  
House. Large corner lot. Pecan trees. Garden area. \$7,500.

**NEED**  
One acre or more. 150 to 200 acres, with or without home.

**PRICE REDUCED**  
3 Bdrms., den, fireplace, heat/air, fresh paint, carpet. W. Rebecca. VA \$43,000.

**MUST SELL**  
Almost new 3 bdrm. Good floor plan, air/heat, \$40,000. VA.

**TWO LOTS**  
2 BDRM. mobile, double garage with upstairs storage. Corner. \$14,000.

Established local realtors

Member Multiple Listing

**Sam D. Hunter Real Estate**

107 E. Cash Ph. 592-4661

### ● MISC. FOR SALE

**YARD SALE** Saturday only, 9:00 - 5:00. Boys & mens clothes. Old Singer sewing machine, household items, etc. 522 W. Magnolia. 3-15-1tp

**PORCH SALE** 414 W. Washington. Girls clothes 10-12, books, glass, small appliances, electric range, lots of misc. Thursday only, 10-4. 3-15-1tp

**DRIVEWAY SALE** - Saturday. Have chest, twin bed, mattress, old box springs, girls' clothes 4-6, boys' jeans etc. Canceled if rain or cold weather. 103 West Garden. 3-15-1tp

**GARAGE SALE** Friday & Saturday, 9-5. Men's & women's clothes, beds, lamps, new luggage, lots of misc. 811 North Park. 592-5775. 3-15-1tp

**PATIO SALE** Multi-family. Desk, bedspreads & curtains car seat, calculator, books, Intellivision, toys, leather coat, good children & adult clothing, and more. 1612 Karen, Thurs. & Fri., 8-5:30. 3-15-1tp

**BACKYARD SALE** Thursday & Friday, 9-6. 2 motorcycles, snow mobile, baby items, clothes, knick knacks, tool box, slalom ski, live well, and misc. 1609 Yucca. 3-15-1tp

**INSIDE SALE** 507 E. Jefferson, Thurs., Fri., Sat. Complete bed & dresser \$35; 2 gas heaters; bedspreads \$5.00; electric blanket \$4; bar stool. Lots of things. 10 a.m. - 5 p.m. 3-15-1tp

**1976 LTD.**, air, power steering, \$995. 592-5033. 3-15-1tp

**Featured Home of the Week**



No spring cleaning required for this immaculate home! Beamed ceiling magnifies the warmth and space of the living room. Modern kitchen with gadgets galore. Cultured good fixtures accent the luxury in the bath. Garage door opener makes it unnecessary to brave the bad weather. Giant shade trees are among the neighborhood's oldest inhabitants. \$47,900

**NICE-SIZED CORNER LOT**, fenced with double gate, 3 bedrooms, large country-style kitchen with lots of cabinets, 1 1/2 baths, 2 car garage, central heat/air unit, storm windows, extra large 2-car garage. VA appraisal of \$41,000. Will Consider FHA or VA, or can assume low interest rate FHA loan.

**BEAUTIFUL NEW HOME**, large living/den with picture paneling and high-beamed ceilings. Bright master bedroom, bath with two walk-in closets, drapes, decorator blinds, microwave, self-cleaning oven, efficiency fireplace. Priced at only \$64,000.

We have 5-acre tracts to build your dream home on. Ask about our trade-in policy. Call us today at **691-1214**  
**RIP SMITH Realtor/Builder**

**DYNAMIC REALTORS 855-6823**

**LOOK AT THESE SPECIAL IOWA PARK PROPERTIES**

**QUAIL VALLEY:** Beautiful 3 bdrm, 2 bath, 2 garage on 5.75 acres; exceptional decor, stock tank, barn, kennels: \$129,500.00

**W. REBECCA:** Rambling Ranch, 3 bdrm, 2 1/2 bath, 2 garage, computer connection, central heat/air, equipped kitchen: Mid 60's.

**EMMA:** Storm Cellar w/inside access. Lovely brick home, central heat/air, 3 bdrms, 1.75 bath, 2 garage: upper 30's.

**NORTH 3rd & WEST TEXAS:** 5.8 acres in good commercial area. High traffic count. Upper 40's.

**PARK PLAZA:** Cozy fireplace in den, 3 bdrm, 1 1/2 bath, well insulated, work shop, central heat/air, covered patio, upper 30's.

**MAGNOLIA:** TWO FIREPLACES! This lovely 3 bdrm 1 1/2 bath, 2 garage home has everything, mid 60's.

**VAN HORN** - Near schools and shopping. 3-bedrooms, 1 1/2 baths, formal living room, fully carpeted. Flexible terms.

**SPACIOUS LIVING** in Shiloh Estates, 1.7 acres. 22x18 den, built-in bookcases. Sunny garden room off the den and breakfast area. Game room. Over 3,000 square feet. Extras galore. Lovely to live in. Call for appointment.

**LOVELY CORNER**, Magnolia & 3rd. 3 bedrooms, 1 1/2 baths, central heat and air. Large workshop and garden. \$50s.

**The Only Company with VIDEO REALTY**  
Call us to VIDEO tape your home

**LIVING ROOM** suit; Troy-Bilt rototiller; boat motor and trailer; antique pump organ; five tires and wheels, 14-inch; metal twin bed and springs; tool boxes for pickup. 438-2243. 3-15-1tp

**RCBS AMMO-CRAFTER II** w/press. All necessary equipment for reloading .38/.357. Includes powder, brass, primers, and lead. \$250. Call 592-2410 after 5 p.m. 3-15-1tp

**ONE OWNER**, 1977 Chrysler Le Baron, 3800 miles, new tires, excellent condition. \$3200 firm. 592-4868. 3-15-1tp

**PICKET FENCE**, 1x4 pickets, approximately 150 feet. 592-9822, or come by 504 N. Pacific. 3-8-2tp

### ● NOTICE

**WILL TRADE** 2 male ducks and roosters for hens or geese. 592-4544. 3-15-1tp

### ● HELP WANTED

**HELP WANTED** at Dairy Queen, apply in person, preferably between 9-11 mornings. 3-8-tfc

**King's Kids Christian Day Care & Preschool**  
"Iowa Park's Finest For Parents Who Care"  
Ages 2 Yrs & Older Monday thru Friday 7 a.m. to 6 p.m.  
202 N. Jackson 592-4242

**Quail Run Apartments**  
1-2 Bdrm, Ground Floor, Central Heat & A/C, Appliances, Laundry. Close to school & public park. Starting at \$180 per month to qualified tenants. Gas & water paid. Call 592-5813.

### ● BUSINESS

**REGISTERED Child Care.** Monday - Friday, 592-9055. 3-15-4tp

**REGISTERED Child care.** 5:30 a.m. - 5:30 p.m. Drop-ins welcome. 592-9561. 3-8-4tp

**REGISTERED Child Care.** Monday - Friday, 592-2825. 3-1-5tc

**LOSE WEIGHT and Feel Great!** Ask me how. Call your Herbalife Distributor, Mary Cooper, 592-9655 or 592-9563. 3-15-1tc

**CUSTOM TILLING** with Troy-Bilt tiller, vacuum leaves, mow grass, trimming and edging all year long. Mark Wicks, 592-9320. 3-15-1tp

**WILL BUILD** home adjoining Catholic Church and Pace Park, 592-5033. 3-15-1tp

**WILL ROTOTILL** your garden. Please call 592-5649 after 3:30. \$7.50 per hour. 3-15-2tp

**COPIES MADE** at Video Care, 20c each. 2-23-tfc

**AUTO, BOAT** and furniture upholstery repair. Vinyl repair. Call Kamay, 1-438-2243. 2-23-tfc

### LOSE WEIGHT NOW ASK ME HOW

Are you REALLY interested in losing weight? If I could show you a program that supplies all of the daily nutritional needs, and you could lose 10-29 pounds per month, is 100% money back guaranteed, would you be interested in hearing about it? It's completely natural and it's healthy for you, because it is herbs & vitamins. It's fun, it's easy and best of all, you feel great! If you'd like to learn more about it, call your Herbalife Distributor - Lil Smith, 592-4332, 691-1259.

**ROTOTILL** your garden. Also will dig ditches. Have small ditching. Call 592-4517 after 4:30 p.m. 3-1-4tp

**REMODELING?** Do you need another room added on? A garage? Walls removed or added? Free estimates. References. Jack Kerr, 215 S. Wall, 592-9040, 438-2941. 7-7-tfc

**MONOGRAMMING** service 592-9850. 1-5-10tp

**BUZBEE ROOFING & Painting.** 592-4846 or 569-3493. All work guaranteed. 1-5-17tp

**MARY KAY COSMETICS** Allie Girard, consultant, 109 W. Poe, 592-4217. 1-6-tfc

**STORM WINDOWS** - Machine-blown insulation. Roof turbines installed. Free estimates. Jack Kerr, 215 S. Wall, 592-9040, 438-2941. 7-7-tfc

**BLACK POWDER GUNS** and accessories, revolvers \$50 and up. Powder \$4.80 lb. Will order modern guns for 10% over cost. Ye Ole Gun Shack, 413 W. Washington, 592-5430. 1-6-tfc

**FOR YOUR COPY NEEDS** including reduction and enlargement, call Iowa Park Air Conditioning, 592-5891, or come by 609 W. Bank. Charges 20 cents a copy (less for quantities). 10-6-tfc

**ROOFING** - Wolfe Roofing Co. Phone 855-5657. 10-6-tfc

**PRIVATE FENCE** sales and installation. Charles Skelton, phone 592-5190. 1-6-tfc

**BUILDING, remodeling,** or repair, additions, carpentry, patios. Free estimates. Call day or night Billy McDonald 592-4338, Phil McDonald, 592-2363. 11-17-tfc

**VIA CONSTRUCTION** - Roofing or Remodeling. Paneling or Painting. Free Estimates. All work guaranteed. Discounts to Senior Citizens. Call Jimmy Via, 592-5200. 2-9-8tp

**TOLER'S FOLK ART**, 810 S. Yosemite, Iowa Park. 592-5862. 1-5-13tp

**BURK SAND, Yards,** Clean Up. Don Hallum, 804 N. Wall. 592-4365. 1-7-tfc

**LADY FINELLE** natural cosmetics at reasonable prices. Call Annetta Reusch, 592-9001 for a free facial. 1-6-tfc

**MARY KAY Cosmetics,** Ann Moore, 592-4752.

**"MONEY WHEN YOU NEED IT"**  
Loans on most anything of value  
**SOUTHWEST SALES & LOANS**  
4223 Rhoad Rd. 692-1371

**Colonial Heights Apartments**  
Magnolia St. at Johnson Rd. IOWA PARK

One and two-bedroom apartments, energy efficient, central heat/air, total electric appliances, fully carpeted and draped. Children's play area. Off-street parking. Fully equipped laundry room. Month to month rent starting at \$181.00 for one bedroom, and \$220.00 for two bedroom apartment (to qualified persons). Water paid.

CALL 592-2705 EQUAL HOUSING

We service all makes of washers, dryers, freezers, refrigerators and window air conditioners.

**POSEY'S APPLIANCE SERVICE**  
208 James Ph. 592-5452 Iowa Park

**Lawnmower Repair Service**  
**SINGLETON'S**  
 505 W. Highway 592-2671

**Family Boot & Shoe Repair**  
 700 E. Highway 592-2892  
 • All types boot, shoe, saddle repair  
 • Custom boot-making  
 8:30 - 5:30 M-F 8:30 - 2:30 Sat.

**AYRES TIRE**  
 592-5621  
 Expressway & Johnson Rd.  
 Cooper B.F. Goodrich Propane  
 Used Tires Diesel  
 Mechanical Work

**Patty Cake Nursery School**  
 ...now taking kids on Mom's Day Off!  
 DIRECTIONS: North on Bell Rd. across U.S. 297, turn right (east) on Rogers Rd. just past Gilmore's yard, 1/4-mile to house, look for sign.  
 592-2926 592-2398

**GARDENING MONTH**  
**PLANTS AND BULK SEED**  
 Hybrid and standard varieties  
 - We grow our own plants  
**GARDEN, MARKET AND COMMERCIAL**  
 Tomato varieties are grown and weighed separately, with records kept.  
 Bulk seeds for garden and market growers \* Tomato rings with or without drip systems \* A good selection of vegetable plants, some ready now \* Broccoli hybrid, Brussels sprouts and cabbage plants. A wide selection of proven tomato varieties, some ready now for garden and market growers \* Strawberries in hanging baskets.  
**Baker's Greenhouse**  
 1 mile S. of Iowa Park Rd. on Bell Rd.

**POSTAL EXAM**  
 The Wichita Falls Post Office at 1000 Lamar St., Room #122 will be accepting applications from the general public for the Distribution Clerk Machine position from March 22 thru March 31.  
 Starting salary is \$10.56. The people with the highest test scores are hired. Large cities, "Boston, Houston," often test the first week after application. By attending these early workshops you may gain a major advantage over your competitors.  
**WORKSHOP ON POSTAL EXAM PREPARATION CENTER**  
 This workshop was designed by the foremost authority in America on how to achieve Postal Employment. Stephen McNeely is a former postal employee and a Ph.D. candidate in Education. By combining both fields, "he has scored 100% on 5 Clerk Career exams," and 100% on his very first DCW exam. He alone is uniquely qualified to help others gain postal employment.  
**ADVANTAGES OF ATTENDING**  
 Exclusive double guarantee: 1) At the end of the workshop if you do not think these methods will increase your score, your money will be refunded. 2) At the workshop you will be given a written contract guaranteeing you a score of 85% or higher or your money will be refunded.  
 Over 100,000 people have used the methods you will learn by attending this workshop. An astonishing 80% of the people recently hired in one city used these methods. These scores averaged 88.5%.  
 Workshop tuition is \$25.00 and is payable by cash, Visa or MasterCard. (No personal checks). The fee includes the 2 1/2 hour workshop, the textbook Clerk Career, which includes 3 complete tests, diagnostic practice exercises, tips to make you test wise and more.  
**Holiday fee at \$14.95:**  
 Thursday, Friday or Saturday - March 23, 24, or 27  
 At 10:00 A.M. - 12:30 P.M. or 2 P.M. - 4:30 or 7 P.M. - 9:30  
 \* Choose Only One Day and Time!  
**CALL NOW FOR INFO AND WORKSHOP RESERVATIONS - DOLL FREE 1-800-447-8666**  
 Non-Franchise - 606-60701 (Sat-Sun) 9-AM-5PM  
**POSTAL EXAM GUIDE**  
 If you are unable to attend the workshop, you may purchase a copy of the Clerk-Career, U.S. Postal Service Exam Guide by mailing a \$22.00 money order (includes postage and handling) to High Scores, Inc., P.O. Box 322, Long Beach, MS 39680 or at the workshop 30 minutes prior to the times listed above.  
 This is private concern not affiliated with any government agency.

**REPORT OIL FIELD THIEVES**  
 CALL 1-800-OIL-COPS  
 TOLL FREE  
 EARN UP TO  
**\$5000 REWARD**  
 PETROLEUM INDUSTRY SECURITY COUNCIL

**Southwest Bail Bonds**  
 City, County & Credit Bonds  
**24-Hour Service**  
 Confidential Assistance  
**692-1391**

**NEW AT NEW NEARLY NEW STANLEY HOME PRODUCTS**  
**410 Park West Center**  
**Ph. 592-9563**

**E&S Exxon**  
**EXXON** • Tune-ups • Brakes  
 • Front-end alignment  
**592-4897** • Custom exhausts  
**612 W. Highway** • Computer balance

**Bud Mercer Electric Co.**  
 Residential & Commercial  
**BUD MERCER, Owner** Phone 592-5403  
**GARDEN HILL** Phone 592-2686

Installation • Sewing • Repair  
**Ashford Electric Company**  
 Residential - Commercial - Oil Field Repair  
 (Licensed and Bonded)  
**Larry Ashford, Owner**  
 877-982-9642 or 877-982-9888 P.O. Box 97 Iowa Park, TX 76847

Call 888-5887  
 WE'LL BUY IT ANYWAY.  
 Call our REPURPOSED OIL FIELD EQUIPMENT

**YOUR OLD AIR CONDITIONER PROBABLY USES TWICE AS MUCH ELECTRICITY AS IT SHOULD.**  
**Carrier**  
**WE'LL BUY IT ANYWAY.**  
 Today's best Carrier air conditioners are:  
 • **TWICE AS EFFICIENT** as typical older-model air conditioners!  
 • **QUALITY ENGINEERED**—you can't buy better!  
 • the **BEST SELLING** air conditioner brand!  
 Even our lowest priced Carrier units are **True High Efficiency** for big savings. And we'll buy your old air conditioner when you buy Carrier. Get a great deal now!  
**THE WEATHERMASTER™ IV**  
 Carrier's most efficient heat pump line: S.E.E.R. ratings as high as 14.0, C.O.P. ratings as high as 2.8.  
**FREE ESTIMATES, CALL TODAY!**  
**IOWA PARK AIR CONDITIONING & HEATING**  
 607 W. Bank, Iowa Park  
**PHONE 592-5891**  
 Thank you for your business.  
 Chuck, Allen, Paul, Frank and Russell  
 Offer available from participating dealers to single-family home owners until May 31. Void where prohibited.

**AREA OIL & GAS NEWS**

A new producer has been brought on line in the Wichita Regular Field, with World Oil Corp. as the operator. Located four miles northwest of Burkhornett, the well is in a 25-acre lease in the Elizabeth Stanley Survey, A-256. It is designated as the No. 1 Mary Ella Gains. It pumped 40 barrels of oil per day. The well bottomed at 1,725 feet and will produce from perforations 1,646 to 1,668 feet into the hole. The well is 150 feet from the east line and 250 feet from the north line of the lease and survey.

Tom Swanson of Electra has revealed plans to drill a 2,000-ft. developmental well in the Wichita Regular Field. The operator has 140 acres leased, with drills in the S.A. MORGAN Survey, A-271 and has designated the venture as the No. 46 Burnett "D". Drills in eight miles southeast of Electra. The well is 495 feet from the south line and 150 feet from the east line of the lease and 495 feet from the south line and 250 feet from the west line of the survey.

The No. 28 Williams & Parker "C" has been drilled by Swanner Properties of Wichita Falls. It is a developmental well in the Wichita Regular Field, four miles north of Holliday. Drills in a 52-acre lease in the M. Ramsey Survey. Daily potential of 16 barrels was posted with the Railroad Commission. The well went to a 1,895-ft. bottom. Production will be from perforations 1,820 to 1,822 feet into the wellbore. The well is 450 feet from the west line and 70 feet from the north line of the lease and survey.

J.F. Hood of Ft. Worth has filed first production figures on a new oil well in the Wichita Regular Field. The No. T.J. Waggoner "C" showed potential to pump 14 barrels of oil per day. The operator has 26 acres leased, with drills in the E. George Survey, A-456, five miles north of Kama.

The well will produce from an interval 1,060 to 1,085 feet into the wellbore. Total drilling depth was 1,880 feet. The well is 450 feet from the north line and 650 feet from the east line of the lease and survey.

The lease and survey. A 2,000-ft. developmental well is planned by Catlin Drilling Co. of Iowa Park at a drillsite eight miles southwest of Iowa Park. The location is in a 152-acre lease in the H.B. Balch Survey, A-12. Well's designation is the No. 26 Denny. It is in the Wichita Regular Field. The well is 750 feet from the south line and 750 feet from the east line of the lease and the survey.

At a location six miles northwest of Electra, Don R. Seale of Electra has drilled a new oil producer in the Wichita Regular Field. The well is designated as the No. 10 P.G. Krohn "C", pumping at the rate of three barrels per day. Location is in a 160-acre lease in the A.R. Collins Survey, A-418. Bottomed at 295 feet, the well will produce from perforations 252 to 260 feet into the hole. The well is 650 feet from the west line and 650 feet from the south line of the lease and survey.

Joe E. Hood has filed for permit to drill the No. 1 Lady "B", a 2,200-ft. developmental well three miles east of Electra. Location is in an 87-acre lease in the Wichita Regular Field, C.C. Holcomb Survey, A-726. The well is 1,200 feet from the east line and 710 feet from the south line of the lease and the survey.

Burk Royalty Co. of Wichita Falls has filed first production data for a pumping oil in the Wilbarger Regular Field four miles southeast of Vernon. Burk's No. 2 Lancaster pumped 47 barrels of oil and 42,000 CF casinghead gas per day on open choke. It probed to a 4,450-ft. bottom and will produce from a set of perforations 4,054 to 4,072 feet into the hole. Location is in a 160-acre drilling unit, S&T-COR Survey Sec. 71 88x 14. The location is 407 feet from the west line and 1,807 feet from the south line of the lease and survey.

Bennett and Guinn Inc. of Arlington has staked drillsite for two 2,500-ft. developmental wells in the Flynn Field, Wilbarger County. The operation will be in a 985-acre lease in the S&T-COR Survey A-789, about 2.5 miles southeast of Chillicothe.

The wells are designated as the No. 2 and No. 3 Flynn. The drillsite will be 966 feet from the east line and 4,105 feet from the south line of the lease and survey for the No. 2 well. The No. 3 will be 123 feet from the east line and 1,285 feet from the south line of the lease and survey.

**Municipal Court Records**

- Results of municipal court held here yesterday, after no court was held Mar. 7, were:  
 Robert David Lowery, speeding, \$4.  
 Jay Paul Hattaway, speeding, \$1.  
 Leon Preston Sanders, disobeyed stop sign, \$40.  
 Betty Morris Tidwell, speeding, \$4.  
 Billy Lee Link, displayed expired tag, \$4.  
 Billy Lee Link, no motor vehicle liability insurance, \$114.  
 Bailey Robin Powell, speeding, \$4.  
 Joe Torres, no motor vehicle inspection for Texas, \$4.  
 Donna Lucille Landford, speeding, taking defensive driving course (DDC), \$4.  
 Cynthia Ann Kumbie, speeding, \$4.  
 Laura Jean Dietrichson, speeding, \$4.  
 Jason Oliver Kirkhart, no motor vehicle liability insurance, \$4.  
 Jason Oliver Kirkhart, displayed expired registration, \$4.  
 Steven Douglas Shows, speeding, \$4.  
 Richard Wade Smith, excessive noise, \$4.  
 Walter Elmer Brooks, displayed expired motor vehicle inspection, \$4.  
 Edward Matthew Lippa, speeding, \$4.  
 Randy Lee Gregory, no drivers license, \$4.  
 Randy Lee Gregory, expired motor vehicle inspection, \$4.  
 Clarence Ann Stawyer, excessive registration, \$4.  
 Charlotte Ann Stawyer, no motor vehicle liability insurance, \$4.  
 Tina Rene Chadlin, speeding, \$4.  
 Peggy Sylvia Stoiger, speeding, taking DDC, \$4.  
 Perry Lee Hamilton, displayed expired registration, taking DDC, \$4.  
 Mark Anthony Martin, speeding, \$4.  
 Timothy Wayne Koughton, disobeyed stop sign, \$4.  
 Deborah Elaine Sargent, no motor vehicle liability insurance, \$4.  
 Deborah Elaine Sargent, expired drivers license, \$4.  
 Christie Lynn Fosman, speeding, \$4.  
 William Perry Toler, speeding, \$4.  
 David William Gibson, speeding, \$4.  
 Lawrence Joe Shock Jr., expired motor vehicle registration, \$4.  
 Lenora K. Roward, failed to give one half of roadway, \$4.  
 Lenora K. Roward, no operators license, \$4.  
 Kenneth Eugene Wiles, expired motor vehicle inspection, \$4.  
 Lada James Watson, speeding, \$4.  
 Leola Rae Kant, displayed expired motor vehicle inspection, \$4.  
 Patricia Lynn Lyles, expired motor vehicle registration, \$4.  
 Patricia Lynn Lyles, no motor vehicle liability insurance, \$4.  
 Roger Wiles Kungade, displayed expired motor registration, \$73.50.  
 Shawn Wayne Price, speeding, taking DDC, \$4.  
 Judy Ross Bennett, speeding, \$4.  
 Christopher Alan Sparks, public intoxication, \$132.50.  
 Jimmy Duress Rushing, public intoxication, \$4.  
 Richard Allen Young, public intoxication, \$4.  
 Ramsey Williams III, public intoxication, \$4.  
 Gregory Wade Spake, public intoxication, \$132.50.  
 Mark Allen Swanson, public intoxication, \$132.50.  
 Lonnie Allen Swanson, public intoxication, \$4.  
 David Assemin, public intoxication, \$132.50.



IOWA PARK EWTs give first aid to Roy James Martin, 42, of Wichita Falls after his car crashed head-on into a lightpole about noon Thursday near Pleasant Valley Estates. He was taken by ambulance to a Wichita Falls hospital for observation. DPS investigating officer Ronnie Miller said he didn't understand how Martin, who was leaving Iowa Park on the dirt highway, wound up against the pole at the north side.

**DON DIETRICHSON**  
**REWORKING ALL KINDS**  
 • Gasgrates • Fireplaces • Turbines • Additions  
 • Porches • Carports • Screen Doors & Windows  
**LICENSED - BONDED**  
**592-2232**

**Madame Rosette**  
 PAUL, SAND, BEADINGS & APPROPRIATE  
 BILLS, PAPER, PRESERVE & PARTIAL  
 The great career styling advice, your oil solution, up to 100% off on haircuts, color, perms, straightening, blow-dry, etc. (not available to non-residents) and more. (No problem, it's just the way we do it.)  
**SPS&C-SP&NSP**  
 100 E. 2nd Street  
 Wichita Falls, Texas  
 (Between New Street & 1st Street, "Good Street")  
 Hours: 10:00 A.M. - 6:00 P.M.  
 7 days a week