

1984
mar 1

WAYNE WATSON
TCU, BOX 29642
FT. WORTH TX. 76129 761

IOWA PARK LEADER

25
Cents

Vol. 15, No. 24 IOWA PARK, WICHITA COUNTY, TEXAS 76367 THURSDAY, MARCH 1, 1984

City okays annexation, speed zones near schools

Iowa Park grew by some 72 acres and traffic speeds were officially reduced around school campuses, during Monday night's meeting of the city council.

Action was finally taken on the proposed annexation of 72.38 acres northwest of the city after twice being postponed for various reasons.

The tract, which fronts the access

road from Park Tank to the Lake Iowa Park Road, was offered for annexation by developer Rip Smith.

Smith assured the council the deeds on the five-acre lots would include language which would prohibit owners from demanding the city sometime in the future provide sewer service. He said each home would have its own septic system,

which is normal for residences on such large lots.

It was also pointed out that the lots could not be divided into smaller home sites without first being considered by the city council.

City services were an issue because of problems which arose from another development area, Bogan Acres in the northeast part of town, where some residents had sought services not provided by the original developer.

The annexed area does not include homes which have been built in the Quail Valley addition.

Council members corrected an apparent oversight by establishing 20 mile per hour speed limits in the areas around school campuses, during school hours.

Speed limit signs have been ordered, but are not expected to be erected for several weeks due to complex wording on them. Each sign will have the specific hours of the weekday the slower speeds are required, according to James

Continued on page 4

Race develops for alderman

Some competition has finally developed in the city alderman election, but as of yesterday only the two incumbents had filed for school trustee.

Candidates have until Wednesday to file for a place on the April 7 election ballots.

Alderman George Hammonds filed for re-election Tuesday, joining incumbent Bud Thompson. Then Wednesday morning, Bud Mercer filed, making a three-man race for the two positions.

Thus far, no one has chosen to challenge Tim Hunter for mayor. Hunter, completing his first year as alderman, filed for the mayor's job the first day it was permitted, having learned that Charlie Lee would not

seek a second term in office.

No race has developed for the two positions on the school board, where incumbent trustees Jerald Brown and Rex Wells are seeking re-election.

If Hunter is successful in his bid for the mayor's seat, the council will have to appoint his successor to serve the year remaining in his alderman's term.

Drawings will be held March 12 for places on the respective ballots, and absentee voting will commence March 19, ending April 3.



FIREMEN AND MEDICAL PERSONNEL WORK FEVERISHLY TO FREE VICTIM
... Lenora Howard was trapped in crumpled pickup over hour.

Wreck halts traffic, driver is hospitalized

Traffic at West Highway and Pacific was blocked more than an hour Friday night by a two-truck accident which sent two persons to Wichita General Hospital.

A pickup headed east reportedly crossed the center line and struck the rear wheels of a west-bound tank truck.

Lenora M. Howard, 17, of 1217 S. Wall, was the driver of the pickup. With her was Robert Lee Gray, 20, of 209 E. Cash. Timothy John Beaver, 33, of Quannah was driving the truck. Volunteer firemen worked more

than an hour with heavy equipment and assisted by Plumlee Ambulance personnel to extricate Miss Howard from the crumpled wreckage.

The police dispatcher received a call on the accident at 7:16 p.m. and the area was reported as cleared at 8:35 p.m., according to the records.

The pickup's left front struck the rear wheels of the truck, smashing the pickup cab and pinning the driver.

Miss Howard reportedly received a broken left thigh bone, fractured right arm and numerous facial

lacerations. Gray had facial lacerations, and Beaver was uninjured.

Miss Howard, a senior at Iowa Park High, reportedly will remain in traction in the hospital about a month. During that time she will continue her education with instruction from a visiting teacher.

However, she was cited for two violations, according to police records: no drivers license and failed to give half of roadway. Also, Gray received a citation for permitting unlicensed operator to drive.

60 MPH winds cause damage

March got an early start here Sunday, when a storm accompanied by wind gusts as high as 61 miles per hour soaked the area.

Damage was surprisingly light here, when compared with reports received from communities farther to the east.

Exactly half an inch rainfall was measured from the storm at the Experiment Station.

But the winds didn't leave as quickly as they arrived. Winds registering in the 40 MPH were recorded Monday, and 30 MPH until late Tuesday.

Apparently the most expensive damage was at Classic Ceramics, 119 W. Park, where the glass in the front door and one plate glass were broken.

Mrs. Carl Pool, owner, said she was in the store at the time. She said the wind sucked the door open, breaking the restraining arm and smashing the door into the window. No one was injured.

A plate glass was also broken out at White Super Store shortly after 6 p.m.

Numerous homes were missing some shingles, but no entire roofs were torn away, such as was reported in communities to the east. Several yard fences over town were damaged.

A fiberglass wall of a carport at Vogel and Fourth Street was demolished.

One large tree was felled in the front yard of Rev. Dale Walling, at 509 W. Texas. However, he said it had shown signs of damage from an earlier storm and Sunday's gusts finished the toppling. It fell onto the house but did not damage the roof.

Firemen were called to the 1000 block of Lincoln early in the storm. What had been a suspected house fire turned out to be electrical lines hung in tree limbs slapping together and causing large sparkings of electricity.

Highway signs in the area appeared to have suffered more than private property.



TREE FELLED BY HIGH WINDS HERE SUNDAY
... is sawed by Rev. Dale Walling.

Gym burglary case solved

Charges have been filed by the Iowa Park Police Department on three juveniles, ages 10 to 13, in connection with the burglary of Iowa Park Junior High gymnasium over the weekend.

Identification of one youth was determined through fingerprints left at the scene. All the juveniles were taken to the police department by their parents, to whom they were released after the case was filed with the Juvenile Probation Department in Wichita Falls.

Sgt. J.W. Barker saw a light on in the building while patrolling about 1 a.m. Sunday. He found a window broken out on the west side.

Barker searched the building, and the youths were apparently in it when he arrived. When he left the gym, the light was not on that he had seen initially.

Property taken in the burglary, including a radio, two stop watches and a staple gun, has been returned to the school by the parents.

News in Brief

Police have two unclaimed bicycles

Iowa Park Police Department has two bicycles and is unable to locate the owners.

"Anyone missing a bike, who has not reported it, should call and give

us a description, as well as their names and telephone numbers. The description will be checked and an officer will return the call," explained Chief Tom Fenley.

Open house date tentatively set

Plans have been tentatively set to hold an open house at city hall, to allow the public an opportunity to view the recent remodeling project and see the new equipment in use.

Administrator James Barrington said the tentative time would be 1 to 4 p.m. Friday, March 9. Confirmation

will be made in time for next week's edition of the Leader, Barrington said.

The northern portion of the building, which formerly housed the fire department, was remodeled into space for offices, storage and a council work room, as well as new restrooms.

Memorial fund for Berry children

A memorial fund in honor of two teenage children is being established in Wichita Falls.

The two, Scott and Shannon Berry, died in an automobile accident Nov. 23 near Fort Worth. They were the children of Malcolm Berry and Mrs. Shirlene Littlefield, and the grand children of Iowa Parkans Mrs. Louise Berry and Mr. and Mrs. J.V. Morton.

Mrs. Georgann Wigley, Wichita Falls High School English teacher, is heading the drive to raise money to establish an ongoing scholarship to be awarded annually to a WFHS student with academic and leadership abilities.

Checks should be made out to the "Scott, Shannon Berry Memorial

Fund" and mailed or turned over to Mrs. Wigley at Wichita Falls High.

Weather Report

Weather reports are officially compiled for Iowa Park at the Texas Experiment Station, southeast of town.

Rainfall for week.....	.50
Total for month.....	1.09
Total for year.....	1.23
Total for last year.....	4.18

Cook of the Week

Many families have their time-honored desserts, some run the gamut from homelike simplicity to high sophistication. Choosing the right dessert is an art and it should compliment the rest of the meal. A plain dessert can be enticing if it is cooked correctly and served attractively.

One dessert that has stood the test of time is the pound cake. In the old days, it was literally a pound cake - pound of butter, eggs, sugar and flour and it took considerable culinary skill to make one. It was a special treat then, and still is, but the old rule of thumb has given way to a more scientific blend of ingredients.

Dorothy (Mrs. Terry) Bowen's Cream Cheese Pound Cake recipe is one that she got from her grandmother and certainly sounds like it would compliment any meal.

The former Dorothy Sellers, she was born in Alabama and was graduated from Hirschi High School. She is bookkeeper for her husband's Cable Tool Service business. Her hobbies are reading, needlepoint, crocheting and knitting. She is a member of the P.T.A. and it's volunteer program.

The Bowens are members of the Church of God. They have two daughters, Becky, a fifth grade student, and Donna, a first grader.

CREAM CHEESE POUND CAKE
1 1/2 cups chopped pecans, divided
1 1/2 cups butter, softened
1-8 oz. package cream cheese, softened



Mrs. Terry Bowen

3 cups sugar
6 eggs
3 cups sifted cake flour
Dash of salt
1 1/2 tsps. vanilla extract
Sprinkle 1/2 cup pecans in a greased and floured 10-inch tube pan; set aside.

Cream butter and cream cheese. Gradually add sugar, beating until light and fluffy. Add eggs, one at a time, beating well after each addition. Add flour and salt, stirring until combined. Stir in vanilla and remaining 1 cup of pecans.

Pour batter into prepared pan. Bake at 325 degrees 1 1/2 hours or until toothpick inserted comes out clean. Cool in pan 10 minutes, then remove and cool completely on a rack. Yield: 1-10 inch cake.

EASY CHICKEN SALAD
2 cups chopped cooked chicken
1/4 cup mayonnaise or salad dressing
1 hard cooked egg, chopped
3 tablespoons chopped celery
1/4 teaspoon salt
1/8 teaspoon pepper
12 slices whole wheat or white bread
Butter or margarine, softened
Combine chicken and next five ingredients and mix well. Spread on one side of six slices of bread. Spread

butter on both sides of sandwich and grill on both sides until brown. Cut each sandwich crosswise and serve with chips or soup.

APPLE-RAISIN SLAW
1 1/2 teaspoons lemon juice
2 unpeeled apples, sliced
1/2 cup seedless raisins
3 cups shredded cabbage
1 cup mayonnaise
Lettuce leaves
Sprinkle lemon juice over apples. Toss well. Mix in raisins and cabbage; add mayonnaise. Toss and arrange in lettuce-lined bowl. Serve immediately
Yield: 6 servings.

COTTONWOOD CARROT CAKE
2 cups sifted cake flour
2 teaspoons baking soda
1/2 teaspoon salt
2 teaspoons ground cinnamon
2 teaspoons ground allspice
1 1/2 cups vegetable oil
4 eggs, well beaten
2 cups sugar
3 cups grated carrots
Combine flour, soda, salt and spices and set aside.
Combine oil, eggs and sugar and beat well; add dry ingredients and beat well. Stir in carrots. Pour batter into a greased and floured 13x9x2 inch baking pan. Bake at 325 degrees 55 minutes or until a toothpick inserted comes out clean. Cook and frost with Cream Cheese Frosting below.

CREAM CHEESE FROSTING
1-8 oz. pkg. cream cheese, softened
1/2 cup butter or margarine, softened
1-16 oz. pkg. powdered sugar, sifted
1/2 cup raisins, chopped (optional)
1/2 cup flaked coconut

1/2 cup chopped pecans
1 teaspoon vanilla extract
Combine cream cheese and butter, beat until light and fluffy. Gradually add powdered sugar, beating well. Stir in remaining ingredients and beat until spreading consistency.

INDIVIDUAL MEAT LOAVES
2 lbs. ground meat
1 cup buttery cracker crumbs
1 egg, beaten
1/2 cup finely chopped green pepper
1/2 cup finely chopped onion
1/2 cup evaporated milk
1 teaspoon salt
1/4 teaspoon pepper
1 teaspoon seasoned meat tenderizer
1 1/4 cups catsup, divided
3 tablespoons dark corn syrup
Combine first 9 ingredients and 1/4 cup catsup, mix well. Shape mixture into 6 loaves and wrap individually in freezer paper or aluminum foil. To serve, thaw in refrigerator. Bake at 350 degrees 35 minutes. Combine corn syrup and remaining catsup, brush on top of meat loaves. Bake 10 minutes longer.

PECAN CLUSTERS
1-7 oz. jar marshmallow creme
1 1/2 pounds of milk chocolate kisses
5 cups sugar
1-13 oz. can evaporated milk
1/2 cup butter
6 cups pecan halves
Place marshmallow creme and kisses in a large bowl. Set aside. Combine sugar, milk and butter in a saucepan. Bring mixture to a boil; cook 8 minutes. Pour over marshmallow creme and kisses, stirring until well blended. Stir in pecans. Drop by teaspoons onto wax paper. Yield: about 12 dozen.

Mission study continues

Mrs. H.W. Carter, global concerns coordinator of the United Methodist Women, continued the mission study of Africa Tuesday morning. She started with a brief review of the abject poverty in the midst of plenty in Africa where official corruption prevails in most of

the countries. She emphasized that the paramount obstacle to Africa's economical development has been the corruption of those in power with little or no concern for human rights. Mrs. Carter stated "For some unanswered reason the United States has by-passed Ethiopia in the giving of substantial aid although the United States has shared the profits of many African resources."

'Battered wives' speaker's topic

Mrs. L.A. Thurlo gave a talk on "Battered Wives" and how they are being helped through First Step for the program at the Thursday evening meeting of the Iowa Park Lioness Club.

She said that a great deal of wife battering takes place in this area, as well as many other areas, and that women who have never worked will take more abuse because they feel inadequate to make a living for themselves and their children.

First Step provides a place for battered women to get away from an intolerable home situation, according to Mrs. Thurlo. They and their children can stay at the home for two weeks. During that time, the women will have an opportunity to seek employment and receive counseling.

During the business conducted by Mrs. Thurlo, it was voted to make a monetary contribution to First Step.

The meeting was held at the Lions Club building and the hostesses were Mrs. W.E. Karstetter and Mrs. Sam Hunter. Mrs. Sam Hill brought the meditation "Your Talent."

Mrs. Chris Hanson and Mrs. Dale Brooks were guests.

The second part of Mrs. Carter's discussion was given to the study of Methodism in Africa, and she discussed the development of Methodism in various countries of the continent. She stated that Methodism was first organized by ex-slaves, sons of African soil, and as freed slaves they returned to their native country to establish churches of their choice. "Methodism, as well as other Christian faiths, has spread over Africa to the extent that by the year 2000 there will be more Christians in Africa than in the rest of the world," remarked the speaker.

Mrs. Carter, in continuing the study, said that the original organization of churches follows the same pattern as those in the United States. She attributed the rapid growth of the churches in the continent to the development of a liturgy with song and music using local culture and instruments. To conclude, she said "the vibrancy and joyful noise of African worship add to their spiritual and human needs. Christians of the world need to support these people in their efforts to bring Christianity into reality in every part of the world."

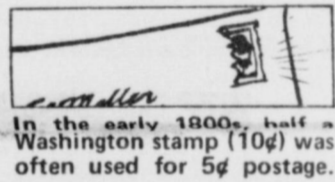
Eighteen members were present.

Jeff Kiser is decorated

Pfc. Jeffrey C. Kiser, son of Henry C. and Sue Kiser of 1007 W. Louisa, Iowa Park, has been decorated with the Air Force Achievement Medal at Fort Bragg, N.C.

The Achievement Medal is awarded to airmen for accomplishment, meritorious service or acts of courage.

Kiser is an infantryman with the 82nd Airborne Division. He is a 1982 graduate of Iowa Park High School.



In the early 1800s, half a Washington stamp (10¢) was often used for 5¢ postage.



Let's talk.

Information about your changing telephone service from Dan Adams, Manager-Community Relations

"What's good about Southwestern Bell?"

While not addressed quite so bluntly, that was the main question we tried to answer in recent group sessions with our customers. These "focus group" meetings were held to give us a better idea of what people perceive to be strengths of our company.

We also asked for, and received, commentary on our weaknesses as seen by these customers.

Good service — particularly its dependability and reliability — was by far the main strength cited in these sessions.

Here are some of the comments made by our customers: "We couldn't survive without the phone service. I have to have my telephone for communications. If you have an emergency or a fire, you need it. I could live without the service, but I wouldn't want to. It is a big part of everybody's life."

It's dependable
"I would stress the dependability. I would point out to consumers being able to rely on your telephone for just about anything: your business, your home life, your social life."

"I'd say they have good service. Their phones work, and you can depend on the calls. If you have any repair work, it gets done."

"I've called to ask questions about rates and bills, and the people I've spoken to have been very polite and willing to answer all my questions."

"The phone company is every day coming up with more efficient ways of doing things, or better ways."

"I think the strength of the telephone company is that they have been more economical as compared to other items in your household budget. They have not gone up proportionately as much. That has been a tremendous asset for the lower income people."

Rate increases in line
"In relationship to every other company's rate increases, they're in line. The regulated companies have more trouble than the unregulated companies because they have to go beg almost to get a nickel and unregulated companies don't."
"Compared to what other

things cost today, I would say telephone service is a good value. It saves me money because I do a lot of comparison shopping through the phone book. I make the telephone work for me."

"You pay for contact with most of the world. You can use the phone to talk to anybody about anything, check on relatives, children, and you don't have to worry about it. It always works. What value would you put on that? A call to poison control when your child just drank a glass of bleach. What do you do? What's the value of that?"

"I like the bills because they come with a return envelope. It's one less address you have to write out and one less envelope you have to work up."

"I think the size of the company and the fact that it has been such a good company for people to work for has been a real asset here."

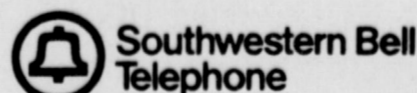
Divestiture confusion
Some customers did tell us they were still confused and uncertain about our separation from AT&T. Here are some of the comments about life after divestiture:

"I feel uneasy about it. I don't really understand what is actually happening and how it is going to affect me. I really can't say anything about it because I really don't know."
"We will be able to tell shortly how well Southwestern Bell Telephone will do on its own — whether in the coming years it is going to fall on its face or lay an egg. Or spread its wings and fly."

Well, the breakup has come and gone and I can assure you Southwestern Bell Telephone isn't laying any eggs. Our service in Texas has never been better. And we're going to work hard to keep it the best there is.

How about you? What do you think is good about Southwestern Bell Telephone? What faults do you find with us? I'd like to hear from you either way — just drop me a line at the address below.

Dan Adams
SW Bell Telephone
2121 Paradise
Vernon, TX 76384



STEAK FINGER BASKET

\$2.59

Reg. \$2.79



805 West Highway

FOR TAKE OUT ORDERS

CALL 592-4731

GE FOOD AND ENERGY SAVER!

22 CU. FT. REFRIGERATOR... HUGE 7.05 CU. FT. FREEZER

One full-width and 2 adjustable split-level glass shelves. Sealed snack pack. 2 high-humidity pans. One lower-humidity pan. Controlled climates—help keep food fresh up to 15 days.

Reg. \$959.95
\$859⁹⁵

Model TBF22DC

ONLY GE DELIVERS CRUSHED ICE, CUBES AND COLD WATER

23.5 cu. ft. 8.57 cu. ft. freezer with adjustable shelves. Two high-humidity sealed pans help keep foods fresh up to 15 days. Lower-humidity pan. Energy saver system.

Reg. \$1,899.95
\$1599⁹⁵

Model TFF24RC

FREE! WITH THE PURCHASE OF DIRECT FROM GENERAL ELECTRIC APPLIANCES SHOWN

USA '84 Warm-Up JACKET

The official jacket of the USA Baseball Team. Comes in white satin for adults and bright red satin for youths.

Or, visit our store and you can order this jacket for the special price of Adults \$39.95 Youths \$34.95

Net proceeds help support the USA '84 Baseball Team.

Adult Retail Value \$69.95

PARKWAY

FURNITURE TrueValue HARDWARE

592-4681

200-206 West Bank

592-5512

As I See It....

By BOB HAMILTON



If you're ever looking for somebody and can't find them, chances are you can follow a police car to an accident or fire truck to a fire, and see whomever you want.

That might sound kinda funny, but it's more a problem than a joke.

I can't blame anyone for being inquisitive and wanting to see what's going on. That's in my blood and it goes with the job.

The problem is, however, that the scenes of accidents and fires get so crowded, it's often a problem for the emergency vehicles to get where they're going and people who are supposed to be working to do what they need to do.

We've had cases of people driving

over fire hoses, parked vehicles being in the way of ambulances trying to reach the patient and people trying to help but only messing things up.

As far as finding out what happened, I can only suggest you be patient and get your news through the newspaper or air media.

To drive over a fire hose is not only illegal, but it is dangerous to the vehicle and its occupants, as well as the firemen, and it's expensive because it often breaks the line. It may be pliable when empty, but you get the water pressure built inside and it can be lethal.

I got to thinking about this column subject Friday night, when two trucks collided in front of Wal-Mart.

While most people stood on the

parking lot, and had a fine view while staying out of emergency workers' way, many did not. There were two groups of people crowding around the wrecked pickup: close friends and relatives who were concerned with the injured girl, and people who just couldn't stay far enough away for want to get a closer look.

Several times they were all asked to step back out of the way and would, but soon they were back as close as ever.

In cases like Friday, there is a possibility that a person's life is at stake, and any hindrance of workers could be harmful. I recall several years ago, not here, when a vial of medical fluid was knocked from the hands of an ambulance worker, and the victim almost died before reaching the hospital to get what had been destroyed.

I can also remember, here and other places, when ambulances were forced to park a block from where the victim was, and the victim carried that distance because so many vehicles were parked blocking the route and one couldn't move before another did.

Most of the time, people here don't follow the fire trucks like they used to in some places I've lived.

More than one department has worked out a plan with the law and set traps for those who refuse to obey the law.

The way it works is, the siren is sounded, one or two trucks with sirens blaring and lights flashing will head out of town. At an appointed place in the country, the trucks will turn into a field and drive a distance. The trailing crowd follows.

The law closes the entrance gate to the field and issues tickets to everyone who is not a fireman or emergency worker, before they can return home.

That's an extreme case. People with more common sense only need to know they are causing problems for emergency personnel, and they will keep their distance.



LOOK WHO'S NEW

Rebecca Lauren, an eight pound daughter, was born to Mr. and Mrs. Rod Turner of Burkburnett Feb. 22. Mrs. Turner is the former Carrie Andersen of Iowa Park.

The grandparents are Mr. and Mrs. William Andersen of Iowa Park and Mr. and Mrs. Gene Turner of Burkburnett. The great-grandparents are Mr. and Mrs. G.L. Arnold of Raton, N.M. and Mrs. Pearl Reed of Springer, N.M.

Mr. and Mrs. Richard Hicks announce the birth of Jered Heath, a seven pound, three ounce son, their first child, born February 23. Mrs. Hicks is the former Kathy Withrow of Burkburnett.

The grandparents are Mr. and Mrs. Robert Withrow of Burkburnett and Mr. and Mrs. Carlton Hicks of Iowa Park. Mrs. Edna Mae Mulig of Deridder, La. is the great-grandmother.

POLITICAL ANNOUNCEMENTS

The following have authorized the Iowa Park Leader to publish announcement of their candidacies for office, and have paid for the space.

STATE SENATOR

District 30

Ray Farabee

STATE REPRESENTATIVE

District 80

Charles Finnell
Durhl Caussey

WICHITA COUNTY SHERIFF

Howard Davis

City

Continued from page 1

Barrington, administrator.

Aldermen approved purchase of a used brush chipper and repair work on North Third and North Wall.

City workers have been requesting purchase of a brush chipper several years, to cut down on the manpower required to handle cuttings of bushes and trees by homeowners and city crews.

Barrington said the equipment being considered appeared to be in good, serviceable state and could be purchased for \$3,300. Such a purchase had been budgeted this year, with an allocation of \$6,000.

The two street repair projects are estimated to cost \$5,742, Barrington told the council.

A portion of pavement on Third, near the rest home, is developing into a major problem and he suggested it be reworked before it became worse.

Wall, from Magnolia to Texas, is in worse condition than any other street in the city, he reported. That pavement not only handles all the traffic of residents, but the heavy trucks of the city's which are based on Texas.

Aldermen suggested Barrington advertise for bids on a storage facility at the sewer plant, which was estimated to cost about \$5,000.

No action was taken on a proposal that the city furnish materials and allow residents do their own work on their alleys, pending drafting of a policy by the city attorney.

The council also tabled a resolution to accept replats of three lots in Garden Valley Subdivision, until it was determined if a utility easement related with the lots were being used.

Abandonment of street right of way which has never been developed on North Aleott was approved.

David Padgett was appointed to another three-year term on the Planning and Zoning Commission, and Buck Voyles was named to succeed Kenny Jones, who had elected not to serve again.

The council approved a 90-day waiver to permit use of power boats, with motor size restrictions, on Lake Gordon.

Robert Gill, representing the North Texas Model Boat Club, said the lake was ideal for use by model boat enthusiasts. Though he is a resident of Wichita Falls, he said there is one local member in the eight-member club and others are indicating strong interest.

Gill said the waiver should be restricted to boats with 1.5-cubic inch

engines or smaller. He explained his organization is covered by liability insurance to assure protection of loss.

Alderman Bud Thompson offered the motion for the waiver, explaining the city should use the time to see if residents and fishermen had any complaints about noise from the motors.



REP. CHARLES FINNELL

Finnell seeks re-election

State Rep. Charles Finnell has announced for re-election to the Texas House of Representatives, 80th District, subject to the May 5 Wichita County Democratic Party Primary.

Though only 40 years of age, Rep. Finnell has become the fourth highest member of the House in seniority. He is a businessman and attorney in Holliday.

Besides chairing a committee which concerns older and retired citizens, he is the only rural representative on the transportation committee.

Rep. Finnell lists quality public education and the farm-to-market road program among the pressing issues to be addressed by the next session of the Legislature.

"I enjoy working and being a problem solver, rather than being one who makes problems worse. I think the voters will see that I have done my best and have provided effective and responsible representation. I look forward to continuing to serve and to seeing that our 80th District gets a fair shake in the Texas Legislature," Finnell said.

The Eyes Of Texans



EFFECTS OF AGING ON NIGHTTIME VISION

Visual Acuity [VA] of the average 65 year old person in dim lighting conditions is about 70% that of the average 20 year old. In common night driving conditions the average VA of a 65 year old is only 40% of that of a 20 year old. Objects can be resolved by young drivers at high luminance at 2½ times the distance that they can be distinguished by older drivers in low luminance. It should come as no revelation that seeing ability declines with age and is a normal consequence of aging. This decline is due to several factors. For example, even if an older person doesn't have cataracts, there is a gradual loss of "contrast sensitivity." Kinda like a TV picture tube that loses its picture quality over a period of time. Some drivers can tolerate more headlight glare than others. It has been shown that people who had good contrast sensitivity without glare also had it with glare.

The gradual decline of vision in low luminance begins around age 40 [as well as everything else it seems!] On the positive side there is no good evidence from accident records that decreases in vision are related to increased accidents.

JAMES EDWARDS, O.D.

103 West Park
Iowa Park, Texas
Phone 592-4992

in the interest of better vision
from the office of

IOWA PARK LEADER

Bob Hamilton Editor-Publisher
Dolores Hamilton Assistant Publisher
Olive Blalock Reporter
Kevin Hamilton Reporter

The IOWA PARK LEADER is published every Thursday. Offices are located at 112 W. Cash, Iowa Park, Texas, 76367. Telephone: 592-4431. Second class Postage Paid at Iowa Park, Texas, 76367. Subscription rates are \$7 per year in Wichita and Archer Counties; \$9 elsewhere in Texas and Oklahoma; \$11 anywhere else in the United States. Classified advertising rates are 16 cents per word first insertion, 8 cents per word thereafter. Any erroneous reflection upon the character, standing or reputation of any person, firm or corporation which may appear in the columns of this newspaper will be corrected upon being brought to the attention of the publisher.



A Free Press

293 Years of Democracy in Action

NOTICE TO SUBSCRIBERS!

The Iowa Park Leader has suspended its practice of mailing individual renewal postcards to subscribers. Instead the Leader will publish a list of readers whose subscriptions are approaching expiration. Subscription prices are listed below, along with a convenient order form which may be clipped, filled out and mailed with payment to the Leader. Renewals and new subscribers must be paid in advance.

Subscriptions due to expire

March 15, 1984

PLEASE DISREGARD IF ALREADY PAID

A.....	Wendell Atkins	Iowa Park	George Lewis	Iowa Park
			Larry Lilley	Wichita Falls
			Eugene Lowrey	Iowa Park
			Lt. Col. F.L. Lucey	F.P.O. N.Y.
B.....	James Beavers	Iowa Park	M.....	
	Larry Beckham	Iowa Park	Lorene F. Mason	Nashville, Tenn.
	Claude Beisch	Iowa Park	Sandy Matthews	Iowa Park
	Eleanor Bell	Atlanta, Ga.	Sherry McDonald	College Station
	Mrs. W.F. Booher	Iowa Park	Melvin McCreary	Iowa Park
	Robert Bradberry	Iowa Park	E.P. Meier	Iowa Park
	Betty Braden	Iowa Park	Chester Morrison	Iowa Park
	Sidney L. Burns	Iowa Park	Mountain Reading Service	Provo, UT
C.....	John Cain	Iowa Park	C.E. Myers	Iowa Park
	N.B. Calhoun	Iowa Park	N.....	
	Mrs. Virginia Camp	Iowa Park	Eunice Neely	Vernon
	Louise Campbell	Iowa Park	Margie Negri	Iowa Park
	Cecil Catlin	Iowa Park	Oleta North	Iowa Park
	Cecil Chesser	Iowa Park	P.....	
	Mrs. O.D. Childers	Wichita Falls	Mrs. T.J. Pace	Iowa Park
	G.L. Cleveland	Iowa Park	Jimmy Parker	Iowa Park
	Betty Clines	Iowa Park	R.....	
	Mrs. Johnny C. Cole	Iowa Park	Swan Reaves	Iowa Park
	Mrs. Arnold Coleman	Iowa Park	Ola L. Reed	Iowa Park
	Mrs. J.E. Cox	Iowa Park	J.M. Richardson	Iowa Park
D.....	Don Decker	Iowa Park	S.....	
	G.D. Dickey	Corpus Christi	N.E. Seay	Iowa Park
			Ernest Segovia	Iowa Park
			Lena Simmons	Iowa Park
			Pauline Singleton	Iowa Park
			Mrs. Lee Smith	Tyler, TX
			John Staber	Iowa Park
			Leroy Stankewitz	Huntsville, TX
			Bill Steger	Iowa Park
			Mrs. Anne Strome	Burkburnett
H.....	Pete Hall	Iowa Park	T.....	
	W.D. Hendricks	Iowa Park	Fred Toler	Iowa Park
	Mrs. Myrtle Hobbs	Iowa Park	Lee Towns	Iowa Park
	William E. Hoffman	Iowa Park	Charles Trainham	Wichita Falls
			Herman Turner	Iowa Park
J.....	Kathy Johnson	Lubbock	V.....	
	Mrs. Leonard B. Jones	Iowa Park	Frank Vaughn	Wichita Falls
K.....	M.R. Karstetter	Iowa Park	W.....	
	John Kibler	Iowa Park	Robert Weston	Iowa Park
	Ethyle Kidwell	Iowa Park	Robert Wheeler	Iowa Park
			James E. White	Iowa Park
			Mrs. Sue Williams	Iowa Park
			Wilbert Wynn	Iowa Park
L.....	Wm. C. Lane	Iowa Park	Y.....	
	Orange Lester	Iowa Park	Mrs. G.B. Young	Iowa Park

Wichita and Archer Counties.....\$7.00
Elsewhere in Texas & Oklahoma.....\$9.00
Elsewhere in the United States.....\$11.00

To: Iowa Park Leader
Box 430
Iowa Park, Tex.
76367

PLEASE CHECK ONE:
 New
 Renewal
 Change of Address Only

\$ _____ Enclosed

(Name)

(Address, P. O. Box, or Route No.)

(City)

(State)

(Zip Code)

"It's a steal, alright, but you'll have to carry it out."

— Sheriff Lick

Purchase one of our jumbo hamburgers, or jumbo cheeseburgers, and the fries and drink are

FREE!

For carry-over orders only at

Little Richard's **Salt Lick**

510 E. Highway

592-5252

Girl Scout cookie sale starts Friday

"The cookies that make dreams come true." That's the theme of the NorCenTex Girls Scout Cookie Sale which starts Friday and continues through March 18.

The theme was created to emphasize the vital importance of the contribution people make to Girl Scouting every time they buy a box of cookies.

When these Girl Scouts begin their cookie sale, it will mark the 50th "Cookieversary" of the American tradition. The idea for the cookie sale was born back in the twenties when individual troops held cookie sales as fundraisers to support their activities.

All four age levels of Girl Scouts, ages 6 to 17, will be selling cookies. This year there are seven varieties to choose from including: Somoas (vanilla cookie covered with caramel, coconut, and cocoa coating), Thin Mints (double rich with fudge middle), Do-Si-Dos (peanut butter sandwiches), Chocolate Chunks, Tagalongs (chocolate, peanut butter combination), Trefoil (old fashioned tender shortbread), and Medallions (pecan pralines and colonial supreme shortbread). The Medallions are a commemorative limited edition, 50th Cookieversary cookie. The cookies will be selling for \$2.00 per box.

The annual sale is the main fund-raiser for the NorCenTex Girl Scout Council and it's troops. Marsha Binion Service Unit Cookie Chairman for Iowa Park explained that the money raised through this year's sale goes to help the troops in Iowa Park

finance their troops many activities.

Girls from over 95 troops in the 11 county area will be selling cookies in seventeen area towns including: Archer City, Burkburnett, Childress, Chillicothe, Crowell, Electra, Guthrie, Holliday, Iowa Park, Knox City, Midway, Munday, Paducah, Petrolia, Qanah, Sheppard Air Force Base, and Wichita Falls.

The Service Unit Cookie chairmen are: Peggy McNutt, Archer City; Ann Baggett, Burkburnett; Sandra

Hancock, Childress; Cheryl Briggs, Chillicothe; Gayle Dishman, Crowell; Debra Clark, Electra; Charise Christian, Guthrie; Carolyn Horany, Holliday; Marsha Binion, Iowa Park; Linda Carver, Knox City; Georgayne Adams, Midway; Kay Wilde, Munday; Barbara Seal, Paducah; Kay Harrison, Petrolia; Dan Hawkins, Qanah; Mary Stephens, Sheppard Air Force Base; Mary Weiss, Jack Eckert, and Gayle Brown, all of Wichita Falls.

4-H CLUB NEWS

LAMB SHOWMANSHIP CLINIC HELD

A Lamb Showmanship Clinic was held Saturday at the 4-H Barns. Programs held were Fitting Your Lamb for Show by County Extension Agent David Finley and Showing Your Lamb by Troy Gilbert of Electra.

Participants of the program included: Rex Wilson, Ronnie and

Tammy Henderson, Christy Cravens, Angie Martin, LaDonna Chandler, Derek Davis, Julie and Scott James, Kim Noll, Sheila Windham, Stacy Gilbert and Kristy Riggins.

Showmanship winners of the clinic were Derek Davis in the junior division and Christy Cravens in the senior division. Winners were presented lamb cards for their efforts.

CARD OF THANKS

To the people of Iowa Park: Words can't adequately express how we feel about this wonderful town. The love and concern show to our family during Paul's illness and passing on was gratefully acknowledged. We wish to thank each one of you for the prayers, cards, flowers, phone calls, visits, food and every act of love. God bless each of you.

Adele Calloway
The Charles Barr Family
The Sam Calloway Family
The Bill Calloway Family



DALE HAYLEY

Dale Hayley is recognized

Dale Hayley, son of Mr. and Mrs. Jack Hayley, a member of Building Trades for two years, member of VICA, serving as vice president this year, has been selected by the Opti-Mrs. Club for the high school student of the month. He has been in FFA two years and was an eighth grade library worker.

He was an "A" honor roll student in the eighth grade and won perfect attendance awards in the fifth and sixth grades.

He is a member of Faith Baptist Church where he is a member of the youth group.

Dale played football six years where he was quarterback the entire time. He played baseball four years. He is employed at White's Super Store. His hobbies are football, baseball, swimming and skiing.

He has ambitions of attending college where he can play baseball and prepare to become a coach.



Brides-to-Be IS YOUR NAME IN OUR Bridal Registry

- TERRI ROWELL and JEFF SMYERS
- JAMIE GILMORE and DANNY ANDREWS
- KELLY HOWARD and KEITH KARSTETTER
- DELAYNE DAVIS and LARRY BEUTEL

Park Pharmacy & Thoughtfulness Shop
115 W. Park 592-4116

NATIONAL BRANDS SAVINGS

DOUBLE GREEN STAMPS WEDNESDAY

WESSON OIL
30% OFF LABEL
48 OZ. BTL. **\$1.99**

HEINZ KOSHER/HAMBURG SLI/GENUINE/PROCESSED DILL PICKLES
32 OZ. JAR **99¢**

DEL MONTE CATSUP
32 OZ. JUG **99¢**

WILSON BONELESS FULLY COOKED REGULAR OR HONEY CURED 93% FAT FREE

HALF HAMS 2-4 LBS. AVERAGE **\$1.99**

LITTLE SIZZLERS HORMEL PORK LINK SAUSAGE **99¢**

12 OZ. PKG.

ASSORTED COLORS KLEENEX TISSUE
250 CT. PKG. **79¢**

DEL MONTE CUT OR FRENCH SLICED GREEN BEANS
16 OZ. CANS **3 \$1**

DEL MONTE 16 OZ. WK/CS GOLD CORN OR 17 OZ. EARLY GARDEN BLEND SWEET PEAS
2 CANS **79¢**

ALL GRINDS FOLGER'S COFFEE
1 LB. CAN **\$2.29**

COKE TAB SPRITE MR. PIBB
6-Pack 32 oz. Btls. **\$2.19**

CARNATION ASSORTED VARIETIES COCOA MIX
12 CT. 1 OZ. ENVS. **\$1.39**

ALL PURPOSE RUSSET POTATOES
10 LB. BAG **\$1.29**

CALIFORNIA FUERTE AVOCADOS
6 FOR **\$1**

CALIFORNIA FRESH BUNCHES **BROCCOLI** LB. **49¢**
CALIFORNIA SUNKIST NAVEL **ORANGES** 3 LBS. **\$1.00**
CALIFORNIA LARGE RIPE **LEMONS** LB. **39¢**
SOUTH AMERICAN THOMPSON SEEDLESS **GRAPES** LB. **99¢**

DEL MONTE CHICKEN OF THE SEA OIL OR WATER PACK CHUNK TUNA
6 1/2 OZ. CAN **77¢**

FROZEN FOOD DAIRY

PARKAY 3 LB. TUB **\$1.49**

KRAFT HALF MOON COLBY OR LINGHIN CHEDDAR CHEESE 10 OZ. PKG. **\$1.49**

KRAFT IND. WRPD. SLI. AMER. SW. PIM. SINGLES 12 OZ. PKG. **\$1.59**

KRAFT CHILLED ORANGE JUICE 32 OZ. BTL. **89¢**

ASSORTED PATIO TV DINNERS 11-13 OZ. PKG. **99¢**

GREEN GIANT CORN ON THE COB 4 EAR. PKG. **99¢**

TOTAL GROCERY SAVERS

GOLD MEDAL KITCHEN TESTED PLAIN FLOUR 5 LB. BAG **99¢**

HUNT'S TOMATO SAUCE 5 8 OZ. CANS **89¢**

CANNED LUNCHEON MEAT SPAM 12 OZ. CAN **\$1.39**

KRAFT REAL MAYONNAISE 32 OZ. JAR **\$1.49**

8 1/2" LUNCHEON PLATES CHINAT 40 CT. PKG. **\$1.99**

ASSORTED BATHROOM TISSUE DELSEY 4 ROLL PKG. **89¢**

LAUNDRY DETERGENT SUPER SUDS GIANT BOX **99¢**

20" OFF LABEL LIQUID PALMOLIVE 22 OZ. BTL. **99¢**

4" OFF LABEL CLOROX 64 OZ. JUG **69¢**

QUAKER STATE DELUXE 10W40 MOTOR OIL QT. CAN **99¢**

ALPO BEEF CHUNKS DOG FOOD 14 OZ. CANS **39¢**

INSTANT FOLGER'S COFFEE CRYSTALS 8 OZ. JAR **\$3.79**

CARNATION EVAPORATED MILK 2 13 OZ. CANS **\$1.00**

THRIFTY GROCERY BUYS

ASSORTED 3 COUNT BOX DRINKS HAWAIIAN PUNCH 8 1/2 OZ. BOXES **79¢**

ASSORTED DEL MONTE SNACK CUPS 4 CT. PKG. **99¢**

DEL MONTE PITTED PRUNES 12 OZ. PKG. **\$1.19**

DEL MONTE SEEDLESS RAISINS 15 OZ. BOX **\$1.39**

KRAFT DINNER MAC & CHEESE 3 7 1/2 OZ. BOXES **\$1**

DEL MONTE FR. COCKTAIL/SLI. YC PEACHES BARTLETT PEAR HLVS. CAN **69¢**

DEL MONTE ASSORTED CUTS PINEAPPLE IN JUICE 15 1/2 OZ. CAN **59¢**

DEL MONTE PINEAPPLE JUICE 46 OZ. CAN **\$1.29**

DEL MONTE PINEAPPLE-GRAPEFRUIT JUICE 46 OZ. CAN **99¢**

FLORAL PITCHER PACK-ORANGE FLAVOR TANG 9 QT. PACK **\$3.39**

HAWAIIAN FRUIT JUICY RED DRINK 46 OZ. CAN **79¢**

VAN CAMP'S PORK & BEANS 3 16 OZ. CANS **\$1**

DEL MONTE 15 OZ. SPINACH OR 16 OZ. EARLY GARDEN POTATOES 2 CANS **99¢**

We're proud to give you more!

THRIFTWAY

Effective Feb. 27 - Mar. 7
WE RESERVE THE RIGHT TO LIMIT QUANTITIES
WE ACCEPT FOOD STAMPS

DOUBLE COUPONS EVERY TUESDAY

WHITE'S SUPER STORE

ParkWest Shopping Center Phone 592-4186
Store Hours: 8 a.m. - 8 p.m. Monday - Saturday; 9 a.m. - 6 p.m. Sunday

Our store family-owned and operated 20 years.

DOUBLE GREEN STAMPS EVERY WEDNESDAY

State program tells taxpayers how to get tax relief

Ron Patterson, executive director of the State Property Tax Board (SPTB), this week announced a statewide effort to inform Texas property owners of their rights, remedies, and responsibilities as taxpayers.

According to Patterson, SPTB will coordinate efforts with appraisal districts and all local news media to help make taxpayers aware of

rendition and exemption filing deadlines and methods by which exemptions or other forms of tax relief may be obtained.

"The first priority for property owners is to file renditions and applications for tax relief before May 1 this year," Patterson said.

Rendition is the method through which a property owner reports or lists the taxable property he owned or managed on January 1, 1984. It is also the means by which a taxpayer is allowed to record his own opinion of his property's value.

Patterson noted that taxpayers may file all exemption applications and property rendition forms with the central appraisal district office. State law also allows one-time applications for homestead exemptions, disabled veterans' exemptions and open-space land valuation.

However, he said, persons whose property is located in more than one county appraisal district have an

additional responsibility. These property owners may be required to file for exemptions and productivity valuation in each appraisal district in which their property is located. Failure to do so could result in one or more taxing units taxing the property on its full market value.

An example would be where a city or school district is located in two counties and chooses to join only one appraisal district.

Property owners who last year received homestead exemptions, disabled veterans' exemptions and open-space land (1-d-1) valuation do not need to reapply in 1984. However, the chief appraiser may confirm a person's current qualifications by requesting a new application form be completed.

Applications must be filed in 1984, Patterson said, by property owners who have not previously received tax relief on their present homestead or land.

State law also requires that applications for agricultural (1-d) valuation be filed each year in all appraisal districts.

Agriculture (1-d) and open-space land (1-d-1) valuations are available to property owners using land for farming or ranching purposes. Such land may be taxed based on productivity rather than market value.

Certain property owners are required to render their property. "Any person who owns or manages income-producing personal property on Jan. 1 is required by state law to file a rendition statement with the appropriate appraisal district," Patterson said.

Special rendition procedures exist for property on which an exemption applicable on January 1 ends during the tax year. In such a case, the person who owns or acquires the property when the exemption ends must render the property for taxation

within 30 days.

And, the chief appraiser may require rendition of other taxable property upon notice to the property owner or manager. Transportation companies, banks and railroads must also file special rendition statements.

Patterson said rendition forms are available from appraisal district offices. Transportation businesses may obtain property report forms from the SPTB.

Complete information on tax exemptions and rendition requirements is contained in "Taxpayers' Rights, Remedies, Responsibilities," a taxpayer pamphlet produced by the SPTB.

The pamphlet also reviews how to prepare and present an appeal to the appraisal review board. It is available at no charge from appraisal district offices or from the SPTB in Austin.

"The property tax is the primary source of local government revenue in Texas," Patterson noted. "It will generate about \$8 billion this year to help fund public schools, cities, counties and special districts."

"We urge all property owners to become familiar with the tax process, to file renditions and to apply for all exemptions or other tax relief to which they are entitled," Patterson said.

New Meter Connections

Harry L. Skinner - 108 E. Jefferson
Harold Peyson - 1311 Sunset
Tommy Poivre - 1008 Louisa
Brenda Underwood - 1003 Louisa
Family Boot & Shoe Repair - 700 E. Highway

-WELCOME-
ASSEMBLY OF GOD
S. Yosemite
9:45 S.S./7 P.M.
Wed. 7 P.M. Service
Rev. Charles Hensley,
Pastor

First Christian Church

105 E. Cash
Sunday School - 9:45 a.m.
Worship - 10:55 a.m.
Corner, Cash & Bond St.

We encourage each of you to worship Jesus Christ in the church of your choice. If you do not have a church home, we invite you to come worship with our church family.

First Presbyterian Church

DR. EARLE W. CRAWFORD, INTERIM PASTOR
CHURCH SCHOOL - 9:45 A.M.
WORSHIP - 11:00 A.M.

A Caring Congregation of
Palo Duro Presbytery - Presbyterian Church [USA]

Grace Baptist Church

511 S. Colorado - 592-5632

Come Let Us Reason Together Saith The Lord
Sunday School . . . 10:00 A.M.
Morning Worship . . . 11:00 A.M.
Children's Worship . . . 11:00 A.M.
Evening Worship . . . 6:30 P.M.
Wednesday Service . . . 7:30 P.M.
Jimmy Johnson, Pastor

Christ The King Catholic Church

First and Clara Phone 592-2802
8:45 a.m. C.C.D. — 10 a.m. Mass

Pacific Avenue Missionary Baptist Church

1400 North Pacific Avenue

Larry Washburn
Pastor
Church - 592-9711
Pastor 592-4288



Sunday School 9:45 a.m.
Morning Worship 11:00 a.m.
Evening Worship 6:00 p.m.
Wednesday 7:00 p.m.

Everybody Welcome

PUPPET SHOW

"On The Road For Jesus"
March 3, 7:30 p.m.

Church of God

IOWA PARK 601 E. CASH
Ole Olds - Pastor

First United Methodist Church

201 E. Bank

Church School 9:40 Youth Meetings 5:00
Morning Worship 10:40 Evening Worship 6:00

GEORGE TOPPER, PASTOR

Church of God

601 E. Cash

Pastor, Ole Olds
Sun. Morning Worship 11:00
Sun. Night Celebration Service 7:00 p.m.
Tues. Ladies Prayer Service 10 a.m.
Wed. Night Bible Study 7:30
Sat. Family Night 7:30
"Catch the Vision"

Par.
592-5316

Office
592-4348

Kamay Road Church of Christ

Corner of Colorado & Emerald

'Seeking the Old Paths'

Lord's Day
10:30 a.m. & 6 p.m.
Wednesday 7:00 p.m.

GOOD SHEPHERD LUTHERAN CHURCH

1st & Magnolia
Iowa Park

Sunday School: 9:45 a.m.,
Worship Service: 10:30 a.m.

First Baptist Church

of Iowa Park

Yosemite at Park

SUNDAY SERVICES

Mornings
Sunday School 9:45
Worship 11:00

Evenings
Church Training 6:00
Worship 7:00

WEDNESDAY

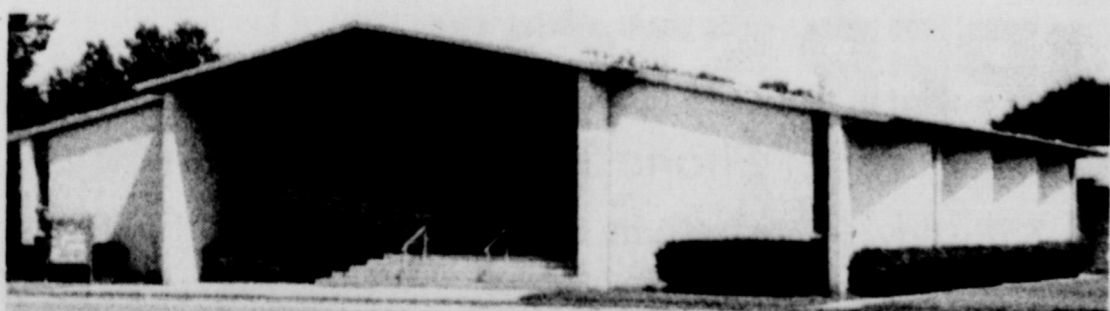
Prayer Meeting 7:00
Choir Rehearsal 7:45



IOWA PARK CHURCH OF CHRIST

SCHEDULE OF SERVICES

Sunday		Wednesday	
Bible Study	9:30 a.m.	Ladies Bible Study	10:00 a.m.
Worship	10:30 a.m.	Evening Study	7:30 p.m.
Evening Worship	6:00 p.m.		



300 East Park, Iowa Park, Texas 76367, (817) 592-5415

WE CORDIALLY INVITE YOU TO ATTEND...

SPRING GOSPEL MEETING

March 4 - 7

Speaker: COLE TIDWELL

SUNDAY

Adult Bible Class "Half Baked Cake"
(9:30 A.M.)

Morning Worship Petitioning God's Grace Through Worship
(10:30 A.M.)

Evening Worship Authority Of The Scriptures
(6:00 P.M.)

MONDAY EVENING (7:30 P.M.) Why Jesus Was Born

TUESDAY EVENING (7:30 P.M.) What The Empty Tomb Means

WEDNESDAY EVENING (7:30 P.M.) Hope Of Israel

IOWA PARK CHURCH OF CHRIST

300 East Park

592-5415



NEW MEMBERS initiated into Iowa Park High School chapter of National Honor Society are: front from left, Melissa Hatcher, Kristi Wood, Windy Kirksey, Paula

Mashburn and Becky Roberts; back row, Holly Farnsworth, Jay Yeakley, Phil Clements, Robert DuBoise and Becky Martin.

Municipal Court Records

Results of municipal court held here yesterday were:

- Lisa Lois Harris, speeding, \$56;
- Russell Wade Price, speeding, \$64;
- Eugene Raymond Soell Jr., speeding, \$42;
- Bryon Lee Ballard, no motor vehicle liability insurance \$94;
- Roger Allen Hamilton, speeding, \$40;
- James David Sandlin, displayed expired motor vehicle registration, \$69;
- Douglas Joe Day, speeding, \$68;
- Michael Andrew Tucker, no motor vehicle liability insurance, \$114;
- Michael Andrew Tucker, no operators license, \$60;
- Sherrie Perkins Uselton, speeding, taking defensive driving course (DDC);
- Michael Gene Wright, speeding, \$49;
- Joe Charles Smith, speeding, \$41;
- Donald Glen Gandy, disobeyed stop sign, \$40;
- Kyle James Grove, speeding, \$49;
- Rodney Wade Davis, speeding, \$48;
- David Bruce Harrington, disobeyed stop sign, \$40;
- Philip Eric Dale, exhibition of acceleration, \$40;
- Jimmy Ray Ervin, exhibition of acceleration, \$40;
- Rita Stephenson Stowe, speeding, \$44;
- Jo Ezell Salmon, speeding, \$43;
- Monkia Lynn Pace, speeding, \$43;
- R. Marshall Neil Jr., displayed expired motor vehicle inspection, \$40;
- Jimmy Lee Far, displayed expired motor vehicle registration, \$49;
- Timothy John McWhorter, exhibition of acceleration, \$40;
- Todd Logan Darling, speeding, \$43;
- Allen Jon Andrews, speeding, \$42;
- Steve Ann Shappell, speeding, \$40;
- Mike William Kuhns, no drivers license, \$40;
- Mike Williams Kuhns, displayed expired motor vehicle inspection, \$40;
- Kerry Lee Walker, speeding, taking DDC;
- Linda Gene Bradshaw, speeding, taking DDC.

Short course in computer programming slated here

Through cooperation between Vernon Regional Junior College and Iowa Park schools, a non-credit college short course in basic programming for micro computers will be held in Iowa Park.

The seven-week course, to be held from 6:30 to 8:30 p.m. each Thursday night, will begin March 22 and end May 3.

A \$15 registration fee will be required. Checks should be made out to Vernon Regional Junior College.

The class will be limited to 18, and

enrollment will be on a first-come, first-serve basis.

Enrollment can be accomplished by seeing Richard Davis, at the IPHS "A" Building vocational office, or by mailing the enrollment fee to: Iowa Park Vocational office, or by mailing the enrollment fee to: Iowa Park Vocational Department, c/o Richard Davis, Iowa Park High School, Iowa Park.

Police vehicles have new look

Police Chief Tom Fenley says he's received more favorable than unfavorable comments about the new look of the department's patrol cars.

Green used for stripes and lettering has been replaced by black, and large lettering is used for "Iowa Park Police."

"I think the new markings make the police cars more identifiable and visible, they're more effective," Fenley says.

Sellers places first and sixth

Iowa Parkan Michelle Sellers won first place in her division of the Cowtown Marathon Saturday, and at the same time placed high in the open women's division.

Besides taking the top place in the 16 and under division, she was sixth in the women's competition, completing the 26.2-mile course in 3:26.52.

Winning time of the 25 top women finishers was 2:45.51. Third place was 3:15.17, just a little over 11 minutes faster than Sellers.

Elite Creations

Floral - Reception Catering - Altar Decoration

Pat Brown - Consultant
592-2211

Located in The Velfree Shop

208 W. Bank

HAPPY BIRTHDAY

Jeffery

Love - Mom, Dad, Judy,
Ricky, Jill & Donnie



Four boxers making names

Four Iowa Parkans are making names for themselves this season in Golden Gloves boxing.

Representing the Iowa Park Boxing Club, coached by Larry McGartey and John Trahan, the athletes are Greg Patterson, Frank Laratta, Shane Patterson and Nathan Smallwood.

Greg fights in the 139-pound high school division. He was district champion and was a finalist in the regional tournament. He also won in his division in both the Sunrise Optimist and Vernon tournaments.

Laratta won the Walters tournament and was the 106-pound Senior

Novice Division champion in last week's regional tourney.

Shane, who fights in the 85-pound Junior Novice Division, won the district title at Lawton.

Smallwood was a finalist in the 80-pound Junior Novice Division of the district tourney in Lawton.

They are scheduled to fight in two more tournaments, Nocona and Silver Mitts.

HS athletes in tourney

Brian Fulfer led a team of nine Iowa Park High boxers in the Wichita Falls Regional Golden Gloves Tournament last week.

All were competing in the All Sports Division, for boys who had never fought before.

Fulfer, fighting in the 147-pound division, earned his title with a third round TKO.

Rowdy Robertson, 200, and Rocky Martin, 165, were finalists in their division.

Others entered were James Beebe, 178, Arthur Bajo, 147, Jeff Sanders, 147, Randy Boutwell, 139, and Lee Birk, 200.

Mike Kent, 178, won the first night but was unable to continue due to a bruised lung received in the fight.

Iowa Park High won the All Sports Sportsmanship trophy.



Fri., March 2 - Italian spaghetti with cheese, meat or cheese sandwich, soup, tossed salad, corn on the cob, garlic toast, chocolate & plain milk, cookies.

Mon., March 5 - Chicken fried steak, meat or cheese sandwich, soup, mashed potatoes & gravy, broccoli with cheese, hot rolls, butter, & honey, chocolate & plain milk, applesauce cake.

Tues., March 6 - Enchiladas with chili & cheese, meat or cheese sandwich, soup, Spanish rice, pinto beans, chilled fruit, cornbread, chocolate & plain milk, cookies.

Wed., March 7 - Charburgers with cheese, meat or cheese sandwich, soup, navy beans, tater tots, lettuce, tomatoes, pickles, onions, chocolate & plain milk, ice cream.

Thurs., March 8 - Roast beef, meat or cheese sandwich, soup, mashed potatoes & gravy, green beans, hot rolls, butter, & honey, chocolate & plain milk, coconut pie.

READY FOR PLANTING

Cabbage, Broccoli, Iris, Day Lilies, Hardy Herbs, Miniature Roses, Lots More!

2951 Elliott, W.F.
Open 10-6 Every Day!

Plants Etcetera

IOWA PARK RECREATIONAL ACTIVITIES CENTER SCHEDULE FOR MARCH, 1984						
MONDAY	TUESDAY	WEDNESDAY	THURSDAY	FRIDAY	SATURDAY	
Learn to crochet the popular "Ray Vest. Demo on Tuesday March 13 at 7 p.m. Get an early start on your Christmas Decorations. Linda Ayres will bring new ideas to share with us on Tues., March 20. Small charge for both of these classes. Call 592-4471 for details and to enroll.			Karen 3 p.m. Campfire Council 6:30 p.m. Aerobics 7:17 adv., 8:20 beg. Softball Tourney Begins	Aerobics 9 a.m. Softball Tourney continued	Karate 10 a.m. Softball Tourney Continued	
Karen 3 p.m. Weight Watchers 6 p.m. Aerobics Adv. 7:15 Beg. 8:20	Aerobics 9 a.m. Bluebirds 3:30 Ceramics 7 p.m.	Rotary 12 Noon Karate 6:30 p.m.	Karen 3 p.m. Optimist 7 p.m. Aerobics Adv. 7:15 Beg. 8:20	Aerobics 9 a.m.	Karate 10 a.m.	
Karen 3 p.m. Weight Watchers 6 p.m. Aerobics Adv. 7:15 p.m. Beg. 8:20 p.m.	Aerobics 9 a.m. Bluebirds 2:30 p.m. Optimist 7 p.m. Ceramics 7 p.m. Crochet "Rag Vest" 7 p.m.	Rotary 12 Noon Karate 6:30 p.m.	Karen 3 p.m. Board Meeting 7:30 p.m. Aerobics Adv. 7:15 p.m. Beg. 8:20 p.m.	Aerobics 9 a.m. Softball Tourney	Karate 10 a.m. Softball Tourney Continued	
Karen 3 p.m. Weight Watchers 6 p.m. Aerobics Adv. 7:15 p.m. Beg. 8:20 p.m.	Aerobics 9 a.m. Bluebirds 3:30 p.m. Ceramics 7 p.m. Linda Ayres "Christmas Decor" 7 p.m. Start Early!!!	Rotary 12 Noon Karate 6:30 p.m.	Karen 3 p.m. Optimist 7 p.m. Aerobics Adv. 7:15 p.m. Beg. 8:20 p.m.	Aerobics 9 a.m. Softball Tourney	Karate 10 a.m. Softball Tourney Continued	
	Aerobics 9 a.m. Bluebirds 2:30 p.m. Optimist 7 p.m. Ceramics 7 p.m.	Rotary 12 Noon Karate 6:30 p.m.	Karen 3 p.m. Aerobics Adv. 7:15 p.m. Beg. 8:20 p.m.	Aerobics 9 a.m.	Karate 10 a.m.	

COUPON

FREE!!

Pitcher of
Soft Drink

with purchase of any size pizza!

Coupon Expires Mar. 29, 1984

ken's. Pizza

902 W. Highway 592-4184

GNB

IRA

A Personal Retirement Plan That Will Save You Tax Dollars Every Year

EVERY WAGE EARNER IS NOW ELIGIBLE

As of January 1, 1982, every wage earner, even though they are active participants in an employer sponsored pension plan, can make tax-sheltered contributions to an individual retirement account (IRA). IRA contributions will accumulate tax-deferred with compounded interest until retirement.

MAXIMUM CONTRIBUTIONS

The maximum contribution to an individual retirement account has been increased from \$1,500 to \$2,000; spousal IRA from \$1,750 to \$2,250. (Spousal IRA's are for married couples where only one spouse is employed.)

Whether or not you are covered by an employer sponsored pension plan	Contributory IRA \$2,000	Spousal IRA \$2,250
--	-----------------------------	------------------------

100% CONTRIBUTION

Contributions are no longer limited to 15% of your annual earnings. You may now contribute up to 100% of your earnings up to the maximum limitation.

STATE NATIONAL BANK

IOWA PARK, TEXAS

Locally Owned

11. (1) SUPERSTARS
 (2) CRYSTAL BALL (1964) (WED)
 (3) THE CATS
 (4) THE CATS
 (5) THE CATS
 (6) THE CATS
 (7) THE CATS
 (8) THE CATS
 (9) THE CATS
 (10) THE CATS
 (11) THE CATS
 (12) THE CATS
 (13) THE CATS
 (14) THE CATS
 (15) THE CATS
 (16) THE CATS
 (17) THE CATS
 (18) THE CATS
 (19) THE CATS
 (20) THE CATS
 (21) THE CATS
 (22) THE CATS
 (23) THE CATS
 (24) THE CATS
 (25) THE CATS
 (26) THE CATS
 (27) THE CATS
 (28) THE CATS
 (29) THE CATS
 (30) THE CATS
 (31) THE CATS
 (32) THE CATS
 (33) THE CATS
 (34) THE CATS
 (35) THE CATS
 (36) THE CATS
 (37) THE CATS
 (38) THE CATS
 (39) THE CATS
 (40) THE CATS
 (41) THE CATS
 (42) THE CATS
 (43) THE CATS
 (44) THE CATS
 (45) THE CATS
 (46) THE CATS
 (47) THE CATS
 (48) THE CATS
 (49) THE CATS
 (50) THE CATS
 (51) THE CATS
 (52) THE CATS
 (53) THE CATS
 (54) THE CATS
 (55) THE CATS
 (56) THE CATS
 (57) THE CATS
 (58) THE CATS
 (59) THE CATS
 (60) THE CATS
 (61) THE CATS
 (62) THE CATS
 (63) THE CATS
 (64) THE CATS
 (65) THE CATS
 (66) THE CATS
 (67) THE CATS
 (68) THE CATS
 (69) THE CATS
 (70) THE CATS
 (71) THE CATS
 (72) THE CATS
 (73) THE CATS
 (74) THE CATS
 (75) THE CATS
 (76) THE CATS
 (77) THE CATS
 (78) THE CATS
 (79) THE CATS
 (80) THE CATS
 (81) THE CATS
 (82) THE CATS
 (83) THE CATS
 (84) THE CATS
 (85) THE CATS
 (86) THE CATS
 (87) THE CATS
 (88) THE CATS
 (89) THE CATS
 (90) THE CATS
 (91) THE CATS
 (92) THE CATS
 (93) THE CATS
 (94) THE CATS
 (95) THE CATS
 (96) THE CATS
 (97) THE CATS
 (98) THE CATS
 (99) THE CATS
 (100) THE CATS

T.V. tab

Saturday, March 3 through Friday, March 9

KOMA PARK CABLE SERVICES

CHANNEL 9 - KETA, Wichita Falls
 CHANNEL 10 - KAUZ, Wichita Falls
 CHANNEL 11 - Chicago, Ill.
 CHANNEL 12 - Chicago, Ill.
 CHANNEL 13 - Public Television

CHANNEL 4 - Home Box Office
 CHANNEL 5 - Charlotte, N.C.
 CHANNEL 6 - Atlanta, Ga.
 CHANNEL 8 - ESPN (All Sports)

10. (1) SUPERSTARS
 (2) CRYSTAL BALL (1964) (WED)
 (3) THE CATS
 (4) THE CATS
 (5) THE CATS
 (6) THE CATS
 (7) THE CATS
 (8) THE CATS
 (9) THE CATS
 (10) THE CATS
 (11) THE CATS
 (12) THE CATS
 (13) THE CATS
 (14) THE CATS
 (15) THE CATS
 (16) THE CATS
 (17) THE CATS
 (18) THE CATS
 (19) THE CATS
 (20) THE CATS
 (21) THE CATS
 (22) THE CATS
 (23) THE CATS
 (24) THE CATS
 (25) THE CATS
 (26) THE CATS
 (27) THE CATS
 (28) THE CATS
 (29) THE CATS
 (30) THE CATS
 (31) THE CATS
 (32) THE CATS
 (33) THE CATS
 (34) THE CATS
 (35) THE CATS
 (36) THE CATS
 (37) THE CATS
 (38) THE CATS
 (39) THE CATS
 (40) THE CATS
 (41) THE CATS
 (42) THE CATS
 (43) THE CATS
 (44) THE CATS
 (45) THE CATS
 (46) THE CATS
 (47) THE CATS
 (48) THE CATS
 (49) THE CATS
 (50) THE CATS
 (51) THE CATS
 (52) THE CATS
 (53) THE CATS
 (54) THE CATS
 (55) THE CATS
 (56) THE CATS
 (57) THE CATS
 (58) THE CATS
 (59) THE CATS
 (60) THE CATS
 (61) THE CATS
 (62) THE CATS
 (63) THE CATS
 (64) THE CATS
 (65) THE CATS
 (66) THE CATS
 (67) THE CATS
 (68) THE CATS
 (69) THE CATS
 (70) THE CATS
 (71) THE CATS
 (72) THE CATS
 (73) THE CATS
 (74) THE CATS
 (75) THE CATS
 (76) THE CATS
 (77) THE CATS
 (78) THE CATS
 (79) THE CATS
 (80) THE CATS
 (81) THE CATS
 (82) THE CATS
 (83) THE CATS
 (84) THE CATS
 (85) THE CATS
 (86) THE CATS
 (87) THE CATS
 (88) THE CATS
 (89) THE CATS
 (90) THE CATS
 (91) THE CATS
 (92) THE CATS
 (93) THE CATS
 (94) THE CATS
 (95) THE CATS
 (96) THE CATS
 (97) THE CATS
 (98) THE CATS
 (99) THE CATS
 (100) THE CATS

TRU-TEST PAINTING HELP SPOKEN HERE.

By Uncle Bob

Dear Uncle Bob:

He painted our house 8 years ago and is thinking about repainting this year. The surface is starting to chalk - or have a powdery substance when you rub your hand over it. What steps should be taken prior to painting?

Dear Bob:

Before any painting is started, the surface must be properly prepared. Remember the rule: "Clean, Dry, Dull" must be painted. "Clean" means that all dirt and chalk and loose peeling paint must be removed. Chalk and dirt to be removed by washing with Tru-Test Siding Cleaner (No. 12) following directions on the label. Peeling paint to be removed by scrubbing or using a putty knife. If any loose material should be primed with proper Tru-Test house primer. Any cracks or open joints between boards or around windows should be sealed with Tru-Test Caulk.

"Dry" means the surface should be dry when painting and no rain predicted for the next 24 hours.

592-5512
 200-206 West Bank
 PARKWAY FURNITURE HARDWARE
 592-1681

10. (1) SUPERSTARS
 (2) CRYSTAL BALL (1964) (WED)
 (3) THE CATS
 (4) THE CATS
 (5) THE CATS
 (6) THE CATS
 (7) THE CATS
 (8) THE CATS
 (9) THE CATS
 (10) THE CATS
 (11) THE CATS
 (12) THE CATS
 (13) THE CATS
 (14) THE CATS
 (15) THE CATS
 (16) THE CATS
 (17) THE CATS
 (18) THE CATS
 (19) THE CATS
 (20) THE CATS
 (21) THE CATS
 (22) THE CATS
 (23) THE CATS
 (24) THE CATS
 (25) THE CATS
 (26) THE CATS
 (27) THE CATS
 (28) THE CATS
 (29) THE CATS
 (30) THE CATS
 (31) THE CATS
 (32) THE CATS
 (33) THE CATS
 (34) THE CATS
 (35) THE CATS
 (36) THE CATS
 (37) THE CATS
 (38) THE CATS
 (39) THE CATS
 (40) THE CATS
 (41) THE CATS
 (42) THE CATS
 (43) THE CATS
 (44) THE CATS
 (45) THE CATS
 (46) THE CATS
 (47) THE CATS
 (48) THE CATS
 (49) THE CATS
 (50) THE CATS
 (51) THE CATS
 (52) THE CATS
 (53) THE CATS
 (54) THE CATS
 (55) THE CATS
 (56) THE CATS
 (57) THE CATS
 (58) THE CATS
 (59) THE CATS
 (60) THE CATS
 (61) THE CATS
 (62) THE CATS
 (63) THE CATS
 (64) THE CATS
 (65) THE CATS
 (66) THE CATS
 (67) THE CATS
 (68) THE CATS
 (69) THE CATS
 (70) THE CATS
 (71) THE CATS
 (72) THE CATS
 (73) THE CATS
 (74) THE CATS
 (75) THE CATS
 (76) THE CATS
 (77) THE CATS
 (78) THE CATS
 (79) THE CATS
 (80) THE CATS
 (81) THE CATS
 (82) THE CATS
 (83) THE CATS
 (84) THE CATS
 (85) THE CATS
 (86) THE CATS
 (87) THE CATS
 (88) THE CATS
 (89) THE CATS
 (90) THE CATS
 (91) THE CATS
 (92) THE CATS
 (93) THE CATS
 (94) THE CATS
 (95) THE CATS
 (96) THE CATS
 (97) THE CATS
 (98) THE CATS
 (99) THE CATS
 (100) THE CATS

10. (1) SUPERSTARS
 (2) CRYSTAL BALL (1964) (WED)
 (3) THE CATS
 (4) THE CATS
 (5) THE CATS
 (6) THE CATS
 (7) THE CATS
 (8) THE CATS
 (9) THE CATS
 (10) THE CATS
 (11) THE CATS
 (12) THE CATS
 (13) THE CATS
 (14) THE CATS
 (15) THE CATS
 (16) THE CATS
 (17) THE CATS
 (18) THE CATS
 (19) THE CATS
 (20) THE CATS
 (21) THE CATS
 (22) THE CATS
 (23) THE CATS
 (24) THE CATS
 (25) THE CATS
 (26) THE CATS
 (27) THE CATS
 (28) THE CATS
 (29) THE CATS
 (30) THE CATS
 (31) THE CATS
 (32) THE CATS
 (33) THE CATS
 (34) THE CATS
 (35) THE CATS
 (36) THE CATS
 (37) THE CATS
 (38) THE CATS
 (39) THE CATS
 (40) THE CATS
 (41) THE CATS
 (42) THE CATS
 (43) THE CATS
 (44) THE CATS
 (45) THE CATS
 (46) THE CATS
 (47) THE CATS
 (48) THE CATS
 (49) THE CATS
 (50) THE CATS
 (51) THE CATS
 (52) THE CATS
 (53) THE CATS
 (54) THE CATS
 (55) THE CATS
 (56) THE CATS
 (57) THE CATS
 (58) THE CATS
 (59) THE CATS
 (60) THE CATS
 (61) THE CATS
 (62) THE CATS
 (63) THE CATS
 (64) THE CATS
 (65) THE CATS
 (66) THE CATS
 (67) THE CATS
 (68) THE CATS
 (69) THE CATS
 (70) THE CATS
 (71) THE CATS
 (72) THE CATS
 (73) THE CATS
 (74) THE CATS
 (75) THE CATS
 (76) THE CATS
 (77) THE CATS
 (78) THE CATS
 (79) THE CATS
 (80) THE CATS
 (81) THE CATS
 (82) THE CATS
 (83) THE CATS
 (84) THE CATS
 (85) THE CATS
 (86) THE CATS
 (87) THE CATS
 (88) THE CATS
 (89) THE CATS
 (90) THE CATS
 (91) THE CATS
 (92) THE CATS
 (93) THE CATS
 (94) THE CATS
 (95) THE CATS
 (96) THE CATS
 (97) THE CATS
 (98) THE CATS
 (99) THE CATS
 (100) THE CATS

"See me for all your family insurance needs."

Philip Welch

100 W. Park
 592-4155

Like a good neighbor, State Farm is there.

STATE FARM INSURANCE

State Farm Insurance Companies
 Home Office: Bloomington, Illinois

PAWCHECK PROTECTION

Talk To Me

Robert L. Livingston
 3027 Northwest Drive
 Wichita Falls, TX 76093
 (817) 723-1159

Call today for more information
 BANKERS LIFE AND CASUALTY COMPANY
 A Chicago Branch

10. (1) SUPERSTARS
 (2) CRYSTAL BALL (1964) (WED)
 (3) THE CATS
 (4) THE CATS
 (5) THE CATS
 (6) THE CATS
 (7) THE CATS
 (8) THE CATS
 (9) THE CATS
 (10) THE CATS
 (11) THE CATS
 (12) THE CATS
 (13) THE CATS
 (14) THE CATS
 (15) THE CATS
 (16) THE CATS
 (17) THE CATS
 (18) THE CATS
 (19) THE CATS
 (20) THE CATS
 (21) THE CATS
 (22) THE CATS
 (23) THE CATS
 (24) THE CATS
 (25) THE CATS
 (26) THE CATS
 (27) THE CATS
 (28) THE CATS
 (29) THE CATS
 (30) THE CATS
 (31) THE CATS
 (32) THE CATS
 (33) THE CATS
 (34) THE CATS
 (35) THE CATS
 (36) THE CATS
 (37) THE CATS
 (38) THE CATS
 (39) THE CATS
 (40) THE CATS
 (41) THE CATS
 (42) THE CATS
 (43) THE CATS
 (44) THE CATS
 (45) THE CATS
 (46) THE CATS
 (47) THE CATS
 (48) THE CATS
 (49) THE CATS
 (50) THE CATS
 (51) THE CATS
 (52) THE CATS
 (53) THE CATS
 (54) THE CATS
 (55) THE CATS
 (56) THE CATS
 (57) THE CATS
 (58) THE CATS
 (59) THE CATS
 (60) THE CATS
 (61) THE CATS
 (62) THE CATS
 (63) THE CATS
 (64) THE CATS
 (65) THE CATS
 (66) THE CATS
 (67) THE CATS
 (68) THE CATS
 (69) THE CATS
 (70) THE CATS
 (71) THE CATS
 (72) THE CATS
 (73) THE CATS
 (74) THE CATS
 (75) THE CATS
 (76) THE CATS
 (77) THE CATS
 (78) THE CATS
 (79) THE CATS
 (80) THE CATS
 (81) THE CATS
 (82) THE CATS
 (83) THE CATS
 (84) THE CATS
 (85) THE CATS
 (86) THE CATS
 (87) THE CATS
 (88) THE CATS
 (89) THE CATS
 (90) THE CATS
 (91) THE CATS
 (92) THE CATS
 (93) THE CATS
 (94) THE CATS
 (95) THE CATS
 (96) THE CATS
 (97) THE CATS
 (98) THE CATS
 (99) THE CATS
 (100) THE CATS

10. (1) SUPERSTARS
 (2) CRYSTAL BALL (1964) (WED)
 (3) THE CATS
 (4) THE CATS
 (5) THE CATS
 (6) THE CATS
 (7) THE CATS
 (8) THE CATS
 (9) THE CATS
 (10) THE CATS
 (11) THE CATS
 (12) THE CATS
 (13) THE CATS
 (14) THE CATS
 (15) THE CATS
 (16) THE CATS
 (17) THE CATS
 (18) THE CATS
 (19) THE CATS
 (20) THE CATS
 (21) THE CATS
 (22) THE CATS
 (23) THE CATS
 (24) THE CATS
 (25) THE CATS
 (26) THE CATS
 (27) THE CATS
 (28) THE CATS
 (29) THE CATS
 (30) THE CATS
 (31) THE CATS
 (32) THE CATS
 (33) THE CATS
 (34) THE CATS
 (35) THE CATS
 (36) THE CATS
 (37) THE CATS
 (38) THE CATS
 (39) THE CATS
 (40) THE CATS
 (41) THE CATS
 (42) THE CATS
 (43) THE CATS
 (44) THE CATS
 (45) THE CATS
 (46) THE CATS
 (47) THE CATS
 (48) THE CATS
 (49) THE CATS
 (50) THE CATS
 (51) THE CATS
 (52) THE CATS
 (53) THE CATS
 (54) THE CATS
 (55) THE CATS
 (56) THE CATS
 (57) THE CATS
 (58) THE CATS
 (59) THE CATS
 (60) THE CATS
 (61) THE CATS
 (62) THE CATS
 (63) THE CATS
 (64) THE CATS
 (65) THE CATS
 (66) THE CATS
 (67) THE CATS
 (68) THE CATS
 (69) THE CATS
 (70) THE CATS
 (71) THE CATS
 (72) THE CATS
 (73) THE CATS
 (74) THE CATS
 (75) THE CATS
 (76) THE CATS
 (77) THE CATS
 (78) THE CATS
 (79) THE CATS
 (80) THE CATS
 (81) THE CATS
 (82) THE CATS
 (83) THE CATS
 (84) THE CATS
 (85) THE CATS
 (86) THE CATS
 (87) THE CATS
 (88) THE CATS
 (89) THE CATS
 (90) THE CATS
 (91) THE CATS
 (92) THE CATS
 (93) THE CATS
 (94) THE CATS
 (95) THE CATS
 (96) THE CATS
 (97) THE CATS
 (98) THE CATS
 (99) THE CATS
 (100) THE CATS

10. (1) SUPERSTARS
 (2) CRYSTAL BALL (1964) (WED)
 (3) THE CATS
 (4) THE CATS
 (5) THE CATS
 (6) THE CATS
 (7) THE CATS
 (8) THE CATS
 (9) THE CATS
 (10) THE CATS
 (11) THE CATS
 (12) THE CATS
 (13) THE CATS
 (14) THE CATS
 (15) THE CATS
 (16) THE CATS
 (17) THE CATS
 (18) THE CATS
 (19) THE CATS
 (20) THE CATS
 (21) THE CATS
 (22) THE CATS
 (23) THE CATS
 (24) THE CATS
 (25) THE CATS
 (26) THE CATS
 (27) THE CATS
 (28) THE CATS
 (29) THE CATS
 (30) THE CATS
 (31) THE CATS
 (32) THE CATS
 (33) THE CATS
 (34) THE CATS
 (35) THE CATS
 (36) THE CATS
 (37) THE CATS
 (38) THE CATS
 (39) THE CATS
 (40) THE CATS
 (41) THE CATS
 (42) THE CATS
 (43) THE CATS
 (44) THE CATS
 (45) THE CATS
 (46) THE CATS
 (47) THE CATS
 (48) THE CATS
 (49) THE CATS
 (50) THE CATS
 (51) THE CATS
 (52) THE CATS
 (53) THE CATS
 (54) THE CATS
 (55) THE CATS
 (56) THE CATS
 (57) THE CATS
 (58) THE CATS
 (59) THE CATS
 (60) THE CATS
 (61) THE CATS
 (62) THE CATS
 (63) THE CATS
 (64) THE CATS
 (65) THE CATS
 (66) THE CATS
 (67) THE CATS
 (68) THE CATS
 (69) THE CATS
 (70) THE CATS
 (71) THE CATS
 (72) THE CATS
 (73) THE CATS
 (74) THE CATS
 (75) THE CATS
 (76) THE CATS
 (77) THE CATS
 (78) THE CATS
 (79) THE CATS
 (80) THE CATS
 (81) THE CATS
 (82) THE CATS
 (83) THE CATS
 (84) THE CATS
 (85) THE CATS
 (86) THE CATS
 (87) THE CATS
 (88) THE CATS
 (89) THE CATS
 (90) THE CATS
 (91) THE CATS
 (92) THE CATS
 (93) THE CATS
 (94) THE CATS
 (95) THE CATS
 (96) THE CATS
 (97) THE CATS
 (98) THE CATS
 (99) THE CATS
 (100) THE CATS

MORNING

5:00 (3) ZOLA LEVIT

(3) SERGEANT RALPH

(3) HOO COMING ATTRACTIONS

5:30 (3) HOO COMING ATTRACTIONS

(3) DENNIS THE MENACE

(3) NATIONAL GEOGRAPHIC SPECIAL

(3) THE GREAT WALL: THE LIFE OF THE EARTH'S

(3) BIGGEST AND DEADLIEST THING MAN HAS EVER

(3) JIM BAKER

(3) SPYGLASS (R)

(3) CAPTAIN JACKAROO

(3) THE LAMINARMS

(3) BETWEEN THE LINES

(3) BROTHERS FROM

(3) WE'VE WALKED LOT (R)

(3) INTERVIEW: REVENUE SERVICE DONE

(3) IN OUR OWN MAKE

(3) HOO FRAGILE ROCK GOGO goes off on a

(3) one-fringe exploration and finds a possi-

(3) bly new fringed end of the Gorge tower.

6:35 (3) PATTERNS FOR LIVING

(3) SPRINGS

(3) DODLEY FOREST

(3) CHARLE BROWN AND SMOOPY

(3) THE U.S. FROM REPORT

(3) THE MONCHICKS / LITTLE

(3) BACCHUS / BOBIE ROY / SCHOOLAHOUSE

(3) AMERICAN GOVERNMENT

(3) "Playing For Time"

(1980) Vanessa Rodgers, Jane Almer-

(3) der, a group of women protesters in Aus-

(3) tralia at Jackson Lake (R)

(3) MI T

(3) WILD WINDSON

(3) WILD WINDSON

(3) PAPA / SCOPY DOO / MENI

(3) BOY

(3) ELECTRIC COMPANY (R)

(3) AMONG SPOKESMAN /

(3) MCKENZIE HILL

(3) MISTER ROGERS (R)

11:00 (3) FUTURE WITH THAM SUE

(3) THE RESULTS

(3) AMERICA'S TOP TEN

(3) FOLDS ON SOCIETY

(3) LEFT FOOTBALL New Jersey Gam-

(3) at Jackson Lake (R)

(3) MI T

(3) WILD WINDSON

(3) WILD WINDSON

(3) PAPA / SCOPY DOO / MENI

(3) BOY

(3) ELECTRIC COMPANY (R)

(3) AMONG SPOKESMAN /

(3) MCKENZIE HILL

(3) MISTER ROGERS (R)

11:00 (3) FUTURE WITH THAM SUE

(3) THE RESULTS

(3) AMERICA'S TOP TEN

(3) FOLDS ON SOCIETY

(3) CROCKEY

(3) THE BURNING HILLS

(3) THE BURNING HILLS

(3) THE BURNING HILLS

(3) THE BURNING HILLS

(3) THE BURNING HILLS

(3) THE BURNING HILLS

(3) THE BURNING HILLS

(3) THE BURNING HILLS

(3) THE BURNING HILLS

(3) THE BURNING HILLS

(3) THE BURNING HILLS

(3) THE BURNING HILLS

(3) THE BURNING HILLS

(3) THE BURNING HILLS

(3) THE BURNING HILLS

(3) THE BURNING HILLS

(3) THE BURNING HILLS

(3) THE BURNING HILLS

(3) THE BURNING HILLS

(3) THE BURNING HILLS

(3) THE BURNING HILLS

(3) THE BURNING HILLS

(3) THE BURNING HILLS

(3) THE BURNING HILLS

(3) THE BURNING HILLS

(3) THE BURNING HILLS

(3) THE BURNING HILLS

(3) THE BURNING HILLS

(3) THE BURNING HILLS

(3) THE BURNING HILLS

(3) THE BURNING HILLS

(1980) Vanessa Rodgers, Jane Almer-

(3) der, a group of women protesters in Aus-

(3) tralia at Jackson Lake (R)

3:30 (3) IN OUR OWN MAKE

(3) HERBERT U.S.A. (R)

(3) PAPA / SCOPY DOO / MENI

(3) BOY

(3) ELECTRIC COMPANY (R)

(3) AMONG SPOKESMAN /

(3) MCKENZIE HILL

(3) MISTER ROGERS (R)

4:00 (3) FUTURE WITH THAM SUE

(3) THE RESULTS

(3) AMERICA'S TOP TEN

(3) FOLDS ON SOCIETY

(3) CROCKEY

(3) THE BURNING HILLS

(3) THE BURNING HILLS

(3) THE BURNING HILLS

(3) THE BURNING HILLS

(3) THE BURNING HILLS

(3) THE BURNING HILLS

(3) THE BURNING HILLS

(3) THE BURNING HILLS

(3) THE BURNING HILLS

(3) THE BURNING HILLS

(3) THE BURNING HILLS

(3) THE BURNING HILLS

(3) THE BURNING HILLS

(3) THE BURNING HILLS

(3) THE BURNING HILLS

(3) THE BURNING HILLS

(3) THE BURNING HILLS

(3) THE BURNING HILLS

(3) THE BURNING HILLS

(3) THE BURNING HILLS

(3) THE BURNING HILLS

(3) THE BURNING HILLS

(3) THE BURNING HILLS

(3) THE BURNING HILLS

(3) THE BURNING HILLS

(3) THE BURNING HILLS

(3) THE BURNING HILLS

(3) THE BURNING HILLS

(3) THE BURNING HILLS

(3) THE BURNING HILLS

(3) THE BURNING HILLS

(3) NEWS

(3) COLLEGE BASKETBALL "San Bel-

(3) Conference Semifinal" (from Birm-

(3) ham, Ala.) (R)

10:00 (3) DENNIS THE MENACE

(3) GOSPEL SINGING JUBILEE

(3) GOSPEL SINGING JUBILEE

(3) GOSPEL SINGING JUBILEE

(3) GOSPEL SINGING JUBILEE

(3) GOSPEL SINGING JUBILEE

(3) GOSPEL SINGING JUBILEE

(3) GOSPEL SINGING JUBILEE

(3) GOSPEL SINGING JUBILEE

(3) GOSPEL SINGING JUBILEE

(3) GOSPEL SINGING JUBILEE

(3) GOSPEL SINGING JUBILEE

(3) GOSPEL SINGING JUBILEE

(3) GOSPEL SINGING JUBILEE

(3) GOSPEL SINGING JUBILEE

(3) GOSPEL SINGING JUBILEE

(3) GOSPEL SINGING JUBILEE

(3) GOSPEL SINGING JUBILEE

(3) GOSPEL SINGING JUBILEE

(3) GOSPEL SINGING JUBILEE

(3) GOSPEL SINGING JUBILEE

(3) GOSPEL SINGING JUBILEE

(3) GOSPEL SINGING JUBILEE

(3) GOSPEL SINGING JUBILEE

(3) GOSPEL SINGING JUBILEE

(3) GOSPEL SINGING JUBILEE

(3) GOSPEL SINGING JUBILEE

(3) GOSPEL SINGING JUBILEE

(3) GOSPEL SINGING JUBILEE

(3) GOSPEL SINGING JUBILEE

(3) GOSPEL SINGING JUBILEE

(3) GOSPEL SINGING JUBILEE

(3) GOSPEL SINGING JUBILEE

(3) GOSPEL SINGING JUBILEE

(3) GOSPEL SINGING JUBILEE

(3) GOSPEL SINGING JUBILEE

(3) GOSPEL SINGING JUBILEE

(3) GOSPEL SINGING JUBILEE

(3) GOSPEL SINGING JUBILEE

(3) GOSPEL SINGING JUBILEE

(3) GOSPEL SINGING JUBILEE

(3) GOSPEL SINGING JUBILEE

(3) GOSPEL SINGING JUBILEE

(3) NEWS

(3) COLLEGE BASKETBALL "San Bel-

(3) Conference Semifinal" (from Birm-

(3) ham, Ala.) (R)

12:30 (3) DENNIS THE MENACE

(3) GOSPEL SINGING JUBILEE

(3) GOSPEL SINGING JUBILEE

(3) GOSPEL SINGING JUBILEE

(3) GOSPEL SINGING JUBILEE

(3) GOSPEL SINGING JUBILEE

(3) GOSPEL SINGING JUBILEE

(3) GOSPEL SINGING JUBILEE

(3) GOSPEL SINGING JUBILEE

(3) GOSPEL SINGING JUBILEE

(3) GOSPEL SINGING JUBILEE

(3) GOSPEL SINGING JUBILEE

(3) GOSPEL SINGING JUBILEE

(3) GOSPEL SINGING JUBILEE

(3) GOSPEL SINGING JUBILEE

(3) GOSPEL SINGING JUBILEE

(3) GOSPEL SINGING JUBILEE

(3) GOSPEL SINGING JUBILEE

(3) GOSPEL SINGING JUBILEE

(3) GOSPEL SINGING JUBILEE

(3) GOSPEL SINGING JUBILEE

(3) GOSPEL SINGING JUBILEE

(3) GOSPEL SINGING JUBILEE

(3) GOSPEL SINGING JUBILEE

(3) GOSPEL SINGING JUBILEE

(3) GOSPEL SINGING JUBILEE

(3) GOSPEL SINGING JUBILEE

(3) GOSPEL SINGING JUBILEE

(3) GOSPEL SINGING JUBILEE

(3) GOSPEL SINGING JUBILEE

(3) GOSPEL SINGING JUBILEE

(3) GOSPEL SINGING JUBILEE

(3) GOSPEL SINGING JUBILEE

(3) GOSPEL SINGING JUBILEE

(3) GOSPEL SINGING JUBILEE

(3) GOSPEL SINGING JUBILEE

(3) GOSPEL SINGING JUBILEE

(3) GOSPEL SINGING JUBILEE

(3) GOSPEL SINGING JUBILEE

(3) GOSPEL SINGING JUBILEE

(3) GOSPEL SINGING JUBILEE

(3) GOSPEL SINGING JUBILEE

(3) GOSPEL SINGING JUBILEE

(3) NEWS

(3) COLLEGE BASKETBALL "San Bel-

(3) Conference Semifinal" (from Birm-

(3) ham, Ala.) (R)

12:30 (3) DENNIS THE MENACE

(3) GOSPEL SINGING JUBILEE

(3) GOSPEL SINGING JUBILEE

(3) GOSPEL SINGING JUBILEE

(3) GOSPEL SINGING JUBILEE

(3) GOSPEL SINGING JUBILEE

(3) GOSPEL SINGING JUBILEE

(3) GOSPEL SINGING JUBILEE

(3) GOSPEL SINGING JUBILEE

(3) GOSPEL SINGING JUBILEE

(3) GOSPEL SINGING JUBILEE

(3) GOSPEL SINGING JUBILEE

(3) GOSPEL SINGING JUBILEE

(3) GOSPEL SINGING JUBILEE

(3) GOSPEL SINGING JUBILEE

(3) GOSPEL SINGING JUBILEE

(3) GOSPEL SINGING JUBILEE

(3) GOSPEL SINGING JUBILEE

(3) GOSPEL SINGING JUBILEE

(3) GOSPEL SINGING JUBILEE

(3) GOSPEL SINGING JUBILEE

(3) GOSPEL SINGING JUBILEE

(3) GOSPEL SINGING JUBILEE

(3) GOSPEL SINGING JUBILEE

(3) GOSPEL SINGING JUBILEE

(3) GOSPEL SINGING JUBILEE

(3) GOSPEL SINGING JUBILEE

(3) GOSPEL SINGING JUBILEE

(3) GOSPEL SINGING JUBILEE

(3) GOSPEL SINGING JUBILEE

(3) GOSPEL SINGING JUBILEE

(3) GOSPEL SINGING JUBILEE

(3) GOSPEL SINGING JUBILEE

(3) GOSPEL SINGING JUBILEE

(3) GOSPEL SINGING JUBILEE

(3) GOSPEL SINGING JUBILEE

(3) GOSPEL SINGING JUBILEE

(3) GOSPEL SINGING JUBILEE

(3) GOSPEL SINGING JUBILEE

(3) GOSPEL SINGING JUBILEE

(3) GOSPEL SINGING JUBILEE



"SURE LOOKS FRIENDLY" - One of numerous youngsters who saw and touched farm animals on display Saturday afternoon in the parking lot of Wal-Mart looks at young calf. The animals were provided by Iowa Park FFA members.

LOOK WHO'S NEW

Cody Lynn Whitaker Jr. announces the birth of his new sister, Mia Gayle, born February 13. Parents of the children are Mr. and Mrs. Cody Whitaker.

The grandparents are Mr. and Mrs. Ed L. Goff, Mr. and Mrs. Toby Whitaker of Iowa Park, and Jimmy Stansbury of Garden City, Kansas. Great-grandparents are Mrs. Via, Mr. and Mrs. Alvin Jeter, Mr. and Mrs. Whitaker, all of Iowa Park, and Mr. and Mrs. Stansbury of Bowie, Texas.

Cole Tidwell leads services

Cole Tidwell, minister of the Lone Grove, Okla. Church of Christ, will be the speaker for a gospel meeting starting at the Iowa Park Church of Christ Sunday and continuing through Wednesday. Sunday services will be at 10:30 a.m. and 6 p.m. Services during the week will be at 7:30 p.m.

The minister is the son of Mr. and Mrs. E.E. Skinner of Iowa Park. He was graduated from Holliday High School, Oklahoma Christian College and East Central College at Ada, Okla. He and his wife, Jo Rheta, have two sons and a daughter.

Obituaries

Johnny Souther

Services for Johnny Souther, 31, were held Feb. 22 and burial was in the Electra Memorial Park under direction of Totten-Day Funeral Home.

He was born July 31, 1952, in Wichita Falls. He had been a longtime resident of Electra area and was an oil field worker.

He is survived by a daughter, Chastity Fay of Snyder; his mother, Frances Fay Souther; his father, Wayland Richard of Vernon; a sister, Gloria Jane Boren of Iowa Park; five brothers, Larry Ray of Vernon, Jerry Paul of Electra, and Jimmy Lee, Richard Darrell, and Bobby Jack, all of Wichita Falls.

Monte Jack Bradley

Monte Jack Bradley, 27, brother of Mary Lou Bradley of Iowa Park, was killed in an auto accident Sunday near Guthrie.

Graveside services were Tuesday in Fairview Cemetery in Memphis, with Rev. Buff Heard officiating. Burial was under direction of Seigler Funeral Home in Paducah. He was born Feb. 6, 1958, in Childress.

In addition to the sister, he is survived by his wife, Linda; a son, Raymond; a daughter, Mandy Ann, all of Guthrie; his parents, Mr. and Mrs. Bill Bradley of Memphis; his grandparents, Mr. and Mrs. R.J. (Rusty) Bradley of Electra and Mr. and Mrs. Ed Aiken of Thomas, Okla.

He was born May 8, 1900, in Atlanta, and had lived in Electra since 1919. He was a retired oilfield worker, a member of the First Baptist Church and of the Electra Masonic Lodge.

Survivors include two daughters, Wanda Crout of Watonga, Okla., and Neva Hyde of Eugene, Ore.; three sisters, Mattie Dinwiddie of Wichita Falls, Ruth Riddle of Holliday, and Gladys Fletcher of Whitesboro; two brothers, Alton Holbrook and Eschol Holbrook, both of Electra; five grandchildren; and six great-grandchildren.

Carl Dillard

Services will be at 10 a.m. today at Owens and Brumley Funeral Home in Burkburnett for Carl Dillard, 80, with Wayne Nance of First Baptist Church officiating. Burial will be in Highland Cemetery in Iowa Park.

Dillard was born March 13, 1903, in Rusk County. He was a member of the Methodist Church. He and Dollie Talley were married April 16, 1923, in Electra.

Survivors include his wife; one daughter, Margie Beaver of Wichita Falls; two sons, Carl Jr. of Crane and Dick of Kamay; one brother, H.F. of Holliday; 13 grandchildren; and 13 great-grandchildren.

FFA News

Scott Young, Kim Williams and Misty Hicks attended the Rider Livestock Judging contest Saturday where Misty was fourth high point individual and received a trophy and ribbon.

Miss Hicks, an Area Four officer, attended a meeting at Breckenridge recently where plans for the spring convention were made.

JUDGING TEAM WINS FIRST AT ARCHER CITY

Iowa Park FFA placed first among 14 teams in a land judging contest Tuesday at Archer City.

Members of the team were Kristi Wynn, Bobby Whisnand, David Williams and Dana Gray. Wynn was third-high individual.

The school's second team, made up of Tina Reasor, Larry Green, Tracy Young and Karen Johnson, did not place, but Reasor was high individual among all students participating.

SHOW CLINIC

A clinic for showing livestock will be held at 6:30 p.m. Friday at the FFA Ag Barn for all interested 4-H and FFA members.

Jo R. Carson

Services for Jo R. Carson, 89, a former Holliday resident, were Tuesday morning at Davis-Morris Funeral Home in Brownwood.

She was born March 13, 1894, in Fort Worth and moved to Brownwood with her parents as a child. She and H.M. "Monroe" Carson were married in 1909 in Brownwood. She lived in Holliday 37 years and returned to Brownwood in 1947. She was a member of Woodland Heights Church of Christ.

Survivors include three daughters, Faye Betts of Pryor, Okla., Estelle Moody of Aurora, Colo., and Odie Mae McCoy of Beeville; three sons, Robert L. of Brownwood, Dale and J.M. "Honeyboo," both of Wichita Falls; a sister, Lillian Ezra of Brownwood; a brother, U.O. Urban of Austin; 13 grandchildren; and 15 great-grandchildren.

Jessie V. Sellers

Services were Tuesday afternoon in the First Baptist Church in Holliday for Mrs. Jessie V. Sellers, 77, who died Saturday in a Wichita Falls hospital.

Rev. Mike Gresham, pastor, officiated, and burial was in the Holliday Cemetery under direction of Owens and Brumley Funeral Home.

Mrs. Sellers was born July 31, 1906, in Tarrant County and had lived in Holliday 60 years. She was a retired employee of Perkins-Timberlake and a member of the First Baptist Church.

She is survived by her husband, W.C. Sellers of Holliday; two sons, Cletus and James, both of Holliday; a daughter, Beatrice Holman of Seabrook; a sister, Mildred Gooding of Hobart, Okla.; eight grandchildren and seven great-grandchildren.

Nellie Katherine Clapp

Services were Saturday morning at First Presbyterian Church for Nellie Katherine Clapp, 85, with Dr. Earle W. Crawford, interim pastor, officiating. Burial was in Highland Cemetery under direction of Tanner-Aulds Funeral Home.

Mrs. Clapp was born Aug. 21, 1898, in Dallas. She had lived in Iowa Park since 1939 and was a member of First Presbyterian Church.

She is survived by two sons, John W. Jr. and Leslie B., both of Iowa Park; a sister, Mattie Shannon of Dallas; five grandchildren; and four great-grandchildren.

Pallbearers were Bob Perkins, Bill Glasgow, Mark Cotterly, Hubert Bradley, Bob Birk, and George Hammonds.

L.L.C. Hayes

Services for L.L.C. Hayes, 83, were held Friday at the First Baptist Church in Electra with Rev. William G. Etheredge, retired pastor, officiating. Burial was in Electra Memorial Park under direction of Totten-Day Funeral Home.

WE CARE ABOUT YOUR HEALTH WE CARE ABOUT YOUR HEALTH WE CARE ABOUT YOUR HEALTH

WAL-MART PHARMACY

592-4157

500 West Highway

DEBBI — CHRISTY
BONNIE — PATTY
& VESTA

WE CARE ABOUT YOUR HEALTH WE CARE ABOUT YOUR HEALTH WE CARE ABOUT YOUR HEALTH

TEKNIKA TEKNIKA TEKNIKA TEKNIKA TEKNIKA TEKNIKA TEKNIKA TEKNIKA TEKNIKA

TEKNIKA

...Japan's best-kept television brand secret!

We're closing out the entire inventory purchased from another dealer, and passing the savings to you.

YOUR CHOICE

- TEKNIKA 25" cable-ready, remote control, 105 channels, all-wood cabinets, one-button color. **\$699**
- TEKNIKA 19" 105 channel color with remote. **\$529**
- TEKNIKA 19" Deluxe Color, one-button color. **\$299**
- TEKNIKA 13" Deluxe Remote Color, energy-miser. **\$369**
- TEKNIKA 13" Color Portable memory-type tuning. **\$269**

All TEKNIKA sets have 5-year picture tube and 5-year parts warranties, and Video Care is an authorized TEKNIKA Service Center.

VIDEO CARE

Parkwest Shopping Center 592-5552

✓ Limited Supply
✓ Financing available with approved credit
✓ 25% down, 90-day payout and no interest if approved
✓ No Rain Checks

TEKNIKA TEKNIKA TEKNIKA TEKNIKA TEKNIKA TEKNIKA TEKNIKA TEKNIKA TEKNIKA

ALLSUP'S CONVENIENCE STORES

- WHILE SUPPLIES LAST
- SELF SERV GAS
- OPEN 24 HOURS
- FOR YOUR CONVENIENCE
- PRICES EFFECTIVE MARCH 1-3, 1984

REG., KING SIZE, NEW LIGHTS

FRITOS CORN CHIPS REG \$1.79 BAG **\$1.49**

ALLSUP'S FAST CONVENIENT **MONEY ORDERS** EACH **29¢**

NOW AVAILABLE AT ALLSUP'S **NO NONSENSE HOSIERY** LARGE SELECTION ALL SIZES AND COLORS

ALLSUP'S COOKED FOOD SPECIAL AS FEATURED **CHOPPED B.B.Q. SANDWICH** ON TV. **99¢** ENJOY THE TASTE OF REAL SOUTHWESTERN B.B.Q. EACH

ALLSUP'S NEW **HOT CHOCOLATE** 8 OZ. CUP **30¢** ASST. FLAVORS

BORDEN'S ICE CREAM 1 1/2 GAL. CTN **\$1.79**

COTTAGE CHEESE 12 OZ. CTN **79¢**

BORDEN'S HI-PRO MILK 1/2 GAL. CTN **\$1.19**

DR. PEPPER 6 Pack 12 oz. Cans **\$1.79**

NICE 'n SOFT BATHROOM TISSUE 4 Rolls **\$1.09**

SHURFINE FLOUR 5-Lb. Bag **69¢**

BUYING? SELLING? RENTING? HIRING?

WANT ADS PAY OFF

DEADLINES

10 A.M. WEDNESDAY (Word Ads Only)
4 P.M. TUESDAY, DISPLAY ADS

**SAVE 10¢ PER WORD FIRST
INSERTION BY PAYING
WITH COPY AT OFFICE**

**RATES:
20¢ PER WORD FIRST INSERTION
10¢ PER WORD EACH REPEAT**

HOMES FOR SALE

MOBILE HOME, 1 1/2 lots, fenced. Buy or assume payment, 592-9602. 2-16-4tp

REDUCED Corner lot across from Kidwell. 3 bedroom, 1 1/2 baths, family kitchen. Owner says sell it.

CLOSE TO CRYOVAC Priced to sell. 4-bedroom, 2 bath, brick home. Central heat, air. Very nice for the price.

JOAN SHIERY
592-5540
HIRSCHI REALTORS
692-8120 691-1212

REDUCED - 4 bedroom close to school. Nice home, fenced yard. Owner transferred. Appraisal price \$59,000. Asking \$57,900.

3 BEDROOM brick home, 1 1/2 baths, privacy fence. \$1 VA move-in or owner will pay closing costs. \$46,000.

3 BEDROOM Den with fireplace, privacy fence. VA appraisal \$50,000. **SOLD**

STARTER HOME - \$15,000. Good condition. Can be assumed. Payments \$125.00.

10 ACRES - 4 bedroom home, 2 baths, den, extra large kitchen. Barn, storm cellar, 100% minerals, capped oil well, Iowa Park school district.

3 BEDROOM RICK "Doubt" ready to move in. \$36,000. **SOLD**

COMPLETELY remodeled. Mint condition. 2 bedroom. Nice area. \$20,000.

LOVELY LARGE older home. Close to town. 3 bedrooms, formal dining and living, nice den, all built-ins. \$45,000. **SOLD**

19.8 ACRES - 2 stock tanks, good fishing, large barn. Double-wide trailer 1 mile north expressway on Huntington Lane. \$60,000.

7 - 50 FT. LOTS \$10,000. Good home sites.

3 BEDROOM brick - 2 bedroom separate unit, great for rental. Extra large lot. Allowance allowed for painting. \$60,000.

2 BEDROOM on 3 lots. Large lot, extra build. \$25,000. **SOLD**

If you are thinking of selling your home, call us. We have clients and need listings.

Member Multiple Listing

Shirley Rains
Real Estate

HOMETOWN REALTOR
Shirley Rains, Broker
Vincent Rains, Salesman
119 W. Park 592-4248
Iowa Park, Tex. 76367
Vincent Rains 592-4584

FOR SALE by owner - Three-bedroom, brick home with fireplace, 1 1/2 bath, utility room, 2-car garage, fenced yard and 10x14 storage. 592-5829. 2-9-4tp

FOR RENT

ONE BEDROOM furnished apartment for single or couple. Available March 14. \$175 month, \$125 deposit. 592-9473, 592-4585. 3-1-2tp

THREE BEDROOM house, 1 bath, fireplace. Call after 6 p.m. 592-4379. 3-1-1tc

MISC. FOR SALE

GARAGE SALE - 209 E. Garden. Baby items, baby swing, fishing supplies, weight bench, kitchen appliances and lots of misc. 8-2 Saturday only. 3-1-1tp

2 EVAPORATIVE coolers - 4200 cubic feet. 2 speed, used 2 weeks, cost over \$400 each, good buy at \$300 each. Also, slide-in camper (not cab over) for long wheel base, walk in door. Good condition \$300. Call 592-5685 see at 1004 S. Wall. 3-1-1tp

Great Starter Home

For young couple. 3 bedroom, 1 and 1/2 bath house for sale near Cryovac Plant.

LARRY RHOME
REAL ESTATE
Call 691-2500
or 691-7607

YES YOU CAN

Own this large three bedroom, livingroom, den diningroom. Over 1900 sq. ft. of floor space. \$59,500.

THREE BEDROOMS Large living room, formal dining, nice kitchen, 1 bath, single garage. \$29,900.

TWO BEDROOM One bath, livingroom, large kitchen & dining room. Good storage building. Lafayette. \$18,500.

THREE BEDROOM 1 1/2 baths, livingroom, family room. Large workshop.

TWO BEDROOM 1 bath, large livingroom, kitchen and den or third bedroom.

HEY LOOK Large home in Holiday, Tex. Three bedrooms, 2 baths, large corner lot. \$20,000.

PRICE REDUCED Two bedrooms, one bath, lovely paneling, single garage. \$26,500.

SUNSET Four bedrooms, 1 1/2 baths, nice garage, large lot, fenced yard. \$42,250.

Try The Action Co. I Think You Will Like Us

MEMBER
MULTIPLE LISTING
SERVICE

JOHNNY LEE
REAL ESTATE

592-2378
109 W. Cash

GARAGE SALE - Thurs. - Fri., 9-4, dinette set, clothes, lots of misc. 406 W. Diamond. 3-1-1tp

COUCH & CHAIR for sale. Matching color and style. Good condition. \$100. Call 592-2360. 3-1-1tp

9.N FORD TRACTOR top shape, tandem disc, 2 bottom plow and blade. 1213 So. Wall St. (alley). 3-1-2tp

1981 SUBARU station wagon, 18,000 miles, excellent condition, AM/FM cassette. \$7,000. Call 322-1364 after 6 p.m. 3-1-1tp

BUSINESS

CHILD CARE in my home. Days or nights, hot meals & low rates. By the day or week. Call 592-4975. 3-1-2tp

REGISTERED Home. Have openings Monday - Friday, ages 0-5. 592-2826. 3-1-1tp

REGISTERED Child Care, Monday - Friday. 592-2825. 3-1-5tc

Quail Run Apartments

1-2 Bdrm, Ground Floor, Central Heat & A/C. Appliances, Laundry. Close to school & public park. Starting at \$180 per month to qualified tenants. Gas & water paid. Call 592-5813.

PRICED TO SELL Older 3 bdrm., dining room, corner. Reduced. Owner-Broker. **SOLD**

RESTORED Large, older, 3 bdrm. & more. 4 lots. Corner. See to appreciate.

OUTSIDE CITY LIMITS Over 2 acres, orchard, garden, extra clean 3 bdrm., 2 bath mobile. Greenhouse. Much more. \$37,500.

IMMED. POSSESSION 14x80 lots. Corner. Call & make offer. Owner-Broker. **SOLD**

SMALL 3 ROOM House. Large corner lot, Pecan trees, Garden area. \$7,500.

NEED One acre or more. 150 to 200 acres, with or without home.

PRICE REDUCED 3 Bdrms., den, fireplace, heat/air, fresh paint, carpet. W. Rebecca. VA \$43,000.

MUST SELL Almost new 3 bdrm. Good floor plan, air/heat, \$40,000. VA.

TWO LOTS 2 BDRM. mobile, double garage with upstairs storage. Corner. \$14,000.

Established local realtors
Member Multiple Listing

Sam D. Hunter
Real Estate

107 E. Cash Ph. 592-4661

CHILD CARE Any age. 6:30 to 5:30. Fenced back yard and lots of toys. Lots of attention. References. 592-4090. 3-1-2tp

REGISTERED Child Care, Monday - Friday. 592-9055. 2-16-4tp

EXPERIENCED, mature private duty nurse will work in home, hospital or rest home, 592-5318, 592-5118. 3-1-1tp

COPIES MADE at Video Care. 20c each. 2-23-tfc

ROTOTILL your garden. Also will dig ditches. Have small ditching. Call 592-4517 after 4:30 p.m. 3-1-4tp

WILL ROTOTILL your garden. Please call 592-5649 after 3:30. 3-1-2tp

ROTOTILLING & ditch with work. Call 592-4517 after 4:30. 2-23-2tp

WILL BUY cattle, sheep, goats, hogs. Smith, 592-9368. 2-16-4tp

AUTO, BOAT and furniture upholstery repair. Vinyl repair. Call Kamay, 1-438-2243. 2-23-tfc

DOUBLE "M" Beauty Shop. Taking late appointments, ask for Diana, 592-5815 or 592-5274. 2-23-2tp

There's no place like your home!

TWO ACRE track in Arrowhead Estates has a brand new 3 bedroom home on it. Two living areas each with its own fireplace. Energy efficient. Ready now! \$105,000.

QUAIL VALLEY is the quiet setting for this 3 bedroom custom built home on 5 acres. Large den with wet bar. Brick fireplace covers one wall. Kitchen has lots of cabinets plus built-in desk. Metal barn, shed & tack room. Cross fenced. Great for horse lovers! \$127,500.

ALPHA REALTORS
692-1800
The Gallery OF HOMES

Toll Free 1-800-453-1851

DYNAMIC REALTORS
855-6823

LOOK AT THESE SPECIAL IOWA PARK PROPERTIES

QUAIL VALLEY: Beautiful 3 bdrm, 2 bath, 2 garage on 5.75 acres; exceptional decor, stock tank, barn, kennels: \$129,500.00

W. REBECCA: Rambling Ranch, 3 bdrm, 2 1/2 bath, 2 garage, computer connection, central heat/air, equipped kitchen: Mid 60's.

EMMA: Storm Cellar w/inside access. Lovely brick home, central heat/air, 3 bdrms, 1.75 bath, 2 garage: upper 30's.

NORTH 3rd & WEST TEXAS: 5.8 acres in good commercial area. High traffic count. Upper 40's.

PARK PLAZA: Cozy fireplace in den, 3 bdrm, 1 1/2 bath, well insulated, work shop, central heat/air, covered patio, upper 30's.

MAGNOLIA: TWO FIREPLACES! This lovely 3 bdrm 1 1/2 bath, 2 garage home has everything, mid 60's.

VAN HORN: put a crackling log on the fireplace & relax in the cozy den, 3 bdrm, 1 1/2 bath, 2 garage, central heat/air: upper 40's.

YUCCA: Fantastic Dream home on 1.72 acres, executive area, 4 bdrm, 2 bath, huge den, garage, low 100's.

The Only Company with VIDEO REALTY
Call us to VIDEO tape your home

GENERAL SHELTERS of Texas, Inc. is seeking a dealer in Wichita Co. for retail sales of portable buildings. Lot and small investment required. Excellent opportunity to expand existing business with low risk. Contact Mike Wulf, General Manager 817/422-4547. 2-16-4tp

MARY KAY COSMETICS Allie Girard, consultant, 109 W. Poe, 592-4217. 1-6-tfc

STORM WINDOWS - Machine-blown insulation. Roof turbines installed. Free estimates. Jack Kerr, 215 S. Wall, 592-9040, 438-2941. 7-7-tfc

BLACK POWDER GUNS and accessories, revolvers \$50 and up. Powder \$4.80 lb. Will order modern guns for 10%-over cost. Ye Ole Gun Shack, 413 W. Washington, 592-5430. 1-6-tfc

FOR YOUR COPY NEEDS including reduction and enlargement, call Iowa Park Air Conditioning, 592-5891, or come by 609 W. Bank. Charges 20 cents a copy (less for quantities). 10-6-tfc

ROOFING - Wolfe Roofing Co. Phone 855-5657. 10-6-tfc

PRIVATE FENCE sales and installation. Charles Skelton, phone 592-5190. 1-6-tfc

BUILDING, remodeling, or repair, additions, carports, patios. Free estimates. Call day or night Billy McDonald 592-4338, Phil McDonald, 592-2363. 11-17-tfc

VIA CONSTRUCTION - Roofing or Remodeling, Paneling or Painting. Free Estimates. All work guaranteed. Discounts to Senior Citizens. Call Jimmy Via, 592-5200. 2-9-8tp

REMODELING? Do you need another room added on? A garage? Walls removed or added? Free estimates. References. Jack Kerr, 215 S. Wall, 592-9040, 438-2941. 7-7-tfc

MONOGRAMMING service 592-9850. 1-5-10tp

TOLER'S FOLK ART, 810 S. Yosemite, Iowa Park. 592-5862. 1-5-13tp

BUZBEE ROOFING & Painting. 592-4846 or 569-3493. All work guaranteed. 1-5-17tp

BURK SAND, Yards, Clean Up. Don Hallum, 804 N. Wall. 592-4365. 1-7-tfc

LADY FINELE natural cosmetics at reasonable prices. Call Annetta Reusch, 592-9001 for a free facial. 1-6-tfc

MARY KAY Cosmetics, Ann Moore, 592-4752.

GARDENING MONTH

PLANTS AND BULK SEED
Hybrid and standard varieties
- We grow our own plants

GARDEN, MARKET AND COMMERCIAL
Tomato varieties are grown and weighed separately, with records kept.
Bulk seeds for garden and market growers * Tomato rings with or without drip systems * Moisture meters and soil thermometers to monitor your soil * Growers and farmers, good for hanging baskets * 63-day hybrid sweet corn, also gol cross * Garlic sets * A good selection of tomato, peppers and other vegetable plants * Past and present testing of all vegetable varieties done for eight years.

Baker's Greenhouse
1 mile S. of Iowa Park Rd. on Bell Rd.

"MONEY WHEN YOU NEED IT"
Loans on most anything of value
SOUTHWEST SALES & LOANS
4423 Hwy 80. 592-1271

LOSE WEIGHT NOW ASK ME HOW

Are you REALLY interested in losing weight? If I could show you a program that supplies all of the daily nutritional needs, and you could lose 10-29 pounds per month, is 100% money back guaranteed, would you be interested in hearing about it? It's completely natural and it's healthy for you, because it is herbs & vitamins. It's fun, it's easy and best of all, you feel great! If you'd like to learn more about it, call your Herbalife Distributor - Lil Smith, 592-4332, 691-1259.

True Value HARDWARE STORES

TOOL VALUE OF THE MONTH
Master MECHANIC®
21-in. Pruner w/Grip
Sturdy tubular-steel frame with tension handle. Blade changes are easy. MMP21P
Quantities Limited

True Value HARDWARE STORES

BARGAIN OF THE MONTH
FSKARS
4.99 White Supplies Last
2-Pc. Scissors Set
8-in. and Shortcut™ scissors with the original orange handles. 10M24D/12
Quantities Limited

PARKWAY
HARDWARE True Value FURNITURE
592-4681 200 - 206 West Bank 592-5512

SHAW SPECIALS

'81 BLAZER
305, automatic, air, power, Silverado. Lots of other equipment. Local owner. 46,000 miles. \$9250

'80 DODGE PICKUP
Long wide, Prospector, 318, automatic, air, power, Tu-tone. 60,000 miles. \$4350

'80 MONZA 2+2
V-6 automatic, air, power. Clean as a pin! \$3575

'79 COURIER PICKUP
Long bed, 4-cylinder, 5-speed, air, radial tires. Local owner, low mileage \$2995

'79 DODGE ASPEN
4-door, 6-cylinder, automatic, air, power. High mileage, but extra clean. \$2495

'79 THUNDERBIRD
V-8, automatic, air, power. Lots of other options. Local one owner. \$4395

'78 MUSTANG 2+2
V-6, automatic, air, power, local owner. \$2995

30 OTHER CARS AND PICKUPS TO CHOOSE FROM

Shaw Motor Co.
Iowa Park 592-4106

Colonial Heights Apartments
Magnolia St. at Johnson Rd.
IOWA PARK

One and two-bedroom apartments, energy efficient, central heat/air, total electric appliances, fully carpeted and draped. Children's play area. Off-street parking. Fully equipped laundry room. Month to month rent starting at \$181.00 for one bedroom, and \$220.00 for two bedroom apartment (to qualified persons). Water paid.

CALL 592-2705
EQUAL HOUSING

We service all makes of washers, dryers, freezers, refrigerators and window air conditioners.

POSEY'S APPLIANCE SERVICE
208 James Ph. 592-5452 Iowa Park

Finnell appointed to Interstate Oil Commission

State Rep. Charles Finnell of Holliday was appointed recently to the Interstate Oil Compact Commission by Governor Mark White, with the term to continue at the pleasure

of Gov. White.

Finnell was appointed to serve on the Public Lands Committee of the Commission, along with Senator Bill

Sims, Senator Glenn Kothmann, and Rep. Jerry Clark.

Screening clinic set

The Texas Department of Health will conduct a screening clinic from 1 until 3 p.m. Monday, March 12 at the Holliday Elementary School, according to Zander Underwood, public health nurse.

Screening tests will be offered for blood pressure, diabetes, anemia, height, weight, and skin disorders. Underwood said if any abnormality is found, the person will be referred to the physician of their choice.

NOTICE OF APPLICATION FOR PLUID INJECTION WELL PERMIT

Curtis R. Inman, Box 2137, Midland, Texas 79702 has applied to the Railroad Commission of Texas for a permit to inject fluid into a formation which is productive of oil or gas.

The applicant proposed to inject fluid into the 1500' Sand, J.&J. Waggoner "A", Well Number 1708. The proposed injection well is located 7 miles SE of Electra in the Regular Field, in Wichita County. Fluid will be injected into strata in the subsurface depth interval from 1512 to 1524 feet.

LEGAL AUTHORITY: Chapter 27 of the Texas Water Code, as amended, Title 3 of the Natural Resources Code, as amended, and the Statewide Rules of the Oil and Gas Division of the Railroad Commission of Texas.

Requests for a public hearing from persons who can show they are adversely affected, or requests for further information concerning any aspect of the application should be submitted in writing, within fifteen days of publication, to the Underground Injection Control Section, Oil and Gas Division, Railroad Commission of Texas, Drawer 12667, Capitol Station, Austin, Texas 78711 (Telephone 512-445-1373).

3-1-1te

NOTICE

PUBLIC NOTICE

The City of Iowa Park, Texas, is accepting sealed bids on a Burroughs L800 posting machine until 10:00 A.M. on Thursday, March 22, 1984. Questions may be directed to James Barrington at (817)592-2131 or the machine may be viewed at City Hall, 108 North Wall, P.O. Box 190, Iowa Park, Texas, 78387.

PUBLIC NOTICE


The Board of Adjustment of the City of Iowa Park, Texas, will meet on March 29, 1984, at 5:30 P.M., in the City Council Chamber to conduct Public Hearings and consider the issuance of Variances for the following items:

1. A request by Mr. Jim A. Isbell to grant a variance for Lots 19, 20, 21, and 22 of Block 158, Original Townsite to provide a 10 foot set back from the right-of-way to align with other houses in the block.
 2. A request by J.C. Meardon, Inc. for a variance on Lots 8 and 9 and 50 feet on the east of Lot 7 of Block 114, Original Townsite to provide a church building in a previously nonconforming use on a lot of less than one acre in size.
- All individuals wishing to provide comment in favor of or against either variance may do so in writing prior to the meeting or in person at the meeting. All meetings are open to the public.

3-1-1te

NEW AT NEW NEARLY NEW
STANLEY HOME PRODUCTS
 410 Park West Center
 Ph. 592-9563

Southwest Bail Bonds
 City, County & Credit Bonds
 24-Hour Service
 Confidential Assistance
 592-1397

GUTTERING and PARTS in stock

SHAMBERGER BUILDING CENTERS
 PHONE 592-4171
 102 SO. VICTORIA IOWA PARK, TEXAS

Lawnmower Repair Service
SINGLETON'S
 505 W. Highway 592-2671

B&W Garage & Roustabout Service
 Truck - Auto - Stationary Engine Repair
 Tank Batteries Painted (592-2871 shop)
 Brownie 592-4402 504 S. Colorado Weldon 592-5227

Patty Cake Nursery School
 ..now taking kids on Mom's Day Off!
 DIRECTIONS: North on Bell Rd. across U.S. 287, turn right (east) on Rogers Rd. just past Gilmore's yard, 1/4-mile to house, look for sign.
 592-2926 592-2398

Kuntry Klass
PACKAGE STORE
 (Formerly B.J.'s & Bob's)
 4100 Old I.P. Road 592-6702
 Betty Guyette, Owner

NEW NEARLY NEW
 410 Park West Center
SPRING PREVIEW
 Open This Saturday
 From 1 - 5 p.m.
STANLEY HOME PRODUCTS AVAILABLE HERE
 Open Tues. - Thurs. 9:30 a.m. - 5 p.m.
 Friday 1 - 5 p.m.
MEN - WOMEN - CHILDREN CLOTHES
 We are a consignment shop

IOWA PARK Air Conditioning & Heating
 Service On All Makes
 Engineering Sales
 607 W. Bank
FRANK GUYETTE
PHONE 592-5891

Bud Mercer Electric Co.
 Residential & Commercial
 BUD MERCER, Owner Phone 592-6413
 HARDEN HILL Phone 592-2688

AYRES TIRE
 592-5621
 Expressway & Johnson Rd.
 Cooper B.F. Goodrich Propane
 Used Tires Diesel
 Mechanical Work

E&S Exxon
 *Tune-ups *Brakes
 *Front-end alignment
 592-4897 *Custom exhausts
 612 W. Highway *Computer balance

Palm & Card Readings by Sister Mary
 I give never failing advice upon all matters.
 Courtship, marriage, divorce, love, quarrels, I will tell you what you want to know about your past, present and future. I will bring peace and happiness into your home if you have husband, wife or sweetheart problems guaranteed to help you solve them.
 3309 Kemp Blvd. PALM READINGS 591-0752
 Across the street from Kettle Restaurant only \$5.00
 5-11 pm
 Wichita Falls, TX

Holliday News



Lady Eagles land four on All-District list 4

Four Holliday Lady Eagle basketball players, all underclassmen, were named to the All-District team for District 11-AA this year, resulting from a recent coaches' poll, said coach Steve Melhaney Tuesday.

The team members from Holliday's record-setting women's team include three juniors and a sophomore, with two each listed on the first and second

team, and one selected as honorable mention.

The complete All-District list for 1984 is as follows:

FIRST TEAM: Cheryl Lowder, Holliday, Jr.; Jana Harmon, Holliday, Soph.; Traci Daniel, Petrolia, Jr.; Lisa Lewis, Olney, Soph.; Nicki Greenhaw, Olney, Jr.; Sandra Doggin, A.C. Sr.; Tiffany Mansbridge, Henrietta, Jr.

SECOND TEAM: Baffle Broyles, Holliday, Jr.; Vicki Adams, Petrolia, Jr.; Teresa Ross, Olney, Sr.; Lisa Stennett, Olney, Sr.; Kim Marney, A.C. Sr.; Teresa Hamilton, Henrietta, Jr.

Tammy Stevens of Holliday, also a junior, was listed as honorable mention, according to Melhaney.

The Lady Eagles overcame an unspectacular regular season, playing around the 500 mark, to take Ohio for runnerup in District 11-AA behind Olney, then won the first women's bi-district contest ever played by a Holliday team against Hico one week later in Graham. The girls were outlasted in Knox City in the area playoffs by a senior-laden Anson team.

Lions slate pancake feed

The Holliday Lions Club will hold a pancake supper from 5 to 8 p.m. tomorrow in the Holliday High School Cafeteria, according to Lions member Douglas Thomas.

Thomas said the supper, held each year to finance local projects, will cost \$2.50 per person for all one can eat.

Included in the club's project list is the purchase of glasses for underprivileged children locally, and to send a couple of local youth to summer camp.

King's Kids Christian Day Care & Preschool
 "Iowa Park's Finest For Parents Who Care"
 Ages 2-Yrs & Older
 Monday thru Friday
 7 a.m. to 6 p.m.
 202 N. Jackson 592-4242

IOWA PARK V.F.D.

EMERGENCY MEDICAL SERVICE
592-2181
 Public Service Message



Twice, the U.S. has had three different Presidents in a single year: Van Buren, W. Harrison and Tyler in 1841; Hayes, Garfield and Arthur in 1881.

Area oil, gas report

The No. 1 Richardson Two has been finished by Ken Ellis Oil Co. of Wichita Falls.

It is a developmental well in the Beaver Creek Field, seven miles west of Kamay. Drillite is in a 140-acre lease in Wichita County's H&TCRR Survey, Sec. 28, Blk. 7.

Daily potential of 21 barrels was posted with the Railroad Commission. The well went to a 4,424-ft. bottom. Production will be from perforations 3,738 to 3,740 feet into the wellbore.

The well is 680 feet from the south line and 330 feet from the west line of the lease and the survey.

At a location six miles southwest of Iowa Park, S&J Operating Co. of Wichita Falls has finished a new oil producer in the Wichita Regular Field.

The well is designated as the No. 39 Hammon Foe, pumping oil at the rate

of 20 barrels per day.

Location is in a 409-acre lease in the ETRR Survey, A-782. Bottomed at 1,475 to 1,445 feet into the hole.

The well is 487 feet from the west line and 1,250 feet from the north line of the lease and survey.

Hull Oil Co. of Wichita Falls has revealed plans to drill two 1,700-ft. developmental wells in the Wichita Regular Field. The operator has 132 acres leased, with drillite in the GC&SPRR Survey, A-772 and has designated the ventures as the Nos. 4 and 5 J&J Waggoner "B". Drillite is six miles southeast of Electra.

The No. 4 well is 450 feet from the west line and 450 feet from the south line of the lease and 450 feet from the west line and 80 feet from the south line of the survey.

The No. 5 well is 150 feet from the south line and 1,075 feet from the east

Thursday, March 1
 Breakfast: Pancakes, syrup, butter, sausage.

Lunch: Chicken and noodles, cranberry sauce, whipped potatoes, English peas, milk, bread, peaches.

Friday, March 2
 Breakfast: Toast, jelly, butter, milk.
 Lunch: Beef ravioli, beans, potatoes, crackers, milk, jello.

Monday, March 5
 Breakfast: Cinnamon roll, juice, milk.
 Lunch: Chicken nuggets, creamed potatoes, gravy, green beans, hot rolls, fruit.

Tuesday, March 6
 Breakfast: Oatmeal, bacon, toast, milk.
 Lunch: Prito chili pie, corn, salad, cheese, milk, strawberry banana delight.

Wednesday, March 7
 Breakfast: Prosted flakes, milk, fruit.
 Lunch: Hamburgers, lettuce, tomatoes, onions, pickles, ice cream, milk.

Thursday, March 8
 Breakfast: Waffles, syrup, sausage, milk.
 Lunch: Enchiladas, salad, beans, milk, butter, fruit.

Friday, March 9
 Breakfast: Biscuits, gravy, fruit, milk.
 Lunch: Fish, macaroni and cheese, tartar sauce, salad, cake, bread.

MARCH 12 thru MARCH 16
 SPRING BREAK

Friday, March 9
 Breakfast: Biscuits, gravy, fruit, milk.
 Lunch: Fish, macaroni and cheese, tartar sauce, salad, cake, bread.

MARCH 12 thru MARCH 16
 SPRING BREAK

MARCH 12 thru MARCH 16
 SPRING BREAK

MARCH 12 thru MARCH 16
 SPRING BREAK

MARCH 12 thru MARCH 16
 SPRING BREAK

MARCH 12 thru MARCH 16
 SPRING BREAK

MARCH 12 thru MARCH 16
 SPRING BREAK

MARCH 12 thru MARCH 16
 SPRING BREAK

MARCH 12 thru MARCH 16
 SPRING BREAK

MARCH 12 thru MARCH 16
 SPRING BREAK

MARCH 12 thru MARCH 16
 SPRING BREAK

MARCH 12 thru MARCH 16
 SPRING BREAK

MARCH 12 thru MARCH 16
 SPRING BREAK

MARCH 12 thru MARCH 16
 SPRING BREAK

MARCH 12 thru MARCH 16
 SPRING BREAK

MARCH 12 thru MARCH 16
 SPRING BREAK

MARCH 12 thru MARCH 16
 SPRING BREAK

MARCH 12 thru MARCH 16
 SPRING BREAK

MARCH 12 thru MARCH 16
 SPRING BREAK

MARCH 12 thru MARCH 16
 SPRING BREAK

MARCH 12 thru MARCH 16
 SPRING BREAK

MARCH 12 thru MARCH 16
 SPRING BREAK

MARCH 12 thru MARCH 16
 SPRING BREAK

MARCH 12 thru MARCH 16
 SPRING BREAK

MARCH 12 thru MARCH 16
 SPRING BREAK

MARCH 12 thru MARCH 16
 SPRING BREAK

MARCH 12 thru MARCH 16
 SPRING BREAK

MARCH 12 thru MARCH 16
 SPRING BREAK

MARCH 12 thru MARCH 16
 SPRING BREAK

MARCH 12 thru MARCH 16
 SPRING BREAK

MARCH 12 thru MARCH 16
 SPRING BREAK

MARCH 12 thru MARCH 16
 SPRING BREAK

The Silver Spur
 1400 1/2 Old Iowa Park Rd.
 Phone 767-1242
 D.J. playing Sunday thru Wednesday playing your favorite C&W and Rock
Friday & Saturday LIVE COUNTRY & WESTERN BAND!
SUN. — Mixed Pool Tourney. Happy Hour All Night
MON. — Spur Night Cover charge \$4
TUES. — Women's Pool Tourney 8 p.m.
WED. — Free Dance Lessons
THUR. — Men's Pool Tourney 8 p.m.
FRI. — Spur Nite Cover charge \$5
1-MONTH FREE MEMBERSHIP!
 Private Club for Members and Guests

Wichita County's KMA Field gained a new producer when Hardy L. Gage of Wichita Falls completed the No. 1 Thompson ten miles southeast of Iowa Park.

The well indicated ability to pump at the rate of ten barrels per day. It was taken to a 4,300-ft. bottom and will produce from perforations 4,134 to 4,300 feet into the wellbore.

The operation is in a 40-acre lease in the Cowherd Brothers Survey.

The well is 330 feet from the south line and 500 feet from the east line of the lease and the survey.

S&J Operating Co. of Wichita Falls has filed first production figures on two new oil wells in the Wichita Regular Field. The Nos. 37 & 35 Passett & Tuttle showed combined potential to make 12 barrels of oil per day.

The operator has 794 acres leased, with drillite in the Col. Tap RR Survey, A-749, six miles southwest of Iowa Park.

Bottomed at 989 feet, the wells will produce from perforations ranging from 608 to 954 feet into the hole.

The No. 37 well is 150 feet from the south line and 150 feet from the west line of the lease and the survey.

The No. 35 well is 450 feet from the north line and 570 feet from the west line of the lease and the survey.

A 1,000-ft. developmental well is planned by Loe Mae Co. of Ft. Worth at a drillite five miles south-southwest of Iowa Park. The location is in a 217-acre lease in the L. Netherly Survey, A-240. Well's designation is the No. 8 Lochridge "B". It is in the Wichita Regular Field.