

1984
Feb 9

EARL WATSON
520 W. CLARA
IOWA PARK TX 76367 112



GRASSFIRE - Homeowners and two trucks from the Iowa Park Volunteer Fire Department fought a grassfire Tuesday afternoon on Wellington Lane. Apparently started by burning trash, flames quickly spread in the dry grass with the help of a southerly wind, and threatened several homes and outbuildings.

City, school elections to be called next week

Both the city and school elections will be called next week.

The city council will meet for the first time in three weeks at 7 p.m. Monday in council chambers, and the school board meeting will begin at 7:30 p.m. Tuesday in the administration building.

Besides calling for an election in April to name a mayor and two aldermen, the council will also call for a vote to change the city's charter from a general laws to home rule. Part of their discussion Monday will be names to appear on the ballot as candidates for the charter commission.

Aldermen will also consider acting on an ordinance to annex a 72-acre tract into the northwest part of the city. Proposed by developer Rip Smith, action on annexation was tabled at the last meeting for changes in the legal description.

Another ordinance which will be considered is establishing fire zones in parking areas around apartments. Specifically proposed for Colonial Heights Apartments, an ordinance is required before fire zones can be overseen by the police department.

Two resolutions will be considered by the council. One would accept the 1982-83 city audit report, and the other would permit spending some \$7,400 left over from bonds sold to build ground storage structures for the purchase of water pipe.

Aldermen will accept or reject the one bid received to sell the corner lot across the street north from city hall, site of the old Park Hotel which was donated for use of the library. Administrator James Barrington said the bid was \$4,039.

The council may take action on appointing two positions on the Planning and Zoning Commission. Three-year terms of Kenny Jones and

David Padgett expire at the end of this month.

Billy Gilmore has asked for a public appearance before the council, concerning the alley behind his home.

Under the administrator's report on the agenda are: speed zones on state roads inside the city, which are part of an amendment changing speed zones considered last month; plans for library construction work, and names for the charter commission.

TRUSTEE MEETING

School trustees will call their election for April. Terms of Jerold Brown and Rex Wells expire this spring.

Contracts for all principals and other key personnel of the school district will be considered for extension.

Also on the board's agenda is the adoption of the 1984-85 school year calendar.

Senior Citizens to attend events

Iowa Park's school district is inviting all Senior Citizens to attend future school functions, with the exception of varsity football games, free of charge.

Supt. Harold Cowley this week issued an invitation to all persons 65 years of age or older to register for "Senior Citizens Activity Club" membership cards. The accompanying form can be used, or forms can also be obtained at the school administration office.

Cowley explained the members are certainly welcome to attend all varsity football games, but the school must charge regular admission prices, because gate receipts are divided between the two schools playing,

as in the district and University Interscholastic League rule.

Cards can be used for all other athletic events, as well as plays, concerts and similar activities.

"We consider you (Senior Citizens) a vital part of our community and have always appreciated the support you have provided our schools. We will be proud to have you participate more fully in our many activities and hope you will take advantage of the opportunity," Cowley wrote in his letter of invitation.

After forms are completed and delivered or sent to the administration office, membership cards will be issued at that time, either in person or by mail.

APPLICATION FOR SENIOR CITIZEN'S ACTIVITY CARD

Name _____
Address _____
Phone _____ Age _____

IOWA PARK LEADER

25 Cents

Vol. 15, No. 21 IOWA PARK, WICHITA COUNTY, TEXAS 76367 THURSDAY, FEBRUARY 9, 1984

Hawkettes need help to get out of district

If Coach Ray Sefcik's Hawkettes are going to be back in the state playoffs again this year, they're going to have to beat Mineral Wells there tonight, and count on Burkburnett defeating guest Azle.

It will take that combination for Iowa Park and Azle to wind up in a tie for second place, in which case league rules would require a one-game playoff to determine which advances out of district.

Both teams have been running neck and neck behind Vernon the past couple of weeks. . . until Tuesday night. Iowa Park lost to the state's 10th rated team here, 60-48, while Azle was besting Boswell, 54-43.

The Hawkettes have beaten Azle in both meetings this year, but stand at

8-5 in district play while Azle is 9-4. Vernon is 12-1 against conference opponents.

Turnovers were Iowa Park's main problem Tuesday. Vernon jumped out to a whopping 18-9 lead by the end of the first quarter, but the Hawkettes cut that to four points, 26-20 by the half.

During the second half, Vernon would extend its lead, only to have it cut to the six-point spread at least four times.

Three Hawkette starters were on the bench at the final buzzer. Dana Trantham and Lisa Sefcik both went by the foul route, and Lisa Selby injured a knee and was sidelined.

Lisa Holloway led the Hawkettes in scoring with 16 points. Sefcik had 13

and Selby 12.

The girls had stayed in the race with Azle through Friday with a 58-47 win over Gainesville. Michelle Smith led scoring with 15 points, Trantham had 14 and Selby 10.

In tonight's action, the Hawkette JV is to start at 5 followed by the varsity game.

HAWKS LOSE PAIR

Vernon's Lions pulled into a tie with Burkburnett for second place Tuesday night, but they had to escape the Hawks in an overtime while the Bulldogs were upsetting league-leading Hirschi.

Vernon jumped out to a 14-11 lead at the end of the first quarter and held onto a 27-25 edge at the half.

In the third, the Hawks took a four-point lead, but the Lions battled back to a 43-43 tie going into the fourth period. With the score tied at 56-56, the Lions took a time out with 56 seconds remaining in the game and decided to go for the final,

game-winning shot.

But it didn't work, and the game went into overtime.

The Lions got a three-point lead early and went into a stall. That was cut to one, but the Lions continued their stall, and went to the foul line with 19 and 12 seconds to build enough lead to win, 64-60.

Actually, Iowa Park outscored the visitors from the floor, with the Hawks sinking 24 field goals to Vernon's 22. Neither team was especially hot at the foul line, but Vernon sank 20 of 37 attempts to Iowa Park's 12 of 22.

Lee Birk had 14 points to lead Hawk scorers. Steven Biddy and Robert Harper each had 12.

Gainesville's Leopards pretty well had things their own way Friday, in their own gym. They kept increasing their lead in each quarter, 23-15, 44-33, 59-44, and going on to win, 82-60.

Robert Harper and Ray Sefcik both finished in double figures, 14 and 11 respectively.

With three more games on their schedule, the Hawks travel to Mineral Wells Friday night, and stay at home to host Burkburnett Tuesday and Azle the following Friday.

The junior varsity will play at 5 p.m. on each of those three dates, with the varsity following.

JUNIOR VARSITY GAMES

The Hawk junior varsity dropped both its last two games. Gainesville won, 57-44, and Vernon, 49-32. Shawn Chambers had 18 points against Gainesville and Mark Copeland was held to seven by Vernon.

The Hawkette JV ran away and hid from both Gainesville and Vernon. Sherrie Schweiss had 15 in leading Iowa Park past Gainesville, 50-27, and racked up 20 in the 44-27 win over Vernon.

Lee won't seek return as mayor

Charlie Lee has confirmed he will not seek re-election as mayor of Iowa Park, after serving one term in that post.

Tim Hunter, who is completing his first year as alderman, Monday filed as a candidate for mayor.

Terms of two aldermen also expire this spring: George Hammonds and Bud Thompson.

Hammonds told the Leader Tuesday that he did not plan to run again in the April election. Thompson was not available for comment on his plans.

Lee had served one year as alderman before successfully running for mayor.

SALES TAXES

Holiday up, Iowa Park down

Iowa Park and Holiday switched in their sales tax positions held most of last year, according to the report published this week by the state comptroller's office.

For a change, Iowa Park is listed in the minus column and Holiday in the gain, when compared with the same two-month period last year.

Iowa Park received a check for \$13,041.04 for sales taxes collected during January, down from the \$16,295.13 reported for the same month in 1983.

Combining the checks received in January and February, Iowa Park has received \$21,907.21, which is 8.59 percent less than the \$23,964.94 received a year ago.

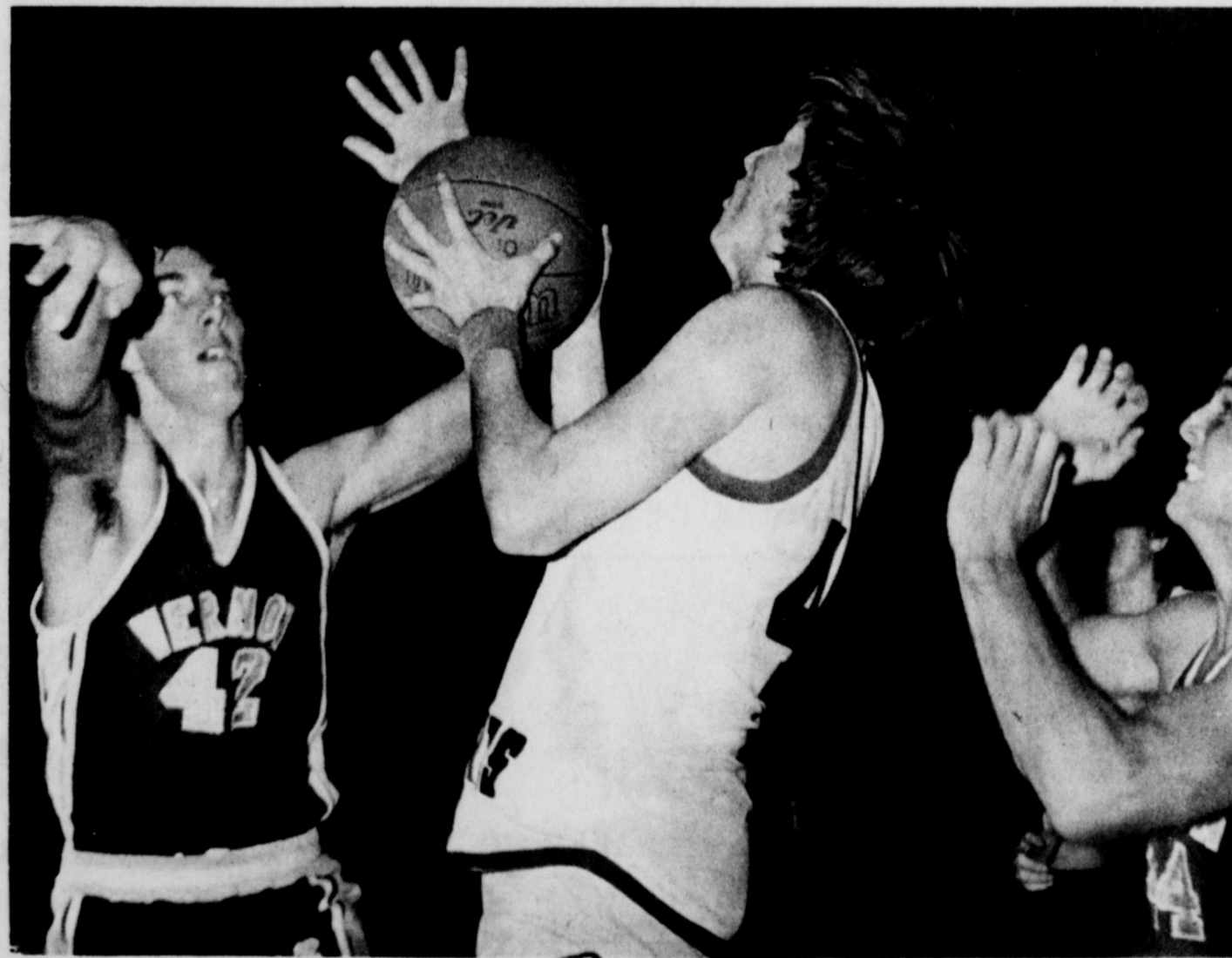
Holiday, on the other hand, received \$10,584.36 this month, giving that city \$16,695.86 for the year, an increase of 20.81 percent over last year. In 1982, February's check was for \$7,669.08, making the two-month sum \$13,819.94.

Wichita County is running 6.55 percent less than last year, according to the report. Wichita Falls is 7.2 percent below last year, but Electra is 1.97 above and Burkburnett is 3.47 percent greater than this time last year.

Overall, Archer County shows a 23.86 percent increase over 1982.



LISA SEFCIK HAS BALL KNOCKED FROM GRASP



ROBERT HARPER BATTLES TO SCORE AGAINST VERNON'S LIONS

Former principal gives schools passing grade

The 23 Study Club's annual education program Thursday afternoon featured an address on "Iowa Park Schools in Review" by Miss Ethyle Kidwell, and a talk by Col. Joe Dotson, Ret., Special Olympics Director, North Texas Area.

The meeting was held at the home of Mrs. Bill Bates and Mrs. Keith Aulds was the co-hostess.

Mrs. Earle Denny served as program leader for the afternoon. Mrs. James A. Sewell presented the meditation on "Daily Living."

The arts number featured Mrs. O.R. Moore who gave a lecture and demonstration on Eggerly that held club members spellbound. She got interested in egg artistry four years ago and during the short time has won numerous awards for her creations. She attends shows at

Dallas, San Francisco and Washington, D.C. each year where she exhibits her works and takes further instructions.

From her treasure trove of decorative rhea, turkey, goose, quail, ostrich, pheasant, duck and very rare swan eggs, she showed some of her jewel boxes with Austrian rhinestones, sculptured pieces with bread dough accents, nature and seasonal scenes. She also showed delicate eggery jewelry.

Introduced by Mrs. Erwin F. Soell, Col. Dotson gave an informative talk on Special Olympics in this area showing how the mentally retarded have benefited and how some have had personal success through participation in the program.

He said that Special Olympics, a

worldwide sports training for mentally retarded started in 1968 under the Joe Kennedy Jr. Foundation. The program was adopted in 1973 by the Wichita Falls Kiwanis Club and the first track meet was held in 1974 with 67 children and adults taking part.

Col. Dotson announced the Special Olympics basketball competition which will be held at Burkburnett High School Saturday and the annual track day the first Saturday in May and invited club members to attend.

"Schools all over the nation have been under fire for a number of years, and one national educator remarked that education now rates C plus because society as a whole rates no higher than that," Miss Kidwell said to introduce her talk. She was proud to say that schools over the nation are trying to stage a comeback and that nothing has happened that parents and teachers cannot correct.

Realizing that the Iowa Park schools have some problems common to all schools, she said that they have never dropped to the level that many schools have. In preparation for her address, Miss Kidwell visited and was given a tour of the four schools and West Wichita County Cooperative in Iowa Park.

At Iowa Park Junior High School, the first one that she visited, she was favorably impressed with the well-equipped library where the librarian teaches reading skills to sixth graders in addition to the scheduled reading classes with their reading teachers; the five-year math program now in its second year; the

results of the Texas Assessment Basic Skills given each year to third, fifth and ninth grade students; and the remedial math program for all grades in junior high school.

At Kidwell Elementary School for the kindergarten, first and second grade students, Miss Kidwell became aware of the excellent curriculum guides made by the teachers; the full-time counselor; special educational classes for severe/profound handicapped; the early childhood program, speech and occupational therapy, psychological consultation and homebound service.

Other services and facilities at the Kidwell school include a modern library with a certified librarian, music and physical education program. The parent involvement program through the P.T.A. also impressed the educator for whom the school was named.

"Some of the finest work in the school system has been done at the Bradford Elementary School which houses third, fourth and fifth graders," Miss Kidwell observed. Besides the regular classroom instruction, the special educational services available include a resource teacher, remedial program for students working below grade levels in certain areas, a modern library with a certified librarian, physical education and music classes and an elementary counselor.

The active P.T.A. at Bradford has a new parent volunteer program. The new curriculum guides at the school that follow more closely state requirements, but also cover local needs more specifically impressed Miss Kidwell as well as the local achievement test and TABS scores above average in the state.

"The Iowa Park High School is in good shape because the administrators and teaching staff have kept abreast of the time by adding to the curriculum as needed and deleting or slowing up on things not so worthwhile," Miss Kidwell said. A computer science program has been added this year, a must in the fast coming computerized world. The school also has a stepped up math program and teaches spelling in English classes.

In closing, Miss Kidwell discussed the West Wichita County Cooperative where Iowa Park serves as the fiscal agent for Holliday, Electra, City View and Iowa Park schools. In addition to the director, the staff for the four schools includes three diagnosticians, a psychologist, occupational and physical therapists, two administrative teachers aides, 24 special educational therapists, 24 special education teachers, 14 special teacher aides.

In Iowa Park, resource classrooms are available in all schools as well as a speech therapist, part-time teacher

for pregnant students, part-time adjustment counselor for secondary students.

During the business directed by Mrs. D.O. James, Mrs. Keith Aulds, president-elect, announced the appointment of officers to include: Mmes. Mrs. James, parliamentarian; Travis Smith, federation counselor; Howard Marlar, historian, Homer Blalock, reporter.

Standing committees announced were: Mmes. H.W. Carter, Bill Bates, Sam Hill, budget and finance; Joe Singer, E.F. Soell, Miss Ethyle Kidwell, program and yearbooks; Mmes. James, Charlie Lee, Riley Thompson, reports; Vern Gilbert, N.D. Hodson, telephone; L.E. Brooks, Earle Denny and James Sewell, tellers; Sam Hunter, Rollins Woodall, Travis Smith, youth awards.

The local club committees appointed were: Mmes. China Smith, Bates, Metz, performing and creative arts; Hunter, Brooks, Carter, conservation; Thompson, Hodson, C.E. Birk, home life; Blalock, Metz and Miss Kidwell, education; Travis Smith, Gilbert, international affairs; Soell, China Smith, Birk, public affairs; Singer, Bates, Denny, Texas Heritage; James, Woodall, and Sewell, Americanism; Lee, Denny, Marlar, parade of homes.

During the social hour, the refreshments and table carried out the Valentine colors and motif.

Weather topic of club speaker

Skip McBride from Channel 3 weather gave the program Tuesday evening for Epsilon Eta chapter of Epsilon Sigma Alpha in a meeting held in the home of Mrs. David Parkey, with Mrs. Roy Johnson the co-hostess.

Introduced by Mrs. Darrell

Gunderson, McBride explained hot and cold masses and what they cause, cross section of clouds on warm and cold fronts, high and low pressure. He showed slides of clouds when tornadoes start forming, and said that the station was updating their brochures on tornado tips.

During the evening, pledges were assigned to committees to include: Mrs. Al Denton, project; Joni Whittis, service; Jo Bumgardner, contact; Mrs. Marvin Robertson, publicity; and Mrs. Tex Burns, scrapbook.

The pledges will be responsible for the Feb. 20 program in a meeting at the home of Joni Whittis.

TWINS RECOGNIZED

Twins Jim and Tim Goetze were on the "Distinguished Students" list of Tarleton State Univ. for the fall semester, for not having a grade lower than a "C."

INVENTORY CLEARANCE SALE!

Storage Convenience, Flexibility

Only GE Delivers Crushed Ice, Cubes and Cold Water



Model TBF22DC

22 cu. ft. No-Frost Refrigerator with 7.05 cu. ft. Freezer

- One full-width and two adjustable split-level steel shelves.
- Controlled climates help keep food fresh up to 15 days.
- Two high-humidity jumbo pans for moisture-loving vegetables.
- One lower-humidity pan for fruits, berries.

SAVE \$90.00
 WAS \$939.95
 NOW \$849.95*



Model TFF24RC

23.5 cu. ft. No-Frost Side-by-Side Refrigerator-Freezer

- 8.57 cu. ft. freezer with adjustable shelves.
- Automatic energy saver system helps cut operating cost.
- Convertible meat pan.
- Porta Bin door shelves.
- Helps keep foods fresh up to 15 days with two high-humidity sealed pans.
- Lower-humidity pan.

SAVE \$150.00
 WAS \$1799.95
 NOW \$1649.95*

*COLORS, DELIVERY, AND INSTALLATION AVAILABLE AT EXTRA COST. GE. WE BRING GOOD THINGS TO LIFE.

*COLORS, DELIVERY, AND INSTALLATION AVAILABLE AT EXTRA COST. GE. WE BRING GOOD THINGS TO LIFE.

FREE! WITH THE PURCHASE OF APPLIANCES SHOWN

DIRECT FROM GENERAL ELECTRIC

USA '84 Warm-Up JACKET

The official jacket of the USA Baseball Team. Comes in white satin for adults and bright red satin for youths.

Or visit our store and you can order this jacket for the special price of \$39.95. Net proceeds help support the USA '84 Baseball Team.

Adult Retail Value \$69.95

PARKWAY

True Value HARDWARE

FURNITURE HARDWARE

200-206 W. Bank
 592-4681 592-5512

WAL-MART

clip'n'save

COUPONS

discount specials

VALUABLE COUPON

Silkience
 Shampoo or Conditioner
 All Types
 15 Ounce
 With This Coupon

2.34
 Limit 1 Expires 2-11-84

VALUABLE COUPON

Diaparene
 Cushies
 Super Thick
 80 Count
 With This Coupon

2.34
 Limit 1 Expires 2-11-84

VALUABLE COUPON

Sensodyne
 Toothpaste
 4 Ounce
 With This Coupon

1.97
 Limit 1 Expires 2-11-84

VALUABLE COUPON

Duration
 4 Hour Nasal Spray
 1/2 Fl. Ounce
 With This Coupon

1.84
 Limit 1 Expires 2-11-84

VALUABLE COUPON

Sominex
 Formula 2
 32 Count
 With This Coupon

2.92
 Limit 1 Expires 2-11-84

VALUABLE COUPON

Impulse
 Body Spray
 All Scents
 2.5 Ounce
 With This Coupon

2.26
 Limit 1 Expires 2-11-84

VALUABLE COUPON

Metamucil
 Powder
 21 Ounce
 With This Coupon

6.74
 Limit 1 Expires 2-11-84

VALUABLE COUPON

Tylenol
 Regular Strength
 100 Tablets
 With This Coupon

3.12
 Limit 1 Expires 2-11-84

VALUABLE COUPON

Vaseline
 Dermatology Formula
 Lotion
 11 Ounce
 With This Coupon

2.97
 Limit 1 Expires 2-11-84

VALUABLE COUPON

Bounce
 Fabric Softener
 40 Count
 With This Coupon

1.73
 Limit 1 Expires 2-11-84

500 West Highway, Iowa Park
 9 A.M. - 9 P.M. Monday thru Saturday

WAL-MART'S ADVERTISED MERCHANDISE POLICY—It is our intention to have every advertised item in stock. However, if due to any unforeseen reason, an advertised item is not available for purchase, Wal-Mart will issue a Rain Check on request for the merchandise to be purchased at the sale price whenever available, or will sell you a similar item at a comparable reduction in price. We reserve the right to limit quantities. Limitations void in New Mexico.

As I See It....

By BOB HAMILTON



If I read between the lines correctly, about that Wichita Falls veteran police sergeant's reasons for quitting last week, I can well understand. I see such reasons in newspapers every day.

As I understand it, he didn't like the administration of justice, as it is applied today.

I could buy a big steak if I had a nickel for every time a policeman has told me how frustrating it was to arrest someone, many of them on extremely serious charges, and say the person was back home before the ink was dry on the report sheet.

It is also becoming painfully apparent that our crowded jail and

prison conditions are the reason for the daily release on probation of felons.

But the legal maneuvering called plea bargaining seems to be the big burr under most lawmen's saddles. Let me tell you of two such instances I read about in weekly newspapers I received in the mail yesterday.

In 1982, a 32-year-old Andrews man was arrested after the death of an 11-year-old girl. She was walking on the side of a street when he struck and drug her 60 feet with his car. That was after skidding his tires 138 feet, according to the report.

Well, last week, as result of the plea bargaining, he entered a guilty

plea to involuntary manslaughter, and a related felony of DWI was dropped.

The report indicated he tested .18 on the breathalyzer, well above the .10 required for a charge of driving while intoxicated.

He received a five-year probated sentence.

The other case was down at Big Lake, where two men, 21 and 28, were charged with the rape of a 14-year-old girl.

They had a trial for one of the men, who had confessed to the incident.

After plea bargaining, the charge was lowered to the lesser offense of statutory rape, he received a three-year probated sentence and was required to pay a whopping \$97 in court costs, \$150 attorney fee, and no fine.

That plea bargaining kinda got under Big Lake Wildcat publisher David Werst, and apparently rightfully so.

You see, the judge who sat on the case had appointed his own daughter as the defense attorney. And David failed to find any sympathy for the poor district attorney, who apparently didn't object to the appointment, nor to the terms of the plea bargaining.

Eventhough I've had numerous explanations about the legal system, there's still a lot about it I don't understand. Nor do I like it any better.

I'm told it's still the best system in the world. But it was attorneys telling me.

Griffith seeks re-election

Iowa Parkan Gordon Griffith said yesterday he has filed as a candidate for precinct three county commissioner.

Griffith, who won his first term of office over half a dozen other candidates four years ago when veteran commissioner Buck Voyles chose not to seek re-election, said he filed Jan. 9 for a place on the Democratic Party primary ballot.

"I want to thank all the people of the precinct for supporting and working with me during my three years on commissioner's court. It's been a privilege and honor to serve the people," he said.

Griffith said one of his main jobs has been controlling the jail addition construction project and moving the family court into the annexation building.

He said he feels precinct three has a good reputation for maintaining the roads in the rural areas, and added he had resurfaced several miles of paved roads as well as graveling several other miles of unpaved roads.

One of his projects he has felt strongly about was the erection of road signs at all intersections to assist



GORDON GRIFFITH

people in following directions, especially law enforcement people and firemen.

"I feel we have a real good court. I look forward to working with the people of precinct three, but am dedicated to working for all the people of the county," Griffith said.

Johnson is sheriff candidate

Veteran law enforcement officer James Lee Johnson of Wichita Falls has filed for a place on the Democratic Party primary ballot as a candidate for county sheriff.

Johnson, who spent 25 of his 31 years as a lawman in Wichita Falls, says he feels his experience "... covering all phases from driving a patrol car to departmental management, with liaison between all police agencies, plus directing and administering the recruiting program of the Department of Public Safety, give me a background apart from anyone else seeking the job."

He served six years on the Wichita Falls Police force after being discharged from the Marine Corps in 1949. Following two brief stints as a security inspector for the Los Alamos Scientific Laboratory in New Mexico and deputy sheriff in Archer County, he was a trooper-warrant officer for the DPS 23 years. He is currently a private investigator for a Wichita Falls company.

"My main goals, if elected Wichita County Sheriff, are the rapid reduction of our rural crime situation, and the immediate implementation of having qualified and experienced deputies and investigators who have already achieved state certification. This will reduce time in training, thus



JAMES LEE JOHNSON

giving us immediate efficiency and tax dollar savings," Johnson said.

Hightower files for new term

Cong. Jack Hightower announced recently that he has filed for re-election to Congress from the 13th District.

Hightower has served the 13th District as a member of the U.S. House of Representatives since 1975, through five Congresses and three presidents. Prior to his election, Hightower served in both the Texas House and Senate, and as District Attorney.

"The people of our district have been good to me and my family," Hightower said. "I've worked to promote bipartisan, conservative, common-sense solutions to our national problems. I'm proud of what we've been able to do for the people of this district and for the nation."

Through his work on the House Appropriations Committee and its key subcommittees, Hightower has been able to effect millions of dollars in savings for the taxpayers.

POLITICAL ANNOUNCEMENTS

The following have authorized the Iowa Park Leader to publish announcement of their candidacies for office, and have paid for the space.

- STATE SENATOR
District 30
Ray Farabee
- STATE REPRESENTATIVE
District 80
Charles Finnell
Durhl Caussey

IOWA PARK LEADER

766280

Bob Hamilton Editor-Publisher
Dolores Hamilton Assistant Publisher
Olive Blalock Reporter
Kevin Hamilton Reporter

The IOWA PARK LEADER is published every Thursday. Offices are located at 112 W. Cash, Iowa Park, Texas, 76367. Telephone: 592-4431. Second class Postage Paid at Iowa Park, Texas, 76367. Subscription rates are \$7 per year in Wichita and Archer Counties; \$9 elsewhere in Texas and Oklahoma; \$11 anywhere else in the United States. Classified advertising rates are 16 cents per word first insertion, 8 cents per word thereafter. Any erroneous reflection upon the character, standing or reputation of any person, firm or corporation which may appear in the columns of this newspaper will be corrected upon being brought to the attention of the publisher.

MEMBER
TEXAS PRESS ASSOCIATION

Major burglary at apartments

A major burglary was reported to have taken place at Woodbriar Apartments sometime over last weekend.

Mrs. Francys M. Reed told police someone had broken into her apartment, 903, and taken personal possessions valued at \$5,966, according to the report filed.

Among the items taken were: Stevens 22-410 over-under gun; silver plate pitcher and coffee pot; mink stole, wooden jewelry box with costume jewelry, antique milk glass glove box; two gold railroad antique pocket watches and another of silver; necklace and earring set; Red Cross jeweled gold Masonic pin; wedding band, gold wrist watch and other items.

Tina Renee Chaffin told police someone broke the rear window of her Sunbird automobile over the weekend, while parked at 809 Van Horn. Loss was set at \$115.

SNB

IRA

A Personal Retirement Plan That Will Save You Tax Dollars Every Year

EVERY WAGE EARNER IS NOW ELIGIBLE

As of January 1, 1982, every wage earner, even though they are active participants in an employer sponsored pension plan, can make tax-sheltered contributions to an individual retirement account (IRA). IRA contributions will accumulate tax-deferred with compounded interest until retirement.

MAXIMUM CONTRIBUTIONS

The maximum contribution to an individual retirement account has been increased from \$1,500 to \$2,000; spousal IRA from \$1,750 to \$2,250. (Spousal IRA's are for married couples where only one spouse is employed.)

| | | |
|--|--------------------------|---------------------|
| Whether or not you are covered by an employer sponsored pension plan | Contributory IRA \$2,000 | Spousal IRA \$2,250 |
|--|--------------------------|---------------------|

100% CONTRIBUTION

Contributions are no longer limited to 15% of your annual earnings. You may now contribute up to 100% of your earnings up to the maximum limitation.

STATE NATIONAL BANK
IOWA PARK, TEXAS
Locally Owned

A Free Press

293 Years of Democracy in Action

NOTICE TO SUBSCRIBERS!

The Iowa Park Leader has suspended its practice of mailing individual renewal postcards to subscribers. Instead the Leader will publish a list of readers whose subscriptions are approaching expiration. Subscription prices are listed below, along with a convenient order form which may be clipped, filled out and mailed with payment to the Leader. Renewals and new subscribers must be paid in advance.

Subscriptions due to expire

February 15, 1984

PLEASE DISREGARD IF ALREADY PAID

- | | |
|---|--|
| <p>A..... Mrs. M.O. Archer Iowa Park</p> <p>B..... Dean Bankhead Wichita Falls Carl S. Bates Iowa Park James Beals Iowa Park Mrs. B.G. Bearden Wichita Falls Mrs. Lacy Beavers Iowa Park H.L. Berry Iowa Park Claude Boles Iowa Park James P. Bowman Iowa Park Everett Boulware Iowa Park</p> <p>C..... Bert Caddell Iowa Park Thomas S. Carlson Iowa Park W.O. Chandler Iowa Park Fred Cheek Iowa Park W.H. Coats Electra Yasuka Cook Iowa Park County Ext. Office Wichita Falls Ira Crum Iowa Park</p> <p>D..... Jimmy Davis Iowa Park Cene Dean Wichita Falls Richard Dean Yuma, AZ. C.O. Dodd Iowa Park James H. Dyer Iowa Park</p> <p>E..... Mrs. Leonida Eddins Iowa Park Mrs. Wilburn England Iowa Park</p> <p>F..... Wiley Francis Iowa Park Eddie French Iowa Park</p> <p>G..... Ruth Gensler Iowa Park Mrs. Freddie Glover Arlington Larry Goin Iowa Park Archie Gould Iowa Park</p> <p>H..... Mrs. J.O. Hicks Wichita Falls H.T. Hildebrand Iowa Park Bob Hodges Iowa Park Holliday High School Holliday Dale C. Holloway Panhandle Bennie Horton Iowa Park Stanley Hoye Electra</p> <p>J..... Joe E. Jones Iowa Park John Henry Jones Iowa Park</p> <p>K..... Tom Kaiser Iowa Park Cindy Kingcade Iowa Park Don Kirkham Iowa Park W.H. Kuykendall Holliday</p> <p>L..... Preston Leath Iowa Park Mrs. Charlie Lemond Iowa Park Earl Logan Iowa Park Jack Lott Iowa Park</p> | <p>Marie Lovelace Iowa Park Debby Lusk Granbury</p> <p>M..... Mrs. Ottis Martin Lake Charles, La. W.T. McQuerry Iowa Park R.L. Midkiff Iowa Park Jerry Mixon Nacogdoches Mrs. Velma Moran Vernon Jerry D. Morgan Iowa Park Marilyn Morris Bowie Morris Van Lines Wichita Falls Patricia Murphy Burkburnett</p> <p>O..... Ann Owen Iowa Park</p> <p>P..... Preston Pace Iowa Park Roy Palmer Iowa Park David Parkey Iowa Park Mrs. B.B. Parks Iowa Park Jessie Parks Iowa Park Marvin Parks Iowa Park Clyde Patterson Iowa Park Margaret Pickett Wichita Falls</p> <p>R..... Dr. Thurma Reitz Iowa Park Ross Roberts Iowa Park Vance Ross Lubbock C. Rusk Iowa Park</p> <p>S..... Lynn W. Savage Iowa Park Bill Sawyer Okla. City Ann Sefcik Jacksboro Gene C. Shawver Iowa Park Murray Shook Iowa Park Mrs. J.W. Sims Iowa Park Bud Singleton Iowa Park China B. Smith Iowa Park Harold Smith Iowa Park Ruby Smith Wichita Falls Dewey Spruiell Iowa Park Bill Spurgeon Iowa Park Jerry Starr Iowa Park Harry Stoskus Iowa Park</p> <p>T..... Texas Electric Wichita Falls Terry's Welding Service Kamay Freddie Thomas Iowa Park Jerry Thomas Boerne Mrs. Lynn R. Trigg Iowa Park Mrs. Shirley Trimm Iowa Park Barbara Tucker Wichita Falls Lee O. Tucker Iowa Park Paul Tucker Burleson</p> <p>W..... Jimmy Walker Iowa Park Randy Watreas Iowa Park Lester Watson Iowa Park Jimmie D. Williams Iowa Park John Wilson Iowa Park W.M. Williams Iowa Park Charles Wright Wichita Falls</p> |
|---|--|

Wichita and Archer Counties.....\$7.00
Elsewhere in Texas & Oklahoma.....\$9.00
Elsewhere in the United States.....\$11.00

To: Iowa Park Leader
Box 430
Iowa Park, Tex.
76367

PLEASE CHECK ONE:
 New
 Renewal
 Change of Address Only

\$ _____ Enclosed

(Name)

(Address, P. O. Box, or Route No.)

(City) (State) (Zip Code)



MICHELLE EVANS

Michelle Evans is recognized

Michelle Evans, daughter of Mr. and Mrs. Jerry Evans, has been named the January Student-of-the-Month by the Rotary Club.

A senior in Iowa Park High School, she is a Double A honor roll student, a member of the National Honor Society where she has served as treasurer during her junior and senior years. She was awarded the Youth Appreciation Week Citation in both her sophomore and junior years. She was a member of the band when she was a freshman and is a member of Future Homemakers of America this year. She has played basketball three years.

In junior high school, Michelle was a Double A honor roll student and among the top 10 in the graduating class. She was a two-year member of the band, basketball, track and volleyball teams.

Night WMU meets

Mrs. J.A. Berg was program coordinator for the study of "Bold New Work" during the meeting of the Night WMU of First Baptist Church Monday evening. Mrs. Elmer Singleton and Mrs. H.E. Cummings were hostesses for the meeting held in the home of Mrs. Singleton.

The leader stated that the purpose of Bold New Work by Southern Baptists was to start 3,000 new churches during the year. Topics presented by Mrs. W.F. Booher, Cummings, Roy Smith, Singleton, E.T. Patterson, V.I. Woodfin and Riley Thompson described how the goal was to be accomplished through mission revivals, associational campaigns, establishing second churches and congregations for unchurched people, cultivating friendship with ethnic groups and individual involvement.

Mrs. Woodfin directed the business and Mrs. Patterson conducted the prayer period for missionaries on the birthday calendar. Nine members were present.

Christian Women establish policy

The Christian Women's Fellowship of First Christian Church met Monday evening with Mrs. Wylie Williams for a business meeting, program, and worship meditation. Mrs. Dale Walling conducted the business during which time the policy for the public address system recently purchased by the organization was established. It was voted to send Valentine greetings to the shut-ins, students, and military of the church.

Following the business, Mrs. Walling gave the lesson from "Peace with Justice" on "Compelled by

Faith." Mrs. Johnnie Cole brought the worship meditation on "Peace on Earth" and concluded with a vocal solo "Let There Be Peace, on Earth and Let It Begin With Me."

CARD OF THANKS

To all who called, visited, sent cards and helped in any way to make our 35th wedding anniversary celebration more memorable, we want to say "thank you" from hearts full of love.

Lee and Martha Vaughan



LOOK WHO'S NEW

Mr. and Mrs. Gary Dipprey announce the birth of a daughter, Shay Lynn, born January 25. She weighed seven pounds and six ounces.

The new baby has a sister, Misty, 18 months old.

Grandparents are Mr. and Mrs. Harold Bartow of Iowa Park, Mr. and Mrs. Dipp Dipprey of Kamay and Mr. and Mrs. George Dodson of Vernon.

Shower fetes bride elect

The honoree's chosen colors of burgundy, silver and pink for her wedding governed decorations for a pre-nuptial shower given Sunday afternoon in honor of Miss Terri Rowell, bride-elect of Jeff Smyers. The function took place at the home of Mrs. John Meux in Wichita Falls and Miss Lori Meux was the co-hostess.

The refreshment table decor was enhanced with a centerpiece of burgundy and pink silk flowers, silver tea and crystal punch services.

Special guests were Mrs. C.W. Rowell and Mrs. Allison Smyers, mothers of the betrothed couple.

Out-of-town guests from Dallas were Mrs. Ernest Ward, Miss Linda Rowell, Miss Dorothy Benatti, grandmother, sister and aunt, respectively, of the bride-elect, and Mrs. Jimmy Murfield, sister of the groom-elect.

CARD OF THANKS

The family of R.G. "Fat" Davis wishes to thank their many friends for all of their thoughtfulness during this time of loss.

DOUBLE GREEN STAMPS WEDNESDAY

THRIFTWAY

VALENTINE SPECIALS

CONTADINA TOMATO SAUCE
4 8 OZ. CANS **\$1.00**

RANCH STYLE BEANS
3 No. 300 CANS **\$1**

SUNSHINE KRISPY CRACKERS
16 OZ. BOX **79¢**

SUPER SUGAR CRISP CEREAL
18 OZ. BOX **\$1.69**

ALL GRINDS FOLGER'S COFFEE
1 LB. CAN **\$2.29**

HEAVY GRAIN FED BEEF ROUND STEAK
LB. **\$1.79**

PURE GRANULATED SHURFINE SUGAR
5 LB. BAG **\$1.59**

WHITE OR ASSORTED BATHROOM TISSUE WHITE CLOUD
PKG. **99¢**

THRIFTWAY SUPER BUDGET STRETCHER FAMILY PACK GROUND BEEF
LB. **89¢**

WRIGHT'S HICKORY SMOKED SLAB BACON
LB. **\$1.69**

25% OFF LABEL REGULAR OR BUTTER FLAVOR CRISCO SHORTENING
3 LB. CAN **\$2.29**

TOTAL GROCERY SAVERS

| | |
|---|---|
| HORMEL CHUNK HAM 6 1/2 OZ. CAN \$1.19 | CARNATION HOT COCOA MIX 20 OZ. CANNISTER \$2.19 |
| M&A CHOC. CHIP COOKIES CHIPS AHoy! 19 OZ. PKG. \$1.99 | LAUNDRY DETERGENT ARM & HAMMER 65 OZ. PKG. \$1.49 |

RED RIPE SLICERS TOMATOES LB. **49¢**

FRESH GOLDEN CARROTS 1 LB. PKG. **35¢**

PORTALES MARYLAND SWEET YAMS LB. **35¢**

CALIFORNIA RUBY RED GRAPEFRUIT LB. **29¢**

CALIFORNIA MINEOLA TANGERINES LB. **35¢**

SNOW WHITE CELLO WRAP CAULIFLOWER EACH **89¢**

White's Delicatessen

FRIED CHICKEN

| | | |
|----------------------------|---------------------------------|----------------------------|
| 10-Piece Box \$6.49 | 2-Piece Snack Box \$1.89 | 15-Piece Box \$8.49 |
|----------------------------|---------------------------------|----------------------------|

FRESH DAIRY SPECIALS

| | |
|--|--|
| SHURFRESH COTTAGE CHEESE 24 OZ. CTN. \$1.29 | VELVET SPREAD MARGARINE 2 LB. BOWL 99¢ |
| KRAFT DELUXE AM/PI/M/SWISS/OLD ENG. SLICES 8 OZ. PKG. \$1.29 | |

FROZEN FOOD SPECIALS

| | |
|--|---|
| ASSORTED MORTON HONEY BUNS 9 OZ. PKG. 75¢ | ORE IDA HASH BROWN POTATOES 2 LB. PKG. \$1.19 |
| BANQUET 8 PIECE FRIED CHICKEN 30 OZ. PKG. \$3.29 | BOOTH FANTAIL SHRIMP 1 LB. PKG. \$5.49 |

COKE - SPRITE TAB - MR. PIPE 32 oz Btls. **\$2.09**

50% OFF LABEL-KING SIZE FRESH START 34 OZ. BTL. **\$3.19**

We're proud to give you more!

THRIFTWAY

PRICES GOOD THRU FEB. 12
WE RESERVE THE RIGHT TO LIMIT QUANTITIES
WE ACCEPT FOOD STAMPS

LOOK WHO'S NEW

John Randall, a six pound 15 ounce son, their first child, was born to Mr. and Mrs. Randall Schram February 1. Mrs. Schram is the former Deanne Patterson.

The new baby's grandparents are Mr. and Mrs. Eldon Patterson and Mr. and Mrs. Jim Huff of Iowa Park. Mrs. Mabel Schram of Tulsa, Okla. is the great-grandmother.

PAYCHECK PROTECTION

I can make sure a regular cash income is available to protect you and your family, if a covered accident or illness forces you to stop working.

Talk To Me

Robert L. Livingston
3227 Northwest Drive
Wichita Falls, TX 76305
(817) 723-1159

Call today for more information
BANKERS LIFE AND CASUALTY COMPANY
Chicago, Illinois
We think a lot of you. The proof is in our products.

DOUBLE COUPONS EVERY TUESDAY

WHITE'S SUPER STORE

ParkWest Shopping Center

Phone 592-4186

Store Hours: 8 a.m. - 8 p.m. Monday - Saturday; 9 a.m. - 6 p.m. Sunday

Our store family-owned and operated 20 years.

DOUBLE EVERY WEDNESDAY

Obituaries

John W. Clapp

Services for John W. Clapp, 86, who died Saturday in a Wichita Falls hospital, were Monday afternoon at Tanner-Aulds Funeral Home. Rev. Wilfred Galbraith, Presbyterian minister from Elgin, officiated and burial was in Highland Cemetery.

He was born Nov. 14, 1897, in Dallas and married Nellie Katherine French Oct. 2, 1919, in Dallas. He owned Northwest Materials Co. in Iowa Park and Valley View.

He is survived by his wife; two sons, John W. Jr. and Leslie B., both of Iowa Park; five grandchildren; and four great-grandchildren.

Pallbearers were Jim, Bill, Larry, and Leslie Boyd Clapp, James Conner and Don Clapp.



Wilburn C. Probst

Services for Wilburn C. Probst, 86, who died Tuesday in a Wichita Falls hospital, will be at 2 p.m. today at Owens and Brumley Funeral Home in Wichita Falls. Rev. Howell Farnsworth, pastor of the Iowa Park First Baptist Church, will officiate. Burial will be in Crestview Memorial Park.

A resident of Iowa Park since 1932, he was born May 5, 1897, in Gunter. He was a retired service station owner.

He is survived by his wife, Ruby Lee; a daughter, Doris Dean Perry of Mesquite; two sisters, Daisy Bowden of Waco and Mary Reed of Gunter; three grandchildren; and three great-grandchildren.

CARD OF THANKS

We wish to express our heartfelt gratitude to our friends who have expressed their love and sympathy in so many ways, including flowers, cards, calls and visits, during the illness and death of our loved one. We shall always remember each with kind thoughts.

The John W. Clapp Sr. Family

Robert H. Skinner

Funeral services for Robert H. Skinner, 54, of Las Cruces, N.M., a former resident of Iowa Park, were held Thursday at the Getz Funeral Home in Las Cruces, with Rev. Conley Henderson, pastor of the First Church of the Nazarene at El Paso, officiating. Burial was in the National Cemetery in El Paso.

He was born Sept. 1, 1927, at Amherst and moved to Iowa Park in 1936 and lived here until he joined the U.S. Army where he retired as a sergeant, after 20 years of service.

He is survived by his wife, Betty; a son Steve; two daughters, Brenda Rees, all of Las Cruces, and Barbara Patterson of Mora, Minn.; his mother, Mrs. C.H. Skinner, two brothers, Clyde and Luther; a sister, Mrs. J.D. Morrison, all of Iowa Park; and six grandchildren.

Mr. and Mrs. Clyde Skinner, Mr. and Mrs. Luther Skinner and Mr. and Mrs. J.D. Morrison attended the services.

First Baptist sets youth-led revival

Dave Stanley, step-brother of Elvis Presley, evangelist, and Gary Forsythe, music director, will conduct a youth-led revival at First Baptist Church, starting at 7 p.m. Friday and continuing through the Sunday evening worship service.

Dee Stanley, mother of the evangelist, married Vernon Presley in 1960, and he and his two older brothers, Rick and Billy, moved into the Graceland Mansion in Memphis, Tenn. At the age of 16 years old, Dave was making an annual salary of \$50,000, traveling from city to city, and doing over 1,700 concerts with Presley. After the death of the Rock and Roll King, things changed drastically for Stanley. He moved to

Ft. Worth and served 14 months as director of sound communications for Evangelist James Robison. During this time he felt the call for full-time evangelism, and the Dave Stanley Ministries was established.

Dave is currently continuing his education at Baylor Univ. where he is seeking a B.A. degree in religion. He has spoken in hundreds of churches, crusades, high school assemblies and one-night rallies.

Services will be held Friday and Saturday at 7 p.m. and on Sunday at 11 a.m. and 7 p.m.

WANT ADS
GET RESULTS

First Christian Church

105 E. Cash

Sunday School - 9:45 a.m.

Worship - 10:55 a.m.

Corner, Cash & Bond St.

We encourage each of you to worship Jesus Christ in the church of your choice. If you do not have a church home, we invite you to come worship with our church family.

First United Methodist Church

201 E. Bank

Church School 9:40

Morning Worship 10:40

Youth Meetings 5:00

Evening Worship 6:00

GEORGE TOPPER, PASTOR

Christ The King Catholic Church

First and Clara

Phone 592-2802

8:45 a.m. C.C.D. — 10 a.m. Mass

—WELCOME—
ASSEMBLY OF GOD
S. Yosemite
9:45 S.S./7 P.M.
Wed. 7 P.M. Service
Rev. Charles Hensley,
Pastor

Schedule for:

Recreational
Activities
Center

A demonstration on "blooming vest" making will be given at 7 p.m. Tuesday, Feb. 21, by Linda Ayres.

Versatile and growing in popularity many items of apparel can be used and all are attractive, according to Miss Ayres.

A fee will be charged for the class, and enrollment with additional information can be obtained by calling 592-4471.

UMW meets

Twenty members of the United Methodist Women attended the Tuesday morning meeting. Mrs. Larry Parks, president, read the poem "Window of Gold" to open the business session.

Mrs. Gene Owens gave the devotion, using "Water Under the Bridge" by Norman Vincent Peale.

Announcement was made that Mrs. H.W. Carter would present a study on Central Africa for the Feb. 21 and Feb. 28 meetings.

REPORT OIL FIELD THIEVES
1-800-OIL-COPS
TOLL FREE • REWARD

Grace Baptist Church

511 S. Colorado - 592-5632

Come Let Us Reason Together Saith The Lord

Sunday School . . . 10:00 A.M.

Morning Worship . . . 11:00 A.M.

Children's Worship . . . 11:00 A.M.

Evening Worship . . . 6:30 P.M.

Wednesday Service . . . 7:30 P.M.

Jimmy Johnson, Pastor

Welcome To The Worship and Fellowship of

First Presbyterian Church

CHURCH SCHOOL - 9:45 A.M.

FELLOWSHIP Time - 10:40 A.M.

MORNING WORSHIP - 11:00 A.M.

Church of God

601 E. Cash

Pastor, Ole Olds

Sun. Morning Worship 11:00

Sun. Night Celebration Service 7:00 p.m.

Tues. Ladies Prayer Service 10 a.m.

Wed. Night Bible Study 7:30

Sat. Family Night 7:30

"Catch the Vision"

Par.
592-5316

Office
592-4348

Pacific Avenue Missionary Baptist Church

1400 North Pacific Avenue

Larry Washburn
Pastor
Church - 592-9711
Pastor 592-4288



Sunday School 9:45 a.m.
Morning Worship 11:00 a.m.
Evening Worship 6:00 p.m.
Wednesday 7:00 p.m.

Everybody Welcome

Kamay Road Church of Christ

Corner of Colorado & Emerald

'Seeking the Old Paths'

Lord's Day
10:30 a.m. & 6 p.m.
Wednesday 7:00 p.m.

GOOD SHEPHERD LUTHERAN CHURCH

1st & Magnolia
Iowa Park

Sunday School: 9:45 a.m.
Worship Service: 10:30 a.m.

First Baptist Church of Iowa Park



Yosemite at Park
SUNDAY SERVICES

Mornings

Sunday School 9:45

Worship 11:00

Evenings

Church Training 6:00

Worship 7:00

WEDNESDAY

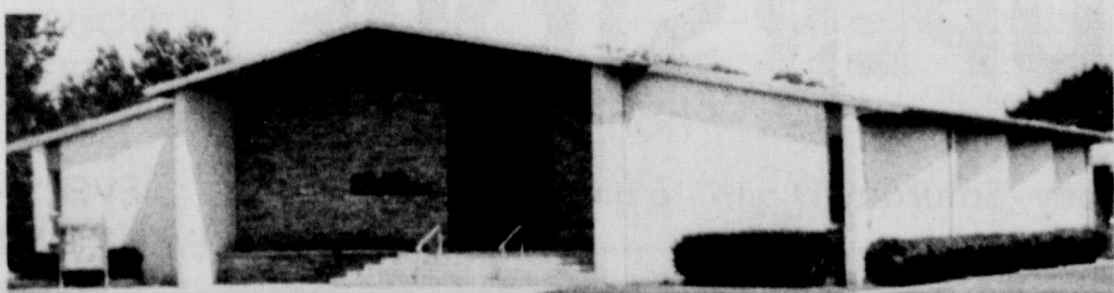
Prayer Meeting 7:00

Choir Rehearsal 7:45

IOWA PARK CHURCH OF CHRIST

SCHEDULE OF SERVICES

| | | | |
|-----------------|------------|--------------------|------------|
| Sunday | | Wednesday | |
| Bible Study | 9:30 a.m. | Ladies Bible Study | 10:00 a.m. |
| Worship | 10:30 a.m. | Evening Study | 7:30 p.m. |
| Evening Worship | 6:00 p.m. | | |



300 East Park, Iowa Park, Texas 76367, (817) 592-5415

Revival



DAVE STANLEY

(Step-Brother of Elvis Presley)

will relate his personal testimonial

Feb. 10 - 12

7 p.m.

Music by Gary Forsythe

First Baptist Church

Iowa Park

NURSERY PROVIDED



HORTICULTURE STUDENTS from Iowa Park High School last week planted a tree in front of Bradford Elementary School. The tree was donated by the Iowa Park Garden Club, repeating a project of last year.

Toby Brown is recognized

The Opti-Mrs. Club has selected Toby Brown, son of Mr. and Mrs. Charles Brown for the Iowa Park Junior High School Student-of-the-Month.

An office worker this year, he is a two-year choir member and was in safety patrol in the fourth grade.

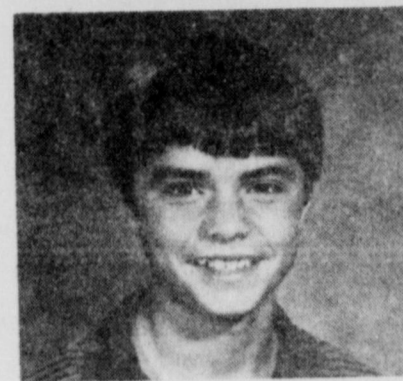
His awards include: Who's Who in English and choir in the seventh grade; honor roll student for three years; perfect attendance award in the sixth grade; first place on conservation poster in the fourth grade; and number one rating in UIL solo contest in the seventh grade.

He attends the Faith Village Church of Christ in Wichita Falls where he leads the singing.

Toby is sports minded having played basketball and football two years, soccer seven years, and baseball three years. His hobbies are

hunting, fishing, woodwork, water skiing and gardening.

Looking ahead to plans for the future after high school graduation, he thinks now that he would like to attend Abilene Christian Univ. to major in engineering or agriculture to later become a farmer.



TOBY BROWN

New Meter Connections

Kenny Gilmore - 521 W. Alameda
Mark Limham - 405 E. Aldine #2
Avy Rateliff - 405 E. Aldine #5
Dalton Sidwell - 303 E. Pecan



The world's largest mushroom farm is in Winfield, Pennsylvania. Out of the farm come seven thousand tons of mushrooms a year.



Fall-Winter FASHION CLEARANCE

Sportswear
Dresses

Gowns
P.J.s
Robes

1/2 price or less

Daywear
Lingerie **25% OFF**



The Velfree Shop

208 W. Bank

592-2211

GET A LARGE PIZZA FOR A MEDIUM PIZZA PRICE

Tuesday and Wednesday are Family Nights at Ken's

On Tuesday and Wednesday nights at Ken's Pizza restaurants, you can get a large pizza for the price of a medium pizza. So, the whole family can enjoy a fresh, hot Ken's pizza with all the toppings you want, at a price that'll please you. Take your choice of Ken's traditional thin crust pizza or our extraordinary pizza in a pan. Make the middle of the week a reason to celebrate, with a family night pizza at Ken's.

ken's PIZZA®
The pizza that brings you back!

592-4184

Register for a **FREE 5-Lb. Box of Valentine CANDY**

- No purchase necessary
- You need not be present to win
- Drawing Feb. 11

WAL-MART

500 West Highway, Iowa Park

ALLSUP'S
CONVENIENCE STORES

WE LOVE YOUR BUSINESS

PRICES EFFECTIVE FEBRUARY 9-11, 1984

GIFT BOXED **VALENTINE CANDY**

ASST. QUALITY CHOCOLATES LARGE SELECTION ALL SIZES FOR

\$2.50 UP TO **\$13.00** EACH

WHILE SUPPLIES LAST
32 OZ. YOUR FAVORITE **FOUNTAIN DRINK**
ALLSUP'S PLASTIC REUSABLE CUP
39¢

ALLSUP'S CONVENIENT **MONEY ORDERS**
29¢ EACH UP TO \$200*

BORDEN'S **ORANGE JUICE**
89¢ QT. CTN

DEL MONTE **TOMATO SAUCE**
8 oz. Cans

4/89¢

COOKED FOOD SPECIAL AS FEATURED ON TV. **CORN DOGS**
FOR **289¢**

COKE 6 Pack 12 oz. Cans **\$1.79**

COOKED-FOOD SPECIAL
CHICKEN STEAK OR SANDWICHES
99¢ Each

HILLS BROTHERS' **COFFEE**
1-Lb. Can **\$1.89**

ALLSUP'S ASST. FLAVORS **ICE CREAM**
\$1.69 1/2 GAL. 100 CTN

• WHILE SUPPLIES LAST • SELF SERV GAS • OPEN 24 HOURS FOR YOUR CONVENIENCE

Area oil, gas report

Flusche Supply Inc. of Electra has filed first production figures on two new oil wells in the Wichita Regular Field. Drillsite is 2.5 miles east of Electra in the H&GN Survey.

The No. 63 Gulf Tank Farm showed potential to pump six barrels per day. Bottomed at 918 feet, the well will produce from perforations 830 to 850 feet into the hole. Location is in a 121-acre lease. The well is 150 feet from the north line and 1,990 feet from the west line of the lease and the survey.

The No. 27 Fee showed potential to pump six barrels per day. Bottomed at 928 feet, the well will produce from perforations 832 to 854 feet into the hole. The well is 570 feet from the south line and 2,490 feet from the west line of the lease and the survey.

A 2,000-ft. developmental well is planned by S&J Operating Co. of Wichita Falls at a drillsite five miles south of Electra, Wichita County. The location is in a 286-acre lease in the A-Gibson Survey. Well's designation is the No. 1 Waggoner "Two." It is in the Wichita Regular Field.

The well is 1,850 feet from the south line and 2,100 feet from the west line of the lease and survey.

The No. 9 Goetze has been finalized by Alvis J. Carroll of Wichita Falls.

It is a developmental well in the Wichita Regular Field, nine miles north of Electra. Drillsite is in a 35-acre lease in Wichita County's SA&MGRR Survey, A-477.

Daily potential of three barrels was posted with the Railroad Commission. The well went to a 925-ft. bottom. Production will be from 872 to 878 feet into the wellbore.

The well is 150 feet from the south line and 150 feet from the east line of the lease and the survey.

Cowboy Energy of Graham has revealed plans to drill five 800-ft. developmental wells in the Wichita Regular Field. The operator has 60 acres leased, with drillsite in Wichita County's KWVFL Survey and has designated the ventures as the Nos. 10 thru 14 Anderson-Patterson. Drillsite is two miles northwest of Holliday.

A 4,300-ft. developmental well is planned by Ken Ellis Oil Co. of Wichita Falls. The location is in an 80-acre lease in Wilbarger County's H&TCRR Survey, Sec. 4, Blk. 6. Well's designation is the No. 1 Ancell "Y." It is in the Ancell KMA Field.

The well is 330 feet from the west line and 1,320 feet from the south line of the lease and survey.

F.T. Johnson Jr. of Wichita Falls has filed for permit to drill the No. 1 Shephard, an 8,000-ft. developmental well two miles south of Oklaunion.

Location is in a 320-acre lease in Wilbarger County's H&TCRR Survey, Sec. 24, Blk. 4. The well is in the Wilbarger Regular Field.

The well is 2,173 feet from the north line and 2,173 feet from the west line of the lease and the survey.

Kadane Oil Co. of Wichita Falls has revealed plans to drill an 8,600-ft. wildcat well. The operator has 317 acres leased, with drillsite in Hardeman County's H&TCRR Survey, A123, and has designated the venture as the No. 1 Bell. Drillsite is 4.3 miles southeast of Medicine Mounds.

The well is 467 feet from the southeast line and 1,895 feet from the southwest line of the lease and 2,126 feet from the northwest line and 1,895 feet from the southwest line of the survey.

At a location 15 miles southeast of Vernon, Breck Operating Corp. of Breckenridge has finalized a new oil producer in the Wilbarger Regular Field.

The well is designated as the No. 1 Waggoner Ranch, pumping oil at the rate of 14 barrels per day.

Location is in a 70-acre lease in the H&TCRR Survey, A-81. Bottomed at 2,555 feet, the well will produce from perforations 2,382 to 2,390 feet into the hole.

The well is 330 feet from the west line and 330 feet from the south line of the lease and the survey.

Flowing 663 barrels of oil per day, along with 141,000 CF casinghead gas, the No. 1 Brunson-Matthews was completed successfully by Phillips Oil Co. of Oklahoma City.

The wildcat was drilled to 8,496 feet total depth and will produce from an interval 8,110 to 8,150 feet into the wellbore. Production tests were run on a 12/64 choke, and tubing pressure registered 800 PSI.

The location is in a 40-acre lease in Hardeman County's W&NWRR Survey, Sec. 49, Blk. H. Drillsite is two miles southwest of Medicine Mound.

The well is 950 feet from the south line and 467 feet from the west line of the lease and the survey.

An 8,500-ft. wildcat well is planned by Jones Co. of Albany at a drillsite one mile southeast of Medicine Mounds, Hardeman County. The location is in a 582-acre lease in the W&NWRR Survey, Sec. 46, Blk. H. Well's designation is the No. 1 McLennan.

The well is 467 feet from the south line and 2,100 feet from the west line of the lease and the survey.

Parker Gas Inc. of Dallas has filed first production figures on a new oil wildcat well. The No. 1 Ft. Worth and Denver Unit showed potential to pump 101 barrels of oil and 52,000 CF gas per day.

The operator has 68 acres leased, with drillsite in Hardeman County's W&NWRR Survey, Sec. 141, Blk. H, inside the city limits of Quanah.

The well will produce from an interval 5,682 to 5,694 feet into the wellbore. Total drilling depth was 8,842 feet.

The well is 660 feet from the west line and 660 feet from the north line of the lease and the survey.

Woodham Oil Corp. of Fulshear has given up in its efforts to make a producer out of the No. 1 Devoll. It was a wildcat try in the W&NWRR Survey, A-362, Hardeman County. The location was two miles southwest of Quanah. Spudded 11-4-83, the well had reached 8,940 feet total depth.

The well was 700 feet from the south line and 1,000 feet from the west line of the lease and the survey.

M/E Petroleum Inc. of Fort Worth has revealed plans to drill a 5,700-ft. wildcat well. The operator has 80 acres leased, with drillsite in Hardeman County's H&TCRR Survey, A-1132, and has designated the venture as the No. 1 Krebs. Drillsite is six miles south of Chillicothe.

The well is 500 feet from the west line and 1,210 feet from the south line of the lease and 500 feet from the west line and 1,450 feet from the south line of the survey.

An 8,700-ft. wildcat well is planned by Simo Oil Corp. of Wichita Falls at a drillsite two miles southwest of Medicine Mound, Hardeman County. The location is in a 160-acre lease in the TTRR Survey, A-630. Well's designation is the No. 1 Stermer.

The well is 467 feet from the west line and 600 feet from the north line of the lease and 600 feet from the north line and 2,033 feet from the east line of the survey.

ACTIVITIES in Neighboring Communities

SEW SMART SEMINAR

The nationally-known sewing expert, Clotilde, will be in Wichita Falls for an all day seminar on Saturday, Feb. 25, from 9 a.m. to 4:30 p.m. The seminar is being sponsored by the Wichita County Family Living Committee and the Texas Agricultural Extension Service, Barbara Cornelius, County Extension Agent. Reservations must be made by Feb. 17, by mailing the tuition fee to 1626 Midwestern Pkwy., Wichita Falls. Call 766-0131 for tuition information.

GREEK FOODS CLASS

Minie Pavella, retired director of Extension Home Economics of Greece, will be teaching a class on Greek Food Cooking on Monday evening, Feb. 13, at 7 p.m. The class will be held at the 4-H Auditorium in Wichita Falls.

Plants Etcetera
Mini Roses, Begonias, Baskets, Herb Baskets, Lots More!
Open 10-6 Every Day!
2951 Elliott, W.F.



Happy 13th Birthday,

Christine

Love, Wayne, Mother and Billy

Elite Creations

Floral - Reception Catering - Altar Decoration

Pat Brown - Consultant
592-2211

Located in The Velfree Shop

208 W. Bank

"It's a steal, alright, but you'll have to carry it out."
— Sheriff Lick

Purchase one of our jumbo hamburgers, or jumbo cheeseburgers, and the fries and drink are

FREE!

For carry-out orders only at

Little Richard's **Salt Lick**

510 E. Highway

592-5252

TEXAS GARDENER TIPS

Build a Strawberry Factory in a Basket

You may have the wrong soil and conditions in your yard for growing strawberries, but here's a solution that should bring anyone in Texas success—build your own strawberry factory in a hanging basket! All you need is a large, wire-type basket, a good potting mix, sphagnum moss, fertilizer, and several healthy plants.

Choose the same types of plants you would use if you were planting them in the ground. In South, Central and much of East Texas, the varieties Sequoia, Tioga, and the newly-developed Cardinal do well. Sunrise, a heat- and drought-resistant variety, is well adapted to

North, Central and East Texas. If you garden in the colder areas of the state, the more hardy Ogallala and Fort Laramie are recommended.

Plant your strawberry basket in late winter after severe weather is over (you can plant it earlier if you protect it from the elements).

Line the inside and top edge of the wire basket with moist sphagnum moss an

inch thick to prevent the loss of potting soil. Put



about 2 inches of moist potting soil (not garden soil) in the bottom. Begin planting near the bottom of the basket and work upward in a circular pattern. Poke planting holes through the basket at soil level and insert strawberry plants at 6-inch intervals.

Make sure each plant's roots are in the soil mix and the crown is in the moss lining. Continue the procedure until the basket is filled with soil within 1 inch of the top. Plant the top of the basket with 4 or 5 plants, concentrating the plants more toward the edge of the basket. Water the basket often and fertilize it weekly with a water soluble fertilizer.

Before you know it, you'll have mouth-watering strawberries right from your own back porch.

TEXAS GARDENER™

P.O. Box 9005 Dept. BR
Waco, TX. 76710

©1983 TEXAS GARDENER MAGAZINE

SOCIAL SECURITY TIPS

EMPLOYEE TAX RATE STAYS SAME

Although the Social Security tax rate for employees and employers will increase from 6.7 percent for 1984, the effective tax rate for employees will remain at the 1983 level, John Bynum, Social Security district manager in Wichita Falls said recently.

This is because employees have been given a one-time 0.3 percent credit against the 1984 tax rate, Bynum said. As a result, employees whose earnings are the same in 1984 as they were in 1983 will see no increase in the amount of Social Security taxes withheld from wages.

In 1984, Social Security taxes will be paid on annual earnings up to \$37,800 the maximum that counts for Social Security. The 1983 maximum was 35,700.

The 1984 Social Security tax rate for self-employed people will be 14 percent, double the rate paid by employees. But, Bynum said, self-employed people will receive a credit of 2.7 percent of self-employment income, resulting in an effective tax rate of 11.3 percent.

The 1983 self-employment tax rate was 9.35 percent.

EARNINGS TEST

If you get monthly Social Security benefits, here's an important announcement.

The amount you can earn in 1984, and still get your full Social Security payments, has been increased to \$6,960 if you're 65 or older. For people under 65, the earnings limit

has been increased to \$5,160.

If you earn more than these amounts, \$1 will be deducted for each \$2 over the annual limit.

EARNINGS REPORTS DUE, NOTE PLANNING ASPECTS

Annual earnings reports are due by April 15 from Social Security beneficiaries who worked last year and earned over the annual earnings limits. The limits were \$6,600 for people 65 and over and \$4920 for people under 65.

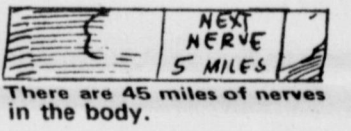
John R. Bynum, district manager in Wichita Falls, stresses the use of the report as a planning aid as well as a reporting document.

Examining how close actual earnings for 1983 were to the estimate made last year should help in estimating 1984 earnings. Beneficiaries are required to indicate how much money they earned last year to enable Social Security to determine if benefits were paid in the right amount. Beneficiaries must also report how much they expect to earn this year. Benefits are reduced by \$1 for each \$2 in earnings over the exempt amount.

Failure to properly estimate the amount of earnings one expects is a major cause of overpayments, officials note. If earnings are higher than the level estimated, a person could receive more benefits than he or she is entitled to, an overpayment.

The law requires overpayments to be paid back to the trust funds. Most often this involves reductions in future checks until the overpayment is repaid. To insure that benefits paid are in the right amount, any change in earnings - higher or lower than the estimate given to Social Security - should be reported to the Social Security Administration as soon as possible. Lower earnings than estimated could result in a higher benefit check.

Reports may be made to any Social Security office. People 70 and over all of last year do not have to file a report of their earnings. The earnings test does not apply to them.

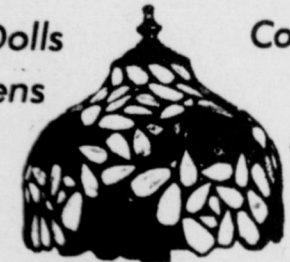


There are 45 miles of nerves in the body.

Shop The Parlor

Put Country In Your Home

Sock Dolls Chickens Ducks Collectibles Baskets Antiques



Depression Glass Handcrafted Items

B9's COUNTRY PARLOR

504 East Highway

Tues. - Sat. 10-6 592-5787

OPEN UNDER NEW MANAGEMENT JOHNSON ROAD TEXACO

Johnson Rd. & Expressway 592-5871

A FULL-SERVICE STATION

•Self-Service •Wash Jobs
•Tire Repair •Minor Repairs
•Oil & Filter Change — ALSO — (Weekends by Appointment)

HOURS: 7-7 Mon. thru Sat.; 7-6 Sunday

Locally-owned & operated by
J.D., Bettie & Paul Parker



DON DECKER

"Short Rows" with

FARMERS' GRAIN & FERTILIZER, INC.

NURSERY TO OPEN

We will open our nursery by February 15th with a complete line of best adapted fruit and shade trees. Home fruit growers will be especially interested in the new Venus grape which is large, compact, purple and seedless.

Tim Hunter of the Iowa Park Experiment Station has already placed his order for 10 of these new grapes. In fact, Tim provided me with the name of the Arkansas grower.

We are the only place in the country where you can buy topsoil by the pickup load and we'll load it for you. This Thornberry topsoil which came from Don Dwyer Jr. is excellent for renovation of old lawns, flower beds, gardens, and new plantings.

Seed potatoes should be cut into pieces now in order to allow the cut surfaces to dry before planting. The best planting dates will be from Valentine's Day to March 1.

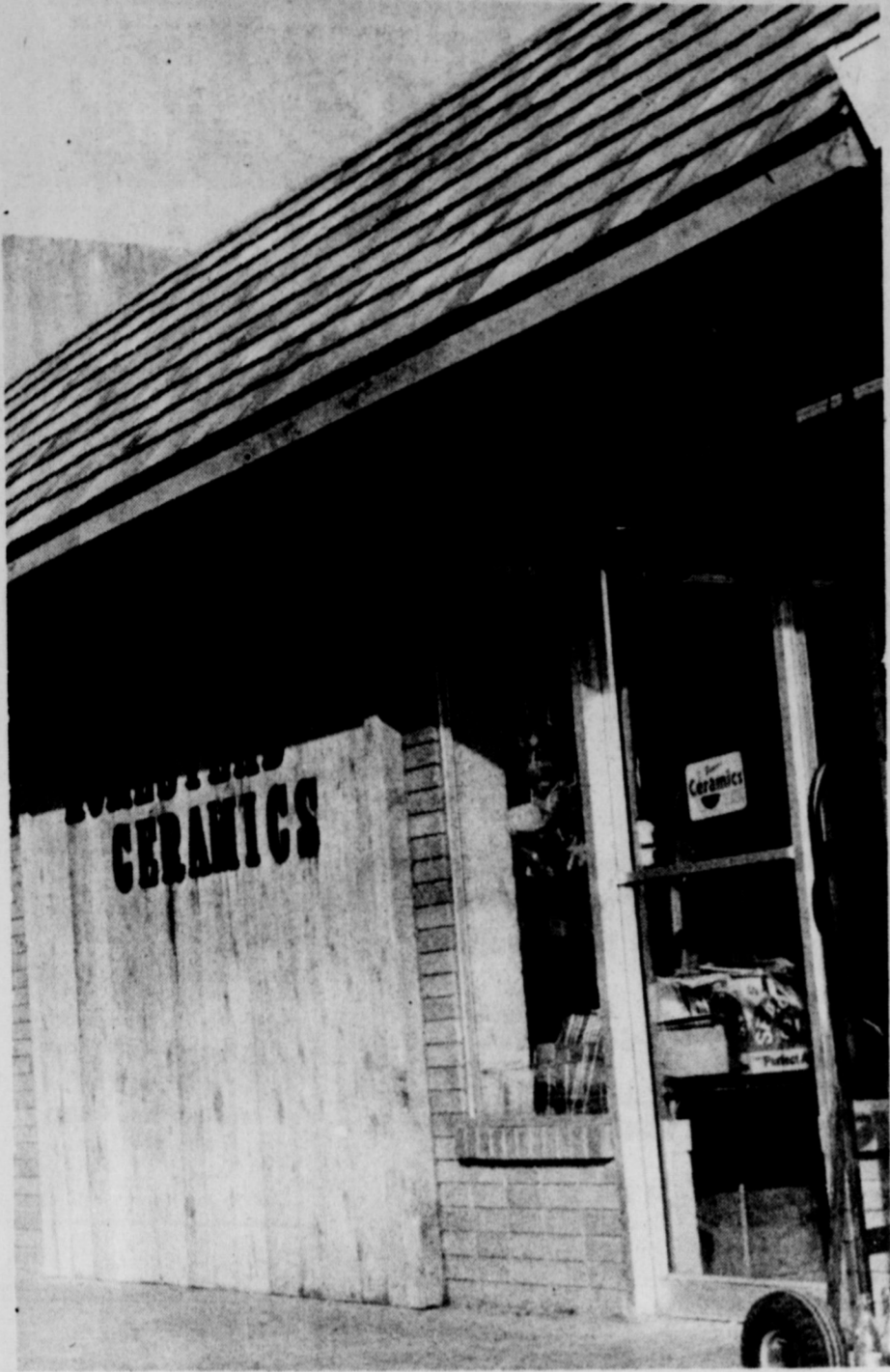
We have Red Desoto potatoes in stock. This variety comes from the commercial growers at Munday; which is specifically adapted to this area. The supply is short so gardeners will want to get their seed potatoes early.

Home owners are winning the battle against winter weed which plague home lawns every spring. John Barbour of Wichita Falls sprayed his lawn with Phytar 560 killing henbit, wild rye, clover, rescue grass and chick weed. He will come back with a premerge Balan application about March 1, for the control of crabgrass and other summer weeds.

211 S. Victoria

592-4118

Iowa Park



DOWNTOWN BEAUTIFICATION - Latest of downtown businesses to improve the appearance of their buildings are Homestead Ceramics, on Cash Street, and Iowa Park Florists, on Park. Homestead's front was improved by a new shingled awning and paneling covering an unused entrance. A similar awning was installed this week at Iowa Park Florists, but the owners say it is only a part of the yet-unfinished project.



Municipal Court Records

Results of municipal court held here yesterday were:

- James Delton Stone, speeding, \$48;
- Billy Joe Johnson, speeding, \$61;
- Ricky Glen Steele, expired motor vehicle registration, \$49;
- Ricky Glen Steele, no motor vehicle liability insurance, \$94;
- Dennis Gene Yeager, expired MVI, \$60;
- Billy Sherwood McKinley, speeding, \$45;
- Donald Lee Vines, speeding, \$49;
- Deanna Ogden Lankford, speeding, \$47;
- Jim Bryan Pulley, expired MVI, \$60;
- Regina Ann Hillard, speeding, \$46;
- Cortey Olis Nall, expired MVI, \$40;
- Lisa Rhea Yeakley, speeding, \$44;
- Patrick William Sargent, speeding, \$48;
- Robert Lee Gray, speeding, \$45;
- Johnnie Robert Brown, disobeyed stop sign, \$40;
- Ronald Wayne Brackett, invalid license plate, \$49;
- Douglas Earl Hansard, displayed expired MVI, \$40;
- James Crawford Lindsey II, speeding, \$46;
- Sammy Don Jordan, displayed expired registration, \$49;
- Sammy Don Jordan, no operators license, \$40;
- Sammy Don Jordan, no motor vehicle liability insurance, \$94;
- Sharon Lee Bilson, speeding, \$46;
- Jeffery Dean Lawson, speeding, \$40;

Caussey reports finances

Holiday school trustee Durhl Caussey, candidate for 80th District state representative, reportedly received a total of \$2,858.32 in

campaign contributions, though spending \$6,736.05 through December, said Bob Balch, Caussey's treasurer.

Balch, of Wichita Falls, said the Holliday businessman had not received a contribution from any political action committees, preferring instead to keep a distance from special interest groups.

Caussey, a Democrat, is opposing incumbent Charles Finnell, also of Holliday. His filing fee was reportedly mailed at 5:30 Monday afternoon.

His contributions include loans made to his campaign for \$1,281.92; donations in excess of \$50 adding up to \$656.40; and, donations of over \$50, \$920, Balch reported.

Balch added the largest contribution through December was for \$155.



Fri., Feb. 10 - Chalupas, meat or cheese sandwich, soup, buttered corn, lettuce & tomato salad, chocolate or plain milk, pudding cake.

Mon., Feb. 13 - Tacos with cheese, meat or cheese sandwich, soup, buttered corn, lettuce & tomato salad, chocolate & plain milk, pumpkin cake.

Tues., Feb. 14 - Submarine sandwich, meat or cheese sandwich, soup, pork & beans, chilled fruit, potato chips, lettuce, tomatoes, pickles, onions, chocolate & plain milk, Valentine cake.

Wed., Feb. 15 - Charburgers, meat or cheese sandwich, soup, tater tots, navy beans, lettuce, tomatoes, pickles, onions, chocolate & plain milk, ice cream bars.

Thurs., Feb. 16 - Fried chicken, meat or cheese sandwich, soup, mashed potatoes & gravy, green beans, hot rolls, butter & honey, chocolate & plain milk, lemon sunshine pudding.

FIRE CALL

- 1/26: EMT to West Highway behind White's, 3:40 p.m., 2 trucks, 9 men.
- 1/26: EMT to George Ball Field, 6:15 p.m., 1 truck, 10 men.
- 1/28: Grassfire at Pleasant Valley, 12:53 p.m., 2 trucks, 6 men.
- 1/28: Grassfire at Witchcraft Farm on 368, 1:07 p.m., 2 trucks, 10 men.
- 1/28: Grassfire at Wichita River and 368, 6:54 p.m., 2 trucks, 10 men.
- 1/29: Grassfire, 1 mile east of Iowa Park; 9:55 p.m., 2 trucks, 14 men.
- 1/29: Grassfire on Keil Lane, 2:56 p.m., 2 trucks, 17 men, Cameron Garden VFD assisted.
- 2/1: Car fire at 369 and 367, 3:44 p.m., 2 trucks, 11 men.
- 2/3: Structure fire, 905 S. Colorado, 12:26 p.m., 2 trucks, 8 men.
- 2/3: Grassfire, 1 mile east, 7:44 p.m.; 2 trucks, 12 men.
- 2/4: Grassfire on East Highway 2:10 p.m., 1 truck, 7 men.
- 2/5: EMT to 304 E. Magnolia, 4:14 a.m., 1 truck, 7 men.
- 2/5: House fire, 404 W. Lafayette; 11:37 p.m., 4 trucks, 14 men.

Art show slated Mar. 17

The Holliday Art Association will present its first-annual "West-O'-Wichita Arts and Crafts Show" Saturday, Mar. 17, at the Holliday High School cafeteria.

Slated to begin at 10 a.m., and ending at 5 p.m., the setup time for

this nonjuried sale show is from 8 until 10 a.m. that morning. The public is invited, free of admission, with concessions furnished by the Holliday High School Band Club.

Applicants must show original work only, and a charge of \$10 will ensure one of three types of available space: a 2'x6' table; a 4'x8' pegboard, or an empty space. Chairs will be furnished.

Anyone wishing to enter must include name, address, telephone number, and description of the particular work to be shown, and mailed before March 10 to: Holliday Art Association, P.O. Box 701, Holliday, TX 76366.

Further information concerning the arts and crafts show can be obtained by calling 586-1728.

Couple sets June date

A lakeside setting has been chosen for Kristi Kay Lucy and Barry Kyle Lawson to exchange vows of marriage June 9th at Lake Kickapoo.

Miss Lucy, daughter of Mr. and Mrs. Don Lucy of Holliday, was graduated from Holliday High School and currently attends Midwestern State University while working for Bobby Evans Sporting Goods.

Lawson, son of Mr. and Mrs. Sammy Lawson of Lakeside City, also was graduated from Holliday High School and attends Midwestern while working for Hale Supply Co.

IRS Tax Tips

DON'T WAIT FOR TAX PACKAGE TO FILE TAX RETURN, IRS SAYS
If you haven't received your tax package by now, you probably won't receive one this year, the Internal Revenue Service says.

Tax packages are mailed each year shortly after the December holidays, and are received by most taxpayers during the first two weeks in January or earlier. Due to the postage costs involved, tax packages only receive limited forwarding. Those that cannot be delivered as addressed are not forwarded outside of local carrier routes, IRS explains.

HEARTS of different COLORS

\$59⁹⁵

Oz was never as colorful . . . Beautiful hearts in a rainbow of colors each more lovely than the next. Expertly crafted in 14 Kt gold with stones. Give yourself or someone you love a special gift of colorful heart jewelry today.

Louis' Distinctive Jewelry
408 W. Park 592-5942

WE CARE ABOUT YOUR HEALTH. WE CARE ABOUT YOUR HEALTH. WE CARE ABOUT YOUR HEALTH. WE CARE ABOUT YOUR HEALTH. WE CARE ABOUT YOUR HEALTH.

WAL-MART PHARMACY
592-4157
500 West Highway

DEBBI - CHRISTY
BONNIE - JEAN & VESTA

| | |
|---|--|
|  <p>Drixoral 12-hour relief of colds, hay fever & sinus 20 tablets \$4¹⁷ Reg. 5.93</p> |  <p>Afrin[®] Menthol Nasal Spray For Up to 12 Hour Relief 15 ML \$1⁹⁵</p> |
|  <p>Robitussin DM Cough Syrup Reg. 5.17 \$3⁹⁷ 8 oz.</p> |  <p>REGULAR STRENGTH TYLENOL Reg. 3.82 100 Capsules \$2⁸⁷</p> |

CHILI DOG

64[¢]
Reg. 85[¢]

Enjoy Coke

Harvey's FAMILY RESTAURANT HAMBURGERS

805 West Highway
FOR TAKE OUT ORDERS
CALL 592-4731

BUYING? SELLING? RENTING? HIRING? WANT ADS PAY OFF

DEADLINES

10 A.M. WEDNESDAY (Word Ads Only)
4 P.M. TUESDAY, DISPLAY ADS

SAVE 10¢ PER WORD FIRST INSERTION BY PAYING WITH COPY AT OFFICE

RATES:

20¢ PER WORD FIRST INSERTION
10¢ PER WORD EACH REPEAT

HOMES FOR SALE

FOR SALE OR RENT- two bedroom house, 1 bath, two lots, fenced backyard. Call 1-808-3262. 2-2-3tc

REDUCED Corner lot across from Kidwell. 3 bedroom, 1 1/2 baths, family kitchen. Owner says sell it.

CLOSE TO CRYOVAC Priced to sell. 4-bedroom, 2 bath, brick home. Central heat, air. Very nice for the price.

JOAN SHIERRY
592-5540
HIRSCHI REALTORS
692-8120 691-1212

4 BEDROOM close to school. Nice home, fenced yard. Owner transferred. Appraisal price \$59,000.

3 BEDROOM brick home, 1 1/2 baths, privacy fence. \$1 VA move-in or owner will pay closing costs. \$46,000.

3 BEDROOM brick. Den with fireplace, built-ins, storm cellar, privacy fence. VA appraisal \$50,000.

STARTER HOME - \$15,000. Good condition. Can be assumed. Payments \$125.00.

10 ACRES - 4 bedroom home, 2 baths, den, extra large kitchen. Barn, storm cellar, 100% minerals, capped oil well, Iowa Park school district.

EXTRA NICE 3 bedroom home for lease. Custom drapes, fireplace, built-ins, 1 1/2 bath.

3 BEDROOM BRICK Double garage, fenced. Ready to move in. \$36,000.

COMPLETELY remodeled. Mint condition. 2 bedroom. Nice area. \$20,000.

LOVELY LARGE older home. Close to town. 3 bedrooms, formal dining and living, nice den, all built-ins. \$45,000.

19.8 ACRES - 2 stock tanks, good fishing, large barn. Double-wide trailer 1 mile north expressway on Huntington Lane. \$60,000.

7 - 50 FT. LOTS \$10,000. Good home sites.

3 BEDROOM brick - 2 bedroom separate unit. great for rental. Extra large lot. Allowance allowed for painting. \$60,000.

2 BEDROOM home on 3 lots. Storm cellar, extra buildings. \$25,000.

CORNER LOT - 3 bedroom, 2 bath, formal living, fireplace in den. Landscaped & privacy fence. \$66,000.

Shirley Rains
Real Estate

HOMETOWN REALTOR
SHIRLEY RAINS Broker
Member Multiple Listing

119 W. Park 592-4248
IOWA PARK, TEXAS 76367
Vincent Rains 855-3698

FOR SALE by owner

Three-bedroom, brick home with fireplace, 1 1/2 bath, utility room, 2-car garage, fenced yard and 10x14 storage. 592-5829. 2-9-4tp

IOWA PARK Do you make \$14,800 a year or less; would you like to live in a new 3 bedroom, 1 1/2 bath house. Full carpeted with central heat/air, with extremely low payments.
SWAN CONSTRUCTION COMPANY, 692-8788.

Great Starter Home

For young couple, 3 bedroom, 1 and 1/2 bath house for sale near Cryovac Plant.

Call 691-2500 or 691-7607

HAVE BUYERS for one acre or more for homesite. 150 to 200 acres with or without home. Home with large lot, garden area. Call us if you have this or any other type property for sale.

FOR LEASE Brick home, fenced yard, immediate possession. \$350 monthly.

800 N. JACKSON Extra clean two bedroom home. Paneling and nice carpet throughout. Good corner location. \$24,500 V.A. Appraisal. Price may be negotiated. Owner Realtor.

511 E. RUBY Two large corner lots, 14x80 Town & Country Mobile Home. \$20,000. Look and make offer. Owner Broker.

SOON BE SPRING Ideal home site 8 acres. Hard soil, close in. Wa. water. Owner finance \$20,000.

QUICK POSSESSION Extra clean 3 bdrm. brick. Almost new. Cent. heat/air. \$40,000. VA

CLEAN & BRIGHT 3 bdrms., den, new built-ins, cent. heat/air, carpet. Good Buy. \$5,000 below VA appraisal or make offer.

MOVE IN New 3 bdrm. brick, 2 baths, good floor plan. \$500 below VA appraisal or make offer.

MOVE IN & FINISH 1296' living area. Unfinished 3 bdrm, 1 1/2 baths, 2 lots, well & garden. \$20,000, or make offer.

LOTS In Garden Valley. Some curb & gutter.

MOBILE HOME 2 bdrm. on 2 lots. Double garage with upstairs storage. Corner. \$14,000.

Established local realtors
Member Multiple Listing

Sam D. Hunter
Real Estate
107 E. Cash Ph. 592-4661

FOR RENT

LEASE: 3 bedroom brick, 1 1/2 baths, formal dining, living rooms, garage, fenced, walk to school. Owner, Realtor, 569-1934. 2-9-2tp

IOWA PARK any interested prospective tenants for office or retail space in 9,672 sq. ft. indoor mall to be constructed in West Park Shopping Center, Iowa Park, TX., please call area code 817-322-4811. 2-2-4tc

MISC. FOR SALE

3 1/2 HORSE POWER tiller \$150; Yamaha 116 mi, 1981 champ, like new. 592-4387, 901 E. Cash. 2-9-1tp

1981 GRANDE PRIX cruise, AM-FM radio, air. Excellent condition. 592-2497. 2-9-1tp

FIREWOOD - Oak. 592-5586 or 592-4814. 1-19-4tp

PECANS - paper shell \$1.00 lb. for 10-lb. bag; 75 cents lb. for 100 lb. bags. Free delivery 20 lbs. or more. Iowa Park Florist 592-5221 or Jimmy Howell 438-2336. 12-15-tfc

LONGHORN BULLS for sale. Call 592-4155 or 592-9662. 12-29-tfc

HELP WANTED

EXPERIENCED DIETARY cooks. Come by Heritage Manor, 1109 N. 3rd. 2-9-1tc

WANTED - Part-times sales representative for home party plan, new in area. European-style plastics for the home. Established national company. We train. Contact Florene Deere (817) 855-9068, (817)723-7712. 2-2-3tc

BUSINESS

WANT TO babysit infant in my home. Call 592-5727. 2-9-1tp

WILL BABYSIT my home for working mother. Prefer infant or toddler. 707 S. Colorado. 2-9-1tp

REGISTERED home needs full-time children, infant to pre-school. Loving care. 592-2826. 2-9-1tp

CHILD CARE Monday thru Friday, 6:30-5:00, ages 1-5. 592-4090. 2-9-2tc

REGISTERED Home. Lots of toys, hot meals; large fenced yard. Infants through pre-school. 592-5368. 2-2-2tc

REGISTERED Child Care, 5:30 a.m. - 5:30 p.m. 18 months and older. Will take and pick up from schools. 592-9561. 2-2-4tp

LOOKING for houses to clean. Call Judy 1-438-2368. 2-9-2tp

WANTED - Houses to clean. Call 592-9352. 2-2-2tp

VIA CONSTRUCTION - Roofing or Remodeling, Paneling or Painting. Free Estimates. All work guaranteed. Discounts to Senior Citizens. Call Jimmy Via, 592-5200. 2-9-8tp

GARDEN PLOWING - New or old gardens within Iowa Park. 592-4587. 2-2-2tp

JERRY'S VINYL REPAIR recoloring, auto, furniture, commercial. Free estimates, 438-2243. 7-7-tfc

MONOGRAMMING service 592-9850. 1-5-10tp

STORM WINDOWS - Machine-blown insulation. Roof turbines installed. Free estimates. Jack Kerr, 215 S. Wall, 592-9040, 438-2941. 7-7-tfc

FOR YOUR COPY NEEDS including reduction and enlargement, call Iowa Park Air Conditioning, 592-5891, or come by 609 W. Bank. Charges 20 cents a copy (less for quantities). 10-6-tfc

MARY KAY COSMETICS Allie Girard, consultant, 109 W. Poe, 592-4217. 1-6-tfc

BLACK POWDER GUNS and accessories, revolvers \$50 and up. Powder \$4.80 lb. Will order modern guns for 10% over cost. Ye Ole Gun Shack, 413 W. Washington, 592-5430. 1-6-tfc

ROOFING - Wolfe Roofing Co. Phone 855-5657. 10-6-tfc

BUILDING, remodeling, or repair, additions, carports, patios. Free estimates. Call day or night Billy McDonald 592-4338, Phil McDonald, 592-2363. 11-17-tfc

REMODELING Concrete - Additions, driveways. 592-9555. 1-12-52tp

TOLER'S FOLK ART. 810 S. Yosemite, Iowa Park. 592-5862. 1-5-13tp

REMODELING? Do you need another room added on? A garage? Walls removed or added? Free estimates. References. Jack Kerr, 215 S. Wall, 592-9040, 438-2941. 7-7-tfc

Quail Run Apartments

1-2 Bdrm. Ground Floor, Central Heat & A/C, Appliances, Laundry. Close to school & public park. Starting at \$180 per month to qualified tenants. Gas & water paid. Call 592-5813. 7-7-tfc

NOW RENTING PRESTIGE APARTMENTS

Starts \$325
1100 sq. ft.
Fireplace
2 1/2 Bath
Microwave
Dishwasher
Refrigerator
Full size Washer
Dryer Hook-ups

592-2989 or 592-5434

THREE BEDROOMS

Large living room, formal dining, nice kitchen, 1 bath, single garage. \$29,900.

TWO BEDROOM

One bath, livingroom, large kitchen & dining room. Good storage building. Lafayette. \$18,500.

GOOD BUY

Two nice 50x142 lots. Old house, partially burned. Lots of good lumber. \$6,500.

THREE BEDROOM

one bath, living room, dining room, large kitchen, central heat & air. \$29,900.

EAST ALAMEDA

Two bedrooms, one bath, lovely paneling, single garage. \$27,500.

SUNSET

Four bedrooms, 1 1/2 baths, nice garage, large lot, fenced yard. \$42,250.

Try The Action Co. I Think You Will Like Us

MEMBER MULTIPLE LISTING SERVICE

JOHNNY LEE
REAL ESTATE


592-2378
109 W. Cash

OPEN HOUSE

507 W. Coleman

Sunday, 2 to 5 p.m.

Host - Charles Seigler
Builder - Al Maag




2951 Southwest Pkwy. 691-7855

Toll Free 1-800-453-1851

DYNAMIC REALTORS

855-6823



LOOK AT THESE SPECIAL IOWA PARK PROPERTIES

QUAIL VALLEY: Beautiful 3 bdrm, 2 bath, 2 garage on 5.75 acres; exceptional decor, stock tank, barn, kennels; \$129,500.00
W. REBECCA: Rambling Ranch, 3 bdrm, 2 1/2 bath, 2 garage, computer connection, central heat/air, equipped kitchen; Mid 60's.
EMMA: Storm Cellar w/inside access. Lovely brick home, central heat/air, 3 bdrms, 1.75 bath, 2 garage; upper 30's.
NORTH 3rd & WEST TEXAS: 5.8 acres in good commercial area. High traffic count. Upper 40's.
PARK PLAZA: Cozy fireplace in den, 3 bdrm, 1 1/2 bath, well insulated, work shop, central heat/air, covered patio, upper 30's.
MAGNOLIA: TWO FIREPLACES! This lovely 3 bdrm 1 1/2 bath, 2 garage home has everything, mid 60's.
VAN HORN: put a crackling log on the fireplace & relax in the cozy den, 3 bdrm, 1 1/2 bath, 2 garage, central heat/air; upper 40's.
YUCCA: Fantastic Dream home on 1.72 acres, executive area, 4 bdrm, 2 bath, huge den, garage, low 100's.

The Only Company with VIDEO REALTY
Call us to VIDEO tape your home



Lawnmower Repair Service

SINGLETON'S

505 W. Highway 592-2671

"MONEY WHEN YOU NEED IT"
Loans on most anything of value
SOUTHWEST SALES & LOANS
4423 Phoe Rd. 692-1371



King's Kids Christian

Day Care & Preschool
"Iowa Park's Finest For Parents Who Care"
Ages 2 Yrs & Older
Monday thru Friday
7 a.m. to 6 p.m.
202 N. Jackson 592-4242

NEW AT NEW NEARLY NEW STANLEY HOME PRODUCTS

410 Park West Center
Ph. 592-9563

Southwest Bail Bonds

City, County & Credit Bonds
24-Hour Service
Confidential Assistance
692-1391

SHAW SPECIALS

'82 FORD PICKUP
Short narrow bed, 302 V-8, standard transmission, power steering and brakes. Low mileage. Was \$5895 Now \$5250

'82 DATSUN KINGCAB PICKUP
Diesel, 4-speed, air, high mileage but looks and runs great. Local owner. Was \$4495 Now \$4150

'81 DODGE ARIES
2-door, 4-cylinder, 4-speed, air, power, 40,000 miles. One owner, extra clean. Was \$3995 Now \$3675

'80 FORD PICKUP
Long wide bed, 6-cylinder 4-speed overdrive, air, power, tape stripe. One local owner. Was \$4495 Now \$3950

'79 CADILLAC
4-door, Fleetwood Brougham, fully loaded. Local owner. Was \$6995 Now \$6250

'77 FORD PICKUP
Long wide bed, Explorer, 351, automatic, air, power. Local owner. Was \$1995 Now \$1750

'80 FORD PICKUP
Long wide, 302, auto, air, power, 44,000 miles. Local owner. Was \$5895 Now \$5450

Shaw Motor Co.
Iowa Park 592-4106

Colonial Heights Apartments

Magnolia St. at Johnson Rd.
IOWA PARK

One and two-bedroom apartments, energy efficient, central heat/air, total electric appliances, fully carpeted and draped. Children's play area. Off-street parking. Fully equipped laundry room. Month to month rent starting at \$181.00 for one bedroom, and \$220.00 for two bedroom apartment (to qualified persons). Water paid.

CALL 592-2705



We service all makes of washers, dryers, freezers, refrigerators and window air conditioners.

POSEY'S APPLIANCE SERVICE

208 James Ph. 592-5452 Iowa Park



RIBBON CUTTING ceremonies for Holliday's newest business, Holliday Home Furnishings, took place Saturday morning with owners Don and Sharon Duke cutting the red

ribbon held by chamber president Ethyl Cook and publicity chairperson Sylvia Stone. The business is located at the former White's store on Seymour Hwy.

Lady Eagles in playoffs

Five girls' basketball teams from District 11-AA will converge on Hirschi High School gymnasium tonight through Saturday night to find the conference's two best teams.



Thursday, February 9
Breakfast: Cheese toast, milk, fruit.
Lunch: Chalupas, lettuce, tomatoes, French fries, catsup, milk, cobbler.

Friday, February 10
Breakfast: Frosted flakes, milk, juice.
Lunch: Hamburgers, lettuce, tomatoes, pickles, onions, chips, milk, ice cream.

Monday, February 13
Breakfast: Biscuits, gravy fruit, milk.
Lunch: Fish, macaroni and cheese, salad, tartar sauce, milk, bread, fruit.

Tuesday, February 14 - Breakfast:
Cinnamon roll, milk, juice.
Lunch: Turkey roast, brown gravy, whipped potatoes, green beans, milk, bread, cake.

Wednesday, February 15
Breakfast: Jelly, toast, milk, juice.
Lunch: Burrito, chili and cheese, French fries, milk, cookies.

Thursday, February 16
Breakfast: Oatmeal, toast, milk, fruit.
Lunch: Barbecue ribs, creamed potatoes, gravy, corn, bread, milk, fruit.

The Lady Eagles, tied with Petrolia for second place in the west zone, meet the Lady Pirates in the only game slated for tonight, beginning at 7.

Olney's girls, 35-21 winners over the Lady Eagles Tuesday night in Holliday, play Jacksboro, runners-up in the east zone, at 8:30 p.m. tomorrow at the Wichita Falls' school.

Preceding that game will be a matchup between Chico, first place team representing the east zone, against the winner of the Holliday-Petrolia game. The game will start at 7.

The finals, to be played at 8 p.m. Saturday, will pit the winners of the two Friday night games.

Tickets for the games will be \$3 for

adults and \$2 for students.

In boys action, the Eagles are currently tied with Henrietta for second place in the west zone, and can clinch a playoff spot in next week's district tourney if they win their last two games.

State-ranked Olney, despite stingy play from Holliday Tuesday night, maintained an unblemished district mark with a 58-50 win in Holliday. Nocona has wrapped up the east zone championship, with Jacksboro holding the edge for second place.

The Eagles host Henrietta tomorrow night at 7 in Eagle gym for the first of two remaining conference games. Tuesday, the boys travel to Archer City to hopefully gain a spot in the district tournament.

Windthorst and Byers, both state-bound, will meet in a practice game Tuesday at 7 p.m. in Eagle gym.

Free clinic set

Monday afternoon

A free childhood immunization clinic, sponsored by the Texas Department of Health, will be held from 2 until 4 p.m. Monday at the Archer Service Center in Archer City.

According to Janett Talley, public health nurse, parents of children needing immunizations are urged to bring them to this free clinic, and also to bring the child's shot records with them.

Immunizations against DPT, polio, measles, mumps and rubella will be offered. Parents or legal guardian must accompany child, Talley said.



Kuntry Klass
PACKAGE STORE
(Formerly B.J.'s & Bob's)
4100 Old I.P. Road 855-6702
Betty Guyette, Owner

B&W Garage & Roustabout Service
Truck - Auto - Stationary Engine Repair
Tank Batteries Repaired (592-2871 shop)
Brownie 592-4402 Weldon 592-5227

IOWA PARK
Air Conditioning & Heating
Service On All Makes
Engineering Sales
607 W. Bank
FRANK GUYETTE
PHONE 592-5891

Bud Mercer Electric Co.
Residential & Commercial
BUD MERCER, Owner HARDIN HILL
Phone 592-5413 Phone 592-2666

E&S Exxon
EXXON
•Tune-ups •Brakes
•Front-end alignment
592-4897
612 W. Highway •Custom exhausts
•Computer balance

Green Thumbers
Strawberry Plants Are Here!
For hanging baskets or garden boxes Ea. 10¢
Also — Check our new drip irrigation systems & seed racks, plus bulk garden seed
NOTE: vegetable plants will be ready for you by early April!
Baker's Greenhouse
One mile South on Bell Rd.

Patty Cake Nursery School
...now taking applications for your children.
592-2926 or 592-2398
DIRECTIONS - North on Bell Rd. across U.S. 287, turn right (east) on Rogers Rd. just past Gilmore's yard, 1/4-mile to house, look for sign.
Lajuana Vanek, owner

The following is a list of our *Dissatisfied* classified advertisers

KING'S FOOD

300 W. Bank

STORE HOURS — 7 AM - 9 PM Monday - Saturday
8 AM - 8 PM Sunday

592-2861



WE BELIEVE

OUR FOOD QUALITY STANDARDS ARE HIGH! OUR PRICES LOW!
PRICES EFFECTIVE THROUGH SUNDAY, FEBRUARY 12

FOOD STAMPS Welcome Here

DEL MONTE C.S./W.K.
GOLDEN CORN

OR
DEL MONTE
SWEET PEAS

17 oz.
Cans
2/\$1

DEL MONTE
CATSUP

32 oz.
89¢

DEL MONTE
TOMATO SAUCE

8 oz.
Cans
5/\$1

PROFESSIONAL
CLEANING

at DO-IT-YOURSELF
PRICES!

Rug Doctor.
RENT THE STEAM
CARPET AND
UPHOLSTERY
CLEANER FOR THE
DO-IT-YOURSELER
INQUIRE AT KING'S FOOD

SHURFINE
TUNA

oil/water

6.5
oz.
59¢

SHURFINE
COFFEE

ALL GRINDS
1-lb. Can
\$1.69

O'GRADYS
POTATO CHIPS

Reg. \$2.09
\$1.69

PET
EVAPORATED
MILK

13 oz.
2/\$1

CHARLIE BROWN
'CYCLOPEDIA

Vol. VI

Eq.
\$2.69

NORTHERN
TOWELS

Asst.
Jumbo
Roll
69¢

SKIPPY
Creamy/Crunchy
PEANUT BUTTER

14.5 oz.
\$1.69

SEA DOG
DOG FOOD

4-lb. Bag
Reg. \$2.39
\$1.69

CHIPS AHOY
or
DOUBLE STUF

19 or
20 oz.
\$1.99

MORTON
DINNERS

Asst.
10-11 oz.
95¢

COUNTRY STYLE
RIBS

Lb.
\$1.09

JIMMY DEAN
SAUSAGE

2-lb.
Roll
\$2.89

FIRST CUT
PORK CHOPS

Lb.
\$1.29

AFFILIATED

VAN CAMP'S WH./TLW.
HOMINY

14.5
oz.
3/\$1

LUCKY LEAF
CHERRY PIE
FILLING

22 oz.
\$1.79

We gladly accept W.I.C. Cards

HEAVY BEEF BONELESS

CHUCK ROAST
Lb.
\$1.58

RODEO BRAND

FRANKS 12 oz. **88¢**
LUNCHMEATS 12 oz. **\$1.09**
Bolo, Salami, Luncheon

FAMILY PACK MEATS

GROUND BEEF Lb. **98¢**
ROUND STEAK Lb. **\$1.78**
PORK STEAK Lb. **\$1.28**
BONELESS CHUCK STEAK Lb. **\$1.08**
BONELESS SWISS STEAK Lb. **\$2.39**
LEAN CUBE STEAK Lb. **\$2.99**

big for barbecues
BEEF

EXTRA LEAN
GROUND CHUCK Lb. **\$1.88**
BOSTON BUTT Lb. **\$1.19**
PORK ROAST Lb. **\$1.39**
SLICED SLAB BACON Lb. **\$1.09**
SMOKED HAM HOCKS Lb. **\$1.09**

PRODUCE SPECIALS

RUSSET
POTATOES

5-lb.
Bag
99¢

LEMONS 8-pk. **89¢**
ROME APPLES Lb. **39¢**
FRESH CAULIFLOWER Lb. **69¢**

NAVEL
ORANGES

Lbs.
4 \$1

SANTA
ROSA
PLUMS

Lb. **99¢**

TANGERINES Lb. **49¢**
RUBY RED GRAPEFRUIT 5-lb. Bag **\$1.39**

LARGE
AVOCADOS

5/\$1

MIX or MATCH
CELLO RED RADISHES
GREEN ONIONS

4 \$1
FOR

DAIRY SPECIALS

SHURFRESH
HALF-MOON
CHEDDAR

8 oz.
\$1.29

SHURFRESH
BISCUITS

SM/BM
SANDWICH-MATE
SINGLES 12 oz.
\$1.19

FROZEN FOODS SPECIALS

SWANSON
POT PIES

2 varieties
8 oz.
2/\$1

VITA GOLD
ORANGE
JUICE

12 oz.
99¢

JENO'S
PIZZA

Asst.
10-12 oz.
99¢