

Chamber presents awards at banquet

Some 250 persons attended the annual Chamber of Commerce banquet Saturday night when announcements were made of award recipients.

One recipient was a first for the Chamber, in that the Outstanding Citizen of the Year Award went to the entire membership of the Iowa Park Volunteer Fire Department.

Receiving the Outstanding Educator Award was Mrs. Delbert Todd, presented by Dr. Erwin Soell; Outstanding Agriculturist, Dewey Spruiell, by Harrel Sullivan; and Outstanding Senior Citizen, Riley Thompson, by Phil Welch.

H.M. Nipper made the presentation of the Outstanding Citizen Award. During his announcement, he kept referring to "This person..." and made so many conflicting references the audience had no way of guessing who would receive the award.

President Preston Leath and Chief Danny Skinner represented the membership in accepting the award. Each member also received a certificate, as all four plaques are retained in the Chamber's office.

Speaker Bob Cox encouraged the audience to "Put your house in order," referring to the courthouse, school, church and residence.

James Edwards was installed as president of the Chamber, Erwin Soell, first vice president and Nipper, second vice president.

The meal was prepared and served by the MuleSkinners.



RILEY THOMPSON
... Outstanding Senior Citizen



DEWEY SPRUIELL
... Outstanding Agriculturist



MRS. DELBERT TODD
... Outstanding Educator



DANNY SKINNER, PRESTON LEATH
... Firemen Outstanding Citizens

IOWA PARK LEADER ²⁵Cents

Vol. 15, No. 20 IOWA PARK, WICHITA COUNTY, TEXAS 76367 THURSDAY, FEBRUARY 2, 1984

Hawkettes keep hope alive for playoff slot

their last two games... Hawkettes remain in the running for a post season playoff position.

While they were losing Friday night to Boswell, 54-46, and defeating Hirschi 55-49 Tuesday, they remain in a second-place tie with Azle, which also lost Friday and won Tuesday.

The two clubs now have a district record of 7-4 behind the 3-AAAA leader Vernon, which stands at 10-1.

The Hawks, losing both to Boswell (74-70) and Hirschi (73-52), are in a four-way tie for fourth place with Gainesville, Boswell and Mineral Wells, all standing 3-6.

The Hawkettes have but three games remaining on their schedule, and two of them are on the road. They travel to Gainesville tomorrow, host Vernon Tuesday, and the following Thursday play at Mineral Wells.

But the girls began their district play before the boys. The Hawks play the same next three games as the girls, and then host Burk Burnett and Azle for their final games.

Next week's games at Mineral Wells will not be played on the same date, however. The girls will play on Thursday, with the boys making the trip the following day.

BOSWELL GAMES

Like their first meeting here, the Hawks played Boswell's Pioneers a close, but losing game Friday at Saginaw. When the Pioneers played here early in January, they went home with a 65-63 victory. They found their home somewhat more to their liking, defeating the Hawks this time 74-70.

Iowa Park held a scant, 37-36, lead at the half, but the hosts surged to a 55-50 lead by the end of the third quarter.

Iowa Park's inability to sink free shots led to the loss. The Hawks...

attempts. Iowa Park had 26 fouls called, Boswell 25.

Lee Birk and Steven Bidy led Iowa Park scoring with 19 points each.

In the girls' game, Boswell jumped to a 12-5 lead by the end of the first quarter. Iowa Park took the lead 25-22 at the half, and Boswell came back to lead 37-31 going into the final period, with Boswell winning 54-46.

Iowa Park had won 53-30 in their first meeting, played here.

Cindy Clanton and Lisa Holloway each scored 12 points.

Both the junior varsity teams won their games, however. The girls took a 39-31 decision and the boys 40-31.

HIRSCHI GAMES

Hirschi's varsity girls made a close game of it during the second and third quarters, but the first and fourth...

seven-point lead stood at the half, 31-24, but Hirschi pulled to within four, 42-38, going into the last frame before bowing 55-49.

Holloway led scoring with 20 points and Lisa Sefcik had 12.

A late surge in the fading moments of the first quarter brought the Hawks from way behind into a 19-19 tie. But from that point on, it was all Hirschi, which led 36-28 at the half and 58-30 (Iowa Park scored only two points) after three quarters. The Huskies emptied their reserve bench in the last period, which ended 73-52.

Jerry Allen scored 14 points for Iowa Park, and Birk had nine.

The junior varsities split their games. The girls ran away and hid with a 60-22 decision, but the boys suffered a one-point edging, losing 59-58.



LISA HOLLOWAY TAKES AIM AT BASKET
... and scored 20 points against Hirschi.

Mail pilfering, solicitors are problems for police

Pilfering of mail and unregistered door-to-door solicitors have been a problem recently for the Iowa Park Police Department.

Two neighbors on Park Plaza this week filed complaints that mail in their home boxes had been damaged. Such an act is a violation of federal postal laws and carries heavy penalty.

Between noon and 4 p.m. Tuesday, mail was destroyed at 719 and 721 Park Plaza. Police and postal officials have been alerted and are investigating. Mail in the boxes had been torn in half and put back in the boxes.

Over the past two weeks, several complaints regarding attempts to sell products by door-to-door solicitors have been received by the department.

"A company is attempting to circumvent the city ordinance that requires a solicitor's permit by calling citizens on the telephone and attempting to make appointments, said Chief Tom Fenley.

"If a company representative calls an individual, and an appointment is actually set up, then no permit is required by our ordinance. The

problem seems to be that these sales people will make an appointment in a particular neighborhood, and after making that contact, they will go to other houses that have not been contacted by telephone," Fenley said.

He explained, the company's telephone solicitor's routine includes advising the potential customer that he had won a "prize," and that the representative will be happy to deliver the item.

Once the appointment is made, the representative makes an attempt to sell the company's merchandise, often using questionable sales tactics that, at best, are unprofessional.

"I have talked to a manager, and have requested that he have his sales representatives operate within the law. This request was made about 10 days ago. Because of continuing complaints, I have issued instructions to my officers to give no further warnings to these people, and to make arrests when the situation warrants it.

"I recommend that citizens, in all cases, be very careful when making such requested appointments, and to be especially cautious with this particular company," Fenley said.



BUILDING PROGRESS - Workmen began Tuesday putting the metal siding and insulation on the Volunteer Fire Department sub-station on South Texowa. The exterior is expected to be completed by today.

News in Brief

Court bond minimum is raised

Minimum bond in Iowa Park's municipal court for a traffic violation has been raised from \$31 to \$40, effective the first of the calendar year.

Bond minimum, which often is the amount of the fine, is established

exclusively by court judge G.A. Benesh. Maximum bond allowed by state law is \$200.

The minimum bond for a citation for having no proof of vehicle liability insurance was raised by state legislature from \$81 to \$94, according to Police Chief Tom Fenley.

Flu bug not yet a problem

As has happened to other schools in this part of the country, the flu bug has bitten a lot of students. But it has not yet reached serious proportions, according to Harold Cowley, superintendent.

Absenteeism yesterday was 11.6 percent of the school's 1,672 enrollment, Cowley reported. This is up from the normal five percent, but far from any decision to close the schools, as has happened in a few other districts.

Sixty four of the 525 students at high school were absent yesterday, 62 of 425 at junior high, 32 of 389 at Bradford and 36 of 333 at Kidwell.

Four teachers were also absent Wednesday, one each at junior high and Bradford and two at Kidwell.

Administration personnel at each campus started noticing more students than normal Monday, Cowley said. Tuesday was somewhat improved, and yesterday was about the same.

Cook of the Week

"Sugar is a food indispensable, excellent and irreplaceable," wrote Rosie Maurel, and it has played a game of hide-and-seek with history. One cup packed brown sugar, 1 cup sugar, 1 1/4 cups sugar are among the ingredients listed in Mrs. Mark Wicks' five recipes for this week and attest to its wide use in cookery. Even though there are many sugar substitutes used today, the majority of cooks prefer the real thing for cakes, pies and desserts.

Sugar is spoken of as a produce of India, but Helen and Scott Nearing wrote that the first historic mention of sugar is found in China in the eighth century. The first westward movement of sugarcane seems to have been in Persia, and the Arabs were the first to bring it to the Western world. Once it became available in Europe, Italy went wild over it, and it was widely used in France.

Brillat-Savarin wrote "It was in the colonies of the New World that sugar was really born." Columbus himself brought the first sugarcane, presumably on his second voyage, to the New World. It was cultivated on the banks of the Mississippi, where the first sugar mill was built in 1758.

Thomas Jefferson felt that sugar on a commercial basis could not be developed very profitably in the United States. Before the Civil War, sugar estates existed in Alabama, Florida and Georgia, but in the more competitive world which emerged after the war, sugar growing became non-competitive. More efficient methods of extraction had been developed in other countries, and the sugar content of cane grown in American climate was low.

The first sugar mill in the United States was built on the banks of the Mississippi River in 1758. By 1875 only 42 mills remained in the U.S., and by 1880 the number had been cut to 27. To show how Americans use sugar, the consumption is ninety-nine pounds per capita per annum, or a quarter pound a day.

Suzanne Wicks was graduated from Wichita Falls High School. She read water meters for the City of Iowa Park four years. She and her husband, Mark, who is employed by the City of Wichita Falls as a fireman, have one daughter, Valerie, one and a half years of age. Suzanne's hobbies are cooking, needlework and canning. She and Mike have a large garden each spring and she canned over 300 pints of food last year.

SPINACH PIE

In mixing bowl, beat together: 1 can spinach, drained, or fresh spinach when available
1 small pkg. cream cheese, softened
1/4 cup grated Cheddar cheese
3 eggs
1/2 cup milk
1 small onion, grated
Garlic, salt and pepper to taste
Mix until well blended, then pour into unbaked pie shell; add more cheese on top. Bake one hour at 350 degrees.

APPLESAUCE COOKIES

1 1/4 cup flour
1/2 tsp. each of baking soda, baking powder and cinnamon
1/4 tsp. each of cloves and nutmeg
1/2 cup butter or margarine, softened



Fall-Winter FASHION CLEARANCE

Sportswear
Dresses

Gowns
P.J.s
Robes

1/2 price or less

Daywear Lingerie 25% OFF

The Velfree Shop

208 W. Bank

592-2211



DELAYNE DAVIS and LARRY BEUTEL

Couple sets March date

The engagement of DeLayne Davis and Larry Beutel is being announced today by the young lady's parents, Mr. and Mrs. Don Davis. The future groom is the son of Mr. and Mrs. Leonard Beutel of Sanborn, N.Y. Miss Davis was graduated from Iowa Park High School and is

employed as a secretary at National Linen Supply. Her fiancé was graduated from Sanborn, N.Y. High School and the Univ. of N.Y., and is employed as a salesman for National Linen Supply.

The couple will be married March 31 at First Christian Church.

Blindness topic of club speaker

Lola (Mrs. Preston) Pace presented a program Thursday evening on the National Federation of the Blind for a meeting of the Iowa Park Lioness Club at the home of Mrs. Sam Hill where Mrs. G.L. Cleveland served as her co-hostess.

Mrs. Pace, who is blind, explained that the NFB, organized in 1940, is the largest organization of blind in America, and its purpose is the complete integration of the blind into society on a basis of equality. The objectives of the organization involve the removal of legal, economic and social discrimination, the education of the public to new concepts concerning blindness, and the achievement of the blind. She described the organization as "the voice of the blind-the blind speaking for themselves."

Mrs. Pace, who is president of the Wichita Falls chapter of NFB, left Sunday for Washington D.C. and returned Wednesday where she participated in a "March on Washington" with approximately 200 blind people to ask for legislation to insure job opportunities for the blind. She described JOB, Job Opportuni-

TOPS meet

Twelve members of the TOPS Club weighed in at the Monday night meeting held at Texas Electric Reddy Room.

The Best TOPS loser for the week was Edith French and the Best KOPS was Mildred Beall. Ruth Nelson, who was in charge of the program, gave instructions on "How to Manage a BING."

ties for the Blind, a program developed by NFB in cooperation with the United States Department of Labor, to help qualified blind people, who are looking for work, find jobs.

The speaker reminded her listeners that blind people were ordinary people and wanted to be treated like they were. She gave 10 courtesy rules to follow.

Mrs. W.E. Karstetter gave the meditation on "The Great King." Members answered roll call by relating an extraordinary experience. Mrs. D.O. James was the presiding officer.

Preserving food speaker's topic

Barbara Cornelius, county extension agent, presented the program on gardening and preservation of foods Friday morning for the Iowa Park Garden Club. She explained several methods of preserving foods, such as canning, freezing and drying and distributed pamphlets on each method.

Mrs. Michael Hodson gave the thought for the day.

Mrs. R.L. Good directed the business. Mrs. Charlie Lee reported that a tree was needed at Kidwell Elementary to replace one that had died. It was voted to purchase a non-bearing mulberry tree for planting on Arbor Day.

Mrs. Robert Illingworth won the door prize. Hostesses were Mmes. D.O. James, Frank Gossett and Charlie Lee. Seventeen members and two guests were present.



Mrs. Mark Wicks and Valerie

1 cup packed brown sugar
3/4 cup applesauce
Stir together flour, baking powder, soda and spices. Mix butter and sugar together. Add applesauce, then flour mixture until well blended. Drop by teaspoon onto greased cookie sheet. Bake in preheated 375 degree oven 12-15 minutes or until brown around edges. Yield: approximately 60.

BROCCOLI QUICHE

1 pkg. chopped broccoli, defrosted and drained
1 cup Swiss cheese, shredded
1/2 cup Cheddar cheese, grated
2 T minced onion
4 eggs
1 1/2 milk (half and half can be used if richer quiche is desired)
3/4 tsp. salt
1/8 tsp. pepper

Sprinkle cheese, broccoli and onion in bottom of 9-inch unbaked pie shell. Beat eggs slightly, then add milk and spices. Pour cream mixture into pan. Bake 15 minutes at 425 degrees. Reduce heat to 300 degrees and bake 30 minutes longer until knife inserted one inch from edge comes out clean. Let stand 10 minutes before cutting. Makes 6 main dish servings or 8 appetizers.

FRIED SQUASH

3 lbs. yellow squash, sliced 1/4 inch thick
1 small onion, chopped
1 bell pepper, chopped

Salt and pepper
1 stick butter
Melt butter in skillet. Add squash, onion, bell pepper, salt and pepper. Cook covered over medium heat, stirring occasionally until tender.

JELLO COOKIES

4 1/2 cups sifted flour
1 tsp baking powder
1 lb. butter
1 1/4 cups sugar
2 eggs
1/4 cup water
2 pkgs. Jello, any flavor
1 1/2 tsp. vanilla
Cream butter and sugar. Add eggs, vanilla and water. Add dry ingredients. Drop cookies by T onto greased cookie sheet. Mash down

slightly. Bake at 350 degrees about 8 minutes. Do not brown. Cookies are supposed to be soft.

SUGARED NUTS

In skillet, combine 1 cup sugar, 1 tsp. cinnamon and 1/2 cup milk. Cook to 236 degrees (soft ball stage). Stir in 3 cups pecan halves and 1 teaspoon vanilla. Turn out on wax paper and separate nuts.

New Meter Connections

Johnson Rd. Texaco - 1500 Johnson Road
Debbie Baker - 303 E. Bank
Alvin James - 907 S. Wall
Owen Brennan - 1217 N. Pacific
Virginia Lawrence - 508 E. Alameda
Troy Brown - 706 W. Texas

HEARTS
of different
COLORS

\$59⁹⁵

Oz was never as colorful . . .
Beautiful hearts in a rainbow of colors each more lovely than the next. Expertly crafted in 14 Kt gold with stones. Give yourself or someone you love a special gift of colorful heart jewelry today.

Louis'
Distinctive Jewelry

408 W. Park 592-5942

True Value

Your local independently owned True Value® Hardware Store has national chain-buying power.

HARDWARE STORES

1984 DOLLAR DAZZLERS

ELECTRIPAK



\$10
Outlet Center
Four-outlet center with circuit breakers. MOC4C



\$3
SAMSON® Toilet Plunger
Rubber force cup helps clear toilet, drain stoppages. 7505



\$7
SNAPT.
Stor-A-Cord Jr.™
25-ft. extension cord with 3 polarized outlets. 48775



Your \$2 Choice

A) 2-Pk. 9-in. Roller Covers for all flat paints on semi-smooth surfaces. 409-FHH-09
B) 4 1/2-Gallon Utility Pail of durable plastic with handle has many household uses. 1720
C) 20-Ft. Extension Cord of 18/2 wire puts electricity where you need it. 239343
D) Indoor/Outdoor Thermometer of rustproof aluminum with F° and C° scales. 8 1/2-in. L. 5135



16-Oz. \$2
Elmer's® Glue-All
Dries strong, clear on all porous materials. Nontoxic. 371

Stop In and Pick Up Your FREE Copy of Our Dollar Dazzlers Circular

PARKWAY

FURNITURE HARDWARE

200-206 W. Bank

592-4681 592-5512

3M



2 for \$1
Scotch® Magic Tape
450-in. roll of 1/2-in. wide transparent tape. 104A

Obituaries

Jake Prickett

Services for Jake Prickett, 78, father of Billie Brown of Iowa Park, were held Wednesday at Cooper-Sorrell Chapel in Honey Grove. The officiants were Rev. James Henry, pastor of Sunnyside Baptist Church in Wichita Falls, Rev. Thomas Beall of Northside Baptist Church in Greenville and Rev. Raymond Smoot of Vineyard Grove Baptist Church near Honey Grove.

Burial was in the Gum Springs Cemetery in Carson Community under direction of Hampton-Vaughan Funeral Home.

Prickett was born May 2, 1905, in Fannin County, and was a deacon in the Vineyard Grove Baptist Church. He had served on the school boards at Ivanhoe and Carson Community.

He is survived by his wife, Mary Iva; two daughters, Corene Jones of Wichita Falls and Billie Brown of Iowa Park; three sisters, Alma Bradshaw of Horn Lake, Miss., Addie Loschke of Allens Chapel Community, and Mrs. Willie V. Bradshaw of Honey Grove; and four grandchildren.

Robert Molina

Rosary for Robert "Ruper" Molina, 74, of Holliday was held Thursday morning at Owens and Brumley Funeral Home. Funeral services were held there Friday morning with Rev. Josh Iberrea, pastor of First Mexican Baptist Church, officiating, assisted by Rev. Mike Gresham, pastor of Holliday First Baptist Church. Burial was in the Holliday Cemetery.

Born March 27, 1909, in Boyd, Texas, he had lived in the Wichita Falls-Holliday area since 1979. He was a retired landscaper.

Survivors include his wife, Bessie; three sons, Robert of Wichita Falls, Jessie and Rudolph, both of Holliday; two daughters, Juanita Rivas of Wichita Falls and Mary Stucki of Iowa Park; six sisters, Oma Nunez of Birmingham, Ala., Gavina Garrett of Detroit, Mich., Dominga Garcia of Wichita Falls, Candy Weigand of Hardin, Mont., Inez Mellroy of Fountain Valley, Calif., and Tonly Field of Casper, Wyo.; two brothers, William of Fort Morgan, Colo., and William of Hardin, Mont.; 24 grandchildren and 16 great-grandchildren.

R.G. Davis

Graveside services for R.G. "Fat" Davis, 75, were Monday afternoon in Holliday Cemetery with Chaplain Bob Brown of Wichita General Hospital officiating. Services were under direction of Tanner-Aulds Funeral Home.

A 30-year resident of Holliday, he was born Sept. 27, 1908, in Young County. He was a retired rancher. He and Francis A. Wages were married June 15, 1946, in Wichita Falls.

He is survived by his wife; a son Robert C. Davis of Electra; a daughter, Leann Davis of Holliday; a brother, Charles Davis Jr. of Newcastle; and a sister, Ila Woods of Newcastle.

George Selby

Services for George Selby, 66, were Wednesday afternoon at Hampton-Vaughan Funeral Home with Rev. Raymond H. Franklin, pastor of Northside Baptist Church, officiating. Burial was in Crestview Memorial Park.

He was born Feb. 6, 1917, in Ravia, Okla., and had lived in Wichita Falls 14 years. He was a retired mechanic and a member of the Baptist Church.

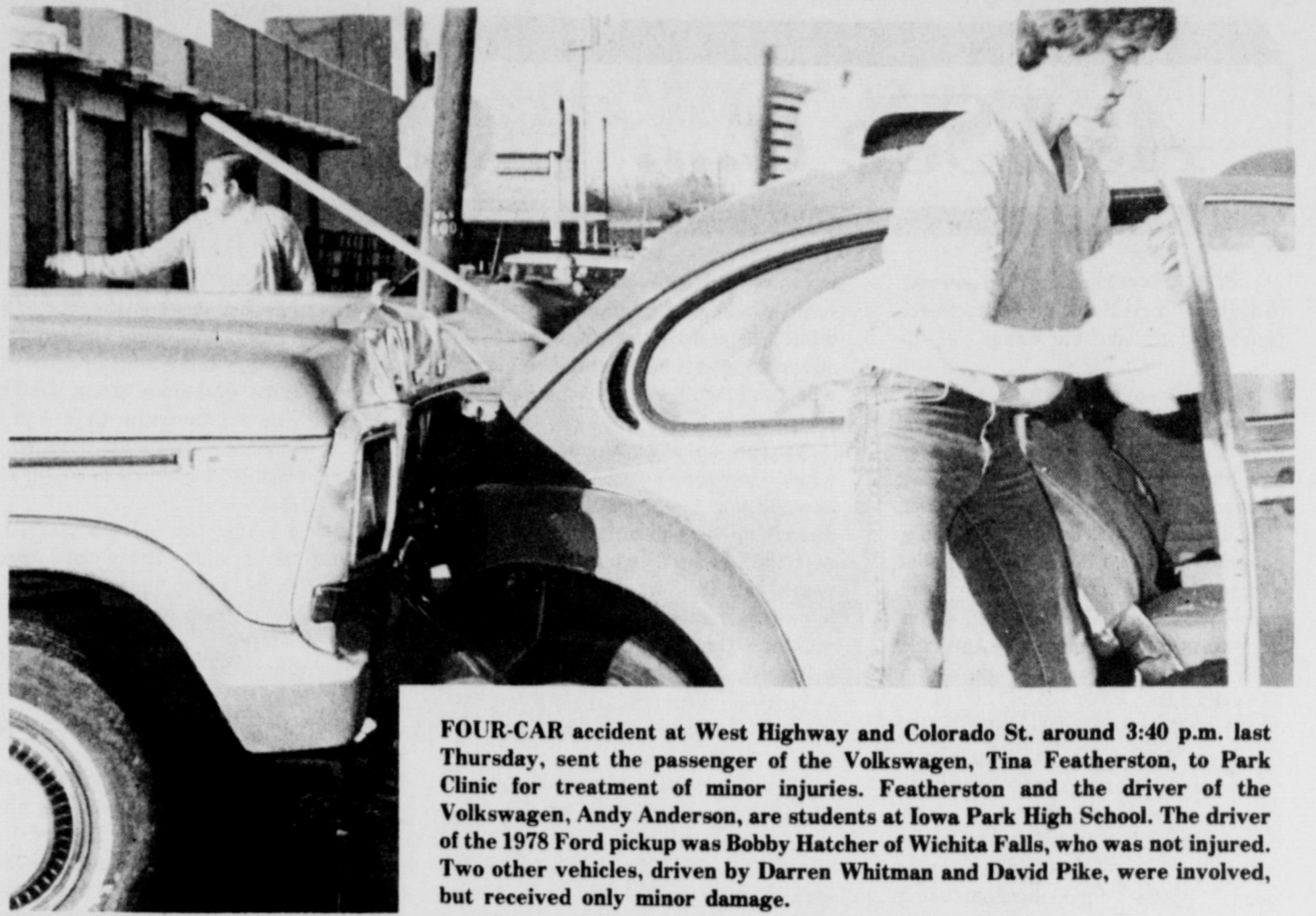
Survivors include his wife, Stephanie; six daughters, Georgina Morgan, Carolyn Fields, Sherri Lopez, Teresa Brown, Dana Selby and Lisa Selby, a student at Iowa Park High School, all of Wichita Falls; three sons, Steven, Bill and Micheal, all of Wichita Falls; a brother, John, of Temple Okla.; 12 grandchildren and one great-grandchild.

Paul Bata

Paul Bata, 62, father of John Paul Bata of Iowa Park, died Friday in a Seymour hospital. Services were Tuesday morning at Seymour Memorial Funeral Home with Rev. Bob Harper, pastor of Red Springs Baptist Church, officiating. Burial was in the Henson Cemetery.

He was born Sept. 7, 1921, in Denton County, Ore., and grew up in Rosenberg, Tex. He served in the Army Air Corps during World War II.

He is survived by his wife, Patsy Lou of Wichita Falls; three daughters, Sydney Ann McConnel of Mesquite, Reese Marie McLaughlin of Arlington and Patsy Louise Riley of Wichita Falls; three sons, Albert and William, both of Wichita Falls, and John Paul of Iowa Park; seven brothers, John and Frank of Duncan, Ariz., Albert of Needville, Jim of Towanda, Pa., Stanley of Houston, Jerry of Livingston, and Joe of Diagonal, Iowa; two sisters, Anna Slavik of Diagonal and Agnes Rolse of Sacramento, Calif.; and 11 grandchildren.



FOUR-CAR accident at West Highway and Colorado St. around 3:40 p.m. last Thursday, sent the passenger of the Volkswagen, Tina Featherston, to Park Clinic for treatment of minor injuries. Featherston and the driver of the Volkswagen, Andy Anderson, are students at Iowa Park High School. The driver of the 1978 Ford pickup was Bobby Hatcher of Wichita Falls, who was not injured. Two other vehicles, driven by Darren Whitman and David Pike, were involved, but received only minor damage.



"All three television stations in Texoma tell you they are doing the best job at covering your news. I'm asking you to compare. Each night do some dial-switching and decide for yourself. We think you'll see a difference and be back to depend on Bill Warren, Linda Goelzer and Joe Snyder for news, meteorologist Jerry Eckhart for the most accurate weather and Timm Matthews with Sports on NewsCenter 3."

Warren W. Silver

Warren W. Silver

Vice-President / General Manager



COMING ON STRONG!

KFDX-TV Wichita Falls, TX



Brides-to-Be IS YOUR NAME
IN OUR Bridal Registry

DELAINE DAVIS
and
LARRY BEUTEL

TERRI ROWELL
and
JEFF SMYERS

JAMIE GILMORE
and
DANNY ANDREWS

KELLY HOWARD
and
KEITH KARSTETTER

Park Pharmacy &
Thoughtfulness Shop

115 W. Park 592-4116

As I See It....

By BOB HAMILTON



Part of my weekend just served to support a feeling I've had several years: I don't like big cities.

Dolores and I attended the midwinter meeting of the Texas Press Association. It was held in the new Sheraton Hotel on LBJ Freeway. Just as I remembered from the last visit, I didn't like driving on the same pavement with all those people, I was extremely uncomfortable with the pace (even out of the vehicle), and I understand better now why the cost of living in a large city is higher than Iowa Park.

The convention was worth it all, however. A real learning experience for a newspaperman, the programs were on an unifying effort to have all newspapers in the nation with the same number of columns, studies being made for merchandising advertising in newspapers, legal information available from Austin to newspapers over the state, and the TPA launching an effort to make our pages better known as an advertising medium to those who have forgotten.

The vast majority of newspapers in the nation have indicated their intentions to convert to standard advertising units (SAU) this summer,

we were told. The idea is to have the same numbers of columns and column widths, which we don't now have, so advertising agencies and customers will know what measurements with which to work.

As the speaker began detailing what everyone was going to, it dawned on me that what he was describing was exactly what we did with the Leader's pages exactly three years ago this week. So we won't have any changes coming, other than making the space between our columns slightly more narrow. Otherwise, we'll just sit back and let the rest of the industry catch up with us.

Whenever walking around a hotel like that one, or riding in an elevator, I get a kick out of nodding my head and saying hello to complete strangers. It just really tears them up. Assuming them most to be from larger cities, where that sort of friendliness just isn't shown, you can always figure where they're coming from if they don't answer. I get a second laugh after passing someone who doesn't respond by stopping, turning, and catching them looking over their shoulders trying to figure out what I'm all about.

I get real white-knuckled driving in Dallas and other large cities. They're either all idiots or trying to imitate the ones who are. Leaving the hotel to come home, eight miles from US 35 on LBJ the traffic came to a halt. There we were, four lanes stopped. Once in a while, we would move up a car length.

After a while, the drivers started getting impatient. Some on the outside who were in pickups or four-wheel drive vehicles, just took off on the grass, climbing embankments to reach the access road. Then the outside shoulder became clogged, making up five lanes wide, followed by the inside shoulder doing the same thing. Finally, we had seven lanes, because those driving on the grass couldn't go any farther.

It took us an hour and 10 minutes to travel less than eight miles. We finally passed the scene of a terrible accident that had taken place in the east-bound lanes, and we were heading west. That was Saturday afternoon, and I had begun to wonder if we'd make it in time for the Chamber banquet.

If you go see any entertainment in Dallas, take plenty of money. We saw Lola Falana (I guess that's how she spells it) at the Registry Hotel. Driving there, we passed about half a dozen new banks within walking distance of the hotel. I guessed that was because so many people needed to float loans before paying to get into such shows.

The show lasted one hour, and we didn't eat anything. But the tab, along with the parking expense (\$3) and tips amounted to \$15 more than I made in a week on my first newspaper job.

Every once in a while, I get to thinking the pace of being a newspaper publisher, and the cost of putting out a paper, is getting to be too much. I make a trip like this one, and realize things aren't so bad after all.

claimed it was because of his looks.

Of course we have to admit there are a lot of male television announcers who are not what you would call handsome, but there are some homely females on the tube, too, and apparently looks isn't everything. The television station for which Ms. Craft worked did not fire her, merely transferred her to another department, with the same pay, according to reports of testimony that came out in the trial. The station manager denied ever telling Ms. Craft that she was homely but she insists he did. The station management contends that it is their right to shuffle personnel around in an effort to improve ratings, their lifeblood in the television industry. We agree with them.

This is an era where it is unthinkable to discriminate against anybody on the basis of sex, race, religion or anything else. Christine Craft knows this and took full advantage of a sympathetic jury in getting an award that was way out of proportion to any damage to her feelings. Her lawyer, working on a contingent fee, got half of it and so both made some quick and easy money on what we consider a phony charge.

There are plenty of television news people on the air these days that ought to be replaced, not because of their looks, but because they do a lousy job of reading the news that somebody else gathered and wrote for them to read. After the Craft incident, however, it is likely that television employers will move carefully before replacing employees with somebody who does a better job. Somehow, we can't think this is progress.

JOE THOMPSON
Electra Star-News

HAROLD HUDSON
Perryton Herald

Christine Craft, the television newswoman of Kansas City, has won a jury verdict of \$350,000 to compensate her for being demoted from an anchor news job. She claims it was discrimination because she was a woman and because she was not pretty enough to satisfy the station management. Apparently the jury agreed, although they didn't give her the \$5 million she asked as compensation for her pain and suffering. At the risk of being called a male chauvinist we have to say that had Christine Craft not been a female she would not have received such favorable treatment from the jury. We doubt if a male television anchorman would have received any award had he been demoted and then

Letter to the Editor

Dear Sir:

We have moved to the city from Wichita County near Iowa Park. We already miss many of the "personal touch" things that our association with the Iowa Park Community gave us access to. The friendly attitude of the people of your town is difficult to find elsewhere.

There are a number of individuals that warrant special praise, but I think, most of all, your postal people are the paragons. In Iowa Park you have postal SERVICE - Robert Wilcox, Marilyn Reeves, and Jim Hendon, to name three exceptional postal employees, have given our family service and extra consideration that reflects their devotion to their jobs and the outstanding people that they are. Our new post office has a hard act to follow... but then, so does our new neighborhood.

Thank you for Everything,
Dick & Marianne Noe

Little League meetings Sunday

New officers of the Little League Ladies Auxiliary will be elected during a 2 p.m. meeting Sunday at the ASCS building. Mike Price will be in charge of the meeting.

The board of directors will hold a meeting at 4 p.m.

POLITICAL ANNOUNCEMENTS

The following have authorized the Iowa Park Leader to publish announcement of their candidacies for office, and have paid for the space.

STATE SENATOR
District 30
Ray Farabee

STATE REPRESENTATIVE
District 80
Charles Finnell
Durlh Causey

IOWA PARK LEADER

76R280

Bob Hamilton Editor-Publisher
Dolores Hamilton Assistant Publisher
Olive Blalock Reporter
Kevin Hamilton Reporter

The IOWA PARK LEADER is published every Thursday. Offices are located at 112 W. Cash, Iowa Park, Texas, 76367. Telephone: 592-4431. Second class Postage Paid at Iowa Park, Texas, 76367. Subscription rates are \$7 per year in Wichita and Archer Counties; \$9 elsewhere in Texas and Oklahoma; \$11 anywhere else in the United States. Classified advertising rates are 16 cents per word first insertion, 8 cents per word thereafter. Any erroneous reflection upon the character, standing or reputation of any person, firm or corporation which may appear in the columns of this newspaper will be corrected upon being brought to the attention of the publisher.

MEMBER
TEXAS PRESS ASSOCIATION

A Free Press

293 Years of Democracy in Action

NOTICE TO SUBSCRIBERS!

The Iowa Park Leader has suspended its practice of mailing individual renewal postcards to subscribers. Instead the Leader will publish a list of readers whose subscriptions are approaching expiration. Subscription prices are listed below, along with a convenient order form which may be clipped, filled out and mailed with payment to the Leader. Renewals and new subscribers must be paid in advance.

Subscriptions due to expire

February 15, 1984

PLEASE DISREGARD IF ALREADY PAID

- | | |
|--|---|
| A.....
Mrs. M.O. Archer Iowa Park | Marie Lovelace Iowa Park
Debby Lusk Granbury |
| B.....
Dean Bankhead Wichita Falls
Carl S. Bates Iowa Park
James Beals Iowa Park
Mrs. B.G. Bearden Wichita Falls
Mrs. Lacy Beavers Iowa Park
H.I. Berry Iowa Park
Claude Boles Iowa Park
James P. Bowman Iowa Park
Everett Boulware Iowa Park | M.....
Mrs. Ottis Martin Lake Charles, La.
W.T. McQuerry Iowa Park
R.L. Midkiff Iowa Park
Jerry Mixon Nacogdoches
Mrs. Velma Moran Vernon
Jerry D. Morgan Iowa Park
Marilyn Morris Bowie
Morris Van Lines Wichita Falls
Patricia Murphy Burkburnett |
| C.....
Bert Caddell Iowa Park
Thomas S. Carlson Iowa Park
W.O. Chandler Iowa Park
Fred Cheek Iowa Park
W.H. Coats Electra
Yasuka Cook Iowa Park
County Ext. Office Wichita Falls
Ira Crum Iowa Park | O.....
Ann Owen Iowa Park |
| D.....
Jimmy Davis Iowa Park
Cene Dean Wichita Falls
Richard Dean Yuma, AZ.
C.O. Dodd Iowa Park
James H. Dyer Iowa Park | P.....
Preston Pace Iowa Park
Roy Palmer Iowa Park
David Parkey Iowa Park
Mrs. B.B. Parks Iowa Park
Jessie Parks Iowa Park
Marvin Parks Iowa Park
Clyde Patterson Iowa Park
Margaret Pickett Wichita Falls |
| E.....
Mrs. Leonida Eddins Iowa Park
Mrs. Wilburn England Iowa Park | R.....
Dr. Thurma Reitz Iowa Park
Vance Ross Lubbock
C. Rusk Iowa Park |
| F.....
Wiley Francis Iowa Park
Eddie French Iowa Park | S.....
Lynn W. Savage Iowa Park
Bill Sawyer Okla. City
Ann Seifeck Jacksboro
Gene C. Shawver Iowa Park
Murray Shook Iowa Park
Mrs. J.W. Sims Iowa Park
Bud Singleton Iowa Park
China B. Smith Iowa Park
Harold Smith Iowa Park
Ruby Smith Wichita Falls
Dewey Spruiell Iowa Park |
| G.....
Ruth Gensler Iowa Park
Mrs. Freddie Glover Arlington
Larry Goin Iowa Park
Archie Gould Iowa Park | T.....
Texas Electric Wichita Falls
Terry's Welding Service Kamay
Freddie Thomas Iowa Park
Jerry Thomas Boerne
Mrs. Lynn R. Trigg Iowa Park
Mrs. Shirley Trimm Iowa Park
Barbara Tucker Wichita Falls
Lee O. Tucker Iowa Park
Paul Tucker Burleson |
| H.....
Mrs. J.O. Hicks Wichita Falls
H.T. Hildebrand Iowa Park
Bob Hodges Iowa Park
Holliday High School Holliday
Dale C. Holloway Panhandle
Bennie Horton Iowa Park
Stanley Hoye Electra | W.....
Jimmy Walker Iowa Park
Randy Watreas Iowa Park
Lester Watson Iowa Park
Jimmie D. Williams Iowa Park
John Wilson Iowa Park
W.M. Williams Iowa Park
Charles Wright Wichita Falls |
| J.....
Joe E. Jones Iowa Park
John Henry Jones Iowa Park | X.....
Wichita and Archer Counties..... \$7.00
Elsewhere in Texas & Oklahoma..... \$9.00
Elsewhere in the United States..... \$11.00 |
| K.....
Tom Kaiser Iowa Park
Cindy Kingade Iowa Park
Don Kirkham Iowa Park
W.H. Kuykendall Holliday | |
| L.....
Preston Leath Iowa Park
Mrs. Charlie Lemond Iowa Park
Earl Logan Iowa Park
Jack Lott Iowa Park | |

Wichita and Archer Counties..... \$7.00
Elsewhere in Texas & Oklahoma..... \$9.00
Elsewhere in the United States..... \$11.00

To: Iowa Park Leader
Box 430
Iowa Park, Tex.
76367

PLEASE CHECK ONE:
 New
 Renewal
 Change of Address Only

\$ _____ Enclosed

(Name)

(Address, P. O. Box, or Route No.)

(City) (State) (Zip Code)

IOWA PARK RECREATIONAL ACTIVITIES CENTER SCHEDULE FOR FEBRUARY, 1984					
MONDAY	TUESDAY	WEDNESDAY	THURSDAY	FRIDAY	SATURDAY
Linda Ayres will teach "Blooming Vest" making. This will be a demonstration. Fee \$4.00		Karen 4 p.m. Rotary 12 Noon Karate 6:30 p.m.	Karen 3 p.m. Camp Fire Council 6:30 p.m. Aerobics Adv. 7:15, Beg. 8:20	Aerobics 9 a.m.	Karate 10 a.m.
Karen 3 p.m. Weight Watchers 6 p.m. Aerobics Adv. 7:15, Beg. 8:20 p.m.	Aerobics 9 a.m. Camp Fire 3 p.m. Ceramics 7 p.m. Weblos 7:30	Karen 4 p.m. Rotary 12 Noon Karate 6:30 p.m.	Karen 3 p.m. Optimist 7 p.m. Aerobics Adv. 7:15, Beg. 8:20 p.m.	Aerobics 9 a.m.	Karate 10 a.m.
Karen 3 p.m. Weight Watchers 6 p.m. Aerobics Adv. 7:15, Beg. 8:20 p.m.	Aerobics 9 a.m. Camp Fire 3 p.m. Optimist 7 p.m. Ceramics 7 p.m. Weblos 7:30	Karen 4 p.m. Rotary 12 Noon Karate 6:30 p.m.	Karen 3 p.m. Aerobics Adv. 7:15, Beg. 8:20 p.m. Iowa Park RAC Board Meeting 7:30	Aerobics 9 a.m.	Karate 10 a.m.
Karen 3 p.m. Weight Watchers 6 p.m. Aerobics Adv. 7:15, Beg. 8:20 p.m.	Aerobics 9 a.m. Camp Fire 3 p.m. Ceramics 7 p.m. "Blooming Vest" Linda Ayres - 7 p.m. Weblos 7:30 p.m.	Karen 4 p.m. Rotary 12 Noon Karate 6:30 p.m.	Karen 3 p.m. Optimist 7 p.m. Aerobics Adv. 7:15, Beg. 8:20 p.m.	Aerobics 9 a.m.	Karate 10 a.m.
Karen 3 p.m. Weight Watchers 6 p.m. Aerobics Adv. 7:15, Beg. 8:20 p.m.	Aerobics 9 a.m. Camp Fire 3 p.m. Optimist 7 p.m. Ceramics 7 p.m. Weblos 7:30 p.m.	Karen 4 p.m. Rotary 12 Noon Karate 6:30 p.m.			

MEMBER
TEXAS PRESS ASSOCIATION



Survey indicates students may fill teacher needs

Despite current concerns over the state of the teaching profession, a new survey of college-bound juniors and seniors across the United States indicates the number of young people interested in becoming teachers could be more than adequate to meet the profession's needs.

The survey also makes clear that higher salaries are essential to attracting people into teaching who would otherwise not enter that profession.

The study was conducted in 21 high schools by Dean John N. Mangieri of Texas Christian University's School of Education and Dr. Richard E. Kemper, associate professor of education at the University of South Carolina.

The 4,349 students who responded to the survey came from urban, suburban and rural areas of Pennsylvania, Arizona, Ohio, Minnesota, South Carolina and Texas. The schools included groups of majority and minority students from diverse socioeconomic backgrounds.

The study, supported in part by a grant from the Research Fund of TCU, sought to learn why high school students are or are not interested in teaching as a profession. Its findings, believe Dr. Mangieri and Dr. Kemper, should be helpful in trying to develop teacher recruitment programs.

There has been research on who chooses teaching as a profession. Primary reason for this study, however, was that there has been something of a void in the area of why people choose to teach. "There is an even greater lack of information regarding factors which may be related to people who do not select teaching as a profession," the survey points out.

"For example, do more females still choose teaching as a career than males? Is job security a key factor in one's choice of teaching as a career? Is salary a major reason why many college-bound students are not selecting education as a career?" Such questions have been largely neglected by contemporary researchers.

All the students surveyed were asked whether they were very interested, somewhat interested, had no opinion or were not interested in the teaching profession. Only nine percent replied they were very interested, but another 26 percent professed to be somewhat interested, for a combined total of more than one-third of the respondents showing some interest in teaching.

Of that percentage, 931 were women, 600 were men, indicating women will continue to make up the larger proportion of the teaching profession. Those 1,531 interested students next filled out a questionnaire designed to determine why they were interested in teaching.

Most important, that questionnaire showed, was knowledge and skill in the subject they planned to teach, followed by interest in the subject and desire to work with children or young adults. These findings indicate that teacher preparation programs which stress strong content major and early field-based experiences would attract and retain students interested in teaching.

Least important were prestige and recognition associated with teaching, working conditions, the fact that a relative or friend is a teacher and the cost of college preparation for teaching. Sixty-two percent of the females, compared with 40 percent of the males, indicated security of

teaching as a profession was very important.

Students who said they had no opinion or were not interested in teaching as a career filled out still another questionnaire on what influenced their lack of interest. Higher salaries, more rapid salary increases and better chances for professional advancement were listed as "very important" factors which could influence their interest in

teaching.

A relatively low percentage of students in both the interested and disinterested categories considered prestige and recognition accorded the teaching profession to be important. It is unclear, the study notes, whether these responses mean prestige and recognition are not important or whether the respondents perceive teaching as a profession which carries a little

prestige or recognition.

The summary points out, "It is interesting to note that among the group that responded they were 'not interested' in teaching, 50 percent of the males compared with only 17 percent of the females indicated that prestige and recognition were 'very important.' This could suggest a critical area for consideration in attracting people into teaching."

Other items also suggest consid-

erable differences between factors males and females regard as "very important." Among students not interested in teaching, 56 percent of the males and only 28 percent of the females considered better working conditions to be very important. On the other hand, 56 percent of the women and 30 percent of the men thought better chances of getting a teaching position in a geographic area of their choice was of great

importance.

In the group interested in teaching, 73 percent of the females and 50 percent of the males thought their interest in working with children and young adults was a very important factor.

The findings indicate that attempts to attract young people into the teaching profession should take into account differences which may be related to sex.

Thrifty Anniversary Savings!

SUNNYDELL OAK FARMS MILK Gal. **\$1.96**

BATHROOM TISSUE NICE N SOFT 4 ROLL PKG. **99¢**

VEGETABLES DEL MONTE REGULAR OR NO SALT 16 OZ. CUT OR BEANS, 17 OZ. GOLD CORN-WH/CS, 17 OZ. SWEET PEAS, 15 OZ. SPINACH 4 CANS **2.99¢**

FRUITS DEL MONTE REGULAR OR LITE SYRUP 17 OZ. FRUIT COCKTAIL OR CHERRY FRUIT, 15 OZ. TC SLICED PEACHES, OR BARTLETT PEAR HLVS. 3 CANS **69¢**

HILLS BROS. ALL GRINDS COFFEE 1 LB. CAN **\$1.85**

WHOLE HAMS KAHN'S HICKORY GROVE BONELESS FULLY COOKED 12-14 LBS. AVG. **\$1.79**

ORANGES CALIFORNIA SUNKIST NAVEL 3 **\$1** LB.

HUNT'S KETCHUP THICK, RICH 32 OZ. BTL. **89¢**

SLICED BACON ARMOUR STAR 1 LB. PKG. **\$1.59**

BRISKETS BONELESS BEEF-WHOLE IN THE BAG PACKER TRIM HEAVY GRAIN FED BEEF 1 LB. **\$1.39**

HAM SLICES KAHN'S HICKORY GROVE BONELESS CENTER CUT 1 LB. **\$2.39**

SAUSAGE HILLSHIRE FARM REGULAR OR POLISH SMOKED 1 LB. **\$1.99**

SAUSAGE HORMEL LITTLE SIZZLERS PORK LINK 12 OZ. PKG. **\$1.19**

BEEF PATTIES ARMOUR BREADED PRE-COOKED CHICKEN FRIED 1 LB. **\$1.49**

CATFISH COUNTRY SKILLET FARM GROWN FROZEN FRESH 1 LB. **\$1.99**

LIQUID DOWNY FABRIC SOFTENER 96 OZ. BTL. **\$2.99**

HI-DRI PAPER TOWELS 2 JUMBO ROLL **99¢**

DOG CHOW PURINA 25 LB. PLUS 5 LBS. FREE **\$7.29**

SHelf SPECIALS

HORMEL MILD OR HOT PLAIN CHILI	15 OZ. CAN	99¢
CARNATION EVAPORATED MILK	2 TALL CANS	\$1.00
KRAFT SALAD DRESSING MIRACLE WMP	32 OZ. JAR	\$1.59
30' OFF LABEL WESSON OIL	38 OZ. BTL.	\$1.69
SUNSHINE HI-NO CRACKERS	12 OZ. BOX	\$1.19
HUNT'S TOMATO SAUCE	2 15 OZ. CANS	\$1.00
HONEY BOY PINK SALMON	15 OZ. CAN	\$1.69
KRAFT ASSORTED BARBECUE SAUCE	18 OZ. BTL.	99¢
KRAFT BACON & BTRMLK. DRESSING	8 OZ. BTL.	89¢
KRAFT STRAWBERRY PRESERVES	18 OZ. JAR	\$1.59
FISHER PARTY PEANUTS	12 OZ. CAN	\$1.79
ORVILLE REDENBACHER POPCORN	15 OZ. JAR	\$1.19

FRESH DAIRY SPECIALS

KRAFT CHEESE VELVEETA	2 LB. BOX	\$2.99
MARGARINE QUARTERS PARKEY	1 LB. PKG.	59¢
KRAFT STACK PACK AMERICAN SINGLES	16 OZ. PKG.	\$2.39
CASINO MONT. JACK-PLAIN/JALA. CHEESE	8 OZ. PKG.	\$1.39
HUNGRY JACK FLKY. BTRMLK/FLUFFY/BTR.	2 5 CT. CANS	69¢

FROZEN FOOD SPECIALS

MORTON FAMILY PACK GLAZED DONUTS	14 OZ. PKG.	\$1.29
PATIO BEEF & BEAN BURRITOS	2 5 OZ. PKGS.	99¢
ORE IDA CORN ON THE COB	4 CT. PKG.	\$1.29
ORE IDA HOME ST.-THN/PLANKS/WDG. POTATOES	24 OZ. PKG.	\$1.29
ASSORTED SWANSON DINNERS	10 1/2 OZ. - 11 OZ. PKG.	\$1.19

MAC & CHEESE 2 7 1/2 OZ. BOXES **99¢**

UNCLE BEN'S 2 LB. PKG. **\$1.79**

COCOA MIX 12 ENV. PKG. **\$1.49**

BROWNIES 23 1/2 OZ. BOX **\$1.59**

CORN FLAKES 18 OZ. BOX **\$1.19**

QUICK OATS 18 OZ. BOX **89¢**

CANDY BARS 6 CT. PKG. **\$1.49**

SCHELLER BLACK TRASH BAGS 4 OZ. CAN **89¢**

TRASH BAGS 10 CT. PKG. **\$1.59**

CAT CHOW PURINA ORIGINAL BLEND-75' OFF 10 LB. BAG **\$5.99**

CHEER 50' OFF LABEL-LAUNDRY DETERGENT 84 OZ. BOX **\$2.99**

IVORY LIQUID PLEDGE \$1.00 OFF LABEL-TWIN PACK 2-32 OZ. BTL. **\$2.99**

BRITE LEM/ ORIG/ WOOD FURNITURE POLISH 7 OZ. CAN **\$1.49**

KLEENEX 175 CT. PKG. **79¢**

TISSUES KLEENEX BOUTIQUE 100 CT. PKG. **79¢**

LIGHT DAYS KOTEX OVAL PADS 30 CT. PKG. **\$2.69**

MAXIPADS KOTEX 30 CT. PKG. **\$2.69**

COKE - SPRITE TAB - MR. PIBB 32 oz. Btl. **\$2.09**

IOWA PARK SCHOOL MENU

Fri., Feb. 3 - Chicken fried steak, meat or cheese sandwich, soup, mashed potatoes & gravy, lima beans, hot rolls, butter & honey, chocolate & plain milk, pudding.
 Mon., Feb. 6 - Bar-B-Q on bun, meat or cheese sandwich, soup, tater tots, sweet relish, chilled fruit, chocolate or plain milk, cookies.
 Tues., Feb. 7 - Pizza, meat or cheese sandwich, soup, buttered corn, combination salad, chocolate or plain milk, Wacky cake.
 Wed., Feb. 8 - Charburgers, meat or cheese sandwich, soup, French fries, pinto beans, lettuce, tomatoes, pickles, onions, chocolate or plain milk, ice cream bars.
 Thurs., Feb. 9 - Creamed turkey & dressing, meat or cheese sandwich, soup, mashed potatoes, English peas, hot rolls, butter, & honey, chocolate or plain milk, pumpkin pie.

AT AFFILIATED FOODS INC. MEMBER STORE

We're proud to give you more!

THRIFTWAY

PRICES GOOD THRU FEB. 5
 WE RESERVE THE RIGHT TO LIMIT QUANTITIES
 WE ACCEPT FOOD STAMPS

DOUBLE COUPONS EVERY TUESDAY

WHITE'S SUPER STORE

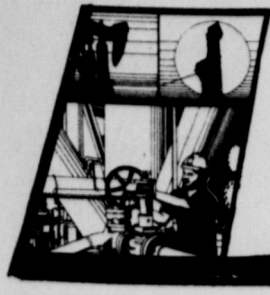
ParkWest Shopping Center

Phone 592-4186

Store Hours: 8 a.m. - 8 p.m. Monday - Saturday; 9 a.m. - 6 p.m. Sunday

Our store family-owned and operated 20 years.

DOUBLE EVERY WEDNESDAY



Area oil, gas report

At a location seven miles southeast of Electra, Curtis R. Inman of Midland has finalized a new oil producer in the Wichita Regular Field.

The well is designated as the No. 5 J.J. Waggoner, pumping oil at the rate of 15 barrels per day.

Location is in a 40-acre lease in the H. George Survey, A-454. Bottomed at 1,935 feet, the well will produce from perforations 1,512 to 1,522 feet into the hole.

The well is 250 feet from the south line and 250 feet from the east line of the lease and the survey.

Southwest Natural Resources Corp. of Carrollton has filed first production figures on a new oil well in the Wichita Regular Field. The No. 1 Southwest Jeter showed potential to make nine barrels of oil per day.

The operator has 26.3 acres leased, with drillsite in Wichita County's Denton CSL Survey, Sec. 17, Blk. 4, 7.5 miles southwest of Wichita Falls.

The well will produce from an interval 640 to 669 feet into the wellbore. Total drilling depth was 1,850 feet.

The well is 450 feet from the west line and 150 feet from the northwest line of the lease and the survey.

ABB Drilling Co. of Wichita Falls has revealed plans to drill two 1,275-ft. developmental wells in the Wichita Regular Field. The operator has 185 acres leased, with drillsite in Wichita County's Denton CSL Survey, League 4, Blk. 10 & 9, and

has designated the ventures as the Nos. 12 & 14 Jo McVeigh. Drillsite is five miles northeast of Holliday.

The No. 12 well is 750 feet from the north line and 1,670 feet from the east line of the lease and 3,075 feet from the north line and 7,900 feet from the west line of the survey.

The No. 14 well is 450 feet from the north line and 1,970 feet from the west line of the lease and 2,775 feet from the north line and 8,200 feet from the west line of the survey.

At a location eight miles southwest of Wichita Falls, Camino Corp. of Wichita Falls has finalized a new oil producer in the Wichita Regular Field.

The well is designated as the No. 2 Copper Ridge, pumping oil at the rate of five barrels per day.

Location is in a six-acre lease in the DCSL Survey, A-417, Sec. 15, Blk. 4. Bottomed at 1,222 feet, the well will produce from perforations 693 to 696 feet into the hole. The well is 150 feet from the north line and 150 feet from the east line of the lease and the survey.

W.S. Wallace of Wichita Falls has filed first production figures on a new oil well in the Wichita Regular Field. The No. 77 Burnett lease showed potential to make six barrels of oil per day.

The operator has 220 acres leased, with drillsite in Wichita County's H&TBRR Survey, Sec. 2, five miles south of Electra.

The well will produce from an interval 1,788 to 1,798 feet into the wellbore. Total drilling depth was 1,980 feet. The well is 450 feet from the north line and 450 feet from the east line of the lease and the survey.

The No. 5 H.C. Obenhaus has been finalized by J.S. Looney of Burkburnett.

It was a developmental well in the Wichita Regular Field, 12 miles northeast of Electra. Drillsite is in a 58-acre lease in Wichita County's Waggoner Col. Lands Survey.

Daily potential of five barrels was posted with the Railroad Commission. The well went to a 730 feet bottom. Production will be from perforations 680 to 690 feet into the wellbore. The well is 150 feet from the south line and 1,290 feet from the west line of the lease and the survey.

J.F. Hood of Ft. Worth has

revealed plans to drill a 2,000-ft. developmental well in the Wichita Regular Field. The operator has 40 acres leased, with drillsite in Wichita County's W.S. Kennard Survey, A-171, and has designated the venture as the No. 2 Stone-Love. Drillsite is five miles northeast of Kamay.

The well is 150 feet from the north line and 450 feet from the west line of the lease and 6,000 feet from the south line and 450 feet from the west line of the survey.

A Midland-based operator has staked location for the No. 45 J.H. Marriott, a developmental well to be located two miles northeast of Electra. With projected total depth of 2,000 feet, the well is in a 109-acre lease in the Wichita Regular Field, SPRR Survey, A-280. The operator is Texaco Inc.

The well is 1,450 feet from the west line and 150 feet from the south line of the lease and 1,450 feet from the west line and 698 feet from the south line of the survey.

Flowing 62 barrels of oil per day on a 10/64 choke, the No. 1 Nellie C. Bullman has been completed in Wilbarger County's Fargo Field 10 miles north of Vernon.

Calhoun and Ellison Oil Co. of Aspermont is the operator.

The well was drilled to a 4,724-ft. bottom and will produce from a perforated interval in the Canyon Formation, 4,554 to 4,467 feet into the hole. It registered flowing tubing pressure of 110 PSI.

Location was in a 160-acre unit in the H&TCRR Survey Sec. 44 Blk. 15, 150 feet from the west line and 880 feet from the south line of the lease and survey.

Two shallow developmental wells are scheduled for spudding in the Wilbarger County Special Field three miles west of Electra. Designated as the No. 4 and No. 5 Scott Estate, the wells carry permit for 300-ft. TD apiece. Mobil Producing Inc. of Houston is the operator.

The No. 4 well is 1,430 feet from the north line and 170 feet from the west line of the lease and 2,164 feet from the south line and 170 feet from the west line of the survey.

The No. 5 well is 1,708 feet from the north line and 490 feet from the west line of the lease and 1,886 feet from the south line and 490 feet from the west line of the survey.

An 8,500-ft. Hardeman County wildcat is scheduled for spudding a half mile south of Medicine Mounds, with the Jones Co. of Albany as the operator. Designated as the No. 1 M.W.H. Unit, the well is in a 40-acre unit in the W&NWRR Survey A-514. Drillsite will be 467 feet from the north line and 660 feet from the west line of the lease and 853 feet from the south line and 350 feet from the east line of the survey.

At a drillsite 2.5 miles southwest of Quanah, Enserch Exploration Inc. of Dallas is preparing to drill a 9,100-ft. Hardeman County wildcat. It will be known as the No. 1 Berry "191." The well will be spudded in a 160-acre unit in the W&NWRR Survey A-465. Drillsite will be 1,350 feet from the west line and 467 feet from the north line of the lease and 1,350 feet from the west line and 2,108 feet from the south line of the survey.

Location has been staked for an 8,700-ft. Hardeman County wildcat two miles southwest of Medicine Mound. Simo Oil Inc. of Wichita Falls is the operator.

The operation will be in a 160-acre drilling unit in the TTRR Survey A-630. It will be located 467 feet from the west line and 600 feet from the north line of the lease and 600 feet from the north line and 2,033 feet from the east line of the survey.

Pumping 61 barrels of oil per day on an open choke, a new producer has been brought on line in the Quanah Field, Hardeman County, by Madison Oil Co. of Wichita Falls.

Designated as the No. 1 Georgia-Pacific, the well is in a 160-acre lease in the W&NWRR Survey Sec. 144 Blk. H, about two miles north of Quanah.

It was drilled to 9,100-ft. total depth and was plugged back to 5,930. It will produce from a perforated interval 5,848 to 5,865 feet.

Drillsite was 660 feet from the south line and 1,200 feet from the west line of the lease and survey.

At a location five miles south of Electra, W.S. Wallace of Wichita Falls has finalized a new oil producer in the Wichita Regular Field.

The well is designated as the No. 76 S.B. Burnett, pumping oil at the rate of seven barrels per day.

Location is in a 220-acre lease in the H&TBRR Survey. Bottomed at 1,990 feet, the well will produce from perforations 1,763 to 1,781 feet into the hole.

The well is 150 feet from the north line and 750 feet from the west line of the lease and the survey.

W.C. Winfrey of Wichita Falls has revealed plans to drill four 1,000-ft. developmental wells in the Wichita Regular Field. The operator has 222 acres leased, with drillsite in Wichita County's HT&BRR Survey, A-136, and has designated the ventures as the Nos. 52 thru 55 D. Douglas. Drillsite is one-half mile east of Electra.

The wells are 467 feet from the south line and 2,100 feet from the west line of the lease and the survey.

A 1,900-ft. developmental well is planned by E.E. Yarberr of Wichita Falls at a drillsite one mile north of Holliday, Wichita County. The location is in a 26-acre lease in the Denton CSL Survey, A-417. Well's designation is the No. 8 J.L. Jackson.

The well is 150 feet from the west line of the lease and 265 feet from the south line and 815 feet from the west line of the survey.

Smith Producing Co. of Wichita Falls has filed for permit to drill the No. 28 Pearl Boyd Estate, a 770-ft. developmental well four miles east of Kamay. Location is in a 160-acre lease in the Wichita Regular Field, D.L. & C Survey, A-712.

The well is 900 feet from the south line and 400 feet from the east line of the lease and the survey.

Hunter and McDonald of Wichita Falls have revealed plans to drill a 2,050-ft. developmental well in the Wichita Regular Field. The operator has 61 acres leased, with drillsite in Wichita County's HT&BRR Survey, A-135 and has designated the venture as the No. 1 Burnett "B". Drillsite is two miles east of Electra.

The well is 150 feet from the north line and 450 feet from the west line of the lease and 1,800 feet from the north line and 2,000 feet from the east line of the survey.

J.M. Huber Corp. of Oklahoma City has filed first production figures on a

new oil well in the Summer (Mississippi Field. The No. 1 Condon showed potential to pump 30 barrels per day.



Mr. and Mrs. Billy Moon announce the birth of their third daughter, Lori Jo. She was born January 22 and weighed six pounds and 11 ounces. Their other daughters are Angela, four and a half years of age, and Lindy 22 months of age. The grandparents are Mr. and Mrs. B.A. Harrigal of Graford, Mr. and Mrs. Frank Moon of Kingston, Ark. and Mrs. Mary Honaker of Archer City. The great-grandparents are Mr. and Mrs. Zack Cummins of Graford, Mrs. Jessie Banks of Winnsboro, and Mrs. Rachel Leach of Las Vegas, Nev.

Denera Nicole, a four pound, nine ounce daughter, was born to Mr. and Mrs. Robert Henderson Jan. 21. Mrs. Henderson is the former Kelly Riggs.

Grandparents of the new baby are Joyce Peace of Iowa Park, Emmett Riggs of Oklahoma City, Mrs. Joy Childers of Hudson, Fla. and Louis Henderson of Michigan. The great-grandparents are Mr. and Mrs. G.R. Ensey of Archer City.

A daughter, Stephanie DeAnn, was born Jan. 10 in Wichita General Hospital to Mr. and Mrs. Bill Johnston. She weighed six pounds, 15 ounces.

Grandparents are Mr. and Mrs. Burl Hughes of Wichita Falls and Mr. and Mrs. Curtis Choate of Mineral Wells. Great-grandmother is Mrs. Jessie Hail of Iowa Park.

ACTIVITIES in Neighboring Communities

SEMINAR FOR PARENTS AND TEACHERS

The North Texas Association for the Education of Young Children (NTAEYC) is sponsoring a parenting skills seminar at the University Methodist Church in Wichita Falls Feb. 11. Diana Harman Whitehurst will speak on the topic "Developing Decision - Making in Your Child."

The seminar is scheduled from 10 a.m. to noon, is free and will be beneficial to both parents and educators.

J.F. Hood of Ft. Worth has

Church of God

601 E. Cash
Pastor, Ole Olds
Sun. Morning Worship 11:00
Sun. Night Celebration Service 7:00 p.m.
Tues. Ladies Prayer Service 10 a.m.
Wed. Night Bible Study 7:30
Sat. Family Night 7:30
"Catch the Vision"

Par. Office
592-5316 592-4348

First Christian Church

105 E. Cash
Sunday School - 9:45 a.m.
Worship - 10:55 a.m.
Corner, Cash & Bond St.

We encourage each of you to worship Jesus Christ in the church of your choice. If you do not have a church home, we invite you to come worship with our church family.

Welcome To The Worship and Fellowship of

First Presbyterian Church

CHURCH SCHOOL - 9:45 A.M.
FELLOWSHIP Time - 10:40 A.M.
MORNING WORSHIP - 11:00 A.M.

First United Methodist Church

201 E. Bank
Church School 9:40 Youth Meetings 5:00
Morning Worship 10:40 Evening Worship 6:00

GEORGE TOPPER, PASTOR

Grace Baptist Church

511 S. Colorado - 592-5632

Come Let Us Reason Together Saith The Lord
Sunday School . . . 10:00 A.M.
Morning Worship . . . 11:00 A.M.
Children's Worship . . . 11:00 A.M.
Evening Worship . . . 6:30 P.M.
Wednesday Service . . . 7:30 P.M.
Jimmy Johnson, Pastor

First Baptist Church of Iowa Park

Yosemite at Park

SUNDAY SERVICES

Mornings	9:45
Sunday School	9:45
Worship	11:00
Evenings	
Church Training	6:00
Worship	7:00
WEDNESDAY	
Prayer Meeting	7:00
Choir Rehearsal	7:45

Kamay Road Church of Christ

Corner of Colorado & Emerald
"Seeking the Old Paths"
Lord's Day 10:30 a.m. & 6 p.m.
Wednesday 7:00 p.m.

Pacific Avenue Missionary Baptist Church

1400 North Pacific Avenue

Larry Washburn
Pastor
Church - 592-9711
Pastor 592-4288

Sunday School 9:45 a.m.
Morning Worship 11:00 a.m.
Evening Worship 6:00 p.m.
Wednesday 7:00 p.m.

Everybody Welcome

IOWA PARK CHURCH OF CHRIST

SCHEDULE OF SERVICES

	Sunday	
Bible Study	9:30 a.m.	
Worship	10:30 a.m.	
Evening Worship	6:00 p.m.	
		Wednesday
		Ladies Bible Study
		Evening Study
		10:00 a.m. 7:30 p.m.

300 East Park, Iowa Park, Texas 76367, (817) 592-5415

GOOD SHEPHERD LUTHERAN CHURCH

1st & Magnolia
Iowa Park
Sunday School: 9:45 a.m.
Worship Service: 10:30 a.m.

Christ The King Catholic Church

First and Clara Phone 592-2802
8:45 a.m. C.C.D. — 10 a.m. Mass

Deacon succeeds priest in Catholic Church here

Rev. Mr. Patrick Burke, a native of New Orleans, La., became Deacon of Christ the King Catholic Church in Iowa Park and St. Paul's Catholic Church at Electra on New Year's Day. He and his wife, Linda, and their children, Christopher, 13 years of age, and Karen, nine, reside at 709 Rebecca.

He was graduated from Redemptorist High School, Loyola Univ., Holy Cross College and Notre Dame Univ. Seminary in La. He worked 12 years as supervisor for the Louisiana Department of Revenue. After he was ordained a deacon in the Catholic Church he worked in that capacity

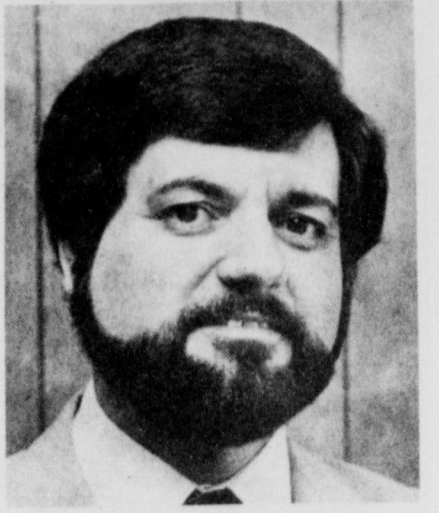
evenings and weekends at St. John Basco.

During the summer of 1983, when he was studying at Notre Dame Univ. in South Bend, Ind., an announcement was made of the need for a deacon, who was willing to relocate, to serve the Catholic churches in Iowa Park and Electra. He applied for the job and was interviewed by the personnel board and approved by Bishop Joseph Delaney of the Catholic Diocese at Fort Worth.

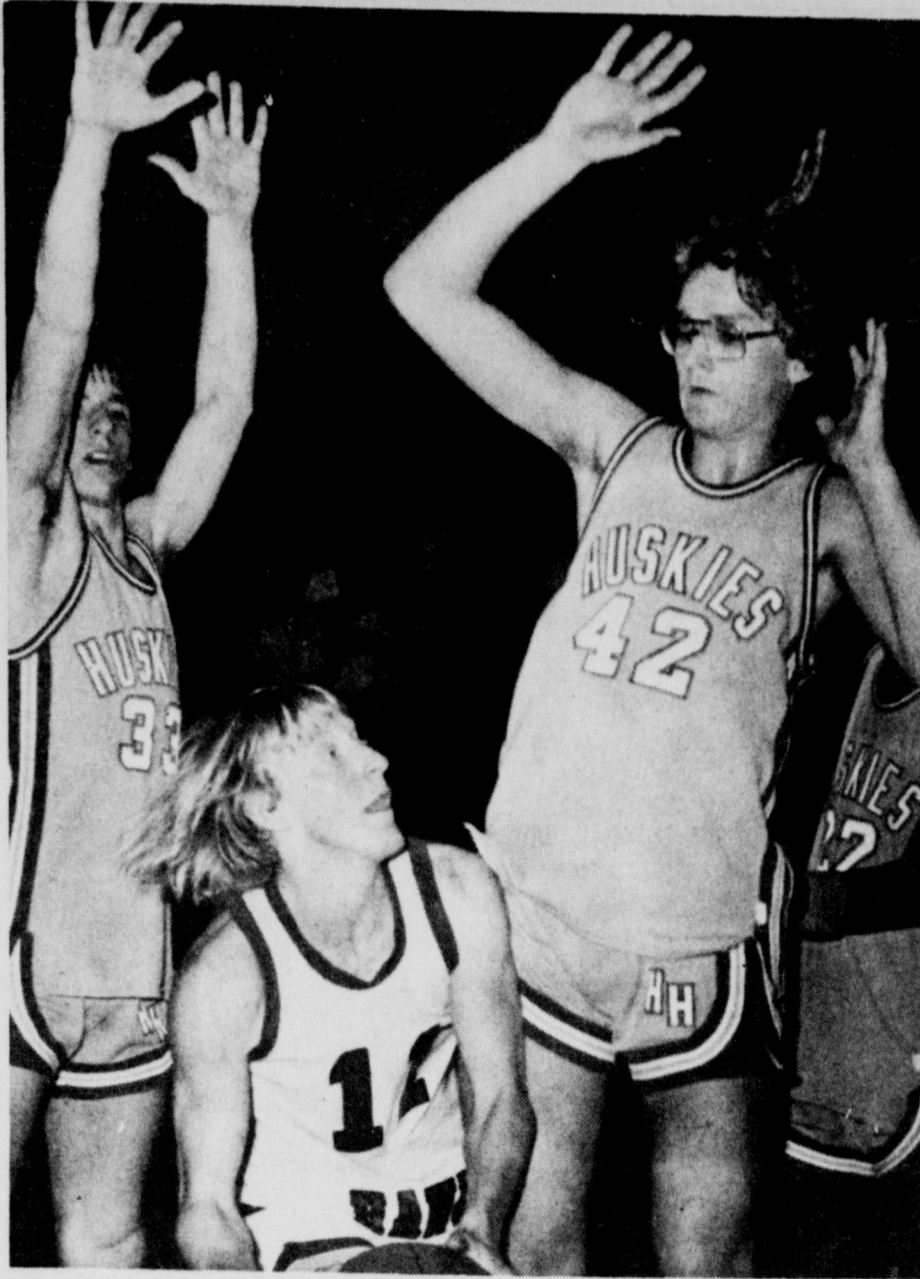
Rev. Mr. Patrick said that the Order of Deacons goes back to New Testament times. It came back into existence for his church in 1965 when it was reinstated by Pope Paul VI

due to the shortage of priests. The deacon can administer the sacrament, baptismal, marriage, communion, funeral and other liturgical services, but he cannot say mass or hear confessions.

Deacon Burke said that it has been easy for him and his family to transplant from Louisiana to the Lone Star State and Iowa Park because of the warmth and friendliness that have been showered upon them, not only by the members of his parishes but from the townspeople in general. He says he is looking forward to meeting the ministers of the different churches, working with them and becoming a part of community life.



REV. MR. PATRICK BURKE



TOUGH SHOOTING - Van Hedrick looks for some way to shoot at the basket during Tuesday's Dist. 3-AAAA game here against Hirschi. The state's fifth-ranked Huskies walked away with the final score, 73-52.

Municipal Court Records

Results of municipal court held here yesterday were:

- William Daniel Moffett, no proof of insurance, \$81;
- Kimberly K. Cornman, invalid license plates, \$31;
- Steven Lee Masters, expired motor vehicle inspection sticker (MVI), \$60;
- Lester Lee Rose, display expired registration, \$73.50;
- Michael Lee King, speeding, \$63;
- Walter Dee Tinnerstat, displayed expired registration, \$49;
- Jerry Roy Stansbury, speeding, \$41;
- James Brinkley Cockrum, failure to comply with requirements on striking unattended vehicle, \$40;
- Mark Alan Ward, expired MVI, \$40;
- Jo Guthrie McDonald, speeding, \$50;
- Michael Lee Jones, speeding, \$42;
- Kendell Joe Hill, displayed expired MVI, \$40;
- James Lishel Beebe, displayed expired registration, \$49;
- Glenda Mapp Goodwin, disobeyed stop sign, \$40;
- Darrell Keith Jolly, speeding, \$40;
- Darrell Keith Jolly, disobeyed stop sign, \$40;
- Kurt Herman Trzeciak, speeding, \$51;
- Craig C. French, speeding, \$42;
- Sam Paul Callaway, speeding, \$45;
- Erna Hacker Hutchins, speeding, \$44;
- Rose Parkhill Ware, speeding, \$45;
- Tami Kay Buckmaster, expired MVI, \$40;
- Estel Elwood Jameson, expired MVI, \$40;
- Carlan Jan Flatt, displayed red light on front, \$40;
- Charles Farley Friday, speeding, \$43;
- Harvey Don Eaton, speeding, \$51;
- Edward Louis Sawyer, disobeyed stop sign, \$40;
- Jerry Wayne Pesterfield, disobeyed stop sign, \$40;
- Jerry Wayne Pesterfield, expired drivers license, \$40;
- Glenda Spruiell Key, speeding, \$42;
- Linda Acree Gibbons, expired MVI, \$40;
- David Kenneth Dunlay, expired MVI, \$49;
- Robert Thomas Wheeler, speeding, taking defensive driving course (DDC);
- Richard Samuel Hicks, speeding, taking DDC;
- Kendell Joe Hill II, speeding, \$45;
- Charles Kevin Boykin, public intoxication, \$49;
- John Marshall Rhodes, public intoxication, \$49;
- Joe Kirk Baggett, public intoxication (driving), \$112.50.

ABOUT TOWN

Iowa Park is the retirement location choice for Thomas J. Beason, a pipefitter in the 3750th Civil Engineering Squadron. He retired Dec. 31 with 20 years federal service.

"It's a steal, alright, but you'll have to carry it out."
— Sheriff Lick

Purchase one of our hamburgers or cheeseburgers, and the fries and drink are FREE!

For carry-out orders only at

Little Richard's Salt Lick

510 E. Highway 592-5252

VALENTINE PLANTS

Mini Roses, Begonias, Baskets, Herb Baskets, Lots More!
Open 10-6 Every Day!
2951 Elliott, W.F.

Plants Etcetera

BACON BURGER

\$ 1.54

REG. \$1.75

805 West Highway

FOR TAKE OUT ORDERS

CALL 592-4731

Cut out for Ken's Pizza!

592-4184

902 W. Hiway

\$2 & \$1 off.

Get \$2.00 off the price of any large Ken's pizza or \$1.00 off the price of any Ken's medium pizza or Ken's small deep pan pizza. One coupon per pizza. Offer not good with other promotions or coupons. OFFER GOOD UNTIL Feb. 19, 1984

COUPON CASH VALUE 1/20 OF A CENT

Free Salad(s)

With a purchase of any small deep pan pizza or medium Ken's pizza get one free trip to the salad bar . . . or . . . two free trips to the salad bar with any large pizza purchase. Offer not good with other promotions or coupons. OFFER GOOD UNTIL Feb. 19, 1984

COUPON CASH VALUE 1/20 OF A CENT

\$2.50 & \$1.50 off.

Get \$2.50 off the price of any large Ken's pizza or \$1.50 off the price of any Ken's medium pizza or Ken's small deep pan pizza. One coupon per pizza. Offer not good with other promotions or coupons. OFFER GOOD UNTIL Feb. 19, 1984

COUPON CASH VALUE 1/20 OF A CENT

Pasta Two-for-One.

Purchase either Ken's famous Baked Rigatoni or Spaghetti with meat sauce and get the second pasta [same size] FREE. Offer not good with other promotions or coupons. OFFER GOOD UNTIL Feb. 19, 1984

COUPON CASH VALUE 1/20 OF A CENT

Wichita Falls

SEE YOU THERE!

ADMISSION: \$2.00
Children 16 & under, with Parents - FREE!

FEBRUARY

3RD - 4TH

FRIDAY 4 P.M. - 9 P.M. SATURDAY 10 A.M. - 9 P.M.

5TH

SUNDAY 10 A.M. - 6 P.M.

★★★★★★★★★★★★★★★★★★★★

★ Hundreds of Dollars in Door Prizes!

★ KLUR Fishing Tank!

★ Summer Style Show by BETSY'S.

★★★★★★★★★★★★★★★★★★★★

★ ACTIVITIES CENTER ★

DOWNTOWN WICHITA FALLS AT 10TH & INDIANA.

F.Y.I.

(For Your Information)

Great Things are Happening

SAJ

For both our readers and advertisers!

THE ERIE TIMES

On (date) this newspaper's page design will change to a six column format. This change has been suggested by the American Newspaper Publishers Association and 90% of the dailies and 78% of the weeklies polled will make this design improvement before July 1, 1984. What does it mean to you?

FOR READERS: it means we will be able to set our news and features in a type measure that will be much easier to read. Readership studies have shown that the width in which a line of type is set is just as important as the size and style of the type. Our new 2-1/16 inch columns will provide close to optimum readability.

FOR ADVERTISERS: the new format will make space buying much easier and simplify ad production. A sample of the new format and other pertinent information is available to our advertisers. Contact your ad representatives.

Sample advertisement for newspaper promotion, intended to inform advertisers of change in paper's makeup.

*This is coming a little late, for the Leader.
 We made this conversion **February 7, 1980.**
 That may not make us the first, but certainly
 we are pioneers in the industry.
 We've never hesitated to improve.*

**IOWA PARK
 LEADER**

TA MEMBER
TEXAS PRESS ASSOCIATION

12:30 (4) TO BE ANNOUNCED
(5) MARY TYLER MOORE
12:45 (8) THE GROWING INFANT
1:00 (5) THIS WEEK IN THE NBA
1:10 (5) GOOD NEWS
1:15 (8) NIGHT COURT
1:30 (8) SPORTSCENTER
1:35 (8) WINGSIDE REVIEW (R)
1:45 (8) JAKE GREY THEATRE (R)
1:55 (8) HMO MOVIE ** * *

1:55 (8) HMO MOVIE ** * *
2:00 (8) THE FACTS OF LIFE
2:05 (8) HMO MOVIE ** * *
2:10 (8) HMO MOVIE ** * *
2:15 (8) HMO MOVIE ** * *
2:20 (8) HMO MOVIE ** * *

2:30 (8) HMO MOVIE ** * *
2:35 (8) HMO MOVIE ** * *
2:40 (8) HMO MOVIE ** * *
2:45 (8) HMO MOVIE ** * *
2:50 (8) HMO MOVIE ** * *

3:00 (8) HMO MOVIE ** * *
3:05 (8) HMO MOVIE ** * *
3:10 (8) HMO MOVIE ** * *
3:15 (8) HMO MOVIE ** * *

3:15 (8) HMO MOVIE ** * *
3:20 (8) HMO MOVIE ** * *
3:25 (8) HMO MOVIE ** * *
3:30 (8) HMO MOVIE ** * *

3:35 (8) HMO MOVIE ** * *
3:40 (8) HMO MOVIE ** * *
3:45 (8) HMO MOVIE ** * *
3:50 (8) HMO MOVIE ** * *

3:55 (8) HMO MOVIE ** * *
4:00 (8) HMO MOVIE ** * *
4:05 (8) HMO MOVIE ** * *
4:10 (8) HMO MOVIE ** * *

4:15 (8) HMO MOVIE ** * *
4:20 (8) HMO MOVIE ** * *
4:25 (8) HMO MOVIE ** * *
4:30 (8) HMO MOVIE ** * *

4:35 (8) HMO MOVIE ** * *
4:40 (8) HMO MOVIE ** * *
4:45 (8) HMO MOVIE ** * *
4:50 (8) HMO MOVIE ** * *

4:55 (8) HMO MOVIE ** * *
5:00 (8) HMO MOVIE ** * *
5:05 (8) HMO MOVIE ** * *
5:10 (8) HMO MOVIE ** * *

5:15 (8) HMO MOVIE ** * *
5:20 (8) HMO MOVIE ** * *
5:25 (8) HMO MOVIE ** * *

5:30 (8) HMO MOVIE ** * *
5:35 (8) HMO MOVIE ** * *
5:40 (8) HMO MOVIE ** * *

TVtab
Saturday, February 4
through Friday, February 10

CHANNEL 9 - KFDX, Wichita Falls
CHANNEL 10 - KAUZ, Wichita Falls
CHANNEL 11 - Chicago, Ill.
CHANNEL 12 - Lawton, Okla.
CHANNEL 13 - Public Television

IOWA PARK CABLE SUBSCRIBERS
CHANNEL 4 - Home Box Office
CHANNEL 5 - Charlotte, N.C.
CHANNEL 8 - Atlanta, Ga.
CHANNEL 13 - Public Television

DAYTIME
MORNING
5:00 (4) THE BLACKWOOD BROTHERS (MON)
(5) JEWISH VOICE BROADCAST (TUE)
(6) AM BAKER (THU)
(7) SOUND OF THE SPIRIT (FRI)
(8) TODAY
(9) CBS MORNING NEWS
(10) BOZ'S BIG TOP
(11) GOOD MORNING AMERICA
(12) IN OUR OWN MAGE (MON)
(13) AMERICAN GOVERNMENT (TUE)
(14) INTRODUCING BOBBI (WED)
(15) CHOCO AND THE MAN
(16) THE LORAX BY DR. SEUSS (THU)
(17) LOVE BOAT
(18) FAITH 20
(19) JIM BAKER
(20) NATIONAL GEOGRAPHIC SPECIAL (WED)
(21) HMO MOVIE (THU)
(22) HMO MOVIE (FRI)
(23) HMO MOVIE (SAT)
(24) HMO MOVIE (SUN)
(25) HMO MOVIE (MON)

9:30 (4) FRAGILE (WED)
(5) HMO MOVIE (THU)
(6) HMO MOVIE (FRI)
(7) HMO MOVIE (SAT)
(8) HMO MOVIE (SUN)
(9) HMO MOVIE (MON)
(10) HMO MOVIE (TUE)
(11) HMO MOVIE (WED)
(12) HMO MOVIE (THU)
(13) HMO MOVIE (FRI)
(14) HMO MOVIE (SAT)
(15) HMO MOVIE (SUN)
(16) HMO MOVIE (MON)
(17) HMO MOVIE (TUE)
(18) HMO MOVIE (WED)
(19) HMO MOVIE (THU)
(20) HMO MOVIE (FRI)
(21) HMO MOVIE (SAT)
(22) HMO MOVIE (SUN)
(23) HMO MOVIE (MON)
(24) HMO MOVIE (TUE)
(25) HMO MOVIE (WED)

9:30 (4) FRAGILE (WED)
(5) HMO MOVIE (THU)
(6) HMO MOVIE (FRI)
(7) HMO MOVIE (SAT)
(8) HMO MOVIE (SUN)
(9) HMO MOVIE (MON)
(10) HMO MOVIE (TUE)
(11) HMO MOVIE (WED)
(12) HMO MOVIE (THU)
(13) HMO MOVIE (FRI)
(14) HMO MOVIE (SAT)
(15) HMO MOVIE (SUN)
(16) HMO MOVIE (MON)
(17) HMO MOVIE (TUE)
(18) HMO MOVIE (WED)
(19) HMO MOVIE (THU)
(20) HMO MOVIE (FRI)
(21) HMO MOVIE (SAT)
(22) HMO MOVIE (SUN)
(23) HMO MOVIE (MON)
(24) HMO MOVIE (TUE)
(25) HMO MOVIE (WED)

9:30 (4) FRAGILE (WED)
(5) HMO MOVIE (THU)
(6) HMO MOVIE (FRI)
(7) HMO MOVIE (SAT)
(8) HMO MOVIE (SUN)
(9) HMO MOVIE (MON)
(10) HMO MOVIE (TUE)
(11) HMO MOVIE (WED)
(12) HMO MOVIE (THU)
(13) HMO MOVIE (FRI)
(14) HMO MOVIE (SAT)
(15) HMO MOVIE (SUN)
(16) HMO MOVIE (MON)
(17) HMO MOVIE (TUE)
(18) HMO MOVIE (WED)
(19) HMO MOVIE (THU)
(20) HMO MOVIE (FRI)
(21) HMO MOVIE (SAT)
(22) HMO MOVIE (SUN)
(23) HMO MOVIE (MON)
(24) HMO MOVIE (TUE)
(25) HMO MOVIE (WED)

9:30 (4) FRAGILE (WED)
(5) HMO MOVIE (THU)
(6) HMO MOVIE (FRI)
(7) HMO MOVIE (SAT)
(8) HMO MOVIE (SUN)
(9) HMO MOVIE (MON)
(10) HMO MOVIE (TUE)
(11) HMO MOVIE (WED)
(12) HMO MOVIE (THU)
(13) HMO MOVIE (FRI)
(14) HMO MOVIE (SAT)
(15) HMO MOVIE (SUN)
(16) HMO MOVIE (MON)
(17) HMO MOVIE (TUE)
(18) HMO MOVIE (WED)
(19) HMO MOVIE (THU)
(20) HMO MOVIE (FRI)
(21) HMO MOVIE (SAT)
(22) HMO MOVIE (SUN)
(23) HMO MOVIE (MON)
(24) HMO MOVIE (TUE)
(25) HMO MOVIE (WED)

9:30 (4) FRAGILE (WED)
(5) HMO MOVIE (THU)
(6) HMO MOVIE (FRI)
(7) HMO MOVIE (SAT)
(8) HMO MOVIE (SUN)
(9) HMO MOVIE (MON)
(10) HMO MOVIE (TUE)
(11) HMO MOVIE (WED)
(12) HMO MOVIE (THU)
(13) HMO MOVIE (FRI)
(14) HMO MOVIE (SAT)
(15) HMO MOVIE (SUN)
(16) HMO MOVIE (MON)
(17) HMO MOVIE (TUE)
(18) HMO MOVIE (WED)
(19) HMO MOVIE (THU)
(20) HMO MOVIE (FRI)
(21) HMO MOVIE (SAT)
(22) HMO MOVIE (SUN)
(23) HMO MOVIE (MON)
(24) HMO MOVIE (TUE)
(25) HMO MOVIE (WED)

9:30 (4) FRAGILE (WED)
(5) HMO MOVIE (THU)
(6) HMO MOVIE (FRI)
(7) HMO MOVIE (SAT)
(8) HMO MOVIE (SUN)
(9) HMO MOVIE (MON)
(10) HMO MOVIE (TUE)
(11) HMO MOVIE (WED)
(12) HMO MOVIE (THU)
(13) HMO MOVIE (FRI)
(14) HMO MOVIE (SAT)
(15) HMO MOVIE (SUN)
(16) HMO MOVIE (MON)
(17) HMO MOVIE (TUE)
(18) HMO MOVIE (WED)
(19) HMO MOVIE (THU)
(20) HMO MOVIE (FRI)
(21) HMO MOVIE (SAT)
(22) HMO MOVIE (SUN)
(23) HMO MOVIE (MON)
(24) HMO MOVIE (TUE)
(25) HMO MOVIE (WED)

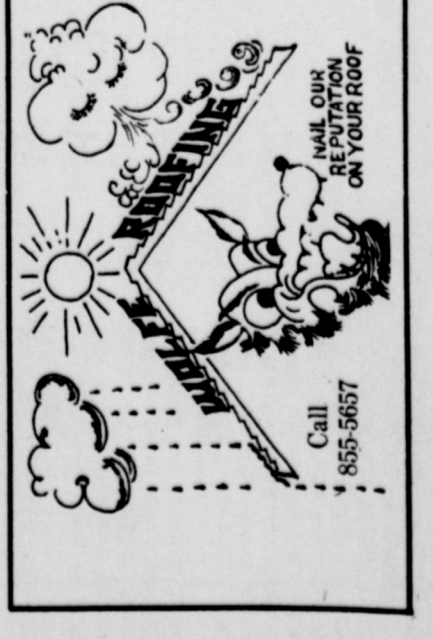
By Uncle Bob
Dear Uncle Bob:
My house has always been painted white. It's about 30 years old and last year we repainted. Now there seems to be a grey cast appearing on certain areas. What causes this? It never happened before.
Mr. Spotts
Dear Mr. Spotts:
That grey color appearing on your house is very likely mildew. To be absolutely sure put a drop of Laundry Chlorine Bleach on some of the grey discoloration. If it is mildew the grey color will disappear.
To remove the discoloration scrub the discolored area with the following solution:
2/3 cup laundry detergent
1 quart household chlorine bleach
3 quarts warm water
When clean, rinse thoroughly with fresh water from a hose. Avoid splashing the solution on shrubbery or grass.

TRU-TEST PAINTS
PAINTING HELP SPOKEN HERE.
Mr. Spotts
Dear Mr. Spotts:
That grey color appearing on your house is very likely mildew. To be absolutely sure put a drop of Laundry Chlorine Bleach on some of the grey discoloration. If it is mildew the grey color will disappear.
To remove the discoloration scrub the discolored area with the following solution:
2/3 cup laundry detergent
1 quart household chlorine bleach
3 quarts warm water
When clean, rinse thoroughly with fresh water from a hose. Avoid splashing the solution on shrubbery or grass.

See me for a State Farm
Family Insurance Checkup
Philip Welch
100 W. Park
Phone 592-4155
Like a good neighbor, State Farm is there
State Farm Insurance Companies
Home Offices: Bloomington, Illinois

FRIDAY
FEBRUARY 10, 1984
EVENING
6:00 (4) LARRY ALLEN
(5) SPORTSCENTER "Olympic Edition"
(6) BARNEY MILLER
(7) BUSINESS REPORT
(8) HOGAN'S HEROES
6:30 (4) NEW SONG
(5) COLLEGE BASKETBALL REPORT (R)
(6) WHEEL OF FORTUNE
(7) NBA BASKETBALL Chicago Bulls at Philadelphia 76ers
(8) FOX NEWS
6:55 (8) FOX NEWS
7:00 (8) FOX NEWS
7:10 (8) FOX NEWS
7:20 (8) FOX NEWS
7:30 (8) FOX NEWS
7:40 (8) FOX NEWS
7:50 (8) FOX NEWS
8:00 (8) FOX NEWS
8:10 (8) FOX NEWS
8:20 (8) FOX NEWS
8:30 (8) FOX NEWS
8:40 (8) FOX NEWS
8:50 (8) FOX NEWS
9:00 (8) FOX NEWS
9:10 (8) FOX NEWS
9:20 (8) FOX NEWS
9:30 (8) FOX NEWS
9:40 (8) FOX NEWS
9:50 (8) FOX NEWS
10:00 (8) FOX NEWS
10:10 (8) FOX NEWS
10:20 (8) FOX NEWS
10:30 (8) FOX NEWS
10:40 (8) FOX NEWS
10:50 (8) FOX NEWS
11:00 (8) FOX NEWS
11:10 (8) FOX NEWS
11:20 (8) FOX NEWS
11:30 (8) FOX NEWS
11:40 (8) FOX NEWS
11:50 (8) FOX NEWS
12:00 (8) FOX NEWS

WEDNESDAY
FEBRUARY 8, 1984
EVENING
6:00 (4) SPORTSCENTER "Olympic Edition"
(5) BARNEY MILLER
(6) BUSINESS REPORT
(7) HOGAN'S HEROES
6:30 (4) GARY MITRK
(5) HMO MOVIE ** * *
6:45 (8) HMO MOVIE ** * *
6:55 (8) HMO MOVIE ** * *
7:05 (8) HMO MOVIE ** * *
7:15 (8) HMO MOVIE ** * *
7:25 (8) HMO MOVIE ** * *
7:35 (8) HMO MOVIE ** * *
7:45 (8) HMO MOVIE ** * *
7:55 (8) HMO MOVIE ** * *
8:05 (8) HMO MOVIE ** * *
8:15 (8) HMO MOVIE ** * *
8:25 (8) HMO MOVIE ** * *
8:35 (8) HMO MOVIE ** * *
8:45 (8) HMO MOVIE ** * *
8:55 (8) HMO MOVIE ** * *
9:05 (8) HMO MOVIE ** * *
9:15 (8) HMO MOVIE ** * *
9:25 (8) HMO MOVIE ** * *
9:35 (8) HMO MOVIE ** * *
9:45 (8) HMO MOVIE ** * *
9:55 (8) HMO MOVIE ** * *
10:05 (8) HMO MOVIE ** * *
10:15 (8) HMO MOVIE ** * *
10:25 (8) HMO MOVIE ** * *
10:35 (8) HMO MOVIE ** * *
10:45 (8) HMO MOVIE ** * *
10:55 (8) HMO MOVIE ** * *
11:05 (8) HMO MOVIE ** * *
11:15 (8) HMO MOVIE ** * *
11:25 (8) HMO MOVIE ** * *
11:35 (8) HMO MOVIE ** * *
11:45 (8) HMO MOVIE ** * *
11:55 (8) HMO MOVIE ** * *
12:05 (8) HMO MOVIE ** * *



PARKWAY
FURNITURE True Value HARDWARE
200-206 West Bank
592-5512
592-4681

VIDEO CARE
Parkwest Shopping Center
592-5552
Television Repairs
Guaranteed service on most major brands.

FIND IT ALL IN THE WANT ADS
Northwestern (Subject to blackout)
WE NOW SEEL CUT SIZES
T.S. THOMAS, CABINETMAKER
1516 Beverly Wichita Falls Ph. 723-6523

SATURDAY

- 5:00 (1) MASTER ROGERS (R)
(2) CASTLE SQUARE (M)
(3) FIGURE WITH TAMMY SUE (TUE)
(4) MR. MISTAKE AND COMPANY (WED)
(5) NODDY TACK (TH)
(6) HERITAGE USA UPDATE (TH)
(7) SPORTS LOOK (M)
(8) THIS WEEK IN THE NEWS (TUE)
(9) JOHN WALTER (M)
(10) THE EFFERSONS (M)
(11) THE EFFERSONS (M)
(12) NEWS (M)
(13) ONE DAY AT A TIME (M)
(14) SESAME STREET (M)
(15) HBO MOVIE (TUE-FRI)
(16) HBO MOVIE (TUE-FRI)
(17) GOOD NEWS AMERICA
(18) SPORTSCENTER
(19) NBC NEWS
(20) CBS NEWS
(21) WAPR IN CHICAGO (M)
(22) WAPR IN CHICAGO (M)
(23) ABC NEWS
(24) CAROL BARNETT AND FRIENDS
(25) CAROL BARNETT AND FRIENDS

SUNDAY

- 8:30 (1) FATHER JOHN BERTULLOCCI
(2) AL MACQUEE SPECIAL: A TRIB-
UTE TO BOB MARLEY
(3) ISSUES UNLIMITED
(4) P.M. AM / RISKY CURE /
MELINDA
(5) COMMUNICATING THROUGH LITER-
ATURE
(6) MARY SWAGGART
(7) PLASTICMAN
(8) SESAME STREET (R)
(9) ONE DAY AT A TIME
(10) SESAME STREET (R)
(11) HBO MOVIE *** "Lon of the Desert"
(1981) Anthony Quinn, Oliver Reed. A
hard-hitting Academy Award best actor
attempts to become leader for 20 years.
PG
(12) COLLEGE BASKETBALL REPORT (R)
(13) ALVA AND THE CHAMPIONS
(14) CHARLE BROWN AND SMOOKEY
(15) THE IMPERETS
(16) THE IMPERETS
(17) THE IMPERETS
(18) THE IMPERETS
(19) THE IMPERETS
(20) THE IMPERETS

MONDAY

- 5:00 (1) MASTER ROGERS (R)
(2) CASTLE SQUARE (M)
(3) FIGURE WITH TAMMY SUE (TUE)
(4) MR. MISTAKE AND COMPANY (WED)
(5) NODDY TACK (TH)
(6) HERITAGE USA UPDATE (TH)
(7) SPORTS LOOK (M)
(8) THIS WEEK IN THE NEWS (TUE)
(9) JOHN WALTER (M)
(10) THE EFFERSONS (M)
(11) THE EFFERSONS (M)
(12) NEWS (M)
(13) ONE DAY AT A TIME (M)
(14) SESAME STREET (M)
(15) HBO MOVIE (TUE-FRI)
(16) HBO MOVIE (TUE-FRI)
(17) GOOD NEWS AMERICA
(18) SPORTSCENTER
(19) NBC NEWS
(20) CBS NEWS
(21) WAPR IN CHICAGO (M)
(22) WAPR IN CHICAGO (M)
(23) ABC NEWS
(24) CAROL BARNETT AND FRIENDS
(25) CAROL BARNETT AND FRIENDS

TUESDAY

- 5:00 (1) MASTER ROGERS (R)
(2) CASTLE SQUARE (M)
(3) FIGURE WITH TAMMY SUE (TUE)
(4) MR. MISTAKE AND COMPANY (WED)
(5) NODDY TACK (TH)
(6) HERITAGE USA UPDATE (TH)
(7) SPORTS LOOK (M)
(8) THIS WEEK IN THE NEWS (TUE)
(9) JOHN WALTER (M)
(10) THE EFFERSONS (M)
(11) THE EFFERSONS (M)
(12) NEWS (M)
(13) ONE DAY AT A TIME (M)
(14) SESAME STREET (M)
(15) HBO MOVIE (TUE-FRI)
(16) HBO MOVIE (TUE-FRI)
(17) GOOD NEWS AMERICA
(18) SPORTSCENTER
(19) NBC NEWS
(20) CBS NEWS
(21) WAPR IN CHICAGO (M)
(22) WAPR IN CHICAGO (M)
(23) ABC NEWS
(24) CAROL BARNETT AND FRIENDS
(25) CAROL BARNETT AND FRIENDS

Holliday News

O'Brien, Parish chosen Mr. and Miss H.H.S.

Holliday High School seniors Pat O'Brien and Melissa Parish were named Mr. and Miss H.H.S. at the annual awards assembly held recently in Erma Barton Auditorium.

Selected from ballots cast by the student body, high school principal Bill Lee presented awards to the two. In addition, Lee presented awards to the following for various achievements:

Wittiest, Shannon West and Sallye

Rathman; all school beau and beauty, O'Brien and Staci Anderson; best dressed, Jay Burks and Laura Lowder; friendliest, Gradlin Franks and Brenda Wise; Busiest, Robert Parkey and Terri Davis; most courteous, Ricky Levell and Leslie Mankins; most studious, Robert Parkey and Mankins; most likely to succeed, O'Brien and Mankins.

Senior class favorites were Shannon West and Tracie Coulter, while Lowder was named senior

beauty. Junior favorites were Lyle Jeffcoat and Tammy Stevens, and class beauty was Cheryl Lowder. Sophomore favorites were Cindy

Snider and Pat Parker, while Snider was also named beauty. Freshman favorites named were Scotty Lofland and Tracy Hawley, and Stacey Moore class beauty.

Holliday junior high honor roll released

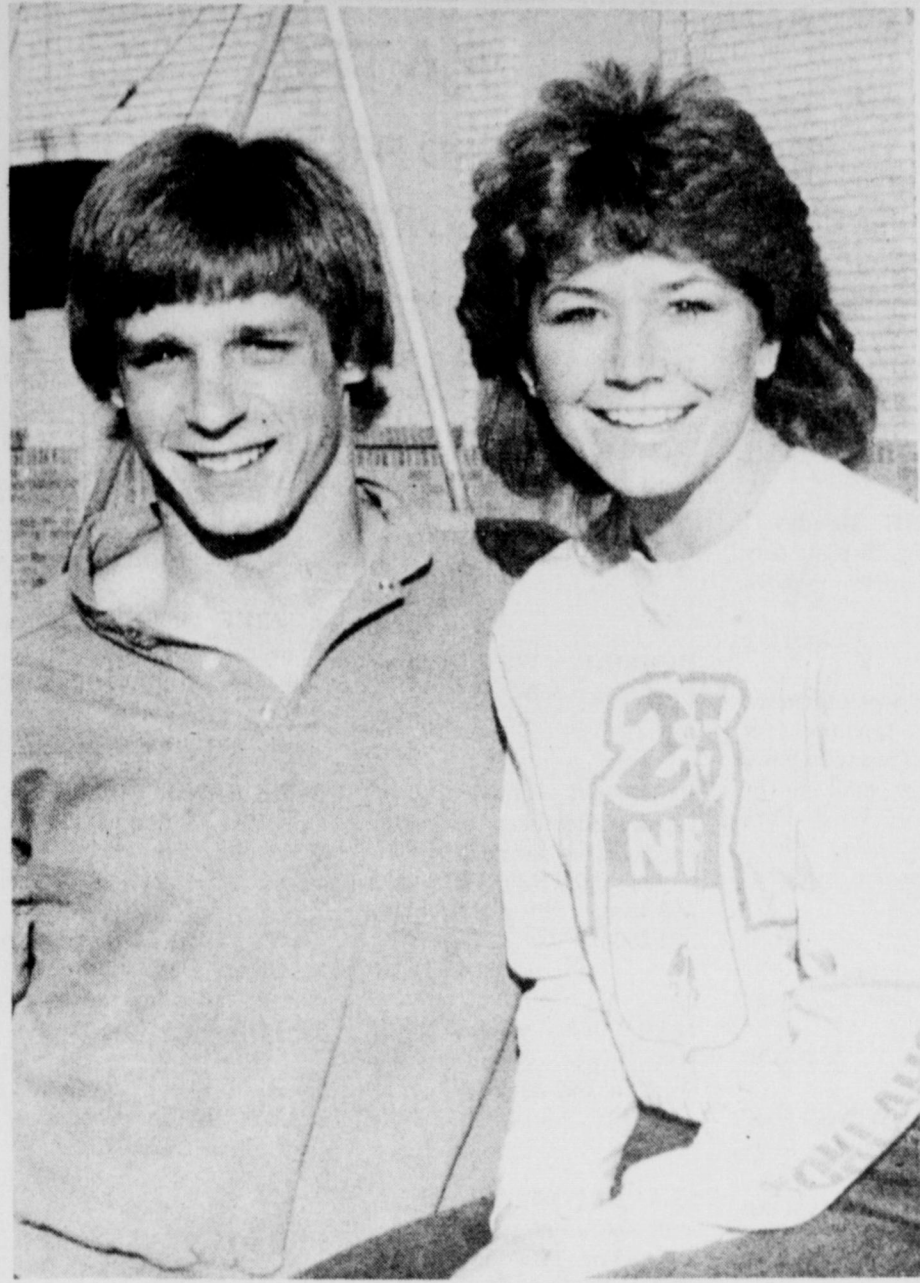
Honor roll for the first semester of the 1983-84 school year at Holliday's middle school was released recently by principal Jake Cottrell. Students earning mention on the "AA" list averaged 90 or above in each course, while those on the "A" list averaged 90 or above in all classes combined for the three six-week periods. They are:

EIGHTH GRADE AA: Seretha Finnell, Shannon O'Brien. **A:** Klonie Berend, Dustin Bridges, Laura Bynum, Denise Dodson, Tiffany Franks, Jenny Ingram, Laura Lackey, Pat Maxwell, Norelia Reid, Sandy Santellana, and Colt West.

SEVENTH GRADE AA: Tammy Beaves, Beth Moldenhauer. **A:** Pam Bailey, Scott Belcher, Mary Jane Billingsley, Christy Edwards, Melissa Faver, Leslie Goodlett, Keri Lilley,

LaShana Luke, Katha McAllister, Luci Mellhaney, Ronnie Molina, Michael Richards, Chad Stubblefield, and Laurie Styles.

SIXTH GRADE AA: Carla Carr, Schondra Conyca, Brian Sweitzer, Kim Whitsitt, Renee Wilson. **A:** LeAnn Cannedy, Angie Dodson, Jody Echols, Tanya Franks, Johnny Hancock, Darren Hill, Rickey Hogue, Tammy Hoover, Robert Lindley, Ryan Menasco, Teresa Noll, Brian Roland, Julie Scholl, Terry Stewart and Melissa Wagner.



PAT O'BRIEN AND MELISSA PARISH
... Mr. and Miss H.H.S. for 1983-84



Friday, February 3

Breakfast: Cinnamon toast, milk, fruit.

Lunch: Pizza, corn, salad, milk, cobbler.

Monday, February 6

Breakfast: Donuts, milk, juice.

Lunch: Corn dogs, pinto beans, spinach, milk, cookies.

Tuesday, February 7

Breakfast: Biscuits, gravy, milk, fruit.

Lunch: Turkey pot pie, creamed potatoes, English peas, milk, fruit.

Wednesday, February 8

Breakfast: Waffles, syrup, milk, juice.

Lunch: Steak, creamed potatoes, gravy, green beans, hot rolls, milk, jello.

Thursday, February 9

Breakfast: Cheese toast, milk, fruit.

Lunch: Chalupas, lettuce, tomatoes, French fries, catsup, milk, cobbler.



ROBERTA SHAWVER, daughter of Mr. and Mrs. George Shawver of Holliday, will compete Feb. 11 in the Miss Wichita Falls Scholarship Pageant in that city's Memorial Auditorium. She is a senior in Holliday High School.

Fingerprinting planned

Fingerprinting children in the Holliday School District will begin at 9 a.m. Wednesday, Feb. 8 in the room adjacent to Elementary principal Carol Magee's office, according to Holliday P-TA president-elect Vicki Finnell.

The procedure of fingerprinting children for positive identification has recently received a great deal of attention and enthusiasm in Holliday and the surrounding area. Lectures

have accompanied the push to have children fingerprinted, dealing with the advantages of having the prints, for situations ranging from a missing child to extreme examples of child abduction.

Finnell said that parents with children not enrolled in the Holliday Schools are more than welcome to participate, and that volunteers are needed and welcome to help with P-TA and ATPE officials Feb. 8.

SOCIAL SECURITY TIPS

SSI "ALERT" SENT TO SOCIAL SECURITY BENEFICIARIES

Before they reach 65, Social Security beneficiaries will get a leaflet about the availability of Supplemental Security Income (SSI). The message about SSI is enclosed with material these beneficiaries routinely get about Medicare hospital insurance and medical insurance.

The SSI alert was mandated for the elderly by the 1983 Social Security amendments. The leaflet describes

how the SSI program provides monthly payments to people who are 65 and older or blind or disabled with limited income and resources.

The program is run by the Social Security Administration, but benefits are paid from Federal general revenues rather than the Social Security trust funds. A Social Security beneficiary with low income and resources may also qualify for SSI payments, the leaflet explains.

CHECK THE CLASSIFIEDS For All Your Needs



IRA

A Personal Retirement Plan That Will Save You Tax Dollars Every Year

EVERY WAGE EARNER IS NOW ELIGIBLE

As of January 1, 1982, every wage earner, even though they are active participants in an employer sponsored pension plan, can make tax-sheltered contributions to an Individual Retirement Account (IRA). IRA contributions will accumulate tax-deferred with compounded interest until retirement.

MAXIMUM CONTRIBUTIONS

The maximum contribution to an individual retirement account has been increased from \$1,500 to \$2,000; spousal IRA from \$1,750 to \$2,250. (Spousal IRA's are for married couples where only one spouse is employed.)

Whether or not you are covered by an employer sponsored pension plan	Contributory IRA \$2,000	Spousal IRA \$2,250
--	--------------------------	---------------------

100% CONTRIBUTION
Contributions are no longer limited to 15% of your annual earnings. You may now contribute up to 100% of your earnings up to the maximum limitation.



STATE NATIONAL BANK
IOWA PARK, TEXAS
Locally Owned

"Short Rows" with

FARMERS' GRAIN & FERTILIZER, INC.

SPRING GARDENING TIPS



DON DECKER

It is spring gardening time and we are the headquarters for garden plants and seeds. Only the best varieties for this area are in stock and our garden seed is bulk rather than in small packages.

Onion planting time is here, and Mrs. Keith Aulds of Iowa Park has already planted 600 onion plants. She selected the white Granex variety which is a large, flat, sweet onion.

It is too early for potatoes. Old timers say the potatoes should be planted between Valentine's Day and Washington's Birthday which I have observed to be about right. For those who prefer to plant according to the moon, we'll be in the dark of the moon from February 17 through March 1. We will have the Red Desoto seed potatoes which is the variety grown by commercial growers at Munday.

The control of grasses and weeds had been accomplished before William Andersen plants his garden. He used Vapam, a soil fumigant, which kills all weed seed, grass roots and tubers, soil insects and diseases.

He used Vapam at the rate of one gallon per 400 square feet. This fumigant was leached into the soil immediately after application with a lawn sprinkler.

It is time to kill everything which is green in the lawn. Green plants in the lawn are usually a mixture of henbit, wild rye, rescuegrass, chick weed, and sheep shorrel. All of this can be killed between now and the 1st of March with either Roundup or Phytar 560.

Rick Emmert of Burkburnett and Flossie Thompson of Iowa Park are ridding their lawn of the spring weeds by spraying now with Roundup or Phytar 560 plus a surfactant. Preemerge herbicides such as Balan can be applied about March 1, for summer weed control.

211 S. Victoria

592-4118

Iowa Park



GIFT BOX

VALENTINE CANDY

ASST. QUALITY CHOCOLATES LARGE SELECTION ALL SIZES

\$2.50 UP TO \$13.00 EACH

COOKED FOOD SPECIAL AS FEATURED ON TV.

CORN DOGS

FRESH COOKED & DELICIOUS

289¢ FOR

32 OZ. YOUR FAVORITE

FOUNTAIN DRINK

ALL SUP'S PLASTIC REUSABLE CUP

39¢

WHILE SUPPLIES LAST

BORDENS ASST. FLAVORS

ICE CREAM 1/2 GAL. RND CTN

\$1.69

BORDENS

HI PRO MILK 1/2 GAL. CTN

\$1.19

ALL SUP'S

MONEY ORDERS

EACH

29¢

UP TO \$2.99

ALL SUP'S HOT

CHOCOLATE

8 OZ. CUP

30¢

COKE

6 Pack 12 oz. Cans

\$1.69

BBQ SANDWICHES Each

99¢

SHURFINE FLOUR 5-Lb. Bag

69¢

ALL SUP'S

CONVENIENCE STORES

- WHILE SUPPLIES LAST
- SELF SERV GAS
- OPEN 24 HOURS FOR YOUR CONVENIENCE
- PRICES EFFECTIVE FEBRUARY 2 - 4, 1984

Permits start year off big

Building permits for three new homes were issued at city hall during January, giving 1984 a bright outlook in Iowa Park.

Permits for January amounted to \$104,366.

Permits issued included:
Opal Long, 1008 E. Washington, mobile home, \$1,500;
G.W. Milner, 701 W. Magnolia, addition, \$2,000;
Al Maag, 505 W. Coleman, new residence, \$25,000;
Al Maag, 503 W. Coleman, new

residence, \$29,500;
Billy Roden, 108 W. Chestnut, mobile home, \$7,000;
Vern Mikkelsen, 908 Dosia, alteration, \$350;
Terry Bowen, 400 E. Bank, addition, \$7,500;
Delbert Sigafus, 405 S. Victoria, addition, \$1,000;
Farmers Grain and Fertilizer, 211 S. Victoria, addition, \$516;
Larry Latimer, 606 W. Washington, addition, \$5,000;
Kenny Gilmore, 521 W. Alameda, new residence, \$25,000.



DARLENE MAHLER, daughter of Mr. and Mrs. Clarence Mahler of Iowa Park, will compete in the Miss Wichita Falls Scholarship Pageant Feb. 11 in Wichita Falls Memorial Auditorium.

Tractor safety program slated

A farm tractor safety program will be held on Feb. 11 and 18 at 7:30 a.m. at Iowa Park High School.


The program is sponsored by the Wichita County Young Farmers. Only 40 participants between the ages of 14 to 16 will be allowed. For registration, call the County Extension Office at 766-0131 before Feb. 10.

Participants will need to bring a sack lunch both days, but drinks will be furnished by the Young Farmers.

Cornbread, bean supper set Feb. 11

Cornbread and beans will be served between 5:30 and 8 p.m. Feb. 11 in the high school cafeteria as a fund-raising activity for Iowa Park school bands.

Entertainment will be provided by all the bands, and tickets will be \$2.50 for adults, \$1.50 children 5-12, with children four and under free.




Happy 50th Birthday
Annie Dean
Love, C.T. and the Js

HAPPY BIRTHDAY

Donna

Love, Larry



"MONEY WHEN YOU NEED IT"
Loans on most anything of value
SOUTHWEST SALES & LOANS
4423 Rhee Rd. 592-1371

+ King's Kids
Christian
Day Care & Preschool

"Iowa Park's Finest
For Parents Who Care"

Ages 2 Yrs & Older
Monday thru Friday
7 a.m. to 6 p.m.

202 N. Jackson 592-4242

Lawnmower Repair Service
SINGLETON'S
505 W. Highway 592-2671

BARNETT HOME-IMPROVEMENTS
Vinyl & Steel Siding • Storm Windows
Insulation • Glasswork • Remodeling

4007 Featherston Randy Barnett
Wichita Falls, TX 76308 691-1284

Patty Cake Nursery School
...now taking applications
for your children.
592-2926 or 592-2398

DIRECTIONS - North on Bell Rd. across U.S. 287, turn right (east) on Rogers Rd. just past Gilmore's yard, 1/4-mile to house, look for sign.

LaJuana Vanek, owner

Green Thumbs
Strawberry Plants
Are Here!

For hanging baskets or garden boxes **Ea. 10¢**

Also — Check out our new drip irrigation systems & seed racks, plus bulk garden seed

NOTE: vegetable plants will be ready for you by early April!

Baker's Greenhouse
One mile South on Bell Rd.

True Value
BARGAIN OF THE MONTH



7.99
While Supplies Last

Heating Pad
Sponge included for moist heat. Three heat settings, "on" light. 1819
Quantities Limited

True Value
TOOL VALUE OF THE MONTH




3.29
While Supplies Last

16-Oz. Nail Hammer
Claw hammer with high-carbon steel head, hickory handle. 3-16-HFN
Quantities Limited

PARKWAY
HARDWARE **True Value** FURNITURE
592-4681 200 - 206 West Bank 592-5512

Look Who's having a birthday



OPEN
UNDER NEW MANAGEMENT
JOHNSON ROAD TEXACO

Johnson Rd. & Expressway 592-5871

A FULL-SERVICE STATION

- Self-Service
- Tire Repair
- Oil & Filter Change

— ALSO —

- Wash Jobs & Minor Repairs (Weekends by Appointment)

HOURS: 7-7 Mon. thru Sat.; 7-6 Sunday
Locally-owned & operated by
J.D., Bettie & Paul Parker

WE CARE ABOUT YOUR HEALTH. WE CARE ABOUT YOUR HEALTH. WE CARE ABOUT YOUR HEALTH.

WAL-MART PHARMACY
592-4157
500 West Highway

DEBBI — CHRISTY
BONNIE — JEAN
& VESTA

 <p>Maalox Plus 12 oz. \$1.96</p>	 <p>Bausch & Lomb Saline Solution 12 oz. \$2.86</p>
 <p>Robitussin DM Cough Syrup 4 oz. \$1.83</p>	 <p>Ascription A/D 100 tablets \$2.26</p>

WE CARE ABOUT YOUR HEALTH. WE CARE ABOUT YOUR HEALTH. WE CARE ABOUT YOUR HEALTH.

Sign Up Time is HERE

SOCCER
Teams Now Forming!




February 4
10 a.m. - 2 p.m.

County Agriculture Building
220 W. Park
IOWA PARK, TEXAS

SIGN UP AND HAVE FUN!

TEAMS FOR ALL AGES 6 thru - JR. High
DIVISIONS BY AGE

JOIN! just for the fun of it!!
Iowa Park Soccer Club Memberships will be available.



Let's talk.

Information about your changing telephone service from Dan Adams, Manager-Community Relations

Meeting your needs in 1984

With the splitting up of the Bell System, some aspects of your telephone service may change. We've talked about many of these changes in previous columns. To help you better understand some of these changes, we've provided a checklist below, which can be used for quick reference when you have a question about whom to contact for a particular telecommunication service or product. We suggest you keep this checklist with your phone book for easy reference. And, remember, if you have further questions, don't hesitate to drop me a line at the address below:

Dan Adams
SW Bell Telephone
2121 Paradise
Vernon, TX 76384

Who to contact in 1984 for the service you require:	SWB Telephone*	SWB Telecom*	AT&T	Other Long Distance Companies	Other Telephone Equipment Retailers
To order new local service	✓				
Change in local telephone service	✓				
Local line repair	✓				
Residential inside wiring	✓				
Residential equipment repair		✓	✓		✓
Business equipment repair		✓	✓		✓
Buying single-line residence phones		✓	✓		✓
Buying single-line or multi-line business phones		✓	✓		✓
Leasing residential equipment			✓		✓
Leasing multi-line business equipment		✓	✓		✓
Custom Calling Services	✓				
Long distance outside SWB service areas			✓	✓	
Long distance within SWB service areas	✓				✓
Calling cards	✓		✓	✓	
White pages directories and listings	✓				
Local directory assistance	✓				
Long distance operator services			✓		
Billing for services previously provided by Southwestern Bell or Bell System	✓				

*Southwestern Bell Telephone and Southwestern Bell Telecom are two new subsidiaries of Southwestern Bell Corporation. Other subsidiaries of the corporation include Southwestern Bell Publishing and Southwestern Bell Mobile Systems.
*Only for equipment purchased from Telecom.

