

1983
Dec 15

EARL WATSON
528 S. CLARA
1022 PARK TOWER

Library needs \$1,000 for \$100,000 grant

Financing renovations of the Burnett home so it can be used as a community library apparently is about to become a reality. Iowa Park was within \$1,372.08 Monday night of qualifying for a \$100,000 matching grant. Information of the grant was made public Monday by Mike Dodd, president of the Friends of the Library, as he spoke to the city council. He quoted a letter from William D. Gooch, assistant state librarian, as saying the funds would come from the Library Services and Construction

Act, Title II, Public Library Construction program. Because it is a federal grant, however, in-kind work and property cannot be considered as matching. Dodd explained the value of the Burnett house and its land, as well as the old hotel property which was donated for the benefit of the library, could be considered. But pledges made to the library and not yet paid can be included as matching funds, Dodd said, as well as any expenditures made already on the structure. Broken down, the fund has on hand

\$41,292.79, pledges receivable of \$39,657.17 and expenditures on the structure of \$17,677.96, for a total of \$98,627.92. However, the city must sign an agreement to underwrite, or guarantee, the pledges uncollected. Pledges include \$29,000 from corporate sources, \$5,057.17 from the city and \$5,600 from individuals, of which more than \$3,000 is expected to be paid before Jan. 1, Dodd told the council. Should the city accept the grant, a number of changes in the plans for renovation will have to be made, it

was pointed out. First of all, Gooch specifically stated the grant would be made to the city of Iowa Park. The city had earlier this year turned over the operation of the library to the "Friends" to get out of red tape requirements of bidding and other entanglements they felt might hamper progress. "It looks like we're being cornered again," commented Alderman Bud Thompson. "We're right back into the picture." Dodd said there would need to be some reworking of papers and the legal work would have to be speedy because of time constrictions. "If our (the Friends) existence hampers the progress, then we would need to make some changes." He told the council his group had also made a request for a pledge from the Tandy Corporation and would continue its quest for funds, pointing out whatever it received would deduct the amount of pledges the city underwrites. Pledges made to the Friends of the Library are tax deductible, because it is a chartered non-profit corporation. Mrs. Luther Shaw is the treasurer. Original estimates for complete

renovation of the Burnett home for use of a library, which would include an elevator to the second floor, were slightly over \$200,000. At a meeting of the Friends board last week, contractor Jesse McCullough told the group the least expensive avenue to have the

renovation done was on a "cost-plus" basis. Mmes. W.A. George, Frank Harlin and Herman Escue were named to the building committee. Also at the meeting, attended by four directors and nine trustees, Frank Gossett led a discussion of bylaw changes to be voted on at the next meeting, set Jan. 10.

IOWA PARK LEADER

25 Cents

Vol. 15, No. 14 IOWA PARK, WICHITA COUNTY, TEXAS 76367 THURSDAY, DECEMBER 15, 1983

Trustees hear report of financial soundness

School trustees Tuesday night heard how financially sound the district is, heard a proposal to do some land trading and switched the insurance company carrying major medical policies for district personnel. In his brief comment after presentation of the 1982-83 audit, Nayland Smith, accountant, told the board the "district is in good shape with over \$1-million in the fund balance as of Sept. 1." The balance was actually almost \$2-million. After having started the 1982-83 school year with a carryover of \$1,702,328, the district wound up with an Aug. 31 balance of \$1,860,793, a gain of \$158,464. As an explanation of the increased carryover, the district received \$21,079 more money from local sources and \$17,708 more from the state than had been expected in the budget. In addition, virtually every department wound up spending less than was budgeted, with plant maintenance and operation having the largest carryover of \$105,519. Smith's only recommendation, which he pointed out would be a board decision, was to have the checking account put into a NOW account, earning several thousand dollars over a year.

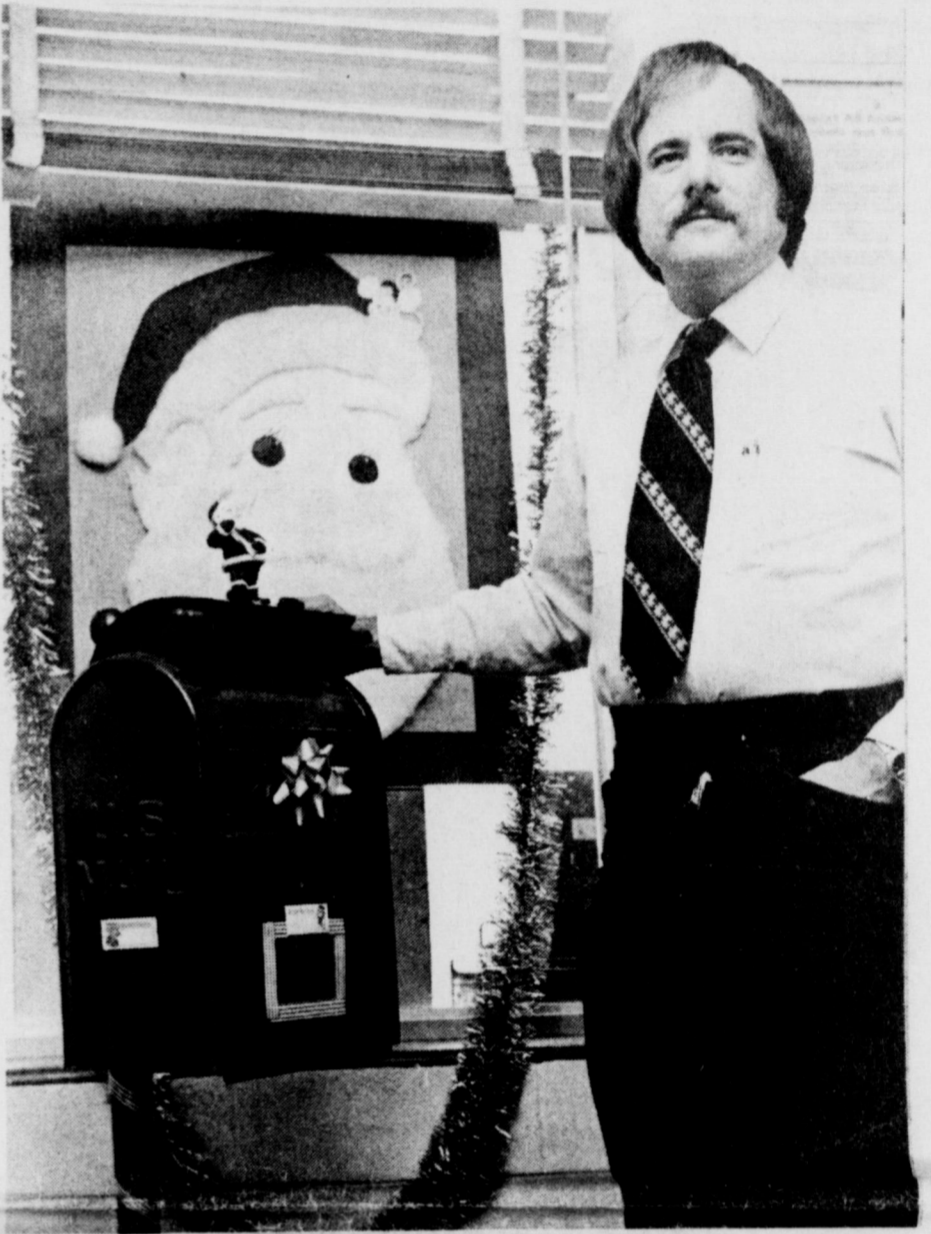
The recommendation, which was considered some two or three years ago, will be on the January meeting agenda. Only four members of the board were present and those attending wanted a full representation before making such a decision. **TRADE PROPOSED** Housing developer Bill Swann proposed the board sell or trade the north half of a block the school owns. He explained he had purchased the south half of the next block, adjoining the rest home, and wants to develop the land. As an alternate, Swann offered to join with the school to open the street separating their properties. Swann said he would purchase the half block, which has eight lots, or trade four other lots where the street is already developed. In either case, he proposed an independent appraisal be made on the value of the property, and if they were to trade, a cash settlement could be made if necessary. He pointed out that the school, with its three remaining vacant lots and the undeveloped eight lots gives the school an 11-year inventory, if it continues to build one home a year by students of Building Trades class. Should the two parties trade, the school would still have a seven-year

inventory, he suggested. The board tabled the proposal to await a study of the building grounds committee, composed of Rex Wells and Jerald Brown, and its report at the January meeting. Facing a 25-percent premium increase for major medical insurance the school has for its full-time employees, trustees voted to change coverage from Crown Insurance to Blue Cross, at the recommendation of insurance broker Marvin Trawick. The premiums will remain approximately the same as the present coverage, however the deductible was increased to \$400. Because the present coverage expires Feb. 1, Trawick said his staff will have to contact all members of the faculty to have them sign new registrations for the coverage before the January pay date, in order that

Continued on page 4

Santa Claus here Friday

After keeping out of eyesight in Iowa Park the past couple of years, Santa Claus is coming to town Friday afternoon, at the invitation of the Chamber of Commerce. He's to fly in via a jet helicopter and land at 4 p.m. in the vacant area between White's and the Optimist Club Christmas tree sales lot at Park West Shopping Center. Each child is to receive an apple or orange, and the expected crowd of youngsters will be assisted by members of the Amity Study Club. At 5 p.m., he's to leave the scene aboard a fire truck.



DIRECT TO SANTA - Iowa Park Postmaster Ken Turman shows a new, especially erected mail box for youngsters to use when mailing letters to Santa Claus. The bright, red box is located in the lobby near the counter, and is expected to get lots of use during the next week. All the letters will appear in the Leader's Christmas edition.

City delays decision on golf course water

The city council took no action Monday night on a proposal to financially assist in laying a pipeline from the sewage plant to carry

affluent to a golf course, but encouraged developer Rip Smith to continue his studies toward a workable solution. Smith, at an earlier meeting, told the council he wants to build a nine-hole golf course on the east side of Lake Iowa Park. He was denied free water from the lake to irrigate the course, and countered with a proposal to take the affluent from the sewage treatment plant for irrigation. The catch appears to be that Smith's proposal includes the city paying half the cost of the pipeline and half the maintenance of it in the future. In return, Smith said he would open the course, which would be open primarily to club memberships, three days a week to the general public as well as half a day for senior citizens, half a day for ladies and also allow fee-free play by members of the high school golf team. Responding to a request made at the last meeting for cost figures on the pipeline, Smith reported a six-inch line be laid 16,400 feet at a cost of \$45,100, and boring under the highway would be an additional \$7,200. Total cost, not including the pump which Smith said he would purchase and set in place, would be \$52,300 of which the city's share would be \$25,150. Original discussions of the pipeline centered on an idea that the city might sometime in the future recycle the affluent through Lake Iowa Park. However that proposal has been turned down by the state water control board. Alderman Tim Hunter pointed out, however, that several other states are permitting recycling, and should Texas change its policy, the line to the lake would already be laid, at current low prices. Councilman Bud Thompson and

George Hammonds both said they had received some negative comment about the city's participation in the project, though Hammonds said he had heard more encouraging than discouraging comments. Thompson said many of the comments he had received had to do with the money being better used to improve streets in the community. Asked if he had easements for the water line, Smith said he had talked with several of the property owners, but had not discussed with school administration people about skirting the high school campus on the south and west fence lines. The success of the golf course is based on the availability of water for irrigation, as well as selling of club memberships, Smith has explained. He said the basic plan is to sell \$200,000 in memberships, which would require the city's participation on the pipeline. If he can sell \$225,000 to \$250,000 in memberships, he could pay for the line himself. But if he can sell \$300,000 in memberships, he can do the pipeline and enlarge the course to 18 holes, he told the council.

LAND ANNEXATION

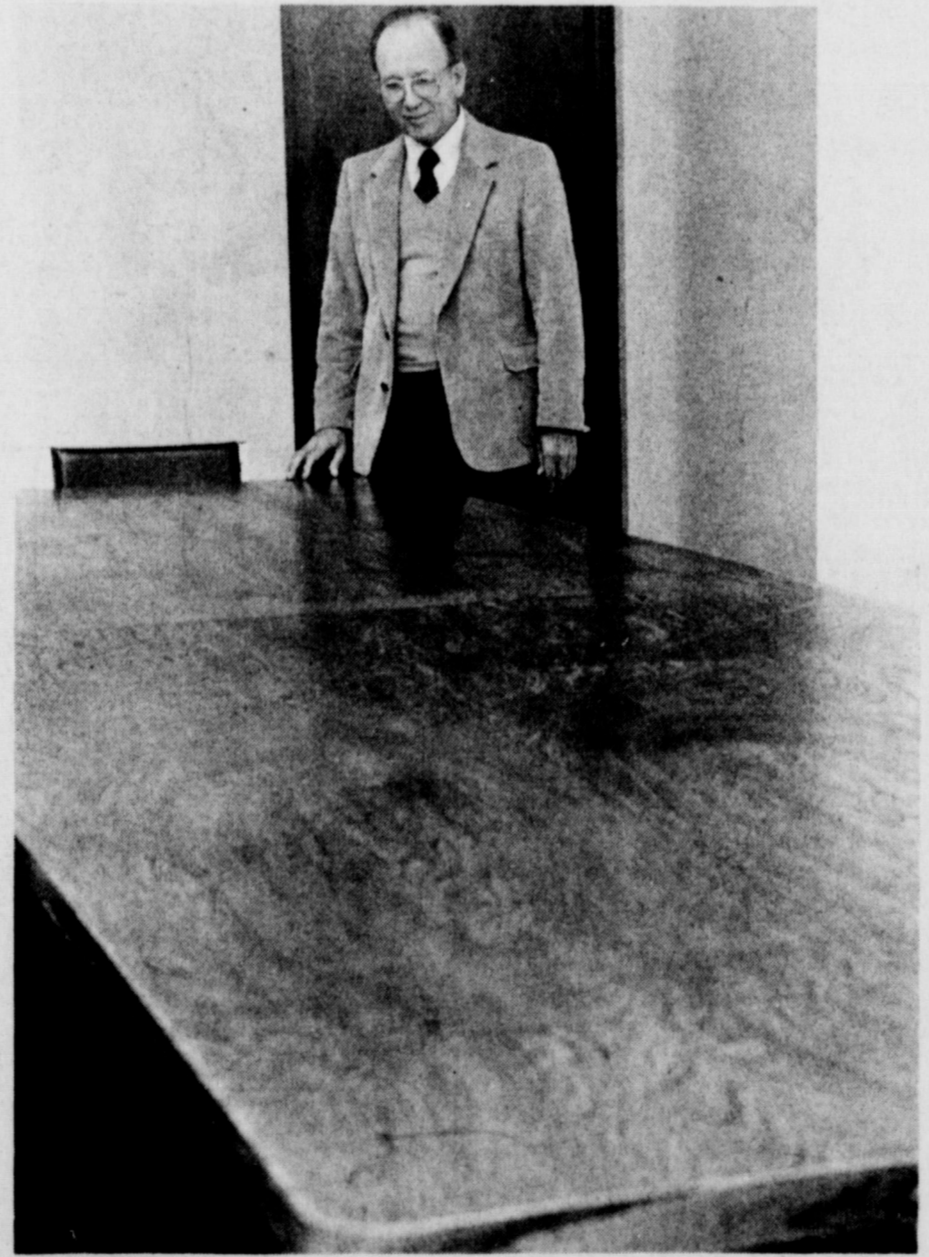
The proposed golf course has nothing to do with some 73 acres of land Smith is proposing to have

Continued on page 4

City above state average, county towns in sales tax

Iowa Park's sales tax receipts for the year slipped about three percentage points since October, but the city is still the only municipality in the county continuing to show a gain over last year. Through the first 11 months of this year, Iowa Park is 17.93 percent above what it received in sales taxes for the same period in 1982. It is

down, however, from the 20.27 percent increase reported last month. November's sales tax check from the state comptroller's office was \$8,159.46, down from the \$8,731.48 the same month in 1982. But for the year, the city has received \$118,332.87, as compared with the \$100,339.21 reported for the 11 months in 1982. But for the year, the city has received \$118,332.87, as compared with the \$100,339.21 reported for the 11 months in 1982. Iowa Park is well above the state average this year. The state is running only 1.79 percent above last year. Electra has whittled down on its minus figure, to 21.49 percent behind last year. Wichita Falls is a minus 3.48 and Burkburnett minus 2.51. Holliday made a big move of improvement during November. Its rebate check was \$8,045.18, as compared to \$7,222.96 for the same month last year. To date, the city has received \$83,460.10, down from \$91,450.43 for the same 11-month period in 1982.



HAND-MADE FOR COUNCIL - Mayor Charlie Lee poses with a conference table to be used for executive meetings of the city council, as well as committee and department work sessions. If he looks proud of the table, he should... he built it himself. The table and other parts of the renovated old fire station will be viewed by the public at an open house sometime next month.

9 Shopping Days til Christmas

Weather Report

Weather reports are officially compiled for Iowa Park at the Texas Experiment Station, southeast of town.

Rainfall for week.....	.03
Total for month.....	.17
Total for year.....	25.80
Total for last year.....	33.58