

1984  
Aug 30

MRS. LITA WATSON  
520 W. CLARA  
IOWA PARK TX 76367 112

# Aldermen are concerned with sewer plant problem

While conferring with engineering firms about what was believed to be a minor problem at the local sewer treatment plant, the city fathers have found that problem to be the "tip of the iceberg."

Members of the city council were told Monday night that the "short term" solution could cost as little as \$15,000, but the "long term" solution could be construction of an entirely new treatment plant.

The problem began a few months ago, when plant operators reported an unusual foaming occurrence. At that time, Administrator James Barrington began a search for an engineering firm with experts in waste water treatment plant operations. Representatives of the firms would visit here, and give unofficial solution recommendations after studying the plant.

Barrington said he had narrowed the field to the firm of Molzen-Corbin of Albuquerque, N.Mex., explaining the firm had the most experience, but likewise would be the most

expensive.

But it was what Barrington learned from the consensus of engineers visiting here that brought out the major concern to the council. There is no back-up system in the present plant, should a major breakdown occur to render the plant useless during a period of time needed to make repairs.

While the plant is only 11 years old, Barrington said the equipment, designed to last 30 years, is becoming of an age where parts could wear out, causing shutdowns. A shutdown of more than 24 hours would be disastrous, aldermen were told.

The central part of the plant's equipment is such that if it were to break down, the contents would have to be emptied in order to make repairs. Problem is, there's no place to empty the contents, nor are parts immediately available since that particular system is no longer in production.

The short term solution, Barrington explained, is to build additional

drying beds which, if properly designed and constructed, could be worked mechanically. The number of drying beds needed is questionable, but the figures used could reach as much as \$100,000.

Should the council, after what was described as a lengthy and thorough study, decide to build another completely-new treatment plant, the present plant would be maintained as a backup system.

The present plant operates at approximately one-third of its million-gallon per-day capacity.

### OTHER BUSINESS

Fourth Street could possibly be open for traffic between Van Horn and West Highway before the first of the year.

The council accepted a bid from Mike Knox of Wichita Falls, who offered to pay \$892 for salvage rights on the old Overbey house. The structure sits in the path of the street.

The bid included a 60-day period to remove the structure. During that

time, bidding for construction work of the street can be advertised and acted on, Barrington told the council.

Members were named to two city boards by the council. Milburn Bates was named to the electrical board and Virgil Woodfin to the parks board. Both board terms are two years, and one more is still to be named to the electrical board and two to the parks board.

Following a discussion on renovations to the older part of city hall, council members directed Barrington to gather cost figures for the project, which are estimated to be between \$30,000 and \$55,000.

Part of the renovation project would include a drive-through area to permit payment of utility bills at a window on the south side of the building.

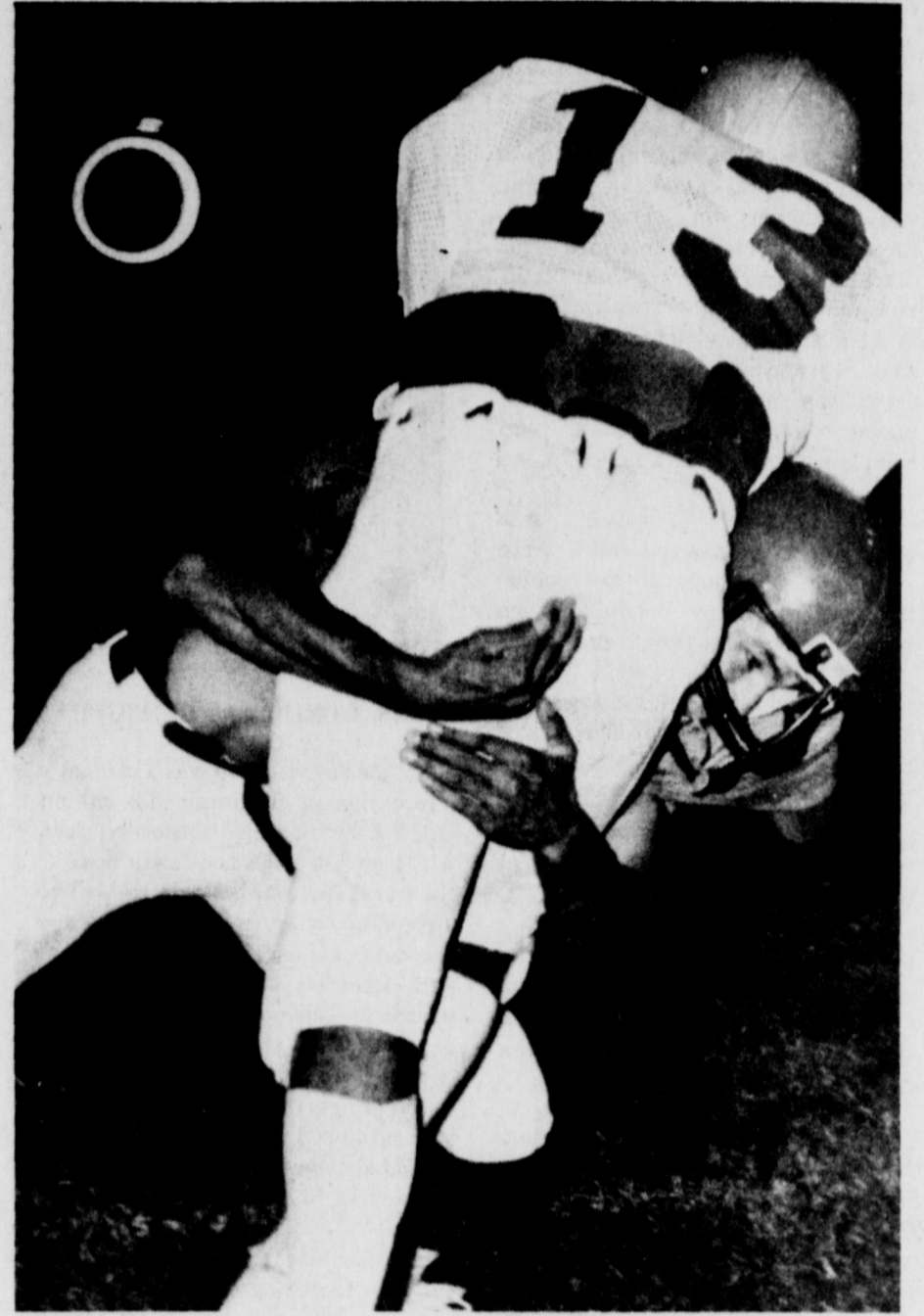
The council rejected a proposal by a salesman to purchase Christmas decorations to be used in the business section.

Directors of the Valley Farms Community Center had requested any comment from the city on a proposal to close the paved road that passes the Center on the south side.

A response was requested, because the city owns a tract of land south of the road, acquired when the water transmission line was built for a lift station to be constructed in the future.

Assured the closing of the road would not cut off the city from its property, the council agreed the change posed no problem to the city.

Barrington also reported commissioner's court earlier that day had approved the contract with the city to do street improvement.



**TOUGH TACKLE** - Senior Kendell Hill shakes the ball loose from a Jacksboro runner during Friday's scrimmage against the Tigers. The Hawks will hold their second and final pre-season scrimmage tomorrow in Hawk Stadium with Olney, beginning at 7 p.m. Freshman scrimmage starts at 5 and junior varsity follows at 6.

## IOWA PARK

# LEADER

25 Cents

---

Vol. 15, No. 50      IOWA PARK, WICHITA COUNTY, TEXAS 76367      THURSDAY, AUGUST 30, 1984

## News in Brief

### ESA to assist during telethon

Epsilon Sigma Alpha (ESA) will again participate in the Jerry Lewis Telethon against Muscular Dystrophy, which will be shown locally by KFDX-TV 3 in Wichita Falls.

The local ESA will man phones at Shaw Motor Co. to take local pledges from 5 p.m. until midnight Sunday, and from 7 a.m. until 6 p.m. Monday.

"People with neuromuscular diseases in our community benefit directly from Telethon dollars, which

support local MDA programs," Joni Whitis of ESA said.

Persons interested in taking part in the local program as a group or individually, can contact Whitis at 592-9034, or Shirley Parkey at 592-4085.

Available for individuals is an "extra-special-kit" for door-to-door collecting. Also, ESA will have a "fishbowl" at Shaw Ford where persons can bring contributions.

### Trustees to amend '83-84 budget tonight

Iowa Park school trustees are to meet in a called session at 7:30 this evening to amend the 1983-84 budget.

Amending the budget is a

bookkeeping process required by law, to close out the finances of the previous fiscal year.

The meeting will be held in the school administration building.

### Hawk Boosters next meets Sept. 10

The Hawk Booster Club will not meet Monday night, which is on the Labor Day holiday, according to Nancy Young, secretary.

Regular weekly meetings, which

are at 7 p.m. at the field house, will begin Sept. 10. Besides brief business sessions, the meetings primarily consist of reports by the coaches and films of the previous week's game.

### Burglaries reported

Police received reports Sunday of two burglaries in Iowa Park.

Pharus Lemond said a storage unit he has rented at 805 W. Highway was burglarized of \$708.15 worth of items.

Most of the items taken were new gloves, 13 dozen of them. Also taken was a \$50 Edison electric heater.

Keith Hilliard said someone had broken into his storage shed at 1314 Emma, but a list of items had not been completed.

She's attractive. She's intelligent. She knows what she wants. And she's going to England to advance her education.

She's Cindy Flanagan, 1978 graduate of Iowa Park High School and daughter of Mrs. Georgia Flanagan.

Miss Flanagan has been recipient of a Rotary International Scholarship, and will leave Sept. 19 for Hull, England. At the University of Hull, she will study three 10-week semesters, with the hours to be applied toward her Ph.D.

How does she plan to apply her knowledge and degrees? She hopes to be a dean of students at some small four-year institution of higher learning or junior college.

There has been no question in her mind that she wanted a career in education, but it was during her years at North Texas State Univ. that she narrowed the field to working with students, rather than teaching.

Third in her IPHS graduating class of 166 students with a four-year grade point average of 96.6, she was graduated Summa Cum Laude in May of 1982 from Midwestern State Univ. with a bachelors degree in education.

She received her Master's in education last spring from NTSU with a major in counseling and student services and minor in vocational education.

Her mother and mother's relatives have all been educators. Mrs. Flanagan has achieved an outstanding record of success as Base Education Officer at Sheppard AFB.

An inspiration to become a dean of students was Viola Grady, who has recently retired as dean at Midwestern.

Furthering her desire to be a dean was her experience at NTSU, where she became aware of the great numbers of international students attending both that institution and other major universities in the nation. Because of this, she feels obtaining part of her education abroad will be invaluable experience.

At North Texas she was assistant hall director in the housing department. She also worked as a graduate assistant in that department, and as a graduate teaching

assistant in the vocational education department.

A strong believer of any exchange program which introduces students to other nations and their customs, she believes strongly in peace through education and understanding. "Only through education can we really understand one another and better co-exist," she says.

Mrs. Flanagan will use part of her vacation time from SAFB to accompany Cindy to England. Hull is located about 10 hours train time

northeast of London, on the coast and sort of the Hull River.

She learned of the Rotary International Scholarship while attending Midwestern State, when another student at that time was a recipient. "If I hadn't read about it in The Wichitan (student newspaper), I wouldn't have known about it," she said.

At Hull, she will enroll in higher education classes, and hopes to at

Continued on page 4

## Iowa Parkan to study in England

## Enrollment down from last year

Thirty-six fewer students were enrolled yesterday than the third day of schools last year in Iowa Park.

While six more students were in class Wednesday than Monday, the first day, the total reported by principals of the four campuses was 1,673, down from the 1,709 reported last year.

There were 535 in class at the high school, 410 at junior high, 375 at Bradford and 353 at Kidwell.

Enrollment at the high school jumped around the first three days. The senior class gained five students from Monday to Wednesday, but the sophomore class dropped five. Both the freshman and junior classes lost one each.

Yesterday's report indicated there are 129 in the senior class, 125 juniors, 134 sophomores and 147 freshmen.

At the junior high, 149 are enrolled in the eighth grade, 137 in the

seventh and 124 in the sixth grade. The total is 410.

Bradford enrollment includes 124 in the fifth grade, 134 in the fourth and 117 in the third, for a total of 375.

Kidwell has 141 in the second grade (as compared with 118 last year), 124 first-graders, 73 in the kindergarten, 15 in early childhood and five in special education.

Only one principal in the system indicated he might have one more student who has not yet reported.

The principals were asked if they anticipated any students who were here last year and had not seen them as of yesterday. History has shown many parents who have a vacation planned over the Labor Day holiday weekend have withheld their children from class until they return.

With the new system of funding from state, administrators over the state are concerned about absent students. The cost of state support is approximately \$10.30 per student per

day.

After reaching its record enrollment in 1970, when Iowa Park schools had 2,292 students the first week of classes, the student count has been on a continual slide downward.

First week enrollment figures for the previous 17 years include:

1984	1,673
1983	1,684
1982	1,693
1981	1,732
1980	1,808
1979	1,862
1978	1,898
1977	1,968
1976	2,019
1975	2,048
1974	2,076
1973	2,110
1972	2,090
1971	2,118
1970	2,292
1969	2,041
1968	1,813

### Weather Report

Weather reports are officially compiled for Iowa Park at the Texas Experiment Station, southeast of town.

Rainfall for week..... .45  
 Total for month..... 2.83  
 Total for year..... 11.81  
 Total for last year..... 16.68

## Birdett national commander Order of the Cootie

Bobbie Alton Birdett of Iowa Park was elected Supreme Commander of the Military Order of the Cootie, honor degree of the Veterans of Foreign Wars of the United States, at the conclusion Saturday of the 65th Supreme Scratch in Chicago.

Born August 8, 1928, in Dublin, he grew up in the Lone Star State attending Palacios High School. Birdett joined the U.S. Navy and served aboard the U.S.S. Amphitrite where he saw service in China and

Guam, being discharged Dec. 23, 1947.

He joined the James King Jr. Post in Wichita Falls in 1952, where he is currently a life member. He served the Post in many capacities and was Commander in 1977-78. During his work related residence changes he kept active in the VFW, transferring to the local VFW Post. He was Texas VFW District 15 Commander in 1967-69.

During 1969 he joined North Texas Pup Tent 33 at Vernon. He served in



many jobs in PT 33 including Seam Squirrel in 1970-71. He is currently a member of Wiskataw PT 47, Wichita Falls. Birdett served as MOC Fourth District Commander in 1970-71.

He became active in the Grand of Texas and was elected Judge Advocate in 1970. He served as Grand Commander of Texas in 1971-72, and was Grand Quartermaster for six full terms. He was named "All Star Grand Quartermaster" on five separate occasions and Grand Quartermaster of the Year 1978-79. He was Fifth Supreme District Hospital Commis-

sioner for a number of years.

Birdett served as Chief of Security for the 52nd Supreme Scratch in Dallas and was 59th Supreme Scratch Chairman in Dallas in 1978. He was elected Supreme Historian in 1981 at the 62nd Supreme Scratch in Philadelphia and matriculated through the chairs to Supreme Commander.

He and his wife Faye, a Texas Past Grand President, have three children, a son, Thomas William, and two daughters, Stephanie and Charlene Robertson, along with four grand-

daughters and one grandson.

Birdett is a 25-year civil service employee of the U.S. Air Force where he has been a quality assurance inspector the past 12 years. He is a member of the American Legion, life member D.A.V., Masonic Lodge, Scottish Rite, life member National Rifle Association, life member Texas Rifle Association and the American Postal Workers Union Auxiliary.

He lists among his hobbies, along with active participation in the VFW and MOC, a large collection of Coca-Cola memorabilia.



# Kee, White nuptial vows are exchanged recently

Miss Tammy Gayle Kee, daughter of Marvella Kee of Wichita Falls and Billy Kee of Holliday, became the bride of Gordon Neil White, son of Mr. and Mrs. Robert G. White of Holliday, in a double-ring ceremony performed August 18 at the 10th & Broad Church of Christ in Wichita Falls. The officiant was Joe Glenn.

For the eight o'clock service, the nuptial space of the church was illuminated with tall white candles burning in pyramid candelabra flanked by spiral candelabra holding votive candles in crystal cups. Boxwood greenery entwined the candelabra and a large white satin bow added a special decorative touch to the pyramid candelabra. Two large silk arrangements of gladioli, carnations and mums in orchid, purple and white were the complementary floral accents to the setting.

The unity candlestick was bedecked with boxwood and a white satin bow. Mothers of the couple lighted the outer candles which burned throughout the ceremony and until the bride and groom extinguished them after using them to light the candle that symbolized their union.

The wedding music was provided by a quartet composed of Ted Paddock, Quibis Brown, Richard Ward and Starlett Croxson. They sang "Sweet, Sweet, Spirit" during the lighting of the candles for the service by Scott White, brother of the groom, "Follow Me" while mothers of the bride and groom were lighting the candles in the unity candelabrum.

The bridesmaids entered during the solo rendition of "Evergreen" by Starlett Croxson. The quartet sang "The Wedding Song" while the bride walked to the altar with her father. Following the recitation of marriage vows, they sang "Father, Hear the Prayer We Offer," and concluded the music with "May the Lord Bless and Keep You" for the wedding party to exit from the church.

The bride's father presented her in marriage. The white gown that she



MRS. GORDON NEIL WHITE

chose for her wedding was a romantic impression of flattering silk chiffon detailed with rich Chantilly lace which covered the bodice. In design, the gown featured an empire bodice, a stand-up collar, two layered sleeves, the outer sleeves split to the wrists and accented with lace and seed pearls. A wide panel of scalloped lace captured interest in the full skirt and covered the semi-cathedral train.

Her fingertip tiered illusion veil was bordered in Chantilly lace and cascaded from a camelot cap of lace and pearls. She carried a silk cascade bouquet of white and lavender roses, tiger lilies, carnations and stephanotis with matching silk streamers.

Shawn Billingsley of Miami, Texas participated in the wedding as maid of honor. She wore a pale orchid gown of sheer polyester fashioned with fitted bodice, puffed sleeves, purple satin sash that tied in the back, an overskirt with a scalloped hemline

caught up at intervals with purple satin bows.

The bridesmaids, Robin Taylor of Duncan, Okla., Sherrie Cecottie of Canadian, and Rayna Riddles of Wichita Falls, and the flower girl, Alison White of Holliday wore identical gowns. The attendants wore hair combs of orchid flowers and baby's breath and carried white lace fans trimmed with orchid and purple flowers and matching cascading ribbons.

The flower girl wore a halo of flowers in the chosen colors and carried a white basket of flowers in the same shades.

The groom wore a white tuxedo and a white silk rosebud boutonniere, and the male members of the wedding party wore black tuxedos with orchid cummerbunds and lavender rosebud boutonnieres.

David Cummings of Spearman served as best man. Larry Boydston and John Arnett of Wichita Falls and Weldon Nichols of Holliday were groomsmen.

During the ceremony, the bride presented her mother and the groom's mother with purple roses tied with lavender and white ribbon. Each complemented her wedding attire with a corsage of purple roses combined with white baby's breath.

The bride's mother wore a street-length mauve polyester crepe knit dress designed with bodice and skirt of lettuce-edged crystal pleats. The groom's mother wore a full-length dress of plum interlock knit set off with a jacket accented with front and back lace insets, tiny pearl buttons, lace-trimmed collar, chiffon sleeves with lace cuffs.

Following a wedding trip to Antler's Guest Resort in Creede, Colo., the couple are living at Denton where the groom is a senior at North Texas State Univ. For travel, the bride chose a multi-colored dress of pink, orchid and purple checks and

wore harmonizing accessories and corsage.

The bride was graduated from Burkburnett High School where she was active in track and volleyball. She attended West Texas State Univ. on a volleyball scholarship and was a member of Chi Omega sorority. She has been employed by Western Christian Foundation in Wichita Falls.

The groom was graduated from Holliday High School where he was actively involved in football, informative and persuasive speaking, one-act play and UIL journalism. He was a member of the National Honor Society, Quill and Scroll and Thespian Society. He attended WTSU on a scholarship and belonged to Kappa Alpha fraternity. He has been employed by Finnell Oil Co.

The wedding reception was given in the Family Life Building at the church. The bride's and groom's tables were covered with white satin overlaid with white net gathered at each corner with large purple satin bows.

Sandi Brown and Linda Wilson served at the bride's table where the three-tiered white cake was the focal point of interest. Two sets of dividers added stateliness to the confection which was decorated with orchid and purple frosting flowers and a top ornament featuring two large white satin wedding bells and two white doves.

Other table appointments were the silver punch bowl, silver candelabrum decorated with orchid candles, orchid and purple flowers, and bell-shaped mints in the favored colors.

Sandy Paddock and Karla Wallace presided at the groom's table. On it were a chocolate wedding ring cake topped with orchid and purple frosting flowers, and a large purple candle in a hurricane globe encircled with flowers in the chosen colors.

Brenda Kee, sister of the bride, sat

at a round table covered with a white eyelet cloth holding a candle and floral arrangement to register the wedding guests.

Other members of the houseparty were Ann Vaughn, VOLLIE Baber, Melba Reece and Loretta Kaufhold.

The groom's parents were hosts for the rehearsal dinner at K-Bob's in Wichita Falls.

Special out-of-town guests were Mrs. Sussie Kee of Electra, grandmother of the bride, and Mrs. Suzanne White of Fort Worth, grandmother of the groom. Others were Robert Carson of Brownwood, Mrs. Velma Moore of Bowie, Bob Leese of Ruidosa, N.M., Tracy Moore of Denver City; Messrs. and Mmes. Dave Peters of Stephenville, Riley Middleton and children of Vernon, Don McLeod and children of Austin.



A son, Sean Daniel, was born Sunday in Wichita General to Mr. and Mrs. Mark Hogue. He weighed eight pounds, seven ounces.

Grandparents are Mr. and Mrs. Bobby Tuggle and Mr. and Mrs. Larry Gore, all of Wichita Falls. Great-grandmothers are Mrs. Opal Odom of Wichita Falls and Mrs. Fannie Price of Iowa Park.

## Big turnout of locals in WF bicycle event

Among the estimated 2,500 riders who started the third annual Hotter 'N Hell Hundred bicycle event in Wichita Falls Saturday was a large delegation from Iowa Park.

Besides several individuals, the Iowa Park 4-H Club, Boy Scouts and adult leaders and supporters had entered in the event, which is one of the longest held in the nation.

Twenty-two members of the 4-H Club rode.

Making the 10-mile loop were Clay Carrilla-Miranda, Julie James, Lisa Tanner, Necia Williams, Dee Decker and Dianne Turnmire.

Riding 25 miles were Randy Barnes, Greg Carrilla-Miranda, Duwayne Davis, Scott James, Shari Morris, Ralph and Aquilla Carrilla-Miranda and Gail Draper.

The longest distances were ridden by Ron Barnes, Don Decker, David Turnmire and Jerel Kerby, who rode 100 kilometers (62 miles), and Donna Tanner, who made it 50 miles.

Boy Scouts from Iowa Park Troop 37 included Sean King, 50 miles, and Mike Lubinski, 57 miles.

High temperatures and strong southeasterly winds added to the grueling ride, entrants reported. Riders were trained to drink water frequently in an effort to combat heat fatigue.

As a result, none of the local riders suffered any ill effects from the experience. Rest stops at 10-mile intervals provided all cyclists with fresh water and fruit.

Each rider received a patch or pin designating the distance achieved. The awards were made available through the Wichita Falls Bicycle Club in cooperation with the National Wheelman Association.

## The Eyes Of Texans



### THE IMPORTANCE OF VISUAL CARE FOR YOUR KIDS

How early should a child have their first visual exam?

A child should have their eyes examined whenever they need it but at least by age 3. And at the very least before they start to school. (An eye doctor can examine the eyes of a child even if they are too young to read, talk or answer questions.)

What are some signs of a child with vision problems?

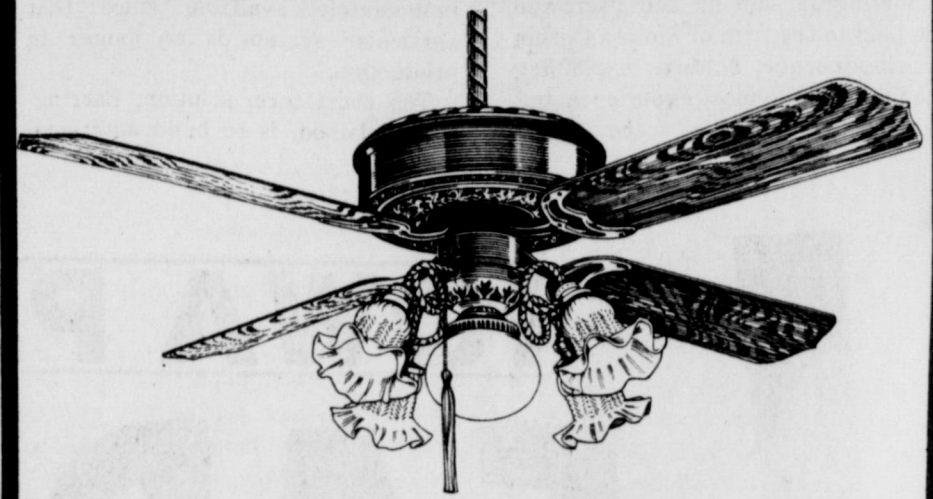
Usually short attention span and a tendency to avoid close work. Frequent headaches, nausea, dizziness and eyes that itch or burn. Also a tendency to blink or rub eyes often. If an older child likes sports and distant seeing activities but shies away from reading he may be farsighted. But if he likes to read but has little interest in far vision activities he may be nearsighted. A nearsighted (myopic) person usually has no eyestrain even though they may see distant objects very blurred. It's farsighted people and those with astigmatism that have most of the eyestrain and headaches.

Of course the best way to find out how your child's vision is, is to have their eyes examined by your eyecare professional.

JAMES EDWARDS, O.D.  
103 West Park  
Iowa Park, Texas  
Phone 592-4992

in the interest of better vision  
from the office of

## CEILING FANS SPECIAL AUGUST PRICES



48-Inch  
3-speed  
Reversible  
Reg. \$99.95

**\$59.95**  
Present Supply

52-Inch  
Antique Brass  
3-speed  
Reversible  
Reg. \$119.95

**\$79.95**  
Present Supply

All Display Demonstrators **1/2 price**  
Subject to Stock on hand

## PARKWAY

FURNITURE *True Value* HARDWARE

592-5512 200 - 206 West Bank 592-4681



### SHOWER SELECTIONS FOR

RHONDA WHEELER and MIKE HULSE  
SELENA CANADA and RUSSELL HAYLEY

**Parkway**  
*True Value*  
FURNITURE HARDWARE  
592-4681 592-5512

## CLOSED



**Dr. Carter Pirkle & Staff**  
Ruth, Karen, Rhonda & Joan

## SNB

### — We invite you to shop and compare our INTEREST RATES FOR SAVINGS (Applicable August 29 thru September 4)

Account	Interest (compounded daily)	Yield
91 Days	10.25%	10.79%
182 Days	10.80%	11.403%
7 - 31 Days	8.70%	9.09%
New Money Market Accounts	8.90% (simple interest)	
Super NOW Accounts	7.55% (simple interest)	
1 1/2 Years, less than 2 1/2 Years	10.75%	11.347%
2 1/2 Years, less than 3 1/2 Years	10.80%	11.403%
I.R.A.	10.80%	11.403%
1 Year Certificate of Deposit	10.95%	11.570%



**STATE NATIONAL BANK**  
IOWA PARK, TEXAS  
Locally Owned







# As I See It....

By BOB HAMILTON



I don't know why it is, but everyone always seems surprised when the temperatures are 100

I don't know why it is, but everyone always seems surprised when the temperatures are 100 degrees plus during August.

Seems like they expect the triple-digit readings in July and then things to cool off as school is about to start.

I've noticed, watching the weather reports in the evenings, that the "personalities" doing the weather don't do much to make people think

any differently.

"Boy, it was really hot!" they will state, as if they'd never seen 100 degrees in August.

I've found that temperatures are largely a state of mind. If I'm told it's hot, I start thinking about how hot it is. If I'm given the impression it's hotter than usual, I guess I'm hotter than usual.

Well, I've got news. It is always hot in August. There's nothing new in the degree field for this part of the country.

This is one reason I've been so proud of our school buildings. I

always figured our children were more comfortable attending classes than we were here in the office. And that was good.

I've visited classes during early September in Wichita Falls, and it was terrible. All the teacher could do was set a box fan up on the front desk, tell the students to sit still and be quiet. There was no teaching, no learning and no comfort.

But the Wichitans are apparently going to take care of that now. Maybe. If they approve the big multi-million-dollar bond issue.

Nope, it is always hot in August. And it's a time to store up memories of heat. Recalling how hot it is can be comforting this winter, when the temperature is freezing.

# Scholarship

Continued from page 1

least be able to monitor the English Literature classes. Early communication with the school indicated she might not be able to schedule the English classes in her curriculum.

Semesters in English universities are 10 weeks in length, with a full month off in between. This will enable her to come home for the Christmas holidays. During the second month-long break, she plans to tour the continent, which she also feels will broaden her education and understanding.

The Rotary scholarship includes a round-trip ticket, tuition, fees, room/board, travel expenses and cash for incidentals.

"I feel I'm actually an ambassador, both for the Rotary members and people in this area," she commented. Cindy said she was to make talks to Rotary Clubs in England, and also to organizations here upon her return.

An unsatisfactory experience as a student teacher at Wichita Falls High while a student at Midwestern was one thing that led the Iowa Parkan to know she wanted to work on the college level.

"There was a lack of respect" toward teachers by students in the high school age group, she explained. She didn't feel students gave teachers the attention necessary to learn.

And as to teaching on the college level, she said she wants a field with more variation than instructing one subject; hence, working with students to solve their problems.

Her list of honors and achievements during college indicates her desire for a life of variety. They include senior class president ('82); Lady Midwestern ('82); Mortar Board, national senior honor society (vice president); MSU Woman of the Year ('81); MSU Outstanding Junior Woman ('80); MSU Outstanding Freshman Woman ('79); Who's Who in American Colleges and Universities; MSU Council of Presidents (four years); Outstanding Young American (two years); Outstanding Young Citizen (national); MSU "Best Actress" award ('80) and "Best Supporting Actress" award ('81); Senior Beauty; Alpha Chi, national senior honor society, and Alpha Psi Omega, national theatre honor society (secretary).

Additionally, she was in Alpha Lambda Delta, national freshman

honor society (vice president, junior and senior advisor); Artist Lecture Series Committee (three years); Cap and Gown, senior honor society (vice president); Chi Omega, national sorority; Kappa Delta Pi, honorary education society; MSU Honors Program (four years); MSU Student Senate (two years); Mu Phi Epsilon, national music honor society; Sigma Tau Delta, national English honor society; Texas State Educators

Association, state education organization (treasurer); Wai-Kun, MSU yearbook (editor four years); MSU Allocations Committee; MSU Committee of the Southern Association of Colleges and Schools (student representative); MSU Concert Choir; and recipient of the E.W. Moran Honors Scholarship, Akin Drama Scholarship, MSU Honors Scholarship, MSU General Scholarship and Rotary Club Scholarship.

# Bollworms serious

By DAVID FINLEY  
County Agent

Bollworms are a serious pest of cotton at the present time. They are the worst that I have seen in my almost eight years of working for the Extension Service.

I went into a field of John Williamson's near Iowa Park earlier this week and was amazed at the number of bollworm "millers" in the cotton. There were several small worms in a field of William Lalk's near Electra. These were in the terminal of the plant and causing some damage.

I also looked at an irrigated field in Iowa Park that on Monday had only a few eggs and no worms. On Tuesday, that same field had 10 to 12 thousand eggs per acre in it.

These are just a few instances of what is happening in the cotton now. The potential for a serious outbreak is there. We have hot temperatures during the day, cool at night, and moisture for the green lush plants that in turn is creating high humidity in cotton fields. I feel the humidity there is the key.

With moist, humid air around the eggs, hatch is almost assured. There are also pretty high levels of beneficial insects present but not in numbers to control a heavy outbreak.

What does all this mean to the cotton producers? What it should mean is that they should be checking their cotton every three days for the next week and a half. Even longer if the egg lay is stretched out.

Here is what producers should do when checking their fields. Go to the lushest, greenest cotton in the field to make the examination. Measure off 10 feet of row and examine the top one-third of all the plants in that 10 feet. Count the number of eggs and worms that are found. Now, do not look at the cotton in one area to make a decision on spraying. We recommend looking at the cotton in at least four locations in the field.

To determine how many worms or eggs per acre, use this method. Divide 17,424, which is the number of row feet per acre on 30 inch rows, by the number of row feet examined. Finally, multiply this by the number of worms or eggs found.

Treatments for bollworms are justified when this number averages 5,000 or more worms per acre. Also, it may be advisable to add an ovicide to the insecticidal treatment if egg numbers average 15,000 or more.

Be sure that bollworm eggs and larvae are what are being counted.

# Consultant meets board

The long-awaited meeting of the Friends of the Library with a library consultant and architect took place Wednesday of last week.

Miss Linda Allmand of Fort Worth was the choice of the local organization some five months ago to work with architect Don Daugherty in planning the renovation of the Burnett home for use as a library.

The consultant presented floor plans she recommends, designed to maintain the architectural beauty of the structure, while providing functional and up-to-date library services.

Daugherty and the consultant are to finalize the plans and prepare specifications for bid contracting "within the next few months."

Part of the plans are based on response to a questionnaire provided by Miss Allmand and returned by local residents.

President of Friends of the Library, Michael Dodd, submitted his resignation, explaining he is moving to Austin. No action was taken during the meeting to fill that position.

# Crops tour set Tuesday

The 1984 Wichita County Crops Tour will be held Tuesday, beginning at 7:30 a.m., from the Westward Ho Restaurant on Highway 287 at Electra.

Cotton varieties at Terry McAlister's near Punkin Center and Raymond Schroeder's of Electra will be toured. Also, minimum tillage wheat plots near Electra and Iowa Park will be looked at.

Four stops will be included on the tour. Breakfast will be served at 7:30

a.m., courtesy of George Menocal of Monsanto Chemicals and Warren Smith of the Farmer's Co-Op Gin in Burkburnett.

Area entomologist, Emory Boring; area agronomist, Al Alexander; and chemical company representatives will be present to discuss variety trials, insects and minimum tillage plots.

There are some excellent plots for cotton and wheat producers to examine.

# Ex-Students make homecoming plans

The Iowa Park Ex-Student Association met recently to discuss activities for the Oct. 13 homecoming.

Gathered at president Tim Hunter's home, the group detailed plans for the parade entries, registration at the football game, an open house at the Friendly Door on Saturday, the alumni banquet, and a reception prior to the banquet.

This year, an emphasis will be placed on classes ending in "4".

The next meeting of the alumni association will be Sept. 15. Anyone interested in holding an office or helping with the homecoming festivities, can contact any of the following association officers: President Tim Hunter; Don James, first vice president; Jerry Spruiell, second vice president; Jo Patterson, corresponding secretary; Lela Mercer, recording secretary; Ruth Gard, treasurer; and, Joni Whitis, reporter.

Walmart Sells for Less • Walmart Sells for Less • Walmart Sells for Less •

## WAL-MART PHARMACY

592-4157  
500 West Highway  
BONNIE — PATTY & LEAH  
JEREL KERBY Pharmacist

### 2 FOR 1 SALE

While They Last!

**Maalox Plus**  
CONVENIENCE PACK  
**Tablets**  
• 3 packs  
• Reg. 98¢ **54¢ or 2 for 1**

**WATCH YOUR SALT™**  
Sodium Free\*  
**Riopan®**  
Antacid  
Fast Relief  
Reg. 3.47  
**1.79 or 2 for 1**  
12 fl oz  
\*Considered dietetically sodium free.

**Selsun blue**  
**Shampoo**  
Reg. 3.64  
17 oz.  
**1.57 or 2 for 1**

**Stresstabs 600**  
**Stresstabs 600**  
**Stresstabs 600**

**YOUR CHOICE**  
**2 for 1**

**America's Preferred Stress Formula Vitamins**  
**STRESSTABS 600**  
HIGH POTENCY STRESS FORMULA VITAMINS

Walmart Sells for Less • Walmart Sells for Less • Walmart Sells for Less •

## NOTICE TO SUBSCRIBERS

This is only a notice to those listed below that their subscriptions will expire on the published date. You don't owe us a thing if your name is on the list. It only means that what you've paid for is running out. To renew your subscription, please fill out the form below, as it appears on your paper's mailing label, please. Indicate whether this is a renewal or new subscription. Enclose your check or money order, as all subscriptions must be paid in advance.

### Subscriptions due to expire

## SEPTEMBER 15, 1984

PLEASE DISREGARD IF ALREADY PAID

A.....	Wanda Adams H.L. Allen R.A. Ashton	Kingsville IP IP	L.....	John Landrum Lynn Landrum Harold Lynn	Hillsboro Burkburnett Grand Prairie
B.....	D.W. Baeca Charles Barr Sammy Bates L.B. Beavers Bee Hive Leon Bidy B.A. Birdett Pat Blackburn Darryl Blackwell Mrs. Uriah Blum Lilyanne Blume S.M. Bradberry Glen Brewer Buddie Bridwell Henry Brown Henry J. Brown	IP IP Houston IP IP IP IP IP IP IP Pampa IP IP IP IP	M.....	Jim Marriott Mrs. Cal Mason Richard McBay H.P. McLeland Jim Medlinger Betty Melchiori John W. Meux Margaret W. Miller	Kamay Houston Richardson IP IP IP WF IP
C.....	James R. Copas Thomas Cowart	IP IP	O.....	Rev. Ole Olds James Owens	IP IP
D.....	Bubba Davis Buddy Davis David Davis Mrs. Lee Ora Davis William T. Duncan	Dallas IP IP IP IP	P.....	Steve Perry Lena Powell Elgin Pressler Carl Priebe Janice Putman Dorothy Pybus	Electra IP IP IP IP IP
E.....	F. Wayne Edwards James Edwards	IP IP	R.....	J.C. Ralston Mike Rathman Helen Reed Melvin Richards Marvin Robertson	IP WF IP WF IP
F.....	Gary Fielding Dr. Benny Fleming Wanda Frantz Greg Frazier	IP Holliday IP Midland	S.....	Earl Scheffe Stan Scott Jeff Shierry E.J. Shook Oscar Singleton John Sitgreaves Bruce Stewart James Stewart Henry Sullivan	IP Saginaw IP IP IP IP IP IP
G.....	Doreene Gaston Oscar Goetze	IP IP	T.....	Stewart Taylor Dr. Gene Todd	IP Independence
H.....	Randy Heidrich Buddy Henderson Johnie Hicks Jackie E. Hodges Mrs. Lucile Holm Mrs. Ben House Mrs. B.G. House W.L. Howland	IP WF IP IP IP Arlington IP IP	U.....	United Way	WF
J.....	David Johnson George Jones	IP IP	V.....	Romona Kay Vaughn	IP
Wichita and Archer Counties.....			W.....	Cheryl Wahlberg E.L. Watts W.F. Williams Mike Winkler Jimmie Wolf W.W. Wright	Lubbock IP Denver IP WF IP

Elsewhere in Texas & Oklahoma..... \$7.00  
Elsewhere in the United States..... \$9.00  
Elsewhere in the United States..... \$11.00

To: Iowa Park Leader  
Box 430  
Iowa Park, Tex.  
76367

**PLEASE CHECK ONE:**  
 New  
 Renewal  
 Change of Address Only

\$ \_\_\_\_\_ Enclosed

(Name) \_\_\_\_\_  
 (Address, P. O. Box, or Route No.) \_\_\_\_\_  
 (City) (State) (Zip Code)

# IOWA PARK LEADER

766280

Bob Hamilton ..... Editor-Publisher  
Dolores Hamilton ..... Assistant Publisher  
Olive Blalock ..... Reporter  
Kevin Hamilton ..... Reporter

The IOWA PARK LEADER is published every Thursday. Offices are located at 112 W. Cash, Iowa Park, Texas, 76367. Telephone: 592-4431. Second class Postage Paid at Iowa Park, Texas, 76367. Subscription rates are \$7 per year in Wichita and Archer Counties; \$9 elsewhere in Texas and Oklahoma; \$11 anywhere else in the United States. Classified advertising rates are 16 cents per word first insertion, 8 cents per word thereafter. Any erroneous reflection upon the character, standing or reputation of any person, firm or corporation which may appear in the columns of this newspaper will be corrected upon being brought to the attention of the publisher.

MEMBER  
**TEXAS PRESS ASSOCIATION**



# Adoption of tax rates underway throughout state

Local governments in Texas are in the middle of one of the most crucial steps in the annual tax process—adoption of property tax rates for the 1984 tax year.

The "truth-in-taxation" laws contained in the Texas Property Tax Code ensure that taxpayers will be informed of proposed tax increases through public notices and can become involved in the tax rate adoption process through public hearings.

These laws also provide a limited form of initiative and referendum by which voters in some instances can reduce the amount of tax increase adopted by a taxing unit's governing body.

Many tax assessors are now taking the first step in the truth-in-taxation process by calculating and publicizing the "effective tax rate."

The effective tax rate is a key element of truth in taxation, a benchmark by which any tax rate changes are measured. It is a tax rate that will generate the previous year's level of tax revenue for maintenance and operation, based on the current year's property values for the property that was taxed in the previous year. It also includes the tax rate necessary to pay the taxing unit's debt obligations for the upcoming fiscal year.

The tax assessor calculates the effective tax rate after the unit's appraised property values are certified by the appraisal review board and the chief appraiser. He must then publicize the effective rate, along with the calculations for the rate and an estimate of uncommitted tax revenues left over from the previous year (called "unencumbered fund balances"). This is normally done by Aug. 7 or as soon thereafter as possible.

If the members of a school board, city council, commissioners' court or other governing body decide to adopt a tax rate that exceeds this effective rate by more than three percent, they must publicize their intent and hold public hearings. If the tax rate they finally adopt exceeds the effective rate by more than eight percent (with certain exceptions for school districts), the voters can petition for an election to roll back the tax increase.

The effective tax rate, by using current-year property values to generate prior-year operating revenue, prevents tax bills from rising automatically because of rising property values or reappraisals. Thus, according to Ron Patterson, executive director of the State Property Tax Board, "Rising values on existing properties cannot create new tax dollars; only action by the unit's governing body can do that, and the taxpayers must be notified and given the chance to comment before that action is taken."

The effective tax rate also contains adjustments for newly granted tax exemptions and productivity valuation. As a result, says Patterson, the effective rate offsets the shift of tax burden to other classes of property caused by new exemptions or new productivity values.

Properties on the tax roll for the first time (such as new building, new homes or newly annexed territory) do not figure at all in the effective tax rate calculations. Thus, adding new properties to the tax roll creates new tax revenues. Deleting properties or deleting part of the taxable value of property (by exemptions, productivity valuation, or deannexation) causes a loss of tax revenue.

After the effective rate is publicized, the next step in truth in taxation lies with the governing bodies of the taxing units as they decide what level of services to budget for and what tax rate will be needed to provide those services.

If the decision is to keep the tax

rate within three percent of the effective tax rate, the governing body is not required to notify the public.

However, if the governing body intends to raise taxes by more than three percent above the effective rate, it must announce its intentions in a quarter-page newspaper ad and hold a public hearing to listen to the taxpayers' opinions on the proposed tax hike. A second quarter-page ad is required to announce the public meeting at which the final tax rate will be adopted.

If the tax rate is set more than eight percent higher than the effective tax rate, the voters can challenge the tax increase by

petitioning for an election to limit the increase.

After a successful election, any taxing unit other than a school district would have its tax rate reduced immediately to eight percent above the effective tax rate. A school district would have its tax rate limited to the eight percent level in the following year.

As a result of new laws enacted in this summer's special legislative session, school districts will be able to increase taxes in certain instances by more than eight percent before facing the possibility of a rollback election. Between now and 1987, voters may not limit a school district's tax

increase that offsets the amount of lost state education aid or that increases the district's enrichment equalization funds.

Patterson pointed out that the property tax system in Texas gives all property owners several opportunities throughout the year to influence the amount they pay in property taxes.

"Open meetings and budget

hearings allow a taxpayer to express his opinion about how his tax dollars are spent," said Patterson. "Appraisal review board hearings allow him to ensure that the value placed on his property for tax purposes is fair and in line with other values in the jurisdiction. And, truth in taxation and the rollback election process then gives him the chance to have his say about tax-rate proposals that may

increase his final tax bill."

Taxpayers can find more detailed information on their role in the Texas property tax system through a pamphlet entitled "Taxpayers' Rights, Remedies, Responsibilities!" Copies are available at local tax offices or from the State Property Tax Board in Austin.

## Save up to \$59

in Free Options on your Gold Lance Class Ring



Plus a Free Graduation Key Chain. Ask for complete details. Gold Lance Class Rings. 2-4 Week Delivery. Lifetime Warranty.

### Louis'

Distinctive jewelry

408 W. Park 592-5942

CLIP THIS AD AND BRING TO OUR STORE BY DEC. 31, 1984 TO QUALIFY

**CLASS RING PARTY AT LOUIS'**  
408 W. Park 2 to 8 p.m. Saturday, Sept. 11

## Picture Perfect

## SAME-DAY SERVICE PHOTO PROCESSING

### Right Here In Iowa Park

Drop off your film on the way to work, and pick it up on your way back home!

★ 1-hour service available ★

Think of it...processing and prints all in the same day!



Color films processed:

- Disks ● 110
- 35mm ● 126

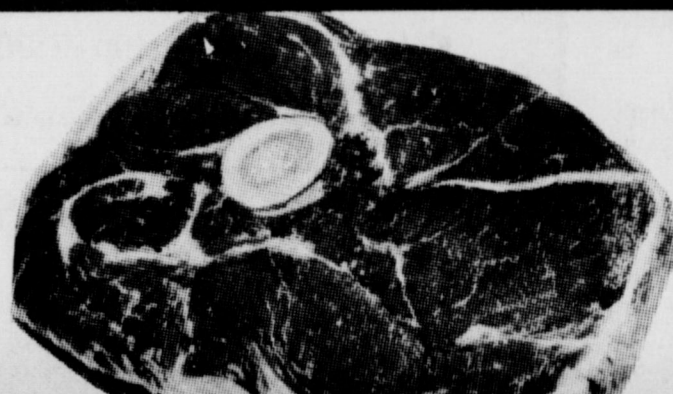


Located at  
**City Cleaners**  
107 W. Cash



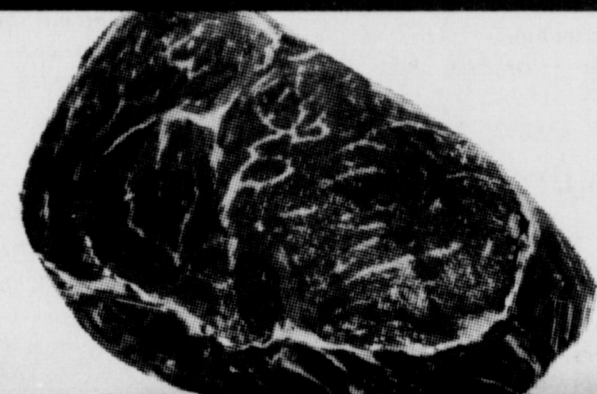
FAMILY PACK  
**GROUND BEEF**

**89¢**  
LB.



FAMILY PACK  
**ROUND STEAK**

**\$1.48**  
LB.



**BONELESS CHUCK ROAST**

**\$1.48**  
LB.



- DONUTS • ECLAIRS
- CINNAMON ROLLS
- BROWNIES • FRIED PIES
- HOMEMADE PIES
- DESSERTS

# FRESH DAILY

- BARBECUED BRISKET • CHOPPED BEEF
- SAUSAGE • FRIED CHICKEN
- DELI-SLICED SANDWICH MEATS, CHEESES

Assorted Salads  
from our Salad Bar

**DAILY LUNCH SPECIALS!**

## Mike's Thrift Way Foods

ParkWest Shopping Center

Phone 592-4186

Store Hours: 8 a.m. - 8 p.m. Monday - Saturday; 9 a.m. - 6 p.m. Sunday

Our store family-owned and operated 20 years.



**Guess Who**  
will be 13 on  
**Sept. 1st?**  
**Love Mom, Dad,  
Brian & Menga**

Coke SPRITE  
TAB · MR. PIBB  
DIET COKE  
16 32 oz. Btls.  
**\$2.19** plus deposit



## County hay show entries are due

Entries for the 1984 Wichita County Hay Show are due Tuesday. Both round and square bales may be entered. Square bales may be taken to the County Extension Office or Texoma Agricultural Products by Sept. 4. Also, round bale samples must be in by that date.

A protein analysis will be run on each sample. This will be paid for by Ralph Harvey and Texoma Ag. Products, Iowa Park. This score will be coupled with a physical score of the sample. Both added together will

give the total score that determines the winner.

The 1984 show will be held Sept. 25 and will be judged by Dr. Dale Lovelace of Dallas. He will be assisted by area agronomist Al Alexander of Vernon.

Prizes will include cash and cash prizes of up to \$150 for each class winner. Classes of hay that may be entered include coastal bermuda, native bermuda, forage sorghums, alfalfa, small grains and other grasses.

## Camp Fire seeks adults

The Camp Fire Council of North Texas is looking for adults interested in becoming volunteer Camp Fire club leaders. Camp Fire membership is open to both girls and boys, from kindergarten through high school. Adult leaders meet with small groups of members, usually once a week, to help with club activities and to provide friendship and leadership.

Because Camp Fire is co-educational, entire families can get involved. In fact many Camp Fire clubs now have husband and wife teams sharing in the club's membership. This provides busy

families, especially those where both parents work, with the opportunity to spend a little extra time together while taking part in worthwhile activities.

Camp Fire, founded in 1910 as Camp Fire Girls, is a national not-for-profit youth agency with members in 35,000 communities in the United States. The Camp Fire Council of North Texas serves the North Texas area. Anyone who would like to find out more about Camp Fire or becoming an adult volunteer, contact the Camp Fire Council of North Texas at 322-5209.

## 4-H CLUB NEWS

### 4-HERS COMPETE AT TEXAS 4-H DOG SHOW

Four Wichita County 4-H'ers competed at the Texas 4-H Dog Show held in Dumas Aug. 18.

Trina Haley exhibited her sheltie to have the Top Dog of the show. In addition, Haley also received High Scoring Shetland Sheepdog, first place in graduate novice obedience class, and third place in novice showmanship.

Tammy Barfield had the High

Scoring Golden Retriever of the show and third place in the graduate novice class. Kathy Ennis placed fourth in specialty breeds with her Japanese Chin.

### CARD OF THANKS

The family of Harold Dean Blum gratefully acknowledges the kindness shown during the time of our bereavement. Your expression of love and concern will always be remembered.

The Blum Family  
The Coats Family

### CARD OF THANKS

We wish to express our sincere appreciation to our friends who so kindly remembered us with prayers, visits, cards, flowers and food during the time of the loss of our loved one.

The Pease Guthrie Family  
E.L. "Mutt" Kirkland  
Noah E. Guthrie Jr.  
Allen "Pete" Guthrie  
Bill L. Guthrie

### Look Who's New

A son, Kyle Knox, was born Aug. 24 in Tuscon, Ariz. to Mr. and Mrs. Fred Campbell III.

The father is a former Iowa Park resident, as are the paternal grandparents, Mr. and Mrs. Fred Campbell of Lake Whitney. The Campbells also have a daughter, Courtney Diane.

### CARD OF THANKS

Our heartfelt thanks to all of you who expressed your love through food, visits and words of comfort during the illness and loss of our dear wife and mother, Cora Lee Partney. May God richly bless you all.

Grafton Partney  
Travis Partney & Family  
Kathleen Hicks & Family  
Bobbie Huckaby & Family  
Virginia Banks & Family  
Joye Robertson & Family

## Pacific Avenue Missionary Baptist Church

1400 North Pacific Avenue

Larry Washburn  
Pastor  
Church - 592-9711  
Pastor 592-4288



Sunday School 9:45 a.m.  
Morning Worship 11:00 a.m.  
Evening Worship 6:00 p.m.  
Wednesday 7:00 p.m.

Everybody Welcome

## First United Methodist Church

201 E. Bank

Church School 9:40 Morning Worship 10:40 Youth Meetings 5:00 Evening Worship 6:00

JACK MEYERS, PASTOR

## Northside Baptist Church

800 N. Wall

- Sunday School - 10 a.m.
- Sunday Worship - 11 a.m.
- Sunday Evening Worship - 6:30 p.m.
- Wednesday Worship - 7:30 p.m.

EARL CORRELL - Pastor Ph. 592-2200

## Church of God

601 E. Cash

Pastor, Ole Olds  
Sun. Morning Worship 11:00  
Sun. Night Celebration Service 7:00 p.m.  
Tues. Ladies Prayer Service 10 a.m.  
Wed. Night Bible Study 7:30  
Sat. Family Night 7:30  
"Catch the Vision"

Par.  
592-5316

Office  
592-4348

## First Presbyterian Church

REV. BETTY L. MEADOWS - Pastor

CHURCH SCHOOL - 9:30 A.M.  
WORSHIP - 11:00 A.M.

A Caring Congregation of  
Palo Duro Presbytery - Presbyterian Church [USA]

## Faith Baptist Church

411 S. Wall 592-4894  
Pastor - Ken Cole

Sunday School - 9:45 a.m. Tuesday Morning Prayer - 5:30 a.m.  
Morning Worship - 11:00 a.m. Wednesday Morning Prayer - 9:30 a.m.  
Church Training - 6:00 p.m. Wednesday Evening Prayer - 7:00 p.m.  
Evening Worship - 7:00 p.m.

Nursery Care Provided  
Full Range of Missions' and Childrens' Ministries

## Kamay Road Church of Christ

Corner of Colorado  
& Emerald

'Seeking the  
Old Paths'

Lord's Day  
10:30 a.m. & 6 p.m.  
Wednesday 7:00 p.m.

## Grace Baptist Church

511 S. Colorado - 592-5632

Come Let Us Reason Together Saith The Lord  
Sunday School . . . 10:00 A.M.  
Morning Worship . . . 11:00 A.M.  
Children's Worship . . . 11:00 A.M.  
Evening Worship . . . 6:30 P.M.  
Wednesday Service . . . 7:30 P.M.

## First Christian Church

105 E. Cash

Sunday School - 9:45 a.m.  
Worship - 10:55 a.m.  
Corner, Cash & Bond St.

We encourage each of you to worship Jesus Christ in the church of your choice. If you do not have a church home, we invite you to come worship with our church family.

## Christ The King Catholic Church

First and Clara Phone 592-2802

8:45 a.m. C.C.D. — 10 a.m. Mass



## First United Pentecostal Church

802 First Street 592-4275  
Rev. Grover Milner, Pastor

Sunday Services  
Sunday School - 10 a.m.  
Special Singing - 11 a.m. - 12 Noon  
Evangelistic Service - 7 p.m.  
Wednesday - Prayer Meeting  
and Bible Study - 7:30 p.m.

## First Baptist Church of Iowa Park



Yosemite at Park

SUNDAY SERVICES

Mornings

Sunday School 9:45  
Worship 11:00

Evenings

Church Training 6:00  
Worship 7:00

WEDNESDAY

Prayer Meeting 7:00  
Choir Rehearsal 7:45

## Key introduces film processing

One-day color film processing was introduced in Iowa Park this week.

Tommy Key, owner of City Cleaners, has installed equipment in his business which has the capability of one-hour service.

Key attended a training session to acquaint him with the equipment, techniques and quality control. He calls the new business "Picture Perfect."

## Johnny Bernstein enters seminary

Iowa Parkan Johnny Bernstein enrolled Friday at Southwestern Seminary in Fort Worth.

A 1972 graduate of Iowa Park High School, Bernstein attended Midwestern State Univ. three years. He and his family will reside at Weatherford.

-WELCOME-  
ASSEMBLY OF GOD  
S. Yosemite  
9:45 S.S./7 P.M.  
Wed. 7 P.M. Service  
Rev. Charles Hensley,  
Pastor

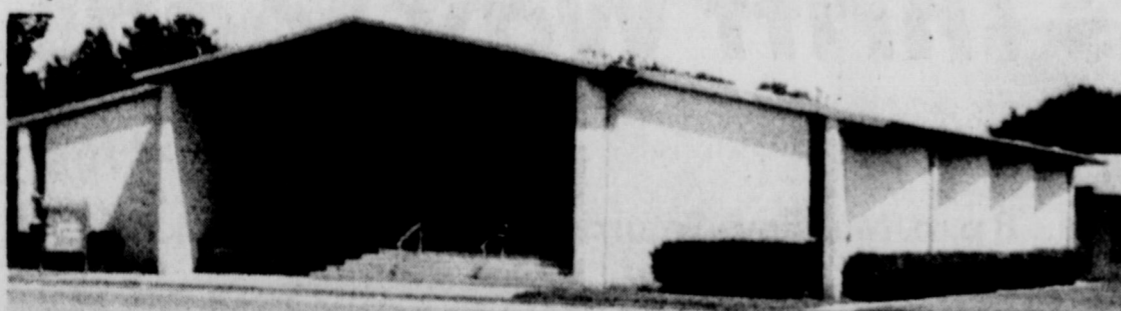
GOOD SHEPHERD  
LUTHERAN  
CHURCH  
1st & Magnolia  
Iowa Park

Sunday School: 9:45 a.m.  
Worship Service: 10:30 a.m.

## IOWA PARK CHURCH OF CHRIST

SCHEDULE OF SERVICES

Bible Study	Sunday	9:30 a.m.	Wednesday	10:00 a.m.
Worship		10:30 a.m.	Ladies Bible Study	7:30 p.m.
Evening Worship		6:00 p.m.	Evening Study	



300 East Park, Iowa Park, Texas 76367, [817] 592-5415

## THE BARRYS COMING IN CONCERT



SEPT. 2-7

7:30 NIGHTLY

## First Assembly of God

200 S. YOSEMITE

MEMBER





# Hawks dominate Tiger scrimmage

While the Hawks pretty well had their way Friday evening scrimmaging Jacksboro's Tigers, Coach David Baugh and his staff still have plenty to work on in preparation for tomorrow's scrimmage with Olney.

The Hawk first unit offense amassed 161 yards in 27 plays on the

ground, while holding the Tigers to only 33 yards on 21 rushing plays. Iowa Park scored once.

The varsity takes the field at 7:30 Friday night in Hawk Stadium against Olney, in the final pre-season scrimmage. Prior to their play, the freshmen will scrimmage at 5 p.m. and the junior varsity at 6.

While the first-unit Hawk teams controlled the ground, both offen-

sively and defensively, the same was not true in the air. Quarterback Ray

Sefcik attempted only two passes behind the first-team line, completing neither. Jacksboro attempted nine and completed two, gaining 57 yards.

During the second series of plays run by the first-unit defense, Iowa Park intercepted two aerial attempts.

Pitting the second unit offenses and defenses, Iowa Park gained 67 yards on 11 plays to Jacksboro's 21 yards on 10 carries. Iowa Park scored once.

Van Hedrick completed his only pass attempt, a 17-yarder. Sefcik tried three passes, completing none. None of Jacksboro's second unit offense pass attempts, six, was completed, and one was intercepted.

Commenting on his varsity team's play, Baugh said the backs ran hard, but the blocking was not consistent. "We have lots of room for improvement."

Defensively, the team played "pretty aggressive," Baugh felt. "We had a breakdown in the secondary in the early part, but then we changed

and got some interceptions."

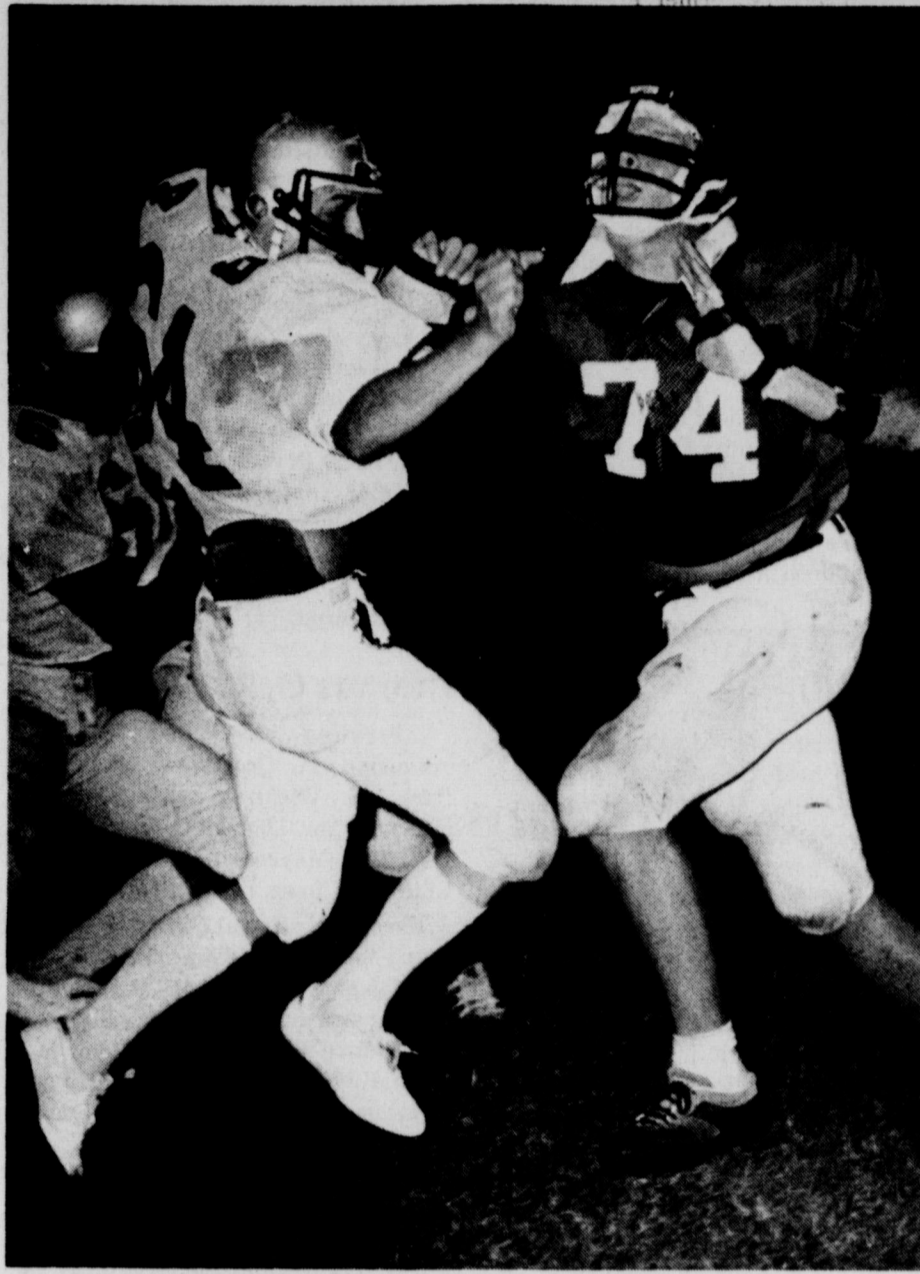
Big James Beebe was the workhorse for the first unit offense, carrying eight times for 65 yards. Kendall Hill had 25 yards on four carries and scored the touchdown. Lee Roach had the longest run from Scrimmage, 20 yards.

Randy Boutwell, who carried four times during the second unit offensive series, and gained 31 yards. Hedrick scored once during that series.

The freshmen outscored the host Tigers 3-0, and the junior varsity scored once while holding the Tigers scoreless.

In the first-down department, the first unit varsity offense had 11 first downs, nine in the first session and two in the second. Jacksboro's first unit had four during the evening, two in each session.

The Hawk second unit offense gained five first downs while the defense held Jacksboro to only one.



TIGER TACKLE DRAWS TOUGH ASSIGNMENT ... trying to hold out Charles Perry, 74.

## Gwinn enrolls at Penn State

Norman Gwinn has received a three-year U.S. Navy Research Fellowship, and has enrolled in Penn State Univ.

The son of Mr. and Mrs. Glenn Gwinn, he was in the top one percent of his graduating class at Texas

A&M.

Under the terms of the scholarship, he receives full support three years while working on his master's degree, guaranteed summer employment, but is under no obligation to enlist in the Navy.

Additionally, he received a \$2,000 Dean's Scholarship from Penn State.



## Open rodeo Sept. 7-8

An open rodeo will be held Sept. 7-8 at the Wichita County Mounted Patrol Arena on FM 369, with proceeds going to the Midwestern State Rodeo scholarship and area charities.

This is a qualifying rodeo for the Texas Cowboy Rodeo Association, where the top 15 cowboys and cowgirls in each event will compete to represent Texas in the National Finals in Denver next December.

Starting at 7:30 each night, a dance will follow the second evening's performance.

A calf scramble will be held each night for youngsters 11 and under, with a pair of boots given each night's winner.

Prizes will be awarded to members of the audience, also, including boots, shirts, jeans, vests, t-shirts and soft drinks.

The rodeo is co-sponsored by the Mounted Patrol and Cooley's Western Wear.


Fri., Aug. 31 - Bar-B-Q on bun, meat or cheese sandwich, soup, potato salad, sweet relish, baked beans, chocolate & plain milk, cookies.

Mon., Sept. 3 - HOLIDAY

Tues., Sept. 4 - Chicken fried steak, meat or cheese sandwich, soup, mashed potatoes & gravy, English peas, hot rolls, butter & honey, chocolate & plain milk, fruit & jello.

Wed., Sept. 5 - Cheeseburgers, meat or cheese sandwich, soup, tater tots, pinto beans, lettuce, tomatoes, pickles, onions, chocolate & plain milk, ice cream.

Thurs., Sept. 6 - Turkey & noodles, meat or cheese sandwich, soup, tossed salad, green beans, hot rolls, butter & honey, chocolate & plain milk, fruit cobbler.



# LOSE WAIT!

## ken's PIZZA

# BUFFET

11 AM to 1:30 PM Monday - Friday

## Pizza, Pasta and 35-Item Salad Bar

No Waiting - Just Eating!

592-4184 IOWA PARK

## CHEESEBURGER with FRIES & MED. DRINK

**\$2.69** REG. \$2.95




### Harvey's FAMILY RESTAURANT HAMBURGERS

805 West Highway  
FOR TAKE OUT ORDERS  
**CALL 592-4731**


**Little Richard's**

## Salt Lick Restaurant

510 E. Highway 592-5252

Friday & Saturday Special  
**ALL YOU CAN EAT FISH & SHRIMP**

YOU EAT BETTER... FOR LESS!



**Richard has lost 75 lbs. in 127 days!**

His blood pressure before was 188 over 88, and pulse rate 98. Now his b.p. is 130 over 70 and p.r. 78—

**— Ask Him How —**

IOWA PARK RECREATIONAL ACTIVITIES CENTER SCHEDULE FOR SEPTEMBER, 1984					
MONDAY	TUESDAY	WEDNESDAY	THURSDAY	FRIDAY	SATURDAY
United Way					1 SOFTBALL TOURNAY
3 HAPPY LABOR DAY Weight Watchers 6 p.m.	4 Karen Registration 5-7 p.m. Optimist 7 p.m.	5 Karen Registration 4-6 p.m. Karate 6:30 p.m.	6 Benefit Softball Tourney Campfire Meeting 6:30 p.m. Aerobics 7:15 p.m.	7 Aerobics 9 a.m. Oil Painting 9 a.m. Tourney Continued	8 Tourney continued
10 Karen Weight Watchers 6 p.m. Aerobics 7:15 p.m.	11 Aerobics 9 a.m. Campfire 3:30 p.m. Optimist 7 p.m. Ceramics	12 KARATE 6:30 p.m.	13 Karen AEROBICS 7:15 p.m.	14 Aerobics 9 a.m. Oil Painting Softball Tourney Begins	15 Tourney Continued
17 Karen Weight Watchers 6 p.m. Aerobics 7 p.m.	18 Aerobics 9 a.m. Optimist 7 p.m. Ceramics 7 p.m.	19 Children's Ceramic Classes 4 p.m. Karate 6:30 p.m.	20 Karen RAC Board Meets 7:00 p.m. Aerobics 7:15 p.m.	21 Aerobics 9 a.m. Oil Painting 9:00 a.m. Softball Tourney	22 Tourney Continued
24 Karen Weight Watchers 6:00 p.m. Aerobics 7:15 p.m.	25 Aerobics 9:00 a.m. Campfire 3:30 p.m. Optimist 7:00 p.m. Ceramics 7 p.m.	26 Children's Ceramics 4 p.m. Karate 6:30 p.m.	27 Karen Aerobics 7:15 p.m.	28 Aerobics 9:00 a.m. Oil Painting 9 a.m. Softball Tourney	29 Tourney Continued

# SONIC

America's favorite drive-in



## OLD-FASHION HAMBURGER

**99¢**

Cheese — 20¢ extra

Offer good thru Sept. 5

# SONIC

Call-ins Welcome 592-4221 719 W. Highway



# Obituaries

## Cora L. Partney

Services for Cora L. Partney, 77, were held Tuesday afternoon at Iowa Park First Baptist Church. Rev. Hal Farnsworth, pastor, officiated.

Burial was in Crestview Memorial Park in Wichita Falls under direction of Tanner-Aulds Funeral Home.

Mrs. Partney was born June 22, 1907 in Throckmorton County, and died Sunday in a Wichita Falls hospital.

She married W.G. Partney Nov. 28, 1926 in Throckmorton and had been a resident of Iowa Park since 1937. A member of First Baptist Church, she was also past president of Wichita Valley Farms Home Demonstration Club and a member of The Friendly Door.

Survivors include her husband; a son, Travis William of Nocona; four daughters, Mrs. Kathleen Hicks of Roby, Mrs. Bobbie Jean Huckaby of Iowa Park, Mrs. Virginia Lee Banks of Wichita Falls and Mrs. Joye Robertson of Borger; a brother, Loyd Hargrove of Fort Worth; two sisters, Mrs. Jewel Gillespie and Mrs. Annabel Canion, both of Austin, 17 grandchildren and 11 great-grandchildren.

The grandchildren served as pallbearers.

## Fred E. Smith

Funeral services were held Saturday morning at Tanner-Aulds Funeral Home for Fred E. Smith, 76, a former Iowa Park resident who died Wednesday in a Kingsland nursing home. Burial was in Highland Cemetery.

He was born Mar. 2, 1908 in Jud and was a retired oilfield welder. He had lived 10 years in Kingsland.

Survivors include a brother, Clyde, and a sister, Mrs. Cleo Lewis, both of Iowa Park.

## Hugh R. Wood

Funeral services for Hugh R. Wood, 79, will be at 10 this morning at the Church of Christ, with Glenn Gwinn and Tim Moore officiating.

Burial will be at 12 noon at Cottonwood Cemetery in Bryson, under direction of Tanner-Aulds Funeral Home.

Born April 12, 1905 in Jack County, Mr. Wood died Tuesday at his home, 206 W. Smith.

He and Beulah Harrison were married July 18, 1925 at Girard. A retired oilfield worker, he was a member of The Friendly Door and Iowa Park Church of Christ.

Survivors include his wife; two daughters, Florene Harris of Nocona and Kathy Wilkinson of Iowa Park; two sisters, Naomi Marley of Jacksboro and Eddy Barker of Senate; two grandchildren and two great-grandchildren.

## Bobby Ray Wallace

Funeral services were held Friday afternoon at a Wichita Falls funeral home for Bobby Ray Wallace, 52. Dr. Morris Chapman, pastor of First Baptist Church in Wichita Falls, officiated. Burial was in Crestview Memorial Park.

Born Feb. 25, 1932 in Tulia, he had lived most of his life in Wichita Falls until his death Aug. 22. He was employed by Wallace-Raub Construction.

Survivors include his wife; three daughters, Shelley Daily of Loving, Janie York of Wichita Falls and Leanne Prestwood of Dilley; a son, Scott of Wichita Falls; his mother, Ruth Wallace of Wichita Falls; three sisters, June Frazier and Frances Davis, both of Wichita Falls, and Laverne Brown of Holliday; and five grandchildren.

## Margie Wilbanks

Graveside services were held for Leolon Whitley Friday morning at Crestview Memorial Park in Wichita Falls. Rev. Jack Johnson, pastor of Trinity United Methodist Church, officiated.

Born in Carthage, Mo., she had lived in Wichita Falls since 1922. She died Aug. 22 in a Wichita Falls hospital.

Survivors include a daughter, Mrs. Bob Jones of Wichita Falls; two sons, Fletcher H. Jr. and John, both of Iowa Park; a brother, John H. Carpenter of Fort Worth; two grandchildren and two great-grandchildren.

## Lelon Whitley

Last rites for Margie Wilbanks, 68, were held Tuesday afternoon at Sullivan Funeral Home in Vernon. Rev. Jerry Woods, pastor of Second Baptist Church officiated and burial was in Quannah Memorial Park.

Mrs. Wilbanks died Monday in a Vernon hospital. She was born Feb. 15, 1915 in Quannah. She was employed many years by the Leader Department Store in Quannah. She and Aaron Wilbanks were married Jan. 15, 1933, in Altus.

Survivors include her husband; a daughter, Pat Boyd of Vernon; two brothers, T.B. Bates of Quannah and Milburn Bates of Iowa Park; a sister, Dorothy Davidson of Quannah; and two grandchildren.

# Motorists are reminded of bus laws

"Schools are opening throughout the state which means motorists will

have to be more careful," Jim Stacks, District Engineer of District Three, State Department of Highways and Public Transportation warns.

"The increase in traffic will cause more accidents involving school buses and children. One way to reduce these accidents is by following safe operating procedures as well as the laws pertaining to passing a stopped school bus," he said.

State law requires drivers on the same roadway as a school bus that

has stopped to load or unload school children to stop and remained stopped until one of three things happen: (1) the bus driver signals you to go on by, (2) the flashing red lights are turned off, or (3) the bus itself goes into motion. The law applies whether you are meeting the bus or whether you are going in the same direction as the bus.

It also applies inside the city limit as well as outside the city. The only exception to the law is when driving on the other side of a divided highway (one separated by a physical median). Motorists who fail to stop for a school bus can be fined up to \$200.

"We, as motor vehicle operators, must realize the importance of our role in preventing needless deaths and injuries to our school children," Stacks added.

"When you see the amber warning lights flashing, atop a school bus, prepare immediately to come to a complete stop. When the red warning lights atop the bus are flashing, you must come to a complete stop a safe distance from the bus and remain stopped until the red lights are turned off. Always give special observance to the proper courtesies and rules of the road when driving near a school bus."

## E.B. Clark Sr.

Services were held Monday morning for E.B. "Gene" Clark Sr. of Wichita Falls in First United Methodist Church of Wichita Falls. Rev. De Forrest Wiksten, pastor, officiated and burial was in Riverside Cemetery.

He was born March 15, 1903 in Iowa Park and died Saturday at his home. He was an oil field operator and had lived in Wichita Falls most of his life.

Survivors include his wife; a son, Gene of Denver, Colo.; four sisters, Mrs. Charles Fender of Bartlesville, Okla., Ruth Pryer of Dallas, Martha Barron of Albuquerque, N.Mex., and Mark Markham of Santa Fe, N.Mex.; two brothers, Alan of Midland and Willis of Pampa; and four grandchildren.

## A.O. Holt

Graveside services for A.O. Holt, 88, will be held at 10:30 a.m. Friday at Highland Cemetery. Rev. Brad Cosway, associate pastor of Wichita Falls Pentecostal Church of God, will officiate and services are under direction of Tanner-Aulds Funeral Home.

He was born April 16, 1896 in Mountain Grove, Mo. and had been a resident of Iowa Park 60 years before moving five years ago to Wichita Falls. He died Wednesday in his home.

He was a member of the Baptist Church and a 50-year member of the Iowa Park Masonic Lodge.

Survivors include a daughter, Mrs. Leola Watts of Wichita Falls; two stepdaughters, Eula Johnson of Iowa Park and Mildred Hassell of Waxahachie; a brother, A.B. of Lewiston, Idaho; a sister, Mrs. Mildred Hull of Selah, Wash.; six grandchildren, five great-grandchildren and 13 great-great-grandchildren.

## Thomas O. Rogers

Services were held at the graveside in Crestview Memorial Park in Wichita Falls Tuesday afternoon for Thomas O. Rogers, 66. Rev. Jack Meyers of First Methodist Church of Iowa Park officiated.


Born Dec. 6, 1917 in Texico, N. Mex., he died Friday in Lawton.

He was a retired MKT Railroad switchman and former owner of Fisherman Bait Stand on Holliday Road. He was a veteran of World War II and member of Disabled American Veterans.

Survivors include his stepmother, Mrs. T.A. Rogers of Wichita Falls; a sister, Marcella Childers of Iowa Park; and two brothers, Calvin of Austin and Collie of Clovis.

# Court Records

Results of municipal court held here yesterday were: Charles E. Rhodes, Jr., speeding, \$61; Derrel Lynn Beesinger, speeding, \$44; Derrel Lynn Beesinger, displayed expired license plates, \$49.



**Happy 95th Birthday**  
**Gran Gran**  
**Morgan**

*Betty, Louis, Audrey,  
Lydia, Bush*

**Gloria Sargent** 1005 Park Plaza  
**Private Piano** 592-9039

★ Emphasis on technique, transposition and enjoyment. ★ 1 year's study in Germany  
★ 6½ years of foreign teachers

**Johnson Road**  
**Texaco**  
Now under new management

**Mike Moore**  
formerly with Beverly Tire Shop in Wichita Falls

— OFFERING —

- Tune-ups
- Lubes
- Brake work
- Tires
- Oil change
- Batteries

**FULL & SELF-SERVICE**  
"Give me a try"  
**WE APPRECIATE YOUR BUSINESS**

**COOLEY'S** MasterCard Visa American Express  
WESTERN WEAR COWBOY BOOT HEADQUARTERS  
691-6012 Corner Southwest Parkway and Kemp across from K-Mart

**Wrangler Jeans**  
Starting At \$13.50

Wrangler Student Cowboy Cut Jeans \$13.50  
Wrangler Mens Cowboy Cut Jeans \$14.50  
Wrangler Boys Shirts 1/2 Price

Plus... a special mail-in offer from Wrangler

**BUY THREE GET ONE... FREE!**

1 BUY two Wrangler jeans, plus one Corduroy Sport Coat or one Wrangler shirt

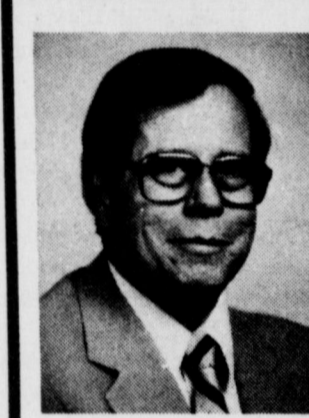
2 MAIL form, and proof of purchase

3 RECEIVE Certificates for free Wrangler jeans

1/2 PRICE COAT SALE  
Corduroy Sport Coats Circle 'S' and Kenny Rogers Sport Coats Kids Nylon Windbreakers Sizes 4-20

Tempco Goosedown Coats and Jackets **25% OFF**

Tony Lama Boots Reg. \$160  
Acme Boots Starting at \$41.95  
Abilene Boots Reg. \$125 **NOW \$99**



Let's talk.

Information about your changing telephone service from Dan Adams, Manager-Community Relations

**Tele-Help has the answers**

"My phone's not working... who should I call? What can I do to save money on my phone service? Why are there so many pages in my phone bill? How do I pick the long distance service company that's right for me?"

These are some of the questions I've been getting from many of you since Southwestern Bell Telephone became an independent company on Jan. 1.

Last year we anticipated many of these questions and began telling our customers about the changes in our business using advertising, bill inserts, news stories, brochures and public talks by our employees.

But we found that people aren't likely to listen until the message directly affects them. Our research shows that only about 17 percent of our customers fully understand the changes brought on by the Bell System split up.

We're concerned about this confusion. That's why we've started a new informative program to help you. It's in the public interest. You've been good customers too long. We split from AT&T, not you.

The new program is called "Tele-Help," and it will give you more information about your phone service, what to do, when and how. Perhaps you've already seen and heard some of the advertising. It's all designed to help clear up any confusion and make sure your phone service remains as useful as we can make it.

**You can still "call on us" for help**

Tele-Help is our way of saying we hope you'll still "call on us." Just as you've turned to us in the past, we want you to continue to do so in the future.

In talking with you, we identified six major areas that most of you want to know more about. These topics comprise the first six Tele-Help booklets: phone service in general, phone bills, repair, telephone sets, long distance service and money-saving tips. Other booklets are in the works, and I'll tell you more about them in subsequent columns.

We feel the booklets are easy to understand and they're available at no charge. You can order the entire set if you like.

To get Tele-Help is easy! Just call toll-free 1-800-325-2686 (and ask for "extension 84") Monday-Friday, 8 a.m.-8 p.m. Or, fill out the coupon below and mail it to us.

**Yes, I want Tele-Help! Please send me the booklet(s) checked here:**

- A Guide to Your Phone Service
- A Guide to Your Phone Bill
- A Guide to Home Phone Repair
- A Guide to Telephone Equipment
- A Guide to Long Distance Service
- A Guide to Saving Money on Phone Service
- The complete series
- Check here for Spanish version

To speed your order, please print clearly.


NAME \_\_\_\_\_

ADDRESS \_\_\_\_\_

CITY \_\_\_\_\_ STATE \_\_\_\_\_ ZIP \_\_\_\_\_

(AREA CODE) \_\_\_\_\_ PHONE \_\_\_\_\_

Please mail to:  
Tele-Help  
Southwestern Bell Telephone  
Drawer 8, Dept. 84  
Wheeler Station  
St. Louis, MO 63188



**Southwestern Bell Telephone**

Dan Adams  
SW Bell Telephone  
2121 Paradise  
Vernon, TX 76384

GET WITH IT... **SCHOOLS IN**

...Why not make a **Dance Class** part of Your Schedule?

Classes offered in Jazz, Tap, Acrobatics, & Twirling.  
Ages 3 to Adult

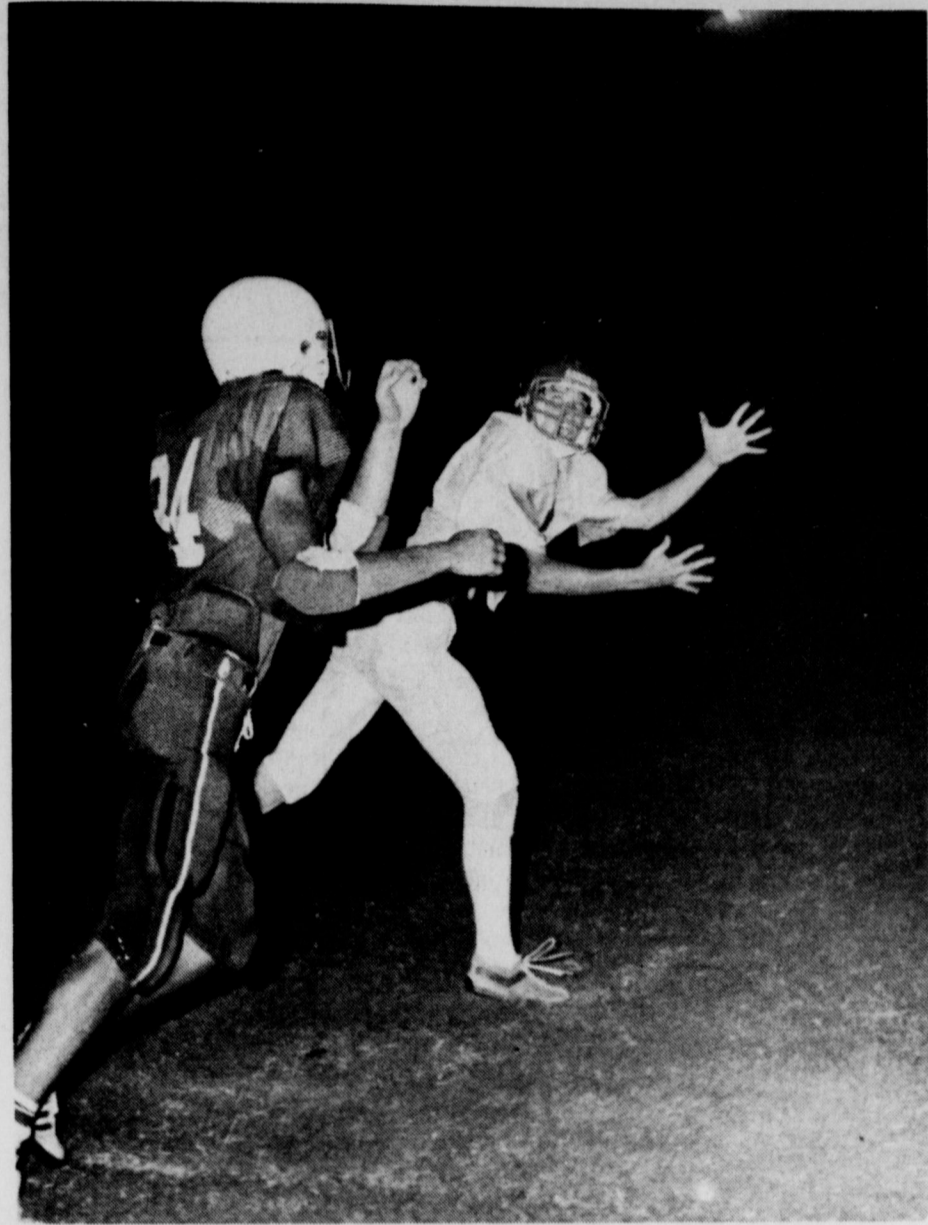
For more info, call 766-1258

**STUDIO KG**  
Karen Gauthier

Call about our special teenage class & rates.



# Holiday News



JOHN SMYERS LOOKS FOR TOM HAMILL AERIAL FRIDAY NIGHT

## City council to discuss mayor, salaries

Holiday city council will meet at the Community Center at 7 p.m. Tuesday for its regular bi-monthly meeting, and members of the council are sure they will discuss such topics as employee salaries and the city hall. What the council doesn't know, however, is what Mayor Mike Parker will or will not do at the meeting, after receiving a vote of no confidence at the last meeting of the group Aug. 20.

During that meeting, council went into closed executive session to discuss personnel, which lasted approximately three hours. After

returning to open session, Mayor Parker explained that water superintendent Morganna Thorn and the mayor himself was discussed. He then asked each alderman, with Jimmy Willis the only member

absent, for his vote of confidence. The four aldermen present, including John Goforth, Elizabeth Gorman, J.R. Franklin and Jim Virdell, each responded by saying, "I have no confidence in your abilities as Mayor."

Mayor Parker responded by saying, "I accept your decision and will turn in my resignation."

One city official, who asked not to be identified, Tuesday said Mayor Parker had not discussed the matter

further, and had not been at city hall since the meeting or contacted any member of the council.

The official further added that Mayor Parker will either present his letter of resignation Monday night to the council, or remain absent from future meetings, disqualifying himself from the position.

If Mayor Parker remains absent from meetings, mayor pro-tem Elizabeth Gorman will act in his position.

### Season tickets remain on sale

Season tickets remain on sale for the Holiday Eagles' 1984 season from 8 a.m. to 4 p.m. in the superintendent's office.

Past season ticket holders have until 12-noon tomorrow to purchase the tickets with their choice of seats, then the remainder of tickets will be sold to the general public on a first-come, first-serve basis.

### James Butler gets promotion

James L. Butler, nephew of Mr. and Mrs. Bobby B. Bryan of Holliday has been promoted in the U.S. Air Force to the rank of senior airman.

Butler is a bombing and navigation systems mechanic at Barksdale Air Force Base, La., with the 2nd Avionics Maintenance Squadron.

His wife, Terri, is the daughter of Kenneth R. and Shirley Vickers of Howe.

The airman is a 1978 graduate of Holliday High School.

### Band Club to meet

The Holliday Band Club will meet at 7:30 p.m. Tuesday at the high school band hall, according to director Mark Cartwright.

Prospective members and active members are invited to attend. The band club is now open to the general public, and membership fees are \$3 per family.

### Trustees to set tax rate tonite

Holliday School Board will greet taxpayers of the Holliday I.S.D. at 7 tonight in the Holliday Elementary Building at a public hearing on a proposal to increase total property tax revenues in 1984.

The board is asking for an increase of from \$775,138.95 in 1983 to

\$975,000 in 1984 in tax revenues.

The difference is the amount needed to keep the school working in the black for the current school year, with most of the additional financing needed to cover implementation of the new school reform bill, passed in special session by the Texas Legislature.

The board is reportedly looking at an increase from 56.46-cents per \$100 market valuation to 67-cents per \$100 valuation, or approximately 20-percent above last year's tax rate.

## Student enrollment higher than 1983

Enrollment figures for Holliday's schools shows a total enrollment of 762 students in kindergarten through 12th grade, according to superintendent Dan Owen.

Approximately 746 students were present for the first day of school Friday, with 16 more enrolling Monday and Tuesday, Owen said. Complete enrollment figures will be made following the Labor Day Weekend, with more students anticipated.

The figure for this year is 35 above last year's enrollment count, but Owen said that includes two sections

of kindergarten students for the first time.

In ninth through 12th grade, 226 enrolled the first day, five more than the 221 enrolled in the 1983-84 year.

In grades six through eight, 180 students enrolled the first day, and six were added earlier this week for a total of 186, still six less than the 192 enrolled in 83-84.

Kindergarten through fifth grade reported an enrollment of 340 Friday, and nine more this week for a total of 349 enrolled, 36 more than 83-84. That includes two classes of kindergarten with 62 enrolled.

## Eagles impressive against Knox City

Knox City's Greyhounds, defending state champions in Class A last year, and returning four starters on offensive and four on defense, looked to be a formidable opponent for Holliday's Eagles Friday night in Eagle Stadium.

Lucky for the Greyhounds, it was just a scrimmage, because the Eagles did everything but act hospitable, controlling both offense and defense in a 2-0 shutout.

The Greyhounds, hoping to best their 14-1 record last season, could muster only two short, but sustained drives against a rangy Eagle defense. On the other hand, the Eagle offense showed a lot of promise, both from the air and on the ground.

Holliday coaches were pleased with the overall performance of their team, saying the defense was ahead of the offense, but at this time of year that is expected. Especially pleasing

to the coaches was the play of the second and third string players, proving that the Eagles indeed have good depth for the coming season.

The freshman team fell behind in its scrimmage against Knox City 2-0, while the junior varsity impressed its coaches, winning 2-1.

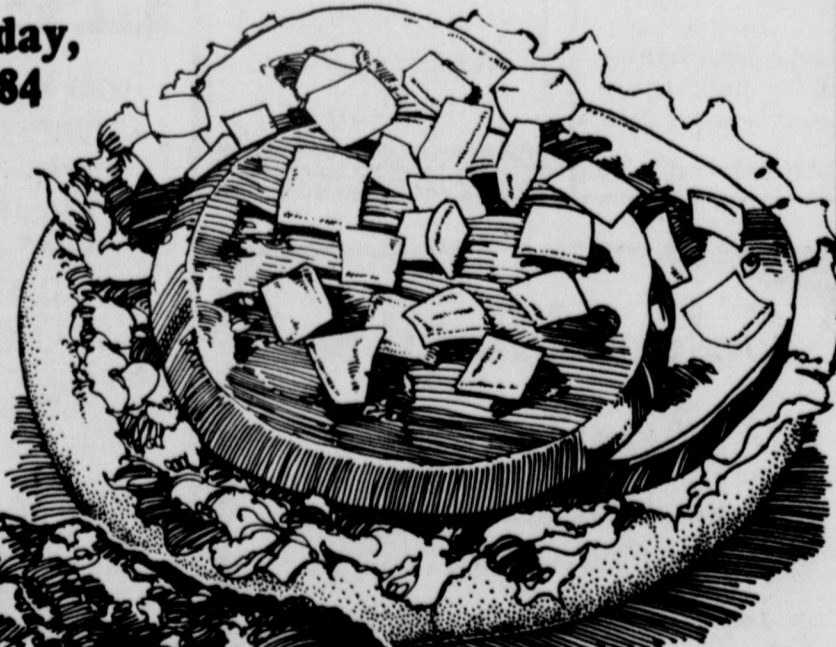
Tomorrow, the varsity, junior varsity and freshman teams travel to Munday for the second and final scrimmage prior to regular season.

# Dairy Queen knows what makes a burger better.

**new HOMESTYLE Hungr-buster 99¢**

Let's get right to the meat of the matter. What makes our new Homestyle Hungr-buster® so much better is the beef. A quarter-pound of 100% pure beef to be exact, in a real homestyle pattie made especially to be juicier, more tender and more flavorful. Made to your order, and topped just the way you want it. Come taste the new Homestyle Hungr-buster® at Dairy Queen. There's no better burger. Because there's no taste like home.

Monday thru Sunday, Aug. 27-Sept. 9, 1984



**ALLSUP'S**  
CONVENIENCE STORES  
THERE'S ONE NEAR YOU!®

**OPEN LABOR DAY!**  
PICNIC SUPPLIES- ICE- SOFT DRINKS- FRESH COOKED FOODS- SELF SERVE GAS- SNACKS- PRODUCE- MONEY ORDERS  
WHILE SUPPLIES LAST  
PRICES EFFECTIVE  
**AUG. 30-SEPT. 1, 1984**

---

**LAY'S**  
POTATO CHIPS

**LAY'S ASSORTED FLAVORS**  
**POTATO CHIPS \$1.09**  
REG. \$1.39 BAG

---

**CORN DOGS** GIANT

**2 FOR 99¢**

---

**TALLSUP**

COOL REFRESHING  
32 OZ.  
FOUNTAIN DRINK  
**59¢**

---

**WILSON'S FRANKS**

**68¢** 12 OZ. PKG.

---

**QUAKER STATE MOTOR OIL**

**89¢** 10-W-40 QT.

---

**STRONGPOINT 22% PROTEIN WITH FREE SERVING BOWL**

**DOG FOOD \$8.99**  
40 LB. BAG

---

**ALLSUP'S ICE CREAM**

**ASSORTED FLAVORS \$1.79**  
1/2 GAL. CTN.

---

**BORDEN'S FRUIT DRINKS**

**99¢** GAL.

---

**PEPSI**

**\$2.19**  
6 Pack 12 oz. Cans

---

**ATTENTION ROADRIDERS**  
ALLSUP'S LEISURE TOUR \$300.00 IN CASH PRIZES  
FOR MORE INFORMATION CALL OR WRITE  
LEA COUNTY ROADRIDERS P.O. BOX 891 HOBBS, N. M. 88240  
(505) 397-2824 OR (505) 392-4875

© Copyright 1984 Tex. D.Q. Co. Council. All Rights Reserved  
® TM Trademarks of the Tex. D.Q. Co. Council  
\* Registered Trademark Am. D.Q. Corp.



# BUYING? SELLING? RENTING? HIRING? WANT ADS PAY OFF

## DEADLINES

10 A.M. WEDNESDAY (Word Ads Only)  
4 P.M. TUESDAY, DISPLAY ADS

## SAVE 10¢ PER WORD FIRST INSERTION BY PAYING WITH COPY AT OFFICE

## RATES: 20¢ PER WORD FIRST INSERTION 10¢ PER WORD EACH REPEAT

### HOMES FOR SALE

**IOWA PARK** - 3 bdrm. executive home on one-sized lot. Century 21, Gold Coat Realtors, Sheila: 761-1311 - 692-0646. 8-30-1tc

**IOWA PARK** Lovely 4 bedroom, 2 bath, brick, 1,700 sq. ft. Large den, beautiful rock fireplace, sun room, new carpet throughout, large kitchen. Assumable FHA low interest loan \$53,500. 592-2974. 8-19-1tp

**EAST BANK** Two lots & old house. \$8,800.

**CLEAN MOBILE HOME** Two window units, store room. Two lots. \$16,000.

**15 ACRES SOUTH-EAST OF CRYOVAC** Good home site or business location. Good grass, tank, fenced and cross fenced. Old house and barn. \$35,000.

**DOWNTOWN WICHITA FALLS** Large older home with nice large business building. Located across street from Employment Commission. Business building renting for \$375, month. \$75,000.

**MANES** 4 bdrm., 1 1/2 den, fireplace, large kitchen with immense cupboards. Privacy fence, beautiful yard with huge covered patio. Much More! \$69,500.

**W. CLARA** New 3 bdrm., 1 1/2 baths, beautiful kitchen. Many extras! \$47,000. **SOLD**

**EDGEHILL** 3 bdrm., den, 18x32 shop, \$9,000 equity. Approx. Bal. \$45,760. Make offer.

**EMMA** 3 bdrm., near high school. Privacy fence. Immed. Possession. \$39,500.

**WESTRIDGE** 3 bdrm., near high school, pretty storage unit in back yard. \$42,500.

**ALDINE** Established, 3 bdrm., 2 baths, large kitchen, much more! Possible lease to buy.

**EAST GARDEN** 2 bdrm., brick. Heat/air, fenced. \$35,000.

**QUICK SALE** 2 or 3 bdrm. Close downtown. Woodburning stove, cellar. \$24,000. Lease to buy.

**529 S. WALL** Corner location, small 2 bdrm. house and 2nd older bldg. 3 lots. \$10,500.

**7 1/2 ACRES** \$22,500. Owner finance.

**46 ACRES** on Hwy. 258. \$30,000.

**ELECTRA** 107x180' lot, 6 yr. old metal bldg. Insulated, office, restroom, 4 folding doors, overhead heat. Price reduced for quick sale. \$45,000.

**COTTLE COUNTY** 758 ac. S/E Paducah. \$152,000.

Member Multiple Listing  
**Sam D. Hunter**  
Real Estate  
107 E. Cash Ph. 592-4661

**PLEASANT VALLEY** For sale by owner. 3 bedroom, 1 1/2 baths, family room, fireplace, storm cellar, decorator fence, 14.6 acres land, metal bldg. 50x100. Call 855-8945 - for appointment. 8-30-3tp

**FOR RENT**  
**3 BEDROOM**, 1 1/2 baths, 2-car garage, cellar, privacy fence, near school. \$400 month. 592-4938, Monday Wednesday. 8-23-2tp

**LARGE FURNISHED** 1 bedroom duplex, \$185 month plus utilities. \$100 deposit. Adults. No pets. See at 203 W. Lafayette. 592-5959. 8-30-1tp

**PRESTIGE APARTMENT** 1-bedroom, \$325; dishwasher, microwave, fireplace. 592-2989. 8-9-tfc

**WANTED**  
WANT TO BUY 3 bedroom brick, central heat/air. Assumable loan or owner finance. 592-5726. 8-30-1tp

**RITA LANE** Three bedrooms, 2 1/2 baths, fireplace, new carpet, two car garage, storm cellar, privacy fence, security and fire alarm system, four ceiling fans, microwave and much more. \$71,000.

**ONE OF A KIND** Large corner lot with storm cellar, trees and storage bldg. \$6,500.

**EMMA DRIVE** Three bedrooms, 1 1/4 baths. Large storm cellar & storage bldg. Lovely covered patio, two car garage. New VA Appraisal \$38,500.

**THRIFTY BUY IN BRICK** Large livingroom, kitchen and diningroom. Very lovely carpet, two bedrooms & large bath. Owner finance. \$31,500.

**BEGINNER SPECIAL** Two bedrooms, large family room, one bath, kitchen and diningroom, single garage. \$20,400.

**CORNER LOT** Two bedrooms, livingroom, kitchen & diningroom, one bath. \$18,200.

**REDUCED AGAIN** Bargain of the Town. Two bedrooms, 1 bath large livingroom, kitchen & dining, single garage. \$26,000.

**LARGE FAMILY** Try this four bedroom, 1 1/2 bath, brick home. Lovely carpet, single garage. Price reduced to \$39,800.

**NORTH PARK** Three bedroom, 1 1/2 bath brick home with large livingroom, kitchen and dining area. \$42,500.

Try The Action Co. I Think You Will Like Us

MEMBER  
MULTIPLE LISTING  
SERVICE

**JOHNNY LEE**  
REAL ESTATE  
592-2378  
109 W. Cash

### MISC. FOR SALE

**YARD SALE** - 523 W. Magnolia, Thursday, Friday, Saturday. Go-cart, '71 motorcycle, lots of clothes, misc. 8-30-1tc

**4-FAMILY** Carport Sale, Friday - Saturday. Electric range, dishwasher, King trombone, radio cassette player, highchairs, numerous household items - linens, dishes, cookware, couch, lots of clothing. 609 N. Yosemite. 8-30-1tp

**YARD SALE** - Thursday. Clothes, child's organ, gun loader, central heat & air unit, motorcycle, etc. 904 East Cash, Iowa Park, Tx. 8-30-1tp

**YARD SALE** at 208 S. Yosemite Friday, Saturday and Monday. 8' till late. Four families clothing, girls 7-14, junior 5-9, ladies 10-20. Lots of miscellaneous items from junk to jewels. 8-30-1tp

**GARAGE SALE** - 1111 Lincoln. Saturday only, 8 a.m. till 3 p.m. Lots of misc., some clothing, like new. 8-30-1tp

**THREE FAMILY** Garage Sale, Thursday & Friday, 514 W. Magnolia. '67 Chevy pickup, baby furniture, and miscellaneous. 8-30-1tp

**GARAGE SALE** - 1302 Bluejay. 5 p.m. Friday through Sunday. 8-30-1tp

**MLS Hallmark**  
"Service at its Best"  
2951 Southwest Pkwy.  
691-7555

**COUNTRY HILLS** - Neat 3 bedroom home; new carpet, new water heater, large kitchen/dining. 40's #199

**KAREN** - Fresh paint inside & out, new dishwasher; ceiling fan. 3 bedroom brick. Low 50's. #186

**NEAR HOLIDAY** - 6 acres stock tank, large home with game room, 2 fireplaces. Very nice. #176

**PARK PLAZA** - Brick, 3 bdrm., fireplace, fenced, large shop, covered patio. Priced right \$39,500

**DOUGLAS ST.** Corner lot. 4 bdrm. 2 full baths, lots of closets. New appraisal \$55,650

**4 ACRES** - 3 bdrm. house, new wiring and plumbing, central heat/air, barns, storm cellar. Owner finance Mid 50s

**PARK ST.** - 3 bdrms., brick, garden room, den, large formal living & dining, 1 1/4 bath Low 60s

**CASH ST.** - Excellent condition. 2 bedroom, new carpet, close to town. \$29,500

**JAMES ST.** - 3 bedrooms, new paint, fenced yard. Possible owner finance Mid 20s

**ALDINE** Immediate possession. New appliances, storm cellar, den with fireplace, 3 bdrms, living & dining. \$50,000

**CLARA** - Owner says sell - Den with fireplace, 3 bedrooms, dining, living, fenced. As is \$35,000

**SMITH ST.** New Home! New area being developed! Decorated in earth-tone shades, paneled, 3 bdrms, 2 baths. Builder says sell! \$42,000

**MAGNOLIA** - Extra nice, large rooms, 3 bdrms., 1 1/2 baths, plant or utility room, large living area. You need to see this one! \$42,000

**BACK-TO-SCHOOL** Garage Sale, Friday and Saturday, 1001 Foley. 8-30-1tp

**GARAGE SALE** Furniture, lots of all size clothing including maternity and baby; antique camera; used tires; lost of misc. 804 Van Horn, Thursday and Friday. 8-30-1tp

**GARAGE SALE** Lots of miscellaneous. All day Thursday, and Friday till noon. 1332 Sunset. 8-30-1tp

**CONN** alto saxophone and clarinet. Bryan Fowler, 592-9326. 8-30-1tc

**BUNDY TROMBONE** - Excellent condition. Reasonably priced. 592-2351. 8-30-1tc

**BUNDY TROMBONE**, used two years. Really good. \$175. Call 592-5245. 8-30-1tp

**BUNDY CLARINET** - Good condition. \$200 or best offer. 592-5819. 8-30-1tp

**1984 HONDA ATC 200-S**, a steal at \$1,200. Day 322-5828, night 855-0880. 8-30-1tc

**QUEEN SIZE** Hide-a-bed, rocker loveseat. 592-4218. 8-30-1tp

**1956 CHEVROLET**, ton 1/2 utility bed, stout truck. \$700. 592-2974. 8-29-1tp

**Attention, First Time Homebuyers!** Three homes with possible low-interest rate financing.

**1312 Emma** - 3 bedrooms, 1 1/2 baths, large dining, neat and clean.

**1005 Park Plaza** - 3 bedrooms, 1 1/2 baths, new kitchen, single garage, fenced.

**1307 Sunset** - 4 bedrooms, 2 baths, single garage, close to Cryovac, \$38,500.

**No. 38 Surrey** - 3 bedrooms, 1 1/4 baths, 2 living areas, large fenced yard with pool, \$71,900.

**JOAN SHIERRY**  
Rowland & Donnell  
Realtors  
592-5540 - 692-1903

**PARK PLAZA** - Brick, 3 bdrm., fireplace, fenced, large shop, covered patio. Priced right \$39,500

**DOUGLAS ST.** Corner lot. 4 bdrm. 2 full baths, lots of closets. New appraisal \$55,650

**4 ACRES** - 3 bdrm. house, new wiring and plumbing, central heat/air, barns, storm cellar. Owner finance Mid 50s

**PARK ST.** - 3 bdrms., brick, garden room, den, large formal living & dining, 1 1/4 bath Low 60s

**CASH ST.** - Excellent condition. 2 bedroom, new carpet, close to town. \$29,500

**JAMES ST.** - 3 bedrooms, new paint, fenced yard. Possible owner finance Mid 20s

**ALDINE** Immediate possession. New appliances, storm cellar, den with fireplace, 3 bdrms, living & dining. \$50,000

**CLARA** - Owner says sell - Den with fireplace, 3 bedrooms, dining, living, fenced. As is \$35,000

**SMITH ST.** New Home! New area being developed! Decorated in earth-tone shades, paneled, 3 bdrms, 2 baths. Builder says sell! \$42,000

**MAGNOLIA** - Extra nice, large rooms, 3 bdrms., 1 1/2 baths, plant or utility room, large living area. You need to see this one! \$42,000

**CAMPER TRAILER** - 1976, 23-foot Prowler. Fully self-contained, roll-out awning, electric jacks, tandem axle, two-wal refrigerator, sleeps 6, twin beds, roof air. Must sell. 691-0762. 8-30-1tp

**1974 CLASSIC CAPRICE** - Loaded, very nice car. Good tires, runs perfect. Call 592-5635 or come by 205 S. Colorado, Iowa Park. 8-30-1tp

### BUSINESS

**MOTHER** in Cryovac Area will care for children after school until 5:30. 592-2372. 8-30-1tp

**REGISTERED** Child Care Monday-Friday. All ages. 592-5406. 8-30-2tc

**CHILD CARE** in my home. Nights only. Call 592-5081 or 592-2564, ask for Lisa. 8-30-2tp

**INFANT CARE** now available. King's Kids #2. 592-4242 or 592-2996. 8-2-5tp

**KING'S KIDS** Christian Day Care & PreSchool. Enroll now for fall. Fulltime: 6:45 a.m. - 6 p.m. Pre-School Classes: 8:30-11:00 a.m. Half Days: 8 a.m. - 2 p.m. Summer openings available now, all ages. 592-4242. 8-2-5tp

**REGISTERED** Day Care - Monday through Friday, ages 2-5. Also before and after school. 592-5444. 8-9-4tp

**REGISTERED** Child Care Monday - Friday. 592-9055. 7-26-8tp

**SCHOOL AGE** children only. Experienced care in registered home before and after school. Open 7 a.m., close 5:30 p.m. 592-5134. 8-23-4tp

**REGISTERED** Day Care. Infant to toddlers. In Kidwell area. 592-5368. 8-23-2tc

**HOME CLEANING** Service. References. Call after 3 p.m., 592-2866. 8-23-6tp

**Quail Run Apartments**  
1-2 Bdrm. Ground Floor, Central Heat & A/C, Appliances, Laundry. Close to school & public park. Starting at \$180 per month to qualified tenants. Gas & water paid.  
Call 592-2933

**Colonial Heights Apartments**  
Magnolia St. at Johnson Rd. IOWA PARK  
One and two-bedroom apartments energy efficient, central heat/air, total electric appliances, fully carpeted and draped. Children's play area. Off-street parking. Fully equipped laundry room. Month to month rent starting at \$181.00 for one bedroom, and \$220.00 for two bedroom apartment (to qualified persons). Water paid.  
CALL 592-2705  
EQUAL HOUSING

**BUZBEE ROOFING** and Painting. All work guaranteed. Phone 569-3493 or 592-4846. 8-16-24tp

**MARY KAY** Cosmetics, Rosene White, 307 E. Alameda, 592-5337. 7-12-12tp

**MARY KAY COSMETICS** Allie Girard, consultant, 109 W. Poe, 592-4217. 8-2-tfc

**REMODELING?** Do you need another room added on? A garage? Walls removed or added? Free estimates. References. Jack Kerr, 215 S. Wall, 592-9040 495-3411. 5-10-tfc

**ROOFING** - Wolfe Roofing Co. Phone 855-5657. 10-6-tfc

**BUILDING**, remodeling, or repair, additions, carports, patios. Free estimates. Call day or night Phil McDonald, 592-2363. 6-14-tfc

**LADY FINELLE** natural cosmetics at reasonable prices. Call Annetta Reusch, 592-9001 for a free facial. 1-6-tfc

**MARY KAY** Cosmetics, Ann Moore, 592-4752. 8-19-26tp

**INSULATION** and Storm Windows. For free estimate call Jerry Matthews at 761-2124 or 592-9829. 7-19-tfc

**AUTO, BOAT** and furniture upholstery repair. Vinyl repair. Call Kamay, 1-438-2243. 2-23-tfc

**PRIVATE FENCE** sales and installation. Charles Skelton, phone 592-5190. 1-6-tfc

**PRESTIGE APARTMENTS**  
1-Bedroom  
1,000 sq. ft.  
\$325  
Available Sept. 1  
Dishwasher, Microwave, Fireplace, Washer, Dryer Hookups  
PHONE 592-2989

**COPIES MADE** at Video Care, 25c each. 2-23-tfc

**FOR YOUR COPY NEEDS** including reduction and enlargement, call Iowa Park Air Conditioning, 592-5891, or come by 609 W. Bank. Charges 20 cents a copy (less for quantities). 8-2-tfc

**PROPERTY OWNERS!** I buy real estate. If you are planning to sell in the near future, call me. I just might be able to save you the anxiety of waiting for the right buyer to come along. 592-5726. 8-23-4tp

**BLACK POWDER GUNS** and accessories, revolvers \$50 and up. Powder \$4.80 lb. Will order modern guns for 10% over cost. Ye Ole Gun Shack, 413 W. Washington, 592-5430. 1-6-tfc

**HELP WANTED**  
**BABYSITTER** WANTED for one child, in my home. 592-9786 or 592-2012. 8-30-1tp

**RICHARDSON** Dairy Queen, Holliday, Texas now taking applications for part-time, fulltime help. Must be neat and willing to work. Good pay, company benefits; Chance for advancement. Apply in person to manager, Gracie Martin. No phone calls please. 6-28-tfc

**NEED \$\$\$?** Like people? World's largest Toy Party Co. now hiring demonstrators. No investment, no collecting, no delivering. Call 766-1258. 8-16-3tc

**NEED \$\$\$?** Like people? World's largest Toy Party Co. now hiring demonstrators. No investment, no collecting, no delivering. Call 766-1258. 8-16-3tc

**NEED \$\$\$?** Like people? World's largest Toy Party Co. now hiring demonstrators. No investment, no collecting, no delivering. Call 766-1258. 8-16-3tc

**NEED \$\$\$?** Like people? World's largest Toy Party Co. now hiring demonstrators. No investment, no collecting, no delivering. Call 766-1258. 8-16-3tc

**NEED \$\$\$?** Like people? World's largest Toy Party Co. now hiring demonstrators. No investment, no collecting, no delivering. Call 766-1258. 8-16-3tc

**NEED \$\$\$?** Like people? World's largest Toy Party Co. now hiring demonstrators. No investment, no collecting, no delivering. Call 766-1258. 8-16-3tc

**NEED \$\$\$?** Like people? World's largest Toy Party Co. now hiring demonstrators. No investment, no collecting, no delivering. Call 766-1258. 8-16-3tc

**NEED \$\$\$?** Like people? World's largest Toy Party Co. now hiring demonstrators. No investment, no collecting, no delivering. Call 766-1258. 8-16-3tc

**NEED \$\$\$?** Like people? World's largest Toy Party Co. now hiring demonstrators. No investment, no collecting, no delivering. Call 766-1258. 8-16-3tc

**NEED \$\$\$?** Like people? World's largest Toy Party Co. now hiring demonstrators. No investment, no collecting, no delivering. Call 766-1258. 8-16-3tc

**NEED \$\$\$?** Like people? World's largest Toy Party Co. now hiring demonstrators. No investment, no collecting, no delivering. Call 766-1258. 8-16-3tc

**NEED \$\$\$?** Like people? World's largest Toy Party Co. now hiring demonstrators. No investment, no collecting, no delivering. Call 766-1258. 8-16-3tc

**NEED \$\$\$?** Like people? World's largest Toy Party Co. now hiring demonstrators. No investment, no collecting, no delivering. Call 766-1258. 8-16-3tc

**NEED \$\$\$?** Like people? World's largest Toy Party Co. now hiring demonstrators. No investment, no collecting, no delivering. Call 766-1258. 8-16-3tc

**NEED \$\$\$?** Like people? World's largest Toy Party Co. now hiring demonstrators. No investment, no collecting, no delivering. Call 766-1258. 8-16-3tc

**NEED \$\$\$?** Like people? World's largest Toy Party Co. now hiring demonstrators. No investment, no collecting, no delivering. Call 766-1258. 8-16-3tc

**SEEKING** mature woman to care for five-year-old and two children after school and Saturdays in my home. Also light housekeeping. Must be able to drive. For appointment call 592-5585 after 8 p.m. 8-30-1tc

**HELP WANTED** at Dairy Queen, apply in person, preferably between 9-11 mornings. 3-8-tfc

**NOTICE**  
**FOUND** - Male basset hound in 400 block N. Victoria. 592-2240. 8-30-nc

**PUBLIC NOTICE**  
The City of Iowa Park, Texas, is accepting bids for a fire truck until 10:00 A.M. on Wednesday, September 19, 1984. Bid specifications may be received by contacting James Barrington, City Administrator, P.O. Box 190, Iowa Park, Texas 76367. Phone (817) 592-2131. Bids must be submitted to the same address by bid opening day and time. 8-30-2tc

**PUBLIC NOTICE**  
The City of Iowa Park, Texas, is receiving sealed bids to sell a used Emco trash truck. The truck may be viewed at the City Barn at 101 West Texas Street in Iowa Park. Bids should be submitted to James Barrington, City Administrator, P.O. Box 190, Iowa Park, Texas by 10:15 A.M. on Wednesday, September 19, 1984, at which time and place the bids will be publicly opened. 8-30-2tc

**YOUR OLD AIR CONDITIONER PROBABLY USES TWICE AS MUCH ELECTRICITY AS IT SHOULD.**  
**Carrier**  
**WE'LL BUY IT ANYWAY.**  
Today's best Carrier air conditioners are:  
• **TWICE AS EFFICIENT** as typical older-model air conditioners!  
• **QUALITY ENGINEERED**—you can't buy better!  
• the **BEST SELLING** air conditioner brand!  
Even our lowest priced Carrier units are *True High Efficiency* for big savings. And we'll buy your old air conditioner when you buy Carrier. Get a great deal now!  
**THE WEATHERMASTER™ IV**  
Carrier's most efficient heat pump line. S.E.E.R. ratings as high as 14.0. C.O.P. ratings as high as 3.6.  
**FREE ESTIMATES, CALL TODAY!**  
**IOWA PARK AIR CONDITIONING & HEATING**  
607 W. Bank, Iowa Park  
PHONE 592-5891  
Thank you for your business.  
Chuck, Paul, Frank and Russell  
Offer available from participating dealers to single-family home owners until Sept. 30, 1984. Void where prohibited.



# RAC holds mini Olympics

Approximately 40 young athletes participated recently in the Iowa Park Recreational Activities Center (RAC) Mini Olympics, with 17 of them taking home first and second place ribbons, and all participants receiving ribbons for their part in the festivities.

The youngsters, ranging in age from five to 12 and competing in four different age categories, competed in six individual events for the ribbons. First and second place finishers and the division in which they competed were as follows:

AGES 5 & 6	FIRST PLACE	SECOND PLACE
40-yd. dash	Eric Heidrich	Sara Kennedy
80-yd. dash	Eric Heidrich	Haley Alsop
120-yd. dash	Wes Hodges	Eric Heidrich
Softball throw	Sarah Kennedy	Eric Heidrich
Vertical jump	Bebecca Onstead	Haley Alsop
Running broad jump		

AGES 7 & 8	FIRST PLACE	SECOND PLACE
40-yd. dash	Brandon Onstead	Clint Witherspoon
80-yd. dash	Brandon Onstead	Clint Witherspoon
120-yd. dash	Michelle Onstead	Clay Parker
Softball throw	Clint Witherspoon	Clay Parker
Vertical jump	Clay Parker	Michelle Onstead
Running broad jump	Brandon Onstead	Clay Parker

AGES 9 & 10	FIRST PLACE	SECOND PLACE
40-yd. dash	James Hembree	Patric Kennedy,
		Greg Kasperek (tie)
80-yd. dash	Scott McNeely	James Hembree
120-yd. dash	Gregg Kasperek	Patric Kennedy
Softball throw	Scott McNeely	Jeff Franklin
Vertical jump	Scott McNeely	James Hembree,
		Greg Kasperek (tie)
Running broad jump	Patric Kennedy	Greg Kasperek

AGES 11 & 12	FIRST PLACE	SECOND PLACE
40-yd. dash	Denny Blevins	Chad Witherspoon
80-yd. dash	Denny Blevins	Stephanie Lozipone
120-yd. dash	Stephanie Lozipone	Chad Anderson
Softball throw	Chad Witherspoon	Chad Anderson
Vertical jump	Stephanie Lozipone	Chad Anderson
Running broad jump	Denny Blevins	

# AREA OIL & GAS NEWS

ABB Drilling Co. of Wichita Falls has revealed plans to drill a 1,850-ft. developmental well in Wichita's Regular Field. The operator has 200 acres leased, with drillsite in the Denton Survey, Sec. 4, Blk. 21, and has designated the venture as the No. 11 Perkins & Cullum "A". Drillsite is three miles northeast of Holliday. The well is 1,930 feet from the east line and 632 feet from the south line of the lease and 1,123 feet from the west line and 6,251 feet from the north line of the survey.

The same operator has filed for permit to drill the No. 4 Jo McVeigh "A", a 1,650-ft. developmental well five miles northeast of Holliday. Location is in an 85-acre lease in Wichita's Regular Field, Denton Survey, Sec. 4, Blk. 10. The well is 150 feet from the east line and 1,050 feet from the north line of the lease and 6,474 feet from the west line and 3,396 feet from the north line of the survey.

Three 2,000-ft. developmental wells are planned by Texaco Inc. of Midland at a drillsite three miles northeast of Electra. The locations are in a 368-acre lease in Wichita's Regular Field, DL&C Survey, A-713. Well's designations are the Nos. 118, 119, and 120 W.B. Honaker NCT-1. The No. 118 is 150 feet from the north line and 2,101 feet from the east line of the lease and 150 feet from the north line and 205 feet from the west line of the survey. The No. 119 is 150 feet from the north line and 1,261 feet from the east line of the lease and 150 feet from the north line and 1,045 feet from the west line of the survey. The No. 120 is 570 feet from the north line and 1,226 feet from the east line of the lease and 570 feet from the north line and 1,080 feet from the west line of the survey.

Smith Production Co. of Wichita Falls has filed first production figures on a new oil well in the Wichita Reg. Field. The No. 26-S, James K. Smith showed potential to make 18 barrels of oil. The operator has 188 acres leased, with drillsite in Wichita County's G.P. Meade, A-465 Survey, 3.5 miles east of Kamay. The well will produce from an interval 775 feet to 777 feet into the wellbore. Total drilling depth was 777 feet. The well is 1,180 feet from the east line and 2,420 feet from the south line of the lease and survey.

A new producer has been brought on line in Wichita County's Wichita Reg. Field, with Swanson & Schalk of Electra as the operator.

Located 6.5 miles southeast of Electra the well is in a 200-acre lease in the T&NORR Co. Survey, A-316. It is designated as the No. 75, S.B. Burnett "B".

The well indicated ability to pump at the rate of five barrels of oil per day. The well bottomed at 1,880 feet and will produce from a perforated interval, 1,801 to 1,810 feet into the hole. The well is 875 feet from the south line and 1,060 feet from the west line of the lease and survey.

At a location eight miles southeast of Electra, Tom Swanson of Electra has finaled a new oil well producer in Wichita County's Wichita Reg. Field.

The well is designated as the No. 65, Burnett "C", pumping oil at the rate of five barrels of oil per day. Location is in a 100-acre lease in the T&NORR, A-316 & 506. Bottomed at 1,654 feet, the well will produce from perforations 1,587 to 1,590-ft. into the hole. The well is 500 feet from the north line and 1,900 feet from the east line of the lease and survey.

Tom Swanson of Electra has filed first production figures on a new oil well in the K.M.A. Field. The No. 3 James Estate showed potential to make 10.15 barrels of oil a day.

The operator has 511 acres leased, with drillsite in Wichita County's H&TCRR Co., Sec. 16, Blk. 7 Survey, 15 miles south of Electra.

The well will produce from an interval 3,994 to 4,000 feet into the wellbore. Total drilling depth was 4,625 feet. The well is 3,527 feet from the east line & 2,269 feet from the north line of the lease and survey.

A new producer has been brought on line in Wichita County's Wichita Reg. Field, with Roy H. Smith Drilling Co. of Wichita Falls as the operator.

Located five miles north of Kamay the well is in a 260-acre lease in the H. George, A-454 Survey. It is designated as the No. 34, T.J. & J.L. Waggoner "C".

The well indicated ability to pump at the rate of ten barrels of oil. The well bottomed at 1,932 feet and will produce from a perforated interval to 1,426 to 1,424 feet into the hole. The well is 805 feet from the west line and 450 feet from the south line of the lease and survey.

A 2,000-ft. developmental well is planned by L&S Drilling Inc. of Wichita Falls at a drillsite four miles north of Kamay, Wichita County. The location is in a 60-acre lease in the H. George, A-454. Well's designation is the No. 14, T.J. Waggoner "EE". It is in the Wichita Reg. Field. The well is 872 feet from the north line and 150 feet from the west line of the lease and 310 feet from the north line and 150 feet from the west line of the survey.

A new producer has been brought on line in Wichita County's Wichita Reg. Field, with Landrum Petroleum Co. Inc. of Burkburnett as the operator.

Located seven miles southwest of Iowa Park the well is in a 105.4-acre lease in the CTRR No. 1, A-51 Survey. It is designated as the No. 23, Sparks-Mayfield.

The well indicated ability to pump at the rate of seven barrels of oil per day. The well bottomed at 1,278 feet and will produce from a perforated interval in the Wichita Reg. Field, 1,256 to 1,263 feet into the hole. The well is 600 feet from the west line and 600 feet from the south line of the lease and survey.

Wichita County's Wichita Reg. Field gained a new producer when F.T. Felty of Burkburnett completed the No. 13, S.B. Daniels five miles southeast of Burkburnett.

The well indicated ability to pump at the rate of 16 barrels of oil per day. It was taken to a 1,321-ft. bottom and will produce from a set of

perforations, 1,282 to 1,287 feet into the hole. The operation is in a 68-acre lease in the H. Hastie, A-99 Survey. The well is 600 feet from the west line and 715 feet from the north line of the lease and survey.

A Wichita Falls-based operator has staked location for the No. 2, Roller, a developmental well to be located five miles north of Wichita Falls. With projected total depth of 1,400 feet, the well is in a 140-acre lease in Wichita County's Wichita Reg. Field, C. Larbaletrier, A-370 Survey. The operator is Shangrila Oil Co. The well is 450 feet from the north line and 1,059 feet from the west line of the lease and 1,059 feet from the west line and 1,375 feet from the south line of the survey.

The same operator has revealed plans to drill a 1,400-ft. developmental well in the Wichita Reg. Field. The operator has 140 acres leased, with drillsite in Wichita County's C. Larbaletrier, A-370 Survey and has designated the venture as the No. 1, Roller. Drillsite is five miles north of Wichita Falls. The well is 450 feet from the north line and 759 feet from the west line of the lease and 759 feet from the west line and 1,375 feet from the south line of the survey.

A 3,300-ft. wildcat is planned by Texaco Inc. of Midland at a drillsite two miles northwest of Electra, Wichita County. The location is in a 420-acre lease in the GC&SFRR, A-359 Survey. Well's designation is the No. 231, Second B.A. Bywaters. It is 1,035 feet from the south line and 1,365 feet from the west line of the lease and 1,191 feet from the north line and 1,365 feet from the west line of the survey.

Bobby Schaaf Operating Inc. of Wichita Falls has filed for a permit to drill the No. 30, North Bear, a 1,500-ft. developmental well three miles southeast of Burkburnett. Location is in a 196-acre lease in Wichita County's BBB&CRR, A-29 Survey. The well is in the Wichita Reg. Field. The well is 1,800 feet from the west line and 450 feet from the north line of the lease and 1,800 feet from the west line and 2,185 feet from the south line of the survey.

## AYRES TIRE

592-5621

Expressway & Johnson Rd.

Cooper B.F. Goodrich Propane  
Used Tires Michelin Diesel  
Mechanical Work

Installation Rewiring Repair

### A & D Electric Company

Residential -- Commercial  
(Licensed and Bonded)  
24 Hour Service

Larry Ashford 817/592-9642 Herman Daymude 817/592-9044  
P.O. Box 91, Iowa Park, Texas 76367

Miller Roofing  
Call 855-5657  
NAIL OUR REPUTATION ON YOUR ROOF

## DON DIETRICHSON

"REMODELING ALL KINDS"  
• Garages • Fireplaces • Turbines • Additions  
• Patios • Carports • Storm Door & Windows

LICENSED BONDED  
592-2232 Free Estimates

## Bud Mercer Electric Co.

Residential & Commercial

BUD MERCER, Owner Phone 592-5413  
HARDIN HILL Phone 592-2666

Phone 692-8797

## Hill Electric

COMMERCIAL, RESIDENTIAL & INDUSTRIAL

HARLYN HILL 20 YEARS EXPERIENCE  
4111 BEARD WICHITA FALLS, TEXAS

## Family Boot & Shoe Repair

700 E. Highway  
592-2892

\* All types boot, shoe, saddle repair  
\* Custom made boots, belts, billfolds  
8 - 5:30 M-F 8:30 - 12 Sat.

## DAVIS BACKHOE

RANDY DAVIS 817-592-2027  
706 E. PARK IOWA PARK TEX 76367

Commercial Residential Industrial  
Oil Field

## Collins Painting Co.

33 Surrey  
Troy Collins 592-5104 Doug Collins 592-4789  
Furniture, home & lawn, refinishing  
Free pickup & delivery - Free estimates  
Bonded and Insured

## E&S Exxon

EXON • Tune-ups • Brakes  
• Front-end alignment  
592-4897 • Custom exhausts  
612 W. Highway • Computer balance

### Lawnmower Repair Service

## SINGLETON'S

505 W. Highway 592-2671

### Buzbee Roofing

Phone 569-3493 or 592-4846  
ALL WORK GUARANTEED

NEW AT  
NEW NEARLY  
NEW  
STANLEY  
HOME PRODUCTS  
410 Park West Center  
Ph. 592-9563

"MONEY WHEN YOU NEED IT"  
Loans on most anything of value  
SOUTHWEST SALES & LOANS  
4423 Phoe Rd. 692-1371

Shop without going shopping the Amway way  
Complete Product Line Fully Guaranteed  
Call 592-9778

### QUALITY HEATING & COOLING

SERVICE - INSTALLATION - MAINTENANCE  
COMMERCIAL - RESIDENTIAL  
(FRASER-JOHNSTON SALES & SERVICE)  
IOWA PARK, TEXAS  
592-4773

KENDELL J. HILL Owner ALAN HOUSE Field Engineer

### Southwest Bail Bonds

City, County & Credit Bonds  
24-Hour Service  
Confidential Assistance  
692-1391

Palm & Card Readings by Sister Mary  
Palm Readings.....\$5.  
Card Reading.....\$10.

Courtship, marriage, divorce, lovers quarrels. I will tell you what you want to know about your past, present and future. I will bring peace and happiness into your home. If you have husband, wife or sweetheart problems guaranteed to help you solve them.

3309 Kemp Blvd. Across the street from Kettle Restaurant  
7-11 pm 691-0762  
Open 7 days Wichita Falls, TX

### Stanley Ray Air Conditioning

Installation of Equipment & Duct Work  
Service All Brands Heating - Cooling

Rheem Specialists 592-9354 692-6308

## SHAW SPECIALS

'81 CADILLAC Fleetwood - Brougham. Low mileage, 2-door hardtop. One owner.

'81 CHEVY SILVERADO 305 V-8, Loaded. Black and silver, one owner, real sharp.

'81 MERC. LYNX S/W White, 4-speed, nice. Local owner.

'79 CHEVY BONANZA V-8, automatic. Headache rack and running boards. Local owner.

'80 CHEVY Z-28 T-top, blue. Loaded.

2 VW RABBITS 1980 and '75 models. Bargains!

Many Used & New Cars On Our Lot. Come See Us! See or call O.L. Tucker, Bobby Morgan or Ronnie Berry

### Shaw Motor Co.

Iowa Park 592-4106

King's Kids Christian Day Care & Preschool  
"Iowa Park's Finest For Parents Who Care"  
Ages 0 thru 10 Monday thru Friday  
6:45 a.m. to 6 p.m.  
300 W. Park 202 N. Jackson 592-4242

We service all makes of washers, dryers, freezers, refrigerators and window air conditioners.

## POSEY'S APPLIANCE SERVICE

208 James Ph. 592-5452 Iowa Park