

1984
Aug. 9

Cryovac to undergo another expansion

Contracts are to be signed for the fourth expansion project of the Cryovac plant, according to Frank Gossett, plant manager.

Total value of the project will be between \$6- and \$7-million, which includes addition of some 15,000 square feet and equipment on the east end of the structure.

Completion of the expansion is expected to be about the end of 1984, and equipment is expected to be in place around the middle of next year.

The expansion is expected to require an additional 25 personnel, according to Gossett. That would take the plant's workforce near the 500 mark.

Announcement of expansion financing approval by W.R. Grace, parent organization of Cryovac, was made earlier this week when a delegation of top corporate figures visited the local plant.

Heading the group, which flew into

Wichita Falls aboard a corporate jet, was Carl M. Graf, president of W.R. Grace, and Robert Samuels, I.C.G. group executive.

Receiving the construction contract is Electra Construction Co. of Electra. This marks the first construction work on the plant to be awarded to any firm other than Miller and Holmes Const. Co.

First expansion was in 1977, followed by another in 1980 and again in 1982.



IT FINALLY RAINED - Iowa Park received rain Tuesday afternoon, but it wasn't general. Measurements ranged from a trace to over half an inch. But the problem was, it

was primarily between Johnson Road on the west and Rifle Range Road on the east. Iowa Park's official measurement was only .2 of an inch.

IOWA PARK LEADER 25 Cents

Vol. 15, No. 47 IOWA PARK, WICHITA COUNTY, TEXAS 76367 THURSDAY, AUGUST 9, 1984

City, school meetings scheduled next week

Regularly-scheduled meetings of the city council and school board will be held next week.

The city meeting will begin at 7 p.m. Monday in council chambers and the trustees are to meet at 7:30 p.m. Tuesday in the administration building.

On the city agenda will be the setting of dates to hold interviews with applicants seeking the chief of police job, which has been vacant about two months.

Two resolutions will be considered. One concerns a road working agreement with the county and the other is a contract for service by Latah Ambulance.

The second of two required public hearings will be held to receive suggestions on how next year's federal revenue sharing funds might be spent.

Aldermen are to consider amending an ordinance to establish building permit fees.

A personal appearance has been requested by Danny Clack, of Triangle Ranch, to request purchasing raw water from Buffalo Lake to supplement stock tank water.

Also on the agenda is a discussion about railroad crossings and the condition of streets at the crossings.

SCHOOL BOARD

While a portion of Tuesday's trustee meeting will be used for discussion of the new budget, no action is expected to be taken. A public hearing and action on the tax rate has been set Aug. 20.

The board is to act on bids for the purchase of gasoline, milk, ice cream and bread. Action is also to be taken on the free lunch program, an annual requirement.

Another annual requirement is for the board to certify the tax roll, provided by the Wichita County Tax Appraisal District.

School supply lists for elementary students were released this week by principals, as the Aug. 27 start of classes nears.

Also new hours students will attend schools have been finalized.

Starting time for all classes at all campuses will be 8:10 a.m. Students at Kidwell will be released in the afternoon at 3, Bradford students at 3:35 and junior high and high school students at 3:45.

The varied ending times in the afternoon is to allow an even flow of buses to pick up the students at the various campuses. Those riding buses in the morning should be ready about 10 minutes earlier than last year, Supt. Harold Cowley said.

The change in starting time for school was required when all schools adopted a seven-period schedule, instead of the usual six periods.

Teachers are to report to class by 8 a.m. and leave at 4 p.m. Principals will be at the schools from 7:30 a.m. until 4:30 p.m., while secretaries will work from 7:45 a.m. to 4:15 p.m.

Elementary students who have not pre-registered should register Aug. 15 or 16 at their respective school. Immunization records are required for registration.

Junior high students not registered should be at the junior high Aug. 16 or 17. Immunization records are also required.

Any student not pre-registered for high school classes should do so immediately, according to Bob Dawson, principal.

Parents of any children who needs to be screened for kindergarten this year should contact Kidwell Elementary. The telephone number is 592-4322.

SCHOOL SUPPLIES

KINDERGARTEN

- 3 No. 2 pencils
- Box crayons, 8 count (regular)
- Box facial tissue (200 count)
- Rest mat (plastic, heavy towel or throw rug, no larger than 24x46)
- Snack charge - \$10 per semester.

FIRST GRADE

- 1 large pencil eraser
- 1 pair pointed scissors
- 6 No. 2 pencils, regular
- 2 boxes crayons, 8 count
- 1 watercolor set with good brush
- 2 plastic bottles, 4 oz., school glue
- 1 glue stick
- 1 box facial tissue (200 count)
- 1 school box

SECOND GRADE

- 4 No. 2 pencils
- 1 large eraser
- 1 8-oz. bottle school glue
- 1 box regular crayons (24 count)
- 1 pair pointed scissors
- 1 box facial tissue (200 count)
- 1 school box
- 1 box watercolors
- 1 red pencil
- 1 package notebook paper (wide ruled)
- 2 folders with pockets, no brads

THIRD GRADE

- 2 red pens
- 2 No. 2 pencils
- 1 pkg. looseleaf notebook paper (wide ruled)
- 1 box crayons (24 count)
- 1 pair pointed scissors
- 8 folders with pockets and brads
- 1 Spiral notebook, 8x10
- 1 box facial tissue (200 count)
- 1 wooden ruler with inches and metric

- 1 large eraser
- 1 bottle school glue, 4 oz.
- 1 school box
- 2 cursive writing tablets
- 1 tote bag

FOURTH GRADE

- 4 No. 2 pencils
- 1 box crayons (24 count)
- 1 plastic bottle school glue, 4 oz.
- 1 ruler, 12-inch
- 1 pkg. looseleaf notebook paper (wide ruled)
- 1 box map colors
- 1 set magic markers, fine tip
- 1 pair pointed scissors
- 6 folders with brads and pockets
- 1 box facial tissue (200 count)
- 1 red grading pencil
- 1 small tote bag
- 1 small zipper bag for pencils
- 2 Spiral notebooks

FIFTH GRADE

- 2 No. 2 pencils
- 1 plastic bottle school glue, large
- 1 ruler, 12-inch, metric and inch
- 1 package looseleaf notebook paper, wide ruled
- 1 box map colors, 12-count or larger
- 1 pair pointed scissors
- 1 Spiral notebook
- 1 package dividers with vinyl tabs
- 8 folders with brads and pockets
- 1 folder with rings
- 1 box facial tissue (200 count)
- 2 red grading pencils
- 1 plastic zipper pencil bag
- 1 tote bag (optional)
- 1 package medium weight typing paper
- 1 box crayons (24 count)

All items used by elementary students are to be marked for identification, according to the principals.

Junior high and high school students will receive their lists of supplies needed once they report to classes.

Building permits higher in July

July's building permit value amounted to 25 percent of the year's total.

Permits totaled \$122,754 during the last month, bringing the year's sum to \$446,691. July was slightly over June's \$99,922.

Permits issued by city hall during July included:

- Ray Townsend, 311 E. Garden, new home, \$22,000;
- Joe Blizzard, 117 West View, addition, \$2,500;
- Stephen L. Anderson, 602 E. Alameda, mobile home, \$17,000;
- Rip Smith, 1509 Quail Valley, new

- home, \$40,000;
- Herman Escue, 412 S. Bond, addition, \$3,500;
- Sandra Lehman, 102 E. Garden, addition, \$15,000;
- Jim Lawder, 608 E. Highway, alteration, \$800;
- Mike McCarty, 108 James, addition, \$500;
- Robert W. Benson, 702 S. Bond, addition, \$6,000;
- Debra Neel, 110 W. Alameda, addition, \$2,500;
- Johnny Huff, 203 W. Diamond, addition, \$10,954;
- Wm. E. Thompson, 616 W. Louisa, carport, \$2,000.

News in Brief

July sales tax declines here

Iowa Park's sales tax for July amounted to \$12,531.44, down from a year ago but for the year, still a 2.17 percent increase.

Figures released by the state comptroller's office indicate Iowa

Park has received \$82,720.75 through the first seven-month period, as compared to \$80,961.06 last year.

The July sales tax in 1983 amounted to \$13,414.44.

Choir Boosters to wash cars Saturday

Iowa Park Choir Booster Club will hold a car wash from 10 a.m. to 4

p.m. Saturday at the Texaco Station on the corner of Kemp and Kell in Wichita Falls.

Members of the organization are also to meet at 7 this evening in the high school music room.

Weather Report

Weather reports are officially compiled for Iowa Park at the Texas Experiment Station, southeast of town.

Rainfall for week.....	.20
Total for month.....	.20
Total for year.....	9.18
Total for last year.....	16.30

Junior High band rehearsals set

All junior high band students are to report at 9 a.m. Monday at the junior high band hall, with their instruments, according to Ed Hefti, director.

Rehearsals will be held from 8:30 to 11:30 a.m. Tuesday through Friday.



REPLACING LINE - An indication of why the city is hoping for a \$100,000 matching grant from the federal government to replace old water lines was made evident this week. After patching a line at Bank and Victoria three times recently, workers finally had to dig across the pavement to lay a new section of line that couldn't be patched again.

Police recover vehicle

Police got more than they figured early Saturday morning when they stopped a vehicle on suspicion of intoxication.

During a routine record check with the Department of Public Safety, it was determined the driver had stolen the vehicle from Lubbock.

Officers stopped a pickup at 2:26 a.m. near the overpass at Bell Road and the expressway. The pickup had a dealer's tag, and it was determined the driver was using it without authorization.

Lester Alan Gunter, 37, was arrested on a charge of driving while intoxicated. His passenger Jerry Leon Creek, 24, was charged with public intoxication. The pickup was impounded and turned over to an employee of Messer Ford of Lubbock the following day.

While being held in the local jail, Gunter complained of chest pains and said he might be having a heart attack. He was transported by ambulance to Bethania Hospital. An officer stood guard until he was turned over to the sheriff's department at 7:38 a.m.

Creek was released after posting \$49 bond. Gunter remains in county jail.

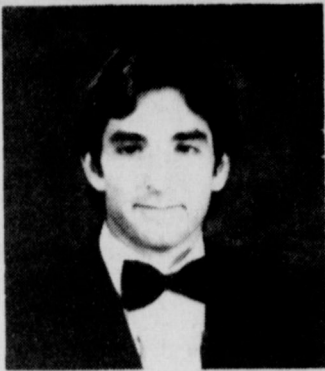
Another DWI case was recorded on police records at 9:48 p.m.

A citizen reported an erratic driver on East Highway, and the vehicle was stopped by a police unit at Yosemite.

June Green Woodard, 58, of Altus was arrested and turned over to the county sheriff's office, charged with DWI.

Bernard Blair told police Monday someone had taken \$74 worth of items from his home at 902 E. Highway. Listed as missing were a 50-foot garden hose, sprinkler and two-drawer chest.

Obituaries



Darin Coffman

Services were held Monday afternoon at First Baptist Church for Darin Coffman, 18. Rev. Hal Farnsworth, pastor, officiated.

Burial was in Highland Cemetery under direction of Tanner-Aulds Funeral Home.

Coffman, who was graduated in May from Iowa Park High School, died as result of injuries sustained when his pickup was struck at the intersection of Grant and Kell in Wichita Falls, about 11 p.m. Friday. A charge of involuntary manslaughter has been filed against the driver of the other vehicle, Donald Steven Stone, 18, of Burkburnett.

Coffman was born Sept. 12, 1965 in Wichita Falls. He had enrolled as a freshman at Midwestern State Univ. In high school, he played football and was a member of the FFA. He was also a member of Wichita County Young Farmers.

Survivors include his parents, Mr. and Mrs. Luke Coffman, who live on Rt. 1 out of Wichita Falls; a brother, Kevin of Iowa Park; his paternal grandfather, Grover Coffman of Bomarton and his maternal grandmother, Bertha Whitten of Seymour.

Pallbearers were Chris Reeves, Rowdy Robertson, Mack Weaver, Jeff Brookshire, Dale Hayley and Derek Crumpton. Honorary pallbearers were the Wichita County Young Farmers, the Class of 1984 and the 1983 Hawk football team.

John Sammons

Last rites for John Sammons, 66, were held Sunday afternoon at the First Baptist Church in Haskell. Mike Strawn, minister of Electra Church of Christ, officiated, and burial was in Willow Cemetery.

He was born July 15, 1918 in Throckmorton and died Aug. 2 in Larose, La.

A veteran of World War II, he was a retired employee of Gulf Oil Co. He married May Yates July 6, 1967 in Houma, La.

Survivors include his wife; two sons, Kenneth of Marrero, La., and Don of Electra; a daughter, Connie Ellerbe of Larose; a stepdaughter, Rossilyn Perry of Iowa Park; a stepson, John Yates of Wichita Falls; two sisters, Maurine Gregor of San Antonio and Emma Irby of Iowa Park; two brothers, Howell of Slaton and Glen of Haskell, and 12 grandchildren.

Nettie Lowrance

Funeral services were held Tuesday afternoon at First Presbyterian Church for Nettie Lowrance, 75. Officiating were Rev. Earle Crawford, pastor emeritus of First Presbyterian Church of Wichita Falls, Rev. Bob Beck, Baptist minister, and Rev. Betty Meadows, pastor of First Presbyterian Church.

Burial was in Highland Cemetery under direction of Tanner-Aulds Funeral Home.

Born Nov. 4, 1908 in Bryan County, Okla., she died Aug. 4 in a Wichita Falls hospital.

A longtime resident of Iowa Park, she and her husband were married May 28, 1931. She was a former member of the 23 Study Club, Home Demonstration Club, the World War I Auxiliary Barracks 387 in Wichita Falls, and the First Presbyterian Church.

Survivors include her husband, Gale; three sons, Robert Bruce of New York, Linton Gale of Iowa Park and Gene Leroy of Chico; a brother, J.W. Martin of Wichita Falls; four sisters, Audrey Knight of Bokchito, Okla., Iva Jo Shaver and Bonnie Prue Grisham, both of Fort Worth, and Verda Ogle of Iowa Park; a grandchild and five great-grandchildren.

Kenneth Ray Scott Sr.

Funeral services were held Monday morning at Tanner-Aulds Funeral Home for Kenneth Ray Scott Sr., 51, with Rev. Hal Farnsworth, pastor of First Baptist Church, officiating. Burial was in Highland Cemetery.

Born Nov. 17, 1932 in Iowa Park, he died Friday in a Tecumseh, Okla., hospital. He was a retired diesel mechanic.

Survivors include his parents, Mr. and Mrs. Virgil Scott of Iowa Park; two sons, Kenneth Ray Jr. of Odessa and Kent of Shawnee, Okla.; a daughter, Kenya Hampton of Tecumseh; a sister, Kay Schaffer of Burkburnett, and four grandchildren.

Marty Clyde Pennycuff

Funeral services were held Thursday afternoon at Moorehead Funeral Home in Comanche, Okla. for Marty Clyde Pennycuff. Rev. Ben Scott and Rev. Walter Snider officiated and burial was in the Loco, Okla., Cemetery.

He was the infant son of Mr. and Mrs. David Pennycuff of Comanche. He died Monday in a Lawton hospital.

Survivors include two sisters, Kristal Joann and Tina Louise, both of Comanche; two stepbrothers, Richard LaWayne and William David, both of Biloxi, Miss.; grandmothers, Ruby Cross of Loco and Bonnie Pennycuff of Iowa Park; and grandfather, J.D. Pennycuff of Electra.

John Cassidy

John Cassidy, 88, was buried in Frederick Memorial Cemetery following services Sunday afternoon at First United Methodist Church in Frederick, Okla. Rev. Don Price officiated.

He was born Feb. 3, 1896 in Mill Shoals, Ill., and died Friday at his home after a lengthy illness. He married Opal Marie Newsome Nov. 18, 1923 at Altus.

A veteran of World War I, he was a retired farmer, and a member of the American Legion, 90th Division, 500 Club and First United Methodist Church.

Survivors include his wife; a daughter, Rose Marie Reynolds of Iowa Park; a son, John Jr. of Tulsa; a brother, Ed of Frederick, and five grandchildren.

CARD OF THANKS

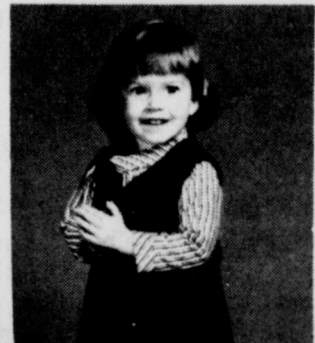
We would like to express our heartfelt appreciation for the efforts of the EMT's of Iowa Park Volunteer Fire Dept., and to all the people for their kindness and sympathy during our period of grief.

The Tabor Family
Jim, Jim and Josie

CARD OF THANKS

I want to thank each and every one of our friends for their prayers, flowers, food and other gifts sent to us during my surgery and stay in the hospital. This comes with much love and heartfelt thanks to each of you.

Annabel & George
Hammonds & Family



Happy 16th Birthday,
**Kay Donne
Cockburn**

Dr. James D. Edwards

OPTOMETRIST

Wishes to announce he now has

Tinted Soft Contact Lenses

available in four natural,
iris-enhancing colors:

Green, Aqua, Blue and Amber.

For information **592-4992**
or Appointment, Call: **103 W. Park**

MEMBER AMERICAN OPTOMETRIC ASS'N.

\$177,000 raised for Rehab Center

A total of \$177,000 was raised at the recent Crippled Children's Livestock Auction benefiting North Texas Rehab Center, Wichita Falls. Cash donations continue to come in with a projected amount of \$190,000 for this 16th annual auction.

Nils Richardson, executive director; Joe Parker, general auction chairman, and committee members have expressed their appreciation to ranchers, farmers and businessmen who donated to the auction. They also commended the buyers who were extra generous in their bids at the merchandise and livestock sales.

The amount raised at closing time is \$10,000 ahead of the same time last year, Parker said. Livestock brought \$45,500; merchandise, \$68,000 (\$10,000 was silent auction proceeds); and \$62,000 in cash donations. The 1983 final total was \$183,125. The auction is the largest fund raising event for the Rehab Center.

Livestock donations and merchandise were greater than last year also. Several new ideas were featured for this year's two-day event; a silent auction, music by the Light Crust Doughboys, a golf tournament and a lobster bake.

CARD OF THANKS

We want to express our sincere thanks to all who have called or come by to see Donald while he was in the hospital and also since he's come home, and especially to all the churches who have offered prayers for us.

Also many thanks to the Ladies of Northside Baptist Church of Iowa Park for the food they brought in.

The Donald Hallum Family

CARD OF THANKS

We want to express our gratitude to those who gave us such comfort in the loss of our beloved husband, father, son, grandfather, and brother.

Thanks so much for the flowers, food, memorials, cards, visits, telephone calls, and most comforting words of sympathy. May God bless each of you.

The Bobby Bradford Family
and A.M. Bradford Family

CARD OF THANKS

How can I say thanks to my church family, relatives and friends who have given so much of themselves through their prayers, flowers, cards and visits to express their concern for me during my stay in the hospital and since I returned home? There is no way to adequately express my gratitude, but I want you to know that I do "thank you a lot."

Leota Weseman

CARD OF THANKS

My heart overflows with thanksgiving and appreciation for the kindness and love of friends so unselfishly shown in a myriad of ways during recent weeks. My prayer is that I can always find a thankful response to things of this kind and reflect my Lord as he enables me to render service to others. God bless each of you abundantly.

Olive Blalock

"Good things, when short, are twice as good."
Baltasar Gracian

"Give every man thy ear, but few thy voice."
Shakespeare



SHOWER SELECTIONS FOR

JAYNA EVANS
and
RANDY CASE

RHONDA WHEELER
and
MIKE HULSE

SELENA CANADA
and
RUSSELL HAYLEY

Parkway

True Value
HARDWARE
FURNITURE
HARDWARE

592-4681 592-5512

**LIE DOWN ON A
Somma[®]
AMERICA'S NEW MATTRESS**



**THEN LIE DOWN ON
ANY OTHER MATTRESS**

PARKWAY

FURNITURE HARDWARE

592-5512 200-206 West Bank 592-4681

COMPARE
COMFORT
LUXURIOSNESS
WEIGHT
PORTABILITY
CONSTRUCTION
WARRANTY

WAL-MART PHARMACY

592-4157

500 West Highway

BONNIE — PATTY
& LEAH



JEREL KERBY
Pharmacist

Riopan[®]
magaldrate

ANTACID
SUSPENSION
LOW SODIUM

\$2.89

12 fl oz

ANTACID/ANTI-GAS

Riopan
Plus[®]

magaldrate
and
SIMETHICONE
LOW SODIUM

\$3.09

12 fl oz

Chlor-Trimeton[®]
DECONGESTANT

Allergy/Sinus
Congestion Tablets

\$2.19

24 TABLETS

Chlor-Trimeton[®]
DECONGESTANT

Allergy/Sinus
Congestion Tablets

\$2.19

24 TABLETS

aids healing without stinging

NEOSPORIN[®] OINTMENT

POLYBACIN & SACTRACIN-NEOMYCIN
TOPICAL ANTIBIOTICS

\$2.87

10 oz.

SUMMER
CLEARANCE

LOTS OF ODDS & ENDS

- CONTAINERS
- PRESERVE JARS
- WATERING CANS
- BIRD HOUSES
- SALT BOX
- GREEN PLANTS
6", 8" and 10"

Difffenbachia, Zebra, Croton, Nephthyttis,
Schefflera, Peace Lily, Chinese Evergreen
& Peperromia

50% OFF

DRIED &
SILK
ARRANGE-
MENTS

20% TO
50% OFF

GOOD ASSORTMENT
CRYSTAL

50% OFF

- ✓ No Delivery
- ✓ No Call-Ins
- ✓ Cash & Carry on
Green Plants

Iowa Park Florists

8:30 - 5 Weekdays
8:30 - 12 Saturday
114 W. Park
592-2141




As I See It....

By BOB HAMILTON



Remember those gleaming reports that came out of Austin back during the special legislative session? The ones that told about how much new money would be coming to the school districts?

Sounded great, didn't it? Well, it's so great, that if the Iowa Park school tax is increased five cents, we'll still draw down the carryover something like \$500,000.

Sounds great, doesn't it? The entire board met in a budget session last Thursday and was presented all the income and expenditure figures. That session lasted from 5:30 to about 10 in the evening. Then the budget committee and department heads met about the same starting time Tuesday, and left the building at 1:45 yesterday morning.

That's great, isn't it? That Tuesday session resulted in the cutting of some \$60,000. That's taking just about every department to the bone, leaving about enough meat to carry on school through the year.

The preliminary budget calls for expenditures of \$4,920,652. That includes \$286,000 in state-mandated salary increases.

There wouldn't be much problem, with the salary increases and all, if it weren't for the formula Iowa Park must operate under. Such things as using a two-year-old district valuation and we just lost more than \$25-million in values. And the fact we're not small enough to qualify for a small district adjustment, and not having enough "experienced teachers" to share in an entitlement.

"What we're working on now is more where we'll be two and three years from now. We've got the direction from state and will make it work. What we want from you is help," Supt. Harold Cowley told the board.

He explained that costs were going to get higher over the next three

years. This is not only because of the salary increases, but because the state's share in those salaries will be decreasing at the same time.

While the district is in good financial condition now, with approximately \$1,280,790 carryover, it won't be that way. For example, if the taxes were raised from 43 cents, which we paid last year, to 57 cents, the state average, next year, we'd still have a deficit of \$481,161.

That's outstanding, right?

Community gets state exposure

Newspaper readers at San Antonio, and possibly several other areas of the state, now know some history about Iowa Park.

Jack Maguire, whose syndicated column "Talk of Texas" appeared in Sunday's San Antonio Light, wrote about Iowa Park under a topic heading of "What's In A Name?". A copy of the article was provided to the Leader by Mrs. Stanley Williamson.

The article stated: "Iowa Park, Wichita County, got its name from two different sources.

"When it was established in 1888 by the Fort Worth & Denver Railway, most of its first settlers were from Iowa. Because the townsites included a number of recreational areas, they decided to name the place Iowa Park."

With Tuesday's cutting of the budget requests, that leave next year's expenses at \$4,860,652. All revenue, not including local taxes, is estimated at \$3,262,157. That leaves \$1,598,495 that will have to come from taxes and the carryover.

Sound bleak? Then consider the Decatur district, where taxes will be raised from 61-cents to a figure they're working with now, \$1.10, but not yet adopted.

Great thinking by the legislature, right?

Wrong, and I think the voters will remember in future elections which of their elected delegates voted for this messed up "education reform" package.

I sure will.

Two locals named to Dean's Roll

Two students from the Iowa Park area are among 626 students listed to the dean's Honor Roll at Abilene Christian Univ. for the 1984 spring semester.

To be listed on the Dean's Honor Roll, a student must be enrolled for at least 12 semester hours for a grade and earn a 3.5 grade point average or higher.

Area students listed are Kent O'Neal Roberts, son of Mr. and Mrs. Ross O'Neal Roberts of Route 2, and Kevin Hobert Robnett, son of Mr. and Mrs. Virgil David Robnett of 602 West Coleman.

IOWA PARK LEADER

Bob Hamilton Editor-Publisher
Dolores Hamilton Assistant Publisher
Olive Blalock Reporter
Kevin Hamilton Reporter

The IOWA PARK LEADER is published every Thursday. Offices are located at 112 W. Cash, Iowa Park, Texas, 76367. Telephone: 592-4431. Second class Postage Paid at Iowa Park, Texas, 76367. Subscription rates are \$7 per year in Wichita and Archer Counties; \$9 elsewhere in Texas and Oklahoma; \$11 anywhere else in the United States. Classified advertising rates are 16 cents per word first insertion, 8 cents per word thereafter. Any erroneous reflection upon the character, standing or reputation of any person, firm or corporation which may appear in the columns of this newspaper will be corrected upon being brought to the attention of the publisher.



Letter to the Editor

SUPPORT CAPT. DEAN

As concerned citizens of the City of Iowa Park, we feel that it is time the Mayor, City Council and City Administrator unanimously appoint Capt. Robert Dean as Chief of Police with the proper authority to execute the duties of that office.

Capt. Dean is qualified, dedicated and called upon when others fail. He has been Acting Chief of Police at least three times in as many years. Isn't it about time that a local taxpayer, who is qualified, be appointed Chief of Police.

Mr. & Mrs. Charlie Sells



— We invite you to shop and compare our

INTEREST RATES FOR SAVINGS

(Applicable August 8 thru August 14)

Account	Interest (compounded daily)	Yield
91 Days	10.30%	10.848%
182 Days	10.85%	11.459%
7-31 Days	8.75%	9.143%
New Money Market Accounts	8.95% (simple interest)	
Super NOW Accounts	7.60% (simple interest)	
1 1/2 Years, less than 2 1/2 Years	10.80%	11.403%
2 1/2 Years, less than 3 1/2 Years	10.85%	11.459%
I.R.A.	10.85%	11.459%
1 Year Certificate of Deposit	11.00%	11.626%



IOWA PARK, TEXAS

Locally Owned

IRS Tax Tips

BARTERING CARRIES TAX RESPONSIBILITIES

Bartering, or the exchange of goods or services for goods or services of equal value, usually called bartering, is an American tradition that carries federal income tax responsibilities, the Internal Revenue

Service said.

Income from any source must be reported, according to the IRS, and, in the case of bartering, the tax is computed on the fair market value of the goods or services exchanged.

For example, an auto mechanic repairs a carpenter's truck in

exchange for repair work performed by the carpenter in the auto mechanic's exchange for repair work performed by the carpenter in the auto mechanic's office. Both individuals must report the services received as income at fair market value. However, both may claim the fair market value of the repair work done as a business expense on their income tax returns.

Taxpayers who have not reported income gained from bartering can correct their income tax returns

NOTICE TO SUBSCRIBERS

This is only a notice to those listed below that their subscriptions will expire on the published date. You don't owe us a thing if your name is on the list. It only means that what you've paid for is running out. To renew your subscription, please fill out the form below, as it appears on your paper's mailing label, please. Indicate whether this is a renewal or new subscription. Enclose your check or money order, as all subscriptions must be paid in advance.

Subscriptions due to expire

August 15, 1984

PLEASE DISREGARD IF ALREADY PAID

A.....	Faye Hobbs	IP	P.....	Edward Page	IP
Lloyd Alexander	WF	Mrs. George Hoge	IP	James Pappas	IP
Richard Altie	IP	Lorraine Hoing	Hol.	Larry Parks	IP
Charles C. Anderson	IP	Lloyd W. Holmes	IP	W.G. Partney	IP
Mrs. Tommy Ashton	IP	Vern Horsky	IP	Jerry B. Paschall	IP
Louise Ault	IP	Calvin Huff	IP	Dennis Patterson	IP
		J.C. Huff	IP	Mark Patterson	IP
B.....	James Hunter	IP	Aletha Penn	IP	
L.F. Balch	IP	Erna Hutchins	IP	Bob Perkins	IP
Loys D. Barbour	IP			Deena Perry	Waukomis
Ronald Barnes	IP	L.....		Richard Phillips	IP
Michael Bauer	Mt. Juliet	Ben English	IP	Ray Pierce	IP
G.K. Beall	IP			C.B. Posey	IP
Elizabeth Beck	WF	J.....		Mrs. Carl Price	IP
B.J. Binion	IP	Opal Jackson	IP	Sherri Pryor	WF
Jason Blair	IP	Estel Jameson	IP		
A.L. Bohannon	IP	Alvin Jeter	IP	Q.....	
George Boles	IP	Phil Johnson	IP	Quality-Plus Auto & Truck Elec.	
Barbra Boyd	Spiro	Sarah Johnson	Mt. Sterling	R.....	
Fred Botkin	IP	Donald Ray Jones	IP	John Rains	IP
Beatrice Brookshire	IP	Earl Jones	IP	Alice Read	IP
G.L. Brookshire	IP			Eddie Richardson	IP
Floyd Browning	IP	K.....		James W. Riddlehuber	IP
Kenneth Burks	IP	Tim Kasper	IP	J.J. Riley	IP
Frank Burns	IP	Pat Kennedy	IP	Jack Rogers	WF
Mrs. D.C. Burrell	IP	Carl R. Kent	IP	Mark Ruskin	IP
		Fred Krum	IP	William Russell	IP
C.....	John C. Kuykendall	Hol.		F.E. Ruth	IP
H.J. Cannon	IP	Mark Kyle	IP	S.....	
Vernon Cannon	WF			E.L. Sasser	IP
Brian Catlin	Ft. Worth	J.....		Kerry Scobee	IP
J.A. Caulfield	IP	Joe Laird	IP	R.B. Scobee	IP
Robert Chesher	Hol.	Robert Lamb	IP	Charlie Sells	IP
Dr. Gordon G. Clark	IP	Gracie Lee	IP	Mrs. L. Shelton	IP
Hester Clark	IP	Larry Leitner	Waco	Andy Sitgreaves	IP
Ray D. Cook	IP	Donald Littig	IP	Joe Slack	WF
Sonny Cook	IP	Lone Star Gas Co.	IP	Red Slack	Bowie
Johnny Cooley	WF	Louis Jewelry	IP	Frank Smith	IP
Raymond Cope	IP	Robert Luney	IP	David Springer	IP
Gary Crawford	IP	Charles Lyons	IP	Dan Spruiell	IP
Larry Culpher	IP			Doug Spruiell	IP
R.D. Cunningham	San Antonio	M.....		Garry Stamm	IP
		Carol Magee	WF	Pauline Steele	IP
D.....	N.H. Marcum	WF		A.B. Stermer	IP
O.D. Davenport	IP	Gordon Martin	IP	Milton Stevenson	IP
Don Davis	IP	Joanna Matthews	IP	Nora Stoker	WF
George O. Davis	IP	Mrs. Virginia May	IP	E.W. Sumrall	IP
Mrs. Jo Ann Davis	IP	Jeri McCann	IP	T.....	
Lynn Davis	Aurora	Hunt McKee	IP	Talley Insurance	Hol.
Martha Dillard	IP	Michael McKnight	IP	Dub Taylor	IP
L.A. Drissel	IP	J.L. Meisel	IP	George Taylor	IP
Paul Duffey	IP	Jim Bob Merrick	IP	Mrs. Evie Teal	IP
Glenn O. Durham	IP	C.E. Metz	IP	Hubert C. Thompson	IP
		Joe Minton	IP	Larry Thompson	IP
E.....	Mrs. J.A. Mixon	IP		Riley M. Thompson	IP
T.D. Eaton	IP	Ann Moore	IP	Cornelia Todd	IP
Gratan Eiben	IP	James E. Moore	Roanoke	Ken Turman	IP
E.P. Evans	IP	Don Moser	IP	Willie Tyler	Kamay
		Birthe Myers	IP	V.....	
F.....	L.C. Fields	IP		Lee Vaughan	IP
L.C. Fields	IP	Richard Noe	WF	Thomas E. Venhaus	IP
First Christian Church	IP	Robert Norris	Demorest	Jimmie Voyles	IP
Methodist Church	IP			W.....	
W.H. Fuller	IP	G.....		Madline Waddell	IP
		Pat Gaines	Waurika	Wayne Ward	WF
H.....		Gene Gant	IP	John Weaver	IP
Larry Hall	IP	Mrs. Ruth Gard	IP	John Webb	IP
Joe Don Hamilton	WF	Beulah Garner	IP	Phillip Welch	IP
Joe C. Harris	IP	Taylor George	IP	Phillip Welch	IP
Robert O. Harper	IP	Billy Clark Gilmore	IP	G.O. Wester	IP
W.F. Hastings	IP	Lyndell Glenn	WF	Richard Wheeler	IP
Arvil Hatfield	IP	James F. Gossett	IP	Mrs. E.H. White	IP
Billy Helms	IP	Jimmy Green	IP	Joni Whitis	IP
Max Henderson	IP	Gordon Griffith	IP	Marion L. Wilkins	IP
Nancy Henderson	IP	Jerry Guyton	IP	Gerline Williams	IP
Carlton Hicks	IP			John Wilson	WF
Ray Hicks	IP			Gary Wood	IP
				Mrs. Rollins Woodall	IP
				Hugh Woody	IP
				Kerry Wooten	IP
				David Wright	IP
				P.L. Wright	IP
				W.T. Wright	IP
				Y.....	
				Mike Yancey	Lakeside City
				Mrs. N.A. Yarbrough	IP
				Bural M. Yoder	IP
				Wichita and Archer Counties.....	\$7.00
				Elsewhere in Texas & Oklahoma.....	\$9.00
				Elsewhere in the United States.....	\$11.00
				To: Iowa Park Leader	
				Box 430	
				Iowa Park, Tex.	
				76367	
				PLEASE CHECK ONE:	
				() New	
				() Renewal	
				() Change of Address Only	
				\$ _____ Enclosed	
				(Name)	
				(Address, P. O. Box, or Route No.)	
				(City) (State) (Zip Code)	

Cook of the Week



Mrs. John A. Rains

Katie (Mrs. John A.) Rains, this week's cook, is a bundle of energy despite her hectic work schedule as directory supervisor for Southwestern Bell's Wichita Falls office. A 20-year resident of Iowa Park, she still takes the time to prepare hearty meals for her husband, a Texas Electric Service Co. employee, and daughter, Jana, an eighth grader at Iowa Park Junior High School.

Originally from Walters, Okla., Mrs. Rains learned to cook as a fourth grader. She lists the Lemon Lime Refrigerator Cake as her daughter's favorite, and the Lemon Chess Pie as her husband's consistent choice.

The family resides at 817 N. Park.

LEMON CHESS PIE

Mix:
2 cups sugar
1 tablespoon flour
1 tablespoon cornmeal
Add:
4 unbeaten eggs
1/4 cup butter melted
1/4 cup milk
1/4 cup lemon juice
Pour into pie crust and bake at 350 degrees until top is golden brown.

NEVER FAIL PIE CRUST

3 cups flour
1 1/4 cup shortening
1 tsp. salt
1 egg well beaten
5 tablespoons water
1 tablespoon vinegar
Cut shortening into flour and salt. Set aside. Combine eggs, water, vinegar. Pour liquid into flour mixture all at once. Blend with spoon until flour is moistened. Chill for a few minutes, roll out and shape into pie tins. Makes 3 crusts.

LEMON LIME REFRIGERATOR CAKE

1 small pkg. lime Jello
1 pkg. lemon or yellow cake mix
Dissolve Jello in 3/4 cup boiling water. Add 1/2 cup cold water. Set aside at room temperature.

Mix cake as directed and bake in 9x13 pan. Cool cake 20-25 minutes.

Poke holes in top of warm cake (still in pan) with a meat fork. Space holes 1 inch apart. With a cup, slowly pour a small amount of Jello mixture into each hole.

Refrigerate cake while preparing topping.

TOPPING

1 envelope Dream Whip
1 small pkg. lemon instant pudding mix
1 1/2 cups cold milk
In a chilled, deep bowl blend and whip topping mix, instant pudding

and cold milk until stiff. Immediately frost cake, and keep refrigerated before serving.

QUICHE

1 lb. ground beef
1/2 of medium-sized onion, chopped
2 cups shredded Monterey Jack cheese
1/4 oz. can chopped green chilies (drained)

5 eggs, beaten
2 cups milk
1 cu Bisquick
In a skillet saute beef and onions.

Add cheese and green chilies. Pour into 10" Pyrex pan sprayed with Pam. Mix eggs, milk, and Bisquick and pour into Pyrex pan. Season to taste with salt, pepper and garlic powder. Bake at 400 degrees until light brown.

CON QUESO

1 2 lb. box Velveeta cheese
1/2 lb. ground beef
1/2 lb. sausage
1 can cream of mushroom soup
1 small can green chilies
1 can Rotel tomatoes
3/4 lb. Cheddar cheese
In a skillet saute beef and sausage, drain grease off, set aside. Cut Velveeta cheese into chunks and put in double boiler. When partly melted add grated Cheddar cheese. Combine these in crock-pot and add soup, green chilies, and Rotel tomatoes. Simmer on low for 20 minutes. Serve over nacho chips while hot. Makes 2 1/2 to 3 quarts.

JUDY MIREK
formerly of J.C. Penny's, now at
UPPER CUT
3900 Gail St.,
Wichita Falls
(Across from Barwise School)

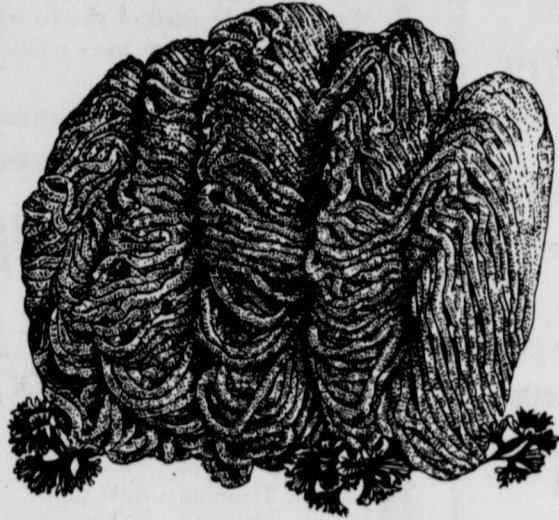


Shop • 692-3802 Home • 592-5627

SPECIALS THRU AUGUST 14

Permanent \$25 Haircuts \$7

SUPER FOOD SAVINGS



FAMILY PACK

GROUND BEEF Lb. **99¢**

FAMILY PACK

ROUND STEAK Lb. **\$1.58**

FAMILY PACK

T-BONE STEAK Lb. **\$2.99**

CHUCK STEAK Lb. **\$1.68**

BONELESS

CHUCK ROAST Lb. **\$1.48**



10 oz. Can

PILLSBURY BISCUITS **49¢**

MEADOWLAKE
SOFT MARGARINE

1-Lb. Tub

69¢



100 Count

ZEE LUAU NAPKINS **69¢**



VLASIC RELISH 10 oz. **69¢**



CATTELMEN'S BARBECUE SAUCE Btl. **89¢**

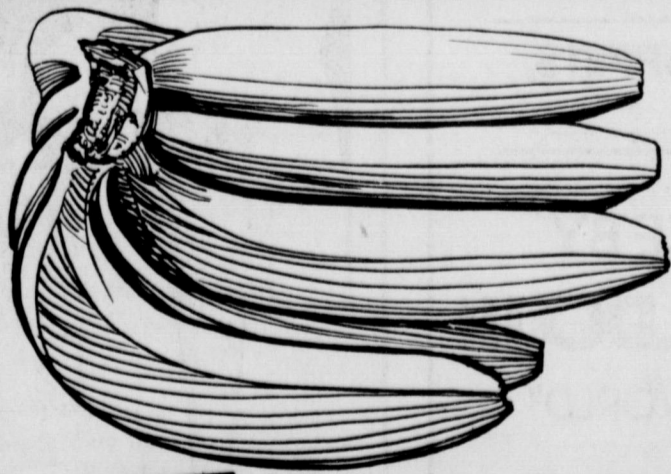


HI DRY TOWELS 2 Rolls **\$1**

TV PORK & BEANS 3 15 oz. Cans **\$1**

KRAFT SANDWICH SPREAD 24 oz. **\$1.38**

BONNER BATHROOM TISSUE 4 Roll Pkg. **79¢**



BANANAS 3 Lbs. **99¢**

CARROTS 4 1-Lb. Pkgs. **\$1** **YELLOW ONIONS** Lb. **19¢**

RED DELICIOUS APPLES Lb. **49¢**

Coke **COKE - SPRITE**
TAB - MR. PIBB
DIET COKE
16 32 oz. Btls.
\$2.19 plus deposit

Mike's Thrift Way Foods

ParkWest Shopping Center

Phone 592-4186

Store Hours: 8 a.m. - 8 p.m. Monday - Saturday; 9 a.m. - 6 p.m. Sunday

Our store family-owned and operated 20 years.



Brides-to-Be IS YOUR NAME
IN OUR Bridal Registry

JAYNA EVANS
and
RANDY CASE
MARY JACOBI
and
MIKE DODD

Park Pharmacy &
Thoughtfulness Shop

115 W. Park 592-4116

LOOK WHO'S NEW

A daughter, Kaci Brianne, was born August 6 to Mr. and Mrs. Steve Stewart. She weighed seven pounds. The baby's mother is the former Cindy Lyles.

Grandparents are Mr. and Mrs. Gary Lyles and Mr. and Mrs. John Stewart all of Iowa Park. Great-grandparents are Mr. and Mrs. Jack Hart of Iowa Park, Mr. and Mrs. Howard Lyles of Holliday, and Mr. and Mrs. T.H. Morgan of Iowa Park. Great-great-grandparents are Mrs. John Lyles of Holliday, and Mr. and Mrs. George Ensey of Archer City.

A daughter, Ginger Shea, was born Aug. 6 to Mr. and Mrs. Gary Steger. She weighed eight pounds, 12 ounces.

Grandparents are Mrs. Doyce Tucker of Commerce and Mr. and Mrs. Bill Steger of Iowa Park.

The Stegers have two other children, Greg and Gina.

4-H NEWS

FASHION SHOW WINNERS NAMED

The age-old skill of sewing blended with the latest looks in fashion as four young seamstresses took top honors in the Rolling Plains District 4-H Fashion Show, July 24, at the Paducah Public School. The four will represent the district's 21 counties in the State 4-H Fashion Show, Sept. 17-18 in San Angelo.

The winners are Melissa Matus of Wilbarger County, tailored daywear; Kathy Hardy of Dickens County, non-tailored daywear; Sarah Henley of Childress County, active sportswear; and Brenda Channell of Childress County, evening and specialty wear.

Jolene Hodges of Valley View 4-H competed in the beginner while her sister Lisa competed in the senior non-tailored division. Cynthia Mitchell of the Friberg Cooper 4-H Club was entered in the intermediate division. These girls won the right to compete at district by being top winners in the Wichita County Show. All three contestants won blue ribbons.

LOOK WHO'S NEW



Mr. and Mrs. Bobby Kenedy are the parents of a son, Jason Randall, born July 19 in Wichita General Hospital. He weighed seven pounds, six ounces.

Grandparents are Mr. and Mrs. Truman Kenedy of Burkburnett, and Mr. and Mrs. Andy Sidlauskas of Iowa Park. Great-grandparents are Willie Cook of Iowa Park and Mr. and Mrs. Tony Sidlauskas of Comstock Park, Mich.

Schedule for:

Recreational Activities Center

A talent program will be held at 2 p.m. Friday, and the public is invited to attend.

The following Friday, Aug. 17, the RAC will hold a mini olympics.

To begin at 2 p.m., events will be running and jumping, with ribbons to be awarded for first and second places.

This will be the last special event for youth between the ages of six and 12, before school starts.



-WELCOME-
ASSEMBLY OF GOD
S. Yosemite
9:45 S.S./7 P.M.
Wed. 7 P.M. Service
Rev. Charles Hensley,
Pastor

Pacific Avenue Missionary Baptist Church

1400 North Pacific Avenue

Larry Washburn
Pastor
Church - 592-9711
Pastor 592-4288



Sunday School 9:45 a.m.
Morning Worship 11:00 a.m.
Evening Worship 6:00 p.m.
Wednesday 7:00 p.m.

Everybody Welcome

First Christian Church

105 E. Cash
Sunday School - 9:45 a.m.
Worship - 10:55 a.m.
Corner, Cash & Bond St.

We encourage each of you to worship Jesus Christ in the church of your choice. If you do not have a church home, we invite you to come worship with our church family.

Faith Baptist Church

411 S. Wall 592-4894
Pastor - Ken Cole

Sunday School - 9:45 a.m. Tuesday Morning Prayer - 5:30 a.m.
Morning Worship - 11:00 a.m. Wednesday Morning Prayer - 9:30 a.m.
Church Training - 6:00 p.m. Wednesday Evening Prayer - 7:00 p.m.
Evening Worship - 7:00 p.m.

Nursery Care Provided
Full Range of Missions' and Childrens' Ministries

Northside Baptist Church

800 N. Wall

- Sunday School - 10 a.m.
- Sunday Worship - 11 a.m.
- Sunday Evening Worship - 6:30 p.m.
- Wednesday Worship - 7:30 p.m.

EARL CORRELL - Pastor

Ph. 592-2200

Church of God

601 E. Cash

Pastor, Ole Olds

Sun. Morning Worship 11:00
Sun. Night Celebration Service 7:00 p.m.
Tues. Ladies Prayer Service 10 a.m.
Wed. Night Bible Study 7:30
Sat. Family Night 7:30
"Catch the Vision"

Par.
592-5316

Office
592-4348

Grace Baptist Church

511 S. Colorado - 592-5632

Come Let Us Reason Together Saith The Lord
Sunday School . . . 10:00 A.M.
Morning Worship . . . 11:00 A.M.
Children's Worship . . . 11:00 A.M.
Evening Worship . . . 6:30 P.M.
Wednesday Service . . . 7:30 P.M.

Christ The King Catholic Church

First and Clara Phone 592-2802
8:45 a.m. C.C.D. — 10 a.m. Mass



First United Pentecostal Church

802 First Street 592-4275
Rev. Grover Milner, Pastor

Sunday Services
Sunday School - 10 a.m.
Special Singing - 11 a.m. - 12 Noon
Evangelistic Service - 7 p.m.
Wednesday - Prayer Meeting and Bible Study - 7:30 p.m.

GOOD SHEPHERD LUTHERAN CHURCH

1st & Magnolia
Iowa Park

Sunday School: 9:45 a.m.
Worship Service: 10:30 a.m.

Kamay Road Church of Christ

Corner of Colorado & Emerald

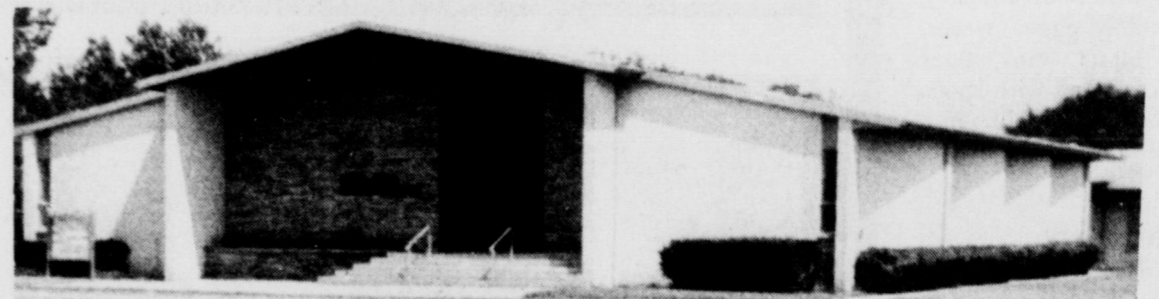
Seeking the Old Paths

Lord's Day
10:30 a.m. & 6 p.m.
Wednesday 7:00 p.m.

IOWA PARK CHURCH OF CHRIST

SCHEDULE OF SERVICES

Bible Study	Sunday	9:30 a.m.	Wednesday	10:00 a.m.
Worship		10:30 a.m.	Ladies Bible Study	
Evening Worship		6:00 p.m.	Evening Study	7:30 p.m.



300 East Park, Iowa Park, Texas 76367, [817] 592-5415

First United Methodist Church

201 E. Bank

Church School 9:40 Youth Meetings 5:00
Morning Worship 10:40 Evening Worship 6:00

JACK MEYERS, PASTOR

First Presbyterian Church

REV. BETTY L. MEADOWS Pastor
CHURCH SCHOOL - 9:45 A.M.
WORSHIP - 11:00 A.M.

A Caring Congregation of
Palo Duro Presbytery - Presbyterian Church [USA]

First Baptist Church

of Iowa Park

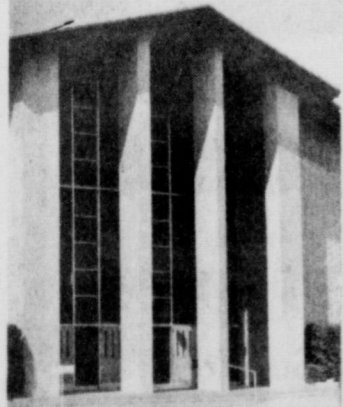
Yosemite at Park

SUNDAY SERVICES

Mornings
Sunday School 9:45
Worship 11:00
Evenings
Church Training 6:00
Worship 7:00

WEDNESDAY

Prayer Meeting 7:00
Choir Rehearsal 7:45



LET'S BE HEROES FOR GOD!

KIDS CRUSADE

BIBLE STORIES, CLOWNS, PUPPETS,
CONTESTS, PRIZES

SPECIAL APPEARANCE BY
BOREGARD & WALDO III

"THE FUNNIEST FACES IN THE WORLD"

August 15-16-17
7 P.M.

FIRST ASSEMBLY OF GOD

"THE FRIENDLIEST CHURCH IN IOWA PARK"

200 S. YOSEMITE

Country Generations



The Gospel in Song
7 P.M. Sunday

FIRST ASSEMBLY OF GOD

200 S. YOSEMITE



NO INJURIES were reported when two pickups ran head-on late Wednesday of last week on the Seymour Highway, near the West Wichita Volunteer Fire

Department station. Damage was extensive to both vehicles.

SCHOOL DISTRICT: Iowa Park CISD 243-903

NOTICE OF CALCULATION OF EFFECTIVE TAX RATE AND PUBLICATION OF ESTIMATED UNENCUMBERED FUND BALANCES

I, Allen T. Shewmake, Tax Assessor - Collector for Iowa Park CISD, in accordance with the provisions of Sec. 26.04, Property Tax Code, have calculated the tax rate which may not be exceeded by more than three percent by the governing body of the Iowa Park CISD without holding a public hearing as required by the code. That rate is as follows: $\$.4571$ per \$100 of value. The estimated unencumbered fund balance for Maintenance & Operation fund: \$ 1,280,790. The estimated unencumbered fund balance for Interest & Sinking fund: \$ 15,191. (Name) Allen T. Shewmake Assessor / Collector (Date) August 6, 1984

CALCULATIONS USED TO DETERMINE EFFECTIVE TAX RATE

I. DATA	
1. 1983 Total tax levy from the 1983 tax roll	\$ 1,117,494
2. 1983 Tax rate (\$.36 M&O and \$.07 I&S)	\$ 43 / \$100
3. 1983 Debt service (I&S) levy	\$ 191,005
4. 1983 Maintenance and operation (M&O) levy	\$ 926,489
5. 1983 M&O taxes on property in territory that has ceased to be a part of unit in 1984	\$ 0
6. 1983 M&O taxes on property becoming exempt in 1984	\$ 2,580
7. 1983 M&O taxes on taxable value lost because property is appraised at less than market value in 1984	\$ 7,335
8. 1984 Total taxable value of all property M&O 244,517,183 I&S 260,586,110	\$ 244,517,183
9. 1984 Taxable value of new improvements added since Jan. 1, 1983	\$ 4,367,552
10. 1984 Taxable value of property annexed since Jan. 1, 1983	\$ 0
11. 1984 Tax levy needed to satisfy debt service (I&S)	\$ 192,418
12. Rate to raise 1983 tax levy due to appraisal roll errors (lost dollars divided by the difference of 1984 taxable values minus over-65 homesteads taxable values) [\$ 0 + (\$ 192,418 - \$ 0) x 100]	\$ 0 / \$100
13. Rate to regain taxes lost in 1983 due to appraisal roll errors (lost dollars divided by the difference of 1984 taxable values minus 1984 over-65 homesteads taxable value) [\$ 0 + (\$ 4,244,782 - \$ 0) x 100]	\$ 0 / \$100
14. 1983 M&O Taxes used to regain lost 1982 levy	\$ 0
15. 1984 Taxable value of over-65 homesteads with frozen taxes	\$ 4,244,782
16. Frozen M&O levy of over-65 homesteads with frozen taxes	\$ 12,817
17. Frozen I&S levy of over-65 homesteads with frozen taxes	\$ 2,496
II. CALCULATION	
MAINTENANCE AND OPERATION (M&O) TAX RATE	
1. (A) 1983 Total tax levy (Data 1)	\$ 1,117,494
(B) Subtract 1983 Debt service levy (Data 3)	-\$ 191,005
(C) Subtract 1983 Taxes on property no longer in unit (Data 5)	-\$ 0
(D) Subtract 1983 Taxes on exemptions (Data 6)	-\$ 2,580
(E) Subtract 1983 Taxes on productivity valuation (Data 7)	-\$ 7,335
(F) Subtract frozen M&O levy of over-65 homesteads (Data 16)	-\$ 12,817
(G) Subtract 1983 M&O taxes used to regain lost 1982 levy (Data 14)	-\$ 0
(H) Adjusted 1983 M&O levy	\$ 903,757
2. (A) 1984 Total taxable value of all property (Data 8)	\$ 244,517,183
(B) Subtract 1984 Value of new improvements (Data 9)	-\$ 4,367,552
(C) Subtract 1984 Value of annexed property (Data 10)	-\$ 0
(D) Subtract 1984 Value of over-65 homesteads (Data 15)	-\$ 4,244,782
(E) Adjusted 1984 Taxable value for M&O	\$ 235,904,849
3. (A) Divide the Adjusted 1983 M&O levy (1-H above) by the Adjusted 1984 Taxable value for M&O (2-E above) (\$ 903,757 + \$ 235,904,849)	\$.003831
(B) Multiply by \$100 valuation	x \$100
3. (C) Effective M&O rate for 1984	\$.3831 / \$100
INTEREST AND SINKING (I&S) TAX RATE	
4. (A) 1984 I&S levy needed to satisfy debt (Data 11)	\$ 192,418
(B) Subtract frozen I&S levy of over-65 homesteads (Data 17)	-\$ 2,496
(C) Adjusted 1984 I&S levy	\$ 189,922
(D) 1984 Total taxable value of all property (Data 8)	\$ 260,586,110
(E) Subtract 1984 Value of over-65 homesteads (Data 15)	-\$ 4,244,782
(F) Adjusted 1984 Taxable value for I&S	\$ 256,341,328
(G) Divide the Adjusted 1984 I&S levy (4-C above) by the Adjusted 1984 taxable value for I&S (4-F above) (\$ 189,922 + \$ 256,341,328)	\$.000740
(H) Multiply by \$100 valuation	x \$100
(I) Effective I&S rate for 1984	\$.0740 / \$100
APPRAISAL ROLL ERROR RATE	
5. (A) Rate to raise 1983 levy due to appraisal errors (Data 12)	\$ 0 / \$100
(B) Add Rate to regain taxes lost due to errors (Data 13)	+ \$ 0 / \$100
(C) Total Rate to adjust for appraisal roll errors	\$ 0 / \$100
TOTAL EFFECTIVE TAX RATE FOR 1984	
6. (A) Effective M&O rate (3-C above)	\$.3831 / \$100
(B) Add Effective I&S rate (4-I above)	+ \$.0740 / \$100
(C) Add Rate to adjust for appraisal roll errors (5-C above)	+ \$ 0 / \$100
(D) 1984 Effective Tax Rate	\$.4571 / \$100

1984 Effective Tax Rate is the tax rate published as required by Sec. 26.04, Property Tax Code.

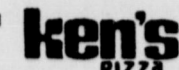
Cut out for Ken's Pizza!

592-4184
902 W. Hiway

\$2 & \$1 off.

Get \$2.00 off the price of any large Ken's pizza or \$1.00 off the price of any Ken's medium pizza or Ken's small deep pan pizza. One coupon per pizza. Offer not good with other promotions or coupons. OFFER GOOD UNTIL September 6, 1984

COUPON CASH VALUE 1/20 OF A CENT



Free Salad(s)

With a purchase of any small deep pan pizza or medium Ken's pizza get one free trip to the salad bar . . . or . . . two free trips to the salad bar with any large pizza purchase. Offer not good with other promotions or coupons. OFFER GOOD UNTIL September 6, 1984

COUPON CASH VALUE 1/20 OF A CENT



\$2.50 & \$1.50 off.

Get \$2.50 off the price of any large Ken's pizza or \$1.50 off the price of any Ken's medium pizza or Ken's small deep pan pizza. One coupon per pizza. Offer not good with other promotions or coupons. OFFER GOOD UNTIL September 6, 1984

COUPON CASH VALUE 1/20 OF A CENT



Pasta Two-for-One.

Purchase either Ken's famous Baked Rigatoni or Spaghetti with meat sauce and get the second pasta (same size) FREE. Offer not good with other promotions or coupons. OFFER GOOD UNTIL September 6, 1984

COUPON CASH VALUE 1/20 OF A CENT



City or Special District: City of Iowa Park

NOTICE OF CALCULATION OF EFFECTIVE TAX RATE AND PUBLICATION OF ESTIMATED UNENCUMBERED FUND BALANCES

I, Allen T. Shewmake, Assessor/Collector for City of Iowa Park, in accordance with the provisions of Sec. 26.04, Property Tax Code, have calculated the tax rate which may not be exceeded by more than three percent by the governing body of the City of Iowa Park without holding a public hearing as required by the code. That rate is as follows: $\$.7362$ per \$100 of value. The estimated unencumbered fund balance for Maintenance & Operation fund: \$ 50,000.00. The estimated unencumbered fund balance for Interest & Sinking fund: \$ 11,999.00. (Name) Allen T. Shewmake Assessor / Collector (Date) July 31, 1984

CALCULATIONS USED TO DETERMINE EFFECTIVE TAX RATE

I. DATA	
1. 1983 Total tax levy from the 1983 tax roll	\$ 637,754
2. 1983 Tax rate (\$.6511 M&O and \$.1089 I&S)	\$ 76 / \$100
3. 1983 Debt service (I&S) levy	\$ 91,384
4. 1983 Maintenance & Operation (M&O)	\$ 546,370
5. 1983 M&O taxes on property in territory that has ceased to be a part of unit in 1984	\$ 261
6. 1983 M&O taxes on property becoming exempt in 1984	\$ 385
7. 1983 M&O taxes on taxable value lost because property is appraised at less than market value in 1984	\$ 359
8. 1984 Total taxable value of all property	\$ 88,151,640
9. 1984 Taxable value of new improvements added since Jan. 1, 1983	\$ 2,134,645
10. 1984 Taxable value of property annexed since Jan. 1, 1983	\$ 0
11. 1984 Tax levy needed to satisfy debt service (I&S)	\$ 90,148
12. Rate to raise 1983 tax levy due to appraisal roll errors (lost dollars divided by 1984 taxable value) (\$ 0 + \$ 90,148 x 100)	\$ 0 / \$100
13. Rate to regain taxes lost in 1983 due to appraisal roll errors (lost dollars divided by 1984 taxable values) (\$ 545,365 + \$ 86,016,995 x 100)	\$ 0 / \$100
14. 1983 M&O Taxes used to regain lost 1982 levy	\$ 0
II. CALCULATION	
MAINTENANCE AND OPERATION (M&O) TAX RATE	
1. (A) 1983 Total tax levy (Data 1)	\$ 637,754
(B) Subtract 1983 Debt service levy (Data 3)	-\$ 91,384
(C) Subtract 1983 Taxes on property no longer in unit (Data 5)	-\$ 261
(D) Subtract 1983 Taxes for exemptions (Data 6)	-\$ 385
(E) Subtract 1983 Taxes on productivity valuation (Data 7)	-\$ 359
(F) Subtract 1983 Taxes used to regain lost 1982 levy (Data 14)	-\$ 0
(G) Adjusted 1983 M&O levy	\$ 545,365
2. (A) 1984 Total taxable value of all property (Data 8)	\$ 88,151,640
(B) Subtract 1984 Value of new improvements (Data 9)	-\$ 2,134,645
(C) Subtract 1984 Value of annexed property (Data 10)	-\$ 0
(D) Adjusted 1984 Taxable value for M&O	\$ 86,016,995
3. (A) Divide the Adjusted 1983 M&O levy (1-G above) by the Adjusted 1984 taxable value for M&O (2-D above) (\$ 545,365 + \$ 86,016,995)	\$.006340
(B) Multiply by \$100 valuation	x \$100
(C) Effective M&O rate for 1984	\$.6340 / \$100
INTEREST AND SINKING (I&S) TAX RATE	
4. (A) 1984 I&S levy needed to satisfy debt (Data 11)	\$ 90,148
(B) 1984 Total taxable value of all property (Data 8)	\$ 88,151,640
(C) Divide the 1984 I&S levy (4-A above) by the 1984 Total taxable value (4-B above) (\$ 90,148 + \$ 88,151,640)	\$.001022
(D) Multiply by \$100 valuation	x \$100
(E) Effective I&S rate for 1984	\$.1022 / \$100
APPRAISAL ROLL ERROR RATE	
5. (A) Rate to raise 1983 levy due to appraisal errors (Data 12)	\$ 0 / \$100
(B) Add rate to regain taxes lost due to errors (Data 13)	+ \$ 0 - \$100
(C) Total Rate to adjust for appraisal roll errors	\$ 0 / \$100
TOTAL EFFECTIVE TAX RATE FOR 1984	
6. (A) Effective M&O rate (3-C above)	\$.6340 / \$100
(B) Add Effective I&S rate (4-E above)	+ \$.1022 / \$100
(C) Add Rate to adjust for appraisal roll errors (5-C above)	+ \$ 0 / \$100
(D) 1984 Effective Tax Rate	\$.7362 / \$100

1984 Effective Tax Rate is the tax rate published as required by Sec. 26.04, Property Tax Code.

Council adopts budget, sets rate

Holliday City Council Monday night approved the fiscal budget for 1985 and set the tax rate for the coming year, in action taken during its regular bi-monthly meeting.

The tax rate will be .3213 per \$100 valuation, down almost eight cents.

The 1985 budget was broken down into five sections this year, with a summary for the general fund, water fund, municipal fund, meter fund, and revenue sharing.

GENERAL FUND
A total income of \$286,840.15 with expenditures of \$276,608.81 will leave an unbudgeted reserve fund of

\$10,231.34, according to the summary. Income generated in the general fund comes mainly from ad valorem taxes totaling \$74,502.27, and sales tax returns totaling \$90,000.

Major expenditures listed for the following year include \$30,000 for street resurfacing, and \$84,042.65 in salaries.

WATER FUND
The summary lists an income of \$208,242.29 with expenses of \$205,333.25, leaving a fund reserve of \$2,909.04. Income will mainly come from water collections totaling

\$132,000. Expenditures during the coming year will include \$57,187 for salaries and \$36,000 for water purchased. In addition, another \$27,000 from the water fund will be transferred to the general fund for refuse.

MUNICIPAL FUND
Under the municipal fund, which includes office equipment and supplies, an income of \$3,569.14 is listed with expenses totaling \$3,229.95.

METER FUND
The meter fund includes water meter deposits, refunds, and transfers. \$21,707.19 is budgeted for 1985 with expenses totaling \$4,000, leaving a reserve of \$17,707.19.

REVENUE SHARING
An income of \$26,229.97 will be used entirely to finance such projects as civil defense, equipment purchase, fire department, Fire Marshall (scene control devices and Fire Prevention Week), and city park development.

Trustees face budget session

The Holliday School Board will meet at 7:30 p.m. Monday to approve expenditures for the 1984-85 school year, and amend the 1983-84 budget, according to superintendent Dan Owen.

Finances has been a major consideration before the board this year, with trustees faced with the unwelcome task of possibly raising the tax rate by more than 10 percent to accommodate the new school reform bill, passed in a special session of the Texas Legislature.

In a mid-July called meeting of the board, Owen informed trustees that the state was funding approximately \$100,000 less than anticipated for the coming school year.

The board will hear a report from the finance committee at the meeting, which has been meeting separately during the last two weeks to discuss ways to make up the anticipated loss of state funding.

Annuals arrive, distribution today

The latest edition of the Eagle Annual for Holliday Schools has been delivered, according to annual sponsor Tommy Lofland, and students can pick them up between 3 p.m. and 6 p.m. today at the Erma Barton Auditorium.

Sales tax shows healthy increase

The July sales tax refund for Holliday dropped slightly compared to the two previous months, but shows a 30.58 percent increase over the same period last year, according to a report from the Texas Comptroller's Office.

Holliday received a check for \$10,781.12 in city sales and use tax

allocations for a period ending July 26. Only Archer City received more among the county's six entities, with a total of \$11,731.93.

The 1984 payments to date for Holliday totals \$67,341.69, compared to \$51,570.05 for the same period in 1983.

691-6012 **COOLEY'S** WESTERN WEAR COWBOY BOOT HEADQUARTERS
Corner Southwest Parkway and Kemp across from K-Mart

Wrangler Jeans

Starting At \$13.50
Wrangler Student Cowboy Cut Jeans \$13.50
Wrangler Mens Cowboy Cut Jeans \$14.50
Wrangler Boys Shirts 1/2 Price

Plus... a special mail-in offer from Wrangler

BUY THREE GET ONE... FREE!

1 BUY one Wrangler jeans plus one Corduroy Sport Coat or one Wrangler shirt

2 MAIL form and proof of purchase

3 RECEIVE Certificate for free Wrangler jeans

1/2 PRICE COAT SALE
Corduroy Sport Coats
Circle 'S' and Kenny Rogers Sport Coats
Kids Nylon Windbreakers
Sizes 4-20

Tempco Goosedown Coats and Jackets 25% OFF

Tony Lama Boots
Reg. \$160
Acme Boots
Starting at \$41.95
Abilene Boots
Reg. \$125 **NOW \$99**

"The safest way to double your money is to fold it over once and put it in your pocket." Kin Hubbard

Holliday News

Eagle football teams begin workout Monday

Two-a-day workouts for the 1984 edition Holliday Eagles begins bright and early Monday morning, according to head coach Don Lucy.

High school players report in Monday with an 8 a.m. starting time, with the afternoon sessions starting at 5. The athletes will practice without pads four days for conditioning, and Friday will be the first day the players dress out in pads.

The first scrimmage, according to Lucy, will be against Knox City Friday, Aug. 24 at Eagle Stadium. The following Friday, the freshmen, junior varsity and varsity units will travel to Munday for the second and final scrimmage. Both are slated to start at 6 p.m.

As for the regular season schedule,

Lucy says the travel will be down quite a bit, but the competition stands to be tougher. Holliday hosts Archer City in the season opener Sept. 7 in a county shootout, and Sept. 14 the Eagles will host defending state champion Boyd.

September 21 will be the first on-the-road game for Holliday, but for only a short distance, to Iowa Park. On Sept. 28, district play will begin with Holliday traveling to Seymour. The next games, in order, will be against Electra, Henrietta, Nocona, Jacksboro, Petrolia, and Olney.

Band Club opens its membership

Holliday Band Club members voted recently to open its organization to all interested persons, ending a long-standing but unwritten policy of allowing only parents of band students to join.

The function of the club is to help finance instruments for band members, and a current two-year program is underway to finance new uniforms for the bands.

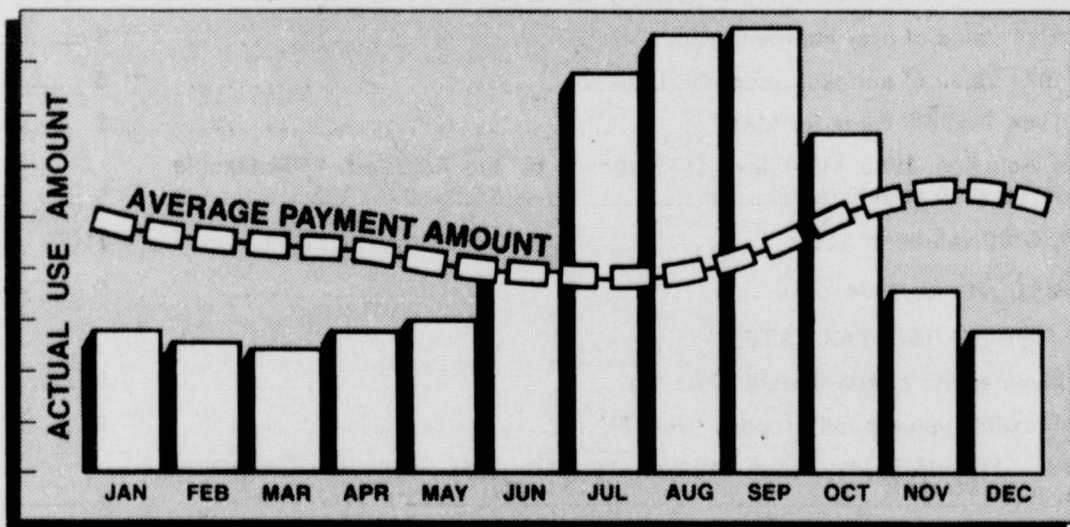
Meetings are held the first Monday of each month at 7:30 p.m.

Officers for the 1984-85 year are Barbara Welch, president; Melvin Bills, vice president; Sharon Nichols, secretary; Jo Krob, treasurer; and Mary K. Dolberry, reporter.

— ENROLL NOW —
Aladdin Beauty College No. 1
817 Scott 4011 Rhea Rd.
Classes First Tuesday of Each Month
August 7, Sept. 4, 1984
Call 817-322-5297 or 817-691-3920 Ask for Admissions Officer

TANNER-AULDS FUNERAL HOME
-Since 1908-
300 E. Cash 592-4151
● Pre-need funeral plan
● Burial insurance
"Our family serving your family"

Average Payment can help smooth out high summer electric bills.



In the summer, intense Texas heat can make your air conditioner work longer and drive your electric bill up in a hurry.

Our Average Payment Plan can help by "averaging out" your payments. You still pay for all the electricity you use, and your payments will still vary from month to month. However, in high-use months you pay for less electricity than you use, and in low-use months you pay for more.

Average Payment can help smooth out high summer electric bills. It's available to both residential customers and churches.

If you'd like to know more, give us a call.



ALLSUP'S NEW! 32 OZ. FOUNTAIN DRINK FILLED WITH YOUR FAVORITE SOFT DRINK
TALLSUP 59¢
BIG ENOUGH TO QUENCH ANY THIRST

NEW! STRONGPOINT DOG FOOD 40 LB. BAG \$8.99
HIGH QUALITY 22% PROTEIN \$4.00 VALUE FREE IN BAG

BORDEN'S HOMOGENIZED MILK \$2.59 GALLON

Fast Hot SANDWICH HAM & CHEESE 99¢
ON WHITE OR RYE REG. \$1.89 EACH

ALLSUP'S SMOOTH & DELICIOUS ICE CREAM 1/2 GAL. CTN. \$1.69 ASSORTED FLAVORS

COOKED FOOD SPECIAL FRESH COOKED BURRITOS 2 FOR 99¢

DR. PEPPER \$2.39 6-Pack 16 oz. Returnable Btls.

CARING MAKES GOOD NEIGHBORS
SUPPORT THE MUSCULAR DYSTROPHY ASSOCIATION KIDS DOORBELL BRIGADE AUG 25th & 26th, 1984

ALLSUP'S CONVENIENCE STORES
PRICES EFFECTIVE AUG. 9-11, 1984
WHILE SUPPLIES LAST
OPEN 24 HOURS-EVERYDAY
ICE-SELF SERVE GAS-GROCERIES
MONEY ORDERS
FRESH COOKED FOODS

THERE'S ONE NEAR YOU



WHERE ARE THEY NOW? - An effort is being made to have a reunion of the Hawks of 1964 during the Oct. 12 IPHS homecoming. Team members were: front left, Keith Burkhart, Jackie Harris, John Huff, Bobby Kenet, Bill Whittingstall, Kerry Thompson and Jimmy Dunn; middle row, Phillip Green, Robert Dawson, Jerry Wakefield,

Donald Rauschuber, Alan Holderman, Gary Coleman, Brent Davis and Billy Jackson; back row, Greg Webb, Danny Tarbet, Terry May, Ronnie Waters, Carlton Walls, Mike Patusek and Dennis Hill. Not pictured were Jimmy Bradberry and Gordon Parkey.

Whereabouts needed for '64 Hawk reunion

A reunion for the Hawk football team of 1964 will be held this fall, if one of the members has his way.

Robert Dawson, who was a junior the season of '64 is trying to locate all the members of the team. He's asking for help from the public, in an effort to contact his teammates and arrange the meeting.

Anyone knowing the addresses of team members is asked to write: Robert Dawson, 9212 Northpoint, Dallas, 75238, or Bob Dawson, 501 W. Clara, Iowa Park.

Dawson wants to hold the reunion during Iowa Park High's annual homecoming, which will be Oct. 12.

The Hawks will play Bowie that weekend.

The team of '64 was the first of Iowa Park's to go undefeated through the regular season. It was the first of those fabulous winning squads under former coach Tommy Watkins, who was in his second year in '64.

The 1964 team set the standards for others to follow, eventually leading to the state championship in 1969 and co-championship of 1970.

Non-conference games that year were: Henrietta, 36-0; Stamford, 26-0; Decatur, 34-0; Hirschi, 19-6 (Hirschi advanced to Class AAA semifinals after that), and Burkbur-

nett, 35-6.

District 2-AA games included: Seymour, 55-0; Quanah, 28-14; Olney, 21-20; Electra, 35-0 and Childress, 29-15.

The Hawks were tied by Phillips, 12-12, but were declared bi-district winners by virtue of 5-2 penetrations.

But the road ended there, as the Hawks met Denver City for the regional title on Thanksgiving Day and lost, 6-26.

High school footballers start two-a-days

High school football gets underway for another season Monday, when athletes begin two-a-day sessions.

Coach David Baugh said all varsity, junior varsity and freshman players are to report at the field house at 7:30 Monday morning, and he'll get things started off by having them run a mile.

Following a team meeting at 8:30, at which rules and policies will be explained, the first workout will begin at 9 a.m. and the afternoon session at 5 p.m.

Daily sessions after that will be 9 and 5, for varsity and junior varsity. Freshmen will work out once each day, at 9 a.m.

Players were to be issued shoes yesterday. They are to run on their

own until the coaches take over Monday.

Through Thursday, they'll be working out in shorts, with no contact. That's UIL rules. They are allowed to put on full pads the fifth day, which will be Aug. 17.

The next day, the 18th, they'll have innersquad scrimmages for all freshmen, junior varsity and varsity players, lasting until about noon.

First scrimmage will be Aug. 24, at Jacksboro. The teams will scrimmage Olney here Aug. 31.

Junior high footballers will receive their equipment the first day of school.

Municipal Court Records

Results of municipal court held here yesterday were:

- Gwendolyn Peddy Ramos, speeding, \$47;
- Michael Ray Anderson, speeding, \$68;
- Michael Ray Anderson, no drivers license in possession, \$60;
- Richard Nelson Dodson, speeding, \$41;
- Debra Lynn Malone, speeding, \$60;
- John Randall Norris, speeding, \$62;
- Dee Pannell Fowler, speeding \$41;
- Dee Pannell Fowler, displayed expired registration, \$49;
- Rebecca Rene Roberts, speeding, \$42;
- Brenda Sue Teague, failed to yield right of way, \$40;
- John Edd Henderson, no drivers license in possession, \$60;
- Jerry Leon Creek, public intoxication, \$49.

ATTENTION COACHES AND WOULD-BE COACHES

The Iowa Park Soccer Club is having a pre-season meeting and planning session on Sunday Aug. 12 at 2:00 p.m. at the RAC [Recreational Activity Center] located at 304 E. Texas. Anyone interested in coaching for the fall season is urgently requested to attend. For more information call 592-9096 or 592-5067.



ADVERTISEMENT



Tips On Dental Health

RICHARD CARVER, D.D.S.

ROOT CANAL FILLING

Occasionally the pulp tissue of the tooth is injured, may die and become infected. Root canal treatment is necessary if the tooth is to be retained. This means to remove the infected tissue and replace it with a sealing material to prevent the bacteria from entering the canal at the root tip. With modern materials and methods this sometimes can be done in one appointment, but it usually takes several times.

Root canal therapy can be done if the tooth is accessible (usually not on wisdom teeth), and the canals are open enough for the dentist to get the reamer (little drills) through to the tip of the root in a manner that it can be thoroughly cleaned and sealed.

The success rate is about 90+ percent, but it also depends on the patients health and the ability of the body to repair itself. It is usually wise for the treated tooth to be covered with a crown to prevent further damage and to rebuild the crown of the tooth.

Especially if you are out of the country and have tooth problems. . . it might be wise to the dentist to do something temporary instead of extracting it.

Prepared as a public service in the interest of better dental health. RICHARD CARVER D.D.S., Phone 592-5141.

ADVERTISEMENT

College Graduates!

Have you found that you need additional training to make the most of your present job?

OR... maybe you've been thinking about making a career change, but you need a broader background?

If so, you should know that Midwestern State University offers **Masters Degree** programs in the following areas:

- Computer Science
- Business Administration
- Clinical Psychology
- Political Science
- Physical Education
- Public Management
- Music
- History
- English
- Biology
- Education



Even if your Bachelor's Degree was in an unrelated area, you might be surprised at how quickly you can meet the basic requirements needed to become a graduate student in an entirely different field.

AND... for the convenience of the working student, **many of our graduate programs can be completed by taking courses only in the late afternoon or evening.**

For more information about our graduate programs, write or call our Admissions Office at 692-6611, ext. 4333, or come by Room 1015 of the Hardin Administration Building. **Registration for the 1984 fall semester will be August 30-31**, but new students must apply for admission before August 20 to avoid delays in processing.



MIDWESTERN STATE UNIVERSITY
3400 Taft, Wichita Falls, Texas 76308

MAKE MONEY SAVE MONEY

Enroll in the H&R Block Income Tax Course now. Make money during tax time. Comprehensive course taught by experienced H&R Block instructors begins soon in your area. Send for free information.

CLASSES BEGIN SEPTEMBER 4

7.5 CEU's Awarded

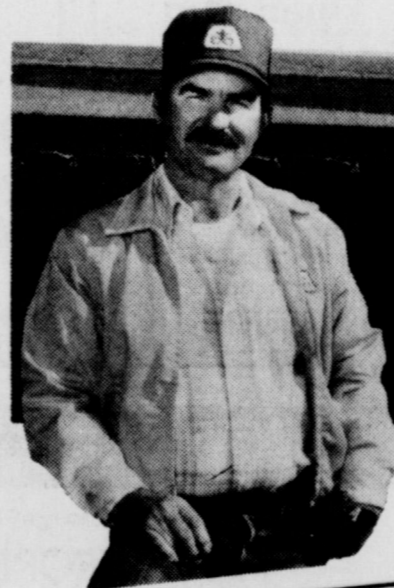
Contact our nearest office.

H&R BLOCK 1506 11th St. 322-8658

WHO COULD BE A BETTER INCOME TAX TRAINER?

Please send me free information about your tax preparation course, and how I can make money.

Name _____
Address _____
City _____ State _____ Zip _____
Phone _____



"I was surprised how quick the variety was ready to graze."

"In fact, some of my neighbors tried to rent my pasture when they saw how much better established it was than others all around us."

Pioneer* variety 2157 gets off to a fast start, quickly establishing the kind of healthy, vigorous growing stand so necessary for good pasture. Its upright growth habit helps provide maximum available grazing.

And because 2157 has proven to be such a good yielder, you can count on it to deliver top-quality wheat at season's end.

If pasture is part of your wheat program, new 2157 should be, too.

New Wheat Variety 2157

Superior Yield • Excellent Standability • Outstanding Grazing

"When I pulled my combine into the field, I knew for sure this wasn't an ordinary wheat crop."

"That 2157 was standing out there good and straight. And when I moved down the rows, I could hear the cylinders running full."

Farmers who've seen this impressive new high yielding variety like its standability and tolerance to dry growing periods and severe weather. It has excellent resistance to leaf rust, fungal leaf blights, soil borne mosaic virus and the Hessian fly.

In side-by-side comparisons, Pioneer* brand 2157 wheat has consistently out-yielded other popular varieties. And it has shown consistently high test weights.



Farmers Grain & Fertilizer
Iowa Park 592-4118



*Registered trademark of Pioneer Hi-Bred International, Inc. Pioneer is a brand name, numbers identify varieties. The Limitation of Warranty, and remedy appearing on the label is part of the terms of sale.

FRISCO BURGER

\$1.74

Reg. \$1.90



805 West Highway

FOR TAKE OUT ORDERS

CALL 592-4731

BUYING? SELLING? RENTING? HIRING? WANT ADS PAY OFF

DEADLINES

10 A.M. WEDNESDAY (Word Ads Only)
4 P.M. TUESDAY, DISPLAY ADS

SAVE 10¢ PER WORD FIRST INSERTION BY PAYING WITH COPY AT OFFICE

RATES:

20¢ PER WORD FIRST INSERTION
10¢ PER WORD EACH REPEAT

HOMES FOR SALE

3-BEDROOM, carpeted, fireplace, rented house. Small equity. 592-5416.
8-9-1tp

HOME FOR SALE by owner. Brick, 3-bedroom, 1 1/2 baths, well established yard, nice neighborhood, near school. Call 592-4047 after 5 for appointment. Located at 708 Mockingbird. 7-26-4tp

FOR RENT

3-BEDROOM, 2-car garage, 2 baths. \$375, \$150 deposit. 592-2955.
8-9-1tp

FOR LEASE: Extra nice 3 bedroom, 1 1/2 bath, brick. Air/heat, carpeting, drapes, storage, covered patio, fence with dog run. Aspen Properties. 592-5726.
8-9-1tp

PRESTIGE APARTMENT

1-bedroom, \$325; dishwasher, microwave, fireplace. 592-2989.
8-9-tfc

MISC. FOR SALE

GARAGE SALE Saturday only, 8:00 - 3:00, 209 E. Garden. Baby things, electric appliances, home interior, camera and lots of misc.
8-9-1tp

GARAGE SALE - Saturday only, 713 W. Clara.
8-9-1tp

MOVING SALE - Too much to mention. 304 E. Bank, Thursday through Saturday.
8-9-1tc

3-FAMILY garage sale, 1317 Edgehill. Thursday only. Lots of misc.
8-9-1tp

CARPOT SALE - 700 N. Bond, 8-4 Saturday. Two 10-speed bicycles; nice school clothes, 10 and 12, juniors 3 and 5; home interiors.
8-9-1tp

MOVING SALE Thursday & Friday. Clothes, shoes, furniture, baby accessories, and knick knacks. Inside house, 704 S. Jackson.
8-9-1tp

THREE-FAMILY Garage Sale. Lots of Misc. Fri. and Sat., 208 W. Pecan.
8-9-1tp

YARD SALE Baby clothes, books, toys, small appliances propane bottle, much more. Friday, Saturday, 8-5, 419 W. Valley.
8-9-1tp

GARAGE SALE, Saturday 9 A.M. Please no early birds. 715 Rebecca. Girls clothing, 4T, 5T, Boys 10-12, Ladies 10-12. Furniture, lots of misc. including 1957 Chevy PU, \$725 or best offer.
8-9-1tc

PORCH SALE - 610 S. Bond St. Refrigerator, \$50; upright Sears freezer, \$125; car top luggage carrier, \$20; other misc., Friday and Saturday. 592-5948, calls welcome.
8-9-1tp

FURNITURE Sofa, love seat, stove, dinette, chairs, bunk beds with new mattresses. 309 E. Cash.
8-9-1tp

REGISTERED blue ribbon pit bulldog puppies. Will be weaned Aug. 14. 592-4538 after 4.
8-9-2tc

'76 MUSTANG II - 4-speed, 4-cylinders, custom paint, very good condition. \$1,400 or best offer. 592-9301.
8-9-2tp

VERY NICE 3-bedroom brick, central heat/air, kitchen built-ins, 1 1/2 baths, well cared for home, close to high school. Low \$40s.
8-9-2tp

PARK PLAZA AREA - 4-bedroom, 2 bath home, central heat/air. A great buy at \$38,500.
8-9-1tp

JOAN SHIERRY Rowland & Donnell Realtors
592-5540 - 692-1903
7-26-3tc

NO DOWN PAYMENT Purchase a Beautiful, Energy Efficient Build-It-Yourself Miles/Pathway home (pre-cut materials and step-by-step building instructions), before August 15, 1984 and receive a United States government-backed certificate (zero-coupon type) worth \$20,000 in the year 2009. A second \$30,000 certificate will be presented upon timely payment in full of your Miles/Pathway home purchase. Act now and you'll be \$50,000 richer in 2009. 70 plans. Serious Buyers Only. Call [collect] for immediate details Ron [817]293-0927

11,500 BTU Chrysler Air-Temp 220 window unit 95EER. Excellent condition. 592-2216.
8-9-1tp

BABY BED for sale. Very good condition. Call 592-4521
8-9-1tp

BUSINESS

REGISTERED Day Care - Monday through Friday, ages 2-5. Also before and after school. 592-5444.
8-9-4tp

REGISTERED Day Care in my home. Have openings, 592-2826.
8-9-1tp

KING'S KIDS Christian Day Care & Pre-School. Enroll now for fall. Fulltime: 6:45 a.m. - 6 p.m. Pre-School Classes: 8:30-11:00 a.m. Half Days: 8 a.m. - 2 p.m. Summer openings available now, all ages. 592-4242.
8-2-5tp

TERESA TINY TOTS - Child care, 592-2629.
8-2-4tp

REGISTERED Child Care beginning August 20th, 6 a.m. - 5:30 p.m. Also before and after school. 592-9561.
8-2-2tp

INFANT CARE now available. King's Kids #2. 592-4242 or 592-2996.
8-2-5tp

REGISTERED Child Care Monday - Friday. 592-9055.
7-26-8tp

GARDEN OR YARDS tilled. Call 592-9320.
8-9-1tp

LADIES FUN part-time job. Show toys and gifts now until December. Free \$300 kit. No investment, collecting or delivery. Over 21. HOUSE OF LLOYD, call 766-1258.
7-26-3tc

MLS Hallmark "Service at its Best" 2951 Southwest Pkwy. 691-7855

\$122,500 - Ideal home for large family; 6 acres; stock tank. #176

\$52,000 - Freshly painted; 3 bedroom, 1 1/2 bath, brick home; large lot. #186

\$49,900 - Charming 3 bedroom, 1 1/2 bath brick home; new carpet. #199

\$38,000 - 3 bedroom, 2 baths; garage by contract over 1 acre. #145

GENERAL SHELTERS of Texas, Inc., the fastest growing manufacturer of portable buildings, is seeking a dealer in Iowa Park area for retail sales of portable buildings. Lot and small investment required. Excellent opportunity to expand existing business with low risk. Contact Mike Wulf, General Manager, at 817/422-4548.
8-9-4tc

PARK SERVICE CENTER Commercial, residential, air conditioning, heating service. Repair most major appliances, restaurant equipment 592-2515, 592-9467.
8-9-1tp

WILL BUILD new homes, additions or repairs. Free estimates. Tom Moore, 592-4307.
8-2-2tp

FOR YOUR COPY NEEDS including reduction and enlargement, call Iowa Park Air Conditioning, 592-5891, or come by 609 W. Bank. Charges 20 cents a copy (less for quantities).
10-6-tfc

BUILDING, remodeling, or repair, additions, carports, patios. Free estimates. Call day or night Phil McDonald, 592-2363.
6-14-tfc

LADY FINELLE natural cosmetics at reasonable prices. Call Annetta Reusch, 592-9001 for a free facial.
1-6-tfc

MARY KAY Cosmetics, Ann Moore, 592-4752.
8-19-26tp

INSULATION and Storm Windows. For free estimate call Jerry Matthews at 761-2124 or 592-9829.
7-19-tfc

REMODELING? Do you need another room added on? A garage? Walls removed or added? Free estimates. References. Jack Kerr, 215 S. Wall, 592-9040 495-3411.
5-10-tfc

BLACK POWDER GUNS and accessories, revolvers \$50 and up. Powder \$4.80 lb. Will order modern guns for 10% over cost. Ye Ole Gun Shack, 413 W. Washington, 592-5430.
1-6-tfc

MARY KAY Cosmetics, Marti Tinnerstet, 592-2065.
7-5-8tp

HANDYMAN SERVICES. Painting, carpenter, repairs, renovations, wallpapering, paneling, etc. Reasonable and work guaranteed. No job too small. References. Herb 592-5560.
5-10-tfc

COPIES MADE at Video Care, 25c each.
2-23-tfc

AUTO, BOAT and furniture upholstery repair. Vinyl repair. Call Kamay, 1-438-2243.
2-23-tfc

ROOFING - Wolfe Roofing Co. Phone 855-5657.
10-6-tfc

MARY KAY COSMETICS Allie Girard, consultant, 109 W. Poe, 592-4217.
1-6-tfc

PRESTIGE APARTMENTS

1-Bedroom
1,000 sq. ft.
\$325
Available Sept. 1
Dishwasher, Microwave, Fireplace, Washer, Dryer Hookups
PHONE 592-2989

Quail Run Apartments
1-2 Bdrm, Ground Floor, Central Heat & A/C, Appliances, Laundry. Close to school & public park. Starting at \$180 per month to qualified tenants. Gas & water paid.
Call 592-2933

Like to rent your house but don't want to be bothered by the details?
Let Aspen Properties manage those details for you
ASPEN PROPERTIES
QUALITY PROPERTY MANAGEMENT & RENTALS IN IOWA PARK
592-5726

Colonial Heights Apartments
Magnolia St. at Johnson Rd.
IOWA PARK
One and two-bedroom apartments, energy efficient, central heat/air, total electric appliances, fully carpeted and draped. Children's play area. Off-street parking. Fully equipped laundry room. Month to month rent starting at \$181.00 for one bedroom, and \$220.00 for two bedroom apartment (to qualified persons). Water paid.
CALL **592-2705** EQUAL HOUSING

MARY KAY Cosmetics, Rosene White, 307 E. Alameda, 592-5337.
7-12-12tp

PRIVATE FENCE sales and installation. Charles Skelton, phone 592-5190.
1-6-tfc

HELP WANTED

HELP WANTED at Dairy Queen, apply in person, preferably between 9-11 mornings.
3-8-tfc

RICHARDSON Dairy Queen, Holliday, Texas now taking applications for part-time, fulltime help. Must be neat and willing to work. Good pay, company benefits; Chance for advancement. Apply in person to manager, Gracie Martin. No phone calls please.
6-28-tfc

NEW AT NEW NEARLY NEW STANLEY HOME PRODUCTS
410 Park West Center
Ph. 592-9563

BULK GARDEN SEED at reduced price.

IN STOCK
TRICKLE DRIP IRRIGATION DRIP IRRIGATION SUPPLIES
SOIL TEST
Closed Sundays
BAKER'S GREENHOUSE
mile south on Bell Rd.

Remember Last Summer?

Don't sweat through another hot summer in your house. Enjoy cool comfort in every room with central air conditioning. We have the widest selection of air conditioning systems and heat pumps. Our experts can show you which one can do the best job for your home... with maximum energy efficiency! Call us now for whole house comfort this summer.

Fraser-Johnston Heating and Air Conditioning
Service, Installation, Maintenance On All Makes
Quality Heating & Cooling
Kendell Hill 592-2849 **592-4773** Alan House 592-2622

WANT ADS GET RESULTS

QUIET BEAUTY
4 bdrm., liv-den fireplace, large kitchen with immense cupboards. Privacy fence, beautiful yard with huge covered patio. Much More! \$69,500.

W. CLARA
New 3 bdrm., 1 1/2 baths, beautifully decorated. Good floor plan. Many extras! \$47,000.

EDGEHILL
3 bdrm., den, 18x32 shop, \$9,000 equity. Approx. Bal. \$45,760. Make offer.

EMMA
3 bdrm, near high school. Privacy fence. Immed. Possession. \$39,500.

WESTRIDGE
3 bdrm., near high school, pretty storage unit in back yard. \$42,500.

MUST SEE
Established, spacious 3 bdrm., 2 baths, huge living, large kitchen, much more! Make offer for equity.

EAST GARDEN
2 bdrm., brick. Heat/air, fenced. \$35,000.

QUICK SALE
2 or 3 bdrm. Close downtown. Woodburning stove, cellar. \$25,000 or make offer.

529 S. WALL
Corner location, small 2 bdrm. house and 2nd older bldg. 3 lots. \$10,500.

7 1/2 ACRES
\$22,500. Owner finance.

46 ACRES
on Hwy. 258. \$30,000.

ELECTRA
107x180' lot, 6 yr. old metal bldg. Insulated, office, restroom, 4 folding doors, overhead heat. Price reduced for quick sale. \$45,000.

COTTLE COUNTY
758 ac S/E Paducah. \$152,000.

Member Multiple Listing
Sam D. Hunter
Real Estate
107 E. Cash Ph. 592-4661

FOLEY
Three bedrooms, 1 1/2 baths, livingroom, kitchen & dining area with large garage. \$40,500.

CHOICE LOT
75x150 corner lot. Nice storm cellar. Some trees, close to town & shopping. \$6,500.

PERFECT
3 bedroom, 1 1/2 baths, large storm cellar, fenced yard, lovely patio, two car garage. \$38,500.

NEW APPRAISAL
Beautiful brick home with over two thousand feet of living space. Two car garage, fireplace & much more. \$73,000.

TWO BEDROOM BRICK
Central heat, lovely carpet, large bath. \$31,500.

NEW LISTING
Two bedrooms, large bath. Extra big livingroom. Large corner lot, single garage and more. \$20,400.

THREE BEDROOM
Brick, 1 1/2 baths, lovely carpet, single garage. \$36,600.

NEW LISTING
2 bedroom, 1 bath, large livingroom, kitchen and dining room. \$18,200.

PRICE REDUCED
Two bedrooms, one bath, lovely paneling, single garage. \$26,500.

SUNSET
Four bedrooms, 1 1/2 baths, nice garage, large lot, fenced yard. \$41,250.

Try The Action Co. I Think You Will Like Us

MEMBER MULTIPLE LISTING SERVICE
JOHNNY LEE
REAL ESTATE
592-2378
109 W. Cash

OPEN HOUSE
609 W. Manes
2 - 5 P.M. Sunday
Immaculate 4 bedroom or 3 bedroom with either office, study or sewing room, large screened in patio, heat pump, and tastefully decorated. It's almost new, just old enough to have a lovely, well established yard.
Come by the Open House or call for a Private Showing.
RIP SMITH Realtor/Builder
691-1214

NOTICE

FREE PUPPIES - 592-2479.
8-9-1tp

FREE KITTENS 592-5749.
8-9-1tp

FREE PUPPIES - half dachshund, half poodle. 592-9333.
8-9-1tp

LOST - Calico kitten near Farmers' Grain. Reward. 592-4030.
8-9-1tp

PUBLIC NOTICE
The Iowa Park Consolidated Independent School District will hold a public hearing on the proposed 1984-85 annual budget on Monday, August 20, at 7:30 P.M. in the school administration building. The public will be given an opportunity to make oral and written suggestions on the proposed budget at this time. The proposed budget is available for public inspection at the administration building, 413 E. Cash, during normal business hours.
8-9-1tc

PUBLIC NOTICE
The City of Iowa Park, Texas is accepting sealed bids for the purchase and removal of the house, known as the Overby house, located at 902 West Highway. The high bidder will be responsible for the removal of the structure. Bids will be accepted until 10:00 A.M. Tuesday, August 21, 1984 at the City Administrator's office at which time and place they will be publicly opened and read. The City reserves the right to reject any or all bids.
8-2-2tc

NEWS OF HEALTH

Some Important Reminders About Medication

If you are taking medication, here are some important reminders:

- Never exchange medication with a relative or friend, no matter how similar your illnesses may seem.
- Try to avoid alcoholic beverages when taking any medicines.
- Keep an up-to-date list of all the medicines you are taking. Show the list to any physician who intends to prescribe another drug for you.
- Don't expect your medicine to make you feel better immediately. Give it time to work.
- Don't be lulled into a false sense of security if you start feeling better after a day or two. Stopping your medication too soon may cause a relapse or flare-up of the original problem.
- Make sure you understand when each of your medications should be taken because timing can have a strong effect on the success or failure of certain medicines.
- Because a number of medications may cause temporary drowsiness, be particularly careful when driving a car or operating any dangerous machinery.
- If you have skipped a dose of your medication, don't try to catch up by doubling the next dose

stand when each of your medications should be taken because timing can have a strong effect on the success or failure of certain medicines.

PUBLIC NOTICE

The Iowa Park Consolidated Independent School District offers vocational programs in Auto Body, Auto Mechanics, Building Trades, Consumer and Homemaking, Clothing, Food & Nutrition, Cosmetology, General Construction Trades, Home and Family Living, Home Furnishings, Ornamental Horticulture, Occupational Orientation, Vocational Agriculture, Office Procedures, and Computer Science.

Admission to these programs is based on individual needs, ability, and interest.

It is the policy of the Iowa Park Consolidated Independent School District not to discriminate on the basis of sex, handicap, race, color, and national origin in its educational and vocational programs, activities, or employment as required by Title IX, Section 504, and Title VI.

The Iowa Park Consolidated Independent School District will take steps to assure that lack of English language skills will not be a barrier to admission and participation in all educational and vocational programs.

For information about your rights or grievance procedures, contact the Title IX and Section 504 coordinator, Robert Palmer, at 413 East Cash, Iowa Park, Texas, telephone 592-4193.

8-9-2tc

IOWA PARK V.F.D.

EMERGENCY MEDICAL SERVICE

592-2181

Public Service Message

WHO IS BON DEL?

BON DEL is a company whose founder adapted a home water-filtering unit from NASA's space flight purification system. (See *ENCYCLOPEDIA BRITANNICA 1983 Yearbook*). NASA reported this fact in its own magazine, *NASA SPINOFF*, and now displays the **BON DEL** unit in its museum.

Due to the new awareness that our municipal systems are not adequate to control the pollution of our drinking water, and that the necessary chlorine treatment is harmful to us, it is expected that the EPA will soon recommend home water filters. The **BON DEL** unit is EPA approved, removes the chlorine and other chemicals, and is the nation's top selling home water filter.

Local distributors include Vickie Gilmore, Etoy Chapman, Corliss Wallace, Ken Gilmore and Jack Helmcamp. Maryanne Gilmore is now Key Manager. For more information, or a free home trial, call any of the above.

PUBLIC NOTICE

NO. 37,036-B

IOWA PARK CONSOLIDATED INDEPENDENT SCHOOL DISTRICT, ET AL VS. MYRTIE WALKER IN THE 78th JUDICIAL DISTRICT COURT IN AND FOR WICHITA COUNTY, TEXAS

CITATION BY PUBLICATION

THE STATE OF TEXAS COUNTY OF WICHITA IN THE NAME AND BY THE AUTHORITY OF THE STATE OF TEXAS NOTICE IS HEREBY GIVEN AS FOLLOWS:

TO: MYRTIE WALKER, if living, or in the event she be deceased then the unknown heirs, executors, administrators and legal representatives of the ESTATE OF MYRTIE WALKER, Deceased; and any and all other persons, including adverse claimants, who own or claim or have an interest in the hereinafter described real property delinquent for taxes to Plaintiffs herein, to-wit:

Being that certain 30' x 130' tract of land out of Block 22, Tract 21, Wichita Valley Farm Lands and being more particularly described in that certain deed of record in Volume 711, Page 405 of the Deed Records of Wichita County, Texas.

Which said property is delinquent to Plaintiffs for taxes in the following amounts:

TAXING DISTRICT	YEARS DUE	AMOUNT DUE
IOWA PARK CONSOLIDATED INDEPENDENT SCHOOL DISTRICT	1970 thru 1983	\$ 75.46
WICHITA COUNTY WATER IMPROVEMENT DISTRICT NO. 2	1958 thru 1983	\$113.63
STATE OF TEXAS AND COUNTY OF WICHITA	1946 and 1950 thru 1983	\$383.46

YOU ARE HEREBY NOTIFIED that this suit has been brought by the IOWA PARK CONSOLIDATED INDEPENDENT SCHOOL DISTRICT and the WICHITA COUNTY WATER IMPROVEMENT DISTRICT NO. 2, as Plaintiffs and COUNTY OF WICHITA AND STATE OF TEXAS as Intervenor against MYRTIE WALKER, if living, or in the event she be deceased then the unknown heirs, executors, administrators and legal representatives of the ESTATE OF MYRTIE WALKER, Deceased; WICHITA COUNTY (IN REM ONLY); and any and all other persons, including adverse claimants, who own, have or claim any legal or equitable interest in or lien upon said property, as Defendants by Plaintiffs Original Petition filed on the 13th day of June, 1984, in a certain suit styled IOWA PARK

CONSOLIDATED I.S.D., ET AL VS. MYRTIE WALKER for collection of taxes on real property and that said suit is now pending in the District Court of Wichita County, Texas, 78th Judicial District, and the file number of said suit is 37,036-B.

Plaintiffs and all other taxing units who may set up their tax claims herein seek recovery of delinquent ad valorem taxes on the property hereinabove described, and in addition to the taxes, all interest, penalties, and costs allowed by law thereon, up to and including the day of judgment herein, and establishment and foreclosure of liens, if any, securing payment of same, as provided by law.

All parties to this suit, including Plaintiffs, Defendants, and Intervenor, shall take notice that claims not only for taxes, which were delinquent on said property at the time this suit was filed but all taxes becoming delinquent thereon at any time thereafter up to the day of judgment, including all interest, penalties, and costs allowed by law thereon, may, upon request therefore, be recovered herein without further citation or notice to any parties herein, and all said parties shall take notice of and plead and answer to all claims and pleadings now on file and which may hereafter be filed in said cause by all other parties herein, and all of those taxing units above named who may intervene herein and set up their respective tax claims against said property.

You are hereby commanded to appear and defend such suit on the first Monday after the expiration of forty-two (42) days from and after the date of issuance hereof, the same being the 10th day of September A.D., 1984, Wichita County, Texas, to be held at the courthouse thereof, then and there to show cause why judgment shall not be rendered for such taxes, penalties, interest, and costs, and condemning said property and ordering foreclosure of the constitutional and statutory tax liens thereon for taxes due the Plaintiffs and the taxing units parties hereto, and those who may intervene herein, together with all interest, penalties, and costs allowed by law up to and including the day of judgment herein, and all costs of this suit.

HEREIN FAIL NOT, but of this writ make answer as the law requires.

ISSUED AND GIVEN UNDER MY HAND AND SEAL OF SAID COURT in the city of Wichita Falls, Wichita County, Texas, this 23rd day of July 1984.

WAYNE WIGGINS
Clerk of the District Court
78th Judicial District
Wichita County, Texas
By Becky Turpin
Deputy
7-26-3tc

King's Kids Christian Day Care & Preschool

"Iowa Park's Finest For Parents Who Care"

Ages 0 thru 10
Monday thru Friday
6:45 a.m. to 6 p.m.
300 W. Park
202 N. Jackson 592-4242

We service all makes of washers, dryers, freezers, refrigerators and window air conditioners.

POSEY'S APPLIANCE SERVICE

208 James Ph. 592-5452 Iowa Park

J&N CONCRETE CONTRACTORS

Patios Porches Slabs Driveways Sidewalks

Years of Experience Reasonable Rates

855-4276

Lawnmower Repair Service

SINGLETON'S

505 W. Highway 592-2671

Bud Mercer Electric Co.

Residential & Commercial

BUD MERCER, Owner Phone 592-5413
HARDIN HILL Phone 592-2666

Phone 692-8797

Hill Electric

COMMERCIAL, RESIDENTIAL & INDUSTRIAL

HARLYN HILL 20 YEARS EXPERIENCE
4111 BEARD WICHITA FALLS, TEXAS

WOLFE ROOFING

Call 855-5657

NAIL DOWN REPUTATION ON YOUR ROOF

DON DIETRICHSON

"REMODELING ALL KINDS"

- Garages • Fireplaces • Turbines • Additions
- Patios • Carports • Storm Door & Windows

LICENSED • BONDED

592-2232 FREE Estimates

AYRES TIRE

592-5621

Expressway & Johnson Rd.

Cooper B.F. Goodrich Propane
Used Tires Michelin Diesel
Mechanical Work

Installation Rewiring Repair

A & D Electric Company

Residential -- Commercial
(Licensed and Bonded)
24 Hour Service

Larry Ashford 817/592-9642
Herman Daymude 817/592-9044
P.O. Box 91, Iowa Park, Texas 76367

Family Boot & Shoe Repair

700 E. Highway 592-2892

All types boot, shoe, saddle repair
Custom made boots, belts, billfolds

5:30 M-F 8:30 - 12 Sat.

DAVIS BACKHOE

RANDY DAVIS 817-592-2027

706 E. PARK IOWA PARK TEX 76367

Commercial Residential Industrial Oil Field

Collins Painting Co.

33 Surrey
Troy Collins 592-5104
Doug Collins 592-4789

Furniture, home & lawn, refinishing
Free pickup & delivery - Free estimates
Bonded and Insured

E&S Exxon

EXXON

- Tune-ups • Brakes
- Front-end alignment
- Custom exhausts
- Computer balance

592-4897
612 W. Highway

NO. 36,166-C

IOWA PARK CONSOLIDATED INDEPENDENT SCHOOL DISTRICT, ET AL VS. UNKNOWN HEIRS & SUCCESSORS IN TITLE TO CLEVE ADAMS IN THE 89th JUDICIAL DISTRICT COURT IN AND FOR WICHITA COUNTY, TEXAS

CITATION BY PUBLICATION

THE STATE OF TEXAS COUNTY OF WICHITA IN THE NAME AND BY THE AUTHORITY OF THE STATE OF TEXAS NOTICE IS HEREBY GIVEN AS FOLLOWS:

TO: The unknown heirs, executors, administrators and legal representatives of the ESTATE OF CLEVE ADAMS, Deceased; and any and all other persons, including adverse claimants, who own or claim or have an interest in the hereinafter described real property delinquent for taxes to Plaintiffs herein, to-wit:

Tract I: Being all that certain Lot 8, Block 113, Original Town Plat of the City of Iowa Park, Wichita County, Texas, and being more particularly described as that tract conveyed to Cleve Adams by that certain deed of record in Volume 315, Page 407 of the Deed Records of Wichita County, Texas.

Tract II: Being all that certain Lot 3, Block 140, Original Town Plat of the City of Iowa Park, Wichita County, Texas, and being more particularly described as that tract conveyed to Cleve Adams by that certain deed of record in Volume 515, Page 31 of the Deed Records of Wichita County, Texas.

Which said property is delinquent to Plaintiffs and Intervenor for taxes in the following amounts:

TAXING DISTRICT	YEARS DUE	AMOUNT DUE
IOWA PARK CONSOLIDATED INDEPENDENT SCHOOL DISTRICT	Tr. I: 1970 thru 1983 Tr. II: 1970 thru 1983	\$132.40 132.40
CITY OF IOWA PARK	Tr. I: 1970 thru 1983 Tr. II: 1970 thru 1983	\$128.88 128.88

WICHITA COUNTY WATER IMPROVEMENT DIST. NO. 3	YEARS DUE	AMOUNT DUE
Tr. I: 1969 thru 1972 Tr. II: 1969 thru 1972		\$ 3.57 3.57

COUNTY OF WICHITA AND STATE OF TEXAS	YEARS DUE	AMOUNT DUE
Tr. I: 1969 thru 1983 Tr. II: 1969 thru 1983		\$ 35.48 35.48

YOU ARE HEREBY NOTIFIED that this suit has been brought by the IOWA PARK CONSOLIDATED INDEPENDENT SCHOOL DISTRICT, THE CITY OF IOWA PARK and WICHITA COUNTY WATER IMPROVEMENT DISTRICT NO. 3 as plaintiffs against the unknown heirs,

executors, administrators and legal representatives of the ESTATE OF CLEVE ADAMS, Deceased; WICHITA COUNTY (IN REM ONLY); and any and all other persons, including adverse claimants, who own, have or claim any legal or equitable interest in or lien upon said property, as Defendants by Plaintiffs Second Amended Petition filed on the 31st day of July, 1984, in a certain suit styled IOWA PARK I.S.D., ET AL VS. UNKNOWN HEIRS & SUCCESSORS TO CLEVE ADAMS for collection of taxes on real property and that said suit is now pending in the District Court of Wichita County, Texas, 89th Judicial District, and the file number of said suit is 36,166-C.

Plaintiffs and all other taxing units who may set up their tax claims herein seek recovery of delinquent ad valorem taxes on the property hereinabove described, and in addition to the taxes, all interest, penalties, and costs allowed by law thereon, up to and including the day of judgment herein, and establishment and foreclosure of liens, if any, securing payment of same, as provided by law.

All parties to this suit, including Plaintiffs, Defendants, and Intervenor, shall take notice that claims not only for taxes, which were delinquent on said property at the time this suit was filed but all taxes becoming delinquent thereon at any time thereafter up to the day of judgment, including all interest, penalties, and costs allowed by law thereon, may, upon request therefore, be recovered herein without further citation or notice to any parties herein, and all said parties shall take notice of and plead and answer to all claims and pleadings now on file and which may hereafter be filed in said cause by all other parties herein, and all of those taxing units above named who may intervene herein and set up their respective tax claims against said property.

You are hereby commanded to appear and defend such suit on the first Monday after the expiration of forty-two (42) days from and after the date of issuance hereof, the same being the 24th day of September A.D., 1984, Wichita County, Texas, to be held at the courthouse thereof, then and there to show cause why judgment shall not be rendered for such taxes, penalties, interest, and costs, and condemning said property and ordering foreclosure of the constitutional and statutory tax liens thereon for taxes due the Plaintiffs and the taxing units parties hereto, and those who may intervene herein, together with all interest, penalties, and costs allowed by law up to and including the day of judgment herein, and all costs of this suit.

HEREIN FAIL NOT, but of this writ make answer as the law requires.

ISSUED AND GIVEN UNDER MY HAND AND SEAL OF SAID COURT in the City of Wichita Falls, Wichita County, Texas, this 7th day of August, 1984.

WAYNE WIGGINS
Clerk of the District Court
89th Judicial District
Wichita County, Texas
By Becky Turpin
Deputy