

# IOWA PARK LEADER

25 Cents

Vol. 14, No. 8 IOWA PARK, WICHITA COUNTY, TEXAS 76367 THURSDAY, NOVEMBER 4, 1982

## BY COUNCIL

# Administrator, attorney posts to be considered

A major portion of Monday night's city council meeting could be held in executive session, because personnel appears on the agenda in two different places. The council is to begin meeting at 7 p.m. in council chambers.

Tuesday night, starting at 7:30 p.m., school trustees will hold their monthly meeting in the administration building.

Primary purpose of the city's executive session will be to consider applications for the city administrator's position. Mayor Charlie Lee said the council will consider those who have applied for the post, and narrow the field to three or four, whom they will call in for interviews at a later date.

At the last council meeting, Lee suggested that a called meeting might be held to consider applications. But one member of the council, Bud Thompson, has been out of town, and Lee said he wanted deliberations to be made by a full council.

The city administrator's position has been vacant since Oct. 15, when Steve Morath resigned to go to work for Lone Star Gas Co. Lee has been at the city hall each weekday morning, doing the administrator's work. Also to be considered during the executive session will be filling the city attorney's position.

Lee said he has an attorney who will be interviewed for consideration. That post has been open a week, following Roger Lee's (no kin to the mayor) resignation.

Also on Monday's agenda will be a report from the mayor and Alderman Tim Hunter on a meeting they attended in Wichita Falls this week. At issue is whether Iowa Park will join with Wichita Falls and other area communities in forming a corporation to finance home construction at an interest rate lower than the commercial market, by sales of bonds.

Bids for purchase of a backhoe for the street department will be considered, and discussion on the city's participation in the federal flood insurance program will also be on the agenda.

### TRUSTEE MEETING

Other than regular monthly reports, Tuesday's meeting of school trustees will include Richard Davis' annual follow-up report on last spring's graduates, and reports by each of the four campus principals, according to Supt. Harold Cowley.

## Hawks still in contention; play at Saginaw tomorrow

Tomorrow night's Hawk football game will not be played in Fort Worth, nor Boswell. It will be played in Saginaw.

The school's name, Fort Worth Boswell, is about as misleading as the team's 2-5-1 season record.

The Pioneers, whose stadium is reportedly off Highway 287, in the southwest part of Saginaw, may have won only one and lost four of its Dist. 3-AAAA games, but none have been wipeouts.

Evidence last week's game with the

Gainesville Leopards. Playing at Gainesville, just like the Hawks, the Pioneers were edged by one point, 23-22.

Not only does that score indicate the hard-to-find Saginaw team is competitive, it shows the Pioneers can muster considerable offense. The Leopards held the Hawks to one touchdown, and that was set up by a fumble deep in the Gainesville territory.

Coach David Baugh's scouting report on the Pioneers is that they have considerable speed in the backfield (one touchdown was more than 60 yards against the speedy Leopards), they have big linemen (10 are 200 or more pounds), and they run the option, throwing about half the time.

Baugh compared the Pioneers with the 1981 edition of the Hawks: they started off slowly but developed through the season and finish strong.

A lot of that development could be attributed to Saginaw's coach, Fred West, who joined the school only last year.

West, who developed a traditionally-tough team at Comanche prior to his move, said the major thing he had to work on when he arrived was the team's attitude. "We needed to develop a winning attitude and some confidence within our kids. We've started to get over that hurdle and once we clear it for good, we'll be in good shape," he said.

His club wound up the 1981 season with a 4-6 record, which compares with Iowa Park's 3-6-1 record that season during Baugh's initial year as Head Hawk.

### ILLNESS IS WORRY

Baugh said Tuesday he is concerned about the physical condition of his team, which has been wracked all week by an illness that sounds like flu.

Four players had to leave the campus that day, all with similar symptoms, and one returned from missing Monday. He said end Robbie

Hausler, tailback Lee Roach, center Craig Whisnand and fullback Paul Rogers were all out of school Tuesday, and linebacker Don Sidauskas had missed Monday.

"Because we're so shallow in depth, if we don't have those players in good condition Friday night, we could be in real trouble," Baugh said.

The Mean Green mentor said his club had apparently suffered a mental letdown before taking the field against Burkburnett.

They had to reach such a mental high to play outstanding ball against Vernon and Gainesville on consecutive weeks, they were just flat when they played the Bulldogs, he said.

But Baugh has no concern about the mental condition of his Hawks tomorrow night, only the physical. Iowa Park has an opportunity not only of achieving its best season since the 1974 season, 8-2, but advancing into the state playoffs.

### STILL IN CONTENTION

Because every team in Dist. 3-AAAA has lost at least once, Iowa Park is still in the running for a playoff spot. Gainesville and Hirschi are atop the standings with 4-1 loop records, but both face tough tests the last two weeks of the schedule.

Hirschi must travel to Vernon tomorrow night, while Gainesville plays at Azle. Then the closing Friday, the Huskies must take on Burkburnett, while the Leopards host tough Vernon.

Meanwhile, Iowa Park, Vernon and Burkburnett enter the final two weeks with identical 3-2 conference records.

## Postmaster McQuerry moving to Vernon

Iowa Park postmaster Lee McQuerry has accepted a similar position in Vernon.

McQuerry said Nov. 12 would be his last day in the Iowa Park post office.



**BITTERSWEET** - A piece of wrapped caramel candy was turned into Iowa Park police Saturday night with a straight pin inside. The candy was alleged to have been collected by children of Mrs. Jean Hutchings, 804 Park Plaza, somewhere in the Foley Addition. No injuries resulted and no other reports of tampered candy were received.

## Trio arrested Wednesday for marijuana possession

Three young adults were arrested here last Wednesday night in the largest marijuana haul, three pounds, to date in Iowa Park.

Charged with possession of marijuana over four ounces and placed in Wichita County jail were Mary Cole, 20, Johnny Doyle Suttles, 21, and Charlotte Renee Harper, 17. All gave their addresses as 122 West View, where the bust was made.

Cole and Harper were reportedly released from jail Sunday after making \$3,500 bond, but Suttles remains in lieu of the same amount bond.

Acting on a tip, two Iowa Park officers were watching the house at the time the unprocessed weed was hauled to the location under cover of darkness.

The officers obtained a search warrant, and assisted by two more from the local department, returned to the location and took the suspects into custody.

The marijuana was still on the stalk, having apparently been harvested sometime recently.

Street value of three pounds of marijuana is reportedly \$1,800.

None of the trio was listed as gainfully employed.

The one suspect is not to be confused with another Mary Cole who resides in the Foley Addition.

### OTHER REPORTS

Mrs. Jean Hutchings, 804 Park Plaza, told police Saturday night that her children, trick or treating between 6:55 and 9, in the Foley Addition, returned home with a caramel candy piece that had a straight pin stuck into the middle. An investigation continues.

Also Saturday night, Rodney Wade Davis, 100 E. Diamond, said he parked his pickup overnight at the football stadium, and someone removed flood lights from the front bumper. Value was set at \$45.

Jack Blagg, school employee, reported to police at 11:05 p.m. Friday that someone had broken two windows on the south side of the junior high building and written abusive language with shoe polish on a door.

### MuleSkinners to feed public free Saturday

The Iowa Park MuleSkinners got such a heart-warming reaction from the senior citizens of the community recently, when they put on a free feed, they've decided to try feeding everyone in town.

Louie McCarthy, president, announced the civic organization would feed the public, free of charge, Saturday night at the MuleBarn, in the 100 block of West Cash.

And they'll have country-western music for diners to listen to, and also dance if they wish.

Starting at 7 p.m., Mule-Skinner Chili will be served with red beans, crackers and ice tea. Service will continue as long as the 400 pounds of chili meat lasts, McCarthy said.

The street will be closed off to traffic, making room for those eating and dancing.

## Democrats sweep here

All four voting precincts in and around Iowa Park went along with the majority of Texas in Tuesday's general election, and voted straight Democratic Party.

With one exception. Precinct 32 did not favor Bob Bullock for state comptroller.

Of the 2,084 votes cast in the four area boxes, 1,715 were in precincts 32 and 33. Precinct 32 attracted 1,319 ballots, 396 in precinct 33, 220 in precinct 60 (Valley Farms), and 149 in precinct 34 (Valley View).

Bullock, the most controversial state officer on the ballot, was re-elected by the majority of the state's voters, but he failed by two votes in precinct 32, 631-633, with challenger Mike Richards carrying the box.

In the two local races, incumbents Charles Finnell and Virgil Hill were unopposed on the ballot. Finnell was seeking re-election as state representative and Hill as justice of the peace.

Combined votes from the four boxes in the seven major races were:

- U.S. Senate - Lloyd Bentsen 1208, Jim Collins 745.
- Congressman - Jack Hightower 1403, Ron Slover 576.
- Governor - Mark White 1188, Bill Clements 797.
- Lt. Governor - Bill Hobby 1365, George Strake 640.
- Attorney General - Jim Mattox 1357, Bill Meier 638.
- Comptroller - Bob Bullock 1090, Mike Richards 903.
- Agriculture Commissioner - Jim Hightower 1285, Fred Thornberry 699.

## New townhouse permit issued

A new townhouse and multiple home additions highlighted the building permit report for October, according to city hall.

Permits issued during October amounted to \$50,650, which made the year's total \$920,948.

Not included in this month's permits is an apartment complex to be built at the corner of Johnson Road and Magnolia. Owned by Bill Swan Construction of Wichita Falls, the site has been cleared in preparation for construction.

- Permits issued included:
- James Collins, 408 E. Magnolia mobile home, \$5,000;
- Dale Williams, 410 W. Pecan, addition, \$3,000;
- Kennie L. Jones, 1611 Wagon Wheel, addition, \$1,000;
- Mike Jordan, 110 N. Atlantic.

Continued on page 4



**SPECTACULAR COLLISION** - Two pickups were involved in a grinding wreck shortly before 6 p.m. Thursday at the intersection of Third and Magnolia. Dennis Reed Bogart, 20, was driving one with Pamela Young Rogers as a passenger. Kevin Ray Thompson, 19, was driver of the other, with Blaine Kidwell as passenger. The Bogart pickup was traveling south and rolled against a large highline post. The

doors jammed and the Jaws of Life had to be used to extract the passengers. All three young men were treated in Wichita Falls hospitals and released: Bogart with a broken pelvis; Thompson with torn back muscles; and Kidwell with a severe gash on his right elbow. Bogart was issued a traffic citation for failure to yield right of way.



# Abernathy, Miller vows are solemnized

A concert of pre-nuptial classical music was presented by Don Owens, organist, to set the mood for a double-ring ceremony performed Oct. 23 to unite Miss Kelly Ann Abernathy and Rodney D. Miller.

The First United Methodist Church was the scene of exchange of vows by the daughter of Mr. and Mrs. Chester L. Abernathy of Iowa Park and the son of Mr. and Mrs. Ralph D. Miller of Granite City, Ill. The bride's uncle, Rev. Charles E. Wells of Oklahoma City, director of education for the United Methodist Churches of Oklahoma, was the officiating minister.

The focal point of interest in altar decorations was an open Bible on the altar table backgrounded by a tall gold cross and flanked by single tall white candles aflame in gold holders. The stained glass window above the choir loft enhanced the solemn atmosphere. On either side of the table tall white candles burned in seven-branched candelabra accented with leather leaf plaques centered with white gladioli and daisies and cascading blue silk ribbons. Church pews were marked with silk bows.

Presented in marriage by her parents, the bride's father walked with her to the altar. She wore a formal original gown of white Chantilly lace. The bodice featured a Queen Anne neckline and long sleeves ending in petal points at the wrists. The full skirt was formed with multiple tiers of the lace and tapered to a semi-cathedral train. The entire gown was sprinkled with sequins to accentuate its beauty.



MRS. RODNEY D. MILLER

The bride's matching veil was adorned with sequins and pearls and secured to a Juliet cap of lace and gems. She carried a colonial bouquet fashioned of white carnations, daisies, English ivy and blue and white silk streamers.

To make the traditions of the occasion really special, the bride wore a daughter's ring that contained a diamond from her mother's engagement ring, and a sixpence in her shoe that her mother purchased in England 21 years ago and has kept it in a case for the memorable day in Kelly's life. She wore a single strand of pearls and ear rings loaned to her by her aunt, Mrs. Ivan Roberson, for "something borrowed"; and chose her dress and garter for "something new" and "something blue."

Attending her cousin as maid of honor was Miss Mary E. Wells of Oklahoma City. Miss Carla Ernst and Miss Sheri Dodd of Wichita Falls were bridesmaids. Miss Sara Sue Abernathy, sister of the bride, and Miss Tina Frazier were candlelighters. The quintet wore identical light blue crepe gowns printed with darker blue floral patterns styled with ruffled V necks and elasticized waistlines. The attendants carried blue carnations with long stems tied with blue ribbons.

Lizabeth B. Castles had the flower girl role in the wedding. She wore a white homespun cotton frock designed with a Victorian high neckline trimmed in lace, wide shawl-like ruffle around the laced-edge yoke. The three-quarter length sleeves featured wide ruffled lace insets. The waistline was tied with a sash type belt and a lace inset was repeated on the skirt above the hemline. She carried blue and white carnations in a white basket trimmed with blue and white silk ribbons.

The groom wore a white carnation boutonniere with his dark suit, and his attendants, all of Wichita Falls, wore blue carnation boutonnieres with their suits. Waldin Gibbs was best man. Steve Loggie and Jeff Gibbs were groomsmen, and Ivan Roberson of Altus, Okla. was usher.

Mrs. Abernathy, mother of the bride, was attired in a floor length burgundy silk dress patterned with high ruffled neckline and long sleeves. She complemented her dress by wearing a white glamelia corsage.

Following a wedding trip to Dallas, the newlyweds are living in Wichita Falls. The bride chose black tuxedo pants, white shirt and a tan blazer for her going away costume. She was graduated from Iowa Park High School, and the groom received a degree from Midwestern State University and is employed by Independent Services.

The bride's parents hosted the wedding reception in the Fellowship Hall of the church.

Miss Sara Sue Abernathy and Miss Tina Frazier were in charge of registering guests at a table covered with white lace. The appointments included the wedding book, plume pen and a brass tray filled with the net rice bags tied with blue ribbons.

The decorations and appointments on the refreshment table covered with white embroidered organza over white satin harmonized in perfect taste. The centerpiece featured two hurricane lamps surrounded by greenery dotted with blue carnations. The white napkins accented with silver bells and wedding rings, crystal punch service and cake completed the decor.

Frosting blue carnations and white daisies clinging to pale green leaves set off the sculptured elegance of the pure white cake of three tiers separated by Grecian pillars. The flowers added beauty to the confection around the base and top of each layer and between the pillars. The top ornament that pictured a bride, dressed in white Chantilly lace to match the bride's gown, and groom in formal attire standing under an archway of pearls lent a sweet tradition to the cake.

Miss Ann Ernst and Mrs. Harold Wright served refreshments during the reception. Mrs. Gene Leonard and Mrs. Carl Abernathy were house-party members.

The rehearsal dinner was held at the church on Friday evening.

Mrs. Roy Kizzar of Altus, Okla., grandmother of the bride, was a special wedding guest. Others in attendance from Oklahoma included Mr. and Mrs. Ivan Roberson, Altus, Danny Knight, Arnett, Gene Leonard, Blair, Carl Abernathy, Midwest City, Chuck Wells and Barbara, Ryan; Mrs. Charles Wells, Barbara, Ryan and Christen, Oklahoma City, and Mrs. Betty Huckaba, Kristen and Erin, Carnegie. Other out-of-town guests were Mrs. Lee Givens of Corpus Christi, the bride's godmother, and Mr. and Mrs. R.D. Campbell of Dallas.

## 4-H News

### IOWA PARK CLUB MEETS

Cheryl Ruggs, county extension agent, gave a program on nutrition based on the four food groups for a meeting of the Iowa Park 4-H Club held Monday night at the ASCS building. She was introduced by Scott Davis, president.

During the meeting, it was announced that Karie Davis will represent Wichita County and the Iowa Park 4-H Club at the District 3 Food Show after winning first place in the county food show held Saturday. Twelve of the club members won blue ribbons and one member won a red ribbon at the show.

The winners included Leesa Shook, Dawn Tanner, Tammy Reitz, Cheryl Vergauwen, Douglas Hale, Stacy French, Tammy Hendersson, Ricky Hollenbeck, Shari Morris, Derek Davis and Pam Stamm.

### EIGHT TAKE TOP HONORS IN COUNTY 4-H FOOD SHOW

Eight youth took top honors in the Wichita County 4-H Food Show Saturday.

Winners earned first place awards in two divisions, senior and junior, which each included four classes.

First place winners in the senior division are Terrie Martin of City View, main dish; Merry Elliott of City View 4-H, fruit/vegetable, Kristi Wood of City View 4-H, breads and cereals, and Beth Wood of City View 4-H, nutritious snacks and desserts.

First place winners in the junior division are Michelle Heinert of Horse Club, main dish; Dondra Lawson of

Friberg-Cooper, Fruits/vegetables; Karie Davis of Iowa Park, breads and cereals, and Cynthia Mitchell of Friberg-Cooper, nutritious snacks and desserts.

These 4-H'ers will compete in the District 3 4-H Food Show to be held Nov. 20 at Sikes Senter Mall.



### SHOWER SELECTIONS FOR

HOLLY BURRELL and JOEL WITT

JUDY LIGGETT and HOWARD LANE

TRACY HALE and BRENT CATLIN

BARBARA and RICHARD ASHTON

Parkway



200 - 206 W. Bank

## Epsilon Eta pins three

The home of Mrs. Bert Williamson was the scene of the Epsilon Eta chapter of Epsilon Sigma Alpha meeting Tuesday evening. Co-hostesses were Mrs. David Parkey and Mrs. Bill Vanek.

A highlight of the meeting was the pledge pin ceremony conducted for Paula Fulfer, Nelda Stegall and Mrs. Ronnie Taylor. Mrs. Vanek and Mrs. Parkey, rush captains, were assisted by Mrs. Phil McDonald, president, in conducting the ceremony.

The model meeting program featured a skit by Mmes. Roy Johnson, Darrell Gunderson, Parkey, McDonald and Vanek. The skit based on parliamentary procedure pointed out the most common mistakes in conducting a meeting.

Mrs. Steve Turner, service chairman, reported a profit of \$90.25 on the Halloween face painting project and that the proceeds had been forwarded to the Cystic Fibrosis Foundation.

Plans were announced for serving of stew and corn bread during the Arts and Crafts Festival at the Recreational Activities Center Nov. 27.

The next meeting will be the annual Thanksgiving dinner Nov. 16.

*Solve  
"The Nothing to Wear  
Blues..."*

~Achieve YOUR Own Distinctive Look With Basic Wardrobe Building.  
~Have YOUR Most Flattering Colors in Clothing and Make-up Charted by a Professional.  
~Know How to Get the Most From YOUR Wardrobe Dollar.

Contact Jackie Proffitt for *Color Charisma*  
(817) 691-2857

*Begin Now, YOU Have Nothing to Lose But the Blues!*



**\$40 CASH REBATE**

**NEW POTSCRUBBER® DISHWASHER WITH TEMPERATURE SENSOR SYSTEM**

- Temperature Sensor System provides additional water heat—when you need it.
- PermaTuf® tub and door liner backed by a no-charge full parts and labor warranty for 10 years. (Ask for details).
- Potscrubber cycle removes even baked-on soils.

regularly \$649.95  
less rebate \$ 40  
**YOUR COST \$ 609<sup>95</sup>**



**\$50 CASH REBATE**

**30" ELECTRIC RANGE**

- P-7® self-cleaning oven system.
- Two 6" and two 8" Calrod® surface heating units.
- Digital clock, automatic oven timer, reminder timer.

regularly \$699.95  
less rebate \$ 50  
**YOUR COST \$ 649<sup>95</sup>**



# CASH REBATES

**DIRECT FROM GENERAL ELECTRIC COMPANY ON SELECTED GE MAJOR APPLIANCES**

**OCTOBER 1 THROUGH NOVEMBER 30 1982**



**\$40 CASH REBATE**

**NO-FROST FOOD SAVER REFRIGERATOR**

- 19 cu. ft. with 5.23 cu. ft. freezer
- Moist 'n Fresh and Cool 'n Fresh storage compartments and Sealed Snack Pack
- Equipped for automatic icemaker (Optional—extra cost)

regularly \$699.95  
less rebate \$ 40  
**YOUR COST \$ 649<sup>95</sup>**



**\$20 CASH REBATE**

**5-CYCLE AUTOMATIC DRYER!**

- Five cycles including automatic regular, permanent press/cottons, polyester knits, dewrinkle, damp dry.
- Four drying selections—high/cottons, medium/perman press, low/knits, no heat/fluff.

regularly \$469.95  
less rebate \$ 20  
**YOUR COST \$ 449<sup>95</sup>**

regularly \$349.95  
less rebate \$ 20  
**YOUR COST \$ 329<sup>95</sup>**

**GE. We bring good things to life.**



**If it's just merchandise you want, you can shop anywhere.**

**If you want a lot more for your money, be sure to shop locally!**

There's a lot more to shopping than meets the eye. On the surface it appears that the products and services you buy are of prime importance. They are important, but where you shop is more important. When you shop locally, you get a lot of important extras. Remember that part of every dollar you spend locally benefits you and your town in the form of taxes local firms pay. When you support out of town firms, you help another town, not your community. Charitable donations by local firms also help your own community. So remember the advantages of shopping locally where your dollars make good sense.

**No need to roam...the best shopping's here at home!**





**STATE NATIONAL BANK**  
IOWA PARK, TEXAS  
FDIC Locally Owned

592-5512  
592-4681

# PARKWAY

200-206 West Bank

FURNITURE  
  
HARDWARE



# Cook of the Week

If the Cook of the Week section has ever seemed drab or humdrum, it certainly will not this week as we feature Nan (Mrs. David R.) Davis and enjoy her recipes from Portugal, the Philippines and one from South Carolina, her native state. A newcomer to Iowa Park, she is one of the busiest, most talented, versatile and most interesting people that it has been our privilege to meet and interview.



Mrs. David Davis

She was graduated from Charleston, South Carolina High School and received a B.S. degree in home economics from Winthrop College at Round Hill. She has done extensive graduate work, the majority of it at Texas Women's University in Denton. She taught home economics six years, also taught driver's education and junior high science.

Nan is a licensed clown, "Blossum," and entertains for charity benefits. She has taken four cake decorating courses though Wilton and won a cake decorating contest last year.

Mr. Davis, water and sewer superintendent for the City of Iowa Park, retired as major from the U.S. Air Force where he has 21 years of active and six years of inactive service. He is a native Texan and she jokingly says that when he proposed marriage to her, he warned her that they "would retire in Texas."

When the couple were in Azores, Portugal, they adopted two children, Nancy a fifth grader and Duane, a fourth grader at Bradford Elementary School. While stationed in the Philippines, they adopted Robbie, five years of age, a student at King's Kids. In the Philippines, Mrs. Davis was religious coordinator for the Protestant chapel.

The Davises are members of First United Methodist Church in Iowa Park. She is a member of United Methodist Women and Mary fellowship. She has been elected the children's coordinator of the church and has organized the Acolyte Guild.

Nan is a member of the parent advisory board for special education representing Bradford Elementary School in the district, and a PTA member. A Dynamic Realtor for Century 21, she is vice president of Wichita Falls Women's Council of Realtors and entertainment chairman for the Board of Realtors. She is also soccer team mother for Bandits 3 Div.

## ALCATRA [Portugese]

(Serves 8)  
5-6 lbs. pot roast or any tough beef  
1 bay leaf  
2 onions, sliced  
3 whole cloves  
1 T salt  
6 whole black peppercorns  
3 cloves garlic, chopped  
1 bottle wine

Place meat in shallow earthenware casserole, cover with onion; add spices, wine and enough water to come 1/2 to 3/4 up the sides of the meat. DO NOT IMMERSE MEAT IN LIQUID. Cover. Place in refrigerator for 1 to 3 days, turning meat several times a day.

When ready to cook, place uncovered in 325 degree oven for 2 1/2 - 3 hours, turning meat every 20-30 minutes. Add water to keep liquid about 1/2 way up side of meat.

Note from Mrs. Davis: "I like to add potatoes and carrots the last hour of cooking, or serve with a side dish of rice. The flavor improves the next day. The darker the wine in color, the darker the meat liquor will be."

## SOPA DE ESPRITO SANTO

[Portugese]  
[Holy Ghosts Soup]  
2 sprigs mint  
2 1/2 lbs. beef stew meat  
1 lb. ham  
1 large onion, minced  
2 cloves of garlic  
3 large carrots, peeled  
6 slices dried bread  
1 whole cabbage  
6 turnips  
6 potatoes  
2 sweet potatoes  
1 tomato

Into a large pot, put beef and salt liberally. Cover with water and place on slow fire bringing to a boil. Add remaining ingredients and let simmer for at least 2 hours. Remove about 1/3 of vegetables and all of the meat. Pour remaining broth and vegetables on dried bread and sprigs of mint in a large serving bowl. Cover and let stand several hours, then reheat before serving. The meat and vegetables can be served as a main course. The soup is typically Azorean and is always served at religious functions which honor the Holy Ghost.

## LUMPIA [Philippines]

1 lb. ground beef, or beef and pork mixed  
1 large onion, chopped fine  
1 carrot, chopped fine  
1/2 green pepper, chopped fine  
10 pieces green beans, chopped fine  
1/4 head cabbage, sliced fine  
Salt and pepper to taste  
100 lumpia wrappers

Saute onion; add meat, cooking until browned. Season with salt and pepper; drain mixture and return to stove; add carrots and beans and return to stove; stir fry for at least 5 minutes. Add remaining vegetables and stir fry for another 5 minutes. Drain and set aside to cool before wrapping.

WRAPPING:  
Use at least 1 tsp. per wrapper. Put the meat mixture at least 1/2 inch from edge of wrapper. Bring the edge to the meat and roll over. Fold both ends and continue rolling until you reach the other edge. Deep fry until slightly brown. Serve with sweet and sour sauce.

(One can also freeze the lumpia and fry in deep fat frozen as needed.)

Great for meals, snacks and parties. Different vegetables can be used in meat mixture.)

## SWEET AND SOUR SAUCE

1/4 cup brown sugar  
1/4 cup soy sauce  
1/4 cup white sugar  
1 T cornstarch  
1/2 cup vinegar  
Combine ingredients and bring to a boil until it thickens. Serve sauce hot or cold.

## CHICKEN ADOBO [Philippines]

2-3 lbs. chicken pieces  
1/4-1/2 cup margarine or oil  
1 large onion, sliced  
4 cups water  
1/2 cup soy sauce  
1/4 cup vinegar  
2 or 3 bay leaves  
2 or 3 whole peppercorns  
1 clove garlic, chopped  
5 T flour

Brown chicken in margarine or oil and set aside. Saute garlic and onion; add to chicken. Pour 4 cups water into chicken mixture and let it boil, adding vinegar, soy sauce, bay leaves, peppercorns and garlic. Reduce to medium heat; cover and simmer until chicken is cooked. Before serving, blend the flour with 1/2 cup water and stir into chicken mixture. Simmer for 15 minutes to thicken sauce. Serve with a side dish of rice.

## POMPION

[South Carolina low country recipe]  
1 firm medium dry pumpkin  
1 dozen lemons (or 1 cup lemon juice, more or less)  
1 cup sugar to each 2 cups pumpkin chips

Peel pumpkin and cut into thin pieces 1/2 inch square. Add sugar and lemon juice (save the skins if using lemons); let stand overnight. Boil pumpkin until chips look clear and transparent. Take chips out and boil

syrup until it thickens a little. Cut up lemon skins and boil separately until soft. Add chips and lemon skins to the thickened syrup and bring to a boil. Place in jars and seal. Makes 6-8 pints.

## SANS RIVAL [Philippines]

6 egg whites  
1/4 cup sugar  
1 tsp. vanilla  
1 1/2 cups cashew nuts, chopped fine  
Grease and flour heavily 3 - 18x15" cookie sheets. Set aside.

Beat egg whites until soft peaks are formed; gradually add the sugar, beating well after each addition. Continue beating until egg whites are very stiff; fold in nuts and vanilla. Spread thinly in prepared pans; bake at 300 degrees for 20 minutes or until golden brown. Cut wafers in center, if desired. Loosen and slide wafers to a flat surface; cool. Work while wafers are hot because they are hard to loosen when they are crisp and cool. Note: "I also line pan with wax paper."

## FILLING:

1 cup sugar  
1 cup butter  
1/2 cup water  
6 egg yolks  
(Can use 2 T rum for part of water)

Boil sugar and water until it spins a thread in cold water. Meanwhile, beat egg yolks until thick; pour syrup in egg yolks into thin streams while beating. Cool. Cream butter, blend egg mixture into butter. Fill and cover wafers with filling, stacking them on top of each other. Sprinkle with chopped cashew nuts. Serve chilled. Note: "I've used pecans and walnuts successfully."

## Mrs. Roberts has program

The Christian Women's Fellowship met in the parlor of First Christian Church Monday evening for the third in a series of programs on "Putting Love First." Mrs. Rollin Roberts presented an interesting study on "Maturing Love."

Members brought their baby pictures and Mrs. Roberts used them along with a picture of the baby Jesus to stress how each one should grow physically, intellectually and spiritually as Jesus did. She also used

recorded music to emphasize her program.

Mrs. Wm. Andersen led the worship on "Today Is the First Day of the Rest of Your Life - Living on the Growing Edge."

During the business session led by Mrs. Dale Walling, discussion was held concerning gifts for Heritage Manor, items for the food pantry and a dishwasher for the parsonage.

Refreshments were served by the hostess, Mrs. Pauline Steele, to 10 members.

**ACCEPTING IN-SEASON CLOTHING**  
**NEW NEARLY NEW**  
410 Park West Center 592-9563  
Open Tues. - Thurs. 9:30 a.m. - 5 p.m.  
Friday 1 p.m. - 5 p.m.  
Also open first Saturday of each month, 1 - 5 p.m.

**Mens-Womens-Childrens Clothing**  
Bring those gifts that didn't fit or that article of clothing you couldn't live without, that you've worn a time or two, and let us resale it for you at 50% commission



TRACY HALE AND BRENT CATLIN

HOLLY BURRELL and JOEL WITT

JUDY LIGGETT and HOWARD LANE II

TANDRA WILKERSON and DAN WILLIAMS

Park Pharmacy & Thoughtfulness Shop

115 W. Park 592-4116

WE CARE ABOUT YOUR HEALTH WE CARE ABOUT YOUR HEALTH WE CARE ABOUT YOUR HEALTH

**LARRY PRIBBLE**  
Pharmacist

**Store Hours:**  
9 a.m. - 7 p.m.  
Monday thru Friday  
9 a.m. - 6 p.m.  
Saturday

**Phone 592-4157**

**Afrin<sup>®</sup> Nasal Spray**  
Decongestant for Up to 12 Hours  
30 ML **2.68**

**Ecotrin<sup>®</sup> Tablets**  
Maximum Strength  
24's **1.66**

**Cepastat Lozenges**  
Antiseptic Cooling for Sore Throats  
18's **1.25**

**Maalox<sup>®</sup> Plus Antacid**  
A Pleasant Change of Taste  
Tablets 100's or Suspension 12 oz.  
Your Choice **2.23**

**Phisoderm Skin Cleanser**  
Regular Formula  
5 oz. **1.48**

**Campho-Phenique<sup>®</sup> Liquid**  
Pain-Relieving Antiseptic  
1 oz. **1.15**

**Aseptom Thermometer**  
by Becton Dickinson  
Easy to Read  
Oral #4015 or Rectal #4025  
Your Choice **1.97**

**Summer's Eve**  
Regular, Herbal or Vinegar & Water Disposable Douche  
Twin Pack 4.5 oz. Your Choice **.99**

**Organic Health Vitamin E Lotion**  
Enriched with Natural Vitamins A & D  
8 oz. **1.99**

**Prime<sup>™</sup> Centre Vitamins & Minerals**  
A to Z  
100 Caplets  
Compare to Centrum **3.79**

**WAL-MART Pharmacy**  
592-4157 500 W. Hiway Iowa Park

WE CARE ABOUT YOUR HEALTH WE CARE ABOUT YOUR HEALTH WE CARE ABOUT YOUR HEALTH

## IOWA PARK RECREATIONAL ACTIVITIES CENTER SCHEDULE FOR NOVEMBER 1982

SUNDAY	MONDAY	TUESDAY	WEDNESDAY	THURSDAY	FRIDAY	SATURDAY
	Joy - Dance Weight Watchers, 6:30 Aerobics, 7 p.m.	Aerobics, 9 a.m. Optimist, 7 p.m. Ceramics, 7 p.m.	Rotary, 12 Noon Aerobics, 7 p.m. Bible Study, 7 p.m.	Karen - Dance Christmas Showcase (tree ornament) 7 p.m.	Aerobics, 9 a.m.	
7	Joy - Dance Weight Watchers, 6:30 Aerobics, 7 p.m.	Blue Birds Optimist, 7 p.m.	Rotary, 12 Noon Aerobics, 7 p.m. Bible Study, 7 p.m.	Whole Wheat Yeast Bread [Barbara Cornelius] 10 a.m. Karen - Dance Garden Club, Dinner	Aerobics, 8:30 a.m.	13
14	Joy - Dance Weight Watchers 6:30 Aerobics, 7 p.m.	Optimist, 7 p.m. Ceramics, 7 p.m.	Rotary, 12 Noon Aerobics, 7 p.m. Bible Study, 7 p.m.	Karen - Dance Girl Scout/Parents Dinner	Aerobics, 8:30 How To Make Wind Chimes, 7 p.m.	20
21	Joy - Dance Weight Watchers, 6:30 Aerobics, 7 p.m.	Blue Birds Optimist, 7 p.m. Ceramics, 7 p.m.	Rotary, 12 Noon Aerobics, 7 p.m. Bible Study, 7 p.m.	HAPPY THANKSGIVING	CLOSED	E.S.A. CRAFTS FAIR
CLASSIC CHEVY CLUB	Joy - Dance Weight Watchers, 6:30 Aerobics, 7 p.m.	Optimist, 7 p.m. Ceramics, 7 p.m.				



# Worth Quoting

The Time: A cool autumn evening, 1986.

The Place: A smoke-filled bar in Dallas.

The Scene: Tony Dorsett, Randy White, Danny White (wearing a disguise), Harvey Martin, Too Tall Jones, Butch Johnson, Bob Breunig and a couple of other former Cowboys are having their weekly get-together, discussing the job market.

The waitress asks what they'll have to drink.

Dorsett orders a scotch on the rocks while Martin, White and Jones ask TD if he can spring for a couple of beers for them.

"Come on, my man, we've been out of work for four years now," says Randy White. Dorsett tells the waitress to put three light beers on his tab.

Danny White asks for a glass of the coldest milk in the house. Breunig orders a glass of Perrier and looks nervously in Dorsett's direction.

Butch asks if they still make a "California Quake." The waitress says she's never heard of the California Quake. Crushed, Butch settles for a beer.

"Put it all on my tab," says Dorsett magnanimously. "I got it covered."

"How'd you hang onto all your money, anyway," Martin asks Dorsett.

"I just started with a lot more than you did," answers TD.

Too Tall breaks in with a mournful moan.

"You know," he sighs, "that boxing was a lotta fun when I really didn't need the cash. But nowadays, man it's brutal. I'm taking a beating in all these grungy little joints."

"If I'm lucky, nobody remembers that I used to play pro football," Jones explains. "But if some loudmouth reminds everybody I used to play back when they had an NFL, the chumps start throwing stuff at me."

Everybody shakes their heads.

"I got a call from Dick Vermeil last week," says Breunig. "He wanted me to go to work for him."

"Doing what," asks Martin. "Running a concentration camp?"

Everybody laughs, but not too heartily.

"Nah, he's got a used car lot in Uniontown Gap, Pa.," says Martin. "He says I could start off in the vans and campers department - but it's strictly commission. He's already got Wilbur Montgomery and Vince Ferragamo working for him."

"Of course, he made them change their names."

"It sounds pretty good to me," says Butch, "I just got laid off from my ballet-instructing job."

Dorsett is shocked by this revelation.

"How could it be Butch? You're the best man. Nobody could do an end zone dance like you could."

But Butch shakes his head.

"TD, like nobody remembers what an end zone was," says a chestfallen Johnson. "Besides, my teaching was fine. There was another problem...the girls complained that they were tired of always hearing me tell them about that catch I made in the Super Bowl against Denver."

"You guys remember it, don't you? Remember, I dived - sorta flew through the air - into the end zone..."

"Yeah, Butch," they say as a group, "We've heard it before."

Gloomy silence sets in. Dorsett quickly orders another round for the table to try and lift the spirits.

"How's the preaching coming?" somebody asks Danny.

"Not bad," says the former QB. "But to tell you the truth, there's still something else I'd rather do on Sunday."

"I'll drink to that," says Dorsett, "and I'm buying, so you guys had better drink to that as well."

Breunig reports that his book sales

are down.

"The motivational book business just isn't what it used to be," he says shaking his head. "Nobody wants a book called 'You Can Tackle Life's Problems Too.' All I get is a bunch of nasty letters from people asking me why I couldn't tackle Ed Garvey back in '82."

"Heck, I hadn't written the book then."

From the end of a table, comes a growl from Randy White.

Dorsett hastily orders another round in an attempt to soothe the big guy.

"Would you look at this can," says Randy between clinched teeth. "It says '55 Percent Water.'"

Again, a gloomy silence envelopes the table.

"Where is Garvey? I'd like to meet him in a dark alley," growls a still-seething Randy White.

"I heard he's in the wildest part of Australia," says Dorsett, "trying to sell bongo drums to aborigines."

"I'll send the barbeque sauce," says Too Tall, rubbing his cauliflower ear, "if they want to have him for dinner sometime."

"You know," says Dorsett, moodily stirring his drink, "I might've become the all-time leading rusher in the history of the NFL..."

"Maybe so," says Martin, "but you'd also be the leading fumbler of all time."

"Who's buying the drinks, pal?" "Just kidding, Tony. Just kidding."

"Maybe so," says TD, "but this is the last round. You guys think I'm made of money."

And with that, the party breaks up. As the former Cowboys file out into the cold, dark night, somebody asks, "has anybody heard how the negotiations are going?"

"They're still at it in New York," says Danny, weaving under the influence of too much milk. "And I hear they're making progress..."

"They've agreed to use a leather ball and play on Sundays."

By **CHUCK McDONALD**  
The Graham Leader

# As I See It....

By **BOB HAMILTON**



The general election is over, and boy, were there some surprises!

I have every intention of giving all the victors a fair chance, with one exception. But I must admit I've got a few reservations about a couple others.

One thing is for sure, if I don't like what I see is being done by any of them, I hold the right to complain. I voted.

I cannot, for the life of me, see how the citizens of this state... as intelligent as they are... be so

uncaring, so tough-skinned, so short-remembered, as to re-elect Bob Bullock as state comptroller.

Even a large number of fellow publishers from the plains area endorsed him! Bah-humbug!

Bullock, I must admit, ran the best campaign he could. He kept his mouth shut and his name out of print. Low-key, I think it's called. Sneaky, I call it.

Had his Republican opponent been half as aggressive as his Democratic opponent in the primary, Bullock would never have survived. He'd be right where he ought to be: looking for a minimum wage job, and probably having a hard time finding it.

You see, most of us who hire people ask questions about the applicant. That's why political hacks like Bullock

make a living at running for office. They know most Texans vote straight ticket and they'll win.

Well, he's got another term of office during which he can feel secure that he can continue sending manure through the mails to those who respect him as much as I.

Reservations are for the new governor and commissioner of agriculture.

White, I've known since he was first appointed secretary of state. Thornberry I've never met. But neither of them has done much more than seek office in their adult lives.

But we've gone through the process of selection and we have the winners. I only hope I'm as optimistic in a couple of years as those who apparently were who helped elect them.

## Permits

Continued from page 1

addition, \$4,000; Mrs. J.E. Penn, 420 S. Bond, addition, \$850;

Parkside View Development Corp. 1210-1216 N. Jackson, townhouse, \$20,000;

David W. Hutson, 111 E. Garden, addition, \$500;

Kenneth McCreary, 311 W. Jefferson, addition, \$1,500;

Birthe Myers, 614 W. Rebecca, addition, \$2,000;

James Jenkins, 904 E. Cash, addition, \$1,500;

Lawrence Shook, 403 W. Texas, addition, \$5,000;

Jerry Evans, 600 W. Cornelia, addition, \$2,000.

## Weather Report

Weather reports are officially compiled for Iowa Park at the Texas Experiment Station, southeast of town.

Rainfall for week.....	.51
Total for month.....	1.15
Total for year.....	30.33
Total last year.....	28.68

## News in brief

### Hawk Band earns top marching rating

Iowa Park High School Band won first division rating in the North Zone University Interscholastic League marching and twirling contest held Tuesday in Wichita Falls, and the junior high band won second division rating.

Twirlers from Iowa Park receiving UIL first division ratings were

Brenda Cook, Vicki Floyd, Robin Isbell, Kayla Nault and Dena Beavers. Lisa Hodges received a non-UIL first division in twirling.

A division one rating in marching is the first step toward achieving the coveted sweepstakes award. The second step is to earn the same division in both concert and sightreading in the spring.

### Seventeen singers make all-region

Seventeen members of the Iowa Park High School A Cappella Choir made the All-Region Choir in auditions held in Abilene Saturday. They will audition for All-Area Choir Nov. 29 and sing in the All-Region Concert Nov. 30 at Wichita Falls High School.

Choir members who made All-Region Choir included Lori Barr,

Alisa Cain, Phillip Clements, Robert DuBoise, Maureen Duffey, Bryan Fowler, Melissa Hatcher, Tim Norris, Kent Roberts, Kevin Robnett, Wes Toller, Craig Whisnand and Jay Yeakley. Those named alternates were Georgia Alsup, Becky Brown, Paula Mashburn and Tammy Washburn.



MARKING THE DATES for a special week at Vernon Regional Junior College is Robert Lewis, freshman music major from Iowa Park. The son of Mr. and Mrs. Wendell Allen points to VJRC's 10th anniversary celebration dates.

# Even if you're unhandy, you can do something to help hold down electric bills.

Save energy and money at home by learning how to insulate, caulk and weatherstrip — it's easy when you know how. Just call us, or ask for our "Unhandy Person's Guides" on the comments portion of your bill.



It's important to learn ways to conserve energy, especially since we're having to pay more for fuels to make your electricity — partly because another of our contracts for low-cost natural gas has expired, but mainly because the price of *all* fuel continues to rise.

You can conserve and help hold down your bill by using the "Unhandy Person's Guides" from Texas Electric.



## COUNTER TOPPING

FORMICA WILSON-ART MICARTA

"BUY FROM THE OLD PRO"

T.S. THOMAS, CABINETMAKER

1516 Beverly Wichita Falls Ph. 723-6523

# IOWA PARK LEADER

Bob Hamilton ..... Editor-Publisher  
Dolores Hamilton ..... Assistant Publisher  
Olive Blalock ..... Reporter  
Kevin Hamilton ..... Reporter

The IOWA PARK LEADER is published every Thursday. Offices are located at 112 W. Cash, Iowa Park, Texas, 76367. Telephone: 592-4431. Second class Postage Paid at Iowa Park, Texas, 76367. Subscription rates are \$7 per year in Wichita and Archer Counties; \$9 elsewhere in Texas and Oklahoma; \$11 anywhere else in the United States. Classified advertising rates are 16 cents per word first insertion, 8 cents per word thereafter. Any erroneous reflection upon the character, standing or reputation of any person, firm or corporation which may appear in the columns of this newspaper will be corrected upon being brought to the attention of the publisher.





THIS AD GOOD  
THRU SUNDAY  
NOVEMBER 7

IOWA PARK, TEXAS STORE ONLY

300 W. BANK

592-5321

# SUPER FINE FOODS

AFFILIATED

AFFILIATED

We Reserve the Right to Limit Quantities

Shurfresh  
**Sliced Bacon**  
1 Lb. Vac Pac  
**1 58**

"NATURALLY TENDER"		BLADE CUT	
Round Steak Lb.	1 58	Chuck Steak Lb.	1 18
LEAN, TENDER Pork Steak Lb.	1 38	CHICKEN FRIED Steak Patties Lb.	1 58
COUNTRY STYLE Spare Ribs or Backbone Lb.	1 68	LEAN Ground Beef Lb.	89¢

Assorted  
**Pork Chops**  
Family Pack  
**1 48**

USDA Choice  
**Boneless Chuck Roast**  
**98¢**

SILVER SPUR Sliced Slab Bacon Lb.	1 58
KRECK'S Party Pups 12 Oz. Pkg.	68¢
SILVER SPUR Pork Sausage 2 Lb. Pkg.	2 58

COUNTY FAIR BONELESS Hams Halves Lb.	2 38	Whole Lb.	2 28
HILLSHIRE FARMS Smoked Sausage Beef or Pork Lb.	1 98		
SMOKED Jowls Lb.	98¢		

## Our Beef Is "Naturally Tender"

Shurfine Cut  
**Green Beans**  
Limit 4  
16 Oz.  
**4/1 00**

Shurfine **FANTASTIC FALLS SALE!**

Thrift King  
**Mac & Cheese**  
Limit 5  
**5/1 00**

Shurfine Crinkle Cut  
**Potatoes**  
Limit 2  
2 Lb. Bag  
**68¢**

Shurfine C/S or W/K  
**Corn**  
Limit 3  
16 Oz.  
**3/1 00**



fanci pans®  
PORCELAIN-ON-STEEL COOKWARE  
THIS WEEK'S FEATURE ITEM:  
**8 QT. STOCK POT**  
Regular Retail \$18.99 With \$5.00 Purchase **\$16.99**

Red Delicious  
**Apples**  
2 Lb. Bag  
**69¢**

SHURFINE BLEACH Limit 2 1 Gal.	59¢
SHURFINE CHOPPED TURNIP GREENS	3/1 00
SHURFINE Sliced Carrots 16 Oz.	39¢
SHURFINE TUNA 6.5 Oz.	69¢
SHURFINE PEACHES 16 Oz.	2/1 00
SHURFINE Evaporated Milk 13 Oz.	2/88¢
DELTA Paper Towels Jumbo Roll	49¢

SHURFINE Shortening Limit 1 3 Lb.	99¢
SHURFINE Tomato Sauce Tomato Soup	4/1 00
SHURFINE Margarine Qtrs.	3/1 00
SHURFINE TEXAS STYLE BISCUITS 12 Oz.	3/1 00
SHURFINE FROZEN Broccoli Cuts 20 Oz.	99¢
SHURFINE Whipped Topping 8 Oz.	65¢
CANNED 6-PACK COCA-COLA & ASSORTED FLAVORS	1 59

TEXAS 5 LB. Oranges	1 49
CALIFORNIA STALK Celery 3 FOR	1 00
EAST TEXAS 1 Sweet Potatoes 3 LBS	1 00
FRESH GREEN Broccoli Lb.	49¢
Coke, Sprite Mr. Pibb & Tab 1 Liter Plus Deposit	1 79

SHURFINE APPLE BUTTER 28 Oz.	89¢	SHURFINE Tomatoes 16 Oz.	2/89¢	SHURFINE Catsup 32 Oz.	99¢	SHURFINE Drinks 2 Liter Assorted	79¢
------------------------------	-----	--------------------------	-------	------------------------	-----	----------------------------------	-----

## Budget Stretching Prices Down Each Aisle!

NABISCO RITZ CRACKERS	1 29	LARGE EGGS Doz.	68¢	WOLF CHILI 19 oz. Can	99¢	PLUS Different Special Each Day
-----------------------	------	-----------------	-----	-----------------------	-----	---------------------------------



## Lions Camp inspiration

A success story related by Dusty Willingham, prominent business woman of Wichita Falls, was the highlight of the Iowa Park Lioness Club program Thursday evening in a meeting held in the home of Mrs. Riley Thompson, with Mrs. D.O. James, co-hostess.

Introduced by Mrs. L.A. Thurlo, the speaker told how at 13 years of age she was stricken with polio, spent time in an iron lung in the hospital, and left with braces and the inability to do much to help herself. Her dreams of achieving success in the field of athletics shattered, she wondered what the future held for her.

At this point in her life she was led to the Lions Crippled Children's Camp in Kerrville one summer, and Mrs. Willingham stated emphatically that the first visit to the camp gave her inspiration and confidence to overcome her handicap. She completed high school, received a degree from college and is now a mother of two, grandmother of one and a successful business woman and civic worker.

Mrs. Keith Aulds, president, was in charge of the meeting. Mrs. Sam Hill read a poem "A Challenge" for the meditation. Mrs. Thurlo distributed yearbooks and gave a resume of the programs.

Mrs. Frank Gossett and Mrs. Dave Davis were introduced as new members.

## Church bazaar set Saturday

The First United Methodist Church will hold its annual bazaar Saturday from 9 a.m. to 3 p.m. in the newly remodeled Fellowship Hall.

The bazaar will feature a bake shop, arts and crafts, plants, stitchery, recycled treasures, and the youth of the church will have a booth selling Christmas tree ornaments.

Lunch will be served and people will have their choice of stew, Frito pie, chili, sandwiches, cake, pie and drinks.

### Schedule for:

## Recreational Activities Center

a demonstration on making of small Christmas gifts and tree ornaments will be held at 7 this evening by Mrs. Betty Merriman, RAC director. Items already made will also be on display. Admission will be \$1.

Three new classes in aerobics will begin next week. Classes will be at 7 p.m. Monday and Wednesday and 8:30 a.m. Fridays.

Thursday of next week, at 10 a.m., Barbara Cornelius will present a demonstration on making whole wheat bread in a plastic bag. No admission fee will be charged.



**BAZAAR ATTRACTION** - Mmes. Frank Gossett, James Beals and David Davis admire the beautiful quilt that will be included in the many items for sale at the United Methodist Women's annual harvest bazaar Saturday. A variety of useful gifts and novelties will be featured along with the bake and plants sales.

## Obituaries

### H.G. Dickerson

Services for H.G. "Pud" Dickerson, 78-year-old retired oilfield worker who died Friday in Hollis, Okla., were held Sunday at Tims Funeral Home in Altus. Rev. C.L. Abercrombie of the Central Baptist Church officiated, and burial was in the Fairmont Cemetery in Hollis.

A native of New Mexico, Dickerson was born April 17, 1904. He had resided in Southwestern Oklahoma most of his life. He had lived in Elmer the past five years and was a Baptist.

Survivors include two sons, Orlin of Iowa Park and Richard Pete of Wichita Falls; a daughter, Mattie Pate of Wichita, Kan.; five brothers, Zearl of Rockford, Ill., Pete of Marysville, Calif., Jessie of Tyler, Bennie of Denver, Colo. and George of Mangum, Okla.; four sisters, Edna Nelson of Hollis, Artie Mae Zeaman of Altus, Jannie of Olustee and Inez Neely of Oklahoma City; 11 grandchildren and 13 great-grandchildren.

### Bernard Baxter

Services for Bernard Baxter, 72, of Route Two, Iowa Park, were held Friday afternoon at Hampton-Vaughan Funeral Home in Wichita Falls. Rev. Jim Rudd, pastor of Highland Heights Christian Church, officiated. Burial was at Crestview Memorial Park.

He was born June 10, 1910, in Stamford and had lived in Wichita County 62 years. He was a member of Highland Heights Christian Church and retired employee of Hornsby Heavy Hardware. He had also worked at General Mills for 25 years.

Baxter was a member of the Open Door Sunday School Class and song leader for Golden Harps Choir of American Association of Retired Persons.

He is survived by his wife, Bee; two daughters, Sharon Burres of Austin and Judy Baxter of Carrollton; two brothers, Guy R. Baxter of Glenside, Pa., and Jack Baxter of Albuquerque, N.M.; and eight grandchildren.

## Little Richard's Salt Lick Restaurant

510 E. Hiway 592-5252

**THURSDAY & FRIDAY SPECIAL**  
**Louisiana Jumbo Fried Shrimp**

Monday - Friday

11 a.m. - 9 p.m.

Video Games

## District Methodist Women hold day-long meeting

The Wichita Falls District of United Methodist Women met at First United Methodist Church Saturday in an all-day session, with 141 delegates from 20 local units attending. The theme of the ninth annual meeting was "The Freedom To Be Whole." Mrs. Johnnie Harris, president, directed the activities.

Mrs. Margaret Carter, president of the local unit, was in charge of arrangements for the session which included a reception at 9 a.m. and making assignments for the displays in the west wing of the church.

Keynote speaker for the day was Mrs. Mary May, wife of minister of

visitation at First United Methodist Church in Winnsboro. She is in her second quinquennium on the General Board of Global Ministries, which entails her travelling as a representative of the Woman's Division of the United Methodist Church to some 9,000 projects around the world. She described her recent trip to China and Korea where her message was a plea that the shells of war be turned into the bells of peace.

Shirley Lowrey gave the report for the district committee on nominations and Mrs. Harris was elected to continue as president of the organization for another year.

## Share meal Thanksgiving

Thanksgiving can be an occasion to reflect on good things which have happened through the year.

Someone who has to spend it alone may lose perspective of the good things. Their loneliness may weigh so heavily on their minds, that they dwell upon it, and forget the good things.

Sheppard AFB chaplains are trying to prevent that with their fifth annual Operation Thanksgiving.

This program matches single airmen with host families. The hosts pick up their guests at the recreation center, Building 430, at noon on the special day, and share their Thanksgiving dinner with them.

Families willing to share that meal with one or more airmen may call Chaplain (Major) Richard Pusch at 851-2246 or 851-4360.

## Shape Up For The Holidays LADIES AEROBICS

Look Better! Feel Better!



This course will help you lose inches and pounds, strengthen and tone muscles, when combined with a sensible diet/exercise effort.

This is a four-week course beginning **Mon., Nov. 8**

After a recess for Christmas, four-week courses will continue until summer.

\$12 - total cost for once a week  
\$18 - total cost for twice a week  
\$24 - total cost for three times a week

\$2 RAC membership required - membership good until Oct. 1983. Classes held at RAC on Mon. and Wed. at 7:00 p.m., and Friday mornings at 8:30 a.m. Please come 1/2 hour before class to register.

Phone:  
**JOY HEDRICK, 592-2000**  
**RAC, 592-4471**



## Let's talk.

Information about your changing telephone service from Dan Adams, Community Relations Manager.

### Some Answers for AT&T stockholders

In Southwestern Bell's territory, there are 224,000 AT&T stockholders and more than 100,000 of them are right here in Texas. Many of you have questions about what will happen to your AT&T stock after divestiture.

Currently, AT&T stock represents an investment in the total Bell System—Long Lines, Western Electric, Bell Labs and the operating companies, like Southwestern Bell. At divestiture, the assets of the Bell System will be divided.

For example, a share owner who currently owns 50 shares of AT&T stock will still own 50 shares of AT&T stock after divestiture. In addition, the stockholder will own a proportionate interest in the divested operating companies.

No final decision has been made on a procedure for dividing the stock once AT&T spins off the 22 operating companies. However, AT&T is working on a plan to make it easy and inexpensive for share owners to manage their holdings.

Specific investment procedures and other details have not been finalized. Any plan regarding AT&T stock requires review by the Bell operating companies, the Department of Justice and the federal court before it can be enacted.

Whatever plan is accepted, AT&T is committed to ensuring the plan is fair and equitable. In addition, AT&T plans to minimize, as much as possible, transaction costs associated with the consolidation of small share holdings.

### Check Identification Whenever in Doubt

It's a good idea to make sure you're satisfied before letting anyone in your home. That's why every Southwestern Bell employee carries an identification card.

The ID card shows his or her name, a photograph and an expiration date. The next time a Bell employee comes, you can request

identification, if desired. He'll understand that you don't let just anyone enter your home.

### Planning Before Emergencies Occur

The best way to prepare for emergencies is through advance planning. Make sure that every family member—especially small children—understand what they should do when the unexpected happens.

Remember to keep important telephone numbers near the phone. Police, fire and ambulance numbers should head your list. You might also note doctors, hospitals, neighbors and near-by relatives.

In families with small children, note the pediatrician, poison control center, school or day care numbers as well as how to reach you at work. Also take time to review how to report an emergency with youngsters.

They should give the nature of the emergency, name and address and a contact number. If the emergency requires leaving the house, always give a neighbor's phone number instead of your own.

### A Directory Keeps Numbers Safe, Handy

Record emergency numbers as well as important addresses and dates in a Personal Directory. If you'd like a free copy, send your name and address to: Southwestern Bell, Personal Directory, P.O. Box 225265, Dallas, Texas 75265.

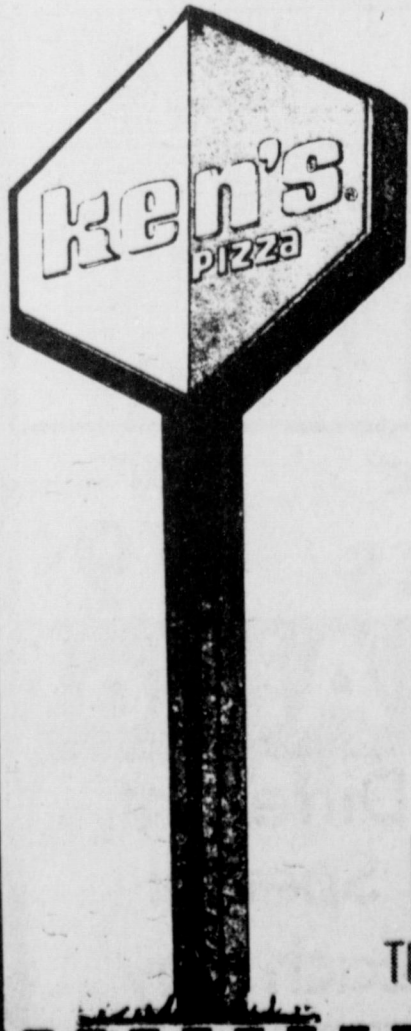
This time of year reminds me of all the good things in life to be thankful for. I hope that this year's holiday season is equally special for you, too.

Remember, if you have a question or comment you'd like to pass along, don't hesitate to drop me a line. Here's my address:

Dan Adams  
Southwestern Bell  
2121 Paradise  
Vernon, Texas 76384

Southwestern Bell

## For All You Pizza Lovers!!



With this coupon, purchase one Ken's pizza at the regular price, and get the next smaller size [same style pizza, with equal number of toppings or less] FREE. Offer not good with other promotions or coupons.

# FREE PIZZA

Thursday, Friday and Saturday Only



**ken's PIZZA**  
The pizza that brings you back!

902 W. Hiway 592-4184





**DOUBLE**

**EVERY WEDNESDAY**

**DOUBLE COUPONS  
TUESDAY**

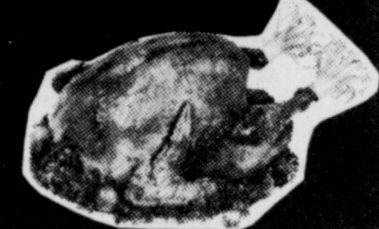
**WHITE SWAN**

**STOCK UP SALE**



**REGISTER FOR FREE TURKEY**

- No Purchase necessary
- Register when in store
- Drawing 6 p.m. Nov. 20



**WHITE SWAN SUGAR**

5-Lb. Bag

**\$1.19**

Limit 1 With \*10<sup>th</sup> Purchase or More, Excluding Cigarettes Additional Purch. ...1<sup>st</sup>

**FOLGER'S COFFEE**  
**\$1.99**

Lb. Can

**WHITE SWAN "Mix & Match"**

WHOLE OR SLICED BEETS 17 Oz.  
SLICED CARROTS 16 Oz.  
GOLDEN CORN WHOLE KERNEL OR CREAM STYLE 16 Oz.  
SPINACH 16 Oz.  
SAUERKRAUT 16 Oz.  
MIXED VEGETABLES 17 Oz.  
POTATOES 16 Oz.

**5 Cans \$1.99**



QUANTITY RIGHTS RESERVED

**WHITE SWAN "Mix & Match"**

LUNCHEON PEAS 17 Oz.  
CUT GREEN BEANS 16 Oz.  
BLACKEYE PEAS WITH SNAPS 15 Oz.  
BLACKEYE PEAS 15 Oz.  
GREEN BEANS WITH POTATOES 16 Oz.  
GREEN BEANS FRENCH STYLE 16 Oz.

**5 Cans \$1.99**

**WHITE SWAN BISCUITS**  
Sweetmilk or Buttermilk  
**7 10 Ct. Cans \$1.00**



**GREEN CABBAGE**

Lb. **15¢**

CALIF. FRESH **BROCCOLI**

Lb. **59¢**

GREEN SKIN **AVOCADOS**

3 For **\$1.00**



**RUSSET POTATOES**

10 Lb. Bag **99¢**

FIRM **LETTUCE**

Head **49¢**

EXTRA FANCY RED OR GOLDEN DELICIOUS **APPLES**

Lb. **49¢**



**BACON** ..... Lb. Pkg. **\$1.89**

**HOT DOGS ALL MEAT** 12 Oz. Pkg. **\$1.09**

**CORN KING BONELESS HAM HALVES** ..... Lb. **\$2.39**

**OSCAR MAYER COOKED HAM** ..... 6 Oz. Pkg. **\$1.69**

**OSCAR MAYER REG. OR BEEF BOLOGNA** ..... 8 Oz. Pkg. **99¢**

**OSCAR MAYER SALAMI** ..... 8 Oz. Pkg. **\$1.29**

**LOUIS RICH SMOKED TURKEY BREAST** 6 Oz. Pkg. **\$1.49**

**HORMEL CANNED HAM** ..... 3-Lb. Can **\$8.49**

**SWIFT PREMIUM**

**ARMOUR STAR**

**HOT DOGS ALL MEAT** 12 Oz. Pkg. **\$1.09**

**CORN KING BONELESS HAM HALVES** ..... Lb. **\$2.39**

**OSCAR MAYER COOKED HAM** ..... 6 Oz. Pkg. **\$1.69**

**OSCAR MAYER REG. OR BEEF BOLOGNA** ..... 8 Oz. Pkg. **99¢**

**OSCAR MAYER SALAMI** ..... 8 Oz. Pkg. **\$1.29**

**LOUIS RICH SMOKED TURKEY BREAST** 6 Oz. Pkg. **\$1.49**

**HORMEL CANNED HAM** ..... 3-Lb. Can **\$8.49**

**SWIFT PREMIUM**

**ARMOUR STAR**

**HOT DOGS ALL MEAT** 12 Oz. Pkg. **\$1.09**

**CORN KING BONELESS HAM HALVES** ..... Lb. **\$2.39**

**OSCAR MAYER COOKED HAM** ..... 6 Oz. Pkg. **\$1.69**

**OSCAR MAYER REG. OR BEEF BOLOGNA** ..... 8 Oz. Pkg. **99¢**

**OSCAR MAYER SALAMI** ..... 8 Oz. Pkg. **\$1.29**

**LOUIS RICH SMOKED TURKEY BREAST** 6 Oz. Pkg. **\$1.49**

**HORMEL CANNED HAM** ..... 3-Lb. Can **\$8.49**

**SWIFT PREMIUM**

**ARMOUR STAR**

**HOT DOGS ALL MEAT** 12 Oz. Pkg. **\$1.09**

**CORN KING BONELESS HAM HALVES** ..... Lb. **\$2.39**

**OSCAR MAYER COOKED HAM** ..... 6 Oz. Pkg. **\$1.69**

**OSCAR MAYER REG. OR BEEF BOLOGNA** ..... 8 Oz. Pkg. **99¢**

**OSCAR MAYER SALAMI** ..... 8 Oz. Pkg. **\$1.29**

**LOUIS RICH SMOKED TURKEY BREAST** 6 Oz. Pkg. **\$1.49**

**HORMEL CANNED HAM** ..... 3-Lb. Can **\$8.49**

**SWIFT PREMIUM**

**ARMOUR STAR**

**HOT DOGS ALL MEAT** 12 Oz. Pkg. **\$1.09**

**CORN KING BONELESS HAM HALVES** ..... Lb. **\$2.39**

**OSCAR MAYER COOKED HAM** ..... 6 Oz. Pkg. **\$1.69**

**OSCAR MAYER REG. OR BEEF BOLOGNA** ..... 8 Oz. Pkg. **99¢**

**OSCAR MAYER SALAMI** ..... 8 Oz. Pkg. **\$1.29**

**LOUIS RICH SMOKED TURKEY BREAST** 6 Oz. Pkg. **\$1.49**

**HORMEL CANNED HAM** ..... 3-Lb. Can **\$8.49**

**FREEZER PACKAGE SPECIALS**

Package No. 1 Includes:

- 10 Lbs. Round Steak
- 10 Lbs. Sirloin Steak
- 10 Lbs. Hamburger
- 10 Lbs. Boneless Chuck Roast
- 10 Lbs. Fryers

**50 Lbs. \$74.95**

Package No. 2 Includes:

- 10 Lbs. Chuck Roast
- 10 Lbs. Family Style Steak
- 10 Lbs. Short Ribs
- 10 Lbs. Hamburger
- 10 Lbs. Fryers

**50 Lbs. \$59.95**

PRICES GOOD THROUGH WEDNESDAY, NOV. 10

WHITE SWAN VANILLA WAFERS 12 Oz. 2 Pkg. <b>\$1.00</b>	WHITE SWAN WHITE OR GOLD HOMINY 14.5 Oz. 4 Cans <b>\$1.00</b>	SOFT N LITE FLOUR 5 Lb. Bag <b>69¢</b>	WHITE SWAN QTRS. MARGARINE 1-Lb. 3 Cans. <b>\$1.00</b>	WHITE SWAN 1-LB. MARGARINE 2 Tube <b>\$1.00</b>	RANCH STYLE 15 Oz. WHITE SWAN SALTINE BEANS 3 Cans <b>\$1.19</b>	WHITE SWAN SALTINE CRACKERS 2 Lb. Boxes <b>\$1.00</b>
---	---	--	--	---	--	---

**Visit the Coke Robot 11 a.m. 2 p.m. Saturday**

Enjoy **Coke** **Mr. PiBB** **6 1-Liter Bottles \$1.99** (Plus Deposit)

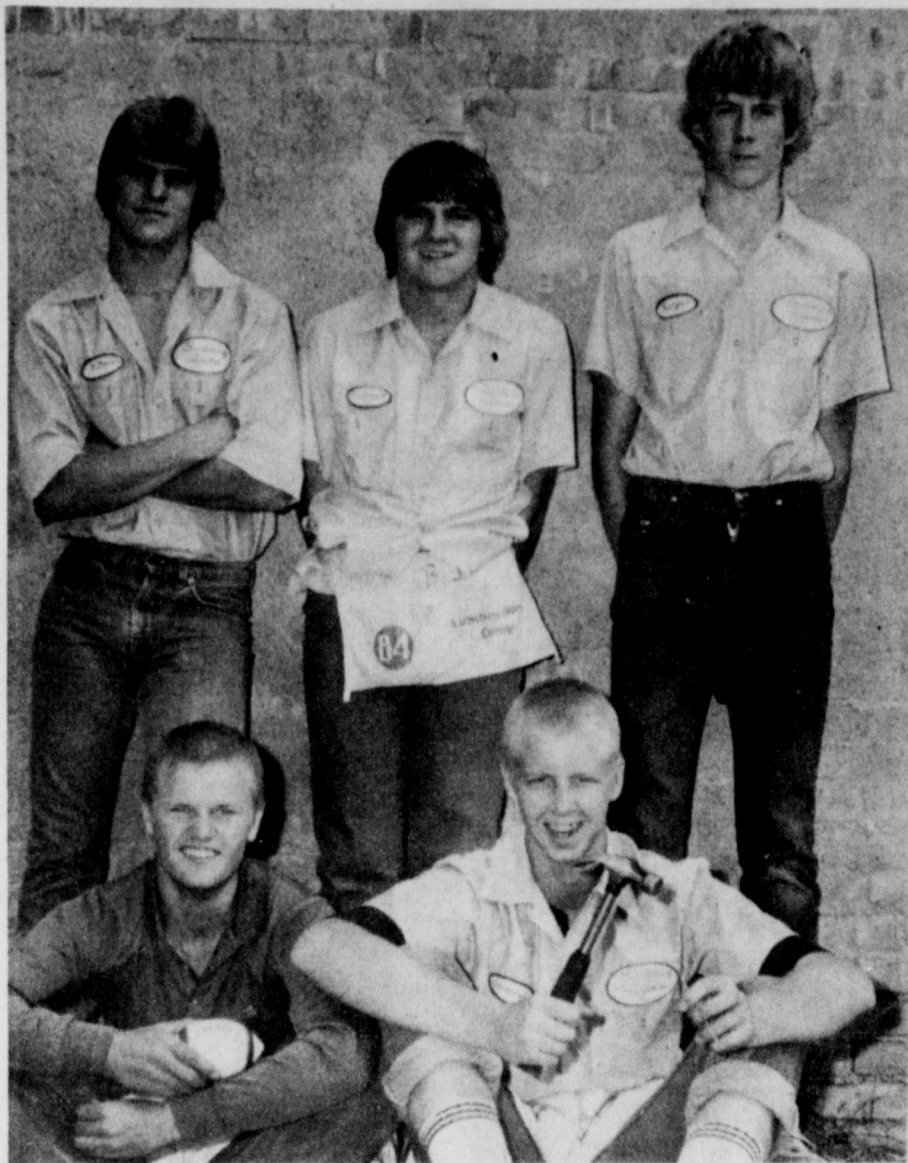
Enjoy **Sprite** **Tab** **IT'S SUGAR FREE!**

**FREE COKE SAMPLES ALL DAY SATURDAY**

**FREE MICROWAVE COOKING DEMONSTRATION SATURDAY**  
BY HOME ECONOMIST FROM LITTON

**IOWA PARK WHITE'S SUPER STORE**  
ParkWest Shopping Center Phone 592-4186  
Store Hours: 8 A.M. - 8 P.M. Monday - Saturday; 9 A.M. - 6 P.M. Sunday  
Free Delivery in Iowa Park





**BUILDING TRADE OFFICERS** at Iowa Park High School for the 1982-83 school year are top row from left: Joe O'Brien, parliamentarian; Jody Bennett, secretary; and, Barry Harper, reporter. Bottom row from left: Jeff Brookshire, treasurer; and, Danny Sargent, sergeant-at-arms. Not pictured, Jerry Fairchild, president, and Don Sidlauskas, vice president.



**Fri., Nov. 5** - Chicken fried steak, meat or cheese sandwich, soup, mashed potatoes & gravy, green beans, hot rolls & butter, chocolate & plain milk, dessert.  
**Mon., Nov. 8** - Meat loaf, meat or cheese sandwich, soup, whipped potatoes, green beans, hot rolls & honey, chocolate & plain milk, dessert.  
**Tues., Nov. 9** - Chalupa with cheese, meat or cheese sandwich, soup, lettuce & tomatoes, pear halves, chocolate & plain milk, dessert.  
**Wed., Nov. 10** - Spaceman sandwich (bun pizza) meat or cheese sandwich, soup, lettuce, tomatoes, pickles, French fries, macaroni & cheese, chocolate & plain milk, dessert.  
**Thurs., Nov. 11** - BBQ brisket, meat or cheese sandwich, soup, potato salad, chili beans hot rolls & honey, chocolate & plain milk, dessert.



**ONLY MINOR INJURIES** were sustained by one driver in a two-car wreck Friday afternoon in the south-bound lane of Highway 287 almost directly in front of Park Tank Trucks lot. Both vehicles, carrying out-of-area people, were almost totally destroyed.

### Electra beaten by big plays

Tuesday was big-play night for Iowa Park Junior High seventh graders, as they raced past Electra 24-9.

Scott Davis scored on a 55-yard run, while Jerry Mays scored from 52 and 55 yards out. Mays and Scott Weaver scored points after touchdowns, and Greg Feltman sacked the Electra quarterback in the end zone for a safety.

Additionally, the young Hawks had two touchdowns called back on penalties.

Electra had the upper hand in the

eightth grade game, winning 15-6. Monty Castro scored for Iowa Park, on a four-yarder.

### Soccer Results

**DIVISION ONE**  
 Mavricks 0, Eagles 1  
 Eagles 0, Broncos 3  
 Hawks 1, Scramblers 2  
**DIVISION TWO**  
 Chiefs 10, Hornets 0  
 Bandits 3, Scramblers 0  
 Lions 0, Flames 8  
 Hawks 0, Bullets 1  
**DIVISION THREE**  
 Bandits 1, Eagles 6

Beth Johnson of Iowa Park was presented a shotgun Saturday evening by the Iowa Park Soccer Association. At the same time, recognition was given Peyton Parkerson, Rebecca Leath, Scott Denton, Cody Beavers, Michael Denton, Chris Williams, Brian Kinnett and Justin Gafford.

### Turkey shoot set

The Longhorn Gun Club will sponsor a turkey shoot at noon Sunday on the Sheppard Air Force Base skeet and trap shooting range. There will be special events for children, beginners, experienced shooters, hunters and trap and skeet shooters. Thirty prizes of turkeys, hams or bacon will be awarded. The meet is open to everyone.



**LOOK WHO'S NEW**

Mr. and Mrs. Scott Brown announce the birth of their first child, Chasity Ann, a seven pound seven ounce daughter, born October 31. Mrs. Brown is the former Tamela Banks.

Grandparents are Mr. and Mrs. John C. Brown and Mr. and Mrs. Jimmy Banks of Iowa Park. Great-grandparents are Mrs. Lula Jones of Wichita Falls, Mr. and Mrs. C.B. Banks and Mr. and Mrs. W.S. Morgan of Iowa Park.

### Shop

Iowa Park First!

### Municipal Court Records

Wichita County Young Farmers Tuesday evening approved two projects for the near future.

Results of municipal court held here yesterday were:  
 Gerald Claude Hopkins, speeding, \$63;  
 Wanda Frieling Frantz, speeding, \$33;  
 Daniel Alphonso Shine, disobeyed stop sign, taking defensive driving course;  
 Michael James Bell, exhibition of acceleration, \$31.

### ABOUT TOWN

Mark Reed, manager of Wal-Mart Discount Store, was voted Tuesday into membership of the Noon Lions Club.

## Young Farmers set projects

The group decided to underwrite Dale Anderson's trip to the Future Farmers of America national convention Nov. 12-13 in Kansas City.

They also approved sponsoring both the Wichita County and regional pecan shows, slated Dec. 3-4 and Dec. 8-9, respectively.

Other plans include a delegation from the local chapter to attend the National Institute for Young Farmers in San Antonio next month, as well as a delegation to the state convention in January at Abilene.

The annual Christmas party will be at 7 p.m. Dec. 3 at the Activities Center in Wichita Falls.

Tuesday's program was on a new chemical for weed control in wheat. Gerald Hobson, DuPont Chemical representative, explained the uses and advantages of Glean.

Next meeting will be Dec. 7, when Don Decker, county agent, will explain procedures for certifying farmers desiring purchase of restricted-use chemicals.

### Leaders meet, plan events

The Iowa Park Camp Fire Leaders Association held the monthly meeting Tuesday evening at Texas Electric Reddy Room.

During the meeting, plans were discussed for the Blue Bird Parade of Toys to be held on Dec. 4, followed by a hot dog supper at Harrell Park.

Announcement was made of the Mother-Daughter covered dish supper to be held on Dec. 11 at the First United Methodist Church.

The group will hold a candy sale meeting Dec. 16.



## FREE PHOTO ORNAMENT

When you make a 95¢ deposit on your \$12.95 "Smiles to Remember" portrait collection, you'll get our loving portrait ornament free.

Imagine how delighted you'll be when you see your very own child's face on our loving portrait ornament. It can be yours free, with just a 95¢ deposit on your "Smiles to Remember" portrait collection.

Your 20-Portrait Collection includes 2-8x10s, 3-5x7s and 15 wallets.

**95¢ DEPOSIT / \$12.95 TOTAL PRICE OF COLLECTION**

**WALMART**

THESE DAYS ONLY —

**NOVEMBER: THUR FRI SAT  
 04 05 06**

**DAILY: 10 AM - 8 PM**

500 West Highway, Iowa Park

LIGHT UP YOUR TREE WITH SMILES.



114 W. CASH IOWA PARK 592-4721

**DUE TO POPULAR DEMAND  
 NEW FRIDAY NIGHT HOURS**

**5 - 8 P.M.**

**CATFISH PLATE 3.75**

**&**

**BBQ BRISKET 4.50**

(TO-GO ORDERS WELCOME)

STARTING THIS WEEK, OPEN ON

**SUNDAYS**

11 A.M. - 2 P.M. See You After Church

**Something Else  
 NEW**

**CHICKEN SANDWICH**

**\$ 1.54** Reg. \$1.75



805 West Highway

FOR TAKE OUT ORDERS

**CALL 592-4731**



SHURFINE CHERRY PIE Filling **99¢**  
21 OZ. CAN



# FANTASTIC FALL SALE!



**PRICE FIGHTER VALUES**

PURE VEGETABLE Shurfine Shortening 48 OZ. CAN **\$1.39**

SHURFINE 100 CT. Tea Bags BOX **\$1.59**

SHURFINE EVAPORATED Milk 2 13 OZ. CANS **89¢**

SHURFINE COFFEE Creamer 11 OZ. JAR **89¢**

SHURFINE READY-TO-SPREAD VANILLA-CHOCOLATE Frosting 16 OZ. CAN **\$1.09**

SHURFINE Pancake Mix 32 OZ. BOX **79¢**

SHURFINE TOMATO Sauce **\$1.00**  
4 8 OZ. CANS




SHURFINE TOMATO Catsup **99¢**  
32 OZ. BTL.



SHURFINE SALTINE Crackers **59¢**  
16 OZ. BOX



VAC PAK ALL GRINDS Shurfine Coffee **\$1.79**  
16 OZ. CAN



EXTRA FANCY DELICIOUS Red Apples **3 \$1.00**  
LB.



**PRODUCE SPECIALS**

CENTRAL AMERICAN Bananas LB. **29¢**


TEXAS RUBY RED Grapefruit LB. **25¢**

YELLOW SWEET Onions LB. **19¢**

CALIFORNIA HEARTS Celery LGE. PKG. **59¢**

CALIFORNIA Carrots 1 LB. PKG. **29¢**

SHURFINE ASSTD. FLAVORS Cake Mixes **59¢**  
18 1/2 OZ. BOX




GRADE 'A' SELF BASTING SHURFRESH Turkeys **79¢**  
TENDER TIMER 10-22 LBS. AVG. LB.




SHURFRESH BONELESS Half Hams **\$2.59**  
LB.

ALL PURPOSE-PAPER BAG Shurfine Flour **69¢**  
5 LB. BAG



SHURFINE OIL OR WATER PAK Chunk Tuna **68¢**  
6 1/2 OZ. CAN



SHURFRESH SLICED Bacon 1 LB. PKG. <b>\$1.69</b>	SHURFRESH Franks 12 OZ. PKG. <b>99¢</b>
SHURFRESH 4-6 LBS. AVG. Baking Hens LB. <b>65¢</b>	SHURFRESH Bologna 12 OZ. PKG. <b>\$1.09</b>
SHURFRESH PURE PORK Sausage 1 LB. ROLL <b>\$1.19</b>	SHURFRESH CHEESE PIMIENTO-JALAPENO Spread 7 1/2 OZ. CTN. <b>99¢</b>
SHURFRESH Canned Ham 3 LB. CAN <b>\$7.29</b>	SHURFRESH THIN SLI. BEEF-HAM-PASTRAMI-TURKEY-CORNERED BEEF Meats PKG. <b>49¢</b>

SHURFINE MED.-LONG Grain Rice 2 LB. BAG <b>69¢</b>	SHURFINE 3SV CUT GREEN Green Beans 3 16 OZ. CANS <b>\$1.00</b>
SHURFINE 7 1/2 OZ. Dinners MACARONI AND CHEESE 3 BOX <b>89¢</b>	SHURFINE SLICED PICKLES Beets 16 OZ. CAN <b>79¢</b>
SHURFINE GLASS Applesauce 25 OZ. JAR <b>79¢</b>	SHURFINE CREAM STYLE-WHOLE KERNEL Corn 2 17 OZ. CANS <b>79¢</b>
SHURFINE MANDARIN Oranges 11 OZ. CAN <b>59¢</b>	SHURFINE FRESH SHELLED Blackeyes 2 15 OZ. CANS <b>69¢</b>
SHURFINE CRANBERRY SAUCE STRAINED-WHOLE 16 OZ. CAN <b>59¢</b>	SHURFINE EARLY HARVEST Sweet Peas 2 17 OZ. CANS <b>79¢</b>
SHURFINE LITE FRUIT Cocktail 16 OZ. CAN <b>69¢</b>	SHURFINE WH. IRISH Potatoes 2 16 OZ. CANS <b>79¢</b>
SHURFINE LITE HALVES-SLICES Peaches 16 OZ. CAN <b>69¢</b>	SHURFINE WH. SWEET Potatoes 16 OZ. CAN <b>69¢</b>
SHURFINE LITE BARTLETT Pear Halves 16 OZ. CAN <b>69¢</b>	SHURFINE STRAWBERRY Preserves 18 OZ. JAR <b>\$1.19</b>
SHURFINE 15 1/2 OZ. IN NAT. JUICE SLI-CRU.-CHU. Pineapple CAN <b>59¢</b>	SHURFINE Grape Jelly 18 OZ. JAR <b>79¢</b>
SHURFINE FANCY Tomato Juice 46 OZ. CAN <b>89¢</b>	SHURFINE PEANUT BUTTER CRUNCHY-SMOOTH 18 OZ. JAR <b>99¢</b>
SHURFINE SHURFINE DARK RED Kidney Beans 15 OZ. CAN <b>43¢</b>	SHURFINE Waffle Syrup 32 OZ. BTL. <b>99¢</b>
SHURFINE 3SV CUT Wax Beans 16 OZ. CAN <b>43¢</b>	SHURFINE FRESH PAK-Cucumber Chips 16 OZ. JAR <b>79¢</b>

**DAIRY & FROZEN FOODS**

SHURFRESH QTRS. Margarine 4 16 OZ. BOX <b>\$1.00</b>
SHURFRESH 5 CT. Biscuits SWT. MLK BTR-MLK 10 4 OZ. CANS <b>\$1.00</b>
SHURFRESH IND. SLICES CHEESE AMERICAN FOOD 12 OZ. PKG. <b>\$1.39</b>
SHURFRESH HALFMOON LONGHORN-COLBY-CHEDDAR Cheese 10 OZ. PKG. <b>\$1.29</b>
SHURFRESH FRENCH Onion Dip 8 OZ. CTN. <b>39¢</b>
SHURFRESH ASSTD. FLAVORS Ice Cream ROUND CTN. GAL. CTN. 1/2 <b>\$1.49</b>
SHURFINE ASSTD. Pizza 12 OZ. BOX <b>89¢</b>
SHURFINE WHIPPED Topping 8 OZ. CTN. <b>59¢</b>
SHURFINE SPEARS Broccoli 10 OZ. PKG. <b>59¢</b>
SHURFINE CAULIFLOWER & Broccoli 20 OZ. PKG. <b>\$1.19</b>
SHURFINE KRINKLE CUT Potatoes 32 OZ. PKG. <b>\$1.19</b>
SHURFINE DEEP DISH Pie Shells 12 OZ. PKG. <b>69¢</b>

**SHELF SPECIALS**

SHURFINE DRY MAKES GRAVY Dog Food 25 LB. BAG <b>\$3.99</b>
SHURFINE WHITE BATHROOM Tissue 8 ROLL PKG. <b>\$1.49</b>
SHURFINE POWD. ALL PURPOSE OR BLUE Detergent 49 OZ. BOX <b>\$1.49</b>
SHURFINE KITCHEN Tall Bags 15 CT. BOX <b>99¢</b>
SHURFINE 30 GAL. Can Liners 10 CT. BOX <b>\$1.19</b>
SHURFINE ALUMINUM Foil 12x25' 2 ROLL <b>\$1.00</b>
SHURFINE CONC. FABRIC Softener 64 OZ. BTL. <b>\$1.29</b>
SHURFINE BLACK Pepper 4 OZ. CAN <b>79¢</b>
SHURFINE LIQUID Bleach GAL. JUG <b>79¢</b>

FRESH GROUND Hamburger **89¢**  
Lb.



We're proud to give you more!

the price fighter

## Discount Foods

107 West Park

PRICES EFFECTIVE OCT. 31-NOV. 13, 1982  
WE RESERVE THE RIGHT TO LIMIT QUANTITIES.

WE ACCEPT FOOD STAMPS  
WE ACCEPT MANUFACTURER'S COUPONS

**MEMBER STORE**  **AFFILIATED FOODS, INC.**





### Mary's Haircutting

Next to Cabe's on West Highway



**FARMERS' GRAIN  
& FERTILIZER, INC.**

211 S. Victoria

## WAL-MART

Discount  
Department Store



PROPANE



## AYRES TIRE COMPANY

Expressway 287  
& Johnson Road

Phone  
592-5621

Wrap'em Up Hawks!!!!

## CRYOVAC

PACKAGING/MARKETING SYSTEMS

Iowa Park

We're Proud of the Hawks



## Louis' Distinctive jewelry

592-5942  
408 W. Park

Louis & Betty Sefcik

## E&S Exxon



- Tune-ups
- Brakes
- Front-end alignment

592-4897  
612 W. Highway

## Tanner-Aulds Funeral Home

Iowa Park



## SHAW MOTOR CO.

Iowa Park

592-4106

WE BACK THE HAWKS!!!

## SCOBEE'S I & II

Mini-Mart  
Grocery Store

'Home Owned & Operated'  
I 592-9102 592-2663  
322 W. Hwy. 900 W. Hwy.



## BOBBY EVANS Sporting Goods INC.



## ken's PIZZA

902 W. Highway  
592-4184

Open after each Friday night's  
football game.

The Hawks are  
on a Sonic Boom!

Phone  
592-4221

719 W. Hwy.



805 West Highway

# Burkburnett humbles Hawks by 24-0 margin

Halloween came to Iowa Park a night earlier than was set by the city council. But it was in the form of the Hawks tricking themselves, providing a treat for the visiting Burkburnett Bulldogs.

Mistakes and play lacking the intensity of the previous two weeks proved to be the downfall for Iowa Park, as the 'Dogs went back to northern Wichita County with a 24-0 victory.

"It's hard for any team to get up to the high our kids reached three straight weeks," lamented Coach David Baugh later. He was referring to the outstanding football played by his Hawks, first in the 3-0 defensive battle against Vernon and then knocking off the state's second-ranked club, Gainesville, 7-6.

And it looked like the Mean Green was back on the winning trail, at least through the first quarter.

The loss knocked the Hawks out of a three-way tie for first place in district. But though they're down, they are not out of the running, because every team in the conference has at least one defeat and more are well within the realm of possibility.

Iowa Park had everything going its way through the first quarter, gaining 74 yards to Burk's 16 and amassing a 5-1 difference in first downs.

The Hawks advanced to Burk's 35 yard line on their first possession where, on third down and needing seven yards for another first, Marc Klinkerman's pass glanced off the outstretched hands of Terry Klinkerman and into the awaiting hands of a 'Dog defender.

Six plays later, Burk was forced to punt. Iowa Park, starting from its own 40, marched to the Bulldog 25 in seven plays, but failed to convert on a

third-and-three attempt.

Burk mounted its first successful offensive drive, and marched to Iowa Park's 10. Still needing three yards for a first down, Todd Cadwallader booted a 26-yard field goal to light up the scoreboard for the first time, with 3:38 remaining in the half.

Still well within striking distance, Iowa Park opted to receive the second half opening kickoff. But what took place during the next five minutes put the game out of reach.

On the opening kickoff, Lynn Fulfer took the ball inside the five yard line, and stood there, thinking he was in the end zone. A return specialist, Fulfer had returned the earlier kickoff 23 yards. And he didn't realize he wasn't in the end zone until he saw an official rotating his arm, indicating play was still underway. He was able to get the ball out to the 12 before being tackled.

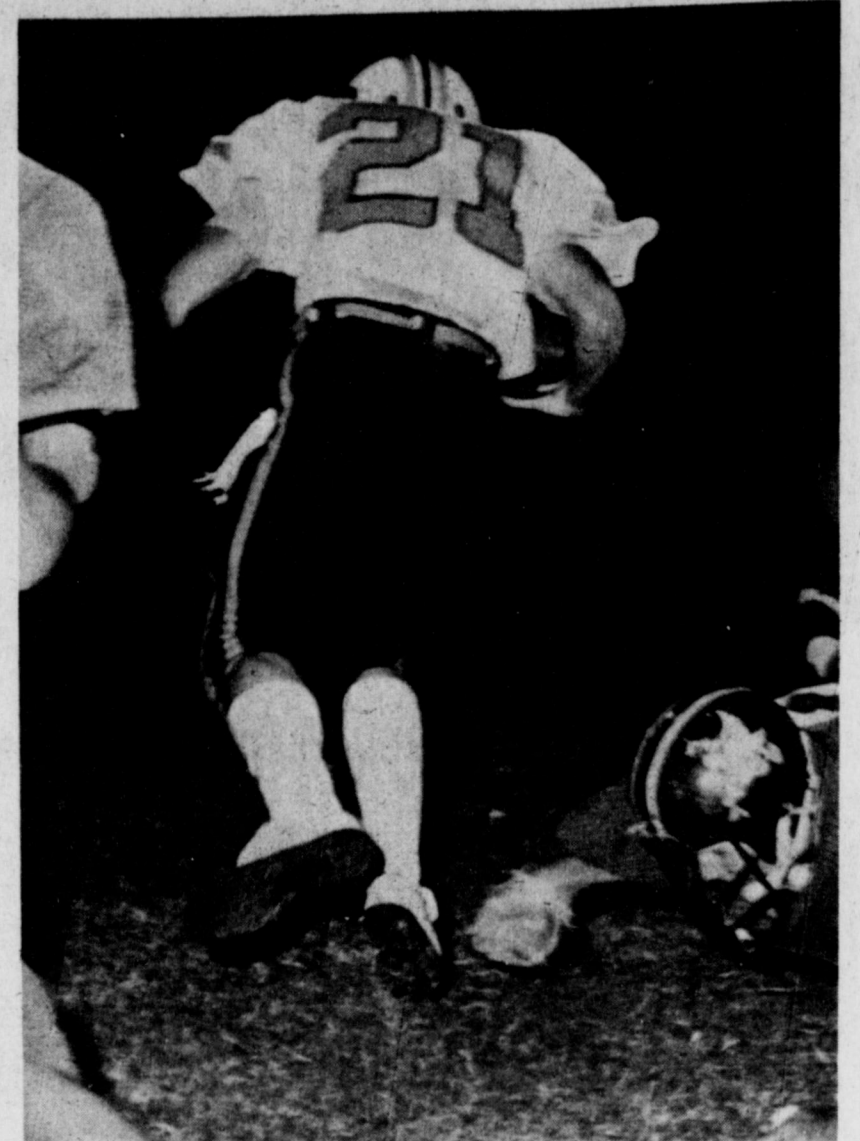
Then on the first play from offense, tailback Kevin Parker had the ball knocked from his grasp and it was covered by a visitor on the Hawk 10.

Four plays later, Burk scored from the one.

Fulfer returned the following kickoff 21 yards, to the 26. But three plays later, Burk's Ken Heath made his second interception of the evening, setting up the second Bulldog touchdown which came four plays later, from three yards out.

With the game pretty well out of reach, Burk's James Hisks broke into the open on the second play of the final period, and raced 64 yards to score. Cadwallader split the uprights again, for the final lighting of the scoreboard, with 11:19 remaining in the game.

The visitors completely dominated the game through the second and

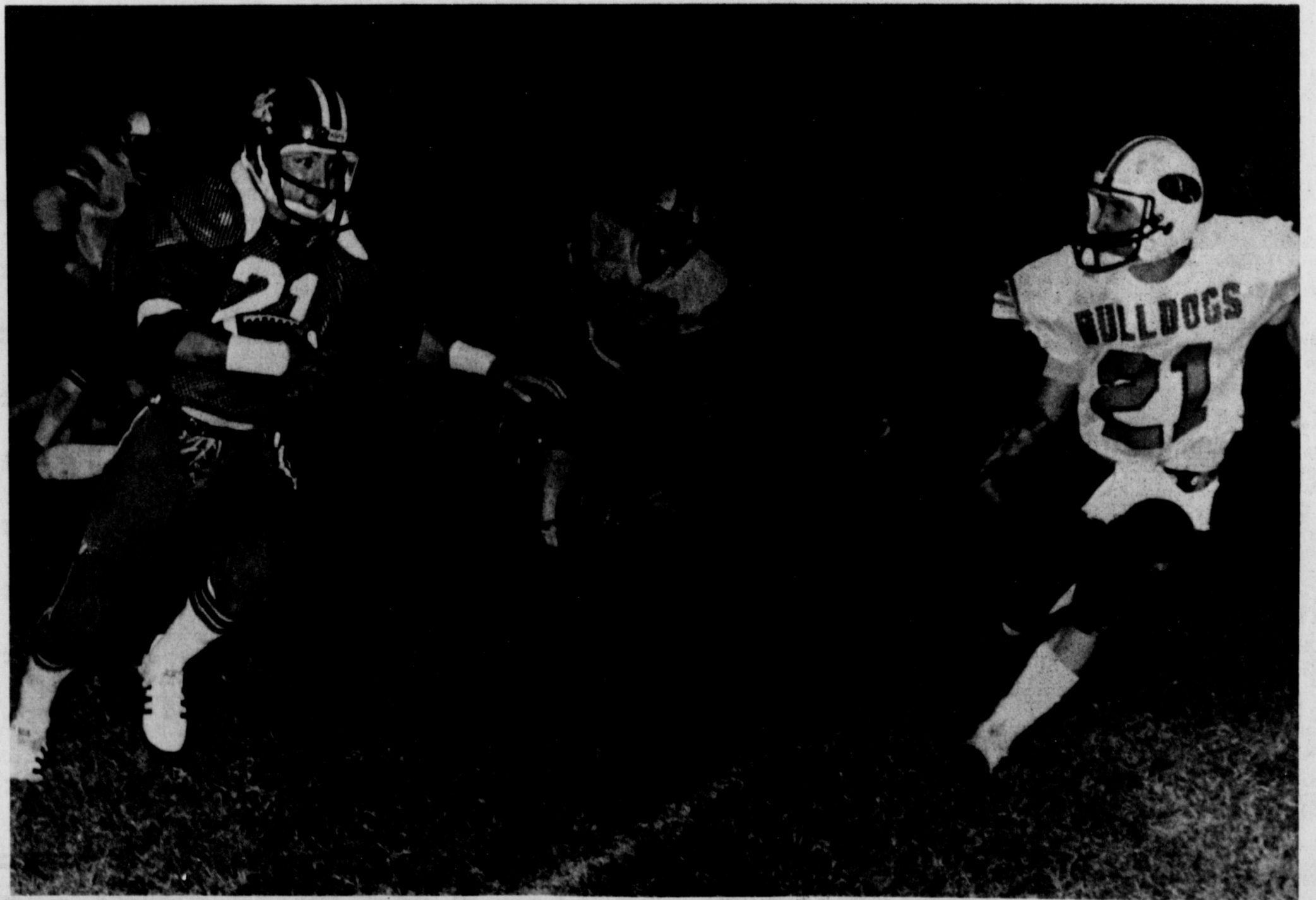


DOWNED BY RAYMOND TYLER AFTER INTERCEPTION

third periods of play, amassing 145 yards offense while holding the Hawks to a minus five yards.

Though he was called on only twice in the third quarter and none in the second, fullback Paul Rogers still gained 107 yards on 18 carries. Parker gained 33 on 10 tries and Fulfer 20 on six, to account for most of the Hawks' yardage.

IP		Burk
11	First Downs	11
148	Yards Rushing	229
0	Yards Passing	24
148	Total Yards	253
0/5	Passes	1/4
0	Interceptions by	2
1	Fumbles Lost	0
3-25	Penalties	7-73
3/31	Punts	4/25



KEVIN PARKER SKIRTS RIGHT END FOR SHORT YARDAGE

## Iowa Park Florists



114 W. Park  
Phone 592-2141

102 S. Victoria

592-4171

## SHAMBURGER BUILDING CENTERS

Open 6 days a week 7:30 a.m. to 5:30 p.m.





**Park Tank Truck Service**  
IOWA PARK, TEXAS 78387



RADIO EQUIPPED TRUCKS • OIL • MUD • WATER  
FRAC TANKS • WINCH TRUCKS • SALT WATER DISPOSAL  
592-4164

**4 GOOD REASONS**  
to see your good neighbor agent  
**CAR • HOME LIFE • HEALTH**

**Philip Welch**  
100 W. Park  
Like a good neighbor,  
State Farm is there.



STATE FARM INSURANCE COMPANIES  
Home Offices: Bloomington, Illinois


**J and J Oil Well Services**  
Acidizing • Cementing • Fracturing  
RIFLE RANGE ROAD  
(817) 592-2136

John Ray Res. 569 4319  
John Stewart Res. 438 2389

Radio Equipped Fully Insured

**Park Pharmacy**  
and Thoughtfulness Shop  
Phone 592-4116  
24-Hour Prescription Service

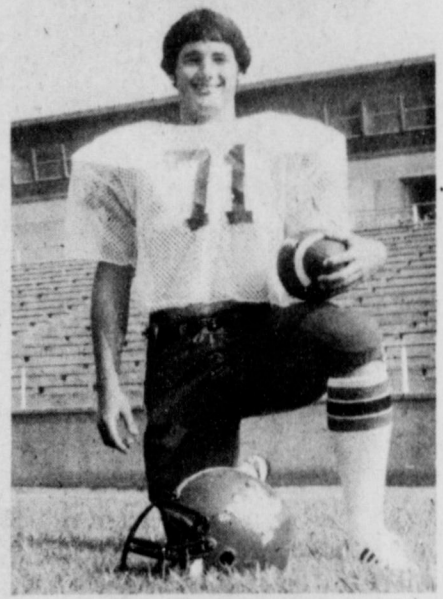
**GO...MEAN GREEN!**  
**Pleasant Valley Grocery**  
and  
**Midway Fish Farm**  
Randy Jameson - Owner




**Players of the Week**



Don Sidlauskas



Frank Johnson



Paul Rogers


**SUPER FINE FOODS**  
Quality Service

300 WEST BANK STREET  
IOWA PARK, TEXAS

OPEN  
8 til 9pm  
SUNDAY 9  
til 8:30

**SPRUIELL DRILLING COMPANY INCORPORATED**

Office — 307 N. Wall  
592-5471  
Shop — 107 E. Poe  
592-5223



**PARKWAY Furniture & True Value**

complete line of hardware and plumbing  
200-206 W. Bank



**DISCOUNT FOODS**  
107 West Park



**IOWA PARK HAWKS**

VS

**BOSWELL**

**THERE FRIDAY**

**WHITE'S SUPER STORE**  
ParkWest Shopping Center  
Phone 592-4186

**IOWA PARK Air Conditioning & Heating**  
Service On All Makes Engineering Sales  
607 W. Bank  
FRANK GUYETTE  
PHONE 592-5891



**Settle Drug**  
120 W. Park  
Phone 592-4191



**Petal Pushers**  
Flower & Gift Shop  
309 N. Wall  
592-2641



**KING'S KIDS CHRISTIAN DAYCARE & PRESCHOOL**  
"Iowa Park's Finest For Parents Who Care."  
202 N. Jackson 592-4242

**IOWA PARK LEADER**


**Season Schedule and Record**  
ALL GAMES START AT 8 P.M.

IOWA PARK	<b>28</b>	Breckenridge	<b>7</b>
IOWA PARK	<b>28</b>	Bowie	<b>0</b>
IOWA PARK	<b>41</b>	Electra	<b>0</b>
IOWA PARK	<b>24</b>	Mineral Wells	<b>16</b>
IOWA PARK	<b>10</b>	Hirschi	<b>35</b>
IOWA PARK	<b>3</b>	Vernon	<b>0</b>
IOWA PARK	<b>7</b>	Gainesville	<b>6</b>
IOWA PARK	<b>0</b>	Burkburnett	<b>24</b>
IOWA PARK	November 5 There	Boswell	
IOWA PARK	November 12 Here	Azle	

**BEALL Auto Parts, Inc.**  
Parts & Supplies for Autos, Trucks & Small Engines  
Holliday 586-1211 Iowa Park 592-4181

**GO HAWKS! HEO T.V. CABLE of Iowa Park**  
901 W. Highway 592-2164

**SAM'S BODY SHOP**  
Sam and Marye Lou



**VIDEO CARE**  
Parkwest Shopping Center  
Next to TG&Y  
592-5552  
Ken Via, Owner




The Place To Go After The Game!  
**Little Richard's LONE STAR WEST Restaurant**  
Expressway 287 at FM 369  
855-4451 Open 24 Hours

**MEAN GREEN STRENGTH Iowa Park Ready Mix**  
592-2052  
SAND—ROCK—GRAVEL

JUNIOR VARSITY			FRESHMAN			7TH and 8TH		
Sept. 2	Breckenridge	H 7:30	Sept. 2	Breckenridge	H 5:30	Sept. 14	Electra	H 6:00
Sept. 9	Bowie	H 7:30	Sept. 9	Bowie	H 5:30	Sept. 21	OPEN	
Sept. 16	Electra	T 7:30	Sept. 16	Electra	T 5:30	Sept. 28	City View	H 4:00
Sept. 23	OPEN		Sept. 23	OPEN		Oct. 5	Electra	T 6:00
Sept. 30	Mineral Wells	T 7:30	Sept. 30	Mineral Wells	T 5:30	Oct. 12	Vernon	H 4:00
Oct. 7	Hirschi	H 7:30	Oct. 7	Hirschi	H 5:30	Oct. 19	City View	T 4:00
Oct. 14	Vernon	T 7:30	Oct. 14	Vernon	T 5:30	Oct. 26	Burk	H 3:30
Oct. 21	Gainesville	H 6:30	Oct. 21	Gainesville	H 5:00	Nov. 2	Electra	H 6:00
Oct. 28	Burk	T 7:30	Oct. 28	Burk	T 7:30	Nov. 9	Vernon	T 4:00
Nov. 4	Electra	H 7:30	Nov. 4	Electra	H 5:30			
Nov. 11	Burk	H 7:30	Nov. 11	Burk	H 5:30			

**GNB STATE NATIONAL BANK**  
IOWA PARK, TEXAS  
Member F.D.I.C.





# Eagles end home stand with 21-7 win

Holliday's Eagles, ranked seventh in state in the latest Associated Press poll for Class AA, upped their season record to 8-1 with a hardfought 21-7 win over Class AAA power Commerce in Holliday Friday night.

The win was especially sweet for the seniors on the Eagle squad, being their last scheduled game to be played in Eagle Stadium. In 10 years of playing together, this particular bunch has an unblemished record playing at home.

The seniors, honored before the game, are Jeff Belcher, Kevin

Blankenship, Bruce Bynum, Gil Gilbert, Brad Harmon, Clint Lee, Mike A. Parker, Clint Sissom, Tod Stevens, Timmy Stubblefield, Johnny Trainham, Erick Neal, Harold Parsons, Chuck Evans, Barry Hardin and Mike W. Parker.

Commerce, coming into the game with an identical record to the Eagles, looked strong in the beginning when they marched to Holliday's 28 following the kickoff.

However, the Big Red defense spoiled any hopes of a Commerce score, forcing a punt four plays later. The Eagles sustained a drive of

their own on their initial possession. Utilizing the running of Belcher, who finished with a game-high total of 196 yards in 32 carries, and Harmon, Holliday drove to its opponent's 30. Quarterback A. Parker then lofted a long pass to W. Parker in the endzone, with the latter holding on for an apparent touchdown. However, after a long delay, the referees ruled that W. Parker had landed out of the endzone, and the pass was ruled incomplete.

The drive stalled at that time, and the ball was turned over on downs. Enter the Eagle defense, which

allowed only four first downs to the large Commerce squad the entire night. The visitors ran three straight rushing plays, which totalled a mere three yards.

Fielding a 35-yard punt at their 37, the Eagles drove 63 yards in eight plays, capped by Belcher's 21-yard sprint through the middle of the Tiger defense. With less than nine minutes remaining in the first half, A. Parker's kick gave the host team a 7-0 lead.

A. Parker's booming kickoffs were especially welcome in this game, with the Tiger's swift runningbacks forced to down the ball in the endzone two of three times following a Holliday score, and setting up at the 17 on the only return.

Holliday drove the length of the field with little time left on the clock, but Commerce intercepted at its own seven to thwart the drive.

After three plays netted minus one yard, the Tigers punted, this time only 21 yards, giving the Eagles excellent field position.

With 1:44 showing on the clock in the first half, Harmon bulled over from the one for the second Holliday score. The kick was again good, and the Eagles went into intermission with a 14-0 buffer.

The third period ended scoreless, but Holliday sustained another long

drive in the fourth stanza. This one was 80 yards, with Belcher going over from the four for his second touchdown of the night, giving the Eagles a 21-0 lead.

Commerce's offense finally got on the right track, with quarterback Keith Bryart hitting Bruce Smith on 60-yard bomb, narrowing the margin to 21-7.



MIKE W. PARKER WRAPS UP RUNNER WITH BELCHER AND NEAL ASSISTING



BRAD HARMON MAKES CUT ON SWEEP

☆☆☆☆☆☆☆☆

HOLLIDAY	COMMERCE
22	First Downs 4
329	Yards Rushing 59
18	Yards Passing 80
347	Total Yards 139
2-7	Passes 3-13
1	Interceptions by 1
1	Fumbles 0
1-36	Punts 7-32.6
5-40	Penalties 4-33

**Talley Insurance Agency**  
 Insurance & Real Estate  
 BOX 369 - HOLLIDAY, TEXAS 76366  
 Phone: 586-1273

**Parnell Trucking**  
 Construction Dozer Backhoes  
 Welding Oil Field Hauling Ditcher  
 TX RRC 5697 OK ICC MC159 343 F  
 723 4470 817-438 2921 586 1342

**HOLLI-TEX Supply Company**  
 New & Used Oil Field Supplies  
 Holliday 586-1271

**STEVE'S Repair Shop**  
 Complete Automotive Repair  
 S. MAIN 586-1321  
 • Arcade • Deli • Meat Market

**Spee-Dee Grocery**  
 Hwy. 287 Holliday 586-1166

**Rick's Gulf**  
 Olive & US 287 586-1777

## Season Schedule and Record

Holliday 6	Eastland 28
Holliday 32	Nocona 0
Holliday 14	Boyd 6
Holliday 39	Henrietta 22
Holliday 16	Olney 0
Holliday 42	Jacksboro 6
Holliday 67	Petrolia 0
Holliday 80	Chico 0
Holliday 21	Commerce 7
Holliday	November 5 There Archer City
Open	

ALL GAMES START AT 8 P.M.

## Holliday Eagles Roll On

9-JV FOOTBALL SCHEDULE

Sept. 9	Nocona	T 6:30-JV
Sept. 16	Boyd	H 6:30-JV
Sept. 16	Burkburnett	T 3:00-9th
Sept. 23	Henrietta	T 6:30-JV
Sept. 30	Olney	H 5:00-9-JV
Oct. 7	Jacksboro	T 5:00-9-JV
Oct. 14	Petrolia	H 6:30-JV
Oct. 14	Burkburnett	H 8:00-9th
Oct. 21	Chico	T 6:30-JV
Oct. 28	Vernon	f 5:00-9th-JV
Nov. 4	Archer City	H 6:30-JV

**SHAW MOTOR COMPANY**  
 600 West Highway

**AYRES OIL INC.**  
 • Propane Carburetion • Diesel  
 • Gasoline • Propane  
 • Motor Oil • Filters  
 • Goodyear Tires  
 Jack Ayres 586-1208

**TERRY'S WELDING SERVICE INC.**  
 Construction Dozer Backhoes  
 Welding Oil Field Hauling Ditcher  
 R.R.C. 5697 Kamay Texas  
 723 4470 817-438 2921 586 1342

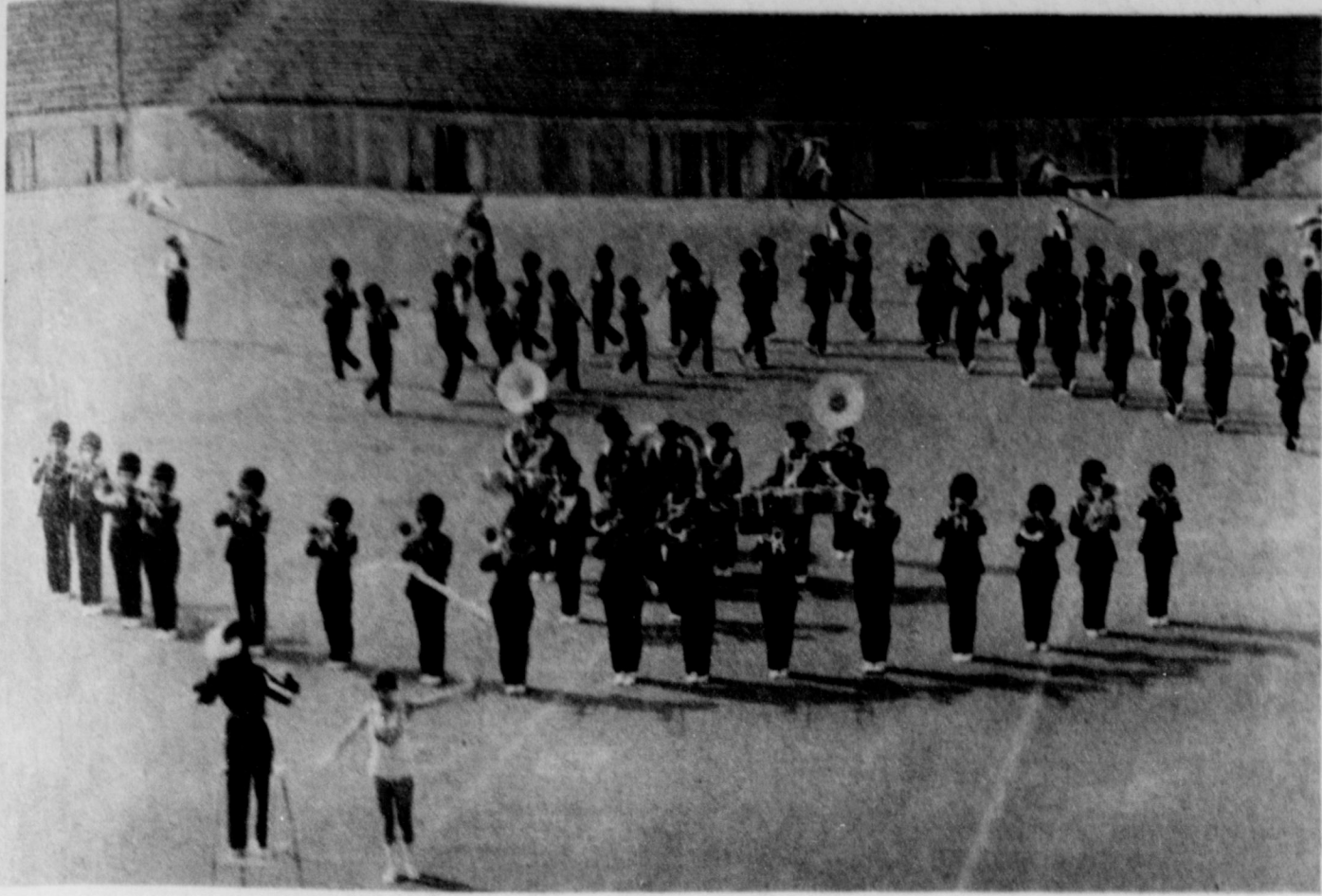
**MIKE RATHMAN LOGGING CO.**  
 Route 3, Box 598 AA  
 WICHITA FALLS, TEXAS 76308

**Beall Auto Parts, Inc.**  
 Parts & Supplies for Autos, Trucks & Small Engines  
 Holliday 586-1211 Open 8-6 Iowa Park 592-4181

**HOLLIDAY Foodworld**  
 George Cowan Owner Phone 586-1384

**STATE NATIONAL BANK**  
 IOWA PARK, TEXAS  
 EQUAL HOUSING OPPORTUNITY Member F.D.I.C.  
 Your Area Bank - Locally Owned





**EAGLE MARCHING BAND DURING PERFORMANCE TUESDAY MORNING**  
...took Division "I" rating in Memorial Stadium.

## County rivalry continues tomorrow night

Holliday's Eagles travel tomorrow night across the county to Archer City for a District 11-AA contest which, if they win, will ensure them of an unbeaten district slate going into the state playoffs the following week.

And, aside from the fact the Wildcats are only 3-4 in the district and 4-5 for the season, the Big Red will have to do all they can to keep from looking ahead a week or two.

The upset-minded Wildcats are led by quarterback James Pippin and runningbacks Mike McBride and Roger Beall. The backfield tandem showed signs of good form against Chico last Friday, which the Wildcats won 33-8. McBride scored two touchdowns on short runs, and Pippin threw another pass (23 yards) for another score.

The defense for A.C. looks to be in question, though, with the Dragon offense scoring against it, only the second touchdown Chico has tallied the entire season.

As far as county bragging rights are concerned, Holliday has enjoyed the last few years as King of Archer City, winning 19-0, 33-0 and 55-0 the last three years.

With the state gridiron playoffs only two weeks away, the Eagles will enjoy their open date the last week of regular season, giving them ample time to prepare for their first opponent, which looks to be between Ranger and Hico. That game will be decided next week.

Olney, on the other hand, looks to have its hands full for the first playoff game, when they face a tough DeLeon team.

And, Holliday looks to be on a collision course with the team that

spoiled what would have been an unbeaten regular season. Eastland, still ranked at the top of Class AA teams, would be the Big Red's second playoff opponent, if each team wins to that point.

## Lady Eagles in playoffs

The Lady Eagle volleyball team, runner-up in District 11-AA behind Chico, play in the bidistrict tournament at 6:30 p.m. today in Springtown against a tough Hamilton squad.

In the district tournament a week earlier, the Lady Eagles won the first game against the Lady Dragons 15-9,

but a rally by Chico in the final two games gave them the title. The scores in the final two games were an identical 15-8, 15-8.

The Lady Dragons will host Hico, runners up to Hamilton, with the winners of the two matches facing each other in the finals that night.

## Band earns Division I

Holliday band director Tom Woody continues to produce award winning bands at Holliday High School, as evidenced Tuesday morning when the Eagle Band, for the fourth straight year, came away with a Division I rating.

Other bands in Class AA competition receiving a "I" rating included Seymour, Jacksboro, Henrietta, Haskell, Archer City and Olney.

Holliday's three twirlers also received first division ratings. The regular feature twirlers for the band, Patti Hewitt and Rhonda Rasmussen,

received superior ratings, as did former twirler-turned-cheerleader Sallye Rathman.

## TESCO office to be re-opened

Texas Electric Service Co. will re-open an office in Holliday at 119 S. Main. Beginning Nov. 9, Holliday customers may conduct business on Tuesday and Thursday between 10 a.m. and 2 p.m.

At other times, customers may still call the Wichita Falls office at 766-3331.

## Sheppard ends midgets' season

The Holliday Eagle Midget football team ended its season Saturday in Iowa Park with a heartbreaking 14-8 loss to Sheppard, despite a late-game rally by the Holliday squad.

Sheppard scored the initial touchdown of the game midway through the second quarter, on a 20-yard pass completion when faced with a fourth and 15 situation. The two-point conversion was successful, giving the Sheppard team an 8-0 lead.

Early in the third period, Sheppard scored again on a one-yard quarterback sneak, capping a five play, 42 yard drive. The Eagles thwarted Sheppard's attempt on the conversion, making it 14-0.

On the first play from scrimmage following Sheppard's second score, Scott Belcher passed 65 yards to Ronnie Molina for the two point conversion, closing the gap at 14-8.

Holliday had two more chances to score, but a swarming Sheppard defense denied the Eagles each time.

Defensive coach Tootie Whitworth praised Timmy Denney, James Holt, Robert Lindley, Jason Whitworth and Belcher for their outstanding efforts. Offensively, Holliday showed little punch except for the one pass play. Whitworth was Holliday's leading rusher with 55-yards in 13 carries.



### Friday, November 5

Breakfast: Scrambled eggs, toast, milk.

Lunch: Hamburgers, lettuce, tomatoes, pickles, onions, French fries, ice cream, milk.

### Monday, November 8

Breakfast: Oatmeal, milk, juice.  
Lunch: Batter fried fish, macaroni and cheese, milk, salad, bread, tartar sauce, fruit cobbler.

### Tuesday, November 9

Breakfast: Donut, peaches, milk.  
Lunch: Creole spaghetti, batter bread, blackeye peas, syrup and butter, fruit, milk.

### Wednesday, November 10

Breakfast: Waffles, syrup, milk.  
Lunch: Barbecue pork on a bun, relish, potatoes, mustard, cookie.

### Thursday, November 11

Breakfast: Biscuits, gravy, milk, jelly.  
Lunch: Chicken and noodles, creamed potatoes, green beans, milk, cake.

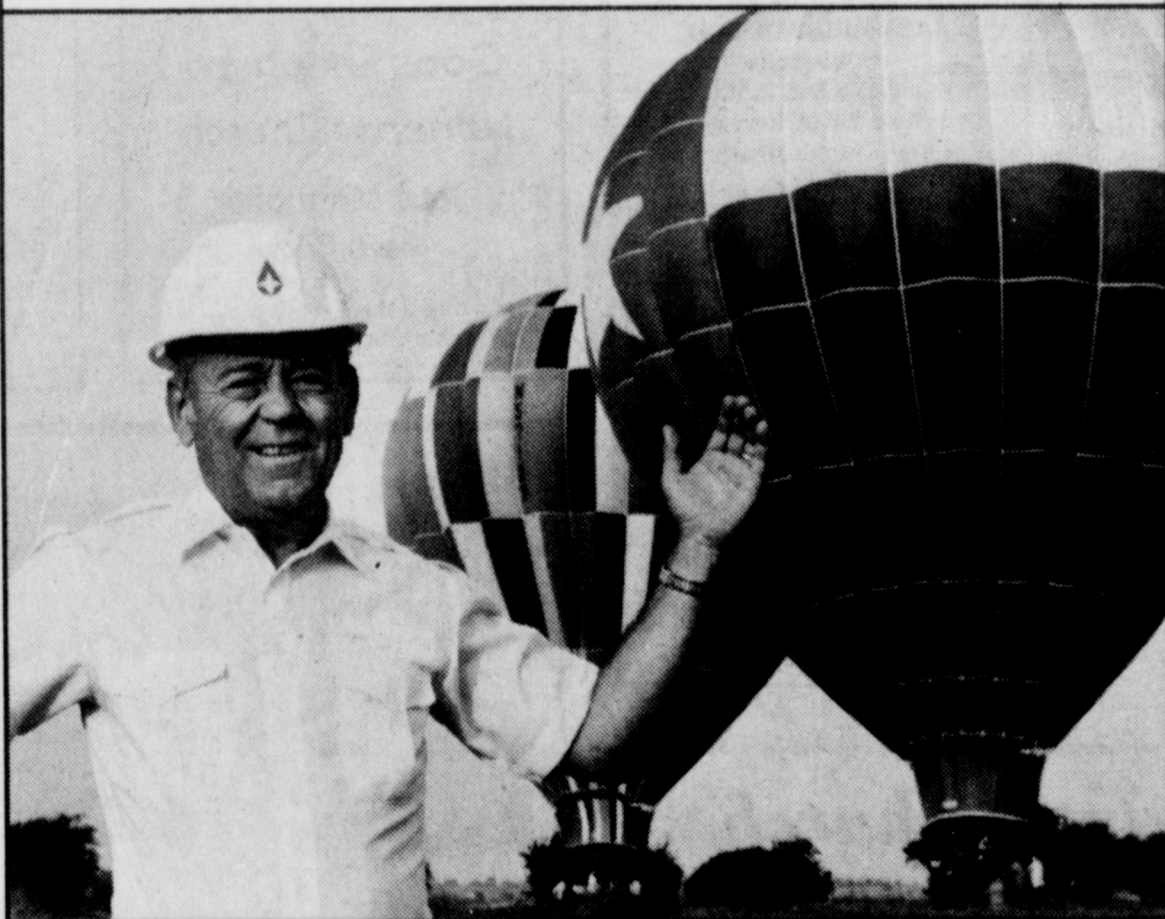
## NOTICE TO SUBSCRIBERS!

The Iowa Park Leader has suspended its practice of mailing individual renewal postcards to subscribers. Instead the Leader will publish a list of readers whose subscriptions are approaching expiration. Subscription prices are listed below, along with a convenient order form which may be clipped, filled out and mailed with payment to the Leader. Renewals and new subscribers must be paid in advance.

### Subscriptions due to expire November 15

A.....	Steve Lowe	Iowa Park
Floyd J. Adams	Corpus Christi	Gale Lowrance
Keith Aulds	Iowa Park	Richard Lunney
B.....	M.....	
T.J. Bailey	Iowa Park	Belle Magee
C.B. Barnett	Iowa Park	Jerry Major
David Baugh	Iowa Park	Dorothy A. Martin
A.O. Beadle	Poolville	Larry Mason
A.O. Beall	Iowa Park	Mrs. Raydean Mattis
Kenneth Beall	Iowa Park	Floyd May
Ralph Beall	Iowa Park	Burl McCormick
Wendell Bean	Iowa Park	Earl McCoy
Eleanor Bell	Tulsa, Ok.	Mrs. Bertha McDonald
T.C. Berry	Iowa Park	Mrs. Marian L. McDonald
M/Sgt. Wm. S. Black	Iowa Park	Santa Fe, N.M.
Titia Belle Blanks	Iowa Park	Faye McAllister
E.E. Bottles	Iowa Park	Mrs. Betty Merriman
Jimmy Bradberry	Iowa Park	C.E. McClurg
William La Brier	Iowa Park	J.A. McDonald
Lester Brooks	Iowa Park	Glen Miller
Chester Brown	Iowa Park	J.P. Miller
Carol Buikema	Dallas	Lee A. Miller
James D. Buntun	Iowa Park	Bud Mitchell
R.J. Butts	Iowa Park	John Mixon
C.....	Carl Moer	Iowa Park
N.B. Calhoun	Iowa Park	Carl Moran
Sam Callaway	Fort Worth	D.L. Moulton
Mrs. Marie Callon	Iowa Park	N.....
Arthur M. Carter	Holliday	Terry Nault
Jimmy A. Carter	Iowa Park	W.R. Nichols
Dr. Richard Carver	Iowa Park	H.M. Nipper
L.A. Chappell	Holliday	L.E. Norsworthy
Grace Chastain	Iowa Park	P.....
Earl Chesser	Iowa Park	Preston Pace
Roy E. Childers	Iowa Park	Helen Page
John W. Clapp	Iowa Park	Park Clinic
T.M. Clark	Iowa Park	Park Clinic, Dr. Watson
O.F. Coffman	Wichita Falls	Mrs. H.O. Petty
James Conkling	Iowa Park	Mrs. H. Pierce
Tom Covington	Bedford	H.R. Pittman
Mrs. Ruby Cox	Iowa Park	Q.....
W.T. Crawford Sr.	Iowa Park	J. Louis Quick
Clemmie Crockett	Iowa Park	R.....
Bill Curry	Iowa Park	Dan Read
D.....		Mrs. Ed Reed
Mrs. Clay Davis	Iowa Park	Mrs. M.E. Reneau
Corliss E. Davis	Grapevine	Terry W. Riley
Mrs. G.O. Davis	Iowa Park	Fla.
Mrs. J.J. Dwyer	Iowa Park	Rev. Delano Robertson
E.....		V. David Robnett
Herbert Elliott	Iowa Park	Mrs. J.C. Roby
A.L. Emils	Iowa Park	Dr. Jerry Rogers
F.....		Gregory L. Ross
Sam Fairchild	Iowa Park	S.....
Mrs. W.L. Fenner	Wichita Falls	Mrs. Walter Scott
Norma Ferguson	Holliday	Mrs. James A. Sewell
Florence Fleming	Iowa Park	Paul Shea
Jesse Flick	Iowa Park	W.B. Shook
Mrs. Roy Fortner	Iowa Park	Mrs. R.B. Sisk
George R. Francis	Iowa Park	R.J. Sitgreaves
Bobby Frazier	Iowa Park	Mrs. C.H. Skinner
Gerald D. Frazier	Iowa Park	Eugene G. Smith
G.....		Dr. Erwin F. Soell
James B. Garrett	Iowa Park	Dennis Sorey
Jane Gauntt	Wichita Falls	Larry Sossamon
Otis Gay	Iowa Park	State National Bank
Vernon L. Gilbert	Iowa Park	Mrs. W.G. Steele
Mrs. M.E. Goforth	Iowa Park	Stanley Stephens
Terry A. Goin	Iowa Park	R.A. Stewart
Steve Gray	Iowa Park	John Sykes
James M. Griffin	Iowa Park	College Station
Frank Guyette	Iowa Park	T.....
H.....		Mrs. Doug Tanner
Billy Harrington	Iowa Park	J. Boyd Taylor
Mrs. Mike Hartmangruber	Iowa Park	Texas Electric
R.J. Hayley	Iowa Park	Texas Electric
Frank Harlin	Iowa Park	Mrs. T.M. Thaxton
Howard Hatcher	Iowa Park	Eldon Thompson
Charles R. Heacox	Iowa Park	Marion Tillery
Floyd G. Heard	Iowa Park	Roger Tinnerstet
Dean Henderson	Iowa Park	Gayle Todd
Carroll Hester	Iowa Park	Lee Towns
Mrs. Harry Hill	Iowa Park	Mrs. Lynn R. Trigg
Roberta Hill	Iowa Park	V.....
R.W. Hill Ins.	Iowa Park	Denette Vanek
Mrs. Sam Hill	Iowa Park	John Virgin
Mrs. M.L. Hines	Iowa Park	Waco
Jerry Hodges	Iowa Park	W.....
Mrs. Lee A. Holloway	Iowa Park	E.E. Wallis
A.O. Holt	Wichita Falls	Hoyt Watson
Jerry Hunt	Bensenville, Ill.	Ray Watson
I.....		Kenneth Watts
IP Chamber of Com.	Iowa Park	Mrs. F.L. White
J.....		Mrs. Fred Widmoyer
Oscar Jackson	Seymour	Robert Wilcox
Don Jagger	Iowa Park	Robert A. Wilkerson
Tommy Jares	Iowa Park	Anita Williams
Sally Jones	Fort Worth	Wayne Williams
W.D. Johnson	Iowa Park	Wylie Williams
K.....		Bob Windle
Roy Lee Keith	Ringgold, Ga.	Charles Woodfin
Wayne B. Kingade	Iowa Park	Virgil Woodfin
Leo Knezek	Iowa Park	Ivan Woods
L.....		Y.....
Charlie Lee	Iowa Park	Mike C. Yancey
Mrs. George Lofland	Iowa Park	Lakeside City

Lone Star Specialist Pete Evans uses two balloons to explain an important home-heating message. The message is that a new high-efficiency\* gas furnace can help you stretch your energy dollars.



## A high-efficiency gas furnace makes a difference you can see.

The larger balloon could hold 104,000 cubic feet of natural gas; enough to heat an average home for more than a year.

The smaller balloon can also hold enough natural gas to heat the same home for the same amount of time.

Why the difference in size?

The larger balloon represents the gas capacity you'd need to operate a gas furnace built 10 or more years ago.

The smaller balloon represents the gas capacity you'd need with a new high-efficiency gas furnace.

Yes, it's quite a difference. Especially when you add up annual savings over the lifetime of the new furnace.

Gas has always been your most efficient fuel. A high-efficiency furnace makes gas go even further.

Call your local dealer. Tell him you'd like to stretch your energy dollars with a high-efficiency gas furnace.



**Lone Star Gas Company**  
Gas. First in energy efficiency.

\*Efficiency ratings based on results of test procedures established by the Department of Energy.

To: Iowa Park Leader  
Box 430  
Iowa Park, Tex.  
76367

### PLEASE CHECK ONE:

New  
 Renewal  
 Change  
of Address Only

\$ \_\_\_\_\_ Enclosed

(Name)

(Address, P. O. Box, or Route No.)

(City)

(State)

(Zip Code)



# Church of God members observe 50 years growth

The Church of God will celebrate its 50th anniversary Sunday with special morning and evening services, when Rev. W.F. Williams, who served as pastor of the church from 1964 until August 1982 and is presently the overseer of the Churches of God in Colorado, will bring the messages for both services.

Activities for the day will start with Sunday School at 9:30 a.m. At 10:30 a.m. the youth choir, directed by Darla Olds, will present special music, followed by singing directed by Jim Riddlehuber and music by the sanctuary choir directed by Jerald Brown.

At 10:30 a.m. the youth choir, directed by Darla Olds, will present special music, followed by singing directed by Jim Riddlehuber and music by the sanctuary choir directed by Jerald Brown.

At 11 a.m., the offering will be taken and the pastor Rev. Ole Olds will welcome and recognize the visitors. Testimonies will be given by Mr. and Mrs. Steve Brown, Earnest Lee and others before the message by



V.A. Wilson

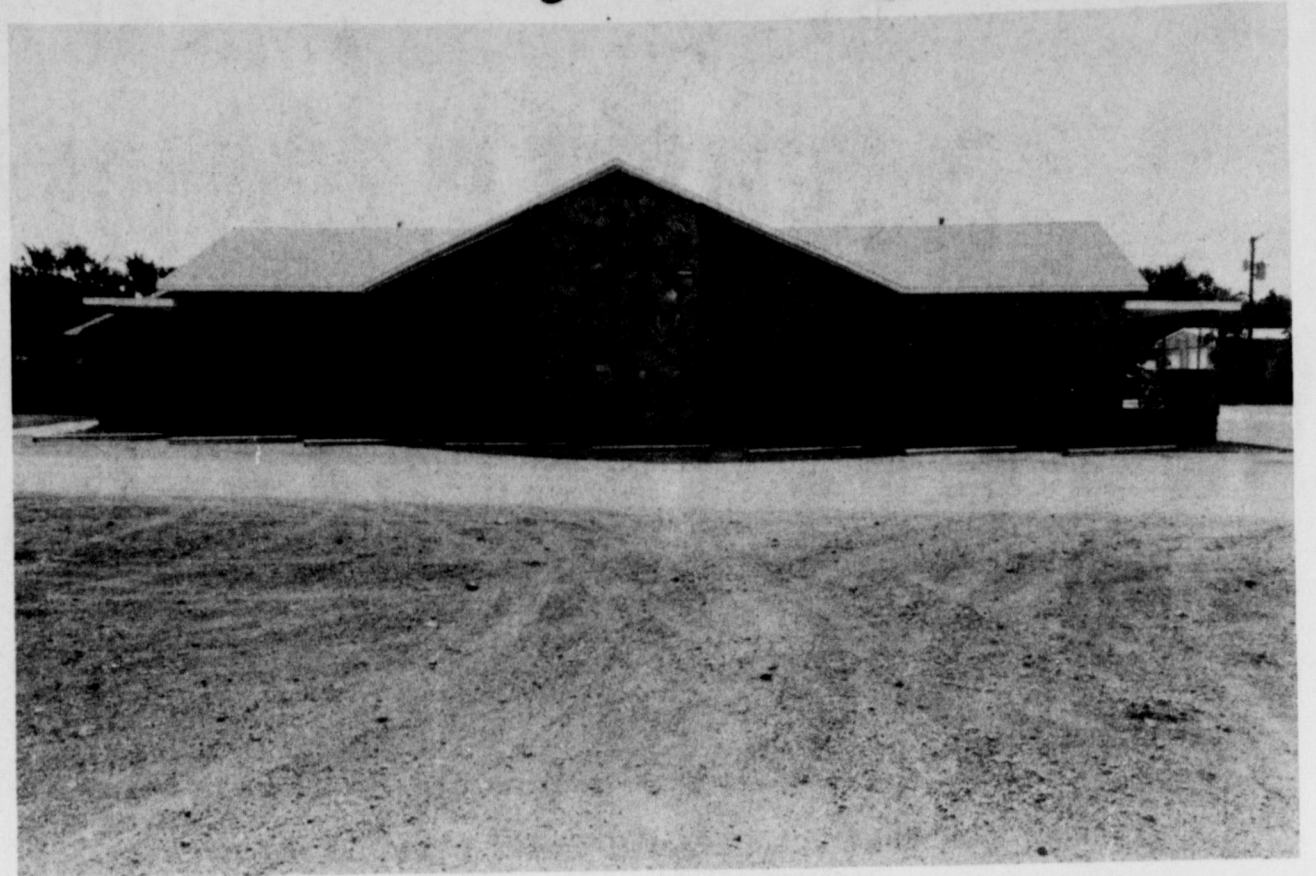


Mrs. V.A. Wilson

Rev. Williams.

It was largely through the efforts of the late Mr. and Mrs. V.A. Wilson, who were killed in a train-car crash with their granddaughter, Judy Wilson, in 1954, that the Church of God in Iowa Park came into existence.

In the early part of 1931, Mrs. Wilson began her work here by giving Bible stories she had secured in Electra while the couple lived there to a few neighborhood boys at their home on S. Park. She read the stories to them and invited them back. The following Sunday she told Bible



Present facilities are located at 601 East Cash

## Area oil, gas report

A 2,000-foot developmental well is planned by Flusche Supply, Inc. of Electra at a drillsite one mile south of Electra, Wichita County. Well's designation is the No. 26 Waggoner "A".

D.D. Strange, operating out of Wichita Falls has recorded a marginally successful developmental well in the Wichita Regular Field. It is the No. 6-A Earle Denny "A", showing potential for 9 barrels of oil per day on an open choke.

Drillsite was in an 82-acre lease in the H.B. Balch Survey, two miles east of Valley View, Wichita County.

The well was drilled to a total 1,301 foot bottom after entering the pay structure at 172 feet. It was perforated to produce from an interval 180 to 192 feet into the hole.

A wildcard for oil is scheduled for spudding 12 miles east of Holliday by Robert P. Lindsay Oil Operations. The well will be known as the No. 2 Culley, with projected total depth of 6,000 feet. It will be situated in a 101-acre lease in Archer County's German Emigration Land Co. Survey.

Location has been staked by H&S Operating, Inc. of Dallas for a 1,500-foot developmental probe in the Archer County Regular Field, five miles southwest of Archer City. The well is designated as the No. 1 ABK. Drillsite will be in a 213-acre lease in Archer County's A. Edwards Survey.

The No. 1 Tribune 117 Deep is slated to be drilled in the Archer Regular Field by Thomas C. Canan, operator from Wichita Falls. With projected total depth of 6,000 feet, it will be spudded in a 200-acre lease of Archer County's ATNCL Survey, 4.5 miles north of Archer City.

Deen Drilling Co. of Archer City has staked location for the No. 1 Parker-Wilson in the Archer Regular Field. It is scheduled for 2,000 feet of hole making. The location is in a 120-acre lease in Archer County's H&TC RR Survey, about three miles southwest of Mankins.

The No. 1 & 2 Weinzapfel and the No. 1 Conrady, three developmental wells in the Archer Regular Field, are scheduled to be drilled four miles west of Windthorst. S.L. Mowrey of Wichita Falls is listed as the operator. Locations are in a 60 and 80-acre leases in the Clark & Plumb Survey.

Projected total depths for each of the three wells is 1,300 feet.

Joey Meador Oil Co. of Archer City has revealed plans to drill a 1,500-foot developmental probe in the Archer Regular Field, four miles southwest of Windthorst. The well will be located in an 80-acre lease in the TE&L Survey and is to be designated as the No. 1 Wolf.

The No. 1 Mollie Harber "C", a developmental try in the Archer Regular Field, is scheduled to be spudded five miles southeast of Anarene. With projected total depth of 1,200 feet, the well will be in a 19-acre lease in the R.R. Rainey Survey. Pierce-Western Oil of San Angelo is listed as the operator.

Location has been staked by Burk Royalty Co. of Wichita Falls for a 6,000-foot developmental probe in Archer County's H&TC Survey, six miles south of Wichita Falls. The well is designated as the No. Doneghy "B".

Drillsite will be in a 527-acre lease in the Archer Regular Field.

Tom Swanson of Electra has revealed plans to drill a 4,500 foot developmental well in the KMA Field. The operator has 40-acres leased, with drillsite in Wichita County's H&TC RR Co. Survey and has designated the venture as the No. B-1 M.W. Simon. Drillsite is 10 miles south of Electra.

Joey Meador Oil Company of Archer City has posed initial production figures for the No. 2 Norris 133, new oil well in the Archer Regular Field, three miles northwest of Archer City.

The well indicated potential for 16 barrels of oil per day on an open choke. With drillsite in a 40-acre lease in Archer County's John W. Harris Subdivision, the well had total drilling depth of 1,112 feet. It entered the pay horizon at 1,108 feet and will produce from a set of perforations 1,108 to 1,112 feet.

## Brazil churches program topic

Mrs. J.A. Berg coordinated the monthly program taken from the Royal Service magazine Monday for the meeting of Night WMU of First Baptist Church held in the home of Mrs. Bill Curry. The theme of the program was "Brazilian Baptists: Freely Received---Freely Given."

The topics presented by the leader and her assistants, Mmes. J.T. Parker, D.O. James, Roy B. Smith, C.L. McKinnon and Homer Blalock placed emphasis on the home, national and world mission efforts of the Brazilian Baptists.

Focusing special attention on 10 missionaries during the prayer period for those on the birthday calendar for the day, Mrs. E.T. Patterson gave a

### CARD OF THANKS

The Executive Board and Members of Kidwell PTA would like to thank the people of Iowa Park for their support of our annual Halloween Carnival. This year's Carnival was a huge success. A special "Thank You" to Kings Kids Day Care Center, Superfine Grocery, Homestead Ceramics, The MuleSkinners, The Donut Box, and McDonalds for their donations. Your support is greatly appreciated.

Galyia Kasparek  
President, Kidwell PTA

talk on "Bless the Missionaries," using maps to show where each was serving and directing separate prayers for each one.

Mrs. V.I. Woodfin conducted the business. It was voted to cooperate with the Day WMU in preparing Thanksgiving love baskets and to contribute items to the local emergency food pantry for the November missions in action project. Fifteen members and one guest, Mrs. Odus Mason, were present.

## UMW meets

Mrs. James Owens presented "Thanksgiving Miracle," author unknown, a timely and family story and poem, for a meditation Tuesday morning during a meeting of the United Methodist Women.

Mrs. H.W. Carter directed the business when plans were finalized for the annual bazaar which will be held Saturday in the Fellowship Hall of the church. Mrs. Don Beals reported on the food center sponsored by the Ministerial Alliance and reminded members of cakes to be sent to Sheppard AFB Hospital.

It was voted to continue support of the Wesley Foundation Center at Midwestern State Univ. Twenty-four were present.

stories to seven children, the next to 12, and the next to 21.

After a few months, the Wilsons decided to have a Sunday School for all ages. They started in a small two-room house near their home by removing a partition for classes in the evenings. After much interest, they decided to have church services, and soon the house became, too small.

During the summer of that year an outside revival was held with Mrs. Earl (Gertrude) Alexander ministering, and many people made professions of faith. In Jan. 7, 1932, the Church of God was organized under the direction of the state overseer, and Mrs. Alexander was named pastor.

In 1935, Rev. J.T. Campbell became pastor and the church building was moved to North Alcott on land that is now the property of Iowa Park Junior High School. During the summer, the building burned while most of the

members were gone to the state "camp meeting." The building was rebuilt the latter part of that year.

In 1944, when Rev. J.T. Melton was pastor, the building was moved to its present location at 601 E. Cash, and in 1950 when Rev. G.M. Gilbert was pastor, it was moved temporarily while new facilities were being built. The first sanctuary at the present site was built through volunteer efforts of men of the church. They purchased two two-story buildings from Barrow-Grace Buick in Wichita Falls, tore them down and hauled the lumber to Iowa Park to construct the building.

A complete remodeling of the facilities was begun on Sept. 1, 1976, during the pastorate of Rev. Williams and completed in Feb. 1977. From the small beginning of seven in Sunday school, it has grown steadily through the years, and the average attendance during September 1982

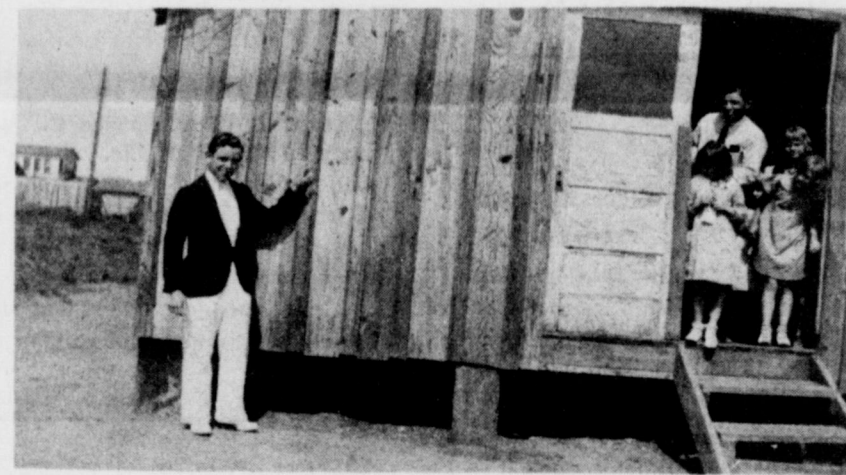
was 220.

Pastors who have served the church since Mrs. Alexander include Revs. Jack Cockrell, Rome Brouse, J.T. Campbell, Roben Marten, C.F. Meador, O.L. Crowe, Oscar Davis, T.M. White, J.T. Melton, W.C. Hill, Ray T. Hill, G.M. Gilbert, Jack W. Truett, L.C. Pennington, M.G. Swart, Charles E. Prince, and W.F. Williams. Rev. Ole V. Olds became pastor in Sept. of this year. Leon Goforth served as interim pastor from April to Sept. in 1962 after the death of Rev. Swart.

Charter members were Victor Wilson, Myrtle Wilson, Mae Travis, Irene Rudder, Mammie Rudder, Lue Hill, Mammie Hensley, Geneva Hensley, Eldon Gee, Mrs. L.R. Lee and Essie Gee.

Florence Battle, the present church clerk, has served for 20 years. She succeeded Mrs. Steve Brown, who also served in that capacity for 20 years. Serving before her were V.A. Wilson and Cereta Reeder.

Among the special guests expected for the celebration are the three children of the late Mr. and Mrs. Wilson: Mrs. T.R. (Ruby) Fleetwood and Ira Dell Wilson of Dallas, and Mrs. J.B. (Cleo) Williams of Arlington.



Original building was on South Park

## FIRST CHRISTIAN CHURCH

[Disciples of Christ]



DALE L. WALLING

105 E. Cash 592-4513  
You are cordially invited to worship with us each Sunday.  
Church School 9:45 a.m.  
Worship 10:55 a.m.  
YOUTH PROGRAM 6:00 p.m.

WELCOME--  
ASSEMBLY OF GOD  
S. Yosemite  
9:45 S.S./7 P.M.  
Wed. 7 P.M. Service  
Rev. Charles Hensley,  
Pastor

Kamay Road  
Church of Christ  
Corner of Colorado  
& Emerald  
Seeking the  
Old Paths  
Lord's Day  
10:30 a.m. & 6 p.m.  
Wednesday 7:00 p.m.

Good Shepherd  
Lutheran Church  
1st & Magnolia  
Iowa Park  
Sunday School: 9:45 a.m.  
Worship Service: 10:30 a.m.



## IOWA PARK CHURCH OF CHRIST

SCHEDULE OF SERVICES

Sunday	Wednesday
Bible Study 9:30 a.m.	Ladies Bible Study 10:00 a.m.
Worship 10:30 a.m.	Evening Study 7:30 p.m.
Evening Worship 6:00 p.m.	

\* Study the Bible in the privacy of your own home. Write for a FREE Bible Correspondence Course and enrich your life: Church of Christ, P.O. Box 520, Iowa Park, Texas 76367

300 East Park, Iowa Park, Texas 76367, [817]592-5415  
L. KEITH PARKER, PREACHER

## Church of God

601 E. Cash

Pastor - Ole Olds

Sun., Morning Worship 11:00  
Sun. Night, Celebration Service 7:00 p.m.  
Tues., Ladies Prayer Service 10 a.m.  
Wed. Night Bible Study 7:30  
Sat. Family Night 7:30  
"Catch the Vision"

Par. 592-5316

Office 592-4348

## Grace Baptist Church

511 S. Colorado - 592-5632

Come Let Us Reason Together Saith The Lord  
Sunday School . . . 10:00 A.M.  
Morning Worship . . . 11:00 A.M.  
Children's Worship . . . 11:00 A.M.  
Evening Worship . . . 6:30 P.M.  
Wednesday Service . . . 7:30 P.M.  
Jimmy Johnson, Pastor

## Welcome To The Worship and Fellowship of First Presbyterian Church

CHURCH SCHOOL - 9:45 A.M.  
FELLOWSHIP Time - 10:40 A.M.  
MORNING WORSHIP - 11:00 A.M.

Norman D. Nettleton, Pastor 211 So. Yosemite

## Christ The King Catholic Church

First and Clara

8:45 A.M. Sundays 10:00 A.M. C.C.D. & Bible Study











# Stop Looking - It's All in The WANT ADS

## DEADLINES

10 A.M. WEDNESDAY  
(Word Ads Only)

4 P.M. TUESDAY, DISPLAY ADS

## SAVE 10¢ FIRST INSERTION BY PAYING WITH COPY

## RATES:

20¢ PER WORD FIRST INSERTION  
10¢ PER WORD EACH REPEAT

### HOMES FOR SALE

**IOWA PARK.** Do you make \$15,500 a year or less; would you like to live in a new 3 bedroom, 1 1/2 bath house. Full carpeted with central heat/air, with extremely low payments.  
**SWAN CONSTRUCTION COMPANY, 692-8788.**  
3-18-tfc

**14x52 MOBILE HOME**  
Two bedroom, bath, nice kitchen, living room, dining area. **\$11,500**

**OWNER FINANCE**  
Three bedroom dining room, the cleanest home in town. **\$33,000**

**BEAUTIFUL**  
The best lot in town. Large beautiful trees surround this 92x140 corner lot.

**SPECIAL**  
Better than you think. Two bedroom, one bath, single garage. **\$15,000**

**COMMERCIAL LOT**  
Eastside Drive, Wichita Falls, Texas.

**GOOD ASSUMPTION**  
Three bedroom, bath, large livingroom, kitchen & dining combo with large den. **\$24,500**

**EXTRA! EXTRA!**  
Great home over two thousand square feet of beauty. Double face fireplace, beamed ceilings in livingroom & den, corner lot and more. **\$65,500**

**IT'S NEW**  
Three bedrooms, large livingroom, nice garage and much more. **\$42,500**

**BEAUTY PLUS**  
Three bedroom, 1 1/2 baths, large living room with fireplace, lovely earthtone carpet, large storage. **\$51,500.**

**CITY FARMING**  
Have your cake and eat it too. Two plots of land, 108 acres and 53 acres, close in to town. Some irrigated acres.

**VACANT LOT**  
Ideal for homesite or mobile home. Utilities close to property **\$3,000**

**PRICE REDUCED**  
Three bedroom brick home, corner lot, hard, single **\$38,500**

**HOLIDAY, TEXAS**  
Commercial store bldg. Over six thousand feet of sales floor, plus five stall work shop on Main Highway 82.

**SEVEN MONTHS OLD**  
Over 2600 sq. are feet. Two baths, family, giant living room, three bedroom, 4 acres of land. **\$105,000**

For additional property information, call now. It would be our pleasure to help you locate your next home.

**MEMBER**  
Multiple Listing Service

**JOHNNY LEE**  
**REAL ESTATE**

109 West Cash  
592-2378

### FOR RENT

1972 ELCONA mobile home for sale or rent in Iowa Park. 592-5327.  
11-4-1tp

**ROOM FOR HORSES**  
5 acres with horse barn. This beautiful home has a wet bar, sprinkler system in front and back. This 4 bedroom dream house is total electric. It includes fireplace, gun rack, and fenced yard.

**CLOSE TO HIGH SCHOOL**  
A nice home on corner lot has an assumable VA loan.

**CENTURY 21**  
Dynamic Realtors  
592-2455 Andy Salan

**ANNOUNCEMENT**  
Re/Max Associates and Joan Shiery have joined HIRSCHI REALTORS  
The offices at 2945 Southwest Parkway are now known as Hirschi Realtors Southwest, main offices are located at 3308 Kemp. If I can be of service to you with any of your real estate needs, please call anytime at 691-1212 - Southwest Office  
692-8120 - Main Office  
592-5540 - Home

Lovely brick home close to Kidwell, 3 bedroom, 1 1/2 baths, central heat-air, sparkling clean, pretty wall paper.

**JOAN SHIERY**  
592-5540  
**HIRSCHI REALTORS**  
692-8120 691-1212

**CLOSE IN**  
Older 3 bedroom and den with fireplace. Built-ins, dishwasher, heat and air, 3 car garage, shop. Large corner lot, walk to town. \$50,000.

**BUY NOW**  
Two bedroom frame. Forced sale. \$16,000.

**ACREAGE**  
32 acres, three barns & corral, water meter, good home site. \$36,000.

**HOME & INCOME**  
One bdrm. home, corner lot, 14x60 2 bdrm. mobile home on good lot. All for \$25,000.

**MOBILE WITH LOT**  
Two bdrm. mobile home on 40x150' lot. Nice. \$10,000.

**COMFORT & BEAUTY**  
Pleasant Valley Estates - 4 bdrms. office, game room, 2 fireplaces, detached triple garage & workshop. 2.39 acres. Former home of prominent area builder, who included many extras for comfortable & economic living. \$160,000.

**INVESTMENT**  
Income property. Two bdrm. house, two one bdrm. apartments, and older church building with 1,272 sq. ft. area. All for \$35,000.

**PRICED TO SELL**  
Two bdrms. FHA or VA, fenced, cellar, quiet location. \$30,000.

Your Established Local Realtor Member  
Multiple Listing Service  
**SAM D. HUNTER**  
REAL ESTATE  
107 E. Cash Ph. 592-4661

**4 BEDROOM** house, corner lot, storm cellar, 105 W. Pecan. Inquire about it 506 S. Wall.  
11-4-2tc

**OFFICE SPACE**, square footage to meet your needs, central location. Available early 1983.  
11-4-4tc

**25x75 FT. STORE** building, 106 West Cash, \$120 month. 723-6082. Nite 692-3521.  
10-21-5tp

**MISC. FOR SALE**  
**GARAGE SALE** 723 Park Plaza, Saturday 9-5, Sunday 12-4. Bicycle, sun lamp, apartment-size washer, clothes, miscellaneous, 592-2468.  
11-4-1tp

**GARAGE SALE** Saturday only. Good used carpet, gold shag, 12x15, \$50; stereo comp. cab. \$30; Getzen (Severinson mod.) trumpet; some clothing & misc. items. 1006 Cindy, PVE.  
11-4-1tp

**GARAGE SALE**, Saturday, starts at 9 a.m. Baby furniture and clothing; carpet pieces; miscellaneous Pleasant Valley Estates, 1004 Cindy.  
11-4-1tc

**GARAGE SALE**, 304 W. Diamond, Thursday-Friday, 8:30-5; Saturday 10-4. Ladies and girls' coats and sweaters, heater, vinyl couch, miscellaneous.  
11-4-1tp

**GARAGE SALE**, rain or shine, Thursday, Friday. Lots of dolls, some furniture, miscellaneous. 803 S. Yosemite.  
11-4-1tp

**YARD SALE** - Every Thursday, Friday and Saturday, 604 E. Washington.  
11-4-3tp

**GARAGE SALE** Friday & Saturday, 10:00 to 6:00. Dryer, dishwasher, tape player, clothes, shoes, many misc. items. 1508 Karen.  
11-4-1tp

**GARAGE SALE** - 10 a.m. till 7 p.m. Saturday, Sunday, 210 W. Magnolia. L.W.B. insulated computer top, 2 nice bar stools, ottoman, baby clothes, adding machine, clothes; lots of odds and ends.  
11-4-1tp

**RUMMAGE and Bake Sale**, Saturday only, 8:00 a.m. - 4:11 S. Wall, Faith Baptist Youth.  
11-4-1tp

**700 WEST CORNELIA** - Garage Sale, Thursday, Friday, Saturday. Guitar, amplifier, ping pong table, lawn mower, bicycle, much more!  
11-4-1tp

**NEW 3-PIECE** man's suit, never been worn, size 40-34 pants \$50; 2 steel belted tires, size 15", lots of miles left \$15 each; 20 good white shirts, size 15 \$1.00 each. 592-2143.  
11-4-1tp

**OPEN HOUSE SUNDAY**  
OCTOBER 31 & NOVEMBER 7  
2 P.M. TO 4 P.M.  
402 VAUGHN  
BURKBURNETT - 3 bedroom brick home with spacious living room. 7x10 child's playhouse with central air, cellar, 9x10 storage bldg, 12x16 work shop, private dog yard & garden area.  
Under \$45,000  
569-3935 for appointment anytime  
OWNER FINANCING AVAILABLE

**16-FT. FROST-FREE** Sears refrigerator. Freezer on bottom. Copper color. 592-5172 or 592-5961.  
11-4-1tc

**3 EWES** \$40 each, 592-5033.  
11-4-1tp

**HEAVY DUTY** bed springs with coils, like new. 701 S. Colorado.  
11-4-1tp

**CHRISTMAS SPECIAL** - above ground swimming pool, 24 ft. 592-5856.  
11-4-2tp

**1980 DODGE** Mirada CMX clean, low mileage, loaded, AM-FM stereo 8 track. Call 592-2126.  
11-4-2tp

**76 MONTE CARLO**, red w/maroon interior, 65,000 miles. For more information, call Ray at 692-7778 or 692-9310, ex. 61.  
11-4-1tc

**67 FAIRLANE** Ford, 2 door, 708 W. Texas, 592-4357.  
11-4-1tp

**FOUR 20-INCH** bicycles, C.P. Simmons 116 West Garden.  
10-28-2tp

**PORTABLE** dishwasher; small Thomas organ. 592-5335.  
10-28-2tp

**PEARS**, medium-sized \$4 per bushel; also shelled pecans 592-4905.  
10-28-2tp

**BUSINESS**  
**MONOGRAMMING**, fast, professional work. 592-5456.  
11-4-9tp

**WILL VACUUM** your lawn clear of leaves. Very reasonable. Call 592-9320. Mark Wicks.  
11-4-1tp

**True Value**  
HARDWARE STORES  
**BARGAIN OF THE MONTH**

**WEST BEND**  
**12.99** While Supplies Last  
Electronic Triple Timer™  
Times 3 activities at once from 1 second to 10 hours in each channel. 2 "AA" batteries included. 400-110  
Quantities Limited

**Parkway**  
**True Value**  
HARDWARE  
200 - 206 W. Bank

**WILL HELP** clean your house. Reasonable rates. 592-9618.  
11-4-4tp

**KING'S KIDS** Christian Day Care & Pre-School: openings for pre-school classes: 8:30 to 11:30 a.m. 5 mornings - \$60 per month. 3 mornings - \$36 per month. 2 mornings - \$28 per month. 202 N. Jackson, 592-4242.  
11-4-6tp

**ROOFING** - Wolfe Roofing Co. Phone 592-5630.  
7-1-tfc

**CONCRETE WORK** - Any kind 592-2324 or 592-9555.  
9-27-52tp

**PRIVATE FENCE** sales and installation. Charles Skelton, phone 592-5190.  
2-19-20tp

**BLACK POWDER GUNS** and accessories, revolvers \$50 and up. Powder \$4.80 lb. Will order modern guns for 10% over cost. Ye Ole Gun Shack, 413 W. Washington, 592-5430.  
5-14-tfc

**CARPENTRY WORK** done, anything from remodeling to replacing front doors. Free estimates. 592-2480, Gary Williams.  
4-1-27tp

**BURK SAND**, Yards, Clean Up. Don Hallum, 804 N. Wall, 592-4365.  
1-7-tfc

**MARY KAY COSMETICS** Allie Girard, consultant, 109 W. Poe, 592-4217.  
4-5-tfc

**HENDERSON** Monument Company. Serving since 1900. Monuments and all types of cemetery work. Bob Aulds, representative, Tanner-Aulds Funeral Home 592-4151.  
12-24-tfc

**MARY KAY** Cosmetics, Ann Moore, 592-4752.  
8-19-26tp

**BUILDING**, remodeling, or repair, additions, carports, patios. Free estimates. Call day or night. Billy McDonald 592-4338, Phil McDonald 592-2363.  
9-30-tfc

**MORAN MONUMENT** Works, Vernon, Texas, Old Highway 287, near East View Cemetery. A good selection of granites, cemetery lettering, grass markers, vases of bronze and marble.  
9-30-tfc

**REMODELING?** Do you need another room added on? A garage? Walls removed or added? Free estimates. References. Jack Kerr, 215 S. Wall, 592-9040, 438-2941.  
9-2-tfc

**STORM WINDOWS** - Machine-blown insulation. Roof turbines installed. Free estimates, Jack Kerr, 215 S. Wall, 592-9040, 438-2941.  
9-2-tfc

**JERRY'S VINYL REPAIR**, recoloring, auto, furniture, commercial. Free estimates, 438-2243.  
2-23-tfc

**PAINTING** - interior and exterior. Free estimates. Steve Ming, 592-5122.  
9-9-12tp

**LADY FINELE** natural cosmetics at reasonable prices. Call Annetta Reusch, 592-9001 for a free facial.  
4-22-tfc

### HOME SERVICES

**REGISTERED** Child Care. Monday thru Friday, all ages, \$30 week. Call 592-5544 after 6 p.m.  
10-28-tfc

### HELP WANTED

**WANTED:** Mature Christian lady to work in nursery. Sundays 9:15 - 12:15 (other times as needed for various activities.) Call First Christian Church, 592-4513 or 592-4109.  
10-14-tfc

**HELP WANTED** - Prefer age 23-50. Salary negotiable. Come by Iowa Park Dairy Queen.  
9-16-tfc

### NOTICE

**\$10 REWARD** for return of Fun Shooter camera lost at Kidwell Carnival. Pictures of baby's first steps on film. Please call Beverly Bohannon, 592-5466.  
11-4-1tp

**WANTED** rider to and from Wichita Falls Monday thru Friday. Call after 6:00 - 592-4954.  
11-4-1tp

**LADY LOVE**  
Aloe Vera Products  
Complete line of skin and hair care, and liquid drink.  
**PATSY COPE, Consultant**  
592-4366

**BOHANNON'S**  
UPHOLSTERY & TRIM  
Furniture, Pickup and truck cushions.  
801 W. Smith 592-9624  
Iowa Park

**"MONEY WHEN YOU NEED IT"**  
Loans on most anything of value  
**SOUTHWEST SALES & LOANS**  
4423 Rhea Rd. 692-1371

**King's Kids** Christian Day Care & Preschool  
"Iowa Park's Finest For Parents Who Care"  
Ages 2 Yrs & Older Monday thru Friday 7 a.m. to 6 p.m.  
202 N. Jackson 592-4242

**SHAW SPECIALS**  
'82 FORD PICKUP Long wide bed, Ranger XLT Lariat, fully loaded, demo, factory warranty  
'82 CHEVY PICKUP Long wide bed, Silverado, fully loaded, 2400 miles, factory warranty  
'81 FORD DOOLEY Long wide bed, one ton, V-8, 4 speed, air, power, 18,000 miles, like new  
'81 TRANS AM Fully loaded, T-top, just like new  
'81 ESCORT 4 Door, 4 cylinder, automatic, air, power, many other options, factory warranty.  
'79 CAMARO BERLINETTA 305, automatic, air, power, wire wheels, low mileage, local owner  
30 OTHER MAKES & MODELS TO CHOOSE FROM  
**SHAW FORD**  
See O. L. Tucker, Bill Wilson  
Iowa Park 592-4106



### FOCUS ON BREAKFAST

Breakfast-Eaters More Likely To Meet Nutritional Needs  
Several studies indicate breakfast is the most frequently missed meal by Americans of all ages. Nutritionists, however, regard breakfast as the most important meal of the day since the longest period of time between any two meals is usually between the evening meal or snack and breakfast the next morning. The body needs the nutrients and energy from the breakfast meal to produce efficient late morning physical and mental performance.

The results showed that ready-to-eat cereal breakfasts which included either a ready-sweetened or non-ready-sweetened cereal had a similar nutritional content—both of these breakfast types provided 25% or more of the Recommended Dietary Allowances for many vitamins and minerals. When a breakfast including a ready-to-eat cereal was compared to other breakfast alternatives, the ready-to-eat cereal breakfast was found to be higher in vitamins, minerals and fiber and lower in calories, fat, cholesterol, sodium and protein. The total sugar content was similar. The study also indicated that when breakfast was skipped, less than two-thirds of the Recommended Dietary Allowances for vitamins B<sub>6</sub> and D, folic acid, magnesium and zinc was met.

A daily breakfast provides assurance that individual nutritional requirements will be met, a convincing reason to "break the fast" each and every day.

Most nutritionists agree that breakfast should provide one-fourth to one-third of an individual's total daily requirements for calories and many essential nutrients. An easy rule to follow is to include foods from at least three of the Basic Four Food Groups.

A study conducted in Cleveland, Ohio examined breakfast patterns of children 2-11 years old.

**TEXAS TANK TRUCKS**  
Bobtail Service  
586-1795  
Jim Virdell 586-1837 David Brown 438-2939  
Rate! 723-6691 unit 4269

**ALL WORK GUARANTEED**  
**Buzbee Roofing & Painting**  
Phone 569-3493 or 592-4846

**JIM'S MARKET**  
113 W. Cash Store - 592-2051  
Night - 592-4597  
**1/2 BEEF** Heavy Grain Fed \$1.19 lb.  
**HIND QUARTER** \$1.49 lb.  
Cut, Wrapped, Frozen  
**Pork Freezer Pack**  
6 lbs. Center Cut Pork Chops  
8 lbs. Pork Steak  
2 lbs. Sliced Bacon  
2 lbs. Jim's Pork Sausage  
Guar. Wt. 24.95

**PO-BOY PACK**  
1 Chuck Roast  
1 Arm Roast  
4 Rib Steaks  
1 Fryer  
2 lbs. Jim's Pork Sausage  
2 lbs. Sliced Bacon  
7 lbs. Ground Beef (Approx. Weight)  
24 lbs. Guar. Weight \$36.50

**ECONOMY FREEZER PACK**  
Individually Wrapped  
3 Round Steaks  
2 Sirloin Steaks  
4 Rib Steaks  
1 Arm Roast  
3 T-Bones  
1 Chuck Roast  
2 Loin Tips  
1 Rump or Pikes Peak Roast  
12 lbs. Ground Beef (Approx. Weight, extra lean)  
2 Grade "A" Fryers  
Guar. Wt. \$69.95

**Barbecue Pack**  
5 lbs. Spare Ribs  
3 lbs. Pork Chops  
5 lbs. Beef Ribs  
6 lbs. Hamburger  
6 lbs. Fryer  
2 lbs. Short Ribs  
30 LB. PACK \$37.89  
**Barbecue Pack**  
5 lbs. Spare Ribs  
3 lbs. Pork Chops  
5 lbs. Beef Ribs  
6 lbs. Hamburger  
6 lbs. Fryer  
2 lbs. Short Ribs  
25 lbs. \$24.89  
**Barbecue Pack**  
3 lbs. Chuck Roast  
3 lbs. Arm Roast  
3 lbs. Spare Ribs  
6 lbs. Short Ribs  
4 lbs. Sliced Bacon  
2 lbs. Rib Steak  
12 lbs. Fryer  
6 lbs. Pork Chops \$44.89  
49 LB. PACK

We service all makes of washers, dryers, freezers, refrigerators and window air conditioners.  
**POSEY'S APPLIANCE SERVICE**  
208 James Ph. 592-5452 Iowa Park