

1983
Jan 27

EARL WATSON
520 W. CLARA
IOWA PARK TX 76367 112



STREET DEPARTMENT CREWS were at work early Saturday morning, clearing major streets of an unofficial four inches of snow which fell Friday night and that morning. Official measurement at the Experiment Station was two

inches, however. No major wrecks, injuries or problems resulting from the heavy cover were reported, and most of it had melted away by late Sunday.

City election set for April

April 2 was set to elect three city aldermen, during Monday night's regular meeting of the council.

What makes this spring's election unique is that all three terms which will expire are now being held by aldermen serving unexpired terms.

Mayor Charlie Lee had just completed his first year as alderman when he ran uncontested for his present office. Johnny Coker was appointed to complete his year as alderman.

Then two aldermen, Bill Gilmore and Herman Mahler, resigned, forcing a special election. Lita Watson, who had not sought a fourth term in the spring election, and Tim Hunter, were winners of the special election, and their terms expire in April.

Applications for places on the ballot are now being accepted at city hall. Absentee voting will begin in March, 20 days before election date.

Calling of the election was but one of numerous items on Monday's agenda.

The council approved an ordinance rezoning five lots which front on the access road, between Third and Fourth Streets, from convenience commercial to medium density residential, which includes apartments. It was approved by a 3-2 vote, with aldermen Coker and Hunter opposing.

Two resolutions were approved. One authorizes a contract with the Recreational Activity Center for another year. The other approves a contract with Iowa Park Soccer Association to use a six-acre tract of city-owned land on the south side of town for playing fields.

Following a 26-minute executive session, which was closed to the public, the mayor explained a personnel problem in the police department had been subject of the discussion. Outcome of the discussion was the need of a grievance procedure policy which would not only apply to police but to all city personnel, he said.

Aldermen approved advertising for bids to purchase three pickups and a truck chassis. A compact pickup

would be for the sewer and water department, two full-size pickups for the parks department and sanitation department, and the truck, on which a dump bed would be installed, for the street department.

Council members authorized purchase and installation of a sewer lift pump, with a maximum expenditure of \$2,000, which would serve the Recreational Activities Center and a proposed restroom for Burnett Baseball Field.

The RAC has always been served by a septic tank, which has been a problem in the past and is not adequate to handle the additional load from a public restroom, the council was told.

While the mayor explained the council had no choice but to pay the city's share of the Wichita County Tax Appraisal District's bill for this year, he said it should be pointed out the cost to the city was \$14,690.77.

Authorization was also given for advertising for bids to rebuild the east lane of Park Ave. between Yosemite and Colorado.

Bids will have alternates for turnkey work or supplying materials for city crews to do the work. Additionally, bids will be sought for asphalt and concrete.

Alderman Bud Thompson said he had received numerous complaints about the nuisance of bees and pigeons in the city. He said both were being kept in the city.

After Thompson said he was allergic to insect bites, alderman Hunter admitted he kept a hive of bees in town, but also said bees travel up to two miles, so in-town or out-of-town bees being kept were not the solution to Thompson's problem.

During his report to the council, James Barrington, city administrator, said night lights for the Burnett Library grounds would be installed within a week, and that drawings for city hall remodeling would soon be ready to advertise for bids.

A written request for water service to a nearby proposed housing development was not considered because no one representing the project was present.

The project would be located west of Quail Valley Estates, just below the lake dam. Listed as owner and developer was Gene Wigley and Shirley Rains as realtor.

11 bandsmen in clinic, concert

Eleven members of the Iowa Park High School Band will participate in the All-Region clinic and concert Saturday at Wichita Falls High School. Band students from several schools will participate.

Representing Iowa Park High School will be Kara Johnson, Kristi Wynn, Vicki Floyd, Lori Barr, Kent Roberts, Kevin Robnett, Philip Clements, Brian Fowler, Pam Barr, Amy Silvers and Toby Smith.

IOWA PARK LEADER

25 Cents

Vol. 14, No. 20 IOWA PARK, WICHITA COUNTY, TEXAS 76367 THURSDAY, JANUARY 27, 1983

SATURDAY NIGHT

Recognition due four citizens

The "wall of honor" of the Iowa Park Chamber of Commerce office will have more honored history added to it Saturday night, when four citizens will be recognized for their contributions to the community.

One of the highlights of the annual banquet, which will be at 7 p.m. in the high school cafeteria, will be announcement of the Outstanding Citizen of the Year, Outstanding Senior Citizen, Outstanding Agriculturist and Outstanding Educator.

Tickets remain on sale, \$7.50 per person, at the Chamber office or any member of the board of directors, as well as at the door.

Featured speaker will be Don Newbury, president of Western Texas College at Snyder, who has been asked to return after being a "hit" at a previous local banquet.

A steak dinner will be prepared and served by the Iowa Park MuleSkinners. Charlie Lee will serve as master of ceremonies.

New officers to be installed will be Linda Merrick, president, Dr. James Edwards, first vice president, and H.M. Nipper, second vice president. Retiring president is Phil Welch.

Previous recipients of the Outstanding Citizen Award are Mrs. D.O. James, 1971; Dr. Gordon Clark, 1972; Mrs. Frank Harlin, 1973; Ralph Beall,

1974; Wayne House, 1975; Darrell Dick, 1976; Mrs. Earl Watson, 1977; Mrs. Charlie Lee, 1978; Bill Steger, 1979; Gordon Griffith, 1980; Buck Voyles, 1981; and Bill Gilmore, 1982.

Following Fenton Dale as the first recipient of the Outstanding Senior

Citizen Award, in 1976, were Mrs. W.F. George, 1977; Arch Hughes, 1978; Charlie Metz, 1979; Mrs. Bertha McDonald, 1980; Mrs. Otis Gay, 1981; and Mrs. James Sewell, 1982.

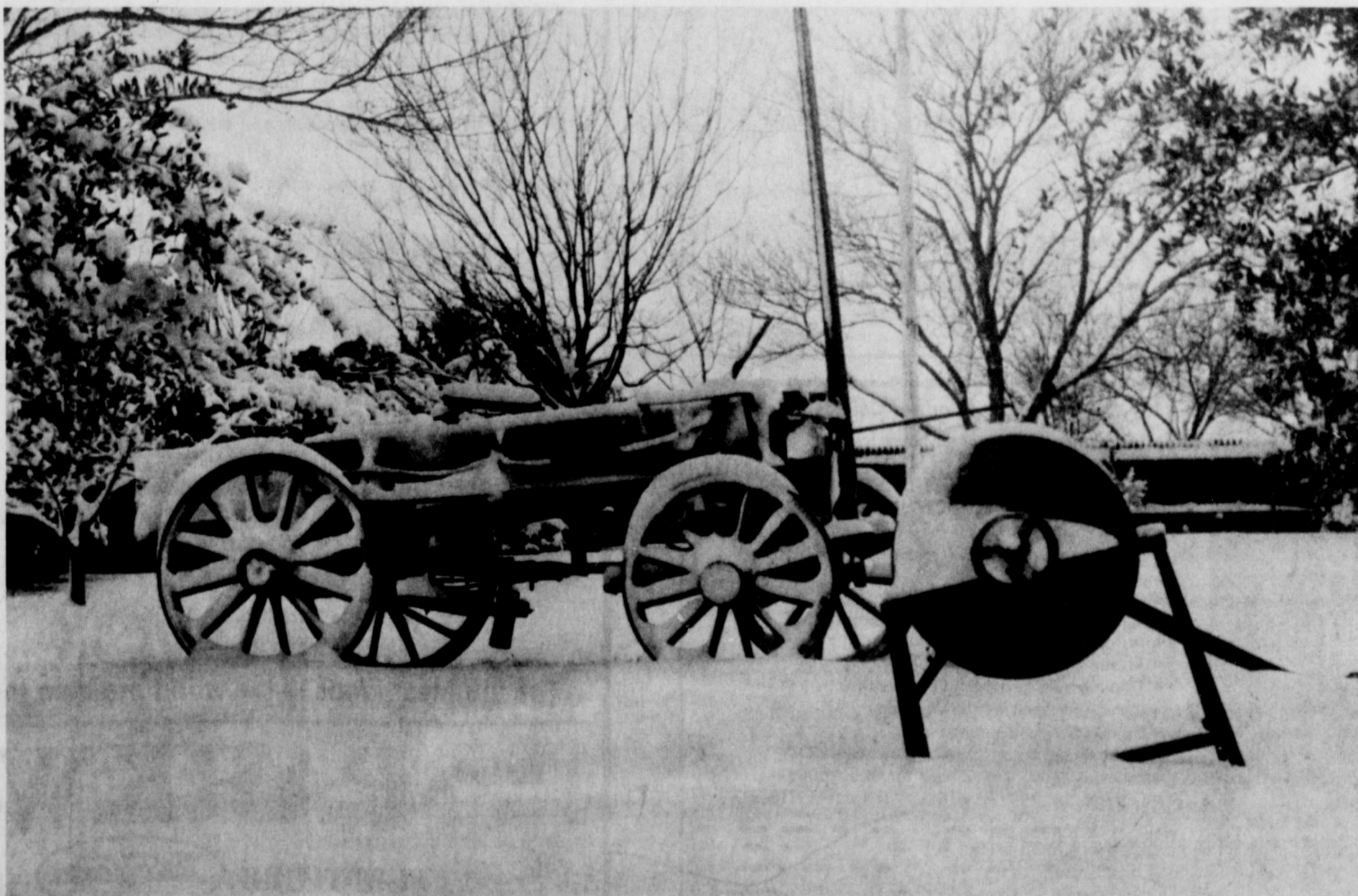
The Outstanding Agriculturist Award was first presented in 1978,

and it went to Virgil Woodfin. He was followed by Loys Barber, 1979; Ray Hicks, 1980; Rex Wells, 1981; and last year Barry Mahler was added to the plaque.

John Sibley was the initial recipient of the Outstanding

Educator award, in 1979. Miss Ethyle Kidwell received the award in 1980, Linda Ayres in 1981 and Bob Dawson in 1982.

Each of the recipients' names is added to the appropriate plaque which hangs in the chamber office.



SCENIC DISPLAYS were enhanced by Saturday's snow. An old wagon and grinding stone in the yard of W.T. Crawford, 1203 S. Johnson Road, looked almost like a picture postcard from mountainous or northern regions.

Four thefts are reported

Two acts of vandalism and four thefts, including one in which \$1,130 worth of property was taken, were reported to police during the past week.

Larry Meador told police his station wagon was locked and parked overnight in the driveway at 909 Van Horn. Someone opened the vehicle and took a bass guitar, hard-shell guitar case, 35mm camera and two lenses and a skill saw, all valued at \$1,130.

Thomas Shane McAda of Wichita Falls said his pickup was parked in the west parking lot at Iowa Park High School from 8:15 a.m. to 4:25 p.m. Tuesday, and during that time someone forced entry and took an \$89 equalizer.

Sometime Friday night a 12-volt battery was reportedly taken from a pickup parked at 908 Louisa, according to a report filed by Weldon Shrum.

A 20-inch Huffy bike valued at \$120 was reported as stolen sometime between 7 and 8:30 p.m. Jan. 19 by Debbie Cooper. The thief is alleged to have kicked in a garage door to gain entry.

During the same period and at the same address, Charles Parks said his car, which was parked in the driveway, had both rear tires cut with a knife.

The bottom glass of a door at Quikie Food Store, 208 James, was shattered during Friday night.

Weather Report

Weather reports are officially compiled for Iowa Park at the Texas Experiment Station, southeast of town.

Rainfall for week.....	.40
Total for month.....	2.92
Total for year.....	2.92
Total last year.....	.12



MARY ANN DAWSON

May wedding date set

Mr. and Mrs. Robert James Dawson are announcing the engagement of their daughter, Mary Ann, and Mark Stephen Shields, son of Mr. and Mrs. Earle Andrew Shields of Ft. Worth.

Miss Dawson was graduated from San Marcos Academy and North Texas State Univ. at Denton. She is presently a graduate student at the Univ. of Texas at Austin and is employed as a research and teaching assistant in the Department of Curriculum and Instruction.

The groom-elect was graduated from Arlington Heights High School in Ft. Worth. He has attended Schreiner College at Kerrville and Denver Univ. He is presently completing his studies in finance at Saint Edwards Univ. at Austin and is employed by J. Harris Incorporated.

The couple will be married May 21, 1983 in First Baptist Church in Iowa Park.

Eastern Star anniversary is observed

The Iowa Park chapter of the Order of Eastern Star celebrated the 73rd anniversary of the organization Tuesday night. The program presented to commemorate the occasion featured some of the highlights of the early meetings given by Violet Gilbert, associate matron, who also read a transcript of the minutes of the first meeting, which lasted over a period of three days.

Mrs. Robbie Smith read several poems appropriate for the anniversary meeting. Faye McAllister, worthy matron, gave a toast to the occasion.

The chapter was organized on Jan. 25, 1910 with 20 members. The current membership is 96. The first musical instrument purchased by the lodge was an organ bought for twenty five dollars in 1911. The first open installation of officers was a joint meeting with the Masons in 1911, all meeting at the lodge hall and marching to the Methodist church for the ceremony.

During the social hour, a sheet cake decorated with the Eastern Star emblem surrounded by small dolls representing the five heroines of the order was cut and served to 39 members and visitors from Electra, Holliday and Wichita Falls.

Make the Connection

Texas Department of Public Safety

Cook of the Week

January is the "sweetest" month of the year because it is National Candy Month. Many cooks, instead of succumbing to a postholiday slump, sweeten the cold, wintry days with candy, cakes or pies. Theresa (Mrs. Paul) Arrington is probably choosing the cake route because two of her recipes today are for cakes, one strawberry, the other chocolate.

The strawberry, the juicy edible red fruit of a plant of the rose family, goes back to prehistoric times. The seeds were the scarcest finds at Mesolithic sites in Denmark, Neolithic sites in Switzerland and Iron Age sites. It was said of one, "God could have made a better berry, but doubtless God never did."

In the U.S. cultivated strawberries were first grown in home gardens for family consumption. They were rare in markets because of the perishability problem. In the early 1800s, the Philadelphia suburbs raised the berries close to a concentrated market. It was fashionable to frequent the city's many "strawberry gardens" to eat the delectable berry. In 1840, Martin Van Buren was attacked during his presidential campaign on the ground that he had used public money to raise strawberries for his own table.

In 1847, the Erie Railroad began to operate, facilitating the delivery of perishable products. In June of that year, the train brought 80,000 baskets of strawberries to New York. Now with speedy and refrigerated transportation, they are within everybody's reach.

Theresa Arrington was graduated from Burkburnett High School and does substitute teaching in the Iowa Park schools. She and Paul, who is a local mail carrier, have one son, Joshua, 18 months old. They are members of Faith Baptist Church where they are directors of youth and teachers in the high school department.

Theresa's hobbies are cooking, ceramics, sewing, and she thoroughly enjoys her role as a homemaker, wife and mother. Below are five of her recipes.



Mrs. Paul Arrington

STRAWBERRY CAKE

1 box white cake mix
1 small box strawberry jello
1/2 cup water
4 eggs
1/2 cup frozen strawberries, thawed
Mix all ingredients together. Bake at 350 degrees until done. Cake is done if center springs back when touched lightly with fingers. Frost when fully cooked with:
1/2 cup frozen strawberries
1 stick oleo
1 box powdered sugar
Mix thoroughly and spread on cake when cool.

CHICKEN SPAGHETTI

1 pkg. chicken thighs
2 cans cream of chicken soup
1 pkg. spaghetti
1 cup each of chopped celery, onions, bell pepper
Cook chicken and debone. Cook celery, onions, pepper in chicken broth. Cook spaghetti; mix in chicken, vegetables and soup. Pour in casserole and top with grated cheese. Note: if too dry add some chicken broth.

STRAWBERRY JELLO SALAD

2 small boxes strawberry jello
2-10 oz. boxes frozen strawberries
1 cup nuts, chopped
1 cup boiling water
1 small can crushed pineapple, drained
3 medium mashed bananas
Mix jello in bowl and set aside. In another bowl, mix strawberries, juice and all, bananas, pineapple and nuts; add to jello mixture. Pour one half in cake pan. Let set in refrigerator about 30-45 minutes until it starts to harden. Do not put the other half in refrigerator; let it stand on cabinet. Take jello out of refrigerator and top with Cool Whip, then add the other half of jello mixture. Set back in refrigerator until ready to serve.

MEXICAN CASSEROLE DINNER

1 can chili, heated
1 can Ranch Style beans
3 cups cooked rice
1/2 cup grated cheese
Onions, dried or fresh, as desired

Put in saucepan and bring to a boil:

1 stick oleo
1/2 cup Crisco
3 Tbsp. cocoa
1 cup water

Pour over flour and sugar and mix well. Add:

1/2 cup buttermilk
1 tsp. soda
2 eggs, slightly beaten
1 tsp. vanilla

Bake 20 minutes at 400 degrees

ICING

Mix and bring to a boil:

1 stick oleo
3 1/2 Tbsp. cocoa
6 Tbsp. milk
Then add:
1 box powdered sugar
1 tsp. vanilla
1 cup chopped pecans
Spread over hot cake.

CHOCOLATE CAKE

Sift together:
2 cups flour
2 cups sugar

50-75% OFF
ON ALL FALL & WINTER MERCHANDISE INCLUDING:
BYERS-CONDOR-FORCASTER COATS
JACK WINTER-SHAPLEY AND NAMA BLOUSES
PERSONAL-ALLISON COLLECTABLE ALL WRANGLER PANTS & SHIRTS

THE Velfree SHOP

NEXT DOOR TO PARKWAY FURNITURE
208 W. BANK, IOWA PARK 592-2211

Tree pruning is program

Virgil Woodfin provided a program on tree pruning for the Evening Lions Club Tuesday. He was introduced by Gordon Callahan, program chairman.

Woodfin stated that pruning of trees should be done in the dormant season and only a minimum amount should be done out of season. He gave reasons for pruning trees to include control the shape, add strength and remove dead wood. He advised to make good clean cuts off side limbs and to never leave stubs on the trees.

During a question and answer period, he gave suggestions for pruning fruit and pecan trees.

Frank Gossett was recognized as a new member. Dinner music was furnished by Mrs. Otis Gay and Mrs. Jimmy Spears.

SHOWER SELECTIONS FOR

MICKIE GREGG and STEVE MOODY
CYNTHIA COLLAZO and PAUL RUMBLE

Parkway
True Value Hardware
200 - 206 W. Bank

TWU student on honor roll

Sarah Lyn White, daughter of Mr. and Mrs. Harold White, a senior occupational therapy major, made the University Honor Roll at Texas Women's Univ. for the fall semester. She had a grade point average of 3.5.

She is studying advanced occupational therapy at TWU, located at Houston Medical Center, this semester and will return in the fall to complete her degree work.

for Your Valentine

Personalized Gift Baskets & Tins

For All Ages

Delivered by our little cupids

Call Pat Brown at 592-2614 or Judy Rush Porter at 592-9786

Elite Creations

Located in The Velfree Shop

Phone 592-2211



THE ETERNAL MAGNAVOX

A NEW DIMENSION IN RELIABILITY IN TELEVISION & VCR

MAGNAVOX 25" diagonal Automatic AFT

- MX/300 chassis
- 100" in-line matrix tube
- Programmable scan tuning
- 105 channel capability
- Infrared remote control
- RC4956PE
- Available as non-remote BC4756PE

\$699⁹⁵

MAGNAVOX 19" diagonal Computer Color 330

- MX/300 chassis
- 90" in-line matrix tube
- Programmable scan tuning
- High resolution filter
- 105 channel capability
- Infrared remote control
- Audio output jack
- RC4254SL

\$569⁹⁵

MAGNAVOX Bookshelf Audio System

- AM/FM stereo receiver with cassette
- LED dial pointer
- Metal tape capability
- Soft eject
- Recessed belt drive turntable
- Bookshelf size speakers
- 5 1/2" woofers/2" speakers
- BC1760GY

\$299⁹⁵

MAGNAVOX
The brightest ideas in the world are here today.

PARKWAY
FURNITURE True Value HARDWARE
200 W. Bank 592-4681 592-5512

TEKNIKA

19" Deluxe Remote Control Color TV

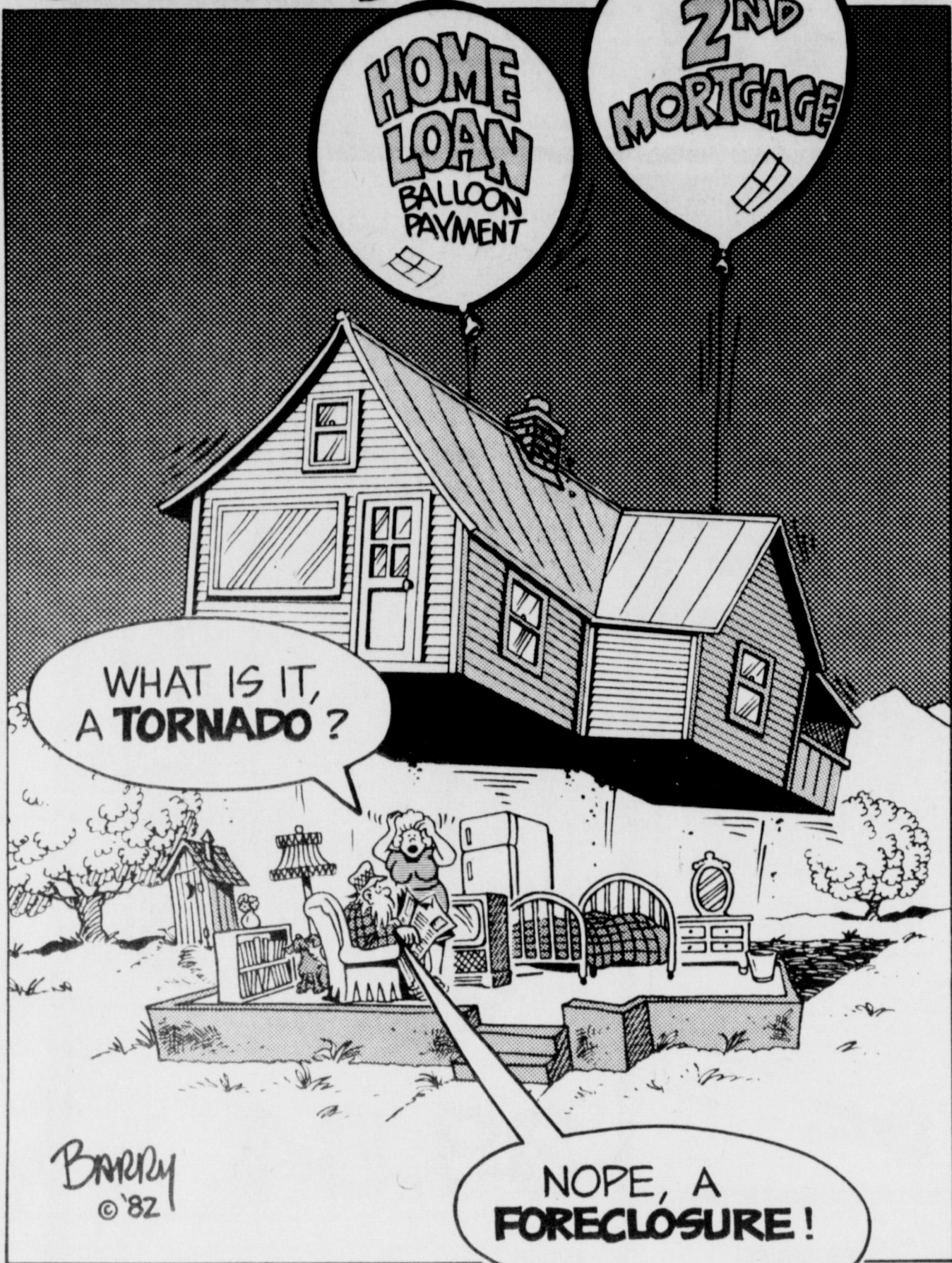
- Energy-Miser® chassis consumes less electricity and produces less heat.
- Electronic tuner with touch-button selection of 12 VHF, 70 UHF and 9 CATV midband channels.
- Any 12 channels can be preset.
- In-line gun, Slotted Mask picture tube minimizes color spillover.
- New rocker-type control (glide up/down) for volume.
- Wireless infrared beam remote control unit
- Automatic color tuning (4 functions).
- Automatic fine tuning for perfect pictures.
- Two-memory system remembers the channel and the volume level setting last used.
- Quick start picture tube.
- 75 ohm connector for MATV and cable TV.
- Pedestal video clamp circuit for truer colors.
- Dimensions: 24" (W) x 16-3/4" (H) x 18-11/16" (D)

VIDEO CARE
Parkwest Shopping Center Iowa Park
592-5552

SALE PRICE \$499 Retail Price \$799

* Picture tube and parts guaranteed until 1988
* Complete service after the sale.

J.P. Doodles



by Barry McWilliams

Area oil, gas report

Koonce Oil Co. of Iowa Park has filed for permit to drill the No. 12 McCarthy, a 1,000-foot developmental well in the Wichita County Regular Field, 4.5 miles southwest of Iowa Park. The operation will be in an 80-acre lease in Wichita County's BS&F Survey.

Crawford Oil Co. of Iowa Park has revealed plans to drill a 1,200-foot developmental well in the Wichita Regular Field. The operator has 97-acres leased, with drillsite in Wichita County's Denton County School Land Survey and has designated the venture as the No. 1 E. Sherrod. Drillsite is 4.5 miles east of Holliday.

Location has been staked by Joe McDonald of Burkburnett for a 1,400-foot developmental probe in Wichita County's H. Balch Survey, four miles southwest of Iowa Park. The well is designated as the No. 11 Hodges "B" Lease. Drillsite will be in a 155-acre lease in the Wichita County Regular Field.

The No. 5 G.A. Hoge is slated to be drilled in the Wichita Regular Field by R.W. Sargent, operator from Electra. With projected total depth of 1,100 feet, it will be spudded in a 50-acre lease of the Kemp WVFL Survey, two miles east of Kamay, in Wichita County.

A new oil producer in the Wichita Regular Field has been finaled by W.T. Crawford Jr. of Wichita Falls. Designated as the No. 14 Kempner "B", the well indicated capacity to produce 1 barrel of oil per day on an open choke.

The location is five miles southeast

of Kamay, in a 58-acre lease in the KWWFL Survey, Wichita County. Bottomed at 917 feet, the well will produce from an interval of perforations 802 to 811 feet into the hole. The pay formation was first encountered at 802 feet.

The No. 11 W.T. Waggoner Estate "SS" Lease, a developmental well in Wilbarger County's H&TC Survey, is scheduled to be drilled 10 miles southeast of Harrold. S&H Oil Co. of Vernon is listed as the operator. Location is in a 183-acre lease in the Wilbarger County Regular Field. Projected total depth of 2,000 feet.

A wildcat for oil is scheduled for spudding four miles west of Tolbert by Taubert & Steed, operator of Wichita Falls. The well will be known as the No. 1 Schultz, with projected total depth of 8,500 feet. It will be situated in a 238-acre lease in Wilbarger County's H&TC Survey.

Plug-and-abandon orders have been issued for the No. 1 Purtle Unit, a wildcat for oil venture of Paul DeClava of Wichita Falls, in Wilbarger County. Spudded 10-17-82, the well had reached 7,669 foot total depth. Drillsite was two miles west of Odell.

Happy 40th Birthday
Helen Admire

from
JoAnn & Donald
Shirley & Lawrence



IOWA PARK LEADER

Bob Hamilton Editor-Publisher
Dolores Hamilton Assistant Publisher
Olive Blalock Reporter
Kevin Hamilton Reporter

The IOWA PARK LEADER is published every Thursday. Offices are located at 112 W. Cash, Iowa Park, Texas, 76367. Telephone: 592-4431. Second class Postage Paid at Iowa Park, Texas, 76367. Subscription rates are \$7 per year in Wichita and Archer Counties; \$9 elsewhere in Texas and Oklahoma; \$11 anywhere else in the United States. Classified advertising rates are 16 cents per word first insertion, 8 cents per word thereafter. Any erroneous reflection upon the character, standing or reputation of any person, firm or corporation which may appear in the columns of this newspaper will be corrected upon being brought to the attention of the publisher.

MEMBER
TEXAS PRESS ASSOCIATION

As I See It....

By BOB HAMILTON



I couldn't help but express my frustration during Monday night's city council meeting, when the subject got around to Lone Star Gas rates.

Attending the meeting were Wayne Bolling and former city administrator Steve Morath. They were there to explain the utility company's request for a rate increase and dispute alternative rates obtained from the city's consultant. Bolling did all the talking, Morath mainly sat and listened.

It was the first time I'd heard a representative from the company admit the line which serves Iowa Park carries gas from both Texas and Oklahoma.

Iowa Park challenged Lone Star a few years ago in Austin, that the price for gas sold at the city gate should be at interstate rate rather than intrastate. Interstate rates are lower because they are set by the federal government.

The city didn't get anywhere in Austin. But, like I said, this was the first time to my knowledge that interstate gas was acknowledged to be in the line.

Bolling said an attorney would be needed to say whether or not Lone Star wasn't making more money on gas sold on this line than on lines serviced by an intrastate line.

When I asked the representative why businesses are charged a higher minimum than residences, the answer really blew my thinking.

Commercial rates are charged because commercial businesses in the big cities are harder to serve and it costs the company more, he said, in effect.

But we're not in a larger city. It's not harder to serve a business in Iowa

Park than it is a home. Yet we pay a higher minimum rate because of situations in cities like Dallas and Fort Worth.

The new rate being requested by Lone Star is a minimum of \$5 monthly for residences and \$8 for commercial users.

I can't speak for all businesses in Iowa Park, but most of us are small in size and this office is probably typical of the majority of some 150 "commercial" users.

We use gas only for winter heating. Thus, our meter dial doesn't turn a lick some five months of the year, and very little all but a couple or three months.

During those non-use months, we must pay the minimum, which for the past two years has been \$5.25. And that's for absolutely nothing except receiving a bill saying we didn't use any gas and what we owe.

I'm hoping the city council will approve in its new rate contract... they're going to give Lone Star an increase of some kind, or the state will do it for them... the new rates will set commercial users at the same minimum as residential. It could spell

out that if commercial users require a larger metering system than small users, a charge could be levied for that, of course.

But there is no sense in a small business owner paying a higher minimum rate than the owner pays for his home, especially when he uses more gas at home than he does at his business.

Local staff not included because they don't set the company's policies, Lone Star has been ripping off Iowa Park.

New Meter Connections

Dale McCreary - 406 West Poe
Shannon White - 505 N. Victoria
Don Dawson - 408 W. Washington
Vernon Tephner - 502 E. Pasadena
Billy Link - 311 W. Washington
Judy Porter - 502 E. Alameda
J.D. Freudiger - 205 W. Washington

Happy 20th Birthday,
Mark Kirkham.

Love,
Mom and Dad



REPORT OF CONDITION

Consolidating domestic subsidiaries of the

THE STATE NATIONAL BANK

of IOWA PARK

Name of Bank

City

In the state of TEXAS

at the close of business on December 31

published in response to call made by Comptroller of the Currency, under title 12, United States Code, Section 161.

Charter number 13614

National Bank Region Number 1119-1109-1

Statement of Resources and Liabilities

Thousands of dollars

ASSETS		
Cash and due from depository institutions		4,762
U. S. Treasury securities		879
Obligations of other U. S. Government agencies and corporations		2,826
Obligations of States and political subdivisions in the United States		4,512
All other securities		24
Federal funds sold and securities purchased under agreements to resell		1,400
Loans, Total (excluding unearned income)	16,623	
Less: Allowance for possible loan losses	155	
Loans, Net		16,468
Lease financing receivables		None
Bank premises, furniture and fixtures, and other assets representing bank premises		258
Real estate owned other than bank premises		None
All other assets		491
TOTAL ASSETS		31,620
LIABILITIES		
Demand deposits of individuals, partnerships, and corporations		6,428
Time and savings deposits of individuals, partnerships, and corporations		17,499
Deposits of United States Government		28
Deposits of States and political subdivisions in the United States		3,846
All other deposits		87
Certified and officers' checks		169
Total Deposits		28,057
Total demand deposits	7,694	
Total time and savings deposits	20,363	
Federal funds purchased and securities sold under agreements to repurchase		None
Interest-bearing demand notes (note balances) issued to the U. S. Treasury and other liabilities for borrowed money		None
Mortgage indebtedness and liability for capitalized leases		None
All other liabilities		327
TOTAL LIABILITIES (excluding subordinated notes and debentures)		28,384
Subordinated notes and debentures		None

MEMORANDA EQUITY CAPITAL		
Preferred stock	No shares outstanding	None
Common stock	No shares authorized	50,000
	No shares outstanding	50,000
Surplus		700
Undivided profits and reserve for contingencies and other capital reserves		2,436
TOTAL EQUITY CAPITAL		3,236
TOTAL LIABILITIES AND EQUITY CAPITAL		31,620
Amounts outstanding as of report date		
Standby letters of credit, total		80
Time certificates of deposit in denominations of \$100,000 or more		3,791
Other time deposits in amounts of \$100,000 or more		650
Average for 30 calendar days (or calendar month) ending with report date		
Total deposits		27,934

We, the undersigned directors attest the correctness of this statement of resources and liabilities. We declare that it has been examined by us, and to the best of our knowledge and belief is true and correct.

Roberta Hill
W.R. Stogor

Directors

Roberta Hill

Vice President & Cashier

of the above-named bank do hereby declare that this Report of Condition is true and correct to the best of my knowledge and belief

Roberta Hill
Signature

January 18, 1983

IOWA PARK V.F.D.

EMERGENCY MEDICAL SERVICE

592-2181

Public Service Message

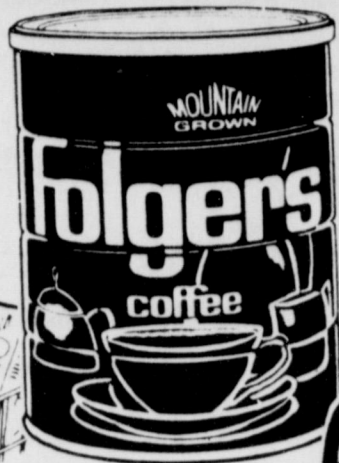


DOUBLE

EVERY WEDNESDAY

DOUBLE COUPONS TUESDAY

STOCK UP ON FOOD STACK UP ON SAVINGS



COFFEE FOLGER'S 1-Lb. Can

Limit 1 With '10⁰⁰ Purchase or More, Excluding Cigarettes Additional Purchase ... '2⁰⁰

\$1.99

FRESH PRODUCE
for your table

MRS. BAIRD'S STAYFRESH **BREAD**

HOMEBAKED **ROLLS**

HOT DOG & HAMBURGER **BUNS**

YOUR CHOICE **67¢**

HI DRY PAPER

TOWELS

Jumbo Roll **59¢**

CAMPBELL'S

Pork n Beans

28 oz. Can **59¢**

AJAX

CLEANSER

14 oz. **39¢**

LAY'S

TOSTATOS

Reg. \$1.39 **\$1.09**

CONOCO

ALL-SEASON

MOTOR OIL

Qt. **89¢**

STP

Gas Treatment

8 oz. **79¢**

WHITE'S

AIR FILTERS

\$1.99

PRESTONE

DE-ICER

14 oz. **\$1.49**

WINDSHIELD

WASHER FLUID

6 oz. **59¢**



GOLD MEDAL FLOUR

5-Lb. Bag **99¢**



RANCH STYLE CHILI
19 Oz. Can **99¢**



RANCH STYLE Beans
15 Oz. Cans **3 \$1.00**

- CORN KING BONELESS **HAM HALVES** Lb. **\$2.29**
- SANDWICH STEAKS **STEAK UMM'S** 14 Oz. Pkg. **\$2.69**
- GRADE 'A' 10/14 Lb. **TURKEY HENS** Lb. **75¢**
- HEAD'S **CORN DOGS** 10 Ct. Pkg. **\$2.59**
- HERBY'S REG. OR JALAPENO **PIMENTO SPREAD** 7.5 Oz. Ctn. **99¢**
- OSCAR MAYER **COOKED HAM** 6 Oz. Pkg. **\$1.69**
- OSCAR ALL MEAT OR **BEEF BOLOGNA** 8 Oz. Pkg. **99¢**
- LOUIS RICH SMOKED **TURKEY BREAST** 6 Oz. Pkg. **\$1.19**
- FAMILY PACK **ROUND STEAK** Lb. **\$1.58**
- SIRLOIN STEAK** Lb. **\$2.39**
- ARM ROAST** Lb. **\$1.49**
- GROUND BEEF FRESH** Lb. **89¢**
- FAMILY PACK CUT-UP **FRYERS** Lb. **59¢**



ARMOUR STAR SLICED BACON
1-Lb. Pkg. **\$1.99**



ARMOUR STAR MEAT OR BEEF HOT DOGS
12 Oz. Pkg. **99¢**

FIRM HEAD LETTUCE
HEAD **39¢**

CALIF. **RED EMPEROR GRAPES**
Lb. **69¢**

FIRM HEAD **GREEN CABBAGE**
Lb. **15¢**

MEDIUM SIZE **YELLOW ONIONS**
Lb. **15¢**

SWEET CRISP **CARROTS**
3 1-Lb. Bags **\$1.00**

RUSSET **POTATOES**
10 Lb. Bag **\$1.89**

CHEER DETERGENT
49 Oz. Box **\$1.89**



MAXWELL HOUSE **INST. COFFEE**
10 Oz. Jar **\$4.49**



PRICES GOOD THROUGH TUESDAY, FEB. 1

QUANTITY RIGHTS RESERVED



BETTY CROCKER READY TO SPREAD **FROSTING**
16.5 Oz. Can **\$1.39**

BETTY CROCKER LAYER **CAKE MIX**
18.5 Oz. Box **79¢**



Morton Dinners
11 Oz. Pkg. **69¢**

FISHER BOY **Fish Sticks**
28 Oz. 2 Pkgs. **\$1.00**



- SKIPPY **PEANUT BUTTER** 18 Oz. Jar **\$1.49**
- BATHROOM TISSUE **SOFT N PRETTY** 6 Roll Pkg. **\$1.69**
- LUNCHEON MEAT **SPAM** 12 Oz. Can **\$1.39**
- KRAFT **MAC & CHEESE** 7.25 Oz. 3 Pkgs. **\$1.00**
- KRAFT **MIRACLE WHIP** 32 Oz. Jar **\$1.49**
- DETERGENT **JOY LIQUID** 48 Oz. Btlc. **\$2.39**

SNOW DRIFT **SHORTENING** 3 Lb. Can **\$1.79**

WHITE SWAN **SALAD OIL** 48 oz. Btl. **\$1.89**

WHITE SWAN WHOLE **BEETS** 3 16 oz. Cans **\$1**

WHITE SWAN **HOMINY** 3 15 oz. Cans **\$1**

6 1-Liter Bottles **Plus Deposit \$1.69**



WHITE SWAN **BLEACH** 64 oz. **49¢**

WHITE SWAN FABRIC **SOFTENER** Gal. **99¢**

IOWA PARK
WHITE'S SUPER STORE
ParkWest Shopping Center Phone 592-4186
Store Hours: 8 A.M. - 8 P.M. Monday - Saturday; 9 A.M. - 6 P.M. Sunday
Free Delivery in Iowa Park

IRS Tax Tips

IRS TAX HELP AVAILABLE

"Although there is a new number to dial - 1-800-424-1040 - the service will be the same as in prior years," said Bob Fonck, Director's Representative for the Internal Revenue Service Wichita Falls office in announcing the taxpayer assistance program for the 1983 filing period. "Taxpayers will be able to get answers to their tax questions, order forms and publications, get information regarding their accounts, and find out about the Volunteer Income Tax Assistance (VITA) site nearest their home from 8:00 a.m. to 4:30 p.m. each Monday through Friday."

Fonck noted that, while the Wichita Falls office will not provide walk-in tax assistance, IRS will be working with community agencies this filing period to conduct a series of group self-help sessions. He also mentioned that IRS has produced two films - one on the short forms, Form 1040A and Form 1040EZ, and one on Form 1040 and Schedule A & B - which are available to schools and civic groups beginning in February.

The Wichita Falls office will maintain a limited selection of forms and publications but Fonck encourages taxpayers to use the order form contained within the tax package received in the mail. Certain post offices and banks will stock individual returns and local libraries will have a file of reproducible forms as well.

"Our VITA volunteers are attending training sessions right now and will be ready to do basic return preparation for low-income, handicapped, elderly and otherwise disadvantaged taxpayers by mid-January," said Fonck. Taxpayers may pick up a list of VITA sites and their schedules at the Wichita Falls office or may order a schedule through the toll free service.

Thompson enlists

Eric Floyd Thompson, son of Mr. and Mrs. Floyd William Thompson of Holiday, recently enlisted in the Air Force in Wichita Falls. He departed Jan. 11 enroute to Lackland AFB, San Antonio, where he will attend a six-week basic military training course.

Airman Thompson, a 1979 graduate of Iowa Park High School, selected the Security Police area for job training according to Sgt. Dan McFarland, the Air Force recruiter.

Honor rolls released

Honor rolls for the third six-weeks period were released this week by principals of both the high school and junior high. They are:

12th Grade, AA - Lisa Yeakley, James Cowley, Keith Starr, Alisa Cain, June Dietrichson, Lori Barr, Robbie Hausler, Mark Shiery, Sherrie Cole, Frank Johnson, Harlan Kidd, Darla Flick.

12th Grade, A - Brant Baugh, David Hildebrand, Kevin Robnett, Teri Oswald, John Henderson, Tim Stewart, Kregg Fehr, Chuck Gilstrap, Kent Roberts, Susan Cameron, Jeff Lawson, Nancy Black.

11th Grade, AA - Sonya Herrell, Caroline Patterson, Mike Bean, Kristi Wood, Becky Martin, Jodi Corless, Tracy Lawson, Michelle Evans, Susan Streich.

11th Grade, A - Billy Flatt, Lisa Sefcik, Wendy Kirksey, Brian Fowler, Craig Whisnand, Paula Mashburn, Teresa Caldwell.

10th Grade, AA - Jay Yeakley, Pam Barr, Tracey Hall, Melissa Hatcher, Larry Stodghill, Robert Duboise, Phillip Clements.

10th Grade, A - Becky Wood, Holly Farnsworth, Kristi Wynn, Alaina Coker, Michelle Langdon, Tina Featherston, Michelle Crittenden.

9th Grade, AA - Ronald Young, Donald Young, Cathy Downes, Amy Silvers, Tammy Washburn, Kyle Cheek, Randy Boutwell, Deryl Roy, Lisa Cruz.

9th Grade, A - April Williams, Robin Isbell, Vicki Floyd, Christi Sondquist, James Redcliff, John Roy, Scott Boss.

8th Grade, AA - Amy Brillhart, Scott Davis, Tina Escue, Linda Gibbons, Brett Hale, Rachel Jones, Missy Logan, Kyle Long, Richard Morath, Sarah Owens, Kerri Richardson, Gaylene Sorey, Lana Swan, Philip Thames, Wendy Trantham, Wes Ward.

8th Grade, A - Robert Adams, Pam Conner, Lisa Fletcher, Danny Forman, Jason Gholson, Lisa Grace, Mark Ivy, Stacy Miller, Dennis Phillips, Carla Pool, Renee Smith, Dee Ann Todd, Sharon Wynn.

7th Grade, AA - Bret Barrick, Toby

Brown, Stan Coker, Lisa Cook, Christy Cravens, Sheri Cravens, Karie Davis, Elaine Elder, Kathy Fehr, Lisa Hodges, Greg Huff, Berry Kaiser.

7th Grade, A - Leona Allen, Wendy Barr, Stacy Boren, Jerri Brown, Shana Devore, Chad Fielding, Suzanne Gunderson, Vicki Haynes, Jeff Huff, Andy Jacobi, Zack Johnson, Pam Kinion, Janie Koch, Nanette Mathews, Lorre Moser, Tommy Neely, Kame Oshiro, Craig Rickman, Markita Savage, Troy Short, Charles Smith, George Storey.

6th Grade, AA - Cody Barnett, Steve Catlin, Amy Freeman, Tiffany Gray, Valerie Hedrick, Stephanie Lankford, Jenny Salan, Stacy Swan, Carrie Wilson.

6th Grade, A - Jeff Bartow, Jody Beavers, Andrea Blackwell, Paul Bowling, Tomi Sue Cockburn, Denise Dunlay, Kim Martin, Deborah McLeMore, Shelly McQuerry, Jana Rains, Chris Wilson, Melissa Wilson, Shay Witherspoon, Tassie Yeager, Tammy Huff.



Fri., Jan. 25 - Frito chili pie w/cheese, meat or cheese sandwich, soup, tossed salad, pinto beans, jalapeno peppers, corn bread & butter, chocolate & plain milk, dessert.

Mon., Jan. 31 - Turkey & noodles, meat or cheese sandwich, soup, mashed potatoes, English peas, hot rolls & butter, chocolate & plain milk, dessert.

Tues., Feb. 1 - Pizza, meat or cheese sandwich, soup, tossed salad, buttered corn, fruit, chocolate & plain milk, dessert.

Wed., Feb. 2 - Cheeseburger, meat or cheese sandwich, soup, French fries, pinto beans, lettuce, tomatoes, pickles, chocolate & plain milk, dessert.

Thurs., Feb. 3 - Lasagne, meat or cheese sandwich, soup, tossed salad, fried okra, hot rolls & butter, chocolate & plain milk, dessert.

GET IN SHAPE WITH

LADIES AEROBICS

Featuring
"JAZZER SIZE" Warm Up

Strengthen Cardio Vascular System

LOSE INCHES

Physical Fitness Program As Written

In April 1982 READER'S DIGEST

\$18 - Total Cost for Twice a Week
\$12 - Total Cost for Once a Week
\$2 - RAC Membership Good Until Oct.

Class held at RAC on Monday and Wednesday
7:00 P.M. Registration Monday, Jan. 31 at
6:30 P.M. RAC is located at the east end of
Texas Street in Iowa Park.

THIS IS A FOUR WEEK COURSE.

Phone:
JOY HEDRICK, 592-2000
RAC, 592-4471

NEWS FROM THE

Halls of the Hawks

By KARI HAMILTON

Art and Spanish classes are taking a trip Saturday to Dallas to see the El Greco exhibit in the Dallas Art Museum. Mrs. Carole Venhaus and Barry Lucy will be chaperoning the 40 students on the trip.

At the first of the week, Home and Family Living classes of Cary Roberts had a two-day experience with parenthood. The students were required to be full-time parents to "hard-boiled egg babies." The purpose of this is to make the students aware of all the responsibilities of parenthood.

Last Friday, the Boy Scouts went on a three-day skiing trip to Taos, N. Mex. Seven high school students went on the trip, including Frank

Johnson, Mark, John and Allen Henderson, Susan Streich, Doug Smith, Greg Patterson, Kristi Wood and Clark Waters.

Supervising the trip were Buddy Henderson and Bob Bentley, district director of Boy Scout Explorers.



CORDLESS TELEPHONE FEATURES:

- Makes and receives phone calls anywhere inside or outside your house (up to 100 ft. away from clock radio)
- No cords or wires.
- Automatically redials last telephone number called if you get a busy signal
- Mute-Allows you to talk to someone in the room without party on the line listening.

AM-FM ELECTRONIC DIGITAL CLOCK RADIO

- AM-FM indicator. Easy to read large LED time display
- Display high-low dimmer switch snooze alarm
- Low silhouette design. Attractive walnut styling
- Slide rule dial indicator

Retail \$219.95

Video Care Discount Price

\$149⁹⁵

Check us out for all your Conventional and Cordless Telephone needs. New stock arriving daily

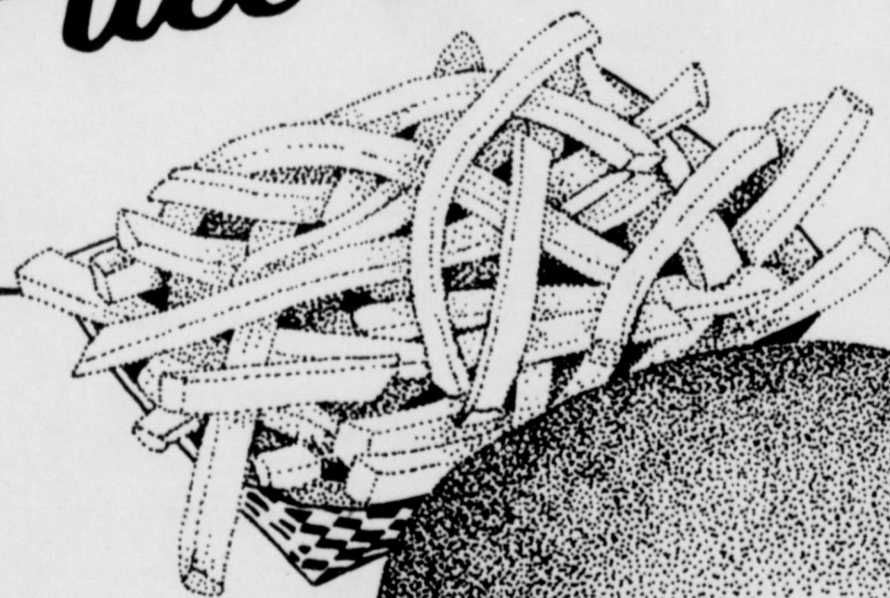
VIDEO CARE

Parkwest Shopping Center

Iowa Park

592-5552

ask for our
"Full Meal Deal"



\$2.59

Only at participating Texas Dairy Queen stores.

If you're looking for a great meal and a great deal, look at all you get for just \$2.59.

- Quarter-pound[†], 100% pure beef Hungr-buster[®], made to order.
- French Fries.
- Medium soft drink.
- 5-oz. D.Q. Sundae, your choice of topping.

At \$2.59 it's not just a deal, it's a steal!



[†]pre-cooked weight

Copyright 1983 Tex. D. Q. Council. All Rights Reserved. TM Trademarks of the Tex. D. Q. Council. *Registered Trademark Am. D. Q. Corp.

HEAVY BEEF
SIRLOIN STEAK
Lb. **\$1⁹⁹**

HEAVY BEEF
T-BONE STEAK
Lb. **\$2⁷⁹**

PRICES EFFECTIVE FULL WEEK

TEXSUN
GRAPEFRUIT JUICE
46 oz. Can
69¢

TOM'S TWIN PACK
POTATO CHIPS
\$1.39 Value - 3 Flavors
99¢

ALL BRANDS
CIGARETTES

KINGS Ctn. **\$7⁴⁷** LONGS Ctn. **\$7⁵⁷**



SLICED SLAB
BACON
Lb. **\$1⁵⁹**

THRIFT KING SOLID
MARGARINE
3 Lbs. **\$1**



VINE RIPE
TOMATOES
Lb. **39¢**


CRISCO
3 Lb. Can **\$1⁵⁹**
Limit One Can with \$20 Purchase excluding tobacco

U.S.D.A. No. 1 RUSSETT
POTATOES
10 Lb. Bag **69¢**
Limit One Bag with \$20 Purchase excluding tobacco

THRIFT KING
DETERGENT
42 oz. Box **99¢**
Limit One Box with \$20 purchase excluding tobacco

MARYLAND CLUB
COFFEE
1-Lb. Can **\$1⁷⁹**
Limit One Can with \$20 Purchase excluding tobacco

ALWAYS FRESH
BREAD
Large Loaf **49¢**
Limit Two Loaves with \$20 purchase excluding tobacco



HARVEST
BONELESS HAM WHOLE 5-7lb. AVG.
Lb. **1⁶⁹**

WE GLADLY ACCEPT FOOD STAMPS
QUANTITY RIGHTS RESERVED

DEL MONTE
Tomato Sauce 4 8 oz. Cans **\$1**

VAN CAMP'S
Pork & Beans 2 16 oz. Cans **79¢**

DEL MONTE
Tomato Catsup 32 oz. Btl. **\$1¹⁹**

ASSORTED FLAVORS HAMBURGER
HELPER Pkg. **89¢**

WOLF BRAND
CHILI 19 oz. Can **\$1¹⁹**

ZEE NICE 'N SOFT
TOILET TISSUE 4 Roll **\$1¹⁹**

SHURFINE ASS'D FLAVORS
SOFT DRINKS
8 12oz. CANS **1¹⁹**

SHURFRESH GRADE 'A'
LARGE EGGS 59¢ Doz.



U.S.D.A. GRADE
FRYERS Lb. **49¢**

FRESH, LEAN
GROUND CHUCK Lb. **\$1⁸⁹**

CHICKEN BREASTS \$1¹⁹	FROZEN BEEF PATTIES 5 Lb. Box \$4¹⁹
BEEF SHORT RIBS Lb. \$1²⁹	HEAVY BEEF T-BONE STEAK Lb. \$2⁷⁹
HEAVY BEEF RIB STEAK Lb. \$1⁷⁹	HEAVY BEEF SIRLOIN Lb. \$1⁹⁹

COKES
SPRITE, TAB, MR. PIBB
6 1-Liter Bottles **\$1⁷⁹**

DEL MONTE
New Potatoes 2 16 oz. Cans **99¢**

DELTA
Paper Towels Jumbo Roll **59¢**

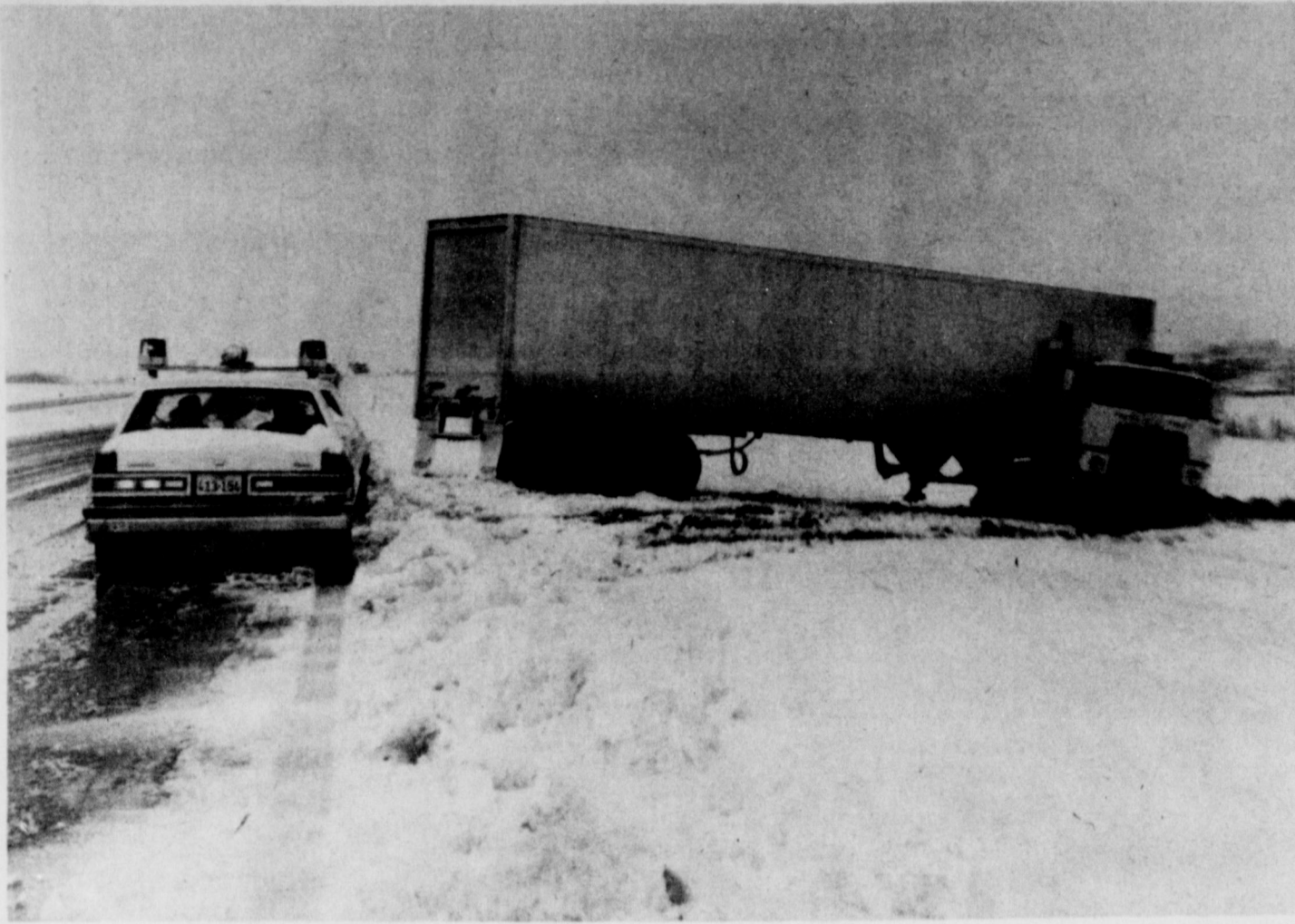
YELLOW Onions 5 Lbs. 59¢	CELLO Carrots 2 Lb. Bag 59¢	RED DEL. Apples 3 Lbs. \$1
---------------------------------	------------------------------------	-----------------------------------

EVERYDAY LOW PRICES

THRIFT KING MACARONI and CHEESE DINNERS 4 for \$1	
SUNSHINE KRISPY Crackers Lb. Box 79¢	THRIFT KING Tomatoes 16 oz. Can 49¢
THRIFT KING Spinach 14 oz. Can 39¢	THRIFT KING Green Beans 15 1/2 oz. Can 29¢

KEN'S FOODLINER

400 West Park Formerly H&S Open: 8-9 Mon. - Sat. 8-6 Sundays



NO INJURIES but considerable damage resulted just east of the city on U.S. 287 when a north-bound tractor trailer jackknifed and wound up in a ditch Saturday morning. Workers had the truck moved within two hours, however.

Guar good PIK cover crop

By Don Decker
County Agent

The large supply of guar this year makes it the number one candidate for a legume cover crop on directed acres in the government programs. The previously announced 20 percent diversion and now the additional 30 percent Payment In Kind (PIK) Program means some producers could have as much as 50 percent of their crop land out of cotton and wheat. The diverted acres, regardless of the percentage, provides an opportunity to use a legume cover crop to aid in soil improvement.

The two common cover crops for this area are guar and southern peas, according to Dr. Al Alexander, Extension area agronomist. He goes on to say both of these legumes have equal ability in fixing nitrogen from the air and in the production of organic material.

There is a big cost advantage in favor of guar. The cost of establishing guar as a cover crop should be minimal. In addition to cheaper seed cost, little land preparation is required for drilling guar seed.

Growers using guar as a cover crop would want to inoculate the seed with group e (cowpea), inoculant. Guar seeding is done when soil temperatures reach 70 degrees or higher. Soil temperature records over the past three years in Wichita County indicate soil temperatures reached 70 degrees on the average of May 12.

The seeding rate on guar is four to six pounds per acre in rows or 10 to 15 pounds per acre drilled. Drilling is the recommended practice when planting as a cover crop.

Alexander reminds growers to turn guar under before the lower pods turn brown. This will give maximum tonnage of organic material and will prevent possible problems of voluntary plants in the next crop.

The top producing guar variety in the demonstration by Terry and Harrison McAlister of Punksin Center was Brooks with 653 pounds per acre. I'm sure Lester Brooks, who developed this variety at the Iowa Park Experiment Station almost 20 years ago, is glad to see that it still competes with the newer improved ones. Brooks is retired and now lives south of Iowa Park.

The other varieties in the test and their yield in pounds per acre included: Kinman with 568 pounds, Tx 71-3292 made 554 pounds, Essar yielded 460 pounds, Seah 90 with 414 pounds, and Tx 79-2741 giving 374 pounds per acre.

Yields were taken with a combine. Plot sizes were 50 feet by 150 feet. An economic analysis was made figuring the value of the guar at 20 cents per pound. The top yielding variety grosses \$130.60 per acre while the lowest yielder made \$74.80 per acre.

PUBLIC NOTICE

NOTICE OF APPLICATION FOR OIL AND GAS WASTE DISPOSAL WELL PERMIT

W.D. Vestal Oil Co., 1711 Quail Valley, Iowa Park, Tx. 76367 has applied to the Railroad Commission of Texas for a permit to dispose of produced salt water or other oil and gas waste by well injection into a porous formation not productive of oil or gas.

The applicant proposes to dispose of oil and gas into the 1590-1602 Lee Kempner, Well Number 1. The proposed disposal well is located 2 Mi. E. of Kamay, Tx. in the Wichita Co. Reg. Field, in Wichita County. The waste water will be injected into strata in the subsurface depth interval from 1590 to 1602 feet.

LEGAL AUTHORITY: Chapter 27 of the Texas Water Code, as amended, Title 3 of the Natural Resources Code, as amended, and the Statewide Rules of the Oil and Gas Division of the Railroad Commission of Texas.

Requests for a public hearing from persons who can show they are adversely affected, or requests for further information concerning any aspect of the application should be submitted in writing, within fifteen days of publication, to the Underground Injection Control Section, Oil and Gas Division, Railroad Commission of Texas, Drawer 12967, Capitol Station, Austin, Texas 78711 (Telephone 512/445-1373).

1-27-1tc

NOTICE OF APPLICATION FOR OIL AND GAS WASTE DISPOSAL WELL PERMIT

W.D. Vestal Oil Co., 1711 Quail Valley, Iowa Park, Tx. 76367 has applied to the Railroad Commission of Texas for a permit to dispose of produced salt water or other oil and gas waste by well injection into a porous formation not productive of oil or gas.

The applicant proposes to dispose of oil and gas waste into the 820-824 Lee Kempner, Well Number 25. The proposed disposal well is located 2 Mi. E. of Kamay, Tx. in the Wichita Co. Reg. Field, in Wichita County. The waste water will be injected into strata in the subsurface depth interval from 820 to 824 feet.

LEGAL AUTHORITY: Chapter 27 of the Texas Water Code, as amended, Title 3 of the Natural Resources Code, as amended, and the Statewide Rules of the Oil and Gas Division of the Railroad Commission of Texas.

Requests for a public hearing from persons who can show they are adversely affected, or requests for further information concerning any aspect of the application should be submitted in writing, within fifteen days of publication, to the Underground Injection Control Section, Oil and Gas Division, Railroad Commission of Texas, Drawer 12967, Capitol Station, Austin, Texas 78711 (Telephone 512/445-1373).

1-27-1tc

NOTICE OF APPLICATION FOR OIL AND GAS WASTE DISPOSAL WELL PERMIT

W.D. Vestal Oil Co. 1711 Quail Valley, Iowa Park, Tx. 76367 has applied to the Railroad Commission of Texas for a permit to dispose of produced salt water or other oil and gas waste by well injection into a porous formation not productive of oil or gas.

The applicant proposes to dispose of oil and gas waste into the 678-684 Lee Kempner, Well Number 26. The proposed disposal well is located 2 Mi. E. of Kamay, Tx. in the Wichita Co. Reg. Field, in Wichita County. The waste water will be injected into strata in the subsurface depth interval from 678 to 684 feet.

LEGAL AUTHORITY: Chapter 27 of the Texas Water Code, as amended, Title 3 of the Natural Resources Code, as amended, and the Statewide Rules of the Oil and Gas Division of the Railroad Commission of Texas.

Requests for a public hearing from persons who can show they are adversely affected, or requests for further information concerning any aspect of the application should be submitted in writing, within fifteen days of publication, to the Underground Injection Control Section, Oil and Gas Division, Railroad Commission of Texas, Drawer 12967, Capitol Station, Austin, Texas 78711 (Telephone 512/445-1373).

1-27-1tc

Explanation of PIK set

A detailed explanation of the payment in kind (PIK) program for crop producers, with special emphasis upon its implications for the Rolling Plains, will be held in Vernon Feb. 4.

The program will be held at the Texas A&M Univ. Agricultural Research and Extension Center from 9:30 a.m. until 3 p.m. It is being sponsored by the Rolling Plains Economic Program and will be conducted by specialists with the Texas Agricultural Extension Service.

PIK is a U.S. Department of Agriculture program designed to reduce production, reduce surplus stock holdings and avoid increased budget outlays that would otherwise

be necessary under price support programs.

Detailed provisions of the program will be explained by Dr. Ron Knutson, Extension economist in marketing and policy, from College Station. During the afternoon, the effect of PIK on cover crops, insects and management practices will be discussed by U.U. Alexander, Extension agronomist, and Emory P. Boring III, Extension entomologist.

A clear understanding of the PIK provisions is vital to area crop producers and the Feb. 4 meeting will answer many questions of Rolling Plains farmers, said Ed Garnett, district Extension director.

IRS Tax Tips

Based on which form they filed last year, taxpayers will receive either the Form 1040 or Form 1040EZ and 1040A package. This year, the 1040EZ, containing only 11 lines to complete, has been added to the Form 1040A package. "The 1040EZ is designed for single taxpayers who have no dependents, whose taxable income is less than \$50,000, earned from wages, salaries and tips and no more than \$400 in interest," Cagle said.

Generally, as in previous years, the Form 1040 is for those taxpayers who itemize deductions or claim such tax credits as child care, energy, political contributions and investment credit.

Since filing their tax forms last year, some taxpayers may have had a change in their tax status and need a different form than that received in the mail. Federal tax forms and scheduled are available at most post offices, many banks and some libraries. The most convenient way to obtain additional forms is by using the handy order blank in the tax forms package.

The tax forms package received in the mail has a pre-addressed, peel-off label and large, pre-addressed envelope which is useful to the taxpayer and to the IRS. By using the label and envelope, the taxpayer can help to speed up the processing of the tax return, decrease the chance of errors and often receive a refund faster.

If the mailing label has incorrect information, such as wrong address or Social Security Number, the correction should be made directly on the label.

Obituaries

Clark E. Lane

Services for Clark E. Lane, 81, were held Tuesday afternoon at the First Assembly of God in Wichita Falls, with Rev. T.L. Wilborn, pastor, officiating. Burial was in Crestview Memorial Park under direction of Hampton-Vaughan Funeral Home.

He was born March 13, 1901, in Oklahoma and died Monday in a Wichita Falls nursing home. He founded the first licensed nursing home of Wichita Falls and was the retired owner of Lane Nursing Home. Before going into the nursing home business, he was a general contractor, and he was also retired from Sheppard Air Force Base, where he worked as foreman of the woodmill shop. He was a member of First Assembly of God Church.

He is survived by his wife, Virginia Mae of the home; a foster daughter, Lillian Christine Pais of San Diego, Calif.; five sons, Clark Jr., Howard P., Jack, Fred D. and Dalton F.; 15 grandchildren; and 13 great-grandchildren.

The family requests memorials be made to the First Assembly of God Building Fund.

Earl Clifford Hargrove

Earl Clifford Hargrove, 73, of Mesquite, Nev., brother of Mrs. W.G. Partney of Iowa Park, died Saturday

in the Veterans' Hospital in Salt Lake City.

He served in the U.S. Army during World War II. Stationed in the Philippines, he worked in construction building roads and bridges. After the war, he continued to work in construction making roads through valleys and mountains in Arizona, the Grand Canyon, Colorado and Utah until his retirement.

His wife preceded him in death in 1981. He is survived by a stepdaughter, Ina Hines of Houston; three sisters, Mrs. Partney of Iowa Park, Mrs. E.J. Gillispie and Pat Ann Canion, both of Austin; two brothers, Howard of Graham and Loyd of Fort Worth.

Mae Spradling

Mrs. Mae Spradling, 83, sister of Mrs. Lois Holloway of Iowa Park, died Saturday in a hospital at Paris. Services were held Monday in Greenville at the Coker Funeral Home. She was born August 13, 1899 at Greenville.

She is survived by two daughters, Mrs. Ruby Wilkinson of Mesquite and Mrs. Lucille Ross of Paris; a son, Joe of Greenville; a sister, Mrs. Lois Holloway of Iowa Park; two brothers, Ellis Ames of Dallas and Harold Ames of Medford, Ore.; several grandchildren and great-grandchildren.

FIRST CHRISTIAN CHURCH

(Disciples of Christ)



DALE L. WALLING

105 E. Cash 592-4513
You are cordially invited to worship with us each Sunday.
Church School 9:45 a.m.
Worship 10:55 a.m.
YOUTH PROGRAM 6:00 p.m.

Kamay Road Church of Christ

Corner of Colorado & Emerald
Seeking the Old Paths
Lord's Day 10:30 a.m. & 6 p.m.
Wednesday 7:00 p.m.

Good Shepherd Lutheran Church

1st & Magnolia Iowa Park
Sunday School: 9:45 a.m.
Worship Service: 10:30 a.m.

Christ The King Catholic Church

First and Clara

8:45 A.M. Sundays 10:00 A.M. C.C.D. & Bible Study

Grace Baptist Church

511 S. Colorado - 592-5632

Come Let Us Reason Together Saith The Lord
Sunday School . . . 10:00 A.M.
Morning Worship . . . 11:00 A.M.
Children's Worship . . . 11:00 A.M.
Evening Worship . . . 6:30 P.M.
Wednesday Service . . . 7:30 P.M.
Jimmy Johnson, Pastor

Church of God

601 E. Cash

Pastor - Ole Olds

Sun., Morning Worship 11:00
Sun. Night, Celebration Service 7:00 p.m.
Tues., Ladies Prayer Service 10 a.m.
Wed. Night Bible Study 7:30
Sat. Family Night 7:30
"Catch the Vision"

Par. 592-5316

Office 592-4348

Welcome To The Worship and Fellowship of First Presbyterian Church

CHURCH SCHOOL - 9:45 A.M.
FELLOWSHIP Time - 10:40 A.M.
MORNING WORSHIP - 11:00 A.M.

Norman D. Nettleton, Pastor 211 So. Yosemite



IOWA PARK CHURCH OF CHRIST

SCHEDULE OF SERVICES

	Sunday	Wednesday	
Bible Study	9:30 a.m.	Ladies Bible Study	10:00 a.m.
Worship	10:30 a.m.	Evening Study	7:30 p.m.
Evening Worship	6:00 p.m.		

* Study the Bible in the privacy of your own home. Write for a FREE Bible Correspondence Course and enrich your life: Church of Christ, P.O. Box 520, Iowa Park, Texas 76367

300 East Park, Iowa Park, Texas 76367, (817)592-5415
L. KEITH PARKER, PREACHER

LOOK WHO'S NEW

Mr. and Mrs. Sammy Don Jordan are the parents of a son, Jon Aaron, born January 15. He weighed seven pounds and 11 ounces. The new baby has a brother, Chad, 5 years old. Grandparents are Mrs. Sue Rogers of Iowa Park, Fulton Irby of Houston, and Mr. and Mrs. Elbert Jordan of Wichita Falls. Great-grandparents are Mrs. E.E. Jordan of Wichita Falls, Mrs. Mattie Sammons of Haskell, and Mrs. Ada Irby of Houston.

Makes honor roll

Mr. and Mrs. Doyle Boggs have been notified that their daughter, Marjorie, a freshman student at Texas Wesleyan College at Ft. Worth made the Academic Honor List for the fall semester 1982. She had a 3.8 grade point average. Marjorie was graduated from Iowa Park High School and is a psychology major at TWC.

Young Farmers

Wichita County Young Farmers copped three awards last weekend at the 29th annual Texas Young Farmers convention held at Abilene. The chapter received the Outstanding Chapter award for Area Four, as well as the Area's Radio and Television Award. The third award was presented to Barry Mahler, who was named Area Four Star Young Farmer. Attending the meeting were

17 named All-District

Seventeen students of the Iowa Park freshman band made the All-District Band in tryouts held Saturday at Rider High School. They will participate in the concert that will be held Feb. 5 at Wichita Falls High School. Students who will participate in the concert are John Roy, Ronald Young, Mark Savage, Robin Isbell, Daryl Roy, Dena Beavers, Christy Sandquist, Tammy Washburn, Stacy Grace, Deanna Mashburn, Cindy Lunney, James Redcliff, Todd Crumpton, Cathy Downes, Stephen Biddy, Kari Robnett, Jeanetta Garrett.

REPORT OIL FIELD THIEVES
1-800-OIL-COPS
TOLL FREE • REWARD

awkettes in second place



JEFF LAWSON FINDS LESS COMPETITION FOR THE BALL AT LOW ... the senior forward was a defensive standout against Azle.

GRIMSTOPPERS TEXTBOOK

The Case of the LINGERING LINGUINI OR Pasta Point of No Return

The Solution
A quick trip to your cleaning experts. We have highly trained professionals who specialize in grime prevention. Case Closed

City Cleaners
107 West Cash

Steak Finger Platter

WAL-MART Sale Prices Good Thru Saturday, January 29 500 West Highway

Rave Specials

Rave Body Only Soft Body Wave
One Complete Kit **5.32** One Refill Kit **2.92**

Rave Soft Perm
One complete kit **4.84**
One refill kit **2.93**

WAL-MART'S ADVERTISED MERCHANDISE POLICY - It is our intention to have every advertised item in stock. However, if due to any unforeseen reason, an advertised item is not available for purchase, Wal-Mart will issue a Rain Check on request for the merchandise at the sale price whenever available, or will sell you a similar item at a comparable reduction in price. We reserve the right to limit quantities.

Brides-to-Be IS YOUR NAME IN OUR *Bridal Registry*

MICKIE GREGG and STEVE MOODY

Park Pharmacy & Thoughtfulness Shop
115 W. Park 592-4116

WAL-MART

Quality Portrait Collection

ONLY **8.86**

WAL-MART EXCLUSIVE

- 86¢ Deposit
- \$8.86 Total Portrait Collection
- 13 Professional Color Portraits
- 1 - 8x10, 2 - 5x7s and 10 wallets
- \$1.00 for each additional subject in portrait

THESE DAYS ONLY
JANUARY: WED THUR FRI SAT
26 27 28 29

DAILY: 10AM - 8 PM

500 West Highway, Iowa Park

WAL-MART SALE PRICES GOOD THROUGH SATURDAY, JANUARY 29 500 West Highway

Special Savings

<p>2.14 Pond's Cold Cream • 3.5 Ounce • Lemon</p>	<p>3.28 Pond's Cold Cream • 6.1 Ounce • Original</p>	<p>3.72 Pond's Dry Skin • 6.5 Ounce • Cream</p>	<p>2.12 Pond's Essential Cleansing Lotion & Makeup Remover • 2 Ounce tube</p>
<p>2.97 Vaseline Dermatology Formula • 3 Ounce • Cream</p>	<p>2.28 Vaseline Intensive Care Lotion • 15 Ounce • Pure petroleum jelly</p>	<p>1.68 Q-Tips • 300 Count</p>	<p>2.97 Vaseline Dermatology Formula • 11 Ounce • Lotion</p>
<p>1.97 Vaseline Intensive Care • 5 Ounce • Lotion</p>	<p>2.28 Vaseline Intensive Care Lotion • 15 Ounce • All Scents Your Choice</p>	<p>WAL-MART'S ADVERTISED MERCHANDISE POLICY - It is our intention to have every advertised item in stock. However, if due to any unforeseen reason, an advertised item is not available for purchase, Wal-Mart will issue a Rain Check on request for the merchandise at the sale price whenever available, or will sell you a similar item at a comparable reduction in price. We reserve the right to limit quantities.</p>	

Hawks, Hawkettes in second place

Boswell Friday,
Hirschi Tuesday

Both varsity basketball teams had a share of second place in Dist. 1-AAAAA standings as they host Boswell tomorrow night.

Two straight losses by the Hawkettes dropped the team out of a tie with Mineral Wells and Vernon, both with 7-2 records. The girls are 1-3 in conference play and 16-6 for the season.

The Hawks won their last two outings to share second place with Burkburnett, each 5-2. Leading the league is Hirschi, 6-1, with Iowa Park holding the only win over the Huskies.

Unlike past seasons, this year the league is not divided into halves. The teams with the best records will be the champions after round robin play.

Both teams are to play at Hirschi Tuesday night.



JEFF LAWSON FINDS LESS COMPETITION FOR THE BALL AT LOW LEVEL
... the senior forward was a defensive standout against Azle.

HAWKS WIN

Though they held an 11-point edge going into the fourth period here Tuesday, the Hawks had to hold off a determined rally by Azle to finally win 79-70.

Azle twice cut the lead to four points, with the last being 72-68 with

1:06 remaining in the game. The visitors were extremely accurate on

their outside shots and outscored the Hawks from the floor, 58-56.

But the game was determined at the foul line, where the Hawks hit 21 of 30 attempts. Azle canned 12 of 16 shots from the charity line.

Iowa Park showed a well-distributed offense with Kevin Bidy and Wayne Hodges scoring 19 points and Marc Klinkerman 18.

The Hawks' win over Mineral Wells Friday was with unexpected ease. They led 23-14, 39-18 and 52-30 at each of the official rest stops and went on to win 70-54.

Again the scoring was well-distributed with Hodges canning 17 points and 14 each by Bidy and Jeff Lawson. In the game, Iowa Park sank 28 field goals while the hosts had only 19.

HAWKETTES LOSE

Despite a 20-point effort by Lisa Yeakley and 16 from Michelle Smith, the Hawkettes could not overcome Azle, losing 61-54.

In their first meeting, back in December, Iowa Park edged Azle 56-55 at Azle.

Azle led 13-10 going into the second quarter, but Iowa Park took a 29-27 lead at the half. Azle recovered the lead, 41-38, by the end of the third period.

The Hawkettes cut the visitors' lead to two points, 53-52, with 1:23 remaining in the game, but could not

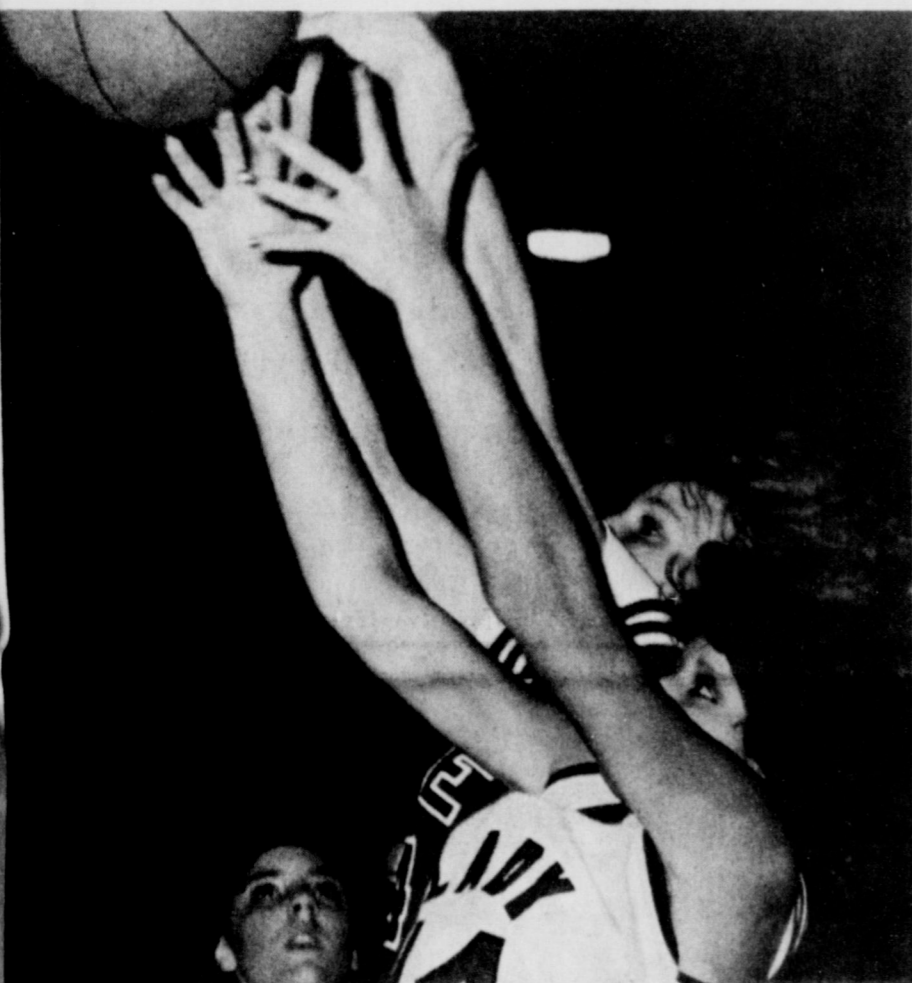
overcome the lead.

Though Azle had one more field goal, 22-21, than the Hawkettes, the game was decided at the foul line. Iowa Park sank only 12 of 29 shots from the charity line. But more importantly, eight free shots were missed in the fourth period, six of them the front end of one-and-one opportunities.

A fourth-period rally by the Hawkettes Friday night threw the game into overtime, but wound up in a disappointing 73-71 loss.

Iowa Park trailed at the end of each period, 16-11, 36-23 and 50-40, but tied the score at 65-all by the end of regulation play.

Yeakley and Lisa Holloway each scored 22 points to lead Iowa Park point making, and Lisa Sefcik finished with 14.



LISA HOLLOWAY FIGHTS FOR REBOUND
... against player from Azle.

Azle sweeps JV games

Azle won both the junior varsity basketball games here Tuesday, with the girls scalping Iowa Park 39-14 and the boys escaping with a 43-40 decision.

Marye Cates was high for Iowa Park with eight points. The loss dropped the team record to 9-6 for the season.

In the boys' game, Azle was running away with the game, leading by 14 points, 38-24, going into the final period. But the Iowa Park rally, led by Jerry Allen's 12 points, fell short.

The freshman girls won 37-22 over Wichita Falls High Thursday, with Laura Parker scoring 12.

Despite double digit scoring by three players, K.D. Cockburn 16, Parker 12 and LaDonna Wilkinson 12, the girls lost 67-61 to Graham Monday.

Fresh girls will host Vernon today, while the Jayvees will host Boswell tomorrow.

In Texas, 98.5% of all the people killed in passenger cars, trucks, and buses in 1980 were not wearing their seat belts.



Little Richard's
Salt Lick Restaurant
510 E. Hiway 592-5252

THURSDAY & FRIDAY SPECIALS natural products at reasonable prices. Call Annetta Reusch, 592-9001 for a free facial. 1-6 tfe

CENTURY 21 CHARLES CHANDLER, REALTOR
691-1420

A Yesteryear Home for today's family! Huge 6 bedroom two-story on large corner lot. Space for garage apartment or workshop, \$55,000. Call today! 322-9097.

Good Starter Home for \$16,500! 2 bedrooms, large utility, updated kitchen, storm door and windows. Roof 2 years old. Call 692-0404.

BLACK POWDER GUNS and accessories, revolvers \$50 and up. Powder \$4.80 lb. Will order modern guns for 10% over cost. Ye Ole Gun Shack, 413 W. Washington, 592-5430. 1-6 tfe

REMODELING? Do you need another room added on? A garage? Walls removed or added? Free estimates. References. Jack Kerr, 215 S. Wall, 592-9040, 438-2941. 9-2 tfe

La Tinda

Iowa Park Rd. & Wellington

OPEN 7 AM - 10 PM

7 Days A Week

BEER, GROCERIES, GAS

Accept All Major Credit Cards

IOWA PARK RECREATIONAL ACTIVITIES CENTER SCHEDULE FOR FEBRUARY, 1983

MONDAY	TUESDAY	WEDNESDAY	THURSDAY	FRIDAY
	1 Microwave Cooking 1:30 Optimist 7 p.m. Dolls 7 p.m. Ceramics 7:30 p.m.	2 ROTARY 12 noon Aerobics 7 p.m. Bible Study 7 p.m.	3 N. Texas School of Per. Arts Quilting 1:30 Country Western Dance 7:30 p.m.	4 KARATE 6:30
7 Joy Hedrick Weight Watchers 6:30 Aerobics 7 p.m.	8 Blue Birds Optimist 7 p.m. Ceramics 7:30 p.m.	9 ROTARY 12 Noon Aerobics 7 p.m. Bible Study 7 p.m.	10 N. Tex. School of Per. Arts Quilting 1:30 Country Western Dance 7:30	11 KARATE 6:30
14 Joy Hedrick Weight Watchers 6:30 Aerobics 7 p.m.	15 Optimist 7 p.m. Ceramics 7 p.m.	16 ROTARY 12 Noon Aerobics 7 p.m. Bible Study 7:00	17 N. Tex. School of Per. Arts Quilting 1:30 Country Western Dance 7:30 RAC Board 7:30	18 KARATE 6:30
21 Joy Hedrick Weight Watchers 6:30 Aerobics 7 p.m.	22 Blue Birds Optimist 7 p.m.	23 ROTARY 12 Noon Aerobics 7:00 Bible Study 7:00	24 Quilting 1:30 p.m. Country Western Dance 7:30	25 KARATE 6:30

DAVIS GUTTERING
Seamless Leak-Free 5-Colors
Call 592-5121 for Free Estimates

We service all makes of refrigerators and air conditioners.
POSEY'S APPLIANCE SERVICE
208 James Ph. 592-5452 Iowa Park

BUY NOW AND WE'LL SAVE YOU HUNDREDS WITH 11.9% ANNUAL PERCENTAGE RATE*

SEE US TODAY AND DRIVE HOME A NEW '82 OR '83 FORD CAR OR LIGHT TRUCK AT HUGE SAVINGS!



\$6,656 Stock No. R8322

*11.9% Annual Percentage Rate on all of today's new '82 and '83 cars and light trucks except '83 Thunderbirds. Take delivery by March 31. Limit one per qualified retail buyer. Dealer participation may affect consumer price.

BIG SELECTION OVER 1000 CARS AND TRUCKS TO CHOOSE FROM!

BIG SAVINGS LET US SHOW YOU HOW MUCH.



SHAW MOTOR COMPANY

Iowa Park