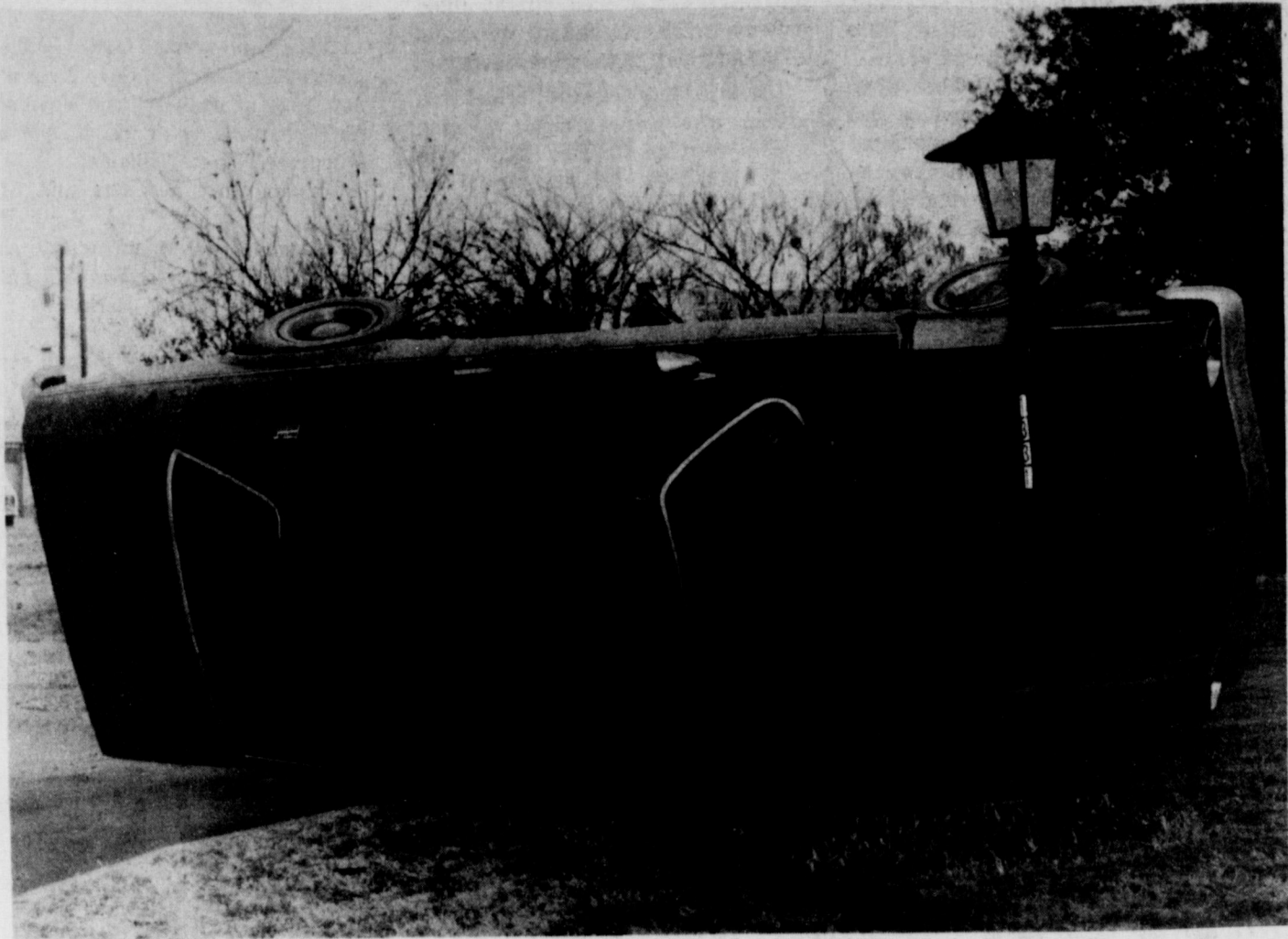


1982
Dec 2

EARL WATSON
520 W. CLARA
IOWA PARK TX 76367 112



VANDALS TIPPED AUTO ONTO SIDE DURING EARLY MORNING HOURS
... Jean Barnes, 1331 Sunset, suffered financial loss.

Police arrest man for leaving wreck

An Iowa Park man was arrested and charged Monday for "failing to stop and render aid involving personal injuries motor vehicle accident" which occurred Nov. 6.

Donald Scott Owen was arraigned before Justice of the Peace R.L. Stewart and released after posting \$1,000 bond.

Owen is accused of having been involved in an accident at the intersection of Cash and Victoria which inflicted minor injuries to Tina Mae Stevenson.

The injured woman, after giving a statement, was taken to the hospital. The vehicle which had left the scene, was

transported to Wichita General Hospital where she was treated for minor injuries, including a bruised left leg, and released.

Owens' car was found by police, parked in the alley at 108 W. Ruby.

OTHER CASES

Four cases of criminal mischief and two of theft were reported during the past week by police.

Jean Barnes, 1331 Sunset, told police someone had turned her 1977 Vega coupe over on its side in the driveway where it was parked, about 9 a.m. Sunday.

Sets of shoe prints, both apparently

athletic shoes. One print left the trademark "York" in the mud.

No estimate was available on the damage to the car.

That same night, Randal Fulbright, who lives at 121 West View, told police someone slashed two tires on his pickup.

Sometime Monday night, someone fired a small caliber bullet through the back window of a new pickup on Shaw Motor Co. lot. Damage to the window and interior was estimated at \$600.

The rear window of a car was broken by an unknown object while it was parked at 604 S. Park. Cost of repair was set at \$200.

Charles Salmon, 1004 Louisa, told police several tools were taken from his place, but he could not specify a time period of less than three weeks. The tools, valued at \$420, included a router, two drills, three power saws, carbide blade and a staple gun.

Approximately \$1,800 worth of clothes, as well as a check book and credit cards, were reportedly taken from a locked car belonging to James Randall Newman. The car was parked at 1004 Lincoln Wednesday night, when the theft reportedly took place.

Hearing set for re-zoning

Five lots fronting on the south access road are proposed to be changed from convenience commercial to general residential and will be the subject of a public hearing Monday by the planning and zoning commission.

The commission will hold its meeting at 7 p.m., but in the Chamber of Commerce office rather than the usual place in council chambers.

Karl King and Elmer Ford, owners of lots 1 through 5, Block N, Texas Addition, proposed "to rezone the 1.73-acre tract from convenience commercial to general residential

IOWA PARK
LEADER 25 Cents
Vol. 14, No. 12 IOWA PARK, WICHITA COUNTY, TEXAS 76367 THURSDAY, DECEMBER 2, 1982

Flood zone designated Building now prohibited by ordinance

The Iowa Park city council Monday night in called session passed an amendment to the zoning ordinance which prohibits building or locating mobile homes in certain areas of town considered flood zones.

Action on the ordinance is required to meet standards set by the federal government. Without passage, homeowners in the city would not be eligible for the government-sup-

ported flood insurance program. Monday's meeting was the first to be attended by new city administrator James Barrington. All council members were present except alderman Bud Thompson.

Vern Horsky, chairman of the city's planning and zoning commission, was present, as was Tom Merrick, representing the NorTex Regional Planning Commission.

Most of the hour-long meeting was

used to go over a suggested ordinance received by the city. Such terms as "high tide" and "tidal waters" were removed from the language of the article.

Work was first begun some three years ago on the project, and enactment of the amendment is the final phase to be taken on the local level. Final draft will be reviewed by the environment assessment committee of NorTex before it is forwarded to Washington, Merrick explained. The hearing in Wichita Falls will be held at 7 a.m. Tuesday.

Council members expressed surprise that more areas in the city had not been designated as "100-year flood" zones, which are set out after a survey and study by the Army Corps of Engineers.

The largest area is in the northeast part of the city, including Lake Gordon and land to the southeast of the dam, primarily the land east of Texowa and north of Park.

Two other zones included the draw that cuts through Redin Heights from the expressway to west highway, and another draw south of Magnolia between Third and First streets.

Homes now located in the flood areas are governed under the "grandfather clause." They will not have to be removed, but will require a higher insurance premium than those located outside the designated areas.

Any proposed construction in the designated zones is subject to appeal, according to the ordinance.

Following the meeting, Buster Reeves complimented the city and state for work done on ditches near land he owns. He had complained earlier that the ditches needed to be cleaned to allow water movement and cut down on flooding.

His land is north of the Masonic Lodge, and other ditch cleaning was at the intersection of Bank and West Highway.

Mayor Charlie Lee returned compliments with Reeves, saying "It's not unusual for someone to come before the council with a complaint. But it is unusual for someone to come back after the complaint has been taken care of, and say it was."

Lone Star rate request gets approval of PUC

The Railroad Commission of Texas last week approved a \$42.9-million city gate rate increase for Lone Star Gas Company. The increase is the amount agreed to between cities represented by the Texas Municipal League and Lone Star, and is reflected in a settlement Commission in public hearing held in September.

The Commission order includes 100 percent recovery of the utility's cost

of purchased gas.

The revenue increase is less than half of the \$90-million originally requested by the company on June 25.

The rate increase which took immediate effect raised the base city gate rate charge to \$4.02 for each thousand cubic feet of gas, an increase of 32-cents. The typical residential customer using 6000 cubic feet of gas per month will pay an additional \$1.92, a 6.6 percent increase. Commercial customers consuming 37,000 cubic feet monthly would have a bill increase of \$12, a 7.1 percent increase.

Ministerial Alliance to meet

The Iowa Park Ministerial Alliance will meet at 9 a.m. Monday in the library of First Baptist Church.

All area ministers are invited to attend, according to Ken Cole, president.

The city gate rate is the amount that the company's transmission division is permitted to charge the distribution divisions for gas delivered for sale to residential and commercial customers and for distribution company-used and unaccounted-for gas. The transmission division buys gas from producers and transports it to 536 cities and towns served in Texas by Lone Star Gas Co. The point at which city distribution systems purchase the gas from the transmission division for customer consumption is the city gate.

Year's building permits top million-dollar mark

Building permits for the year exceeded the million-dollar mark when November's permits were included.

November permits listed only one new home, but with four mobile homes and numerous additions, the month's sum was reported at \$113,600.

For the year, permits have now totaled \$1,034,548.

The year's total is expected to swell considerably when an apartment complex which is staked out at

Johnson Road and Magnolia is put on the books. That project is to be built by Bill Swan Construction Co.

Permits issued during November included:

- Toni M. Gray, 710 W. Rebecca, addition, \$5,000;
- Ken Hines, 602 W. Cornelia, addition, \$3,500;
- Randy Billingsley, 307 W. Chestnut, mobile home, \$19,000;
- Ronald L. Hubert, 1000 S. Wall, mobile home, \$38,000;
- Daniel Milner, 500 S. Bond, new residence, \$12,000;
- Jimmy Cash, 1015 Van Horn, addition, \$750;
- James R. Entekin, 608 S. Victoria, addition, \$1,200;
- Johnnie Routh, 502 S. Bond, mobile home, \$20,000;
- James A. Gray, 705 W. Smith, mobile home, \$12,000;
- C.E. Thompson, 600 N. Pacific, addition, \$150;
- Roger G. Mathews, 910 E. Bank, addition, \$2,000.

Four donors reach levels

Four Iowa Parkans reached donation plateaus Monday when the Red River Regional Red Cross Bloodmobile made its scheduled stop at Faith Baptist Church.

Three donors, Peggy Sullivan, John Landrum and Glenn Collier Jr. each completed their third gallon donation levels. Also, Linda Lawson completed her second gallon.

In all, 32 units of blood were collected by the Red Cross.

Volunteers who assisted with the effort included: Roberta Cole, registered nurse; Gerald Frazier and Paul Shea, emergency medical technicians with the volunteer fire department; Margie Sumner, Barbara Grove, Kyle Grove and members of the Optimist Club.

Farmers were waiting for last week's rains

Though the rains which fell over the Thanksgiving holidays may have dampened the spirits of many students and travelers, the moisture was extremely important to area farmers.

A large percentage of acreage in this part of the country still has not been sown to wheat, due to a lack of moisture.

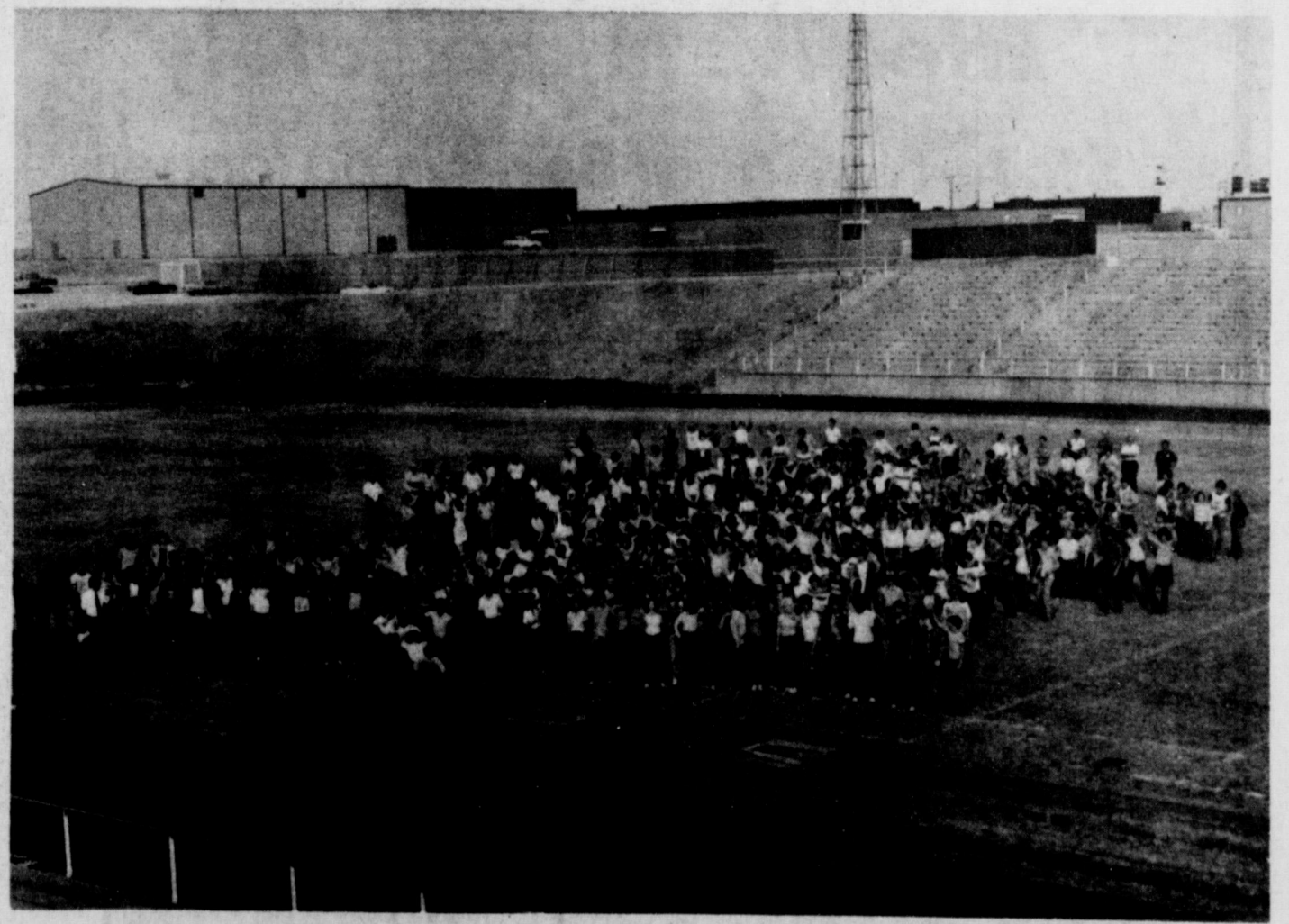
According to a report from the Texas Agriculture Experiment Station southeast of the city, 2.21 inches of rain soaked the area. Other than a scant .11 of an inch measured Nov. 11, that was the first measurable moisture since .51 of Oct. 28, which still was not enough to help get a wheat crop up.

Most of the wheat that had been planted was put in the ground in early September, which is earlier than

farmers like to plant if they are not planning to graze cattle.

One farmer said the unseeded acreage would be left unplanted if moisture was not available by the middle part of December.

Weather Report	
Weather reports are officially compiled for Iowa Park at the Texas Experiment Station, southeast of town.	
Rainfall for week.....	2.21
Total for month.....	2.32
Total for year.....	32.65
Total last year.....	29.31



ENTIRE STUDENT BODY, all 542 Iowa Park High School students, along with the faculty and administration gathered recently in Hawk Stadium for a "group shot." Purpose of the pose was to help raise money for funds-short yearbook. A full-color photograph will be printed on a giant poster and sold to students to help defray publication costs of this year's annual.

Only 20 Days Left TO CHRISTMAS SHOP

Young, Riley nuptials are exchanged Saturday evening

When the organ swelled the strains of Lohengrin's "Wedding March" Saturday evening at the Floral Heights United Methodist Church in Wichita Falls, Miss Shannon Lynn Young entered with her father, who escorted her to the altar and presented her in marriage for her parents to Stephen Randall Riley.

Parents of the bride are Mrs. Norma Young of Iowa Park and Howard Young of Wichita Falls. The groom's parents are Mrs. Martha Tinnerstet of Iowa Park and Bob Riley of Graham.

The bride was an exquisite picture in a luxurious gown of tissue taffeta and Alencon lace in the palest of candlelight. The natural waist bodice of imported French shadow lace was enhanced with overlays of Alencon lace that accented the front boat neckline which dipped to a deep V in the back. The delicate shadow lace extended into the bishop sleeves adorned with crystal pleating and was repeated in deep inserts on the full skirt and chapel train, also distinctively detailed with crystal pleating to complete the "dream come true" bridal gown look.

The bride's headpiece, made by Mrs. Jean Proulx, a close friend, featured a waist length illusion veil secured to a Juliet cap embellished with pearls, rhinestones, lilies of the valley and lace appliques. She carried a silk cascade of white rose-centered large and small candlelight irises, frost rose-tipped forsythia and Hahn's ivy to give a further touch of glamour to the gown.

Keeping traditions of the occasion, the bride wore a diamond ring that was given to her when she was five years old by her grandmother, Mrs. Frances Williams for "something old"; she wore her mother's cultured pearls for "something borrowed"; chose her gown for "something new" and a garter for "something blue"; and wore a good luck penny in her shoe.

P-TA delegates at convention

Mrs. Mike Winkler and Mrs. Harvey Tidwell were among 2,354 delegates who attended the P-TA state convention held Nov. 21-23 in Ft. Worth.

They attended business meetings, workshops, voted on 22 resolutions for submissions to the Texas Legislature and represented Kidwell and Bradford P-TAs at a special membership party held at Billy Bob's.

On Sunday night "Outstanding Principal" and "Premier Principal" certificates were awarded to former Kidwell principal, the late Robert "Bob" Cole. These were accepted by his daughter, Mrs. Pete Aston, the former Carla Cole, who attended the service with her husband. Also attending the awards ceremony from Iowa Park were Mrs. Desmond Mayfield and Mrs. Jimmy Kasparek.



MRS. STEPHEN RANDALL RILEY

Rev. Howell Farnsworth, pastor of Iowa Park First Baptist Church, and Dr. James Palmer, pastor of Floral Heights United Methodist Church, officiated the double-ring nuptials.

For exchange of their vows, the bride and groom stood before the altar table that held an open Bible flanked by single white candles burning in gold holders. On either side were large arrangements of white silk gladioli and mums raised by tall stands. Soft lighting was provided by votive candles in tapered candelabra. Candles were lighted before the ceremony by Andy Mooty, cousin of the groom, and Carey Williams, cousin of the bride.

The musical setting was provided by Don Unwin, organist, who presented prelude selections, the traditional marches, and furnished accompaniment for the offerings by the vocalists, Buddy Mercer and Terri Hale for their renditions, "Entreat Me Not to Leave Thee" and "The Lord's Prayer."

The intriguing colors of frost rose and aubergine were emphasized in the bridal attendants' and flower girl's gowns. The attendants wore formal aubergine polyester knit gowns designed with slightly raised bodices, spaghetti tie belts, blouson chiffon bodice overlays with closures in the back. They wore haircombs covered with silk stephanotis and lilies of the valley in the chosen colors, and carried candlelight lace fans accented with frost rose and aubergine silk irises and roses with matching streamers.

The charming quartet of attendants included Miss Gisele Farmer of Wichita Falls, the maid of honor, Mrs. Frank Trotter of Houston, Miss Julie Cope of Wichita Falls and Mrs. Kenny Parker of Dallas.

Miss Marti Mooty of Bedford, cousin of the groom, was the flower girl. She was attired in a frost rose polyester sheer frock featuring ruffle trim at the neck, on the bodice and sleeves, a tie bow at the back waistline and a flounced skirt. She carried a natural wicker basket containing miniature silk roses and irises in the chosen shades.

Brandon Young of Wichita Falls, brother of the bride, dressed like the groom's attendants, was assigned the role of ring bearer.

For his formal wedding attire, the groom wore a cut-away charcoal grey jacket, pin-striped pants, candlelight shirt, ascot and a white silk boutonniere composed of a rose and stephanotis.

His attendants were Bobby Griffith of Dallas, the best man, Ross Riley, brother of the groom, of Bowie, Pat Ehler of Iowa Park and Ken Gerry of Wichita Falls, the groomsmen. Ushers were Mike Fournier, Mark Smith, Mike Guthrie, cousin of the bride, Harlan Kidd, Andy Mooty, cousin of the groom, and Carey Williams, cousin of the bride. Their attire matched the groom's except for regular jackets instead of cut-away.

The bride's mother wore a formal grey Qiana gown fashioned with a natural waist bodice styled with a high neck accented with a deep V in the back, cummerbund around the waist, long sleeves draped to the elbow and fitted to the wrists, and an A-line skirt. The groom's mother wore a formal wine taffeta gown designed with a raised bodice set apart with an off-shoulder look draped with a flounce. The full skirt was distinctive with a deep hem flounce ruffled with a pick-up front. They complemented their gowns by wearing aubergine-tinted candlelight rose corsages.

Mr. and Mrs. Bob Riley were hosts Friday evening for the rehearsal dinner at the Boston Tea Party.

Mr. and Mrs. Howard Young honored the bride and groom at a postnuptial reception held in the Fellowship Hall of the church. The three tables in the setting were attractively draped with floor length white satin cloths overlaid with Quaker lace.

The bride's table reflected the ultimate in beautiful and tasteful decorations. The centerpiece was an imposing silver candelabrum filled with candlelight candles and surrounded with the bridal attendants' fans. Other appointments included the silver punch bowl, white scalloped napkins accented with a dove holding a bow with pearl hearts attached in its mouth, "Shannon and Randy, November 27, 1982," each feature either drawn or lettered in aubergine, mints made by Mrs. B.J. Gibson, and the cake.

The ornate candlelight-iced cake was decorated with cascades of frost rose and aubergine roses and scrollwork on each of the four tiers separated by one set of tall and one set of low Grecian pillars. Satin wedding bells ruffled in candlelight between the third and fourth tiers and a floral top piece of the frosting roses in the exciting colors added the touches that lent themselves to the

other decorations to effect a picture of perfection.

The cake and punch were served by Mrs. Ken Moorhead, Miss Kate Nichols and Miss Denise White.

Mrs. Helen Kidd and Mrs. Gene Hayden of El Paso served at the groom's table which was appointed with a colonial fruit cone in the center, a chocolate ring cake decorated with a cascade of frosting roses, an heirloom silver coffee urn.

Rexa Winger directed registration of wedding guests at an oblong table which held the bride's bouquet, white plume pen and guest book.

The bride and groom were graduated from Iowa Park High School. She received a B.B.A. degree from Midwestern Univ. and is employed by C.B. Christie Jr. He is quality control manager for Quail Plastic, Inc. They will live in Wichita Falls when they return from a trip to Hawaii, a wedding gift from the bride's maternal grandmother, Mrs. Frances Williams of Electra.

Following the reception, the bride changed into a violet Qiana street length dress fashioned with a ruffled asymmetrical neckline, mandarin collar and long sleeves for travelling.

Grandparents of the bride and groom who were special wedding guests were Mr. and Mrs. T.H. Young of Wichita Falls, Mr. and Mrs. Fred Ross of Saginaw and Mrs. Frances Williams of Electra. Mrs. S.H. Williams, also of Electra, the bride's great-grandmother, was a very special guest.

Mrs. Bill Robinson and Mrs. Kenny Parker were hostesses for a bridesmaid luncheon Saturday at Mrs. Robinson's home.

Recent nuptial courtesies honoring the bride included a pouncing party given by Mrs. Dale Thompson and Mrs. Frank Trotter; a lingerie shower given by Mrs. Glen Price in Electra; and a miscellaneous shower extended by Mmes. B.J. Gibson, Mary Stynes, Mary Elizabeth Brunelle and Carolyn Stires.



Mr. and Mrs. Gary Williams announce the birth of Gary Kyle, a six pound, 14 ounce son, born November 23. He has one sister, Hayli Dyer and a brother, Chris Williams.

Grandparents are Mr. and Mrs. Ray B. Stubbs and Lawrence Williams. Great-grandparents are Mrs. C.O. Stubbs and Mrs. Margaret Williams, all of Iowa Park.

John Kyle, a nine pound, seven ounce son, the first child of Mr. and Mrs. George Jordan of Wichita Falls was born November 26. Mrs. Jordan is the former Gail Greenwood.

Grandparents are Mr. and Mrs. Fred Greenwood of Iowa Park and Mr. and Mrs. Omer Jordan of Wichita Falls. The great-grandmother is Mrs. Dot Caplinger of Hermitage, Ark.



For that special friend...

Gift Baskets

Custom-made to your needs and specifications

During the Christmas season, your Gift Basket will be personally delivered by Mrs. Claus and her Elves.

Elite Creations

Located in The Velfree Shop

Pat Brown Phone 592-2211 Judy Rusk Porter



SHOWER SELECTIONS FOR

TANDRA WILKERSON and DAN WILLIAMS

KAREN LOWE and TRICE EPPS

HOLLY BURRELL and JOEL WITT

Parkway



200 - 206 W. Bank

THE WIZARD'S GREAT GAME GIVEAWAY!

BUY ODYSSEY² NOW! GET FIVE GAMES - \$82.00 VALUE*

ONE FREE GAME

YOUR CHOICE FROM THE MASTER STRATEGY SERIES:



Quest for the Rings! Battle dragons and other demons to recover the Rings of Power using computer and gameboard concepts.

\$49.95 suggested retail.



Conquest of the World... computer and gameboard strategy. Maneuvers land, sea and air forces to control the world.

\$49.95 suggested retail.

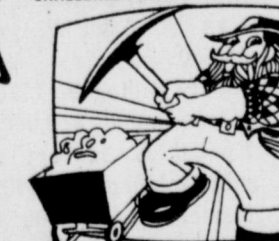


The Great Wall Street Fortune Hunt! A fast-paced game of investment. Use computer and gameboard to make your fortune grow!

\$49.95 suggested retail.

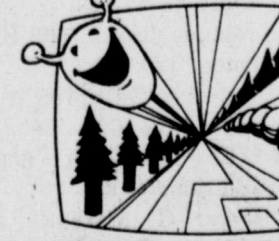
ONE FREE GAME

YOUR CHOICE FROM THESE CHALLENGER SERIES GAMES:



Pick-Axe Pete! Help Pete strike it rich in the Misty Mountain Mine. Bouncing boulders, secret keys, disappearing ladders - ten challenging mine layouts.

\$32.95 suggested retail.



K.C.'s Crazy Chase! It's K.C. against the dreaded Dratapilar in a truly a maze-ing showdown! Design your own mazes. Use the optional Voice Module for added enjoyment.

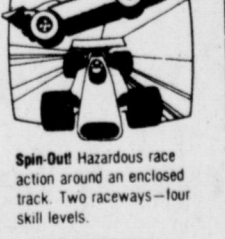
\$34.95 suggested retail.

THREE MORE GAMES

in one cartridge, packed with your Odyssey² Video Game.



Speedway! Race in a test of skill and courage.



Spin-Out! Hazardous race action around an enclosed track. Two raceways - four skill levels.



Crypto-Legit! Use the key-board to decipher secret messages scrambled by the computer.

The Wizard Knows What You Buy A Video Game For...

GAMES, GAMES, GAMES! And that's what you get with this exciting offer from Odyssey². For fun when you open the box, three games (on one cartridge) are packed with your Odyssey² Video Game Master Unit... and then you get your choice of TWO MORE CHALLENGING GAMES mailed direct from the Wizard! See us for your Great Game Giveaway Coupon! Ask for a demonstration of Odyssey² and the new Odyssey² voice module! This offer good on Odyssey² Video Main Units purchased from October 8 through December 24th, 1982.

ODYSSEY² NOW ONLY \$169⁹⁵

PARKWAY

FURNITURE True Value HARDWARE

200 W. Bank 592-4681 592-5512

ODYSSEY²

THE KEYBOARD IS THE KEY TO GREATER CHALLENGE.

SNB

Effective Immediately

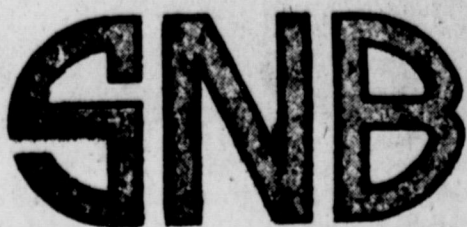
State National Bank is no longer

serving as collecting agent for

Southwestern Bell Telephone

Company. Payments must be

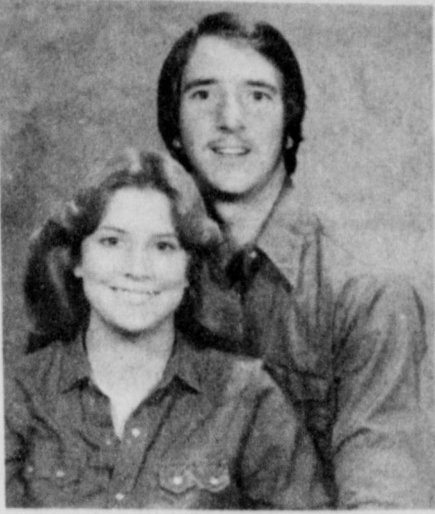
mailed directly to the company.



STATE NATIONAL BANK

IOWA PARK, TEXAS
FDIC Locally Owned

Honor roll students listed for six weeks



TRACEY LUNA
and
RANDY BILLINGSLEY

Wedding date set

Miss Tracey Luna, daughter of Helen Luna and Richard Luna, and Randy Billingsley, son of Mr. and Mrs. James Billingsley, have selected Jan. 7 for their wedding date, and the ceremony will be performed at Grace Baptist Church, according to an announcement by her parents.

Miss Luna is a senior at Iowa Park High School where she is in the band and is serving as secretary. The future groom attended Iowa Park High School and is employed by A.P. Clark Deep Well Service.

Honor rolls for the second six week period at Iowa Park High School and Junior High have been released by their respective principals, Bob Dawson and Jimmy Alsop.

Students making the "AA" honor roll averaged 90 or above in each of their respective courses. Those making the "A" roll averaged 90 or above in all classes combined.

They are: **12th GRADE AA:** Lori Barr, David Hildebrand, Harlan Kidd, Mark Shierry, June Dietrichson, Sherrie Cole, Robby Hausler, Jeff Lawson, Kent Roberts, Lisa Yeakley, James Cowley, Keith Starr, Chuck Gilstrap, Pam Horton, Diana Lyons.



PATRICIA THOMAS
and
DOUGLAS BLEVINS

Announce engagement

Mr. and Mrs. Norm Thomas of Montague, Mich. announce the engagement of their daughter, Patricia, and Douglas Blevins, son of Mr. and Mrs. Roy Blevins of Iowa Park. The wedding will take place Feb. 19, 1982, in Montague.

Miss Thomas was graduated from Kendall School of Design in Grand Rapids, Mich. and is presently an interior designer with Killebrew-Rucker Associates Inc. in Wichita Falls. Her fiance received a surgical nursing degree from Midwestern State University and works at Wichita General Hospital.

A: Frank Johnson, Billy Wachsmann, Kevin Robnett, Alisa Cain, Jimmy Ervin, Marc Klinkerman, Darla Flick, John Henderson, Susan Davis, Lorraine Kirkhart, Cyndi Lewis, Roxa Reusch.

11th GRADE AA: Susan Streich, Sonya Herrell, Mike Bean, Becky Martin, Jodi Corless. **A:** Kristi Woods, Brenda Cook, Craig Whisnand, Jan Hale, Teresa Caldwell, Wendy Kirksey, Caroline Patterson, Tim Norris, Bryan Fowler, Becky Barbe, Lisa Sefcik, Betsy House, Michelle Evans, Dana Trantham, Cindy Wells.

10th GRADE AA: Robert DeBoise, Melissa Hatcher, Larry Stodghill, Jay Yeakley, Phillip Clements, Tracey Hall, Pam Barr, Holly Farnsworth. **A:** Michelle Crittenden, Tina Featherston, Kristi Wynn, Jana Cummings, Alaina Coker, Michelle Langdon, Cindy Harper, Kimberly Bajo.

9th GRADE AA: Cathy Downes, Kyle Cheek, Ronald Young, Amy Silvers, Deryl Roy, Donald Young, Tammie Washburn, John Roy. **A:** Scott Boss, Lisa Cruz, Robin Isbell,

James Redclift, Cindy Coltrain, LaDonna Wilkenson, Lisa Donohoo.

8th GRADE AA: Robert Adams, Amy Brillhart, Kelsy Corless, Scott Davis, Tina Escue, Lisa Fletcher, Danny Forman, Jason Gholson, Linda Gibbons, Lisa Grace, Brett Hale, Mark Ivy, Rachel Jones, Kyle Long, Missy Logan, Stacy Miller, Richard Morath, Kim Nicholson, Sarah Owens, Dennis Phillips, Carla Pool, Kerri Richardson, Gaylene Sorey, Lana Swann, Phil Thames. **A:** Lynne Brumeloe, Dana Gray, Lewis Johnson, Stephanie McCord, Melissa Schmitt, Kirsten Sharpe, Kim Sims, Renee Smith, Jana Thompson, Dee Ann Todd, Eric Whitman, Sharon Wynn.

7th GRADE AA: Bret Barrick, Lisa Cook, Christy Cravens, Sheri Cravens, Karie Davis, Kathy Fehr, Andy Jacobi, Lorre Moser. **A:** Wendy Barr, Jenny Bowerman, Jerri Brown, Toby Brown, Stan Coker, Elaine Elder, Vicki Haynes, Lisa Hodges, Jeff Huff, Berry Kaiser, Troy Short.

6th GRADE AA: Cody Barnett,

Steve Catlin, Dan Fannin, Amy Freeman, Stephanie Lankford, Kim Martin, Deborah McLemore, Jana Rains, Jenny Salan, Stacy Swan, Melissa Wilson, David Rinehart. **A:** Jody Beavers, Andrea Blackwell,

Tomi Sue Cockburn, Denise Dunlay, Sherri Feltman, Tiffany Gray, Valerie Hedrick, Tammie Huff, Jay Isbell, Peni Lee, Shelley McQuerry, Lara Rochau, Kelli Richardson, Chris Wilson, Shay Witherspoon.

BULOVA DATE AND DAY AUTOMATICS



Build up his ego with a watch so adventurous in style that he'll treasure it always. And rely on it constantly.

These handsome 17 jewel automatics give him more than just the correct time and date. The day of the week is a dual language choice... English or Spanish. The exclusive Set-O-Matic system simplifies any calendar resetting. Everything works with ease. Including the price.

- A. Goldtone case. Jet black dial. Black strap. \$99.95
- B. Goldtone case with matching bracelet. Silver dial. \$135.00
- C. Goldtone case with matching link bracelet. White dial. \$125.00

Louis'
Distinctive Jewelry

408 W. Park IT'S BULOVA WATCH TIME 592-5942

New Meter Connections

Daniel Milner - 500 S. Bond
Robert R. Jordan - 621 W. Washington
Tom Sargent - 207 W. Crystal
James Gray - 705 W. Smith
Sandra L. Fletcher - 1306 Blue Jay
James Barrington - 1005 Foley
Greg Lauritzer - 1205 N. Pacific
Ronald L. Wyatt - 810 E. Highway
Lawrence Sanders - 405 E. Aldine

REPORT OIL FIELD THEVES
CALL 1-800-OIL-COPS
TOLL FREE
EARN UP TO
\$5000 REWARD
PETROLEUM INDUSTRY SECURITY COUNCIL

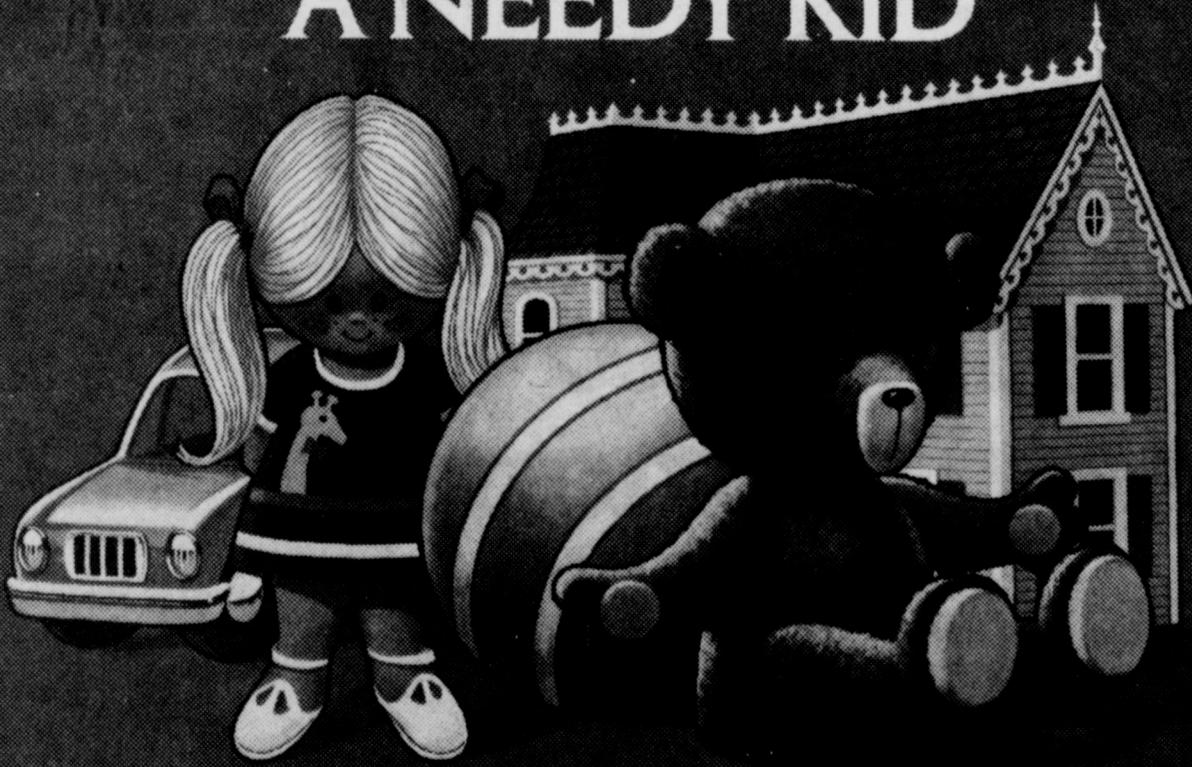
GRIMSTOPPERS
TEXTBOOK

The Case of the CULINARY COLLISION
or
The Platters' Greatest Hits

The Solution
A quick trip to your cleaning experts. We have highly trained professionals who specialize in grime prevention.
Case Closed

City Cleaners
107 W. Cash 592-4241

PLAY SANTA TO A NEEDY KID



AND WATCH WHAT WE'LL DO FOR YOU.

HBO
INSTALLATION
only **\$5**
or

50% Discount any Cable hook-up with donation of new unwrapped toy(s).

How would your kids feel if they found nothing under the tree on Christmas morning?

Unfortunately, many disadvantaged youngsters may know that awful hurt this holiday season. Unless you help.

When you donate a gift we'll give you one in return. Specifically, the special offer featured here.

It's our way of showing our appreciation for what you're doing:

Making Santa a reality for kids who need it most.

All toys received will be given to Iowa Park Ministerial Alliance and distributed to disadvantaged youngsters. Offer valid Nov. 29-Dec. 10 Existing cable areas only.

ATV TV Cable of Iowa Park

592-2164
901 W. Highway

STRETCH

YOUR FOOD DOLLARS HERE!

Round Steak lb. \$1.79		Ground Chuck lb. \$1.69
1/2 BEEF Cut & Wrapped lb. \$1.19		T-Bone Steak lb. \$2.99
		Chili Meat lb. \$1.59

Corn 16 oz. 2/79¢	
Green Beans 3/\$1	
Pork & Beans 3/\$1	

REGISTER FOR **FREE TURKEY**
Drawing each week til Christmas

Potatoes
5 Lb. Bag **69¢**

Shurfine **Sweet Potatoes**
2 16 oz. Cans **\$1**

the price fighter
Discount Foods
107 West Park

Worth Quoting

There has been a lot of discussion recently about the change in the telephone industry and how deregulation will bring about not only more competition in the telephone industry but also many more ways to use telephone service. One of these new ways has become commonplace - the 800 type of telephone or WATS line which allows unlimited calls for a set monthly fee. We have had more and more telephone calls in this office from rank strangers, all with a glib line of sales arguments, offering to let us in on one type of good deal or another. We were for a while deluged with long distance calls from people selling commodities or letting us in on good buys in gold or diamonds, but these have slacked off, maybe because we have never bought anything from the telephone peddlers.

More lately we have had calls from Dallas and Houston from males and females who call us by our first name and imply that we are old friends. When they finally get around to the point, it is usually some type of sure fire group health and life insurance which we are supposed to recognize as an outstanding buy today. We have disappointed these people, too, because we are simply not in the market for insurance bought over a telephone. We have also had our share of salesmen who call to let us in on wonderful bargains in printing plates or line film. We have had calls from salesmen presenting themselves as representative of a downstate office supply company who finds himself in the awkward position of having shipped a quantity of office supplies to Perryton only to find that their customer is gone. Thus they are prepared to let us have the merchandise at distress prices rather than haul it back downstate.

We suppose it is the American way, and we know that there is no commerce without salesmanship, but we prefer the standard, no gimmick

approach which offers good merchandise at reasonable prices. There are just not that many bargains and he who thinks he is getting something for near nothing is usually disappointed.

A congressman from an eastern state was quoted recently as stating that taking wealth from the Rockefellers and Exxon and giving it to people who need it "isn't communism, it's Americanism." This idea is responsible for the eagerly accepted notion of the windfall profits tax which soaks up 30 percent of the price of a barrel of oil as soon as it comes out of the ground. The windfall profits tax passed easily because of the notion that there is nothing wrong about taking from the rich and giving it to those not so rich. Our income tax structure is based on this notion that it is quite all right to tax away income of the rich because they still have plenty left. The late President Franklin D. Roosevelt, in one of his memorable quotes, once declared that no man should be allowed to make more than \$25,000 a year, that this was plenty. Anything over this should be taxed away and given to the less fortunate.

This has led to the widespread idea that the government ought to pay for everything and manage everything. Our country was developed by people who believed that the more they produce the more they should have. Those who produced less were expected to have less. Equal opportunity but not equal division of the results of productive work was accepted as a fact of life then. The equal rights movement now has been extended to insist that everybody ought to have as much as anybody else regardless of his or her contribution to society, business or progress. Senator Jesse Helms of

North Carolina recently observed that every October, whether they deserve it or not, "federal employees get a pay raise. Everyone gets the same raise as a percentage of salary, regardless of merit."

This is the union principle as well as the civil service principle, to reward workers on the basis of how long they have been there instead of what they produce.

By HAROLD HUDSON
Perryton Herald

Letter to the Editor

Expresses appreciation

Dear Iowa Park Friends & Family, I want to thank you very much for showing me your Christian hospitality on my recent visit to home.

I felt bad after driving around seeing equipment parked not in use. And being told who was going out of business. But after going to our churches there in Iowa Park and seeing how everyone was pulling together to make things work out, made me feel much better. I know now that if any town can survive the unemployment, business failures, general hard times, Iowa Park will because they are turning to the right direction for help.

As you have been told, I will be coming home in March of '85. It all started for me in 1976. It will be nearly nine (9) years of this terrible ordeal. Many things have happened to me in this time. I can truthfully say it has been to my gain as I have come to know the greatest of all Men, Jesus the Christ. I'm sorry for all the pain and problems I've caused everyone.

Thank you for being the friends you are through this.

In Christian Love,
Bobby M. Johnson 06796-023
FCI Institution M/G
3150 Horton Rd.
Fort Worth, Tx. 76119

As I See It....

By BOB HAMILTON



The future of this nation's finances appear more cloudy every day.

That may sound pessimistic from this writer, but if you sit down and think about it, you get chill bumps.

It had become very apparent that the people who are most heard are those who have been affected by cutbacks during the recession our nation has suffered recently. And boy, are the Democrats making hay with it!

When Pres. Reagan took office, he said inflation was the first priority of attention, and it has pretty well been taken care of. The rate has been cut from around 18 percent to six, according to figures I recall.

That is great for a family's outlook. One can make plans to buy something, and not expect it to be out of reach by the time the money is saved, at the present rate of inflation. But a couple of years ago, you didn't know what to expect a price to be 12 months later.

But caught in the middle are those who have been laid off from work. They can't plan on anything.

I especially feel badly about those who were caught in our area, and more directly those who were caught in the oil business. They had little or nothing to do with the economic

situation.

But those in the north, who were making those big salaries in the auto manufacturing business, don't get any attention too much. I can show you a column written only a few years ago where I predicted the auto workers would price themselves out of the market.

And while I'm not too happy about a jobs program like the one to repair highways and bridges, I see some salvation about it. If the bill passes in congress, at least they've found a way to finance it: charging five cents per gallon tax to those who use those highways and bridges.

But now the Democrats are barking about another works program with a mere \$5-billion price

tag. While that might sound good to those out of work, it sure does make those of us who are working, and paying the taxes, sweat.

We shouldn't worry about a \$5-billion project, however, but for the fact that it was just a couple of months ago that the Democrats were hollering about this administration's big deficit. Remember that?

But what's a deficit? According to the National Taxpayers Union, we only owe \$11.6-trillion. Shucks, each of us could just pay the \$145,653 we owe and wipe that out overnight.

I was going to write a bunch more on the subject, but I'm developing a whopping headache. After all, I cringe when I have to pay 42-cents for a cup of coffee.

IOWA PARK LEADER

766280

Bob Hamilton Editor-Publisher
Dolores Hamilton Assistant Publisher
Olive Blalock Reporter
Kevin Hamilton Reporter

The IOWA PARK LEADER is published every Thursday. Offices are located at 112 W. Cash, Iowa Park, Texas, 76367. Telephone: 592-4431. Second class Postage Paid at Iowa Park, Texas, 76367. Subscription rates are \$7 per year in Wichita and Archer Counties; \$9 elsewhere in Texas and Oklahoma; \$11 anywhere else in the United States. Classified advertising rates are 16 cents per word first insertion, 8 cents per word thereafter. Any erroneous reflection upon the character, standing or reputation of any person, firm or corporation which may appear in the columns of this newspaper will be corrected upon being brought to the attention of the publisher.

MEMBER
TEXAS PRESS ASSOCIATION

Correction

Two rolls of fence was stolen from the Optimist Club's Christmas tree lot next to White's Super Store Sunday night, Nov. 21, instead of the home of Allen Shewmake, as reported in the Nov. 25 Leader.

Value on the 175-feet of fencing was set at \$132. Shewmake reported the incident to police.

Christmas Specials

TEKNIKA
19" Deluxe
Color Portable
\$329★
W/T

- * Cable-ready hookup
- * One-button auto color control (5 functions)
- * Separate VHF/UHF control

- * Illuminated channel indicators
- * 2-year picture tube, 1-year parts and labor
- * Sug. Retail \$519

TEKNIKA
12-Inch
Black/White
Portable
\$88★

- * Low power consumption, only 27 watts
- * Quick start picture tube
- * White cabinet with built-in handle

- * 2-year picture tube, 2-year parts and labor
- * Sug. Retail \$149.95

★ Complete Service After The Sale

We have a limited supply of the new recently-delivered plastic phone book covers - Free of charge to those who did not receive one.

VIDEO CARE

(817) 592-5552 P. O. Box 102
Park West Shopping Center
(next to T. G. & Y.)
Iowa Park, Texas 76367

What does a clean filter have to do with saving money?

There are lots of ways to save money. One is to check the filter in your heating and cooling unit once a month.

The filter is there to collect dust and lint. But when it's dirty, your unit has to work longer and harder to heat and cool your home. And that leads to



higher electric bills.

If your filter is permanent, clean it; if it's disposable, replace it. A clean filter can help you save money all year long.

And those other ways to save? You'll find them in "The Unhandy Person's Guide" from Texas Electric. If you need one, call us—or ask for one on the comments portion of your bill.





DOUBLE EVERY WEDNESDAY

DOUBLE COUPONS TUESDAY

FREE BONUS BUYS

- FAMILY PACK ROUND STEAK Lb. \$1.68
- BONELESS CHUCK ROAST Lb. \$1.48
- OSCAR MAYER COOKED HAM 6 Oz. Pkg. \$1.69
- JIMMY DEAN REG. HOT-SPICY SAUSAGE Lb. Pkg. \$1.89
- USDA GOOD LEAN BEEF
- SIRLOIN STEAK Lb. \$1.99
- ARM ROAST Lb. \$1.79
- CLUB STEAK Lb. \$2.39
- FAMILY PACK T-BONE STEAK Lb. \$2.99

DECKER SLICED BACON \$1.79 Lb. Pkg.



LEAN BONELESS STEW MEAT Lb. \$1.99

DECKER ALL MEAT FRANKS 12 Oz. Pkg. 99¢

FAMILY PACK GROUND BEEF Lb. 89¢

DECKER CHICKEN FRIED BEEF PATTIES Lb. \$1.69

CHICKEN of the SEA TUNA IN WATER or OIL 6.5 Oz. Can 89¢



BETTY CROCKER CAKE MIX ALL FLAVORS 18.5 Oz. Box 79¢



BETTY CROCKER RTS FROSTING 16.5 Oz. Can \$1.29



CHARMIN BATHROOM TISSUE 4-Roll Pkg. 79¢

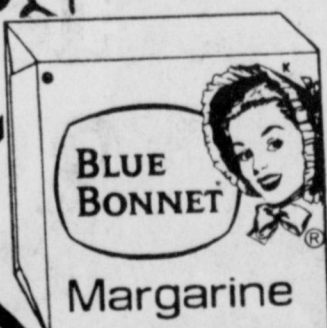


Limit 1 With \$10.00 Purchase or More, Excluding Cigarettes

BLUE BONNET MARGARINE QTRS. 1-Lb. Ctn. 2 \$1.00 For

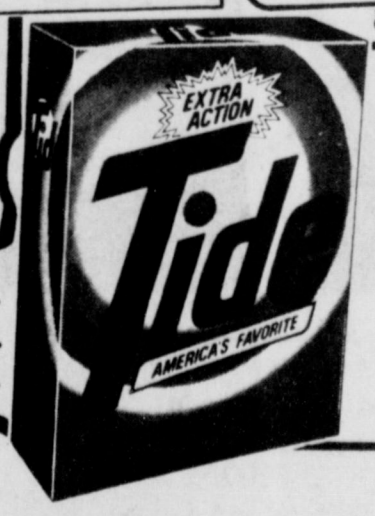


GALA TOWELS 66¢ Jumbo Roll



GOLD MEDAL Flour 99¢ 5-Lb. Bag

FISHERBOY FISH STICKS Lb. Pkg. 99¢



TIDE DETERGENT \$2.99 84 Oz. Box

FRESH GREEN CABBAGE 15¢ lb. TEXAS RUBY RED GRAPEFRUIT 4 For \$1.00

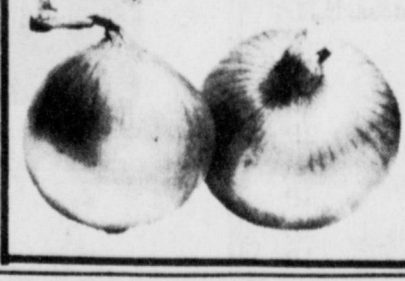
ORANGES \$1.49 4-Lb. Bag

EXTRA FANCY IDAHO ROME APPLES Lb. 39¢



RUSSET POTATOES \$1.19 10-Lb. Bag

MED. YELLOW ONIONS 19¢ lb.



PRICES GOOD THROUGH WEDNESDAY, DEC. 8

Enjoy Coke Mr. PiBB 6 1-Liter Bottles \$1.99 (Plus Deposit)

Enjoy Sprite TAB IT'S SUGAR FREE!

IOWA PARK WHITE'S SUPER STORE

ParkWest Shopping Center Phone 592-4186

Store Hours: 8 A.M. - 8 P.M. Monday - Saturday; 9 A.M. - 6 P.M. Sunday

Free Delivery in Iowa Park

TV SPECIALS

Good Through Saturday

Soundesign AM/FM STEREO RADIO with Cassette Recorder Reg. \$109.95 **\$79**

Soundesign Compact HOME STEREO SYSTEM Reg. \$179.95 **\$148**

20-INCH MX BIKE Boys or Girls \$66

LITTLE HOT CYCLE \$14.88

EUREKA VACUUM CLEANER \$78

GE 17-Inch Portable COLORTV with remote \$378

EVERY TUESDAY IS DOUBLE COUPON DAY

BRING IN ANY NUMBER OF MANUFACTURER'S "CENTS OFF" COUPONS AND WE DOUBLE YOUR SAVINGS. OFFER EXCLUDES RETAILER OR FREE COUPONS, CIGARETTE OR TOBACCO COUPONS, OR REFUND CERTIFICATES. COUPON VALUE CANNOT EXCEED THE VALUE OF THE ITEM. LIMIT RIGHTS RESERVED. OFFER GOOD FOR A LIMITED TIME ONLY!

NOTICE TO SUBSCRIBERS!

The Iowa Park Leader has suspended its practice of mailing individual renewal postcards to subscribers. Instead the Leader will publish a list of readers whose subscriptions are approaching expiration. Subscription prices are listed below, along with a convenient order form which may be clipped, filled out and mailed with payment to the Leader. Renewals and new subscribers must be paid in advance.

**Subscriptions due
to expire
December 15**

A.....	IP	K.....	IP
Herbert W. Adcock	IP	Pete Koonce	IP
Mrs. I.L. Alvey	IP	John C. Kuykendall	Hol.
Charles C. Anderson	IP		
A.N. Arrington	IP	L.....	
Joe D. Ayers	Hol.	Wayne Leslie	WF
		Larry Lilley	WF
B.....		E.H. Little	IP
Bill Baker	WF	Debby Lusk	Kamay
J.C. Beck	WF		
Billy C. Beavers	IP	M.....	
Walter Berbee	IP	A.L. Maag	IP
John Birdwell	Kamay	Mrs. W.T. Mankins	Hol.
Pauline Boutwell	WF	Denny McCarthy	IP
Mrs. B.J. Boyd	IP	Phil McClendon	IP
M.J. Brandt	IP	Vida McClendon	IP
James C. Bridges	IP	O.S. McLemore	IP
Harry Brott	IP	Manuel Moyer	IP
Mrs. Harroll Brown	IP	Ruth Mulhauser	IP
		Edward Myers	IP
C.....		N.....	
Delbert Catlin	IP	Oleta North	IP
Jim Clapp	IP		
Danny Colwell	IP	O.....	
Donald Cook	IP	Mrs. Johnnie Ozee	IP
Preston Cowart	Portland, Ore.		
Roy Crabtree	Arlington, TX	P.....	
Duffey Cribbs	WF	James Pitcher	Hol.
M.W. Crumpton	IP	Troy Powell	IP
		Mrs. Joe Poynor	Kamay
D.....			
Mrs. Herbert W. Davis	IP	R.....	
Don Dowell	IP	Buster Reaves	IP
Eldon Dowell	IP	Mrs. G.F. Richter	IP
D.L. Dick	Duncanville, TX	G.W. Riley	Kamay
Gary Dillard	Hol.	R.T. Robinson	IP
		C.W. Rowell	WF
E.....		S.....	
Keith Edwards	Dallas	E.E. Sargent	IP
Robert W. Edwards	Houston	Ben Scales	WF
Mrs. Elsie Evans	Weatherford	School - Junior Hi Library	
		School - Administration Bldg.	
F.....		Randall Schramm	IP
Ralph Finney	IP	Michael W. Sewell	Radford, VA.
Lonnie Fischer	IP	Darell Shierry	IP
Pamela Foreman	Houston	Ricky Sidlauskas	Gainesville
Robert Forney	WF	Bill Stiver	IP
Tommy Fulbright	IP	Mrs. Ed Stolper	IP
		Glenn Stout	IP
G.....		Bill Swan	WF
W.A. George	IP		
Mrs. W.F. George	IP	T.....	
Ray Gholson	IP	Eunice Templeman	IP
George Gunter	IP	Mrs. Lavere Thompson	IP
		Cecil Turner	IP
H.....		W.....	
Dee Hankins	IP	Gerald Walsh	IP
Maggie Hasten	IP	Bob Walter	Ruidosa, N.M.
Mrs. Willie L. Herrell	IP	Earl Watson	IP
Donald Hill	IP	E.T. Wells	IP
Jackie Hodges	IP	Mrs. Hubert Weseman	IP
N.A. Hodson	IP	James Whitaker	IP
Ronald L. Hubert	IP	Kenneth Wilkinson	IP
Jim C. Huff	IP	Dale Williams	IP
		Mrs. Raymond Williams	IP
I.....		Sam Willingham	IP
Albert Inteman	WF	Mrs. Dick Wolfe	Archer City
		A.J. Wood Jr.	IP
J.....		Stanley C. Wright	IP
Garry Johnson	WF		
Nelson Johnson	IP		
Tanya Jones	IP		

Wichita and Archer Counties.....\$7.00
Elsewhere in Texas & Oklahoma.....\$9.00
Elsewhere in the United States.....\$11.00

To: Iowa Park Leader
Box 430
Iowa Park, Tex.
76367

PLEASE CHECK ONE:

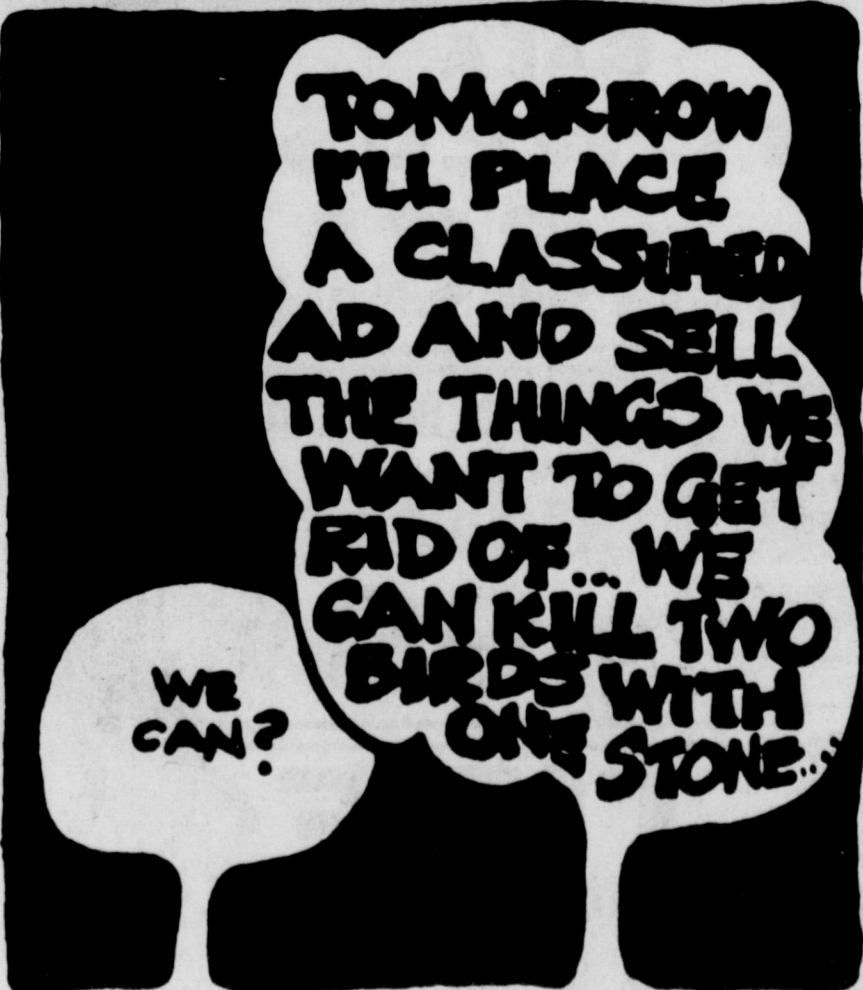
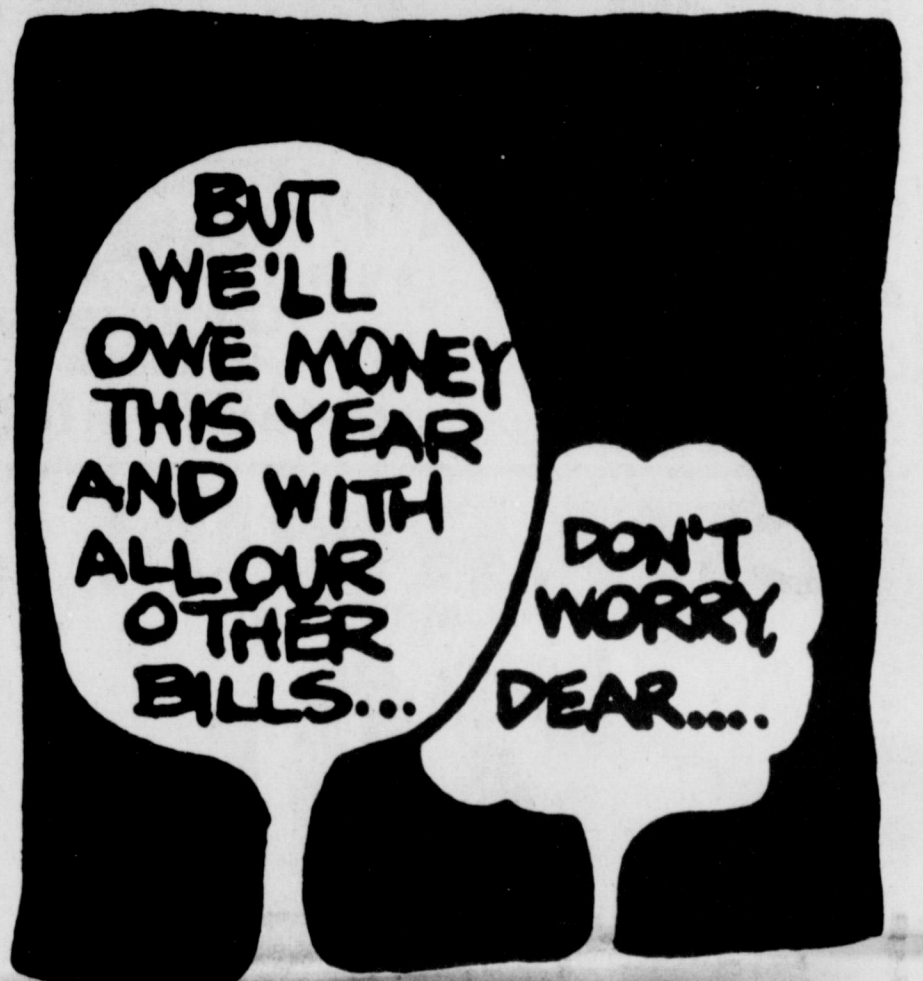
- New
 Renewal
 Change
of Address Only

\$ _____ Enclosed

(Name)

(Address, P. O. Box, or Route No.)

(City) (State) (Zip Code)



IOWA PARK LEADER

Our classifieds aren't cheap.

But at 10¢ e per word, cash in advance

.....they're inexpensive.

THIS AD GOOD
THRU SUNDAY
DECEMBER 5

IOWA PARK, TEXAS STORE ONLY

300 W. BANK

592-5321

AFFILIATED

SUPER JACKPOT

\$600.

Drawing to be held Dec. 4-4 p.m.

SUPER FINE FOODS

We Reserve the Right to Limit Quantities

Shurfine
Pork Sausage
2 Lb. **2⁷⁵**
1 Lb. **1³⁹**



USDA Boneless
Chuck Roast
Lb. **1⁴⁸**



Best of the Steaks
Ribeye Steak
Lb. **3⁹⁹**

Select Sliced
Beef Liver
Lb. **59¢**

Smoked
Jowls
Lb. **99¢**

Siber Sun
Sliced Slab
Bacon
Lb. **1⁵⁹**

Family Pack
Round Steak
Lb. **1⁶⁸**

Family Pack Lean
Pork Steak
Lb. **1²⁹**

Family Pack
Assorted
Pork Chops
Lb. **1³⁹**

Our Beef Is "Naturally Tender"

PEAK Antifreeze
1 Gal. **2⁹⁹**
Limit 2




Shurfine
Lowfat 1 1/2% Milk
1 Gal. Jug **1⁷⁹**



Del Monte
Tomato Sauce
6/1⁰⁰
Limit 6



Shurfine
Coffee
1²⁹
Limit 1



Fox Deluxe
Assorted
Pizzas
99¢



Sunkist
Ruby Red Bagged
Grapefruit
5 Lb. Bag **79¢**



- DEL MONTE Cut or French Style **Green Beans** 16 Oz. Can **3/1²⁹**
- DEL MONTE Leaf **Spinach** **3/1²⁹**
- DEL MONTE Sweet **Peas** **3/1³⁹**
- LUCK LEAF 23 oz. **Lemon Pie Filling** Can **1⁰⁹**
- CARNATION 12 **Hot Cocoa Mix** Envelopes **1³⁹**

- DEL MONTE Cream Style or Whole Kernel **Corn** 17 Oz. Can **3/1²⁹**
- DEL MONTE Whole New **Potatoes** **3/1²⁹**
- TIDE **Detergent** 84 Oz. Box **3⁴⁹**

- SCOTT **Jumbo Towels** **69¢**
- EVEREADY Energizer **Battery** **1⁸⁹**
- SHURFINE **Tea Bags** 48 Oz. **89¢**
- AMERICAN BEAUTY **Flour** 5 Lb. **78¢**
- Frozen Food & Dairy Specials**
- CHIFFON Soft Stick **Margarine** **2/88¢**
- SHURFINE FROZEN **Orange Juice** 16 Oz. **1¹⁹**
- PET-RITZ Assorted **Cobblers** 26 Oz. **1⁷⁹**

- FRESH Green **Cabbage** Lb. **9¢**
- EXTRA FANCY RED ROME **Apples** Lb. **39¢**
- BAKER RUSSET **Potatoes** 4 LBS **1⁰⁰**
- TWO POUND BAG **Carrots** Ea. **49¢**
- Drink Refreshments**
- 7UP** 32 Oz. 6 Pack Plus Deposit **1⁵⁹**
- Reg. & Sugar Free **1⁵⁹**
- Reg. or Sugar Free **Pepsi & Mountain Dew** 32 Oz. 6 Pack Plus Deposit **1⁵⁹**

- Jackpot Winners for Week 3**
- *300 - Dean Hodge
 - *100 - Ernie Reusch
 - *50 - Francis K. White
 - *50 - Vickie Perry
 - *50 - Sherry L. Jones
 - *50 - Clara Austin
- All Local Winners—

Budget Stretching Prices Down Each Aisle!

Obituaries



Lena Ruth Spruiell

Services for Mrs. Lena Ruth Spruiell, 89, who died Monday in a Wichita Falls hospital, were Wednesday afternoon at the Iowa Park Church of Christ, Boyd Taylor, a Church of Christ minister of Garland, and Rev. Ken Cole, pastor of Iowa Park Faith Baptist Church, officiated. Burial was in Highland Cemetery under direction of Tanner-Aulds Funeral Home.

A native of Roscoe, she was born June 13, 1893. She married Hill Spruiell Dec. 24, 1911 at Sweetwater and had lived in Iowa Park since 1919 moving here from Hubbard. She was a member of the Church of Christ. She and her husband, who died June 18, 1975, were the organizers of the Iowa Park Senior Citizens.

She is survived by six sons, Joel, Dewey, Dan, Glen, Bill and Walter, all of Iowa Park; a daughter, Mrs. Evelyn Oualline of Oklahoma City. One son, Jack, preceded her in death. Other survivors include a brother, Clyde Nunn of Sweetwater; two sisters, Fannie Bonner of Sweetwater and Mary Allen of Rotan; 21 grandchildren and 23 great-grandchildren.

Grandsons were pallbearers.

Velma Metz

Services for Mrs. Velma Metz, 74, a former resident of Iowa Park, were Tuesday afternoon at the First Christian Church in Ada, Okla. Rev. Paul Mills officiated and burial was in the Vamoosa Cemetery.

Mrs. Metz and her late husband, Derrell, lived here in the mid 1930s when he operated a cafe with his brother, C.L. Metz. She was born Nov. 6, 1908 in Sasakwa, Okla.

Survivors include a daughter, Derrelyn Sue Marshall of Houston; a son, Fred Metz of Pacifica, Calif.; a brother, John Vance of Ada, Okla.; a sister, Mrs. J.C. Cobb of Tishomingo, Okla.; and a grandson.

Mr. and Mrs. C.L. Metz and Mr. and Mrs. Jim Medlinger attended the funeral service.

Completes training in vehicle repair

Airman Robert E. Richard Jr., son of retired Air Force Staff Sgt. and Mrs. Robert E. Richard Sr. of 1000 Lanelle Drive, has graduated from the U.S. Air Force vehicle repair course at Chanute Air Force Base, Ill.

Graduates of the course learned to service and repair general purpose vehicles used by the Air Force, and earned credits toward an associate degree in applied science through the Community College of the Air Force.

Richard will now serve at RAF Bentwaters, England, with the 81st Transportation Squadron.

He is a 1981 graduate of Iowa Park High School.

Pantry pest control measures

By BARBARA CORNELIUS
County Agent

The presence of small beetles or moths in the home could indicate the presence of pests that have made your home theirs. These insects are often called "pantry pests" because they attack stored food products. They attack breakfast cereals and other cereal grains, bread, macaroni, dried fruit, nutmeats, dry pet food, cornmeal, seeds, chocolate and other food materials.

The source of the infestation usually is a food package that was infested along the way from the producer to the manufacturer to the home. When an infested package is in the cupboard for a long time period, the insects often escape to infest other foods. Many pantry pests are able to bore into or enter uninfested packages through extremely small cracks.

Stored product pests are usually beetles or moths. The beetles are about one eighth inch in length and are gray, brown, black or reddish

brown. The moths are about 1/4 to 1/2 inch in length and have a wingspan of less than one inch. Beetles feed on stored products as both adults and larvae and only the larval stages of moths feed on these products.

If beetles or moths are present search for the infested material and destroy it. Infested product boxes may have small exit holes. Seed heads in dried flower arrangements are also a possible source of infestation.

Stored product pests can be killed by placing infested material in the freezer at 0 F for seven days or longer or by heating the material in a shallow tray at 120 F for 30 minutes or 140 F for 15-20 minutes. The dead insects can then be sifted out. By storing susceptible items in tight containers or sealed in heavy plastic, infestation or reinfestation can be prevented.

When insects have become widely distributed, it may be necessary to spray with an insecticide. After removing all food dishes and thorough cleaning of the storage area, a household aerosol containing Dursban, diazinon or Baygon can be used to spray, shelves, drawers or cabinets. Special attention should be paid to cracks and crevices in cleaning and insecticidal treatment.



Fri., Dec. 3 - Hamburgers, fixin's, French fries, ice cream.
Mon., Dec. 6 - Chicken nuggets, hominy, broccoli, apple pie.
Tues., Dec. 7 - Macaroni/cheese & ham, green beans, stewed tomatoes, chocolate cake.
Wed., Dec. 8 - Roast beef, potatoes, peas, peach pie.
Thurs., Dec. 9 - Lasagna, mixed vegetables, salad, cherry cake.

Friendly Door members who will observe their birthdays in December were honored at a birthday party Wednesday. Included in the group were Gladys Thompson, Kathryn Ford, Irene Sargent, Helen Reed, Ruby Good, Mildred McLemore, Marge George, Nina Graves, Larry Balsley, Lois Berg, Mae Shelton, Eula Johnson, Hester Hofer, Hilda Thompson and Aubrey Robertson.

The monthly blood pressure check will be held Dec. 14. Special activities scheduled for the month include a program on "Remembering Christmas" by Judy Keddy Dec. 15, a finger foods party Dec. 17 and the annual Christmas dinner Dec. 21.

The center will be closed Dec. 24 through Dec. 27, according to Myrna Robinson, site manager.



IOWA PARK SCHOOL MENU

Fri., Dec. 3 - Tacos w/cheese, meat or cheese sandwich, soup, lettuce & tomato salad, buttered corn, chocolate & plain milk, dessert.
Mon., Dec. 6 - Corn dog, meat or cheese sandwich, soup, macaroni & cheese, blackeyed peas, dill pickles, chocolate & plain milk, dessert.
Tues., Dec. 7 - Lasagne, meat or cheese sandwich, soup, tossed salad, fried okra, hot rolls & butter, chocolate & plain milk, dessert.
Wed., Dec. 8 - Char-burger, meat or cheese sandwich, soup, French fries, macaroni & cheese, chocolate & plain milk, dessert.
Thurs., Dec. 9 - BBQ brisket, meat or cheese sandwich, soup, potato salad, pinto beans, hot rolls & butter, chocolate & plain milk, dessert.

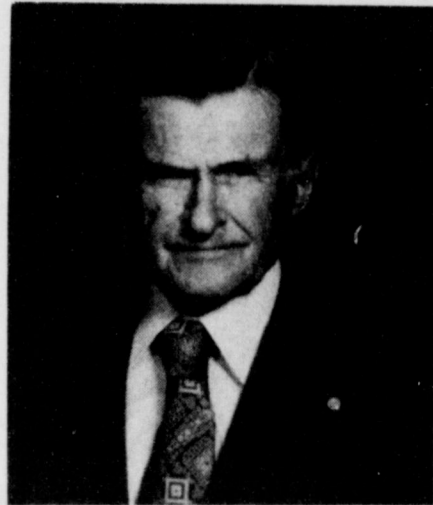
J.C. Pendergrass

Services for J.C. Pendergrass, 67, who died Sunday in an Archer City hospital, were Tuesday morning at Aulds Funeral Home of Archer City, with Rev. Wallace Pierce, pastor of Faith Memorial Baptist Church, officiating. Burial was in the Archer City Cemetery.

He was born Sept. 22, 1915, in Wilbarger County. He was a retired carpenter and served in the Army in World War II.

Survivors include his wife, Oleta; a son, Jimmy of Iowa Park; a stepdaughter, Fay Hinkle of Amarillo; three sisters, Annie Baxter of Wichita Falls, Lucy Gensler of Dallas and Helen Tedrow of Megargel; four brothers, Frank of El Paso, Tom, T.C. and Troy, all of Iowa Park; three grandchildren, two

The new baby's grandmothers are grandchildren and three great step-grandchildren.



Wilbur Edwin Karstetter

Services for Wilbur Edwin Karstetter, 86, were held Wednesday morning at First Baptist Church with Rev. Hal Farnsworth, pastor, and Rev. Jack Darnell, pastor of Wichita Falls First Church of God, officiating. Burial was in the Electra Memorial Cemetery under direction of Tanner-Aulds Funeral Home.

He was born May 7, 1896, in Latham County, Mo. He was a retired oil pumper who worked 37 years for Gulf Oil Co. He had lived in Iowa Park 27 years. He was a member and deacon of First Baptist Church, and a member of the Noon Lions Club.

He is survived by his wife, Mabel; three sons, Edwin Lee of Waco, Howard Bruce of Houston and Malcolm Ray of Iowa Park; a stepdaughter, Kathryn Knecht of Iowa Park; a brother, John of Burkburnett; two sisters, Edith McCullough of Poteau, Okla. and Ruby Carlton of Midwest City, Okla.; seven grandchildren and five great-grandchildren.

Pallbearers were Charlie Helms, Joe Singer, C.B. Smith, Wayne Williams, Pat Green and Jimmy Miller.

Welcome To The Worship and Fellowship of First Presbyterian Church

CHURCH SCHOOL - 9:45 A.M.
FELLOWSHIP Time - 10:40 A.M.
MORNING WORSHIP - 11:00 A.M.

Norman D. Nettleton, Pastor 211 So. Yosemite

Kamay Road Church of Christ

Corner of Colorado & Emerald
Seeking the Old Paths
Lord's Day 10:30 a.m. & 6 p.m.
Wednesday 7:00 p.m.

-WELCOME-
ASSEMBLY OF GOD
S. Yosemite
9:45 S.S./7 P.M.
Wed. 7 P.M. Service
Rev. Charles Hensley,
Pastor

Good Shepherd Lutheran Church

1st & Magnolia Iowa Park
Sunday School: 9:45 a.m.
Worship Service: 10:30 a.m.



IOWA PARK CHURCH OF CHRIST

SCHEDULE OF SERVICES
Sunday 9:30 a.m. Bible Study
10:30 a.m. Worship
6:00 p.m. Evening Worship
Wednesday 10:00 a.m. Ladies Bible Study
7:30 p.m. Evening Study

* Study the Bible in the privacy of your own home. Write for a FREE Bible Correspondence Course and enrich your life: Church of Christ, P.O. Box 520, Iowa Park, Texas 76367

300 East Park, Iowa Park, Texas 76367, (817)592-5415
L. KEITH PARKER, PREACHER



Dear Santa, Please bring me a record and book, S.S. Friend, Necklace Dolly dolbed pillow, dress Jennifer Eiben

Dear Santa, Please bring me a dolly and book, S.S. friend, necklace, doll bed, pillow, dress Stacy Eiben

Dear Santa, I want a Smurf Watch, a Baby doll and a Smurf sleeping bag. Please bring me some Smurf pajamas and bring my sister Lisa an E.T. doll and a sleeping bag. I have Been a good girl. Tell Mrs. Claus and your-elf's how. Bring my Parents Something too. I Love you very much. Love, Jolene Hodges age 7 - grade 2



Edwina Paige, a nine pound, seven ounce daughter, was born to Mr. and Mrs. James Blair of Wichita Falls November 14. Mrs. Blair is the former Paula Stolper.

The new baby's grandmothers are Mrs. Peggy Stolper of Iowa Park and Mrs. Mary Blair of Wichita Falls. Great-grandparents are Mrs. Bertha Blair of Iowa Park, Mrs. Roda Reed of Holliday, Mrs. Lorena Parker, Mr. and Mrs. S.J. Splawn of Wichita Falls.

Count on the Classifieds to Do the Job

Christ The King Catholic Church

First and Clara
8:45 A.M. Sundays 10:00 A.M. C.C.D. & Bible Study

Grace Baptist Church

511 S. Colorado - 592-5632
Come Let Us Reason Together Saith The Lord
Sunday School . . . 10:00 A.M.
Morning Worship . . . 11:00 A.M.
Children's Worship . . . 11:00 A.M.
Evening Worship . . . 6:30 P.M.
Wednesday Service . . . 7:30 P.M.
Jimmy Johnson, Pastor

Church of God

601 E. Cash
Pastor - Ole Olds
Sun., Morning Worship 11:00
Sun. Night, Celebration Service 7:00 p.m.
Tues., Ladies Prayer Service 10 a.m.
Wed. Night Bible Study 7:30
Sat. Family Night 7:30
"Catch the Vision" Office 592-4348
Par. 592-5316

FIRST CHRISTIAN CHURCH

[Disciples of Christ]

DALE L. WALLING
105 E. Cash 592-4513
You are cordially invited to worship with us each Sunday.
Church School 9:45 a.m.
Worship 10:55 a.m.
YOUTH PROGRAM 6:00 p.m.

PROTECT Your Valuable Home from

• Washed-out lawns and flower beds
• Damage to foundations from water seepage
• Rotting and staining of home exterior

SEAMLESS GUTTERS do not rust or leak!

FOR FREE ESTIMATES CALL:
Harold Stengel 592-5121

DAVIS CONTINUOUS GUTTERING

AVOID THE COST OF NEGLIGENCE!

Kmart
THE SAVING PLACE

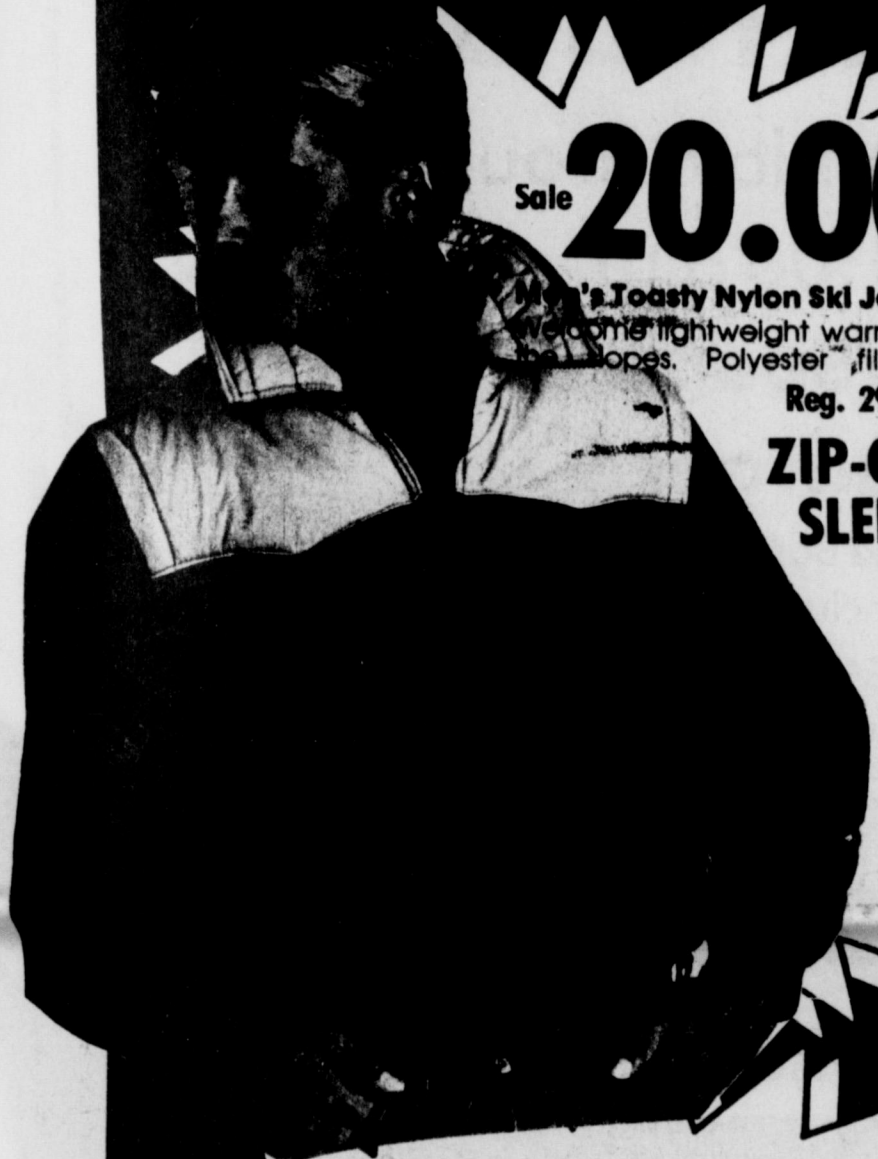
SALE ENDS SAT.
DECEMBER 4, 1982
OPEN DAILY 9:30 - 9



CLOSED SUNDAY

K mart® ADVERTISED MERCHANDISE POLICY
Our firm intention is to have every advertised item in stock on our shelves. If an advertised item is not available for purchase due to any unforeseen reason, K mart will issue a Rain Check on request for the merchandise to be purchased at the same price whenever available or will sell you a comparable quality item at a comparable reduction in price. Our policy is to give our customers "satisfaction always."

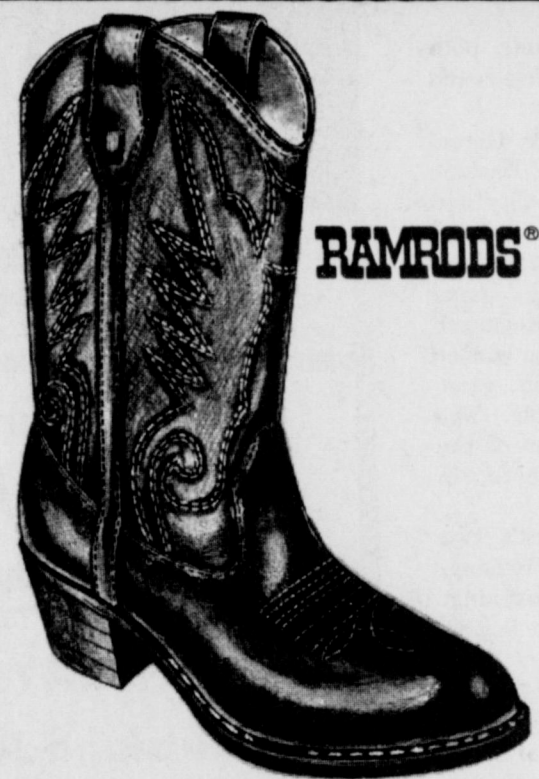
SALE



Sale **20.00**

Men's Toasty Nylon Ski Jacket
Weighs the lightweight warmth on or off the slopes. Polyester fill, zip front.
Reg. 29.96
ZIP-OFF SLEEVE

We've Declared War On High Prices!
Combat Inflation and Fight Back With These Explosive Values!

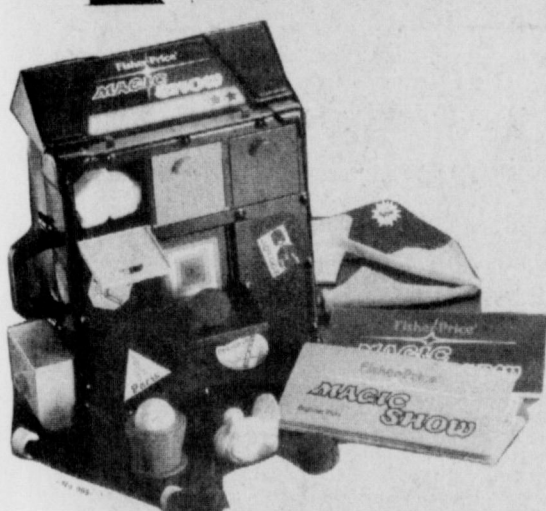


RAMRODS®

15.90

Men's 12" Cowboy Boots For The Style That Won The West
Add an interesting variation to your footwear wardrobe. Rugged vinyl, inside and out, plus authentic-looking western cowboy heel, tear-drop pull-tabs and steel-shank support for quality and comfort.

While Quantities Last On All Items



Fisher Price
Magic Show

Sale **12.96**

A magic show especially designed to make magic simple for children. Set has many crowd-pleasing tricks. Self-contained trunk has sliding panels, false doors, cunning compartments and stores accessories. Two instruction booklets containing beginner, intermediate and expert tricks are included. 5 yrs. and up.



Misses' Sizes

Ladies
Fashion Tops

Sale **4.00**

Reg. 6.96

Classic V-neck Styling, fashion shades



35 Lites
Deluxe Tree Light Set

Sale **3.96**

Reg. 5.96

Clear or Assorted color lights.



6 foot American Pines
Foldaway Christmas Tree

Sale **19.96**

Reg. 29.96

Scotch Pine, 54 branches, 90 Tips, Stk. No. 72-90-66



Handy Steel
Car Ramps

Sale **13.88**

Reg. 19.44

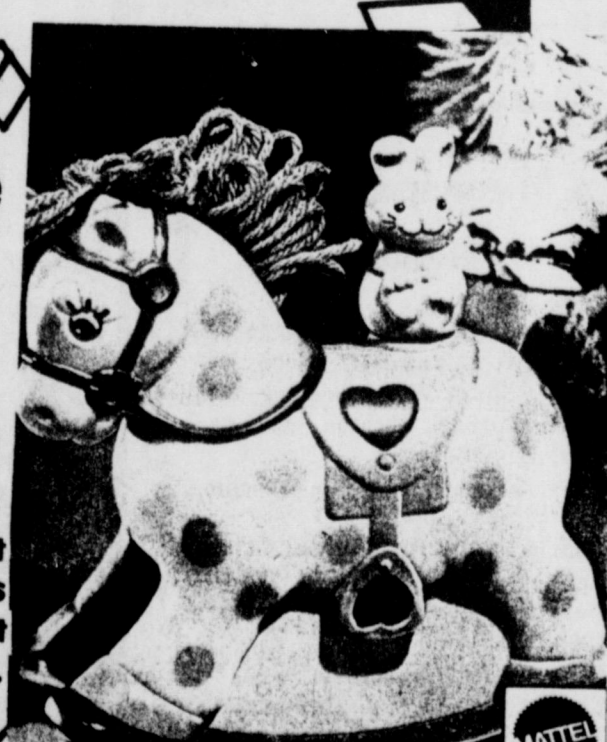
Built-in wheel cradle and slip-resistant incline. Ideal for all-around use.

Mattel
Rock-A-Bye Pony

Sale **13.96**

Reg. 19.96

Colorful pony adjusts to fit most cribs, Rocks and plays a soft lullaby for about 15 minutes.



Attention Shoppers!

K-MART WILL NOT BE UNDERSOLD!

Present any competitors at the checkouts and K-Mart will meet the price on any identical item if the merchandise is available in our regular stock.

3-Roll Pkg.
Gift Wrap

Sale **1.97**

Reg. 3.97

Gift wrap paper in festive Christmas designs. 30 inch X 16 foot rolls, 120 sq. ft.

Pistachios

Sale

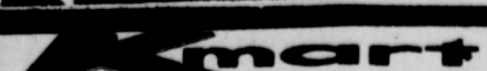
1.77

Reg. 2.47

8-OZ. Pkg.

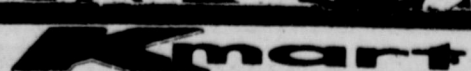
All Boxed
Christmas Cards

25% OFF REG. PRICE



2805 Southwest Parkway
Wichita Falls, Texas

2047 Loop II
Wichita Falls, Texas



Hawkettes rolling with second victory

The rolls have been reversed for Iowa Park varsity basketball teams this year.

Where the Hawkettes were having their problems at the start of the 1981-82 basketball season while the Hawks were rolling along, its the boys who are having their troubles getting on the winning side this season and the girls are undefeated.

The Hawkettes extended their record to 2-0 here Tuesday night with a 57-33 win over Nocona. But Friday night at Graham, the Hawks suffered their second loss in as many starts, losing to the Steers 52-51.

Coach Ray Sefcik's Hawkettes almost ran away and hid from Nocona, taking a 27-8 halftime lead

and extending that to 40-14 by the end of the third period, before clearing his bench for the last stanza.

Lisa Yeakley led local scoring with 22 points and Lisa Selby had 10.

Iowa Park girls swept the triple-header, with the junior varsity winning 36-22 and the freshmen 45-17. Becky Brown and Rhoda Gibson were high pointers in the JV game with nine and seven points respectively. Tanya Barrick and Crystal Lewis had eight each in the freshman game.

Monday at Hirschi, the freshmen lost 52-50 in overtime, after being down by 20 points at one point in the contest. Barrick had 15 while Kathy Cockburn and Laura Parker scored 11 each.

Graham found the home court helpful, jumping to a 19-11 lead by the end of Friday's first quarter. But the Hawks charged back and pulled to within one point, 27-28, by halftime. The game was nip and tuck the rest

of the way, with the Hawks leading 39-38 after three periods. Iowa Park had a chance to win in the latter seconds of the contest, but couldn't get a shot to fall into the nets.

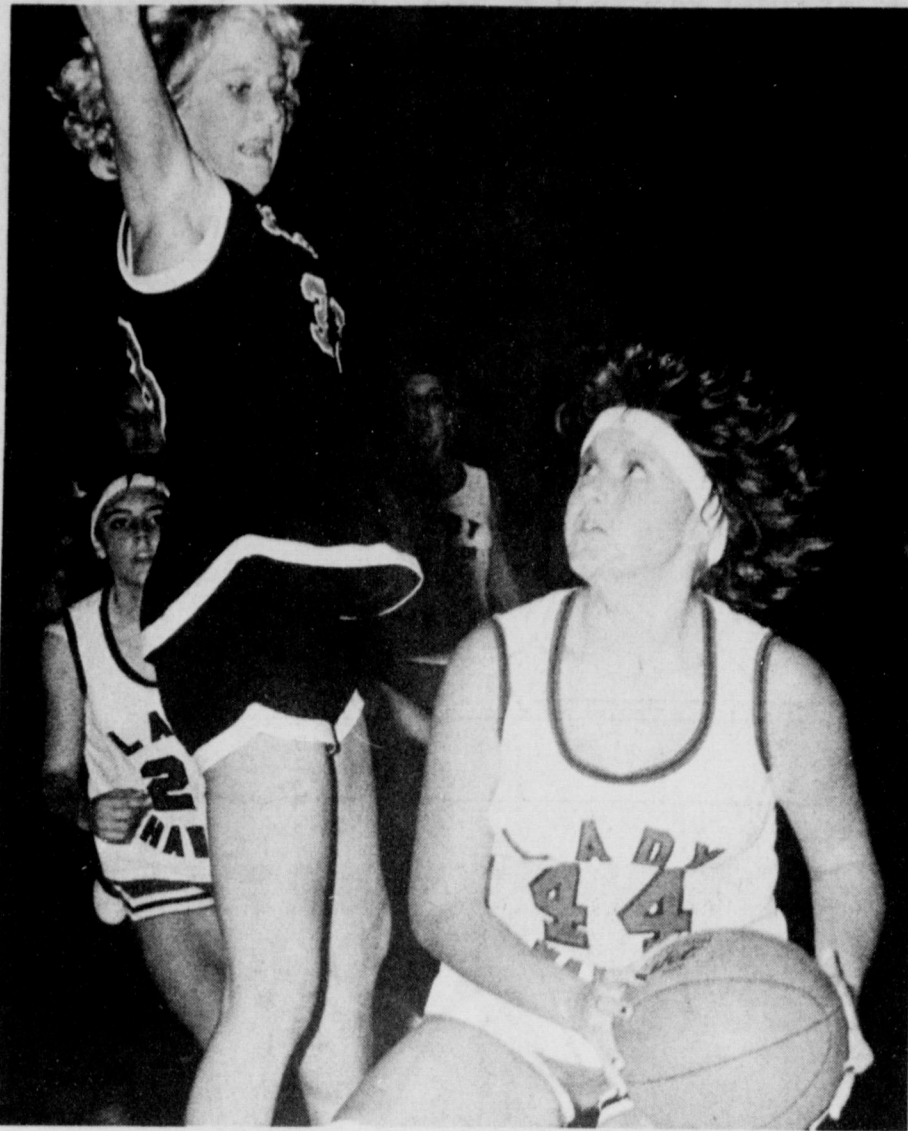
Iowa Park outscored the hosts 22-21 in field goals and shot well from the foul line, canning seven of eight attempts. But 16 fouls on the Hawks gave the Steers 15 shots at the charity line, and they connected on 10 of them, enough for the margin of victory.

Marc Klinkerman was the only other Hawk in double figures, 11.

Graham also won the junior varsity game 40-28.

Kevin Bidy was high scorer for Iowa Park with 20 points. Marc Klinkerman was the only other Hawk in double figures, 11.

Graham also won the junior varsity game 40-28.



LISA HOLLOWAY DRIVES FOR TWO-POINTER ... Hawkettes defeated Nocona, 57-33.

Iowa Park, Holliday could meet at Seymour

Iowa Park and Holliday varsity basketball teams could meet Friday in the second round of tournament play at Seymour.

Playing in 10-team brackets, both Iowa Park teams drew first-round byes.

Other teams entered are Goree, Throckmorton, Megargel, Haskell, Electra, Seymour, Archer City and Benjamin.

Holliday girls play Megargel at 5 this afternoon, and the boys' game follows at 6:30, also against Megargel.

Iowa Park girls take on the winner of the Goree-Throckmorton game today, at 8 a.m. tomorrow. The Hawks will play the winner of the same schools at 9:30, both in second-round play.

The winner of Iowa Park's two games will take on the Holliday-Megargel winners Friday evening. The girls' game is to start at 8 p.m. and the boys' at 9:30.

In the losers' bracket, should the Hawkettes lose their first game, they will meet the loser of the Holliday-Megargel game at 1 Friday afternoon. The boys' game 3:30.

First-round pairings in the bottom half of the bracket are Haskell-Electra, Seymour-Archer City and Benjamin drew a first-round bye.

Third place final will be played at 2 p.m. Saturday in the girls' bracket and 3:30 in the boys'. Consolation games will be at 5 and 6:30, with championship games slated to be played at 8 and 9:30 that evening.

Turkey shoot slated Saturday

A turkey shoot will get underway at 10 a.m. Sunday one mile north of the Kamay post office.

Sponsored by the Whitaker Gun Club, hams and turkeys will be prizes. Shells, food and drink will be available, according to Larry Whitaker.

Municipal Court Records

Results of municipal court held here Nov. 24 and Dec. 1 were: Jeffrey Shane Wise, speeding, \$52; Susan Burbank Ashton, disobeyed stop sign, \$31; Joyce Elizabeth Wilson, speeding, \$35; Dennis Reed Bogart, failed to yield right of way, \$31; Guadalupe G. Arrendondo, speeding, \$36; Kathy Dawn Wagner, speeding, \$31; Charles Jay Baggett, speeding, \$56; Timothy Frank Smith, speeding, \$35; Donald Scott Owen, no proof of liability insurance, \$81; Larry Bryan Boydston, speeding, \$53; Charles Jay Baggett, speeding, \$36; Lawrence Ray Frantz, speeding, \$32; Terry Duane Nault, disobeyed stop sign, \$31; Jerry Roy Stansbury, speeding, \$32; Brant Adrien Baugh, disobeyed stop sign, \$31; James Lynn Mann, speeding, \$31; Jeffrey LeRoy Hensley, speeding, \$32; Dayna Denean Daugherty, speeding, \$42; Billy Joe Harrington, speeding, \$35; Millicent Ann Jones, speeding, taking Defensive Driving Course; Stephen Joe Jones, speeding, \$33; Jackie Darlene Smith, speeding, taking Defensive Driving Course.

Little Richard's
Salt Lick Restaurant
510 E. Hiway 592-5252

THURSDAY & FRIDAY SPECIAL
Louisiana Jumbo Fried Shrimp

Monday - Friday
11 a.m. - 9 p.m. Video Games

Frisco Burger

\$1.64 Reg. \$1.85



805 West Highway

FORTAKE OUT ORDERS

CALL 592-4731

LUNCHEON BUFFET

ALL YOU CAN EAT

Monday through Friday

11:00 a.m. - 1:30 p.m.

Pizza, Spaghetti, Rigatoni & Buffet

Complete Salad Bar With Over 35 Items Including Soup

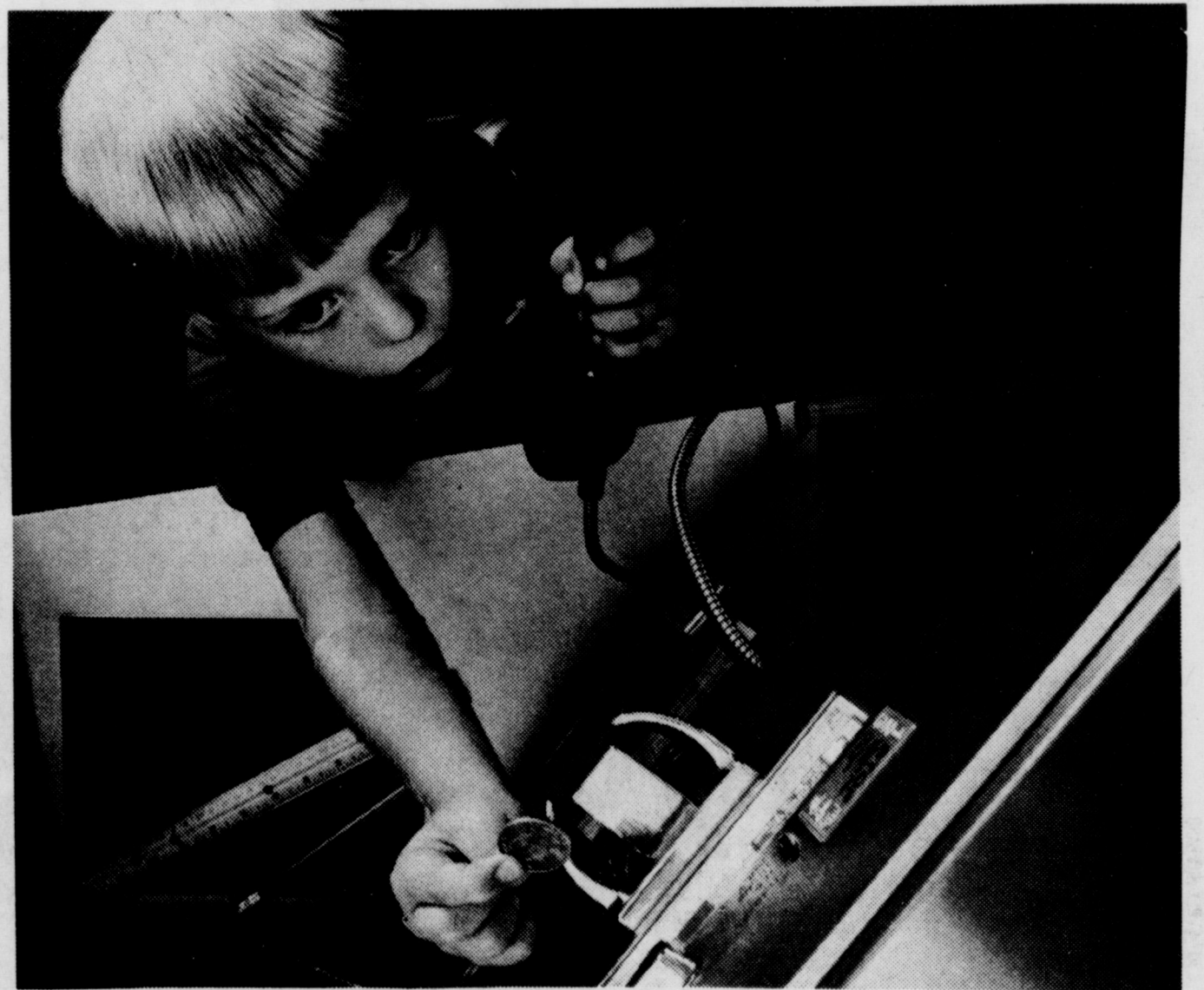
FREE TEA WITH BUFFET
December 2-9 Only

\$3.39
PER PERSON

ken's PIZZA

PIZZA BY THE SLICE

When Your Child Needs You...



Make Sure You're Only A Call Away.

You never know when a youngster may need to call from a coin phone. So, it's a good idea to have your child keep a quarter handy to telephone.

Southwestern Bell has a card for that purpose. It's called a "Quarter Keeper."

In addition to a slot designed to hold a quarter, it includes names and numbers to contact during an emergency.

To order your "Quarter Keeper," just complete the coupon.

The card reminds your child you're only a phone call away.

Southwestern Bell

... at your service for 100 years.

'Super Bill' to be speaker

"Super Bill" will be guest speaker for the annual Iowa Park Hawk football banquet, sponsored by the Booster Club.

President Norman Hodges said Tuesday he had confirmation that Bill Bradley, former outstanding player at the University of Texas at Austin and the Philadelphia Eagles, will speak at the Jan. 15 event.

Tickets will go on sale to the public about the first of January, Hodges said.

Bell Quarter Keeper

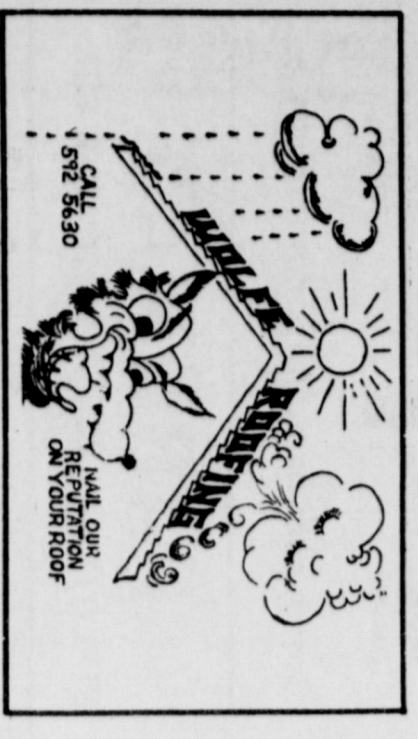
Yes! I'd like to request my Quarter Keeper. I understand this request places me under no obligation. Please send to:

Name _____
Address _____
City _____
State _____ Zip _____

Mail to:
Quarter Keeper
P.O. Box 225265
Dallas, Texas 75265

SATURDAY

- 8:45 **INSTRUCTIONAL SERIES** "Basketball: Part 1: Handling and Dribbling." Guest: Paul Smith. By: Henry. (R)
- 9:00 **WCS WAGNET LOT**
- 9:00 **MONA & MARY / LAWRENCE & SHARLEY**
- 9:05 **SEXUAL STREET (R)** (1970) Albert Finney, Ann Giblin. Based on the novel by Lawrence Sanders. A man and a woman meet in a high-rise apartment building on Christmas Eve.
- 9:30 **THE CAROL COLLEGE SHOW**
- 10:00 **JOHN BAKER**
- 10:00 **ROBERT AND COSTELLO**
- 10:00 **FUTURE SPORT** A scientific exploration of athletic performance which can aid athletes in improving their performance. (R)
- 10:00 **PROFESSOR HALL / MATHIAS**
- 10:00 **SUPERMAN**
- 10:00 **STACY & SCARLETT DOO / PIPPI**
- 10:00 **ELECTRIC COMPANY (R)**
- 10:00 **THE NEW HEATS** Len Dawson and Nick Buntzner's highlights of the previous week's NFL games and interviews by players and coaches.
- 10:30 **SN SCHOOL** Tips for better skiing. (Filmed at Killington, N.H.) (R)
- 10:30 **HEALTHY & SPACIOUS**
- 10:30 **VOYAGE TO THE BOTTOM OF THE SEA**
- 11:00 **MASTER ROGERS (R)**
- 11:00 **JACK WAGNER**
- 11:00 **THE EATONS**
- 11:00 **NCA TODAY**
- 11:00 **WEEKEND SPECIALS** "After the job is done, for a lot of glory, for the world's deplorables." (R)
- 11:00 **SOCIOLOGY**
- 11:00 **HEAVENLY DOG** (1980) Chevy Chase, Betty White. While treating a political scandal in London, a private detective is murdered and then carried as a scrutiny dog. PG
- 11:05 **MOVIE** "The Power and the Glory" (1956) William Holden. Deborah Kerr. Producers argue when a young widow falls in love with a Marine. (R)
- 11:30 **STARS OF THE TREES**
- 11:30 **FLM Highlights of Super Bowl IX** Minnesota Vikings vs. Pittsburgh Steelers
- 11:30 **NCA FOOTBALL** Army Cadets vs. Navy Midshipmen from Veterans Stadium in Philadelphia, Pa.
- 11:30 **CALL THE BLINDLINE** 512-5630
- 11:30 **MAIL OUR REPORTING ON YOUR ROOF**



MAIL OUR REPORTING ON YOUR ROOF

CALL THE BLINDLINE 512-5630

SUNDAY

- 8:30 **THE CAROL COLLEGE SHOW**
- 9:00 **WCS WAGNET LOT**
- 9:00 **MONA & MARY / LAWRENCE & SHARLEY**
- 9:05 **SEXUAL STREET (R)** (1970) Albert Finney, Ann Giblin. Based on the novel by Lawrence Sanders. A man and a woman meet in a high-rise apartment building on Christmas Eve.
- 9:30 **THE CAROL COLLEGE SHOW**
- 10:00 **JOHN BAKER**
- 10:00 **ROBERT AND COSTELLO**
- 10:00 **FUTURE SPORT** A scientific exploration of athletic performance which can aid athletes in improving their performance. (R)
- 10:00 **PROFESSOR HALL / MATHIAS**
- 10:00 **SUPERMAN**
- 10:00 **STACY & SCARLETT DOO / PIPPI**
- 10:00 **ELECTRIC COMPANY (R)**
- 10:00 **THE NEW HEATS** Len Dawson and Nick Buntzner's highlights of the previous week's NFL games and interviews by players and coaches.
- 10:30 **SN SCHOOL** Tips for better skiing. (Filmed at Killington, N.H.) (R)
- 10:30 **HEALTHY & SPACIOUS**
- 10:30 **VOYAGE TO THE BOTTOM OF THE SEA**
- 11:00 **MASTER ROGERS (R)**
- 11:00 **JACK WAGNER**
- 11:00 **THE EATONS**
- 11:00 **NCA TODAY**
- 11:00 **WEEKEND SPECIALS** "After the job is done, for a lot of glory, for the world's deplorables." (R)
- 11:00 **SOCIOLOGY**
- 11:00 **HEAVENLY DOG** (1980) Chevy Chase, Betty White. While treating a political scandal in London, a private detective is murdered and then carried as a scrutiny dog. PG
- 11:05 **MOVIE** "The Power and the Glory" (1956) William Holden. Deborah Kerr. Producers argue when a young widow falls in love with a Marine. (R)
- 11:30 **STARS OF THE TREES**
- 11:30 **FLM Highlights of Super Bowl IX** Minnesota Vikings vs. Pittsburgh Steelers
- 11:30 **NCA FOOTBALL** Army Cadets vs. Navy Midshipmen from Veterans Stadium in Philadelphia, Pa.
- 11:30 **CALL THE BLINDLINE** 512-5630
- 11:30 **MAIL OUR REPORTING ON YOUR ROOF**

4 GOOD REASONS

to see your good neighbor agent

Philip Welch

100 W. Park

Like a good neighbor, State Farm is there.

Home Offices: Bloomington, Illinois

MONDAY

- 8:30 **THE CAROL COLLEGE SHOW**
- 9:00 **WCS WAGNET LOT**
- 9:00 **MONA & MARY / LAWRENCE & SHARLEY**
- 9:05 **SEXUAL STREET (R)** (1970) Albert Finney, Ann Giblin. Based on the novel by Lawrence Sanders. A man and a woman meet in a high-rise apartment building on Christmas Eve.
- 9:30 **THE CAROL COLLEGE SHOW**
- 10:00 **JOHN BAKER**
- 10:00 **ROBERT AND COSTELLO**
- 10:00 **FUTURE SPORT** A scientific exploration of athletic performance which can aid athletes in improving their performance. (R)
- 10:00 **PROFESSOR HALL / MATHIAS**
- 10:00 **SUPERMAN**
- 10:00 **STACY & SCARLETT DOO / PIPPI**
- 10:00 **ELECTRIC COMPANY (R)**
- 10:00 **THE NEW HEATS** Len Dawson and Nick Buntzner's highlights of the previous week's NFL games and interviews by players and coaches.
- 10:30 **SN SCHOOL** Tips for better skiing. (Filmed at Killington, N.H.) (R)
- 10:30 **HEALTHY & SPACIOUS**
- 10:30 **VOYAGE TO THE BOTTOM OF THE SEA**
- 11:00 **MASTER ROGERS (R)**
- 11:00 **JACK WAGNER**
- 11:00 **THE EATONS**
- 11:00 **NCA TODAY**
- 11:00 **WEEKEND SPECIALS** "After the job is done, for a lot of glory, for the world's deplorables." (R)
- 11:00 **SOCIOLOGY**
- 11:00 **HEAVENLY DOG** (1980) Chevy Chase, Betty White. While treating a political scandal in London, a private detective is murdered and then carried as a scrutiny dog. PG
- 11:05 **MOVIE** "The Power and the Glory" (1956) William Holden. Deborah Kerr. Producers argue when a young widow falls in love with a Marine. (R)
- 11:30 **STARS OF THE TREES**
- 11:30 **FLM Highlights of Super Bowl IX** Minnesota Vikings vs. Pittsburgh Steelers
- 11:30 **NCA FOOTBALL** Army Cadets vs. Navy Midshipmen from Veterans Stadium in Philadelphia, Pa.
- 11:30 **CALL THE BLINDLINE** 512-5630
- 11:30 **MAIL OUR REPORTING ON YOUR ROOF**

4 GOOD REASONS

to see your good neighbor agent

Philip Welch

100 W. Park

Like a good neighbor, State Farm is there.

Home Offices: Bloomington, Illinois

TUESDAY

- 8:30 **THE CAROL COLLEGE SHOW**
- 9:00 **WCS WAGNET LOT**
- 9:00 **MONA & MARY / LAWRENCE & SHARLEY**
- 9:05 **SEXUAL STREET (R)** (1970) Albert Finney, Ann Giblin. Based on the novel by Lawrence Sanders. A man and a woman meet in a high-rise apartment building on Christmas Eve.
- 9:30 **THE CAROL COLLEGE SHOW**
- 10:00 **JOHN BAKER**
- 10:00 **ROBERT AND COSTELLO**
- 10:00 **FUTURE SPORT** A scientific exploration of athletic performance which can aid athletes in improving their performance. (R)
- 10:00 **PROFESSOR HALL / MATHIAS**
- 10:00 **SUPERMAN**
- 10:00 **STACY & SCARLETT DOO / PIPPI**
- 10:00 **ELECTRIC COMPANY (R)**
- 10:00 **THE NEW HEATS** Len Dawson and Nick Buntzner's highlights of the previous week's NFL games and interviews by players and coaches.
- 10:30 **SN SCHOOL** Tips for better skiing. (Filmed at Killington, N.H.) (R)
- 10:30 **HEALTHY & SPACIOUS**
- 10:30 **VOYAGE TO THE BOTTOM OF THE SEA**
- 11:00 **MASTER ROGERS (R)**
- 11:00 **JACK WAGNER**
- 11:00 **THE EATONS**
- 11:00 **NCA TODAY**
- 11:00 **WEEKEND SPECIALS** "After the job is done, for a lot of glory, for the world's deplorables." (R)
- 11:00 **SOCIOLOGY**
- 11:00 **HEAVENLY DOG** (1980) Chevy Chase, Betty White. While treating a political scandal in London, a private detective is murdered and then carried as a scrutiny dog. PG
- 11:05 **MOVIE** "The Power and the Glory" (1956) William Holden. Deborah Kerr. Producers argue when a young widow falls in love with a Marine. (R)
- 11:30 **STARS OF THE TREES**
- 11:30 **FLM Highlights of Super Bowl IX** Minnesota Vikings vs. Pittsburgh Steelers
- 11:30 **NCA FOOTBALL** Army Cadets vs. Navy Midshipmen from Veterans Stadium in Philadelphia, Pa.
- 11:30 **CALL THE BLINDLINE** 512-5630
- 11:30 **MAIL OUR REPORTING ON YOUR ROOF**

Iowa Park Plumbing

Commercial - Residential

Remodel - Repair - Sewer Machines

Mitch Miller

592-4019

School transfer policy being ignored by some

A student transfer policy set by Holliday School trustees last year is being disregarded by some parents, and they have until after the Christmas holidays to rectify the situation.

The problem, Holliday superintendent Dan Owen said Tuesday, begins when parents or legal guardians of a student move out of the school district, leaving the student with other relatives or friends.

"All students presently enrolled prior to May 11, 1982 may continue to attend school until they graduate, as long as they are living with their legal guardians," Owen said. "When their legal guardian establishes residence outside the district, the student enrolled will no longer attend school." The new policy was written, along

with several others, in an attempt to establish a uniform format for students enrolled at Holliday.

Owen said that, regardless of where the student is attending school, the district where the parents reside receives any state funding for their child. So, in other words, a student enrolled at Holliday with legal guardians living elsewhere costs the school.

"We feel there are a lot of parents who don't understand the policy," Owen remarked. "Some of the parents are leaving their children with brothers or sisters, aunts or uncles, or just friends, but they aren't their legal guardians."

"There are definitely a few in violation," he added.

Owen further stated that students known to be attending school in violation of the policy will be withdrawn from school following the holidays.

Honor rolls released

Holliday High School principal Bill Lee has released the honor roll for the second six week period. Students making the "A" roll averaged 90 or above in each of their respective courses, while those making the "A" roll averaged 90 or above in all classes combined.

They are: 12th GRADE AA: Jeff Belcher, Kay Flatt, Debbie Long, Brad Thompson, John Trainham. **A:** Kim Blankenship, Kristi Carlton, Steven Haerry, Patti Hewitt, Sean Loftiss, Terah K. Molina.

11th GRADE AA: Leslie Mankins, Karen Molina, Roberta Shawver. **A:** Terri Briggs, Terri Davis, Rhonda Krob, Tina Morrison, Deborah Noll, Kristy Williams.

10th GRADE AA: Becky Cullers, Kevin Gallo, Sheryl McMaster, Gayle Peters, Linda Seel, Tammy Stevens, Terry Varnell. **A:** Buffie Broyles, Ronnie Fellhauer, Cheryl Lowder, Kristi Martin.

9th GRADE AA: Laura Bills, Lad Cole, Kathy Davis, Jeff McReynolds, Robert Parkey, Michele Rippin, Kim Wylie. **A:** Ginger Potts, Rhonda Rasmussen, Kelly Smith.

8th GRADE AA: Chuck Bearden, Darron Carlton, Shane Daniles, Tammy Dolberry, Stephanie Fleming, Amy Goodlett, Traci Hawley, Scott Lofland, Lisa Lowe, Laurie Mankins, David Parkey, Amanda Parnell. **A:** Kyle Bedford, Bryan Box, Robert Case, Christean Echols, Brad Grimm, Amy Lemons, Jana Loftiss, Jason Loftiss, Mike Martin, Jamie Murphy, Tim O'Brien.

7th GRADE AA: Klonie Berend, Seretha Finnell. **A:** Jenny Ingram, Lea Ellen McDonald, Shannon O'Brien, Curtis Smith.

Clinic set today

The Texas Department of Health will conduct an Immunization Clinic from 2-4 p.m. today at the Archer Service Center in Archer City, according to public health nurse Zandra Underwood, R.N.

Immunizations will be provided for DTP, polio, measles, mumps, and rubella. Underwood asks that persons attending bring their immunization records to the clinic.



Friday, December 3
Breakfast: Pancake, syrup, milk, bacon.
Lunch: Hamburgers, lettuce, tomatoes, pickles, chips, milk, ice cream.

Monday, December 6
Breakfast: Cereal, milk, juice.
Lunch: Pizza, corn, salad, cobbler, milk.

Tuesday, December 7
Breakfast: Gravy, biscuits, milk.
Lunch: Steak fingers, whipped potatoes, gravy, green peas, hot rolls, fruit.

Wednesday, December 8
Breakfast: Jelly, toast, milk.
Lunch: Chalupa, lettuce, tomatoes, cheese, corn, milk, cake.

Thursday, December 9
Breakfast: Sausage, waffles, syrup, milk.
Lunch: Jiffy burgers, corn, French fries, cookies, milk.

Musicians earn honors

Two members of the Holliday High School Eagle Band made All-Region Orchestra through recent auditions, according to director Tom Woody.

Terah Kay Molina, the band's drum majorette, earned first chair honors with the French horn, while Annette Wilhelm made third chair with the trombone.

The two will participate in a two-day clinic Jan. 6-7, 1983 in Abilene, with a concert scheduled the last evening.

Holliday News

Trustees okay insurance bid

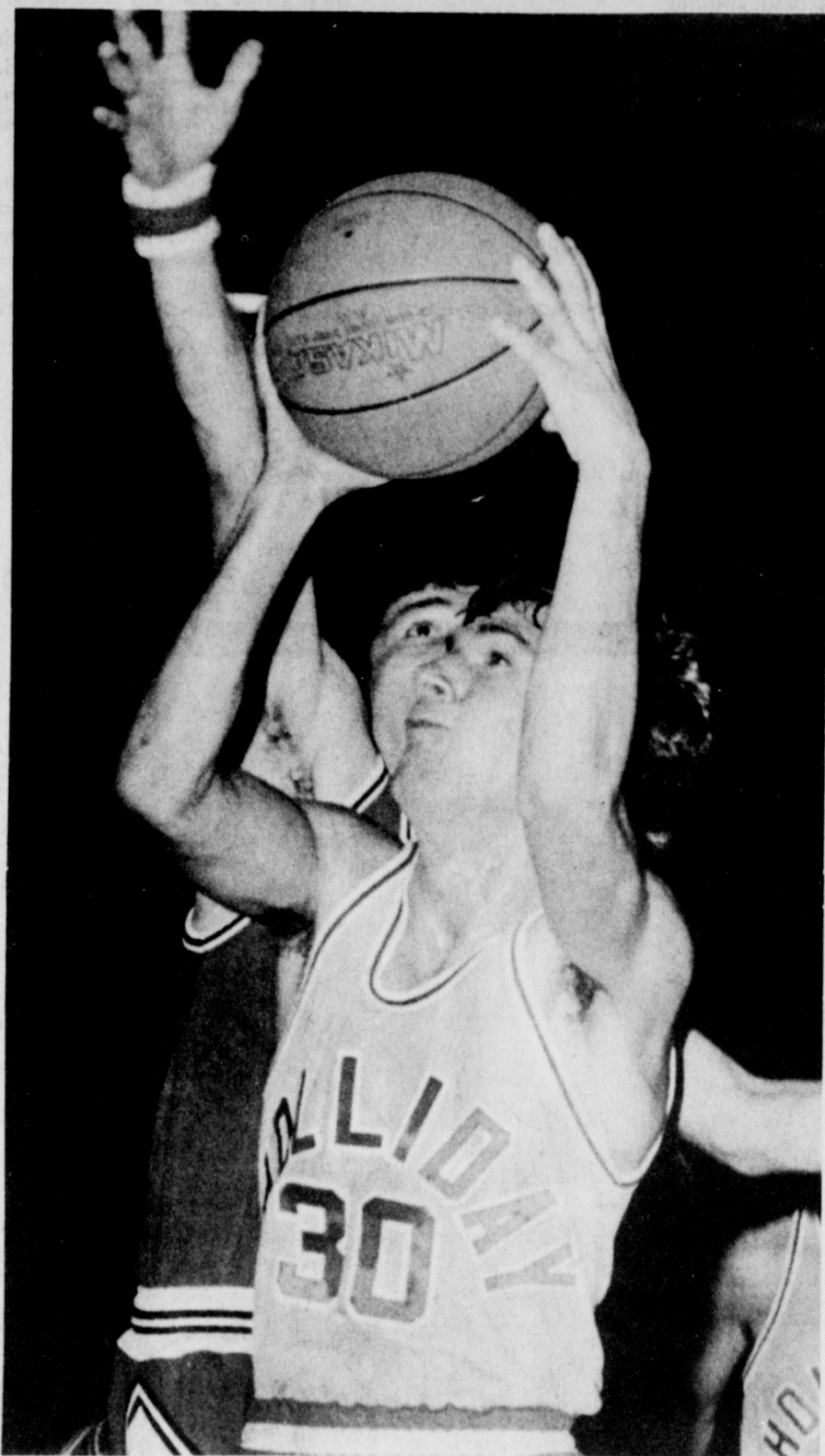
Holliday School Board Monday night accepted the low bid on the school's three-year insurance policy renewal, in action taken during a special called meeting.

Trustees accepted the low bid from St. Paul Lloyd's Insurance Co., represented by Don Talley of Holliday, for \$28,525. The bid, one of four, includes a \$1,000 deductible, 80-percent car insurance with Texas Multi-Peril (fire, theft, malicious mischief, vandalism) and general liability for the parking lots.

Talley had met with the insurance committee on two previous occasions

to discuss insurance needs for the school. The committee, chaired by trustee Larry Lilley, felt Talley's experience with past insurance coverage for the school was needed while discussing future needs.

Other bids received were: American Lloyd's represented by Kenny Reynolds of Winfred and Co., \$30,394; Houston General Insurance represented by Boley-Featherston-Huffman and Deal \$30,651; and, and one-year policy only from American International Lloyd's represented by Thornhill Insurance of Seymour, \$10,777.



GILL GILBERT goes high for a layup against Electra Tuesday night, in a 51-30 loss to the Tigers. The Eagles are now 0-3, with an earlier loss to Electra and Notre Dame. The Lady Eagles are also 0-3, losing 44-36 Tuesday night to Electra, with earlier losses to the Lady Tigers and Notre Dame. Both teams will compete in the Seymour Tournament today through Saturday.

IRS Tax Tips

2,609 TAXPAYERS OWED REFUNDS

The Internal Revenue Service has \$1,203,216.43 it wants to send to some north Texas taxpayers. Over 2,600 taxpayers in the northernmost 143 counties have not received their 1981 refund checks, which average \$461. The smallest refund is \$1, while the largest is over \$96 thousand.

The most common reason for the failure of refund check and taxpayer to meet up is that the taxpayer has moved and not left a forwarding address. Others have changed their marital status and their names and failed to notify the Postal Service and

the IRS. Still others are the victims of illegible address entries on the Form 1040.

When a check is returned to the IRS as undeliverable, the IRS follows up by mailing a notice to the address of record. If this fails, extensive efforts are made at the district level to locate the taxpayer's correct address.

If your name appears on the following list, please write or call the IRS. Write: Internal Revenue Service, 1100 Commerce Street, Mail Code 151-A, Dallas, Texas 75242, or call 742-2440 in Dallas, 335-1370 in Fort Worth, or 1-800-492-4830 elsewhere in Texas.

ANNOUNCING The Vernon Regional Junior College Winter Registration Carnival

WITH SUCH NOTABLE CELEBRITIES AS:

Sarah, Roy, Vicki, Kay, CYNDI, Dona

And their playful and entertaining companion -
IBM-34, or "Ole %; ' ★ ?"

ENROLL NOW!!

OFFICIAL REGISTRATION: **January 6, 1983**

Time: 9:30 am - 1:00 pm
4:30 pm - 7:00 pm

Place: VRJC Administration Bldg.

LATE REGISTRATION: January 10, 1983 through January 18, 1983.

Join us for a time of Mental Renewal and fellowship...

For additional information, call (817) 552-6291

and ask for any of our previously named Celebrities!

19 Tuesday, Dec. 7

KING SIZE
WALLET
CREATIVE
COLOR
PORTRAITS
FOR ONLY

99¢

Kodak paper. For a Good Look at the Times of Your Life. TM

GILBERT FOR CHRISTMAS

Extra Charge for GROUPS

NO LIMIT

WE USE KODAK PAPER

GET PICTURES MADE BY GRANDPA. GRANDPA DID NOT END ALL THE LITTLE ONES AT THESE SAME LOW PRICES!

Shugart's Inc.

COLOR PHOTOS

About Our **FREE 8 x 10 OFFER**

Holliday Foodworld

West Seymour Hwy.

HOLLIDAY INDEPENDENT SCHOOL DISTRICT

HOLLIDAY, TEXAS
BALANCE SHEET

[EXCLUSIVE OF ENTERPRISE AND TRUST AND AGENCY FUNDS]
AUGUST 31, 1982

ASSETS	
Cash and Temporary Investments	\$477,321.59
Receivables	59,304.09
Deferred Costs	72,460.70
Land, Buildings and Equipment	2,895,396.07
Amount To Be Provided For Bond Principal Payment	890,460.64
Amounts Available For Payment of Bond Principal	234,539.36
Total Assets	\$4,629,482.45

LIABILITIES, FUND BALANCES, RESERVES	
LIABILITIES	
Current Payables	\$182,706.64
Deferred Income	41,979.81
Bonds Payable - Deferred	1,075,000.00
Total Liabilities	\$1,299,686.45

FUND BALANCES AND RESERVES	
General Operating Fund	\$202,275.25
Designated Purpose Fund	(3,265.15)
Reserve For Retirement of Funded Indebtedness	234,539.36
Reserve For Authorized Construction	850.47
Reserve For Investment In General Fixed Assets	2,895,396.07
Total Fund Balances and Reserves	3,329,796.00
Total Liabilities, Fund Balances, and Reserves	\$4,629,482.45

STATEMENT OF REVENUE AND EXPENDITURES [EXCLUSIVE OF ENTERPRISE AND TRUST AND AGENCY FUNDS] FOR THE FISCAL YEAR ENDED AUGUST 31, 1982

Revenue	
General Operating Fund	\$1,246,880.71
Designated Purpose Fund	16,709.59
Interest and Bonded Debt Fund	141,045.36
Construction Fund	678.20
Total Revenue	\$1,405,313.86
Expenditures	
General Operating Fund	1,404,563.03
Designated Purpose Fund	16,762.20
Interest and Bonded Debt Fund	108,080.00
Construction Fund	15,777.39
Total Expenditures	1,545,162.62
Excess Expenditures Over Revenue	\$139,848.76

The above condensed financial statements were prepared from the audit report dated November 4, 1982 and are subject to the auditor's opinion and comments which are included in that report.

County's pecan show slated this weekend

By Don D. Decker
County Agent
The Wichita County Pecan Show is scheduled for Friday and Saturday at

Sikes Senter Mall in Wichita Falls. The pecans were processed for the show at the Iowa Park Experiment Station. Ten nuts from each sample

will be cracked, shelled, and weighed. This requires a lot of work, and those interested in the show are invited to assist with the processing.

entered in the queen pageant include: Jamie Jones, Terry Taylor, Missy Kestler, and Levada Davis. The winner will represent Wichita County at the state Pecan Queen Pageant to be in July, 1983.

Iowa Park is president of the Young Farmers while Tim Hunter heads up the pecan growers. County winners will go onto the regional pecan show.

The first West Texas Regional Pecan Show to be held in Wichita Falls is scheduled Dec. 8-10. Pecan winners from 25 pecan-growing counties in West Texas will have entries at the regional show. This event will feature over 400 pecan winners coming from over 25 county shows held in West Texas.

The regional pecan show is under the direction of Dr. Austin Stockton, Dr. George McEachren, Extension horticulturists, Wichita County Pecan Growers, and the Wichita County Young Farmers.

Pecans will be offered for sale throughout the show, and pecans will be cracked for the public at 20-cents per pound. Estes Chemical Company will feature spray equipment and chemicals used for pecan production. Tasty pecan samples will be offered at the Texas Agricultural Products booth by JoAnne Noble of the Texas Department of Agriculture. Other exhibits will include pecan variety identification by Tim Hunter and grafting and budding by Virgil Woodfin and Wesley Davis.

Door Prizes will be offered including several five-pound packages of pecans along with pecan trees from local nurseries. Those in attendance will have the opportunity to guess at the number of pecans in a sack. The person with the closest guess will win five pounds of pecans.

This event is sponsored by the Wichita County Young Farmers in cooperation with the Wichita County Pecan Growers. Luke Coffman of

A pecan sample consists of 40 nuts placed in a paper bag bearing the owner's name, address, and variety if known. When the variety is unknown, the officials at the show will make proper identification. This is a good reason for entry in the show.

Highlights of the show will be the pecan judging at 11 a.m. on Friday by Floyd Key, retired Extension agent from Comanche County. Pecan grafting and budding demonstrations will be presented at 3 p.m. on both Friday and Saturday by Wesley Davis, Tim Hunter, and Virgil Woodfin.

The pecan pie contest gets underway at 6 p.m. on Friday. This event is divided into two divisions, including nine to 19 years of age and 20 years of age and over for the seniors.

The pecan queen pageant is scheduled for 7 p.m. in Penney's Court with girls 16 to 19 years of age competing for the title of Wichita County Pecan Queen. Contestants

office. The best time to apply is about 3 months before your actual retirement date. That way, you'll be sure to get your first check right on time. You can apply at any Social Security office.

Or, if you want, your application can be handled over the phone or through the mail. You'll need your birth certificate, your Social Security card, and your W-2 forms from the past couple of years. But even if you can't find all the necessary papers, you should go ahead and file your application anyway.

The people at the Social Security office will probably be able to suggest substitute proofs you can use. For more information, call or write any Social Security office. Someone there will be glad to help you.

SOCIAL SECURITY TIPS

APPLYING FOR RETIREMENT BENEFITS

If you're getting close to retirement, you've probably been thinking about Social Security. . . when to apply, where to apply, how to apply. Well, we just happen to have the answers at the Social Security

Help somebody back to life!



Be a Red Cross blood donor

Christmas Arts & Crafts Show Dec. 6 - 10

Customers of United Savings will be displaying their homemade goodies, to the public. Drawings for a spiced Christmas wreath & a turkey will be given away Dec. 15th at 3:30 p.m.

Register anytime. No purchase or a deposit necessary, nor do you need to be present to win.



United Savings

OF TEXAS
THE SAVINGS AND LOAN YOU CAN BANK ON.
Member FSLIC. Your savings insured to \$100,000.



The Eyes Of Texans



JAMES EDWARDS Optometrist

SHOULD CONTACT LENSES BE GIVEN AS CHRISTMAS PRESENTS?

Giving the gift of enhanced vision through contact lenses is certainly a useful and thoughtful Christmas present. However, they are some practical considerations that should be kept in mind. [Of course] it should be determined that contact lenses are really needed, i.e., that the prospective patient's vision is bad enough to give him or her sufficient motivation to want to wear and take care of the contacts. The public hears though the media of how wonderful contact lenses are but they don't hear of the disadvantages of them. Contacts, especially the soft type, require [a lot of care and] careful daily cleaning. Soft contacts can tear easily and the solutions for cleaning them can cost about \$100 a year.

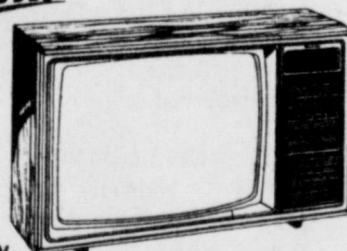
On the positive side both soft and the newer hard contacts are made to "breathe", i.e., they take in oxygen which makes them more comfortable and less likely to harm the eye than the old hard type.

If you would like to give someone contacts for Christmas but have some questions about them, most eye doctors will be glad to discuss the pros and cons with you without obligation.

JAMES EDWARDS, O.D.
103 West Park
Iowa Park, Texas
Phone 592-4992

In the interest of better vision from the office of

say Merry Christmas in color t.v.



19" Portable
Remote Control
\$519* W/T

SY 1927 W

- * Cable-ready
- * Direct access remote
- * Up/Down channel scanning
- * Sug. Retail \$739
- * Infra-red remote
- * One-button auto. color control
- * 5-yr. picture tube, 1 yr. parts and labor



13-Inch
Color
Portable
\$299* W/T

- * Triple-plus chassis
- * AFC switch
- * Separate VHF/UHF tuners
- * 5-yr. picture tube, 1-yr. parts and labor
- * Sug. Retail \$379

★ Complete Service After The Sale

We have a limited supply of the new recently-delivered plastic phone book covers - Free of charge to those who did not receive one.

VIDEO CARE

(817) 592-5552 P. O. Box 102

Park West Shopping Center
(next to T. G. & Y.)
Iowa Park, Texas 76367

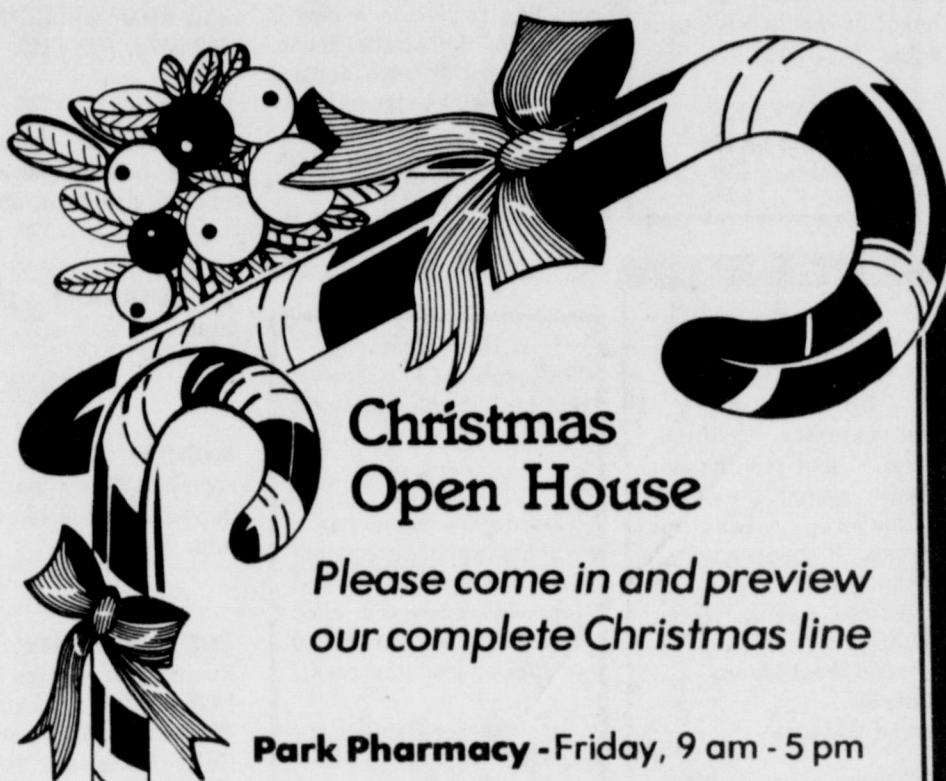


LOOK WHO'S NEW



Mr. and Mrs. Mark Alan Smith announce the birth of their first child, Crystal Nicole, a six pound 13 ounce daughter, born November 18. Mrs. Smith is the former Candy Lee. Grandparents are Mr. and Mrs. Eugene Smith, Mrs. Sally Junk and Sam Lee. The great-grandparents are Mr. and Mrs. Orval Brandon of Quanah, Mrs. Dick Smith and Mrs. Lida Bea Lee of Lebanon, Okla.

"Good order is the foundation of all good things."
Edmund Burke



Christmas Open House

Please come in and preview our complete Christmas line

Park Pharmacy - Friday, 9 am - 5 pm

Crown Hallmark - Sat. (10-7) & Sun. (2-7)

"Precious Moments" by Jonathan & David slide presentation will be given during Open House.

You can see all of our beautiful Hallmark Christmas cards, collectible ornaments, gift wrap, stocking stuffers, party goods and many distinctive gift ideas. There'll be lots of fun and festivity, free refreshments and some special surprises, too! We'll plan to see you there!

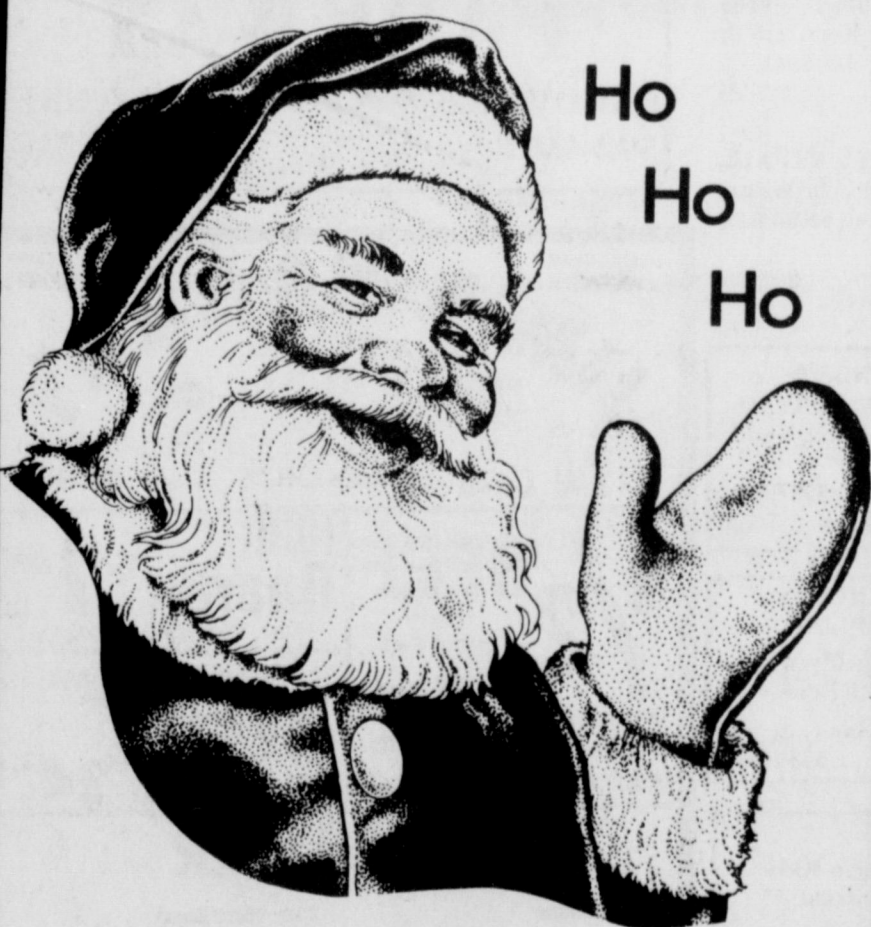
Park Pharmacy & Thoughtfulness Shop

115 W. Park 592-4116

Crown Hallmark

Corner of Fairway and Southwest Pkwy. 692-8313

Wal-Mart Sells for Less • Wal-Mart Sells for Less • Wal-Mart Sells for Less



Ho
Ho
Ho

Santa Claus
Is Coming To

WAL-MART

12 Noon to 6 p.m.

SATURDAY

Come Visit With Him

500 W. Hiway in Iowa Park

Wal-Mart Sells for Less • Wal-Mart Sells for Less • Wal-Mart Sells for Less

Wal-Mart Sells for Less • Wal-Mart Sells for Less • Wal-Mart Sells for Less

Register for



FIVE FREE
TURKEYS

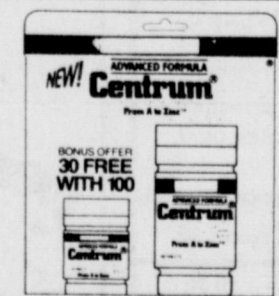
One each will be given
Dec. 20-21-22-23-24

Register whenever you are in this store

No purchase required.



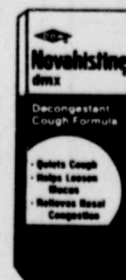
Metamucil
Natural-Fiber Laxative
Regular, Orange or New Strawberry Flavored
21 oz.
Your Choice **6.72**



Centrum Vitamins
Multivitamin-Multimineral
from A to Zinc
130's **6.99**



Prime Vitamin E
Pure Vitamin E in Natural Vegetable Oil
400 I.U.
130 Capsules **3.28**



Novahistine DMX
Decongestant Cough
Formula
4 fl. oz. **2.56**



Chlor-Trimeton Decongestant
Allergy/Sinus Relief
4 mg
24 Tablets **2.36**

WAL-MART PHARMACY

592-4157 500 W. Hiway

Wal-Mart Sells for Less • Wal-Mart Sells for Less • Wal-Mart Sells for Less

Stop Looking - It's All in The WANT ADS

DEADLINES

10 A.M. WEDNESDAY
(Word Ads Only)
4 P.M. TUESDAY, DISPLAY ADS

SAVE 10¢ FIRST INSERTION BY PAYING WITH COPY

RATES: 20¢ PER WORD FIRST INSERTION 10¢ PER WORD EACH REPEAT

COUNTRY STYLE
3 bedroom, 1 1/2 baths. Room to roam in this beautiful home with two acres. \$72,150.
JOHNNY LEE REAL ESTATE
109 W. Cash 592-2378

OPEN HOUSE
Sunday, Dec. 5
2 p.m. - 5 p.m.
Custom-built dream home, four-months-old, plush carpet, elegant wallpaper, beautiful drapes, 3 bedrooms, 2 baths, 2-car garage, covered patio, total electric.
604 West Manes
Hostess
Janice Giddens
SANDRA WILKINSON REAL ESTATE
692-8461 691-1767

HOMES FOR SALE
IOWA PARK. Do you make \$15,500 a year or less; would you like to live in a new 3 bedroom, 1 1/2 bath house. Full carpeted with central heat/air, with extremely low payments.
SWAN CONSTRUCTION COMPANY, 692-8788.
8-18-tfc

1300 Sunset
Assumable, 3 bedroom, 1 1/2 bath, brick. No credit check.
5 Acres
This dream home has a wet bar, sprinkler system in front and back, and fenced-in backyard. This 4 bedroom house includes fireplace, and gun rack.
Starter Home
Special Terms for Low Income Families.
CENTURY 21
Dynamic Realtors
592-2455 Andy Salan

FOR RENT: 1 bedroom duplex, furnished. \$175 mo., plus \$100 deposit. No pets. 592-9478, 592-4585.
12-2-1tp

3-BEDROOM house: carpeted, built-in stove, refrigerator, fireplace. 592-5416.
12-2-1tp

2 BEDROOM furnished house, 907 E. Cash. 592-4387.
12-2-2tp

MOBILE HOME, 2 bedrooms \$175 per month, \$100 deposit. 592-5948 after 6 p.m.
12-2-1tp

FOR SALE OR LEASE
Business or storage building 1875 sq. ft., 12 ft. ceiling, 106 W. Cash St. \$125 per month. Call Longest Property Management, 723-0919.
12-2-5tp

FOR SALE OR LEASE
Business or storage building 1875 sq. ft., 12 ft. ceiling, 106 W. Cash St. \$125 per month. Call Longest Property Management, 723-0919.
12-2-5tp

FOR SALE OR LEASE
Business or storage building 1875 sq. ft., 12 ft. ceiling, 106 W. Cash St. \$125 per month. Call Longest Property Management, 723-0919.
12-2-5tp

FOR SALE OR LEASE
Business or storage building 1875 sq. ft., 12 ft. ceiling, 106 W. Cash St. \$125 per month. Call Longest Property Management, 723-0919.
12-2-5tp

MISC. FOR SALE
GARAGE SALE - 1008 W. Louisa, Sunday 12-5, Monday 9-5. Household items, clothes, toys, tools, extra door locks, electric plugs and switches.
12-2-1tp

GARAGE SALE 509 W. Texas, Saturday, Sunday. Boys' clothes 8-12; girls junior 8-7; bedspreads, curtains, confection oven; some furniture. Inside if bad weather.
12-2-1tc

YARD SALE 310 South Colorado. Tools, tables, handmade dolls, lot more items. Thursday only, weather permitting.
12-2-1tp

GARAGE SALE - Clothes, books, jewelry, misc. Thurs. - Sat. 1001 Park Plaza.
12-2-1tp

YARD SALE 106 West View, Thurs. and Fri. only.
12-2-1tp

GARAGE SALE - 1312 Mockingbird, Iowa Park, across from Cryovac. TV, small appliances, clothes, misc. Friday and Saturday.
12-2-1tp

PECANS - Iowa Park Florist. Paper shells, Schleys, \$1.50 lb.
11-11-6tp

SINCLAIR ZX81 Computer with 16K ram, nearly new - \$150; B&W Zenith Port TV \$40; Port. color TV \$45; 2 new Goodyear P175/75R14 steelbelt tires, \$75 both.
12-2-1tp

1977 HONDA MR50; Sear's touchtone microwave; 4 ea Firestone tires, LR70-15 S/S; Unisonia Tournament 150 TV game. 592-9376.
12-2-1tp

71 PONTIAC LEMANS, AM/FM 8-track stereo, sun roof, new mag and tires. \$1,000. Call after 5, 592-2514, ask for Mike.
12-2-1tc

BUSINESS
FIREWOOD, Oak, \$50 rick, \$100 cord. 592-4789, 592-5586 anytime or 592-4814 after 5-9P.
12-2-1tp

WILL VACUUM your lawn clear of leaves. Very reasonable. Call 592-4820. Mark Wicks.
12-2-2tp

WILL DO housekeeping, etc. part-time. Work with the elderly or couples only. Call 592-4617, ask for Kim or leave name and number, Iowa Park only.
12-2-1tp

GREEN TOMATOES 2 1/2 and 50c lb. Baker's Greenhouse, mile south on Bell Road.
11-25-2tc

HELP CLEAN your septic tank the easy way with FX bacteria. \$7.98. Tree roots removed. Drains opened. Ask for FREE BOOKLET. Pleasant Valley Grocery, FM 369 and Old Highway.
11-25-6tc

KING'S KIDS Christian Day Care & Pre-School: openings for pre-school classes: 8:30 to 11:30 a.m. 5 mornings - \$60 per month, 3 mornings - \$36 per month, 2 mornings - \$28 per month. 202 N. Jackson, 592-4242.
11-4-6tp

FOR TV REPAIR Call Walt's TV. 592-2415.
11-18-7tp

LADY FINELE natural cosmetics at reasonable prices. Call Annetta Reusch, 592-9001 for a free facial.
4-22-tfc

NEW LISTING
Extra clean 2 bedroom, large utility & storage room. Cellar, garage & shop. VA-FHA or Equity 9 1/2 interest. \$28,000. 402 W. Texas - owner transferred.
12-2-1tc

NEW LISTING
New 3 bedroom brick, 1 1/2 baths. Fenced yard, near school. New FHA or Conventional loan. \$46,200.
12-2-1tc

CLOSE IN
Older 3 bedroom and den with fireplace. Built-ins, dishwasher, heat and air. 3 car garage, shop. Large corner lot, walk to town. \$50,000.
12-2-1tc

BUY NOW
Two bedroom frame. Forced sale. \$16,000.
12-2-1tc

ACREAGE
32 acres, three barns & corral, water meter, good home site. \$36,000.
12-2-1tc

MOBILE WITH LOT
Two bdrm. mobile home on 40x150' lot. Nice. \$10,000.
12-2-1tc

ROOFING - Walls Roofing Co. Phone 592-5630. 7-1-1tc

MARY KAY Cosmetics. Ann Moore, 592-4732. 6-21-2tp

PAINTING - interior and exterior. Free estimates. Steve Ming, 592-5122. 6-4-12tp

PRIVATE FENCE sales and installation. Charles Skelton, phone 592-4199. 2-19-2tp

CONCRETE WORK - Any kind 592-2224 or 592-9055. 6-21-2tp

MONOGRAMMING, fast, professional work. 592-5456. 11-4-9tp

BLACK POWDER GUNS and accessories, revolvers \$50 and up. Powder \$4.80 lb. Will order modern guns for 10% over cost. Ye Ole Gun Shack, 413 W. Washington, 592-5430. 5-14-tfc

CARPENTRY WORK done, anything from remodeling to replacing front doors. Free estimates. 592-2460, Gary Williams. 4-1-27tp

BURK SAND, Yards, Clean Up. Don Hallum, 804 N. Wall, 592-4365. 1-7-tfc

MARY KAY COSMETICS Allie Girard, consultant, 109 W. Poe, 592-4217. 4-5-tfc

STORM WINDOWS - Machine-blown insulation. Roof turbines installed. Free estimates, Jack Kerr, 215 S. Wall, 592-9040, 438-2941. 9-2-tfc

JERRY'S VINYL REPAIR, recoloring, auto, furniture, commercial. Free estimates, 438-2243. 2-23-tfc

BOHANNON'S UPHOLSTERY & TRIM Furniture, Pickup and truck cushions. 801 W. Smith 592-9624 Iowa Park

PETE'S HOME REMODELING I Take Pride in My Work Please Call Pete Holliday 586-1938 586-1185

MEMORIALS Monument Company. Serving since 1900. Monuments and all types of cemetery work. Bob Asida, representative, Taster Asida Funeral Home 592-4151. 12-24-tfc

REMODELING? Do you need another room added or a garage? Walls removed or added? Free estimates. References: Jack Kerr, 215 S. Wall, 592-9040, 438-2941. 9-2-tfc

BUILDING, remodeling, or repair. additions, carpentry, patios. Free estimates. Call day or night. Billy McDonald 592-4332, Phil McDonald 592-2963. 9-30-tfc

MORAN MONUMENT Works, Vernon, Texas, Old Highway 287, near East View Cemetery. A good selection of granite, cemetery lettering, grass markers, vases of bronze and marble. 9-30-tfc

14x52 Mobile Home	\$11,500
Three Bedroom IN CONTRACT	\$23,900
Three Bedroom, 2 Baths, Fireplace	\$64,500
Three Bedroom, 2 Baths [new]	\$44,900
Three Bedroom, 1 1/2 Baths	\$51,500
VACANT LOTS 52x140, Beautiful Trees	\$8,000
Commercial Lot	\$5,000
50x94 Corner Lot	\$3,000
Commercial Building, 10,000 feet of floor space for sale or lease.	
3 Acres	\$7,800
Two Bedroom, 1 Bath	\$15,000
Two Bedroom, 1 Bath	\$14,500
Three Bedroom, 1 1/2 Baths	\$43,600

Johnny Lee Real Estate
109 West Cash 592-2378
MEMBER MULTIPLE LISTING SERVICE

"MONEY WHEN YOU NEED IT"
Loans on most anything of value
SOUTHWEST SALES & LOANS
4423 Rhea Rd. 992-1371

DOLLHOUSE
on Edgehill, extremely neat and well maintained brick home. Good floor plan, heat/air, fenced, excellent financing. Ruth Graham, 787-5860.

ON FOLEY
Lovely brick home on Foley. Spanish style, 3-bedroom, 1 1/2 baths, open floor plan. Large fenced yard.

NEAR KIDWELL
Lovely brick home close to Kidwell. 3 bedroom, 1 1/2 baths, central heat-air, sparkling clean, pretty wall paper.

JOAN SHIERRY 592-5540
HIRSCHI REALTORS 692-8120 691-1212

News By Nan

DON'T WAIT UNTIL SUMMER if you're thinking of buying or selling real estate. With low interest rates prevailing, can you really afford to wait? Take a look at the difference in monthly (principle and interest) payments for varying interest rates paid out over 30 years:

Mortgage Balance	Monthly Payment for 30 Years at		
	12%	14%	16%
\$30,000	\$308.59	\$355.47	\$403.43
\$40,000	\$411.45	\$473.95	\$537.91
\$50,000	\$514.31	\$592.44	\$672.38
\$60,000	\$617.17	\$710.93	\$806.86

WANT TO WIN A FREE TURKEY - Send me a favorite recipe that I can share with others, and you will be entered into a drawing for a free turkey! Your recipe with your name, address and phone number should be postmarked by Dec. 18, 1982. Drawing will be held at the office of Century 21 Dynamic Realtors on Dec. 21, 1982.

NAN DAVIS
Century 21 DYNAMIC REALTORS
3502 Sheppard Access Rd Wichita Falls, 76304 Office - 855-6823 Nights - 592-9407
FREE NOTARY SERVICE

Come Meet **Blossum THE CLOWN** at our **HOLIDAY OPEN HOUSE** 2-5 p.m. Sunday

416 WEST DIAMOND
Two bedrooms, one bath. Farmers Home financing to help make it easy for you to afford a new home. Blossum will be here from 2 to 3 p.m.

1304 NORTH FOURTH
Assumable 10 1/2% FHA loan. Make an offer on the equity. Has four bedrooms, one and 1/2 baths, shop. Blossum will be here from 3 to 4 p.m.

1705 QUAIL VALLEY
Four bedrooms, three baths, livingroom and den, two-car garage, all on five acres of land. A real family home. Blossum will be here from 4 to 5 p.m.

Register for Christmas Door Prize Free Goodies for Kiddies

Century 21 DYNAMIC REALTORS
3502 Sheppard Access Rd Wichita Falls, 76304 Office - 855-6823
FREE NOTARY SERVICE

King's Kids Christian Day Care & Preschool
"Iowa Park's Finest For Parents Who Care"
Ages 2 Yrs & Older Monday thru Friday 7 a.m. to 6 p.m.
202 N. Jackson 592-4242

DAVIS GUTTERING
Seamless Leak-Free 5-Colors
Call 592-5121 for Free Estimates

BOHANNON'S UPHOLSTERY & TRIM Furniture, Pickup and truck cushions. 801 W. Smith 592-9624 Iowa Park

PETE'S HOME REMODELING I Take Pride in My Work Please Call Pete Holliday 586-1938 586-1185

King's Kids Christian Day Care & Preschool
"Iowa Park's Finest For Parents Who Care"
Ages 2 Yrs & Older Monday thru Friday 7 a.m. to 6 p.m.
202 N. Jackson 592-4242

DAVIS GUTTERING
Seamless Leak-Free 5-Colors
Call 592-5121 for Free Estimates

True Value TOOL VALUE OF THE MONTH
749 White Supplies Last
6-in-1 Ratchet Screwdriver
Built-in ratchet operates forward, reverse or locked. 6 different tips, oversized handle for extra power. SB401
Quantities Limited

True Value BARGAIN OF THE MONTH
999 White Supplies Last
3-Pc. Correlle® Serving Set
Set includes 1 & 2-qt. bowls, 12 1/2-in. platter, Correlle® dinnerware and many other china patterns.
Quantities Limited

PARKWAY HARDWARE FURNITURE
592-4681 200 - 206 West Bank 592-5512

JIM'S MARKET
113 W. Cash Store - 592-2051 Night - 592-4697

1/2 BEEF Heavy Grain Fed Cut, Wrapped, Frozen \$1.19 lb.
U.S.D.A. Choice \$1.29 lb.

HIND Quarter \$1.49 lb. Cut, Wrapped, Frozen

Pork Freezer Pack
6 lbs. Center Cut Pork Chops
3 lbs. Pork Steak
2 lbs. Blood Bacon
2 lbs. Jim's Pork Sausage
Quar. Wt. \$24.95

PO-BOY PACK
1 Chuck Roast
1 Arm Roast
4 Rib Steaks
1 Fryer
2 lbs. Jim's Pork Sausage

2 lbs. Sliced Bacon
7 lbs. Ground Beef (Approx. Weight)
24 lbs. Quar. Weight \$36.50

Barbecue Pack
5 lbs. Spare Ribs
3 lbs. Pork Chops
5 lbs. Beef Ribs
6 lbs. Hamburger
6 lbs. Fryers
25 lbs. \$37.89

ECONOMY FREEZER PACK
Individually Wrapped
3 Round Steaks
2 Sirloin Steaks
4 Rib Steaks
1 Arm Roast
3 T-Bones
1 Chuck Roast
2 Loin Tips
1 Rump or Pican Pork Roast
12 lbs. Ground Beef (Approx. Weight, extra lean)
2 Grade "A" Fryers
Quar. Wt. \$69.95

40 LB. PACK \$44.89

We service all makes of washers, dryers, freezers, refrigerators and window air conditioners.
POSEY'S APPLIANCE SERVICE
208 James Ph. 592-5452 Iowa Park

HOME SERVICES

RESPONSIBLE 19-year-old girl would like to do babysitting evenings and weekends for all ages.
12-2-1tp

REGISTERED Day Care - Have opening for 2 children. 592-9031.
12-2-1tp

THERESA'S Tiny Tots, state licensed for 12. Two openings for 3 and four year olds. 8:00 to 5:00, phone 592-2629.
11-11-4tp

REGISTERED Child Care. Monday thru Friday, all ages, \$30 week. Call 592-5544 after 6 p.m.
10-28-tfc

REGISTERED Child Care, Monday through Friday 592-9055.
11-18-4tp

JOB WANTED to sit with elderly or shut-in. Will do light housekeeping and cooking. Iowa Park or Holliday area. 438-2242.
12-2-1tp

HELP WANTED

FIRST GRADE teacher at Notre Dame Elementary School, 4060 York St., Wichita Falls, 76309. Contact Cindy Stabile, principal.
12-2-2tc

WANTED: Mature Christian lady to work in nursery. Sundays 9:15 - 12:15 (other times as needed for various activities.) Call First Christian Church, 592-4513 or 592-4109.
10-14-tfc

NOTICE

FREE - four cute black kittens, 7 weeks old, house-trained. Call after 4 p.m. Electra 495-3021.
12-2-1tc

Area oil, gas report

Location has been staked by Joe McDonald of Burkburnett for a 2,000-foot developmental probe in Wichita County's J.M. Sharp Survey, 2.5 miles southwest of Iowa Park. The well is designated as the No. 1 Burnside Lease. Drillsite will be in a 157-acre lease in the Wichita County Regular Field.

The No. 3 Dutton-P.T.D., a developmental try in the Wichita Regular Field, is scheduled to be spudded six miles west of Wichita Falls. With projected total depth of 1,200 feet, the well will be in a 2-acre lease in Wichita County's Denton County School Land Survey. Camino Corp. of Wichita Falls is listed as the operator.

Pumping at the rate of 16 barrels of oil per day, the No. 1 Kempner "A" has been completed in the Wichita Regular Field by Wichita Falls-based F.T. Johnson, Jr.

Located one mile south of Kamay, the well is in a 123-acre lease block of Wichita County's KWVFL Survey. It was drilled to a total depth of 4,647 feet, after entering the pay zone at 3,858 feet. It will produce from a

perforated interval of 3,858 to 3,870 feet into the hole.

Catlin Drilling Co. of Iowa Park has posted initial production figures for the No. 12 Denny, new oil well in the Wichita Regular Field, eight miles southwest of Iowa Park.

The well indicated potential for 16 barrels of oil per day on an open choke. With drillsite in a 158-acre lease in Wichita County's H.B. Balch Survey, the well had total drilling depth of 1,305 feet. It entered the pay

horizon at 1,025 feet and will produce from a set of perforations 1,025 to 1,031 feet into the wellbore.

Electra-based Flusche Supply Inc. has turned in first production figures for its No. 61 Gulf Refrigeration Co. Tank Farm, a successful developmental well in the Wichita County Regular Field.

Pumping oil at the rate of 10 barrels per day, the well was tested on an open choke.

Drillsite was in a 122-acre lease in

Wichita County's H&GN Survey, two miles east of Electra. The well was taken to a total depth of 1,960 feet after entering the pay zone at 1,946 feet. Production interval will be 1,946 to 1,950 feet into the wellbore.

At a location two miles southeast of Harrold, Flusche Supply Inc. of Electra has also completed the No. 9 Perkins, new oil well in Wilbarger Regular Field.

Drillsite was in a 40-acre lease in Wichita County's H&TC Survey.

The Perkins well showed daily potential for 9 barrels of oil on an open choke. Production will be from an interval 1,880 to 1,892 feet.

IOWA PARK CONSOLIDATED INDEPENDENT SCHOOL DISTRICT

IOWA PARK, TEXAS
ANALYSIS OF CHANGES IN RESERVES AND FUND BALANCES
(EXCLUSIVE OF ENTERPRISE AND TRUST & AGENCY FUNDS)
FOR THE FISCAL YEAR ENDED AUGUST 31, 1982

	GENERAL OPERATING FUND	DESIGNATED PURPOSE FUND	INTEREST & BONDED DEBT FUND	CONSTRUCTION FUND	GENERAL FIXED ASSETS / COOPERATIVES / LEASE PURCHASES
Balance, September 1, 1981	\$1,408,773.88	\$ 110.49	\$ 34,505.07	\$(6,750.22)	\$6,187,193.15
Revenues	3,822,504.18	131,174.54	166,777.28	22,699.67	
Expenditures	(3,500,005.72)	(133,253.81)	(192,083.64)	(58,202.15)	
Net Revenue (Expenditure)	322,498.46	(2,079.27)	(25,306.36)	(35,502.48)	
OTHER CHANGES					
Adjustment of Prior Year Receivables		(526.41)			
Fund Balance Transfers	(54,986.00)	(14.00)		55,000.00	172,010.18
Investment in General Fixed Assets					
Fund Balance Transfer from Activity Funds	26,041.86				
Net Other Changes	(28,944.14)	(540.41)		55,000.00	172,010.18
Balance, August 31, 1982	\$1,702,328.20	\$(2,509.19)	\$ 9,198.71	\$ 12,747.30	\$6,359,203.33

	GENERAL OPERATING FUND	DESIGNATED PURPOSE FUND	INTEREST & BONDED DEBT FUND	CONSTRUCTION FUND	TOTAL REVENUE
5700 REVENUE FROM LOCAL AND INTERMEDIATE SOURCES, TRANSFERS, AND NON-REVENUE RECEIPTS					
5710 Local Maintenance & Debt Service Tax	\$1,094,404.89	\$	\$164,083.38	\$	\$1,258,488.27
5720 Local Revenue from Services	64,768.24				64,768.24
5730 Tuition from Patrons	8,137.00				8,137.00
5740 Transfers from within State	6,300.00	1,582.68			7,882.68
5750 Enterprise Funds	3,359.15				3,359.15
5760 Other Revenue from Local Sources	234,084.59		2,693.90		236,778.49
5790 Non-Revenue Receipts				22,699.67	22,699.67
5700 Total Revenue-Local & Intermediate Sources	1,411,053.87	1,582.68	166,777.28	22,699.67	1,602,113.50
5800 REVENUE FROM STATE SOURCES					
5810 Per Capita & Foundation	2,307,540.00				2,307,540.00
5830 Transportation	82,071.00				82,071.00
5800 Total Revenue-State Sources	2,389,611.00				2,389,611.00
5900 FEDERAL PROGRAM REVENUES					
5910/20 Federally Distributed Revenues	1,708.31				1,708.31
5930 Vocational Education - Non-Foundation	20,131.00				20,131.00
5940 Elementary and Secondary Education Act		57,846.94			57,846.94
5950/60 Other State Distributed Federal Program Revenues		71,744.92			71,744.92
5900 Total Revenue-Federal Sources	21,839.31	129,591.86			151,431.17
5000 TOTAL REVENUE	\$1,822,504.18	\$131,174.54	\$166,777.28	\$22,699.67	\$4,143,155.67

FUNCTION	GENERAL OPERATING FUND	DESIGNATED PURPOSE FUND	INTEREST & BONDED DEBT FUND	CONSTRUCTION FUND	TOTAL EXPENDITURES
10 INSTRUCTION SERVICE					
11 Instruction					
6100 Payroll Costs	\$2,007,081.90	\$ 79,990.11	\$	\$	\$2,087,072.01
6200 Purchased and Contracted Services	8,088.74	10,855.02			18,943.76
6300 Supplies and Materials	51,941.49	454.93			52,396.42
6400 Other Operating Expenses	12,209.00	103.40			12,312.40
6600 Capital Outlay	28,839.27				28,839.27
Total Instruction	2,108,160.40	91,403.46			2,199,563.86
20 INSTRUCTIONAL RELATED SERVICES					
21 Instructional Administration					
6100 Payroll Costs	49,464.86	7,481.45			56,946.31
6200 Purchased and Contracted Services	8,638.12				8,638.12
6300 Supplies and Materials	1,723.85				1,723.85
6400 Other Operating Expenses	2,243.29				2,243.29
6600 Capital Outlay	665.82				665.82
Total Instructional Administration	62,735.94	7,481.45			70,217.39
22 Instructional Resources and Media Services					
6100 Payroll Costs	55,934.94				55,934.94
6200 Purchased and Contracted Services	3,675.00				3,675.00
6300 Supplies and Materials	10,625.74	2,154.89			12,780.63
6400 Other Operating Expenses	68.20				68.20
6600 Capital Outlay	8,654.76	6,476.00			15,130.76
Total Instructional Resources and Media Services	78,958.64	8,630.89			87,589.53
23 School Administration					
6100 Payroll Costs	135,842.38				135,842.38
6200 Purchased and Contracted Services	2,356.38				2,356.38
6300 Supplies and Materials	1,240.39				1,240.39
6400 Other Operating Expenses	1,913.56				1,913.56
6600 Capital Outlay	672.00				672.00
Total School Administration	142,024.71				142,024.71
30 PUPIL SERVICES					
31 Guidance and Counseling Services					
6100 Payroll Costs	150,906.62	18,326.04			169,232.66
6200 Purchased and Contracted Services	2,878.82	5,469.57			8,348.39
6300 Supplies and Materials	5,167.88				5,167.88
6400 Other Operating Expenses	2,386.50	759.60			3,146.10
6600 Capital Outlay	175.00				175.00
Total Guidance and Counseling Services	161,514.82	24,555.21			186,070.03
33 Health Services					
6200 Purchased and Contracted Services	\$ 12.30	\$	\$	\$	\$ 12.30
6300 Supplies and Materials	202.57				202.57
Total Health Services	214.87				214.87
34 Pupil Transportation - Regular					
6100 Payroll Costs	68,138.36				68,138.36
6200 Purchased and Contracted Services	1,081.04				1,081.04
6300 Supplies and Materials	48,630.79				48,630.79
6400 Other Operating Expenses	4,725.00				4,725.00
6600 Capital Outlay	31,728.49				31,728.49
Total Pupil Transportation - Regular	154,303.68				154,303.68
35 Pupil Transportation - Exceptional Children					
6200 Purchased and Contracted Services	1,138.00	300.00			1,438.00
Total Pupil Transportation - Exceptional Children	1,138.00	300.00			1,438.00
36 Co-curricular Activities					
6200 Payroll Costs	5,237.29				5,237.29
6300 Supplies and Materials	410.63				410.63
6400 Other Operating Expenses	67,322.83				67,322.83
6600 Capital Outlay	100.53				100.53
Total Co-curricular Activities	73,071.28				73,071.28
40 ADMINISTRATION					
41 General Administration					
6100 Payroll Costs	110,331.68				110,331.68
6200 Purchased and Contracted Services	72,931.57	400.00			73,331.57
6300 Supplies and Materials	11,955.70				11,955.70
6400 Other Operating Expenses	29,745.17				29,745.17
6600 Capital Outlay	8,791.18				8,791.18
Total General Administration	233,755.30	400.00			234,155.30
42 Debt Service					
6511 Bond Principal		135,000.00			135,000.00
6523 Bond Interest		56,730.00			56,730.00
6590 Fees and Other Expenditures		353.64			353.64
Total Debt Service		192,083.64			192,083.64
50 PLANT SERVICES					
51 Plant Maintenance and Operation					
6100 Payroll Costs	\$ 126,429.74	\$	\$	\$	\$ 126,429.74
6200 Purchased and Contracted Services	270,000.52	482.80			270,483.32
6300 Supplies and Materials	78,669.64				78,669.64
6400 Other Operating Expenses	167.00				167.00
6600 Capital Outlay	8,861.18				8,861.18
Total Plant Maintenance and Operation	484,128.08	482.80			484,610.88
52 Facilities Acquisition and Construction					
6600 Capital Outlay				58,202.15	58,202.15
Total Facilities Acquisition and Construction				58,202.15	58,202.15
TOTAL EXPENDITURES	6000	82,500.00	813,322.01	192,083.64	888,545.32

results you want? you want classifieds!

TEXAS TANK TRUCKS

Jim Virdell 586-1837 Bobtail Service 586-1795 David Brown 438-2939

Ratel 723-6691 unit 4269

ALL WORK GUARANTEED

Buzbee Roofing & Painting

Phone 569-3493 or 592-4846

E&S Exxon

EXXON

592-4897

612 W. Highway

- Tune-ups
- Brakes
- Front-end alignment

IOWA PARK

Air Conditioning & Heating

Service On All Makes Engineering Sales 607 W. Bank FRANK GUYETTE

Carrier

PHONE 592-5891

Shaw Motor Co.

Now Offering

10.75%

A.P.R. on all 1982 model cars AND LOOK AT THESE REBATES FOR CARS, TRUCKS & VANS

\$200 CASH REBATE	'82 ESCORT L, GL, GLX
\$500 CASH REBATE	'82 ESCORT EXP
\$500 CASH REBATE	'82 Model 4x2 Pickups
\$700 CASH REBATE	'82 Model 4x4 Pickups
\$700 CASH REBATE	'82 Model Vans
\$700 CASH REBATE	'82 Model Broncos
\$300 CASH REBATE	'83 RANGER Pickups

Shaw Motor Co.

IOWA PARK

592-4106

