

More candidates file for city election

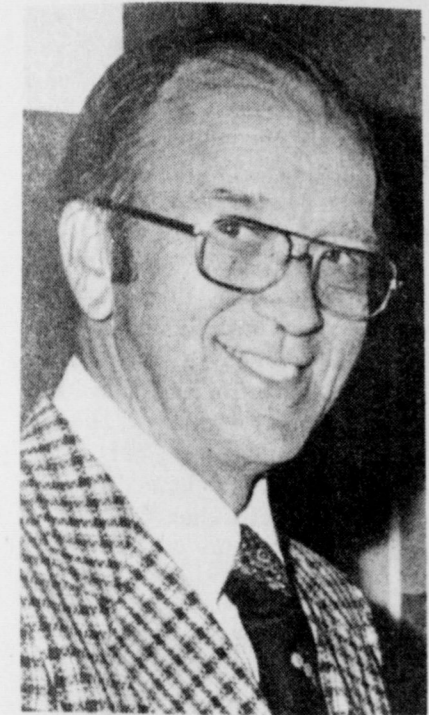
With yet a couple of hours remaining between Leader presstime and filing deadline, both the city and school ballots were filled. No additional candidates had filed for the school trustee election from the previous week. Candidates as of presstime were Virginia Klinkerman and incumbents Roy Boutwell, Martha Dudley, and Ray Hicks. There was one candidate for mayor, Charlie Lee.

Candidates who had filed for alderman were Johnny Coker, John P. Kight, Ken Thornton, Walter Berbee, former alderman George Hammonds and incumbent Bud Thompson.

the council will appoint someone to fulfill his remaining term. Mayor Johnny Crawford and alderman Lita Watson have both confirmed they will not seek re-election.

A drawing for placings on the city ballot will be held at the city hall at 4:30 p.m. today. Trustee places on the ballot will be determined by a drawing at 9:30 this morning at the school administration building. Absentee balloting will open in both elections Mar. 15, and the election will be held April 3.

In both elections, aldermen and trustees are elected at-large, with those receiving the greatest number of votes being declared winners.



CHARLIE LEE
... not moving away.

Cryovac plant head retiring

Cryovac plant manager Charlie Lee has announced he will retire from the firm Aug. 31. Lee, who will complete 27 years in June working for the subsidiary of W.R. Grace, admitted retirement was the "... toughest decision of any I can recall." Completing his first year as an alderman on the city council and having filed as a candidate in the April 3 election for mayor, Lee said he has no intention of moving following retirement. Lee said he decided to retire because there were "... still a lot of things I want to do and I don't want to wait until I'm too old to do them. I have no intention of becoming lazy, however." He said he has no idea of who will be his successor as manager of the giant plant, nor when one will be named. Before moving here in the early 1970s, while the plant was still under construction, Lee's previous years with Cryovac were in Cedar Rapids, Iowa. He was manager of that plant a number of years before moving here.

IOWA PARK LEADER

25 Cents

Vol. 13, No. 26 IOWA PARK, WICHITA COUNTY, TEXAS 76367 THURSDAY, MARCH 4, 1982

Boutwell reaches goal

If one wants to formally address the president of Iowa Park's school board these days, he'll say, "Dr. Roy K. Boutwell."

The Iowa Park High School graduate who is now employed as director of student financial aids at Midwestern State Univ. recently received his doctorate in higher education administration after a three-year, field-based program with Nova University of Fort Lauderdale, Fla.

Nova Univ. is accredited by the Southern Association and has since 1972 offered a program designed to make doctoral study available to rears and personal obligations make a traditional program virtually impossible because of the lengthy residency requirements.

Nova is designed on a three-year completion schedule and involves seven separate modules of study that touch every phase of college and university operations. There are five practicums, weekend cluster meetings each month at Mountain View College in Dallas and the completion of a major project which relates closely to the traditional dissertation.

Participants must attend two seven-day summer seminars. All activities and requirements are scheduled to avoid conflict with activities and full-time employment responsibilities of a participant in his



DR. ROY K. BOUTWELL

institution. Boutwell was employed at Midwestern in 1966 as loan collections and aids officer. He had formerly been employed by E.F. Hutton and Company in Wichita Falls, where he was an account executive and licensed as a registered representative of the New York Exchange, the American Stock Exchange and the Chicago Board of Trade. He was assigned as associate director of university affairs from 1969 until 1972, with responsibilities for public relations with the community and alumni. From 1972 until 1977 Boutwell was

director of admissions and was responsible for all undergraduate admissions procedures, operations and supervision of the admissions staff. He supervised, planned and implemented a comprehensive state-wide student recruitment and public relations program with secondary schools and junior colleges.

Boutwell was personnel director 1977-81. He established the newly-created personnel office, serving 220 staff and 147 faculty positions. He developed all forms and procedures and affirmative guidelines, relating to functions of staff recruitment.

He was graduated cum laude with a from Midwestern in 1964. His major was in general administration with a double minor in economics and military science. He earned his master of business administration in 1971, also from Midwestern.

He is a current member of the Texas Association of Student Financial Aid Administration, the National Financial Aid Administration, College and University Personnel Association and Personnel Association of Texas Senior Colleges and Universities.

Boutwell became director of financial aids in September. He works with students as they seek assistance in financial matters relating to their education.

He is completing his second term on the local school board and has already filed for re-election in the April 3 election.

The Boutwells live southeast of the city of FM 1814.



SNOWFALL covered the area with more than two inches, after rain last Thursday turned to the heavy white stuff. The flakes were so wet and heavy they stuck on everything they touched, such as fences, light poles, buildings, and berry plants such as this one.

Grand jury indicts local man for fraud

A federal grand jury last week indicted an Iowa Parkan on 10 counts of mail fraud.

Gilmore Welding Inc., and a long-time member of the city council, is alleged to have participated with Raymond Eugene Key, area production superintendent for Petro-Lewis in Wichita Falls and Bowie, in making fraudulent bills for repairs on large trucks owned by Petro-Lewis Corp. The indictment covers a period from August 1980 until Jan. 14, 1981.

Gilmore said he was informed of the indictments by the Federal Bureau of Investigation through a

telephone call, and drove to Wichita Falls Wednesday of last week. There, U.S. Magistrate Robert K. Roach

him on his personal recognizance. Arraignment was set for tomorrow, but Gilmore said yesterday he had not been informed of the time it will be held.

Key reportedly pleaded guilty to mail fraud Monday of last week and sentencing has been scheduled for 10:30 a.m. May 10.

Although he has not yet named his legal representative, Gilmore told the Leader he had been advised not to make any statements concerning the charges.

Burned youth suffers setback

Kevin Pace, who was seriously burned near his home at 200 Hope early last week, reportedly suffered a setback Tuesday and remains in critical condition at Shriners' Burn Clinic in Galveston.

According to Sandra Thurber, Pace's father, David, was called back to the hospital Tuesday morning after it was reported his son was suffering from high fever due to infection. Mrs. Thurber added in an interview with the Leader Wednesday morning that the infection had not been located by doctors when Pace was called.

Pace earlier reported to the Leader his son would remain in Galveston hospital 20-25 days and then begin outpatient treatment. He further added the phone at home was constantly ringing with calls from concerned friends.

Young Pace, who turned five years of age last month, received skin grafts immediately upon arrival at Galveston on his left hand. He was flown from Dallas to Galveston by

Shriners. Future grafts are anticipated for his left elbow and ear.

A special fund has been started at the State National Bank for young Pace, and officials at the bank suggest donors to address any mailed donations to State National Bank, in care of "David Pace for Kevin Pace Fund."

Young Pace's older brother, Carl, is currently staying with the Ed McDonald family.

Teachers get new contracts

Iowa Park school trustees in a called meeting Tuesday approved one-year contracts for 120 teachers and supporting personnel, and accepted resignation of six teachers.

Following a 30-minute executive session, during which time trustees discussed personnel matters, a list of personnel was approved as presented.

Supt. Harold Cowley told board members he now has openings for a pair of third grade teachers, an elementary counselor, coach and instructor for West Wichita Co-op.

Trustees were told there would be two fewer teachers next year than are on this year's staff.

Thefts, mischief cases reported

Two thefts and one case of criminal mischief were reported to city police during the past week.

Tex Pendergrass told police someone took a side tire and wheel from a rented trailer he had parked at 604 E. Washington Thursday night. Loss was set at \$65.

Also, sometime that same evening someone fired a high powered rifle through the southeast door of the junior high school building, breaking the glass.

Sometime Saturday night an oxygen and acetylene cutting torch was reportedly taken from a pickup parked at 116 West View. Perry Copas said the loss amounted to \$151.

News in brief

Woman indicted for murder

The Wichita County grand jury last week indicted an Iowa Park woman for murder of her husband. Joyce Elizabeth Wilson, 37, was

indicted for killing her husband, Gene Franklin, 38, Jan. 24 at their 1014 Foley home. Her bond was set at \$10,000

Singers earn highest ratings

The Iowa Park High School A Cappella Choir members brought home their share of first division honors in the Regional Solo and Ensemble contest held Saturday at Wichita Falls.

Tillman, Eric Birk, Buddy Mercer, Phillip Clements, Kent Roberts, Danny Coltrain, Craig Whisnand and Jay Yeakley.

The girls' quartet composed of Alisa Cain, Brenda Cook, Susan Streich and Maureen Duffey, the boys' quartet composed of Jay Yeakley, Bryan Fowler and Terry Escue, and the Chamber Singers also brought back first division honors.

Those who earned superior rating on solos were Alisa Cain, Jayna Evans, Karen Callahan, Susan Streich, Paula Mashburn, Timi

City, school meetings next week

Meetings of both the city council and school board are set for next week. The city will meet at 7 p.m. Monday in council chambers and school at 7:30 p.m. Tuesday at the administration building.

An appearance before the council is sought by Andy Arrington, seeking to change a transfer of ownership he gave for a drainage through property he owns, to an easement.

An ordinance abandoning an alley through a block owned by Pete Koonce will be considered. Approval of the request was made at the last city meeting, but the ordinance must be voted on to make the transfer complete.

A resolution concerning trading of

property will also be considered. It has to do with property at Texowa and Bank, where a sewer lift station is located, and the city is seeking to obtain additional land around the facility.

Bids for a one-ton truck chassis and a brush chipper will be opened for consideration, and aldermen will be asked whether the city will participate with other municipalities between Wichita Falls and Texline concerning the effect of coal trains on the community.

School trustees will consider adopting textbooks, bids on purchase of a pickup and the annual contract to participate in the West Wichita Co-op.

Holliday elections heat up with filings

City and school races in Holliday have heated up drastically during the last day of filing for both elections Wednesday.

In the city races, incumbent mayor James Cook is seeking reelection, along with aldermen Leon Addison (Place 4) and Fred Daume, Jr. (Place 2). Clarence Hoover, Jr. has filed for a place on the ballot, running against Addison, while Mike A. Parker, a former alderman, has announced his intentions of running against Daume for his seat.

Three full terms and one unexpired term on the Holliday school board has drawn the most number of

candidates, but incumbent trustee Jack Ayres had not filed for reelection as of presstime Wednesday.

Terms for board president Tommy Mankins, Larry Finnell and Ayres are included on the ballot, in addition to the unexpired term for incumbent Gene Harmon. Harmon was named to the board last year when Jake Cottrell stepped down to take a coaching position at Holliday High School.

Mankins and Finnell have an

Continued on page 4

Townhouse boosts building permits

A townhouse to be built on Pacific helped loft the month's building permits to \$94,254.

So, for the two months of 1982, building permits now total \$216,808.

Permits issued during February included: Richard Hander, 506 E. Highway, demolition permit, \$4; Tom Longest, 106 W. Cash, repair, \$1,000; Paul Blackwell, 921 Foley, addition, \$1,500;

Gordon C. Bohannon, 801 W. Smith, addition, \$2,500; B.W. Koonce 604 S. Colorado, addition, \$6,000;

Randy Heidrich, 1308 Emma, alteration, \$2,000;

Park Side View Development Co., 1213, 1215, 1217, 1219 N. Pacific, townhouse, \$80,000;

Jack Coltrain, 25 Surrey, alteration, \$450;

E.C. Langford, 125 Wood Circle, addition, \$800.

Weather Report

Weather reports are officially compiled for Iowa Park at the Texas Experiment Station, southeast of town.

Rainfall for week.....	.64
Total for month.....	.81
Total for year.....	2.68
Total last year.....	3.82

Nanez, Woodrow nuptials solemnized Saturday evening

Miss Annette Yvonne Nanez and Clarence Woodrow (J.R.) Young III were united in marriage Saturday evening in a double-ring ceremony officiated by Rev. Baxton Bryant at the Wesley United Methodist Church in Wichita Falls.

The bride's parents are Mr. and Mrs. Joe M. Nanez of Iowa Park and the groom is the son of Mr. and Mrs. Bobby Gibbs of Wichita Falls.

The couple repeated their vows and exchanged rings as they stood before pyramid-shaped brass candelabra bearing tall white candles.

Wedding musicians were Mrs. Febe Garcia, organist, who played a selection of prelude numbers and the traditional marches. She also accompanied Miss Tandra Wilkerson for her solo renditions of "There Is Love" and "The Hawaiian Wedding Song."

Escorted by her father who presented her in marriage for her parents, the bride wore a lovely white Chantilly lace gown over peau de soie. The tight bodice was fashioned with a portrait neckline, sheer yoke bordered with a wide pleated ruffle and long sleeves. The full skirt that flowed gracefully into a chapel train was overlaid with an apron-effect tier edged with a wide pleated flounce which was seen again around the hemline of the gown and train.

Her headpiece featured a satin bandeau dotted with pearls which held a waist length illusion mantilla and face veil. She carried a lacy cascade bouquet of peach silk rosebuds, white stephanotis and lilies of the valley completed with picot ribbon streamers.

In keeping traditions, the bride wore a ring that had been loaned to her by her paternal grandmother, Mrs. Sylvia Nanez for both "something old" and "something borrowed"; her gown was "something new" and a garter was "something blue."

Mrs. Greg Clement of Wichita Falls



MRS. CLARENCE W. YOUNG III

served as matron of honor and Miss Lori Nanez, sister of the bride, was maid of honor. They were attired in identical peach Qiana gowns designed with empire waists, spaghetti straps and organza capelets. They carried nosegays of light blue silk tea roses intermixed with peach baby's breath accents and finished with lace picot streamers.

The services were carried on lace-trimmed white satin pillows in wicker baskets trimmed with peach and baby blue ribbons by Jollene Villegas of Wichita Falls, cousin of the

bride, and Sabina Skinner of Las Cruces, N.M. Their becoming long white cotton frocks were imprinted with peach rosebuds and featured puff sleeves and sashes that hugged the waists and tied in bows in front. Each wore a cluster of peach and light blue flowers in her hair.

The groom wore a pale blue tuxedo with tails, white ruffled shirt and a boutonniere formed of a peach silk rosebud and baby's breath. The best man, groomsman and ushers wore light blue vested Prince Edward tuxedos and matching shirts. Fathers of the couple were attired in navy blue tuxedos with vests and baby blue shirts.

The groom was attended by Henry Hackbusch of Arlington as best man and Steve Carter of Wichita Falls as groomsman. Ushers and candlelighters were Rick Nanez, brother of the bride, and Brad Young, brother of the groom.

Mothers of the bride and groom chose wrist corsages to wear with their long gowns. Mrs. Nanez wore a jade green Qiana dress featuring an overlay of crochet on the split-sleeved bodice. Her corsage consisted of

white carnations and turquoise accents. Mrs. Gibson selected a pale blue knit dress complemented with a waist length pleated jacket. Peach baby's breath and blue poufs were intermingled with white carnations in her corsage.

The reception honoring the newlyweds was held in the Fellowship Hall of the church and hosted by the bride's parents, and the rehearsal dinner was given by the groom's parents at Trade Winds on the eve of the wedding.

At the postnuptial reception, peach and baby blue which dominated the decorative scheme in the room were combined to make the refreshment tables covered with blue lace over blue taffeta outstanding in the setting.

On the bride's table, a four-tiered cake stood apart by itself as a highlight of appointments. Others were the bride's bouquet, crystal punch service and blue napkins bearing the names of the couple and their wedding date.

The white cake of four tiers was set off with heavy grape scrolls and stringwork, cascades of peach and blue roses and two sets of filigree columns. The top tier was ornamented with a bride and groom standing in front of a lacy pearl heart interlaced with tiny peach flowers. Mrs. David Carender and Miss Robin Arredondo presided at the table.

The main attraction on the groom's

table was the horseshoe-shaped chocolate cake decorated with peach and blue flowers and a "Good Luck Annette and J.R." message. It was made and decorated by the bride's aunt, Mrs. Delfino Villegas of Wichita Falls. The table, where Mrs. Gary Willson served, also held a crystal punch service and nosegays carried by the bridal attendants.

The gift table laid with white lace over blue held wicker baskets tied with peach and blue bows filled with net bird seed bags.

Members of the houseparty were Mrs. James Hennen, Mrs. Jim Bryan and Sue Shirley.

Guests registered for the wedding and reception at a table in the church foyer covered with white lace over blue. It held a bell jar filled with peach and blue flowers topped with a votive candle in a blue hob nail cup, the book and pen.

Following a trip to San Antonio, the newlyweds will live in Wichita Falls. She was graduated from Iowa Park High School and attended Midwestern State University. He was graduated from Wichita Falls High School and is employed as manager of Foot Action in Sikes Center.

Special wedding guests were Mrs. Anna Schmid, Mrs. Sylvia and Joe M. Nanez, grandparents of the bride. Other out-of-town guests were Mrs. Jerry Hennen of Dallas, Mr. and Mrs. Melburn Johnson and Sabrina Skinner of Las Cruces, N.M.



2nd Lt. and Mrs. Randy Black, Mather AFB, Calif. announce the birth of Kristina Bramley, an eight pound, nine ounce daughter, born Feb. 27. The new baby has two brothers, Brandon Paul and Nicholas Paul.

Grandparents are Mr. and Mrs. Larry Balsley of Iowa Park and Mrs. Helen Black of Hurst.

Class of '72 members sought

June 19 has been set for the reunion of Iowa Park High School Class of '72, but a number of members have yet to be notified and their addresses are needed by the planning committee.

Anyone knowing the address of the following is asked to notify Cathy Blair, Box 213, Iowa Park:

- Rosa Balli, Jeff Blaker, Chuck Buikema, Laura Catron, Nancy Cudd, Ann Gilmore, Debby Keener, Coleen Kennedy, Keith Lance, Tony Lee, Elaine Morgan, Tommy Nicholson, Kathy Pearson, Geneva Rains, Jerry Sauls, Gweneth Schmidt, Randy Sutton, Donna Thatcher, Lee Tucker and Rhonda Watson.

Shower fetes bride elect

Miss Tami Catlin, bride-elect of Ronnie Taylor, was honored at two pre-nuptial courtesies during the week. The first was a lingerie shower held at Texas Electric Reddy Room, and the second was a rice bag party held in the home of Mrs. Randy Catlin.

Hostesses for the lingerie shower were Mmes. Sammy Bates, Sonny Bates, Bob Hodges and Miss Jill Watts.

The refreshment table was prettily decorated in the honoree's chosen colors of lavender and gray. Draped with a floor length cloth of white satin accented at the corners with lavender bows with long streamers accented with wedding bells, it was centered with a crystal basket filled with lavender silk carnations and gray baby's breath. The table favors were handmade miniature garters in the chosen hues trimmed with lace and ribbon.

For a memento of the occasion, the bride-elect was presented with a regular sized garter duplicating the style of the favors. She and her mother, Mrs. Carl Catlin, and the groom-elect's maternal grandmother, Mrs. Milburn Bates, were presented with dainty corsages created of silk flowers and baby's breath in lavender and gray shades.

The couple will be married Mar. 12 in the Church of God.

Good landscape plan can cut time, work

Don Decker, Wichita County agent, gave a program on "Low Maintenance Landscaping" in the "Area," in which he showed a film and outlined seven reasons for low maintenance for the Iowa Park Garden Club Friday morning. He was introduced by Mrs. W.A. George.

He suggested the planting of shrubs requiring little or no pruning, using adapted trees for this area, and to go slow on flowering annuals. He further told members that shaped shrubs require a lot of work, and that they needed to consider ground cover, learn how to use herbicides and adopt a lawn waste saver program.

Regarding the watering of grass, Decker advised not watering until the grass left a footprint when walked upon, then to water six inches deep. He said that it was a mistake to mow with a bagger since the clippings acted as a mulch for the grass. He recommended Balon, a herbicide, to kill weeds now, and to use it or Betason around Sept. 15.

Leaflets were distributed to explain more fully how to care for the yards and listed trees and shrubbery adapted to the area.

Hostesses for the meeting attended by 22 members were Mmes. George and D. U. Ford.

The thought for the day was given by Mrs. Frank Harlin who read "A Prayer for a New Day" from Helen Steiner Rice's book "Someone Loves You."

Mrs. George conducted the business. It was voted to sponsor a Yard of the Month and place attractive iron signs in the yards, then at the end of the year present a plaque for the best Yard of the Year.

Mrs. Thurman Reitz, chairman of the flower show for this year, announced that the annual event will be held April 23 at United Savings and "Special Occasions" will be its theme.

The possibility of sponsoring a "table settings" pilgrimage to be held at a later date in several homes was discussed. Mrs. Margarette Archer presented Mrs. George with a fruitless mulberry tree.

The next meeting will be held in the home of Mrs. China B. Smith and she will give a program on her recent trip to Europe.

Complete Bridal Reception-Special Occasion-Anniversaries-Accessories & Rental Service.

The Special Touch

Sue Garrett 716 West Alameda 592-4552
Teresa Wright 592-4042

Wrangler
"No-Fault" Denims

COWBOY CUT & NO-FAULT BOOT FLARE BLUE JEANS

NOW JUST
\$12.95

ALL 100% COTTON 14 oz. HEAVYWEIGHT DENIM, BUILT TO LAST

WESTERN WORLD
3709 Callfield Rd.
(Just west of Sikes Center) - 692-0921
Under the Big Western World Sign

True Value
HARDWARE STORES®

STOP IN AND PICK UP YOUR COPY OF OUR HARDWARE WEEK CIRCULAR

20-INCH ROTARY MOWER
LAWN CHIEF
Completely Assembled
169⁹⁸

LAWN RAKE
Pull-type 22 spring-tempered teeth for clearing leaves, clippings. LR22CS
5⁹⁹

ROUND POINT DIRT SHOVEL
High-carbon steel blade with rolled shoulders for firm stepping. SLRCS
5⁹⁹

TRU-TEST Supreme
6⁸⁸
LAWN FOOD
Granular nitrogen formula feeds lawns gradually, supplying them with the necessary nutrients for thick, green growth. 25-4-8

TRU-TEST SPECIAL
5⁹⁸ Gallon
LATEX FLAT WALL FINISH
Choose this budget-priced finish when you want good coverage and long wear. Goes on smoothly and dries quickly. Pastels and white. Y

PARKWAY
200-206 West Bank
592-5512
592-4681

FURNITURE
True Value
HARDWARE

Cook of the Week

Are little girls really made of sugar and spice and everything nice? Chances are in most cases they are and quite a few of them in our town are busily engaged right now in selling Girl Scout Cookies from Little Brownie bakers that are made of sugar, spice and a lot of nice ingredients.

The Girl Scouts and Brownies will be on the march until March 14 knocking on doors to sell several varieties of cookies, each girl hoping to be among the top sellers. After the sale, many of them will probably be in the kitchen helping their mothers prepare some of the delectable desserts using the cookies in the recipes that they are sharing with us this week.

Pictured today are five Brownies from Mrs. Don Decker's Troop 32 who are enthusiastic about the cookie sale and willing to work hard to make it a success.



FRONT ROW - JULIE JAMES, STEPHANIE BATES, DEANNA ADAMS
BACK ROW - JENNIFER RINEHART, CHELLE ROBERTS

GIRL SCOUT PIE
(Made with Little Brownie Chocolate Van Cho Cremes)

Crush 11 Chocolate Sandwich Cremes and press into pie pan. Fill pie shell with vanilla ice cream. Spread fudge ice cream topping-over top. Freeze.

FRUIT CUP WITH COOKIE CRUNCH TOPPING
(Made with Little Brownie Vanilla Sandwich Cremes)

1 can fruit pie filling (22 oz. size)
1 tsp. grated lemon rind
1 tsp. cinnamon
1/2 stick margarine
1/4 cup cool tap water
2 tsp. cornstarch
1 recipe Cookie Crunch Topping
Blend cornstarch and water until smooth. Set aside. Combine all other ingredients in top of double boiler, stirring well. After margarine is melted, add the cornstarch mixture. Stir until mixture thickens. (Remove from heat.) Place fruit mixture into individual baking cups (about 5) and top with Cookie Crunch Topping. Bake at 350 degrees for 12 to 15 minutes.

COOKIE CRUNCH TOPPING
10 Little Brownie Sandwich Creme cookies
1/2 stick margarine

Crush cookies on wax paper with a rolling pin. Place crumbs into a bowl and cut margarine into them with a fork or pastry blender until well mixed - it will have a coarse texture. Sprinkle on top of fruit, puddings, ice cream, whipped cream or hard sauce.

GIRL SCOUT MINT-WICH PIE
(Made with Little Brownie Sandwich Cremes and Mint Cookies)
1 package Little Brownie Assorted Sandwich Cremes and Mint cookies
1/2 cup melted butter

Firmly crush assorted cookies. Mix with melted butter. Press into 9-inch pie plate.

FILLING
1 - 9 oz. carton Cool Whip
1 small package chocolate instant pudding
1 package crushed Girl Scout Mint cookies
Combine ingredients and pour into crust. Refrigerate 2 hours before serving.

TEXAS PIE
(Made with Little Brownie Trefoil Cookies)
1 stick margarine (soft)
1 cup flour
1 package Little Brownie Trefoils (crushed fine)
1 cup nuts, finely chopped

Cream all ingredients together. Press into pan and bake at 350 degrees for 20 minutes. (Pan should be no larger than 9x13) Cool completely.
1-8 oz. package Philadelphia cream cheese
1 cup powdered sugar
1 cup Cool Whip (small carton)
1 tsp. vanilla
Mix thoroughly and pour over crust.
2 small packages instant chocolate pudding
3 cups cold milk
Mix until thick, pour over cream cheese mixture. Spread Cool Whip over pudding mix and top with chopped nuts.

TREFOIL COOKIE FRUIT CAKE
(Made with Little Brownie Trefoil Cookies)
1 package of Little Brownie Trefoil cookies
1 pound nuts (pecans)
1/2 pound candied cherries
1/2 pound candied pineapple
1/2 pound white raisins (scant cup)
2 eggs
1/2 cup white sugar
1 small can evaporated milk
1/8 tsp. salt

pin, chop fruit and nuts keeping out 4 whole cherries, 16 pecan halves and 2 slices pineapple. Mix chopped fruit and nuts with Trefoil cookie crumbs. Beat eggs well, add sugar, salt and milk. To this mixture, add fruit, nuts, and Trefoil cookie mixture, mixing well. Let stand while preparing pan with wax paper. Pack in pan, decorate top with cherries, pecan halves and pineapple (or try the recipe for frosting below) Bake in moderate oven at 325 for 1 hour.

CAKE FROSTING FOR TREFOIL FRUIT CAKE
1 1/2 sticks margarine
1 lb. box powdered sugar
3 to 4 T pineapple juice
1 tsp. vanilla
1/4 tsp. salt
1/8 tsp. green food coloring
Maraschino cherries
Pineapple tidbits (canned)
Pecan halves, cut in half lengthwise.
Cream margarine well, gradually add the powdered sugar (sifted). Blend in pineapple juice, one tablespoon at a time, until frosting is of spreading consistency. Add salt, vanilla and food coloring, blend all to a smooth light green color. Spread frosting on completely cooled cake. Decorate with cherries, pineapple

UMW members begin study

Mrs. Chauncey Weiler, chairman of Global Concerns of the United Methodist Women, introduced the annual study of the division Tuesday morning. She reviewed the first lesson in a series of five as given in Dr. James Will's book, "Must Walls Divide?" The book is basically a study of the ecumenical movement in Europe and a study of dimensions of Christian missions in Europe, with the special emphasis on east Europe. Quoting from the author, Mrs. Weiler stated that the ecumenical work has been very difficult in Europe, which is the only continent where, in one way or another, the countries have shown favor to certain churches. She mentioned that the favored churches feel a certain kind of ecclesiastical superiority which complicates both physically and practically any joint effort in missions. Mrs. Weiler noted that the differences in history, language barriers, customs and political beliefs add to the confusion.

Concluding, she gave a short review of the divisions in Christianity not only along church lines, but also by national boundaries and animosities between governments creating

walls which lead to the title "Must Walls Divide?"
Mrs. Gene Owens conducted a short business meeting. Announcement was made of the World Day of Prayer observance at the First Christian Church between 12 and 1 p.m. Friday.



Brides-to-Be IS YOUR NAME
IN OUR Bridal Registry

TAMI CATLIN
and
RONNIE TAYLOR

LISA WATSON
and
STEVE WHITE

JENNIFER FORD
and
TONY SINGER
REESA ROBINSON
and
KENNY PARKER

BARBARA ALLISON
and
DARYL BEALS

JO ANNE MELCHIORI
and
KEN RICE

TERI SINGER
and
MIKE GEORGE

Park Pharmacy &
Thoughtfulness Shop
115 W. Park 592-4116

Holy Land trip told

An educational and entertaining program was provided for the Iowa Park Lioness Club Thursday evening by Mrs. Jim Miller, who described her recent trip to the Holy Land through slides and lecture. To enhance interest, she gave the biblical history of many of the places that she visited and the contemporary status of these.

Among the items on display from the area Mrs. Miller toured were numerous maps, English Hebrew Conservational Guide, an opal from Haifi, wearing apparel including a yarmulka and kaffiyeh, locust beans and wild honey that John the Baptist ate in the wilderness, Jewish calendars, coins, pottery, water from the Dead Sea and many others.

P-TA members hear of events

The monthly meeting of Bradford P.T.A. was held Tuesday night in the school cafeteria with Mrs. James Conner presiding.

During the announcements of forthcoming events, the jump-a-thon which will be held Saturday from 8:30 to 12 p.m. in the school gym was emphasized. The observance of P.T.A. Day March 17 and a joint meeting with Kidwell P.T.A. March 23 were announced. The joint meeting will be held at the high school and the speaker will be Shirley Crawford, regional director of Texas War on Drugs.

Mrs. Wm. Boucher, cultural arts chairman, announced that four Bradford students, Jana Rains, Melissa Lewis, Christie Strain and Tiffany Gray had been named winners in the district "What Makes Me Smile" contest and that their entries would be sent to state.

Some of the places of interest that she visited were shown in the slides of synagogues, minarets, Old Jerusalem, Church of All Nations, Tomb of David, Dome of the Rock, Golgotha, Samaria, several fortresses, towers and tombs of biblical significance.

The meeting was held in the home of Mrs. L.E. Brooks and Mrs. W.E. Karstetter served as co-hostess.

Preceding the program, Mrs. Homer Blalock gave the devotion using "The Rug Weaver" for a theme.

Mrs. Keith Aulds directed the business. Mrs. Sam Hunter gave a report on the purchase of flatware project and it was voted to purchase service for 50 for use at various club and community functions. Mmes. Riley Thompson, Sam Hill and Grover Cleveland were appointed on a committee to nominate young people for the Outstanding Boy and Outstanding Girl 1982 awards.

Mrs. V.I. Woodfin was welcomed as a new member.



Mr. and Mrs. Kern Railsback of Galena Park, announce the birth of Bridget Dawn, their first child. She was born February 11 and weighed six pounds and three ounces. Mrs. Railsback is the former Barbara Curry.

Grandparents are Mr. and Mrs. Jack Railsback and Mr. and Mrs. Bill Curry of Iowa Park. The great-grandparents are Mrs. Helen Scheer of Henrietta and Mr. and Mrs. G.D. Railsback of Meridian.



The first paper money in America was issued by colonists in Massachusetts in 1690.



IS THIS YOUR ONLY RETIREMENT PLAN?



Years ago, Social Security might have been enough. But how much will it help you today? Or 20 years from now?

Consider the advantages of investing in an INDIVIDUAL RETIREMENT ACCOUNT (IRA)

- ★ Every Wage Earner Qualifies
- ★ Contributions Are Fully Tax-Deductable
- ★ Have Less Dependence On Social Security
- ★ Totally Insured Up To \$100,000
- ★ Provide A Comfortable Future
- ★ Your Full Investment Works For You No Fees Or Commission
- ★ Compounded Interest Is Tax Deferred
- ★ You Can Make Your Contribution To IRA With A Monthly Deposit

Check With Roberta Hill About Your IRA Today!

Today's Tax Shelter... Tomorrow's Retirement Fund.

OFFICERS
Stanley Williamson, Chairman of the Board & President
H.M. Nipper, Senior Executive Vice President
David Parkey, Senior Executive Vice President
Bert Williamson, Vice President
Roberta Hill, Vice President and Cashier
Jean Hopkins, Vice President
Janis Latimer, Vice President and Asst. Cashier

DIRECTORS
Fred Dwyer, Agri-Business
O.N. Newman, Attorney
Fred Parkey, Mgr. Red River Authority
W.R. Steger, Tax Assessor & Collector
Stanley Williamson, Banking, Investments & Ranching
Bert Williamson, Banking & Oil Investments
Joe Williamson, Farming & Ranching



STATE NATIONAL BANK
IOWA PARK, TEXAS



Locally Owned
FDIC

It's Gardening Time!

BRIGGS & STRATTON



\$298 Reg. \$329⁹⁵

5-HP Chain Drive TIL-R-Plow. Briggs & Stratton engine, 26" tilling path, safety remote clutch control. Drag bar and attachment assembly handles a variety of optional ground handling attachments. \$7.60

5-HP GEAR DRIVE Reg. \$429⁹⁵ \$398

IOWA PARK

WHITES

Home & Auto

Park West Shopping Center

592-4186

Pecan tree fertilizing time is now

Don D. Decker
County Agent

Pecan fertilization needs to be completed as soon as possible, especially on yard trees. Early fertilization enables the pecan trees to take up most of the fertilizer before the lawn grasses begin to grow. The fibrous root system of lawn grasses makes for a tough competitor in the uptake of nutrients and moisture from the pecan trees.

Pecans make all of their growth during the first 40 days of spring. This is the reason nitrogen and zinc need to be available to the pecans early in the spring.

If pecan shoots make less than four inches of growth during a year, it indicates too little fertilizer. When the shoot growth is over 12 inches, it indicates too much fertilizer. This rule of thumb can be used to gauge

Needs discussed

The Night W.M.U. of First Baptist Church met at the church Monday for a finger foods supper and the Week of Prayer for Home Missions program. The theme of the program given by Mrs. Bill Curry, prayer chairman, and Mrs. E.T. Patterson was "The World Is Here."

The discussions showed the efforts that are being made to minister to the millions of people that have come to the U.S. from other countries, the lost, needing churches, religionists, who are trying to teach quite differently from what the Bible teaches, ethnic citizens, with particular emphasis on the seamen, and others suffering physical needs, especially the millions of hungry people in the nation.

Mrs. Patterson told the story of Annie W. Armstrong, the first corresponding secretary of W.M.U., and the one for whom the Easter offering is named.

Mrs. Elmer Singleton was in charge of business. Mrs. V.I. Woodfin, missions in action chairman, discussed the part the group would have in serving the noon meal for the Baptist Student Union at Midwestern State University Wednesday.

Eleven were present. Mrs. C.A. Hicks, a prospective member, was in attendance.

now a grower is doing with their pecan fertilization.

The only fertilizer which pecans respond to is nitrogen. Either ammonium nitrate (33-0-0) or ammonium sulphate (21-0-0) can be used. Mrs. Erie Miller of Wichita Falls fertilized her pecan trees

recently with ammonium nitrate at the rate of three pounds per inch diameter of the tree trunk. Ammonium sulphate is recommended at the rate of four pounds per inch diameter of the tree trunk. Mrs. Miller placed the fertilizer a little short of and a little beyond the drip line of her pecan tree. The fertilizer was applied on the surface then watered into the soil.

Nitrogen moves with soil moisture. As the water moves into the soil, it carries the nitrogen with it. For this reason, it is not necessary to punch holes into the ground for applying fertilizer.

Zinc cannot be applied into the soil, as it becomes tied up with other elements. Zinc is applied as a foliage spray beginning at bud break. Three or four zinc applications during the first 40 days of growth will do wonders for the pecan trees.

This was evident in the pecan pest management demonstration conducted by Jim Kuehler in 1981. His trees received six zinc applications between April 6 and June 5. His shoot growth averaged a little over four inches. His trees had a dark green color and made the best growth of

any previous years.

Euonymus is a popular shrub in this area, but it is one which has a problem with euonymus scale. This is evident by white, crusty spots which develop on the stems and leaves. If uncontrolled, this pest will eventually kill the shrub.

Piner Avis of Wichita Falls is experiencing scale problem on his euonymus shrubs. Since this pest is rather difficult to control, he is using dormant oil mixed with diazinon. His mixture includes six tablespoons of dormant oil and one teaspoon of diazinon per gallon of water. Avis is making application late in the afternoon to avoid any leaf burning caused by the sun shining through the oil upon the leaf surface. He is careful to thoroughly wet the foliage and stems for the control of this pest. One application does the job.

Holliday

Continued from page 1

nounced their intentions to run for another term. Rev. Larry Lilley, Bob Martin, Carl Nichols and Melvin Bills have filed for a place on the school ballot.

Running against Harmon for the remaining one year on the unexpired term is Clay Lindley.

Martin is the only challenger that has served previously on the board.

Obituaries

Lee Holbrook Giles

Services for Lee Holbrook Giles, 73, were held Wednesday afternoon at Owens and Brumley Funeral Home. Burial was in Crestview Memorial Park.

A 47-year resident of Wichita Falls, he was born Dec. 12, 1908, in Fannin County. He was a retired oil field worker and a member of the United

Methodist Church.

He is survived by his wife, Kate; three sons, Preston, Jerry and Robert, all of the Wichita Falls area; a daughter, Linda Boren of Iowa Park; a brother, Edgar of Denton; four sisters, Luetta Foster of Fort Worth, Ozella Coffey of Aubrey, Jean Sherer of Ocean Shores, Wash. and Maxine Bowles of Argyle; and seven grandchildren.

As I See It....

By BOB HAMILTON



Someone once commented that it's getting more expensive to get rid of something than it was to purchase it.

The reference was to garbage, and it is more a reality than a jest.

This year's city budget calls for expenditures of \$178,938. That includes \$51,663 for operation of the landfill, where the trash is buried, and \$127,275 for trash collection.

These figures are probably accurate, but there's more to it. They don't include the city having to dispatch crews out on the county roads between here and the landfill to pick up the trash.

Wait a minute, now. What they're picking up isn't what blows off the trucks, though there is a little of that. The main work they do is picking up what others dump in the ditches.

Charlie Helms told me this week the city is expending about 30 manhours a month outside the city cleaning up after people.

Why would they do that? Well, the

city feels responsible for the roadways to the landfill, since city vehicles use them daily to haul away our garbage.

If you want to cut down on your city's cost of operation, get the name or license number of anyone you see dumping trash between here and the landfill, and turn it in to the police department.

Helms was also saying some of our residents are getting busy trimming trees and shrubs. The problem is, they're piling the debris so high in the alley, the truck is having a hard time passing through to pick them up.

If someone ever comes up with a workable method of making money from all the trash we bury daily, let me know. We can package it, sell it, and cut the cost of living for us all.

Municipal Court Records

Among the findings of municipal court held here Thursday was the first case filed under a new state law requiring proof of liability insurance. That and other cases were:

- Jerry Paul Smith, failure to show proof of liability insurance, \$100;
- Steven Wayne Fulfer, defective tail lights, \$51;
- Steven Wayne Fulfer, no operator's license, \$51;
- Aubrey Gayle Houston, expired commercial license, \$31;
- Jimmy Carroll Sheets, speeding, \$62;
- Michael McCarty, dogs running and roaming at large, \$50;
- Michael McCarty, dogs running and roaming at large, \$51;
- Dawn Denise Walker, public intoxication, \$31;
- Larry Dale Britt, consumption after hours, \$31;
- Larry Dale Britt, public intoxication, \$31;
- Charles D. Richardson Jr., public intoxication, \$31;
- Nacy Lorraine Olson, public intoxication, \$31;
- Richard J. Galli, public intoxication, \$31;
- Melvin Wayne Correll, public intoxication, \$31;
- Melvin Wayne Correll, minor in possession, \$31;
- Michael Wade Moore Sr., public intoxication, \$31;
- Shelia Ann Mosley, public intoxication, \$31.

IOWA PARK LEADER

763280

Bob Hamilton Editor-Publisher
Dolores Hamilton Assistant Publisher
Olive Blalock Reporter
Kevin Hamilton Reporter

The IOWA PARK LEADER is published every Thursday. Offices are located at 112 W. Cash, Iowa Park, Texas, 76367. Telephone: 592-4431. Second class Postage Paid at Iowa Park, Texas, 76367. Subscription rates are \$7 per year in Wichita and Archer Counties; \$9 elsewhere in Texas and Oklahoma; \$11 anywhere else in the United States. Classified advertising rates are 16 cents per word first insertion, 8 cents per word thereafter. Any erroneous reflection upon the character, standing or reputation of any person, firm or corporation which may appear in the columns of this newspaper will be corrected upon being brought to the attention of the publisher.

MEMBER
TEXAS PRESS ASSOCIATION

Worth Quoting

We have written a couple of editorials taking issue with the wails of anguish surrounding the proposed cut in the federal student loan program, and have been accused of getting out of touch with the times and not realizing how hard it is to finance a college education these days. We will admit to getting gray around the ears and perhaps dwelling in the past too much, but nobody is going to make us believe that it is harder to get a college education today than it was when we got one in the 1940s. We went to school at West Texas State as a freshman, transferred to the University of Texas for our sophomore year, then ran out of money. Our parents didn't have the money to send us to college, either, so we laid out a year, working to save up enough to go back to school.

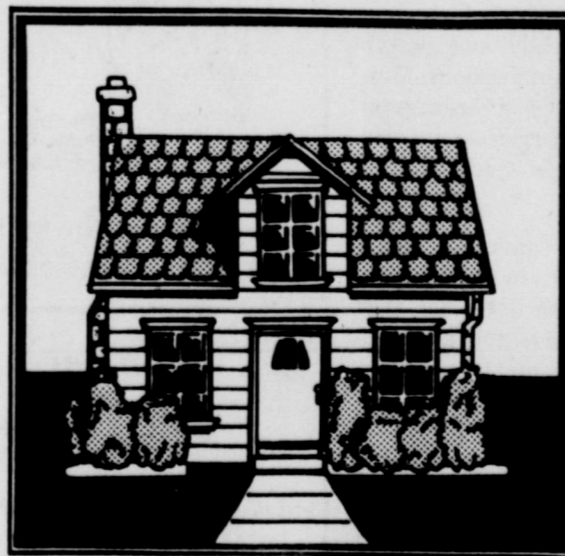
It is hard for today's younger generation to believe this, but we had a job as a teller in the First National Bank in Perryton that year for \$75 a month and it was considered a good job in those days. Out of this we saved enough to launch our second phase of our education at UT but it meant that we would have to find a job, and quickly. We looked and looked and finally found one with the Leigh service station on South Congress where we started at 25

cents an hour. This was low pay even in those days but it was all we could find so it merely meant that we had to work more hours, which we did. At one time we were working 56 hours a week in this service station and carrying five subjects, 15 semester hours, at the university. This meant our social life suffered, and we didn't get as much sleep as we probably needed, but we did make it through the university with a B average and got a degree.

We went from college right into the Army and found it a welcome change because we did less work, ate regular meals and got a lot more sleep than we did during college days. In looking back on our college career, of course we missed a lot because we had to spend so much time working. But it was either work and get an education or drop out and work without one and we chose the education and have never regretted it. Now, today's youngsters can tell us that it is hard to work your way through college today but they will never make us believe it. For one thing, we didn't consider an automobile an absolute necessity as today's youngsters do. Some of them, forced to make a choice between a car or college, choose the car.

By HAROLD HUDSON
Perryton Herald

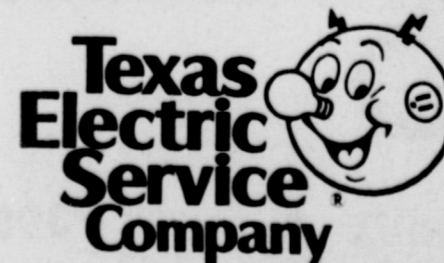
Get a tighter grip on your energy dollars.



Attend an Operation Tighten-Up workshop in your neighborhood. We'll show you how to save energy and money at home with simple, do-it-yourself conservation tips. A workshop only takes

about an hour, and it's free.

To find out when and where a workshop will be held in your neighborhood, call Texas Electric.



Schedule for:

Recreational Activities Center

Once again the Iowa Park Recreational Activities Center will sponsor a hobby show. It will be held from 10 a.m. to 4 p.m. Mar. 20

All hobbyists are invited to display what they have. There is no charge for displaying nor will there be an admission fee to the public.

A "people's choice" award will be presented.

Those wishing to enter can call 592-4471 between noon and 7 p.m.

Also during the show, the Iowa Park MuleSkinners will serve chili and beans, and a soft drink stand will be available.

Candidates Seeking Election

The following have authorized and paid to announce their candidacies for office:

STATE SENATOR, 30th Dist.
Ray Farabee

STATE REPRESENTATIVE
80th Dist.
Charles Finnell
Bill J. Glassford

Shop

Iowa Park
First!

AFFILIATED

Naturally Tender Boneless

Chuck Roast



Lb. **1.38**

Shurfresh Hom o

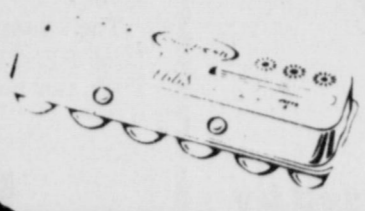
Milk



Gallon **1.99**

Shurfresh Grade A Large

Eggs



Dozen **69¢**

Shurfresh

Hams



3 Lb. Can **5.69**

Shurfresh Frozen

Orange Juice



3 6 Oz. **1.00**

Kraft Salad Dressing

Limit 1

Miracle Whip



32 Oz. **99¢**

Rindless Slice Slab

Bacon



Lb. **1.19**

Florida X-Fancy

Strawberries



Pint **59¢**



Cokes

Sprite - Tab - Mr. Pibb

2 Liter **1.09**

Assorted

Pork Chops



Lb. **1.28**

Vine Ripe Large

Tomatoes



Lb. **49¢**

Congratulations

\$100

Shirley Kissner Winner



Geack's	German Sausage	12 Oz. Pkg.	1.49
Carl's	Pork Sausage	2 2 Lb. Pkg.	2.79
Boneless	Chuck Steak	Family Pack Lb.	1.68
Boneless	Swiss Steak	Lb.	1.88
Lean Tender	Gravy Steak	Lb.	1.88
Budget Pack	Full Cut Round Steak	10 Lbs. or Over	1.79

Avocados	5 For	1.00
U.S. No. 1 Russet Potatoes	5 Lb. Bag	99¢
Shurfresh Supreme Ice Cream	1/2 Gal.	1.99
Swanson Chicken & Turkey Pot Pies	8 Oz.	49¢
Swanson Fried Chicken	2 Lb.	2.99
Yoplait Yogurt	6 Oz.	2 For 88¢
Pet Rit ₃ Pie Shells	2 Ct.	75¢
Birdseye Dover Farms Topping	8 Oz.	89¢

Del Monte Cut & French Style Green Beans	3 16 oz.	1.00
Starkest Tuna	5 oz.	95¢
Wesson Cooking Oil	24 oz.	1.79
Duncan Hines Cake Mixes	18.5 oz.	88¢
Wolf Chili w beans	15 oz.	79¢
Gladiola Mixes	Ass't. 4 6 oz.	1.00
Gladiola Flour	5 lb.	88¢
Wolf Beef Stew	24 oz.	1.39
Swift Vienna Sausage	5 Oz.	2 For 88¢
Hamburger Helper	1.75 8 oz.	85¢
Del Monte Sweet Peas	17 oz.	48¢
Del Monte Leaf Spinach	15 oz.	2/ 88¢
Hunt's Ketchup	1/4 gal.	99¢

SUPER FINE FOODS

Quality Service

2700 IOWA PARK ROAD
WICHITA FALLS, TEXAS

SUPER FINE FOODS

Quality Service

300 WEST BANK STREET
IOWA PARK, TEXAS

SUPER FINE FOODS

Quality Service

601 WEST FRONT STREET
ELECTRA, TEXAS

WE RESERVE THE RIGHT TO LIMIT QUANTITIES

WE RESERVE THE RIGHT TO LIMIT QUANTITIES

WE RESERVE THE RIGHT TO LIMIT QUANTITIES

Holliday News

March busy for students

March is a busy month for Holliday's students, with several U.I.L. events in both athletics and literary events to begin soon, signalling the changeover from winter to spring programs.

March 17, students from second through seventh grade will compete in the Spring Elementary and Junior High Literary Meet in Nocona.

Events include story telling, picture memory, spelling and plain writing, number sense, oral reading and story telling.

Holliday Elementary has been especially successful in the past, winning the meet three of the last four years.

On the following day, Holliday High School thespians will host the west zone one-act play competition. Other west zone participants include Archer City, Windthorst and Petrolia. Chico, Millsap, Nocona and Boyd will meet for the east zone competition. Winners of both zones will compete Mar. 24 in the District One-Act Play meet in Olney.

The Dist. 13-AA Literary meet will be held Mar. 25 at Midwestern State University, with Holliday going into the one-day event district champions the past two years. The ready writing and science portions of the literary meet will be held three days earlier, Mar. 22, in Windthorst.

Holliday to inaugurate baseball against Hawks

Aside from a few days of rain and snow, workers have almost completed construction of the new baseball diamond on the Holliday High School campus, according to maintenance supervisor and principal Dan Owen.

According to Owen, the rain and snow hampered efforts to complete the field before the opening season game against Iowa Park at 4 p.m. today. "The field is for the most part completed, but we don't think the fence will be completely up before the game," said Owen. However, the game will be held and baseball fans around Holliday will have their first chance to see how coach Jake Cottrell's Eagles handle experienced

competition. The Eagles will be playing baseball for the first time as representatives of Holliday High School. Iowa Park, on the other hand, began their baseball program in the early 1970s after competing for several years in an area high school league.

The Hawks were hit hard last year by graduation, and coach Daryl Frazier, himself a former Iowa Park graduate and standout in baseball, considers this year a rebuilding one for his young team.

According to Owen, most of the heavy equipment used to ready the new field was provided by Archer County at a considerable savings to

the school. Workers have been busy levelling the infield, moving bleachers, and marking the baselines for the upcoming game.

H.H.S. Spring Sports

1982 BASEBALL SCHEDULE

Thursday, March 4	Iowa Park	4:00	Here
Monday, March 8	Notre Dame	3:00	Here
Thursday, March 18	Iowa Park	4:00	There
Monday, March 22	Rider J.V.	3:30	There
Monday, March 29	Rider J.V.	4:00	Here
Thursday, April 1	Petrolia	3:30	There
Thursday, April 8	Bowie	4:00	There
Monday, April 12	Notre Dame	3:00	There
Thursday, April 15	Petrolia	3:30	Here
Tuesday, April 20	Windthorst*	3:30	Here
Tuesday, April 27	Petrolia *	3:30	Here
Friday, April 30	Windthorst *	3:30	There
Tuesday, May 4	Nocona *	3:30	There
Thursday, May 6	Petrolia *	3:30	There
Friday, May 14	Nocona *	3:30	Here

1982 TRACK SCHEDULE

March 13	Bridgeport	Varsity Boys
March 13	Olney	Varsity & JV Girls
March 18	Olney	Jr. High Boys
March 19 & 20	Holliday	Varsity Girls, Boys
March 27	Olney	Varsity & JV Boys
March 27	Bridgeport	Varsity & JV Girls
March 27	Henrietta	7-8 Boys & Girls
April 2	Archer City	7-8 Boys & Girls
April 3	Archer City	Varsity Boys & Girls
April 6	Holliday - District Meet	7, 8, Varsity Girls
April 16	Holliday Triangular	Varsity & JV Boys
April 17	Girls Regional Qualifiers	
April 22	Holliday - District Meet	7, 8, Varsity Boys
April 23-24	Stephenville - Regional	Girls
May 1	Boys Regional Qualifiers	
May 7-8	Stephenville - Regional	Boys
May 6-7-8	Austin - State	Girls
May 14-15	Austin - State	Boys

Holliday city council: no quorum, no action

Holliday city council's regular bi-monthly meeting Monday night was cancelled due to lack of a quorum, when three aldermen failed to show.

Absent from the meeting were aldermen Jim Virdell, Leon Addison and Fred Daume, Jr. Aldermen John Goforth and Jimmy Willis were present, along with mayor James Cook, city administrator Jim Hamill and city attorney Gary Southard.

The three absent aldermen forced the cancellation of the last city meeting of 1981 when they failed to show. Willis and Goforth were present at that time.

Two items on Monday's agenda included adding a referendum to the April city election ballot for the construction of a new city hall.

ADVERTISING

Central Bail Bonds

Ken Knowles - Owner

Call 322-4484 for 24 hour bail bond service.

If you've ever been in jail (regardless of the circumstances) and have had the experience of not knowing if you would be able to afford to post bail . . . then you probably know how invaluable a good bondsman is.

CENTRAL BAIL BONDS is conveniently located at 711 Lamar in Wichita Falls, phone 322-4484, and they offer the fastest possible service for all types of bail bonds. When you're in need of their service, you can always count on a speedy posting of the bond and a quick release.

Being in jail is certainly no fun but it still happens to the best of us. EVERYONE should be aware of their rights in these matters and keep the phone number of a competent bondsman such as CENTRAL BAIL BONDS close by.

The editors of this 1982 Wichita Falls Business Review urge ALL area residents to remember the name and phone number of this reputable bondsman.

*Your
message
gets
across
better
IN
WANT ADS*

ADVERTISING

HOLLIDAY SCHOOL MARCH 8-12
SPRING BREAK

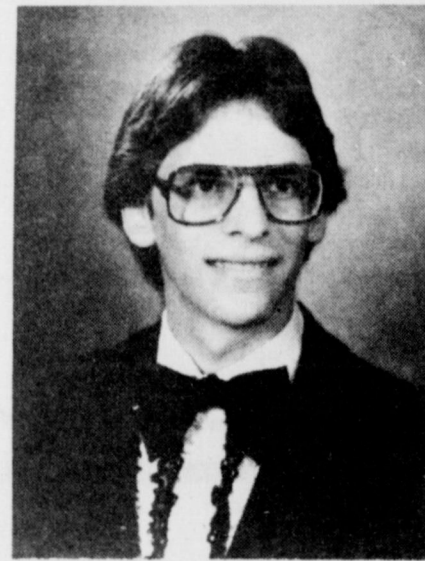


*When The goin' gets ruff
And your knowledge ain't e'nuff
There's when to rely
On the Leader's reply*

**IOWA PARK
LEADER**



TO REGIONAL - Five members emerged from local competition to determine Iowa Park High School Russell, Gary Smith, Michael Bailey, Joe Chunn and Jay Herrington.



DAVID STABER

Staber is merit finalist

Bob Dawson, Iowa Park High School principal, has been notified that David Staber, a senior, has been designated a National Merit Finalist by the National Merit Scholarship Corporation.

Competition began in October of 1981 as over one million high school juniors across the nation took the National Merit Exam. From this group, approximately 13,000 received Semi-Finalist consideration and ultimately 13,500 became Merit Finalist. About one-half of this group will receive National Merit Scholarship offers.

To be awarded this honor, a student must score among the top 15,000 juniors in the nation and be judged by a selection committee in the areas of abilities, accomplishments and personal characteristics.

David, the son of Mr. and Mrs. John Staber, has been actively involved in high school activities for four years. He has been a seven-year member of the band where he received several division awards, and he has also been a member of the stage band. He is a two-year member of Thespians and has competed in UIL one-act play and several speaking events. He is a two-year member of National Honor Society and has maintained an "A" average during his high school years.

After high school graduation, David plans to attend Texas Tech Univ. and work toward becoming a corporate lawyer.



WELCOME-
ASSEMBLY OF GOD
S. Yosemite
9:45 S.S./7 P.M.
Wed. 7 P.M. Service
Rev. Charles Hensley,
Pastor

**Kamay Road
Church of Christ**
Corner of Colorado
& Emerald
Seeking the
'Old Paths'
Lord's Day
10:30 a.m. & 6 p.m.
Wednesday 7:00 p.m.



4-H

News



Certified youth farm tractor drivers are now available for employment in the Wichita County area. Thirty-five youths in Wichita County have recently completed a 16-hour farm tractor safety program sponsored by the Wichita County Young Farmers. If you need part-time or a summer tractor driver, these youth are the ones you are looking for. A list of these youth is available at the county Extension office on 1626 Midwestern Parkway.

The Department of Labor requires that youth 14 and 15 years of age receive a 10-hour certification program before hiring on as farm tractor drivers. A copy of the "Certificate of Training" must be presented to the employer. This certificate lists the jobs in which the youth is qualified to perform.

The employer of a 14 or 15 year old as a farm tractor driver is held responsible for these youth, so it is important that the employer know the youth's limitation. The certification program protects the employer as much as it does the youth he is hiring.

The Valley View 4-H Club met in the home of Dr. John Webb Monday night. Christy Cravens, vice president was the presiding officer.

It was reported that four beef judging teams participated in a judging show in Wichita Falls when the junior teams won third and 11th and the senior placed 11th and 25th. Mrs. Christy McKenzie discussed the popcorn and container project now in progress.

Scott Webb gave a report on the method and demonstration workshop that he attended and Kim Williams showed a film on fire safety.

Wichita County is in need of adult leaders. Volunteer 4-H leaders are the key to successful 4-H and youth programs. They have the opportunity to help young people develop into responsible and productive individuals. Working with youth is exciting and challenging and provides personal satisfaction.

Young people do not develop their understandings, attitudes and skills overnight. They need and want guidance and encouragement as they strive to discover their own abilities.

Because boys and girls are lively and active, 4-H leaders often find that

different kinds of leadership ability are helpful for different situations. Depending on the size and complexity of a local club's program these various leadership specialties may be handled by different people.

The Texas 4-H & youth program has a place for you. If you are interested in becoming a 4-H leader contact Cheryl Ruggs, County Extension Agent - 4-H and Youth at 766-0131.

Several upcoming events and current projects were discussed during the Monday night meeting of the Iowa Park 4-H Club.

It was announced that the current popcorn sale would continue through next Wednesday and that the containers of popcorn would sell for \$4.35. In addition to the popcorn, members are selling salt and pepper shakers for \$3.85. To order, or for information, anyone interested may contact any member.

The Wichita County Project Show which will be held Mar. 9 was discussed and members registered for both local and county shows. Those who are interested in showing and have not attended the meeting can contact Terry Taylor. Entry fee for the showing at the local show will be charged.

Members were reminded that entry cards for the local show must be in by Mar. 6 and that the 4-Hers would have the concession stand at the show.



The oldest written national constitution still in use is the United States Constitution, written in Philadelphia during the summer of 1787.

Welcome To The Worship and Fellowship of
**First
Presbyterian Church**
CHURCH SCHOOL - 9:45 A.M.
FELLOWSHIP Time - 10:40 A.M.
MORNING WORSHIP - 11:00 A.M.
Norman D. Nettleton, Pastor 211 So. Yosemite

Grace Baptist Church
511 S. Colorado - 592-5632
Come Let Us Reason Together Saith The Lord
Sunday School . . . 10:00 A.M.
Morning Worship . . . 11:00 A.M.
Children's Worship . . . 11:00 A.M.
Evening Worship . . . 6:30 P.M.
Wednesday Service . . . 7:30 P.M.
Jimmy Johnson, Pastor

**Christ The King
Catholic Church**
8:15 A.M. Sundays 6:30 P.M. C.C.D. & Bible Study
Meetings held at Good Sheperd Lutheran Church
First and Magnolia

Scholarships are offered

Sheppard Air Force Base officers' wives club has announced availability of three college scholarships and one vocational school scholarship for eligible area high school seniors.

One college scholarship will be for \$1,000 and two will be for \$500 each. The vocational school scholarship will be for \$300.

Two \$100 book grants will also be awarded this year, according to Diana Rauch, scholarship chairperson.

To be eligible for the scholarships, students must be seniors in the Wichita Falls area. Their fathers must be either active-duty or retired officers and their mothers must be members of the Sheppard Officers

Wives Club. Sons and daughters of associate members are eligible if the member has been in good standing for six months preceding the application.

The scholarships will be used during the 1982-83 school year.

Application forms may be obtained from high school counselors or Mrs. Rauch, 221 Jupiter Street.

All applications and transcripts must be submitted to the scholarship committee by Mar. 1.

Personal conferences will be conducted March 30.

Mrs. Rauch pointed out that more scholarships are being offered this year and encouraged everyone eligible to apply.



TERRY ESCUE

Terry Escue recognized

Terry Escue, son of Mr. and Mrs. Herman Escue has been named the Opti-Mrs. Club's Student of the Month for February.

A senior at Iowa Park High School, he has been an "A" honor roll student for six years. He is a member of the National Honor Society and was chosen "Choir King" this year. He received Who's Who in physical education his junior year and placed second in the Optimist Club's oratorical contest when he was a freshman.

Terry has been a choir member for three years and this year he made district, region, area and state choirs. He has participated in U.I.L. solo and ensemble for two years. He made district choir and was an American Legion's Boy's State representative during his junior year. He is serving as section leader of bass two in the choir and has played the guitar in the stage band for two years. He was on the annual staff in the eighth grade.

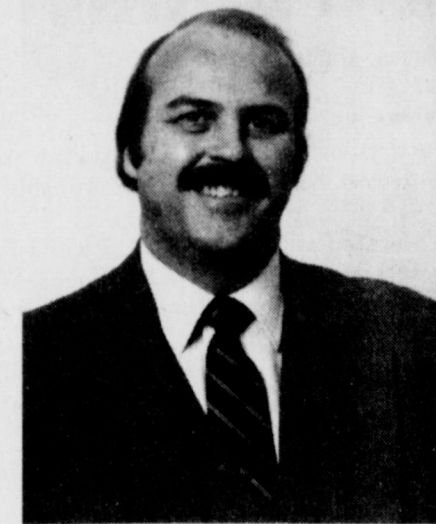
Terry is a member of First Baptist Church. He sings in the sanctuary choir and is a member of a male quartet which sings for worship services and special occasions. He has been a member of the youth group for four years. He belonged to Royal Ambassadors when he was a seventh and eighth grader and attended Chaparral Baptist Assembly Youth Camp.

In sports, Terry played baseball from the first through eighth grades, and played tight end in football and basketball guard when he was in junior high. He lists his hobbies as water skiing, singing, art, reading, guitar playing, hunting and fishing. He plans to attend Midwestern State University to further his education and would like to work with computers in the business field.

Beacon Lighthouse recently announced the promotion of two Iowa Park natives, Linda Greenwood Merrill and Harry Moore, Jr.

Former Iowa Parkans receive promotions

Merrill has been named operations manager at the Lighthouse. Since joining the Lighthouse in 1979 as quality control manager she has also served as manufacturing manager. Prior to that she was with Howmet and Sprague Electric in the quality assurance department.



HARRY MOORE JR.

Moore has assumed the duties of public information director. He came to the Lighthouse in 1978 as administrative assistant to the executive director and has served as bookkeeper/office manager. A 1964 graduate of Iowa Park High School he was recognized for his outstanding contribution to the blind in Wichita Falls in 1981 by the Beacon Lights Social Club.

He is a member of the Wichita Falls Downtown Lions Club and a graduate of Midwestern State Univ. He currently resides in Wichita Falls with his wife, Ann.



LINDA MERRILL

A 1971 graduate of Iowa Park High School, she is currently residing in Wichita Falls with her husband Dale and son, Jason. She is currently attending Midwestern State Univer-

Companion animals topic of speaker

Sherry McDonald was guest speaker for the Texas A&M Society for Companion Animals at a luncheon meeting Wednesday in Bryan. The membership of the TAMU Society for Companion Animals are professors and veterinarians employed by the university, and the members are compiling data for the companion animals research program at A&M.

Miss McDonald served as chairman of Special Childrens Riding School in the fall and she has worked with these children since 1980. She is a junior at the university with a major in secondary special education L.L.D. In regard to her speaking engagement, Miss McDonald, daughter of Mr. and Mrs. Joe McDonald of Iowa Park, said "I am very honored to have been asked to speak to this distinguished organization. Any information that I might be able to

add to their research would mean a great deal to me. I believe in this program because I have seen how horses can benefit children who have mental or physical handicaps. I feel sure smaller animals will also have an impact on both children and adults.



New Meter Connections

Bob Welker - 208 E. Garden
Randy Worrell - 902 Foley Dr.
Glen Collins - 1011 Van Horn
Johnny Nix - 901 E. Pasadena
Sunny Pool - 760 N. Victoria
Jim Whaley - 505 S. Texowa
Kenneth Walker - 1019 Van Horn

You Are Invited
To Attend
**IOWA PARK MISSIONARY
BAPTIST CHAPEL**
410 Park West Center

Sunday School 9:45 A.M. Sunday Night 6:00 P.M.
Worship 11:00 A.M. Wednesday Night 7:00 P.M.

Larry Washburn, Pastor 592-4288
All Lessons & Studies from King James Version Bible



**IOWA PARK
CHURCH OF CHRIST**

SCHEDULE OF SERVICES

	Sunday	9:30 a.m.	Ladies Bible Study	Wednesday	10:00 a.m.
Bible Study				Evening Study	
Worship		10:30 a.m.			7:30 p.m.
Evening Worship		6:00 p.m.			

* Study the Bible in the privacy of your own home. Write for a FREE Bible Correspondence Course and enrich your life: Church of Christ, P.O. Box 520, Iowa Park, Texas 76367

300 East Park, Iowa Park, Texas 76367. [817]592-5415
L. KEITH PARKER, PREACHER

SATURDAY CONT.

135 (5) MOVE *** "The Apollos" (1965) Motion Picture. Aspiring Comedians in a rare form is shown from a comedy and hidden in stereo.

200 (8) MOVE *** "The Sky for Me" (1981) Dan McCallin. Robert Vaughn. The man from UNCLE, most probably a modern man using a mind bending gas to dominate the world.

1000 (2) MOVE *** "They Went That Way And That Way" (1978) Tim Conroy. Chuck McClain. Two hopelessly inept policemen are sent to prison to conduct an undercover search for a cache of stolen money.

1130 (2) MOVE *** "The Great Secret" (1978) John Denver. "The Great Secret" (1978) John Denver. "The Great Secret" (1978) John Denver.

1230 (2) MOVE *** "Savage" (1974) Andy Griffith. Sam Bottoms. After minding an old prospector, a selfish lawyer sets his sights on his young hunting guide who tries to elude him in the desert.

1300 (2) MOVE *** "Dear Dead Daddies" (1972) Ripon. "Dear Dead Daddies" (1972) Ripon. "Dear Dead Daddies" (1972) Ripon.

1500 (2) MOVE *** "The Night of the Hunter" (1954) Robert Montgomery. To Marjorie Main to accompany her husband, she is forced to take care of the man and his children.

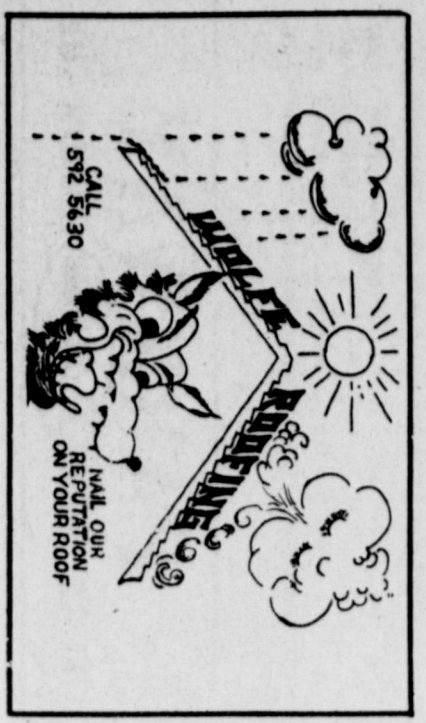
1600 (2) MOVE *** "The Night of the Hunter" (1954) Robert Montgomery. To Marjorie Main to accompany her husband, she is forced to take care of the man and his children.

1700 (2) MOVE *** "The Night of the Hunter" (1954) Robert Montgomery. To Marjorie Main to accompany her husband, she is forced to take care of the man and his children.

1800 (2) MOVE *** "The Night of the Hunter" (1954) Robert Montgomery. To Marjorie Main to accompany her husband, she is forced to take care of the man and his children.

1900 (2) MOVE *** "The Night of the Hunter" (1954) Robert Montgomery. To Marjorie Main to accompany her husband, she is forced to take care of the man and his children.

2000 (2) MOVE *** "The Night of the Hunter" (1954) Robert Montgomery. To Marjorie Main to accompany her husband, she is forced to take care of the man and his children.



(8) MOVE *** "A Town Called Hell" (1977) Robert Shaw. Telly Savalas. The search for a Mexican revolutionary leads to a small isolated town.

(2) MOVE *** "The Night of the Hunter" (1954) Robert Montgomery. To Marjorie Main to accompany her husband, she is forced to take care of the man and his children.

(2) MOVE *** "The Night of the Hunter" (1954) Robert Montgomery. To Marjorie Main to accompany her husband, she is forced to take care of the man and his children.

(2) MOVE *** "The Night of the Hunter" (1954) Robert Montgomery. To Marjorie Main to accompany her husband, she is forced to take care of the man and his children.

(2) MOVE *** "The Night of the Hunter" (1954) Robert Montgomery. To Marjorie Main to accompany her husband, she is forced to take care of the man and his children.

(2) MOVE *** "The Night of the Hunter" (1954) Robert Montgomery. To Marjorie Main to accompany her husband, she is forced to take care of the man and his children.

(2) MOVE *** "The Night of the Hunter" (1954) Robert Montgomery. To Marjorie Main to accompany her husband, she is forced to take care of the man and his children.

(2) MOVE *** "The Night of the Hunter" (1954) Robert Montgomery. To Marjorie Main to accompany her husband, she is forced to take care of the man and his children.

(2) MOVE *** "The Night of the Hunter" (1954) Robert Montgomery. To Marjorie Main to accompany her husband, she is forced to take care of the man and his children.

(2) MOVE *** "The Night of the Hunter" (1954) Robert Montgomery. To Marjorie Main to accompany her husband, she is forced to take care of the man and his children.

(2) MOVE *** "The Night of the Hunter" (1954) Robert Montgomery. To Marjorie Main to accompany her husband, she is forced to take care of the man and his children.

(2) MOVE *** "The Night of the Hunter" (1954) Robert Montgomery. To Marjorie Main to accompany her husband, she is forced to take care of the man and his children.

(2) MOVE *** "The Night of the Hunter" (1954) Robert Montgomery. To Marjorie Main to accompany her husband, she is forced to take care of the man and his children.

(8) MOVE *** "The Night of the Hunter" (1954) Robert Montgomery. To Marjorie Main to accompany her husband, she is forced to take care of the man and his children.

(2) MOVE *** "The Night of the Hunter" (1954) Robert Montgomery. To Marjorie Main to accompany her husband, she is forced to take care of the man and his children.

(2) MOVE *** "The Night of the Hunter" (1954) Robert Montgomery. To Marjorie Main to accompany her husband, she is forced to take care of the man and his children.

(2) MOVE *** "The Night of the Hunter" (1954) Robert Montgomery. To Marjorie Main to accompany her husband, she is forced to take care of the man and his children.

(2) MOVE *** "The Night of the Hunter" (1954) Robert Montgomery. To Marjorie Main to accompany her husband, she is forced to take care of the man and his children.

(2) MOVE *** "The Night of the Hunter" (1954) Robert Montgomery. To Marjorie Main to accompany her husband, she is forced to take care of the man and his children.

(2) MOVE *** "The Night of the Hunter" (1954) Robert Montgomery. To Marjorie Main to accompany her husband, she is forced to take care of the man and his children.

(2) MOVE *** "The Night of the Hunter" (1954) Robert Montgomery. To Marjorie Main to accompany her husband, she is forced to take care of the man and his children.

(2) MOVE *** "The Night of the Hunter" (1954) Robert Montgomery. To Marjorie Main to accompany her husband, she is forced to take care of the man and his children.

(2) MOVE *** "The Night of the Hunter" (1954) Robert Montgomery. To Marjorie Main to accompany her husband, she is forced to take care of the man and his children.

(2) MOVE *** "The Night of the Hunter" (1954) Robert Montgomery. To Marjorie Main to accompany her husband, she is forced to take care of the man and his children.

(2) MOVE *** "The Night of the Hunter" (1954) Robert Montgomery. To Marjorie Main to accompany her husband, she is forced to take care of the man and his children.

(2) MOVE *** "The Night of the Hunter" (1954) Robert Montgomery. To Marjorie Main to accompany her husband, she is forced to take care of the man and his children.

(8) MOVE *** "The Night of the Hunter" (1954) Robert Montgomery. To Marjorie Main to accompany her husband, she is forced to take care of the man and his children.

(2) MOVE *** "The Night of the Hunter" (1954) Robert Montgomery. To Marjorie Main to accompany her husband, she is forced to take care of the man and his children.

(2) MOVE *** "The Night of the Hunter" (1954) Robert Montgomery. To Marjorie Main to accompany her husband, she is forced to take care of the man and his children.

(2) MOVE *** "The Night of the Hunter" (1954) Robert Montgomery. To Marjorie Main to accompany her husband, she is forced to take care of the man and his children.

(2) MOVE *** "The Night of the Hunter" (1954) Robert Montgomery. To Marjorie Main to accompany her husband, she is forced to take care of the man and his children.

(2) MOVE *** "The Night of the Hunter" (1954) Robert Montgomery. To Marjorie Main to accompany her husband, she is forced to take care of the man and his children.

(2) MOVE *** "The Night of the Hunter" (1954) Robert Montgomery. To Marjorie Main to accompany her husband, she is forced to take care of the man and his children.

(2) MOVE *** "The Night of the Hunter" (1954) Robert Montgomery. To Marjorie Main to accompany her husband, she is forced to take care of the man and his children.

(2) MOVE *** "The Night of the Hunter" (1954) Robert Montgomery. To Marjorie Main to accompany her husband, she is forced to take care of the man and his children.

(2) MOVE *** "The Night of the Hunter" (1954) Robert Montgomery. To Marjorie Main to accompany her husband, she is forced to take care of the man and his children.

(2) MOVE *** "The Night of the Hunter" (1954) Robert Montgomery. To Marjorie Main to accompany her husband, she is forced to take care of the man and his children.

(2) MOVE *** "The Night of the Hunter" (1954) Robert Montgomery. To Marjorie Main to accompany her husband, she is forced to take care of the man and his children.

(2) MOVE *** "The Night of the Hunter" (1954) Robert Montgomery. To Marjorie Main to accompany her husband, she is forced to take care of the man and his children.

IOWA PARK Air Conditioning. Service On All Makes. Engineering Sales. 607 W. Bank. FRANK GUYETTE. PHONE 592-5891.

Smith, Page all-district repeaters

Steve Smith and Steve Page repeated as members of the Dist. 3-AAAA All-District team, it was announced yesterday.

Smith was accorded the highest honor conference coaches could give him in recognition of his season, by naming him the district's most valuable player.

Both are seniors and were the mainstays of last year's team which captured the district championship.

This year's team tied with Wichita Falls Hirschi in district play with identical 10-2 records, but the Huskies represented the conference by virtue of a coin toss. Hirschi lost Tuesday 61-48 in bi-district play to Cleburne, the same team that knocked off the Hawks last season.

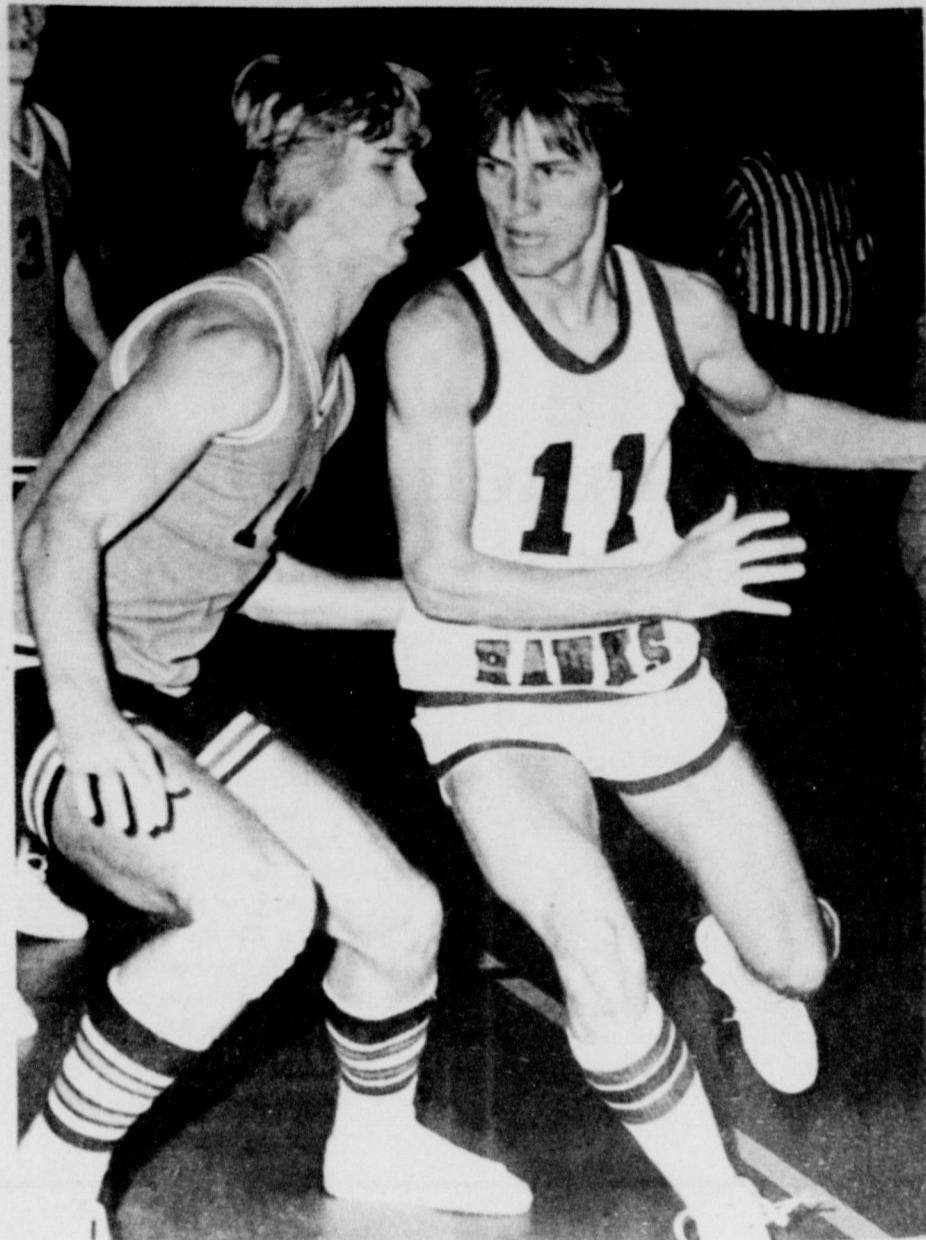
Smith, a 6-1 forward, averaged 20.6 points in his 12 league games, and 19.6 points overall for the season. His season high was the final game, against Hirschi, when he canned 30 points.

Page, 6-7 center, averaged 14.2 points in district play and 15.2 for the season. He is the tallest player on the honor team.

Graham's Ron Ranger, 6-4, was selected by the coaches as the sophomore of the year.

The other two members of the first team were from Hirschi. They were Ronie Smith, 6-0 junior forward, and Kenny Easterling, 6-1 senior forward.

Iowa Park's Marc Klinkerman, Bobby Bates and Kevin Bidy were named to the honorable mention list.



DISTRICT COACHES HONOR STEVE SMITH
... named league's most valuable player.

Klinkerman and Bidy are juniors and Bates a senior.

Six players were on the all-district second team. They were Jimmy Logan and Tyler Ware of Graham,

Dewayne Andrus of Burkburnett, Brent Brittain of Vernon, Kenny Johnson of Hirschi and Mike Salisbury of Mineral Wells. Brittain is a junior and the rest seniors.

Richardson, Neely are all-district

Two Hawkettes were named to the Dist. 3-AAAA All-District Team and another on the honorable mention list.

Both seniors, Tammie Richardson and Lindy Neely were among the 11 players voted by coaches of the conference. Junior Lisa Yeakley was named among six honorable mentions.

Richardson led the Hawkettes in scoring with 344 points for the season, 169 of which were against opponents. She averaged 14.3 points per game for the season, but in the 11 district games, she averaged 15.3 per outing, including a 29-pointer against Burkburnett.

Neely was a defensive standout for the Hawkettes, but she averaged 8.7

points against conference opponents and 7.1 for the season.

Yeakley, the playmaker for the team, averaged 12 points per district contest and 10.3 for the season.

Vernon, district champion, had three players named to the All-District team. The Lady Lions lost 48-46 to Stephenville in bi-district and were eliminated from further state playoffs.

Besides Iowa Park's two players, named were: Lawana King, junior, Burkburnett; Diane Beaver, senior,

Hirschi; Julie Grant, senior, Vernon; Claudia Reece, junior, Vernon; Laura Loving, senior, Graham; Mary Pert, senior, Burkburnett; Dana Allen, senior, Mineral Wells; Angela Tennon, sophomore, Mineral Wells; and Kathy Burnett, junior, Vernon.

Other honorable mention list players included: Derinda Walker, senior, Hirschi; Francis Williams, sophomore, Graham; Nancy Davis, senior, Vernon; Theresa Ray, junior, Mineral Wells; and Lisa Dandridge, sophomore, Hirschi.

Midwestern State initiates program for talented students

A Gifted and Talented Program for exceptional high school students co-sponsored by Midwestern State Univ. and Region Nine Education Center will be initiated on the MSU campus this summer.

Through the Gifted and Talented Program, high school students will be enrolled for six semester hours or two courses. The college credit earned during the summer may later be applied at Midwestern or any other four-year institution.

The program is designed primarily for juniors who will be entering their senior year, however students entering their junior year may apply.

The program will run concurrently with the first summer term, June 4-July 9, at Midwestern.

MSU and Region Nine officials coordinating the program said the screening committee that chooses participants in the program will be very selective. Students will be selected on the basis of a 14-point list of criteria.

A committee of MSU and Region Nine representatives is finalizing curriculum for the summer program, and a number of special activities have been planned for participants

who will be housed in a dormitory if they wish.

Scholarships will be offered on a competitive basis to help offset costs for tuition, fees and books and room and board for those who stay in the dorm. Tuition is \$86.50 for six summer hours. Summer room and board fees are being determined.

Brochures explaining the program in detail will soon be distributed to principals and counselors at all high schools in the Region Nine area. Students who wish to apply for the program may contact those individuals at their respective schools.

The deadline to apply for the program is April 15.



Four members of the Iowa Park chapter of Future Farmers of America placed among the top 10 individuals of a livestock judging contest held Saturday in Wichita Falls.

Dana Hicks placed fourth, Tracy Taylor sixth, Gina Duncan eighth and Ken Williams tenth.

Dana Hicks, area first vice president, met Thursday with other officers to plan the May 7 area FFA convention at Stephenville.

Center to benefit from rummage sale

The traditional rummage sale benefiting North Texas Rehabilitation Center, 516 Denver, Wichita Falls, will be held Mar. 6 at the Center. The sale hours are from 8 a.m. to 6 p.m. and will feature a good selection of bargains.

Now in its fourth year, the sale is among the special events preceding the annual National Easter Seal Telethon to be aired March 27-28 over KAUZ-TV.

The sale is open to the public. Persons wishing to donate merchandise for the sale may bring items to the rehab center any time now.

Memory is demonstrated

Noon Lions Club members observed a demonstration of how a person can memorize great volumes of material, if enough "intent" is administered.

Jay Henson, a retired resident of Wichita Falls, explained he developed a technique of memorizing while a high school student in 1922. It was his responsibility to call the roll of 55 ROTC students, and he learned their names in the order of the roll.

Henson, who retired in 1971 after 21 years in Civil Service at Sheppard AFB, compared his memorizing of information with a person learning the tune of a song. While reciting a list, a wrong name or number sounds as incorrectly to him as a missed note of music.

To demonstrate his memory, he handed out cards, each headed by a year. Information on the card included, from the first years they were recorded, the American League pennant winner, National League winner, world series winner and

scores, each league's batting champion and averages, men's and women's national tennis champions, National Open Golf champions, Kentucky Derby winners, Indianapolis Speedway Classic winners, heavyweight boxing champions, Rose Bowl winners, and academy award winners for best actress, actor and production.

Members identified the year and asked the winner of any category, and Henson responded without mistake.

Iowa Park School Menu

Fri., Mar. 5 - Chicken fried steak, meat or cheese sandwich, soup, whipped potatoes & gravy, English peas, hot rolls & butter, chocolate & plain milk, dessert.

Mon., Mar. 8 - Macaroni & cheese, meat or cheese sandwich, soup, onion rings, blackeyed peas, corn bread & butter, chocolate & plain milk, dessert.

Tues., Mar. 9 - Chalupas w/cheese, meat or cheese sandwich, soup, tossed salad, buttered corn, chocolate & plain milk, dessert.

Wed., Mar. 10 - Charburgers, meat or cheese sandwich, soup, French fries, lettuce, tomatoes, pickles, onions, chocolate & plain milk, dessert.

Thurs., Mar. 11 - Barbeque chicken, meat or cheese sandwich, soup, potato salad, baked beans, hot rolls & butter, chocolate & plain milk, dessert.

COUNTER TOPPING

FORMICA WILSON-ART MICARTA
"BUY FROM THE OLD PRO"
T.S. THOMAS, CABINETMAKER
1516 Beverly Wichita Falls Ph. 723-6523

Family Night Every Thursday

from 6 p.m. to 9 p.m.

Buy 2 Tokens, Get 1 Free



Armadillo Arcade
300 East Highway

Wheat Farmers Top Dress With

Planterra

Planterra soil inoculant works by replacing beneficial soil elements which have been depleted over the years, to rebuild soil structure. The result? More fertile soil and a higher yield per acre... and increased profits for you.

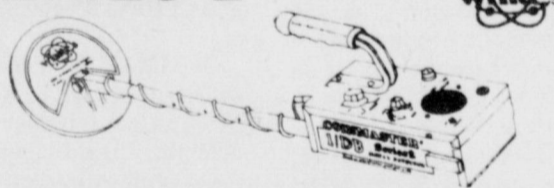
Planterra has been proven effective, too, with more than 40 years of research, plus actual farm use, on a wide variety of crops, including corn, cotton, milo, soybeans, alfalfa, wheat, fruits, and vegetables. Planterra can be used alone or with your regular fertilizer program.



Planterra
Rt. 1, Box 285
Wichita Falls, TX 76301
817-855-3050

* Normal Cost is 5.00 to 7.00 per acre based on mode of application.

COINMASTER 1/DB SERIES 2



\$129.95

TR DISCRIMINATION AT ITS LOWEST PRICE

The 1/DB Series 2 helps the developing treasure hunter to be more confident about locating targets, and increases the success rate for valuable finds. The Variable Discriminator distinguishes between "good" and "junk" items, or, it can be used to cancel the effects of mineralized ground to detect all metals.

FREE LITERATURE
FREE DEMONSTRATIONS
TAKE TRADE-INS
BUY YOUR COINS or GOLD

PEMBERTON'S COINS

211 N. Ave. D.
Burkburnett, TX

569-5011

Tue.-Fri. 12-6 p.m., Sat. 9 a.m. - 6 p.m.

Dairy Queen

Call-In Orders, Phone

592-4811

505 W.
Southwest Expressway

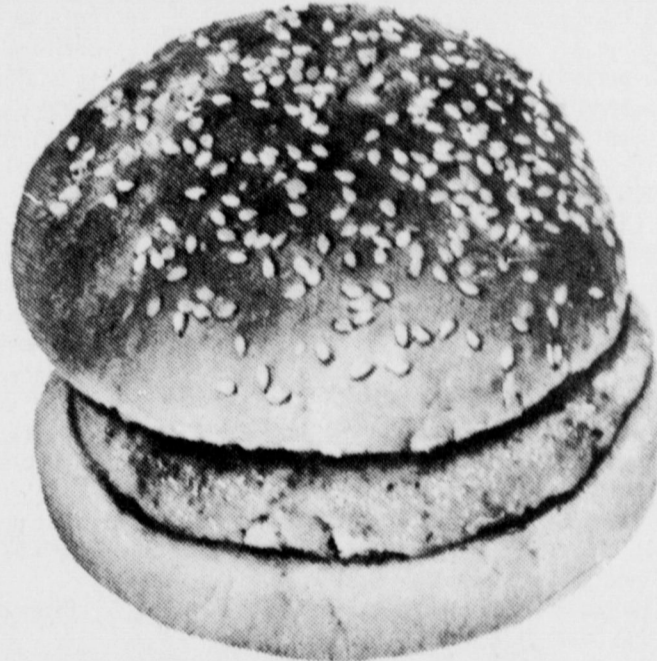
Open 10 a.m. - 10 p.m. Daily

Ray Copening
Owner/Operator

COKE FLOAT

69¢ Reg. \$1.05

BEAN DAY EVERY WEDNESDAY NOON



Steak Sandwich

\$1.69 Reg. \$1.90



805 West Highway

FOR TAKE OUT ORDERS

CALL 592-4731

MSU homecoming activities are scheduled this weekend



COL. ARTHUR W. BURER, new commander of the 3750th Air Base Group at Sheppard AFB has been named liaison officer to Iowa Park as part of Sheppard's Enhanced Participation in Communities program. He was repatriated in 1973 after almost seven years in North Vietnam prison camps.

A campus-wide Homecoming Carnival and Armadillo Derby are the new activities planned by the Midwestern State University Ex-Students Association for the 1982 MSU Homecoming Friday and

Saturday on the campus.

Also for the first time in many years, MSU exes and students are coordinating Homecoming activities concurrently. A number of events have been scheduled all through Homecoming Week.

Homecoming main events will get underway at 5:30 p.m. Friday with the Ex-Students Fish Fry, which has become one of the most popular activities at Homecoming, in Clark Student Center.

Saturday's activities start with the Ex-Students breakfast at 8:30 a.m. in Clark Center Cafeteria with master of ceremonies Dr. D.L. Ligon presiding. The traditional Homecoming luncheon at noon Saturday will feature entertainment, the presentation of alumni awards including the Ex-Students Association Distinguished Alumnus award and election of new association officers.

An Ex-Students Ribbon Cutting and Reception will be held at 1:30 p.m. Saturday in the ex-Students

Dining Room in Clark Center. The event will mark the official opening of the dining room, formerly known as the Faculty Dining Room, remodeled and refurbished through special contributions by alumni and other friends of the university.

Also scheduled Saturday is a

matinee performance at 2:30 p.m. in the Fine Arts Center of "Whose Life Is It, Anyway?" by MSU Theatre. The play is a contemporary drama about an artist stricken with paralysis that recently was produced as a movie. Evening performances will also be held at 8 p.m. Thursday and Friday.

The Homecoming celebration will wind up with a dance for students and exes beginning at 8 p.m. Saturday in Clark Center with live country and western music by "Country Class," one of North Texas' most popular bands. The dance will also feature the presentation of the 1982 Homecoming Queen and her court.

ACLD meeting set

The March meeting of ACLD (Association For Children And Adults With Learning Disabilities) will be held in the First Presbyterian Church, 3601 Taft, March 11, at 7:30 p.m. Dr. Tracy Menard will discuss "Emotional and Behavioral Problems in LD Children."

Dr. Menard has been a school psychologist, was psychologist for the children's and adolescent units at the State Hospital, and is presently at Region Nine Education Service Center coordinating the program for the associate school psychologists of our region.

A free nursery will be provided.

PUBLIC NOTICE

RESOLUTION NO. 82-3 NOTICE OF CITY OFFICERS' ELECTION CITY OF IOWA PARK

Mayor

Notice is hereby given that a City Officers' Election will be held on the 3RD day of APRIL, 1982 in the above named city for the purpose of electing the following officers for said city: Mayor, 1 Aldermen, 2. Said election will be held at the following polling places in said city:

In Election Precinct No. 32, at Kidwell School Building; In Election Precinct No. 33, at Bradford School Building. The polls at each of the above designated polling places shall on said election day be open from 7 o'clock a.m. to 7 o'clock p.m.

The absentee voting for the above designated election shall be held at City Hall Building, in said city, and said place of absentee voting shall remain open for at least 8 hours on each day of absentee voting which is not a Saturday, Sunday or an official State holiday, beginning on the 20th day and continuing through the 4th day preceding the date of said election. Said place of voting shall remain open between the hours of 8:30 o'clock a.m. and 5:00 o'clock p.m.

Dated this 8th day of February, 1982.

Johnny Crawford

(Se da aviso por la presente que se llevara a cabo una Eleccion de Funcionarios de la Ciudad el dia 3 de Abril de 1982, en la ciudad arriba mencionada para el proposito de elegir a los siguientes funcionarios para dicha ciudad: Alcalde, 1 Concejales, 2. Dicha eleccion se llevara a cabo en los siguientes lugares de votacion en dicha ciudad: El Precinto Electoral Num. 32 en el Edificio Kidwell School; El Precinto Electoral Num. 33 en el Edificio Bradford School. Los sitios de votacion arriba designados para dicha eleccion se mantendran abiertos en el mencionado dia de elecciones de las 7:00 a.m. a las 7:00 p.m.

La votacion ausente para la eleccion arriba designada se llevara a cabo en el Edificio City Hall, en dicha ciudad, y dicho lugar de votacion ausente se mantendra abierto por lo menos ocho horas en cada dia de votacion ausente no siendo sabado, domingo o dia festivo oficial del Estado, principiando 20 dias y continuando hasta el cuarto dia anteriores a la fecha de dicha eleccion. Dicho lugar de votacion se mantendra abierto de las 8:30 a.m. a las 5:00 p.m. Fechado esta dia 8th de Feb. de 1982.)

These elevations, together with the flood plain management measures required by Section 60.3 of the program regulations, are the minimum that are required. They should not be construed to mean the community must change any existing ordinances that are more stringent in their flood plain management requirements. The community may at any time enact stricter requirements on its own, or pursuant to policies established by other Federal, State, or Regional entities. These proposed elevations will also be used to calculate the appropriate flood insurance premium rates for new buildings and their contents and for the second layer of insurance on existing buildings and their contents.

Pursuant to the provisions of 5 USC 605(b), the Associate Director, to whom authority has been delegated by the Director, Federal Emergency Management Agency, hereby certifies that the proposed flood elevation determinations, if promulgated, will not have a significant economic impact on a substantial number of small entities. A flood elevation determination under Section 1363 forms the basis for new local ordinances, which, if adopted by a local community, will govern future construction within the floodplain area. The elevation determinations, however, impose no restriction unless and until the local community voluntarily adopts floodplain ordinances in accord with these elevations. Even if ordinances are adopted in compliance with Federal standards, the elevations prescribe how high to build in the floodplain and do not proscribe development. Thus, this action only forms the basis for future local actions. It imposes no new requirement; of itself it has no economic impact.

The proposed base (100-year) flood elevations for selected locations are:

Proposed Base (100-year) Flood Elevations

NATIONAL FLOOD INSURANCE PROGRAM Proposed Flood Elevation Determinations

AGENCY: Federal Emergency Management Agency.

ACTION: Proposed Rule.

SUMMARY: Technical information or comments are solicited on the proposed base (100-year) flood elevations listed below for selected locations in the nation. These base (100-year) flood elevations are the basis for the flood plain management measures that the community is required to either adopt or show evidence of being already in effect in order to qualify or remain qualified for participation in the National Flood Insurance Program (NFIP).

DATES: The period for comment will be ninety (90) days following the second publication of this proposed rule in a newspaper of local circulation in each community.

FOR FURTHER INFORMATION CONTACT:

Mr. R. Gregg Chappell, P.E.
National Flood Insurance Program
(202) 287-0270
Federal Emergency Management Agency
Washington, D.C. 20472

SUPPLEMENTARY INFORMATION: The Federal Emergency Management Agency gives notice of the proposed determinations of base (100-year) flood elevations for selected locations in the nation, in accordance with Section 110 of the Flood Disaster Protection Act of 1973 (Pub. L. 93-234), 87 Stat. 980, which added Section 1363 to the National Flood Insurance Act of 1968 (Title XIII of the Housing and Urban Development Act of 1968 (Pub. L. 90-448), 42 U.S.C. 4001-4128, and 44 CFR 67.4 (a).

State	Texas
Village/ City/ Town/ County/	Pleasant Valley Wichita (Docket No.)

Source of flooding	Location	Depth in feet above ground *Elevation in feet (NGVD)
East Fork	Approximately 150 feet Pond Creek downstream of Fort Worth and Denver Railroad	*968
Middle Fork Pond Creek	Just downstream of Pleasant Valley Road Just upstream of U.S. Highway 287 Business	*959 *979
West Fork Pond Creek	At Corporate Limits	*971

Maps available for inspection at the Midway Fish Farm, Pleasant Valley, Texas 76367.

Send comments to Mayor Leon Little, Route 2, Box 179 or Mr. Glen Miller, City Secretary, Route 2, Box 129, Iowa Park, Texas 76367.

NOTICE THAT BIDS WILL BE RECEIVED BY WICHITA COUNTY WATER IMPROVEMENT DISTRICT NO. 2 FOR SELECTION OF DEPOSITORY

NOTICE IS HEREBY GIVEN that in accordance with the Board of Directors of Wichita County Water Improvement District No. 2, proposals will be received by said Board of Directors from any banking corporations, associations or individual banker that may desire to be selected as Depository of the funds of said Wichita County Water Improvement District No. 2

All bids must conform to and embody the provisions of the order of the Board of Directors which are in words and in figures substantially as follows:

(a) All bids must be sealed and delivered to the President of the Board of Directors prior to 11:00 o'clock, A.M. on the 9th day of March, 1982, at which time all bids so received shall be opened.

(b) All bids submitted must state the rate of interest offered on funds of said District for the period of time beginning the 1st day of July, 1982, and ending the 1st day of July, 1984.

(c) All bids must be accompanied by a certified check for \$500.00 payable to the order of the District as guarantee of good faith on the part of the bidder that if said bid be accepted the bidder will enter into the bond required by law

as such depository of Wichita County Water Improvement District No. 2

(d) In the event any bidder to be selected as such depository shall fail or refuse to execute and furnish the bond required by the District within the time stipulated by law for filing same, the bidder's certified check shall be forfeited to the District as liquidated damages.

(e) The depository so selected and designated shall be named for the period of two years beginning with the 1st day of July, 1982, and ending the 1st day of July, 1984.

(f) The bond of the depository selected for the first year shall be and is now fixed at the sum of \$100,000.00 and shall be conditioned as required by law: that the Board of Directors in selecting and designating said depository reserves the right to require additional bond as authorized by Article 2548 of the Revised Civil Statutes of 1925.

(g) The duties of such depository shall be those prescribed in Sections 113 and 114 of Chapter 25 of the General Laws of the 39th Legislature, Regular Session, and those prescribed for county depositories in Chapter 2, Title 47, of the Revised Civil Statutes of 1925 not in conflict therewith.

(h) The Board of Directors reserves the right to accept or reject any or all bids.

Bill Rowland, President,
Board of Directors, Wichita County Water
Improvement District No. 2

NATIONAL FLOOD INSURANCE PROGRAM Proposed Flood Elevation Determination

AGENCY: Federal Emergency Management Agency.

ACTION: Proposed Rule.

SUMMARY: Technical information or comments are solicited on the proposed base (100-year) flood elevations listed below for selected locations in the nation. These base (100-year) flood elevations are the basis for the flood plain management measures that the community is required to either adopt or show evidence of being already in effect in order to qualify or remain qualified for participation in the National Flood Insurance Program (NFIP).

DATES: The period for comment will be ninety (90) days following the second publication of this proposed rule in a newspaper of local circulation in each community.

FOR FURTHER INFORMATION CONTACT:

Mr. R. Gregg Chappell, P.E.
National Flood Insurance Program
(202) 287-0270
Federal Emergency Management Agency
Washington, D.C. 20472

SUPPLEMENTARY INFORMATION: The Federal Emergency Management Agency gives notice of the proposed determinations of base (100-year) flood elevations for selected locations in the nation, in accordance with Section 110 of the Flood Disaster Protection Act of 1973 (Pub. L. 93-234), 87 Stat. 980, which added Section 1363 to the National Flood Insurance Act of 1968 (Title XIII of the Housing and Urban Development Act of 1968 (Pub. L. 90-448), 42 U.S.C. 4001-4128, and 44 CFR 67.4 (a).

State	Texas
Village/ City/ Town/ County/	Iowa Park (FEMA-)

Source of Flooding	Location	*Depth in feet above ground. *Elevation in feet (NGVD)
Buffalo Creek Tributary	Just downstream of West Smith Avenue	*1013
Gordon Creek *	Just upstream of North Atlantic Street Approximately 200 feet downstream of North Penn Street (extended)	*1016 *1020

Maps available for inspection at City Hall, 103 North Wall Street, Iowa Park, Texas 76367.

Send comments to Mayor Johnny Crawford or Mr. Steve Morath, City Administrator, City Hall, P.O. Box 190, Iowa Park, Texas 76367.

