

LOCAL

Jennyslipper Banquet

See Page 4

TRAVEL

*250,000 Truck Visits Here

See Page 7

SPORTS

Youth Basketball Signup

See Below

WEATHER



BAILEY COUNTY JOURNAL

The Community Of Opportunity-Where Water Makes The Difference



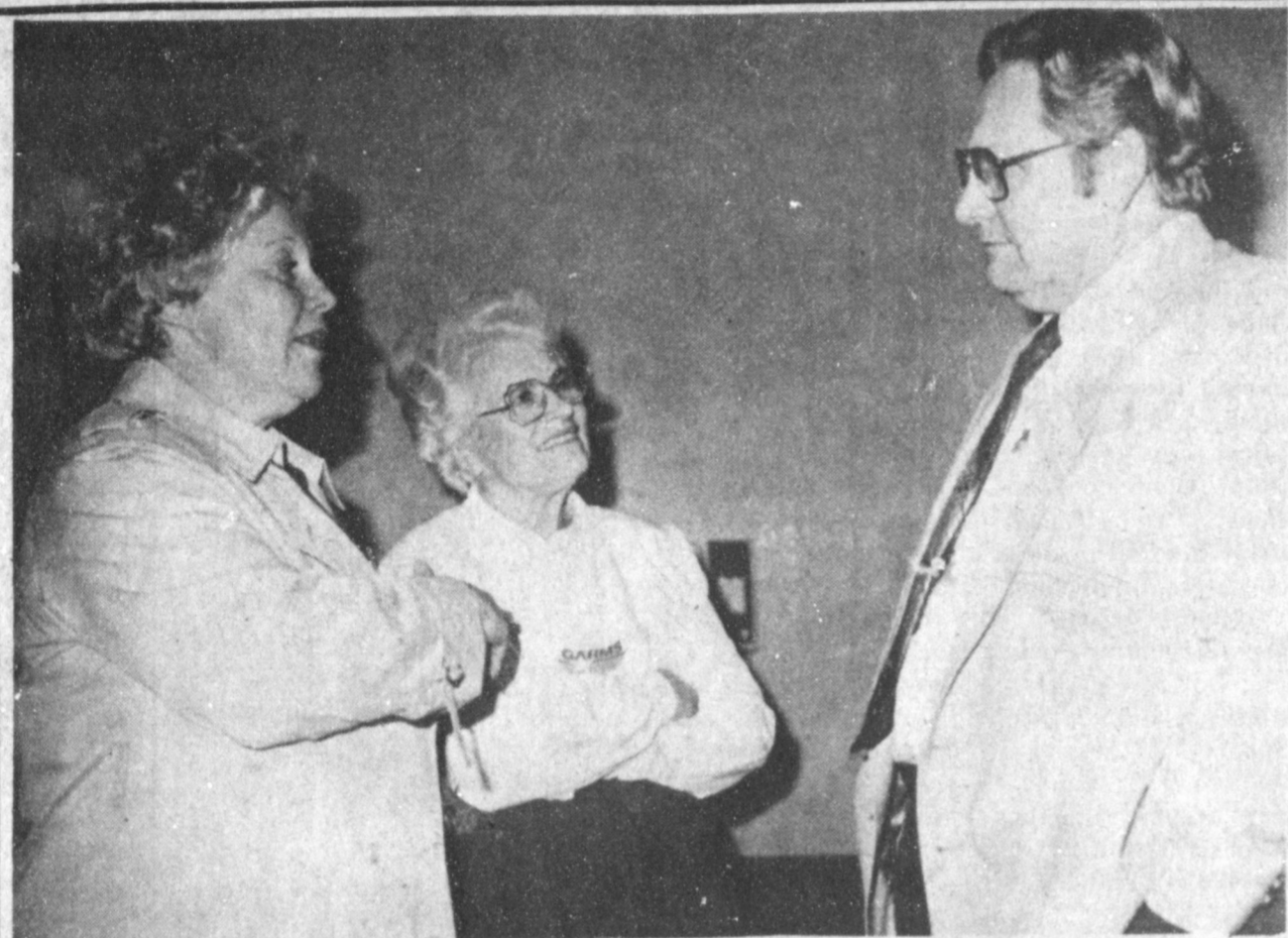
Vol. 26, No. 3

12 Pages Today

Published Every Sunday At Muleshoe, Bailey County, Texas 79347

20¢

Sunday, January 17, 1988



GARMS BRINGS CANDIDACY TO MULESHOE--Nancy Garms, left, candidate for Senator for the 19th District of Texas, has brought her campaign to Muleshoe. Thursday afternoon, she and her mother-in-law, Mildred Garms, center, visited with Muleshoe Mayor Darrell Turner during an introductory reception at Muleshoe State Bank's community room. Several people visited during the reception and heard the Amarillo attorney make brief comments concerning her candidacy.

Senatorial Candidate Visits Two Days

She was bubbly, bouncy, full of life, plain-spoken, and made a big, big impact on Muleshoe in her two days in town visiting. She is Nancy Garms, Amarillo attorney and candidate for Senator of the 31st Senatorial District of Texas.

Accompanied to Muleshoe by her mother-in-law, Mildred Garms, Mrs. Garms was open, blunt and said she has to give

credit for her decision to attempt to be elected to the seat being vacated by Bill Sarpalus, to the Muleshoe Jennyslippers.

She first met the Jennyslippers two years ago, and said

her first thought was, "Here I have been introduced to a group of ladies so tough and gutsy, that surely I can do it (run for state office)."

In a reception at the Muleshoe State Bank community room, Mrs. Garms told the persons there she had based her

Kiwanis Host

School Board Friday Morning

By: R.A. Bradley

Muleshoe Kiwanis Club met Friday morning at the Old Corral with 14 members, Sweetheart Sue Haire and 15 guests present.

Five of the guests were from the Hereford Kiwanis Noon Club, including, Sid Ham, Bartley Dowell, Larry Ogerly, Jack Johnson and Harley Daniel. The Muleshoe Kiwanis Club has a special place in our hearts for the Hereford Club because they were one of our sponsoring clubs when the Muleshoe Kiwanis Club was started.

Other guests were Nancy Garms, candidate for the Senate from this district, and her mother-in-law, Mildred Garms, both from Amarillo. Other guests were Judy Watson and Nelda Merriott, wives of two of our Kiwanis members.

Guests also included Joe Cearley, principal of Mary DeShazo Elementary School; H. John Fuller, superintendent of MISD and School Board Members, Julie Cage, Cindy Purdy, Sam Harlan, Gordon Wilson and Howard Watson. Only two board members were not present, Rex Harris and Lyndon Huckaby.

Nick Bamert gave the Friendship Coin to Robert Montgomery, because Robert was so good at pouring coffee and greeting members and guests that Nick decided Robert was looking for a friend. Maybe he made it this morning!

The MISD School Board presented the program, on Project 2000. Our young people who entered kindergarten this year will or should (we hope and pray) be graduating in the year 2000. This is only 13 years away.

Cont. Page 6, Col. 5



RAY RUTHARDT

Ray Ruthardt Is Candidate For Sheriff

Ray Ruthardt has asked the Journals to officially announce his candidacy for the position of Sheriff of Bailey County, by making the following statement: "I am announcing my candidacy for Sheriff of Bailey County, subject to the Democratic Primary on March 8.

"I am a property owner and taxpayer of Bailey County where I have resided for 28 years.

"I request your support and cooperation. I will give fair and efficient service equally, to all of Bailey County, regardless of race, color, or creed.

"I believe in good, law enforcement, and if elected, I will cooperate with all the County Officials and Employees, State Officials, School Personnel and Residents of this county. To give them the best law enforcement possible.

"Also, I will conduct the affairs of the office based on good moral principles.

"I will do my best to visit with each of you before election day.

"Your vote and support will be appreciated."

Pd. Pol. Adv.

around muleshoe

Fine Arts Boosters will be holding a meeting Monday, January 18, at 7:30 p.m. at the 16th and D Church of Christ.

Members will be finalizing plans for the February Sweetheart Festival, which will be held at the Bailey County Coliseum.

Your attendance and participation will be appreciated.

Southwestern Oklahoma State University has announced both the President's and Dean's Honor Rolls for the 1987 fall semester.

A grade of 'A' in 15 semester hours for undergraduate work taken during that time results in the student being named to the President's list. There are 118 students who have accomplished this.

Named to the President's List from Muleshoe is Sidney Michael O'Grady.

Pvt. David W. Vela, son of Joe M. and Susie C. Vela of Muleshoe, has completed an Army Motor transport operator course at Fort Dix, N.J.

During the course, students were trained in the operation and maintenance of military vehicles of less than four and one-half tons rated capacity. Instruction was also given in the transportation of personnel, equipment and supplies.

He is a 1986 graduate of Muleshoe High School.

Three students from Muleshoe are among 442 Eastern New Mexico University students named to the 1987 fall semester Dean's Honor Roll.

Cont. Page 6, Col. 4

Latest Sales Tax Rebate Reflects Better Economy

'88 Marketing Seminar Set For Muleshoe

"You are invited to participate in a Marketing Seminar to be held at the Bailey County Civic Center in Muleshoe on Thursday, January 28, from 9 a.m. to 4 p.m.," says Spencer Tanksley, County Extension Agent.

The day-long program will cover marketing alternatives with primary emphasis on options in grain, cotton and livestock.

Conducting the training seminar will be Dr. Ed Smith, Extension - Economist - Marketing Specialist; Dr. Carl Anderson, Extension Economist-Cotton; and Dr. Ernie Davis, Extension Economist-Livestock Marketing, all of College Station, Texas.

Tanksley said there will be a \$25 registration fee to cover the materials each one will receive during the training. "Although we are not aware of a limit of persons, as there has been at some of the area seminars, we encourage you to begin calling the county Extension office early to let us put you on the attendance list," added the County Agent. "Please let us hear from you no later than January 26 if you plan to attend this meeting."

He continued, "We feel that these programs will be informative and a benefit to you in your farming operation."

The following items of interest will be presented: Cotton Outlook and Situation; Grain Outlook and Situation; Livestock Outlook and Situation; Pricing and Marketing Strategies; Localizing the Futures - Basis; Hedging Mechanics; Introduction to Options; Options Update; Options Decisions-Crops; Options Decisions-Livestock, Options Decisions-Cotton.

Educational programs conducted by the Texas Agricultural Extension Service serves people of all ages, regardless of socioeconomic level, race, color, Cont. Page 6, Col. 4

Signup Slated For Youth Basketball

Muleshoe Youth Basketball signup has been scheduled for two nights this month. The first signup will be January 21, 6-8 p.m. at the Earl Ladd Fire Station. Second signup will be the following week on January 28, 6-8 p.m. at the fire station.

Youth basketball is designed for students third through sixth grade, and registration fee is \$15 per player.

A coaches meeting has been scheduled for January 29, at 7 p.m. at the office of Terry Field Insurance. Anyone interested in coaching or refereeing is urged to attend this meeting.

At this time, team sponsors are also being sought. Anyone interested in being a team sponsor is asked to call Margaret Copley at 272-3022.

Basketball practice is expected to begin around February 1, with the first games to be played February 15 or 16.

State Comptroller Bob Bullock last week sent checks totaling \$53.7 million in local sales tax to 891 cities that levy the one-percent city tax.

In Bailey County, Muleshoe shows a marked 12.88 percent increase over last year's figures. They received \$12,377.28 for their current payment, and for the same time a year ago of \$10,964.78.

Morton has a whopping 51.91 percent increase in sales tax receipts according to Bullock. Their payment for this period last year was \$2,786.86, and was \$4,233.43 for their current payment.

Littlefield, in Lamb County, is reflecting a decrease of 10.52 percent for their current payment. Last year, for this period, Littlefield had received \$15,147.71, and the same period this year, their payment was \$13,553.99.

In Parmer County, Friona shows a 3.96 percent increase in sales tax receipts, with a payment of \$5,308.82 for this pay period, compared to \$5,106.59 for the same time a year ago.

Bullock said this month's allocations showed an increase of \$5.1 million over last year's January allocations, an increase of 10.6 percent.

However, Bullock warned, the unusually large increase is a fluke.

"Last year, we received a late sales tax report of about \$2.3 million from a large statewide corporation, so January 1987 allocations were seasonally smaller. That's why this year's increase appears to be so large," Bullock said.

The actual increase in statewide sales tax allocations was about \$2.8 million, or 5.6 percent, Bullock said.

"This year's increase is also due to the wider tax base enacted by the Legislature and the slow but steady healing of our state's economy," he added.

January checks represent taxes collected in November and reported by December 20. October was the first month that the broadened tax base went into effect, according to Bullock. This month's largest allocation, \$8.8 million, was to Houston, an increase of 15.24 percent. Dallas received the second-largest allocation, \$6.3 million, an increase of 5.4 percent. San Antonio's check totaled \$3.5 million, a 17.85 percent increase from last year.

Bullock also sent checks totaling \$24.4 million to the state's six metropolitan transit authorities, an increase of 4.8 percent over January 1987 payments.

Hereford Vegetable Conference Set On January 19

Ways to combine cultural practices and marketing strategies which meet market demands and provide producers the best possible return will be examined at the 1988 West Texas Vegetable Conference here on Jan. 19. More than a score of speakers will address the theme, "Ride the Rising Stars."

The annual conference will be in the Hereford Community Center, 100 Avenue C at Park Avenue. It begins at 8:30 a.m., said Dr. Roland E. Roberts, vegetable specialist with the Texas Agricultural Extension Service and program coordinator.

Speakers, including research scientists, Extension agents and specialists, and growers, will present information to help producers make the best decisions for the coming growing season, Roberts said. The morning session will stress major vegetable crops grown on the High and Rolling Plains, new opportunities in the market place and techniques for marketing and production that have proven successful.

After a catered luncheon, the potato director of a leading biotechnology firm will trace potato propagation from test tube to farm. Then, two concurrent sessions will focus upon special concerns for the area's two major vegetable crops, potatoes and onions.

The conference has been planned by the Extension Service. Con't. Page 6, Col. 3



CHECK TO HELP WITH HOSPITAL EXPENSES--This week, Jim Burgess, left, chairman of the West Plains Medical Center Board of Directors, was presented a check in the amount of \$300 by Margaret Gleason, representing Kappa Kappa Iota Sorority. The money is to be used to help with expenses for WPMC.

Announced Grain

Contest 1987 Winners

Gary Matthews, who farms in Gaines County, Texas and brothers, Terry and Gary O'Neal, farming in Gray County, Texas, have been named winners in the 1987 national grain sorghum production contest. The Yield and Management Contest, sponsored by National Grain Sorghum Producers Association, is conducted in two categories—irrigated and non-irrigated. Contestants were scored against the three-year average established for their county by the Crop Reporting Service. Winners were those producers whose yields were highest in relation to the county average.

Matthews is winners of the irrigated category. He is 35 years old and has been farming 12 years. Matthews rotates his crops and applies fertilizer according to soil test recommendations. He produced his winning yield of 171.07 bushels per acre on land which he had

prepared to produce 900 lbs. (160 bu. ac.). He credits optimum growing conditions for the high yields. The three-year average for Gaines County is 51.9 bu./ac.

Other winners in the irrigated category are: Second Place, Jerome Mueller, who lives in Yankton, South Dakota and farms in Cedar County Nebraska and, Third Place, Houston Lee of Roosevelt County, New Mexico.

The O'Neal brothers, Terry and Gary, entered farms in two Texas counties and won with both. Their Gray County entry, taking national first place in the non-irrigated category, was the Texas first place winner in that category. The O'Neals second entry from Carson County, Texas took the state's second place prize. The winning yield was 97.81 bu./ac. compared to a county three year dryland average of 30.7 bu. ac.

Other winners in the non-irri-

gated category are: Second Place, Terry Carsten, Rooks County, Kansas and Jeffrey L. Clark, Pennington County, South Dakota.

The contest had 233 entries

from nineteen states. Contestants were asked to complete a management information questionnaire on method of tillage, seed per acre, use of herbicides, insecticides, fertilizer, etc.

National GSPA recorded this information in a computer program for reference and analysis. The information has also been printed in handbooks which will be distributed to contestants, the Extension Ser-

vice, seed company sponsors and others who request it.

The national contest winners will be honored by National GSPA at an awards banquet in San Antonio, Texas on February 15.

Texas Press Women Amarillo Meet

Publicity, Promotion, Public Relations. Three important concepts to deal with in advancing the causes of community organizations.

Texas Press Women, District 15, is presenting a Publicity Workshop January 22 and 23 at the Sheraton Hotel in Amarillo. The Workshop is designed for anyone in Amarillo and the surrounding area involved with publicity and promotion for organizations such as civic groups, charities, businesses, schools and agencies.

The Workshop costs \$25 per person and includes a reception, nine educational sessions, a special breakfast, lunch, refreshment breaks, a publicity handbook, handouts and more. Cost is \$20 per person if two or more register together. A major portion of each fee will be donated to the TPW Scholarship Fund.

A panel of 16 Amarillo professionals will present sessions on such topics as organizational communications, newspaper publicity, magazines and photography, leadership, fundraising, desktop publishing, TV and radio broadcasting, political communications, free-lance and fiction and club management/parliamentary procedure.

The reception for all workshop participants is 5 - 6:30 p.m. January 22 in the Sheraton Atrium and features a get-acquainted Happy Hour with complimentary beverages for Sheraton guests, speakers and TPW members and a cash bar for other Workshop participants. The Workshop gets underway at 7:30 a.m. January 23 with a breakfast featuring two representatives from the U.S. Army Recruiting Co., who will discuss recruiting publicity.

To give participants a variety of topics to choose from, three simultaneous workshops will be presented during each of the two morning sessions, followed by lunch and three simultaneous panel discussions in the afternoon.

Major contributors for the TPW Publicity Workshop include: St. Anthony's Hospital, First National Bank of Amarillo, Transamerica Telecommunications, Inc., Ben Konis, Amarillo Globe News, Texas State Tech-

nical Institute, Welcome Partner, Xero Color, TypePros, Quik Print, Dixon Paper, Graham Data, Amarillo Chamber of Commerce, Delta Airlines, Miller National Printing, and Kerr Distributing.

Reservations for the Publicity Workshop should be sent by January 10 to: TPW - Danella Davis, Box 30926, Amarillo, Texas 79120, (806)353-1900. Checks should be made payable to Texas Press Women District 15. Special room rates are available at the Sheraton for Workshop participants. Reservations can be made by calling (806)358-6161.

Speakers in session I, from 10:30 - 11:30 a.m., include Steve Bosarge of Bosarge Consultants, on in-house communications, "Are You Guarding or Climbing a Tower of Babel?"; attorney Nancy Gams and political consultant Pat Berry on political communications, "It's Politics"; and Dennis Spies, managing editor of the Amarillo Globe-News, and Helena Biasatti, editorial assistant for the American Quarter Horse Association, on newspaper publicity and magazine photography.

Speakers in Session II, from 11:45 a.m. - 12:30 p.m., include Judith Henry, director of the University Media Center at West Texas State University on leadership, "A Direct Approach"; Bob Kerr, CEO of Kerr Distributing, on club management / parliamentary

It's good you don't hear most of what people say about you.

One of the dangers of looking ahead is that we see things that never happen.

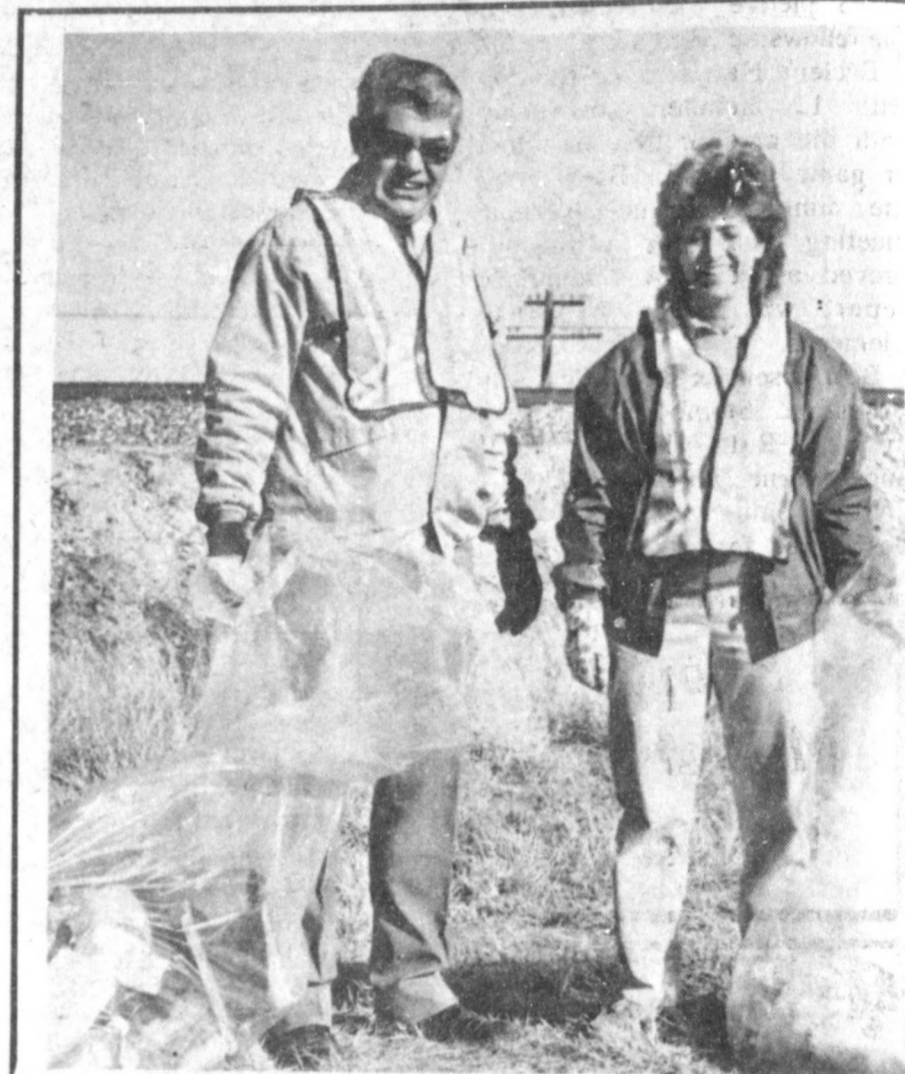
The utmost tragedy in the world is the minds of small boys is that the home team lost.

procedure, "Runnin' It and How!"; and Jim Matthews, former executive director of the Amarillo Area Foundation, on fundraising, "Money 101".

For Session III, from 1:45 - 3:15 p.m., a panel of four Amarillo media professionals will present a discussion on TV and radio broadcasting entitled, "You're on the Air!". Presenters include Katie Barbee, anchor for KVII-TV, Laurie Dahl, anchor for KAMR-TV, Walt Howard, anchor for KFDA-TV and John Dawson, operations manager at KGNC AM-FM

radio. Becky Patterson and Judy Neill from Texas State Technical Institute will also present a panel discussion on desktop publishing, "Big Time Publishing for Peanuts"; and "Fiction: Write and Sell" is the title of the third panel discussion in Session III, which will be presented by Carol Finch, author and marketing director for the Amarillo School Employees Credit Union, and writer DeWanna Pace.

For more information, call Danella Davis at (806)353-1900.



MULESHOE'S NEWEST GARBAGE COLLECTORS--Bob Donaldson, left, and Margie Merritt, officers of the Muleshoe Activities Committee, worked alongside U.S. 84 east of Muleshoe Thursday afternoon, collecting cans, bottles and other trash along the bar ditch. MAC has adopted two miles immediately east of the Muleshoe city limits.

Protection is a John Deere Filter

Beware of the dangers which can affect your engines — dirt, rust, water and fuel contaminants, excess fuel consumption, premature wear. Protect your John Deere engines with the filters that are guaranteed to fit and work. John Deere filters, now at special prices from Mr. Parts Pro.

OIL FILTERS

\$740



PART NO. AR43634

Matched to the engines they protect, John Deere oil filters meet tough engineering specifications for paper quality, efficiency, number of folds, angle of bends, and bonding between filter paper and end cap.

ULTRA-GARD™ AIR FILTERS

\$2700



PART NO. AR79679

New Super-Lock™ pleated media makes Ultra-Gard filters outperform the competition, with up to 21 percent more dust-loading capacity and 67 percent longer life.

If it's a John Deere filter, it's the real thing, now for the price of most imitations.

Dent & Co.

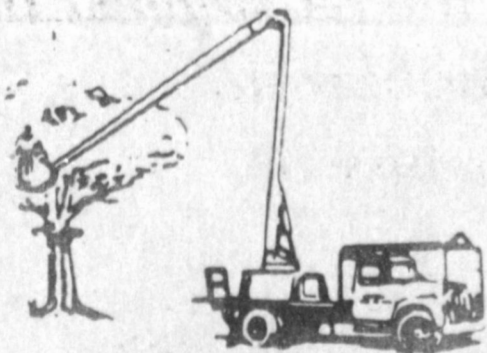
West Hwy. 84 Muleshoe 272-4296

NOTICE

ALLIED TREE SERVICE

RESIDENTIAL • COMMERCIAL

TREE TRIMMING



60 FT. HIGH REACH BUCKET

- ★ SHELTER BELTS ★ STUMP REMOVAL
- ★ TREE FEEDING
- ★ TREE SPRAYING
- ★ FERTILIZING
- ★ ORNAMENTAL TRIMMING
- ★ TREE PRUNING
- ★ SOIL TESTING
- ★ POWER RAKING

"SPECIALISTS IN RESTORING DAMAGED LAWNS"

(LANDSCAPING) (TREE PLANTING)

Phone: (505) 762-4445 or (505) 356-4779

and leave message for Allied Tree Service.

Serving All Surrounding Counties

A Company Representative Will Contact You As Soon As Possible



FAST, DEPENDABLE SERVICE!

LICENSED INSURED

Eat meat. It's good for you!



Rib Eyes



\$4¹⁵ LB. by the strip

T-Bones



\$2⁷⁹ LB. by the loin

Bacon

\$1⁶⁹ LB. 2-lb packages



Sausage



\$1²⁵ LB. 2 lb. sticks \$2⁵⁰

1/2 Beef \$1²⁹ LB.



Cut and Wrapped To Your Specifications

Winkler Meat Co

401 Main

Muleshoe

272-4703

Rose Sain Named Six Months Best Loser

Rose Sain was named six months best loser for TOPS Club chapter No. 34 Thursday night, January 14 when the club met in the Heritage Thrift Shop. She received a banner, a crown charm and a gift from each member of the club.

First runner up was Mary Edmiston and she received a charm, a gift from Mrs. Sain, a banner and a check from the club. Other runners up and receiving charms included: Nan Gatlin, second runner up, and Jewell Peeler was third runner up.

During the regular business meeting, Lavern James called the meeting to order and the TOPS pledge was recited and the fellowship song sung.

Evelene Harris called the roll with 12 members answering with the amount they had lost or gained. Thesia Davis read the minutes of the previous meeting and they were approved as read. A treasurer's report was given by Ruth Clements.

Best loser for the week was Ernestine Steinbock. Runners up were Ruth Clements, first; and Laverne James, second.

Mrs. Sain was also named best loser for the month with

Virginia Paez being named first runner up. Mrs. Sain received a charm for 50 pounds weight loss.

Secret pals were drawn for the new year.

One visitor, Windy Sain, was welcomed and a new member, Ginger Arnold, was welcomed into the club.

The meeting was closed with the singing of the goodnight song.

Winter Forecasts

Residents in the Southeast and West witnessed new proof in December that long-range weather forecasts are only guesses.

Before winter began, the U.S. Weather Service predicted a cold winter for the Southeast. The West was to be drier than usual. That was the word in November.

Exactly the opposite weather arrived. The West had record blizzards and snow fell in areas which seldom see much of it—in southern California and Arizona and New Mexico.

Meanwhile, most of the Southeast enjoyed the mildest December in years. On Christmas Day and all through that week, Gulf air kept the region unusually warm. Millions of dollars were saved on heating bills, as a result.

Most of the unofficial predictions and the official U.S. prediction were far off the mark. And that's good. One likes to think the weather is unpredictable, to a large degree.

Thus, forecasters aren't able to remove the uncertainty, the mystery, and the surprise, from weather. It will be a less interesting and exciting world when we know all weather answers in advance.

The man who rushes to finish every task often leaves something unfinished.

Those perfectly contented with themselves are blinded by self-satisfaction.

Being born poor need not be a permanent handicap but only hard work will erase it.



TOPS CLUB BEST LOSERS RECOGNIZED--Rose Sain, left, was named best loser for TOPS Club Chapter No. 34 during the meeting Thursday night. Mary Edmiston, right, was named first runner up. These ladies were honored with gifts and banners.

Fehlis, Harrison Assume State Leader Appointments

Appointments of Dr. Chester Fehlis and Miss Meatra Harrison as state leaders for county Extension programs have been announced by Dr. Zerle L. Carpenter, director of the Texas Agricultural Extension Service.

Fehlis and Harrison have provided strong leadership and support of Extension programs as District Extension directors in South Central District 10, and in their previous appointments," Carpenter said.

"We are extremely pleased to have two such highly skilled leaders and management officials in key Extension administrative roles," Carpenter noted.

He added that Harrison will have supervisory responsibility and will provide statewide program leadership for district Extension directors in home economics, while Fehlis will have the supervisory responsibility and provide program leadership for district Extension directors in agriculture.

Harrison has worked as district Extension director in District 10 since the fall of 1976, and has been with Extension since 1950.

Harrison also served as a 4-H and youth specialist with the Expanded Nutrition Program for six years, where she was responsible for training and support of county Extension agents of the ENP youth program in total youth development, understanding the target audience and teaching methodology. Earlier, she served as a county Extension agent in Jefferson and Falls counties.

She has served in many leadership roles, including the Epsilon Sigma Phi Alpha Zeta Chapter state president and has just completed her term of office as Epsilon Sigma Phi national president. She holds the B.S. and M.Ed. degrees in home economics education from Prairie View A&M University, and has received the Alumni Distinguished Service Citation from that university. She also is a recipient of the Texas Superior Service Award given by the Extension Service.

Fehlis began his professional career with the Extension Service in 1969, serving as an agent in Jackson County for four years, in Willacy County

for two years and in Victoria County for seven years.

He transferred to the position as district Extension director in District 10 in the fall of 1982. He has provided leadership for the Texas A&M University Plantation Field Day from 1983 through 1986 and for the South Central Texas Beef Herd Improvement Program (BHIP) from 1983 to the present time.

Fehlis also has received wide recognition for his leadership and management skills, and is active in many professional organizations. He holds the Texas Superior Service Award given by the Extension Service and has received recognition from the National Association of County Agricultural Agents on many occasions.

Don't expect everyone to agree with you; variety of opinion makes the world interesting.

The best way to sleep soundly is to live sensibly and think sanely.

Telephones & Manners

One of the ironies of the modern age is how telephones make otherwise polite people impolite. Telephones need not be, but often are, the cause of rude interruptions, by millions daily.

One frequent failing is by clerks. Almost invariably, the customer who came to make a purchase, standing at the cash register or counter to pay, must wait when some unknown rings the clerk's extension.

The customer hopes, usually in vain, the clerk will say: "If you'll hold, I'll be with you as soon as I'm finished with a customer."

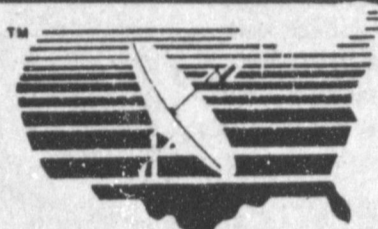
What the clerk usually does is let the customer wait, while he answers the questions of a chap sitting at home in his living room. If the waiting customer suggests to the clerk he or she should let the caller wait, often the clerk's feathers are irreparably

ruffled. Who does the customer think he is? Etc.

One can be buying a ticket on a bus or airline. The ticket agent will let the customer with money in hand wait while he or she answers a caller. One can be talking to a salesman about a new car, in his cubbyhole off the showroom. The telephone rings and he lets the prospective new car buyer wait! Etc.

Clerks and sales people should be more carefully instructed by management to let telephone callers take their turn. They should refuse to be interrupted when they have a "live fish" on the hook.

But the indispensable, unique convenience, the telephone, can be a bully, and a tyrant—for those who haven't learned good telephone manners. And a surprising number of people haven't.



SUPERIOR LIVESTOCK AUCTIONS

Via Satellite

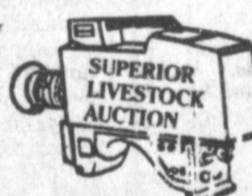
Sale to be held at the Clovis Livestock Auction, Thursday, January 21, 1988. Previews at 9:00 a.m., Sale at 10:00 a.m., Mountain Time.

9,000 to 10,000 head of local cattle offered, with a total consignment of 30,000 head.

Telephone lines available for buying or selling. Everyone is invited to attend.

For more information call:

Bob Bradley
(505) 762-5663
762-7013
762-4422



Don Foster
(806) 364-3900

Shop Muleshoe First

MEET THE CANDIDATES

The Journal has been authorized to announce the following candidates for public office:

Parmer County Tax Assessor
Doris Herington

SHERIFF
Larry Cox

CLEARANCE SALE

RUFF HEWN

Skirts-Pants & Blouses

50% off

ELLEN TRACY

Coordinate Groups

50% off

- Country Suburban Coordinates..... 50% off
- Scott McClintock Skirts..... 50% off
- Leather Gloves..... 50% off
- Wool Coats..... 50% off
- Denim Mini Skirts..... 50% off
- Denim Skirts & Jeans..... 50% off
- Sleepwear & Robes..... 50% off

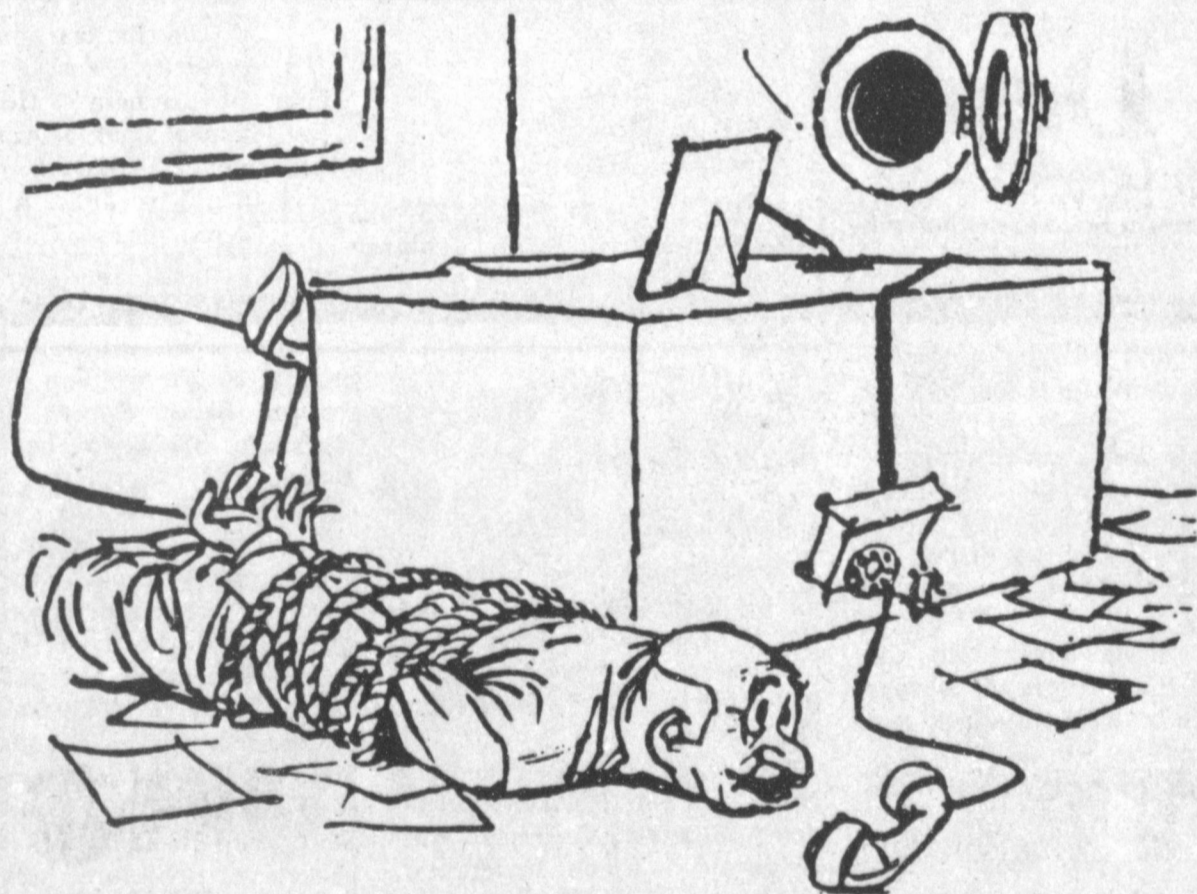
EVAN PICONE HOSE (Everything In Stock) 50% off

Lady You-Nique

MEET THE CANDIDATES

The Journal has been authorized to announce the following candidates for public office:

- SHERIFF**
Jerry Hicks
Ray Ruthardt
COMMISSIONER
- Precinct 1**
R. L. Scott
H. E. Neuson
James Meason
- Precinct 3**
Joey Kindle



"Thanks, operator...and may I suggest that you keep your valuables in a safe deposit box at

1st Bank

Home or the office is no place for your valuables. We have safe deposit boxes for the things you treasure most. For peace of mind let us safe guard your valuables.



202 S. 1st

Member FDIC

272-4515

Large Crowd Attends Jennyslipper Banquet

Performing before an unusually large crowd of Jennyslippers, husbands, honored guests and friends, Nick Black and his Black Magic Show kept the audience in suspense as he performed various magical acts, at the Jennyslipper banquet Tuesday night at the Civic Center.

Black, assisted by his wife, JaDawn, and young son, conducted several card tricks and illusions.

Using volunteers from the audience, Black delighted those present with card tricks. He capped off the presentation using hypnosis and illusion. His son was placed on a table top apparently suspended in mid air and remained motionless as a large loop was passed back and forth over the table and the boy.

He provided an unusual and exciting example of some of our local talent.

R.A. Bradley gave the invocation before the meal which consisted of brisket and all of the trimmings catered by the Blue Goose.

Billie Downing, 1987 Jennyslipper president, welcomed the Jennyslippers and their husbands as well as the honored guests, Wilma Waddle, 1978 Citizen of the Year; Elizabeth Watson, 1981 Citizen of the Year; Dorothy Green, 1987 Citizen through the Years; and the Woman of the Year; Jennie McVicker, 1982; Magann Rennels, 1983, Nelda Merriott, 1984; Janie Moraw, 1985; Julie Cage, 1986; and Cleta Williams, 1987.

Mrs. Downing presented each of the ladies with a long stemmed pastel colored carnation.

The news media was also recognized and presented certificates of appreciation as well as pastel colored carnations. Mrs. Rennels accepted the certificate for Jo Ella Flowers, Channel 6; Evelene Harris, The Journals; Rhonda Carpenter, KMUL Radio Station; and Judy Watson, Ranger.

Elizabeth Watson spoke briefly to the crowd about the

Muleshoe Art Association Will Meet Tuesday

Muleshoe Art Association will meet at 2 p.m. Tuesday, January 19 in the meeting room of Summit Savings. Nancy Carr of Levelland will give a demonstration on Water Color.

Gennie Seifort of Clovis, N.M. has been named Artist of the Month at the Muleshoe Public Library and some of her paintings will be on display at the library for the month of January.

Mrs. Erald Gross told the Journal that visitors are always welcome to these meetings and the members are asked to take paintings to hang at the Old Corral.

Plenty of Room

He calls his girl Stadium for there seems to be room for everyone in her heart.

Leadership Training being sponsored by the Muleshoe Chamber of Commerce and Agriculture. While speaking to the group she read a poem "What Are The Characteristics Of A Leader" in which the author wrote "All I

Ever Needed To Know I Learned In Kindergarten."

Members of the History Book Committee, Thursie Reid and Vivian White, Co-chairmen; Evelyn Peat, treasurer; and Anne Camp, were also recognized.

Retiring officers and committee chairmen were also recognized and included: Billie Downing, president; Donna Kirk, president elect; Sandy Robinson, secretary; and Evelyn Peat, treasurer; and committee

chairmen, Nelda Merriott, public relations; Pat Mudford, membership; Lucy Mardis, special events; Bobbie Harrison, budget and finance; Joyce Holmes, agriculture; Kathryn Taylor, business development; Pat Langfitt, commercial growth; Nancy Kidd, and Greta McCormick, service and cultural development.

Vivian White and Anne Camp installed the 1988 officers and introduced the committee chair-

men who include: Donna Kirk, president; Sandy Robinson, president elect; Ellen Ladd, secretary; and Norma Bruce, treasurer.

New committee chairmen include: Nelda Merriott, public relations; Ruby Green, membership; Lucy Mardis, special events; Doris Wedel, agriculture; Evelyn Peat and Pat Langfitt, budget and finance; Kathryn Sanders, business development; Thursie Reid, commercial growth; and Billie Downing, service and cultural development.

Donna Kirk, retiring president elect was presented a plaque by Mrs. Downing. "I have called her our advisory officer" Mrs. Downing stated as she presented Thursie Reid a plaque. Also receiving plaques were Evelyn Peat, retiring treasurer; and Sandy Robinson, secretary.

The Golden Girls, Nelda

Merriott, Bobbie Harrison, Kathryn Taylor, and Pat Langfitt, were recognized, with Mrs. Harrison receiving the "Best Supporting Actress Award."

Ms. Reid presented Mrs. Downing a plaque in appreciation of her year of hard work being Jennyslippers president.

Mrs. Downing spoke briefly about the different activities the Jennyslippers had sponsored during the past year.

In her final duty as Jennyslipper president, Mrs. Downing presented Donna Kirk with the presidents pin and stated that she should wear the pin with pride as the past presidents had done. Past presidents of Jennyslippers include Nelda Merriott, Marjorie Merritt, Kathryn Taylor, Vivian White, Thursie Reid and Billie Downing.

Donna Kirk gave her accepting speech and the benediction was given by Jerrell Otwell.



HONORED GUESTS AT BANQUET--Tuesday night the Jennyslippers had as their guests women of the area who have been honored as the Citizens of the Year, Citizen Through the Years, and Women of the Years'. Back row:(L-R) Nelda Merriott, Cleta Williams, Jennie McVicker, Magann Rennels, and Julie Cage; Front row (L-R) Elizabeth Watson, Dorothy Green and Janie Moraw.



JENNYSLIPPER OFFICERS INSTALLED--(From Left) Donna Kirk, president; Sandy Robinson, president-elect; Ellen Ladd, secretary; and Norma Bruce, treasurer; were installed during the Jennyslipper banquet Tuesday night.

April Watkins Named 4-H Club Sweetheart

The Muleshoe 4-H Club met on Monday, January 11 at the Bailey County Civic Center. There were forty-two 4-H members present and twenty-one adults.

The meeting was called to order by Colin Tanksley, president. A business session was conducted in which, under new business, April Watkins was elected 4-H Sweetheart for 1987-88. April will assist with

passing out the winning ribbons for the Bailey County Junior Livestock Show to be held January 21-23 at the Civic Center.

Other business included doing a community project for the American Cancer Society in conjunction with the Bailey County Fair in September. The program was given by Linda Huckaby on the March of Dimes Foundation. She asked for volunteers to conduct the march in Muleshoe. Several 4-H members took packets of literature home to participate in the Muleshoe march.

The 4-H members chose to have a poster contest to advertise the Bailey County Junior Livestock Show. Their posters were to be turned in to the Extension office by Friday, January 15th, for judging. Winners will receive appropriate recognition.

After the business meeting, Tadd Young led the group in recreation and it was reported that everyone enjoyed themselves.



APRIL WATKINS

Strong Defense

No enemy nation could take the risk of invading us. Our juvenile delinquents are too well armed.

-Scoop, Winter Harbor.

All Year Long

One of our present troubles seems to be that too many adults, and not enough children, believe in Santa Claus.

-Times, Marshalltown, Ia.



The hardest nut in the world is Brazil's rich lathering Babassu nut, important in soap manufacture.



Germans used to believe striking a door sill with an ax would end a spell of bad weather.

Pennyrich

CUSTOM FIT BRAS

Sculptress

BRA PROBLEM

The 32B padded bra didn't help Mrs. M either! The padding only pressed the soft breast tissue against the rib cage. Her bustline was forced back into an unnatural position.



PENNYRICH SOLUTION

Mrs. M now wears a 30DD Pennyrich Bra without one ounce of padding! The Pennyrich Bra does not push soft breast tissue back. It allows room for you to move forward.



Nearly Me Prosthesis

For Appointment

(505) 762-5110

Lois Lesly

919 Mitchell



Feeling A Little Like You've Been Left Out In The Cold?

Warm Up With A Subscription Today.

\$12.50

By Carrier

\$14.75

By Mail In Bailey County And Surrounding Areas

\$16.50

By Mail Elsewhere

Muleshoe Journal/Bailey County Journal
P.O. Box 449
Muleshoe, Texas 79347

Fall and Winter Merchandise

50% OFF

Sale Now In Progress

Lookin' Good

206 Main

Phone 272-5052



JUNE WEDDING PLANS REVEALED--Walter and Brenda Lackey and Arnold and Pat Prater wish to announce the engagement and approaching marriage of their children, Deborah Lackey and Kerek Prater. The bride elect will be a 1988, graduate of Muleshoe High School and Prater is a 1981, graduate of Muleshoe High School and is employed at the First State Bank of Dimmitt. The couple plans a June wedding.



When it comes to dieting, "starch is no longer a dirty word." For years, dieters have been told to avoid complex carbohydrate foods -- the "starchy" ones -- like bread, potatoes, and pasta.

But current research in nutrition, diet and health shows that starchy foods should be included in a weight-loss diet. It is only the butter, sour cream and other fatty toppings that have to go.

Starch contains four calories per gram, just like protein. However, starchy foods are almost fat-free, while high-protein foods like meat and dairy products contain fat, which has a full nine calories per gram.

Starchy foods also have a "Stick-to-the-ribs" quality which make dieters feel full, and less likely to indulge in high-fat foods. According to the Tufts University Nutrition Newsletter, overweight subjects who were fed eight-to-twelve slices of bread per day in university research studies, still lost weight.

Obviously, eating too much bread -- or any one food -- is not recommended since it can lead to an unbalanced diet. But nutritionists do agree that



MEMBERS OF THE HISTORY BOOK COMMITTEE--(L-R) Anne Camp, Thursie Reid, Evelyn Peat, Vivian White and Billie Downing, have been working hard toward getting the Bailey County History Book to the publishers.

Americans should get about 50 to 60 percent of their total calories from carbohydrates, mostly in the form of starch.

Even if you are not concerned about pounds, starchy foods are important in providing the fiber that is important for good health. Whole grain breads, cereals, rice, pasta and beans all contain substantial amounts of fiber.

So, do not feel guilty about a plate of pasta or a steaming baked potato. Eat them with lower fat toppings and you still have a good, nutritious "diet food."



NEWS MEDIA RECEIVES CERTIFICATES--The news media was honored Tuesday night by the Jennyslippers at their banquet and received certificates and carnations of appreciation. Back row: (L-R) Judy Watson, Ranger; Rhonda Carpenter, KMUL Radio; Front row: (L-R) Evelene Harris, Muleshoe and Bailey County Journals; and Jack Rennals, Channel 6.



SHELLEY TURNBOW, TREVOR LEN

Baby Shower Honors Shelly Turnbow, Son

Mrs. Shelly Turnbow and son, Trevor Len, was honored with a baby shower Sunday, January 10 from 2 to 4 p.m. in the home of Jamie Myers.

Guests were greeted by the honoree and her mother, Bobbie Dunham; and mother-in-law, Joyce Turnbow, and were registered by Krystal and Myndi Heathington, nieces of the honoree.

The hostesses served assorted breads, miniature muffins, and punch from silver appointments. A white lace table cloth

covered the serving table which was accented with a basket holding a teddybear and topped with balloons. The honoree's corsage consisted of baby booties stuffed with socks and accented with blue ribbon.

Honored guests were Mrs. Dunham and Mrs. Turnbow, grandmothers of Trevor Len; and his aunts, Rhonda Myers and Dani Heathington.

The hostesses gift was a high chair. Hostesses for the event were Brenda Black, Sarah Black, Mary Hunt, Sue Johnson, Dawn Williams, Tammie Black, Jamie Myers and Jeanett Burden.

We would like to thank those of you who were supportive to the family with the food, flowers and especially your prayers. In this our time of sorrow, words would never be enough to say Thank You. May the Lord richly bless all of you.
The Guzman Family
and
The Hodges Family



By Linda Attaway
In preparing food items from conventional recipes for microwaving, the basics still apply. This includes cutting portions into smaller pieces of uniform size. This allows more even heat penetration and faster cooking.

Delicate ingredients, such as cheese, shrimps and other shellfish, should be added near the end of the microwave cooking cycle. This prevents them from overcooking and becoming tough.

Other hints also apply: dips, spreads and casseroles made with pre-cooked ingredients may be adapted without changes. Pie shells are microwaved before filling.

Cake dishes are filled no more than half-full. Bread loaves may be elevated on a saucer to help the bottom cook evenly.

In case of doubt, don't borrow and don't lend. It's time to make plans for a summer vacation.

The tax changes are the most sweeping in history.



Put H&R Block on your side.

The tax laws have changed dramatically. And the forms have changed, too. Our experienced preparers thoroughly understand the new tax laws and forms. We'll find you the biggest refund you have coming. If there's ever a time for H&R Block, it's now.

H&R BLOCK DON'T FACE THE NEW TAX LAWS ALONE.
224 West 2nd
272-3332
Weekdays 9-6 Sat. 9-5

Medium Pan or Thin Single Topping Pizza

\$5.99
Your Home Town Pizza Hut.

January 18 - January 23

1412 W. American Blvd.

272-4213

Bailey County Journal USPS 040-200
Established March 31, 1963. Published by Muleshoe Publishing Co., Inc. Every Sunday at 304 W. Second, Box 449, Muleshoe, Texas. 79447. Second Class Postage paid at Muleshoe, Texas 79447.

TXA MEMBER NATIONAL NEWSPAPER ASSOCIATION PANHANDLE PRESS ASSN. WEST TEXAS PRESS ASSOCIATION

L. B. Hall, President & Publisher
SAMMYE HALL, Vice President & Comptroller
Clara Williams, News Editor
Evelene Harris, Society Editor
Dorset Burch, Advertising Manager
Lillie Sims, Bookkeeping

SUBSCRIPTIONS:
Muleshoe Journal and Bailey County Journal
Bailey and surrounding counties
Muleshoe Journal and Bailey County Journal
Flowerhouse in Texas \$14.75
Muleshoe Journal and Bailey County Journal
Outside of Texas \$18.50
Years by Carrier \$12.50

Advertising rate card on application.
Advertisers should check their ad the first day of insertion. The Journal will not be liable for failure to publish an ad or for a typographical error or error in publication except to the extent of the cost of the ad for the first day of insertion. Adjustment for errors will be limited to the cost of that portion of the ad where the error occurred.

MOVE 'EM OUT...

All Tony Lama Childrens Boots \$59⁹⁸

All Childrens Squaw Boots & Moccasins 50% OFF

8 am - 8 pm CST
482-3363
314 Wheeler Street
Accepting: American Express-Visa-Discover-Master Card

ALL DOWN COATS 50% OFF

All Felt Hats 20% OFF
Mens 5 Buckel Overshoes \$14⁹⁸

Rip's IN TEXICO Western Wear



INTRICATELY PAINTED TRAILER--This intricately-painted trailer was in Muleshoe briefly last Friday afternoon. The show trailer is 48-feet long, and each side is air brushed with desert scenes, including scenes immediately noticeable, as well as very well 'hidden' items along the sand dunes and spiky grass. Even the clouds in the sky hide figures and items. The Overland Express is pulled by four hooded Peterbilt tractors, presided over by Stagecoach Pete.

Senatorial Candidate

Cont. From Page 1

decision to seek state office at this time on two major criteria -- Right now is the toughest time, ever, for the State of Texas; and second, she was ready for the challenge of seeking state office.

"We need someone in Austin to say 'Whoa' and mean it," she said. "The federal government is telling us how, when and where and why to house our prisoners; they are telling us what we can teach at school, and when we can teach it; they are telling us when, where and how to register our dogs.

"They make all the regimentations then tell us - we can't afford to help get it done -- you find the financing for it."

The attorney and former school teacher and coach is married to a clinical psychologist; and is the mother of two sons, an R.N. and a student. She taught in Crystal City ISD,

Texas; North Chicago ISD, Illinois; Brownfield ISD, Brownfield; University of Tulsa; Amarillo College and West Texas University.

She has been employed in Austin as Legislative Analyst during the 68th Legislative Session for Governor Mark White; she has helped with the Campaign of former candidate Max Sherman for Attorney General; assisted during a Special Summer Session of Bob Simpson, former State Representative.

At this time, she is in the process of closing out her private law practice to devote full time to campaigning for State Senator. "I want my campaign to be as open as I would run an office in Austin -- Where you can see it."

"She added, "It has been 10 years since we have had an effective voice in Austin. Not

since Max Sherman was there. We need to keep a strong voice from the Panhandle. We need someone who can be a part, and we need to be there."

When asked about a Personal Income Tax, Mrs. Garms said that it is the last thing we need in the State of Texas.

In speaking of how to keep in touch with the people at home. She encouraged more telephone calls, letters and personal contact with the legislators. "You need to be sure they are hearing what you want them to know. With 29 counties, I realize it is hard to get back in each county, but, it can be done. Your legislators need to make at least three visits a year."

Mrs. Garms said that in a statewide survey, it was proven that the number one way to raise money in the state of Texas was a lottery, and said that if that is what the people want, then it should be considered, but don't believe the state will go for it since they would own the lottery."

A strong advocate of a diversified economy, Mrs. Garms spoke strongly in favor of going for the middle processing dollars -- for the small to medium industries -- not large industry for this part of the state, and gave several examples.

She also spoke on overcrowding in prisons, Victim's Rights and other current subjects.

The candidate and her mother were taken to the Old Corral for dinner, then it was back to the courthouse to draw for placings for candidates named on the Bailey County Democratic ballot.

For contested local races, James Meason was first; H.E. Newsom, second and incumbent R.L. Scott, third for Commissioner, Precinct One. Ray Ruthardt drew first place in the Bailey County Sheriff's race, and Deputy Sheriff Jerry Hicks, drew second. In the Senator's race, Mrs. Garms drew first place; Mel Phillips, second and H. Bryon Poff, third.

The evening wound up with the Jennyslippers hosting another reception in the home of Mr. and Mrs. T.R. White.

Vegetable...

Cont. From Page 1

vice with the cooperation of the Deaf Smith County Extension Vegetable Program Development Committee, the Texas Agricultural Experiment Station, Texas Tech University and the High Plains Vegetable Growers and Shippers Council.

Educational and agribusiness exhibits will provide growers a glimpse of new materials and equipment.

Additional information is available at county Extension offices throughout the High Plains.

California ups minimum wage to \$4.25 an hour.

Muleshoe...

Cont. From Page 1

Dean's Honor Roll students from Muleshoe are senior accounting major Patricia L. Summers, honors; senior elementary education major Teresa G.D. Slayden, honors; and sophomore biology major Wendy Gay Jarman.

Ag Meeting...

Cont. From Page 1

sex, religion, handicap or national origin.

The Extension office number is 806/272-4583. Registration fees may be paid at the Seminar.

Kiwanis...

Cont. From Page 1

John Fuller introduced the board and the program was turned over to Cindy Purdy and Sam Harlan. They presented a real good program and showed a video film from the Texas State Board of Education about things we need to do and expect in the next 13 years. Cindy and Sam gave a good program and impressed that the future of the school and community depend on both - one cannot exist without the other if either are to be successful.

A questionnaire was passed out for everyone to express their views and desires for the school by 2000. Cindy and Sam enlisted the help of school board members Gordon Wilson and Howard Watson to read the questionnaires to show (or see) if they could read that early in the day. A good question and answers part was entered into by quite a few members and guests.

The Muleshoe Kiwanis Club would like to commend our School Board -- John Fuller and administration and our teachers on the fine job in educating our youth to their fullest and their desire to do it better each and every day. "THANK YOU."

President Max Crittenden called the meeting to order. Pledge to the flag was led by Howard Watson and Invocation by James Roy Jones.

The U.S. Air Force has announced the retirement of Maj. Boyd L. Clayton, son of Mrs. F.D. Clayton of Earth, after 20 years of service.

Clayton served as chief of transportation at Sheppard Air Force Base, Texas, prior to retiring.

He received a master's degree in 1977 from Webster College, St. Louis.

Youth of the Calvary Baptist Church will again have special

Valentine Cookies.

The nine inch sugar cookie will be decorated with your message and delivered to the recipient.

To reserve your cookie, call 272-5319 or 272-4012, or see any member of the Calvary Baptist youth department.

The proceeds will be used for church camp this summer.

Jackson says might ask Wright to join his team.

AMALIE
Better than it has to be.®

TRUCKLOAD SALE

Wiedebush and Company is having another Truckload Oil Sale. You can buy quality Amalie Products at 10% off regular prices.

Buy 10 Cases, drums or 5 gallon cans and get ONE UNIT FREE.

The way our oil prices are going up, this program could very easily save you as much as 25% in the coming months.

This offer good January 1, 1988 through March 1, 1988.

Wiedebush & Co.
1620 W. American Blvd. 272-4281

HOMESTEAD EXEMPTIONS

CAN LOWER THE PROPERTY TAXES ON YOUR HOME

A homestead exemption lowers the property taxes on your home by lowering its taxable value. For example, if your home is valued at \$50,000 and you receive a \$5,000 homestead exemption, your home will be taxed as if it were worth only \$45,000.

You qualify for a homestead exemption if you owned your home on January 1 and used it as your primary residence on January 1. It doesn't matter whether your home is a house, a condominium or a mobile home.

Exemptions are available to all homeowners on their school taxes. Additional exemptions are available to homeowners who are disabled or age 65 and over. Other exemptions may be offered to homeowners by school districts, counties, cities, and special districts. All taxing units offer exemptions to disabled veterans.

Apply to your local appraisal district office at the address shown below for all exemptions you may qualify for. Application forms are available at this office.

If you received a homestead exemption on your present home in 1987, you won't need to apply again for 1988 unless the chief appraiser requires you to reapply.

However, if you passed your 65th birthday or became disabled before January 1, file a new application to receive the additional exemptions.

If you haven't received an exemption on your present home, or if you've moved to a new home, make a new application for 1988.

The deadline for applications is April 30, 1988. Contact your appraisal district before then if you need more time.

For more information, get a free copy of the pamphlet, *Taxpayers' Rights, Remedies, Responsibilities*, at your appraisal district office or from the State Property Tax Board in Austin.

Bailey County Appraisal District

104 E Ave C 272-5501

KEY VALUES

Are Found In Our CLASSIFIED SECTION

Muleshoe Journal

Phone 272-4536 304 W. 2nd

'PJ' And 'Sno-Kat' Out To Prove There's Still 'Knights Of The Road'

Once known as 'Knights of the Road,' truckers have worn somewhat a 'tarnished' crown for the last few years. But, that's all due to change. If Donal 'Puddle Jumper or P.J.' Roberts and Connie 'Sno-Kat' Cleveland, have anything to do with it.

Last Friday, the long-distance trucking duo was through Muleshoe in their very colorful, most unusual truck.

While parked at the Dairy

Queen, while 'getting an order to go,' the truck quickly drew attention -- much to the joy of Curator Roberts, who spent the next hour explaining the murals on the tractor and 48-foot trailer.

Roberts, who says he has been a truck driver since 1953, and Cleveland, who says she has been driving for the past 17 years, are driving partners for Bobby Whitfield Trucking of Caddo Mills, TX.

The very special truck was painted with the artistic wizardry of Von Otto, of Airbrush Unlimited, who painted desert scenes on each side of the 48-foot trailer, and included hidden objects of art among the sand dunes and hills.

Very prominent on each side of the trailer is the old fashioned Overland Stage, pulled by four Peterbilt tractors, with the driver's whip whistling over their hoods.

Included on the right side of the trailer is an airbrush of truck company owner, Bobby Whitfield and his wife, Tammye. On each side is a curving winding highway, interspersed with small signboards with a special significance.

Von Otto painted the signboards denoting different companies the trucking line delivers to with one of their 17 trucks in the fleet of Bobby Whitfield Trucking.

It was an unusual experience to find guitars, Mexican hats, pistols, Indians, animals, birds, and other objects skillfully blended into the airbrushed sandhills and dunes.

You cannot just take a quick look at the truck, trailer, or the fabulous chrome engine and walk away. It takes time to examine such as the pearlized water scenes on the sides of the tractor, or the Saturday night 'Cowboy' on one side or the Saturday night 'Cowgirl' on the other side in bathtubs.

Roberts explained that his 'Stagecoach Pete' travels 175,000-200,000 miles per year, with a lot of miles being driven to truck shows around the country. He proudly pointed out that his very different truck usually drives away with the top prizes from the shows.

"We are trying to change the image of the trucker," says Roberts. "Unfortunately, we have been portrayed as drug addicts, ex-convicts, rapists, murderers, and as the low scum of the earth."

"That's just generally not true, we want to go back to being known as Knights of the Road," he added.

Roberts explained that while preparing the truck to be a 'show truck' it was taken to Cummins Engine Company, where a sparkling chrome engine was installed. The engine plates are engraved on each side with names of the engineers and mechanics who installed the chrome engine with more than 1,100 chrome parts.

Inside the tractor, chrome seats were installed and chrome

side panels were also included. Chrome work on the truck is valued at \$24,000; the airbrushing, which took over 800 hours, is valued at more than \$25,000. Add this to a truck valued at more than \$200,000 to start with, you have a truck, a magnificent truck, valued in excess of \$250,000.

Everywhere Roberts and Cleveland go in their bright red

truck with the colorful murals, crowds gather round to hear the story of the truck from Roberts, who is proud to proclaim "I am very proud to be an American."

If you see Stagecoach Pete you will remember it. It goes "Truckin' on down the highway, taking the story of the American Trucker" as told by P.J. Roberts and his sidekick, Sno-Kat Cleveland.

Rural Postal Carrier Exams Will Be Open

Donald S. Bloyd, Sectional Center Manager / Postmaster, Lubbock, has announced that the Rural Carrier Examination the Brownfield Area will be open from January 19 through February 2.

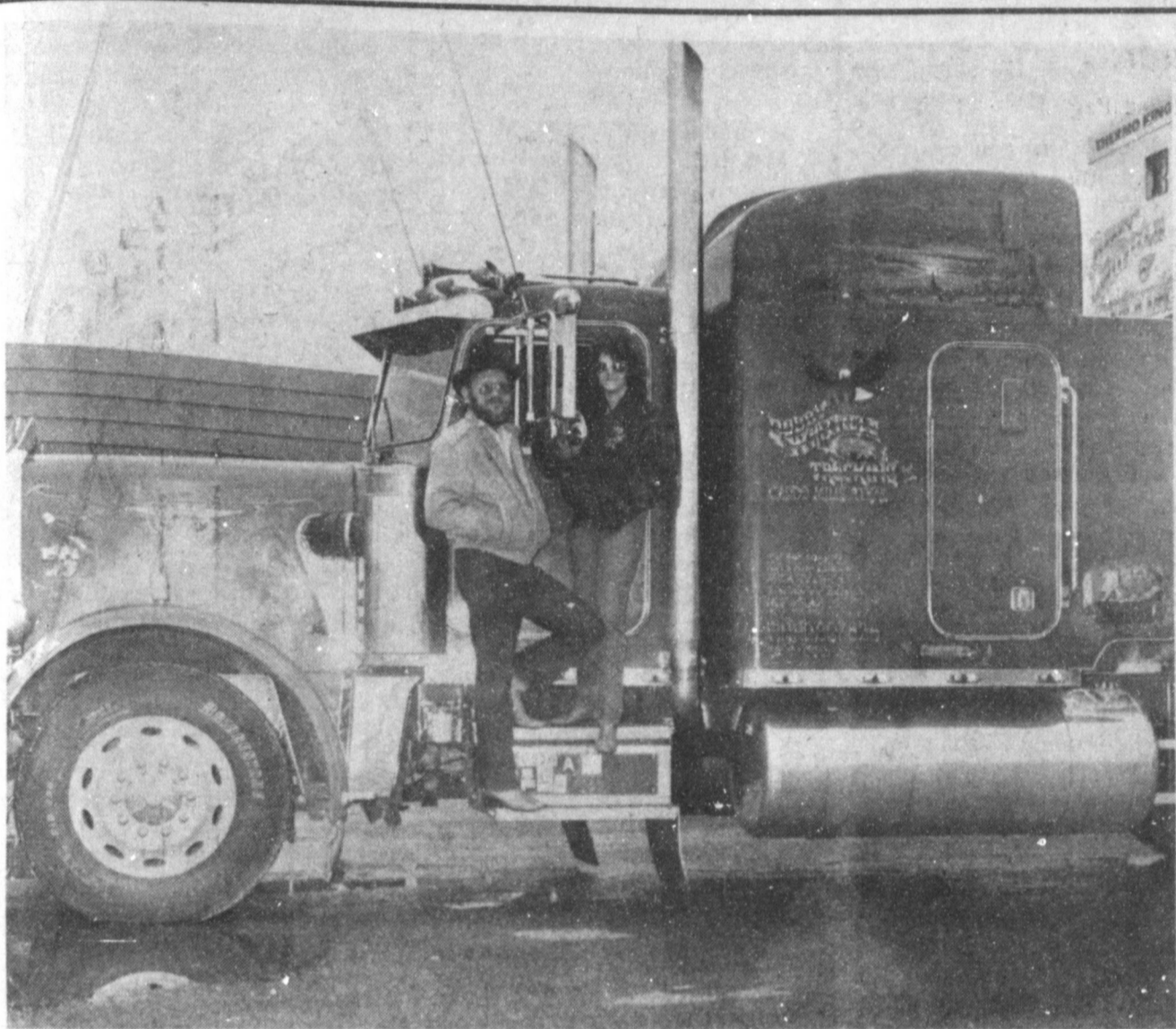
The Brownfield register includes the towns of Brownfield, Denver City, Lamesa, Meadow, O'Donnell, Ropesville, Seagraves, Tahoka and Wolfforth.

Persons who are interested may apply at the offices listed above, and in Lubbock and Amarillo between January 19

and February 2. Applications will not be accepted prior to or after these dates, said Bloyd.

Starting salary for the position of Rural Carrier Associate, which is primarily a leave replacement position, is \$9.05 per hour. Starting salary for a full-time rural carrier is \$18,834 per year.

Shop Muleshoe First!



THEY ARE THE CURATOR/DRIVERS OF STAGECOACH PETE--Donal 'Puddle Jumper or P.J.' Roberts, left, and his running partner, Connie 'Sno-Kat' Cleveland are the drivers and curators of this huge rig. The show truck is driven all over the United States for Bobby Whitfield Trucking of Caddo Mills, TX. Innovative Whitfield now has three air-brushed trucks, but probably the most famous is the Stagecoach Pete truck, a bright red tractor, and colorful trailer, that was in Muleshoe last week.

Higginbotham-Bartlett

Announces

New Store Hours:

8:00 a.m. to 6:00 p.m.

Monday thru Saturday

Effective Jan. 1, 1988

215 Main 272-3351

Fort Worth Stock Show Starts Soon

The 92nd annual Southwestern Exposition and Livestock Show is expected to establish many new records during its 17-day run Jan. 22 through Feb. 7 at the Will Rogers Memorial Complex in Fort Worth.

Although final tabulations of entries in the various breeding and show divisions are not complete, Stock Show President/Manager W. R. Watt Jr. said "indications are that we will host a record number of entries this year."

He added that premiums and prize money for the livestock show and rodeo will exceed \$500,000 for the first time in the show's history.

Watt credited several factors for the entry increase. Among them are the new and improved facilities at the Will Rogers Complex, a more favorable market for livestock, and the introduction of new breeding show divisions at the Stock Show.

Categories have been added in the open breeding cattle and junior heifer departments, as well as several special events planned for the horse division. In addition to the traditional breed shows, the Stock Show will host the Southwest's first major Llama show and the Southwestern Sheep Dog Trails.

Also on the schedule are nine prestigious breed auction sales for cattle and horses, plus the Sale of Champions for winning animals for the junior division.

Entry deadline for the Small Stock Division, including poultry, pigeons and rabbits, is Jan. 15. This group is expected to generate over 4,000 head.

Increased demand for rodeo tickets has been answered with the addition of five night performances, bringing the total to 28 rodeos. Tickets are priced at \$10 for Friday night and weekends, \$8 for Monday through Thursday nights, and \$6 for Monday through Friday matinees.

The rodeo box office, located in the lobby of Will Rogers Coliseum, is open daily from 9 a.m. to 5 p.m., and on Sundays from noon to 5 p.m. Phone orders for rodeo tickets are being accepted at 817/335-9346.

ABOUT YOUR HOME By April Rhodes

Frozen fruit packed in dry sugar will thaw just a little faster than fruit in syrup.

When broiling fish, add lemon juice to prevent that fishy smell.

When dyeing or tinting a garment, run a few lengths of thread through the garment to use for buttons or repairs.

How to get off our mailing list.

The 1987 Census of Agriculture is coming to a mailbox near you. And we're hoping that you'll take the time to fill out your Ag-Census questionnaire and return it before February 1, 1988.

That way, you won't receive another census form until 1992. Otherwise, we'll send you another Ag-Census questionnaire.

And another. And another. In fact, we'll keep on writing until you mail in your form.

So fill out and return your Ag-Census form early. All the information you give is completely confidential.

That's guaranteed by law.



True Value HARDWARE STORES

Mid-Winter Cleanup

E-Z DOES IT.

9.98* Gallon
E-Z Kare Latex Flat Finish for walls and ceilings. Ideal for bedrooms, more.

12.98* Gallon
E-Z Kare Latex Flat Enamel leaves a tough, beautiful low-sheen finish.

12.98* Gallon
E-Z Kare Latex Semi-Gloss Enamel is ideal for kitchens, bathrooms. Scrubbable!

Paint Now...Pay Later! Make buying paint as easy as using it! These cards are well-earned at participating stores.

20th Anniversary

TRU-TEST
Celebrating 20 years in paint manufacturing! 1967-1987

1.19
Stick Ups Air Deodorizer with the heavy-duty formula. 2-pk.

3.44
3-Pc. Orel Brush Set has poly bristles to spread smoothly. 1, 1 1/2, 2 in.

2.58
Kleenz-Em Brush & Roller Cleaner removes paint quickly. Quart.

1.99
Murphy's Oil Soap cleans wood surfaces, leather, vinyl and more. 32 oz.

2.99
All-Purpose Cleaner is industrial strength for cleaning, degreasing. 16 oz.

2.49
Lysol Disinfectant Spray kills household germs, mold & mildew. Regular. 12 oz.

Humidifier
with humidistat & fan control services average size home
Reg. \$134.95
Now \$84.95

Humidifier
with humidistat only
Reg. \$89.95
Now \$59.95

STANDARD 75, 100, 150, 200
1.44 Your choice
4-Pk. Soft White Bulbs reduce annoying glare and shadows. 40, 60, 75 or 100W.

EMPIRE
5.99
Nylon Dust Mop has a fleece backing to polish white tile dusts. 48-in. handle.

EMPIRE
4.99
Angle Smooth Sweep Broom is angled to get into corners.

TRU-TEST
2.99
Heavy-Duty Laundry Detergent in concentrated formula. 1/2 gal.

TRU-TEST
1.49 Quart
All Purpose Cleaner for washable surfaces.

TRU-TEST
2.49 Quart
Humidifier Water Treatment prevents lime-scale buildup, odors.

TRU-TEST
98c Quart
Ammoniated Glass Cleaner cuts grease.

Fry & Cox, Inc.

401 S. 1st. 272-4511

AG-CENSUS CAMPAIGN NEWSPAPER AD NO. AC-88-1256-2 COL.

Letter To The Editor

January 8, 1988

THANK YOU LIFEGIVERS

United Blood Services would like to express thanks to the many volunteer blood donors in Muleshoe. A total of 333 pints were donated by Muleshoe residents in 1987. The blood given helped to save or sustain many lives in the community.

Appreciation goes out to the following organizations for volunteering their time and energy to assure successful blood drives in the community: Muleshoe Rotary Club, Young Homemakers, First United Methodist Church, members of the Advisory Council and the media.

Since the need for blood donors and volunteers to assist with blood drives is ongoing, your cooperation is a vital element in our responsibility to maintain a safe and available

supply of this life-giving community resource. We are grateful for your contribution to the safety and health of your community. Again, on behalf of our staff and the many patients who will benefit, thank you.

Sincerely,
United Blood Services

BIBLE VERSE



"He that hath two coats, let him impart to him that hath none; and he that hath meat, let him do likewise."

1. Who made the above statement?
2. To whom was he speaking?
3. What happened just after this?
4. Where may this statement be found?

Answers to Bible Verse

1. John the Baptist.
2. The people who were listening to his sermon.
3. He introduced Jesus as the long promised Messiah of Jews.
4. Luke 3:11.

Courthouse News

MARRIAGE LICENSE

James Russell Wright and Darlene Ann Miller, Portales, N.M.

Louis Edell Germain, Muleshoe and Rene Rodriguez, Cactus, TX

Juan Jesus Galaviz, Muleshoe and Tammara Dee Vise, Farwell

WARRANTY DEEDS
Edith Lee Sims Bridges to Oron Sims--The (S/2) of the (NE/4) of Section (61), Block Y, WD&FW Johnson Subdivision, Bailey County, Texas.

Kenneth D. Krebbs to Knights of Columbus--A (5) acre tract of land out of a (15) acre tract of land set out and described in contract of Sale and Purchase Texas Land Program VLB Account No. 71556 by and between Kenneth D. Krebbs and Veterans Land Board of Texas.

John Wayne Bellar and I O'Don Bellar to O'Don Bellar

and wife, Darlene Bellar--An undivided one-third interest in and to Labor 24, League 199, Lubbock County School Land, Bailey County, Texas.

COUNTY COURT
Mary Sifuentes, DWI, \$250
Fine 3 Days Jail

Enochs News

By: Mrs. J.D. Bayless

Mr. and Mrs. Clifford Snitker had their family gathering Sunday, Jan. 10. Those present were Mr. and Mrs. J.C. Snitker of Enochs and Robert from Austin, Mr. and Mrs. Curtis Snitker and son of Hart, Mr. and Mrs. Jody Snitker and children of Dimmitt and Glyn Snitker and friend of Hart, Mr. and Mrs. Staley Snitker and Cindy and granddaughter, Erica from Midland. Mrs. Kathy Spencer and children of Friona and Mr. and Mrs. Franklin Noltie of Lubbock.

Sunday afternoon Mr. and Mrs. J.E. Layton and Mrs. Etta Layton went to Muleshoe to visit Mrs. Juanita Snow at the Nursing Home.

The past week January 5 till the 10 the ice was on the trees and it was real cold.

Mr. and Mrs. E.N. McCall was in Lubbock Saturday and Mr. and Mrs. Steve Mosser and Kim and Kelly of Slaton came over and they all had dinner with Mr. and Mrs. Robert George and Brent.

Mr. and Mrs. Clifford Snitker received word Tuesday the 5th of January, that her sister, Mrs. Gracie Foster of Henderson had passed away. We express our sympathy to them and all of their family.

Guests in the home of Mr. and Mrs. Elwood Autry Sunday was their son and family, Mr. and Mrs. Autry of Lazbuddie.

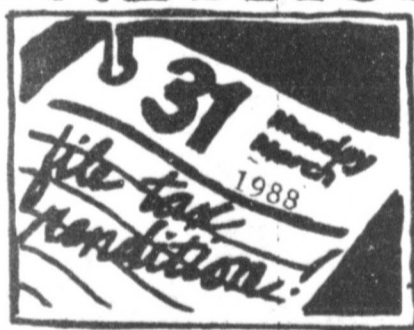
Visitors at the Baptist Church Sunday morning were Rev. and Mrs. Donnie Howell of Littlefield and Robert Zomora of Austin. The Howells also visited Rev. and Mrs. David Graves and family.

There is no error so crooked but it hath in it some line of truth.
-Martin F. Tupper.



FULFILLING A 'TRASHY' COMMITMENT--Eddie Morris, left, chairman of the Muleshoe Activities Committee, and Jerry Hailey, MAC official, took advantage of bright, sunny weather Thursday afternoon to pick up trash and debris, along a two-mile stretch of U.S. 84 adopted by MAC to keep clean.

PROPERTY TAX RENDITIONS



HELP YOU PROTECT YOUR RIGHTS AS A TAXPAYER

A rendition

is a report to the appraisal district that lists all the taxable property you own or control on January 1, 1988. You may also give your opinion of the property's value, if you wish.

You must file

a rendition if you own tangible personal property used to produce income--such as the machinery and equipment used by a business.

The appraisal district may require any taxpayer to file a rendition by sending the taxpayer a written notice and a rendition form.

You may want

to file a rendition, even if you aren't required to file, to preserve some of your rights as a taxpayer:

- You put your correct mailing address on record so your tax bills will go to the right address. Even if your bill goes to the wrong address, the law still holds you responsible for paying your taxes on time or else paying extra charges for late payments.
- You can put your own opinion

of your property's value on record. If the appraisal district then places a higher value on your property, it must notify you in writing of the higher value and explain how you can protest that value to the appraisal review board.

•By filing a special type of rendition called a *report of decreased value*, you can notify the appraisal district of significant damage to your property that occurred in 1987. The district will send someone to verify the damage and take it into account when assigning a 1988 value to your property.

File renditions

with your local appraisal district at the address shown below. Forms are available at this office.

The new deadline

for 1988 renditions is March 31. You can get an extra 30 days if you ask for it in writing before the March 31 deadline.

For more information, get a free copy of the pamphlet, *Taxpayers' Rights, Remedies, Responsibilities*, at your appraisal district office or from the State Property Tax Board in Austin.

Bailey County Appraisal District

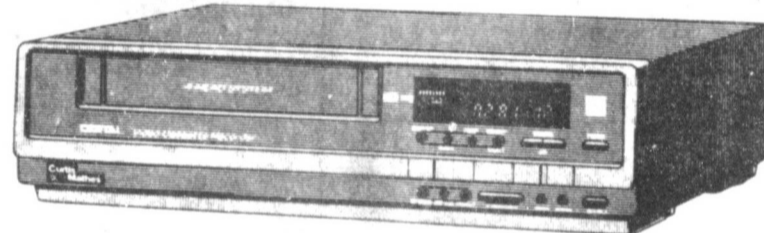
104 E Ave C

272-5501

TIRED OF FINANCE CHARGES?... At Curtis Mathes Buy ANY VCR, TV, STEREO or SATELLITE RECEIVER WITH

12 MONTHS NO INTEREST

NOW THRU JAN. 31, 1988 12 Month Financing with 0% A.P.R. upon approved credit



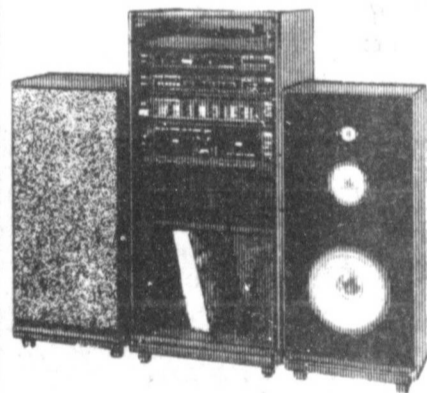
VCR'S \$349
\$2767 from \$349
Per Month
12 Monthly Payments
No Finance Charge, Sales Tax *18.76
Down payment *47.76 on approved credit

25" REMOTE CONTROL CONSOLES

Starting at \$599



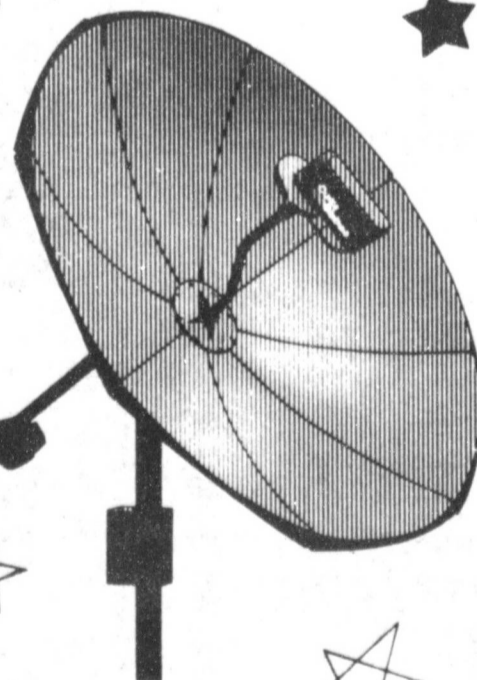
12 MONTHS 0% INTEREST



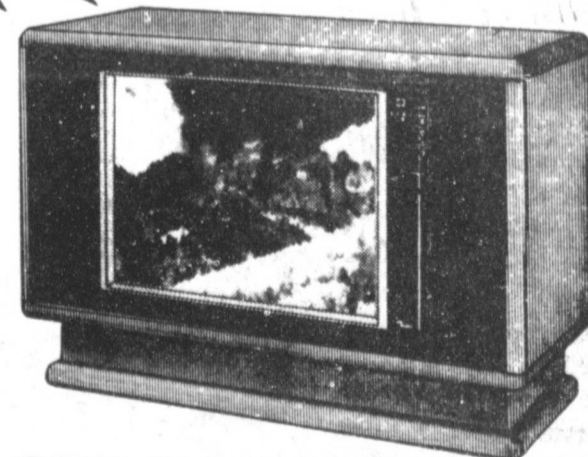
STEREO SYSTEMS



BIG SCREEN TV'S from \$1995



SATELLITE RECEIVER SYSTEMS



27" STEREO CONSOLE TV'S



CURTIS MATHES MOVIE CLUB

MOVIE RENTALS AS LOW AS ONLY 99¢ Every Day

BUY · RENT · LEASE

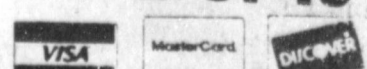
Curtis Mathes HOME ENTERTAINMENT CENTER

FOUR YEAR PARTS LABOR PICTURE TUBES

Store Hours: 9 a.m.-7 p.m. Mon. thru Thurs. 9 a.m.-8 p.m. Fri. and Sat.

1611 N. PRINCE 762-3743

CLOVIS



Lazbuddie Menu

JANUARY 18-22-88
BREAKFAST
MONDAY
Biscuits, Fruit, Milk
TUESDAY

Three-Way Menu

JANUARY 18-22-88
BREAKFAST
MONDAY
Cereal, Juice, Milk
TUESDAY
Toast & Jelly, Juice, Milk
WEDNESDAY
Cinnamon Toast, Juice, Milk
THURSDAY
Biscuit, Gravy, Sausage, Eggs, Jelly, Juice, Milk
FRIDAY
Waffles & Syrup, Juice, Milk
LUNCH
MONDAY
Bar-B-Que Weiners, Green Beans, Cream Potatoes, Hot Rolls, Milk, Honey/Butter
TUESDAY
Chalupas, Spanish Rice, Salad, Milk, Cake
WEDNESDAY
Pinto Beans, Okra, Tomato Relish, Cheese Sticks, Corn Bread, Milk, Cobbler
THURSDAY
Spaghetti Meat Sauce, Peas, Grated Cheese, Celery sticks, Garlic Toast, Milk, Jello
FRIDAY
Grilled Cheese Sandwiches, Fries, Pickles, Salad, Bread, Milk, Cookies

Leland Mounts Funeral Services Held Saturday

Funeral services for Leland Mounts, 91, were held at 11 a.m. Saturday, January 16 in the First United Methodist Church with the Rev. Richard Edwards, pastor, officiating. Burial was in Bailey County Memorial Park under the direction of Ellis Funeral Home. Mounts died at 6:45 p.m. Wednesday in the Muleshoe Nursing Home.

Born July 27, 1896, in Bellvue, Mounts moved to Muleshoe in 1965, from Goodland. He was a retired farmer and ginner, a member of the First United Methodist Church of Muleshoe, and a veteran of WWI serving in the U.S. Army. He married Clara Harvel on March 29, 1929, in Hale Center. Survivors include his wife, Clara; and two sisters, Hattie Hasie of Lubbock and Maetta Smith of Denison.

John Glasscock Former Muleshoe Resident Dies

Funeral services for John Garland Glasscock, 64, of Portales, N.M. were conducted at 2 p.m. (Mountain Time) Friday, Jan. 15 in Wheeler Starlight Chapel in Portales with Kenneth Broad, officiating, assisted by the Rev. Al Staggs, pastor of the First Baptist Church of Portales.

Burial was in Bailey County Memorial Park under the direction of Wheeler Mortuary of Portales. Local arrangements were under the direction of Ellis Funeral Home of Muleshoe. Glasscock died Monday in the Methodist Hospital in Lubbock.

Born August 22, 1923, in Seymour, Glasscock moved to Portales from Muleshoe. He retired in 1984, as principal of Lindsay Elementary School in Portales, after 23 years of teaching. He married Pat Bennett on June 13, 1949, in Muleshoe. He was a member of the Muleshoe First United Methodist Church and a veteran of World War II serving in the U.S. Army Paratroopers.

Survivors include his wife, Pat; a son, Ted Glasscock of Portales, N.M.; two daughters, Gail Roberts of Austin, and Jo Beth Steinhaus of Alamogordo, N.M.; three sisters, Lela Foust of Austin, Juno Dotson of Tucson, Ariz. and Polly Cantrell of Harlingen; a sister-in-law, Minnie Glasscock of Albuquerque, N.M.; and three grandchildren.

Cereal, Fruit, Milk
WEDNESDAY
Oatmeal, Toast, Juice, Milk
THURSDAY
Donuts, Fruit, Milk
FRIDAY
Cinnamon Rolls, Fruit, Milk
LUNCH
MONDAY
Spaghetti, Green Beans, Fruit, Milk
TUESDAY
Beef Fajitas, Pinto Beans, Green Salad, Sour Cream, Guacamole, Fruit, Milk
WEDNESDAY
Sloppy Joes, French Fries, Cheese Sticks, Pickles, Cookies, Milk
THURSDAY
Fried Chicken, Potatoes, Gravy, Green Beans, Hot Rolls, Fruit, Milk
FRIDAY
Hamburgers, French Fries, Lettuce, Pickles, Cobbler, Milk
SALAD BAR IS SERVED DAILY

Muleshoe School Menu

JANUARY 18-22-88
BREAKFAST
MONDAY
Milk, Cereal, Toast, Fruit
TUESDAY
Milk, Honey Buns, Juice
WEDNESDAY
Milk, Cheese Toast, Fruit
THURSDAY
Milk, Pancakes, Syrup, Sausage, Fruit
FRIDAY
No School
LUNCH
MONDAY
Milk, Steak & Gravy, Creamed Potatoes, Green Beans, Hot Rolls, Fruit
TUESDAY
Milk, Juicy Burgers, Lettuce & Tomato, Pickles & Onions, Tater Tots, Cobbler
WEDNESDAY

Milk, Frito Pie, Salad, Corn, Crackers, Fruit
THURSDAY
Milk, Corn Dogs, Veg. Beef Soup, Crackers, Cinnamon Rolls, Fruit
FRIDAY
No School
COMBO LINE
MONDAY
Milk, Pizza, Mixed Vegetables, Pickles, Fruit
TUESDAY
Milk, Hamburgers, Lettuce & Tomato, Pickles & Onions, Tater Tots, Cobbler
WEDNESDAY
Milk, Burritos, Corn, Salad, Crackers, Fruit
THURSDAY
Milk, Corn Dogs, Veg. Beef Soup, Crackers, Cinnamon Rolls, Fruit
FRIDAY
No School

Errors of opinion may be tolerated where reason is left free to combat it. -Thomas Jefferson.

Rivers rush to the ocean no faster than man rushes to error.

Immaculate Conception Catholic Church

Father Patrick Maher
Northeast of City

First Baptist Church

220 West Ave. E.
Barry Bradley, Pastor

Emmanuel Baptist Church

Iglesia Bautista Emmanuel
107 East Third
Isaias Cardenas, Pastor

Trinity Baptist Church

311 E. Ave. B.
Rev. A.L. "Buster" Huggins

Circle Back Baptist Church

Joel E. Stafford
Intersection FM 3397 & FM 298
946-3676

Calvary Baptist Church

1733 W. Ave. C
Rev. Darrel Martin

Muleshoe Baptist Church

8th and Ave. G.
Bob Dodd, Pastor

Progress Baptist Church

Paul Brigham, Pastor
Progress, Texas

Richland Hills Baptist Church

17th and West Ave. D.
David McAdams, Pastor

St. Matthew Baptist Church

Corner of West Boston & West Birch
M.S. Brown, Pastor

Progress Second Baptist Church

1st and 3rd Sunday
Clifford Slay, Pastor

The Community Church

Morton Hwy.

St. John Lutheran

Sunday School and Bible Classes 9:30 a.m.
Church services
Church Services 10:30 a.m.
Rev. Mac Bearss, Pastor

Templo Calvario

507 South Main
Sunday 10:00 a.m.
Sunday Evening 7:00 p.m.
Evangelistic Services
J.L. Soto, Pastor

New Covenant Church

Plainview Hwy.
Sunday 10:00 a.m.
Wednesday 7:00 p.m.
Jimmy Lowe, Pastor

Lazbuddie Methodist Church

965-2121
Larry Raid Farris, Pastor

Jehovah Witness

Friona Hwy.
Boyd Lowery, Pastor

Church Of The Nazarene

9th and Ave. C.
Dennis Hayes, Pastor

**NOW AVAILABLE
7 1/2 %
Sales Tax Charts**

**The Sales Tax Now
Effective Is 7 1/2 %**

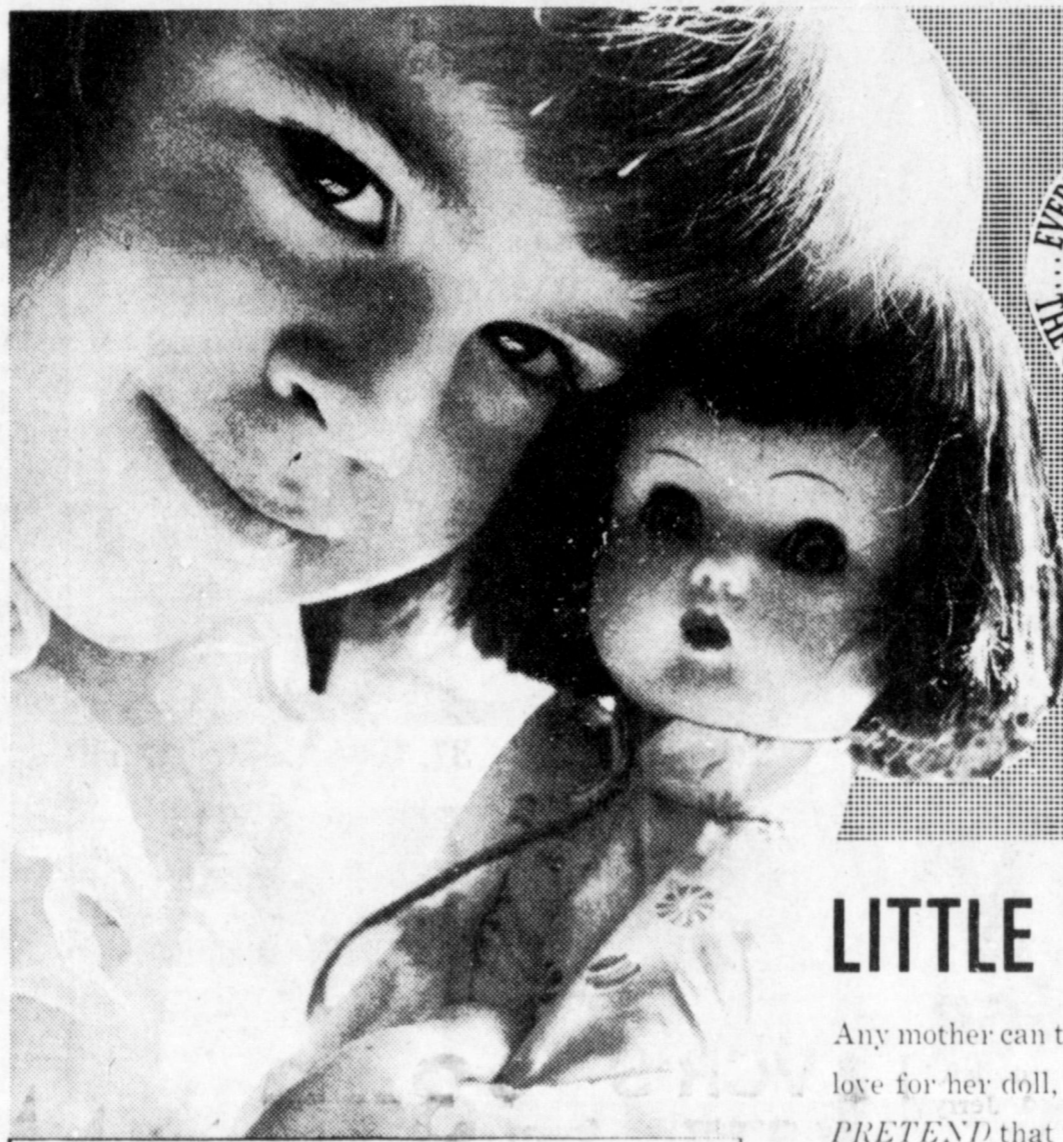
6% State, 1% City,

1/2% County

Charts FREE To All Retailers

Bob Stovall Printing

221 E. Ave B Muleshoe 272-3373



LITTLE FRIEND

Any mother can tell about a child's love for her doll, and the world of *PRETEND* that they live in. They confide in the doll, reprimand them, and care for them.

The church is a real and true friend. The church may be counted on in times of need, in times of trouble, and in times of sorrow. The church also wants to share in your times of joy.

"A friend loveth at all times."

The Church is God's appointed agency in this world for spreading the knowledge of His love for man and of His demand for man to respond to that love by loving his neighbor. Without this grounding in the love of God, no government or society or way of life will long persevere and the freedoms which we hold so dear will inevitably perish. Therefore, even from a selfish point of view, one should support the Church for the sake of the welfare of himself and his family. Beyond that, however, every person should uphold and participate in the Church because it tells the truth about man's life, death and destiny; the truth which alone will set him free to live as a child of God.

©Coleman Adv.

Longview Baptist Church

965-3413
B.C. Stonecipher, Pastor

Primera Iglesia Bautista

223 E. Ave. E.
Roy Martinez, Pastor

Lariat Church Of Christ

Sunday School 10:00 a.m.
Worship 11:00 & 6:00 p.m.
Wednesday Services 7:00 p.m.
Sam. Billingsley, Minister

Muleshoe Church Of Christ

Clovis Hwy.
Bret McCasland, Minister

16th & Ave. D. Church Of Christ

Sunday 10:30 a.m.
Evening 6:00 p.m.
Wednesday 8:00 p.m.

First Assembly Of God

Rev. David C. McCune
9:45 Sunday School
11:00 Morning Worship
6:30 Evening Services
7:30 Mid Week Services
272-3984

Primitive Baptist Church

621 South First
Elder George Johnson, Pastor
Spanish Assembly Of God

East 6th and Ave. F.
Luis Campos, Pastor

First United Methodist Church

507 W. 2nd Street
Richard Edwards, Pastor

El Divino Salvador Methodist Church

5th and Ave. D.
Jose M. Fernandez, Pastor


1st Baptist Church

Lazbuddie, Tx. 965-2126
Gary Wilcox, Pastor

Lazbuddie Church Of Christ

United Pentacostal Lighthouse Church

207 East Ave. G.
Rev. J.A. Torres

Western Drug 114 Main 272-3106			Dairy Queen 1204 W. Amer. Blvd. 272-3412
Serv-All Thriftway 401 W. Amer. Blvd. 272-4739	KC Mufflers Inc. 201 North First 272-3620	American Valley Inc. Hwy. 84 W. 272-4266	Kemp's Discount Furniture 414 W. Amer. Blvd. 272-5023
Farmers Spraying Service Lazbuddie 965-2624	West Tex Feed Yards 272-7555	Central Texico 221 W. Amer. Blvd. 272-3915	Fry & Cox, Inc. 401 S. 1st 272-4511
Main Street Beauty Salon 115 Main 272-3448	Lenau Lumber 202 E. Ash 272-4222	Bratcher Motor Supply 107 E. Ave. D 272-4288	Five Area Telephone Cooperative, Inc. 302 Uvalde 272-5533
Irrigation Pumps & Power West Hwy. 84 272-4483	Lindsey Jewelry 202 Main 272-3355	Foster Fertilizer Lazbuddie 965-2921	Bobo Insurance 108 E. Ave. C 272-4264

Nursing Home News

Seems as if nothing is as beautiful as the bright warm sunshine after a few days of cloudy cold and icy weather 'Welcome Sunshine.'

Thursday Lois Ethridge and Ora Roberts lead us in a fun

game of pass-word.

Friday morning Lena Ruthardt brought three interesting and educational films from the library.

Fri. afternoon Dennis Hayes from the Nazarene Church lead us in Gospel Songs and shared a Devotional with the residents.

Sat. Mr. J.C. Shanks came to cut the men's hair. Laverne

James and Ruth Clements came to play Bingo with the residents. We thank our local super markets for donating fruit for this occasion.

Sun. afternoon the Muleshoe Singers came to sing Gospel music.

Among those visiting this week were Lena Hawkins, Ollie Sebring, J.E. Embry. We do enjoy visitors.

Lula Maye Shanks and Louise King made and served home made pies & cake to the residents Tues. afternoon after beauty shop.

Thank you Joyeline Costen for the beautiful new West Bend 30 cup coffee pot and the delicious hot chocolate mix.

Curtis Shelburne came Monday to visit and play games with

the residents.

Ora Roberts was visited by her son J.D. Duncan and daughter Ruby Clark.

Stella Morgan went out with her daughter on Sun. afternoon.

JoeLee Truelock went out with her daughter Shug Kilgough recently. Several of her family members visited her

like Coffey remains in Methodist Hospital. Please pray for him.

The Lazbuddie Young Homemakers will decorate the Nursing Home for Valentine's Day and host a Valentine coffee for the residents.

We invite anyone interested to come by Thursday afternoon around 2:30 to play games with us.

Longer Days

On December 22nd Americans experienced the shortest day of the year.

If it's any consolation, days have since been getting longer. Every day is a minute, or thereabouts, longer than the day before.

It will take a while for the sun's heat to build up, and it will be March 21 before daylight hours equal darkness.

But we are on our way—for those able to survive eight or ten more weeks of winter.

Fire & Oxygen

Those who grew up in an era when most homes had fireplaces often forget youngsters today are relatively unfamiliar with their requirements.

Many modern Americans are unaware that fireplaces and oil heaters consume oxygen, and of the need for ventilation.

Especially in today's tightly enclosed and better insulated apartments and homes, burning an open fire without air inlets can make inhabitants sick.

Fires not only consume oxygen people breathe but produce carbon monoxide, the odorless gas which sometimes causes death in closed cars in winter.



ONE MINUTE SPORTS QUIZ

1. What was the score of the UCLA-Florida Aloha Bowl game?
2. How one-sided were the stats, in favor of Florida?
3. Who won the season finale between Dallas and St. Louis?
4. Name the six division winners in the NFL.
5. What was Babe Ruth's uniform number?

Answers

1. UCLA 20, Florida 16.
2. First downs, Fla. 24 to 15; rushing, Fla. 185 to 48, etc.
3. Dallas, 21-16.
4. Indianapolis, Cleveland and Denver (AFC) and Washington, Chicago and San Francisco (NFC).
5. Number 3.



SMILES

Almost Bachelor to newlywed: "How do you like married life?" Newlywed: "Just great. It's almost like being in love."

Who Knows?

1. Name the North Star State.
2. For what was Sir Edwin Henry Landseer best known?
3. What two famous Americans celebrated birthdays January 17 and 19?
4. Who created the folk character Uncle Remus?
5. Name Italy's longest river.

Answers to Who Knows

1. Minnesota.
2. For his paintings—particularly of animals.
3. Benjamin Franklin, 17th; Robert E. Lee, 19th.
4. Joel Chandler Harris.
5. The Po River.



ROTARY SPEAKERS TALK ABOUT TRACK SEASON--Tuesday at noon, three coaches visited the Muleshoe Rotary Club and spoke on the upcoming track season. They told of the new track and how track competitions are now scheduled in Muleshoe after being held away for several years before the construction of a new track this year. They are from left, Coach Roy Donaldson; Coach Jerry Johnson; Coach Andy Gamble, and Dr. Robert Lepard, who was in charge of the Rotary program for the day.

SPECIAL COW SALE

11:00 A.M. M.S.T. Saturday - January 23, 1988

Clovis Livestock Auction

Expecting to sell over 1,000 Springer Cows, Cow and Calf Pairs, Bred Heifers and Breeding Age Bulls

Advance Consignments Include:

224 Nice Springer Heifers, bred to Brangus Bulls. Includes about 50 Black White Face, 50 Red Baldies, 30 Charlois Cross, the balance Brangus and Brahma Cross. Most all have just a touch of ear. Begin calving February 15th. Calve out in 90 days.

65 Young cow and calf pairs. Young, nice cows, various breeds.

135 Springer Cows. Mostly young cows. Includes: Black White Face, Red White Face, Charlois and etc.

50 Springer Heifers, Brangus and Brangus Cross. Start calving February 15th. Brangus Bulls. Calve out in 90 days.

40 Heavy Springer Brangus Cows.

50 Extra nice big young Hereford Springer Cows, bred to Limousin Bulls. Few calves on the ground.

45 Nice Black White Face Young Cows. Just begin calving.

150 Horned Hereford Cows. Mostly 3 to 6 years old.

30 Mixed Horned Cows.

112 Young Springer Cows. About 60 being Mixed English Cows - 40 Brahma Cross Cows.

127 Mixed Cows. Running Age. About 1/2 Brah Cross - 1/2 English Cross.

40 Heavy Springer Cows.

FOR MORE INFORMATION OR TO CONSIGN LIVESTOCK, CALL*

RUSTIN ROWLEY, CHARLIE ROGERS OR JOE ROWLEY

OR

Clovis Livestock Auction
(505) 762-4422

Dick Moore

(505) 359-0950

We especially invite you to attend the SUPERIOR LIVESTOCK VIDEO AUCTION to be held at CLOVIS LIVESTOCK AUCTION on Thursday, January 21, 9:00 A.M.

Selling 30,000 yearlings and calves at this sale.

For more information call Bob Bradley or Don Foster, Superior Representatives at (505) 762-7013 or (806) 364-1645, or Dick Moore, Charlie Rogers, Rustin Rowley, or Joe Rowley, CLOVIS LIVESTOCK Personnel at (505) 762-4422.

Next Video Auction Sale will be held in February.

Consign your cattle early.

CLOVIS LIVESTOCK AUCTION

We sold 1554 head of cattle this Wednesday, 01-13-88. Trade was active and demand good. Feeder steers \$3-4.00 higher; feeder heifers \$3-5.00 higher and slaughter cows and bulls weaker. Several cattle already consigned for next week's sale.

REPRESENTATIVE SALES:

STEERS

J.E. Carmichael	Andrews, Tx	12 Mix	544	86.00
Bobby Gresham	Dora	10 Mix	502	90.50
Jimmy Latham	Quay	10 Mix	492	89.25
Clarence Adams	Portales	6 Wf	359	106.50
Rick Brumfield	Portales	Blk Mf	655	83.50
Caswell Cattle Co.	Muleshoe, Tx	2 Hol	555	65.00
Canyon Blanco Ranch	Ft. Sumner	Mf	580	87.30
Cross A Ranch	Tucumcari	3 Hol	613	66.50
J.E. Carmichael	Andrews, Tx	3 Mix	413	99.00
Olin Gardner	Blk	775	79.00	
Leon Gregory	Ft. Sumner	Wf	560	86.00
Karla Gresham	Portales	Hol	785	63.00
Nola Hendrickson	Tucumcari	3 Mix	617	83.00
Ben Hall	Ft. Sumner	Red	740	75.00
Weldon Kube	Muleshoe, Tx	Blk	990	72.25
Lacey & Daugherty	Clovis	7 Wf	410	101.00
Racy Morse	Grady	Mix	605	82.25
Leon Morris	Ft. Sumner	Blk	485	89.50
Tony Montoya	Pena Blanca	Mf	365	107.00
Rafter Cattle Co.	San Jon	Mf	605	83.00
R.J. Reener	Friona, Tx	Blk Wf	650	82.50
Conrad Reener	Friona, Tx	Hol	600	66.00
Bill Smith	Clovis	4 Blk Wf	731	80.50
Doug Screws	St. Vrain	3 Blk	763	78.00
Gary Stamps	Clovis	4 Mix	900	70.25
Shoemaker Ranch	Cuervo	5 Mix	683	82.00
K.W. Victor	Rogers	3 Char	608	85.00
Bill Upton	Cuervo	4 Wf	570	84.00
V & H Farms	Rogers	4 Char	512	89.00

HEIFERS

Arch Ranch	Portales	5 Blk	467	83.00
John Brumfield	Portales	3 Mix	652	75.25
Kent Best	Portales	2 Blk Wf	710	74.75
L.R. Crowder	Clovis	Blk Wf	690	75.50
J.E. Carmichael	Andrews, Tx	11 Mix	463	81.00
Dorothy Coker	Tucumcari	Blk Mf	580	75.00
Johnny Eastwood	Clovis	3 Mix	457	87.00
Gary Frost	San Jon	Blk	710	76.00
Bobby Gresham	Dora	10 Mix	687	77.00
A.T. Hays	Clovis	Blk Mf	760	75.00
Hewett & Autrey	Ft. Sumner	3 Mix	483	80.00
Don Knight	Tucumcari	2 Mix	335	89.50
Robert Lopez	Tucumcari	2 Blk Mf	513	78.00
Wayne McClaran	Farwell, Tx	5 Mix	440	85.00
Allan Roberts	Portales	2 Mix	705	75.50
Radcliff Ranch	Dora	Char Wf	475	81.00
Bill Smith	Clovis	5 Blk Wf	763	72.50
Stout Land & Cattle Co.	Grady	Char Wf	735	74.50
Sam Scott	St. Vrain	5 Mix	386	84.00
V & H Farms	Rogers	2 Char	500	80.50
Lowell Wilhoit	Portales	3 Blk	528	80.00

SPRINGER COWS

W.W. Batie	Tucumcari	Blk	550.00
Paul Estrada	Tucumcari	Blk	525.00
James Hileman	Clovis	Char	570.00
Holmes Lovejoy	Milnesand	4 Wf	580.00
Bill Williams	Clovis	Blk	530.00

COWS

Robert Curtis	Tucumcari	Char	1025	52.50
Roy Davidson	Midland, Tx	Wf	1265	48.25
Don Essary	Floyd	Blk	915	49.10
Grau Charlois	Grady	2 Char	1250	52.00
Hutchins Ranch	Broadview	Wf	1120	49.00
Dean Kinsolving	Tatum	Blk	1125	49.00
Earl Keller	Earth, Tx	Char Wf	1340	48.25
Dale Miller	Portales	Wf	850	49.50
Jim O'Connell	Newkirk	Blk	1190	49.50
Wayne Palla Dairy	Clovis	Hol	1395	52.00
Mike Sorrels	Tucumcari	Blk	1065	47.50
R.J. Sanderson	Friona, Tx	Blk Wf	1145	53.50
Triple E Dairy	Portales	Hol	1315	49.00

BULLS

Bill Crenshaw	Taliban	Wf	1775	64.00
Bob Lacey	Clovis	Red	1505	64.00
Russell Farms	Floyd	Blk	1640	67.00
Russell Richardson	Melrose	Blk	1215	65.00
Steele Ranch	Ft. Sumner	Wf	1535	63.50
Sandhill Dairy	Portales	Hol	1675	65.00
C.E. Trimble	Bovina, Tx	Char	1135	69.00

ADVANCE CONSIGNMENT FOR NEXT WEDNESDAY

- 100 Mixed Angus Cattle from the Hinkson Ranch
- 70 Good Quality 675 Lib. Steers
- 50 Extra Nice 650 Lib. Steer & Heifers

CLOVIS LIVESTOCK MARKET

P. O. BOX 187 - CLOVIS, NM 88101
762-4422

Charlie Rogers Rustin Rowley

Bailey County Journal

Classified

Call 272-4536

CLASSIFIED RATES
Per Word.....\$.15
Minimum Charge \$2.30

Consecutive Insertions
Minimum Charge \$2.00

CLASSIFIED DISPLAY RATES
\$1.75
Per Column Inch

DEADLINES
12 noon Tues.
For Thursday Paper
12 noon Friday
For Sunday Paper
We reserve the right to classify, revise, or reject any ad. Not responsible for any error after ad has run once.

1. Personals

MARY KAY COSMETICS Josie Flowers 272-3865. fl-49s-tfc

STORAGE ROOMS & office space for rent call 272-4754. sl-53t-tfc

WE WILL not be responsible for any debts other than those authorized by the undersigned. Gary Mike Hill, Carol Beth Hill. 1-2s-3tp

ATTENTION area cattlemen Are you out of pasture? Call 925-6737. gl-2t-4tc

I WILL not be responsible for any debt other than those I make myself Mike Wilkinson. 1-3s-1tp

STORAGE Rooms Available
For Storage \$25.00-\$30.00 per month
Ted Barnhill 272-4903
b1-42s-tfc

CONCERNED About Someone's Drinking? HELP IS AVAILABLE
through Al-Anon
Call 227-2350 or 965-2870 or come to visit Tuesday nights, 8:00 p.m. or Saturday mornings at 11:00 a.m. at 1116 W. American Blvd., Muleshoe.

3. Help Wanted

2. Lost & Found

LOST SIXTEEN head of steers branded 7 bar on left hip. Red name tag in left ear, orange flight tag in right ear. Weigh 500 pounds. Contact Davey Haber 806-257-3886. h2-2t-6tc

8. Real Estate

FOR SALE beautiful 4 bedroom, 2 bath home at the edge of town, on 1/2 acre. Full grown trees, lots of flowers, water well. NO CITY TAXES, all the amenities of country life, with the convenience of town very close by. All this and more at an unbelievable price. Call now at 272-3813 or 272-5422. w8-2s-tfc

FOR SALE by owner brick home 3-2-2 Central H/A (Gas), automatic sprinkler system, nice view Richland Hills owner-agent. 272-5629. 18-1t-8tc

FOR RENT with option to buy 3 bdrm., 2 full baths, central A/H. 2 acres of land. Good well & storm cellar. 3 miles east on Highway 70, 1 mile north on YL road, 200 yards east. Call anytime 806-352-1715. b8-1t-2tc

FOR SALE at 711 East Fir. 2 bdrm. home. If you can pay rent, you can buy this house. Owner will finance. will take travel trailer or mobile home as down payment. For more information call 272-5383 or owner J.T. Montgomery, Wilcox, AZ. 602-384-4577. m8-3s-2tc

9. Automobiles For Sale

FOR SALE 1986 Chevrolet Cavalier Z24. Call 272-4408 or 272-3318. s9-3s-2tc

1981 Chev. Monte Carlo, clean, excellent care, PS, PB, cruise, R&H. Call 272-4524 EXT. 170 days 272-5156 evenings. See at 1821 W. Ave. D L.T. Johnson. j9-2t-tfc

3. Help Wanted

8. Real Estate

WHITT-REID REAL ESTATE
201 Main Office 272-3611

2 BR, 1 Bath, 1 garage-Reduced from \$26,000 to \$20,000 for quick sale. OH-14

3 BR, 1 Bath, 1 garage-Central Heat, approx. 1300 S.F. Living space, Reduced from \$36,000 to \$27,500. 25H-33

2 BR, 1 Bath, on Austin St. good location-\$25,000. 25H-32

We Need Listings

- We need irrigated & dry
- Acreage on pavement
- Nice 3 bedroom homes

Roy Whitt Thursie Reid
272-3058 272-5318
Certified Appraiser

9. Automobiles For Sale

FOR SALE: 1979 Buick Electra. One owner, good condition. would make good second car. 272-3089. y9-53t-tfc

15. Misc.

RANCH HOUSE Restaurant for rent call 272-4261. r15-3s-3tc

dealership log homes

One of America's finest lines, starting at \$13,800. Great earning potential, will not interfere with present employment. Investment fully secured. If you can purchase or mortgage a model home, call Herb Derick. Toll Free 1-800-346-LOGS.

OLD-TIMER LOG HOMES

442-D METROPLEX DR. NASHVILLE, TN 37211

NOTES ... COMMENTS

The majority isn't necessarily right.
Too much talk loses most arguments.

3. Help Wanted

8. Real Estate

JAMES F. HAYES & CO. AGRICULTURAL REAL ESTATE
Vic Coker-Agent (806) 965-2468

640 ACRES - 4 electric sprinklers, steel pens with concrete tanks, domestic well, all fenced. Soil & water. Rare opportunity, good value.

320 ACRES of prime farmland Southwest of Hub in Pecos County. Excellent water: 3 8" wells and tailwater pit. This farm is clean. Top notch in every respect.

160 ACRES IN LAMB COUNTY - Excellent water, electric tankler, fully allotted, fenced, prime opportunity for first time buyer.

160 ACRES North of Lazbuddie. 1 8" well, clean, lays good. Excellent terms Available!

160 ACRES - 2 Wells - Excellent Water, fully allotted, good check. Soil that will grow anything.
Call Vic if you need farm & ranch appraisal work done.

8. Real Estate

Children who dislike school seldom realize what a good time they're having.
There's nothing wrong with the idea that looking ahead and planning for the future is smart.
If you make mistakes every day don't feel discouraged; there is no one who doesn't.

8. Real Estate

116 W. Ave. C BINGHAM & NIEMAN REALTY 272-5285 or 5286
We have homes for as little as \$600.00 total move in cost, with payment scheduled according to income for qualified buyers!!!!

RICHLAND HILLS
IMMACULATE 3-2-2 Brick, corner lot, Cent. A&H, built-ins, FP, loads of storage & closet space, sprinkler sys.!!!!

PRICE REDUCED 3-1-1 Brick, Cent. heat, Evap. air, built-ins, fenced yard....

MAKE OFFER 3-1/4-1 Home, Cent. heat, evap. air, built-ins, fenced yard, detached storage-garage. Nice locations. \$40's!!!!

HIGHLAND & STEWART
JUST LISTED-VERY NICE 3-2-2 Brick, Cent. A&H, newly remodeled kitchen with built-ins, storm windows, fenced yard, storage bldg. and much more!!!!

3-1/4-1 Home, wall furnace heat, evap. air, fenced yard. Nice home in a nice area. \$20's!!!!

SPACIOUS 3-2-2 Brick Home on corner lot, Cent. A&H, built-ins, fireplace, loads of storage, 2900 plus sq. ft. of LV. area lots of extras, undergrd. sprinkler sys., fenced yard. A GREAT BUY!!!

JUST LISTED Nice 3-2-2 Brick Home (2 story), on corner lot, Cent. A&H, built-ins, and much more. LET'S LOOK TODAY!!!!

2-1-1 home, wall heat, evap. air, fenced yard. \$20's....

PARKRIDGE
IMMACULATE 3-2-2 Brick Home Cent. A&H, built-ins, fireplace, energy efficient, nicely decorated, plus beautifully landscaped yard. \$50's!!!!

HIGH SCHOOL
JUST LISTED Nice 3-2-2 home, Cent. A&H, utility, large fenced yard with lots of trees. \$40's!!!!

JUST LISTED 3-2-2 home, corner lot, nice carpet, fenced yard. \$30's!!!!

3-1-1 home, corner lot, Cent. A&H, built-ins. \$30's....

PRICE REDUCED Spacious 3-2 Brick, Cent. A&H, built-ins, 2400+ sq. ft. of lv. area, den w/FP, fenced yard, storage bldg., & much more, \$60's!!!!

JUST LISTED 3-1 home, nice carpets, new roof, storm windows & much more. \$20's!!!!

DIANNE NIEMAN, BROKER

8. Real Estate

JAMES F. HAYES & CO. AGRICULTURAL REAL ESTATE
Vic Coker-Agent (806) 965-2468

640 ACRES - 4 electric sprinklers, steel pens with concrete tanks, domestic well, all fenced. Soil & water. Rare opportunity, good value.

320 ACRES of prime farmland Southwest of Hub in Pecos County. Excellent water: 3 8" wells and tailwater pit. This farm is clean. Top notch in every respect.

160 ACRES IN LAMB COUNTY - Excellent water, electric tankler, fully allotted, fenced, prime opportunity for first time buyer.

160 ACRES North of Lazbuddie. 1 8" well, clean, lays good. Excellent terms Available!

160 ACRES - 2 Wells - Excellent Water, fully allotted, good check. Soil that will grow anything.
Call Vic if you need farm & ranch appraisal work done.

8. Real Estate

GRAIN PRICES
YELLOW CORN...3.54 cwt
YELLOW FOOD CORN...3.80 cwt
WHITE FOOD CORN...4.75 cwt
MILO...2.98 cwt
SOYBEANS...5.43 cwt
NEW WHEAT...2.71 cwt
COMMODITY CERTIFICATES
104 1/2
Prices-January 15, 1988
MARKETS COURTESY OF FARMERS CO-OP ELEVATORS
272-4335 - Muleshoe, Texas

8. Real Estate

116 W. Ave. C BINGHAM & NIEMAN REALTY 272-5285 or 5286
We have homes for as little as \$600.00 total move in cost, with payment scheduled according to income for qualified buyers!!!!

RICHLAND HILLS
IMMACULATE 3-2-2 Brick, corner lot, Cent. A&H, built-ins, FP, loads of storage & closet space, sprinkler sys.!!!!

PRICE REDUCED 3-1-1 Brick, Cent. heat, Evap. air, built-ins, fenced yard....

MAKE OFFER 3-1/4-1 Home, Cent. heat, evap. air, built-ins, fenced yard, detached storage-garage. Nice locations. \$40's!!!!

HIGHLAND & STEWART
JUST LISTED-VERY NICE 3-2-2 Brick, Cent. A&H, newly remodeled kitchen with built-ins, storm windows, fenced yard, storage bldg. and much more!!!!

3-1/4-1 Home, wall furnace heat, evap. air, fenced yard. Nice home in a nice area. \$20's!!!!

SPACIOUS 3-2-2 Brick Home on corner lot, Cent. A&H, built-ins, fireplace, loads of storage, 2900 plus sq. ft. of LV. area lots of extras, undergrd. sprinkler sys., fenced yard. A GREAT BUY!!!

JUST LISTED Nice 3-2-2 Brick Home (2 story), on corner lot, Cent. A&H, built-ins, and much more. LET'S LOOK TODAY!!!!

2-1-1 home, wall heat, evap. air, fenced yard. \$20's....

PARKRIDGE
IMMACULATE 3-2-2 Brick Home Cent. A&H, built-ins, fireplace, energy efficient, nicely decorated, plus beautifully landscaped yard. \$50's!!!!

HIGH SCHOOL
JUST LISTED Nice 3-2-2 home, Cent. A&H, utility, large fenced yard with lots of trees. \$40's!!!!

JUST LISTED 3-2-2 home, corner lot, nice carpet, fenced yard. \$30's!!!!

3-1-1 home, corner lot, Cent. A&H, built-ins. \$30's....

PRICE REDUCED Spacious 3-2 Brick, Cent. A&H, built-ins, 2400+ sq. ft. of lv. area, den w/FP, fenced yard, storage bldg., & much more, \$60's!!!!

JUST LISTED 3-1 home, nice carpets, new roof, storm windows & much more. \$20's!!!!

DIANNE NIEMAN, BROKER

8. Real Estate

JAMES F. HAYES & CO. AGRICULTURAL REAL ESTATE
Vic Coker-Agent (806) 965-2468

640 ACRES - 4 electric sprinklers, steel pens with concrete tanks, domestic well, all fenced. Soil & water. Rare opportunity, good value.

320 ACRES of prime farmland Southwest of Hub in Pecos County. Excellent water: 3 8" wells and tailwater pit. This farm is clean. Top notch in every respect.

160 ACRES IN LAMB COUNTY - Excellent water, electric tankler, fully allotted, fenced, prime opportunity for first time buyer.

160 ACRES North of Lazbuddie. 1 8" well, clean, lays good. Excellent terms Available!

160 ACRES - 2 Wells - Excellent Water, fully allotted, good check. Soil that will grow anything.
Call Vic if you need farm & ranch appraisal work done.

8. Real Estate

GRAIN PRICES
YELLOW CORN...3.54 cwt
YELLOW FOOD CORN...3.80 cwt
WHITE FOOD CORN...4.75 cwt
MILO...2.98 cwt
SOYBEANS...5.43 cwt
NEW WHEAT...2.71 cwt
COMMODITY CERTIFICATES
104 1/2
Prices-January 15, 1988
MARKETS COURTESY OF FARMERS CO-OP ELEVATORS
272-4335 - Muleshoe, Texas

8. Real Estate

116 W. Ave. C BINGHAM & NIEMAN REALTY 272-5285 or 5286
We have homes for as little as \$600.00 total move in cost, with payment scheduled according to income for qualified buyers!!!!

RICHLAND HILLS
IMMACULATE 3-2-2 Brick, corner lot, Cent. A&H, built-ins, FP, loads of storage & closet space, sprinkler sys.!!!!

PRICE REDUCED 3-1-1 Brick, Cent. heat, Evap. air, built-ins, fenced yard....

MAKE OFFER 3-1/4-1 Home, Cent. heat, evap. air, built-ins, fenced yard, detached storage-garage. Nice locations. \$40's!!!!

HIGHLAND & STEWART
JUST LISTED-VERY NICE 3-2-2 Brick, Cent. A&H, newly remodeled kitchen with built-ins, storm windows, fenced yard, storage bldg. and much more!!!!

3-1/4-1 Home, wall furnace heat, evap. air, fenced yard. Nice home in a nice area. \$20's!!!!

SPACIOUS 3-2-2 Brick Home on corner lot, Cent. A&H, built-ins, fireplace, loads of storage, 2900 plus sq. ft. of LV. area lots of extras, undergrd. sprinkler sys., fenced yard. A GREAT BUY!!!

JUST LISTED Nice 3-2-2 Brick Home (2 story), on corner lot, Cent. A&H, built-ins, and much more. LET'S LOOK TODAY!!!!

2-1-1 home, wall heat, evap. air, fenced yard. \$20's....

PARKRIDGE
IMMACULATE 3-2-2 Brick Home Cent. A&H, built-ins, fireplace, energy efficient, nicely decorated, plus beautifully landscaped yard. \$50's!!!!

HIGH SCHOOL
JUST LISTED Nice 3-2-2 home, Cent. A&H, utility, large fenced yard with lots of trees. \$40's!!!!

JUST LISTED 3-2-2 home, corner lot, nice carpet, fenced yard. \$30's!!!!

3-1-1 home, corner lot, Cent. A&H, built-ins. \$30's....

PRICE REDUCED Spacious 3-2 Brick, Cent. A&H, built-ins, 2400+ sq. ft. of lv. area, den w/FP, fenced yard, storage bldg., & much more, \$60's!!!!

JUST LISTED 3-1 home, nice carpets, new roof, storm windows & much more. \$20's!!!!

DIANNE NIEMAN, BROKER

KNOW THE WEATHER

Does a mild winter always mean bumper crops in the summer and fail ahead? A mild winter, contrary to what people believe, is not necessarily the best thing for trees and plants which produce saleable products.
Some trees and plants require so many cold nights during the winter. If they do not receive this cooling process, which controls the dormant period, they are likely to produce little or bear too early, or both.
Thus an average winter is better than an extremely cold or an extremely warm one. And there has been little change in our average winter weather over the years—despite the fact that elderly people usually think the weather was colder in their childhood. It was slightly colder but the difference in the average winter at the turn of the century and today is relatively minor.

In Fashion

Fake furs continue to be very popular. These fun furs are classy and elegant. They are worn with evening wear, dressy daytime outfits and even jeans.
Long, below-the-hip turtleneck sweaters are popular with the very short mini skirt.
Wool garments will continue to be in demand during the cold winter months of January and February 1988. Sweaters blended with wool plaid, pleated skirts are attractive for work and school.

18. Legal

NOTICE OF RATE CHANGE REQUEST AND STATEMENT OF INTENT
Notice is hereby given that BAILEY COUNTY ELECTRIC COOPERATIVE ASSOCIATION (the "Utility") intends to change rates for electric utility service effective February 12, 1988. Based upon a test year ending June 30, 1987, the increase requested over actual test year revenues is \$851,242 or 9.7%. Based on adjusted test year revenues the increase is \$923,800 or 10.6%.
The changes are applicable to all areas and all customers served by the Utility. The classes and numbers of Utility customers affected are as follows:
Farm and Home 2711
Small Commercial 417
Irrigation 2274
Medium Commercial 57
Cotton Gins 12
Security Lighting 1046
Large Commercial 1
The Utility intends to change its service rules and regulations including rules relating to obtaining service, line extension and line extension charges, the provision of electric service, service fees, and discontinuance of service.
Implementation of the proposed changes is subject to approval by the appropriate regulatory authority. A statement of intent including the proposed revisions of tariff and schedules and a statement specifying in detail each proposed change is available at the general office of the Utility located at 305 East Avenue B, Muleshoe, Texas.
Persons who wish to intervene or otherwise participate in these proceedings should notify the Commission as soon as possible. A request to intervene, participate, or for further information should be mailed to the Public Utility Commission of Texas, 7800 Shoal Creek Boulevard, Suite 400N, Austin, Texas 78757. Further information may also be obtained by calling the Public Utility Commission Consumer Affairs Division at (512) 458-0223 or (512) 458-0221 teletypewriter for the deaf.
Campbell McGinnis
ATTORNEY FOR THE UTILITY
m18-2s-4tsc

IMMEDIATE OPENINGS FOR: RN'S & LVN'S FULL TIME & PART TIME POSITIONS

If your interested in providing care to a diverse & challenging case load of medical, surgical, obstetrical & chemical dependency patients, Littlefield Medical Center is currently recruiting full & part time RN's & LVN's to handle its increasing patient load.

RN'S
COMPETITIVE SALARIES \$12.50 STARTING HOURLY RATE WEEKENDS DIFFERENTIAL OF \$4.00 PER HOUR. SHIFT DIFFERENTIAL OF \$1.73 PER HOUR.

LVN'S
COMPETITIVE SALARIES, \$7.25 STARTING HOURLY RATE- SHIFT DIFFERENTIAL OF \$1.00 PER HOUR. FLEXIBLE STAFFING.

If interested applicants need to send resume or apply in person as soon as possible. For more information contact:

ESTELLA ELIZONDO PERSONNEL DIRECTOR LITTLEFIELD MEDICAL CENTER 1500 S. SUNSET LITTLEFIELD, TEXAS 79339 806-385-6411 EXT 303

BINGHAM & NIEMAN REALTY 272-5285 or 5286

JUST LISTED-NICE 2-1-1 home, wall furnace heat, earthtone carpets!!!
LENAU ADDITION

NICE 3-2-2 Brick, Cent. A&H, built-ins, fenced yard. \$40's!!!!

JUST LISTED-COZY 3-1/2-1 home, Cent. heat, nice earthtone carpets, fenced yard, storage bldg., & more!!!!

JUST LISTED 3-1-1 home, Cent. A&H, utility, storage bldg., cellar, gas grill, & more. \$20's!!!!

COUNTRY CLUB
3-2-2 Brick, Cent. A&H, built-ins, fenced yards.

COUNTRY HOMES
JUST LISTED 2-2-1 brick home on 1 acre on pavement, close to town, Cent. A&H. \$40's!!!!

2-1-1+1 carport home on 1 acre on pavement close to town, built-ins, wall furnace heat, evap. air, satellite system, and fenced area for horses or calves. \$20's!!!!

3-1-2 home, 1/2 acre, Cent. A&H, new paint, nice carport, cellar. \$30's!!!!

2-1 home, 20 acres, sub. pump, sprinkler, barns & corrals. \$40's!!!!

3-1 home on .59 acres on highway at edge of town plus 1-1 mobile home for rental unit, storage, or workshop. A GOOD BUY!!!

LARGE BUILDING on 2 lots, paved parking....

JUST LISTED Nice, well-maintained Self-Service Laundry. 34 washers, 16 dryers in nice, modern building, excellent location. Books available to qualified Buyer.

SALE OR LEASE nicely remodeled office bldg. with over 3,000 sq. ft. of area, excellent location across from Courthouse. PRICED TO SELL!!!

APPROX. 3,000 sq. ft. bldg. Railroad frontage. CASH PRICE \$15,000.00

GEORGE NIEMAN, BROKER

Classified!

Think Classified!