

Westinghouse 21--Win Valuable Prizes

NEW BIG PICTURE WESTINGHOUSE TV



THE AMHERST Model 736T17

TERMS

NO CASH DOWN PAYMENTS

same high-quality Dependability in all Westinghouse products. Price includes Sales Tax and Warranty, plus picture tube.

ONLY 199.95

COMPLETE

- Big-picture set in brown, rich-looking plastic cabinet. It gives you the brightest, clearest picture possible because of these and many other features:
- No Streaks, No Flutter, No Flop-over automatically with Advanced Electronic Clarifier.
- New, powerful Super Pentode Tuner for clearest pictures wherever you live.
- New Manual Area Selector lets you select best reception for local or distant channels.
- UHF adaptability.

CAN BE SURE... IF IT'S Westinghouse

TED'S SERVICE CENTER

IOWA PARK, TEXAS

131 "TELEVISION HEADQUARTERS" 130 W. Cash
Open till 9:30 every night

million precious seconds

ed with Gas



your baby cries
2 A.M. bottle... when you are rushed
your family off to work
school on time... when time slips by
are late starting dinner
MEETS THE NEED FOR SPEED.
tic gas delivers maximum heat
t-second.
to any desired heat in a split-second.
s off in a split-second.
n-up.
ish change from one heat to another.
cooling. Response is split-second!
THE TIMES when split-second response
commands saves precious minutes.
harness your cooking to a slowpoke fuel?
GIVES YOU HIGH HEAT... ANY HEAT... OFF HEAT
TLY.

OUR GAS RANGE DEALER
NE STAR GAS COMPANY



By I. B. Lovell

The secretary of agriculture has recommended to the House appropriations committee that \$131 million be lopped off the budget of the department of agriculture. Hardest hit by his recommendations are the agricultural conservation practices program and the Rural Electrification Administration.

The school lunch program was slashed 10 per cent, and flood prevention was cut more than half. All the recommendations amounted to a 10 per cent cut in total appropriations. However, it wasn't a 10 per cent cut straight across.

The secretary's recommendations were in direct opposition to those made by Farmers Union's full board of directors in Denver recently. The directors petitioned Congress to keep most agencies' appropriations at present levels and recommended sizable increases in others.

Specifically, Farmers Union recommended the conservation program be expanded, more funds should be made available to additional counties and Farmers Home Administration should be able to authorize more loans for farm and home management supervisory assistance. Additional funds for REA, to meet the ever increasing farm demand for electric power and to speed up the rate of progress in the rural telephone program.

The board pointed out that the present farm programs have been developed to fill the needs of the whole people for an assured continuous abundance of food and fiber. This is not a selfish demand by the farm people for a handout; farmers can't maintain the high level of production without materials from industry, which must be paid for in cash.

The nation's food and fiber supply depends on the soil and the ability of farmers to pay for steel, chemicals, fuel, power and the es-

entials of high level production. If the volume of cash for paying operation costs goes down, farm production will go down. None of us like to think of any human going hungry; yet only about one-third of the world population has enough food of the right kind to be well nourished.

There is no over-production of food and fiber in the world in relation to need. What is lacking—and what must be built up—is purchasing power.

• Presbyterian News

Five laymen of the Iowa Park Presbyterian church will attend the Presbytery Men's Council in Dallas on Friday. Planning the trip are John Clapp jr., C. E. Birk, Geo. Richter, Charles Williams, Milton Taylor also Rev. M. C. Yeargan.

Officers of Men of the Church for 1953 are John Clapp jr., president; George Richter, vice-president; Jimmy Jinkins, secretary; and C. E. Birk, program chairman.

WOMEN OF THE CHURCH

Officers recently installed for this year by Women of the Church are Mrs. Luther Shelton, president; Mrs. Gayle Park, vice-president; Mrs. C. E. Birk, secretary; Mrs. John Clapp sr., treasurer.

PRESBYTERIAN YOUTH

Senior young people of the church met Sunday evening following the worship service for supper and business. Retiring president Jimmy Jinkins conducted election of officers. Those elected are: Don McManus, president; Mary Gayle Park, vice-president; Jimmy Shelton, secretary; Marvin Richter, treasurer.

The young people voted to buy a rocking chair for the nursery.

Plans for summer camps were discussed. Three members are eligible to go to Mo-Ranch in Kerrville for the senior high fellowship camp, June 9-16. Only those who have attended summer senior camp at Lake Dallas, presidents of local organization, and presbytery and state officers are eligible to attend the Mo-Ranch camp.

Those of the local church who may go are Jimmy Jinkins, Marvin Richter and Don McManus.

Mrs. Zula McKittrick of Idaho Falls, Idaho, arrived Monday to visit her mother Mrs. John Matthews and other relatives for two or three weeks.

The name of Joy Scott was left off the honor roll published last week. She is a freshman and made the AA roll, which requires all grades to be 90 or above.

R. F. Kuntz and daughter of Fort Worth and Mr. and Mrs. L. E. Kuntz of Wichita Falls visited their sister and daughter Mrs. J. C. Ralston and Mr. Ralston last Sunday.

"FRINGE AREAS" ARE FOR THE BIRDS.....



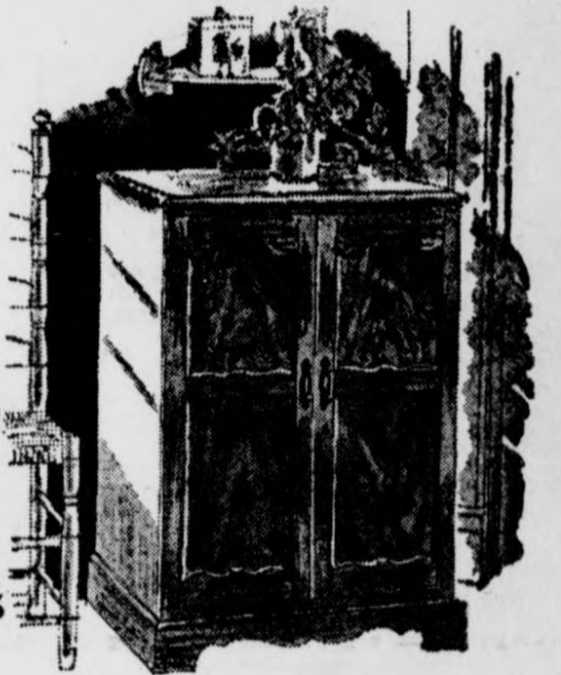
... AND THE NEW '53 WITH MARK V CHASSIS!

Hoffman
EASY-VISION
television

The New '53 Hoffman with famous Mark V Chassis practically makes "fringe areas" obsolete! Now you can get peak TV reception in almost unbelievable areas with a Hoffman. This is because the Hoffman with Mark V Chassis has 18% MORE POWER for '53—reaches out to bring in weaker signals and stations—gives you better reception and clearer, sharper pictures! If you live "out with the birds"... and like it... but would still like to get good TV reception... see the new 1953 Hoffman with Mark V Chassis today!

21" CHERRYWOOD CONSOLE

Here's the TV cabinet that's specially designed for Provincial or Early American furnishings in a rich, hand-rubbed Cherrywood. Has huge 21" picture with Mark V Chassis... Easy-Vision Lens... Dual "Hi-Lo" Speakers... Full-Focus Picture... No-Glare Angle Lens... Wide-Way Controls. Model 21PT02



*No Extra Charges... price includes: parts, picture-tube warranty and Federal Excise Tax!

COME IN TODAY... SEE THE GREAT NEW '53 HOFFMAN... PRICES START AT \$109.95

Elmer Singleton

320 E. Highway

Phone 4031

TIRE Headquarters In Iowa Park

SAVE MONEY! BIG TRADE-IN FOR YOUR OLD TIRES ON NEW, SAFE Famous-for-Value Firestone CHAMPIONS

600-16
\$12.95
Exchange, plus tax

Are you going to need tires for your Car, Truck or Tractor any time in the near future? If you are, come in and see Jack and get his prices first.

BATTERY RECHARGING

Battery Rentals — by the day, week, month

Firestone Motor King Battery \$9.95 exc.

12 month guarantee

THE WELCOME MAT IS ALWAYS OUT AT

Jack's Super Service

"We give S & H Green Stamps"

Phone 4101 Iowa Park 400 E. Highway



"Perfect Results Every Time... with no pot watching on an

Electric Range!"

"I just put the food into the oven... set the accurate controls and my worries are over! I'm free to go shopping, out with the children, or play a game of bridge! And, when I get home... there's dinner... cooked to perfection... hot... ready to serve!"

Yes, an electric range surely makes life easier. See YOUR electric appliance dealer, soon, for the electric range that's right for you... in size and in price.

Women who know
Cook electrically!



TEXAS ELECTRIC SERVICE COMPANY
W. R. PASTUSEK, Manager

THIS IS THE Hardware Week
 FEATURING FAMOUS BRANDS
 Come in and Save!
 APRIL 17-25
 THE INDEPENDENT HARDWARE STORE

The year's biggest merchandising event in hardware and housewares brings you famous brands and featured values. Come in now for your Spring home, farm and shop needs. It's Hardware Week,

Do Jobs Faster

 GET THESE EXTRAS IN PLUMB HAMMERS
 • Built-in Balances • Take-up Wedges
 • Special Analysis • Tested Micky Steel Head Handle
 Regular \$3.35, \$2.25
Sale Prices \$2.59, \$1.59

Columbus GAS RANGE
 Full Size — Divided Cooking Top
 Automatic Burner Lighters
 FREE — Set of Colored Pyrex Oven Ware with purchase of this gas range. Regular price \$109.95.
\$98.95

American Kitchen Steel Sink Cabinet
 Single Drain Board, Swing Faucet.
 FREE — 9 x 12 Congoleum Rug with each cabinet.
\$59.95

6 Foot
STEP LADDER
 Regular price \$6.95
Sale Price \$4.65
PROTECT Your Floors

FURNITURE SLIDES EASILY and QUIETLY ON BASSICK RUBBER CUSHION GLIDES
7c Each

Famous LICO
BIG 16" HANDY FLOOR SWEEP
 JOB TESTED FOR EASIER BETTER DUSTLESS SWEEPING
Special 1.98

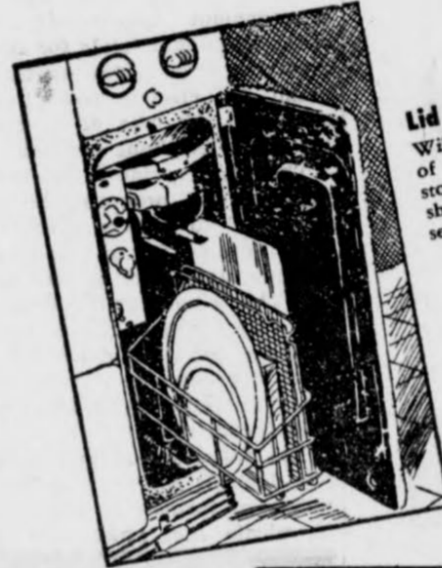
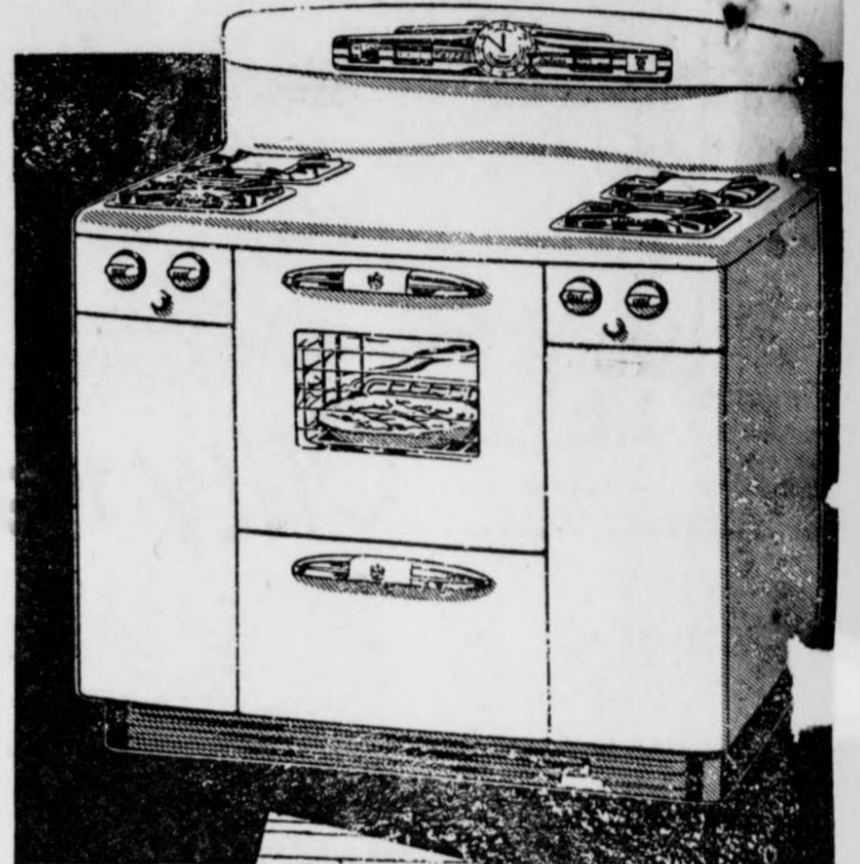
General Mills Tru-Heat Iron
 Famous tapered-heel iron that irons backward as easily as forward. Extremely light weight; rests on its side. Accurate heat control. Fully guaranteed. **\$14.95**
Special \$11.95

Two Piece Frieze
LIVING ROOM SUITE
 Makes into a Bed
 FREE — \$5.50 Cavalier Cedar Chest.
During Sale \$188.50
BED ROOM SUITE
 FREE — Two shaggy rugs which regularly sell for \$4.50 each.
During Sale \$75.45

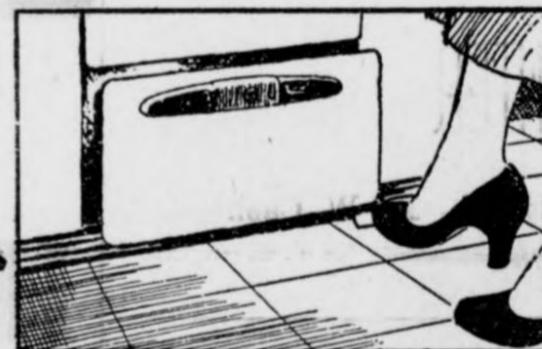
First Showing!
THE NEW Super 60
SEE IT! TRY IT!
TAPPAN Gas Range

Just when we thought modern ranges had every possible convenience—along comes Tappan with a really SUPER range.

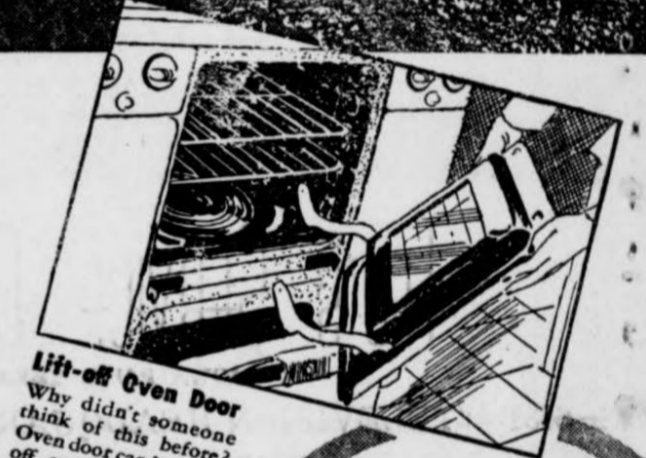
Come in and see the new Tappan Super-Sixty. Try its wonderful oven right here on our sales floor. Let us give you a demonstration and show you these NEW Tappan features... these exclusive Tappan features, found only on this new Tappan Super-Sixty.



Lid Basket
 Will save you dozens of steps every day—stores pan lids, cookie sheets, cutting board, serving trays.



Pre-toe Broiler
 Press the pedal and broiler drawer rolls out. Touch door and back it goes into broiling position.



Lift-off Oven Door
 Why didn't someone think of this before? Oven door can be lifted off range. Gives you clean oven. Detached door can be taken to sink for quick, easy cleaning.

THIS NEW TAPPAN

Free \$60.00 Stove Hood 394.95

IT'S NEW! IT'S GREAT!
Westinghouse FROST-FREE*



THE ONLY REFRIGERATOR THAT COUNTS

NO DEFROSTING... Anywhere! Any Time!

See the new Westinghouse FROST-FREE—the only refrigerator that COUNTS! It counts door openings, because door openings let in warm air which causes frost to form. At every 60th door opening, which is just when frost begins to build up, FROST-FREE automatically defrosts itself, and automatically evaporates the frost water! Westinghouse FROST-FREE is the only home-proved automatic refrigerator. See it and other Westinghouse Refrigerators today. You'll find prices surprisingly low!

- WOMEN LOVE THESE FEATURES, TOO**
- GIANT-SIZED FREEZE CHEST
 - CONVENIENT BUTTER KEEPER
 - ROAST-DEEP MEAT KEEPER
 - EXTRA-LARGE HUMIDRAWERS
 - EGG KEEPERS and Shelves-In-The-Door
 - TRIPLE-PLATED SHELVES
 - EASY-TO-USE 3-way Door Handle

Regular \$46.95 Sunbeam Mix Master FREE with purchase of 6-ft. Frost Free Westinghouse Refrigerator. **299.95**

cedar
THE MOP WITH THE Fastest Pickup!

 "Sweep Suction" Action makes mop easy for dust! Results in corners, under furniture. Pad is washable, replaceable.
COMPLER
\$1.65

Light Cream Colored Plastic
LIVING ROOM SUITE
 Divan and Platform Rocker
 Divan makes into a Bed
 FREE — \$55.50 Cedar Chest
Special \$154.00

Full Size
Bell Econmizer
 Inner Springs — 180 coils
During this Sale \$19.95

54-inch
AMERICAN KITCHEN SINK
 Double Drain Board
 Spacious Cabinet
 FREE — Congoleum Rug to cover your kitchen with this beautiful American Kitchen Sink.
Special \$134.95

Opens cans easily

#38 DAZEY DUAL ELECTRONIC 100 LITER CAN OPENER
 Cuts out entire lid of round, square or oval cans. Lifts out of bracket or swings flat against wall. Features permanent type magnetic lid lifter to prevent can lid from falling into contents of can.
 Duxite Finish — Red Knobs
\$4.25
 Other DAZEY Can Opener \$1.49 to \$6.95

WILLIAM CAMERON
IDEAL CABINET
 Unfinished
 Consists of:
 Two 36-inch Base Sections
 One 39-inch Center Base Section with drawers. One door in one base, two drawers and two doors in other base — with bread board.
 Two Top Sections, 36 in. wide and 33 in. high. Each has two doors and three shelves.
 Drain Board, 9 1/2 feet long and 26 in. wide, 1 1/2 in. thick.
 Splash Board 9 1/2 ft. long and 14 in. high.
 FREE — Paint and Varnish and Hardware to finish according to your own decorative scheme. ...
During Sale \$183.70

New Westinghouse LAUNDROMAT
 Completely Automatic
 FREE — Morning Glory Mattress with purchase of Laundromat.
\$299.95

Famous Goodall
LAWN MOWER
 Two horsepower gasoline motor 18 inch
 FREE — \$14.00 Rubber Tired Wheelbarrow.
During Sale \$130.00



Free Starter Set
 of the New
Fiesta Dinnerware
 with Purchase of this Dinette
 by Virtue Bros.
\$127.50

Bradford Furniture & Hardware

Phone 3821

Iowa Park, Texas

115 W. Cash

Dunhams Fly East On Vacation Trip

Mr. and Mrs. R. D. Dunham of Amarillo and formerly of Iowa Park, left their small son Ricky here while they spent their vacation in the East. They flew from Amarillo to Memphis and Knoxville, Tenn., then on to Greensboro and Burlington, N.C., to visit Dr. and Mrs. John Stephens. They spent four days with the Stephens before

returning home by way of Houston and Wichita Falls.

They returned here last Friday and visited several days before returning to Amarillo Tuesday.

Mrs. Dunham will be remembered as Billie Jean Girard and Mrs. Stephens as Ava Nell Lee. They were classmates in Iowa Park High school.

Mr. and Mrs. R. A. Williams have been visiting their son and wife, Mr. and Mrs. Wayne Williams, in Tucson, Ariz.

Soil Conservation BAPTISTS

The Wichita county portion of the Wilbarger-Wichita Soil Conservation District has about 200,000 acres of dryland ranges. Their production greatly influences farmers' and ranchers' net income. Thus it might be worthwhile to think a little on how and from what a plant grows.

The Doane Agricultural Service, Inc., St. Louis, Mo., said several years ago that 95 per cent of the plant food comes from the air through leaves so there must be ample leaf surface before heavy growth will be produced. A scientist once grew a willow tree for 5 years in a container containing 200 pounds of soil. Nothing was added except water. When the willow was removed 199 pounds of soil remained.

The leaves are the food-forming organs of the plants. Green leaves are able to convert the energy of the sun and carbon dioxide of the air to starches sugars cellulose, proteins and fats. Grazing or usage of ranges must be limited to the extent that good amounts of green leaves are on the plant during the growing season if maximum growth is obtained.

If your range was one of those from which most of the leaves were grazed last year, and dead grass lying on the soil for protection is gone, technicians for the district suggest a period of deferment from all grazing or a reduced amount of grazing that would allow for more leaf growth.

Joe Cunningham, Merle Waggoner of Wichita Falls and W. A. George of Iowa Park are district co-operators planning to rest one or more pastures during the growing season.

Pledges Give Skit At ESA Meeting

Members of Epsilon Sigma Alpha met in the home of Mrs. Pete Guthrie last Tuesday evening for a Pledge Program and Test. Mrs. Leslie Clapp was co-hostess with Mrs. Guthrie.

A skit was presented by the six pledges: Mmes. Ray Watson, Jesse McCullough, Johnny Crawford, Lee Perry, John Clapp jr., Bryan Faris jr.

Mrs. Donald Hill, vice-president, conducted the business session in the absence of Mrs. Joe Chandler, president. Nomination of officers for the coming year was made by the nominating committee. Election will be at the next meeting.

Mrs. Charlie Coppock, sponsor, was given a "hanky" shower by the members.

Mrs. Dale Harbour of Wichita Falls, formerly of Iowa Park, was dismissed from Wichita General hospital this week after surgery.

Friends Honor Mrs. L. C. Perry

The home of Mrs. Herman Mahler was scene of a covered dish luncheon and social Tuesday honoring Mrs. L. C. Perry, who is moving to Electra in the near future.

The courtesy was extended by a group of the honoree's close friends. During the social, Mrs. C. J. Simpson presented Mrs. Perry a lovely gift from the WSCS of the Methodist church.

Attending were Mmes. J. D. Thompson, Arch Hughes, Fenton Dale, R. R. Brubaker, Guy E. Perdue, M. L. Smith, Dave O. Harbour, T. C. Scott, Jim Milliron, Simpson, Perry and Mahler.

Jimmie Don Bates of Dallas was home last weekend.

ATTENTION

All Farmers!

We will have gasoline for sale beginning Monday, April 27 — Wholesale & Retail

All kinds of Garden and Field Seeds

Farmers Union Co-op Elevator

IOWA PARK, TEXAS

GIFTS

We have all types and kinds of gifts for the home and car.

Beautiful Gift Wrappings

AUTHORIZED DEALER

WHITE

Auto Store

THE HOME OF GREATER VALUES

113 W. Park Iowa Park Phone 7221

In every State of the 48...

TRUCK USERS BUY MORE CHEVROLET TRUCKS than any other make!



No matter the size or type of truck you need—what better proof could there be that a Chevrolet truck is your best buy!



MORE CHEVROLET TRUCKS IN USE THAN ANY OTHER MAKE!

Recently published official registration figures for the last full year show that truck users in every single State bought more Chevrolets than any other make!

It is difficult to imagine more convincing proof of Chevrolet's superiority, for such clear-cut and overwhelming preference can lead to but one conclusion: Chevrolet trucks must be better, must

enjoy solid advantages over other trucks. Such preference must rest on a firm foundation of good, sound value. And, of course, it does—as owners of Chevrolet trucks can testify.

So before you buy any truck, see how much more Chevrolet trucks offer you. Stop in and see us soon. Continuation of standard equipment and trim illustrated is dependent on availability of material.

HILL MOTOR CO.

216 N. Yosemite

Phone 2211

Pick-Ups! Pick-Ups! Pick-Ups!

We've Got 'em NEW or USED

You can buy one on Crop Payments — no monthly payments to worry about

OTHERS TALK GOOD DEALS

SEE US BEFORE YOU TRADE

International Harvester Company

1113 Sheppard Access Road

Wichita Falls, Texas

YEARS AHEAD OF THEM ALL!

Don't you want to try a cigarette with a record like this?

1. THE QUALITY CONTRAST between Chesterfield and other leading cigarettes is a revealing story. Recent chemical analyses give an index of good quality for the country's six leading cigarette brands.

The index of good quality table—a ratio of high sugar to low nicotine—shows Chesterfield quality highest

... 15% higher than its nearest competitor and Chesterfield quality 31% higher than the average of the five other leading brands.

2. First to Give You Premium Quality in Regular and King-size... much milder with an extraordinarily good taste—and for your pocketbook, Chesterfield is today's best cigarette buy.

3. A Report Never Before Made About a Cigarette.

For a full year a medical specialist has been giving a group of Chesterfield smokers regular examinations every two months. He reports... no adverse effects to nose, throat and sinuses from smoking Chesterfield.



BEST FOR YOU

R. D. Deloy

FACTORY REPRESENTATIVE

PHONE 5711

IOWA PARK, TEXAS

3-Way Service

- Custom Built Trailer Coaches
- Standard Vacation Trailers
- Triler Repairs

"No Job Too Big or Too Small"

Sunshine Coaches

110 West Park Phone 7121
Bill Roach Iowa Park

Corral Lodge

A Good Clean Place to Eat

We will be open every day except Sunday to serve you. Hours: 7:00 to 2:30, 5:30-10.

Phone your orders if you can't come to eat

Mr. and Mrs. Bing Miller, Managers

COMPLETE INSURANCE

- Fire
- Windstorm
- Hail
- Automobile

CARROLL DUKE INSURANCE AGENCY

Phone 4411 Cash Street

W. G. STEELE LBR. & BLDG.

Fence in Those Little Chicks, Now!

COMPANY Phone 5021



NOT JUST ANY DRUG STORE — PARK PHARMACY!
When the Doctor leaves, and you have prescriptions that need to be filled—quickly and accurately—bring them to Park Pharmacy and get your patient on the rapid road to recovery.

Park Pharmacy

Phone 3131 Fred Hays
When Closed, Have Your Physician Call
Us at 7251, 2361, 5121 or 2671

IN IOWA PARK IT'S THE

Iowa Park Cleaners

"WHERE QUALITY COUNTS"

ALL NEW EQUIPMENT AND EXPERIENCED HELP

For Pick Up & Delivery **5041** 1st Door West of Bank

Billie Lynch Harris to Wed Clarendon Man

The engagement and approaching marriage of Miss Billie Lynch Harris to Walter Mars Warner of Clarendon is being announced by her parents Mr. and Mrs. Bill Harris.

The groom-elect is the son of Mr. and Mrs. H. T. Warner of Clarendon and grandson of Mrs. Rowena B. Parker of Iowa Park and the late Leonard Parker, a pioneer family of this area.

The wedding date is calendared for Monday, May 25, in the First Methodist church in Clarendon in double rites with Miss Jane Franklin of McClean and Jarret Davis of Clarendon, cousin of the groom-elect.

Miss Harris is a graduate of Iowa Park High School and attended Midwestern university, in Wichita Falls. The past several months she has been employed in the offices of the General Adjustment Bureau in Wichita Falls. She is a member of two pioneer families here, the granddaughter of Mr. and Mrs. C. E. Harris and the late Mr. and Mrs. C. A. Harding.

The groom-elect is a graduate of Clarendon high school and attended Clarendon junior college, the School of Mining and Engineering in Socorro, N.M. He recently returned from Korea where he was with the First Cavalry and now is associated with his father in contracting, farming and ranching at Clarendon.

School News

In addition to others listed in last week's Herald, Caroline Sewell won first division rating in flute at the solo and ensemble contest at Denton, April 11.

In the concert and sight reading contest the past Saturday, Iowa Park won second division in concert and first division in sight reading.

This Thursday the Dixieland band of Iowa Park goes to Holliday to play for the high school assembly program.

Wednesday, May 6, 57 members of the Hawk band go to Enid, Okla. for the Tri-State Band Festival. They plan to return Saturday.

Pre-Nuptial Courtesy Extended Miss Steed

Miss Patsy Steed, bride-elect of Oscar Singleton, was honored last Friday evening with a pre-nuptial shower in the parlor of the Baptist church.

Hostess list included Mmes. E. W. Sumrall, J. Louis Quick, Ralph Stone, T. M. Thaxton, L. E. Brooks, Sam Hill, O. S. McLemore, Billy Joe Harrington, Everett Sewell, Fred Wright, R. R. Brubaker, Dorothy Thompson, O. E. Lochridge, D. O. James and Bonnie Hudson.

Mmes. Hill, Stone and Thaxton alternated in duties of presiding at the crystal service. Guests were greeted by Mmes. Quick and Wright while Mrs. Harrington secured signatures and Mmes. Hudson and Sumrall presided at the gift display table.

Musical selections were furnished during the party by Misses Barbara Butts and Sheri Brooks and Mrs. Lochridge at the piano, and by Miss Katy Merie Sumrall, vocalist.

Local Folk Attend Family Gathering

Mrs. R. R. Brubaker left last Friday to visit her sister and family, Mr. and Mrs. Frank W. Smith in McKinney.

Saturday they were joined by Mr. and Mrs. M. E. Banks, Mr. R. R. Brubaker and Mrs. H. B. Young and daughter Linda Ann of Wichita Falls and all went on to Denton for the annual Stover Reunion at the Southern hotel.

Saturday night a naval picture "The Fighting Lady" was shown. Smoky Stover a kinsman, was in the picture and had been chosen by the U. S. Navy as a typical navy flier. His plane was lost and never returned.

Sunday morning the Stover kin assembled in Hubbard hall at TSCW for a program and dinner. Table decorations were covered wagons and red roses. Election of officers was conducted after dinner.

Kin that came the farthest was from Los Angeles, Calif. Mrs. M. E. Banks was the first grandchild. There were 125 descendants of Margaret and Abraham Stover present. Mrs. Banks, Mrs. Brubaker and Smith are among the descendants.

Mr. and Mrs. Brubaker came back by Arlington to see his sister Mrs. Beulah Ellison, before returning home Sunday night.

Mr. and Mrs. I. L. Alvey and Mrs. Herman Kight were in Oil Center, N.M., last week to visit Mrs. David Shumaker, who was ill in a hospital. Mrs. Shumaker is the former Neva Alvey.

Mr. and Mrs. Miles Hines of Lubbock were in Iowa Park last week.

23 Study Club Ends Successful Year, Installs New Officers

Executive board of the 23 Study club met Tuesday evening in the home of Mrs. Charlie Coppock with Mrs. Taylor George, president, in charge. The 1952-53 work and program were discussed.

This was the final meeting of the executive board for the current season. Present were Mmes. L. E. Brooks, R. R. Brubaker, S. L. Denby, King Abernathy, George and Coppock.

A luncheon at the Methodist church was the setting for the 23 Study club's final meeting for 1952-53.

Mesdames Lloyd McCloud and Dick Davis of Bryson were honor guests. Mrs. McCloud is parliamentarian and president-elect of First District Federation of Women's clubs. Mrs. Davis is district chairman of the Pan American committee.



Mrs. Lloyd McCloud

Tables were beautifully decorated with vines entwined on a low white picket fence with occasional yellow carts filled with yellow daisies and deep purple iris, the club colors. Bases of the tapers were banked with pansies along the table which was arranged in T shape carrying the state theme.

"Whatever my task, be this my creed; I am on earth to fill a need" was the theme of tribute honoring the charter members of the club at its organization 30 years ago. Mrs. Taylor George, president, paid tribute to the nine women of vision who met then to organize a Federated club. Mrs. Carroll Duke who was the first president, Mrs. Florence Sherwood and Mrs. Lucy Birk are active member of the original group. They were given especial acknowledgment.

Mrs. George expressed appreciation to her committees and members for a year of challenging growth. She voiced the members' appreciation to the Iowa Park Herald and Mrs. Myrna Smith for their generous co-operation in publicity releases.

Don Owens, a high school student, played a group of beautiful organ numbers and accompanied Mrs. James Sewell at the piano when she presented the fine arts number, singing John Fringle Scott's "Consider the Lillie."

Mrs. Charlie Metz was program chairman and presented Mrs. Sam Hill who gave the invocation, after which Mrs. L. E. Brooks led the pledge of allegiance to the flag.

In her devotional Mrs. King Abernathy read verses from Ephesians 4 and 5, exhorting her listeners to give thanks always to God for the Resurrection of his Son, which is the inspiration for the spring season and the beginning of life anew. She emphasized the season by reading "Thank God I'm Alive," from Hilltop selections.

Roll Call was responded to with assigned topics of timely subjects. An invitation from the Valley Farms Home Demonstration club to be their guests May 5 at 2:30 was accepted by the club.

Mrs. Sewell reported the spring convention of First District Federation of Women's clubs in Mineral Wells.

Mrs. George presented Mrs. McCloud, who installed officers of the club for the coming year in an impressive and charming ceremony. She charged the group on their responsibilities for individual duties and collective activities. Officers installed were:

Mrs. James Sewell, president.
Mrs. Charlie Metz, vice-president.
Mrs. Dave Harbour, secretary-treasurer.

Mrs. Sam Hill, corresponding secretary.
Mrs. Richey Abernathy, parliamentarian.

Mrs. Homer Blalock expressed the club's appreciation to Mrs. McCloud and presented her a gift.

There were 23 members and three guests present.

Mr. and Mrs. M. L. Smith will attend a community reunion in Weatherford this weekend.

Mrs. Sarah Tucker of Dallas is visiting Mr. and Mrs. Bing Miller of Corral Lodge this week.

Mr. and Mrs. Virgil Alvey and daughter Sandy Lee of Albuquerque, N.M., visited Mr. and Mrs. I. L. Alvey and other relatives last week.

Mrs. J. L. Belote has been dismissed from Wichita General hospital after surgery last week. She is now in the home of her daughter Mrs. E. C. Hall in Wichita Falls. She will return to her home here sometime next week.

MOST for your money!



NEW 1953

Motorola TV

WITH AMAZING NEW STANDOUT PICTURE

Stunning, compact table model in bright ebony plastic. Keeps radiant with damp cloth. Popular 17 inch picture tube. Built-in Lifetime Focus; One-Knob Tuning with shielded Channel-light; step-up signal power Area Selector Switch. Built-in antenna.

MODEL 17T11E \$209.95

Includes Federal Tax and 1 Year Warranty

TED'S Service Center

TELEVISION HEADQUARTERS
Phone 6431 Iowa Park

Result of 18,000 Inventions



SINCE ALEXANDER GRAHAM BELL designed the first telephone 78 years ago, there have been more than 18,000 inventions and improvements in your telephone service — about 230 a year. Some you see, like today's convenient handset. Most are behind the scenes in the complicated equipment it takes to handle your calls swiftly and accurately. But seen or unseen, our constant search for ways to do a better job for you helps hold down the cost of your service and expands its value. SOUTHWESTERN BELL . . . A TEAM OF 28,000 TEXANS . . . PARTNERS IN TEXAS' PROGRESS.

HUMBLE Esso Extra GASOLINE

...No. 1 in Texas

Esso Extra ranks No. 1 in sales among premium gasolines because it's No. 1 in quality. More Texans use Esso Extra than any other premium gasoline because they get:

Extra anti-knock performance; extra quick starting; extra power . . . plus a patented solvent oil that keeps engines extra clean.

So will you. Fill up with Texas' No. 1 gasoline at the Humble sign in your neighborhood.

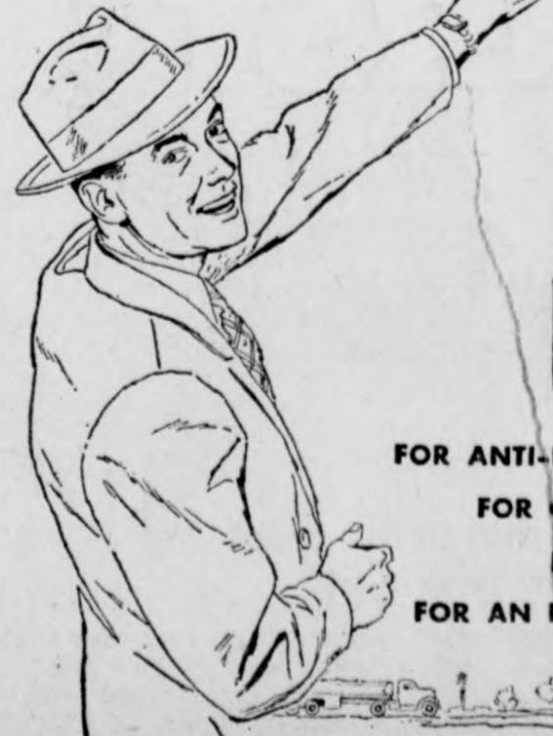
HUMBLE OIL & REFINING CO.

No. 1

HUMBLE

YOUR GUARANTEE OF Extra QUALITY

FOR ANTI-KNOCK PERFORMANCE
FOR QUICK STARTING
FOR POWER
FOR AN EXTRA CLEAN ENGINE



CURTIS SEWELL STATION

Phone 4161

Highway 287

Westinghouse 21--Win Valuable Prizes

NEW BIG PICTURE WESTINGHOUSE TV



THE AMHERST Model 736T17

TERMS

***NO HIDDEN COSTS**

the same high-quality performance in all Westinghouse televisions regardless of price. Price includes Federal Tax and Warranty, plus shipping charges on picture tube.

ONLY 199.95

- COMPLETE**
- Big picture set in brown, rich-looking plastic cabinet. It gives you the brightest, clearest picture possible because of these and many other features:
 - No Streaks, No Flutter, No Flop-over automatically with Advanced Electronic Clarifier.
 - New, powerful Super Pentode Tuner for clearest pictures, wherever you live.
 - New Manual Area Selector lets you select best reception for local or distant channels.
 - UHF adaptability.

YOU CAN BE SURE... IF IT'S **Westinghouse**

TED'S SERVICE CENTER

IOWA PARK, TEXAS

6431 "TELEVISION HEADQUARTERS" 130 W. Cash

Open till 9:30 every night

million precious seconds

saved with **Gas**

When your baby cries or his 2 A.M. bottle... when you are rushed to get your family off to work and to school on time... when time slips by and you are late starting dinner... **GAS MEETS THE NEED FOR SPEED.**

Automatic gas delivers maximum heat in a split-second. Adjusts to any desired heat in a split-second. and turns off in a split-second. No warm-up. No sluggish change from one heat to another. No slow cooling. Response is split-second!

THINK OF THE TIMES when split-second response to your commands saves precious minutes. Yes, why harness your cooking to a slowpoke fuel?

ONLY GAS GIVES YOU HIGH HEAT... ANY HEAT... OFF HEAT... INSTANTLY.



SEE YOUR GAS RANGE DEALER OR LONE STAR GAS COMPANY



speaks

By L. B. Lovell

The secretary of agriculture has recommended to the House appropriations committee that \$131 million be lopped off the budget of the department of agriculture. Hardest hit by his recommendations are the agricultural conservation practices program and the Rural Electrification Administration.

The school lunch program was slashed 10 per cent, and flood prevention was cut more than half. All the recommendations amounted to a 10 per cent cut in total appropriations. However, it wasn't a 10 per cent cut straight across.

The secretary's recommendations were in direct opposition to those made by Farmers Union's full board of directors in Denver recently. The directors petitioned Congress to keep most agencies' appropriations at present levels and recommended sizeable increases in others.

Specifically, Farmers Union recommended the conservation program be expanded, more funds should be made available to additional counties and Farmers Home Administration should be able to authorize more loans for farm and home management supervisory assistance. Additional funds for REA, to meet the ever increasing farm demand for electric power and to speed up the rate of progress in the rural telephone program.

The board pointed out that the present farm programs have been developed to fill the needs of the whole people for an assured continuous abundance of food and fiber. This is not a selfish demand by the farm people for a handout; farmers can't maintain the high level of production without materials from industry, which must be paid for in cash.

The nation's food and fiber supply depends on the soil and the ability of farmers to pay for steel, chemicals, fuel, power and the es-

entials of high level production. If the volume of cash for paying operation costs goes down, farm production will go down. None of us like to think of any human going hungry; yet only about one-third of the world population has enough food of the right kind to be well nourished.

There is no over-production of food and fiber in the world in relation to need. What is lacking—and what must be built up—is purchasing power.

• Presbyterian News

Five laymen of the Iowa Park Presbyterian church will attend the Presbytery Men's Council in Dallas on Friday. Planning the trip are John Clapp jr., C. E. Birk, Geo. Richter, Charles Williams, Milton Taylor also Rev. M. C. Yeargan.

Officers of Men of the Church for 1953 are John Clapp jr., president; George Richter, vice-president; Jimmy Jinkins, secretary; and C. E. Birk, program chairman.

WOMEN OF THE CHURCH

Officers recently installed for this year by Women of the Church are Mrs. Luther Shelton, president; Mrs. Gayle Park, vice-president; Mrs. C. E. Birk, secretary; Mrs. John Clapp sr., treasurer.

PRESBYTERIAN YOUTH

Senior young people of the church met Sunday evening following the worship service for supper and business. Retiring president Jimmy Jinkins conducted election of officers. Those elected are: Don McManus, president; Mary Gayle Park, vice-president; Jimmy Shelton, secretary; Marvin Richter, treasurer.

The young people voted to buy a rocking chair for the nursery.

Plans for summer camps were discussed. Three members are eligible to go to Mo-Ranch in Kerrville for the senior high fellowship camp June 9-16. Only those who have attended summer senior camp at Lake Dallas, presidents of local organization, and presbytery and state officers are eligible to attend the Mo-Ranch camp.

Those of the local church who may go are Jimmy Jinkins, Marvin Richter and Don McManus.

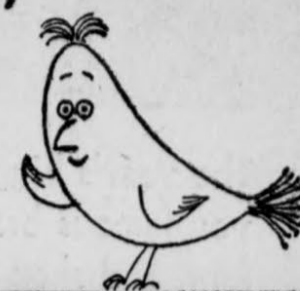
Mrs. Zula McKittrick, of Idaho Falls, Idaho, arrived Monday to visit her mother Mrs. John Matthews and other relatives for two or three weeks.

The name of Joy Scott was left off the honor roll published last week. She is a freshman and made the AA roll, which requires all grades to be 90 or above.

R. F. Kuntz and daughter of Fort Worth and Mr. and Mrs. L. E. Kuntz of Wichita Falls visited their sister and daughter Mrs. J. C. Ralston and Mr. Ralston last Sunday,

"FRINGE AREAS"

ARE FOR THE BIRDS.....



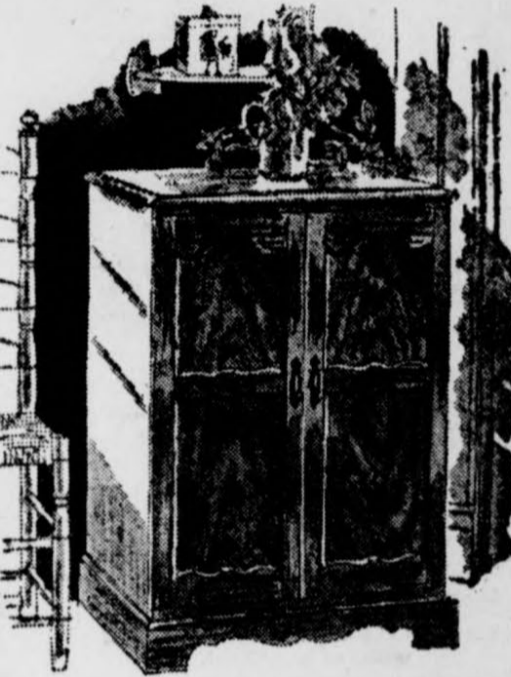
...AND
THE NEW '53
WITH
MARK V CHASSIS!

Hoffman
EASY-VISION
television

The New '53 Hoffman with famous Mark V Chassis practically makes "fringe areas" obsolete! Now you can get peak TV reception in almost unbelievable areas with a Hoffman. This is because the Hoffman with Mark V Chassis has 18% MORE POWER for '53—reaches out to bring in weaker signals and stations—gives you better reception and clearer, sharper pictures! If you live "out with the birds"... and like it... but would still like to get good TV reception... see the new 1953 Hoffman with Mark V Chassis today!

21" CHERRYWOOD CONSOLE

Here's the TV cabinet that's specially designed for Provincial or Early American furnishings in a rich, hand-rubbed Cherrywood. Has huge 21" picture with Mark V Chassis... Easy-Vision Lens... Dual "Hi-Lo" Speakers... Full-Focus "Picture... No-Glare Angle Lens... Hide-Booy Coasters. Model 21P108



*No Extra Charges... price includes: parts, picture-tube warranty and Federal Excise Tax!

COME IN TODAY... SEE THE GREAT NEW '53 HOFFMAN... PRICES START AT \$199.95

Elmer Singleton

320 E. Highway

Phone 4031

TIRE Headquarters

In Iowa Park

SAVE MONEY! **BIG TRADE-IN FOR YOUR OLD TIRES ON NEW, SAFE Famous-for-Value Firestone CHAMPIONS**

600-16
\$12.95
Exchange, plus tax

Are you going to need tires for your Car, Truck or Tractor any time in the near future? If you are, come in and see Jack and get his prices first.

BATTERY RECHARGING

Battery Rentals — by the day, week, month

Firestone Motor King Battery \$9.95 exc.

12 month guarantee

THE WELCOME MAT IS ALWAYS OUT AT

Jack's Super Service

"We give S & H Green Stamps"

Phone 4101 Iowa Park 400 E. Highway



"Perfect Results Every Time... with no pot watching on an

Electric Range!"

"I just put the food into the oven... set the accurate controls and my worries are over! I'm free to go shopping, out with the children, or play a game of bridge! And, when I get home... there's dinner... cooked to perfection... hot... ready to serve!"

Yes, an electric range surely makes life easier. See YOUR electric appliance dealer, soon, for the electric range that's right for you... in size and in price.

Women who know
Cook electrically!



TEXAS ELECTRIC SERVICE COMPANY
W. R. PASTUSEK, Manager

THIS IS THE Hardware Week
 FEATURING FAMOUS BRANDS
 Come in and Save!
 APRIL 17-25
 Independent Hardware Store

The year's biggest merchandising event in hardware and housewares brings you famous brands and featured values. Come in now for your Spring home, farm and shop needs. It's Hardware Week,

Do Jobs Faster

GET THESE EXTRAS IN PLUMB HAMMERS
 • Built-in Balance • Take-up Wedge • Special Analysis • Treated Hickory Steel Head
 Regular \$3.35, \$2.25
Sale Prices \$2.59, \$1.59

Columbus GAS RANGE
 Full Size — Divided Cooking Top
 Automatic Burner Lighters
FREE — Set of Colored Pyrex Oven Ware with purchase of this gas range. Regular price \$109.95.
\$98.95

American Kitchen Steel Sink Cabinet
 Single Drain Board, Swing Faucet.
FREE — 9 x 12 Congoleum Rug with each cabinet.
\$59.95

6 Foot
STEP LADDER
 Regular price \$6.95
Sale Price \$4.65
PROTECT Your Floors

FURNITURE SLIDES EASILY and QUIETLY ON BASSICK RUBBER CUSHION GLIDES
7c Each

Two Piece Frieze
LIVING ROOM SUITE
 Makes into a Bed
FREE—55.50 Cavalier Cedar Chest.
During Sale \$188.50

BED ROOM SUITE
FREE — Two shaggy rugs which regularly sell for \$4.50 each.
During Sale \$75.45

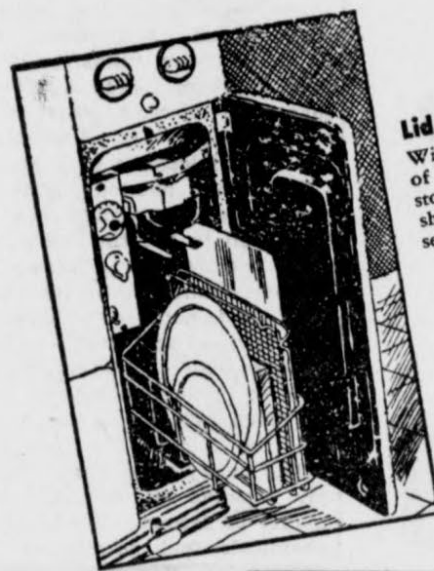
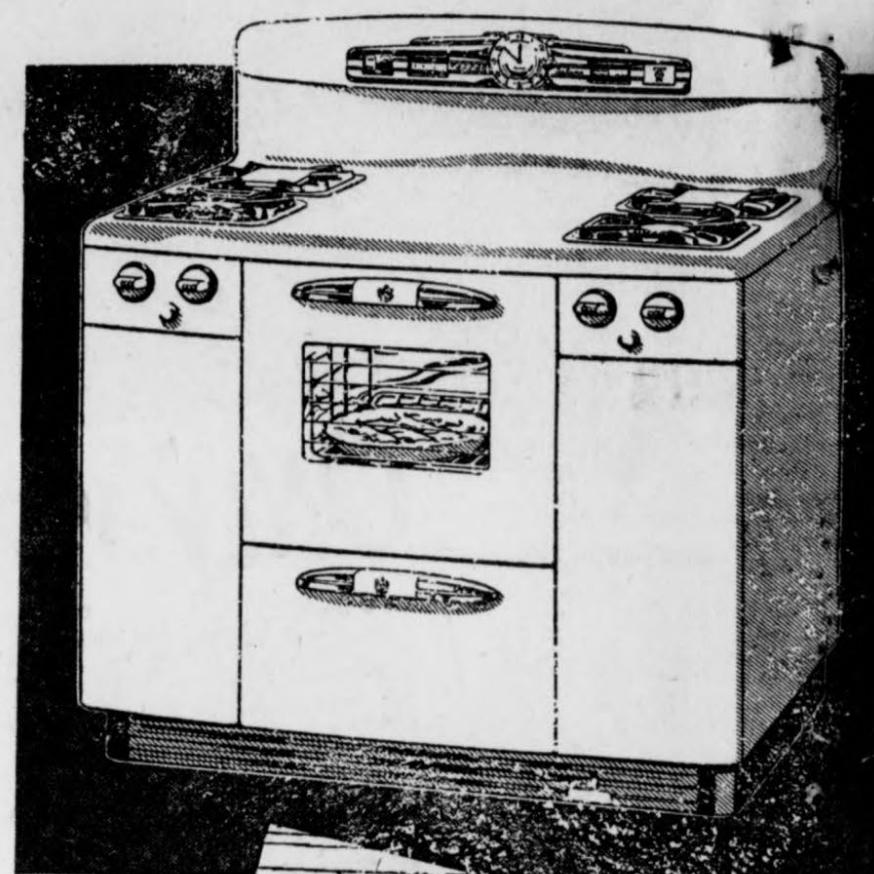
Famous EICO
BIG 16" HANDY FLOOR SWEEP
 JOB TESTED FOR EASIER BETTER DUSTLESS SWEEPING
Special 1.98

General Mills Tru-Heat Iron
 Famous tapered-heel iron that irons backward as easily as forward. Extremely light weight; rests on its side. Accurate heat control. Fully guaranteed.
\$14.95
Special \$11.95

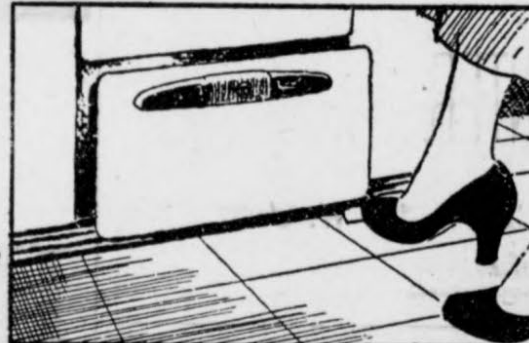
First Showing!
THE NEW Super 60
SEE IT! TRY IT!
TAPPAN Gas Range

Just when we thought modern ranges had every possible convenience—along comes Tappan with a really SUPER range.

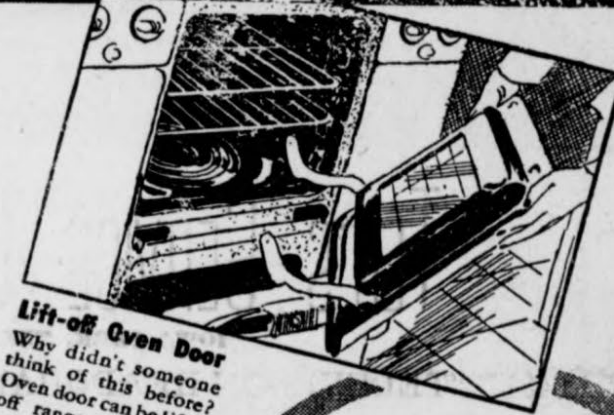
Come in and see the new Tappan Super-Sixty. Try its wonderful oven right here on our sales floor. Let us give you a demonstration and show you these NEW Tappan features... these exclusive Tappan features, found only on this new Tappan Super-Sixty.



Lid Basket
 Will save you dozens of steps every day—stores pan lids, cookie sheets, cutting board, serving trays.



Pro-tee Broiler
 Press the pedal and broiler drawer rolls out. Touch door and back it goes into broiling position.

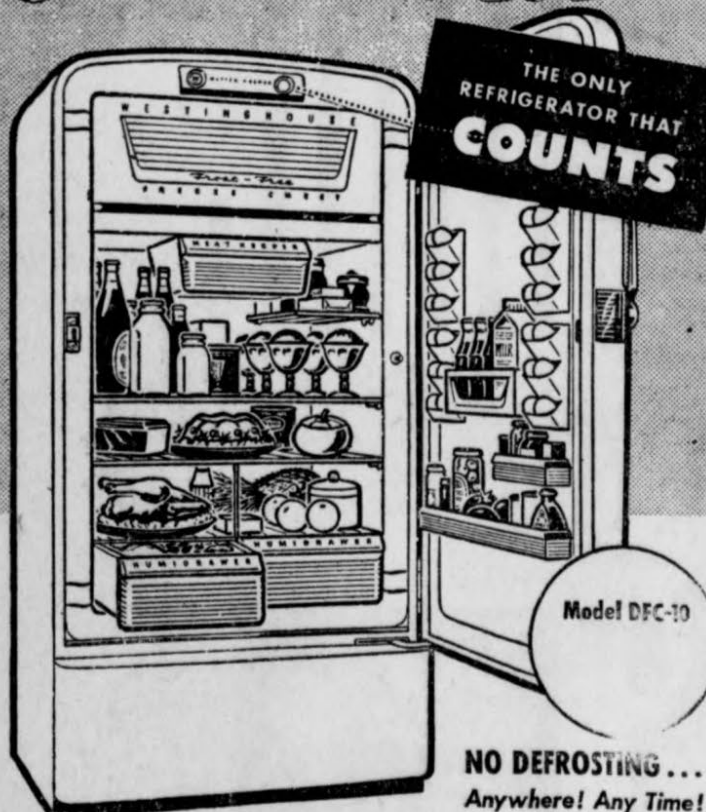


Lift-off Oven Door
 Why didn't someone think of this before? Oven door can be lifted off range. Gives you clean oven. Detached sink for quick, easy cleaning.

THIS NEW TAPPAN

Free \$60.00 Stove Hood 394.95

IT'S NEW! IT'S GREAT!
Westinghouse FROST-FREE*



THE ONLY REFRIGERATOR THAT COUNTS

NO DEFROSTING... Anywhere! Any Time!

See the new Westinghouse FROST-FREE—the only refrigerator that COUNTS! It counts door openings, because door openings let in warm air which causes frost to form. At every 60th door opening, which is just when frost begins to build up, FROST-FREE automatically defrosts itself, and automatically evaporates the frost water! Westinghouse FROST-FREE is the only home-proved automatic refrigerator. See it and other Westinghouse Refrigerators today. You'll find prices surprisingly low!

- WOMEN LOVE THESE FEATURES, TOO**
- GIANT-SIZED FREEZE CHEST
 - CONVENIENT BUTTER KEEPER
 - ROAST-DEEP MEAT KEEPER
 - EXTRA-LARGE HUMIDRAWERS
 - EGG KEEPERS and Shelves-In-The-Door
 - TRIPLE-PLAYED SHELVES
 - EASY-TO-USE 3-way Door Handle

Regular \$46.95 Sunbeam Mix Master **FREE** with purchase of 6-ft. Frost Free Westinghouse Refrigerator. **299⁹⁵**

O cedar
THE MOP WITH THE Fastest Pickup!

 "Sweep Suction" Action makes "m" thereby for dust! Sweeps in corners, under furniture. Pad is washable, replaceable.
COMPLETE \$1.65

Light Cream Colored Plastic
LIVING ROOM SUITE
 Divan and Platform Rocker
 Divan makes into a Bed
FREE — \$55.50 Cedar Chest
Special \$154.00

Full Size
Bell Econmizer
 Inner Springs — 180 coils
During this Sale \$19.95

54-inch
AMERICAN KITCHEN SINK

Double Drain Board
 Spacious Cabinet
FREE — Congoleum Rug to cover your kitchen with this beautiful American Kitchen Sink.
Special \$134.95

Opens cans easily
#38 DAZEY DUAL ELECTRONIC HD LIFTER CAN OPENER
 Cuts out entire lid of round, square or oval cans. Lifts out of bracket or swings flat against wall. Features permanent type magnetic lid lifter to prevent can lid from falling into contents of can.
 Dazyle Finish—Red Knobs
\$4.25
 Other DAZEY Can Opener \$1.49 to \$6.95

WILLIAM CAMERON IDEAL CABINET
 Unfinished

Consists of:
 Two 36-inch Base Sections
 One 39-inch Center Base Section with drawers. One door in one base, two drawers and two doors in other base — with bread board.
 Two Top Sections, 36 in. wide and 33 in. high. Each has two doors and three shelves.
 Drain Board, 9 1/2 feet long and 25 in. wide, 1 1/2 in. thick.
 Splash Board 9 1/2 ft. long and 14 in. high.
FREE — Paint and Varnish and Hardware to finish according to your own decorative scheme.
During Sale \$183.70



Free Starter Set

of the New **Fiesta Dinnerware**

with Purchase of this Dinette Set

by Virtue Bros.

\$127.50

Bradford Furniture & Hardware

Phone 3821

Iowa Park, Texas

115 W. Cash

Names Fly East Vacation Trip

Mr. and Mrs. R. D. Dunham of Amarillo and formerly of Iowa Park, left their small son Ricky here while they spent their vacation in the East. They flew from Amarillo to Memphis and Knoxville, Tenn. then on to Greensboro and Burlington, N.C. to visit Dr. and Mrs. John Stephens. They spent four days with the Stephens before

returning home by way of Houston and Wichita Falls. They returned here last Friday and visited several days before returning to Amarillo Tuesday. Mrs. Dunham will be remembered as Billie Jean Girard and Mrs. Stephens as Ava Nell Lee. They were classmates in Iowa Park High school.

Mr. and Mrs. R. A. Williams have been visiting their son and wife, Mr. and Mrs. Wayne Williams, in Tucson, Ariz.

Soil Conservation BAPTISTS

The Wichita county portion of the Wilbarger-Wichita Soil Conservation District has about 200,000 acres of dryland ranges. Their production greatly influences farmers' and ranchers' net income. Thus it might be worthwhile to think a little on how and from what a plant grows.

The Doane Agricultural Service, inc., St. Louis, Mo., said several years ago that 95 per cent of the plant food comes from the air through leaves so there must be ample leaf surface before heavy growth will be produced. A scientist once grew a willow tree for 5 years in a container containing 200 pounds of soil. Nothing was added except water. When the willow was removed 199 pounds of soil remained.

The leaves are the food-forming organs of the plants. Green leaves are able to convert the energy of the sun and carbon dioxide of the air to starches sugars cellulose, proteins and fats. Grazing or usage of ranges must be limited to the extent that good amounts of green leaves are on the plant during the growing season if maximum growth is obtained.

If your range was one of those from which most of the leaves were grazed last year, and dead grass lying on the soil for protection is gone, technicians for the district suggest a period of deferment from all grazing or a reduced amount of grazing that would allow for more leaf growth.

Joe Cunningham, Merle Waggoner of Wichita Falls and W. A. George of Iowa Park are district co-operators planning to rest one or more pastures during the growing season.

Pledges Give Skit At ESA Meeting

Members of Epsilon Sigma Alpha met in the home of Mrs. Pete Guthrie last Tuesday evening for a Pledge Program and Test. Mrs. Leslie Clapp was co-hostess with Mrs. Guthrie.

A skit was presented by the six pledges: Mmes. Ray Watson, Jesse McCullough, Johnny Crawford, Lee Perry, John Clapp Jr., Bryan Faris Jr.

Mrs. Donald Hill, vice-president, conducted the business session in the absence of Mrs. Joe Chandler, president. Nomination of officers for the coming year was made by the nominating committee. Election will be at the next meeting.

Mrs. Charlie Coppock, sponsor, was given a "hanky" shower by the members.

Mrs. Dale Harbour of Wichita Falls, formerly of Iowa Park, was dismissed from Wichita General hospital this week after surgery.

Mary-Martha circle met with Mrs. Malcolm Mills last Monday afternoon. Mrs. Mills led the devotional thought entitled "How to Pray," and the program consisted of a discussion of "Hindrances to Prayer." A brief business session following with the following participating: Mmes. Ray Watson, Allen Guthrie, Dennis Bryant, Leslie Chapp, DeLoss Kagy, A. I. Duckworth and the hostess.

Blanche Groves circle met with Mrs. L. E. Brooks for mission study taught by Mrs. T. M. Thaxton. Present were Mmes. Jim Cowden, Carl McKinnon, D. C. Bridgers, D. O. James, Virgil Woodfin, Thaxton and the hostess.

Ruth circle met at the church Monday afternoon for a mission lesson brought by Mrs. J. N. Easterwood. Present were Mmes. Maria Stogdill, R. R. Brubaker, Lee Vaughn.

Business Women met in the home of Mrs. Glenn Scott on Monday evening. Bible study was led by Mrs. Dorothy Thompson. Those present were Mmes. F. W. Wright Jack Ralston, Taylor George, Joe West, Homer Blalock, Carroll Duke, the hostess and Miss Clorssa Apple, a visitor.

Reapers circle met with Mrs. A. W. Rowell for mission study Tuesday afternoon. Present were Mmes. A. E. Jones, L. B. Beavers, Bud Mitchell, E. R. Rice, V. R. Munden and the hostess. Mrs. Fannie Rowell was a visitor. Next meeting will be May 4 with Mrs. Jones.

Sallee-Morgan circle met with Mr. J. H. Wilson on Wednesday afternoon. Present were Mmes. Lee Roy Truett, Sam Ferguson, R. L. Redin, H. L. Payton, J. A. Berg, George Roberts, E. W. Sumrall, Urban Farmer, I. L. Alvey, Sam Hill and the hostess.

Starting date for Vacation Bible school at the Baptist church is set for May 25. Revival dates are June 14 through 28.

Friends Honor Mrs. L. C. Perry

The home of Mrs. Herman Mahler was scene of a covered dish luncheon and social Tuesday honoring Mrs. L. C. Perry, who is moving to Electra in the near future.

The courtesy was extended by a group of the honoree's close friends. During the social, Mrs. C. J. Simpson presented Mrs. Perry a lovely gift from the WSCS of the Methodist church.

Attending were Mmes. J. D. Thompson, Arch Hughes, Fenton Dale, R. R. Brubaker, Guy E. Perdue, M. L. Smith, Dave O. Harbour, T. C. Scott, Jim Milliron, Simpson, Perry and Mahler.

Jimmie Don Bates of Dallas was home last weekend.

ATTENTION

All Farmers!

We will have gasoline for sale beginning Monday, April 27 — Wholesale & Retail

All kinds of Garden and Field Seeds

Farmers Union Co-op Elevator

IOWA PARK, TEXAS

GIFTS

We have all types and kinds of gifts for the home and car.

Beautiful Gift Wrappings

AUTHORIZED DEALER

WHITE

Auto Store
THE HOME OF GREATER VALUES

113 W. Park Iowa Park Phone 7221

In every State of the 48...

TRUCK USERS BUY MORE CHEVROLET TRUCKS

than any other make!



No matter the size or type of truck you need—what better proof could there be that a Chevrolet truck is your best buy!



MORE CHEVROLET TRUCKS IN USE THAN ANY OTHER MAKE!

Recently published official registration figures for the last full year show that truck users in every single State bought more Chevrolets than any other make!

It is difficult to imagine more convincing proof of Chevrolet's superiority, for such clear-cut and overwhelming preference can lead to but one conclusion:

Chevrolet trucks must be better, must

enjoy solid advantages over other trucks. Such preference must rest on a firm foundation of good, sound value. And, of course, it does—as owners of Chevrolet trucks can testify.

So before you buy any truck, see how much more Chevrolet trucks offer you. Stop in and see us soon. Continuation of standard equipment and trim illustrated is dependent on availability of material.

HILL MOTOR CO.

216 N. Yosemite

Phone 2211

Pick-Ups! Pick-Ups! Pick-Ups!

We've Got 'em NEW or USED

You can buy one on Crop Payments — no monthly payments to worry about

OTHERS TALK GOOD DEALS

SEE US BEFORE YOU TRADE

International Harvester Company

1113 Sheppard Access Road

Wichita Falls, Texas

YEARS AHEAD OF THEM ALL!

Don't you want to try a cigarette with a record like this?

1. THE QUALITY CONTRAST between Chesterfield and other leading cigarettes is a revealing story. Recent chemical analyses give an index of good quality for the country's six leading cigarette brands.

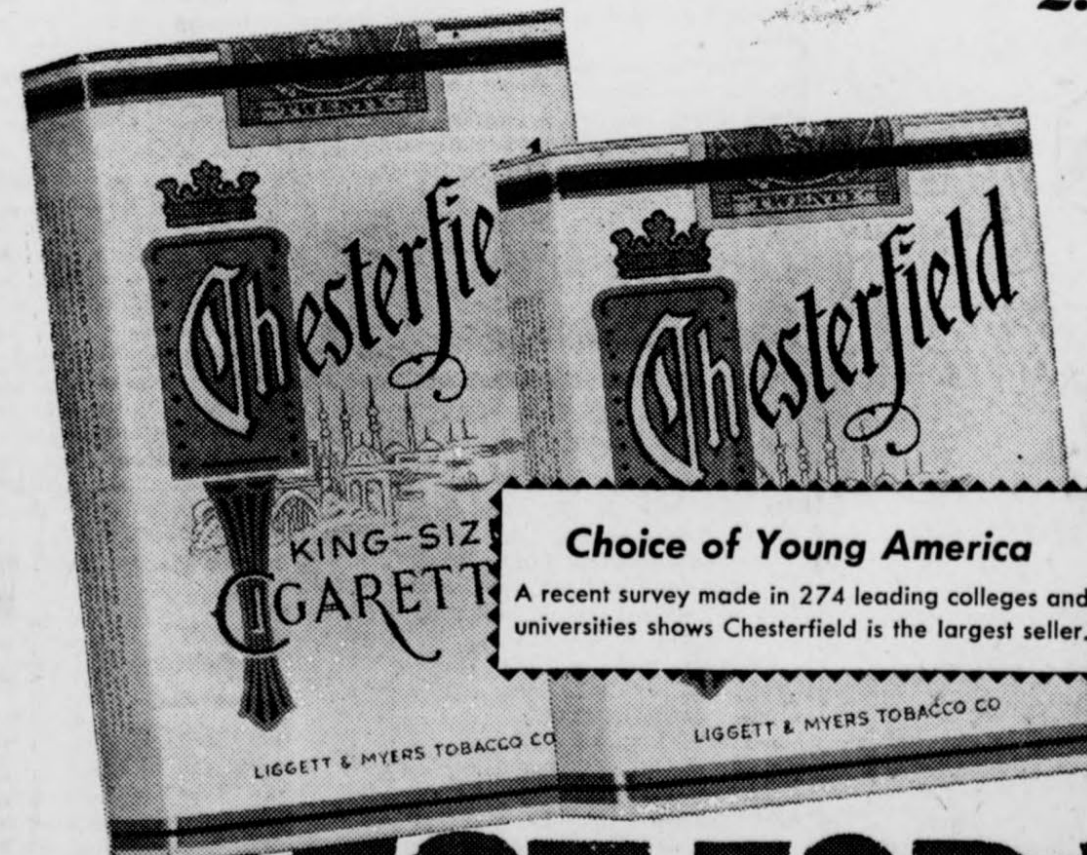
The index of good quality table—a ratio of high sugar to low nicotine—shows Chesterfield quality highest

... 15% higher than its nearest competitor and Chesterfield quality 31% higher than the average of the five other leading brands.

2. First to Give You Premium Quality in Regular and King-size ... much milder with an extraordinarily good taste—and for your pocketbook, Chesterfield is today's best cigarette buy.

3. A Report Never Before Made About a Cigarette.

For a full year a medical specialist has been giving a group of Chesterfield smokers regular examinations every two months. He reports... no adverse effects to nose, throat and sinuses from smoking Chesterfield.



BEST FOR YOU

R. D. Deloy

FACTORY REPRESENTATIVE

PHONE 5711

IOWA PARK, TEXAS

3-Way Service

- Custom Built Trailer Coaches
- Standard Vacation Trailers
- Triler Repairs

"No Job Too Big or Too Small"

Sunshine Coaches

110 West Park Phone 7121
Bill Roach Iowa Park

Corral Lodge

A Good Clean Place to Eat

We will be open every day except Sunday to serve you. Hours: 7:00 to 2:30, 5:30-10.

Phone your orders if you can't come to eat

Mr. and Mrs. Bing Miller, Managers

COMPLETE INSURANCE

- Fire
- Windstorm
- Hail
- Automobile

CARROLL DUKE INSURANCE AGENCY

Phone 4411 Cash Street

W. G. STEELE LBR. & BLDG.

Fence in Those Little Chicks, Now!

COMPANY Phone 5021



NOT JUST ANY DRUG STORE — PARK PHARMACY!
When the Doctor leaves, and you have prescriptions that need to be filled—quickly and accurately—bring them to Park Pharmacy and get your patient on the rapid road to recovery.

Park Pharmacy

Phone 3131 Fred Hays
When Closed, Have Your Physician Call
Us at 7251, 2861, 5121 or 2671

IN IOWA PARK IT'S THE

Iowa Park Cleaners

"WHERE QUALITY COUNTS"

ALL NEW EQUIPMENT AND EXPERIENCED HELP

For Pick Up & Delivery 5041 1st Door West of Bank

Billie Lynch Harris to Wed Clarendon Man

The engagement and approaching marriage of Miss Billie Lynch Harris to Walter Mars Warner of Clarendon is being announced by her parents Mr. and Mrs. Bill Harris.

The groom-elect is the son of Mr. and Mrs. H. T. Warner of Clarendon and grandson of Mrs. Rowena B. Parker of Iowa Park and the late Leonard Parker, a pioneer family of this area.

The wedding date is calendared for Monday, May 25, in the First Methodist church in Clarendon in double rites with Miss Jane Franklin of McClean and Jarret Davis of Clarendon, cousin of the groom-elect.

Miss Harris is a graduate of Iowa Park High School and attended Midwestern university, in Wichita Falls. The past several months she has been employed in the offices of the General Adjustment Bureau in Wichita Falls. She is a member of two pioneer families here, the granddaughter of Mr. and Mrs. C. E. Harris and the late Mr. and Mrs. C. A. Harding.

The groom-elect is a graduate of Clarendon high school and attended Clarendon junior college, the School of Mining and Engineering in Socorro, N.M. He recently returned from Korea where he was with the First Cavalry and now is associated with his father in contracting, farming and ranching at Clarendon.

23 Study Club Ends Successful Year, Instals New Officers

Executive board of the 23 Study club met Tuesday evening in the home of Mrs. Charlie Coppock with Mrs. Taylor George, president, in charge. The 1952-53 work and program were discussed.

This was the final meeting of the executive board for the current season. Present were Mmes. L. E. Brooks, R. R. Brubaker, S. L. Denney, King Abernathy, George and Coppock.

A luncheon at the Methodist church was the setting for the 23 Study club's final meeting for 1952-53.

Mesdames Lloyd McCloud and Dick Davis of Bryson were honor guests. Mrs. McCloud is parliamentarian and president-elect of First District Federation of Women's clubs. Mrs. Davis is district chairman of the Pan American committee.



Mrs. Lloyd McCloud

Tables were beautifully decorated with vines entwined on a low white picket fence with occasional yellow carts filled with yellow daisies and deep purple iris, the club colors. Bases of the tapers were banked with pansies along the table which was arranged in T shape carrying the state theme.

"Whatever my task, be this my creed; I am on earth to fill a need" was the theme of tribute honoring the charter members of the club at its organization 30 years ago. Mrs. Taylor George, president, paid tribute to the nine women of vision who met then to organize a Federated club. Mrs. Carroll Duke who was the first president, Mrs. Florence Sherwood and Mrs. Lucy Birk are active member of the original group. They were given especial acknowledgment.

Mrs. George expressed appreciation to her committees and members for a year of challenging growth. She voiced the members' appreciation to the Iowa Park Herald and Mrs. Myrna Smith for their generous co-operation in publicity releases.

Don Owens, a high school student, played a group of beautiful organ numbers and accompanied Mrs. James Sewell at the piano when she presented the fine arts number, singing John Pringle Scott's "Consider the Lillie."

Mrs. Charlie Metz was program chairman and presented Mrs. Sam Hill who gave the invocation, after which Mrs. L. E. Brooks led the pledge of allegiance to the flag.

In her devotional Mrs. King Abernathy read verses from Ephesians 4 and 5, exhorting her listeners to give thanks always to God for the Resurrection of his Son, which is the inspiration for the spring season and the beginning of life anew. She emphasized the season by reading "Thank God I'm Alive," from Hilltop selections.

Roll Call was responded to with assigned topics of timely subjects. An invitation from the Valley Farms Home Demonstration club to be their guests May 5 at 2:30 was accepted by the club.

Mrs. Sewell reported the spring convention of First District Federation of Women's clubs in Mineral Wells.

Mrs. George presented Mrs. McCloud, who installed officers of the club for the coming year in an impressive and charming ceremony. She charged the group on their responsibilities for individual duties and collective activities. Officers installed were:

Mrs. James Sewell, president.
Mrs. Charlie Metz, vice-president.
Mrs. Dave Harbour, secretary-treasurer.
Mrs. Sam Hill, corresponding secretary.
Mrs. Richey Abernathy, parliamentarian.

Mrs. Homer Blalock expressed the club's appreciation to Mrs. McCloud and presented her a gift. There were 23 members and three guests present.

Mr. and Mrs. M. L. Smith will attend a community reunion in Weatherford this weekend.

Mrs. Sarah Tucker of Dallas is visiting Mr. and Mrs. Bing Miller of Corral Lodge this week.

Mr. and Mrs. Virgil Alvey and daughter Sandy Lee of Albuquerque, N.M., visited Mr. and Mrs. I. L. Alvey and other relatives last week.

School News

In addition to others listed in last week's Herald, Caroline Sewell won first division rating in flute at the solo and ensemble contest at Denton, April 11.

In the concert and sight reading contest the past Saturday, Iowa Park won second division in concert and first division in sight reading.

This Thursday the Dixieland band of Iowa Park goes to Holiday to play for the high school assembly program.

Wednesday, May 6, 57 members of the Hawk band go to Enid, Okla. for the Tri-State Band Festival. They plan to return Saturday.

Pre-Nuptial Courtesy Extended Miss Steed

Miss Patsy Steed, bride-elect of Oscar Singleton, was honored last Friday evening with a pre-nuptial shower in the parlor of the Baptist church.

Hostess list included Mmes. E. W. Sumrall, J. Louis Quick, Ralph Stone, T. M. Thaxton, L. E. Brooks, Sam Hill, O. S. McLemore, Billy Joe Harrington, Everett Sewell, Fred Wright, R. R. Brubaker, Dorothy Thompson, O. E. Lochridge, D. O. James and Bonnie Hudson.

Mmes. Hill, Stone and Thaxton alternated in duties of presiding at the crystal service. Guests were greeted by Mmes. Quick and Wright while Mrs. Harrington secured signatures and Mmes. Hudson and Sumrall presided at the gift display table.

Musical selections were furnished during the party by Misses Barbara Butts and Sheri Brooks and Mrs. Lochridge at the piano, and by Miss Katy Merie Sumrall, vocalist.

Local Folk Attend Family Gathering

Mrs. R. R. Brubaker left last Friday to visit her sister and family, Mr. and Mrs. Frank W. Smith in McKinney.

Saturday they were joined by Mr. and Mrs. M. E. Banks, Mr. R. R. Brubaker and Mrs. H. B. Young and daughter Linda Ann of Wichita Falls and all went on to Denton for the annual Stover Reunion at the Southern hotel.

Saturday night a naval picture "The Fighting Lady" was shown. Smoky Stover a kinsman, was in the picture and had been chosen by the U. S. Navy as a typical navy flier. His plane was lost and never returned.

Sunday morning the Stover kin assembled in Hubbard hall at TSCW for a program and dinner. Table decorations were covered wagons and red roses. Election of officers was conducted after dinner.

Kin that came, the farthest was from Los Angeles, Calif. Mrs. M. E. Banks was the first grandchild. There were 125 descendants of Margaret and Abraham Stover present. Mrs. Banks, Mrs. Brubaker and Smith are among the descendants.

Mr. and Mrs. Brubaker came back by Arlington to see his sister Mrs. Beulah Ellison, before returning home Sunday night.

Mr. and Mrs. I. L. Alvey and Mrs. Herman Kight were in Oil Center, N.M., last week to visit Mrs. David Shumaker, who was ill in a hospital. Mrs. Shumaker is the former Neva Alvey.

Mr. and Mrs. Miles Hines of Lubbock were in Iowa Park last week.

Mrs. J. L. Belote has been dismissed from Wichita General hospital after surgery last week. She is now in the home of her daughter Mrs. E. C. Hall in Wichita Falls. She will return to her home here sometime next week.

MOST for your money!



NEW 1953

Motorola TV WITH AMAZING NEW STANDOUT PICTURE

Stunning, compact table model in bright ebony plastic. Keeps radiant with damp cloth. Popular 17 inch picture tube. Built-in Lifetime Focus; One-Knob Tuning with shielded Channel-light; step-up signal power Area Selector Switch. Built-in antenna.

MODEL 17T1H \$209.95

Includes Federal Tax and 1 Year Warranty

TED'S Service Center

TELEVISION HEADQUARTERS' Phone 6431 Iowa Park

Result of 18,000 Inventions



SINCE ALEXANDER GRAHAM BELL designed the first telephone 78 years ago, there have been more than 18,000 inventions and improvements in your telephone service — about 230 a year. Some you see, like today's convenient handset. Most are behind the scenes in the complicated equipment it takes to handle your calls swiftly and accurately. But seen or unseen, our constant search for ways to do a better job for you helps hold down the cost of your service and expands its value. SOUTHWESTERN BELL . . . A TEAM OF 28,000 TEXANS . . . PARTNERS IN TEXAS' PROGRESS.

HUMBLE Esso Extra GASOLINE

... No. 1 in Texas

Esso Extra ranks No. 1 in sales among premium gasolines because it's No. 1 in quality. More Texans use Esso Extra than any other premium gasoline because they get:

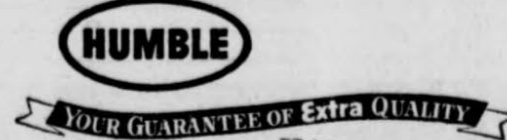
Extra anti-knock performance; extra quick starting; extra power . . . plus a patented solvent oil that keeps engines extra clean.

So will you. Fill up with Texas' No. 1 gasoline at the Humble sign in your neighborhood.

HUMBLE OIL & REFINING CO.

No. 1

- FOR ANTI-KNOCK PERFORMANCE
- FOR QUICK STARTING
- FOR POWER
- FOR AN EXTRA CLEAN ENGINE



CURTIS SEWELL STATION

Phone 4161

Highway 287