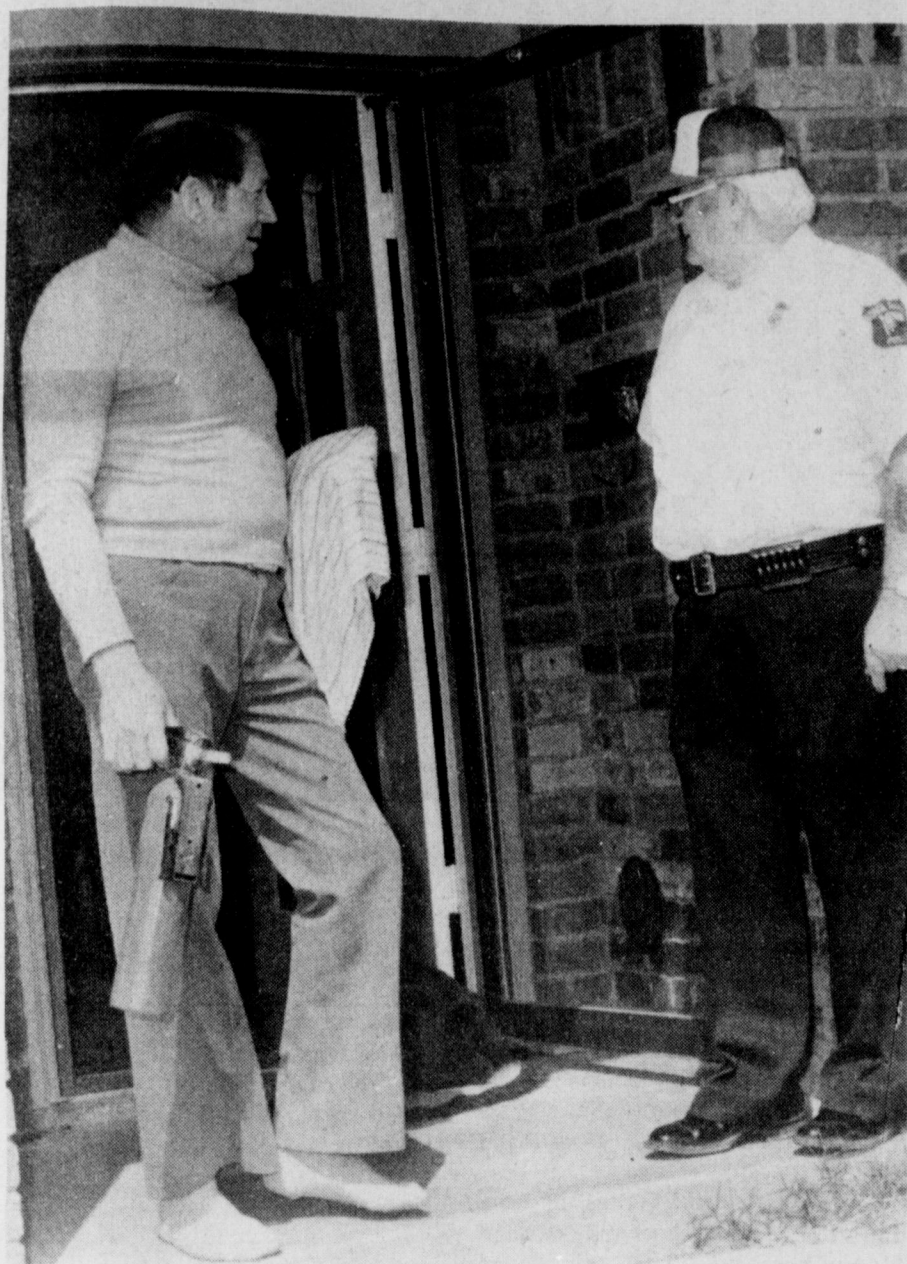


1981
Mar 19

PARK CLINIC-DR. E.P. WATSON
310 W. ALAMEDA
IOWA PARK, TEXAS



HELPFUL NEIGHBOR - Dwaine Holmes holds his fire extinguisher and tells Police Chief Charles Whittingstall of damage in the James Sims home shortly before 2 p.m. Monday. Holmes answered a plea for help at the Sims home when flames started burning cabinets above the kitchen stove. He had the fire out when volunteer firemen arrived with three units.

Damage light from storm

Saturday night's hail storm in Iowa Park could be compared to a barking dog: it sounded a lot worse than it was.

Very little, if any, damage was reported from the storm, which produced mostly pea and marble size hail stones. There were larger hail

stones, according to observers, but they were soft.

Roof damage appears to be restricted to the older coverings which "were about ready to be replaced, anyway," according to one insurance spokesman.

Luther Shaw, local Ford dealer, said they had looked very closely at the cars and pickups on his lot, and only one or two "very small" dents were detected.

Fruit trees and early gardens apparently suffered the most from the storm, which left many yards covered with hail. Tree blossoms were stripped from branches and some gardens were levelled. Trees are expected to produce considerably less fruit than is normally expected.

Rainfall varied considerably. While only .34 of an inch was recorded at the Texas Experiment Station southeast of the city, one gauge on Van Horn reportedly caught 1.5 inch.

Whitaker top showman

Bruce Whitaker, son of Mr. and Mrs. Jim Whitaker, walked off with the most outstanding exhibitor award of Saturday's annual Iowa Park Project Show.

Other showmanship awards went to: Kevin Wells, market swine; Misty Hicks, breeding swine; James Cowley, sheep; Chris Reeves, horses; and Kay Stevenson, beef.

Grand and reserve champions in each of the divisions were, in order of first and second:

Geldings - Chris Reeves, Cindy Spandle.

Broilers - Tammy Robertson, Tracy Taylor.

Fryer Rabbits - Rose Soell.

Turkey Tom and Hens - Susan Howell.

Mares - Jill Watts, Chris Reeves.

Market Lambs - James Cowley, Jay Hathaway.

Market Swine - Stanley Watson, Tracy Taylor.

Beef Steers - Kay Stevenson, Stanley Watson.

Beef Heifers - Bruce Whitaker, Kay Stevenson.

Iowa Park youth pretty well dominated the annual Wichita County Junior Livestock Show this week.

Showing both champions and depth in quality, approximately one-third of all the animals making the premium sale were local entries.

As an example, 58 of more than 200 swine entered in the show were selected for the premium sale. Of those 58, 28 were from Iowa Park.

Rick Nanez exhibited the grand champion turkey tom, which the

Iowa Park school trustees, in a called meeting Thursday night, approved contracts for professional and para-professional personnel, gave them a blanket \$500 salary increase for the 1981-82 school year, and rejected bids for property insurance and voted to seek new bids to be opened at a called meeting Monday evening.

Following a 161-minute executive session during which each principal and department head was asked to meet with trustees, three motions

were proposed and accepted.

The first motion was to "elect personnel as presented (on a printed list);" the second was to accept resignations of three personnel; the third was for the \$500 salary increase.

Because of variables included in bids for the school's property insurance, trustees voted to reject all bids and advertise for new bids, which are to be received by 1:15 p.m. Monday and considered at a 7:30 p.m. called meeting.

Trustee Rusty Rusk pointed out he

voted to reject the bids and advertise for them once more, but commented it would be like "showing your poker hand and then betting on it." His point was that some of the bidders had already indicated what their bids would be and it might discourage some bids the second time.

Two insurance representatives present admitted the re-bidding process could have a bearing on their bids, though they did not indicate whether the quotes would be increased or decreased.

The \$500 salary increase was said to be for the 1981-82 school year alone, defining it as a "bonus." The school district's policy of paying employees an additional \$300 to live within the district remains.

The increase salary is above whatever teacher salaries are set for next year by the state legislature, which is currently in session and considering proposals to increase salaries between 15 and 33 percent.

Resignations accepted were from Joyce Allen and Renabelle Otten, both West Wichita Coop personnel working on the Kidwell Elementary campus, and Melvin Schupp, high school building trades vocational instructor.

The list of "personnel as presented" was broken down by campus, or West Wichita Cooperative. Those receiving contracts for the coming year included, as presented:

High School - James E. Arnold, David Lynn Baugh, Ruby Darlene Black, Lou Jane Cowley, Jo Ann Davis, Betty Cleo Dearen, James Roland Gotcher, Denise Gayle Hambrick, Elvie Jean Johnson, Timothy Charles Kaspar, Iva Harriette Laird, Linda Louise Lovelace, Barry Don Lucy, Lucy Raydean Mattis, Elizabeth Thompson Meux, Gregory Ray Miller, John

Continued to page 4

IOWA PARK LEADER

25
Cents

Vol. 12, No. 28 IOWA PARK, WICHITA COUNTY, TEXAS 76367 THURSDAY, MARCH 19, 1981

City hall remodeling on council's agenda

Preparations for the remodeling of the city hall project will comprise almost half of the agenda items for Monday night's city council meeting.

Three resolutions connected with the project are on the agenda for the 7 p.m. meeting, which will be held in council chambers.

All in forms of resolutions, one will authorize publication of notice of the city's intention to issue certificates of obligation; aldermen will consider approval of plans and specifications and giving notice to bidders; and the last is authorizing execution of a financial advisory contract with Rauscher, Pierce and Reffnes, Inc.

Two appointments will be considered. One will be to name David Padgett to the Planning and Zoning

Commission, replacing Robert Nolen. The other will be to re-appoint Dr. Earl Watson as city health officer.

Two ordinances will be offered for consideration.

One will be to amend the animal control ordinance, concerning con-

finement and impoundment.

The other will be to require issuance of a food training certificate to eating establishment employees.

Also to be discussed will be a lease agreement with Shamburger Lumber, which expires this month.

Following completion of the regular council business, members will sit as the city's board of adjustments to consider a request for variance to the minimum side yard setback at 1001 W. Louisa for construction of a carport.

Choirs earn sweepstakes once again

The Iowa Park High School A Cappella Choir and Treble Chorus won sweepstakes for the second consecutive year in the annual UIL concert and sight reading contest held here last week.

They won the honors by receiving superior ratings in both sightreading and concert.

Three other choirs also represented Iowa Park in the contest. The tenor/bass chorus received a one in concert and a

two in sightreading; the chorale received a three in concert and two in sightreading; and the mixed choir received a two in both concert and sightreading.

All five choirs are directed by Miss Janet Walker.

Local stock exhibitors dominate county

Iowa Park youth pretty well dominated the annual Wichita County Junior Livestock Show this week.

Showing both champions and depth in quality, approximately one-third of all the animals making the premium sale were local entries.

As an example, 58 of more than 200 swine entered in the show were selected for the premium sale. Of those 58, 28 were from Iowa Park.

Rick Nanez exhibited the grand champion turkey tom, which the

judge said would have made the top 10 at the Houston Fat Stock Show.

Jeff Miller had the reserve champion tom, and Ronda Wheeler, Lino Arredondo and George Howell entries also made the premium sale.

Robby Hausler and Rowdy Robertson showed the grand and reserve champion turkey hens, respectively, and entries by Robbie Wheeler, Mark Henderson and Wayne Nicholson made the sale.

Bruce Whitaker showed the grand champion heifer.

Rose Soell had the reserve champion meat pen rabbits., and Cindy Spanable's entries also made the premium sale.

The champion Suffolk lamb was exhibited by Jay Hathaway. Other lamb exhibitors making the sale included Tommy Riggins, Scott Young, Kristy Cravens, Gary Roy, James Cowley, Sandy Gullatt, Toby Grace, Zack Johnson and Mickie Gregg.

Besides the domination of the

turkey division, Iowa Park had its best showing in the swine division.

James Brixey showed the champion Spotted Poland China; Jeff Sawyer the champion Hampshire; Dana Hicks the champion Cross, which was the champion market barrow; Misty Hicks the champion Breeding Gilt and Bobby Slack the reserve champion; and Darin Coffman the reserve champion Spot.

Terry Taylor earned the showmanship award in the breeding swine

division.

Swine exhibitors who took their animals (some more than one) to the premium sale were Ricky Dean, Greg Patterson, Kelly Moore, Michelle Brewer, Stanley Watson, Terry Taylor, Misty Hicks, Bobby Slack, Dana Hicks, Steve Smith, Tracy Taylor, Jeff Sawyer, Darin Coffman, Jeff Stone, James Brixey, Kevin Wells, Tammie Richardson, Chris Reeves, Bobby Gilbert, Tracy Taylor, Robby Marston, Becky Whitaker and Andy Macom.



PROJECT SHOW - looking for grand champion turkey.



COUNTY SHOW - pen-of-five lambs from judge's view.

Silk roses are taught

Mrs. Frank Harlin gave a program and demonstration on "How to Make Silk Roses" where all members participated during the Friday morning meeting of the Iowa Park Garden Club held in Texas Electric Reddy Room. She had patterns and silk patterns cut for each member who burned edges and made her rose.

Mrs. W.A. George was in charge of the period devoted to business. Mrs. Charlie Lee contributed the thought for the day.

Mrs. Marvin Klinkerman, vice-president, handed out yearbooks to members who had not previously received them. A letter was read from the American Red Cross requesting that the club be represented at a meeting Mar. 24.

Plans were made to tour Smith's Gardentown Mar. 27. Members will meet at First Christian Church at 10 a.m. and leave from there.

Mrs. Lee brought a jade plant and japonica cuttings for the horticulture specimens. Mrs. F.M. Wilson won the door prize.

Hostesses for the meeting were Mrs. J.R. Cope and Mrs. Norman Deason.

Latin America group's study

Mrs. Don Owens presented the devotional thought in keeping with the lecture on Latin America for the United Methodist Women in their meeting Tuesday morning. She selected an article published in Texas Methodists which condemned the acts of brutality, violence and oppression occurring in El Salvador and the military aid by all governments.

Mrs. Chauncey Weiler gave the third lecture in a series of five on Latin America. The topic for the day was "The Mirage of Economic Growth in Latin America."

She stated that attempts by other nations to develop Latin American countries have resulted in under development of other people, and that eighty percent of industries are owned and operated by foreign corporations which take the money out of the country, leaving very little for the support of the people.

Mrs. Weiler added that military dictatorship was brought on by the revolt of the impoverished people who considered themselves like the Israelites held captive in Egypt. In closing, she quoted a paragraph from an open letter to the National Council of Churches covering the existing conditions and the injustice to a people of a Christian nation where Christians are repressing Christians. Twenty-seven members were present.



JULIANNA NELSON

May wedding date selected

The Grace Church in Wichita Falls will be the setting for the exchange of nuptial vows May 29 by Miss Julianna Nelson and Stan Blair, according to an announcement by her parents, Mr. and Mrs. Herb Nelson of Wichita Falls. Parents of the future groom are Mr. and Mrs. Earl Blair of Iowa Park.

Miss Nelson, who is now a resource teacher at Iowa Park Junior High School, was graduated from Rider

Seven students at MSU feted

Among 32 Midwestern State Univ. students who have been elected to Who's Who in American Universities and Colleges this school year, seven are Iowa Park residents or former students of Iowa Park schools.

The students were honored at a reception held Monday in Clark Student Center.

The seven are Cindy Jo Flanagan, Norman Ray Flowers, Dale Lee Gwinn, Darlene Rose Mahler, Alice Elaine Montz, Mark Puder and Sharon Tigrett-Brister.

Dr. Jesse Rogers, vice president for academic affairs, welcomed the parents, spouses and friends of the recipients and thanked the faculty and members of the administration in attendance for their support.

Who's Who certificates were awarded to the recipients by Dr. Robert Becker, chairman of the Who's Who Committee.

High School and received a BSE degree in special education from Midwestern State University in Dec. At the university, she was named an outstanding student in education. She was a member of the Association for Childhood Education and Kappa Delta Pi, an honorary education society and belonged to the Baptist Student Union. She has worked in the children's church at Grace Church.

The groom-elect was graduated from Iowa Park High School. He received a bachelor of music degree from Midwestern State University and is a candidate for a masters degree in the spring. He is presently singing with the New York City Opera, having previously sung with the Oklahoma City and Shreveport, La. Symphonies. He has also studied at the Music Academy in Vienna, Austria. At MSU, he was president of the university choir for two years. He has served as music and Sunday school director of the junior high department at Grace Church.

Two career airmen retiring in area

Two career airmen stationed at Sheppard Air Force Base will be retiring this month and plan to live in this area.

Senior Master Sgt. Burton L. Eastman is retiring at Holliday after more than 28 years of service. He is assigned to the 3755th School Squadron.

Tech. Sgt. George K. Hessinger, assigned to the 80th Flying Training Wing, is retiring in Iowa Park after more than 20 years service.

TOPS Club has spring banquet

The TOPS Club held the annual spring banquet Monday evening at Western Sizzling Steak House in Wichita Falls. Mrs. Gene Young was mistress of ceremonies. Mrs. A.O. Beall offered the invocation.

Following the meal, Alice Bell, area supervisor, conducted a KOPS graduation ceremony for Mrs. B.G. House of Vernon, a former member of the Iowa Park TOPS Club. She was assisted by Mmes. Beall, E.T. Wells and Lloyd Lowe, 15-year KOPS members. The area supervisor also installed new officers.

Mrs. Randy Heidrich presented award certificates and charms to Mrs. House and Cindy Edwards honoring them for their achievements in weight control during the year. Mrs. Young presented Mrs. Heidrich with a plaque for having been voted the outstanding member of the year by other club members.

Other activities during the evening included the presentation of gifts to retiring officers and the reading of "Losing Limericks" from the TOPS magazine by Mrs. Young.



JACK REYNOLDS and DONNA BARGE

Announce engagement

Mr. and Mrs. Don Barge of Iowa Park and Mr. and Mrs. Jack Reynolds of Wichita Falls announce the engagement and approaching marriage of their children, Donna and Roy.

Miss Barge was graduated from Iowa Park High School and attended Hardin-Simmons University and Midwestern State University. She is presently a portrait consultant for Olan Mills Photography Studio.

The future groom attended Midwestern State University where he was a member of Phi Sigma Kappa

fraternity. He is employed by NL Treating Chemical Corporation.

The couple will be married June 13 and will establish residence in Victoria.



Try cooking sweet potatoes tempura style in a light batter, quickly fried in hot peanut oil.

New Meter Connections

David Lee - 207 N. Penn
Roy Meller - 202 W. Crystal
Lonnée J. Beavers - 901 E. Pasadena
Jerry Stewart - 611 W. Cornelia
Ray Hamilton - 204 N. Yosemite
Shirley Patterson - 206 N. Hawthorne
Patricia Hannah - 1006 Park Plaza
Sheryl N. Goss - 700 W. Rebecca
Jerry Newman - 305 E. Jefferson
Brenda Simmons - 511 E. Alameda
Gary Rusk - 1602 Yucca
Johnny Suttle - 405 E. Aldine
A.W. Todd - 408 W. Texas
Floyd May - 1004 N. Jackson
Marcus Jordan - #8 Surrey
Joe C. Fischer - 110 W. Pecan
David White - 910 S. Wall
Calvin Sampley - 303 E. Pecan
Bill Whitehead - 203 Glenda

Class has election

New officers of the Gleaners class of Faith Baptist Church were elected Tuesday evening during a meeting held in the home of Mrs. John Hatfield.

Mrs. Paul Callaway was elected president. Others elected were Mmes. Bud McDonald and Audrey Holdeman, group leaders; Hatfield, secretary-treasurer; Hubert Thompson, devotional chairman and Truman Kingcade, food chairman.

Mrs. Larry Balsley brought the devotion on the "23rd Psalm for Today".

Members voted to join the Bible of the Month Club and purchase Bibles to give in case of sickness or bereavement or where one is needed.

**You've Never Saved
So Much, So Fast
For So Little!**

Thirty Month Certificate

12.00%

YIELDS

12.747

IF INTEREST IS LEFT TO COMPOUND ANNUALLY
\$1000 MINIMUM REQUIRED.

OR YOU MAY PREFER OUR...

Money Market Certificate

12.346% Yields \$624.16

\$10,000 MINIMUM. 182 DAY TERM

Federal regulations require a substantial interest penalty for early withdrawal on Certificates of Deposit. (Penalties are imposed only on the amount withdrawn.)

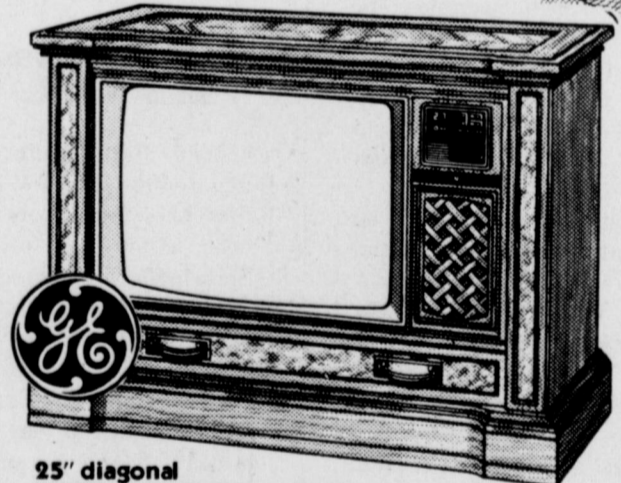
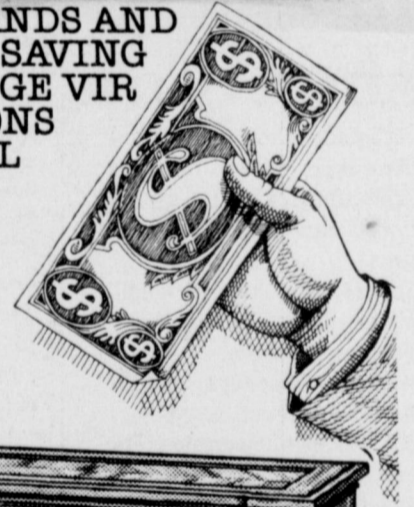
PARKER SQUARE

Savings
and Loan Association

Six Convenient Locations

**GET A \$50
FACTORY
REBATE.**

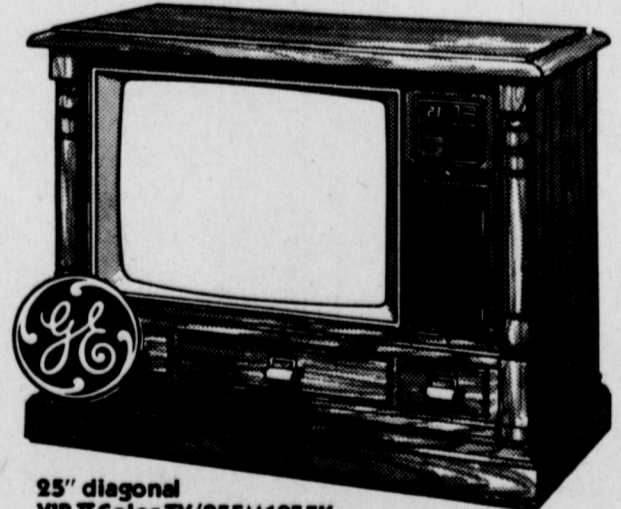
SHAKE HANDS AND
COME OUT SAVING
ON THESE GE VIR
TELEVISIONS
WITH DUAL
MODE
REMOTE
CONTROL



25" diagonal
VIR II COLOR TV/25EM1854P

■ VIR II Broadcast Controlled Color ■ Dual Mode Remote Control ■ Quartz Electronic Tuning — 91 Channels ■ Audio Output Jack ■ Cabinet of wood and simulated wood.

Original Price \$989.95
Rebate 50
Final Cost \$939.95



25" diagonal
VIR II Color TV/25EM1855K

■ VIR II Broadcast Controlled Color ■ Dual Mode Remote Control ■ Quartz Electronic Tuning — 91 Channels ■ Audio Output Jack ■ Cabinet of Wood and Simulated Wood

Original Price \$989.95
Rebate 50
Final Cost \$939.95

Rebates effective on retail purchases March 1 to April 30, 1981
GE brings good things to life.

PARKWAY

FURNITURE **True Value** HARDWARE

592-5512

200-206 West Rank

592-4681

Wed., April 1

9 99¢
KING SIZE
WALLET
CREATIVE
COLOR
PORTRAITS
FOR ONLY
NO
LIMIT

Kodak paper. For a Good Look at the Times of Your Life. TM



Extra Charge for GROUPS

GET PICTURES MADE OF GRANDPA, GRANDMA, DAD, MOM AND ALL THE LITTLE ONES AT THESE SAME LOW PRICES!



WE USE KODAK PAPER

Shugart's inc.

ASK About Our FREE 8 x 10 OFFER

COLOR PHOTOS

IOWA PARK
WHITES Home & Auto
Park West Shopping Center 892-4136

Cook of the Week

In his book "Food in History", Reay Tannahill states "without food there would be no history, no mankind." He discusses how it has helped to shape the development of society for many years in dictating population growth and influencing political and social theory.

Further stressing the importance of food, it has widened the horizons of commerce, inspired wars, played a large role in creation of empires and discovery of new worlds. It has also had a big part in religion, science and technology.

Food continues to have a major role in the 20th century. The foods people eat depend a lot on where they live and the kinds adapted to the area. However, with modern transportation, foods from other countries are just a short distance away, so most modern cooks can serve either ordinary or exotic foods, according to their pleasure.

Today Sue (Mrs. Robert) Goodknight shares some of her recipes that call for basic foods, each prepared in her own particular way. The daughter of Air Force parents, she was born in Amarillo and attended schools in several states and in the Panama Canal Zone. She was graduated from John Marshall High School in Oklahoma City and attended Oklahoma Christian College.

She and her husband, who is a technical manual writer in civil service at Sheppard AFB, and their three children have lived in Iowa Park two and a half years. They belong to the Faith Village Church of Christ in Wichita Falls.

Mrs. Goodknight is a substitute teacher at Kidwell and Bradford Elementary Schools. She is historian of the Kidwell P.T.A. and will be chairman of the membership drive next year. She is also in the volunteer teachers' aide program at the school. Her hobbies are oil painting, stitchery and cooking.

The couple's children are Scott, a fifth grader, Justin, a first grader, and Shelley, a kindergarten student.

HOLIDAY HOMINY

1 can (303 size) white hominy
1/2 cup commercial sour cream
1/4 cup Monterey Jack cheese
1 T onion, grated
2 green chilies, washed and chopped
Combine all ingredients in baking dish, bake 30 minutes at 350 degrees.

WMU hears review

Ten members of the Night WMU of First Baptist Church attended the meeting held Monday night in the home of Mrs. J.C. Roby. Mrs. Elmer Singleton was the presiding officer.

Mrs. S.B. Reaves reviewed a chapter of the mission book "Mission Possible," entitled "Prayer Power" for the program. The study centered around the work of the Capital Baptist Association in Oklahoma City and its five areas of work. Included in these were: women's center, Baptist Mission, Grace Rescue, community center, and the jail inmates and policemen centers. In each case, she stressed the efforts expended by volunteer and lay workers to minister to the needs of the underprivileged and "down and out."



Mrs. Robert Goodknight

PUNCH

Boil:
3 cups water
3 cups sugar
Add:
2 large envelopes jello (red)
Juice of six lemons
1 large can pineapple juice
1 gallon water
Enough ice to cool thoroughly or pour over ice in glasses.

PEANUT BUTTER THINGS

3/4 cup sugar
1/4 cup butter
3/4 cup white Karo
Boil above ingredients 1 minute or

until butter is melted. Remove from heat and add:
1/4 cup peanut butter
1 tsp. vanilla
Stir until smooth, add 4 cups Special K cereal. Drop by teaspoons on wax paper.

PUMPKIN BARS

2 cups sugar
1/2 cup oil
1 can (16 oz.) pumpkin
4 eggs, beaten
2 cups Bisquick baking mix
2 tsps. ground cinnamon
1/2 cup raisins
Cream cheese frosting (below)
Heat oven to 350 degrees. Grease jelly roll pan, 15 1/2 x 10 1/2 x 1 inch. Beat sugar, oil, pumpkin and eggs in large mixer bowl on medium speed, scraping bowl occasionally, one minute. Stir in baking mix, cinnamon and raisins. Pour into pan. Bake until wooden pick inserted in center comes out clean, 25-30 minutes. Cool. Frost with Cream Cheese Frosting. Cut into bars about 3x1 inch. Refrigerate any other remaining bars.

CREAM CHEESE FROSTING

1 pkg. (3 oz.) cream cheese, softened
1/2 cup margarine or butter, softened
1 T milk
1 teas. vanilla
2 cups powdered sugar
Beat cream cheese, margarine, milk and vanilla until creamy. Stir in powdered sugar until smooth.

Cake decorating sorority program

Mrs. Richard Hicks, who has won numerous awards and recognition on her cake decorating, gave the program for the Tuesday evening meeting of Epsilon Eta chapter of Epsilon Sigma Alpha Tuesday evening. She demonstrated how to make roses, leaves and stems using various colors to complete the cake decorations. One of her confections was served later for refreshments.

During the meeting held in Texas Electric Reddy Room, the jewel pin ceremony was held for Mes. Don Decker, Larry Mott and Jerry Hopkins.

During the business directed by Mrs. Roy Johnson, members voted to participate in the Easter Seal Telethon on an individual basis March 28-29. It was announced that \$3,168.12 had been pledged for the

Skate-A-Thon held to benefit St. Jude Children's Hospital.

Long range plans were discussed and a drawing presented to show future equipment, trees and shrubs for improvements at Pace Park.

Hostesses were Mes. Carlton Hicks, Richard Hicks, Steve Turner and Jerry Hopkins.



LOOK WHO'S NEW

Mr. and Mrs. James V. Holm Jr. of Wichita Falls announce the birth of their third child. Mary Ellen was born February 24 and weighed six pounds and one ounce.

The new baby has two brothers, James V. III, two and a half years old, and Michael Dwayne, eleven months old.

The grandparents of the baby girl are Mrs. Lucille Holm of Iowa Park, James V. Holm Sr. of Wichita Falls, and Mr. and Mrs. Nelson E. Sims of Washington Courthouse, Ohio. Mr. and Mrs. Walter Arick of Nocona are great-grandparents.

Clip & Save

Iowa Park School Menu

Friday, March 20 - Tacos, meat or cheese sandwich, soup, lettuce, tomatoes, cheese, green beans, chocolate & plain milk, dessert.
Monday, March 23 - Goulash, meat or cheese sandwich, soup, blackeyed peas, cole slaw, corn bread & butter, chocolate & plain milk, dessert.
Tuesday, March 24 - Fried chicken, meat or cheese sandwich, soup, mashed potatoes & gravy, green beans, hot biscuits & butter, chocolate & plain milk, dessert.
Wednesday, March 25 - Char-burgers, meat or cheese sandwich, soup, lettuce, tomatoes, pickles, tater rounds, pinto beans, chocolate & plain milk, dessert.
Thursday, March 26 - Turkey and spaghetti, meat or cheese sandwich, soup, candied yams, combination salad, hot rolls & butter, chocolate & plain milk, dessert.

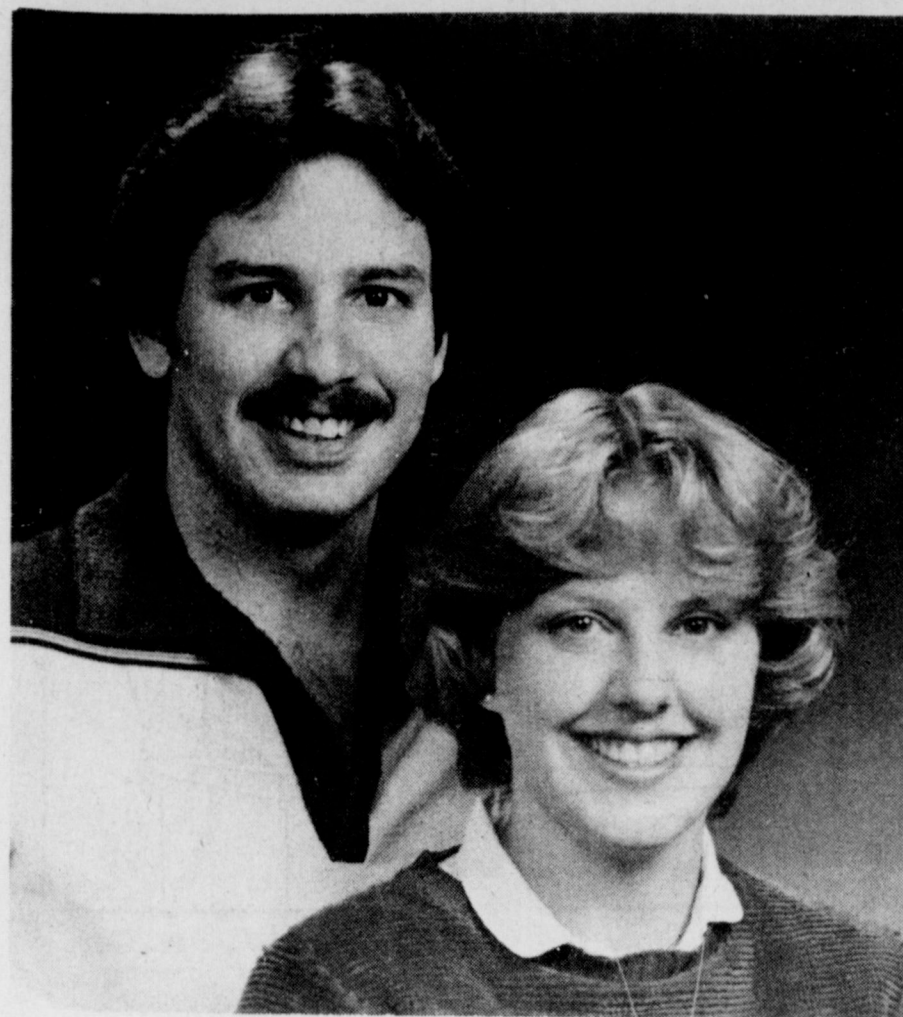
Compliments

Barbour Insurance Agency



Charlene Barbour

Ph. 592-4173
900 West Highway



STEPHAN DWAYNE GARMON and RHONDA BARGE

Couple picks May date

The engagement of Miss Rhonda Lorraine Barge and Stephen Dwayne Garmon is being announced today by the young lady's parents, Mr. and Mrs. Don Barge. Parents of the future groom are Mr. and Mrs. Robert B. Garmon of Poway, Calif.

The bride-elect was graduated from Iowa Park High School and is a senior education major at Hardin-Simmons University. She is employed by Hastings Books and Records.

The groom-elect was graduated from Poway High School and Palomar Community College where he received an associate of arts degree. He was also graduated from Hardin-Simmons University where he received a B.S. degree in biology. He is employed by Pelican's Internation Inc.

The wedding will take place May 2 in the First Baptist Church of Abilene.

Amity meets

The monthly meeting of the Amity Study Club was held Tuesday evening in the home of Mrs. Jerry Denton, and the co-hostess was Mrs. Robert McIlroy.

For the meditation, Mrs. Earnie Reusch read one of her original poems, "Hyacinths" and an excerpt from "Too Busy To Pray."

In keeping with the program theme, "Total Look in Self-Grooming", Mrs. Larry Watts discussed glamour make up, stressing the changes and things to consider in choosing the right make ups for different occasions. She used Mrs. Philip Welch and Mrs. Denton for models during the demonstration.

Mrs. Don Rice conducted the business at which time two new members, Mrs. Steve Montz and Mrs. Joe Vickers were recognized. Members were assigned their duties for the Santa Rosa District Convention which will be held at Trade Winds Motel Friday and Saturday. Hostesses for the convention will be the Amity Study Club, Philia Study Club and 23 Study Club of Iowa Park and the 1934 Study Club of Wichita Falls.



Mr. and Mrs. Billy Bob Marine announce the birth of their first child, Angela Marie, a six pound, five ounce daughter, born March 3. Mrs. Marine is the former Mary Helen Wallis.

Grandparents are Mr. and Mrs. E.E. Wallis of Iowa Park.



...gives a man a good feeling...



To Know He's Dealing With Folks Who Care

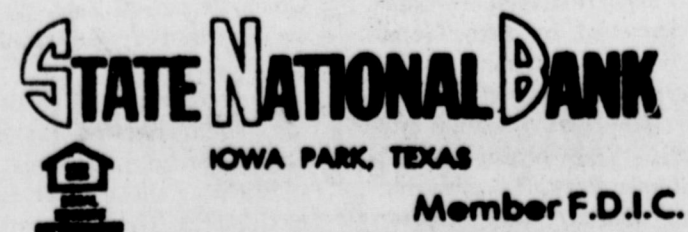
All our customers are our friends and neighbors as well. Many of them we know on a first name basis, and when people are that close, it's next to impossible to think of them as just 'accounts.' When we deal with their financing, they trust us to do our best for them. And we do.

OFFICERS

Stanley Williamson, Chairman of the Board & President
H.M. Nipper, Senior Executive Vice President
David Parkey, Senior Executive Vice President
Bert Williamson, Vice President
Robert Hill, Vice President and Cashier
Jean Hopkins, Vice President
Janis Latimer, Vice President and Asst. Cashier
Ruby Strickland, Asst. Vice President

DIRECTORS

Fred Dwyer
O.N. Newman
Fred Parkey
W.R. Steger
Stanley Williamson
Joe Williamson
Bert Williamson



IOWA PARK, TEXAS

Member F.D.I.C.

Shower Selections

for

Randall Schram and Deanne Patterson

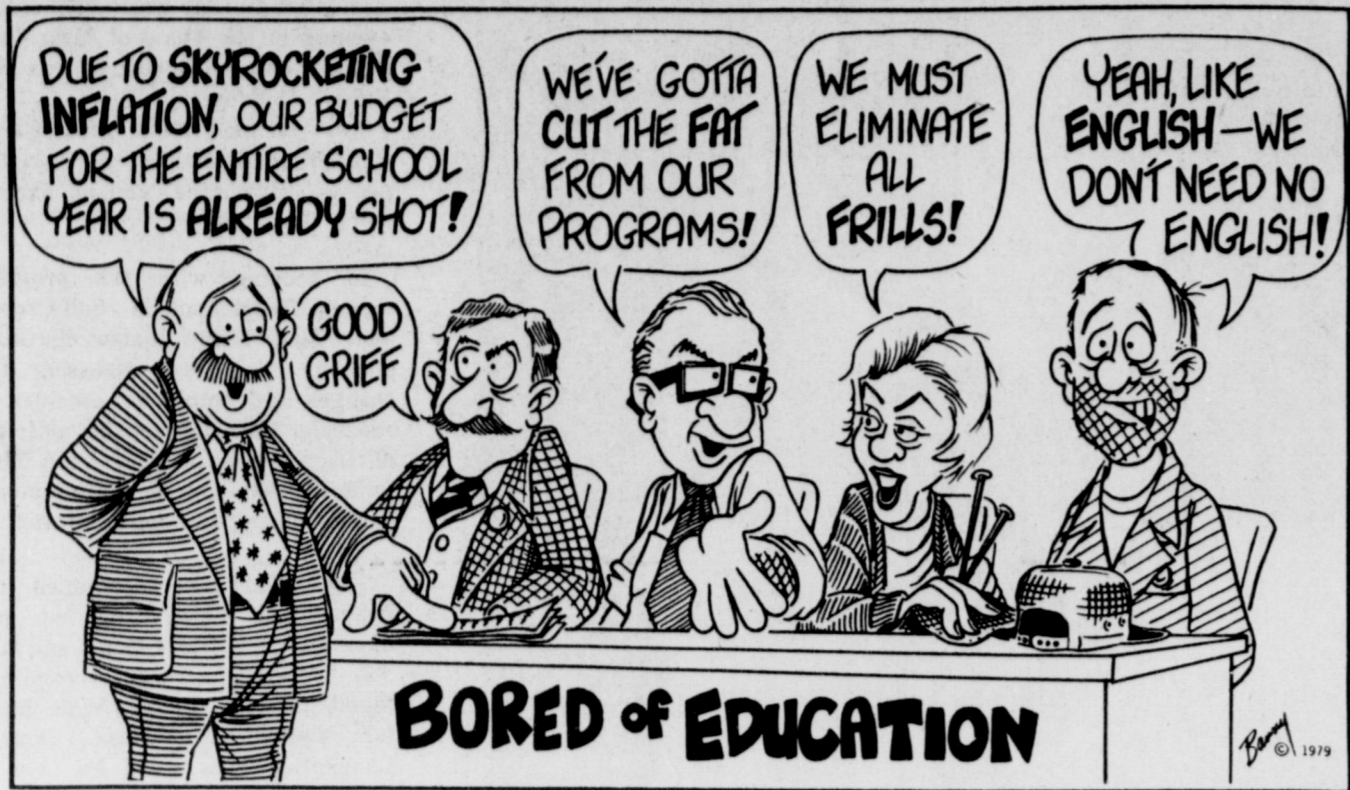
are now on display



IOWA PARK
WHITES Home & Auto
Park West Shopping Center 592-4186

J.P. Doodles

by Barry McWilliams



Chamber directors hear report of efforts helping unemployed

A major effort to help unemployed obtain work in this area was explained Monday to directors of the Iowa Park Chamber of Commerce.

Four members of the Private Industry Council explained how the program is working through the Nortex Regional Planning Commission.

At the meeting were representatives from Nortex, PPG and Certain-Teed, as well as Chamber director Charlie Lee, who represents Cryovac on the council.

Through the Private Sector Initiative Program, 55 persons have already been reached since August (80 percent of them are women) and 22 have been placed in jobs, directors

were told.

In the program, persons are given job counseling, support services, job training and job placement.

In the counseling, persons are instructed on getting and keeping a job, how to determine the best job and where to look for it.

Support services make available some assistance in the areas of transportation and child care.

Job training is available through Vernon Regional Junior College Technical School, Wichita Falls public schools and North Texas Skills Center. Students receive a training allowance while actively participating.

Directors were told additional information could be obtained by

telephoning 322-1197 in Wichita Falls.

The Chamber will reinstate its former program of holding a ribbon cutting ceremony for any new business established in the city, to help publicize its opening and make the owners feel welcomed into the business community.

Directors voted to start the program again, after an absence of some four years, and president Tommy Key named Bob Hamilton to chair the program and draft guidelines for the committee's activities. All directors are to be members, it was pointed out.

A report on the city's proposed remodeling of the city hall building, part of which is the Chamber office, was made; directors voted to replace the back door of the office; and Keith Auld and Wayne House were named to coordinate the annual city-wide clean-up day to be set sometime in April.

Teachers

Continued from page 1

Bruce Ratcliff, Earnest Ivan Reusch, Teresa Marie Rousseau, William Ray Sefcik, Carole Londa Venhaus, Janet Lea Walker, Dickie Lee Wineinger, Wilbert Dean Wynn, Linda Kay Escue, Susan Kay Bidy, Nancy Jane Padgett, Nancy Carol Young.

Vocational - Wendell Dean Allen, Linda Janelle Ayres, George Terry Brandt, Jerry Don Gholson, Horace Carlton Hicks, Valer Mae Jones, Cynthia Ann Mannas, Bonnie Alice Medlinger, Carey Dale Roberts, Melvin R. Schupp, Robert Junior Sumner, Geraldine A. Nowell.

Junior High - Marilyn Jo Barrick, Raymond Mark Cartwright, Betty Sue Cash, Jackie Dueaine Denton, Betty Jean Dyer, Daryl Alexander Frazier, Bobby Joe Gray, Karen Jo Jackson, Eddie V. Jones, Meredith Huff Long, Myrna Louise Sharpe, Alyce Joyce Smith, Mozelle Sullivan, Patsy Ann Todd, Karla Gay Wallace, Karen D. Whisnand, Carolyn Mahler Richter, Denise Allene Frerich, Linda Sue Nichols, Marvel E. Towns, Anna Lucille Dowell.

Bradford Elementary - Johnna Sue Adams, Raymon Perry Allen, Mary Frances Atkins, Eleanor Maude Bell, Karlene Gayle Boucher, Helen Ilene Burrell, Patricia Hardgrave Coker, Jewell Kathryn Cole, Patricia Nell Cravens, Charlie Mae Curry, Phyllis Annebeth Dawson, Lucy May Heard, Armilda Ann Hickey, Randall Odis Lovelady, Judith Ann Schneider, Gale Frank Slem, Arlene Lynn Welch, Barney Jo Wynn, Mary Evelyn Pike, Lois Merle Keller, Judy Williams.

Kidwell Elementary - Nancy Louise Bauer, Jean Bernell Baugh, Judy Darlene Brown, Pamela Jean Burnam, Lavonia Gayle Cleghorn, Patricia Ann Davis, Sherry Ellen Eckelkamp, Janet Kay Martin, Joy Belle McKinnon, Helen Dale Roberts, Mary Helen Schell, Nancy Carol Thompson, Joni Lynn Whitis, Beverly Jean McClure, Shirley Jenelle Alsop, Elizabeth Diane Walser.

Administration & Tax Office - Julie Lenor Davis, Georgia R. Kingcade, James Robert Merrick, Danna J. Redclift, Allen T. Shewmake, Barbara Janice Teel.

West Wichita County Coop - Carol Jean Edwards, Eldon Lee Patterson, Mary Carol Snodgrass, Joyce Malone Allen, Donna LaRae Collins, Linda Sue Gray, Danielle Joan Kinney, Juliana Nelson, Renabelle G. Otten, Karen Luise Yates, Sandra Jean Brown, Barbara Sue Mann, Sylvia Spring Russell, Sarah Margaret Totten, Kathleen Karen Drake, Cynthia Ann Pettit, Toni Sue Pokorny, Sandra Kay Sullenberger, Carolyn Lee Steere, DeElva Winkles Cottrell, Donna Lee Reynolds, Mary Leann Slack, Eveline Conrads Timms, Lenora Earlene Davis, Barbara Ann Gerstner, Caudia Hope Honeycutt, Joanne Lee Horsky, Ethel Lavacca Johnson, Anna Virginia Phillips, Jimmie Darlene Phillips, Katheryn Elaine Wilkinson, Jacqueline DeLois Cranford, Lurline Smith, Shirley Ann Hoggard, Glenda Joyce Dolberry, Delores Ann Stevens.



As I See It....

By BOB HAMILTON

To the casual observer, one who has never been involved with or associated with, a stock show is a lot of work.

If you visited the local project show Saturday or went over to Wichita Falls Monday and Tuesday, where our youth were exhibiting their livestock on a competitive basis, you got a pretty good idea about the quality raised around here.

But unless you've been involved in the background of raising stock for competitive judging, you only saw the top of the iceberg. There is much, much more to the program than parading a well-washed, vacuumed and manicured steer around the ring while dressed in freshly-pressed jeans and a white shirt.

It all starts out with the desire to show an animal, determined months in advance. Strong family support is a must. Then, working with what money is available, a search of quality breeders' stocks is done, and you buy the best your money will allow. And sometimes, paying as much as \$100 for a baby pig only a few weeks old is tough to come by.

Then the real work starts, once you have the animal home. There is a strict diet, which changes as the animal matures and as show date nears. There are hours upon hours of walking and working with the animal, training it so it can be handled in a show ring. A side but important benefit is the animal's controlled exercise, also.

All this goes along with whatever illnesses the animal may develop.

Sometimes a youngster has to sit up all night with a sick lamb or calf, nursing it to stay alive.

And then there are the finishing touches to put on the animal at show time. Washing, combing, clipping, sometimes curling, even powdering, all go into the program of preparation.

Today's stock shows are worked down to a fine science. They aren't like the old days, when you got up early on judging day, went out in the pasture for a steer you had your eye on the past week, roped him and, with the help of four others, drag him into the ring. Even with five of you holding the critter down, the judge wouldn't dare lay a hand on the steer's back, in fear of his life.

I haven't seen any of it around here, but I've been to shows in Lubbock where a young boy of about 14 would have four or five of his father's employees working with his steers. He'd never see them until they were brought to the ring's gate. That kind of stock show contestant isn't what it is all about.

A youngster, working with show animals, gets a real education about life. Learned are the care of an animal, financial investment, training and preparation, success or failure, caring or not caring, applying education, and maybe some glory.

There's more to live stock shows than what takes place in the ring, just like there's more to life than just living.

IOWA PARK LEADER

763280

Bob Hamilton Editor-Publisher
 Dolores Hamilton Assistant Publisher
 Olive Blalock Reporter
 Kevin Hamilton Reporter

The IOWA PARK LEADER is published every Thursday. Offices are located at 112 W. Cash, Iowa Park, Texas, 76367. Telephone: 592-4431. Second class Postage Paid at Iowa Park, Texas, 76367. Subscription rates are \$7 per year in Wichita and Archer Counties; \$9 elsewhere in Texas and Oklahoma; \$11 anywhere else in the United States. Classified advertising rates are 16 cents per word first insertion, 8 cents per word thereafter. Any erroneous reflection upon the character, standing or reputation of any person, firm or corporation which may appear in the columns of this newspaper will be corrected upon being brought to the attention of the publisher.

MEMBER
TEXAS PRESS ASSOCIATION

Jobs depend on energy...
 let's keep on working.



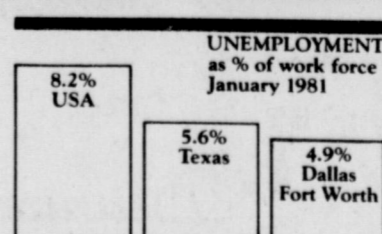
We Americans have always understood that we can't get something for nothing. We're hard-working people.

One of the things that has kept us working, and kept our standard of living climbing here in the Southwest, has been a ready supply of reasonably priced electric energy. It makes our labor more productive, and helps hold down the cost of the goods we produce. It helps keep our industries competitive, and that enables them to grow and employ more people.

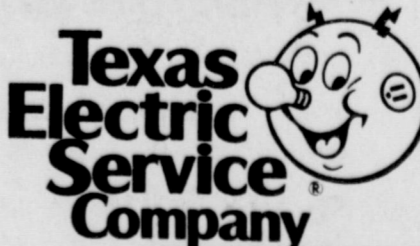
The costs of energy everywhere keep rising. But an even bigger problem is making sure we have enough electric energy here.

At your electric company, we're working to keep this area attractive by supplying the electricity we all need at reasonable cost. We're planning ahead to keep our supply abreast of the need, so business and industry can plan confidently for their future here.

Because that means jobs here.



Source: U. S. Bureau of Labor Statistics.



W. N. HOUSE, Manager, Phone 592-4149

Obituaries

Mrs. Evie Scott Bildstein

Services for Mrs. Evie Scott Bildstein, 73, of Vernon, who died Monday in a Temple, Texas hospital, will be today at 2 p.m. at Sullivan Funeral Home at Vernon with Rev. Benny Kilgo, pastor of First Baptist Church, officiating. Burial will be in Wilbarger Memorial Park.

She was born Dec. 28, 1907, in Oklahoma. She moved to the Vernon area as a child. She was a Baptist and member of Esther Sunday School Class and Fargo Homemakers Club.

She is survived by three sons, Robert F. Scott and Jimmy Scott, both of Vernon, and David Scott of Houston; a sister, Mrs. Beulah Smith of Marshall; three brothers, L.S. Swanson of Iowa Park, R.C. Swanson of Corpus Christi and Luther Swanson of Houston and five grandchildren.

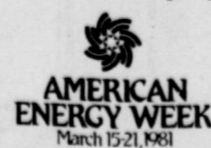
Edwin Pace

Edwin Pace, 77, of Petrolia, died Friday in a Wichita Falls nursing home. He was the father of Joyce Whitaker of Iowa Park.

Services were held Saturday at Hampton-Vaughan Funeral Home with Rev. Sonny Baker officiating. Burial was in the Petrolia Cemetery.

Pace had lived in the Wichita Falls area most of his life. He was born in Union, Miss., on Sept. 29, 1903. He was a retired carpenter and a Baptist.

In addition to Mrs. Whitaker, he is survived by another daughter, Helen Griffith of Petrolia; a son, Carl Pace of Wichita Falls; a sister, Louise Byas of Corcoran, Calif.; a brother, Henry Pace of Bellevue, and five grandchildren.



AMERICAN ENERGY WEEK
 March 15-21, 1981

SUPER FINE FOODS

Super Jack Pot This Week \$3594



2700 Iowa Park Rd.
Wichita Falls, Tex.

300 West Bank
Iowa Park, Texas

601 West Front
Electra, Texas

USDA Choice
Heavy Beef
Brisket

Lb. **\$1.18**

Blade Cut
Chuck Roast

Lb. **99¢**

**HOME OF YOUR
FAMILY PAK
MEATS
PRICED
10¢ LB. UNDER OUR
SINGLE PAK MEATS
TO SAVE YOU MONEY**

**Family Pak
Ground Beef**

Lb. **\$1.19**

Charcoal Steak
Lb. **\$2.99**

Cubed Steak
Lb. **\$2.79**

Hillshire Sausage Lb. **\$1.88**
Ground Chuck Lb. **\$1.69**
Sliced Slab Bacon Lb. **88¢**
Party Pups (Franks) 12 oz. **69¢**
Boneless Rump Roast Lb. **\$1.98**

**Shurfresh
Bacon**
Sliced

Lb. **\$1.19**

**Boneless
Chuck Roast**

Lb. **\$1.59**

**Family Pak
Pork Steak**

Lb. **99¢**

**Family Pak
Asst'd
Pork Chops**

Lb. **\$1.33**

**Family Pak
Swiss Steak**

Lb. **\$1.69**

**Family Pak
Catfish Steaks**

Fresh Water **\$6.95** 5 Lb. Bag

**Family Pak
Chicken Fried
Steak Patties** Heat and Serve

Lb. **\$1.69**

**Heinz
Ketchup** 44 oz. Btl.

\$1.19 Limit 2

**Rainbow
Sliced
Pickles** Hamburger Dill

16 oz. Btl. **88¢**

**Tide
Detergent** 49 oz. Box

\$1.49 Limit 1

**Kraft Singles
Cheese** 8 oz. Pkg.

\$1.19

**Big Taste
Instant
Potatoes**

16 oz. Box **89¢**

**Shurfine
Crackers** 1 Lb. Box **59¢**

**Wieske
Polish Dill Pickles** 32 oz. Jar **99¢**

**Swift
Chicken & Pork
Lunch Meat**

12 oz. Can **98¢**

**Spam
Lunch Meat** 12 oz. Can

\$1.29

**Armour 3 oz. Can
Potted Meat** **29¢**

You Save More
At Superfine
Food

**Armour
Vienna
Sausage** 5 oz. Can

49¢

7 UP 6 Pak 32 oz. Reg. or Diet

\$1.79

Pepsi Cola Mountain Dew 6 Pak 32 oz.

\$1.79

Scott Towels 2 Jumbo Rolls **99¢**

**August
Fried Pies** 4 Pkgs.

\$1.00

**Superfine Produce
Specials**

Charmin Bathroom Tissue 4 Roll Pkg. **\$1.09**

**Superfine Produce
Specials**

**Iceberg
Lettuce** 3 Heads For **\$1**

**Welch's
Grape Jelly** 32 oz.

\$1.39

**Shurfresh
Eggs** Large Doz. **68¢** Limit 4

**Crisco
Cooking Oil** 24 oz. Btl. **\$1.28**

**Calif.
Sunkist Navel
Oranges** **29¢** Lb.

Carrots 2 Lb. Bag **39¢**

Avocados 5 for **\$1.00**

Purple Top Turnips 3 Lbs. For **\$1.00**

**Hi-Top
Peanut Butter** 5 Lb. Jar **\$9.98**

**Pillsbury
Biscuits** 4 7 oz. Cans **89¢**

**Sunkist
Navel Oranges** Lb. **29¢**

Tangerines 3 Lbs. For **\$1.00**

Cantaloupes Lb. **49¢**

AFFILIATED

**Shurfine
Crinkle Cut
Potatoes** 2 Lb. Bag **68¢**

Limit 2 Please

**Oak Farms
Buttermilk** 1/2 Gal. **89¢**

**Minute Maid
Apple Juice** Frozen **79¢** 12 oz. Can

AFFILIATED



STAN BLAIR

Iowa Parkan to appear on tv show Saturday

Stan Blair and Jan McDaniel, graduates of the Midwestern State University Music Department, will be featured in a television program to be aired at 5 p.m. Saturday on Channel 3.

The program, "Stan Blair and Jan McDaniel in Concert", is sponsored by MSU, the Women's Forum and the Wichita Falls Musicians Club.

Dr. Nita Akin, who has been instrumental in initiating and supporting many cultural activities locally and internationally, designated the concert as the first of a new series of concerts entitled "Fun With Music." The televised program includes sea chanteys, Broadway tunes and several sacred songs.

Blair recently was a finalist in the Regional Metropolitan Opera Auditions and will be returning to New York in April to tour with the New York City Opera Company. McDaniel is currently enrolled in the Master of Music program at North Texas State University and serves as assistant

conductor of the Wichita Falls Symphony Orchestra.

Blair is the son of Mr. and Mrs. Earl Blair, 1009 Melanie, Iowa Park. McDaniel resides at Nocona.

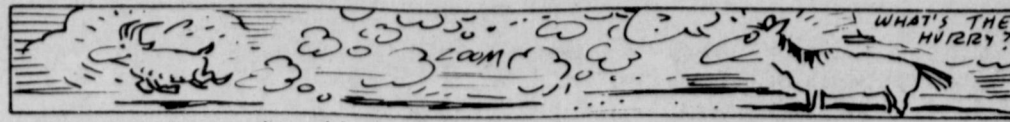
Sales tax receipts ahead of last year

Iowa Park and Holliday are both running well ahead of sales recorded in 1980, according to the third-month report on sales tax prepared by the state comptroller's office.

While Iowa Park is showing a 30 percent increase for the three-month period, Holliday is slightly higher, at 39 percent.

To date, Iowa Park has received \$23,800 in sales taxes, up from the \$18,253 reported for the same period last year.

Holliday's receipts have been \$21,691, and for the same three months of 1980, had received \$15,504.



A two day old gazelle can outrun a full-grown horse.



A lead poultice was once believed to cure a sea serpent bite.

NOW OPEN

RAY'S SERVICE
Corner of Yosemite & Old 287

OPEN 7:00 a.m.  CLOSE 7:00 p.m.
6 days a week

Phone 592-9712

	Wash Grease	Brakes Shocks	
	Tune Up's Oil Change		
	Drum and Disc Muffler & Tail Pipe		

Some Racing Equipment
OWNER — RAY HAMILTON

Call-In Orders, Phone
592-4811
505 W. Southwest Expressway

Open 10 a.m.-9 p.m.
10 a.m. - 9 p.m. Friday & Saturday

Today through Sunday only

Country Basket

Chicken-fried meat strips
Old-fashioned country gravy
Texas toast
Golden French fries

\$ 1.79

BEAN DAY Every WEDNESDAY
Compliments and Complaints Welcomed.

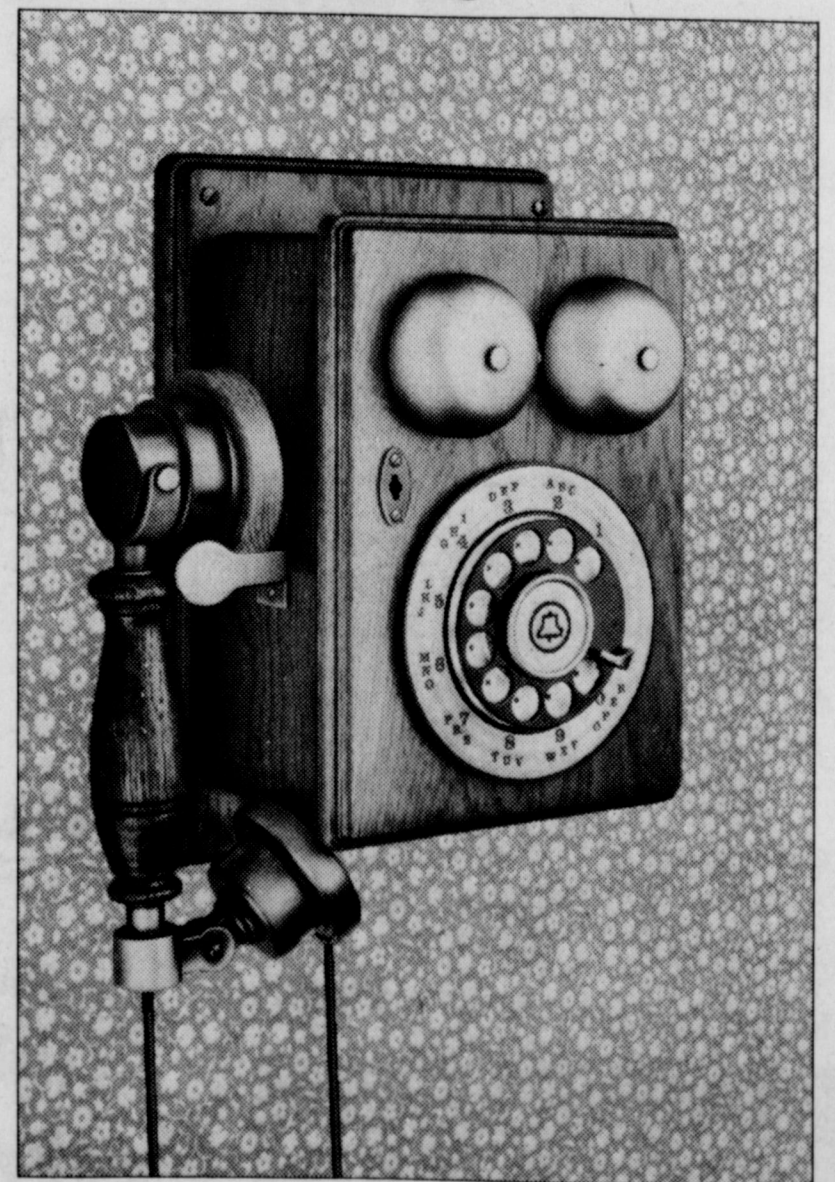
Woodrow Wilson. Ragtime. The Great Houdini. The year is 1913 and a new Bell telephone begins ringing throughout the land. Ah, those were the days...


Now you can relive those days with Southwestern Bell's *new* Country Junction* telephone — a happy blend of yesterday's spirit with today's technology.

Lovingly handcrafted in natural oak and antiqued nickel trim, the Country Junction phone is a classic that blends with period settings and makes an attractive statement with the crisp, cool lines of contemporary taste.

No matter where the telephone is placed — kitchen, den, family room, living area — this is a phone that will be seen and admired. Because it has modular components, installing it is as easy as hanging a picture.

In a busy, bustling world, the Country Junction telephone is a pleasant reminder of those times when all phone conversations began with the voice that smiled.



 Southwestern Bell

*Trademark of AT&T Co.
Working parts remain the property of the telephone company.

A Special Personal Lines Bulletin from

Barbour Insurance

Look what we've done in TEXAS!

35% NEWER HOME PROGRAM
for the truly preferred dwelling

30% DEVIATION



SHOOT STRAIGHT
with THE TRAVELERS
for MORE HOMEOWNERS
BUSINESS

High school, junior high honor rolls are released

Honor rolls for the fourth six-week period have been released by principals of both the high school and junior high. They include:

SENIORS AA - Denny Anderson, Jim Hodges, Mark Griffith, Linda King, Wendell Burnam, Tracy Hale, Joe Spruiell, Steve Smith, Marc Nowell, Thomas Jones, Frances Sampley, Dan Muckensturm, Russell Shawver, Dennis Sorey.
SENIORS A - Lorena Smith, Janna Raley, Teresa Young, Audrey Klinkerman, Laura Dowell, Tammie Robertson, Michelle Mueller, Troy Linthicum, Brian Dowell, Mark Kirkham, Bill Jeffress, Boyd Petrich, Deena Hefner, Gary Wallace, Jane Dickey, Bill Hoffman, Ken Thomason, John Virgin.
JUNIORS AA - Eric Birk, Marjorie Boggs, Connie Heard, Susan Gullatt, Lindy Neeley, Scott Staggs, Michelle Bamber, Paige Watkins, Jayne

Elliott, Sherry Boss, Scott Muckensturm.
JUNIORS A - Carla Kent, Leslee Phillips, Paul Rowe, Jeryl Brixey, Terry Escue, Shawn Prunty, Wayne Watson, Gina Duncan, Kristi Lemmon, Marianne York, Stacy Forman, John Sitgreaves, Debbie Washburn, Jimmy Smith, Les Smith, Donna Martin, Tammie Richardson, Melanie Mason, Jayna Evans, Tina Blalack, Gloria Schmidt.
SOPHOMORES AA - James Cowley, Kent Roberts, Robby Hausler, Lori Barr, Brad Thompson.
SOPHOMORES A - Darla Flick, Lorraine Kirkhart, Chuck Gilstrap, Lisa Yeakley, Carrie Patton, Mark Klinkerman, Alisa Cain, June Dietrichson, Nancy Black, Sarah Lowe, Billy Wachsmann, David Hildebrand, Debbie Thomason, Kyle Wells, Keith Starr, Harlan Kidd.
FRESHMEN AA - Sonya Herrell, Timothy Norriss, Paula Machburn,

Craig Whisnand, Michelle Evans, Susan Streich, Glenn Todd.
FRESHMEN A - Brenda Cook, Teresa Caldwell, Larry Pressler, Brenda Simon, Tracy Lawson, Jan Hale, Betsy House, Becky Martin, Lee Birk, Dana Trantham, Scott Daily, Mike Bean.
8th GRADE AA - Scott Davis, Brett Hale, Rachel Jones, Kim Nicholson, Doug Onstead, Sarah Owens, Dennis Phillips, Lana Swan, Philip Thames, Wes Ward.
8th GRADE A - Phillip Clements, Alaina Coker, Jana Cummings, Pam Barr, Tracey Hall, Melissa Hatcher.

Cindy Harper, Van Hedrick, Becky Roberts, Brian Todd, Kim Williams, Robert DuBoise, Jay Yeakley.
8th GRADE A - Kim Bajo, Becky Brown, Michelle Crittenden, Charla Edwards, Tina Featherston, Jill Green, Brenda Helms, Misty Hicks, Lisa Holloway, Kristi Lane, Kim Phillips, Pat Sargent, Timi Tillman, Kristi Wynn, David Pike.
7th GRADE AA - Tami Buckmaster, Kyle Cheek, Lisa Cruz, Cathy Downes, Deryl Roy, Lori Patton.

John Roy, Amy Silvers, Tammy Washburn, Donald Young, Ronald Young.
7th GRADE A - Tonya Barrick, Dena Beavers, Janice Black, Vicki Floyd, Mary Harris, Robbin Isbell, Deanna Mashburn, Shellie Parish, Steve Sosebee, Toby Smith.
6th GRADE AA - Scott Davis, Brett Hale, Rachel Jones, Kim Nicholson,

Doug Onstead, Sarah Owens, Dennis Phillips, Lana Swan, Philip Thames, Wes Ward.
6th GRADE A - April Cunningham, Tina Escue, Tandra Fair, Linda Gibbons, Lisa Grace, Brad Huff, Missy Logan, Kyle Long, Richard Morath, Kirsten Sharpe, Jackie Snow, Dee Ann Todd, Wendy Trantham, Laurie Underwood.

Kamay Road Church of Christ

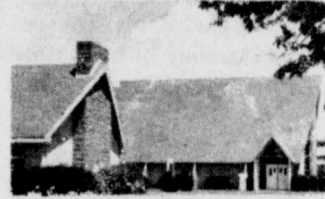
Corner of Colorado & Emerald
 'Seeking the Old Paths'
 Lord's Day 10:30 a.m. & 6 p.m.
 Wednesday 7:00 p.m.

Faith Baptist Church

Serving the Lord with Gladness
 411 S. Wall
 Sunday School 9:45
 Worship 11:00
 Training Union 6:00
 Evening Worship 7:00
 Prayer Service 7:30
 Ken Cole, Pastor

FIRST CHRISTIAN CHURCH

(Disciples of Christ)



Rev. Clyde Markee
 105 E. Cash 592-4513
 You are cordially invited to worship with us each Sunday.
 Church School 9:45 a.m.
 Worship 10:55 a.m.
 YOUTH PROGRAM 6:00 p.m.

Grace Baptist Church

511 S. Colorado - 592-5632
 Come Let Us Reason Together Saith The Lord
 Sunday School...10:00 A.M.
 Morning Worship...11:00 A.M.
 Evening Worship...6:30 P.M.
 Wednesday Service...7:30 P.M.
 Jimmy Johnson, Pastor

Welcome To The
 Worship and Fellowship of
First Presbyterian Church
 Norman D. Nettleton, Pastor
 CHURCH SCHOOL - 9:45 A.M.
 FELLOWSHIP Time - 10:40 A.M.
 MORNING WORSHIP - 11:00 A.M.
 211 So. Yosemite

Christ The King Catholic Church
 8:15 A.M. Sundays
 6:30 P.M. C.C.D. & Bible Study
 Meetings held at Good Sheperd Lutheran Church
 First and Magnolia

YOU ARE ALWAYS WELCOME
 SUNDAY BIBLE STUDY 9:30
 PREACHING 10:30 & 6:00
 WEDNESDAY EVENING 7:30
Keep In Touch
 Phone 592-2541
 ... for information relative to members of the congregation. Bible reading suggestions. Short devotional. Information changed daily.
CHURCH of CHRIST
 300 EAST PARK
 592-5415
 L. Keith Parker, Minister



NEW SCOREBOARDS were installed in Iowa Park High gymnasium just prior to the final regular season game. Donated by State National Bank, scoreboards were placed on both the north and south walls, replacing the lone south wall scoreboard.

SPRING SELLING OF BARGAINS

Free
Spatula or Cake Knife
One to Customer

Shasta Soft Drinks
2 Liter Btls. No Dep. **99¢**

Shurfine **Sugar**
5 Lb. Bag **\$1.89**

Shurfine Saltine **Crackers**
1 Lb. Box **59¢**

Shurfine **Tomato Sauce**
8 oz. Can **5/\$1.00**

Heavy Beef 100% Beef **Hamburger Meat** Lb. **99¢**

Heavy Beef **Sirloin Steak** Lb. **\$1.99**

Heavy Beef **Round Steak** Lb. **\$1.79**

Heavy Beef **Chicken Fry Steak** Lb. **\$1.99**

Shurfine Chunk Light **Tuna in Water** 6 1/2 oz. Can **89¢**

Shurfine **Pork & Beans** 300 Can **3/\$1**

Shurfine Early Harvest **Sweet Peas** 303 Can **2/79¢**

Shurfine **Spinach** 303 Can **2/79¢**

Shurfine **Dinners** **3/89¢**

Scott **Towels** Jumbo Roll **69¢**

1/2 **Beef**
Cut & Wrapped
\$1.19 Lb.

Wright No. 2 **Bacon** Lb. **59¢**

We have **tomato, cabbage, broccoli, cauliflower and onion plants.**
We also have **garden seed.**

Delsey Bathroom **Tissue**
4 Roll Pkg. **99¢**

Giant Size **Tide** **\$1.79**

DISCOUNT FOODS

107 WEST PARK

Local woman finds relatives

By OLIVE BLALOCK

Gold, diamonds and precious gems are all obtained by searching and mining. That is an indisputable fact, and they are not the only valuable things in life that have to be pursued and sought after.

In recent months, at least two women in Iowa Park, who were adopted when they were very young, through diligent searching and refusing to be buffeted by circumstances have dug deep enough into the mines of the past to learn about their progenitors and living blood kin.

In August, 1980, Martha Jean (Mrs. Norman) Russell, having conceived such a purpose in her heart years before, set out to achieve it and found two older brothers and a sister that she had been separated from since 1938. The Leader carried her story in September of that year.

In February, 1981, Ruby Grace (Mrs. Bobby) Gibson, who had cherished the same dream through the years realized it when she met and "got acquainted" with her two older sisters.

Mrs. Gibson, daughter of the late Ethel and Jessie Niles of McLennan County, was born in Wichita Falls during the depression. At the time of her birth, her father was terminally ill and her mother's health was greatly impaired; and there were three other children in the family, the oldest 14 years of age and the youngest five years old.

When the baby was 13 months old, Mr. and Mrs. J.D. Lamb of Wichita Falls expressed an interest in adopting her, and her parents felt that it was for the child's best interest that they entrust her to people who could provide for her physical, material and spiritual needs, so they signed the adoption papers.

When Ruby was four or five years old, a neighbor's child implied that she was not on an equal standing with her because she (Ruby) was "adopted". That word at that time carried an emotional content that made her feel stigmatized and started an inferiority complex.

When she asked Mrs. Lamb what adopted meant, she explained that they had taken her by choice as their own child, but from that time on Ruby had a feeling of "not belonging" and an intense desire that became somewhat of an obsession to find out to whom she belonged.

She was graduated from Wichita Falls High School and later fell in love with and married Bobby Gibson, who was understanding of her interest in tracing her genealogy. About 20

years ago, she found her birth certificate at the courthouse and took it to the judge whose name appeared on the adoption papers to seek advice and help. Weeks and months of frustration followed that left her with an "against a brick wall" feeling, but even that did not suppress her "never give up spirit."

Ob Feb. 2, 1981, as Mrs. Gibson watched a television show where the host was interviewing a 27-year-old woman, her real mother and the mother who had adopted her, she made a decision to search for her real family. The next morning she called Mrs. Dan Griffith, a very close friend, who promised to help her in every way possible, and Mrs. Gibson gives her a big portion of credit for the success of the search.

The two women first got a certified copy of Ruby's birth certificate, then started on a trek that took them first to a genealogical library in Dallas where they got the names of her real parents, then to Tyler searching for more information; and on to Waco where they found "a pot of gold at the end of the rainbow."

At their motel room the first night in Waco, they called every Niles in the telephone directory, and one of the calls was made to Kenneth Niles, who is with the Waco Schools

Taxation Department, who turned out to be a second cousin of Mrs. Gibson. Through him she met and became acquainted with one of her sisters, Lorene (Mrs. Jack) Buckner, who lives in Waco. Naturally, they talked for hours and hours and it was hard for them to part when Mrs. Gibson and Mrs. Griffith had to return home. About a week and a half later, she went to Houston to visit her other sister, Polly (Mrs. Grady) Wilmoth, whose husband is very ill.

Mrs. Gibson learned that her mother died in 1978 and she went to Hillsboro where she was buried and placed a wreath on her grave. She found out, too, that her brother died at the age of 22 with an apparent heart attack. She returned home with a lot of pictures of family members, two of those are pictures of her mother, one taken when she was a young woman and the other a few years before her death. She found out that she and her sisters have the same number of children (four) and

each has two boys and two girls. Mrs. Gibson is looking forward to her sisters visiting her and her family here and learning more about her real family. Perhaps nothing they can tell her will be more interesting than the story they have already told her about her great-grandfather, John Henry Niles, a half Cherokee, who walked with the Indians from Georgia to Oklahoma for land. He was seven feet, seven inches tall and wore a size 15 EEE shoe. As to his weight, he was "skin and bones" when he died and weighed only 375 lbs.

What touching human interest story that promises a "happy beginning" for the children of Ethel and Jessie Niles and their families. Incidentally, in regard to the couple who adopted Mrs. Gibson, Mrs. Lamb is deceased and he is now a resident of the nursing home in Iowa Park and Mrs. Gibson tries to show her gratitude and appreciation for his love and care given to her through the years.



MRS. GRADY WILMOTH and MRS. BOBBY GIBSON

Iowa Parkan in mock attack

Air Force Tech. Sgt. Thomas A. Costello, son of retired Air Force Tech. Sgt. and Mrs. Forrest L. Costello of 805 Van Horn, Iowa Park, has participated in Global Shield 81, the Strategic Air Command's (SAC) response to a simulated attack on the United States.

The service member is among the more than 100,000 U.S. Air Force, Navy, Marine Corps and Canadian personnel taking part in SAC's largest, no-notice, 20-day training exercise.

During one portion of Global Shield, more than 500 B-52 and FB-111 bombers and KC-135 tankers took off from 70 different locations in the United States and Guam within minutes of notification. This exercise

is not related in any way to real world situations, according to a SAC spokesman.

Trustees call Monday meet

Iowa Park school trustees will hold a called meeting Monday evening to open bids for property insurance and the sale of a building.

The board last week rejected all bids for insurance coverage and asked new bids be submitted for consideration at 7:30 p.m. Monday.

To make room for construction of a physical education building on the Bradford campus, a wooden "temporary" building which has been in use must be sold and removed.

Subsidized crop insurance available to local farmers

Farmers in Wichita County can now obtain subsidized Federal Crop Insurance against a partial or total loss of their 1981 crops. The county is one of 250 in which insurance is being offered for the first time as part of a nationwide expansion recently authorized by congress.

Policies are currently available for cotton and grain sorghum, according to E. Ross Smith, Federal Crop Insurance Corporation district director.

Under the new program, the federal government pays up to 30 percent of the insurance premium of policy holders who do not elect to participate in the separate USDA disaster payments program. Farmers who participate in the disaster payment program on a limited crop may purchase insurance but are not eligible for the subsidy. After the 1981 crop year, the disaster payment program will be ended.

Federal Crop Insurance is designed to enable farmers to insure a part of

all of the money they invest in their crops against loss due to all unavoidable causes. Policies can also be used as a loan collateral to assure funds for payment in a poor crop year, Smith says.

Policy holders can elect to insure 50 percent, 65 percent or 75 percent of their average crop yields. They can also choose, from among three selections, the price they want to be paid for each bushel or pound their insured crop falls short of the production guarantee. Another option provides an additional premium discount when the hail and fire coverage of the FCIC policy is replaced with an equal or larger amount of private hail and fire insurance.

For information about the subsidized insurance and the protection it provides, contact the Federal Crop Insurance office in Vernon or a local insurance agent. Deadline for sign up on cotton and grain sorghum is Mar. 31.

IRS Tax Tips

1980 IRA Contributions Are Still Acceptable

Eligible workers have until Tuesday, April 15, 1981, to make their 1980 contributions to their Individual Retirement Savings Arrangements (IRA's); however, if they file their 1980 income tax returns after April 15 on an extension, they have until the date that they file their returns to make their contributions.

Since penalties are assessed for excessive contributions, this period for making contributions allows taxpayers to close calculate the amount of the contribution, make the contribution, and still be able to deduct it from their 1980 taxable income, the IRS explains.

IRA's are taxpayer-initiated retirement plans set up by workers not covered by qualified pension or retirement plans where they are employed. IRA's also are available to non-working spouses of eligible workers.

Many banks, insurance companies, credit unions, and other financial institutions can provide additional information on setting up and maintaining IRA's. In addition, the IRS has a free booklet, IRS Publication 590, "Tax Information on Individual Retirement Arrangements," which can be ordered by mail using the order form in the tax package, or by calling the IRS number in the local telephone directory. If more convenient, it can also be picked up at most IRS offices.

Sick Pay Benefits Are Taxable Income

Taxpayers who become sick or injured on the job and receive sick pay benefits from their employer must include the payments as income on their federal tax return, the Internal Revenue Service says.

The payments are taxable whether they were made directly by the employer or from a welfare fund, a state sickness or disability fund or an insurance company, provided the plan was paid for by the employer.

Benefits received under an accident or health insurance policy for which the employee paid the premiums are not considered taxable by the IRS.

More information on sick pay benefits is contained in the free IRS Publication 525, "Taxable and Nontaxable Income." It can be ordered on the handy order form in the tax package or by calling the IRS Tax Forms/Information number listed in the telephone directory.

Only One Individual May Claim Dependent's Exemption on Return

If you share responsibility for the support of an aged parent, here's an important tax tip. Even though several persons may together contribute over half of a dependent's support, a dependent can be claimed as an exemption by only one taxpayer.

If no one person in a family contributes more than one-half of the

cost of supporting an individual, the group should choose one of its members to claim the exemption. Usually the taxpayer who paid the most in support is the one receiving the exemption. However, that taxpayer must have contributed more than 10 percent of the total support and must meet all other dependence tests.

The remaining contributors in the group must complete and sign Form 2120, "Multiple Support Declaration," stating that they will not claim the exemption that year. The forms are filed with the income tax return of the person claiming the exemption.

Additional information on dependency exemptions is contained in IRS Publication 501, "Exemptions." Taxpayers may use the order form in the tax package, or call the IRS Tax Forms/Information number listed in the local telephone directory to obtain this handy reference.

Choice of Tax Preparer An Important Decision

The choosing of a paid preparer by taxpayers to do their federal income tax returns should be done carefully and wisely. Most tax return preparers are honest and do not deliberately attempt to defraud either their clients or the IRS. However, a few misuse the responsibility of preparing a tax return for someone else, and the IRS has suggestions on how to identify these preparers.

Taxpayers should not sign a blank return, or one which is partially completed, or one prepared in pencil. These could be altered by the preparer. Preparers should be asked to sign the return in the taxpayer's presence.

ELECT
Bob Goodknight
to the
SCHOOL BOARD
IPCISD



Pol. Adv. Pd. by Bob Goodknight

Re-elect
George Hammonds
to the
Iowa Park
City Council



Your vote and support
will be appreciated

Pd. Pol. Adv. by George Hammonds

BILL GILMORE CANDIDATE for IOWA PARK CITY COUNCIL

Bill Gilmore is the son of the late Jim and Mae Gilmore, who came to Iowa Park in the early 1920's. He has one sister, Mrs. Bill Glasgow of Wichita Falls, and a brother, James, who is now living at the homesite of their parents, at 701 S. Park.

Bill married his high school sweetheart, the former Maryanne Chambers, in 1950. They live at 514 W. Washington, and have four sons, all of whom live in Iowa Park. Their sons are all home owners here.

The eldest son, Cecil, is married to the former Debra Blizard. They have two boys, Cecil Joe, Jr., and Christopher, and a girl, Hope Elaine.

Jimmy and his wife, the former Vicki Illingworth, have one son, Jason Bradley.

Kenny is married to the former Becky Willis. Their children are Angela Dawn, Kenny Glenn, Jr., and Kelly Joe Calvin.

Billy is married to the former Denise Wooten.

As a native son, born here in 1932, Bill Gilmore is most concerned with all areas of city government that affect the welfare of permanent residents. He understands the frustrations of the elderly and low income citizens. Growing up in a poor family, Bill began working for wages at 13, stocking shelves at Black's Market, clerking for Jerrell's Grocery, washing dishes

for Charlie Metz's Cafe, and later scooping manure at Spruiell's dairy.

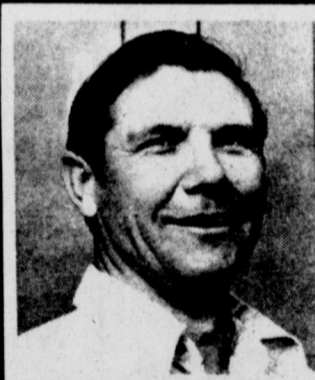
The founder of GILMORE, INC. Bill literally began his business in the back yard of his home twenty one years ago. He spent several years on pipeline construction overseas to earn the capital to erect the first building at the present site on the expressway. With the help of his four sons, who are now his partners, he has expanded the original welding company into a full-service truck center, serving many nation-wide firms. GILMORE, INC. now employs 45 people. Bill helped Maryanne in opening COUNTRY COLLECTIONS Art Gallery, also on the expressway three years ago.

As the head of the corporation, Bill is familiar with current costs of materials and labor, and has had responsibility of managing large expenditures to best advantage.

Having served eight years on the council previously, Bill is aware of local problems, and experienced in dealing with them. He has the first-hand knowledge that is vital in making decisions for the best interest of the people.

Bill is a charter member and past director of Iowa Park Rotary Club, Iowa Park Volunteer Fire Dept. member of the MuleSkinners and attends First Baptist Church.

Pd. Pol. Adv. by Jim Gilmore



ELECT
Rex Wells

to the

Iowa Park School Board

Your Vote and Support Will Be Appreciated

Pd. Pol. Adv. by Rex Wells

Harold Phillips

Candidate For
City Council

Resident of Iowa Park 32 years

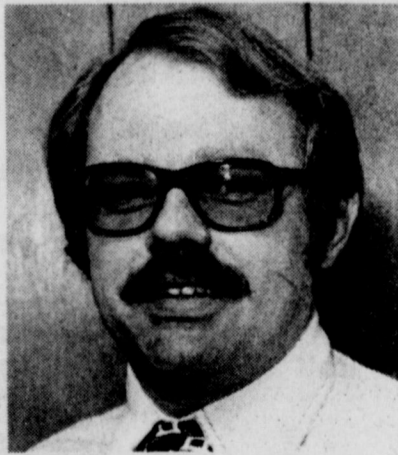
Your Support Appreciated

Pol. Adv. Pd. by Harold Phillips, 312 E. Diamond



VOTE VOTE VOTE VOTE VOTE VOTE

H E
O N
M H
A A
S U
S



Hold's Bachelor's and Master's Degrees
from Midwestern State University
Employed by Region IX Education Service
Center as a Guidance Counselor for three
Clay County Schools
Over eight years experience in Education

Pd. Pol. Adv. by Tom Venhaus

R U
B O
A F
T E
S

T.V. tab

Saturday, March 21 through Friday, March 27

IOWA PARK CABLE SUBSCRIBERS
 CHANNEL 9 - KFDX, Wichita Falls
 CHANNEL 10 - KAUZ, Wichita Falls
 CHANNEL 11 - Chicago, Ill.
 CHANNEL 5 - Atlanta, Ga.
 CHANNEL 8 - WOR, New York

WASHINGTON WEEK IN REVIEW
 (1981) Harry Gaudino, Hope Lange based on a novel by Howard Fast. A socialist dragged by a feudist co worker later vanishes.
HBO MOVIE "The Lady Vanishes" (1979) Elioit Gould, Cybil Shepherd An innocent man and a beautiful woman are swept into a deadly espionage caper aboard a European express train traveling through pre-war Nazi Germany. PG
6:00 (4) THE LESSON
(5) BILLY GRAHAM CRUSADE This documentary filmed inside Alcatraz Prison Ministry in the rehabilitation of criminals.
(6) DALLAS
(7) BILL MOYERS' JOURNAL
(8) BILL MOYERS' JOURNAL
 9:30 (4) GOOD NEWS AMERICA
 9:45 (4) NEWS
(5) BENNY HILL
(6) PRISONER: CELL BLOCK H
(7) VIDEO / PALN REVIEW
(8) CHAPEL HOUR
 10:30 (4) MAUDE
(5) TONIGHT
(6) ALL IN THE FAMILY
(7) THE ODD COUPLE
(8) FRODOGS
HBO MOVIE "Wanda Nevada" (1979) Peter Fonda, Brooke Shields. A gambler and the orphan he won in a poker game set off in search of a burned girl five years ago.
10:45 (4) MOVIE "The Angry Red Planet" (1960) Grant Tinker, John Herpin. An amoebic-like creature engulfs a spaceship with it.
11:00 (4) IN BAKER "Soldier, Blue" (1970) Peter Strauss, Concha Benoit. In the late 1800s, a young cavalry officer is courted by two beautiful women, but loses because of a woman's lies and children at Sand Creek by U.S. Army soldiers.
(5) NBA BASKETBALL (Lined In Progress)
(6) THE PRICE IS RIGHT
(7) THE PRICE IS RIGHT
(8) THE PRICE IS RIGHT
(9) THE PRICE IS RIGHT
(10) THE PRICE IS RIGHT
(11) THE PRICE IS RIGHT
(12) THE PRICE IS RIGHT
(13) THE PRICE IS RIGHT
(14) THE PRICE IS RIGHT
(15) THE PRICE IS RIGHT
(16) THE PRICE IS RIGHT
(17) THE PRICE IS RIGHT
(18) THE PRICE IS RIGHT
(19) THE PRICE IS RIGHT
(20) THE PRICE IS RIGHT
(21) THE PRICE IS RIGHT
(22) THE PRICE IS RIGHT
(23) THE PRICE IS RIGHT
(24) THE PRICE IS RIGHT
(25) THE PRICE IS RIGHT
(26) THE PRICE IS RIGHT
(27) THE PRICE IS RIGHT
(28) THE PRICE IS RIGHT
(29) THE PRICE IS RIGHT
(30) THE PRICE IS RIGHT
(31) THE PRICE IS RIGHT
(32) THE PRICE IS RIGHT
(33) THE PRICE IS RIGHT
(34) THE PRICE IS RIGHT
(35) THE PRICE IS RIGHT
(36) THE PRICE IS RIGHT
(37) THE PRICE IS RIGHT
(38) THE PRICE IS RIGHT
(39) THE PRICE IS RIGHT
(40) THE PRICE IS RIGHT
(41) THE PRICE IS RIGHT
(42) THE PRICE IS RIGHT
(43) THE PRICE IS RIGHT
(44) THE PRICE IS RIGHT
(45) THE PRICE IS RIGHT
(46) THE PRICE IS RIGHT
(47) THE PRICE IS RIGHT
(48) THE PRICE IS RIGHT
(49) THE PRICE IS RIGHT
(50) THE PRICE IS RIGHT

CHARLES' ANGELS
 (1981) Harry Gaudino, Hope Lange based on a novel by Howard Fast. A socialist dragged by a feudist co worker later vanishes.
HBO MOVIE "The Lady Vanishes" (1979) Elioit Gould, Cybil Shepherd An innocent man and a beautiful woman are swept into a deadly espionage caper aboard a European express train traveling through pre-war Nazi Germany. PG
6:00 (4) THE LESSON
(5) BILLY GRAHAM CRUSADE This documentary filmed inside Alcatraz Prison Ministry in the rehabilitation of criminals.
(6) DALLAS
(7) BILL MOYERS' JOURNAL
(8) BILL MOYERS' JOURNAL
 9:30 (4) GOOD NEWS AMERICA
 9:45 (4) NEWS
(5) BENNY HILL
(6) PRISONER: CELL BLOCK H
(7) VIDEO / PALN REVIEW
(8) CHAPEL HOUR
 10:30 (4) MAUDE
(5) TONIGHT
(6) ALL IN THE FAMILY
(7) THE ODD COUPLE
(8) FRODOGS
HBO MOVIE "Wanda Nevada" (1979) Peter Fonda, Brooke Shields. A gambler and the orphan he won in a poker game set off in search of a burned girl five years ago.
10:45 (4) MOVIE "The Angry Red Planet" (1960) Grant Tinker, John Herpin. An amoebic-like creature engulfs a spaceship with it.
11:00 (4) IN BAKER "Soldier, Blue" (1970) Peter Strauss, Concha Benoit. In the late 1800s, a young cavalry officer is courted by two beautiful women, but loses because of a woman's lies and children at Sand Creek by U.S. Army soldiers.
(5) NBA BASKETBALL (Lined In Progress)
(6) THE PRICE IS RIGHT
(7) THE PRICE IS RIGHT
(8) THE PRICE IS RIGHT
(9) THE PRICE IS RIGHT
(10) THE PRICE IS RIGHT
(11) THE PRICE IS RIGHT
(12) THE PRICE IS RIGHT
(13) THE PRICE IS RIGHT
(14) THE PRICE IS RIGHT
(15) THE PRICE IS RIGHT
(16) THE PRICE IS RIGHT
(17) THE PRICE IS RIGHT
(18) THE PRICE IS RIGHT
(19) THE PRICE IS RIGHT
(20) THE PRICE IS RIGHT
(21) THE PRICE IS RIGHT
(22) THE PRICE IS RIGHT
(23) THE PRICE IS RIGHT
(24) THE PRICE IS RIGHT
(25) THE PRICE IS RIGHT
(26) THE PRICE IS RIGHT
(27) THE PRICE IS RIGHT
(28) THE PRICE IS RIGHT
(29) THE PRICE IS RIGHT
(30) THE PRICE IS RIGHT
(31) THE PRICE IS RIGHT
(32) THE PRICE IS RIGHT
(33) THE PRICE IS RIGHT
(34) THE PRICE IS RIGHT
(35) THE PRICE IS RIGHT
(36) THE PRICE IS RIGHT
(37) THE PRICE IS RIGHT
(38) THE PRICE IS RIGHT
(39) THE PRICE IS RIGHT
(40) THE PRICE IS RIGHT
(41) THE PRICE IS RIGHT
(42) THE PRICE IS RIGHT
(43) THE PRICE IS RIGHT
(44) THE PRICE IS RIGHT
(45) THE PRICE IS RIGHT
(46) THE PRICE IS RIGHT
(47) THE PRICE IS RIGHT
(48) THE PRICE IS RIGHT
(49) THE PRICE IS RIGHT
(50) THE PRICE IS RIGHT

WEDNESDAY
 MARCH 25, 1981
 EVENING
6:00 (4) ALL IN THE FAMILY
(5) DILLSCHEE
(6) BARNEY MILLER
(7) ELECTRIC COMPANY (R)
(8) REWAL PILES
(9) NBA BASKETBALL Atlanta Hawks vs. Indiana Pacers
(10) FACE THE MUSIC
(11) M*A*S*H
(12) P.M. MAGAZINE
(13) CAROL BURNETT AND FRIENDS
(14) MICHELLE / LEHRER REPORT (1984) Julie Andrews, Dick Van Dyke. A stately English banker hires an unusual woman, who flies through the sky by the tip of her parasol and whose closest friends are chimpanzees, to act as a nanny for his two children. PG
7:00 (4) BILLY FARWELL
(5) JERRY GORHAM CRUSADE
(6) BILL MOYERS' JOURNAL
(7) BILL MOYERS' JOURNAL
(8) MANDALAY
(9) MOVIE "A Yank in the Rye"
(10) MOVIE "A Yank in the Rye"
(11) MOVIE "A Yank in the Rye"
(12) MOVIE "A Yank in the Rye"
(13) MOVIE "A Yank in the Rye"
(14) MOVIE "A Yank in the Rye"
(15) MOVIE "A Yank in the Rye"
(16) MOVIE "A Yank in the Rye"
(17) MOVIE "A Yank in the Rye"
(18) MOVIE "A Yank in the Rye"
(19) MOVIE "A Yank in the Rye"
(20) MOVIE "A Yank in the Rye"
(21) MOVIE "A Yank in the Rye"
(22) MOVIE "A Yank in the Rye"
(23) MOVIE "A Yank in the Rye"
(24) MOVIE "A Yank in the Rye"
(25) MOVIE "A Yank in the Rye"
(26) MOVIE "A Yank in the Rye"
(27) MOVIE "A Yank in the Rye"
(28) MOVIE "A Yank in the Rye"
(29) MOVIE "A Yank in the Rye"
(30) MOVIE "A Yank in the Rye"
(31) MOVIE "A Yank in the Rye"
(32) MOVIE "A Yank in the Rye"
(33) MOVIE "A Yank in the Rye"
(34) MOVIE "A Yank in the Rye"
(35) MOVIE "A Yank in the Rye"
(36) MOVIE "A Yank in the Rye"
(37) MOVIE "A Yank in the Rye"
(38) MOVIE "A Yank in the Rye"
(39) MOVIE "A Yank in the Rye"
(40) MOVIE "A Yank in the Rye"
(41) MOVIE "A Yank in the Rye"
(42) MOVIE "A Yank in the Rye"
(43) MOVIE "A Yank in the Rye"
(44) MOVIE "A Yank in the Rye"
(45) MOVIE "A Yank in the Rye"
(46) MOVIE "A Yank in the Rye"
(47) MOVIE "A Yank in the Rye"
(48) MOVIE "A Yank in the Rye"
(49) MOVIE "A Yank in the Rye"
(50) MOVIE "A Yank in the Rye"

THURSDAY
 MARCH 26, 1981
 EVENING
6:00 (4) ALL IN THE FAMILY
(5) DILLSCHEE
(6) BARNEY MILLER
(7) ELECTRIC COMPANY (R)
(8) REWAL PILES
(9) NBA BASKETBALL Atlanta Hawks vs. Indiana Pacers
(10) FACE THE MUSIC
(11) M*A*S*H
(12) P.M. MAGAZINE
(13) CAROL BURNETT AND FRIENDS
(14) MICHELLE / LEHRER REPORT (1984) Julie Andrews, Dick Van Dyke. A stately English banker hires an unusual woman, who flies through the sky by the tip of her parasol and whose closest friends are chimpanzees, to act as a nanny for his two children. PG
7:00 (4) BILLY FARWELL
(5) JERRY GORHAM CRUSADE
(6) BILL MOYERS' JOURNAL
(7) BILL MOYERS' JOURNAL
(8) MANDALAY
(9) MOVIE "A Yank in the Rye"
(10) MOVIE "A Yank in the Rye"
(11) MOVIE "A Yank in the Rye"
(12) MOVIE "A Yank in the Rye"
(13) MOVIE "A Yank in the Rye"
(14) MOVIE "A Yank in the Rye"
(15) MOVIE "A Yank in the Rye"
(16) MOVIE "A Yank in the Rye"
(17) MOVIE "A Yank in the Rye"
(18) MOVIE "A Yank in the Rye"
(19) MOVIE "A Yank in the Rye"
(20) MOVIE "A Yank in the Rye"
(21) MOVIE "A Yank in the Rye"
(22) MOVIE "A Yank in the Rye"
(23) MOVIE "A Yank in the Rye"
(24) MOVIE "A Yank in the Rye"
(25) MOVIE "A Yank in the Rye"
(26) MOVIE "A Yank in the Rye"
(27) MOVIE "A Yank in the Rye"
(28) MOVIE "A Yank in the Rye"
(29) MOVIE "A Yank in the Rye"
(30) MOVIE "A Yank in the Rye"
(31) MOVIE "A Yank in the Rye"
(32) MOVIE "A Yank in the Rye"
(33) MOVIE "A Yank in the Rye"
(34) MOVIE "A Yank in the Rye"
(35) MOVIE "A Yank in the Rye"
(36) MOVIE "A Yank in the Rye"
(37) MOVIE "A Yank in the Rye"
(38) MOVIE "A Yank in the Rye"
(39) MOVIE "A Yank in the Rye"
(40) MOVIE "A Yank in the Rye"
(41) MOVIE "A Yank in the Rye"
(42) MOVIE "A Yank in the Rye"
(43) MOVIE "A Yank in the Rye"
(44) MOVIE "A Yank in the Rye"
(45) MOVIE "A Yank in the Rye"
(46) MOVIE "A Yank in the Rye"
(47) MOVIE "A Yank in the Rye"
(48) MOVIE "A Yank in the Rye"
(49) MOVIE "A Yank in the Rye"
(50) MOVIE "A Yank in the Rye"

FRIDAY
 MARCH 27, 1981
 EVENING
6:00 (4) ALL IN THE FAMILY
(5) DILLSCHEE
(6) BARNEY MILLER
(7) ELECTRIC COMPANY (R)
(8) REWAL PILES
(9) NBA BASKETBALL Atlanta Hawks vs. Indiana Pacers
(10) FACE THE MUSIC
(11) M*A*S*H
(12) P.M. MAGAZINE
(13) CAROL BURNETT AND FRIENDS
(14) MICHELLE / LEHRER REPORT (1984) Julie Andrews, Dick Van Dyke. A stately English banker hires an unusual woman, who flies through the sky by the tip of her parasol and whose closest friends are chimpanzees, to act as a nanny for his two children. PG
7:00 (4) BILLY FARWELL
(5) JERRY GORHAM CRUSADE
(6) BILL MOYERS' JOURNAL
(7) BILL MOYERS' JOURNAL
(8) MANDALAY
(9) MOVIE "A Yank in the Rye"
(10) MOVIE "A Yank in the Rye"
(11) MOVIE "A Yank in the Rye"
(12) MOVIE "A Yank in the Rye"
(13) MOVIE "A Yank in the Rye"
(14) MOVIE "A Yank in the Rye"
(15) MOVIE "A Yank in the Rye"
(16) MOVIE "A Yank in the Rye"
(17) MOVIE "A Yank in the Rye"
(18) MOVIE "A Yank in the Rye"
(19) MOVIE "A Yank in the Rye"
(20) MOVIE "A Yank in the Rye"
(21) MOVIE "A Yank in the Rye"
(22) MOVIE "A Yank in the Rye"
(23) MOVIE "A Yank in the Rye"
(24) MOVIE "A Yank in the Rye"
(25) MOVIE "A Yank in the Rye"
(26) MOVIE "A Yank in the Rye"
(27) MOVIE "A Yank in the Rye"
(28) MOVIE "A Yank in the Rye"
(29) MOVIE "A Yank in the Rye"
(30) MOVIE "A Yank in the Rye"
(31) MOVIE "A Yank in the Rye"
(32) MOVIE "A Yank in the Rye"
(33) MOVIE "A Yank in the Rye"
(34) MOVIE "A Yank in the Rye"
(35) MOVIE "A Yank in the Rye"
(36) MOVIE "A Yank in the Rye"
(37) MOVIE "A Yank in the Rye"
(38) MOVIE "A Yank in the Rye"
(39) MOVIE "A Yank in the Rye"
(40) MOVIE "A Yank in the Rye"
(41) MOVIE "A Yank in the Rye"
(42) MOVIE "A Yank in the Rye"
(43) MOVIE "A Yank in the Rye"
(44) MOVIE "A Yank in the Rye"
(45) MOVIE "A Yank in the Rye"
(46) MOVIE "A Yank in the Rye"
(47) MOVIE "A Yank in the Rye"
(48) MOVIE "A Yank in the Rye"
(49) MOVIE "A Yank in the Rye"
(50) MOVIE "A Yank in the Rye"

SATURDAY
 MARCH 21, 1981
 MORNING
5:00 (4) ZOLA LEVITT
(5) FATHER MANNING
(6) INFANTRY FACTORY
(7) JIM BAKER
(8) BATMAN AND THE SUPER SE-
(9) VEGETABLE SOUP
(10) THE BATTLE OF THE PLANETS
(11) SCOOBY DOO
(12) OVER EAST
(13) RIMPY ROOM
(14) NEWARK AND REALITY
(15) THREE SCORE
(16) SUNSHINE GANG (TUE)
(17) AFTER SCHOOL SPECIAL (WED)
(18) INSIDE TRACK (THU)
(19) CIRCLE SQUARE (FRI)
(20) LOVE LUCK
(21) LOWELL LINDSTROM MINISTRY
(22) THE PARTNERSHIP FAMILY
(23) DAVEY AND GOLIATH
(24) BULLWINKLE
(25) TOM AND JERRY
(26) U.S. FARM REPORT
(27) SUPERHEROES
(28) LITERATURE
(29) SUNDAY GAMES
(30) MOVIE "A Yank in the Rye"
(31) MOVIE "A Yank in the Rye"
(32) MOVIE "A Yank in the Rye"
(33) MOVIE "A Yank in the Rye"
(34) MOVIE "A Yank in the Rye"
(35) MOVIE "A Yank in the Rye"
(36) MOVIE "A Yank in the Rye"
(37) MOVIE "A Yank in the Rye"
(38) MOVIE "A Yank in the Rye"
(39) MOVIE "A Yank in the Rye"
(40) MOVIE "A Yank in the Rye"
(41) MOVIE "A Yank in the Rye"
(42) MOVIE "A Yank in the Rye"
(43) MOVIE "A Yank in the Rye"
(44) MOVIE "A Yank in the Rye"
(45) MOVIE "A Yank in the Rye"
(46) MOVIE "A Yank in the Rye"
(47) MOVIE "A Yank in the Rye"
(48) MOVIE "A Yank in the Rye"
(49) MOVIE "A Yank in the Rye"
(50) MOVIE "A Yank in the Rye"

SUNDAY
 MARCH 22, 1981
 MORNING
5:00 (4) ZOLA LEVITT
(5) FATHER MANNING
(6) INFANTRY FACTORY
(7) JIM BAKER
(8) BATMAN AND THE SUPER SE-
(9) VEGETABLE SOUP
(10) THE BATTLE OF THE PLANETS
(11) SCOOBY DOO
(12) OVER EAST
(13) RIMPY ROOM
(14) NEWARK AND REALITY
(15) THREE SCORE
(16) SUNSHINE GANG (TUE)
(17) AFTER SCHOOL SPECIAL (WED)
(18) INSIDE TRACK (THU)
(19) CIRCLE SQUARE (FRI)
(20) LOVE LUCK
(21) LOWELL LINDSTROM MINISTRY
(22) THE PARTNERSHIP FAMILY
(23) DAVEY AND GOLIATH
(24) BULLWINKLE
(25) TOM AND JERRY
(26) U.S. FARM REPORT
(27) SUPERHEROES
(28) LITERATURE
(29) SUNDAY GAMES
(30) MOVIE "A Yank in the Rye"
(31) MOVIE "A Yank in the Rye"
(32) MOVIE "A Yank in the Rye"
(33) MOVIE "A Yank in the Rye"
(34) MOVIE "A Yank in the Rye"
(35) MOVIE "A Yank in the Rye"
(36) MOVIE "A Yank in the Rye"
(37) MOVIE "A Yank in the Rye"
(38) MOVIE "A Yank in the Rye"
(39) MOVIE "A Yank in the Rye"
(40) MOVIE "A Yank in the Rye"
(41) MOVIE "A Yank in the Rye"
(42) MOVIE "A Yank in the Rye"
(43) MOVIE "A Yank in the Rye"
(44) MOVIE "A Yank in the Rye"
(45) MOVIE "A Yank in the Rye"
(46) MOVIE "A Yank in the Rye"
(47) MOVIE "A Yank in the Rye"
(48) MOVIE "A Yank in the Rye"
(49) MOVIE "A Yank in the Rye"
(50) MOVIE "A Yank in the Rye"

MONDAY
 MARCH 23, 1981
 MORNING
5:00 (4) ZOLA LEVITT
(5) FATHER MANNING
(6) INFANTRY FACTORY
(7) JIM BAKER
(8) BATMAN AND THE SUPER SE-
(9) VEGETABLE SOUP
(10) THE BATTLE OF THE PLANETS
(11) SCOOBY DOO
(12) OVER EAST
(13) RIMPY ROOM
(14) NEWARK AND REALITY
(15) THREE SCORE
(16) SUNSHINE GANG (TUE)
(17) AFTER SCHOOL SPECIAL (WED)
(18) INSIDE TRACK (THU)
(19) CIRCLE SQUARE (FRI)
(20) LOVE LUCK
(21) LOWELL LINDSTROM MINISTRY
(22) THE PARTNERSHIP FAMILY
(23) DAVEY AND GOLIATH
(24) BULLWINKLE
(25) TOM AND JERRY
(26) U.S. FARM REPORT
(27) SUPERHEROES
(28) LITERATURE
(29) SUNDAY GAMES
(30) MOVIE "A Yank in the Rye"
(31) MOVIE "A Yank in the Rye"
(32) MOVIE "A Yank in the Rye"
(33) MOVIE "A Yank in the Rye"
(34) MOVIE "A Yank in the Rye"
(35) MOVIE "A Yank in the Rye"
(36) MOVIE "A Yank in the Rye"
(37) MOVIE "A Yank in the Rye"
(38) MOVIE "A Yank in the Rye"
(39) MOVIE "A Yank in the Rye"
(40) MOVIE "A Yank in the Rye"
(41) MOVIE "A Yank in the Rye"
(42) MOVIE "A Yank in the Rye"
(43) MOVIE "A Yank in the Rye"
(44) MOVIE "A Yank in the Rye"
(45) MOVIE "A Yank in the Rye"
(46) MOVIE "A Yank in the Rye"
(47) MOVIE "A Yank in the Rye"
(48) MOVIE "A Yank in the Rye"
(49) MOVIE "A Yank in the Rye"
(50) MOVIE "A Yank in the Rye"

TUESDAY
 MARCH 24, 1981
 MORNING
5:00 (4) ZOLA LEVITT
(5) FATHER MANNING
(6) INFANTRY FACTORY
(7) JIM BAKER
(8) BATMAN AND THE SUPER SE-
(9) VEGETABLE SOUP
(10) THE BATTLE OF THE PLANETS
(11) SCOOBY DOO
(12) OVER EAST
(13) RIMPY ROOM
(14) NEWARK AND REALITY
(15) THREE SCORE
(16) SUNSHINE GANG (TUE)
(17) AFTER SCHOOL SPECIAL (WED)
(18) INSIDE TRACK (THU)
(19) CIRCLE SQUARE (FRI)
(20) LOVE LUCK
(21) LOWELL LINDSTROM MINISTRY
(22) THE PARTNERSHIP FAMILY
(23) DAVEY AND GOLIATH
(24) BULLWINKLE
(25) TOM AND JERRY
(26) U.S. FARM REPORT
(27) SUPERHEROES
(28) LITERATURE
(29) SUNDAY GAMES
(30) MOVIE "A Yank in the Rye"
(31) MOVIE "A Yank in the Rye"
(32) MOVIE "A Yank in the Rye"
(33) MOVIE "A Yank in the Rye"
(34) MOVIE "A Yank in the Rye"
(35) MOVIE "A Yank in the Rye"
(36) MOVIE "A Yank in the Rye"
(37) MOVIE "A Yank in the Rye"
(38) MOVIE "A Yank in the Rye"
(39) MOVIE "A Yank in the Rye"
(40) MOVIE "A Yank in the Rye"
(41) MOVIE "A Yank in the Rye"
(42) MOVIE "A Yank in the Rye"
(43) MOVIE "A Yank in the Rye"
(44) MOVIE "A Yank in the Rye"
(45) MOVIE "A Yank in the Rye"
(46) MOVIE "A Yank in the Rye"
(47) MOVIE "A Yank in the Rye"
(48) MOVIE "A Yank in the Rye"
(49) MOVIE "A Yank in the Rye"
(50) MOVIE "A Yank in the Rye"

WEDNESDAY
 MARCH 25, 1981
 MORNING
5:00 (4) ZOLA LEVITT
(5) FATHER MANNING
(6) INFANTRY FACTORY
(7) JIM BAKER
(8) BATMAN AND THE SUPER SE-
(9) VEGETABLE SOUP
(10) THE BATTLE OF THE PLANETS
(11) SCOOBY DOO
(12) OVER EAST
(13) RIMPY ROOM
(14) NEWARK AND REALITY
(15) THREE SCORE
(16) SUNSHINE GANG (TUE)
(17) AFTER SCHOOL SPECIAL (WED)
(18) INSIDE TRACK (THU)
(19) CIRCLE SQUARE (FRI)
(20) LOVE LUCK
(21) LOWELL LINDSTROM MINISTRY
(22) THE PARTNERSHIP FAMILY
(23) DAVEY AND GOLIATH
(24) BULLWINKLE
(25) TOM AND JERRY
(26) U.S. FARM REPORT
(27) SUPERHEROES
(28) LITERATURE
(29) SUNDAY GAMES
(30) MOVIE "A Yank in the Rye"
(31) MOVIE "A Yank in the Rye"
(32) MOVIE "A Yank in the Rye"
(33) MOVIE "A Yank in the Rye"
(34) MOVIE "A Yank in the Rye"
(35) MOVIE "A Yank in the Rye"
(36) MOVIE "A Yank in the Rye"
(37) MOVIE "A Yank in the Rye"
(38) MOVIE "A Yank in the Rye"
(39) MOVIE "A Yank in the Rye"
(40) MOVIE "A Yank in the Rye"
(41) MOVIE "A Yank in the Rye"
(42) MOVIE "A Yank in the Rye"
(43) MOVIE "A Yank in the Rye"
(44) MOVIE "A Yank in the Rye"
(45) MOVIE "A Yank in the Rye"
(46) MOVIE "A Yank in the Rye"
(47) MOVIE "A Yank in the Rye"
(48) MOVIE "A Yank in the Rye"
(49) MOVIE "A Yank in the Rye"
(50) MOVIE "A Yank in the Rye"

THURSDAY
 MARCH 26, 1981
 MORNING
5:00 (4) ZOLA LEVITT
(5) FATHER MANNING
(6) INFANTRY FACTORY
(7) JIM BAKER
(8) BATMAN AND THE SUPER SE-
(9) VEGETABLE SOUP
(10) THE BATTLE OF THE PLANETS
(11) SCOOBY DOO
(12) OVER EAST
(13) RIMPY ROOM
(14) NEWARK AND REALITY
(15) THREE SCORE
(16) SUNSHINE GANG (TUE)
(17) AFTER SCHOOL SPECIAL (WED)
(18) INSIDE TRACK (THU)
(19) CIRCLE SQUARE (FRI)
(20) LOVE LUCK
(21) LOWELL LINDSTROM MINISTRY
(22) THE PARTNERSHIP FAMILY
(23) DAVEY AND GOLIATH
(24) BULLWINKLE
(25) TOM AND JERRY
(26) U.S. FARM REPORT
(27) SUPERHEROES
(28) LITERATURE
(29) SUNDAY GAMES
(30) MOVIE "A Yank in the Rye"
(31) MOVIE "A Yank in the Rye"
(32) MOVIE "A Yank in the Rye"
(33) MOVIE "A Yank in the Rye"
(34) MOVIE "A Yank in the Rye"
(35) MOVIE "A Yank in the Rye"
(36) MOVIE "A Yank in the Rye"
(37) MOVIE "A Yank in the Rye"
(38) MOVIE "A Yank in the Rye"
(39) MOVIE "A Yank in the Rye"
(40) MOVIE "A Yank in the Rye"
(41) MOVIE "A Yank in the Rye"
(42) MOVIE "A Yank in the Rye"
(43) MOVIE "A Yank in the Rye"
(44) MOVIE "A Yank in the Rye"
(45) MOVIE "A Yank in the Rye"
(46) MOVIE "A Yank in the Rye"
(47) MOVIE "A Yank in the Rye"
(48) MOVIE "A Yank in the Rye"
(49) MOVIE "A Yank in the Rye"
(50) MOVIE "A Yank in the Rye"

FRIDAY
 MARCH 27, 1981
 MORNING
5:00 (4) ZOLA LEVITT
(5) FATHER MANNING
(6) INFANTRY FACTORY
(7) JIM BAKER
(8) BATMAN AND THE SUPER SE-
(9) VEGETABLE SOUP
(10) THE BATTLE OF THE PLANETS
(11) SCOOBY DOO
(12) OVER EAST
(13) RIMPY ROOM
(14) NEWARK AND REALITY
(15) THREE SCORE
(16) SUNSHINE GANG (TUE)
(17) AFTER

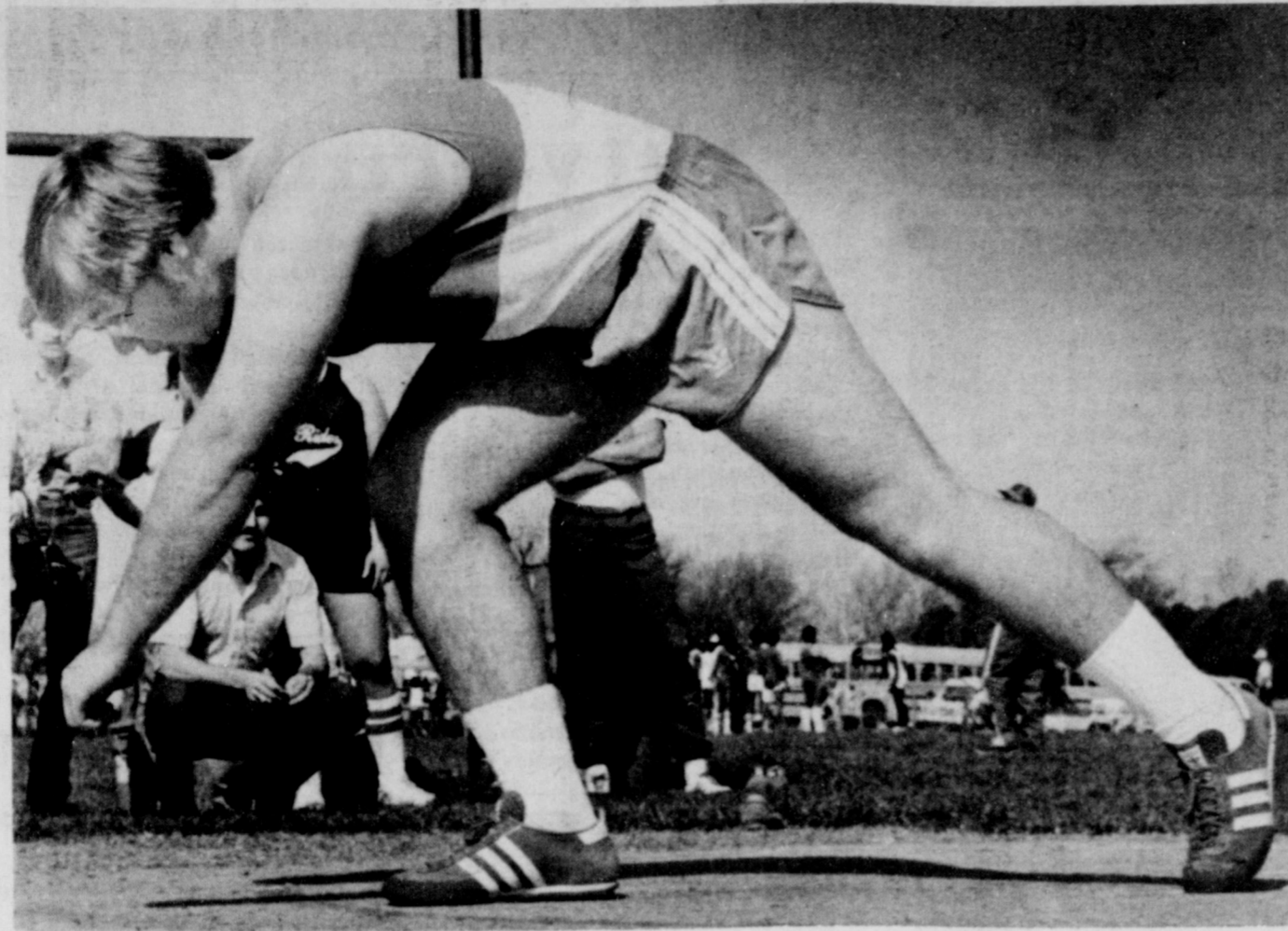
Philip 7th in nation

Philip Jackson placed seventh in the finals of the Elks Club National Hoop Shot competition held last weekend in Market Square Arena at Indianapolis, Ind.

The eight-year-old son of Rev. and Mrs. Michael Jackson hit 19 of 25 attempts from the free shot line, consistent with the other contests in which he earned the trip to the nationals.

A nine-year-old won the title, hitting 23 shots. Five others tied with 22. There were 12 competing in the 8-9 year old bracket.

Besides receiving a plaque for reaching the finals, young Philip thought one of the highlights of the trip was a talk by Rick Berry, star of the Indiana Pacers professional basketball team.



SHOT PUT WINNER MIKE RAY STEADIES HIMSELF FOR HEAVE ... senior weightman easily won at Wichita Falls meet.

Soccer teams

go 4-5-1

Iowa Park soccer teams Saturday won four games, lost five and tied one.

In division one, the Dolphins beat the Rockets 4-0 and the Chiefs outscored the Rowdies 5-1, while the Tornados lost 5-0 to the Red Hots and the Stings were edged by the Eagles 1-0.

Only the Panthers were victorious in Division two play, defeating the Sky Hawks 3-1. The Thunderbirds lost 7-1 to the Hurricanes and the Hornets were shut out 2-0 by the Knights.

The Hawks lost 7-0 to the Rowdies in Division three, but the Aztecs tied the Trojans 1-1.

In division four, the Aztecs toppled Barwise 5-2.

Junior high girls last

Competing in their first meet of the season, Iowa Park's junior high girls teams finished last in their divisions, but by very few points.

Kirby won the seventh grade division with 100 points, followed by Barwise 94, Zundy 89, McNeil and Mineral Wells tied at 78 each, and Iowa Park 67.

Kirby also won the eighth grade competition with 143 points. Zundy had 131, Barwise 75, McNeil 55, Mineral Wells 50 and Iowa Park 46.

Seventh grade results:
400 relay - Cockburn, Barrick, Patton, Green, 6th, 1:01.2
800 meters - Miller, 4th, 3:20; Garret, 6th 3:27
100 meter hurdles - Lewis, 3rd, 21.7; Barrick, 4th, 21.8
800 relay - Cockburn, Washburn, Patton, Green, 4th, 2:10.9
100 meters - Parker, 4th, 14.5
1200 meters - Washburn, 3rd, 4:54.2
1600 meter relay - Robinett, Needham, Hines, Barrick, 4th, 5:35.8
Shot put - Weaver, 5th
Triple jump - Patton, 2nd, 25-10
Discus - Feix, 2nd, 58-3; Weaver, 3rd, 55-5

Eighth grade results:
400 relay - Brown, Roberts, Farnsworth, Kissner, 5th, 55.9
200 meters - Brown, 6th, 29.3
800 relay - Brown, Roberts, Farnsworth, Kissner, 3rd, 2:01
1600 relay - Hatcher, Holloway, Harper, Green, 5th, 5:24
Shot put - Cates, 4th, 28-1/2
Triple jump - Roberts, 6th 27-0
Discus - Holloway, 3rd, 67-9; Cates, 4th, 64-0
Long jump - Roberts, 2nd, 14.7; Kissner, 5th, 13-9

Junior Hawks look to improve

There's only one way for Iowa Park junior high boys' track teams to go, and that's to improve.

At least, that's based on their performances against visiting teams here Thursday afternoon.

The younger Hawks finished last in the seventh, eighth and ninth grade divisions.

Burkburnett won the seventh grade division with 99 points, followed by Vernon, 86, Zundy, 85, Kirby, 82, Barwise, 73, McNeil, 41, and Iowa Park, 25.

McNeil copped the eighth grade division with 119 points. Barwise was second with 93, Kirby, 91, Zundy, 68, Vernon, 62, Burkburnett, 47, and Iowa Park, 13.

Vernon ninth graders ran away and hid from the other five teams in their division by scoring 166. Burkburnett was a distant second with 82, Hirschi 75, Rider 72, Wichita Falls High 67 and Iowa Park had 24.

Lake area cleaned

Thirteen members of the Lake Diversion Sportsmen Club worked Sunday cleaning the roadsides around the lake.

Municipal Court Records

Results of municipal court held here Thursday were:
James Patrick Muterspaugh, speeding, \$56.50;
Guy Ernest Stutsman, disobeyed stop sign, \$28.50;
Chris Edward Barnes, expired motor vehicle inspection sticker, \$28.50;
George Edward Holt, speeding, \$30.50;
Wayne H. Flickinger, public intoxication, \$28.50.



GOLFERS

Enjoy the beauty & excitement of Skyline Golf Course
GREEN FEES
\$3.00 WEEK DATES
\$3.00 SATURDAYS
SUNDAYS AND HOLIDAYS
Public Welcome
Complete Pro Shop
Facilities
RALPH MORROW
Golf Professional
(Lessons By Appointment)
SYLINE C.C.
N. Beverly Ph. 855-0771

The Old Shamrock Cafe has been remodeled and reopened under new management

Billy Jack's Shack

FM 369 & U.S. 287

Starting Friday, serving



Lobster tail Dinner \$6.95

Hawk strength in field events

As for the past number of years, field events continue to be the main point-earning events for the Hawk track team.

Iowa Park, after being gined out in the Possum Kingdom Relays a week earlier, finally got a chance to compete Saturday at the Wichita Falls Relays.

Though the team earned only 14 points among mostly larger schools, the Hawks still finished ahead of two other teams: Dallas Cooper and Hirschi.

Senior weightman Mike Ray gave an indication he wants to return to the state track meet, winning his specialty, the shot put, by almost three feet ahead of the second-place finisher.

Ray got off a toss of 53-11/4, besting Gainesville's entry of 51-1/2.

Robin Combs earned the other Hawk points, placing fourth in the discus with a toss of 126-0.

In junior varsity competition, Iowa Park placed sixth with 38 points.

Klinkerman was third in the high hurdles, 17.1; Parker was third in the

100 meters, 11.2; Henderson ran a 5:01.9 for third in the 1600 meters; and Johnson was third in the high jump, 5-6.

The Hawks will compete Saturday in the annual Boomtown Relays at Burkburnett.

Hawks drop pair

The Hawk baseball team found the going rough last week in the Wichita Falls Classic tournament.

In the first round they lost to Rider 10-2, and Friday Lawton topped the locals 10-0 in five innings.

Next game on the Hawk schedule is Mar. 27, when the team travels to Bowie.

The author of a letter retains the same literary rights in it as if it were a short story, poem or novel. It is therefore illegal to publish someone else's letter without his permission, even if it was written to you.

Schedule for:

Recreational Activities Center

A new series in country western dance lessons begins at 8 this evening. Joan Hausler is the instructor. Enrollment is open to all adults.

Also at 7:30 this evening, the RAC board will meet.

Bingo will be played Friday beginning at 8 p.m. "Everyone who wants to see these games continue, please be here this week," said Betty Merriman, RAC manager.

The RAC will be closed this weekend, but Mrs. Merriman says to watch for a high school dance for Apr. 7.

COUNTER TOPPING

FORMICA WILSON-ART MICARTA
"BUY FROM THE OLD PRO"
T.S. THOMAS, CABINETMAKER
1516 Beverly Wichita Falls Ph. 723-6523

LUNCHEON BUFFET ALL YOU CAN EAT

Monday through Friday
11:00 a.m. - 1:30 p.m.

Pizza, Spaghetti, Rigatoni & Buffet

Complete Salad Bar With Over 35 Items

— PLUS — \$ **2.99**
Kids Eat For Only 20¢
Per Year Of Age (Children Under 12)
Example: A Child 9 Years Old Pays Only \$1.80

ken's PIZZA

592-4184 920 West Highway

SALE \$1.79 Country Basket



"get country!"

Come on in and enjoy a Country Basket! Tasty chicken-fried meat strips with our old-fashioned country gravy, big Texas toast, and a gob of golden fries. For folks who just won't be satisfied with anything less than real Texas Country taste.

And our sale price is a big Texas-size bargain. Hurry!

Monday March 16 thru Sunday March 22 only



Only at participating stores

Finnell named to national group

Sate Rep. Charles Finnell has been named to the membership of a national legislative committee by Speaker of the House Bill Clayton. Clayton said he was re-appointing Finnell to the states and the arts committee of the Assembly on the Legislature of the National Conference of State Legislatures (NCSL) for a two-year term. The committee has been working for the past two years to investigate the needs of the arts and make recommendations on where increased state legislative support is most needed. Over 30 topic areas in the arts have been identified for detailed study and 21 recommendations have now been adopted by the committee. The recommendations form the basis of a guidebook for legislators on supporting the arts. Future work includes continued study and adoption of recommendations, possible development of model legislation and assistance to individual states in support of the arts.

Holliday News



MR. and MRS. NORMAN KUYKENDALL

Pair observing 50th anniversary

Mr. and Mrs. Norman Kuykendall will celebrate their 50th wedding anniversary Sunday from 2 to 4 p.m. at the First Baptist Church in Holliday. Hosting the reception will be their children, Donald Kuykendall of Weatherford and Ronald from Wichita Falls, and their families. Mr. and Mrs. Kuykendall were married Mar. 22, 1931 in Waurika,

Oklahoma. They have lived in the Holliday area for the last 43 years. He is retired after 39 years with Guy J. Brown Oil Co. Also helping with the reception will be Mrs. Kuykendall's brother and sister-in-law, Mr. and Mrs. H.D. Ashbrook of Lake Arrowhead. The couple also have three grandchildren and one great-grandchild.

Aldermen concerned about highway project
City grants pay hikes

Holliday City Council Monday night raised the salaries of three city employees, and signed a letter addressed to the Texas Highway Department stating the city's position on a proposed project to expand US 82/277. Councilmen raised employee Mike Donaldson's salary 25-cents to \$4.25. Donaldson has been with the city three months, according to city administrator Jim Hamill, and has taken on additional duties including mechanical work on the city's vehicles.

City secretary Laverne Slatton was given a 25-cent per hour raise, after successfully completing "Course 110" for Tax Assessors and Collectors Feb. 25. According to city policy, city employees are given raises after completing required courses. City water superintendent Don Stewart's salary was raised to \$1,150 per month. In addition, Stewart was guaranteed one weekend per month standby at \$25, and was given a \$10 water allowance and \$8.80 telephone allowance, to be paid on the first and 15th of each month. City employees are placed on standby on a rotating basis, and each receives \$25.

Councilmen were read a letter addressed to Jimmy L. Stacks, district engineer in Wichita Falls, regarding a contract with Holliday and the Texas Highway Department. The right-of-way contract calls for widening existing culverts and ditches on US 82/277. If the project goes through, a second project will expand the highway into four lanes from Kamay Y to Holliday. The cause for councilmen's concern deals with financing the first project. According to W.C. Snodgrass of the Texas Highway Department, the city

is required to pay all expenses incurred in the project, with the state later reimbursing the city 90-percent of the total cost. The council, concerned about the city's current financial delimita, is proposing in the letter that the city place it's initial 10-percent in escrow. In other business, councilmen agreed on the purchase of a multi-purpose saw, heard a report on defective fire plugs. Aldermen agreed to purchase a

DM50 Homelite saw and accessory kit at approximately \$700. The saw will be used by city workers for water line and street repairs. Hamill stated that he is waiting on a response from State Fire Insurance Co. concerning needed repairs on the fireplugs. The subject was tabled until next month's meeting. In addition, the purchase of a metal detector was discussed, but Hamill said it wouldn't be necessary at this time.

Holliday School Menu

- Friday, March 20
Breakfast: Oatmeal, butter, toast, milk, fruit.
Lunch: Chalupa, cheese, lettuce, taco salad, cookies, milk.
- Monday, March 23
Breakfast: Cereal, milk, fruit.
Lunch: Hamburgers, lettuce, tomatoes, onions, chips, milk, ice cream.
- Tuesday, March 24
Breakfast: French toast, syrup, milk, fruit.
Lunch: Fish, macaroni and cheese, tartar sauce, cole slaw, milk, cobbler.
- Wednesday, March 25
Breakfast: Cinnamon rolls, milk, juice.
Lunch: Pizza, macaroni salad, corn, milk.
- Thursday, March 26
Breakfast: Cereal, milk, fruit.
Lunch: Steak fingers, whipped potatoes, rolls, gravy, peas, fruit.

Want to make money?

Part-time or full time, individual or business.

Due to response to heavy TV advertising in your area we need representation. Dealer can work out of home or established business.

Only one dealer will be chosen in your area.

If interested call

A-1 Metal Products
East Highway 82

Manufacturers of Little Joe Fireplace Inserts and Stoves

Gainesville, Tx.

817-665-0371

Ask for Jud Judkins

"The silliest of all people are those who do foolish things to show off." Vauvenargues



Wrangler

\$3.00 OFF ANY
Ladies or Girls Wrangler Boy-o-Boy Jeans!
Clip Coupon

SAVE \$25 OFF
the price of any man's two
or three-piece suit
Clip Coupon

WRANGLER STUDENT JEANS
Sizes 7 to 14 Now Just **\$13.95**

WRANGLER KIDS JEANS
Sizes 7 to 14 Now Just **\$10.95**

WRANGLER KIDS JEANS
Sizes 7 to 14 Now Just **\$8.95**

WRANGLER MEN'S
14 oz. BLUE DENIM JEANS
Now Just **\$14.95**
Straight leg & boot flare

RED TAG BOOT SALE
Shop our exclusive exotic boot sale is progress now.
OSTRICH ANTELOPE
EEL SNAKE TURKEY
\$22.00 OFF
Reg. Price
With this coupon

Sale Ends
April 18

W W BRANDS

Shop these & Other great Values at



WESTERN WORLD

Open 9 a.m. to 6 p.m.
3709 CALLFIELD RD
JUST WEST OF SIKES CENTER
UNDER THE BIG WESTERN WORLD SIGN
692-0931

Cowboy Boot Headquarters



Custom Cutout
Name Belts Available

Full Time Professionals

WHISNAND REALTORS 592-2153

900 West Highway
in the same building with Barbour Insurance

L.S. WHISNAND Broker 592-2365	BOBBY WHISNAND Manager 592-2413	DONNA WELLS Sales Representative 592-9574
CLETYS STILES Sales Representative 592-5785	BILLY L. McDONALD Sales Representative 592-4338	

RURAL ACREAGE

6.5 Acres, cleared and fenced. Irrigation ditch adjoins, Located between Peterson and Bridwell Roads on Willow Road.
NEW — 6 to 36 Acres on Peterson Road, south of FM 367 near Baptist Youth Camp.

114 Hope

- 3 Bedrooms
- 1 1/2 Baths
- Covered patio
- Fenced
- Nice home

1601 Yucca

- 4 Bedrooms
- 2 1/2 Baths
- Den with fireplace
- Dining room
- Privacy fence
- All built-ins
- Price reduced to \$69,900

For A Quick Sale - Call Us - We Buy Equities

ADVERTISING

ADVERTISING

1981 Wichita Falls Business Review

Advertising copy prepared and sold
by Independent Newspaper Services, Inc.,
Denver, Colo.

Doctors Nursing Service Inc.

"Always under doctors orders"

One of the most upstanding community members has to be the DOCTORS NURSING SERVICE dedicated to providing area residents with the very finest in quality nursing care to patients in hospitals, nursing homes, and in the patients home.

This popular concern is located at 205 Triad Bldg. in Wichita Falls, phone 322-4957, and has earned the respect and admiration of all those who have done business with them. Their honest and forthright manner of dealing on a one-to-one basis with people of all walks of life have made them the local leader in the field. DOCTORS NURSING SERVICE is the only registry we have found with a M.D. medical director available 24 hours a day, who screens all patient folders for proper qualified care.

The DOCTORS NURSING SERVICE is renowned throughout the region as being a foremost advocate of fair business practices and community-minded ventures. The writers of this 1981 Wichita Falls Business Review suggest that all area residents make this fine firm headquarters for all their nursing care news. We think you'll be glad you did.

Mike & Steve Rhone Realtors & Builders

Mike & Steve Rhone - Owners

When it comes to remodeling and repairing your home, don't do it the slow, time-consuming do-it-yourself way. Do it the easy, carefree way by calling MIKE & STEVE RHONE REALTORS & BUILDERS at 4700 K-Mart, in Wichita Falls, phone 691-2011, and letting a skilled alteration specialist do the job right the first time!

This quality-conscious firm has the knowledge and the tools to handle most any addition or remodeling job and they'll do it for less than you'd think! Call today and get on your way to having the nicest house in the entire neighborhood.

MIKE & STEVE RHONE REALTORS & BUILDERS' reputation is well established with homeowners in the local area. Let their years of skill and experience work for you on your next project. Whether it's a room addition, a new floor or just repair work, the authors of this 1981 WICHITA FALLS BUSINESS REVIEW don't think you'll be able to do better than to contact this reliable firm for your needs!

Patterson Oldsmobile, Mercedes, Toyota

Harry Patterson, Owner

Looking at new cars? Careful consumers in the Wichita Falls area have come to regard the PATTERSON OLDSMOBILE, MERCEDES, TOYOTA as one dealership where deals are made to the customer's satisfaction! This respected firm, located at 315 Central Freeway East, phone 766-0293 is one of the area's foremost "transportation experts!"

Because most automobile manufacturers don't make a car that's exactly right for everyone, this is one new car dealership which features several brands for you to choose from. They carry the complete line-up of Oldsmobile, Mercedes, and Toyotas - Quality and dependability built into every model! If your budget isn't quite ready for a new car, select from one of the area's finest assortments of guaranteed, reconditioned used units. Either way, you get PATTERSON'S famous service after the sale!

The writers of this 1981 REVIEW recommend this outstanding new and used automobile dealership to all of our readers. It's one spot where service goes right along with the sale!

Compton Oil Field Equipment

Charlie Compton - Owner

One of the region's largest suppliers of new and used oilfield equipment is COMPTON OIL FIELD EQUIPMENT, phone 692-4493 or 692-4494. This well known firm specializes in supplying the needs of the oil industry with quality drilling and pumping equipment and supplies.

If you're in charge of drilling an oil well, you know that you must rely on your equipment to get the job done. This quality-conscious company features all the famous brand names in oil field gear. There's a full line of casing, tubing and pumping units. They also carry tanks, treaters and separators in addition to heaters, line pipe and sucker rods. No matter what YOU need to drill that well...COMPTON OIL FIELD EQUIPMENT has it or can get it fast! Call them first whenever you need oilfield equipment.

The authors of this 1981 WICHITA FALLS BUSINESS REVIEW are pleased to be able to recommend this fine concern.

Jones Enterprises

Cordell & Marie Jones - Owners

JONES ENTERPRISES located at 3508 McNeil, Suite "D" in Wichita Falls phone 691-3673 can do printing for any need. They specialize in all types of quality offset printing.

If your work calls for writing or typing your name, address, date or special information on various papers, you can save many man hours by having these combinations printed. Time is one of our most precious assets, so why waste it by doing unnecessary work. By using printed material you can always be assured there are no errors in spelling or numbers.

JONES ENTERPRISES has a wide selection to choose from and also print business cards, letterheads, statements, invoices, hand bills, booklets, direct mail advertising and special forms of many descriptions.

All of these have proven themselves to the public as a time saver and have thus become popular in usage. Stop by their office and let them take your order. They offer every customer a personalized service and all orders are given prompt attention.

JONES ENTERPRISES is also one of the area's finest secretarial services. Give them a call for any secretarial service needs.

The compilers of this 1981 REVIEW point out the advantage of having a concern in our area, such as JONES ENTERPRISES that is known for the quality of their work and for doing what is asked of them. Be sure to see them for all your printing needs.

State Medical Of Wichita Falls Inc.

Lucien Velasquez - Manager

Has a member of your family or a friend been stricken with an illness or injury which requires specific treatments or equipment? To help them get back on their feet again, you may need the services of STATE MEDICAL OF WICHITA FALLS INC. at 810 Denver, in Wichita Falls, phone 322-4535.

This reputable firm features such sickroom supplies as oxygen equipment, hospital beds, commodes, traction rigging, exercise equipment for physical therapy and much, much more. Their reasonable rates and considerate service have won them the respect of leading physicians and clinics.

STATE MEDICAL OF WICHITA FALLS INC. offers free pick-up and delivery service and 24 hour emergency service to their customers. The road to recovery is a lot smoother with this respected firm's help. The writers of this 1981 WICHITA FALLS BUSINESS REVIEW suggest that you call them whenever you need hospital equipment or supplies of any type . . . you'll be glad you did!

Nadene's Ceramic Palace

Nadene Compton - Owner

Looking for a great, practical hobby that's as much fun as it is inexpensive? Ceramics is a fine way to keep busy as well as providing an unending source of gifts and beautiful, decorative objects. It's the art form for everyone!

NADENE'S CERAMIC PALACE at 1501 Filmore in Wichita Falls, phone 322-8900, is one of the region's leading suppliers of ceramics equipment and supplies. They will also be happy to answer any questions or teach you any techniques in the making of your own beautiful ceramic pieces.

NADENE'S CERAMIC PALACE carries everything for the beginner or professional ceramic's hobbyist. They will also custom fire your products in their professional style kiln and they have a wide selection of gift items for sale.

The writers of this 1981 WICHITA FALLS BUSINESS REVIEW suggest that YOU get into the enjoyable and rewarding hobby of ceramics.

CESSCO Rental & Supply

Louis L. Hanserd - Owner

Mr. Contractor! Looking for the finest heavy equipment at the lowest rates? See CESSCO RENTAL & SUPPLY for ALL of you equipment rental needs and SAVE!

Located at 703 E. Scott & at Seymour Hwy. at Kell Blvd., phone 766-0238, this full line rental service can offer you more of what you need to get your job done fast and right!

This reputable firm has been serving the needs of the construction industry in the area for many years with the very best in equipment of all types! They feature famous names in heavy duty loaders, dozers, scrapers, trucks, trailers, compactors, cranes, backhoes, trenchers and other needed rigs to get that big job done...fast!

Contractors in this area have come to know and trust CESSCO RENTAL & SUPPLY when it comes to quality equipment and its maintenance. They offer more than most anyone in terms of value and service. With a firm such as this in town, the editors of this 1981 WICHITA FALLS BUSINESS REVIEW ask why you need to go anywhere else for your construction needs?

Downtown Motors

See Jerry Irwin

For many years, automobile dealers considered the "used car" business a sideline to selling new models. The friendly guys down at DOWNTOWN MOTORS at 300 Scott in Wichita Falls, phone 767-7426, totally reject this theory. They specialize in used cars exclusively, and, right now, they're dealing with a lower profit margin than anyone in an all-out effort to help their customers beat inflation and find a terrific deal on a good previously-owned automobile.

The kind of business that DOWNTOWN MOTORS does is the main reason for their large "family" of repeat customers. People return again and again when they need an automobile because they know that integrity, quality and value are passwords at DOWNTOWN MOTORS.

Buy the safe way! Stop in at DOWNTOWN MOTORS and look over the tremendous values in quality pre-owned automobiles. The editors of this 1981 WICHITA FALLS BUSINESS REVIEW recommend DOWNTOWN MOTORS for better cars AND better values!

Criterion Insurance Company

Bob Puder Agent

The people of this area are indeed fortunate to have in their midst a friendly insurance agency that has built a fine reputation in this area by serving local needs through all types of insurance, including life, auto, fire, casualty, etc. from reliable companies.

There are a lot of insurance agencies and agents in this area. What makes one stand out above all others? It's the service and personal interest that they take in the welfare of you, your family and your personal property.

Most of us do not want to think about the many things that could happen to us or our property....and there is no need to if we have a competent insurance agency planning for our future security.

For security and peace of mind, we the editors of this 1981 WICHITA FALLS BUSINESS REVIEW recommend the CRITERIAN INSURANCE COMPANY located at 4140 Burkburnett Road in Wichita Falls, phone 855-3910 for information or an appointment. We know you'll be glad you did.

San Juan Pool Store

"Now Featuring Spas and Hot Tubs!"

Bob & Elaine Hennessey - Owners

Gracious living can be yours when you have the experts at the SAN JUAN POOL STORE at 1708 Kemp in Wichita Falls, phone 723-0974 install a beautiful fiber glass spa, Redwood hot tub, or one-piece molded fiber glass swimming pool in your back yard. SAN JUAN POOL STORE is famous for their quality, design, and durability.

Give them a call anytime and they will explain the many size designs, and price ranges they offer with absolutely no obligation on your part. You'll be amazed how inexpensively you can have them completely install a California Copperage Hot Tub, spa or pool equipped with all the extras that make it complete in every way. They can install your pool in just ten working days.

Not only will these items add much enjoyment and healthful exercise to your living, but it greatly adds to the value of your home and can be paid for with long term low monthly payments.

The designers of this 1981 WICHITA FALLS BUSINESS REVIEW commend this dealer and contractor on their fine reputation for honest business dealings and give the SAN JUAN POOL STORE our recommendation to the people of this area.

Wilson And Altman

Personal Injury Specialists

Dedicated to the proposition that the client MUST come first, WILSON AND ALTMAN is well known as one of the leading law officers in the region. Their fair and honest dealings with people from all walks of life, and their outstanding work have made them the choice of many prominent citizens of the area. Call them today for some straight talk and some real service!

Located in Suite 500 of the Oil and Gas Building, phone 723-0767, this exceptional law firm takes all accident and personal injury cases on a contingency basis, with no charge for your first visit. If you're looking for a quality lawyer, see the attorneys at WILSON AND ALTMAN and become a lifetime client! After April 1st, WILSON AND ALTMAN will be taking in a new partner, Larry Lambert, to better serve the Wichita Falls area.

The editors of this 1981 WICHITA FALLS BUSINESS REVIEW think that you'll really like the kind of effort that these fine attorneys put into every case!

Billy Joe Dawkins Maintenance Service

Billy Joe Dawkins - Owner

In the last few years carpeting in home and office have come to be more of a rule than the exception. This is due to the many new fibers that have been developed that make carpeting so much more practical, yet these wonder fibers need the knowledge of experts in the field of cleaning.

The name in this area that people have come to trust is BILLY JOE DAWKINS MAINTENANCE SERVICE at 1602 Parkdale in Wichita Falls, phone 723-6307. They are well known for their fast, efficient and economical methods of carpet care and cleaning.

Through their years of experience in this field they have learned the proper chemicals and cleaning aids for each type of material. You can be assured that this firm is one company that will do exactly what they say they will and guarantee all the work they do.

The authors of this 1981 REVIEW suggest to anyone who has need of an expert carpet cleaner, that they contact BILLY JOE DAWKINS MAINTENANCE SERVICE for a very professional job.

AMSCO Steel Products Co.

For quality in steel products, many major manufacturers and contractors in this area rely on the AMSCO STEEL PRODUCTS CO. to serve their needs.

With warehouse and office facilities located at 212 Lee in Wichita Falls, phone 723-2715, this reputable firm has been supplying the steel needs of the region's heavy industry for many years now.

Their complete stock, outstanding service and fine products have made them the first place that smart builders call. Whether you need steel in plates, sheets, bars, tubing, channels, angles, pipe, beams or ANY particular extrusion, this is THE warehouse that has it!

The precision equipment at the AMSCO STEEL PRODUCTS CO. allows them to burn, shear or saw steel to just the size and shape you want. The writers of this 1981 WICHITA FALLS BUSINESS REVIEW would like to make particular commendation of AMSCO STEEL PRODUCTS CO.!

Calvin Davis Construction Inc.

Calvin Davis - Owner

In the estimate of many people in the Wichita Falls area who have had CALVIN DAVIS CONSTRUCTION INC. located at 500 Clipper Lane in Wichita Falls, phone 691-3352, handle any of their general building construction, there is not a better qualified contractor anywhere.

You can be assured with CALVIN DAVIS CONSTRUCTION INC. that the job will be completed by competent men in the field with the best of materials and in the shortest time possible. Unlike so many other construction companies, CALVIN DAVIS CONSTRUCTION INC. is noted for their reliability, fair prices, and general business like policies.

They use only the latest equipment and tools, combined with the most up to date building practices of the day, and perform their work in a professional manner.

Without hesitation, we, the authors of this 1981 WICHITA FALLS BUSINESS REVIEW take this time to make public our commendation of the CALVIN DAVIS CONSTRUCTION INC., and suggest to our readers that they have them handle their construction.

Webb Landscape Co.

For true beauty and artistic landscaping, call WEBB LANDSCAPE CO. at 2101 10th in Wichita Falls, phone 322-5469.

WEBB LANDSCAPE CO. specializes in all types of artistic landscaping and designs with nature. Using natural materials that will enhance your lawn, this reliable firm works with plants, sod, foliage, shrubbery, trees and many other beautiful and natural additions. The pros at WEBB LANDSCAPE CO. can also design your home or office around a beautiful array of growing plants and decorative accessories.

This well-liked company also specializes in sprinkler system design and maintenance. Don't put off having that system installed another year. You'll save money on your water bill and you'll never again move another hose.

The writers of this 1981 WICHITA FALLS BUSINESS REVIEW suggest that you contact the area's finest landscape contractor, WEBB LANDSCAPE CO., for all of your lawn beautifying needs!

ADVERTISING

ADVERTISING

ADVERTISING

With top-of-the-line shingles, beauty is more than skin deep

Today's better grade of roofing shingles offers the homeowner a rainbow of attractive colors and styles from which to choose. But, that's not to say there isn't more to these shingles than meets the eye.

Major producers have engineered into so-called "top-of-the-line" shingles a host of consumer benefits over and above what run-of-the-mill roofing has to offer.

Added durability is one such advantage. Unlike the standard asphalt shingle that has to be replaced every 15 years or so, TOL shingles such as CertainTeed's Hallmark carry a 25-year limited warranty—representing a whole decade of additional service. In view of this, the shingles are also an economical choice.

Some of the top-of-the-line asphalt shingles have a fiber glass base that offers the homeowner another advantage—additional fire resistance.

For homes located in wooded locations, and even in neighborhoods where fireplaces are common, fiber glass-based shingles afford added security for home and family. In fact, even felt-based top-of-the-line shingles are more fire resistant than untreated wood shakes.

Yet, it is the appearance of top-of-the-line shingles that puts them visibly a cut above conventional roofing.

CertainTeed Glasstex, for example, is a fiber glass-based top-of-the-line shingle that comes with a random wood grain texture. Earthtone colors such as "Bronzed Brown," "Golden Tan" and "Antique Olive" complete its distinct appearance.

Even more exciting are the three-dimensional products. One of these is the Hallmark shingle, which combines the sculptured surface of Glasstex with random overlay tabs.

The result is a shingle that looks like a hand-split wood shake, complete with deep shadow lines and rich, natural coloring.

Top-of-the-line shingles are beautiful, but the beauty is more than skin deep. Better durability and greater fire resistance than can be had with untreated wood roofing make them the kind of product you'd like to marry to your home.

For more information on top-of-the-line roofing, write to the CertainTeed Home Institute, P.O. Box 860, Valley Forge, PA 19482.

BETTER BUSINESS BUREAU TIPS

Saving money, energy with insulation

Most homes in America are underinsulated, which means that most of us are wasting energy and money. According to energy experts, insulation properly installed can substantially reduce home heating bills in winter and the cost of cooling in summer. Adding adequate insulation to a home is a good investment, advises the Better Business Bureau, but the prudent consumer should learn more about the subject first and avoid costly mistakes.

The prime need of most homes is attic insulation followed by insulation for the walls and floors. If insufficiently insulated, an attic simply adds heat to a home in summer and lets heat escape in winter.

Insulating an attic is simple enough that many consumers can do it

themselves. Adding insulation to an existing wall, however, can be tricky. It takes special equipment and needs professional help. If the entire home is to be insulated, it may prove more economical to contract with a reliable insulation installer to do the whole job.

Variety of Insulation Types

There are many different types of insulation, including mineral fiber, which comes as blankets (rolls or batts) or

loose fill; cellulose fiber and expanded materials, which come as loose fill; and foamed plastics, which are preformed into boards or blown into wall cavities.

Note that in this last category is urea formaldehyde foam insulation. The U.S. Consumer Product Safety Commission recently voted to propose a nationwide ban on the product because of its health hazards. The proposed ban,

if it should become effective, would exempt any manufacturer or installer who can demonstrate to the Commission that their product does not present an unreasonable risk of adverse health effects. The gas which UF insulation releases, according to the CPSC, has been linked to cancer and has caused such short-term problems as breathing difficulties, skin and eye irritations and nausea. In 1979, the State of Massachusetts banned all future installations of UF foam insulation in that state.

All insulations have an "R" (resistance) value. The higher the value, the more effective the insulating capability. Measure insulation by its "R" value; don't get sidetracked by the thickness. It is the "R" value that really counts. The only exception to this rule is when one is assessing existing attic insulation that has no "R" value indicated. In that case, six inches or more of insulation is generally enough, but less than that is a sign of wasted energy.

An adequately insulated home may have values like these: ceilings, R-30; floors, R-19; walls, R-13. These will vary depending upon the climate where the home is located. The local utility will be able to suggest the optimum "R" values for homes in that area.

Most utilities are participating in a federal program to help customers assess their insulation needs and find capable insulation contractors. In addition, check with neighbors and friends for recommendations and call the Better Business Bureau for reliability reports on contractors under consideration.

Get Detailed Contract
The cost of insulation services varies widely. Get a minimum of three estimates on the job and compare them

carefully. Insist on a written contract that includes the types of insulation, their "R" values and the exact areas to be covered. In the case of loose fill, have the number of bags specified and count the empty ones when the job is completed.

With the nationwide concern over energy conservation, some unscrupulous contractors have entered the market and taken advantage of unwary homeowners. Be alert for:

- * Exaggerations of a material's "R" value;
- * False claims that a material is non-combustible or self-extinguishing;
- * Scare tactics, such as statements that existing insulation is "inferior" or may burn easily;

* Claims that certain insulation is "approved by" federal agency or the Underwriters Laboratories, Inc. (UL).

Choosing an insulation contractor wisely and eliminating the places where a home wastes energy are two important ways to save money. In addition, expenditures for home insulation can qualify for special federal income tax credits under certain conditions. Don't let money and energy escape into thin air!

ADVERTISING

Sundance Sun Tanning Salon

Mrs. Bobby Evans - Owner

Have you ever wished there was a tanning salon in town where you could get a really exotic year-round sun tan like seen on T.V. and in leading world fashion magazines? Well, now there is! The SUNDANCE SUN TANNING SALON located at 4022 Kemp in Wichita Falls, phone 692-6786, specializes in the ultimate in high fashion tanning, body wraps, and aerobic classes for the person who knows fashion and demands the very best!

You'll never feel or look better than when you walk out of this shop and show-off your new look.

Call for an appointment or just drop in and relax. The SUNDANCE SUN TANNING SALON has six personal tanning booths so they can take care of you in style!

We, the writers of this 1981 WICHITA FALLS BUSINESS REVIEW are pleased to be able to recommend this fine tanning salon to all of our readers who know fashion and want to look their very best all year long!

The T-shirt Patch

Randy Romines and Joe Brumley - Owners

Looking for something unusual? Try THE T-SHIRT PATCH at Parker Square, phone 766-3564, and at Sheppard next to the Main Exchange, phone 855-5811, where style takes over! Here you'll find just what you've been looking for in the way of quality individualized T-shirts! The prices are lower, the selection is greater and the styles...well, you'll just have to see them to believe it!

With a fine assortment of transfers in stock at all times, this is one clothing store where quality doesn't take a backseat to anything! There are T-shirts and transfers to please every taste and lifestyle and the courteous, efficient personnel know just how to fit you for a more personal appearance!

Honesty, courtesy and quality are some of the things that separate THE T-SHIRT PATCH from other shops in the area and the customers are quick to acknowledge this by returning again and again. As the writers of this 1981 WICHITA FALLS BUSINESS REVIEW, we give our unconditional recommendations to this fine store!

Leon's Cabinets

Leon Bragg - Owner

When service for which you cannot go window shopping such as raised panel doors is needed, it then becomes more important to know the reputation of the firm with which you're going to do business. LEON'S CABINETS, located at 304 Galveston, in Wichita Falls, phone 692-2339 is a firm which one can do business with confidence and assurance of receiving total satisfaction.

They feature the area's finest raised panel doors. They know the business perfectly and insist that each job be perfect. They employ only competent, well trained men who have the desire to please the customer.

This firm is favorably known for prompt service and fair prices. Much of their popularity is due to the fact that they stand behind every job and are there when you need them.

The writers of this 1981 WICHITA FALLS BUSINESS REVIEW, suggest that you contact LEON'S CABINETS first. We're sure you will be pleased with any work they do for you.

Las Vegas Drive Inn

Bobby Buck - Owner

Wouldn't a cold, frosty mug of beer taste great right now? If you agree, then stop in at LAS VEGAS DRIVE INN where the beer is always colder and the people are friendlier! You'll enjoy the great atmosphere and the outstanding service offered by this well-known establishment.

Easily reached at 400 Burkburnett Road in Wichita Falls, phone 322-0372, this fine pub specializes in making YOU feel at home from the moment you walk in! They feature an unbeatable combination of fine companionship and the coldest beer (and wine) in town! You're never a stranger when you drop in at this favorite night spot!

So, do yourself a favor and make stopping at LAS VEGAS DRIVE INN an enjoyable habit! You'll find the people, drinks and service to be among the very finest ANYWHERE! As the writers of this 1981 WICHITA FALLS BUSINESS REVIEW, we know you'll agree after just one visit!

Strong Supply

Owners - Leon Barrington, Don Bowen, Mike Price

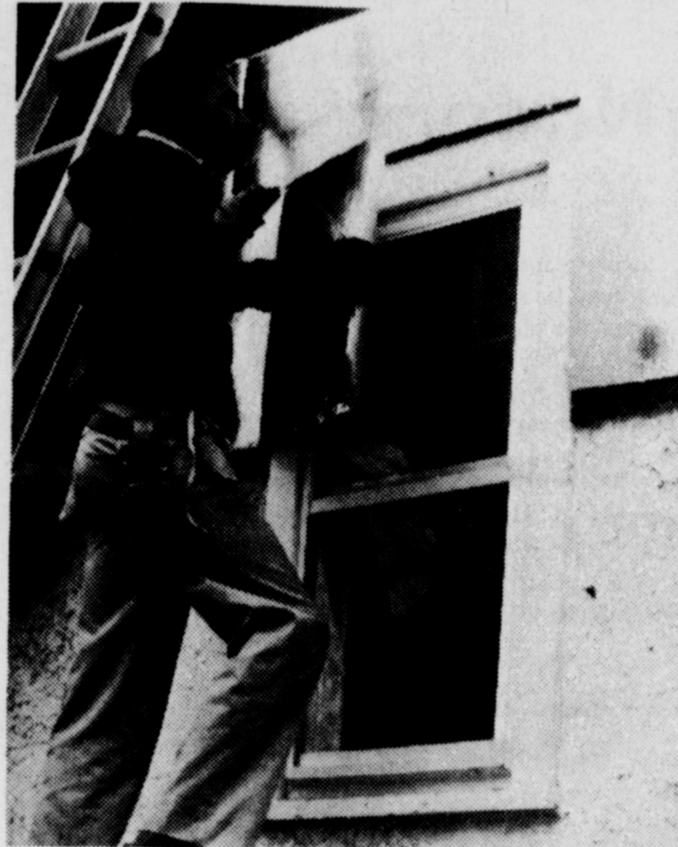
As the price of merchandise, tools and equipment continues to climb, more and more people are beginning to realize that by renting whatever they need from the STRONG SUPPLY located at 2701 Grant St., phone 723-4344, they can save many dollars over buying the merchandise and then maybe never using it again.

The management of STRONG SUPPLY take particular pride in assuring that everything he has for rent is clean and in the best condition, and that it will do the job it was rented to do without breaking down.

Not only is the rental price right, but the items you have to choose from are wide and varied, and the helpful personnel here will gladly assist in selecting the right item for the job.

To the people of this section, we, the editors of this 1981 WICHITA FALLS BUSINESS REVIEW make the recommendation that you rent whatever you need from STRONG SUPPLY. You'll enjoy doing business with this well liked and respected firm.

ADVERTISING



ADDING INSULATION BOARD underneath CertainTeed solid vinyl siding can reduce home heat loss and help seal off drafts. Products such as Certafoam may even allow easier application of the siding by providing a smoother wall surface.

ADVERTISING

Mister Doyce Tuxedo Shop

Under New Ownership
Jennie Glenn Kluever

Getting married? Do it right...and right on by stopping in at the area's most progressive shop, MISTER DOYCE TUXEDO SHOP!

Here you'll find a full line of formal wear in both modern and traditional styles for the groom and male attendants! This unique shop has both rentals and sales facilities for your convenience.

Conveniently located at Parker Square, phone 767-9333, this "super shop" consolidates the needs of the groom, as well as all of the members of the "supporting cast" for that all-important day!

Make plans now to consult this "one-stop" headquarters. You'll find the assortment of lovely clothing and the unparalleled service MISTER DOYCE TUXEDO SHOP offers to be among the best! The authors of this 1981 WICHITA FALLS BUSINESS REVIEW are sure that you'll be a most beautiful couple when you say, "I do."

Carolyn's Lounge

Carolyn Wheeler
-Proprietor

A hard days work entitles you to the best! The best beer in town AND the best place to unwind after a long day on the job can both be found at 1402 Lamar in Wichita Falls, phone 767-9110! If you haven't already guessed, we're talking about CAROLYN'S LOUNGE!

Many of the area's working men KNOW that this fine pub will provide them with a great glass of draft AND the spirit of comradeship that they seek. A couple of cold ones will quench your thirst and a game or two of pool and you're ready for another day! No wonder so many working folks stop in most every day!

In addition to beer and pool, CAROLYN'S LOUNGE features your favorite wine for your enjoyment!

In compiling this 1981 WICHITA FALLS BUSINESS REVIEW, we, the writers, think you'll enjoy visiting this outstanding tavern as much as we've enjoyed telling you about it!

J. Talley Studio

Jerry Talley - Owner

In researching our business review we encountered one of the finest photography studios in this area: the J. TALLEY STUDIO.

They conduct a photographic studio that believes that portraiture can deal with more than just the stark reality that past limitations have imposed. When we speak of J. TALLEY STUDIO we speak of photographers who remove the "Drag" from their work. They deal considerably in fantasy and the unlimited imagination that the world of photography offers. This imagination is applied to all of the personal and commercial work that they do.

Their wedding service is known as the best in the region and is unexcelled anywhere.

They have the experience and equipment to do almost any type of personal or commercial photography in a most expert and professional manner.

Here you will find the talent and skill that puts their work in a class by itself and the pride that keeps it there.

We feel that we cannot adequately describe the work done here. The best we can do is suggest that you stop in and say "Hi" and see for yourself. For those of you who already have, Jerry says thanks.

By the way, if you don't know where they are located, it is in Wichita Falls, at 3819 Call Field and their phone is 691-3773.

As editors of this 1981 WICHITA FALLS BUSINESS REVIEW we are honored to recommend the J. TALLEY STUDIO to all our readers.

Browse Shop No. 2

Marvin Oliver - Owner

Stop in and say, "Howdy!" to the folks at BROWSE SHOP NO. 2, your western wear headquarters! Located at 1110 E. Scott in Wichita Falls, phone 766-0972, this is one of the area's leading "cowboy" stores where you can find real western boots and clothing for the entire family.

This distinctive shop features nationally-known brands of handsome western boots, plain and fancy. There are shirts, pants, jackets and, of course, the cowboy's favorite: Levi's! You may not be up to riding a rodeo, but if you wanted to...you would look the part!

BROWSE SHOP NO. 2 has authentic western garb for "top hands" of all ages. Your bank cards are welcome, and there are convenient lay-a-way plans available. The writers of this 1981 WICHITA FALLS BUSINESS REVIEW urge EVERYONE to shop where western means more than style...it means a way of life.

M & T

Bookkeeping Service

Bill Ormand - Owner

Almost everyone nowadays from the business man to the farmer finds it necessary to keep some form of books to show the money taken in and the expenses of operating a business or farm, for the purpose of accurately reporting their Federal and State Income Tax. Even the salaried individual has the same annual problem in accurately keeping an account of the many things necessary to give a true and comprehensive report of income and expenses.

The M & T BOOKKEEPING SERVICE, located at 101 Fre-Mar Valley in Wichita Falls, phone 723-1890 renders a competent and accurate tax report service. They have men and women trained in tax laws. Their years of training in this field enable them to prepare your tax returns in much less time and with much less work, and often with substantial tax savings.

For a small fee, this competent concern can relieve you of this big task. Phone them today and let them show you their many methods of saving you time and money on your tax preparation.

In this 1981 WICHITA FALLS BUSINESS REVIEW we, the editors, heartily recommend the M & T BOOKKEEPING SERVICE to all of our friends and neighbors.

ADVERTISING

Hudson Blueprint Co.

Cecil Hudson - Owner

Headquarters for all types of blueprinting services as well as the major supplier of drafting equipment in the local area, the HUDSON BLUEPRINT CO. is located at 603-5 Lamar in Wichita Falls, phone 723-0591.

This well known firm specializes in the very highest quality, blueprints available for architects, designers, engineers, oil companies, and builders. They offer many extra services, such as...16mm microfilm for documents, 35mm microfilm for engineering drawings. HUDSON's can microfilm computer output without being a burst condition and, of course, HUDSON's has microfilm viewers. HUDSON's will service all blueprint machines within a 200 radius.

No wonder they're the favorite blueprinter of so many leading architects. This is also one of the best places to get any needed drafting equipment. From tables to mechanical pencils to transits...they have what you need. With a fine selection of domestic and imported equipment, the HUDSON BLUEPRINT features quality above all else.

The authors of this 1981 Wichita Falls Business Review urge all readers who need quality blueprinting or require the finest drafting equipment available to check with this reliable firm...first!

G & M Fence Co.

Earl Murphy and Kim Garrison - Owners

Enjoy more privacy and increase your property value with the latest most beautiful styles of custom fencing from G & M FENCE CO., at 4308 Jacksboro Hwy., in Wichita Falls, phone 322-8527! This reliable fencing contractor has thousands of feet of experience...they have to do a better job!

This is one company which believes strongly in the basic principle of good business: Do the best work for less and the customer will be more than satisfied! You'll always get a square deal and an outstanding fence when you deal with this reputable contractor!

The G & M FENCE CO. offers most any type of fence for residential or industrial application. For the homeowner, this qualified firm can offer a wide variety of styles to work with any landscape AND increase the property value. Call them today and see just what it will take to enhance the beauty of YOUR property with a wooden or metal fence.

The editors of this 1981 BUSINESS REVIEW would like to take this opportunity to recommend this outstanding fencing contractor.

ADVERTISING

ADVERTISING

BUY, SELL, TRADE OR RENT THROUGH THE

CLASSIFIED ADS

DEADLINES

10 A.M. WEDNESDAY
(Word Ads Only)

DIAL 592-4431

RATES:

16¢ PER WORD FIRST INSERTION
8¢ PER WORD EACH REPEAT

4 P.M. TUESDAY, DISPLAY ADS

— SAVE 5¢ FIRST INSERTION BY PAYING WITH COPY —

A-A Roofing & Repair
Specializing in Roof Repairing, Gutters & Down Spouts and Any Type Building or Re-modeling.
Phone 592-5079

ELECTRA MEMORIAL HOSPITAL
Needs RNs and LVNs for full-time, part-time positions. New competitive salary structure, excellent benefits. Contact director of nurses - 817-495-3981.

Haswell Tank Truck Service
24-Hour Service Fully Insured
592-4632
Drilling Water & Mud Salt Water Disposal Vacuum Trucks Transports Bobtails

WOLFE & CO. ROOFING
CALL 592-5630
NAIL OUR REPUTATION ON YOUR ROOF

Backhoe & Dump Truck
Gary Crawford Backhoe Service
592-4382
Gary Crawford Owner-Operator 810 N. Yosemite Iowa Park, Tex. 76367
Oil Field Commercial Residential

Complete Agriculture Spray Service
A-1 Flying Service, Inc.
P.O. Box 457 Wichita Falls, Texas 76307
Bill Bunton 322-8949 James Garrett 592-2250

Who's Going To Pay The Mortgage?
Our Great Southern professional can help you answer that question now before the need is there. He can tell you how beneficial a mortgage cancellation insurance policy would be to your family in the event of your untimely death.
DENNIS GEORGE Insurance Agency
592-4978 322-5772

4 GOOD REASONS to see your good neighbor agent CAR • HOME LIFE • HEALTH
Like a good neighbor, State Farm is there.
Philip Welch
100 W. Park Phone 592-4155

We service all makes of washers, dryers, freezers, refrigerators and window air conditioners.
POSEY'S APPLIANCE SERVICE
208 James Ph. 592-5452 Iowa Park

55 DRIVE FRIENDLY THE TEXAS WAY
PREPARING INCOME TAXES IS OUR BUSINESS Let Us Prepare Yours
Business or Individual 592-5195

FARIS NOWELL Assistant Supervisor SHAKLEE CORP.
Products & Distributorships Available 592-5365

King's Kids Christian Day Care & Preschool
"Iowa Park's Finest For Parents Who Care"
Ages 2 Yrs. & Older Monday thru Friday 7 a.m. to 6 p.m.
202 N. Jackson 592-4242

MISC. FOR SALE
YARD SALE 2 family, stroller, potty, clothes, 10 speed, couch, chair, stereo, etc. 102 W. Garden on Saturday, 21st, 10 a.m. to 3-19-1tp

LARGE CORNER LOT with slabs for home and garage-workshop. 5127 Bahama, Wichita Falls. Assume 10% loan. Call 592-5444 or 691-0255, evenings. 3-19-tfc

1980 DATSUN 510 - 2 door, reclining bucket seats, AM/FM cassette stereo, air conditioner. 592-9023 or 592-4186. 3-19-1tp

PUBLIC NOTICE
SEALED BIDS for the sale of a 24x36 foot wooden physical building located at the Bradford Elementary campus, to be moved by March 30, will be accepted until 4 p.m. March 23 at the Iowa Park Consolidated Independent School District administration building, 413 E. Cash, Iowa Park, Texas. 3-19-1tc

REGISTERED Child Care in Garden Valley-references, reasonable rates, fenced yard. 592-4312. 3-19-1tp

WOULD LIKE to keep 2 toddlers or pre-school. My home days, consider evenings. Fenced yard, hot meals, plenty of TLC. 592-2486. 3-12-2tp

HAVE OPENING to keep 4 children fulltime or part time. Reasonable rates. Registered. 592-5973. 3-12-2tp

REGISTERED MOTHER would like to take care of children or pick up children going to Kidwell for working mothers. Very nice play room and fenced yard. Call 592-9596. 3-12-3tc

DEPENDABLE colored lady would like live-in with elderly couple. Prefer living quarters or servant quarters. Can give good references. 723-5765. Alice Fay Blackwell, 506 Eastside Drive, Wichita Falls, 76301. 3-19-1tc

DYNIQUE COSMETICS (Aloe Vera Skin Care) Patsy Cope, Consultant, 1507 Johnson Rd. 592-4366. 10-9-13tp

MARY KAY COSMETICS, Allie Girard, consultant, 109 W. Poe, 592-4217. 4-5-tfc

FASHION TWO TWENTY Cosmetics. Annetta Reusch, consultant, #42 Surrey, 592-9001. 7-3-tfc

LAWN MOWING, light hauling, garage cleaning. Reasonable rates. Call after 4 p.m., 592-5778. 3-5-4tp

SELL IT WITH CLASSIFIEDS

BUSINESS
AMWAY PRODUCTS Karen Church 592-9644. 3-19-4tp

FOR TV REPAIRS, call Walt's TV, 592-2415. 3-19-11tp

CONCRETE WORK - Any kind. 592-9403 or 592-9555. 9-27-52tp

SHACKLEE PRODUCTS. Call Ann Smith, 592-4414. 3-5-4tp

FOR WATKINS Products or information on becoming an authorized dealer, call C. Wilson, 592-4635. 3-12-3tp

I WILL DO Railroad Commission reports at my home in Kamay, Doris McKenzie, 438-2367. 3-5-3tp

YOUNG'S PRINTING 592-2584. 3-19-12tp

BEGINNING GUITAR lessons. Call Lori Smith, 592-4414. 3-5-4tp

PRIVATE FENCE sales and installation. Charles Skelton, phone 592-5190. 2-19-20tp

ROOFING - Wolfe Roofing Co. Phone 592-5630. 1-1-tfc

HOUSE PLANS drawn and blueprinting. 592-9365. 2-19-5tp

LAWN MOTORS and small engine repair. 592-5620, 700 E. Alameda. 3-5-3tp

NEED FILL SAND? Call Donald Hallum, 592-4365, 804 N. Wall, Iowa Park. 1-3-tfc

PRIVATE FENCE sales and installation. Charles Skelton, phone 592-5190. 6-22-tfc

HOUSE PAINTING - Call for free estimate, John D. Fecher. Phone 592-4472. 12-30-tfc

REMODELING? Do you need another room added on? A garage? Walls removed or added? Free estimates. References. Jack Kerr, 2155 Wall, 592-9040. 7-31-tfc

PHOTOGRAPHY by Chris. Weddings, family reunions, home portraiture, senior pictures, team pictures. 438-2367. 3-6-15tp

JERRY'S VINYL REPAIR, recoloring, auto, furniture, commercial. Free estimates, 438-2243. 2-23-tfc

STORM WINDOWS - Machine-blown insulation. Roof turbines installed. Free estimates. Jack Kerr, 215 S. Wall, 592-9040. 7-31-tfc

SHOTGUN reloading components. Shot \$15.95 bag, \$62 100 lbs., wads \$10.50 thousand, Red Dot or green powder \$5.95 lb., CCI Primers \$11.95 thousand; 12 gauge target hulls \$4.25. Black powder guns and accessories. Powder \$4.60 lb. Ye Ole Gun Shack, 409 W. Washington Ave., 592-5430. 9-4-tfc

MORAN MONUMENT Works, Vernon, Texas, Old Highway 287, near East View Cemetery. A good selection of granites, cemetery lettering, grass markers, vases of bronze and marble. 9-30-tfc

BEAVERS Bookkeeping Service, Lonnie J. Beavers, 901 E. Pasadena. Temporary phone 592-5967. 3-12-4tp

GARY'S BACKHOE & DOZER SERVICE can meet your needs with low rates and quality work. Also available is our dump truck service. We have all forms of sand, soil and gravel from only \$8 per yard. Our rates are the same in all areas, all weather conditions, any hour, day or night. We are fully insured and our work is guaranteed to satisfy you. **RATE SCHEDULE** - Backhoe and frontloader (with operator) \$30 per hour. Light dozer (with 8 ft. blade) and winch (with operator) \$30 per hour. 7-yd. dump-truck (with operator) \$12.50 per hour. Pickup truck with operator \$7 per hour. Phone 438-2331. 3-5-tfc

HELP WANTED
WANTED TEENAGE girls to call for evening baby-sitting. 592-4312. 3-19-1tp

HELP WANTED
IOWA PARK. Do you make \$1,000 a month or less; would you like to live in a new 3 bedroom, 1 1/2 bath house. Fully carpeted with central heat/air, with extremely low payments. SWAN CONSTRUCTION COMPANY, 692-8788. 1-29-tfc

SWAN CONST. CO. Under construction - New 3 bedroom, Hursh Street. FHA, VA and Conventional financing available. Under construction - New 3 bedroom, Aldrich Street. FHA, VA and Conventional financing available. Iowa Park - Make \$1,000 a month or under you can own a new 3 bedroom, 1 1/2 bath, carpeted, central heat-air, with extremely low payments. Buy Now And Choose your own colors & carpeting 692-8788

RE/MAX Above the Crowd! REALTORS®
2945 Southwest Parkway Phone 691-1212
MEMBER Multiple Listing Service

ONE OF A KIND Luxurious cannot describe this home. Over three thousand square feet of beauty. Three bedrooms, 4 bathrooms, two kitchens, two central heat and air units. Indoor swimming pool and party area. Two fireplaces. Call Johnny, 592-2378

TIRED OF WORKING Be your own boss in this ideal location for business with beautiful living quarters upstairs. Owner finance with low interest rate up to thirty years to pay. Call Johnny, 592-2378

4 BEDROOMS 1 1/2 baths, central heat-air, storm cellar, good well with pump, 3 lots, \$34,500. Call Johnny.

LARGE 2 STORY 4 bedrooms, 1 1/2 baths, very large lot, dishwasher, range, refrigerator, washer and dryer included with this older home. Call Lynn.

Lynn Dozier Home Ph. 723-0206
Johnny Lee Home Ph. 592-2378
Joan Shierry Home Ph. 592-5540

FISHIN' ROD FREE
An angler is only as good as his or her equipment and the proper care and maintenance of tackle is essential to performance. Dull hooks, frayed line or worn rod guides invite disappointment at the moment of truth. The American Fishing Tackle Manufacturers Association offers these tips for making sure your gear is ready for your next fishing outing.
• Fishing rods should be completely disassembled, cleaned and a light coat of penetrating oil applied over metal joints.
• To prevent bowing, rods should be stored in an upright position and never leaned against a wall or floor. Rigid plastic or metal tubular containers take the worry out of stepping on or breaking rods during the off-season.
• Reels should be removed from the reel seats, broken down and lubricated to prevent rust from forming or salt water from corroding the moving parts.
• A few simple tugs should indicate whether line has begun oxidizing and losing its prescribed "test" strength specifications. If the line is relatively new, reversing its position on the reel will restore its strength.
• Hooks on lures should be sharpened with an ignition point file and rusty hooks replaced. Worn lures can be rejuvenated with enamel paints or tape. Spinners and spoons made of nickel or copper can be repolished with a soft cloth.

NOTICE
LOST - Black female Springer Spaniel, with white markings, 2 1/2 months old. 592-4316 after 5. 3-19-1tc

PUBLIC NOTICE
SEALED BIDS for property insurance will be accepted at the Iowa Park Consolidated Independent School District administration building, 413 E. Cash, Iowa Park, Texas, until 1:15 p.m. March 23, 1981. Specifications are available at the office. 3-19-1tc

HOME FOR SALE
NICE LARGE furnished cabin, crappie house on water at Lake Diversion. 817/438-2390. 3-12-2tp

IOWA PARK. Do you make \$1,000 a month or less; would you like to live in a new 3 bedroom, 1 1/2 bath house. Fully carpeted with central heat/air, with extremely low payments. SWAN CONSTRUCTION COMPANY, 692-8788. 1-29-tfc

SWAN CONST. CO. Under construction - New 3 bedroom, Hursh Street. FHA, VA and Conventional financing available. Under construction - New 3 bedroom, Aldrich Street. FHA, VA and Conventional financing available. Iowa Park - Make \$1,000 a month or under you can own a new 3 bedroom, 1 1/2 bath, carpeted, central heat-air, with extremely low payments. Buy Now And Choose your own colors & carpeting 692-8788

RE/MAX Above the Crowd! REALTORS®
2945 Southwest Parkway Phone 691-1212
MEMBER Multiple Listing Service

ONE OF A KIND Luxurious cannot describe this home. Over three thousand square feet of beauty. Three bedrooms, 4 bathrooms, two kitchens, two central heat and air units. Indoor swimming pool and party area. Two fireplaces. Call Johnny, 592-2378

TIRED OF WORKING Be your own boss in this ideal location for business with beautiful living quarters upstairs. Owner finance with low interest rate up to thirty years to pay. Call Johnny, 592-2378

4 BEDROOMS 1 1/2 baths, central heat-air, storm cellar, good well with pump, 3 lots, \$34,500. Call Johnny.

LARGE 2 STORY 4 bedrooms, 1 1/2 baths, very large lot, dishwasher, range, refrigerator, washer and dryer included with this older home. Call Lynn.

Lynn Dozier Home Ph. 723-0206
Johnny Lee Home Ph. 592-2378
Joan Shierry Home Ph. 592-5540

HOME OFFICE NASHVILLE, TENNESSEE 37219
LIFE & CASUALTY INSURANCE COMPANY OF TENNESSEE AN AMERICAN GENERAL COMPANY
DALE ROBBINS 592-9031

Quality **PLANTS** Quantity
Baker's Greenhouse
1 mile South on FM 1814 (Bell Rd.)

IOWA PARK LODGE No. 713 A.F. & A.M.
700 W. Washington 592-5506
Stated Meeting 7:30 P.M. 2nd Thursday
W.M. - Marvin Doyle Parks...592-5021
Sec. - Taylor George...592-5234

used but not abused
LOW-MILEAGE USED CARS

Our 1981 cars and pickups are in big demand, so we've been trading for some real good used units. A couple of these are factory demonstrators with low mileage.

'75 Mercury Cougar, 2-door hardtop, gold \$2875	'75 Dodge Pickup \$1990
'76 LTD 4-door, green \$2880	'76 Ford Van, 18,951 miles \$2355
'76 LTD 4-door \$1995	'76 Chevrolet Pickup \$2695
'76 LTD 4-door \$2295	'77 Ranchero Pickup \$2995
'77 Chevrolet Monte Carlo 2-door \$3495	'77 Ford F150 \$2495
'78 Fairmont Futura, red, 2-door \$3950	'77 Ford Pickup, white \$2195
'80 Granada 2-door, blue, 3,516 miles Factory Demonstrator	'78 Ford F150 Pickup, black \$2995
'80 Granada 4-door, creme, 9,605 miles Factory Demonstrator	'79 Ford F150 Ranger \$4695
	'79 Chevrolet Pickup Quar. Wt. 19 lbs \$5995

Shaw Motor Co.
600 W. Hwy 592-4106

JIM'S MARKET
FINANCING AVAILABLE FOOD STAMPS ACCEPTED
113 W. Cash Iowa Park Store - 592-2051 Night - 592-4697

1/2 BEEF Heavy Grain Fed Cut, Wrapped, Frozen \$1.25/lb. U.S.D.A. Choice 1.32/lb.	HIND Quarter \$1.55/lb. Cut, Wrapped, Frozen Pork Freezer Pack 6 lbs. Center Cut Pork Chops 3 lbs. Pork Steak 2 lbs. Sliced Bacon 2 lbs. Jim's Pork Sausage Quar. Wt. 19 lbs. \$19.95
PACK #1 10 lb. CHUCK ROAST 10 lb. CHOPPED SIRLOIN 10 lb. SEVEN STEAK 10 lb. PORK CHOPS 10 lb. GROUND BEEF 50 lb. \$79.95	PACK #2 10 lb. CHUCK ROAST 10 lb. PORK STEAK 10 lb. SEVEN STEAK 10 lb. GROUND BEEF 10 lb. FRYERS 50 lb. \$68.50
PACK #3 10 lb. PORK STEAK 10 lb. CHUCK ROAST 10 lb. SPARE RIBS 10 lb. GROUND BEEF 10 lb. FRYERS 50 lb. \$66.95	PACK #4 10 lb. SEVEN STEAK 10 lb. PORK STEAK 10 lb. GROUND BEEF 10 lb. PORK ROAST 10 lb. FRYERS 50 lb. \$68.50
PACK #5 10 lb. PORK STEAK 10 lb. BACON 10 lb. GROUND BEEF 10 lb. PORK ROAST 10 lb. FRYERS 50 lb. \$65.95	PACK #6 15 lb. ROAST 15 lb. STEAK 10 lb. CHOPPED SIRLOIN 10 lb. GROUND BEEF 50 lb. \$85.65
PACK #7 20 lb. BEEF RIBS 10 lb. PORK CHOPS 10 lb. GROUND BEEF 10 lb. FRYERS 50 lb. \$57.95	PACK #8 10 lb. PORK CHOPS 10 lb. PORK STEAK 10 lb. PORK SAUSAGE 10 lb. PORK SPARE RIBS 10 lb. FRYERS 50 lb. \$65.50