

1980  
Aug 21

PARK CLINIC-DR. R.F. WATSON  
310 W. ALAMEDA  
IOWA PARK, TEXAS



LIGHTED CROSSING - Workmen have been installing street lights at railroad crossings in the city to assist night drivers in seeing rail cars. The suggestion came from a state hearing held here last spring.

# Schools open Monday

## Lots of changes for lots of students this year

When the school bells ring at 8:30 Monday morning, they will be signaling the opening of the 1980-81 school year for Iowa Park students, and a lot of changes.

Heading the list of changes will be the consolidating of all classes at the four campuses in Iowa Park.

With the closing of the Valley View campus, students who would have been bussed there will be at the Bradford Elementary, if they are fifth graders, and at the junior high, if they are sixth graders.

Then, all elementary grades have been consolidated. All kindergarten, first and second grade students will attend Kidwell Elementary this year, and all third, fourth and fifth graders will meet classes at Bradford Elementary.

The sixth, seventh and eighth grades will all be held at the junior high.

### BUS ROUTE CHANGES

With the closing of Valley View, some bus routes in the rural area will be changed, and students living in town may well find themselves eligible to ride buses to their schools.

All rural routes will remain the same except buses one and nine. Bus nine has been eliminated, and bus one will pick up those students. Buses will run the same times they did last year.

Four major thoroughfares through the city have been determined as hazardous avenues to be crossed by students afoot, and if the students must cross one of them to attend their respective schools, they are eligible to ride buses, according to Bill

Steger, who is in charge of school transportation.

The four thoroughfares are Expressway 287, Johnson Road, Old Highway and FM 368.

All students living in Country Hills Estates, Shiloh and Quail Valley are eligible to ride buses, which are to arrive in those areas approximately 7:30 a.m.

A third grader living in the 900 block of Cornelia is eligible to ride a bus to Bradford, but a second grader living at the same address would not be eligible to ride a bus to Kidwell.

All students living east of FM 368 (or Pacific), and north of the Old Highway are eligible to ride buses to all campuses except the junior high.

A second grader living in Garden Valley is eligible to ride a bus to

Kidwell, but a third grader at the same area is not eligible to ride a bus to Bradford.

All intracity bus routes will be run between 7:50 and 8:15 in the mornings.

Bus routes and times are subject to change after school is started, if it is learned significant changes in student addresses have been made since a study earlier this summer was completed, according to Allen Shewmake, who assists Steger in transportation.

### HIGH SCHOOL STUDENTS

All Iowa Park High students will pick up their schedules, locker assignments and locks today or tomorrow, according to Bob Dawson, principal.

Between 10 a.m. and noon, seniors will report today and sophomores tomorrow. Between 2 and 4 p.m., juniors will report today and freshmen tomorrow. Freshman orientation is to begin at 2 p.m. Friday, and will last about an hour, Dawson said.

All teachers in the Iowa Park school system reported yesterday to begin three days of in-service training, most of which will be held at Midwestern State Univ. campus under direction of the Region Nine Service Center.

After attending classes all next week, students will get an early holiday Sept. 1, Labor Day. Their next day from classes will be Oct. 20, which is another in-service day for teachers. Christmas holidays will begin Dec. 20 and continue through Jan. 4.

# IOWA PARK LEADER

25 Cents

VOL. XI, NO. 50 IOWA PARK, WICHITA COUNTY, TEXAS 76367 THURSDAY, AUGUST 21, 1980

## Voters reject district, bonds

Voters Saturday turned down in no uncertain terms a proposal to form a hospital district and raise \$15-million in bonds for remodeling of Wichita General Hospital.

With the eastern two-thirds of Wichita County involved in the referendum, 82 percent (9,697 - 2,703) turned down proposition one, forming of a district and levying a 20-cent tax, and 70 percent (10,665 - 3,172) turned down the bond issue.

The four voting boxes in the central part of the county, precincts 32, 33, 34 and 60, turned down proposition one by 89 percent (805 - 88) and proposition two by 86 percent (898 - 128).

Election officials could not give a definite explanation as to why the voting varied so much on the two propositions.

One suggestion as to why 13,837 votes were cast on proposition two and only 12,400 on proposition one was that the mechanical voting machines had a two-page ballot, and possibly some turned only to proposition two and did not see the

page with proposition one on it.

Another possibility offered was that proposition dealt primarily on the issue of money, the bonds.

While still another suggestion was that the first page, proposition one, was lengthy reading and page two, proposition two, was short.

One thing was for sure, however, none of the 48 voters who turned out at precinct 34, the Valley View poll, wanted to organize a hospital district. That count was 48 against and none for. But on the bond issue, 56 voted against it and four supported it.

Voters in precinct 32, which is the largest box in Wichita County, turned down proposition one by a 524-82 margin, 88 percent, and proposition by 594-90, 85 percent.

Precinct 33 voters were even more definite in their opinions against either proposal. Proposition one went down 190-20 (90 percent), and proposition two failed 209-24 (89 percent).

At precinct 60, the Valley Farms Community House, proposition one failed 35-6 (83 percent) and proposition two 39-10 (74 percent).

## School tax rate lowered to \$1.95

Most homeowners in the Iowa Park school district got a break Monday night when the board of trustees took action to lower the tax rate and approved the budget.

The rate was set at \$1.35 per \$100 evaluation, down from the \$1.58 rate set last year. The budget, however, is some \$80,000 over last year, \$3,788,548.

Tax assessor/collector Bill Steger told trustees that oil and industry will be picking up most of the gains in values this year, a change in trend

established some 16 years ago.

He explained that a home assessed at \$20,000 that paid \$316 last year would pay only \$270 this year, "barring any reappraisal." Homeowners have been carrying the burden the last 16 years," Steger said, "hopefully we will be able to keep lowering them."

Steger commended the board members and school administration for being able to keep taxes low and pointed out that three school districts that same night were laboring over raising taxes, because some oil and

utility people "may cause them some problems."

The tax rate has now been lowered some 45 cents over the past four years, Steger pointed out.

Iowa Park's budget actually is only \$3,232,242 when the \$556,306 budget for the West Wichita County Cooperative is subtracted. The local district serves as fiscal agent for the Co-op, and the two budgets are figured as one for budgeting purposes.

The local budget is only \$80,397 greater than it was for the 1979-80 budget.

Included in the new budget is enough money to complete the high school gym (it must be separate from the 1979-80 budget since what has not yet been paid must come from the

new budget), and \$120,000 which will be used toward constructing a new physical education structure for the Bradford campus.

In other business during Monday's called meeting of the board, a boys' physical education instructor was hired for Bradford, and fund-raising projects for the high school student council were approved.

Frank Slemple, who taught last year in the Austin school system, was hired. He filled the last vacancy on the faculty. Supt. Harold Cowley told trustees.

Student Council representatives Kevin Davis and Troy Linthium sought and received permission to sell t-shirts, buttons and green spirit towels during the year to raise funds for the organization's activities.

## News publisher to be speaker

The date and keynote speaker of the annual Iowa Park Chamber of Commerce banquet were announced Monday at the monthly meeting of the board of directors.

James Roberts, publisher of the Andrews County News and president of the Texas Press Association, will speak Jan. 31 in the high school cafeteria.

Roberts is an outspoken advocate of free enterprise and is openly critical of the "government's meddling in the petroleum industry."

Reservations for organizations who want booths at the annual Whoop-T-Do, to be held Oct. 4, are

now being received at the Chamber office, according to Mrs. Ray Pittman, secretary. Fees for booths this year will be \$10, or \$15 if electricity is required. David Parkey is chairman of this year's event.

Tommy Key, who will head up this year's Christmas parade, said letters will be mailed out this month to prospective participants. The date has not yet been decided.

At the Sept. 15 meeting of Chamber directors, a report on activities of the Industrial Development Corporation will be made by chairman H.M. Nipper. Two directors are to be named this year to the IDC board, according to its charter.



EMERGENCY TREATMENT is given to a patient of Wood Convalescent Home by a nurse, aide, emergency medical technician and policeman after she was found Tuesday morning on North Third Street. The patient, Jewel Tubbs, had been taking a walk and apparently stumbled, striking her head, arm and knees on the rough pavement. Elmer Cornwell found her, summoned help, and she was taken to Wichita General for observation. She was not seriously injured.

## Thefts, mischief cases reported

Two cases of theft and one of criminal mischief were reported to police during the past week.

A driver identified as Michael Ray Kilgor allegedly bought \$16.75 worth of gasoline at the Johnson Road Texaco Sunday and drove off without paying.

Mrs. Shelia Miller told police that someone had entered her home at 705 W. Clara and taken a jewelry box containing items valued at \$700. No signs of forced entry were found.

Hugo Segarra of Fort Worth told police last Thursday he had found several areas of damage to his house at 903 W. Cornelia. Damage was inflicted to the fence, walls, screened door and window and broken window, totaling \$317.50, police were told.

## Lake swimming ban on agenda

The city council will consider Monday night an ordinance which

would prohibit swimming and restrict motorized boats on Gordon Lake. The meeting will begin at 7 p.m. in council chambers.

Though a similar rule was passed by the council some nine or 10 years ago, it has somehow been lost from the books, and aldermen have indicated such restrictions were necessary.

## Rain measurements vary, but it was wet, anyway

In the spotted areas that received rain over the weekend, the moisture was a welcomed relief.

Measurements varied from .20 of an inch to 1.5 inches, according to reports in and around Iowa Park.

The Texas Experiment Station measured only .22 of an inch, while Ray Hicks said he received 1.5 inches. Ray Pittman measured an even inch at his home, but Virgil Woodfin's gage said .6. David Williams reported 1-2 inches south of Dundee, and four inches on a farm he operates in the

northeastern part of Baylor County.

At the Wichita River FM 368 crossing, Lester Brooks said he measured .3 of an inch Saturday and only a trace Sunday.

Rains both Saturday and Sunday fell within 15 minutes of 4 p.m.

For the year, the Experiment Station has measured 9.24 inches of precipitation, considerably lower than the 23.97 inches measured the same date in 1979.

Saturday's rain was the first measurable precipitation since mid June.

Weather Report	
Weather reports are officially compiled for Iowa Park at the Texas Experiment Station, southeast of town.	
Rainfall for week.....	.22
Total for month.....	.22
Total for year.....	9.24
Total last year.....	23.97



LYNN BLACK

### Wedding date is set

Mr. and Mrs. George Evans of Wichita Falls announce the engagement of their daughter, Lynn Browning Black, and Bill Andersen, son of Mr. and Mrs. William H. Andersen of Iowa Park.

The bride-elect was graduated from S.H. Rider High School and is employed at Gordon's Jewelers in Sikes Senter Mall. Her fiancé, a graduate of Iowa Park High School, is employed by Texcolor Inc. in Wichita Falls.

### Western painting demonstration set

Jack Stevens will demonstrate western painting during the meeting of the Iowa Park Arts and Crafts Association Tuesday at 7 p.m. in the Good Shepherd Lutheran Church.

The picture will be auctioned off invited to attend.

Mrs. George Boles, president, will conduct the business meeting at which time committees to serve for the art show during Whoop-T-Do will be named. All club members are urged to be present.

The betrothed couple invite their friends to attend their wedding Sept. 27, at 7:30 p.m. in the First Christian Church in Iowa Park.

### Shower fetes bride elect

Miss Karen Andersen, bride-elect of Richard Lehman, was honored recently at a pounding given at the Haystack Apartments in Wichita Falls by Karen Spruiell and Vicki Johnson. Decorations were inspired by the colors of lavender and yellow, the honoree's chosen colors.

The decorations were spotlighted by a white tree on the refreshment table decorated with miniature lavender packages of staple foods, and the sheet cake decorated in the

Mrs. Wm. Andersen and Mrs. Wayne Lehman, mothers of the engaged couple, were special guests.

The wedding will take place August 30 at the First Christian Church.

### Wedding group given party

The young ladies who will participate in the wedding of Miss Judy Cook and James Spears Saturday evening in the Church of God were feted at a luncheon and swimming party last Saturday. The bride-elect, assisted by her mother, Mrs. Bill Cook, extended the courtesy to them.

Tables for the luncheon were arranged around the pool. The meal was served "a la three white wrought iron carts" laden with an assortment of salads, sandwiches, tidbits and meats. A watermelon basket filled with colorful fruit was one of the show pieces on the carts.

The table laid with powder blue satin, holding the gifts for the honored guests, was set up inside the house and appointed with a miniature white cart trimmed in gold and filled with royal blue and baby blue silk hibiscus and poppies and baby's breath centered with a white lace bow and topped with a parasol to match the cart. Miss Cook presented her attendants, candlelighters and ring bearer with gold chains accented with charms engraved with the role they would have in the wedding on one side and the names of the betrothed couple and their wedding date on the other side.

The guest list included Mmes. Dennis Herder, Howard Davis, Les Maple, Sonny Cook, Jimmy Spears, mother of the groom-elect, C.J. Cook, grandmother of the bride-elect; Misses Teresa Feltman, Johnna Frederick, Julie Davis, Melissa Spears; and Brandon Herder.

### New Meter Connections

Lois Mata - 206 N. Hawthorne  
Larry Sossaman - 700 Coleman  
Teresa Bernstein - 510 E. Bank  
Stan Stephens - 705 E. Jefferson  
William Cape - 205 W. Jefferson  
G.L. Cason - 209 N. Hawthorne  
Carson W. Crume - 716 W. Texas



### Select Your School Wardrobe



From

The Velfree Shop

208 W. Bank



TRACY HARDIN and KELLY COMPTON

### August date selected

Mr. and Mrs. Walter Hardin of Wichita Falls announce the engagement and approaching marriage of their daughter, Tracy, and Kelly Compton, son of Mr. and Mrs. Michie Compton of Iowa Park.

The wedding will be performed August 29 at the Southwest Baptist Church in Wichita Falls.

Miss Hardin was graduated from Rider High School and will enroll in Midwestern State University's School of Nursing in September. Her fiancé was graduated from Iowa Park

### CARD OF THANKS

My family joins me in expressing heartfelt appreciation to the Iowa Park Fire Department for rendering first aid to me when I was injured in a car accident August 11. We are also grateful to everyone who has shown concern for me and interest in my recovery. Thanks to all of you.

Debbie Boles

### Scouts to be honored

Four members of Boy Scout Troop 38 will receive the Eagle Scout ranking at a banquet in their honor at 6:30 p.m. Saturday at the First United Methodist Church.

They are Allen, Mark and John Henderson and Wayne Watson.



### Shower Selections For:

JEANETTE BURNS  
and  
JIMMIE RICHARDSON

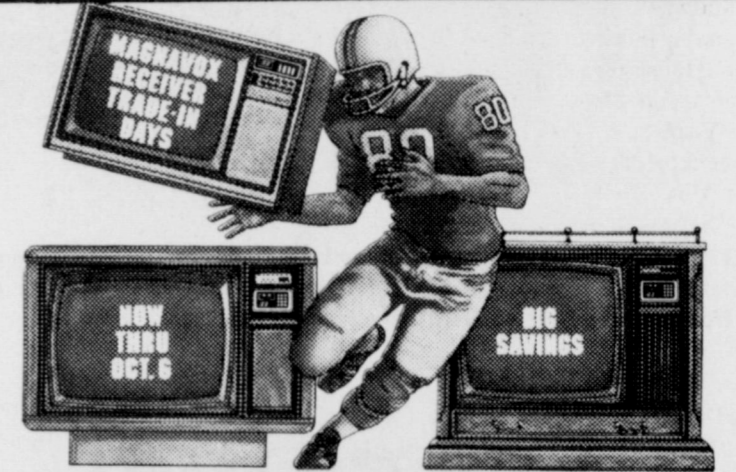
KAREN ANDERSEN  
and  
RICHARD LEHMAN

JUDY COOK  
and  
JAMES SPEARS

### Parkway



200 - 206 W. Bank



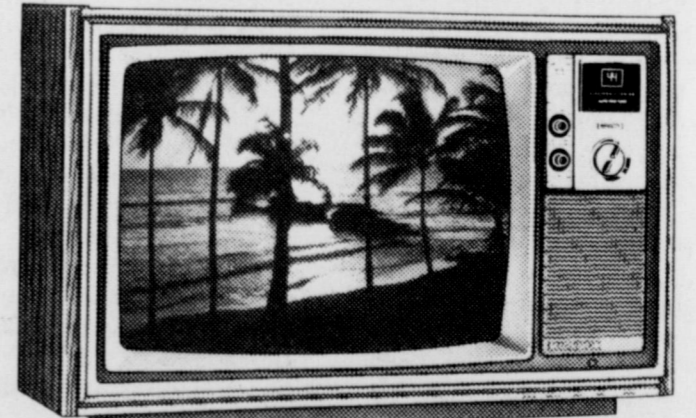
### Let's trade receivers.

Trade in your old TV. Save money.

Buy a Magnavox color television during Magnavox Receiver Trade-In Days and you'll receive a trade-in allowance on your old TV.

With our Touch-Tune™ models, you'll be set to see all the NFL games and the new fall shows with a 25% sharper, clearer color picture than ever before.

### Score big savings on your old receiver now.



Model 4222 - 19" diagonal portable color television with AFT and electronic tuning for easy and accurate channel selection. Also features a 100% modular solid-state chassis, 100° in-line picture tube and illuminated channel display.



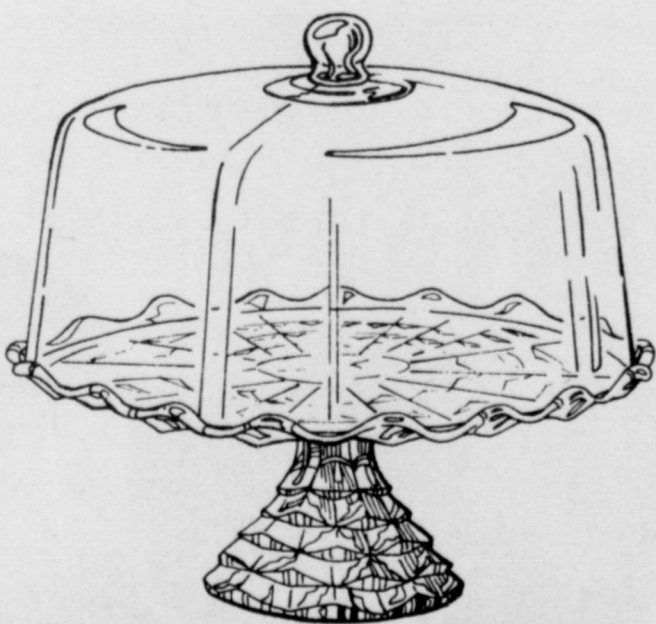
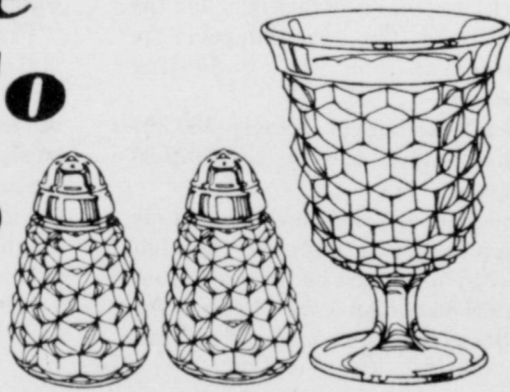
Model 4916 Carefully crafted in Mediterranean styling, this Magnavox 25" diagonal color television lets you Touch-Tune to your favorite program at the set or by Remote Control. There's an LED channel indicator and it's even Cable Ready!



### PARKWAY

FURNITURE True Value HARDWARE

### Save Up To 33%



### on Fostoria's "American" Pattern

Cherished for generations, Fostoria's famous American pattern stemware and giftware blends beautifully with every decor. So gracious to serve... so durable you can use it everyday! Choose from our wide selection including several new additions - now at great savings. Fostoria.

The Crystal For America



# Cook of the Week

Do some people have an inherent talent for cooking that many seem to lack? Some say no and that an ability to cook is not inherited, neither is an inability to cook. Rather, they think that it is a skill that can be learned and that anyone can become an excellent cook if he/she wants to.

Whether Kathy (Mrs. Wayne) Radford has an inherent talent for cooking or has learned the skill, she is sharing some delicious-sounding recipes with us this week that attest to her being an excellent cook. One of these is Coconut Cream Pie, a dessert that has been, and still is a favorite, of perhaps millions of people.

Coconut is the fruit of the coconut palm. It is not known where the coconut palm comes from. Scientists believe that nuts from the tree have been carried by ocean tides, as well by man, from one tropical country to another. It has been impossible to find the origin of the palm since it was already growing in every tropical country at the dawn of history.

Confectioners and bakers make good use of the meat, using shredded coconut either carefully dried or in the natural milk, and it is popular in making pies, cakes, candy and cookies.

The former Kathy Thompson, daughter of Mr. and Mrs. James Thompson of Athens, former residents of Iowa park, was graduated from Iowa Park High School and received a B.A. degree from Midwestern State University with a major in sociology and a minor in criminal justice. She worked at the Children's Aid Society through her college years and for a time after graduation. Her husband works for Seiman-Allis. They are members of the Faith Baptist Church.

Troy Radford, their three and a half year old nephew is living with them temporarily.



Mrs. Wayne Radford and Troy

## SAUSAGE ROLLS

1 lb. hot ground sausage  
3 cups Bisquick  
12-13 ozs. grated Cheddar cheese  
Mix well with hands. Form into small balls; can be frozen at this point. Bake about 10 minutes at 350 degrees. Serve hot.

## SQUASH CASSEROLE

1 lb. yellow squash  
1/4 cup chopped onion  
Stove-top stuffing mix (chicken type)  
Cheddar cheese  
Make stove-topping according to directions. Cook sliced squash and onion until done. In casserole dish, put stuffing, then squash. Top with

cheese and bake in moderate oven until cheese melts.

## PEANUT BUTTER BALLS

Mix together:  
1 lb. oleo  
1 qt. peanut butter  
2 lbs. powdered sugar  
Roll into 1 inch balls. Chill.  
Melt in saucepan:  
18 ozs. semi-sweet chocolate chips and 1 bar paraffin. Using coolspoon, dip balls into chocolate. Cool on wax paper and store in refrigeration.

## CLAM CROWDER

10 1/2 oz. can clams or 1 1/2 cups steamed clams and juice  
Boiling water  
3 medium potatoes, pared  
1 small onion, chopped  
2 Tbs. flour  
1/4 cup cold water  
2 tsp. salt  
Dash pepper  
2 Tbs. butter  
1 cup evaporated milk  
Drain clams, saving juice, then chop clams fine. Add to clam juice enough water to make 3 cups. Bring to boil and add potatoes, cut in 3/8 inch dice and the onion. Simmer 15 minutes. Blend flour to a smooth paste with the cold water; add to the potatoes slowly, stirring until mixture boils and thickens. Now add seasonings and clams, and reheat. Heat evaporated milk over hot water, then add to it slowly the hot clam mixture, stirring vigorously. Serve immediately. 5 servings.

## COCONUT CREAM PIE

1/4 cup flour  
1/2 cup sugar  
1/4 tsp salt  
1 1/2 cups scalded milk  
3 eggs, separated  
2 Tbs. butter  
1/2 tsp vanilla  
1/2 cup coconut  
6 Tbs. sugar  
1 baked 8-inch pie shell

Mix flour, 1/2 cup sugar and salt in top of double boiler; add scalded milk and stir well. Cook over direct heat until smooth and thick, stirring constantly. Beat egg yolks well, stir in a little of the hot mixture and pour back into double boiler; cook over boiling water 2 minutes, stirring constantly. Remove from heat and add butter and vanilla.

Beat egg whites until light and gradually beat in 6 Tbs. sugar until stiff. Fold coconut and 1/2 of the meringue into cooled filling. Pour filling into cooled pie crust and spread remaining meringue over filling, touching the edges of the crust all around. Place in a moderate oven (350 degrees) and bake 10 or 12 minutes until golden brown. Cool before cutting.

## ABOUT TOWN

Terry Ratcliff, who is associated with Horace Man Insurance, has returned from Springfield, Ill. where he attended a two-weeks training conference.

Happy 25th Anniversary



Love Kathy, Kim and John Allen

Happy 12th Birthday



Mom, Dad, KK & Charles



DENISE FREEMAN and CRAIG LEWIS

IOWA PARK LEADER, IOWA PARK, TEXAS, AUGUST 25, 1980, PAGE 3

## Announce engagement

Mrs. Shirley Brown of Van Buren, Ind. is announcing the engagement of her daughter, Miss Dawn Denise Freeman and Craig Allen Lewis, son of Vernon Lewis of Iowa Park and Denny Lewis of Post Worth.

The couple will be married Nov. 22 at the Faith Baptist Church in Iowa Park.

Miss Freeman, who is a registered nurse at Wichita General Hospital, was graduated from Ben Davis High School at Indianapolis and attended the University of Indiana. She was graduated from the School of Nursing at Midwestern State University. The future groom was graduated from Paschal High School in Post Worth. He attended MSU and is presently employed by Norman Pinsky Oil Co.



## Bridal Registry

- JUDY COOK and JAMES SPEARS
  - KAREN ANDERSEN and RICHARD LEHMAN
  - JEANETTE BURNS and JIMMIE RICHARDSON
- Park Pharmacy  
115 W. Park

Country Collections Art Gallery is pleased to present...

**RANDALL W. GRIFFITH**  
one man show

saturday, august 23  
2 p.m. to 9 p.m.

sunday, august 24  
2 p.m. to 5 p.m.

NORTH SIDE EXPRESSWAY 287  
BETWEEN PETERSON AND BELL ROADS  
IOWA PARK, TEX.

# SNB

**SNB Pays As Much Interest As Any Other Financial Institution In The Area On 6-Month Money Market Certificates of Deposit**

Offering **10.015%** Interest Per Annum  
on \$10,000 Certificate of Deposit.

Yielding a Big **506.31** in 182 days.

Rates could change by time of certificate maturity. Substantial penalty if withdrawn prior to maturity. Federal regulations prohibit compounding of interest during term of certificate.

**We're investing in our community...**

**Invest your money with**

**State National Bank**

See Roberta Hill for further details.



**Dr. James D. Edwards**  
**Optometrist**

Wishes to announce the opening of his office  
at 103 West Park

Open 9 a.m. to 4 p.m.  
August 21, 22, 25, 26, 27.

Evening and Saturday morning appointments available For appointment or information call:  
**592-4992**

**STUDENT RESIDENCE CENTER**  
**Vernon Regional Junior College**

Student housing is available for the Fall Semester, 1980.

Living in the new Student Residence Center affords the student the advantage of living on campus inexpensively.

For information and reservations, contact:  
Office of Dean of Student Services  
Vernon Regional Junior College  
4400 College Drive Pho. 817-552-6291

**VERNON REGIONAL JUNIOR COLLEGE**  
WILLBARGER COUNTY JUNIOR COLLEGE DISTRICT  
4400 College Drive Vernon, Texas 75604

**SNB Pays As Much Interest As Any Other Financial Institution In The Area On 6-Month Money Market Certificates of Deposit**

Offering **10.015%** Interest Per Annum  
on \$10,000 Certificate of Deposit.

Yielding a Big **506.31** in 182 days.

Rates could change by time of certificate maturity. Substantial penalty if withdrawn prior to maturity. Federal regulations prohibit compounding of interest during term of certificate.

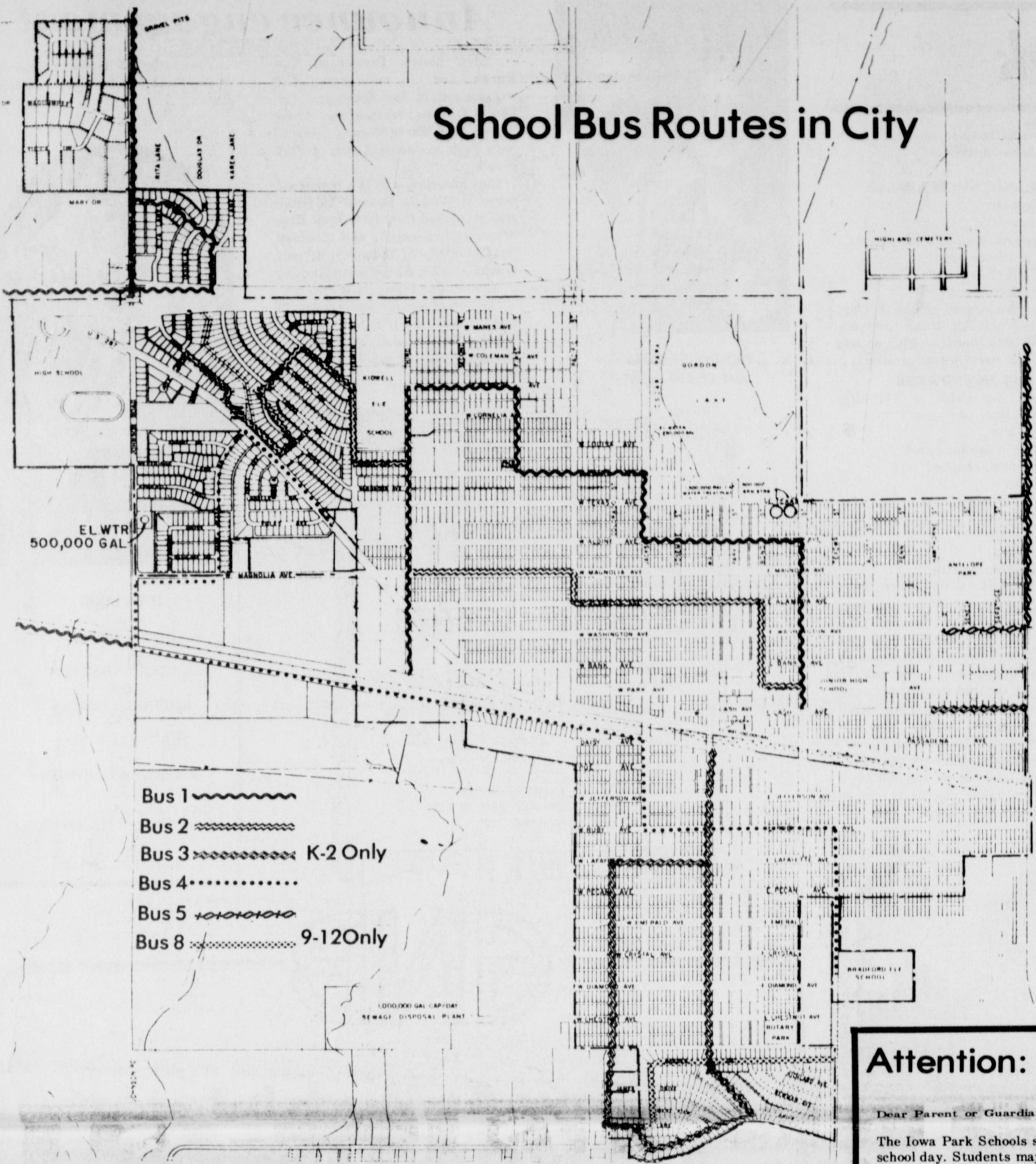
**We're investing in our community...**

**Invest your money with**

**State National Bank**

See Roberta Hill for further details.

**STATE NATIONAL BANK**  
IOWA PARK, TEXAS  
Member F.D.I.C.



**Booklet tells drilling costs**

Average cost of drilling an oil or natural gas well in Texas is \$51.95 per foot, a 238 percent increase from 1970, according to Texas Mid-Continent Oil & Gas Assn.

The calculation is based on figures from the Association's annual compilation of facts and figures on the Texas petroleum industry, titled "80 Facts About Texas Oil and Gas."

"80 Facts" points out that Texas oil and gas operators drilled nearly 85.9 million feet of hole in 1979, and lost \$1.4 billion in dry holes.

Like its predecessors, "80 Facts" will be distributed free to the general public, according to William H. Abington, Association executive vice president.

In addition to its section on drilling, "80 Facts" includes data on production, offshore, refining-processing, employment, economics, and

taxation. A general category also is included.

The new leaflet serves as a quick reference to the highlight activities of the petroleum industry in Texas during 1979, Abington said.

**Meeting for blind**

The August meeting of the National Federation of the Blind of Wichita Falls will be held at Sike Senter Community Room Friday at 7 p.m.

The meetings are held the fourth Friday of each month and all blind and interested sighted persons are invited to attend. For more information, contact Lola Pace, the president, at 592-5757 evenings; Amie Carmichael, vice president at 691-2675; or Darlene Holcomb, treasurer, at 767-9927.

**IOWA PARK LEADER**

Bob Hamilton ..... Editor - Publisher  
 Dolores Hamilton ..... Assistant Publisher  
 Olive Blackock ..... Reporter

The IOWA PARK LEADER is published every Thursday. Offices are located at 112 W. Cash, Iowa Park, Texas, 76367. Telephone: 592-4431. Second class Postage Paid at Iowa Park, Texas, 76367. Subscription rates are \$6 in Wichita and Archer Counties; \$8 in Texas and Oklahoma; \$10 elsewhere, all payable in advance. Classified advertising rates are 10 cents per word first insertion, 5 cents per word thereafter. Any erroneous reflection upon the character, standing, or reputation of any person, firm, or corporation which may appear in the columns of this newspaper will be corrected upon being brought to the attention of the publisher.

MEMBER  
**TEXAS PRESS ASSOCIATION**

**Attention: Parents or Guardians of school children**

Dear Parent or Guardian:

The Iowa Park Schools serve nutritious meals every school day. Students may buy lunch for .55, .65, and .75 cents, breakfast for .30 cents, and extra milk for .10 cents for white milk and .10 cents for chocolate milk.

Children from families whose income is at or below levels shown on the attached scale are eligible for free or reduced-price meals. The reduced price for lunch is .10 cents and for breakfast .10 cents. If your income is greater than those shown, but you have unusually high medical bills, shelter costs in excess of 30 percent of your income, special education expenses due to the mental or physical condition of a child, or disaster or casualty losses, your children may still be eligible.

The school children of parents or guardians who become unemployed are eligible for free or reduced-price meals during the period of unemployment, provided that the loss of income causes the family income during the period of unemployment to be at or below the levels shown on the scale.

To apply at any time during the year for free or reduced-price meals for your children, complete the attached application and return it to the school. The information given on the application is confidential and will be used only for the purpose of determining eligibility for free or reduced-price meals. Within ten days of receiving your application, the school will let you know whether or not your children are eligible. If you do not agree with the school's decision, you have a right to a fair hearing. This can be done by writing or calling the Chairman of Cafeteria Committee at P.O. Box 428, Iowa Park, Texas, 592-5082.

In certain cases foster children are also eligible for these benefits. If you have foster children living with you and wish to apply for such meals for them, please notify us or indicate it on the application.

All children are treated the same regardless of ability to pay. In the operation of child feeding programs, no child will be discriminated against because of race, sex, color, or national origin.

If we can be of any further assistance or if your family size or income changes during the year, please contact us.

Sincerely,  
 Harold Cowley  
 Superintendent of Schools

Each school district may determine the price charged for reduced-price meals, but in no case may the charge for a reduced-price lunch exceed 10 cents or a reduced-price breakfast exceed 10 cents.

**APPLICATION FORM**

Date.....

Names and grades of children for whom application is made.....

Name and address of parent or guardian:.....

Total number in family living in the same household:.....

Total family income before deductions. Include wages of all working members, welfare payments, pensions, social security, and all other income. Fill in one:  
 Yearly..... Monthly..... Weekly.....

If your gross family income exceeds the amount indicated in the attached family income scale and you wish to apply under any of the special hardship conditions, please complete the application form, indicate below one or more of the special hardship conditions cited in the attached letter, and state the expense of the hardship for the previous 12 months.

In certain cases foster children are eligible for free meals and free milk, or for reduced-price meals, regardless of your family income. If you have foster children living with you and wish to apply for such meals and milk for them, please check here:.....

I hereby certify that all of the above information is true and correct. I understand that this information is being given in connection with the receipt of Federal funds; that school officials may, for cause, verify this information; and that deliberate misrepresentation may subject me to prosecution under applicable State and Federal criminal statutes.

Signature of Adult Family Member

**As I See It....**

By BOB HAMILTON



It appears obvious that the citizens of Wichita County do not want another taxing entity, such as the proposed hospital district. Certainly there was good representation at the polls, based on turnout at

referendums of similar nature. And the vote was overwhelmingly against the district.

Now, it would seem, the county commission and Wichita Falls' city council should turn more of their attention toward correcting the problems which have been pointed out during the campaign to form the district.

If these elected officials don't want to do the job, which they understood was their's when they asked to be elected, then they should step down and let someone who will take care of business replace them. Overseeing the operation of the hospital is one of those jobs, regardless of whom they appoint to the board.

If conditions at the hospital are as bad as the district supporters told us during the campaign, certainly someone has dropped the ball. And it wasn't last month or last year that the ball hit the floor!

A major contributor to the financial problems of the hospital is our federal government. Like a lot of the fed's programs, the idea behind Medicare

is great, but part of the program was sneaked up on our blind sides and is just now coming into view.

We learned, during our studies about the hospital's problems, that Medicare pays only 75 to 80 percent of the charges of its patients. The amount paid depends on how much profit a hospital shows, and capital expenditures are not included in the profits.

This is one reason why more than \$3-million in bills were not collected in 1979 and \$12.6-million over the past five years.

Our federal government beat its breast about initiating Medicare, but didn't tell us our taxes paid to the fed would not pay for all the bills. We must pick up the balance, somehow, locally, hospital administrators are told.

Anyway, for the present, our citizens are to be congratulated for turning out at the polls Saturday to vote their convictions. There have been other worthy causes which have been decided by considerably fewer voters.

**Little recognized**

Travis Little of Iowa Park was recognized as an honor student for the 1980 spring semester by Dean Earnest Gloyna of the College of Engineering at the University of Texas at Austin.

To achieve the engineering honor roll, a student must have maintained at least a 12-hour course load throughout the semester, passing all courses with a minimum grade point average of 3.25, on a four-point grading system.

**Municipal Court Records**

Results of municipal court held here Thursday were:  
 Kirk Robert Miller, driving without lights, \$28.50;  
 Randal Glen Hughes, disobeyed stop sign, \$28.50;  
 Ronald Gene Duerson, disobeyed stop sign, \$28.50;  
 Joyce Fuller Kingcade, disobeyed stop sign, \$28.50;  
 Bernard Hernandez, excessive noise, \$28.50.

**GOLFERS**  
 Enjoy the beauty & excitement of Skyline Golf Course

**GREEN FEES**  
 \$3.00 WEEK DAYS  
 \$3.00 SATURDAYS  
 SUNDAYS AND HOLIDAYS  
 Public Welcome  
 Complete Pro Shop  
 Facilities

**RALPH MORROW**  
 Golf Professional  
 (Lessons By Appointment)  
**SYLINE C.C.**  
 N. Beverly Ph. 855-0771

**COUNTER TOPPING**  
 FORMICA WILSON-ART MICARTA  
 "BUY FROM THE OLD PRO"  
 T.S. THOMAS, CABINETMAKER  
 1516 Beverly Wichita Falls Ph. 723-6523

**VERNON REGIONAL JUNIOR COLLEGE**  
**Licensed Vocational Nursing**  
 Classes on Campus begin August 25, 1980  
 Pre-enrollment examination given by appointment.  
 Call school office now. (817) 552-6291 ext. 267

**Cosmetology**  
 Classes start each Wednesday. For information  
 Call (817) 552-6291 ext. 265

Vernon Regional Junior College is approved for the training of eligible veterans  
 Student Residence facilities available on campus.

ATTACHMENT A  
 INCOME POVERTY GUIDELINES  
 JULY 1, 1980 - JUNE 30, 1981

Family Size	Annual Free Meals	Annual Reduced-Price Meals
1	\$0 - 5,230	\$5,230 - 8,150
2	0 - 6,900	6,900 - 10,760
3	0 - 8,580	8,580 - 13,380
4	0 - 10,250	10,250 - 15,990
5	0 - 11,930	11,930 - 18,600
6	0 - 13,600	13,600 - 21,220
7	0 - 15,280	15,280 - 23,830
8	0 - 16,950	16,950 - 26,440

Each Additional Family Member \$1,680 \$2,610

# J R B

## SUPERMARKETS

NO SALES TO DEALERS  
We reserve the right to limit quantities  
WE HONOR FOOD STAMPS

**DOUBLE STAMPS**  
WEDNESDAY AND SATURDAY

PRICES EFFECTIVE:

Iowa Park  
AUGUST 21ST  
THRU AUGUST 27TH



Dankworth Sliced Slab #1 Quality  
**BACON** \$1<sup>19</sup> Lb.

Cudahy Bar-S All Meat 12 Oz.  
**FRANKS** 99¢

Farmland Family Pak  
**PORK CHOPS** 1 lb. \$1<sup>49</sup>

Farmland Waiver Thin  
**PORK CHOPS** 1 lb. \$1<sup>99</sup>

Farmland  
**BACON** 12 oz. \$1<sup>19</sup>

Oscar Mayer Lean 'N Tasty Reg./Beef  
Breakfast **STRIPS** 12 oz. \$1<sup>29</sup>

JRB Our Very Best  
**BACON** 1 lb. Pkg. \$1<sup>59</sup>

Decker Jumbo All Meat  
**FRANKS** 1# \$1<sup>49</sup>

Packer Trimmed  
**BRISKETS**  
Lb. \$1<sup>39</sup>

Farmland Center Cut  
**PORK CHOPS** \$1<sup>89</sup>

Jimmy Dean  
**TACO FILLING** \$1<sup>59</sup>



Armour Star All Meat  
**HOT DOGS** 12 Oz. \$1<sup>29</sup>

Oscar Mayer  
**COOKED HAM** 6 Oz. \$1<sup>59</sup>

Oscar Mayer Tube  
**BRAUNSCHWEIGER** 8 oz. 79¢

Morehead Pimento & Cheese  
**SPREAD** 14 Oz. \$1<sup>49</sup>

Decker, Fine For Seasoning  
**SALT JOWLS** 1 lb. 79¢

Kraft Light 'N Lively Low Calorie  
**CHEESE** 12 Oz. \$1<sup>69</sup>

Kraft  
**VELVEETA** 2# Box \$2<sup>99</sup>

Kraft  
**HALF MOON** 16 Oz. \$2<sup>49</sup>

Decker (Bologna, Beef Bologna, Pickle Loaf, Liver Loaf, Spice Luncheon, Cotto Salami)  
**LUNCHMEATS** 6 Oz. 67¢

Decker All Meat (Bologna, Salami, Spice Luncheon)  
**LUNCHMEATS** 12 Oz. \$1<sup>19</sup>

WE NOW FEATURE HY-TOP BRAND MERCHANDISE INSTEAD OF PARADE. HY-TOP IS THE SAME MERCHANDISE AND PACKED BY THE SAME PACKER AS PARADE, BUT WITH MORE ITEMS AVAILABLE.

Bush's Golden/White #300 Can  
**HOMINY** 5/\$1

Showboat #300 Can  
**Spaghetti** 4/\$1

Del Haven Cut Green #303 Can  
**BEANS** 3/\$1

Del Haven Pinto #300 Can  
**BEANS** 3/\$1

Parade 32 Oz. Btl.  
**CATSUP** 79¢

Hy-Top Sunflower  
**OIL** 24 Oz. Btl. \$1<sup>19</sup>

FIDE  
**Detergent**  
19 Oz. Box  
\$1<sup>59</sup>

HY-TOP  
MACARONI AND CHEESE  
**DINNERS**  
7 1/2 Oz. Box  
4/\$1

SHOWBOAT  
PORK AND  
**BEANS**  
300 Can  
4/\$1

PARADE  
CORNBREAD POUCH  
**MIXES**  
White/Yellow  
6 Oz. Pkg.  
7/\$1



Nestle With Lemon  
**INSTANT TEA** 4 Oz. Jar \$1<sup>79</sup>

Parade or Hy-Top  
**CAKE MIXES** 18.5 Oz. Box 69¢

Nabisco Honey Maid  
**GRAHAM CRACKERS** 16 Oz. Box 99¢

Keebler All Varieties  
**SNACK CRACKERS** 8.9 Oz. Box 89¢

Dinty Moore  
**BEEF STEW** 15 Oz. Can 89¢

Betty Crocker  
**POUND CAKE** 16 Oz. Box 99¢

Kraft With Meat Dinner  
**SPAGHETTI** 19 1/2 Oz. Box \$1<sup>29</sup>

Parade  
**ORANGE JUICE** 46 Oz. Can 89¢

Charmin All Varieties  
**TISSUE** 4 Roll Pkg. 99¢

Schillings  
**SALAD TOPPING** 3.5 Oz. Size 89¢

Ajax Dishwashing 5c Off Label  
**DETERGENT** Reg. Size 59¢

Viasic Kosher/Polish Spears  
**PICKLES** 24 Oz. Jar 99¢

Kraft Sandwich  
**SPREAD** 16 Oz. Jar 99¢

Kraft Sandwich  
**SPREAD** 24 Oz. Jar \$1<sup>43</sup>

LaChoy  
**BEAN SPROUTS** 16 Oz. Can 49¢

Clover Club  
**POTATO CHIPS** Reg. or Dip \$1.59 99¢

Bounty Designer or White  
**TOWELS** Jumbo Roll 79¢

LaChoy Chow Mein  
**NOODLES** 3 Oz. Can 55¢

Ken-L-Ration Tender Chunks  
**DOG FOOD** 14 Oz. Can 37¢

Dynamo Liquid 15c Off Label  
**DETERGENT** 32 Oz. Bottle \$1<sup>64</sup>

Bold  
**DETERGENT** 49 Oz. Box \$1<sup>99</sup>

Ralston Honey Bran  
**CEREAL** 12 Oz. Box \$1<sup>09</sup>

Skinner Short Cut Elbow  
**MACARONI** 12 Oz. Pkg. 49¢

**HEALTH & BEAUTY AIDS**

Sine-Off Tablets  
**COLD MEDICINE** 24 Ct. Size \$1<sup>99</sup>

Bufferin  
**PAIN RELIEVER** 36 Ct. Btl. \$1<sup>29</sup>

Liquid  
**PRELL SHAMPOO** 7 Oz. Btl. \$1<sup>39</sup>

AQUAFRESH 25c OFF LABEL  
**TOOTHPASTE** 6.4 Oz. Tube \$1<sup>19</sup>

Right Guard  
**DEODORANT** 10 Oz. Can \$2<sup>49</sup>

Pampers Daytime  
**DIAPERS** 30 Ct. Box \$3<sup>19</sup>

Elmers  
**GLUE** 4 Oz. Size 49¢

**CRAYONS** 24 Ct. Box 69¢

**SEE THRU BINDER** \$1<sup>79</sup>

Duo Tang w/Pockets  
**FOLDER** 4/\$1

**FROZEN FOOD SPECIALS**

Slim & Trim Gandy's or Oak Farms  
**COTTAGE CHEESE** 24 Oz. Ctn. \$1<sup>29</sup>

Pillsbury Buttermilk or Country Style  
**BISCUITS** 10 Ct. Can 4/89¢

PARKAY  
**MARGARINE** 1# Quarters 59¢

Pillsbury Big Country  
**BISCUITS** 10 Ct. Can 49¢

Carnation Crinkle Cut 2 Lb. Bag  
**FROZEN POTATOES** 79¢

Morton's Cream or Fruit  
**MINI PIES** 3 1/2-8 Oz. Size 39¢

**ICE MILK** Slim & Trim Gandy's or Oak Farms 1/2 Gal. Ctn. \$1<sup>19</sup>

Morton's All Varieties  
**DONUTS** 9-11 Oz. Size 69¢

Gorton's  
**FISH STICKS** 12 Oz. Size \$1<sup>89</sup>

Gorton's  
**SHRIMP** 8 Oz. Size \$2<sup>29</sup>

CALIFORNIA SEEDLESS WHITE  
**GRAPES** 89¢ Lb.

RUSSETT  
**POTATOES** 1 lb. 29¢

Texas Grown  
**CABBAGE** 1 lb. 29¢

1# Cello  
**CARROTS** 2/49¢

**CUCUMBERS** Medium Size 49¢

**RED ONIONS** 1 lb. 49¢

**PLUMS** California 1 lb. 49¢

# Drugs can be abused innocently, Lions told

There is a lot of drug abuse that doesn't fit the mold made by news stories about using illegal drugs. It is caused innocently but can be just as dangerous, according to Tuesday's speaker at the Noon Lions Club meeting.

Mrs. Roy Cleveland, a nurse who is nearing completion of her master's degree and wife of an Iowa Park High graduate who now is a pharmacist, explained the dangerous situations.

- She listed them as being:
- \* using drugs prescribed for another person;
  - \* interaction of drugs taken with alcohol;
  - \* duplicated prescriptions of drugs

issued by different physicians;

\* drugs should be discarded once a year because they can run out of date and become extremely dangerous;

\* a list of drugs being taken should always be carried on the person, in cases when emergency treatment is required;

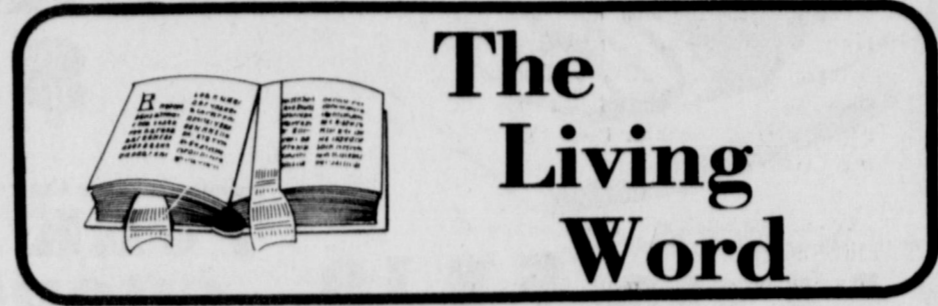
\* only one pharmacy should be used, enabling the pharmacist to warn the customer when conflicting drugs are prescribed;

\* when symptoms are not improved after taking prescribed drugs, the patient should check back with the physician.

Mrs. Cleveland said any patient should inquire about the use of any

prescribed drugs, whether it will react with other drugs being used or it might cause a reaction. The information can come from the

physician, a trained nurse or the pharmacist. She also recommended purchasing of a book, "The People's Pharmacy."



In our day we seem to be witnessing a breakdown in the traditional role of the father in the home. In view of this change and struggle, it is important to remember God's plan for fathers. In the first chapter of the Bible we read of the creation of man and of what God originally intended for him to be. Genesis 1:27,28. FIRST of all a father is a human being, created by God, "And God created man in his own image..." A father then possesses innate dignity given him by God. His personal worth and integrity result from participation in God's nature or likeness. In the SECOND place, the father is a man, "Male and female, created he them." He is God's creature expressed as male. He responds to life distinct from the female. In the THIRD place, the father is a husband and parent. These are responsibilities that come from man's creative nature, out of his physical and emotional nature. A loving mate, a protective father, these are necessary pieces in the puzzle we call man. FINALLY, the father is a bread-winner. He is to fill the earth and subdue it. He is to have dominion over the other creatures, Gen. 1:28.

What advice can we give to fathers that will help solve some of the major problems which they face in our time? The beginning point is for a father to recognize that he is a human being,

made in the image of God. He must understand, respect, and accept his God-given nature. That means, of course, that we must look to God our creator, for direction for our lives and for those about us. Each father needs to be a Christian so that he can in the full sense be a child of God. As he recognizes in God the qualities of the divine Father, he better learns to be a father to his own children. The greatest bequest any father can give his children is that of a love for God, a faith in Christ, a knowledge of the Bible, and understanding of prayer, and a desire to be a part of the work and worship of the church. What kind of father are you?

Study the Bible in the privacy of your own home. Write for a free Bible Correspondence Course and enrich your life. Church of Christ, P.O. Box 520, Iowa Park, Tx. 76367.

Michael Danchak, Minister  
Church of Christ

**Kamay Road Church of Christ**  
Corner of Colorado & Emerald  
'Seeking the Old Paths'  
Lord's Day 10:30 a.m. & 6 p.m.  
Wednesday 7:00 p.m.

"Love sought is good, but giv'n unsought is better."  
Shakespeare

**FIRST CHRISTIAN CHURCH**  
[Disciples of Christ]  
  
Rev. Clyde Markee  
105 E. Cash 592-4513  
You are cordially invited to worship with us each Sunday.  
Church School 9:45 a.m.  
Worship 10:55 a.m.  
YOUTH PROGRAM 6:00 p.m.

-WELCOME-  
ASSEMBLY of GOD  
S. Yosemite  
9:45 S.S./7 P.M.  
Wed. 7 P.M. Service  
Rev. Charles Hensley,  
Pastor

Serving the Lord with Gladness  
**Faith Baptist Church**  
411 S. Wall  
Sunday School 9:45  
Worship 11:00  
Training Union 6:00  
Evening Worship 7:00  
Prayer Service 7:30  
KEN COLE, Pastor

# Carnival raises \$600

Over \$600 was cleared during the Muscular Dystrophy Association Dance and Carnival, according to Quikie Food Store manager Debbie Collinsworth, sponsor of the event.

For awhile, though, it looked as if only the carnival would be held.

"Both bands ("Persuasion" and "Mental Revenge") backed out on us," Collinsworth said. After making numerous phone calls, she found a dee-jay willing to provide the music.

Neither band was available for comment.

# Girls have camp out

Junior Girl Scout troop 29 camped out overnight at the Wichita Mountains over the weekend. They were accompanied by their leaders, Nancy Jones, Anne Smith and Kay Buckmaster. Other parents who accompanied the group were Mr. and Mrs. Bob Binion, Mrs. Pat Cunningham and Freddie Smith.

The Brownies and Junior Girl Scouts will resume their meetings the second week of school. Girls from the first through sixth grades are eligible to become members.

Winners in the various contests held during the carnival included Ricky Mooring love leg contest and jelly bean count, Katy Hutto crazy cashier, and Kristy Riggins' entry in the little dog contest.

"All in all, the dance and carnival was a success," remarked Collinsworth, "and we want to thank the merchants and citizens of Iowa Park who donated their time to make it the success it was."

Part of the proceeds of the carnival have been turned in, but according to Collinsworth, Quikie Store's job isn't done quite yet.

"We still have a way to go before we have to turn all the money in," she said, "and as of now, we have a trash can in the store where people can deposit their aluminum cans, and Monday we will begin a contest for the children in Iowa Park."

In the contest, kids can pick up their MDA donation cannister at the Quikie Store Monday, then collect donations until a time to be specified later.

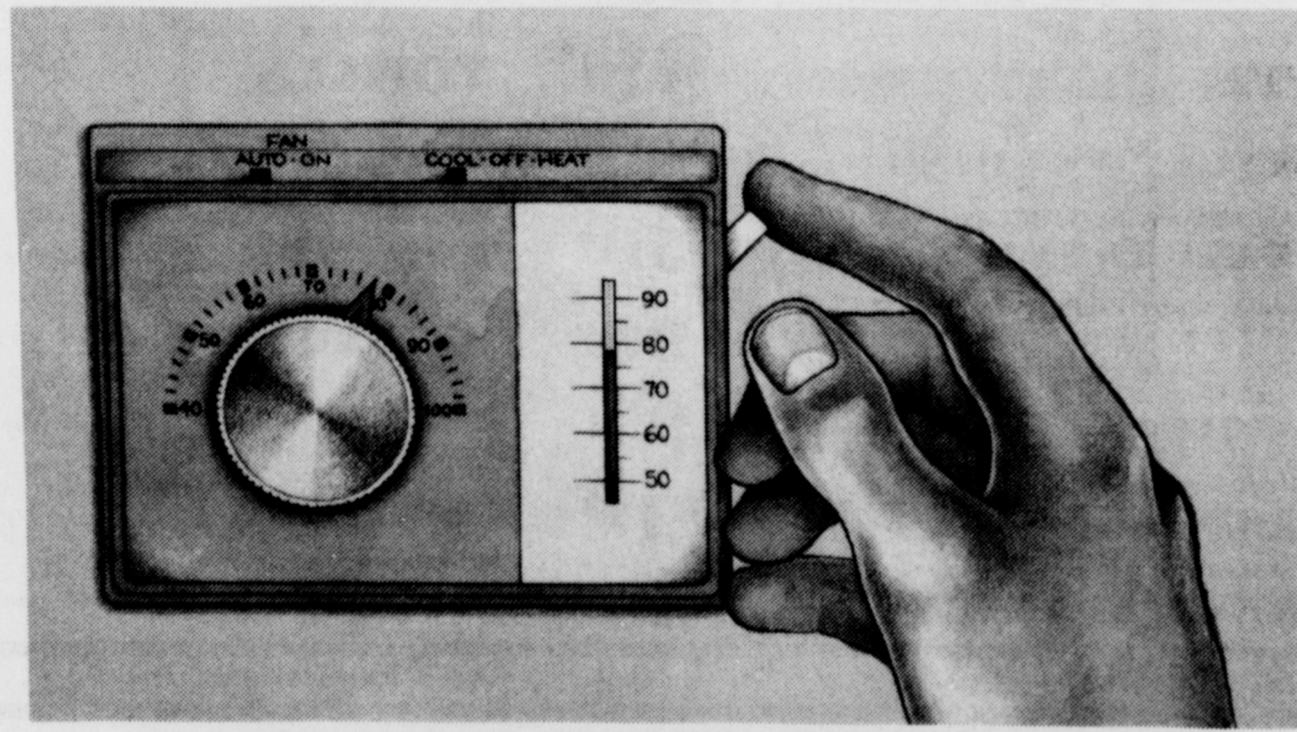
The top four contestants turning in the most donations will receive prizes, according to Collinsworth.

**Grace Baptist Church**  
511 S. Colorado - 592-5632  
Come Let Us Reason Together Saith The Lord  
Sunday School... 10:00 A.M.  
Morning Worship... 11:00 A.M.  
Evening Worship... 6:30 P.M.  
Wednesday Service... 7:30 P.M.  
Jimmy Johnson, Pastor

Welcome To The Worship and Fellowship of  
**First Presbyterian Church**  
Norman D. Nettleton, Pastor  
CHURCH SCHOOL - 9:45 a.m.  
FELLOWSHIP TIME - 10:40 a.m.  
MORNING WORSHIP - 11:00 a.m.  
211 So. Yosemite

**YOU ARE ALWAYS WELCOME**  
SUNDAY BIBLE STUDY 9:30  
PREACHING 10:30 & 6:00  
WEDNESDAY EVENING 7:30  
**Keep In Touch**  
Phone 592-2541  
... for information relative to members of the congregation. Bible reading suggestions. Short devotional. Information changed daily.  
**CHURCH of CHRIST**  
300 EAST PARK  
592-5415  
Mike Danchak  
Minister

# Take control.



# Save money.

- Set it on 78° or higher.
- Leave the fan on "Auto".
- When you leave, turn the air conditioner off.



W. N. HOUSE, Manager, Phone 592-4149

# ABORTION

## Questions and Answers

**Q: WHAT IS ABORTION?**

A: According to The New Webster Dictionary of the English Language, "Abortion is the act of miscarriage, or producing young before the natural time." What is commonly referred to as abortion is "Induced Abortion", or the killing of the unborn child so that he or she will be aborted. By some methods the child is often born alive but usually too small to survive.

**Q: WHEN DOES LIFE BEGIN?**

A: In human reproduction, biological life does not begin; it is continuous. There is no period where life stops and later starts up again. Cells come only from living cells. If the egg were not alive and mature, it would never be fertilized. If the sperm were not alive it couldn't even reach the egg, much less fertilize it. The continuity of life is a principle that both pro-life and pro-abortion scientists agree upon.

**Q: HOW EARLY DOES THE BABY DEVELOP?**

A: At conception a genetically unique individual begins to develop. Many of the characteristics he or she will have are then determined. Such as eye color, height, skin pigmentation, sex and intelligence potential. All he or she needs to function is nourishment and time to grow.

The heart begins beating in 2 to 3 weeks; by the 6th week brain waves can be read. The nervous system is complete in about 4 weeks and the infant begins to move at about 6 weeks, even though the mother will not feel it for 3 1/2 more months.

By the 8th week the bones, face, arms, legs, fingers, toes, circulatory, and major muscle systems are complete and most of the organs are present.

By the 12th week the baby has a distinct individuality in appearance and behavior, with facial expressions resembling the parents.

By the 16th week the baby has eyelashes and by the 20th week hair appears on the head.

By this time the infant is completely formed and functioning. Birth is only a change of residence.

For more information call  
438-2354 592-5075

### Sunday school class installs officers

The Live, Love and Lift Sunday school class of First Baptist Church held the monthly meeting highlighted by the installation ceremony Monday evening in the Fellowship Hall of the church.

Mrs. D.O. James was the installing officer and used Reflections for the theme. She presented each officer with a mirror, stressing the thought that each must seek to improve not only the image in the mirror but also the inner image which people see reflected in her daily life.

Those installed were Mmes. Carlton Hicks, president; Bea Hoyer, vice-president; H.E. Howard, secretary; Preston Leath, assistant secretary; Joe Singer, teacher and treasurer; Donald Hill, devotional chairman.

Group leaders installed were Mmes. Alton Hunter, Steve Lovelady, Everett Stephenson and N.E. Guthrie, Jr.

Mrs. Howell Farnsworth and Mrs. James were guests.

## Alumni make plans

A meeting of officers and chairmen of the Iowa Park High School Alumni and Ex-Students Association was held Tuesday evening to make plans for the annual reunion banquet which will be held Oct. 4 during homecoming activities.

Jim Medinger, president, was in charge of the meeting held in his home. Other officers present were Kenneth Vie, first vice president; James Richter, second vice president; Mrs. Ruth Gard, treasurer; Mrs. E.T. Patterson, corresponding secretary; and Mrs. Homer Blalock, publicity chairman.

Announcement was made that Barry Mahler had been secured to serve as master of ceremonies and that Bill Curry would be in charge of the singsong.

Committees named included Mr. and Mrs. Jimmy Banks, chairmen to be in charge of the entry in the homecoming parade Oct. 3; Mrs. Bud Mercer, chairman of banquet decorations; Allen Shewmake, food

chairman; Robert Wilcox, program chairman; Mmes. James Richter, Barry Mahler and Kenneth Via were named to be responsible for the reception starting at 5:30 p.m. in the high school library preceding the banquet at 7 p.m. on Oct. 4. They will also be in charge of naming a registration committee for the reception and banquet.

Other committees named included Bill Guthrie, Mrs. D.O. James and Mrs. Patterson, chairman of registering the ex-students at the homecoming football game Oct. 3; Kenneth Via, door prizes and awards to the ex-student who travels the greatest distance to attend the banquet, and to the class with the most members in attendance.

During the banquet, special recognition will be given to the classes of 1900, 1910, 1920, 1930, 1940, 1950, 1960 and 1970. Mrs. Patterson will be mailing out newsletters to ex-students around Sept. 1. She mailed 900 last year and will mail at least that many this year.



Mr. and Mrs. Terry Wayne Tatom of Oklahoma City announce the birth of their first child, Jeremy Wayne, a six pound, four ounce son born August 11.

Grandparents are Mr. and Mrs. Gene Tatom of Iowa Park and Mr. and Mrs. Don Stafford of Oklahoma City. Great-grandparents are Mrs. Hattie Brown of Iowa Park, Mr. and Mrs. J.E. Jetton of Weinert and Obie Stafford of Kamay.

### TOPS meets

Members of the TOPS Club discussed a play that they will present during the Sept. 20th Play Day in Wichita Falls at the meeting Monday night.

Twenty members weighed in and two new members, Sandra English and Bobbie Gilbreth, were welcomed. Mrs. A.O. Beall was the best KOPS loser and Margaret Farr was the best TOPS loser for the week.

### Choir members attend clinic

Eighteen members of the 1980-81 high school choirs attended the All-State Music Chorus Clinic at East Texas State University in Commerce, Texas last week. The clinic covered the district, region, area and state try-out music for the upcoming year.

Those who attended were Janet Walker, director, Lorena Smith, Russell Shawver, Lori Barr, Brian Cockburn, Deena Hefner, Buddy Mercer, Meri Lynne McIlroy, Jim

Hodges, Michele Mueller, Wendell Burnam, Jane Dickey, Tracy Hale, Rose Soell, Kevin Robnett, Melanie Mason, Jayna Evans, Eric Birk, and Carla Kent.



Everyone shares his birthday with at least nine million other people.

## \$100,000 INSURANCE ON SAVINGS

Count on us for Savings now insured to \$100,000.

Your savings are now insured up to \$100,000.

Congress has recently passed and the President has signed a new law allowing the Federal Savings and Loan Insurance Corporation to raise the amount of insurance on your savings from \$40,000 to \$100,000.

Plus, when you open a separate savings account for each member of your family at Parker Square Savings, each account is insured up to \$100,000.

## MONEY MARKET CERTIFICATE

6 MONTH (\$10,000 MIN.) 10.015% INT. YIELDS \$506.31

\*100,000 CERTIFICATES ARE SUBJECT TO NEGOTIATION. CALL US FOR DAILY QUOTE.

EIGHT YEAR CERTIFICATE (\$1000 Min.)	8%	Yields Annually	8.32%
SIX YEAR CERTIFICATE (\$1000 Min.)	7.75%	Yields Annually	8.06%
FOUR YEAR CERTIFICATE (\$1000 Min.)	7 1/2%	Yields Annually	7.90%
ONE YEAR CERTIFICATE (\$1000 Min.)	6 1/2%	Yields Annually	6.72%
SIX-MONTH CERTIFICATE (\$1000 Min.)	6%	Yields Annually	6.27%
PASSBOOK SAVINGS	5 1/2%	Yields Annually	5.65%

Federal regulations require a substantial interest penalty for early withdrawal on Certificates of Deposit (Penalties are imposed only on the amount withdrawn.)

**PARKER SQUARE Savings**  
and Loan Association

IOWA PARK 301 No. Wall 592-2188  
HOLLIDAY Bois'd Arc and Hiway 277586-1203

We are proud to introduce



## WANDA GREEN

She's ready to serve you with precision cuts, styling and perming

Painless ear-piercing now available

## Reflections

HIS and HERS Hair Styling

305 N. Wall REDKEN® Ph. 592-5121  
9-6 Monday-Friday 9-12 Saturday

Fix it the same way you did last August.

## SOAP

108 1/2 West Cash Iowa Park  
Call 592-5131 for appointment

## BEST INVESTMENT GOING.....

Whether it's for academic transfer, occupational training or personal interest, courses at Vernon Regional Junior College are the Best Investment Going.

Thousands of North Texan's careers began when they invested in their future at VRJC.

For information about how you can invest in your future this fall semester, contact:

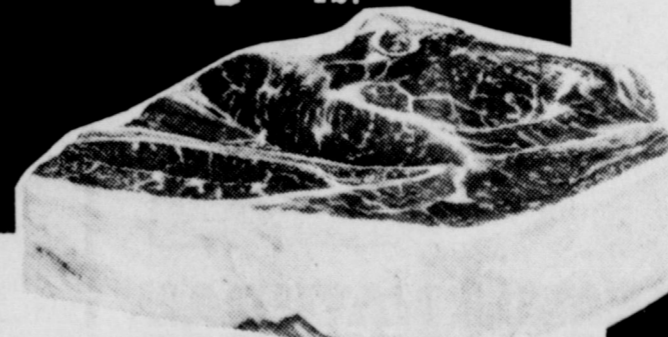
Registrar's Office  
**VERNON REGIONAL JUNIOR COLLEGE**  
4400 College Drive  
Vernon, Texas (817) 552-6291

Registration  
**August 28**  
9 am - 1 pm; 4:30 pm - 7:30 pm

**VRJC**  
VERNON REGIONAL JUNIOR COLLEGE  
WILBARGER COUNTY JUNIOR COLLEGE DISTRICT  
4400 College Drive Vernon, Texas 75384

## Warm Weather Treats AT COOL, COOL SAVINGS!

**Chuck Roast**  
\$1.39 Lb.



Arm Roast Lb. \$1.59

Round Steak Lb. \$1.79

Gatorade

32 oz.

59¢



- Our Darling Corn 17 oz. Cans 3/\$1
- Shurfine Spinach 300 Can 3/\$1
- Kounty Kist Sweet Peas 17 oz. Can 3/\$1
- Showboat Pork & Beans 4/\$1
- Roxey Dogfood 5 Cans \$1

1 Liter Bottles  
**Cokes, Sprite, Mr. Pibb**

6 for \$1.79



Plus Deposit

## Discount Foods

107 West Park

# Holliday News

**\$1.4 MILLION**

## School budget passed

Anticipating a 10 percent rise in operating costs, the Holliday school board Monday night adopted its 1980-81 budget calling for expenditures of \$1,398,124, or an increase of approximately \$165,000 over last year.

The tax rate, to be based on 100 percent evaluation for the first time, was set at 65 cents per \$100 evaluation. Of that, 55 cents will go to maintenance taxes, and 10 cents to debt service taxes. This is an increase of less than three percent from last year.

Total revenues are budgeted for \$1,838,308, leaving a \$440,184 contingency fund to begin school on next year.

### INSTRUCTION

Taking the biggest hunk out of the budgeted expenditures is instruction, earmarked for \$571,210. Of that \$468,060 will go toward teachers salaries.

Other appropriations under instruction include substitutes \$10,000, teacher aides \$12,520, West Wichita Co-Op \$6,000, Region IX, ESC \$10,000, Xerox \$6,000, teaching supplies \$15,000, furniture \$15,000, and miscellaneous equipment \$10,000.

Other items under instruction receiving between \$1,000 and \$5,000 each are group insurance, workmen's compensation, tuition, equipment repair, auto rental, travel, insurance, and audio-visual equipment.

Items under \$1,000 each for instruction are Texas Employment Commission (TEC), auto repairs, audio-visual supplies, classroom books, textbooks, subscriptions, and miscellaneous supplies.

### LIBRARY

Holliday's two school libraries are budgeted for \$37,810, with \$16,210 going to salaries, \$5,630 to aides, \$10,000 to books, \$1,200 for book binding, \$1,000 each for audio-visual supplies, subscriptions and supplies.

Lesser amounts are budgeted for group insurance, workmen's compensation, TEC, travel, furniture and other equipment.

### PRINCIPALS

Principals were budgeted for \$69,659, with \$44,966 for salaries, \$15,813 for secretaries, \$1,680 for group insurance, \$1,500 for supplies, and \$2,500 for travel.

Other expense items, all for \$1,000 or less, include workmen's compensation, TEC, graduation expense, furniture, equipment and miscellaneous.

### TRANSPORTATION

Transportation was budgeted for \$96,370 with \$30,000 going to gas, and \$20,000 each to salaries and vehicles, \$5,000 for extra drivers, \$5,000 for outside repairs and maintenance, \$2,500 for tires, \$3,500 for parts, and \$5,000 for insurance. Expenditures of \$1,000 each or less include group insurance, workmen's compensation, TEC, physicals, oil, tools, travel, bonding expense, licenses, shop equipment and miscellaneous.

### CO-CURRICULAR

Co-curricular is budgeted for \$86,656. The breakdown includes athletic budget \$36,445, salaries \$22,700, band budget \$14,461, travel \$9,000, other expenses \$2,500 and expenditures of \$1,000 or less for workmen's compensation, dues and fees, and equipment.

### FOOD SERVICE

Food service was budgeted for \$22,520, with the cafeteria expected to operate at a deficit of \$20,000, and group insurance \$2,520.

### ADMINISTRATION

Administration is budgeted for \$142,869 with \$81,979 earmarked for salaries, \$25,000 for consultants, \$8,000 for auto and \$5,000 for office supplies.

Other expenditures include tax collection \$4,000, travel \$3,500, insurance \$3,000, audit \$2,500, election expenses \$2,000, and \$1,500 for professional services.

Expenditures of \$1,000 each or less include group insurance, workmen's compensation, TEC, maintenance and repair, vehicle repair, subscriptions, legal publications, bonding expense, filing fees, furniture, and other equipment.

### DEBT SERVICE

Debt service was budgeted for \$100,160 with \$70,060 to be applied to interest, \$30,000 to principal and \$100 for bank charges.

### MAINTENANCE

Maintenance is expected to receive \$168,870 with \$40,000 going to salaries, \$30,000 for lights, \$20,000 for property insurance, \$15,000 for janitor supplies, \$12,000 for gas, and \$10,000 for building repairs.

Other expenses include \$7,500 for ground repairs, \$5,000 each to water, telephone, building supplies and grounds supplies, \$3,500 to part-time employees, \$2,520 to group insurance, \$2,500 to liability insurance, \$2,000 for equipment, \$1,800 to workmen's compensation and \$1,500 to other expenses.

Expenses of \$1,000 each or less

include TEC, miscellaneous supplies, travel, and miscellaneous expense.

### CONSTRUCTION

From separate construction funds, \$40,000 was budgeted for building construction, \$32,000 for furniture, and \$30,000 for equipment.

## City buys asphalt

Holliday city council Monday night okayed the purchase of \$9,000 worth of asphalt to pave streets, plus voted to reimburse residents of Holliday Estates who were overcharged on their water rates since the area was annexed into the city.

Councilmen voted to purchase \$9,000 worth of asphalt to pave Siesta Lane, North Elm and another street to be designated later.

Residents of Siesta Lane complained at a previous meeting of the poor street conditions, and petitioned the council to correct the situation. After signing a paving lien, holding them responsible for paying the driveway and gutter costs, residents found the cost estimate to be over previous expectations.

As an alternative, councilmen decided to purchase the asphalt, and repair other streets in the process. According to mayor Tom Hall, the amount of asphalt to be purchased will pave approximately one mile of street.

Grady Graves met with the council to discuss several residents in the Holliday Estates who have been

overcharged on their water rates beginning January of 1979, when the area was annexed into the city.

According to Graves, around eight residents were kept on the same water rates as non-Holliday residents, while others were charged the city rate.

According to Lucy, most players reported in good condition and workouts have been productive.

Asked what to expect from this year's squad, Lucy responded, "We should be quicker overall than last year, especially in the line, and we have a group of backs coming back that should make things interesting."

A big question mark exists in the depth of the offensive line, but line coach Mike Greer thinks that is only temporary. "We have a fine group of linemen returning," said Greer, "and, although Bobby Vinson is the only returning starter, several of the others have seen a lot of playing time."

Vinson, the lone returning starter for the Eagle line, will anchor both offensive and defensive lines at guard. The rest of the starting line as of this week includes Jerry Jones at center, Rodney Moore at offensive guard, Jeff Eastman and Joe Todd at tackle, and Lindy Dolberry and Cameron Honea at end. Joel Mankins has retained his spot at quarterback, Carl Martin has impressed coaches at the fullback position, and returning 1,000 yard plus running back Ray Looney is the starting tailback.

On defense, Dolberry, Jones, Eastman and Todd are the starting linemen. Joe Chase, sophomore Jeff Belcher and Weldon Nichols are the starting linebackers, and Mankins, Donnie Bridges and Larry Boydston

are the starting defensive backs.

Knox City, Holliday's opponent tomorrow night, was downgraded to Class A this year, and is ranked sixth in the state by Texas Football Magazine.

Returning 13 lettermen and 10 starters from last year's 8-2 campaign, the Greyhounds are depending on senior runningback Tim Roberson (4.640) to supply the fireworks to their potent offensive attack.

Game time is 6 p.m., with freshmen and junior varsity teams scheduled to scrimmage first. Next Friday the Eagles will travel to Bowie for yet another scrimmage, and then host their season opener September 5 against Seymour.

School lunch prices were increased as follows: 65 cents for kindergarten through third grades, 75 cents for fourth through sixth grades, 80 cents for eighth through 12th grades, and \$1.10 for adults.

## School lunch prices raised

Holliday school trustees voted Monday night to increase meal ticket prices.

Lunch prices were increased as follows: 65 cents for kindergarten through third grades, 75 cents for fourth through sixth grades, 80 cents for eighth through 12th grades, and \$1.10 for adults.

Breakfast prices will be 30 cents for kindergarten through third grades, 40 cents for fourth through 12th grades, and 50 cents for adults.

**FAST FILM SERVICE**

**TEXCOLOR**

**SIZZLING SUMMER SPECIAL**

Choose Your own Poses

1—8x10	Reg. \$29.50	
2—5x7	<b>\$14<sup>75</sup></b>	
4—3x5	From Same Pose Save 50%	

**NO LIMIT — NO EXTRAS**

**SINGLES — COUPLES OR FAMILY GROUPS**

**Texcolor**  
**Ti4house**

**SALES CENTER**  
692-4190  
10 A.M.—9 P.M.

## Holliday School Menu

- Monday, Aug. 25**  
Breakfast - Cereal, milk, juice.  
Lunch - Sandwiches, lettuce, tomatoes, pickles, raisins, milk.
- Tuesday, August 26**  
Breakfast - Biscuit, gravy, milk, juice  
Lunch - Macaroni and cheese, red beans, corn bread, greens, jello, milk.
- Wednesday, August 27**  
Breakfast - Toast, jelly, milk, fruit  
Lunch - Chicken fried steak, creamed potatoes, gravy, peas, syrup and butter, hot rolls, milk
- Thursday, August 28**  
Breakfast - Doughnut, milk, juice  
Lunch - Barbecue on a bun, relish, corn, oatmeal cookies, milk

## Attention: Parents or Guardians of school children

Dear Parent or Guardian:

The Holliday Ind. School serves nutritious meals every school day. Students may buy lunch for 65c kindergarten through third, 75c fourth through sixth grades, 80c for seventh through 12th grades, and \$1.10 for adults; breakfast for 30c kindergarten through third grades, 40c for fourth through 12th grades and 50c for adults.

Children from families whose income is at or below levels shown on the attached scale are eligible for free or reduced-price meals. The reduced price for lunch is 10c and for breakfast 10c. If your income is greater than those shown, but you have unusually high medical bills, shelter costs in excess of 30 percent of your income, special education expenses due to the mental or physical condition of a child, or disaster or casualty losses, your children may still be eligible.

The school children of parents or guardians who become unemployed are eligible for free or reduced-price meals during the period of unemployment, provided that the loss of income causes the family income during the period of unemployment to be at or below the levels shown on the scale.

To apply at any time during the year for free meals or reduced priced meals for your children, complete the attached application and return it to school. The information given on the application is confidential and will be used only for the purpose of determining eligibility for free meals and reduced price meals. Within ten days of receiving your application, the school will let you know whether or not your children are eligible. If you do not agree with the school's decision you have a right to a fair hearing. This can be done by calling or writing Mr. W.T. Mankins, School Board President, Box 224, Mankins, Texas 76308, Phone 586-1606.

In certain cases foster children are eligible for these benefits. If you have foster children living with you and wish to apply for such meals for them, please notify us or indicate it on the application.

All children are treated the same regardless of ability to pay. In the operation of child feeding programs, no child will be discriminated against because of race, sex, color, or national origin.

If we can be of any further assistance or if your family size or income changes during the year, please contact us.

Sincerely,  
Ray Coe  
Superintendent

### ATTACHMENT A INCOME POVERTY GUIDELINES JULY 1, 1980 - JUNE 30, 1981

Family Size	Annual	
	Free Meals	Reduced-Price Meals
1	\$0 - \$5,230	\$5,230 - 8,150
2	0 - 6,900	6,900 - 10,760
3	0 - 8,580	8,580 - 13,380
4	0 - 10,250	10,250 - 15,990
5	0 - 11,930	11,930 - 18,600
6	0 - 13,600	13,600 - 21,220
7	0 - 15,280	15,280 - 23,830
8	0 - 16,950	16,950 - 26,440

Each Additional Family Member **\$1,680** **\$2,610**

Each school district may determine the price charged for reduced-price meals, but in no case may the charge for a reduced-price lunch exceed 10c or a reduced-price breakfast exceed 10c.

### APPLICATION FORM

Date: \_\_\_\_\_

Names and grades of children for whom application is

made: \_\_\_\_\_

Name and address of parent or guardian: \_\_\_\_\_

Total number in family living in the same

household: \_\_\_\_\_

Total family income before deductions. Include wages of all working members, welfare payments, pensions, social security, and all other income. Fill in one:

Yearly \_\_\_\_\_ Monthly \_\_\_\_\_ Weekly \_\_\_\_\_

If your gross family income exceeds the amount indicated in the attached family income scale and you wish to apply under any of the special hardship conditions, please complete the application form, indicate below one or more of the special hardship conditions cited in the attached letter, and state the expense of the hardship for the previous 12 months.

In certain cases foster children are eligible for free meals and free milk, or for reduced-priced meals, regardless of your family income. If you have foster children living with you and wish to apply for such meals and milk for them, please check here: \_\_\_\_\_

I hereby certify that all of the above information is true and correct. I understand that this information is being given in connection with the receipt of Federal funds; that school officials may, for cause, verify this information; and that deliberate misrepresentation may subject me to prosecution under applicable State and Federal criminal statutes.

Signature of Adult Family Member



## IF YOU SMELL NATURAL GAS, FOLLOW THESE 3 STEPS TO SAFETY.

The natural gas industry has an excellent safety record.

The fact that you can smell natural gas is because we add a harmless chemical to it as an extra safety feature. Otherwise, it would be completely odorless. If you detect faint whiffs of what you think may be gas, investigate. It may be something that is as easily and safely corrected as a pilot light that has gone out, or a burner valve that's partially open.

If your equipment seems to be working properly and the odor intensifies and seems to be everywhere, please follow these precautions:

- 1.** Do not switch anything electrical on or off. Do not use the telephone in your own home. Do not strike a match. Do not do anything that might cause a spark.
- 2.** Have everyone leave the house immediately, leaving doors open to help ventilate.
- 3.** Go to a nearby telephone and call Lone Star Gas Company. Wait until we have found the source of the odor to determine whether it's safe for you to return to the house.

You may never have a natural gas leak, but we want you to be informed in case one does occur. Please make sure your family is aware of these precautionary steps. And we suggest that you keep this message for future reference.

Lone Star Gas Company 