

1979  
Feb 1

DR. EARL WATSON  
520 W. CLARK  
IOWA PARK, TEXAS

PAGE 17

**IOWA PARK LEADER**

VOL. X NO. 22 THURSDAY, FEBRUARY 1, 1979  
IOWA PARK, WICHITA COUNTY, TEXAS 76367

**20 CENTS**

# Miss Wichita County crowning here Saturday

Fifteen young ladies including four from Iowa Park will be under the spotlight when the 1979 Miss Wichita County Scholarship Pageant is staged at 7:30 p.m. Saturday in the Iowa Park High School auditorium.

The current Miss Oklahoma, Kendi Brown formerly of Wichita Falls, will be a special guest at the pageant.

Contestants will compete in interview, formal presentation, talent and swimsuit competition.

Iowa Park entries include Lydia Bushfield, Tammy Joyce, Wendy Baston and Robin Doan.

Electra will be represented by Diane Robinson. Sheppard AFB entries include Roasland Hill and Sherree Cannon.

Burkburnett entries will be Janet Lax, Lolly Hatcher and Kathy Nixon. Kim Darnell, Flora Hite, Kathy Goode, Rhonda Dennis and Fayne Noyes will represent Wichita Falls.

Judges from Dallas, Fort Worth and Nebraska will select the winner, who will continue to represent the county in July at the Miss Texas Pageant. Winner of the state pageant will continue to the Miss America Pageant.

Director and emcee for Saturday night's festivities will be Danny Parkerson of Iowa Park. It is being sponsored by the Iowa Park Optimist Club. James Richter is president.

The Iowa Park Opti-Mrs. Club is assisting, along with Wichita Falls and Burkburnett Optimist Club members.

The new Miss Wichita County will be awarded a \$750 scholarship to the school of her choice, a \$500 wardrobe, jewelry, crown, trophy, banner, stickpin and flowers.

First runner-up will receive a \$250 scholarship and Miss Congeniality will be awarded a \$100 savings bond.

If 15 young ladies displaying their beauty and talent aren't enough to make the night interesting, *City Leader* of Iowa Park will be providing entertainment throughout the evening.

Current interest in disco dancing will set the stage for the opening



**KENDI BROWN**  
...Miss Oklahoma to be pageant guest

scene when all contestants participate in a routine set to the music of "Saturday Night Fever" choreographed by Bobby Houston of Wichita Falls.

Tickets are available from any contestant, Iowa Park Optimist Club or Opti-Mrs. Club members and chamber of commerce offices in the county.



**SLIP SLIDING AWAY**--The two inches of snow Iowa Park received Monday morning caused some traffic problems, but that afternoon youngsters pulled out their sleds for some fun on Mother Nature's slippery blanket. These youths were sledding down the expressway embankment--a good, steep slope, but dangerously close to traffic.

## City takes stand on unpaid bills

The City of Iowa Park apparently is financing Christmas for some residents.

If that's true, City Administrator Steve Morath doesn't think it's right, and he says residents who owe the city should pay their bills.

As of January's bill posting this week, \$4,456 is owed the city for water, trash and sewer service.

Morath has issued a directive to the billing clerk that persons who owe for more than one month's bill must pay their current bill by Feb. 25, and make arrangements with the clerk to pay the back bills owed.

Those who fail to pay their current bills by the deadline time, and owe uncollected balances, will have their water cut off, according to the directive.

When the October billing was mailed to residents, only \$140 was uncollected from previous billings. November's billing included \$1,775 past due, and December's was \$5,312. The total billing for December was \$35,832.

Morath said, based on the uncollected balances for the months reported, he could only determine that residents were spending their money on Christmas, and leaving their bills from the city to be paid later.

## Four to be recognized at Chamber banquet

Four more names will be added to the plaques of honor on the walls of the Iowa Park Chamber of Commerce office next week.

The four will be recognized by the Chamber during the annual banquet,

which will get underway at 7 p.m. Feb. 10 in the high school cafeteria.

They will be the Outstanding Citizen of the Year, Outstanding Senior Citizen, Outstanding Agriculturist, and the newly-created

category of Outstanding Educator.

The Outstanding Citizen award was initiated in 1971, when Mrs. D.O. James was named first recipient. She was followed, in order, by Dr. Gordon G. Clark, Mrs. Frank Harlin, Ralph

Beall, Wayne House, Darrell Dick, Mrs. Earl Watson and Mrs. Charlie Lee.

Fenton Dale was the first recipient of the Outstanding Senior Citizen. He was named in 1976, and was followed by Mrs. W.F. George and Arch Hughes.

The Outstanding Agriculturist award was initiated last year. Virgil Woodfin was the first named.

In the case of each award, recipients are selected by an anonymous committee, on the basis of their participation and contribution to the community and respective fields during the past year.

In addition to the recognitions, banquet features will include a steak dinner, prepared by the Iowa Park MuleSkinners, and banquet speaker Gil Stricklin, Dallas humorist.

Serving the meal will be members of the Iowa Park Chapter of Future Homemakers of America. Decorations will be provided by the Iowa Park Garden Club.

Tickets, \$5 per person, are on sale at the Chamber office, Iowa Park Leader and State National Bank.

## New phone hookups reflect 1978 growth

Gains in the total number of telephones in Iowa Park during 1978 reflect the overall telephone growth throughout the state last year, according to statistics compiled by Southwestern Bell.

Gary Cook, local manager for the telephone company, said 415 phones were added in Iowa Park last year as part of the company's statewide growth of 500,000 telephones.

At the close of 1978, Iowa Park had 4,790 total telephones in service. Statewide, Southwestern Bell installed its 8-millionth phone late in the year.

"We expect growth to continue," Cook said. "Locally, we project an additional 270 phones this year. Across Texas, Southwestern Bell is anticipating a gain of about 560,000

phones during 1979."

The company's 1978 construction budget was more than \$1 billion throughout the state, the manager said. "This year, our forecasters project a construction budget of \$1.3-billion to maintain service and meet growth throughout the state."

The manager emphasized the reorganization will not change Southwestern Bell's primary goal of quality phone service. "We're changing the way we respond to the needs of customers, he said, "which should help us do an even better job of providing the quality service."

The local economy received an added boost during 1978 when Southwestern Bell paid ad valorem taxes and 1977 gross receipts taxes exceeding \$14,618.

## Bloodmobile slates visit Tuesday

N.D. Hodson, Blood Services Chairman for Iowa Park Red Cross has announced that the Red River Regional Red Cross Bloodmobile will be in Iowa Park at the First Christian Church from 1 to 6 p.m. on Tuesday.

This marks a change from the regular Thursday date the Bloodmo-

bile has observed here in the past.

In announcing the bloodmobile date, Hodson pointed out that the goal for this visit has been set at 75 units to insure the blood and blood product needs of the county are met.

The Red River Regional Red Cross Blood Center is the processing site for

40 regional hospitals. Regular deliveries are made to these hospitals but when a special need arises at a hospital such as the Wichita General or Bethania Hospital, the Red Cross Center sends out the necessary units of blood.

Sometimes a hospital makes a request on an emergency or as soon as possible basis. During the recent bad weather, the Center's four-wheel-drive vehicle, making such a run, was the only one allowed on a highway that was closed because of ice and snow.

Because blood can only be stored for 21 days, donors are always needed to replace the supply. A donor may give blood every 56 days if they are between the ages of 18 and 65, in good health and weigh at least 110 pounds. Seventeen-year-olds can give with written parental consent.

The actual process of giving blood only takes from four to ten minutes but with time for registration, the medical history and refreshments, the donor should expect to spend about an hour at the bloodmobile. A brief medical examination including blood pressure, temperature, pulse and hemoglobin blood test is given to every potential donor. These are some of the factors that determine if it is safe for the individual to be a blood donor and if the blood being donated is safe for a patient to receive.

"One hour is not a lot of time when it could save someone's life. Blood cannot be made anywhere except in the human body and must be given voluntarily. It is truly the gift of life," said Hodson.

## FM 368 being re-routed in North part of town

The state highway department is changing the route of FM 368 through Iowa Park again.

Effective Friday, the route will be changed to eliminate two 90-degree turns in a residential area.

The new route eliminates turns at Alameda and Yosemite Streets north of West Highway, and provides a straight route from US 287 to West Highway (Loop 370).

When traveling South on 368, instead of turning East on Alameda and then South again at Yosemite, the route will continue straight at Alameda, and continue three blocks to West Highway. The route will turn East on West Highway to Yosemite, and then continue as it has always been.

Markers designating the route are to be installed in the morning.

The route was changed last year, when the highway department paved Pacific be-

tween Alameda and West Highway. But it was later learned that a formal request had to be submitted by the city council, before the high department could assume maintenance responsibility of the new route.

A letter was then submitted for action by the state, but in the meantime, the route had to revert to its former route. Application from the city was approved recently.

During the changing of the route, first the straight route and then back to the initial route, drivers experienced considerable confusion at the Alameda and Pacific intersection. Because of the confusion, four-way stop signs were installed.

As of Friday, there will no longer be four-way stop signs at the intersection. The North-South traffic will have right of way, and East-West traffic will be required to come to a full stop, according to a department spokesman.

## Lone Star Gas seeks full expense recovery

Lone Star Gas Company announced Friday that it has filed an application for a rulemaking with the Texas Railroad Commission seeking authority to recover 100 percent of purchased gas costs.

At present Lone Star is limited by the commission to an 85 percent recovery of increased residential and commercial gas costs at the city gate, not all of which is recovered by Lone Star from these customers. The company has operated under such a purchased gas adjustment provision since June, 1975. During the years

1976, 1977 and 1978, about \$30 million of legitimate operating expenses went unrecovered in gas cost alone. If the company had been permitted to recover full gas costs in 1978, it would have meant only a two and one-half percent increase in consumers' to the escalating cost of gas.

According to Doug Williams, senior vice president, operations, the passage of the Natural Gas Policy Act has for the first time placed maximum lawful rates upon all gas produced in Texas.

## Change noted on West Cash

Another business is closing out this week in the 100 block of West Cash, but it is being replaced by a new firm.

Johnny Lee confirmed that he is closing out Lee's Bargain Center at 113 W. Cash, and expects to be out of the building by this weekend.

Lee, who has operated his furniture business in the same location most of the time since Settle Drug moved from the building, is completing work on his real estate license and expects to go into that business in the future.

The new business will be a butcher shop, owned and operated by Dave Whitaker, who said he hopes to have two shops in operation within two to three weeks.

Whitaker, a long-time resident of Iowa Park, was for several years the butcher for the Piggly Wiggly store here.

## East tour program topic

Adventures, high points of an on tour covering snakes in the spring of Iowa Park Lioness Club Thursday evening.

Mrs. Tanner presented the program through slides and narration at her home. Mrs. Homer Blalock was co-hostess.

Starting at Los Angeles, the tour group's first stop was at Honolulu, then on to Japan. The slides chosen to best depict the Oriental country included the palace,

parks and shrines, doll painting, finger weaving, cloisonne art, cherry blossoms, the famous bullet train and Mt. Fuji.

At Taiwan, she showed slides of the national museum, Episcopal Church, Buddhist shrines and Grand Hotel. Hong Kong, the Pearl of the Orient, was one of the most fascinating places on the tour for Mrs. Tanner and she focused attention upon the high-rise apartments, explaining the need for them, and bazaars there. The ornate and mysteri-

ous spirit houses, pagodas, and Imperial Palace, emerald Buddha, barges, sampans, variety of melons, classical dancers and elephants were some of the sights of interest in Bangkok.

Traveling to Nepal, an independent kingdom between Tibet and India, Mrs. Tanner realized a lifelong dream to see the Himalya Mountains and Mt. Everest, the highest peak. She showed a picture of the beautiful little Living Goddess and explained how she was both honored and limited in her short lived reign, stupas and erotic art.

Other things that made the trip such a memorable one for Mrs. Tanner were

the Taj Majal at Agra, the oldest university in India at Bombay, Jade House and Tiger Balm Garden at Singapore and rubber trees in the Philippines. Enroute home she spent several days in Honolulu.

Mrs. Sam Hill used a New Year's theme for the devotion. She reminded members that 1979 would inevitably bring many changes and that the way people handled them could enhance or hinder their happiness and success.

Mrs. W.E. Karstetter was in charge of business. Members gave their goals for the new year when they answered roll call.

Others present were Mmes. Wm. Nunn, Sam Hunter, W.F. Booher and D.O. James.

## New books received at Iowa Park Library

A number of new books have been received at the Iowa Park Library, according to Mrs. Billy Washburn, librarian.

The new biographies include: Joan Crawford by Bob Thomas, First Lady's Lady by Shelia Rabb Weidenfeld, Lauren Bacall by Myself, The Tracker, the story of Tom Brown, Jr. and Mommie Dearest by Christina Crawford.

Fictions include Journey to Paradise by Barbara Cartland, Wild Times by Brian Garfield, The Dark Pasture by Jessica Stirling, The Rick and the Beautiful by Ruth Harris, The Autumn Rose by Fiona Hill, Heir to Kuragin by Constance Heaven, Paleoverde by Jacqueline Briskin.

Others are On to Berlin by James M. Gavin, But You Look So Well by John R. Ginther, a personal account of multiple sclerosis, See You at the Top by Zig Ziglar, How to Get Whatever You Want Out of Life by Dr. Joyce Brothers and Adrienne Arpel's 3-Week Crash Make-over/shapeover Beauty Program.

New juvenile books received are Banana Twist by Florence P. Heide, The Night of the Hurricane by Nancy Hale, A Swiftly Tilting Planet by Madelaine

L'Engle, Marcella by Johnny Gruelle, Raggedy Ann in the Snow White Castle.

Modern Carpentry by Willis H. Wagner has been donated to the library in memory of Eldon Thompson, Jr.

## Friendly Door Lunch Menu

**THURSDAY, Feb. 1**  
Meat loaf/spinach, corn pudding, salad, iced sheet cake.

**FRIDAY, Feb. 2**  
Chopped Bar-B-Q beef/potatoes, peas, slaw, cornbread, peaches.

**MONDAY, Feb. 5**  
Spaghetti/vegetables, salad, dressing, applesauce.

**TUESDAY, Feb. 6**  
Chuck roast/potatoes, peas, carrots, salad, peach cobbler.

**WEDNESDAY, Feb. 7**  
Creamed chicken/rice, corn, salad, chocolate pudding.

**THURSDAY, Feb. 8**  
Chopped beef / potatoes, green beans, salad, gingerbread.

**FRIDAY, Feb. 9**  
Fried chicken / macaroni, broccoli, tomatoes, salad, plums.

## Cook of the Week

Iowa Park is noted for her good cooks and not all of their cuisine is typically Texan. It has been influenced by the cooking in every state in the union, Mexico, Europe, South America, the Orient and many other places.

In exchanging recipes and eating favorite foods of nearby and faraway places, one soon comes to the conclusion that meat of some kind is one of the most important parts of many families' meals. It is described in the Ladies Home Journal Cookbook as the central jewel for which the rest is the setting and further, "when poets sang of meals they sang of meats." It is equally popular on the table of the man on the street and that of the gourmet.

Joy (Mrs. Gerald) Davidson, conscious of the place that meat has in meal planning, is sharing three meat recipes with us this week and a casserole dish that is a good substitute for meat.

The personable Mrs. Davidson is a native Oklahoman and was graduated from high school at Sand Springs. The family moved to Iowa Park in 1974. Mr. Davidson is quality control supervisor for CE NATCO at Electra. They are members of First Christian Church. They have two sons, Mark of Dublin, Calif. and Gerald Jr. of Wichita Falls, and a daughter Jill, a sophomore at Iowa Park High School.

At the church, Mrs. Davidson is chairman of the Christian Education Department and service chairman of Christian Women's Fellowship. Her hobbies include sewing, reading, gold leafing and pen and ink on glass art.

### MRS. NELSON'S MEAT RECIPE

2 lbs. hamburger meat  
1 onion, cut fine  
1 pepper, cut fine  
Salt to taste  
About 6 or 8 crackers or oatmeal

Mix and shape into balls and mash flat so they will brown and cook faster. When brown, cover with: 1 can cream of mushroom soup



Mrs. Gerald Davidson

1 can celery soup  
1 can water  
Black pepper to taste  
Cook for about 2 minutes

### COUNTRY APPLE PIE

Place in unbaked pie shell:

5 cups sliced fresh apples (or 1 can sliced apples)

Mix together and pour over apples:

3/4 cup sugar  
1/4 t salt  
4 T flour  
1/2 t cinnamon

1 cup cream (or canned milk)

Sprinkle 1 T sugar and 1/4 t cinnamon mixed together on top. Bake at 400° for 50-60 minutes.

### BRISKET OF BEEF

5 or 6 lb. brisket

Sprinkle brisket with celery, onion and garlic salts. Place in baking pan and pour 3 ozs. liquid smoke over it. Place in refrigerator overnight before cooking.

Sprinkle with salt, pepper and Worcestershire sauce. Cover meat, foil around edges. Bake 5 hours at 275°.

Uncover. Pour 6 ozs. barbecue sauce over meat and cook another hour. Let cool and cut when warm. Heat and serve.

### LAYERED SALAD

1 medium head lettuce  
2 large carrots, grated  
1 #303 can small peas  
1 medium onion, sliced thinly

1 #303 can sliced beets (not pickled beets)  
1 pint Hellman's Mayonnaise  
3 T sugar

1/2 cup bacon bits

Drain peas and beets separately. Break up the lettuce in bite-sized pieces and place in bottom of 4-quart salad bowl. Add grated carrots, then peas, onion, partially separated

into rings, drained sliced beets.

Cover with the mayonnaise; sprinkle sugar over top. Add bacon bits and chill overnight.

Note: the recipe may be halved by using smaller cans of ingredients.

### MEAT LOAF

1 1/4 lbs. ground beef

6 crackers, rolled

1/2 t pepper

1/4 t celery salt

1/4 t garlic salt

1 can tomato soup

1 egg, slightly beaten

Mix beef, cracker crumbs, egg and seasonings. Use 1/3 can tomato soup in mixture. Shape into loaf and flour all over. Place in greased and floured pan. Take remainder of soup, fill can to top with water, and pour over loaf. The water will go to the sides of the pan and mix with the flour to make gray and the tomato will stay on top of loaf.

Bake uncovered for one hour at 350°.

### FUDGE PIE

1 stick oleo

1 cup sugar

2 eggs

3/2 cup flour

3 T cocoa

1 t vanilla

Melt oleo and cocoa together. Add remaining ingredients and pour into a greased pie pan. Bake at 325° for 25 minutes. Serve with scoop of vanilla ice cream.

### FRITO CASSEROLE

Arrange a layer of Fritos in the bottom of a 2-quart casserole. Cover with a layer of sliced onions and a layer of American Longhorn cheese. Continue with alternating layers until casserole is full.

Pour over top:

1 can cream of chicken soup

mixed with 2/3 cup water  
1 can Ro-tel tomatoes with chiles

Bake about 30 minutes at 350°

### BLOND BROWNIES

Melt 1/2 cup butter, oleo or other shortening

Add 1 egg and sift in:

1 cup brown sugar

1 cup flour

1/8 t salt

1/2 t salt

1/2 t baking powder

Add 1/2 cup chopped nuts, 1 t vanilla and mix well.

Spread into 8x8 greased pan and sprinkle 1/2 pkg. chocolate chips on top. Bake 25-30 minutes at 350°.

## Candlemaking program topic

Mrs. Garland Lehman presented a program on candlemaking for the New Pioneers Home Demonstration Club in a meeting at her home Wednesday. She showed numerous inexpensive ways to use household containers for molds and candle holders.

The programs for the year which will include shopping tips, cooking ideas, crafts, family communication, 4-H programs and importance of the homemaker were discussed.

Others attending were Mmes. James Whitaker, Ray Hicks, Larry Whitaker and Richard Lunney.

## Birthday party at Friendly Door

The monthly birthday party will be held at Friendly Door today and members are to bring their white elephants.

Volunteer workers for January were Wanda Singer, Una Adams, Ilene McCoy, Betty Lowe, Mildred Moten and Frances Bowerman.



## Shower Selections For:

SHERYL POSEY and BRUCE HAMMONDS

CAROL MOJER and JEFF MARTIN

Parkway True Value  
200 - 206 W. Bank

# BARGAIN OF THE MONTH

**WHILE SUPPLIES LAST**

now **2.99**

## Covered Wastebasket

Lid locks open — leaves both hands free. Sturdy plastic construction resists dents, will not rust. Cover holds plastic liner bags securely in place. 14 1/2-in. diameter, 21 1/4-in. high — big enough to use standard grocery bags. Gold, brown.

Quantities Limited

# PARKWAY

FURNITURE HARDWARE

592-5512 200-206 West Bank 592-4681

# SAVINGS Spectacular

Walnut or Oak <b>Record Cabinets</b> Your Choice <b>\$50</b>	One Roll Sculptured Nylon <b>Shag Carpet</b> <b>\$6.95</b> Sq. Yd.	Discontinued 12"x18" <b>Carpet Samples</b> <b>25¢</b> Ea.	
One Plastic Covered <b>Swivel Rocker</b> <b>\$99.95</b>	2 Only <b>4-Drawer Chests</b> Reg. \$189.95 <b>\$94.97</b>	King Size Bed Set 1 only - Includes Mattress, Box Springs, Frame, Hd bd. <b>\$388.85</b>	Mattress & Box Spring 1 Only - Full Size Reg. \$239.98 <b>\$189.95</b>
Brass Headboards Entire Stock <b>20% off</b>	Headboards Odd Lot <b>1/2 Price</b>	Odd Lot <b>Nite Tables</b> Your Choice <b>\$50</b>	Wood Burning Fireplaces 2 Only Cast Iron Reg. \$299.95 <b>\$249.95</b> Ea.

# PARKWAY

FURNITURE HARDWARE

200-206 West Bank  
592-5512 592-4681

Every Item  
We Have For Sale  
In Our Store  
Makes A Beautiful  
Valentine Gift.

# Louis'

Distinctive Jewelry  
408 W. Park 592-5942

## 'Fun(d)ies' set Feb. 24

A variety show, "American Heart Fun(d)ies" will be held at the Iowa Park High School auditorium Feb. 24 at 7:30 p.m. Jim Russell from KLUR will be master of ceremonies.

The show will feature music, dancing, comedy routines and magic acts, and all proceeds will benefit American Heart Association.

Auditions for talent will be held Feb. 11, 12, 13. Anyone interested in performing can call 592-5027 or 592-5858 for further information.

## Eight students in MSU show

Eight Iowa Park students at Midwestern State University will take part in "The Gondoliers," a light opera by Gilbert and Sullivan which will be staged at the university Thursday, Friday and Saturday at 8:15 p.m. and Sunday at 2:30 p.m.

Included in the group are Cindy Flanagan, Lee Gwinn, Chris Lester, Norman Flowers, Darlene Mahler, Ricky Blair, Stan Blair and Vicki Miller.



REV. and MRS. HOWELL FARNSWORTH

## Reception welcomes new pastor, family

Rev. Howell Farnsworth is the new pastor of First Baptist Church. He filled the pulpit at both morning and evening services Sunday, and he and his wife, Sue, and children, Phil a junior at Iowa Park High School, and Holly, a sixth grade student, were honored at a reception at the church Sunday afternoon.

Rev. and Mrs. Farnsworth are natives of Dallas and were both graduated from Sunset High School. He was

graduated from Dallas Baptist College and Southwestern Baptist Seminary at Fort Worth.

While in the seminary, he was youth director at First Baptist Church in Irving for four years. He has served as pastor of First Baptist Church at Alvord and First Baptist Church at Groesbeck, moving from the latter to accept the call to First Baptist Church here.

Before surrendering to the ministry, Rev. Farnsworth was public relations director for the Oak Cliff Bank in Dallas and also worked for the First National Bank in Duncanville. While in college he was a photographer for Dresser Industries.

Attesting to his civic mindedness, he served as a member of the Duncanville City Council for four years



Rice paper is not made from rice but from a small tree of the ginseng family.

and also served on the City Planning Commission and Parks Board.

Outside of his regular duties as pastor of a church, he served as president of the Camp Copass Board and also served on the boards at Mt. Lebanon and Latham Springs.

First Baptist Church here had been without a full-time pastor since the Rev. Kenneth Flowers resigned Nov. 1 to assume duties as pastor of First Baptist Church at Brownfield. The pulpit committee elected by the church to search out a pastor to come before the church in view of a call was composed of Mrs. Howard Marlar, Mrs. E.T. Patterson, Bill Veal, Gilbert Mueller,

## Kaufman church calls Newton

Former Faith Baptist Church pastor Jacky Newton assumed pastorate of First Baptist Church of Kaufman Sunday, according to an article in the Kaufman Herald.

Newton came to Iowa Park from Tullia, where he was associate pastor and education director for the First Baptist. After some four years here, he was called to the First Baptist of Abernathy.

Jack Railsback (chairman) and Mrs. Robert McLroy, alternate.

The committee recommended that Rev. Farnsworth come to the church in view of a call Jan. 7 and the following Sunday in a called business meeting, the church voted to call him for a pastor. The family moved to Iowa Park Jan. 22. He preached to a capacity crowd Sunday morning.

## Dances, classes slated at RAC

Disco dances at the Recreation Activity Center are scheduled Friday and Saturday nights.

The Night Hawk will provide music Friday night, and Saturday night music will be by The Voyagers, a disco group from Iowa Park including Billy Anderson, David Horsky and Steve Beavers.

RAC director Kenn Kuckenbecker said there are openings remaining in coming disco dance and silk flower making classes. Both are scheduled to begin Feb. 6.

For more information contact the RAC at 592-4471 from 3-9 p.m. Tuesdays and Thursdays and from 6-11 p.m. Fridays and Saturdays.

## MSU homecoming set

Midwestern State University Homecoming '79 has been set for Feb. 16, 17, and the Ex-Students Association has planned one of the busiest schedules in years to welcome former students and friends back to the campus, according to Steve Cookingham, Ex-Students president.

Activities will begin at 6:30 p.m., Friday, Feb. 16, with the traditional Ex-Students Fish Fry, featuring all the fish or hamburgers you can eat, in the Outdoor Education Center on the university's South Campus. Entertainment will be provided by the MSU Office of University Affairs.

Saturday's activities will begin with a breakfast at 8 a.m. in Clark Student Center. The breakfast is being sponsored by former MSU athletes for all alumni and will feature Dr. D.L. Ligon, MSU Sports Information Director, as Master of Ceremonies. Tickets are \$2.75 per person.

From 10-11:30 a.m., Saturday, the Departments of Art, Speech and Drama, and Military Science will host open houses, and at 10:30 a.m., The Department of Music will host a reception for ex-music students in the Music Building. As part of its open house the Department of Art will feature an exhibition of award-winning prints by artist Dan Smith of Seattle, Wash.

The homecoming luncheon will begin at 12 noon in the Clark Student Center Ballroom. The program will feature entertainment by a student singing group; an address on the State of the University by Dr. John G. Barker, MSU President; the presentation of alumni awards; and the election of new Association officers for the 1979-80 year. Tickets are \$5 per person.

At 4 p.m., the MSU Indians will take on Texas College in a rare afternoon basketball game in D.L. Ligon Coliseum. Tickets are \$2.50 for general admission and may be purchased in the Office of University Affairs or the Athletic Ticket Office.

Then, at 8 p.m., the Ex-Students Association will present "Oliver" in Concert in the Main Theatre of the Fine Arts Center. "Oliver," whose recordings of "Jean" and "Good Morning Starshine" were both gold records, is a talented and versatile performer, and his concert will be the first ever sponsored by the Association. All seats will be reserved, and tickets will be \$4.50 (\$3.50 for MSU students and active members of the Association) if purchased in advance from the Office of University Affairs, Clark Student Center Office or Pants West in Sikes Center. All Tickets will be \$5 at the door. Immediately following the

"Oliver" concert, the association will host a Vegas style Casino Party at the Bea Wood Student Theatre of the Fine Arts Center with part of the proceeds to go to an Ex-Students scholarship fund. Tickets are \$4.50 per person and will include food, drinks and an initial casino money stake at the gaming tables. Prizes will be auctioned at midnight.

Although Homecoming '79 is sponsored by the Ex-Students Association, all events are open to the public. Anyone interested in making reservations or

Mary Shaw was named to the Deans' List for the 1978 semester at East Texas State Univ., Commerce.

Students who have at least a 3.25 grade point average are eligible for the Deans' List. ETSU uses the 4.0 grading system.

## CLOSE OUT!

We've sold our building and must vacate by this weekend!

— ENTIRE STOCK —

**COST Plus 10%**

— NO DELIVERIES —

**Lee's Bargain Center**

113 W. Cash

592-4792

# SNB



## Use our nest.

When you hide away your money in a little nest-egg, the only thing you get out of it is knowing that it's nearby.

When you put your savings away at State National Bank of Iowa Park, you still know that it's nearby, because the bank is nearby. But you also get a lot more for your money.

As our savings account customer, you'll get the benefit

of knowing that your money is collecting interest, and not just dust. Your savings are insured, and you get the confidence of knowing that your money is working as hard for you as you are to earn it.

If you're going to nest-egg your savings, use our nest... State National Bank of Iowa Park, helping you make today count for tomorrow.

Locally Owned

### OFFICERS

Stanley Williamson, Chairman of the Board & President  
H.M. Nipper, Executive Vice President  
Roberta Hill, Vice President and Cashier  
David Parkey, Senior Vice President  
Bert Williamson, Assistant Vice President  
Jean Hopkins, Assistant Cashier  
Janis Latimer, Assistant Cashier

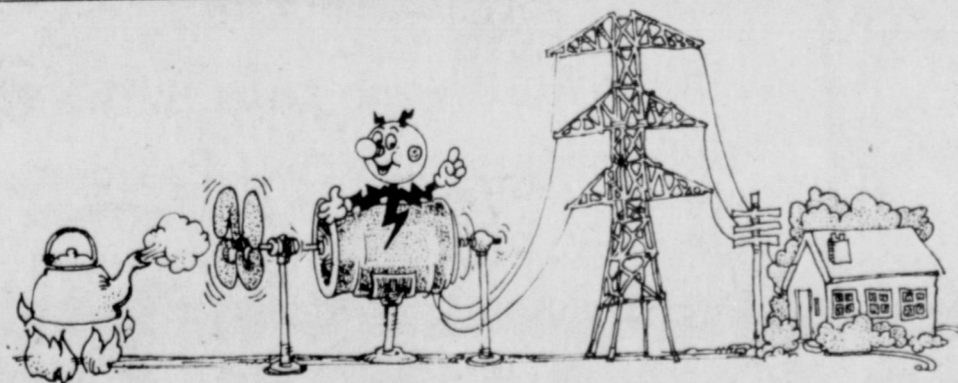
### DIRECTORS

Fred Dwyer  
O.N. Newman  
Fred Parkey  
Luther F. Shaw  
W.R. Steger  
Stanley Williamson

# SNB

**STATE NATIONAL BANK**  
IOWA PARK, TEXAS  
Member F.D.I.C.

## Here's why it takes fuel to make electricity.



It takes fuel to make electricity.

A lot of people don't understand that, but it's true.

Most of the power plants in this country require steam to generate electricity. To make steam you must boil water, and that requires a lot of heat.

That's why we

have to buy and burn large amounts of fuel, such as lignite coal and natural gas, every month. The steam we make with it turns the generators that make your electricity, which we distribute to you right when you need it.

The fuel we use costs money, more all the time, which is

why we show it separately on your bill. At Texas Electric, we want you to know what you're paying for. And to remember: it takes fuel to make electricity.

**Texas Electric Service Company**

W. N. HOUSE, Manager, Phone 592-4149

# As History Change On The Range: 1973

settlers of a new region often on a subsistence level for a number of years. They ate what they grew, wore what they made, and used such tools and furnishings as they could make for themselves. Then, almost suddenly, one or more of the nearby villages would develop into a trade center, the railroads would arrive, and even the

rural communities had new access to processed materials and manufactured goods. Redmour G. Gaines, born in 1858, grew up along the town of Valley Mills, in Bosque County. His recollections of his home in the 1860s include mention of chinked-log cabins, dirt floors covered by home-loomed rag carpets, and meals cooked on the

fireplace with skillets and ovens, "as there were no cook stoves in the country, and but few people had ever seen one."

By the 1870s, changes in the settlers' way of life and in the area itself were taking place at a fast and furious pace. A portion of Gaines' reminiscences for 1873 appear below, and illustrates the speed with which the frontier became absorbed into the modern and mechanized world.

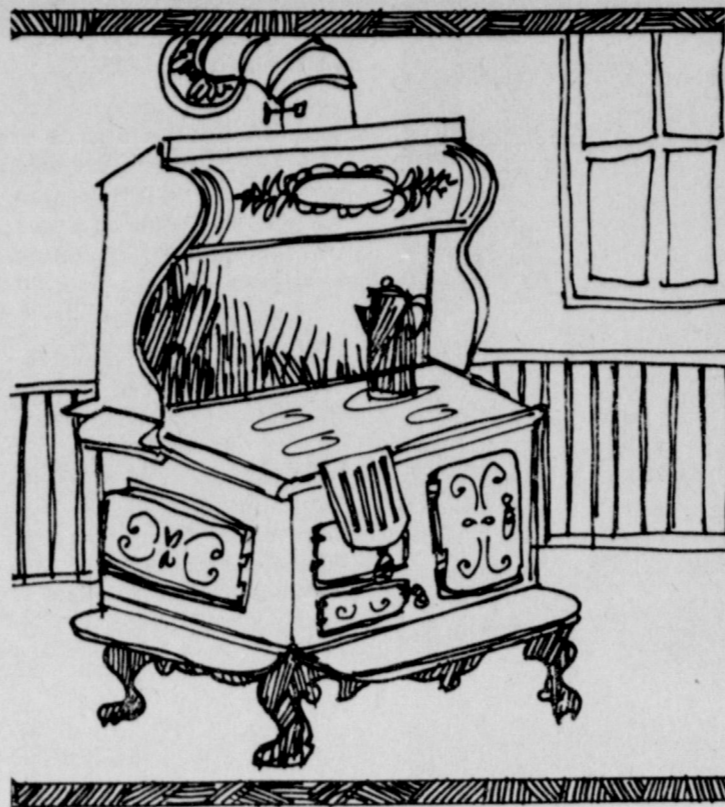
"This was a year of home building all over central and north Texas, as lumber could be had in Waco and Dallas. All kinds of rough lumber could be bought for \$6.00 per thousand, shingles \$4 or \$5 per thousand. The standard home consisted of one room-16 x 16, shed room 10 x 16, front gallery 10 x 16. A two room house seemed to be big enough for most any family. "This was the first year that the cow man really had a right to squeal about the settlers plowing up the grass. You could ride out to big prairie and look any direction and see great black spots where some settler had ripped up the grass and was building a grasshopper fence around his plowed land. This fence consisted of posts eight feet apart and three rails or poles tied to the post with rawhide strips about one inch wide. The farmer could get out in winter and skin enough poverty cows to get his fence built without any nails being used as they cost 25c per pound at that time.

"This was the year for the cook stove—the rain proof—and the stove pipe poked out through the shed room of every home in the country. In the country the old skillet, dinner pot, and bake oven went to the scrap heap. You could buy a Charter Oak stove with forty pieces for \$45. The women sure went on a strike against the old fire place that the poets write about.

"This was the last year of the ox wagon rolling up to a camp meeting; they simply went out of style. You could buy a La Belle, Studebaker, Milburn, Cooper, Mitchell wagon for \$75.00-\$25 down and \$50 in the fall. It seemed that everybody bought a new wagon for the summer camp meetings.

"Painted bedsteads, chairs with cane bottoms, rocking chairs, and other new furniture appeared in the old timers' home.

"This year the first sewing machine came into the country—made by Grover and Baker Sewing Machine Co. They claimed it was the first lock stitch machine made. It was the



first one I ever saw. They sold them for \$45 spot cash and did a good business. "This year we quit drinking out of the long handle gourd. The tin peddler hit the county. He would trade the women tin milk pans for chickens, eggs, and butter; and he had the finest line of tin dipper that made the water look good compared to the old gourd. Every house got a new tin dipper if it took the last old hen. Take an old Texan who had been drinking water out of a gourd all his life and hand him a new dipper full of water—it would look so clear and bright when he cut his

eye down at it that he could not help stepping back and giving a snort."

Gaines' memoirs chronicle a number of other notable events and trends: the inauguration of Gov. Coke, the decreasing occurrence of cattle drives up the Chisholm Trail, the arrival in the area of "silk hat gamblers" and rustlers, the advent of further settlers in covered wagons, and the fencing of the range with barbed wire.

The year 1873 remained in his view as the period of the greatest increase in Central Texans' standard of living.

## County well represented in pageant Saturday



KATHY NIXON



ROASILAND HILL

Iowa Park, Burkburnett, Electra, Sheppard AFB and Wichita Falls will be represented during Saturday night's Miss Wichita County Scholarship Pageant.

The pageant, sponsored by Iowa Park Optimist Club, is slated for 7:30 p.m. Saturday at the Iowa Park High School auditorium.

Among the 15 contestants, Wichita Falls will be represented by Flora Hite, 21, and Rhonda Dennis, 21.

Roasiland Hill, 22, will represent Sheppard AFB, and Burkburnett will be represented by Janet Lax, 18, and Kathy Nixon, 17.



JANET LAX



RHONDA DENNIS



FLORA HITE

**RCA XL-100 25" diagonal** *Limited time offer!*

**Big-Screen RCA XL-100 Decorator Console** **\$599**

With RCA's 100% solid state XtendedLife chassis—designed to outperform and outlast any previous XL-100 chassis.

- Automatic Color Control and Flashstone Correction
- RCA Super AccuColor black matrix picture tube

• Low power consumption—actually uses less energy on average than a 100-watt bulb.

**IT'S HERE! RCA's most compact XL-100 color TV ever**

Introducing **the RoomMate**

**13" diagonal RCA XL-100**

**The sharpest, brightest small-screen color TV in RCA history**

See it now—the new RoomMate featuring RCA's XtendedLife chassis

- Low power consumption—uses less energy than a 75-watt light bulb
- RCA's new AccuLine black matrix picture tube
- Automatic Fine Tuning

**\$299**

**BLACK & WHITE TV SUPER VALUE SPECIAL**

**LOWEST PRICE EVER for a 12" diagonal 100% solid state RCA Sportable B/W TV**

Brand New 1979 RCA ComPact 12

- 100% solid state chassis
- Low power consumption—36 watts (average)
- Fast warm-up picture tube
- Pre-set VHF line tuning
- Dual-function VHF/UHF antenna

**ONLY \$88.00**

IOWA PARK **WHITES Home & Auto** Park West Shopping Center 592-4186

## NEWS OF HEALTH

### Allergies: Things You Should Know

Although some 17 per cent of the people in America suffer from one or more major allergies, there are a lot of facts many may not know.

An allergy is a reaction by the body to substances it recognizes as foreign. The reaction triggers the formation of antibodies and the release of certain chemicals. It's these chemicals that cause the symptoms of allergy.

The most common causes of allergies are pollens, molds, dust, feathers, hair and chemicals. Sometimes an allergy can almost be predicted. For instance, studies have shown that if both parents have hay fever, a child has a three out of four chance of having an allergy, too, and a 50 per cent chance of getting it in his early years.

Anyone with these allergy symptoms would do well to consult with their pharmacist who now is in a position to recommend a number of products which were

formerly available only on prescription.

One recognized for its prompt, effective relief of hay fever and other respiratory allergy symptoms is Chlor-Trimeton tablets from Schering Corporation, and available without prescription in tablet or syrup form.



MANY PEOPLE WOULD BREATHE EASIER if they knew more about their allergies.

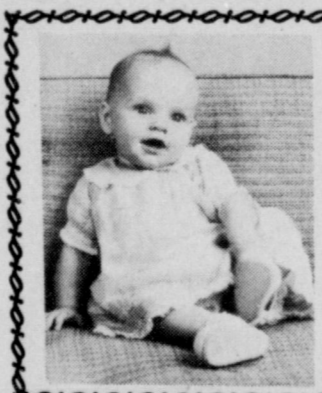
It contains the most widely used antihistamine ingredient.

### Robin Doan to appear

Iowa Park's Robin Doan, who was recently named Miss Pecan of Nocona, will make her first public appearance Mar. 3.

Miss Doan will be introduced at the 52nd annual Nocona Chamber of Commerce banquet, which will begin at 7 p.m. in the Nocona High School gymnasium.

Tickets to the banquet, where Bob Jet will be the main speaker, are \$6 per person.



**Elaine is 21**

**Happy Birthday!**

Love Mom & Dad

**WHITES 5 H.P. CHAIN DRIVE ROTOTILLER \$229**

**WHITES DELUX 5 H.P. GEAR DRIVE ROTOTILLER \$329 No. 87-59**

**WHITES DELUX 5 H.P. CHAIN DRIVE ROTOTILLER \$339 No. 87-63**

**\$5.99 Value FREE HOE** With Purchase of Any Advertised Whites Rototiller

**IOWA PARK WHITES Home & Auto** Park West Shopping Center 592-4186

**UNESCO, IT'S TIME FOR LUNCH!**

A grateful mother in the Congo, impressed by the United Nations organization's educational work, named her son Unesco.

**WELCOME TO THE HOME OF THE "OXFORD UNIVERSITY PRESS"**

An African chieftain, when choosing an English name, dubbed himself "Oxford University Press."

**RED TAG Sale**

**Complete Storewide Sale on all in-stock Furniture & Accessories**

When you come in, **Look to the Right.** Everything on that side of the store will be wearing a **RED TAG** with savings from

- 20 to 50% OFF**
- ★ Living Room
  - ★ Bedroom
  - ★ Lamps
  - ★ Recliners
  - ★ Pictures
  - ★ Everything Goes
  - ★ Hutches
  - ★ Accessories
  - ★ End Tables

**IOWA PARK WHITES Home & Auto** Park West Shopping Center 592-4186

# Worth Quoting

My erudite Ph.D. brother is a constant irritant to my inflated ego. That he is intellectually superior I don't question. He keeps proving it by talking to me in Ph.D.

In his own inimitable way he manages to tear apart in seconds what has taken me hours, or even days, to put together, all the while deepening my sense of inferiority.

I am continually mesmerized by his disputations wreaking havoc on my columns. If I say one thing is black, to him it is white. If I say Jimmy Carter raises peanuts, no, its chinquapins.

I called him recently, knowing I should have left well enough alone, and discussed one of my more recent columns. The column was, I thought, one of profundity, and one in which I was extremely proud.

"Demps," I said when he answered the phone. "Have you read my last column?"

"Are you quitting the business?" he immediately asks.

"Why no." "Then it's not your last column." "You know what I mean. The latest one published."

"You didn't say that." "Look," I say in total exasperation, "This is costing me. I don't have the time nor the money to engage in silly semantics so how about answering my question?"

"What question?" "D--- it. The one about my latest column." "Too wordy." "Is that all you've got to say?" "No," he answers laconically. "You

didn't prove your point." "What point?" "About the early bird getting the worm."

"Good gosh," I say, "You know that's just an expression." "Then you should have qualified it." "Oh h---," I yell in the phone. "Just forget it."

"I probably will," he answers calmly.

Without further ado, I hang up the phone, trembling with self-indignation. As I walk to another room, I suddenly burst out laughing. I realize that once again my Ph.D. brother has won yet another battle in the continuing war against my inflated ego. God, how I love that man.

DON WATKINS  
Fiona Star

Where did all the marbles go? That's a question I ponder when all else fails to put me to sleep, and since a recent night featured insomnia on the menu I had ample opportunity to roll the subject around in the space in my head which usually is occupied by the brain in the species Homo sapiens.

In my youth marbles was the big game. Every boy had a marble bag and if he could hold his own in a friendly game had marbles in that bag most of the time. Not that anyone where I grew up gambled. We just played keepers, which was a study in capitalism.

Ask a youngster today if he ever shoots marbles and he looks at you in an inanner which immediately makes you wish the question had not been asked.

Shooting marbles is almost a lost art and with its loss this country has suffered. I have a tendency to blame television for most of this country's evil and certainly the boob tube can be blamed for the decline in the great American game of marbles.

For one thing youngsters spend most of their time in front of the TV set instead of outside. Secondly, marbles is a game which doesn't cost much money to play so it isn't heavily advertised on television.

One learned a lot of things playing marbles, important things which prepared a boy for manhood.

VIRGIL MOORE  
Breckenridge American

# As I See It....

December snow in February? Sounds funny, but we've still got it. For frozen precipitation to remain more than a month in this part of the country is extremely unusual.

Those dark piles at the corners of the downtown business district are sleet, snow and ice which have been scraped up from parking areas. Some of the stacks are the remains of that winter storm we had prior to New Year's Eve.

If they don't melt before the weekend, I understand there is a real chance that more will be added to them. Apparently some of those predictions based on fur thickness and other tell tale signs that this would be a severe winter are going to turn scoofs into sighs.

Believe it or not, this siege of winter weather has delayed completion of the television cable system here.

Workmen have gone as far as they can, installing the system throughout the town. They are waiting now for a drying spell, so concrete can be poured to hold up the tower and satellite receiver.

Had it not been for the weather, we would have long since been enjoying the new television service in our homes. However, owner Ben Campbell told the city council he would have it completed by

February, and he's got a whole month yet to go.

I can understand why Campbell is as interested as anyone in getting the service working. I may be missing some programs and movies, but he has a lot of money tied up and no revenue coming in until service is underway.

It's never been any secret that it costs money to borrow money.

This fact was brought out strongly recently by an opponent who's fighting a proposal to allow savings and loan firms to increase their interest rates from 10 percent to 12 percent on home mortgages.

The opponent pointed out that, if the additional two percent is allowed, the total cost of a \$50,000 home mortgage over 30 years would be increased \$27,000.

Reckon that's where the old saying "It takes money to make money" came from?

Hope you are planning to attend

the Iowa Park Chamber of Commerce banquet Feb. 10. Advance tickets are on sale.

I've always hoped, and it's getting closer to reality, that the annual banquet would become THE social event of the year in our community.

After all, what else is there for a man to put on his best suit other than a wedding, funeral, graduation or church?

Remember the military draft? When the draft was scrapped, the entire system was dismantled, including local selective service boards and national registration.

Few realize that, should a national emergency arise, the most optimistic estimates indicate it would take 65 days just to get the first person inducted. Then you can add another four and a half months of training .... then seven months .... just to get the first man out of the pipeline to the fighting line.

Should another war break out, it could indeed be a short one.



## Humor 'n Whimsey

Joe Riordan

Franklin McIlhenny is a businessman in San Antonio, now.

But when he was six years old and living in the Alamo City, his parents Marge and Thomas enrolled him in Catholic Parochial School, although the family were members of the Episcopal Church.

And therein lies my story. Although Franklin had never been exposed to Catholic teaching nuns, his parents felt he wouldn't react unfavorably to the ladies in the black dresses and strange starched head coverings.

If young McIlhenny noticed the difference between nuns and other teachers, he never mentioned it. In fact within a short time it was evident Franklin had a strong favorable feeling toward his first grade teacher, Sister Gwendolyn.

During the months of September, October and November, he told his mother of the wonderful attributes of Sister Gwendolyn. When discussion in the family called for expert opinion he would chime in with:

"Sister Gwendolyn says..." and then quote his first grade teacher on many different subjects.

From September through November, Franklin's favorite topic of conversation at home seemed to be Sister Gwendolyn.

When the Christmas season approached his thoughts turned to Christmas presents. Not only getting presents but also giving them. One thing was sure. He wanted to get a present for Sister Gwendolyn, but couldn't decide what it should be.

He hit on the solution one day and decided to talk it over with his mother.

"I know what I want to give Sister Gwendolyn for Christmas. But I am afraid it might cost too much money."

Marge McIlhenny was interested, but noncommittal.

"What do you want to give Sister for Christmas, Franklin?"

"I want to give her a new dress, because she is so poor she has worn the same one every day since school started."

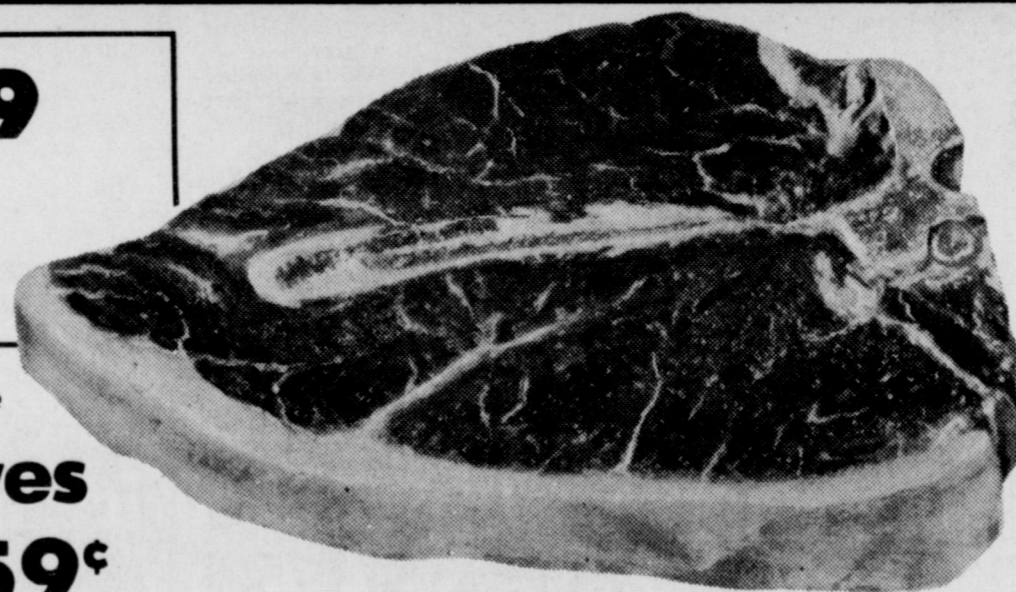
# SHOP US FOR SUPER FOOD SAVINGS

Ebner

**Sausage**

2 Lb. Pkg. **\$2.79**

Ebner will present a **Sausage Demonstration** Saturday from 9 a.m. until 1 p.m.



Heavy Beef

**T-Bone Steak**

**\$2.19** Lb.

Food King

**Salad Dressing** Qt. **74¢**



Towie

**Olives** 10 Oz. **59¢**

Argo

**Green Beans** 16 Oz. Can **4/51**

Our Darling

**Corn** 17 Oz. **3/51**

Thrift King

**Pinto Beans** 15 Oz. Can **4/51**

Thrift King

**Pork & Beans** 15 Oz. Can **4/51**

Shurfine

**Tomato Sauce** 8 Oz. Can **5/51**

Roxey

**Dog Food** **6/51**



Swift

**Chili** No Beans 15 Oz. **79¢**

Contadina

**Tomatoes** 14 1/2 Oz. Can **39¢**

Maryland Club

**Tea Bags** 100 Ct. **\$1.99**

Food King

**Shortening** 42 Oz. Can. **\$1.39**

Purina

**Cat Chow** 4 Lbs. **\$1.89**



Heavy Beef

**Sirloin Steak** Lb. **\$1.63**

Heavy Beef

**Club Steak** Lb. **\$1.49**

**Beef Ribs** Lb. **63¢**

**Beef Cutlets** Lb. **\$2.09**

Extra Nice

**Tomatoes** Lb. **59¢**

Iceberg

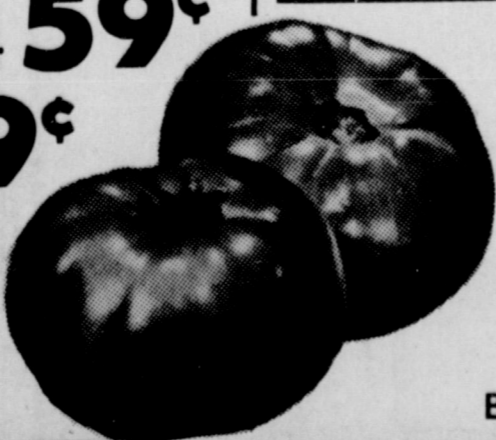
**Lettuce** Head **59¢**

California Sunkist

**Oranges** Lb. **39¢**

Texas

**Cabbage** Lb. **19¢**



**Tissue**

Thrift King 4 Roll Pkg. **55¢**

**Towels**

Viva Big Rolls **69¢**



**DISCOUNT FOODS**

107 WEST PARK

Iowa Park's newest place of Worship  
**Iowa Park Missionary Baptist Chapel**  
 410 Park West Shopping Center  
 (Next door to Louis Jewelry)  
 Sunday School ... 9:45 A.M. B.T.C. ... 6:00 P.M.  
 Worship ... 11:00 A.M. Evening Worship ... 6:00 P.M.  
 Wednesday Evening Worship 7:00 P.M.  
 Phone 592-4288 Larry Washburn, Pastor

## Tax credit given to energy savers

Taxpayers who take certain steps to save energy in their homes can cut their income tax bills by up to \$2,500 as a result of recent legislation.

The law, which is retroactive to April 20, 1977, provides for a tax credit of up to \$300 for energy conservation materials installed in the home, with a separate credit of as much as

\$2,200 for taxpayers who install "renewable" energy source devices such as solar or wind equipment.

The smaller credit is figured at 15 percent of the first \$2,000 spent on such items as storm or thermal windows and doors, insula-

tion, weatherstripping and caulking. Also qualifying are furnace replacement burners, flue-opening modifications, electrical or mechanical ignition systems to replace gas pilot lights, and clock thermostats.


The "renewable" energy source credit is 30 percent of the first \$2,000 plus 20 percent of the next \$8,000 invested in qualifying solar, wind or geothermal equipment used to heat, cool or provide hot water for use in the home.

Both credits are available for items purchased and installed on a taxpayer's principal residence between April 20, 1977 and December 31, 1985. The "renewable" energy credit is available for both existing and newly constructed homes. Renters as well as homeowners are eligible for the credit.

Taxpayers need not itemize deduction to claim the residential energy tax credit. They do, however, have to file Form 5695, "Energy Credits," is available at IRS offices and many banks and post offices.

**TRINITY LUTHERAN CHURCH**  
 8 1/2 miles north FM 368  
 1 1/2 miles west FM 1813  
 Sunday School: 9:45  
 Worship: 10:30  
 Welcome!

--WELCOME--  
 Assembly Of God  
 S. Yosemite  
 9:45 S.S./6 P.M.  
 Wed. 7 P.M. Service  
 Rev. Charles Hensley,  
 Pastor

**FIRST CHRISTIAN CHURCH**  
 [Disciples of Christ]  
  
 Rev. Clyde Markee  
 105 E. Cash 592-4513  
 You are cordially invited to worship with us each Sunday.  
 Church School 9:45 a.m.  
 Worship 10:55 a.m.  
 YOUTH PROGRAM 6:00 p.m.

Welcome  
**Grace Baptist Church**  
 Iowa Park  
 511 S. Colorado - 592-5632

Come Let Us Reason Together Saith The Lord

Sunday School ..... 10:00 A.M.  
 Morning Worship ..... 11:00 A.M.  
 Evening Worship ..... 6:30 P.M.  
 Wednesday Service ..... 7:30 P.M.

Jimmy Johnson, Pastor

**YOU ARE ALWAYS WELCOME**  
 SUNDAY BIBLE STUDY 9:30  
 PREACHING 10:30 & 6:00  
 WEDNESDAY EVENING 7:30  
**Keep In Touch**  
 Phone 592-2541  
 ...for information relative to members of the congregation. Bible reading suggestions. Short devotional. Information changed daily.  
**CHURCH of CHRIST**  
 300 EAST PARK  
**IOWA PARK**  
 [Call office - Ride one of our buses]  
**592-5415**  
 STEVE BRACKEN PREACHER

## 4-H CLUB



## News

Dress for energy savings by wearing fabrics that "breathe," colors that "fit" the weather, and layers that can be added or subtracted as temperatures change.

Energy-conscious young people in the national 4-H fashion revue program suggest wearing natural fiber fabric -- wool, cotton, silk, and linen -- or blends with a high natural fiber content, next to the skin. These fabrics "breathe" by increasing air penetration and moisture absorption, points out Anita Burchett, assistant county agent with the Texas Agricultural Extension Service.

Dark colors, like the new burnt sienna and vintage plum, are good choices for winter because they absorb heat from the sun.

4-Hers also recommend "layering" for the latest in fashion and energy conservation. Start with a cowl or turtleneck sweater, add a blouson big top, and complete the look with a boxy, unstructured vest. Air trapped between the layers of clothing acts as an insulator, so several light layers may be warmer and more comfortable than one heavy garment.

Girls and boys 9-19 learn-by-doing how to dress for all seasons and all occasions in 4-H fashion revue, an educational feature of the over-all 4-H clothing program.

Fashion revue projects and activities stress development of skills in choosing, constructing, accessorizing, and modeling garments that complement a 4-H member's wardrobe.

Supported by Simplicity Pattern Company, Inc., and conducted by the Extension Service, the program provides opportunities for 4-Hers to earn recognition for their fashion know-how.

4-H members who rank in the top 10 percent in county fashion revues are eligible for medals of honor. One winner from each state receives an expense-paid trip to National 4-H Congress in Chicago each year and participates in the National 4-H Fashion Revue. Six national winners are awarded \$1,000 scholarships.

All winners are chosen by Extension Service, and awards are donated by Simplicity and arranged by the National 4-H Council. More information on the 4-H fashion revue program

in available from the county Extension office, adds Anita Burchett.

### MAKE OUTDOOR WEAR IN 4-H

Insulated outdoor wear is not hard to make, but finding the material is sometimes difficult. By using Frostline Kits one can have the advantages of a wide selection of fabrics and a variety of designs to choose from without the hassle of cutting the item out. Frostline Kits are ready to assemble insulated jackets, coats, pillows, and a number of small items which can be ordered with goose-down or polyester filling.

Some finished items will be shown at a special meeting at 7:00 on Feb. 6 at the County Extension office. Sewing techniques will also be shown. For more information on this clothing opportunity, contact Anita Burchett, Assistant County Extension Agent, at 766-0131.

4-H leaders in Wichita County will have an excellent opportunity to receive training on a pot pourri of ideas designed to update them and give current information related to various areas of grooming, clothing, and textiles. The weekend training will be held February 3 and 4 at the Texas 4-H Center in Brownwood. Sessions will include:

A fashion show featuring the Spring/Summer 1979 Simplicity Wardrobe to reveal fashion trends for the coming season.

Fabric trends for the Spring will be shown through fabric swatches and garment samples.

Fashion/fabric handouts with emphasis on youth.

Demonstration and workshop session for sewing on today's fashion fabrics.

Make-up application hints for a fashionable and attractive look for Spring/Summer 1979.

4-H rabbit and poultry projects are gaining in popularity with many rural and urban youngsters. New materials and techniques used in these two projects will be shared at the Texas 4-H Center near Brownwood on the Feb. 17-18 weekend.

This leader training workshop is designed to help adult and teen leaders become more knowledgeable and skilled in working with 4-H members and their rabbit and poultry interests.

If you're tired of the same old stations night after night...

try Cable Television for a change

You Can Still Save 1/2 Price

on installation through Feb. 14

Due to bad weather, deadline for half price installation is being extended two weeks, to Feb. 14

### Installation Charges Through February 14

\$12.50 first TV \$10 for HBO  
 \$12.00 each extra \$10 each extra

### Regular Installation Rates After February 14

\$25 first TV \$20 for HBO  
 \$12 each extra \$20 each extra

### 9 Channels To Pick From

CHANNEL	CABLE CHANNEL
2 Weather Station	2
3 Wichita Falls - NBC	9
6 Wichita Falls - CBS	10
7 Lawton ABC	12
IND. San Francisco KTVU	8
IND. Chicago WGN	11
24 Dallas PBS - ED	13
17 Atlanta IND (24 hr)	5
PTL. Religious (24 hr)	4
HBO. Movie Sta.	2

## T.V. CABLE

Of Iowa Park

901 W. Highway

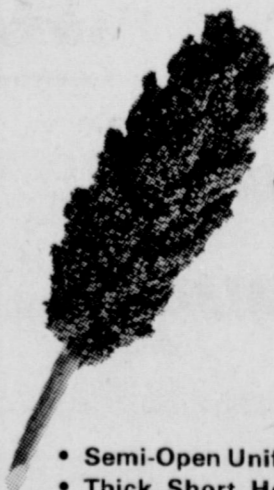
592-2164

## Golden Acres BRAND

"Golden Acres" is a brand name registered by Taylor Evans Seed Company, Tulsa, Texas 79088. "T.E." names or numbers are variety designations.

### HYBRID GRAIN SORGHUM

UNIVERSALLY POPULAR YELLOW ENDOSPERM GREENBUG RESISTANT



TE  
**Y-101-R**

- Easily Threshed
- Drouth Resistant
- Heavy Yield Potential
- Semi-Open Uniform Well Exserted Heads
- Thick, Short, Heavy Stalk, Excellent Standability
- Extensive Root System, Adapts to Varying Soils
- Excellent Greenbug Resistance

WE RECOMMEND TE-Y-101-R



**McClendon's**  
 Feed and Seed

211 S. Victoria  
 Ph. 592-4461

COME IN NOW FOR YOUR SEED NEEDS

# Tree, shrubbery planting

By DON D. DECKER  
County Agent

Shade trees, shrubbery, and fruit tree planting time is here. A planting guide is available at my office which can assist home owners in selecting adapted species and varieties as well as placement in the landscape.

Ben Walker is adding six apple trees to his landscape. One of his concerns has been a need to plant varieties to accommodate pollination. Apples are not self fruitful, so pollen must come from another tree in order for fertilization to take place.

Recommended varieties include Jersey Mac, Mollie's Delicious, Starkrimson Delicious, and Starkspur Golden Delicious. The pollinators for these varieties can be Starkspur Earliblaze or Winter Banana. The spacing being used by Walker is 25 feet between trees. Dwarf types can be planted at 15 foot spacing.

Site location is important. Sandy loam soils 3-5 feet deep with permeable subsoil is considered ideal. A location with good air drainage will help to eliminate freeze losses. It is advisable to avoid river bottoms and air pockets.

Tree training begins at planting time. The tree is cut off to a 30 inch switch at planting. The tree is planted at the same depth as in the nursery row. This insures the bud union will be located above the ground. Training and pruning for the next three years is important toward development of a strong framework.

Apples do not have the insect and disease problem associated with peaches and plums. The main enemy of apple production is cotton root rot, which is a soil born disease.

Pecans make excellent yard trees for shade. They can also produce an abundance of pecans for the family with proper care. This tree falls into the medium range of growth

rate of the species available to this area. A well cared-for pecan can make a desirable shade tree within ten years. Keeping Bermudagrass away from the base area of the tree is one of the main factors which can contribute to the rapid growth rate.

Richard Gregg of Burk Burnett is using pecans in his landscape. Gregg is planting Choctaw, Mohawk, and Desirable varieties. The Desirable will serve as pollinator for the other two varieties.

There is a whole host of pecan varieties available, depending on individual preference. Pecan varieties which also do well in this area include: Wichita, Cheyenne, Shawnee, Apache, Sioux, Caddo, Barton, Western, Chickasaw, Shoshoni, and Tejas.

There are many new home vegetable gardeners each year. For the novice gardener these tilling tips may be helpful.

Tilling the garden will be easier if you will leave a row untilled between passes. There are two reasons for doing this: wide turns are much easier to negotiate with a tiller than "about faces" and the machine won't be pulling itself and you toward the row next to it.

In tilling heavy clay or breaking up ground for a new garden, reduce engine speed. The tiller will dig better, buck and bounce less.

When tilling the garden for the first time, don't try to work it to its maximum depth in the first pass. Set the brake stake for half the

depth you desire. Then rest it to full depth and go over the ground for a second time. Till only when the soil is

somewhat moist. Tilling soil will leave behind hard clumps which will become rock hard as they dry.



The brain grows rapidly up to the age of 5 and generally stops growing by the age of 20.



The body has approximately 206 bones, nearly 700 muscles, and almost 250 joints.



25th Anniversary Convention  
Texas Young Farmers  
January 1979 - Abilene, Texas

**ATTEND CONVENTION** - Five members of the Wichita County Young Farmers recently attended the state Young Farmer convention in Abilene. Barry Mahler, standing left, received the Outstanding Officer award for Area IV. Mahler is past Area IV president and represented the area as a state officer. Also standing is David Bogard. Seated from left are Jerry Gholson, Vocational Agriculture teacher, Melvin Joyner Jr., and Gary Anthony.

## Municipal Court Records

Results of municipal court held here last Thursday were:  
Calvin Wesley Sampley, excessive noise, \$28.50;  
James Stephen Hartman-gruber, speeding, \$36.50;  
Richard Wesley Smith, failure to signal, \$38.50;  
James Vincent Rohrbaugh, no driver's license, \$38.50;  
Freddie Lee Hambricht, disobey stop sign, \$38.50;  
Minh Van Truong, disorderly conduct, \$28.50;  
Bernard Hernandez, public intoxication, \$28.50;  
Larry Dale Williams, curfew, \$28.50.

## Tax assistance is volunteered

Volunteer Income Tax Assistance workers have set up for work for the second year in Iowa Park.

The volunteers are reportedly trained by the Internal Revenue Service to assist those with low incomes and the elderly with their tax forms, at no charge.

The VITA center is located at 510 N. Colorado, and will be open from 10 a.m. to 2 p.m. Monday, Wednesday and Friday, beginning Monday. Hours for Tuesdays and Thursdays will be 1-3 p.m.

Doris Owens, one of the volunteers, suggested that those seeking assistance should have last year's

returns, and those of their spouse if possible, when they go to the center.

Mrs. Margaret Archer is another of the volunteers.

## New Meter Connections

Dale Dye - 1004 A South Wall  
Jackie P. Perkins - 101 West View  
Stephen H. Good - 1506 Karen Lane

Elben E. Ingram - 510 E. Lafayette  
Gena Shoulders - 301 E. Magnolie  
Billy Parkay - 505 N. First

Bobby L. Smith - 210 W. Garden  
Carl A. Foster - 719 E. Park  
K. L. Thornton - 1322 Edgehill Drive

## COUNTER TOPPING

FORMICA WILSON-ART MICARTA  
"BUY FROM THE OLD PRO"  
T.S. THOMAS, CABINETMAKER  
1516 Beverly Wichita Falls Ph. 723-6523

# Direct Fashions of DALLAS TOTAL CLEARANCE SALE

Saturday, February 3, 9 a.m. - 3 p.m.

Deep, deep reductions on everything you need for the frigid weeks ahead. Plus A solid collection of transition wear to take you into spring. Be on hand early - the best buys go first!

Jr. & Missy Sizes <b>Dresses</b> 50% off	Jr. & Missy Sizes <b>Sweaters</b> 50% off	<b>GENUINE RABBIT Jackets &amp; Coats</b> Varied colorations, beautiful styling. 50% off	
Print Shirts 40%	Disco Dazzlers Party Wear 50% off	Pant Suits Elegant Textures & Colors 50% off	Velvet Blazers to wear with everything \$39.88
Junior Blouses \$16.88	Missy Pants & Vests \$3.99 Ea.	Jackets \$5.99	Great Discoveries Rack - \$1.00
<b>COME EARLY WHERE: VFW CLUB IN WICHITA FALLS Feb. 3</b>		Select Group of Missy Coordinates PANTS 40% off JACKETS 60% off	
Dressing Room Available		Your Favorite Classic Coordinates Proportioned Pants \$6.99 Jackets 40% off Shells 40% off Skirts \$5.99	
Personal Checks & Returns			

## MEAT MARKET SPECIALS

All U.S.D.A. Choice Cuts

EXTRA LEAN GROUND BEEF lb. \$1.39

RUMP ROAST lb. \$1.49

BEEF CUTLETS lb. \$1.89

ROUND STEAK lb. \$1.59

PIKE'S PEAK ROAST lb. \$1.69

PORK SPARE RIBS lb. \$1.29

CENTER CUT PORK CHOPS lb. \$1.69

OUR OWN COUNTRY PORK SAUSAGE lb. \$1.39



One Liter Coke

29¢ plus deposit

Try Our BARBECUE From the Deli

IMPERIAL SUGAR 5 Lb. Bag \$1.09

# CABE'S FOOD STORE

900 W. Hwy. Open 7 A.M. - 11 P.M. 7 Days a Week 592-5511

## REMEMBERING...

By BILL BROOKS

### STICK HORSES AND RUBBER BAND GUNS

Playing outlaws and good guys took up a lot of my time when I was growing up. Of necessity we made most of the stuff we played with, including the most common items for any cowboy to have, a stick horse and one or several rubber band guns.

When a new broom was bought the old one was always converted into a cow pony and added to our motly herd. You didn't have to do much to a broom to make a horse of it, just tie a rope or leather strap on it for reins and a bandana around it for decoration. We sometimes cut the straw part off, sawed a horse head out of wood and nailed it to the handle but this type was flimsy and was sure to be broken when you were bushwacked and had to fall to the ground. No, just a plain old worn-out broom with a strap on it was the most dependable.

We made our guns by sawing the shapes from the thick boards from the ends of apple boxes. A pattern was drawn off on the wood and it was sawed out with a coping saw. A brace-and-bit was used to drill a hole for the trigger. A spring-type clothes pin was taken apart

and half of it was nailed to the handle of the gun with small brads. The clothes pin was put back together and the weapon was ready for action.

Ammunition was rubber bands cut from old inertubes. We would take scissors and cut strips about 1/2 inch wide across the tube. The gun was loaded by hooking a rubber band over the front end of the barrel, stretching it back and clamping it in the clothes pin. To shoot the gun you just squeezed the clothes pin and the rubber band would zap the enemy if he was within

ten feet.

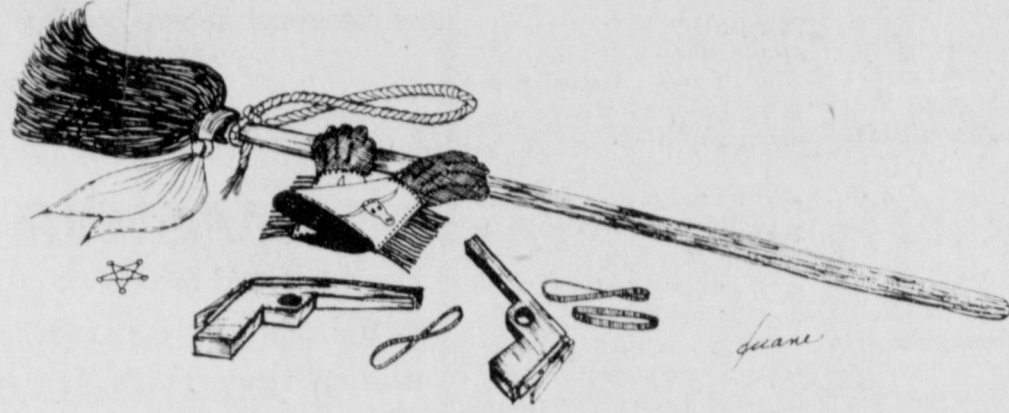
It was a silent weapon but the shooter usually added sound effects that could not be mistaken for anything but "real" pistol fire.

We would each have names like "Dead Eye", "Lefty" or "Wild Bill", names we had adopted from picture shows we had seen. In fact we would sometimes imitate the movie stars, making up our own script, picking up the action where the movies had left off.

With rubber band guns there was little room for argument as to whether you

had hit the enemy or not since the rubber band would sting enough to make even the toughest kid holler. If you hit him on the arm or leg he was considered "winged" and only had to lie there for a minute or two before he could get back up and join the battle. But if you hit him or the head or body he was considered "dead" and could not get up until a new game was started.

The way to win was to have at least two guns, plenty of ammunition, a quick draw, a deadly aim and, of course, a fast horse to make your "gitaway."



© QUOTE STICK HORSE AND RUBBER BAND GUNS

## Obituaries

### Marvin Lee Beavers

Graveside service for Marvin Lee Beavers, 70, of Metairie, La., a former resident of Iowa Park, was Tuesday afternoon at Highland Cemetery under direction of Tanner-Aulds Funeral Home.

The Rev. Charles L. Hensley, pastor of the Assembly of God Church, officiated. Born Nov. 18, 1908 in Crockett, he was a retired driller with Texaco Oil Co. and had lived at Metairie 30 years.

He is survived by his wife, Polly Mae; a daughter, Mrs. Betty Mahoney of Pittsburg, Pa., four brothers, W.A. Sr. of Holliday, John H. of Hoisington, Kan., Lonnie and Lacy, both of Iowa Park; and two grandchildren.

Pallbearers are Herman, Doug, Bill and Jim Beavers, Morris Harrell and Marty Colvin.

### Roy Cecil Smith Sr.

Services for Roy Cecil Smith Sr., 65, of Holliday, who died Monday in a Wichita Falls hospital, were Wednesday afternoon in the First Baptist Church at Holliday.

The Rev. Lloyd Riddles officiated and burial was in Highland Cemetery in Iowa Park under direction of Tanner-Aulds Funeral Home.

He was born May 10, 1913, in Harrold and was an oil field pumper for Feldman Oil Co. He had lived in Holliday 24 years and was a member of First Baptist Church.

He is survived by his wife, Sue; four daughters, Minnie Pearl Pearson of Killeen, Peggy Sue Pettitt of Grand Prairie, Kristy Sue Smith and Shanda Lou Smith of Holliday; two sons, Roy Smith Jr. of Fort Stockton and Larry Bryan Boydston of Holliday; five brothers, Henry and Louie Lawson of Odessa, Fred and Ray Lawson of Oklahoma City and Ed Lawson of Stanton; two sisters, Reba McDougall of Wichita Falls and Bonnie Hambright of Iowa Park; seven grandchildren and one great-grandchild.

Pallbearers F.J. McDougle, Fred Pepper, Red Slack, Kenneth Holt, E.W. Stone, and J. L. Stone.

### Andrea Spainhour

Mrs. Andrea Spainhour, 38, of Wichita Falls, sister of Wallace Wilson Jr. of Iowa Park, died Monday in a Wichita Falls hospital.

Services were Wednesday afternoon in Owens and Brumley Funeral Home with Dale Foster, minister of Faith Village Church of Christ, officiating. Burial was in Crestview Memorial Park.

A Wichitan 28 years, she was born May 31, 1940 at Fort Sill, Okla. She was a housewife and member of the Faith Village Church of Christ.

Survivors include her husband, Stanley W.; two sons, Steve and Robert, both of Wichita Falls; the brother, in Iowa Park; her parents, Mr. and Mrs. Wallace Wilson Sr. of Wichita Falls; and grandparents, Mr. and Mrs. W.G. White of Clinton, Okla.

### John W. Chandler

Services for John W. Chandler, 65 of Seymour, father of Mrs. Ida Bell Jones and Mrs. Elaine Owen, both of Iowa Park, were Tuesday afternoon in the First Baptist Church at Seymour.

Dr. Jerry Lemon, pastor, was the officiant and burial was in Riverview Cemetery under direction of Seymour Memorial Funeral Home.

A lifelong resident of Seymour, he was born July 16, 1913. He was a retired farmer and rancher, a member of First Baptist Church and IOOF Lodge. He married Ida Bell Ruth Crouch in Seymour Sept. 16, 1933.

He is survived by his wife; five sons, Jimmy of Wichita Falls, Belvin of Grand Prairie, George, Eddie and Gerald, all of Seymour; three daughters, Johnnie Mae Skinner of Fort Worth, Mrs. Jones and Mrs. Owen of Iowa Park; four brothers, Earl and Carl of Seymour, Baylor of Houston and Eddie of Fort Worth; six sisters, Louelle Chandler of Seymour, Mildred Roach of Atlanta, Bonnette Kovr of Graham, Mozell Christianson of Easland, Loranelle Morgan of Irving and Sue Powell of Haskell; and 16 grandchildren.

### Mrs. Ruben Parish

Services for Mrs. Ruben Parish, 84, will be today at 2 p.m. in Tanner-Aulds Funeral Home. The Rev. Mike Jackson, pastor of First United Methodist Church, will officiate. Burial will be in Highland Cemetery.

The former Leah Eckridge, she was born Sept. 14, 1894 in Jack County. She married Ruben Parish April 17, 1917 in Wichita Falls and had lived in Iowa Park since 1937. She was a member of First United Methodist Church.

A former school teacher, she was a life member of the Iowa Park PTA.

She is survived by her husband; four sons, Eugene of Dallas, Fred and John, both of Andrews and Russell of Spokane, Wash.; 17 grandchildren and six great-grandchildren.

Pallbearers will be Junior Jenkins, Jack Skinner, Bill, Ronnie, Jackie and Johnnie Spruell.

### Mrs. Addie L. Wolfe

Mrs. Addie L. Wolfe, 87, a 62-year resident of Iowa Park, died Tuesday in a Wichita Falls hospital.

Services will be today at 4 p.m. in Tanner-Aulds Funeral Home. The Rev. W.F. Williams, pastor of the Church of God, will officiate. Burial will be in Highland Cemetery.

She was born Sept. 27, 1891, in Jacksboro. She was a member of the Church of God.

Survivors include a daughter, Mrs. Mary Ellen Hatfield of Iowa Park; a son, Alvin Louis Wolfe of Dallas; a sister, Lizzie Eden of Winnsboro; two brothers, Atticus Bailey of Fort Worth and Ernest Bailey of Jacksboro; two grandchildren and one great-grandchild.

Pallbearers will be Jimmy Skinner, A.L. Bohannon, Tip Martin, Luther Skinner, Billy Stewart and Jerald Brown.

### Mrs. J.M. Goins

Services for Mrs. J.M. Goins, 75, were Friday afternoon in First Baptist Church at Burkburnett. The Rev. Lamoin Champ, pastor, officiated.

Entombment was in the family mausoleum in Rosemont Cemetery under direction of Owens and Brumley Funeral Home in Burkburnett.

Mrs. Goins, the daughter of pioneer Burkburnett residents, was born Feb. 9, 1903 in Burkburnett. She was the granddaughter of Mrs. Sarah Davis, who settled in Wichita County in 1878 on land purchased from the Burk Burnett ranch.

As a child, she attended the town lot sale which founded Burkburnett in 1907 when her parents, the late Mr. and Mrs. A.A. Morgan, purchased several sites. The family later built one of the first homes in the new township.

She attended Burkburnett schools and was married May 13, 1919, in Frederick, Okla. She was a member of First Baptist Church.

She is survived by her husband; two daughters, Mrs. W.A. George of Iowa Park and Mrs. James Frye of Burkburnett; two sons, Thomas and Charles, both of Burkburnett; a sister, Mrs. Willie King of Wichita Falls; a brother, Buster Morgan of Ridgeway, Colo.; 13 grandchildren and 11 great-grandchildren.

### James C. Daily

Funeral service for James C. Daily, of Loving, father of Mrs. Lavina Turner of Iowa Park, was Thursday in Loving Church of Christ with John Hobbs, minister, officiating.

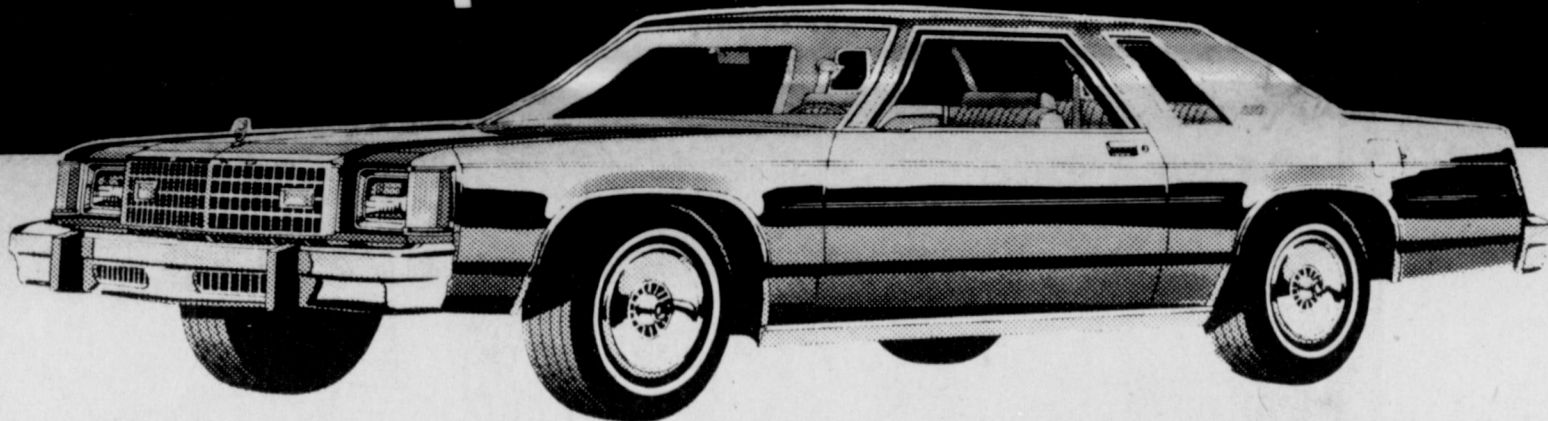
Burial was in the Loving Cemetery under direction of Morrison Funeral Home.

Born Dec. 25, 1919, in Olney, he was a lifetime Young County resident. He was a member of Loving Church of Christ and volunteer fire department. He was married to Ruth Prater Aug. 25, 1939, in Archer City. He was an oil field pumper.

He is survived by his wife; four sons, Carroll, Billy, Danny and Dale, all of Loving; two daughters, Mrs. Terry Logan of Graham and Mrs. Turner of Iowa Park; four sisters, Mrs. Ray Thetford of Graham, Mrs. Burton Smith of Olney, Mrs. S.C. Massey of Loving and Mrs. Evelyn Pavey of Tuscon, Ariz.; a brother, Kenneth of Graham; and 12 grandchildren.

# LTD Dollar Dealing Days

Your Texas Ford Dealer slashes prices on all '79 LTD's



THE '79 FORD LTD, BIG ON RIDE, BIG ON COMFORT, BIG ON MILEAGE AND SMALL ON PRICE!

#### Low base price includes:

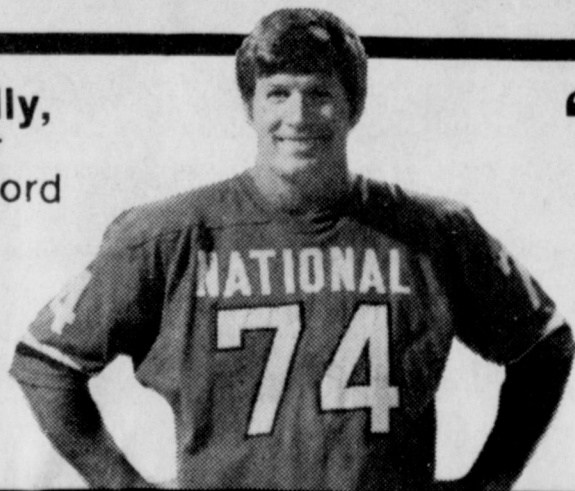
- Automatic Transmission
- 302 V8 Engine
- Power Brakes
- Power Steering

Prices slashed on options too! Like air conditioning, AM/FM stereo or vinyl roof. Ask your Ford dealer.

# \$5992\*

\*Destination charges, dealer prep and local taxes extra. Price does not include cost of whitewalls and accent group on model shown.

Bob Lilly, for your Texas Ford Dealer



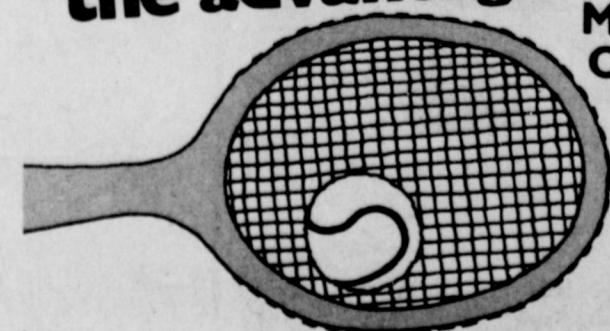
"And that's before your Ford dealer even starts dollar dealing."

Texans are BIG on 

## Shaw Motor Co.

Iowa Park, Texas

Give every NEWBORN the advantage



MARCH OF DIMES



THIS SPACE CONTRIBUTED BY THE PUBLISHER



# Mineral Wells, Hirschi sweep Iowa Park game

For the first time this season, both the Iowa Park varsity basketball teams lost two consecutive games.

The Hawks lost Friday to Mineral Wells 71-50, and Tuesday to Hirschi 65-55.

Mineral Wells handed the Hawkettes their third, and worst, loss of the season 51-30, and Hirschi came out on top 48-45.

The Hawks made the Huskies play Iowa Park's brand of ball through the first three quarters, and went into the final period with the score tied 45-45.

Hirschi decided to abandon its zone of defense when the Hawks passed the ball around the first two minutes of the game without taking a shot. That loosened the area under the basket, and the Hawks held a 17-14 lead at the end of the first period.

Hirschi came back with a 17-14 period of its own, and the score was tied at 31-31 when the teams went to the dressing rooms for halftime.

Turnovers and the hot shooting of Hirschi's Kelly Edwards broke the game

open in the final period. Randall Griffith and Harry Hutchins had their best nights of the season, scoring 26 and 18 points respectively.

Mineral Wells completely dominated both backboards during the first half Friday, which aided the Rams to take a 42-18 halftime lead.

Officials called 46 fouls during the contest, 26 against the visiting Rams and 20 against the Hawks.

Jim Richardson and Griffith led local scorers with 13 each. Hutchins had 10.

Mineral Wells' victory over the Hawks apparently impressed the Associated Press sporting staff, because when the state ratings came out Tuesday, the Rams had been raised from second to first among AAA teams.

## HAWKETTE LOSES

Turnovers and superior height of opponents led to back-to-back losses by the Hawkettes, who are now 17-4 on the season.

After trailing only 22-23 at halftime, the Hawkettes almost totally lost their composure in the third quarter against Mineral Wells when they were outscored 16-1.

Most of the turnovers came, in both games, when attempts to force passes to players under the basket were intercepted.

Burkburnett will come to Iowa Park tomorrow night for a triple header. First game will be between the junior varsities, starting at 5 p.m.

Tuesday the teams will travel to Vernon.



RANDALL GRIFFITH MISSES REBOUND  
...Rams dominated both backboards



TESSY JOHNSON GUARDS RAMETTE  
...bench strength tested by Mineral wells

## Junior high takes first

Iowa Park Junior High's eighth grade boys extended their season record to 17-2

when they won their division of Graham's tournament Saturday.

### ---Clip & Save--- Iowa Park School Menu

**THURSDAY, Feb. 1**  
Tacos with cheese, meat & cheese sandwich, soup, lettuce & tomato salad, buttered corn, Spanish rice, chocolate & plain milk, coconut cream pie.

**FRIDAY, Feb. 2**  
Fish & tartar sauce, meat & cheese sandwich, soup, macaroni & cheese, blackeyed peas, hush puppies & butter, chocolate & plain milk, poor boy cake, jello.

**MONDAY, Feb. 5**  
Burritos with cheese & chili, meat & cheese sandwich, soup, seasoned corn, combination salad, chocolate & plain milk, fruit cobbler.

**TUESDAY, Feb. 6**  
Italian spaghetti, meat & cheese sandwich, soup, green beans, mashed potatoes, garlic toast & butter, chocolate & plain milk, coconut cake, jello.

**WEDNESDAY, Feb. 7**  
Cheeseburgers, meat & cheese sandwich, soup, lettuce, tomatoes, pickles & onions, potato chips, beans, chocolate & plain milk, ice cream bars.

Compliments

*Barbour*  
Insurance Agency

Charlene Barbour  
Ph. 592-4173  
900 West Highway

**EARN \$498.61**  
**IN 182 DAYS**  
By depositing \$10,000 in a Parker Square Savings 6-Month Money Market Certificate at

**9.626% PER ANNUM**

Effective yield **10.103% per annum**

At the end of 182 days, your \$10,000 Money Market Certificate is worth \$10,498.61  
**FULLY INSURED DAILY COMPOUNDED**

**PARKER SQUARE Savings**  
*and Loan Association*

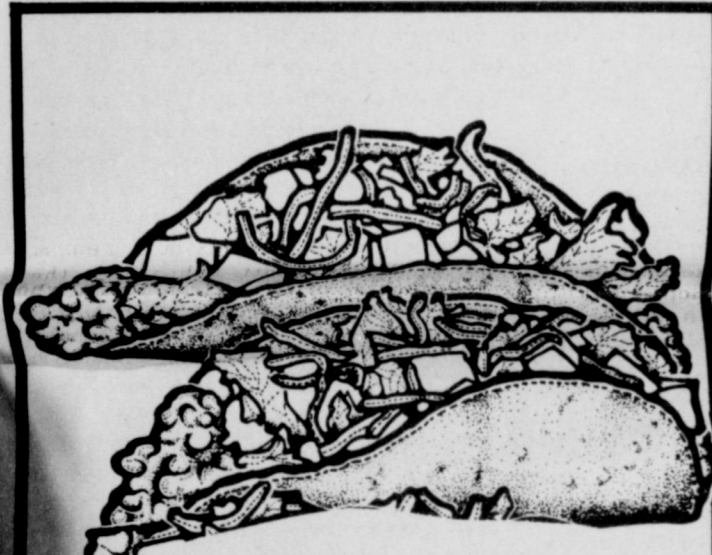
**ESLIC** ONE PARKER SQUARE  
WIGGINTON FALLS  
111 S. Main, Henrietta 301 N. Wall, Iowa Park 313 S. Ave. D, Burkburnett Southwest Pkwy., Rhea Rd.

**GOLFERS**  
Enjoy the beauty & excitement of Skyline Golf Course

**GREEN FEES**  
\$3.00 WEEK DAYS  
\$5.00 SATURDAYS  
SUNDAYS AND HOLIDAYS  
PUBLIC WELCOME  
Complete Pro Shop  
Facilities

**RALPH MORROW**  
GOLF PROFESSIONAL  
(Lessons By Appointment)

**SKYLINE G.C.**  
N. BEVERLY PHONE 855-0771



## TACOS

3 for

**\$1.35**

Specials good thru Sunday



805 West Highway

**FOR TAKE OUT ORDERS  
CALL 592-4731**

**Dine In... Or Out with us**

**Open 10 A.M. Daily**

**Close 10 p.m. Nightly**

**Dairy Queen**

**Jane Dean**

**Expressway and Pacific Street**

Through Sunday

**MEXICAN DINNER**

**\$1.85**

Please Buy

**Camp Fire Candy**

**Feb. 2 - 16**

Phone 592-4811 for Take-Out Orders

This Coupon Worth **\$1 OFF ANY LARGE PIZZA**

Through Feb. 7, 1979

**MICHAEL D's PIZZA PARLOR ETC.**

6 a.m. - 10 p.m. Sunday - Thursday

6 a.m. - 11 p.m. Friday - Saturday

920 W. Highway Ph. 592-2392

# Holliday, Archer City trade wins here Tuesday

It was a rowdy brand of basketball that kept fans in an uproar Tuesday night as they watched Holliday and Archer City trade victory wins.

The Ladies picked up their sixth district win in a 54-51 overtime victory.

Holliday's gals are 6-3 in loop play.

The Eagles dropped to 5-4 in district with their 84-50 loss to the Wildcats.

With less than a minute remaining in the contest the Lady Eagles and Archer City were tied 45-45, but Kristi Lucy pulled Holliday out in front with two charity shots. However, Archer City came back to put in two more before the final buzzer forcing the overtime shoot-out to decide the 47-47 tie.

Early in the three-minute overtime period Holliday's Gayla Davis sank a free throw, followed by a two-point jumper by giving Holliday a 50-47 edge.

Archer City came back to gain the lead 51-50.

In the fading overtime seconds Lucy sank another two-point jumper, followed

by two free throws by Paula Sanders, giving Holliday the 54-51 victory.

Lucy was highpoint with 18, followed by Mindy Lowder with 11.

Earlier in the season

### Class enrollment extended for adults

It's not too late to enroll in adult education classes being offered in Holliday by Vernon Regional Junior College.

Shorthand and bookkeeping classes offered by VRJC will be meeting tonight at 6:30 in the high school.

Next session of the typing class will be at 6:30 p.m. next Tuesday at the high school.

Interested persons should call 586-1624.

Archer City upset the lady Eagles 57-42.

The Eagles couldn't overcome Archer City's full court press defense, and fell to the Wildcats 84-50. Kent Lemons paced the Eagles with 18 points.

Both Holliday varsity teams will go on the road tonight to meet Millsap. Tip-off time will be 6:30 p.m.

Holliday will host its last games of the year at 6:30 p.m. next Tuesday when Nocona comes to town.

Earlier in the year the Eagles were defeated by Millsap 57-52 and defeated Nocona 48-42.

The Lady Eagles defeated Millsap earlier 43-42 and upended Nocona 41-38.

## Honor rolls released

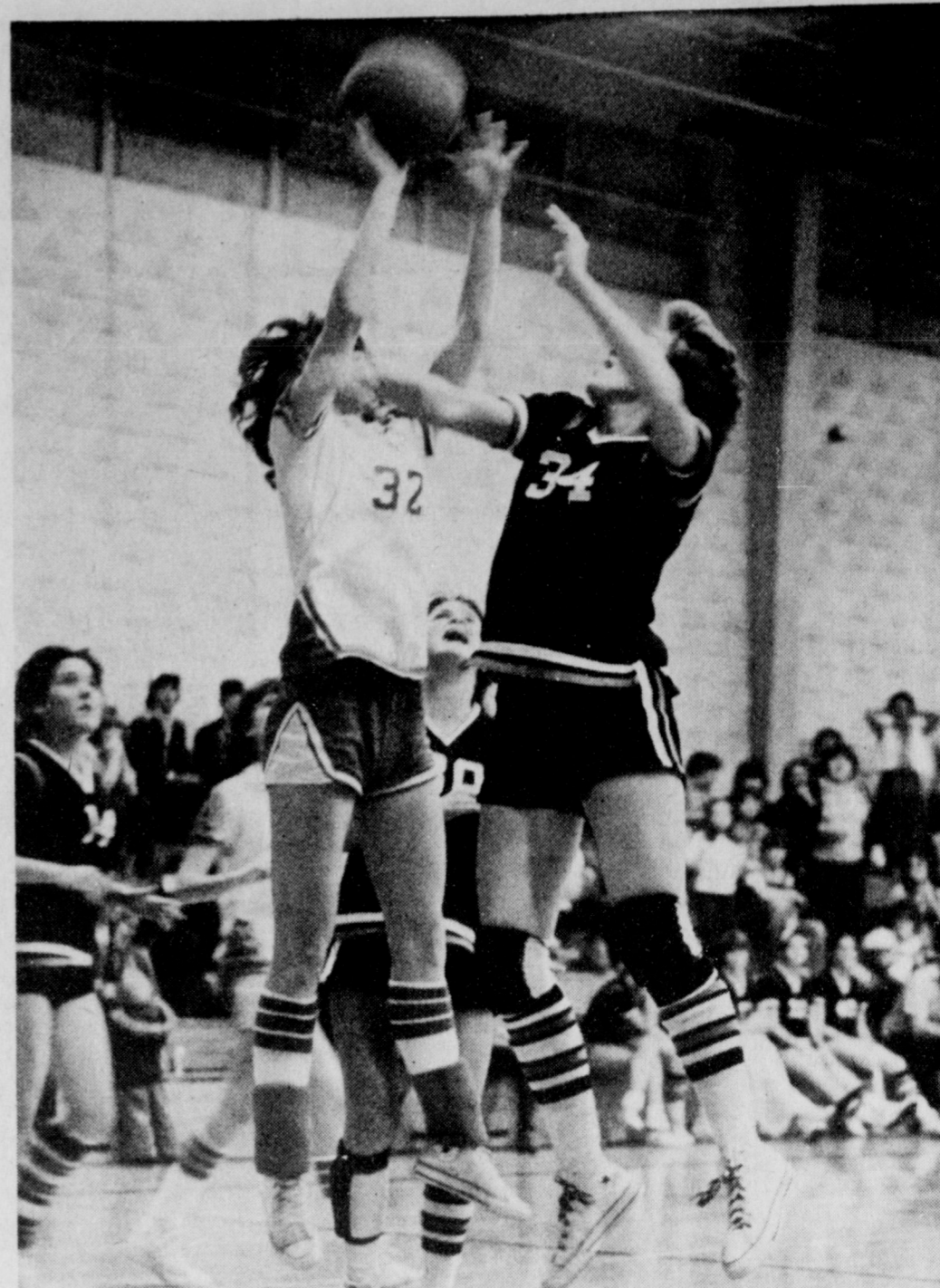
Third six-weeks honor roll at Holliday elementary was released by principal Dan Owen.

**First Grade** - Ray Avery, Kim Barber, Melanie Baxter, Sean Calloway, Jerry Dyer, Darren Hill, Brad Holmes, Russell Kucinski, Kenneth McMaster, Ryan Menasco, Jeremy Patterson, Bryan Roland, Price Rushing, Julie Scholl, Tishia

Stone, Scott White, Charles Whiting, Jennifer Young, Jody Young, Penny Bailey, John Baloh, Carla Carr, Jeremy Clayton, Michael Coates, Rhonda Cox, Darla Dilsworth, Jody Echols, Stephen Grant, Robert Lindley, Kendra Loyd, Keith Marlar, Finis Morgan, Teresa Noll, Ruth Seales, Tamara Smith, Chad Snider, Paul Stone, Lonnie Tucker, Denissa Weyant, Renee Wilson, Shanna Wylie, Robbie Shannon.

**Second Grade** - Tammy Beavers, Scott Belcher, Mark Berend, Melissa Charlton, Timmy Denney, Christy Edwards, Rachel Entrop, Kim Foster, Shannon Fuller, Leslie Goodlett, Keri Lilley, Chane Loyd, Katha McAllister, Brannon McShan, Jodi Shawver, Buba Jones, Mike Richards, Chad Stubblefield, Clint Thurman, Deanna Cantwell, Aaron Elliott, Michael Potts, Laurie Styles, Larissa Ward.

**Third Grade** - Debbie Armstrong, Rayna Echols,



**OVERTIME BATTLE**-Donna McGill [32] has a short jumper blocked when she goes up against Archer City. The Lady Eagles outgunned Archer City in overtime to claim a 54-51 victory extending their district record to 6-3.

Kristina Ferguson, Seretha Fennell, Kathy Hall, John Hill, Becky Noll, Colt West, Klonie Berend, Jack Huddleston, Paul Morgan, Lana Parish, Bobbie Patterson, Christie Shannon, Kenny Webb, Cheryl Whiting, Pat Williams.

**Fourth Grade** - Scott Broyles, Tammy Dolberry,

Christean Echols, John Fields, Amy Goodlett, Kristi Jackson, Scotty Lofland, Laurie Mankins, Jamie Martin, Tina Menasco, Stacey Moore, Amanda Parnell, Debbie Trainham, Stevie Tucker, Lee Ann Canafax, Darren Carlton, Mitchell Byrd, Roy Dyer, Traci Hawley, Robbin Stone.

**Fifth Grade** - Laura Bills, Jonathan Graham, Rhonda Rasmussen, Kim Wylie, Kathy Davis, Tracy Nipper.

**Sixth Grade** - Ronnie Fellhauer, Cheryl Lowder, Gayle Peters, Tammy Stevens, Bill Cook, Becky Cullers, Buffie Broyles, Sheryl McMasters, Linda Seel.

## HOLLIDAY NEWS

- ✓ We Live In Iowa Park
- ✓ We Promote Iowa Park
- ✓ We Believe In Iowa Park
- ✓ Our Office Is In Iowa Park



Full Time Professionals

# WHISNAND REALTORS 592-2153

404 West Park in Park West Shopping Center

**L.S. WHISNAND**  
Broker  
592-2365

**BOBBY WHISNAND**  
Manager  
592-2413

**CHARLES QUICK**  
Sales Associate  
592-5194

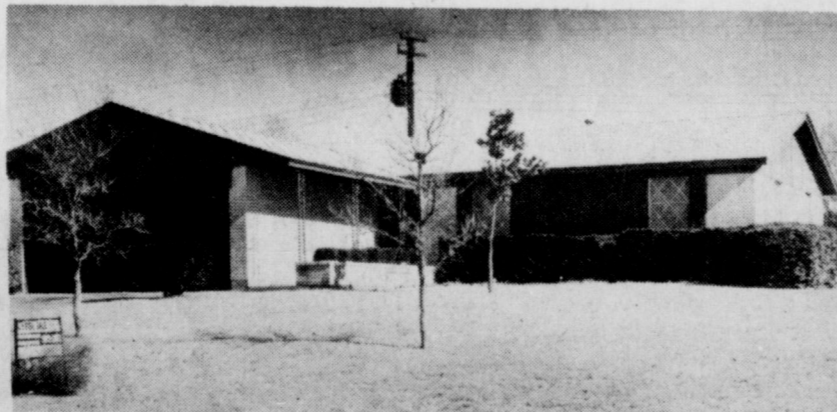
**RANDY HARRIS**  
Sales Representative  
692-0878

**CLETYS STILES**  
Sales Representative  
592-5785

**PAT CARTER**  
Sales Representative  
592-5417

### 1605 Douglas

- 3 Bedrooms
- 1 1/4 Baths
- 1,254' Living Area
- All Built-Ins
- Fully Carpeted



Owner Financed

### 303 Kathleen

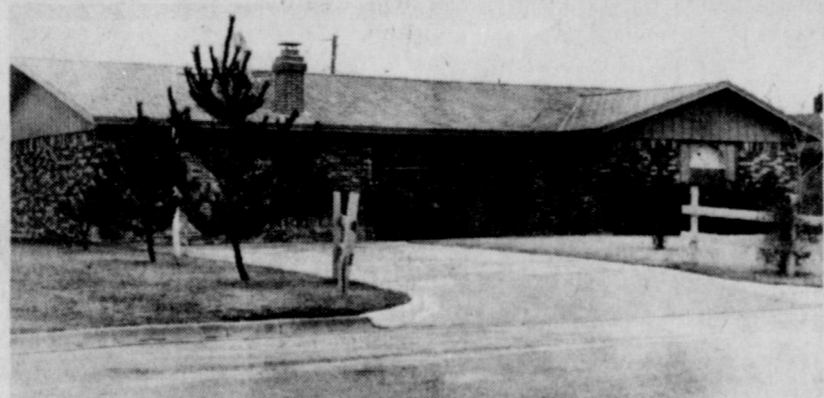
- 3 Bedrooms
- 1 1/4 Baths
- Double Garage
- Central Heat/Air
- Fully Carpeted
- Fenced

Sales Price \$26,500



### 909 Foley

- Brick, 3 Bedroom
- Den, Fireplace
- Office
- Covered Patio
- All Built-Ins

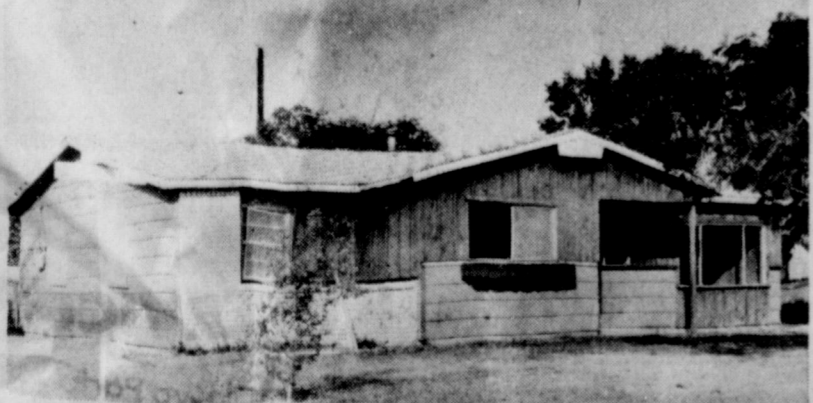


Sales Price \$39,800

### 101 Westview

- Large Corner Lot
- 3 Bedrooms
- Den
- Covered Patio, Cellar

Sales Price \$18,000



*"Let's see now, which should I do first . . . the dishes or read the Iowa Park Leader?"*

When you need help, call The Leader

592-4431

# person-to-person want ads really work

DEADLINES:  
10:00 A.M. WEDNESDAY  
(Two-Ad Order)

4:00 P.M. TUESDAY DISPLAY ADS  
(With Orders)

## DIAL 592-4431

—SAVE 5¢ FIRST INSERTION BY PAYING WITH COPY—

RATES:  
10¢ PER WORD FIRST INSERTION  
5¢ PER WORD EACH REPEAT

### Public Notice

#### SHERIFF'S SALE THE STATE OF TEXAS County of Wichita

NOTICE: IS HEREBY GIVEN That, by virtue of a certain Order of Sale, made by the Court, in and for the County of Wichita, Texas, in the case of *John F. Gibson vs. Heirs of Kila Page, Payne, Crowell, Lyon C. Clements, Laverne Milligan and Nelson D. Page*, and in my hands for service, I, John F. Gibson, as Sheriff of Wichita County, Texas, did, on the 15th day of January, 1979, levy on certain Real Estate, situated in Wichita County, Texas, described as follows, to-wit: Lots 5 & 6, Block 17, O.T. #1902, also known as 209 and 211 W. Aldine, Iowa Park, Wichita County, Texas.

Note: "A" bidder at the Sale must be registered at the time the Sale begins with the Sheriff, Deputy Sheriff, or agent conducting the Sale.

And, that on the first Tuesday of February, 1979, the same being the 20th day of said month, at the Court House, in the City of Wichita Falls, Texas, at 10:00 a.m. by virtue of said levy and said Order of Sale I will sell said above described Real Estate at public vendue, for cash to the highest bidder, as the property of said Heirs of Kila Page, Payne, Crowell, Lyon C. Clements, Laverne Milligan, and Nelson D. Page.

Witness my hand, this 3rd day of January, 1979.

JOHN F. GIBSON  
Sheriff, Wichita County, Texas.  
By Howard E. Davis,  
Deputy.

1-18-79

#### PUBLIC NOTICE TOWN OF PLEASANT VALLEY

The U.S. Department of Housing and Urban Development has announced that the Town of Pleasant Valley, Texas has been accepted into the National Flood Insurance Program.

This means that property owners here are now eligible to buy flood insurance protection at affordable rates subsidized by the Federal Government.

The policies can be purchased from any property insurance agent or broker licensed to do business in the area in which the property to be insured is located. Agents and brokers may obtain policy forms, rates, flood insurance manuals, and any other necessary information on the insurance aspects of the

program from the servicing agent for the National Flood Insurance Program at the following address: National Flood Insurance Program, P.O. Box 34294, Bethesda, Maryland 20899.

Since flood insurance is now available on areas of property in areas shown on maps by HUD as being Special Flood Hazard Areas, according to the law, any flood insurance which provides any form of Federal or federally related financial assistance for the acquisition or construction of buildings in these areas.

This would include grants from Federal agencies, FHA, VA, and FPHA mortgage loans, loans from the Small Business Administration, and conventional mortgage loans from any federally regulated or supervised banks and savings and loan associations.

While flood insurance is available to all residents of the community, the Federal requirements to purchase flood insurance as a condition for receipt of federally related financial assistance do not apply to property outside the danger zones.

Under the program, coverage can be obtained for all buildings and their contents. The available limit of insurance for single-family homes is now \$35,000 and \$100,000 for other residential buildings at the subsidized rate of 25 cents per \$100 of coverage. The rate goes to 40 cents per \$100 for nonresidential buildings.

The contents of all residential buildings can be insured up to \$10,000 per unit at 35 cents per \$100 of coverage, and the rate goes to 75 cents per \$100 for contents of all nonresidential structures up to a maximum of \$100,000 in coverage per unit.

The Federal Insurance Administration will also prepare additional maps showing the elevation of the base flood (i.e., the flood having a one percent chance of being equal or exceeded in any given year) in approximately 20,000 communities across the Country.

When this Flood Insurance Rate Map is published for the community, an additional increase in the present limits of coverage will be made available under actuarial rates.

The program is designed to stimulate individual participation in its protection against flood disasters, and to help promote sound flood plain management on the part of local governing authorities.

#### NOTICE TO BIDDERS

Sealed bids will be received by the Wichita County Water Improvement District No. 2, 402 East Scott, Wichita Falls, Texas 76701, until 10:00 A.M. March 15, 1979, for an industrial type, wheel mounted tractor equipped with front end loader. A tractor at Lake Kemp will be traded in. Specifications are available from District office at 402 East Scott, Wichita Falls, Texas 76701, telephone 817-767-6722. The Board reserves the right to accept or reject any or all bids. This acceptance of bid is subject to approval of Army Corps of Engineers. 2-3-79

#### MISC. FOR SALE

PECANES in shell 75 cents lb., cracked pecans, shelled \$3.99-5.99 1-25-79

PECAN SEEDINGS, 382-2526, Main South Bell Road, Baker's Greenhouse, 1-25-79

FIREWOOD - Mesquite, green and seasoned mixed, \$36 cord, \$39 cord. Delivery \$14 extra. Call Troy, Phone 592-2388. 1-25-79

NEW MINN. KOTA trolling motor \$20 to \$30 less than any price in the area. Call T.D.R. Fishing Supply, 592-5828, after 6 p.m. for information. 1-25-79

FIREWOOD FOR SALE, \$25 Pick, \$45 Cord you pick up. \$40 Pick, \$60 cord delivered, call 592-4074. Between 8 a.m. - 5 p.m. Mon. - Fri. 2-4-79

EL CAMINO, Camper Shell, \$100, 150 amp. welder, used once \$90, 3/8" drill press, \$36, riding lawn mower \$35, lawn vacuum \$40, Girls bike \$15, Macrame hanging table, 7 1/2 ft. tall \$50, 4 1/2 Valley Drive 592-0321. 2-1-79

MIXED FIREWOOD \$37 rick, \$70 cord, delivered, stacked, Danny 592-2374. 2-1-79

MAGNAVOX 25" TV. Used sixteen months. Picture tube warranty. Reposition. 592-5606. 2-1-79

HAY FOR SALE. Highly fertilized coastal bermuda. Kamay 438-2231. 1-25-79

1961 GMC 2-ton truck, 8, by 16 feet (albed, 12 ply tires, good shape \$4100. Danny 592-2374. 2-1-79

PUBLIC NOTICE  
The City of Iowa Park is accepting bids on a 1978 LTD Police Car. Vehicle is inoperable and will require significant repair. The vehicle may be seen at 100 E. Texas, Iowa Park, Texas. Bids will be opened at 10:00 A.M. February 5, 1979. Stephen R. Merath. 1-25-79

NEED HILL SAND? Call Donald Hallum, 592-4266, 604 N. Walk Iowa Park. 1-25-79

JERRY'S VINYL REPAIR, restoring auto, furniture, commercial. Free estimates, 466-2243. 2-23-79

FOODIE GROOMING - Call 82-666 for appointment. Tom Burnett, 500 W. Alameda. 2-3-79

FREE ESTIMATES 638-2674  
Washing, Dyeing, Reconditioning, "A" Service

INCOME TAX work for small businesses and individuals. 592-7126 after 5 p.m. 1-25-79

IOWA PARK LODGENo. 713 A.F. & A.M.  
20 W. Washington 510-5916  
Breakfast Monday 7:30 P.M. and Thursday  
Chamber Meeting W. M. 510-6136  
Bygone Groups Inc. 510-6136

#### HOME SERVICES

UPHOLSTERY SHOP 116 W. Cash. Furniture, bench seats, kitchen chairs, etc. Reasonable rates, pick up & delivery. 10% off on all home hours Mon. 7 p.m. - 3 p.m. Sat. 10 a.m. after hours call 592-3536. 1-25-79

INSULATION - Custom made storm windows. Can save energy and earn a tax credit. FREE ESTIMATES. J.K. SERVICES, 592-9044, Electric 492-2779. 1-11-79

HOUSE PLANS 592-9365 1-18-79

MARY KAY COSMETICS, Norma Chandler, 110 W. Alameda, 592-4738. 1-11-79

MARY KAY COSMETICS, Allie Grand, consultant, 109 W. Poe, 592-4217. 4-5-79

HOUSE PAINTING - Call for free estimate. John D. Fecher, Phone 592-4472. 12-30-78

FLOW GARDENS, dicing, mowing, level yards. O.S. McLeMore, Ph. 592-4297 or 592-4517. 3-10-79

WOULD LIKE to keep child in my home, between Wichita and Iowa Park, call 865-3794. 1-25-79

THERESA'S TINY TOTS, State licensed for 12 babies through 5, Open from 6:00 a.m. to 5:00 p.m. Monday through Friday, 592-2629. 1-25-79

RELIABLE PLUMBING and Heating Repair, Harry Skinner, Owner, 592-5674. Complete sewer cleaning and repair. 11-9-78

KOONCE LAWN MOWER, Small Engine Repairs, 262 No. Jackson, 592-4779. 12-20-78

MORAN MONUMENT Works, Vernon, Texas, Old Highway 267, near East View Cemetery. A good selection of granites, cemetery lettering, grass markers, vases of bronze and marble. 9-30-78

PRIVATE FENCE sales and installation. Charles Skelton, phone 592-5180. 6-22-78

ROOFING - Wolfe Roofing Co. Phone 438-2674. 3-5-79

NEED HILL SAND? Call Donald Hallum, 592-4266, 604 N. Walk Iowa Park. 1-25-79

JERRY'S VINYL REPAIR, restoring auto, furniture, commercial. Free estimates, 466-2243. 2-23-79

FOODIE GROOMING - Call 82-666 for appointment. Tom Burnett, 500 W. Alameda. 2-3-79

FREE ESTIMATES 638-2674  
Washing, Dyeing, Reconditioning, "A" Service

INCOME TAX work for small businesses and individuals. 592-7126 after 5 p.m. 1-25-79

IOWA PARK LODGENo. 713 A.F. & A.M.  
20 W. Washington 510-5916  
Breakfast Monday 7:30 P.M. and Thursday  
Chamber Meeting W. M. 510-6136  
Bygone Groups Inc. 510-6136

#### HOME FOR SALE

UNDER construction in Iowa Park. Farmers Home Financing. Low down payment, payments based on income. 3 bedrooms, 1 1/2 baths, garage, 4443 sq. ft. built-in cook stove, carpeted SWAN CONSTRUCTION, 592-8788. 2-4-79

FOR RENT  
ONE BEDROOM, House, good location, \$115 plus utilities, plus deposit \$82.438. 2-3-79

THREE BEDROOMS, new kitchen, den with fireplace, dining room paneled, completely remodeled inside, outside later, fenced yard, large storage shed, 592-4636. 2-1-79

TRAILER HOUSE, 406 Alameda, 592-4514. 2-1-79

THREE BEDROOM, 404 W. Washington, 592-9345. 2-1-79

3 BEDROOM brick, fenced yard, 1 1/2 baths, double garage, kitchen built-ins, Close to Kidwell, 692-2110. 1-11-79

NOW LEASING - Quail Run Apartments. For information, call 592-4749. Mrs. Beuna R. Brooks. 12-31-78

NOTICE  
LOST - Long haired female Siamese with gray markings. Answers to Geiselle, Lost in Park Plaza Addition around Westridge Street. Call 592-4443. 2-1-79

LOST - at Iowa Park High School Seiko watch, diamond ring and bracelet. Reward. No questions asked. 592-5634. 2-1-79

LOST AROUND, South Bend Street - grown male cat, short haired, smoke gray, no collar, family pet, reward, 592-4925. 2-1-79

FREE PUPPIES - Half cocker spaniel, 592-5128, after 5. 2-1-79

CARD OF THANKS  
To our friends who brought us words of support and comfort, who served as pallbearers and who brought gifts of love. We wish to express our deepest gratitude. May God bestow upon you and yours his richest blessings. The flowers were beautiful.  
The families of Anna Lopez.

CARD OF THANKS  
The many expressions of love and sympathy shown during the illness and at the death of our loved one are greatly appreciated. It is comforting to know that others care.  
Jane Gerardo, Eugin Henry and family, Mary Jo Beagle and family.

**AMBWAY**  
SHOP WITHOUT GOING SHOPPING  
John & Karen Church, 592-5179

**FB**  
Offering Coverage For Life, Disability, Auto, Home, Business Liability  
We appreciate the opportunity to serve our neighbors & friends in our community.  
Raymond Cape  
Business Ph. 592-2136 Home 592-4706

Custom PICTURE FRAMING  
Finished and un-finished framing. Will do matting. New Supply of Matting.  
Ray Fortner, 602 Redeen (Base) Iowa Park, Tex. Phone 592-4216

Complete Lawn Mower Service  
**WHITES** Home & Auto  
Park West Shopping Center 592-4186

**E & S EXXON**  
Winterize Your Car  
592-4897  
612 W. Highway

Life, Health, IRV and all IRA Plans  
Contact the **DENNIS GEORGE** Insurance Agency  
592-4978 or 322-5772  
Representing Great Southern Life Insurance Co.

**IOWA PARK AIR CONDITIONING & HEATING**  
SERVICE ON ALL MAKES ENGINEERING SALES  
907 W. BANK  
FRANK GUZZETTE  
PHONE 592-5391

**Monty's Plumbing**  
Complete Service  
592-4928, 592-5339  
Details sewer machines, water heaters, water, sewer and gas line digging and installing. Monty, Bob, Ernest, operators.

Thinking about a Swimming Pool call **ABA Pools, Inc.**  
for free estimate on concrete, gunite, constructed pools.  
691-2231

We service all makes of washers, dryers, freezers, refrigerators and window air conditioners.  
**POSEY'S APPLIANCE SERVICE**  
208 James Ph. 592-5452 Iowa Park

Want Ads Get Results for only PENNIES



I need you! head in my business.  
Mary's Hair Styling  
300 W. Highway Next to Caber's  
592-5427

BILL'S PLUMBING and ROOFING SERVICE  
All Work Guaranteed  
New in Iowa Park  
Phone 592-4557

BATTERIES for most HEARING AIDS and TIMEX WATCHES at PARK PHARMACY 115 PARK

**True Value TOOL VALUE OF THE MONTH**  
NOW 4.99  
24-inch LEVEL  
Precision-milled edges and scales. 4 plumb and 2 level vials are protected by heavy-glass windows. Aluminum. (778) 5017  
Quantities Limited  
**Parkway True Value**  
300 - 208 W. Bank

**Dobson Construction Co.**  
Excavating - Foundations - Additions  
Don Dobson Iowa Park, Texas 592-2674  
Tom Estimation  
Don Dobson Iowa Park, Texas 592-2674

**IOWA PARK LODGENo. 713 A.F. & A.M.**  
20 W. Washington 510-5916  
Breakfast Monday 7:30 P.M. and Thursday  
Chamber Meeting W. M. 510-6136  
Bygone Groups Inc. 510-6136