

**HISTORY**

**Touch Of History**

See Page 11

**CELEBRATION**

**Big Weekend Ahead For Muleshoe**

See Below

**LOCAL**

**Violence Invades Local Area**

See Below

**WEATHER**

November 25	59	16	.00
November 26	52	25	.00
November 27	35	27	.Tr
November 28	45	14	.00

**BAILEY COUNTY JOURNAL**

*'The Community Of Opportunity-Where Water Makes the Difference'*



Vol. 25, No. 48

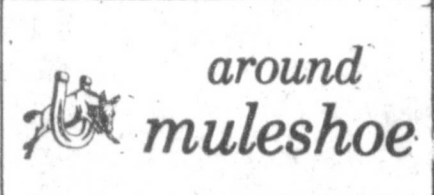
14 Pages Today

Published Every Sunday at Muleshoe, Bailey County, Texas 79347

**20°**

Sunday, November 29, 1987

**Local Arts & Craft Fair, Parade, Luncheon Slated**



\*\*\*  
The Big Christmas Community Blood Drive will be held Thursday, December 3, at the United Methodist Church, 11 a.m.-7 p.m.

Regular blood donors have been notified, and walk-ins will be welcome.

It will be conducted by the United Blood Services of Lubbock.

\*\*\*  
Bob Graves, principal at Watson Junior High School, said the latest principal awards went to Phoebe Gomez, sixth grade; Colleen Dodd, seventh grade and Oscar Alfaro, eighth grade.

\*\*\*  
On Monday, December 7, 7-9 p.m., the American Association of Retired Persons (AARP) will be hosting a Chili Supper at the Bailey County Coliseum.

The supper is a benefit for West Plains Medical Center Hospital.

Tickets are \$5 for adults and \$2.50 for children.

There will be a drawing for the following door prizes: Hand made quilt, bathroom set, Christmas wreath and hand made doll.

\*\*\*  
Donations to the Marty Long Fund are still being accepted at Muleshoe State Bank, at a teller window, the drive-in windows, or any bank employee. The fund will be used to help defray the high costs involved with Marty's treatment.

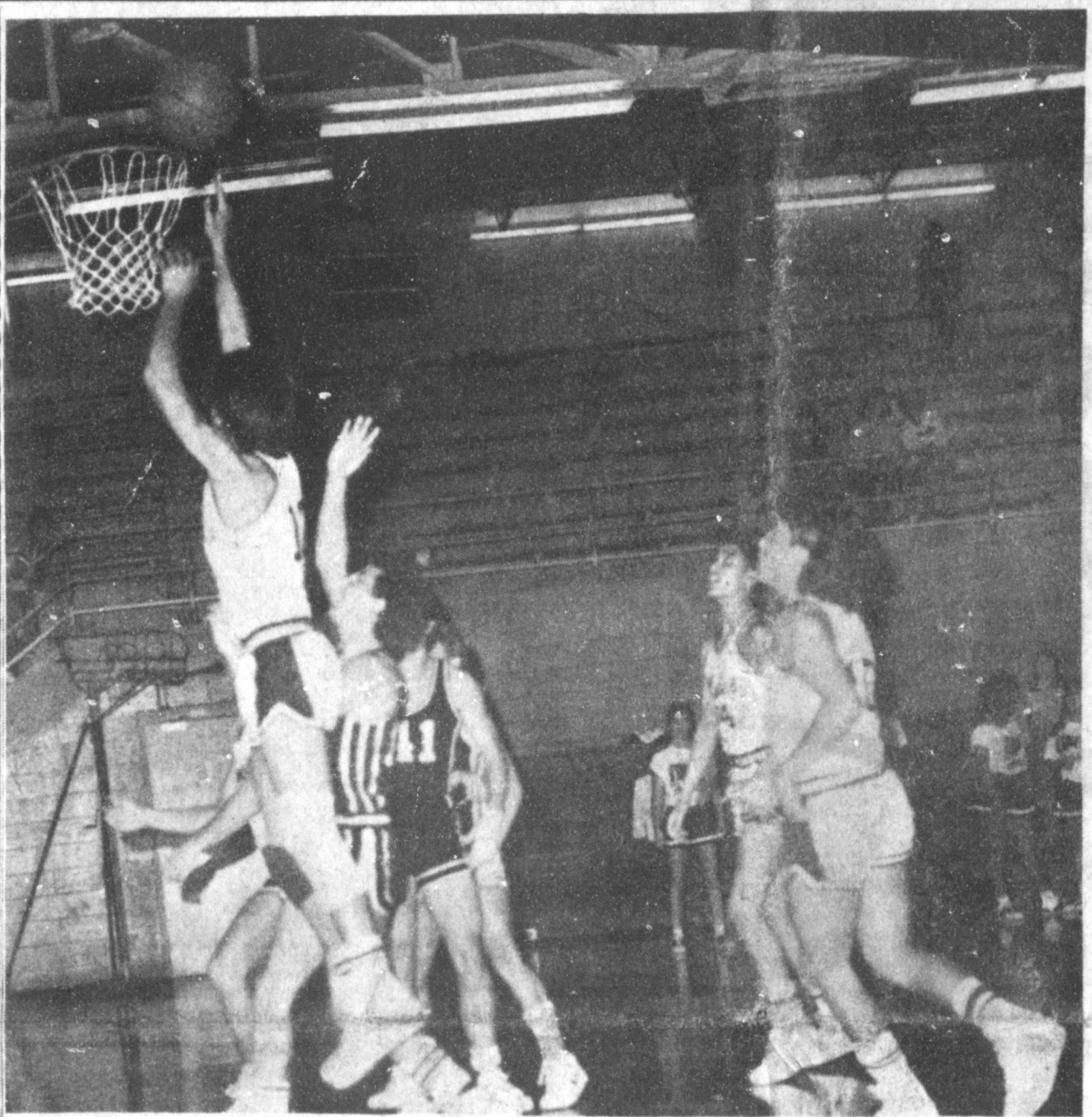
\*\*\*  
In conjunction with the American Institute of Foreign Studies Johanna Wrinkle is planning to take several local students on a "European Overview" next summer from June 15-June 25.

A parent-student meeting will be held Tuesday, December 1, in Room 11 at Muleshoe High School. For those who cannot attend at that time, a short meeting will be held at 5 p.m., Wednesday December 2.

\*\*\*  
Pvt. Arthur Silva, son of Lilia and Gonzalo Silva of Sudan, has completed a food service specialist course at the U.S. Army Quartermaster School, Fort Lee, Va.  
Cont. Page 8, Col. 2



**ROSWELL, N.M.**--Abel A. Leal, a high school sophomore at New Mexico Military Institute, has been named Distinguished New Cadet in his troop for the month of November. Leal is the son of Mr. and Mrs. Jesse Leal of Muleshoe.



**GOING FOR THE BASKET**--Sergio Gonzales is shown going for the basket during the Muleshoe Mule-Spade basketball game in Muleshoe last Tuesday night. The Mules roamed over the Spade team, taking a decisive victory. Under the leadership of Coach Lonnie Scott, the Mules are making a good showing early in the 1987-88 season.

**Armed Robbery, Cotton Burr Fire Keep Police, Fire Department Busy**

It was only the day after Thanksgiving! A Friday, but, according to the calendar, not Friday the 13th. But, try to tell local emergency personnel that, and they may dispute it.

At 7:21 p.m. Friday evening, Muleshoe Police Department dispatcher Martina Valdez notified local officers that an armed robbery had just taken place at Church's Fried Chicken at the corner of West 15th and American Blvd.

City Patrolman Don Carter was the first officer to arrive, and found that a young man, armed with a 'Rambo' type knife had strolled into the restaurant, brandished the knife and demanded all the cash from the cash register.

He was described as being

**Gold Mule Shoes Moved And Hidden**

During this week, the places you will find the Gold Mule Shoe for many prizes include:

November 30, December 1 and December 2, the Gold Mule Shoe will be hidden at Latrell's, Poyner's Otasco Store and Damron Drug.

On December 3, 4 and 5, the Gold Mule Shoe will be at Harvey Bass Appliance, Serv-All Thriftway and Ben Franklin Store.

Friday morning, Terry Nickel, manager of C.R. Anthony Store, said Nora Burris had found the Gold Mule Shoe hidden in Anthony's. She received a stuffed Isotoner puppy and a 50 percent discount on one item she purchased.

15-19 years of age, slender, approximately 5-9 to 5-11, with blonde or light brown hair, green eyes and freckles.

He was dressed in a levi jacket and there was no description on his pants.

He took the money and left the restaurant, westbound.

No vehicle was noted by the restaurant employees, or the few customers in the place.

Patrolman Carter was quickly joined by other city officers, including Chief Wayne Holmes, Sgt. Richard Bonham, Det. Julian Dominguez and Patrolman John Wuerflein.

Also assisting, and looking for the robber were Sheriff Bob Henderson, Deputy Sheriffs Jerry Hicks and Steve Bearden and DPS Patrolman Lacie Kirk, who was on patrol at the time the robbery took place.

An undisclosed amount of cash was taken in the robbery.

At presstime, officers were still checking out suspects in the Friday evening robbery.

**GIN FIRE**

At 2:20 p.m. Friday afternoon, members of the Muleshoe Fire Department were summoned to a burr fire at the West Camp Gin.

Sheriff Bob Henderson and Deputy Steve Bearden also responded to the fire to help

control traffic as heavy smoke drifted across the West Camp Road in the vicinity of the fire.

Until 12:45 a.m. Saturday, the firemen fought the fire in 'shifts' with one crew fighting the fire, while the second shift rested for awhile.

Weary firemen finally rolled up their hose after midnight on Friday, and returned to the fire station and then to their homes.

Members of the Fire Department Auxiliary prepared sandwiches and drinks for the firemen as they rested in between firefighting.

Cont. Page 8, Col. 4

**Toy Project Gets Started**

Richelle Watkins, director of the ambulance service, said the first names were turned in to the service Monday morning at 715 West Second St.

She reminded that the coupon will be published periodically, and asks that all coupons be taken or mailed to the Ambulance Service, 715 West Second St., Muleshoe, Texas 79347.

No other place has been authorized to receive the coupons, she said, in order to avoid confusion, and keep all names, ages and addresses together, so some child or children will not inadvertently be left out.

A deadline has also been established to receive the requests for assistance. The final deadline for submitting the coupon, or any request, will be at 5 p.m. on Friday, December 18, in order to allow time for processing.

This weekend will be the 'perfect' opportunity to do a lot of Christmas shopping, with a wide range of gift choices available.

Friday and Saturday, December 4-5, will be the time for the annual Homemaker Extension Club's Arts and Crafts Fair at the Bailey County Civic Center and Coliseum.

Handcrafted items of all types will be on display, including paintings, ceramics, woodworks, knit and crochet items, stuffed dolls, animals and toys, Christmas decorations and other gift choices.

Many baked goods will be available, along with items of clothing, quilts and afghans, pillows and bathroom sets.

You will be able to fill almost your entire Christmas shopping list when you visit the annual

**Chamber Selling**

**Greeting Cards**

**At Special Price**

"The Muleshoe Chamber of Commerce and Agriculture is offering the Muleshoe occasional cards now for a special price," said Toni Eagle, manager. "The cards included are all the holiday cards, as well as the birthday and anniversary cards."

For a single card, the price is 50 cents each, a package of eight is priced \$3.50 and a package of 16 cards is \$6.50.

She added, "now is a great time to buy your Thanksgiving and Christmas cards as well as stocking up on cards for 1988. Come by the Chamber office and buy your cards for all the occasions in the coming year."

Mrs. Eagle said the special sale price will be through December 31.

**Arts and Crafts Fair.**

**BAR-B-QUE**

**B-B-Q Luncheon**

Friday at noon, the Jennyslippers will be serving their annual Bar-B-Que luncheon during the annual Arts and Crafts Fair at the Bailey County Coliseum.

On the menu will be barbecue and all the trimmings, including drink and dessert, for \$6 for adults and \$3 for children under the age of 12.

Also, this year for the first time, the Jennyslippers will offer delivery service for any orders called in to 272-4114 before 10 a.m. Carry-out orders will be available as in past years.

During the afternoon on Friday, and all day on Saturday, during the Arts and Crafts Fair, the Jennyslippers will be operating the concession stand at the coliseum.

**Christmas Parade**

Muleshoe Chamber of Commerce and Agriculture manager, Toni Eagle, said late last week, "The 28th Annual Christmas Parade is just a week away."

"And, the Chamber is still accepting entries. Entries are arriving from the surrounding area, and a few from the city. We need more entries to have the best Christmas Parade ever. The theme for this year's parade is 'Let Silver Bells Ring.'"

She said parade line-up is at 1 p.m. at the Boy Scout grounds, with the parade beginning at 2 p.m. on Saturday, December 5.

The Chamber would like to encourage the churches, school organizations, clubs and organi-

Cont. Page 8, Col. 3

**Emergency Farm Loan Applications Accepted**

Applications for emergency farm loans for losses caused by hail which occurred May 22 through July 6, 1987 are being accepted at the Farmers Home Administration (FmHA) office located in Muleshoe, FmHA County Supervisor, Jay R. McKay said Friday.

Bailey County is one of twelve in Texas recently named by Secretary of Agriculture Richard E. Lyng as eligible for loans to cover part of actual production losses resulting from the hail.

McKay said farmers may be eligible for loans of up to 80 percent of their actual losses or the operating loan needed to continue in business or \$500,000 whichever is less. For farmers unable to obtain credit from private commercial lenders, the interest rate is 4.5 percent.

"As a general rule, a farmer must have suffered at least a 30 percent loss of production to be eligible for an FmHA emergency loan," McKay said.

Farmers participating in the PIK or Federal Crop Insurance programs will have to figure in proceeds from those programs in determining their loss.

"Applications for loans under this emergency designation will be accepted until July 11, 1988, but farmers should apply as soon as possible," said McKay. "Delays in applying could create backlogs in processing and possibly over into the new farming season."

FmHA is a credit agency of

the U. S. Department of Agriculture. It is authorized to provide disaster emergency loans to recognized farmers who work at and rely on farming for

Cont. Page 8, Col. 3




**ON ACTIVITIES BOARD**--Heather Merritt, a 1986 graduate of Muleshoe High School, is serving the Associated Students Activities Board at Eastern New Mexico University. The activities board is responsible for the programming and planning of activities at the university. Merritt, a sophomore art major, is serving as secretary and producer of novelties for the board. She is the daughter of Thomas and Marjorie Merritt of Muleshoe.

**15**  
Shopping Days  
to the  
**December 19**  
**\*2,000**  
**MAC Drawing**



**STATE CAPITAL**



**HIGHLIGHTS**  
By Lyndell Williams  
TEXAS PRESS ASSOCIATION

**AUSTIN**—Attorney General Jim Mattox, for the second time this fall, returned from a trip out of the country to find himself in a political cross-fire that rocks his campaign train.

Last week Mattox returned from Central America to face what remained of the wrath of several Texas county treasurers who speculated that he was, in effect, using political blackmail to shake them down for campaign contributions.

Almost three weeks ago, Mattox told the annual conference of the County Treasurers Association of Texas that a legal opinion that could erode their powers was pending before him.

A couple of days later, Mattox's campaign asked for money and support from treasurers across the state.

The solicitation riled some treasurers, including some of the GOP persuasion, and they took the issue to the press. Mattox's staff was really hotfooting to stomp out the brushfire before the boss returned.

**Manipulation Denied**

Mattox, now running for governor, has been asked to render a legal opinion whether county payrolls should be handled by the treasurers or the county auditors.

A spokesman for Mattox said that his 11-member opinion committee would probably resign if the attorney general tried to manipulate the opinion as speculated.

**Mattox vs. PUC**

Earlier, Mattox returned from Russia to find the Public Utilities Commission had kicked him off rate cases representing consumers. They'll fight it out in the Texas Supreme Court.

Last week, PUC commissioners continued the sabre-rattling by hiring a prestigious Austin law firm to represent them in the high court drama.

But the question of conflict of interest arose once it was discovered that the law firm also represents utility companies that are challenging PUC rates.

**AIDS Testing Debate**

State Insurance Board members listened to insurance companies push hard for permanent rules giving them the right to test prospective policy purchasers for AIDS. The industry says it can't stay in business if it has to insure sick people.

"We're not engaged in any kind of social service, or welfare service, or health service. We're in the insurance business," one spokesman said.

But Glenn Maxey, former Capitol aide, now head of a gay group, warned of the need for strict limits on such testing.

He wants the industry barred from requiring anyone to take an AIDS blood test except in certain cases, where health history raises the possibility of AIDS.

**Conviction Reserved**

The cattle-theft conviction of former state Rep. David London was reversed last week by the Texas Court of Criminal Appeals.

London had served about one year of a 10-year prison sentence, according to his Austin attorney.

In a unanimous opinion, the appeals court said prosecutors should not have been allowed to question a defense witness about her brother's criminal record.

London, a former Bonham resident, served in the House in 1981-82.

**Other Highlights**

• CBS television's "60 Minutes" has prepared a report on the big money politics of the Texas Supreme Court.

• U.S. Senator Lloyd Bentsen told capitol reporters he will run for re-election in 1988. No challenger has surfaced.

• State Rep. Bobby Aikin, D-Commerce, announced he will not seek re-election, but will run instead for an East Texas seat on the State Board of Education. His legendary father, the late Sen. A.M. Aikin, played a major role in creating the agency in the 1949 school reform bill.

**Nursing Home News**  
By Joy Stancell

\*\*\*  
We feel our family Thanksgiving Potluck supper was a great success. We wish to thank our families, The King's Kids, Mr. and Mrs. Bobby Burris, the Nursing Home employees and last but not least our hard working volunteers. You all did a wonderful job!  
\*\*\*

Rickie Kelly brought her very

young gymnastics class Tues. morning to perform for the residents. We express our thanks to them for such a fun visit.  
\*\*\*

Lois Ethridge has gone to Texline to spend Thanksgiving in the home of her son and daughter-in-law Mr. and Mrs. Roland Ethridge. Lois attended the A.A.R.P. meeting Fri. with Clara Lou Jones, and the services Sun. with Nancy Kidd at The Assembly of God.  
\*\*\*

What a treat we had Tues. afternoon. Five Area Telephone brought us two large coolers of

assorted canned pops, iced down, ready to pop open and drink and enjoy. They also brought us tables and chairs for our Potluck Supper.  
\*\*\*

Bobby Johnson of DeShazo Elementary, brought a group to sing a protract *The First Thanksgiving* Fri. afternoon.  
\*\*\*

Happy Birthday this month to these residents Ora Roberts, Dec. 9th, 1900, Effie Smith, Dec. 2nd, 1902 and Joelle Truelock Dec. 19, 1909.  
\*\*\*

Our monthly birthday party will be Dec. 17th at 3:00 p.m. Hosted by the Needmore Community Club.  
\*\*\*

We are planning on having our annual residents' Christmas Party, Fri. Dec. 18th at 3:00. Please keep this in mind.  
\*\*\*

Thank you for remembering and donating to our Christmas card project.  
\*\*\*

Season's Greetings!

**Caring For Muleshoe Area Families**  
Since 1959  
**Ellis Funeral Directors**  
272-4524  
**Pre-Need Funeral Plans**  
**Monuments**  
**Granite-Marble-Bronze**

**Bailey Co. Ambulance Service Toy Project**

Name Of Family \_\_\_\_\_

Exact Location Of Residence \_\_\_\_\_

Name Of Boys	Ages	School
_____	_____	_____
_____	_____	_____
_____	_____	_____
Name Of Girls	_____	_____
_____	_____	_____
_____	_____	_____
_____	_____	_____

If More Room Needed - Please Add Another Sheet

17 More than 13,000

Senior citizens made the smart choice and joined

**SENIOR Class**™

**Here's why:**

- Senior Class accepts Medicare and approved supplemental insurance as full payment - you pay no deductibles!
- Many convenient services, discounts and timesaving benefits are available to members.
- It's easy to join; all you have to do is be 55 or older.
- Membership is free and lasts a lifetime.

If you are a member of Senior Class, St. Mary of the Plains Hospital accepts Medicare and approved supplemental insurance as payment in full for any inpatient medical services. Even if you have Medicare and no supplemental insurance, St. Mary will pay half of any deductibles or coinsurance.

Should you ever have to be hospitalized, as a Senior Class member you'll receive many courtesy services during your stay. Members also receive discounts at local merchants and are offered a variety of interesting educational classes.

And qualified, experienced insurance consultants are available to file your claims and answer any questions about your medical insurance policies.

Take advantage of the many benefits of Senior Class. It's the smart choice. Free enrollment or getting information is as easy as calling (806) 741-7111.

**It's free.**  
**It's easy.**  
**It's yours.**  
**Just call (806) 741-7111.**

**SENIOR Class**™

Yes! Please send me more information on Senior Class!

Yes! Please enroll me as a member of Senior Class!

Please Print.

Name \_\_\_\_\_

Address \_\_\_\_\_

City \_\_\_\_\_ State \_\_\_\_\_ Zip \_\_\_\_\_

Phone \_\_\_\_\_

Please fill out this coupon and mail to: Senior Class  
St. Mary of the Plains Hospital  
4000 24th Street  
Lubbock, TX 79410

St. Mary of the Plains Hospital  
A Sisters of St. Joseph of Orange Corporation  
4000 24th St. • Lubbock, TX 79410

© 1987. All rights reserved St. Mary of the Plains Hospital.



# Holiday Stuffings Dress Up Holiday Dinners

Turkey for the Holidays? Naturally! This year bend tradition a bit by serving a bronzed and beautiful turkey filled with an out-of-the-ordinary stuffing.

Any of these buttery dressings is an excellent choice depending on your preference

for a bread, cornbread or rice stuffing. Leek and Cornbread Stuffing offers the convenience of a packaged cornbread stuffing enhanced with leeks, celery, pecans and bacon. If you'd prefer the sweet accent of chunks of apple in your dress-

ing, opt for Waldorf Stuffing. It's ultra easy because it starts with seasoned long grain and wild rice mix.

### TURKEY STUFFING TACTICS

Here are a few simple tips for stuffing poultry.

1. Lightly spoon some of the stuffing into the neck cavity, then into the body cavity. Don't pack the stuffing; it needs room to expand during roasting.

2. To keep the stuffing inside the bird, pull the neck skin over the stuffing to back of the bird. Use a wooden or metal skewer to hold the skin in place. Tuck drumsticks under the band of skin across the tail or tie the drumsticks to the tail.

3. Insert a meat thermometer in the center of the inside thigh muscle. The bulb shouldn't touch the bone. Cover loosely with foil and roast in a 325 oven until the thermometer registers 180 to 185 (about 4 to 5 hours for a 12- to 14- pound turkey). Stuffing for a Scaled-down Feast

For a smaller bird, tailor the amount of stuffing. Halve any of the three recipes that follow to stuff a 5- or 6-pound capon or roasting chicken, for example. Or, trim the recipes down even more to a fourth and stuff two 1- to 1 1/2-pound Cornish game hens.

### Extra Stuffing

If you have more stuffing than you can fit in the fowl's cavity, measure the extra. Transfer to a casserole. For every cup of stuffing, stir in 2 teaspoons of chicken broth or water. (This adds necessary moistness since the stuffing in the casserole won't be soaking up the flavorful poultry juices.) Cover and chill. Place casserole in the oven with bird during the last 20 to 40 minutes of roasting.

### Safety Tips

Stuff all types of poultry just before cooking. The risk is too great for bacterial contamination if you refrigerate a stuffed, uncooked bird.

After the meal, remove

leftover stuffing from the bird. Store immediately in a covered container in the refrigerator. Plan on using the stuffing within a few days.

### LEEK AND CORNBREAD STUFFING

Yield: 12 cups (enough for a 12 to 14 pound turkey)

1 package (16 oz.) cornbread stuffing mix; 1 1/4 cups (2 1/2 sticks) butter, divided; 1 1/2 cups chopped leek (2 large leeks); 1 cup chopped celery; 3/4 cup coarsely chopped pecans; 10 slices bacon, cooked, drained and crumbled; 1/2 teaspoon salt; 1/4 teaspoon pepper.

Prepare cornbread stuffing according to package directions using only 3/4 cup (1 1/4 sticks) butter. Sauté leek and celery in remaining 1/2 cup butter until leek is tender, about 10 minutes. Stir sautéed vegetables into cornbread mixture. Stir in pecans, bacon, salt and pepper.

### WALDORF STUFFING

Yield 12 cups (enough for a 12 to 14 pound turkey)

3/4 cup (1 1/2 sticks) butter; 1 1/2 cups chopped celery; 1 1/2 cups chopped unpeeled red cooking apples (about 2 large); 3/4 cup coarsely chopped walnuts; 1

teaspoon salt; 1/4 teaspoon pepper; 6 cups toasted whole wheat bread cubes; 6 cups toasted white bread cubes; 2 cups chicken or turkey broth; 2 eggs, beaten.

Melt butter in 4-quart Dutch oven. Sauté celery until tender, about 5 minutes. Stir in apples, nuts, salt and pepper. Add bread cubes. Combine broth and eggs; toss with bread mixture.

### MUSHROOM-RICE STUFFING

Yield: approx. 12 cups (enough for a 12 to 14 pound turkey)

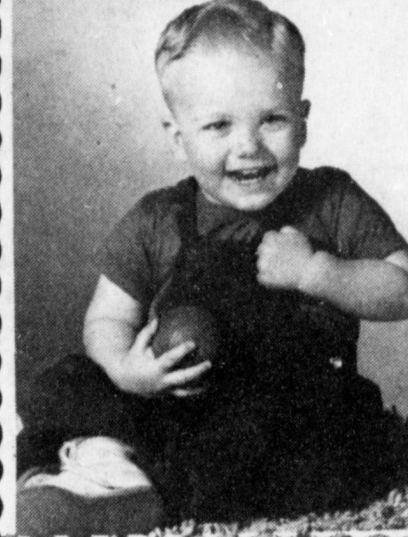
3 packages (6 oz. each)

seasoned long grain and rice mix; 1 cup plus 2 tablespoons (2 sticks plus 2 tablespoons) butter, divided; 7 1/2 cups chicken broth; 1 pound fresh mushrooms, sliced; 1 1/2 cups chopped celery; 1 cup chopped onion; 3/4 cup chopped red pepper.

Prepare rice mix according to package directions sautéing rice in 6 tablespoons butter and using chicken broth in place of water. Meanwhile, sauté mushrooms, celery, onion and pepper in remaining 3/4 cup butter until tender, about 10 minutes. Stir sautéed vegetable mixture into cooked rice mixture.



**GIRL SCOUTS RECEIVE TABLE AND CHAIRS**—Tuesday afternoon Brownies, Misti Johnson, Melissa Williams, Crissy Davis and Amy Campbell along with their leader, Anita Johnson, accepted a table and four chairs for the Girl Scouts at Western Gift Store. This table and chairs was earned through the Community Project Program. At the present time Girl Scouts are working for two additional chairs which along with those already earned will be used at the Girl Scout Hut. The Brownies have already earned a picnic basket, table tennis set and are working toward a camera.



**Happy Birthday**

???

**From: Your Whole Bunch**

**Arriving Soon!**

**Beautiful Poinsettias**

4 in. and 6 in. Pots  
Baskets  
Centerpieces  
Trees

**Arriving Now!!**

**Free Delivery**

**Kristy's Plants**

**Open Monday, November 30**

9 am to 5 pm  
1516 W. American Blvd.

**Bailey County Journal** USPS 040-200  
Established March 31, 1963. Published by Muleshoe Publishing Co., Inc., Every Sunday at 304 W. Second, Box 449, Muleshoe, Texas 79347. Second Class Postage paid at Muleshoe, Texas 79347.

**MEMBER 1987 TEXAS PRESS ASSOCIATION**

Member NATIONAL NEWSPAPER ASSOCIATION PANHANDLE PRESS ASSN. WEST TEXAS PRESS ASSOCIATION

L.B. Hall, President & Publisher  
Sammye Hall, Vice President & Controller  
Chris Williams, News  
Evelene Harris, Society  
Dannett Bunch, Advertising  
Lillie Nino, Bookkeeping

**SUBSCRIPTIONS:**  
Muleshoe Journal and Bailey County Journal  
Bailey and surrounding counties  
Muleshoe Journal and Bailey County Journal  
Elsewhere in Texas \$14.75  
Muleshoe Journal and Bailey County Journal  
Outside of Texas \$16.50  
Yearly by Carrier \$12.50  
Advertising rate card on application.

Advertisers should check their ad the first day of insertion. The Journal will not be liable for failure to publish an ad or for a typographical error or errors in publication except to the extent of the cost of the ad for the first day insertion. Adjustment for errors will be limited to the cost of that portion of the ad where the error occurred.

**Rip's WESTERN WEAR IN TEXICO SINCE 1943**

NOW OPEN NIGHTS TILL 8:C.S.T.



**The Original Cowboy Cut Gold Jeans**



NEW

**15 1/2 oz. Premium Stone-Wash Denim**

- ✓ Real Leather Patch
- ✓ Brass, Instead Of Copper Brads

---

**NEW Leather Sweaters**  
as seen on  
**Dolly Parton Show**

---

All New Colors and Styles Of  
**WOMENS WRANGLERS**  
Includes Hurricane-Wash Turquoise

## WHO IS BACKING GARMS FOR STATE SENATE?



We are not just one sex, race or profession. We're not one social group, church group or neighborhood.

We're Panhandle People from all walks of life. People from Pampa, Hereford, and Plainview; from Clarendon, Muleshoe, and Dumas.

We are people with one thing in common: A belief in one determined, qualified, credible leader to represent each of us in the State Senate.

**PEOPLE FOR A CREDIBLE DEMOCRAT IN AUSTIN.**

# GARMS

**FOR STATE SENATE**

Pol. ad paid for by Garms for State Senate, Capt. Cecil Hawkins, U.S.N. (Ret.), Treas., 6141 Amar Blvd. W., Amarillo, TX 79106

COUPON

This Coupon Worth **\$500 OFF**

OF ANY ITEM IN OUR STORE OVER \$15.00.

Expires Dec. 5, 1987

EXCLUDING 13MWZ

<p style="text-align: center;"><b>Elephant Boots</b> (Also Elephant Ropers) Your Choice.....</p> <p style="text-align: right; font-weight: bold; font-size: 1.2em;">\$159.98</p>	<p style="text-align: center;"><b>Ladies Ropers</b></p> <p style="text-align: center; font-size: 1.5em; font-weight: bold;">49<sup>98</sup></p> <p style="text-align: center; font-size: 0.8em;">&amp; up</p>	<p style="text-align: center;"><b>Fashion Ladies Fringed Boots</b></p> <p style="text-align: center; font-size: 1.2em;">\$44 to \$49<sup>98</sup></p>	<p style="text-align: center;"><b>Men's ROPERS</b></p> <p style="text-align: center; font-size: 1.5em; font-weight: bold;">\$59<sup>98</sup></p>
<p style="text-align: center;"><b>Python Boots</b> (Great Gift For Christmas).....</p> <p style="text-align: right; font-weight: bold; font-size: 1.2em;">\$179.98</p>	<p style="text-align: center;"><b>17" Bullhide Boots</b> (For Real Cowboys).....</p> <p style="text-align: right; font-weight: bold; font-size: 1.2em;">\$109.00</p>		
<p style="text-align: center;"><b>Mulehide Boots</b> "Fits Like A House Shoe".....</p> <p style="text-align: right; font-weight: bold; font-size: 1.2em;">\$89.98</p>			

CALL **482-3363**

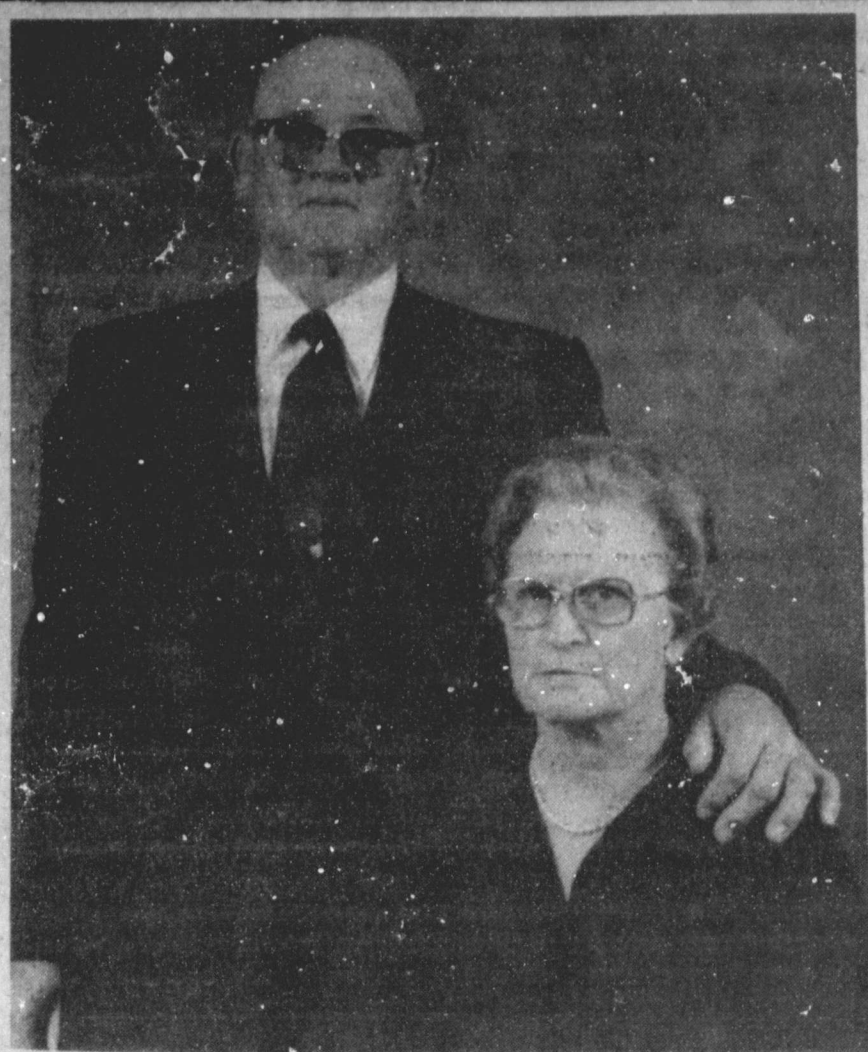
314 WHEELER TEXICO



Rip's

IN TEXICO WESTERN WEAR SINCE 1943





**COUPLE CELEBRATES ANNIVERSARY**--Mr. and Mrs. Orville Lackey of Muleshoe were honored with a 50th wedding anniversary reception Saturday, Nov. 28 at the Bailey County Civic Center. Lackey and the former Florence Ruth Holbert were married on Nov. 20, 1937, in Ropesville. He is a retired farmer and served on the Board of Directors of Bailey County Electric. Mrs. Lackey is active in church and civic affairs. They are members of the Trinity Baptist Church. Mr. and Mrs. Lackey have three children, Dean Edward Lackey of Dallas; Yvonne Eskew of Greenville, SC and Randy Mack Lackey of Muleshoe. They also have four grandchildren and two great grandchildren.

**Sudan Senior Class Present 'O, Men, Amen'**

For the first time in the past few years, Sudan residents were treated to a special night recently when the members of the senior class presented "O, Men, Amen" by Donald Campbell and produced by permission of Baker's Plays of Boston and Hollywood.

It was pertaining to a weekend and the following week of a group of Zeta Zeta Phi Sorority girls on the Campus of Philbury College.

This sorority didn't like men and the house mother tried to convince the girls that men "are no good." The humorous story unfolded to reveal that actually all the sorority sisters did like men.

Cast of actors were: Miss Brackle, Zeta house mother, Melissa Nix; Muriel, president of Zeta, Karin Whitten; the Zeta sorority sisters, Regina, Carmen Rames; Eulalia, Shannon Peck; Amy, Kathy Powell; Hortense, Darlene Henley and Griselda, Cheri Ford; Herman, the janitor was Jimmy Kyle Glasscock; Diane, seventh Zeta sister, Cindy Roberts; Sadie Hampshire, prospective sister, Dawn Gaston; Tony Cartwright,

Philbury College student, Eddy Boyles; and Jonathan Cartwright, Tony's uncle, Michael Bartley.

Also Jane Stevens, editor of Philbury Falcon, Donice Holley; Milo Hammersmith, Chip DeLoach; Harvey Schwarzenbugger, Jimmy Kyle Glasscock; and Mikey Schmitt, Eddie Salinas.

Football players were Alfred, a dummy, Chris Griggs; Helen Lestrade, foundress of Zeta Zeta Phi, Kendra Whitten; and the stage crew were Anthony Williams, and Rene Garza. Royce McAdams was announcer and Patsy Fisher was director.

Other senior class members include Rosa Camarillo, Gus Cruz, Delmar Hernandez, Brad Masten, Letty Montez, Silvia Ortega, Troy Robles, Jayson Vincent and Anthony Williams.

**Davison Named Assistant 4-H Club Director**

H. T. "Tom" Davison, who has served as state 4-H program leader with the Texas Agricultural Extension Service for the past four years, has been named assistant director for 4-H

**Rebekah Lodge News**

Fourteen members of the Rebekah Lodge attended a salad dinner in Hereford on November 17. The occasion was the Presidents Meeting for District 5. Lodge Deputy Thursie Reid presented the President Marie Mason with a love offering. It was reported that all of the members attending enjoyed the program and the friendship of several district lodges.

On November 24, 19 members were present when Noble Grand Pat Langfitt called the meeting to order. The flag was presented by Linda Tosh and minutes of the previous meeting were read by June Green.

The Charter was undraped in memory of Brother Lusky Green and Sister Lillian Sims. Those in the undraping ceremony included: Ona Berry, Adele Tompkins, Clara Lou Jones and Pat Langfitt.

The Charter was undraped in memory of Brother Lusky Green and Sister Lillian Sims. Those in the undraping ceremony included: Ona Berry, Adele Tompkins, Audrey Langfitt, Pat Langfitt and Clara Lou Jones was Musician.

All members are reminded to take bingo gifts for the home for the aged. They are also reminded to take recipes for the cookbook. The members voted to bid to cater the Chamber of Commerce banquet. A committee was appointed for this project and includes Ruby Green, Adele Tompkins, Clara Lou Jones and Pat Langfitt.

Nominations open for Noble Grand-Novella Price; nominations open for Vice Grand-Louise Allen; Nominations open for secretary-June Green; Nominations open for treasurer-Ina Wilemon and Terie Snell; Nominations open for representative-Adele Tompkins; Nominations open for Alternate representative-Thursie Reid; Nominations open for Team Captain-Ruby Green.

Further nominations will be accepted next week with the election to also be held at that time. The meeting was dismissed with a prayer by Pat Langfitt.



**DECEMBER DATE SET**--Michael and Shirley Bean of Muleshoe and Mr. and Mrs. H.C. Scott of Anton wish to announce the engagement and approaching marriage of their children, Tamara Leatrice Bean and Thomas Edward Scott. Vows will be exchanged at 2 p.m. Saturday, Dec. 26 at the Circleback Baptist Church in Circleback. The bride elect is a 1985, graduate of Muleshoe High School and is now employed by Dr. Patrick J. Edwards, MD in Slaton. Scott is a 1985, graduate of Anton High School. He is an airman in the U.S. Air Force. The couple will make their home in Abilene where Scott will be stationed.

**Poteets' Celebrate Fortieth Anniversary**

Those visiting in the home of George and Hortense Poteet to help them celebrate their fortieth wedding anniversary included: Rev. and Mrs. Harvey Hudnall of Farwell; Salina Lynn of Fort Worth, Billy Guy and Tomi Poteet of Dimmitt, Mabel Newman of Tucumcari, N.M.; Fred and Darlene Finke of Amarillo, and David, Regina, Kira Finke of Olton.

Also Tony, Linda, Lynn, Jason Poteet of Amarillo; Dagmar Poteet of Lubbock; Robert and Marguerite Johnston of Lubbock.

Also George Poteet and Hortense Hudnall were married

in her parents home the late Delbert and Nora Hudnall, of Lazbuddie, on November 22, 1947, by Rev. Harvey Hudnall.

**Rings and Rings**

"If it isn't the doorbell or telephone," mumbled the busy housewife, "it's the ring around the tub."

**Helpful!**

"Pardon me, sir, do you know the way to the post office?"

"No, I'm sorry, I don't." "Well, it's two blocks up and one block to the right."

**Sudan FFA Receives Outstanding Chapter Award**

Sudan chapter of FFA was named Outstanding Chapter recently during the TFTA District convention held at the Wayland Baptist University in Plainview.

They received this award for their services to the school and to fellow students. Cheri Ford received the Scholarship Award for her essay and transcripts. Her portfolio will be sent to the state contest in February at Dallas. Donice Holley and Cheri Ford will be voting delegates in the TFTA House of Representatives at the State Convention.

Miss Holly, this year's parliamentarian, introduced the current district officers and Miss Ford, this year's Chaplain, gave the invocation.

Teena Newman and Hyla Ford ran for District offices. Teena was named District Parliamentarian and Hyla was named District Chaplain.



**Karen's Special Occasions Floral** invites you to a

**Christmas Open House**

Friday, December 4th 9 a.m. - 5 p.m.  
Saturday, December 5th 9 a.m. - 4 p.m.  
Sunday, December 6th 2 p.m. - 5 p.m.

Hosted by: Karen, Diane, Mary, Tammi and Tammy

Come by for refreshments and daily door prizes

501 Ave. A Farwell, Texas

**To Be Given Away... Santa Claus**

Animated - Full Curly White Beard, Gold Glasses; Traditional Red Suit Trimmed In White Fur, Toy Sack, Black Boots; Black Gloves, Black Belt & Buckle Value: \$125.00

Register Anytime  
No Purchase Necessary  
You Must Be Present To Win!  
Drawing To Be Held

Saturday, December 19th, 3:00 p.m.



Also Register For A

**Christmas Door Wreath** To Be Given Away

Saturday, December 19th, 3:00 p.m.

You Do Not Have To Be Present To Win The Wreath.



401 S. 1st **Fry & Cox, Inc.**



**19** WALLET SIZE COLOR PHOTOS  
WE USE KODAK PAPER **99¢**  
No limit on this offer

AT **Pay-N-Save**  
515 W. American Blvd.  
Wed. Dec. 2  
Photo Hours: 9:00 - 6:30

GIVE OUR PICTURES FOR CHRISTMAS

Ask about our FREE 8 x 10 offer

**Shugart's inc.**

Group charge 99¢ per person per 19 wallets

Kodak paper. For a Good Look at the Times of Your Life. TM



## Creative Living

By Sheryl Borden

Recipes to prepare in 30 minutes or less and with no more than 360 calories and information on the Face Finder will be presented on "Creative Living" on Tuesday, December 1 at 12 noon and repeated on Saturday, December 5 at 2:00 p.m. on KENW-TV. (All times are Mountain.)

Round the world in 30 minutes of 360 calories is the topic to be presented by Gayle Shockey, Registered Dietician with Heart Keeper Cooking School in Fallbrook, CA. This is designed for the modern day cook who is interested in delicious, nutritious, and quick to fix ethnic recipes from around the world.

Maggie Gregory, co-owner of Image Avenue in Albuquerque,

will demonstrate a new instrument called the "Face Finder". She will also explain how to use the results from this computer in selecting eye glasses, accessories and even in determine the correct hair style for each person.

Due to the December Pledge Drive, "Creative Living" will not be seen on Tuesday, December 1 or December 8 at 9:30 p.m., but will return to it's regularly scheduled time on Tuesday, December 15.

Two interesting topics will be presented on the show on Thursday, December 3 at 12 noon. Teresa Farney, Director of Consumer Affairs with the National Turkey Federation in Reston, VA will show step-by-step how to create a very unusual, edible centerpiece she calls a Flight of Fancy. This creation makes use of bread and rolls, skewered veggies, turkey deli meat and other delicious finger foods. Turkey deli products offer consumers a new low-fat alternative to red meat deli products and are very tasty.

LeAnn Nelson, owner of Natural Accents, Denver, CO will tell how she began her business and became an entrepreneur. Her story is an interesting one and it provides basic information for anyone who might be interested in becoming an entrepreneur. There are several important essentials that are required for starting a successful business, and LeAnn will cover some of these.

"Creative Living" is produced and hosted by Sheryl Borden. The show airs on more than 100 PBS stations in the United States, Canada, Guam and Puerto Rico and is distributed by Pacific Mountain Network, Denver, CO. Viewers can request copies of printed materials offered on the show by calling on KENW-TV's toll-free telephone lines between 8 a.m. and 5 p.m., Monday through Friday. In New Mexico, the number is 1-800-432-2361, out-of-state, 1-800-545-2359 and Portales and Roosevelt County:

562-2112.

### ROUND THE WORLD IN 30 MINUTES OR 360 CALORIES QUICK LASAGNE

1/2 lb. lasagne noodles; 2 pkg. frozen chopped broccoli, thawed/draind (20 oz); 8 oz. part skim ricotta cheese; 1 cup lowfat cottage cheese; 1 1/2 cups grated skim mozzarella cheese; 4 green onions, minced; 2 Tbsp. fresh basil or 1 Tbsp. dried basil; 1/4 tsp. nutmeg; 32 oz. no added salt Spaghetti Sauce (Prego or Newmans); Parmesan cheese, optional.

Cook lasagne noodles as package directs. Drain, rinse in running water and drain again. Squeeze broccoli to remove water. Combine broccoli with cheeses, green onions, basil and nutmeg. Spread about 1/2 cup of cheese mixture along length of each noodle. Roll jelly roll style to make a spiral. Spirals can be frozen in plastic bags. Place spiral on a baking dish. Spoon spaghetti sauce on and around spirals. Sprinkle with parmesan cheese. Cover with foil. Bake in a 350 degree oven for 30

minutes or until heated through. Yield: 12 spirals.

### HERB GREEN BEANS

1 1/2 lbs. green beans; 1 tsp. fresh lemon juice; 1/4 tsp. fresh ground white pepper; 1 Tbsp. minced fresh chervil or parsley; 1/4 tsp. salt, optional.

Fill a large saucepan with 1 inch of water and place steamer basket with green beans. Cook until tender, but still slightly crisp, about 6 minutes. Remove from basket and add the lemon juice, chervil, white pepper and salt; toss to coat. Yield: 6 servings.

### GOURMET POUND CAKE

2 cups all purpose flour; 1 cup granulated sugar; 3 tsp. baking powder; 3/4 cup nonfat milk; 1/2 cup low calorie margarine; 2 eggs; 1 tsp. vanilla; 1 Tbsp. brandy; 1/4 tsp. fresh grated nutmeg.

Heat oven to 350 degrees. Spray 9X5X3-inch loaf pan with Pam. Measure all ingredients and mix at low speed for 3 minutes. Bake until golden or about 65 minutes. Yield 1 loaf or 12 slices.



**DESHAZO ELEMENTARY ENRICHMENT NEWS**--The fifth grade classes at DeShazo Elementary have just added three more cheerleaders to the first six weeks group which brings the total to eight. The girls added this six weeks are: Tiffany Copley, Julie Gilliland and Jodie Foster. At the end of each six weeks three girls will be chosen. These cheerleaders participate in leading cheers at each awards assembly of DeShazo.

### Jodi Ferris Named AAUW Girl Of Month

Miss Jodi Ferris, daughter of Wayne and Johnnie Ferris, a senior at Muleshoe High School has been selected as AAUW Girl of the Month for November.

Each month the American Association of University Women selects either a junior or senior student who meets the standards set by their organization, in school, church and community activities. It was reported that Jodi is outstanding in all of these areas and illustrates exceptional qualities of leadership.

Jodi is a member of the annual staff, received the Spanish II Award as a sophomore and the Art Award as a junior student. She is a member of the Student Community Action Club and as a member of the club works with the Muleshoe Heritage Foundation, and

other civic organizations to improve the school and the community. This club works to make money and contributes it to preserve some of the areas' heritage.

Miss Ferris is an active member of the First Baptist Church and exemplifies high moral standards. "It is a pleasure to recognize Jodi as the November Girl of the Month" said a spokesman from the group.

**Easy**  
"Pop, how do they catch crazy men?"

"It's easy. A little rouge and lipstick, a new hair-do and a pretty dress."

**Clever**  
Father: Well, son, how are your marks at school?  
Son: Underwater.

Father: What do you mean?  
Son: I'm not sure.

## Ben Franklin

Better quality for less Mon. - Sat.

2104 W. Amer. Blvd. 272-3885 8 a.m. - 9 p.m. 12 - 6 p.m.

### Christmas GIFT IDEAS

#### NEW STORE HOURS

From Now Until Christmas

For your shopping convenience.

Mon. thru Sat 8 AM to 9 PM

Sundays 12 Noon to 6 PM

**Care Bears**  
Reg. \$13.99  
Special **\$4.99**

**Mighty Tonka Dump Truck**  
**\$12.97**

**Giant 36" Care Bears**  
Special **\$19.99**

**Xmas Candy Canes**  
regular size **79¢**  
Box of 12 peppermint & cherry flavors

**Trans Formers**  
Entire Large Selection  
**25% Off**

**Lonley Puppies**  
For Adaption various colors  
**\$5.97**

**Pictionary**  
The game of quick draw  
Special **\$19.99**

**Outdoor Xmas Light Sets**  
C9 1/4 25 lights per strand multi color **\$5.97**  
red, blue & clear

**Pound Purries**  
Lovable & huggable by Tonka  
**\$7.77**

**Torpedo Run**  
The submarine attack game  
**\$19.99**  
floor wars series

**Corvette's-Camero's**  
Radio Controlled sports cars  
Function forward, reverse, turns in reverse  
**\$9.99**

**Queen Ann Chocolate Covered Cherries**  
8 oz. box **89¢**  
\* milk chocolate  
\* dark chocolate  
\* burgandy flavor

### Preparing Tender Venison

If the venison's tough, don't blame the cook. It could be due to what the hunter did--or didn't do--in the field, says a wildlife specialist with the Texas A&M University Agricultural Extension Service.

"In addition to the age and sex of the animal, hunting and field dressing practices are extremely important in determining the quality of venison," says Don Steinbach.

"An undisturbed animal which is cleanly shot will yield more tender meat than a stressed animal. Field dressing the carcass as soon as possible and letting it hang for a full 48-hours will also increase tenderness by allowing muscles to stretch."

He adds that aging the carcass in cold storage just above freezing for about a week will add to the tenderness and possibly the flavor of the venison.

After that, the tenderness is up to the cook.

According to TAEX home economist Marilyn Haggard, the key to preparing tender venison is to cook it as you would lean beef.

"Most game has little fat and so is very similar to lean beef. The naturally more tender cuts, such as the loin and rib can be pan fried or roasted. But round steak, meat from the leg and the less tender cuts are best when cooked by braising, stewing or pot roasting," she says.

Haggard cautions against overcooking game meat. "It has short fibers that toughen quickly if overcooked or cooked at too high a temperature. Plan to serve it medium-to well-done rather than rare or overcooked."

Marinating venison for stir-fry, or fajitas and before pan-frying or roasting will also make it more tender. She advises marinating the meat in an acid-based sauce for at least 24 hours.

"If you use a sauce with the venison, reduce the amount of sugar in the recipe. The natural flavor is sweeter than other meat, so sauces made for domestic meats may be too sweet," notes the home economist.

Haggard also recommends removing all visible fat before cooking, since it will exaggerate the gamey flavor. If some fat is required, ground pork or beef fat can be substituted.

"Some people like to add chunks of beef fat or bacon to self-baste and moisten venison as it roasts," she says. "If you're trying to cut back on your intake of fat, however, you'll be better off sticking to low-fat cooking methods such as marinating and stir-frying the meat."

Both specialists agree that venison has an undeserved reputation for toughness. Yet, in a recent research study using taste panels, Texas A&M University graduate student Dan Moczygemba found that venison was rated as tender as lean beef and only slightly less tender than lean pork.

When the beef, pork and venison were compared for fat and cholesterol levels, Moczygemba says preliminary analyses indicated no significant differences.

Shop Muleshoe

Make Your Christmas Complete With A Tree From Our Large Supply.

Make Your Selection NOW!!

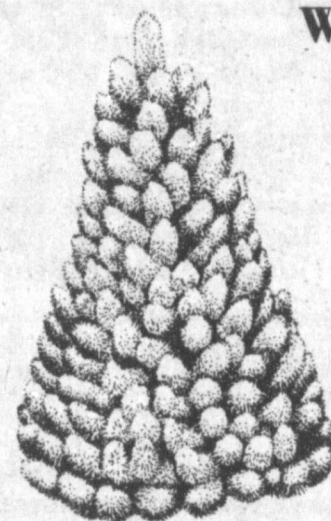
We also feature:

Flocking

Table Sized Trees

Tree Stands

Happy Holiday Season



Baker Farm Supply

1532 W. American Blvd.

272-4613

Is Christmas Shopping Running You A Little Short Of Cash?

Let First National Bank Help You Out!

We Can Arrange A Quick And Easy Loan So That You Can Have The Cash You Need To Complete Your Christmas Shopping In Grand Fashion!

See Us Soon...For Your Cash For A Merrier Christmas!



FIRST NATIONAL BANK MULESHOE

202 S. 1st

Member FDIC

272-4515



## Education: Can We Meet Challenges of the Future?

By Governor William P. Clements, Jr.

There is little doubt that the 1987 Texas Legislature was the most taxing in history.

That is true both on a physical and fiscal level.

Legislators endured a 180-day regular session and two special sessions, each of them filled with grueling debates and tough votes befitting a state that finds itself at an economic crossroads.

The cornerstone of that debate, of course, was the development of a two-year state spending plan that attempted to balance the call for increased state services with dwindling state revenues.

The result was a \$38.1 billion budget and a \$5.7 billion tax increase.

Had the budgetary process been delayed much longer, some schools in Texas would not have opened on time September 1, and school district finance officers would have found themselves anxiously searching the mail each day for the essential state paychecks designed to supplement local operating costs.

The new budget begins to address some of our educational needs—in a financial sense.

Under the new budget, which goes into effect September 1, the budget for the Texas Education Agency programs is up about \$300 million over 1987 operating levels.

Those who keep an eye on state spending and education will quickly note that that increase is not as great as in previous years. In a nine-year period, ending in 1985, public education spending in Texas increased 165 percent.

Curtailling the growth of state government—the recent legislative session—puts pressure on state education officials and those at the local level to ensure that programs are prioritized and taxpayer dollars efficiently spent.

But, in terms of education, money wasn't everything. There were some policy questions to be addressed and some programs that needed refining.

We met with mixed success. As you know, I have long been opposed to the state mandating programs without providing local districts money to fund them.

### EMS, Police

### Set Another

### Turkey Shoot

Following the successful turkey shoot recently held jointly by the Bailey County Ambulance Service and the Muleshoe Peace Officers Association, two more turkey shoots have been scheduled.

On Saturday, November 28, 10 a.m. - 5 p.m., they will be conducting a shoot at the police shooting range, just north of the railroad tracks at the Muleshoe east city limits. Parking will be to the south side of the railroad tracks, with access to the range just under the tracks.

This will be followed by a shoot on Sunday, December 6, 12 noon to 5 p.m. at the same location.

Only shotguns may be used, and ammunition will be available. Ear protection is required.

Cash prizes will be given. For additional information, call the Bailey County Ambulance Service, 806/272-4390 Monday through Friday, 8 a.m. - 5 p.m.

A prime example was the Texas Legislature's decision in 1984 to invoke strict teacher-student class size ratios. Those ratios—1 to 22 from kindergarten through fourth grade—threaten many districts with financial hardships because of a need for more teachers and class space.

I supported a plan that would have given some flexibility by boosting that ratio to one teacher for each 25 students—if a qualified teaching assistant was in the classroom full-time.

We did not win that particular battle.

We won some other battles, though. For example, the Legislature agreed to reduce by half the number of appraisals our outstanding teachers receive each year.

All that is behind us. Now we must look to the future to ensure that our educational system meets not only the demands of the coming decade, but the coming century as well.

We cannot bury our heads in the sand and pretend that the status quo is acceptable. It is not. Education—quality education—is the frame on which our Texas way of life is built. Economic development is the engine that drives our economy.

### Muleshoe...

Con't. From Page 1

The course trained personnel to prepare and serve food in large and small quantities. Students received training in baking, field kitchen operations, and the operation of an Army dining facility.

Airman First Class Perry M. Howard, son of Pat C. Howard of Farwell and Dona P. Howard of Dunwoody, Ga., has graduated from a U. S. Air Force communications equipment repair course at Sheppard Air Force Base, Texas.

During the course, students were taught to install and repair teletypewriter and communications machines. They also earned credits toward an associate degree through the Community College of the Air Force.

Army Private David W. Vela, son of Joe and Susie Vela of 909 W. Ninth, Muleshoe, Texas, has completed basic training at Fort Dix, N.J.

During the training, students received instruction in drill and ceremonies, weapons, map reading, tactics, military courtesy, military justice, first aid, and Army history and traditions.

He is a 1986 graduate of Muleshoe High School.

Army private Ricky L. Tennyson, son of Terry L. and Jodee A. Tennyson of Sudan, Texas, has completed basic training at Fort Dix, N.J.

During the training, students received instruction in drill and ceremonies, weapons, map reading, tactics, military courtesy, military justice, first aid, and Army history and traditions.

He is a 1987 graduate of Sudan High School.

Those two elements, education and economic development, can exist independently. State government, however, must demonstrate leadership and forge an alliance between them both to ensure economic prosperity.

On the business side, we must restructure our tax system to reflect a shift from a dependence on oil and gas to a service-based economy. I, along with other legislative leaders, have appointed a tax equity commission to study our tax structure and to make recommendations to help in our economic transition.

Of crucial importance on the education side is the appeal of the Edgewood v. Kirby ruling in state district court. That ruling, if upheld, threatens the stability of our current educational system. The next 18 months will be crucial as we attempt to meet the challenges posed by this litigation.

Those are just some of the major problems we now face. There are many more.

Our illiteracy rate, for example, is indefensible, inexcusable and intolerable.

Today, an estimated 2.4 million Texans are functionally illiterate. We have moved to reduce that problem through the establishment of an Adult Literacy Council. We—as educators and those interested in quality education—must provide that council with valuable input and work at the local level to involve businesses and industries that will benefit from a skilled workforce in the following years.

We also have a dropout rate that is intolerable. Last year, only nine states had higher dropout rates. Our rate is a

### Busy Weekend...

Con't. From Page 1

zations, businesses, and individuals to have an entry in this year's parade. Mrs. Eagle reminded that the larger the parade, the larger the crowd will be to participate in other activities scheduled for the parade day.

Santa will visit and will be available the day of the parade at the Annual Christmas Bazaar at the Bailey County Civic Center for pictures.

Divisions of the parade include floats, antique cars, unique vehicles, mules, commercial, individual and riding clubs. The CofC manager said she hoped to start new divisions for the churches and for school organizations. All entries are welcome, and may be entered by calling the CofC office at 272-4248 or by going by the CofC offices at 215 South First Street to fill out an entry form.

"Please consider placing an entry in the Christmas Parade," said Mrs. Eagle. "We need your enthusiasm and entry to make this year's parade a success. Come and join us for a day of Christmas Cheer!"

### FmHA...

Con't. From Page 1

a substantial part of their living. Eligibility is extended to individual farmers who are U. S. citizens and to farming partnerships, corporations or cooperatives in which U. S. citizens hold a majority interest.

The FmHA office in Muleshoe is open from 8 a.m. to 5 p.m. on Monday through Friday.

### Mules Win, Mulettes Lose Last Week

Last week, the Mulettes downed Lamesa by a score of 74-44 during the Denver City Tournament to take a decisive victory, according to Mulettes coach, Ruben Osuna.

Leading scoring was Debbie Brown, 21 points; Amy Bean 11; Wendy Green, 10; Joe Heathington and Michelle Cox, each with seven; Heather Hutton, six; Krystal Angeley and Brenna Matthews, each had four points and Amy Harrison and Monica Swint each had two points.

This made the Mulette season 2-0, however, they later lost to the freshman Wayland Flying Queens from Plainview.

Monday night, the freshman basketball team fell to Tulia, 49-54, making their season record 0-2 for the year to date.

Sharing the lead in scoring were Larry Gonzales and Rodney Reynolds, each with 14 points; Brian Bush had 11 points; Hector Sanchez had four points and John Orozco, Michael Chavez and Jason Box each had two points in the game, said Coach Andy Gamble.

The freshmen's next game is Monday night, November 30 at Dimmitt.

dismal one-in-three overall. For Hispanics, it is an unacceptable 45 percent.

The Texas Education Agency will, in the coming months, develop a dropout reduction program. Your input into this program will be important, because it will help determine the effectiveness of the effort at the local level.

There are many more problems that must be addressed.

For example, we must continue to refine our teacher appraisal system. That system is now under review by another of my task forces.

Another task force is now studying vocational education in Texas to ensure that it not only is efficient, but producing graduates whose skills will be in demand during Texas economic diversification.

Drugs remain a problem at the junior

### Violence...

Con't. From Page 1

### AMBULANCE EMERGENCY

Also on Friday night, members of the Bailey County Ambulance Service responded to an emergency sick call west of Muleshoe.

They found a 70-year old man having breathing difficulties. He was transported to West Plains Medical Center for emergency treatment before being transferred on to Methodist Hospital in Lubbock for additional treatment.

### GUNSHOTS

Early Saturday morning, the Muleshoe City Police Department received a report of 'several' gunshots being heard just north of Muleshoe.

Responding officers found nothing, but were informed that "at least eight" gunshots had been heard by area residents.

This came on the heels of a high speed chase toward Muleshoe from Earth on Highway 70. Earth officers finally stopped a speeding pickup and the occupants were thoroughly checked out before being ticketed and came on their way to Muleshoe. The shaken young men were apparently ready to go home after finding they were possible suspects in the earlier armed robbery in Muleshoe.

Also helping with the search for the robbery suspect were Sheriff Bob Henderson, Deputy Sheriffs Jerry Hicks and Steve Bearden, who immediately began to cover the streets around the robbery scene.

and senior high school level. I have appointed a task force to study the problem—and to recommend a course of action.

The challenges are many and the solutions not always obvious. Still, I know that together we can work to build a better Texas with education remaining the solid foundation that it has been for decades.

### WASHINGTON NOTES

#### \$15 Billion for Air Traffic

The Senate authorized \$15.6 billion in a measure aimed at easing congestion in the skies. The legislation would guide federal spending over the next three years for improving airports and modernizing aircraft-tracking equipment.

#### Medicare Expansion

The Senate has approved a gradual expansion of Medicare coverage of prescription drugs as part of legislation to protect the elderly and disabled from catastrophic medical expenses. Last July, the House passed a similar bill on a 302-127 vote.

### Farm Bureau Helping To Host State Reception

Board members and their wives will be helping District II Farm Bureau host a reception Sunday, today, 1:30-5:30 p.m. in the Lubbock Civic Center for the fifty-fourth annual meeting of the Texas Farm Bureau.

Also, the local Farm Bureau office will close Wednesday morning, in order for all local Farm Bureau employees to attend the closing session of the meeting.

Included in the closing day will be the election of board members, election of a new state president and a general business session.

Sunday will be a date for a reception and Free Enterprise Speech Contest finals.

On Monday, conferences and caucuses will be held during the day, with the day concluding in the Miss Texas Farm Bureau contest.

Tuesday will be a day of business sessions and entertainment for the state meeting.

*Give A Christmas Gift That Will Be Treasured For Generations To Come!*

**Order Form**

NAME \_\_\_\_\_

ADDRESS \_\_\_\_\_

Phone No. \_\_\_\_\_

Make check payable to: **BAILEY COUNTY HISTORY BOOK**

and return this order along with your family history to:

Story **MULESHOE PUBLIC LIBRARY**  
 322 W. 2nd  
 Deadline **MULESHOE, TEXAS 79347**  
 Dec. 1

**"Tales and Trails of Bailey County"**  
**The History of Bailey County**  
 Compiled By The Jennyslippers

**Pre-Season Service Savings**

**YOU CAN HAVE AN ON-FARM INSPECTION OF YOUR EQUIPMENT AND SAVE ON SERVICE WORK, TOO**




**SAVE 10%** on parts when work is done in our Service Center

**plus SAVE 10%** on labor

That's right! We'll send a service technician to your farm to inspect your tractor, combine, or planter. It's called the Performance Plus Checkup, and it's designed to cover every detail of your Case, IH, or Case International equipment. When our man is through, you'll know exactly the operating status of your equipment. If work is needed, we'll do it then at our special Pre-Season discount and you'll be ready for your busy season now. Get an on-farm inspection and Pre-Season Service Savings!

Expires January 30, 1988 

**C & H Equipment**

West HWY 84
Muleshoe
272-5514

**Muleshoe Motor Co.**

*Is Celebrating Their*

**25th Anniversary**

*All New 1987*

**Ford, Mercury, Chrysler, Plymouth and Dodge Cars and Trucks In Stock**

**Will Be Sold At Inventory + \$25.00 One Week ONLY!**

*See Robert, Tommy or Charles*

**'Car Capital Of The West Plains'**

1225 West American Blvd.
272-4251





The 1987 cotton crop under harvest on the High Plains is shaping up as a record-setter almost certain to be remembered as a "near miracle," according to Donald Johnson, Executive Vice President of Plains Cotton Growers, Inc.

Barring disastrous weather in the next 30 to 45 days, he says, "we will harvest more cotton with a higher value and better quality than anyone thought possible only six weeks ago. And that's almost unbelievable when you consider the crop's late start last spring, less than optimum heat units through the month of July and almost a month of cloudy, wet weather beginning about the middle of August."

Eschewing a specific per-acre yield estimate himself, Johnson points to the projections of other crop observers, ranging upward from an average of 480 pounds to as high as 550 pounds, with "more than a few" expecting to break the all-time record of 513 pounds.

Using what most consider a conservative 500 pounds per acre and 2.6 million acres for harvest, area production would come in at just over 2.7 million bales, the biggest crop since 1981 and the fourth largest ever.

What's so amazing, Johnson continues, is that when the yield record was set in 1965 almost the entire crop was planted in April or May, while as much as 70 percent of the 1987 crop was planted in June. Moreover, he says, about 65 percent of the 1965 crop was on irrigated land, compared to something less than 50 percent under irrigation this year.

Qualitywise, early reports from the Lubbock and Lamesa classing offices show unusually good grades and staples, and, most surprising for a late crop, a high percentage of micronaire readings in the desirable range of 3.5 to 4.9. Average micronaire is running at an exceptional 3.81. That figure will decline as the harvest progresses into a more representative mix of early and late planted cotton, Johnson concedes, but samples from June planted cotton still point to above average micronaire readings for the whole crop.

"And that's unheard of for a crop with less than 30 percent planted in the optimum planting period before May 20," he marvels.

In addition to a possible record-setting yield, total farm-level value of the crop, at prevailing prices as of this writing, promises to topple another previous high.

The 2,888,700-bale 1973 crop, at the time called a good crop, good price "once-in-a-lifetime" happening, brought farmers about \$900 million, exceeding previous highs by some \$300 million.

But, proving once again that records are made to be broken, the 1987 crop has a good chance to top the billion dollar mark for the first time in history. Using a 2.7 million bale production, a 60 cent price for lint, \$80 a ton for seed and a total 16 cents per pound deficiency payment, PCG estimates the 1987 farm-level crop value at \$1,087,000,000.

With the farm value having a multiplier effect in the area economy of from 2.5 to 3, Johnson concludes, it's safe to say that cotton's contribution to everybody's Merry Christmas will be very, very substantial.



The sun is 330,330 times larger than the earth.

**GOOD DEALS**  
*from a Good Dealer*

**TITAN II POST SEASON SALE**

If you thought you needed a new combine during this year's harvest, then get one now, for next year...a new Titan II Combine from John Deere. The Titan II has the capacity and reliability you demand in a combine. And we have some big pass along savings and special financing to get you the best deal possible. For a Good Deal on a new Titan II Combine, now's the time, because it's TITAN II POST SEASON SALES TIME.

- New Titan II financing...
- 8.5% Fixed rate financing, OR...
  - 0.0% Financing until the 1988 use season, OR...
  - Cash discount instead of finance waiver.
- Note: Financing subject to approved credit.



Now's the time to see us...

**Dent & Co.**

West Hwy. 84 Muleshoe 272-4296

**Lindsey Jewelers**

Estara cerrando sus puertas despues de 33 anos

Hemos reducido los precios en tiempo para los dias de Navidad.

**35%-75% descuento por toda la mercancia**

Discount Chart

VERDE 35% descuento	AZUL 45% descuento	ROJO 55% descuento	PLATA 65% descuento	ORO 75% descuento
------------------------	-----------------------	-----------------------	------------------------	----------------------

<b>Anillo de diamante</b> Comensara de \$ <del>199</del> 1/4 CT. TW \$189	<b>Anillos de Diamante</b> Comensara de <del>399</del> 1/2 CT. TW \$379	<b>Anillo de diamante</b> Comensara de <del>599</del> 1 CT. TW \$569
---	---	--

**Anillos de Aniversario**

1/2 CT. TW \$ 499  
1 CT. TW \$ 899

El anillo que dice que se vuelve ha casar con ella

**Prometida? Piensa Casarse?**

Precios Increible y Selecciones en anillos de boda.

**Anillos de Diamante por caballeros**

Comensara de \$145

**Aretes de diamante**

Comensando ha	REG	AHORA
\$ 1995	1 CT. TW \$ 199500	\$ 899
REG	1/2 CT. TW \$	\$ 499
\$ 4500	1/4 CT. TW \$ 39900	\$ 149
	1-20 CT. TW 6900	\$ 2995

**Relojes de Seiko**

reducidos tremendamente

**Aretes de Pearlas**

Precio Reg. \$4995  
\$1995

**Cadenas de 14 K estan ha 55% descuento**

<b>Basos de Cristal y mucho mas que no podemos poner aqui</b>	<b>10 &amp; 14 K Anillos de Oro 35-75% descuento</b>	<b>Gran seleccion de decoraciones de Navidad reducidos increillble</b>	<b>Platos Copas Soperas de China</b>
<b>Diamanted sueltos ha descuentos increible</b>	<b>Cajas para jollas 35-75% descuento</b>	<b>Soperas y Platos de plata 35-75% descuento</b>	<b>Compre ahora para la Navidad Cumplianos y aniversarios</b>

*Todos productos son parecidos alos retratos*

**Lindsey Jewelers**  
202 Main St. Muleshoe

Hours 9:30 - 5:30 Mon-Sat

1-806-272-3355

*Todos productos limitado ha lo que tenemos ha mano*



## Sudan News by Evelyn Ritchie

\*\*\*  
Brian May, son of Mr. and Mrs. Harold May, was recently in Europe on a business trip with National Mohair Counsel and toured England and Italy. While in Italy, he visited his grandmothers birthplace and village and visited with relatives and friends and brought back some family history with him. He commented of the beauty of the country and the friendliness of the people there.

\*\*\*  
Gaylene Rogers and Phil Kent, along with other tourists have returned home from vacationing in Japan and Hong Kong.

\*\*\*  
Dwayne Powell attended the Senior Class play Monday night.

\*\*\*  
Mr. and Mrs. Jim Green, Jimbo and Christal have recently moved to Sudan where she will be pastoring the Church of God of Prophecy. Green plans to open an electrician shop in the near future. They moved here from Cleveland, Tenn. Welcome!

\*\*\*  
The Guild Circle of the United Methodist Women met Monday in the home of Thetta Walker. Mary Tollett gave the invocation and Nellie Williams was in charge of the program, entitled "In Everything We Give Thanks". Dorothy Drake accompanied the group as the

other members sang, in participation with the program. Eloise Curry, president, presided over the business meeting. The next meeting will be at church-wide coffee for all ladies of the church on Sat. Dec. 5 from 10-12 at the church.

\*\*\*  
Eloise served refreshments to others attending who were Jackie McAlpin, Anita Wallace, Mae White, Betty Masten, Jennifer Horn, Frances Potter, Mary Tollett, Nellie Williams, Dorothy Drake and the hostess.

\*\*\*  
Mrs. J.P. Arnold visited in Ardmore, Okla. last week with her sister, Mrs. Ceamon Lacy and also with her sister-in-law, Mrs. Roy White. She also visited in McKinney with her brother-in-law, Mr. and Mrs. Ardell Arnold. Mrs. Lacy of Ardmore returned home with her for a visit here.

\*\*\*  
Mr. and Mrs. Gordon Martin and Malcom Wade of Lubbock visited during the weekend with their parents, Mr. and Mrs. Larry Brotherton and Shirley and also attended the football game.

\*\*\*  
Mr. and Mrs. Joey Bellar of Abilene visited during the weekend with his parents, Mr. and Mrs. Joe Bellar and Jarod and attended the final Hornet football game in which Jarod participated in.

\*\*\*  
Among college students home for the weekend were Michelle Gaston, Bonnie Newman, Jeff Kinnie, Mike May, Wade Donnell, Shawni DeLoach, Danette Provence, Jamie Ingle, and Lee Bastley.

\*\*\*  
Missy Fisher sank two free throws with 10 seconds left Saturday to give Wayland Baptist a three point lead, and the Flying Queens held on for a 64-63 win over Schreiner College in Waylands season opener. Missy had 4-4-5-12 and Sharla Harrison, another Sudan resident playing for the Queens had 2-2-2-8 for the game.

\*\*\*  
J. C. Jones has returned home on Saturday from the hospital where he underwent surgery several days ago. It was reported he is doing well.

\*\*\*  
Doris May spent a few days recently at White River.

\*\*\*  
Recently visiting with Mr. and Mrs. Joe Kent were her mother, Mrs. Maureen Barnett and her aunt, Mrs. Eloise Boyd both of Arlington. Thanksgiving holiday guests with them will be friends, Mr. and Mrs. Gay Wager of Florida.

\*\*\*  
Ronnie Duval of El Paso, formerly of Sudan, visited this week with Mr. and Mrs. Bob Taylor and Sherribob.

\*\*\*  
Mr. and Mrs. David Quisenberry and girls visited in Tahoka during the weekend with her parents, Mr. and Mrs. Jerry McKibbin.

\*\*\*  
Mary Baker and Kristen of Lubbock visited Friday with her mother, Marie Allen and attended the final football game when Sudan Hornets lost to the Farwell Steers.

\*\*\*  
Mr. and Mrs. Savoy Tennyson of Stephenville visited recently with their son, Mr. and Mrs. Terry Tennyson and Star.

\*\*\*  
Mr. and Mrs. John Chester and girls of Clovis visited Friday night with her grandmother, Mr. and Mrs. Glenn Gatewood and also with his parents, Mr. and Mrs. Glen Chester and attended the football game here Friday night.

\*\*\*  
Frances Gardner visited

during the weekend with her children in Eunice, N.M.

\*\*\*  
Mr. and Mrs. James Humphreys and girls of Lubbock visited here during the weekend with their families, Mr. and Mrs. Wayne Swart, Mr. and Mrs. John Humphreys and other family members.

\*\*\*  
Mr. and Mrs. Allen Roberts and family of Okla. City, visited during the weekend with his mother, Mrs. Bonnie Roberts and other family members.

\*\*\*  
Mr. and Mrs. Kermit Whitten were in Austin during the weekend to attend the State Cross Country competition when their son, Jimmy Kyle participated placing 7th. Mr. and Mrs. Kenneth Vincent were also there and their son, Jayson, competed placing 42 out of 103 contestants. Also attending State were Mr. and Mrs. Rick Hill, Tracey and Dustin Provence, cousins of Jimmy Kyle.

\*\*\*  
Jimmy Williams of Medicine Mound visited during the weekend with his parents, Mr. and Mrs. John Williams, his sister, Mr. and Mrs. Jay Ford and Jackelyn and grandmother, Mrs. Estelle Lowe.

\*\*\*  
John Taylor and Gail and Randy Gregg of Floydada visited here Friday night and attended the football game and also here was James Taylor of Clarendon.

\*\*\*  
Mrs. Wayne Howell was a patient in the Amherst Hospital for a few days recently. It was reported that she is home and doing well.

\*\*\*  
Bobby Richards and also his son, Michael Don are both patients in Lubbock General Hospital this week. It was reported that Bobby is not doing well.

\*\*\*  
Keevan Masten of Corpus Christi was home recently to visit his family, including Danny

Masten, Donna Masten, Shawnda and Brad, his grandparents, Mr. and Mrs. Nolan Parrish and Mr. and Mrs. W.C. Masten.

\*\*\*  
The Sudan Area Senior Citizens met on Monday, Nov. 23 at 6 p.m. at the Senior Citizens building.

\*\*\*  
Mr. and Mrs. Conner Burford visited their children and others in Hereford last Sunday. While there Willie attended ordination services at Hereford First Baptist Church when her son, Tommy Rosson, was ordained as a Deacon.

\*\*\*  
Melanie Peck, Carmen Ramos and Julie Brotherton recently went to Texas Tech to represent Sudan at a function that explained U.I.L. literary events. Healsds of the U.I.L. came all the way from UT in Austin to explain the importance of each event and short cuts or helpful hints to the event each person was in.

The State Cross Country meet was held on Sat. Nov. 14 in Georgetown. Qualifying to go to State were Jimmy Kyle Glasscock who placed 5th at Regionals and Jayson Vincent who placed 7th at Regionals. Jimmy Kyle placed 17th at the State meet when some 130 persons participated and Jayson placed 42. Congratulations to Jimmy Kyle and Jayson on their feat and for representing Sudan so well at State.

\*\*\*  
Anthony D. Griggs, son of Forest G. and Verna J. Griggs of Sudan, Texas, has been promoted in the U.S. Army to the rank of private first class.

\*\*\*  
Griggs is a unit supply specialist in West Germany, with the 12th Aviation Group.

\*\*\*  
He is a 1985 graduate of Sudan High School.

Shop  
Muleshoe First!

The Golden Mule Shoe Will Be At Damron Drug November 30th December 1st and 2nd (Monday-Tuesday-Wednesday) Find the Mule Shoe and receive 20% OFF the regular price of any item, including prescriptions. Damron Drug 308 Main 272-4210

Don't wait for 2nd best. We Do QUALITY WORK & GUARANTEE IT. We save \$50 deduction on all windshields at Williams Body Shop 1111 East 9th Littlefield, Texas In business for 35 years. Give Us A Call 385-4577.

AT A & M Sale Good Til Dec. 5, 87

makita 14" Cut-Off Saw Now: \$189.99 Reg. \$249.99 No. 2414

Heavy Duty

FLEX-O-LADDER 12' Fold Up Ladder Only: \$84.99 No. FLM-3000

TITAN Deluxe Utility Heater Just: \$25.99 Reg. \$29.53

UL Listed

2 Ton POWER CABLE HOIST-PULLER Now just: \$19.99 Reg. \$31.99 No. 1900013 I

Big or small we've got the gifts for all

WB 1/2" Air Impact Wrench Kit With Sockets \$39.99 No. 1920072 I

Designed for high starting torque. 1/2" bolt capacity, 4.5 C.F.M. air consumption: 90 operating PSI & 250 ft. torque.

FARM VAC 5 Gallon Wet/Dry Vac At: \$44.99 Reg. \$59.99 No. 600A

RAYOVAC The Heavy Workhorse Flashlight Only: \$2.99 #WH4-S 2 Cell SZ AA

Fits right in your pocket and goes anywhere to give you a light anytime

12" Outdoor Thermometer At: \$7.99 Reg. \$9.90

Long Sleeve Western Shirts W.B. Now: \$10.99 Reg. \$13.99

Authentic western styled, yarn dyed shirts with button flap pockets. No. 2030001

Team Roper Jacket Black or Brown No. 82033 XS-XLg. Just: \$39.99 Reg. \$44.50 2XL Reg. Just: \$43.99 Reg. \$48.99 2XLg Tail Just: \$49.99 Reg. \$53.99

Heavy Duty Bench Vise 4" Only: \$24.99 No. 2035 5" Only: \$39.99 No. 2050

This massive vise is heavier, stronger, completely machined and beautifully finished. The smooth movement of the completely enclosed drive mechanism tells you that this is a quality product.

3 Piece Tool Chest Combo Special At: \$189.99 Reg. \$249.99 No. 633

Welding Helmet SUPER RED NYLON Lift-Front At: \$27.99 Reg. \$31.99 No. 55680

Lightweight and tough nylon like helmet above, but with the added convenience of a flip up lens for viewing the chipping/slag removal or grinding of finished welds without removing helmet. Comes complete with ratchet headgear No. 55676 and shade 10 lens and clear lens (2"x4 1/4").

All Stores Open Monday-Saturday 7:30 A.M. - 5:00 P.M. Sunday 12:30 - 3:00 P.M. VISA All Are Welcomed



# Touch Of History Snyder Ranch County's Biggest Back In 1885

The largest ranch in Bailey County was the Snyder Ranch, which was located in the southeastern central section of the county.

D.W., J.W. and Thomas S. Snyder operated their ranch until about 1885. Their brand was LF on the left side.

Most of their ranch land was leased for three cents an acre.

**DDDDDD RANCH**  
The DDDDDDD (7D) leased land from the Snyders. The stock company ranch began operations in the county about 1883. At first its headquarters was on what is known as the Swisher County School land which is due west of Circleback, O.W. Laurence related in 1939 to Mrs. C.V. Stevens.

The 7D, which was a beef company, would drive cattle from the lower country to Bailey County and fatten them. Then the cattle were driven to Montana and the Dakotas to be butchered. It would take three months to make two drive of four or five herd the drive was taken each year. The company quit operation in the county in 1887. It drove all the cattle that it had on the ranch at that time to Montana, cowboy Laurence said.

### OTHER SOUTH CENTRAL RANCHES

Some of the other ranches that were cut out of the original Snyder Ranch were operated by John R. Goode, Enochs and Flowers, Paul Brothers, J.H. Jennings, and Newsom. Whaley and Jones. These were shown on a map made in 1917 which was owned by the late A.P. Stone.

The Circlebacks Ranch, the V's (owned by Mr. Vivan who herded sheep on the V's), and the Bar N Bar ranch are other ranches of parts on the original Snyder Ranch land.

**BAR N BAR RANCH**  
The Bar N Bar Ranch, in the southeast corner of Bailey County, was started by L.T. Lester in 1895. The headquarters was north of present-day Bula community and south of the Circleback, with the ranch land spreading also to Crosby and Lamb counties. In 1900-1902 Lester sold the ranch to the C.B. Livestock Company with Julian Bassett one of the owners. It's greatest period of importance was in 1904-1905 when 10,000 cattle were run on its 120,000 acres, according to Gus Ford in his book Texas Cattle Brands."

**CIRCLEBACK RANCH**  
The Circleback Ranch was operated in the late 1800's.

Among the foremen were Porter Ernest, Tom and Dud Kent, a Mr. Sims and Mr. R.K. Slaughter. It contained approximately 10 to 12 sections.

## Muleshoe School Menu

NOV. 30-DEC. 4  
BREAKFAST

**MONDAY**  
Milk, Toast, Jelly, Fruit

**TUESDAY**  
Milk, Cheese Toast, Fruit

**WEDNESDAY**  
Milk, Blueberry Muffin, Fruit

**THURSDAY**  
Milk, Honey Buns, Juice

**FRIDAY**  
Milk, Biscuits, Gravy, Sausage, Fruit

**LUNCH**

**MONDAY**  
Milk, Pizza, Mixed Veg., Pickles, Fruit

**TUESDAY**  
Milk, Hamburgers, Lettuce & Tomato, Pickles & Onions, Tater Tots, Cobbler

**WEDNESDAY**  
Milk, Enchalladas, Beans, Corn,

Corn Bread, Fruit

**THURSDAY**  
Milk, Corn Dogs, Veg. Beef Soup, Crackers, Cinnamon Rolls, Fruit

**FRIDAY**  
Milk, Chicken Nuggets, Gravy, Creamed Potatoes, Eng. Peas, Hot Rolls, Fruit

**COMBO LINE**

**MONDAY**  
Milk, Steak & Gravy, Creamed Potatoes, Greer Beans, Hot Rolls, Fruit

**TUESDAY**  
Milk, Juicy Burgers, Lettuce & Tomato, Pickles & Onions, Tater Tots, Cobbler

**WEDNESDAY**  
Milk, Cheese Nacho's, Beans, Corn, Corn Bread, Fruit

**THURSDAY**  
Milk, Corn Dogs, Veg. Beef Soup, Crackers, Cinnamon Rolls, Fruit

**FRIDAY**  
Milk, Fish, Macaroni & Cheese, Eng. Peas, Hot Rolls, Fruit

## ABOUT YOUR HOME

By April Rhodes

For a different, cool drink, fill a tall glass with ice and add equal parts of tea and Pepsi-Cola.

Wallpaper can do all kinds of decorating tricks for you. A room can be made to look larger, smaller, to have a higher ceiling, a lower ceiling, to seem cooler or warmer through your choice of wallpaper.

Do a way with kitchen clutter by adding brightly painted peg-board panels. There's no end to the list of things you can hang in attractive array.

A child's bedroom can be made most attractive by making curtains and bedspread out of a combination of brightly colored sheets.

Three tablespoons cocoa plus 1 tablespoon shortening can be substituted for 1 square of unsweetened chocolate.

## BIBLE VERSE



"The wise man's eyes are in his head; but the fool walketh in darkness."

1. Who was the author of this wise saying?
2. Who was his father and mother?
3. For what architectural masterpiece is he best known?
4. Where may the above saying be found?

### Answers to Bible Verse

1. King Solomon.
2. King David and Queen Bathsheba.
3. Solomon's temple, at Jerusalem.
4. Ecclesiastes 2:14a.

### Immaculate Conception Catholic Church

Father Patrick Maher  
Northeast of City

### First Baptist Church

220 West Ave. E.  
Barry Bradley, Pastor

### Emmanuel Baptist Church

Iglesia Bautista Emmanuel  
107 East Third  
Isaias Cardenas, Pastor

### Trinity Baptist Church

344 E. Ave. B.  
Rev. V.L. "Buster" Huggins

### Circle Back Baptist Church

Joel E. Stafford  
Intersection FM 3397 & FM 298  
946-3676

### Calvary Baptist Church

1733 W. Ave. C  
Rev. Darrel Martin

### Muleshoe Baptist Church

8th and Ave. G.  
Bob Dodd, Pastor

### Progress Baptist Church

Paul Brigham, Pastor  
Progress, Texas

### Richland Hills Baptist Church

17th and West Ave. D.  
David McAdams, Pastor

### St. Matthew Baptist Church

Corner of West Boston & West Birch  
M.S. Brown, Pastor

### Progress Second Baptist Church

1st and 3rd Sunday  
Clifford Slay, Pastor

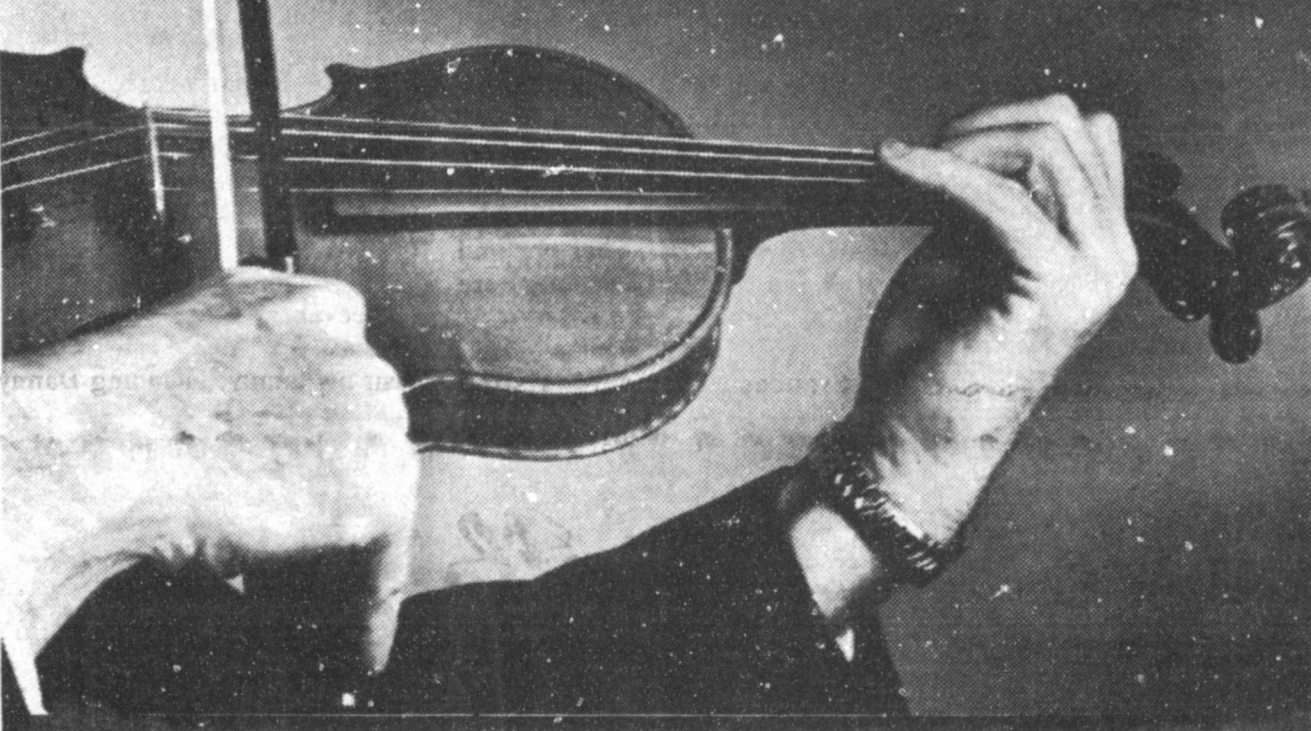
### The Community Church

Morton Hwy.

We all thrill to a...

## FAMILIAR TUNE

It is so soothing, comforting, and pleasing to listen to our favorite tunes when played by capable artists. These tunes can make our minds wander back to pleasant memories of days gone by, and also awake us to new joys. Each Sunday we have the opportunity to be thrilled by the preaching of God's word, and the story of God's great love for us. Attend church Sunday and enjoy worshipping God with others.



The Church is God's appointed agency in this world for spreading the knowledge of His love for man and of His demand for man to respond to that love by loving his neighbor. Without this grounding in the love of God, no government or society or way of life will long persevere and the freedoms which we hold so dear will inevitably perish. Therefore, long from a selfish point of view, one should support the Church for the sake of the welfare of himself and his family. Beyond that, however, every person should uphold and participate in the Church because it tells the truth about man's life, death and destiny; the truth which alone will set him free to live as a child of God.

Coleman Adv.



### Longview Baptist Church

965-3413  
B.C. Stonecipher, Pastor

### Primera Iglesia Bautista

223 E. Ave. E.  
Roy Martinez, Pastor

### Lariat Church Of Christ

Sunday School 10:00 a.m.  
Worship 11:00 & 6:00 p.m.  
Wed. Services 7:00 p.m.  
Sam. Billingsley, Minister

### Muleshoe Church Of Christ

Clovis Hwy.

### Bret McCasland, Minister 16th & Ave. D. Church Of Christ

Sunday 10:30 a.m.  
Evening 6:00 p.m.  
Wednesday 8:00 p.m.

### First Assembly Of God

Rev. David C. McCune  
9:45 Sunday School  
11:00 Morning Worship  
6:30 Evening Services  
7:30 Mid Week Services  
272-3984

### Primitive Baptist Church

621 South First  
Elder George Johnson, Pastor

### Spanish Assembly Of God

East 6th and Ave. F.  
Luis Campos, Pastor

### First United Methodist Church

507 W. 2nd Street  
Richard Edwards, Pastor

### El Divino Salvador Methodist Church

5th and Ave. D.  
Jose M. Fernandez, Pastor

### 1st Baptist Church

Lazbuddie, Tx. 965-2126  
Gary Wilcox, Pastor

### Lazbuddie Church Of Christ

United Pentacostal  
Lighthouse Church

207 East Ave. G.  
Rev. J.A. Torres

### St. John Lutheran

Sunday School and Bible  
Classes 9:30 a.m.  
Church services  
Church Services 10:30 a.m.  
Rev. Mac Bearss, Pastor

### Templo Calvario

507 South Main  
Sunday 10:00 a.m.  
Sunday Evening 7:00 p.m.  
Evangelistic Services  
J.L. Soto, Pastor

### New Covenant Church

Plainview Hwy.  
Sunday 10:00 a.m.  
Wednesday 7:00 p.m.  
Jimmy Lowe, Pastor

### Lazbuddie Methodist Church

965-2121  
Larry Raid Farris, Pastor

### Jehovah Witness

Friona Hwy.  
Boyd Lowery, Pastor

### Church Of The Nazarene

9th and Ave. C.  
Dennis Hayes, Pastor

<b>Western Drug</b> 114 Main 272-3106			<b>Dairy Queen</b> 1204 W. Amer. Blvd. 272-3412
<b>Serv-All Thriftway</b> 401 W. Amer. Blvd. 272-4739	<b>KC Mufflers Inc.</b> 201 North First 272-3620	<b>American Valley Inc.</b> Hwy. 84 W. 272-4266	<b>Kemp's Discount Furniture</b> 414 W. Amer. Blvd. 272-5023
<b>Farmers Spraying Service</b> Lazbuddie 965-2624	<b>West Tex Feed Yards</b> 272-7555	<b>Central Texico</b> 221 W. Amer. Blvd. 272-3915	<b>Fry &amp; Cox, Inc.</b> 401 S. 1st 272-4511
<b>Main Street Beauty Salon</b> 115 Main 272-3448	<b>Lenau Lumber</b> 202 E. Ash 272-4222	<b>Brucher Motor Supply</b> 107 E. Ave. D 272-4288	<b>Five Area Telephone Cooperative, Inc.</b> 302 Uvalde 272-5533
<b>Irrigation Pumps &amp; Power</b> West Hwy. 84 272-4483	<b>Lindsey Jewelry</b> 202 Main 272-3355	<b>Foster Fertilizer</b> Lazbuddie 965-2921	<b>Bobo Insurance</b> 108 E. Ave. C 272-4264

## Three-Way Menu

NOV. 30-DEC. 4  
BREAKFAST

**MONDAY**  
Cereal, Juice, Milk

**TUESDAY**  
Toast & Jelly, Juice, Milk

**WEDNESDAY**  
Cinnamon Toast, Juice, Milk

**THURSDAY**  
Biscuit, Gravy, Bacon, Jelly, Juice, Milk

**FRIDAY**  
Waffles & Syrup, Juice, Milk

**LUNCH**

**MONDAY**  
Corn Dogs, Green Beans, Cream Potatoes, Milk, Cake

**TUESDAY**  
Sloppy Joes, Salad, Corn, Milk, Jello

**WEDNESDAY**  
Pinto Beans, Okra, Coleslaw, Corn Bread, Milk, Cobbler

**THURSDAY**  
Spaghetti Meat & Sauce, Peas, Salad, Hot Rolls, Milk, Honey / Butter

**FRIDAY**  
Ham & Cheese Sandwich, Fries, Lettuce, Tomatoes, Pickles, Buns, Milk, Cookies

## Auction

PROPERTY KNOWN AS  
"TRADEWINDS PLAZA SHOPPING CENTER"  
MULESHOE, TEXAS  
AUCTION TO BE HELD AT  
10:05 A.M., TUESDAY  
**DEC. 1, 1987**

AT THE  
BAILEY COUNTY  
COURTHOUSE

### Muleshoe, Texas

Property is located at the northwest corner of 8th Street and American Boulevard, Muleshoe, Bailey County, Texas.

Sold for cash. Sold subject to all taxes due. Sold by Trustee's Deed. Sold by JACK FAULK, Substitute Trustee.

Jack Faulks Auctioneers  
(806) 763-4919 TxE-018-0053  
Box 5701 Lubbock, TX 79417







# Bailey County Journal

# Classified

Call 272-4536

**CLASSIFIED RATES**  
Per Word.....\$1.15  
Minimum Charge \$2.30

Consecutive Insertions  
Minimum Charge \$2.00

**CLASSIFIED DISPLAY RATES**  
\$1.75  
Per Column Inch

**DEADLINES**  
12 noon Tues.  
For Thursday Paper  
12 noon Friday  
For Sunday Paper  
We reserve the right to classify, revise, or reject any ad. Not responsible for any error after ad has run once.

## 1. Personals

**CONCERNED**  
About Someone's Drinking?  
**HELP IS AVAILABLE**  
through Al-Anon  
Call 227-2350 or 965-2870 or come to visit Tuesday nights, 8:00 p.m. or Saturday mornings at 10:30 a.m. at 1116 W. American Blvd., Muleshoe.

## 3. Help Wanted

**NURSING INSTRUCTOR NEEDED**  
AT ENMU- Clovis  
Opportunities for  
\* Substituting  
\* Job-sharing  
\* Full-time  
Up to \$15 per hour depending upon Credentials  
For information, call 769-2811  
Provost, ext. 116  
Nursing, ext. 134  
Send resume to: Office of Provost ENMU-Clovis 417 Schepps Blvd. Clovis, N.M. 88181 e3-48s-3tc

**GET PAID** for reading books! \$100.00 per title. Write: ACE-A883, 161 S. Lincolnway, N. Aurora, IL 60542. 3-48t-8tp

**PART TIME HOME MAILING PROGRAM!** Excellent income! Details, send self-addressed, stamped envelope. WEST, Box 5877, Hillside, NJ 07205. s3-47t-6tc2ts

**DOES JOB HUNTING HAVE YOU WONDERING WHICH WAY IS UP?** Prepare for new jobs coming to the Panhandle area. Call 1-800-227-1571 ext. 511 for information about Welding and Fabrication career training at Texas State Technical Institute in Amarillo. 3-48s-1tc

**NEEDED CARRIERS** for the Muleshoe/Bailey County Journals. Two routes opened. Must be at least 12 years of age and must provide own transportation. Be available every Wed. & Sat. afternoon. No phone calls, apply in person. 304 W. 2nd. 3-48s-1tc

## 5. Apts. For Rent

**FOR RENT 2** bdrm. furnished apt. Good Location. Water paid. Call 272-7575. p5-47t-ffc

## 8. Real Estate

**JAMES F. HAYES & CO. AGRICULTURAL REAL ESTATE**  
Vic Coker-Agent  
(806) 965-2468

**640 ACRES**- 4 electric sprinklers, steel pens with concrete bunks, domestic well, all fenced. Best soil & water. Rare opportunity, good value.

**1050 ACRES OF DRYLAND**- 350 acres cultivated, balance grass. Wheat allotment. 2 w. ditches. Absentee landowner is anxious.

**160 ACRES WITH MODERN HOME** N.E. of Muleshoe in DeWitt County. Electric Sprinkler. Good soil, Best water. \$700 / acre.

**320 ACRES** of prime farmland Southwest of Hub in Pecos County. Excellent water: 3 8" wells and a tailwater pit. This farm is clean. Top notch in every respect.

**160 ACRES IN LAMB COUNTY**- Excellent water, electric sprinkler, fully allotted, fenced, prime opportunity for first time buyer.

**160 ACRES** North of Lazbuddie. 1 8" well, clean, lay out good. Excellent terms Available!

**160 ACRES** - 2 Wells - Excellent Water, fully allotted, good check. Soil that will grow anything.

Call Vic if you need farm & ranch appraisal work done.



So light-shy — and so ingenious — are some sea urchins that they pick up pebbles and hold them up to cast shadows when caught in flashlight beams.

## 8. Real Estate

## 8. Real Estate

We have homes for as little as \$600.00 total move in cost, with payment scheduled according to income for qualified buyers!!!!

**RICHLAND HILLS**  
NICE-3-2-2 Brick, Cent. A&H, built-ins, FP, fenced yard, & more.....

**IMMACULATE** 3-2-2 Brick, corner lot, Cent. A&H, built-ins, FP, loads of storage & closet space, sprinkler sys.!!!!

**PRICE REDUCED**-3-1-1 Brick, Cent. heat, Evap. air, built-ins, fenced yard.....

**HIGHLAND ADD.**  
SPACIOUS 3-2 1/2-2 Brick Home on corner lot, Cent. A&H, built-ins, fireplace, loads of storage, 2900 plus sq. ft. of Lv. area, lots of extras, undgrd. sprinkler sys., fenced yard. A GREAT BUY!!!

**JUST LISTED**-Nice 3-2-2 Brick Home (2 story), on corner lot, Cent. A&H, built-ins, and much more. LET'S LOOK TODAY!!!

2-1-1 home, wall heat, evap. air, fenced yard. \$20's.....

**PARKRIDGE**  
IMMACULATE 3-2-2 Brick Home, Cent. A&H, built-ins, fireplace, energy efficient, nicely decorated, plus beautifully landscaped yard. \$50's!!!!

**HIGH SCHOOL**  
JUST LISTED-3-2-2 home, corner lot, nice carpet, fenced yard. \$30's!!!!

3-1-1 home, corner lot, Cent. A&H, built-ins. \$30's.....

**SPACIOUS** 3-2 Brick, Cent. A&H, built-ins, nice den w/FP, fenced yard, storage bldg., & much more. \$70's!!!!

**JUST LISTED**-3-1 home, nice carpets, new roof, storm windows, & much more. \$20's!!!!

**NICELY REMODELED** 3-2-1 carport home, Cent. heat, evap. air, built-ins, utility, earthtone carpets, ceiling fans, covered patio, fenced yard & more. \$30's!!

3-2-1+2 carport home, Cent. A&H, built-ins, fireplace, fenced yard & more. \$40's!!!!

**JUST LISTED**-NICE 2-1-1 home, wall furnace heat, earthtone carpets!!!!

**LENAU ADD.**  
JUST LISTED-Nice 3-2-1 Brick, 2,000+ sq. ft. of lv. area, very well kept!!!! \$40's!!!!

**DIANNE NIEMAN, BROKER**  
"WE APPRECIATE YOUR BUSINESS"

## 8. Real Estate

**WHITT-REID REAL ESTATE**  
201 Main Office 272-3611

\$600 total move in cost - 3 bedroom, single garage homes - for those who qualify.

2 Bedroom, single garage home. Reduced for quick sale, \$22,000. 25H8

3 Bedroom Brick Home - Richland Hills Addition - over 2000 sq. Ft. of living space, \$56,000. 5H9

**We Need Listings**

● We need irrigated & dry

● Acreage on pavement

● Nice 3 bedroom homes

Roy Whitt Thursie Reid  
272-3058 272-5318

Certified Appraiser

## 8. Real Estate

**HOUSE FOR SALE** or rent. 1623 W. Ave. B. 3 bdrm., 2 bath, one garage. 505-762-2090, after 10:30 a.m. or 505-762-2625 after 5:30 p.m. k8-47s-tfc

**Repeat Performance**  
Who was that blonde I saw you with last night? The redhead I was with Thursday night.

## 8. Real Estate

## 8. Real Estate

**BINGHAM & NIEMAN REALTY** 272-5285 --- 272-5286

NICE 3-2-2 Brick, Cent. A&H, built-ins, fenced yard. \$40's!!!!

3-2-2 carport home, corner lot, nicely remodeled. \$30's.....

**JUST LISTED-COZY** 3-1 1/2-1 home, Cent. heat, nice earthtone carpets, fenced yard, storage bldg., & more!!!!

**COUNTRY CLUB**  
3-2-2 Brick, Cent. A&H, built-ins, fenced yards, & more. \$50's!!!!

**COUNTRY HOMES**  
JUST LISTED-2-1-1+1 carport home on 1 acre on pavement close to town, built-ins, wall furnace heat, evap. air, satellite system, and fenced area for horses or calves. \$20's!!!!

3-1-2 home, 1/2 acre, Cent. A&H, new paint, nice carport, cellar. \$30's!!!!

2-1 home, 20 acres, sub. pump, -sprinkler, barns & corrals. \$40's!!!!

**SPACIOUS** 3-2 1/2-2 Brick Home on 5 acres, Cent. A&H, built-ins, fireplace, sunroom, finished basement, sprinklers sys., storage bldg., horse barn, calf barn, corrals & much more. Close to town. MUST SEE TO APPRECIATE!!!

3-2 home on 1 acre on pavement close to town, Cent. A&H, built-ins, storm windows & doors, fenced yard. \$30's!!!!

3-1 home on .59 acres on highway at edge of town plus 1-1 mobile home for rental unit, storage, or workshop. A GOOD BUY!!!

**LARGE BUILDING** on 2 lots, paved parking.....

**JUST LISTED**-Nice, well-maintained Self-Service Laundry, 34 washers, 16 dryers in nice, modern building, excellent location. Books available to qualified Buyer.

**APPROX.** 3,000 sq. ft. bldg., Railroad frontage. CASH PRICE \$15,000.00.

**JUST LISTED**-2-2-1 brick home on 1 acre on pavement, close to town, Cent. A&H. \$40's!!!!

**EXCELLENT Commercial** -300 ft. of Hwy. frontage. bldg. area plus add'l. oldg.!!!!

**GEORGE NIEMAN, BROKER**

**IN CONTRACT**

**Think Classified!**

## 11. For Sale Or Trade

**GUNS FOR SALE**  
1 - Remington 760-308.  
2 - Remington 1100 Auto V R 12 ga modified.  
1 - Winchester 1200 12 ga.  
1 - Savage 300 12 ga pump.  
1 - Westernfield (mossbury) 550 C-lett-A Chokey.  
1 - Belguim Browning Sweet Sixteen.  
Call 272-4796 after 7:00.  
p11-48t-2tc

**18. Legal**

**NOTICE BY PUBLICATION**  
STATE OF TEXAS TO ALL WHOM IT MAY CONCERN, GREETINGS:  
YOU ARE HEREBY COMMANDED to appear and answer before the Honorable District Court, 121st Judicial District, Terry County, Texas, at the Courthouse of said county in Brownfield, Texas, at or before 10 o'clock a.m. of the Monday next after the expiration of 20 days from the date of service of this citation, and there to answer the petition of Santana M. Herrera, Petitioner, filed in said Court on the 20th of August, 1987, against Respondent(s), and said suit being number 11,861 on the docket of said Court, and entitled "In the Interest of Christopher Lee Herrera, A Child," the nature of which suit is a request to terminate the parent-child relationship and for adoption of the child. Said child was born on the 15th day of September, 1979.  
The Court has authority in this suit to enter any judgment or decree in the child's interest which will be binding upon you, including, but not necessarily limited to, the termination of the parent-child relationship, the determination of paternity, and the appointment of a conservator with authority to consent to the child's adoption.  
Issued and given under my seal of said Court at Brownfield, Texas, this 19th day of November, 1987.  
BETTY FRAZIER  
Clerk of the District Court of Terry County, Texas  
By: Rita Homesley Deputy  
c18-48s-1tc

## Who Knows?

1. When did 18-year-olds cast their first votes?
2. When is the first Sunday of Advent?
3. Define pseudonymous.
4. How many feet equal one mile?
5. Which ex-president organized the University of Virginia?

## Answers to Who Knows

1. November 2, 1971.
2. November 29, 1987.
3. Bearing or using a fictitious name.
4. 5280 ft.
5. Thomas Jefferson.



## MICROWAVE COOKING

By Linda Attaway

With cool weather approaching, vegetables from the garden will put your microwave to good use. For example, to rehydrate dried beans, don't soak them overnight, put one pound of the dried beans in a five-quart casserole with eight cups of water and cover tightly.

Microwave on High for eight to ten minutes or until boiling. Keep the cover on and let stand for one hour, then proceed with your favorite recipe.

A cup of hot tea can also be beneficial on a cold day. Make it right in your microwave oven.

Put your favorite ceramic teapot in the oven—remember, no metal parts—with about four cups of water. Heat on High for 8 to 10 minutes or until boiling. Add your tea and wait the recommended time for steeping.

## KNOW THE WEATHER

Do the stars affect our weather? Does the Milky Way, which now extends in a vast curve through the center of the celestial hemisphere from northeast to west, have any influence on the weather?

As far as astronomers now know, the stars have little if anything to do with our weather, but our sun is all-important and actually is the source of all weather. The stars—and other suns—may have long range bearings on our sun and on our weather but that questions is not yet finally resolved.

The sun's heating of the earth's surface is the beginning of all our weather movement, the making of clouds, the rising of warm air, and the making of winds. Without our sun, the earth would be a bleak place, perhaps like the moon or some cold lifeless planet.

The layer of gases surrounding the earth is also necessary for life.

## Timing TV

Many who watch the evening news like to skip the commercials. But the networks have sneakily learned (conspired?) to synchronize watches. Often all three commercial networks break off news and begin commercials at the same time.

They're force-feeding us. If one can switch to PBS, that's an out. One can also switch to the local wrecks, robberies and murders. Or one can mute sound. The weak-minded will, however, then curiously sneak glances at the action on screen.

This can result in acrimony, even threats of violence. If one has wondered how television creates violence, this is a perfectly reasoned and logical scientific analysis of its darker side.

## 1. Personals

**MARY KAY COSMETICS** Josie Flowers 272-3865. fl-49s-tfc

**MASTERCARD / VISA!** Regardless of credit history. Also, new credit card. No one refused! For information call.... 1-315-733-6062 Ext. M1950. 1-44s-6tsp

**OPEN YOUR OWN** beautiful discount high quality shoe store. Satisfaction Guaranteed. **LADIES-CHILDRENS/ MENS.** Over 300 nationally known brands - over 1500 styles - 40 to 50% below wholesale prices. Your "\$" cash investment of \$12,900.00 to \$39,900.00 includes beginning inventory, training, and grand opening promotions. Ladies Apparel stores also available. Call Today. Prestige Fashions 501-329-8327. 1-48s-2tpts

**STORAGE** Rooms Available For Storage \$25.00-\$30.00 per month Ted Barnhill 272-4903 b1-42s-tfc

## 2. Lost & Found

**FOUND:** Black bald face cow on left side 3 1/2 miles N.W. Needmore. 946-3352. Owner can pay for ad. h2-48t-2tc

## 3. Help Wanted

**TRACTOR TRAILER DRIVERS**

**KLM**

**KLLM OPENING AMARILLO TERMINAL**

ACCELERATED GROWTH HAS CREATED IMMEDIATE OPPORTUNITIES FOR:

- ★ Single Drivers
- ★ Permanent Teams
- ★ Team 1st Drivers
- ★ Team 2nd Drivers
- ★ Excellent Pay with Guar. Base Salary
- ★ Safety & Fuel Bonus
- ★ Free Health, Dental, Disability & Life Ins.
- ★ Paid Vacation, Guaranteed Time Off

Requires 1 yr. exp. for lead/Single in all four seasons in the last 24 months. 6 mo. exp. for 2nd driver.

OUR REPRESENTATIVE WILL BE IN:  
December 2 & 3 Room 100.

FOR INFO., OR APPOINTMENT CALL:  
"The Hilton Inn"  
Call Driver Personnel Mon-Fri. 8 AM - 5 PM



**STRAIGHT TALK FROM TDA**

MIKE MOELLER

DEPUTY COMMISSIONER TEXAS DEPARTMENT OF AGRICULTURE



**Native Plants--They're The Natural Thing To Do**

More than 5,000 species of plants are native to Texas. That's counting just plants that were growing here when the conquistadors arrived.

Now gardening pioneers are rediscovering native Texas trees, shrubs and flowers. Nurseries and landscaping businesses around the state report unprecedented consumer demand for native plants and for information about how to grow them in urban settings.

Most native plants--like Mexican plum, red maple, lantana and redbud--originated in Texas soil. Others are naturalized Texans from way back. They either hopped the fence or were transplanted here so long ago that they now propagate freely in the wild. Among these naturalized natives are such notable plants as crape myrtle and lilac chaste tree, or vitex.

**Going Native.** Native plants share certain economic and aesthetic advantages over imports. Natives are hardier and better adapted to Texas conditions than imports. Properly matched to their habitats, native plants may need less water than introduced ornamentals. Also, unlike many hybridized, sterile imports, native plants can re-seed themselves. They multiply each season at no extra cost to you.

It takes some folks a while to warm up to native plants' subtle colors and discreet flowers, accustomed as most of us are to the bolder hues and bigger blooms of hybrid ornamentals. Once your eye adjusts to native plants, though, you'll find landscaping with them an appealing proposition. They create a low-input, low-maintenance landscape that is totally Texan--part of our state's unique beauty and diversity.

One reason why native plants need less attention is that they naturally resist pests. Grown under proper conditions, they don't need pesticides to

protect them from insects and disease. While no plant is entirely pest-free, centuries of natural selection have given native plants time to develop a live-and-let-live relationship with natural predators. Under extreme stress from pests or weather they may look bad, but they're survivors. They almost always bounce back.

**Individual Attention.** Don't expect all that's native to flourish automatically in your yard. Texas is a big state, with native plants adapted to each region's soil and climate. So you need to be prepared to treat native species as individually as you do non-natives.

Proper site preparation is critical. Follow the commercial landscaper's rule: Put a \$2 plant in a \$20 hole. Dig a hole roomy enough to accommodate each plant's entire root ball.

Make sure plants from other parts of Texas feel at home in your climate and landscape. Use peat moss and fertilizer on forest plants from East Texas that are used to moist, rich, acidic soil. But skip soil amendments and fertilizers when transplanting West Texas trees or shrubs, like purple sage, that do best in well-drained, relatively poor, alkaline soils. Soil that's too rich can keep these plants' roots from invading the surrounding soil. The plants may become root-bound and sickly in a few years.

Use your own good judgment to match plants to soil. For instance, if you're planting in a very dry site with poor soil, choose a small tree or shrub and feed it a little by adding one part topsoil to two parts soil from the site. In a moist, rich soil, like a former azalea bed, choose American beautyberry or coral berry instead of a dry-country plant like purple sage.

The best time to transplant natives is from November through late February. Water them regularly during the crucial first year after transplanting. After a year, most native plants will do well on rainfall alone.

Learn each native plant's particular soil, sun and water requirements before you buy. Smart choices at the outset lead to years of satisfaction later.

For more information about Texas native plants, or for a copy of TDA's *Texas Native Tree and Plant Directory*, write Texas Department of Agriculture, P. O. Box 12847, Austin, TX 78711 or call (512) 463-7624.

# Lindsey Jewelers

## Closing Our Doors After 33 Years

Just In Time For The Big Holiday Shopping Spree, We Have Lowered Our Prices To

# 35% To 75% Off Throughout The Whole Store!

Discount Chart

**GREEN**  
35% OFF

**BLUE**  
45% OFF

**RED**  
55% OFF

**SILVER**  
65% OFF

**GOLD**  
75% OFF

1/4 CT. TW Reg. Values To \$695  
**Diamond Rings**  
Starting at \$199  
\$189

1/2 CT. TW Reg. Values To \$1195  
**Diamond Rings**  
Starting at \$399  
\$379

1 CT. TW Reg. Values To \$1350  
**Diamond Rings**  
Starting at \$599  
\$569

**ANNIVERSARY RINGS**  
1/2 CT. TW \$499  
1 CT. TW \$899  
The ring that says you would marry her again.

**Engaged? Plan to Marry?**  
INCREDIBLE PRICES & SELECTION ON BRIDAL SETS

**BOLD HANDSOME MEN'S DIAMOND RINGS**  
Starting at \$145<sup>00</sup>

**Diamond Earrings**

	Reg.	Sale
1 ct. TW	1495 <sup>00</sup>	899 <sup>00</sup>
1/2 ct. TW	1200 <sup>00</sup>	499 <sup>00</sup>
1/4 ct. TW	399 <sup>00</sup>	149 <sup>00</sup>
1-20 ct. TW	69 <sup>00</sup>	29 <sup>95</sup>

REG. \$45<sup>00</sup>

**Seiko Watches**  
Drastically Reduced

**Pearl Earrings**  
Reg. 49<sup>95</sup>  
Now \$19<sup>95</sup>

# 14 K Chains 55% OFF

**Crystal & Glassware Too Much To List**

**10 and 14 K Gold Fashion Rings 35-75% OFF**

**Wide Selection of Christmas Decorations Drastically Reduced**

**China Galore**  
• Plates  
• Bowls  
• Cups  
• Saucers

**Loose Diamonds At Remarkable Savings**

**Wooden Jewelry Boxes 35-75% OFF**

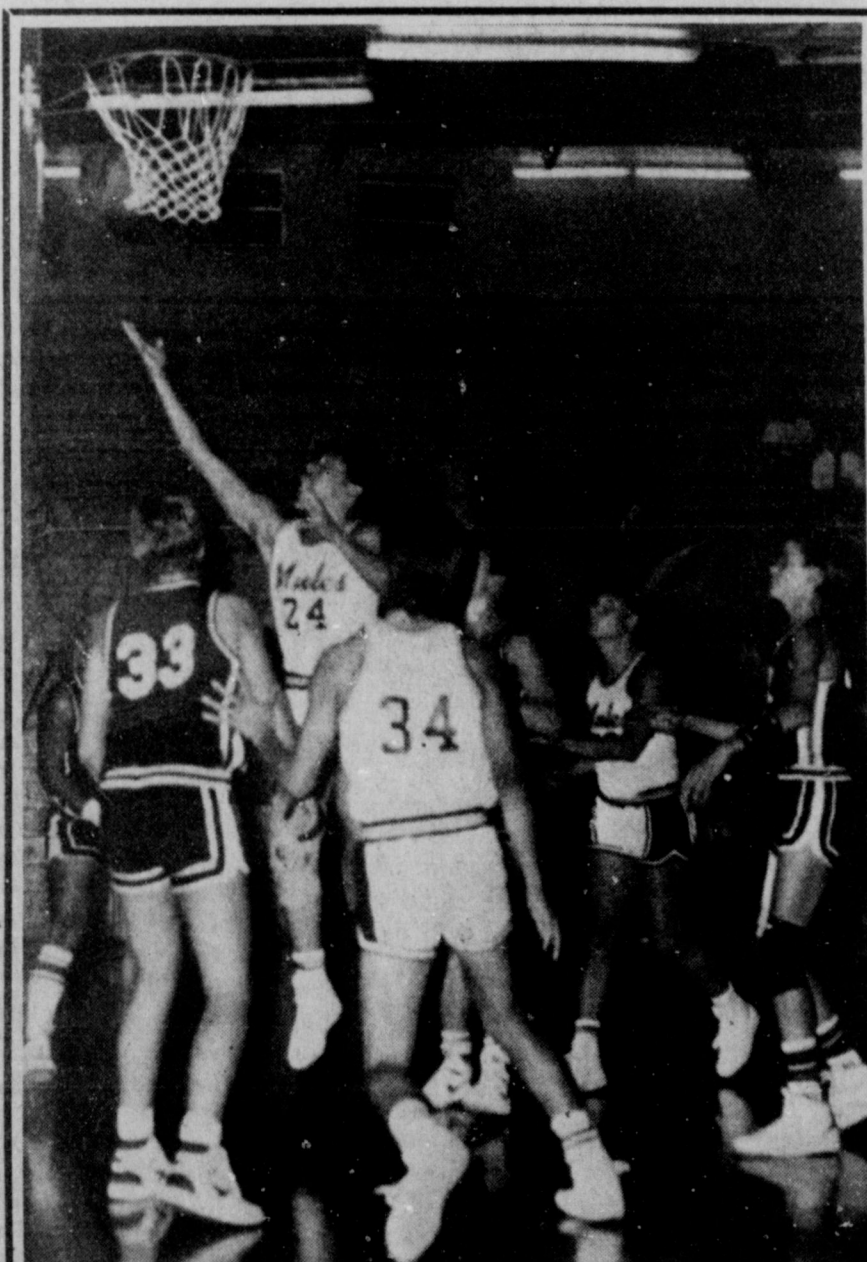
**Silver Holloware 35-75% OFF**

**Buy Now For Christmas Birthdays Anniversary**

**All Products Similar To Picture Shown 9:30 - 5:30 Mon-Sat**

**Lindsey Jewelers 202 Main St. Muleshoe**  
1-806-272-3355

**All Products Limited To Stock On Hand Subject To Prior Sale**



**THIS IS CALLED 'DRAWING A CROWD'**--A good crowd gathers round as the Mules go for two in the Muleshoe-Spade basketball game Tuesday night in Watson Junior High School gym. The Mules won handily over the visiting team to stretch out their list of victories for this season.

**The Honey Comb**

And

**Sherri's Jewelry And Accessories**

Located At 120 W. Ave C

Cordially invite you to our

**Open House**

**Sunday, November 29th**

**1 to 5**

Introducing an exclusive line of clothing by Lilia Smith.

Also fashion jewelry and accessories all 20% OFF

the day of Open House Only!

Register for a \$30 gift certificate to be given away December 19th.

