



BUY, SELL OR TRADE —  
GUNS AND PISTOLS  
WATCHES CLEANED \$2.95  
All Work Guaranteed  
★ **Hale Variety**

HELP WANTED — LOOK: Splendid Raleigh Business available in East Lynn Co. Exceptional opportunity for industrious person. See Ollie Riddle, Box 1, Wilson or write Rawleigh's, Dept. TXC 560-18

House for rent, 1 mile east of Wells, 4 rooms and bath. Call Julian Pirtle, Aten 22287 1tp

BUY YOUR DAILY PAPERS AT INDEX OFFICE —  
**LUBBOCK AVALANCHE**  
12 MONTHS ..... \$13.95  
WITHOUT SUNDAY ..... \$12.00  
EVENING with Sunday ..... \$12  
EVENING without Sunday ..... \$10.25

For sale — one and one half lots on pavement on 12th st. Mrs. Laverne Gardenhire, phone 287 or 47

—o—  
**Track Events To Come**

March 25 - 26 — Kermit  
April 2 — Hale Center Relays  
April 9 or 14 — District meet  
April 22-23 — Regional meet  
April 30 — Red Raider relays  
May 5, 6, 7 — State

**SCHOOL EVENTS**

19th — 23rd — Lubbock stock Show  
25th — Armed Forces Day Scouts Talent Show 8 p. m.  
26th — Literary events at Sunday

**O'Donnell Barber Shop**

LATEST STYLES CUT BY THE BEST METHOD  
Specialize in Flat Tops  
Prompt Service — John

**O'DONNELL INDEX - PRESS**

Established in 1923  
Box 546, O'Donnell, Texas  
Published Every Wednesday  
O. G. SMITH, JR., Owner  
Advertising Rate: 60c col. in.  
Entered as second class matter September 23, 1923 at Post Office at O'Donnell, Texas under Act of Congress on March 3, 1879.

**SUBSCRIPTION RATES**  
In Lynn, Dawson and Borden Counties \$2 per year. Elsewhere in U. S. \$2.50 per year.  
Card of Thanks \$1.00. Classified advertising 4c per word, with minimum charge of 50c.  
Your label at top of paper tells date your subscription expires.

At Stud — Appaloosa horse, Fee \$50 with return, Jim Smith, Rt. 1, O'Donnell, Texas 3-16 p

**Saleh And Saleh**  
ATTORNEYS AT LAW  
GENERAL PRACTICE IN ALL COURTS  
502 N. 1st St. — Phone 2171  
LAMESA, TEXAS

"CARPET" at contract prices.  
Myres Carpet Shop, 2420 19th St. Lubbock, CALL COLLECT, C. L. Gann, PORTER 3-6876, Free estimates, no obligation Feb. col.

Mrs. E. B. M. Cook's problem wasn't automation. It was the lack of it.

Mrs. Cook is in charge of biological production at the Texas State Department of Health, which annually distributes some 300,000 sealed vials of smallpox vaccine and 300,000 separately sealed smallpox vaccine needles. Filling and sealing used to be done by hand, but those tedious, time consuming days are gone forever.

A machine to do the job was not available commercially, so Mrs. Cook explained her problem to two of the department's shop staff, Grover Kenyon and Pete Ezba. A few days ago they delivered their brain child — a device which in one hour duplicates the work of three people working eight hours a day for two days. Using a jet stream of air it fills and seals 9,000 capillary tubes per hour, all automatically.

Estimated cost of the machine if it could be purchased commercially: \$3,000. Cost to the department: About \$400 plus labor.

This year is already shaping up as a bad one for measles, but state health officials aren't surprised. A survey of the state's measles pattern for the past 20 years shows the disease usually is up one year and down the next.

This is slated to be the "up" year, since 1959 was comparatively mild with only 37,000 cases reported for the entire 12 months. For the week ending Feb. 20 the State Health Department tallied an aggregate of 1,664 cases, bringing the 1960 total to date to 11,708 compared with less than 5,000 cases for the same period last year.

**RENEW YOUR SUBSCRIPTION THE O'DONNELL INDEX-PRESS**

**ANTON "99" STORMPROOF COTTON**

Developed to meet many requirements now demanded by cotton producers, buyers, and Cotton Industry. Is an excellent STRIPPER-SNAPPER cotton with top yields and grades, high lint turn-out. Fiber has high micronaire and tensile strength.  
All seeds are State Registered and properly processed and treated. Fuzzy, Saw Delinted and Acid Delinted seed available. DIRECT FROM BREEDER.

BETTER SEEDS — FOR BETTER CROPS — THROUGH RESEARCH

**W. H. ANTON, State Registered Plant Breeder**  
LOCKHART, TEXAS

**STANLEY FUNERAL HOME**

AND BURIAL ASSOCIATION

Day or Nite Call WY 84433 At Tahoka

"Thoughtful, Courteous Service"

We Accept Burial Policies Of All Companies

★ Day or Nite Try O'Donnell's ALL-NEW—  
**DIME-O-MATIC LAUNDRY**

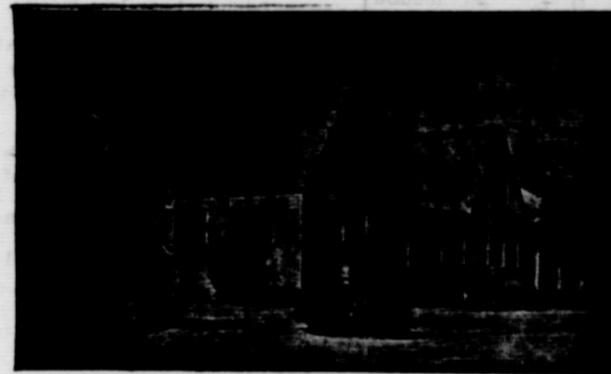
16 AUTOMATIC WASHING MACHINES (20c per load)

3 AUTOMATIC DRYERS

(10c for 10 Minutes)  
SOFT, HOT WATER ALWAYS

AIR CONDITIONED

MONDAY AND THURSDAY OPEN TO 10 P. M. OTHER DAYS OPENED TO 8 P. M.



**HIGGINBOTHAM FUNERAL HOME**

"Dedicated To Helpfulness" Phone 4585  
408 N. Austin St., Lamesa  
24 Hour Ambulance Service  
Burial Insurance "Bonded Protection"

SEE US FOR YOUR SPRING ...

**COTTONSEED**

This is a service organization and we are striving to serve you better.

**Wells Farmers Co-operative Gins**

DEALERS IN ...  
COTTON, COTTON SEED AND COTTON SEED PRODUCTS

B. J. (Shorty) McLaurin, Mgr.

**1960 MOTOR VEHICLE**

**License Plates**

Are on sale from Feb. 1 to April 1st at the following places in Lynn County:

Lynn County Tax Office, Tahoka

Moore Insurance Agency, O'Donnell

Please bring your 1959 Registration Receipts and Titles.

J. E. (Red) BROWN

Tax Assessor and Collector, Lynn County

**BIG HELP**

in a small space



**Combination ELECTRIC WASHER-DRYER**

If your home is compact, with limited room for additional appliances, you'll welcome the space-saving convenience of an Electric Washer-Dryer. It both washes and dries clothes in one compact unit that can be installed in a width of 36 inches or less. Because of its compactness,

the Electric Washer-Dryer fits into most kitchens or utility rooms, regardless of size. In some homes today, it finds a place in the bathroom, handy to the clothes hamper and linen closets. For big help in a small space, check the advantages of an Electric Washer-Dryer!



See Your Electric Appliance Dealer

**TEXAS ELECTRIC SERVICE COMPANY**  
C. R. REESE, Manager Phone 60

2-4A

Air Conditioning—temperatures made to order—for all-weather comfort.

See The Dinah Shore Chevy Show in color Sundays, NBC-TV—the Pat Boone Chevy Show on Saturdays, ABC-TV



OPEN THE ONE-PIECE TAILGATE—SEE THE  
**WIDE INSIDE**

DIFFERENCE IN A CHEVY WAGON!

Chevy wagons are widest where wagons should be—with the widest seating, the widest cargo space and the widest choice of power teams in the low-price field. Check any of the five handy, handsome new models at your dealer's. You won't find these versatile advantages in any other wagon near Chevy's size and price!

- Widest seating, front and rear—up to a full 3.1 inches wider in front, up to 4.2 inches in the rear.
- Widest cargo area—the load platform's a whopping 5½ feet wide, designed for a wider variety of cargo.
- Widest area between wheel housings—

- allows more room for bulky loads.
- Widest choice of engines and transmissions—24 combinations in all, to give you peak performance with any kind of load.
- Full Coil springs that ride right loaded or light—no other wagon near Chevy's price and size gentles the bumps with coil springs at all four wheels.
- More road and ramp clearance—you can take full loads over bumps and grades without scraping bumpers.
- Truly practical 9-passenger model—with roomy rear-facing third seat and electric roll-down rear window.



See Corvair for the wide, wide difference in compact cars!

Every Corvair gives you a fold-down rear seat for extra storage space—at not a penny extra. And this is only one of many advantages you'll find in no other compact car in the land!

See your local authorized Chevrolet dealer for fast delivery, favorable deals!

**ELLIS CHEVROLET CO.**

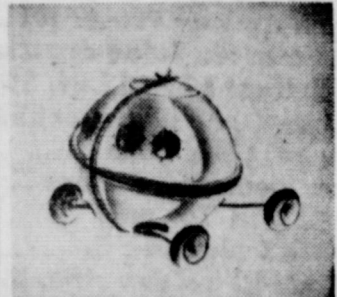
PHONE 124, O'DONNELL, TEX.

# Evolution of Auto Is Dream Mixture

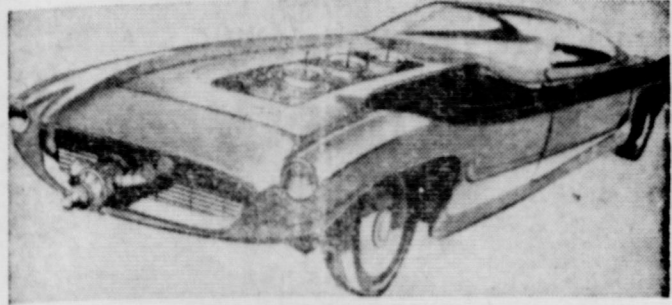
The greatest puzzle in the automobile industry is how to make a car that will satisfy all of the people involved in its manufacture — and still please the buyer.

"Each group of engineers has strong interests and objectives that are often widely separated," says M. C. Patterson, Dodge general manager. "Each has its own idea of what a car should be, and no two of them are alike. So, the evolution of a new car is bound to involve certain conflicts."

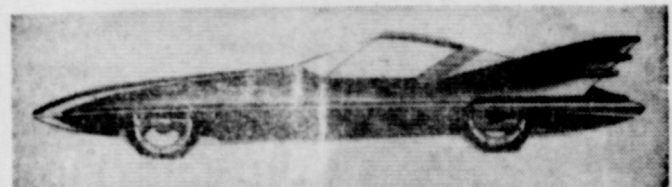
"The fact that new cars do come out year after year is indeed a triumph of knowledge, imagination, creative ability, and most of all, cooperation and team work."



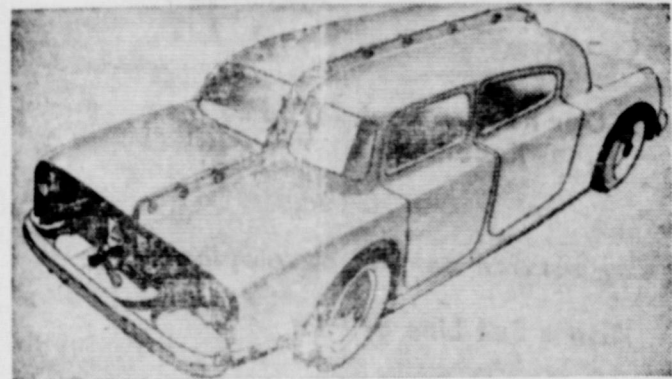
**THE SAFETY ENGINEER** visualizes the ideal car as a sphere—safe but little room for the engine.



**THE PERFORMANCE ENGINEER** is chiefly concerned with the engine. He wants everything under the hood except hot and cold running water.



**THE STYLIST** wants beautiful lines, fine balance, and an eye-catching expression of an artistic theme.



**THE BODY ENGINEER'S** perfect car is one with no structural problems, no tough curves, no tight places—just a straight-forward design.



**MIX THEM ALL** together properly and you have what the sales force hopes is indeed a dream car for the average American motorist.

**KCBD — TV CH. 11**

**Sunday**

12:25 Sign on  
12:30 Eternal Light  
1:00 Sports  
3:30 Dee Weaver  
4:00 to be announced  
5:00 Meet the Press  
5:30 Game of Week  
6:00 Riverboat  
7:00 Our American Heritage  
8:00 Dinah Shore  
9:00 Loretta Young  
9:30 Lock Up  
10:30 Arthur Murray  
10:30 News, Weather, Sports  
11:00 Movie

**Monday**

6:30 Continental Classroom  
7:00 Today  
9:00 Dough Re Mi  
9:30 Treasure Hunt  
10:00 Price is Right  
10:30 Concentration  
11:00 Truth or Consequences  
11:30 It Could Be You  
12:00 Burns and Allen  
12:30 Susie  
1:00 Queen for a Day  
1:30 Thin Man  
2:00 Young Dr. Malone  
2:30 From These Roots  
3:00 House on High Street  
3:30 Movie  
5:00 Hospitality Time  
5:15 Mr. District Attorney  
5:45 Here's Howell  
6:00 News, Weather, Sports  
6:15 Huntley - Brinkley News  
6:30 Cheyenne  
7:30 Wells Fargo  
8:00 Peter Gunn  
8:30 This Man Dawson  
9:00 Maverick  
9:00 Lawman  
10:30 News, Weather, Sports  
11:00 Jack Paar Show

**Tuesday**

6:30 - 5:00 (same as on Monday)  
5:15 Sgt. Preston  
5:45 Here's Howell  
6:00 News, Weather, Sports  
6:15 Huntley - Brinkley News  
6:30 Laramie  
7:30 Donna Reed  
8:00 Rifleman  
8:30 Ethel Merman  
9:30 Wichita Town  
10:00 Real McCoys  
10:30 News, Weather, Sports  
11:00 Jack Paar Show

**Wednesday**

6:30 - 5:00 (same as on Monday)  
5:15 Casey Jones  
5:45 Here's Howell  
6:00 News, Weather, Sports  
6:15 Huntley - Brinkley News  
6:30 Wagon Train  
7:30 Price is Right  
9:00 This is Your Life  
9:30 77 Sunset Strip  
10:30 News, Weather, Sports  
11:00 Jack Paar Show

**Thursday**

5:45 Here's Howell  
6:00 News, Weather, Sports  
6:15 Huntley - Brinkley News  
6:30 Seahunt  
7:00 Flight  
7:30 Johnny Staccato  
8:00 Bachelor Father  
8:30 Tennessee Ernie Ford  
9:00 Groucho Marx  
9:30 Bold Venture

10:00 Wyatt Earp  
10:30 News, Weather, Sports  
11:00 Jack Paar Show

**Friday**

6:30 - 5:00 (same as on Monday)  
5:15 Texas Rangers  
5:45 Here's Howell  
6:00 News, Weather, Sports  
6:15 Huntley - Brinkley News  
6:30 Bronco  
8:30 M Squad  
9:00 Cavalcade of Sports  
10:00 Man Without a Gun  
10:30 News, Weather, Sports  
11:00 Jack Paar Show

**Saturday**

8:00 Roy Rogers  
9:00 Howdy Doody  
9:30 Huff and Ready  
10:00 Furry  
10:30 Circus Boy  
11:00 True Story  
11:30 Detective's Diary  
12:00 Warm Up  
12:15 game  
3:30 Scoreboard  
3:45 MGM movie  
5:30 Lone Ranger  
6:00 Colt 45  
6:30 Bonanza  
7:30 Man and Challenge  
8:30 Five Fingers  
9:30 Bourbon Street Beat  
10:00 News, Weather, Sports  
11:00 MGM movie

B.P.S. Vinyl-board, Vinyl Latex, Flat Wall paint at Cicero Lumber Co. in O'Donnell

**Dr. O. H. NANCE**  
Optometrist  
528 N. 1st Lamesa ph. 554

**CLAUDE'S**

All Kinds Cowboy and Wellington BOOTS — WESTERN SHIRTS — MOCCASINS — LOAFERS — ALL KINDS FINE LEATHER GOODS — EXPERT REPAIR ON ALL SHOES AND BOOTS

**—POLITICAL—**  
**— ANNOUNCEMENTS —**

The following announce their candidacy for public office subject to the Democratic Primary Election on May 7, 1960 —

**For Senator, 28th District**  
—PRESTON SMITH of Lubbock—  
—Re-election—

**For State Representative, 99th Dist**  
BILL SANDERSON  
LYNN COUNTY

**FOR SHERIFF:**  
NORVELL (Booger) REDWINE (Re-election)  
CLEVE BAIRINGTON  
JACK MILLER  
**FOR TAX ASSESSOR COLLECTOR**  
J. E. (Red) Brown (re-election)  
GEORGE D. McCRACKEN  
**For School Superintendent:**  
J. P. HEWLETT (Re-election)  
**For County Attorney —**  
HAROLD GREEN (Re-election)  
**FOR COMMISSIONER, PCT 3:**  
MRS. BEATRICE McLAURIN (Reelection)  
W. A. (Andy) JORDAN  
J. G. (Ted) ROGERS  
DAWSON COUNTY

**FOR SHERIFF:**  
EARL CALHOUN  
ROY BURDETT  
HENRY C. MAYFIELD (Re-election)  
BORDEN COUNTY

**FOR COMMISSIONER, PCT 1**  
HUBERT WALKER

Time Payments on remodeling.  
T. V. Sets, carpets, linoleums, at Cicero Smith Lbr. Co.

FREE PLANNING AND ESTIMATES ON ALL REPAIRS AND REMODELING at Cicero Smith Lumber Co. in O'Donnell.

**Noble L. Rumbo, M. D.**  
Medicine and Surgery  
RUMBO CLINIC  
OFFICE TELEPHONE 61  
RESIDENCE PHONE 150

**REX**

Saturday  
Jeff Chandler in  
**THE JAYHAWKERS**

Sunday  
**THEY CAME TO CADINA**

**NEW PHARMACY LOCATION**

Our Pharmacy is Now Next Door North of Dairy Mart. We are now ready to fill your Prescription needs.

**PRESCRIPTIONS**

**Lott Pharmacy**  
Hugh Lott, Registered Pharmacist

The prevention and control of diseases are important in live stock production because profits depend on maximum yields from pastures and crops.

The fastest and best method for raising large fish in the farm pond is to stock the pond with the proper kind of fish and at the right rates of fertilize. Proper fertilization, in all amounts at intervals during winter and spring, will usually take out troublesome underwater growth.



**Homeowning Can Be Hazardous Too!**  
Just as the bullfighter may become overconfident with success, so may the homeowner not stop to think of hazards he faces in owning a home.

A fire, windstorm, or explosion could destroy his home. An injury to his property could result in crippling lawsuit.  
If you are a homeowner, don't let trouble take you by surprise. Call your local independent insurance agent and let him protect your property with insurance placed in a Capital Stock Insurance Company, the standard carriers of reliable protection for more than a century.

**LOANS**  
**MOORE INSURANCE AGENCY**  
Phone 220, O'Donnell

## Glass School Reward For Not Tossing Rocks

DARIEN, Conn.—Because junior high children in this town can be trusted not to throw stones, educators have rewarded them with a modern, daylighted building that contains entire walls of glass.

The new structure, designed by Ketchum, Gina and Sharp, New York architectural firm, not only has floor-to-ceiling windows which might tempt ordinary kids, but also corridors that are lined with glass walls.

It was decided to use this treatment, which assures extraordinarily fine daylighting in all classroom and general areas, after Darien schoolmen reported they never were bothered with the kind of vandalism that makes it necessary to have 100 per cent replacement of window glass every two years in some metropolitan centers.

As an added feature, the classroom windows have fixed metal louvers to cut out sky glare. The result is one of the most perfectly daylighted schools in the nation.

One way to safeguard against excessive insecticide residues on harvested crops and protect those who handle the materials is to follow the recommendations of the manufacturer. The label on every insecticide container should be studied and followed to the letter.

**TEXAS RAIL FACTS**

INCREASE THE ECONOMY OF TEXAS A HALF-BILLION DOLLARS ANNUALLY THROUGH PURCHASES OF MATERIAL AND PAY FOR EMPLOYEES!

NOW THE **FORD Falcon** BRINGS YOU  
**AMERICA'S LOWEST-PRICED 6-PASSENGER WAGONS!**  
choice of 2-door and 4-door models



From America's Wagon Specialists! Priced as much as \$154 under other 6-passenger compact wagons! Full Falcon quality—room—and up to 30 miles a gallon!

The Falcon Wagon is the newest wonder in the wonderful new world of Fords for 1960! And wonderful it is... with a price tag that's as much as \$154 below other 6-passenger compact wagons! With the longest loadspace—over 7 feet of it—of any compact wagon! With all the wonderful economy of the already overwhelmingly popular Falcon Sedans! Like the sedans, the Falcon Wagon delivers up to 30 miles a gallon of regular gas... the best gas mileage of all American-built station wagons! It's got everything! Room for six big-sized adults, huge cargo space, and wonderful, wonderful ease of handling. Come in for a Test Drive!

AND, FOR ABSOLUTELY ROCK-BOTTOM ECONOMY, SEE THE

**Falcon TUDOR SEDAN!**

It's the LOWEST PRICED\* of all 6-passenger cars in America... priced as much as \$124 less than other 6-passenger compact cars. Yet, compare it with the others and you'll see, feel and hear the big quality differences Ford has built into this thriftest of all family cars!

\*Based on a comparison of manufacturers' suggested retail delivered prices

See ALL the FORD Falcons at your FORD DEALER'S!

FORD—The Finest Fords of a Lifetime FALCON—The New-size Ford THUNDERBIRD—The World's Most Wanted Car F.S.A.P.

**FORBES MOTOR CO.**  
O'DONNELL, TEXAS

# BLOCKER GROCERY

Your S. & H. GREEN STAMP store

SPECIALS For Friday and Saturday

Bacon lb	45c	Spare ribs lb	45c
Tall Korn lb		Cudahy's Premium lb	
Pork roast	49c	Club Steaks lb	69c
Lean Boston Butts		Sanders Choice Beef lb	

**Tuna - - 2 for 25c**

"Hi Note" Flat cans

**Spinach - 2 Cans for 25c**

303 cans Del Monte

**TOMATOES - 2 for 25c**

303 cans "Diamond"

**PEACHES - 4 for \$1**

No. 2 1/2 can "Hunt's" Sliced

**SALAD DRESSING 39c**

Quart Jar Kraft's "Salad Bowl"

**Red Plum Jam - 3 for \$1**

20 oz. "Bama" Tumbler

**SUGAR 5 lb - 39c**

5 lb bag Pure cane

**STRAWBERRIES - 6 for \$1**

10 oz. Frozen, Sliced

TRADE WHERE MA SAVES MONEY FOR PA

## Weekend Specials

SPECIALS FOR FRIDAY AND SATURDAY  
OPEN ON SUNDAYS

**Sausage 2 lbs - 69c**

Pure pork, Wilson, 1 lb mild, 1 lb hot

BEEF RIBS per lb ..... 19c

**BACON 3 lbs - \$1**

Sliced, Nuehoff's

OLEO Wilson 2 lbs ..... 25c

CATSUP Sniders hot ..... 2 bottles for ..... 25c

BEEF STEW Ellis No. 303 can ..... 4 for ..... \$1

Shortening White Swan, 3 lb can ..... 59c

Peaches, sliced or halves ..... no. 2 1/2 cans 4 for \$1

Fruit Cocktail No. 2 1/2 can ..... 4 for ..... \$1

Orange Drink 1/2 gal. jar ..... 35c

Tomato Juice 13 oz. cans ..... 5 for ..... \$1

Tomato Sauce ..... 12 cans for \$1

Assorted Vegetables of Lima Beans, Blackeye peas, Pork and Beans, Spaghetti, new potatoes, and English peas, 300 cans ..... 12 cans for ..... \$1

## JACKSONS

Grocery & Market

★ We give Double Thrift Stamps And Double, Double Thrift Stamps On Wednesdays  
AT THE NORTH "Y"

The prevention and control of plant diseases are important in live stock production because profits depend on maximum yields from pastures and crops.

The fastest and best method for growing large fish in the farm pond is to stock the pond with the proper kind of fish and at the right rates and fertilize. Proper fertilization, small amounts at intervals during late winter and spring, will usually shade out troublesome underwater plant growth.

One way to safeguard against excessive insecticide residues on harvested crops and protect those who handle the materials is to follow the recommendations of the manufacturer. The label on every insecticide container should be studied and followed to the letter.

For sale — one and one half lots on pavement on 12th st. Mrs. Laverne Gardenhire, phone 287 or 47

BUY, SELL OR TRADE —  
GUNS AND PISTOLS  
WATCHES CLEANED \$2.95  
All Work Guaranteed  
★ Hale Variety

HELP WANTED — LOOK: Splendid Rayleigh Business available in East Lynn Co. Exceptional opportunity for industrious person. See Ollie Riddle, Box 1, Wilson or write Rayleigh's, Dept. TXC 560-18

House for rent, 1 mile east of Wells, 4 rooms and bath. Call Julian Pirtle, Aten 2237 1tp

## Specials For Friday and Saturday

No. 2 1/2 can Sunspun Fruit Cocktail	3 for
Scrappy Dog Food	3 for
1/2 gal. Apricot Preserves	
quart Morton Salad dressing	
Pet Instant Milk 12 qt. Size	
303 can Our Value Blackberries	
Lettuce, good, firm lb	
25 oz. Heinz Dill Pickles	
Gum 3 pkg. for only	
LEMONS nice per lb	
BANANAS golden ripe, lb	
All meat Bologna lb	
Longhorn Cheese lb	
Club Steak lb	

★★ Double Frontier Stamps On Wednesday  
WE GIVE FRONTIER SAVING STAMPS

## Line Grocery And Market

WE DELIVER PHONE 112  
Plenty of parking behind the store, come in and

Visit Our Record Rack -- Top 50 Records

One day service on film developing  
Also a Full Line of Film

**Coffee 69c**  
Folgers 1 lb can

**Biscuits 2 for 15c**  
Kimbells

**Shortening 49c**  
3 lb can Kimbells

**Dog food 2 for 15c**  
15 3-4 oz Kim

**Cheer 76c**  
Giant Size with steak knife

**Lotion 49c**  
54c size with a 59c moisture creme  
A \$1.13 value for only 49c

**Sugar 25c**  
2 Boxes Powdered

**Peaches 2 for 31c**  
Del Haven Brand 303 cans

**Peas 2 for 25c**  
Sweet Mission 303 cans

# MANSELL BROS

PHONE 50 SPECIALS FOR FRIDAY And SATURDAY  
FREE DELIVERY

## Finest Quality MEATS

Weiners lb - 49c

Beef roast lb 57c

Fresh Fryers and Hens

sliced Bacon lb 53c

Armour Star per lb

\$\$\$\$\$\$\$\$\$\$\$\$  
SILVER DOLLAR THRIFT STAMPS



\$\$\$\$\$\$\$\$\$\$\$\$

★★ WE GIVE DOUBLE SILVER

DOLLAR THRIFT STAMPS ON

● EVERY WEDNESDAY ●

Soil tests results are a blueprint for better farming. Soil tests are the best device we have for determining plant food needs. By following the recommendations from the soil testing laboratory, farm income can be increased and production costs cut.

O'DONNELL INDEX - PRESS  
Established in 1923  
Box 546, O'Donnell, Texas  
Published Every Wednesday  
O. G. SMITH, JR., Owner  
Advertising Rate: 60c col. in.  
Entered as second class matter September 23, 1923 at Post Office at O'Donnell, Texas under act of Congress on March 3, 1879.  
SUBSCRIPTION RATES  
In Lynn, Dawson and Borden Counties \$2 per year. Elsewhere in U. S. \$2.50 per year.  
Card of Thanks \$1.00. Classified advertising 4c per word, with minimum charge of 50c.  
Your label at top of paper tells date your subscription expires.

POLITICAL ANNOUNCEMENTS

The following announce their candidacy for public office subject to the Democratic Primary Election on May 7, 1960 —  
For Senator, 26th District — PRESTON SMITH of Lubbock — Re-election  
For State Representative, 90th Dist — BILL SANDERSON LYNN COUNTY  
FOR SHERIFF: NORVELL (Booger) REDWINE (Re-election) CLEVE BAIRINGTON JACK MILLER  
FOR TAX ASSESSOR COLLECTOR J. E. (Red) Brown (re-election) GEORGE D. McCRACKEN  
For School Superintendent: J. P. HEWLETT (Re-election)  
For County Attorney — HAROLD GREEN (Re-election)  
FOR COMMISSIONER, PCT 3: MRS. BEATRICE McLAURIN (Re-election)  
W. A. (Andy) JORDAN J. G. (Ted) ROGERS FOR SHERIFF LYNN COUNTY  
FOR SHERIFF: EARL CULHOUN ROY BURDETT HENRY C. MAYFIELD (Re-election)  
BORDEN COUNTY FOR COMMISSIONER, PCT 1 HUBERT WALKER