

# Low Priced, Quality Printing At Index Office

## O'DONNELL INDEX PRESS

39th year, no. 3 O'DONNELL, LYNN COUNTY, TEXAS, Wednesday, Sept. 21, '60 \$2 And \$2.50 Per Year

### Eagles To Play Tulia Here

#### First Home Game Friday--

The Eagles open their first home game with the Tulia Hornets Friday at 8 p. m. at Johnson Field. After dropping their first three games including last Friday's game with Tahoka (28 to 6) the Eagles are taking on a new spirit and the word is out that the Hornets will have bird trouble aplenty come Friday night. Tulia is rated as a possible winner of their 2A district however anything can (and usually does) happen in a ball game. Showing especially well for the Eagles last Friday night were the Mahurin twins -- real scrappers.

Thursday afternoon the undefeated Jr. H. Eaglets play Sandosa here. Two backfield men, Taylor and Garcia hold great promise for the years to come.

#### Harvest Slowly Begins

The fall harvest is not expected to hit high gear before the middle of next month as only 493 bales have been ginned thru Tuesday noon. Some 1200 Mexican Nationals are here. Charlie Jackson, manager of Bolynda Farm Labor Ass'n, estimated and he expects a total of near 4,000 by middle of October.

Early grain is moving in rapidly. Estimated cotton ginnings for the town has been guessed at 35,000 to 40,000 bales -- depending on rain and the date of a freeze.

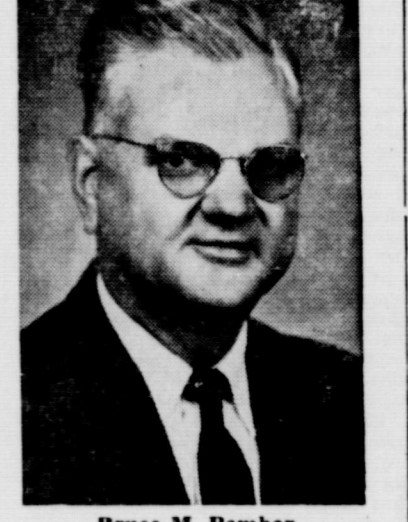
Wilson Walker is attending Sul Ross College.

#### Baptist Pastor Resigns

Rev. Bill Burton Sunday resigned as pastor of the First Baptist Church here to accept a call to the Baptist Church at Freona. Bro. Burton and family have been here for the last three years. During his pastorate a new Baptist Mission was built and other physical properties were improved. During this period the congregation has grown rapidly especially the Sunday School. He proved to be a good civic leader working with the PTA and the Little League. The love and admiration of the community goes with this fine family.

### Rotary Official Was Here Tuesday

#### Folks You Know



Bruce M. Pember

Monday night, the O'Donnell Rotary Club and their Rotary Annex entertained District Governor Bruce Pember and his Rotary Annex, Maurice, with a banquet at the Community House. Miss Mary Forbes, accompanied at piano by Miss Joan Lacy. Rotary Club sweetheart, sang "Over The Rainbow" and "My Task". After the banquet the Rotary Annex were entertained with a coffee at the home of Rotary Annex Irene Criner. Those attending were Rotarians Bill Schooler and Lola, Charlie Criner and Irene, Kaymon Marcom and Gwyn, Truett Hodnett and Bernice, Homer Hardberger and Jan, Clyde Winans and Wanda, Weldon Martin and Ruth, Wayland Taylor and Mary, Blaine Mitchell, Ralph Beach and Gladys, Harvey Line and Alta, Hugh Lott and Rhoda Lou, Andy Jordan and Sybil, John Criner and Irene, Kaymon Everest and Moody, Jimmy Forbes and Sue, Louline Mansell and Noble Rumbold and Mary Ann.

Mrs. J. L. Adams and sons, Jay and Thurman of San Angelo spent the week end with Mr and Mrs E. T. Wells.

### Fair Is A Big Success

The second annual O'Donnell Community Fair closed here Saturday after a successful two day show.

An incomplete list of winners includes: Swine division -- Grand champion sow shown by Lanny Brewer, grand champion boar by Jack Wood. Both champions were Poland Chin. Sheep division (57 entries) -- The Vaughn Bros. had a champion ram and ewe of Hampshire class. Ralph Beach, champion ram and ewe of Shropshire division, Wendell Edwards, champion ram and ewe of Southdown class. J. D. Evans, champion ram and ewe of fine wool class. The grand champion dairy cow was shown by Orville Evans. In the quarterhorse show, Homer Guinn had the grand champion mare, a 1959 mare by Tom Big Enough and Beth Edwards. The grand champion stallion was shown by Creighton and Oden. He was Cousin Clegg, a 1959 stallion by Silver King and Brown Joetta. John Tyler of Tahoka won first place in the 4-H Sears gilt show.

### '46 Study Club Opens Season With Dinner

The 1946 Study Club opened its new year with a dinner in the Community House last Thursday at 8 p. m. The tables were attractively decorated with autumn place mats, leaves and mums. The new president of the Club, Mrs. Dallas Vaughn greeted the 25 attending club members and expressed her appreciation to all for their cooperation in planning the new year.

Mrs. Douglas Ballew, program chairman, introduced the program for the evening entitled "Sweet Freedom's Song." This included a review of the Club in 1959 as shown on film by Mrs. C. A. Lacy and a skit entitled "The Melting Pot" presented by club members. The new year books were presented and the course of study "Of Thee I Sing" was explained. The meeting concluded with the club members singing "America".

Members of the journalism staff that publishes the school paper are: Marchetta Wood, editor, Lola Autry, business manager, Molly Hensley, Art editor, Terry Parker, copy editor, Barbara White, gossip editor, Charlotte Crawford, feature editor, Billy Evers, organization editor, Dennis Jordan, sports editor, Delilah Randall, correspondent, and Kenneth Hawkins, sponsor.

Mrs. Kenneth Williams is the new church secretary of the First Baptist church. The Church is currently putting in a central heating and air conditioning unit.

### TO HONOR TEACHERS

The Methodist Church will entertain the teachers of the school and their husbands and wives with a dinner Sept. 27th in the Fellowship Hall of the Church. The WCS will be host.

### E. W. MCMURTRY AND FAMILY HAVE REUNION

Decendents of E. W. McMurtry of O'Donnell, now 88 years old, and the late Mrs. McMurtry gathered in Albuquerque recently for a reunion at the Presbyterian encampment grounds in the Sandias. Mr. McMurtry, now makes his home with his son, A. R. McMurtry of O'Donnell, was present to meet more than 50 of his children, grandchildren and great grandchildren.

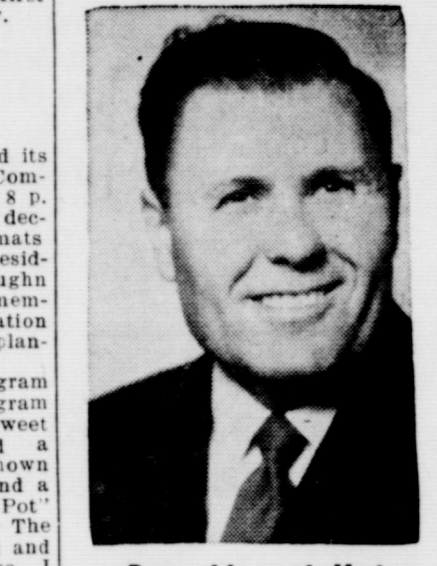
### FROM TEXAS STATE DEPARTMENT OF HEALTH

The major killers--cancer, heart diseases and accidents--do most of the statistic rattling in Texas just as elsewhere throughout the United States. But there are lesser killers, no less potent once they strike--and in many cases the disease is preventable. For instance, during 1959 there were 52 deaths attributed to tetanus, often called lockjaw. Most could probably have been prevented. Twenty-four deaths were among infants less than one-year-old, but 17 fatal cases of tetanus were among persons 15 years of age or older. Tetanus can be guarded against with appropriate toxoid injections. In fact, a standard recommendation of the American Academy of Pediatrics is for children to be immunized against tetanus in combination with pertussis and diphtheria, commonly referred to as DTP shots. Parents are familiar with the DTP shots administered to their infants by pediatricians or a family doctor while the child is still less than a year old. Such early protection is also recommended by State health authorities. However, the protection afforded by tetanus toxoid loses strength over the years and should be maintained with a periodic booster or in the event of injury subject to tetanus infection if recommended by your family doctor. Especially vulnerable are playing children and dworkers who may be injured on the job. Males fall victim to the disease nearly twice as often as females. In 1959, there were 34 tetanus deaths among males and only 18 among females. continued back page

### Revival Opens

The First Baptist Church will begin their fall Revival this Sunday, September 18th and continue one week thru the 25th. The Rev. Marvel Upton, pastor of First Baptist Church at Sunray will be the visiting evangelist. Rev. Upton has been pastor of this church for several years and during this period the church has experienced a marvelous growth. He is in great demand thruout this area as an evangelist in revival campaigns. He is a fearless preacher of a sound doctrine. Rev. Bill Burton, local pastor said, and every one is cordially invited to attend this revival.

Art Dodds, local music director of the Baptist Church, will direct the music during the revival. Services have been announced for 7:30 a. m. and 7:30 p. m. during the week days and regular times of 11:00 a. m. and 7:30 p. m. on Sundays.



Rev. Marvel Upton

Mrs. Joe Proctor returned last week from Ft. Worth where she visited her sister Mrs. Lela Anderson.

Mr and Mrs. Truett Hodnett and Miss Florence Carpenter visited their cousin in Stephenville over the week end.

Mr and Mrs. Allen Vandivere visited her brother, Mr and Mrs. Carl Reavis in San Antonio over the week end.

Mr and Mrs. Bob Ragan visited at Ratan with his brother Mr and Mrs C. Ragan over the week end.

Mr and Mrs. Elmer Sunrow are visiting in Greenville.

### USE CHEMICALS TO MAKE LAWNS MORE ENJOYABLE

College Station -- Insect infested lawns can be a nuisance to people as well as pets. Chiggers, fleas and brown dog ticks are usually the culprits when a lawn is avoided instead of enjoyed. C. F. Garner and R. L. Ridgway, extension entomologists, say that if proper control measures are used, however, these pests can be eliminated with a minimum amount of work and expense. For the control of chiggers, the specialists recommend the application of dusts or sprays of chlordane, toxaphene or imedane to infested grass and ground litter. An emulsion spray usually gives the best results. For treating small areas, use a compressed air or knapsack sprayer and apply 2 1-2 to 3 quarts of spray per 1,000 square feet. If dust is used, apply 5 percent chlordane at 40 to 50 pounds per acre, or 20 percent toxaphene at 5 to 15 pounds per acre (approximately 1 pound per 1,000 square feet).

Fleas usually enter the home on dogs, cats, rats and other animals. They deposit eggs loosely on their hosts, and these eggs fall into the ground, into cracks in the floor, or similar places. Since fleas spend their early developmental stages in the soil they often become a nuisance on the lawn and around out-buildings. These places should be treated with a 2 1-2 percent malathion spray or with a 4 percent malathion dust. Garner and Ridgway say that dogs should be dusted thoroughly with 4 percent malathion dust or dipped in a 1-2 percent malathion water solution. A commercially prepared 2 or 2 1-2 percent malathion is recommended for control of fleas in the home. DDT has been approved for the control of fleas and chiggers in outdoor areas, and this material may be substituted for any of the previously listed chemicals, the specialists continue.

### CITY OF O'DONNELL ANNUAL REPORT

CITY OF O'DONNELL, TEXAS	
ANNUAL REPORT	
JULY 1, 1959 TO JUNE 30, 1960	
<b>RECEIPTS</b>	
Water and Sewer Collections	\$26,902.70
Tax Collections	\$29,616.79
Gross Sales Tax	2,303.25
Occupation Tax	605.75
Refunds and Reimbursements	486.90
Sales	1,700.00
Swimming Pool	2,493.77
Community Center Rentals	456.00
Other Sources	580.70
<b>Total Receipts</b>	<b>\$65,175.86</b>
<b>EXPENSES</b>	
Salaries	\$13,635.39
Operating Expense	12,014.86
Maintenance and Upkeep	10,255.14
Insurance and Bonds	831.00
Bonds and Interest	15,858.02
Other Expenses	3,177.76
City Hall, Swimming Pool and Community	
House Payments	24,106.96
Equipment	4,626.73
<b>Total Expenses</b>	<b>\$4,506.76</b>
<b>DEFICIT OR (LOSS)</b>	<b>(\$19,330.90)</b>

Due to the Civic Improvements completed all expense items have increased this year over last year \$9,899.02, however the receipts only increased \$105.98; therefore the recommendation was made and adopted by the City Council to force collections on all delinquent ACCOUNTS which are -- PAVING, WATER AND SEWER ACCOUNTS AND TAXES

## WHAT YOU CAN DO TO FIGHT COMMUNISM

### AND PRESERVE

**A**vert yourself--learn the true nature and tactics of communism.

**M**ake civic programs for social improvement your business.

**E**xercise your right to vote; elect representatives of integrity.

**R**espect human dignity--communism and individual rights cannot coexist.

**I**nform yourself; know your country--its history, traditions, and heritage.

**C**ombat public apathy toward communism--survival is at stake.

**A**ttack bigotry and prejudice wherever they appear; justice for all is the bulwark of democracy.

**J. Edgar Hoover**  
DIRECTOR, FEDERAL BUREAU OF INVESTIGATION

**PATRIOTISM IS EVERYBODY'S JOB!**

### YOUR HEAD QUARTERS FOR COTTON--

## Insecticides

**For Ground or Aerial Applications**  
Phone 200 in O'Donnell or Hatch 5218, Lamesa  
We will be glad to make a check of your cotton fields for infestations.  
Tell us your needs -- We Will Get It

**O'DONNELL FARM & RANCH STORE**  
Paymaster FORMULA FEEDS  
L. G. CLARK, OWNER PHONE 200

RENEW YOUR SUBSCRIPTION  
THE O'DONNELL INDEX-PRESS

FREE TERMITE INSPECTION  
PIONEER PEST CONTROL

# Cotton Farmers One - Stop Service

## When You Gin at The FARMERS COOPERATIVE GIN

YOU  
GET--

1. THE BEST GINNING EQUIPMENT AVAILABLE, MAINTAINED AT TOP EFFICIENCY, CLEANING and DRYING to FIT EACH TRAILER LOAD of COTTON, Etc., Etc.
2. Your Cottonseed Crushed at the --- PLAINS COOPERATIVE OIL MILL
3. Your Cotton Handled and Stored at the --- FARMERS COOPERATIVE COMPRESS
4. Marketing Service Available for "A" and "B" Cotton Through PLAINS COTTON CO-OP, Assn.
5. If You GROW the Cotton, You GET the SAVINGS MADE BY THESE FARMER-OWNED COOPERATIVES

COME IN and TALK IT OVER  
FARMERS COOPERATIVE GIN

Weldon Martin—manager

DIRECTORS

Carl Sanders—president  
H. D. Vaughn H. W. Hancock  
M. E. Greenlee and Wayne Carroll

IN ADDITION TO PONTIAC

VEACH PONTIAC CO.

NOW SELLS AND SERVICES  
VAUXHALL



COME IN AND SEE BRITAIN'S NUMBER 1 EXPORT CAR!

You are cordially invited to see and drive the finest of the family imports—the superbly crafted British Vauxhall. This trimly styled car gives you the handling and economy of a small, compact car—yet has room for a family of five . . . four big doors . . . vacation-size luggage space. You get wrap-around windshield and rear window, wrap-around bumpers, American type gearshift, custom type fully fitted interiors—and above all, British quality. Available in 4-door sedan or station wagon models. Come in and see it soon.

VEACH PONTIAC CO.

9th and Hohn St. O'Donnell, Texas

### GIN YARD GROUPING OF COTTON ADVISED

College Station — The practice of ginning cotton in the order of arrival at the gin needs revision. The reason, says B. C. Reeves, extension cotton ginning and mechanization specialist, is the ever-increasing number of machines used to harvest the fleecy staple.

Machine harvested cotton, he says, usually has a higher moisture and trash content than hand-picked cotton and different settings of gin machinery and drying equipment are required for each type. A modern gin can turn out a bale of cotton every 6 to 10 minutes and there isn't time to make the needed adjustments on an individual bale basis. The result, points out Reeves, somebody loses and it is usually both the grower and ginner.

The answer to the problem is the grouping of seed cotton on the gin yard according to the method of harvesting or moisture content. Reeves says that a number of gins in Texas have been using this plan and both the ginner and grower have profited. The grower has received a better selling price for his cotton and the ginner has been able to do a better job.

Reeves suggests that farmers and ginner get together and agree on a procedure for solving the problem locally. In some instances, hand-picked cotton has been ginned during the day and machine harvested cotton during the night. If machine harvested bales are in the majority, then ginning hours can be adjusted to take care of the local situation.

Experience has shown, says the specialist, that trucks and trailers are usually back in the field, under the grouping plan, as soon as they were under the old system of ginning on a first come basis. The best ginning job is done when the lint moisture is 5 to 7 percent. Drying to this level, says Reeves, gives a smooth sample and allows proper cleaning. He advises farmers and ginner to get together on the problem before the heavy harvesting season begins.

### School Events to Come

SEPT. 22—Jr. Hi. Sundown here

CHURCH OF THE NAZARENE

A friendly Church serving a friendly community in a needy world invites you, Sunday school at 10 a. m. Morning Worship at 11:00 a. m. Evening Worship at 7:30 p. m. Prayer meeting each Wednesday at 8 p. m.

### Saleh And Saleh ATTORNEYS AT LAW GENERAL PRACTICE IN ALL COURTS

502 N. 1st St. Phone 2171

LAMESA, TEXAS

BUY, SELL OR TRADE —  
GUNS AND PISTOLS  
WATCHES CLEANED \$2.95  
All Work Guaranteed

### Hale Variety

O'Donnell Barber Shop

LATEST STYLES CUT BY THE BEST METHOD  
Specialize In Flat Tops  
Prompt Service John

### Dr. O. H. NANCE

Optometrist

528 N. 1st Lamesa ph. 554



### There's a Better Way

A construction worker may know a lot about drills but he's not the man you'd go to for dental treatment.

And if you were ill, chances are you'd look for the best possible treatment administered by a trained expert with years of experience in the field of medicine.

Accept no less when it comes to insurance.

Your independent capital stock agent has made insurance his lifetime work and is an expert counselor. He stands ready with the resources of the entire capital stock industry to provide you service 24 hours a day.

(Agency Name)



MOORE INSURANCE AGENCY  
Phone 220, O'Donnell

WE'RE READY TO GIN YOUR ---

# COTTON

- ★ We have recently overhauled our gin and it is in first class shape.
- ★ Competely equipped with Moss Lint Cleaners
- ★ Fast, Efficient, Courteous Service.
- ★ Give us a try and we know you will want to gin with us.

## Producers Gin

Fred Raney, Manager

Phone 257 --- O'Donnell

## STANLEY FUNERAL HOME

AND BURIAL ASSOCIATION

Day or Nite Call WY 84433 At Tahoka

"Thoughtful, Courteous Service"

We Accept Burial Policies Of All Companies

## Quality Ginning

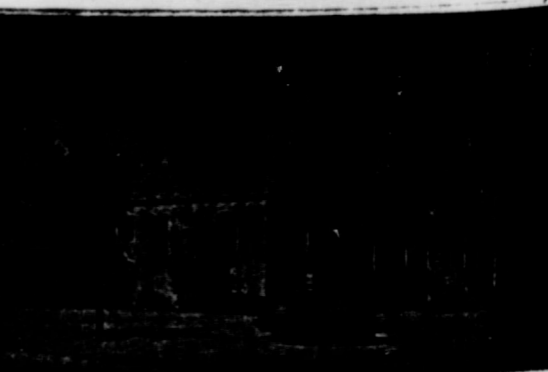
Is Our Business -- Try Us

This is a service organization and we are striving to serve you better.

## Wells Farmers Co-operative Gins

DEALERS IN ---  
COTTON, COTTON SEED AND COTTON SEED PRODUCTS

B. J. (Shorty) McLaurin, Mgr.



### HIGGINBOTHAM FUNERAL HOME

"Dedicated To Helpfulness" Phone 4585  
408 N. Austin St. Lamesa  
24 Hour Ambulance Service  
Burial Insurance "Bonded Protection"

## ATTENTION --- Pea & Bean Growers

We have installed a complete CLEANING and FUMIGATING PLANT at 401 N. Lynn St in Lamesa and we are in the market for all varieties of

★ ★ DRIED PEAS AND BEANS  
CUSTOM CLEANING — FUMIGATION — STORAGE

L. R. BARRON COMPANY

PHONE 5203 LAMESA, TEXAS


**O'DONNELL INDEX - PRESS**  
Established in 1938  
Box 546, O'Donnell, Texas  
Published Every Wednesday  
O. G. SMITH, JR., Owner  
Advertising Rate: 60c col. in.  
Entered as second class matter  
September 23, 1923 at Post Office  
O'Donnell, Texas under Act of  
Congress on March 3, 1879.  
**SUBSCRIPTION RATES**  
In Lynn, Dawson and Borden  
counties \$2 per year. Elsewhere in  
\$3.25 per year.  
Card of Thanks \$1.00. Classified  
Advertising 4c per word, with mini-  
mum charge of 50c.  
Your label at top of paper tells  
you your subscription expires.

FOR SALE — Aluminum Camper  
w/bed pickup. See Bud Cross-  
up

Frozen foods consumed by U. S.  
wholesalers during the 30-year period  
1925-54, increased ninefold, and  
retail food consumption increased  
275 percent, reports John C.  
Deaney, extension economist.

**CUSTOM**  
**Spraying**  
With Hi-Boy Sprayer  
SEE —

**Burley BREWER**  
RT. 3 TAHOKA  
PHONE ATEN 2231

**CLAUDE'S**  


All Kinds Cowboy and Wellington  
BOOTS — WESTERN SHIRTS  
MOCASINS — LOAFERS — ALL  
KINDS FINE LEATHER GOODS  
EXPERT REPAIR ON ALL  
SHOES AND BOOTS

fast relief from the  
miseries  
of SUMMER COLD  
or HAY FEVER!  
  
**Super Anapac**  
WITH NEW NASAL DECONGESTANT  
WITH NEW NASAL DECONGESTANT  
**Super Anapac**  
TABLETS  
With New Nasal Decongestant  
Special nasal decongestant helps  
shrink swollen membranes of sinus  
areas to relieve simple congestion,  
carry the pressure-pain away with it.  
Nasal drip, sneezing, clogged breath-  
ing... all seem to disappear as  
never before. Fights colds at any  
stage. Reduces fever, relieves head-  
ache, ache-all-over misery, watering  
eyes. Vitamin C helps build body  
resistance.  
12's 98¢ • 30's 1.79  
at our **Rexall** drug store  
**Lott Pharmacy**

By Andy Vulgamore  
  
FREE MILEAGE INFORMATION  
"He uses a ouji board for his road."  
COME IN PLEASE  
DRIVE OUT PLEASED  
**QUICK SERVICE**  
DEALER OF HUMBLE  
PRODUCTS

**BAPTIST S. S. IN "PROVE YOUR  
LOVE" ATTENDANCE  
CAMPAIGN**  
The Sunday School of the First  
Baptist Church and their local Mex-  
ican Mission, are engaged in a one  
month attendance campaign. The  
goal for high attendance for the  
four Sundays is 363 a Sunday. The  
Mission has a goal of 72 each Sun-  
day. In the first two Sundays there  
has been good attendance although a  
little short of the 363 goal. The two  
Sundays of the revival, the 18th and  
25th are expected to help bring the  
average up. Wayne Vandivere is the  
Sunday School Superintendent.

The sixth annual Range Camp,  
sponsored by the Texas Section of  
the American Society of Range  
Management, will be held at the  
Texas A.M. College Adjunct, Junc-  
tion, August 14-20. Bobby Ragsdale,  
associate extension range  
specialist, said a main objective of  
the camp—to be attended by 32  
outstanding 4-H and FFA members  
—was to make youth more familiar  
with the importance of maintain-  
ing and improving range conditions  
in Texas.

**NICELY FURNISHED** Apartment,  
ground floor. Reasonable rent. In-  
dex.

**HOUSE TO BE MOVED**—24 by  
46, 6 rooms and bath, nice bath-  
room and fixtures, plenty built-in  
cabinets. Priced at \$1,750 for im-  
mediate sale, cash. Eli Vickers, Rt.  
1, Aten 2244.

**FOR RENT**—Modern 3-bedroom  
home. Inside completely redecorated.  
See or call Mrs. Wilburn Line.

Net income for a typical South-  
western sheep ranch was \$10,812  
per ranch in 1959. This figure com-  
pares to \$8,181 for Northern Plains  
sheep ranches and \$8,319 for South-  
western cattle operations.

For sale — nice modern 4 room  
house, bath, —2 walk in closets,  
plenty water, electric pump, pave-  
ment two sides, fenced, also a fur-  
nished garage apartment. Will  
carry a nice loan. E. C. Harris

The Brownfield Baptist Associa-  
tion meeting will be at Wilson Sept.  
21st.

For all T. V. Repairs call JIM  
BURKETT, Aten 2366, Free pick  
up and delivery 10-5

Beginning Monday, Oct. 8rd —  
Adult haircuts will be \$1.25 at —  
O'DONNELL BARBER SHOP  
EVERETT BARBER SHOP

**TAX-MAN SAM SEZ:**

Quite a few Pops still worry ev-  
ery summer about how much money  
Junior makes during vacation. At  
one time Pop lost his income tax  
exemption for Junior earned over  
\$600 during the year. However,  
since 1945 this is no longer the  
case. Pop doesn't have to worry  
about how much money Junior  
makes. A father who furnishes  
principal support for his child can  
claim an exemption for a child un-  
der 19 years of age, or for a bona  
fide student, over 18 years of age  
who was a full-time student for 5  
months of the year, even though  
the child files his (or her) own in-  
come tax return. This is the one  
case where you can take a double  
deduction for the same exemption.

The Internal Revenue Service  
has 58 fine young Texans going  
to several tax schools in Dallas.  
Internal Revenue recruits outstand-  
ing young men and women each  
year, mostly from the graduating  
college classes in North Texas, to  
enforce our tax laws. They care-  
fully train new employees to not  
only understand the complexities  
of the tax law but how to deal  
fairly and justly with taxpayers.  
The tax training program has the  
theme that it is more important to  
administer the tax laws fairly and  
justly than it is to carry out the  
letter of the law. When these  
young tax men and women assume  
their duties of auditing tax returns,  
collecting tax payments, they will  
be able to deal with the many tough  
problems. We can all be thankful  
that these young tax people will be  
trained to be fair and just in work-  
ing with taxpayers. It certainly  
helps when the people charged with  
law enforcement try to be human.

Is it cheaper to own cotton har-  
vesting machinery or have the har-  
vesting done by a custom operator?  
Many Texas cotton producers who  
expect to machine harvest their crop  
will soon be faced with making  
that decision, says C. A. Parker,  
extension farm management speci-  
alist. He suggests that cotton grow-  
ers discuss the situation with local  
county agent before making a final  
decision.

The sale of food by wholesalers,  
retail stores, and eating establish-  
ments now adds up to \$70 billion  
each year, making food industry the  
nation's largest.

Drugs are not the poultryman's  
panacea, says Dr. A. I. Flowers, vet-  
erinary microbiology professor at  
Texas A.M. College. He points out  
that disease control is, just as it  
has always been, a management  
problem. Prevention of disease  
should be a major objective of poul-  
try flock management but should  
a flock become infected, Dr. Flow-  
ers recommends an accurate diag-  
nosis as soon as possible.

Insect infested lawns can be  
cleared up with the right insecti-  
cides, say entomologists of the  
Texas Agricultural Extension Ser-  
vice. They suggest a visit with the  
local county agent for complete  
details on control measures.

**SEE CICERO SMITH IN O'DONNELL FOR ---**  
**ALL YOUR FALL BUILDING NEEDS AS ---**  
★ **COTTON AND GRAIN TRAILERS, FARM LABOR**  
**HOUSING and all other harvest needs.**  
★ Give us a try --- We want your business  
**Ralph Knight, Mgr. Phone 18 O'Donnell**

**Cicero Smith**  
**LUMBER COMPANY**

**Your Magic Key to --**  
**BIGGER AND BETTER CROPS**  
For control of seed-borne and soil-borne disease organisms to promote  
**BETTER Stands, Better Quality**  
**Better Yields**  
**Plant Acid Delinted Seed**  
\$35.00 Per ton  
**Cottonseed Delinters, Inc.**  
On Post Highway, East Tahoka Phone WY 8-4115

**TELLING AND SELLING**  
**THIS AREA-**  
**The Opportunity Frontier**  
**OF TEXAS**

**THERE ARE NEW HORIZONS FOR INDUSTRY IN**  
**The Opportunity Frontier**  
**OF TEXAS**



Expanding business and industrial horizons are opening new doors to progress in THE OPPORTUNITY FRONTIER OF TEXAS, most of which is served by Texas Electric Service Company. Here you find a wide diversity of resources... petroleum and chemicals, cattle and cotton, grain sorghum and gypsum. Add to all this the growing aircraft, automotive, missile and electronic plants... to name only a few industry examples.

In this area is the heart of the great Permian Basin. One-fifth of all new oil wells drilled in the U.S. in the last 14 years are in THE OPPORTUNITY FRONTIER OF TEXAS. This storehouse of oil and gas reserves is a vital national defense asset.

THE OPPORTUNITY FRONTIER is an area with genial climate, good water resources, and splendid transportation. It offers an excellent pool of labor for industry's needs. Here you will find progress-minded communities with an understanding of the problems of industry.

Cooperating with the cities and communities it serves, Texas Electric works to stimulate the growth of THE OPPORTUNITY FRONTIER... for we grow as it grows.

Here nature is bountiful and man extends a hand of welcome. We say to you with deep conviction: there is no finer spot in America for a new plant, warehouse or branch office... than THE OPPORTUNITY FRONTIER OF TEXAS.

Our Area Development Department will gladly supply plant site information to fit your specific needs.

**TEXAS ELECTRIC SERVICE COMPANY**  
General Offices: Fort Worth, Texas • A Member of the Texas Utilities System

**TO THE MEN WHO SAY "YES" ON NEW PLANTS**



The advertisement reproduced at left is the first in a series of Area Development messages being sponsored by your electric service company in nationally-known publications to help encourage new industry to locate in THE OPPORTUNITY FRONTIER OF TEXAS.

This message is appearing this month in **Business Week**, **Wall Street Journal**, and **The New York Times**, where it will be read by the nation's leading business executives... the men who have the power to choose sites for new plants, warehouses or branch offices.

This program is designed to point up the many advantages in markets and resources offered to expanding industry in the area served by Texas Electric Service Company in THE OPPORTUNITY FRONTIER OF TEXAS.

Industries attracted to the area will be joining a roster of leading American firms who already have located here and have made substantial investments in plant facilities.

The basic objective of this program is to promote the progress of your community and others served by Texas Electric Service Company in THE OPPORTUNITY FRONTIER. And progress means benefits for everyone — new job opportunities, added tax revenues and greater business activity in the area.

**TEXAS ELECTRIC SERVICE COMPANY**  
Dependable Electric Service - A Partner in Area Growth

# BLOCKER GROCERY

Your S. & H. GREEN STAMP store

SPECIALS For Friday and Saturday

Beef roast lb 59c

Chuck lb

Sausage links lb 59c

Swift's Brookfield lb

Bologna lb 49c

E and R. all meat

Spare ribs lb 43c

Lean, Pork

Notebook Paper 25c

50c Size "Aladdin"

COFFEE lb - - - 59c

Blocker's special blend ground fresh while you wait

SARDINES - - - 15c

Tall can, natural

Fluffo . 3 lb can 69c

3 lb can shortening

HOMINY . 3 cans for 29c

No. 2 can "White Swan"

PICKLES . . . . . 25c

Quart Jar "Concho" Sour or dill

Strawberries . 6 for \$1.

10 oz. box frozen, sliced

PEAS . . . . . 15c

10 oz. Keith's frozen

TRADE WHERE MA SAVES MONEY FOR PA

## Weekend Specials

SPECIALS FOR FRIDAY AND SATURDAY

OPEN ON SUNDAYS

Bacon 2 lb . 89c

2 lb Thick Sliced

ROAST, Choice lb 59c

Weenies 3 lb bag 99c

Hi C Drink, Orange or grape 46 oz. can . . . . . 25c

Peaches no. 2 1-2 cans . . . . . 4 cans for \$1

JELLO, all flavors, 3 boxes for . . . . . 25c

Corn, Kounty Kist 2 cans for . . . . . 25c

Frozen Fish Sticks 10 oz. pkg . . . . . 25c

Mellorine . . . 25c

Swift's 1-2 gallon . . . . . 25c

Powdered Sugar Brown or white 2 boxes . . . . . 25c

### JACKSON'S GROCERY & MARKET

We Give Double Trist Stamps  
FREE DELIVERY SERVICE ANYTIME  
Where Customers Send Their Friends  
AT THE NORTH Y PHONE 150

The tetanus germ is a stable spore which can lie dormant for long periods of time—blowing around in the dust waiting an opportunity to spring to death-dealing life under the proper conditions of warmth and moisture found in a deep cut or puncture wound, or even an abrasion.

Net income for a typical Southwestern sheep ranch was \$10,812 per ranch in 1959. This figure compares to \$3,181 for Northern Plains sheep ranches and \$8,319 for Southwestern cattle operations.

The Brownfield Baptist Association meeting will be at Wilson Sept. 21st.

For all T. V. Repairs call JIM BURKETT, Aten 2366, Free pick up and delivery 10-5

BUY, SELL OR TRADE —  
GUNS AND PISTOLS  
WATCHES CLEANED \$2.95  
All Work Guaranteed

★ **Hale Variety**  
NICELY FURNISHED Apartment, ground floor, Reasonable rent, Index.

HOUSE TO BE MOVED—24 by 46, 6 rooms and bath, nice bathroom and fixtures, plenty built-in cabinets. Priced at \$1,750 for immediate sale, cash. Eli Vickers, Rt. 1, Aten 2244.

FOR RENT—Modern 3-bedroom home. Inside completely redecorated. See or call Mrs. Wilburn Line.

For sale — nice modern 4 room house, bath, —2 walk in closets plenty water, electric pump, pavement two sides, fenced, also a furnished garage apartment. Will carry a nice loan. E. C. Harris

For rent — 3 room apt., air con. panel ray heated, furn. Hal Singleton.

Is it cheaper to own cotton harvesting machinery or have the harvesting done by a custom operator? Many Texas cotton producers who expect to machine harvest their crop will soon be faced with making that decision, says C. A. Parker, extension farm management specialist. He suggests that cotton growers discuss the situation with local county agent before making a final decision.

The sale of food by wholesalers, retail stores, and eating establishments now adds up to \$70 billion each year, making food industry the nation's largest.

Drugs are not the poultryman's panacea, says Dr. A. I. Flowers, veterinary microbiology professor at Texas A&M College. He points out that disease control is, just as it has always been, a management problem. Prevention of disease should be a major objective of poultry flock management but should a flock become infected, Dr. Flowers recommends an accurate diagnosis as soon as possible.

Insect infested lawns can be cleaned up with the right insecticides, say entomologists of the Texas Agricultural Extension Service. They suggest a visit with the local county agent for complete details on control measures.

Texans who exhibit exceptional bravery during a time of crisis or disaster are eligible for the Texas Farm and Ranch Safety Council's "Rural Heroism Awards." Any heroic act involving personal danger or sacrifice to aid or assist others may be nominated for the three state awards—properly engraved plaques. Local county agents, Farm Bureau and teachers of vocational agriculture have, or will soon have, available details on the program.

## Specials For Friday and Saturday

Specials for Sept. 23, 24

- Libby's white or yellow corn . . . . . 20c
- 3 lb White Swan Shortening . . . . . 59c
- Qt. Mazola Oil . . . . . 59c
- 1-2 gallon Waxahachie Honey . . . . . 89c
- No. 303 can Libby's sliced Beets . . . . . 15c
- Wapco Green Beans 2 cans for . . . . . 25c
- Nancy Lee Dried June Peas . . . . . 10c
- 4 lb Bama Peach, Apricot Preserves . . . . . \$1.09
- Lucky Whip . . . . . 53c
- Longhorn Cheese lb . . . . . 47c
- Chuck Roast lb . . . . . 59c
- Lettuce, nice and crisp lb . . . . . 13c
- Bananas, Golden, yellow lb . . . . . 13c
- Fresh yellow Squash lb . . . . . 10c



★ ★ Double Frontier Stamps On Wednesday  
WE GIVE FRONTIER SAVING STAMPS

## Line Grocery And Market

## Money Savers

TIDE 69c

Giant size 5c off pkg

Coffee 69c

Maryland Club per lb

Shortening 59c

Kimbells 3 lb can

Baby food 3 for 31c

Heinz Strained

Beans 15c

cut green, Kimbells 303 can

Pineapple 2 for 39c

Diamond, crushed 303 can

Tuna 3 for 89c

Del Monte, chunk style

Cake mix 29c

Duncan Hines, white, yellow and chocolate

Napkins 29c

200 count Embossed

1 day film developing

★ 50 Top Hit Records

Visit Our Record Rack

## Finest Quality MEATS

Bologna lb 49c

All meat

sliced Bacon lb 59c

Fresh Fryers and Hens

Good Beef roast 59c

\$\$\$\$\$\$\$\$\$\$\$\$\$\$  
SILVER DOLLAR THRIFT STAMPS



\$\$\$\$\$\$\$\$\$\$\$\$\$\$

★ ★ WE GIVE DOUBLE SILVER DOLLAR THRIFT STAMPS ON

● EVERY WEDNESDAY ●

# MANSELL BROS

PHONE 50 SPECIALS FOR FRIDAY And SATURDAY FREE DELIVERY

PHONE 50