

INDEX-PRESS WANT ADS HAVE FARMER'S INTEREST COSTS BUT TWO CENTS A WORD

BEN MOORE Real Estate Insurance



BE AN

EARLY BIRD THIS YEAR!

Might as well beat everybody to the job of getting your farm machinery in top shape for the jobs ahead.

Our service shop is ready to repair any machines and put them in A-1 shape.

Your FRIENDLY International Dealer

O'Donnell Implement Co.

A. K. WILLIAMS



OUR CHICKS ARE HI-QUALITY, BLOOD TESTED, SWIFT CHICKS. A CHICK WITH PROVEN LIVABILITY. ALL KINDS OF RED CHAIN FEED.

Always A Good Produce Market at B. & O.'s Top Prices for Fryers, Eggs, and Cream

B. & O. CASH STORE

Buy More War Bonds

Bring Us Your Produce

Save With Safety

On Your Prescriptions



W. E. VERMILLION AND BERNIE FRALIN, REGISTERED PHARMACISTS

Corner Drug

BERNIE FRALIN

Utility Room Is Work Saver for Homemaker



This corridor-type utility room fits perfectly into a long narrow space off the kitchen.

Handiest room in the house is a first-floor utility room, according to the Rural Home Editor of nationally-circulated Capper's Farmer.

going into the kitchen. "Equipped with running water, a sink or lavatory, storage cupboards, several electric outlets for washer, home freezer and other equipment, this room near the kitchen can be used in countless ways.

CHURCH OF THE NAZARENE

C. C. Calhoun pastor Sunday school 9:45 a. m. Sunday school: 9:45 a. m. Morning worship: 11:00 a. m. NYPS: 6:45 p. m. Juniors: 6:45 p. m. Evangelistic services: 7:30 p. m. WFMS: Each Monday: 2:30 p. m. Prayer meeting: Weds. 7:30 p. m. Prayer and fasting service each Friday noon. All Welcome.

ASSEMBLY OF GOD

R. T. Peek, pastor Sunday School 10 a. m. Morning Worship 11:00 a. m. Evening Worship 7:00 p. m. Thursday Evening Prayer meeting at 7:00 p. m. Everybody is welcome

CHURCH OF CHRIST

Arthur L. Golden, Minister

"Speaking the truth in love" Sunday. Bible Study 10:00 a. m. 10:50 a. m. Worship 6:15 p. m. Young People's Training class. 7:00 p. m. Worship. Wed. 7:00 p. m. Prayer, Bible study. Thursday: 3:00 p. m. Ladies Community Bible Class.

"Here's a friendly congregation for worship and meditation. Here is friendship warm and true And a seat reserved for you. Ladies Bible class; Wed. 3 p. m. The acreage of rice harvested in Texas during 1946, which was 412,000 acres, was the largest in the state's history.

YOU CAN DEPEND UPON

Prescription

Department

A REGISTERED PHARMACIST IS AVAILABLE 24 HOURS A DAY PHONE 35 AND 180 AT OUR FOUNTAIN WE FEATURE THAT GOOD

Bell's Ice Cream

ALSO COFFEE THAT YOU WRITE HOME ABOUT

Wiese

DRUG STORE

"YOUR BUSINESS WILL BE APPRECIATED"

REX

Theatre

EVENING SHOW

OPEN: 6:45; Start 7 p. m.; Box office Closes 9 p. m.; Sundays Box office closes 8:30 Matinee 2:00 - Starts 2:15

FRI. NITE AND SAT Matinee Mar. 21-22 Reckless Gunplay with Bill Elliott as Red Ryder CONQUEST OF CHEYENNE With Bobby Blake

Saturday Mar. 22 nite Sonja Henie and John Payne in SUN VALLEY SERENADE With Glenn Miller Orch.

Sun - Mon. Mar 23-24 It's Simply Swell elegant Smash. Six Sensational Songs June Haver, Geo. Montgomery, Vivian Blaine Celeste Holm, Vera Ellen

THREE LITTLE GIRLS IN BLUE

Tues. March 25th America's Favorite Musical With Ken Curtis, Joan Barton

LONE STAR MOONLIGHT

Wed. - Thurs. Mar 26-27 A SAGA of High sea thrills Alan Ladd, Brian Donley

TWO YEARS BEFORE THE MAST

Dips and Peaks

Practical economists view business outlook in terms of peaks and valleys. They have come to accept the ups and downs of the charts as interpretation of the myriad factors indicative of the dynamic economy.

Level Road? America's economy is a changing economy. It is dynamic. And its direction, always, has been upward toward the mountain peaks of higher and higher standard of living for all her citizens.

This need be no bitter revelation. The price of no depression was mean accepting a static economy. We can have "no progress" along with "no depression."

Price Too High State socialism desires to become your protector. You may have the care to turn over to the state the job of deciding how many jobs there will be, what will be produced, who will take the jobs, and at what wage.

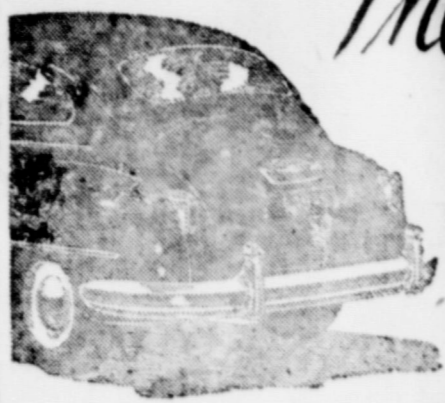
Almost within our own generation the working man has had his budget cut nearly one-third. Real wages the "undiscovered" common man have tripled in many industries.

The Department of Agriculture is urging farmers to include more cover crops in their plans for 1947 planting.

Cotton insect infestation in Texas as last season were probably the worst in the state's history.

Commercial fertilizer as 4-10 or 5-10-5 will improve growth home lawns when applied at rate of two or three pounds for square feet of space.

The Beautiful Chrysler



...WITH HYDRAULICALLY OPERATED TRANSMISSION AND FLUID DRIVE



The finest new car of all!

SEE YOUR CHRYSLER-PLYMOUTH DEALER

DIRECT FACTORY DEALER

O'Donnell Motor Co.

JACKSON AND WILLIAMS, OWNERS

SALES AND SERVICE

Specials

SPECIALS FOR FRIDAY AND SATURDAY

Marshmallows 19c
5 OZ. PKG.

Cheerios

GOGGLES FREE WITH TWO PKGS
2 LARGE PKGS ONLY 29c

Soap 15c

FREDERICK ALL PURPOSE LARGE PKG.

Coffee 47c

ADMIRATION 1 LB

Juice PINEAPPLE NO 2 CAN 17c

WE NOW STOCK COLORED OLEOMARGARINE, READY TO SERVE

EXTRA SPECIAL PRICE 3 FOR ONLY

Juice 25c

GRAPEFRUIT JUICE NO. 2 CAN

CABBAGE 4c

GREEN AND FIRM, PER LB.

Baby Food

HEINZ, 3 CANS FOR ONLY 25c

H'mburger lb 27c

Steak, rib lb 38c

BREAD

BLUE RIBBON, FULL LB. LOAF 10c

Phone 17 -- We Deliver

CAMPBELL

GROCERY -- MARKET-- BAKERY

BLOCKER GROCERY

"Trade Goes Where Invited, Stays Where Treated Best"

Specials For Friday & Saturday

Hominy NO. 2 CAN 10c

Nectar APRICOT, PT. 19c
BOTTLE

Cabbage, lb 4c

NICE FIRM HEADS, GARDEN FRESH

Peas 'RE'H GRE'N BLACK 18c
EYES, NO. 2 CAN

Spuds 10 lbs 27c

IDAHO RUSSETS

Treet 45c

ARMOUR'S 12 OZ. CAN

Catsup 14 OZ. BOTTLE 21c

CIGARETTES \$1.65

ALL BRANDS, PER CARTON

Purex 25c

A FINE BLEACH, 1-2 GALLON

Market Specials

Steak, Grain Fed, lb . . . 33c

Dry Salt Pork, U S No 1 . . . 29c

WE PAY HIGHEST CASH PRICES FOR EGGS, CREAM --- TRADE WHERE YOU PLEASE
TRADE WHERE MA SAVES MONEY FOR PA

WANT ADS

FARM LAND: For RENT: 160 acres about 17 miles north of O'Donnell; write owner P. O. Box 117, Ocean Park, Calif. 27c.

FOR RENT: Furnished Apartment; also one cabin furnished. Close in Mrs. R. M. Mahurin.

NOTICE: Farmers, have your Planting (Cotton) Seed Culled and DELINTED; plant 4 to 7 pounds per acre; save time by planting 25% more Acres each day; they come up quicker and grow off faster; operating every day; phone 397 Lamesa Delinting Co., located at Lamesa Co-Op Gin, Lamesa, Tex 28p

FOR SALE: Windmill, tower, sucker rods and pipe, new tank and tank tower; 0100 takes all. See D. O. HAWKINS at north "Y", 2tp.

THE CHURCHILL CHIPPEWA CLIPPER Will be in O'Donnell Saturday Evening. You can ride one a whole year for \$7.95 See BOB GARY for reservations

FOR SALE or trade: Equity in House, five rooms and bath, garage with 2 small rooms on rear. \$1085 for equity, Balance paid like rent. Contact Cecil Gardner.

Would like to show you my line of embroidery pieces; also some pillow tubing. See me at my home two blocks north of high school. ALENE LINE

"SAVE MONEY" Let us readjust your insurance. BEN MOORE INS. AGENCY, Cal Lee, Special Agent; Several years with State Insurance Commission. xc

YEP, WE HAVE YOUR BATTERY FOR IMP TRACTORS; O'DON. M. TRAC. CO.

SHORTY SEZ:

"ONE STOP DOES IT ALL"

COMPLETE TRACTOR AND CAR REPAIRS
TRACTOR PAINTING
BATTERIES, SPARK PLUGS
TAIL PIPES, ETC.

COME BY & FILL UP WITH

GOOD GULF GAS
ALL GULF PRODUCTS

WILSON

GARAGE & STATION
"YOUR BUSINESS IS ALWAYS APPRECIATED"

FARM FOR CASH RENT

160 ACRES, APPROXIMATELY 135 IN CULTIVATION FOR ONLY \$375 CASH RENT. THIS PLACE SE 1-4, SEC. 11, BLOCK C-41, ABOUT 12 MILES WEST O'DONNELL. THIS IS A SANDY FARM AND OWNER WILL NOT PERMIT TENNANT TO PLANT PEANUTS. IF PRESENT MOISTURE CONDITIONS PREVAIL THIS IS YOUR OPPORTUNITY TO MAKE A NICE PROFIT. CALL JOE BAILEY, 2-1848, LUBBOCK OR WRITE ME AT 2014 17TH ST.

YOU Are Invited

TO A

Bridge and "42" Party

Friday Nite March 21st

8 P. M.

American Legion Hall

BENEFIT OF THE PLAYGROUND PROJECT OF THE

1946 Study Club

THIS SPACE THE COMPLIMENTS OF

Lambert Grocery

"YOUR STORE"
PHONE 13 WE DELIVER