



**Assembly of God**  
 Sunday School 10 a. m.  
 Morning worship 11:00 a. m.  
 Evening worship 7:30 p. m.

---

**Real Estate**  
 - FARMS - RANCHES -  
 CITY PROPERTY  
 Leases and Royalties

**B. M. Haymes**

**Church of Christ**  
 Sunday Services:  
 Bible School at 10:00 a. m.  
 Communion: 11:00 a. m.  
 Preaching at 11:15 a. m. and 7:30 p. m.  
 Men's Bible class and Young Peoples' classes at 6:45 p. m.  
 Tuesday Ladies Bible class at 9:30 a. m.  
 Wednesday Bible classes for all ages at 8 p. m.

---

For Sale: 8 room Furnished House Bud Pugh

---

House Moving: Bud Pugh

Orders now being taken by the Eastern Star for Christmas cards.

**CHURCH OF THE NAZARENE**  
 F. M. Page, Supt.  
 Jack C. Pischel, Pastor

Morning Worship 11 a. m.  
 Sunday School 10 a. m.  
 N. Y. P. S. 10:00 a. m.  
 Evangelistic Service 7:30 p. m.  
 Mid-week Prayer Service Wednesday 7:30 p. m.

---

Want to sell, buy or trade . . . four bits will tell your story to 925 guaranteed readers in this area. No other medium of advertising has this CONCENTRATED coverage The Index.

---

FOR SALE  
 Ford Tractor with scoop knives, Blade, turning plow, cultivator, planter, rear lift \$800.00 Bud Pugh

**FIRST BAPTIST CHURCH**  
 "The Friendly Church With A Message"

9:45 a. m. Sunday School  
 10:55 Morning Worship  
 5:00 p. m. Youth Choir  
 7:00 p. m. Training Union  
 8:00 p. m. Evening worship  
 9:00 p. m. Youth Fellowship

---

MONDAY  
 4: p. m. Womens Missionary Society  
 4:00 p. m. Sunbeams  
 FIRST AND THIRD TUESDAYS  
 8:00 p. m. Brotherhood  
 8:00 p. m. Royal Ambassadors

---

WEDNESDAY  
 7:30 p. m. Life Service Band and Teachers Meeting  
 8:00 p. m. Prayer meeting  
 9:00 p. m. Choir practice

---

O'DONNELL EAGLE FOOTBALL SCHEDULE  
 Oct. 29, Whiteface, There \*  
 Nov. 5th Coahoma Here \*  
 Nov. 12th Seagraves, There \*  
 Nov. 19, Sundown, Here \*

**O'Donnell Index - Pr**  
 Published Every Wednesday.  
 O. G. SMITH, JR.  
 Box B, O'Donnell, Texas

Entered as second class matter September 23, 1923 at Post Office at O'Donnell, Texas under Act of Congress March 3, 1879.  
 Advertising rates: Local 45c and National 45c per column inch.

---

SUBSCRIPTION RATES  
 In Lynn, Dawson and Borden Counties \$1.50 per year  
 Elsewhere \$2.00 per year  
 Card Of Thanks 50c Classified Advertising 2c per word with minimum charge 50c  
 Read label at top of paper to see when your paper expires.

---

FOR SALE OR TRADE  
 42,000 capacity hatchery and Feed Store complete at Plainview. Will trade as down payment on land or house or will take car as down payment.  
 J. D. Strickland  
 1402 E 23rd Odessa, Tex.

---

For sale: 20 gal. butane bottle and regulator, coal oil heater, cook stove; see Bill Sheppard near Drive in Theatre 2tp

FOR YOUR Children the greatest gift of all THEIR MOTHER'S TIME

... is assured IF you have provided sufficient monthly income for your family in the event of your death.

Monthly income plan will fit in with your present life insurance! See!

**ELVIN R. MOORE**  
 Representing Southwestern Life Insurance Co.

CALL OR COME BY

**Moore Insurance**

"For All Your Insurance Needs"  
 Phone 220

**O'Donnell FARM AND RANCH STORE**  
 L. G. Clark Owners C. A. Doss

Complete Line PAYMASTER FEEDS

A Complete Line of FIELD SEEDS

"In Business to save you money"

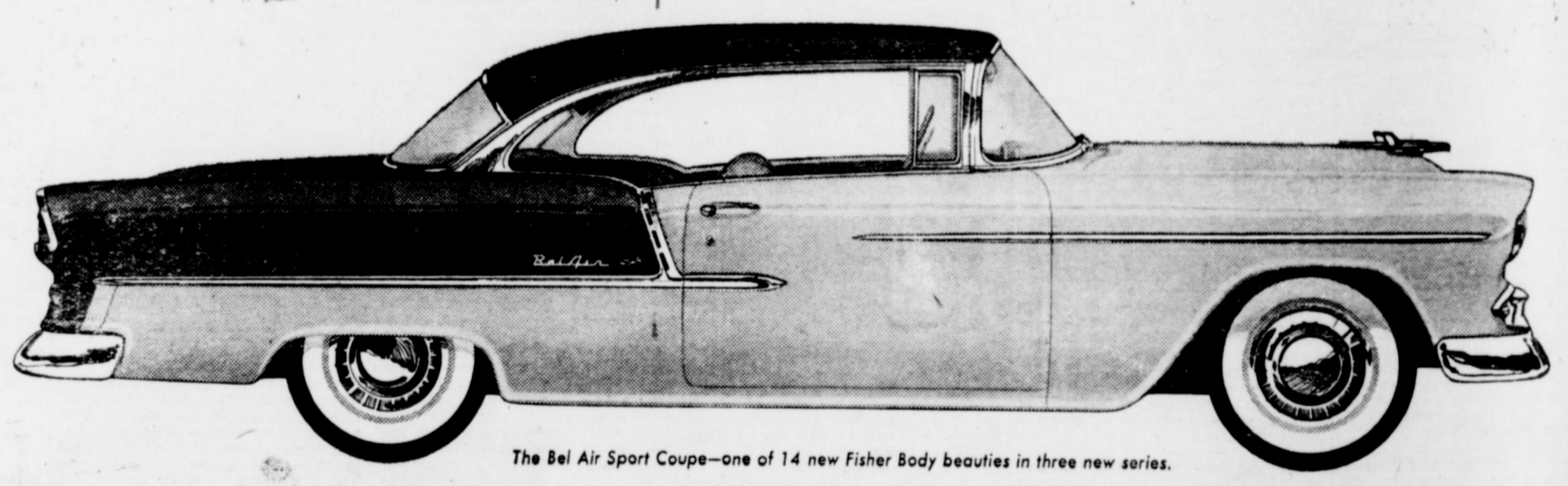
**WHOLESALE PRESS ASSOCIATION**



Low...and behold!

# The motoramic Chevrolet for '55

Chevrolet and General Motors took a whole new look at the low-cost car —and just look what happened! **FIRST SHOWING TOMORROW!**



The Bel Air Sport Coupe—one of 14 new Fisher Body beauties in three new series.

The valve-in-head V8 as only the valve-in-head leader can build it!

**8**

Now Chevrolet, the leading builder of valve-in-head engines, introduces the "Turbo-Fire V8." It carries the V8 design to a new high in efficiency with its high horsepower (162), high-compression (8 to 1), high performance and surprisingly high gas mileage. Available with standard transmission, or with the extra-cost options of Overdrive or Powerglide.

**6**

You can choose from two new sixes, too! Chevrolet also offers the last word in six-cylinder performance and economy! There's a new "Blue-Flame 136" teamed with Powerglide and a new "Blue-Flame 123" with either standard transmission or Overdrive.

Can't you tell just by looking that Chevrolet and General Motors have come up with a completely new idea about the low-priced car? The idea is this: to build a car that offers the very newest thing in styling, the most modern features, the finest kind of performance and the highest quality of manufacture—all at a modest price. It's something that took a lot of doing and that only the world's leading car builders could do. Everything's new in this Motoramic Chevrolet from its lower top right down to its tubeless tires. Come in for the most fascinating visit you ever made to an automobile showroom!



## The motoramic Chevrolet



More than a new car—a new **concept** of low-cost motoring!

**ELLIS CHEVROLET CO.**

CHEVROLET SALES AND SERVICE

O'Donnell, Texas

The egg is a perishable product. It can't stand rough treatment nor maintain the high quality and taste it possessed when laid if not given proper care. Frequent washing and rapid cooling are two practices which will pay off.

# VAN'S

SOFT WATER  
Help-Your - Self

## Laundry

### METHODIST NEWS

J. Marvin Menefee, Pastor  
Sunday School 10:00 a. m.  
Morning Worship 11:00 a. m.  
M.Y.F. 7:00 p. m.  
Prayer meeting 7:00 p. m.  
Evening worship 8:00 p. m.  
Womans Society Of Christian Service  
Tuesday: Mary Martha Circle at 9:30 a. m.  
Monday: Faith Circle 2:30 p. m.  
Wesleyan Service Guild each 2nd and 4th Thursdays at 8 p. m.  
Junior Friends: Last Monday in each month 9:30 a. m.  
Intermediate Fellowship: each last Thursday at 4 p. m.  
Methodist Men: each 2nd Wednesday at 8 p. m.  
Choir practice Wednesday at 7 p. m.

Lost: Hampshire pig, about 9 weeks old, 50 or 55 lbs. Mrs. Gene Gardenhire at Miles farm 3 1-2 miles east town.

327	328	329	330
357	358	359	3
377		379	3
378		399	4
427			

NOW  
You Know  
They're  
SAFE!



Get One!

MEMBER FEDERAL DEPOSIT INSURANCE CORPORATION

## First National Bank Of O'Donnell

There's Always Something New Here  
Full Line Playtex Baby Needs  
All Brands Baby Foods  
● Try The New Parker Jotter Ball Point Pen  
Only \$2.95



Always A Line of Elizabeth Arden Products

## Lott Pharmacy

Hugh Lott, Registered Pharmacist

## Lynn County Farm Bureau

Office in McElroy Bldg; 1649 Sweet St.  
Tahoka Phone 528

We Attend to Your Insurance Need.  
Gas Exemption Forms Filled Out for any  
Farmer FREE!

BRACEROS FOR YOUR FARM LABOR

FARM BUREAU INSURANCE SERVICES

Auto - Fire - Life - Polio - Blue Cross, Blue Shield  
Farm Liability

Office Hours: 9 to 5 Six Days a Week



### HIGGINBOTHAM FUNERAL HOME

"Dedicated to Helpfulness"  
408 N. Austin St. Lamesa Phone 4586  
24 Hour Ambulance Service  
Burial INSURANCE "Bonded Protection"

# REX

Wednesday and Thursday  
Oct. 27th and 28th  
Danny Kaye in

Knock On Wood

Friday and Saturday  
Oct. 29th and 30th  
Johnny Weissmuller as  
Jungle Jim in

Jungle Man-Eaters

Sunday and Monday  
Oct. 31 and Nov. 1  
Scott Brady in

The Law vs. Billy  
The Kid

In Technicolor



Enjoy Yourself!

Let us help banish those worries about loss of personal property that too often detract from vacation enjoyment.

Our Personal Effects Policy will cover your luggage, clothing and other personal property against practically all risks of loss or of damage. When you pack, pack protection, too.

— LOANS —  
CLAYTON  
INSURANCE AGENCY  
PHONE 148

### VA Quiz

Q -- My National Service Life Insurance has been lapsed for more than three months and I understand I must take a physical examination in order to reinstate it. Will VA give me the examination?  
A -- Yes. You may receive your physical examination, at no cost, from a VA regional office or hospital clinic.

Enter our . . .

### PAY and LAY CONTEST

Today: Come in and see the entries and then make your guess

● Valuable prizes will be given the winners

ED JAMES FEED AND SEED

Q -- I intend to go to school under the Korean GI Bill. I would like to get a part-time job to supplement my GI allowance. Is there any limit on how much money I would be permitted to earn?  
A -- No. There is no limit on the outside earning of veterans in school under the Korean GI Bill. No matter what you earn, your GI monthly allowances will remain the same.

Q -- I am enrolling in college this fall under the Korean GI Bill. When can I expect my first GI allowance check?  
A -- You will receive your first check about two months after you enroll. Under the law, payments are made after the end of each month of training so that accounts for one month. Then, you and your school must sign a certification that you've been in training all month. VA pays its allowance within 20 days after it receives this certification; so that accounts for almost another month.

### Sunshine Sue,

star of WRVA's "Old Dominion Barn Dance" says:

"You know, friends,  
I just couldn't keep house  
without Karo



my family loves the  
heartly maple-y flavor  
Karo adds to every bite



Pour  
Karo Waffle Syrup  
on biscuits,  
pancakes...  
everything!

\* 1 1/2-POUND AND 3-POUND BOTTLES... 3- AND 10-POUND CANS



# The Basic Idea Behind the All-New 1955 PONTIAC

On Display October 29 and 30

ABOUT 30 years ago General Motors Corporation presented to America a new car called Pontiac. This new car was the direct result of a very specific idea.

The idea was this: to create a car which took its style, its engineering principles and its features from the very best and most expensive in America—and to build these into a car priced just above the very lowest!

Naturally, such an idea produced a wonderful and highly popular car—a car which millions of satisfied owners have driven with outstanding pride and pleasure.

Now, nearly three decades later, an entirely new Pontiac has been created for 1955—a car completely new from the ground up!

One thing, however, about the 1955 Pontiac remains unchanged—its basic idea—to offer the American public the very finest car that can possibly be built to sell at a price within easy reach of any new-car buyer.

When you see the new Pontiac on Friday or Saturday—Oct. 29 or 30—you will be immediately impressed by its remarkable new styling. No other car in the world looks like this new Pontiac!

When you drive it you will be astonished at its performance. For the 1955 Pontiac introduces the powerful new Strato-Streak V-8, an all-new engine that has already been proved in more than 3 million test miles!

When you price the new Pontiac you will come face to face with the basic Pontiac idea—you will be agreeably surprised that so much car, so much sparkling newness, so much luxury, so much downright goodness can be priced so near the very lowest.

We cordially invite you to come in on Friday or Saturday and see for yourself what a superb all-new General Motors masterpiece has been created to carry the wonderful name "Pontiac" for 1955.

## Harris Pontiac

7th and Deak St

O'DONNELL, TEXAS

# Gibson's

CLEANERS

CLEANING

PRESSING

Alterations

Joe M. Lehman, M. D.

Medicine and Surgery

Hours 8 a m to 6 p m daily

Sunday: 9 a m to 11 a m

Office phone 134; Home

209

Stanley - Jones

Funeral Home

And Burial Association

phone 233 Bx 185 Tahoka

O'DONNELL UPHOLSTERY

Draperies, Belts, Buttons,  
Buttonholes and Corsets

Mrs. H. L. Wood

Dr. O. H. NANCE

Optometrist

528 N. 1st Lamesa ph. 554

# BLOCKER GROCERY

"Trade Goes Where Invited, Stays Where Treated Best"

## SPECIALS For Friday and Saturday

**SUGAR 10 lb 89¢**  
10 lb bag pure cane

**Crisco 82c**  
3 lb can



**CHILI 29¢**  
No. 1 can "Wolf"

**Catsup 16¢**  
14 oz. Bottle "Del Monte"

**TIDE 25¢**  
Large Box

**TUNA 29¢**  
"Van Camp's" Green Label

**Sardines 15¢**  
Tall can: Natural: "Steamboat"

**sliced Bacon 1 lb 55¢**  
Corn King

**Beef Roast 45¢**  
Choice cuts lb

**Fryers**

**TRADE WHERE MA SAVES MONEY FOR PA**  
We Reserve The Right to Limit. Nothing Sold to Merchants to be re-sold

### FOLKS YOU KNOW

Mrs. Earl Gillespie had her children Mr. and Mrs. Homer Tisdell of Fort Worth and Mr. and Mrs. Childress of New Mexico visit her over the week end.

Mr. and Mrs. F. M. Jones and Mr. and Mrs. Wes Caswell visited Mr. and Mrs. Carroll Jones in Grand Prairie over the week end.

Miss Patsy Fralin of Seminole visited her sister Mr. and Mrs. Hal Singleton 3rd Sunday.

Mr. and Mrs. Jay Havens of Quanah spent the week end with her parents Mr. and Mrs. Tom Yandall.

### VA Quiz

Q -- I have a 30-percent service connected disability, which I incurred in Korea. Would that alone be enough to entitle me to Public Law 16 training?

A -- No. A service connected disability alone is not sufficient to entitle you to Public Law 16 training. You also must be in need of training to overcome the handicap of your disability. Need would have to be established at a session with a VA counselor.

Q -- I am going to a vocational school under the Korean GI Bill. I understand that I am allowed 30 days of absences a year. Do legal holidays and week ends count as absences?

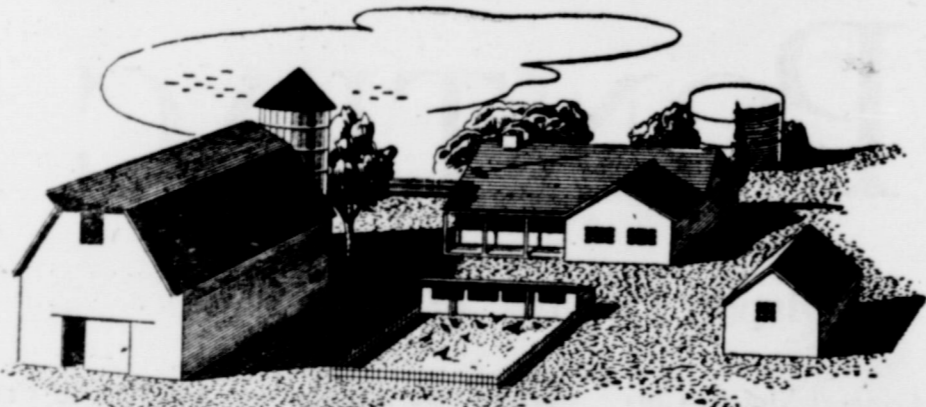
A -- No. However, other days during school vacation periods -- such as Christmas and Easter -- would be counted as absences.

Q -- I have a permanent GI insurance policy on the endowment plan. At the end of the endowment period, how will I be paid the money in a lump sum or in monthly installments?

A -- You may choose to receive the proceeds in either manner -- lump sum or monthly installments, ranging from 36 to 246 in number.

Mr. and Mrs. Gum Minton are home from Mayo Clinic where Mr. Minton had surgery.

## MAKE REPAIRS AND IMPROVEMENTS NOW!



- PAY NO MONEY DOWN •
- TAKE 3 YEARS TO PAY •

ARRANGEMENTS COMPLETED IN 15 MINUTES AT YOUR FRIENDLY CICERO SMITH STORE

Your neighbors call us "the home folks" and that's just what we are. We sell the highest grades of roofing, plumbing, electrical contractor's supplies, builder's hardware, lumber, and just about everything else you need to keep your home in good condition . . . at the most reasonable cost. Be comfortable. Save money this winter. Make your home repairs NOW!

**MONEY IS AVAILABLE NOW FOR LABOR, MATERIALS, TOOLS AND EQUIPMENT TO DO ANY REPAIR OR IMPROVEMENT JOB**

## CICERO SMITH LUMBER CO.

Don Edwards, Mgr.

Phone 18,

O'Donnell, Texas

PHONE 50

Found: Little Girl's Mexican Purse Pay for Ad and Pick up at Index.

### Lunchroom Menu

Monday: Tomolite pie, lettuce wedge, navy beans, buttered spinach, milk, corn bread, butter, bread peach cobbler.

Tuesday: bacon strip, tomato & lettuce salad, English peas, candied yams, milk, bread, jello with fruit.

Wednesday: Sausage, beets, green beans and potatoes, creamed carrots, milk, rolls, butter, bread, stewed apricots.

Thursday: barbecue beef, cabbage and carrot salad, pinto beans, cranberry sauce, milk, bread, cake squares.

Friday: Ham, sliced tomatoes, Blackeye peas, potato salad, milk, bread, ice cream.

### NEW MOORE

Paul Turner of Halfway visited here Sunday. Ted Rogers was home Saturday night.

Mrs. Bobbie Light and Mrs. H. L. Webb were in Lubbock Friday visiting Mrs. Cecil Webb who is in the hospital there.

Mr. and Mrs. Leo Godbehere of Riverbank, Calif., spent the week end with Mr. and Mrs. Olan Blair. Mrs. O. P. Crutcher, Jr. and children of Lamesa spent Sunday night with her mother Mrs. Virgil Adams. Mr. and Mrs. H. Y. Conrad visited Mr. and Mrs. Menix at Lamesa Sunday.

The ladies of the Civic club have been rather busy lately. They quilted two quilts last week and will put another one up to quilt Wednesday of this week. They also had a bake sale last Saturday selling cake, pie, hot coffee and hamburgers. Saturday they will sell hot coffee, chili and stew with the cakes and pies. Money made will go to pay for the lot where the club house sets.

Maurice Carpenter of Long Beach, Calif. visited J. J. Hodnett and his aunt, Miss Florence Carpenter here last week.

Mrs. Cleon Eason, Jr. of Andrews visited here last week.

Cleon Eason and Ray Eason are on a deer hunt near Blanding, Utah.

## Specials For Friday and Saturday

- Large cello pkg Celery ..... 23
- Long green Cucumbers lb ..... 12
- 10 lb bag White Spuds ..... 49
- 12 oz. Sunspun Catsup ..... 15
- 80 count Napkins ..... 12
- 303 SunSpun Pie Cherries ..... 23
- 3 lb carton Pure Lard ..... 69
- No. 1 pink Salmon Libby's ..... 59
- No. 303 Libby's Pumpkin 2 cans for ..... 25
- 1 lb Supreme Crackers ..... 25
- Swift Premium Bacon lb ..... 64
- Pork Chops lb ..... 59
- All Meat Cello Franks lb ..... 49

## Line Grocery And Market

Plenty of parking behind the store; come in and shop with us. WE DELIVER PHONE 118



**Crackers 24¢**  
1 lb Supreme

**Spinach 2 for 29¢**  
No. 303 "Del Monte"

**Beans 3 for 29¢**  
Kimbell's Mexican Style 303 can

**Instant Coffee \$1.79**  
Maxwell House; Instant; 6 oz. jar

**Snowdrift 3 lb can 79¢**

**CHEER 69¢**  
Giant Box

**Pet dry milk 29¢**  
3 quart Instant

**JAM 19¢**  
Red Plum; Bama;; 12 oz. glass

**Chili 49¢**  
Wolf Brand No. 2 can

### CHOICE MEATS

**Banner Bacon 59¢**  
per lb

**Beef roast 49¢**  
Home Killed

**beef ribs 29¢**  
per lb

Fresh Fryers and Hens

# MANSELL BROS

SPECIALS FOR FRIDAY AND SATURDAY  
FREE DELIVERY

PHONE 50

Agles Whitef  
O'Donnell ar  
Friday nite cov  
20 to 6 li  
power game  
first a  
play. Th  
games in v  
three vic  
ward.  
The Eagles  
control  
minutes.  
a 60 yard  
Pullback  
over as well  
point byranni  
Is the sec  
passed in a bi  
ing which co  
per dirt, how  
was missed.  
Mott did it  
Sander ran  
line man  
Pierce.  
Baptis  
New P  
Sunday  
Church the  
Ernest D.  
its new p  
caused by  
Rev. O. O.  
Corpus Ch  
family wil  
future.  
REUNION  
Guests  
home over  
ess. Elibe  
and Mrs.  
his niece,  
daughters  
ham - also  
children a  
and Mess  
ies. N. M  
w. Virgil  
Bertie A  
Lucy, Mr  
N.Y.P.S. H  
Thirty  
home of  
ward' p  
week. Le  
were jud  
dressed o  
was spon  
Young P  
Mr. at  
Plainvie  
home Su  
The  
October  
MET  
J. Mar  
Sunday  
Morning  
Evening  
groups.  
Evenin  
The V  
needs e  
gay nites  
The  
Monday  
Mary  
Tuesday  
Choir  
ie at 8  
Metho  
Monday  
program  
BARGA  
Fl. W  
DA  
1 Year  
Rech  
DAILY  
1 Year  
Rech  
Lu  
7 days  
Week d  
Also At  
Agent t  
The In  
P  
TELLS  
See  
affairs  
fairs,  
suits,  
fall to  
Will I  
What  
When  
What  
How c  
Shoul  
Will I  
Will I  
Does  
right  
Does  
How  
How  
How  
Why  
mir.  
How  
Thing  
Know  
happi  
ed at  
ands  
All  
Spec  
V  
9 a.  
After  
NEX  
Store