



**Dr. O. H. NANCE**  
Optometrist  
528 N. 1st Lamesa ph. 554

BUY-SELL OR TRADE —  
GUNS AND PISTOLS  
WATCHES CLEANED \$2.95  
All Work Guaranteed  
★ *Hale Variety*

**Noble L. Rumbo,**  
**M. D.**  
**Medicine and Surgery**  
RUMBO CLINIC  
OFFICE PHONE 8-3294  
Home Phone 8-3376

**Saleh And Saleh**  
ATTORNEYS AT LAW  
GENERAL PRACTICE IN ALL COURTS  
502 N. 1st St. — Phone 2171  
LAMESA, TEXAS

BUY YOUR DAILY PAPERS AT  
INDEX OFFICE —  
LUBBOCK AVALANCHE  
Morning and Sunday — \$14.95  
Morning without Sunday \$13.00

Laying hens need a starter, developer and finisher type ration during the production period. At least that is what research conducted at Texas A and M College indicates.

**O'DONNELL INDEX - PRESS**  
Established in 1923  
Box 546, O'Donnell, Texas  
Published Every Wednesday  
O. G. SMITH, JR., Owner  
Advertising Rate: 60c col. in.  
SUBSCRIPTION RATES  
In Lynn, Dawson and Borden Counties \$2 per year. Elsewhere in U. S. \$2.50 per year.  
Card of Thanks \$1.00. Classified advertising 4c per word, with minimum charge of 50c.  
Your label at top of paper tells late your subscription expires.

**ELECTION NOTICE OF CITY OF O'DONNELL, TEXAS**  
The annual City of O'Donnell Election has been called for April 3, 1962.  
Two aldermen and a mayor are to be elected.  
Deadline for candidates filing for a place on the ballot is 30 days prior to election. Terms expiring are those of Harvey Line and Homer Hardberger, aldermen and L. J. Hash, mayor.  
Absentee voting begins 20 days prior to election and ends 3 days before election. Voting will be at the City's Tax Office.  
By Order of:  
L. J. HASH, MAYOR  
ATTEST: MOODY EVERETT, City Secretary.

Second class postage paid at O'Donnell, Texas.

**ROUTE MAN SPARE TIME**  
Refilling and collecting money from new paper coin operated dispensers in this area. No selling. To qualify you must have car, \$600 to \$1500 cash and 6 to 12 hours weekly. Can net up to \$300 monthly. More full time. For personal interview write Box 22042, Denver 22, Colo.

**JUDGE SPRABERRY SEEKS RE-ELECTION AS DAWSON COUNTY JUDGE** (from front page)

**SCHOOL ELECTION NOTICE**

At a regular meeting of the Board of Trustees for the O'Donnell C. I. S. D. Feb. 8th, 1962 an election was ordered to be held on the first Saturday in April for the purpose of electing three trustees for the ensuing three years. Terms expiring are those of D. B. McMillan, Andy Jordan and Bart Anderson.

**REQUIREMENTS FOR CANDIDATES TO GET NAME PRINTED ON BALLOTS**—Candidates must be qualified resident voters of said School District, must sign application in person, or if by petition, must be signed by at least eight qualified voters of the district. Applications must be filed not later than March 8, 30 days prior to said election. Application may be filed with the Superintendent of Schools or with D. B. McMillan, President of the Board of Trustees.

Signed, D. B. McMillan, President of Board of Trustees.  
For rent—590 acres in cultivation with sale of equipment, also 50 head cattle, 3 wells, small cotton allotment, pasture and silo. Jeff White Jr. 2-14c

or of Youth Incorporated, The Boys Club, and is a member of the Permian Basin Juvenile Council. He was largely responsible for acquiring a juvenile officer for Dawson County to help with our youth.

Judge Spraberry is a member and one of the directors of the Permian Basin Petroleum Association. This association is composed of 65 counties in West Texas and Southeast New Mexico. Of the twenty four directors of this association, only three are County Judges. The Permian Basin Petroleum Association was established to provide a means of conveying the feeling of Basin residents to others, to provide leadership in areas lacking it and to cooperate with legislative and regulatory bodies protecting the rights of this region.

He is active in Community affairs and belongs to the Kiwanis Civic Club, Chamber of Commerce and was chairman of the DeMolay's March of Dimes blockade the past three years.

Judge Spraberry received his college education from Oklahoma University, Texas Technological College and Hardin Simmons University.

**Price, spice and everything nice!**

Who ever thought a car that saves like this could have so much sizzle? Chevrolet engineers, that's who! Liveliness and luxury for a low, low price were exactly what they had in mind to begin with. And they began from scratch with a whole carload of ingenious new ideas designed to give you more for your money. That spunky 6 with gas-sipping stinginess is just one example. Another: a new unitized Body by Fisher that's fit for a full-size family inside, easy to park

outside. Still another: tough but gentle one-piece Mono-Plate rear springs that outdo many a bigger car for quiet comfort. Any wonder Chevy II won Car Life magazine's 1962 Engineering Excellence award hands down? (The wonder would be if you settled for anything less—once you get your hands on one at your Chevrolet dealer's!)

**Chevy II Nova**



The sporty Chevy II Nova Convertible and sprightly 4-Door Sedan

See the new Chevy II at your local authorized Chevrolet dealer's

**ELLIS CHEVROLET CO.**

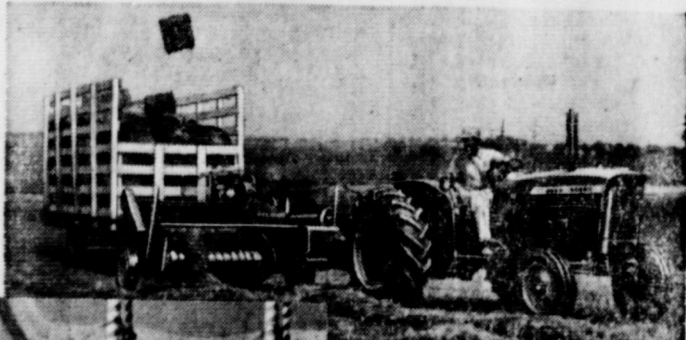
Box 124, O'Donnell, Texas

Let's get together  
**JOHN DEERE DAY!**

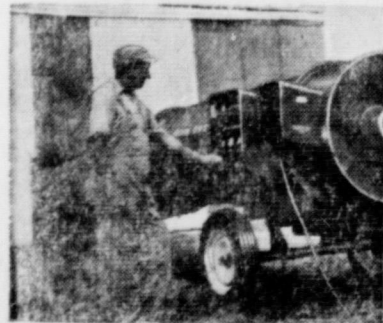
George Gobel

If you like farming . . . if you like people . . . if you like fun . . .

you'll like our John Deere Day show! From start to finish, it's got something for every member of the family to enjoy . . . useful, entertaining farm information . . . comedy . . . music . . . top-flight Hollywood performers. Television personality George Gobel brings to the screen his familiar, home-spun brand of humor . . . as star of the heart-warming story that ties the show together . . . as master-of-ceremonies on film for the whole program. Gobel, veteran actor John Carradine, and young Billy Mumy take you to a wondrous carnival that has all the color, glamour, and excitement of a county fair. You'll see "Lonesome George" in comedy sketches as hilarious as anything he's ever done on TV. It promises to be a day you'll long remember!



You'll witness new John Deere equipment for 1962 . . . combines actually being clocked in the field . . . a labor-saving way to make hay . . . how top-quality tractors are built . . . amazing oddities in farming . . . the story of a dealer's business. Don't miss the greatest farm show of the year in this area!



Come see this new portable crop dryer and the whole line of "What's New" for 1962.



Date: Thursday, Mar. 15, Time: 7:00 P. M.

Place: School Cafeteria

**Wayland Taylor, Inc.**

O'Donnell, Texas



Does your skin need a new lease on youth?

**Discover CARA NOME TRANSCENDA CREAM**

THE CREAM THAT TRANSCENDS EVERYTHING YOU'VE EVER DARED HOPE FOR

In this newest of night creams, Rexall scientists have blended near-duplications of the very substances that make young skin look young.

FEEL IT! Cara Nome Transcenda is light and greaseless, with a delicate texture—actually contains micronized silk.



SEE IT DISAPPEAR! It begins working at the first pat, bathing your skin with rare oils, rich emollients, precious moisture.

WATCH IT WORK! In remarkably few days you'll see the difference. Tiny lines and wrinkles due to dryness smooth away. It'll delight you as a younger-looking complexion dawns.



CONSULT OUR COSMETICIAN about new Cara Nome Transcenda TODAY.

As seen in VOGUE

AT OUR **Rexall** DRUG STORE

Lott Pharmacy

**Moore Insurance**  
Complete Insurance Service

Phone 428-3335 :: O'Donnell, Tex.

**WHITE FUNERAL HOME**

Tahoka, Texas

Call Collect: No. 998-4433 -- Day or Night for Emergency Ambulance Service to any Hospital you designate. Holders of Advance First Aid Cards.

BONDED Insurance Program from \$200.00 To \$1,000.00 Cash Policy.

FULL CREDIT GIVEN ON ANY BURIAL POLICY REGARDLESS OF COMPANY

MAY WE SERVE YOU IN TIME OF NEED.

MARTIN AND BILLIE WHITE  
WHITE FUNERAL HOME, TAHOKA, TEXAS

**POLITICAL COLUMN**

The index has been authorized to enter the following names in the Political Column subject to action of the voters in the Democratic primary, May 5, 1962

**STATE SENATOR**  
**WESLEY ROBERTS** of Seminole DISTRICT JUDGE 106 DIST.  
**FRANK SMITH** of Tahoka (Re-election)  
**STATE REPRESENTATIVE 75th District**  
**JERRY CAIN** of Tahoka  
**E. R. (Randy) PENDLETON** of Andrews  
**DONALD JOE GRIMES** of Seagraves  
**ROBERT E. OWEN** of Seminole COUNTY SUPERINTENDENT  
**J. P. HEWLETT** (Re-election)  
**JUSTICE OF PEACE, PCT. 4**  
**ROBERT BRUNETT** (Re-election)  
**COUNTY CLERK:**  
**C. W. ROBERTS** (Re-election)  
**COMMISSIONER, PCT. 2**  
**WOODROW (Gde) BREWER** (Re-election)  
**CLARENCE WILLIAMS** COUNTY JUDGE  
**W. M. MATHIS** (Re-election)

**DAWSON COUNTY COMMISSIONER, PCT. 2**  
**A. B. FULLOW** (Re-election)  
**MOODY NEELEY** COUNTY JUDGE  
**R. F. SPRABERRY** (Re-election)

**O'Donnell Barber Shop**  
 NOW AT NEW LOCATION JUST EAST OF VEX THEATRE  
 LATEST STYLES CUT BY THE BEST METHOD  
 Specialize in Flat Tops  
 Prompt Service — John

**SCHOOL EVENTS**

March 2, 3 Stock Show at Tahoka  
 3 Brownfield Track Meet  
 5 County Teachers Meet at Tahoka at 7  
 5 Teachers In Service Meeting  
 6th Jr. Play  
 6 County Career Day at Tahoka  
 8-9 Lamesa Stock Show  
 9 Dist. Teachers Meet, Lubbock  
 10 Seminole Track Meet  
 12 FHA, FFA meetings  
 12 PTA Meeting  
 13 FHA Flying Matadors  
 15 WMS Baptist Senior Banquet  
 19-21 Lubbock Stock Show  
 21 Assembly  
 30 FHA Slumber party

Will do housekeeping and baby sitting, Dalia and Mary Garcon, 11th and Standefer st. 1tp

Sewing wanted — Mrs. Prentis Scott. All types of sewing, Western Wear a specialty, place your rodeo order now for early delivery 4tp

New Kirby Vacuum Cleaners  
 Sales and Service, repairs all makes  
 Good used cleaners \$10 up  
**J R SIDES, 801 N. 13th Lamesa**  
 Phone 5130 for demonstration

15 ft. Kelvinator deep freeze upright reg. \$349.95 now on sale at \$269.88 with trade at Singleton Appliance

**DATES GIVEN ON ELECTIONS**

Following is a votin guide of the 1962 Elections:  
 First primary: May 5, Absentee voting from April 15 to May 1.  
 Second primary: June 2, Absentee voting from May 13 to May 29.  
 General election: Nov. 6th, Absentee voting from Oct. 17 to Nov. 2nd. Party conventions: Precinct, May 5, county, May 12, state, Sept. 18.

**Farm Meetings Set For March 13 and 14th**

There will be a two day meeting on farm problems here next month according to Glenn Clark of the local farm store. On March 13, Dr. Allen Heidebrecht will talk at a night meeting on all phases of feeding. On the morning of March 14th Dr. Miles of Mathusen Fertilizer Co.

**CHURCH OF THE NAZARENE**

A friendly Church serving a friendly community in a needy world invites you Sunday school at 10 a. m. Morning Worship at 11:00 a. m. Evening Worship at 7:30 p. m. Pray

**ASSEMBLY OF GOD CHURCH**

A welcome and service for all Sunday School 9:45 a. m. Morning Worship 11 a. m. Evangelistic service 7:30 p. m. Midweek Service 7:30 p. m. Young people service 6:30 p. m. Large enough to know you — small enough to serve you.

★ Announcing The Purchase Of ----  
**BOLCH TEXACO SERVICE STATION**  
 And Will Continue To Feature Texaco Gas And Products As Well As ---  
 ★ Mohawk Passenger Tires  
 ★ U. S. Tractor Tires  
 ★ Michelin Tires For Trucks and Pickups  
**Jude Taylor**  
 "O'DONNELL TIRE CO."  
 Come To See Us --- Your Trade Invited

**TRACTOR TIRES**  
 12x38 -- \$90.00 13x38 -- \$100.00  
**EXIDE BATTERIES**  
 DEEP BREAKING -- 8 to 12 inches \$4.00 per acre  
 NEW and USED 4--row Shredders  
 Bring Your Tractor in For Overhaul  
 Earl Wingfield, Mechanic  
**Edwards Implement**  
 Phone 428-3414 O'Donnell, Texas

**CLAUDE'S**  
 All Kinds Cowboy and Wellington BOOTS — WESTERN SHIRTS  
 MOCCASINS — LOAFERS — ALL KINDS FINE LEATHER GOODS  
 EXPERT REPAIR ON ALL SHOES AND BOOTS  
 Phone 428 - 3416



**MOTOR VEHICLE**  
**1962 LICENSE PLATES**  
 Are on Sale from February 1 to April 1, 1962 at  
 Lynn County Tax Office, Tahoka  
**MOORE INSURANCE AGENCY, O'Donnell**  
 Please bring your Titles and 1961 Registration Receipts.  
 1962 License Tags must be on vehicles operated on highways by April 1, 1962  
**GEORGE McCracken**  
 TAX ASSESSOR AND COLLECTOR  
 Lynn County, Texas

**HIGGINBOTHAM FUNERAL HOME**  
 "Dedicated To Helpfulness"  
 408 N. Austin St. Lamesa Phone 4585  
 24 Hour Ambulance Service  
 Burial Insurance "Bonded Protection"

**1962 MERCURY MONTEREY**  
 The best-looking buy for the big-car man



**New sizzle for MERCURY MONTEREY!**

Some like 'em hot. And some like 'em even hotter. Go Monterey and you can pick any degree of "hot" you wish . . . from the economical Monterey "6" all the way to the mighty Mercury Monterey 390 V-8. (Also, new Marauder 406 V-8 available on special order in Monterey hardtop and sedan models.)

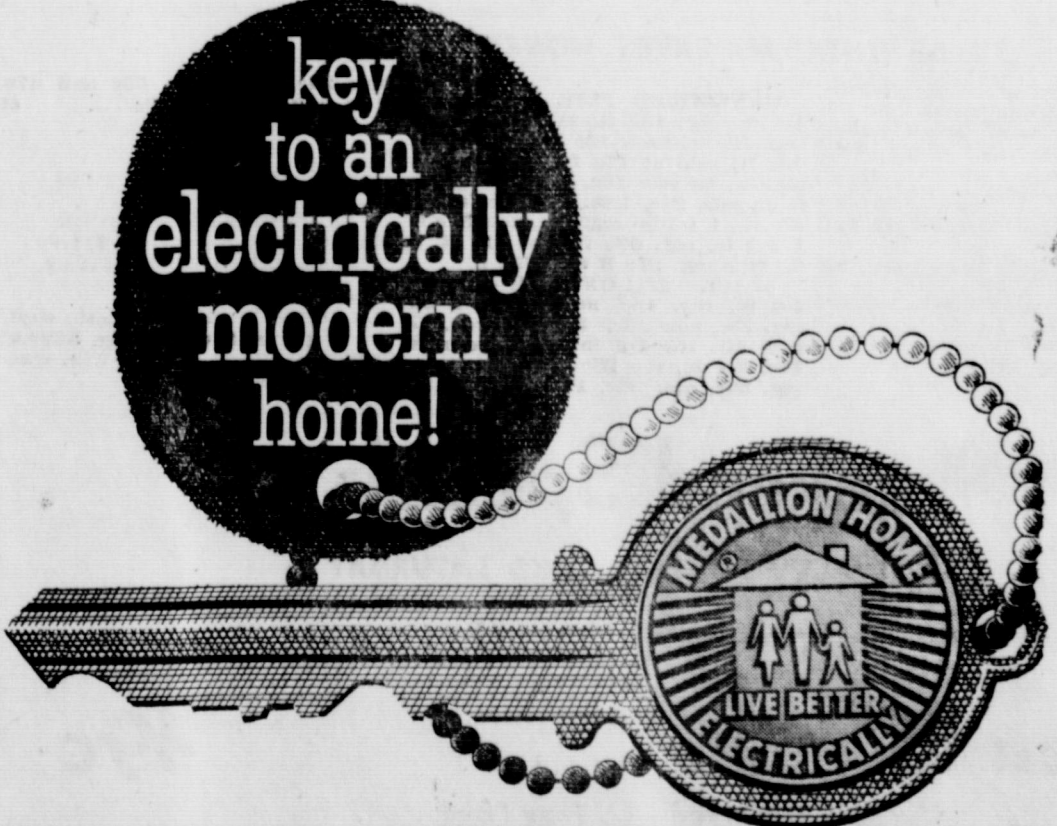
Here's sizzle enough to warm the heart of any big-car man—the kind of performance that makes Mercury famous. See your Mercury Monterey dealer now for all the facts about Mercury Monterey's newest hot-performing engine line-up. Better yet, try one of these Mercury Monterey mile-melters yourself!

LINCOLN-MERCURY DIVISION • 1962 MERCURYS • PRODUCTS OF Ford MOTOR COMPANY

**SEE THE BEST-LOOKING BUY FOR THE BIG-CAR MAN AT MERCURY QUALITY HEADQUARTERS**

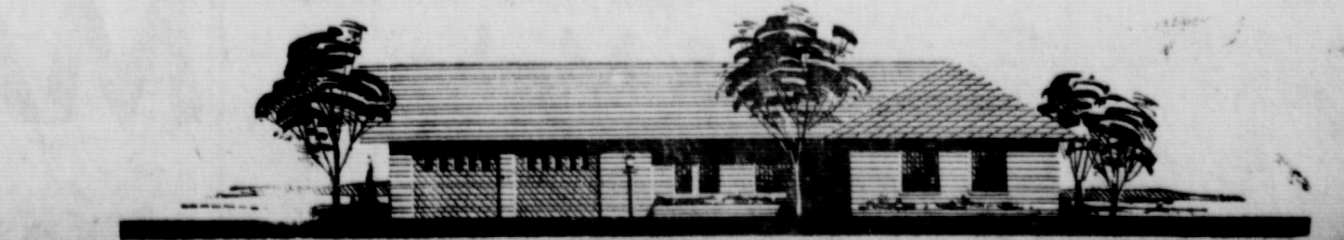
**Forbes Motor Co.**  
 O'Donnell, Texas

key to an electrically modern home!



When you see the Live Better Electrically Medallion displayed on a home, you know it's a home equipped for truly modern electrical living. The Medallion certifies that the home is one that meets modern high standards for electrical excellence with FULL HOUSEPOWER wiring...modern efficient LIGHT FOR LIVING...and WORK-SAVING ELECTRIC APPLIANCES, including an electric range, electric bathroom heating and at least three other major electric appliances. So look for the Medallion when you look for a new home. It's your key to a home that is electrically modern and will stay modern for years to come.

**TEXAS ELECTRIC SERVICE COMPANY**



# BLOCKER GROCERY

Your S. & H. GREEN STAMP store

## SPECIALS For Friday and Saturday

<b>Picnics</b> <b>\$1.98</b>	<b>Beef Roast lb</b> <b>49c</b>
3 Lb can boneless fully cooked	Choice Chuck Lb ....
<b>Bacon lb</b> <b>49c</b>	<b>Always a Nice Selection Of Fresh</b>
Tall Korn 1 Lb reg sliced	<b>Vegetables and Frozen Foods</b>
2 Lb Thick Sliced .....98c	

**COFFEE** . . . . . **59c**  
Decker's special blend ground fresh while you wait lb

**Tomato Juice** . . . . . **15c**  
29 oz. can "Ashley's"

**Pop Corn** . . . . . **10c**  
10 oz. can "Kimbell's"

**FLOUR** . . . . . **79c**  
10 Lb Print Bag "Everlite"

**SPINACH** . . . . . **2 for 25c**  
300 can "Hunt's"

**Pineapple** . . . . . **6 for \$1**  
Flat "Del Monte" crushed

**PEACHES** . . . . . **25c**  
Hunt's no. 2 1/2 can whole, spiced

**MELLORINE** . . . . . **39c**  
1/2 gallon Borden's

**ORANGE JUICE** **2 for 35c**  
6 oz. can Donald Duck Frozen

### TRADE WHERE MA SAVES MONEY FOR PA

For rent- 500 acres in cultivation with sale of equipment, also 50 head cattle, 3 wells, small cotton allotment, pasture and silo. Jeff White Jr. 2-14c

30 gal Day and Nite or Mission hot water heater, jet glass lined, 10 year warranty reg. \$79.91 now on sale at Singleton Appliance for only \$59.50

**GALVANIZED PIPE SALE**  
1-8 in. reg. 15c ft. sale 13c, 1-4 in. reg. 18c ft. sale 16c ft. 3-8 in. reg. 19c ft. sale at 17c ft., 1-2 in. reg. 22c ft., on sale 19c, 3-4 in. reg. 26c ft. on sale, 24c, 1 in. reg. 41c ft. sale 35c ft., 1 1-4 in. reg. 55c, now 51c ft. 1 1-2 in. reg. 66c ft. now 61c ft., 2 in. pipe reg. 87c ft. now 75c ft.  
**BLACK PIPE ON SALE**  
1-8 in. reg. 1pc, now 10c, 1-4 in. reg. 15c, now 13c, 3-8 in. reg. 17c, now 15c ft., 1-2 in. reg. 19c, now 17c, 3-4 in. reg. 25c, now 23c, 1 in. reg. 36c, now 34c, 1 in. reg. 47c ft.

now 30c, 1 1-4 reg. 56c now 47c, 2 in. reg. 78c now 68c — at  
SINGLETON APPLIANCE

**BUY YOUR DAILY PAPERS AT SUNDAY OFFICE — LUDWIG AVAALANCHE**  
Morning and Sunday — \$14.95  
Morning without Sunday \$13.00

1 Philco Bendix Automatic wash er, 2 speeds, 8 cycles, reg. \$329.95 value on sale at \$249.95 with trade at Singleton Appliance

## Weekend Specials

SPECIALS FOR FRIDAY AND SATURDAY  
OPEN ON SUNDAYS

**Bacon lb** . . . . . **49c**  
Nuehoff Preferred 1 Lb Tray Pack

Picnic hams Lb .....29c	Surefine Frozen Orange Juice
3 Lb Franks .....99c	12 oz. can ..... 34c
Korn Kist Tray pack Bacon Lb ....39c	Maxwell House Coffee reg or
Surefine Flour all purpose 5 lb ....39c	drip 1 lb can ....63c
1 Lb. Vanilla Wafers ..... 19c	Bananas Lb ..... 10c
Dill or sour Hamburger Sliced	Cream style corn 303 can 2 for 29c
Pickles 32 oz. barrel type jar ....29c	Fresh shelled Blackeye peas 15 oz ...
Biscuits ..... 4 cans only 29c	can ..... 2 for .....29c
Del Monte Fruit Cocktail 303 cans	La Grande Early June Peas 2
2 for only .....39c	cans for only .....29c

## Jackson Grocery & Market

WE GIVE DOUBLE THRIFT STAMPS  
FREE DELIVERY SERVICE ANYTIME  
AT NORTH Y PHONE 428-3424

**New Kirby Vacuum Cleaners**  
Sales and Service, repairs all makes  
Good used cleaners \$10 up  
J R SIDES, 801 N. 18th Lamesa  
Phone 5189 for demonstration

15 ft. Kelvinator deep freeze up-right reg. \$349.95 now on sale at \$269.88 with trade at Singleton Appliance

Each dollar spent for the proper kinds and amounts of fertilizer will return from 2-10 depending on the crop, foisture and management. A soil test is the best guide for determining how much and what kind of fertilizer to use. A copy of B-955 "Fertilizing Texas Pastures" is available at your county agent's office.

### REX THEATRE

O'DONNELL, TEXAS

Saturday 7 p. m.

He tamed a town with Roaring Guns With Joel McCrea, Vera Miles in color  
**Wichita**

Sun. - Mon.

Sun. 1:15 and Mon. 7:15  
Have yourself a Hawaiian Holiday with Gidget with James Darnen, Deborah Walley, in color  
**Gidget Goes Hawaiian**

### SPECIALS FOR FRIDAY AND SATURDAY

80 count Kim Napkins	2 for 25c
No. 1 can Rose Bowl Mackerel	19c
2 Lb White Swan Coffee	\$1.39
1/2 gallon Red Karo	63c
1 Lb Supreme chocolate nut Sandies	39c
1 quart Clorox	19c
Libby's cut beans	25c
Full Dress Dog Food	3 cans for 25c
303 can Kuner Whole Potatoes	15c
25 Lb Pureasnow	\$2.00
3 Lb White Swan Shortening	49c
Chuck Roast Lb	49c
Round Steak Lb	49c
All Meat Franks Lb	49c
10 lb cello bag Spuds	43c
10 oz. Fresh frozen Strawberries	19c
Fresh Onions 2 bunches for	15c

**LINE GROCERY & MARKET**  
LINE UP WITH LINE  
WE GIVE FRONTIER STAMPS  
Wednesdays — Double Stamp  
O'Donnell, Tex. Phone

## Money Savers

**Coffee 63c**

Folgers 1 Lb can

**OLEO 4 lb 59c**

Diamond

**Sun 39c**

Detergent giant size

**Strawberries 2 for 36c**

10 oz. Frozen Mity Nice

**Cottage Cheese 19c**

12 oz pk Borden's

**Buttermilk 39c**

1/2 gal Borden's

**Shortening 59c**

3 Lb can Flair

**Napkins 25c**

200 count Kim

**Eucheleda Dinner 39c**

Patio Frozen

**Biscuits 3 for 25c**

Kimbell's

**Vanilla wafers 25c**

1 full pound pkg

**FLOUR 49c**

5 Lb Gold Medal

**Finest Quality MEATS**

**FRYERS 34c**

Grade A

**Pork Liver lb 19c**

Fresh Pork

**Pork Steak lb 45c**

nice and lean

**pork roast lb 39c**

Fresh

**Bacon lb 59c**

Cudahy's "Bar-S"

\$\$\$\$\$\$\$\$\$\$\$\$\$\$  
**SILVER DOLLAR THRIFT STAMPS**



\$\$\$\$\$\$\$\$\$\$\$\$\$\$

★ ★ WE GIVE DOUBLE SILVER DOLLAR THRIFT STAMPS ON EVERY WEDNESDAY ★ ★

# MANSELL BROS

SPECIALS FOR FRIDAY And SATURDAY  
Phone 428-3413 FREE DELIVERY

Phone 428-3413