

Orchid Beauty Shop
For Beauty Work that
Easily Beautifies
Call 165 for appointment

The O'Donnell Index

SERVING O'DONNELL TRADE TERRITORY THOROUGHLY

Read Index Ads and
Save Money

VOLUME XVII

O'Donnell, Lynn County, Texas, Thursday, July 11, 1940

NUMBER 43

Saturday, July 13, Preparedness Day

Saturday, July 13, has been set as South Plains Preparedness Day according to an announcement made late last week by A. I. Glassman, Commander of the American Legion Post Lubbock. A parade will be held in Lubbock, beginning at 10:00 a. m. Saturday, through the downtown business section of Lubbock. A special military band will head the parade, to be followed by U. S. Army units, numerous mechanized units, armored cars, battery equipment trucks and enlisted personnel. Others participating in the Preparedness Day Parade will be all Veterans of Foreign Wars, Spanish-American War Veterans, Boy Scouts, National Guardsmen, ROTC units and others, as well as members of the American Legion.

Plans are under way for a patriotic rally to be held immediately following the parade. All military units from South Plains towns are invited to participate. Patriotic Americans are invited to take part in the Preparedness Day Program, according to Commander Glassman.

Saleh Home Nearing Completion This Week

The newly remodelled and improved home of Mr. and Mrs. N. Saleh in this week nearing the "finish line," as masons, carpenters, painters and paper hangers put the final touches on what will be one of the most attractive and conveniently arranged homes in this section.

An addition was built across the back of the old house, adding two large bedrooms and two halls to the original building. Partitions were changed, new openings cut, and other alterations made on the interior, so that the new house now includes four bedrooms, bath, two halls, a number of closets, kitchen, dining room, and living room. Heavy tarpaper was applied on the old walls before the exterior rock finish was put in place. Slaughter and Hines are doing the masonry, the rocks having been brought in from all parts of the country. A brick trim at opening and corners adds a pleasing and harmonious touch to house and garage, which is also rock finish.

CAR LOADINGS

The Santa Fe Railway System car loadings for the week ending July 10, 1940, were 23,666, as compared with 25,295 for the same week in 1939. Received from connections were 5,457, as compared with 4,835 for the same week in 1939. The total cars moved were 29,123, as compared with 30,151 for the same week in 1939.

The Santa Fe handled a total of 29,965 cars during the preceding week of this year.

Charter No. 15831

Armored Cars And Soldiers Visit In O'Donnell Tuesday

Thirty years, lacking one day, from the day the first train ran into O'Donnell, the city was host to a mechanized detachment of the regular army. Forty-six men, two scout cars, one reconnaissance car, five trucks and three trailers were here with anti-aircraft guns, defense guns, a Thompson sub-machine gun, the new semi-automatic rifles, and various other pieces of equipment.

Flagmen, streets and cheering crowds welcomed the detachment to O'Donnell and spectators were urged to ask questions, handle the guns, and get acquainted with the personnel of the party, which was commanded by Lt. Carolsone and Lt. Robinson.

The cars were equipped with two-way radios, for voice or wireless, and the party was accompanied by a military band which played several numbers. Talks were made by the commanding officers, during which they mentioned that the recruiting office at Lubbock is "running wide open."

The detachment was a part of the Fifth Cavalry, stationed at Ft. Clark.

Softball Schedule For Coming Weeks

With play-offs already being talked, and more than a little speculation as to which teams will take in the finals, we are herewith authorized to announce the schedule of softball games for the coming two weeks.

- Monday, July 15—Druggists vs. Arizona Chemical, 8:30.
- Monday, July 15—Welch vs. Mesquite, 9:30.
- Wednesday, July 17—Farmers vs. High School, 8:30.
- Wednesday, July 17—New Moore vs. Harmony, 9:30.
- Friday, July 19—Girls game, 7:00.
- Friday, July 19—Girls game, 8:15.
- Friday, July 19—Wells vs. Okay, 9:30.
- Monday, July 22—Welch vs. Mesquite, 9:30.
- Wednesday, July 24—Okay vs. Harmony, 8:30.

LOCAL GROCER SERIOUSLY ILL IN SANITARIUM

Mr. Smith, senior partner of Smith & Shaffer Grocery here, is seriously ill in a Lamesa sanitarium this week suffering from an intestinal obstruction.

Mr. Smith has not well for several days before being taken to the sanitarium Friday last week.

Good Crowds Attend Rodeo Performance

Splendid attendance, much interest, more excitement and plenty of heat and dust were on display here Wednesday when the Thirtieth Anniversary celebration and Rodeo were sponsored by O'Donnell merchants and business men.

A parade through the business district at three o'clock and music by Hop Halsey's Drug Store Cowboys gathered in groups to discuss events of the past day thirty years ago when the first train came into O'Donnell.

Harris Bros. are to be congratulated on the truly excellent show staged in the arena, events having been kept moving rapidly and were performers displaying workmanship which would have been creditable for any similar show.

In the three main events, Limey Thomas of Levelland won top honors in calf roping, his time being 17.8 seconds. Johnny Stovall of Fluvanna placed first in steer riding, bronze riding honors going to Clevis Honeycutt of Tahoka.

Only one serious accident marred the afternoon. Elmer Levey, receiving painful injuries about the head and body when spilled by an unusually vicious Branch. Knocked unconscious by the force of his fall, Levey was unable to roll clear of the flying hoofs, and was rather battered up as a result. He was carried from the arena and a physician summoned, but when he arrived the would-be rider was sitting up and remarking with a grin to friends that he "just had a little bark peeled off."

Good crowds were also reported present at the rodeo dance in the evening, sponsored by Shorty Wright at the dance hall.

Hundreds of Gullies Gnawing at Pastures

Gullies by the hundreds are gnawing at good pasture and crop land in the Lamesa Camp area, according to C. V. Firestone, an engineer with the Soil Conservation Service. Gullies are more active on the cultivated land in Dawson County and on the range land in Borden County.

Sheet erosion by both wind and water has been stealing away the rich top soil of crop land for many years in this area due to the irregular topography of the land and the continuous planting of clean tilled crops up and down the slopes. During recent years sheet erosion has been partially eliminated by contour tillage, strip cropping and yearly rotation. When cotton, corn or peas are planted in narrow strips in yearly rotation between strips of sorghum crops little or no sheet erosion occurs. On the heavier soils contour tillage should be supported by a good system of terraces to eliminate or prevent gullies. All the equipment in this area suitable for terrace construction has been kept busy for several years but it will take at least five more years to complete terraces on the farms where terraces are needed if no additional equipment is secured.

Methods of controlling gullies on range land are controlled grazing, contour furrowing, diversion structures, check dams, sodding, woody plants and fence of electric lines to permit growth of native vegetation. The most practical method used in this area is the watered and to hold it in the gullies. If active erosion is stopped in the gullies they will eventually become stabilized by native vegetation. Fencing of gullies to protect the vegetation is also a very good practice that is being used on the ranches of this area.

Mrs. Hancock's Father Dies Tuesday

Mrs. Walter Hancock and other members of the family here were called to Valley Mills Tuesday by news of the death of her father, Mr. Laughlin. Details of his illness or funeral plans were not available as we go to press.

Mrs. Laughlin has not been in the best of health for some years, so that his passing was not unexpected, a fact which did little, however, to relieve the grief of the family.

Friends here will join with us in extending sympathy to the bereaved.

Rollin McCord was here Monday in the interest of his candidacy for the office of district attorney.

Lewis Robinson made a business trip to Lubbock Monday.

Mrs. D. M. Poe of Hamlin spent Friday here with Mr. and Mrs. W. Palmer and family.

KONGENIAL BRIDGE CLUB WITH MRS. STREET

Mrs. Irvin Street was the gracious hostess Tuesday to members of the Kongenial Bridge Club, with one table of guests also present.

Mrs. Jack Howard won high score, consolation and bingo prizes going to Mrs. J. N. BuBany.

A salad course was served with

hot rolls, cookies, and iced tea to the following guests: Mmes. Teeter, Walls, Howard and Gene Gardinire of Austin, and club members, Mmes. BuBany, Brewer, Stark and Adams.

John D. Yarbrough, on furlough from the army, spent part of his time in O'Donnell last week with friends.

Girls' Softball Games Lead Interest Honors

General consensus of opinion among softball fans here is that the girls' games, played each Friday night, have drawn better attendance and created more interest than all the other games during the week.

Four girls' teams are in the league, and each team, as well as individual players, have turned in some excellent records. For one thing, two girls' teams recently played the fastest game of the season, seven innings in forty-five minutes. Furthermore, on another occasion, one team started the game with only five players on hand. Fortunately that team won the toss for first bat, and by the time they went into field, the missing players had arrived. How's that for getting things done?

Standing of the four teams to date is as follows:

Team	Won	Lost
Red and White	4	1
T-Bar	4	1
Shack and Shorty	2	3
Wells	0	5

Managers are respectively, Sam Selvidge, Miss Opal McKibben, Shorty Wright and Miss Betty Tyler.

JENNETTE FORTNER HAS BIRTHDAY PARTY

Little Miss Jennette Fortner celebrated her tenth birthday last Friday with a party in the afternoon at the home of her parents.

Games were enjoyed on the lawn after the girls had been opened and admired, after which the small hostess cut the beautiful birthday cake and served it with punch.

Guests were Jimmie Ruth Miller, Peggy and Corby Besch, Patsy, Julia and Edna Edwards, Fatty Butts, LaMoyn, Harrell, and Rodger Lane, William Shoemaker, Jennette Ganton, Doris Shumake, Claudia Ann Chears, Mona Fay Williams, and Nell Wyatt of Tahoka.

Miss Angeline Haldy returned to Borger Monday after having spent several days here with her sister, Mrs. C. H. Cabool.

Dry Cleaning!

HEAT INSURANCE



When soaring summer temperatures keep you wilted and listless, there's nothing so refreshing to jaded spirits as

FRESH, CLEAN CLOTHING

But choose Your Cleaner With Care


The Bitterness of Low Price cannot overcome the Bitterness of Poor Performance. Remember that new materials, especially in slacks and play suits, demand special cleaning methods. Bring us your tailoring, for cleaning and re-sizing, so that your clothes may retain their newness and freshness.

"It pays to keep your clothes cleaned and pressed"

MODERN CLEANERS

AT THOMPSON'S MEN'S STORE

Better Tailoring for Those Who Care
Phone 133



ATTENTION, FARMERS

Now Is The Time To Vaccinate Against SLEEPING SICKNESS

We are now able to furnish you with Cutter's Chick Vaccine, approved by the United States Department of Agriculture. Establishes immunity in three weeks.

We Carry a Complete Line of Mulford's Veterinary Biologicals

We recommend genuine Parke-Davis Kreso Dip, Dr. Legear's Poultry and Veterinary Remedies, Dr. Hess Poultry and Veterinary Biologicals.

O. R. O. FOR CHICKENS—67c

WHITSETT'S

DRUGS AND JEWELRY

"Always ready to serve you"

Reserve District No. 11

REPORT OF THE CONDITION OF

THE FIRST NATIONAL BANK OF O'DONNELL, TEXAS

In the State of Texas, at the close of business on June 29, 1940, published in response to call made by Comptroller of the Currency, under section 5211, U. S. Revised Statutes.

ASSETS	
1. Loans and discounts	\$146,700.00
3. Obligations of States and political subdivisions	14,311.59
5. Corporate stocks, including stock of Federal Reserve bank	1,500.00
6. Cash, balances with other banks, including reserve balance, and cash items in process of collection	128,712.78
7. Bank premises owned \$65,000.00, furniture & fixtures \$500.00	7,000.00
12. Total Assets	\$298,224.37
LIABILITIES	
13. Demand deposits of individuals, partnerships, and corporations	\$220,662.88
14. Time deposits of individuals, partnerships, and corporations	13,500.00
15. Deposits of United States Government (including postal savings)	196.92
16. Deposits of States and political subdivisions	9,285.74
18. Other deposits (certified and cashier's checks, etc.)	901.83
19. Total Deposits	\$244,674.37
23. Other liabilities	1,200.00
24. Total Liabilities	245,874.37
CAPITAL ACCOUNTS	
25. Capital Stock	\$ 40,000.00
(c) Common stock, total par	\$40,000.00
26. Surplus	10,250.00
27. Undivided profits	2,100.00
28. Total Capital Accounts	\$232,300.00
30. Total Liabilities and Capital Accounts	\$478,174.37

State of Texas, County of Lynn, ss.
I, J. L. Shoemaker, Jr., cashier of the above-named bank, do solemnly swear that the above statement is true to the best of my knowledge and belief.

J. L. SHOEMAKER, JR., Cashier.

Sworn to and subscribed before this 5th day of July, 1940.

B. M. HAYMES, Notary Public.

CORRECT ATTEST:
L. D. Tucker, John Earles, J. M. Noble, Jr., Directors.

WELL INDEX

September 28, 1923, at the post office at the Act of March 3, 1897.
ADAY AT O'DONNELL, TEXAS
 \$1.00 PER YEAR IN ADVANCE

Owner

RATES ON APPLICATION

**Continued Support
 Will Be Appreciated!**

A. M. CADE

Candidate For

ASSESSOR - COLLECTOR

Re-Election

I would like to again thank my friends in Lynn County who have so loyally supported me in the past, and to assure you of my genuine appreciation for your friendship and the confidence you have shown in me. I am anxious to thank each of you personally, not only for your support in the past, but for the interest you have manifested in my present race.

Having honestly endeavored, at all times to make Lynn County an efficient and courteous officer, I now place my candidacy in your hands and ask your support for re-election solely on the basis of the services I have rendered while in office.

If you see fit to re-elect me to the office of Assessor-Collector, it shall be my utmost and constant endeavor to continue to serve the people of Lynn County to the best of my ability.

TOM N. HALE

Solicits Your Vote For

SHERIFF

Capable - Trustworthy - Fearless

Mr. Hale has served Lynn County well and faithfully as commissioner from Precinct 4, and his friends believe he is deserving of a promotion.

If elected, he promises a square deal to all... regardless of color, race, or financial standing, and to administer the law fairly, yet economically. He will appreciate your vote and good will.

**Give Tom Hale a chance—
 he will not fail you**

J. M. CHRISTOPHER

Candidate for Re-election

CONSTABLE, PRECINCT 3

Solicits your vote and influence on a record of past duties faithfully and conscientiously performed, and a sincere promise to continue this service.

I wish to thank each of you for the loyal support you have given me in past years, and to assure you that this support has been an inspiration to me in the performance of the duties of this office.

VISITS AGED FATHER IN ARKANSAS THIS WEEK

Mrs. Arch McMillan and other members of the family left Sunday to visit her father, J. H. Stephens, whom she has not seen in twenty-five years. Mr. Stephens is living in the Confederate home at Sweet Rock Arkansas, and is 94 years of age.

Until last year he and Mrs. Stephens had kept house alone, but after her death he decided to go into the home for Confederate veterans, thinking it wise to remain in a climate and environment to which he was accustomed rather than come to West Texas to make his home with his daughter.

Mr. and Mrs. Jack Miles and Mr. and Mrs. Stansell Jones returned Wednesday of last week from a vacation trip which took them as far as Catalina Island.

Mrs. S. E. Winfrey and children of Clovis are visiting Mr. and Mrs. Waldo McLaurin.

Mr. and Mrs. Glen Allen and Bubs spent Sunday with relatives in Lamesa.

FOR SALE: Good Jersey Milk Cows. See R. L. Nowell, O'Donnell Motor Parts.
PARTY FRIDAY EVENING HONORS VISITOR

SEE
JNO. A. MINOR
 For
FEED AND SEED
CUSTOM GRINDING
FEED MIXING

Phone No. 128
WILLIAMS' DAIRY
 For Pure, rich Milk that can't be surpassed in food value and flavor
 Deliveries Night and Morning—Quart
10c
 On Sale Daily at B & O Store, Blocker Grocery
 Abraham Bros. Grocery, Line & Lambert

LOW PRICES ON BETTER FOODS
 Buy With Confidence—Well-Known-Brands

100 BU ELBERTA PEACHES THEY MUST GO!	BANANAS Nice Golden Fruit—Dozen 9c	TOMATOES Grape Vine, Vine Ripened Pound 3c
KERR MASON JARS 1/2 Gal. \$1 Quarts 73c	SPUDS 10 POUNDS 14c	TRY OUR MARKET FOR QUALITY MEAT
Large Box, Concentrated SUPER SUDS 2 bars Palmolive Soap Free 23c	PRUNES Gallon 22c	STEAK T-Bone, Pound 25c
MATCHES Carton 6 Boxes 14c	DUKE'S TOBACCO 3 PACKAGES 10c	BACON Sugar Cured, Sliced, Pound 18c
VANILLA FLAVORING 8 oz. bottle 9c	FLOUR Hereford Best in Pink Bag 48 lb. Bag \$1.35 EVERY SACK GUARANTEED TO PLEASE	BOLOGNA Sliced, Pound 10c
VINEGAR Quart Jar Each 10c	CORN No. 2 Can 2 For 15c	BACON DRY SALT, Pound 9c
SYRUP RIBBON CANE 1/2 Gallon 27c	PICKLES Quart Jar 9c	DRESSED FRYERS EVERY DAY
SOAP CAMAY BAR 5c	PINEAPPLES No. 2 Can, Sliced 2 For 29c	

SPECIALS FOR FRIDAY, 19th, SATURDAY, 20th
OATES FOOD STORE
 PROMPT FREE DELIVERY PHONE 71 O'DONNELL

POLITICAL ANNOUNCEMENTS

The Index is authorized to announce the following candidates for the offices indicated, subject to the Democratic Primary:

For Congress:
 GEORGE MAHON (Re-Election)

For Representative:
 HOB HALSEY
 JACK DOUGLAS

For District Attorney:
 BURTON G. HACKNEY
 ALTON T. FREEMAN
 ROLLIN MCCORD
 LAWRENCE L. BARBER
 TOM L. PRICE

For County Judge:
 P. W. GOAD (Re-Election)
 CHESTER CONNOLLY
 H. M. SNOWDEN

For Sheriff:
 JOHN JOHNSON
 B. L. PARKER (Re-Election)
 T. N. (Tom) HALE

For County Attorney:
 CALLOWAY HUFFAKER
 H. C. STORY
 R. P. WEATHERS
 A. M. CADE (Re-Election)

For County Clerk:
 W. M. (Walter) MATHIS (Re-Election)

Commissioner, Precinct 3:
 JOHN A. ANDERSON
 WALDO McLAURIN (Re-Election)

For Commissioner Precinct 2:
 Dawson County:
 G. C. ATEN
For Justice of Peace, Precinct 4:
 GEORGE D. FOSTER (Re-Election)

For Constable:
 MELVIN PROCTOR
 J. M. CHRISTOPHER (Re-Election)
 P. G. (CURLY) GALNEAU

Commissioner, Precinct 2:
 FURNISHED APARTMENT FOR RENT—Light housekeeping facilities—Mrs. W. T. Burk. 2tp

C. N. WOODS
 "Gifts That Last" JEWELRY

WATCH REPAIRING
 TAHOKA, TEXAS
 1st Door North of Bank

LOST—Sorrel horse, weight 11 pounds, about 8 years old; roan, mane. Please notify J. F. Hender, 43 son, Box 537, Lamesa, Texas. Phone No. 459-J.

THE RECORD... Facts That Concern You No. 20 of a series

WHAT IS MALT?..

and how is it used in making beer and ale?



Answer: Brewers' malt is barley that has had its starches modified. The barley is first permitted to "sprout" by the addition of moisture. At the right instant, the growth is checked by heat and the sprouts are removed.

What remains is malt... the essential base of all good beer and ale.

Every step in the brewing of good beer and ale has been taught by centuries of experience. Today, amazingly expert brewers—using only

the purest ingredients—make beer and ale the mild, tasty, wholesome beverages that they are.

Now the brewing industry is taking action to keep the retailing of beer as wholesome as beer itself. A plan to eliminate abuses is already in effect in a number of states. It is being extended. Ask us for an interesting free booklet.

Write: United Brewers Industrial Foundation, 19 East 40th Street, New York, N. Y.

BEER...a beverage of moderation



Only Ford

GIVES YOU 8 CYLINDERS - TOP GAS ECONOMY, TOO

1ST PERFORMANCE

1ST ECONOMY

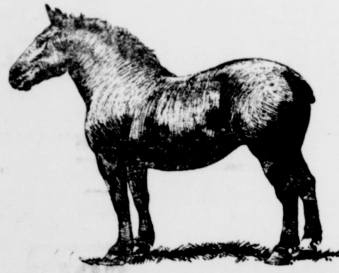
24.92 miles per gallon! Two miles a gallon better than any other standard-equipped car at its price! That's the big 85 h.p. Ford's record in this year's official Gilmore-Yosemite Economy Run. Yet Ford alone in this class has the smoothness of 8 cylinders! Get economy and performance, too!... Get a Ford V-8!

Built in Texas by Texas Workers

You'll find your Ford Dealer eager to "Deal" ... See him today!

GET THE FACTS . . . AND YOU'LL GET A FORD!

LYNN COUNTY MOTOR CO.



ATTENTION, FARMERS

Now Is The Time To Vaccinate Against **SLEEPING SICKNESS**

We are now able to furnish you with Cutter's Chick Vaccine, approved by the United States Department of Agriculture. Establishes immunity in three weeks.

We Carry a Complete Line of Mulford's Veterinary Biologicals

We recommend genuine Parke-Davis Kreso Dip, Dr. Legear's Poultry and Veterinary Remedies, Dr. Hess Poultry and Veterinary Biologicals.

O. R. O. FOR CHICKENS—67c

WHITSETT'S DRUGS AND JEWELRY

"Always ready to serve you"

TO THE VOTERS OF LYNN COUNTY

I wish to express my appreciation to each of you for your support in the past and especially for your most loyal co-operation during my administration as your County Judge. I shall always feel very grateful to the good people of Lynn County for having honored me with this office of trust. In asking the people to re-elect me County Judge of Lynn County I would like to call your attention to some of the things which have been accomplished during my administration in this office.

"I have, with the co-operation of my co-workers and the good citizens of Lynn County, been able to set up and put into operation a very progressive and constructive program that has taken care of many and much needed improvements, such as: highway construction—two new highway designations (one north from Tahoka to Wilson and one from O'Donnell to Seagraves; surveys are now being made on these highways and we hope construction will begin in the near future)—courthouse and jail improvements, a county health unit with a full-time nurse, a county library, and a new and modern agricultural building. May I say that the above mentioned program is being so conservatively and economically operated so as to avoid any possibility of an increased burden on the taxpayers of Lynn County."

The increased duties of this office are such that it makes it impossible for me to make a thorough campaign. So I may not get to see each of you personally. I will greatly appreciate any investigation of my record which you may care to make. If you feel that I have served you well in the past and can best serve you in the future, I will greatly appreciate your vote and influence in the coming election.

Sincerely yours,
P. W. GOAD
 County Judge

Jesse Bulch returned over the week-end from a trip to East Texas, and has furnished us with some rather interesting statistics concerning that country. According to him, the mosquitoes are so big and so numerous that the terrapins close up an hour before sundown, and the mosquitoes not equipped with sirens have tail-lights so they can hunt in pairs. Furthermore the ticks chase a fellow down, come swarming through the grass like Hitler's army on a blitzkrieg. And (still according to Jesse) when those folks die down there and go to their just reward, they'll sweat it's air conditioned.

Jesse declares on his honor as gentleman and a salesman that all this is the truth; if anybody wants to hear some yarns about East Texas, he can tell some.

Mr. and Mrs. Roy Everett and Miss Wanda Zell left Sunday to spend several days on a ranch in New Mexico. They will be joined there by two of her sisters and her mother.

Mr. Walter L. Hester of El Paso is a guest this week in the home of Mr. and Mrs. W. W. Williams.

Mr. and Mrs. C. H. Mansell were in Lamesa Monday morning.

THANK YOU, FRIENDS

FOR THE OPPORTUNITY OF CONTINUING TO SERVE YOU AS COUNTY CLERK. I SINCERELY TRUST THAT THE MANY HAPPY ASSOCIATIONS OF THIS TERM WILL BE CONTINUED DURING THE TERM TO COME.

W. M. MATHIS

THANK YOU, FRIENDS

FOR THE SPLENDID VOTE YOU GAVE ME LAST SATURDAY. I APPRECIATE IT ALL THE MORE BECAUSE MY TWO OPPONENTS WERE BOTH FINE FELLOWS, AND CLEAN, HARD CAMPAIGNERS. KNOWING THIS MADE THE EXPRESSION OF YOUR CONFIDENCE IN ME ALL THE MORE GRATIFYING.

I SOLICIT YOUR SUPPORT

AND YOUR INFLUENCE DURING THIS MONTH BEFORE THE SECOND PRIMARY, AND EARNESTLY SEEK YOUR VOTE AT THAT TIME.

IN THE COMING CAMPAIGN, I SHALL FOLLOW THE SAME RULES I HAVE ALWAYS USED—PROMISING NOTHING OTHER THAN, IF I AM RETURNED TO SERVE YOU AS YOUR SHERIFF, I SHALL MAKE EVERY EFFORT TO BE A CONCIENTIOUS, EFFICIENT, AND IMPARTIAL PEACE OFFICER, HOLDING NO GRUDGE AND BEING UNDER NO OBLIGATION TO ANYONE.

THANKING YOU AGAIN FOR THE EXPRESSION OF YOUR CONFIDENCE IN LAST SATURDAY'S ELECTION, AND I SINCERELY HOPE THAT YOU MAY SEE FIT TO CONTINUE THIS SUPPORT IN AUGUST.

B. L. PARKER

"CHEAP ELECTRICITY AND MY ELECTRIC REFRIGERATOR KEEP OUR FOOD EXPENSE LOW"



- Low electric rates and more efficient mechanism of modern electric refrigerators mean that the cost of electric refrigeration is cheaper than ever. Ask an electric refrigerator dealer to show you the many improvements in the new models.

See Your Electric Refrigerator Dealer
TEXAS ELECTRIC SERVICE COMPANY
C. E. CAMERON, Manager

UNANIMOUSLY ELECTED Friday and Saturday
AS THE OUTSTANDING VALES FOR - AUG. 2 & 3

HYPRO Quart Size 15c	
ICE CREAM SALT 4 Pounds 9c	Baking Powder CALUMET 25c Size 19c
COFFEE 1 lb. Package BLUE BONNET 16c	APRICOTS WHITE SWAN 2 No. 2 Cans 29c
OXYDOL 25c Size 19c	
TOILET TISSUE Dutch Silk Tissue 6 For 23c	
TOMATOES No. 2 cans 3 for 21c	
PEACHES In Heavy Syrup (Concho) No. 1 tall 10c	
Hominy Carrots Pork & Bean Spaghetti Mix Veggies. Blackyed Peas 6 CANS 25c	BEEF ROAST Pound 14c SHORT CUT STEAKS 16c BEEF RIBS Pound 11c TANG Cudahy's Sanwich lb. 21c
PEP (Kellogg's) 10 oz. pkg. 9c RICE (Comet) 2 Pounds 14c	CATSUP 14 oz. Bottle 10c JELLO 3 for 13c
COCOA MOTHERS' 2 Pounds 19c	MACARONI AND SPAGHETTI 3 BOXES 10c
	OATS WHITE SWAN 3 Pounds 18c
SEE US FOR FRESH VEGETABLES AND FRUITS	
SALAD DRESSING WHITE SWAN QUART 29c	ICE COLD CANDY 3 FOR 10c
	TEA TETLEY'S 1-4 LB. 17c
PHONE 50 FREE DELIVERY	MANSELL BROS. PHONE 50 WE DELIVER

POLITICS MAY COME

AND

POLITICS MAY GO

BUT EATING GOES ON FOREVER..

FOR EVERYBODY

SO THE SENSIBLE THING IS TO BUY GROCERIES WHERE YOU ARE CERTAIN OF THE QUALITY AS WELL AS THE PRICE.

BUY GROCERIES THE B & O WAY

B & O CASH STORE