

Tax Collections Above Average

State and county tax collections are better than usual as near 90 percent of taxes due by next 31 have already been paid, says George McCracken, county assessor and collector.

During October and November, the year \$189,355.64, after discounts, in state and county taxes had been paid here compared to \$182,119 or about 65 percent, the same period a year ago. Taxpayers were given a three percent discount in October, a two percent discount in November, and a one percent discount applied in December.

Last year 2,074 farm trailers had been registered through November, this year 3,122. Under the old poll tax law of 1961, 391 had qualified to vote by securing poll tax receipts. Under the new law this year, only 100 have registered, slightly more than last year.

Winners Named in Calf Preview

Winners of the showmanship contest at the 4-H Beef Calf Preview Saturday morning at the county Show Barn were presented awards by Rutherford's, Bill Griffin, county agent. Winners in the senior division were: Tonia Dorman of O'Donnell, first; Myrna Bartley, Tahoka, second; and Dana Emerson, O'Donnell, third. Junior division winners were: Jerry D. Franklin, O'Donnell, first; Mark Tekell, Tahoka, second; and Troy Stegemoller, Wilton, third.

Letters To Santa

Dear Santa, I want a pair of fuzzy wuzzy house shoes. I need a size 3, and want a pullover sweater. I need size 8 and a half. I want a miniskirt, size 8 and a half. And want an instamatic camera. Your friend, Mary Ann Sumrow

O'Donnell, Texas P.O. Box 101 Dec. 10, 1966 Dear Santa, I've been good and I want a toy stroller and a convertible bicycle. I want some Santa Claus candy. Bring some toys to the other boys and girls that have been good. That is all I want for this year. Love, Mellissa.

AGLES FETED AT ANNUAL BANQUET

Mrs. Paul Mansell introduced Rev. Robert Brown, master of ceremonies. Steve Gary told of unusual events that happened before a game. Coach Jerry D. Brown recognized all the players and cheerleaders. Rev. Partain was guest speaker. The Norwood Bros. entertained with music. The group closed with singing of the Alma Mater.

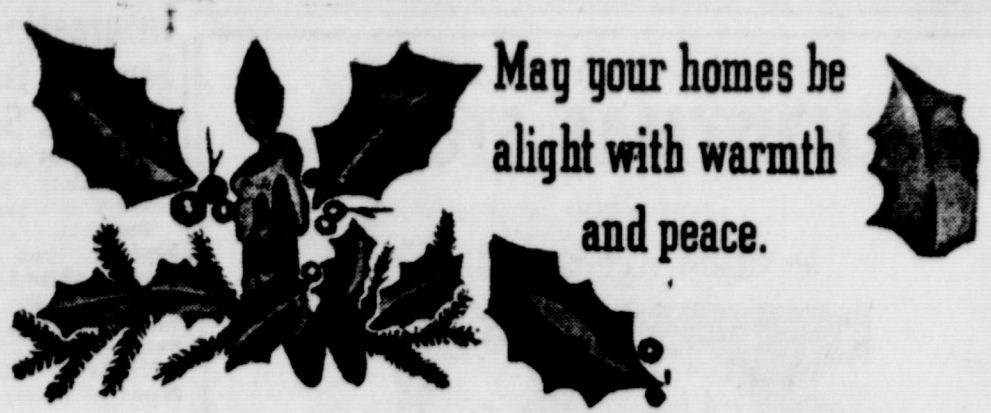
ELEMENTARY PUPILS PRESENT MUSICAL

Playing to a full house, the first four grades presented their annual Christmas program at the PTA meeting last Tuesday night. Over 100 were cast in the opera, tells of a mother who took her daughter to the gift shop. LEADOW GIRLS WIN OVER O'DONNELL The Meadow "A" girls took home a victory after downing O'Donnell 52-28 here last Tuesday. Linda Sumrall was high point girl for O'Donnell with 12. Playing a fine job as guards were Niecy Burlson, Nancy McCruder, Debra Webb, and Jayne Middleton.

BARNES TOTALS 73 POINTS IN THREE GAMES

In games played recently against Fluvanna, Klondike, and Meadow, Ronny Barnes scored 73 points to bring his total points to 100. In the O'Donnell vs Meadow game played here last Tuesday, Barnes looped in 26 points for his team. Barnes is considered outstanding by the players. Bobby Caswell won the Lynter Oratorical Contest—and a trip to Washington D.C. in

Accept our hearty thanks for the pleasant business associations of the past year. Once again we say Merry Christmas!



May your homes be alight with warmth and peace.

Low Priced, Quality Printing At Index Office O'DONNELL INDEX PRESS

44th Year No. 14 O'Donnell, Lynn County, Texas, Friday, Friday, Dec. 23, 1966 2 and \$2.50 per year

Cotton Promotion Plan Is Approved

Lynn county farmers joined those over the nation's cotton belt in giving approval to both marketing quotas and the cotton promotion program by more than the necessary two-thirds majority vote. Ballots were counted Wednesday, and Wallace Dove of the local ASCS office announced Lynn farmers voted 1156 to 154, or 88.24 per cent, in favoring a continuation of marketing quotas; and 957 to 332, or 74.24 per cent in favor of the cotton research and promotion program which will take \$1.00 per bale to compete with the synthetic fibers on a nation-wide basis.

There were 43 challenged ballots on marketing quotas and 40 on the promotion proposal. South Plains farmers followed the Lynn trend, and apparently both carried nationwide. Press reports, unofficial, gave the national vote as 272,831 to 24,781 favoring marketing quotas and 181,204 to 84,342 favoring the promotion act, or 91.7 and 68.2, respectively, favoring. Twenty-three South Plains counties voted 20,662 to 2,143 for marketing quotas and 16,852 to 5,089 for the promotion act, or 90.60 and 76.80 percent in favor, respectively.

ADDRESSES OF OUR SERVICE BOYS

- Charley D. Shaw, Sn. 9159133 Division 6056 Class 6628 S.S.C. U.S.N.T.C. Rm. "A" School San Diego, Calif.
- SP-4 Joe Pat Gary US4366886 610 Trans. Co. A.P.O. 96312 San Francisco, Calif. 96312
- Mr. and Mrs. Buddy Mahurin 1217 E. Houston St. Sherman, Tex. 75090
- Ronnie Bairrington YN3 VT-24 U S N A A S Chase Field Fort Carson Colorado 80913 (He will be home Saturday for the Holidays.)
- SP-4 Donald R. Thomas US 34 352 405 569th Eng. Co. (TOPO) A.P.O. S. F. 96240
- Pvt. William Lewis Snellgrove US 54382404 1st Platoon, Co. B, 1st Battalion 61st Infantry Fort Carson Colorado 80913 (He will be home Saturday for the Holidays.)

New shipment of poor boy shirts by Ralph's Original zipper back, elbow sleeve, assorted colors, including black, all sizes, from 8 to 10—\$5.95.

Ellie's Fashions

Hafford Smith was taken to Lubbock Methodist Hospital by an ambulance Tuesday morning. Mrs. Jim Christopher is seriously ill in an Amarillo Hospital.

Rotary News

The O'Donnell Rotary Club met Tuesday with president Wayne Noland presiding. LeRoy Olsak was a visiting Rotarian. Tom Peabody, Boy Scout Executive, was a guest. The motto of the 4-H clubs of America spelled out the central theme of the program of this organization. LaNita and Kent Wood presented the program for the club's noon luncheon. The O'Donnell Rotary Club salutes the O'Donnell 4-H club work, the sponsors and the young people who are striving to become better citizens in order to have a better America.

A letter from the John Bownens of Erina, Australia to O'Donnell tells of the near heat wave that was experienced in New South Wales two weeks ago, and then followed by a cold rain last week. The drastic changes in the weather is causing much flu and colds. During the week of the Heat Wave, a Texas Tornado (so the Bownens write) did quite a bit of damage at the town of Erina. The Bownens Creek was so clogged with debris from the damage that it took many hours to clear the creek and stop the overflow on to the Bowen Poultry Farm.

Thought for the week: "I dedicate my Heart to clearer thinking, My Heart to greater loyalty, My Hands to larger service, and My Health for better living For my Club, my Community, and my Country." 4-H Club motto.

SCOUT NEWS

The right knot for the right use is one of the skills that Boy Scout Troop 789 is trying to learn. The right knot holds when you want it to hold and unties quickly. To tie the Clove Hitch knot, throw the rope end around the pole and lay it over its own standing part. Bring the rope end once more around the pole. Finish by carrying the end under the rope itself, then tighten the hitch as much as possible. Boy Scout Troop 789 of O'Donnell realizes that these knots are good things to be able to do. Several years ago, some people were trying to rescue a boy who had slipped from a cliff and was stranded on a ledge. The rope that was tossed to the boy had no knot to slip around his waist, and the boy's hands gave out holding onto the rope, and he fell to his death. The Bowline knot would have saved the boy's life.

OES Honors Masons With Dinner

The annual Christmas dinner honoring the Master Masons was held Dec. 19 at Community Center. Mr. and Mrs. L. D. Jackson served a delicious turkey dinner. The group was honored with a visit from Mr. and Mrs. Bill Dorman of Abernathy.

Piny Rains is improving after injuries in a car mishap. He is in Veterans Hospital at Wichita Falls. Junior Trigo is home from college at Big Spring.

Santa Due Here Saturday

SANTA VISIT SET HERE
The Fire Dept. Santa will make one stop only and that will be at the Community Christmas Tree across from Hash Cleaners to south. Bring the kiddies. Santa Claus wired Fire Chief Leroy Mensch from the North Pole that he would make his annual visit here Christmas Eve at 3 p.m. Members of the O'Donnell Volunteer Fire Department will assist Santa in distributing bags filled with candy, fruits and nuts. Ask Mom and Dad to bring you to Town.

SPEECH III CLASS TO PRESENT PLAY WEDNESDAY
At the High school Christmas party in the cafeteria Wednesday the Speech III class will present "The Last Christmas", a one act play showing that Christmas is for the family.

O'Donnell Firms To Close Monday

As usual O'Donnell firms will observe two days for Christmas and New Year—that is Sunday and Monday. Be sure to do your weekend shopping for both of these holidays with the above in mind. It would be a good idea to have the car serviced, gas and oil as there will be few stations open Christmas Day. A number of service firms will close at noon Saturday but stores generally will be open to 8 Christmas Eve night.

Begin now to lock your home if away as petty thugery often increases at this season. If you plan a trip—start there early and start home early and avoid night driving. Let's have the small fry be kind to old folks and not fire crackers near homes of the aged or ill.

Store To Close On Tuesday

We will be closed Monday and Tuesday for the holiday. If your Santa mistook you for a 12 when you are a 28, come in Wednesday and we will have a bonfire under the old dead elm. Fuz's insurance Co. is very generous about a fire loss.

Mr. Smith, our second husband, has suggested we visit my folks. He is in for a surprise as all he will get is Pink Lemonade—and very weak at that . . . o. well. We love you all, Marvis and Ellie

One Service Is Set For Sunday

On Christmas Day, Sunday, there will be only one service and that is at 10:00 a.m., the pastor, Rev. announced this week. Last Sunday night the annual Christmas cantata and tree was enjoyed by a good attendance. Thursday at Draw Methodist Church a Christmas program will be given and gifts brought for a needy family near Draw.

GRASS FIRE DAMAGES FENCE

A grass fire Monday damaged about 12 feet of yard fence at Burley Brewer home. Mr. and Mrs. C. H. Tyler recently flew to San Angelo, Calif. to visit with their children and families, Mr. and Mrs. Truett Tyler and Mr. and Mrs. Clyde Gibson.

Mrs. J. T. Middleton Sr. was in the hospital last week recovering from a broken ankle.

Holiday "Accidental Death Alert" Points Up Rights of Fellow Drivers

Austin (Spl.)—The Texas Safety Association today issued its annual "Accidental Death Alert" for the Christmas holiday period and called on motorists to consider the rights of fellow drivers in the true spirit of Christmas giving. "The greatest gift you can give your fellow traveler is his life," S. Ross Carr of Houston, TSA president said. "Consideration of his rights in traffic will go a long way in achieving this."

The "Accidental Death Alert" begins at 6:00 p. m. Friday, December 23, and ends at 11:59 p. m. Monday, Dec. 26. It coincides with the period set by the Texas Department of Public Safety for "Operation Deathwatch." The DPS program covers the area of traffic. The TSA "Alert" is for all types of accidents.

The Association is also urging citizens to be on the alert for hazards, such as fires in the home, falls and hunting accidents. It joins DPS, the Texas Highway Department and other groups each year in coordinated safety programs aimed at reducing accidental deaths during the holiday period.

Past experience indicates that 47 persons may lose their lives in Texas in traffic accidents during the coming three-day Christmas holiday period. Other lives will be lost in other types of accidents. Object of this year's coordinated program is to see how many of the "indicated" deaths can be prevented.

In closing, Carr urged all drivers to cooperate with law enforcement officers and to put safety first—"at home, at play, at work, or on-the-road."

Today . . .

Today we publish the Index's 45th Christmas Edition and our 22nd such edition since moving here.

Without an exception the firms appearing this week as advertisers were anxious to send the greetings and appreciation to you for business afforded them during the near now rapidly closing. It is also the wish of your publisher to thank this week's advertisers and you, the readers, of this home town newspaper for your continued goodwill. God bless us all and keep us safe during Christmas as we go our many ways.

CROWDS ENJOY PROGRAMS

A good crowd enjoyed the first series of Christmas programs Monday afternoon at the City Park. The unusually talented Eagle Band directed by W. J. Buchanan gave a 30 minute concert of holiday music. Mayor E. R. Moore gave a brief talk expressing the thanks of the Community to the 1946 Study Club for sponsoring the programs and for taking the responsibility of improving the park in the years ahead. The Study Club will present a different program each afternoon at 5:30 thru Friday. Be here. You will find it a real Christmas treat.

CHRISTMAS LIGHTING WINNERS LISTED

Winners of the Christmas Lighting contest are: Exterior: 1st Lorene Thompson, 2nd, Wilma White, 3rd, Carolyn Clark, honorable mention are Bertha Brewer, Earl Gillispie. Door or window: 1st Carole Edwards, 2nd Carolyn Clark, 3rd, Wanda Jean McLaurin, honorable mention, Mrs. Dick Barton, Mrs. Lanny Brewer. The Entre Nous Study Club wishes to thank everyone who participated. O'Donnell has some beautifully lighted homes.

Country Editor

For the past three years small fry—and bigger fish, too, have enjoyed Wallace Kains' pet monkey at his station. The monk has a dog food credit card made out to Smokey. He was two years old when Joe Garner gave him to Wallace. At that time Smokey was in poor health but now has a full dress of glossy hair. Smokey is a South American monkey and uses his tail as another hand. African Monkeys use their tails for climbing and are generally larger. Smokey weighs about 6 pounds.

In order of native intelligence, the monkey ranks 1st followed by the horse and third is the dog. A country editor is a poor fourth.

Louie Birdwell, son of Mr. and Mrs. Lynn Birdwell, recently spoke to the Texas Sheep and Goat Raisers Assn. at Fort Worth. The Ed. is in the process of adopting Louie. We have always wanted a smart kid. Congrats, Louie.

Our Borden County buddy, Jack Minter, will leave in January for Australia where he will be a modern day pioneer. Actual flight time will be about 24 hours and the price tag is \$500. Crossing numerous time zones he will be there before "he leaves here". Ain't it wonderful to live in today's era?

Daphene, one of the most charming young ladies on the Plains, will follow Jack with the children in a few months.

A young man from Lamesa will accompany Jack. They plan to first explore and if prospects look favorable to lease about 500,000 acres of raw land subject to finding water. Later several scores of families will move to the colony later to become a Church of Christ congregation.

As usual, the Index will not be published Christmas week. Our bride and the Ed (a courtesy card in one hand and a check book in the other) hope to visit Dime Box. A most joyous holiday to you.



**SHOP O'DONNELL'S
CHRISTMAS STORE**

Many Gift Items too Numerous to
Mention Are On Sale!



Cash in Your Christmas Bonus Now—Deadline in Dec. 24th.

Honorable Mention in Wrapping 1965.

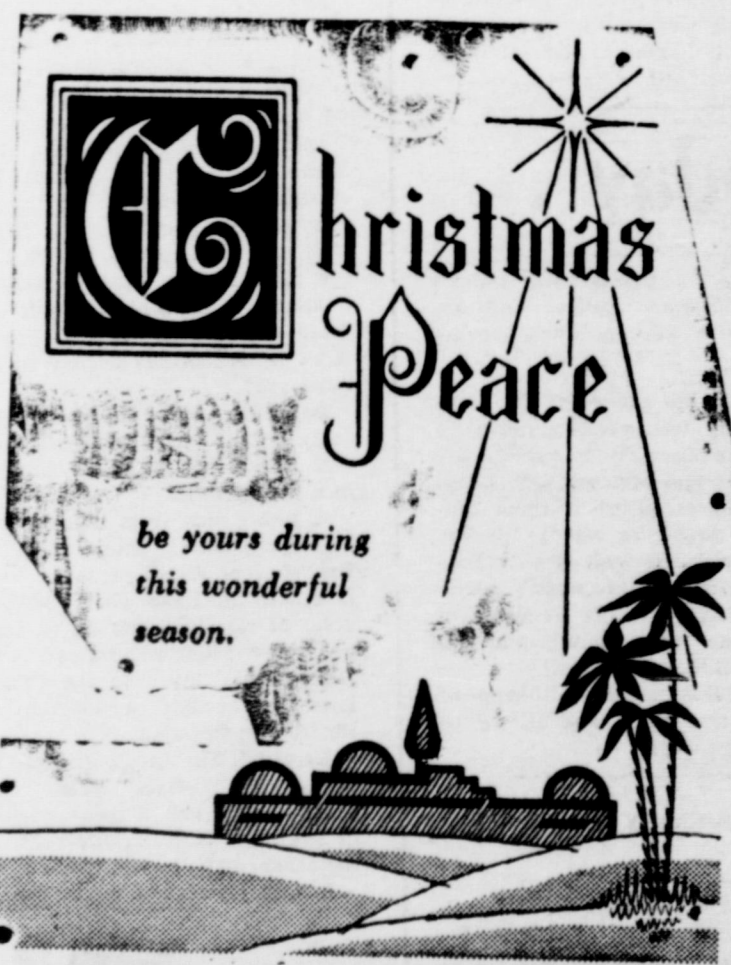
SHOP EARLY WHILE OUR STORE IS
CHUCK FULL OF GIFTS FOR MILADY.

ELLIE'S



Veach Pontiac

MR AND MRS OSCAR VEACH



be yours during
this wonderful
season.

WHITE FUNERAL HOME

BILLIE AND MARTIN
TAHOKA

**Interesting Job?
Santa's Beats All
At This Season**

WHO HAS ONE of the most interesting jobs this time of year? That's easy. It's Santa.

The rotund gentleman hiding behind the red ensemble and the flowing white beard learns a great deal about the nature of humans, especially children, at this time of year.

However, after receiving thousands of letters from all over the



country, and talking to thousands of youngsters on street corners and in department stores. Santa usually comes to the same conclusion each year. Times and customs change, but children seldom do.

Requests that Santa receives follow a general pattern each year—everything from bicycles to roller skates and cowboy suits for boys, with dolls and elaborate accessories the favorite with the girls.

There are some exceptions. Lots of children make requests for useful items, typewriters and such, in the hope of becoming writers and stenographers. Last year one lad asked for a Bengal tiger.

Santa, understanding human that he must be, promises to fill all the requests that he can and explains tenderly why there are some that are out of reach.

FOR SALE—560 acres, NW Borden County, all tillable, 145 A. Cultivation, maize and cotton allotment, 2 miles south of old Mesquite school, 2 miles off pavement. B. B. Street, Box 567, Tahoka, Phone 998-5047. 4tp

DR. O. H. NANCE
Optometrist
210 N. Houston
Ph. 554

FOR SALE — Brick house, two sides pavement, 6 rooms, modern phone 428-3826. 10-21c

**Tree Decoration
Has Ancient Source
In Arabian Legend**

When you fasten the ornaments to your Christmas tree this year you will be commemorating a centuries-old Arabian legend that relates how plants blossomed and flowered and trees miraculously bore ripened fruit on the eve of the first Christmas.

In fact, the Christmas tree itself stems from the story of a Scandinavian "sacred" tree and Martin Luther, a German, is said to have brought the first one indoors and decorated it for the Yule season in the early 16th century.

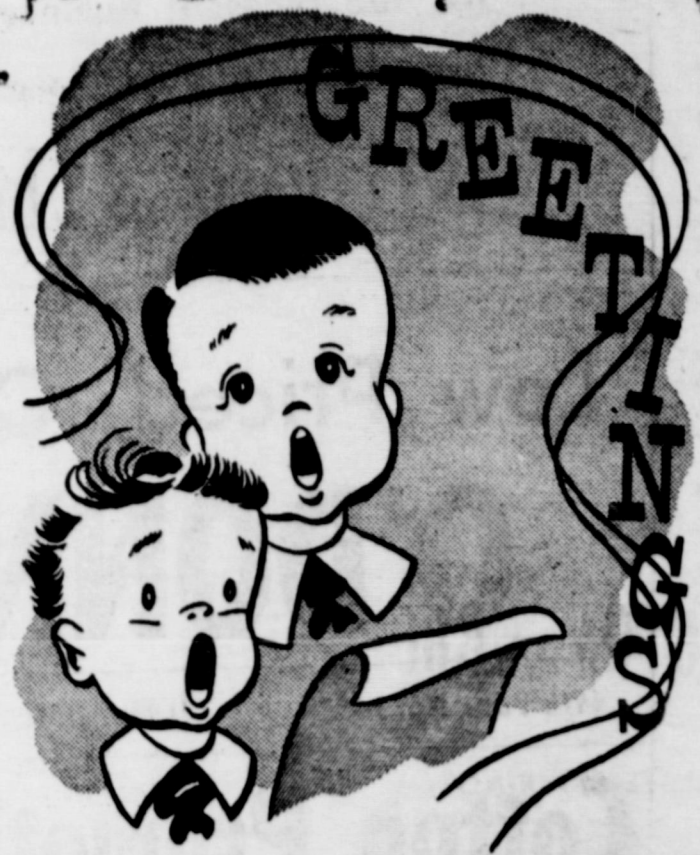
These are only two of more than a score of legends from which today's Christmas symbols and customs stem. According to Jeannette Lee, who has probed their origin for nearly a dozen years, the American Christmas symbols — from candles and bells to kissing under the mistletoe—have no common nationality. They have come from all parts of the world.

**Bethlehem Rites
Feature March
To Nativity Cave**

CHRISTMAS is observed in Bethlehem on December 25 by the Roman Catholics and Protestants, on January 6, by the Greek Orthodox and affiliated churches, and on January 18 by the Armenians.

All Bethlehem, however, turns out on December 24 for the arrival of the Patriarch of Jerusalem—Cardinal of the Holy Land—who each year brings an ancient effigy of the Infant Jesus to Bethlehem which he lays in the manger within the cave where Christ was born.

Dramatically the procession approaches: heralded by a single horseman, his banner streaming aloft. A corps of native police mounted upon fiery Arabian horses follow and then another single horseman upon a prancing black steed carrying the cross on high; the Patriarch in his cardinal and ermine, mitred bishops, clergy in embroidered vestments and white robed acolytes—swinging golden censers—precede the jeweled pavilion of the Holy Child. Magnificent porteges of government officials, foreign embassies, bands, religious organizations follow, and finally, American made automobiles mingle with native two-wheeled carriages.



**Your Lynn County
Officials**

W. M. MATHIS, County Judge

BEATRICE McLAURIN, County Commissioner

WOODROW Ode BREWER, Co. Commissioner

CARL SPEARS, SHERIFF

C. W. ROBERTS, County Clerk

GEORGE D. McCracken, County Tax Assessor
And Collector

J. P. HEWLETT

... County School ...

**CHRISTMAS
GREETINGS**

Our hearts are full of
best wishes for all of our
friends.



RUTH'S CAFE



EVERETT BARBER SHOP
Naymon Everett



May you prosper in the
wealth with which Christ-
mas abounds ...

Peace, love of life, kindness
and the brotherhood of all
people.



FOUNTAIN OF BEAUTY

MRS. MAVIS GASS

HAPPY
HOLIDAY

Hash Cleaners

MR. AND MRS. L. J. HASH



To all the good people of our town we wish the sum of all happiness.

BAIRRINGTON GROCERY

MR. AND MRS. CLEVE BAIRRINGTON



May the bough of your tree bend low with good things

Jones Service Sta.
Ervin "Bud" Jones

GREETINGS



We sing His praise this Christmas day.

LyNtegar Electric Cooperative

OWNED AND OPERATED BY THOSE WE SERVE
TAHOKA

Number of Farms Show Decrease In This Area

A total of 851 farms were counted in Lynn county during the 1964 Census of Agriculture, the U. S. Department of Commerce's Bureau of the Census reports.

In the last previous Census of Agriculture (1959), the total counted in the county was 962 farms.

The 1964 total is published in a preliminary report on the county just issued. The report also shows that average farm size in the county was 675.3 acres and that the average value of the county's farms (land and buildings) in 1964 was \$176,458.

Other important county statistics in the report are:

1. Value of all farm products sold by farms in the county in 1964, \$17,244,708; in 1959, \$20,790,991.

2. Value of all crops sold by county farms in 1964, \$16,140,123; in 1959, \$19,648,046.

3. Value of all livestock and livestock products sold by county farms in 1964, \$1,104,485; in 1959, \$1,142,945.

Information obtained for the first time in an agricultural census included the amount of income received by the county's farmers from recreational services as well as data on the use of pest control chemicals in the county in 1964.

A Census of Agriculture is taken every 5 years in years ending in "4" and "9" to gather information on the nation's agricultural resources and production. The data are needed to make decisions affecting many segments of the U. S. economy. The 1964 farm census was the 18th in a series that began in 1840.

The preliminary report for the county contains more than 500 facts about agriculture in the county. Among additional facts it contains are the number of farms by size, type, and economic class; the number of farm operators by method of tenure, age, color, off-farm work, and number of school years completed; land in farms by use and by land-use practices; data on equipment and facilities; farm expenditures; number of hired workers; and number of farms reporting poultry and livestock production and those reporting crop production by acres and quantities as well as sales.

Man Finds He Has Tuberculosis In Both Lungs,

in a West Texas town very near here, there once lived a man who had no steady, full-time job. Call him Joe.

Just a week or so ago, Joe spent one day something like this: A cup of coffee with Harry and Mike at the drug store. He was coughing some, but Harry and Mike were used to his coughing. Then an hour or so at Thurston's used car lot. He liked cars, and he liked to visit. He spat on a tree, and he visited with a customer and a salesman. Later more coffee at another Main Street coffee bar.

Because everybody else seemed to be lining up at the Tuberculosis Association mobile x-ray unit, Joe lined up too. He had the time, and the x-ray Number 31-302-b took just a second. In minutes, he was back on the street, making the rounds.

A few days later, a doctor scanned x-ray Number 31,602-b. He stopped short, looked again, and again made a careful check of this particular chest picture.

Then he marked it "Urgent" and he made a telephone call.

The chain reaction set in. The doctor's call led to a stir at the West Texas Tuberculosis Association offices in Lubbock. More telephoned messages - all including the word "urgent" - until the wandering Man on Main Street was located.

His home town doctor confirmed the urgency of this case. Joe had an advanced case of tuberculosis, both lungs showing severe damage.

Within hours, he was en route to a hospital where he will live several months, until he can no longer endanger Main Street with the tubercule bacillus - the big name for the deadly germ that travels on a breath of air.

Approximately 50 persons in 23 West Texas counties already this year have learned that they have suspected cases of active TB. Judging by the figures, close to

3,000 Texans will be found to have active TB this year. They will be among 50,000 Americans to make the same discovery and among 2 or 3 hundreds of millions of infected persons in the world. In the developing countries, health authorities estimate that 10 to 15 million active TB cases are able to transmit the disease to one another and travelers. In the U.S. alone, the disease kills 9,000 persons annually—434 in Texas last year.

It is the business of Christmas Seal gifts to reduce these numbers, and they are being reduced. A seal on a letter says that somebody, somewhere cares to eradicate tuberculosis.

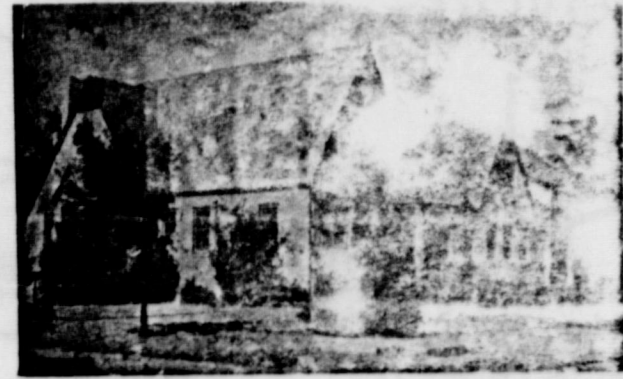
SCOUT NEWS

Saturday, December 3, Boy Scout Troop 789 will work at the City Park. The City Park is a community project and Troop 789 reminds O'Donnell citizens to help keep it a nice park and an asset to the community.

The Boy Scout Motto is "Be Prepared." The Scout Slogan is "Do a Good Turn Daily." The Boy Scout handclasp is one of friendship. That is way it is made with the left hand—the hand nearest the heart. The Boy Scout Uniform stands for Brotherhood, Scout Ideals and Outdoor Life.

Troop 789 tells of the respect for the Flag—Washington said, "We will take the stars and blue union from heaven, red from our mother country, separating it by white stripes, thus showing that we have separated from her, and white stripes shall go down to posterity representing liberty."

Subscribe for your favorite Daily paper at Index office LUBBOCK AVALANCE By mail Daily and Sunday --\$16.60 Daily only --\$14.65 Buy or renew Index for \$1.50 when get take your daily paper --Save 50c



24 Hour Ambulance Service

403 N. Austin Ave., Lamesa, Texas — Phone 872-8335

Oxygen Equipped Air Conditioned
BRANON-PHILIPS FUNERAL HOME
"DEDICATED TO HELPFULNESS"

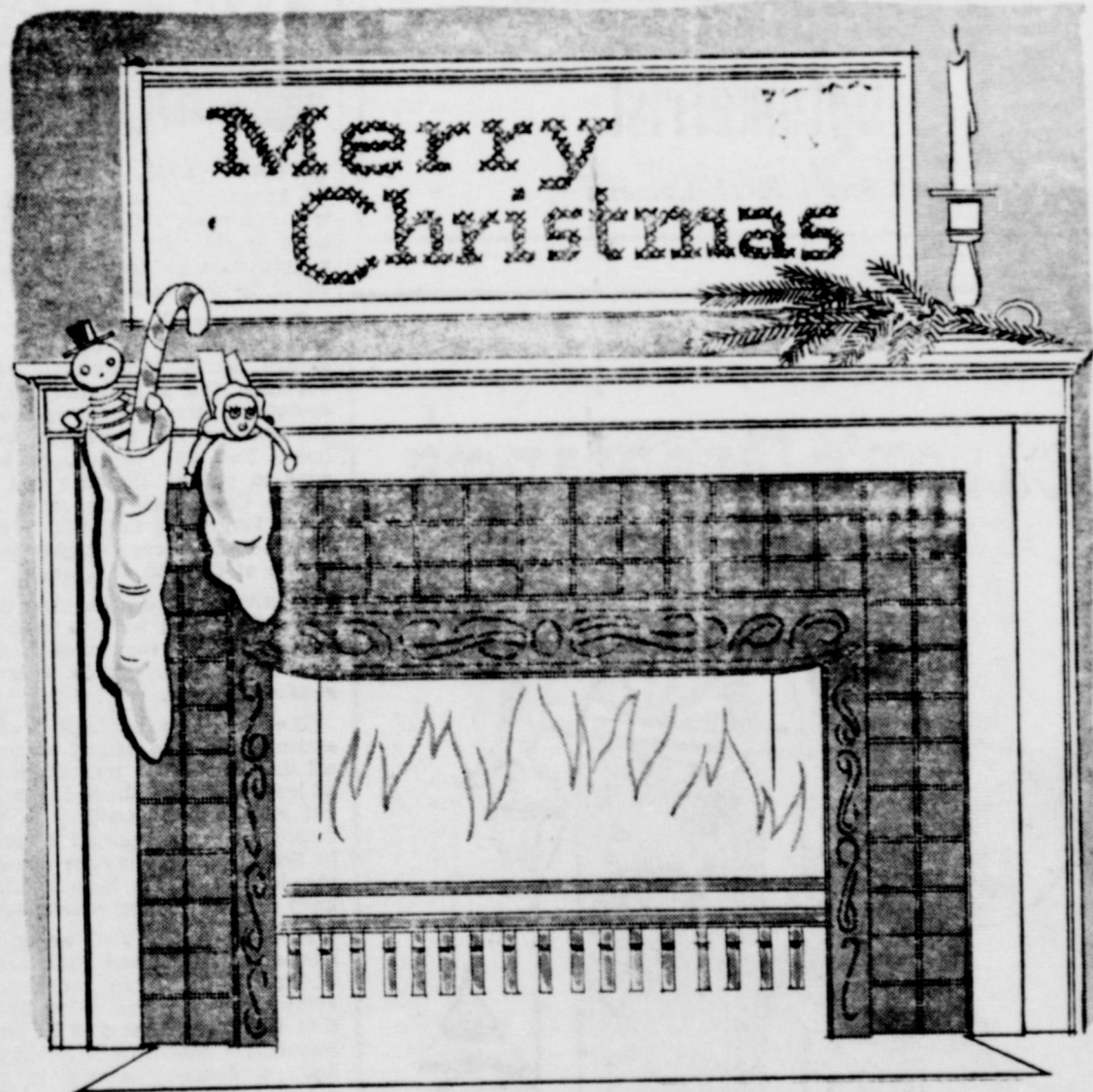
SAVE 1%

Pay Your State and County Taxes NOW! . . . AND SAVE!

1 percent discount will be allowed on all 1965 State and County taxes if paid during the month of December

Don't forget to register as a qualification for voting (new law).

GEORGE McCracken
Tax Assessor and Collector
Lynn County, Texas

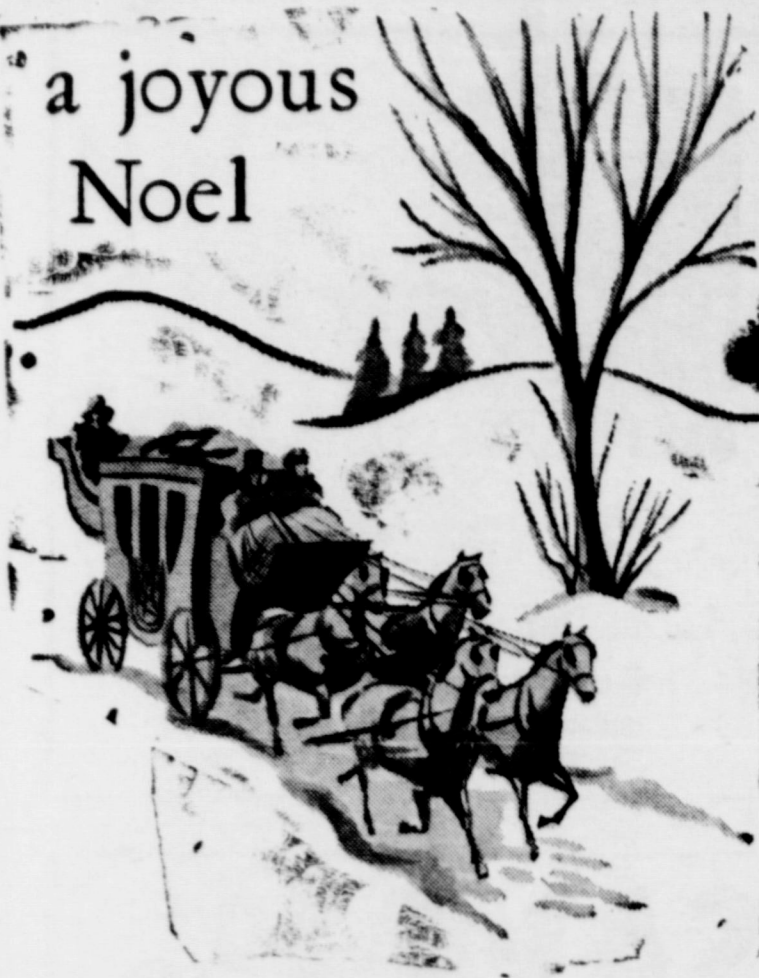


To old friends, and to new friends we hope to earn, it is a pleasure to extend best wishes of the season.

PAYMASTER GIN, O'Donnell

CLYDE WINANS, MGR.

a joyous
Noel



First National Bank of
Lamesa

MEMBER OF F. D. I. C.



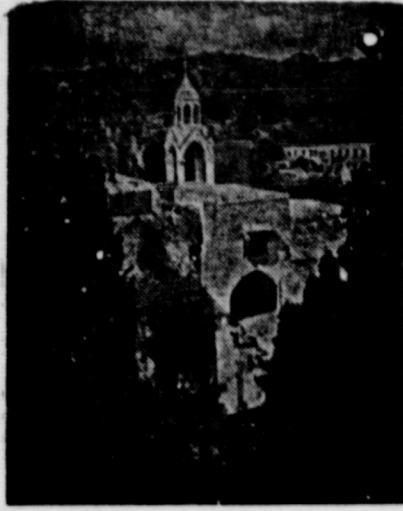
Dr. C. M. Southall,
Optometrist

508 South First, Lamesa

Season's Greetings



Lamesa Cotton Oil Mill
LAMESA



BETHLEHEM
The Church of the Nativity

Everyone Wants
To See Just One
'Good Old' Yule

"How I would long to see just one more 'old-fashioned Christmas!'"

These are familiar words at this time of the year. Before the Yuletide season is over, some member of the family, grandfather or grandmother, probably, is certain to pass that remark, as they have done each Christmas of the past.

And yet, if we search back into the records . . . to the turn of the century, say . . . we find that, even then, someone was wishing for "an old-fashioned Christmas." It is then that we realize that the celebration of the birth of Christ has not changed greatly with the passage of centuries. Basically, Christmas is the same, year after year. It is only the world and the people who are not the same.

He may not admit it, but when grandfather first began to raise a family, he overheard his elders musing over the changing Christmas customs and heralding the approach to "complete commercialism" of the Yuletide celebration. Even then they were worried.

No one can deny that Christmas has been greatly "commercialized" since the days of early America. Yet, so has the entire nation. In the days of our ancestors there were none of the vast trading centers and commercial marts that we know today. Our very way of life has been greatly changed with modernization. Our holidays, and Christmas is the principal one, have managed to keep abreast.



EVERY AVERAGE American home will have a Christmas tree this year. Traditional and symbolic as the trees are, they present a great fire hazard, and should be carefully watched.

Remember that when you bring a tree into the house it is going to dry up. A freshly-cut tree will not take fire any easier than the evergreen trees growing outside, but the hazard increases by the hour. For this reason, it is not wise to put up the tree too early before Christmas day or to leave it too long after the 25th. Trees of all kind will become highly inflammable at the end of a week.

Families, clubs, churches or organizations that wish to keep their trees up longer than a week should take special safeguards to keep it reasonably safe.

The tree can be kept fresh by setting it up in a pan of water. Cut off the base of the tree at an angle at least one inch above the original cut and keep it standing in water during the entire period it remains in the house. It may be necessary to add water from time to time to keep the water level above the cut.

Place the tree well away from stoves, radiators, and other sources of heat. When you smoke, stay away from the tree. Also be sure that the tree is secured in such a way that it cannot fall. Do not put it near a doorway where it might block an avenue of escape, should a fire occur.

DR. O. H. NANCE
Optometrist
210 N. Houston
Ph. 554

FOR SALE — Brick house, two sides pavement, 6 rooms, modern phone 428-3826. 10-21c

FOR SALE—560 acres, NW Borden County, all tillable, 145 A. Cultivation, maize and cotton allotment, 2 miles south of old Mesquite school, 2 miles off pavement. B. B. Street, Box 567, Tahoka, Phone 998-5047. 4tp

A MERRY

Christmas



COLLINS DEPARTMENT
STORE

LAMESA

Citizens Favor Cut
In Federal Spending

Seven out of ten Americans want to reduce federal government spending to control inflation.

Eight out of ten express concern about inflation.

Two out of three say they have been hurt by it.

One-third feel they are worse off financially than a year ago.

These are some of the results released today from a major national opinions survey taken in October by the Opinions Research Corporation, Princeton, New Jersey. The study was commissioned by the National Association of Manufacturers.

Merry
Christmas

We want you to know we are thinking of you this Christmas season.



The Kid's
Shop, Lamesa



LAMLSA MUSIC CO.

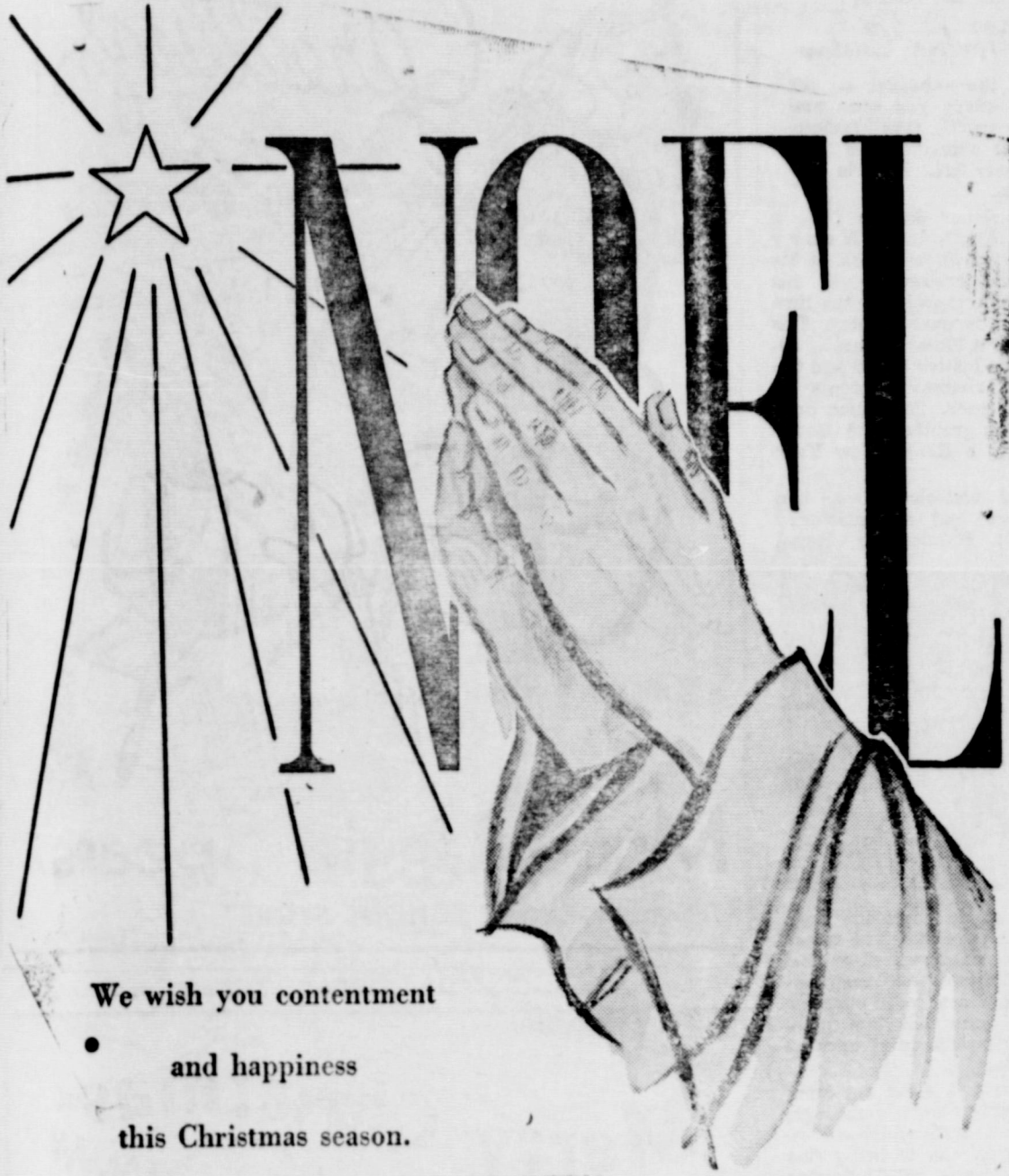
509 SOUTH 1st LAMESA



Joy to the
World

Christmas

The Vogue
LAMESA



We wish you contentment
and happiness
this Christmas season.

Woolam Gins

T. V. And Pete Woolam And Employees

Pesticide Use Warning Given

The wise use of pesticides inside your home is your personal responsibility says County Home Demonstration Agent Ann Duncan.

When actually using pesticides inside the house, be sure to read the label first, and understand all of the information. Use only the amount called for on the label. Provide adequate ventilation. Don't let the children help. Keep them away from where you are mixing or using a pesticide. Put the family pets outside while you are spraying and take their food and water dishes with them. Remove birds, bird cages, aquariums and fish bowls.

Take everything out of the dish cabinets, shelves and cupboards before you spray. Wait until the spray dries and then cover the shelves with clean paper or foil before you put things back. Never allow pesticides to get on food, fishes, pets or pans. Never spray the insides of a refrigerator or oven.

Pesticide products designed for use in the home are not automatically safe. It's how you handle them that makes their use safe or unsafe in your home, says Miss Duncan.

Keep home-type pesticides in locked safe storage before and after their use. These pesticide products—and other potentially noxious products—can be dangerous unless they are safely locked away.

DR. O. H. NANCE
Optometrist
210 N. Houston
Ph. 554

FOR SALE — Brick house, two sides pavement, 6 rooms, modern phone 428-3826. 10-21c

Welcome To
RUTH'S CAFE
Home of Fine Foods

For Cotton A'lot
ments see or call Carl Sanders 428-3389 4 + p



and may the
angel of peace
guard you.

THOMPSON'S

Department Store

MR. AND MRS FLOYD THOMPSON



And may the light of the Christmas
star shine upon you and bring you
peace.

**First National Bank Of
Takoka**



Christmas

O'Donnell Compress
Mr. And Mrs. Johnny Billingsley

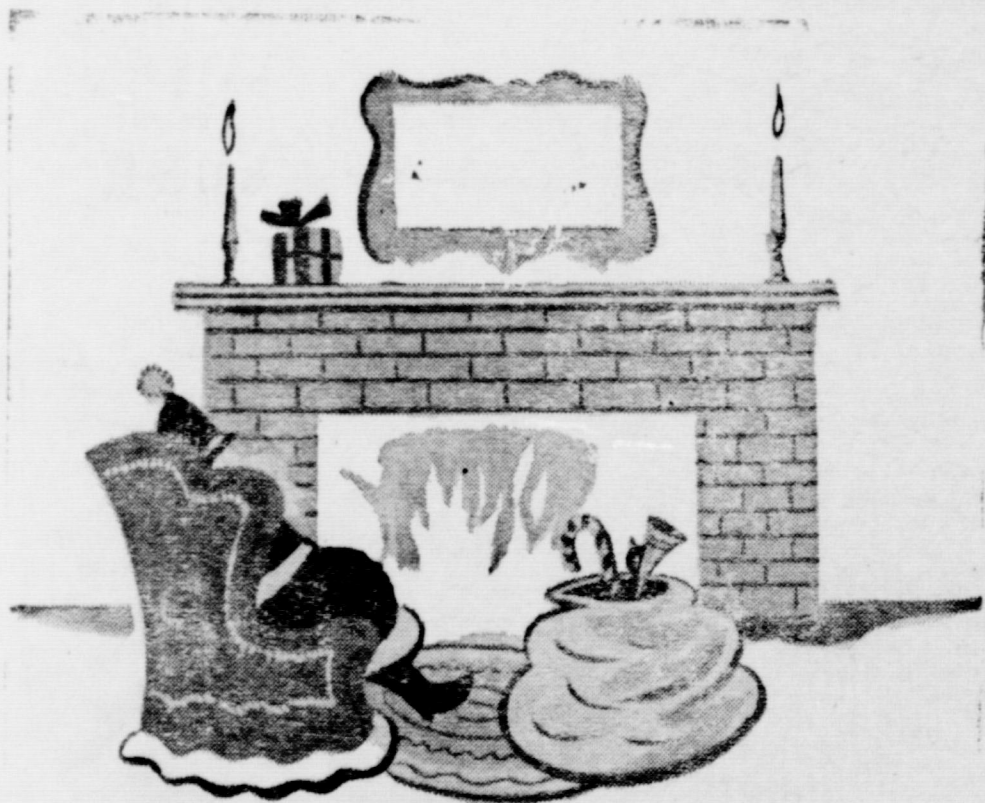


And a Merry, Merry
Christmas to one
and all

Wayland Taylor, Inc.

Your Friendly John Deere Dealer

Wayland Taylor And Staff



Merry Christmas

We take "time out"
from a busy season
to extend
our very best to you.

CLAYTON GRAIN CO.

S. M. CLAYTON, JR., OWNER

"Greetings by Mail" Originated in 1845, Now a Modern Custom

Look at the paintings on the Christmas cards you send and receive — you'll find famous names and some of the best contemporary art. Here is how it all began.

On a December day in 1846, a middleclass Englishman, Henry Cole, sat at the library desk of his London home addressing to his friends what were probably the first Christmas cards ever printed. The cards depicted a Victorian family assembled at the festive board and the traditional Christmas customs of giving to the poor. They also bore the now-classic greeting: "A Merry Christmas and a Happy New Year to you."

Cole, in a historic move, two months before had commissioned John Calcott Horsley, a Royal



Academy artist, to paint the illustration for the card and had struck off a thousand lithographed copies. He dispatched them that December. This was such a markedly successful stroke of good will that plain Henry Cole subsequently became Sir Henry Cole.

Horsley's art was a far cry from today's Christmas card paintings, but he started a cycle which a hundred years later was to bring fine art into high favor on Christmas cards.

An American shopping for cards may select, for instance, a painting called "Snow Under the Arch" by another Royal Academy member—Winston Churchill, Britain's wartime prime minister and famed amateur artist. Or he might choose Peter Hurd's "One Night in Winter" or "Grandma" Moses' "The White Church" or "The Nativity" by Alexander Ross.

Social Security Numbers Needed At ASCS Office

If the ASCS county office asks you what your Social Security number is, please don't think you are being singled out for special attention, cautions Wayman Smith, chairman, Agricultural Stabilization and Conservation County Committee. The number is needed by the Internal Revenue for identification purposes in connection with farm program payments.

Many farmers have already filed Form 3435-A with the county office, listing their social security or employer identification number. Requests for the information were mailed last fall to each known producer who receives program payments. Producers who receive direct program payments and who have not yet filed the form, however, are asked to forward the information to the county office by Oct. 1, 1966.

For 1966, ASCS must report to the Internal Revenue Service any sight draft payments of \$600 or more under direct payment programs. This includes the Agricultural Conservation Program; the feed grain, wheat, and cotton programs; the wool incentive payment program; and others.

And, beginning January 1, 1967, and each year thereafter, all such sight draft payments made to producers under these programs, will be reported to IRS without regard to the amount. Producers will be advised annually of the program payment reported to IRS, beginning with payments made in 1967.

Registration Now

No longer will Texas citizens pay poll taxes as a qualification for voting in national, state, or local elections.

But, all citizens eligible must now register between October 1, 1966, and no later than January 31, 1967, in order to vote in any election during the coming year.

Registration is free and may be done by mail on securing a prescribed form at the office of the County Tax Assessor and Collector, George McCracken. Registrant must sign his name to the blank, together with necessary information as to age, residence, etc.

Other qualifications for voting remain the same as under the old poll tax system. A voter must have lived in the state at least one year, in the county at least six months.

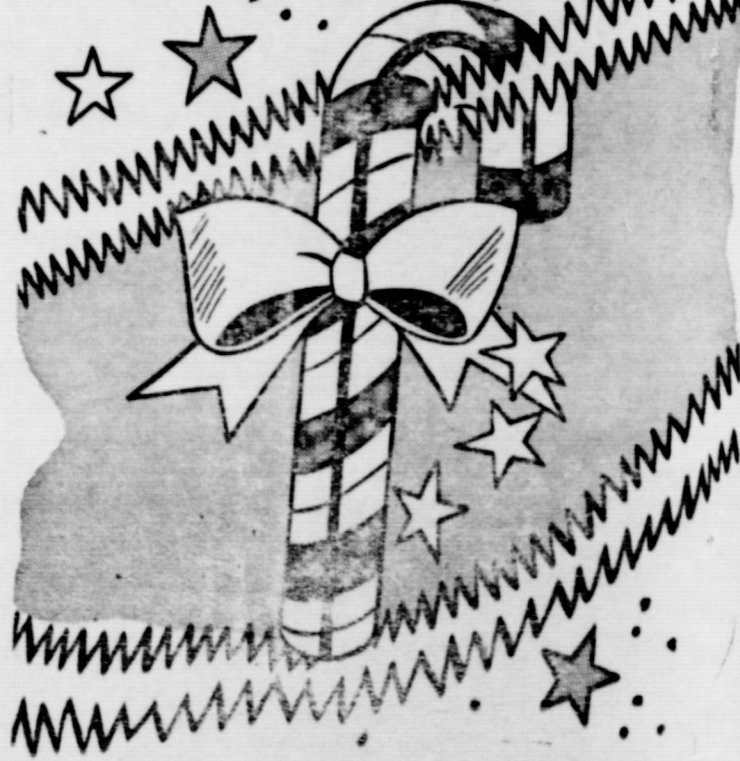
In Lynn county, a county not having a city of 10,000 or more people, overage citizens do not



To all our customers
this holiday season.

Mrs. Maggie Spears
"YOUR SCHOOL STORE"

Merry Christmas



Gibson Motor Freight

HICK GIBSON



Noel
We join you in singing
his praise this
Christmas day.

Moore Insurance

MR AND MRS. ELVIN MOORE

RENEW YOUR SUBSCRIPTION
★ Try Index Advertising For Results



First National Bank Of O'Donnell

J. T. FORBES, PRESIDENT
MEMBER F. D. I. C.



Wells Farmers Co-op Gin

A. H. PACE, MANAGER

Have a happy Christmas —
one you will remember in
days to come.

*Merry
Christmas*



HIGGINBOTHAM-BARTLETT LUMBER CO.

E. T. WELLS, MANAGER

Tax Collections Show Increase

Tax collections through Wednesday last week totaled \$103,707.23, according to George McCracken, county tax assessor and collector.

In 1965 at this time in October taxes amounting to \$103,739.16 had been collected.

McCracken states that only 173 citizens have registered for voting purposes, which compares to 183 poll tax payments at this time last year. Local residents are being reminded to register as a qualification for voting under the new laws.

License plates for farm trailers are now on sale in several places of business throughout the county for the convenience of farmers. Among these places other than the local tax office is Moore Insurance Agency, O'Donnell.

O'DONNELL INDEX-PRESS
Friday, June 24, 1966

O. G. SMITH, Owner

Entered as second class at Postoffice, O'Donnell, Texas.

Published each Friday
O'Donnell, Texas

Any error will be corrected if called to attention of newspaper.

SUBSCRIPTION rates \$2 a year in Lynn, Dawson and Borden counties. Elsewhere \$2.50 a year. ZIP Code 79351

Custom Moleboard Breaking

8 inches, \$3.00 per acre
10 inches, \$4.00 per acre

Billy Russ

Phone 327-5207

9 miles south to Draw Highway, then 3 1/2 miles east on the Draw Highway

Season's Greetings



May the
true meaning
of Christmas
be yours.

O'Donnell Implement Co.

Your Farmall Dealer,
CARR SPRABERRY, OWNER



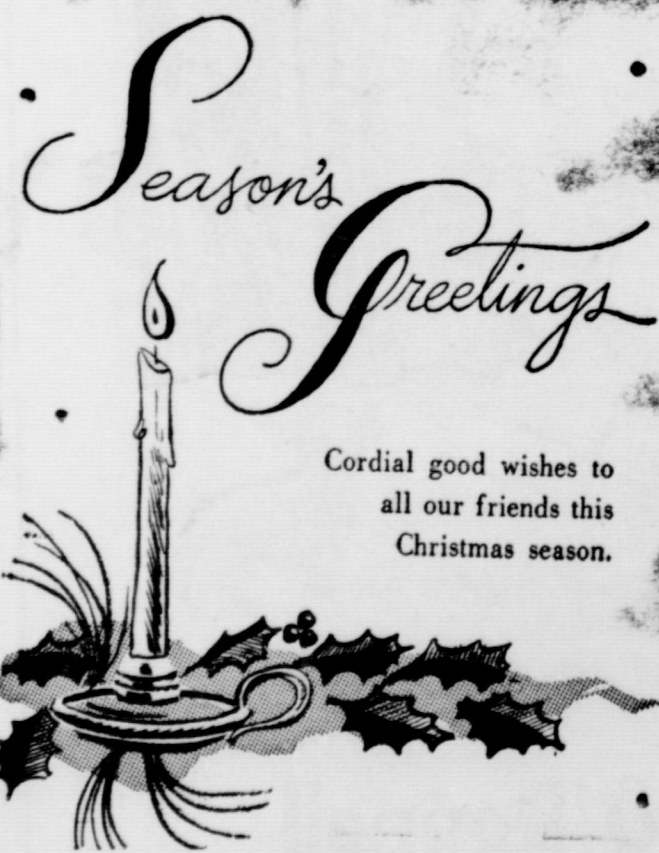
**O'Donnell Farmers
Fuel Association**



Let faith and hope be your inspiration during this Christmas season.

KLEENALL LAUNDRY

MR. AND MRS. CECIL ROYE AND STAFF



Cordial good wishes to all our friends this Christmas season.

Lott Pharmacy

MR AND MRS HUGH LOTT

**Custom of 'Pinata',
Observed in Mexico,
Is Spreading to U.S.**

The pinata, Christmas custom so long observed by the happy children of Mexico, is gradually spreading into the United States.

Although it performs year-round duty in the land south of the border, the pinata is busiest during the Mexican Christian festival that lasts from December 16 to January 6. In America, it is used in various parts of the country only at Christmas time.

The pinata is made of thin, fragile clay, and is filled with sweetmeats and trinkets before being suspended from the ceiling.

Each of the guests, not always only just children—is blindfolded and given a stick. The object is to swing the sticks overhead until someone shatters the pinata, sending the delicious contents pouring out, whence a mad scramble takes place for the spoils.

The pinata is a great aid in making the long Christmas season tolerable for Mexican children. Tradition decrees that they must wait until the final day of the 21-day Christmas season to receive their gifts.

**Christmas Was Once
Holiday That Moved
About on Calendar**

Christmas was once a movable feast. The eastern branches of the Christian church usually celebrated it in April or May. Western Europe sometime in January.

In 337 A.D., St. Cyril, bishop of Jerusalem, set out to make the date universal. With the permission of Pope Junius I, he appointed a commission to determine, if possible, the precise date of Christ's nativity. The theologians of the Church finally agreed upon December 25, and since the year 354 this date has been celebrated.

Members of the Greek, Russian and Ukrainian Orthodox churches in the 20th century observed the date of January 7, because they use the Julian calendar, which lists December 25 on that date by our calendar.



Among the myriad problems which beset parents at Christmas time are the many questions from the small-fry about Santa Claus. And the business of telling Junior or his little sister the truth about the jolly old gentleman in the red suit is really a major task.

However, the situation is bound to arise, and when it does, it does something to your heart strings—so you draw the little ones close and cast about for the best explanation.

Oddly enough, the true story is best—and the easiest to tell. So why not just tell the little ones this?

St. Nicholas (or Nicolas) is Santa Claus' real name. He lived in Asia Minor and was the beloved bishop of the Greek church of Myra in Lycia. He is the patron saint of the young, and in some European countries a person dressed as a bishop still assembles the children and distributes gifts of nuts, sweetmeats and other nice things to the good boys and girls.

Children loved St. Nicholas and trudged along beside him as he trudged the dusty roads of the Lycia countryside, bringing fruit and candy to the sick and needy.

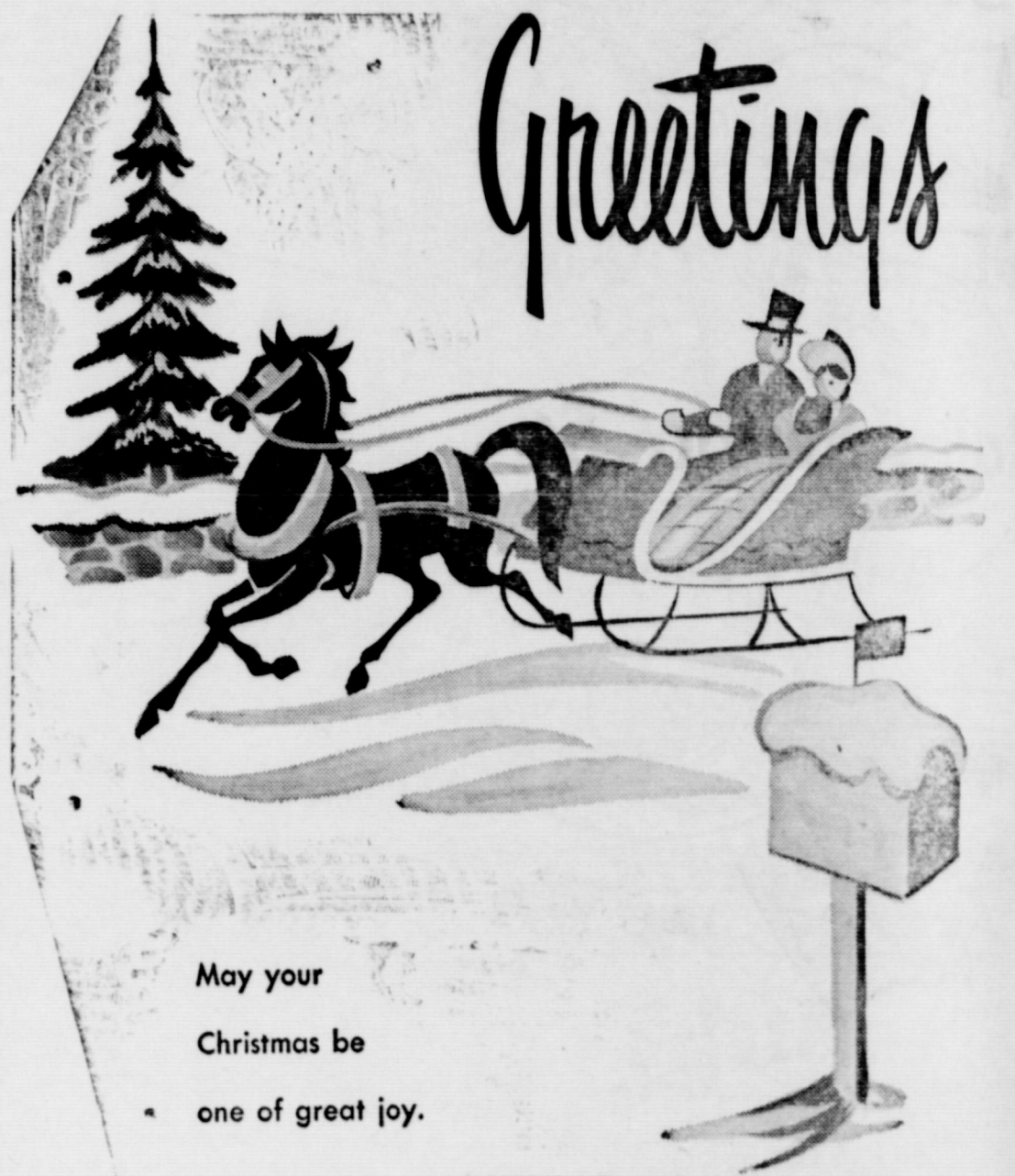
One of many stories told of his goodness concerns a poor and honest man and his three good and beautiful daughters. The father was unhappy for poverty prevented his giving the customary dowries to his daughters, and for this reason they could never have suitable husbands.

One night a bag of coins was tossed in at the man's window. The next night the act was repeated. But on the third night the father watched, and the anonymous giver was detected. The jolly bishop stood with the third bag of coins in his hands. The father was very proud and would not accept the money. The good bishop begged the poor man to accept the gifts and use them for his daughters' dowries, requesting that his name never be revealed.

At last, the father accepted the money for his daughters, but he could not keep the name of the generous bishop secret—so the legend of the goodness of St. Nicholas was further spread and strengthened.

Subscribe for your favorite Daily paper at Index office
LUBBOCK AVALANCE By mail
Daily and Sunday --\$16.60
Daily only --\$14.65
Buy or renew Index for \$1.50 when get take your daily paper --Save 50c

sacrifice to responsible party in this area. Cash or terms. Write Credit Mgr., Tallman Piano Stores, Inc., Salem, Oregon. 2tp



May your
Christmas be
one of great joy.

ELLIS CHEVROLET CO.

JOHN ELLIS AND STAFF



It's Christmas!
May the True,
Tender Meaning
of the
First Christmas
Come to You
This Year

**O'Donnell Farmers
Co-op Gin**

W. T. Martin, Manager

SEASON'S GREETINGS

Merry Christmas

Rains Service Sta.
Wallace Rains



And our sincere best wishes.

BALDWINS
LAMESA, TEXAS



Let us pause at this season and recall Him in peace and quiet joy.

Branca-Philips Funeral Home
LAMESA, TEXAS

Poinsettias

The poinsettia has no Christmas legend and its adoption as a symbol or decoration for Christmas is of recent origin. In Spain it is known as the flor de noche-buena, and is connected with the sentiment of Christmas.

Its beautiful flaming star is one of the favorite flowers of the Christmas season, and its use as an indoor decoration is universal.

Legends of Holly

Many beliefs are connected with the Christmas holly: Legends relate that the crown of thorns was plaited from the holly, the white berries turning red like drops of blood after the crucifixion.



It is said that whoever brings the holly into the house first either husband or wife, is the one who will rule in the ensuing year. For many years the superstition persisted that holly was hateful to witches. It was placed on doors and windows to keep out evil spirits.

Christmas Helps World's Economy

Many people, with the total exception of children, have come to believe that Christmas has become too commercial. In a spiritual sense, this is true to some extent.

Economically, however, no other holiday or festive season contributes so much to the welfare of the world. Christmas has hardly passed into the new year before thousands are at work on toys and myriads of other Christmas specialties for the next holiday. Each year, as the lights of Christmas trees twinkle on a wintry night, how many of us think of the millions who have gained employment through the Christmas shopping industry?

And yet, "too commercial" may be an understatement. Is it too wrong, once a year, to make the dominant theme one of giving, rather than of receiving? Christmas, and the spirit of Christmas, has endured wars and great chaos through centuries as a time of joyousness and happiness, and giving has always been an important part of the festivities.

The picture of the family united, with presents opened, and children wrapped in the joyousness of Childhood's greatest emotion is still, and will remain the Christmas story.

Abbreviation, Xmas Of Greek Origin

There has been much unfavorable comment on the abbreviated form for Christmas that is commonly used. Many think it inappropriate and undignified to use the shortened form, Xmas.

The explanation of its origin is that the initial letter of the Greek name for Christ is X and the coincidence of its cruciform shape led to an early adoption of this letter as the figure and symbol of Christ. X is frequently found on walls of the catacombs. When the early Christians wished to make a representation of the Trinity, they would place either a cross or an X beside the names of the Father and the Holy Ghost. From this came the shortened form Xmas, instead of Christmas.



SHIRT-SLEEVED SANTA . . . It's not a common subject for discussion, but Santa Claus sometimes does take off his coat and just lounge around in his beard and shirtsleeves. However, this is not standard procedure, and it's mighty few Santas you see sitting on a park bench in New York.

Welcome To **RUTH'S CAFE**
Home of Fine Foods

For Cotton Allotments see or call Carl Sanders 428-3389 4 + p



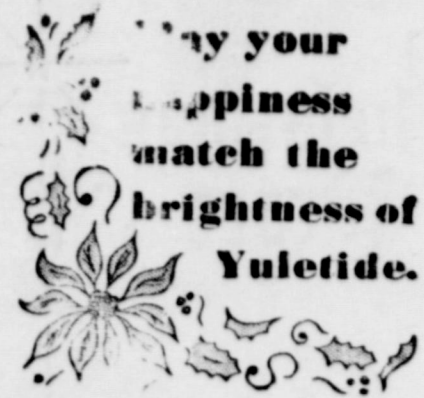
May the guardians of the Christmas Season attend you.

MORRIS Shoe Shop



To all our many friends a Merry Christmas.

THE KNIT SHOP
Mrs. Macky Turner, Owner
In Fenton Bldg, Tahoka
Phone 998-5090
Our O'Donnell Friends Are Cordially Invited To Visit Our Knit Shop



THE L'ANN SHOP --Lucille Herndon
THE L'ANN READY TO WEAR
Johnnie Zimmerman
LAMESA



AT CHRISTMAS, we wish you all the happiness this magic season offers.

Lynn County Farm Bureau
TAHOKA


GREETINGS



May your Christmas be one of JOY.

Forbes Motor Co.
Ford & Mercury Sales & Service

J T FORBES and STAFF



Christmas
Peace

May the wonderful peace
of the first Christmas be yours
this holiday season.

EDWARD'S IMPLEMENT CO.
Your Friendly O'Donnell M-M Dealer
CLYDE EDWARDS AND STAFF

MERRY CHRISTMAS.



It's good to
be back in
town and
say hello.

Smylie Variety
MRS. WILLIE SMYLIE.



Our thanks for your many courtesies

QUICK SERVICE STATION
ANDY VULGAMORE

REINDEER

FAIRY TALES and Christmas stories are a Yuletide tradition. It is thus fitting that the story which promises to be America's most popular and long-lived fairy tale is related to the Christmas season.

Once upon a time there was a reindeer with a built-in flashlight bulb for a nose. You know, Rudolph, the red-nosed reindeer. From a small beginning in 1938, the little animal with the built-in beacon has become as familiar as Humpty-Dumpty and Cinderella to youngsters everywhere.

First invented as a sales giveaway promotion for Montgomery Ward by Robert L. May, Rudolph was featured in many free booklets before he became associated with Christmas. Songwriter Johnny Marks liked the title "Rudolph, the Red Nosed Reindeer", so he wrote a song about it. He was so sure he had a success that he started his own Publishing company, using "Rudolph" as his first release. Gene Autry made the initial recording, and that one record sold 2,000,000 copies.

Last year, there were 16 different recordings of the song for sale, ranging from boogie-woogie by Sugar Chile Robinson to Bing Crosby, and cowboy singers.



Naturalized Citizen - That's Our Santa

Santa Claus as Americans know him is a naturalized American citizen, and as such is America's contribution to the Christmas legend. That's the opinion of Dr. Gustav O. Arlt of the department of Germanic languages on the Los Angeles campus of the University of California.

"The Norwegians who settled early in America brought the first version of the modern Santa Claus, who in Europe had been known as St. Nicholas, but never adequately personally described," said Dr. Arlt.

"When the American Clement Moore described the jolly, rotund gentleman in minute detail in his poem "Twas The Night Before Christmas," he assumed the proportion of living legend and thus became an integral part of Christian legend and folklore," the professor stated.

Archaeologists' Findings Bear Out Bible Stories

Archaeologists' findings oftentimes serve to further establish the authenticity of the story of Jesus. Only recently a group discovered the name of Jesus, carved before 70 A.D. and perhaps by an eyewitness to the crucifixion, among inscriptions on 11 early Christian burial urns found in a cave on the Jerusalem-Bethlehem road.

The urns may provide the "oldest archaeological record of Christianity" and an historical confirmation of the trial and crucifixion of Christ, the archaeologists said.

A sect of Hebrews, who followed Jesus, denounced Pontius Pilate and mourned the crucifixion of their leader, was believed to have left the writings on the urns in the

DR. O. H. NANCE
Optometrist
210 N. Houston
Ph. 554

FOR SALE — Brick house, two sides pavement, 6 rooms, modern phone 428-3826. 10-21c

Welcome To
RUTH'S CAFE
Home of Fine Foods

For Cotton Allotments see or call Carl Sanders 428-3389 4 t p

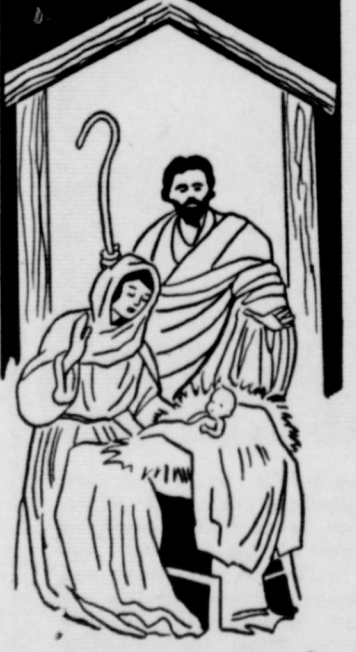


Merry Christmas

We're not
depending on Santa.
We say it ourselves ...
Happy Holiday

O'Donnell Lumber And Hardware
Wayne Nowlin And Staff

Merry CHRISTMAS



We wish you the blessings of this holy season.

O'Donnell Auto Supply
MR. AND MRS BUCK ELLIS

May This Be Your "Most Remembered" Holiday



C. J. BEACH
"FARM AND RANCH LOANS"
Oil and Gas Leases, Royalty

As the Spirit of Christmas unfolds itself over the countryside, we add our greetings and best wishes of the season.



VERNON COOK
TV, RADIO AND ELECTRICAL SERVICE



KEEPING CHRISTMAS

by Henry Van Dyke

Are you willing to forget what you have done for other people, and to remember what other people have done for you; to ignore what the world owes you, and to think what you owe the world; to put your rights in the background, and your duties in the middle distance, and your chances to do a little more than your duty in the foreground; to see that your fellow-men are just as real as you are, and try to look behind their faces to their hearts, hungry for joy; to own that probably the only good reason for your existence is not what you are going to get out of life, but what you are going to give to life; to close your book on complaints against the management of the universe, and look around you for a place where you can sow a few seeds of happiness—are you willing to do these things even for a day? Then you can keep Christmas.



Cowboy's Party Is Real American Fete

One of the most typical of our American holiday celebrations is the Cowboy's Christmas Ball, which has been held almost every year since 1884 in the small town of Anson, Texas.

The celebration started as a wedding party in the old Star Hotel when ranchers poured in from the widely scattered ranges to honor one Cross P. Charley and his bride. It was such a success that it was repeated year after year.

Christmas Eve brought the spirit of the old West to Anson. Cowboys donned their colorful dress, their gay shirts and decorated boots. Cowgirls outfitted themselves in gingham dresses "like mother wore". A cowboy band swung out and the dancers perform the heel and toe polka, the Varsouvienne, and other old folk dances.

"TO PARTY with good credit: Re-possessed 1966 Singer sewing machine in walnut console. Automatic zig-zagger, blind hems, fancy patterns, etc. Total balance \$28.76, terms. Write Credit Dept., 1114 19th Street, Lubbock, Texas."



THROUGH THE HOOP . . . Flippy, a trained porpoise at Marine Studios, Fla., gets into the holiday spirit by leaping through a Christmas wreath suspended over the water of his tank.

BUY YOUR COOK BOOKS NOW!

Can't think of anything to get your friend for Christmas? Maybe she would like a cook book. You can get one on vegetables, casseroles, salads, meats and desserts for only \$2.95.

If you would like one of these cook books for Christmas presents or for yourself, they are sold for fund raising by Future Homemakers of America. Phone 428-3849 or 428-3241 or contact any FHA

Free Speech Issue In Court Proceeding

LINCOLN, Ill.—Free speech was the issue here in a contempt of court case in which nearly 600 persons faced possible fines and jail sentences.

The defendants, many of them members of a reform group known as the "Good Government Council of Logan County," were cited for contempt for petitioning Circuit Judge Frank M. Bevan to replace a state's attorney in a case involving the prosecutor's friend.

Judge Bevan said the petition contained "odious, defamatory language concerning an official of this court," State's Attorney Edwin C. Mills.

Members of the Good Government Council contended Judge Bevan could not hold them in contempt and said if the prosecutor felt he was defamed by the petition he could sue them in a civil court.

The case arose when, as a result of action taken by the Good Government Council, Justice of the Peace Vincent Jones was charged with illegal diversion of funds collected in overweight trucking fines. Mr. Jones was charged with perjury, embezzlement and malfeasance.

The council followed up the case with a petition asking that Mr. Jones, be replaced by a special or assistant prosecutor.

Yule Tree Business Figured in Millions

CHRISTMAS TREES are a multi-million dollar business. Throughout the nation, some 15 million trees are supplied to the holiday demand. Prices range from \$1 to \$5, and that adds up to real money.

A Christmas tree, in the lake states, is usually a balsam or a spruce. The same is true in New England and the Appalachian section. Elsewhere in the country, virtually all kinds of evergreens are used.

The lodgepole pine and Douglas fir are frequently used in Colorado. On the Pacific coast, it is principally Douglas fir.

In Maryland, Virginia and Washington, D. C., a scrub pine takes a trimming.

In other localities, white pine, southern pine, hemlock, red and white cedar and redwood are used.

The business of harvesting this annual crop begins in the fall, when cutters go into the woods after trees. It continues as truckers bring huge loads to metropolitan markets.

Many land owners manage their swamps to make them yield a crop of trees year after year. Thinning operations are another source of Yule trees.

Farmers have discovered that they can get a cash crop from eroded acres by harvesting Christmas trees 10 or 15 years after they are planted.

COLLEGE-HIGH SCHOOL STUDENTS SET PROGRAM

Friday, Dec. 23, at 7 p.m. is Student Night at the First Baptist Church. High School and College students will participate in the Christmas Program in the auditorium. Everyone is invited.



Eyedrops are a refreshing "eye-opener" on arising in the morning and will soothe tired eyes when used before retiring for the night. Plenty of sleep, proper diet, good reading habits are also helpful in giving you a bright outlook on life, report researchers for the Murine Company of Chicago.



Merry Christmas



Our cordial good wishes to all.

O'DONNELL ELECTRIC AND SUPPLY

MR. AND MRS. RALPH KNIGHT



A CHRISTMAS Hello

W. J. SHOOK

MAGNOLIA OIL AND GAS



'Twas the night before Christmas

A HAPPY YULETIDE

Fina Service Station

AT THE NORTH "Y"

MR. AND MRS. BEN MORRISON



Merry Christmas

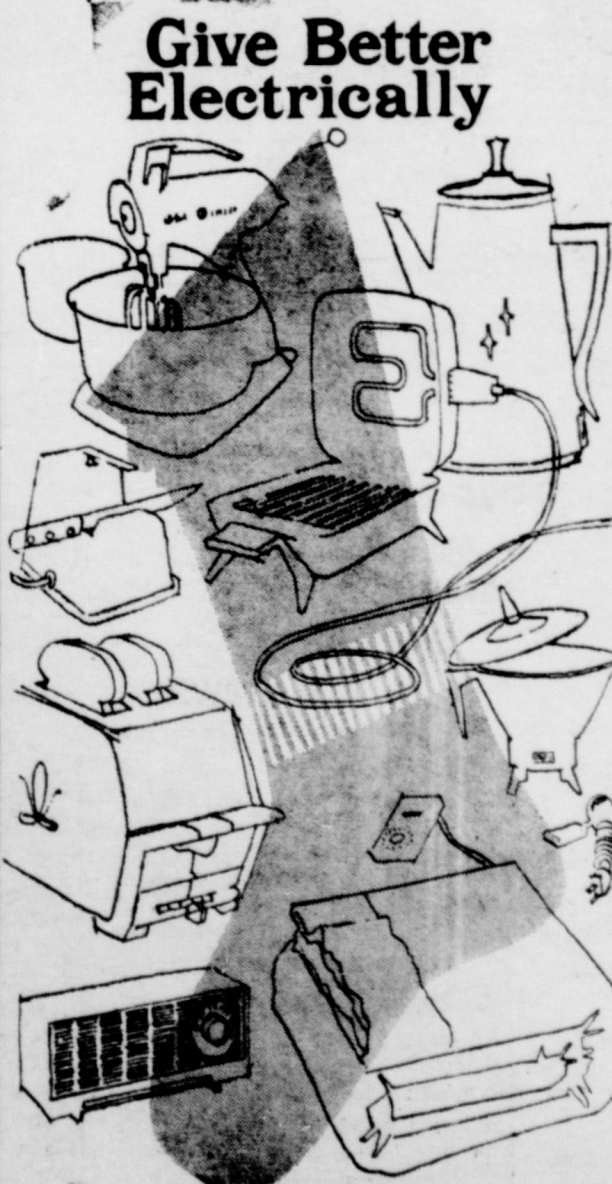
REBEL BEAUTY SHOP

MRS ZHEL SINGLETON



Give Happier

You give happier tomorrows when you give electrical gifts. They speed work around the house . . . add comfort, convenience and pleasure . . . make living better the year around. See the many beautiful and lastingly useful electrical gifts on display at your favorite store that sells appliances. Make your selections now and give better . . . electrically!



Give Better Electrically

TEXAS ELECTRIC SERVICE COMPANY

Blocker Grocery

Your S. & H. GREEN Stamp Store

SPECIALS FOR FRIDAY And SATURDAY

FREE FREE FREE

Come In And Register For a ham And 2 Turkeys

Drawing Dec. 24th

beef Roast lb 49c

Choice Chuck Beef

hams lb 69c

HALF OR WHOLE

Sirloin lb 79c

SEE US FOR YOUR CHRISTMAS

TURKEY

Same Speicals As last week



To all our friends everywhere we
send greetings and our sincere
wish for a happy Christmas.

DOUG JOHNSON
JAMES MELTON
IGNACIO PEREZ
JOE FURLOW
J. D. STEWART

LOST — Two white face Herford heifer yearlings, coming 2-year-olds. Phone or contact Jack Gleg-horn, O'Donnell, Tx. No. 428-3827.

PRESENT FIRE HAZARDS

The Texas Safety Association reminds home owners to place Christmas greenery where it can not be ignited by lighted candles, a spark from the fireplace or other sources of flams. Also, always use paper table cloths, and cotton bat-ting, which has been marked fire resistant.

Dear Santa,
I have been a good boy, I want a bike and a gun and a thing for Mrs. Pugh.

Love, Johnny.
Johnny Dorman

Dear Santa,
I forgot to tell you that I was a good boy. I like Christmas. I went to see you Santa.

Love, Delwin.
Delwin

Mr. and Mrs. C. H. Tyler re-ceived word last week of the death of his brother, Bud in Miss-issippi. He was 99.

**How To Live
A Longer Life**

Drive with your eyes on the road, your hands on the wheel, and your mind on your driving—at all times!

Never get impatient behind the wheel. Be calm and courteous. And don't take for granted that the other guy will be, too.

Keep your car fit for the road. Make sure your horn and brakes work, your tires are properly in-flated, and check to see that you have a good spare. A safe car makes a god driver even better.

Know what your car will do... and drive accordingly. Remem-ber, at 50 mph it takes 25 times the distance to stop that it does at 10 mph.

**POSTMASTER EXTENDS HIS
THANKS FOR COOPERATION**

We want to thank each of you for the fine cooperation you have shown us during the past year in your mailing and especially dur-ing this holiday season. We wish you a Merry Christmas and Happy New Year.

Nationwide it is expected that more than 8 billion pieces of mail will be delivered before Christ-mas, a new record. The use of ZIP and a pattern of your early mailing has helped us move the large amount of mail with greater efficiency, therefore we don't ex-pect a backlog of holiday mail not to be delivered before Christmas day.

About our local mailing on Sat-urday Eve., Sunday and Holidays, please place your out of town mail in the outside drop box and do not place your local mail in the outside drop box because it is picked over up by the Star Rt. carrier, carried to Lubbock where it is cancelled and then returned back to our office the next morn-ing.

**LINE GROCERY
& MARKET**

LINE UP WITH LINE
WE GIVE FRODOLE STAMPS
Wednesday - Double Stamp

O'Donnell, Tex. Phone 428-3841

- Pickles, kimballs, sour or dillqt. 29c
- Pumpkin, Del Monte, No. 2 1-2 26c
- Meal, Aunt Jemima, 5 lbs. 43c
- Cider, Apple, 1-2 gal. 89c
- Inst. Maxwell House Coffee 10 oz. \$1.49
- Salmon, Honey Boy, No. 1 63c
- Shortening, Snow Drift, 3 lb. 69c
- Jumbo Pies 12 for 39c
- Peas, Mission, 303 can 17c
- Spagetti,-Mac., Franco Amer. 19c
- Sausage, Tenn. Farm 1 1-2 lb. \$1.09
- Salt, Dry, No. 1 lb. 43c
- Franks, Neuhoff, all meat lb. 59c
- Celery, Stack, nice crisp ea. 19c
- Spuds, No. 1 10 lbs. 59c
- Yams, Good Baking lb. 12c

MERRY CHRISTMAS . . HARVEY AND STAFF



Biscuits 5c

KIMBELLS

Coffee 69

KIMBELLS

pineapple 2-49c

GESHA no. 2 can Sliced

oleo 2-39

KIMBELL

Egg Nog 59

Borden Quart Size

LUX 79

Dishwashing detergent qt size

Hose 79

Cannon nylon 99c value

Shortening 69

MRS. TUCKER'S 3 Lb Can

CHILI 59

FRITOS 300 size can

MEATS

HENS 49

canned hams \$4.49

Bacon lb 69c

Chuck Wagon

Cheese Lb. 59c

LONGHORN

SEE OUR DISPLAY OF
CHRISTMAS CANDIES
FRUITS, NUTS

Shop Our
Holiday Gifts



PAUL, JACK, HATTIE, ILENE

VICTOR

8888888888
SILVER DOLLAR
THRIFT STAMPS



8888888888

Double SILVER DOLLAR thrift
Stamps every Wednesday

MANSSELL BROS.