



★ Try Index Advertising For Results

# Look what you save traveling Santa Fe's Family Fare Plan



**How the Family Fare Plan works:** Father pays full round-trip fare. Mom, and children from 12 through 21 years, travel round trip for the one-way fare. Children 5 and under 12 travel round trip for only half the one-way fare. Children under 5 travel free. Family Fares apply in Pullman or chair car. Trips must start between Monday and Thursday, but return trips may start any day.

See your local SANTA FE REPRESENTATIVE



Say "Santa Fe via Chicago" for your trip to the NEW YORK FAIR

**Frogs and Freedom**  
There's an old story that says you can't kill a frog by dropping him in boiling water. He reacts so quickly to the sudden heat that he jumps out before he's hurt. But if you put him in cold water and then warm it up gradually, he never decides to jump till it's too late. By then he's cooked!

Men are just as foolish. Take away their freedom overnight, and you've got a violent revolution. But steal it from them gradually (under the guise of "security", "peace", or "progress") and you can paralyze an entire generation. Look at the income tax. It started out as a harmless sounding 1%. It would have been easy to jump out of water as tepid as this, but like the frog, we waited while it climbed ever higher. (Try jumping now!)

Worst of all, we never learn. Even today we cannot believe that Medicare is the same warm water that will one day boil us in Socialized Medicine. We see no connection between farm price supports and Nationalized Agriculture. And if we draw a parallel between subsidized teachers' pay and federal control of education, we are called "extremist".

The tragedies of history are always repeated by those who refuse to learn them. To seek guidance from the past is not "turning the clock back" as we are so

often told. It is merely a good way to keep out of hot water.

## EXPLORERS AND AG. DEPT. HAVE JOINT TRIP

On Friday of last week the Explorers and Ag. boys loaded up to travel to Alpine for a judging contest.

Boys on the judging team were Eddie Moore, Dwight Crawford, Jerry Barton and Mike Childress. The team placed 7th over all in livestock, also third in swine judging. Jerry Barton was high point man on the team. The team was 40 points under the top team.

After the judging contest was over, Mr. Reed and the boys were off to Big Bend National Park for a trip down the Rio Grand River. The group arrived there approximately 4:30 that afternoon. After the gear was unpacked, the boys were off to the river in their boats. This was a fun-packed afternoon since everyone got soaking wet. Many an echo rang through Santa Elena canyon as boys yelled at each other.

On Sunday morning at approximately 8:00 the boats were back in the water and headed downstream toward Santa Elena, a small village in Mexico some 8 miles away. The boys made it there by 1:00 that afternoon.

All the boys agreed that they had a god time. The group arrived home about 10:30 Sunday night.

## O'DONNELL NEIGHBORHOOD OF GIRL SCOUTS MEET

The O'Donnell Neighborhood of Girl Scouts met in the home of Mrs. W. E. Singleton Jr. with Mrs. Russell of Lubbock, our district advisor, present. Plans were made for the remainder of this year.

Mrs. Russell commended the Senior Troop for their impressive and excellent flag ceremony at the Birthday celebration at the Coliseum in Lubbock March 13.

Day Camp will be held at the O'Donnell City Park June 7 thru 11, 9:30 to 2:30 each day. Mrs. Pete Woolam will be the Camp Director, and Mrs. Cecil Kizer Assistant Director. Brownie and Junior Scouts will attend from New Home, Tahoka and O'Donnell. The Senior and Cadette Scouts will help as program aides. O'Donnell will register after school May 5 and 6 at Mrs. Allen Holliday's home.

The Senior Scout Troop 104 is sponsoring a vaudeville show with individual talent at the High School auditorium April 27 at 8 o'clock.

All the troops will have a slumber party at the Gymnasium on Friday night, May 7.

Mrs. Pete Woolam and Mrs. W. E. Singleton Jr. will attend the Caprock Council meeting in Lubbock April 12 at the Plainsman Hotel at 12 noon.

A junior leader and assistant, assistant leaders for the Brownies and Coddettes are needed for next year's program. There will be a Leadership Training Course at the St. Luke Methodist Church in Lubbock April 27 and May 4 from 9:30 to 2:30 each day. There will be a nursery available at a minimum cost. If you are interested, please call Mrs. J. W. Gardenhire, 439-2433.

## PASTURE PLANTING

It is advisable to dry plant grass seed now to use to advantage any moisture that may come this spring, says Larry Dobbs, Soil Conservation Service Technician. The small grass seed have to be planted very shallow in a well prepared seedbed. After a rain, by the time the ground has dried enough to get on the land and plant, much of the moisture is gone. Under irrigation, the grass can be watered to a stand. Rain-fall must be best used on dry land plantings by planting prior to rains.

After grass is to a stand, the next enemy is weeds. This must be taken in consideration before planting. The plantings can be placed in rows so cultivation can be practiced. Also chemical herbicides and mowing or shredding are good for weed control. Due to the weed problem encountered in grass planting, it is not advisable to fertilize until the grass is to a good stand. Usually fertilizing is started the second year.

It is not easy to establish and maintain a good stand of grass. The first essential after planting is sufficient moisture to allow substantial plant growth and development. Grass that is to be planted under dryland conditions should be planted now to take full advantage of spring rain and cooler temperatures.

For sale: 66 cart with 2 motors Good condition \$125  
Yellow Chrome Maetto set 2 pieces \$20

Chrome high chair yellow \$5  
Will sell equity in our house or trade equity for late model car, pickup or trailer house. Payments only \$45 month for 7 rooms and one and half baths Phone 428-3760

For sale — 2 formal dresses sizes 12 and 14 A J Howell at High School

## YOU ...

Are A Member of

## IF ... ELLIE'S Christmas Club

You Save Ellie's Fashion Sales Slips

## HERE ...

... IS HOW THE CLUB WORKS

FOR EACH DOLLAR MARKED ON SALES SLIPS YOU PRESENT YOU WILL BE ALLOWED 5 PERCENT CREDIT TO APPLY ON MERCHANDISE OF YOUR CHOICE

An example: If you present \$100 in cash sales slips you have \$5.00 worth of Merchandise due you free from ELLIE'S

YOU MAY CASH YOUR SALES SLIPS AT ANY TIME AND

YOU MAY SAVE YOUR SALES SLIPS FOR

AS MANY MONTHS OR YEARS DESIRED

ELLIE'S SALES SLIPS may be transferred, swapped or given to a friend or relative

## Always ...

A Complete Stock of  
**AUTO parts**  
WE ALWAYS APPRECIATE YOUR TRADE  
**O'Donnell Auto Supply**

BUCK ELLIS, OWNER

QUALITY WORK AT

REASONABLE PRICES

## Kleenall

LAUNDRY AND CLEANERS

Also Automatic Coin Operated Dry Cleaning

Free Pickup and Delivery CALL 428-3744

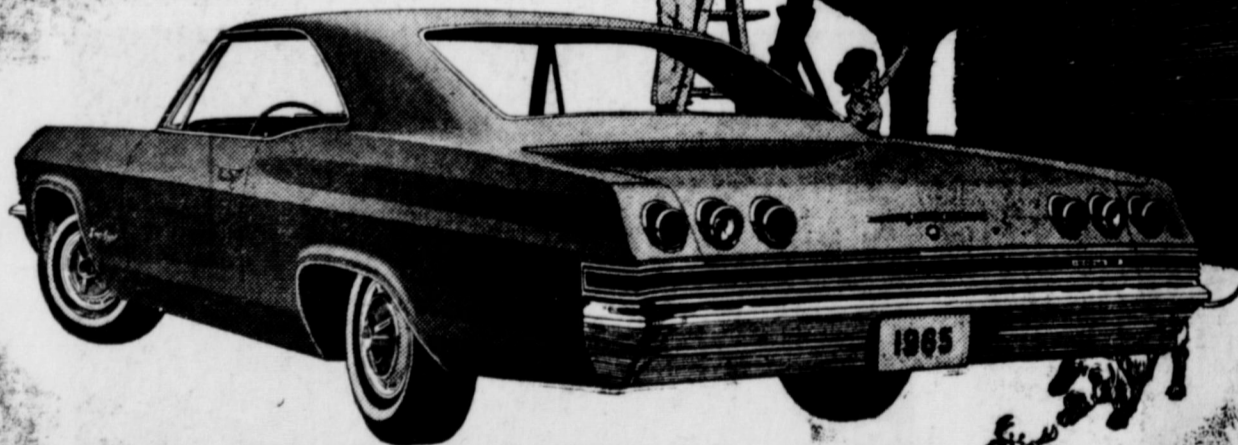
(Across Street City Hall)

## Moore Insurance Complete Insurance Service

Phone 428-3335

O'Donnell, Tex

## Zing into spring! Chevrolet Impala



Chevrolet Impala Super Sport Coupe—one of two bucket-seated beauties for '66.

People who buy other big expensive-looking cars get one thing you won't (big expensive-looking payments)

It looks like a big car. And is—by almost any standard you want to apply.

Width? Nobody builds a car as much as one inch wider. Length? It grew three inches this year. Roominess? Every closed model's got three inches more shoulder room, front and rear, and more leg and foot room up front too. Luxury? Nice little touches like the look of mellow walnut across the Impala's instrument panel. And big touches. Like the fineness of the same Body by Fisher workmanship that makes some of America's most

expensive cars look so expensive. How about the ride? Chevrolet engineers took the Jet-smooth one and smoothed it out even more this year. Also made it more stable by widening the wheel stance. Price? That's where Chevrolets fall way short of the other big expensive-looking cars. But we wouldn't have it any other way. Would you?

One last question: How soon can you make a good spring buy on a Chevrolet? One last answer: Just as soon as you can get down to your Chevrolet dealer's.

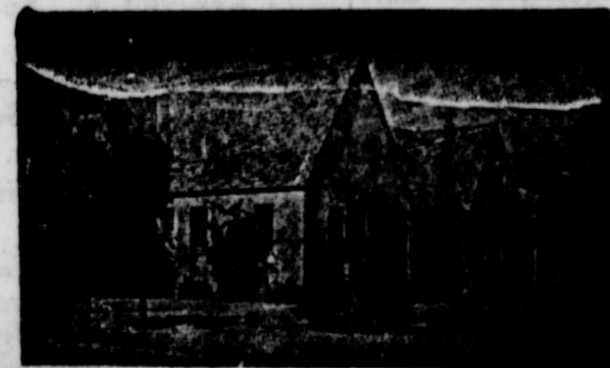


HIGH TIME TO TRADE AT YOUR CHEVROLET DEALER'S

Zing into spring in a new Chevrolet, Chevelle, Corvair, Chevy II or Corvette

## ELLIS CHEVROLET CO.

BOX 184, PHONE 4-8815, O'DONNELL, TEXAS



24 HOUR AMBULANCE SERVICE  
OXYGEN EQUIPPED — AIR CONDITIONED  
**BRANON - PHILIPS FUNERAL HOME**  
"DEDICATED TO HELPFULNESS"  
408 N. Austin Ave., Lamesa, Texas, Telephone 7688

SERVICE POST  
service facility  
customer are  
in the postal  
Line document  
word from F  
Gronowski  
a new improve  
office."  
new experimen  
service unit, the  
March just of  
to meet after  
calling needs of  
first unit was  
center was  
D.C. It offers  
facilities for bu  
cards and env  
parcels  
the new model  
dispensing  
have five time  
and a larger r  
devices and  
for better pro  
ing that the se  
signed as a sup  
and not as a r  
postal faciliti  
postal faciliti  
—O—  
a complete lin  
ington boots  
Claude's Boot 8  
—O—  
HOUSE FOR 84  
—O—  
extra large 1  
room, nice kit  
and bath with  
two room apt.  
Low monthly  
good car for do  
5682 or write  
field or see II  
I REC  
I  
If you see  
be is a part  
It isn't unus  
top of a pit  
on the move  
His job is  
quality fores  
Focal point  
at Texas A &  
The principal  
Area west of  
woods" serv  
The progr  
and by forest  
Interest is  
demands of  
already been  
will permit  
during long  
pine. Also v  
specific gra  
beetles and  
Work in  
much cross  
top of the c  
year. First, l  
ripe, he bag  
pollen from  
his next tr  
Eighteen m  
more flowe  
summing job.  
A light  
A climber c  
a tree. Nes  
with only l  
used for th  
Some day  
will pay of  
head.  
IN CASE  
"To Know  
To Do It Is  
Done Is SEE  
When Yo  
oka 998-44  
THE STATE  
"LICENSED F  
AND HAVE IN  
REQUIRED FI  
RRING AID.  
IT IS GOOD  
OF LYNN COU  
SERVICE WH  
FUNERAL HO  
WE ARE ON  
TO YOU.  
MARTIN W  
2  
AL  
SER  
BILLIE WH  
H  
YE  
ER  
BORDEN D.  
A  
FU

**SERVICE POST OFFICES**

Service facilities for the customer are receiving new in the postal system. Post-Line documented today after word from Postmaster Gen. Gronowski in Washington a new improved "self service" office.

A new experimental 24 hour service unit, the second, opened March just outside Los Angeles to meet after hours postage mailing needs of suburbanites. First unit was installed at a center just outside Washington, D. C. It offers around the clock facilities for buying stamps, cards and envelopes at cost.

The new model the vending machines dispensing cards, envelopes have five times as much capacity and a larger roof over the machines and parcel post for better protection of the units.

The self service units designed as a supplement to service and not as a replacement for postal facilities or personnel.

Complete line of cowboy and wagon boots  
Claude's Boot Shop 8-8416

**HOUSE FOR SALE**

Extra large bed rooms, large room, nice kitchen and dining and bath with double garage two rooms apt. on large corner lot. Monthly payments. Will take good car for down payment, call 5682 or write 520 E 5th St. Field or see Index 4 13 6tc

**CHURCH OF NAZARENS**

**SUNDAY**  
Sunday School: 10 a. m.  
Morning Worship: 11 a. m.  
N.Y.F.F.: 7 p. m.  
Worship hour 8 p. m.  
Wed. Prayer meeting: 7 p. m.  
A cordial welcome to all

For Expert Boot and shoe repair  
all Claude's Boot Shop 8-8416

Complete Line Western Shirts  
all Claude's Boot Shop 8-8416

For sale 10x20 ft chicken house with built in rabbit hutches and steel chicken nests with about 2 dozen hens \$75 if sold by Sunday. Also 6x8 ice house Bud Fugh

**SUBSCRIBE TO YOUR DAILY NEWSPAPER AT INDEX OFFICE**  
LUBBOCK AVALANCHE  
Morning with Sunday ..... \$15.00  
Morning without Sunday ..... \$12.00

**NOBLE H. PRICE, M. D.**  
528 North 1st Lamesa  
OFFICE PHONE 8016

For a complete line of belts, bill folds and saddy see  
call Claude's Boot Shop 8-8416

Social Invitations, white eggshell stock, double post card size 50c. \$5.75 for 100 printed. Index

Used T V sets \$29.95 and up  
For the best RADIO, TV and ALL ELECTRICAL SERVICE call 428-8451, VERNON COOK etc

**FIRST METHODIST CHURCH**

Church School 10:00 a. m.  
Morning Worship: 10:30 a. m.  
MYF and Children's groups at 8 p. m.  
Evening worship 7 p. m.  
David Hamblin, Pastor

**CHURCH OF CHRIST (SUNDAY)**  
10:00 A. M. — Bible School  
10:45 A. M. — Worship Service  
6:30 P. M. — Young People Class (WEDNESDAY)  
9:30 A. M. — Ladies Bible Class  
6:30 P. M. — Worship Service

**FIRST BAPTIST CHURCH**  
Sunday School 9:45 a. m.  
Morning Worship 10:55 a. m.  
Training Union 8:00 p. m.  
Evening Worship 7:00 p. m.  
T. Partain, Pastor

For your plumbing call 428-8310 or 428-3761  
May 1st pd

**St. Plus X Catholic Church**  
Sunday Masses: O'Donnell, 9:00  
Monday and Tuesday, 7 a. m.  
Wednesday 7 p. m.  
Thursday, 7:30 p. m.  
Friday: 7 a. m., Sat. 8:30 A M  
s. m., Tahoka, 11:00 A. M.

**ASSEMBLY OF GOD**  
W. E. HAHN, Pastor  
Sunday School 10 a. m.  
Morning worship 11 a. m.  
Evening worship 7 p. m.  
Thursday worship service 7 p. m.

**DR. O. H. NANCE**  
Optometrist  
210 N. Houston Ph. 554

**Saleh and Saleh**  
ATTORNEYS AT LAW  
GENERAL PRACTICE IN ALL Courts  
602 N. 1st Phone 2171  
Lamesa and O'Donnell

**TREFFLON For Weed Control.**  
In Your Cotton \$4.35 per acre per season control SEE WENDELL EDWARDS

**PICTURE CONTEST**  
So many of our "cuts" are not identified, the Index is having a contest to see who can name correctly the greater number of pictures so far as identification.

**DROPOUT PROBLEM IS OF NATIONAL CONCERN**  
Three million of the nation's young people between the ages of 16 and 19 have become dropouts. Although this alarming number is cause for concern, nevertheless the



114

**rate of dropout has dropped from 41 percent to 30 percent since 1950**

Today, thanks to Dr. Jenner, we can have a similar immunization and avoid the disfiguring and killing epidemics which once swept the term dropout doesn't bring pleasant pictures to mind. Many people often associate the colloquial term with juvenile delinquents. Yet the boy or girl who becomes a dropout may be a nice young person — just bewildered, unsure of himself, and his goal in life. Many youngsters face the decision of whether to leave school or continue before they are old enough or experience enough to decide wisely. The process which leads to a student leaving school is a long one — and it is affected by the student, his family and his school. Youngsters need guidance and encouragement from their families and school officials. Many people must share the blame for a school dropout. A smallpox like sore appeared on his arm and he had other mild smallpox like symptoms.

**Europe**

Several years later in France Louis Pasteur made a startling discovery one morning. The discovery — a re-inoculation of some chickens with chicken cholera — set the wheels turning in Pasteur's creative mind.

"I've found a way to make a beast a little sick — inject some microbes into a chicken so that it gets the disease but only a little of it — and when it gets better — it can resist the disease. We can apply this to other diseases in man: we can save lives." These may have been some of the thoughts running

For sale a nearly new four row rotary row and 3 knife bed cotton slide in good shape Wilbur Line 85 6006 Odessa Ph. EM 21868

For sale: 3 bedroom home modern and one 2 bedroom modern houses on 5th street. Both houses recently decorated call or write Wilbur Line Box 8008 Odessa, Tex. Phone EM 2-1368 (No reasonable offer will be rejected)

**Tree Improvement Research Is Year Round Work**



If you see a man scaling a pine tree like a monkey, chances are he is a part of the Texas Forest Service tree improvement team. It isn't unusual for him to spend most of a working day in the top of a pine tree. He's even patient when yellow jackets are on the move since he is usually 80 feet above ground.

His job is part of an over-all Service effort to produce high quality forest trees for Texas landowners.

Focal point of this activity is the forest genetics laboratory at Texas A & M University, headed up by Dr. J. P. van Buijtenes. The principle field laboratory is the Arthur Temple Sr. Research Area west of Alto in Cherokee County. However, all the "piney woods" serves as a laboratory to these "tree improvers."

The program is financed by both state and federal governments and by forest products industries.

Interest is centered in developing strains of pines to meet the demands of industry and forest landowners. Much progress has already been made in producing a drought resistant type. This will permit survival of planted pine seedlings on dry sites and during long periods of drought and in extending the range of pine. Also under investigation are quality trees of low and high specific gravity, and trees that are resistant to Southern pine beetles and tip moth.

Work in tree improvement is time consuming and entails much cross pollination. Since most pine tree flowers are near the top of the crown, a worker must climb each tree several times a year. First, he checks on flower growth. When flowers are about ripe, he bags them to keep out foreign pollen. Next, he applies pollen from another selected tree just as the flowers ripen. On his next trip, after the flowers are set, he removes the bags. Eighteen months later he picks the special cones. With 50 or more flowers in the top to care for, this is a time consuming job.

A light sectional alloy ladder is used to climb the tall trees. A climber carries 10 foot sections of ladder with him as he climbs a tree. Near the top, however, he leaves his ladder and crawls with only limbs and a safety belt to aid him. A rope harness is used for the descent. Enroute down, he disassembles his ladder.

Some day fruits of the labor of these Texas Forest Service men will pay off for Texas woodland owners. Already benefits are on hand.

**THE HOTLINE IS HOTTER FOR '65 WITH A NEW 200-CU. IN. SIX**



**'65 MUSTANG \$2395\* F.O.B. Detroit**

We've added nineteen more horses to the standard Mustang engine this year. And for the same low price you get bucket seats, sporty floor shift, carpeting, padded dash, vinyl interiors, wheel covers and all the styling that has made Mustang the hottest new car in history. Come in and pick out your Mustang now!

\*Manufacturer's suggested retail price. Destination charges and state and local taxes, if any, not included. Options such as whitewall tires extra cost. See your Ford Dealer for his selling price.

**SEE YOUR TEXAS FORD DEALER**  
**Forbes Motor Co.**  
O'Donnell, Texas

**Whether you cook electrically in the kitchen...family room...or patio**



**You'll enjoy cooking that's clean and cool because it's FLAMELESS**

Only electricity offers you so much versatility. You can cook in the kitchen with your electric range... or in the family room or on the patio with your electric roaster-oven or frypan. And because electricity is flameless, you'll enjoy cleaner, cooler cooking wherever you choose to cook. Heat used in electric cooking is as clean as electric light. There are no by-products of fuel combustion to soil walls and curtains... no open flames to waste heat into the cooking area. See your electric appliance dealer soon. Start cooking the clean, cool, modern way... with flameless electricity.

**TEXAS ELECTRIC SERVICE COMPANY**  
W. B. MITCHELL, Manager 428-8822

**IN CASE OF SUDDEN ILLNESS OR ACCIDENT**

"To Know What To Do Is Wisdom. To Know How To Do It Is Skill." To Do The Thing As It Should Be Done Is SERVICE.

When You Call The White Funeral Home In Tahoka 998-4433 This Is The Service You Receive —

THE STATE DEPARTMENT OF HEALTH REQUIRES THAT A "LICENSED FIRST AIDER" BE ON EACH AMBULANCE CALL AND HAVE IN EACH AMBULANCE THE NECESSARY AND REQUIRED FIRST AID EQUIPMENT AND SUPPLIES FOR RENDERING AID.

IT IS GOOD TO KNOW THAT YOU DO NOT HAVE TO GO OUT OF LYNN COUNTY TO GET THIS TYPE OF PROTECTION AND SERVICE WHEN YOU CALL COLLECT — 998-4433 — WHITE FUNERAL HOME, TAHOKA, TEXAS  
WE ARE ON CALL 24 HOURS EACH DAY TO BE OF SERVICE TO YOU.

**MARTIN WHITE** — 23 Years Advanced First Aid; 8 years NAVY MEDICAL CORPS; LAB. AND X-RAY TECHNICIAN; LICENSED FUNERAL DIRECTOR AND EMBALMER

**BILLIE WHITE** — HOLDER OF ADVANCED FIRST AID CARD AND 10 YEARS IN FUNERAL SERVICE AND LICENSED FUNERAL DIRECTOR

**BORDEN DAVIS** — ADVANCED FIRST AID CARD AND LICENSED FUNERAL DIRECTOR AND EMBALMER since 1929

# BLOCKER GROCERY

Your S. & H. GREEN STAMP store  
SPECIALS For Friday and Saturday

Pork Chops lb	59c	Ground meat	39c
Bacon lb	39c	LEAN	
KORN KIST LB		beef ribs lb	35
		Lean for BARB Q	

Buttermilk . . . 35c  
1-2 Gallon "Gandy's"

PEARS . . . 3 for 89c  
No. 2 1-2 can Halves in heavy syrup

SPINACH . . . 3 for 49c  
303 can "Del Monte"

COFFEE . . . \$1.59  
10 oz Jar Instant Folgers

CHILI . . . 59c  
No. 2 can Kimbells No Beans

CRACKERS . . . 19c  
1 LB Box Saltines Cracker BARRELL

CATSUP . . . 2 for 49c  
LARGE 20 OZ BOTTLE "Del Monte"

CORN . . . 4 for 69c  
303 can Del Monte Golden Cream Style

BISCUITS . . . 7 cans 49c  
ALL KINDS REGULAR CANS

LEMONADE . . . 2 for 25c  
6 oz can Frozen concentrate

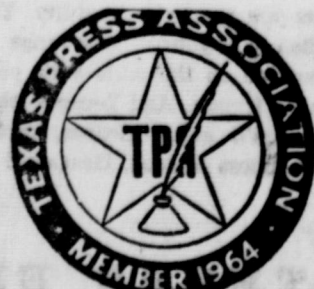
RENEW YOUR SUBSCRIPTION

★ Try Index Advertising For Results

★ FOR SALE  
**Cottonseed**

First Year From White Sack  
Western Storm Proof  
Gregg, Paymaster 101 A. Lockett 88A  
S. M. CLAYTON, JR.

TREFLON For Weed Control.  
In Your Cotton \$4.25 per acre per  
season control SEE WENDELL ED-  
WARDS



O'DONNELL INDEX - PRESS  
O. G. SMITH, Owner  
Entered as second class matter at Post  
Office, O'Donnell, Texas.  
Any error will be corrected if  
called to attention of newspaper.

### NEWSPAPER SAYS ZIP CODE ISN'T FASTER

St. Louis Mo.—A St. Louis newspaper has tested the U. S. post office's "ZIP code" system and found it hasn't speeded mail deliveries appreciably since its inauguration in July 1963.

The Globe-Democrat mailed letters, some with and others without ZIP codes, to some 30 points in the St. Louis area and across the country. Arrangements had been made for the return of duplicate mailings.

"Most of the pairs of letters arrived simultaneously," according to the newspaper.

"There was some variation, but in such cases the letters arriving first carried the conventional postal zone designations as frequently as they bore the ZIP code."

For sale: kid's HORSE with Saddle, etc. S M Clayton Jr.

**LINE GROCERY & MARKET**  
LINE UP WITH LINE  
WE GIVE FRONTIER STAMPS  
Wednesdays — Double Stamps  
O'Donnell, Tex. Phone 428-3841

- 10 roll KIM TISSUE ..... 79c
- 5 Lb Pure cane Sugar ..... 49c
- No. 1 can Rosebowl Mackerel ..... 19c
- 303 can Diamond Tomatoes .... 2 for 26c
- 2 Lb Comet Rice ..... 47c
- 29 oz Libby Pineapple Grapefruit Juice 23c
- 1 Lb Maryland Club Coffee ..... 83c
- 1-2 Lb Hershey Cocoa ..... 33c
- 12 Oz Armour Treet ..... 49c
- Large Pet or Carnation ..... 16c
- ALL MEAT FRANKS LB ..... 49c
- SALT PORK LB ..... 39c
- KIMBELL BISCUITS 2 cans for ..... 15c
- BANANAS Golden yellow Lb ..... 13c
- Fresh Onion 2 bunches for only ..... 15c
- Lemons Full Of juice Lb ..... 15c

## Money Savers

Crackers 28c  
1 Lb BOX SUNSHINE

Whip 'n chill  
JELLO  
2 for 39

Tuna 4- \$1  
DEL MONTE

corn flakes 19c  
8 Oz POST TOASTIES

cake mix 3-\$1  
BETTY CROCKER YELLOW WHITE  
LEMON, DEVIL FOOD

FLOUR 59c  
5 Lb Gladiola

Oxydol 31  
Regular Box

Cleanser 2-45  
Giant can Comet

Toothpaste 45c  
Giant Size Stripe

Charcoal 69  
10 Lb Kimbell

Nestea 39  
1 oz INSTANT

tissue 2-16  
2 Roll Pkg Kim

Lemonade 2-21  
6 oz Libby Frozen

Donuts 34c  
Morton Frozen

tater tots 34  
1 Lb Ore'ida

*Finest Quality* **MEATS**

Bacon 2 lb 98c

Franks 3 lb 98c

Chuck roast lb 59c  
US Graded

Liver lb 19c

Hamburger 3 lb \$1

\*\*\*\*\*  
SILVER DOLLAR  
THRIFT STAMPS



\*\*\*\*\*  
★★ WE GIVE DOUBLE SILVER  
DOLLAR THRIFT STAMPS ON  
EVERY WEDNESDAY

# MANSELL BROS

SPECIALS FOR FRIDAY And SATURDAY  
Phone 428-3413 FREE DELIVERY

Phone 428-3413