

Jumping to conclusions doesn't always end in happy landings.

REX

Show Starts 7:00 p. m.
Box Office Opens 6:45

Fri. nite - Sat. Mat.
April 10th and 11th
Robt. Rayn and Mala
Powers in
City Beneath The Sea
In Technicolor

Sat. nite Apr. 11th
Mptzi Gaynor and Scott
Brady in
Bloodhounds Of Broadway

Sun. and Mon. April 12th
and 13th
Red Skelton in
The Clown
with Jane Greer

Tuesday April 14th
Linda Darnel and Gary
Merrill in
Night Without Sleep

Wed. and Thurs. April
15th and 16th
Mickey Rooney and Bob
Hope in
Off Limits

Assembly of God

R. T. Peek, pastor
Sunday School 10 a. m.
Morning worship 11:00 a. m.
Evening worship 7:30 p. m.

Church Of Christ

Bible Study 10 a. m.
Preaching 11 a. m.
Communion 11:50 a. m.
Ladies Bible Study
Tuesday 3 p. m.
Mid week worship
Wednesday 7 p. m.



Storm Warning

WHEN you know a storm is coming, you head for protection. BUT disaster doesn't give warnings!

Fire, windstorm or other peril may strike at any time. If you are not ready NOW with adequate insurance, better call us today.

CLAYTON
INSURANCE AGENCY
— LOANS —
PHONE 148

Gravediggers Profit From Will of Corpse

NAPLES—The will of the deceased man made the gravediggers very happy. Of course, they realized that digging his grave would be a more arduous task than their job usually required. The dead man weighed 270 pounds.

But as they dug, each shovelful of dirt became lighter and lighter. Pretty soon the dirt seemed to weigh nothing at all, and the gravediggers grew more cheerful. They were seen taking large and frequent swigs from some wine flasks sitting on the ground beside the new grave.

The dead man's will had bequeathed them the flasks full of wine so the deceased wouldn't seem like "such a large corpse."

Tax Collector Shows No Mercy to Rich Dog

BOSTON—"Dog or no dog," Henry F. Long, state tax commissioner says, "she must pay an inheritance tax."

Long wants \$369 in taxes from Lassie, a collie left \$5,000 in the will of her late master.

Axel R. Carlson, Lassie's late owner, left the sum to pay for the collie's care. The dog was sent to live with Mrs. Gertrude Hanson of Quincy.

Long figured the tax as being six percent of \$5,000 plus 23 percent temporary surtax.

Besides the inheritance tax, Lassie will also have to pay income tax annually on any income the inheritance draws.

Mrs. Hanson will turn the matter over to Lassie's lawyers.

Principal Outlaws T-Shirts, Dungarees

ROSELLE, N. Y. — Schoolboys should dress properly for an occasion and school is an occasion was the recent ruling of Albert S. Peing, principal of the Abraham Clark school here.

He told the parent-teacher association that clothes may make the man but all types of clothing are not becoming to school boys.

He called upon parents to see that their sons were dressed properly. "T-shirts and dungarees are all right for a job, he opined, but they are not appropriate for school attire. He made no criticism of the apparel of the girl students.

Farmers are urged by the State Farm and Ranch Safety Committee to check each piece of farming equipment before beginning the spring rush season on the farm. Using equipment, including tractors, which has not been checked could easily lead to serious accidents. Farm labor is expected to be short and days lost from accidents are not recoverable.

CHURCH OF THE NAZARENE

Rev. L. M. Seay, pastor
Sunday School 10 a. m.
E. C. Pace, Supt.
Morning Worship 11 a. m.
N. Y. P. S. Service 7 p. m.
Evangelistic Service 7:45 p. m.
Mid Week Prayer Meeting
Wednesday 8 p. m.

New Available . . .
Safety Deposit Boxes
\$3.60, \$7.20, \$18
Annually, Tax Included
FIRST NATIONAL BANK
Of O'Donnell
Less Than A Penny A Day
Keeps Your Valuable Safe

FLOWERS

FOR ANY OCCASION
THE HOUSE OF FLOWERS
Mr. and Mrs. J. E. BILLMAN
Phone 880 -- Tahoka
Mrs. H. L. Wood

Elvin R. Moore
Representing The
Southwestern Life
Insurance Co.

Real Estate

— FARMS — RANCHES —
CITY PROPERTY
Leases and Royalties
B. M. Haymes

Dr. Celeste Schaal
CHIROPRACTOR
Lubbock Highway
Phone 30 -- Tahoka

Dr. O. H. NANCE
Optometrist
528 N. 1st Lamesa; ph 554

VAN'S
SOFT WATER
Laundry
WET WASH
RUFF DRY
FREE Pickup And
Delivery
Stanley - Jones
Funeral Home
And Burial Association
phone 233 Bx 185 Tahoka

Sisk SOFT WATER
Laundry
WET WASHES
Ruff Dry
(Formerly Arnett's
Laundry)
Also DRYER AND
EXTRACTOR

Gibson's
CLEANERS
CLEANING
PRESSING
Alterations



Worth more... and why

There's an old saying that a thing is worth what someone is willing to pay for it. Well, if you could tour the wholesale and retail used car auctions around the country, if you could survey hundreds of used car lots you would discover that used Fords bring higher prices than any competitive make—and by substantial amounts.

THAT'S WHY we feel our '53 cars should not be compared with cars in the same price range. Not because our competitors don't do a good job—obviously they do—but because we feel Ford Cars have more in common with the highest priced automobiles. The similarities are far greater than the differences.

For example. Today, the most expensive cars in this country have V-type, 8-cylinder engines. Ford Cars have had this exact same type of engine for over 20 years.

What's more astounding, the current Strato-Star V-8 sells for hundreds of dollars less than several other makers charge for a six-cylinder car. Now there's nothing wrong with a Six but they do cost less to make. Ford makes a Six—the most modern overhead valve Six in the industry. And if it's a six-cylinder car you want, Ford has it and for less money than the V-8, which is as it should be.

What about ride? Here's another Ford similarity with high-priced cars . . . *Riding Comfort.* One of the misconceptions for many years has been that weight—sheer weight—is what it takes to make a car ride well. Ford has found that you can make a 3000-pound car ride softer and hold the road better by far than many cars that weigh a full 1000 pounds more. In the '53 Ford, for example, front end road shock has been reduced up to 80%. We say it compares most favorably with the heaviest cars sold today.

What about automatic transmissions? It would take the fingers of both hands to count the various kinds of automatic and semi-automatic transmissions on the market today. The one we

offer is called Fordomatic. It is the most versatile on the market, it represents the most profound consideration of engine-to-wheel power transfer—and that it does the best job for our engines isn't even open to question. It "shifts" better than you could shift by hand.

What you can see is also important. Here again Ford Cars lead not only in their price field but in the medium and upper brackets as well. Ford visibility is *Full-Circle Visibility.* This means huge, curved unobstructed glass area, front and rear, plus side windows that allow all passengers what the hotels call "room with a view."

Appearance? A higher price, of course, does not make a car more beautiful. Conversely, beauty in a Ford comes "for free." Ford has found that it costs no more to develop a beautiful car than one that is less pleasing in appearance. You can drive up to the most exclusive doorways in the world and feel perfectly at home in your Ford. Fords "belong" . . . in exactly the same social category as the finest, one-of-a-kind creations. After all, a Ford is a custom creation multiplied.

What about running costs? Here's one place that Ford's advantages are obvious. For oil and gas economy Ford has the big cars whipped. Ford parts cost less. Ford service charges are less. Ford tire mileage is thousands of miles greater. And, Ford depreciation is the lowest of any car on the market—bar none.

What are Fords made of? Some people have the idea that the costliest cars are made of "better stuff." It's true that some high-priced cars have costlier upholstery and fittings. What Ford has is

so good, both in durability and appearance, that you probably could not tell the difference. You might even prefer it, because of its better design and more pleasing appearance.

Then there's the question of sheet metal. If you were to measure and analyze the sheet metal structure in the most expensive car, you most likely would find it identical in thickness to the corresponding panels in Ford.

After all, then, what is the difference between a Ford and the costliest cars?

In our opinion, the difference is largely a matter of dimensions, weight (and the power required to move it) plus the distinction of owning a car that not so many other people own. The desire for these things is understandable . . . and probably justified for people who are willing to pay the price to satisfy it.

As to comparing Ford with other cars in its price range, by all means do so if you wish. But, as we said before, you'll get a better picture of Ford value by comparing with cars that are most like Fords—those that are priced up to twice as much. In fact, we think you'll quickly begin comparing the other cars with Ford—because the 1953 Ford has really established the New Standard of the American Road.

'53 FORD

Worth more when you buy it . . .
Worth more when you sell it . . .

Forbes Motor Co.

Phone 92; O'Donnell, Tex.

FORD Sales and Service

Coffee...

WILL BE SERVED ALL DAY...
That good WHITE SWAN coffee

THERE WILL BE PLENTY OF...

FREE

BALOONS AND BUBBLE GUM
FOR THE KIDS

FOR THE...

LADIES

BISCUIT CUTTERS AND EGG
SEPARATORS and other gifts

MANSELL BROS. is ALWAYS A
Good Place To Trade...

Corn 6 for 99c
Concho; White, Golden

GUM

3 for 9c

All Kinds



PINEAPPLE

27c

No. 2 can Crushed



PEACHES

29c

No. 2 1/2 sliced or half



Asparagus

39c

No. 303 can, all green
Mary Washington



**Fruit
Cocktail**

24c

No. 303 can

ORANGE JUICE 2 for 29c

Frozen, Donald Duck 6 oz can

MANSELL BROS

SPECIALS FOR FRIDAY AND SATURDAY
FREE DELIVERY

PHONE 50

PHONE 50



Coffee 87c lb no limit

WHITE SWAN



18c

12 oz. vac. pack



Spinach 15c

No. 2 CAN

Cheer 27c

LARGE BOX



**GLADIOLA
PIE CRUST MIX**
Only 5¢
WITH PURCHASE OF
GLADIOLA DEVIL'S
FOOD MIX

**GLADIOLA
FLOUR**

10 lb 89c; 25 lb \$2.09



79c



29c

48 OZ. CAN



17c

14 oz
Bottle



Peas

19c

No. 303 can

Tomatoes 7 for 99c

Concho; No. 303 cans

**Napkins
2 for 25c**

80 count; Charmin

AJAX

Cleanser

2 for 15c

Cheese 2 lb 98c

Velveta

Crackers 23c

Sunshine per lb

ALWAYS A COMPLETE LINE
OF FRESH FRUITS AND

VEGETABLES

Joy 69c

For Instant Dish Washing
Giant Economy Size



BACON 51c

PER LB

Beef Liver lb 49c

FRESH

Pork Chops lb 59c

Lean, per lb

Ground Beef 43c

FRESH, per lb

TRY OUR DELICIOUS BAR-B-QUE CHICKEN... also Fresh POTATO SALAD

Watch Nursery Stock

How many times have you purchased nursery stock from a mail order house or roadside stand only to find later that the plants were inferior or misrepresented?

It happens all too frequently. Many times the plants fail to grow at all. If they do, the gardener may discover he has a weak, multiflora hedge rose instead of the American Beauté he was expecting—or perhaps a tree crippled with disease when he was entitled to healthy stock for the price paid.

For many years legitimate nurserymen have suffered the consequences of these actions by unscrupulous operators. Reliable local dealers and out-of-state houses are eager and willing to cooperate with Texas officials in wiping out the fly-by-night firms which abuse the public trust.

One of the duties of the Texas Department of Agriculture of which few people are aware is the inspection and certification of nurseries operating within the state. The department also checks similar agencies in states from which dealers want to ship plants into Texas. When the firms and their nursery stock meet state specifications, a certificate is issued.

There are nearly 6,000 state inspected firms operating within Texas. Each one has been issued a license which certifies that the stock on hand is apparently free of disease or harmful insects. Each nursery is spot-checked periodically to make certain a high standard is maintained.

Unnecessary Stock Value Losses

A staggering \$19 million is the approximate figure lost by farmers and ranchmen annually on cattle and hogs sent to market with bad bruises.

According to data compiled by livestock commissions, some 9.5 percent of all hogs marketed have meat damaging bruises, and 6.9 percent of all cattle marketed are bruised. This extremely high rate of loss does not include bruise damage to our sheep and calves.

It would be an error to figure that the packer is one who takes the loss on the bruised animal he buys. Experience has taught him the ratio of damage he can expect on his purchases and he makes his offers accordingly. He knows that on each hog this loss will amount to around \$1.59 and on each steer about \$5.88. This is deducted from the price paid to you, the farmer and stockman.

Where do these damages occur? Most of them occur on the farm in various ways. Ashortage of feed troughs and hay racks have the same effect as crowded animals for lack of barn space. The construction of these racks also has a lot to do with ease with which these animals bruise themselves. Horned animals need a lot of room.

We know that because of the nature of the animals, a lot of bruises will occur under ideal conditions if equipment and housing. Still we could profit by doing the best we can toward limiting these injuries.

Diphtheria is A Disease Of Neglect

Diphtheria is a disease of neglect, declared Dr. Geo. W. Cox, State Health Officer. If all babies, beginning at three months of age were taken to a physician of clinic for immunization against diphtheria, the infant deaths from this disease would cease. Such immunizations may be given in conjunction with whooping cough and tetanus vaccine for triple protection.

Diphtheria occurs most frequently in early childhood. It is caused by a germ that grows in the nose and throat and throws out a toxin or poison into the blood stream. This poison may attack the heart muscle or it may cause a paralysis known as peripheral neuritis.

Diphtheria is a dangerous disease for a child to have and it is highly infectious to other children. It starts with a sore throat, fever, and sometimes croup and hoarseness.

Adequate immunization early in life is the main defense against diphtheria. It helps the body build up immunity against the dangerous malady.

About a year after completion of the initial immunization against diphtheria, whooping cough, and tetanus a booster injection may be given and another at four to six years of age. Some physicians advise a further injection at nine or ten years of age.

Although the death rate from diphtheria has been markedly reduced in the past twenty years, infants were unsafe without immunization. It is only when all babies are immunized early in life that the conquest of diphtheria will be accomplished.

Rheumatic Fever Hits The Children

Rheumatic fever and its complication, rheumatic heart disease, probably disable more school age children than any other cause except accidents declared Dr. Geo. W. Cox, State Health Officer.

Rheumatic fever is a well known enemy of children still physicians do not know exactly what causes it. It usually appears about two weeks after an infection caused by germs of the streptococcus such as tonsillitis, scarlet fever or sore throat. Some children appear more susceptible than others and this trait seems to run in families. Rheumatic fever can occur in any surroundings, but it is most common among children living in poor and crowded homes, and among children who do not get enough of what is called the protective foods such as milk, eggs, meat, butter, fresh fruits, vegetables and the like.

Rheumatic fever actually has no symptoms that are all its own. A few of the group of symptoms the doctor looks for are: persistent fever, poor appetite, tiredness, failure to gain weight, paleness, repeated nosebleed and especially pain and inflammation that moves from joint to joint.

Rheumatic fever is a disease that may affect any part of the body—skin, joints, blood vessels, heart or brain—but usually it is the heart that is most seriously affected. Unless they are prevented by good management, the acute attacks have a tendency to come back again and again. When this happens, the valves of the heart are usually affected: Sometimes so slightly that the child is not handicapped sometimes so seriously that the child dies. The present day treatment of rheumatic fever is directed at two things. First, reducing the risk of heart damage from an acute attack by bed rest and appropriate treatment with drugs. Second, doing everything possible to prevent another attack after recovery from the first.



"There's more time for fun with an Electric Range in my kitchen!"

"Cooking electrically saves more time for fun. Electric cooking is so clean, it saves hours of extra work cleaning in the kitchen. And no running to the range to see when foods are done. Accurate temperature controls take the guesswork out of cooking." You'll enjoy more leisure time when you cook electrically, too. For finer flavor . . . meals prepared in a jiffy . . . cakes baked to an even brown . . . cook electrically.



Your favorite electric appliance dealer has an electric range in the right size and price for your family. See him soon.

TEXAS ELECTRIC SERVICE COMPANY
J. H. WILSON, Manager

Send us your NEWS

Woman Leaps Quicker Than Coiled Rattler

PANAMA CITY, Fla.—The snake missed, Mrs. Woody Laf-fon didn't.

She battered the 14-inch ground rattler, which she had found coiled at the foot of her small son's crib, with a short-handled coal shovel.

The wife of the Panama country club golf pro, who says she has been "terrified of snakes" all her life, found the reptile in her two-year-old son's bedroom when she answered his call.

"For a moment," she says, "I was panicked. Then I happened to think of a short-handled coal shovel which hung near the back door.

"I kept my eyes on the rattler while I got the shovel from the hook."

As the reptile, one of the most poisonous of its species, struck, so did the frightened mother. She connected squarely.

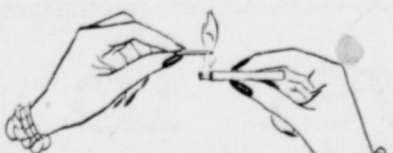
Mrs. H. L. Wood
Makes Belts, Buckles, Buttons, Buttonholes and Drapries. See me

For rent: furnished house, see Jake Gates.

For Rent with sale of tractor, 225 acres; R. O. Lane 4-2 xc

only **Gas**

gives you smokeless broiling in wonderful new automatic ranges



See why Gas broiling is smokeless. Hold a match over a lighted cigarette. See how the flame eats up every wisp of smoke. That's why there's never any smoke when a Gas flame does your broiling.



See the modern ranges at your dealer's

West Texas Gas Company

HELPING BUILD WEST TEXAS SINCE 1927

It's Spring in TEXAS



Make SURE your car gets

CONOCO "Spring Tonic" Service!

More than just an oil change
A COMPLETE "SPRING TONIC" FOR YOUR CAR!

Available only at your CONOCO Dealer



DRAIN AND REFILL WITH CONOCO Super MOTOR OIL

While the engine is hot, he'll drain your gritty, winter-worn oil. He'll recondition air and oil filters, and, most important of all, he'll refill your crankcase with the right grade of Conoco Super—the motor oil with Oil-Plating* that helps your engine eat less—run better—live longer!

CONOCO Super IS A HEAVY-DUTY OIL

FREE BATTERY CHECK-UP
Your Mileage Merchant will clean battery terminals and make sure your battery is in top condition.

FREE RADIATOR SERVICE
He'll tighten hose connections, flush radiator if you wish, and see that your cooling system is set for warm-weather driving.

BUMPER-TO-BUMPER LUBRICATION

Using Conoco's special Check-Chart for your make of car, he will get to every single lubrication point, assuring smooth, squeak-free riding. And he'll replace winter-worn transmission and rear-axle lubricants with correct Spring-grade Conoco lubricants for quiet, wear-free operation.

P.S. Don't forget to fill your tank with CONOCO "Spring-Tailored" gasoline!

Elvin "Fuzzy" Moore
For One Of The Best
POLIO INSURANCE
Policies Written

Joe M. Lehman, M. D.
Medicine and Surgery
Hours 8 a m to 6 p m daily
Sunday: 9 a m to 11 a m
Office phone 134; Home
209

O'Donnell Index Press
Published Every Thursday by
O. G. SMITH, OWNER
Box 8, O'Donnell, Texas
Entered as second-class matter
Sept. 28, 1923 at post office at O'
Donnell, Texas, under the Act of
NATIONAL 45C
ADV. RATES: 40C LOCAL
WINDMILL PRESS ASSOCIATION
Subscription Rates
First zone (Dawson, Lynn... and
border counties) \$1.00
Beyond first zone \$1.00

For Sale: First year out of
white sack hybrid cotton seed,
\$150 per ton. C. L. 'Jude'
TAYLOR 5:15 p
For Sale: Cottonseed 1st year
from Summorur Half and Half
\$8 per 100 lbs. G. C. McPherson
3 miles north and 1 west New Moore
For Sale 80 bu. 2nd year Mach
seed. Inquire Jackson's Grocery 3
See me for your Washing. Mrs
Carroll Davis. xp
Address and mail postal. Make
over \$50 week. Send \$1 for in-
structions. LENDO, Watertown
Mas.
Will keep children in my hom
or will go out to baby sit. Mrs
Annie Jackson phone 237 4tp

METHODIST NEWS

Rev. H. A. Longino, pastor
Sunday school 10:00 a. m.
Morning worship 11:00 a. m.
Evening worship 7:30 p m
W. S. C. S. Faith Circle Mondays
at 9:30 a. m. and Martha Mar ha
Circle Tuesday 9:30 a. m.

FIRST BAPTIST CHURCH

Preaching Service 11 a m
Training Union 7 p m
Evening worship 7:30 p m
Wednesday nite
Teachers meeting 7 p m
Prayer Meeting 7:30 p m

TOM GARRARD

ATTORNEY
Tahoka, Texas
Practice All State and Federal
Courts; Land Titles a Speciality

Most drunks are not convinced
that they will never get anywhere
by drinking until the start home
from the same corner about five
times.

A Wide Variety of Gifts For The GRADUATE ...
May we suggest you see our fine line Parker '21'
Gift pencil and pen sets; Schick Electric Razors
See our 52 piece set Community Silver at \$77.50

Always A Line of Elizabeth Arden Products

Lott Pharmacy
Hugh Lott, Registered Pharmacist

**Alert Scientists
Grow Polio Vaccine
In Chicken Embryo**

NEW YORK—The first vaccine
to make people immune to polio
may have been developed recent-
ly at laboratories here. The new
vaccine already has been tested on
20 human volunteers. All devel-
oped protective antibodies in the
blood, materials produced in the
blood which fight disease organ-
isms. None of the volunteers suf-
fered any bad side effects.

However, the vaccine will not
necessarily give immunization
from all types of polio as it was
produced from only one of the
three strains of virus that cause
the disease, possibly the most dead-
ly. But it may develop initial basic
immunity against the other two
strains.

The scientists have been able to
induce the elusive virus to grow
in chick embryos in eggs, meaning
that eventually it will be possible
to manufacture the protective virus
in large amounts.

The major problem in making a
vaccine to use against virus dis-
ease such as polio has been found
in the difficult character of viruses
themselves—scientists still don't
know exactly what they are.

A virus, unlike a bacteria which
is a living organism, acts like both
an organism and a chemical mole-
cule. It is much smaller than a
bacteria, and cannot be seen with-
out an electron microscope. But a
virus will grow or multiply only
in a living cell. Some scientists
think they are a sort of gene,
heredity agent, gone wrong.

Only a
Gas Range...



- ★ Gives you smokeless broiling
- ★ Instant heat
- ★ A wide choice of top burner arrangements
- ★ Air-circulated ovens

See the modern automatic gas
ranges at your dealer's today. He
will be proud to show you their
wonderful features. Buy one of
the modern ranges and enjoy the
most convenient cooking in the
world.

West Texas Gas Company

HELPING BUILD WEST TEXAS SINCE 1927

NOTICE

We are discontinuing our seed business and
will NOT handle field and garden seed this year.
We pay oil mill price for your cottonseed.
Bring us your Surplus Seed.

O. C. McBRIDE AND SONS

LYNN COUNTY FARM BUREAU

Office at Tahoka Co-op gin on Post Highway; P. O. Box 297

Phone No. 528

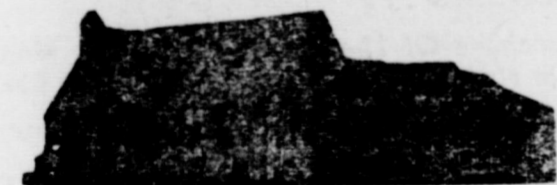
We Attend to Your Insurance Needs
Gas Exemption Forms Filled Out for any
Farmer FREE!

Office hours: 1 to 5 P. M. and Saturday Mornings

Calvary Baptist Church

Sunday school 10:00 a m
Morning service at 11:00
B T C. 7:00 p m
Evening worship hour 7:30 p m
Wednesday, prayer meeting 7 p m

Send us your NEWS



HIGGINBOTHAM FUNERAL HOME

"Dedicated to Helpfulness"

Phone 223 403 N. Austin St. Lamesa

24 Hour Ambulance Service

Burial INSURANCE "Bonded Protection"

L. T. Brewer, Local Representative

Vernon Cook
EXPERT RADIO REPAIRS

WANTED: Man or Lady

For full or part time work in O'Donnell or vicinity
Servicing an established route of Watkins Cust-
omers. Write: Watkins Products Store
4108 Ave. H, Lubbock, Tex.

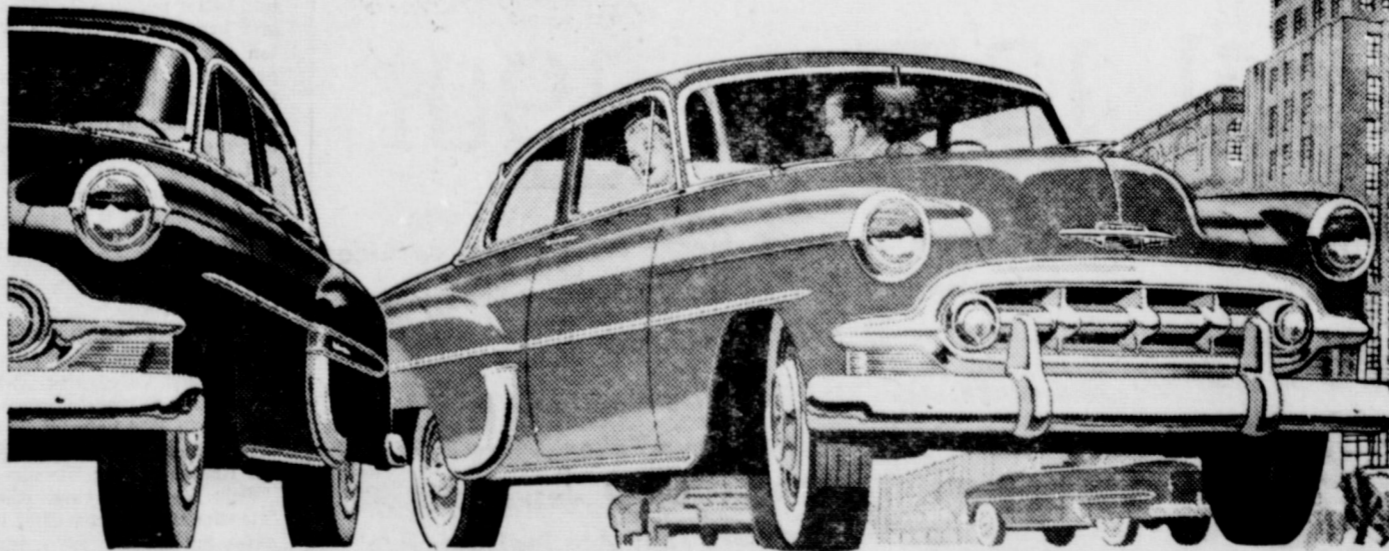
CALL OR COME BY

Moore Insurance

"For All Your Insurance Needs"
Phone 220

Chevrolet is the only low-priced car to offer...

Extra-Easy Power Steering



The Bel Air 4-Door Sedan (above) and the "Two-Ten" 2-Door
Sedan (right)—two of 16 beautiful models in 3 great new series.

You park and steer with finger-tip ease,
yet the familiar feel of the road is still there.
Driving is easier—and safer than ever!



MORE PEOPLE BUY CHEVROLETS THAN ANY OTHER CAR!

Ellis Chevrolet Co.

Chevrolet Sales and Service—: O'Donnell, Texas

Power Steering! It's yours in Chevrolet for 1953 and
in no other low-priced car!

This wonderful new feature, optional on all models at
extra cost, marks the most important advance in driver
convenience and safety since the automatic transmission,
which Chevrolet also introduced into its field.

Power Steering makes steering virtually *effortless* on all
roads and at all speeds. It permits you to park, even in a
tight space, with finger-tip ease. It cuts steering effort
approximately 80%; reduces driver fatigue; makes driv-
ing simpler, safer and more enjoyable than ever before.

But come in! See and drive Chevrolet for 1953 with
Power Steering and all its other exclusive advantages!

Continuation of standard equipment and trim as illustrated is dependent
on availability of material.

BLOCKER GROCERY

"Trade Goes Where Invited, Stays Where Treated Best"

SPECIALS For Friday and Saturday

Salmon 39c

Tall can; chum; "Honey Boy"

Peas 2 for 29c

"Kimbell's" No. 2 cans; Fresh Blackeyes

Pork & Beans 3

for 35c

"Van Camp's" 300 size

Peaches 27c

"Del Monte" in heavy syrup No. 2 1/2 can, Sliced or halves

Oleo 2 lb 43c

All Sweet; Colored Quarters

TEA 29c

"Lipton's" 1-4th lb box

TRADE WHERE MA SAVES MONEY FOR PA
We Reserve The Right to Limit. Nothing Sold to Merchants to be re-sold

...SPECIALS for FRIDAY and SATURDAY

- White Swan Cut Okra No. 303 can 17c
- Honey Boy Salmon 49c
- White Swan Apple Butter 28c
- White Swan Luncheon Peas No. 303 can 23c
- PICNIC HAMS lb 39c
- Club or T-Bone Steak, lb for only 65c

Mahurin Gro. & Mkt.

Your Business Is Always Appreciated
PHONE 200 WE DELIVER

Open Thursday April 9th

BEAUTY SHOP

In My Home

Billie's Beauty Shop

In Ike Barnes Residence

3 miles west of Wells Store

Your Patronage Will Be Appreciated

Gospel Meeting

Church Of Christ

April 12 Thru 19th



Ernest E. West
Of Brownfield
Visiting Evangelist

Enjoy The Good
Gospel Singing

HEAR These Sermon Subjects for Evening services and morning an devening Lord's Day services (Morning service sermons to be announced)

- Sun. Morn. Apr. 12: "Our Misunderstood Bible"
- Sun. Even. Apr. 12: "They Have Taken Away My Lord"
- Monday, Apr. 13: "The Sonship of Jesus"
- Tuesday, Apr. 14: "Matters That Are Indispensible"
- Wed. Apr. 15: "Present Dangerous Trends in the Church"
- Thurs. Apr. 16: "The Restoration Of An Erring Christian"
- Friday, Apr. 17: "New Testament Conversion"
- Saturday, Apr. 18: "It Is Not Enough"
- Sun. Morn. Apr. 19: "Characteristics of A Christian"
- Sun. even., Apr. 19: "Obedience"

Morning Services At 10 a.m.; Evening Services 7:30 p. m.

A MOST CORDIAL WELCOME TO ALL

Wanted: experienced farm hand, good wages for man who will work; if you do not want to work, don't apply. 2101 31st st. Lubbock, Phone 2-0516 3tp

Write or come to see us for . . .
IRRIGATED or DRY FARMS

Near Hereford
G. F's, we can sell you land near Hereford. See or write us at once. Cooperate with agents.

J. B. ELLISTON
132 E. 3rd or call 179 or 768 W P. O. Box 1508, Hereford, Texas 4p

Lost: Saddle Quiet, \$1 reward, see Naymon Everett

Wanted: a good soaking rain; Farmers of O'Donnell

For sale: 290 acres on pavement 4 miles from O'Donnell, 4 room house, well and windmill, some out buildings, price \$105 per acre. B. M. Haymes

For sale or trade: 5 used windows, complete with weather stripped frames and screens, old style bath tub, good Star windmill without tower. B. M. Haymes

For Rent: 6 room modern house on pavement, \$40 mo. See Index

Have a few hundred bushels of good Hybrid half and half cotton seed at \$6.40 per hundred or \$6.25 per hundred in 1,000 lb lots or more; also have these seed delinted at \$12.00 per hundred. H. B. Davis, rt. 1, O'Donnell, 18 miles southeast of O'Donnell on farm to market road 2tp

Always A Line Of . . .

Red Chain Feeds
Ford Tractor for rent for garden, yard work, etc.
We buy, sell or trade . . . for anything

Edwards Implement

Lifeboat Race Began With Sea Battles of Old

NEW YORK—Had they lived centuries ago, seamen who rowed in the International lifeboat race held this year on the Hudson river might have been pulling an oar for their lives in a battle at sea instead of racing against friendly competitors for glory and exercise.

The Winner
While thousands watched from the Manhattan shore, a Norwegian crew beat an American boat by three lengths over a mile course from Grant's tomb to the soldiers and sailors monument at Riverside drive and 89th street. Great Britain, the Netherlands, and Israel trailed in that order.

Roman triremes, the galleys of the Barbary corsairs, the long ships of the Vikings—all were powered in battle maneuvers by oars. Rowers often were convicted criminals or war captives, galley slaves chained to their benches.

Sailing Days
When larger ships were built and sails replaced manpower, seamen still rowed. Oars moved the small boats that shuttled between anchorage and shallow beach and towed great square riggers in and out of congested harbors.

Old records of naval battle contain references to instances where rowing boats were launched from warships to tow them to safety or into better position for attack. Oars and brawn took George Washington across the Delaware to surprise the Hessians, helped Sag Harbor whalers to run down their quarry and still help Grand Banks dorymen get about in search of cod.

With rowing a universal skill in the days of sail, it was natural that competition should develop wherever shipping gathered. Writers of the sea speak of gig and whaleboat races between windjammers' men of many nations in such farflung ports as Hong Kong, Le Havre, and Valparaiso. There is a record of a rowing race on the Hudson in 1824 between New York ferrymen and a boat's crew from the British frigate Hussar.

This sort of racing, sometimes intentionally international in character but more often a matter of rivalry between individual ships or shipping lines, never became formalized.

Specials For Friday and Saturday

- TOMATOES good, firm, pink, ctn. 23c
- Long, green, good, fresh Cucumbers lb 15c
- Celery Hearts, big twin stalks only 25c
- Van Camps TUNA 29c
- Qt. W. P. Bleach only 13c
- 15 1/2 oz. Diamond Pork and Beans 10c
- Large size 12 oz. Post Toasties 19c
- 5 lb Sack Aunt Jemima Meal 43c
- 3 lb Carton Armour's Pure LARD 49c
- Small Lux or Camay Toilet Soap 2 for 15c
- 1 lb Armour Repeat Sliced BACON only 49c
- Assorted Cold Cuts per lb 49c

Line Cash Grocery And Market

Plenty of parking behind the store; come in and shop with us: WE DELIVER PHONE 118

Ride The Bus & Save Money

Patrons may ride the 10:20 a. m. bus to Lubbock and have six hours to shop in Lubbock and ride the 6:15 p. m. bus back arriving at O'Donnell at 7:20 p. m.

You will not have to worry about parking space. The Bus Station in Lubbock is conveniently located to the shopping district.

BE WISE AND SAVE MONEY and WORRY

T. N. M. & O. COACHES

ANNOUNCING . . .

The Purchase Of The Interest Of Mrs. Maggie Spears in the O'Donnell Flower and Gift Shop
Drop Around Often To See What's New
A full line of gift items for the girl graduate
And The Spring Bride.

"Flowers For All Occasions"

O'Donnell Flower And Gift Shop

Mrs. Eva Fritz, Owner
Carol Lambert, Assistant

THANKS . . .

To my friends and customers for your valued patronage while I was associated in the Flower and Gift Shop.

With best of personal wishes to Eva, I again express my sincere thanks to all of you.

Mrs. Maggie Spears

Please turn to Page 3 for our full page of Grocery Specials

MANSELL BROS

PHONE 50

SPECIALS FOR FRIDAY AND SATURDAY
FREE DELIVERY

PHONE 50

(Histor)
(Ed. n
an early
from Lyn
It was
citizens o
country v
the count
Tahoka a
first Lyn
sworn in
Dean of
county L
judicial
The C
first on J
building
county of
These 1
Elliott, c
superinte
rt and tr
the count
E. Bal
W. T. Pe
the follow
O. L.
Porterfel
Poughran
Going
was creat
of it
for Grand
Lynn).
The cou
Capt.
helper
to Ly
establi
Grassi
Lynn
Baylor
the coun
When Lu
red in 1
Lubbock
Althou
from Nev
known to
around t
Double L
as the 1
American
McDonald
Tahoka 1
and Fran
sattle ou
next year
this herd
manent r
T Bar ra
ly. Othe
among ti
Winn an
son, Col.
Bros. an
Alley, fa
son, was
and ran
Tahoka 1
Then
Ketter e
at New
ranch o
up all
break th
tice of r
first lan
A few
the Cow
Will Mo
the For
W. Stand
Kuykend
terfeld,
others, C
Lockwoo
Preston,
and the
store wa
time. "C
ed a sto
west of
Sweet
establish
about w
is now
corner o
late J.
bought
ter of 11
Petty, B
ed a mi
south sp
camp fir
pany an
ing the
The
offer Dew
of town.
an Indis
water".
Miss I
tained w
day nite
Mr. an
ford spe
Mrs. Joh
Dec
T
ope
Ass
day
for
tra
C
ate
E
Ever
brin