

FARMERS' NOTICE
 Save money and time: Have your cottonseed for planting culled and delinted by us. Use four hole corn plate or cotton plate.
Lamesa Delinting Co.

FREE Culling Service
 Expert Culling of your poultry. We will pay top price for your non-producing poultry. Write, call or see us today.
Pryor Produce

206 N. Main Phone 636 LAMESA
 Prompt Reply to all Requests

--- Professional Announcement ---
 In the future I am limiting my practice to diseases of the Eye, Ear, Nose and Throat, and the fitting of glasses.

J. C. LOVELESS, M. D.
 Lamesa, Texas

STANLEY FUNERAL HOME
 And Burial Association
 Neal Stanley, Owner
 phone 233 Bx 185 Tahoka

SHOEMAKER INS. AGENCY
 Fire and Casualty Insurance
 A Representative of
FLOYD WEST AND CO.
 General Agents
LLOYD SHOEMAKER
 DR. C. B. BUCY
 VETERINARIAN
 LAMESA, TEXAS
 Phone 192 or 502 - M

FLOWERS
 FOR ANY OCCASION
 Come in and see us or order from your local Agent ---
THE CORNER DRUG
THE HOUSE OF FLOWERS
 MR AND MRS. J. B. BILLMAN
 Phone 330 ----- Tahoka

"LIVE WIRES" by **VERNON COOK**



O'Donnell Index Press
 Published Every Thursday by
O. G. SMITH, OWNER
 Box B, O'Donnell, Texas
 Entered as second-class matter Sept. 28, 1923 at post office at O'Donnell, Texas, under the Act of
ADV. RATES: 40C LOCAL NATIONAL 45C

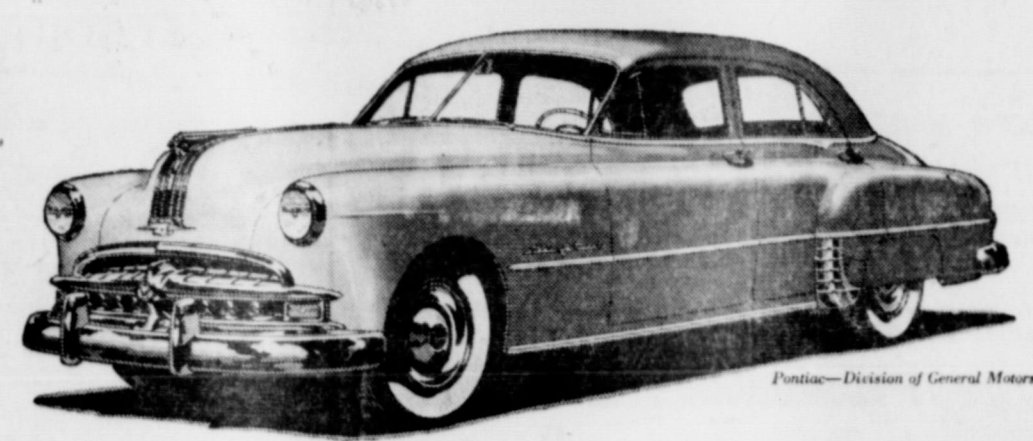
Subscription Rates
 In first zone (Dawson, Lynn, and Borden counties) \$1.50
 Beyond first zone \$2.00

TEXAS PRESS ASSOCIATION
 MEMBER 1949



HELP --UR--SELF LAUNDRY SERVICE ALSO WET AND ROUGH DRY
 New Machines Added
PLENTY OF STEAM SOFT WATER
VAN'S LAUNDRY YOUR TRADE INVITED
 pickup and delivery of Laundry

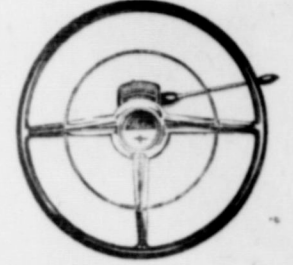
Be sure to see the **New '49 PONTIAC**



Lowest Priced Car with GM Hydra-Matic Drive!

Want thrilling performance plus "automatic" driving at its very best? Want lots and lots of room and airy vision? Want a ride that gentles the roughest highways? What YOU want is this big new Pontiac for 1949—the lowest-priced car with GM Hydra-Matic Drive!

Come feast your eyes on the stunning beauty of the new Pontiac models. And take our word for it, when you drive and ride, you're in for an even greater thrill! So why not come in as soon as you can—see the 1949 models—and get the whole Pontiac story?



GM HYDRA-MATIC DRIVE gives you unsurpassed "automatic" driving ease. No clutch pedal. You just sit back and drive! GM Hydra-Matic has been proved in millions of miles of driving. Optional on all models at extra cost.

City Service and Appliance
 Pontiac Sales and Service O'Donnell, Texas

VERNON D. ADCOCK
 LAWYER
 COUNTY ATTORNEY'S OFFICE
 LAMESA

If your coffee percolator will not operate efficiently, check it over. The percolator valve or pump may be clogged. Clean the valve or stem by forcing water thru it or use a small round brush to unclog it.

Mice are being used in laboratory tests to check on the effectiveness of new fly sprays. The mice are rolled around several times on an old style phonograph rigged up under a shower spray. Then they are dried with a stream of air and used in the tests the following day.

Headquarters For ---
Pangburn's EASTER CANDY
 See Our Nice Line of

Easter Flowers
 On Display The Week Before Easter
 A REGISTERED PHARMACIST ON DUTY AT ALL TIMES
 TELEPHONE 35 AND NITE CALL 48

Wiese
 DRUG STORE

Real Estate
 — FARMS — RANCHES —
 — CITY PROPERTY —
 Leases and Royalties
B. M. Haymes

You're Always Welcome At—
Crescent Cafe
 O. L. McClendon
 The Home of Fine Chill, Tasty Sandwiches, Short Orders, Hot Cakes, Hamburgers, Hot Dogs ...

Bud E. Anderson
 PRESENTS
 All New—All Different

SEAL BROS. CIRCUS AND ANIMAL EXHIBITION

250 PEOPLE 101 Performing ANIMALS

AN AMAZING COLLECTION OF WORLD FAMOUS CIRCUS ARTISTS AND TRAINED ANIMALS GATHERED FROM THE FOUR CORNERS OF THE EARTH *

Two Full Hours of Clean, Wholesome Entertainment for the Entire Family

Bud E. Anderson's World Famous LIBERTY HORSES
 * * * * *
WILHELMINA—Largest Performing Elephant on Tour in America
 * * * * *
DEKOHL TRIO—Internationally Famous Jugglers.
 * * * * *
THE RIDING FULLERS—Bareback Riders Supreme.
 * * * * *
THE BANTIS TROUPE—High Tight Wire Artists.
 * * * * *

Clowns Galore * Trained Ponies * Educated Dogs and Monkeys and a Host of Other Acts

Performances Daily 2 p. m. POPULAR PRE-WAR PRICES
 Doors Open at 1 p. m.

HERE'S THE ALL-PURPOSE CULTIVATOR FOR PRACTICALLY EVERY TILLAGE JOB

The all-around usefulness of the John Deere Tool-Bar Cultivator makes it a cultivator that soon proves its worth on every farm.

Equipped with broad, flat, sub-surface sweeps, it's all set to do a good job of sub-surface tilling, undercutting surface growth and killing weeds, yet scarcely disturbing erosion-controlling surface trash.

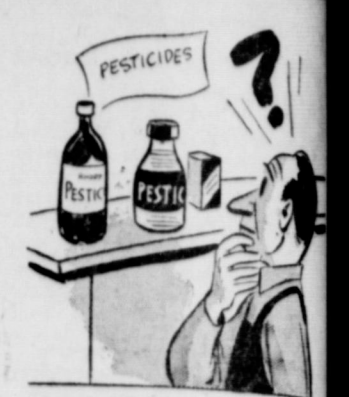
With the double-coil spring teeth and shovels, the John Deere becomes a heavy-duty field cultivator for many jobs. Add beams and lister bottoms and it becomes a lister for blank listing. With the planting attachment, it lists up to four rows. With the disk gang attachment, the John Deere is ideal for throwing up beds for melons, tomatoes and other such crops.

When you consider its broad usefulness, its quality construction, and other outstanding features, you'll agree—the John Deere is a cultivator you can't afford to be without. See us for complete details the next time you're in town.

JOHN DEERE ... The Quality Name in Farm Equipment

MANSSELL BROS.
 GROCERY AND MARKET; FURNITURE AND APPLIANCES
 JOHN DEERE SALES, SERVICE AND PARTS "Your Trade Always Invited"

Know Your Pesticides



As every county agent will point out, it is profitable to the farmer to know how to choose and use pesticides properly.

There are many well known and many relatively new chemicals for controlling pests. Their strength points and their weak points should be compared before making a choice.

"It is important," the agents emphasize, "to be familiar with pest problems and to recognize and follow reliable recommendations rather than mere reports and suggestions of untrained persons."

"Study the problems that may follow use of certain materials, such as residues and off-flavors. Consider timing of applications, dosage, methods of removing residues, etc., as a means of overcoming secondary problems. Be sure products you buy comply with all regulations."

"Accuracy of dosage is one of the fundamentals in the use of modern chemicals. Read labels and accompanying directions carefully."

Check Fire Equipment, Farmers Are Advised

Farmers are urged by county agents to check fire extinguishers to be certain they are approved.

These warnings are based on reports from Fire Protection Institute, a national fire safety organization, that many "unapproved" extinguishers have been made available during the past few years. It was pointed out that an unapproved extinguisher is about as useful as a counterfeit dollar.

REX Theatre

... EVENING SHOW

Box Office opens at 7 P. M.
 Box office close at 8:30; On Sunday close at 8 p m

Fri. nite - Sat. Mat.
 April 8th and 9th
 Wm. Boyd as Hopalong Cassidy in
Strange Gamble

Saturday nite only Apr 9th
 James Cagney, Pat O'Brien, Humphrey Bogart and Ann Sheridan in
Angels With Dirty Faces

Sun. - Mon Apr. 10 - 11th
 Dennis Morgan in
One Sunday Afternoon
 Color by Technicolor

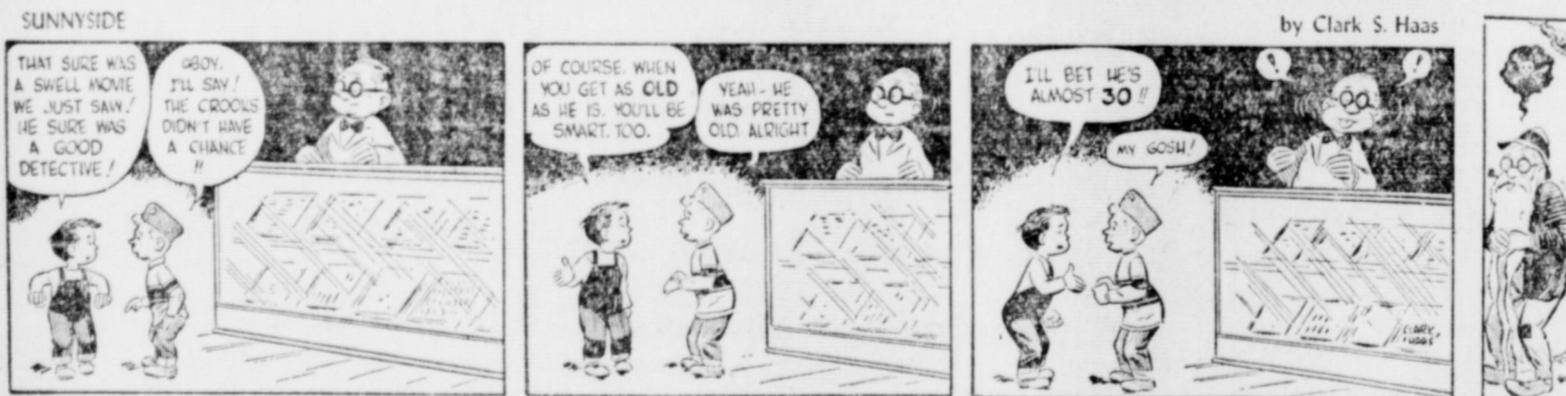
Tues. Apr. 12th
 Alexis Smith in
The Decision of Christopher Blake
 Human and Tender

Wed. - Thurs Apr 13- 14
 June Allyson, Perry Como, Judy Garland, Lena Horne, Gene Kelly, Mickey Rooney and Ann Southern in
Words and Music

HIGGINBOTHAM FUNERAL HOME
 TEL. 223

YOU'LL LIKE OUR INSURANCE
 OUR POLICIES PROVIDE A PRE-FINANCED FUNERAL SERVICE
 Considerate, Efficient Service Anytime, Anywhere

O'Donnell, Tex. 10
Sunday, April
 Afternoon Show only. Auspice Fire Department At Ball Ground.



Amazing NEW
AUTO-LITE
Resistor
SPARK PLUG

HELPS ENGINES 3 WAYS

- * A Smoother Engine Idle.
- * Improved Gasoline Economy.
- * Increased Electrode Life.

* Because of its low rate of electrode erosion, the new Auto-Lite Resistor Spark Plug permits wider initial gap settings and makes these advantages possible.

SEE YOUR LOCAL DEALER

TUNE IN "SUSPENSE" - TELEVISION TUESDAY - RADIO THURSDAY - CBS NETWORK

MOTHER, MOTHER, I'VE BEEN THINKING OF THAT CAKE YOU BAKED TODAY - SO TASTY AND SO LIGHT AND SO FLUFFY TELL ME HOW TO BAKE THAT WAY

BAKE THE CLABBER GIRL WAY MY DEAR, WITH CLABBER GIRL BAKING POWDER

Ask Mother, She Knows... Clabber Girl is the baking powder with the balanced double action... Right, in the mixing bowl, Light from the oven.

CLABBER GIRL
Baking Powder

In more ways than one... THE NATIONAL JOY SMOKE

Pipe smokers prefer Prince Albert for its cool, tongue-easy smoking comfort - roll-your-owners like the way Prince Albert rolls up fast and easy into extra-tasty cigarettes!

I GET REAL SMOKING COMFORT IN A PIPEFUL OF P.A. - AND WITH THE NEW HUMIDOR TOP P.A. STANDS SO FRESH AND RICH-TASTING

"Crimp cut Prince Albert has been a favorite in my pipe for years," says Al Earl. "Rich-tasting P.A. smokes mild and cool - easy on the tongue." Right, Al! P.A.'s choice tobacco is specially treated to insure against tongue bite.

I LIKE THE WAY P.A.'S NEW HUMIDOR TOP KEEPS EASY-TO-ROLL, CRIMP CUT P.A. FRESH FOR TASTY, MILD 'MAKIN'S' SMOKES

"Yessir! Prince Albert's crimp cut is great for fast, easy shaping of full-bodied cigarettes," says Paul Fillman. "And those trim P.A. 'makin's' smokes are mild, cool and extra tasty." Yes! For more smoking joy, roll 'em with P.A.

R. J. Reynolds Tobacco Co., Winston-Salem, N. C.

THE NEW HUMIDOR TOP LOCKS IN THE FRESHNESS AND FLAVOR

MORE MEN SMOKE

Prince Albert

THAN ANY OTHER TOBACCO

THE NATIONAL JOY SMOKE

TUNE IN P.A.'S "GRAND OLE OPRY," Saturday Nights on NBC

IF THEY LEAVE FOR A GOOD TIME

It's our fault. It's because our town does not have recreational incentives to keep our young people here. Let's improve our recreational facilities.

