

KNOW TEXAS

In the East Texas timber belt there is annual production of about 1,500,000,000 board feet of lumber.

There are about 17,000,000,000 board feet of lumber standing in the soft wood forests of East Texas and about half that much hardwood.

The north end of the East Texas timber belt is well settled. In the southern end of this belt the forests are still heavy and not so many farms are found.

East Texas is adapted to diversified farming and fruit and truck growing, which industry is increasing.

Rapid growth of Texas cities creating a market has done much to promote truck growing in East Texas.

Every section of Texas is potential in the production of petroleum and natural gas.

Texas produces larger peach crops than any other state except California and Georgia.

The sweet potato crop of Texas averages about 6,500,000 bushels a year.

The 1926 wheat crop of Texas was the largest in the history of the state. Texas flour mills produce products valued at more than \$40,000,000 a year.

Texas has great deposits of gypsum which is used as building material and as fertilizer.

Did you know the Popular's Clearance Sale can save you money on your merchandise purchases.

The O'Donnell Index

Published every Friday at O'Donnell, Texas
By Roberts Printing Company.

J. W. Roberts, Editor

Subscription Rates

In first zone\$1.50
Beyond first zone\$2.00

Advertising rates on application

Entered as second class matter September 28, 1923, at the post office at O'Donnell, Texas, under the Act of March 3, 1897.

Pastures for hogs must be supplemented with grain for the most satisfactory results. An acre will ordinarily furnish pasture for from 5 to 15 hogs averaging 100 pounds. A good plan is to have two pastures for from 5 to 15 hogs averaging 100 pounds. A good plan is to have two pastures for each lot of hogs, so that by alternating them the pastures may be grazed fairly closely and still provide good succulent feed.

Clean cultivation supplemented by some type of cover crop is a standard method of soil management in orchards. The breaking of the soil ordinarily will need to be followed throughout the growing season by frequent cultivation. Soils containing considerable clay and easily packed by frequent heavy rains require tilling more often than where packing does not occur.

A recent study by the United States Department of Agriculture of a forest area in northern California badly infested with the western pine beetle revealed that in the last two years the insect has killed nearly four times as many trees in a burned-over tract as in the adjacent unburned forest.

When a fowl becomes sick it is usually best to kill it, as it may be affected by a contagious disease which, before it is recognized, may spread. Furthermore, if the poultry owner attempts to treat such birds there is great danger of carrying infection from the sick to the healthy in handling or feeding. If a disease becomes established in the flock, however, some kind of treatment is advisable if possible. In case of treatment it is important that the sick birds be separated from the healthy ones as soon as the symptoms become noticeable.

Take advantage of the money saving values offered at the Popular during their June Clearance Sale, beginning today at 2 p. m.

Crab Finds Rich Oil Field

Oil recently found on an island off the coast of Honduras was discovered by the aid of a land crab, after man had searched for years for the petroleum. The region is infested with the crabs, which burrow into the soil. One of them dug into a marsh beneath a cottage. The next day the owner of the house smelled the odor of oil, and soon found a high-grade flow. He had been searching for oil for years without success.

A Long Wait

"And what cemetery is that?" asked the Palestine tourist pointing toward an expansive hill entirely covered with gravestones.

"Oh, that's a family cemetery," replied the guide.

"A family cemetery?"

"Yes, that's where all Methuselah's nieces and nephews who passed away waiting for their rich uncle to die are buried."—New Orleans Times-Pic.

**CLEANING
PRESSING
ALTERING**

As it should be done

Try us and be convinced

E. S. SCRIMSHIRE
Your Tailor
Phone 3



Making Indigestible Foods Digestible

An old-fashioned dinner served not long ago by a new-fashioned hostess was acclaimed with delight and amazement.

"But I thought with present day dietetics we were to be denied all these rich things to eat!" exclaimed one of the guests.

"You can combine a knowledge of modern dietetics with old-fashioned food," replied the hostess and she proceeded to explain the digestibility of some of the seemingly indigestible foods. The secret lies in combining pineapple with heavier and less easily digested foods, since the pineapple, itself, is a powerful digestive.

Pineapple Dumplings made just as our grandmothers made apple dumplings by replacing the old-fashioned apple by the modern canned Hawaiian pineapple which contains an enzyme bromelin acts as a direct aid in the digestion of other foods—especially meats. They are made by mixing and sifting two cups of flour, four teaspoons baking powder, two tablespoons sugar and one-half teaspoon salt. Cut in three tablespoons fat and add one-half to three-fourths cup milk, enough to make a stiff dough. Roll out on a floured board to one-fourth inch thickness and cut in four inch squares. On the center of each square place one well-drained slice of Hawaiian pineapple and one teaspoon sugar. Fold up the edges that have been moistened, press together well and place folded side down on a greased baking dish. Bake in a moderate

oven thirty minutes and serve with a hot sauce made from the syrup drained from the pineapple.

Pineapple Coconut Meringue Pie is made by heating one and one-half cups milk, and mixing four tablespoons flour, one-eighth teaspoon salt, one-half cup sugar and adding the hot milk. Cook in a double boiler for about twenty minutes or until mixture is thick and flour thoroughly cooked. Pour over two well-beaten egg yolks, return to double boiler and cook until eggs thicken, or about three minutes. Cool, add one cup well-drained crushed Hawaiian pineapple, one-half cup shredded coconut and one-half teaspoon vanilla and pour into baked pie crust. Add two tablespoons powdered sugar to two stiffly-beaten egg whites and spread on top. Sprinkle with coconut and brown quickly in a hot oven.

Pineapple Turnovers, another old-fashioned favorite are easily digestible when made thus: Roll pastry thin and cut into four inch squares. Thoroughly drain the syrup from one can of sliced Hawaiian pineapple. On the center of each square place a slice of the drained pineapple and one teaspoon of sugar and butter. Moisten the edges of the pastry and fold together in the form of triangles, pressing the edges firmly together. Fry until brown in deep hot fat, drain on brown paper, sprinkle with powdered sugar and serve immediately.

Pineapple Pancakes with Honey are more delicious as well as more digestible than other kinds.

Mix and sift two cups half teaspoon salt and spoons baking powder, beaten egg, mixed with one-fourth cups milk, crushed Hawaiian pineapple, one tablespoon melted on a hot greased griddle with honey instead of syrup.

Crisp Bacon with Fritters is a delightful fast or luncheon dish. Bacon slices crisp and platter with pineapple made as follows: Beat in a bowl, sift in a cupful gradually and add one-half of milk, one-fourth teaspoon and a teaspoon of olive oil until smooth and glossy. Stand in a cool place for then add a teaspoon of powder. Dip one slice of fat, fry for a few minutes drain and sift with sugar.

Baked Ham with Pineapple is a new version of a Southern dish. Place a of Hawaiian pineapple in a roasting pan. Cover with sweet potatoes lengthwise cover pineapple. Add a of three-sliced apples top two ham slices. Pour over either pineapple juice or cup of water, depending on sauciness desired. Cook in a in a covered dish for two or until tender. Dress with brown sugar, dot of butter, and return to oven or broiler for browning. Sprinkle with parsley serving.

They'll Study Timber Wolf

A rather unusual hunting trip is being undertaken by two eastern sportsmen, William H. Newson of New York city and F. O. Dufour, professor of civil engineering at Lafayette university, Easton, Pa. They have invaded the broad expanses of northern Quebec wilderness to spend the winter hunting and studying timber wolves. They will devote their entire time to this sport, and work to gather further data on the life habits of this wild life destroyer. It is reported that timber wolves are extremely plentiful throughout that district this year.

Monument to Apple

The craze to erect monuments has in late years been extended to cover memorial shafts to such things as hogs, chickens, cows, oranges, corn, etc. But the first monument to the apple, it is claimed, was recently unveiled at Cornelia, Ga. Incidentally, it is said to be the largest replica of that fruit ever made. The "apple" is of steel, measures 22 feet in circumference, and weighs 5,200 pounds. It surmounts a pillar. An inscription on the base reads: "Habersham County, Georgia, the Home of the Big Red Apple." This odd monument was made possible by local apple growers.

Spoiling Her Drive

Suzanne Lenglen, the French professional tennis champion, said at a luncheon in New York:

"I am very fond of golf, but when I took it up in Nice everybody laughed at me. Everybody said I'd be a failure."

"The first day I played at the Nice Country club I was getting ready to tee off when Baron De Malpurgo ran out of the clubhouse and shouted excitedly:

"Mademoiselle! Mademoiselle Suzanne! Be sure to save me all the worms you turn up—I'm going fishing!"

Prisoners Have Journal

Produced by prisoners in Wakefield prison, Yorkshire, England, a weekly newspaper is being published. Its circulation is confined to the institution. The paper is named "The Venturer," and contains topical articles, life sketches, prison gossip and the general news of the week. There is a correspondence column and the prisoners vie with each other for literary supremacy. "Wakefield prison is mainly for young people," said a home office official, "and special training is emphasized there more than is possible in other prisons."



You don't take a bath in a basin of water

Water is so cheap you feel you can use all you want.

And electric light, too, is so cheap that it is no economy to use less than you need. It is the only service that comes into your home that is cheaper today than it was ten years ago.

Don't try to make a "basin" of light do the work of a "tubful."

TEXAS ELECTRIC SERVICE CO.

Electricity Is Your Servant

"Always Available"
GRANDSONS OF THE FUTURE MAY RELY UPON OUR SERVICE WHICH IS BUILT FOR A GENERATION AHEAD.
LET US FIGURE YOUR ESTIMATE.
HIGGINBOTHAM BARTLETT CO.
THE HOME BUILDERS
Phone 103 — E. T. Wells, Local Mgr.
O'DONNELL, TEXAS

CICERO-SMITH LUMBER CO.
"Where Quality Counts"
GOOD LUMBER — GOOD SERVICE
Lumber, Builders Hardware, Wind Mills, Wire, Post, Paint and "Nigger Head Coal."
Don Edwards, Manager

REMOVED
We will pay the highest market price for your poultry and eggs at all times. See us before you sell.
We have moved our place of business to the Campbell building just across the street from the Index office and will be glad to give you prices any time.
O'DONNELL PRODUCE CO.
J. W. Smith, Prop.

More And Better Poultry
Texas needs more and better poultry, for these thrifty little citizens of the farmyard are factors in wealth that no farmer can afford to overlook.
A flock of pure-bred chickens on the farm will help materially in providing a sure living at home.
Let's have more and better chickens on the farms and in the back yards of this section.

THE FIRST NATIONAL BANK
Conservative—Safe—Accommodating

JUNK

Program)
 discovery of the
 error to the
 Every
 laborers and
 whiten
 them em-
 Autumn and
 their millions
 promise of
 and the
 who
 acres
 harvest it with
 the small
 with their
 true, children
 go back to
 required their
 mortgage on the

highest authority in
 word in warning.
 Cotton Manufactur-
 its meeting held
 following, and
 upon it, that "it
 to the world:
 are gravely concern-
 of the methods of har-
 recently but rapid-
 introduced in the
 of the belt. The plan
 and still worse than
 trashy, dirty cotton
 which is often seriously
 careless and strenu-
 to which it has been
 the sledding process
 the stalk becomes mixed
 and no cleaning machi-
 covered, nor even the
 can remove it. While
 are not yet avail-
 that approximate
 of last season's
 'snapped' or 'sled-
 remark is frequent!
 process is 'here to stay'
 the saving in cost of pick-
 against
 of the grade and charac-
 produced, and urge
 the farmers, that
 The economic
 and to the manu-
 be very severe and
 in self-defense
 against its use through
 differential.

that the
 United States be
 cognizance of this
 through the Depart-
 specify separa-
 their reports and es-
 the cotton crop the num-
 'snapped' or 'snapped'
 is properly picked.

well for those who ex-
 their cotton to heed this
 is not the buyers that
 but the spinners, who
 its value, and once they
 its fate is

with inch or
 will command a price
 will at least pay for
 snapped
 have one competitor,
 that is selling
 a pound.

made some wonderful
 the cotton picker has
 invented. Respectfully
 B. L. YAZARUS,
 Pleasant, Texas

ANCE!
 moved my office
 the First National
 bell building across
 the Index office.
 my services will
 location.
 Campbell
 was added to
 on Monday morn-
 Mrs. Westmore
 day vacation to
 ne, Stamford and
 Mrs. E. G. Mar-
 Sunday night
 elands and Mrs.
 accompanied them as
 Monday.

mare with one
 about 900, has
 ten days. Owner
 coming after her.
 route Three, O'Don-

school students wishing
 work will see Mrs. R.
 nce, at her home on

of the money
 offered at the Popular
 June Clearance Sale,
 day at 2 p. m.

HOME FIRE HAZARD HINTS

Twenty-One "Safety First" Rules Which Should Be Strictly Observed By Everyone

1. Keep house, yard and outbuildings clear of rubbish and inflammable materials.
2. Do not start an open fire near fence, barn, or house; never when a wind is blowing.
3. Be sure all chimneys are safe. Have them examined and cleaned each season before fires are built.
4. Never stop flue openings with paper or rags. Use only tight metal cap.
5. Watch the stoves. Do not place close to frame walls, and have a good zinc mat underneath.
6. Screen OPEN fires. Safety of life as well as property demand it.
7. Use only safety matches; and keep matches away from children.
8. Never start a fire with kerosene.
9. Do not put ashes in wooden receptacles.
10. Do not empty ashes against fences, barns, or outbuildings.
11. Keep gasoline out of the house and barn.
12. Never use gasoline or inflammable volatiles to clean gloves clothing etc., in the house. Gasoline vapor is more deadly than dynamite.
13. Do not permit children to play with fire in any manner.
14. Never leave the house with an open fire burning, or with oil or gas stoves lighted.
15. Do not use paper shades on lamps or electric globes.
16. Beware of the electric iron.
17. Do not use pennies, nails, or wire fuses in electric circuits. Fuses are your safety valves, and only the safe kind should be permitted.
18. Have your wiring carefully gone over once each year by a competent electrician.
19. Do not leave oily rags or mops on floor in closets. They are subject to spontaneous combustion.
20. If you smell smoke, investigate until you find cause.
21. If you do not know how to turn in an alarm, ask some of the boys in the fire department.

STOMACH SO BAD CAN'T EAT EVEN FRUIT

"For years was badly constipated and troubled with gas after eating. Could not eat fruit and many other things. Adlerika has done me good - can now eat anything." (signed) W. H. Fletcher. Adlerika removes GAS and often brings astonishing relief to the stomach. Brings out a surprising amount of waste matter you never thought was in the system. Stops that full bloated feeling and makes you enjoy eating. Excellent for chronic constipation. Corner Drug Store.

Did you know the Popular's Clearance Sale can save you money on your merchandise purchases.

FREE—A present to everyone attending the June Clearance Sale at the Popular beginning today at 2 p. m.

FOSTER'S
 Filling Station
 for
 Prompt Service
 and
 Good Values

SEE US

For All Kinds of
 BUILDING MATERIAL
 Low Price Cotton, Low Price Lumber
 Build Your Home Now

BENNETT MFG. CO.
 E. M. Wilder Mgr.

COLLEGE STATION, Texas, May—Now is the time to begin culling the farm poultry flock, according to D. F. Irwin, professor of Poultry husbandry at the A. & M. College of Texas. With the price of eggs due



W. D. ROUNTREE, M. D.
 Texarkana, Texas
 Pellagra A Specialty

If you have any of the following symptoms, I have the remedy, no matter what your trouble has been diagnosed: - Nervousness, stomach trouble, loss of weight, loss of sleep, sore mouth, pains in the back and shoulders, peculiar swimming in the head, frothy like phlegm in the throat, passing mucus from the bowel, especially after taking purgative, burning feet, brown, rough or yellow skin, burning or itching skin rash on the hands, face and arms; resembling sunburn, habitual constipation (sometimes alternating with diarrhoea), copper or metallic taste, skin sensitive to sun heat, forgetful, despondent and thoughts that you might lose your mind, gums a fiery red and falling away from the teeth, general weakness with loss of energy. If you have these symptoms and have taken all kinds of medicine and still sick I especially want you to write for my booklet, Questionnaire and FR Diagnosis.

W. D. ROUNTREE, M. D.
 Texarkana, Texas

C. E. CAMERON

is the representative of the Texas Electric Service Company in O'Donnell.

For any information about your electric light service call Mr. C. E. Cameron at Texas Electric Service Company, Lamesa, Phone No. L. D. 11 or or at Lamesa Texas, Phone 237

Electrical Work

Wiring Houses a Specialty
 Motor Work
 Agent for
 Edison Mazda Lamps
 Call or See Me at Home on 9th St
 Opposite Sorrels Lumber Yard
 PHONE 136

H. E. GILLESPIE

FRITZ FILLING STATION

Prompt Service and
 Courteous Treatment

Gas, Oils and
 Accessories

Fairley & Haymes
 Real Estate—Insurance
 Best Cotton Land on the Southplains
 TELEPHONE NO. 153
 O'DONNELL, TEXAS

to stay fairly low for several more months, only the best birds in the flock will be able to return a profit above the cost of feed and labor, Professor Irving said in a recent discussion on culling. He also brought out the fact that meat prices are highest at this season, so that in many cases there will be more profit in culling and selling now, though some of the birds may still be laying.

"Another point in the favor of culling at this time is that the removal of the adult birds will allow more time and space to be devoted to the growing pullets, on which the hopes for next year are based," Professor Irving said. "In addition, the reduction of the feed bill for the layers will have a tendency to counteract the steadily increasing amount of feed used by the growing birds.

"Unless the heavy breeds can lay close to twenty eggs a month, and that is high production for them during the summer, it will actually be more profitable if they are laying over fifteen eggs a month. Of course if a certain output of eggs is required or the birds are yearling breeders and are to be kept another year, it would be foolish to cull so soon; but if part of the flock is to be sold in the Fall anyway, it will be worthwhile to remove the poorer ones now.

"The following rules may be observed in removing poor birds: (1) In the case of all yellow-skinned breeds, remove birds that show any yellow pigment in the beak or shanks (2) In case of heavy breeds, remove the birds that are excessively fat. (3) If birds have been marked with

W. A. Tredway
 ALL KINDS OF INSURANCE
 Office Back of Corner Drug Store
 O'Donnell, Texas

BUSINESS AND PROFESSIONAL DIRECTORY

DR. C. G. DUNN
 Dentist
 First National Bank Bldg.
 Lamesa, Texas

V. O. KEY
 Abstracts, Loans and Insurance
 Key Building
 Lamesa, Texas

GIBSON AND MAY
O'DONNELL AND LUBBOCK
 TRUCK LINE
 General Hauling
 Phone 113 or Phone 48
 O'Donnell, Texas

W. H. CRUNK
 Lawyer
 Notary Public
 Warren Building
 O'Donnell, Texas

I. O. O. F.
 Meets Every Monday Night at
 Odd Fellows Hall
 O'Donnell Texas
 Visiting Brothers Welcome

Eyes Tested
 Lenses Ground
 Glasses Fitted
SWART OPTICAL CO
 1015 Broadway
 Lubbock, Texas

DR. C. P. TATE
 Physician and Surgeon
 All Calls Promptly Attended
 Day or Night
 Office Phone 21, Day or Night
 O'Donnell, Texas

C. T. KIBBE, D. C.
 O'Donnell's Chiropractor
 Not Medicine Not Surgery
 Not Osteopathy
 Phone 102
 Hours: 9 to 12 and 2 to 6

LUBBOCK CLINIC
 Third Floor Temple Ellis Bldg.
 Phone 1200
 LUBBOCK, TEXAS

Complete Diagnostic Laboratory
 including X-Ray and Modern
 Physio Therapy
V. V. CLARK, M. D.
 Diagnosis and Internal Medicine
D. D. CROSS, M. D.
 Surgery, Gynecology and Consultation
J. E. CRAWFORD, M. D.
 Eye, Ear, Nose and Throat
O. W. ENGLISH, M. D.
 General Medicine and Surgery
G. H. ATER, D. D. S.
 Dental Surgery, Pyorrhea and
 X-Ray
MISS EDNA WOMMACK
 X-Ray and Laboratory Technician
H. S. RIGGS
 Business Manager

spiral bands for broody periods, remove those birds that show excessive broodiness. (4) Remove all crow-headed birds. (5) Remove all birds that are poor in flesh as they will not lay profitably. (6) Remove birds that have excessively large abdomens. Be sure to distinguish an excessively large abdomen from one that is merely full from heavy laying.

"Confine the culled birds closely for a week, and feed heavily on grain and wet mash before marketing. Use a regular laying mash with twenty-five per cent corn meal added. This should put all the birds, even the broody ones, in good condition for the market. From twenty to twenty five cents per pound will ordinarily be realized after this fattening.

A number of our local fire boys are planning on leaving Sunday for the State Convention which is being held at San Antonio beginning Tuesday morning. Lee Christopher says that instead of attending the firemen's convention, he expects to wait until the boys get back and take his honeymoon. We wonder who the unfortunate girl could be.

RHEUMATICS WHY SUFFER

RHEUMALAX relieves rheumatism quickly and surely, for science of today find and perfect what centuries of research have overlooked. A new discovery that relieves or costs you nothing. Sold and guaranteed by Christopher Drugs.

Effective spraying of tomatoes

can be done only with a high-pressure power or traction outfit, says the United States Department of Agriculture. Spraying should begin when the first signs of blight appear and be carried on at intervals of 10 days until five applications are made

O. H. SHEPPARD, M. D.
 General Practice and Electro-Therapeutics. Files cured without detention from work or business. Office half block Southeast Index Building, O'Donnell, Texas 4-20tp

PIGS FOR SALE—They are good and priced right. See W. H. Crunk. 30-tfc

FOR RENT—Furnished rooms. See Mrs. H. E. Gillespie. tfe

AGENT WANTED IN O'DONNELL territory. Make \$75 per week, \$1.50 an hour for spare time, introducing finest Guaranteed Hosiery. 96 styles and colors. Low prices. Auto furnished. No capital or experience necessary. **BETTER KNIT TEXTILE CO.**, Desk 2711, Greenfield, Ohio. 33-3tp

PLANTS—I now have plenty of the following plants for sale: sweet potatoes, 50c per 100, tomatoes, 40c per 100; cabbage, 40c per 100; Bermuda onions, 20c per 100; pepper, have beets soon. **T. C. Leedy**, Tahoka, Texas. 34-tfc

TATE-LAX for Constipation, Rheumatism, stomach, liver and kidney disorders. Tate-Lax a dependable system cleanser. For sale by Corner Drug Store. It's guaranteed. 30-26c

SORRELS LUMBER CO.

COMPLETE STOCK OF BUILDING MATERIAL
STAR WINDMILLS and PIPING
 Barbed Wire and Posts, Poultry and Hog
 Wire, Paints, Oils and Varnishes

Our Business

For the next two months will be in charge of D. H. Barrett of Dallas, a tailor of wide experience with a pleasing disposition, and Noel Sikes who needs no introduction to the people of O'Donnell.

Your patronage will be appreciated by them as well as—

C. E. RAY

Cleaning, Pressing, Dying and Alterations
 Phone 66

WE CLOSE AT SEVEN EACH DAY EXCEPT SATURDAY

You Are Benefitted

By our expert knowledge of your motor ills. Just bring it in and we will turn it back humming like a new one.

Gantt & Hubbard

That's Good

You'll be chuckling the same sentiments about our delicious cold drinks the first time you stop here in search of cooling refreshments, right off ice.

CHRISTOPHER DRUGS

THE NYAL STORE

The tomato, for many years after its introduction into the United States in about 1800, was regarded generally as an ornamental plant. Owing to its relation to nightshade it was considered poisonous. After this prejudice was broken down the use of tomatoes soon became general.

A CASE WHERE YOU LOSE IF YOU WIN

By W. R. MOREHOUSE
Public Relations Commission, American Bankers Association

(This is one of a series of articles exposing the wiles of sharpers who are after your money.)

EVERY person who takes part in one of the many fake real estate raffles that are going on wins because there are no losers, regardless of the numbers they hold. The numbers, in fact, are only the bait to entice people into the scheme. The raffles are what might be termed "come-on" traps to catch investors. If you have ever tried your luck with a real estate raffle you doubtless felt like giving three cheers when advised that you had won, not knowing that in winning you had taken your first step toward being caught in the trap. You were momentarily overcome with joy over your success which looked to you like the "luck of a lifetime."

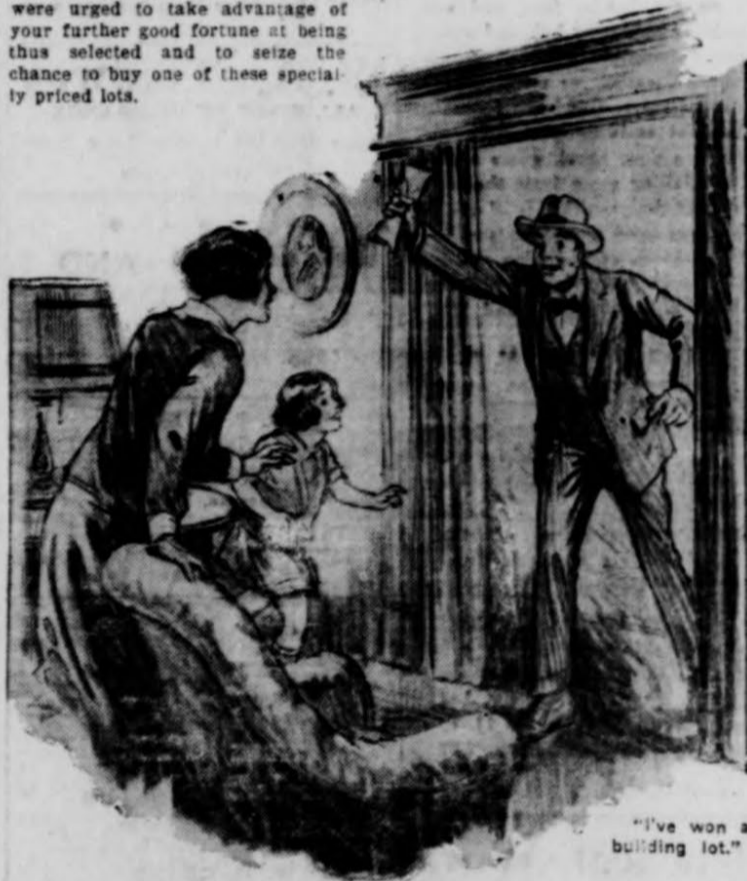


W. R. MOREHOUSE

Puffed over your good fortune, you hastened out to inspect your newly acquired piece of property. A high-pressure salesman representing the syndicate that was "giving" you the lot walked by your side. After a tiresome trip through an undesirable district the salesman pointed out your new real estate holdings,—a narrow, shallow lot, unimproved, uneven, and with no conveniences such as water, sewer, gas and electricity. Not even graded streets or sidewalks. Not worth its taxes!

Before you were fully awake to the fact that you had been tricked your attention was directed away from the unattractive landscape before you to another picture. You were shown another lot, ideal in its location with all modern conveniences soon to be installed, and told that if the lot you drew in the raffle was not entirely satisfactory you would be allowed a credit of \$250 for it on one of the more desirable lots being sold "to a few selected people as a special inducement and for a short time only," at the bed-rock price of \$950. You were urged to take advantage of your further good fortune at being thus selected and to seize the chance to buy one of these specially priced lots.

ing statements of the high-pressure salesman as to the value of the \$950 lot and his assurance that it must double and treble in value, and would pay over the additional \$700—to secure lots worth less than half the price they paid for them! The few who would insist on receiving title to the lot won in the fake raffle would soon be silenced by the statement that it would be delivered to them upon payment of



"Think of it!" exclaimed the high-pressure salesman. "It will take only \$700 cash as we are willing to allow you a credit of \$250."

Where You Begin to Lose

Perhaps, as you stood there, you began to suspect that other "winners" had come to view the same lot you had won. If you reached the conclusion that it was being repeatedly used as "bait" you were right. You realized that after all there is nothing free about so-called free things. But others, unfortunately less suspicious than you, would be impressed by the glow-

ing certain expenses in connection with the transfer, which, however, would exceed the actual value of the prize lot.

There is nothing to be gained in participating in fake real estate raffles. There are plenty of legitimate sales. Raffles usually are only bait used to trap you. Of course, you win, but in winning you lose if you go through with it. Before drawing your money out of your savings account to go into a real estate scheme consult your banker or a Better Business Bureau, to find out whether it is a bona fide plan. Spend time to save money!

HOW A FARMING COMMUNITY WAS REBUILT AGAIN

Glass factories and coal mines had kept the butcher, the baker, the candlestick maker and the banker busy the year round in Point Marion Pennsylvania. Hired men left the farms followed by the farm owners to get their share of the attractive wages.

Suddenly labor saving machinery was brought in to the old hand method window glass factories. The coal business took a drop and hundreds of people had to find new employment. Savings accounts dwindled. Deposits of the two banks dropped off almost a million dollars.

"Bring in more industries," was being sung at luncheon clubs all over the land, every town seemed to be advertising unlimited water supply, cheap fuel and free factory sites. Competition was keen and the reward doubtful.

The question came, "Why not stimulate the agricultural pursuits of the community which have lain dormant so long?" Farm income might be increased and production costs lowered in many instances.

The first move of one of the banks was the purchase of healthy chicks. These were furnished by the bank at wholesale to interested farmers, payment to be made by note payable in six months. The bank followed through by aiding in the dissemination of culling and feeding knowledge and by helping to market the products which in most instances paid the initial cost of all the chicks.

When the pumpkins began to turn yellow, plans were laid for a great community exhibit. Besides the poultry display, farm produce exhibits from the surrounding country were entered. Altogether it made an impressive exhibit, bringing home the lesson to Point Marion people that there were great undeveloped opportunities within their own door yards which they had overlooked.

The annual exhibit will be continued in the future by the bank. A horse show is sponsored, better seed corn and seed potatoes are made available to the farmers for planting and the bank will continue to build agriculture in the community as a sound basis on which to work. "It will probably be some time before we shall see larger fruits of our endeavors," the banker says, "but we are looking ahead ten to fifteen years."

THE NEW MENACE

Hitch-hiking its way towards the nation's corncrib, the European corn harer is threatening to destroy crops to the value of billions of dollars and chase skyward the cost of production. If it worms its way into the Wabash and Mississippi Valleys, it can readily float downstream, spread out and become more difficult to control. Proper cooperation of all concerned will, no doubt, enable us to continue to grow corn profitably. Agricultural Bulletin. American Bankers Association.

A corn and apple show is to be an annual feature at a bank in Baltimore County, Maryland. Another banker has been able to get his country to "think corn," over 500 farmers planting improved corn. Many plant bankers in the state are giving moral support and funds to this work.

Lynn Theatre

Owned and Operated by Lindsey Theatre Enterprises, Inc., of Lubbock

PROGRAM FOR WEEK BEGINNING MONDAY, JUNE 6th

WEDNESDAY AND THURSDAY:
Reginald Denny In

"SKINNERS DRESS SUIT"

The funniest comedy of the year. Don't forget Thursday night is family night—The whole darn family for 50c.

FRIDAY AND SATURDAY:

Rex, The Devil Horse In
"BLACK CYCLONE"

PRICES 10c and 35c

A. C. Woodward, — W. L. Taylor
OWNER AND MANAGER ABTRACTOR
C. J. (DOCK) BEACH, LOCAL REPRESENTATIVE
A. C. WOODWARD LOAN COMPANY
LAMESA ABSTRACT COMPANY, Inc.
LOANS — INVESTMENTS — INSURANCE — ABSTRACTS
Office across street from P. O.
Lamesa, Texas

Get ALL your motor's power

YOUR motor was designed to deliver a certain number of revolutions per minute. When "knocking" occurs the revolutions immediately drop. This means loss of power and wear and tear on the engine.

Conoco Ethyl eliminates knocks—delivers all your motor's power. That's why it pays to deal at the Conoco sign.

CONTINENTAL OIL COMPANY
Producers, Refiners and Marketers
of high-grade petroleum products in Arkansas, Colorado, Idaho, Kansas, Missouri, Montana, Nebraska, New Mexico, Oklahoma, Oregon, South Dakota, Texas, Utah, Washington and Wyoming

CONOCO Motor Oils



Extra Knockless miles



FACTS about used car allowances

Most new car sales now involve the trading-in of the buyer's used car. More and more people are asking "Why should my used car seem to have several values? ... Why should dealers in different makes of cars offer me allowances differing materially? Does the largest allowance offered mean the best deal for me?"

Here are basic facts

- 1 Your used car has seemingly different values because competitive dealers are bidding to you a new car.
- 2 Your used car has only one fundamental basis of value—what the dealer who accepts it in trade can get for it in the used car market.
- 3 The largest trade-in allowance which is offered on your used car is not necessarily the best deal for you. Sometimes it is; but sometimes it is not.
- 4 An excessive allowance may mean that you are paying an excessive price for the new car in comparison with its real value.
- 5 Judge the merits of the new car in comparison with its price, including all delivery and finance charges. Then weigh the difference in allowance offered on your used car.

WHEN YOU are ready to trade in your present car, remember that after all you are making a purchase and not a sale. You are buying a new car and simply applying your present car as credit toward the purchase price of a new car.

GENERAL MOTORS

Clip and mail the coupon below

GENERAL MOTORS (Dept. A), Detroit, Mich.

- CHEVROLET Please send, without any obligation, the illustrated literature describing the General Motors product I have checked—along with the name of the nearest dealer in my case I may wish a demonstration. **YOUR PROVING GROUND BOOK.**
- PONTIAC
- OLDSMOBILE
- OAKLAND
- BUICK
- LASALLE
- CADILLAC
- Name _____
- Address _____

FRIGIDAIRE DELCO-LIGHT
Electric Refrigerators Electric Plants