

"What a Man Does For Himself Dies With Him—What He Does For His Community Lives On and On"—

# O'Donnell Press

ADVANCING INTO THE FUTURE—BOOSTING, BUILDING, BENEFITTING

INDEPENDENT  
NEWSPAPER  
Supported By No Clique or  
Selfish Faction

O'DONNELL, TEXAS, FRIDAY JANUARY 17, 1941

For the Best Interests of O'Donnell and Lynn County

## Contests Are Set

County rural schools will hold their annual Interscholastic basketball tournament in the gym on Friday and Saturday, Jan. 31 and Feb. 1, Fred Brynmore superintendent, announced. The winner of the tournament, both boys' and girls' contest, will be awarded the rural championship and may play the larger schools for the championship of the entire county. The complete schedule is as follows: Friday, Jan. 31 T-Bar vs. Grassland boys. T-Bar vs. Grassland girls. Newmoore vs. New Lynn Wells vs. New Lynn girls. T-Bar vs. New Lynn boys. T-Bar vs. New Lynn girls. Saturday, Feb. 1 Newmoore vs. Grassland Wells vs. Grassland girls. T-Bar vs. Newmoore boys. T-Bar vs. Wells girls. Grassland vs. New Lynn Grassland vs. New Lynn

## "Dunking" Habit "Not So Hot" So Sheriff Thinks

Dunking may have been a delight to the late Huey P. Long, but such practice can become a lost art so far as Con Burns, deputy sheriff here, is concerned. Burns dunked a piece of cornbread last Thursday and while the cornbread proved it could navigate his throat satisfactorily, the same was not true of a piece of wire about three-quarters of an inch in length which had reposed coyly in the bread and of which Burns was unaware until it lodged halfway in his throat. Choking for breath, Burns sought first aid here, but the wire remained adamant and refused to either come up or go down, so the sheriff hurried to Lubbock where it was extracted at no great trouble so far as labor was concerned. And Burns is doing nicely, but is off the dunking habit for a while.

## Baptists Hold Meeting

TAHOKA, Texas, Jan. 16 (Spl.)—With board meetings of both Brotherhood and W. M. U. work occupying most of the morning, an inspirational sermon by Rev. A. L. Hicks of Brownfield, and dinner, the monthly meeting of the Brownfield Baptist Association here Thursday had an attendance of some 150 from about fifteen churches of this Association. With Rev. Lowell Ponder, District Missionary, in charge of the men's work and Mrs. Henry Heck, Association President, in charge of the women's work, reports were heard and plans made for the Baptist Enlargement Campaign. Mrs. L. Lumsden, District President, also took part in the women's meeting. The afternoon and evening was devoted to B. T. U. emphasis, and a report of this will be given next week.

## Commissioners In Court Session

TAHOKA, Texas, Jan. 16 (Spl.)—The new commissioners court, consisting of Chester Conolly, county judge, and commissioners W. O. Henderson of Tahoka, Leon Jennings of New Home, and Lonnie Williams of Draw, all new members, and Waldo McLaurin of O'Donnell, a long-time member of the court, was in session here the first of the week. In addition to routine work, the court was busy acquainting itself with the financial condition of the county and the work that lies out before them.

## Classified Ads

FOR RENT—4-Room house. 24 acres land near O'Donnell. — See Luther McMillan.

FOR SALE OR TRADE: Farmall tractor, well equipped, in good condition, cheap. See B. M. Haynes or D. E. Ramsey, O'Donnell. 23-3tp

LOST: Man's suit and ladies' black coat and dress. Lost between Lamesa and Lubbock last Saturday. Reward. Phone 468 or address Box 591, Lamesa, Texas. 1tc.

FOR SALE—Duroc Jersey pigs, subject to registration. \$3.00 each. 2 miles east of Wells Store. — Deward McMillan. 41 2tp

FOR SALE—Second-year Summers Hi-Bred cottonseed. All A-1 prime seed. — S. M. Clayton, Jr. O'Donnell. 41 4tp.

## Instructions Given Local Draftees

It is requested that the following information be furnished all Local Boards in your state relative to articles prohibited or desired brought by Selectees when called for service. This information should be given the Selectees prior to their departure from Local Boards to Induction Stations.

Baggage: Only minimum hand baggage should be brought. There is no provision for transporting or storage of trunks. Barrack bags will be issued at Reception Centers. Foot Lockers will be issued when Selectee arrives at his organization.

Shoes: One pair of comfortable and serviceable shoes in good state of repair is essential.

Autos: Private autos prohibited. Athletic Equipment: Selectees should be encouraged to bring any athletic equipment they have.

Musical instruments: It is suggested that such musical instruments as guitars, banjos, etc., be brought.

Pictures: Small photographs permitted but there will be no place for large pictures in barracks.

Fire Arms and Weapons: Not permitted and will have to be returned to home of Selectee at his own expense.

Liquor: NOT PERMITTED. Any brought to Induction Stations or Reception Centers will be confiscated.

Visitors: Facilities for housing and entertaining visitors in the vicinity of Reception Centers will be very limited.

Money and Valuables: Their safekeeping will be a responsibility of the individual men.

Books and Periodicals: There will be well stocked libraries and reading rooms available at Reception Centers and Posts. It is suggested that periodicals received by mail be not forwarded until the Selectee is sent from the Reception Center and arrives at his organization.

Postal Cards: These will be furnished each Selectee at the Reception Center for the purpose of notifying relatives and friends of their arrival at Reception Center. Similar cards will be furnished when the Selectees is transferred to his final station in order that his permanent address will be known.

Toilet Articles and Wearing Apparel: Toilet Articles, towels, and a limited amount of clothing in addition to that worn, such as shirts, underwear, socks and handkerchiefs, are desirable. Uniforms and clothing will be issued to Selectees within 24 hours after arriving at Reception Center.

## Boothe's Sponsor Anniversary Sale

A special 1st Anniversary Sale and 9c Sale opens at Boothe's 5c to \$5.00 Store today, and according to the management unusual bargains will be offered the public.

A unique window display in connection with the sale was arranged in one of the store windows by Miss June Gary, employee. To feature kitchen appliances and items of every day need around the house, Miss Gary hung a clothes line in the window, and suspended various items of clothes. Cooking utensils, mouse traps, pots and pans were used to the best advantage underneath.

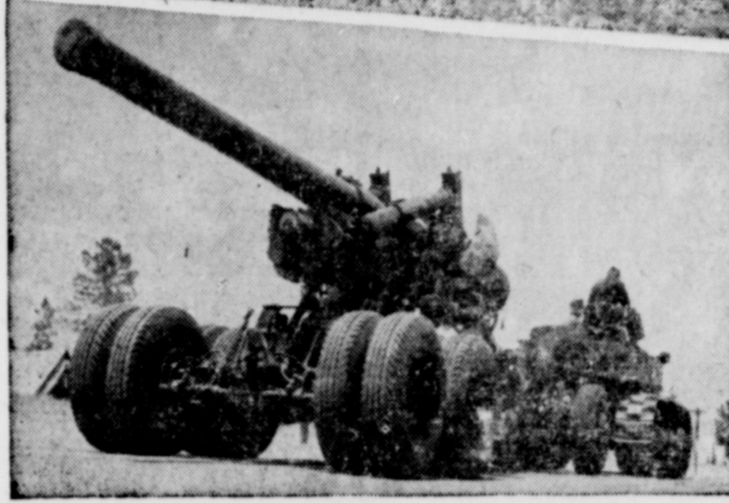
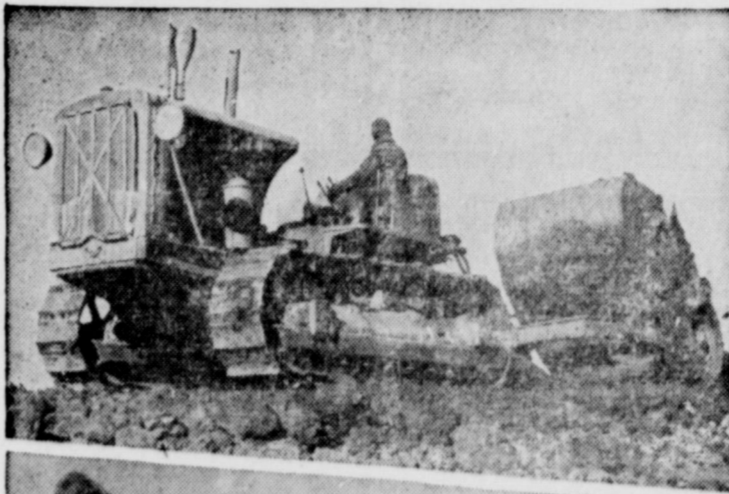
## EILAND TRACTOR CO. MOVES INTO LOCATION

The Eiland Tractor company, local dealers for the Ford tractor, moved into the building just west of Ray's Tailor shop this last week. Various models are displayed. Will Ed Tredway is local manager.

## TAKEN TO HOSPITAL

Mrs. Delores Burke, local music teacher was taken to an Abilene hospital Thursday. Mrs. Burke has been seriously ill at her home since Sunday.

## Machines Protect America



Machines play the leading role in modern defense. Shown above are machines for soil defense and national defense. The cannon is one of a number of U. S. guns capable of long-range destruction. The earth-moving equipment at top is of a type used by many farmers in building dams and reservoirs. In 1939 farmers moved more than 11 million cubic yards of earth in performing this conservation practice, equivalent to the volume of material going into Columbia river's huge Grand Coulee dam.

## Golf Tourney Starts Sunday On Local Course

Qualifying rounds will be reeled off here beginning Sunday afternoon at the Lakeside Golf club in a flag tournament. Almost the entire membership of 25 will take part and play restricted to resident members. Finals will be played Sunday week.

Plans call for most members to make their bid Sunday, but several will wait until week days to stage their thrust for the prizes which will be given winning divot diggers.

Eighteen holes will be played, and the general free-for-all idea maintained. Players ordinarily shooting scores in the highest brackets will be given handicaps and thereby have even opportunity with the low score players.

Members of the Lakeside club are Namon Everett, Eldon Carroll, Stansell Jones, Charles Kirkland, Paul Mansell, Bill Allison, Ross Stark, Floyd Thompson, T. L. Higginbotham, E. T. Wells, M. J. Whitsett, B. J. Boyd, E. J. Cummins, Don Edwards, Bedford Caldwell, Dr. Campbell, Dr. Farrington, Raymond Busby, Shack Blocker, Wayne Clayton, L. E. Robinson Jr., Lloyd Shoemaker, J. Howard Crawford, Oil D. Harris, Harvey Jordan, Burleigh Brewer.

## O'Donnell Man Suffers Troubles; Wonders What Next!

If you think business is bad, and you've your share of troubles, hark-en to the story as told by Harvey Castleberry, who left Monday for Carlsbad, New Mexico, where he will enter a sanitarium for treatment.

"I've had troubles, but I've also learned how good people can be in time of trouble, and so I'll keep my chin up," Castleberry said.

"Last summer my wife became much better after an illness of about 12 years," he related, "and we thought things might be shaping up. However, I suffered a heat stroke in September and that wasn't so good. But I learned things could be worse, because after examination in November, I was pronounced suffering from tuberculosis. That was bad, yet I learned that things could be worse for in December I was operated on for appendicitis. To cap it off, and capture everything in the book, I demonstrated I could take more when in January I caught the flu."

"Now, I'm on my way to Carlsbad, and really waiting to see what will happen next," Castleberry laughed, "but my friends have really helped me and I won't forget them."

## MRS. BUBANY ENTERTAINED ACE-HI CLUB WEDNESDAY

Members of the Ace-Hi Bridge club were delightfully entertained this week by Mrs. J. M. Bubany.

Mrs. Bedford Caldwell received high score trophy. Mrs. Geo. Oates, second and bingo, and traveling prizes were awarded Mrs. J. T. Middleton, Jr.

A delicious salad plate was served at the tea hour.

Playing were Mesdames Caldwell, Oates, Middleton, Thompson, Bearden, Howard Daniels and Gibson.

Mrs. Sterling Bearden will be hostess next week at her home on East Ninth street.

## CLUB DID NOT MEET

Owing to illness of members the Kongenial Klub did not meet this week.

Mrs. Roy Miles, Mrs. Steve Greenwood and Jerry were in Big Spring this week to attend the funeral of a relative.

Mrs. C. L. Hafer and Mrs. J. Mack Noble attended a bridge party in Tahoka Wednesday.

## Tahoka Boxers Meet CCC Tonight

By Ruby Nell Smith  
TAHOKA, Texas, Jan. 16 (Spl.)—Boxing will get off to a flying start in the Tahoka gymnasium at 7:30 o'clock, Friday night, where the Tahoka Boxers engage the Littlefield CCC Camp.

From both Camps come the word that all fighters are in good condition and a lot of action should be in the making Friday night.

There are twelve regular bouts of two minute rounds with three or four bouts as an added attraction.

Topping the list for the Tahoka fighters will be "Tech" McLaurin from O'Donnell, who last year won the State T. A. A. F., in the light weight division. Pushing the O'Donnell fighter, will be Tahoka's own Pete Jolly who has shown a lot of improvement.

The fighters and their weights are:

Littlefield CCC Boys  
Heavyweight, J. Ramsey; Lightweight, W. Cullpepper; Middleweight, J. Taylor; Welterweight, B. Smith; Lightweight, B. Holder; Lightweight, B. Thurman; Featherweight, B. Bradshaw; Featherweight, P. Yenez; Welterweight, P. McKibben; Flyweight, S. Kaiser; Flyweight, S. Pendleton; Welterweight, unnamed.

Tahoka-O'Donnell Boys

Heavyweight, R. Knight; Lightweight, unnamed; Middleweight, L. Thompson; Welterweight, T. McLaurin; Lightweight, M. Boothe; Lightweight, C. Kirkland; Featherweight, G. Brower; Featherweight, G. W. White; Welterweight, P. Holly; Flyweight, R. Warren; Flyweight, A. Gary; Welterweight, B. Hatchell.

## NEW OFFICERS

In a business meeting held last week, new officials were elected for Sew and Chatter Needle club.

New officers are: President, Mrs. Calvin Fritz; vice-president, Mrs. Stansell Jones; secretary-treasurer, Mrs. S. F. Johnson.

Mrs. Hollis Hunt was hostess at the home of her mother, Mrs. John Anderson.

Refreshments were served to Mesdames Jones, Oates, Fritz, Johnson, Line and Harris.

Mrs. Johnson is hostess this week.

## O'Donnell Scene Of Several Auto Wrecks Over Week

Three persons were injured and several others suffered bruises and shock in automobile accidents near O'Donnell over the weekend. No one was seriously injured.

Louis Glenn Clark of the O K community in Dawson county was hospitalized at Lamesa and Mr. and Mrs. Ewing Lawson of Crosbyton were taken to a Lubbock hospital for injuries following an almost head-on collision of their two cars at the Reavis Service station five miles south of O'Donnell Monday morning. Clark suffered from bodily injuries and shock.

Buck Preston, Nolan Hall, Joyce Hinds and Jessie Jean Long suffered various bruises and shock when their car was wrecked near O'Donnell Sunday night.

Nelson Dovel and Frances Mays escaped unscathed when their car plunged into a cotton field Sunday night and turned over. The occupants were pinned underneath car seats and were unable to push open doors. Help arrived on the scene quickly. The car landed upside down and the entire rear of the machine was crushed in like an eggshell.

Blewett Davis was a business visitor in Central Texas over the weekend.

Miss Mary Frances Fowler was reported as being ill Thursday.

Mrs. Farrell Farrington has been visiting in Amarillo the past week.

Mr. and Mrs. Gardenhire of Levelland visited here last weekend.

J. W. Watson of Levelland was a business visitor here Tuesday.

Mr. and Mrs. Barton Burk of Snyder visited here last week end.

Mr. and Mrs. Bedford Caldwell and Philip were in Brownfield Sunday.

Mrs. John Earles was shopping in Lamesa Saturday.

## TREES... TREES... TREES... TREES... TREES...

### 800,000 Chinese Elms at Prices Unbelievable!

10,000  
**ROSE BUSHES**  
10c Each — \$1.00 Dozen

8 to 10 foot Trees 25c      5 to 7 foot Trees 10c      10 to 15 foot Trees 35c

EVERGREENS

SHRUBS

FRUIT TREES

## WEAVER'S NURSERY

LAMESA, TEXAS



**THE O'DONNELL PRESS**

Published Every Thursday—Forms Close Wednesday Night

Entered at the postoffice at O'Donnell, Texas, as second-class mail matter, under the Act of March 3, 1879.

WILLIAM G. FORGY, Editor and Owner

Devoted to the Best Interests of O'Donnell and Lynn County—One of the best agricultural sections of Texas.

SUBSCRIPTION PRICE—In Lynn and Adjoining Counties \$1.00 per annum; elsewhere \$1.50 per annum. Payable in advance.

In case of error or omission in advertisements the publishers do not hold themselves liable for damages further than the amount received by them for such advertising.

Any erroneous reflection upon the character, standing or reputation of any person, firm or corporation will be gladly and fully corrected upon being brought to the publishers' attention.

**Recommend Care In Flu Recovery**

Austin, Texas, Jan. 16 While influenza is prevalent, the citizens of Texas are warned that they should not be in too big a hurry to return to their work following a siege of this disease. Influenza of itself is seldom

fatal, but complications, principally pneumonia, are the causes of death, asserts Dr. George W. Cox, State Health Officer.

The number of cases of pneumonia reported last week was four times the usual incidences at this season of the year. The increase corresponds along directly with the amount of influenza reported.

The termination of the acute sym-

ptoms of influenza does not indicate a complete recovery. Many persons believe this to be true and return to their daily routines, only to suffer a relapse. Others plod along in a weakened state, harbor a sub-acute cold, and by continuing to lower their resistance, invite prolonged trouble.

Past experience indicates that the longer an epidemic persists, the more severe it becomes. The possibility of complications increases; therefore early medical care in any suspected case of influenza is very important. Success in handling pneumonia depends on early recognition, and its onset may be unrecognized by the patient. In general a sharp pain in the chest on breathing and coughing may mean that pneumonia has developed.

Proper medical care during attacks of influenza will prevent persons returning to work until it is safe to do so, and thus lessen the chances of having pneumonia.

**Service Establishments Total 31,575 In State**

Texas had 31,575 service establishments in operation in 1939, the Census Bureau, Department of Commerce, reported today. These establishments did a volume of business amounting to \$137,198,000.

Service establishments in Texas in 1939 reported employment of 61,595 persons, of which 45,713 were full-time employees and 15,882 part-time employees. In addition, 32,346 proprietors were reported who devoted the major portion of their time to the operation of their business.

The total pay roll, exclusive of proprietors' compensation, amounted to \$41,473,000. Full-time employees received \$37,242,000 and part-time employees, \$4,231,000.

Power laundries, accounting for over one-eighth of the total receipts of all service establishments in the State, was the most important business from the standpoint of volume of business.

**F. S. A.**

In Lynn County

By ARGEN HIX

**Ups And Downs In Weight**

It's time to look ahead to the days and weeks of planning regular meals. Time to think about better nutrition, time to modify meal plans if there are any special diet problem in the family.

Most folks can eat as their appetites direct if the meals include enough of the protective foods. Yet there are many persons who feel that they ought to lose a few pounds, others who need to gain weight.

When the science of nutrition first entered the news many years ago, it was mostly a matter of counting calories, learning how much energy a given food would yield, and how that energy affected body weight. Then proteins came in for a big share of attention, and foods that furnished efficient proteins that the body could use to advantage were in the limelight. After a time the interest centered on minerals; and before long everybody was, and still is, talking about vitamins.

The matter of calories usually takes care of itself, but in cases of over-weight it helps to know something about high-calorie and low-calorie foods. However, vitamin needs, mineral needs and protein needs are vitally important in both gaining and reducing diets.

Simply reading the scales will not always tell when weight control is in order. It's best to seek the advice of a doctor before trying to make drastic changes in body weight. And it takes some knowledge of nutrition to modify the diet without omitting any of the necessary food values.

Milk is such a rich source of calcium that it isn't easy to have a well-balanced diet without it, even if we disregard its other food values. A person trying to lose weight

may prefer to drink buttermilk or skim milk because they contain only about half as many calories as whole milk. But there must be some butter or other fat to give a staying quality to both the gaining and the reducing diet.

Whole-grain cereals belong on every diet list.

There are certain low-calorie fruits and vegetables that belong in both gaining and reducing diets. These are tomatoes, citrus fruits, and the green leafy vegetables. Yellow and green vegetables are also important protective foods.

Everybody needs such fruits and vegetables for the vitamins and minerals they contain. When trying to gain weight add the more filling vegetables, such as corn and fresh or dried peas or beans, and serve vegetables with extra butter, cream sauce, or Hollandaise sauce.

An egg a day is a good rule for most any diet. And meat, fish, or poultry should be fitted into at least one of the day's meals. When trying to lose weight, use the lean portions of meats and omit rich sauces and gravies.

But when trying to gain weight, include the fat along with the lean of meats and serve with drippings or gravy.

Fats and sweets help a person to gain weight, and they should take their proper place along with a variety of other foods. Weight for weight, fats yield more than twice as many calories as starches or sugars. So the overweights must use fats sparingly. Remember that nuts and most salad dressings are high in calories. Stay away from pastries and foods fried in fat.

Sugar and other sweets are also fattening and must be used sparingly. If you are overweight, beware of candy or nuts between meals.

Loss or gain only after the diet is well balanced and the doctor assures you that your health will not be injured.

Mr. and Mrs. Bedford Caldwell moved to the S. M. Minton house in Dawson Heights this week from the Campbell house on East Ninth Street.

**IN MUNDAY**

B. M. Haymes and children returned Sunday from Munday, where they were called by the illness of Mrs. Haymes' father.

Mrs. Haymes remained to be with her father who is seriously ill.

**WORK BEGUN ON TEXAS TECH JOURNALISM BUILDING**

LUBBOCK, Jan. 15—Work was begun January 8 on a \$70,000 press and journalism building at Texas Technological College. The new structure will be of brick and stone and the architecture will harmonize with the modified Spanish type buildings already on the campus. It will have two stories of approximately 60 by 120 feet with a basement for storage.

The building is located between the library and engineering building and faces east. It will house offices and class rooms for the department of journalism, the Tech Press, the college publicity department, the Treador, semi-weekly student newspaper, college yearbook, the Tech Magazine, photographic studio, a journalism library and reading room, and several extra offices.

In addition to housing the activities mentioned, the four class rooms in the building will afford much needed class room space for other departments of the college. Contract calls for completion of the structure by late summer so that it will be available for use at the opening of the fall semester.

With the new home the laboratory plan of teaching journalism can

be further emphasized. All processes of newspaper first-hand. The building financed by income from student publications and Press.

**NOTICE**

The accounts of Dr. J. M. Harris and Dr. W. C. Hill are in the hands of Mr. Schumaker, First Bank of O'Donnell.

**CALLOWAY HUNT**

Attorney-at-Law  
Tahoka, Texas  
Room 3, First National Bank  
Civil and Criminal

**TOP PRICES FOR HOGS**

155—Phone—230

**LEE BILLINGS**

LAMESA, TEXAS

**WHEN YOU HAVE EYE TROUBLE**

See—

Dr. J. M. Harris

Lamesa, Texas

**TOWNSEND'S**

Flowers for occasions

Phone 12-M

**LAMESA DRUGLESS CLINIC**

CHIROPRACTIC ADJUSTMENTS — PHYSIOTHERAPY

SUPPLEMENTAL NUTRITION

COLONIC IRRIGATION — X-RAY LABORATORY

STEAM & MINERAL BATHS — CORRECTIVE MASSAGE

EXPERT MASSEUR

Dr. Hall W. Cutler Dr. A. M. Lindse

CHIROPRACTORS

Expert Masseuse

**DOES FORD PAY GOOD WAGES?**

HERE ARE SOME FACTS about Ford Labor.

During the year ended November 30th, 1940, the Ford Payroll throughout the United States averaged 113,628 hourly wage earners, not including office employees, students, or executives. They were paid \$185,105,639.12. On this basis, the average annual wage was \$1,629.05.

According to the latest available government figures, the annual average wage of all workers in employment covered by old age insurance law was \$841.00.

If the 45,000,000 workers of this country received the same average wage as Ford employes, they would have had additional wages of more than \$35,000,000,000, thus increasing the national income about 50%. Think what such an increase would mean to the workers of this country and to the American farmer, whose prices are based on the national income.

Wage scales in the Ford Rouge plants are divided into three classifications:

- Unskilled . . . Minimum hiring wage . 75c per hour
  - Semi-skilled . . . Minimum hiring wage . 80c per hour
  - Skilled . . . Minimum hiring wage . 90c per hour
- Higher wages are in consideration of ability and years of service.

Minimum wage scales for unskilled labor at the Rouge plant are the highest in the industry. Top wages for skilled labor compare favorably with, or are higher than, wages in other automobile plants.

Now some facts on Ford labor conditions:

Not only are sanitation and other health conditions the best in the industry, but Ford also leads in safety devices for the protection of employes. Proof of this is found in the following com-

parison of compensation insurance costs:

The national average rate in automotive manufacturing plants as computed by the National Association of Underwriters is in excess of \$1.50 premium on each \$100 payroll. The Ford cost of workmen's compensation is less than 50c.

This indicates that the chance of injury in a Ford plant is much less than in the average automobile plant.

The Ford Motor Company has no age limit for labor, and in fact deliberately attempts to keep older workers working. The average age of Ford workers at the Rouge and nearby plants is 38.7.

A recent check-up shows that nearly one-half the workers at these Ford plants were 40 or over, falling into these age groups:


- 25,819 between 40 and 50
- 14,731 between 50 and 60
- 3,377 between 60 and 70
- 417 between 70 and 80
- 12 between 80 and 90

In addition to the so-called regular employes, the Ford Motor Company has hired, and now has on the payroll, at the same regular hourly wage, thousands of workers who are blind, crippled or otherwise incapacitated for normal productive work. They are not selected for their ability to build cars or to maintain the plant. They are on the payroll because of Henry Ford's belief that the responsibility of a large company to labor goes beyond the point at which the unfortunate worker can no longer produce profitably.

The above are facts. They are open to anyone who really wants to deal in facts. Anyone who wants to get a job . . . buy a car . . . or place a national defense contract on the basis of fair labor treatment must place Ford at the top of his eligible list.

**FORD MOTOR COMPANY**

**Lynn County Motor Company**

SALES  SERVICE

Here It Is—A Sale You'll Appreciate . . .

**BOOTHE'S ANNIVERSARY SALE!**

It's of importance to your pocketbook . . . right in connection with our 9c SALE. The greatest of value for your money. We want you to receive FULL VALUE from the many bargains and you'll find them listed on our big circular which will come to you direct by mail.

HERE ARE JUST A FEW BARGAINS NOT LISTED ON OUR BIG 4-PAGE CIRCULAR

- \$1.25 Wool Shirts . . . . . 50c
- \$1.00 Baby Sweaters . . . . . 69c
- 69c Sweat Shirts . . . . . 49c
- 69c White Tennis Oxfords . . . . . 39c
- 25c Shirts and Shorts, now . . . . . 19c
- \$1.98 Chennile Bedspreads . . . . . \$1.79
- \$1.49 Indian Blankets . . . . . \$1.09
- 59c Blankets . . . . . 49c
- 79c Children's Pajamas and Sleepers . . . . . 49c
- Men's Pajamas, \$ 1.49 and \$1.98 values, now . . . . . 99c
- 15c Boxed Handkerchiefs . . . . . 9c

- SPECIAL VALUE**
- Dinner Set Dishes - Red - Blue Designs 15c to 29c values
- Now 9c and 15c

- Workcraft Shirts and Trousers**
- \$1.39 values . . . . . 99c
- \$1.15 values . . . . . 89c

- 15c Men's Sox . . . . . 10c
- \$1.39 Value Hosiery . . . . . 99c
- 12c Outing . . . . . 9c
- 69c Purses now . . . . . 29c
- 10c to 25c Children's Anklets . . . . . 10c
- \$1.25 Ladies Sweaters . . . . . 99c
- \$1.00 Ladies Sweaters . . . . . 29c
- \$1.00 Housecoat Dresses . . . . . 79c
- 59c Children's Dresses . . . . . 29c
- \$1.19 Blankets . . . . . 79c
- \$1.98 Blankets . . . . . \$1.49
- 10c Value Manila Paper . . . . . 5c
- 7 9c White Enamel, Dishpan . . . . . 69c
- 25c Throw Rugs . . . . . 19c
- 15c Throw Rugs . . . . . 9c

- \$1.25 Picture Frames . . . . . 50c
- 49c Men's Ties . . . . . 19c
- 79c Bucket, 10 quart . . . . . 69c
- 59c Covered Pan . . . . . 49c
- 19c Prints . . . . . 15c
- 10c Prints . . . . . 9c
- 65c Pop Guns . . . . . 39c
- 35c Pop Guns . . . . . 19c

**BOOTHE'S 5c to \$5.00 STORE**  
O'Donnell, Texas (Formerly Thornhill's Variety)

**We Appreciate Your Business**  
WE HAVE A SERVICE FOR EVERY NEED AT A PRICE FOR EVERY PURSE  
PICK-UP—  
Mondays and Thursdays  
—in O'DONNELL  
MODERN CLEANERS  
Leave Laundry at Modern Cleaners for pick up  
**LAMESA STEAM LAUNDRY**



# SOCIETY

## CLUB MET AT WELLS

T. Wells was hostess to the Tuesday Bridge Club Tuesday.

Conclusion of games Mrs. G. Forgy won high score. L. E. Robinson and Mrs. Campbell won slam prizes. Refreshing salad course was served.

Playing other than the mentioned were Mesdames Noble, Hafer, Henderson, Jordan, Whitsett, Oates, Thelma Palmer.

Mack Noble will be hostess Friday.

## W. S. of C. S.

Business meeting held at the Church Monday. Mrs. Naret, pres. presided.

A short lesson from the G. A. Manuel was given, followed by several songs.

Billie Jan Johnson was a new member.

Others were Peggy, Ina Merle and John Ellen Beach, Edna, Julia and Joyce Edwards, Pat Burns, Ruth Vandell, Virginia Shaw, and LeMoyné Line.

## AGED 94

Down every day," says Okrugupist. "Used ADLERIKA contains ADLERIKA contains for quick bowel action, ADLERIKA today.

## WE NEED PAIN RELIEVERS!

Tubes, Iron, Scrap Metals  
PAY TOP PRICES  
Lubbock Iron & Metal Co.  
Lubbock, Texas

raising the desired fund. Those attending were Mesdames Stark, Jones, Gates, Pearce, Curtis, Coffee, Bowlin, Moore and Everett.

A social will be held next Monday in the home of Mrs. J. P. Bowlin.

## BAPTIST W. M. U.

Mrs. J. A. Edwards was director for the program Monday when W. M. U. members met at the Baptist Church.

The lesson was from the study course book, "Golden Milestones of Japan."

Present were Mesdames Pierce, Vandell, Emerson, Burns, Stubblefield, Goddard, Howard, James, Earles, and Edwards.

Plans were made for a group to attend the association meeting in Tahoka this week.

## INTERMEDIATE G. A.

For the weekly meeting members of the G. A. met at the Baptist Church Monday with their counselor, Mrs. Floyd Thompson.

A short lesson from the G. A. Manuel was given, followed by several songs.

Billie Jan Johnson was a new member.

Others were Peggy, Ina Merle and John Ellen Beach, Edna, Julia and Joyce Edwards, Pat Burns, Ruth Vandell, Virginia Shaw, and LeMoyné Line.

Mrs. C. E. Eiland of Lamesa visited with her sister, Mrs. Marshall Whitsett Saturday.

Mr. and Mrs. N. M. Wyatt of Tahoka visited friends and relatives here Sunday.

Mrs. Belle Knight and Mrs. Irvin Jones were in Lubbock Sunday to visit the Rev. O. A. Addison, who is ill in a Lubbock hospital.

Mr. and Mrs. L. T. Brewer and daughter Anne visited Mr. and Mrs. J. W. Gardenhire in Shallowater Monday.

Dr. and Mrs. J. M. Bubany visited friends in Brownfield Sunday.

Miss Genevieve DeBusk, Miss Mabel Skinner and Royce Skinner were in Lubbock Monday.

Mr. and Mrs. Bell Edwards of Gilmer were recent visitors in the home of Mr. and Mrs. J. A. Edwards.

## Two Methods Of Spoiling Child

COLLEGE STATION, Jan. 23.—There are two ways to spoil a child, according to Dosca Hale, specialist in parent education and child development for the Texas A. and M. College Extension Service. First, over-indulgence will spoil a child and make it difficult for him to adjust himself to the world around him. In addition, the child who receives little or no affection can be as badly spoiled as one who receives too much attention.

"Understanding the child and giving him affection and reassurance are the best ways of helping him to be a happy and well-adjusted person," the specialist comments.

## Call Your Shots

Recognizing the seriousness of losses from crippled birds, sportsmen's organizations throughout the country this year are stressing the importance of "within - effective - range" shooting. In nation-wide advertising campaigns, commercial firms likewise are cautioning the hunter against out-of-range shooting.

Out of a group of 176 cooperating sportsmen, novice hunters without dogs reported the largest loss of game birds. These hunters lost 46.7 percent of the birds shot. Average hunters without dogs lost 70, or 39.8 percent, of the 176 birds shot by this class. Veteran hunters without dogs lost 19 of the 71 birds shot, or 26.8 percent. Novices with dogs decreased their losses 36.8 percent, average hunters to 23.8 percent, and veteran hunters to 15.5 percent.

Mrs. J. F. Campbell spent several days recently visiting with Dr. and Mrs. Kenneth Campbell in Big Spring.

## QUICK RELIEF FROM Symptoms of Distress Arising from STOMACH ULCERS DUE TO EXCESS ACID

Free Book Tells of Home Treatment that Must Help or it Will Cost You Nothing

Over one million bottles of the WILLARD TREATMENT have been sold for relief of symptoms of distress arising from Stomach and Duodenal Ulcers due to Excess Acid—Poor Digestion, Sour or Upset Stomach, Gasiness, Heartburn, Sleeplessness, etc., due to Excess Acid. Sold on 15 days' trial! Ask for "Willard's Message" which fully explains this treatment—free—at

Corner Drug Store

## BORDEN COUNTY GETS DEER AND WILD TURKEY

Borden County, wisely advertised as a county without a doctor and a place where not a single soul is on WPA, is rapidly becoming the home of the deer and wild turkey.

Last week a State Game Commission truck rolled into Gail with 18 head of deer, nine doe and nine bucks. Wayman Perciful, junior administrative officer at the county agent's office, assisted in unloading the animals at the Beal Ranch, south of the county seat, where range conditions are promising.

It is thought by game commission attaches that the deer will be at home on the Beal holdings since this part of Borden County is similar in Kendall County.

Twelve more head of the deer will be transported to Borden County soon, State Game commission officials stated Tuesday. The commission will also provide a number of wild turkeys for propagation in Dawson's neighboring county to the east.—Lamesa Courier.

## SANTA FE BUSINESS PICKING UP

The Santa Fe System carloadings for the week ending Jan. 11, 1941 were 18,060 compared with 17,472 for the same week in 1940. Received from connections were 6,691 compared with 5,631 for the same week in 1940. The total cars moved were 24,751 compared with 23,103 for the same week in 1940. The Santa Fe handled a total of 21,631 cars during the preceding week of this year.

R. L. Nowell was a business visitor in Lamesa Monday.

Mr. and Mrs. Fred Henderson visited in Big Spring Sunday.

# Used Tractors For Sale!

### At ABSOLUTE BARGAIN PRICES

Reconditioned throughout . . . and all guaranteed to be in good shape. If you want a good tractor, or if you want an extra one that will do the work, we urge that you see these.

## LIBERAL TRADE-INS GIVEN

- One Twin-City Model "Z"
- One John Deere, "A" with 4-row equipment
- And many other makes.

WE'RE FEATURING—  
USED FARMALLS IN ALL MODELS  
AT VERY LOW PRICES

O'DONNELL IMPLEMENT CO.  
James Applewhite, Mgr.

Plenty of Parking Space at—

# LINE-LAMBERT

And You'll Save on Purchases

## SPECIALS FOR FRIDAY—SATURDAY

We Deliver ——— January 17 - 18 ——— We Deliver

# Food Specials

Coffee Red & White None Better lb. **25c**

GRAPEFRUIT Nice Size Doz. **15c**

Fresh Strawberres pt. **15c**

GRAPE JUICE 12 Oz. Can 3 for **25c**

All Bunch Vegetables <sup>2</sup> for **5c**

JELLY, 12 ounce Any Flavor **15c**

Mustard qt. **10c**

CRYSTAL WHITE TOILET SOAP 4 bars **13c**

Cooking Oil One Gal. **80c**

CHUCK WAGON BEANS 2 for **15c**

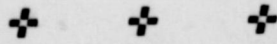
Soap Chips <sup>5</sup> Lbs. **33c**

ROAST BEEF 12 oz. can **15c**

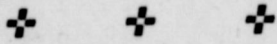
PLENTY OF FRYERS AND DRESSED HENS

## A Matter of Good Will . . . .

If you wreck your car and have the garageman to fix it, you make arrangements to quickly pay the bill; when the electric bill is due, you do your best to pay it and prevent the power from being cut off; when you buy groceries on credit, there is no question but what you make an effort to pay at least part so that you and your family may eat.



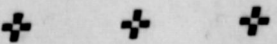
This is known as ACTION TO KEEP GOOD WILL AND A GOOD CREDIT RATING.



Should a doctor, (who comes to you in your time of need, and performs functions which others cannot do for you) measure out HIS services as businesses do, and refuse to serve unless your bills are paid promptly?



A doctor incurs many expenses in order to serve you, and when you fail to pay him, where can HE raise the money to pay HIS bills.



Why not try to help your doctor become a more efficient servant by paying your bills promptly? Stated sums paid at intervals will help all.





There's one subject that hasn't died down in the last few months and that's the war which is generally termed "European", but appears to affect the whole world.

And with all the talk of "bottle-necks," strikes, appeasement, et cetera, only a bit of reading will insure the fact that we're, as a nation, are far from "all aid short of war" to Great Britain. We've wondered about the supplies going from here to Russia, thence forwarded on to Germany, and just how long not so Merry Old England would stand for it. It appears she won't stand for it much longer—it's too big a leak in her blockade. We've stopped the shipment of oil and other materials to many countries, including Japan with whom we're supposed to be friendly, yet kept right on being nice far more harm to us than Japan to Red, Red Russia, which has done ever thought of doing. Our relations with Stalin's pet country has been a peculiar one, and if the facts were truly known, a bit of dirt would fly into our faces. Russia is helping Germany, all she can, so if we're to help Britain, WHY DO we treat that Goddess country as if she were whiter than Germany or Japan? Mostly politics — and too much infiltration of Communists into our official government, schools and key defense positions. Let's root the whole gang out — including many persons who've been here for years and thought so little of this country they've never taken out citizenship papers.

New car buyers within recent days: C. H. Doak, J. B. Miles, M. C. Crutcher and Waldo McLaurin, Chevrolets and Ed Cook, Chevrolet truck; C. G. Crutcher, John Earles, Tom Anderson, Irvin Sumrow, Fords, Hoot Gibson, Ford truck, and Mont Young, Mercury. Too many used cars have been sold for listing here free of charge.

Genial "Mack" McCollough, who has operated a cafe here for over

three years, is going to leave us. Mack is moving to Lamesa, and we hate to see him go. He's furnished us many "cokes" on the picks he's made on prize fights and football games.

Last minute news tip—O'Donnell received a quarter inch of rain this week, so says Ben Moore, local operator of the government rain gauge.

**Mrs. J. W. Elliott Is Local Birthday Party Chairman**

TAHOKA, Texas, Jan. 16 (Spl.)—Mrs. J. W. Elliott, Tahoka, has accepted the chairmanship for the 1941 President's birthday celebration for Lynn county. The appointment was made by W. L. Clayton, Houston, chairman of the Texas State Committee and announcement of acceptance came from Geo. Waverley Briggs, Dallas, vice chairman and



campaign director of the Texas Fight Infantile Paralysis Campaign. Fifty per cent of the net proceeds derived from the local celebration will be retained here this year, Mr. Briggs announced. After payment of all expenses incumbent upon holding the celebration, January 30, the residue will be divided between the local organization and the State Committee. In counties where chapters are operating the county's share of the fund will be turned over to the chapter while in unorganized counties the fifty per cent will be retained by the local campaign chairman until such time as a local chapter is organized.

Selection of committee members will be made immediately for the local drive and definite plans will be announced within a few days by the county chairman.

Again the celebration is of nationwide scope, Mr. Briggs said, and in almost every community, hamlet and

**HARRIS Funeral Home**  
Day phones Tahoka 233 and 42  
Night Phone 233 and 15  
**Funeral Chapel**  
NIGHT & DAY  
**Ambulance Service**

city throughout the land President Roosevelt's birthday will be celebrated the night of January 30 to the end that crippled children everywhere in the land might be benefited. Mr. Briggs urges that every citizen in every community in Texas enlist now in this fight against infantile paralysis.

An intensified drive for funds is to be made throughout the county.

**IMPORTANCE OF FRUIT IN THE DAILY DIET**

"A person should eat two servings of fruit every day", said Miss Maurine McNatt, county home demonstration agent, at the meeting of the T-Bar 4-H club Friday, January 10, at the school.

Fruits are classified in two groups—those which are rich in vitamin C and those which are called other fruits. Those which are rich in vitamin C are citrus, tomatoes, strawberries, and melons. Those fruits called other fruits are apples, bananas, apricots, pineapples, pears, figs, etc. A person should eat a fruit from one of these groups every day.

All twelve members were present. Club will meet again January 24, with the sponsor, Miss Faye Anderson, in charge.

**MIKE BARRETT BUYS BROWNFIELD NEWS**

Mike Barrett, formerly of Lamesa, has purchased the Brownfield News, taking charge of the paper about the first of the year. He succeeds Bob Shelton as editor and publisher.

Mr. Barrett majored in journalism in college and then taught the subject for a time in the Kermit High School. He now has an opportunity to put into practice the things which he learned in college and taught in high school, and we predict that he will have a successful newspaper career.

Steve Anglin was here the fore part of the week from Mineral Wells where he will be employed.

**12 FIGHTS 12**

(PLUS PRELIMINARIES)

**TONIGHT**

TAHOKA HI GYM ----- 7:30 P. M.

TAHOKA & O'DONNELL

vs.

LITTLEFIED C. C. C.

C. C. C.

- J. RAMSEY
- W. Cullpepper
- J Taylor
- B Smith
- B. Holder
- B. Thurman
- B. Bradshaw
- P. Yenez
- P. McKibben
- S. Kaiser
- S. Pendleton
- Unnamed

- Heavy Weigt
- Light Weight
- Middle Weigt
- Welter Weight
- Light Weight
- Light Weight
- Fly Weight
- Fly Weight
- Welter Weight
- Fly Weight
- Fly Weight
- Welter Weight

TAHOKA

- R. Knight
- Unnamed
- L. Thompson
- T. McLaurin
- M Booth
- C. Kirkland
- G. Brower
- G. W. White
- P. Jolly
- R. Warren
- A. Gary
- B. Hatchell

**TRADE WHERE MA SAVES MONEY FOR**  
**BLOCKER'S**  
We Lead Others

PAY CASH - PAY LESS - DONT PAY the OTHER MAN  
NOTHING SOLD TO MERCHANTS TO BE RESOLD

**SPECIALS**

STARTING FRIDAY, JANUARY 17th. - - Runs

**Spuds** 10 Lbs. 10

CRACKERS ..... 2lb. ....

**FLOUR** Everlite 48-lbs \$1.4

CATSUP --- Heinz --- 14 oz. ....

GRAPE JUICE Church's - - - qt. . .

BEANS -- Chuck Wagon -- - - 3 for

GRAPE FRUIT JUICE --- Bounty - doz.

**Peanut Butter** qt. 1

**Potted Meat** ea. 2

**Coffee** Bright and Early 1-lb. can 19

MARSHMALLOWS --- Brown's - - - 1 lb. .

PINEAPPLE JUICE --- Libby's - - 46 oz. .

**MACKERAL** 3 for 2

APPLE BUTTER --- 1 gallon - - - . . . . .

PEACHES --- No. 2 1/2 - Heavy Syrup - - 12

The safe easy way to get clothes clean  
**OXYDOL** Giant Size for 53

**Texas Grapefruit** each

**Vegetables** All Bunch 2 For 5

LUNCH MEATS --- Assorted Slices - lb. .

DRY SALT JOWLS --- . . . . lb. . . . .

WE PAY CASH FOR EGGS—TRADE WHERE YOU PLEASE

CASH BUYS CHEAPER GROCERIES  
WHEN YOU PAY CASH YOU SAVE!  
We Reserve the Right to Limit Quantities!