



## DO YOUR SHOPPING NOW

There are many things which December and April do not have in common, weather being first point on which they differ, but there is one bit of good advice which can be accepted without question either in December or April. This message of pure wisdom is: "Do your shopping early."

The buying public has learned from sad experience that the local stores do not emulate the traditional "general store" in buying stocks in the lump for the next five years. Parodying that bromide, "the early bird catches the worm," it can be said with truthfulness that "the early shopper catches the pride of the shops." If you don't buy early you take what the other shoppers have refused.

Spring and summer buying is limited chiefly to wearing apparel, the household needs and the shipments of out-of-doors life. At this time of the year the mind of every man, woman and child turns to the thought of light and colorful raiment, to furnishings which will lend a cool sunny atmosphere to the city home and to the multitude of accessories to summer play. Our merchants recognizing this seasonal demand and provide amply for it, but it is manifest that the wide choice of the new stocks can not be maintained to the end of the season.

Many people defer their spring buying until the passing of winter. Others advance their seasonal buying a few weeks and give themselves the privilege of leisurely shopping and wide choice. The late shopper saves no money and loses that enviable satisfaction given only to the early shopper.

Spring stocks are fresh on the counters. The very first choices are already being made. He and she who hesitate will lose. Shop early for spring as well as for Christmas.

## LOANS WILL BE AVAILABLE TO TEXAS STUDENTS

LUBBOCK, Texas, March 28.—Interest from the permanent trust fund of \$20,000 bequeathed to Texas Technological College as a student loan fund by the late George T. Morrow will become available for loans to students September 1, 1929, according to President Paul W. Horn. The president, business manager, and registrar of this institution were named in the will as the administrators of the fund. The interest only will be available for student loans.

## LEGISLATORS TO VISIT TECH

LUBBOCK, Texas, March 28.—Fifty members of the Senate Finance and House Appropriations committees will visit and inspect the Texas Technological College April 8, according to Senator Bink L. Parrish of Lubbock, who has just returned

from Austin during the legislative vacation. The local Chamber of Commerce will co-operate with College authorities in entertaining the law-makers while in Lubbock.

## SOUTHERN BUSINESS GROWS BY LEAPS AND BOUNDS

Arthur Coleman, in the April issue of Holland's, The Magazine of the South, says, "Today there are millions who, being possessed of all the means of information at man's command, do not know the tremendous steps the New South is making toward her goal of industry supremacy; do not realize the awe-inspiring power still unexploited, still untapped. It seems almost impossible that this should be so; that people who call themselves modern, and who live in a world of modern marvels and modern means of knowledge, should go uninformed concerning so great an economic movement, change, renaissance, beneath their heedless noses."

"For the New South is coming into a power that is startling in scope, in its vastness. It would be starting in a purely industrial and commercial section. Much more amazing is it, then in a region which the people of a nation have come to regard as purely agricultural. One expects other and more commercialized sections of the United States to show gains and growth in industry. And that is why it is so unexpected to learn that, in six years, the annual value of manufactured products in the South increased \$567,000,000; while manufactured products values in the remainder of the country, during those six years, decreased \$297,509,000.

"The industries of the Nation are learning that the New South offers advantages in such abundance and of such quality as can be found in no other one section of any country. They are discovering that many of the Southern mills can pay a dividend on the annual cost of heating similar establishments in some portions of the country. They are discovering that wages for competent labor are 25 to 40 per cent cheaper than in more congested sections, and that the labor itself is of a far higher class. And the fact that Southern taxes are not oppressive is very welcome knowledge to Northern industries who are finding it more and

## C. N. WOODS

Watchmaker and Jeweler  
Tahoka, Texas

## CITY TRANSFER CO.

J. W. Kirkpatrick, Owner  
O'Donnell, Texas  
Drayage and Heavy Hauling

more difficult to compete with contemporary institutions in this territory."

## CLEAN UP!

There is no "sure sign" of spring, but spring should be a "sure sign" of the arrival of that time for the community to clean up. There is no superstitious or prophesying about this clean-up sign.

When warm weather has come to stay (until cold weather returns in the autumn) every owner of property and tenant should instinctively feel it his duty to remove the evidences of winter's ravages and to aid and augment nature in her work of rebeautification.

Every spring clean-up program should include disposal of winter's accumulation of litter and decayed vegetation, repairing and repainting of buildings, and landscape gardening. Landscape gardening is no longer associated with large estates alone.

Cleanliness about the person or the home costs nothing. A community clean-up need involve no expense, except of a moderate amount of labor on the part of the householders. If there ever were excuses for uncleanness they were removed long ago.

What is the compensation of a community-wide clean-up campaign? It improves the general health of the community by removing deposits that are breeding places of disease germs and disease carrying insects. A clean town is a better place in which to live than one that is unsanitary and unsightly. And the best community advertising is the appearance of being "clean-up, painted up and planted up."

Index Ads Get Results—Try Them

## WANTS SINGLE CLOCK TO TICK FOR WORLD

A fifth of a second is of no vast importance to the average citizen, or even to a commuter, but to astronomers and other scientists it may make a big difference. To overcome this difficulty, according to reports from Germany, a noted inventor has developed a plan whereby one clock will beat time for the entire earth. It is proposed that from a central observatory the ticks of this master electric clock be sent instantaneously by radio to all countries, giving a single accurate time. At present each country sets its clocks by radio and telegraph from a national observatory, and there is often a discrepancy between different countries.

In the plan proposed, television devices would be used to synchronize all clocks with the master timepiece, and with this system in operation, the world's clocks need never be more than one one-hundred-thousandth of a second apart.

## KNOW TEXAS

The total population on tenant farms in Texas is about 1,250,000. On owned farms it is 862,000.

About 1,000,000 persons residing in Texas were born in other states.

## FAIRLEY &amp; HAYMES

INSURANCE AND REAL ESTATE  
OF ALL KINDS  
O'DONNELL, TEXAS

"Happy Thought"  
Gifts For Easter

PERFUMES and TOILETRIES  
CANDY ASSORTMENT  
EXQUISITE STATIONERY  
HOUSEHOLD APPLIANCES

Many other gifts to numerous to mention. You may select a lovely Easter token for anyone here at—

CORNER DRUG STORE  
"The Rexall Store"

Prescriptions Carefully Compounded

## WE USE ONLY GENUINE CHEVROLET PARTS IN SERVICING OUR CARS

Experience has proved to us that only genuine Chevrolet parts may be depended upon to render the long-time, dependable service that every Chevrolet owner has a right to expect. And they are less expensive to install—they fit perfectly the first time, without grinding or filing.

Consequently, we always carry in stock a large supply of genuine Chevrolet parts—and use them exclusively in our service work.

It will pay you to bring your car to us regularly for inspection and servicing. Our mechanics have been special trained in Chevrolet service schools, and all our charges are based on a low flat-rate schedule, worked out by Chevrolet Motor Co. Bring your car in and let us look it over for you. If it is in good condition, we will tell you so—and if it needs servicing, we will tell you just what needs to be done and exactly how much the job will cost. Come in today!

RAYBURN CHEVROLET COMPANY

Tennessee leading with 115,861 and Alabama next with 103,244.

The number of families in Texas has increased from 575,734 in 1900 to well over a million at present.

The present negro population of Texas is estimated at 779,000. The center of population of Texas is about 13 miles southwest of Waco.

If women had any sense there would be more bachelors.

Song neighbors will borrow every thing, including trouble.

## O. H. SHEPPARD, M. D.

General Practice and Electro-Therapeutics. Piles cured without detention from work or business. Office half block Southeast Index Building, O'Donnell, Texas.

MILK BUTTER CREAM DELIVERIES MADE WHERE IN TOWN ABSOLUTELY SATISFACTORY EVERY RESPECT. —PHONE 1000

DAIRY C. L. TOMLINSON

To Stimulate  
Chick Growth

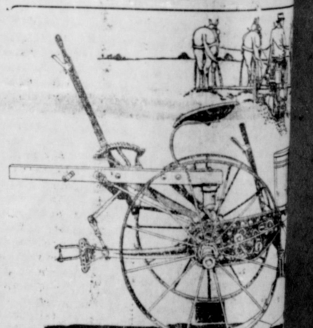
The first spring chickens on the are the ones that bring top prices. Chick food stimulates growth. Usually it will make your chicks market from one to weeks ahead of normal growth. Better order a supply now.

We have baby chicks for sale. Let us order now.

Bring your eggs for setting on Saturday and Wednesday.

## O'Donnell Electric Hardware

H. H. WILLIAMS, Owner  
Fritz Building

You'll Get  
Bigger Yield

You're sure to get bigger yields if you plant your corn and cotton just the way it should be planted—the right way, the right kind of seed bed. You can get that accuracy and good work if you use

## John Deere No. 40

It is equipped with the famous 999 Corn Drop—plants as accurately as the human hand. Plots for planting a variety of seeds can be furnished. You can plant just the stand of cotton you want. The John Deere Saw-Tooth Type Steel Picker Wheel picks up the corn and drops it into the furrow as well and does the leveling and firm covering over the seed. Leveling beam from the front of the machine. We have a "list" ready for you. Come and see it when you are in town.

Mansell Bros. Hdw. Co.  
John Deere and Oliver Implements

At this Store You Get QUALITY

## COLLECTIONS

ANYWHERE AND EVERYWHERE

We have collectors in your territory.

People die, move away, and even go bankrupt. Don't let your accounts go too long. An account more than 60 days old is not considered an asset by bankers. Write for rate card. Will buy secured and unsecured notes. 415 Ellis Bldg., Lubbock, Texas.

## MERCHANTS COLLECTION CO.



## Cheertal Service Promptly Given

When you are having trouble with your present plumbing, or wish new plumbing work done—call us. We are prepared to give prompt attention to your work. Every job we do is guaranteed.

Eaton and Street  
Wh 14 Plumbing of all kinds

### TAHOKA MAKING EXTENSIVE PLANS FOR ENTERTAINING C. C.

To The O'Donnell Index:

The Tahoka Chamber of Commerce and the Chambers of Commerce of the South Plains are preparing to put over one of the largest District Chamber of Commerce Conventions in the history of the West. The Texas Chamber of Commerce, at Tahoka on April 22nd. Invitations have been sent to every Chamber of Commerce and High School on the South Plains and those in adjoining territory, inviting them to be present, with their various organizations, Bands, Service Clubs such as the Rotary, Lions, Kiwanis and Hi School Clubs of various kinds.

A silver loving cup is being offered by the Tahoka Chamber of Commerce to the winner of the "My Home-Town speaking contest. This contest is open to one contestant from each public school on the South Plains. Rivalry is expected to be keen in this contest as several schools have already stated they were going to enter the contest.

The Convention Luncheon will be served by the Lynn County Home Demonstration Clubs under the direction of Miss Thelma Greenwade, County Demonstrator. Practically

all of the food served will be Lynn County products, produced by the ladies of the Home Demonstration Clubs.

All of the large newspapers of the state have been requested to have their correspondents at the convention, so as to be in a position to give to the world news of the happenings during the Convention.

Stanford — (WTCC) Manager Homed D. Wade, of the West Texas Chamber of Commerce has advised J. M. Del Curto state entomologist of the interest of the regional organization in the adjustment of the fumigation expense incurred under the legal order of the state and federal department of agriculture. This followed a conference of one of his departments with Mr. Von Roeder, of the Pink Bell Worm Commission.

Most people who have nothing to do make the mistake of doing it.

People who talk in their sleep should tell the truth while awake.

Try a rhubarb betty, made like apple betty, with rhubarb sauce sweetened to taste. Dot each layer with butter, and add spice if liked.

Wash blankets, before putting them away this spring, through several sudsy lukewarm waters. Rinse at least twice in clean lukewarm water. Make suds from neutral soap. Hang blankets half over the line to dry in a warm place, but not in direct sunlight.

Under no circumstances should milk be placed in a refrigerator in an open pitcher, bottle, or other uncovered container. It should be tightly stoppered and not be opened until immediately before use. If only a portion of the bottle of milk is used, the cap should be replaced.

Orange russe sometimes answers the problem of what to have for dessert. Slice oranges, and discard as much of the "rag" as possible. Arrange small pieces of dry sponge cake or lady fingers around the sides of individual glass dishes or cups and pile the oranges in the center. Sprinkle with powdered sugar, or grated coconut, or pour soft custard over the fruit. Chill before serving.

When the season for the furnace is over, it is a good plan to clean out the fire pot and ash pit entirely, take

down and clean the smoke pipe and store where it will not rust, and give the outside of the furnace a coat of the paint that comes for the purpose. If possible, have the flues of the chimney cleaned at this time. This work should be done before any of the special spring house-cleaning is attempted, since more or less dust

and ashes will be blown through the house.

Celery seeds are so small that it is difficult to distribute them evenly. It is much easier to do the work properly if the seed is mixed with several times its bulk of some material such as finely sifted white sand or moist muck soil.

## CICERO-SMITH LUMBER CO.

"Where Quality Counts"  
GOOD LUMBER—GOOD SERVICE  
Lumber, Builders' Hardware, Wind Mills, Wire, Post, Paint and 'Nigger Head Coal.'  
DON EDWARDS, Manager

# Mental pictures every car buyer should have

SOME DAY you will consider buying a new car.

Keep in mind these pictures made from photographs of scenes at General Motors' 1268-acre Proving Ground. A car wallowing in a sunken road with water over the hubs... a car bucking a long stretch of cruel bumps and potholes... a car straining to reach the top of a heart-breaking hill... a car doing twists and turns and other acrobatics that few cars are ever called upon to do.

Such are the tests given *advance models* of a General Motors car at the Proving Ground. The tests involve speed, power, endurance, braking, riding comfort, handling ease; fuel, oil and tire economy, body strength—every phase of car construction and performance. When every test has been met, the factory goes ahead and builds *your car* like these proved models.

Keep these pictures in your mind. They will come in handy next time you are buying a car.

On this four-mile test track the engineers can run a car night and day, at any speed, to learn just how it stands the pace.



Rough going on a Proving Ground road, made hard to test various parts of General Motors cars under harshest possible conditions.



A scientific "bath tub"—used to wash cars, but to show the Proving Ground engineers exactly what happens when a car is driven through water.



Very seldom are hills as steep as this. The average grade of highway hills is seven per cent. This hill is 17 per cent and a car must be good to make it.

- CHEVROLET, 7 models, \$245-\$725. A six in the price range of the four. Smooth, powerful 6-cylinder valve-in-head engine. Beautiful new Fisher Bodies. Also Light delivery chassis. Sedan delivery model, 1 1/2 ton chassis and 1 1/2 ton chassis with cab, both with four speeds forward.
- PONTIAC, 7 models, \$245-\$895. Now offers "big six" motoring luxury at low cost. Larger I-head engine; larger Bodies by Fisher. New attractive colors and stylish line.
- OLDSMOBILE, 7 models, \$275-\$1015. The First Car at Low Price. New models offer further refinements, mechanically and in the Fisher Bodies—yet at reduced prices. Also new Special and De Luxe models.
- OAKLAND, 8 models, \$1245-\$1375. New Oakland All American Six. Distinctively original appearance. Splendid performance. Luxurious appointments. Attractive colors. Bodies by Fisher.
- BUICK, 15 models, \$2195-\$2145. The Silver Anniversary Buick. Three wheel-bases from 125 to 128 inches. Masterpiece bodies by Fisher. More powerful, vibrationless motor. Comfort and luxury in every mile.
- LaSALLE, 14 models, \$2295-\$2875. Companion car to Cadillac. Continental lines. Distinctive appearance, 30-degree V-type 8-cylinder engine. Striking color combinations in beautiful bodies by Fisher.
- CADILLAC, 25 models, \$1595-\$7500. The Standard of the world. Famous efficient 8-cylinder 90-degree V-type engine. Luxurious bodies by Fisher and Fleetwood. Extensive range of color and upholstery combinations. (All Buick, LaSalle, Cadillac, Oldsmobile and Pontiac models may be made on the low-cost GMAC Plan.)

#### ALSO

- FRIGIDAIRE Automatic Refrigerator. New silent models with cold-control device. Two-tone cabinets. Price and model range to suit every family.
- DELCO-LIGHT Electric Plants & Water Systems. Provide all electrical conveniences and labor-saving devices for the farm.

#### CLIP THE COUPON

General Motors (Dept. A), Detroit, Mich.

Please send me, without obligation, information on the new models of the products I have checked—*together with your new illustrated book "The Open Mind."*

CHEVROLET  PONTIAC  OLDSMOBILE  OAKLAND

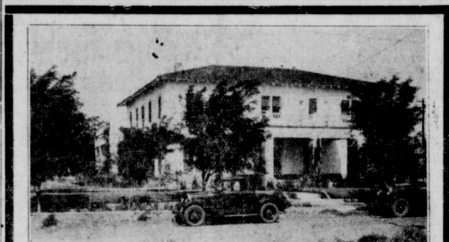
BUICK  LaSALLE  CADILLAC

Delco-Light Electric Power and Light Plans

Frigidaire Automatic Refrigerator  Water Systems

Name.....

Address.....



### DUNN SANITARIUM

Fully equipped for X-Ray and Electro-Therapy. Ambulance furnished free day or night. Two blocks south of school bldg. Lamesa, Texas Phone 212



## NOW as never before you should be careful about lubrication

THE lubrication requirements of the present high speed motors are most exacting. With their fine adjustments, these motors will not operate efficiently with every oil. They require a lubricant which is made especially to meet the particular conditions which they have created.

That's why it's most important to always specify the oil you want—and it will pay you well to insist always on a brand which has back of it the resources and experience of the Continental Oil Company. Then you will always be sure to get the right oil—in the grade made especially for your motor.

Ask for these brands at the better service stations and garages.

#### CONTINENTAL OIL COMPANY

Producers, Refiners and Marketers of high-grade petroleum products in Arizona, Arkansas, California, Idaho, Kansas, Missouri, Montana, Nebraska, New Mexico, Oklahoma, Oregon, South Dakota, Texas, Utah, Washington, Wyoming.

Conoco Amalie is 100% Pennsylvania Oil—refined from premium crudes by a special process. Universally recommended by automotive engineers and lubrication experts. Through exhaustive laboratory and road tests it has demonstrated its ability to lubricate properly under the most trying conditions of motor operation.



# EXTRA LIFE for your car

## GENERAL MOTORS

"A car for every purse and purpose"

FINN IN—General Motors Family Party, Every Monday, 8:30 P. M., General Motors, Ford WEAU and 17 associated radio stations.

The O'Donnell Index

Published every Friday at O'Donnell, Texas

By Roberts Printing Company

J. W. Roberts Editor

Subscription Rates In first zone \$1.50 Beyond first zone \$2.00

Advertising rates on application. Entered as second class matter September 28, 1923, at the post office at O'Donnell, Texas, under the Act of March 3, 1879.



POLITICAL ANNOUNCEMENTS

The Index is authorized to announce the following names subject to City Election to be held April 2, 1923.

Mayor of O'Donnell E. M. Wilder, re-election.

Marshall and Tax Collector J. H. Yarborough

J. Y. Everett

C. C. Nelson

Dr. D. H. McDaniel

Aldermen: R. C. Carroll, re-election.

W. E. Singleton, re-election.

C. L. Davis, re-election.

City Attorney: W. H. Crunk, re-election.

EDITOR MAKES SOCIAL ERROR

As far back as we can remember, ye editor has been taught, "Better late than never," and we sincerely hope and trust that reporting an error in this week's paper that should have appeared in our last issue will at least prove that our intentions are good. We refer to a social event at which a number of interesting games were played among them being progressive bridge and ye editor was honored when the hostess included us among her guests for the evening. We were also fortunate enough by the aid of "mister luck" and one of the best partners in town, to be presented a beautiful set of hand painted individual smoking trays, for holding high score among the gentlemen. Of course, we enjoyed the party and so informed the hostess before our departure and also thanked her in our humble way for the gift. The social error occurred when in our rush to get the paper into the mails the event was overlooked. We are publishing an account of the party elsewhere in this paper and trust that such a blunder will never occur again. Such is the life of an editor.

MAUDLINE CRAWFORD CELEBRATES BIRTHDAY

Little Miss Maudline Crawford spent an excited and happy birthday evening Monday, March 25. When a number of friends united to help her celebrate her fourteenth birthday.

Assembling about 8:00 o'clock, the guests opened festivities with a series of snappy games, which continued throughout the evening. The honoree received many beautiful and useful gifts.

Hot chocolate, cake, and peanuts, with Easter chicks as plate favors, were served to the following: Edward Vermillion, Lois Burdette, Gwendolyn Lawler, Evelyn Lawler, Kathryn Vazey, Marydell Vermillion, Margaret Miller, Edward Clayton, Jack Glynn Cathey, Wilbur Shumake, Alvis Tredway, Lee Vaughn, and Cecil Tredway.

JUNIOR S. S. CLASS GUESTS OF MRS. JEFF MUSICK

Mrs. Jeff Musick entertained members of her Sunday School Class last Friday evening with an informal Easter party. A series of group games and contests kept the fun rolling merrily till a late hour.

Delicious refreshments of ice cream and cake were served to the twenty-two guests. We regret that we were unable to list the names.

A man isn't licked until he begins to complain about the rules.

Richard Arlen and Nancy Carroll in Manhattan Cocktail News and Comedy

CLASSES DISMISS FOR THE COUNTY MEET

Classes were dismissed Thursday at noon in both Grammar and High School, in order that pupils, teachers, and patrons could attend County Interscholastic Meet at Tahoka. Large crowds are attending from O'Donnell.

Mrs. Haymes' Bible Story Class enjoyed a wonderful Easter egg hunt Monday afternoon from 4:00 to 6:00. The children took or sent their eggs some time before, so that they were well out of sight before time for the hunt. Judging from rather incoherent reports, it was an undoubted success.

Richard Arlen and Nancy Carroll in Manhattan Cocktail News and Comedy

LUBBOCK MEDICAL SURGICAL AND DIAGNOSTIC CLINIC

Sixth Floor Myrick Building Phone 1200

ELLWOOD HOSPITAL

Nineteenth and El Tiana Sts. Phone 902

LUBBOCK, TEXAS Complete Diagnostic Laboratory including X-Ray and Modern Physio Therapy

D. D. CROSS, M. D. Surgery and Disease of Women.

V. V. CLARK, M. D. Diagnosis, Internal Medicine and Electro Therapy

J. S. CRAWFORD, M. D. Eye, Ear, Nose and Throat

O. W. ENGLISH, M. D. General Medicine and Surgery

G. H. ATER, D. D. S. Dental Surgery, Pyorrhea and X-Ray

W. D. McRIMMON X-Ray and Laboratory Technician

H. S. RIGGS Business Manager

GALLOPING GUS THE HOTFOOT CUSS



Drive Right Up!

On tires and tubes, we'll treat you right, And try with all our main and might

To serve you many other ways Through your happy, living days!

Auto supplies are only a part of our service. If the old coffee pot is worn out, here's the place to get a new one. Galloping Gus specializes in—well, most everything! He might be called a general specialist. At all odds, he's waiting to serve you.

SINGLETON Hardware Co.

Galloping Gus, the Hotfooted Cuss. Comes when you call without flurry or fuss!

MRS. E. T. WELLS IS HOSTESS AT BRIDGE

On Thursday evening, March 14, Mrs. E. T. Wells was hostess to a number of friends at her lovely home in the north part of the city.

Eight o'clock was the appointed hour for the guests to arrive, but only one was marked up on time. The others had to pay forfeits which were later redeemed by the guests by performing in some manner which provided rather amusing. Progressive bridge was the principal pastime and after a number of spirited games high score was awarded to Mrs. A. A. House for the ladies and J. W. Roberts for the gentlemen.

Delicious refreshments were served to the following guests: Messrs. Garner, A. A. House, B. J. Boyd, Ferrell Farrington, M. J. Whitsett, J. W. Roberts, and Miss Willis Schooler, and the host and hostess.

M. S. CONCLUDES STUDY "THE NEW AFRICA"

The Women's Missionary Society of the Methodist Church studied the final chapters of their Mission study Monday afternoon. Mesdames R. O. Stark and J. P. Bowlin discussed chapters, and Mrs. Procter summarized the book. This has been a most interesting study.

The society will meet at the church next Monday afternoon at 3:00 o'clock.

Most of the work is done by people who are too nervous to loaf.

You don't have to nurse a growth very carefully to make it grow.

WANT ADS

WANTED—Second-hand windmill. Must be in good condition. W. L. Gardenhire. 26-2tp

FOR SALE—Second year Half-and-Half cotton seed. Also \$125.00 Radio for sale or trade. Roy Carpenter. 25-3tc

WANTED—Old clean rags at the Index Office.

FOR RENT—Two nicely furnished rooms for light housekeeping. Close to school. Lights, water and gas. Call at Index Office for particulars.

WANTED—Old clean rags at the Index Office.

FOR SALE—Rhode Island Red Eggs, 75c per 15, \$4 per hundred at the Farm four miles south. W. H. Gary. 26-4tp

SEE ME for farm and city loans. City loans on monthly plan. Low rate of interest. C. J. (Dock) Beach.

TO TRADE—Two 2-row John Deere Cultivators for milk cows, or good half and half cotton seed. See Newmoore gin man. 24-3tp

SEE ME for State Certified cotton seed. C. L. Tomlinson, O'Donnell, Texas, Phone 50702. 23-4tc

FOR SALE—2 section barrows, good condition. Can be seen at Carroll Plow and Wagon Shop. \$12.50 and \$15.00. Chas. McConal. 27-4tp

FARM WANTED—Want to hear from owner having good Texas farm for sale for fall delivery. Send description. B. F. T., Box 408, Olney, Ill.

HALF AND HALF Cotton Seed, originally from Ga., kept pure, \$1 per bushel, at my place. W. L. Gardenhire. 27-4tp

REGISTERED JERSEY BULL—Rosette's Tormentor of Fulfurris, No. 266,184, fee \$5.00 to insure, at my place 3 miles west of O'Donnell. Ed Goddard. 27-2tp

LOST—Sixteen foot stalk cutter blade, Saturday, between Bob Carroll's Blacksmith Shop and T-Bar. A. E. Leverett, O'Donnell, Texas, Rt. 3. 27-2tp

HOT WEATHER WILL SOON BE HERE

And now is the time to buy that new set of tires and tubes so that you can ride with safety during the hot days.

Federal Tires at Wholesale Prices

HIGHWAY GARAGE

John Earls, Prop.

FOR SALE—Giant Bronze Turkey eggs, 35c each. The kind advertised 75c and \$1 each elsewhere. H. V. Miller, Rt. No. 1, O'Donnell, Texas. Phone 50412. 27-2tc

NOTICE—I am now ready to call your cotton seed at customary prices. L. E. Jones, Rt. 2, O'Donnell, Texas. 22-4tp

MRS. LADD, Beauty Operator at Miles Barber Shop will be in O'Donnell Fridays and Saturdays only. Please make appointments if possible. 27-1tc

LOST OR STRAYED—Bay Mare, wt. about a thousand pounds, an old cut on left hind leg, is now at my place and owner can have same by paying for this ad and paying keeping charges. D. A. Barnhart, Lamesa, Rt. 2. 27-3tp

CHINESE ELMS Fruit trees, evergreens, shrubbery, roses, hedges, etc. Write for price list or call at 13 street and Avenue L. Lubbock, Texas. tfe

If you want Chinese Elms or any good nursery stock, that does well in this country, send your order to Dalmont Nursery, Route 2, Plainview, Texas. 22-4tc

PURE BRED EGGS for sale, 4c each from best layers, cocks from Missouri accredited super tested exhibition Buff Orpington chicks 15c each. 10 miles east of O'Donnell, J. V. Burdett. 26-4tp

FOR SALE—We now have a full line of Men's, Women's and children shoes. If we can't fix your old shoes we will sell you a new pair. Electric Shoe Shop, S. A. Billington, Proprietor. 21-4tc

Bill Der Says



When You BUILD A HOME The First Consideration is to Get GOOD MATERIAL

It makes no difference how efficient the workmanship, if the material is inferior, you will have an unsatisfactory building. We have built our business by making our material as good as we represent it to be.

HIGGINBOTHAM-BARTLETT COMPANY

"EVERYTHING TO BUILD ANYTHING" E. T. WELLS, Mgr. O'Donnell, Texas

WILL STAND—Jersey Bull, registered, Tormentor of Fulfurris, No. 285439; Sire Rosette's Tormentor of F. No. 266184; Dam, Tootsie's Grand Ruby, No. 637017; Located in southeast part of town, at F. M. Vaughn's place. Will stand for \$3.00. 23-4tp

TAKEN UP—Great big, hands high, aged sheep, old, with piece of wool neck. Been at my place many days. Owner calling and paying for trouble. H. C. McDaniel, east of O'Donnell, Texas. 23-4tp

Such a Good Reason We will have to admit it was a good one but we also want to tell you that our Ceries and Meats are as good as found in town and we believe at the prices to be found in town.

WE ALSO HAVE A COMPLETE STOCK OF FIELD AND GARDEN SEED—ALL FRESH

SPECIALS FOR SATURDAY

Oranges, good ones, Sunkist, doz.

Corn, No. 2, American Wonder, Gentleman, 2 cans for

Coffee, Sam Houston, 100 per cent per pound, (with glass)

Three Pound Can (with cup and saucer) Per can

Syrup, Pure Ribbon Cane, Gal.

Flour, Famous Kimbell's Best, Per sack

(If not good take me back) 100 lb.

Shipment of White Bermuda Onions and Cabbage plants, ordered and delivered to be here Saturday.

B & O CASH STORE

"Where Cash Talks"

The Most Complete Home Servant

ELECTRICITY has become the versatile servant of the home, the store, and the factory.

In the home it cooks the meals, heats the food, entertains with the radio or various types of reproducing machines, sweeps the floor, washes clothes and curls the hair. Electricity truly the emancipator of the household.

In the office, store and factory electricity multiplies the efficiencies of man and increases his income.

It is the business of the TEXAS ELECTRIC SERVICE COMPANY to see that this servant is constantly on the job—night and day. In spite of the daily increasing demands for its services, this Company is always ready with an adequate supply of electric energy to meet every emergency. Tomorrow's service is being built today.

Texas Electric Service Company The Silent Partner of Progress

What's Doing in Our Public Schools

For the past few years the Grammar School opera has been a feature of commencement weeks, so we are certain all patrons will be glad to know that active plans are well under way for an even better one this year.

Mrs. Martin's room entertained at the assembly hour Thursday morning with a clever and entertaining program. Two short plays were well acted and were very amusing.

Mrs. Joe Wilson told a very beautiful story, "John 3:16." At the end of this much appreciated number, the declaimers were kind enough to speak for the audience, and our story-teller told her story.

Irene Jordan won the highest average among the girls, Lawrence Tredway among the boys. Wayne Clayton was winner in the contest for learning the most great men, questions, and new words.

Mrs. Gooch's room, the 5th grade, invited Miss Sargent's section of the 6th grade on a real picnic last Friday afternoon. Fully sixty children enjoyed the occasion.

Mrs. W. E. Vermillion, room-mother of the 7th grade, visited her children Friday and read an interesting story to them. They are hoping she will come again soon.

Several pupils in this room are back in school after being out on account of illness. When you come to the building come in the 7th grade room and see the lovely Easter border drawn by Wilma Green and Viola Wyatt.

Miss Alta Rodgers, teacher of the grade, has been seriously ill this week, being compelled to go to the hospital for some treatment for her ear. She will probably be back at her place Monday.

This grade is setting a record in spelling, since each week a number of pupils make 100 per cent. Those making this grade the past week are Meri Miles, Mildred Goddard, W. S. Parr, G. C. McPherson, Jimmie Lee Shook, Dalton Summerall, Wallace Cook, Garland Curtis, Hope Shook, Maurice Isbill, Roxine Terry, Beatrice James, Donald Ballew, W. C. Ables, Wynelle Scott, Mozelle Hanes, J. E. Webb, Alice Maness, Roxie Petty, Cullen Newsome.

When picking your friends be careful not to pick them too much.

Index Ads Get Results—Try Them

Notice

TO NEWSPAPER MEN WHO READ THE INDEX ARE YOU BOTHERED WITH STATIC ELECTRICITY? I HAVE A DEVICE THAT WILL TAKE FROM 95 TO 100 PER CENT OF THE STATIC OUT OF YOUR PAPER BEFORE YOU CAN READ IT. YOU WON'T HAVE TO WAIT TILL THE ELECTRICITY IS OUT OF YOUR PAPER BEFORE YOU CAN MAKE THE SECOND RUN. ALSO YOU CAN TAKE THE PAPER RIGHT OFF THE PRESS TO THE FOLDER IN ANY KIND OF WEATHER. CONDITION AND YOU WILL NOT BE BOTHERED WITH STATIC. IF I CAN'T TAKE IT OUT IT WILL NOT COST YOU A RED CENT. I AM A PRINTER AND KNOW WHAT STATIC WILL DO ON PRESS DAY. IF INTERESTED I WILL GIVE YOU A FREE DEMONSTRATION IN THE NEAR FUTURE. S. T. PRICE, The O'Donnell Index, O'Donnell, Tex.

SIR HARRY LAUDER

Immediately following the successful opening of "Huntingtower," Sir Harry Lauder's first moving picture venture, American producers, recognizing the universal appeal of the picture, began negotiations for the showing of the film in this country.

For years and years, Sir Harry Lauder has been a popular star of the American concert and vaudeville stages. He has drawn his public from all classes and conditions of American life.

Harry Lauder's singing has made the native Scotch ballads household music in every household. Every one of his tours has meant a revival of interest in Scotch music and song.

Harry Lauder's comedy is as well-known as that of Charlie Chaplin. There is surely no place in the United States where the inimitable art of this lovable comedian has not penetrated.

Harry Lauder's name is a name with which to conjure pictures of good, wholesome, characteristic fun and good-fellowship. It has a universal appeal which is unbounded by nationality, age or culture.

Harry Lauder is the comedian of the home and the fireside just as much as he is the entrancing entertainer of the concert and vaudeville stages.

Now, after many years of public acclaim, this unique personality has been transferred to the screen. Many scouted the idea that a silent Harry Lauder could be Harry Lauder at all. Many felt that the subtleties of his art would be lost by the camera.

"Huntingtower," Sir Harry Lauder has a vehicle well suited to his particular appeal. In "Huntingtower," Harry Lauder is the real, the lovable, the winning Harry Lauder which every member of every family loves and enjoys.

LYNN THEATRE

Friday FAMILY NIGHT (Whole Family 50c) Al Hoxie "Dead Shot Casey" News-Comedy Saturday Ken Maynard in "Cheyenne" News-Comedy Sunday & Monday Richard Arlen and Nancy Carroll in Manhattan Cocktail News-Comedy Tues. & Wed. Sir Harry Lauder's First film adventure, "Huntingtower" Thurs. & Fri. Three Outcasts News-Comedy Friday is Family Nite News-Comedy -Serial Saturday The White Outlaw News-Comedy -Serial

Delegation to Go to Plainview Next Month

(From Wilson Pointer) Wilson will be represented at the Panhandle South Plains Dairy Show at Plainview next month. The date set to go is Friday, April 15, so it will be well to let the President know this week just what your plans are.

A number of the business men will take their cars and they want as their guests as many farmers as they can accommodate. At the present there is room for 17 farmers and those desiring to make the trip will please get in touch with the president, Mr. W. A. Brashear.

After a number of interesting games the hostess served elaborate refreshments of chicken sandwiches, stuffed eggs with olives arranged on a nest of lettuce, potato chips and bottled drinks, the bottles gaily wrapped in Easter cut-outs.

Those present were the guest of honor, Mesdames Paul Gooch, Irvin Street, Ferrol Farrington, J. W. Campbell, J. W. Shaw, W. E. Vermillion, D. A. Edwards, Misses Thelma Palmer and Christine Millwee.

Mr. W. H. May is undergoing treatment at the Lubbock Sanitarium for sinus trouble.

BAPTIST REVIVAL IS NOW IN PROGRESS

The Baptist Revival is in progress and you are missing something if you do not attend these services. The soul stirring sermons of Bro. Darby and the good singing under the direction of Mr. R. E. Key, are a great spiritual uplift. Come to the services the remainder of the week and you will be greatly benefited.

Mr. and Mrs. J. A. Hobbs returned home Sunday from May, Texas, where they had been visiting their daughter, Mrs. Elva Shults and family.

Richard Arlen and Nancy Carroll in Manhattan Cocktail News and Comedy

VULCANIZING Foster's Filling Station "Camp Comfort" I have just installed the very latest model Vulcanizing equipment, all new and just from the factory and am anxious to repair all tires in O'Donnell and territory that need it.

Richard Arlen and Nancy Carroll in Manhattan Cocktail News and Comedy

Fashions that Bloom for Easter BRILLIANT NEW COLORS—BRIGHT SHADE PRINTS FROCKS The new Easter fashions arrive, and it is proper to wear these gay colors and new prints for Easter—but be sure to select only from these exclusives whose colorings and designs are accepted from the standpoint of good taste and fashion correctness.



Large vertical text on the left edge, partially cut off, containing various names and notices.

### BETTER HOMES WEEK PLANNED

Committees Appointed for Home  
Demonstration Club Contests  
On April 15 and 20

The Better Homes Chairman of the Home Demonstration Clubs of Lynn County met in the county court room on Saturday, March 16. This meeting was for the purpose of planning the Better Homes Week, which is to be held in the American Legion Home April 15-20, according to Miss Thelma Greenwade.

The following committees were appointed:

Demonstration Home and Furnishing Committee: Mrs. R. W. Fenton, Chairman; Mrs. A. L. Faubion, Mrs. Lloyd E. McCormick, Mrs. J. E. Earles, Mrs. J. B. Vickers.

Program Committee: Mrs. W. Barton, Mrs. J. M. Seagr, Mrs. Forrester, Mrs. Strain, Mrs. A. A. Lawson, Mrs. D. G. Cook, Mrs. Lloyd McCormick, Mrs. H. M. Bright, Mrs. E. V. Starnes, Mrs. J. B. Vickers, Mrs. G. W. Hiekerson, Mrs. J. E. Earles.

Reception Committee: Mrs. J. E. Earles, Chairman, Mrs. J. A. Beasley, Mrs. A. A. Lawson, Mrs. Brightman, Mrs. Joe Unfred, Mrs. McCormick, Mrs. Spurgeon.

Publicity Committee: Mrs. Elliott, Chairman, Mrs. C. C. Williams, Mr. Ray Shaver, Mrs. Taylor White, Mrs. Carl Holden, Mrs. L. Lumsden, Mrs. J. F. Campbell, Mrs. E. M. Walker, Mrs. T. E. Clements.

The members of the program committee will meet on March 23 and plan out the program for the entire week. Don't fail to be at the American Legion Home Saturday, March 23, at 2:30 p. m.

### WHAT NEWSPAPER ADS DID

It was only a few years ago that the retail stores in towns and the smaller cities did the bulk of their week's business on Saturday. While the other five business days might have paid expenses the merchant depended upon the Saturday sales for the major portion of his week's profit. Needless to say the average merchant would have been exempt from excess profits taxes in those days.

The newspaper is given credit for discovering the possibility of scattering the Saturday peak load over the six business days of the week and it was newspaper advertising which has achieved the present more equitable distribution of the week's business. Saturday is still the merchant's busy day, but now he is only a little less busy on the preceding five days.

This is only one of the many services performed for business by newspaper advertising. It is irrefutable that a great part of the increase in business experienced by the retail stores generally in recent years has been created by newspaper advertising.

ing. Newspaper advertising has been the "Aladdin's Lamp" of the retail merchant. There are still isolated towns where one may see for himself what "might have been" the nation over if newspaper advertising had never been.

### ONLY ONE BUG SINCE 1912

If our ancestors had realized that plant diseases and insect pests do not appear spontaneously of themselves, but are introduced from countries where they are native or have become established, we might be free from many of the troublesome plant pests we are fighting today. Since the passage of the Federal plant quarantine act in 1912, no new major plant pest is known to have been introduced and become permanently established in this country, except one which came across the Mexican border.

### CORN FOR SILAGE

More food material for stock can be obtained from an acre of corn made into silage than from an acre of any other crop, in a large portion of the United States. In planting corn to ensilage, choose a variety that will mature sufficiently for silage before frost. Corn does not need to be so mature for silage as for the grain, and a later maturity variety can be used and a greater yield obtained. There is little, if any, advantage in planting a variety that produces foliage and stalk at the expense of grain, as the ears contain the most valuable part of the food. The greater the quantity of grain in the silage the more nutritious it is and the greater the saving of supplementary concentrates.

### DODDER'S MARRIED NAME

The names "hellbind" and "strangleweed," by which the parasitic plant dodder is sometimes called, are most appropriate. After dodder has established itself on a host plant, usually on alfalfa or clover, it loses hold of the ground and lives entirely on the host, from which it draws its nourishment and its vigor. Although dodder has been known to live over from year to year by means of small pieces of its stems, it is commonly

### C. E. CAMERON

is the representative of the Texas Electric Service Company in O'Donnell.

For any information about your electric light service call Mr. C. E. Cameron at Texas Electric Service Company, Lamesa, Phone No. L. D. 11 or at Lamesa Texas, Phone 237

introduced through the use of impure seed, both domestic and foreign. For this reason, clover and alfalfa seed should be carefully examined for dodder seeds, which are dull coated, with roughened or minutely pitted surfaces, and often have three flat faces. The seeds of dodder range from the size of a grain of sand to that of an alfalfa seed, or even larger, and they vary in color from dark, reddish brown to gray, green or yellow.

Cattle exceed all other domestic animals in number and value, totaling about 629,000,000 head. Asia has about two-fifths of the world's cattle, Europe about one fifth, with South America, North America, Africa, and Oceania following in the order given. This estimate includes all bovine animals, and in some countries, notably India, buffaloes are included.

A fanning mill for cleaning small grain is a good investment on farms where dockage is heavy. Removal of dockage from wheat and other grains before shipment from the farm makes higher-grade which brings a better price, and leaves the dockage which is a good feed for livestock. Also, the weed seed, chaff and light grain can be removed from seed grain, leaving only good seed for planting.

Soybeans, when properly cured, make almost as good hay as alfalfa and are less particular about the soil in which they grow. They succeed on nearly all types of soil, though do best on mellow, fertile loams or sandy loams. For hay, soybeans should be sown rather thickly—about 6 pecks to the acre—so that too large stems will not develop. Under

usual spring conditions comparatively shallow seeding is best. Poor stands often result from covering too deeply. In general, the land should be prepared as for corn. On land giving good yields of corn, when soybeans are grown following corn, they should produce a good crop without direct applications of fertilizer. On sandy soils of low fertility, however, fertilizers are needed.

Index Ads Get Results—Try Them

### "It Pays to Look Well"



The Fitch Shampoo is more than a shampoo. Applied with our super-service methods, it is a scientific scalp treatment.

Super-service is our motto—which means the very latest scientific equipment, standard toilet preparations, clean towels and absolute sanitation.

Tonsor Barber Shop  
NAYMON EVERETT, Prop.

Setting fire to the woods, a frequent practice in certain parts of the South at this time of year, is usually uneconomical and often results in direct money loss. Timber is a valuable asset—much too valuable to be destroyed or injured by fire. Well stocked with trees and unburned, an acre of Southern pine will grow 300 and 800 board feet of timber a year, which means \$2 come, or in some cases \$4 to \$6 per acre. Preventing fire among livestock farmer. When the fire, however, it call in a good veterinarian early.

# Safety

Every action by the officers of the institution is determined by one major consideration—

The safety of our depositors

In all our investments, in all of which we are guided by this policy—in your surplus money may be here for you day and night—and that ways be available for your use at the moment of your need.

## THE FIRST NATIONAL

"Security—Reliability—Conservation"

## When Your Suit Comes Home From the Dry Cleaners

Not only will it look like a new suit but you will be rewarded by longer wear. Nothing wears clothing like grime and grease for it takes the life out of the fabric. Begin today and send your suit and other apparel here for cleaning at regular intervals.

### C. E. RAY

Phone 66

## Announcement

We wish to announce to the public that we have purchased the M-System Meat Market, located in the M-System Grocery, from McGill Bros., and will operate same in the future.

It will be our aim at all times to serve the highest quality meats at the lowest possible prices. Service with satisfaction will be our purpose.

We want all old customers of the former management to continue with their patronage and especially invite those who have not been customers in the past to give us an opportunity to prove that our meats are of the highest quality and our service as good as the best.

Your patronage will be appreciated.

## M-SYSTEM MEAT MARKET

WILLIAMS BROS., Props.

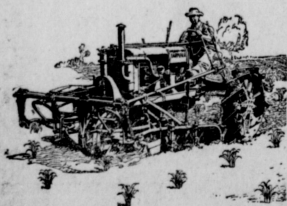
# Honest Pride

We are taking no little amount of time as a result of the fact, that despite the unexpected demands on supply and demand, the result of sudden and unexpected spells, during the past two months our complaint desk has been practically closed for commission for lack of calls. It is as an indication of your satisfaction with our efforts to give you as near perfect service as it is humanly possible to do.

## West Texas Gas Company

"Headquarters for Gas Appliances"

## 'FARM WITH FARMALLS'



### ONE MAN WITH A FARMALL CULTIVATES 20 TO 35 ACRES OF COTTON A DAY

The success of the cotton crop depends on weed eradication during the early growing season. That necessitates thorough cultivation at frequent intervals. The Farmall and two-row cultivator enables one man to cultivate from 20 to 35 acres a day. The clearance of 36 inches permits the Farmall to pass over the cotton without injuring the growing plants. The wheels are spaced for road traveling and the steering arrangement permits cultivating all rows consecutively. Let us demonstrate the Farmall cultivator.

McCORMICK-DEERING FARMALL

PALMER & TULL IMP. CO.

"Quality Implements"

Donley county cream shipments continue to increase. At Clarendon 214 tons galton cans worth about \$12,000 per can formed a shipment which recently brought \$2500 to the town. Some cream is shipped out by truck to nearby creameries.

Plainview is building up. The new Hilton Hotel will bring the skyline from four stories to eight. Montgomery Ward, J. C. Penny and other well known companies are building in the town, and permanent buildings are being erected for the Plainhand Plains Second Annual Dairy Show.

Practically All Farmers Are Ready to Plant

Farmers of this community are probably further along with their work this spring than in any previous year.

With plenty of moisture for listing and breaking, they promptly proceeded to take advantage of it in the early months of the year.

Not much planting will be done before the 15th of April, and the greater part will not begin until the first of May.

COTTON CO-OPERATIVES SHOW GREAT PROGRESS

The cotton cooperative marketing organizations now are on a better operating basis than at any time in the last ten years, declared James S. Hathecock, United States Department of Agriculture economist, addressing the cooperative marketing school at Raleigh, N. C., March 20.

"The severe economic depression of 1920-21," Mr. Hathecock said, "forced the South to give attention to the economic problems of cotton marketing. During the next two years, fifteen state-wide or regional cooperative cotton marketing associations were formed, and organization campaigns were conducted under high pressure to get the largest possible membership. Extravagant promises were made, but those in charge of the organization work believed during the period of advancing cotton prices, the speaker declared, the early cooperatives were fairly successful, but when prices declined the organizations discovered basic faults in organization, operating and sales methods. The transition period

was one of experimentation in new methods until the present type of organization is vastly different from that of the original organizations.

"The changes made in cooperative marketing of cotton," Mr. Hathecock said, "have effected a closer understanding and working relationship between the associations and their members. Under present contractual arrangements, responsibility is shared with the individual members, particularly with respect to the choice of time when sales are to be made. The members are studying the problems of marketing more carefully than ever before, and the result is certain to be more sympathetic and better informed membership.

"In the beginning, one of the principal purposes of cooperative cotton marketing was to avoid 'dumping' in the fall by distributing sales in an orderly manner throughout the year. It was expected that this program would result in the highest possible average prices. Since then the ideas of cooperative cotton marketing officials with respect to orderly marketing have undergone a complete change. Under the operation of the daily price fixation pools, for example, the association sells spot cotton whenever there is sufficient mill demand, but leaves the time of price fixation entirely in the hands of the individual members. The early belief that 'dumping' caused an autumnal price dip has been discarded as the behavior of prices has come to be better understood.

"A very important change has been made in cooperative marketing with respect to pooling practices. During the first few years it was the practice of cotton cooperatives to distribute the exact distributable proceeds of each grade and staple pool to the members participating in it without regard to prices being returned to members from other pools. Each pool was treated separately as if there were only one pool. Before very long it was discovered that in some instances higher prices per pound were being paid for the lower grades and shorter staples than for higher grades and longer staples.

"This situation has been corrected by carrying the sales of all pools in one sales account and distributing the total nondistributable amount to the various pools in proportion to the quantity in each pool and in accordance with proper commercial grade and staple differences. In this

manner the member receives full value for his cotton on a quality basis and is given the production incentives necessary to an improvement of his quality.

"A gradual increase in direct-to-mill sales has been in evidence during recent years, and some of the associations are now selling 100 per cent of their cotton in this way. Classing and grading services have been improved, and the cotton being offered by cotton cooperatives to-day probably comes nearer to being uniformly classed and stapled than at any previous time in the history of the movement."

WHAT OTHERS ARE DOING

According to the Terry County Herald, 19 registered Jersey cattle were shipped into Terry County last week and were purchased by farmers of that County. The Jerseys came from the famous King ranch at Tuff, Texas.

The Hamlin Herald states that the Texas Cement Co., of that place are enlarging their facilities for the manufacture of sheetrock. Hamlin is planning a new high school building, according to the Herald.

21 registered Jersey heifers in Post last week and they will be distributed among the Jersey Club, sponsored by the Rotary Club, so states the Post Dispatch. In addition to the 21 heifers, there were six that go to the Chamber of Commerce and these will be given away, one each month at the Trades Day.

Circulars announcing the speaking of Chas. Weeks, distributed over Dawson County by airplane, according to The Dawson County Journal. The order for the circulars was given at noon and at three o'clock they were being read over the entire county.

Giant Ford Airplane Is To Visit Slaton Next Tuesday

People of this section will be given an opportunity to see Henry Ford's latest contribution to the mechanical age, his giant tri-motored airplane at Slaton, Tuesday. The Slaton Motor Co., of Slaton has made it possible for this plane to visit this section. The plane represents a cost of \$61,000.00, it is of the cabin type and accommodates 18 passengers.

Mr. Stokes, manager of the Slaton Motor Co., states that "It is estimated that the operating expenses of this giant bird of the air is \$125.00 per hour." A parachute jump from the plane at an altitude of 300 feet will be made.

The coming of this plane to Slaton will afford us with a rare opportunity to see the latest in aviation and it is hoped that many will take advantage of it.



WILL STAND BY Jack this season at same location. \$10.00 on insurance. Would like to have your trade. James Pratt. 24-4tp

If You Want To BUY, SELL OR TRADE Anything, Anywhere, See

M. A. Scott Real Estate Co.

PHONE 157

At Rear of Old First Nat'l Bank Bldg. O'Donnell, Texas

EASTER SPECIALS

PRICES CUT TO THE CORE ON EVERYTHING IN THE STORE

SPECIAL FOR SATURDAY and MONDAY

\$15.95 Silk Dresses Special \$8.95

\$ 8.95 Silk Dresses Special \$4.95



The charm of the new apparel for summer wear is especially evident in this showing. Colors are appealing, styling is all that you could ask.

HERE ARE THE NEW HOSE

Colorful and Stylish



To enable each shopper to pick the hose best suited to her needs we have provided an ample selection of weights and weaves in the new colors.

A SPECIAL SHOWING OF NEW EASTER MILLINERY



An array of the season's most attractive styles awaits you here now. A liberal showing of the larger head sizes has been provided so that all may find a hat to fit in the style wanted.

SORRELS LUMBER CO.

Dependable Service and Materials

Phone 53 O'Donnell, Texas



EASTER FLOWERS

Easter Lillies, per bloom 75c
Begonias, per bloom 50c
Colias, two for 25c

Also Calla Lillies and Hydrangias

WHITSETT DRUG CO.

"Nothing but the Best"

C. C. DRY GOODS COMPANY

**BIG SALE**  
**Popular Dry Goods Store**  
**O'DONNELL, TEXAS**

**DEMONSTRATION SALE**

**Opens Friday, March 29, Nine A. M.**  
**Free Whistles for the Kiddies, Come early, It will be worth your extra effort**

In this sale we demonstrate to you that it pays to trade at the Popular Store. This season we are offering you the highest grade merchandise at real values. Just look over the bargains on this sheet. They are but a few of the thousands we are offering. Come and see for yourself as space forbids a full discription of the wonderful values and great savings.

**FREE**  
**To First 20 Customers**  
 Purchasing \$10.00 over we will give pair of \$1.00 Phoenix Hose.

**MEN'S**  
**Full Cut Triple Stit-  
 ched Coat Style Work  
 Shirt.**  
 Blue and Grey **69c**



**LADIES  
 DRESSES**

Here is a Sen-  
 sation.  
 100 silk dress-  
 es, values up  
 to \$16.75.  
**\$5.55**  
 No Exchanges  
 No Refunds

**MATTRESS TICK**  
 8-oz. Feather Tick, 32-in. wide  
 Per yard  
**25c**

**36-INCH PRINT**  
 Guaranteed Fast Color  
 Per yard  
**18c**

**TOWELS**  
 Double Terry Towels, 20x40  
 6 Towels for  
**\$1.00**

**OIL CLOTH**  
 Plain and Fancy Patterns  
 Per yard  
**29c**

**COVERALLS**  
 Children's Hickory Stripe Unionalls  
 3 to 8  
**79c**

**LADIES' SHOES**  
 New Spring Shoes—\$5.00 Value  
**\$3.88**

**SHIRTS**  
 Men's Fast Color Dress Shirts  
 All New  
**98c**

**CAPS**  
 New Spring Adjustable Caps for  
 the boys—Each  
**59c**



**MEN'S SUITS**

Men's 2 pant  
 Suits, all wool.  
 Values to \$35.  
**\$12.50**  
 Up

**SOX**  
 Men's Fancy Silk Sox—Pair  
**23c**

**DRESS PANTS**  
 Men's Wool Dress Pants, Values to \$5  
**\$2.85**

**WASH DRESSES**  
 New Spring Wash Dremes  
**89c**

**WORK SHOES**  
 Men's Friedman-Shelby Work Shoes  
**\$1.98**

**CHILDREN'S HOSE**  
 Regular 25c grade—6 pairs for  
**\$1.00**

**OUTING**  
 Dark Outing—12 yards for  
**\$1.00**

**OVERALLS**  
 "Leadall" O'Alls for men  
**\$1.29**

**FELT SLIPPERS**  
 Ladies Felt Slippers  
**59c**

**BED SPREADS**  
 Wrinkle Bed Spreads—68x108  
**\$1.88**

**SHIRTING**  
 All good dark patterns—per yard  
**11c**

**GINGHAM**  
 Assorted Colors—12 yards for  
**\$1.00**

**LADIES PURSES**  
 Comes in Variety of Colors  
**98c**



**MILLINERY**

Our entire stock  
 of New Spring  
 Hats, Ladies and  
 Children's at  
 Great reductions



**KOTEX**  
 3 boxes for  
**\$1.00**

**POPULAR DRY GOODS STORE**  
**O'DONNELL, TEXAS**

**LADIES S**  
 One lot Lad  
 All sizes