



**Saleh And Saleh**  
ATTORNEYS AT LAW  
GENERAL PRACTICE IN ALL COURTS  
502 N. 1st St. Phone 2171  
LAMESA, TEXAS

**Dr. O. H. NANCE**  
Optometrist  
528 N. 1st Lamesa ph. 554

**O'Donnell Barber Shop**  
LATEST STYLES CUT BY THE BEST METHOD  
Specialize in Flat Tops  
Prompt Service John

## CUSTOM Spraying

With Hi-Boy Sprayer  
SEE —  
**Burley BREWER**  
RT. 3 TAHOKA  
PHONE ATEEN 2231 11-1

Wanted — Sewing, Western wear a speciality. Mrs. Prentiss Scott, Aten 2848 27c

For sale — 1952 Ford Pickup, good condition, \$250, Bud Cross, Box 288, Phone 157

**Noble L. Rumbo, M.D.**  
Medicine and Surgery  
RUMBO CLINIC  
OFFICE TELEPHONE 61  
RESIDENCE PHONE 180

# Go now - pay later on the Santa Fe

Now enjoy all the fun and excitement of a Santa Fe trip and pay for it when you get back. Only 10% down. Spread the balance over 12, 18 or 24 months. (Minimum balance of \$60 required.) Good for all trips sold by the Santa Fe. Find out all the details of this convenient new way to travel.



Ask your local Santa Fe agent about the "Go now—pay later" plan



Serving Chicago, Texas, California and the great Southwest

## NOW FOR '61... 2 TOTALLY DIFFERENT TYPES OF CHEVY TRUCKS!

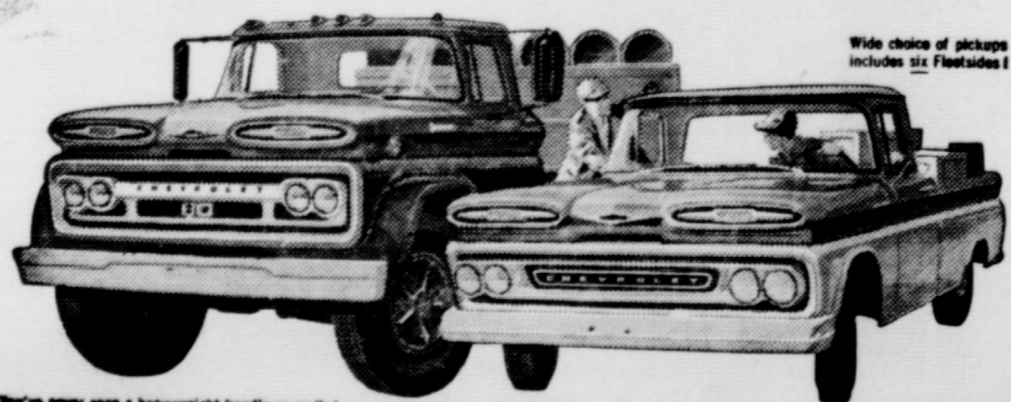


### 1. REAR-ENGINE CORVAIR 95's—THE TRUCKS THAT BEGAN WITH 4 WHEELS AND A FRESH IDEA!

Here are high-capacity haulers that offer the most accessible load space you ever saw. Think of up to 1,900 pounds of whatever you haul riding on a highly maneuverable 95-inch wheelbase. This design's a beauty. Features 4-wheel independent suspension, integral body-frame build, thrifty air-cooled rear engine—all kinds of fresh new ideas about truck efficiency and economy.

### 2. TORSION-SPRING CHEVROLETS—WORTH MORE BECAUSE THEY WORK MORE!

You actually feel the advantages of independent front suspension in the almost total absence of I-beam shimmy and wheel fight. The driver rides easy, the load's better protected, tires take less abuse, the whole truck is subjected to far less damaging road shock and vibration. Efficiency goes up. Profits follow. Look over the whole line—both types of Chevy trucks.



They're never seen as heavyweights handle so easily!

SEE THE GREATEST SHOW ON WORTH NOW AT YOUR LOCAL AUTHORIZED CHEVROLET DEALER'S!

## ELLIS CHEVROLET CO.

PHONE 126, O'DONNELL, TEX.

### SCHOOL EVENTS TO COME

- Oct. 24 — FHA Supper
- Oct. 27 — Jr. Hi Seagraves here
- Oct. 28 — Home Coming, Friendship here
- Nov. 2nd — Southern Assembly at 9 a. m.
- Nov. 3 — Jr. Hi. Lamesa, here
- Nov. 4 — Seagraves there
- Nov. 7 — Faculty meeting
- Nov. 14 — FHA Meeting
- Nov. 18 — End 2nd 6 weeks
- Nov. 19 — PFA dist. meet at Brownfield
- Nov. 24-27 — Thanksgiving

### O'DONNELL INDEX - PRESS

Established In 1933  
Box 546, O'Donnell, Texas  
Published Every Wednesday  
O. G. SMITH, JR., Owner  
Advertising Rate: 60c col. in.  
Entered as second class matter September 23, 1923 at Post Office at O'Donnell, Texas under Act of Congress on March 3, 1879.  
SUBSCRIPTION RATES  
In Lynn, Dawson and Borden Counties \$2 per year. Elsewhere in U. S. \$2.50 per year.  
Card of Thanks \$1.00. Classified advertising 4c per word, with minimum charge of 50c.  
Your label at top of paper tells date your subscription expires.

### POINTS FOR HIGH SCHOOL PARENTS

- Don't try to relieve your school days thru your child, mother-daughter team that "just like sisters" may do harm to daughter's
- Don't be taken in by wild about your high school or students, that may sweep town like a flash fire
- Don't spread these rumors them to the high school he can give you the facts.
- Don't just drop around the motion strikes you to visit student's classes — you are to embarrass him and make problem for the teacher.
- Don't ride roughshod over regulations and practices — Susie is going to a school will end at 11 o'clock — insist on her being home at 11.
- Don't line up on your yard side against the school or the or. Learn the facts and things thru.
- Don't be a drop-out parent your child starts to hitch he needs you more than before.



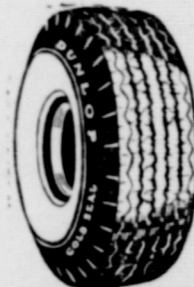
### There's a Better Way

A construction worker may know a lot about drills but he's not the man you'd go to for dental treatment.  
And if you were ill, chances are you'd look for the best possible treatment administered by a trained expert with years of experience in the field of medicine.  
Accept no less when it comes to insurance.  
Your independent capital stock agent has made insurance his lifetime work and is an expert counselor. He stands ready with the resources of the entire capital stock industry to provide you service 24 hours a day.

(Agency Name)



**MOORE INSURANCE AGENCY**  
Phone 220, O'Donnell



YOU'RE MILES AHEAD IN SAFETY WITH

**DUNLOP TIRES** POPULARLY PRICED

Lubbock Tire Co.

Homer Fannon, owner  
4110 AVE H Phone SH 7-2174  
Come to see us when you are in Lubbock. We want to visit with you whether you need tires or not.

## KNOW YOUR VOTING RIGHTS!

We feel that all legal voters of Texas should know—

No matter how you have ever voted . . .

Or in which primary you voted . . .

Or if you voted . . .

Or how your poll tax receipt is stamped . . .

You CAN vote for any candidate of any party on the November 8 ballot.

For Democrats who value the ideals and true aims of the Democratic Party, the only choice is Nixon and Lodge.

**TEXAS DEMOCRATS FOR NIXON - LODGE**

ALLAN SHIVERS, Chairman  
308 W. 15th, Austin

(Pd. Pol. Adv.)

### DEFOLIANTS AND DESICCANTS

Save \$35 per bale by machine harvest using harvest aid chemicals

Complete Line of Ortho Products

★ Ortho Liquid Cotton Defoliants

● Arsenic Acid 75

P.C.P. ---PENTA

**DALE THUREN FARM STORE**

★ In Tahoka and O'Donnell

## CLAUDE'S



All Kinds Cowboy and Western BOOTS — WESTERN MOCCASINS — LOAFERS — KINDS FINE LEATHER — EXPERT REPAIR ON SHOES AND BOOTS

FREE Trial Size with Purchase of

**REXALL SUPER PLENAMIN**

SAVE \$1.50  
America's Largest Selling Vitamin-Mineral Product

Buy a bottle of 72 tablets at regular price and get a bottle of 18 FREE

Value \$6.19 Save \$1.49

11 Vitamins, 12 Minerals in Each Tablet  
Use the free trial size—if not satisfied return large size unopened for money back.

COME IN—SEE THE OTHER SPECIAL SUPER PLENAMIN OFFERS!

AT OUR REXALL DRUG STORE

Lott Pharmacy

About 100 head of Hereford, Angus and Shorthorn will be featured in the first Performance Test Bull and Female Beef Cattle Sale. The sale will be held at the Car Lot Bull Barns, Ft. Worth, on Oct. 25.

USDA fire prevention specialists advise families to work out a simple emergency plan that is understood, rehearsed periodically, by all members of the family. They also recommend having fire fighting equipment such as rakes, axes and hoses handy.

Publication B-177 "Freezing Poultry For Home Use" has recently been reprinted for the third time by the Texas Agricultural Extension Service. It is available from the offices of local county extension agents.

Donations of surplus foods by the U. S. Dept. of Agriculture at home and overseas totaled almost 2.8 billion pounds in the year ending June 30, 1960. This is down only slightly from the all time record set the previous year.

For sale — nice modern 4 room house, bath, — 2 walk in closets, plenty water, electric pump, pavement two sides, fenced, also a furnished garage apartment. Will carry a nice loan. E. C. Harris

BUY, SELL OR TRADE — GUNS AND PISTOLS — WATCHES CLEANED \$2.95 — All Work Guaranteed — ★ *Haie Variety*



HIGGINBOTHAM FUNERAL HOME

"Dedicated To Helpfulness" 408 N. Austin St. Lamesa Phone 4585 24 Hour Ambulance Service Burial Insurance "Bonded Protection"

## Quality Ginning Is Our Business -- Try Us

This is a service organization and we are striving to serve you better.

## Wells Farmers Co-operative Gins

DEALERS IN --- COTTON, COTTON SEED AND COTTON SEED PRODUCTS B. J. (Shorty) McLaurin, Mgr.

WE'RE READY TO GIN YOUR ---

## COTTON

★ We have recently overhauled our gin and it is in first class shape.

★ Completely equipped with Moss Lint Cleaners

★ Fast, Efficient, Courteous Service.

★ Give us a try and we know you will want to gin with us.

## Producers Gin

Fred Raney, Manager

Phone 257 --- O'Donnell

## Save 3 Per Cent

## PAY YOUR STATE & COUNTY Taxes

NOW AND SAVE

3 percent discount will be allowed on all 1960 State and County Taxes if paid during the month of October.

Also don't forget to pay your Poll Taxes.

J. E. (Red) BROWN Tax Assessor and Collector Lynn County, Texas

### Research Pays Off ---

How much does research cost? The better question would be: What is research worth? Research is indeed the proverbial "stitch in time."

Medical research has brought about many outstanding drugs and spectacular operations which save individual lives and relieve suffering, but more outstanding and spectacular are the advances in preventive medicine that have been made which stop suffering before it starts.

Economically speaking, preventive medicine has saved the people of the United States countless dollars. A case in point is retrolental fibroplasia, an eye condition marked by the formation of fibrous tissue behind the crystalline lens. Prematurely born babies are often stricken causing partial or total blindness.

At first premature births were blamed. However, research financed by federal and private means discovered the cause to be the excessive administration of oxygen—employed regularly in incubators for premature infants.

This study cost approximately \$50,000. In the U. S. 5,000 children are blind because of retrolental fibroplasia. Each child will cost an estimated \$100,000 for education, training and support from birth to death—or a grand total of \$500 million. Caring for these 5,000 children in our generation will cost 100,000 times more than the cost of the research which prevents the disorder.

### CHURCH OF THE NAZARENE

A friendly Church serving a friendly community in a needy world invites you, Sunday school at 10 a. m. Morning Worship at 11:00 a. m. Evening Worship at 7:30 p. m. Prayer meeting each Wednesday at 8 p. m.

Custom Spraying — Defoliants and Insecticides — Hi-Boy Ground Applications — See J. W. Gardenhire, phone Aten 2238 2tc

For rent — nice modern house, rock finish just south of water tower, see John Earles.

Lost: our fertilizer spreader. Please return to O'Donnell Farm and Ranch Store

For sale — house to be moved, stucco, 2 bedrooms, see W. J. Shook Ivan Line or Elvin Moore

### GAS COMPANY ASKS RATE INCREASE HERE

Permission for a ten percent increase in gas rates is being asked of the O'Donnell City Council by the Pioneer Natural Gas Co. to meet rising costs of the product and its distribution. The same increase is being applied for in all other cities served by the firm.

The petition for the increase, submitted by C. I. Wall, president of the company, points out that the last gas rate increase here was in 1957, a hike in the minimum bill of 25 cents per month. The increase asked here and in the other cities would increase minimum bills from \$1.50 to \$1.65 and the 10 percent hike would continue in all brackets. Gas costs vary downward with volume used. Present average price per 1,000 cubic feet of gas consumed is 57.6 cents while the requested average price per 1,000 cubic feet would be 63.4 cents — an increase of 5.8 cents per 1,000 cu. ft. A graph in the petition shows that the average rate for all Texas cities is 75 cents per 1,000 cu. ft.

See us before you sell your "B" cotton, C N. Hoffman

### RENEW YOUR SUBSCRIPTION

THE O'DONNELL INDEX-PRESS

## STANLEY FUNERAL HOME

AND BURIAL ASSOCIATION

Day or Nite Call WY 84433 At Tahoka

"Thoughtful, Courteous Service"

We Accept Burial Policies Of All Companies

## Your Magic Key to -- BIGGER AND BETTER CROPS

For control of seed-borne and soil-borne disease organisms to promote

BETTER Stands, Better Quality Better Yields

## Plant Acid Delinted Seed

\$35.00 Per ton

## Cottonseed Delinters, Inc.

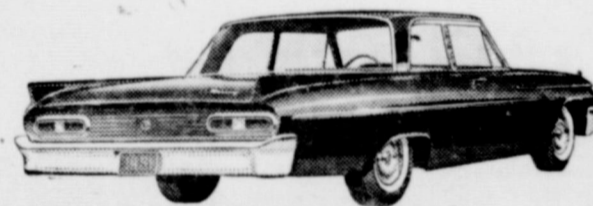
On Post Highway, East Tahoka

Phone WY 8-4115

Announcing a new and better kind of low-price car



1961 MERCURY METEOR 600

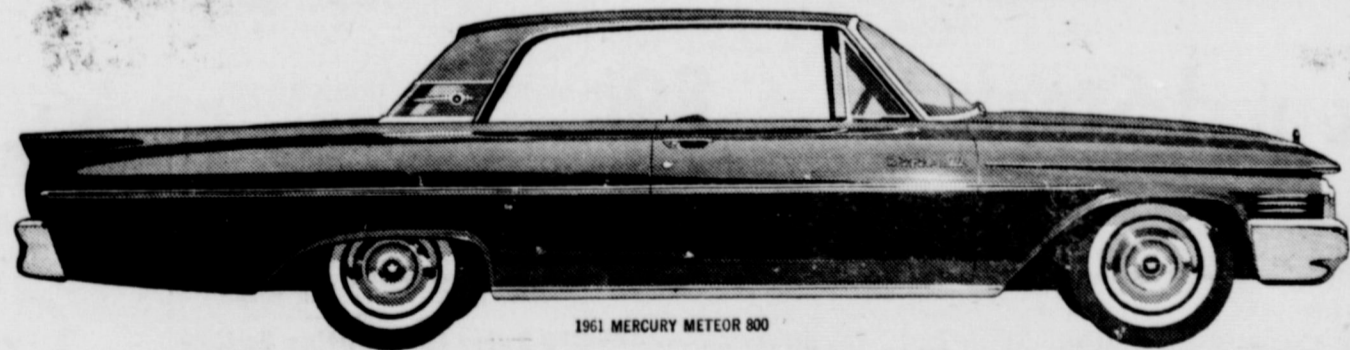


1961 MERCURY METEOR 800

Priced to compete with the low-price field!

## MERCURY METEOR

600 and 800 series



1961 MERCURY METEOR 800

### HIGHLIGHTS

**Costs less to buy! Far greater value!** Mercury prices are far lower this year, but just look at these extra values: • The first low-price car with a fine-car ride—only one with new Cushion-Link suspension. • Even roomier than 1960. • More soundproofing than any other low-price car. • Trimmer, more convenient size.

**Now 1-year or 12,000-mile warranty!** Your Mercury dealer is extending his warranty on all 1961 Mercurys to one full year or 12,000 miles, whichever comes first. See him for full information. He will be glad to show you a copy of his new warranty. Here's real proof of Mercury quality and reliability.

**Costs less to drive! New Super-Economy engines! 7 self-servicing features!** • Engines include Mercury's first "6" plus new V-8's that use regular gas—deliver up to 15% more gas mileage. • Self-protecting anti-rust-treated body. • Special Super-Enamel finish never needs waxing. • Mufflers are aluminum for more than double the life. • Brakes are self-adjusting. • You can drive 4,000 miles between oil changes. • Chassis is pre-lubricated for first 30,000 miles. • Spark plugs are self-cleaning. Stop in. See the newest and smartest buy in the low-price field today. LINCOLN-MERCURY DIVISION Ford Motor Company.

1961 MERCURY the better low-price car

\*Exclusive on all Meteor 800's, Montreys, and Mercury station wagons

## WIN A NEW MERCURY OR COMET! 50 CARS GIVEN AWAY FREE!

Enter the Mercury-Comet Sweepstakes today! See your Mercury dealer. Sweepstakes ends Oct. 31. Subject to state and local regulations

## FORBES MOTOR CO.

O'DONNELL, TEXAS

# BLOCKER GROCERY

Your S. & H. GREEN STAMP store

SPECIALS For Friday and Saturday

|  |   |
|--|---|
| Beef roast lb 59c<br><i>Chuck lb</i>             | FRANKS . . . 55c<br><i>Rath's All meat lb</i> |
| Sausage 2 lb 89c<br><i>Rath's Pure Pork 2 lb</i> | Smoked Jowls 29c<br><i>Sugar Cured lb</i>     |

|  |
|--|
| Crackers . . . . . 49c<br><i>2 lb box Salad Wafers</i> |
|--|

|   |
|---|
| VELVETTA . . . 2 lb. box 83c<br><i>"Kraft's" Cheese Spread 2 lb box</i> |
|---|

|  |
|--|
| Pickles . . . . . 25c<br><i>Concho Full Quart sour or dill</i> |
|--|

|  |
|--|
| Biscuits . . . . . 2 for 15c<br><i>"Kimbell's"</i> |
|--|

|   |
|---|
| SARDINES . . . . . 15c<br><i>Tall can Natural</i> |
|---|

|   |
|---|
| JELL-O . . . . . 2 for 15c<br><i>Assorted Flavors</i> |
|---|

|   |
|---|
| Lemonade . . . . . 10c<br><i>6 oz. "Keith's" Frozen</i> |
|---|

|  |
|--|
| Peas . . . . . 15c<br><i>10 oz. "Keith's" Frozen</i> |
|--|

TRADE WHERE MA SAVES MONEY FOR PA

## Weekend Specials

SPECIALS FOR FRIDAY AND SATURDAY

OPEN ON SUNDAYS

|  |
|--|
| Round Steak lb 89c                     |
| Pork Roast lb . . . . . 39c            |
| Weiners 3 lb Bag . . . . . 99c         |
| Fish Sticks 8 oz. Keiths . . . . . 25c |

|   |
|---|
| FLOUR 10 lb 89c<br><i>10 lb Paper Bag</i> |
|---|

|   |
|---|
| Blackeye Peas No. 303 cans . . . . . 2 cans for 25c |
| Fruit Cocktail No. 303 cans 2 for . . . . . 49c     |
| Powdered Sugar Brown or White 2 for . . . . . 25c   |
| Corn, Kountry Kist 2 for . . . . . 25c              |
| Tomato Sauce 3 cans for . . . . . 25c               |
| Green Onions bu . . . . . 5c                        |

**JACKSON'S GROCERY & MARKET**  
We Give Double Trist Stamps  
FREE DELIVERY SERVICE ANYTIME  
Where Customers Send Their Friends  
AT THE NORTH Y PHONE 150

### CARD OF THANKS

The family of Mrs. E. D. Archer wishes to thank our friends for the many kind things that they did for us during the illness and death of our dear mother. The flowers were beautiful, and we thank you so much for the food, the cards and letters. May the Lord bless each one of you in His prayer.  
Mrs. J. B. Hibbert, Mrs. L. D. Evans, Mrs. H. C. Warren, Mrs. J. L. Carlisle, Mrs. W. J. Kelly and Boyce Archer.

### ASSEMBLY OF GOD CHURCH

A welcome and service for all  
Sunday School 9:45 a. m.  
Morning Worship 11 a. m.  
Evangelistic service 7:30 p. m.  
Young people service 6:30 p. m.  
Midweek Service 7:30 p. m.  
Large enough to know you — small enough to serve you.  
Rev. D. R. Kirkendoll, pastor

### 10 Rules for Hunting Safety

The thrill of the hunt is exhilarating, and yet at the same time can be soothing. This paradox of emotions probably accounts for the tremendous popularity of the sport. But there is still another aspect — this one, not so attractive — the ever present possibility of an accident. During 1959 there were 159 accidental deaths attributable to firearms. While a large number were children who had pulled a "toy" gun out of Dad's bureau, most were outdoor hunting or allied "cleaning" accidents. By October 1, 1960 — during dove hunting season — there were four deaths from hunting accidents. However, death from firearms is not the only way to die during hunting season. A good many hunters slip and fall over precipices while gazing off into the distance instead of watching their steps on unsure ground. But the greatest danger is still the hunter's weapon. Here are the ten commandments of shooting safety, which if followed seriously may save your own or your partner's life.

1. Treat every gun with the respect due a loaded gun.
2. Watch that muzzle. Carry your gun safely — keep the safety on until ready to shoot.
3. Unload guns when not in use, take down or open breech — guns should be carried in cases to shooting areas.

For sale — nice modern 4 room house, bath, — 2 walk in closets, plenty water, electric pump, pavement two sides, fenced, also a furnished garage apartment. Will carry a nice loan. E. C. Harris

BUY, SELL OR TRADE — GUNS AND PISTOLS WATCHES CLEANED \$2.95 All Work Guaranteed

### ★ Hale Variety

Wanted — Sewing, Western wear a specialty. Mrs. Prentiss Scott. Aten 2348 2tc

For sale — 1952 Ford Pickup, good condition, \$250. Bud Cross, Box 288, Phone 157

See my Christmas and all occasion cards at my home or call 259 Miss Alene Line.

Custom Spraying — Defoliants and Insecticides — Hi-Boy Ground Applications — See J. W. Gardenhire, phone Aten 2283 2tc

For rent — nice modern house, rock finish just south of water tower, see John Earles.

For sale — house to be mo ed, stucco, 2 bedrooms, see W. J. Shook Ivan Line or Elvin Moore

For all T V Repairs, call JIM BURKETT Aten 2366, Free pickup and delivery 1 1 61 p

For Sale — 2 bedroom house, 306 6th st. See A. E. Baker, Box 289 2tp

For sale — Windmill, 5 ft. wheel sucker rod, pipes, Mrs. C. L. Tomlinson

## Specials For Friday and Saturday

|   |
|---|
| 14 oz. Ireland's Barbecue . . . . . 69c           |
| No. 2 can Libby's crushed Pineapple . . . . . 29c |
| No. 1 can Tomatoes . . . . . 29c                  |
| Northern Napkins 2 pkg for . . . . . 25c          |
| 4 rolls Como Tissue . . . . . 25c                 |
| Scrappy Dog Food 3 cans for . . . . . 25c         |
| No. 1 Brookdale Salmon . . . . . 59c              |
| 25 lb Light Crust Flour . . . . . \$1.99          |
| Chicken of Sea Tuna . . . . . \$1.39              |
| 1 lb Imperial Oleo . . . . . 40c                  |
| Bologna lb . . . . . only 46c                     |
| Longhorn Cheese lb . . . . . 59c                  |
| Golden Yellow Bananas lb . . . . . 15c            |
| Fresh Onions 2 bunches for . . . . . 15c          |
| Alvacodas medium . . . . . each 10c               |



★ ★ Double Frontier Stamps On Wednesday WE GIVE FRONTIER SAVING STAMPS

## Line Grocery And Market

## Money Savers

|  |
|--|
| Oleo 2 for 29c<br><i>Diamond Brand</i> |
|--|

|   |
|---|
| Biscuits 3 for 19c<br><i>Kimbell sweet milk or buttermilk</i> |
|---|

|  |
|--|
| Tomatoes 2 for 31c<br><i>Hunts, sold pack 300 size can</i> |
|--|

|                                       |
|---------------------------------------|
| Mazola oil 59c<br><i>Quart Bottle</i> |
|---------------------------------------|

|   |
|---|
| Towels 2 for 39c<br><i>paper, Kleenex</i> |
|---|

|   |
|---|
| Napkins 29c<br><i>Kimbell 200 pk Embossed</i> |
|---|

|   |
|---|
| Coffee 65c<br><i>Kimbell's 1 lb can</i> |
|---|

|  |
|--|
| Mashed Potatoes 2 for 45c<br><i>Instant, Betty Crocker</i> |
|--|

|   |
|---|
| Shortening 59c<br><i>3 lb can Kimbell</i> |
|---|

WELCOME HOME --- EX - STUDENTS

1 day film developing

★ 50 Top Hit Records

Visit Our Record Rack



|                             |
|-----------------------------|
| Pork chops 59c<br><i>lb</i> |
|-----------------------------|

|                                     |
|-------------------------------------|
| Cheese lb 59c<br><i>Longhorn lb</i> |
|-------------------------------------|

|  |
|--|
| sliced Bacon lb 59c<br><i>Armour Star lb</i> |
|--|

Fresh Fryers and Hens

\$\$\$\$\$\$\$\$\$\$\$\$\$ SILVER DOLLAR THRIFT STAMPS



\$\$\$\$\$\$\$\$\$\$\$\$\$

★ ★ WE GIVE DOUBLE SILVER DOLLAR THRIFT STAMPS ON EVERY WEDNESDAY

# MANSELL BROS

PHONE 50

SPECIALS FOR FRIDAY And SATURDAY FREE DELIVERY

PHONE 50