

# The O'Donnell Index

The best advertising medium in Lynn County. Read in 1,800 homes each week.

O'DONNELL, LYNN COUNTY, TEXAS.

FRIDAY, OCTOBER 18, 1929

NUMBER 4

## General Rains Hard Cotton Picking

Heavy rains of the past week have retarded the cotton picking which is shown by the seven gins of the mill Wednesday at noon having ginned 2240 bales of crop. The past week's 1432 bales which is approximately half the amount of the week previous.

Estimates to date show that of the same date a year ago 2624 bales had been ginned. This year's cotton crop is equal to that of last year.

## Plant at Lamesa

The new slogan of the Lamesans in charge of the plant here is "The South Plains of Texas." In the body of the map another sign reads: "The eyes of Texas are on the South Plains."

On a scroll sign at the side of the map the fair visitors read that the South Plains has ideal dairying, cattle, hog and poultry raising conditions, that grain sorghums with 98 per cent the feed value of corn, produce an average of 30 bushels per acre, that cotton produces an average of 3.5 of a bushel and has an average of 21 inches per year of rainfall, 17 inches of which comes during the growing season from April to October.

A statement made here several years ago by Arno S. Pearce, secretary of the International Federation of Master Cotton Spinners at Manchester, England is quoted on the map as follows: "There is no other cotton section in the whole United States which can compete with so low an average cost of production."

The fair visitors are likewise reminded of the splendid weather conditions on the South Plains which has an altitude of 3,251 feet above sea level, or a thousand feet higher than the Ozark Mountains with an inexhaustible supply of pure, shallow water and 3,550 hours of sunshine per year.

Another sign reminds the state fair visitors that 5,000,000 acres of undeveloped land awaits them and can be had at low prices and with convenient terms.

Pictures of agricultural scenes over the South Plains section are shown in the Lubbock County booth and information about Texas Agricultural Experiment Station Number 8 and other institutions serving the entire Plains section is included in the exhibit.

W. T. McKinley, manager of the Lubbock Post Company assisted in setting the exhibit up and was responsible for the mechanical devices that rotated a wheel representing the South Plains section which proved one of the best drawing features of the exhibit.

Ed Bishop, secretary of the Floyd Chamber of Commerce set up the Floyd County exhibit which was also unique. A tower in the center of the platform supporting two moving airplanes called attention to fair visitors that Floyd County holds the "non-stop" production record.

Around this attraction was agricultural products to prove this contention and roads with laden trucks showed nine Plains towns including Croston, Ralls, Matador, Silverton, Lockney, Sterley, South Plains and their connection with Floydada.

The Garza county exhibit set up by the ace exhibitor George Samson, secretary of the Post Chamber of Commerce, winner of the blue ribbon at the West Texas Fair at Abilene and the Panhandle South Plains Fair at Lubbock is expected to run a close race for first honors at the state fair.

W. M. Gourley, vocational agricultural teacher at Silverton set up the Briscoe County exhibit and Claude Holley, Secretary of the Chamber of Commerce of Stanton and Mrs. Holley set up the Martin County exhibit. All three of these exhibits are enter-

## SIXTY PRESENT AT MONTHLY BANQUET

About sixty were present at the regular monthly banquet of the Chamber of Commerce which was held in the Curtis Building on the west side of the square. Stamford, Lamesa and Lubbock were represented with speakers. Rev. Joe Wilson, pastor of the Baptist Church acted as toastmaster.

The meeting was a spirited one and entertaining talks were made by the County Agent Davis of Dawson county and Editor Smith of Lamesa; C. W. Baker of Stamford; Mr. Reeves of the Board of City Development of Lubbock and Judge Kilgore also of Lubbock. Judge Kilgore was the principal speaker of the evening and his remarks were both educational and entertaining.

Local parties appearing on the program were Secretary G. S. Dowell, C. H. Mansell adv. Rev. Joe Wilson. The Baptist ladies served the luncheon.

## MIDLAND COLTS TO PALLY LOCAL SQUAD HERE FRIDAY

LAMESA—The Midland Colts are scheduled to play the local high school football club Friday of this week according to F. T. McCollum, principal of the High School and Coach of the local squad. According to Supt. Lackey of Midland some two hundred fans will accompany their team to Lamesa Friday to give ample backing to the Midland event. The game promises to be one of interest. The local team has won all their games this season and has not had its thirty and line crossed except in the game last Friday when Levland chalked up a touch down by completing a pass for thirty five yards.

## LAMESA LUNCHEON CLUB OUTLINES GOOD PROGRAM

LAMESA—The Lamesa Luncheon Club, through its steering committee headed by W. D. Arnett, chairman, S. L. Forrest and J. E. Barron has definitely outlined a program of work of much interest to local circles. In the next few weeks it proposes to observe Fire Prevention, Health and Sanitation, County Fair, Civic, Educational, Ladies, Farmers, Meat and Milk, Good Roads, Thanksgiving, weeks according to announcement of V. Z. Rogers, President of the Club. The Club meets each Tuesday of each week and has the distinction of not missing a meeting in the past three years. The meetings of the club are open to all who care to attend each week and the attendance is averaging 40 to 50 at each meeting.

## EPWORTH LEAGUE HAS COUNCIL MEETING TUESDAY

On Tuesday night, October 8th, the officers and our instructor met at the home of Mrs. L. E. Robinson for a council meeting.

We adopted a policy, a budget and tended to other business. We also planned our programs for each department superintendent for a month ahead of time. We also have a secretary book now with our reliable secretary keeping record and recording past and present League work.

We feel that by having these monthly council meetings that we can do much better work.

Miss Bessie Mae Tate of Lubbock spent last Monday the guest of friends.

ed in the severe card competition and are expected to be in the top prizes. They all have a wide variety of prize winning products that show what is being raised on the South Plains.

The Panhandle Plains, Inc., exhibit represents the Panhandle and South Plains section. This exhibit is set up in these regular county exhibit spaces and the big space is well filled with all kinds of crops that are being produced on the Plains of Texas. W. H. Upchurch, county agent of Randall County and Hamilton Luna, exhibit manager of the Panhandle Plains, Inc., set up the exhibit and are distributing literature to the crowds at the fair about the Plains section.

Visitors to the fair are showing a big interest in the Plains section this year, Reeves declares, and the exhibits are doing lots of good.

## SKY JUICE COVERS O'DONNELL TERRITORY

The entire O'Donnell territory was covered by slow steady rains last Saturday. The moisture amounted to approximately three quarters of an inch and will be of much benefit to the large acreage of wheat in this section. It will also be very beneficial to the late feed crops.

Cotton picking was completely halted until the first of this week when the sun came out drying the fields sufficient for pickers to resume their work.

## O'Donnell Eagles De- feat Slaton Squad

The O'Donnell Eagles engaged the Slaton eleven on last Friday in one of the most interesting games played on the local gridiron this season. The final score was 6 to 0 in favor of the Eagles.

## LAMESA BAND TO ENTER STATE CONTEST AT DALLAS

LAMESA—According to Conway King, local director of the Municipal Band, he is to enter the band in the State contest at the State Fair at Dallas the 20th of October. King says the band is in the very best of competing condition and is built around the nucleus of first place winning at the West Texas Chamber of Commerce Convention at Amarillo three years ago. King has directed the local band for the past two years coming to Lamesa for this position from Weatherford. He is well known among band directors of the state. King states the State Band contest will not take place in connection with the West Texas Chamber of Commerce Convention at El Paso but the officials of the state organization decided to hold it at Dallas this year as a single feature.

## West Texas Wins Honors at State Fair

Garza County Display is Winner of Third Place at Dallas

West Texas carried off high honors in the agricultural exhibit competition at the State Fair of Texas, Dallas, taking the three first prizes. Hemphill county in the north Panhandle was first, Eastland county second, and Garza county, third, according to information received here from Dallas late yesterday.

The Garza county exhibit, arranged by George Samson, secretary of the Post Chamber of Commerce, has placed among the three highest counties at the state fair for the past four years, taking first place in 1926. This year's display, in addition to the state fair honors, won first place last March at the Fat Stock Show in Fort Worth, placed first at the West Texas fair at Abilene, and first at the South Plains Panhandle fair here.

One of the few South Plains counties to enter the agricultural exhibit contest, the Garza display demanded the attention of thousands of fair visitors, according to word from Dallas. The exhibit is said to have reflected credit to the entire South Plains section.

Harrison county was fourth and Lamar fifth. Prize of \$200, in addition to a ribbon, was awarded to each of the winning counties.

Mr. and Mrs. Guy (Smiling Slim) McGill who have been residing in Tahoka the past few months have moved back to O'Donnell. Slim is in charge of the Market Department at the City Grocery.

Mr. and Mrs. Jimmie Eason of Abilene have recently located here, where Mrs. Eason will be connected with the Hassen Dry Goods Co. Mr. Eason will probably be connected with one of the Barber Shops of this city.

Mr. Robert Clements of Big Spring who underwent an operation about three weeks ago for appendicitis is reported much better and is expected to return to his home Sunday. Mr. Clements is a son-in-law of W. C. Parks of this city.

## Trades Day Visitors Awarded 46 Prizes

## El Paso Planning to Entertain 15,000 Vis- itors at Convention

El Paso is planning to entertain more than fifteen thousand visitors during the Eleventh Annual Convention of the West Texas Chamber of Commerce, October 24-25-26. The pleasure is being left undone for the pleasure of the visitors. Day and night programs have been planned, but there will be no entertainment features in the forenoon, this being given over for the discussion of the problems confronting various phases of West Texas prosperity and development. The Plaza, in the heart of the business district, has been set aside for the different towns and communities to exploit their opportunities, present programs and publicity stunts of whatever character they desire to offer.

The Military Review at Fort Bliss, offering one of the greatest scenes of the kind since the World War, the downtown military parade and convention parade on the second day, and a night football game are but a few of the outstanding entertainment features.

Women visitors at the convention will be honor guests of the women's department of the El Paso Chamber of Commerce at a reception in Liberty Hall on the evening of the opening day, October 24th. Wives, sweethearts and friends of the visiting delegates will have an opportunity to meet their hostesses and El Paso's leaders in women's club work.

The crowning event of the convention will be a gorgeous Spanish Fiesta in Juarez on the closing day. Bull fights in the arena both afternoon and evening will form part of the program, which Angel Martinez is in charge.

A flood of visitors are expected to start arriving in the city the day before the convention opens. Special trains are being made up from practically every section of the state, and hundreds of hotel reservations have already been made.

President-Manager A. M. Bourland today announces the official program for the Eleventh Annual Convention of the West Texas Chamber of Commerce to be held in El Paso October 24-25-26. A number of important committee meetings not listed on the official program will be held. The plan of business for these sessions follows:

Thursday, October 24, 1929  
Opening Session—Liberty Hall.  
9:00 a. m.—Massed band concert—Liberty Hall.  
9:30 a. m.—Concentration called to order by H. L. Birney, President of the El Paso Chamber of Commerce.  
Song—Chas. Andrews, El Paso, leader.  
9:35 a. m.—Invocation—Rev. Angie Smith, Pastor Trinity Methodist Church, El Paso.  
9:40 a. m.—Address of Welcome, Mayor R. E. Thomson, El Paso.  
9:55 a. m.—Response—Hon. Hunter Metcalf, Marfa, Texas.  
10:15 a. m.—Presentation of Hon. A. M. Bourland, Pres.-Mgr. W. T. C. C.  
10:20 a. m.—President's Annual Address.  
10:40 a. m.—Announcement of Convention Working Committees.  
10:45 a. m.—Music.  
10:50 a. m.—Greeting and Introduction of Special guests.  
11:30 a. m.—Address by Hon. Dan Moody, Governor of Texas.  
12:20 a. m.—Announcements.  
12:30 Noon—Noon Recess.

Afternoon  
2:00 to 4:00 p. m.—Group meeting and "My Home Town" Contest.  
4:00 p. m.—Military Review. Other entertainment features.  
7:30 p. m.—Delegation Stunts—Pinza.  
Friday, October 25, 1929  
7:30 a. m.—Special Breakfast.  
9:00 a. m.—Massed Band Concert—Liberty Hall.  
9:30 a. m.—Convention called to order by Pres. A. M. Bourland, Song by Chas. Andrews, El Paso, leader.  
9:35 a. m.—Invocation—Rev. Geo. Gassett, pastor of First Christian Church.  
9:40 a. m.—Special Music.

High and Low Fourth  
Friday, October the eleventh the fourth grade entertained in chapel by giving a short play entitled, "Columbus and the Prior."

The high 4th grade pupils who made 100 in arithmetic every day for a week are Willis Kirkland and Roxie Terry.

The fourth grade girls are preparing a short program to be given on Wednesday afternoon at the P. T. A. We hope to have a large number of parents present.

FRESHMAN CLASS NEWS  
The Freshman class has organized as follows:  
President—Loal Pugh.  
Vice-President—Lois Ash.  
Secy.—Treas.—Margaret Miller.  
Class Colors—Old Red and Silver.  
Motto: "Not at the top but Climbing."

Vernon Kirkland—Sergeant of Arms.  
Mr. Burkhalter is our sponsor, which we are very proud to get. Though we lost Mr. Gilbreath we have elected Mr. Burkhalter and we feel we are starting off right. If we do get started right, we all think we will do fine. We also have some very active officers of the Freshman Class.

REPORTER.

INTEREST GROWING IN IM-  
PORTING OF JERSEY COWS  
INTO LYNN COUNTY TEXAS  
County Agent Ray Shaver reports that considerable interest is being manifest in the importation of the car load of Jersey Cattle which the Tahoka Chamber of Commerce is sponsoring. Several people have interviewed him and he thinks that he will easily secure orders for the car load, within the next few days.

Mr. Shaver is very anxious to get in touch with those desiring to add a good Jersey bull to their herd. It is his plans to secure enough good registered bulls to complete at least two bull circles in Lynn county in this shipment.

9:45 a. m.—Address by Hon. R. C. Dillon, Governor of New Mexico.  
10:15 a. m.—Address, Texas Highway Program by Hon. Jewel P. Lightfoot, Fort Worth.  
11:15 a. m.—Report of Committee on changes in by-laws, operation plan, etc., by Walter D. Cline, chairman, Wichita Falls.  
12:30 Noon—Announcements, recess.  
Afternoon  
2:30 p. m.—Military and Delegation Parade.  
Night Football game, etc.  
Saturday, October 26, 1929  
9:00 a. m.—Massed band concert—Liberty Hall.  
9:30 a. m.—Convention called to order by President A. M. Bourland.  
Song—Chas. Andrews, El Paso, Leader.  
9:35 a. m.—Invocation—Rev. J. E. Congdon, Pastor First Presbyterian Church.  
9:45 a. m.—Special Music.  
9:45 a. m.—Finals, "My Home Town" Contest.  
3:00 p. m.—Business meeting of new directors.  
7:30 p. m.—Guests of Juarez, fun, frolic, etc.

**WOMEN'S CLUBS DC GOOD WORK, IMPROVEMENT SHOWN**

Much Improvement Shown by Exhibits at Fair, Miss Thelma Greenwade Says

(By Thelma Greenwade) The Women's Department of the Lynn County Fair was extremely better this year than it was last year. In each department we can see a lot of improvement, and that is what a Fair is for. To some it may be to make a few dollars but what value will the few dollars be to you if it will not be educational?

The Lynn County Fair gives a clear insight to the progressiveness of Lynn County and it is truly a grand place to live.

In the Home Demonstration Club work we had 8 clubs with an exhibit. This is fine for this hard year we might call it in a way, yet it could have been 100 per cent just as easily as it was eight clubs.

This filled the score cards of Lynn County and most everyone has the complete State Fair Score Card.

Each of these clubs has completed six demonstrations each namely: Poultry, Gardening, Sewing, Home Improvement, Food Preservation and Dairying. Almost every member has worked on these mentioned demonstrations and some have worked on one extra like the 4-H pantry, special Garden, Special Poultry and Special Turkey.

Thus in the Women's Work this year they have completed over 110 demonstrations now, and will do food preparatin the last of this year's work.

In the judging the places were as follows: Wilson, first; O'Donnell, second; Midway, Third; New Home, Fourth; T-Bar, Fifth; New Lynn, sixth.

In the Girls 4-H Club Work, 46 girls made some form of exhibits, 22 of this number made complete exhibits. Isn't that good? By that we mean that 22 of these girls have completed five demonstrations each, making a total of 110 demonstrations complete, to say nothing of those who have not completed all demonstrations, but have done some of the five. Is this not worth while? Let's everyone get behind it and push it along because on these girls the future depends.

**GENERAL MOTORS PROVING GROUND PRINCIPAL REASON OF CHEVROLET'S SUCCESS**

Chevrolet test cars at General Motors Proving Ground have already been driven upwards of five million miles, according to James M. Crawford, chief engineer of the company; who declared last week that use of this vast outdoor laboratory has been one of the principal reasons for Chevrolet's consistent success.

"An average of 12 test cars are in constant operation, purring up steep inclines, plowing through sand, mud and snow, driving into the teeth of heavy winds, testing speed and endurance on the track and subjecting themselves to every known performance trial," he said. These cars are not retired until they have been driven between 30,000 and 50,000 miles.

"After an experimental model attains this mileage it goes to the experimental laboratory to be dismantled. Every part is inspected, all evidences of wear noted. If a detail is not as it should be, work starts immediately developing a new part or process to replace the old.

"The new feature is then built in an entirely new car or three new cars if the operation is vital and this in turn is subjected to the Proving Ground tests. This cycle continues until we have completed satisfaction. In the case of the new six, 100 different experimental models were tested over a period of four years.

"In addition to using the Proving Ground to develop new models and engine features, Chevrolet uses it constantly for checking production cars, and it is this phase of the work that is perhaps the most interesting to the public.

"In order to get an unbiased opinion of these production jobs, they are selected at random from the shipping platform at Flint and put directly on the Proving Ground. Here they are given a general check before going on the regular schedule.

"After every thousand miles for the first 5,000 miles they are ridden by the engineers. After this they are ridden at only 5,000 mile intervals. Performance checks are carefully computed after 2,000, 5,000 and 20,000 miles. At the end of 20,000 miles they are completely dismantled and all parts are thoroughly inspected.

"In this way a chart is set up showing the progress made in design and manufacturing practice from month to month and year to year.

"Follow up work on these production cars brings out forcibly the co-operation that exists between the manufacturing and engineering de-

partments. Not only do the engineers have reports on these cars but the manufacturing division receives separate reports from its own organization inspecting these tests. Thus changes in manufacturing methods can be effected almost immediately."

**INTEREST GROWING IN IMPORTING OF JERSEY COWS INTO LYNN COUNTY TEXAS**

County Agent, Ray Shaver reports that considerable interest is being manifested in the importation of the car load of Jersey cattle which the Tahoka Chamber of Commerce is sponsoring. Several people have interviewed him and he thinks that he will easily secure orders for the car load, within the next few days.

Mr. Shaver is very anxious to get in touch with those desiring to add a good Jersey bull to their herd. It is his plans to secure enough good registered bulls to complete at least two milk circles in Lynn county in this shipment.

**ENROLLMENT AT TEXAS TECH THIS YEAR TOTAL 2030**

LUBBOCK, Texas, October 15.—With a nonenrollment this term of 2,030 students, 300 more than at this date last year, Texas Technological College has exactly the same number on the faculty, it is pointed out by President Paul W. Horn. And he states further that even with this twenty per cent increase in student body the appropriation made by the State to pay salaries is \$10,000 less than last year and the amount for maintenance is \$17,000 less. Also the appropriation for the summer session is one-third less although 1,300 students attended the last summer session.

Notwithstanding the serious situation there is a very fine spirit of co-operation and the best of feeling in evidence on all sides, President Horn further points out. The present situation, according to Business Manager W. T. Gaston, makes it necessary for the administrative and teaching forces at Texas Technological College to learn a new meaning for the word "economy." Both he and the President, however, feel certain that the State of Texas will not allow the institution to be crippled or hampered in its growth.

**HELPING TO BUILD TEXAS**

Success of the Houston ship channel has inspired emulation by other ambitious Texas cities. Brownsville has voted \$2,000,000 and promise \$1,000,000 more toward construction of a channel from Brazos de Santiago pass, provided the undertaking is endorsed by the Federal Government. Harlingen is seeking a channel along the Arroyo Colorado to Laguna Madre and thence across this body of water to and across Padre Island to the Gulf.

Italy has given a Texas asphalt company an order for 100,000 tons of asphalt a year for the next ten

years and work filling the initial shipment was begun at Uvalde roads that Caesar built 2,000 years ago.

The new Gulf Refining Co. plant now nearing completion at Sweetwater and the plant of the United Gypsum Co. at Sweetwater will use 2,400 horsepower in electric current daily or twice as much as the entire city of Sweetwater consumes. The Gypsum Company recently abandoned its own power plant of steam and gas engines because it found electricity cheaper.

Temple's new municipal building, to be dedicated some time in October as a memorial to the war dead of that vicinity, is nearing completion at a cost of \$200,000.

C. D. Spelce of Clay County began topping and budding his 145 acres of native pecan trees in 1918. Since 1925 he has sold \$17,400 worth of improved pecans.

Big Spring dedicated with imposing ceremonies its new 230-acre airport, the program continuing thru Sept. 11 and 12. It has two big steel hangars, machine shop, administration building and is equipped with border, flood and beacon lights.

Runge, which recently sold its municipal light plant to the Central Power & Light Co., will use part of the \$85,000 consideration to retire bonds and the remainder for civic improvements, including a new city hall and fire-station.

Expansion of the Three Rivers Glass Co. has necessitated opening a general sales office in Dallas and district offices in Oklahoma City, Little Rock, New Orleans and Houston. In 1922 the company's sales totaled \$16,000. In 1928 they were a half million. In 1929 the indicated total is three-quarters of a million and with the increased organization the 1930 total is expected to be between \$1,000,000 and \$1,500,000. Its plant is located in Texas.

**CLOVER HALVED THE GRAIN AND DOUBLED THE MILK**

Rusk—As a result of one sweet clover demonstration last year, W. L. Knapp, county agent, has been able to place 1500 pounds of yellow blooming sweet clover seed with Cherokee county farmers recently. Some hairy vetch and biennial sweet clover has also been placed.

Last year Mr. Thurmond grazed two acres of vetch through December and January and then removed the stock until March 24th when he turned them in again until early June. During the latter period a four-acre sweet clover patch was available and 14 head of cattle and three horses grazed the two fields until the plants seeded. He cut the grain ration for dairy cows in half during this time and says the milk production doubled.

Cuero—By producing pork at a feed cost of \$4.69 per 100 pounds, William Oncken, 4-H club boy of Prairie View Community has set the high mark in pork production for De Witt county, J. A. Oswald, county agent reports. The pig weighed 247 pounds when sold, brought 9 1-2 cts. per pound, and made a net profit of \$9.21 for the boy's time. The ration consisted of corn and home mixed protein supplement. Other local club boys who have done well with pigs are Clemence Oncken who made a labor profit of \$5.97 on his pig, and Alvin Bade of Arneckeville whose labor profit was \$7.07.

\* \* \* \* \*

**\* BUSINESS AND PROFESSIONAL DIRECTORY \***

\* \* \* \* \*

V. O. KEY  
Abstracts, Loans And Insurance  
Key Building  
Lamesa, Texas

GIBSON AND MAY  
O'DONNELL AND LUBBOCK  
TRUCK LINE  
General Hauling  
Phone 21 or Phone 48  
O'Donnell, Texas

I. O. F.  
Meets Every Friday Night at Odd Fellows Hall  
O'Donnell Texas  
Visiting Brothers Welcome

COMING  
"Abie's Irish Boy"  
Monday and Tuesday  
October 21 and 22  
LYNN THEATRE

**Cotton Pickers Supplies**

Our stock of supplies for the cotton pickers are more complete now than ever before. See us when in need of:

**BACHELOR STOVES  
TENTS, SCALES WAGON SHEETS  
AND ALL KINDS OF SUPPLIES.**

Anything that can be found in any date hardware store can be found here

LET US KNOW YOUR WANTS

**Singleton Hardware Co.**

**NOW SHOWING**

The Newest in  
**Crosley Radios**

And  
**Brunswick Records And Machines at**

**FAIRLEY MUSIC CO.**

**SORRELS LUMBER CO.**

Dependable Service and Materials

Phone 53  
O'Donnell, Texas

Fine all wool  
**MADE TO ORDER SUITS**

300 SAMPLES  
No Extra Charges.

"NUF SED"

**Scotch WOOLLEN MILLS**

**C. E. RAY**

**CHEVROLET SIX**

—the Car of Universal Appeal

SINCE January 1st, over a million one hundred and thirty-five thousand six-cylinder Chevrolets have been produced. Naturally, this is an outstanding industrial achievement. But it is more than that. It is a great public endorsement of Chevrolet's policy of progress: to build a quality automobile whose design incorporates every possible feature of progressive engineering... whose beauty is distinctive, smart and satisfying... whose reliability is assured by fine materials and precision manufacture... and whose price is so low as to be within reach of the great majority of the people. We want you to know that this policy has meant in the development of the Chevrolet Six—the modern car of universal appeal. We want you to know that Chevrolet has brought within the reach of everybody, everywhere, all the advantages of smooth, six-cylinder performance. Come in today!

The ROADSTER ... \$525	The SPORT COUPE ... \$645
The PHLETON ... \$525	The SEDAN ... \$675
The COACH ... \$595	The IMPERIAL ... \$695
The COUPE ... \$595	

Consider the delivered price as well as the list (f.o.b.) price when comparing automobile values. Our dealers' delivered prices include only authorized charges for freight and delivery, and the charge for any additional accessories or financing desired.

**THIS IS CHEVROLET NATIONAL DEMONSTRATION**

**Rayburn Chevrolet Company**

COME IN—TAKE A RIDE IN THIS SENSATIONAL

Turns Out Fair at Lubbock

Lamesa turned out on the Panhandle South Plains Lubbock Wednesday of this week exhibits from Dawson County on display in this fair...

BEVE IT OR NOT

The longest newspaper in the West, the Yellowstonian, is 160 pages and absorbs between 600 and 700 copies of newspapers daily...

Full day's work that conductor, Bird Newell, when the starter of his Chevrolet sets about the day's Past driving and know-how cuts are necessary to the task before dusk.

subject number several persons who reside each the isolated camps and the of America's greatest...

Until 1928 these various means of getting their newspapers. Since the of the Chevrolet coupe has antist service, never mis-

has already traveled 42-and has never undergone repairs. Thus far the of servicing the car has \$8.50.

receives his papers at the strance each day at 10:20 makes four stops, about each, at the major camps, to the bunk houses...

at an average 32 miles to the actual driving time is five minutes.

int, publicity director of recently invited a reporter by Newell over the route. The writer a splendid view from trails forbidden the rit.

reporter get back to his post an enthusiastic des the enchanting visits that revealed to him. Nor did the ability of the car which through the alluring land-

enjoyed a more comfortable motor car," he wrote. ed through this wonderful despite the consistent speed maintained on grade and Chevrolet took hair pin at a perceptible slacken-

and the rutty roads ed the driver for a sec-

SET FOR CHAM- COMMERCE CON- VENTION AT EL PASO

Texas—The U. S. High- way No. 30, known as "The Way," will send a mot-

at least one hundred auto- mobile to the West Tex- as Commerce convention, 25-26, according to an-

received here today from secretary of the Associa- tion headquarters at Del Rio. will arrive in El Paso on October 23 and plans to at monthly meeting of the on the morning of Oc-

Every city and town be- and San Antonio is ex- pected also that other leading into El Paso will be for the trip into San Antonio.

D. Texas—Arrangements completed by the El Paso Commerce for ninety San Jacinto Plaza, in the business district, to be community exhibits at the annual convention of the Chamber of Commerce.

City have already been in communities where is or other attractive fea- tures placed. Directly across from the Plaza will be a high band stand where con- grams will be given by the for the convention, It at least thirty bands will the convention. Cities the booths have been asked to with the El Paso Commerce.

County Plan- to Hardsurface

The Good Roads Asso- ciation County headed by the president will hold a all good roads enthusiasts county at the District here Friday evening at 8 o'clock according to a call of at this organization. The was held at this meeting to and issue for the purpose of all important high- ways. Officers of the

Association will also be elected it being the Annual Meeting of this organization, Price states. At this meeting definite plans will also be laid, according to Price to get Scurry County on the East, Howard County on the South, Lynn and Lubbock Counties on the North and Gaines County on the West to call with Dawson County a bond election in each county.

According to Price there is at this time much good road sentiment in Dawson County.

Local Elevens Will Play Carlsbad, N. M.

LAMESA—The local high school foot ball squad will motor to Carlsbad, N. M., this week end, Friday for a game with the New Mexico rivals according to F. T. McCollum local coach. The local school squad will meet Levelland on the local gridiron Friday afternoon of the 11th, according to the grid card as scheduled by local high school management.

Permanent Fair Assn. For Dawson County

LAMESA—The Directors of the Lamesa Chamber of Commerce met in regular session at 7 o'clock for breakfast this week. A permanent Fair association for Dawson County was discussed and a Committee composed of F. T. McCollum, chairman, W. B. Collins and Carl Rountree was appointed to perfect plans for a permanent Dawson County Fair. The board also authorized the president, W. D. Arnett to appoint five delegates for the West Texas Chamber of Commerce Convention at El Paso, on October 23, 24, 25th. The president was authorized to head this delegation. The plan of directors breakfast was indorsed and the manager authorized to arrange for breakfast at each regular meeting.

O'DONNELL EAGLES PLAY POST AT LUBBOCK FAIR

The O'Donnell Eagles threw a scare into the Post eleven during their game at the Lubbock Fair which was the biggest upset of dope of any of the daily games played during the week at the fair grounds. The final score was 23-0 in Post's favor. The score may seem a little on-

EVERYTHING ALL SET FOR STATE FAIR AT DALLAS

Dallas, Texas, Oct. 5.—The stage is all set for the world's biggest state fair, which opens on the grounds of the State Fair of Texas, here, Saturday, Oct. 12 and will run for 16 days until Sunday, Oct. 27. It is not only the worlds biggest state fair but will also be the biggest state fair ever staged in the history of the State Fair of Texas, according to

T. E. Jackson, president, who has worked hard throughout the year with other officers and directors of the association to give the people of Texas the greatest State Fair ever held anyplace.

Amusements at the 43rd annual State Fair are better than ever before, there being five major amusements for the 16 days period and numerous others. Among these will be the \$10,000 State Wide band contest, "The Red Robe," in the auditorium, the Magenbeck-Wallace Circus in front of the grandstand, the world champion rodeo in the new Livestock Coliseum, and the combined horse-show and style revue in the new coliseum.

The Morris and Castle shows will occupy the midway, with many new shows, while the State Fair Permanent area, with Lightnin' and two new rides and amusement devices will be running full force.

The greatest agriculture show ever arranged in the entire south, with its own scoring system and with more than two-thirds of the counties of the state represented, will be seen at the State Fair of Texas.

The livestock department has been divided and during the first week of the Fair the Beef Cattle Show will be held, with beef cattle, sheep, goats, jacks, mules and heavy horses, while during the second week the Second Annual Southwest Dairy Show will be in progress in the cattle-barns, Dairy Cattle, milk goats, swine and light horses will be featured in the Dairy Show.

There will also be the largest display of poultry, pet stock, implements automobiles, manufactured products and commercial exhibits, ever seen at the State Fair of Texas.

LAND IS SINKING IN THE SOUR LAKE OIL AREA; TREES ARE DISAPPEARING

BEAUMONT, Oct. 9.—The sinking of earth over an area 150 feet by 150 feet in the Sour Lake oil field, two miles from Sour Lake, Texas, caused oil men to become apprehensive of consequences in that field today.

The depression was first noticed yesterday when it covered only a small area. It continued to enlarge during the night, however, and today had covered the area of a town

PHONE 30702 DAW-LYNN DAIRY C. L. TOMLINSON Owner O'Donnell, Texas

CITY TRANSFER CO. O'Donnell, Texas Drayage and Heavy Hauling BERT FRITZ, Owner Phone 105

CICERO-SMITH LUMBER CO. "Where Quality Counts" GOOD LUMBER—GOOD SERVICE Lumber, Builders' Hardware, Wind Mills, Wire, Post, Paint and 'Nigger Head Coal.' DON EDWARDS, Manager

Cold Weather Will soon be here and you will need stoves and supplies to keep the home warm. We handle the Peerless gas heaters, Allen's Circulating Heaters, also all kinds of other supplies. See us for your winter supplies. MANSSELL BROS. HDW. CO. J. P. Aylor, Agent, O'Donnell

lot. The depth of the depression had not been measured, but the hole filling up with water. Trees of medium size visible yesterday, however, had disappeared today. Some observers placed the depth from 50 to 100 feet.

Cracks Appeared Large cracks were reported forming on the outer edge of the affected area. The area is in an old field which had produced oil for about 25 years. The nearest well was 75 feet away.

Wells in a nearby field have been drilled. No. 1 H. M. Perry, completed Saturday with a daily flow of 150 barrels of oil, started flowing salt water soon after the depression was discovered. Others wells were reported to have increased their flow.

Geologists could give no reason for the phenomena, since no gas wells were located in the field. Blasting in a nearby vicinity was advanced as a possible solution.

KNOW TEXAS

Texas is first in railroad mileage construction is under way now than in any other state and will increase that total by several hundred miles within the next year. Illinois with 12,004.17 and Pennsylvania with 11,261.05 are second and third.

Texas has 978.69 miles of electric railway. New York with 4,792.35 is first in electric railway mileage.

O. H. SHEPPARD, M. D. General Practice and Electro-Therapeutics. Files cured without detention from work or business. Office half block Southeast Index Building, O'Donnell, Texas.

C. N. WOODS Watchmaker and Jeweler Tahoka, Texas

DR. FERRELL FARRINGTON Dentist X-Ray Diagnosis Office Phone No. 9 O'Donnell, Texas Offices in First National Bank Building.

Texas has 4,500 miles of electric transmission lines with many new miles under construction.

Texas has an annual mineral production in excess of \$500,000,000. Its mineral, farm, ranch and lumber production is around \$2,000,000,000 a year.

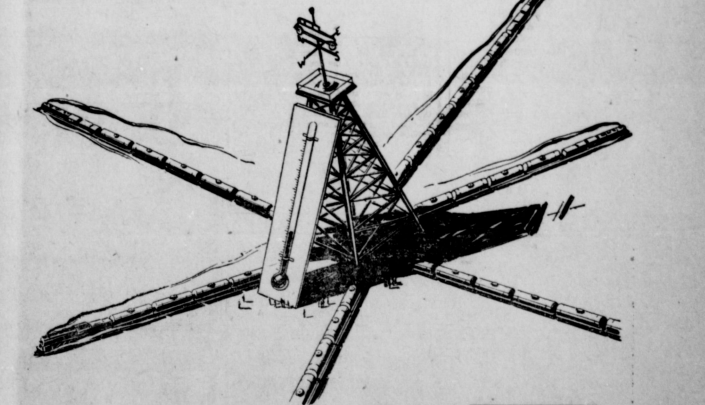
Large and small, Texas' manufacturing plants exceed 44,000 in number with an output valued at \$1,200,000,000 a year.

Index Ads Get Results—Try Them

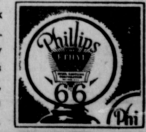
Index Want Ads get results. C. E. CAMERON is the representative of the Texas Electric Service Company in O'Donnell. For any information about your electric light service call Mr. C. E. Cameron at Texas Electric Service Company, Lamesa, Phone No. L. D. 11 or at Lamesa Texas, Phone 237

It's the Unnecessary Repair Bills That makes your car a financial worry. Have your car serviced regularly, its the minor repairing and adjustments that prolongs its life, and prevents serious accidents, and breakdowns later on. Our service departments and its equipment was designed to reduce the cost and increase the efficiency on your repair bills. Bring Your Car to Us Regularly Rayburn Chevrolet Co. Genuine Chevrolet Parts and Service Phone No. 124

CONTROLLED VOLATILITY...



What have tank cars to do with motor cars? Just this. Every day, tank cars filled with Phillips 66 are shipped North, South, East and West. The volatility of the gasoline in each of these tank cars is scientifically controlled to fit the climatic conditions of the locality in which it is sold. The result? Instant starting, quick warm-up, rapid acceleration, remarkable power and mileage—regardless of weather—at no extra cost! For best results try a full tank of Phillips 66... or 66 Ethyl.



Phil-up with Phillips 66 WHEN THE THERMOMETER GOES DOWN THE VOLATILITY GOES UP Gasoline must vaporize before it can be fired in the cylinders of your motor. Volatility refers to the ability of gasoline to vaporize. With volatility controlled, Phillips 66 vaporizes as quickly in cold as in warm weather.

**The O'Donnell Index**

Published every Friday at O'Donnell, Texas  
By Roberts Printing Company

J. W. Roberts Editor  
Subscription Rates  
In first zone \$1.50  
Beyond first zone \$2.00

Advertising rates on application.  
Entered as second class matter September 28, 1925, at the post office at O'Donnell, Texas, under the Act of March 3, 1897.



**O'DONNELL HOLDS MONTHLY MEETING**

Lubbock Attorney Talks at the Chamber of Commerce Program Tuesday Night

(From Lubbock Avalanche)  
O'DONNELL, Oct. 15.—Chamber of Commerce work is by no means a new thing. J. I. Kilpatrick, Lubbock attorney, declared here tonight when he appeared on the program as the principal speaker at the regular monthly meeting of the O'Donnell Chamber of Commerce.

Back in the days of ancient history, tribes of families banded themselves together, and while the organization was more for protection than anything else, they were doing chamber of commerce work, Kilpatrick said. Later in the medieval ages cities had organizations

to look after their harbors, ports, roads and other such things that developed the city and these organizations were doing chamber of commerce work.

"One of the things we get out of chamber of commerce work," Kilpatrick said, "is the friendship and friendly contact and associations we get out of our meetings such as this one."

Over 60 people from O'Donnell were grouped around the heavy-laden banquet table for the meeting. Decorations on the tables representing the horn of plenty were filled with grapes and fruits.

Rev. Joe Wilson, pastor of the First Baptist Church was toastmaster.

Readings were given by Misses Emma Jo Hinkle and Mary V. Shook.

**Dowell on Program**

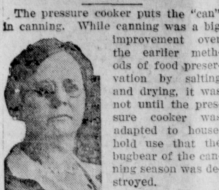
Local speakers included, G. S. Dowell, secretary of the O'Donnell Chamber of Commerce; C. H. Mansell, president of the organization; L. D. Tucker, and Tom Yandell.

Among the visitors in addition to Kilpatrick, were W. W. Evans, Dawson county agent, and Elbert W. Smith, editor of the Lamesa Reporter, both of Lamesa; C. W. Baker, with Penick Hughes Hardware company at Stamford, and Garnet Reeves, publicity manager of the Lubbock Chamber of Commerce.

Red clover makes excellent fall pasture for any kind of livestock, but a first-year growth should not be grazed too closely at this time of the year, or next season's hay crop may suffer. The clover plants should go into the winter with some growth on the crowns to prevent winter killing and to store up material for early growth in the spring.

**Home Canning Made Easy**  
By ETHEL CESSMA MORGAN  
Instructor in Home Economics, Iowa State College.

**THE "CAN" IN CANNING**



Ethel C. Morgan. Job, with a bulky water-bath canner monopolizing the whole stove top, and the escaping steam, making the already hot kitchen still hotter. The pressure cooker has changed all this. Because cooking at temperatures higher than boiling is made possible, the time for cooking is shortened. Instead of boiling the cans of meat, for instance, for three to four hours, they may be sterilized in the pressure cooker for thirty minutes at ten pounds pressure. If partially cooked before, and sixty minutes if uncooked. A proportionate time saving holds true in canning of vegetables.

The pressure cooker puts the "can" in canning. While canning was a big improvement over the earlier methods of food preservation by salting and drying, it was not until the pressure cooker was adapted to household use that the bugbear of the canning season was destroyed. It is no longer necessary to make canning an all-day water-bath canner monopolizing the whole stove top, and the escaping steam, making the already hot kitchen still hotter. The pressure cooker has changed all this. Because cooking at temperatures higher than boiling is made possible, the time for cooking is shortened. Instead of boiling the cans of meat, for instance, for three to four hours, they may be sterilized in the pressure cooker for thirty minutes at ten pounds pressure. If partially cooked before, and sixty minutes if uncooked. A proportionate time saving holds true in canning of vegetables. The pressure cooker is particularly adapted to the homemaker who has a garden where the vegetables are ripening in small amounts. By putting each day's surplus in her pressure cooker while doing up her morning kitchen work, she soon has the shelves full without the messiness of an all-day canning job. Only an occasional glance at the pressure gauge is required for one soon learns just how high to turn the flame to keep the pressure constant. This saves not only time and labor but food as well for the pressure cooker makes it possible for her to can the small amounts which she would have thrown away rather than bother with when canning by the older method.

**OFFER \$525 IN PRIZES IN NATIONAL CANNING CONTEST**

To ward off a threatened surplus of farm products in many sections and to impress more housewives with the economy and healthfulness of home canned foods, a National Canning Contest is now under way to find the best jar of canned fruit, vegetables and meat in the country. Two hundred and twenty-five cash prizes totaling \$5,225 have been hung up by the Sears-Robuck Agricultural Foundation, including a grand sweepstakes prize of \$1,250 for the best jar of canned food entered in the contest. Any woman or girl is eligible to enter the contest, but entries must be in not later than October 1, 1929. Further information on the contest and free jar and entry blanks for sending in entries may be had by writing to Anne Williams, director, National Canning Contest, 928 S. Homan Avenue, Chicago, Ill.

Moshem—It cost Dr. W. W. Blankenship less than \$2.25 an acre to terrace 100 acres of blackland stubble with a large caterpillar tractor and road grader, the county agent reports. The machinery and men to run it cost \$3.50 per hour. Terraces much above the average, of 30 feet width and two feet high, were built.

Freezing improves the flavor of parsnips and it is considered desirable to leave the roots in the ground where they grew until they become frozen. The roots, however, if allowed to remain until they start growth the following spring soon lose in quality and flavor. The period for use can often be extended by digging the roots as soon as the frost

is out of the ground is and storing them in a cool place. Big Foot—Planting corn seven feet apart gives eight ten bushels more to the acre in three and one-half feet easier to gather, take to market, cultivate, and is easier to clean of weeds, according to Rueda, local Prio county agronomist.

Dangerfield—A netting of corn was made on one Richard Crossland, 4-H club. Mrs. Curtis this year by 500 pounds of fertilizer. Favorable moisture conditions made 46 bushels of corn

**Get Ready For Winter**

Cold weather will soon be here. Better repair your house. Repainting and repairing will cut out more of the wind and keep in the heat.

Warm barns, sheds and chicken houses will pay you through increased returns from your livestock. All specialists tell us that proper housing is one of the most important items in raising chickens, hogs and cows.

**"Everything to Build Anything"**  
HIGGINBOTHAM-BARTLETT LUMBER CO.  
E. T. Wells, Manager.  
O'Donnell, Texas

**Home Canning Made Easy**  
By GRACE VIALL GRAY  
Household Science Institute.

**MEAT**



Grace Viall Gray.

Wash the meat for cleanliness, but do not soak in water. Cut into convenient size for packing. Add two tea-spoonfuls of salt to each quart jar of raw meat. Partly cooked meat may be seasoned before searing, frying and roasting. Do not add water to meat packed in jar except for meat used for soup and stews. Partly

ly, turning the meat so all sides are seared to prevent the loss of the meat juice. As soon as it is well seared sprinkle with salt and pepper. Add boiling water to the grease in the roasting pan. Baste frequently. Turn the meat from time to time and roast until nicely browned. Cook until the meat is done, (it should not be red in the center) but without cooking it entirely tender. Slice and pack into hot, clean jars to within one-half inch from top of jar. Add the gravy from the roasting pan. Partly seal and process in a steam pressure cooker for 60 minutes at 15 pounds. Remove from canner and seal immediately.

**OFFER \$525 IN PRIZES IN NATIONAL CANNING CONTEST**

To ward off a threatened surplus of farm products in many sections and to impress more housewives with the economy and healthfulness of home canned foods, a National Canning Contest is now under way to find the best jar of canned fruit, vegetables and meat in the country. Two hundred and twenty-two cash prizes totaling \$5,225 have been hung up by the Sears-Robuck Agricultural Foundation, including a grand sweepstakes prize of \$1,250 for the best jar of canned food entered in the contest. Any woman or girl is eligible to enter the contest, but entries must be in not later than October 1, 1929. Further information on the contest and free jar and entry blanks for sending in entries may be had by writing to Anne Williams, director, National Canning Contest, 928 S. Homan Avenue, Chicago, Ill.

**Barley, though widely utilized in parts of the West as a stock feed, is not so fully appreciated as it should be by the eastern farmer.**

On some farms where small grains are a part of the regular crop program, barley is often the most profitable one. However, it can not compete with corn where sufficient labor is available to work the crop. Barley is regarded in Europe as valuable for production of bacon, and on account of its high protein content is good for growing stock. In this country it is a first-class substitute for corn. It is better fed ground or rolled than whole.

**COMING**  
"Abie's Irish Rose"  
Monday and Tuesday  
October 21 and 22.  
LYNN THEATRE

**C. J. Beach**  
REAL ESTATE—LOANS  
Telephone 125  
P. O. Box 31  
O'Donnell, Texas

**B. M. Haymes**  
Insurance Agency  
Complete Insurance Service  
Phone 153

A good business course will make you independent. Prepare yourself to draw a big salary in the business world.  
**BIG SPRINGS BUSINESS COLLEGE**  
Offers the training necessary to a successful business career. Enroll and do most of your work at home then come to the college at Big Springs, complete your course and graduate. All information desired will be sent on request. Mail the coupon below.  
**Big Springs Business College, Big Springs, Texas.**  
Gentlemen:  
Please send me your catalogue and all necessary information in regard to your college.  
Name \_\_\_\_\_  
Address \_\_\_\_\_

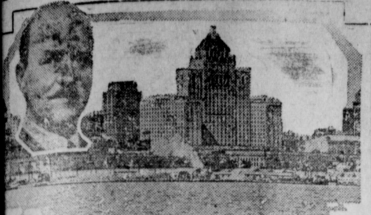
**WANTED**  
To buy maize, kaffir and all kinds of grains, see H. B. Howell or either Koeninger and Henderson at the Henderson-Boone Gin or Public Scales.  
**KOENINGER & HENDERSON**

**SINCE 1916**  
The finest memorials in your O'Donnell cemetery have been finished by us: With our new Sand Engraving machinery we are doing finer work than ever before. We deliver, and set all our work on concrete foundation and you do not pay us till after the work is completed and you see that it is right every way.  
**SOUTH PLAINS MONUMENT CU.**  
Write us for designs and prices—Lubbock

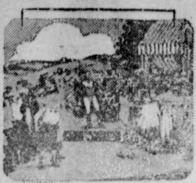
**REAP A HARVEST OF SALES**  
USE **STANTON SERVICE**  
CUTS AND ADS  
FREE AT 280-8-19

**The O'Donnell Index**

**English Music Festival at Toronto's Royal York Hotel**  
**Will Feature Music From the Middle Ages to Present Day**



THE ROYAL YORK HOTEL



SCENIC FROM "HUGH THE DUNDEE" WITH LONDON TRIO



HARRY HOUSE QUARTETTE

English Music Festival featuring...  
 The festival...  
 The festival...  
 The festival...

source of inspiration for the modern...  
 Modern English music...  
 The festival...  
 The festival...  
 The festival...

Mined at the anticipated rate of 100,000 tons a year, it is estimated the salt dome now being developed at Grand Saline, Van Zandt county, will supply salt for 7,000 years.

**WANT ADS**

**FOR SALE OR TRADE—1925**  
 Ford Coupe with six good tires, in good mechanical condition. Will trade for mules, cows or any kind of real estate. Dock Seely. 62-4tc

Milk, the National Drink. Daw-lynn Dairy.

Milk, the National Drink. Daw-lynn Dairy.

**SEE ME** for farm and city loans. City loans on monthly plan. Low rate of interest. C. J. (Dock) Beach.

**FOR SALE—Young Jersey** milk cow, now giving 3 gallons of milk, been fresh about 2 months. Price, \$75.00, small payment down, \$10 a month on balance. Call at Index office for particulars.

**FOR SALE—Jersey** milk cow, with young calf. J. S. Fritz. 2-2tp

**FOR SALE—Practically new** furniture, at a bargain. 1 bed room suite, one living room suit, one plush rug, one dining room suit, three rugs and other household furniture, and at a bargain. Call at Index office for particulars.

HEMSTITCHING done at reason-

able rate. Phone 112.

**FOR SALE—M. Johnson** White Leghorn Cockerels, \$2.00 each. C. L. Tomlinson, O'Donnell, Texas, phone 30702. 3-2tc

iences, close in. Call at Index Of-

**WANTED—To buy** maize, kafir and all kinds of grains, see H. B. Howell or either Koeninger and Henderson at Henderson Boone Gin or Public Sales. Koeninger & Henderson. 4-4tc

**6TH ANNUAL**

**Bargain Rate Offer**

**FOR MAIL SUBSCRIPTIONS**

This is another tremendous value. The Dallas Morning News, daily and Sunday, 365 days, mailed to your address at a substantial saving. The regular rate is \$10 a year, for only **\$7.45**

To those who do not desire the big Sunday edition, during this campaign we mail the daily edition only at a reduced rate. Regular rate \$8 a year, now **\$5.95**

**Dallas Morning News**  
 Supreme in Texas  
**[Whitsett Drug Co.]**

Fill out these blanks and hand your subscription to the local agent in your city.

THE DALLAS NEWS, Dallas, Texas.

Herewith my remittance of \$ \_\_\_\_\_ to cover cost of subscription to The Dallas Morning News (daily and Sunday) (daily only) for one year.

Name \_\_\_\_\_

P. O. \_\_\_\_\_

R. F. D. or Street \_\_\_\_\_ State \_\_\_\_\_

This rate is good for subscriptions only in the States of Texas, Oklahoma, Arkansas, Louisiana and New Mexico.

and GOOD ONLY UNTIL DECEMBER 1st, 1929.

concentrated feed for sleep and the lambs can be marketed before the parasites get a share of the profits.

Live poultry for market should be shipped so that it reaches the market early enough to be weighed the day it arrives, as some shrinkage is bound to occur. The amount varies from 2 to 15 per cent depending on conditions. Shipments received late on Saturday usually have a heavy shrinkage as they are held over until Monday to be weighed.

If it is necessary to make silage from corn fodder, it may be done successfully if enough water is added to make it pack well in the silo. Water may be added by letting a stream from a hose flow into the blower pipe while filling. It is also well to sprinkle the surface of the cut material as it is distributed in the silo.

Recent studies by the U. S. Department of Agriculture on the best temperature for potatoes in storage show that for the ordinary storage period of about nine months, a temperature of about 37° is best. This is sufficiently low to prevent germination and also to keep to a minimum losses in weight from shrinkage, which range from 4 to 30 per cent during a storage period.

one of the best ways of "soft" corn. Under conditions in the Corn Belt the corn can stay in the field until the ears are dry. Even if it takes all the time the ears will be small, well-made shuck and fodder from very dry corn when properly cured has same feeding value as

are fed rations containing straw, roots, and grains and their by-products do not get the lime in some such form from copiato or sifted wood added to the ration if this mineral. Milk and buttermilk contain while legume hays excellent farm-grown feeds in

production depends on cow herd and the use of a good bull, managed so that the herd is an improvement on the preceding one. The cows should be kept each in the place of barren or

fortunately, are easy to use of sodium fluoride, dusted with kerosene are trouble-free and eradicate them. In extreme cases of infestation, it is essential, is it is essential to resort to fumigation.

**KNOW TEXAS**  
 Two thousand, one hundred and ninety-four rural mail routes serve 1,209,900 patrons in Texas at a cost of \$15.25 a year per family. In the United States are 44,288 such routes.

During the first seven months of 1929 Texas started work on 8,917 building projects at a total cost of \$253,060,800.

Four of the 58 active gypsum operators in the United States have plants in Texas, which now stands 4th in gypsum production. Total value of gypsum produced and sold in Texas in 1928 was \$3,094,145.

Between 1896 and 1928, inclusive, Texas produced 154,255,204 bales of cotton, valued at \$11,244,000,000.

**COMING**  
**"Abie's Irish Rose"**  
**Monday and Tuesday**  
**October 21 and 22.**  
**LYNN THEATRE**

**A HIT!**  
 Your sales will score for September if you use **STANTON SERVICE** Illustrations and Copy **FREE AT**

**Index Office**

Save Time and Money by Using the **Telephone** More Often

**O'DONNELL TELEPHONE CO.**

**Fine Fur Trimmed CLOTH COATS**

COATS WITH A DEFINITE MARK OF NEWNESS ARE OFFERED AT A VERY LOW PRICE FOR SUCH FINE VALUES.

**BEAUTIFUL FURS**

Where fur is used on these coats it is lavishly used, and some of them are smartly furless. Fox, wolf, badger, squirrel, fitch and leopard cat are a few of the fine furs.

**FOR WOMEN AND MISSES**

**\$10.75 to \$60.00**

**Tucker Dry Goods Co**

## **Shopping---**

# **American Style**

---

In many places abroad shopping is a matter not to be approached lightly. It takes time, and the ability to bargain, haggle and compromise. They LIKE it!

In this country ADVERTISING has simplified the buying process. When you start out to shop in America you are conversant with quality, brands, values. The reliability of a well-known name is behind most of the things you buy, guaranteeing you satisfaction. And the price is the same to you as to everyone else!

Think of the time and trouble you save by reading the advertisements. How little thought and effort are required in the daily shopping. How well you can budget your expenditures. And how much delightful leisure this decreased shopping time affords you!

---

**TAKE ADVANTAGE OF THE MODERN  
MODE IN BUYING. READ THE ADVERTISE-  
MENTS EVER YDAY. HAVE YOUR MIND  
WELL MADE UP WHEN YOU START OUT  
TO SHOP.**

**NATIONAL STUDENTS ATTEND TWO-DAY FAIR AT STATE FAIR**

Station, Texas, Oct. 15.—1,000 Texas high school vocational agriculture students of the Future Farmers of America, have already in by will attend the two-day organization October during the State Fair. E. R. Alexander, of vocational teaching, A. & of Texas, who is state ad- organization, has an- at Dallas will be the meeting of the first at the State Fair. will be guests of the State

her sweet milk, Mrs. W. C. Rogers of R-Bar home demonstration club in average monthly dairy receipts from Howard county has increased her four cows from \$90.40 a year ago to an average of \$126.66 now. This has been accomplished without much grass, due to the dry season, succulent feed having been provided by cutting green maize. Mrs. Rogers feeds a ration of bran, ground maize and cottonseed meal which costs an average of \$44 per month.

**Anderson—Medical attention was cut to two visits last year in the family of Mrs. Annie Boggess, a Grimes county home demonstration club woman, due to free use in the diet of vegetables from her year-round garden, she says. In addition to fresh vegetables she has canned 475 containers for her fall and winter pantry. She estimates her garden worth a dollar a day the year around.**

**Falfurrias—Four and one-half bales of good staple cotton from four and one-half acres is the record of Francis Hinnant, Brooks county 4-H club boy. He planted pure seed, and applied 200 pounds per acre of 12-4-4 fertilizer, which returned him \$11.51 for every dollar invested, he says. The crop sold for 19.10 cents per pound.**

**Throckmorton—John L. Massey, local 4-H club boy got 18 eggs daily through August from a flock of 23 hens. He built a small house on Extension Service plans, paying one-half down on the lumber and doing the work himself. He is making his egg production foot the balance of the bill, and plans to increase the flock to 50 soon.**

**Mt. Pleasant—The use of calcium cyanamid in dust guns to kill rats under barns and other inaccessible**

places is being used in Titus county now, L. C. Jinks, county agent reports. This method was recently demonstrated by Don Spencer of the U. S. Biological Survey and so many rats were killed in their holes than in one instance, at least, dogs refused to go near the barn for several days following. Quantities of both dust guns and the chemical have been ordered.

**Wasahaachie—Sweet clover was still green in late summer when other pastures were dried up, and served to cut the feed bill for his dairy cows in half, W. B. Sims of Bethel Community told the agricultural club here recently.**

**LOW THIRD GRADE HONOR ROLL**  
Marilyn Rberts, Spelling.  
Lois Howard, Spelling.  
Leona Holman, Spelling.

**Prompt—Polite**  
YES, sir, ten gallons of ethel—any oil?—Air in your tires?—We're eager to fill your tank with powerful, clean-firing liquid power, and to give that courteous, speedy service that makes motoring a pleasure to our patrons.  
**HIGHWAY GARAGE, John Earls, Prop.**

of the title of "Lone Star excellence in work will on a number of the boys Fair gathering. This is title awarded by the or- Revision of constitution and election of new pres- preceded Arthur Ellis, of rly, resigned, will be in- the program. Decision on hold annual state meet- State Fair will also be

**COVER CUT BUTTERFAT COST**

Then his sweet clover pas- playing out in June the placing butterfat went up per pound, so George of Lamb county's dairy was found. In May when and sweet clover pasture his two cows produced of butterfat at a cost of per pound for feed, accord- brought out in the small association. These and 50 pounds butterfat in of 8.2 cents per pound.

**7-A-BUSHEL CORN**

—Corn was produced this of 36 cents per bushel gmekak who grows crops and, plants cowpeas down files and used commercial in his demonstration this 300 pounds of 12-4- per acre at a cost of \$2 It increased the corn shels an acre, W. I. Koss, says.

**BUTTER PAID WELL FOR FEED**

im milk brought four on and grain sorghums ton fed to an eight-pig A. Wood, Swisher coun- ho has completed the lo- er contest. The pigs 40 pounds at the end of

as given by the county ed of skim milk, grain arley and 3 commercial cement. Feed and labor making the pork cost pound. The litter sold its per pound and the feed cost and labor was

—More than 400 lbs. family has been cured. ge of 223 containers of etables canned by each e and girls in home dem- ble of Collingsworth ent report of Miss Veda diting home agent dis- exceeds the goal set for ation work at the begin- year, and is considered ecause the canning and eceeded according to a eed canning budget and with the high standards in the clubs.

armstead beautification y increase in Wilbarger e 41 farm yards have ed and improved in ap- the past two years as e of what may be ac- little cost. The work e charge of Miss Emma e demonstration agent, of the planting of lawns, and flowers.

By properly feeding finding a market for

# Introducing



**SEVEN** cents and five cents are the two steps in the new domestic electric service rate of the Texas Electric Service Company. This rate now makes electric energy cheaper than ever before. You can use double the amount of electricity which you formerly used for only a small additional cost.

This new rate is composed of a moderate flat charge based upon the number of rooms in your home. Then for each room in your home you may use four kilowatt hours per month at a cost of 7 cents per kilowatt hour. For all kilowatt hours over four per room, you pay only 5 cents per kilowatt hour.

For instance, if you have a five-room house, you would pay 7 cents each for the first 20 kilowatt hours used, and 5 cents each for all additional kilowatt hours used. The flat charge for a five-room house is 95 cents. Suppose then that you used 25 kilowatt hours in one month. Your bill would be 95 cents plus \$1.40 for the first 20 kilowatt hours, plus 25 cents for the additional five kilowatt hours, making a total of \$2.60.

Now if you used fifty kilowatt hours your bill would only be increased by \$1.25, making a total of \$3.85.

That is why we call 7 and 5 the economy twins. They are just that to you. They make it possible for you to use all the electricity you want at a price which is by far the lowest in the history of electric service in this community.

Electricity can do countless things for you in your home. It can save time and strength and money for you. It can do your work in less time and with scarcely any effort on your part, so that you will have New Hours in which to enjoy living. And as electricity creates these new hours for you, it, at the same time, saves your strength and preserves your health so that you can take fullest advantage of them.

With "7 and 5, the Economy Twins," ready and eager to work for you in your home so cheaply, you should investigate the many things electricity can do for you. Let the "Economy Twins" work for you.

**Texas Electric Service Company.**  
"Your Electric Servant"

# An Unusual Special Selling of Silk FROCKS



All the accepted style features of the New Mode are in this big group.

Many have frilled or bow trimmed blouses... the new slightly raised waistline... skirts are flared... uneven in hemline. Peplums, boleros and tuckings are new style notes that attest their newness and chic. Sizes for women and misses.

Beautiful quality materials in important fashions make this an outstanding dress event. Very fine satins, transparent velvets, canton crepe, light weight woollens, chiffons in dresses for afternoon, street and sport wear. You may choose from this group with the assurance of fashion correctness and a great saving as well.

## Popular Dry Goods Store

"Famous For Values"

Mrs. B. H. Scott, Home Economics teacher in the O'Donnell Schools, will attend the Home Economics district meet in Lubbock Friday and Saturday of this week.

TIRES VUNCANIZED at Foster's.

### TACKY PARTY

On last Friday night Mrs. Naymon Everett entertained her Sunday School class with a Tacky Party in the home of J. P. Bowlin.

You can imagine how much fun it

was to watch the guests arrive each attired in some ridiculous way. Games of various kinds were played throughout the evening, but the greatest thrill came when they decided to parade the business part of town. Prizes were given to the most comical boy and girl. Miss Mary V. Shook receiving a doll and Hick Gibson a French harp. At the appointed hour punch and cake were served to the following guests:

Misses Margaret Miller, Kimmie Lee Pearce, Thyra Painter, Mary V. Shook, Waldine Kirkland, Kathlyn Veazey, Lavenia Austin, Viola Wyatt, Lois Burdett, Novelle Ratliff, Gladys Gibson, and Messrs Hick Gibson, J. W. Roberts, J. Y. Everett and Claude Tate, and hostess, Mrs. Moody Everett.

### NEARLY KILLED BY GAS — DRUGGIST SAVES HER

"Gas on my stomach was so bad it nearly killed me. My druggist told me about Adlerika. The gas is gone now and I feel fine." — Mrs. A. Adamek. Simple glycerin, buckthorn, saline, etc, as mixed in Adlerika, helps GAS on stomach in 10 minutes! Most remedies act on lower bowel only, but Adlerika acts on BOTH upper and lower bowel, removing poisonous waste you never knew was there. Relieves constipation in 2 hours. It will surprise you. Corner Drug Store.

Mr. and Mrs. Chas. McConal have recently purchased the S. T. Price home and moved in on Monday of this week.

Index Ads Get Results—Try Them

### EPWORTH LEAGUE OF M. E. CHURCH PROGRESSING NICELY

On Sunday, October 6th, the Epworth League started a new year. We elected officers for new positions and appointed committees.

We had a very interesting program Sunday night October 13. Each month we are to have the regular council meeting and business meeting. Our second department superintendent, Mr. Vernon Kirkland has a very interesting program scheduled for Sunday, October 20.

His program is as follows:  
Song—No. 80.  
Prayer.  
Scripture Reading—Psalm 19: 1-4.  
Romans 1:8, 15, 28—Cecil Pearce.  
Song—No. 87.  
How Far Does the Gospel Reach—Vernon Kirkland.  
Gospel in Africa and Gospel in the Far East—Randall Gibson.  
Gospel in Europe—Margaret Miller.

Gospel in Our Own Land—Lois Burdett.  
How Shall Gospel Be Extended—Louise Edwards.  
Our Part on Spread of Gospel—Kathlyn Veazey.  
Business.  
League Benediction.  
All leaguers bring a new member.

Finding of gas in Winkler county has created new interest in the inexhaustible supply of white sand near Fayette and Monahans, and samples have been submitted to tests for glass manufacture. One manufacturer several years ago planned establishment of a plant there, but was deterred by the lack of cheap fuel.

## PERSONAL MENTION

Mr. and Mrs. Harvey... accompanied by Mrs. J. P. B... Sonny Boy were Lamesa... Saturday.

Mrs. Marshall Whitsett... last Friday to come to... of her sister who is in a... Wichita Falls, Texas.

Mr. and Mrs. Ben... purchased the Dr. Ferrel... new home and moved in... of this week.

Mr. and Mrs. R. K. T... Lamesa spent last week... and Mrs. W. H. Thornall... city.

Messrs Emory Bean and Howard Lovington, Ne... spent last Sunday with... here.

Mrs. L. D. Tucker and... Roswell, N. M., spent... with the husband and... Tucker of the Tucker Dry...

Mr. and Mrs. Ed Papp... returned Monday... from manche where they spent... two weeks visiting... friends.

TIRES Vulcanized at...

COMING

"Abie's Irish R... Monday and Tu... October 21 and... LYNN THEAT...

Mr. Marshall Whitsett was a Lubbock visitor Tuesday of this week.

Mr. Sam Ables of Hedley is visiting his son, Jim Ables, of this city.

Misses Louise and Flora Cohen of Pride were O'Donnell visitors Tuesday.

Jack Veazey spent the past week-end with home folks.

Misses Ruth and Itasca Roberts spent last week-end in Lamesa with Miss Mildred Dickerson.

Kindrick Gaston who is attending Tech at Lubbock, spent last week-end with his parents.

Mr. Claude Young of Lubbock is visiting his mother, Mrs. Ernest Young, this week.

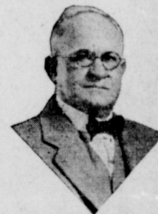
David Chandler of Lubbock spent the week-end with his father and family.

Mr. and Mrs. Otis Evans of Tahoka were O'Donnell visitors Tuesday.

Mr. and Mrs. Jim Clements of Loop were visitors in O'Donnell on Tuesday.

Waldo McLauren left Wednesday for Dallas where he will attend the State Fair.

Mr. and Mrs. Bill Kirkendall, of Lamesa, were visitors in O'Donnell Sunday, the guests of Mr. and Mrs. G. C. McPherson.



W. C. ROUNTREE, M. D.

If you have any of the following... I have the remedy no matter... trouble has been diagnosed: No... stomach trouble, loss of weight... sore mouth, pains in the back and... peculiar swimming in the head, b... oblem in throat, passing mucus... bowels, especially after taking... ing feet, brown, rough or yellow... or itching skin, rash on the hands, f... resembling sunburn, habitual... (sometimes alternating with diarr... or metallic taste, skin sensitive to... fulness, despondency and... you might lose your mind, gums a... falling away from the teeth, gen... with loss of energy.

If you have these symptoms and have taken all kinds of medicine and still sick, I especially want you to write for my booklet.

Mrs. J. B. Massey of Odessa, Texas, Box 112, whose picture appears here writes: I wish to thank you very much for restoring my health from one of the most dreadful, miserable diseases anyone can have. I was in bad health for several years, under care of Doctors for three years. I do not think I could have lived much longer. I am in better health today than for several years, weigh more than I ever did in my life. I believe I am rid of an awful disease that the other Doctors failed to cure.

FOR FREE DIAGNOSIS AND LITERATURE WRITE: W. C. ROUNTREE, M. D. AUSTIN, TEXAS

### CHARTER NO. 12831—Reserve District No. 11 REPORT OF CONDITION OF THE FIRST NATIONAL BANK OF O'DONNELL, TEXAS AT THE CLOSE OF BUSINESS OCTOBER 4, 1929

RESOURCES	
1. Loans and discounts	\$160,777.63
4. Other bonds, stocks, and securities owned	9,231.20
6. Banking house, \$10,000.00. Furniture and fixtures, \$4,200.00	14,200.00
7. Real estate owned other than banking house	4,917.00
8. Reserve with Federal Reserve Bank	23,000.00
9. Cash and due from banks	28,046.14
Total	\$240,171.97
LIABILITIES	
15. Capital stock paid in	\$ 25,000.00
16. Surplus	5,000.00
17. Undivided profits—net	7,519.04
21. Due to banks	24,138.42
22. Demand deposits	150,740.51
26. Bills payable and rediscounts	27,774.00
Total	\$240,171.97

State of Texas, County of Lynn, ss:  
I, J. L. Shoemaker Jr., Cashier of the above named bank, do solemnly swear that the above statement is true to the best of my knowledge and belief.

Correct Attest:  
J. L. Shoemaker, Cashier, C. H. Mansell, D. R. Couch, Roy Riddel, Directors.

Subscribed and sworn to before me this 9th day of October, 1929 (SEAL)  
C. J. Beach, Notary Public, Lynn County, Texas.

**GIFTS That Endure**

The years neither dim the lustre of sparkling gems, nor obscure the sentiment that prompted the gift.

Showing the newest fashions in Elgin Warwick watches, wrist bands, bracelets and a beautiful assortment of diamonds, rubies, sapphires, emeralds, pearls, rings \$25.00 and up.

**WHITSETT DRUG CO.**  
"Nothing but the Best"