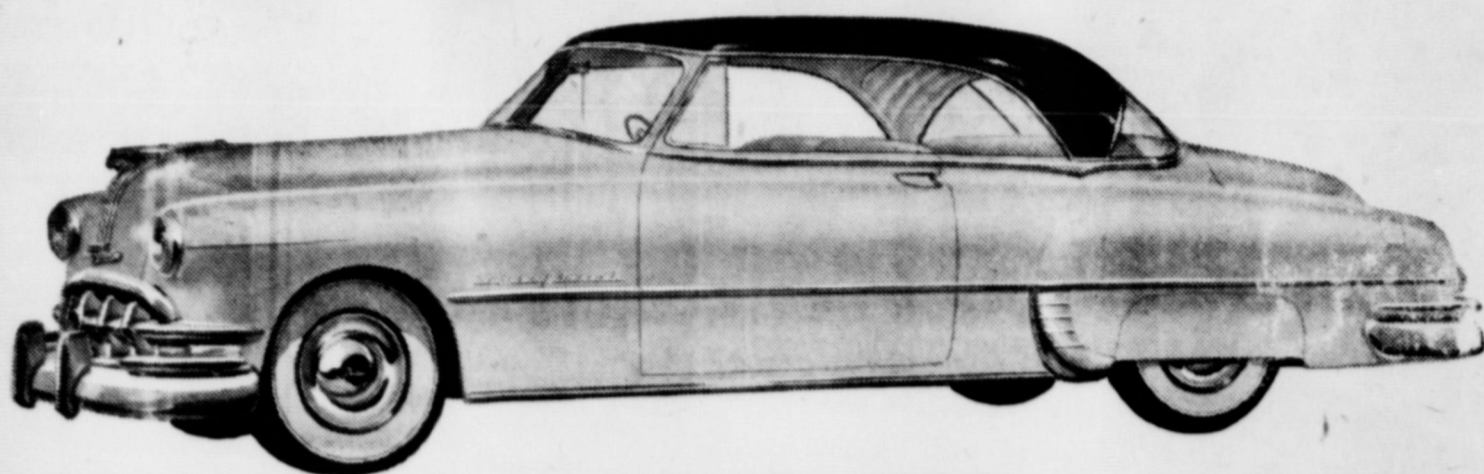


PRESENTING THE DISTINGUISHED NEW 1950

PONTIAC Catalina!



The Most Beautiful Pontiac Ever Built!

There Are Two Brilliant Versions of the Completely New Catalina... The Super De Luxe and The De Luxe... With All the Dashing Grace of a Convertible... Plus the Luxury, Safety and Added Comfort of an All-Steel Body by Fisher!

Consider this a cordial invitation to come in soon and see the most beautiful car you ever laid eyes on!

It's the wonderfully good looking new Pontiac Catalina—a car that combines the dashing grace of a convertible with the safety and convenience of an all-steel body by Fisher.

The Catalina is available in two models: The Super De Luxe in San Pedro Ivory and Sierra Rust, a color scheme featured throughout the car, even to the upholstery of hand-rubbed top-grain leather. The De Luxe—available in the

wide range of Pontiac colors—offers the same smart body with interior trim of fine broadcloth.

The new Pontiac Catalina is a sparkling car—and even better, it's a Pontiac, through and through! That means you will enjoy miles and miles of Pontiac's superb performance, and all of Pontiac's long-range economy.

Dollar for dollar you can't beat a Pontiac—and the Catalina is beautiful proof of it! One look will convince you that here is the most beautiful Pontiac ever built!

DOLLAR FOR DOLLAR YOU CAN'T BEAT A PONTIAC!

City Service and Appliance

7th and Doak St.

O'Donnell, Tex.

Joe M. Lehman, M. D.
Medicine and Surgery
Hours 8 a m to 6 p m daily
Sunday: 9 a m to 11 a m
Office phone 134; Home 209

Stanley Funeral Home
And Burial Association
phone 233 Bx 185 Tahoka

Sam Garrard
Attorney
TAHOKA, TEXAS
Office: 1st Nat'l Bank Building
Office Phone 404

What O'Donnell needs is some leaders more interested in O'Donnell than in publicity and profits

Dr. C. B. Bucy
Veterinarian
Lamesa; ph. 192 or 394W

For rent: Furnished or unfurnished 3 room and bath Apt. See Mrs Bill Holcomb

O'Donnell Lodge no 1187
A. F. and A. M.

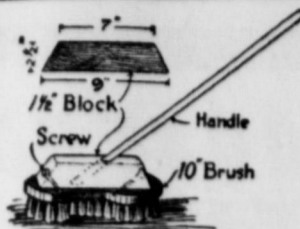
Meets every 4th Thursday in Month; Visitors Welcome
Otis C. Harris, W. M.
Elvin R. Moore, Sec'y

Vernon D. Adcock
LAWYER
County Attorney's Office
LAMESA

SHOEMAKER INS.

AGENCY
Fire and Casualty Insurance
A Representative of
FLOYD WEST AND CO.
General Agents
LLOYD SHOEMAKER

Back-Saving Brush



One of the hardest jobs of the housewife is scrubbing, as it necessitates her getting on her knees. Use a labor-saving helper and obviate that everlasting scrubbing floors on the knees. It is made of an ordinary 2 1/2 by 10-inch fibre brush by attaching a block of wood to the top. The block is 1 1/2 inches thick and 2 1/2 inches wide and 9 inches long at the bottom and beveled to 7 inches at the top. The corners are rounded. After the block is planed it is attached to the brush at both ends.

Seed of a new variety of grain sorghum, Hi-Hegari, has been released to certified seed growers for increase by the Texas Agricultural Experiment Station. Some seed for 1951 plantings will be available thru regular trade channels. The new variety is a heavy forage yielder and was developed primarily for forage and silage.

The New

REX

THEATRE

EVENING SHOW

Box Office Opens 6:45
Show Starts 7:00 p m
Box office closes 9:15 p m

All children 5 years old are required to buy tickets

Fri. nite - Sat Mat.
Allan Rocky Lane in
The Wyoming Bandit

Sat. Nite only July 8th
In Cinecolor
Red Stallion in the Rockies

Sun. and Mon.
July 9th and 10th
BING CROSBY
Riding High
With Coleen Gray

Tus. July 11th
Cameron Mitchell in
Adventures of Gallant Bess
With Audrey Long

Wed. and Thurs July 12th and 13th

Kirk Douglas and Doris Day in
Young Man With a Horn

CRESENT CAFE

O. L. McClendon
The Home of Fine Chili; Tasty Sandwiches, Short Orders, Hot Cakes, Hamburgers, Hot Dogs

FLOWERS

FOR ANY OCCASION
Come and see us or order from our local agent: CORNER Drug THE HOUSE OF FLOWERS
Mr. and Mrs. J. B. BILLMAN
Phone 330 -- Tahoka

TOM GARRARD

Attorney
Tahoka, Texas
Practice All State and Federal Courts except County and Justice Courts. Land Title a speciality

Political Announcements

The O'Donnell Index - Press is authorized to announce the following candidates for office subject to the Democratic primaries:
For Congressman, 19th Dist.
George Mahon (re election)
For District Judge:
Louis B. Reed (re election)
Tom Garrard

LYNN COUNTY:

For Tax Assessor - Collector:
J. E. "Red" Brown
Marvin J. Munn
For County Clerk:
Beulah Pridmore (re election)
For Sheriff:
Roland "Slick" Clem (re election)
Chas. F. Wells
A. L. White
For County Attorney:
B. F. Maddox (re-election)
For Co. Superintendent of Schools
Mrs Lenore Tunnell
For Justice of Peace
T. W. "Bill" Brown
(Re-election)
J. M. Christopher
Horace Brunette
For County Treasurer
Thomas (Tom) Reid
Mrs Tommy Lishman
Opal Nowlin
FOR CONSTABLE
J. T. Edwards
For Commissioner, Pct. 8:
F. E. Redwine
Will Edd Tredway
John Earles
Woodrow McLaurin
For County Judge:
Walter Mathis

RAWSON COUNTY:

For County Judge:
R. W. (Buster) Herndon (re election)
For County Clerk
Howard Humphrey
For Commissioner, Pct. 2:
W. T. (Bill) Snelgrove (Re Election)

BORDEN COUNTY:

For Commissioner, Pct 1:
Hubert Walker (re-election)
For County and District Clerk of Borden County
Mrs Jack B. Rogers
For State Representative 119th District:
Forrest Weimhold
Waggoner Carr
You're Always Welcome At:

Real Estate

— FARMS — RANCHES —
CITY PROPERTY
Leases and Royalties
B. M. Haymes

C'mon Out
TEXAS ELECTRIC SHOW of '50

REDDY KILOWATT FROLICS
FREE!
ELECTRIC REFRIGERATORS
Demonstrations
Entertainment
RADIOS
FARM & RANCH EXHIBITS

AIR CONDITIONERS
TALKING Reddy Kilowatt
ELECTRIC RANGES

TEXAS ELECTRIC SHOW of '50

Lamesa High School Grounds
Now Through Friday—6 to 11 P.M.

Brought to You by TEXAS ELECTRIC SERVICE COMPANY

HERE TODAY!

WHERE TOMORROW?

Likely as not the local junk man is hoping you and other farmers will unmeaningly deduct a few years of life from your farm equipment—by failing to keep it in "tip-top" condition!

Keep your equipment out of the junk pile! Let our experienced mechanics add extra years to its life by giving it a complete going over. They'll do the work quickly, efficiently, and at a mighty reasonable price. There'll be nothing omitted... nothing unnecessary added.

It's greater economy in the long run to keep your John Deere farm equipment in good condition. Take advantage of the fine overhaul service we offer you.

BUY ONLY GENUINE JOHN DEERE PARTS - THEY FIT AND WEAR LIKE THE ORIGINALS!

Mansell Bros.

PHONE 50

FREE DELIVERY

Phone 50

AT THE CHURCHES

Assembly of God

R. T. Peek, pastor
 Sunday School 10 a. m.
 Morning Worship 11:00 a. m.
 Evening worship 8:00p m

CHURCH OF THE NAZARENE

Sunday School at 9:45. A. K. Gilliam, Supr.
 Morning Worship 11:00 a. m.
 Young people service 7:15 p. m.
 Evening worship 8:00p m
 Everyone Welcome

METHODIST NEWS

Sunday school 10 a. m.
 Morning worship 11 a. m.
 Faith Study Group 6:30 p. m.
 Evening worship 7 p. m.
 W. S. C. S. Monday 2:30 p. m.

FOR SALE: 1 U. T. U. Twin City Tractor; good shape; good rubber and 4 row equipment; see Dewey Middleton, etc

FIRST BAPTIST CHURCH

Preaching Service 11 a. m.
 Training Union 7 p. m.
 Preaching Service 8 p. m.
 Wednesday nite
 Teachers meeting 8 p. m.
 Prayer meeting: 8:30 p. m.

Calvary Baptist Church

Preaching Every Sunday
 Sunday school 10:00 a. m.
 Morning service at 11:00
 B. T. C. 7:00 p. m.
 Evening worship Hour 8:00 p. m.
 Wednesday, Prayer meeting 7 p. m.

CHURCH OF CHRIST

SUNDAY: Bible Study 10 a. m.
 Worship: 10:55 a. m.
 EVENING: Young people Song Practice at 7 p. m.
 Regular evening service 7:30 p. m.
 WEDNESDAY:
 3:00 p. m. Ladies Fellowship (for all women)
 7:30 p. m. Mid Week Bible Study and Prayer

BUY your FRESH Homemade Better CORN MEAL from Herman Grocery, Tidwell Grocery, Campbell Grocery and Line Grocery. Guaranteed Satisfaction. Alva Billingsley 5 - 9 pd

Before the pressure cooker is used, it should be cleaned and checked. Be sure the pressure gauge is registering correctly and the safety valve is working properly.

Farm property losses from lightning average about \$10 million per year. An estimated 400 lives are lost and from 800 to 1,000 rural people are injured each year by lightning.

Ten pounds of 40 percent wettable toxaphene or 8 lbs of 50 percent wettable DDT in 100 gallons of water used as a spray will protect cattle for a period of 20 to 45 days

We Appreciate

YOUR PATRONAGE at all Times. We are able to serve you at any time; come in and call for an appointment.

Proctor Beauty Shop

VAN'S Laundry

7 new Maytags (32's with Square Tubs "Nothing like it") Complete Help Your Self Laundry Service

Wet Wash -- Finish Work Soft Water; FREE PICKUP AND DELIVERY

It's Super



for Championship Performance!

Your driving "score" will be low for operating costs... high for power and performance... when you OIL-PLATE your engine with new Conoco Super Motor Oil.

Proved by 50,000-Mile Road Test! After a brutal 50,000-mile road test, engines lubricated with new Conoco Super Motor Oil showed virtually no wear at all... in fact, an average of less than one one-thousandth of an

inch on cylinders and crankshafts.

This means that—with proper crankcase drains and regular care—new Conoco Super Motor Oil can keep new-car power... new-car performance... new-car gasoline mileage... year after year!

Ask Your Mileage Merchant for Conoco Super Motor Oil today! It's far and away the champion of 'em all!



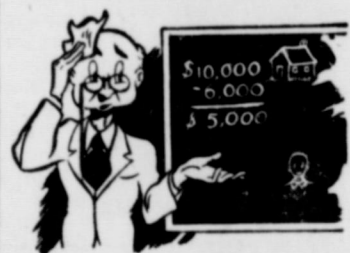
Come in and let me tell you about "50,000 miles no wear!"



© 1950 CONTINENTAL OIL COMPANY

The best possible care should be given to peach trees suffering from delayed foliage. The delayed foliage is a result of last winter's mild weather. There wasn't enough cold weather before Feb. 15 to break the rest period of the trees. This condition has occurred in Texas only four times in the past 50 years.

CHAS. CATHEY LIFE INSURANCE REPRESENTING THE AMICABLE LIFE INS. CO.



EXPERIENCE IS A BETTER TEACHER

If you are still insuring for what your property was worth a few years ago... instead of what it is worth today... Fire may teach you an expensive lesson

Be smart! Make sure NOW that you have adequate insurance protection. Call us any time

CLAYTON

INSURANCE AGENCY

— LOANS —

PHONE 148

"LIVE WIRES"

by VERNON COOK



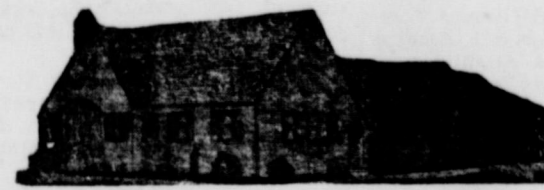
A Complete line of Household and Livestock Many different Nat'l Adv. Brands

Fly Spray

W. E. Vermillion, Pharmacist

Corner Drug

Ivan "Odie" Line



HIGGINBOTHAM FUNERAL HOME

"Dedicated to Helpfulness"

Phone 223 403 N. Austin St. Lamesa

24 Hour Ambulance Service

Burial INSURANCE "Bonded Protection"

HEADQUARTERS FOR

Summer Vacation needs

Eye Shades and many other items

Suntan Lotion and Creams; Thermos Bottles

Lott Pharmacy

Hugh Lott, Registered Pharmacist

Your LIFE INSURANCE POLICIES contain many values

Put to proper use, they help you to conserve the assets you want your heirs to receive.

See *An Analysis Today!*

W. R. Moore

Representing SOUTHWESTERN LIFE INSURANCE CO.

Are you neglecting your skin?

See or call Proctor Beauty Shop for a Free demonstration with Merle Norman Cosmetics.

MATTIE SHOOK

KILTONE

COMBATS COTTON INSECTS!

KILTONE COMBATS—

With Sherwin-Williams Kiltone and the new YELLOW DEVIL low volume sprayer it is possible to make insecticide applications when needed.

Kiltone is a specially formulated liquid spray concentrate containing Toxaphene and DDT. The YELLOW DEVIL low volume sprayer was developed especially for Kiltone application. One fifty-five gallon load of spray mixture treats up to 25 acres of cotton.

See the new YELLOW DEVIL SPRAYER! Find out more about the Kiltone spray program

- ★ Flea Hopper
- ★ Boll Weevil
- ★ Boll Worm
- ★ Thrips
- ★ Lygus
- ★ Plant Bugs
- ★ Stink Bugs
- ★ Army Worms

FARMERS FUEL ASSOCIATION
 Ervin Jones Manager

Product of SHERWIN-WILLIAMS RESEARCH

Just arrived; A GOOD Sand Fighter

We have Agency for Pamco Knifing Attachment

Get it today with Weeders & Knives or Fenders & sweeps for Farmall, U. T. U., John Deere Fords & Massey Harris

We have a nice stock Knives from Wilkens; also have low Devil Knives; Also International Harvesters which best Quality Knife on Today's market

We Have New and Used 4 Row Cultivators

We understand that the International Sweeps are the Cheapest High Quality SWEEPS on Today's Market. Our Stock is Complete in all sizes. Check our ads Before You Buy

O'Donnell Implement Co.

Wagner & Carr Spraberry, Owners

Gibson's CLEANERS

CLEANING

PRESSING

Alterations

BLOCKER GROCERY

"Trade Goes Where Invited, Stays Where Treated Best"

Specials For Friday & Saturday

Spry 72c
3 lb can

Post bran 14c
40 per cent; 8 oz pkg

Pork & Beans 15c
White Swan 24 oz can

Tomatoes
3 cans for 21c
No 1 can

TEA 39c
Maxwell House 1-4th lb 4 tea bags
Ice Tea Glass all for 39c

Peaches 19c
No 2 1/2 can Exposition

Dreft 19c
Large Box

Jergens Lotion 37c
Jergens; 50c size

HAMS lb 39c
Picnic whole or half per lb

Beef roast lb 55c
Choice Cuts; really tender per lb

FRESH DRESSED Fryers
Battery Raised

TRADE WHERE MA SAVES MONEY FOR PA
WE RESERVE THE RIGHT TO LIMIT Nothing Sold to Merchants to be re sold
WE PAY HIGHEST CASH PRICES FOR EGGS, CREAM — TRADE WHERE YOU PLEASE

ARNETT'S LAUNDRY
We are ready to serve you for your finish laundry and have just installed a new shirt unit and utility press. We invite you to give us a trial. You will like our prompt service and low cost. FREE pick-up and delivery; Phone 1-

Watch for the opening date of the Palm Garden Cafe, E E Howington, owner

For sale; nice fryers; see T 1 Hammonds

FOR SALE: 3 acres just south of town with an old house and an extra good well; reasonable; see J W White 1441 W. 228th St. Torrance, Calif 3tp

POLIO and 7 other diseases; Get a family policy. Small Cost, coverage considered. Ben Moore, Insurance.

For Sale: 500 extra good Higari bundles, no sand. Charles Mc Laurin

For Sale: Good Higari bundles 4 and half miles southeast of O'Donnell Mrs W C Oats 2tp

For rent: 2 room Apartment; see Mrs W T Brandon

SPECIALS

SPECIALS FOR FRIDAY AND SATURDAY

Phone 17 -- We Deliver

pork & beans 3 for 25c
Diamond 1 lb cans

KRAFT DINNER 2 For 23c
Macaroni and Cheese large boxes

LARD 3 lb ctn 49c

Baby food 3 for 25c
Heinz any kind

Corn 2 for 25c
CONCHO no 2 cans Cream style, white

Sardines 7c
American oil; flat cans

Tissue 6 for 29c
AMBASSADOR

GREEN BEANS 2 for 27c
"Diamond" no 2 cans

Pickles 23c
"Diamond" Full Quarts sour or dill

Tide 21c
LARGE BOXES

Cheese lb 39c
LONGHORN

Fryers 55c lb
NICE FRESH DRESSED lb

CAMPBELL

GROCERY :: BAKERY :: MARKET

Announcing . . .
Change in Management
Of Curt's Service
Station

With
Joe Harris
As the New Manager
Your Business is Invited

And Will Be Appreciated

Joe's

SERVICE STATION
Gulf Gas And Products
Washing and car and
Truck Service

For Satisfactory Carpenter work and weather stripping see Ben Moore, Jr Phone 111, Box 498

Mid-Summer
Suggestions

Ladies Shorts
(Many Colors and Materials)
Play Shoes
Bathing Suits and Caps
Play Suits
Sun Dresses
Men and Boys:
Swim Suits
Straws
Loafers
Shirts

Thompson's
Toggery

3 lb Armour Star lard 53c
White Swan Coffee 69c
Diamond Tomatoes g no. 2 cans 25c
Winter Valley new spuds no 2 cans 10 cans for \$1
Vienna Sausage "Old Bill" 10 cans for \$1
PORK and Beans Diamond Brand 10 cans for \$1
10 lbs Spuds mesh bag 49c
Plenty Nice Fresh Fryers
Beef ribs 1 lb 45c
Sliced Bacon per lb 45c
FREE DELIVERY Give us a ring 158

Herman Gro.
AND MARKET

Due to the fine response to our sale, we will
Continue Our . . .
STORE WIDE SALE ANOTHER WEEK
Come In Today and Avail Yourself of Money
Saving Values; see if you don't agree that this
is a REAL Sale.

Western Auto Supply Store

Specials For Friday and
Saturday

Fresh Ky. Wonder Beans per lb 17c
Fresh California Apricots per lb 17c
Fresh California Plums per lb 17c
Tuna, Chicken of the Sea 32c
Dried Apricots Red and White per lb 43c
Aunt Jemima Flour none better 25 lbs \$1.89
Scrappy Dog Food 3 cans for 23c
Short's Bar-B-Q beef or pork 303 can 63c
Good 5 Strand broom 79c
Tide or Oxydol large box 21c
3 lbs pure Lard 49c
Drkees Colored Oleo per lb 28c
Longhorn Cheese per lb 39c
Good Beef Roasts none better lb 49c

WE DELIVER PHONE 118
LINE UP WITH

Line Cash Grocery and Market

Weekend Specials

Shampoo 39c
Halo Shampoo 50c bottle

hand lotion 62c
New Cashmere bouquet 12 1-2 oz
78c size

Tooth paste 49c
ECONOMY SIZE

TIDE, Oxydol, VEL 25c ea.
HIC Orange Ade 33c
6 oz. can

Catsup 19c
14 oz. Del Monte

Tuna 33c
Chicken of the Sea Green Label

Flour \$1.69
25 lb Kimbell Print bag

tomatoes 2 for 25c
No 2 can Diamond Brand

BEANS 2 for 25c
Cut; Our Value no. 2 cans

JELLO 5c
ASSORTED FLAVORS

SHREDDED WHEAT 15c
Large Box; Sunshine

JELLY 28c
Pineapple 14 1-2 mhg

Cheese 39c lb
Longhorn per lb

Beef ribs lb 40c
nice and lean per lb

Bacon lb 26c
Squares in cello; per lb

Plenty of Fresh dressed fryers and
CAT FISH

Mansell Bros.

PHONE 50

FREE DELIVERY

Phone